



THE 1934 LA. FAMAC

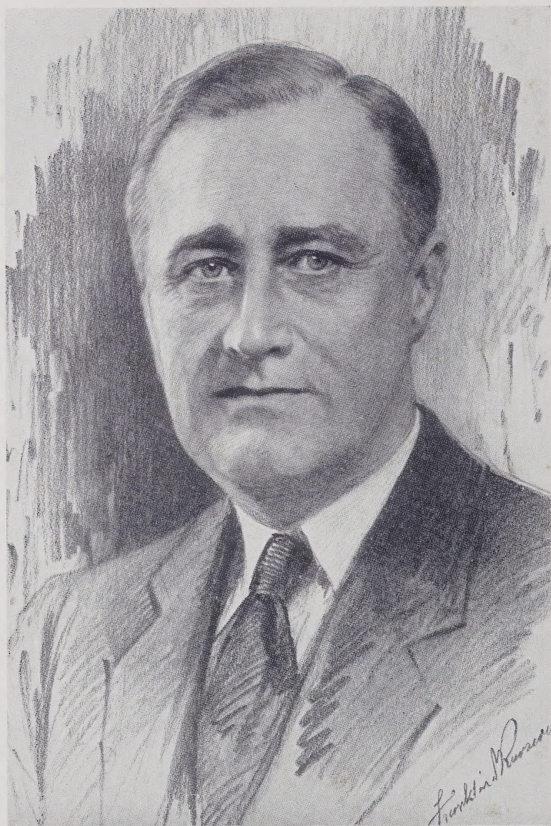
The Lafamac

1934



Volume XIII

Published by Senior Class
Fayetteville High School
Fayetteville, North Carolina





In appreciation of the new hope he has brought us and the surer ways he has shown us, we dedicate this thirteenth volume of the

LAFAMAC

to

FRANKLIN DELANO ROOSEVELT
the thirty-second President of these United States



FOREWORD

In presenting this the thirteenth volume of the LaFamac to the student body, we, the editors, find our emotions both pleasurable and apprehensive. We entered upon the task for which you chose us with keen delight and, at the same time, with many misgivings as to our ability to maintain the level already reached by our predecessors. We have endeavored to make a volume that should picture faithfully the story of the year now closing—one that might let you see both the more serious side of high school life, and also the lighter vein in which our days have been passed.

We are impressed by the changing life of today. Particularly have we felt the transitions of the year as they have become concrete benefits to our town and schools. Under the beneficent guidance of our President, Franklin D. Roosevelt, there has come much of material benefit, and an exhilaration that has been born of a new hope. The landscaping of our grounds, the completion of a fine athletic bowl, the construction of tennis courts, and improvements upon the building were all made possible by the CWA, PWA, and other of our President's provisions.

We rejoice that we are entering upon a day of a bigger and better Fayetteville. With the great river improvement on the east and an enlarged Fort Bragg on the west, we feel our community to be a very particular example of what the "New Deal" is doing for our entire country.



C. B. Poole
5/11/15



MRS. JOHN

Mrs. P. B. John



MR. POOLE



MISS NEWTON

Miss Newton



MRS. BROADFOOT



MRS. CORBETT



MISS DAVIS



MISS FISHER



MR. HARVELL



MR. ALLEN



MISS CARRAWAY



MR. MORRISON

Tracy Morrison



MISS WESTPHAL

Mrs. J. Westphal

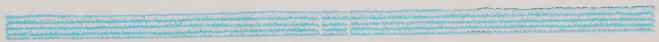


MRS. NEWBERRY



MISS RANKIN

FACULTY





MAGGIE CRUMPLER
EDITOR-IN-CHIEF

Maggie Crumpler



DUDLEY MAXWELL
BUSINESS MANAGER

Dudley

LAFAMAC STAFF



Seavy

Hurst





SENIOR CLASS

COLORS: *Green and White*

FLOWER: *Sweet Pea*

MOTTO: *I think, therefore I am*

COMMENCEMENT SPEAKERS

RACHEL BROTHERS
ELIZABETH FRASER

HAROLD HILBURN
RACHEL NYE

RUTH PORTER
REVA STEIN

SARAH STEVENS
GEORGE EDD WAREN

NELL BURTON *Valedictorian*
 EUGENE BILL *Salutatorian*

ALMA MATER, FARE THEE WELL

THE day of parting is at hand,
 And we are loath to go
 From one where memories linger on—
 From one that we love so.

We've loved thee well, old Fayetteville High,
 Through thee we have been blessed;
 For thou hast taught us how to live,
 Hast given us thy best.

O' may the coming years ne'er bring
 That which will bow thy head
 In sorrow for those that thou thought
 Would never be misled.

But may our years of toil and zest
 To thee bring honor due;
 Through perseverance we shall win
 As thou hast taught us to.

Until we've done our very best
 In honor, truth, and might,
 Will our full debt be paid to thee
 For starting us aright.

Thou hast paved for us the first few miles
 In this highway of Life,
 And may we keep the coming stretch
 As clean from sin and strife.

So, Alma Mater, fare thee well,
 Our echoes linger on
 In these wide halls where joy has dwelt
 In study, youth, and song.

HELEN DEMPSEY.



IRA AYRES

"Speech is great, but silence is greater."

Band '31, '32, '33.



DOROTHY BAILEY

"Not too serious, not too gay,
But a rare good girl in every way."

Glee Club '31, '32; Athletic Association '31; Dramatic Club '31, '32; Garden Club '31; Basketball '32, '33, '34; French Club '34.

STACY GORDON BEDSOLE

"A football hero, basketball too,
Is there anything this boy can't do?"

Masser Hill '32; Basketball '32, '33, '34; Football '32, '33.



ELIZABETH MITCHELLE BELLE

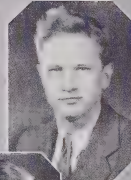
"With volleys of eternal bubble."

Garden Club '31; Dramatic Club '31, '32; Glee Club '31, '32, '33; Latin Club '31, '32, '33, '34; French Club '34; Junior Chamainade Club '34; Basketball '31, '32, '33.

LOUIS A. BELL

"I have a heart with room for every joy."

French Club '34.



EUGENE ARTHUR BILL, JR.

"He is a scholar, a ripping good one,
Exceeding wise, forespoken, and
persuading."

Long Hill High School '31, '32; French Club '34.

STANCL DEBERRY BOWLES

"And the why we call him 'Rooster'
He's such a veritable booster."

Glee Club '33; Class Football '31; Varsity Football '32, '33, '34; Monogram Club '31, '32, '33, '34; Class Basketball '32; Varsity Basketball '33, '34; Baseball '32; Co-captain Basketball '34; Vice President Monogram Club '34; French Club '32, '33.



RACHEL HOWELL BROTHERS

"A friend in need, she's the friend indeed."

Latin Club '31, '32; French Club '33, '34; Dramatic Club '31, '33; Garden Club '32; Glee Club '32, '33; Tennis Tournament '32; Zip-Zap Staff '34; Girl Reserves '34; Junior Chamainade Club '34; "Friendliest" '34.



JEAN WILLIAMS BULLARD

"She smiles and smiles and never sighs."

Dramatic Club '31, '32, '34; Garden Club '31; Athletic Association '31; Basketball '31, '32; Glee Club '32; French Club '34; Latin Club '31, '32.

LE ROY WARD BURGESS

"While from cash and care I'm free,
I laugh at the world and the world
laughs at me."

Football '31; Class Basketball '32; Hi-Y
'33, '34; Zig-Zag Staff '34.



NELL BURTON

"Success is sure to come to one so
faithful as she."

Glee Club '31; Science Club '31; Dra-
matic Club '31, '32; Latin Club '31, '32;
Class Basketball '31, '33; Librarian '33;
French Club '33, '34; Latin Staff '34.

EARL BUTLER

"He's not afraid to say his say,
Though the whole world be against
him."

Football '33, '34; French Club '34; Golf
'33, '34.



NOLA RHEA CARTER

"Never failing
Of the best
Lasting in friendship
Always true."

Wilson High School '30, '31; Basketball
'33, '34; French Club '34.

MAY HUNTER COOK

"Cookie"

"The most precious gifts often come
wrapped in the smallest packages."

Latin Club '31; Garden Club '31; Dra-
matic Club '32, '33, '34; French Club '34;
Girl Reserves '34.



FRANCIS M. CRIST, JR.

"Jew"

"Roll on world, and I'll roll with you."

McDonogh Military Academy '31, '32,
'33; Allan Debating Club '31, '32, '33;
Soccer '32, '33; La Crosse '33; Rifle Team
'31, '32, '33.

MAGGIE BELL CRUMPLER

"As editor-in-chief of our LAFAMAC,
Maggie's made a name,
Hard study and concentration,
Have won for this girl fame."

Garden Club '31; Secretary Class '31;
Latin Club '31, '32; Dramatic Club '31;
Librarian '33, '34; School Reporter '33,
'34; Girl Reserves '34; Editor-in-Chief
LAFAMAC '34; Most Dependable '34; Latin
Staff '34; Cicero Club '33.



MARGARET ELIZABETH DAVIS

"If ever she had an evil thought,
She spoke no evil word."

Glee Club '32, '33; Dramatic Club '31,
'32, '33; Latin Club '31, '32; Basketball
'33, '34.

HELEN CATHERINE DEMPSEY

"A very likable high school lass
Is poet of the senior class."

Basketball '31; Glee Club '32, '33; Class
Poet '34.



BETTY CULPEPPER DOWNS

"Behold! and when she sings,
Even the birds do cease their
melody."

Tumbling Club '31; Glee Club '31, '32,
'33; Dramatic Club '31; French Club '32;
'33; Basketball '33, '34; Junior Chaminade
Club '34.

Handwritten note: Betty Culpepper Downs

Handwritten signature: John D. Downs

JOHN D. DOWNS

"A good disposition I prefer to gold."

French Club '33, '34.



ELIZABETH ANN FRASER

"Betty"

"Her mind to her a kingdom is."

American High School Manila, P. I.,
'31; Main Avenue High School, San
Antonio '31; Thomas Jefferson High
School '32; Hyde Park High School,
Chicago '33; Second Debating Team '34;
Best Informed '34.

IDA GIBSON

"The mildest manners and the
gentlest heart."

Glee Club '31, '32; Tumbling Club '32;
French Club '34; Tennis Club '32; Athletic
Club '31.



GERTRUDE GLINDMEIER

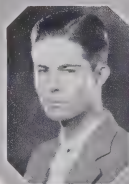
"Gentle of speech, and beneficent of
mind."

French Club '33, '34; Basketball '31, '32,
'33; Garden Club '31; Glee Club '31, '32.

JAMES WILLIAM GOODWIN, JR.
"Billy"

"I am sure care is an enemy of life."

Radio Club '32; Varsity Football '33;
Go! '33, '34.



VIRGINIA GRIFFITH

"I have a heart with room for every
joy."

Washington High School '30, '31; Ander-
son Creek High '31, '32, '33; Freshman
Basketball '30, '31; Tennis Club '30, '31.

Handwritten note: Best All-around
1934 - Virginia Griffith

HENRY ROBINSON HALL

"They who think they can, can conquer."

Hi-Y Club '33, '34; French Club '33, '34.



WILLIAM V. HAMILTON

"Billy"

"Oh, why should life all labor be?"
Football '32.

MILDRED CATHERINE HATCH

"Well-timed silence has more eloquence than speech."

Glee Club '31, '32, '33; Garden Club '31; Girls Athletic Club '31; Basketball '31; Librarian '33, '34; French Club '33, '34; Second Debating Team '34.



VIRGINIA MAE HAWN

"Dresses for breakfast, dinners, and balls,
Dresses to sit and stand in the halls."

Garden Club '31; Dramatic Club '31, '32; Glee Club '33; French Club '33, '34; Basketball '31, '33; Athletic Club '31; Latin Club '31, '32.

BESSIE H. HERRING

"Gentleness is an essential quality in womanhood."

Glee Club '30; Basketball '33.



Has - Remember *Winston and how they played "country" remembered*
SEELY HIGHSMITH, JR.
"He has a nose for news facts
And almost belongs to the intelligentsia."
Leavy

Radio Club '32; Dramatic Club '31, '32, '33, '34; Marshal '33; Hi-Y '32, '33, '34; Band '32, '33; Latin Club '31, '32; LAFAMAC Staff '34; Latin Staff '34.

HAROLD H. HILBURN

"Music finds here her pleasant lodging place,
And speaks out through his voice and grace."

Band '30, '31, '32, '33, '34; Glee Club '32, '33; Latin Club '30, '31; Hi-Y '33, '34; Orchestra '29, '30; German Band '33; French Club '33, '34; Co-Co Symphony '34.



JAMES H. HOLCOMBE

"Jas"

"It is a plague to be too handsome a man."

Captain Freshman Basketball '31; Varsity Basketball '32, '33, '34; Varsity Football '32, '33, '34; President Garden Club '31; Track '31; Glee Club '33; Monogram Club '33, '34; Hi-Y '33, '34; Hand-some '34; French Club '34; Zip-Zag Staff '34.

Arthur McNeill Hollingsworth

ARTHUR McNEILL HOLLINGSWORTH, JR.

"A steady boy with a goal in view,
And willing to work and see it
through."

Elise Academy '31, '32, '33; President
Sophomore Class '31; Alpha Gamma
Epsilon Fraternity '32, '33; Football '32,
'33; Athenian Literary Society '31; French
Club '34.



ELIZABETH A. HOLMES . .
"Lib"

"Flirt! We'll say she can,
She'll tell you how to hold your
man."

Latin Club '31; Dramatic Club '32, '33,
'34; Garden Club '32; Athletic Club '33;
French Club '34; Glee Club '32; French
Play '34.

OLIVER WENDELL HOLMES, JR.

"You'll always see him with a smile
on his face,
There is no one who could take his
place."

Taxidermy Club '31; Radio Club '31;
Dramatic Club '31, '32; Junior Football
'32.



JAMES THOMAS HORNER
"Tom"

"We must have a reason for speech,
But we need none for silence."

Massey Hill High '30, '31, '32; French
Club '34.

OLIVER YATES HUMPHREY, JR.

"When I will, I will,
But when I won't, I won't."



DOROTHY GRACE HUTAFF
"Dottie"

"A girl who respects loyalty and fair
play,
A girl who follows these rules every
day."

Garden Club '31, '32; Science Club '31;
French Club '34; *Ziz-Zag Staff* '34;
LAFAMAC Staff '34; Vice President Girl
Reserves '34; Latin Club '31, '32.

MARGARET JACKSON

"Her purpose is as true as steel,
And diligence works her plan."

French Club '33, '34.



JOHNNIE H. JOHNSON

"Determination makes dreams come
true."

WILLIAM STONE JORDAN, JR.

"He's a honey, his dignity a scream,
But he's the answer to each maiden's
dream."

Latin Club '30, '31, '32, '33; French
Club '33, '34; Vice President Class '33,
'34; Band '32, '33, '34; President Hi-Y
'34; Glee Club '33; Science Club '31;
Marshal '33; French Play '34.



ELIZABETH LANE KING

"I chatter, chatter as I go."

Latin Club '31, '32; Science Club '31;
Athletic Club '31; Class Basketball '31;
French Club '33, '34; Glee Club '32; *Zig-
Zag* Staff '34; Tumbling Club '32; Dra-
matic Club '31, '32, '33; French Play '34;
Tennis Tournament '32.

MIRIAM FOREMAN KEOLLING

"Mi-mi"

"Her smiles are many, her frowns are
few,
She is a girl whose friendship is
true."

Dramatic Club '31, '32; French Club
'33, '34; Latin Club '31, '32, '33.



IRIS REBECCA LEE

"Speak not when others speak, be no
flatterer."

Dramatic Club '31, '32; Garden Club
'31; Glee Club '32.

KERMIT A. LEE

"Hermit"

"Brawny and tall—
A man-size man;
When Kermit says he can, he can."

Varsity Football '33, '34; French Club
'33, '34; Hi-Y Club '33, '34; Monogram
Club '33, '34; Massey High '31, '32;
Glee Club '33; Marshal '33.



BENJAMIN BRINSON LEWIS

"Bennie"

"While I have my today,
Go take your old tomorrow."

Assistant Manager Football Team '30;
Dramatic Club '30, '31, '32; Band '31, '32,
'33; Taxidermy Club '31; Latin Club '30,
'31; Glee Club '31, '32, '33; French Club
'32, '33; Hi-Y Club '32, '33, '34.

TWYLA MADDOX

"Twirler"

"Sober, quiet, patient, and demure,
A friend of whom you're always
sure."

French Club '34; Garden Club '31;
Dramatic Club '32, '34; Science Club '31;
Glee Club '31, '32; Junior Chaminade Club
'34.



MORTIMER MARTIN

"Consider yourself in luck, if you
have a friend like Mortimer."

French Club '33, '34; President Fresh-
man Class '31.

WALTER GEORGE MARTINDALE

"Straight up and down, with a cent 'yes' or 'no'—
Do you think he'll ever give us a show"?

Band '31, '32.



DUDLEY ARTHUR MAXWELL

"Oh, yes he has some virtues, and few of these we're slighting;
But take it from me, as far as I see, not one of these is writing."

Shelby High '31; Taxidermy Club '31; Class Basketball '33; Business Manager LAFAMAC '34; Most Courteous '34; Glee Club '32; Hi-Y '33, '34.

DAVID MELTON

"A better friend you cannot find—
Well versed in books of unusual kind."



LEONIDAS A. MOORE

"L. A."

"A lion among ladies is a dangerous thing."

Band '31, '32, '33, '34; Glee Club '32, '33.

HECTOR McGEACHY, JR.

"McGeechy"

"A lady-killer, a student too,
That boy can dance, a musician—
booh!"

French Club '33, '34; Latin Club '30, '31, '32, '33; Hi-Y '33, '34; Secretary-Treasurer Hi-Y '34; Science Club '31; Chief Marshal '33; President Senior Class '34; Band '32, '33, '34; Radio Club '32; French Play '34.



MARY AGNES McBENNETT

"A shark at math, in English she's great,
Everybody likes her, and oh, boy,
does she rate?"

ELIZABETH COOPER MACKETHAN

"Kitty"

"Cute and attractive, bright and gay,
The kind of a girl who brightens
the way."

Latin Club '31, '32; Dramatic Club '31, '32, '33; Glee Club '31, '32; Tennis Tournament '32; French Club '33, '34; Junior Chaminade Club '34; Zig-Zag Staff '34; Senior Play '30; Girl Reserves '34; LAFAMAC Staff '34; Athletic Club '31, '32, '33; Class Basketball '34; Science Club '32; Most Popular Girl '34.



RACHEL BULLOCK NYE

"Rare compound of quality, noble and true,
With plenty of sense and good
humor too."

Latin Club '31, '32, '33, '34; French Club '33, '34; Junior Chaminade Club '34; Marshal '34; Zig-Zag Staff '34; Class Secretary '34; Girl Reserves '34; Historian '34.



Butch

COURTNAY O'CONNELL

"A gentleman, a scholar too,
With finer qualities through and
through."



LUCY POWELL OLIVER

"Doody"

"When duty and pleasure clash,
Let duty go to smash."

Garden Club '31; Dramatic Club '31, '32,
'33, '34; Science Club '31; French Club
'33, '34; Latin Club '31, '32; Zip-Zag
Staff '34; Girl Reserves '34; French Play
'34

HUGHEY A. PEARSALL

"Tommy"

"He's witty, he's sure to rise,
He's a corker for his size."

Garden Club '31; Football '32, '33;
Baseball '31, '32; A. A. A. Club '31.



SARA ELIZABETH PEDEN

"Lizz"

"Always sweet, always true,
Hair of gold, eyes of blue."

Garden Club '31, '32; Dramatic Club
'31, '32, '33, '34; Science Club '31; Latin
Club '31, '32; French Club '33, '34; Zip-
Zag Staff '34; Girl Reserves '31; Secretary
'31

MARGARET CRAMER PERCIVAL

"So friendly, so jolly, so capable too,
Liked by all, both old and new."

Latin Club '31, '32; Garden Club '31;
Dramatic Club '31, '32, '33, '34; Zip-Zag
Staff '34; LaFAMAC Staff '34; French
Club '33, '34; Band '33, '34; Girl Reserves
'34; Reporter Girl Reserves '34; Junior
Chaminade Club '34; French Play '34.



CLAUDE HAROLD PIGOTT, JR.

"Piggy"

"A musician is a funny thing,
Harold makes our ears ring
With his SAXOPHONE."

Radio Club '31; Band '31, '32, '33, '34;
Vice President Band '34; Orchestra '34

RUTH VANN PORTER

"Wythe"

"The world can't twirl without an
attractive girl."

Class Basketball '31; Science Club '31;
Athletic Club '31; Glee Club '31, '32, '33;
Band '32, '33, '34; Band Vice President
'33; Dramatic Club '31, '32, '33; Class
Treasurer '33; Marshal '33; President
Junior Chaminade Club '34; Girl Reserves
'34; Orchestra '34; French Club '33, '34;
Zip-Zag Staff '34; LaFAMAC Staff '34;
Class Musician '34; Most Attractive '34.

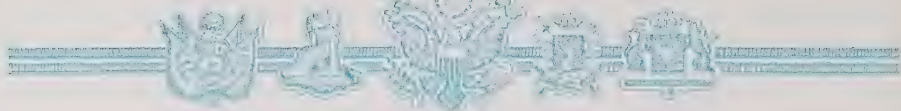


OWEN MEREDITH POWERS, JR.

"O. M."

"Wise to resolve, patient to perform."

Latin Staff '34; LaFAMAC Staff '34;
Radio Club '31; Taxidermy Club '31;
Benson High '32; Cicero Club '33; Most
Staunch '34.



GORDON H. REGISTER

"A shark at Algebra—Gometry too—
A big blonde boy with eyes of blue."



HELEN ELIZABETH REGISTER

"Helen is true, sweet, kind,
A better friend you cannot find."

Glee Club '30, '31, '32, '33; Athletic Club '31; Basketball '31, '32, '33; French Club '33, '34; Zig-Zag Staff '34.

MARGARET LOUISE REHM

"Meek, sweet, brave, and good,
These qualities she possesses in a fine degree."

Dramatic Club '31, '32, '33, '34; Garden Club '31; Junior Chaminade Club '34.



THOMAS D. ROBINSON

"Tommiie"

"Modesty is a candle to thy merit."

Dramatic Club '31, '32, '33; Radio Club '31; Garden Club '31; Band '31, '32; Glee Club '33; French Club '33, '34; Zig-Zag Staff '34; French Play '34; Hi-Y Club '32, '33, '34.

DORIS ROSE

"Dotty"

"A student that one won't forget,
A loyal one to F. H. S."

Science Club '31; Dramatic Club '31; Athletic Club '31, '32; Tennis Tournament '32; Class Basketball '31, '32; Tumbling Club '32; Glee Club '31, '32, '33; French Reporter '34; French Club '33, '34; Librarian '33, '34; Zig-Zag Staff '33, '34; LaFAMAC Staff '34.



MARYLEIGH RUNGE

"A girl who is welcome everywhere
Because she is jolly here and there."

Four Oaks High '31, '32, '33; Secretary Class '31; Glee Club '31, '32, '33; Vice President Class '32, President '33; Music Club '33; Junior Chaminade Club '34; French Club '34.

D. P. RUSS, JR.

"Do your duty and do it well,
What more could anyone ask?"

Dramatic Club '31, '32; Latin Club '31, '32; French Club '33, '34; Radio Club '32; Band '32, '33, '34; Secretary Band '34; Orchestra '34; Triangular Debater '34; Glee Club '32; Testator '34; Class Basketball '31.



RUTH SANDROCK

"To know her is to love her—
You never can forget her."

Dramatic Club '31; Glee Club '31; Class Basketball '31; Salem Academy '32; Dramatic Club '33; Glee Club '33; Class Basketball '32; Junior Chaminade Club '33.



VIRGINIA ERWIN SISK
"Gin"

"Gentle, sweet, a good friend too,
Such qualities one couldn't overdo."

North Wilkesboro High '31; Glee Club '31, '33; Band '31, '32, '33; Girl Reserves '34; *Zig-Zag* Staff '34; French Club '34; Class Treasurer '32; Dramatic Club '33, '34; Junior Chaminade Club '34; Librarian '34.

Syske



EVELYN IRENE SLOAN
"Ebie"

"Though Evelyn joined us late in the game,
For herself she's made a name."

Pageland High '31, '32; Creedmoor High '33; French Club '34; Girl Reserves '34; Donor '34; Best-all-around '34.

CHARLOTTE SMITH

"Quiet, lovable, impulsive, sweet,
From the top of her head to her very feet."

Glee Club '30, '31, '32, '33; Athletic Club '31, '32; Basketball '32; Dramatic Club '32, '33, '34; Home Economics Club '32; French Club '33, '34.



BETTY SOUDERS

"Her air, her manner, her neat attire,
She's a girl we all admire."

Latin Club '31, '32, '33, '34; Latin Staff '34; French Club '33, '34; Athletic Club '31; Basketball '32, '33, '34; Marshal '33; Junior Chaminade Club '34; Girl Reserves '34; Librarian '33, '34; French Play '34; Cheer Leader '34.

DOROTHY TAYLOR SPEARS
"Dot"

"Pretty, daring, carefree, and gay,
But Dot gets her lessons nearly every day."

Science Club '31; Garden Club '31, '32; Latin Club '31, '32; Basketball '31, '32; Dramatic Club '31, '32, '33, '34; French Club '33, '34; *Zig-Zag* Staff '34; LAFAMAC Staff '34; Most Original '34.



REVA SYRIL STEIN
"River"

"What this girl starts out to do,
She'll finish right, I'm telling you."

French Club '33, '34; Varsity Basketball '32, '33; Dramatic Club '31, '32, '33, '34; President Girl Reserves '34; LAFAMAC Staff '34; Secretary-Treasurer Junior Chaminade Club '34; Class Treasurer '34; Triangular Debater '34; Commencement Speaker '34; *Zig-Zag* Staff.

SARAH ELIZABETH STEVENS

"A happy smile that's a joy to see,
And as nice as anyone can be."

Librarian '33, '34; Glee Club '33; French Club '34; Junior Chaminade Club '34; Girl Reserves '34; Dramatic Club '34; *Zig-Zag* Staff '34; French Play '34.



MARY MONTGOMERY STEWART

"A shark at Shakespeare's literature,
An artist too, you may be sure."

Latin Club '31; Dramatic Club '31, '32; Class Secretary '32; (Honorable Mention State Latin Contest '32); Marshal '33; LAFAMAC Staff '34; Latin Staff '34; Girl Reserves '34; Most Courteous '34.

The English Club

Sarah Stevens

TOMMY SWANN

"A friend to me, a friend to you,
This boy plays basketball too."

Varsity Basketball '33, '34; French Club '34; Hi-Y '33, '34.



HAZEL MITCHEL TEW

"Hazel's good in everything, 'specially basketball,
Calm, collected, cool, and swift.
She's the best of all."

Glee Club '31, '32; Garden Club '31, '32; Basketball '31, '32, '33, '34; Tumbling Club '31; French Club '34; Cheer Leader '34.

HARRY FULTON TYLER

"No better than he should be."

Dramatic Club '32; Taxidermy Club '32; Glee Club '31.



LILLIAN DALE VANN

"Lil"

"She never seems to worry,
And can she string a line!
To know her is to love her—
She laughs most all the time."

Athletic Club '31; Class Basketball '31, '32, '33, '34; Glee Club '31, '32, '33; Junior Chaminade Club '34; Band '33, '34; Girl Reserves '34; French Club '33, '34; Dramatic Club '31, '32, '33; LAFAMAC Staff '34.

BENNIE STEPHENS VERSACE

"Ben"

"Bennie joined us late in the game,
But everyone likes him just the same."

Nathan Hale Junior High '31; Alexander Hamilton High '32; Great Bridge High '33; Maury High '34; Fayetteville High '34.



GEORGE EDWIN HUGHES WARREN

"George Edd"

"The best-hearted boy you ever knew;
He's a good student and athlete too."

Dramatic Club '30; Latin Club '30, '31, '32, '33; French Club '33; Varsity Basketball '33, '34; President Monogram Club '34; Manager Football '33; Vice President Hi-Y '34; LAFAMAC Staff '34; Best-all-around '34; Commencement Speaker '34; Class Basketball '31.

WYTHE BREVARD WEATHERS

"Ruth"

"The way to have a friend is to be one."

French Club '33, '34; Glee Club '32; Marshal '33; Class Vice President '32; Class President '33; President Band '33; Drum Major Band '33, '34; Orchestra '34; Band '31, '32, '33, '34; Hi-Y '32, '33, '34; Junior Chaminade Club '34; Zig-Zag Staff '34; LAFAMAC Staff '34; Class Musician '34.



LEONA ADRIENNE WEST

"The best-hearted girl you ever knew,
Lovable, honest, and cheerful too."

Basketball '30, '31; Glee Club '30, '31; French Club '34.

WILLIAM R. WEMYSS

"Not exactly studious,
But prominent in the band,
A happy-go-lucky fellow—
At teasing he is grand."

President Band '31, '32; Band '31, '32, '33, '34; Glee Club '32, '33; Track '32; German Band '33.

CLASS HISTORY

PERHAPS our country had experienced depressions before, but it is very doubtful whether the affairs of the nation had ever been in such a terrible state as 1930 found them. Men were out of employment and women were making sacrifices. Is there little wonder that when an eager group of young people entered Fayetteville High School in this year 1930, that their enthusiasm was dulled and their disappointments numerous? In spite of it all, though, our courage was kept up, and work was begun.

Naturally, at times, notwithstanding all the trials and tribulations that encounter a Freshman in high school, the depression seemed to disappear into the background of our thoughts; and with the help of the faculty, we established the Freshman Class and elected Mortimer Martin, Maggie Crumpler, Billy Owen, and Annie Lee Bennett as our leaders. We were very proud when one of our classmates, Nell Burton, was awarded the Scholarship Medal at the end of the year.

Our teachers proved very helpful and their guidance was deeply appreciated in overcoming such monsters as Algebra and Latin. Yet, somehow, we felt the presence of an unseen guiding hand. At times, we would almost catch a glimpse of this guide, but then, the vision would fade and we would be left in darkness.

Our second year we elected Dudley Maxwell, Mary Stewart, Virginia Sisk, and Wythe Weathers for our class officers. This year many of our boys and girls began to organize a F. H. S. Band under the direction of "Uncle" Joe Hamrick. Nell Burton upheld the class honors, as she had done previously, by receiving the Math Medal for the year.

Of course our third year presented difficulties as had the previous years, but by this time we felt quite at home. This year Wythe Weathers was elected our president, with William Jordan, Cramer Percival, and Ruth Porter to help him. Our Junior year was very exciting due to the fact that we had the thrilling experience of a Junior-Senior prom and the selection of our F. H. S. rings. Our class was very much pleased when we won the English cup, and one of our members, Rachel Nye, won the Stedman Essay award. The Senior Class paid us the honor of selecting William Jordan, Betty Souders, Hector McGeachy, Ruth Porter, Wythe Weathers, Louise Holland, Kermit Lee, Mary Stewart, James Holcombe, and Rachel Nye for Marshals. This year had been an extremely trying one for our country, and such difficulties often arose that but for the competent hand of our unseen guide, we should have gone but lamely along our way.

Then came the glory of at least reaching our Senior year. This year our class elected Hector McGeachy, William Jordan, Rachel Nye, and Reva Stein as officers. We were very successful in athletics, and we can certainly give high credit to the following: Kermit Lee, Tommy Swann, James Holcombe, George Edd Warren, George Cook, and Stancel Bowles. The members had carried on bravely and courageously, and we were proud of our record.

In a manner to heighten this effect, one day Mrs. Roosevelt herself walked down our streets.

Were we wrong in considering this a fulfillment of a prophecy, an omen of assurance for the future?

Toward the dawn of graduation we suddenly realized how much brighter everything seemed, how much happier and more prosperous people looked. We questioned this fact, and one day had our reward when we saw our guide revealed in the clear light, carrying the insignia of the Blue Eagle to personify success and prosperity. And even as we gazed upon him, suddenly the bird seemed to raise its pinions and with a cry of joy, to fly ahead to lead the class of '34 out of the past into a more promising future.


RACHEL NYE,
Historian.



CLASS PROPHECY

THE glamor of the future has caught me! What will the next decade unfold? Ninety boys and girls are about to set forth; could I forecast their destinies? Some of these will fulfil our highest expectations; others, I feel sure, will bring us rare surprises. For the fun of it, Imagination, go forth!

Why, here are our class president, Hector McGeachy and our vice president, William Jordan. These two have joined the C. C. C.'s. It is rumored that Betty Souders, as supervisor, with her efficient secretary, Virginia Sisk, outrageously overworks the poor boys. . . . Sarah Stevens is using her conspicuously literary talent by editing a column under the caption of *Bright Sayings of Children*. Her most faithful and original contributor is Twyla Maddox. Lillian Vann is also noted for her shining contributions. Another popular editor is Elizabeth Holmes, who publishes daily, *Advice to the Lovelorn*. . . . The lights of Broadway dazzle me! Above the Paramount Theater in glaring electric figures, I read: *Her Lambkin*, featuring Cramer Percival and Seavy Highsmith. Who is the nifty little dame with the Fifi dog? Hazel Tew, to be sure, Broadway's idol. With her walks modishly dressed Virginia Hawn. A beautiful cigarette advertisement catches my eye. Peering closer I see the modest signature of Mary Stewart. Her drawings, as well as her beautiful models, Dorothy Spears, Bessie Herring, and Ruth Sandrock are eagerly sought after. Henry Hall has started us by making millions of dollars on a tickless clock, his ticklish stock! On Wall Street, also, are Helen Register, Harold Piggott and Earl Butler buried in contemplation. A newspaper brings me the following item: "Professor Benjamin Versace has recently discovered a sixth, seventh, eighth, and ninth dimension. He is today the house guest of Professor Einstein." Another item: "After years of the combined labor of O. M. Powers, Helen Dempsey, and Iris Lee, a long narrative poem of great historic value has been completed. The poem in full reads as follows: "Roses are red, Violets are blue; You chase me and so am I!" . . . A farm, a farmer, and a farmer's wife! Wythe Weathers, the husky farmer; Ruth Porter, his dainty wife. They are doing outstandingly well and can afford May Hunter Cook as the cook, and Kermit Lee and L. A. Monroe as their two hired men. L. A. milks the cows. Another successful farmer is Ira Ayers. . . . The Navy boasts Rear Admiral Thomas Swann. He has been awarded a medal for bravery. He saved Ida Gibson and Nola Carter from satisfying a shark's gastronomic fancies. Some of his trusted shipmates are Billy Goodwin, Mortimer Martin, and Harry Tyler. . . . Ye Olde Market House! But a sign mars its beauty! Looking closer, I read: *Rachel's Rigup*. Rachel Brothers has installed a favorite high school hangout within its immortal walls! Her soda jerkers are Elizabeth King, Elizabeth Bell, and Virginia Griffith. Maryleigh Runge has established a fashionable hat shop on Hay Street and retails only the choicest models. Over an enormous store building a blazing sign reads: Belk-Lewis! Benjamin Lewis is its most affable and efficient manager. His assistant, Tommy Pearsall, is trying to emulate his employer. Doris Rose heads the Baby Department, and Rachel Nye, the Men's Department. Gertrude Glendmier and Nell Burton are also employed in this growing concern. Another large building draws my attention. A sign reads: *Bill-Book Hotel—Roy Burgess, Mgr.* Lounging in the lobby with the sophisticated air of young married women are Lucy Drake and Peggy Magruder. In the cutest little red suits with big brass buttons are Eugene Bill and John Downs as bellboys. . . . It is the Christmas season and my ears catch the sound of a tinkling bell. Santa Claus! From behind an array of whiskers, George Edd Waren is barely recognizable. Reva Stein is dear little Mrs. St. Nicholas. Amidst the crowds, Lucy Spinks and Margaret Davis tightly grasp their children, who are eager to tell Papa Nick their childish desires. . . . James Holcombe drives the fire engine and the fire loss has decreased 92 per cent. An outstanding movie is being shown at the Carolina Theater. Elizabeth Pedan and Tom Robinson are co-starring in: *Never Name a Nut Nellie*. Their supporting cast includes Margaret Jackson, Dorothy Bailey, and Gordon Register. The famous movie critics, Charlotte Smith, Jean Bullard, and Oliver Humphrey voted it the year's best. A saleswoman! Evelyn Sloan is selling Maxwell House Coffee. Her slogan is: *Maxwell House is Ideal*. I see D. P. Russ and Tom Horner, prominent young lawyers, arguing a case. Former Lucy Oliver is suing Preston Woodall for a divorce. She prepared him some delicious apricots and he called them red-headed prunes. In the jury I recognize David Melton, Johnnie Johnson, and Stacy Bedsole. Ten minutes later, Judge Harold Hilburn declared the case dismissed because of lack of evidence. . . . The Oliver Holmes Circus is in town! Several members of our class offer part of



its entertainment. Betty Downs is a famous trapeze flyer. Billy Hamilton and Lewis Bell are exceedingly comical clowns and George Cook has the world's most perfectly trained monkeys. . . . A writer? Yes, Miriam Koelling has written a pastoral romance entitled, *Cocoonuts*. Margaret Rehm has attractively illustrated the edition. Frank Crist and Mildred Hatch are popular radio announcers. Maggie Crumpler and Dudley Maxwell have organized a publishing company. Their specialty is publishing school annuals. A conference is being held and an air of suspense hangs over the room as Dorothy Hutaff makes the following announcement: "After much consideration as judges, William Wemyss, Betty Fraser, and I have unanimously selected Courtney O'Connell as the best dressed gentleman of New York!"

My classmates these, and I can see not one without a good degree of success, even though *I* might have chosen to have *him* choose differently. How much of this success, I wonder, will have come as the result of the "New Deal" under which we have taken so high courage?

ELIZABETH MACKETHAN.

CLASS SONG

TUNE: *Home on the Range*

OH, give us a WILL that is strong and true
That will aid us all life's journey through;
One that will conquer each strife,
Win the battles we fight,
Gain in full each goal we pursue.

Let a PURPOSE be mine
That will strive to win
That plays a clean, straight-forward game—
Success be the pay
For the game that we play
With aims that are noble and fine.

Let TRUTH be our guide
May she walk by our side
To direct our foot-steps aright;
With truth and love
We will look above,
Sure each dream and each hope shall abide.

Chorus

WILL—PURPOSE and TRUTH;
These three may each one possess,
To aid in the game,
For the honor and fame
That we all hope and strive to attain.

RUTH PORTER.



LAST WILL AND TESTAMENT

CITY OF FAYETTEVILLE
COUNTY OF CUMBERLAND
STATE OF NORTH CAROLINA

WE, the Senior Class of the Fayetteville High School, of the aforesaid County and State, being of sound mind and judgment, with the realization that our high school days are nearing an end, and wishing to dispose of some of the treasures that we have accumulated during our four years journey, do make, publish and declare this our last will and testament. The following we do will and bequeath:

SECTION I, ARTICLE I

To F. H. S., our lifelong love, devotion, and loyalty.

SECTION I, ARTICLE II

To the Faculty, our profoundest gratitude and appreciation for their untiring efforts in making our school life both pleasant and profitable.

SECTION I, ARTICLE III

To Mr. Poole, our innumerable thanks for his active interest in all of our undertakings.

SECTION I, ARTICLE IV

To the Parent Teacher's Association, many thanks for the things they have done to make high school a pleasure.

SECTION I, ARTICLE V

To the Ministerial Association, we wish to express our esteem for the beneficial talks the different members have presented to us from week to week.

SECTION I, ARTICLE VI

To the Federal and State Relief Administrations, our unmeasured appreciation for the work that has been done in the beautification of our building as well as our grounds.

SECTION II, ARTICLE I

To the Juniors, we will and bequeath all the Senior privileges that we strove so untiringly to obtain.

SECTION II, ARTICLE II

To the Sophomores, we will and bequeath the important feeling of an upper classman.

SECTION II, ARTICLE III

To the Freshmen, we wish to leave a feeling of encouragement in reminding them of the old saying, namely: "the darkest hour is just before the dawn."

SECTION II, ARTICLE IV

To Raymond, we will and bequeath all the chewing gum that we left under our desks.

SECTION III, ARTICLE I

I, William Weyms, do will and bequeath my unrivaled musical talent to little "Speedy."

I, Kermit Lee, do will and bequeath my title of "the biggest man in school," to Billy Rainey.

I, Kitty MacKethan, do will and bequeath some unfortunate Junior, my ability to get on the wrong side of my teachers.

I, Dorothy Spears, do will and bequeath my flirtatious ways to Kathleen Strupler.

We, Hector McGeachy and George Edd Waren, do will and bequeath our arguing ability to anyone who can carry on with them as well as we have.

I, Cramer Percival, do will and bequeath my title of "Best all-around," to Forrest (Minky) Nimocks.

Since I cannot take him with me, I, Elizabeth Holmes, do will and bequeath Brooks Patten to any romantic young lady who can get him.

I, Nell Burton, do will and bequeath my math ability to Lelia Brady.

I, Courtney O'Connell, do will and bequeath my ability to tell the biggest "tall stories" in Physics, to Curtis Darden.

I, Lillian Vann, do will and bequeath my athletic ability to anyone wishing to reduce.

I, Seavy Highsmith, do will and bequeath my safety badge to Charles Tripp.

Signed and sealed this the nineteenth day of March, we the class of 1934 do declare this document to be our last will and testament

Signed,

The Senior Class

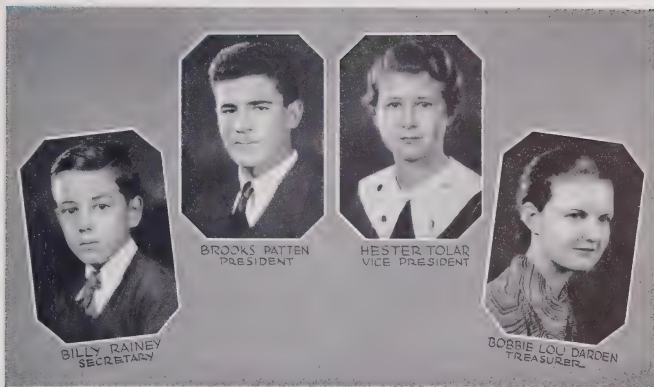
D. P. Russ, Attorney.

Witnessed by:

ELIZABETH MACKETHAN.

WYTHE WEATHERS.

BEN VERSACE.



JUNIOR CLASS

MOTTO: *Tant Que Ca Pent*

FLOWER: *Pansy*

COLORS: *Blue and Gray*

THE JUNIORS

We're juniors together
 At Fayetteville High,
 And we're proud of our record too;
 We've braved stormy weather,
 And worked hard and tried
 To bring honor and glory to you.

We've had many heartbreaks
 It's true, but I guess
 These come to all once in a while.
 But with lots of good courage
 And hard work and zest,
 We've come out on top with a smile.

Next year we too leave you;
 Let's hope you can say
 That our class has been loyal and true:
 For as juniors we've kept
 To the best work and play
 To bring to our school its just due.

LELIA BRADY.



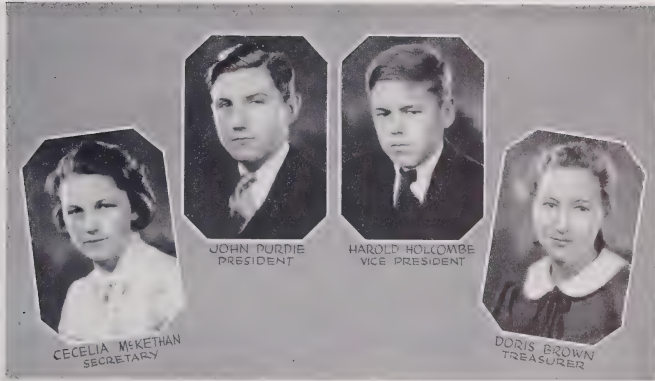
JUNIOR ROLL

ALICE ALLIGOOD
GEORGE ATKINSON
LAUDER BALLARD
GUILFORD BARNHILL
HELEN BELL
ANNIE LEE BENNETT
HAROLD BLACK
KIMBERLY BRABSON
LELIA BRADY
GERTRUDE BROWN
ALICE BULLARD
ELIZABETH BRUCE CASE
ETHEL CHADWICK
DAVID CHANEY
ERRELL CLARK
HUBERT CROSS
BOBBIE LOU DARDEN
MARGEN DAVIS
MARGARET DAWSON
GEORGE DEMPSEY
HAROLD DUNLOP
HUGH DUNLOP
LOUISE WRIGHT FRASER
RUBY GENES

L. C. GIBSON
DANIEL GRAHAM
EMERSON HALL
RUSSELL HALL
STUART HALL
DORA HAYES
GLADYS HOBBS
HANNAH HUSKE
OLGA IMHOFF
CATHERINE JACKSON
ELBERT JACKSON
ESTELLE JONES
HOYLE KINLAW
JOHN D. KINLAW
WESLEY KINLAW
GEORGIA KIRKSEY
EMILY LEWIS
KEITH LONG
SADIE LYTLE
CHARLES McARTHUR
CATHERINE McBRYDE
JANET McCONNELL
LUCILE McINNIS

JORDAN McPIERSON
W. E. MARR, JR.
ELLEN MONAGAN
ANNIE MOORE
PEGGY MOORE
EUNICE MORRIS
RUTH OWEN MORRIS
MARY E. NELSON
FORREST NIMOCKS
CATHERINE OWEN
WILLIAM PALMER
J. E. PARKER
BROOKS PATTEN
HAZEL PEDEN
SARAH PINKSTON
JESSIE PURDY
JERVY QUINTARD
BILLY RAINCY
ANGUS RAY
BILLY RHODES
ROBERT RHODES
EDNA MAE RIDDLE
MARY FRANCES RIDDLE
SWITZERLAND RIDGEWAY

JERRY ROBERTS
SARAH ROBERTS
ANNIE LEA ROSE
BUCK SCOTT
BURNELL SEAY
RUBY SMITH
CAROLYN SPEARS
TED STRUPLER
MARGARET SULLIVAN
CHARLES THOMPSON
BELLE RAY TILLINGHAST
JACK TILLINGHAST
HESTER TOLAR
MARY C. TRICE
CHARLES TRIPP
MARGARET VAUGHAN
DON WADE
BILLY WEISIGER
CATHERINE J. WHITE
CATHERINE V. WHITE
MYRTLE WILSON
ABELOS WOOTEN
FRED ZAHNAN
LUCY DRAKE



SOPHOMORE CLASS

MOTTO: *Keep on keeping on*

FLOWER: *Rose*

COLORS: *Blue and White*

"KEEP ON KEEPING ON

We who are sophomores in '34
 Look eagerly forward to the Senior door,
 When we ourselves can enter there
 If our lessons we've learned with care.
 Two more steps are all we need
 In order to our goal achieve,
 If we let Perseverence be
 The watchword for both you and me.
 But don't give up if things go wrong,
 Just "keep on keeping on."

Each teacher will point to us the way,
 And gladly help us day by day.
 Sometimes we stumble, sometimes we fall,
 Sometimes the steps seem mighty tall;
 Sometimes it's hard to keep a grin
 When we lose or fail to win,
 Or if we are on the lucky side
 Not to puff up with foolish pride.
 But don't give up if things go wrong,
 Just "keep on keeping on."

FLOYD SOUDERS.



SOPHOMORE ROLL

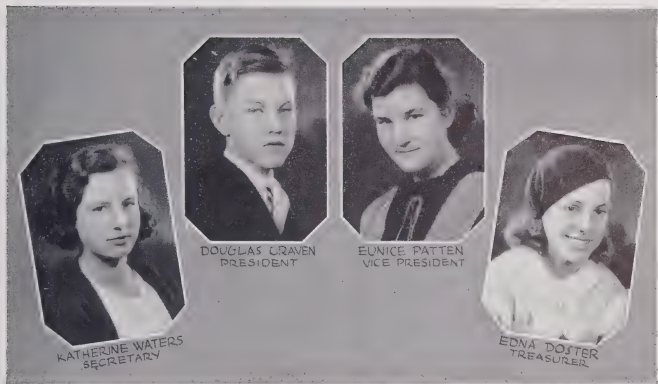
FRANCES ANDREWS
 ANNIE AYERS
 ETHEL BARRETT
 NELSON BASS
 CECIL BEARD
 HELEN BEARD
 BERNARD BEASLEY
 LORRAINE BEASLEY
 BILLY BELCH
 MARGARET ANN BELL
 FRANCES BENNETT
 JULIA BENNETT
 ALBERTA BENTON
 IRENE BLAND
 ELIZABETH BLOODWORTH
 JOE BOONE
 BURGESS BRANTLEY
 DORIS BROWN
 GORDAN BROWN
 ROSA BROWN
 PAUL BUTLER
 FRED CAIN
 STANLEY CAMPBELL
 FRED CARMICHAEL
 SEAVY CARROLL
 PETER CROMARTIE
 MARY KERR CULBRETH

LOUISE ELLIS
 SYLVIA FLEISHMAN
 HERMAN FOWLER
 ALBERT GEDDIE
 D. N. GEDDIE
 LOUISE GEDDIE
 BILLY GEORGE
 REBECCA GILBERT
 HARVEY GOWDWIN
 CATHERINE GOWDY
 W. A. GREGORY
 PHIL HAIGH
 LOIS HALL
 PEARL HALL
 SYLVIA HARDY
 WEAVER HATCHER
 JIMMY HERNDON
 EUGENE HOBBS
 JOE HOBBS
 HAROLD HOLCOMBE
 J. A. HOLMES
 MARGARET JACKSON
 MARGARET JOHNSON
 JOYCE JONES
 LOUISE JORDAN
 ELENITSA KANOS
 ETHEL KENNEDY

KARL KENNEDY
 MARY KEOLLING
 ALICE MCBENNETT
 HOWARD MCDANIEL
 MARJORIE MCFADYEN
 LORRAINE MCFHALE
 CECILIA MCKETHAN
 MARY CATHERINE MCLEOD
 WADDELL MARTIN
 CURTIS MELVIN
 SARAH MONROE
 SARAH OLIVE
 ITIE MAE OLIVER
 JACK OVERBY
 HELEN PEARSALL
 EDWARD PLUMMER
 FRANCES POWERS
 JOHN PURDIE
 JACK RHODES
 BETSY RITCH
 WALTON ROBINSON
 MARY ALICE ROCKWOOD
 ELSIE ROMEO
 CARRIE ROSS
 GOLDIE ROYAL
 DOROTHY SIMPSON
 JOHN RAY SIMPSON

PRATHER SISK
 DOUGLAS SMITH
 EDWARD SMITH
 FLOYD SOUDERS
 MARGARET SPEARS
 ALBERT STEWART
 IRENE STOKES
 J. P. STRINGFIELD
 BILLY SUGGS
 ELSIE SULLIVAN
 FRANK SUTTON
 HOWARD TANNEBAUM
 COLIE TEW
 FRANK THREATT
 JOHN THOMPSON
 ERNEST TOLAR
 HARRY TOLAR
 DORIS TURNER
 SAM TURNER
 REBA TYLER
 ELIZABETH WALSTON
 ALINE WARD
 GRADY WATKINS
 BUFORD WATSON
 M. B. WELLOS
 MILDRED WELLOS
 SARAH WILLIAMS

DAVID WILLIAMS



FRESHMAN CLASS

MOTTO: "Do or die"

FLOWER: *American Beauty Rose*

COLORS: *Red and White*

CLASS POEM:

OUR FIRST YEAR

One year through High School we have come,
One year of knowledge have we won,
One year of joy to set us free,
One year upon life's broad'ning sea.

Upon the threshold of the door
To the higher knowledge you hold in store,
We reach forward through years of three
To the tempting prize ahead we see.

EUNICE PATTEN.



FRESHMAN ROLL

LEON ALLEN
 JAMES APPLEWHITE
 RUTH ASHWORTH
 MARGARET ATKINSON
 LAWRENCE AVERITT
 EDWARD BARNHILL
 BILL BARNES
 EDITH BARNES
 ALFRED BAUCOM
 ANNA JONES BELL
 EDWARD BELL
 WILLIAM BELL
 EUNICE BENTON
 EMILY BIGGS
 BOY BIGGS
 JAMES BILL
 NARCISSEUS BILL
 MOZELLE BOLTON
 DUVEL BRITT
 EFFIE BRITT
 RAY BRITT
 HOWARD BROWN
 JAMES BULLARD
 WALTER CAMPBELL
 BEATRICE CARMICHAEL
 ROBERT CARTER
 STEWART CARTER
 COLON CASHWELL
 THOMAS CHESHIRE
 HELEN CLARK
 CALVIN CLIFFORD
 WADE COLLIER
 CAROLYN COOK
 ROY COOK
 MARGARET COUNCIL
 DOUGLAS CRAVEN
 ELIZABETH CROOM
 BEATRICE DARDEN

ALICE DAVIS
 EDNA DOSTER
 WILLIAM DRIVER
 HENDRIX EDGE
 NANNIE MAE EDGE
 JAMES FAIRCLOTH
 BUCK FARRIOR
 LEROY FAULKNER
 JOE FIELDS
 TOM FIELDS
 CAROLINE GAREIS
 RICHARD GAREIS
 FORREST GARRAWAY
 FRANCES GEDDIE
 LARRY GIBSON
 BILLY GODWIN
 EARL GRAY
 VICTOR GUE
 HOWARD HALL
 INEZ HALL
 MURPHY HALL
 WILHELMINA HALL
 MARY RUTH HAYES
 CAROL HAYFORD
 HERBERT HENDERSON
 GILBERT HERRING
 HAZEL HERRING
 GEORGE HESKETH
 TOMMY HODGES
 VIRGINIA HOLLEMAN
 DAVID HOLLINGSWORTH
 SARAH HOOPER
 GORDON HOWARD
 SAM HOWIE
 LOUISE HULON
 EDNA BELL JACKSON
 CARL JOHNSON
 LOUISE JOHNSON

ELBERT JOLLY
 ROBERT JONES
 WILLIAM JORDAN
 MILDRED KELLEY
 ALLMAN KINLAW
 EVELYN KINLAW
 KATHERINE KINLAW
 BILLY KIRKSEY
 JENNINUS LATTA
 LILLIAN LEWIS
 JOHNNY LITTLE
 JOHN LONG
 FRED LOY
 EDWARD MATTHEWS
 MABEL MATTHEWS
 BILLY MAYNARD
 PAUL MILLER
 FLETCHER MILLIGAN
 VIOLET MILLIGAN
 EMILY MOTZ
 MARGARET McCORMICK
 RUTH McCORMICK
 MAUDE McDANIEL
 LOUISE McLACKLAN
 MARIE McLACKLAN
 JOHN McNEIL
 VIVIAN NEIL
 CLARENCE NELSON
 RUTH OWEN
 VALERIA PAGE
 ETHEL PARKER
 MILDRED PARKER
 EUNICE PATTEN
 MAGDALINE PEOPLES
 MARIE PHILIPS
 VIRGINIA POE
 MARY QUINTARD
 HARVEY RATCLIFFE

NINA RAY
 MARTHA REGISTER
 ELDON RIDGLE
 EUNICE RIDGEWAY
 BRENT RILEY
 LAWRENCE ROBINSON
 LESLIE ROBINSON
 EDITH ROSENFELD
 NELLIE MAE RUPPE
 CHARLIE SCOTT
 JIMMIE SCOTT
 MARGARET SMITH
 VANCE SMITH
 NORMAN SMITH
 JUANITA SMITHMAN
 MARJORIE SNOW
 JOHN STINSON
 EVA STRICKLAND
 SALLY ANN TALLEY
 V. F. TALLEY
 CLAUDE THOMAS
 BUDDY THOMPSON
 CALVIN THOMPSON
 MERVELLE TRAWICK
 FRANCES TYCOR
 MILDRED VREKLAND
 KATHRYN WALTERS
 HELEN WADDELL
 FRED WELLS
 CARY WELTONS
 DANIEL WELMSS
 JOE WIGGINS
 RUTH WINTERS
 ROBERT WILLIAMS
 MARGUERITE WILLIAMSON
 BROWN WRIGHT
 VIRGINIA ZAHRAIN



ACTIVITIES



"Hi-Y"



GIRL RESERVES



1921

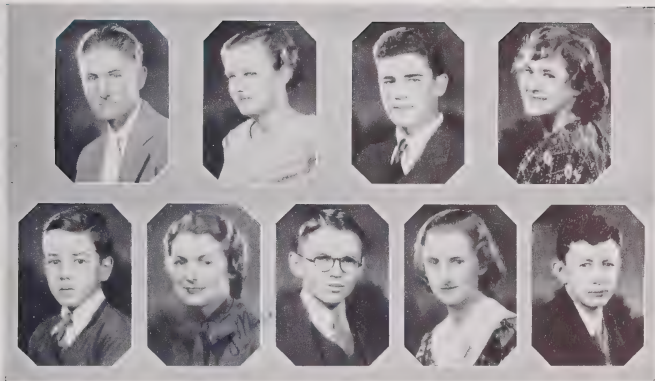
BAND

OFFICERS

| | | | |
|---------------------|-----------------------|----------------------|------------------|
| HAROLD HILBURN..... | <i>President</i> | D. P. RUSS..... | <i>Secretary</i> |
| HAROLD PIGOTT..... | <i>Vice President</i> | BROOKS PATTEN..... | <i>Treasurer</i> |
| ROGER HARVELL..... | <i>Director</i> | CRAMER PERCIVAL..... | <i>Reporter</i> |

PERSONNEL

| | | | |
|-------------------|------------------|-----------------|----------------|
| <i>Cornets</i> | | <i>Clarinet</i> | |
| BROOKS PATTEN | WILLIAM WEMYSS | WYTHE WEATHERS | WEAVER HATCHER |
| L. A. MONROE | W. A. GREGORY | WILLIAM JORDAN | LOUISE JORDAN |
| HECTOR McGEACHY | STANLEY CAMPBELL | | |
| <i>Saxophones</i> | | | |
| D. P. RUSS | | | |
| HAROLD PIGOTT | | | |
| CRAMER PERCIVAL | | | |
| <i>Bass</i> | <i>Baritone</i> | <i>Trombone</i> | <i>Flute</i> |
| JACK OVERY | HAROLD HILBURN | JAMES SAUNDERS | DANIEL WEMYSS |
| <i>Alto</i> | | | |
| VIRGINIA SISK | | | |
| PRATHER SISK | | | |
| EUNICE PATTEN | | | |
| <i>Drums</i> | | <i>Cymbals</i> | |
| RUTH PORTER | | LILLIAN VANN | |
| CHARLES McARTHUR | | | |



MARSHALS

Charles Tripp, *Chief*; Sarah Pinkston, Brooks Patton, Louise Fraser
 Billy Rainey, Peggy Moore, Angus Ray, Annie Lee Bennett, L. C. Gibson



DEBATERS

Brooks Patten, Louise Fraser, Reva Stein, D. P. Russ



THE ORACLE STAFF



FRENCH CLUB



MONOGRAM CLUB



Mestic CLUB



FOOTBALL

Front row: Loy—Tackle; Lee—Tackle; Roberts—Guard; Palmer—Center; Barnhill—Guard; Marr—Tackle; R. Rhodes—Tackle; Butler—Center; McDaniel—Guard.

Center row: Herndon—Back; Cross—Back; T. Sutton—End; Tripp—Back; Goodwin—Back; Captain Cook—Back; Woodall—Back; Tillinghast—Back; Bowles—Back; Bedsole—End; F. Sutton—Back; Holcombe—End.

Back row: Britt—Assistant Manager; Atkinson—Manager; Hatcher—Back; Hobbs—End; Carmichael—Guard; Cromartie—End; McPherson—Tackle; Weisiger—Tackle; B. Rhodes—Guard; Suggs—Center; Assistant Coach Clyde Mayberry; Coach Bob Allen.

SEASON'S RECORD

With "Ikey" Cook as Captain, the Yellow Jackets maintained a season's average of 500 per cent. They played eight games and came out on the winning end in four of the eight. During the season the Yellow Jackets accumulated a total score of 58 points; while the total number of points scored against them by opposing teams was 61.



Lee *Palmer* *Strupler* *Register* *Bedsole* *Marr* *Allen* *Mayberry*

BASKETBALL

Front row: Geddie—Forward; Waren—Guard; Captain Lee—Center; Holcombe—Forward; Swann—Forward; Bowles—Guard.

Center row: Palmer—Guard; Strupler—Guard; Register—Center; Bedsole—Forward; Marr—Forward; Atkinson—Manager.

Back row: Coach Bob Allen; Assistant Coach Clyde Mayberry.

SEASON'S RECORD

It is the opinion of many persons that this year Fayetteville High was represented by the best team that it has ever had. Led by Captain Lee, the team played twenty-four games and won twenty of them, losing only three games to high school teams and one to the Wake Forest Freshman team. For the second consecutive year the Yellow Jackets were runners-up in the Class A division of the State College Basketball Tournament at Raleigh.



GIRLS' BASKETBALL SEASON FOR 1934

| | |
|-------------------------|-------------------|
| MANIE WESTPHAL | Coach |
| BETTY SOUDERS | General Manager |
| LILLIAN VANN | Senior Captain |
| BELLE TILLINGHAST | Junior Captain |
| PRATHER SISK | Sophomore Captain |
| EMILY BIGGS | Freshman Captain |

ASSISTANT MANAGERS

CRAMER PERCIVAL
 JACK TILLINGHAST

CECILIA MCKETHAN
 MOZELLE BOLTON

Though this season has been seemingly insignificant to the public, the practice has meant much to the girls. The P.-T. A. kindly donated to the improvements of the girls' athletic equipment, \$70. From this sum basketball uniforms were purchased. For each class the class colors were used in the make-up of these uniforms.

There was no varsity team this year because of the lack of material; however, each class had a team. Games were played between the classes, and three times chosen members of all teams played Eastover.

The girls derived much benefit from this season's basketball in the way of fairness, obedience, courage, and recreation. The following will be awarded letters for work in games and practice: Dorothy Bailey, Nola Carter, Elizabeth MacKethan, Cramer Percival, Betty Souders, Lillian Vann, Alice Alligood, Emily Lewis, Jessie Purdy, Sarah Roberts, Belle Ray Tillinghast, Sarah Williams, and Emily Biggs.

CRAMER PERCIVAL.

Superlatives



SUNNY & WALKER
BEST ALL-ROUNDER



CRUMPLEY & MURPHY
MOST DISMAYING



RUBINER
MOST ATTRACTIVE



LOOK & SANDROCK
BEST DANCERS



MAXWELL & STEAKT
BEST COURTEOUS



SPRANK
MOST ORIGINAL



GARDNER & HIGGINS
MOST MARRIAGE



PROFFERS
BRILLIANT



MULTHAN & WOODRIF
MOST POTENTIAL



TOWSER
BEST INQUIRY



LEE & TEW
BEST ATHLETES



TOWERS
MOST STUPID

Handwritten note: ...

Handwritten note: ...



SENIOR A B C's

- A is for at last, we're almost through,
But after four years, it's our just due.
- B is for Brothers, friendly and gay,
A right fine girl in every way.
- C is for Crumpler, she won't let you down,
A more dependable girl can't be found.
- D is for Dignified, give us a break!
Say we're that way and you'll take the cake.
- E is for Excuses, we major in those,
Everyone makes them, wherever he goes.
- F is for Fraser, a newcomer you see,
Talks often of her travels quite skillfully.
- G is for Goodwin, the gay gigolo,
Of course he is most any girl's beau.
- H is for Holcombe, that handsome young man,
Jas spends much time admiring his "pan"!
- I is for Innocent, we've passed that stage,
POOR freshmen! They'll outgrow it with age.
- J is for Jordan, a mischievous tease,
He makes excuses, with much ease.
- K is for Koelling, a studious lass,
Who always does better than merely pass.
- L is for Lee, athletic and tall,
A shick for whom all the ladies fall.
- M is for Maddox, "Twirler's" the name,
To wit and beauty she lays great claim (?).
- N is for Nye, a grand, good gal,
Well-liked by all, she's everyone's pal.
- O is for O'Connell, his stories are wild,
But for all that, he's a likable child.
- P is for Porter, an attractive young miss,
Her flashing smile brings Wythe much bliss.
- Q is for Questions, to which there's no end,
To the asylum they'll surely us send.
- R is for Rose, she types for our school,
She takes letters for our C. Parker Poole.
- S is for Sloan, a good-all-round girl,
She has a ready smile and intriguing curl.
- T is for Tew, athletic and small,
At basketball she can't be beat at all.
- U is for Units, we've got them now,
They were well-earned by a sweat of our brow.
- V is for Vann, who in spite of her size,
Makes not only noise, but also eyes.
- W is for Warren, a lady's man right!
He courts a new girl every night.
- X is for X-Zams, they drive us most crazy,
We'd all pass 'em if some weren't so lazy.
- Y is for "Yes," it's just an expression,
Is it the answer to "Have you studied your lesson"?
- Z is for the Zenith, we've yet to attain,
To reach it we must from our frivolities refrain.



ADVICE TO GIRLS

Don't run around with trackmen, they're too fast.
Let biological men alone, they like to cut up too much.
A football man will do; he'll tackle anything.
Don't have anything to do with a baseball man, he hits and runs.
Don't ever talk to band players, they had rather blow their own horn.
A swimmer will do; he'll dive in and do his best.

IDEAL GIRL.

Eyes—Evelyn Sloan
Nose—Elizabeth Holmes
Mouth—Lucy Oliver
Complexion—Sarah Stevens
Hair—Reva Stein
Voice—Rachel Nye
Figure—Ruth Sandrock
Legs—Dorothy Bailey
Personality—Elizabeth Peden
Clothes—Betty Souders
What a woman!

ODE TO MISS FISHER

We are drawing nearer—nearer to the end,
And still we are amused at our friend;
We know she will continue to repeat that old refrain:
"All right, now boys and girls, let's go again!"

When first he went to see her,
He showed a timid heart,
And when the lights were low,
They sat this far apart.
But when their love grew warmer,
And they learned the joy of a kiss,
They knocked out all the spaces,
And sat up close like this.

IDEAL BOY

Eyes—George Edd Waren
Nose—James Holcombe
Mouth—Preston Woodall
Complexion—Dudley Maxwell
Hair—Ikey Cook
Physique—"Toots" Lee
Voice—Hector McGeachy
Personality—George Edd Waren
Clothes—William Jordan
What a man!

WHAT WOULD HAPPEN IF:

Seavy Highsmith grew up?
Mae Hunter Cook got any smaller?
James Holcombe had an inferiority complex?
Maggie Crumpler let you down?
Wm. Jordan's hair turned any pinker?
Elizabeth Fraser hadn't went places?
"Toots" Lee couldn't find a pair of size 15 shoes?
Virginia Hawn didn't like boys?
Courtenay O'Connell didn't tell tall tales?
Margaret Jackson's hair got out of place?
Tommy Swann lost any weight?
George Edd Waren quit talking?
"Twirler" Maddox found out what it was all about?
Wythe Weathers hadn't met Ruth Porter?
Lucy Oliver and Elizabeth Peden were separated?
Preston Woodall forgot to strut?
Ruth Sandrock stepped on her dancing partner's feet?
Reva Stein didn't have her say?

The following firms and individuals are glad to cooperate with the LAFAMAC staff in fostering the publication of such a creditable annual as the 1934 LAFAMAC. Congratulations to the school and Staff!

AETNA LIFE INSURANCE COMPANY

DR. R. A. ALLGOOD

B. S. A. TROOP

M. A. BETHUNE

MRS. J. M. CARSON

DR. A. S. CROMARTIE

D. G. DOWNING

FREEMAN FURNITURE STORE

CHARLES T. HAIGH

CHARLES A. GLOVER

PHILIP O. HOFFER

DR. W. S. JORDAN

DR. J. A. KOSTERMAN

LOUIS LEFKOWITZ

JACQUELINE BEAUTY SHOPPE

PHILIP SATISKY

SIMONS, INC.

ROSE AND LYON

S. W. TOMLINSON

DR. H. W. WHITE

WORTH BUSINESS SCHOOL

Mrs. John to Maid: Just look at this table, why I can write my name in the dust.
The Maid: It must be wonderful. Ah wishes Ah was eddicated.

It *must* be as represented
if it comes from—

HATCHER'S
JEWELRY STORE

Business Established in 1913

PHONE 844

Compliments of

The Carolina Soda Shoppe

SODA - SANDWICHES - NEWS

ED. FLEISHMAN &
BROTHERS

"Always Reliable"

Headquarters for

Men's and Young Men's
CLOTHING HATS SHOES

107 Hay Street

THE
CALEDONIAN
SAVINGS AND TRUST COMPANY

Capital - - - - - \$100,000.00

Total Resources - - - - - \$500,000.00

JOHN M. WILSON, PRESIDENT

A. E. DIXON, VICE PRESIDENT

HUGH H. ALEXANDER, CASHIER

PAUL STEWART, ASST. CASHIER

Lucy Oliver: Preston was the goal of my ambitions, but alas!

Cramer Percival: What happened, Dooty?

Lucy Oliver: Father kicked the goal.

Mrs. Peden: Don stayed very late last night. Doesn't he know how to say good-night?
Elizabeth: Oh, yes, Mother, better than any other boy I ever knew.

Matthews Pharmacy

G. E. MATTHEWS

Pittman Hospital Building
PHONE 614

J. C. PENNEY CO.

*"Where Savings
Are Greater"*

Compliments

...of...

SANDLIN & CO.

Wholesale
GROCERIES
HAY AND FEED
GRAIN

for Economical Transportation



Drive it only 5 miles and
you will never be satisfied
with any other low-priced
car.

M. & O. Chevrolet Co.

FAYETTEVILLE, N. C.

A. E. Rankin Co., Inc.

Wholesale and Retail
Hardware, Builders' Supplies
Sporting Goods, Paints

ROGERS & BREECE

INCORPORATED

AMBULANCE SERVICE
DAY AND NIGHT

Phone 60 or 567
Fayetteville, N. C.

George Edd (to Rachel Nye): Have you ever tried listening to a movie with your eyes shut?

Mr. Poole (from row behind): Have you ever tried listening to one with your mouth shut?

Lieut. Col. Magruder: Did you ever give Peggy that copy of *What Every Girl Should Know?*

Mrs. Magruder: Yes, and she's writing to the author suggesting the addition of three new chapters.

BELK-HENSDALE COMPANY

“The Home of Better Values”



BELK STORES are Carolina's *Largest* Distributors of
RELIABLE MERCHANDISE



Complete Outfitters for Men, Women and Children

“One of the 105 Belk Stores”

The Fayetteville
Observer



Your Own Daily Paper

Pemberton's

MILK and ICE CREAM CO., Inc.

PHONES { Plant 751
 { Store 313



Pasteurized Dairy Products
and *Quality* Ice Cream

Sheriff McGeachy: Why don't you get a job? When I was your age, I worked for three dollars a week, and at the end of four years, I owned the store!

Hector: You can't do that nowadays. They have cash registers.

Ruth Sandrock and Ikey Cook were dancing. Ikey was shocked to hear Ruth say: "Ikey, I don't mind this stepping on my toes so much, but I can't stand this jumping up and down."

Compliments of
**Fayetteville
Office Supply Co.**

Commercial Stationers
and Printers

218 Hay St. Fayetteville, N. C.

C. W. SANDROCK

We Insure Anything

except your life; and save you
20 to 25 cents on every
dollar.

*Clothes for Preps and
Graduates*

...of...

Style Correctness

and

Price Rightness

**FLEISHMAN'S
BIG STORE**

106-108 HAY STREET

Fayetteville, N. C.

T. & B. Super Service

Open Day
and Night



One-Stop
Service

Complete Repairs to Any Car

Brake Testing Wheel Alignment
Chassis Straightened
Body Work

Texas Gas, Oils, Accessories
and Tires

WRECKER SERVICE

PHONE 148

Fayetteville, N. C.

*Today's Photographs Are
Tomorrow's Treasures*

BOYD'S STUDIO

"The Pause That Refreshes"

DRINK

Coca-Cola

The Coca-Cola Bottling Co.

Fayetteville, N. C.

Miss Fisher: Virginia, tell the class about Colonel Lindbergh's feat.
Virginia Sisk: I've never seen them, but I can tell you about Evelyn's.

Betty Souders: All my life I have been saving my kisses for a boy like you.
Jas. Hol: Prepare to lose the savings of a lifetime.

Branch Banking and Trust Company

FAYETTEVILLE, N. C.

| | | |
|-------------------------------|-----------|---------------|
| Capital Stock | - - - - - | \$ 800,000.00 |
| Surplus and Profits, Reserves | - - | 450,000.00 |
| Resources | - - - - - | 13,000,000.00 |

"Sixty Years of Service to Eastern Carolina"

MacKETHAN & CO.

DRUGGISTS

The REXALL Store

"On the Square"

Bowles Motor Co., Inc.

CHRYSLER PLYMOUTH
STUDEBAKER

We Never Close

PHONE 59

The Point Soda Shop

SODAS - PLATE LUNCHES - CIGARS

*As good as the best
Better than the rest*

Hay Street Phone 717

Fayetteville, N. C.

Compliments of

Dunn & Company

Preston Woodall: Say where are you going to get that check of yours cashed?
William Jordan: Couldn't say. I can't think of a single place where I'm not known.

Cramer was standing in the aisle at the movies. An usher approached her and said:
"How many seats do you want, Miss?"

Compliments of
..THE..
**Capitol Department
Store**

✦
"Fayetteville's Finest"

✦
For Those Things
You Like

Royal Sanitary Market

FRESH MEATS, FISH AND
VEGETABLES

113 Gillespie St.
Phone 611 Fayetteville, N. C.

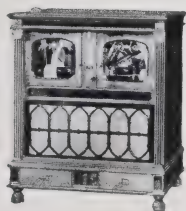
H. R. Horne & Sons

DRUGGISTS

Since 1865

PHONE 1

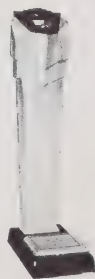
**COIN CONTROLLED MACHINES
OF ALL KINDS**



Placed With
Merchants

—on—

PROFIT
SHARING
BASIS



THE VENDING MACHINE COMPANY

205-15 Franklin Street

Fayetteville, N. C.

Seavy Highsmith: Well, at least there's one thing I can count on.
Tick Sutton: Yeah, I know. Your fingers.

Mr. Sisk was paying calls to the classes, and in one class he wrote on the board, "LXXX." He asked the class if anyone knew what it meant. Everyone thought a while and then Virginia Hawn spoke up. "I know. It means, 'Love and kisses!'"

*Some day your boy is going to want
life insurance for the same reason
you want it now. He can get it NOW
at only a FRACTION of the rate.*

W. N. TILLINGHAST

AGENT

The Northwestern Mutual Life Insurance
Company

J. S. Hall Drug Co.

MAKE OUR STORE YOUR
HEADQUARTERS

Free Delivery Service

PHONE 400

The Individual Photographs in
This Issue of LAFAMAC
Were Made by

The Paton Studio

*"While You're About It,
Get a Good Picture."*



Community Motors, Inc.

Fayetteville, N. C.

HHH

HUSKE HARDWARE HOUSE

Fayetteville, N. C.

He was taking her for a moonlight ride, and after they had ridden a few miles, Maryleigh said,

"I want you to understand that I don't hold hands, neck, or pet."

"Is that clear?"

"Yes," said William Jordan—

"Now where do we go from here?" asked Maryleigh.

"Home," murmured William.

Stancil Bowles: She said she'd be faithful to the end.

Jas. Hol: Why that sounds good.

Stancil Bowles: Yeah, but I'm the quarterback.

QUINN & MILLER
COMPANY



FURNITURE



Fayetteville, N. C.

PHONE 242

M. M. SMITH
Manager

City Optical Company

OPTICIANS

Everything Optical

Wilmington, N. C. Fayetteville, N. C.

All Kinds of
INSURANCE

Claude W. Rankin

Fresh Fruits and Vegetables Build
Health and Vitality

Distributed to Merchants Throughout
This Section by

Howard-Bobbitt Co., Inc.

SANFORD FAYETTEVILLE WILMINGTON

"We Believe in Education"

Compliments of

STEIN BROTHERS

"The House of Quality"

CLOTHIERS AND FURNISHERS

SAY IT WITH FLOWERS

FROM

Sunnyside
Floral Nursery

Established 1873

ARTISTIC ARRANGEMENT
PERSONAL ATTENTION

Prompt Service

Phone 49

Mr. Allen (explaining something about economics): Can anyone give me the latest price of corn?

Billy Goodwin: Yes, sir, it's fifty cents a pint.

Dudley Maxwell: Mr. Hensdale, I'd like to get a job.
Mr. Hensdale: Can you get some references from your friends in the Senior Class?
Dudley Maxwell: No, I have no friends. I was collector for the Annual.

Style Shop

EXCLUSIVE BUT NOT EXPENSIVE

WOMEN'S AND MISSES'

Ready-to-Wear Sport Wear

Millinery

Clayton Cigar Co.

CIGARS

CANDIES

Beverages, Paper and
Specialties

PHONE 22

Compliments of
RANKIN & BROWN

For Many Years
KRESS STORES
Have Specialized in
SCHOOL REQUIREMENTS
BIG VALUES—little prices
"Watch Kress Windows"

TILDON WALKER

AGENT

Sinclair Refining Company

WORTH STREET

Fayetteville, N. C.

Phone 1352

Miller-Jones Co.

*"Modern Footwear for the
Entire Family."*

WE INVITE YOUR
PATRONAGE

Shoes

Hosiery

Findings

120 HAY STREET

CHAS. A. ALLEN

Rough and Dressed

L U M B E R

Fayetteville, N. C.

Phone 495

P. O. Box 962

Miss Broadfoot: Now, class, how many more times do I have to pronounce this for you? "Aeneid"—Maggie, pronounce it.

Maggie C. (not paying any attention): It's—er—Vergil's Adenoids.

Don't forget that I
want to see you May 12, 1939 -
why? you ought to know! -
Remember all the swell times
we've had & don't forget me -

M. K. ...

Rachel

Don't worry "but"
you will "see"

Don't forget
I'll be there
Always
You will
see
I'll be there
Don't worry
you will
see

Hi - Joe, we shure had
some times at F.H.S., always
remember the chief brakemen
of the Joe bus.
your Pal
"The" McGeachy

Best luck, Joe, de id.
Don't forget our fun
during this school year
For ever
Betty
5/15/34

Remember always the hon
tongue at Old F.H.S. —
and around about.
W. Allen Jordan
Chief crane of "Joe bus."

May our friendship continue to be as close
as it always has - George Eld Warren
Kiss with you this

Lots of love and happiness with
you - "Babe" (you name her!).
"Liz" "Dill"

I wish you lots of happiness and hope
that you will always get there in the Gas
Bus. ~~Safe~~ love. "Shut off."

May you and Rachel live happily
now and forever more.

Woodell ~~Wright~~

