

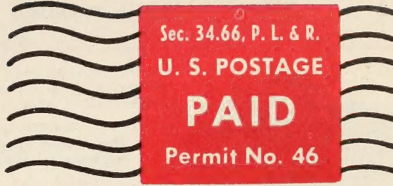
## Historic, archived document

Do not assume content reflects current scientific knowledge, policies, or practices.



RAYNER BROTHERS  
Salisbury, Maryland  
Guaranteed

Index <sup>OK</sup> = 1957 =



Sec. 34.66, P. L. & R.  
U. S. POSTAGE  
**PAID**  
Permit No. 46

62.37

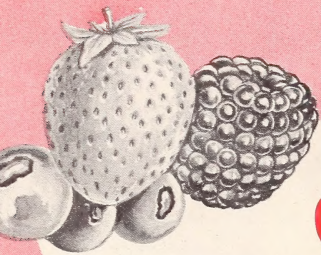
**LEADING  
BEST  
SELLERS**

Selected for  
**YOUR  
GARDEN**

**AT NEW  
LOW PRICES!**

**LIBRARY  
RECEIVED**  
★ 29 1951 ★  
U. S. Department of Agriculture

Library  
U.S. Dept. of Agric.  
Washington 25, D.C.  
51 nb



# GROW YOUR OWN FRUITS

*at a fraction of their store value!*

Nothing you can buy will give you a greater thrill than plants for your garden! When the thawing remnants of winter freeze give way to the welcome warmth of spring the impulse to get out into the open and "dabble in the dirt" of our gardens becomes irresistible. When YOU break the earth of your garden this spring be sure to plant nursery stock that will produce the fullest dividends in beauty and fruit! Remember this: your garden is a willing servant, which, with proper care, will exceed your expectations. So, take the first step to gardening success—TODAY—order the best!

**IT TAKES NO MORE EFFORT TO PLANT THE BEST—**

*Why Be Satisfied with Less?*

## FREE SUBSCRIPTION TO

### "BETTER BERRIES" BULLETINS

The thousand-and-one questions that confront the amateur gardener are answered in concise, easy-to-understand language in "Better Berries." These timely bulletins (printed in handy, loose-leaf form for easy filing and reference) are sent to all Rayner customers without charge! Your first order, no matter how small, automatically entitles you to a 2-year subscription. This service is FREE . . . and is made available to you because we have a continuing interest in your garden success!



# RAYNER BROTHERS Nurseries

### YOUR SATISFACTION FULLY

## GUARANTEED!

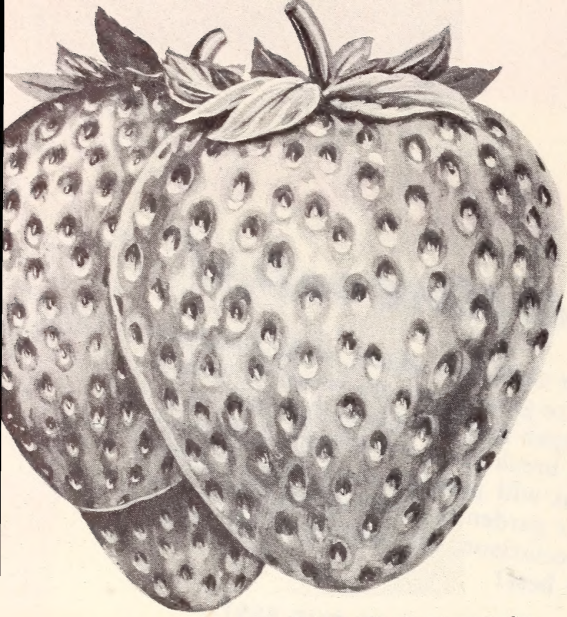
1. Plants purchased from Rayner Brothers are true-to-name!
2. Your stock will be selected from the best parent stock available!
3. You will receive a full count of plants with good, healthy crowns and full developed root systems.
4. Your plants will be carefully dug and packed to reach you in perfect growing condition.
5. You will receive complete information for the utmost growing success!
6. All illustrations in our catalog or this folder depict actual merchandise . . . nothing has been done to mislead and we have carefully avoided over-statement!

"Satisfying Growers Throughout the Nation for a Quarter-Century!"

50 BERRY ROAD

SALISBURY, MARYLAND





# YOU,

in your own garden,  
CAN GROW LOADS OF LUSCIOUS

# STRAWBERRIES

Not only will you get quart after quart of taste-tantalizing berries, but strawberry plants also provide a lovely mass of blossoms that will adorn your flower beds, borders, or other small space.

Much of our 603 acres of fertile soil is devoted to the king of small fruit, the Strawberry. When you plant strawberry plants developed and propagated by our scientific methods you are setting the best! Complete planting instructions are included with your order in addition to a FREE SUBSCRIPTION to Rayner Brothers' "Better Berries" bulletins. Every plant is guaranteed true-to-name, state inspected, and disease-free!



**HEAVY CROWNS  
AND THOUSANDS OF  
FEEDER ROOTS MAKE  
THE DIFFERENCE**

## YOU GET *More* FOR YOUR MONEY WHEN YOU PLANT THE *Best!*

	25 Plants	50 Plants	100 Plants	200 Plants	300 Plants	500 Plants	750 Plants	1000 Plants	5000 lots per 1000
<b>Early Varieties</b>									
BLAKEMORE	\$.90	\$1.50	\$2.40	\$4.20	\$5.40	\$7.50	\$9.90	\$11.50	\$10.50
DORSETT	1.15	1.90	3.00	5.25	6.75	9.40	12.50	15.50	14.50
FAIRFAX	1.05	1.75	2.80	4.90	6.30	8.75	11.55	14.50	13.50
MAYTIME	.75	1.25	2.00	3.50	4.50	6.25	8.25	10.00	9.00
MIDLAND	1.20	2.00	3.20	5.60	7.20	10.00	13.20	16.00	15.00
MISSIONARY	.75	1.25	2.00	3.50	4.50	6.25	8.25	10.00	9.00
PREMIER	1.00	1.70	2.70	4.75	6.10	8.45	11.15	13.50	12.50
HOWARD 17	1.00	1.70	2.70	4.75	6.10	8.45	11.15	13.50	12.50
TEMPLE	1.00	1.65	2.60	4.55	5.85	8.15	10.75	13.00	12.00
<b>Midseason Varieties</b>									
ABERDEEN	.90	1.50	2.40	4.20	5.40	7.50	9.90	12.00	11.00
BIG JOE	1.05	1.75	2.80	4.90	6.30	8.75	11.55	14.00	13.00
CATSKILL	1.15	1.90	3.00	5.25	6.75	9.40	12.40	15.00	14.00
FAIRLAND	1.05	1.75	2.80	4.90	6.30	8.75	11.55	14.00	13.00
KARDINAL KING	1.00	1.70	2.70	4.75	6.10	8.45	11.15	13.50	12.50
PATHFINDER	.90	1.50	2.40	4.20	5.40	7.50	9.90	12.00	11.00
REDCROP	1.05	1.75	2.80	4.90	6.30	8.75	11.55	14.00	13.00
ROBINSON	1.00	1.70	2.70	4.75	6.10	8.45	11.15	13.50	12.50
SCARLET BEAUTY	1.00	1.70	2.70	4.75	6.10	8.45	11.15	13.50	12.50
SEN. DUNLAP	.90	1.50	2.40	4.20	5.40	7.50	9.90	12.50	11.50
SPARKLE	1.05	1.75	2.80	4.90	6.30	8.75	11.55	14.00	13.00
<b>Late Varieties</b>									
AMBROSIA	.90	1.50	2.40	4.20	5.40	7.50	9.90	12.00	11.00
AROMA	.75	1.25	2.00	3.50	4.50	6.25	8.25	10.00	9.00
CHESAPEAKE	1.30	2.15	3.50	6.10	7.85	10.90	14.40	17.50	16.50
FAIRPEAKE	1.15	1.90	3.00	5.25	6.75	9.40	12.40	15.50	14.50
LUPTON	.90	1.50	2.40	4.20	5.40	7.50	9.90	12.00	11.00
REDSTAR	1.15	1.90	3.00	5.25	6.75	9.40	12.40	15.00	14.00
<b>Everbearing Varieties</b>									
GEM	1.90	3.15	5.00	8.75	11.25	15.65	20.65	25.00	24.00
GEMZATA	1.90	3.15	5.00	8.75	11.25	15.65	20.65	25.00	24.00
MASTODON	1.90	3.15	5.00	8.75	11.25	15.65	20.65	25.00	24.00
STREAMLINER	1.90	3.15	5.00	8.75	11.25	15.65	20.65	25.00	24.00
SUPERFECTION	2.25	3.75	6.00	10.50	13.50	18.75	24.75	30.00	29.00
RED-RICH	5.00	8.50	15.00	26.75	36.50	55.50	80.50	97.50	—

### "FLAVOR" STRAWBERRY GARDEN No. 4

25 FAIRFAX, 25 TEMPLE,  
25 SPARKLE, 25 FAIR-  
PEAKE, 25 REDSTAR.

125  
PLANTS **\$3.95**

2 Gardens—250 Plants **\$6.49**  
4 Gardens—500 Plants **\$9.95**

### "MARKET" STRAWBERRY GARDEN No. 5

200 FAIRFAX, 200 TEM-  
PLE, 200 SPARKLE, 200  
FAIRPEAKE, 200 RED-  
STAR.

If you do not desire late varieties  
we will substitute Fairland and  
Robinson for Fairpeake and Red-  
star.

1000 PLANTS  
**\$16.95**

### "NORTHERN" STRAWBERRY GARDEN No. 1

Widely planted strawberry  
varieties thruout the north-  
ern half of this country. 25  
FAIRFAX, 25 PREMIER,  
25 FAIRLAND, 25 RED-  
STAR. Will plant six 25 ft.  
rows.

100 plants **\$2.95**  
(Worth \$4.30)

2 Gardens—200 Plants **\$4.95**  
4 Gardens—400 Plants **\$8.49**

### EVERBEARING STRAWBERRY GARDEN

No. 6

25 GEM, 25 MASTODON, 25 SU-  
PERFECTION.

75 Plants **\$3.95**

No. 7

25 GEM, 25 MASTODON, 25  
STREAMLINER, 25 SUPERFEC-  
TION, 25 GEMZATA.

2 Gardens—250 Plants

125 Plants **\$6.79**

*Rayner's* Headquarters for Top-Grade

# BLUEBERRY PLANTS

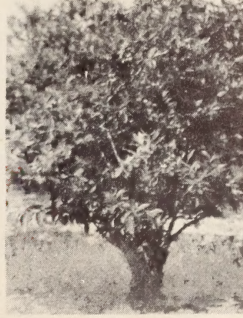


## ● LIFETIME BEAUTY FOR LAWN AND GARDEN

As Maryland's largest growers of blueberry nursery plants we can offer the most dependable of highly prolific, hardy cultivated plants. With very little care you'll be able to produce a steady supply of blueberries, perfect for pies, desserts, and preserves. Use 2 or more varieties for pollination, plant in acid soil of loose texture. Proper acidity can be attained by mulching with peat moss or aluminum sulphate. We enclose complete culture directions with your order.

## ● THRILLING ORNAMENTAL BEAUTY! PLENTY OF FRUIT!

Our premium-grade blueberry plants reach a height of 5 to 6 feet, providing a beautiful picture of blossoms plus plenty of fruit for years and years, returning your purchase price with the first fine crop! We feature all the proven varieties plus several new ones which we do not hesitate to recommend.



## Newest Introductions of Proven Quality!

**FREE  
CULTURE  
DIRECTIONS**

**DIXI**—for largest fruit. This vigorous, late variety produces the largest size berries of fine blue color and high aroma.

**WEYMOUTH**—earliest of all. Ripens in quick time to capture high early market prices. Berries, which are dark blue, lack dessert quality.

**ATLANTIC**—next to Dixi in size. A late variety, outstanding for its size, fine color, and productivity. Very vigorous producer of firm, dessert type berries.

**PEMBERTON**—most vigorous. Midseason champion, producing large, firm berries with slight aroma and good dessert quality.

## NEW LOW PRICES, BLUEBERRY PLANTS

Prices on DIXI, WEYMOUTH, ATLANTIC, PEMBERTON

	Lots of 3-9		Lots of 10-30		Lots of 30-99		Lots of 100	
	Each	Each	Each	Each	Each	Each	Each	Each
1 yr., 3-6"	\$.50	\$.40	\$.35	\$.30	\$.22			
2 yr., 6-9" liner	.75	.70	.60	.50	.45			
2 yr., 9-12"	1.10	1.00	.90	.75	.65			
3 yr., 12-18", 2 or more branches	1.55	1.25	1.15	1.00	.90			
4 yr., 18-24", 3 or more branches	2.35	2.00	1.70	1.50	1.35			

CABOT — JUNE — CONCORD — STANLEY — RANCOCAS  
SCAMMELL — JERSEY — RUBEL — BURLINGTON

	Single	3-9	10-29	30-99	100 or more
	Each	Each	Each	Each	Each
1 yr., 3-6", rooted cuttings	\$.40	\$.30	\$.25	\$.20	\$.15
2 yr., 6-9" liner grade	.60	.55	.45	.40	.35
2 yr., 9-12", 2 branches	.90	.80	.70	.60	.50
3 yr., 12-18", 2 branches	1.25	1.00	.90	.80	.70
3 yr. and 4 yr., 18-24", 3 branches	1.75	1.50	1.25	1.10	1.00
3 ft. Jumbo size	2.50	2.10	1.80	1.50	

VARIETIES MAY BE COMBINED TO TAKE ADVANTAGE OF QUANTITY PRICES

**BLUEBERRY GARDEN**  
No. 17  
Berry Plants, 3 varieties, Gladioli Bulbs. (Value)  
**4.98**

**AGING AGE GARDEN**  
No. 9  
8 choice 18-24"  
on page catalog.  
10 value  
**\$8.79**

**"MARGAIN" BLUEBERRY OFFER**  
(No. 12)  
Ranococas—3 yr.  
Rubel—3 yr.  
Concord—3 yr.  
Aging Age Plants  
\$13.50 Value  
**\$9.75**

**Maryland Golden SWEET POTATOES**  
Rayner's Maryland Golden Sweets have become the most popular to emanate from this great growing area. Matures early, before cold weather, perfect for storage. Ready for shipment May 25.  
50 Plants \$1.00, 100 Plants \$1.50,  
250 Plants \$3.50, 500 Plants \$6.00,  
1000 Plants, only \$10.00.

**Year After Year! Tender ASPARAGUS**  
Plant once and get tender asparagus stalks for years. Our big 2-year roots will produce stalks large enough for cutting the second year and continuing with a big crop each year following.  
2-year  
No. 1 50 100 250 500  
Roots .. \$3.10 \$5.00 \$10.00 \$15.60  
1-year  
No. 1  
Roots .. 1.90 3.00 6.00 9.40

**Excellent Quality RHUBARB**  
Plant a few rhubarb plants and get a continual source of supply for pies and sauces. Rayner's MacDonal Red (definitely the best variety) matures earlier, sweeter, from year to year.  
Each ..... 75c  
3 for ..... \$2.00  
10 for ..... 6.00

**RAYNER'S COMPLETE ALL-PURPOSE GARDEN**

- **STRAWBERRIES**  
Enough to plant 300 ft. of row. 300 Plants, 100 Early, 100 Late, 100 Midseason. Varieties selected for your area.
- **BLUEBERRIES**  
Selected varieties for a long season. 12 Plants, 2 Year Size. Will bear next summer.
- **RASPBERRIES**  
8 Red, 6 Black, 6 Ever-bearing, 18 Plants. Newburgh, Indian Summer and Morrison. (Will supply all black or all red on request)
- **GRAPES**  
2 Red, 2 Blue, 2 White, 6 Vines. Niagara, Concord and Caco. (Will supply all one color on request)
- **BLACKBERRIES**  
6 Sturdy Plants.
- **ASPARGUS and RHUBARB**  
50 2-yr. Plants—3 MacDonal Red.

**\$31.00 Value**  
**\$19.98**  
SAVE \$11.02

**NEW VARIETY BLUEBERRY OFFER**  
No. 5A  
An excellent selection at a new low price. 8 plants in 12-18" size.  
2 WEYMOUTH  
2 DIXI  
2 ATLANTIC  
2 PEMBERTON  
8 new variety plants for  
**\$8.98**

**RAYNER'S RASPBERRY GARDEN**  
No. 16  
Plenty of luscious berries plus outstanding flower beauty. 12 Red Raspberry Plants, 25 Gladioli Bulbs.  
(\$5.30 Value)  
**\$3.29**

**PLEASE ORDER GARDENS BY NUMBER**

# Raspberry Plants

**GUARANTEED TO BEAR!**

**HARDY, NORTHERN STOCK** of extreme vigor and high productivity are the result of our careful propagation methods. Will thrive in any well drained soil. Guaranteed disease-free.

## SAVE MONEY ON RAYNER'S CERTIFIED RASPBERRY PLANTS

### Price List of Certified Red Raspberry Plants

	6	12	25	50	100	250	500	1,000
Latham, 1 Yr., No. 1	\$1.80	\$2.60	\$4.10	\$7.10	\$12.35	\$26.80	\$43.10	\$75.00
Newburgh, 1 Yr., No. 1	1.80	2.60	4.10	7.10	12.35	26.80	43.10	75.00
Indian Summer, 1 Yr., No. 1	1.80	2.60	4.10	7.10	12.35	26.80	43.10	75.00

### Price List Black and Purple Raspberry Plants

	6	12	25	50	100	250	500	1,000
Cumberland, 1 Yr., No. 1	\$1.45	\$2.10	\$3.50	\$5.70	\$9.90	\$21.40	\$34.50	\$60.00
Morrison, 1 Yr., No. 1	1.45	2.10	3.50	5.70	9.90	21.40	34.50	60.00
Sodus, 1 Yr., No. 1	1.60	2.35	3.70	6.40	11.25	24.10	38.80	67.50

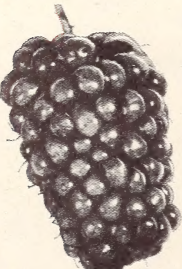


### RED RASPBERRIES

**Latham:** Most popular and widely planted because of its vigor, disease-resistance, high productivity. **Newburgh:** Its freedom from mosaic makes it ideal for planting with black raspberries. Does best in cold climates. **Indian Summer:** The best red everbearer. Tremendous June crop, producing until hard frost.

### PURPLE & BLACKS

**Cumberland:** Leading black variety. Dependable cropper of large, sweet fruit. **Sodus:** Drought resistant variety, yielding the best purple berries. **Morrison:** Best new black for the northern section of the country.



## Highest Quality Thornless

# BOYSENBERRIES

- TOP GRADE • HEAVY YIELDING • THORNLESS

A successful hybrid achieved by crossing the blackberry, loganberry and raspberry. The result: a tremendous berry often more than 2 inches long, and of indescribable taste delight! Bears second year planted.

1-Year No. 1 Plants: 6 Plants for \$2.05, 12 Plants for \$2.95, 25 Plants for \$4.65, 100 Plants for \$14.05.  
Bearing Age Plants: 6 Plants for \$2.95, 12 Plants for \$4.75, 25 Plants for \$8.00, 100 Plants for \$25.00

# Hardy GRAPE VINES

## FAVORITE VARIETIES SELECTED FOR TASTE AND VIGOR

Rayner's grape vines are the product of years of careful propagation methods. With very little care, consuming only a small space, they will produce a steady cash income or source of delectable fruit for you during a lifetime of enjoyment. Full planting and pruning directions included with your order. We feature **CONCORD**, the best blue grape; **CACO**, the best red grape; and **NIAGARA**, the best white grape.



**NEW LOW PRICES**  
2-Year No. 1 Vines: Each 50c, 3 for \$1.35, 10 for \$3.50, 25 for \$7.50, 50 for \$12.50, 100 for \$20.00.



### RAYNER'S SELECTED

## Blackberries

Does your garden have an empty space in a corner or along the fence line? Plant a few of Rayner's hardy blackberry plants for a steady flow of tasty cultivated berries. Highest crops with little care!

No. 1 Plants: 6 for \$1.45, 12 for \$2.10, 25 for \$3.30, 100 for \$9.90.

## LOST YOUR CATALOG?

We'll gladly send you another—write TODAY!

# Choice FRUIT TREES

The Best Investment You Can Make!

## APPLES

Plant at least two varieties for pollination. Get shade, beauty and fruit for years.

**STANDARD SIZE** trees in your choice of **STAYMAN'S Double Red Winesap**, **GRIME'S GOLDEN** for fall bearing, **YELLOW DELICIOUS** for early fruit, **RED McINTOSH** and popular **RED DELICIOUS**.

5-6 Ft. Each \$1.75, 3 for \$5.25, 10 for \$14.50  
**DWARF SIZE** trees take up little space, grow short enough for average person to pick fruit without ladder, but fruit is standard size! All above varieties. 2-year trees, 3 feet up.

Each \$3.00 3 for \$8.25

### 5-in-One Tree

Complete orchard in a single tree. Bears from early season to late fall, producing 5 different types of yellow and red varieties. A novelty well worth the investment. 2-Year trees—5 to 6 ft.

Each \$3.00 3 for \$8.00

## PEACHES

Northern grown to withstand the toughest climate. Choose from **HALE HAVEN** (deep crimson freestone); **RED HAVEN** (new, extra-early freestone); **ELBERTA** (most widely planted market peach); **BELLE OF GEORGIA** (best of white-fleshed peaches). 5 to 6 ft.

Each \$1.75

3 for \$5.25 10 for \$14.50

## CHINESE CHESTNUT

Just as tasty as the American variety, larger in size and guaranteed blight-resistant. Vigorous, adaptable to most types of soil. Plant two or more for pollination. 3-ft. trees.

Each \$1.95 2 for \$3.50

## PEARS

Featuring only the most dependable and productive varieties. Choose from **BARTLETT** (best for home garden and market); **CLAPP'S FAVORITE** (lemon colored with brown markings); **SECKEL** (deep brown, disease resistant). Plant for Clapp's Favorite with either Bartlett or Seckel for pollination.

4-5 ft. size \$1.80 each

**DWARF SIZE** pear trees save space, produce standard size fruit **BARTLETT**, **CLAPP'S FAVORITE**, **SECKEL**. 2-year trees, 3 feet up.

Each \$2.50 3 for \$6.00

Free Planting Instructions with Every Order

TREES TOO LARGE FOR PARCEL POST SHIPPED BY FASTEST EXPRESS TO YOU





GLAMOROUS RIOTS OF COLOR ALL SUMMER LONG!

# Superb GLADIOLUS

**LARGE FLOWERED FAVORITES** Stately plants whose wide range of color provides a succession of blooms from July until late fall. These selected, No. 1 bulbs are the best varieties in each color.

Corona. White with rose picotee edges.....	Per dozen	Picardy. Apricot-pink .....	1.00
Elizabeth the Queen. Lavender .....	\$1.00	Rosa Van Lima. Light rose .....	1.00
Gold Dust. Clear yellow .....	1.20	Silentium. White, scarlet markings .....	1.00
Lilac Wonder. Rose violet .....	1.05	Snow Princess. White .....	1.00
Maid of Orleans. White .....	1.05	Spotlight. Yellow, scarlet blotch .....	1.30
Mrs. Mark's Memory. Magenta .....	1.00	Valeria. Excellent red .....	1.10
New Europe. Light red .....	1.05	Wanda. Creamy buff-yellow .....	1.00
		Yellow Herald. Clear yellow .....	1.20

**COLLECTION A-17**  
3 Bulbs each of the above named varieties — 45 Bulbs  
**\$3.65**

**COLLECTION B**  
25 EXHIBITION GLADIOLUS Jumbo Bulbs. Choice Colors.  
**\$2.00**

**Rainbow Collection**

Choice selections of varied colors. For a continual succession of large flowered blooms this summer and fall, set these bulbs two weeks apart.

25 for **\$1.40**  
100 for **\$5.25**



**Giant Prize-Winning**

## DAHLIAS

These selected bulbs will produce giant flowers of spectacular color and hardy growth.

Anna Benedict. Deep red.....	Each	.85
Jean Trimbee. Pectunia violet .....	.70	
Laetare. Scarlet and gold .....	.70	
Michigan White. Pure white .....	.70	
Premier's Winsome. Pink .....	.90	
Tower's Empire. Golden yellow .....	.85	
1 each of above varieties .....	\$4.00	

6 strong tubers, No. 7

### POPULAR DECORATIVE DAHLIAS

Avalon. Canary-yellow .....	Each	\$ .45
El Toreador. Crimson-red .....	.45	
Jane Gowl. Bronzy buff and gold .....	.50	
Jersey's Beauty. Rose-pink .....	.50	
Mrs. I. De Ver Warner. Lavender .....	.45	
Rosy Darlene. Light pink .....	.50	
White King. Pure white .....	.50	
1 each of above varieties .....	\$2.80	

7 strong tubers, No. 9

### POMPON VARIETIES DAHLIAS

Edith Muller. Rosy orange .....	Each	\$ .30
Indian Chief. Red and white .....	.40	
Mary Munns. Orchid-lavender .....	.35	
Morning Mist. White, lavender .....	.35	
Snowlad. White .....	.30	
Sunshine. Brilliant scarlet .....	.35	
1 each of above varieties .....	\$1.75	

6 strong tubers, No. 5

## GIANT FLOWERED BEGONIAS

Horticultural improvement in recent years has developed the begonia into a gigantic flower of unsurpassed beauty. Plant several in your window boxes, in borders and in flower beds.

Double: Beautiful color range.....	12 for	\$2.50
Single: Large flowers, all colors .....	2.10	
Fritted: Frilled petals, single .....	2.30	
Carnation: Short, fringed petals .....	2.60	

(All above in red, pink, orange, salmon, scarlet, yellow, white.)



## Gorgeous PHLOX Collection

Hardy, field-grown plants that flower for years, repeating their dazzling colors on great, sturdy flower heads. Shipped direct to you from one of America's great phlox specialists. White, pink, salmon-pink, salmon-orange, scarlet-red, rose-blue.

6 Phlox Plants **\$1.95** (One of each color)  
Postpaid

This highly ornamental bush makes a fine specimen planting for your lawn, producing heavy foliage which covers the fruit. Korean Cherries are perfect for pies, sauce and jelly. Plant two for pollination. SPECIAL OFFER: 1 No. 20 and 1 No. 60—

## Ornamental & Delicious! KOREAN CHERRIES

2 Plants for **\$3.69**

## AZALEAS

This perfect plant for border plantings and foundation is one of the most popular of all shrubs because its brilliant color acts as a welcome herald of spring. Proper acidity can be maintained by using aluminum sulphate at the rate of 4 to 8 ounces per square yard, or mulch with peat moss. 6-inch plants, only

**\$1.75**

Choice of scarlet, pink, white.

## HANDY WAY TO ORDER:

Nothing to Tear Out

Nothing to Fill In

MAIL TODAY!

1. Draw a ring around the items you wish to order and put a ring around the price.
2. Write in these spaces the amount of money:  
for Plants \$..... for Parcel Post \$.....  
(NOTE: Trees are too large for parcel post, and are shipped express with express charges collect.)
3. Return entire folder with check or money order.

NAME \_\_\_\_\_  
ADDRESS \_\_\_\_\_  
TOWN \_\_\_\_\_ STATE \_\_\_\_\_  
SHIP \_\_\_\_\_  
PARCEL POST \_\_\_\_\_ EXPRESS \_\_\_\_\_

SHIPPING DATE \_\_\_\_\_  
NOTE: If you desire to leave shipping date to us, write your planting time in shipping date space.

### PARCEL POST RATES

STRAWBERRIES—25-100 plants 25c; add 9c for each additional 100 plants. SWEET POTATOES same.

BLACKBERRIES, RASPBERRIES and BLUEBERRIES—6 plants 25c each; additional plant add 1c.

GRAPES and 3-4 yr. BLUEBERRY PLANTS allow double above rates.

Please include Parcel Post with your order unless shipment is desired by Express. We will rebate any over-payment at time of shipment.

TREES are too large for parcel post shipment, and are sent Express Collect.



**EVERY NEW  
RAYNER CUSTOMER  
HAS A CHOICE  
OF A VALUABLE**

If you do not wish to avail yourself of this FREE OFFER, but have a friend or neighbor whom you would like to receive a free catalog we will appreciate your interest in supplying name and address.

**FREE  
GIFT!**

Send us the names and addresses of six of your neighbors who have a garden and may be interested in receiving information on berry growing. If these names are accompanied by your order for \$6.00 or more, we will reciprocate by including in our shipment, a FREE BONUS of \$2.00 worth of strawberry plants or blueberry plants, in our choice of varieties.