

## Historic, archived document

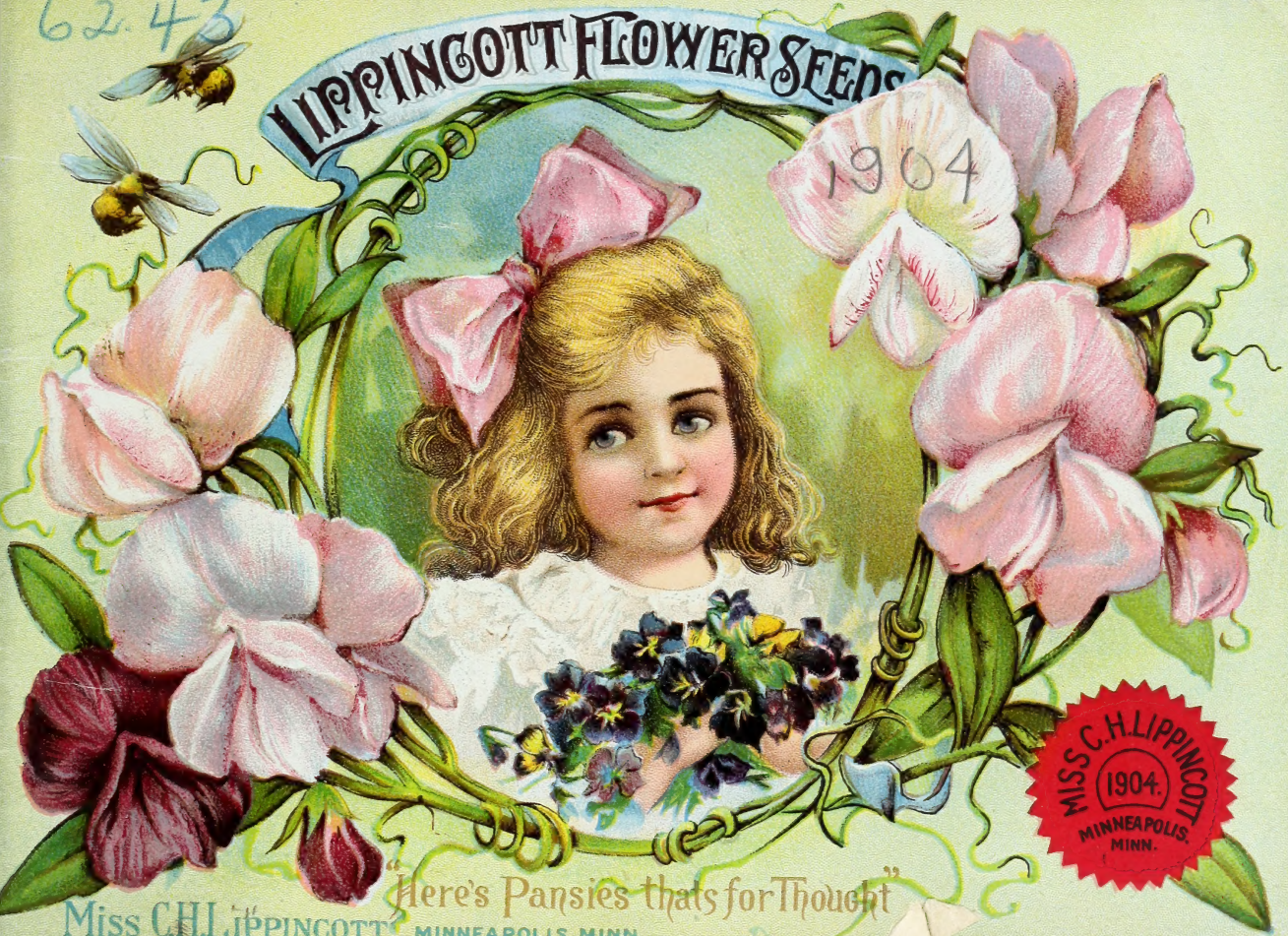
Do not assume content reflects current scientific knowledge, policies, or practices.



62.43

LIPPINGCOTT FLOWER SEEDS

1904



MISS C. H. LIPPINGCOTT  
1904.  
MINNEAPOLIS,  
MINN.

"Here's Pansies that's for Thought"

Miss C. H. LIPPINGCOTT MINNEAPOLIS, MINN.





## A FEW SUGGESTIONS TO CUSTOMERS.



**FREE PREMIUM.** 30 CENTS' worth of seeds extra allowed on all orders amounting to **ONE DOLLAR**; 15 CENTS' worth on all orders amounting to **50 CENTS**. This liberal premium is the same as 50 per cent. discount, but must be selected in seeds and order for premium must accompany original order for seeds.

Make out a list of **Free Packet Seeds**, and remember that only **SEEDS IN PACKETS** can be selected **FREE**—not by the ounce, one-fourth pound, or collections. **No free seeds with grass seed.**

**HOW TO REMIT MONEY.** Always send money by one of the following methods: **Post Office Order**, **Express Money Order**, **Registered Letter** or **Bank Draft**, and if the order is lost or stolen, your money is safe—I especially request my customers to remit money in this way, and I will allow you to select seeds to the cost of the **Money Order**, **Registered Letter** or **Draft**, providing your order amounts to 50 cents. Do not send postage stamps, unless you have no other way of remitting amount; and when you do, two-cent denomination preferred. And **Register them**. If money is sent any other way than specified above it is at the risk of the sender.

**POSTPAID.** All seeds sent postpaid and safe arrival **guaranteed**; all orders received to the amount of \$1.50 and upwards will be forwarded by **Registered Mail** to purchaser's address, which costs me 8 cents extra, but insures the safe arrival of your seeds. Please sign your name and full address on each and every letter you send.

**Quantity of Seed in a Packet.** Customers will please note I state number of seeds in a packet, which will enable those wishing to plant borders and beds of a certain length or size to calculate the number of packages required. **Full Count Guaranteed.** No less quantity than a package can be sold.

**FLORAL CULTURE.** Containing full cultural directions and points how to grow flowers and seeds, mailed free with every order.

**PLEASE—Do not forget to sign your name and full address on each and every order you send. All orders for Flower Seeds should be addressed to**

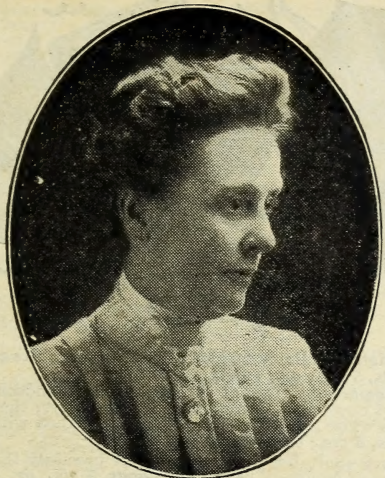
**CARRIE H. LIPPINCOTT,**

**THE PIONEER SEEDSWOMAN OF AMERICA,**

319 SIXTH ST. SOUTH,

MINNEAPOLIS, MINN.





Minneapolis, Minn., Jan. 1st, 1904.

**A** GAIN I send my floral messenger to you as a reminder of the near approach of Spring; and thank you all most cordially for your hearty support and encouragement this last season, in addition to the many preceding years, in which you have given me your hearty co-operation. We have had another most discouraging year to work in, particularly so for the amateur and hard for us all, but still in spite of cold and rain, we have seen most beautiful flowers everywhere, and *never* have I seen Pansies more beautiful and profuse; their bright faces smile a welcome on all sides. This year I open my catalogue with my four favorite annuals, *Sweet Peas, Pansies, Nasturtiums* and *Asters* and would bespeak a trial of them to all new customers, my old friends know them so well, for me to plead for them is unnecessary.

The small list of Roses and plants I handled last year were such a marked success that I feel doubly encouraged to offer them again; they were well received and I have hundreds of letters telling of the fine conditions they were received in, and how well they have done during the past Summer. On the last page of this catalogue will be found a list of Hardy Vines, the remainder of the list and Roses, will be found in Floral Culture, the same as last year.—Once more thanking you for your patronage in the past, and hoping to serve you in the future, I am,

Very sincerely yours,

C. H. Lippincott



**Apple Blossom**—Bright, rosy pink standards, blush wings. *Pkt.*, 100 seeds, 5 cts.; *oz.*, 10 cts.

**Blanch Burpee**—Pure white, extra large flowers, selected stock. *Pkt.*, 100 seeds, 5 cts.; *oz.*, 10 cts.

**Blanch Ferry**—Beautiful combination of pink and white, very fragrant. *Pkt.*, 100 seeds, 5 cts.; *oz.*, 10 cts.

**Blushing Beauty**—Very fine and extra large; rich, soft, fleshy rose. *Pkt.*, 100 seeds, 5 cts.; *oz.*, 10 cts.

**Black Knight**—Flowers of large size and finely expanded. Standard a rich wine-brown or deep claret; wings heavily shaded with brownish-purple. *Pkt.*, 100 seeds, 5 cts.; *oz.*, 10 cts.

**Bronze Knight**—Very novel and unique. Standard of a curious terra-cotta tint, supposed to be bronze; wings ivory white. *Pkt.*, 100 seeds, 5 cts.; *oz.*, 10 cts.

**Butterfly**—Standard and wings white, faintly suffused lavender; entire flower edged with blue. *Pkt.*, 100 seeds, 5 cts.; *oz.*, 10 cts.

**Captain of the Blues**—The nearest approach to blue. Of large expanded form, standard purple-mauve, wings lighter, shading to pale blue. *Pkt.*, 100 seeds, 5 cts.; *oz.*, 10 cts.

**Countess of Radnor**—Standard light mauve, fading into a soft lavender, wings of lighter shade. *Pkt.*, 100 seeds, 5 cts.; *oz.*, 10 cts.

**Coquette**—Deep primrose shaded fawn. *Pkt.*, 100 seeds, 5 cts.; *oz.*, 10 cts.

**Countess of Powis**—A glowing orange suffused with light purple, very novel. *Pkt.*, 100 seeds, 5 cts.; *oz.*, 10 cts.

**Firefly**—Best and brightest of scarlets. Standard fiery scarlet, wings crimson scarlet. *Pkt.*, 100 seeds, 5 cts.; *oz.*, 10 cts.

**Gaiety**—Bright and lively stripes of crimson on white ground. *Pkt.*, 100 seeds, 5 cts.; *oz.*, 10 cts.

**Mrs. Jos. Chamberlain**—One of the largest and handsomest of Eckford's latest novelties. The color is very effective, the whole flower having a white ground which is heavily striped with rose. *Pkt.*, 100 seeds, 5 cts.; *oz.*, 10 cts.

**Kathrine Tracy**—Soft, but brilliant pink, of precisely the same shade in wings and standard. *Pkt.*, 100 seeds, 5 cts.; *oz.*, 10 cts.

**Lady Mary Currie**—A deep orange pink, delicately shaded rosy-lilac. *Pkt.*, 100 seeds, 5 cts.; *oz.*, 10 cts.

**Navy Blue**—A most distinct and striking color in Sweet Peas. The general effect is of a rich, deep true blue, though on close examination the shade in the standards is a deep lavender-purple, suffused throughout with a faint tint of claret or wine-red, while the wings are a rich violet-purple. *Pkt.*, 100 seeds, 5c.; *oz.*, 10c.

**Ramona**—Soft, flesh-pink stripes on white ground, very dainty and delicate. *Pkt.*, 100 seeds, 5 cts.; *oz.*, 10 cts.

**Venus**—Of the largest expanded form; color a rich salmon-buff. *Pkt.*, 100 seeds, 5 cts.; *oz.*, 10 cts.

**Waverly**—Standard rosy claret; wings blue, shaded and laced with rose. *Pkt.*, 100 seeds, 5 cts.; *oz.*, 10 cts.

**Lady Nina Balfour**—Large, expanded form with flowers beautifully hooded; both standards and wings are well rounded and broadly spreading. Coloring a pale lavender or lilac, free from any reddish tint, and when gathered in bunches gives the effect of a soft mouse tint. *Pkt.*, 100 seeds, 5 cts.; *oz.*, 10 cts.



**Prince of Wales**—A bright, self-colored, deep-rose flower of grand size and beautifully hooded form; frequently four on a stem. A greatly improved *Her Majesty*; one of Eckford's finest. *Pkt., 100 seeds, 5 cts.; oz., 10 cts.*

**Queen Victoria**—The nearest approach to yellow in Sweet Peas. Color a soft primrose-yellow, slightly overlaid with faint purple, which imparts a much deeper tone. Flowers of very large size and finest form, erect, slightly pointed, with edges finely recurved. *Pkt., 100 seeds, 5 cts.; oz., 10 cts.*

**Salopian**—Flowers of large size, beautifully rich, deep glowing crimson tinged with orange-scarlet. *Pkt., 100 seeds, 5 cts.; oz., 10 cts.*

**Stanley**—Rich, glossy, dark maroon, of large expanded form. *Pkt., 100 seeds, 5 cts.; oz., 10 cts.*

**Triumph**—Flowers of grand, large size and most beautiful coloring. Standard stiffly erect, broadly expanded; color white; suffused with salmon-pink, tinted with carmine at the base; wings widely spread, delicately veined with rosy carmine, shading to deep rose in the center. *Pkt., 100 seeds, 5 cts.; oz., 10 cts.*

### **New Double Sweet Pea.**

Double Sweet Peas are of incomparable beauty. The plants are of extremely robust growth, producing a lavish profusion of richly fragrant flowers; the flowers are extra large, frequently measuring over two inches across. *They will not all come double*, but if the plants are grown strong and luxuriant, they usually produce from 20 to 40 per cent. of double blossoms. *Pkt., 100 seeds, 5 cts.; oz., 10 cts.*

### **Sweet Peas, Best New Mixed.**

Owing to a special demand for all the new and finer named varieties, I have selected all the large flowering and most distinct sorts, especially for those that can afford to pay for the scarce and rarer varieties that heretofore have been too expensive to include in a mixture, including in all some twenty-five or thirty named varieties. This I call my *best mixed* and I can particularly recommend it as extra choice and fine. *Pkt., 100 seeds, 5 cts.; oz., 10 cts.; ¼ lb., 25 cts.; lb., 90 cts.*

### **Sweet Peas, Fine Mixed.**

This strain, although not embracing the new seedlings, contains a beautiful assortment of the famous *Eckford Sweet Peas*. *Pkt., 100 seeds, 4 cts.; oz., 8 cts.; ¼ lb., 20 cts.; lb., 65 cts.*

**Good Mixed—Pkt., 75 seeds, 3 cts.; oz., 6 cts.; ¼ lb., 15 cts.; lb., 45 cts.**

One package each of the entire collection (30 pkts.) for \$1.00. This includes one package of New Double, Best Mixed, Pink and White Cupid.



### **New Dwarf Pink Cupid Sweet Pea.**

**Pink Cupid**—Bears generally three and sometimes four flowers to a stem. The flowers are identical with the tall-growing *Blanch Ferry* and are *always fully equal in size*. The standard is a bright rose pink, while the wings are pure white or light pink. *Pkt., 100 seeds, 5 cts.; oz., 10 cts.*

### **New Dwarf White Cupid Sweet Pea.**

Grows but five inches high and blooms so freely for months that it appears a perfect mass of white—the leaves being quite hidden. The flowers of fine form and large size, are of the most perfect white, and the plants remain in full bloom two months longer than any other Sweet Pea. Useful for bedding. *Pkt., 100 seeds, 5 cts.; oz., 10 cts.*





# ROYAL SHOW PANSIES

*Royal Show Pansies.*

Is a mixture especially prepared by myself from separate strains and colors of all the largest flowering and finest varieties that can be secured in Europe, and is *unsurpassed in beauty, colorings and markings.* Pkt., 150 seeds, 10 cts.

*Black Prince Pansy.*

A distinct pansy of sterling merit. The rich, glossy black has a peculiarly soft, velvety appearance, the magnificent large flowers are of fine circular form and carried upright well above the foliage; the plants are of very compact, bushy habit, and flower so profusely that the bed of the Black Prince makes a sight not often equalled. Pkt., 100 seeds, 6 cts.

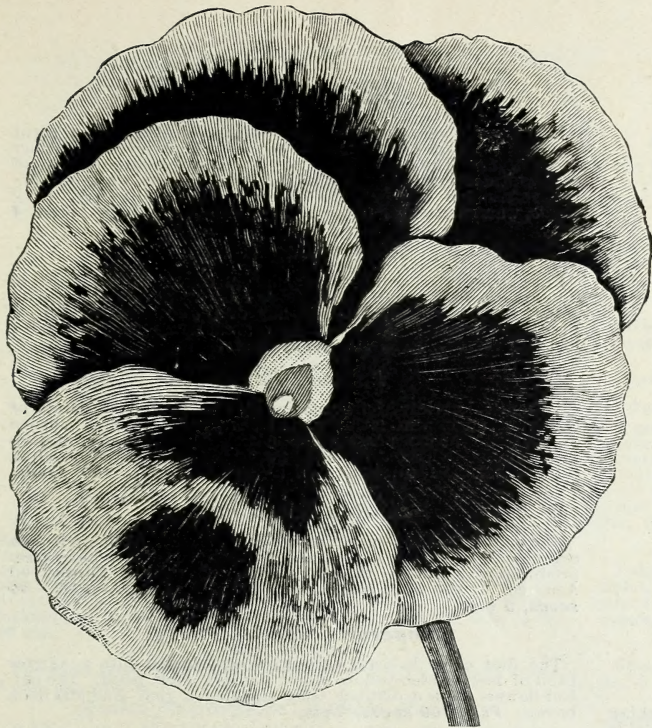
*Pansy, President Carnot.*

Flowers of great size and rounded form; the center of each of the large, rounded petals is heavily blotched with a soft, rich shade of violet-purple. The edges distinctly outlined with a snowy-white band, in the center of the lower petals the color deepens to a velvety-brown tint, contrasting richly with the yellow of the small, distinct eye. Pkt., 100 seeds, 6 cts.

*New Giant Trimardeau Pansy.*

Remarkable for the extra large size of the flowers, which, however, are not so circular in form as the "Imperial German" or the "Royal Show." Pkt., 100 seeds, 6 cts.





**PANSY. "New Giant Madame Perret," or Wine Pansy.**

"This novelty is specially distinguished from other Pansies by the plant being full and spreading with very broad and extremely dark green leaves. The straight and stiff stems it possesses cause the flowers to stand out well from the foliage. The colors of the blossom range through all the shades of red, from a pink to a fine deep purple, with an intermediate bright red edged with white. The face of the flower in some cases is regular in color, while in others it is lined and striped. The extraordinary size of the flowers, which reach as much as 3 to 3½ inches in diameter, make it a novelty of the first rank, and one that is sure to be sought after by lovers of Pansies. **100 seeds, 10c.**

## SWEET SCENTED PANSIES



### **The Perfume of the Violet.**

#### **The Beauty of the Pansy.**

This new class is the result of crossing the Pansy (*viola tricolor*) with the Sweet Violet (*viola cornuta*); the resulting hybrids, in addition to retaining the delightful Violet Perfume, produce the most beautiful Pansy-like blossoms, 2 to 2½ inches across, of great substance and of an endless variety of colors. They are not all equally fragrant, though the majority are as highly scented as the sweetest Violet, and the other high merits of this new strain, aside from their perfume, destine them to wide popularity. **Mixed colors. Pkt., 100 seeds, 5 cts.**

#### **Giant Yellow Prince Pansy.**

The color is pure golden yellow, shaded canary, sometimes with the three lower petals marked with purplish or red blotches and hair lines. It is impossible to reproduce by means of the printer's art the grand depth of brilliant color presented by this beautiful Pansy when well grown. **Pkt., 100 seeds, 6 cts.**

#### **Giant White Spotted Pansy.**

The flowers are very large, pure white with a violet blotch on the three lower petals, of good form and substance. **Pkt., 100 seeds, 6 cts.**

#### **New Imperial German Pansy.**

This mixture embraces seed of over fifty colors and markings, and is guaranteed to equal any strain offered as Imperial German. **Pkt., 100 seeds, 5 cts.**

Mrs. F. M. Ziegler, Muscatine, Iowa, March 18, 1908:—My Pansies were the finest I ever saw last year, and were the talk of the town, and my Sweet Peas and Nasturtiums were not far behind.

Mrs. P. P. Sullivan, Fontanelle, Iowa, March 27, 1909, Writes:—Your seeds all grew last year and produced flowers large and beautiful in coloring.



### "Masterpiece" or Ruffled Pansy.

This strain comes nearer to "Double Pansies" than anything ever introduced under that name. The number of petals is the same as that in other Pansy flowers, but they are crimped and curled in such a fashion that the flowers appear double. The flowers are of enormous size, often 3 inches across, and the color variations and combinations are odd and striking. **Pkt., 100 seeds, 10 cts.**

### Pansy.

**Good Mixed.** Fine for bedding. Many rich colors. **Pkt., 100 seeds, 3 cts.**

### Fire King Pansy.

This novelty comes almost absolutely true, scarcely a plant-bearing flowers at variance from the type, which is very distinct and striking. The three lower petals each have a large blotch of deep brown-red or magenta, margined with yellow, while the upper petals are of a bright reddish-brown, of a *real fiery shade*, warranting the name of **Fire King. Pkt., 100 seeds, 4 cts.**

### Snow Queen Pansy.

Pure satiny white with yellow dot in center of flower, sometimes marked near center with faint blue or purple lines; altogether the least picturesque of any of the different classes of Pansies; it is very highly prized by a great many pansy lovers for just that reason. **Pkt., 100 seeds, 4 cts.**

### Peacock Pansy.

A beautiful variety of ultramarine blue in the upper petals of the flower, edged with a thin white line, within which is a space of purplish crimson, passing into a rich central blotch of deep blue, shading to black. Named "Peacock" because the blending colors resemble the feathers of a peacock. **Pkt., 100 seeds, 4 cts.**

### New Red Mixed Pansy.

The most brilliant Pansy Mixture ever offered, made up from a collection of all the best red and fiery shades which have been produced up to date by the expert Pansy growers of Europe and America. If you want *red pansies* try this mixture. **Pkt. 90 seeds, 5 cts.**

### Emperor Frederick Pansy.

The first color is deep, velvety brown, shaded into a narrow band of deep golden yellow, which borders each petal. The perfect flowers show a distinct face, marking a rich gold and deep brown. **Pkt., 100 seeds, 4 cts.**

### Pansy, Emperor William.

Ultramarine blue with violet eye. **Pkt., 100 seeds, 4 cts.**

**NOTICE.--One packet each of the seventeen varieties (including New Madam Perret and Masterpiece) of pansies for 75c.**

Mrs. Alice Hodges, Mallard, Ill., Jan. 29, 1903, Writes:--This is the third year for your flowers. I like them very much, especially your Asters. I had a lovely bed last fall, which we enjoyed very much.





### **Nasturtiums, Dwarf. Finest Mixed.**

The best ever produced and not surpassed for gorgeousness of colors and brilliancy of effect, embracing every known good sort. In Dwarf Nasturtiums I consider my special mixed the best that money can buy. It is made up especially for critical buyers that have the money to spend for THE BEST ONLY. Dwarf Nasturtiums now rank with Sweet Peas and Pansies as a favorite and fashionable flower. **Pkt., 25 seeds, 4 cts.; oz., 12 cts.; ¼ lb., 40 cts.**

#### **Good Mixed.**

The same grade as is usually sold, and very fine. **Pkt., 20 seeds, 3 cts.; oz., 8 cts.**

### **Dwarf Nasturtiums, Golden Queen.**

Golden-yellow flowers on golden foliage. **Pkt., 25 seeds, 4 cts.; oz., 15 cts.**

### **Dwarf Nasturtiums, Crystal Palace Gem.**

Rich sulphur-yellow, spotted with carmine. **Pkt., 25 seeds, 4 cts.; oz., 15 cts.**

### **Dwarf Nasturtiums, Aurora.**

The ground color is a chrome-yellow, the upper petals being of a somewhat lighter tint, while the two lower petals are spotted and veined with purplish-carmine. **Pkt., 25 seeds, 4 cts.; oz., 15 cts.**

### **Dwarf Nasturtiums, Empress of India.**

The leaves are of a dark purplish-blue color, making a suitable back-ground for the brilliant crimson-scarlet flower. **Pkt., 25 seeds, 4 cts.; oz., 15 cts.**

### **Dwarf Nasturtiums, Lady Bird.**

The ground color of the flowers is rich golden-yellow, each petal barred with a broad vein of bright, ruby-crimson. **Pkt., 25 seeds, 4 cts.; oz., 15 cts.**

### **Dwarf Nasturtiums, Spotted King.**

Rich orange spotted with maroon. **Pkt., 25 seeds, 4 cts.; oz., 15 cts.**

### **Dwarf Nasturtiums, King Theodore.**

Black-brown, dark leaves. **Pkt., 25 seeds, 4 cts.; oz., 15 cts.**

### **New Climbing Nasturtiums. Madam Gunther's Hybrids.**

A new section obtained by artificial hybridizing and distinguished by dark colored foliage and flowers of a richness and variety of coloring not to be found in any of the different classes of Nasturtiums heretofore grown. Colors in these new hybrids include various shades of rose, salmon, bright red, pale yellow, etc., either self-colored or spotted, mottled, striped and margined. **Pkt., 30 seeds, 5 cts.; oz., 12 cts.; ¼ lb., 40 cts.**

### **Tall Nasturtiums, Finest Mixed.**

I also offer a special mixture of the Tall or Climbing Nasturtiums, made up on the same basis as the Dwarf Variety finest mixed, from the best named and brightest colors only. **Pkt., 25 seeds, 4 cts.; oz., 10 cts.**

### **Tall Nasturtiums, Good Mixed.**

Free bloomers and many bright colors. **Pkt., 20 seeds, 3 cts.; oz., 8 cts.**

### **Tall Nasturtiums, Von Molke.**

Ruby rose. **Pkt. 25 seeds, 4 cts.; oz., 15 cts.**

### **Tall Nasturtiums.**

Bright scarlet. **Pkt., 25 seeds, 4 cts.; oz., 15 cts.**

### **Tall Nasturtiums, Hemisphericum.**

Yellow and pink. **Pkt., 25 seeds, 4 cts.; oz., 15 cts.**

### **Tall Nasturtiums, Prince Henry.**

Yellow mottled scarlet. **Pkt., 25 seeds, 4 cts.; oz., 15 cts.**

**One packet each of all the varieties of Nasturtiums, both tall and dwarf, (16 Pkts.) for 50 cents.**



### *Aster, New Japanese or Tassel.*

The beautiful flowers of this new strain of Asters offer a most striking contrast with those of any other variety. They are of immense size, measuring from five to six inches across, with long petals curiously waved and curled, so as to give them a striking resemblance to the Japanese Chrysanthemums. They grow fourteen or fifteen inches high, are well branched, and produce a number of enormous flowers. Colors, flesh and pink. *Pkt., 100 seeds, 5 cts.*

Mrs. W. J. Douglas, Gallatin, Tenn., Jan. 29, 1903:—I have grown your flower seeds for several years and have always found them to be; what you represented them to be. I cannot describe how beautiful my Dwarf Nasturtiums bed was last summer, and the Double Dahlias grown from seed were beautiful, so many rich colors.

Mrs. Geo. W. Dietrich, Prutton, Ky., Apr. 30, 1903:—I have been buying your seeds for 8 or 10 years and have been well pleased with results. My bed of petunias last season was a marvel of beauty.



*The Cornflower Aster—Stokesia Cyanea.* This is one of our most charming and beautiful native hardy plants. The plant grows from 18 to 24 inches high, bearing freely, from early July until frost, its handsome lavender-blue Centaurea-like blossoms, each measuring from 4 to 5 inches across. It is of the easiest culture, succeeding in any open sunny position, and is not only desirable as a single plant in the mixed hardy border but can be used with fine effect in masses or beds of any size. *Pkt., 50 seeds, 15 cts.*





**ASTER NEW VICTORIA**

Magnificent flowers, massive and showy, with regular overlapping petals clear to the center. The flowers measure four inches and over across, and are of rich and varied colors. The plants grow very evenly, pyramidal in form, about eighteen inches high, and carry from twenty-five to forty flowers. Over twenty colors, mixed. *Pkt., 150 seeds, 5 cts.*

**VICTORIA**—Snow white. *Pkt., 100 seeds, 5 cts.*

**VICTORIA**—Bright pink. *Pkt., 100 seeds, 5 cts.*

**VICTORIA**—Dark crimson. *Pkt., 100 seeds, 5 cts.*

**VICTORIA**—Lavender shades. *Pkt., 100 seeds, 5 cts*



**PERFECTION  
ASTER**

One of the most perfect and deservedly one of the most popular of all Astors; very double, large and beautiful flowers, with incurved petals; height, 18 inches to two feet; nearly 30 distinct colors, mixed. *Pkt., 150 seeds, 5 cts.*

**PERFECTION**—Snow white. *Pkt., 100 seeds, 5 cts.*

**PERFECTION**—Pink ball. *Pkt., 100 seeds, 5 cts.*

**PERFECTION**—Crimson ball. *Pkt., 100 seeds, 5 cts.*

**PERFECTION**—Purple. *Pkt., 100 seeds, 5 cts.*

Miss Nannie Watson, Louisville, Ky., Feb. 27, 1903.—I always like your pansy seed, for they always come up so soon and are constant bloomers.





**New Comet Aster.**

The plants of this new variety are perfectly true in character, growing twelve to fifteen inches high and covered with large double flowers, as shown in the illustration. The flowers measure from  $3\frac{1}{2}$  to  $4\frac{1}{2}$  inches in diameter, resembling in shape and artistically curved and twisted petals, the finest Chinese Chrysanthemums. Mixed colors. **Pkt., 150 seeds, 5 cts.**

**Comet—Pure white. Pkt., 100 seeds, 5 cts.**

**Comet—Deep scarlet. Pkt., 100 seeds, 5 cts.**

**Comet—Light blue. Pkt., 100 seeds, 5 cts.**

**Comet—Pure lilac. Pkt., 100 seeds, 5 cts.**

Mrs. Velma Hutchins, Pearle, Ala.:—I think your flower seeds are the best I have ever seen.

For List  
of  
**PLANTS**

SEE  
**Floral  
Culture**

a copy of which  
will be sent free  
on application,  
and address all  
orders to

**MISS  
LIPPINCOTT**

Mrs. A. Hammer-  
schmidt, Naperville, Ill.:  
I look forward every  
spring to the coming of  
your little catalogue.  
The Cosmas seeds I re-  
ceived from you last year  
were a great success.  
They bloomed until frost  
and were beautiful.

Mrs. Mary N. Howard,  
Tonica, Ill.:—I have pur-  
chased seeds of you for  
eight years, and think  
they are splendid.

Mrs. W. L. Speer, Skag-  
way, Alaska, May 3, 1903:  
—The rose bushes were  
received in the best of  
order; their journey did  
not delay their growing  
in the least.



**Harlequin Aster.**

A striking Aster of great beauty, upright habits and a profuse bloomer. This new race produces odd flowers of the most handsome and attractive appearance, which continue in bloom a long time. In the gardens of Paris they are considered the most valuable of all varieties on account of their long duration in bloom and remarkably bright and conspicuous colors. Composed of pure white petals, quaintly interspersed in irregular manner, with deep blue and bright red petals. **Pkt., 100 seeds, 5 cts.**

**New Queen Aster.**

Very dwarf, bushy plants, growing from ten to twelve inches high, excellent for pot culture as well as for bedding. The flowers are of extraordinary size, perfectly double and resemble the finest Victoria Asters in form. Finest mixed. **Pkt., 100 seeds, 5 cts.**



### **New White Branching Aster.**

The magnificent, large double white flowers, quite four inches in diameter, are borne upon long stems, making them excellent for cutting. **Pkt., 150 seeds, 5 cts.**

### **Simple's Branching.**

This is a magnificent new American strain, producing handsome double flowers on long stems. Mixed colors. **Pkt., 150 seeds, 5 cts.**

**SEMPLÉ'S BRANCHING**—Crimson. **Pkt., 100 seeds, 5 cts.**

**SEMPLÉ'S BRANCHING**—Lavender. **Pkt., 100 seeds, 5 cts.**

**SEMPLÉ'S BRANCHING**—Pink. **Pkt., 100 seeds, 5 cts.**

**SEMPLÉ'S BRANCHING**—White. **Pkt., 100 seeds, 5 cts.**

Walter R. Walker, Nehalem, Oregon, Sept. 29, 1903, writes:—Our sweet peas grown from your 8c bargain collection, did splendidly. They are nearly eight feet tall, and have bloomed profusely.

### **Aster, Fire King.**

**The Most Brilliant Aster Ever Introduced.**

And the nearest approach to scarlet yet obtained; a color previously unknown in this popular flower, which, for an autumn show of flowers, few others equal. Habit very compact, not more than twelve inches in height, with large, beautifully in-curved flowers, and makes a charming companion to **SNOWBALL.** **Pkt., 150 seeds, 5 cts.**

### **Aster, Snowball.**

**A Most Distinct and Handsome Variety, Equally Valuable for Pot Culture and Cut Flowers.**

It is a most profuse bloomer, a single plant often producing as many as twenty-five to thirty pure, snow-white flowers, globular in form and of extraordinary size. **Pkt., 150 seeds, 5 cts.**

### **New Yellow Aster.**

The form of the double flower is a perfect ball; the quills are close together and of the *brightest sulphur yellow*, not a mere indication of the color, as in all former productions. The border petals are broad and of a lighter tint, seeming to enclose the flower like and old-fashioned bouquet paper. The flowers are borne upon long, erect stems, excellent for cutting. Plants, twelve to fifteen inches high, are of compact, bushy growth, and most abundant bloomers. **Pkt., 150 seeds, 5 cts.**

### **Asters, Finest Mixed.**

Of all the best varieties, such as Victoria, Perfection, Comet, Harlequin, New Queen, etc. **Pkt., 150 seeds, 6 cts.**

### **Asters, Good Mixed.**

Many bright colors. **Pkt., 100 seeds, 3 cts.**

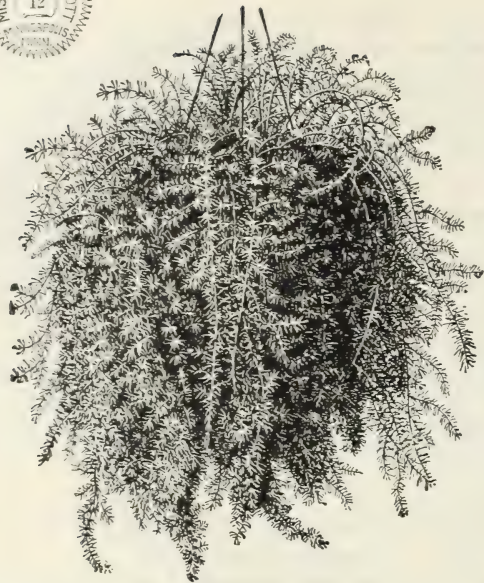
**One Packet each of the entire collection of Asters, including the beautiful new large corn flower Aster. 31 packets for \$1.25.**

Mrs. E. T. Kindred, Roanoke, Va., Feb. 21, 1903, writes:—We were so perfectly charmed with the result of the seed's we got from you last season that we want another order put in right away. The *Nasturtiums* and *Sweet Peas* were the prettiest and most prolific I ever saw, and were a constant source of pleasure to us throughout the entire season.

Mrs. S. E. Lewes, Bristol, W. Va., Feb. 15, 1903, writes:—I think that your seeds are even more than you claim them to be. I wish you great success.







***Asparagus Sprengeri.***

New. Perhaps the best new plant introduced within ten years. Highly praised everywhere; handsomest seen drooping from a pot or basket. Sprays 4 to 6 feet long, of fresh, green, feathery foliage; useful for bouquets, wreaths or sprays, remaining perfect for weeks after cutting. Grows freely the whole year round; extremely valuable for all purposes. Flowers white, followed by red berries. **Pkt., 10 seeds, 10 cts.**

***Asparagus Plumosus Nanus.*** This graceful climbing Asparagus has foliage finer than that of the most delicate fern, and will last for weeks after being cut. It is an excellent house plant, succeeding under almost any conditions. **Pkt., 10 seeds, 10 cts.**



***Anchusa Capensis, or Cape Forget-Me-Not.***

A hardy annual of more than ordinary beauty. It grows about two feet high, branching freely and bearing a profusion of the most lovely flowers, similar in all respects to the Forget-me-not, though the blossoms are much larger and of finer color. It is always taken for a beautiful, large-flowering Forget-me-not, and for bouquets and cut flowers it is indeed superior to it. Its color is a deep, clear, brilliant blue with a pure white eye; one of the rarest and most lovely shades of that color. It blooms early and continues all summer. **Pkt., 150 seeds, 4 cts.**





### **Ambrosia.**

A hardy annual with long spiral stems, bearing an abundance of small, round, greenish-yellow buds and blossoms which are *exceedingly fragrant*. It is as desirable as the Rose Geranium as a plant with fragrant foliage, and for making up into bouquets and other floral work. Its long, beautiful, fringy spirals of lovely green are unsurpassed. It is one of the easiest plants to grow, and seed may be sown early in open ground. *Pkt., 250 seeds, 4 cts.*

### **Alyssum, Little Gem.**

The plants are very dwarf. Each spreads so as to completely cover a circular space twelve to twenty inches in diameter. They soon become one mass of white, remaining in full bloom from spring to fall—being densely studded with the beautiful miniature spikes of deliciously fragrant flowers. *Pkt., 200 seeds, 4 cts.; oz., 30 cts.*

### **Alyssum, Sweet.**

Its pure white fragrant flowers are produced from early spring until killed by frost; very useful in all kinds of bouquets. **NOTE**—For a cemetery plant, nothing is more suitable than Sweet Alyssum—requiring but little care and attention and a continuous bloomer throughout the summer. *Pkt., 200 seeds, 4 cts.; oz., 25 cts.*

### **Alyssum, Saxatile Compactum.**

Showy golden-yellow flowers; hardy perennial, blooms the first season; excellent for rock-work. *Pkt., 200 seeds, 4 cts.*



### **Angel's Breath, or Gypsophila,**

An annual that should be in every garden, for it thrives everywhere, and furnishes the loveliest material for all kinds of bouquets. The tiny little flowers are borne in abundance on long, graceful, branching stems which lend a most graceful, light appearance to any bunch of flowers. *Pkt., 250 seeds, 4 cts.*

### **Aquilegia, or Columbine.**

Very handsome, ornamental, hardy perennial plants of easy cultivation and bearing in profusion large flowers of novel shape and in a great variety of colors. **Double Mixed.** *Pkt., 150 seeds, 3 cts.*



**Abutilon, Flowering Maple.**

A very popular perennial shrub, with bell-shaped drooping flowers, well adapted to house culture, easily raised from seed, and if sown before April, under glass, plants will bloom the first season. For winter flowering, plant in September. Finest mixed. **Pkt., 30 seeds, 5 cts.**

**Crab's-Eye Vine, Abrus Precatorius.**

A most beautiful climber, either for pot culture or the open ground in summer; bears clusters of bright yellow flowers, followed by bunches of pods, which when dry, burst open, disclosing brilliant red seeds with black eyes, used for making beads and other ornaments, for which purpose they are exceedingly pretty. **Pkt., 15 seeds, 6 cts.**

**Achillea.**

**Ptarmica—(Double White Yarrow).** One of the best hardy white perennials in the list. Grows about two feet high, and from spring till frost, is covered with heads of purest white double flowers. A grand plant for cemetery decoration. Easily grown from seed, flowering the first season if sown early. **Pkt., 300 seeds, 8 cts.**

Mrs. J. J. Kline, Shreveport, La., Feb. 6, 1908.—Your flower seeds have grown beautifully in my southern garden, and I want more.



**ANTIRRHINUM TOM-THUMB**

**Antirrhinum, Tom Thumb (Snapdragon.)**

Very dwarf, growing only eight inches high, thickly studded with beautiful spikes of gay colored flowers, orange, scarlet, rose-white, maroon, striped, etc. **Pkt., 250 seeds, 4 cts.**

**Antirrhinum, New Giant.**

Flowers double the size of the older sorts, more closely set on the stems and colors more clear and brilliant. Plants very compact and bushy, growing about twelve inches high. All colors mixed. **Pkt., 200 seeds, 5 cts.**

**Antirrhinum, Queen of the North.**

The finest and most beautiful of all the **Snaphragons**. The plants grow into handsome, regular bushes, twelve inches high, covered with large white flowers of a deliciously sweet perfume. Suitable for bedding or pot culture. **Pkt., 200 seeds, 5 cts.**





***Ageratum, Imperial Dark Blue.***

A plant that blooms continuously all summer in the garden and makes a pleasing contrast of color with more brilliant varieties. I offer seed of the new *Imperial Dark Blue* as best and most showy. **Pkt., 200 seeds, 3 cts.**

***Ageratum, Dwarf White.***

A new variety, very dwarf and compact; pure white. **Pkt., 200 seeds, 4 cts.**

***Acroclinium, Everlasting.***

One of the most beautiful and valuable of the everlasting flowers, called by some "Pink Daisies," very effective in borders during the blooming season, and possesses the additional advantage of being available for winter decoration, for which purpose it is now extensively grown. The densely double flowers are faultless, both in shape and color; the flowers are somewhat larger than the single, and, from the seed I offer, about 75 per cent will be double. **Pkt., 75 seeds, 3 cts.**



***Arabis Alpina.***

*The pure white flowers grow so uniformly and thickly that it gives the effect of a sheet of snow. Plants perfectly hardy.* The earliest, prettiest spring flower. The spreading tufts are densely clothed with neat, lively green leaves and covered with pure white flowers of the most lovely effect, conspicuous in great distance, especially in large masses on rockeries or broad edgings for park roads, having the advantage of braving the greatest drought during summer and always looking neat. **Pkt., 200 seeds, 4 cts.**

Mrs. Anna Taylor, Charlotte, Mich., July 13, 1903.—I have bought my seeds of you quite a few times, and have been well satisfied with them. Now I want a few more perennials and know of no better seed house than Miss C. H. Lippincott, so I will send to you.



**Begonia Vernon.**

One of the most satisfactory pot plants for the house, and a popular bedding plant for the garden or lawn. It blooms with the greatest profusion throughout the summer. Flowers a brilliant orange-carmine with bright yellow centers, and the foliage waxy and glossy. It is easily raised from seed, and comes absolutely true. Valuable for bedding and general culture. *Pkt., 150 seeds, 5 cts.*

**Begonia Rex.**

Beautiful foliage, justly celebrated as the finest of ornamental pot plants, superb large leaves, of exquisite and rich coloring. *Pkt., 50 seeds, 15 cts.*

**Begonia.**—Tuberous rooted, single mixed. Seed saved from finest colors. *Pkt., 100 seeds, 10 cts.*

**Begonia.**—Tuberous rooted, double mixed, from the finest and best colors. *Pkt., 100 seeds, 12 cts.*



**Bird of Paradise, Poinciana Gilliesii.**

The color of the flower is a golden yellow, measuring two and a half inches across, with shape as shown in illustration, and it is produced in very large trusses. The most beautiful part of the flower is the large pistils, which are spread out in fan-like form, and are of bright crimson color. The foliage is also highly decorative, reminding one of a very delicate Acacia. If the seed is started early, it will produce blooms in great profusion the first year. *Pkt., 15 seeds, 8 cts.*

**Balsam Apple.**

A beautiful climbing plant with apple-shaped fruits, which, if preserved in alcohol, make the most useful liniment. *Pkt., 10 seeds, 3 cts.*

Marie Simonton, Avon, So. Car., March 26, 1903.—Your Royal Show Pansies which I got last spring gave perfect satisfaction.





### **Defiance Balsam, Lady Slipper.**

The most perfect in form and largest double flowered Balsam yet developed, and by careful growth and selection, has attained a standard that will be found hard to improve. **The mixture** which I offer is composed in nearly equal proportions of eight colors: Rose, Rose-White Spotted, Pink, Scarlet, White Tinted Violet, White Spotted, Scarlet White Spotted and Purple; each having been grown separately. **Pkt., 50 seeds, 5 cts.**

### **Balsam, Good Mixed.**

A splendid strain, good colors and large double flowers; not equal to "Defiance," but gives good satisfaction. **Pkt., 30 seeds, 3 cts.**

Mrs. Tillie Slemmer, Macedon, Ohio, March 23, 1903. Writes:—I raised some of your Dahlias and Asters last year and they were fine. I now want to try more this year.

### **BEAN,**

#### **SCARLET RUNNER.**

**A Favorite Old-Fashioned Climber.**

One of the very few beans that are both ornamental and useful. It grows rapidly to a height of ten or twelve feet, and is covered from July until heavy frost with clusters of beautiful scarlet flowers. **Pkt., 10 seeds, 4 cts.**

#### **FOR WINTER BLOOMING.**

Do not fail to get a supply of Chinese Primroses for winter-blooming. Do this during July and August, so they may become well established before cold weather. Keep in partial shade and water moderately. A dozen plants will grow and yield a whole windowful of bloom during winter.

Mabel Blevins, Manchester, Ill., Mar. 10, 1903:—I had seeds from you last season and I never saw finer sweet peas than we raised.



**Bachelor's Button.  
Bachelor's Button, Double.**

It has been so perfected that fully eighty per cent of the flowers are double and semi-double; are also increased in size and present many bright colors and distinct markings which have hitherto been unknown in this old-fashioned favorite flower. **Pkt., 50 seeds, 4 cts.**

Iva Gearhart, Tower Hill, Ill., March 23, 1903, Writes:—My seeds all did well I received last year. I got 18 roses out of 30 seeds, and had several different Dahlias and Nasturtiums.



### Carnations, Perennial Varieties.

Indispensable plants for both pot culture in the greenhouse, window garden and open ground culture in summer; of innumerable colors and delicious perfume. The plants may be set in the open ground during the summer, where they will flower as profusely as when grown in pots in the house. Half hardy perennials.

**Double Mixed**—Producing many double flowers of all shades and colors. *Pkt., 75 seeds, 8 cts.*

**Extra Fine Double Mixed**—Seeds saved from the finest and choicest German, French, Italian and English stocks. *Pkt., 100 seeds, 10 cts.*

**Grenadin Scarlet**—Very early, habit dwarf and compact, brilliant double scarlet flowers. *Pkt., 100 seeds, 10 cts.*

**Grenadin White**—Double early flowering, white. *Pkt., 100 seeds, 10 cts.*



### Coccinea Indica.

A remarkable pretty climber. Ivy-like foliage, bright and luxuriant, never troubled with insects, and admirably adapted for trellises, arbors, etc. The small flowers are soon followed by numerous fruits two inches long, which turn to brilliant scarlet, spotted with white, rendering the vine very pretty. *Pkt., 25 seeds, 5 cts.*

### Calceolaria, Hybrida

A favorite and universally admired plant, remarkable for their large, beautifully spotted blossoms, which are very showy, and from which an almost countless number of hybrids have been raised. They are perennial, are grown in pots in the conservatory, greenhouses and gardens. Mixed colors. *Pkt., 150 seeds, 10c.*



A magnificent class of Carnations that will bloom in four months after sowing the seed. They are without exception the most abundant bloomer of all the "pinks." The flowers are of brilliant colors, ranging through many beautiful shades of reds, pinks, white, variegated, etc. It is a most valuable acquisition, as Carnation flowers can be had all summer and winter, if consecutive sowings are made. *Pkt., 100 seeds, 5 cts.*

### Centrosema Grandiflora.

A hardy perennial vine which will bloom in June or July from seed sown in April, and bears in the greatest profusion inverted, pea-shaped flowers from 1½ to 2½ inches in diameter, ranging in color from a rosy-violet to a reddish-purple, with a broad feathered white marking through the center, while the large buds and back of the flowers are pure white, making it appear as if one plant bore many different colored flowers at one time. *Pkt., 25 seeds, 5 cts.*



**Crozy's  
New Dwarf  
Cannas.**

One of the most popular of bedding plants, while even single specimens are most attractive in the garden. They will bloom the first year from seed, if you soak them in boiling water over night; sow singly in small pots as soon as convenient, and grow as rapidly as possible. The roots can be kept in the cellar over winter and each clump will give six to eight good roots for planting out the following spring. **Pkt., 15 seeds, 5 cts.**

**CANNAS.**

**Tall—Old Type**

A mixture of all the best tall growing varieties. **Pkt., 12 seeds, 4c.**

**Canary-Bird Flower—*Tropaeolum Canariensis*.**

One of the most beautiful annual climbers, with bright green foliage, delicately cut and very ornamental. The flowers are bright golden yellow, bearing a fanciful resemblance to birds with expanded wings. Succeeds best in a cool, slightly shaded situation; also does well as a pot or basket plant for the window or conservatory. **Pkt. 25 seeds, 5c.**



**Crozy's New Dwarf Cannas.**



**Giant Empress Candytuft.**

A magnificent variety with enormous flattened heads of large pure white florets. Good stems. **Pkt., 150 seeds, 5 cts.**

**Candytufts,**  
**Hardy Perennial.** *Sempervirens.*

A profuse white blooming hardy perennial, coming in flower early in the spring. Much used for cemeteries, rockeries, etc.; 1 foot. **Pkt., 100 seeds, 6 cts.**

**Candytuft, Snow Queen**

A valuable and distinct species of great beauty. It is an annual variety and grows very rapidly, quickly coming into bloom, remaining in full flower for about three months. It bears but little foliage, and the mass of white produced makes it useful for borders. **Pkt., 150 seeds, 4 cts.**

**SULPHO TOBACCO SOAP**

*A Wonderful Insect  
Pest Exterminator.*

Unsurpassed for quickly exterminating all insect life on plants and flowers in and out of doors. Excellent for rose bushes, shrubs, etc. This popular insecticide never fails to give satisfaction and is cheap, effective, clean, harmless and non-injurious to the tenderest growth. It also acts as a valuable fertilizer, reviving plant life. For domestic purposes it rids the house of cockroaches, and is a superior wash for dogs and all animals. Prevents poultry lice. A trial will give highly gratifying results.

3-oz. cake, sufficient for 1½ gallons prepared solution, mailed postpaid 13c. 8-oz. Cake, sufficient for 4 gallons prepared solution, mail postpaid, 28c.

Address all orders to

**Miss C. H. Lippincott.**



**Campanula, (Canterbury Bells.)**

Well-known popular perennials, producing bell-shaped flowers of many different colors very freely throughout the summer. **Single Mixed., Pkt., 150 seeds, 4 cts.**

**Campanula, Double Mixed.**

NOTE.—The seed saved from double flowers will always produce some single flowers, no matter how careful the selection. **Pkt., 150 seeds, 5 cts.**

M. H. Finster, Steamboat Rock, Iowa, March 11, 1903, Writes:—The Cyclamen I raised from the seeds I bought of you a year ago last fall have been in bloom all winter; eight are now blossoming and I never saw larger finer flowers on any Cyclamen.





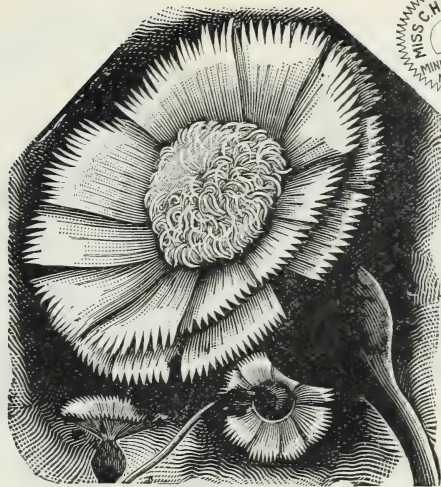
### ***Calendula, Double Yellow.***

Flowers extra large and very double, slightly imbricated, while those of the center are in-curved like the petals of a Peony. Color, bright golden yellow or orange. From seed sown in the open ground it comes into flower early. **Pkt., 100 seeds, 3 cts.**

### ***Calendula, Double White.***

Similar to the yellow, except in color, which is pure white, and flowers smaller. It is equally as free blooming, and the fine double flowers are very showy. **Pkt., 100 seeds, 3 cts.**

Mrs. H. Whitaker, Ridge, Oregon, April 14, 1903.—I wish to acknowledge the neat and tasty catalogue. None other can compare with it in comprehensiveness and real help to buyers, and one trial is enough to convince any one of the superior merits of your seeds.



### ***Centaurea Imperialis.***

*Centaurea Imperialis* is of the easiest culture and flowers continually from early spring until fall. Flowers are double the size of *Centaurea Marguerite*, of various tints and colors, pure white, lilac, rose, purple and dark red, supported on long stems, which renders them very desirable for cut flowers and corsage bouquets. They have the same delicate odor and form as the *Centaurea Marguerite*. Mixed colors. **Pkt., 75 seeds, 6 cts.**

### ***Centaurea Marguerite.***

The most fragrant and longest keeping cut flower. One of the most valuable introductions of late years. The flowers are the size of a medium Carnation, freely produced on long stems, which renders them valuable for cutting; color pure white, pale sulphur-yellow and lavender. The flowers are sweet-scented, and their lasting quality after being cut is remarkable. The plants grow about eighteen inches high and are of the easiest culture; from spring-sown seed they commence to flower in July and continue until late in the autumn. The novelty is entirely distinct from all other *Centaureas*, and undoubtedly the most beautiful variety known. Mixed colors. **Pkt., 100 seeds, 5 cts.**



**Cineraria, Hybrida.**

One of the most popular of all greenhouse plants, and what a splendid display they make when well grown. I know of no plant so easily grown as the Cineraria. The secret of growing well is to grow fast, never allowing them to receive a check, either from being pot bound, dryness of root, or attack of insects; the cooler they are kept the better. In colors they range from crimson, magenta, violet, purple and variegated. Large flowering mixed. **Pkt., 150 seeds, 8 cts.**

**Calliopsis, Lanceolata. (PERENNIAL.)**

Graceful and profuse blooming plant, with large, striking flowers of a brilliant golden yellow, and remains in bloom all summer. Its long wiry stems fit it admirably for bouquet making, while its golden cloud of blooms, far above the foliage, makes it a capital bedder. **Pkt. 200 seeds, 4 cts.**

**KOKHIA  
SCOPARIA,**

*or Summer  
Cypress.*

The plants grow freely from seed sown in the open ground, when the trees are coming out in leaf, and from the earliest stage of growth in the spring until they reach maturity in the fall the plants are always of globe-like form. The plants branch freely, and the stems are clothed with slender light-green leaves. Early in the fall the ends of the shoots are thickly set with small bright-scarlet flowers.—The bushy plants resembling balls of fire. The plants are equally showy, planted singly to show the round ball-like form on all sides, or grown in continuous rows or hedges. **250 seeds, 8c.**



**New Double Calliopsis.**

A handsome double variety, flowers of a rich golden yellow color, with wine-maroon spots. **Pkt., 200 seeds, 5 cts.**

**Calliopsis, or Coreopsis Single.**

Very handsome and showy plants of the easiest culture, require no care and thrive in any garden. Produce flowers in nearly every shade of yellow, orange, crimson, red, brown. It is one of those flowers which will grow in any situation and always be greatly admired. Mixed colors. **Pkt., 200 seeds, 4 cts.**

Mrs. A. W. Merrick, Dougherty, Iowa, Mar. 17, 1903, Writes:—The seeds I got of the Asparagus Ferns last year grew fine. The Plumosus is a beauty now.





**New Early Blooming Cosmos, Dawn.**

This beautiful new strain produces abundantly well-formed lovely flowers of large size; pure white, pink, and crimson in color. It can be had in bloom from July to November and grows freely everywhere. **Pkt., 150 seeds, 5 cts.**

**Cosmos Hybridus.**

Seed sown in April or May and transplanted to open ground will produce plants five or six feet high by September. and from then until November will be covered with hundreds of blossoms three inches across, resembling single Dahlias. All colors mixed. **Pkt., 100 seeds, 4 cts.**

**Cosmos, White Pearl.**

Large, pure white flowers; very valuable for florists. **Pkt., 75 seeds, 4 cts.**

**Cosmos, Pure Pink.**

Beautiful large flowers of a clear, delicate pink color. **Pkt., 75 seeds, 4 cts.**

**Cyclamen, Persicum.**

Well-known bulbous rooted plants, universal favorites as pot plants for winter and spring blooming, producing handsome red and white flowers, with beautiful variegated foliage, in different shades of green. The seed should be sown in the spring, and by autumn will produce a bulb which will blossom the following spring. Mixed. **Pkt., 25 seeds, 5 cts.**

**Cyclamen. Giganteum.**

Flowers of extraordinary size, and of great substance. The leaves are proportionately large and beautifully marked. **Pkt., 25 seeds, 8 cts.**

**Cypress Vine.**

A most beautiful vine with delicate fern-like foliage and beautiful star-shaped rose, scarlet and white flowers. Seed very slow to start growth. All colors mixed. **Pkt., 50 seeds, 3 cts.**

**Cleome Pungens, The Giant Spider Plant.**

A robust plant, growing vigorously four to five feet high, unaffected by wind or weather, and flowering profusely and continuously for months. The flowers are very showy, bright rose color; grows freely from seed sown in the open ground, thrives luxuriantly, and blooms all summer, no matter how unfavorable the season may be. *It is also one of the best honey producing plants,* and should be planted liberally by all bee-keepers. **Pkt., 200 seeds, 5 cts.**





**Clematis, Paniculata.**

*Japanese Virgin's Bower. Hardy Perennial.*

This is one of the few really good hardy climbers. The leaves are of a bright, glossy green, and when in bloom it astonishes with the quantity of flowers, the plant being completely hidden beneath a blanket of white hawthorn-scented blossoms; a grand plant for piazzas, fences, in fact, any position where a climber is wanted; it is just the thing for covering terraces or embankments, does equally well in sunshine or shade, and stands unrivaled as a plant for the cemetery. Soak the seed in warm water for 24 hours before sowing. **Pkt., 50 seeds, 8 cts.**

---

Don't let the  
Coleus Plants  
blossom; the  
blooms don't  
amount to  
anything, and  
so much  
strength is  
taken from  
the leaves.

---



**Coleus.**

M. L. Gardner,  
Wapella, Ill.,  
February 9, 1903,  
writes:—I am al-  
ways pleased to  
receive your cat-  
alogue. It is a  
fine memento of  
coming spring.  
I am always  
pleased to have  
you fill my or-  
ders, for your seeds  
give satisfaction.

One of the best known and most universally admired ornamental foliage plants, in an endless variety of colors and shadings, indispensable for ribbon and carpet bedding, or as single specimens. Coleus seed germinates easily, and success is as sure as with an ordinary annual. **Pkt., 150 seeds, 5 cts.**

**Cockscomb, Queen of Dwarfs.**

Mrs. M.A. Misener,  
Edwards-  
burg, Mich., Mar.  
16, 1903: The flower  
seeds I got of  
you last year  
proved to be the  
best I ever plant-  
ed.

This is the best dwarf-growing Cockscomb; the plants only grow about eight inches high, are firmly set in the crown with well-balanced, large heads, ten to twelve inches across. They grow very uniformly and present an unusually solid effect in color, which is rich, ruby-red, of extreme brilliancy. **Pkt., 200 seeds, 5 cts.**





### *Chrysanthemum, or French Marguerites.*

Annual varieties much grown for cut flowers. The plants grow twelve to eighteen inches high and produce on long stems beautiful large flowers of many bright colors. They flower all summer in the garden, and make elegant pot plants for winter flowering. *Pkt., 100 seeds, 3 cts.*

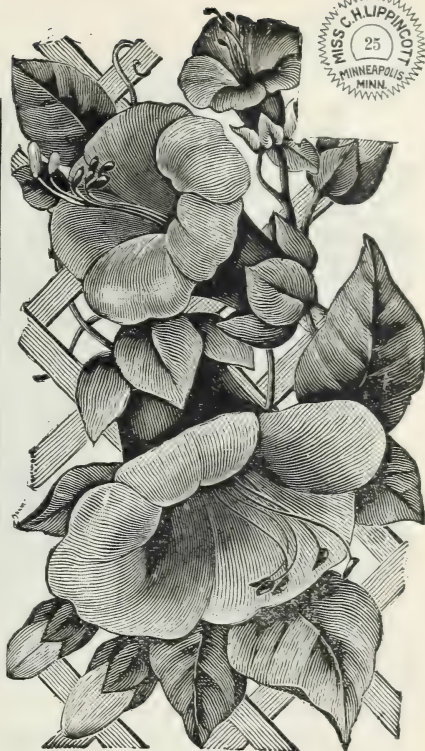
### *Chrysanthemum, Inodorum Plenissimum.*

Although a perennial, it flowers abundantly the first year from seed, each plant producing hundreds of beautiful, perfectly double, snow-white flowers *unsurpassed for bouquets*. It remains in bloom all summer, and is in all respects one of the handsomest and most valuable of flowers. *Pkt., 150 seeds, 5 cts.*

### *Chrysanthemum, Fancy Perennial,*

From the best Incurved, Pompone, Japanese, Chinese and Anemone-flowered varieties. Seed sown in the hot-bed in February or March, or even April, will give plants that will bloom in August or September, and cannot fail, with proper care, to give magnificent flowers in a wonderful variety of colors and forms. *Pkt., 100 seeds, 8 cts.*

**For List of Plants** See **FLORAL CULTURE**, a copy of which will be sent free on application. Make order for plants on separate sheet of paper from seed order, and address to **MISS LIPPINCOTT.**



### *Cobaea Scandens.*

A beautiful, large, bell-shaped flower, green at first, but rapidly changing to a beautiful deep violet-blue. A well established plant will run 30 to 40 feet a season. *Pkt., 20 seeds, 5 cts.*



**The Blue Daisy, *Agatheae Coelestis*.**

The flowers are the very counterpart of the Paris Daisy, which is sky blue with a yellow disc. It makes a very pretty object for summer decoration in the flower garden; of easy growth and the plant may be had in flower all the year 'round. It is allied to *Cineraria*, and requires about the same treatment. A fine winter bloomer. **Pkt., 150 seeds, 5 cts.**

**Orange Daisy, *Erigeron Aurantica*.**

A beautiful perennial plant, somewhat resembling an Aster, but having the ray-florets in several series; flower heads flat, about two inches across, bright orange color, on strong, stout stems. They are of very easy culture in common garden soil and form elegant subjects for mixed borders. In a moist, well-drained situation will flower the first season if started early in the house. **Pkt., 150 seeds, 5 cts.**

Brooklin, Mich.,  
Sept. 22, '03  
Miss C. H. Lippincott,  
Minneapolis,  
Minn.

Dear Madam—  
Last spring I purchased a paper of *Cineraria* seed of you, paying 8c for same. The paper of seeds you said contained one hundred seeds. I have had such lovely luck with them, thought I would let you know how I came out. This is what the one paper of seed done for me: I sold to a city greenhouse 65 large plants for which I received \$2.65. I gave fifty nice plants to my friends and have 60 elegant plants left for myself. How is that? Have also had good luck with my *Primroses*, and have over 50 good, healthy plants. This is my first year trying to grow *Calceolarias*. I gave them the same soil and treatment that I gave my *Cineraria* and *Primroses*, but they don't seem to grow; perhaps another time I will have better success.

Your seeds are all right.  
Yours truly,  
Chas. L. Greene.



**Shasta Daisy—One-Half Natural Size.**

**THE SHASTA DAISY** is one of the most marvelous productions in the flower line that has ever been brought to the notice of floriculturists. It is the first of a new type, which has been obtained by first combining the free-flowering American species with the large but coarse European species and the Japanese species, *Nipponicum*, after which rigid selection through a series of years has produced the present wonderfully beautiful and useful strain. Its first qualification is hardness; it can be grown out of doors by anybody where it is not cold enough to kill oak trees. It is perennial, blooming better and more abundantly each season. It can be multiplied rapidly by simple division, and it is not particular as to soil. It blooms for several months. The flowers are extremely large and graceful, averaging about four inches in diameter, with three or more rows of petals of the purest glistening whiteness, and are borne on single, strong, stiff, wiry stems, nearly two feet in length. The blooms when cut remain perfectly fresh and in good condition for two weeks or more. No other flower can compare with it in usefulness. **75 seeds, 15c**





**Delphinium, or Larkspur.**

**Delphinium, Larkspur.**

Well known annuals of great beauty and remarkable for the richness of their colors, and for large gardens are invaluable. Mixed. **Pkt., 100 seeds, 3 cts.**

**Delphinium. Formosum.**

A hardy, perennial variety, flowers bright blue with white center. **Pkt., 100 seeds, 3 cts.**

**Dolichos, Hyacinth Bean.**

This beautiful annual climber should have a place in every flower garden. It is of very rapid growth. **Pkt., 30 seeds, 4 cts.**



**DOLICHOS (Hyacinth Bean.)**



**Double Daisy. Bellis Perennis.**

Daisies are easily grown from spring sown seed and come into flower in a very short time. The flowers are white, pink, red and variegated. *Not all will come double from seed.* Finest mixed. **Pkt., 150 seeds, 4 cts.**

**New Snowball Daisy.**

A beautiful white flowered variety having very long stems with large double flowers, about eighty per cent of which are extremely double. **Pkt., 150 seeds, 5 cts.**



***Dianthus, or Chinese Pinks. Best Mixed.***

One of the most useful and desirable plants, and for beauty and variety of colors and markings cannot be surpassed, ranging from pure white to the most delicate pink and glowing deep crimson. A bed of these in the flower garden will make a grand display at small cost. The mixture I offer includes, besides the standard sorts, all the new and brightest colors in spotted, striped and handsomely fringed varieties of late introduction, both single and double. I guarantee it will give satisfaction with any other strain offered. **Pkt., 150 seeds, 5 cts.**

***Dianthus, Heddewiggii. Finest Single Mixed.***

Flowers two to three inches in diameter. Most beautiful and brilliant colors. **Pkt., 100 seeds, 4 cts.**

***Dianthus, Dwarf Fireball.***

The most brilliant annual pink in cultivation; the plants are constantly covered with blood-red, perfectly double, facinated flowers until checked by severe frosts. **Pkt., 100 seeds, 4 cts.**

***Dianthus. Dwarf Snowball.***

This beautiful dwarf variety belongs to the Heddewiggii class of Dianthus. The plants are very compact dwarf growth and are covered with lovely, spotless, snow-white flowers, very full and double. From its dwarf growth it is very attractive for edgings, while the flowers are also very useful for cutting for bouquets. **Pkt., 100 seeds, 4 cts.**

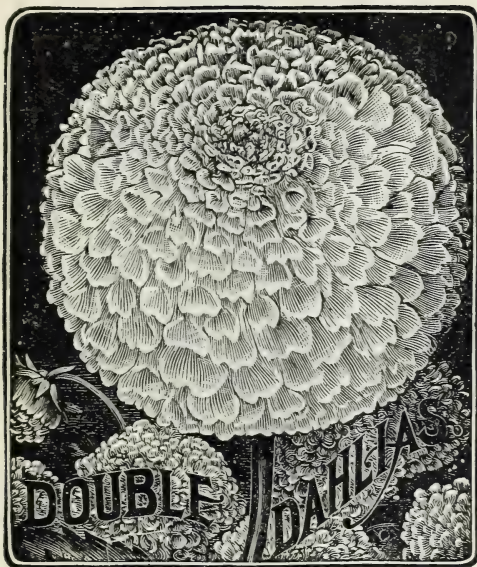
***New Large-Flowered Dwarf Double Hybrid Pinks.***

The plants grow only nine to ten inches high, with extra large double flowers, frequently measuring three inches across—of perfect form and brilliant colors, ranging from pure white to deep crimson, while many are beautifully variegated and fantastically marked. Blooming freely the first season. **Pkt., 150 seeds, 5 cts.**

***Dianthus, Plumarius. Pheasant's-Eye Pink.***

Dianthus, Plumarius, is the old-fashioned Grass Pink. It is perfectly hardy, blooms very profusely in early summer, and is admirable on account of its delicacy, showiness and fragrance. Its use either as a cemetery or garden flower is always satisfactory. **Pkt., 100 seeds, 3 cts.**





**Dahlia, Double.**

Everyone knows and admires the Double Dahlia, but comparatively few are aware that it can be grown so easily from seed, and flowers so beautifully the first season that the purchase of bulbs is a needless expense. Choice mixed, **Pkt., 50 seeds, 5 cts.**

**Dahlia, New Striped Single.**

The extra large single flowers, quite four inches in diameter, comprise a wonderful variety of colors, beautifully striped, flaked, mottled and dotted in a grotesque and charming manner. **Pkt., 40 seeds, 3 cts.**

**25c**  
**Per Pair**

**RUBBER  
MITTENS**  
**For Gardening**

Every lady should have a pair of Rubber Mittens for gardening.

They cost only 25 cts. per pair, and will keep the hands soft and white. Try them and you will never be without them.

Mrs. M. A. Laurence, Newburgh Village, Maine, writes, May 11, 1903:—I ordered your bargain collection last year and never received so great value for 12 cents. I raised forty-three Aster plants from the little packet, and over two dozen Balsams, besides the other varieties.

Mrs. John Hauk, Howard, S. D., March 7, 1903:—I am well pleased with your seeds and know them to be fresh grown, as they are sure to come up. No disappointment in growing your seeds.



**Cactus Dahlia.**

A new class of broad-petaled double flowers, esteemed by many the finest of all. Very distinct and extra for cutting. **Pkt., 50 seeds, 12 cts.**

**Digitals, Fox Glove.**

A handsome and ornamental hardy perennial of stately growth for shrubberies and half shady places. **Pkt., 300 seeds, 3 cts.**

Mrs. G. W. Miller, Cerro Gordo, Ill., April 11, 1903:—My Pansy seeds I got of you last year were fine.





***Datura, Cornucopia, "Horn of Plenty"***

Discovered in South America by a collector of Orchids. The plant is of robust habit, with thick, dark brown-purple, shining stems. The branches are numerous, spreading three or four feet; thick, large, dark green colored leaves. The flowers are trumpet-shaped, measuring eight or ten inches in length and five to seven inches across the mouth, and form *three distinct flowers growing each within the other*. The mouth of corolla is a most delicate white, beautifully marbled with royal purple. A single plant gives from 200 to 300 fragrant blooms during the season, followed by a large thorny seed vessel, which adds to its beauty; is of the easiest culture; plant at the end of May in a warm, rich, soil; can be cultivated as an isolated specimen, in masses, for centers of beds, or to fill barren places, and produces a striking effect. **Pkt., 15 seeds, 4 cts.**

***Eschscholtzia, California Poppy.***

Hardy annual, growing about one foot high, bearing a profusion of rich yellow flowers about two inches in diameter, making a blaze of color in the sunshine and fully as valuable as the common poppy for garden ornamentation, and as easily grown. **Pkt., 200 seeds, 3 cts.**

Mrs. M. A. Miller, Belleville, Ill., April 14, 1903. Writes:—Having tried your seeds last summer I find them to be reliable and as represented.



***Fuchsia, Double and Single Mixed.***

Fuchsias are as easily grown from seed as from cuttings, and from seed many new varieties are obtained. They will flower freely the first year in the open ground, while the plants can be taken into the house in the winter, where they will flower still more freely. The seed I offer has been saved from the very finest double and single varieties. **Pkt., 30 seeds, 10 cts.**





**Forget-Me-Not, "Victoria."**

Of stout and bushy habit of growth, bearing umbels of large, bright, azure blue flowers, with central double blooms, and when fully grown, is quite globular in shape and perfectly covered with flowers. This beautiful Forget-Me-Not is the best for carpet bedding, edgings and masses, and for growing in pots. **Pkt., 150 seeds, 5 cts.**

**Feverfew, Double, Matricaria Eximia.**

A fine old-fashioned bedding plant; also suitable for pot culture. It grows about eighteen inches high, with numerous branching flower stems, which are literally covered with very double, pure white flowers an inch in diameter. The great profusion of fine flowers, with long, slender stems, makes it valuable to grow for cut flowers and as desirable as a good Aster. Blooms until frost. **Pkt., 150 seeds, 3 cts.**

**Gaillardia, New Double.**

Large, double flowers, valuable for cutting. The colors embrace sulphur, golden yellow, orange, amaranth and claret. **Pkt., 150 seeds, 4 cts.**



**Godetia.**

**Godetia, Finest Mixed.**

Beautiful hardy annuals, remarkable for the delicacy of their very fine large blossoms; flowers deep rose pink, rosy carmine, snow-white with bright carmine rose spots, carmine, crimson, lilac with purple and white. **Pkt., 200 seeds, 3 cts.**

**Gourds, Ornamental.**

Tender, annual climbers, with curiously shaped fruit in various colors, many of which are peculiarly marked. **Pkt., 25 seeds, 3 cts.**

**Walker's Japanese Flower Food.**

*Has no equal for improving Palms, Rubber Plants and Ferns, producing growth and renewing the green.*  
By mail, 40 cts.

Miss Olga Eklund, De Kalb, Ill., Feb. 19, 1908, writes:—Your Sweet Peas and Zennias are the finest I ever saw.





**Geranium, Finest Mixed.**

The most popular plant grown, either for pot culture in winter, or for bedding out in summer. No flowering plants are more grown, and certainly none are more suitable for large beds, where a mass of bloom is desired, or for single specimens in pots for the house. But a few are aware that they can be grown easily from seed, and flower the first season if sown early, and will frequently reward the cultivator with charming new varieties; in fact *propagation by seed is the only sure way to obtain new varieties.* The seed I offer has been saved from twenty-five of the finest varieties grown. There can be no finer mixed Geranium, and it cannot fail to bring forth some splendid new varieties. **Pkt., 50 seeds, 10 cts.**

**GERANIUM**—Good mixed. **Pkt., 30 seeds, 6 cts.**

**Geranium.**

Apple-scented leaves delightfully fragrant, highly prized for bouquets. **Pkt., 30 seeds, 10c.**

**Ice Plant.**

*Mesembryanthemum*

A handsome and curious plant, for hanging baskets, rock work and vases. The leaves and stems appear as though covered with icy crystals and look like rock candy. The whole plant is peculiarly brilliant in the sunshine. **Pkt., 200 seeds, 3c.**

**Impatiens Sultani.**

This most distinct and beautiful plant is almost a perpetual bloomer. The flowers are of a brilliant rosy scarlet color, and are produced so freely that a full-grown specimen appears to be a ball of flowers, and continues in full beauty several months. **Pkt., 100 seeds, 5 cts.**



**Gloxinia.**

The Gloxinia is a grand flower and makes a lovely pot plant as easily grown and cared for as many of the common flowers. The handsome, bell-shaped flowers embrace a great variety of the richest and most beautiful colors, ranging from pure white to dark blood-red, pink, blush, lavender, indigo blue, marbled and spotted. They will bloom in four to five months from time the seed is sown. **Pkt., 100 seeds, 10 cts.**

**Helichrysum.**

A very popular everlasting, large, full double flowers of various colors, from bright yellow to scarlet, shaded and tipped. Handsome bouquets may be formed of them for winter, if blossoms are gathered when on the point of expanding. **Pkt., 100 seeds, 3 cts.**

Mrs. H. F. Echternach, Marengo, Ill., April, 16, 1903, writes:—Am more pleased with your seeds each year. My Dahlias last year were wonderfully beautiful.





**Hollyhock, Prize Double.**

The perfect doubleness of the magnificent, large flower will please the most critical. All the best colors from deep yellow, red rose, light buff, carmine scarlet, flesh color, creamy white tinted with rose, purple, yellow on dark ground, crimson flaked with salmon, cherry red, cream on violet ground, lilac on brown ground, dark crimson to pure white, also black. If sown early in March or April, the plants will bloom the first year. All colors mixed. **Pkt., 50 seeds, 5 cts.**

**Hollyhocks, Double Alleghany.**

Of many rich colors, the grand double flowers of this new strain are remarkable for their extra large size and novel forms. The hardy plants remain long in bloom. **Pkt., 50 seeds, 7 cts.**



**Hibiscus, Golden Bowl.**

This is a plant which grows about two feet high and begins to bloom early from spring-sown seed, the enormous flower measuring five or six inches across, beautifully cupped and of the most exquisite, soft canary yellow with a large, black center. These beautiful flowers are borne in great profusion all summer, and if the plants are potted before frost, will continue to bloom in the window all winter. **Pkt., 30 seeds, 6 cts.**

**Hollyhocks, Single.**

Mixed colors. **Pkt., 50 seeds, 5 cts.**

Miss May Robinson, Camden, Mich., Apr. 11, 1903:—I had your flower seeds last year and think them the best I have ever grown.





***Humulus japonicus.* Variegated Japanese Hop.**

One of the most rapid climbers grown; seeds can be sown in the open ground in spring and it will attain enormous dimensions very quickly. The foliage is luxuriant and variegated. It is one of the best plants for covering verandas and trellises. Heat, drought and insects do not trouble it. **Pkt., 30 seeds, 4 cts.**

***Helianthus, Sunflower.* (*Globosus Fistulosus.*)**

The best and most effective of all annual sunflowers; flowers immense, from twelve to fifteen inches in diameter, globular and extremely double. Of easy culture as well as showy. **Pkt., 30 seeds, 3 cts.**



***Heliotrope.***

Heliotrope is a universal favorite on account of its delightful fragrance and duration in bloom, flowering equally well as bedding plants in summer, or as pot plants in the house during the winter. Seed sown in the spring makes fine plants for bedding out, and are as easily grown as verbenas. **Pkt., 100 seeds, 4 cts.**

***Heliotrope, Lemoine's Giant.***

Of vigorous growth and producing heads of flowers double the size of the old sort. **Pkt., 100 seeds, 6 cts.**





**Lantana.**

Well-known shrubby plants, with clusters of verbenalike flowers, and producing their pink, yellow, orange and white heads in great abundance. They have an agreeable aromatic perfume. Mixed. **Pkt., 30 seeds, 5 cts.**

**Lavender, Old-Fashioned Sweet.**

A well-known, sweet scented, hardy perennial, bearing long spikes of blue flowers. **Pkt., 200 seeds, 5 cts.**



**Lobelia, Star of Ischi.**

**Lobelia.**

A very valuable and beautiful class of mostly dwarf growing plants; their delicate drooping habit, and the profusion of their charming little blue and white flowers render them exceedingly ornamental for vases or hanging baskets and rockeries, blooming from June to November, while for border cultivation they are equally effective. Mixed colors. **Pkt., 300 seeds, 3 cts.**

**Lobelia, Star of Ischi.**

Of very dwarf, erect growth, forming dense balls of charming azure blue flowers. **Pkt., 200 seeds, 4 cts.**

**Lobelia, White Gem.**

The best dwarf white variety. **Pkt., 200 seeds, 4 cts.**

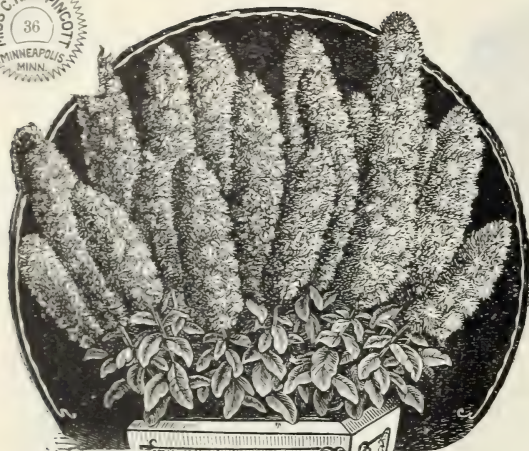


**Linaria, Kenilworth Ivy.**

A very pretty and well-known hardy perennial trailing plant, for covering rock work and very useful for hanging baskets. The flowers are small but pretty, and for a drooping plant nothing can be better, as it is easily grown from seed. **Pkt., 150 seeds, 4 cts.**

**Linum, Crimson Flax.**

Excellent for clumps or edgings and one of the best and most showy hardy annuals for bedding. May be raised in any quantity from seeds sown in March or April where the plants are intended to flower. They are not at all fastidious regarding soil, doing well in any ordinary garden. **Pkt., 100 seeds, 3 cts.**



**Mignonette, Machet. True.**

An entirely new and distinct sort of great merit. It is of dwarf and vigorous growth with massive spikes of deliciously scented red flowers. *Pkt., 200 seeds, 4 cts.*

**Mignonette, Golden Queen.**

Very fine variety, flowers of golden hue; highly effective; of dense pyramidal habit and deliciously fragrant. *Pkt., 200 seeds, 4 cts.*

**Mignonette, New Giant Red.**

The flower spikes are of the largest size, unequalled by any other variety, while the color is uniform and strikingly distinct red. *Pkt., 200 seeds, 4 cts.*

**Mignonette, Giant White.**

Similar to Giant Red in size of spikes, but in color pure white and is quite showy in growth. Not as fragrant as the colored varieties. *Pkt., 200 seeds, 4 cts.*

**Mignonette, Sweet. Reseda Odorata.**

A favorite on account of its fragrance. *Pkt., 200 seeds, 3 cts.; oz., 8 cts.*

**Imperial Japanese Morning Glories.**

They measure from four to six inches across, and their greater substance causes them to remain open much longer than ordinary Morning Glories. The colors of the flowers, shadings and markings, are limitless, and are really wonders of nature, of such incomparable beauty that descriptions are inadequate. *Pkt., Single and Double Mixed, 100 seeds, 5 cts.*

**Tall Morning Glories, Old-Fashioned.**

All colors mixed. *Pkt., 75 seeds, 3 cts.; oz., 8 cts.*

**Moonflower. (*Ipomæa Noctiflora.*)**

It bears lovely white flowers 5 to 6 in. in diameter, with a five-pointed star in the center; the flowers open at dusk, or earlier on cloudy days, at which time they are deliciously fragrant. Start the seed in the house and set out as early as safe in the spring. *Pkt., 10 seeds, 7 cts.*

**Mina Lobata.**

Half hardy Mexican climbing annual. The buds are at first of vivid red, but turn to orange-yellow immediately before they open, and when fully expanded the flowers are of a creamy white shade. *Pkt., 12 seeds, 4 cts.*

**Marigold, The Eldorado.**

The large bushy plants are each a ball of brilliant colors, many single plants having seventy-five flowers in bloom at one time. The flowers are from 3 to 4 inches in diameter, imbricated and perfectly double. They embrace four shades of color—the lightest primrose, lemon, golden-yellow and deep orange. *Pkt., 100 seeds, 4 cts.*

**Dwarf Marigold, Gilt Edge.**

The center of the flower is a rich, velvety, deep, black-brown surrounded by a bright golden ring. The edges of the petals are slightly undulated, which greatly adds to its pleasing appearance. *Pkt., 100 seeds, 4 cts.*

**Marigold, French Mixed.**

A class of showy and extremely effective plants, with fine double flowers of rich and beautiful colors; very well adapted for large beds and bordering. *Pkt., 100 seeds, 4 cts.*

**Marigold, Legion of Honor. Dwarf Single.**

The blooms are of medium size, rich golden-yellow, with the center of each petal broadly marked with velvety crimson-brown, and with clustering stamens in bright shades of orange-yellow. Blooms abundantly from July until cut down by frost. So easily raised from seed that I strongly recommend it to everyone. *Pkt., 100 seeds, 4c.*



**Mexican Mountain Rose,  
Antigonon Annual.**

Flowers which are of rich carmine scarlet shade, are borne in great clusters the entire length of the vine. It is a beautiful and rapid growing climber and valuable alike for the shade it affords and the blossoms it produces. **Pkt., 25 seeds, 6 cts**

**Maurandia.**

A beautiful, rapid, graceful climber, for greenhouse, parlor, basket, or outdoor purposes, with rich purple, white and rose, fox-glove-shaped blossoms. **Pkt., 100 seeds, 3 cts.**

**Nicotiana Affinis.**

When its large, pure white flowers are fully expanded in the evening and early morning, it has a most striking effect, and is so fragrant that a small bed will perfume the whole surrounding atmosphere. If the plants are taken up in the fall, cut back and potted, they will bloom freely all winter in the house. **Pkt., 150 seeds, 4 cts.**

**Nigella, Love-In-a-Mist.**

Hardy annual, known as "Devil-in-Bush" and "Lady-in-Green" because the blossoms are partially concealed by the abundance of finely cut foliage. The plant and flower are both handsome, and require but little care. **Pkt., 75 seeds, 3 cts.**

**Nolana.**

Beautiful trailing plants, almost equal to the Portulaca for growing in masses, and unsurpassed for baskets, pots, vases or rock work. The flower is similar in shape to a morning glory. **Pkt., 40 seeds, 3 cts.**

**Ornamental Grasses.**

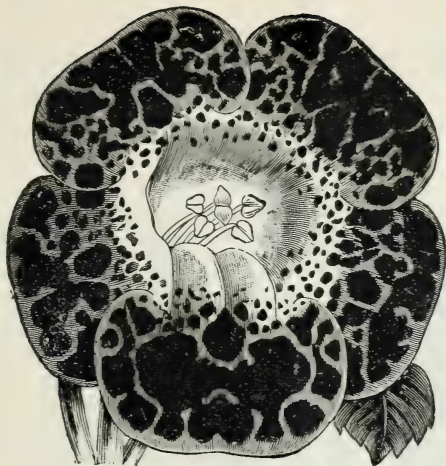
All the annual varieties mixed, many of them being really handsome in growth, and all of them desirable for winter bouquets, if cut while green and dried in the shade. **Large Pkt., 4 cts.**

**Oenothera, Evening Primrose.**

Saucer-shaped flowers of various colors and enormous size, often as large as Moonflower; very striking and fragrant. **Pkt., 100 seeds, 3 cts.**

**Oxalis.**

It is not generally known that these annual varieties of Oxalis are fully equal for edgings to the variety grown from bulbs. Mixed colors. **Pkt., 100 seeds, 3 cts.**



**Mimulus, Monkey Flower.**

Tender looking plants with singularly shaped and brilliantly colored flowers, blotched and spotted in every conceivable manner. Excellent for baskets or vases, while they thrive well in the open garden. Fine hybrid mixed. **Pkt., 150 seeds, 3 cts.**

**Mimulus Moschatus, Musk Plant.**

A well known and favorite plant. Cultivated on account of the musky odor of the plant. **Pkt., 150 seeds, 3 cts.**

**Mimosa, Sensitive Plant.**

An interesting and curious plant. The leaves will close and droop at the slightest touch. Mostly grown as a curiosity. **Pkt., 12 seeds, 3 cts.**

**Marvel of Peru, Four-O'clock.**

It is one of the most brilliant and showy plants that can be grown with little or no trouble. Finest mixed. **Pkt. 25 seeds, 3 cts.**

Mrs. Clayton Jennings, Syracuse, N. Y., Feb. 23, 1903. My Asters and Zennias were the admiration of every one who saw them last year. They were so large and such a variety of colors.



**Petunia, Grandiflora, Large Flowering.**

**MIXED.**

The largest flowering and richest colored variety in cultivation. Single flowers frequently measure over 5 inches in diameter, ruffled or fringed on the edges and beautifully veined with various shades of purple, rose, lavender, yellow and crimson. **Pkt., 100 seeds, 8c.**

Mary B. Brown,  
Clay Center,  
Kans., March 9,  
1903.—I send you  
a small order for  
seeds. I had  
some from you  
last year and my  
flowers were  
lovely. They  
were in bloom  
from May until  
Thanksgiving.

### **Petunia, Double.**

Finest varieties carefully fecundated with best double flowers, and will produce from twenty-five to forty per cent of double flowering plants. Some double, fringed in all shades of colors existing in Petunias and the blossoms that come single will be of the grandiflora type. **Pkt., 50 seeds, 10 cts.**

### **Petunia, Lady of the Lake.**

Some magnificent, double, pure white, beautifully fringed can be obtained from this strain. Produces about twenty to thirty per cent of double flowers. **Pkt., 50 seeds, 10 cts.**

### **Single Petunia, Snowball.**

Grows about eight inches high, with pure satiny white flowers, and makes a beautiful edging or bedding plant. **Pkt., 100 seeds, 4 cts.**

### **New Star Petunia.**

An exquisite variety either for the garden or pot culture, each flower having distinct white, starlike stripes, on rich purplish-red ground. **Pkt., 100 seeds, 4 cts.**

### **Petunia, Hybrida.—Finest Mixed.**

A splendid mixture, embracing all colors. They are excellent for bedding or massing. **Pkt., 150 seeds, 5 cts.**

### **Petunia, Hybrida.—Good Mixed.**

Many colors and a good bedding variety. **Pkt., 100 seeds, 3 cts.**

### **Portulaca, Double Flowering.**

One of the most showy and beautiful annuals, with abundant highly-colored flowers. For baskets, beds, masses or edgings it is invaluable. The seed I offer has been saved with extra care from the finest colors and will give a good proportion of double flowers. **Pkt., 300 seeds, 4c.**

Mrs. Robt. C. Gossage, Riveulet, Mont., April 16, 1903.—I had splendid luck with the seeds I received from you last year. I think your stock, 30 weeks, are the handsomest flowers I ever saw grow. They are such a shower of blossoms all summer and fall.



**Phlox, Large Flowering, Brilliant Scarlet.**

A most effectual color for bedding. *Pkt., 100 seeds, 4 cts.*

**Phlox, Large Flowering, Pure White.**

Large, round flowers of splendid substance. *Pkt., 100 seeds, 4c.*

**Phloxes, "Starred and Fringed."**

These "Starred and Fringed Phloxes" are really entitled to rank as a new race. In the *Fringed Flowers*, the petals are partly frimbriated and partly three toothed, in more than 20 distinct shades. In the *Starred Phloxes*, the pointed central teeth of the petals are five or six times as long as the lateral ones and project beyond them like little spines, giving the flowers a star-like form. *Pkt., 100 seeds, 4 cts.*

**Phlox, Hortensia Flowered.**

These are undoubtedly one of the handsomest species of the Phlox family. The flowers are borne in large umbels, just like a Hydrangea. *Pkt. 100 seeds, 5 cts.*

**Phlox Drummondii, Good Mixed.**

Invaluable for bedding and cut flowers; an excellent strain. *Pkt., 100 seeds, 3 cts.*

**Phlox, Double Flowering.**

A very desirable class. Flowers are double and semi-double and last much longer than those of the single Phlox. The white is especially valuable as a cut flower. All colors mixed. *Pkt., 100 seeds, 5 cts.*

**Phlox, New Yellow.**

New yellow Phlox, is a rich straw yellow of warm and glowing tone, flowers extra large and fine form. *Pkt., 100 seeds, 6 cts.*

**Phlox, Large Flowered.**

Pure pink. *Pkt., 100 seeds, 6 cts.*

**Phlox, Perennial, Choicest Mixed.**

The variety of the perennial Phlox are among the choicest of our flowers for bedding and border plants. They are hardy and need no protection; will flourish in any soil, succeeding better, however, in deep, rich, rather moist, ground. *Pkt., 25 seeds, 5 cts.*

**NOTICE:**—One packet each of the entire collection of Phlox. Ten packets for 35 cts.

Mrs. Herman Reichard, Sturgeon Bay, Wis., March 12, 1903, writes.—This is the fifth year I have had seeds of you, and every year I am better satisfied with them. I can say that every seed that I sowed, grew, and also that my Phlox and Aster bed's were the finest ever seen in these parts. Your seeds need no praise, once tried always used.



**Phlox Drummondii Grandiflora.**

Their long duration in bloom, combined with their almost unequalled richness of color, renders them of invaluable service in the flower garden. The colors range in every conceivable shade, producing flowers twice the size of common Phlox. *Pkt., 200 seeds, 6 cts.*

Amanda Anderson, Hainesville, Utah, Feb. 12, 1903.—Those seeds I received last year all came up and they bloomed fast lovely.

Mrs. Mollie Wilson, Amherst, Wis., March 11, 1903, writes.—I have used your seed for four years. Can find no fault with the seeds.



### **Primula Sinensis.**

#### **Chinese Primrose.**

Many persons seem to think Primulas are successfully propagated only in a greenhouse, hence we find amateurs often reluctant to attempt their culture. They are unequalled as winter bloomers, easily grown if the right conditions are observed, and give a succession of flowers throughout the season, and are prized for both the beauty and their delicate fragrance. Single fringed, finest mixed. **Pkt., 50 seeds, 10 cts.**

#### **Primula, Double.**

Best mixed, all colors. **Pkt., 30 seeds, 14c.**

#### **Primula Obconica.**

Primula Obconica is as near an everblooming plant as it is possible to obtain. It has been known to flower for over twelve months without a break. **Pkt., 40 seeds, 5 cts.**

#### **Polyanthus (Primula Elatior).**

Showy, early spring, free-flowering plants, fine for either pot or outdoor culture; hardy perennials; 9 inches. The best single, all colors mixed. **Pkt., 300 seeds, 5 cts.**

### **Star Primula.**

#### **Primula Steilata Hybrida.**

Many of the blooms are equal in form and purity of color to those of the Chinese Primula, and, as they last longer and the plants can be much more easily grown, they deserve to be widely cultivated. Of the seed now offered, the mixture contains seven charming and distinct colors. **Pkt., 50 seeds, 8 cts.**

### **The Mexican Primrose.**

The suburb colors, combined with airy grace and a beautiful form, goes to make a flower which is almost perfection. The plant seldom grows over ten inches in height, but inclines to a trailing habit, sweeping its branches out over the ground, or drooping over the sides of the pot, holding its large silky flowers erect; as a window plant it combines great hardiness and ease of culture with unrivaled beauty and profusion of bloom. In the open ground it grows freely and blooms profusely; will thrive well under any and all conditions and bloom the year round in pots or during the spring, summer and fall in the garden. **Pkt., 40 seeds, 6 cts.**

### **Poppy, the Shirley.**

It is perfectly hardy and flowers the first season from seed. The flowers are large, exceedingly graceful and elegant; the colors are pure, soft and varied, and range from blush white rose, delicate pink and carmine, through innumerable tints to bright sparkling crimson. **Pkt., 200 seeds, 4 cts.**

### **Hardy, Perennial Poppies.**

**ORIENTALE.**—A charming summer-flowering plant, producing numerous leafy stems about 2½ feet high, which are covered with deep crimson flowers. **Pkt., 100 seeds, 5c.**



### **Double Poppies, Mixed.**

For dazzling richness and variety of colors, the flowers are unequalled. Simply scatter the seeds in the open ground and a mass of beauty will result which will be a constant source of pleasure. **Pkt., 200 seeds, 4 cts.**

### **Iceland Poppies.**

These fine perennial poppies produce flowers in great abundance the first year from the seed. The colors range from the purest white and yellow to the deepest glowing orange-scarlet, and have a delicious fragrance. For vase or house decorations they rank among the loveliest. Mixed colors. **Pkt., 200 seeds, 5 cts.**

### **Scarlet Tulip, Poppies.**

Large, vivid scarlet blossoms, which have a dark spot at the base of the petal. **Pkt., 300 seeds, 8 cts.**





**Poppy, White Swan.**

One of the most effective and valuable Poppies introduced for years. The plants are about 18 inches high, grow in very pretty bush form, crowned with flowers of enormous size, perfect form, very double and of the purest snow-white. Its flowering period is considerably longer than that of other Poppies. **Pkt., 200 seeds, 6 cts.**

Mrs. Louella Holmes, March, 17, 1903. Dover, Okla. Ty.—I had real good success last year with your seeds.

**Passion Flower, Incarnata**  
(MAY POPS.)

Handsome rapid growing climber for greenhouse or sunny position in open ground. Flesh white with purple rays; blossoms first season from seeds. **Pkt., 20 seeds, 8 cts.**

**Passiflora Gracilis.**

This "Fairy Passion Vine" is a charming annual; it has pretty light green leaves, and is a very dainty and graceful thing for hanging baskets, pots or trellises; will grow to a height of 10 to 15 feet out of doors; the flowers are white, followed by seed fruits, at first light green shaded white; when ripe they turn bright shining red and burst open, disclosing fiery scarlet seeds; the entire plant becoming covered with these fruits. The effect is very pretty indeed. **Pkt. 20 seeds, 10 cts.**

**Platycodon.**

(Chinese Bell Flower.)

Hardy perennials, producing very showy flowers during the whole season. They form large clumps, and are excellent for planting in permanent borders or among shrubbery. Mixed blue and white. **Pkt., 500 seeds, 5 cts.**

**Rose, Multiflora True.**

With seed of these new Roses plants may be had in bloom in 60 days from the time of sowing. Plant at any time. They grow quickly and flowers appear in large clusters, and in such quantity that a plant looks like a bouquet. Perfectly hardy in the garden, where they bloom all summer. In pots they bloom both summer and winter. From a packet of seeds one will get Roses of various colors—white, pink, crimson, etc. No two alike and mostly perfectly double and very sweet. **Pkt., 30 seeds, 8 cts.**

**Ricinus Zanzibariensis.**

An entirely new class from Africa, with leaves often measuring two feet across; the seeds are marbled, speckled and spotted. **Pkt., 6 seeds, 4 cts.**

**Ricinus, Cambogiensis.**

Large, palm-like leaves of a brilliant, bronzy-red maroon color with large red veins. **Pkt., 6 seeds, 4 cts.**

**Ricinus, Castor-Oil Bean.**

Many choice varieties mixed. **Pkt., 6 seeds, 3 cts.**

Miss H. C. Robinson, Wilmington, Del., March 21, 1903.—The seeds from your house have always been satisfactory.





**Stocks, Ten-Weeks.**

**The Largest Flowering Globe Pyramidal.**

Immense spikes of perfectly double flowers, pyramidal in shape, the individual blooms frequently measuring from two to 2½ inches in diameter, ranging in colors from crimson, rose, white, blue, lilac, brown and yellow. They are greatly prized for cut flowers on account of their fragrance and diversity of colors. **Pkt., 50 seeds, 4c.**

**Stocks, Dwarf German Ten-Weeks.**

Fine mixed, **Pkt., 50 seeds, 3 cts.**

**Sweet Fern. Pkt., 300 seeds, 5 cts.**

**Stock, White Perpetual, (Princess Alice.)**

The individual flowers are uncommonly large, of a fine rosette-like shape, and of the purest possible white. If sown early will produce a great abundance of bloom from June until November. **Pkt., 50 seeds, 5 cts.**

**Stock.**

**Peach Blossom.**

The plants are of neat pyramidal habit of growth, crowned with magnificent heads of beautiful shaped, perfectly double, sweet-scented flowers of a delicate peach blossom color. For beauty and long continuance of bloom it is unsurpassed; and the delightful fragrance renders it very desirable for bouquets, etc. **Pkt., 50 seeds, 4 cts.**

**Job's Tears.**

(*Coix Lachryma.*)

Curious, ornamental grass with broad, corn-like leaves, and seeds of a light slate color. Valuable for the formation of winter bouquets, in connection with everlasting flowers. Strands of handsome beads are made from the seeds. Hardy annual; three feet high. **Pkt., 30 seeds, 5 cts., oz., 20 cts.**



**Schizanthus. Butterfly Flower.**

Elegant and very free-blooming annuals; of much interest and beauty, and when well grown rival in singularity of colors and markings of the orchids; large flowers spotted with crimson, lilac, purple and yellow, and the petals are cut in a picturesque manner. In pots in the conservatory or house few plants are more attractive; also elegant in a bouquet or vase, and fine for bedding. **Pkt., 150 seeds, 3 cts.**

Mrs. Wm. Nelson, Iowa City, Iowa, March 5, 1903.—We just thought the *Cobaea Scandens* was the finest climber we ever had.

Miss Margaret M. Roe, Dover, Dela., Feb. 12, 1908.—I have used your seeds for several years past and have found them very satisfactory.





### Smilax.

One of the most desirable window vines on account of its charming, glossy green, elegant and graceful foliage, and will grow several feet high the first season. Started in the spring, it affords elegant trellis plants for the house in winter; also fine for hanging baskets. *Pkt., 50 seeds, 4cts.; ¼ oz., 18 cts.*

### Lawn Grass

**FINEST  
QUALITY.**

1 Quart, 23 cts.  
2 Quarts, 40 cts.



### Salpiglossis, Grandiflora.

The graceful flowers, borne on long stems, range in color from the most delicate shades of light blue and straw color to the deepest purple and richest brown and maroon. The quaint funnel-shaped flowers somewhat resemble those of the petunia, and are borne on long stems in great profusion. The metallic gloss and distinct veining of the petals present almost the appearance of jeweled enamels. Large flowering mixed. *Pkt., 250 seeds, 4 cts.*

### Scarlet Sage, *Salvia Splendens.*

One of the grandest plants in cultivation—a bed of them surpassing the finest scarlet geraniums in brilliancy and cotinuous bloom; the lower spikes often measure ten to twelve inches in length, and there are as many as two hundred spikes on a well grown plant. From the time they first begin to flower, the plants are never out of bloom until killed by late frosts. It is easily grown from seed and the purchase of plants should be abandoned. *Pkt., 50 seeds, 5 cts.*

Do not fail to plant a bed of *Dianthus Heddeiwiggii*, you will be more than pleased with results; the largest and most perfect blossoms, the most beautiful and brilliant colors.

Mrs. J. R. Wilber, Riverside, Calif., March 12, 1903, writes: The mixed petunia seed we sent for last spring were the loveliest flowers I have seen. We had all colors even to the green.

Mrs. Millie Plummer, Ulsiah, Calif., April 15, 1903. Have ordered seeds from you each year, for many years and always found them perfectly satisfactory.

Mrs. Maggie Donath, Chillicothe, Ill., Feb. 4, 1903. The seeds I got of you last year were splendid, the Angels Breath was admired by all who saw it.

Mrs. Mary Lockhart, Port Townsend, Wash., Feb. 15, 1903. The Butterfly flower seed I got last year made bushes nearly 2 foot across, and were a mass of bloom.

Elenora Maurer, Arling, Wash., March 16, 1903. The seeds I got of you last year did so well that I am getting all my flower seeds from you this year.



**Sweet William, *Dianthus Barbatus*.**

The Sweet William is one of the finest flowering plants among the hardy perennials. The flowers have a wide range of bright colors and varied markings, including the finest auricula-eyed varieties. Single and double mixed. **Pkt., 100 seeds, 3 cts.**

**Scabiosa.**

**New Golden Yellow.**—The color has long been desired in the Scabiosa family and is now obtained after years of selections. The flowers are double, of a fine pure yellow color and are charming for bouquets. The plants are semi-dwarf and very free blooming. **Pkt. 50 seeds, 5 cts.**

M. T. Houck, Harmony Grove, Md., March 17, 1903, writes. My sweet peas were beauties last year. I never feel I have the best unless I order from you.



**Snowball Scabiosa.**

The flowers are very large, measuring fully two inches in diameter, of purest white and very double. It comes quite true from seed. **Pkt., 50 seeds, 4 cts.**

**Scabiosa, Double Black.**

A new variety, with elegant double-black purple flowers, so deep in color as to appear nearly coal black. **Pkt. 50 seeds, 4 cts.**

**Scabiosa.**

Mixed double, all colors. **Pkt., 75 seeds, 3 cts.**



**Violet, *Viola*.**

The Violet should not be wanting in any garden, on account of its fragrance and early appearance. A single flower will perfume a whole room. Succeeds best in a shady, sheltered place, and can be easily increased by dividing the roots. Finest mixed. **Pkt., 100 seeds, 4 cts.**

**WALKERS'**

**EXCELSIOR PLANT**

**FOOD**

**25 Feeds for 25 cts.**  
It is the Cheapest  
and Best.

**TRY IT!**



**Pure White Verbena.**  
*Candidissima.*

A fine strain of large flowering, pure white Hybrid Verbena; trusses large and borne freely at all times; always comes true from seed. *Pkt., 50 seeds, 4 cts.*

**Striped Verbena.**

Very showy striped flowers of many bright colors, *Pkt., 75 seeds, 4 cts.*

**Defiance Verbena.**

True brightest scarlet. *Pkt., 50 seeds, 4 cts.*

**Verbena Hybrida.**

Fine mixed, from a splendid range of colors. *Pkt., 75 seeds, 3 cts.*

**Verbena Odorata.**

This lovely Verbena is hardy; seed may be sown in the open ground early in the spring. The blossoms, instead of being in clusters, run up into spikes three or four inches long, and are very sweet scented. *Pkt., 75 seeds, 3 cts.*

**Lemon Verbena.**

This elegant, fragrant plant is easily grown from seed and succeeds anywhere. Have a good bed of it in the garden every summer, that you can cut its fragrant foliage and flowers, to make up with bouquets. *Pkt., 100 seeds, 4 cts.*

**Perennial Peas, Lathyrus.**

They do not have the delicious fragrance of the Sweet Peas, but they are equally beautiful. They are perfectly hardy and live year after year bearing magnificent clusters of flowers and bloom early in the spring. *Pkt., 25 seeds, 3 cts.*

**PLEASE BEAR IN MIND**

I cannot allow Plants to be selected as a premium on seeds, neither can I allow premium to be selected on Plant or Rose orders. I am offering them at such an extremely low price to introduce them to my patrons, to add a premium is simply impossible. Plants and Roses will be shipped as soon as weather will permit.

Mrs. Warren E. Fisher, Windsor, Vt., March 2, 1903, writes.—I have found your seeds on the whole very reliable and shall continue to use them as long as they prove as good as they have proved to be.



**Mammoth Verbena.**

Flowers of unusual size, single flowers sometimes being as large as a twenty-five cent piece, while the clusters of bloom are magnificent, and the range of color more vivid than in any other mixture. For garden beds or massing, the Verbena is unrivaled; flowers of the most brilliant color, blooming continually from spring until late in the autumn. Although perennials, they bloom profusely the first season from seed. *Pkt., 100 seeds, 6 cts.*





**WALL FLOWER SINGLE PARISIAN**  
J. G. OUSEY  
ADAMSON & CO. PHOENIX, ARIZ.

Wallflowers are the most deliciously fragrant of all garden flowers; their cultivation has been restricted, however, because they did not bloom until a year after the seed was sown, this new annual variety will flower throughout the summer and fall from seed sown the same spring. Everyone should now grow some and enjoy the pleasing fragrance of the cinnamon-colored flowers. **Pkt., 75 seeds, 4 cts.**

**Wallflower, Double Mixed.**

Spikes of deliciously fragrant double flowers, combining many shades of color, chocolate and orange, purple predominating. **Pkt., 50 seeds, 4 cts.**



**New Giant Zinnias.**

**New Giant Zinnias.**

A new class of Zinnias, giant in size and perfectly double flowers of the richest and most varied colors and shapes. The plants grow about three feet high and bloom freely during a long period, making them particularly valuable for large groups. **Pkt.; 50 seeds, 6 cts.**

Mrs. E. L. Bars, Randolph, Vt., March 29, 1898. — Last year I had your collection of sweet peas [40 colors] and never did I see such beauties.



### Zinnias, Curled and Crested.

Very beautiful and curious new strain, with large heads of flowers, beautifully crimped and curled. **Pkt., 50 seeds, 5 cts.**

### Zinnias, Double Lilliput.

Dwarf, compact bushes, bearing very small, perfectly double, pompon-shaped flowers of the brightest colors, which cover the plant during the entire summer and until frost sets in. The flowers embrace a wide range of both light and dark colors, evenly distributed. **Pkt., 50 seeds, 5 cts.**

### Zinnia.

Choice double mixed. **Pkt., 50 seeds, 3 cts.**

## A BEAUTIFUL LAWN

With its close, velvety turf, is a most essential feature in the adornment of all suburban homes—without it the finest flowering plants and bedding seem insignificant, while with it handsome grounds are assured, even with no other adornment.

About April 1st is the Best Time to Make Lawn

## LAWN GRASS SEED

Is composed of a mixture of grasses best adapted to produce a permanent and fine turf, so that a rich, deep green, velvety lawn is constantly maintained.

Finest Quality	-	-	Quart	-	-	\$0 23
Finest Quality	-	-	2 Quarts	-	-	40
Finest Quality	-	-	Peck	-	-	90
Finest Quality	-	-	Bushel	-	-	3.40
Good Quality	-	-	Quart	-	-	15
Good Quality	-	-	2 Quarts	-	-	28
Good Quality	-	-	Peck	-	-	75
Good Quality	-	-	Bushel	-	-	2.40

### WALKER'S EXCELSIOR LAWN DRESSING.

10 lb. box 50c.; 25 lb. sack, \$1.25; 50 lb. sack, \$2.00. If your lawn is worn and shabby, try the Lawn Dressing. It is absolutely odorless; can be used at any time, and the good results will be apparent inside of two weeks. Lawn grass seed by the peck or bushel. **LAWN DRESSING BY EXPRESS AT BUYER'S EXPENSE.**

### Choice Flower Seeds for Autumn Sowing.

**Abutilon, or Chinese Bell Flower**—Lovely bell-shaped flowers, pink, orange, red, white, etc. **Pkt., 5 cts.**

**Begonia, Vernon**—Grand for window culture. **Pkt., 5 cts.**

**Begonia, Tuberos-Rooted Single**—**Pkt., 10 cts.**

**Begonia, Tuberos-Rooted Double**—**Pkt., 12 cts.**

**Carnation Marguerite**—Fine early blooming carnations. **Pkt., 5 cts.**

**Calceolaria Hybrid**—Splendid large flowering, mixed colors. **Pkt., 10 cts.**

**Cineraria Hybrid**—Large flowering, finest colors, mixed. **Pkt., 10 cts.**

**Nasturtium**—Large flowering, dwarf. There are few flowers equal to Nasturtiums; for pot culture and winter blooming they are superb. We offer a special mixture of the most beautiful and striking colors ever seen. **Pkt., 25 seeds, 4 cts.**

**Pansies, Royal Show**—Is a mixture especially prepared by myself from separate strains and colors of all the largest flowering and finest varieties that can be secured in Europe, and is *unsurpassed in beauty, colorings and markings.* **Pkt., 150 seeds, 10 cts.**

**Primula Sinensis, (Fringed Chinese Primrose)**—Large flowering, splendid mixed. **Pkt., 8 cts.**

**Smilax**—One of the finest climbing vines for the window. **Pkt., 4 cts.**

**Primula Obconica**—A profuse flowering Primrose, flowers pure white, shading to lilac, fine for winter bloom. **Pkt., 5 cts.**

**Schizanthus, or Christmas Orchid Flower**—An elegant free-blooming annual; large, curiously shaped flowers beautifully spotted with crimson, lilac, purple and orange; makes pretty house plants. **Pkt., 3 cts.**

**Gloxinia, Choicest Mixed Hybrids**—Magnificent. **Pkt., 10 cts.**

**Mimulus Moschatus, (The Musk Plant)**—An old favorite, grown for its strong musky odor, does well outside, also in pots. **Pkt., 3 cts.**

**Lemon Verbena**—Well known and highly priced for its delicious fragrance; fine for pot culture. **Pkt., 4 cts.**

**Oriental Poppies**—Intense dazzling scarlet. **Pkt., 5 cts.**

**F**OR List of Plants see **FLORAL CULTURE**, a copy of which will be sent free, on application, and address all orders to **MISS LIPPINCOTT.**





## HARDY CLIMBING VINES

## BEST LARGE-FLOWERED CLEMATIS

Orders for Climbing Vines Should Reach me by  
**APRIL 15th** at the Latest.

### *Ampelopsis Veitchi.*

(Boston Ivy.)

A beautiful climbing plant. This is one of the finest climbers we have for covering walls, as it clings firmly to the smoothest surface, covering it smoothly with overlapping foliage, giving it the appearance of being shingled with green leaves. The color is a fresh deep green in summer, changing to the brightest shade of crimson and yellow in autumn. It is quite hardy, and becomes more popular every year. **Each 10 cts.; 6 for 25 cts.; doz. for \$1.00 postpaid.**

### *Honeysuckles.*

For real home vines, to be near you, climbing over your windows and doorways, there is nothing prettier than sweet-scented Honeysuckles; the foliage is pretty, neat and clean, the flowers are almost continuous, and their fragrance delicious.

### *Honeysuckle Hedges.*

Some of our friends have conceived the idea of planting Honeysuckles along the division fences, and it is wonderful what pretty hedges they make. Iron or wire fences are the best, but almost any kind is soon covered with a mantle of living green, making a very pretty and cheap border for lawns, drives, parks, walks, cemeteries, etc. Other climbing vines will answer the same purpose, but the sweet-scented Honeysuckles are both fragrant and beautiful. They should be planted two feet apart.

### *Hall's Japan.*

A strong growing almost evergreen sort with pure white flowers changing to yellow. Very fragrant and covered with flowers from July to November.

### *Monthly Fragrant.*

Red and yellow; very fragrant. Blooms all summer; leaves tinged with reddish color.

### *Scarlet Trumpet.*

Bright red trumpet-shaped flowers; bloom very freely the entire season, vigorous and rapid growing. **Price of each variety of Honeysuckles 10c.; 6 for 50c.; 12 for \$1.00, by mail postpaid.**

There is no more ornamental class of plants than Clematis and the rich show of bloom produced by the best varieties is far too magnificent to be fairly portrayed by mere words. The flowers are of large size measuring four to six and sometimes eight inches in diameter. The colors run from intense velvety purple through blue, lavender and white, and a new crimson variety (Madame Edouard Andre) has lately been added to the list. **Each 12 cts.; three for 35 cts.; the seven (1 of each) for 80 cts. postpaid.**

*Duchess of Edinburgh.*—One of the best double whites, of vigorous habit, very free of bloom and deliciously fragrant,

*Henryi.*—A vigorous grower and free bloomer, producing its large pure white flowers constantly during summer and early autumn. The best large-flowered variety producing pure white flowers.

*Jackmanni.*—The flowers are large, intense rich velvety violet-purple and are produced in such masses as to form a cloud of bloom. Well known and very popular.

*Madame Baron Veillard.*—Of recent introduction and quite like its parent, the popular Jackmanni, in habit and make-up, except that its flowers are a *lively, satiny lavender pink*; entirely distinct from any other variety and charming in effect.

*Madame Edouard Andre.*—Also of the Jackmanni type and is the nearest approach to a *bright red* that has yet appeared. The flowers are very large, usually six-petaled, of a distinct pleasing shade of carmine, and are produced in a bewildering profusion.

*Ramona.*—Lavender blue; flowers very large, often nine inches across. The most beautiful variety of its color yet known.

*Paniculata.*—One of the most valuable of all hardy flowering vines, of exceedingly rapid growth, soon reaching a height of fifteen or twenty feet and spreading out in all directions. Small, pure white flowers, borne in great masses of panicles or clusters on long stems, so profuse as to fairly cover the plant with a sheet of fleecy white. Its blooming period is in August and September, when most other vines have ceased, and it is then a sight to behold. Not its least charm is its delightful Magnolia like fragrance, which fills the air everywhere, even from a single vine, for a long distance. It is as hardy as an oak.

**For List of Plants and Roses** see **FLORAL CULTURE**, a copy of which will be sent free on application. Make order for plants on separate sheet of paper from seed order, and address to—  
MISS LIPPINCOTT.



# 25 Cent Bargain Collection.

## 15 VARIETIES OF THE BEST AND MOST POPULAR FLOWER SEEDS.

Alyssum, Little Gem; Aster, Finest Mixed; Calliopsis, Mixed; Cobaea Scandens; Dianthus, or Chinese Pink, Finest Mixed; Helichrysum, Mixed; Mignonette, Sweet; Marigold, French Mixed; Pansy, Royal Show; Petunia Hybrida, Fine Mixed; Phlox Drummondii, Grandiflora Mixed; Poppy, the Shirley; Schizanthus, Butterfly Flower Mixed; Sweet Peas, Best Mixed; and Verbena Hybrida, Fine Mixed.

**The Entire Collection** One full-sized package each of the above 15 varieties, mailed to any address FOR 25 CENTS, or FIVE COLLECTIONS FOR \$1.00.

Why give 25 cents for a single plant that will bear only half a dozen flowers in a season, when the same 25 cents will buy this complete assortment of 15 easy growing annual varieties, sufficient to plant your garden? **REMEMBER I cannot make a single change in this collection, and no other varieties can be sold at this price, neither can it be selected as a premium.**

---

## A Bargain Collection of FLOWER SEEDS For Twelve Cents.

10 Choice Annuals. (Everybody's Favorites), all new, fresh seeds, sure to grow and bloom this season. Pansy, 40 colors and markings; Phlox, 20 colors; Verbena, 6 colors; Pinks, 10 colors; Petunia, 10 colors; Asters, 12 colors; Balsam, 8 colors; Sweet Peas, 20 colors; Mignonette, sweet, and Sweet Alyssum.

**FOR 12 CENTS** and the name and address of two of your friends who grow flowers I will send, post-paid, the complete collection, one packet each of the ten varieties (enough for any ordinary garden). This is a **BONA FIDE** offer; made to introduce my flower seeds to new customers and which I guarantee to please you, or the amount paid refunded and the seeds given as a present.

---

**WILD FLOWER GARDEN. CHOICE MIXED SEEDS.** A mixture of many varieties of beautiful, easy-growing flowers, producing a constant and varied bloom the whole season, and is especially suited for those who wish only a few seeds each of the **LEADING VARIETIES**, or a much more extensive collection than their means will permit. In no other manner can so many seeds be obtained for such a **SMALL COST**. The mixture is especially prepared from choice, fresh seeds, the colors and varieties being carefully proportioned, and will be found superior to any mixture offered. They are very useful for sowing alongside the garden fence, and on untidy bare spots of ground and cannot fail to **GIVE SATISFACTION**. Pkt., 300 seeds, 4 cents; ounce, 14 cents.

**MISS C. H. LIPPINCOTT, 319 6th St. S., Minneapolis, Minn.**



Flowers  
from  
Seed



1904  
GREETING

C.H.

MISS C.H. LIPPINCOTT  
MINNEAPOLIS, MINN.