

FE  
719  
ak  
c

CHECK-LIST of  
THE PLANTS  
of

THE COAST OF LABRADOR

1931

Abbe, E. C.

GRAY HERB. NUM  
DEC 8 1931  
LIBRARY

Fl  
3  
719  
at  
c



HARVARD UNIVERSITY

LIBRARY

OF THE

GRAY HERBARIUM

Received Dec. 8, 1931.

Bought  
In exchange

- 1926 Wd = Woodworth { Roman numeral = station  
 Arabic " = spec. no. in Gray Herb.
- 1921 Wt = Wetmore - Roman numeral = sta. in Hamilton Inlet +  
 Lake Melville region
- 1928 B = Bishop { Roman numeral = station  
 Arabic " = spec. no. in Gray Herb.

↓  
 see Rhodora 25  
 page 5

A list of plants known  
 or to be expected from  
 Northern  
 Labrador

based on a list compiled by Prof. M. J. Forman  
 and augmented from lists of  
 Abbe

plants coll. by  
 Woodworth  
 Wetmore  
 +  
 Bishop



at July 15 1887



POLYPODIACEAE

1 Woodsia ilvensis <sup>Wd 1 X</sup>  
B 1, 2, I, II,

W. glabella

- 2 W. scopulina

Cystopteris fragilis

- 3 C. montana

4 Thelypteris Dryopteris <sup>Wd 2 XIV</sup>  
B 6, 7 V, VI Wt 4, 6

T. Phegopteris B 3, 4, 5 I, III, IV  
Wt 1, 14, 17

T. fragrans

T. spinulosa Wt 6, 17

T. s. var. americana B 8-12 VII, VIII, IX, X

T. s. var. intermedia B 13 XI

- 5 Polystichum Lonchitis

- 6 P. mohrioides var. scopulinum

P. Braunii var. Purshii B 14 XI

7 Asplenium viride

8 Athyrium angustum var. laurentianum B 15 XII

A. angustum Wt 17



5



On the Island of Montreal  
 10" fronds  
 (Hillman?)



PLANTES DES ENVIRONS DE MONTREAL  
 2743  
 Asplenium viride, Hedw.

PLANTES DES ENVIRONS DE MONTREAL  
 2744  
 Asplenium viride, Hedw.  
 fronds of 1st pinnae

7



PLANTES DES ENVIRONS DE MONTREAL  
 2745  
 Asplenium viride, Hedw.

8

Asplenium viride, Hedw. fronds of 1st pinnae

9 Cryptogramma Stelleri  
*polymorphic - collect for variability*

10 Peltia densa

OSMUNDACEAE

Osmunda Claytoniana Wt 17

OPHIOGLOSSACEAE

Botrichium lunaria  
*collect for variability*

B. lanceolatum

EQUISETACEAE  
*(get root stalk)*

Equisetum arvense wd 34,59 III V VI VII

E. sylvaticum var. pauciramosum wd 978 II VII XIV  
B 16 XIII  
Wt 4

E. palustre Wt 12

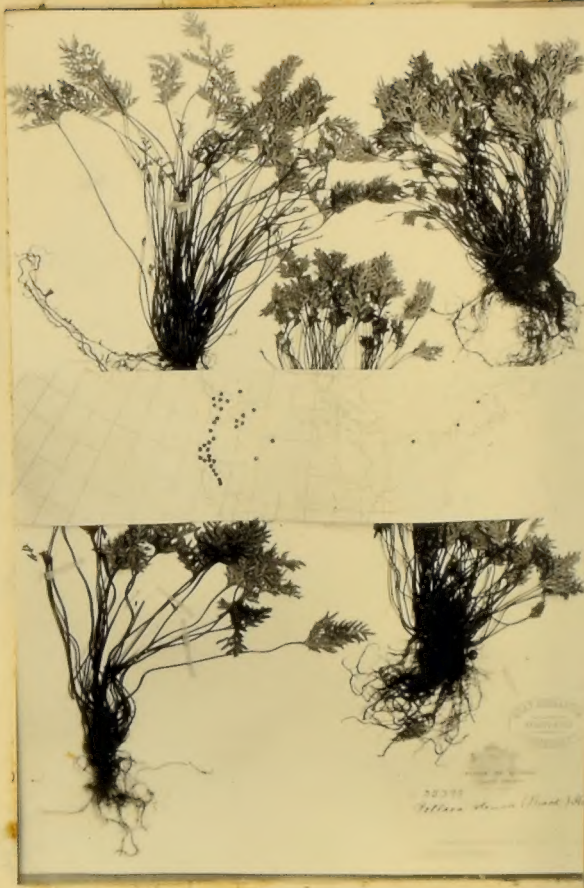
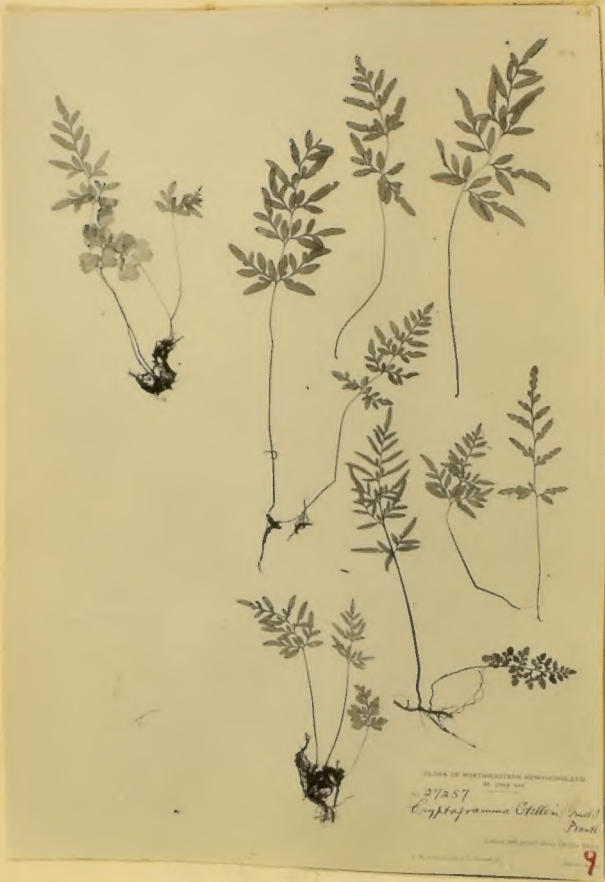
E. limosum f. minus wd 10 XV

E. variegatum

E. scirpoides

LYCOPODIACEAE  
*(get root stalk)*

Lycopodium Selago



*[Faint, mirrored text from the reverse side of the page, including the name 'Cystogramma Stilleri' and other botanical details.]*



L.s. var. appressum B 17-19 XIV, V, XV

Lycopodium annotinum <sup>wd 11 XV</sup> B 21 XVI Wt 12, 14

var. pungens <sup>wd 12, 13, 14 III x XIV</sup> Wt 4, 6

var. acrifolium B 22 XVI  
Wt 4, 9

L. sabinaefolium var. sitchense

L. alpinum Wt 7

L. complanatum Wt 12

L. obscurum Wt 9

L. lucidulum B 20 XI

SELAGINELLACEAE

Selaginella selaginoides B 23-25 V, VII, XVII

PINACEAE

Larix laricina <sup>wd 5 XV</sup> B 26-28 XIII, XVIII, VI

Picea canadensis B 29-31 III, XIX, XI

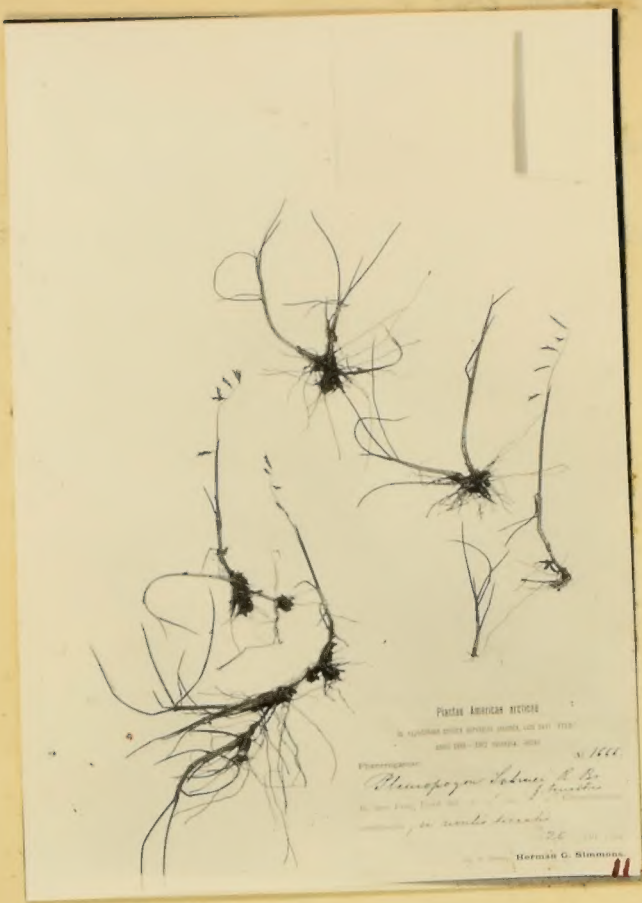
P. mariana <sup>wd 16 XIV</sup> B 32-36 III, XX, XVIII, XI, XXI

Abies balsamea <sup>wd 17 XIV</sup> ; <sup>B 37 XVI</sup> 40-42, XXII, XI, X  
*imp. to collect - get fruit* Wt 3-20

var. phanerolepis <sup>wd 18 XV</sup>  
*important* B 38 III  
43 XXI

Juniperus communis var. montana B 44-46 III, VII, XXI

Wt 18



GRAMINEAE

*Collect all grasses*

11 Pleuropogon Sabinei

12 Puccinellia phryganodes (*coarctata*)

P. coarctata

P. paupercula

var. alaskana B 85 XVI

13 P. tenella B 86 XXV

Festuca rubra B 87-89 XVII, XXVI, XII  
wd 21 II IV wt 5,6  
*basal shoots break through sheathes*

var. prolifera

var. arenaria B 90, 91 XVI, XIII

F. ovina  
*basal shoots leaving sheathes at top*  
*basal shoots leaving sheathes at top*

F. supina wd 22, 23, 24 I V X

14 F. vivipara B 92 XV

15 F. scabrella (= Hallii)

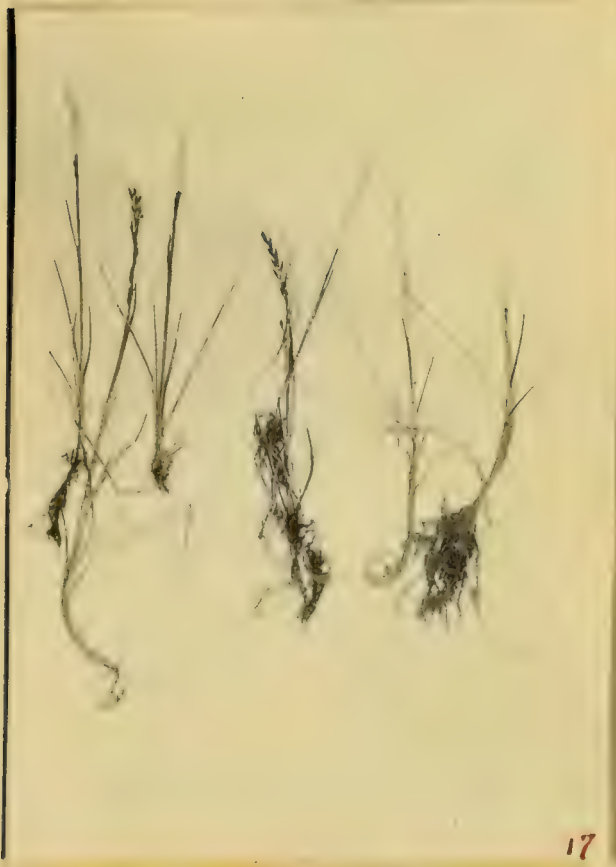
Poa eminens wd 25 XV wt 5, 6, 9  
B 71 XXII  
72 XV  
73 XXIII



15



16



17



18

*Calamagrostis agalix* L.

*Andula*



19



20



21



23



Poa alpina wd 26 V

P. arctica wd 27, 28, 32, 33, 34 I, VIII, IX, XI, XII

~ P. laxa

~ P. abbreviata

P. glauca wd 29, 30, 31, V X  
var. glaucantha - B 74 xxiv

P. nemoralis B 75, 76 - II, xxii

P. pratensis Wt 5, 6, 14, 19

P. subcaerulea B 82 xxvii

P. alpigena B 77-81 xiii, xxiv, xxv, iv, xxvi

~ 16 Colpodium (Arctophila) fulvum

~ 17 Dupontia Fischeri

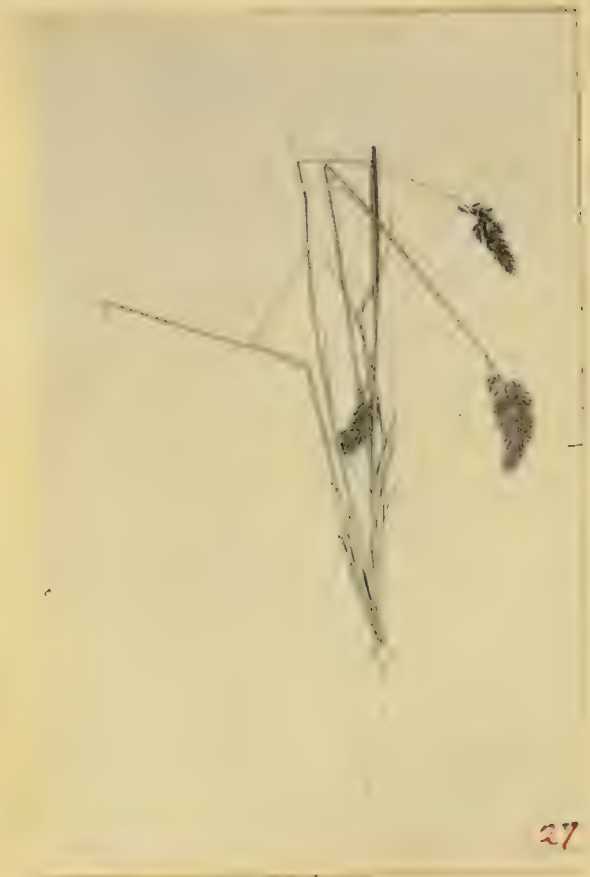
D.

~ 18 D. micrantha wd 35, 36, V, VI  
D. psilosantha from Spitzbergen is this  
B 83, 84 xiii, xiv

19 Catabrosa aquatica

20 Agropyron caninum var. Hornemanni wd 37 II  
var. tenerum B 93 xi

21 Elymus arenarius var. villosus wd 38, 39, 40 III, VII, XV  
B 95-100 xiii, II, xxii, xvii, xxviii, xxiii  
Wt 1-3, 5-8, 10, 16-18



27



29



*Syntherisma occidentalis* Michx.

30

Herbar. G. Blom.



Elymus mollis

22 ~~E~~risetum spicatum wđ 41 V  
wđ coll. the first south of Ellesmere land

var. Maidenii wđ 42, 43, 44, 45, 45 1/2, 46, 47, 48  
I, II, III, VII, VIII, X, XI, XIV,  
B 66 xii

var. pilosiglume wđ 49, 50, II, IX,

23 Deschampsia (Aira) flexuosa wđ 51, 52, 53 VIII, X, XV  
Wt 3, 6

24 D. alpina wđ 54 V

the same material  
name in new book  
probably all the  
same

D. flexuosa var. montana B 67 VIII or IX

D. atropurpurea B 68, 69 xxiv, v

D. caespitosa

25 Agrostis hyemalis var. geminata wđ 55, 56, II, XIV

A. hyemalis Wt 12, 14

A. borealis B 58-60 XVI, XXIV, XXV

A. alba var. vulgaris Wt 19

26 Arctagrostis latifolia

Calamagrostis canadensis var. robusta

wđ 57-60, II, VIII, XI, XIV  
B 61-63 VII, XXII, XX

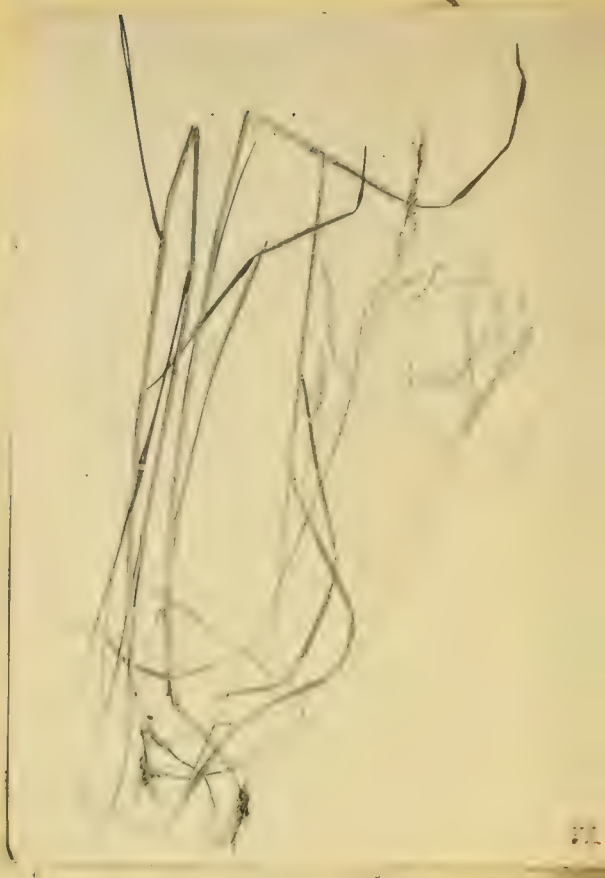
var. Langsdorfii

B 64 XXIV  
Wt 1, 5, 6, 8, 11

C. neglecta wđ 61, XV

Wt 4, 5, 10, 12

C. n. var. ~~breviflora~~ B 65 a+b, XIII



27 Calamagrostis purpurascens

C. hyperborea Wd 62, 63, X, III

28 Cinna latifolia Wt 10, 14

Phippsia algida

29 Alopecurus aequalis var. natans

(- ge. ...)

30 A. alpinus

Phleum alpinum Wt 1

P. pratense Wt 14, 19

Hierchloë alpina Wd 65-71, I, III, VI, VII, VIII, X, XI  
B 56, 57 XIII, XVII  
Wt 1

H. odorata Wd 64 XIV

var. fragrans B 55 XXIII

H. pauciflora

31 Danthonia intermedia B 70 V

Hordeum jubatum B 94 XIII  
Wt 12



32 *Glyceria* (*Panicularia*) *nervata* var. *stricta*  
Wt 12

*G. borealis* Wt 11

## CYPERACEAE

*Eleocharis* *miqumii* B 101 xx  
*E. palustris* Wt 9  
*Scirpus pauciflorus*

*E. acicularis* Wt 12

33 *S. caespitosus* var. *callosus* Wd 72-76, IV, VII, VIII, XI, XIV  
B 103-105 xiv, xix, vi  
Wt 1

*S. hudsonianus* B 102 VI

*S. atrocinctus* var. *brachypodus* Wt 12

*S. rubrocinctus* B Wt 11

*Eriophorum Chamissonis* B 106 xv  
Wt 6

*E. Scheuchzeri* Wd 77-81, II, III, V, VI, VII  
B 110 xv  
Wt 1

*E. spissum* Wd 82-85, V, VI, VIII, XIV

*E. callitrix* Wt 4

34 *E. opacum*

*E. angustifolium* Wd 86-92 1/2, II, III, V, VI, VII, VIII, XI  
B 108 vi Wt 1, 17  
var. *majus* B 107 xv

*E. virginicum* B 109 xxviii

*E. gracile* Wt 10



35 *Kobresia simpliciuscula*

36 *K. Bellardii* wđ 93, 93½ VIII, X - first coll. in n. lat.

37 *Carex nardina*

38 *C. capitata*

39 *C. incurva*

*C. gynocrates* B III, III2, VII, VI

40 *C. pratensis*

41 *C. festiva - macdoniana*

42 *C. ursina*

43 *C. bipartita* wđ 94 VII

*C. glareosa* wđ 95 V

*C. g. var. amphigena* B 117-119 II, XXVI, XXVII  
WE 5, 6

44 *C. heleonastes*

*C. canescens* wđ 96 XIV  
B 122, 123 XIII, XVIII  
WE 10

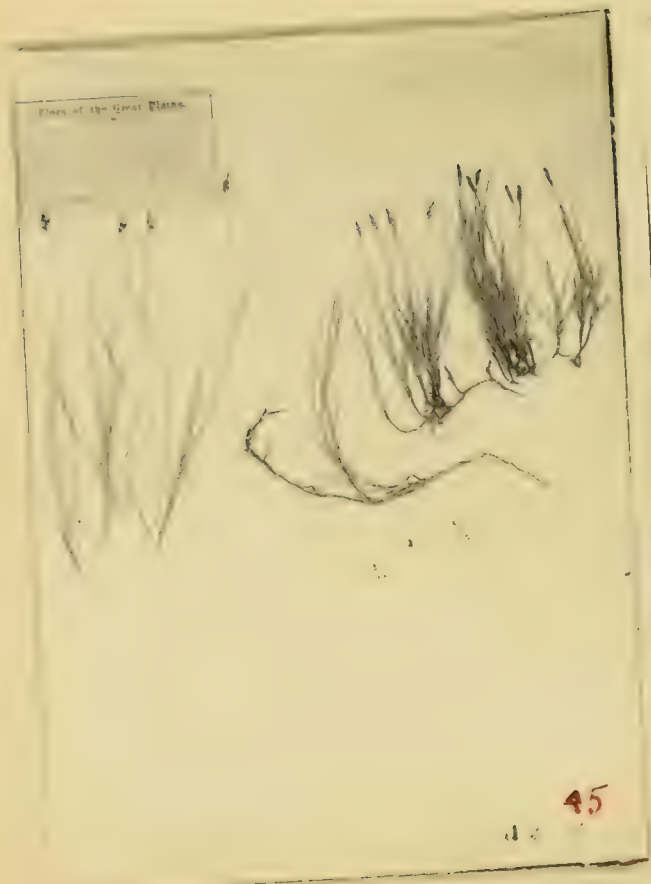
*C. brunnescens* wđ 97, 97½ X, XIV  
B 124-127 V, VIII, VI, XXI  
WE 5, 6, 14



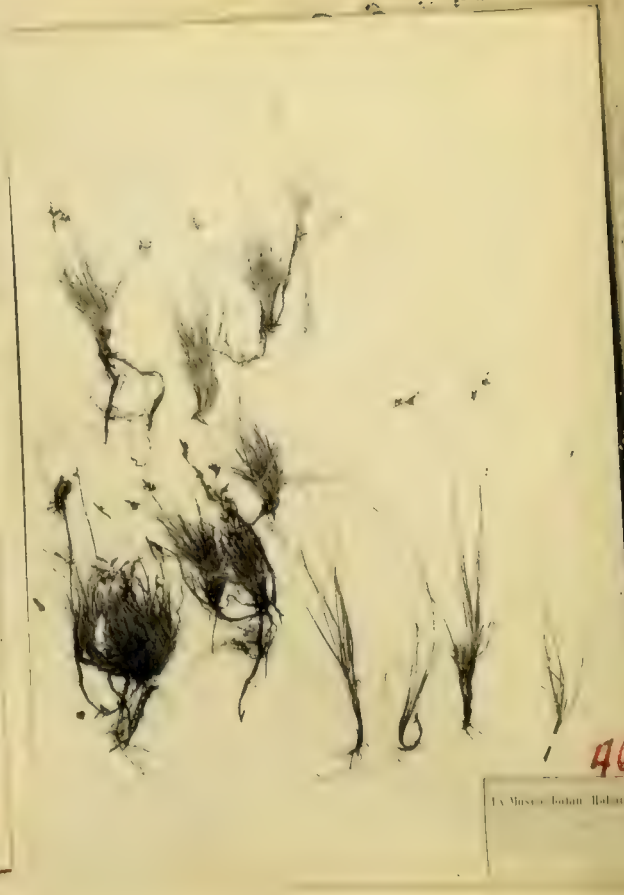
43



44



45



46

La Mesa, Bohol, Balabac

Herbarium of the University of California



45 *Carex trisperma* *wd 98 XIV*  
*B 121 VI*

45 *C. obtusata*

46 *C. supina*

47 *C. rupestris* *wd 99 VII*

48 *C. filifolia*

*C. scirpoides* *B 146-148 XXIV, VII, XVII*

49 *C. glacialis*

*C. vaginata* *B 142-145 III, VII, XIX, VI*

*C. capillaris*

50 *C. atrofusca*

51 *C. misandra*

*C. rariflora* *wd 100, 101, VI, XIV.*  
*B 133-135, XXII, VIII, XXVI*  
*WL 5, 6*

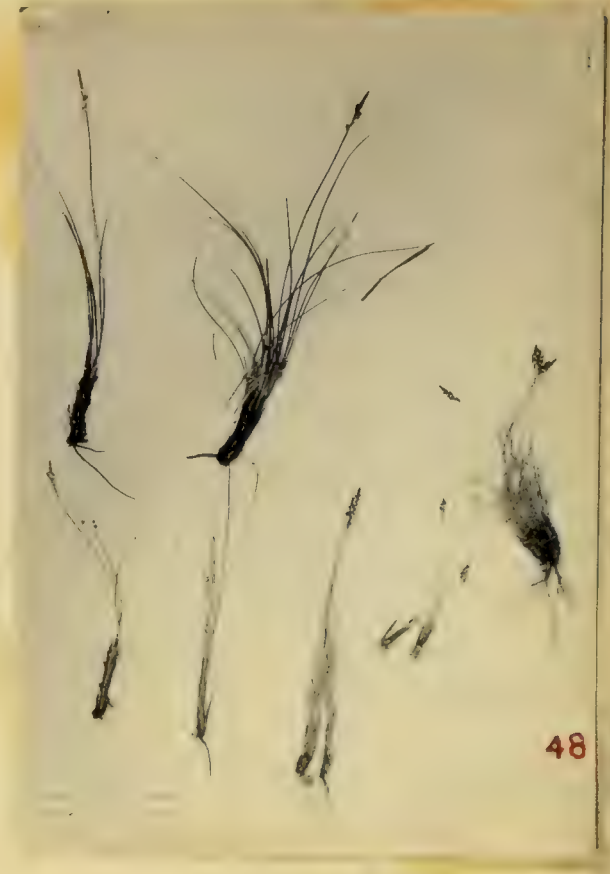
*C. limosa* *B 136 V*

*C. atratiformis* *B 150 VII*

*C. Halleri* *wd 102, 103 IV, VII - 1st coll in Lab.*  
*B 151 XVII*



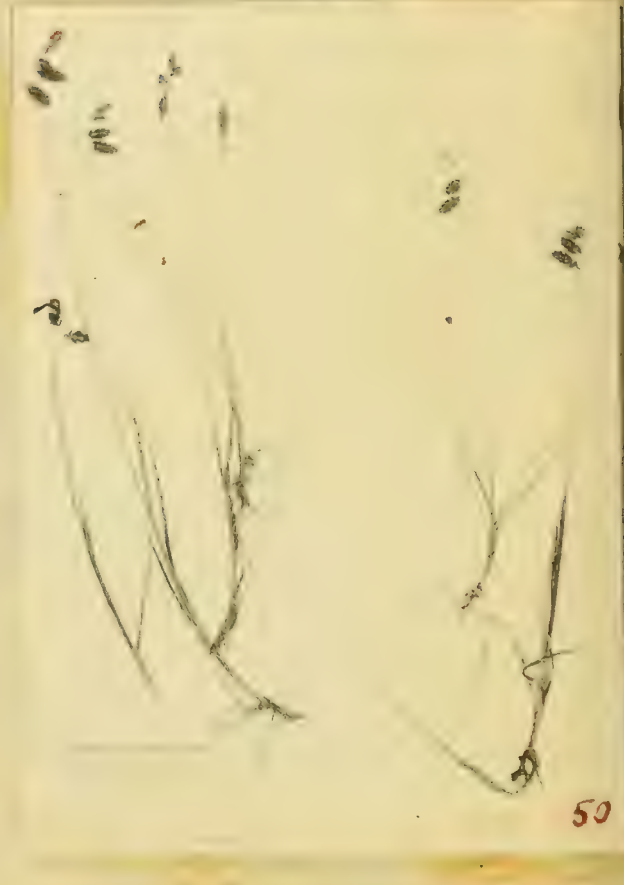
47



48



49



50

*Carex stylosa* B 152, 153 IV, VIII

*C. rigida* Wd 104-112 I, II, III, VI, VII, VIII, IX, X, XI  
 B 154-159 XXIV, XIV, III, XVII, VIII, XV  
 Wt II

*C. aquatilis* Wd 113 XIV  
 B 162-164 XIII, XXIV, XX,

*C. subspathacea*

*C. maritima*<sup>i</sup> Wd 114 XV  
 B 167 XX  
 Wt 5, 6, 12

52 *C. salina*  
 var. *Kattegatensis* B 165 XX  
 Wt 10, 12

52 *C. microglochin*

*C. pauciflora* B 175, 176 XXII, VI

*C. oligosperma* B 171 V

*C. saxatilis*  
 var. *rhombalea* B 173, 174 XIV VII

*C. miliaris* B 172 XVI §  
 Wt 11, 14

var. *major*

*C. rotundata*

53 *C. membranopacta*

*C. versicaria* var. *jejuna* Wd 115 XIV

1910

Jan

Feb

Mar

Apr

May

June 30

July 31

Aug

Sept

Oct

Nov

Dec 31

1911



51



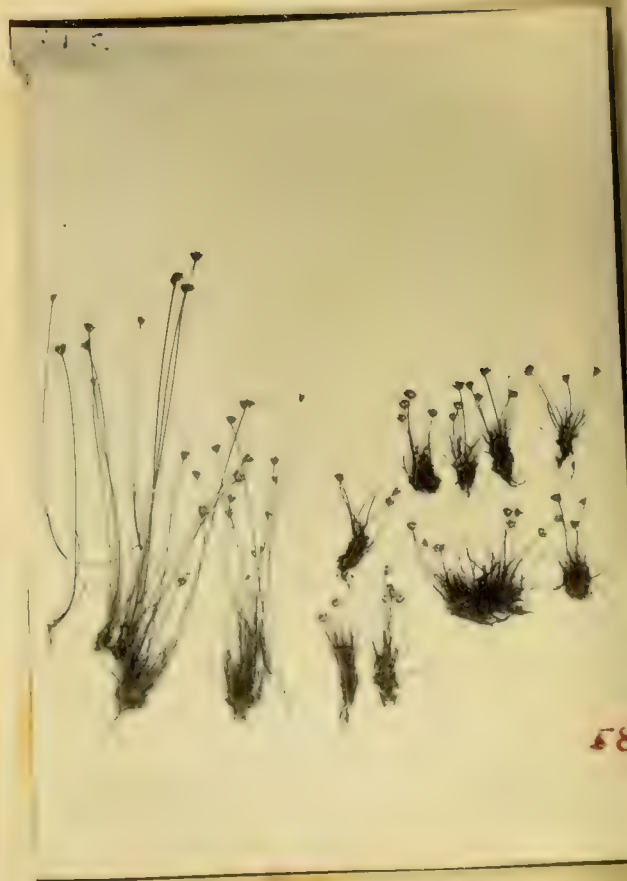
62



63



54



*Carex rostrata* Wt 12

54 *C. misandroides*

*C. exilis* B 113 v

*C. stellulata* var. *angustata* B 114-116 v, xxii, XXI

*C. norvegica* B 120 xvi

*C. leptalea* B 128-132 xxiv, v, xx, vi, XXI

*C. livida* var. *Grayana* B 141 v

*C. polygama* B 149 XXI

*C. Goodenowii* B 160 XXI

*C. lenticularis* Wt 10

*C. lenticularis* var. *Blakei* B 161 VII

55 *C. Lyngbyei* B 166 VIII

*C. Oederi* B 168 XXI

*C. flava* B 169 xxviii 170 vi

*C. projecta* Wt 12

*C. echinata* var. *angustata* Wt 14

2700

2700



59

2700

2700

2700

2700

2700

2700

2700

2700

2700

2700



56 Carex Macloviana Wt 1

C. stipata Wt 12

C. vesicaria Wt 10, 20

C. paupercula B 137-140 VII, V, XX, XVIII

### JUNCAEAE

Juncus trifidus wd 116-119 VI, VII, VIII, X  
B 177 x VIII  
Wt 1

J. balticus var. littoralis wd 120 XV  
B 178 XX  
Wt 14, 20

J. filiformis wd 121, 122 XIV, XV  
B 180-183 IV, VIII, XX, XXI  
Wt 10, 12

J. brevicaudatus wd 123 XIV  
B 186, 187 V, XXI

57 J. biglumis wd 124 VI *lt. coll. fr. lab.*  
*dark purple margins to capsule*

58 J. albescens B 189, 190 VII, XVII

J. stygius var. americanus

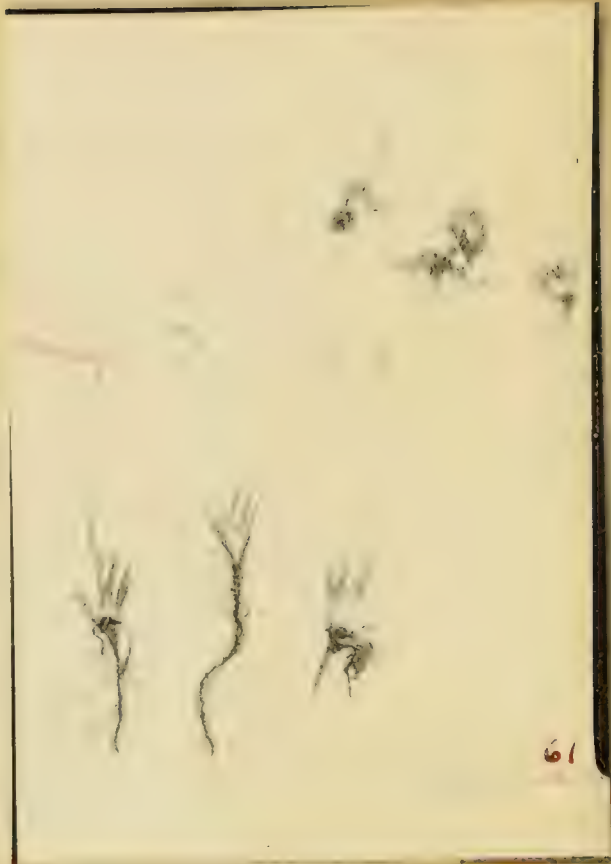
59 J. castaneus wd 125-128 III, V, VI, VII  
B 191, 192 XIV, VII

J. effusus var. compactus B 184, 185 XVIII, XXI

J. articulatus B 188 XI

J. arcticus B 179 XIII

J. alpinus var. insignis Wt 11, 12



*Luzula parviflora* wd 129, 130 II, V

*L. spicata* B 194, III  
Wt 1

*L. confusa* wd 131, 132, 132½ - 135 I, III, VI, VII, VIII, X  
B 193 XXIV

60 *L. nivalis*

*L. campestris* var. *frigida* wd 136 II  
B 196, 197 VI, XXI

var. *alpina* wd 137 VI  
B 195 XIII

#### LILIACEAE

*Allium schoenoprasum* var. *laurentianum* B 201 X

*Tofieldia minima* wd 138, 139  
B 198-200 XXIV, XIV, XVII

61 *T. coccinea*

*Clintonia borealis* B 202, 203 XIII, XI  
Wt 14, 17

*Smilacina trifolia* wd 140, XIV  
few berries laxative B 204, 206 V, VIII, VI  
Wt common in all boys

*Maianthemum canadense* B 207-210 XV, VI, XXI  
few berries laxative Wt 11-15, 17

*Streptopus amplexifolius* B 211-215 XIX, IV, VIII,  
XVIII, VI  
few berries laxative Wt 16, 17

*S. roseus* B 216 VI

62 *S. oreopolus*  
in Dmie, w Nfd, Gaspé, Anticosti

#### IRIDACEAE

*Iris setosa* var. *Canadensis* wd 142 XII Wt 1-5, 5-8, 16-18, 20  
B 219 XXVII

*I. versicolor* wd 141 XV  
B 217, 218 X, XXI  
retention in n. from Battle Harbour

*Sisyrinchium angustifolium* B 220 XXI  
Wt 19



## IRIDACEAE

Habenaria hyperborea wt 15

H. dilatata *wd - White Bay Nfd*  
*B. 221 - 223* XIV, V, XXII  
 wt 1

\ 63 H. straminea

H. obtusata

var. collecteana *B 224 - 228* XIV, III, XVII, VIII, XV

\ 64 Epipactis repens var. ophioides

Cypripedium reginae *wd - White Bay Nfd*

\ 65 Listera cordata *B 229* V  
 wt 17

Goodyera repens var. ophioides wt 17

Spiranthes Romanzoffiana wt 19

Corallorhiza trifida *(VII, V)*  
*B 230*

## SALICACEAE

\ 66 Salix reticulata *wd 143* VII  
*lvs. glabrous, peduncles glabrous + slender*

\ 67 S. vestita *wd 144* IX  
*B 231, 232* I, VII

S. Uva-ursi *wd 145 - 148* I, VIII, X, XI  
*B 233 - 236* XXIV, VII, VIII, XI

\ 68 S. herbacea *wd 149 - 152*, I, V, VI, VIII

S. anglorum *wd 153* VI  
 wt 1

69 S. anglorum var. kophophylla *wd 154* II, III



67



68



69



70

Handwritten text at the bottom of the page, possibly a list of plant names or descriptions, which is mostly illegible due to fading and blurring.

B 237-242 XIII, XIV, III, VII, XVII, XV  
17

70 *Salix arctophila* Wd 155-161 III, VI, VII, VIII, X, XI  
Scales dark, lvs. lustrous, pubescence on capsule sparse

*S. cordifolia* Wd 162-173  
Scales light, lvs. usually hairy

var. *Macounii* Wd 166-166 1/2 III, XI

var. *tonsa* Wd 162 X

var. *intonsa* Wd 162 1/2 - 165

var. *callicarpaea* Wd 167, 173 IV, VI, VII, VIII, X, XI, XII  
B 243-248, XXIV, XXV, VII, VIII, XVII, XV

*S. pyrifolia*

71 *S. calcicola* Wd 174 V

*S. planifolia* Wd 175-178 V, X, XII  
Cathkin on old wood Wt 18  
B 249-251 XIII, XXIV, XVIII

72 *S. brachycarpa*

*S. Lebbiana* var. *perostrata* Wd 179 XIV

*S. argyrocarpa* Wd 180-181 II, XIV  
B 252-255 XIII, XXIV, VII, XIX

*S. lucida* Wt 11

var. *intonsa* Wt 11

*S. sp.?* B 256 XIV

*Populus tacamahacca* noted by Woodward at  
Sandwich Bay  
n. limit not known



71



72



73



Populus tremuloides  
Wt 9,12

## MYRICACEAE

Myrica Gale B 257-259 XIV, XXIII, XXI  
Wt 18

## BETULACEAE

Betula papyrifera? B 261 XI

var. cordifolia Wd 182 XIV  
B 260 XIII

var. minor

B. microphylla Wt 7,17,18

B. Michauxii B. 267-269 XIV, VII, VI

B. pumila B 262 V  
263 XV

B. glandulosa Wd 183-188 III, VI, VII, X, XI  
B 264-266 VII, XVII  
Wt 1,18

var. rotundifolia

Alnus crispa Wd 189, 190 IX, III  
B 270-273, III, VII, XI, VI  
Wt 9,15

var. mollis Wd 191 XIV  
B 274 XXI

A. incana B 275 XX

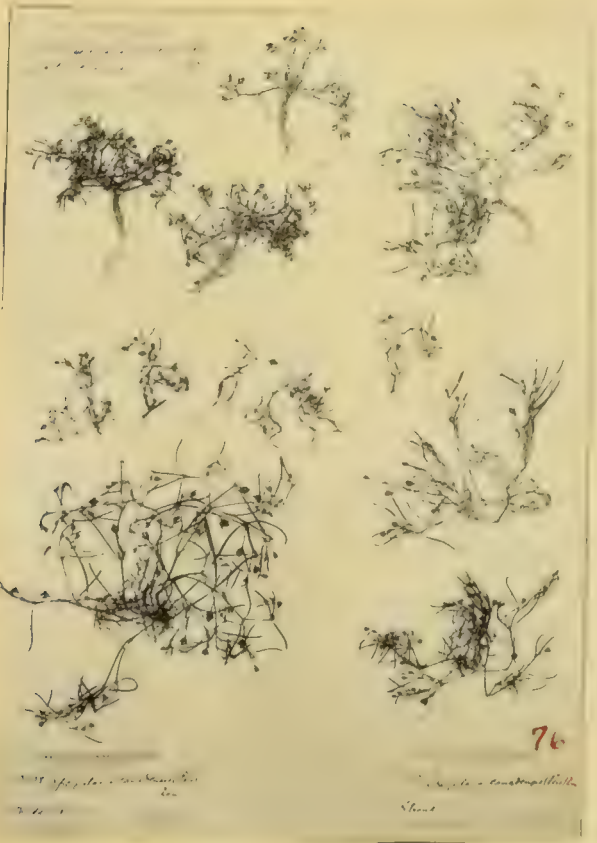


74



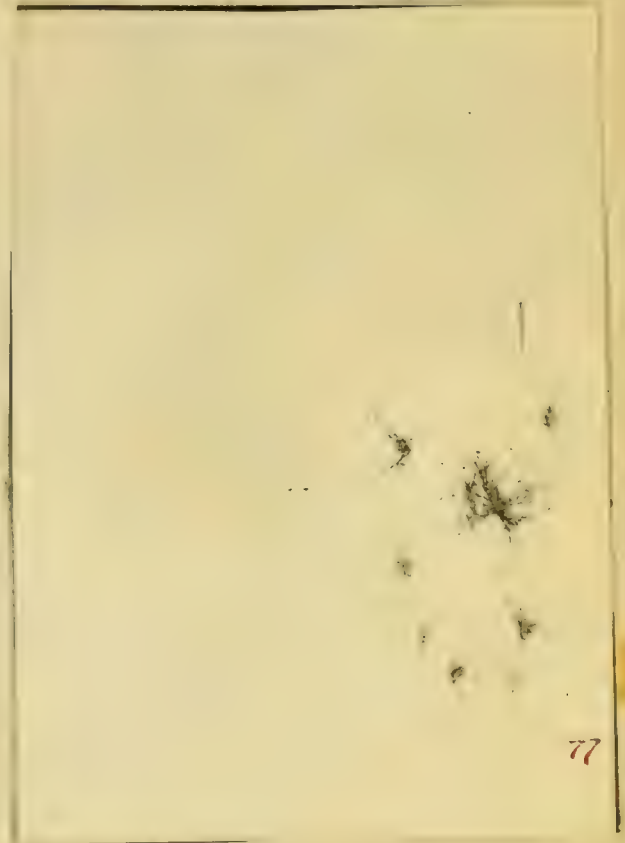
75

*Staphylea trifolia*  
*Staphylea trifolia* L.  
var. *multiflora* (L.) Gray



76

*Staphylea trifolia*  
*Staphylea trifolia* L.  
var. *multiflora* (L.) Gray



77

Staphylea trifolia

## SANTALACEAE

Comandra livida  
(Geocaulon) B 276 VII  
Wt 6.9

POLYGONACEAE *important*

73 Oxyria digyna *cod 192-196, I, VI, VIII, IX, XI*  
B 277 XIII, III

74 Koenigia islandica B 284 XXV

Polygonum viviparum *cod 198-204, I, IV, VI, VII, VIII, IX,*  
*important, need if possible* X, XI  
*bulbs at base good to eat* B 279-283 XXII, XVII, VIII,  
XXVI, XXI

P. boreale Wt 5-8, 20

P. aviculare Wt 10

Rumex acetosella *cod 197, XV*  
Wt 10

R. occidentalis Wt 8, 12

## CHENOPODIACEAE

75 Atriplex glabriuscula  
*good to eat*

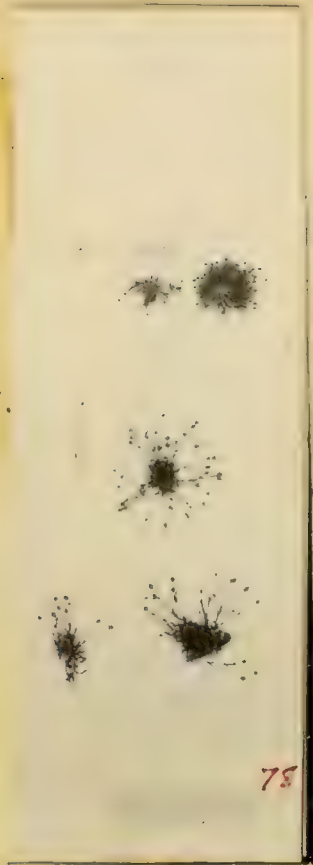
Chenopodium album Wt 9

CARYOPHYLLACEAE - *important technical prep*

76 Spergularia canadensis

Sagina procumbens  
var. compacta B 285 XXVI

77 S. saginoides



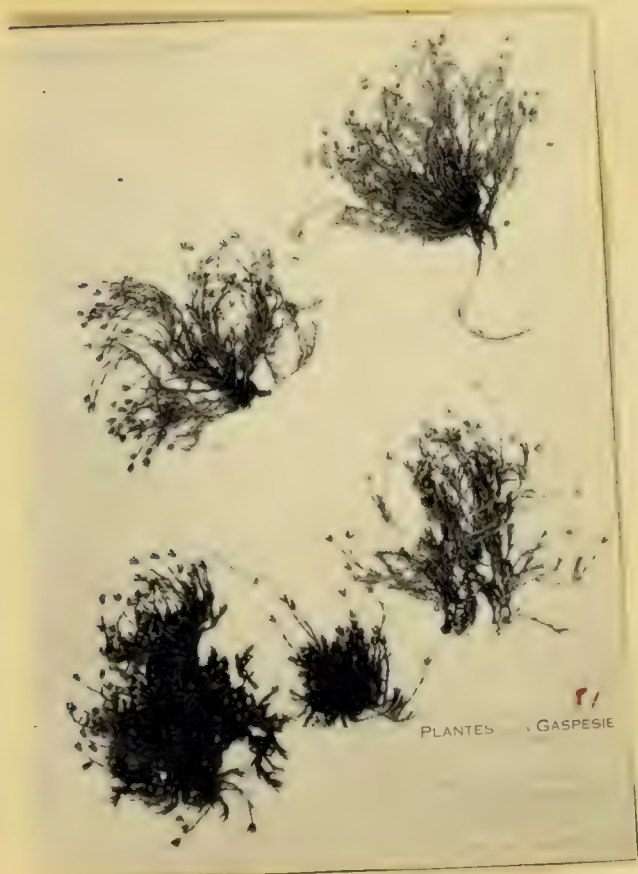
78



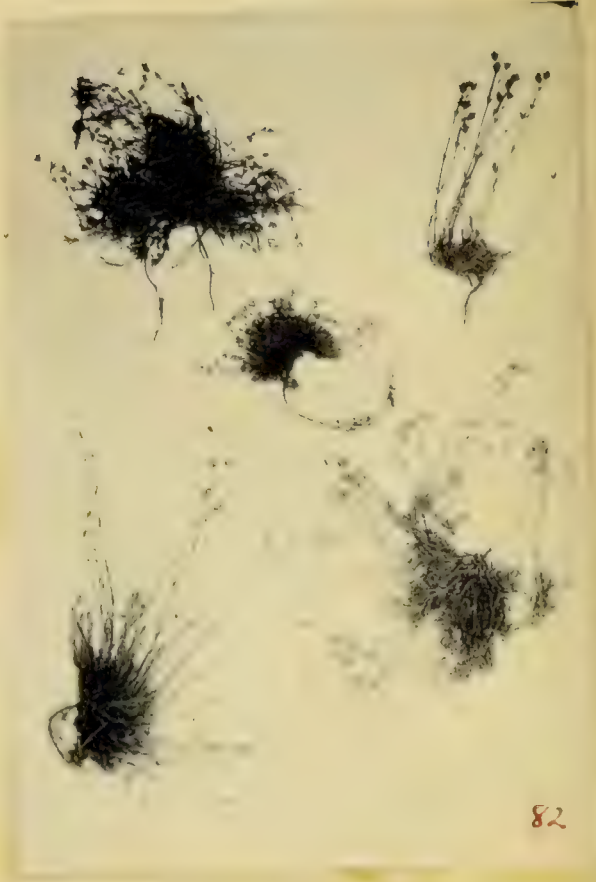
REGNUM

Is a totum Helveticum  
L. Helveticum

80



81  
PLANTES GASPESIE



82



83

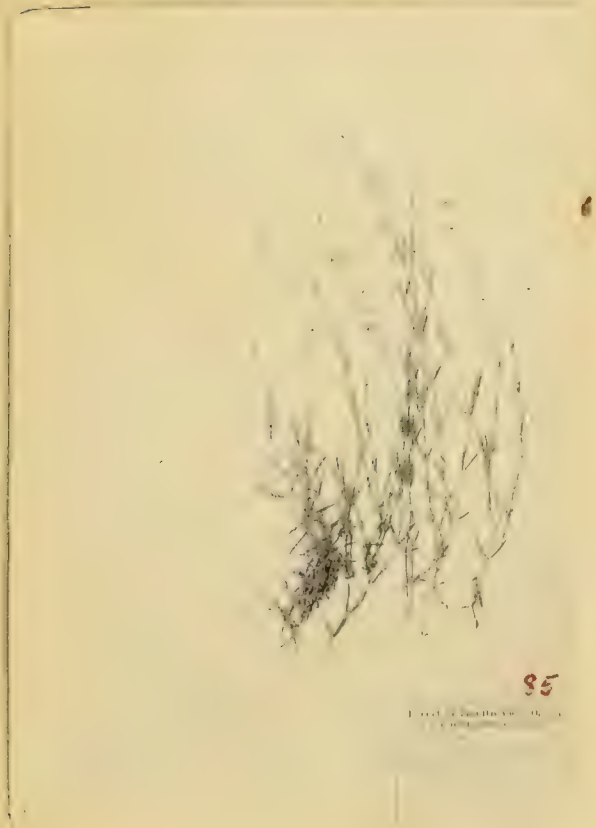


PLANTES DU QUEBEC (CANADA).

84

*Artemisia macrophylla* Nutt.

25 1873  
*Artemisia macrophylla* Nutt.

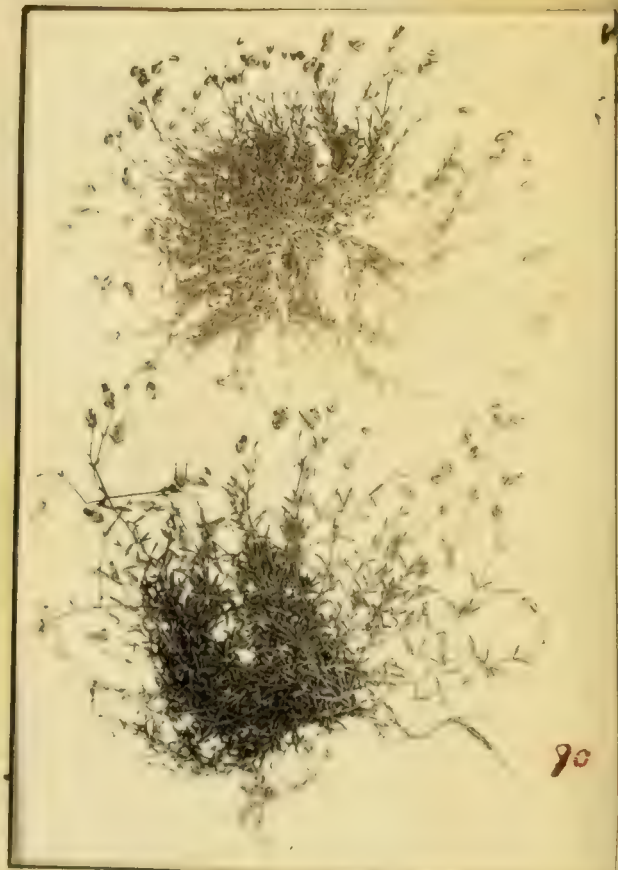


85

*Artemisia macrophylla* Nutt.



86



78 *Sagina nivalis*

~~*S. procumbens* var. *compacta*~~

*Arenaria groenlandica* B 289 VII  
Wt 17

80 *A. uliginosa*

*A. verna* var. *pubescens* Wd 205, 18

81 *A. marcescens*

82 *A. sajanensis*

*A. peploides* Wd 206 XV  
B 286-288 XIII, III, XXVI  
Wt 5, 6, 7

83 *A. cylindrocarpa*

84 *A. macrophylla*

*A. lateriflora* Wt 9

*Stellaria borealis* B 290, 291 IV, VIII  
Wt 9

*S. humifusa* B 293 XXVI  
Wt 8

85 *S. longipes* Wd 207-213, VI, VII, VIII, X, XI, XII, XV  
B 298, 299 XVII, XXVII  
Wt 1, 5, 6

var. *laeta*



91



92



93



94



Stellaria crassifolia B 292 xvii  
Wt 8

S. media B 294-297 xvii, viii, xxvii, xx,  
Wt 8

86 Cerastium alpinum  
*Collect all Cerastioids*

var. lanatum Wd 214 IV  
B 303 xv  
Wt 1

var. glanduliferum Wd 215-217 viii, ix, xi  
B 302 viii

87 C. <sup>e</sup>Beeringianum

88 C. Fischerianum

C. vulgatum B # 300, 301 vi, xi

C. arvense Wd 218 ix  
Wt 1

89 C. cerastioides

90 C. terrae-novae

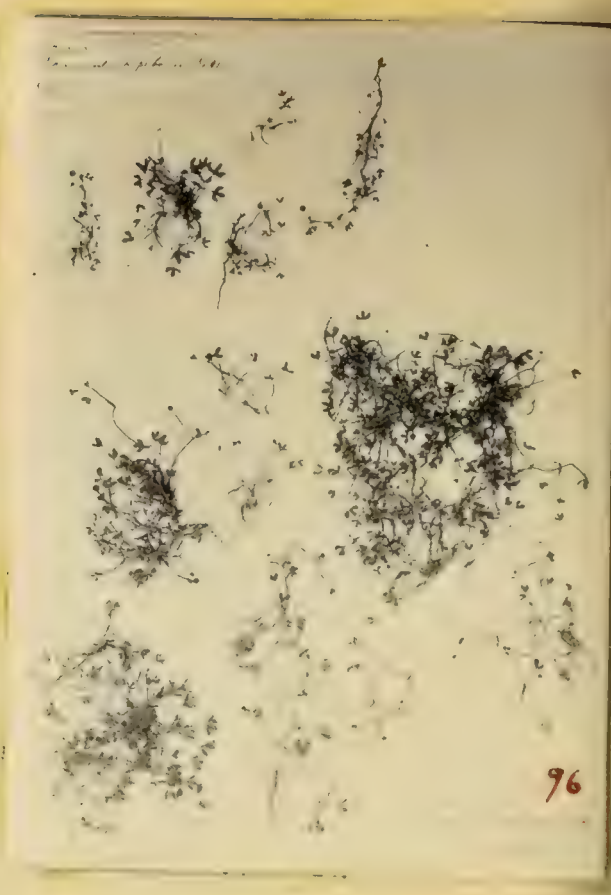
Lichnis alpina Wd 219 x  
B 304, 305 xvi, xvii

91 L. apetala

*L. foresta (Hof.)?*

92 " L. pauciflora Wd 219 1/4, 1/3, 1/2, 3/4, IV, vii, viii, ix

93 Silene acaulis var. exscapa Wd 220-222, I, viii, ix  
*Collect - Icelanders eat it* B 306, 307, xxvi, xv  
Wt 1



## PORTULACACEAE

94 *Montia lamprosperma* B 308, 309 xxv, 14

## NYMPHEACEAE

*Nymphozanthus variegatus* B 310 XXI

## RANUNCULACEAE

*Ranunculus Cymbalaria* Wd 223 xv  
B 311 xxvi

95 *R. Pallasii*

96 *R. hyperboreus* Wt 1

97 *R. lapponicus* Wt 5

*R. reptans* B 312, 313 xvi, xxi  
Wt 11

98 *R. nivalis* Wd 224-227 I, VII, VIII

99 *R. Allenii* (= *Sabinei*)

100 *R. pygmaeus* Wd 228-228½ I, VII

101 *R. pedatifidus* var. *leiocarpus*

*R. pennsylvanicus* Wt 12

*R. repens* B 314, 315 xi, xxviii







106a



107



108



109

*Handwritten botanical notes in cursive script, likely describing the specimen's characteristics or collection details.*

Ranunculus acris B 316, 317 xx, xi  
Wt 19

Thalictrum alpinum

T. polygamum B 318, 319 xxiii, xi  
Wt 19

102 Anemone parviflora Wd 229-230 vii, ix

Caltha palustris

Coptis trifolia Wt 4, 9

C. groenlandica B 320, 323 xix, xxiii, vi, xxix

Actaea rubra Wt 12

### PAPAVERACEAE

Papaver radicatum Wd 231, 232 vii, ix  
(= *medicinale*)

### CRUCIFERAE collect - important

103 Subularia aquatica

104 Thlaspi arvense Wt 19

Cochlearia sp. Wt. 1

Cochlearia cyclocarpa *Sauvay grass*  
*grain unwashed*

C. tridactylites



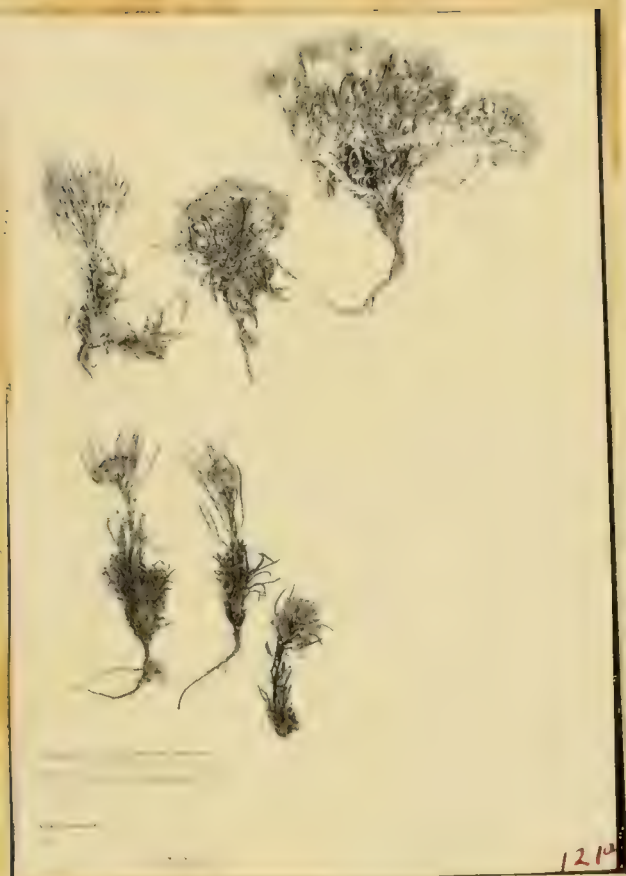


## Cochlearia fenestrata

- 105 C. groenlandica var. oblongifolia <sup>Wd 233-235</sup>  
<sub>B328-331 XVII, VIII, XXVI, XXVII</sub> III, V, VII
- 106 Eutrema Edwardsii
- 106<sub>a</sub> Barbarea orthoceras
- Brassica rapa <sup>B 333 XX</sup>
- Cardamine bellidifolia  
 var. laxa <sup>Wd. 236-238 I, VI, IX</sup>
- 107 C. hyperborea (= digitata)
- 108 C. pratensis var. angustifolia
- C. pennsylvanica <sup>B 335 XXI</sup>
- 109 Lesquerella arctica
- Capsella Bursa-pastoris <sup>B 332 XX</sup>  
<sub>Wt 5</sub>
- 110 Draba stenoloba
- 111 Draba crassifolia
- 112 D. arctica







- 113 *Draba alpina*  
 114 *D. fladnizensis* Wd 239 IV  
 115 *D. nivalis* Wd 240 VI  
     B 324 II  
 116 *D. aurea*  
     *D. incana* B 327 XVII  
     Wt 516  
 117 *D. stylaris*  
 118 *D. megasperma*  
     *endemic to Nfd, Gaspe, Anticosti*  
     *D. hirta* Wd 240 1/2 VII  
 119 *D. rupestris* B 325, 326 XIII, XV  
 120 *D. pycnosperma*  
     *end. to Nfd, Gaspe, Anticosti*  
 120<sub>a</sub> *Arabis humifusa* = *arenicola*  
     *A. alpina* Wd 241 - 243, II, VIII, IX  
 121 *A. Holboellii*  
 121<sub>a</sub> *Erysimum Pallassii*  
 122 *Parraya arctica*



123 *Braya purpurascens*

124 *Braya humilis*

124a *Roripa hispida* var. *glabrata*

B334 XX

~~Capsella Bursa-pastoris Wt5~~

CRASSULACEAE

*Sedum roseum* Wd 244, XII  
 Eat for salad B 349-351 XXVI, XXVII, XV  
 Wt1

*S. villosum*

SARRACENIACEAE

*Sarracenia purpurea* B336-337 XXVIII, VI  
 Wt16

*Drosera rotundifolia* B338-48 XIV, XVII, VIII,  
 XXVI, XXVIII, XII, XVIII, XXVIII, VI, XXI

SAXIFRAGACEAE - collect

*Saxifraga rivularis* Wd 245 I  
 B 352, 353 XXV, XXVI

125 *S. cernua* Wd 246-247½ IV, VII, VIII

*S. caespitosa* Wd 248-250, IV, V, VI  
 B 355-352 XVII, XV

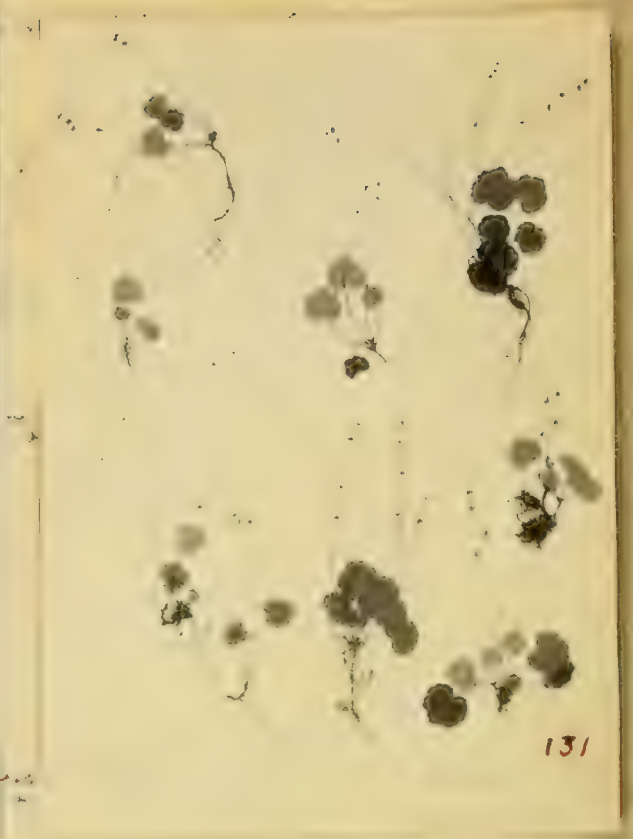
*S. stellaris*

125 var. *comosa* Wd 251 I

126 *S. hieracifolia*



130



131



132



133



\ 127 Saxifraga nivalis Wd 252-253 X

\ 128 S. gaspensis Wd 254 I

S. aizoides Wd 255 IX

S. tricuspidata Wd 256 IV

\ 129 S. Hirculus

\ 130 S. flagellaris

S. Aizoon Wd 257 IX  
B 354 I

S. oppositifolia

131 Mitella nuda B 357 VI

\ 132 Chrysosplenium alterniflorum var. tetrandrum

133 Parnassia Kotzebuei Wd 258-261, VI, VIII, IX, X, XI  
B 360 XIII

\ 134 P. multisetata B 358, 359 XIII, XXVI

P. palustris Wt 1, 16

Ribes lacustre B 365 VI

Ribes glandulosum B 361-364 III, VII, XX, XXIII,



R. prostratum *lod* 262-263  
*Wt common everywhere*

R. triste ~~lod~~

ROSACEAE

Sorbus americana - *noted at Ark*

Amelanchier sanguinea

A. Bartramiana *B* 370-372 - VII, XXIII, VI  
*Wt 6*

A. laevis *B* 373 XXI

Fragaria virginiana var. terrae-novae

Sibbaldia procumbens *lod* 264 VI

Potentilla fruticosa *B* 376 XXVIII  
*Important Technical genus - collect*

P. palustris *lod*. 265 XV *Wt* 5, 6, 8  
 var. parvifolia ~~lod~~ *B* 374-375 XIII, XIV

P. pridentata *lod* 266-267 X, XIV  
*Wt 6*

P. nivea var. macrophylla *lod* 268 IX



~ 135 *P. pulchella*

~ 136 *P. rupripess*

~ 137 *P. Vahliana*

~ 138 *P. emarginata*

*P. norvegica* var. *labradorica* B 382 VII

*P. norvegica* var. *hirsuta* B 383 XX

~ 139 *P. fragiformis*

~ 140 *P. Ranunculus*

~ 141 *P. alpestris* Cod 269-275, III, IV, V, VI, VII, VIII, X  
B 381 II

(= *P. maculatus*)

*P. Egedei*

*P. pacifica* Wd 276-278, VII, XII, XV  
B 377-380 XVI, XXII, XXVII, XXIII  
Wt 1-9, 16-18, 20

*P. monspeliensis* Wt 5-10, 16, 19, 20

*Geum rivale*

*G. macrophyllum* B 384 XI  
Wt 15



14



143



FLORE DE L'ISLE ST. PIERRE ET MIQUELON  
PAR M. L. DE ROBERT

144



145

*Dryas integrifolia* Wd 279-281, IV, VIII, VII  
B 396-397 I, XVII  
Wt 1

*Rubus idaeus* Wt 18  
var. *strigosus* B 385 XXI

*R. idaeus* var. *canadensis* Wd 284, XV

*R. Chamaemorus* Wd 282-283 VIII, XIV  
"Bakerzelle" B 386 XVII  
Wt 1-9, 15-18, 20

*R. acaulis* Wd 285-286, VII, X  
"Plumbog" B 387-390 XXIV, XIX, XVII, XV

*R. pubescens* B 391, 392 VI, VII  
"Plumbog"

*R. triflorus* Wt 9

*Alchemilla vulgaris* var. *filicaulis*

\ 143 *A. v.* var. *vestita*

\ 142 *A. v.* var. *grandis*

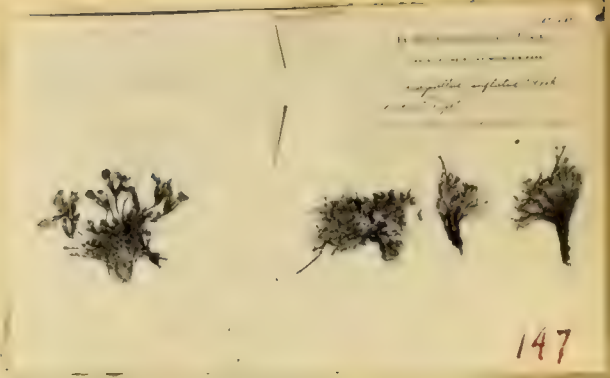
\ 144 *A. alpina*

*Sanguisorba canadensis* B 393 XI  
Wt 10-12

*Prunus pennsylvanica* B 395 XI  
Wt 9

*Rosa virginiana* B 394 XI

*Pyrus dumosa* B. 366-369 III, VII, XI, XII  
Wt 17, 18





## LEGUMINOSAE

Astragalus alpinus *Wd 287-289, III, IX, XI*  
*B 398-399 XIII, XXIV*  
 Wt 1

A. eucosmus

145A. aboriginum

146Oxytropis campestris var. caerulea  
*Wd 290-293, III, VI, VIII, IX, XI*  
 Wt 1

1470. arctica

1480. bellii

1490. artobia

1500. podocarpa

O. terrae-novae *B 400-403 XIII, I, VIII, XV*

Hedysarum alpinum

151Vicia Cracca Wt 19

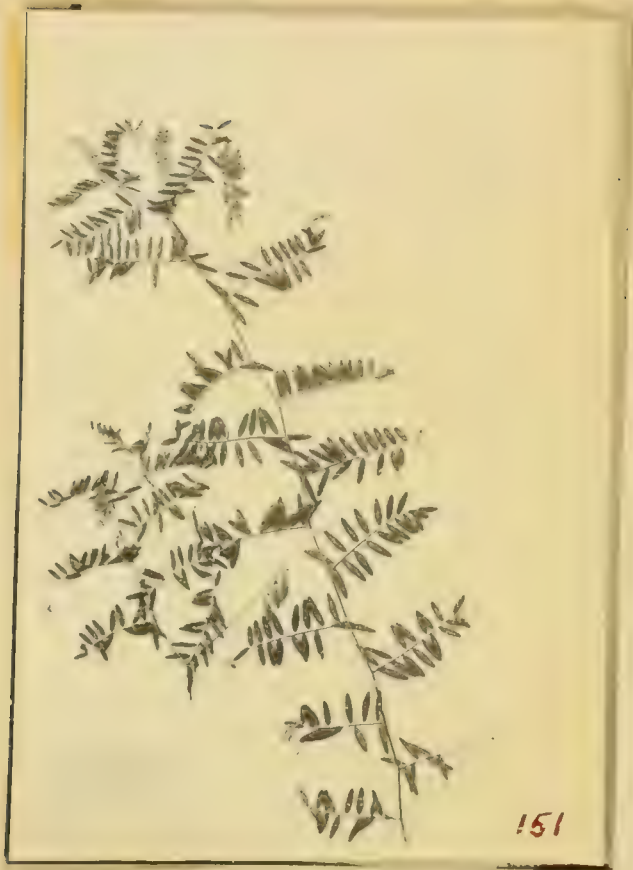
Lathyrus maritimus var. aleuticus *Wd 294 XV*  
*B 404-407 XIV, III, XXII, VIII, XXIII*

152 Lathyrus maritimus Wt common on all salt + brackish  
 shores + on Grand Lake

Trifolium pratense Wt 19

repens Wt 19

agrarium Wt 19



## EMPETRACEAE

Empetrum nigrum Wd 295-297, XI, XIV, XV  
 B 410-412 XXII, VI, XXIX  
 Wt common on all barrens + rocky  
 headlands

E. Eamesii

E. atropurpureum

## GERANIACEAE

Geranium Robertiana B 408 X

G. pratense Wt 10

## CALLITRICHACEAE

Callitriche palustris Wt 12

153 C. anceps B 409 XV

## VIOLACEAE

Viola Selkirkii

- V. palustris

V. pallens Wd 298 XV  
 B 417-420 V, XX, XXI, VI

V. labradorica B 421-425 V, XXII, XIX, XVI, VI  
 Wt 1-3

V. cucullata B 415, 416 VI, XXI



Viola adunca var. glabra

AQUIFOLIACEAE

Nemopanthus mucronata B 413 XXVIII

ACERACEAE

Acer spicatum B 414 XXI

ONAGRACEAE — collect

Epilobium angustifolium Wd 299 IX  
B 427 XX WT common everywhere  
west of Rigolet

E. a. var. intermedium Wd 300-301 X XII  
B 426 + 428 V, VI

E. latifolium Wd 302-309 II, III, VII, VIII, IX, X, XI  
B 432-433 XIII, XIV  
WT 3-9

E. l. var. Kamschaticum Wd 310, 311 II, IX, X  
E. palustre B 429-430 VII, XXVI  
WT 8

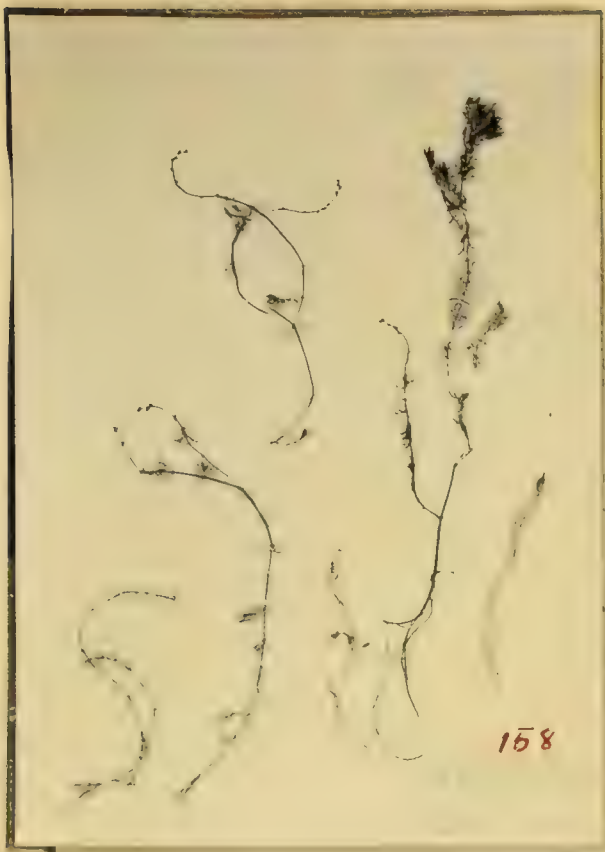
E. palustre var. labradoricum  
B 431 XVI

E. p. var. monticola Wd 312 XV

E. p. var. Longirameum WT 8

154 E. davuricum

155 E. Drummondii



*Epilobium lactiflorum*

*E. alpinum* ~~X<sub>1</sub>~~ *E. angustifolium* Lam.

*E. Hornemanni* B 434-435 V, VIII

*E. glandulosum* var. *adenocaulon* B 436 X1  
Wt 8, 12

156 *Circeea alpina* B 438 X1

157 *Oenothera muricata* B 437 X

#### HALORAGIDACEAE

158 *Myriophyllum alternifolium*

*M. exalbescens*

*Hippuris vulgaris* B 439-441 - VII, VIII, XV  
Wt

*H. v. var. maritima* Wt 8

#### UMBELLIFERAE *get fruit*

159 *Ligusticum scoticum* Wt 313, 313 1/2 XII, XV  
*"Parsley" - good to eat* B 442-444 XVI, XVII, XII

160 *Coelopleurum lucidum* Wt 314, XII  
B 445 XV  
Wt 5, 6

161 *Heracleum lanatum*  
*Health root, Hall root, good greens cooked*





162 Conioselinum pumilum

C. chinense B 446 XII

163 Angelica atropurpurea B 447, 448 VI, X  
Wt 1, 5, 6, 15

### CORNACEAE

Cornus canadensis Wd 315 XII, XIV  
B 449 XXII, VI  
Wt 4, 6, 9, 13

C. c. var. intermedia

C. suecica Wd 316 XII  
B 450 XXVI  
Wt 1, 5, 6

C. stolonifera B 451 XXVIII  
Wt 14, 17

### ERICACEAE

164 Moneses uniflora B 452, 453 III, XX  
Wt 4, 16

Pyrola minor B 454-456, XIII, XXIV, III  
Wt 15

P. secunda var. obtusata B 457-460 XIII, XXIV,  
III, XXII  
Wt 14

165 P. grandiflora Wd 318-322, I, III, VII, VIII, X

P. chlorantha Wt 14

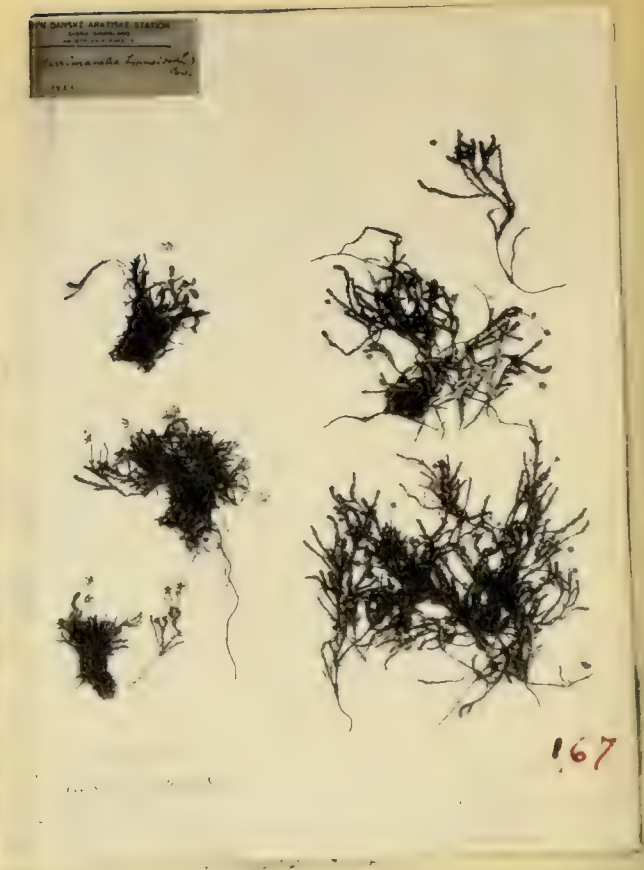
VIN DAMPT ARABISSE STATION  
COTE D'AZUR  
MUSEUM OF NATURAL HISTORY  
MONTENAPOLI  
1911



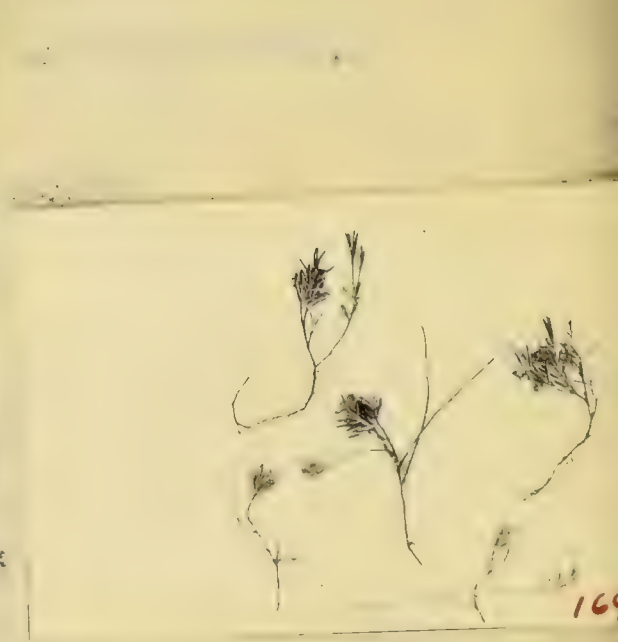
166



168



167



169

*Monotropa uniflora* B461 XI

*Ledum groenlandicum* Wd 323-325, XI, XII, XV  
B 462-464 XVIII, XV, XXI  
Wt common on all barrens

*L. palustre* ♂ Wt 1

*L. p. var. decumbens* Wd 326, 327, 328, VI, VIII, X  
B 465-467 - XIV, VIII, IX

*Rhododendron lapponicum* B 468-469 XXIV, VII

*R. canadensis* B 467 XXVIII

*Kalmia angustifolia* B 470-472 XI, XXVIII, XXI  
Wt 9-15, 20

*K. polifolia* Wd 329, 330 XII, XIV  
B 473-479 XIX, VIII, IX, XXIII, XV, VI, XXI  
Wt 1, 3, 4, 6

166 *Loiseleuria procumbens*

*Phyllodoce caerulea* Wd 331-334, VI, VII, VIII, X  
B 480-482 XXII, XIX, XXIII  
Wt 4

167 *Cassiope hypnoides* Wd 335 I

168 *C. tetragona*

<sup>o</sup>  
*Andr<sub>^</sub>meda glaucophylla*

*A. g. var. iodandra*



-169 *Andromeda polifolia*

*Chamaedaphne calyculata* B 483, 484 VII, XXIX  
Wt 4, 6

*Arctostaphylos Uva-ursi*

*A. alpina* - "poison berry" wd 336~~5~~-338 VI, VIII, XI  
B 485-488 - XIV, VII, XVII, IV  
Wt 4, 7, 17, 20

*Vaccinium uliginosum* Wt common on all barrens

*V. u.* var. <sup>*alpinum*</sup> ~~*uliginosum*~~ wd 339-344 VI, VII, VIII, X, XI, XII  
B 492-493 VIII, VI

*V. caespitosum* B 494, 495 V, XII

*V. Vitis-idaea* var. *minus* wd 345-347, IX, XIV, XV  
B 496-499 XVI, VII, VI, XXIX  
Wt common on all barrens and mountains

*V. Oxycoccus* B 500-503 XXII, VIII, XXIII, XXIX  
Wt 4

- 170 *V. nubigenum*  
Endemic w. Nfld, Gaspe, Anticosti

*V. pennsylvanicum* var. *myrtilloides* Wt common on all barrens

*V. p.* var. *angustifolium* B 490-491 - VIII, VI  
Wt 4

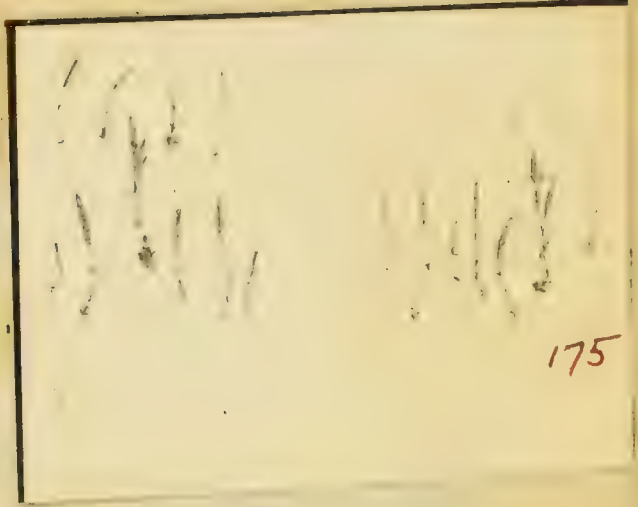
- 171 *V. ovalifolium*

*Chiogenes hispidula* B 489 xxviii  
Wt 4



174

PLANTS OF



175



176

2985  
*Androsace scopulorum* Roll.  
Coville det.

2986  
*Androsace scopulorum* Roll.  
Coville det.



177

## DIAPENSIACEAE

Diapensia lapponica *Wd* 348-352, III, IV, VIII, VII  
 B 504-506 XIII, XIV, XV  
 Wt 17

## PLUMBAGINACEAE

172 Statice labradorica *Wd* 353½-355, V, VI, IX, XI  
 B 507- XIII  
 Wt 1

PRIMULACEAE — *imp. collect*

Primula farinosa Wt 1  
 f. var. macropoda Wt 11

P. borealis

-173 P. egalikensis B 510, 511, XVII, XXVI

P. mistassinica

P. laurentiana B 508, 509 XVII, XV

-174 Androsace Chamaejasme

Trientalis borealis *Wd* 356, X  
 B 512-516 XXII, XIX, XX, XXIII, VI  
 Wt common in woods everywhere

GENTIANACEAE — *collect*

Gentiana Amarella Wt 3

-175 G. nivalis



178



179

*Malva sylvestris* L.  
var. *officinalis* (L.) G.  
179



180



181



182



176 *Gentiana nesophila*.  
*Endemic to Nfld., Gaspé, Anticosti*

*Lomatogonium rotatum* B <sup>518, 519</sup> ~~516, 517~~ xvi, xiii

177 *Halenia deflexa* Wd 357 xii

*Mentyanthes trifoliata*

*M. t. var. minor* B <sup>520</sup> ~~518~~ xiv

### BORAGINACEAE

*Mertensia maritima* Wd 358-359 iv, vi  
 B 522 II  
 Wt 1, 3

*Myosotis* <sup>i</sup> ~~is~~ *laxa* B 521 xxi

### LABIATEAE

*Prunella vulgaris* B 523 xxviii

*P. v. var. lanceolata* B B 544 xi

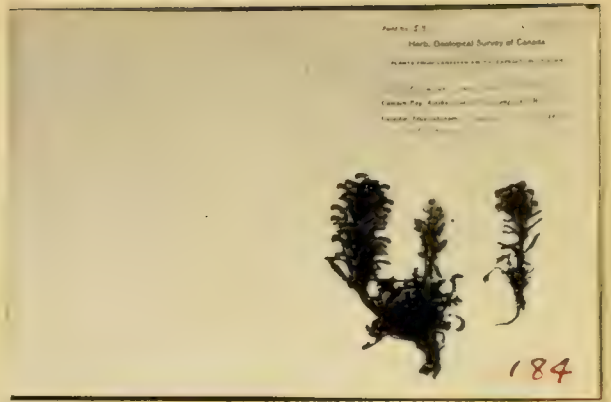
178 *Galeopsis Tetrahit* Wt 18, 19

*Mentha arvensis var glabrata* Wt 12

### SCROPHULARIACEAE

*Veronica alpina var. unalanchensis* <sup>s</sup>  
 Wd 360-364. I, VI, VII, VIII, X

*V. humifusa*



Veronica scutellata B 525 xvi  
Wt ?

V. serpyllifolium a B 526 xxi

179 Castilleja pallida var. septentrionalis<sup>n</sup>  
Wd 365 V Wt II  
B 527-529 xxiv, III, VII

180 Euphrasia arctica Wd 366-369 V, VIII, X, XI  
B 531 xiii  
Wt 1, 2

E. purpurea var Randii  
B 530 xvii

E. stricta B 532 xi

-181 Bartschi alpina Wd 370-373, V, VI, VIII, XI  
B 533 III

-182 Pedicularis lapponica Wd 374-376 VII, XI  
Collect this genus B 537-538 xiii, xxiv

-183 P. sudetica

-184 P. arctica

-185 P. hirsuta

-186 P. lanata (= *L. angustifolia*)

- P. euphrasioides Wd 377 V  
B 539-542 xiii, III, VII, xvii  
Wt 1, 6

-187 P. groenlandica Wd 378 xiv  
B 534-536 xiii, xxii, III  
Wt II



187

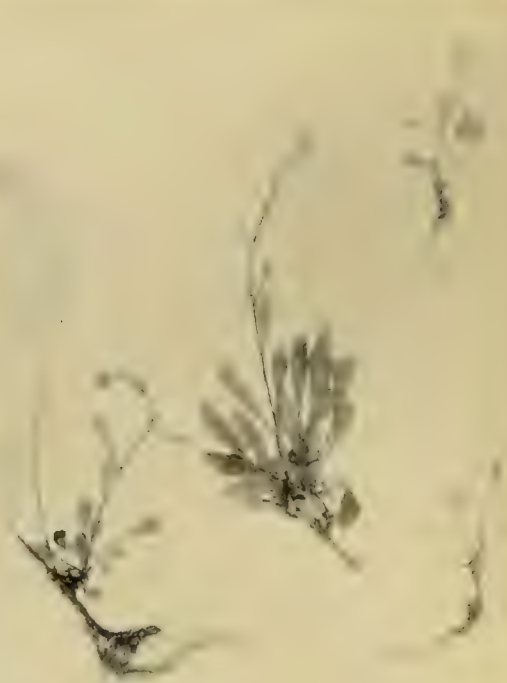
*Asplenium greenlandicum* Hedl.



188



189



190

- *Pedicularis flammea* Wd 379-383 VI, VII, VIII, X  
Wt 1

- *P. capitata*

*Rhinanthus borealis*

*R. Crista-galli* Wt 1

*R. groenlandicus* B 543-545 XIII, XXIV, XVII

### LENTIBULARIACEAE

*Utricularia vulgaris* var. *americana*  
B 546 XXI

*U. cornuta* B 547 XXVIII

*Pinguicula vulgaris* Wd 386 XI  
B 548-554 XXIV, III, XXII, VIII,  
IX, XV, VI,  
Wt 1

- *P. villosa*  
Wt 1

- *P. alpina* - Britton + Br. discovered the Singer coll.  
noted from Lab.

### PLANTAGINACEAE

*Plantago juncoides* var. *glauca* Wd 384-385 III, XII  
B 555-558 XVI, II, XXVI, XXVII

*P. decipiens* (= *P. j.* var. *d.*) B 559-560 II, XXVII  
Wt 20

*P. oliganthos* var. *fallax*



191



192



193



194



195

## Rubiaceae

-Galium Brandegei Wd 357 XV  
 imp. genus B 561 XVI

G. labradoricum B 562 XX  
 Wt 10

G. trifidum Wt 10

G. triflorum Wt 15

~~Linnaea borealis var. americana~~

## CAPRIFOLIACEAE

Linnaea borealis var. americana <sup>WF Common in all woods</sup>  
 Wd 358-359 XII, XIV  
 B 564-565 XXII, VI, XXI  
 Viburnum pauciflorum Wd 390 XIV  
 B 566-571 VII, V, VIII, XII, XVIII, VI,  
 Wt 9

Lonicera villosa var. calvensens  
 B 563 V

Viburnum cassinoides  
 B 572 XI

## CAMPANULACEAE

Campanula rotundifolia Wd 394-398 III, VI, VII, VIII, IX  
 B 573 I

189 - C. uniflora Wd 391-393, I, VI, X

## LOBELACEAE

Lobelia Kalmii B 574 XI





## COMPOSITAE

*Eupatorium maculatum* B 575 X

*Solidago multiradiata* ~~wd 399~~ <sup>wd 399 x1</sup>  
B 582-583 xxv, II

*S. macrophylla* ~~wd 400-402, III, V, X~~  
wt 3, 17

*S. m. var. thyrsoides* ~~wd 400-402, III, V, X~~  
B 576-581 xiii, xv, xii, xi, iv, xi  
wt 9

*S. uliginosa* B 584 v

*S. lepida* wt 15

-190 *S. chlorolepis*

*Aster radula* var. *stricta* B 585-586 xiv, vii

*A. foliaceus* B 588 x1  
wt 11

*A. f. var. frondeus* <sup>n</sup> B 590 v

*A. memorialis* <sup>n</sup> B 587 xxviii

*A. umbellatus?* B 591 xxviii

*A. radula* B 589 xxviii



-191 *Erigeron uniflorus* (W) 403-408 I, IV, VII, VIII, IX, XI

-192 *E. alpinus*

193 *E. acris* var. *asteroides* Wt 19

*E. compositus*

- *Antennaria alpina*

var. *typica* (W) 409-410½ I, VI, VII, IX

- var. *canescens* (W) 411-415 IV, VI, VIII, X, XI

- *A. Sornborgeri* (W) 416-418 V, VI, VIII

*A. glabrata* - (W) 416 8 - changed by Wt 19

- *A. pygmaea* (W) 419-420 VIII, IX

*A. isolepis* (W) 421, IX, V  
B 592, XIV

*Anaphalis margaritacea* B 593 XI  
Wt 14

*Achillea millefolium* var. *nigrescens*

(W) 423, 424, XIV, XV

B 594, 595 VII, XXI

Wt common on all shores

- 194 *Matricaria grandiflora*

*Chrysanthemum integrifolium*

*C. Leucanthemum* var. *pinnatifidum*

B 596 XI

Wt 19

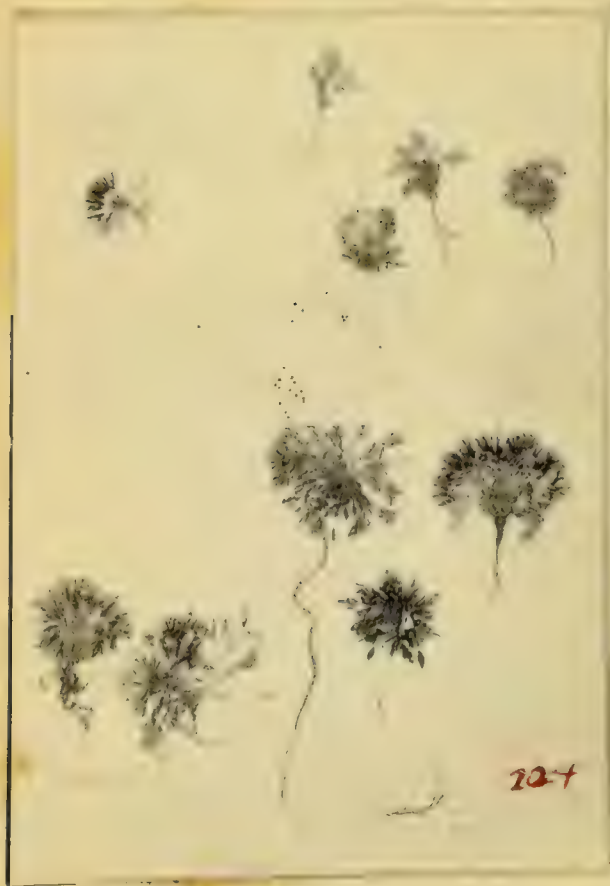
- 195 *Artemisia borealis* (W) 425-426 III IX



203



203<sup>a</sup>



204



204<sup>a</sup>

*Artemisia canadensis* Wt 13

*Petasites palmata* Wd 427 VII  
B 597 XXIV  
Wt 12

196 *P. sagittata*

197 *P. trigonophylla* Wd 427½ II range *extensum*

198 *Arnica "alpina"* Wd 428-430, V, VII, IX  
*Rhodora* 26:105 1924  
*becomes terae - nodosa*

199 *A. plantaginea* Wd 431, 431½, VIII, X

200 *A. Sornborgeri* Wd 432 VI

201 *A. pulchella*

*Senecio palustris* B 599, 600 VIII, IX  
Wt 1

var. *congestus*

201<sub>a</sub> *S. pauciflorus* Wd 433 IX  
B 601 XXIV

*S. Pseudo-Arnica* Wd 434, 435 XII  
Wt 5, 6, 20

*S. vulgaris* B 598 VIII

202 *Cirsium muticum* Wt 15

*C. arvense* B 602 XI

203 *Taraxacum Phymatocarpum*



Taraxacum officinale Wt 10

T. lapponicum Wd 436-441, IV, VI, VII, VIII, IX, XI  
 Outer bracts linear lanceolate and spreading, without horns  
 B 604, 605 XIII, XXIV

T. ceratophorum Wt 1  
 Outer bracts with horns

T. groenlandicum B 606 XIII

Taraxacum spp. Wd 442-446 I, IV, VI, VIII, X sent to Daldstedt  
 for identifi.

203<sub>a</sub> Leontodon autumnalis B 603 XI  
 Wt 19

204 Crepis nana

Coll. by Flecker at Rama 1899  
 "Somborg" " " 1897

[doubtful record of locality  
 "Okak"  
 "Northumberland Bay"]

204<sub>a</sub> Hieracium groenlandicum B 608 I

Prenanthes trifoliata B 607 XI

204<sub>b</sub> Lactuca spicata Wt 15

205 Agoseris gaspensis

207 Gnaphalium supinum

206 G. norvegicum

1875

1875

1875

1875

1875

1875

1875

1875

1875



Winter address

Mrs. P. Hettich of <sup>Marquise</sup> ~~Marquise~~  
32 Fetter Lane  
London EC4

Collector to be returned through  
Macmillan or direct to Hain

Reprint, in lib.  
Additions to Labor Fern  
Fernald & Soubrier  
~~London 1888~~

VXIX

of the

I

XII

III

XI

X

IX

VIII

VII

VI

V

IV

III

II

I

X

XI

XII

I

II

III

IV

V

VI

VII

Transcription  
C. Rigida

- I September Harbor
- II Percoliak Island
- III Windy Tickle
- IV Gannet Islands
- V Mokkaovik
- VI St. Anthony
- VII Hopedale
- VIII Greedy Island-July
- IX do. -August
- X Caribou River
- XI Neddy Harbor
- XII Frenchman's Run
- XIII Fraser River
- XIV ~~Ca e Harrigan~~
- XV Battle Harbor
- XVI Tikkoatokok Bay
- XVII Indian Harbor
- XVIII Caplin Bay
- XIX Holton
- XX Paradise River
- XXI Manuel's Brook
- XXII Manak's Island
- XXIII Petty Harbor
- XXIV Nain
- XXV Rock Island
- XXVI Red Islands
- XXVII Bird Rock
- XXVIII Bonne Bay
- XXIX St. John's

Wetmore's stations-1921

1. Indian Harbor & adjacent islands
2. Black Island, Hamilton Inlet
3. Double Mer-along shores only
4. Barrens north of Rigolet
5. N. side of the Narrows, from the mouth of Double Mer to the E. end of Lake Melville
6. S. side of the Narrows, from opp. the mouth of Double Mer to the entrance to the Backway, both on the shores and the adjacent barrens and bogs.
7. Shores and neighboring terraces of Mulliock Cove
8. Shores and adjacent territory, at Carravalla Bay
9. Along Mulligan's R., including neighboring barrens and mts.
10. Shores at Northwest R.
11. Grand Lake, shores only.
12. Shores of Nascaupsee River.
13. Hamilton R., near Muskrat Ids.
14. Shores and portage at Muskrat Falls, Hamilton River.
15. Shores of the Kenemich R.
16. S. side of L. Melville, from Carter Basin to English River.
17. Barrens and mts. at English R.
18. Shores and barrens on the backway.
19. Grass field at Mud Lake (Pillesort)
20. Shores at Sabascachew Bay.

Woodworth's stations-1926

- 1.45 mi. W. of coast, in Torngats. 2500-3000 ft. granitic rock. very little soil. snowline at 3000 ft. no evidence of glaciation  
Nachvak 8/16/26 (76)
- 2.35 mi. W. of coast. river delta & under 500 ft. granitic rock  
Nachvak 8/17/26 (35)
- 3.30 mi. W. of coast. alluvial terraces under 500 ft. granitic rock.  
Saglek Bay 8/10/26
4. 1/2 mi. N. of Ryan's Bay. granitic rock  
Duck Bight, N. shores 8/25/26 (52)
- 5.15 mi. W. of coast. old sea bottom; plenty of sandy soil. rock granitic  
Ryan's Bay 8/24/26 (100)
6. under 1000 ft. 25 mi. W. of coast no vegetation above. granitic rk.  
Ekortiarasuk 8/29/26 (136)
- 7.10 mi. W. of coast. terraces on NW bank at end of fjord. granitic  
Ryan's Bay 8/24/26 (118)
8. Razorback Mt. under 2500 ft. granitic rock.  
Ryan's Bay 8/23/26 (78)
- 9.10.35 mi. W. of coast. 500-2,000 ft steep hill-cliffs of granitic rk  
Nachvak 8/17/26 (180)
11. Kikkertaksoak Island. under 50 ft. granitic rock, soil sparse  
Saglek Bay 8/9/26 (91)
12. 3rd. pt. on right leaving harbor. dry sandy hillside under 300 ft.  
Cartwright 7/31/26 (35)
13. Sop's Arm, Corner Brook. bog  
White Bay, Newfoundland  
7/21/26 (5)
14. Eagle R. rocky bank; granitic  
Sandwich Bay, 7/27/26 (55)
15. White Bear R. alluvial sandy bank.  
Sandwich Bay 7/29/26 (76)





Stellaria var. Polymorpha

by in Sage Flora





Bell - list of  
Canadian plants

Phytogeography

Proc. Am. Archipel.

H. G. Simmons

Stenfeldt's Flora of ~~Arctic~~ <sup>Arctic</sup> regions

Cat. of Can. plants

McCorm

