

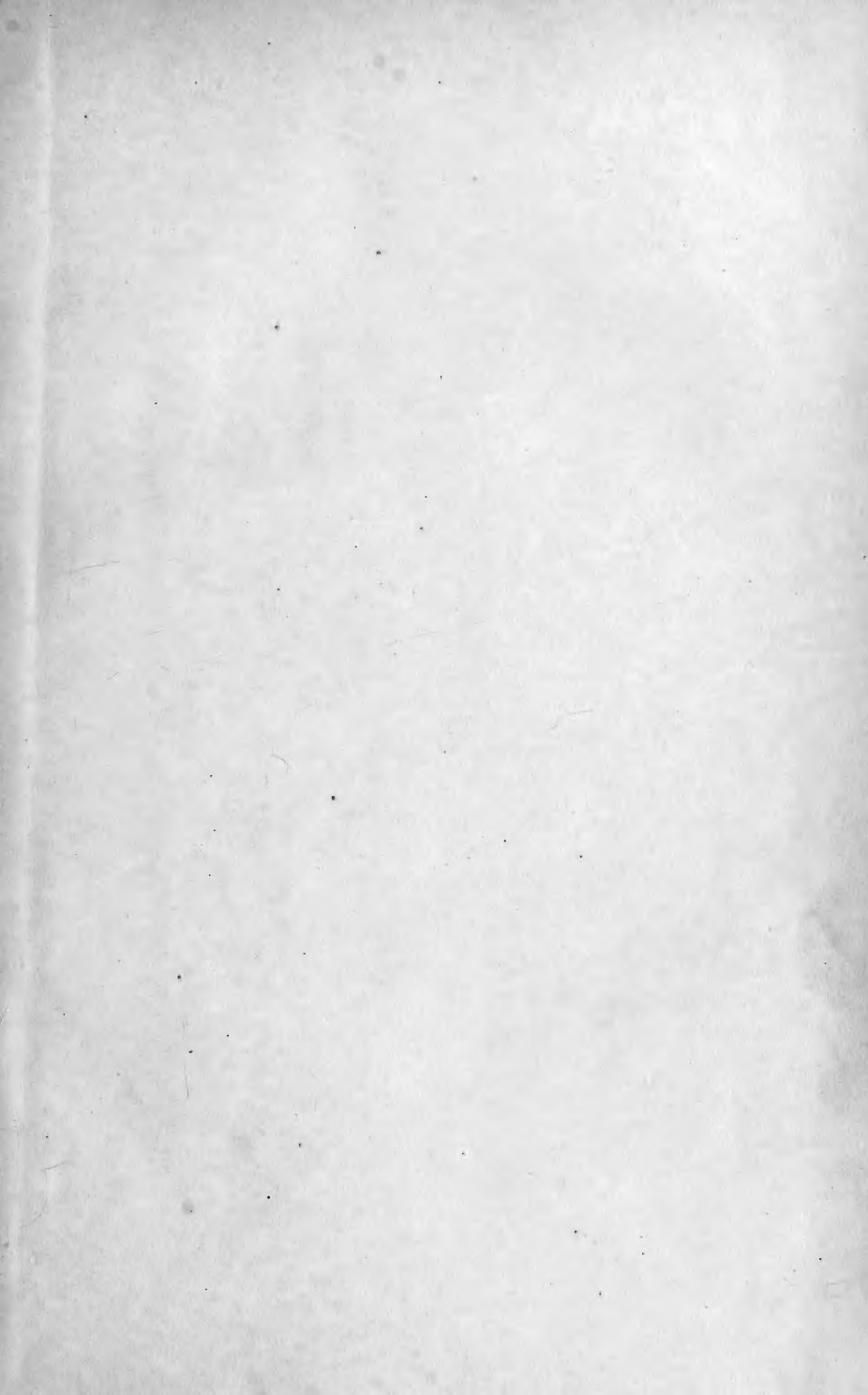
S. M. D.

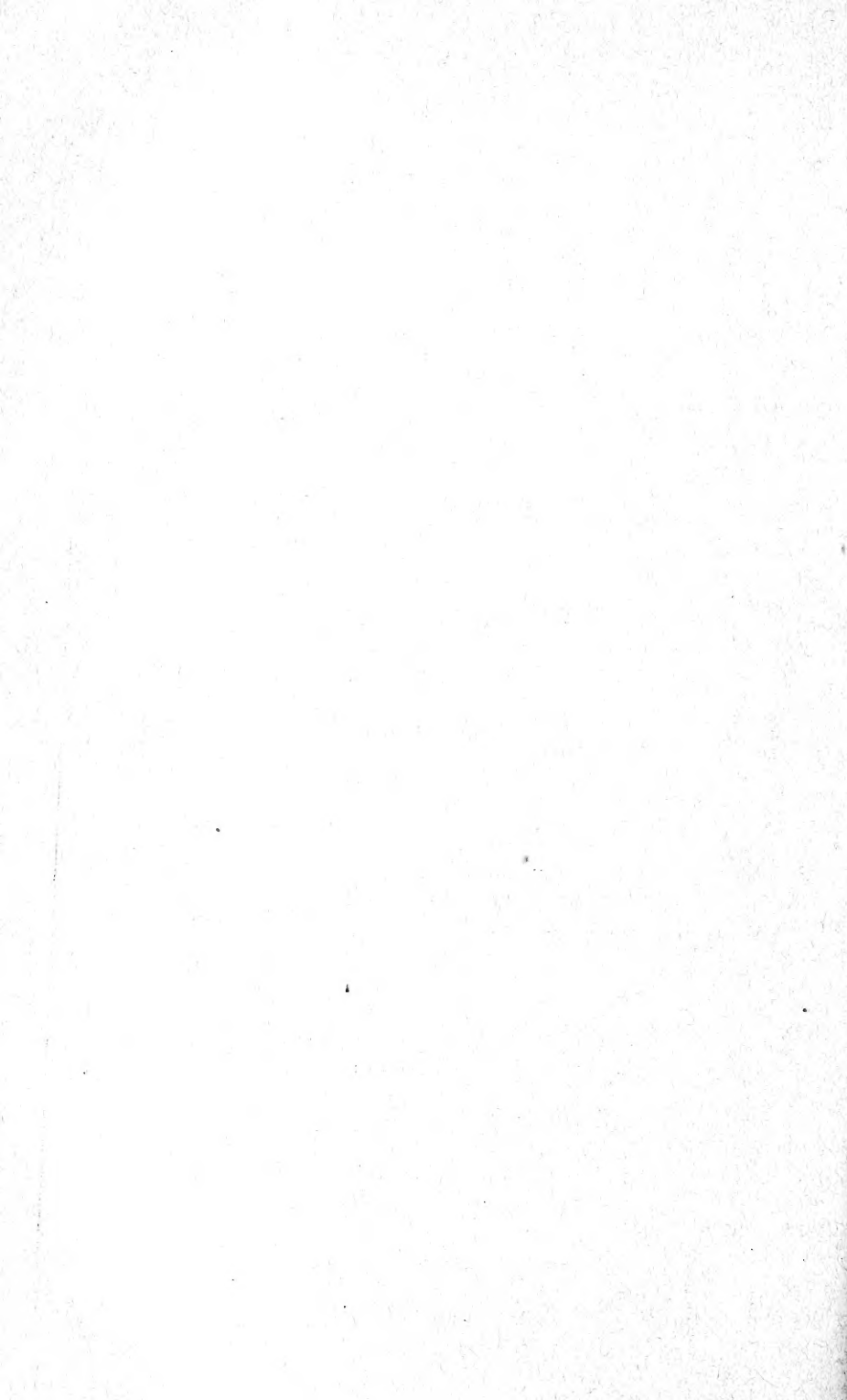




✓
Bathman, R.







LISTS

OF THE

DREDGING STATIONS

OF THE

UNITED STATES FISH COMMISSION

FROM

1871 TO 1879 INCLUSIVE,

WITH

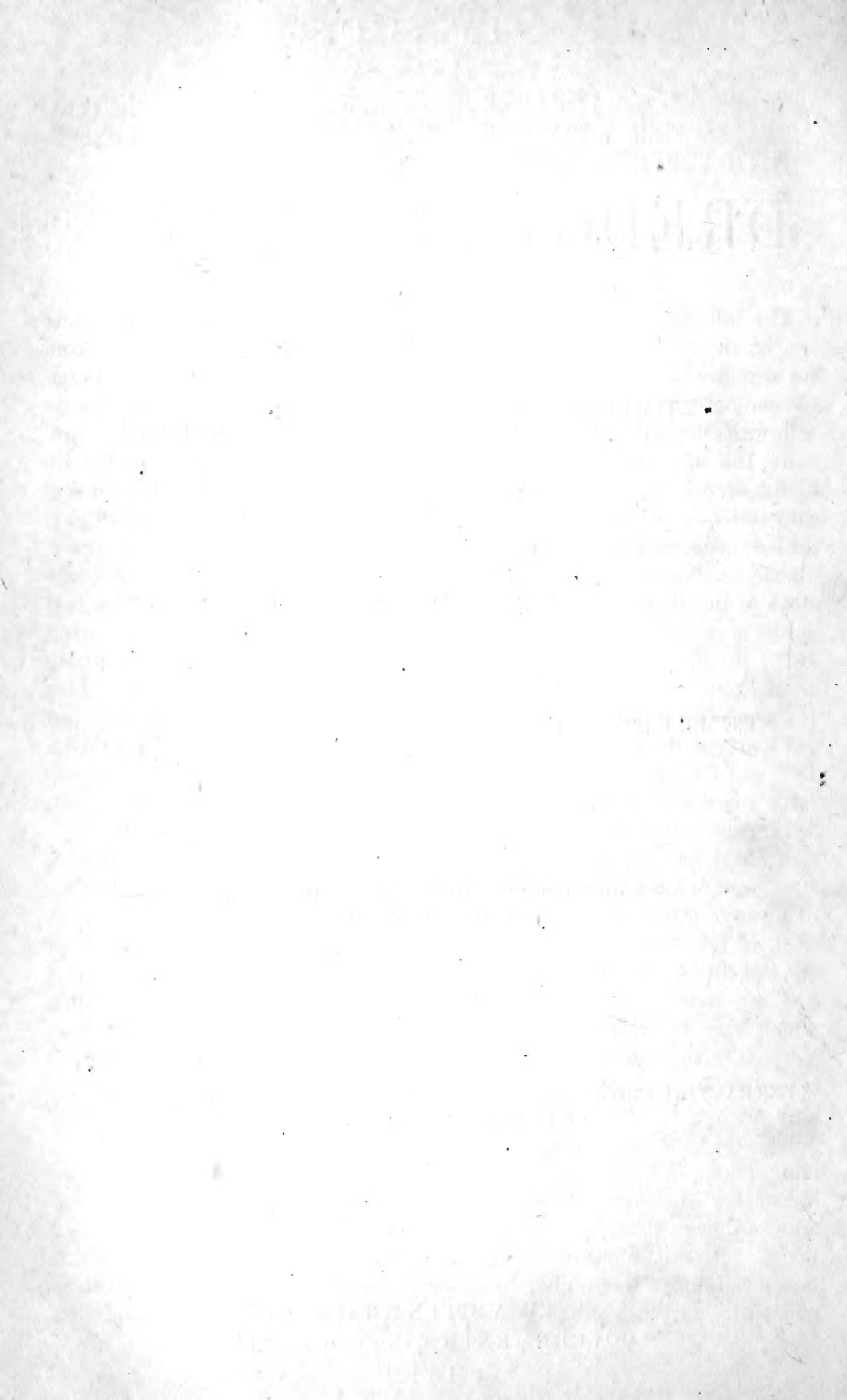
TEMPERATURE AND OTHER OBSERVATIONS.

[ARRANGED FOR PUBLICATION BY SANDERSON SMITH AND
RICHARD RATHBUN.]

[EXTRACTED FROM THE ANNUAL REPORT OF THE COMMISSIONER OF
FISH AND FISHERIES FOR 1879.]

WASHINGTON:
GOVERNMENT PRINTING OFFICE.

1882.



000.—LISTS OF THE DREDGING STATIONS OF THE UNITED STATES FISH COMMISSION FROM 1871 TO 1879, INCLUSIVE, WITH TEMPERATURE AND OTHER OBSERVATIONS.

[Arranged for publication by SANDERSON SMITH and RICHARD RATHBUN.]

The following lists include all the recorded dredging stations made by, or in connection with, the United States Fish Commission, from its organization up to date. The stations are, for the most part, arranged chronologically, and are designated by four series of numbers or letters, as follows: One series of numbers, from 1 to 87, with letters appended, represents the stations for 1871. The 1872 stations (in the Bay of Fundy) are designated by letters from *t* to *z*. Those for 1873 are indicated by a second series of numbers, from 1 to 212, with B. (Bache) or Bl. (Bluelight) added, according as the dredgings were carried on from the steamers Bache or Bluelight. In this series, however, are also included the stations of the Bache for 1872 and 1874, as well as those for 1873. The last series combines all the stations from 1874 to 1879, inclusive (omitting 1876, during which year sea-work was suspended), in numbers running from 1 to 769. For the sake of obtaining greater uniformity in recording the stations on charts, as explained further on, the stations for 1874 and 1875, originally numbered separately, have been united with those from 1877 to 1879, and given numbers following 1879. The numbers for these later years run as follows: 1874, from 400 to 580; 1875, from 600 to 769; 1877, from 1 to 128; 1878, from 129 to 238; 1879, from 239 to 378.

A chart has been prepared by Mr. Smith to illustrate the dredgings of the Commission north of Cape Cod, exclusive of those of 1872 in the Bay of Fundy; those of the Bache, on the Banks, in 1872; and of the Speedwell, off the coast of Nova Scotia, in 1877. On this chart the stations of the Speedwell for 1877, 1878, and 1879 are indicated by numbers only, and are readily distinguished from those of the Bache and Bluelight, which have B. or Bl. affixed to them. In such of the following tables as refer to this chart, the localities given are taken from the original record books, whenever such exist (*i. e.*, for all the work of the Speedwell and much of that of the Bluelight—101 Bl. to 166 Bl.), with some other notes added to facilitate the finding of the localities on the chart. In many cases the positions were marked, at the time, on the steamers' charts by the commanding officer, and all such positions have been adopted, even though differing somewhat from those given by the record books. From the nature of the operations of dredging and trawling, it becomes almost impossible to estimate exactly the changes of position caused by currents, &c., especially when out of sight of land, and in a

few cases the positions were not placed on the charts at the time, and the bearings given do not suffice to fix them very accurately. It is believed, however, that but few positions laid down on the chart are rendered uncertain to any great extent by either of these causes. A large part of the positions determined by the Bache were originally given by latitude and longitude. The other latitudes and longitudes given in the tables are taken from the accompanying chart, and are intended to serve as the readiest means of finding the localities, all of which are either thus designated or are referred to as being near others, which are so. Of the dredging stations *north of* Cape Cod, Nos. 79 B to 97 B, 37 to 123 are outside of the limits of the chart. These, and all others of the *northern stations*, not placed upon the chart, are marked with + before the serial number. The bearings given for the Speedwell's work in 1879 are true; the others, with a few (unrecognizable) exceptions, are magnetic.

In the last column of the tables the letter indicates the apparatus employed in dredging: D., Dredge; Ag. D., Agassiz Dredge; R. D., Rake Dredge; T., Trawl; Ag. T., Agassiz Trawl; O. T., Otter Trawl; Tan., Tangles.

STATIONS FOR 1871, IN AND ABOUT VINEYARD SOUND, MASSACHUSETTS.

During this, the first year of the Commission, the dredgings in shallow water were made partly from a sail-boat, and partly from a steam-launch, and those in the deeper waters, from the United States revenue-cutter *Moccasin*, Capt. J. G. Baker. The dredging stations numbered in all about 250, but to avoid confusion in laying them out on the chart, they were combined into 87 groups or lines, each including from 2 to 9 stations, the lines being designated by numbers, the stations by letters. In this manner they were represented on the large chart accompanying the Report of the United States Fish Commissioner for 1871-'72. In making up the present list the same arrangement has also been followed, and where all the stations of a group were of the same nature, they have been located collectively; otherwise the exact position of each station has been given.

Dates are not prefixed to all of the inner groups, as many of these include stations made on different days. Temperature observations (with Miller-Casella self-registering thermometers) were taken at most of the outer stations, as recorded in the list, but were omitted at the inner ones. The dredge was the implement most commonly used for scraping the bottom, but the beam-trawl was also frequently employed on the smooth inner grounds. The rake-dredge was worked a few times off Gay Head, and the tangles very rarely, in only a few places. The characters of the many localities gone over in 1871, as well as the species of animals found inhabiting them, are fully discussed in the "Report upon the Invertebrate Animals of Vineyard Sound and the adjacent waters, with an account of the physical characters of the region," by Prof. A. E. Verrill; contained in the Report of the United States Fish Commissioner, Part I, for 1871-'72.

Serial num- ber.	Date.	Locality.	Depth in fathoms.	Nature of bottom.	Temperature.		
					Air.	Surface.	Bottom.
1	1871.						
2	June 30	<i>a, b.</i> Off Little Harbor, Wood's Holl...	1½-2	Covered with eel-grass			
		<i>a, b.</i> Off Little Harbor, Wood's Holl, between Nobska Point and Nonamesset Island.	2-3½	Rocky, small stones...			
3	July 11	<i>a, b, c.</i> Off Great Harbor, Wood's Holl, from south of buoy R. No. 4 to Great Ledge.	2½-9½	Rocks, gravel, &c.			
4	June 30	<i>a, b, c, d, e.</i> Beginning nearly the same as No. 3 and extending to beyond buoy R. No. 2.	3½-12½	Rocks, small stones, &c			
5		Wood's Holl:					
		<i>a, b.</i> Southeast of Nonamesset Island...	3½-5½	Sand, gravel			
		<i>c, d.</i> Between Nonamesset Island and Great Ledge.	3½	Rocks, stones, dead shells.			
		<i>e.</i> Off Mink Point, Nonamesset Island...	8½	do			
		<i>f, g.</i> Mouth of Great Harbor...	5½-9½	do			
6	July 20	Vineyard Sound:					
		<i>a, b.</i> Between Nobska Point and Fal- mouth.	2-3	Covered with eel-grass			
		<i>c.</i> Between Nobska Point and Fal- mouth.	3-5	Gravel and shells...			
		<i>d.</i> About ½ mile south of Falmouth...	4½	do			
		<i>e, f.</i> Between Falmouth Harbor and Western end of L'Homme Dieu Shoal.	5½-9	do			
7		<i>a.</i> Lackey's Bay, Vineyard Sound...		Covered with eel-grass			
		<i>b, c, d.</i> Lackey's Bay, Vineyard Sound...		Gravel			
8	June 30	<i>a, b, c, d, e, f, g.</i> Vineyard Sound, off Nonamesset Island and Wood's Holl.	7-10	Rocks, gravel, small stones.			
9	June 29	<i>a, b, c, d.</i> Vineyard Sound, south of Lit- tle Harbor, Wood's Holl, ½ to 1½ miles from Nobska Point.	7-12	Rocks.			
10	July 24	Wood's Holl:					
		<i>a, b, c.</i> Passages between Nonamesset and Naushon Islands.	1½-2½	Soft mud			
		<i>d.</i> Hadley Harbor	3½	do			
		<i>e, f.</i> Between Long Neck and Nonames- set Island.	3-6½	Hard gravel			
11		Wood's Holl Passage:					
		<i>a, b, c.</i> Off Nonamesset Island	3½-4½	Fine gravel, dead weeds.			
12		<i>d, e, f, g.</i> Off Uncatena Island	3½-5	Sand, stones			
		<i>a, b, c.</i> Wood's Holl Passage, between Long Neck and Nonamesset Island.	2½-5½	Sand, gravel			
13		<i>a, b.</i> Mouth of Great Harbor, Wood's Holl, from off Bar Neck wharf to midway between Mink Point and Parker's Neck.	1½-7	Gravel, &c			
14		Wood's Holl, in the passage-way to the east and south of Ram and Bluff Islands:					
		<i>a, b</i>	3½-5½	Rocky			
		<i>c, d</i>	2½-5½	do			
		<i>e, f, g.</i> In Great Harbor	5-10	Rocky, sand			
15		<i>a, b, c.</i> Wood's Holl, buoy No. 3, Middle Ledge to Lone Rock Spindle.	¾-2½	Gravel, small stones, shells			
16		<i>a, b, c.</i> Great Harbor, Wood's Holl, near buoys No. 12 and 14.	1½-14	Rocks			
17		Mouth of Great Harbor, from Bar Neck to east of Nonamesset Island.	1½-14½				
		<i>a, b</i>		Mud and eel-grass			
		<i>c, d, e, f</i>		Rocks, &c			
18	July 24	<i>a, b, c, d.</i> Mouth of Great Harbor, from off Bar Neck wharf to midway between Parker's Neck and Nonames- set Island.	2½-12½	Hard gravel.			
19		<i>a, b.</i> Mouth of Great Harbor, between Parker's Neck and Lone Rock Spin- dle.	1-8½	Gravel, mud, weeds			
20		<i>a, b, c.</i> Mouth of Great Harbor, be- tween Nonamesset Island and Par- ker's Neck.	1½-6½	Gravel, &c			
21	June 27 } June 28 }	<i>a, b, c, d, e.</i> Vineyard Sound, southeast- erly from Nobska Point about ¾ mile; all near together.	6-10	Rocks, gravel, small stones.			
22		Vineyard Sound, between Nobska Point and Falmouth Harbor.	4-5½				
		<i>a, b, c</i>		Stones, dead shells			
		<i>d</i>		Sand, gravel			

Serial number.	Date.	Locality.	Depth in fathoms.	Nature of bottom.	Temperature.		
					Air.	Surface.	Bottom.
23	1871. June 30 } July 3 } July 8 }	a, b, c, d, e, f. Between Nobska Point and Falmouth, and south of Falmouth, about 1 mile.	4½-10	Gravel, small stones, shells.
24	Vineyard Sound: a, b. About 1½ miles south of Falmouth. c, d. North of west end of L'Homme Dieu Shoal.	5½-10 5-13
25	a, b, c, d, e. Vineyard Sound, between Waquoit Bay and Falmouth.	3-5	Sand, shells, eel-grass.
26	a, b, c, d, e. Vineyard Sound; a line of dredgings parallel to No. 25, and from ¾-¾ mile further south.	5-13	Gravel, shells
27	a, b. Vineyard Sound, about midway between the western part of L'Homme Dieu Shoal and the mainland.	5½-13	Sand; shells, eel-grass
28	July 20	Vineyard Sound: a, b. Off western entrance to channel between L'Homme Dieu Shoal and Hedge Fence. c, d, e, f. South of western end of Hedge Fence.	5-6 10-12	Sand, stones, sea-weeds Sand, gravel, small stones.
29	a, b, c. Vineyard Sound; a line parallel to, and just south of, eastern half of Hedge Fence.	5½-12	Gravel, &c
30	a, b. Mouth of Vineyard Haven, between East and West Chop.	5-7	Sand, eel-grass, algæ
31	July 20	Vineyard Sound: a, b. Between Hedge Fence and East Chop. c, d, e. North of East Chop and off Vineyard Haven.	10-13 9-11½	Sand, gravel, small stones. do
32	a, b, c. Vineyard Sound; line running east and west, north of eastern half of Hedge Fence.	11-12½	Gravel, &c
33	Vineyard Sound: a, b. South of eastern end of L'Homme Dieu Shoal.	5½-13½	do
34	c, d. Southeast of same shoal a, b, c, d, e, f. Vineyard Sound, between eastern end of L'Homme Dieu Shoal and Wreck Shoal.	5-8½ 5-7	do Gravel, hard mud, sand.
35	a, b, c, d, e. Vineyard Sound; line running east and west between Wreck Shoal and 1 mile off Waquoit Bay.	4-7½	Gravel, shells
36	a, b, c, d. Nantucket Sound, between Wreck Shoal and Horse-Shoe Shoal.	4½-15½	Astrangia, sponges, &c
37	Vineyard Sound, off north side of Martha's Vineyard and nearly parallel with the shore, distant from shore ¼-¾ mile: a, b, c, d. Between Martha's Vineyard and Middle Ground. e, f, g. Off West Chop. h, i. Off East Chop.	5-11 9-13 4½-9	Gravel, stones, rocks. Rocks, sand Sand, stones
38	Vineyard Sound: a. About ½ mile north of center of Middle Ground. b, c. Just off center of Middle Ground.	10-14 9½-13½	Gravel do
39	June 29	a, b. Vineyard Sound, about midway between Nobska Point and Middle Ground.	12-13½	Stones, gravel
40	a, b, c, d. Vineyard Sound, between Wood's Holl and Middle Ground.	10-13	Gravel, stones, sand
41	Vineyard Sound: a. About 1½ miles east of Nobska Point. b. About 1½ miles southeast of Nobska Point.	4½-6½ 10-12	Small stones do
42	July 17	a, b. Vineyard Sound, off Tarpaulin Cove.	10½-15½	Gravel
43	Vineyard Sound: a, b, c. Line of dredgings off northern half of Naushon Island, parallel to shore, distant about ½ mile. d. Continuation of same, ⅔ mile off Nonamesset Island.	10½-13½ 10½-11½	Gravel, hard sand Gravel

Serial num- ber.	Date.	Locality.	Depth in fathoms.	Nature of bottom.	Temperature.		
					Air.	Surface.	Bottom.
44	1871.	<i>a, b, c, d, e.</i> Vineyard Sound; line about parallel to last, off northern half of Naushon Island, about 1 mile from shore.	10½-15½	Gravel			
45		<i>a, b.</i> Vineyard Sound, off Quick's Hole.	6½-8½	Coarse gravel, shells			
46		Vineyard Sound, off the Elizabeth Islands.	7-14½				
		<i>a, b.</i> Off Pasque Island		Sand, shells			
		<i>c.</i> Off Robinson's Hole		do			
		<i>d, e.</i> Off south end of Naushon Island.		Sand, shells, and gravel			
47		<i>a, b, c, d, e.</i> Vineyard Sound, off west side of Martha's Vineyard, between Menemsha Bight and Cedar Tree Neck, ½ to 1½ miles from shore, and nearly parallel to it.	10-17½				
		<i>a, b, c, d.</i>		Black mud, dead mus- sels, &c.			
		<i>e.</i>		Sand			
48		<i>a, b, c, d.</i> Vineyard Sound, same as last, ¼-½ mile from shore, and extending about 1½ miles both north and south of Cape Higgon.	4½-11	Sand, gravel, shells.			
49		Vineyard Sound: <i>a.</i> About northeast of Gay Head, 4½ miles.	7½-13				
		<i>b.</i> About west of Lucas Shoal, 1½ miles.	5-6				
50		<i>a, b.</i> Vineyard Sound, Menemsha Bight.	4-8				
51		Vineyard Sound, Menemsha Bight: <i>a, b, c.</i>	1½-2½	Mud, fine sand			
		<i>d.</i>	4½	do			
		<i>e.</i>	6-9	do			
52	July 14 } July 17 }	<i>a, b, c, d.</i> Vineyard Sound, north of southwestern extremity of Martha's Vineyard, ½-1 mile from shore (<i>c, d,</i> off Menemsha Bight).	10-12	Sand			
53	July 14	<i>a, b, c, d, e.</i> Vineyard Sound, north and northeast of Devil's Bridge, Gay Head, ⅓ to 1 mile from shore.	5-12	Sand, rocks			
54		Vineyard Sound, north of Gay Head: <i>a.</i> About 1½ miles from shore.	16½	Mussels			
		<i>b.</i> About 2½ miles from shore	14-15½	do			
55	July 22	<i>a, b, c.</i> Vineyard Sound, north of Devil's Bridge, Gay Head, ¾ mile.	6½-13½	Rocky, dead mussels, &c.			
56	July 22	<i>a, b, c, d.</i> Vineyard Sound, northwesterly from Gay Head, about 1 mile.	5-11	do			
57		<i>a, b, c, d, e.</i> About same position as last, forming a line about ⅓ mile further off.	5-13½	Rocky			
58		<i>a, b, c, d, e.</i> Vineyard Sound, northwesterly from Gay Head, 1½-2 miles.	10-16				
		<i>a, b, c.</i>		Rocky			
		<i>d.</i>		Mud, dead mussels			
59		<i>a, b, c.</i> Vineyard Sound, northwesterly from Gay Head, ½-1½ miles.	5½-11½	Rocky			
60		<i>a, b, c.</i> Vineyard Sound, northwesterly from Gay Head, 1-2 miles.	6-11½	do			
61		<i>a, b, c.</i> Vineyard Sound, northwesterly from Gay Head, 1-2 miles; more easterly than 60.	5½-13½	do			
62		<i>a, b, c.</i> Vineyard Sound, northwesterly from Gay Head, 1-2 miles; more easterly than 61.	5½-16½	do			
63		<i>a, b, c, d.</i> Vineyard Sound, north of Devil's Bridge, Gay Head, ¾-¾ mile.	6-8½	Rocks, sand, shells			
64	July 12	Buzzard's Bay, Cataumet Harbor: <i>a.</i> In harbor	3½	Sand, eel-grass			
		<i>b.</i> At mouth of harbor	3½-4½	do			
65		<i>a, b.</i> Buzzard's Bay, off Cataumet Harbor.	4½				
66		<i>a, b.</i> Buzzard's Bay, between Long Neck and Quamisset Harbor.	5-6½	Hard sand			
67	July 24	<i>a, b.</i> Just outside of 66.	5-6½	Sand, mud			
68		Buzzard's Bay, west of Quamisset Harbor: <i>a.</i> About 2 miles	7½	Fine sandy mud			
		<i>b.</i> About 1 mile	7½	do			
		<i>c.</i> About ¾ mile	6-7	Mud			
69		<i>a, b.</i> Buzzard's Bay, west of Quamisset Harbor, about 1½ miles.	5½-7½				

Serial number.	Date.	Locality.	Depth in fathoms.	Nature of bottom.	Temperature.		
					Air.	Surface.	Bottom.
70	1871.	<i>a, b, c, d.</i> Buzzard's Bay, westward of Quamquisset Harbor, about 1 $\frac{3}{4}$ -2 $\frac{1}{2}$ miles.	7 $\frac{1}{2}$	Sand, gravel, stones			
71		<i>a, b.</i> Wood's Holl Passage, between Long Neck and Uncatena Island.	3 $\frac{3}{4}$ -6 $\frac{1}{2}$	Fine gravel			
72		<i>c, d.</i> West of Long Neck, $\frac{1}{2}$ - $\frac{3}{8}$ mile.	3 $\frac{3}{4}$ -6 $\frac{1}{2}$	Rocks, hard sand			
73		<i>a, b, c, d.</i> Buzzard's Bay, northward from Woepecket Island, 1 $\frac{1}{4}$ -2 miles, forming a line running about northeast and southwest.	7 $\frac{1}{2}$ -8 $\frac{1}{2}$				
		Buzzard's Bay, north of northern part of Naushon Island:					
		<i>a, b, c.</i> Parallel and near to shore from Uncatena Island to south of Woepecket Island.	6 $\frac{1}{2}$ -10 $\frac{1}{2}$	Sand, mud			
		<i>d.</i> About west of Woepecket Island, $\frac{1}{2}$ mile.	6 $\frac{3}{4}$	Rocks			
		<i>e, f, g.</i> Northwesterly from Woepecket; <i>e</i> , $\frac{1}{2}$ mile; <i>f</i> , 1 mile; <i>g</i> , 1 $\frac{1}{2}$ miles.	7 $\frac{1}{2}$ -8 $\frac{1}{2}$	Sand and muddy sand.			
74		<i>a, b.</i> Buzzard's Bay, northward of Woepecket Island, 1 $\frac{3}{4}$ -2 $\frac{1}{4}$ miles.	7 $\frac{1}{2}$	Mud			
75		Buzzard's Bay, forming a line of dredgings parallel to the Elizabeth Islands and distant from them $\frac{3}{4}$ -1 mile.	7-9				
		* <i>a, b, c.</i> Off Naushon Island.		Blue mud			
		<i>d, e.</i> Off Pasque Island		do			
		<i>f, g, h.</i> Off Cuttyhunk Harbor.	3 $\frac{1}{2}$ -5				
76		<i>a, b, c.</i> Buzzard's Bay, between Quick's Hole and Lone Rock.	3 $\frac{3}{4}$ -8 $\frac{1}{2}$	Gravel, dead weeds, &c			
77		<i>a, b, c, d, e, f.</i> Quick's Hole, between Pasque Island and Nashawena Island.	5 $\frac{1}{2}$ -8 $\frac{1}{2}$	Rocks, gravel, sand			
78		<i>a, b, c, d, e.</i> Buzzard's Bay, off northern entrance to Robinson's Hole.	3 $\frac{3}{4}$ -7 $\frac{1}{2}$				
		<i>a</i>		Mud, eel-grass, and dead weeds.			
		<i>b</i>		Black mud			
		<i>c</i>		Blue clay			
79		In channel between Chappaquiddick Island, Martha's Vineyard, and Hawe's Shoal:					
		<i>a.</i> Northern part of channel	3 $\frac{1}{2}$ -4 $\frac{1}{2}$				
		<i>b.</i> Southern part of channel	4 $\frac{1}{2}$ -5				
80	Sept. 12	Southeasterly from Martha's Vineyard, $\frac{3}{4}$ to 9 miles:					
		<i>a.</i> 10 miles south from Cape Poge	16 $\frac{1}{2}$	Sand and silicious sponges.	64		60
		<i>b.</i> 13 miles south from Cape Poge	18 $\frac{1}{2}$	Sand	64		59
		<i>c.</i> 1 $\frac{1}{2}$ miles west of <i>b</i>	21	Sandy mud	61.5		59
81	Sept. 12	South of Martha's Vineyard, 5 to 8 miles:					
		<i>a.</i> Southeast of Gay Head, 12 $\frac{1}{2}$ miles	16 $\frac{1}{2}$	Sand			
		<i>b.</i> Southeast of Gay Head, 8 miles	16 $\frac{1}{2}$	do			61
82	Sept. 9	South and southwest from Gay Head, about 5 miles; northwest of Norman's Land:					
		<i>a.</i> 5 miles south-southwest of Gay Head.	8-12	Gravel and stones			
		<i>b.</i> 5 miles south of Gay Head	16	do			62
83		<i>a, b, c, d.</i> Vineyard Sound, off Gay Head, parallel to No. 58, and slightly more distant from shore.	10-16	Rocky			
84	Sept. 11	South and southwest of Gay Head:					
		<i>a.</i> 1 $\frac{1}{2}$ miles southwest of Gay Head	13	Rocks, gravel			
		<i>b.</i> 4 miles southwest of Gay Head	16 $\frac{1}{2}$	Sandy mud			
		<i>c.</i> 2 $\frac{1}{2}$ miles a little west of south of Gay Head.	12	Rocks, gravel			
		<i>d.</i> 3 $\frac{1}{2}$ miles a little east of south of Gay Head.	7	do			
85	Sept. 9	West of Gay Head, 2 to 5 miles:					
		<i>a.</i> 3 miles; <i>b</i> , 3 $\frac{1}{2}$ miles; west of Gay Head.	15 $\frac{1}{2}$	Sand	67		63
		<i>c.</i> 4 miles west of Gay Head	18	Soft, sticky mud	62		58
		<i>d.</i> 1 mile north-northwest from <i>c</i>	19	do	62		57
		<i>e.</i> 5 miles a little north of west from Gay Head.	11	do	63		59
86	Sept. 13	West-southwest of Gay Head, 10 to 13 miles:					
		<i>a.</i> 13 miles west-southwest from Gay Head.	25	Gravel, sand, with some mud.			
		<i>b.</i> 10 $\frac{1}{2}$ miles west-southwest from Gay Head.	25	do	64		

Serial number.	Date.	Locality.	Depth in fathoms.	Nature of bottom.	Temperature.		
					Air.	Surface.	Bottom.
87	1871. Sept. 14	a. 19½ miles west-southwest of Gay Head.	29	Sandy mud.....			
		b. 18½ miles west-southwest of Gay Head.	29do	62	59	

STATIONS FOR 1872, WITH HEADQUARTERS AT EASTPORT, ME.

The dredgings for 1872 were mostly carried on from a large sail-boat; but those in the deeper waters of the Bay of Fundy were made from the United States revenue-cutter *Mosswood*, Captain Hodgdon. The regions explored were about as follows: Eastport Harbor, South Bay, and Passamaquoddy Bay, all of which are comparatively shallow-water areas; the shallow waters about the island of Grand Menan, especially those among the small islands to the east of Grand Menan; and the deeper waters east of Campobello Island, west of Grand Menan; and toward the center of the Bay of Fundy, between Grand Menan and Nova Scotia.

In connection with the shallow-water dredgings no complete record of observations was kept, but the collections made were appropriately labeled with the precise locality, depth of water, nature of bottom, &c. The more important hauls in deep water, mostly accompanied by temperature observations, are as follows, the letters used to designate them being the same as were employed in the original records:

Serial letter.	Date.	Locality.	Depth in fathoms.	Temperatures.		
				Air.	Surface.	Bottom.
+ t.	1872. Aug. 24	Bay of Fundy, off Grand Menan, beginning at a point 8 miles SE. by E. of north end of White Head Island, and running NE. for a distance of nearly 3 miles. (Temperatures taken at the beginning and close, and the same at both.)	106-90	°	° 48	° 38
+ u.	...do ...	Bay of Fundy, off Grand Menan, north of last; beginning 8½ miles E. of White Head Island, and extending about 2 miles SW.	96-100	37½
+ v.	Aug. 23	Bay of Fundy, E. of Grand Menan, about 2½ miles E. of north end of White Head Island.	28-52	53	39½
u'	...do ...	Bay of Fundy, E. of Grand Menan, 1½ miles E. by S. ¾ S. of north end of White Head Island.	29	44
+ v.	Aug. 28	Grand Menan channel, west of Grand Menan Island; 2¾ miles N. by W. ¼ W. of Southern Head, G. M.	40	48	45½
+ v'.	...do ...	Grand Menan channel, west of Grand Menan Island; 4¼ miles NNW. ¼ W. of Southern Head, G. M.	54	47	40
+ v''.	...do ...	Grand Menan channel, west of Grand Menan Island; 6 miles N. ¼ W. of Southern Head, G. M.	55	40
+ w.	Aug. 16	Bay of Fundy, about 3½ miles east of Herring Cove Head, Campobello Island. (Soft muddy bottom.)	60	43
+ w'.	...do ...	Bay of Fundy, just off Herring Cove, Campobello Island.	27	46
+ z.	Aug. 2	Bay of Fundy, 2½ miles, about SE. of Head Harbor Light, Campobello Island.	90	48½	39¾
+ z'.	...do ...	About 2¼ miles ENE. of Head Harbor Light, Campobello Island.	77	42
+ z''.	...do ...	About 1¾ miles NE. of Head Harbor Light.	70	46
+ z'''.	...do ...	Midway between Head Harbor Light and Spruce Island.	33	48	45
+ y.	Aug. 5	Passamaquoddy Bay, off North Harbor, Deer Island.	25	57½	47
+ z.	...do ...	Passamaquoddy Bay, ¼ miles north of last.	32	58	46

STATIONS FOR 1873, WITH HEADQUARTERS AT PEAK'S ISLAND, CASCO BAY, MAINE; AND ALSO STATIONS OF THE UNITED STATES COAST SURVEY STEAMER BACHE FOR 1872, 1873, AND 1874, IN THE GULF OF MAINE, &c.

In this list the dredgings indicated by the above heading have been grouped together, as they appear on the chart prepared for publication. Numbers ranging from 1 B. to 78 B. were originally assigned to the Bache dredgings for 1873 and 1874, in papers published by Professor Verrill in the *American Journal of Science* for April, 1874, and June, 1875, and elsewhere. To these the dredging stations of the Bache for 1872, 18 in number, have been added, thus increasing the list to 97 B. As to the regular series of dredgings made by the *Bluelight*, under command of Lieut. Commander L. A. Beardslee, in and off Casco Bay, no serial numbers were given to the hauls until the commencement of the temperature observations, July 21. To the numbers (1 to 66), given to such of the subsequent hauls as were accompanied by temperature observations, 100 has been added (101 Bl. to 166 Bl.), and numbers from 167 Bl. to 190 Bl. have been given to the hauls from July 12 to July 21, and from 191 Bl. to 212 Bl. to those taken after July 20, but not included in the temperature series. The descriptions of localities from 101 Bl. to 166 Bl. are taken from the record books for temperatures, with some additions, and from 167 Bl. to 212 Bl. from the eight books of dredging lists, which were kept. Additions to 101 Bl. to 166 Bl., taken from the dredging books, are marked D. L.

The dredging stations of the Bache for 1872 were on and about Saint George's Bank and La Have Bank, and extended as far as Halifax, N. S.; in 1873 they were mostly in the Gulf of Maine, especially in the region of Jeffrey's and Cashe's Ledges, a few being made in Massachusetts Bay; those for 1874 were entirely in the Gulf of Maine.

DREDGINGS BY THE BACHE, 1873-Continued.

Serial number.	Date.	Latitude.	Longitude.	Locality.	Depth in fathoms.	Nature of bottom.	Temperature.			Apparatus used.
							Air.	Surface.	Bottom.	
31 B.	42 19	70 29	Massachusetts Bay.....	56	Mud.....	62	60	41½	o
32 B.	42 19	70 23	West of Stellwagen's Bank.....	29	Hard, rocky.....	64	58	44	44
33 B.	42 20	70 18	On Stellwagen's Bank.....	22do.....	64	48½	48½
34 B.	42 22	70 11	East of Stellwagen's Bank.....	44½	Sand.....	61	48½	50½
35 B.	42 08	70 15	Between Stellwagen's Bank and Race Point.....	34do.....	59	57	44	48
36 B.	42 18	69 49	2¾ miles ENE. ¼ N. from Race Point.....	142	Soft blue mud.....	60	58	39	50
37 B.	42 20	70 00	19¾ miles NE. from Race Point.....	117do.....	60	58	42	42

No record exists of any hauls corresponding to Nos. 11 B. and 19 B.

DREDGINGS BY THE BACHE, 1874.*

38 B.	Sept. 2	42 48½	70 37	Thatcher's Island Light, about 10 miles south.....	41	Soft blue mud.....	70	66	45	45
39 B.	do.	42 51½	70 36½	Thatcher's Island Light, about 13 miles south.....	48	Mud.....	70	69	45½	45½
40 B.	do.	42 54½	70 35½	Thatcher's Island Light, about 16 miles south.....	43	Blue mud.....	70	69	47	47
41 B.	do.	42 57½	70 35	Thatcher's Island Light, about 18½ miles south.....	30-27	Mud and rocks.....	69½	69	47½	47½
42 B.	Sept. 3	43 05½	70 20	Boon Island Light, NW. by W. ¾ W. 6 miles.....	68	Brown mud.....	69½	67	52½	52½
43 B.	do.	43 04½	70 28	Boon Island Light, N. by E.; hotel on Isles of Shoals, SW. by W. ¾ W.....	43do.....	75	65	47	47
44 B.	do.	43 00½	70 35	Star Island, SW.; Duck Island, W.....	25	Rocky.....	75	67½	51	51
45 B.	Sept. 4	43 01½	70 11½	Boon Island Light, WNW. 1¼ miles.....	88	Soft mud.....	65	67	40	40
46 B.	do.	43 03	70 04	Agamenticus Mountain, NW. by W. ¾ W.....	51	Hard sandy mud.....	65	69½	42	42
47 B.	do.	43 02½	70 03	Jeffrey's Ledge, near No. 46 B.....	26	Sand and gravel.....	64	58½	45½	45½
48 B.	do.	43 01½	70 03½	Jeffrey's Ledge, near No. 47 B.; Agamenticus Mountain, NW. ¾ W.....	35	Gravel.....	64	58½	47½	47½
49 B.	do.	43 02½	69 52	Boon Island Light, WNW. 27 miles.....	113	64	65	40	40
50 B.	do.	43 01½	69 45	109	60	56	40	40
51 B.	Sept. 5	42 56	69 08	W. of Cashe's Ledge.....	105	Mud and gravel.....	60	55	41	41
52 B.	do.	42 51	68 52½	Cashe's Ledge.....	27	Rock and gravel.....	60	55	42	42
53 B.	do.	42 51	68 50do.....	73	Soft mud.....	63	55	42	42
54 B.	do.	42 49	68 48½	Off SE. edge of Cashe's Ledge.....	110	Mud.....	61	61	42	42
55 B.	do.	42 53½	68 53½	Cashe's Ledge.....	40	Gravel.....	60½	65	43	43

56 B.	do	42	52½	68	54	do	30	do	62	59	40
57 B.	do	42	51½	68	52½	do	37	Rocky	do	do	do
57 B.	do	42	51½	68	52½	do	39	do	60½	57	40
58 B.	do	43	04	69	05	NW. of Cash's Ledge.	65	Mud and gravel.	61	55	41
59 B.	do	43	17	69	17	do	92	Mud and sand	61	57	41
60 B.	Sept. 6	43	22	69	24	do	65	Mud	64	58	51
61 B.	do	43	51	69	38	Booth Bay Harbor, Maine	48	do	62	62½	47
62 B.	Sept. 7	43	40½	69	27	Fernand Point, N. 10 miles	42	Brown mud	68	65	48
63 B.	do	43	43½	69	30	Pumkin Island, NW. 4 miles	58	Mud	64½	59	44
64 B.	do	43	38½	69	26½	Pemaquid Point, N. 12 miles	47	Soft mud	64½	59	44
65 B.	do	43	44½	69	22	Monhegan Island, E. by N. 2 miles	65	Brown mud and gravel.	66	64	40
66 B.	Sept. 8	43	34½	69	31½	Monhegan Island, NE. ¾ E. 14 miles	86	Brown mud	68	64	40
67 B.	do	43	25	69	34½	Seguin Island Light, N. 8° W. 19 miles	91	Mud	64½	59	40
68 B.	do	43	31	69	31½	Seguin Island Light, NW., near No. 67 B.	32	Mud	64	60	46
69 B.	do	43	11	69	35	On Platt's Bank	91	Mud	61½	58	40
70 B.	do	43	03	69	30	do	96	Brown mud	61	58	40
71 B.	Sept. 9	42	55	69	36	do	125	do	61	57	39½
72 B.	do	42	57	69	50	E. of Jeffrey's Ledge.	102	do	62	59	40
73 B.	do	42	58½	70	09	W. of Jeffrey's Ledge.	88	do	62	60	39
74 B.	do	43	01	70	09	do	92	do	64	64	40
75 B.	do	43	02	70	15	do	51	Mud and gravel	64	63	42
76 B.	do	43	03	70	25	SW. of Boon Island	33	Rocky	69	65	44
77 B.	do	42	58½	70	33	White Island Light, E. ¾ S. 3¼ miles	35	Blue clay, mud, sand	61½	60	43
78 B.	Sept. 12	43	04	70	30	Agamenticus Mountain, NW. by N. ¼ N., near Jeffrey's Ledge.					

* The surface temperatures taken this year were quite unreliable, in consequence of an erroneous method of observation.

DREDGINGS BY THE CACHE, 1872.

[The letters preceding the serial numbers are the same used to distinguish the hauls in Smith and Harger's Report on the Saint George's Bank Dredgings (Trans. Conn. Acad., vol. iii), and in Professor Verrill's papers in American Journal of Science. The bottom temperatures this year are quite unreliable, manifestly too high in general.]

+ c	79 B.	Aug. 29	41	40	68	10	On northwest part of Saint George's Bank	25	Soft sand	o	o	o
+ d	80 B.	do	41	40	68	10	do	30	do	o	o	o
+ e	81 B.	Sept. 16	41	25	66	45	East of Saint George's Bank	23	Coarse sand	o	o	o
+ e	82 B.	Aug. 31	41	25	66	24½	do	60	Sand and shells	66	62	45
+ f	83 B.	Sept. 16	41	25	65	58.3	do	59	do	61	58	58
+ f	84 B.	Sept. 15	41	25	65	50.3	do	65	Dead shells	64	60	55
+ g	85 B.	do	41	25	65	42.3	do	430	Sand, gravel, stones	66	65	51
+ h	86 B.	Sept. 12	42	56½	64	51.3	On La Have Bank	45	Gravel and stones	64	61	36
+ i	87 B.	do	42	44	64	36	South of La Have Bank	69	Gravel stones, sponges	62	62	o
+ j	88 B.	Sept. 11	44	30	63	30	Off Chebucto Head, Nova Scotia, entrance Halifax Harbor.	20	Mud and fine sand	o	o	o
+ p	89 B.-91 B.	do	42	05	67	49	Off northwest border of Saint George's Bank	110	Soft mud and sand	56	56	49
+ q	92 B.	do	42	03	67	49	do	85	do	56	56	49
+ r	93 B., 94 B.	do	42	00	67	42	Off north border of Saint George's Bank	45	Coarse sand	o	o	o
+ s	95 B.	do	42	03	67	31	do	40	do	o	o	o
+ s	96 B., 97 B.	do	42	11	67	17	Off northeast border of Saint George's Bank	150	Soft sandy mud	52	52	52
+ s	98 B.-100 B.	do	do	do	do	do	(There are no hauls corresponding to these numbers)	o	o	o	o	o

DREDGINGS BY THE BLUELIGHT, 1873.

Serial number.	Date.	Latitude.	Longitude.	Locality.	Depth in fathoms.	Nature of bottom.	Temperature.			Apparatus used.
							Air.	Surface.	Bottom.	
101 Bl.	July 21	43 32	70 05½	Cape Elizabeth Light, NW. ¼ W.; Portland Head Light, N. by W.	24	Gravelly	°	51	44½	
102 Bl.	July 22	43 44	70 03½	Casco Bay, Stockman's Island, W.; Upper Flag Island, E. by S.	16-22½	Sandy	°	57	50	
103 Bl.	do	43 42	70 03½	Casco Bay, Broad Sound, Bates Island, W.; Eagle Island, E.	22-34	Gravel, br. shells	°	52	48	
104 Bl.	July 24	43 41½	70 08	Casco Bay, Luckses' Sound	12½	Muddy	°	80	56½	46½
105 Bl.	do	do	do	Casco Bay, Broad Sound, between Stockman's and Little Birch Islands.	10½	Fine sand	°	84	62	49½
106 Bl.	do	do	do	Casco Bay, Broad Sound, between Eagle and Bates Islands.	21	Gravel	°	80	65	45½
107 Bl.	July 26	do	do	Casco Bay, Broad Sound, between Stockman's and Upper Flag Islands.	10½	Sand	°	68	56½	47½
108 Bl.	do	do	do	do	do	do	°	57½	do	do
109 Bl., 110 Bl.	July 27	do	do	Casco Bay, Bluelight Cove (channel between Peak's, Great and Little Hog Islands).	3	Muddy	{	60	59	56
111 Bl.	July 28	43 40	70 12	Casco Bay, Bluelight Cove, off Eyegreen Landing.	3	do	{	65	60	56
112 Bl.	do	43 39½	70 13½	Portland Harbor, between Fort Gorges and Fort Preble	11½	Hard	°	65	59	52
113 Bl.	do	do	do	Bluelight Cove	3	Muddy	°	65	60	56
114 Bl.	do	do	do	do	3	do	°	66	62	58
115 Bl.	July 29	do	do	do	1½	do	°	60	58	56
116 Bl.	do	do	do	do	2	do	°	66	60	57
117 Bl.	July 30	do	do	Casco Bay, Broad Sound, between Bates and Eagle Islands.	16-22	Gravel and sand	°	67	60	49½
118 Bl.	do	43 43	70 05½	Casco Bay, Broad Sound, between Little Bangs and Stave Islands.	9½-12	Soft gravel, br. shells	°	66	60	53
119 Bl.	do	do	do	Casco Bay, Broad Sound, between Stockman's and Little Birch Islands.	17 (14½)	Sand, gravel, shells	°	66	60	53
120 Bl.	do	do	do	Bluelight Cove	1½	Muddy	°	68	64	60
121 Bl.	do	do	do	do	2	do	°	70	66	61
122 Bl.	July 31	43 38	70 12½	Portland Light, SSW. ½ of a mile	13½	Sandy	°	69	59½	49½
123 Bl.	do	do	do	Bluelight Cove	2	Muddy	°	71	62	58
124 Bl.	do	do	do	do	2	do	°	66	62	59
125 Bl.	Aug. 1	do	do	do	2	do	°	62	60	56
126 Bl.	Aug. 2	43 42	70 07	Casco Bay, Luckses' Sound, between Hope and Crotch Islands.	11	do	°	71	61	47
127 Bl.	do	43 44	70 01	Casco Bay, Harpswell Sound, SW. end of Bailey's Island, S. by E.; Ram Island, N. by W.	12½	do	°	60	63½	45
128 Bl.	do	43 42	70 11	Casco Bay, between Cow Island and Cow Island Ledge	9	Sandy mud, gravel, shells.	°	67	62	54½
129 Bl.	do	do	do	Bluelight Cove	2	Muddy	°	68	63	57
130 Bl.	Aug. 3	do	do	do	2	do	°	66	61	57
131 Bl.	Aug. 4	43 41½	70 10½	Casco Bay, Cow Island, W. ¼ mile	12	Gravelly	°	70	65	51

T.

132 Bl.	do.	70 05	43 40	Casco Bay, between Halfway Rock and Inner Green Island.	12½	Gravel and shells.	73	63	48½
133 Bl.	do.	70 04½	43 38½	Month Casco Bay, Halfway Rock, E. by N. about 3 miles.	18½	Sandy and rocky.	75	62	46½
134 Bl.	do.	70 03½	43 40½	Month Casco Bay, Halfway Rock, SSE.; Eagle Island, N.E. ¾ N.	18½	Coarse sand, gravel.	74	60	43½
135 Bl.	do.	70 04	43 35½	Bluelight Cove.	3½	Muddy.	71	68	56
136 Bl.	do.	70 04½	43 35½	do.	3	do.	70	62	58
137 Bl.	Ang. 5	70 04½	43 35½	West Cod Ledge, off Portland, Cape Elizabeth, W. ¾ S.; Halfway Rock Light, N.E. ¾ N.	13	Sandy and rocky.	72	64	46
138 Bl.	do.	69 58	43 32	Portland Head Light, N.W. ¾ W. 15 miles; Seguin Island, N.E. by E. 15 miles ('18 miles off Cape Elizabeth', D. L.).	48-54	Muddy.	65	64	39½
139 Bl.	Aug. 6	69 59½	43 31	Bluelight Cove.	3	do.	68	63	57
140 Bl.	do.	69 59½	43 31	do.	2½	do.	68	62	59
141 Bl.	do.	69 59½	43 31	Cape Elizabeth, N.W. by W. about 14 miles; Seguin Island, N.E. by E. about 16 miles.	48-54½	do.	69	64	38
142 Bl.	do.	69 59	43 28½	Cape Elizabeth, N.W. 15 miles; Seguin Island Light, N.E. by E. ¾ E. 18 miles.	48	Stones and mud.	72	64	37½
143 Bl.	do.	69 57	43 27½	2 miles SE. of 142 Bl.	64	Muddy.	68½	65	36
144 Bl.	do.	69 57	43 27½	Bluelight Cove.	2	do.	64	61	57
145 Bl.	do.	70 08½	43 43	Casco Bay, Chandler's Cove, Great Chebeague Island.	7	do.	65	61	58
146 Bl.	do.	70 08½	43 43	Casco Bay, Broad Sound, between Bates Island and Eagle Island.	2	Mud, dead eel-grass.	70	59	54
147 Bl.	Aug. 11	70 08½	43 43	do.	25	Gravelly.	65	57	47½
148 Bl.	do.	70 05	43 35	Casco Bay, Lucksess' Sound, between Stepping Stones and Croich Island.	15	Soft mud.	65	55½	45
149 Bl.	Aug. 12	70 05	43 35	West Cod Ledge, off Portland, Cod Ledge (buoy?) N.E. ¾ E. 1 mile.	13	Sandy, with shells.	63	61	47
150 Bl.	do.	69 52½	43 28½	Cape Elizabeth, N.W. by W. ¾ W. about 20 miles; Seguin Island, N.E. by N., about 15 miles.	68	Muddy.	64	62½	38
151 Bl.	Aug. 13	69 47	43 42½	Seguin Island, E. by S. 1 mile; Jackknife Ledge buoy, N. by E. ¾ mile.	12	Sandy.	64	52	47
152 Bl.	do.	69 38	43 42	Seguin Island, W.N.W. 5 or 6 miles.	33	Sandy and rocky, some mud.	64	57	41½
152½ Bl.	do.	69 38	43 42	Same locality, Cod Stomach.	3	Mud.	60	58	56
153 Bl.	Aug. 14	69 38	43 42	Bluelight Cove.	9	Sand and mud.	62	57	55½
154 Bl.	do.	69 38	43 42	Main channel, Portland Harbor.	3	Muddy.	64	55½	54
155 Bl.	do.	69 38	43 42	Casco Bay, between Clapboard and Long Islands.	9	do.	61	58	57
156 Bl.	Aug. 19	69 38	43 42	Bluelight Cove.	2	do.	62	59	38
157 Bl.	Aug. 20	69 38	43 42	Seguin Island, N.N.W. 9 miles.	75	do.	62	59	38
158 Bl.	do.	69 39½	43 40	Seguin Island, N.W. 5 miles (about same as No. 201 Bl.).	40	Sand and gravel, rocks.	65	58	38½
159 Bl.	Aug. 24	69 39½	43 40	Bluelight Cove.	2	Muddy.	63	61	00
160 Bl.	do.	69 39½	43 40	do.	2	do.	62	58	57
161 Bl.	Aug. 25	69 39½	43 40	do.	2	do.	61	58	56
162 Bl.	Aug. 27	69 39½	43 40	do.	2	do.	60	58	57
163 Bl.	Aug. 29	69 39½	43 40	do.	2	do.	60	58	57
164 Bl.	do.	69 39½	43 40	do.	2	do.	60½	61	57
164 Bl.	{Aug. 30} (Sept. 15)	70 09	43 38	Off Portland, Witch Rock buoy 1 mile west.	11-14	Rocky.	58	54	50½
165 Bl.	Sept. 3	69 55	43 47½	Casco Bay, Quahog Bay, east of south end of Pole Island.	5	Muddy.	63	59½	53
166 Bl.	do.	69 55	43 47½	Casco Bay, Quahog Bay, east of north end of Pole Island.	6	do.	63	59	54½
167 Bl.	July 11	70 11	43 41	Casco Bay, off Cow Island.	16	Mud.	68	58	57
168 Bl.	do.	70 11	43 40½	Casco Bay, middle of Hussey Sound.	17	Rocky.	68	58	57
169 Bl.	do.	70 10½	43 40½	Casco Bay, off Cow Island.	(?)	Sand and rocks.	68	58	57
170 Bl.	do.	70 10½	43 40½	do.	(?)	do.	68	58	57
171 Bl.	do.	70 10½	43 40½	Casco Bay, off Hog Island.	20	Sand and stones.	68	58	57

Tan.

DREDGINGS BY THE BLUELIGHT, 1873—Continued.

Serial number.	Date.	Latitude.	Longitude.	Locality.	Depth in fathoms.	Nature of bottom.	Temperature.			Apparatus used.
							Air.	Surface.	Bottom.	
172 Bl.	July 11	43 44	70 09½	Casco Bay, off Crotch Island.	(?)	(?)	(?)	(?)	(?)	T.
173 Bl.	July 14			Casco Bay, off Overset Island.	16	Clean gravel.				
174 Bl.	do			Casco Bay, off mouth of Bluelight Cove, drifting north.	15-19	Sand and sponge.				
175 Bl.	do			Casco Bay, off north end of Hog Island.	15	Sand				
176 Bl.	do	43 44	70 09½	Casco Bay, between Great Chebeag and Basket Islands.	7-8	Mud				
176* Bl.	do			do (?)	(?)	(?)				Tan.
177 Bl.	do			Casco Bay, off North end of Long Island.	(?)	Mud				
178 Bl.	July 15			Month Casco Bay, off Inner Green Island.	22	Rocky				
179 Bl.	do			do	17	Sandy				
180 Bl.	do	43 40½	70 04	Casco Bay, off Jewell's Island.	(?)	(?)				T.
181 Bl.	July 16			(?)	(?)	Muddy				
182 Bl.	do			(?)	15-23	Shelly and Spongy				
183 Bl.	do			(?)	(?)	do				
184 Bl.	July 17	43 36½	70 02	Off Portland, ENE. of West Cod Ledge.	14-20	Hard and rocky				
185 Bl.	do			Off Portland, WSW. of West Cod Ledge ¼ miles.	10-15	do				
186 Bl.	do			Off Portland, near 185 Bl.	10	do				
187 Bl.	do	43 34½	70 08	Off Portland, SSW. of West Cod Ledge 3 miles.	20-22	do				
188 Bl.	July 18			Casco Bay, off Cow Island.	17	Sandy				T.
189 Bl.	do			do	13½	Sand and stones				
190 Bl.	do			do	14	do				
191 Bl.	July 21	43 36½	70 04½	Casco Bay, between Cow Island and Crow Island.	28	Mud and stones.				
192 Bl.	do			Entrance to Portland Harbor, little west of 122 Bl.	10	Rocky and shelly				
193 Bl.	do			Casco Bay, off Whaleboat Island.	(?)	(?)				T.
194 Bl.	July 22			Casco Bay, off Bateman's (Bates?) Island.	13½	Gravel and br. shell				
195 Bl.	July 24			Casco Bay, between Ministerial and Eagle Islands, the monument on Mark Island showing over north end of Eagle Island.	32	Gravel and stones				
196 Bl.	July 31	43 35½	70 01	Off Portland, 1 mile east of East Cod Ledge.	(?)	(?)				
197 Bl.	do			Entrance to Portland Harbor, near 192 Bl.	11	Hard				
198 Bl.	Aug. 4			Casco Bay, Haddock Grounds, Broad Sound.	12-18	Gravel and shells				
199 Bl.	do	43 46	70 05	Casco Bay, off Chebeag Point.	11½	Mud				
199* Bl.	do	43 43½	70 10	Casco Bay, between Basket and Little Chebeag Islands.	(?)	(?)				
200 Bl.	do	43 43½	70 10	Seguin Island, NW. 6 miles (see 152 Bl.)	35	Muddy				
201 Bl.	Aug. 13	43 39½	69 38	Seguin Island, NW. 5 miles.	45	Rocky and sandy				
202 Bl.	Aug. 20	43 37½	69 51	Off Portland, East Cod Ledge.	(?)	(?)				
203 Bl.	Aug. 25			Casco Bay, between Peak's Island and Overset Island.	18	Rock and sponges				
205 Bl.	Aug. 27			Off mouth Casco Bay, 2 miles off Halfway Rock; the locality mentioned on page 357 of Professor Verrill's Explorations of Casco Bay, Proc. Am. Ass. Adv. Sci., 1873.	27½	Sand, gravel, shells, mud.				
204 Bl.	do	43 37	70 01½							

205 Bl.	Aug. 28	43 39	70 08	Casco Bay, off Whaleboat Island.	18	Gravel and shells	
206 Bl.	Aug. 29			Off mouth of Casco Bay, west of Halfway Rock	(?)	Muddy, &c.	
207 Bl.	do			Casco Bay, Broad Sound	(?)	Muddy and hard, mixed	
208 Bl.	Aug. 30	43 39	70 08	Mouth Casco Bay, off Ram Island	18	Sandy, muddy, &c.	
209 Bl.	do	43 39	70 08	Mouth Casco Bay, SW. of Outer Green Island to Long Island.	15	Rocky	
210 Bl.	do			Casco Bay, off Stepping Stones	12	Muddy?	
211 Bl.	do	43 34	70 07½	Off Portland, Cod Ledge Rock	12½	(?)	
212 Bl.	(?)	43 29½	69 30	Cape Elizabeth, WNW. 39 miles	95	Muddy	T.

STATIONS FOR 1874 AND 1875, WITH HEADQUARTERS AT NOANK, CONN., AND WOOD'S HOLL, MASS.

In 1874, the headquarters of the United States Fish Commission were established at Noank, Conn., and the area covered by its dredgings included Fisher's Island Sound; the eastern part of Long Island Sound; Block Island Sound; and Gardiner's and Peconic Bays; and also extended some distance to the east, south, and southwest of Block Island. In 1875, with headquarters at Wood's Holl, Mass., dredgings were carried on in Vineyard and Nantucket Sounds; Buzzard's Bay; over a portion of Nantucket Shoals; to the southward of Nantucket Island and Martha's Vineyard; and also on and about Southwest Shoal. The dredgings were all made by the United States steamer *Bluelight*, Commander L. A. Beardslee, and a separate series of numbers, to designate the stations, was employed for each year. To facilitate the recording of all the dredging stations of the United States Fish Commission on charts, and to bring the southern ones into uniformity with those made to the north of Cape Cod in more recent years, and already recorded both on charts and in reports prepared for publication in a single series of numbers ranging from 1 to 378, 400 has been added to the 1874 dredgings and 600 to those of 1875. In this way all the dredging stations from 1874 to 1879, inclusive, are included in a single series.

The temperature observations recorded in the two following tables were mostly taken with much care. Former experiences had proved that the Miller-Casella thermometers were slow in acting, requiring from three to ten minutes (according to the depth of water) to obtain a correct reading, and they were, therefore, always left down a suitable length of time. The bottom and surface temperatures, in nearly all cases, were taken with Miller-Casella self-registering thermometers; occasionally a United States naval thermometer was employed for surface temperatures, and the same instrument was generally employed for the air.

STATIONS FOR 1874.

Serial number.	Date.	Locality.	Depth in fathoms.	Nature of bottom.	Temperatures.			Apparatus.
					Air.	Surface.	Bottom.	
	1874.				o	o	o	
401	July 13	Fisher's Island Sound, West Clump, bearing S.	7½	Mud				D.
402	13	Fisher's Island Sound	9½	Sand				D.
403	13	do	11½	do				D.
404	13	Fisher's Island Sound, off Lattimer's Reef.	3½	Rocky				D.
405	(No record.)						
406	July 14	Fisher's Island Sound, N. of Young's Rock.	11	Rocky				D.
407	14	Fisher's Island Sound, NW. of Seal Rocks.	9	Sand, stones				D.
408	14	Fisher's Island Sound, N. by E. of Wicopesit.	11½	Clay				D.
409	14	Fisher's Island Sound, Lord's Channel.	11½	Rocky				Tan.
410	14	Fisher's Island Sound, off Napatree Point.	2½	Sand				T.
411	16	Watch Hill Light-House, R. I., NNW., distant about ¾ mile.	11	do				D.

STATIONS FOR 1874—Continued.

Serial number.	Date.	Locality.	Depth in fathoms.	Nature of bottom.	Temperatures.			Apparatus.
					Air.	Surface.	Bottom.	
412	1874. July 16	Watch Hill Light NNE., distant nearly $\frac{1}{2}$ mile.	5	Rocky	o	o	o	Tan.
413	16	do	5	do				Tan.
414	16	Fisher's Island Sound, off Groton Long Point.	7	Gravel				D.
415	16	Fisher's Island Sound, Groton Long Point NW. by N. $\frac{1}{2}$ mile.	7	do				D.
416	17	Fisher's Island Sound, $\frac{3}{8}$ mile W. by N. of N. Hammock Light-House.	6	Sand, mud				D.
417	17	Long Island Sound, New London Light N. by W., distant about $2\frac{1}{4}$ miles.	8	Sand				D.
418	17	Long Island Sound, New London Light N., distant $1\frac{1}{2}$ miles.	9	Sand, mud				T.
419	17	Long Island Sound, Little Gull Island Light bearing S. by E. 2 miles.	40	Gravel				D.
420	20	Fisher's Island Sound, $\frac{1}{4}$ mile N. of West Clump.	11 $\frac{1}{2}$	do				D.
421	20	Fisher's Island Sound, N. Hammock Light W. by S. $\frac{1}{2}$ mile.	12 $\frac{1}{2}$	Sand, gravel				D.
422	20	Fisher's Island Sound, N. Hammock Light S. by W. $\frac{1}{2}$ W. $\frac{1}{4}$ mile.	13	do				D.
423	20	Fisher's Island Sound, N. Hammock Light E. $\frac{1}{2}$ mile.	17	Gravel				D.
424	20	Fisher's Island Sound, N. Hammock Light E. by N. 1 mile.	7 $\frac{1}{2}$	Sand, mud				D.
425	20	Fisher's Island Sound, N. Hammock Light NE. by E. $\frac{1}{2}$ E. $1\frac{1}{2}$ miles.	10 $\frac{3}{4}$	Mud				D.
426	20	Fisher's Island Sound, near Middle Clump.	8	Sand				T.
427	22	Fisher's Island Sound, $\frac{1}{4}$ mile NW. of Middle Clump.	11 $\frac{1}{2}$ -9 $\frac{1}{2}$	Sand, shells	65	64	62.5	D.
428	22	Fisher's Island Sound, $\frac{1}{4}$ mile NNW. of Middle Clump.	11	do	65	64	62.5	D.
429	22	Fisher's Island Sound, $\frac{1}{2}$ mile NNE. of W. Clump.	8	do	65	64	63	D.
430	23	Fisher's Island Sound, Eelgrass Light-Ship E. by W., distant $\frac{1}{2}$ mile.	7	Sand, gravel	66	64	62.5	D.
431	23	Fisher's Island Sound, between Latimer's Reef and Young's Rock.	10 $\frac{1}{2}$	Sand, gravel, shells	65.5	62.5	61.5	D.
432	23	Fisher's Island Sound, eastward of Latimer's Reef.	11	Coarse sand, shells, rocks	65	62.5	61	D.
433	24	Fisher's Island Sound, Groton Long Point NE. by N., distant $\frac{1}{2}$ mile.	8	Sand, shells	72	66	63	D.
434	24	Fisher's Island Sound, between Sea-Flower Reef and Groton Long Point.	7	do	71	65.5	62.5	D.
435	24	Long Island Sound, Race Point bearing E., distant $2\frac{1}{2}$ miles.	50	Rocky, with mussels	72	68	59	D.
436	24	Long Island Sound, about $\frac{1}{2}$ mile SW. of 435.	50	Rocks, gravel	68	68	58	D.
437	24	Block Island Sound, off Culloden Point, Long Island.	12 $\frac{1}{2}$	Sand, mud	74	66	61	T.
438	24	Block Island Sound, NW. of Culloden Point, Long Island.	12	Sand				D.
439	27	Fisher's Island Sound, eastern part of Sweeper Sound.	4	Sand, shells	70.5	66.5	65	D.
440	27	Fisher's Island Sound, house on Ram Island bearing NE. $\frac{1}{2}$ E.	4	Sand	68.5	66.5	65.5	D.
441	27	Fisher's Island Sound, SW. of Ram Island $\frac{1}{4}$ mile.	3 $\frac{1}{2}$	do	68.5	66.5	65	D.
442	27	Fisher's Island Sound, off Middle Clump.	14	Stones, gravel	68.5	66.5	64	D.
443	27	do	10 $\frac{1}{2}$	do	67	66	64.5	D.
444	29	Fisher's Island Sound, NW. of Eel grass Light-Ship, distant about $\frac{1}{2}$ mile.	7	Sand, gravel, shells				D.

STATIONS FOR 1874—Continued.

Serial number.	Date.	Locality.	Depth in fathoms.	Nature of bottom.	Temperatures.			Apparatus.
					Air.	Surface.	Bottom.	
445	1874. July 30	Block Island Sound, SE. $\frac{1}{2}$ E. of Race Rock nearly 3 miles; E. of Little Gull Island Light-House $5\frac{2}{3}$ miles.	45	Sand.....	76	62.5	57	D.
446	30	Block Island Sound, $\frac{5}{8}$ mile about W. by S. of 445.	40	do.....				D.
447	30	Block Island Sound, $1\frac{1}{8}$ miles about W. by S. of 445.	24	do.....				D.
448	30	Mouth of Gardiner's Bay, Long Island, Gardiner's Point Light-House S. about $\frac{3}{4}$ mile.	14 $\frac{1}{2}$	Gravel.....	71	66	63.5	D.
449	30	Gardiner's Bay, Long Island.....	6 $\frac{1}{2}$	Mud.....	71.5	67.5	64.5	D.
450	30	do.....	4 $\frac{1}{2}$	Sand.....	72	66.5	65	D.
451	30	do.....	3	Gravel.....	72	66.5	65	T.
452	30	do.....	6 $\frac{1}{2}$	Mud.....	69.5	68.5	65	D.
453	31	Block Island Sound, Watch Hill Light N. by W. 3 miles.	18	Sand.....	68	66	56	D.
454	31	Block Island Sound, Watch Hill Light N. by E. 3 miles.	18 $\frac{1}{2}$	Mud, shells.....				T.
455	Aug. 3	Long Island Sound, Bartlett's Reef Light-Ship E. about $1\frac{1}{2}$ miles.	22	Sand, mud.....	60.5	64.5	63.5	D.
456	3	Long Island Sound, Bartlett's Reef Light-Ship E. about $2\frac{1}{2}$ miles.	14	Gravel, sand.....	59	64	63	D.
457	3	Long Island Sound, Bartlett's Reef Light-Ship E. $\frac{1}{4}$ N. about 3 miles.	15 $\frac{1}{2}$	Sand, gravel, shells.....	67	64.5	63.5	D.
458	3	Long Island Sound, Hatchett's Point N.W. about 2 miles.	19	Gravel, shells.....	61.5	64	63	D.
459	3	Long Island Sound, off Saybrook, Conn.	4	Sand.....	67	64.5	63.5	T.
460	3	Long Island Sound, between Cornfield Point and Long Sand Shoal.	9				T.
461	4	Little Peconic Bay, Long Island.	7 $\frac{1}{2}$	Gravel, shells.....	66.5	74	71.5	D.
462	4	do.....	7	Sand, shells.....				D.
463	4	do.....	7	Gravel.....			72	T.
464	4	do.....	13 $\frac{1}{2}$ -10	Sand, gravel.....	67	72	71.5	D.
465	4	do.....	14	Sand, shells.....				D.
466	4	Great Peconic Bay, Long Island.	5 $\frac{1}{2}$	Mud, sand, gravel.....	67.5	74	72	D.
467	4	do.....	5 $\frac{1}{2}$	Sand.....	68	73	72.5	D.
468	4	do.....	4 $\frac{1}{2}$	Gravel.....	66.5	73	72.5	D.
469	4	Little Peconic Bay, Long Island.	9 $\frac{1}{2}$	Sand, shells.....	66	72.5	71	D.
470	4	do.....	4	Sand.....				T.
471	5	Gardiner's Bay, Long Island.....	3 $\frac{1}{2}$	do.....		70.5	68	D.
472	5	do.....	4	Sand, shells.....				T.
473	6	{Block Island Sound, Watch Hill Light N. $\frac{1}{2}$ W., distant 3 miles.}	18-23	Sand.....	63	63	{59 {60}	T.
474	6	Block Island Sound, Montauk Point SW. $\frac{1}{2}$ S. 6 miles.	17	do.....		63.25	60	D.
475	6	Block Island Sound, Block Island Light ENE., distant about 3 miles.	19 $\frac{1}{2}$	Mud.....		63.5	60	D.
476	6	Block Island Sound, Block Island Light SE. by E. $\frac{1}{2}$ E. about 4 miles.	18 $\frac{1}{2}$	Sand, mud.....		64	60	D.
477	6	Block Island Sound, Block Island Light ESE., about 7 miles.	19	Mud.....		64	59	D.
478	6	Block Island Sound, Watch Hill Light N.W. $\frac{1}{4}$ W. about 4 miles.	24	Sand.....	70	64	58.5	D.
479	6	Block Island Sound, Watch Hill Light N.W. $\frac{1}{2}$ N. about 3 miles.	22	Sand, shells.....				T.
480	10	In West Harbor of Fisher's Island.	4	Sand.....	74	66.5	65.25	D.
481	10	do.....	3 $\frac{1}{2}$	do.....	74	66.5	65.25	D.
482	10	In West Harbor of Fisher's Island, off Clay Point.	5 $\frac{1}{2}$	Sand, mud.....	74	66.5		T.
483	10	Off Hawk's Nest Point, inner side of Fisher's Island.	5 $\frac{1}{2}$ -2 $\frac{1}{2}$	Sand, gravel, to mud and weeds.	74			T.
484	10	Fisher's Island Sound, between Middle Clump and Ram Island Reef.	12 $\frac{1}{2}$	Mud, shells.....	73.5	69	64.75	D.
485	11	Block Island Sound, about 1 mile S. of E. end of Fisher's Island.	15	Sand.....	75	66	61	D.

STATIONS FOR 1874—Continued

Serial number.	Date.	Locality.	Depth in fathoms.	Nature of bottom.	Temperatures.			Apparatus.
					Air.	Surface.	Bottom.	
	1874.				°	°	°	
486	Aug. 11	Block Island Sound, about $\frac{3}{4}$ mile S. of E. end of Fisher's Island.	8 $\frac{1}{2}$	Sand	75	65.5	62.5	D.
487	11	Block Island Sound, about $\frac{1}{2}$ mile off centre of Fisher's Island.	8	Stones	72	65.5	63	D.
488	11	Block Island Sound, off Mount Prospect, Fisher's Island, about $\frac{1}{2}$ mile from land.	7 $\frac{1}{2}$	do	76	66.5	63	D.
489	11	Block Island Sound, about $\frac{1}{2}$ mile westward of 488.	6	Stones, gravel	78	66.5	63.25	D.
490	11	Block Island Sound, about $\frac{3}{4}$ mile SE. of Race Point.	5 $\frac{1}{2}$	do	76.5	66.5	63.25	D.
491	11	Block Island Sound, about $1\frac{1}{4}$ miles S. of Mount Prospect.	32 $\frac{1}{2}$	Sand, shells	75	66.5	58.5	T.
492	12	Noank Harbor	2	Mud				D.
493	12	Fisher's Island Sound, between Sea-Flower and Horse-Shoe Reefs.	4 $\frac{1}{2}$	Sand	76	67.5	62.5	D.
494	12	do	4 $\frac{1}{2}$	Sand, gravel	75	67	64.5	D.
495	12	Fisher's Island Sound, W. of Sea-Flower Reef Beacon.	6	Fine sand and mud		67	64.5	T.
496	12	Fisher's Island Sound, W. of Sea-Flower Reef Beacon about 1 mile.	6	Sand, mud	72	67	64.5	T.
497	13	Block Island Sound, Montauk Point Light SSE. about 6 miles.	15 $\frac{1}{2}$	Sand	74	65	64	D.
498	13	Block Island Sound, Montauk Point Light SSE. about 6 $\frac{1}{2}$ miles.	9	Fine sand and gravel.	71	65	64	D.
499	13	Block Island Sound, Montauk Point Light SSE. about 7 $\frac{1}{2}$ miles.	5 $\frac{1}{2}$	Coarse sand and rocky.	72	65	64	D.
500	13	Block Island Sound, Montauk Point Light S. by E. $\frac{1}{2}$ miles.	19	Fine sand	72	65	63.5	D.
501	13	Block Island Sound, Montauk Point Light S. by W. about 3 miles.	20-8	Sand, shells	72	66	63.5	D.
502	13	Block Island Sound, Montauk Point Light SSW. about 2 $\frac{1}{2}$ miles.	8	Stony	72.5	65	65	D.
503	13	Off Montauk Point, Light-House WSW. about 2 miles.	7 $\frac{1}{2}$	Rocky	72	65	64.5	D.
504	13	Off Montauk Point, Light-House W. about 2 miles.	7 $\frac{1}{2}$	do	72	65	64.5	D.
505	14	Fisher's Island Sound, between Eelgrass Light-Ship and White Rock.	5 $\frac{1}{2}$	Sand, gravel	67	66	64.5	D.
506	14	Fisher's Island Sound, about 1 mile E. by N. from Eelgrass Light-Ship.	6	do	67			D.
507	14	Fisher's Island Sound, Stonington Light NE. $\frac{1}{2}$ E. about 1 mile.	5	Sand	67			T.
508	14	Fisher's Island Sound, Eelgrass Light-Ship WNW. $\frac{1}{2}$ mile.	5 $\frac{1}{2}$	Rocky	67			D.
509	17	Fisher's Island Sound, Eelgrass Light-Ship NW. by W. about $\frac{3}{4}$ mile.	7	Stones	69.5	67	63	D.
510	17	Fisher's Island Sound, Eelgrass Light-Ship WNW. 1 mile.	6 $\frac{1}{2}$ -3 $\frac{1}{2}$	Sand, rocky	69.5	67	63	D.
511	17	Fisher's Island Sound, Eelgrass Light-Ship W. by N. about 1 $\frac{1}{2}$ miles.	5 $\frac{1}{2}$	Hard, rocky	69			Tan.
512	17	Fisher's Island Sound, Stonington Light ENE. about 1 $\frac{1}{4}$ miles.	4	Sand	69	66.5	60.5	D.
513	17	Fisher's Island Sound, Eelgrass Light-Ship W. $\frac{1}{2}$ N. about 1 mile.	7	Hard, stones	70	67	63	D.
514	17	Fisher's Island Sound, Eelgrass Light-Ship E. about 1 mile.	7 $\frac{1}{2}$	Sand	70	66.5	63	D.
515	18	Off Block Island, Montauk Point W. about 9 miles.	20	do	71	66	47.5	D.
516	18	Off Block Island, Montauk Point NW. by W. $\frac{1}{2}$ W. about 11 miles.	25	Sand, shells	70	67.5	45.5	D.
517	18	do	23 $\frac{1}{2}$	do	70			D.
518	18	do	23 $\frac{1}{2}$	do	70			D.
519	18	Off Block Island, Old Harbor Point, Block Island N. 5 miles.	11	Sand, stones		67	55	D.

STATIONS FOR 1874—Continued.

Serial number.	Date.	Locality.	Depth in fathoms.	Nature of bottom.	Temperatures.			Apparatus.
					Air.	Surface.	Bottom.	
	1874.				°	°	°	
520	Aug. 18	Off Block Island; Old Harbor Point, Block Island, N. 5 miles.	11	Sand, stones	70			D.
521	18	Off New Shoreham, Block Island	14	Gravel, stones	70	66	57.5	D.
522	18	do	18	Sand, gravel	70	66.5	52.5	D.
523	19	Off Block Island, New Shoreham N.W. by N. about 6 miles.	14	do	73	66.5	54	D.
524	19	Off Block Island, New Shoreham NNW.	14½	Coarse sand	73	66	50.5	D.
525	19	Off Block Island, SE. side	14½	Gravel	69.5	66.5	53	D.
526	19	SE. from Point Judith, Rhode Island, about 4 miles.	13½	Sand, gravel	75	67.5	54.5	D.
527.	19	S. from Point Judith, Rhode Island, about 2½ miles.	9	Stones		69.5	61	D.
528	19	W. from Point Judith, Rhode Island, about 3 miles.	4	Rocks, sand	76	67.5	63	D.
529	19	Off Narragansett Beach, Rhode Island.	8½	Sand, gravel				T.
530	19	do	10½	Stones, gravel				T.
531	21	Block Island Sound, Watch Hill Light N. ½ E., distant ¾ miles.	21	Sand	80	67.25	56.5	D.
532	21	Block Island Sound, S.W. ¾ S. of No. 531, distant ½ mile.	20	do	80	67.25		T.
533	21	Block Island Sound, WSW. of No. 531, distant ½ mile.	17½	do	79.5	67.25		T.
534	21	Block Island Sound, about S. ¾ E. of east point of Fisher's Island ¾ mile.	9	Gravel	78	66.5	63.5	D.
535	21	Block Island Sound, east end of Fisher's Island N. by E. about 2 miles.	19½	Sand	78	67	57.5	D.
536	24	Fort Pond Bay, east end of Long Island.	7½	Mud	76	73.5	65.5	D.
537	24	Off Fort Pond Bay, east end of Long Island.	6½	Sand, gravel				T.
538	24	Napeague Bay, off Culloden Point, Long Island.	8½	Sand		67.5	65.5	D.
539	24	Napeague Bay, east end of Long Island.	5-8	do				T.
540	24	do	6-7	do				D.
541	24	Block Island Sound, Race Point N. about 1½ mile.	42	Stony	70.5	66		D.
542	25	Off Hay Harbor, west end of Fisher's Island.	4½	Sand	70	65.5	64.5	D.
543	25	Off west end of Fisher's Island, Race Point about S., distant ½ mile.	7½	Mud, sand	70	65.5	64.5	D.
544	25	Off west end of Fisher's Island, Race Point SSE. 1 mile.	8½	Fine sand				T.
545	25	Off west end of Fisher's Island, Race Point about S. ¼ mile.	5½	Rocks				D.
546	25	Fisher's Island Sound, between East Clump and Ram Island buoy.	7½	Hard	74.5	65.5	65	D.
547	25	do	14	do				D.
548	25	Fisher's Island Sound, ESE. from house on Ram Island.	7½	do				D.
549	27	Off Niantic Bay, Connecticut, W. of Two-Tree Island.	5	Sand	70.5	65	64	D.
550	27	Off Niantic Bay, Connecticut, between Black Point and Two-Tree Island.	5½	do				T.
551	27	do	5½	do				D.
552	27	Long Island Sound, off Saybrook	6	do				D.
553	27	Long Island Sound, Saybrook Light NE. 2 miles.	7½	do				T.
554	27	Long Island Sound, Plum Island Light SE. by E. 3 miles.	22	Gravel	73.5	66	65	D.
555	27	do	26	do	73.5	66	65	D.
556	30	Off Cox Ledge, ESE. from Block Island about 20 miles. (The shallowest part of Cox Ledge lies in about 40° 11½' N. Lat. and 71° 02' W. Long.)	20	Rocky				D.
557	30	Off Cox Ledge	21½	Sand, rocks	67	62	51.5	D.
558	30	do	21	do				Tan.
559	30	do	21	do				D.

STATIONS FOR 1874—Concluded.

Serial number.	Date.	Locality.	Depth in fathoms.	Nature of bottom.	Temperatures.			Apparatus.
					Air.	Surface.	Bottom.	
560	1874. Aug. 30	About 11 miles SE. by E. from Old Harbor Point, Block Island.	21	Rocky	o	o	o	Tan.
561	30	About 10 miles SE. by E. from Old Harbor Point, Block Island.	34	Mud	70	64	52	D.
562	30	do	34	do	70	64	52	D.
563	31	Block Island Sound, Watch Hill Light N. by W. about 3 $\frac{1}{2}$ miles.	19	Sand				T.
564	31	Block Island Sound, Watch Hill Light N. by W. $\frac{1}{2}$ W. about 3 $\frac{1}{2}$ miles.	18	Sand				O. T.
565	31	Block Island Sound, Watch Hill Light NNW. about 3 $\frac{1}{2}$ miles.	17	do				O. T.
566	31	Block Island Sound, Watch Hill Light NNW. about 3 $\frac{1}{2}$ miles.	18	do				D.
567	31	do	18	do				D.
568	Sept. 2	On Cox Ledge	19 $\frac{1}{2}$	Rocky				D.
569	2	do	20	Sand				D.
570	2	do	18 $\frac{1}{2}$	Rocky				D.
571	2	do	21	do				D.
572	2	do	21	do	72.5	62.5	50	D.
573	2	do	18 $\frac{1}{2}$	do				D.
574	2	do	19	do				D.
575	2	do	18	do				D.
576	2	do	17	do				D.
577	3	About 8 miles SSE. from Block Island.	19	do				D.
578	3	Crab Ledge, about 7 miles SE. of Block Island.	10 $\frac{1}{2}$	do				D.
579	3	Crab Ledge, about 8 miles SE. of Block Island.	10 $\frac{1}{2}$	do				D.
580	3	About 7 miles off New Shoreham, Block Island.	8-10	do				D.

(There are no numbers 581-600.)

STATIONS FOR 1875.

601	1875. July 12	Vineyard Sound, Tarpaulin Cove Light W. by S., Job's Neck NE. by E. $\frac{1}{2}$ E.	11 $\frac{1}{2}$	Sand, gravel	70			D.
602	12	Vineyard Sound, Tarpaulin Cove Light WSW. 1 mile.	11		70			D.
603	12	Vineyard Sound, Tarpaulin Cove Light NW. by W. $\frac{1}{4}$ mile.	17		70			D.
604	12	Vineyard Sound, Menemsha Bight.	8		70			D.
605	12	do	5-7					D.
606	12	do	5-7					D.
607	14	Vineyard Sound, Lackey's Bay	6 $\frac{1}{2}$	Gravel				D.
608	14	Between Martha's Vineyard and No Man's Land, Gay Head Light N. $\frac{1}{2}$ E. 2 $\frac{1}{2}$ miles.	10	Sand, shells				D.
609	14	North of No Man's Land, Lone Rock S. $\frac{1}{2}$ mile.	6	Rocky				D.
610	14	North of No Man's Land	4	Sand				T.
611	14	do	5	do				D.
612	14	Vineyard Sound, Menemsha Bight.	8	do				T.
613	14	Vineyard Sound, Tarpaulin Cove.	14 $\frac{1}{2}$	Gravel				D.
614	15	Vineyard Sound, S. and E. of Davis Neck Shoal.	5 $\frac{1}{2}$	Sand				D.
615	15	Vineyard Sound, S. of Monant Point.	15	Sand, gravel				D.
616	15	Vineyard Sound, off Davis Neck Shoal.	13	Sand				T.
617	15	Vineyard Sound, off East Chop of Holmes' Hole.	13 $\frac{1}{2}$	Hard				D.
618	15	Vineyard Sound, off Falmouth.	4 $\frac{1}{2}$	Sand				T.
619	15	do	5	do				T.
620	20	Vineyard Sound, Cuttyhunk Light NW. by N. 2 $\frac{1}{2}$ miles, Sow and Pigs Light-Ship W. by N.	14	Hard				D.

STATIONS FOR 1875—Continued.

Serial number.	Date.	Locality.	Depth in fathoms.	Nature of bottom.	Temperatures.			Apparatus.
					Air.	Surface.	Bottom.	
621	1875. July 20	Vineyard Sound, Cuttyhunk Light NW. by N. 3½ miles, Sow and Pigs Light-Ship WNW.	19	Hard	o	o	o	D.
622	20	Vineyard Sound, Cuttyhunk Light N. 1¼ miles, Sow and Pigs Light-Ship W. by N.	10				D.
623	20	do					D.
624	20	Vineyard Sound, Menemsha Light.					T.
625	21	Nantucket Sound; Oak Bluffs Hotel W. by S., W. end of Squash Meadow E. by N.	5	Sand				D.
626	21	Nantucket Sound, between Oak Bluffs and Squash Meadow.	6	do				D.
627	21	do	6	do				T.
628	21	Nantucket Sound, Oak Bluffs NW., Cape Poge SE. by E.	5½	do				T.
629	21	Nantucket Sound, about same as 628.	5½	do				T.
630	21	do	5	do				D.
631	26	Nantucket Sound, Cross-Rip Light-Ship E. by S. ½ mile.	10½	Sand	76	69	68.5	D.
632	26	Nantucket Sound, close to Cross-Rip Light-Ship.	11½	Sand, gravel, shells.	76	69	69	D.
633	26	Nantucket Sound, Cross-Rip Light-Ship W. by S. ¾ mile.	12	Sand, gravel	76	69	69	D.
634	26	Nantucket Sound, Cross-Rip Light-Ship WNW. about 1 mile.	10	do	76	69	69	D.
635	26	Nantucket Sound, Brant Point Light, Nantucket, S. by E. 4 miles.	7½	Muddy sand	76	71	69.5	D.
636	26	Nantucket Sound, Brant Point Light SSE. 2½ miles.	8	Mud	76			D.
637	28	Nantucket Shoals, Sankoty Head Light west, distant 10 miles.	16	Sand, shells		59	58	D.
638	28	Nantucket Shoals, about same as 637.	15½	do		59	58	T.
639	28	Nantucket Shoals, Sankoty Head Light west about 9 miles.	14	Sand		60	59	D.
640	28	Nantucket Shoals (a little S. of 639?).	11	Sand, shells		60	59	D.
641	Aug. 4	Buzzard's Bay, Woepecket buoy W. by S. ¾ mile.	7	do	75			D.
642	4	Buzzard's Bay	8	Hard		68	67	D.
643	4	do	5	Sand		69	69	D.
644	4	do	5	do	75	69	69	D.
645	4	Buzzard's Bay, buoy No. 8 off Scraggy Neck NE. ¼ mile.	6	Sand, shells				D.
646	4	Buzzard's Bay, off Cataumet Harbor.	6	Sand	75			T.
647	4	do	6	do	75			T.
648	4	Buzzard's Bay	6	do	75			D.
649	5	Vineyard Sound, Tarpaulin Cove Light N. 1 mile.	16	Hard	71			D.
650	5	do	18	do	71	68	67	D.
651	5	Buzzard's Bay, ¾ mile N. of Penikese.	16	Sand		65	64	D.
652	5	do	16	do				D.
653	5	Buzzard's Bay	8½	Mud	71	68	66	D.
654	5	do	9½	Soft mud	71			D.
655	5	do	10	Sand, mud				T.
656	5	do	8	Mud	71	68.5	66	D.
657	5	do	8	do	71			D.
658	10	About ¾ mile off Gay Head	9	Gravel		66	64	D.
659	10	do	9	Hard	73	66	64	D.
660	10	do	9	do	73	66	64	D.
661	10	About 1½ miles off Gay Head	13	Shells		67	65	D.
662	10	Vineyard Sound	10	Sand				T.
663	10	Vineyard Sound, off Tarpaulin Cove.	14½	Hard		68	66	D.
664	10	do	16	do		67.5	66.5	D.
665	10	do	13½	Hard		67.5		D.

STATIONS FOR 1875—Continued.

Serial number.	Date.	Locality.	Depth in fathoms.	Nature of bottom.	Temperatures.			Apparatus.
					Air.	Surface.	Bottom.	
666	1875. Aug. 11	Off Chappaquiddick, SE. part of Martha's Vineyard.	3	Sand.....	o	o	o	T.
667	11	do	5	Sand, stones.....	72	71.5	71	D.
668	11	do	6	Sand, gravel.....	72			D.
669	11	Off Skiff Island, at SE. corner of Martha's Vineyard.	7	Mud, shells.....	72			D.
670	11	do	29	Sand.....	74	68	66	D.
671	12	Great Point, Nantucket Island W. 5 miles.	7½	do	72	56	56	D.
672	12	do	8	do	72	56	56	D.
673	12	do	9	do	72			T.
674	12	Sankoty Head, Nantucket Island, W. 1 mile.	6½	Sand, gravel.....	72	67	66	D.
675	12	Sankoty Head, Nantucket Island, WNW. 2 miles.	16	Hard	72	66	65	D.
676	12	A little west of 675.....	9	do	76			D.
677	12	Sankoty Head, Nantucket, NW. 1 mile.	7½	do	77			T.
678	12	Sankoty Head, Nantucket, W. ¼ mile.	4½	Sand, shells.....	78			T.
679	13	Nantucket Sound, off west side Nantucket Island.	5½	do	80	76	70	D.
680	13	do	7	Mud.....	80			D.
681	13	do	5	Sand.....	80	71.5	71	D.
682	13	Nantucket Sound, Cross-Rip Light-Ship NW. 2½ miles.	10	Shells, sand.....	79			D.
683	13	Nantucket Sound, Cross-Rip Light-Ship E. about 3 miles.	10½	Sand.....	79	71	70.5	D.
684	13	Nantucket Sound, Cross-Rip Light-Ship E., Cape Poge Light SSW. 2½ miles.	10½	do		71	71	D.
685	13	Vineyard Sound, off Falmouth.....	5	do	78			T.
686	17	Buzzard's Bay, off Nye's Neck.....	7½	Mud, hard.....		76		T.
687	17	do	6	Sandy mud.....				T.
688	17	do	5	do				D.
689	17	do	7	Sand.....				D.
690	17	do	8	Sand, mud.....				D.
691	17	Buzzard's Bay, off Wild Harbor, near N. Falmouth.	8	Sand, gravel.....	75			D.
692	17	Buzzard's Bay, off West Falmouth ¼ mile.	7½	Shells, gravel.....	75		72	D.
693	17	Buzzard's Bay, SW. of No. 692 about ½ mile.	7	Mud.....	75	76	73	D.
694	17	Buzzard's Bay, off Hamlin Point.....	3½	Hard.....	75			D.
695	17	do	5	do	75	75.5	70.5	D.
696	17	Buzzard's Bay, off Quamissett Harbor.	7	Sand, mud.....	75	78.5	70.5	D.
697	23	Vineyard Sound, S. entrance to Quick's Hole.	7½	Stony, mussels.....		67	67	D.
698	23	do	6	Sand, rocks.....	64	68.5	68.5	D.
699	23	Vineyard Sound, off Quick's Hole.....	7½	do	64			D.
700	23	Vineyard Sound, south of Cuttyhunk Light 1 mile.	9½	Sand.....		66	65.5	D.
701	23	Vineyard Sound, off Cuttyhunk Light 1 mile.	9	Rocky.....	64			D.
702	23	Near mouth of Buzzard's Bay, Cuttyhunk Light ESE. 1 mile.	8½	Gravel.....		66	65	D.
703	23	Vineyard Sound, off south side of Cuttyhunk Island.	9					T.
704	23	do	9					T.
705	23	Vineyard Sound, off Robinson's Hole.	15	Sand, gravel.....	66	68.5	66	D.
706	25	Vineyard Sound, off Falmouth.....	4		69			T.
707	25	do	4					T.
708	25	do	6	Sand.....	68.5	73	72	D.
709	25	do	5					D.
710	31	Vineyard Sound.....	9	Hard.....	76	69	69	D.
711	31	do	10	do	76	68.5	69	D.
712	31	do	13	do	76	69	69	D.
713	31	do	8	Shells, gravel.....	76	70	69.5	D.
714	31	do	6	do	76	70	69.5	D.
715	31	do	13	Hard, gravel.....	75	70	70	D.
716	Sept. 1	Off Gay Head, 3 miles SW. buoy No. 25.	17	Mud.....		66	61.5	D.
717	1	Southwest of Gay Head, distant 4 miles.	19	do		66	60	D.

STATIONS FOR 1875—Continued.

Serial number.	Date.	Locality.	Depth in fathoms.	Nature of bottom:	Temperatures.			Apparatus.
					Air.	Surface.	Bottom.	
718	1875. Sept. 1	Southwest of Gay Head, distant 6½ miles.	19	Mud, sand	°	65.5	60	D.
719	1	Southwest of Gay Head, distant 8 miles.	19	Hard, sand		60	58.5	D.
720	1	Southwest of Gay Head, distant 8½ miles.	19	Sand				T.
721	1	Southwest of Gay Head, distant 10 miles.	12	Hard				D.
722	1	Southwest of Gay Head, distant 11 miles.	14	do				D.
723	1	Off NW. end of Devil's Bridge Reef, Gay Head.	9	Rocky				D.
724	1	do	9	do				D.
725	3	South of Cape Poge, Martha's Vineyard, in north part of Muskeget Channel.	4-13	Sand				T.
726	3	About the same as 725	5	Sand, celgrass				D.
727	3	do	4	do				D.
728	3	do	1-4	do				D.
729	3	About 3½ miles SE. of Cape Poge.	7½	Hard				T.
730	3	About 4 miles SSE. of Cape Poge.	9	Sand, gravel				B.
731	3	About ¾ mile S. of No. 730	9	do				D.
732		(No record.)						
733	6	Off Martha's Vineyard	6	Hard			62	D.
734		(No record.)						
735	6	Off Martha's Vineyard, 1½ miles SE. of Squipnocket Point. (No record.)	11	Sand			60	D.
736		do						
737		do						
738	7	Off Nantucket, ½ mile S. of Tuckernuck Island.	3½	Sand			65	D.
739	7	Off Nantucket, off S. side of Tuckernuck Island.	8	Coarse sand			65	D.
740	7	do	8½	Sand				T.
741	7	do	11	do				D.
742		(No record.)						
743	8	2 miles S. of Great Round Shoal buoy, 6½ miles a little NE. of Great Point, Nantucket.	15½	Fine sand	65	60	58.5	D.
744	8	3 miles SE. of Great Round Shoal buoy, 9 miles from Great Point.	18	Sand, shells	65		58.5	D.
745	8	4 miles SSE. of Great Round Shoal buoy, 9 miles from Great Point.	15½	Sand			59	D.
746	8	Off Nantucket, N. of McBlair's Shoal.	13				T.
747	8	do	13½				T.
748	8	do	13½				T.
749	8	do	13½				D.
750	15	8 miles east of Great Point, Nan- tucket.	15	Sand				D.
751	15	9 miles east of Great Point, Nan- tucket.	13	do				
752	15	8 miles east of Great Point, Nan- tucket.	20	do				
753	15	9 miles east of Great Point, Nan- tucket.	10	do				
754	15	11 miles east of Great Point, Nantucket.	10	do				
755	15	12 miles east of Great Point, Nantucket.	10	do				
756	15	15 miles east of Great Point, Nantucket.	9	do				
757	15	15 miles east of Great Point, Nantucket.	9	do				
758	15	16½ miles east of Great Point, Nantucket.	6	do				
759	15	7½ miles east of Great Point, Nantucket.	9	do				
760	15	7 miles east of Great Point, Nan- tucket.	15	do				
761	15	7½ miles east of Great Point, Nantucket.	10	do				
762	20	Off Southwest Ledge, Gay Head NE. 1½ miles.	16½	Gravel	64		60	D.

STATIONS FOR 1875—Concluded.

Serial number.	Date.	Locality.	Depth in fathoms.	Nature of bottom.	Temperatures.			Apparatus.
					Air.	Surface.	Bottom.	
763	1875. Sept. 20	Off Southwest Ledge, $\frac{1}{2}$ mile W. of 762.	17	Gravel, sand	64	60	60	D.
764	20	Off Southwest Ledge, $\frac{1}{3}$ mile S. of 762.
765	20	Off Southwest Ledge, $\frac{2}{3}$ mile W. of 763.	17	Sand, gravel	60	D.
766	20	On Southwest Ledge, $\frac{1}{4}$ mile NW. of 765.	17	do	60	D.
767	20	Off Southwest Ledge, $1\frac{1}{4}$ miles W. of No. 762.	18	Sand	64	61	D.
768	20	9 miles SW. of Gay Head	20	do	64	61	D.
769	20	6 miles SW. $\frac{1}{4}$ W. of Gay Head.	20	do	D.

STATIONS FOR 1877, 1878, AND 1879, WITH HEADQUARTERS AT SALEM, MASS., HALIFAX, N. S., GLOUCESTER AND PROVINCETOWN, MASS.

During these three years the dredgings were carried on from the U. S. Str. Speedwell, commanded in 1877 by Lieut. Commander A. G. Kellogg, in 1878 by Lieut. Commander L. A. Beardslee, and in 1879 by Lieut. Z. L. Tanner. In 1877, headquarters were first established at Salem, and the stations made from there covered the northern part of Massachusetts Bay, and portions of the Gulf of Maine, off Cape Ann. During the session of the commission of arbitration on the fishery claims, however, the headquarters were removed to Halifax, N. S., and dredgings were made in the waters off that coast, from the last of August to the first of October. The Speedwell also made a line of stations on her trip across the Gulf of Maine, from Cape Ann to Cape Sable, N. S. In 1878, with headquarters at Gloucester, Mass., the area dredged over included the northern and central parts of Massachusetts Bay, and the Gulf of Maine, off Cape Ann. In 1879, the dredging grounds were the southern part of Massachusetts Bay, and the Gulf of Maine, off Cape Cod. The bottom temperatures in 1877 were mostly taken with Miller-Casella self-registering, deep-sea thermometers, but in 1878 and 1879 Negretti-Zambra thermometers were used for that purpose. All the temperatures for 1879 were taken with more than usual care, the thermometers employed being frequently compared with a reliable standard.

DREDGINGS BY SPEDWELL, 1877.

Serial number.	Date.	Latitude.	Longitude.	Locality.	Depth in fathoms.	Nature of bottom.	Temperatures.			Apparatus used.
							Air.	Surface.	Bottom.	
1	1877. Aug. 4	42 30	70 45	A little S. of E. from Salem, 4 miles SSE. of Baker's Island.	22	Gravelly	71	{ 63 } { 65 }	0 } 46	D.
2	do			Same as No. 1	22	do		{ 60 } { 62 }	0 } 45	T.
3, 4	do	42 28	70 42	NW. of No. 1	22	do	72?	{ 62 } { 62 }	0 } 45	D.
5	do			Baker's Island NW. by N. 5 1/2 miles, Eastern Point (south of Gloucester) NNE. 6 1/2 miles.	33	Sand and mud	72		0 } 45	D.
6	do			SW. of No. 5		do				T.
7	do			do		do				T.
8	Aug. 6			Halfway Rock NW. by W. 1/2 Baker's Island NW. by N. 3/4 N. (true), close to No. 1.	20	Rocky	70	65 1/2	55	D.
9	do			S. of No. 8	25	Gravelly	69	63 1/2	52 1/2	Tan.
10	do			Same as No. 8	20 1/2	do	69 1/2	64 1/2	50 1/2	D. and Tan.
11	do	42 26	70 37	Thatcher's Island Lights NE. by E. 1/2 E. 1 1/2 miles, Baker's Island Light NW. 1/2 N. 10 miles.	45	Mud	70	64 1/2	48 1/2	D.
12	do			Same as No. 11		do				D.
13	do			1 mile S. of No. 12	50	do				T.
14	do			do		do				T.
15	Aug. 7			Baker's Island NNW. 1/2 W. 3 miles, Halfway Rock NW. by W. 1 1/2 miles, near Nos. 1 to 4, and 8 to 10.	19 1/2	Gravelly	69	66	54 1/2	D.
16	do			Same as No. 15		do				Tan.
17	Aug. 8			Halfway Rock NW. by W. 3 miles, Baker's Island Light, NW. by N. 4 1/2 miles; between No. 5 and No. 1.	32	do				T.
18	do	42 29	70 38	Halfway Rock W. by N. 1/2 N. 6 1/2 miles, Eastern Point Light N. 3/4 W. 5 1/2 miles.	45	Mud				T.
19	do			About same place	45	do				T.
20	do			do	45	do				T.
21, 22	Aug. 10			Halfway Rock W. by N. 1/2 N. 1 1/4 miles, Baker's Island NW. 3/4 N. 3 miles, near No. 1.	26	Hard gravel and stones				D.
23	do			Halfway Rock W. by N. 1/2 N. 6 miles, Eastern Point Light N. 1/2 E. 5 1/2 miles, near Nos. 18 to 20.	35	Mud and clay nodules				T.
24	Aug. 13	42 30	70 41	Halfway Rock W. by N. 1/2 N. 4 1/2 miles, Eastern Point Light N. by E. 4 1/2 miles.	33	Soft mud	70	67 1/2	49 1/2	D.
25	do	42 27 1/2	70 36	Halfway Rock NW. by W. 1/2 W. 8 1/2 miles, Eastern Point N. by W. 3/4 W. 8 miles.	48	do	69	67 1/2	49 1/2	D.
26-30	do			Same as No. 25	48	do				T.
31	do			do	48-50	Mud				D.
32	Aug. 14	42 30	70 20	{ Thatcher's Island Light NW. 1/2 N. 13 1/2 miles, Halfway Rock W. by N. 20 miles.	50	do	78	68	{ 36 } { 39 }	{ T. D. }

33	do									T.
34	Aug. 19	42 37	69 39	Same as No. 32.						{ 37½ } { 38 }
35, 36	do			Gulf of Maine, Cape Ann W. by N. 42 miles. Nearly the same as No. 34.						T. T.
37	Aug. 20	42 39	66 58	Gulf of Maine, 165 miles E. of Cape Ann.						{ 85 } { 89 }
38	do	42 42	66 58	Gulf of Maine.						D. T.
39	do	42 44	66 27	do						{ 88½ } { 89½ }
40	do	42 46	66 27	About 2 miles N. of No. 39.						D. D.
41	do	42 49	66 19	W. of Brown's Bank.						T. D.
42	Aug. 21	43 04½	65 01½	SE. ½ S. from Cape Sable about 32 miles						{ 33½ } { 41 }
43	do	43 05½	65 02	SE. ¼ S. from Cape Sable about 31 miles						D. D.
44	do	43 06	65 04½	SE. ¼ S. from Cape Sable about 30 miles						{ 33½ } { 39 }
45	do	43 06	65 07	SE. ¾ S. from Cape Sable about 28 miles						T. T.
46	do	43 05½	65 09	SE. by S. from Cape Sable about 27 miles						{ 33½ } { 39 }
47	do	43 10	65 12½	SE. ¾ S. from Cape Sable about 22 miles						T. D.
48	do	43 11	65 14½	SE. ¾ S. from Cape Sable about 20 miles						T. T.
49	do	43 13	65 17	SE. ½ S. from Cape Sable about 18 miles						{ 31½ } { 40 }
50, 51	do	43 14	65 17½	Off Cape Negro, Nova Scotia, SE. ¾ S. from Cape Sable 17 miles.						{ 31½ } { 40 }
52	do	43 26½	65 14	Off Shelburne, Nova Scotia, 19 miles south.						{ 36 } { 64½ } { 37 }
53	Aug. 25			In Bedford Basin, north of Halifax						{ 34 }
54	do			do						{ 72 } { 68½ }
55	do			Mouth of Bedford Basin						T
56-58	do			{ Halifax Harbor, off Herring Cove, between Mars Rock and Neverfall Shoal.						{ 46 } { 46½ }
59	Aug. 28			Halifax Outer Harbor, ¼ mile SSW. Rock Head buoy.						{ 72 } { 66½ }
60	do			Halifax Outer Harbor, ¼ mile N. Rock Head buoy.						{ 68½ } { 65½ }
61, 62	do			{ Halifax Harbor, between Mars Rock and York Redoubt } buoy, ¼ mile distant.						{ 47 } { 48½ }
63	Aug. 29			Bedford Basin, ¼ across harbor from Navy Island.						{ 67½ } { 64½ }
64	do			do						{ 67 } { 67 }
65	do			do						{ 33 } { 34 }
66	do			do						{ 68½ }
67	do			do						T. T. R. D.
68	do			Narrows at mouth of Bedford Basin, drifting in.						{ 68 }
69	Sept. 1	42 44	62 43	About 120 miles S. of Halifax						{ 44½ } { 45 }
70	do	42 45½	62 43	do						{ 36 } { 38 }
71	do	42 46	62 44	About 118 miles S. of Halifax						{ 88½ } { 39 }
72	Sept. 4			Sandwich Point (Halifax Harbor) W. ¼ N. ¾ miles						{ 39½ } { 41½ }

† Inside pilot-house.

* Estimated.

DREDGINGS BY SPEEDWELL, 1877—Continued.

Serial number.	Date.	Latitude.	Longitude.	Locality.	Depth, in fathoms.	Nature of bottom.	Temperature.			Apparatus used.
							Air.	Surface.	Bottom.	
73	1877.	0	0				0	0	0	T.
74	Sept. 4			Sandwich Point (Halifax Harbor) W. $\frac{1}{2}$ N. $\frac{1}{2}$ mile		Fine sand and rocks				D.
75	do			do.	18	Fine sand.				D.
76	do			Halifax Harbor, half way between Litchfield and Mars Rocks.	16	Rocky				D.
77	do			$\frac{1}{2}$ mile to the eastward of No. 76	25	Rocks and nullipore	57	55 $\frac{1}{2}$	{ 33 37 $\frac{1}{2}$	{ D. D.
78	Sept. 5			{ Chebucto Head (entrance of Halifax Harbor) SW. by S. $\frac{1}{2}$ S. (SW. $\frac{1}{2}$ S), $\frac{1}{2}$ - $\frac{1}{2}$ miles.	57	Fine sand.			{ 32 $\frac{1}{2}$ 33 $\frac{1}{2}$	{ D. D.
79	do			Farther S. and E. than No. 78	57	Muddy and pebbles	69	56 $\frac{1}{2}$		D.
80	do	44 22	63 28	Chebucto Light N. $\frac{1}{2}$ E. 9 miles	57	Stony, with sponges and red algae.				T.
81	do			do.	57	Mud and sand				Tan. D.
82	do			do.	57	Coarse gravel and stones, bryozoa.				
83	do			do.	101	Fine sand.	65	63	{ 30 38 $\frac{1}{2}$	{ D. T.
84	Sept. 6	44 04	63 27	Chebucto Head N. by E. $\frac{1}{2}$ E. 26 miles						
85	do			do.						
86	do			do.						
87	Sept. 11			Mouth Halifax Harbor, Litchfield Rock NE. by E. $\frac{1}{2}$ E. $\frac{1}{2}$ miles, Automatic Buoy SE. $\frac{1}{2}$ S. 24 miles, dragging E. to 7 or 8 fathoms on Neverfail Shoal.	21	Very fine sand, stones, and algae.	72	61 $\frac{1}{2}$	{ 48 $\frac{1}{2}$ 49	{ D. D.
88	do			Sandwich Point S. $\frac{1}{2}$ mile, drifting S. with tide parallel to shore until Sandwich Point was W. by N.	17	Kelp, red algae, and fine sand.	74	62		T.
89	do			Same as last	21					
90	do			Head of Northwest Arm, Halifax Harbor	6 $\frac{1}{2}$	Mud and eelgrass	74	62	49	D.
91	do			Same as last	7		70	62	58	D.
92	do			Halifax Harbor, Mouth of Northwest Arm, battery NE. by E. $\frac{1}{2}$ E., quarry opposite.						
93	Sept. 13			Halifax Harbor, $\frac{1}{2}$ mile from shore off York Redoubt and Sandwich Point.	16	Sand and red algae				T.
94	do			Little farther E. and S. than last.						T.
95	do			Same as last.		Very fine sand, ooze and red algae.				D.
96	do			do.						T.
97	do			Midway between York Redoubt and McNab's Island Light, Halifax Harbor.						D.

98	Sept. 15	{ Midway between Sandwich Point and McNab's Island } Light, Halifax Harbor.	18	Mud and fine sand	61	{ 46 } { 46½ }	T.
99	do	do	42	Shingle	61½	{ 34 } { 34½ }	D.
100	do	44 28	{ Off Halifax, Devil's Island Light N. by W. ¾ W. 9½ miles, } Sambro Light W. by N. ¼ N. 10¼ miles. } Off Halifax, Sambro Light W. by N. ¼ N. 9 miles.	42	Fine sand with Ophiology- pha.	63	{ 35½ } { 36½ } { 35½ } { 36 }	T. { D. { D.
101	do	do	110	Fine sand and mud	64	T.
102	do	{ Sambro Light N. ¾ W. 26 miles, Egg Island NE. 41 miles, 29 } miles S. of Chebucto Head.	37	do	57½	34	D. and T.
103	Sept. 20	44 02	52	Fine sand and mud	60	35	D.
104	do	44 01	52	do	55	35	T.
105	do	Near last	53	Sand, mud, to rocks.	T.
106-108	do	Same as last	16	T.
109	Sept. 21	Bedford Basin	43	T.
110, 111	do	do	60	72	58	36
112	Sept. 24	Chebucto Head Light NW. by W. about 8½ miles	51	Mud, gravel, and rocks	50	52	45
113	do	do	75	Mud	52	D.
114-117	do	do	75	T.
118	do	Chebucto Head Light NW. by W. about 9 miles	30	Mud and fine sand	55	43½	D.
119	Sept. 27	Halifax Harbor, off York Redoubt	16	T.
120	do	Halifax Outer Harbor	43	T.
121	do	60	T.
122	do	Off Sandwich Point, Halifax Harbor	51	D.
123	do	Thatcher's Island Light NW. ¾ N. 11½ miles, Halfway Rock	75	D.
124	Oct. 17	42 32	W. ¾ N. 19½ miles. Cape Ann NW. ¾ N. 12 to 14 miles.	75	D.
125	do	do	75	T.
126	do	do	30	D.
127	do	Halfway, Rock W. by S. 6½ miles, Eastern Point N. by W.	T.
128	do	42 31½	¾ W. 3¼ miles.	D.

DREDGINGS BY SPEEDWELL, 1878.

129	July 23	42 24	70 33½	49	65	60½	38	T.
130	do	49	Mud	68	63	T.
131	do	45	68	62	38	T.
132	do	45	Mud	70	63	38	T.
132 ^a	do	42 28½	70 36	40	do	D.
133	do	42 32	70 38½	33	Rocky	67	61	D.

DREDGINGS BY SPEEDWELL, 1878—Continued

Serial number.	Date.	Latitude.	Longitude.	Locality.	Depth in fathoms.	Nature of bottom.	Temperatures.			Apparatus used.
							Air.	Surface.	Bottom.	
134	1878. July 23	0 1	0 1	Thatcher's Island NE. $\frac{1}{2}$ N. 63 miles, Eastern Point N. $\frac{1}{2}$ E. 24 miles, Baker's Island W. $\frac{1}{2}$ N. 53 miles, 1 mile NW. of No. 133	26	Pebbles and coarse sand	68	61	0	D.
135	July 26	42 33 $\frac{1}{2}$	70 38 $\frac{1}{2}$	Eastern Point N. by W. $\frac{1}{2}$ W. 2 miles, West Light Thatcher's Island NE. $\frac{1}{2}$ N. 54 miles, 2 miles N. of No. 133.	25	Stony and gravelly	70	58 $\frac{1}{2}$	40 $\frac{1}{2}$	D.
135 ^b	do	do	do	About same as No. 135.	25	do	72	do	40	D.
136	do	do	do	Short distance E. of No. 135 (southwesterly on original chart)	26	Sand and stones	70	65	38 $\frac{1}{2}$	D. and T.
137	July 29	42 32 $\frac{1}{2}$	70 22 $\frac{1}{2}$	Eastern Point WNW. $\frac{1}{2}$ W. 16 $\frac{1}{2}$ miles, Thatcher's Island NW. $\frac{1}{2}$ W. 13 $\frac{1}{2}$ miles.	53	Rocks, drifting into soft mud.	70	65	38 $\frac{1}{2}$	D.
138	do	42 33	70 26	Thatcher's Island NW. $\frac{1}{2}$ N. 9 miles, Baker's Island W. by N. 16 $\frac{1}{2}$ miles.	59	Muddy	do	do	do	T.
139	do	do	do	Drifting SW. from No. 138.	59	do	67	59 $\frac{1}{2}$	40	T.
140	do	42 34	70 32	Eastern Point W. by N. $\frac{1}{2}$ N. 6 miles, Thatcher's Island N. by W. $\frac{1}{2}$ W. 4 $\frac{1}{2}$ miles.	38	do	63	57 $\frac{1}{2}$	44 $\frac{1}{2}$	D.
141	Aug. 1	do	do	Gloucester Harbor, Eastern Point Light ESE., Norman's Woe Rock SW. by S., Fresh Water Cove NW. by W. $\frac{1}{2}$ W.	8 $\frac{1}{2}$	Sandy	do	do	do	T.
142	do	do	do	About as last.	9	do	do	do	do	T.
143	do	do	do	do	do	do	do	do	do	T.
144	do	do	do	do	do	do	do	do	do	T.
145	do	do	do	do	do	do	do	do	do	T.
146	Aug. 1	do	do	Gloucester Harbor, between Round Rock and Ten Pound Island ledge.	8	Sandy	63 $\frac{1}{2}$	56 $\frac{1}{2}$	51	D.
147	Aug. 3	42 33	70 41 $\frac{1}{2}$	About same as No. 145	16	Gravel, stones, broken shells.	67 $\frac{1}{2}$	56 $\frac{1}{2}$	42 $\frac{1}{2}$	T.
148	do	do	do	Eastern Point Light NE. by E. $\frac{1}{2}$ N. 2 $\frac{1}{2}$ miles, Baker's Island W. 4 $\frac{1}{2}$ miles.	*16	Stony	66	61 $\frac{1}{2}$	42	D.
149	do	do	do	$\frac{3}{4}$ mile S. by W. from No. 147.	19 $\frac{1}{2}$	Sand and gravel	66	61 $\frac{1}{2}$	42	D.
150	do	do	do	About 2 miles SSW. of No. 148, Eastern Point NW. $\frac{1}{2}$ N. 4 $\frac{1}{2}$ miles, Baker's Island WNW. $\frac{1}{2}$ N. 3 $\frac{1}{2}$ miles.	7 $\frac{1}{2}$	Sand and mud	70	61	51 $\frac{1}{2}$	T.
151	do	do	do	Gloucester Harbor, half a mile S. of Fresh Water Cove, between it and Eastern Point Light.	7-10	do	do	do	do	T.
152	do	do	do	About the same ground	do	do	do	do	do	T.
153	do	do	do	About the same ground, just off Fresh Water Cove.	do	do	do	do	do	T.
153 ^b	Aug. 8	do	do	do	do	do	do	do	do	T.
154	Aug. 15	42 35	70 31	Eastern Point Light, SW. 2 miles, (on schr. Hatlic)	17	Pebbles, coarse sand	62	64 $\frac{1}{2}$	44 $\frac{1}{2}$	D.
155	do	42 35	70 30	Thatcher's Island NW. $\frac{1}{2}$ N. 7 miles ^b	38	Pebbles, coarse sand	69 $\frac{1}{2}$	64 $\frac{1}{2}$	41 $\frac{1}{2}$	D.
156	do	do	do	$\frac{3}{4}$ mile ESE. of No. 154, Thatcher's Island NW. $\frac{1}{2}$ W. 5 miles, Eastern Point W. $\frac{1}{2}$ N. 8 miles.	45	Muddy	do	do	do	D.
157	do	do	do	A little E. of No. 155.	42	Sand and mud	70 $\frac{1}{2}$	68 $\frac{1}{2}$	41 $\frac{1}{2}$	T.
158	do	do	do	$\frac{1}{4}$ mile W. of last place.	40	Sand and rocks	73	64 $\frac{1}{2}$	42 $\frac{1}{2}$	D.
138	do	do	do	$\frac{1}{4}$ mile W. of last place.	38	Mud and then rocks	do	do	do	D.

159	do	43 30	70 27	Gloucester Harbor, just off Fresh Water Cove.	8	59 3/4	66 1/2	44 1/2	T.
159	Aug. 19	43 30	70 27	Eastern Point Light W. 1/2 S. 0 miles, Thatcher's Island Light, N.W. 3/4 W. 5 1/2 miles.	54	do	71 1/2	39 1/2	D.
161	do			A little S. by W. of No. 160.	*54	Mud	64	39 1/2	T.
162	do			About a mile S. of No. 160.	73	Fine sand	70 1/2	65 1/2	T.
163	do			West Light, on Thatcher's Island N.W. 3/4 W. 6 1/2 miles, Eastern Joint Light W. 3/4 N. 10 miles, a mile SE. 3/4 E. from No. 160.	75	do		40	T.
164	do			West Light Thatcher's Island WNW. 3/4 N. 7 1/2 miles, Eastern Point Light W. 3/4 N. 10 1/2 miles, nearly 2 miles E. of No. 160.	35	do	71	64 1/2	D.
165	Aug. 19	42 44 1/2	70 38	Ipswich Bay, Straitsmouth Light S. by E. 5 miles, Annisquam Light SW. 3/4 W. 5 1/2 miles.					
166	do			About same as last.					
167	do			About same as last, 1/2 mile N.			71 1/2		T.
168	do			Straitsmouth Light SE. by S. 4 1/2 miles, Annisquam Light SSW. 3/4 W. 3 1/2 miles, 2 miles WSW. of No. 165.	21	Sand	71		T.
169	do			About 1/2 mile W. of No. 168.	19	do		40 1/2	T.
170	Aug. 24	42 33	69 59	Eastern Point Light W. by N. 1/4 N. 30 1/2 miles, Boone Island Light N. by W. 1/4 W. 4 1/2 miles.	90	Fine sandy mud with some gravel.		40	D.
171	do			A little S. of last.					
172	do	42 33	69 57	Eastern Point Light W. by N. 1/4 N. 32 1/2 miles, Boone Island Light N.N.W. 3/4 N. 42 1/2 miles.	*90	Similar, but more stony	67	39	T.
173	do			"Drifting towards the N."	115	Sandy mud and fine gravel		65 1/2	T.
174	Aug. 27	42 37	69 40 1/2	Thatcher's Island Light. (Western) W. 1/4 N. 38 miles, Eastern Point Light W. 3/4 N. 42 miles.	140	Muddy	68 1/2	39 1/2	D.
175	do			About as last.	*140	do		66	T.
176	do	42 38 1/2	69 41 1/2	2 miles N. of last place.	175	Mud		38 1/2	T.
177	do			About as last.					
178	do			do					
179	Aug. 29			Gloucester Harbor, just off Fresh Water Cove.	7	Fine sand.	68	38 1/2	T.
180	do			About same as last.	10	do	67	37	T.
181	do	42 24	70 36	Eastern Point Light N. 1/2 W. 7 (11 1/2) miles, Thatcher's Island Light N. by E. 1/4 E. 14 1/2 miles.	45	Mud	73 1/2	41 1/2	D.
182	do			About a mile E. of No. 181.					
183	do	42 30 1/2	70 38	Eastern Point Light N. 1/2 W. 4 1/2 miles, Baker's Island Light SW. by S. 1/4 S. 7 1/2 miles.	45	Mud, gravel, and pebbles.			T.
184	do			A little to NE. of No. 183.	45	Mud	75	42 1/2	T.
185	Aug. 31	42 33	69 55	Eastern Point Light W. by N. 33 miles, Boone Island Light N.N.W. 42 1/2 miles, White Island Light N.W. 3/4 N. 42 miles.	110	Muddy	68 1/2	39	D.
186	do			About same as No. 185.	*110	do	73 1/2		D.
187	do			About same as last.	110	Soft brown mud			T.
188	do	42 33 1/2	69 58 1/2	About 2 miles W. of No. 187.	85	Sandy mud and gravel	68 1/2	40	Tan.
189	do			About same as No. 188.	85	Gravel and pebbles		65 1/2	Ag. D.
190	do			About same as last, drifting towards SE.	*100	Muddy			T.
191	do			About same as last, drifting towards E.	*100	Soft brown mud			T.
192	do			Somewhat E. of last.	100-110	do			T.
193	do			Somewhat SSW. of last.	*100-110	Mud, harder at end.			T.
194	do			Somewhat E. of last	*110	Muddy, harder than last.			T.

* Estimated.

DREDGINGS BY SPEDWELL, 1878—Continued.

Serial number.	Date.	Latitude.	Longitude.	Locality.	Depth in fathoms.	Nature of bottom.	Temperatures.			Apparatus used.	
							Air.	Surface.	Bottom.		
195	1878 Sept. 2	42 27	70 19	Eastern Point Light NW. $\frac{1}{4}$ W. 1 $\frac{1}{2}$ miles, Eastern Light } Thatcher's Island NW. by N. 1 $\frac{1}{2}$ miles. } 4 mile SSW. from No. 195.	33-29	Coarse sand.	72 $\frac{1}{2}$	63 $\frac{1}{2}$	45 $\frac{1}{2}$ 48 $\frac{1}{2}$ 47 $\frac{1}{2}$ 54 $\frac{1}{2}$	D. T. T.	
196	do	42 25 $\frac{1}{2}$	70 23		Eastern Point Light NW. $\frac{1}{4}$ N. 1 $\frac{1}{2}$ miles, Eastern Light } Thatcher's Island NNW. 1 $\frac{1}{2}$ miles, 3 $\frac{1}{2}$ miles W. from } No. 195.	29	Stony, sponges and gravel.	60	61	54	T.
197	do	42 25 $\frac{1}{2}$	70 23		Eastern Point Light NW. $\frac{1}{4}$ N. 1 $\frac{1}{2}$ miles, Eastern Light } Thatcher's Island NNW. 1 $\frac{1}{2}$ miles, 3 $\frac{1}{2}$ miles W. from } No. 195.	23	Stony and spongy.	60	61	54	T.
198	do	42 31	70 20	Eastern Light Thatcher's Island NW. $\frac{1}{4}$ N. 1 $\frac{1}{2}$ miles. } 3 mile S. No. 198, Eastern Light Thatcher's Island NW. $\frac{1}{4}$ } N. 1 $\frac{1}{2}$ miles.	50	Coarse sand and mud.	72 $\frac{1}{2}$	64 $\frac{1}{2}$	30 $\frac{1}{2}$	T.	
199	do			Eastern Light Thatcher's Island NW. $\frac{1}{4}$ N. 1 $\frac{1}{2}$ miles. } 3 mile S. No. 198, Eastern Light Thatcher's Island NW. $\frac{1}{4}$ } N. 1 $\frac{1}{2}$ miles.	98	Muddy.	71 $\frac{1}{2}$	64 $\frac{1}{2}$	30 $\frac{1}{2}$	T.	
200	Sept. 9			Gloucester Harbor, off Norman's Woe.	10	Sandy and rocky.	64 $\frac{1}{2}$	60	56 $\frac{1}{2}$	T.	
201	do			Gloucester Harbor, off Mousel Cove.	8 $\frac{1}{2}$	Sandy mud.	63 $\frac{1}{2}$	61	54	T.	
202	do			Gloucester Harbor, off Norman's Woe.	8-10	Abundant red algae.	63 $\frac{1}{2}$	61	54	T.	
203	Sept. 16	42 31	70 37	Off Gloucester, Eastern Point Light N. by W. $\frac{1}{4}$ W. 4 $\frac{1}{2}$ } miles, Baker's Island Light WNW. 8 miles, drifting to } SW.	42	Muddy with large stones.	62 $\frac{1}{2}$	60 $\frac{1}{2}$	47 $\frac{1}{2}$	D.	
204	do			3 mile SW. by W. from No. 203.	40	Soft brown mud.	63	60 $\frac{1}{2}$	48 $\frac{1}{2}$	D.	
205	do			3 mile SW. by W. from No. 203.	42	do.	63	60 $\frac{1}{2}$	48 $\frac{1}{2}$	T.	
206	do			3 mile NE. by E. from No. 203.	42	Muddy.	65	60	48 $\frac{1}{2}$	T.	
207	do			Same as No. 203.	42	Soft brown mud.	65	60	48 $\frac{1}{2}$	T.	
208	do	42 33	70 43	Off Gloucester, Baker's Island Light W. $\frac{1}{4}$ S. 3 $\frac{1}{2}$ miles, } Eastern Point Light ENE. $\frac{1}{4}$ N. 2 $\frac{1}{2}$ miles, Kettle Island } N. by W. $\frac{1}{2}$ miles.	19-23	Rocky.	63 $\frac{1}{2}$	60	48 $\frac{1}{2}$	D.	
209	do			3 mile N. by W. $\frac{1}{4}$ W. from No. 208, $\frac{1}{2}$ mile from Kettle } Island.	17	Rock, gravel, and mud.	64	60 $\frac{1}{2}$	48 $\frac{1}{2}$	D.	
210	Sept. 17	42 38	70 28 $\frac{1}{2}$	Off Cape Ann, Salvages NW. 5 miles, Eastern Point W. } $\frac{1}{3}$ S. 9 miles.	60	Soft dark-brown mud.	66	60	43	D.	
211	do			About 2 mile E. of No. 210.	60	do.	63 $\frac{1}{2}$	60 $\frac{1}{2}$	42 $\frac{1}{2}$	D.	
212	do			About $\frac{1}{2}$ mile S. by E. $\frac{1}{4}$ E. of No. 210.	68	do.	63 $\frac{1}{2}$	60 $\frac{1}{2}$	42 $\frac{1}{2}$	T.	
213	do			About $\frac{1}{2}$ mile E. by S. $\frac{1}{4}$ S. of No. 212.	08	Soft dark-brown mud and } hard concretions.	63 $\frac{1}{2}$	60 $\frac{1}{2}$	42 $\frac{1}{2}$	T.	
214	do			A little SW. of No. 213.	57	Fine mud and sand.	63 $\frac{1}{2}$	62	50 $\frac{1}{2}$	T.	
215	Sept. 18	42 31	70 32	Eastern Point Light NW. $\frac{1}{4}$ N. 7 $\frac{1}{2}$ miles, Thatcher's Island } Light N. $\frac{1}{4}$ W. 7 $\frac{1}{2}$ miles.	35	Fine sand and few small } pebbles.	63 $\frac{1}{2}$	62	50 $\frac{1}{2}$	D.	
216	do			$\frac{1}{2}$ mile NNE. $\frac{1}{4}$ E. from No. 215.	35	Sandy.	63 $\frac{1}{2}$	62	50 $\frac{1}{2}$	T.	
217	do	42 30	70 35	Eastern Point Light NNW. $\frac{1}{4}$ W. 5 $\frac{1}{2}$ miles, Thatcher's } Island Light N. by E. $\frac{1}{4}$ E. 7 $\frac{1}{2}$ miles, 2 $\frac{1}{2}$ miles westerly } from No. 215.	45	Soft dark-brown mud.	63 $\frac{1}{2}$	62	50 $\frac{1}{2}$	T.	
218	do			Same as No. 217.	45	do.	63 $\frac{1}{2}$	62	50 $\frac{1}{2}$	T.	

Station No.	Date	Time	Depth	Bottom	Direction	Distance	Remarks	Depth	Bottom	Direction	Distance
219	do	42 30	70 33	Eastern Point Light NW ½ N. 7½ miles, Thatcher's Island Light, N. 8½ miles; 4 mile SW. from No. 215.		33	Rocky, stones of all sizes...	70½	63	D.	55½
220	do	42 32	70 35	Eastern Point Light N. W. ¾ N. 4½ miles, Thatcher's Island Light N. by E. 4 E. 6½ miles.		42	Soft brown mud			T.	
221	Sept. 21	42 33	70 31	Eastern Point Light WNW ¾ N. 6½ miles, Thatcher's Island Light N. by W. 4 W. 5½ miles.		37-38	Fine sandy mud	67½	62	D.	49½
222	do			¾ mile S.E. by E. 4 S. from No. 221		40	do			T.	
223	do			About 1½ miles E. 4 S. from No. 221		47	Soft brown mud			T.	
224	do			¾ mile E. by S. from No. 223		47	do			T.	
225	do	42 33½	70 35½	Eastern Point Light NW ¾ W. 3½ miles, Thatcher's Island Light N. by E. 4 E. 5 miles.		26	Rocky	71½	62½	Tan.	53
226	Sept. 23	42 36	70 36	Off Cape Ann, Eastern Point Light W. by S. ¾ S. 3 miles, Thatcher's Island Light N.E. 2½ miles.		18	Irregular, rocky			D. and Tan.	
227	do	42 33½	70 40	Off Gloucester, Eastern Point Light NNE. 1½ miles, S. end Kettle Island E. by S. ¾ S. 2½ miles.		23	Rock, sand, and gravel	64½	60½	D. and Tan.	58
228	do			Eastern Point Light N.E. 2½ miles, 1½ miles SW. from No. 227.		19	Rock and sand			D. and Tan.	
229	do			Eastern Point Light N.E. by N. ¾ N. ½ mile, ¼ mile N. of No. 227.		19	Rocky and coarse sand			D.	
230	do			S. end Kettle Island N. 4 W. ¾ mile, between Nos. 208 and 209		21	Rock, fine mud, and sand	59½	60½	D.	57½
231	do			Gloucester Harbor, just outside Fresh Water Cove, Eastern Point Light SE.		7	Fine white sand and red algae.			T.	
232	Sept. 24	42 30½	70 38	Eastern Point Light N. ¾ W. 4½ miles, Thatcher's Island Light NNE. ½ E. 8½ miles.		45	Soft brown mud	62½	61½	D.	42
233	do			¼ mile S. by W. 4 W. from No. 232.		45	do			T.	
234	do			¾ mile N.E. by E. from No. 232; on chart NW. from No. 232, which is probably correct.		43	do			T.	
235	do	42 33½	70 39	Eastern Point Light N. by W. 4 W. 1½ miles, Thatcher's Island Lights N.E. 4 N. 5½ miles, close to No. 135.		22	Rocky			Tan.	
236	Sept. 26	42 28	70 31	Eastern Point Light NW by N. 9½ miles, Thatcher's Island Lights N. 4 W. 10½ miles.		28	Rocky, coarse sand, and pebbles.	63½	61	D.	48½
237	do	42 31	70 29	Eastern Point Light NW ¾ W. 9 miles, Thatcher's Island Lights N. by W. 4 W. 8½ miles.		38	Coarse sand and gravel	66	61½	D.	49½
238	do	42 30½	70 38	Eastern Point Light N. by W. 4½ miles, Thatcher's Island Lights NNE. ¾ E. 7½ miles, close to No. 232.		43	Soft brown mud	69	61½	T.	

Station No.	Date	Time	Depth	Bottom	Direction	Distance					
239	1879, July 21	41 51	70 14	Cape Cod Bay, Wood End Light N. 16° E., Indian Hill N. 79° W.		13	Blue mud and fine sand	70½	67	D.	65½
240	do	41 52½	70 15	Wood End Light N. 19° E., Rocky Point N. 74° W.		18	Blue mud and fine sand	69½	67	T.	64½
241	do	41 57	70 12	Wood End Light N. 16° E., Billingsgate Light S. 55° E.		19	Blue mud and fine sand			T.	
242	do	41 59	70 13	Race Point Light N. 9° W., Cape Cod Light N. 66° E.		21	Blue mud	72	67	D.	63½
243	do	42 01	70 12	Race Point Light N. 25° W., Wood End Light N. 58° E.		20	do	69	66½	T.	64½
244	July 22	42 04½	70 15½	Race Point Light S. 50° E. (dredge) 1 mile, (trawl) 1½ miles.		25-30	Fine gray sand	70	58	D. and T.	{ 40 } { 45 }
245	do	{ 42 08 } { 42 07½ }	70 17 } 70 13½ }	Race Point Light S. 27° E. (dredge) 5½ miles, S. 7 W. (trawl) 4 miles.		28	do			D. and T.	

DREDGINGS BY SPEEDWELL, 1879.

DREDGINGS BY SPEEDWELL, 1870—Continued.

Serial number.	Date.	Latitude.	Longitude.	Locality.	Depth in fathoms.	Nature of bottom.	Temperatures.			Apparatus used.
							Air.	Surface.	Bottom.	
246	1870, July 25	42 06	70 14½	Race Point Light S. 11° E. 2½ miles, "Spider Ground"	28	Fine gray sand.	66	63	o	D.
247	do	42 07	70 15½	Race Point Light S. 20° E. 3½ miles	34	do	66	63	o	D.
248	do	42 07	70 14	Race Point Light S. 1° W. 3½ miles	32	do	66½	63½	o	D.
249	do	42 08½	70 13	Race Point Light S. 13° W. 4½ miles	30	Coarse sand.	65	62½	o	D.
250	do	42 09	70 10½	Race Point Light S. 9° W. 5½ miles	30	do	66½	62½	o	D.
251	do	42 10	70 10	Race Point Light S. 23° W. 6½ miles	24½	Coarse sand and gravel	65½	60½	o	D.
252	do	42 09	70 09½	Race Point Light S. 34° W. 6½ miles	27	Fine gray sand and gravel	66½	62½	o	T.
253	July 28	41 57	70 17½	Cape Cod Bay, "Fishing Ledge," Wood End Light N. 50° E. 7 miles.	17	Rocky	72	63	o	D.
254	do	do	do	do	21	Sandy	75	65	o	D.
255	do	do	do	do	18	Rocky	76	66	o	D.
256	do	do	do	do	16	do	78	68	o	D.
257	do	do	do	do	20	Soft mud.	72	64	o	T.
258	do	41 55	70 20	Cape Cod Bay, Wood End Light NE. ½ E. 9½ miles	25	Blue mud.	74	64	o	T.
259	do	41 57½	70 22½	Cape Cod Bay, Wood End Light ENE. 10½ miles	23	Green mud	74	65	o	T.
260	do	41 58½	70 19	Cape Cod Bay, Wood End Light ENE. 7½ miles	26	Mud	74	65	o	T.
261	do	42 00	70 15	Cape Cod Bay, Wood End Light ENE. 3½ miles	80	Blue mud	71	63½	o	D.
262	July 29	42 11	69 57	Off Cape Cod, Race Point Light S. 65° W. 14 miles	80	do	71	63½	o	D.
263	do	do	do	do	83	do	71	63½	o	D.
264	do	42 10	69 56½	Off Cape Cod, Race Point Light S. 65° W. 15 miles	80	do	71	65½	o	T.
265	do	42 09½	69 57	Off Cape Cod, Cape Cod Light S. 30° W. 8 miles	72	Gravel.	71	65½	o	T.
266	do	42 12½	69 50	Off Cape Cod, Cape Cod Light S. 45° W. 13 miles	120	Blue mud.	71	66½	o	T.
267	July 31	42 13	69 40	Off Cape Cod, Race Point Light S. 81½° W. 26 miles	135	do	70½	68½	o	T.
268	do	42 12	69 40	Off Cape Cod, Race Point Light S. 84½° W. 26 miles	129	do	71	67½	o	T.
269	do	42 08	69 53	Off Cape Cod, Cape Cod Light S. 67½° W. 9 miles	53	Gravel.	70½	64½	o	T.
270	do	42 06	69 53½	Off Cape Cod, Race Point Light S. 60½° W. 7 miles	42	Blue sand and gravel	71	64½	o	T.
271	Aug. 1	42 06½	70 18	Off Cape Cod, Race Point Light S. 12° W. 2½ miles	34	Fine yellow sand	70½	66½	o	D.
272	do	42 07	70 19	Off Cape Cod, Race Point Light S. 2° W. 3 miles	31	Yellow sand	70	66½	o	D.
273	do	42 07½	70 09½	Off Cape Cod, Race Point Light S. 40° W. 5½ miles	25	Coarse yellow sand and gravel.	69	67	o	D.
274	do	42 09½	70 05	Off Cape Cod, Cape Cod Light S. 11° E. 7 miles.	30	Coarse yellow sand and broken shells.	73½	68½	o	D.
275	do	do	do	do	29½	Green mud	72	66½	o	T.
276	do	42 08½	70 00	Off Cape Cod, Cape Cod Light S. 20° W. 6½ miles.	47	Blue mud	71	66	o	T.
277	do	42 02	70 15	Cape Cod Bay, Wood End Light S. 70° E. 3 miles	28	Sand and shells	74	74½	o	T.
278	Aug. 4	do	do	Provincetown Harbor, Long Point Light N. 75° E. 4 miles	9	Sandy	70	63½	o	D.
279	do	42 09½	70 15	On Stellwagen's Bank, Race Point Light S. 6½ miles.	13-13½	Sand	74	63	o	D.
280	do	42 09½	70 16½	On Stellwagen's Bank, Race Point Light S. 17° E. 6½ miles.	12½-13½	Yellow sand and gravel.	76	63	o	T.
281	do	42 12	70 16½	On Stellwagen's Bank, Race Point Light S. 12° E. 8½ miles.	14	Fine yellow sand and broken shells.	76	62½	o	D.

282	do	42 13	70 13	On Stellwagen's Bank, Race Point Light S. 3° W. 9.4 miles.	13 1/2	Sand and gravel	72 1/2	61 1/2	43	D.
283	do	42 09 1/2	70 22	Southwest of Stellwagen's Bank, Race Point Light S. 44° E. 8 1/2 miles.	31	Sand and green mud	70.7	65 3/4	38 1/2	D.
284	do	42 10	70 22	do	31	Green mud	70.7	65 1/2	39	T.
285	Aug. 6	42 12	70 25	Southwest of Stellwagen's Bank, Race Point Light S. 44° E. 11 miles.	35 1/2	do	69	68	39	D.
286	do	42 16 1/2	70 23	West of Stellwagen's Bank, Race Point Light S. 14° E. 14 miles.	37	do	71	67	39 1/2	D.
287	do	42 17 1/2	70 25 1/2	West of Stellwagen's Bank, Race Point Light S. 20° E. 16 miles.	47 1/2	do	68	67 1/2	38 1/2	T.
288	do	42 20	70 27	West of Stellwagen's Bank, Race Point Light S. 20° E. 19 miles.	33	Fine blue sand and shells.	72	67.3	38 1/2	T.
289	do	42 19	70 25	Same as last in Record Book; nearly 2 miles SE. on chart	45	Fine gray sand	69 1/2	68 1/2	38	T.
290	Aug. 11	42 04 1/2	70 16	Month Cape Cod Bay, Race Point Light S. 86° E. 1 1/2 miles.	31	do	72	63 1/2	38	T.
291	do	42 04 1/2	70 16 1/2	Month Cape Cod Bay, Race Point Light S. 55° E. 1 1/2 miles.	30	do	64	64	40	T.
292	do	42 03 1/2	70 18 1/2	Month Cape Cod Bay, Race Point Light N. 85° E. 2 1/2 miles.	27	Blue mud, fine sand	69	65	41	D.
293	do	42 03 1/2	70 19 1/2	Month Cape Cod Bay, Race Point Light N. 84° E. 3 1/2 miles.	29	do	66	65 1/2	39 1/2	D.
294	do	42 03 1/2	70 23	Month Cape Cod Bay, Race Point Light N. 86° E. 6 1/2 miles.	26	do	68 1/2	66 1/2	39	T.
295	do	42 03 1/2	70 24 1/2	Month Cape Cod Bay, Race Point Light N. 89° E. 7 1/2 miles.	26	do	67	65 1/2	39 1/2	R. D.
296	do	42 02 1/2	70 26	Month Cape Cod Bay, Race Point Light N. 82° E. 9 miles.	26	do	68 1/2	65	39	D.
297	do	42 02 1/2	70 29	Month Cape Cod Bay, Race Point Light N. 80° E. 11 miles.	22	Fine sand	69	65	39 1/2	T.
298	do	42 02 1/2	70 32	Month Cape Cod Bay, Gurnet Point Light S. 78° W. 3 1/2 miles.	16	Fine brown sand	64	61 1/2	50 1/2 (?)	D.
298a	Aug. 20	42 00 1/2	70 30	Month Cape Cod Bay, Gurnet Point Light S. 88° W. 1 1/2 miles.	20	Brown sand and pebbles	68	59	44	T.
299	do	42 01 1/2	70 30	Month Cape Cod Bay, Gurnet Point Light S. 74° W. 4 1/2 miles.	21	Fine brown sand	66	61 1/2	45	T.
300	do	42 01 1/2	70 29	Month Cape Cod Bay, Gurnet Point Light S. 75° W. 5 miles, 1/2 mile S. of No. 297.	20	Brown sand and pebbles	68	61 1/2	45	T.
301, 301a	do	42 01 1/2	70 20	Month Cape Cod Bay, Race Point Light N. 65° E. 5 miles	27	Soft brown mud	66	60	42 1/2	D. and R. D.
302	Aug. 21	42 12 1/2	69 46	Off Cape Cod, Cape Cod Light S. 51° W. 16 1/2 miles	124	Fine brown mud	68	60	41	D.
303	do	42 11 1/2	69 47	Off Cape Cod, Cape Cod Light S. 51° W. 15 miles	122	Soft brown mud	71	61 1/2	41	T.
304	do	42 10	69 45	Off Cape Cod, Cape Cod Light S. 61° W. 15 miles.	122	do	75 1/2	61 1/2	41	T.
305	do	42 09 1/2	69 41	Off Cape Cod, Cape Cod Light S. 68° W. 18 miles.	118	do	69	61	41	T.
306	Aug. 25	42 06 1/2	70 20	Race Point Light S. 50° E. 4 1/2 miles.	30	Blue mud	63	61	41	T.
307	do	42 06 1/2	70 18	Race Point Light S. 46° E. 4 1/2 miles.	31	Blue mud and fine sand	65	61 1/2	43 1/2	T.
308	do	42 08 1/2	70 18	Race Point Light S. 28° E. 5 1/2 miles, S. edge Stellwagen's Bank.	26	Fine sand and broken shells.	64	61 1/2	41	D.
309	do	42 08 1/2	70 17	Race Point Light S. 23° E. 5 1/2 miles, E. of No. 308.	27	Fine yellow sand	66	60 1/2	40 1/2	T.
310	Aug. 29	42 01	70 11	Cape Cod Bay, Wood End Light N. 33° W. 1/2 mile.	21	Blue mud, fine sand	63	60 1/2	47 1/2	D.
311	do	42 00	70 10	Cape Cod Bay, Wood End Light N. 36° W. 1 1/2 miles	16	do	67 1/2	61 1/2	49	R. D.
312	do	41 59 1/2	70 09	Cape Cod Bay, Wood End Light N. 41° W. 2 1/2 miles	15	Mud and sand	63	62	50	R. D.
313	do	41 58	70 09	Cape Cod Bay, Wood End Light N. 29° W. 3 1/2 miles	15	Blue mud	64	61	50 1/2	R. D.
314	do	41 56	70 07	Cape Cod Bay, Wood End Light N. 31° W. 3 1/2 miles	10	Coarse sand	67	61 1/2	61	R. D.
315	do	41 55	70 07	Cape Cod Bay, Wood End Light N. 25° W. 6 miles.	6	Coarse sand and gravel	66	63 1/2	50	T. D.
316	do	41 56 1/2	70 06 1/2	Cape Cod Bay, Wood End Light N. 25° W. 5 1/2 miles	8	do	69	62	63	D.
317	Aug. 30	42 02	70 14	Cape Cod Bay, Race Point Light N. 36° W. 1 1/2 miles	25	Blue mud	59	60	44 1/2	D.
318	do	42 01 1/2	70 15	Cape Cod Bay, Race Point Light N. 14° E. 2 1/2 miles	28	do	61	61 1/2	44 1/2	T.
319	do	42 02 1/2	70 15	Cape Cod Bay, Race Point Light N. 10° E. 1 1/2 miles	26 1/2	do	60	60	44 1/2	T.
320	do	42 02 1/2	70 15	Cape Cod Bay, Race Point Light N. 38° E. 1 1/2 miles	29 1/2	Fine gray sand	63 1/2	61	44 1/2	R. D.
321	do	42 03	70 15	Cape Cod Bay, Race Point Light N. 62° E. 1 mile	29 1/2	do	65	61	44 1/2	R. D.
322	Sept. 1	42 12 1/2	70 01	Off Cape Cod, Cape Cod Light S. 9° W. 10 miles.	67	Speckled sand, broken shells.	66	60	40 1/2	D.
323	do	42 13 1/2	70 01 1/2	Off Cape Cod, Cape Cod Light S. 6° W. 11 miles.	60	Speckled sand	67 1/2	58	40 1/2	T.

DREDGINGS BY SPEDWELL, 1879—Continued.

Serial number.	Date.	Latitude.	Longitude.	Locality.	Depth in fathoms.	Nature of bottom.	Temperatures.			Apparatus used.
							Air.	Surface.	Bottom.	
324	Sept. 1	42 12 $\frac{1}{2}$	70 03	Off Cape Cod, Cape Cod Light S. 2° W. 11 miles.	45	Coarse sand, black specks, broken shells.	67	61	40 $\frac{1}{2}$	T.
325	do	42 14 $\frac{1}{2}$	70 00 $\frac{1}{2}$	Off Cape Cod, Cape Cod Light S. 8° W. 13 miles.	83	Green mud.	67	61	40 $\frac{1}{2}$	T.
326	do	42 14 $\frac{1}{2}$	70 02 $\frac{1}{2}$	Off Cape Cod, Cape Cod Light S. 4° W. 12 $\frac{1}{2}$ miles.	75	do	70	59 $\frac{1}{2}$	40 $\frac{1}{2}$	A. G. T.
327	Sept. 6	42 11	70 12 $\frac{1}{2}$	S. end Stellwagen's Bank, Race Point Light S. 11° W. 7 $\frac{1}{2}$ miles.	17	Coarse sand, black specks.	61 $\frac{1}{2}$	60	44 $\frac{1}{2}$	D.
328	do	42 10	70 13	Off S. end Stellwagen's Bank, Race Point Light S. 11° W. 6 $\frac{1}{2}$ miles.	23	do	72	60 $\frac{1}{2}$	42	O. T.
329	do	42 09	70 12	Off S. end Stellwagen's Bank, Race Point Light S. 17° W. 5 $\frac{1}{2}$ miles.	26	Fine brown sand, pebbles.	67 $\frac{1}{2}$	60	42	R. D.
330	do	42 09 $\frac{1}{2}$	70 13	Off S. end Stellwagen's Bank, Race Point Light S. 8° W. 6 miles.	26	do	68	60	42	T.
331	do	42 09 $\frac{1}{2}$	70 14	Off S. end Stellwagen's Bank, Race Point Light S. 2° W. 5 $\frac{1}{2}$ miles.	28	Fine brown sand, black specks.	67	60 $\frac{1}{2}$	41 $\frac{1}{2}$	T.
332	do	42 09	70 15	Off S. end Stellwagen's Bank, Race Point Light S. 6° E. 5 $\frac{1}{2}$ miles.	28	Fine brown sand, shells.	70	61	42	T.
333	do	42 08 $\frac{1}{2}$	70 16 $\frac{1}{2}$	Off S. end Stellwagen's Bank, Race Point Light S. 18° E. 5 $\frac{1}{2}$ miles.	27	do	71	61	42 $\frac{1}{2}$	R. D.
334	do	42 08 $\frac{1}{2}$	70 18	Off S. end Stellwagen's Bank, Race Point Light S. 28° E. 5 $\frac{1}{2}$ miles.	27	Fine yellow sand	74	61 $\frac{1}{2}$	42	A. G. T.
335	Sept. 9	41 58 $\frac{3}{4}$	70 34 $\frac{1}{2}$	Off Plymouth, Gurnet Point Light N. 30° W. 1 $\frac{1}{2}$ miles.	7	Green mud, sand, with dead eel-grass.	62	61 $\frac{1}{2}$	55	D.
336	do	41 58	70 33 $\frac{1}{2}$	Off Plymouth, Gurnet Point Light N. 40° W. 2 $\frac{1}{2}$ miles.	11 $\frac{1}{2}$	Brown sand, specks, eel-grass.	69	61 $\frac{1}{2}$	50	T.
337	do	41 57 $\frac{1}{2}$	70 30 $\frac{1}{2}$	Off Plymouth, Gurnet Point Light N. 58° W. 4 $\frac{1}{2}$ miles.	16	Green mud and sand	70	62	47 $\frac{1}{2}$	D.
338	do	41 57 $\frac{1}{2}$	70 28	Off Plymouth, Gurnet Point Light N. 62° W. 6 $\frac{1}{2}$ miles.	18	Sand, blue mud	71	62 $\frac{1}{2}$	49 $\frac{1}{2}$	T.
339	do	41 54	70 28	Cape Cod Bay, Manomet Point N. 67° W. 3 $\frac{1}{2}$ miles, 3 $\frac{1}{2}$ miles S. of No. 338.	15 $\frac{1}{2}$	Mud and sand	75	63	47 $\frac{1}{2}$	T.
340	do	41 51	70 27 $\frac{1}{2}$	Cape Cod Bay, Manomet Point N. 38° W. 6 miles.	14	Brown sand and mud	69 $\frac{1}{2}$	63	49 $\frac{1}{2}$	D.
341	do	41 51 $\frac{1}{2}$	70 21 $\frac{1}{2}$	Cape Cod Bay, Manomet Point N. 68° W. 9 miles.	15 $\frac{1}{2}$	Green mud, sand.	63 $\frac{1}{2}$	63 $\frac{1}{2}$	48	T.
342	Sept. 10	42 16	69 56	Off Cape Cod, Cape Cod Light S. 22° W. 14 miles.	94	Brown mud.	63 $\frac{1}{2}$	58 $\frac{1}{2}$	41 $\frac{1}{2}$	T.
343	do	42 17	69 51	Off Cape Cod, Cape Cod Light S. 33° W. 17 $\frac{1}{2}$ miles.	116	do	63	57	41 $\frac{1}{2}$	T.
344	do	42 19	69 47 $\frac{1}{2}$	Off Cape Cod, Cape Cod Light S. 35° W. 15 miles (20 miles on original chart).	130	do	64	57 $\frac{1}{2}$	41 $\frac{1}{2}$	T.
345	Sept. 13	42 13 $\frac{1}{2}$	70 45	Off Boston Harbor, Minot's Ledge Light S. 3 $\frac{1}{2}$ miles.	16	Speckled sand and shells.	60	61 $\frac{1}{2}$	46 $\frac{1}{2}$	D.
346	do	42 16	70 38	Massachusetts Bay, Minot's Ledge Light N. 5 $\frac{1}{2}$ miles.	22	Pebbles and broken shells.	61 $\frac{1}{2}$	61 $\frac{1}{2}$	44 $\frac{1}{2}$	T.
347	do	42 13 $\frac{1}{2}$	70 33 $\frac{1}{2}$	Massachusetts Bay, Minot's Ledge Light N. 66° W. 9 miles.	20	Speckled sand.	65	61 $\frac{1}{2}$	46 $\frac{1}{2}$	T.
348	do	42 09 $\frac{1}{2}$	70 32 $\frac{1}{2}$	Massachusetts Bay, Standish Monument (near Duxbury) N. 35° W. 10 miles.	16 $\frac{1}{2}$	Gravel and sand.	66	62 $\frac{1}{2}$	40 $\frac{1}{2}$	D.

349	...	42	10 $\frac{1}{2}$	70	29	Standish Monument S. 36° W. 13 miles	25	Sand and mud	65	61 $\frac{3}{4}$	O. T.
350	do	42	08 $\frac{1}{2}$	70	25	Standish Monument S. 56° W. 13 $\frac{1}{2}$ miles	31	Blue mud	72 $\frac{1}{2}$	61 $\frac{1}{2}$	43 $\frac{1}{2}$
351	do	42	05 $\frac{1}{2}$	70	26	Race Point Light S. 74° E. 6 miles	30	do	72 $\frac{1}{2}$	62 $\frac{1}{2}$	43 $\frac{1}{2}$
352	Sept. 15	41	54 $\frac{1}{2}$	70	07 $\frac{1}{2}$	Cape Cod Bay, Billingsgate Light S. 78° E. 5 miles	10 $\frac{1}{2}$	Sand and gravel	61 $\frac{1}{2}$	63 $\frac{1}{2}$	Ag. T.
353	do	41	54 $\frac{1}{2}$	70	10	Cape Cod Bay, Billingsgate Light S. 78° E. 5 miles	14	Green mud	61	63 $\frac{1}{2}$	D.
354	do	41	50 $\frac{1}{2}$	70	11 $\frac{1}{2}$	Cape Cod Bay, Billingsgate Light N. 74° E. 6 miles	7	Coarse yellow sand	76 $\frac{1}{2}$	63 $\frac{1}{2}$	T.
355	do	41	48 $\frac{1}{2}$	70	12	Cape Cod Bay, Billingsgate Light N. 56° E. 7 $\frac{1}{2}$ miles	7	Fine sand, pebbles	66	64	D.
356	do	41	49 $\frac{1}{2}$	70	09	Cape Cod Bay, Billingsgate Light N. 48° E. 5 $\frac{1}{2}$ miles	7 $\frac{1}{2}$	Fine brown sand	65	64 $\frac{1}{2}$	D.
357	do	41	55	70	10	Cape Cod Bay, Billingsgate Light N. 48° E. 5 $\frac{1}{2}$ miles	15	Blue mud	65	65 $\frac{1}{2}$	D.
358	do	42	04	69	22	Off Cape Cod, Cape Cod Light S. 86° W. 30 miles	105	Green mud	65	64 $\frac{1}{2}$	T.
359	Sept. 18	42	03	69	22	Off Cape Cod, Cape Cod Light S. 88° W. 30 miles	106	Gray mud	67	58 $\frac{1}{2}$	D.
360	do	42	02	69	28	Off Cape Cod, Cape Cod Light N. 89° W. 26 miles	102	do	65	58 $\frac{1}{2}$	T.
361	do	42	01	69	34 $\frac{1}{2}$	Off Cape Cod, Cape Cod Light N. 89° W. 26 miles	108	do	62	58 $\frac{1}{2}$	T.
362	do	42	00	69	36 $\frac{1}{2}$	Off Cape Cod, Cape Cod Light N. 84° W. 21 miles	108	do	62 $\frac{1}{2}$	59 $\frac{1}{2}$	T.
363	do	42	00	69	36 $\frac{1}{2}$	Off Cape Cod, Cape Cod Light N. 84° W. 21 miles	108	Mud, fine gravel	66	59 $\frac{1}{2}$	D.
364	do	41	58 $\frac{1}{2}$	69	44	Off Cape Cod, Cape Cod Light N. 75° W. 15 miles	70	Hard sand, broken shells	65	59 $\frac{1}{2}$	D.
365	Sept. 19	41	58 $\frac{1}{2}$	69	53	Off Chatham, Chatham Light N. 45° W. 21 miles	7 $\frac{1}{2}$	Coarse sand	63	61 $\frac{1}{2}$	T.
366	do	41	37 $\frac{1}{2}$	69	51	Off Chatham, Chatham Light N. 55° W. 44 miles	11	Fine sand	63	61	T.
367	do	41	38	69	49	Off Chatham, Chatham Light N. 67° W. 5 $\frac{1}{2}$ miles	12	do	63	61	D.
368	do	41	39	69	48	Off Chatham, Chatham Light N. 84° W. 6 miles	15	Coarse sand, gravel	63	61 $\frac{1}{2}$	D.
369	do	41	41	69	47 $\frac{1}{2}$	Off Chatham, Chatham Light S. 78° W. 6 $\frac{1}{2}$ miles	18	do	64	61 $\frac{1}{2}$	T.
370	do	41	35 $\frac{1}{2}$	69	42	Off Chatham, Chatham Light N. 75° W. 12 miles	18	Speckled sand	61	57 $\frac{1}{2}$	T.
371	do	41	35 $\frac{1}{2}$	69	35	Off Chatham, Chatham Light N. 72° W. 16 miles	34 $\frac{1}{2}$	Coarse speckled sand	66	61 $\frac{1}{2}$	T.
372	do	41	40	69	28 $\frac{1}{2}$	Off Chatham, Chatham Light W. 21 miles	70	Sand and pebbles	61 $\frac{1}{2}$	59	T.
373	Sept. 26	42	07	69	59	Off Cape Cod, Cape Cod Light S. 32° W. 5 miles	42	Fine gray sand, black specks	58	54	44
374	do	42	04	69	54	Off Cape Cod, Cape Cod Light S. 75° W. 6 $\frac{1}{2}$ miles	46	Fine sand, broken shells	64	54 $\frac{1}{2}$	T.
375	do	42	04 $\frac{1}{2}$	69	53 $\frac{1}{2}$	Off Cape Cod, Cape Cod Light S. 72° W. 7 miles	46	Coarse sand	59	54	43
376	do	42	04 $\frac{1}{2}$	69	54	do	94	do	59	54	45 $\frac{1}{2}$
377	do	42	04	69	44 $\frac{1}{2}$	Off Cape Cod, Cape Cod Light S. 85° W. 13 miles	94	Brown mud	58	57	D.
378	do	42	04 $\frac{1}{2}$	69	39	Off Cape Cod, Cape Cod Light S. 85° W. 17 $\frac{1}{2}$ miles	96	do	58	57	D.

A series of temperature observations was made by the Speedwell on September 25 and 29, 1879. These had separate numbers from No. 1 to No. 25, and as no dredgings or natural-history observations were made, they have been placed after the tables of dredging localities. Their localities, &c., will be found on the following page (38), and the serial temperatures taken on those days are placed on page 43, at the end of the tables of serial temperatures taken in the course of dredging expeditions.

* TEMPERATURE OBSERVATIONS BY THE SPEEDWELL, SEPTEMBER 25 AND 29, 1879.

Serial number.	Date.	Locality.	Depth in fathoms.	Temperatures.		
				Air.	Surface.	Bottom.
	1879.			o	o	o
1	Sept. 25	Long Point WNW. $\frac{3}{4}$ mile.....	17	55 $\frac{1}{2}$	47 $\frac{3}{4}$
2	25	Wood End Light NW. $\frac{1}{4}$ mile.....	21	55	47
3	29	Wood End Light NE. $\frac{1}{4}$ mile.....	22	59	45
4	29	Wood End Light N. 80° E. 2 miles.....	24 $\frac{1}{2}$	57 $\frac{1}{2}$	44 $\frac{1}{2}$
5	29	Wood End Light N. 55° E. 3 $\frac{1}{4}$ miles.....	21	57 $\frac{1}{2}$	45
6	29	Wood End Light N. 48° E. 5 $\frac{1}{2}$ miles.....	21	57 $\frac{1}{2}$	45 $\frac{1}{2}$
7	29	Wood End Light N. 45° E. 7 $\frac{1}{4}$ miles.....	19 $\frac{1}{2}$	58 $\frac{1}{2}$	46 $\frac{1}{2}$
8	29	Wood End Light N. 50° E. 7 $\frac{3}{4}$ miles.....	19 $\frac{1}{2}$	58 $\frac{1}{2}$	46
9	29	Wood End Light N. 66° E. 6 $\frac{1}{4}$ miles.....	24	59	44 $\frac{1}{2}$
10	29	Wood End Light N. 85° E. 6 miles.....	26	69 $\frac{1}{2}$	58	44
11	29	Wood End Light S. 75° E. 5 $\frac{1}{2}$ miles.....	30	69 $\frac{1}{2}$	58 $\frac{1}{2}$	44
12	29	Race Point Light S. 71° E. 3 $\frac{1}{4}$ miles.....	33	66	58	44
13	29	Race Point Light S. 45° E. 4 $\frac{1}{2}$ miles.....	34	66	57 $\frac{1}{2}$	44 $\frac{1}{2}$
14	29	Race Point Light S. 32° E. 6 miles.....	11	67	58	51 $\frac{1}{2}$
15	29	Race Point Light S. 13° E. 5 $\frac{1}{4}$ miles.....	23	63 $\frac{1}{2}$	57 $\frac{1}{2}$	52 $\frac{1}{2}$
16	29	Race Point Light S. 16° W. 6 miles.....	19	62 $\frac{1}{2}$	58	49
17	29	Race Point Light S. 30° W. 6 $\frac{1}{2}$ miles.....	26	63	57 $\frac{1}{2}$	46 $\frac{1}{2}$
18	29	Race Point Light S. 51° W. 8 $\frac{1}{4}$ miles.....	28	62 $\frac{1}{2}$	57	45
19	29	Race Point Light S. 58° W. 9 $\frac{1}{4}$ miles.....	49	62 $\frac{1}{2}$	57 $\frac{1}{2}$	43 $\frac{1}{2}$
20	29	Race Point Light S. 70° W. 9 $\frac{1}{2}$ miles.....	32	62 $\frac{1}{2}$	57	44
21	29	Race Point Light S. 66° W. 5 $\frac{1}{2}$ miles.....	21	64	57	45
22	29	Race Point Light S. 42° W. 5 $\frac{1}{2}$ miles.....	28	62 $\frac{1}{2}$	56 $\frac{1}{2}$	46
23	29	Race Point Light S. 18° W. 2 $\frac{1}{4}$ miles.....	33	57 $\frac{1}{2}$	44
24	29	Race Point Light S. 83° E. 2 miles.....	30	61	58	44
25	29	Race Point Light N. 16° E. 2 $\frac{1}{4}$ miles.....	27	61	58	44 $\frac{1}{2}$

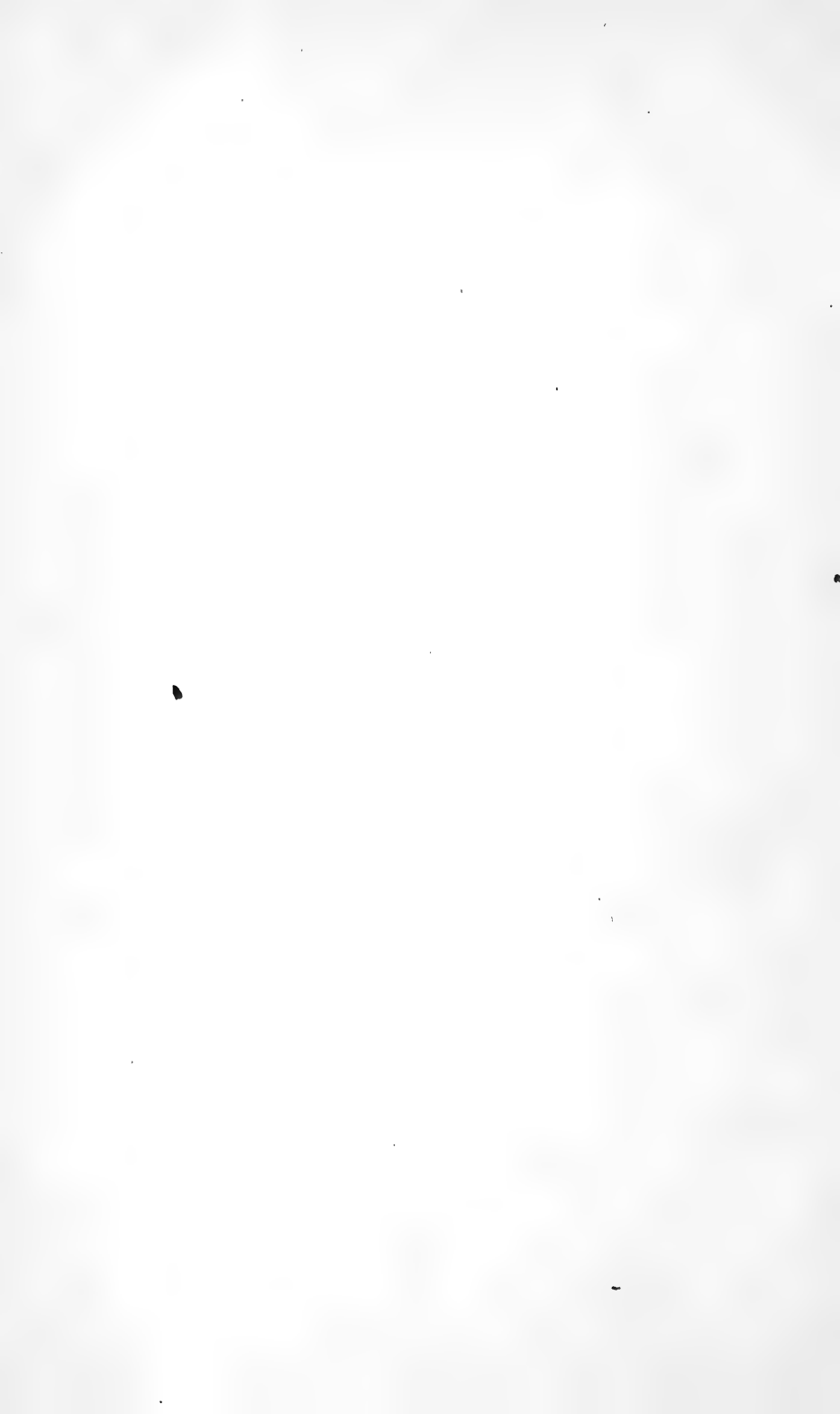
* See pages 37 and 43.

DREDGING STATIONS OF U. S. FISH COMMISSION.

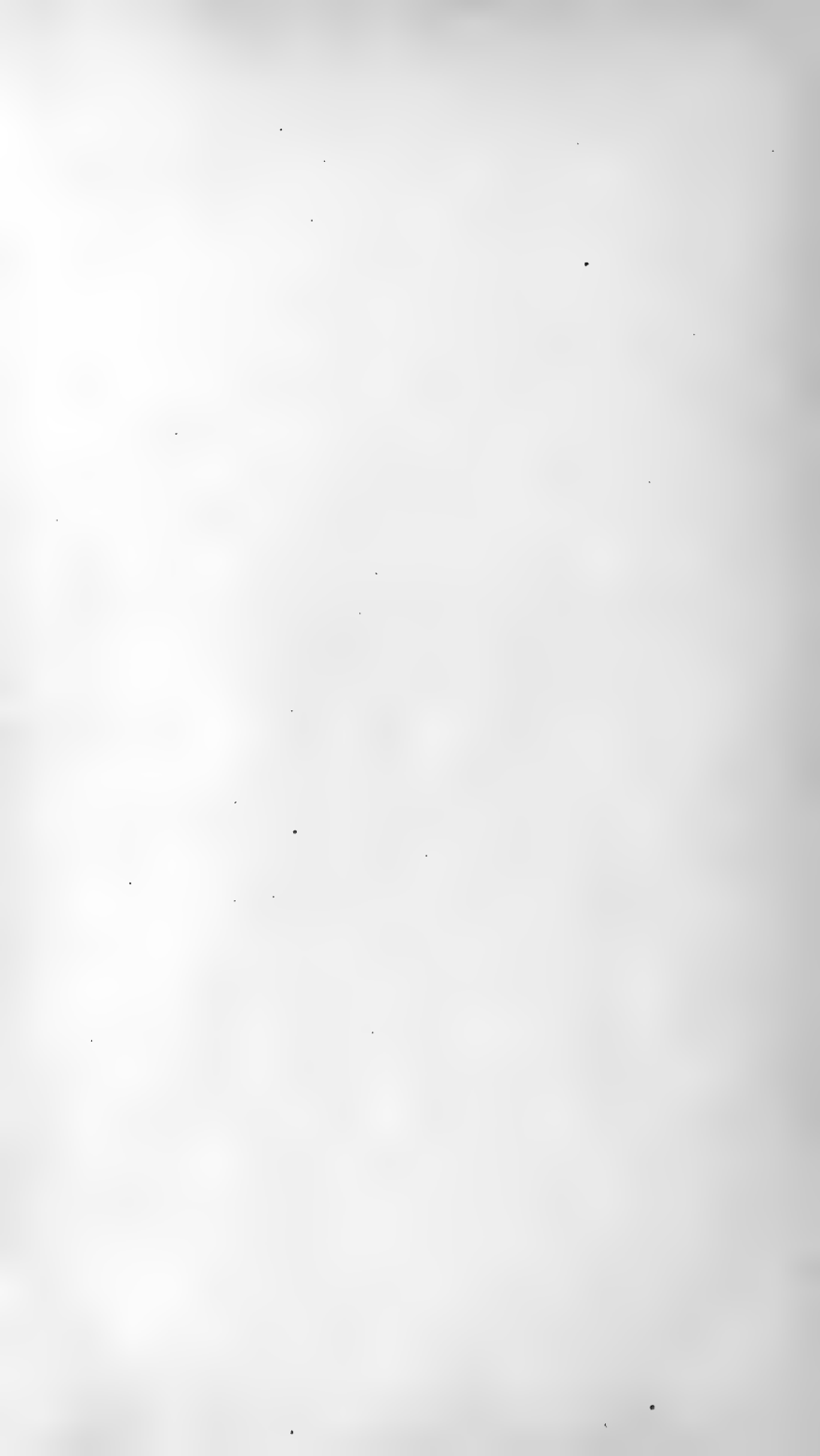
*SERIES OF TEMPERATURES TAKEN BY THE SPEEDWELL SEPTEMBER 25 AND 29, 1879.

Sept. 25	17	55.5	50.75	+	47.8																	
25	21	55		+	47																	
29	22	59	56.5	45																		
20	24½	57.5		46.5	+	44.2																
29	21	57.2	56.5	45	+																	
29	21	57.5	56.2	45.2	+																	
29	19½	58.5	57.5	53.1	+	46.1																
29	19½	58.5	57.5	56	+	46																
29	24	59.2	57	54.1	+	44.8																
29	10	63.5	58	57	44																	
29	30	63.5	58.5	57	44																	
29	33	66	67.8	56.2	48	+	44															
29	34	66	69.2	56	51.1	+	44.2															
29	14	67	68	57	51.5	+																
29	23	63.5	57.2	56	54.5	+	52.5															
29	19	62.5	58	56	49	+																
29	26	63	57	56.2	54.5	+	46.5															
29	28	62.5	57	56.5	55																	
29	49	62.8	57.8	57.2	54.5																	
29	32	62.5	57	55.2	51.5																	
29	21	64	57	55.2	51																	
29	28	62.8	56.5	56.2	46.1																	
29	33		57.5	57	56	45																
29	30	61	58	58	57	44																
29	27	61	58	59	56.8	44.9																

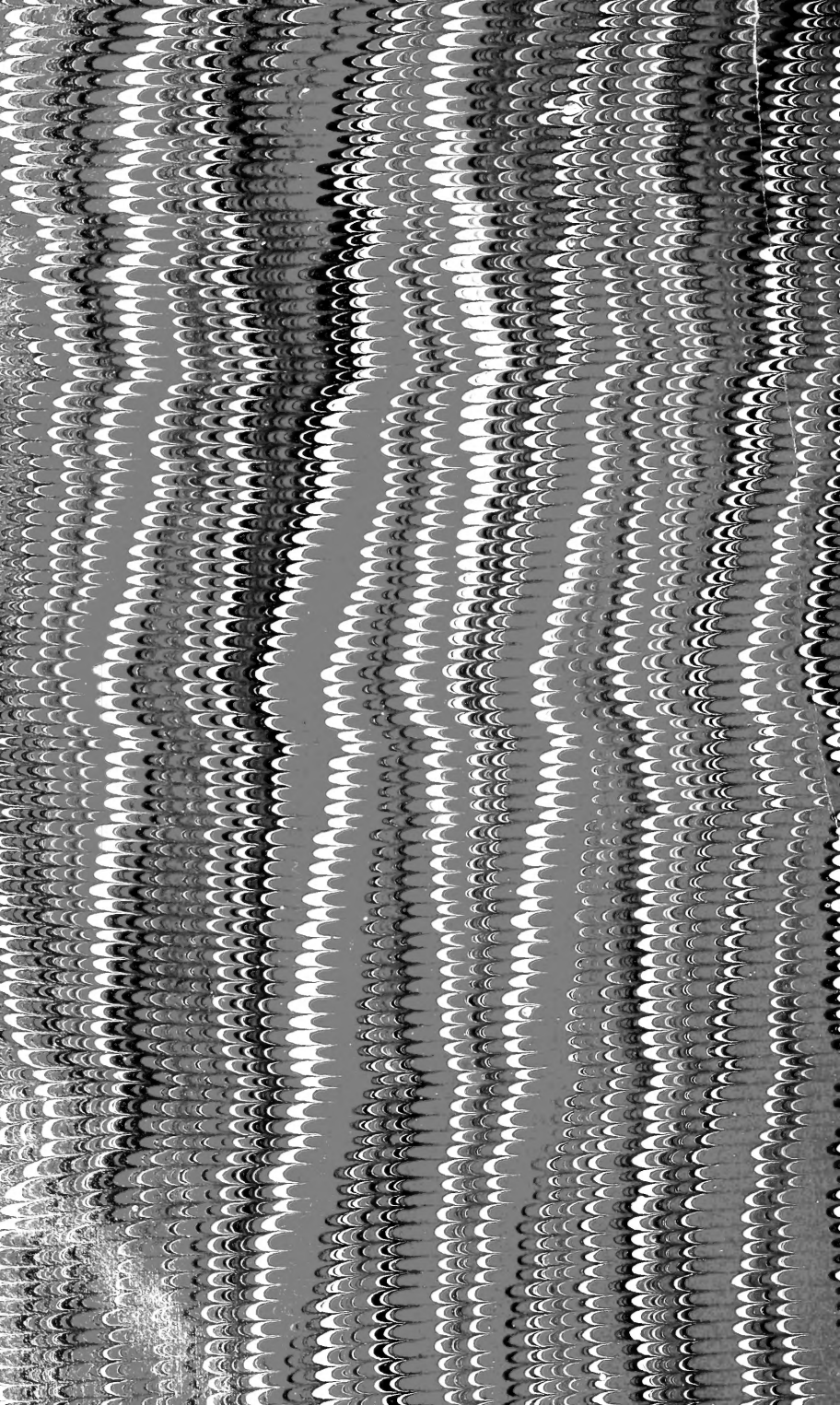
* See pages 37 and 38.

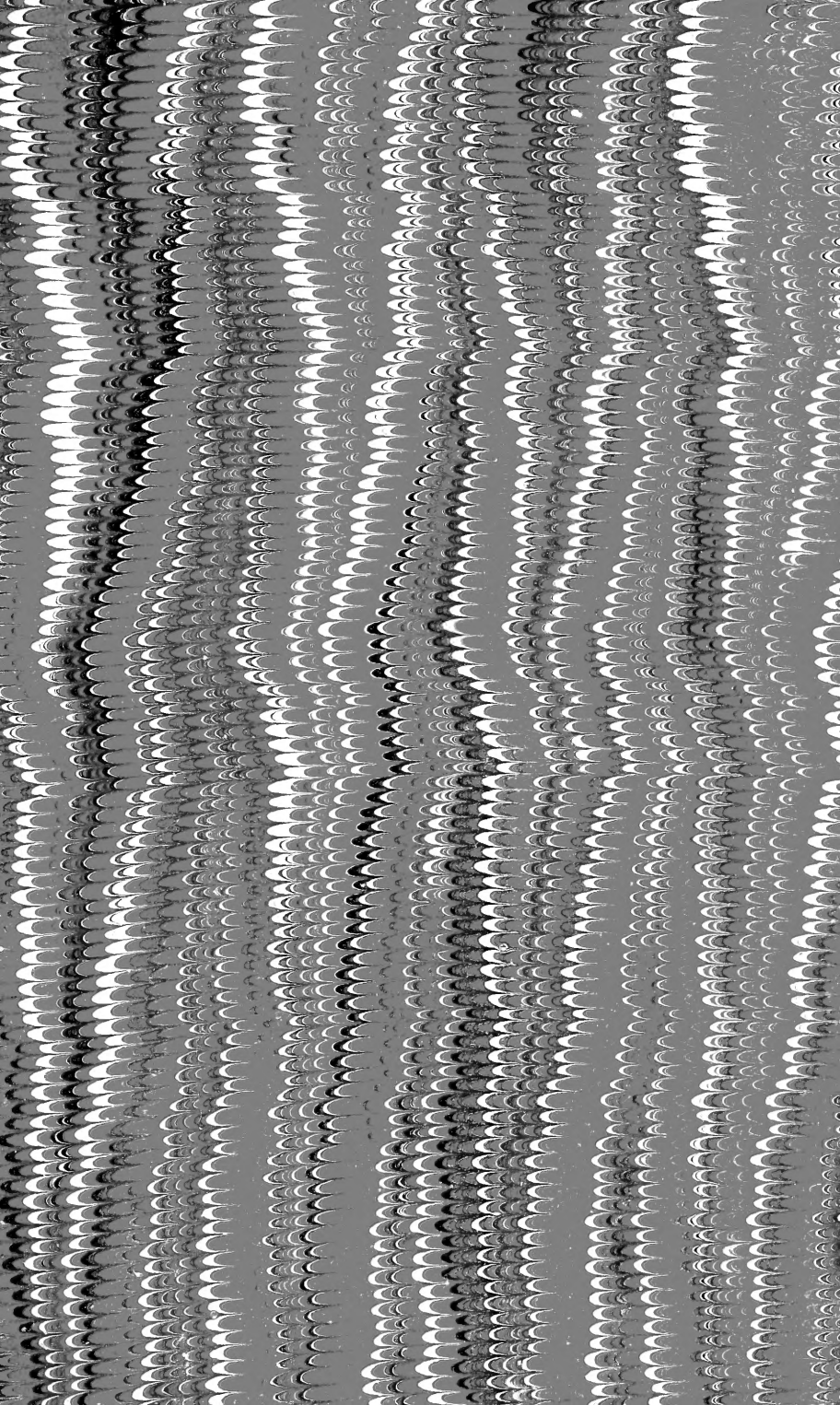












SMITHSONIAN INSTITUTION LIBRARIES



3 9088 01348 4373