

Historic, archived document

Do not assume content reflects current scientific knowledge, policies, or practices.

TRADE PRICES. February, 1905.

LIBRARY
RECORDS
★ SEP 13 1923
U. S. Department of Agriculture

LIVINGSTON'S True Blue Seeds



The New Dwarf
Stone Tomato is
Fully Double the
Size of Dwarf
Champion, Fully as
Prolific, and Con-
sequently Vastly
More Productive.



The Livingston Seed Co.

114 North High St.,

COLUMBUS, OHIO.

FEBRUARY, 1905.

TO DEALERS

COLUMBUS, OHIO, February, 1905.

The quotations in this Trade List are intended for **Dealers Only**. We expect to bill at prices given as far as possible, but should any of our stocks run short we reserve the right to decline orders or advance price.

We do not put out our Vegetable Seeds on Commission.

Transportation At the prices quoted customers must pay cost of forwarding. When desired we will send by mail, but when this is done postage will be added to the invoice at the rate of eight cents per pound. Quarter pounds will be supplied at pound rates; quarter bushels at bushel rates.

Cartage, Etc. We make no charge for cartage, boxes, barrels or packing. Bags only are charged for, and at cost, about 18 cents each.

Terms All general bills of Garden Seeds are payable June 1, 1905, without reference to date of purchase; or a discount of one per cent. a month will be allowed on all payments made before June 1. Bills to parties buying **special items only**, are due in 60 days. Onion Sets, Potatoes, etc., are net cash. Unknown correspondents desiring credit must give satisfactory reference.

Seeds in Packets, Etc. Which cannot be billed at the low bulk prices given in this Bulk Wholesale List, will be invoiced at following discounts from prices in our Retail Catalogue:

All Seeds in Packets, except those herein quoted, at 50 per cent. discount. 500 packets or more at 60 per cent. discount.

Seeds by the ounce, pint or quart, 33½ per cent. discount.

Potatoes by the pound, or Potato Eyes, 40 per cent. discount.

Plants in collections, 10 per cent. discount.

Books on Garden Topics, 15 per cent. discount.

At these liberal rates of discount the goods must travel at the purchaser's expense, and if by mail, postage will be added to the invoice.

Special Notice

We do not supply "cheap seeds," and therefore do not try to compete in price with those who handle them. We furnish the Trade exactly the same quality of seeds that we send to our best Market Gardeners. They are grown either by ourselves or subject to our inspection; hence we feel no hesitancy in saying that they are the purest and best to be found. At the same time, however, it must be distinctly understood, since the success of a crop is dependent upon so many contingencies, as conditions of soil, mode of planting, climate, etc., that we cannot warrant our Seeds or hold ourselves responsible for any loss or damage arising from any failure thereof.

ADDRESS ALL ORDERS AND INQUIRIES:

The Livingston Seed Co.

Seed Growers, Merchants and Importers,

Successors to
A. W. LIVINGSTON'S SONS.

COLUMBUS, O.

RETAIL STORES AND OFFICES: 114 North High Street.
WAREHOUSES: 11 to 13 E. Long St., and Lane Ave. Farm.

LIVINGSTON'S TRUE BLUE SEEDS.

This Price List Cancels all Previous Quotations.

PLEASE USE OUR "CIPHER" WORDS IN TELEGRAMS.

OUR customers will find a **Telegraphic Code** word printed opposite each article, enabling them to order by wire at comparatively little expense.

For example: "Five Baneful" would mean **Five bushels Extra Early Round Pod Valentine Beans**; "Twenty Target" would mean **Twenty pounds Livingston's Beauty Tomato**. The additional word, "Freight," "Express," "Mail," would designate the mode of shipment.

ASPARAGUS.

	Tel. Cipher	Per Lb.	10 lbs. or over Per Lb.
Donald's Elmira.....	<i>Assassin</i>	\$0 40	\$0 35*
Palmetto	<i>Assurge</i>	28	25
Conover's Colossal	<i>Aspen</i>	25	22
Columbian Mammoth	<i>Askak</i>	35	30

ASPARAGUS ROOTS.

		1 yr. Per 1000	2 yr. Per 1000
Palmetto	<i>Arson</i>	2 90	4 00
Conover's Colossal	<i>Article</i>	2 70	3 25
Donald's Elmira.....	<i>Arbest</i>	2 90	4 00
Columbian Mammoth	<i>Arlie</i>	2 90	4 50

BUSH BEANS, Wax or Yellow Podded.

		Per bu.	
Livingston's New Pencil Pod Wax... <i>Beaten</i>		6 20	
Jones' New Stringless Wax..... <i>Behold</i>		7 00	
Keeney's New Rustless Golden Wax.. <i>Beckon</i>		5 75	
Wardwell's Kidney Wax..... <i>Bicorn</i>		8 00	The Crop of WAX BEANS was very short again in 1904, and we can only supply in connec- tion with a reasonable order for small seeds.
Challenge Black Wax..... <i>Begrime</i>		6 50	
New Davis Wax..... <i>Bella</i>		7 50	
Extra Early Valentine Wax..... <i>Berth</i>		7 00	
Currie's Rust Proof Wax..... <i>Believe</i>		7 00	
New Round Pod Kidney Wax..... <i>Bibul</i>		6 75	
Stringless Refugee Wax..... <i>Bewitch</i>		6 50	
Scarlet Flageolet Wax..... <i>Bibac</i>		6 50	
Perfection Wax..... <i>Betray</i>		6 50	
Improved Golden Wax, Grenell's.... <i>Besiege</i>		7 00	
New Prolific Black Wax..... <i>Betroth</i>		6 50	
Mammoth Yosemite Wax..... <i>Billet</i>		7 50	

BUSH BEANS, Green Podded.

	Tel. Cipher	Per bu.	Most Green Podded Beans are again a very short crop and we can only supply in small lots and in con- nection with other seeds.
Extra Early Round Pod Valentine.....	<i>Baneful</i>	\$4 50	
Livingston's Round Six Weeks.....	<i>Baker</i>	4 25	
Extra Early Mohawk.....	<i>Badness</i>	3 75	
Early Long Yellow Six Weeks.....	<i>Bade</i>	3 75	
Extra Early Refugee.....	<i>Baleful</i>	4 75	
Longfellow.....	<i>Bawl</i>	Sold out	
Bountiful.....	<i>Barton</i>	5 00	
Refugee, or 1000 to 1.....	<i>Barrack</i>	4 75	
New Giant Stringless Green Pod.....	<i>Bang</i>	6 50	
New Stringless Green Pod.....	<i>Bached</i>	7 00	

BUSH LIMA BEANS,

		Per bu.	10 bu. or over Per bu.
Burpee's Bush Lima.....	<i>Billow</i>	5 75	5 50
Dreer's Bush Lima.....	<i>Binder</i>	6 00	5 75
Henderson's Bush Lima.....	<i>Binmac</i>	5 25	5 00
New Wonder Bush Lima.....	<i>Becker</i>	5 75	5 50
New Quarter Century Bush Lima.....	<i>Beaham</i>	5 75	5 50

BEANS, Pole.

• Siebert's Early Lima.....	<i>Barbour</i>	5 50	5 25
Large White Lima.....	<i>Botarge</i>	5 25	5 00
Dreer's Improved or Challenger Lima.....	<i>Boscage</i>	5 50	5 25
King of the Garden Lima.....	<i>Botanise</i>	5 25	5 00
Small Lima, or Sieva.....	<i>Bottle</i>	5 25	5 00
Early Golden Cluster Wax.....	<i>Bluster</i>	6 00	5 75
Lazy Wife's.....	<i>Boggle</i>	5 00	4 75
White Crease Back, or Fat Horse.....	<i>Booth</i>	5 00	4 75
Early Dutch Case Knife.....	<i>Blighted</i>	5 00	4 75
Speckled Cranberry, or Horticultural.....	<i>Boaster</i>	5 00	4 75
Southern Prolific; True Round Pod.....	<i>Bony</i>	4 25	4 00
Kentucky Wonder, or Homestead.....	<i>Bodkin</i>	6 00	5 75
Red Speckled Cut Short, or Corn Hill.....	<i>Bonmot</i>	4 75	4 50
Livingston's Royal Corn Bean.....	<i>Boyer</i>	6 00
Powell's Prolific Snap.....	<i>Board</i>	6 50

GARDEN BEET.

		Per lb.	10 lbs. or over Per lb.
New Crimson Globe Turnip.....	<i>Belob</i>	50	45
Crosby's Egyptian (Home Grown).....	<i>Bracelet</i>	35	30
Improved Extra Early Eclipse.....	<i>Brail</i>	30	28
Extra Early Egyptian Turnip.....	<i>Brained</i>	30	25
Early Bassano.....	<i>Bragger</i>	28	24
Dewing's Improved Blood Turnip.....	<i>Braet</i>	30	27
Bastian's Early Blood Turnip.....	<i>Brabback</i>	28	25
Half Long Blood, very choice.....	<i>Brabbade</i>	28	25
Long Dark Blood Red.....	<i>Branch</i>	25	22
Edmand's Early Blood Turnip.....	<i>Brain</i>	30	25
Lentz Extra Early Blood Turnip.....	<i>Brazen</i>	30	28
Detroit Dark Red Turnip.....	<i>Brackish</i>	30	25

MANGEL WURZEL.

	Tel. Cipher	Per lb.	10 lbs. or over Per lb.
Mammoth Long Red	<i>Brier</i>	\$0 12	\$0 10
Mammoth Red Globe	<i>Brisk</i>	12	10
Golden Tankard , yellow fleshed	<i>Brevier</i>	12	10
Champion Yellow Globe	<i>Breefer</i>	12	10
Yellow Leviathan	<i>Brock</i>	12	10

SUGAR BEETS.

Lane's Imperial	<i>Brora</i>	12	10
French White Red Top	<i>Broncho</i>	12	10
Vilmorin's Imperial	<i>Brownie</i>	12	10
Klein Wanzleben	<i>Brook</i>	12	10

BROCCOLI.

Purple Cape	<i>Bursche</i>	2 50
-------------------	----------------------	------	-------

BRUSSELS SPROUTS.

Improved Dwarf	<i>Byback</i>	80
----------------------	---------------------	----	-------

CABBAGE.

New Volga	<i>Colga</i>	3 50	3 00
New Extra Early Eureka	<i>Cabman</i>	2 00	1 80
Illinois Winter Market	<i>Carlet</i>	2 50	2 00
Henderson's Early Spring	<i>Carly</i>	1 40	1 25
Earliest Express, or New Wonderful	<i>Causer</i>	1 00	90
All Head Early	<i>Caravas</i>	1 40	1 25
Large Charleston Wakefield	<i>Carbine</i>	1 25	1 10
Select Extra Early Jersey Wakefield	<i>Carun</i>	1 25	1 10
Select Henderson's Early Summer	<i>Centime</i>	1 25	1 10
Early Dwarf Flat Dutch	<i>Carrom</i>	1 00	90
Early Winnigstadt, <i>select strain</i>	<i>Castel</i>	90	80
Fottler's Improved Brunswick	<i>Cavity</i>	1 10	1 00
Henderson's Succession	<i>Cento</i>	1 25	1 10
All Seasons or Vandergaw	<i>Capture</i>	1 25	1 10
Danish Ball Head (Direct from Denmark)	} <i>Carcass</i>	1 60	1 50
The Lupton			
Autumn King, or World Beater	<i>Chief</i>	1 25	1 15
Autumn King, or World Beater	<i>Choker</i>	1 25	1 10
Chase's Excelsior, choice second early	<i>Carbisk</i>	1 50	1 40
Large Late Flat Dutch	<i>Chandler</i>	80	70
Livingston's New Ideal Winter	<i>Centrip</i>	1 50	1 40
Burpee's Surehead	<i>Chintz</i>	1 25	1 10
Large Late American Drumhead	<i>Chancel</i>	1 00	90
Early Louisville Drumhead	<i>Chare</i>	1 20	1 10
Marblehead Mammoth	<i>Charity</i>	1 25	1 15
Mammoth Rock Red	<i>Chariot</i>	1 50	1 40
Improved American Savoy	<i>Cheek</i>	1 25	1 10
Livingston's Select Premium Flat Dutch	} <i>Chink</i>	1 25	1 10

CARROT.

	Tel. Cipher	Per lb.	10 lbs. or over Per lb.
Livingston's Early Market	<i>Clarion</i>	\$0 50	\$0 45
Guerande, or Ox Heart.....	<i>Clasper</i>	45	40
Earliest French Forcing, or Gold Ball.....	<i>Clamor</i>	55	50
Intermediate Red	<i>Clear</i>	35	30
Early Scarlet Horn (stump rooted) ..	<i>Clamber</i>	45	40
Improved Long Orange.....	<i>Cleve</i>	35	30
Danver's Half Long.....	<i>Classic</i>	40	35
Nantes Early Half Long Scarlet.....	<i>Clipper</i>	40	35
Chantenay or Model	<i>Clabbisk</i>	40	35
Improved Short White (for stock).....	<i>Clement</i>	25	22
White Belgian (for stock).....	<i>Clew</i>	25	22

CAULIFLOWER.

		Per oz.	Per lb.
Livingston's Earliest	<i>Cicago</i>	2 00	25 00
Henderson's Early Snow Ball.....	<i>Cicame</i>	1 60	22 00
Extra Early Dwarf Erfurt.....	<i>Cicaffle</i>	1 30	18 00
Half Early Paris, or Nonpareil.....	<i>Cibare</i>	50	6 50
Lenormand's Short Stem	<i>Cidead</i>	50	6 00
Large Late Algiers	<i>Cicamord</i>	50	6 50
Veitch's Autumn Giant.....	<i>Cideone</i>	35	4 00

CELERY.

		Per lb.	10 lbs. or over Per lb.
New Golden Rose, Self Blanching	<i>Comate</i>	2 10	2 00
Giant Pascal	<i>Cohort</i>	75	70
White Plume, very choice strain	<i>Compound</i>	1 10	1 00
Golden Self Blanching (French).....	<i>Coiner</i>	2 50	2 25
Evan's New Triumph	<i>Combine</i>	75	70
Livingston's New Snowwhite	<i>Comer</i>	2 00	1 75
Dwarf Golden Hearted.....	<i>Codger</i>	75	70
Perfection Heartwell	<i>Commerce</i>	90	80
Giant White Solid	<i>Coif</i>	75	70
Boston Market	<i>Cobble</i>	75	70
Giant Golden Heart	<i>Cohere</i>	1 00	90
Perle Le Grand	<i>Comming</i>	1 25	1 10
Flavoring (old seeds).....	<i>Cornate</i>	10	08
Giant Prague Celeriac	<i>Conch</i>	1 00	90

COLLARDS.

True Georgia	<i>Condole</i>	45	40
--------------------	----------------------	----	----

CORN SALAD.

Large Broad Leaved.....	<i>Condomo</i>	25	22
-------------------------	----------------------	----	----

CORN, Garden Varieties.

		Per bu.	10 bus. or over Per bu.
New Premo	<i>Cormo</i>	3 25	3 00
Kendel's Early Giant	<i>Comflux</i>	3 00	2 75
Burlington Hybrid	<i>Confessor</i>	2 75	2 50
Extra Early Red Cob Cory.....	<i>Conjoin</i>	3 00	2 75
First of All.....	<i>Connate</i>	3 00	2 75

CORN, Garden Varieties—Continued.

	Tel. Cipher	Per bu.	10 bus. or over Per bu.
Extra Early White Cob Cory.....	<i>Copier</i>	\$3 00	\$2 75
New Mammoth White Cory.....	<i>Converse</i>	3 25	3 00
Adam's Extra Early, choice stock....	<i>Confect</i>	2 25	2 00
Early Adams, or Burlington.....	<i>Confan</i>	2 25	2 00
Early Minnesota	<i>Congruent</i>	2 75	2 50
Crosby's Early	<i>Confutant</i>	3 00	2 75
Livingston's Columbus Market.....	<i>Columbus</i>	4 00	3 75
Country Gentleman.....	<i>Conflict</i>	3 75	3 50
Shaker's Early	<i>Convert</i>	3 25	3 00
Livingston's Early Red Cob.....	<i>Constant</i>	3 50	3 25
Livingston's Early White Cob.....	<i>Concern</i>	4 00	3 75
Perry's Hybrid	<i>Contrary</i>	3 00	2 75
Livingston's New Silver Coin.....	<i>Conveyor</i>	4 25	4 00
Egyptian, or Washington Market....	<i>Conical</i>	3 25	3 00
Stowell's Evergreen	<i>Cooler</i>	2 25	2 00
Burpee's White Evergreen.....	<i>Corner</i>	3 00	2 75
Black Mexican	<i>Conference</i>	3 50	3 00
Improved Hickox	<i>Consent</i>	3 25	3 00
Late Mammoth	<i>Constrain</i>	3 25	3 00

CORN, Field Varieties.

Livingston's New Golden Surprise...	<i>Curden</i>	1 50	1 40
True Clarage Yellow.....	<i>Cordate</i>	1 40	1 30
Mammoth White Dent.....	<i>Coupon</i>	1 40	1 30
True Yellow Leaming.....	<i>Cowmule</i>	1 40	1 30
White Cap Yellow Dent.....	<i>Cowmack</i>	1 40	1 30
New White Cob Early Dawn.....	<i>Cornice</i>	1 50	1 40

CRESS.

		Per lb.	10 lbs. or over Per lb.
Extra Curled (<i>Pepper Grass</i>).....	<i>Cuniform</i>	30	25
True Water, 20c per oz.....	<i>Curacva</i>	2 25	
Upland, 30c per oz.....	<i>Curracy</i>	3 00	

CUCUMBER.

New Cumberland	<i>Coalport</i>	75	70
Livingston's New Emerald.....	<i>Cracker</i>		Sold out.
Livingston's Evergreen Pickle.....	<i>Crossroad</i>	65	60
Hill's Forcing White Spine.....	<i>Crocket</i>	65	60
Nichol's Medium Green.....	<i>Crucial</i>	65	60
Arlington Improved White Spine....	<i>Crosier</i>	65	60
Extra Long, or Evergreen White Spine	<i>Crisp</i>	70	65
Livingston's Select Extra Early } White Spine	<i>Crinkle</i>	65	60
Green Prolific, or Boston Pickling....	<i>Croaket</i>	65	60
Jersey Pickle	<i>Crossbol</i>	65	60
Early Green Cluster.....	<i>Cretin</i>	65	60
Early Russian	<i>Crewel</i>	65	60
Improved Long Green.....	<i>Croon</i>	65	60
Early Frame, or Short Green.....	<i>Cretac</i>	65	60

CUCUMBER—Continued.

	Tel. Cipher	Per lb.	10 lbs. or over Per lb.
Westerfield Chicago Pickle.....	<i>Crushing</i>	65	60
Giant Pera.....	<i>Criticism</i>	1 00	90
Cool and Crisp.....	<i>Crescent</i>	65	60
Gherkin, or Burr, True.....	<i>Creeper</i>	1 10	1 00

EGG PLANT.

Livingston's Mammoth Purple.....	<i>Echo</i>	2 85	2 75
New York Large Purple.....	<i>Easeling</i>	2 75	2 65
Black Beauty.....	<i>Eggo</i>	3 60	3 50

ENDIVE.

Fine Green Curled Winter.....	<i>Embogue</i>	80	70
Ever White Curled.....	<i>Electric</i>	80	70
Broad Leaved Batavian (<i>Escarolle</i>)...	<i>Egotist</i>	75	65

KALE.

Siberian, or Dwarf German Greens..	<i>Burgher</i>	25	20
Dwarf Green Curled Scotch.....	<i>Bungling</i>	50	48

KOHL RABI.

Early Purple Vienna.....	<i>Keblap</i>	1 40	1 25
Early White Vienna.....	<i>Kolpie</i>	1 40	1 25

LETTUCE.

May King.....	<i>Lenten</i>	2 25
New Wonderful.....	<i>Litany</i>	70	65
Livingston's Crisp as Ice.....	<i>Leaguer</i>	1 10	1 00
Grand Rapids, extra fine for forcing.	<i>Leggin</i>	50	45
Improved Hanson, select stock.....	<i>Legume</i>	50	45
Big Boston.....	<i>Lanchup</i>	60	55
Denver Market.....	<i>Lattice</i>	50	45
White Seed Tennis Ball, (<i>Boston</i> } Market).....	<i>Luthern</i>	50	45
Black Seed Tennis Ball.....	<i>Lodgment</i>	50	45
Defiance Summer.....	<i>Lessor</i>	50	45
Deacon.....	<i>Latchet</i>	50	45
Silver Ball.....	<i>Lobule</i>	50	45
Black Seeded Simpson, select.....	<i>Lanaman</i>	50	45
Prize Head.....	<i>Linstock</i>	45	40
Early Curled Simpson.....	<i>Loburst</i>	45	40
Tilton's White Star.....	<i>Logline</i>	50	45
Mammoth Black Seeded Butter.....	<i>Liner</i>	60	55
Early White Cabbage, or Phil Butter..	<i>Lazar</i>	45	40
Celery Lettuce, Trianon Cos.....	<i>Logman</i>	65	60
New Mammoth Salamander.....	<i>Letting</i>	65	60
Iceberg.....	<i>Lesson</i>	55	50
California Cream Butter.....	<i>Lapstone</i>	50	45
Marblehead Mammoth.....	<i>Lighter</i>	65	60
Maximum or Immensity.....	<i>Letisy</i>	80	75

LEEK.

	Tel. Cipher	Per lb.	10 lbs. or over Per lb.
Broad London Flag.....	<i>Labyrinth</i>	\$0 65	\$0 60
Carentan, or Scotch Champion	<i>Lagoon</i>	90	80
Large Rouen	<i>Ladding</i>	90	80

MUSKMELON.

New Paul Rose.....	<i>Madcap</i>	70	65
Livingston's New Tip Top	<i>Melody</i>	1 10	1 00
Columbus	<i>Majesty</i>	65	60
Livingston's Market	<i>Marrow</i>	Sold out.	
The Rose Netted Gem	<i>Megrose</i>	60	50
Osage	<i>Maypole</i>	75	70
Emerald Gem	<i>Mallard</i>	1 50	1 40
Extra Early Green Citron.....	<i>Malleg</i>	50	45
Champion Market	<i>Maihem</i>	1 25	1 15
Extra Early Hackensack.....	<i>Maniple</i>	70	65
Perfection (<i>The Princess</i>).....	<i>Meantime</i>	80	75
Early Surprise	<i>Melodeon</i>	80	75
Early Green Nutmeg.....	<i>Malario</i>	75	70
Skillman's Fine Netted.....	<i>Megal</i>	70	60
Winter Pineapple	<i>Memorize</i>	75	70
Hackensack, or Turk's Cap.....	<i>Manor</i>	65	60
Casaba.....	<i>Magnifier</i>	60	55
Jenny Lind, Extra Early.....	<i>Marker</i>	50	45
Miller's Cream	<i>Massive</i>	75	70
Bay View	<i>Magic</i>	80	75
Acme, or Baltimore Nutmeg	<i>Madam</i>	70	65
Burpee's Netted Gem (Rocky Ford).....	<i>Mattock</i>	45	40
Banana	<i>Madman</i>	90	85
Shumway's Giant	<i>Medicine</i>	55	50
Early Grand Rapids.....	<i>Meteoric</i>	55	50
Improved Anne Arundel	<i>Magnet</i>	80	75
Jersey Belle	<i>Marksman</i>	70	65
Kinsman Queen	<i>Mediate</i>	60	55
Long Island Beauty.....	<i>Marshal</i>	1 25	1 15

WATERMELON.

Livingston's Nabob	<i>Modern</i>	40	35
Duke Jones	<i>Miscreant</i>	30	25
Kleckley Sweets, or Monte Cristo	<i>Metrop</i>	40	35
Improved Dixie	<i>Mirage</i>	30	25
Seminole	<i>Monologue</i>	30	20
Florida Favorite	<i>Midday</i>	25	20

WATERMELON—Continued.

	Tel. Cipher.	Per lb.	10 lbs. or over Per lb.
Kolb's Gem, choice stock	<i>Mission</i>	\$0 25	\$0 20
Hoosier King	<i>Minion</i>	40	35
Gray Monarch, or Long Icing.....	<i>Militant</i>	35	30
Pride of Georgia	<i>Momentous</i> ...	30	25
Early Jumbo, large, fine quality.....	<i>Misguide</i>	30	25
Cuban Queen	<i>Meter</i>	32	28
Mammoth Iron Clad.....	<i>Moat</i>	35	30
Improved Mountain Sweet.....	<i>Mocker</i>	30	25
Phinney's Early	<i>Molar</i>	30	25
Ice Cream, true white seeded	<i>Minstrel</i>	25	20
Gypsy, or Rattlesnake	<i>Millstone</i>	35	30
Round Dark Icing	<i>Methodic</i>	25	20
Round Light Icing.....	<i>Monastic</i>	35	30
Peerless	<i>Modish</i>	25	20
Sweet Heart	<i>Moodiness</i>	25	20
Cole's Early	<i>Messmate</i>	35	30
Fordhook Early, very fine	<i>Mentor</i>	25	20
Black Diamond	<i>Merdah</i>	35	30
Blue Gem, or Iceberg	<i>Migrate</i>	35	30
Black Boulder	<i>Misby</i>	35	30
Girardeau's Triumph	<i>Moderate</i>	35	30
Black Spanish	<i>Merchant</i>	30	25
McIver's Sugar	<i>Molten</i>	35	30
Preserving Citron	<i>Mesmerism</i> ..	28	25

ONION.

Livingston's Brown Beauty.....	<i>Orton</i>	1 10	1 00
Extra Early Red Flat.....	<i>Oddity</i>	70	60
Extra Large Red Wethersfield.....	<i>Omous</i>	70	60
Improved Yellow Globe (Under wood Strain).....	<i>Obvite</i>	Sold out.	
Southport Red Globe, our own growth	<i>Oracle</i>	95	90
Yellow Danvers	<i>Oching</i>	60	55
Select Yellow Danvers Globe (eastern grown)	<i>Outig</i>	65	60
Ohio Yellow Globe	<i>Ophide</i>	90	80
Philadelphia Yellow Strasburg, for sets	<i>Oposs</i>	60	55
Large Yellow Dutch, for large onions.	<i>Onset</i>	70	65
Southport White Globe, home grown.	<i>Oral</i>	90	85
Mammoth Prizetaker	<i>Opake</i>	70	65
Southport White Globe, Home Grown.	<i>Ordain</i>	1 50	1 40
White Portugal, for large onions.....	<i>Ouchab</i>	1 25	1 10
American Extra Early Pearl.....	<i>Oblige</i>	1 00	90
Mammoth Silver King.....	<i>Open</i>	1 00	90
Philadelphia Silverskin, for sets.....	<i>Ouchaf</i>	1 25	1 10
Indiana Silver Skin, choice for sets ...	<i>Ovid</i>	1 10	1 00

ONION, Imported Varieties.

	Tel. Cipher.	Per lb.	10 lbs. or over Per lb.
Hard Round Dutch Silverskin.....	<i>Orphon</i>	\$1 40	\$1 30
Earliest White Queen.....	<i>Outop</i>	1 10	1 00
Giant White Italian Tripoli.....	<i>Organ</i>	1 10	1 00
Extra Early Barletta White.....	<i>Ortho</i>	1 20	1 10
Bermuda Island Red, <i>Teneriffe grown</i>	<i>Outoga</i>	1 20	1 10
Bermuda Island White, " <i>grown</i>	<i>Outing</i>	Sold out.	
Neapolitan Maggiajola	<i>Orphod</i>	90	80
Australian Brown	<i>Orphing</i>	60	55

MUSHROOM SPAWN.

Best English Milltrack.....	<i>Mumbler</i>	10	07
-----------------------------	----------------------	----	----

MUSTARD, For Growing.

White English, or London.....	<i>Mourner</i>	15	10
Southern Giant Curled.....	<i>Motto</i>	35	30
New Chinese	<i>Morion</i>	40	35

ONION SETS.

Red Bottom.....	<i>Owabog</i>	32 lbs. to bu.	Prices variable. Write for Quota- tions.
Yellow "	<i>Owaf</i>	32 lbs. to bu.	
White "	<i>Owack</i>	32 lbs. to bu.	
White Multiplier.....	<i>Owacked</i>	28 lbs. to bu.	
Yellow Potato, True....	<i>Owakup</i>	32 lbs. to bu.	
Top or Button.....	<i>Occur</i>	28 lbs. to bu.	

OKRA.

		Per lb.	10 lbs. or over Per lb.
White Velvet, extra fine.....	<i>Oblate</i>	25	20
Perkin's Mammoth	<i>Oath</i>	30	25

PARSLEY.

Plain, or Single!.....	<i>Paleness</i>	20	18
Fine Double Curled	<i>Pagoda</i>	30	25
Champion Moss, curled	<i>Pacify</i>	30	25
Hamburg Turnip Rooted	<i>Palace</i>	35	30

PUMPKIN.

Livingston's Thanksgiving	<i>Pouridge</i>	Crop Failed.	
Connecticut Yellow Field.....	<i>Polymp</i>	18	15
Mammoth Potiron	<i>Popery</i>	1 10	1 00
Large Cheese	<i>Pondal</i>	40	35
Tennessee Sweet Potato	<i>Poser</i>	50	45
Japanese Pie	<i>Pompilo</i>	60
Large Sweet or Kentucky Field	<i>Pond</i>	18	15
Mammoth Tours	<i>Poplit</i>	45	40
Winter Luxury	<i>Postern</i>	45	40
Nantucket or Negro.....	<i>Porous</i>	60	55

POTATOES, Northern Grown.

Our barrels contain 2½ bushels. We deliver Potatoes to the transportation companies carefully packed; after that our responsibility ceases. Purchasers must take all risk from freezing or heating. We make no charge for barrels or cartage. Prices quoted are F. O. B. Columbus, and subject to market changes.

	Tel. Cipher	Per bbl.
Livingston's Banner	<i>Piety</i>	\$2 75
Seneca Beauty	<i>Plenary</i>	3 00
Extra Early Ohio	<i>Piscary</i>	3 00
The Livingston	<i>Pikestaff</i>	3 00

PARSNIP.

	Per lb.	10 lbs. or over Per lb.
New Zimpfer	<i>Palmy</i> \$0 60	\$0 50
Selected Hollow Crown.....	<i>Palliate</i>	20 18

PEPPER.

Improved Thick Long Red.....	<i>Pholly</i>	2 50
Red Cherry	<i>Physical</i>	1 50
Mammoth Ruby King.....	<i>Philomel</i>	1 20	1 10
Sweet Mountain	<i>Picaroon</i>	1 20	1 10
Bull Nose, or Large Bell.....	<i>Petrel</i>	1 10	1 00
Long Red Cayenne	<i>Phalynx</i>	1 50	1 40
Red Chili	<i>Picket</i>	1 50
Golden King, or Queen.....	<i>Pealing</i>	2 00
Long Red Cardinal	<i>Pallot</i>	2 00
Chinese Giant	<i>Pernese</i>	3 00

PEAS.

	Per bu.	10 bus. or over Per bu.	
New Prolific Early Market.....	<i>Pearl</i>	4 00 3 75	
Livingston's Giant Podded Prolific } Sugar	<i>Parley</i>	7 50
New Ameer.....	<i>Pemar</i>	5 00	4 75
Prosperity, or Gradus.....	<i>Paymaster</i>	8 50	8 25
Livingston's First in Market.....	<i>Patten</i>	3 25	3 00
Gregory's Surprise, or Eclipse.....	<i>Paradox</i>	4 75	4 50
Extra Early Alaska.....	<i>Pannier</i>	2 75	2 50
Thomas Laxton.....	<i>Pexton</i>	8 50	8 25
First and Best.....	<i>Pasturage</i>	3 00	2 75
American Wonder, true stock.....	<i>Pantaloon</i>	6 00	5 75
McLean's Little Gem	<i>Pediment</i>	5 25	5 00
Premium Gem	<i>Pencern</i>	5 25	5 00
Nott's Excelsior	<i>Pellet</i>	6 25	6 00
Juno, very large late.....	<i>Peaceful</i>	4 25	4 00
Shropshire Hero	<i>Penury</i>	4 25	4 00
Carter's Daisy	<i>Parboil</i>	7 50
Heroine	<i>Paver</i>	4 50	4 25
Horsford's Market Garden.....	<i>Pavilion</i>	3 25	3 00
McLean's Advancer	<i>Pedestal</i>	3 25	3 00
Pride of the Market.....	<i>Penchiant</i>	5 00	4 75
Telephone, select stock.....	<i>Perfidous</i>	5 25	5 00
Long Island Mammoth (Telegraph).....	<i>Pedantry</i>	4 25	4 00
Improved Stratagem, very choice.....	<i>Percolate</i>	7 00	6 75
Abundance	<i>Pantry</i>	3 50	3 25
Bliss' Everbearing	<i>Papa</i>	3 75	3 50
Tom Thumb, extra choice.....	<i>Pompum</i>	4 50	4 25
Duke of Albany	<i>Palban</i>	5 25	5 00

PEAS—Continued.

	Tel. Cipher	Per bu	10 bus. or over Per bu.
Champion of England.....	<i>Parent</i>	\$ 3 25	\$3 00
Yorkshire Hero	<i>Pergolt</i>	3 50	3 25
Melting Sugar	<i>Peristyle</i>	6 00	
Black Eye Marrowfat, hand picked.....	<i>Pantom</i>	2 00	1 90
White Marrowfat, hand picked.....	<i>Perforce</i>	2 00	1 90
Canadian Field, No. 1, white.....	<i>Pathos</i>	Market price.	

RADISH.

		Per lb.	10 lbs. or more Per lb.
Turnip, Forcing Scarlet.....	<i>Rattle</i>	35	30
“ “ Rosy Gem	<i>Reclaim</i>	30	25
“ “ Non Plus Ultra } “ “ (Fireball) }	<i>Rayden</i>	30	25
“ “ Snowball	<i>Rebec</i>	35	30
“ “ Crimson Giant	<i>Racer</i>	40	35
“ Early Scarlet	<i>Ransom</i>	30	25
“ Scarlet, white tipped.....	<i>Regara</i>	30	25
“ Deep Scarlet (round dark red)	<i>Ratio</i>	30	25
“ Yellow Summer	<i>Regress</i>	30	25
“ New Golden Dresden.....	<i>Rayman</i>	35	30
“ Large White Summer.....	<i>Reagable</i>	30	25
“ Golden Globe	<i>Raymel</i>	30	25
“ Gray Summer	<i>Razure</i>	30	28
Olive, Forcing Vick's Scarlet Globe.	<i>Recruit</i>	35	30
“ “ New Leafless.....	<i>Ramage</i>	1 00
“ “ White Rocket	<i>Receptive</i>	40	35
“ French Breakfast	<i>Rayful</i>	30	25
Half Long, Deep Scarlet.....	<i>Reach</i>	30	25
Long, Cincinnati Market	<i>Recharge</i>	30	25
“ Wood's Early Frame.....	<i>Regrate</i>	30	25
“ Scarlet Short Top.....	<i>Rapacious</i>	25	22
“ Brightest Scarlet White Tipped.....	<i>Really</i>	30	28
“ White Vienna (<i>Lady Finger</i>).....	<i>Refrain</i>	30	25
“ New White Icicle	<i>Rascal</i>	40	35
“ Livingston's Pearl	<i>Rebound</i>	35	30
“ White Chartier	<i>Raid</i>	50	40
“ Improved Chartier	<i>Reading</i>	30	25
Summer, White Strasburg.....	<i>Refuple</i>	30	25
“ Giant White Stuttgart.....	<i>Reform</i>	35	30
Winter, California Mammoth.....	<i>Regam</i>	35	30
“ China Rose	<i>Recital</i>	30	25
“ Long Black Spanish.....	<i>Reality</i>	28	25
“ Celestial, or White Chinese	<i>Ragman</i>	40	35
“ Scarlet Pamir	<i>Recess</i>	Crop Failed	
“ Long White Spanish.....	<i>Rasping</i>	35	30
“ Round Black Spanish.....	<i>Reclose</i>	25	22

RAPE.

Dwarf Essex	<i>Racing</i>	10	07
-------------------	---------------	----	----

RHUBARB.

Large Victoria	<i>Relegate</i>	75	70
Rhubarb Roots (2 yrs old) per doz 50c	<i>Relater</i>

SALSIFY.

	Tel. Cipher	Per lb.	10 lbs. or over Per lb.
Mammoth Sandwich Island.....	<i>Sacker</i>	\$0 60	\$0 50
Wisconsin Golden	<i>Saphead</i>	90	80

SAGE.

Broad Leaf	<i>Sage</i>	1 20	1 10
------------------	-------------------	------	------

SPINACH.

Bloomsdale Savoy	<i>Sanscrit</i>	20	15
Best Prickly Seeded Winter.....	<i>Sapphic</i>	12	10
Best Viroflay Thick Leaf	<i>Satole</i>	15	12
Best Long Standing	<i>Sandal</i>	15	12
New Victoria	<i>Satrap</i>	15	12
Round Leaved Summer.....	<i>Salty</i>	15	12

SQUASH.

Mammoth Whale	<i>Scholic</i>	1 00	90
Livingston's New Pie	<i>Scroll</i>	Sold out.	
New White Summer Crookneck	<i>Soldier</i>	45	40
Fordhook	<i>Sciatic</i>	45	40
Mammoth White Bush Scallop.....	<i>Scutcheon</i>	40	35
Mammoth Yellow Bush Scallop or Golden Custard	} <i>Seaboard</i>	40	35
Giant Golden Summer Crookneck.....		<i>Scioptic</i>	40
Golden Summer Crookneck.....	<i>Scotchman</i>	35	30
Early White Bush Scallop (Patty Pan)	<i>Secular</i>	35	30
Hubbard, choice stock	<i>Scoundrel</i>	50	45
Livingston's Improved Cushaw	<i>Selector</i>	45	40
Essex Hybrid	<i>Savor</i>	65	60
Boston Marrow	<i>Scarf</i>	35	30
Delicious	<i>Schooner</i>	75	70
Mammoth Chili	<i>Sculler</i>	1 25	1 00
Chicago Warty Hubbard	<i>Scaffold</i>	50	45
Golden, or Red Hubbard.....	<i>Seaport</i>	55	50
Winter Crookneck	<i>Sedition</i>	60	55
Golden Bronze	<i>Scoper</i>	75	70

TURNIP.

Extra Early White Milan.....	<i>Thug</i>	50	45
Extra Early Purple Top Milan.....	<i>Tibieg</i>	40	35
Purple Top Strap Leaf.....	<i>Tiptoe</i>	22	20
Purple Top White Globe.....	<i>Tirode</i>	30	25
Seven Top	<i>Titmouse</i>	25	22
Early White Flat Dutch.....	<i>Thumper</i>	22	20
Early White Egg Shaped.....	<i>Token</i>	25	22
Sweet German	<i>Tidbit</i>	22	20
Amber Globe	<i>Thrice</i>	25	22
Large White Globe	<i>Timbrel</i>	25	22
Yellow Stone, very fine.....	<i>Topaz</i>	25	22
Cowhorn	<i>Tepor</i>	28	25
RUTA BAGA, American Purple Top...	<i>Torpor</i>	22	20
“ “ White Russian	<i>Trance</i>	20	18

LIVINGSTON'S

CELEBRATED

Tomato Seeds

FOR MERCHANTS

In Sealed Packages Only.



For the protection of the honest merchant and the grower who desires only true stock of our Tomatoes, we have for several years followed the plan of supplying **Our Celebrated Varieties of Tomato Seeds in Sealed Packages only**; and hence every package of the Livingston varieties of Tomatoes grown at headquarters will be sent out under our **TRUE BLUE SEAL**.

In 1870 we originated and introduced our **Paragon**, which was the first perfectly smooth red variety known. Five years later we introduced the **Acme**, the first perfectly smooth purple sort known. Since the advent of these sorts we have brought out consecutively the **Perfection, Golden Queen, Favorite, Beauty, Potato Leaf, Stone, Royal Red, Aristocrat, Buckeye State, Honor Bright, Yellow Prince, Magnus** and **New Dwarf Stone**. As originators and introducers of these sorts, we use the most assiduous care in growing the Seeds, and although these same varieties are extensively advertised by other dealers, yet we do not hesitate to claim superiority for our Headquarters' Strains.

SPECIAL NOTICE

We annually supply hundreds of merchants in all parts of the United States with our Tomato Seeds put up in packages for retailing. It is a highly satisfactory and successful method, because it affords a dealer's patrons positive evidence that he is selling the genuine article.

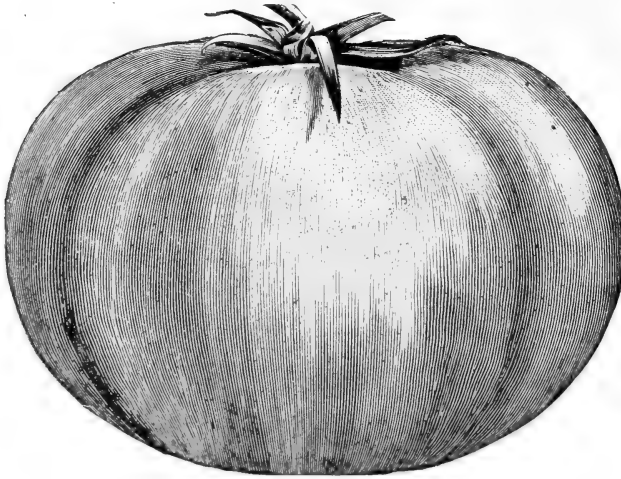
We put up the Seed in **OUNCES, QUARTER-POUNDS** and **POUNDS**, and each package bears our **TRUE BLUE SEAL. NO EXTRA CHARGE.**

Packets for retailing at 5 and 10 cents are supplied to dealers at half price.

To those who have never handled our Seeds we respectfully suggest the propriety of trying this plan.

TOMATO, Livingston's Varieties.

	Tel. Cipher	Per lb.	10 lbs. or over Per lb.
Livingston's New Globe	<i>Tobal</i>	See 3d page of cover.	
Livingston's New Dwarf Stone	<i>Tartar</i>	\$2 50	\$2 25
Livingston's New Magnus	<i>Theorb</i>	1 50	1 40
Livingston's Honor Bright	<i>Tennis</i>	1 60	1 50
Livingston's Aristocrat	<i>Taproot</i>	1 75	1 60
Livingston's Buckeye State	<i>Tarnish</i>	1 75	1 60
Livingston's Royal Red	<i>Theatric</i>	1 40	1 25
Livingston's Stone	<i>Thesis</i>	1 40	1 35
Livingston's Beauty	<i>Target</i>	1 50	1 40
Livingston's Paragon	<i>Terror</i>	1 40	1 35
Livingston's Acme	<i>Tapan</i>	1 50	1 40
Livingston's Favorite	<i>Tepidity</i>	1 40	1 35
Livingston's Perfection	<i>Testan</i>	1 40	1 35
Livingston's Golden Queen	<i>Templar</i>	1 60	1 50
Livingston's New Purple Dwarf	<i>Tarple</i>	3 00	2 50
Livingston's Yellow Prince	<i>Telic</i>	1 50

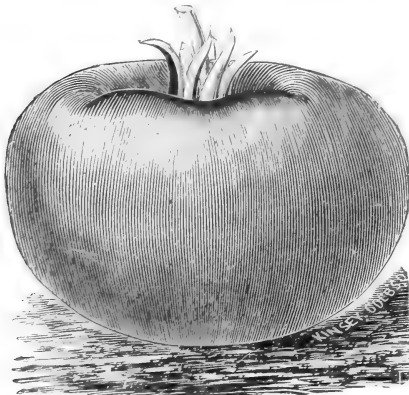


Livingston's Buckeye State Tomato.

This is the largest fruited perfectly smooth PURPLE tomato in cultivation. One of the most satisfactory sorts for the merchants to handle.

TOMATO, Continued.

	Tel. Cipher	Per lb.	10 lbs. or over Per lb.
Dwarf Champion	<i>Taurus</i>	\$1 75	\$1 60
Sparks' Earliana	<i>Tomboy</i>	2 00	1 75
Chalk's Early Jewel	<i>Tender</i>	2 40
New Magnificent	<i>Tancent</i>	2 25	2 00
Ponderosa	<i>Toaster</i>	2 50	2 40
Matchless (Introducer's Stock)	<i>Termagan</i>	1 40	1 35
Atlantic Prize	<i>Tapster</i>	1 40	1 30
Improved Trophy	<i>Theocracy</i>	1 40	1 35
Early Ruby	<i>Tearless</i>	1 40	1 30
Enormous	<i>Textile</i>	1 75	1 65
Turner's Hybrid, or Mikado	<i>Thinker</i>	1 75	1 60
Success	<i>Tasting</i>	1 40	1 30
Yellow Husk	<i>Tenancy</i>	1 75
Purple Husk	<i>Texthand</i>	1 75
Plum Shape Yellow	<i>Testimony</i>	1 40
Purple Peach	<i>Tertial</i>	1 75
Yellow Peach	<i>Thoral</i>	1 60
Yellow Pear	<i>Tegumen</i>	1 75
Red Pear	<i>Terrific</i>	1 75



Sparks' Earliana.

An extremely smooth, bright red tomato of good size and flavor. It was developed by Mr. Geo. C Sparks, on the warm, sandy soil of Salem county, New Jersey, where the greatest competition exists among growers to be first in the market, and the seed we offer is grown from selected stock of his CHOICEST STRAIN. For prices, see above.

Chalk's Early Jewel.

An early deep fruited and solid new tomato, originated by Mr. James Chalk, of Pennsylvania. Color brightest scarlet; foliage rather open, admitting sunshine to hasten ripening. An enormous quantity of fruit ripens at once. We were very favorably impressed with this new sort the past summer, and advise our friends to try it. For prices, see above.

Livingston's Sweet Peas

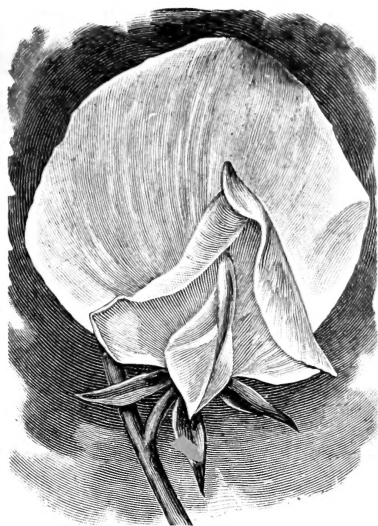
A Superb Collection Including Best
Up-to-Date Kinds.

There is nothing more profitable for
the merchant than Sweet Peas. They
sell readily at 5 cents per ounce.

Figure It Out For Yourself.

NAMED VARIETIES.

America—Blood-red, striped white, lb. 20c.
Apple Blossom—Rosy, blush wings, lb. 20c.
Aurora—Orange, flaked and striped, lb. 20c.
Black Knight—Very dark maroon, lb. 25c.
Blanche Burpee—Large, pure white, lb. 25c.
Blanche Ferry—Pink and white, lb. 22c.
Butterfly—White, blue edge, lb. 22c.
Blanche Ferry, Extra Early—lb. 22c.
Blushing Beauty—Medium early; rich, deep
blush pink; large hooded form; lb-30c.
Boreatton—Dark maroon, lb. 20c.
Brilliant—Scarlet; lb. 22c.
Capt. of the Blues—Purple-blue, lb. 22c.
Captivation—A distinct rosy purple, lb. 20c.
Celestial—Delicate lavender, lb. 25c.
Countess of Cadogan—Lilac and blue, lb. 25c.
Countess of Radnor—Improved—(New Coun-
tess); pale lavender, lb. 25c.
Earliest of All—Very early, nearly white, lb. 25c.
Emily Eckford—Bright, heliotrope, lb. 20c.
Emily Henderson—White, good stems, lb. 20c.
Firefly—Intense crimson scarlet, lb. 25c.
Gorgeous—Salmon-orange, lb. 22c.
Gray Friar—Beautiful watered-purple on white,
makes attractive bouquets, lb. 20c.
Golden Rose—Primrose, striped with pink, lb.
60c.
Her Majesty—Beautiful bright rose, with large
full flowers, lb. 20c.
Janet Scott—New, bright pink and buff;
lb. \$1.00.
Josephine White—New, very early, white;
lb. 30c.
Katharine Tracy—A soft, brilliant carmine
pink; vigorous grower; large flowers; lb. 22c.
Lady Penzance—Delicate rose; wings pure
pink; an early and free bloomer, lb. 20c.
Lady Grisel Hamilton—Large, mauve, blue
wings, lb. 30c.
Lady Mary Currie—Very distinct and beautiful,
lb. 22c.
Lord Kenyon—Large, rosy pink, lb. 22c.
Lovely—Soft shell-pink; exquisite, lb. 25c.
Maid of Honor—Light blue, on white ground;
bold edge of deep lavender, lb. 20c.



Mont Blanc—Large, pure white, lb. 25c.
Miss Wilmot—Large, rich, orange, rose, lb. 22c.
Mrs. Eckford—Pale primrose yellow, extra fine
flowers and form, lb. 25c.
Mrs. Fitzgerald—Soft delicate rose, long stems,
a strong grower, lb. 22c.
Mrs. Sankey—Pure white, fine bold flowers, a
vigorous grower, lb. 22c.
"NAVY BLUE"—The only true blue Sweet Pea.
An entirely distinct color. A vigorous grow-
er. Blooms of generous size and remarkable
substance. Stems usually bear three flowers,
occasionally four, lb. 25c.
Othello—Deep glossy maroon, lb. 25c.
Oddity—Large curled flower; pale carmine with
bright rose edge; a great bloomer, lb. 22c.
Prince of Wales—Rose crimson, lb. 22c.
Royal Rose—Deep rosy pink, wings lighter; one
of the largest, lb. 22c.
Red Riding Hood—Oldest of all Sweet Peas,
very attractive, lb. 22c.
Sadie Burpee—Hardest of all whites; flowers
extra large, yet dainty and beautiful in form;
color purest pearly white, lb. 25c.
Salopian—Deep scarlet or cardinal; the best
red, of fine gradiflora form; stands sun best
of all, deep crimson scarlets, lb. 22c.

LIVINGSTON'S SPECIAL MIXTURE.

Contains all of the **Finest New Large Flower-
ing Sorts and Novelties**. No mixture surpasses
it in size and richness of flower and fragrance.
Lb. 30c.

LIVINGSTON'S FLORISTS MIXTURE.

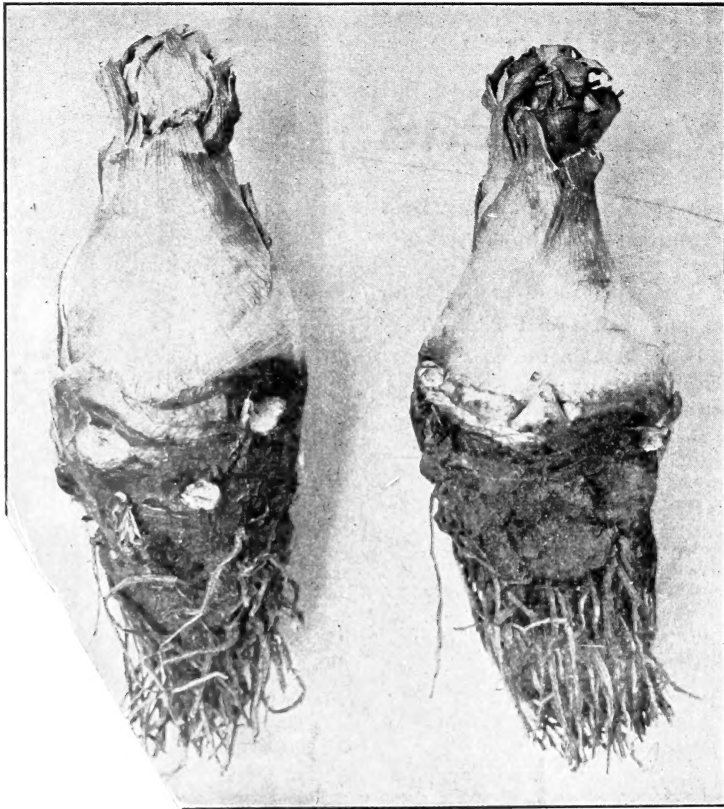
This mixture is made up from about 25 differ-
ent light shades. Some entirely new and lovely
varieties. A valuable mixture. Lb. 25c.

GILT EDGE MIXTURE.

Of undoubted superiority. Contains many
beautifully blended shades. Lb. 20c.

FINE MIXED.

Many sorts and colors. A fine mixture for the
low price. Lb. 18c.



BULBS.

Excelsior Pearl Tuberos.

We handle immense quantities of these bulbs each season, and owing to the excellence of our strain, the demand is constantly increasing. There is all the difference in the world in the quality of Tuberos Bulbs. We handle stock grown by one man only and he is an expert.

Prices. **First Size, 4 to 6 in., 70c. per 100, \$6.50 per 1000.**

BULBS.

Caladium Esculentum.

(Elephant Ears)

Healthy Bulbs Well Cured.

	Doz.	100
1½ to 2½ inches in diam.....	\$0 40	\$2 50
2½ to 3 " " " " " " " " " " " " " "	60	4 00
3 to 4 " " " " " " " " " " " " " "	1 00	7 00
4 to 5 " " " " " " " " " " " " " "	1 85	12 00

Planet Jr. Implements.

We handle these most excellent Tools in large quantities and will be pleased to send a complete Catalogue of them, postpaid, on request.

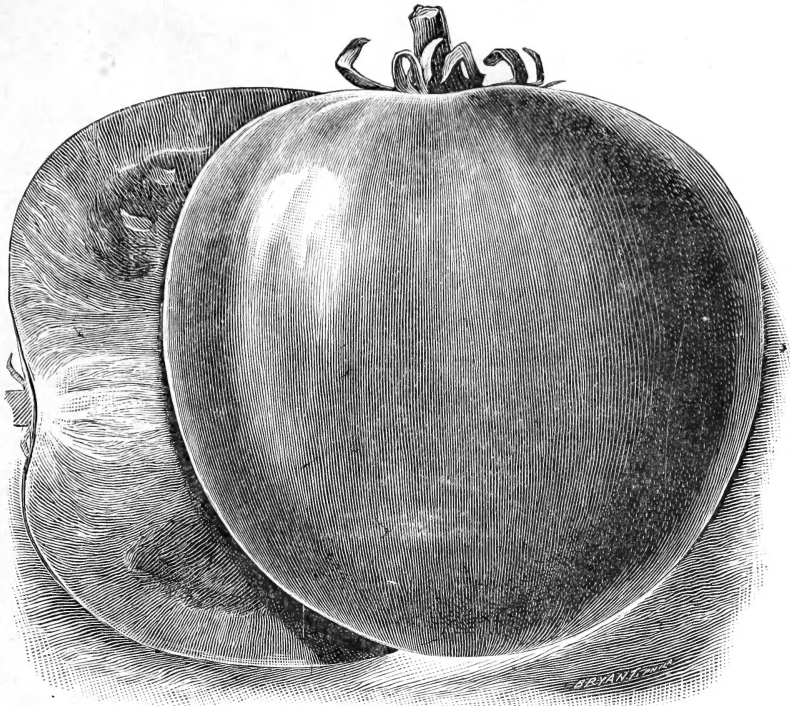
	Tel. Cipher	Net Prices
No. 25 Hill and Drill Seeder	Exactio	\$10 00
No. 4 Hill and Drill Seeder and Single Wheel Hoe	Choma	8 00
No. 4 Hill and Drill Seeder as a Seeder only.....	Chunni	6 40
No. 3 Hill and Drill Seeder	Chalant	8 00
No. 11 Double Wheel Hoe...	Faltasta	6 75
No. 12 Double Wheel Hoe...	Famis	5 25
No. 13 Double Wheel Hoe...	Fana	3 60
No. 16 Single Wheel Hoe....	Faleris	4 40
No. 17 Single Wheel Hoe....	Fallent	3 75
12-Tooth Harrow and Cultivator, Plain.....	Cantabo	4 60

	Tel. Cipher	Net Prices
12-Tooth Harrow and Cultivator, with Wheel.....	Arido	5 50
12-Tooth Harrow and Cultivator, complete.....	Bellosa	6 80
No. 8 Horse Hoe complete...	Chalsole	6 80
No. 9 Horse Hoe complete...	Farcino	5 90
Firefly, Garden Plow.....	Ansata	2 00

SEED BAGS.

	Per 100	Per 1000
No. 1 Coated, 2¼ x 3 in., for Flower Seeds.....	\$0 12	\$1 00
No. 2 2¼ x 4 in., for packets of Cabbage, etc.....	15	1 10
No. 3 3¼ x 4½ in., for packets of Beets, Beans, etc.	18	1 40
No. 4 3¼ x 5 in. for ounces, etc.	20	1 65
No. 5 4½ x 6 in., for quarter-pounds, etc.....	25	2 00
No. 6 5¼ x 8 in., pint size....	20	1 85
No. 7 7½ x 9½, quart size.....	25	2 50
No. 8 7 x 10½ in. three pint size	35	3 25

A New Tomato, Livingston's Globe.



LIVINGSTON'S NEW GLOBE TOMATO.

Is a very beautiful variety, and, on account of its shape, one that permits of a greater average number of slices to be taken from each fruit.

In time of ripening we class it among the first earlies, being about the first to ripen fruit both in our greenhouses as well as our field trials. The fruits are large, and a good marketable size is retained throughout the season; always smooth, firm fleshed and with few seeds; ripens evenly; color, a fine glossy rose, tinged with purple, and without the slightest hint of yellow at any stage of ripening. Fruit clusters spring from the main stem much closer together than in most sorts, and contain from three to seven large tomatoes, thus insuring a heavy crop. It is a remarkably good keeper, none of the many varieties we grow surpassing it in this respect. In quality there is nothing more to be desired, being mild, pleasant and of delicate flavor; unsurpassed for slicing or to eat from the hand.

Every gardener who plants it will find it a new variety, not one that has simply a new name, and will not be disappointed in it; the beautiful and attractive globe shaped fruits will find ready sale.

We bespeak for the Livingston's Globe a great future, for, in our judgment, it will at once become a favorite variety with tomato growers of every class.

RETAIL PRICES.

Packets containing 40 seeds, each, 20c., 3 for 50c., 7 for \$1.00.

WHOLESALE PRICES.

All purchasers of Livingston's Globe Tomato, for the season of 1904-5 are required to offer it only at above rates. To those maintaining these rates we will supply at following prices:

100 packets or more at.....	10 c. per packet.
500 packets or more at.....	9 c. per packet.
1,000 packets or more at.....	8½ c. per packet.
5,000 packets or more at.....	8 c. per packet.
10,000 packets or more at.....	7½ c. per packet.

LITHOGRAPH CARDS, size 3½ x 6¼ inches, showing fruit in natural color and with description, price and blank space for address, will be supplied at a nominal price. Ask for sample.

TRADE PRICE LIST.

Livingston's Select Extra Early
White Spine Cucumber.



The Livingston Seed Co.,
COLUMBUS, OHIO.