


The Lotus



1921



Digitized by the Internet Archive
in 2010 with funding from
University of North Carolina at Chapel Hill

<http://www.archive.org/details/lotus1921peac>

PRESSES OF
LOWARDS & DOUGHTON PRINTING CO.,
RALEIGH, N. C.

THE LOTUS



MCMXXI

PUBLISHED ANNUALLY
BY THE
PI THETA MU AND SIGMA PHI KAPPA
LITERARY SOCIETIES
OF
PEACE INSTITUTE
RALEIGH, N. C.



To

Our Peace Mother
Mrs. Mary Fowler

in recognition of her many years
of unselfish service, and as
a token of our love,
we dedicate
this book



MRS. MARY FOWLER



MAIN BUILDING



MISS MARY OWEN GRAHAM



MAIN BUILDING (SIDE VIEW)



RECEPTION ROOMS



CENTRAL HALL



WYNNE HALL



INTERIOR OF WYNNE HALL



WEST GATE DORMITORY



ANNEX



Editorial Staff

LAURA BELL FRENCH

LILY WINN

Editors-in-Chief

LUCY COOPER

Business Manager

MARY C. HOWARD

KATHERINE CARR

Literary Editors

EUGENIA FAIRLEY

ISABEL CLARK

Advertising Editors

MARGARET S. HALL

MARGARET RAINEY

EVA BULLOCK

Associate Editors

ELEANOR ROBERTS

ELLEN SEAWELL

Art Editors





A Plea for the Editors

*From skipping time 'till past midnight,
We sit and toil and work;
We strive to get it all just right,
And duty ne'er to shirk;
But sometimes when the days are long,
And lessons hard to get,
The Sand Man for us grows too strong,
And lids just will go "shel."
Then with a start we ope our eyes,
And set to work once more;
We put in commas, dot the i's,
Make other marks galore,
That text-books tell us we must use,
When we put hand to pen.
If faults you find, just please excuse,
We're gone to sleep again!*



FACULTY



Faculty

MARY OWEN GRAHAM, *President*

Queen's College; Special Student Teachers' College, Columbia University;
Summer Sessions University of North Carolina

MAY McLELLAND, *Dean*

Queen's College; Teachers' College, Columbia University
Bible

MARGARET McMURRAY INGRAHAM, A.B.

Vassar College; Cornell University, Columbia University
English

WINIFRED M. KUHNS, B.A., B.E.

Randolph-Macon College; George Washington University
Mathematics

RUTH HUNTINGTON MOORE

Pupil of Raphael Collin, Frederiek MacMonnies, Max Bohm,
Henry Salem Hubbell, Paris
Art

HARRIET BYRNE, A.B.

Goucher College
Science

MARY M. PRICE

Queen's College, Summer Sessions of University of North Carolina, and
Columbia University
Latin and English

J. P. BRAWLEY

Joseffy, New York; Theodore Leschetisky, Vienna
Music Director, Piano

LOVIE JONES

Joseffy, New York; Wagner Sawyne, Paris
Piano

MATTHE EDMUND BURWELL

Cincinnati Conservatory of Music
Piano, Theory, Harmony

SALLIE WELCH SHARP

Hood College; Leland Powers School of Expression; Summer School, Chautauqua, N. Y.
Expression

ELEANOR HEUER

Pennsylvania State College; Student Summer School, Johns Hopkins University
Home Economics

MARTHA VENABLE DAVIS

Bellewood Seminary, Ky.; Student Oxford University, England
Registrar

WANDEN WEBBER

Gerster and Mollenhaur, Germany, Corelli and Arigliana, Italy;
Lemon and Baumgartner, Boston; Zure, New York
Voice





LESLIE WENTZEL
University of Pennsylvania; New England Conservatory
Assistant in Voice

LUCIA BECKER, Ph.B., Ph.M.
Mount Holyoke; University of Chicago
History and Education

EMMA MELVIN, A.B.
University of Tennessee; Cornell; University of Chicago; Columbia University
Latin

ELIZABETH MOSELEY, A.B.
Winthrop College; Columbia University
English

MARY DALE McREYNOLDS, A.A., B.S.
Stephens College; Northeast Missouri State Teachers' College; Missouri State University
Home Economics

GLADYS RANIER, A.B.
Ohio Wesleyan University; Summer Student Ohio State University
French and German

LOIS STICE, A.B.
Oxford College, Ohio; University of Louisville, Ky.
French and Spanish

ESTHER A. EICHELBERGER
Ohio State Normal School; New Haven Normal School of Physical Training

CLARA B. REIDER
Peabody Conservatory
Violin, Piano

FLORA McNEILL BOYCE
Teacher Raleigh Public Schools; Summer Sessions Columbia University and University of North Carolina
Teacher Preparatory Department, House Mother Wynne Hall

ELSIE PFAFF, A.B.
Goucher College
Science

HATTIE MAY MORISEY
Peace Institute
Chapel Supervisor

BLANCHE BOWMAN
Indiana Business College
Commercial

MRS. W. H. DAVIS
Librarian

MRS. A. E. BARBEE
Dietitian

ANNA K. RUDY
Dining-room Supervisor

MARY T. FOWLER
Matron

MARY KIRKPATRICK
Secretary

MRS. W. R. McLELLAND
Music Practice Supervisor

W. C. PRESSLY, A.B.
Erskin College, S. C.
Business Manager





Senior Class

Colors: Purple and Gold

Flower: Violet

ELIZABETH SLOAN.....	<i>President</i>
DOROTHY ALDERMAN.....	<i>Vice-President</i>
NELLIE BURGESS.....	<i>Secretary</i>
LAURA BELL FRENCH.....	<i>Treasurer</i>
NELLIE BURGESS.....	<i>Historian</i>
DOROTHY ALDERMAN.....	<i>Poet</i>
EUGENIA FAIRLEY.....	<i>Prophet</i>
GRACE MCNINCH.....	<i>Lawyer</i>

BETH ANDERSON
EVA BULLOCK
DOROTHY LUMLEY

ELLEN SEAWELL

ANNIE McCORMICK
MOZELLE MARRHAM
MARGARET ROBINSON



MISS HARRIET BYRNE
Faculty Advisor



JAMES POU BAILEY
Senior Class Mascot



ELIZABETH WREN SLOAN
GARLAND, NORTH CAROLINA

H O M

President Senior Class, '20-'21; Vice-President Student Council, '20-'21; H O M Editor-in-Chief *Voices of Peace*, '20-'21; Secretary Athletic Association, '20-'21; Secretary Y. W. C. A., '20-'21; Green Volleyball Team, '19-'20; Green Basketball Team, '19-'20.



*"Her joys are as deep as the ocean,
Her troubles as light as its foam."*

No one has ever seen Lib "floored," whether she's in the parlor with a date or in Senior English class. Whatever the job is, she can do it, too—for instance, selling ice cream on the *front* campus. We wonder if she'll go to some university and be valedictorian, or go on the stage. You never can tell about Lib, you know.



GRACE HARTLEY MCNINCH

CHARLOTTE, NORTH CAROLINA

Σ Φ Κ

President Student Body, '20-'21; President Σ Φ Κ Literary Society, '20-'21; Class Lawyer, '20-'21; Cotillion Club, '20-'21; President Junior Class, '19-'20; Y. W. C. A. Cabinet, '19-'20; Delegate to Des Moines Convention, '19-'20; Delegate to Y. W. C. A. Convention, Meredith, '19-'20; President Annex, '19-'20; Delegate to Y. W. C. A. Convention at Greensboro, '18-'19; President Red Cross, '18-'19-'20; Member Student Council, '18-'19-'20; Green Tennis Team, '18-'19.

"To see her is to love her."

Ever since she came to us, Grace has been filling a big place in our school. She is one of those girls who can do just anything, and are always ready to lend a helping hand. Her sweet face and gentle manner win your heart immediately. Her twinkling blue eyes tell of her love of fun. She knows how to work and to play, and perhaps this is the secret of her success. As our president, she has wielded an influence that will be felt long after she is gone.





DOROTHY ALDERMAN

WAGRAM, NORTH CAROLINA

Π Θ Μ

Vice-President Senior Class, '20-'21; Representative from Senior Class, '20-'21; Proctor-in-Chief Chapel, '20-'21; Proctor-in-Chief Dining Room, '20-'21; Poet Senior Class, '20-'21; Π Θ Μ Business Manager *Voices of Peace*, '20-'21; Associate Editor *LOTUS*, '19-'20; Secretary Junior Class, '19-'20; Treasurer Athletic Association, '19-'20; President Special Class, '18-'19; Member Student Council, '18-'19-'21; Winner of Monogram, '18-'19; Basketball Team, '18-'19.



*"Oh for a seat in some poetic nook,
Just hid with trees and sparkling with a
brook."*

We always think of poetry when we hear Dot's name, for above all other occupations, rhyming is her favorite. But in between times she has time to collect ads for the magazine and count up our "minuses." Dot is a good student and takes her work seriously, sometimes even a little too seriously. She's a fine girl, and a good friend to everyone.



BETH ANDERSON

VIOALIA, GEORGIA

Σ Φ Κ

Vice-President Y. W. C. A., '20-'21;
 Treasurer Σ Φ Κ Literary Society,
 '20-'21.

*"Her very quietness called attention to
 her merits."*

There is a charming quaintness about Beth that wins her many true friends. On bright days or dull days she has a cheery "Hello" for everyone. She is a conscientious student and can always be depended upon. If all Georgia girls are like her, we want some more.





EVA BULLOCK

ROWLAND, NORTH CAROLINA

Σ Φ Κ

President Athletic Association, '20-'21; Member Student Council, '20-'21; Associate Editor LOTUS, '20-'21; Captain White Volleyball Team, '20-'21; White Tennis Team, '19-'20-'21; White Basketball Team, '19-'20; White Volleyball Team, '19-'20-'21; Cotillion Club, '20-'21; Delegate to Y. W. C. A. Convention, Red Springs, '19-'20.



"The only way to have a friend is to be one."

"Come on and go to walk," is the favorite utterance of our athletic president. A loyal White is Eva, and a mighty good sport. We'll certainly miss her on the courts next year. How can the Whites get the cup without her?



NELLIE BURGESS

OLD TRAP, NORTH CAROLINA

II Θ M

Secretary Senior Class, '20-'21; Secretary II Θ M Literary Society, '20-'21; Historian Senior Class, '20-'21; Historian Junior Class, '19-'20; Secretary Student Council, '18-'19-'20; Green Volleyball Team, '17-'18-'19; Associate Editor *Voices of Peace*, '19-'20; Treasurer Sophomore Class, '18-'19; Secretary and Treasurer Freshman Class, '17-'18; Green Basketball Team, '17-'18; Winner of Monogram, '17-'18; Annual Honor Roll, '16-'17-'18-'19-'20.

*"Endurance is the crowning quality,
And patience all the passion of great
hearts."*

Nellie studies morning, noon and night, and we believe if she weren't one of the most loyal supporters of our honor system she'd "burn the midnight oil." However, she can see results of her labor in the numerous E's she gets. When the 9:20 bell rings, peals of merry laughter, floating through the transom, indicate that something besides studying goes on in room 449.





EUGENIA FAIRLEY

LAURINBURG, NORTH CAROLINA

Σ Φ Κ

President Y. W. C. A., '20-'21; Prophet Senior Class, '20-'21; Associate Editor LOTUS, '19-'20-'21; Member Student Council, '20-'21; Treasurer Y. W. C. A., '19-'20; Chief Marshal, '19-'20; Vice-President Σ Φ Κ Literary Society, '19-'20; Cabinet Member, '18-'19; Vice-President Sophomore Class '18-'19; Basketball Team, '18-'19; Choral Class, '18-'19.



"All kin' o' smiley 'round the lips."

Whether it is conducting a Y. W. meeting or collecting ads for the *Annual*, Genie may be depended on to do her part cheerfully and well. Girls and teachers are equally fond of her. It is a privilege to know a girl of Genie's disposition; sweet and attractive, full of fun, yet ready to take her share and more of any responsibility.



LAURA BELL FRENCH

STATESVILLE, NORTH CAROLINA

H Θ M

Editor-in-chief *LOTUS*, '20-'21; Treasurer H Θ M Literary Society, '20-'21; Treasurer Y. W. C. A., '20-'21; Treasurer Senior Class, '20-'21; Treasurer Junior Class, '19-'20; Secretary Y. W. C. A., '19-'20; Vice-President Athletic Association, '19-'20; Secretary and Treasurer Choral Class, '19-'20; Cotillion Club, '19-'20-'21; Glee Club, '19-'20; Winner of Monogram, '18-'19; President Sophomore Class, '18-'19; Member Student Council, '18-'19; Annual Honor Roll, '18-'19-'20; Associate Editor *Voices of Peace*, '19-'20.

"The early bird catches the worm."

As treasurer of every organization to which she belongs, Laura Bell wins the admiration of us all by her patience and business ability. Besides these responsibilities, she is one of the editors-in-chief of the *Annual*, and is making good marks in her studies. And even then there is always time for her to "make points" for the Greens and give us our mail. This last would drive some people insane, for we are far from quiet in the excitement of the moment, but Laura Bell goes serenely on in this as in everything else.





DOROTHY LUMLEY

GREENWOOD, SOUTH CAROLINA

Π Θ Μ

President Π Θ Μ Literary Society, '20-'21; Associate Editor *Voices of Peace*, '20-'21; Treasurer Athletic Association, '20-'21; Glee Club, '19-'20-'21; Cotillion Club, '19-'20-'21; Cheer Leader "Annex," '19-'20; Π Θ Μ Editor-in-Chief *Voices of Peace*, '19-'20.



*"Nothing trivier can be found in woman,
than to study household good."*

Dot is a star pupil in Domestic Science and Art. The wonderful things she can concoct! And the creations her fingers can bring into being! But Dot can also play the ukelele. Remember the fame she made for the Annex with her serenade songs? You seldom find Dot very "blue," for she's generally optimistically inclined. She makes good use of her Senior privileges, too, when she puts aside her work.



ANNIE ELIZABETH MCCORMICK
ROWLAND, NORTH CAROLINA

Π Θ Μ

Basketball Team, '18-'19; Volley-
ball Team, '18-'19-'20; Winner of
"P. I.," '18-'19.

*"She doeth little kindnesses,
Which most leave undone or despise."*

Annie has such a cheery smile that it is a pleasure to meet her. She is ready to help out at any time, no matter how busy she may be herself. A more generous hearted girl is hard to find, and though she is naturally reserved and quiet, her fine traits have won her many friends.





MOZELLE MARKHAM

RALEIGH, NORTH CAROLINA

H O M

President Day Students' Club, '20-'21; President Business Class, '20-'21; Yearly Honor Roll, '18-'19-'20.



"With personal gifts and bright instinctive wit."

Mozelle's two diplomas are testimony to her ability as a student. One of the brightest girls in school, she nevertheless does not spend all her time studying. She has some bright, witty remark for everyone she meets, and it is a pleasure to converse with her. She stands high in the esteem of girls and teachers.



MARGARET ROBINSON

CHARLOTTE, NORTH CAROLINA

H O M

Green Volleyball Team, '19-'20;
Basketball Team, '18-'19.

"Mistress of herself, though China fall."

Margaret would have been in statistics if we had voted on the most dignified or the quietest. Her brain, according to her marks, functions well, and apparently all the time. But we have reason to doubt that it's her studies which occupy her thoughts all the time.





ELLEN COLBURN SEAWELL

II © M

Secretary Day Students' Cluh, '18-'19; Art Editor LOTUS, '19-'20-'21.



"My eyes see pictures when they're shut."

Ellen is the artist of the Senior Class, and the delight of Mrs. Moore. It is just a natural gift with Ellen, and she is making herself and others happy by cultivating her talent. She is always bright and happy, getting the best out of life, without taking it too seriously.



History of the Senior Class

Did any of you ever dare to "pick" the Central Hall mirror for the secrets which it has been accumulating for the past several years? It has probably as great a store of secrets and records of events for the Class of 1921 as for any class during its long stay at "Peace." It has been our friend in time of trouble and dire distress, and in time of greatest elation and joy. It has always been quick to "catch" our smile or tear, and to return a like countenance, so it may still be sociable.

Mirror, you knew, as Freshmen, only two of our now "dignified" thirteen, but you were no less a sympathizer with us in our verdancy. You reflected to us our scared, pale faces, as we passed you on our way to initiation. Then, later, you showed our long faces and trembling hands, as we were shoved along in the procession on our way to meet, for the first time, those "horned monsters," called by the wiser upper-classmen, "little tests."

Surely you smiled to yourself when you saw how ready we were for our new duties and responsibilities, as we, a "wise looking" class of nine, slipped easily and boldly into Sophomoreship. Mirror, we knew that your counsel was, "Remember your Freshmen days." Well, did we not remember them—with vim? No one had "petted" or "spoiled" us and so we did not believe in that sort of thing. We helped "Billy" in the initiation with more strength and will than feeling. You must have guessed that from the Freshmen's appearance before and after the "treat," if not from ours.

We know that your memories of our "jolly" Junior days must be vivid, because it seems only yesterday that you welcomed us, a class of eighteen important personages, back to dear old Peace. There was no doubt of our importance, for we could chaperone ourselves, and under-classmen, too, down town. Dear mirror, will you ever forget with what force and vehemence we participated in that long-looked-forward-to social event commonly known as the Junior-Senior Reception? You did not witness our joyful elation at our supreme triumph, when at Commencement we received those little bits of white and green ribbon which meant to us final development into Seniority, but you must have guessed from our consequent show of dignity what our new station was.

Old friend, you must have been sorry to be able to greet only thirteen of us this year. But then you know that one must be courageous to brave Senior English and Senior Bible. Only you and we know joys they have missed. Yes, we are the example, but the example may be one in play as well as in work. They



missed the glorious reception at the Mansion and the lovely party at little James Pou Bailey's, our dear little class mascot. More than all they have missed the treasured friendship of our beloved class teacher, Miss Byrne.

We will soon have to bid you and our other friends a sad farewell. We are going out into the world and the dim future. We hope that you will befriend the Class of 1922 as you have befriended us.





The Last Will and Testament of the Class of 1921

We, the Class of 1921, having come through the ordeal of Seniorhood sound in body and, we hope, sound in mind, and realizing that our days, as students, are numbered, do will, bequeath, and possibly thrust upon some persons, and classes thereafter mentioned, the following legacies:

IMPRIMIS

To the Class of 1922 we bequeath:

1. The privilege of being an example to the whole school.
2. The distinction (plus work) of holding Senior offices.
3. Our privileges, hoping the burden of said privileges won't ruin their posture forever.
4. Our average in Senior English, in hopes the two together will make a pass mark.
5. Our sincere wishes for a happy 1922. These good wishes come from our hearts which you won on Junior-Senior reception night.

ITEM II

To the Class of 1923, we tender:

1. The hopes of being Seniors.
2. The privilege of chaperoning before the rolls are posted.
3. The privilege of having Sophomore sisters some day.

ITEM III

To the Class of 1924, we will:

1. Some of the joy we have had this year to add to their joy of being Sophomores.

ITEM IV

To the new girls who come to Peace in 1922 we do will:

1. Our places on the various rolls, so that all of their time spent at Peace will not have to be spent in Ranks—perhaps!

ITEM V

To all the girls we do gladly give:

1. Our tennis rackets with two strings, along with our "dead" tennis balls.
2. Our bloomers and gym shoes, which have lain in the dust the past year.
3. Our pennants and pictures, which have made our walls so attractive this year, and have had much to do with the popularity of our rooms.

ITEM VI

To Miss Graham we bequeath:

1. The apologies of the Senior Class for all we have done wrong in our years at Peace. We sincerely hope that all future classes will profit by our mistakes.



ITEM VII

To Miss McLelland we will:

1. A perfect Bible examination.
2. A retreat which may not be penetrated by requests, into which she may retire each afternoon to rest.
3. A secretary to look after all slips—especially those of Monday morning, and special holidays such as the Fair and Thanksgiving.
4. An automatic request-granting-machine guaranteed to make every necessary distinction between Star Honor Roll and Ranks.

ITEM VIII

To Mrs. Fowler we do bequeath:

1. A student body inoculated against all diseases.

ITEM IX

To the Faculty we leave:

1. A year's subscription to "Life." This we hope they will enjoy and use in their dealings with the students.
2. A perfect system of Student Government in hopes there will be no skipping, no noise on the halls at any time, nor anything going on that should not go on.

As Residuary Legatee we name Lily Winn, who, because of her faithful and devoted services during the past year, we think is entitled to anything which may be left over. We appoint her sole executrix of this estate, and we rely on her to carry out faithfully these, our last wishes.

In testimony whereof, we have put our hand and seal, on this, the twenty-fourth day of May, in the year of our Lord, One Thousand, Nine Hundred Twenty-one, at Peace Institute, Raleigh, North Carolina.

(Signed)

CLASS OF 1921





Senior Class Prophecy

And it came to pass, on the twenty-fourth day of the fifth month of the fifth year of the reign of Mary, the daughter of Graham, from the land of Mecklenburg, when I, of the tribe of Fairley, sat in the desert with other sojourners from Peace, that a voice cried aloud unto me, and said "Prophecy!" And behold, the vision came to me of the future of my classmates.

And lo, I saw a great crowd gathered together. There was much laughter and dancing to the tinkle of the cymbal. In the midst of the crowd stood Grace McNineh, our beloved Student Body President. It was Inauguration Day. I was not surprised to see that she had aspired unto the highest honor which our state could bestow. Nor did her inaugural address dismay her, for verily she had had much practice in speech-making at Peace.

I turned now and was in the land of Africa, even in the land of the Ethiopians, and, through the spirit which had come over me, I beheld Margaret Robinson. She was a goodly woman and had much renown for her alms deeds as she ministered to that tribe, yea, I say unto you, the dark race of the great river, even the Nile.

Now, lo, I saw a bright light, a great sign shone before me, and there, above the throngs of Broadway, shone the brilliant, yea, dazzling electric sign, "Laura-belle, the Famous Toe-Dancer." I was almost waked from my trance by a voice in the crowd, "Even so, verily, is that Laura Belle French, a classmate of mine who took toe-dancing at Peace!"

But from whence cometh the voice? Alas, our noble, yea, our most learned Nellie Burgess had turned from her noble aspirations, even of the renowned A.B. degree from Columbia, and now sought, with much seeking, the gaieties of the bright lights. Even also a young man was by her side, and he spake many gentle words unto her.

Now it came to pass, in the days when Dorothy Lumley was yet young, there came into the land of Greenwood a young man, and he wore a coat of many colors. He went down, yea, he sent unto her rich gifts, jewels, yea, verily, I say unto you, even of platinum. And he said unto her, "I would that you would arise and go with me unto the land of my fathers, even unto Portsmouth." And she arose and went with him.

Now, in my vision, lo, I beheld Ellen Seawell. Her fame had spread both far and near—yea, it had spread to the uttermost parts of the earth. She had become the head of the great North Carolina Art School, which had been founded through the influence of her art teacher at Peace. I say unto you, Ellen had become the foremost artist of the day.

Now, I was sorely grieved to see how the hand of fate had dealt with another classmate, Eva Bullock. Lo, she was poor and sad to look upon. Her love had forsaken her when she was yet young. But I say unto you, her heart was moved with compassion for poor hungry school girls. Yea, she kept a "Tea Room" in Raleigh and sold much food to Peace girls, even in such small quantities as a pennyworth.



Behold, the spirit turned now, and lo, I was at Chapel Hill, even at the University of North Carolina. A new professor of Economics had been chosen unto them and her name was Mozelle Markham. I had been sure that some day she would attain unto such a high place of honor for she had wrought much worthy work at Peace.

I turned now to the voice. "Lo, have none, save one, trod that rocky road, even the rough roald of matrimony?"

Yea, verily, I say unto you, Annie McCormick did take unto herself a husband, even in that same year 1921.

And Elizabeth, the fair daughter of the House of Sloan, communed thus with herself, and she said, "Behold, what profiteth it me, that I should teach all the days of my life? Rather shall I take unto myself a husband." So she kidnapped Bob and remained with him in his own country. Then, even then, I remembered that she had been our class president, and, in my heart, I wished her much happiness.

Behold, in my vision I saw a flying scroll, and it came near, and lo, it was the *Literary Digest* of 1926. I opened it and saw written therein a chronicle of the many noble acts of Dorothy Ableman: how she had wrought many good works; how she had trained children to become mighty athletes in a big play-ground in Chicago.

And lo, I turned now in the spirit to the land of Peace, and there, with much grace and dignity, in the chair of Science sat Beth Anderson. She had taken the place of our class teacher and now poureth into the heads of Peace girls, much Knowledge of H_2O and H_2SO_4 .

But alas, the spirit of prophecy hath left me. Now, may I wish the Class of 1921 as bright a future as I have presented to you through my vision.

PROPHET.





Senior Poem

*We're leaving now, dear schoolmates
Going out to face the world.
We're had our fun, and met our fates,
Each as a brave young girl.*

*Our stay at Peace has happy been,
No dearer place we know;
She is to us a cherished friend,
And oh, we hate to go!*

*We hate to leave our president dear,
So much for us she's done;
She's guided us through our career,
Till now our race is run.*

*There are others too we hate to leave,—
The faculty, and the rest;
But then of course we shouldn't grieve,
Because it's for the best.*

*Although we leave, we'll not forget
The lessons we've been taught;
The dear, sweet friends that we have met,
And all the joys they've brought.*

*And now, dear Peace, before we start,
We have a wish so true;
A wish that comes from every heart,—
We wish it all for you.*

*The girls of Nineteen-Twenty-One
Wish blessings ne'er to cease
To shower down from moon and sun
And always cover Peace.*

*And may each day from year to year
Bring joys all anew,—
Great wealth, and health, good luck and cheer.
So Peace, now here's to you!*



Senior Club

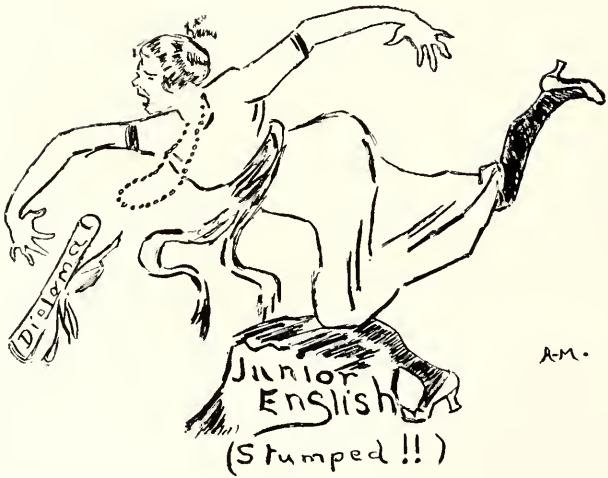
Motto: "Never work on Monday"

DOROTHY ALDERMAN
BETH ANDERSON
EVA BULLOCK
NELLIE BURGESS
EUGENIA FAIRLEY
LAURA BELL FRENCH

DOROTHY LUMLEY
ANNIE MCCORMICK
GRACE MCNINCH
MOZELLE MARKHAM
MARGARET ROBINSON
ELIZABETH SLOAN



Juniors





JUNIOR CLASS

Colors: Red and white

Flower: Richmond Reds

Motto: "Honor lies in honest toil"

MARGARET SPRUNT HALL	President
ELIZABETH GIBSON	Vice-President
NELLIE RUSSELL	Secretary
MARY C. HOWARD	Treasurer

MISS MARTHA VENABLE DAVIS

Faculty Advisor

MARGARET SPRUNT HALL

Σ Φ K; President Junior Class, '21; Member Student Council, '21; Y. W. C. A. Cabinet, '21; Annual Staff, '21; Magazine Staff, '21.

ELIZABETH GIBSON

Σ Φ K; Magazine Staff, '21; Secretary Σ Φ K, '21; Vice-President Junior Class, '21; Vice-President Sophomore Class, '20; Historian Freshman Class, '19; White Tennis Team, '19; Glee Club, '21; Choral Club, '19, '20; Cotillion Club, '19, '20, '21; Commencement Marshal, '20.

NELLIE ELIZABETH RUSSELL

Σ Φ K; Secretary Junior Class, '21; Magazine Staff, '21; Commencement Marshal, '21; Green Tennis Team, '20.

MARY CHAMBERLAIN HOWARD

Σ Φ K; Σ Φ K Editor-in-Chief Magazine, '21; Vice-President Σ Φ K, '21; Annual Staff, '21; Y. W. C. A. Cabinet, '21; Floor Manager Cotillion Club, '21; Cheer Leader Greens, '21; Treasurer Junior Class, '21; Sophomore Class Poet, '20; Magazine Staff, '20; Cotillion Club, '19, '20, '21.





Junior Class

ISABEL BARKLEY

Σ Φ K; House President Annex, '21; Member Student Council, '21.

MARY ELIZABETH BOOKER

Η Θ M; Secretary-Treasurer Sophomore Class, '20; Secretary-Treasurer Freshman Class, '19; Green Volleyball Team, '20.

RUTH BRINKLEY

Σ Φ K

KATHERINE CARR

Η Θ M; President Cotillion Club, '21; President Glee Club, '21; *Annual* Staff, '21; Magazine Staff, '21; Y. W. C. A. Cabinet, '20, '21; Assistant Cheer Leader Greens, '21; Cotillion Club, '20, '21; Glee Club, '20; Choral Club, '20, '21; Delegate Y. W. C. A. Conference at Meredith, '20; Class Poet, '21.

NORMA CONNELL

Σ Φ K; Y. W. C. A. Cabinet, '21; Green Tennis Team, '20.

MARTHA COFIELD FAIRLEY

Σ Φ K; Y. W. C. A. Cabinet, '21; Choral Club, '20, '21; Commencement Marshal, '21; Glee Club, '20, '21; Green Tennis Team, '20; Cotillion Club, '21.



Junior Class

RACHEL GRADY

H O M; Commencement Marshal, '21;
Choral Club, '20, '21.



LUCILE HOWARD

Σ Φ K; Glee Club, '20, '21; Choral Club,
'20; White Tennis Team, '20, '21.



MARGARET BRICE JENKINS

H O M; Cheer Leader Whites, '21; White
Basketball Team, '21.



ELEANOR LEWIS ROBERTS

Σ Φ K; *Annual* Staff, '20, '21; Magazine
Staff, '21; Y. W. C. A. Cabinet, '21; Green
Tennis Team, '20; Green Volleyball
Team, '20.



LILY WINN

Σ Φ K; Editor-in-Chief *Annual*, '21; Mag-
azine Staff, '21; Secretary Student Coun-
cil, '21; Choral Club, '20, '21.



ELIZABETH ALFORD

Σ Φ K; Day Students' Club, '20, '21.





Junior Poem

*We're back together again, girls,
Just one other year till we're through;
We're no longer Freshmen or Sophomores,
But Juniors of Peace, '22.*

*We are ten and six in number,
Not as large as some of the rest,
But we try to live up to our motto,
And we're quite as good as the best.*

*Because of our fun and our studies,
We don't even have time to be blue;
We're as jingous a bunch as you'd hope for,
We Juniors of '22.*

*There's lots of hard work in our courses,
'Cause we're "first year college," you see,
But we're well earned the name "Jolly Juniors,"
'Fore "dignified Seniors" we'll be.*

*And when we're been Seniors and finished,
We'll everyone always be true
To Peace, our dear Alma Mater,
And the Class of '22.*



I I

(Sophomores—of course!)

Colors: Black and Gold

Flower: Black-eyed Susan

Motto: "We must all hang together or hang separately"

ELSIE WARREN *President*
 MARY PATE *Vice-President*
 ATTAWA DIXON *Secretary*
 RHEA VANNOPPEN *Treasurer*

BARDEN, MARY
 BLACK, LOUISE
 BOYD, SARAH
 BROWN, HARRIET
 BROWN, MARY CATHERINE
 BUCHANAN, GRACE
 BUTLER, CLIFF
 CLARK, ISABEL
 DIXON, ATTAWA
 FOWLER, BERTIE
 GOWAN, OLIVIA
 HAMER, SHADIE
 HERRING, ELEANOR
 HERRING, MELISSA
 HODGES, MARY
 HODGES, WILSON

HUMMELL, ELIZABETH
 IRWIN, VAN BELLE
 LEACH, LOUISE
 MONROE, BETSY
 PALMER, MARY LUCY
 PATE, MARY
 PIPPIN, MABLE
 SHOLES, FLORA
 STEWART, MARY THOMAS
 STOCKARD, LULA
 TURNER, THELMA
 VANNOPPEN, RHEA
 WARREN, ELSIE
 WILKINS, MARY
 WITHERINGTON, RACHEL
 YOUNG, RENA





A Toast to the Sophomores

Here's to the sturdy Sophomores!
Here's to their luck and fame!
Here's to their worthy efforts,
Striving to win the game.

We have toiled, we have worked and labored,
We're always played honest and square;
We passed the meagre Freshman Class,
We passed it good and fair.

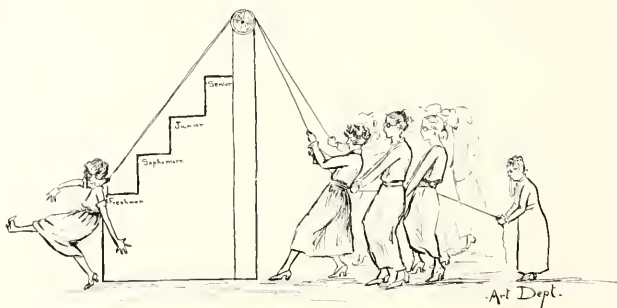
Oh yes, we've had our ups and downs,
Sometimes we've been mighty blue;
We even got restricted some,—
Sophomores always do.

Through classes, exams, and sleepless nights,
Oh yes! And Student Council too,
We slowly but steadily made our way;
And now, Sophomores, we're through.

Next year we'll take a higher step,
And Juniors we will be,
But this year we must be content;
We're Sophomores, you see.

So raise a cheer for the Sophomores,
Make it loud, and long, and true!
We've played the game, and played it square,
And we'll play it till we're through.

Here's to the gallant Sophomores!
May they ever be brave and free!
May they ever be plucky, and lucky, and strong!
Hail, Girls of '23!



Freshman Class

LUCILLE O'BRIANT	<i>President</i>
LUCILLE HATCH	<i>Vice-President</i>
DOROTHY MITTEN	<i>Secretary and Treasurer</i>
Colors:	Purple and Gold	<i>Flower: Violet</i>

Motto: "To thyself be true."

BARDEN, BESSIE	MONROE, FANNIE
BLUE, LILLIAN	MYERS, VIRGINIA
BLUE, RUTH	NICHOLSON, ELIZABETH
BYRD, MILDRED	O'BRIANT, LUCILLE
CROW, NANNIE BURWELL	PENN, CASSANDRA
DEW, MARTHA	PETTUS, MARY
HATCH, LUCILLE	PIGFORD, MOLLIE
HITT, ETHEL	RANKIN, LACY
HOPE, ESTHER	RENNIE, EUGENIA
LINDSEY, MAVIS	REYNOLDS, ELLA
LINDSEY, UNA	RICHARDSON, EVELYN
McKINNON, MARGARET	SCOTT, MARGARET
McLAURIN, MILDRED	SPEIGHT, ADA BELLE
MARSHBOURNE, VIRGINIA	WATSON, MARY ANN
MITTEN, DOROTHY	WITHERS, NANCY
MIXON, ELIZABETH	WRIGHT, MARY LOIS





Preparatory Class

ELIZABETH TURNER *President*

APPLEWHITE, ELIZABETH
ARMSTRONG, CHARLOTTE
BARNES, MAUDE
BORDEN, MARTHA LEE
BUFFALO, KATIE
BUFFALO, RUTH
CAMPBELL, ELIZABETH
COURTWAY, NELMA
COX, BERTHA
CRAWFORD, ELLEN
CRISP, FRANCES
DAVIS, VIVIAN
EASON, JESSIE
EVANS, ANNIE LOUISE
GORDON, MARGARET
HARRISON, ETHEL

HARTNESS, REBECCA
HIGGINS, EUNICE
HINNANT, EDITH
HUBBARD, SUSIE
LASSITER, LILLIE MAE
LIVINGSTON, SADIE
MC AULEY, LILY
MC CLUEB, MARGARET
MCCORMICK, HARRIET
MCDUGALD, MYRTLE
MCNEILL, LOIS
MANGUM, MARY
MANN, FANNY ROGERS
MORRIS, RUBY
PASCHALL, AGNES

PATTERSON, CABOLYN
PELLETIER, GERALDINE
PRIMROSE, ELLA
QUINLAN, JANET
REAVIS, ELIZABETH
REED, ALMA
RICHARDSON, EVELYN
RICKS, JULIA
ROWLAND, CARRIE
SOUTHERLAND, ADDIE
STANLEY, MARTHA
TUBNER, ELIZABETH
WARD, STELLA
WRIGHT, BETSY
WRIGHT, MARGARET
WRIGHT, VIOLET

Special Students

BAUMAN, FLORENCE
BEATH, EFFIE
BLEDSOE, AMORETTE
BOWEN, ISABELLE
BRADLEY, VERA MAY
BUTT, HARTLEY
DAVIS, IVA
DAVIS, MILDRED
FETTER, MARY
FOUNTAIN, OLIVE
HARDING, MARY ALICE
HART, MRS. THOMAS ROY
HATCH, BETSY HULL

HOPKINS, LOIS
JOHNSON, MARGARET
JOHNSTON, ERLY
JONES, CARMEN
LAMBROS, GEORGE
LEE, MARY
MOORE, RUBY
MORISEY, HATTIE MAY
PATTERSON, REBECCA
PEACOCK, EVELYN
PHILLIPS, VIVIAN
POPE, MRS. W. E.
RATCLIFFE, PAULINE
RATCLIFFE, VIRGINIA

RAY, MYRA
SANDERFORD, HELEN
SEARS, MAGGIE
SEARS, SWANNANO
SHERMAN, DALLAS
SHOFFNER, MRS. ANNIE R.
TAYLOR, STELLA
THOMAS, MRS. LOUISE
THORNE, CRICHTON ALSTON
TUCKER, SUSIE
WAITE, LILLIAN
WEBB, ANNABELLE
WHITTEN, CATHERINE

Town Students

ALFORD, ELIZABETH
BARNES, MAUDE
BUFFALO, KATIE
BUFFALO, RUTH
BETLER, CLIFF
BYRD, MILDRED
CANADY, JANICE
CROW, NANNIE BURWELL

DAVIS, CAROL
DENTON, ELIZABETH
EVANS, ANNIE LOUISE
GOWAN, OLIVIA
HINTON, MARY HILLIARD
LASSITER, LILLIE MAE
MANN, FANNIE ROGERS
MARKHAM, MOZELLE

RANKIN, LACY
RENNIE, EUGENIA
RICHARDSON, ANNIE
RICHARDSON, EVELYN
SANDERS, LAURA
SHOLES, FLORA
STOCKARD, LULA
WICKER, MARY RUTH



Art

ALFORD, ELIZABETH
BOOKER, MARY
EASON, JESSIE
FETTER, MARY
GIBSON, DOROTHY
HARTNESS, REBECCA
HINTON, MARY
HOWARD, LUCILE
JONES, CARMEN
LAMBROS, GEORGE
LUMLEY, MILDRED

McCORMICK, HARRIET
RANKIN, LACY
ROBERTS, ELEANOR
SEATS, MRS.
SEAWELL, ELLEN
SHERMAN, DALLAS
SPEIGHT, ADA BELLE
THORNE, CRICHTON
UZZELL, SALLIE
VANNOPPEN, RHEA
WAITE, LILLIAN

WARREN, ELSIE



ART STUDIO



Domestic Art

BORDEN, MARTHA LEE
BROWN, MARY C.
GOWAN, OLIVIA
HALL, MARGARET SPRUNT
HOPE, ESTHER
LASSITER, LILLIE MAE

LINDSEY, MAVIS
LINDSEY, UNA
LIVINGSTON, SADIE
ROWLAND, CARRIE
RUSSELL, NELLIE
WATSON, MARY ANN

Domestic Science

BRINKLEY, RUTH
CAMPBELL, ELIZABETH
DEW, MARTHA
HOPE, ESTHER
LASSITER, LILLIE MAE
LINDSEY, UNA

LIVINGSTON, SADIE
LUMLEY, DOROTHY
MCKINNON, MARGARET
MORRIS, RUBY
SCOTT, MARGARET
WATSON, MARY ANN



DOMESTIC ART CLASS



DOMESTIC SCIENCE CLASS



Expression

BREWER, CATHERINE

COOPER, LUCY

CRISP, FRANCES

HIGGINS, EUNICE

LINDSEY, MAVIS

MANGUM, MARY

MARSHBOURNE, VIRGINIA

MITTEN, DOROTHY

WRIGHT, BETSY

Dramatics

BREWER, CATHERINE

COOPER, LUCY

CONNELL, NORMA

EASON, JESSIE

HUBBARD, SUSIE

LINDSEY, MAVIS

MANGUM, MARY

SIMPSON, VIRGINIA

SLOAN, ELIZABETH





Glee Club

LESLIE WENTZEL
 KATHERINE CARR
 HARRIET BROWN
 LUCY COOPER
 RHEA VAN NOPPEN

Director
President
Vice-President
Secretary
Treasurer

SARAH BOYD
 CATHERINE BREWER
 GRACE BUCHANAN
 ISABEL CLARK
 MARTHA FAIRLEY

ELIZABETH GIBSON
 RACHEL GRADY
 WILSON HODGES
 DOROTHY LUMLEY
 MINNIE MCCLUER

JULIA RICKS
 MARTHA STANLEY
 MARY THOMAS STEWART
 MARY WILLIAMSON
 RACHEL WITHERINGTON



Choral Class

MRS. WANDEEN WEBBER *Director*
 LUCY COOPER *President*
 ETHEL HITT *Secretary-Treasurer*

BEATH, EFFIE	HITT, ETHEL
BLUE, RUTH	HODGES, WILSON
BORDEN, MARTHA LEE	MCCLUER, MARGARET
BOWEN, ELIZABETH	MYERS, VIRGINIA
BROWN, HARRIETT	PATTERSON, CAROLYN
CARR, CATHERINE	REID, ALMA
COOPER, LUCY	RICHARDSON, EVELYN
FAIRLEY, MARTHA	RICKS, JULIA
FETTER, MARY	SANDERFORD, HELEN
GOWAN, OLIVIA	SIMPSON, VIRGINIA
GRADY, RACHEL	STANLEY, MARTHA
HARD, MRS. L. R.	TURNER, ELIZABETH
HARRISON, ETHEL	WHITTEN, CATHERINE
HINNANT, EDITH	WILSON, ANNA

WINN, LILY

Business

BOWEN, ELIZABETH	MCCLUER, MINNIE
COBLE, CAROLINE	MEEKINS, MARIE
DANIEL, CELIA	PARIS, CATHERINE
DENTON, ELIZABETH	SANDERS, LAURA
HOLLIDAY, JESSIE	SNYDER, KATHLEEN
JACKSON, MARY	WILLIAMSON, MARY



Student Council

Officers

GRACE MCNINCH	<i>President</i>
ELIZABETH SLOAN	<i>President Senior Class</i>
MARGARET SPRUNT HALL	<i>President Junior Class</i>
ELSIE WARREN	<i>President Sophomore Class</i>
LUCILLE O'BRIANT	<i>President Freshman Class</i>
ISABEL BARKLEY	<i>President Annex</i>
DOROTHY ALDERMAN	<i>Representative Senior Class</i>
LILY WINN	<i>Representative at Large</i>
WILSON HODGES	<i>President Wynne Hall</i>
EVA BULLOCK	<i>President Athletic Association</i>
EUGENIA FAIRLEY	<i>President Y. W. C. A.</i>





Young Women's Christian Association

EUGENIA FAIRLEY	<i>President</i>
BETH ANDERSON	<i>Vice-President</i>
ELIZABETH SLOAN	<i>Secretary</i>
LAURA BELL FRENCH	<i>Treasurer</i>

MARTHA FAIRLEY
Chairman of Devotional Committee

ELEANOR ROBERTS
Chairman of Poster Committee

MARGARET SPRUNT HALL
Chairman of Mission Study Classes

MARY CHAMBERLAIN HOWARD
Chairman of Music Committee

KATHERINE CARR
Chairman of Social Committee

NORMA CONNELL
Chairman of Social Service Committee





Commencement Marshals

MARTHA FAIRLEY.....*Chief Marshal*

Π Θ Μ

LUCILLE O'BRIANT

RACHEL GRADY

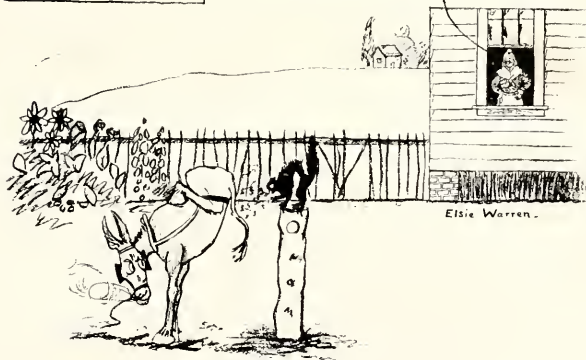
Σ Φ Κ

NELLIE RUSSELL

CATHERINE BREWER



So, Si it is
(SOCIETIES)





A Toast to Billy



O!! you goat—

*Oh, here's to the billy goat,
With coat of gray and white,
Who comes to help the "old girls" out
On 'nitiation night.*

*With true impartiality
He bucks both Pi and Sig,
And be she fat or be she lean,
He never "cares a fig."*

*A thorough-going goat is he,
So when it all is through,
They are so stiff, and weak, and sore,
They say they've had the "flu."*

*And now for the reason, why
He hunts with "hare and houn'":
There's only just one billy goat
In this "consarned" town.*

LILY WINN. Σ Φ Κ



Pi Theta Mu Officers



DOROTHY LUMLEY

President

MARTHA STANLEY

Vice-President

NELLIE BURGESS

Secretary

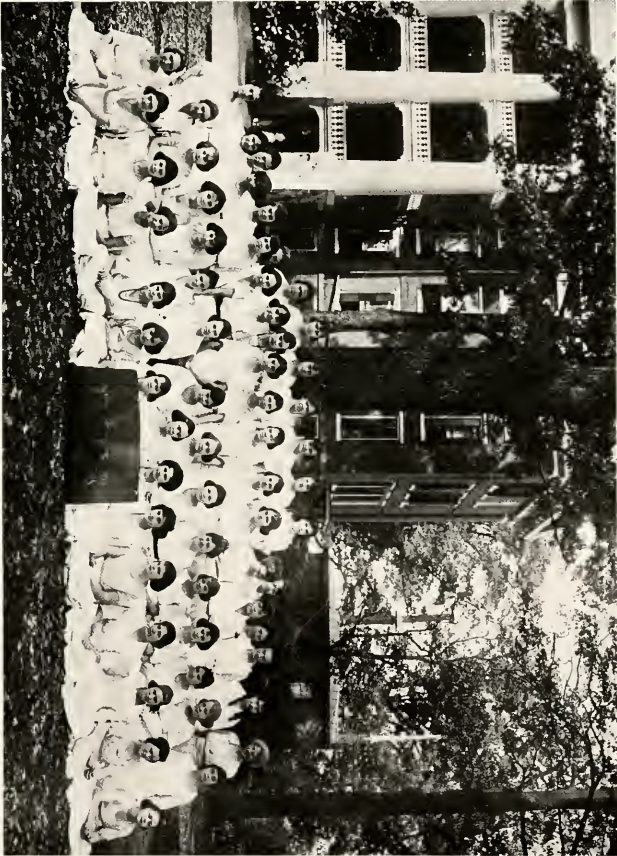
LAURA BELL FRENCH

Treasurer



Pi Theta Mu Literary Society

DOROTHY ALDERMAN	UNA LINDSEY
MARGARET BARNES	SADIE LIVINGSTON
MAUDE BARNES	DOROTHY LUMLEY
LOUISE BLACK	LILY MCAULEY
LILLIAN BLUE	ANNIE MCCORMICK
RUTH BLUE	MARGARET MCKINNON
MARY BOOKER	LOIS MCNEILL
SARAH BOYD	MARIE MEEKINS
MARY BROWN	BETSY MONROE
GRACE BUCHANAN	RUBY MORRIS
KATHERINE CARR	MARY PATE
ISABEL CLARK	CAROLYN PATTERSON
CAROLYN COBLE	MARY PETTUS
BERTHA COX	JANET QUINLAN
ELLEN CRAWFORD	MARGARET RAINEY
FRANCES CRISP	ALMA REED
CELIA DANIEL	EUGENIA RENNEY
ELIZABETH DENTON	ELLA REYNOLDS
ATTAWA DIXON	MARGARET ROBINSON
JESSIE EASON	MARGARET SCOTT
BERTIE FOWLER	ELLEN SEAWELL
LAURA BELL FRENCH	ELIZABETH SLOAN
RACHEL GRADY	ADDIE SOUTHERLAND
SHADIE HARER	ADA BELLE SPEIGHT
ETHEL HARRISON	MARTHA STANLEY
REBECCA HARTNESS	LULA STOCKARD
LUCILLE HATCH	ELSIE WARREN
EUNICE HIGGINS	MARY ANN WATSON
MARY HODGES	MARY WILKINS
ESTHER HOPE	BETSY WRIGHT
VAN BELLE JEWIN	LOIS WRIGHT
MARGARET JENKINS	MARGARET WRIGHT
LILLIE MAE LASSITER	VIOLET WRIGHT
LOUISE LEACH	RENA YOUNG
MAVIS LINDSEY	



PI THETA MU SOCIETY



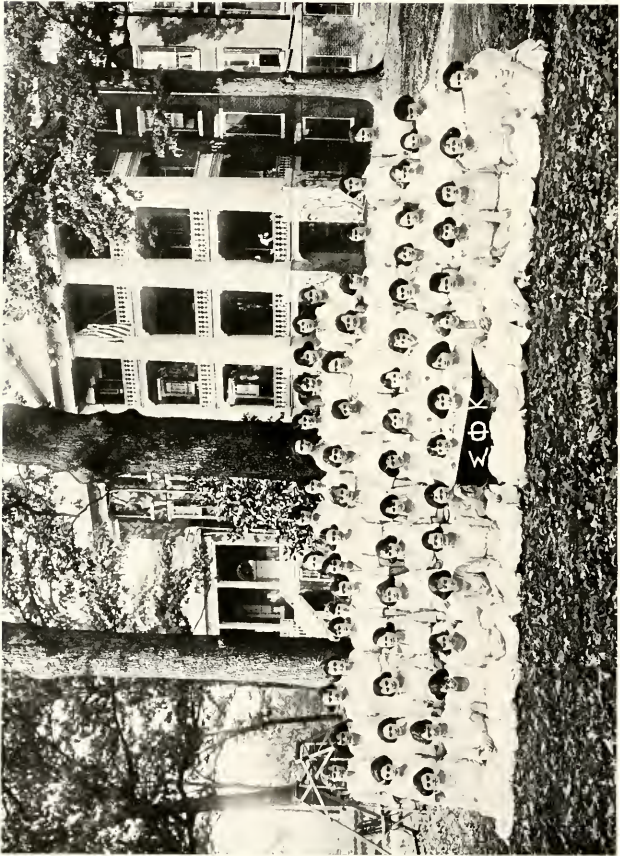
Sigma Phi Kappa Officers

GRACE MCNINCH *President*
MARY CHAMBERLAIN HOWARD *Vice-President*
ELIZABETH GIBSON *Secretary*
BETH ANDERSON *Treasurer*



Sigma Phi Kappa Literary Society

BETH ANDERSON	MYRTLE McDOUGALD
ELIZABETH APPLEWHITE	MILDRED McLAURIN
CHARLOTTE ARMSTRONG	GRACE McNICH
MARY BARDEN	MARY MANGUM
ISABEL BARKLEY	MOZELLE MARKHAM
MARTHA LEE BORDEN	VIRGINIA MARGOW
ELIZABETH BOWEN	VIRGINIA MARSHBOURNE
CATHERINE BREWER	DOROTHY MITTEN
RUTH BRINKLEY	ELIZABETH MIXON
HARRIET BROWN	FANNIE MONROE
EVA BULLOCK	VIRGINIA MYERS
CLIFF BUTLER	ELIZABETH NICHOLSON
ELIZABETH CAMPBELL	KATHERINE PARIS
NORMA CONNELL	GERALDINE PELLETIER
LUCY COOPER	CASSANDRA PENN
NELMA COURTWAY	MOLLY PIGFORD
NANNIE BURWELL CROW	MABLE PIPPIN
VIVIAN DAVIS	ELLA PRIMROSE
MARTHA DEW	LACY RANKIN
EUGENIA FAIRLEY	ELIZABETH REAVIS
MARTHA FAIRLEY	EVELYN RICHARDSON
ELIZABETH GIBSON	JULIA RICKS
MARGARET GORDON	ELEANOR ROBERTS
OLIVIA GOWAN	BESSIE ROBERTSON
MARGARET SPRUNT HALL	NELLIE RUSSELL
ELEANOR HERRING	LAURA SANDERS
MELISSA HERRING	FLORA SHOLES
EDITH HINNANT	VIRGINIA SIMPSON
ETHEL HITT	ANNIE SINGLETON
RUBY HOBBS	HELEN SMITH
WILSON HODGES	MARY THOMAS STEWART
JESSIE HOLLIDAY	ELIZABETH TURNER
LUCILE HOWARD	THELMA TURNER
MARY C. HOWARD	RHEA VANNOPPEN
SUSIE HUBBARD	CATHERINE WHITTEN
ELIZABETH HUMMELL	MARY WILLIAMSON
MARY JACKSON	LILY WINN
MARGARET McCLUER	RACHEL WITHERINGTON
MINNIE McCLUER	NANCY WITHERS
HARRIET McCORMICK	



SIGMA PHI KAPPA SOCIETY



“Voices of Peace”

Σ Φ Κ

MARY CHAMBERLAIN HOWARD
Editor-in-Chief

LUCY WILLIAMS COOPER
Business Manager

MARGARET SPRUNT HALL
ELIZABETH GIBSON

ELEANOR ROBERTS
NELLIE RUSSELL

LILY WINN
Associate Editors

Η Θ Μ

ELIZABETH SLOAN
Editor-in-Chief

DOROTHY ALDERMAN
Business Manager

KATHERINE CARR
MARGARET RAINEY

RENA YOUNG
DOROTHY LUMLEY

ELSIE WARREN
Associate Editors



of Peace



March,
Raleigh, N. C.



of Peace



JANUARY, 1921
RALEIGH, N. C.



Sigma Phi Kappa





ATHLETICS



KARTRES



EVA BULLOCK
President



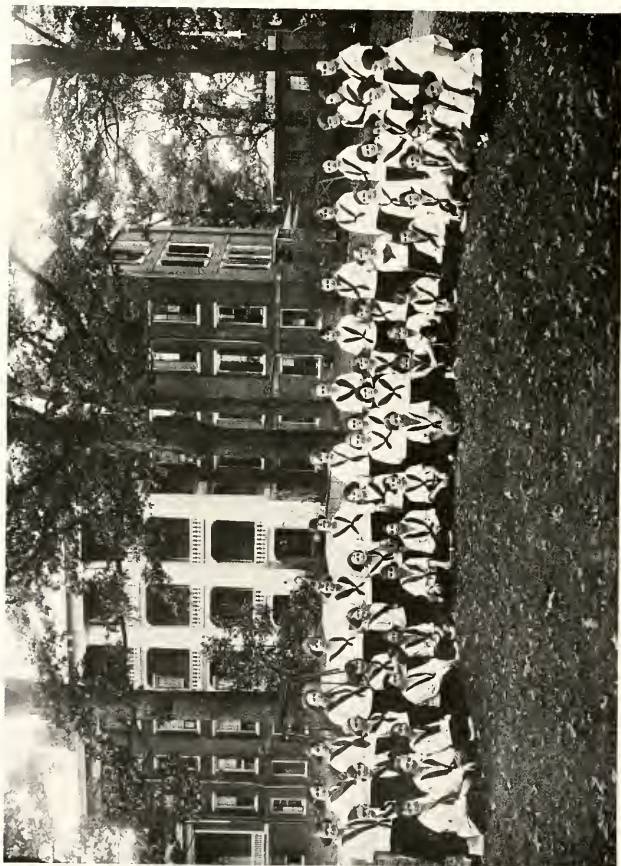
MARTHA STANLEY
Vice-President



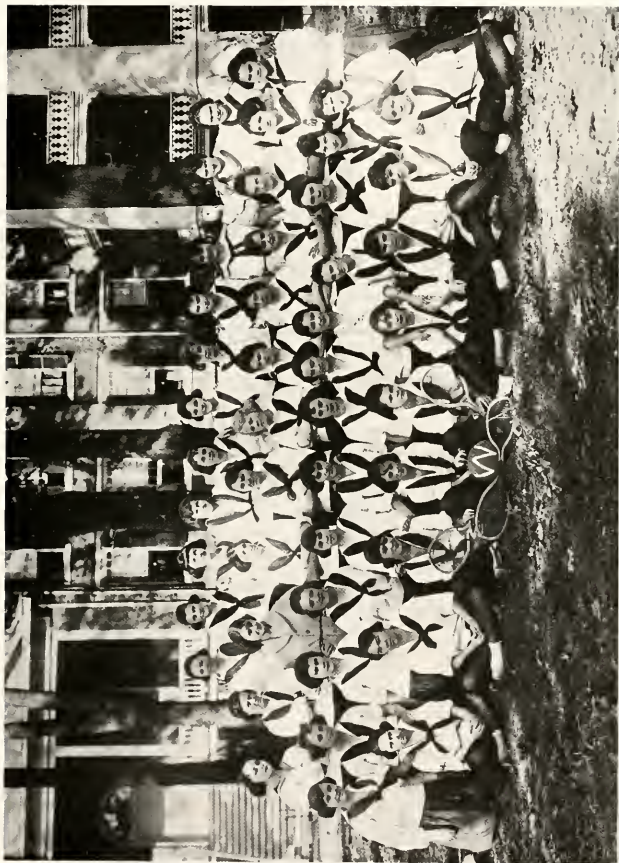
ELIZABETH SLOAN
Secretary



DOROTHY LUMLEY
Treasurer



GREEN GYM TEAM



WHITE GYM TEAM



WHITE TENNIS TEAM



GREEN TENNIS TEAM



GREEN BASKET BALL TEAM



WHITE BASKET BALL TEAM



GREEN VOLLEY BALL TEAM



WHITE VOLLEY BALL TEAM



Glimpses of Peace

The Onslaught

Out of the murky blackness of the starless night came a stream of rosy torch lights, and the *tramp, tramp* of many foot-steps. As they drew nearer and nearer, an army of men could be distinguished bearing red torches. They filed swiftly and breathlessly through the narrow entrance, by tens, twenties—hundreds. The scarlet glow of the torches fell on their tense white faces, and their hatless, ruffled heads. Their eyes flashed, their jaws were set. They looked straight ahead—intent upon their purpose.

As they approached the stately walls of the ancient edifice, they broke into a run—yes, as though they would take the place by storm. As they came nearer and nearer, excitement seized the occupants of the building. They were aware of the onrushers! A stampede followed. Lights flashed on and off—they rushed to the balconies, prepared to meet the invaders, and their shrieks and cries rent the still night air.

Then—all was calm. A faint chord on a mandolin, and the night echoed to a mighty sea of voices—the State College boys had come for a serenade!

ELIZABETH GIBSON, $\Sigma \Phi \chi$





William

William is undoubtedly the best known character at Peace. For over thirty years he has faithfully served our school. Six-thirty always finds him "on the job." With watch in hand he waits to ring the rising gong at seven. For this he truly has a talent, as any Peace girl can testify. When he first came to our school, he rang a bell known as Moses, but one sad (?) day—Moses was no more. In his stead William got a car wheel and a bar of steel, which he uses to this day. The tunes that William plays on this early morning starter have a penetrating melancholy all their own.

But ringing the rising gong is not all of his work. He began service as a waiter in the dining room, where he worked for many years. Now he cleans the study hall, class rooms and lower halls. He is always ready to do anything for our girls, from hanging curtains to uncoording a trunk.

At openings and commencements William is in his glory as he rides our trunks up or down on his famous elevator. Indeed William's is the first and last face Peace girls see. He surely fills well his corner at Peace.





Sunday 1:45-P.M.



5:30 P.M. (Same day)



Such is Life

Don't worry. It won't last. Nothing does. Eleanor looked at this little motto, one of the many adornments of the walls of Room 24. "I know it," she mused to herself. "Even when I said the other day that nothing but awful things could happen at boarding school. And now I'm *so* happy!" She walked to the window and looked out. "Everything's happening at once. The reception, and dinner at the Yearborough, and now—this." This evidently referred to a very fat letter she held, for she kept knocking it on the window pane. "Yes," she said again, as she sat down on the bed, "I *am* thrilled!"

Opening her Latin book, she glanced idly at Chapter XVI, then gazed out of the window again and toyed with the letter. Reaching over, she took a big picture from the table, a picture of a man in a Navy uniform. "Oh," she sighed, and put it down again quite near her, "I'll see you soon. Yes, I will!"

The bell rang. Eleanor stuck a pencil in her brown hair, a note pad in her pocket, and the letter down the front of her gingham dress, and left the room. As she floated downstairs, and up the hall, she heard the usual chatter of girls changing classes, but her brain registered only, "He's coming! Wilson's coming!" Why bother about mere lessons, when she had so many more important things to think about? She took her seat, trying to think just how many Navy men got married abroad, and how many came home unchanged.

"Eleanor, will you discuss the plot structure of the *Jew of Malta*?"

"I'm unprepared," she stated, smiling, and her mind drifted again far over the seas.

Class was over, and she had a study period in which she could think!

Oh joy! On her way upstairs, the maid handed her a note. In her room she read, "You are restricted for a period of one month, for ten above the maximum number of minutes."

"Such is life!" she declared, and sank on the bed in tears.

And the little motto that said *It won't last* laughed.

MARY CHAMBERLAIN HOWARD, Σ Φ Κ



Heard on Date Night

"What are you going to wear tonight?"

"I can't decide whether dark or light."

"I haven't a dress—

My clothes are a mess."

"And look at my hair! It's simply a fright." I must be all that Bobby expects."

"Who's got some curlers, on this hall?"

I just must have some, that is all."

"Who's got some sachet?"

I forgot it today."

"Oh has he come? I heard the maid call." "Oh where's my dress? Where under the sun?"

"Lucy, Lucy, find the 'cutes' "

"What on earth will you have me do next?"

"Oh, this dress won't do.

Try the blue.

"Oh has Willie come? And I haven't begun

To fix my hair. Nellie, dear, run

Get me a pin

And help me begin!"

And then, oh then, there comes the dean.

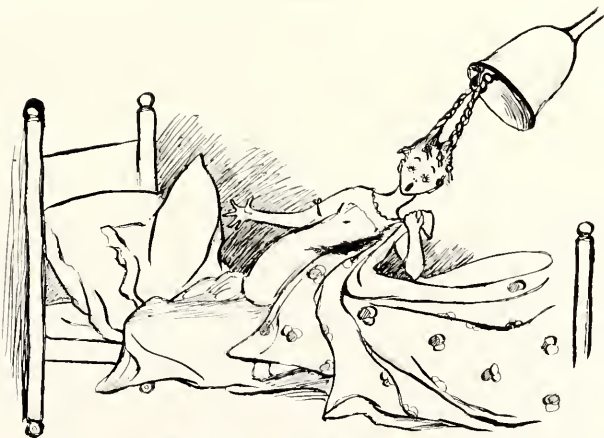
"Girls, hear the noise! What does this mean?"

I know in the parlor

Your dates hear with ardor!

Such unladylike conduct I never have seen."

MARY CHAMBERLAIN HOWARD, Σ Φ Κ



7:00 A.M !!

Betty McCormick



Superlatives ???!



*Our Ideal
Grace McTinch*



*Most Brilliant
Mary C. Howard*



*Sweetest
Margaret McKinnon*



*Best Sport
Catharine Brewer*



*Prettiest
Elsie Warren*



*Handsomeest
Frances Crisp*



*Most Original
Lily Wink*



*Wittiest
Betsy Wright*



*Most Independent
Mavis Lindsey*



*Most Cheerful
Elizabeth Sloan*



*Biggest Gada-bout
Jessie Eason*



*Cutest
Margaret Rimey*



Best Dancer
(Leader)
Minnie McCluer



Most Talkative
Jessie Holliday



Best Dancer
(Follower)
Una Lindsey



Biggest Flirt
Mary Margum



Dearest
Gladie Damer



WYNE HALL



THE ANNEX

THE LOTUS



1 9 2 1



PH
CLUBS

[NINETY-EIGHT]



G. T. O. B.

DOROTHY GIBSON
MAVIS LINDSEY
UNA LINDSEY
MARGARET JENKINS
KATHERINE CARR



D. I. L.

JESSE EASON
ELIZABETH NICHOLSON
MARGARET SCOTT
FRANCES EVERETT



Cotillion Club

Officers

KATHERINE CARR. *President*

MARTHA STANLEY. *Secretary and Treasurer*

Floor Managers

MAVIS LINDSEY

MARY CHAMBERLAIN HOWARD

Members

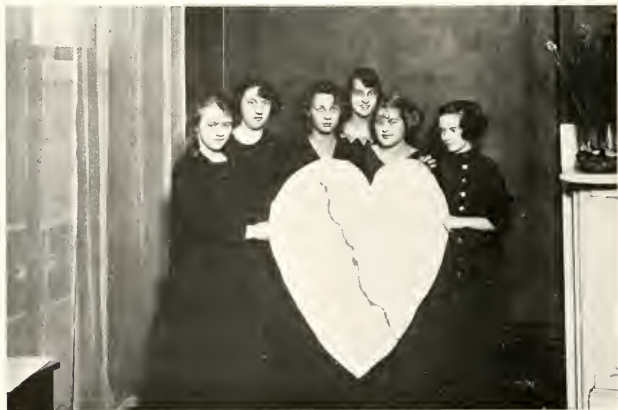
DOROTHY MITTEN
MINNIE MCCLUER
MARY LOIS WRIGHT
UNA LINDSEY
ELIZABETH HUMMELL
MARY MANGUM
ELIZABETH SLOAN
RACHEL WITHERINGTON
MARY THOMAS STEWART
SHADIE HAMER
SARAH JANE BOYD
MARY WILLIAMSON
DOROTHY GIBSON
LAURA BELL FRENCH
EVA BULLOCK
MARGARET MCCLUER
MARGARET RAINEY
ELIZABETH MIXON
DOROTHY LUMLEY
CASSANDRA PENN
ADDIE SOUTHERLAND
ELIZABETH GIBSON
GRACE MCNINCH
MARY PETTUS
MARTHA FAIRLEY
ELIZABETH NICHOLSON
CLARIBEL FOUNTAIN





*D. S. P.
Girls*

KATTY CARR
DOT GIBSON
DOT LEMLEY
PINKIE BOYD
PEGGIE JENKINS



*Heart
Breakers*

MARGARET GORDON
ELIZABETH KEAVIS
ELIZABETH TURNER
MARTHA LEE BORDEN
VIRGINIA MYERS
VIVIAN DAVIS



Feasters

MARGARET MCKINNON
ELIZABETH SLOAN
SHADIE HAMER
MARTHA FAIRLEY
MARY PETTUS
BETSY WRIGHT
EUGENIA FAIRLEY
LUCILE HOWARD
RACHEL WITHERINGTON



M. S. Club

Aim: Go and get it.

BETSY WRIGHT
ELLA REYNOLDS
CASSANDRA PENN
MARY MANGUM



Snookums Club

OLIVIA GOWAN
ELIZABETH GIBSON
NELLIE RUSSELL
ELIZABETH LONG
DOT GIBSON
JESSIE EASON
LILA NORMENT
ATTAWA DIXON

Sisters' Club

DOROTHY LUMLEY
MILDRED LUMLEY
MAVIS LINDSEY
UNA LINDSEY
EPHEMIA FAIRLEY
MARTHA FAIRLEY
MARGARET McCLEER
MINNIE McCLEER
LUCY COOPER
MARY COOPER
BLANCH TRAFTON
FLORENCE TRAFTON





Wake Forest Five

Colors: Old Gold and Black

Aim: To be allowed to attend every Wake Forest game and to spend every week-end with Mary Mangum at W. F.

Motto: Get your lungs full of that Wake Forest spirit and line up to your names, girls

Meeting place: Room 325, 3rd floor

Time of meeting: Just before or after games

Mascot: "Wake Forest," a black and yellow cat

MARGARET MANGUM
JESSIE EASON

DOT MITTEN
LUCILLE HATCH

ELLA REYNOLDS



SPRUNT HALL
 ELIZABETH GIBSON
 NELLIE RUSSELL
 ELEANOR ROBERTS
 MARY C. HOWARD
 LUCY COOPER

FRANCES CRISP
 MARY HODGES
 MARTHA FAIRLEY
 RACHEL WITHERINGTON
 SHADIE HAMER
 MARY PETTUS





Hall of Silence

MISS EICHELREGER
 MARY LOIS WRIGHT
 MELISSA HERRING
 MARY THOMAS STEWART
 LAURA BELL FRENCH
 ELIZABETH HUMMELL
 LILY WINN
 HARRIET MCCORMICK
 ELIZABETH MINON
 ELIZABETH LONG
 MARIE MERKINS
 CAROLINE COBLE
 HARRIET BROWN
 MARGARET RAINEY
 MARLE PIPPIN
 MOLLY FIGFORD
 MINNIE MCCLUER
 MARGARET MCCLUER

Paradise Alley

GRACE BUCHANAN
 RACHEL GRADY
 RHEA VANNOFFEN
 ELIZABETH NICHOLSON
 MARY WILLIAMSON
 EUGENIA FAIRLEY
 LOUISE LEACH
 ISABEL CLARK
 ELLA REYNOLDS
 CATHERINE BREWER
 MARGARET JENKINS





*Wilson
County
Club*

MARGARET BARNES
MARTHA DEW
JESSIE EASON
CATHERINE PARIS
ADA BELLE SPEIGHT



Tree Club

WILSON HODGES
ESTHER HOPE
ISABEL CLARK
LOUISE LEACH
CHARLOTTE ARMSTRONG



Bobbed Hair Club

MILDRED McLAURIN
RUTH BRINKLEY
VIVIAN DAVIS
ELLA PRIMROSE
ELIZABETH SLOAN
MARY LOIS WRIGHT
ELIZABETH TURNER
FRANCES EVERETT

Bobbed Hair

*Oh, the stubby locks, the curly locks,
That one sees everywhere!
The short ones, and the tall ones,
They all have bobbed their hair!*

*They've bobbed it short, they've bobbed it long,
They've cut it every way.
And now, alas! they have no hair,
But they like it short, they say.*

*The red hair, the yellow hair,
The black hair, and the brown,
Cut short off and discarded,
For fads must go the round.*

*Of course we all must be in style—
It's still the same old story.
We're forgotten that our hair
Is "woman's crowning glory!"*

MARY E. BOOKER, II © M



Heart Club

- LIZ
- ELEANOR
- LIBBER
- LUCY
- LIE
- SPRUNT
- MAGGIE
- CAT
- NELLIE
- MARY C.
- MINNIE
- RHEA



Virginia Club

- VIRGINIA SIMPSON
- ANNIE HALL EPPES
- MARTHA STANLEY
- FLORENCE TRAFFON
- ELLA REYNOLDS
- ELEANOR ROBERTS
- BLANCHER TRAFFON
- LUCILLE O'BRYANT
- WILSON HOMER
- MARGARET GORDON





*Une
Deux
Trois*

MARGARET JENKINS
SARAH BOYD
DOROTHY GIBSON

8 Cut-ups

MINNIE MCCLUER
ELIZABETH MIXON
MARY THOMAS STEWART
ELIZABETH HUMMELL
MARGARET MCCLUER
MARY WILLIAMSON
ELIZABETH NICHOLSON
ANN SINGLETON



[ONE HUNDRED ELEVEN]



Hall of Fame

NELLIE RUSSELL
 MARGARET SCOTT
 USA LINDSEY
 LUCILLE O'BRIANT
 MARGARET SPURNT HALL
 JESSIE EASON
 ANNIE McCORMICK
 KATHLEINE CARR
 LUCY COOPER
 MAVIS LINDSEY
 AGNES PASCHELL
 MARTHA FAIRLEY
 MARY BARDEN
 ELEANOR ROBERTS
 MARY C. HOWARD
 ELIZABETH GIBSON
 MARY COOPER
 EVA BELLOCK
 CLARIBEL FOUNTAIN
 DOROTHY GIBSON



The Thoroughfare

JULIA RICKS
 FANNIE MONROE
 BETSY WRIGHT
 ELIZABETH SLOAN
 MARGARET MCKINNON
 JESSIE HOLLIDAY
 FRANCES CRISP
 MARTHA STANLEY
 JANET QUINLAN
 MARY PETTIT'S
 SHADIE HAMER



Sodalitas Caesariana



Emblem—Owl.

Colors—Roman Stirpe

*Margaret est the stella bright, Dorothea
is the same; Eugenia reads fast by sight;
Lilliana has ricit fame.*

*Lucilla through the pensum volats, Ruth-
ena amat Caesar. Ella lores magistra
lots So omnis try to please her.*

De Puella Studiosa

1. *Puella sat in Study-hall
Though ceterae had fled;
She rix did hear a comes call,
" 'Tis tempus nunc for bed."*
2. *But studiosa sat haec lass,
Superba fortis she,
Nolebat meet her Latin Class
And non parata be.*
3. *Clamores echoed near and far,
The maid nolebat ga;
Her liber was the Gallic War,
Amat Caesar so.*



Quakers

MARtha STANLEY
MARtha FAIRLEY
LUCILE HOWARD

DOROTHY ALDERMAN
EUGENIA FAIRLEY
RACHEL WITHERINGTON

ELIZABETH SLOAN



Miss Moseley: "I don't understand how you can say, 'sit on class.'"

Melissa Herring: "No, that is a teacher's privilege."

Ellen Crawford (speaking to girl in practice room): "Play the *Etude*. It is an old piece, but I think it is pretty."

Lois Wright: "Synod is something like synagogue only they didn't finish it."

Louise Black (in history class): "Where is Bull Run?"

Miss McReynolds: "On page 344."

Elizabeth Gibson: "Look at that ambulance of snow falling from the roof!"

Girls at Mrs. McLelland's table: "Please take us to the movies tonight, Mrs. McLelland."

Mrs. McLelland: "Oh, no! you mustn't go out tonight. The teachers are expecting a serenade."

Miss McLelland (in Bible class): "What did Jacob carry with him when he left the house of his father?"

Martha Stanley: "His birthright."



Mollie Pigford: "Harriet, have you anything to read?"
 Harriet McCormick: "No, but I have seen a lot of the girls reading 'The Speaking Voice.' That must be good."

Miss Wentzel asked where loganberries grow.
 Elsie Warren: "I don't know, but I think they buy them down town."
 Jessie Holliday: "Well, they must grow in cans then."

Liz Hummell: "I have to drop Spanish. It counterfeits with my English."

Lily Winn (at table): "Please pass me that vacant glass."

Elizabeth Hummell: "Oh, Miss Moseley, is the biography for our essay due tomorrow?"

Quiz: Write equations for the oxidation of hydrogen sulfide in an abundance of oxygen and then in an insufficient amount.

Answer: $2\text{H}_2\text{S} + 3\text{O}_2 = \text{bad odors.}$
 $2\text{H}_2\text{S} + \text{O}_2 = \text{worse ones.}$

Miss Moseley: "For your next lesson I wish you to write a dream."
 Her written remark on one of the papers: "This is no dream. See me."

Betsy Monroe (upon the arrival of a certain well-known masculine visitor at Peace): "Well, I didn't know Peace was co-ed before!"

Addie Southerland (in study hall): "Miss McReynolds, will you ask if any one has seen my algebra book?"

Miss McReynolds: "Has any one seen Addie Southerland's algebra text?"

Addie: "I said my algebra book, Miss McReynolds."

Riddles From Peace Names

Can you guess?

A word applied to flowers, and a large number of pounds—*Withering-ton.*

An adverb, meaning "rather well"—*Fair-ley.*

A shrub, and "the lord of creation"—*Alder-man.*

The French word for tooth, and an English preposition—*Dent-on.*

A widely spoken language—*French.*

A large body of water, and a smaller one—*Sea-well.*

What each of us hopes to do in life's game—*Winn.*

A word for citizen—*Burgess.*

A word meaning mingle, and a preposition—*Mix-on.*

A German coin, and a meat that Jews do not eat—*Mark-ham.*

An adverb applied to a damp day—*Rainey.*

What an English butler might say, when told to fry an egg—"How-'ard?"

A boy's nickname, and a famous automobile—*Al-ford.*

What kittens seem to say, when rubbing against one's feet—"Pett-us!"

A food for animals, and an aromatic gum-resin—*Ha-mer.*

The opposite of wrong—*Wright.*

What Shakespeare's father might have said, when addressing him—"William-son!"

LULA ARMSTRONG STOCKARD, H © M



KEEP ON TURNING-
SEE OUR
ADS?

PEACE INSTITUTE

RALEIGH, N. C.

*For the Education and Culture of
Young Women*

- I. College Courses
- II. Courses Preparatory to College Courses
- III. Four Years' Preparatory School

*Diplomas awarded in Piano, Voice, Art, Expression and
Home Economics. Certificates in Business
and Secretarial Courses*

INSTRUCTION: Specialists in all departments

SITUATION: Location in Capital City gives special opportunities
Delightful social advantages .. Athletics supervised indoors and
outdoors by Physical Director . Special attention
individual development .. Climate per-
mits outdoor life all the winter

WYNNE HALL

A Home School for Younger Girls

For Catalogue or Further Information write at once to

MISS MARY OWEN GRAHAM, President



Footwear of Enduring Charm

FOOTWEAR that satisfies you is the most economical. The care you take to select appropriate styles is fully repaid by the satisfaction of wearing shoes that have the charm of quality and good taste and that retain their beauty and shapeliness through long service.

Such footwear you will find at this store. Revised prices now in force offer unusual opportunities for economical purchases.

THOMPSON SHOE CO.

The Progressive Store

120 FAYETTEVILLE ST.

Shoes

Hosiery

The Hudson-Belk Co.

RALEIGH, N. C.

"SELLS FOR LESS FOR CASH"

+

To the Young Women of Peace Institute:

We extend to you and your friends a cordial welcome
to our large Department Stores on Martin Street

+

COAT SUITS, COATS, DRESSES

Blouses

Millinery

Novelty Skirts

Petticoats

Corsets

"Kayser Silk" and Crepe de Chine Underwear

-- Second Floor

+

GLOVE AND SHOE DEPARTMENTS

Laces, Notions, Ribbons

Neckwear Department

Silk and Dress Goods Department

-- First Floor

BUY YOUR DRUGS, TOILET ARTICLES, ETC.
AT

Brantley's Drug Store

YOU WILL ALWAYS GET THE BEST

TRY OUR ICE CREAM—YOU WILL ALWAYS COME BACK

J. C. BRANTLEY

Telephone 15

Masonic Temple

O. L. HOPKINS

(Incorporated)

HIGH-CLASS READY-TO-WEAR
FOR LADIES AND MISSES
at Popular Prices

122 Fayetteville Street

Raleigh, N. C.

10% DISCOUNT TO PEACE GIRLS

HORTON'S PHOTOS

“SHOW WHO'S WHO”



OFFICIAL PHOTOGRAPHER
TO "THE LOTUS"

MASONIC TEMPLE BUILDING
RALEIGH, N. C.

DILLON SUPPLY COMPANY

Mill Supplies

Machinery

General Repairing

in our modern shops

Phones 752-753

RALEIGH, N. C.

DUNN & THOMPSON

WHOLESALE GROCERS

DISTRIBUTORS OF

Ryzon, the Perfect Baking Powder

Ridgeway Tea

311 West Martin Street

RALEIGH, N. C.

Charles Lee Smith Howell L. Smith Wm. Oliver Smith
President Secretary Treasurer

Edwards & Broughton Printing Company

RALEIGH, N. C.

Printers, Publishers, Stationers

Steel and Copper Plate Engravers--Manufacturers of Blank Books
and Loose Leaf Systems of all kinds

Engraved Wedding Invitations and Announcements, Visiting Cards
Fine Monogram Stationery

THE ONLY COMPLETELY EQUIPPED STEEL DIE AND
COPPER PLATE ENGRAVING PLANT IN
NORTH CAROLINA

High Class Printing

Artistic Catalogs, Booklets, Menus, Invitations, Stationery
HALFTONES AND ETCHINGS

CORRESPONDENCE INVITED

TEMPTATIONS OF A SCHOOL GIRL
ARE
GOOD FOUNTAIN DRINKS
ICE CREAM AND CANDIES
NEATLY SERVED

THEY ARE MOSTLY TEMPTED AT

WAKE DRUG STORE

PRETTIEST PLACE IN RALEIGH

COR. FAYETTEVILLE AND MARTIN STREETS RALEIGH, NORTH CAROLINA

SAIDIE M. KING

(Incorporated)

Exclusive
Ready-to-Wear

Always Something New
and Attractive

123 Fayetteville Street, Raleigh, N. C.

THE FASHION

KAPLAN BROS. CO. RALEIGH, N. C.

THE STORE OF
"BETTER MERCHANDISE
AND BETTER SERVICE"
IS EXCLUSIVE

Ready-to-Wear
and Millinery

10% DISCOUNT

ON CASH PURCHASES TO STUDENTS
and TEACHERS OF FEMALE COLLEGES

SILVER DRUG COMPANY

Everything in the Drug Line

THE BEST SODA FOUNTAIN DRINKS IN THE CITY

TOILET ARTICLES

Corner Fayetteville and Hargett Streets

RALEIGH, NORTH CAROLINA

EFIRD'S

"RALEIGH'S BUSIEST DEPARTMENT STORE"

We Sell EVERYTHING WORN for Less

EFIRD'S DEPARTMENT STORE

298 FAYETTEVILLE STREET

PHONE 208



Pianos

Player-Pianos

Sheet Music

DARNELL & THOMAS

North Carolina's Musical Center

118 Fayetteville Street

Raleigh, North Carolina

CALIFORNIA FRUIT STORE

known for

CLEANLINESS, QUALITY and SERVICE

since 1900

*Candies, Fruits, Fountain Drinks
and Pure Ice Cream*

“PEACE FACULTY AND STUDENTS ALWAYS WELCOME”

111 FAYETTEVILLE STREET

Phone 35-36

Say it with

FLOWERS

J. L. O'QUINN & COMPANY

“OUR BUSINESS IS GROWING”

Telephone 149

RALEIGH, N. C.

RALEIGH IRON WORKS

Founders & Machinists

Iron and Brass Castings

Machinery Repairs

*SPECIAL ATTENTION GIVEN UPKEEP OF INSTITUTIONAL
PLANTS*

'Phone 98

J. S. SILER & COMPANY

WHOLESALE DEALERS IN

Flour · Feed · Grain

TELEPHONE 61

313 West Martin Street

RALEIGH, N. C.

THOMAS H. BRIGGS & SONS

The Big Hardware Men

Baseball, Golf and Tennis Goods
Majestic Ranges

Follow the Little Blue Flag and Buy

Lozce Bros.' Paint

the Best Paint made

JAP-A-LAC — MURALITE

FOR ALL WORK

FINEST WALL FINISH ON EARTH

RALEIGH, NORTH CAROLINA

*"The House That Makes Homes
Happy"*

**GOODWIN - SMITH
FURNITURE CO.**

124 East Martin Street
RALEIGH, N. C.

H. STEINMETZ

Florist

CUT FLOWERS. WEDDING BOUQUETS
ALL KINDS OF PLANT AND BULBS
DESIGNS. PALMS. FERNS

RALEIGH, N. C.

HELLER BROS.

Sole Agents for

Queen Quality Shoes

Also a Complete Line of

GYMNASIUM SHOES

Ellington's Art Store

Fine Picture Frames
Novelties and Artists' Supplies
Art Embroidery Materials

J. C. ELLINGTON
RALEIGH, N. C.

Peace Pillows and Pennants

GEO. MARSH, President

B. B. BENSON, Vice President and Treasurer

J. A. WILLIAMS, Secretary

GEO. MARSH COMPANY

(Incorporated)

Wholesale Grocers

125 East Martin Street

RALEIGH, N. C.

WHITE'S

Ice Cream

“Surety of Purity”

made in
RALEIGH, N. C.

EAT A PLATE OF ICE CREAM
EVERY DAY

CHASE GLOOM



WE SELL TO SELL AGAIN

Lamps & Fixtures
Electrical Appliances

MAIL ORDERS
A SPECIALTY

WALKER ELECTRIC CO.

108 West Martin St., Raleigh, N. C.

The Shop
Exclusive
for the
Young
and
Small



209 Fayetteville Street

RALEIGH, N. C.

Phone 2250

10 %
Discount
to
Students
and
Teachers

Women & Misses



Styles Authentic

Dainty Frocks for All Occasions

Moderately Priced
for the School Miss

107 Fayetteville Street

RALEIGH

Quality Style Satisfaction Service

The Spirit of Youth
in
Suits, Wraps, Dresses

of quiet elegance
for Peace Girls

Equels Style Shop

117¹/₂ Fayetteville Street, Raleigh, N. C.

Misses Reese & Co.

Fine Millinery

109 Fayetteville St.

Phone 586

Stationery, Kodaks, Albums, Memory Books

SPORTING GOODS

BASKET BALL, TENNIS, GOLF, ETC.

"Everything for the Office"

JAMES E. THIEM

BELL PHONE 135

RALEIGH, N. C.

*Up-to-the-Minute
Footery Styles*

Wm. Heller & Co.

124 FAYETTEVILLE STREET
RALEIGH, N. C.

H. STEINMETZ

Florist

Cut Flowers, Wedding Bouquets
All Kinds of Plants and Bulbs
Designs, Palms, Ferns

RALEIGH, N. C.

**Jolly & Wynne
Jewelry Company**

EXCLUSIVE

Jewelry

FOR WOMEN

Graduation Gifts

RALEIGH, N. C.

RALEIGH'S LEADING HOTEL

*The
Yarborough*

B. H. GRIFFIN HOTEL CO.
Proprietors

B. H. GRIFFIN, President

RALEIGH, N. C.

C.C. GUNN & Co.

*High-Class
Garments* &

for LADIES AND MISSES
At POPULAR PRICES

10% DISCOUNT TO PEACE GIRLS

122 FAYETTEVILLE STREET
RALEIGH, N. C.

'PHONE 457

*Wood
Coal
Ice*

Johnson Coal & Ice Co.
109 West Martin Street

Caveness
Produce Company

WHOLESALE ONLY

*Fruits,
Produce
and
Groceries*

WE FEED PEACE INSTITUTE
WHY NOT YOUR INSTITUTE?

RALEIGH, N. C.

Herbert Rosenthal

THE SHOE
FITTER

Latest Footwear

Compliments of

SAMPLE
SHOE
STORE

218 S. Wilmington Street
Raleigh, N. C.



The Rendezvous of

STYLE, QUALITY AND MODEST PRICES

IN DISTINCTIVE

Suits, Coats, Dresses, Millinery & Accessories

E. J. ELLISBERG, Proprietor
125 FAYETTEVILLE STREET, RALEIGH, N. C.

Exclusive Ideas in Ready-to-Wear
for the College Girls

Highest Class Styles at Moderate Prices
Let us show you

The Royal Shop

SPECIAL ATTENTION TO THE GIRLS. 10% DISCOUNT ON ALL GOODS

Raleigh

Distinctive Printing — Attractive Prices

BOOKLETS, CARDS, INVITATIONS, CIRCULARS, ETC.
PROMPT SERVICE

M. J. CARROLL & SON
PRINTERS

Academy of Music Building, Raleigh, N. C.

*There was a young lady from Snow Hill
Who went and played in the cold till
Her ears were frost bit
And her lips 'gan to split,
This foolish young lady from Snow Hill*

F. W. Woolworth Co.

THE ONLY
5c and 10c Store
in
RALEIGH

Let Woodward do your work

Ideal Cleaning Co.

DYERS AND CLEANERS

RALEIGH, N. C.

TAYLOR'S FURNISHING COMPANY

MASONIC TEMPLE

+

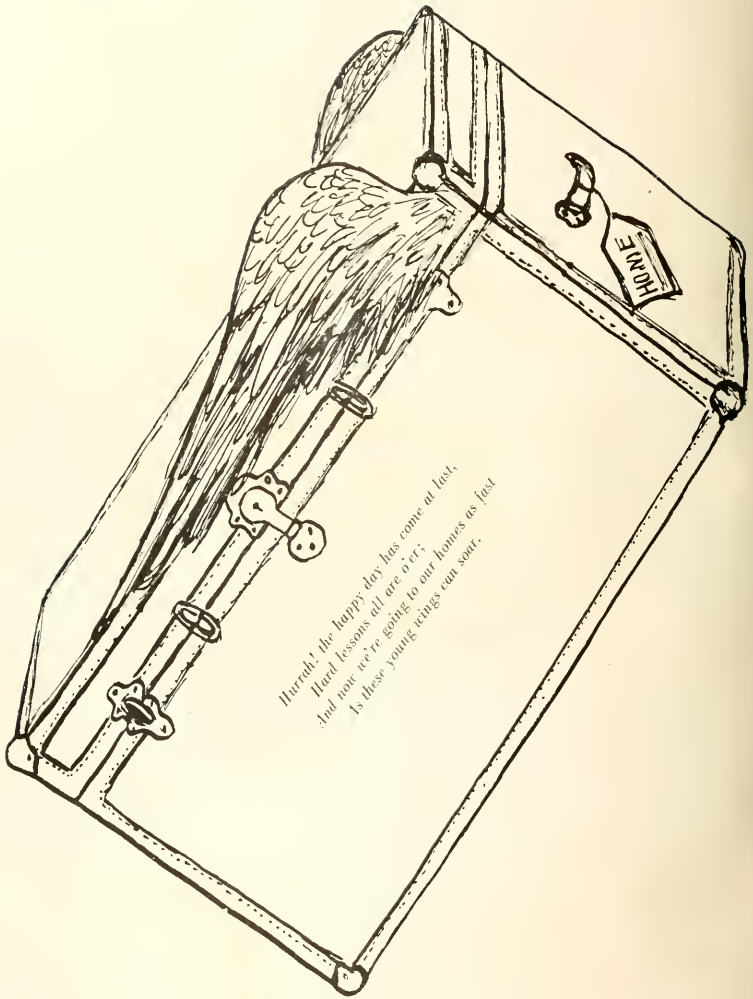
CREATORS AND IMPORTERS

*Coat Suits, Dresses, Coats
Skirts and Waists*

OF THE BETTER KIND

SPECIAL PRICES TO STUDENTS

TAYLOR FURNISHING COMPANY



Hurrah! the happy day has come at last,
Hard lessons all are o'er;
And now we're going to our homes as fast
As these young things can soar.

