


THE
LOTUS
1935



May Kirkpatrick



Digitized by the Internet Archive
in 2010 with funding from
University of North Carolina at Chapel Hill

<http://www.archive.org/details/lotus1935peac>



LOTUS
OF
1935

The Official Yearbook
of
the Students
of
PEACE JUNIOR COLLEGE FOR WOMEN
Raleigh, North Carolina



MRS. GEORGE F. AVINGER
Laurinburg, North Carolina

DEDICATION

To

MRS GEORGE F AVINGER
(Ina McNair)

of

Laurinburg, North Carolina

(President, Peace Alumnae Association, 1932-'33)

Daughter of Peace, one thoroughly imbued with her spirit and her ideals;

Civic and social leader in local and state organizations;

Religious leader in church and community activities which have spiritual development as their objective;

Trustee of Peace, ever ready to give of her time and thought to aid in the upbuilding of Peace;

President of Peace Alumnae Association, capable and untiring in her zeal for all that affects the welfare of Peace and her alumnae;

The students of Peace College, with sincere affection, dedicate this volume of THE LOTUS.



PROLOGUE

THE LOTUS OF PEACE

Above the common face of earth, above the heights where ever man may dwell
There lies a lovely land where dreams abide, hope reigns, enchantment glows,
Like silver dewdrops that vanish in the summer sun, earth's petty worries fade,
And mortal mind sees visions bright afar, and strives to reach the highest shining
peak,
Yet discontent until it dwells among the gods who offer all their never ceasing peace
For there the golden Lotus blooms and blows its fragrant dust into man's very soul,
And Dian, in her palest chariot, veiled in lacy clouds,
Silters the tranquil waters of his mind

Eloise Hayes, '35



CONTENTS

Book I
THE LAND OF THE LOTUS

Book II
THE LOTUS EATERS

Book III
THE LOTUS FRUIT

Book IV
THE LOTUS DUST

Alma Mater

In the heart of Carolina,
'Neath its skies of blue,
Stands our noble Alma Mater,
Glorious to view.
Classic in her broad proportions,
Looks she proudly down—
Reared against the arch of heaven,
With the stars for crown

Chorus

Lift the chorus, speed it onward,
Let it never cease;
Hail to thee, our Alma Mater,
Hail, all hail, to Peace!

Clambering o'er the walls and columns
Historic ivies twine,
As pure love and tenderest memory
In our hearts enshrine
Days of toil and days of pleasure,
Happiness and joy,
Hardships, struggle without measure,
Days without alloy.

Honored be our Alma Mater,
Honored for her past,
Honored in the living present,
Let her honors last!
Long as time shall tell the story,
Long as hearts are true,
May her name be crowned with glory
And honors ever new!

Nannie Carrington Dinwiddie



"A land in which it SEEMED always AFTERNOON"



THE LAND OF THE LOTUS





The Front Campus







The Columns





DR WILLIAM C. PRESSLY—President



MISS MAY McLELLAND — Dean

FACULTY AND OFFICERS



ELIZABETH DAVIDSON
History



ANNE W. RAYNOR
French



MYRA WILLIAMS
Science



EVELYN HOWELL
Home Economics



IDA CURRIE
Commercial Subjects



MRS. MARGARET M. KENNEY
Alumnae Secretary



WINIFRED KUHNS
Mathematics



MRS. RUTH MOORE
Art, History of Art



MRS. BESSIE PICKLESIMER
History and Latin



MRS. FRED STAUDT
Organ



ETHEL GRAMMER
Dietition



FLORENCE DAVIS
Expression

FACULTY AND OFFICERS



LUCY F. STEELE
Bible and Spanish



GLADYS WALDROP
Physical Education



MRS. NINA HOLLAND COVINGTON
English; History, Dramatics



LOVIE JONES
Piano, Harp and Organ



MRS. TENNIE B. SHARPE
Matron and Infirmary



MRS. ROY DEARSTYNE
Voice



CHARLOTTE E. ARMSTRONG
Violin



MARY KIRKPATRICK
Secretary



AMELIA CLARK
Registrar



KATHARYN FREEMAN
Librarian



VIRGINIA WILSON
Music Practice Supervisor



LULA JANE GREY
Day Study Hall Supervisor

ALICE WHITTIER MESEVE
Night Study Hall Supervisor



HELEN HARRIET SALLS
English



MIS^S LUCY E. STEELE

Deep down in the heart of every Peace girl can be found an ardent devotion for one here in our midst, one who within two short years has set the seal of her strong and lovely character upon our very souls. She has striven ceaselessly to help us form habits of honest and wholesome thinking, faithfulness in the daily tasks, courage in meeting obstacles, kindness all along the way, and, above all, reverence. To Miss Lucy Steele—to "our" Miss Steele—we leave our love forever.

Blessing Whitmore, '35.



"And round about the keel with faces pale
Dark faces pale against that rosy flame
The mild-eyed Lotus-Eaters came."

Tennyson -

The Lotus Eaters



'Our Island home
Is far beyond the wave, we will no
longer roam."
—Tennyson.

SENIORS



MARION WOMBLE
President of Senior Class



Ever smiling, ever happy—thus shall we remember Miss Gladys Waldrop, our class sponsor. Her lively disposition, her never failing optimism, and her abundant sympathy have endeared her to the entire student body. How grateful we are, not only for her interest in every activity, but also for her many contributions of spicy originality. In class she is bubbling over with wit; on the athletic field she is an excellent sportswoman. We part from her with regret, only hoping that she has enjoyed her association with us half as much as we have enjoyed her leadership.

Marion Womble, '35

MRS. GLADYS WALDROP
Class Sponsor

ALICE SANDERS
Mascot of Class of 1935
Daughter of Mrs. Ransom Sanders



JOSEPHINE HUTCHISON

Σ Φ Κ

CHARLOTTE, N C

President Student Body ('35); President Junior Class ('34); Student Body Representative on Council ('34); P. S. C. A. Cabinet ('34, '35); Lotus Staff ('34, '35); Privileged Honor Roll ('34, '35); Scholarship ('35); Dramatic Club ('34, '35); Volley Ball Team ('35); Class Historian ('35)

Conferences—black and white checks—Davidson College—"Specials"

MARION WOMBLE

Π Θ Μ

RALEIGH, N C

President Senior Class ('35); Lotus Staff ('35); Treasurer Pi Theta Mu ('35); Glee Club ('34, '35); Marshal ('34).

Gardenias—pledge dances—foot-lights—beach slacks



VIRGINIA SMITH

Π Θ Μ

CHARLOTTE, N C

Vice-President Senior Class ('35); Treasurer P. S. C. A. ('35); Senior Representative on Student Council ('35); Volley Ball Team ('35); Privileged Honor Roll ('35).

Sunsets—black onyx in white gold—train schedules



VIRGINIA ADAMS

H O M

OXFORD, N. C.

Secretary and Treasurer Senior Class '35; Dramatic Club '34-'35; Current Topics Club '35; Papyrus Club '35; Basketball Team '34; Hockey Team '34; Volley Ball Team '34.

Gothic architecture—fourth-level puns—chewing gum



BETTIE BOWLING

H O M

ROCKY MOUNT, N. C.

President F. S. C. A. '35; Student Council '35; Current Topics Club '35; Papyrus Club '35; Volley Ball Team '34; Privileged Honor Roll '35.

Pastel tissues—Cupid's dort—tinkling bells—apple tarts

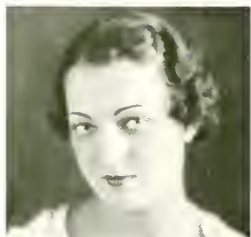
MARIA BRADLEY

H O M

JACKSON, N. C.

Toy dogs—autumn leaves—turtle-neck sweaters





ELOISE CARAWAN

Π Θ Μ

COLUMBIA, N. C.

Beauty (34), President Pi Theta Mu (35), President Athletic Association (35), Marshal (34), Student Council (35); Basketball (34); Hockey (34); Volley Ball (34, 35).

**American Beauties—white furs—dragon flies—
mid-winters**

ETHEL COLEMAN

Σ Φ Κ

HENDERSONVILLE, N. C.

English accent—motor boats—airedales



BETH CRABTREE

Π Θ Μ

RALEIGH, N. C.

Lavender and old lace—English novels—starry nights



CORINNA GANT

Π Θ Μ

RALEIGH, N. C.

Russian tunics—sororities—cocktails—poise



MARJORIE GERBER

Σ Φ Κ

HENDERSON, N. C.

Vice-President P. S. C. A. '35, Glee Club '35, Volley Ball Team '35, Typist for Lotus '35, Privileged Honor Roll '35.

Office files—starched curtains—red apples—
Morning Watch

ELOISE HARRINGTON

Π Θ Μ

RALEIGH, N. C.

Papyrus Club '35

Nights in Mexico—sport roadsters—diving boards—
lipsticks





ELOISE HAYES

Π Θ Λ

RALEIGH, N. C.

Lotus Staff ('35), Vice-President Pi Theta Mu ('35),
Debating Team ('34), Glee Club ('34, '35), Papyrus
Club ('35), Class Poet ('34, '35), Class Prophet ('35)

Nightingales—fur coats—scholarships—State College

MILDRED HINER

Π Θ Λ

RALEIGH, N. C.

Bathing suits and foamy waves—yellow moons shining
on two—tennis racquets



JULIA HOWARD

Σ Φ Κ

WILSON, N. C.

Dramatic Club ('34, '35), Glee Club ('34, '35), Papyrus
Club ('35).

Tumbling—short-hand classes—Bunnies



JOSEPHINE JONES

Π Θ Μ

FAYETTEVILLE, N. C.

Most Popular ('34)

**Persian kittens—Southern drawl—elves—
black-eyed Susans**



MARGARET LEWIS

Π Θ Μ

RALEIGH, N. C.

Lotus Staff ('35), Glee Club ('34, '35), Secretary and
Treasurer Glee Club ('35), Current Topics Club ('35),
Volley Ball Team ('35).

Balanced scales—basketballs—chocolate drops

DOROTHY MACDOUGALD

Σ Φ Κ

CLARKTON, N. C.

Lotus Staff ('34), Debating Team ('34), Glee Club
(('34); Hockey Team ('34)

Peter Pan—bright feathers—Wake Forest—berets





MARY BLUE MONROE

Σ Φ Κ

FAYETTEVILLE, N. C.

Most Popular ('35), Vice-President Dramatic Club ('34), Glee Club ('34); Dramatic Club ('35); Current Topics Club ('35).

Midnight feasts—strawberry ice cream—wire-haired terrier

RUTH PRICHARD

Π Θ Μ

WAKE FOREST, N. C.

Current Topics Club ('35).

Bright sweaters—golf links—gingerbread—perpetual motion



RUTH ROSE

Π Θ Μ

SMITHFIELD, N. C.

Lotus Staff ('35), Papyrus Club ('35); Granddaughters' Club ('34, '35).

Burns' poems—purple—brush and easel



GERTRUDE SCHWARTZ

Σ Φ Κ

RALEIGH, N. C.

Glee Club ('34, '35); Librarian Glee Club ('35);

Friendly smiles—cozy nooks—symphony concerts



WINIFRED SHANNONHOUSE

Π Θ Μ

RALEIGH, N. C.

Court jester—campfires in the dusk—capability

MARY ANNE TAYLOR

Σ Φ Κ

BEAUFORT, N. C.

Most Versatile ('35); Editor-in-Chief of Lotus ('35);
President Sigma Phi Kappa ('35); Glee Club ('34, '35);
Vice-President Glee Club ('35); Dramatic Club ('34,
'35); Papyrus Club ('35); Granddaughters' Club ('34,
'35); Hockey Team '34.

Donce sponsors—dramatics—college songs—week-ends





MILDRED THRIFT

Π Θ Μ

PALEIGH, N. C.

Business Manager Lotus ('35), Advertising Staff Lotus ('34), President Da. Students ('35).

Dresden-china lady—dinner gowns—bobby pins—dates

JANIE WARINER

Π Θ Μ

RUFFIN, N. C.

Hockey Team ('34), Basketball Team ('34), Grand-daughters' Club ('34, '35)

Blue eyes—"Melody in F"—columbine—shell fingernail polish



HELEN MARIE WEIL

Σ Φ Κ

WILDSBORO, N. C.

Dramatic Club ('32-'33), Pajamas Club ('35)

Evening-in-Paris perfume—Punch and Judy—black crepe



BLESSING WHITMORE

Σ Φ Κ

WILMINGTON, N C

"Miss Peace" ('35), Secretary Student Body ('35), P. S. C. A. Cabinet ('34, '35), Lotus Staff ('34, '35), Glee Club ('34); Privileged Honor Roll ('34, '35), Volley Ball Team ('34, '35); Basketball Team ('34), Hockey Team ('34); Class Testator ('35)

**The Magnificent Obsession—crisp lettuce leaves—
white tapers burning on altars**



MABEL WILLIAMS

Σ Φ Κ

ALBERTA, VA

President Dramatic Club ('35), Student Council ('35), Secretary P. S. C. A. ('35), Secretary Sigma Phi Kappa ('35), Glee Club ('34, '35), Marshal ('34), Hockey Team ('34), Basketball Team ('34), Privileged Honor Roll ('35)

Dew on roses—canaries—pink cotton—sleigh bells

RUTH WILLIAMS

Π Θ Μ

ROSEBORO, N C

Plaid scarfs—co-ed colleges—angel cake





MAE WILLIAMSON

Π Θ Μ

RALEIGH, N. C.

Crocheted dresses—Senoritas—large hats—French verbs

CHARLOTTE LANE WRIGHT

Π Θ Μ

RALEIGH, N. C.

Current Topics Club ('35), Papyrus Club ('35)

Blue hair-ribbons—dolls—Gracie Allen—movies



MABEL YORK

Π Θ Μ

RALEIGH, N. C.

Secretary Pi Theta Mu ('35), Current Topics Club ('35)

Paris—long, green earrings—Debutante Balls—tea-time



Class History

Some may call this our history, but to us it is a vivid memory. I could draw for you a brilliant procession of initiations, examinations, kid-parties, junior-senior entertainments, teas, tennis tournaments, society debates and plays, or even those events of minor importance known as classes. Yet somehow as I think over my two short years at Peace, mere events shrink to only secondary importance. The vital thing has been the natural and beautiful evolution of a class from a state of mental uncertainty and confusion to one at least bordering on dignity. This, I believe, is the exclusive senior quality for which every earnest underclassman strives.

In its first days, our class, like all others, suffered. Homesickness and a mood of wonder prevailed. But the seniors proved not such fierce and untouchable persons after all; they were only "Big Sisters," who soothed our aching hearts. After mitigating our nostalgic distress they caught us in a swirl of society rushing. We longed for unmolested peace again only to be entangled in initiations. Having survived these, we lost some of our impeding inferiority complex and began to make ourselves felt as a distinct organization.

Wisely we chose our class adviser, Miss Gladys Waldrop. Soon members of our class were honored by being elected to the P. S. C. A. cabinet. After this we became represented on that grave and somber body, the Student Council, in the person of Josephine Hutchison.

Almost incredibly soon, Christmas had come and with it that never-to-be-forgotten Carol Service. Our class contributed the beautiful and stately tree, bedecked in silver and white. The pre-holiday hubbub died for a moment while every heart lent itself to the service.

Holidays now became only a short and exciting dream. The issues must be faced—those formidable exams, were upon us. In contrast to the holidays these passed as a nightmare.

With our first "stunt," the creative talents of our group burst like a bud suddenly appearing from its hiding-place beneath a leaf. This production, "Born Thirty Years Too Soon," revealed the wit and versatility of Mary Anne Taylor and our class sponsor, Miss Waldrop, the authors and directors. It was sensational—another world was conquered.

March swept with it Spring Holidays like a sweet gush of wind. Back at school again, we found ourselves in a whirl of activity centering around the "Junior-Senior." After intensive planning, the scene was laid. The setting was a cabaret in an open court. Strings of colored lights and balloons, checked table covers, and a profusion of confetti gave a festive atmosphere to the usually staid campus. Only one thing

was lacking, a moon. Never could our class be baffled. We produced a superb, yellow, paper moon which hanging high over the arcade imparted that ineffable touch.

May Day opened the pre-Commencement activities which ended with Class Day. We shall never forget that hour in which the seniors solemnly bestowed upon us their honored rank.

We returned in '35 carrying foremost our new possession, Dignity. Our senior year began with a new seriousness. Marion Womble was our class president. That organization dearest to the heart of every Peace girl, the P. S. C. A., was headed by Bettie Bowling. Josephine Hutchison became president of the Student Body.

The first distinct achievement of our class was the presentation of a three-act comedy, "Polly With a Past." Thus we revived the custom of the annual senior play. This enjoyable performance was under the direction of Mrs. Nina Holland Covington.

Just before Christmas it was announced that we were to have a change in the constitution of our academic year. The usual two-term year was to be converted into one of three terms. This added exams to our pre-Christmas rush.

We returned from the holidays with another radical change facing us. Our Monday freedom was to become a thing of the past. All Saturday afternoon classes and some mid-week classes were to be shifted to Monday afternoon.

The remaining events of our senior year were strangely like those of the junior. The vividness of Commencement Week dims the preceding days. Proudly and happily, yet with a tinge of sadness, we approached our final exercises—the Baccalaureate Sermon on Sunday morning followed by the lovely and impressive vesper service that evening, concerts, teas, and parties, the Alumnae Luncheon, and Class Day. These events were crowned by the most impressive of all—Graduation.

The night of Graduation remains our last vivid memory of the Class. Attired in white and carrying red roses we unconsciously symbolized purity and courage. May we ever be true to these ideals of Peace.

Josephine Hutchison

Last Will and Testament

We, the Senior Class of 1935, having miraculously survived the perils of examinations and endured the hardships of two years of college life, are desirous of settling our worldly affairs while we still have the strength and vigor to do so. Having our feet firmly fixed upon the terra firma of Peace, we hereby make, publish, and declare this our last will and testament.

Article I

Section 1. To our beloved president, Dr. Pressly, we bequeath one jar of "bottled sunshine" that through the coming years his genial countenance may continue to be the inspiration of the student body.

Section 2. To our dean, Miss McLelland, who has contributed so much toward the upbuilding of our character, we leave one can of permanent piping hot coffee, one dozen devoted darling Duke dudes, and six soul-satisfying siestàs.

Section 3. To Miss Davidson we leave the results of our exhaustive research in the intricacies of American History.

Section 4. To Miss Steele we bequeath with love and devotion one copy of Dr. William E. Evans' incomparable book on "How to Memorize," in the hope that she may decide upon a less painful way of instilling in the minds of her indefatigable students the fifth chapter of Romans.

Section 5. To our class sponsor, Miss Waldrop, we each will and bequeath our ability to blush, look coquettish, and be just a "honey" in general, with the hope that she may use these arts very advantageously.

Article II

To the incoming Seniors we bequeath our stimulating and inspiring examples, our bountiful mother-wit, our fastidiousness; and our irresistible charms.

Article III

Section 1. Virginia Adams bequeaths her extraordinary fourth-level brain to Betty Crook.

Section 2. Marion Wamble herewith entrusts her phenomenal ability to play sweet, simple, and girlish parts to Nancy Jones.

Section 3. Mary Anne Taylor leaves her ability to break a rib a year to the football heroes of State.

Section 4. Helen Marie Weil bequeaths her daughterly devotion and tenderest affection for dear old Peace to Catherine Byers.

Section 5. Bettie Bowling, being "fixed" for life and therefore no longer needing that "certain little indefinable something" bequeaths the said attribute to Bettie Sherrill.

Section 6. Eloise Hayes leaves her ability to flunk Senior English to Peggy Johnston.

Section 7. Mary Blue Monroe with reluctance relinquishes her coy ways, collegiate sophistication, and predilection for the opposite sex to Glenn Willard.

Section 8. Mabel Williams desires to leave her carefully developed and almost perfected technique of "squealing" in athletic contests to "Mouse" Page. May this be as big an asset to Mouse as it has been to Mabel.

Section 9. Eloise Carawan bequeaths to Billie Peace Pope her ability to keep a straight face in that serious, somber, and solemn Council, having brought this accomplishment to a high degree of proficiency.

Section 10. Josephine Hutchison, having established a reputation as a dean of no mean ability, takes pleasure in bequeathing her astounding stateliness, matronly mannerisms, and genius for controlling human monkeys to Dorothy Carlough.

Article IV

Section 1. We, the Senior Class, do hereby appoint Master George Pressly as sole executor of this will.

Section 2. This will is signed and sealed in witness thereof by the Class of 1935.

Blessing Whitmore, Testator

Signed this 27th day of May, 1935

Witnesses:

Gladys Waldrop
Alice Sanders

**Would Not
THE SENIOR BE PERFECT**

Who Had

Blessing's hair	Mario's figure
Bettie's complexion	Chorlotte Lane's . . . hands
Ruth Rose's eyes	Mary Anne's legs
Mabel York's nose	Julia's feet
Marjorie's smile	Eloise Hayes's voice
Eloise Corawan's teeth	Ruth Prichard's "pep"
Morion's mouth	Beth's disposition
Mabel Williams's eyelashes	Corinna's poise
Mildred's eyebrows	Jo Hutchison's . . . efficiency

?

Things We'll Miss

Josephine H., our "assistant dean";
Blessing's C. A. programs, best ever seen;
Mary Anne's "prunes"—a delectable dish;
Mildred's curls any girl might wish;
Mabel's charm in recitation;
Eloise C.'s sophistication;
Mabel York's Parisian style;
Dot's good sportsmanship minus bile;
Bettie's knowledge of college rules;
Ruth R.'s memory that seldom fails;
Margaret Lewis's love of work,
Virginia's unwillingness to shirk;
Marion's gallant leadership,
"Shim's" quick wits that never trip,
Eloise Hayes's melodious tones;
Beth's "hello" that should animate stones



"This mounting wave will roll us shoreward
soon."
Tennyson

JUNIORS



GLENN WILLARD
President of Junior Class

JUNIOR CLASS

Colors Lavender and white Flower Lilac

GLENN WILLARD.....	President
STELLA HEATH.....	Vice-President
EDITH BROWN.....	Secretary
NANCY JONES.....	Treasurer
MISS ELIZABETH DAVIDSON.....	Class Sponsor

Frances Baker, Florence Becker, Robbie Sue Black, Julia Branch, Frances Brooks, Edith Brown, Charlotte Bulluck, Cathryn Byers, Margaret Cochrane, Virgilia Cole, Mary Elizabeth Crook, Sarah Crump, Rachael Daniel, Dorothy Danieley, Frances Darden, Bye Davenport, Corinna Denson, Kathryne Denton, Elizabeth Duncan, Helen Eisenhart, Betty Finch, Elizabeth Fountain, Corinna Freeman, Mary Kellam Garrison, Lois Gilliam, Stella Heath, Natalie Hicks, Mary Hooker, Elizabeth Hundley, Betty Hunt, Geraldine Johnson, Mabel Johnson, Margaret Louise Johnston, Nancy Jones, Sue Kelly, Meta Kennison, Elizabeth MacKethan, Nita McDonald, Estelle McElwee, Cathryn McKay, Mary Louise Melvin, Lou Bullock Moss, Mary Kerr Motz, Martha Myers, Margaret Newman, Josephine Pate, Cordelia Perkins, Mildred Polston, Billie Peace Pope, Emily Ray, Patsy Ricks, Makenzie Ross, Lillian Taylor, Mary Rachel Teel, Virginia Turner, Martha Wade, Margaret Walker, Elizabeth Ward, Ruth Webb, Shirley Ann Whitlock, Margaret Wiggins, Margaret Wilkerson, Glenn Willard, Mary Williams, Margaret Williamson, Agnes Wolff, Margaret Waaten

Commercial Juniors

MAYBELLE LEWIS.....President MISS IDA CURRIE.....Sponsor

Mary Elizabeth Allen, Wynona Barber, Frances Bradshaw, Elizabeth Brame Evelyn Bartholamew, Rachel Brothers, Virginia Carr, Marjorie Clark, Virginia May Clark, Jessamine Coates, Annie Virginia Cromartie, Pauline Ethridge, Myrtle Gaddy, Margaret Griffin, Annie Laurie Harrell, Rosalie Hay, Rachael Herring, Helen Hester, Margaret Hill, Ethelyn Holden, Dorothy Holland, Elizabeth Holmes, Athalia Koonce, Maybelle Lewis, Isadore Long, Katherine Lytch, Katherine Macan, Lorene Mathews, Mary McArthur, Helen McInnis, Louise McLaughlin, Jane Moore, Neda Pendleton, Lula Powell, Margaret Price, Blanche Renn, Katherine Riddle, Betty Schmidt Madeline Short, Mildred Stevens, Adelia Vaughan, Eleanor Frances Walker, Mantine Warmack.

Junior Class Poem

Youth moves in its crimson circuit;
 The wheel of life spins on;
 And still, beyond human vision,
 Lies the iridescent dawn
 One more turn of the roseate wheel,
 One more year to spin,
 And some will mold a chalice of gold,
 And some a cup of tin.

If on this earthy wheel below
 We shape our plastic soul
 To make it fit supremely
 For the Master's drinking bowl,
 Then, when this worldly disc is stilled,
 And we stamp our final seal,
 We shall see our earth-completed life
 On the celestial Potter's wheel
 Shirley Ann Whitlock

GLENN WILLARD
Wilmington, N. C.
President



STELLA HEATH
Kinston, N. C.
Vice-President



NANCY JONES
Fronklin, N. C.
Treasurer



EDITH BROWN
Raleigh, N. C.
Secretary



FRANCES BAKER
Raleigh, N. C.



FLORENCE BECKER
Bramwell, W. Va.



ROBBIE SUE BLACK
Goldsboro, N. C.



JULIA BRANCH
Enfield, N. C.



FRANCE BRIDGES
Charlotte, N. C.



CATHRYN BYERD
Savannah, Ga

MARGARET COCHRANE
Charlotte, N. C.



VIRGILIA COLE
Raleigh, N. C.

MARY E. CROOK
Jamaico, B. W. I.



SARAH CRUMP
Sunbury, N. C.

RACHEL DANIELS
Spring Hope, N. C.



DOROTHY DANIELEY
Raleigh, N. C.

FRANCES DARDEN
Raleigh, N. C.



BYBE DAVENPORT
Nashville, N. C.

CORINNA DENSON
Rocky Mount, N. C.



KATHRYNE DENTON
Raleigh, N. C.



ELIZABETH DUNCAN
North Wilkesboro, N. C.



BETTY FINCH
Tampa, Florida



HELEN EISENHART
Hamlet, N. C.



ELIZABETH FOUNTAIN
Tarboro, N. C.



CORINNA FREEMAN
Morehead City, N. C.



MARY K. GARRISON
Raleigh, N. C.



LOIS GILLIAM
Council, N. C.



NATALIE HICKS
Florence, S. C.



ELIZABETH HUNDLEY
Amelia, Va.



BETTY HUNT
Wilmington, N. C.

GERALDINE JOHNSON
Rocky Mount, N. C.



MABEL JOHNSON
Whiteville, N. C.

MARGARET JOHNSTON
Chapel Hill, N. C.



SUE KELLY
Henderson, N. C.

META KENNISON
Townsville, N. C.



NITA McDONALD
Raleigh, N. C.

ELIZABETH
MACKETHAN
Foyetteville, N. C.



ESTELLE McELWEE
Statesville, N. C.

CATHRYN McKAY
Baltimore, Md



MARY LOUISE MELVIN
Raleigh, N C



MARY KERR MOTZ
Yanceyville, N C



MARTHA MYERS
Laurinburg, N C.



JOSEPHINE PATE
Rowland, N. C.



MARGARET NEWMAN
Concord, N C



CORDELIA PERKINS
Stokes, N C.



MILDRED POLSTON
Raeford, N. C.



BILLIE PEACE POPE
Creedmoor, N C



EMILY RAY
Raleigh, N C



PATSY RICKS
Whitakers, N C



LILY TAYLOR
Shelby, N C



MARY RACHEL TEEL
Greenville N C



VIRGINIA TURNER
Creedmoor, N C.



MARTHA WADE
Raleigh, N C



MARGARET WALKER
Ahoskie, N. C



ELIZABETH WARD
Wallace, N C



RUTH WEBB
Oxford, N C



SHIPLEY A WHITLOCK
Raleigh, N C



MARGARET WIGGINS
Raleigh, N C



MARGARET
WILKERSON
Raleigh, N. C.



MARY WILLIAMS
Raleigh, N. C.

MARGARET
WILLIAMSON
Raleigh, N. C.



AGNES WOLFF
Raleigh, N. C.

MARGARET WOOTEN
Pinetops, N. C.



MARY E. ALLEN
Raleigh, N. C.

WYNONA BARBER
Clayton, N. C.



FRANCES BRADSHAW
Raleigh, N. C.

ELIZABETH BRAME
Wendell, N. C.



RACHEL BROTHERS
Fayetteville, N. C.

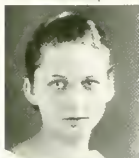
VIRGINIA CARR
Whitakers, N. C.



MARJORIE CLARK
Clarkton, N. C.



VIRGINIA MAY CLARK
Clarkton, N. C.



JESSAMINE COATES
Raleigh, N. C.



ANNIE V. CROMARTIE
Garland, N. C.



PAULINE ETHERIDGE
Raleigh, N. C.



MYRTLE GADDY
Morven, N. C.



MARGARET GRIFFIN
Zebulon, N. C.



ANNIE L. HARRELL
Wallace, N. C.



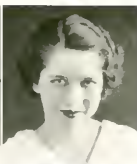
RACHEL HERRING
Rocky Mount, N. C.



HELEN HESTER
Fayetteville, N C



ETHELYN HOLDEN
Neuse N. C.



DOROTHY HOLLAND
Millbrook N C



ELIZABETH HOLMES
Fayetteville, N C



MARGARET HILL
Raleigh, N. C.



ATHALIA KOONCE
Richlands, N C



MAYBELLE LEWIS
Rocky Mount, N C



ISADORE LONG
Roxboro, N C



KATHERINE LYTCH
Laurinburg, N C.



KATHERINE MACON
Henderson, N C.



LORENE MATTHEWS
Leasville, N C



MARY McARTHUR
Fayetteville, N C

HELEN McINNIS
Gibson, N C



LOUISE McLAUHLIN
Littlington, N C

JANE MOORE
Williamston, N C



NEDA PENDLETON
Scotland Neck, N C

LULA POWELL
Inez, N C



BLANCHE RENN
Raleigh, N C

KATHERINE RIDDLE
Raleigh, N C

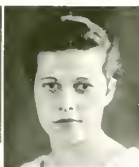


BETTY SCHMIDT
Wilmette, Illinois

MADLINE SHORT
Elm City, N. C.



MILDRED STEVENS
Broadway, N. C.



ADELIA VAUGHAN
Raleigh, N. C.



ELEANOR F. WALKER
Graham, N. C.



MONTINE WARMACK
Roxboro, N. C.

"And deep asleep he seem'd yet all awake"
Tennyson

PREPS.

DORIS DANIEL
President of Sophamores

CAROLINE PAGE
President of Preps

MRS NINA HOLLAND COVINGTON
Sponsor



D Daniel C Page

SOPHOMORES



Marjorie Austro
Hatteras, N. C.



Bonnie Black
Fremont, N. C.



Anne Burr
Raleigh, N. C.



Mary Louise Chandler
Burlington, N. C.



Etta Davis
Raleigh, N. C.



Doris Daniel
President
Baden, N. C.

Eileen Douglas
Greenville, S C



Lucile McDonald
Durham, N. C.



Elizabeth Slater
New Bern, N C



Dorothy Thurman
Raleigh, N C



Mary Helen Watkins
Raleigh, N C





Preps.

Caroline Page	President
Mrs. Nina Holland Covington	Sponsor

Prep III

Anne Elizabeth Bailey	Caroline Page
Edna Barnes	Myra Podman
Peggy Canby	Betty Sherrill
Dorothy Carlough	Kathryn Stanton
Rozella Dameron	Peggy Strud
Elaine Joyce	LoVelle Sykes
Sarah Norris	Julia Triplett

Prep II

Julia Farish	Dorothy Ann Picklesimer
Frances McKee	Betty Vinson

Prep I

Alice Covington	Jane Manning
Betty Lou Fletcher	Emily Schenck
Katherine Gould	Betty Winborne

Seventh Grade

Pauline Abernethy	Betsy Cooper
Sue Gant	



The Lotus Fruit



STUDENT COUNCIL

Josephine Hutchison
President

Mabel Williams
Treasurer

Blessing Whitmore
Secretary

Virginia Smith
Representative of Class of 1934

Mildred Thrift
President of Day Students

Eloise Carawan
President of Athletic Association

Bettie Bowling
President of Peace Student Christian
Association

Florence Becker
Representative of Class of 1935

Marjorie Gerber
Representative of Student Body





Mildred Thrift



Mary Anne Taylor

THE LOTUS

Mary Anne Taylor

Blessing Whitmore

Mildred Thrift

Miss Mary Kirkpatrick

Miss Helen H. Salls

Mary Anne Taylor, Editor-in-Chief

Blessing Whitmore, Assistant Editor

Mildred Thrift, Business Manager

Miss Mary Kirkpatrick, Faculty Advisers

Miss Helen H. Salls, Faculty Advisers

ASSOCIATE EDITORS

Josephine Hutchison Marion Worrell
Margaret Johnston Eloise Hayes
Cathryn McKay Margaret Lewis

TYPISTS

Marjorie Gerber Betty Schmidt
Aitholia Kaance

ART EDITORS

Ruth Rose
Elizabeth MacKethan
Meredith Holderby

BUSINESS STAFF

Elizabeth Holmes
Mary Williams



THE LOTUS STAFF

BLESSING WHITMORE, Wilmington, N. C., MEREDITH HOLDERBY, Buffalo Springs, Va., ELIZABETH MACKETHAN, Fayetteville, N. C., ELIZABETH HOLMES, Fayetteville, N. C., JOSEPHINE HUTCHISON, Charlotte, N. C., CATHRYN MCKAY, Baltimore, Md., PEGGY JOHNSTON, Chapel Hill, N. C., RUTH ROSE, Smithfield, N. C., ELOISE HAYES, Raleigh, N. C., MAMON WOMBLE, Raleigh, N. C., EDITH BROWN, Raleigh, N. C., MARGARET HILL, Raleigh, N. C., MARGARET LEWIS, Raleigh, N. C.



Ethel Simwan

H O M



Elsie Hayes

Matie York

Marion Womble



Π Φ Μ

ELOISE CARAWAN, President; MARIKE WUMBLE, Secretary;
 ELOISE HAYS, Vice-President; MABEL YORK, Treasurer;
 Miss ELIZABETH DAVIDSON, Faculty Adviser

Pauline Abernethy, Virginia Adams, Elizabeth Allen, Peliz Bailey, Frances Baker, Wynona Barber, Evelyn Bartholomew, Bettie Bowling, Maria Bradley, Elizabeth Brame, Julia Branch, Edith Brown, Anne Burr, Eloise Carawan, Dorothy Carlough, Virginia Carr, Jessamine Coates, Virginia Cole, Betsy Cooper, Beth Crabtree, Sarah Crump, Sue Gant, Mar. Kellam Garrison, Lois Gilliam, Rachael Godwin, Katherine Gould, Eloise Harrington, Rosalie Hay, Eloise Hayes, Rachael Herring, Helen Hester, Natalie Hicks, Margaret Hill, Mildred Hiner, Ethelyn Holden, Meredith Holderby, Dorothy Holland, Elizabeth Hundley, Mabel Johnson, Josephine Jones, Elaine Joyce, Margaret Lewis, Ruth Rose, Betty Schmidt, Winifred Shannonhouse, Betty Sherrill, Madeline Short, Elizabeth Slater, Melba Smith, Mabel Stanley, Katherine Stanton, Peggy Stixrud, Virginia Smith, LaVelle Sykes, Lily Taylor, Mildred Thrift, Dorothy Thurman, Judith Triplett, Adelia Vaughan, Martha Wade, Margaret Walker, Janie Wariner, Mary Helen Wattins, Rozella Dameron, Frances Darden, Dorothy Danieley, Kathrine Denton, Eileen Douglass, Helen Eisenhart, Pauline Etheridge, Lucille Evans, Julia Farish, Betty Fletcher, Elizabeth Fountain, Myrtle Gaddy, Corinna Gant, Nita McDonald, Frances McKee, Mary Louise Melvin, Jane Moore, Cordelia Perkins, Dorothy Ann Picklesimer, Billie Peace, Pope Margaret Price, Ruth Prichard, Emily Ray, Blanche Renn, Patsy Ricks, Katherine Riddle, Shirlee Ann Whitlock, Margaret Wiggins, Margaret Wilkerson, Mar. Williams, Ruth Williams, Mae Williamson, Margaret Williamson, Agnes Wolff, Marion Wumble, Margaret Wooten, Charlotte Lane Wright, Edith Wyatt, Mabel York



Mary Anne Taylor

Σ Φ Κ



Betty Felton

Mabel Williams

Makenzie Ross



Σ Φ Κ

Mary Anne Taylor President	Mabel Williams	Secretary
Betty Felton	Vice-President	Makenzie Ross	Treasurer
	Miss Ida Currie	Faculty Adviser	

Marjorie Austin, Florence Becker, Robbie Sue Black, Bonnie Blalock, Frances Brooks, Rachel Brothers, Charlotte Bulluck, Cathryn Bvers, Peggy Canby, Louise Chandler, Marjorie Clark, Virginia M. Clark, Margaret Cochrane, Ethel Coleman, Annie V. Cromartie, Betty Crook, Doris Daniels, Rachel Daniels, Margaret Griffin, Stella Heath, Annie Laurie Harrell, Josephine Hutchison, Elizabeth Holmes, Mary Hooker, Julia Howard, Betty Hunt, Geraldine Johnson, Peggy Johnston, Nancy Jones, Sue Kelly, Meta Kennison, Athalia Koance, Maybelle Lewis, Isadore Long, Catherine Lvitch, Katherine Macon, Cathryn McKay, Louise McLaughlin, Mary Blue Monroe, Bill Moss, Mary Kerr Motz, Martha Myers, Margaret Newman, Caroline Page, Josephine Pate, Neda Pendleton, Mildred Polston, Lula Powell, Myra Rodman, Makenzie Ross, Mildred Stevens, Mary Anne Taylor, Mary Rachel Teel, Virginia Turner, Bybe Davenport, Corinna Denson, Elizabeth Duncan, Betty Felton, Betty Finch, Corinna Freeman, Marjorie Gerber, Lorene Mathews, Dorothy MacDougald, Elizabeth MacKethan, Mary McArthur, Lucile McDonald, Estelle McElwee, Helen McInnis, Eleanor Frances Walker, Mantine Warmack, Blessing Whitmore, Helen Marie Weil, Mabel Williams, Glenn Willard, Elizabeth Ward, Ruth Webb



Betty Howling

P. S. C. A.

Peace Student Christian Association

Betty Howling	President	Virginia Smith	Treasurer
Marjorie Gerber	Vice-President	Blessing Whitmore	Program Chairman
Mabel Williams	Secretary	Miss Lura Steck	Faculty Adviser

Corinna Denson, Chairman of Foreign Missions Committee, Florence Becker, Chairman of Social Service Committee, Virginia Smith, Chairman of Finance Committee, Josephine Hutchison, Chairman of Membership Committee, Louise McClain, Chairman of Home Missions Committee, Glenn Willard, Chairman of Publicity Committee, Marjorie Clark, Chairman of Music Committee, Betty Felton, Chairman of Social Committee





GLEE CLUB

Director Mrs. Roy Eberstye

Cathryn Wiers
 Mary Anne Taylor
 Margaret Lewis
 Gertrude Schwartz

Frances Baker
 Robbie Sue Black
 Julia Branch
 Cathryn Byers
 Amelia Clark
 Marjorie Clark
 Sarah Crump
 Pachel Daniels

Elizabeth Duncanson
 Betty Felton
 Corinna Freeman
 Mary Kellam Garrison
 Marjorie Gerber
 Elsie Hayes
 Julia Howard
 Geraldine Johnson
 Margaret Lewis

Organist Mrs. Fred Staudt

....., President
 Vice-President
 Secretary and Treasurer
 Librarian

Katherine Macon
 Mira Podman
 Gertrude Schwartz
 Mary Anne Taylor
 Margaret Walker
 Elizabeth Ward
 Mabel Williams
 Marion Womble



Mabel Williams



Peggy Johnston



Cathryn McKay



Meredith Holderby

DRAMATIC CLUB

Mabel Williams	President	Cathryn McKay	Secretary and Treasurer
Peggy Johnston	Vice-President	Meredith Holderby	Reporter
Mrs. Wm. Holland Covington	Director		

Virginia Adams, Florence Becker, Frances Brooks, Edith Brown, Cathryn Byers, Louise Chandler, Alice Covington, Matt. Feltor, Betty Finch, Stella Heath, Meredith Holderby, Julia Howard, Josephine Hutchinson, Peggy Johnston, Lorene Mathews, Dorothy MacDougald, Cathryn McKay, Mary Anne Taylor, Mary Rachel Teel, Mabel Williams, Marion Wamble

"POLLY WITH A PAST" Virginia Adams as Stiles, Marion Wamble as Harry, Mary Anne Taylor as Polly, Dorothy MacDougald as Clay





THE PYPYRUS CLUB

The Papyrus Club, formed this year by students in the college English classes, and sponsored by Miss Helen Salls, head of the department of English, is designed to stimulate special interest in creative writing and journalism. This organization has taken an active part in the publication of the PEACE BULLETIN.

OFFICERS

Betty Crook.....	President	Shirley Ann Whitlock.....	Secretary
Stella Heath.....	Vice-President	Miss Helen Harriet Salls.....	Faculty Adviser

MEMBERS

Virginia Adams
 Frances Baker
 Robbie Sue Black
 Betty Bowling
 Cathryn Byers
 Jessamine Coates
 Betty Crook
 Sarah Crump
 Kathryn Denton
 Florence Becker

Mary Kellam Garrison
 Eloise Hayes
 Stella Heath
 Natalie Hicks
 Meredith Holderby
 Mabel Johnson
 Peggy Johnston
 Nancy Jones
 Elizabeth MacKethan
 Edith Brown

Cathryn McKay
 Martha Myers
 Mildred Polston
 Billie Peace Pope
 Mary Anne Taylor
 Ruth Webb
 Helen Marie Weil
 Shirley Ann Whitlock
 Glenn Willard
 Geraldine Johnson



CURRENT EVENTS CLUB

Virginia Adams, Betty Bowling, Marie Egan, Catherine Gannon, Rachel Daniels, Kathryn Denton, Mrs. Kellam Garrison, Josephine Hutchison, Nancy Jones, Margaret Lewis, Elizabeth MacKethan, Francis McKee, Ruth Prichard, Elizabeth Slater, Betty Virsion, Martha Wade, Shirley Ann Whitlock, Marion Womble, Charlotte Lane Wright, Mabel York



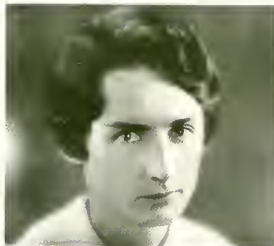
ADVERTISING GROUP

Maria Bradlee, Virgilia Cole, Dorothy Daniels, Betty Felton, Margaret Hill, Meredith Holderby, Elizabeth Holmes, Mary McArthur, Dorothy MacDougald, Ruth Webb, Mildred Thrift.



DAUGHTERS AND GRANDDAUGHTERS

Pauline Abernethy, Raleigh, N. C., Daughter of Mrs. Max Abernethy (Elizabeth Hill). Peliz Bailey, Raleigh, N. C., Granddaughter of Mrs. James Pau (Annie Waller), Daughter of Mrs. Josiah W. Bailey (Edith Pau). Bonnie Blalock, Fremont, N. C., Daughter of Mrs. P. C. Blalock (Lillian Scott). Sarah Crump, Sunbury, N. C., Daughter of Mrs. W. O. Crump (Marie Brooks). Mary Kellam Garrison, Raleigh, N. C., Daughter of Mrs. S. O. Garrison (Mary Broughton). Eloise Harrington, Raleigh, N. C., Daughter of Mrs. H. G. Harrington (Margaret Biem). Mary McArthur, Fayetteville, N. C., Daughter of Mrs. Lacy McArthur (Grace Jennings). Estelle McElwee, Statesville, N. C., Granddaughter of Mrs. Nathan O'Berry (Estelle Moore), Daughter of Mrs. Ross McElwee (Estelle O'Berry). Frances McKae, Raleigh, N. C., Daughter of Mrs. James McKee (Marguerite McPheeters). Martha Myers, Laurinburg, N. C., Daughter of Mrs. J. T. Myers (Henrietta Booth). Sarah Norris, Raleigh, N. C., Granddaughter of Mrs. James Ransom (Julia Creech). Caroline Page Ashboro, N. C., Granddaughter of Mrs. A. C. McIntosh (Caroline Seagle). Ruth Rose, Smithfield, N. C., Granddaughter of Mrs. W. M. Sanders (Lilv Long), Daughter of Mrs. A. H. Rose (Ruth Sanders). Makenzie Ross, Lillington, N. C., Daughter of Mrs. Charles Ross (Fannie Reid McKay). Lily Taylor, Shelby, N. C., Granddaughter of Mrs. J. R. Pender (Lily Brown), Daughter of Mrs. E. Yates Webb (Alice Pender). Mary Anne Taylor, Beaufort, N. C., Granddaughter of Mrs. J. W. Thackston (Anne Beckwith), Daughter of Mrs. Bayard Taylor (Jean Thackston). Janie Worner, Ruffin, N. C., Daughter of Mrs. W. H. Worner (Norcissus Bradley). Edith Wyatt, Raleigh, N. C., Daughter of Mrs. Robert Wyatt (Mamie Rennie).



G. Waldrop



E. Carawan

Miss Gladys Waldrop.....

Eloise Carawan.....

.....Director

.....President

ATHLETICS



TENNIS

Champion- Ruth Webb, Elizabeth MacKethan

Runners-up Makenzie Ross, Betty Crank



BASKETBALL



HOCKEY

"Through every hollow cave and alley lone
Round and round the spicy downs the
Yellow Lotus Dust is blown."

Tennyson

The Lotus Dust





Elizabeth Pugh

MARSHALS

Singing Platform

First Assistant Chief

Quill M. K.

Catering Desk

Photo M.

Joyce L.

M. Radcliff



D. McKay



J. L. L.



C. Litch



M. Holderby

THE PEACE PIPE

Edited by Pacifist P. Johnston

Vol 3 No 3

Raleigh, N C., January 3, 1955

Established in 1952

WHITMORE PACIFIST CANDIDATE

Blessing Whitmore Chosen Pacifist Candidate in North Carolina Gubernatorial Race

Jan 3—At a convention of the Women's Pacifist Party here in the capital city yesterday, Senator Whitmore was nominated for North Carolina governor. Miss Estelle McElwee made the nomination. As the only opposition was offered by Senator Josephine Hutchison and

her band of anti-workers, Miss Whitmore was chosen as Pacifist nominee.

Miss Whitmore is an alumna of the famous Peace College and in private life is the wife of the illustrious screen star, Leroy Lester Loveless.

Miss Adams Resigns

Weeping Willows, Wisconsin — Jan 3—Miss Virginia Adams, matron of the Home for Elderly Indigent Pacifist Spinsters, and her assistants, Misses Maria Bradley, Charlotte Lane Wright, and Josephine Jones, resigned their posts yesterday to Dr. Glenn Willard and her staff, Doctors Betty Finch, Caroline Page, and Meredith Holdery.

As Miss Adams has been matron of the Home for ten years, and is much beloved for her tender care of the inmates, her resignation has been accepted with deep regret.

Dr Willard and her efficient staff came from Hollywood where they were in charge of the Independent Institution for the Incurable Insane.

Fortune Tellers Hold Annual Convention

Jan 3 The Fifteenth Annual Convention of Fortune Tellers, headed by Mrs Mildred Polstan Greenacres, got under way today with a heated discussion of the morality of palm reading.

The profession has been very successful since its organization in 1930 by members of the alumnae of Peace Junior College.

Misses Sarah Crump, Mabel Johnson, Robbie Sue Black, and Ruth Webb were acclaimed the most outstanding members of the union for the year 1954.

Scintillating Syncopaters Return

Jan 3—The "Scintillating Syncopaters," world's most famous women's orchestra organized at Peace Junior College ten years ago, returned from a Burmese tour today to play for the Peace Junior-Senior dinner dance to be given January 5th in the spacious gymnasium of the school.

The manager, Mary Kerr Motz, states that a feature of the evening will be a rendition by Nancy Jones, soloist, of "Wistful Water Woes" (composed by Miss Mildred Thrift) from mock-gondolas situated in the pool which lies in the center of the large building.

The leader of this world-famous orchestra is Myrtle Gaddy, former follies star, and the members are Misses Nancy Janes, Bonnie Blalock, Peggy Stixrud, Dorothy Ann Picklesimer, Betty Bowling, Eleanor Frances Walker, Mae Williamson, Lois Gilliam, Marjorie Austin, Lorene Matthews, Edith Brawn, and Agnes Wolff.

After this engagement the orchestra will return to the famous House of Pandemonium, opening in Chicago, under the management of Miss Gertrude Schwartz, a former Peace student.

Mary Anne Taylor Appointed Dean of Peace College

Jan 3—At the sweeping change of faculty at Peace College this semester, Miss Mary Anne Taylor (Peace, '35) became dean.

Although Miss Margaret Cochran remains as president, other changes have been effected. Miss Elizabeth Halmes is business manager and Miss Betty Vinson is secretary to the president.

The new infirmarian is Miss Dorothy Carlaugh; the dietitian, Miss Betty Crook; the study hall supervisors, Misses Louise Chandler and Eileen Dauglass; the librarians, Misses Ruth Rose and Jane Moore.

Heads of the various departments are: Foreign languages, Miss Betty Sherrill, English, Miss Marion Wamble; mathematics, Miss Florence Becker; science, Misses Cathryn McKay, Elizabeth Ward, and Mabel York; Bible Misses Betty Jane Felton and Mary Blue Manroe; commercial subjects, Misses Ruth and Mabel Williams; piano, Miss Patsy Ricks; voice, Miss Eloise Carawan; violin, Miss La Velle Sykes; art, Miss Betty Hunt; dramatics and physical education, Misses Elizabeth Duncan and Mabel Stanley.

All offices are filled by Peace alumnae.

Heath Sues Manager

New York City—Jan. 3—Miss Stella Heath, the woman's tennis champion of the world, filed suit today against her manager Miss Kitty MacKethan, charging that Miss MacKethan sold a copy of her "Trick Plays" to Miss M. H. Myers, her opponent in the latest Forest Hill matches.

Miss MacKethan, strategic trainer, is unable to reply at once, her lawyer, Miss Makenzie Rass, stated to the press today, as she is confined to her bed with asthma.



SUPERLATIVES

"On the hills like gods together"
—Tennyson



"Mrs. P. [unclear]"
[unclear]

Beau,
Meredith Childers



Versatile
Mary Anne Tilly



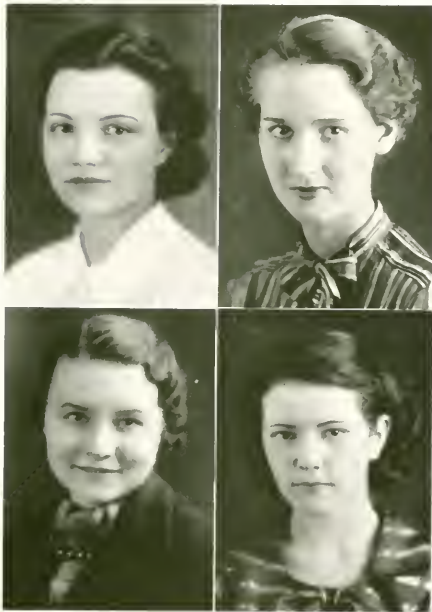
Ethel
Ethel Felton



Popularity:
Mary Blue Monroe

Athletic:
Makenzie Ross





SCHOLARSHIP

SENIOR

Josephine Hutchison

COMMERCIAL

Helen Hester

JUNIOR

Betty Crook

PREPARATORY

Julia Triplett

A CAREER AND YOUR HOME

A promising future is often-times sacrificed on the altar of household drudgery. You have planned a career—yet you, like all other women, will some day want the pleasures and comforts of a home of your own. Must you abandon the work for which you are prepared in favor of the home? Not in this age of electrical conveniences! You can manage a home successfully and at the same time carry on with your vocation or profession. Electrical appliances will provide you with the necessary time and perform your household tasks efficiently and economically.

CAROLINA POWER & LIGHT COMPANY

Welcome Peace

You are cordially invited to make
our store your headquarters
at all times.

Here you can always find the new-
est creations in footwear
and hosiery.

POLLOCK'S, INC.

Style Leaders of the South

122 Fayetteville Street
Raleigh, North Carolina

Patents

Prescriptions

222
FAYETTEVILLE
ST.

Eckerd's

RALEIGH,
N. C.

OF RALEIGH N. C. INC.
"CREATORS OF REASONABLE DRUG PRICES"

We Carry the Most Complete
Stock of

Cosmetics

—in—

City of Raleigh

Visit Our

*Soda Fountain and
Luncheonette*

Provident Mutual
Life Insurance Company
of Philadelphia
Organized 1865

Make your later years happy with
a retirement life income

FRANK M. HARPER & SON
DISTRICT AGENTS
Raleigh, N. C.

J E A N S

SMART SHOP

for

SMART WOMEN

Styles of Individuality

Raleigh,
North Carolina

Your Patronage Appreciated!

STATE, PALACE and CAPITOL THEATRES

NORTH CAROLINA THEATRES, INC.

The Best in Photoplays at Popular Admission Prices

CONFIDENCE

The young ladies of Peace who are sensitive to quality appeal and those who instinctively buy where complete confidence may be placed are among our most welcome customers.

It is ever the policy of this Company to continue to merit such confidence by constant attention to the proper relation of quality and price.

BOYLAN-PEARCE INCORPORATED

"Raleigh's Shopping Center"

BYNUM PRINTING COMPANY

Better Printing

692—Phones—693

FOR PURE CLEAR CRYSTAL
ICE
AND HIGH GRADE
COAL

PHONE 492

**CAPITAL
ICE AND COAL CO., Inc.**
600 West Hargett Street

HILKER BROS.

Tailors - Cleaners - Furriers

Fur Storage - Dyeing

Offices:

16 West Hargett Street
511 Hillshoro Street
PHONES: 4060 and 2985

Work in the Nineteen Thirty-Five

LOTUS

Done by

—HORTON—

Raleigh, N. C.

OFFICIAL PHOTOGRAPHER FOR
PEACE

California Fruit Store

30 Years as the Headquarters
and Meeting Place for
College Students

Speaks for

Quality and Service

LUNCHES
SODA

CANDIES
FRUIT

Phone 2079 702 N. Person St.

PENNY'S SHOE SHOP

We strive to give our patrons
*the best in workmanship
and material*

Corner Person and Pace Streets

Mangel's

COLLEGE CLOTHES FOR ALL OCCASIONS

Underwear, Fan-Tan Hose

Stores Everywhere

Fraternity, College and
Class Jewelry

*Commencement Announcements
and Invitations*

Jeweler to Pi Theta Mu and Sigma
Phi Kappa Clubs of Peace

L. G. BALFOUR CO.

Manufacturing Jewelers and Stationers
ATTLEBORO, MASS.

BRANTLEY'S

Expert Druggists

Fine Sodas

Edenton Street Methodist
SUNDAY SCHOOL

*Welcomes the Peace
College Girls*

REV. EUGENE C. FEW, *Pastor*

C. A. DILLON, *Supt. of Sunday School*

Ask for

GOLDEN TAP GRAPEFRUIT JUICE

at the soda fountain. And insist
upon being served in
Dixie Cups.

Garland C. Norris Company

Vick Moore

Earl Johnson

Moore & Johnson Co.

"A Progressive Insurance Agency"

INSURANCE SURETY BONDS

Lawyers Building
Raleigh, N. C.

It Pays to Visit

EFIRD'S

MEREDITH COLLEGE

RALEIGH, N. C.

A Standard College for Young Women

Courses offered in Arts and Sciences, in Music, in Art, leading to the B.A. and B.S. degrees.

Prepares for life, for vocation, or for further study.
Charges reasonable.

For catalogue or further information write

CHAS. E. BREWER,

President

It's a Thrill to Hear Your
Friend Whisper

It's a Darling } DRESS
 } HAT
 } COAT

Darling Shop

131 Fayetteville Street

Compliments of

T. H. BRIGGS & SONS, Inc.

*"Carolina's Oldest Wholesale
and
Retail Hardware House"*

Raleigh, N. C.

Established 1865 Phone No. 45

CAROLINA COACH COMPANY

Travel in Comfort

NEW MODERN EQUIPMENT

AIR SPRINGS

TROPICAIRE HEAT

RECLINING SEATS

—: Make Your Trip Enjoyable :—

TAYLOR'S

The Show Place of the Carolinas



Buy all your needs at this good store and you will
never make a mistake.

DRESSES : SUITS : COATS : COSTUMES : FURS : UNDERWEAR
GLOVES : HOSIERY : SCARFS : JEWELRY
BAGS : LUGGAGE : NOVELTIES



TAYLOR'S

The Show Place of the Carolinas

DeShazo's

School of Beauty Culture
and
Beauty Shoppe

Clark Art Shoppe

133 S. Wilmington St.

PICTURE FRAMES
ARTIST MATERIALS
AWNINGS
WINDOW SHADES

PERSON STREET PHARMACY

TWO STORES

NORTH PERSON STREET

P. D. GATTIS, Prop.

HAYES BARTON

A Complete Line of
Nationally Advertised Drugs

Plus a Selected Assortment of Toilet Items
Soda Our Specialty

PATRONIZE
PIGGLY WIGGLY
For the Best
GROCERIES : FRESH MEATS
FRESH FRUITS AND
VEGETABLES

Attractive Stores
Courteous Service
Reasonable Prices

Home Owned Home Managed

PIGGLY WIGGLY

Your Patronage Appreciated

Pine State Creamery

Glenwood Avenue
Raleigh, N. C.

A Full Line of
Quality Dairy Products

Made Safe by Pasteurization

Fancy Ice Cream and Ices

Use Your Credit

at

HERBERT ROSENTHAL

BEAUTIFUL SHOES

We Furnish Open Evenings
Transportation By Appointment

VANITY BEAUTY SHOP

"Creator of Better Permanent Waves"

We appreciate the patronage of
both faculty and students of
Peace College

305 Pace Street

Phone 2278

THE FIRST PRESBYTERIAN CHURCH

AND

SUNDAY SCHOOL

OF RALEIGH, NORTH CAROLINA

Extends a welcome to college girls. It is our hope that you will make this your church home during your stay in Raleigh. There are special classes organized in our Sunday School for college girls.

FRANK H. JETER, Superintendent of Bible School

H.M. V. WORTH, Assistant Superintendent

Raleigh's Finest
Hotel Sir Walter

350 Rooms
350 Baths

JEWELRY GIFTS

DIAMONDS
WATCHES
SILVERWARE

Neiman's
JEWELERS SILVERSMITHS DIAMOND EXPERTS
109 FAYETTEVILLE ST.

Expert Repair Department

For Your Entertainment . . .

STATION WPTF
RALEIGH

Serves North Carolina
Features NBC Programs

ON THE AIR
7:30 a.m. 'til 11:00 p.m.

Brogden Produce Co.

Wholesale
FRUITS AND PRODUCE

Raleigh, N. C.

FOR GRADUATION

As well as any time during the school term
We extend to

EVERY PEACE GIRL

A most cordial invitation to make our store her
shopping headquarters . . .

You will always find a warm welcome and
courteous salespeople . . .

Let Us Serve You!

HUDSON-BELK COMPANY

"Central Carolina's Largest Department Store"

CINDERELLA

Wear *Cinderella* Slippers for

STYLE : COMFORT

Price \$5.00 : \$6.00

VISIT OUR BARGAIN BASEMENT

FLOWERS!

Cut Flowers Corsages
Graduation Bouquets
Decorations

PHONE 4070

J. J. FALLON CO., Inc.
"We Grow The Flowers We Sell"



W. H. KING DRUG CO.

WHOLESALE DRUGS

117 S. Wilmington St. Phone 245
RALEIGH, N. C.



STYLE AND QUALITY
At Modest Prices

COATS, SUITS, FROCKS
For All Occasions
HATS AND ACCESSORIES

126 Fayetteville Street

Raleigh's Smartest Shop

Make

Boon-Iseley Drug Co.

Your Headquarters

We Carry a Complete Line of
all well-known

Perfumes, Cold Creams
and Face Powder

CUT RATE DRUGS
CANDIES SODAS

We Deliver

Phone 96

DILLON SUPPLY CO.

MILL SUPPLIES

Heating Equipment

Modern Machine Shop

RALEIGH

DURHAM

Beauty

may be but skin deep—however
regular visits to the

RALEIGH BEAUTY
SHOP

will assure the utmost in lovely
appearance!

Phone 2006 for Appointment

Howards & Carolina Cleaners, Inc.

116 Harrison Avenue

CLEANING : PRESSING : ALTERING : DYEING

Telephones: 4067 - 1063

*Our Motto: Odorless work of the highest quality and
prompt, courteous service.*

GEO. MARSH COMPANY

(Incorporated)

Wholesale Distributors

FINE FOOD PRODUCTS

RALEIGH, N. C.

College Clothes

and

Millinery

FOR THE

COLLEGE MISS

and the Town Home for

Peace Girls

WAKE THEATRE

Welcome Peace

*Raleigh's Reasonable Price
Theatre*

The Shop of Original Modes
LUCIELLE

112 Fayetteville Street

PEACE

A JUNIOR COLLEGE FOR WOMEN

RALEIGH, NORTH CAROLINA

For the Education and Culture of Young Women

- I. College Courses.
- II. Courses preparatory to College Courses.
- III. Special Courses in Art, Piano, Voice, Expression, Home Economics, and Commercial Subjects.

SITUATION—Location in capital city affords special opportunities, delightful social advantages; athletics supervised indoors and outdoors by physical director. Special attention to individual development. Climate permits outdoor life all winter.

For catalogue or other information, write

THE PRESIDENT, PEACE, A JUNIOR COLLEGE FOR WOMEN, RALEIGH, N. C.

BUILDERS OF DREAMS

VISIONS created by the imagination precede the achievement of any really great accomplishment. The ability to weave the threads of imagination into the finished fabric is equally important.

It has been the privilege of the Edwards & Broughton Company to interpret the ideas of the Staff and create in material form their vision.

From the art work and engravings to the finished book, is part of our service to many staffs.

Such able cooperation is one of the "vision" which precede the building of a successful business, and is a part of the working policy of the Edwards & Broughton Company.

To those Staffs desiring complete cooperation from art work and engravings to the finished book, we offer unexcelled service. Complete service means undivided responsibility as to the result—one organization to correspond and talk with—one trained director to merge the many ingredients into the finished product.

You, too, may be proud of your annual.

Correspondence is invited

Edwards & Broughton Company
RALEIGH, NORTH CAROLINA

