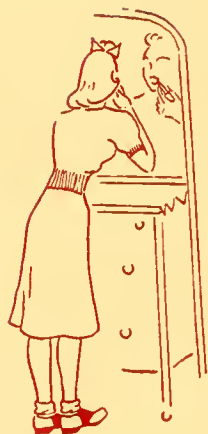


NINETEEN

40

opus



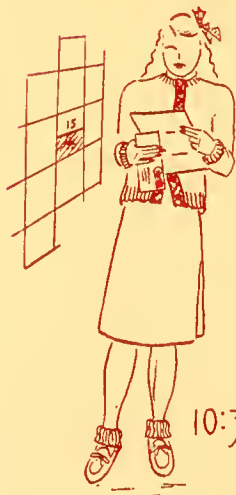
7:55 AM



8:00 AM



7:45 AM



10:30 AM



8:30 AM

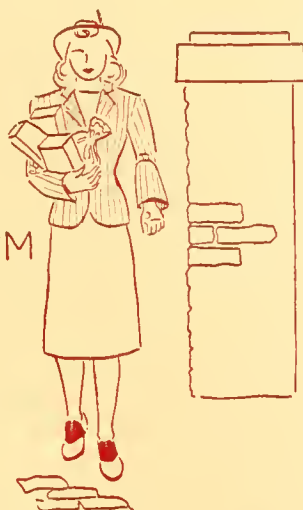


1:45 PM

2:30 PM



5:30 PM



9:00 PM



4:15 PM



9:45 PM



10:05 PM




10:15 PM



10:30 PM

Sarah Bruce McAfee



Digitized by the Internet Archive
in 2010 with funding from
University of North Carolina at Chapel Hill

<http://www.archive.org/details/lotus1940peac>

BURWELL LIBRARY
PEACE

8586



Alma Mater

In the heart of Carolina,
'Neath its skies of blue,
Stands our noble Alma Mater,
Glorious to view
Classic in her broad proportions,
Looks she proudly down
Reared against the arch of heaven,
With the stars for crown

Chorus

Lift the chorus, speed it onward,
Let it never cease;
Hail to thee, our Alma Mater,
Hail, all hail to Peace!

Clambering o'er the wall and columns
Historic ivies twine,
As pure love and tenderest memory
In our hearts enshrine
Days of toil and days of pleasure,
Happiness and joy
Hardship, struggles without measure,
Days without alloy

Honored be our Alma Mater,
Honored for her past,
Honored in the living present,
Let her honors last!
Long as time shall tell the story,
Long as hearts are true,
May her name be crowned with glory
And honors ever new!

MISS NANNIE DINWIDDIE

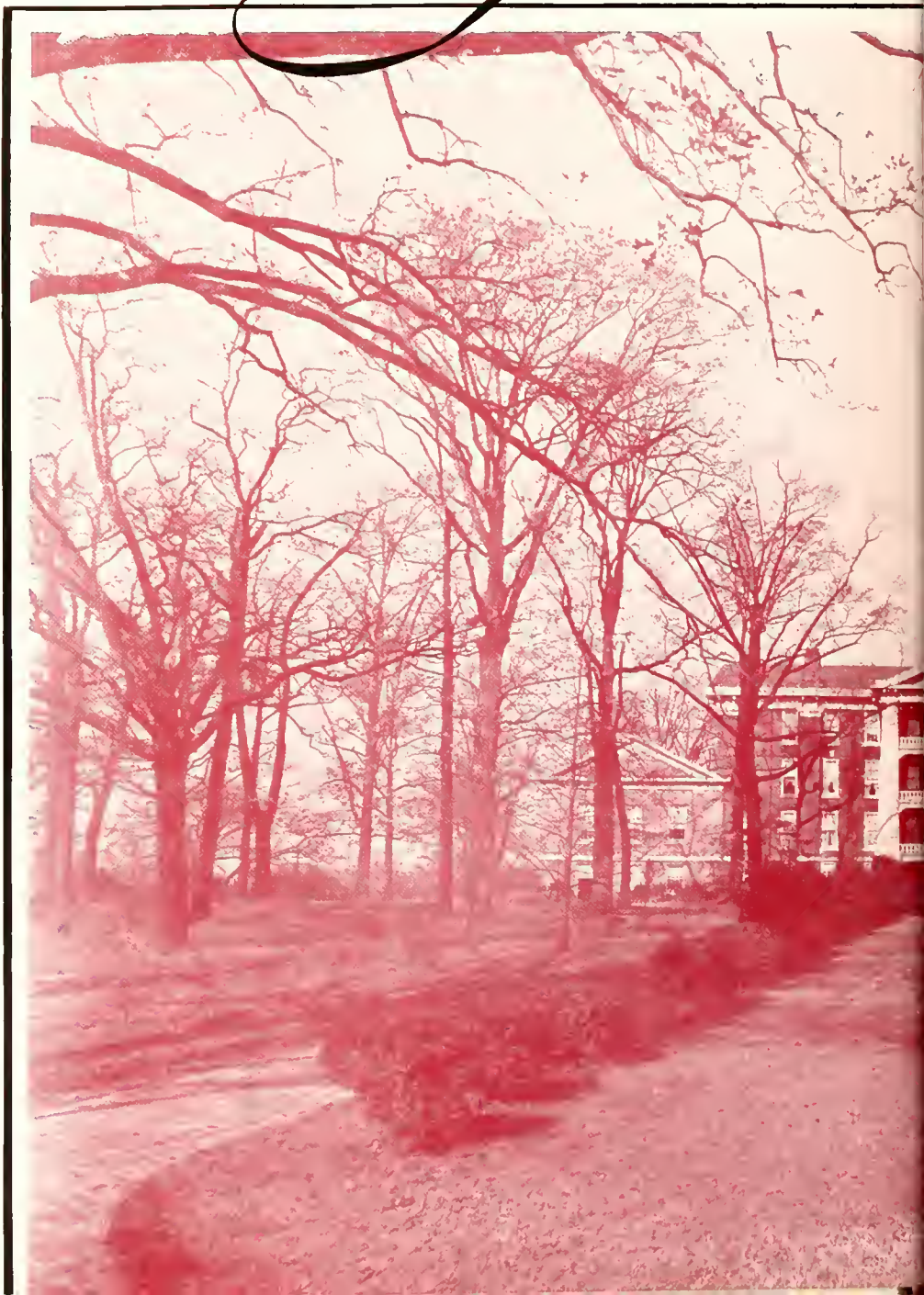
Presenting



LURA C. SELF
Editor

JEAN GRANTHAM
Business Manager

The



Lotus

PUBLISHED BY THE STUDENTS
OF PEACE COLLEGE,
RALEIGH, NORTH CAROLINA





Foreword

We present the school — Peace! We want this book to remind you of the scenes you saw, the friends you knew, the work you did, and the fun you had here. Throughout the book we have endeavored to put down the big things on which you may hang your individual memories





A Part of

We read
in the Library.



In the Lab.
on Tuesday.



At 3:00 we look
through microscopes.

he Routine

1:00 p.m.
finds us eating.



We prepare
food.



We learn to sew.

In Appreciation of Our Art Department-



Seldom does an annual have the opportunity of recognizing in its dedication an alumna, a faithful teacher, and a great artist. The 1913 LOTUS records. "Hail to our leader in Athletics! Although the only Art Senior in our class, she has shown herself fully capable of upholding our artistic view of life. It is evident that Mabel knows a good thing when she sees it, this being the third diploma



she has taken at Peace"
Returning to Peace in 1938 to become the head of the Art Department, she brought with her the fruits of many productive years spent in New York and Europe.



Miss Pugh's life has been one of many attainments. In 1919 she was awarded the coveted Cresson Traveling Scholarship of the Pennsylvania Academy of Fine Arts and the President's prize. Her block prints have won many prizes and have been exhibited at National and International Exhibitions. She is not only an artist but a writer and illustrator as well, having written and illustrated that lovely book for children—"Little Carolina Bluebonnet." She also holds membership in the Fellowship of the Pennsylvania Academy, the Plastic Club, and the Southern States Art League.

To a loving teacher of whom we are very proud we dedicate the LOTUS of 1940



Contents

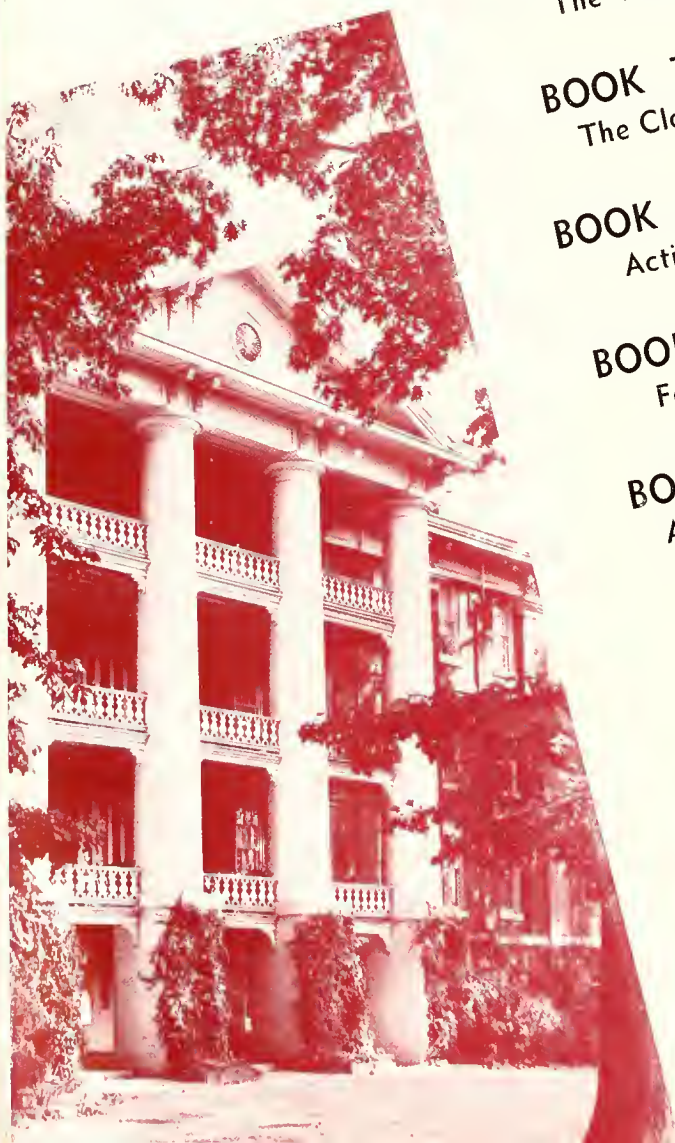
BOOK ONE
The College

BOOK TWO
The Classes

BOOK THREE
Activities

BOOK FOUR
Features

BOOK FIVE
Advertising





THE LOTUS

Dr. Pressly
PRESIDENT

With patient guidance and thoughtful advice, our president leads us through our years at Peace. His true poise, congeniality, and leadership have endeared him to us all. As we leave the portals of Peace, the inspiring influence of our President goes with us.



THE LOTUS

Miss McLelland

DEAN

In Miss McLelland, we find wisdom, fairness, and genuine interest in the problems of her girls. She is truly "Our Dean," admired and loved by all of us for her untiring work in our behalf.



THE LOTUS



Administrative Staff

Marjorie Clark
Secretary

Mrs. Tennie B. Sharpe
Matron
Head of Infirmary

Mary Kirkpatrick
Bursar

Ethel Grammer
Dietitian

Amelia Clark
Registrar



THE LOTUS

Faculty

Heien Board
Voice, Dramatic

Martha Gash Boswell
English

Lucille Cavanaugh
Librarian



Daisy Jones Couch
Commercial Subjects

Letitia Currie
Psychology, History,
Economics

Ido Withers Currie
Commercial Subjects



Mrs. Harry Dixon
Night Study Hall
Supervisor

Lovie Jones
Piano

Perry Lee Jones
Science



THE LOTUS



Winifred M. Kuhn:
Mathematics

Mary Primrose Noble
French, History

Aileen Pendleton
Physical Education



Mabel Pugh
Art, History of Art

Anne W. Raynor
French, Spanish

Jane Leighton Richards
Geography, History



Helen Harriet Salls
English

Nelly Phillips Staudt
Organ, Accompanist

Lucy E. Steele
Bible



Mrs. Sara Gott Turner
Day Study Hall
Supervisor

Bertie Lee Whitesides
Home Economics

Olive Pittman Worth
English, Latin

NOT PICTURED

Martha Hayes Myers, Music Practice Supervisor; Dr. Lila Bonner Miller, Health; Dr. Hubert Haywood, Physician; Herbert Bird, Violin; Mrs. Charles Williams, Voice.

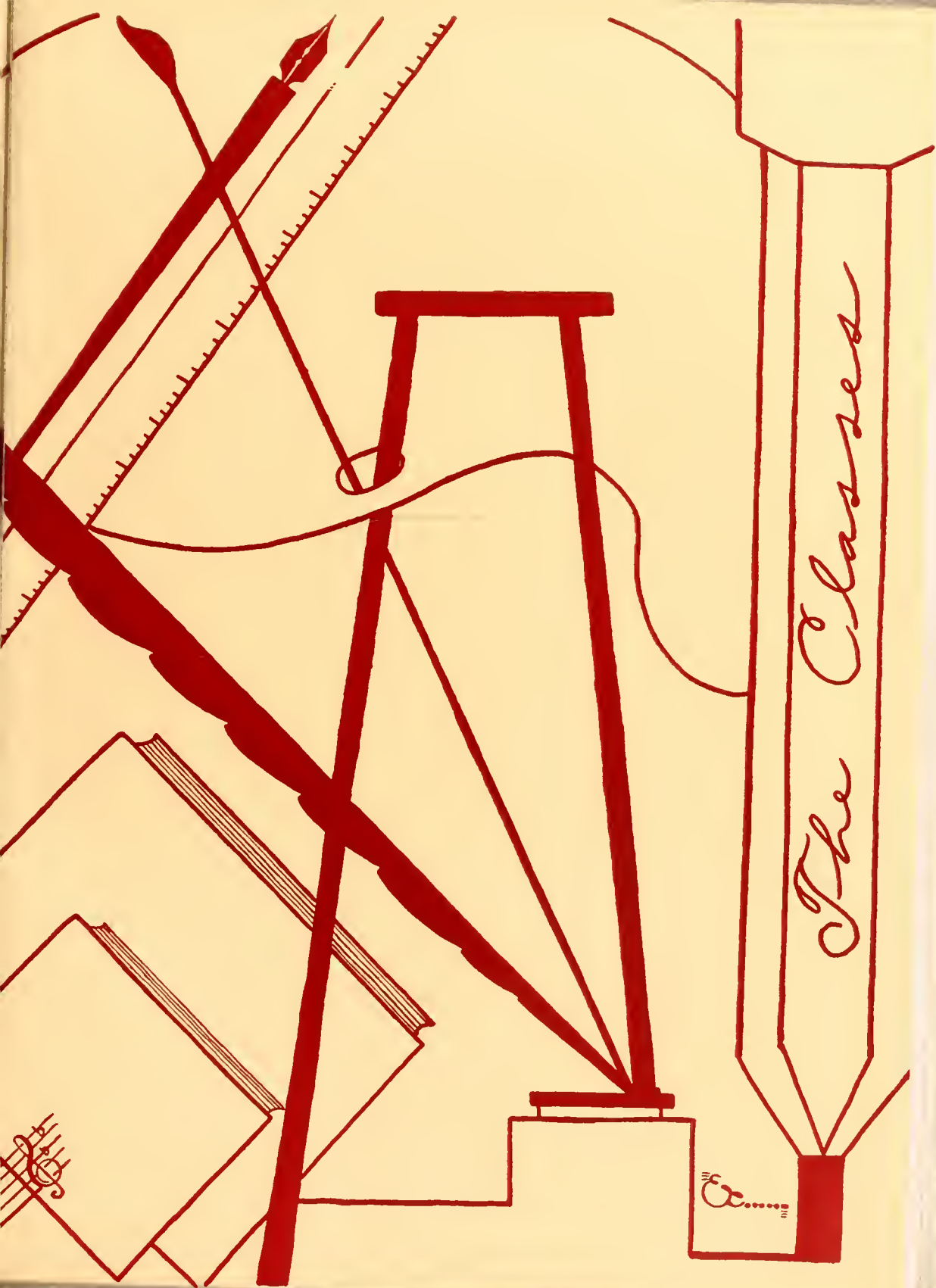
THE LOTUS



Our president and his secretary at work A little outside coaching Mrs. Couch Where to, Miss Steele?

Three musketeers . . . Miss McLellond and Henry out for the sun . . . You Hoo Miss Noble! . . .
 Back from a shopping tour Qui est-ce que vous voyez, Madame Raynor?

Our librarian Miss Board leaves her studio . . . Watch your pronouns, girls Good morning, Miss Lovie Mrs. Turner gets a breath of fresh air Our president again Miss Currie near the cottage . . . Boswell and our English themes



The Classes



THE LOTUS



George Byrne Pressl.
Mascot

The Seniors of Peace College

Officers

DORIS GODDARD, President

ELLEN COCHRAN, Vice President

FRANCES CRAVEN Secretary

RUBY CRAIG, Treasurer

MISS LETITIA CURRIE Adviser



Craven

Goddard

Cochran

Currie

Craig



The Seniors



MILDRED BERNICE ASKEW
Raleigh, North Carolina

Rho Delta Chi

Sigma Phi Kappa '39, Glee Club Librarian '39, Vice President '40, Assistant Business Manager LOTUS '40, Senior Representative for Day Student's Council.

Drawing, Singing, Dancing, Sleeping



EDITH E. BALLANCE
Raleigh, North Carolina

Pi Theta Mu

Swimming, Dogs, May 1, 1937, Ice cream, Onions



ELLEN COCHRAN
Matthews, North Carolina

Pi Theta Mu

Dramatic Club '39, Pi Play '39; Papyrus Club, Phi Theta Kappa; Sigma Pi Alpha, Vice President Senior Class; Vice President Papyrus Club; Vice President Pi Theta Mu Society; Stunt Night; Chairman of Senior Stunt Committee; Art Editor of LOTUS.

Abstract designs, Ghost stories, Gene Krupa, Poetry.



of Peace College

ALICE E. COVINGTON
Raleigh, North Carolina

Pi Theta Mu

Glee Club; Dramatic Club;
Treasurer of Pi Society.

Gardenias, Sophistication, Long
hair, Fluffy dogs, Dances.

LELIA FRANCES CRAVEN
Raleigh, North Carolina

Rho Delta Chi

Secretary of Senior Class.

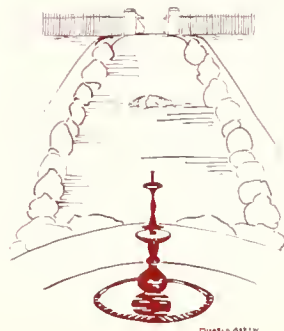
Dancing, Beaches, Saturday
nights, Blue, Airplanes.

RUBY TILSON CRAIG
Raleigh, North Carolina

Sigma Phi Kappa

Treasurer of Senior Class '40,
Stunt Night '40.

Chocolate Pie, Jakes, Nell's
"Plymouth," Red sweaters





The Seniors



CHRISTINA F. CREEKMORE
Raleigh, North Carolina

Rho Delta Chi

Glee Club '39, '40; Sigma Pi Alpha, Secretary, Theta Editor of "Hidaguidia" '40; Papyrus Club, Secretary '40; Associate Editor of LOTUS; "Peace News," Reporter; Chapel Choir

Toy Elephants, Blue, Bon Street perfume, Week-ends, Sailboats



ANNIE LOU DAVIS
Oxford, North Carolina

Sigma Phi Kappa

Stunt Night '40; Hackey Team '39, '40

Nursing, Oxford, Drawl, Noise



ANNIE LOU DENNING
Dunn, North Carolina

Sigma Phi Kappa

Sigma Phi Kappa '39, Secretary '40; Stunt Night '39, '40; Cheer Leader '40; Tennis '39; Softball '39; Hockey Team '40; Field-ball Team '39.

Dancing, Costume jewelry, Blondes, "Moanlove," Midnight feasts.



of Peace College

MARY ALBERTA DICKINSON
Fremont, North Carolina

Rho Delta Chi

Sig Play '39, Stunt Night '39, '40.

Bond Street, Gable and Garfield, Moonlight Serenade, Peanuts

MARY LILY DUNCAN
Raleigh, North Carolina

Rho Delta Chi

Glee Club '39, President '40, Dramatic Club, Treasurer '39, Papyrus Club '39, '40; Sigma Phi Kappa '39

No Biology labs, Chocolate sodas, Any kind of music, One-year-olds, Fletcher's candy

NANCY JOYCE EARLY
Raleigh, North Carolina

Rho Delta Chi

Butterscotch pie, "Gone With the Wind," Pretty clothes, Glee club.





The Seniors



JOYCE WOODY EDWARDS

Raleigh, North Carolina

Rho Delta Chi

Phi Theta Kappa, Sigma Pi Alpha, Sig Play '39

Ice cream sandwiches, White dresses, Wallace Berry, Art

ANN FRANCES EVANS

Henderson, North Carolina

Rho Delta Chi

Sigma Kappa Phi '39, Photography Club '39, Stunt Night '39, '40

Funny people, Jokes, Freckles Horn-rimmed glasses, Glenn Miller

MARY HELEN FARLOW

Raleigh, North Carolina

Sigma Phi Kappa

Stunt Night '39, '40, Sigma Phi Kappa '39, May Court '40

Cats, Brunettes, Long trips, Loafing



of Peace College

BETTY LOU FLETCHER
Raleigh, North Carolina

Pi Theta Mu

Day Student Council, Junior Representative '39, President '40; Papyrus Club, President '40; Phi Theta Kappa '39, '40; Sigma Pi Alpha '39, '40, Associate Editor LOTUS; Stunt Night '40; Pi Theta Mu, Vice President '37; Preparatory Department '35-'38; Glee Club '39.

Apples, Namesakes, Persian kittens, Sand

MARY FRANCES GERLING
Raleigh, North Carolina

Pi Theta Mu

Phi Theta Kappa; Gamma Phi Chapter; Sigma Pi Alpha, Theta Chapter, Treasurer; Senior Stunt; Business Staff of LOTUS.

Cherry dopes, Nelson Eddy, Dancing, Fudge sundaes.

DORIS GODDARD
Upper Nyack, New York

Sigma Phi Kappa

Junior Representative to Council '39; Sigma Phi Kappa, President '40; Senior Class President '40; Vice President of Council '40; Privileged Honor Roll '40; Treasurer of P.S.C.A. '40; Phi Theta Kappa '39, '40; Hockey Team '39, '40; Sigma Pi Alpha '40; Miss Peace '40; May Queen '40.

Clothes, Third floor East, "Blue Orchids," T





The Seniors



LOUISE WELLS GOODMAN
Mount Ulla, North Carolina

Pi Theta Mu

Archery '39, Stunt Night '39, '40, May Day '40

Fraternity men, Excitement, Sunday nights, Long hair no curls



JEAN W. GRANTHAM
Fairmont, North Carolina

Rho Delta Chi

Sigma Phi Kappa '39, Business Staff of LOTUS '39, Business Manager of LOTUS '40, May Court '40

"They Satisfy," "My Prayer," Summer at home, +72-999, '40



MARY INGLES GUERRANT
Callaway, Virginia

Sigma Phi Kappa

Treasurer, Student Council '40; P.S.C.A. Cabinet '40; Hackey Team '39, '40; Associate Editor of LOTUS '40; Stunt Night '39, '40; Senior Superlative '40; Privileged Honor Roll '40

Virginia, Mountains, Brothers, Fingernails, 323 Main



of Peace College

BETSY ANN HAYES
Raleigh, North Carolina

Rho Delta Chi

Business Staff of Annual; Phi
Theta Kappa; Tennis Team

Music, Shows, Sports

ANNE SPICER HOLMES
Goldsboro, North Carolina

Sigma Phi Kappa

Senior Stunt Night, Junior
Hockey Team.

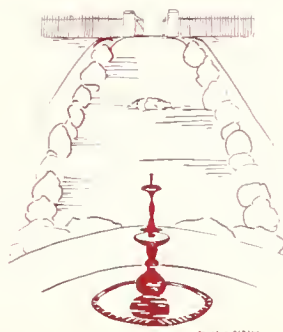
Drums and bass fiddles, "Coro-
lina," Chocolate, Glenn Miller.

FRANCES J. HUDSON
Raleigh, North Carolina

Sigma Phi Kappa

Photographer's Club '39, '40;
Glee Club '39, '40

Chocolate milk, Hotdogs, Ten-
nis, Basketball.





The Seniors



HAZEL HURT

Fayetteville, North Carolina

Sigma Phi Kappa

Papyrus Club '39, '40, Business Manager and Typing Editor of "Voices of Peace" for first quarter, May Court '40

Men, Horses, Fraternities, and Week-ends.

BETTIE LEE JOHNSON

Smithfield, North Carolina

Sigma Phi Kappa

Eckers, State, Food, Short-hand

LILLIAN JOHNSON

Raleigh, North Carolina

Pi Theta Mu

Committee for Society Rush Party '39, Society Play Committee '39; Art Department Auction Sale '39, '40, Business Staff of Annual '40

Life, Books, Salads, Music, Everybody.



of Peace College

MARY WELLONS KNOWLES
Wallace, North Carolina

Sigma Phi Kappa

Student Council, Representative of Senior Class; Senior Superlative, Stunt Night '40, Dancing Group '40

Chocolate ice cream, Dancing, Davidson, "Specials," Blue

MARTHA VARINA LASLEY
Greensboro, North Carolina

Pi Theta Mu

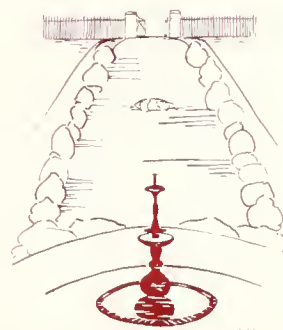
Stunt Night '39, Pi Play '39.

Hot dogs and chocolate milk, Blondes, Henderson, N. C., Fords.

EDITH LEAVISTER
Raleigh, North Carolina

Sigma Phi Kappa

"New hair do's," Capobility, Dances.





The Seniors



MARTHA LONGEST
Rocky Mount, North Carolina

Sigma Phi Kappa

Sig Play '38, Cheer Leader '38,
Athletic Board '39, Cutest '39

Dancing, Tennis, Sigma Pi's,
Week-ends



SARAH BRUCE McAfee
Rocky Mount, North Carolina

Rho Delta Chi

Sigma Phi Kappa '39, Glee
Club '39; Phi Theta Kappa,
Papyrus Club, Stunt Night,
Secretary of Rho Delta Chi '40,
May Court '40; Art Department
of Annual '40

Radical ideas, Abstract people,
Green dice, Boris Karloff,
Beautiful women



NANCY VIRGINIA McCRARY
Roleigh, North Carolina

Pi Theta Mu

Secretary of Day Student Coun-
cil '40

Dancing, Red roses, Week-
ends, Black



of Peace College

MARY NELL McDONALD
Raleigh, North Carolina

Sigma Phi Kappa

Treasurer of Sigma Phi Kappa '40; Junior Stunt '39; Stage Manager of Sigma Phi Kappa Play '39; Senior Stunt '40, Captain of Junior Softball Team '39; Captain of Senior Hockey Team '40; Managram Club '39, Tennis '39.

Sports, Hot dogs, Driving, Laughing

LUCY THURSTON McNEELY
Mooresville, North Carolina

Rho Delta Chi

Sigma Phi Kappa '39, Senior Stunt '39, '40

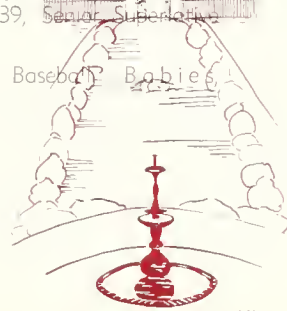
Snazzy people, Baseball, Mary brothers, Food, Horses

MARY WHITE McNEELY
Cooleemee, North Carolina

Pi Theta Mu

P.S.C.A. Cabinet '39, '40; Pi Theta Mu, President '40, Student Body Representative on Council '40, Hockey Team '39 '40, Stunt Night '39, '40; Secretary and Treasurer of Camera Club '39, Privileged Honor Roll; Annual Staff '40, Sigma Phi Kappa '39, Senior Superlative '40

Buicks, Baseball, Babies, "Bunk."





The Seniors



CAROLINE D. NEWBOLD
Wilmington, North Carolina

Rho Delta Chi

P. S. C. A. Cabinet '39, President '40, Student Council '40, Papyrus Club '39, '40, Hockey Team '39, '40, Glee Club '39, Stunt Night '39, '40, Privileged Honor Roll '40, Sigma Phi Kappa '39

Jokes, Unmarried preachers, White frilly blouses, Twins, Quiet hour

LOUISE W. NIERNSEE
Southport, North Carolina

Rho Delta Chi

Sigma Phi Kappa '39, Secretary P. S. C. A. '40, Associate Editor LOTUS '40, Hockey Team '40, Privileged Honor Roll '40, Vice President Rho Delta Chi '40, Stunt Night '40

Sleep, 319 Main, Food, Sports, Storms

C. VIRGINIA PARLEIR
Montgomery, Alabama

Pi Theta Mu

Chevrolet coupe, Coco-Colas, Horses, Week-ends at Carolina



of Peace College

SARAH HENDRY PORTER

Raleigh, North Carolina

Snapshot Editor of LOTUS '40

Tennis, Music, Mathematics

MARY LEOLA PRINCE

Lawrenceville, Virginia

Rho Delta Chi

Sigma Phi Kappa '39, Photographers Club '39, Travelers Club '39, Stunt Night '39 '40, Secretary of Student Council '40, President of Rho Delta Chi '40, Superlative '40, Privileged Honor Roll '40, Hockey Team '40

Virginia, Holidays, Blue, Fire-towers, 319 Main

LENA ROWE

Harrellsville, North Carolina

Pi Theta Mu

Glee Club '39, '40; Dramatic Club '39, Camera Club '39, P.S.C.A. Cabinet '40, Senior Stunt '40, Senior Hockey Team '40, May Court '40; Privileged Honor Roll '40; Sigma Phi Kappa '39

Red roses, Sweet peas, Cornflowers, Motor boats, Brothers





The Seniors



MYRTLE WOOD SAUNDERS

Roanoke, Virginia

Sigma Phi Kappa

Tennis, Bowling, Reading,
Condy

LURA COWLES SELF

Raleigh, North Carolina

Sigma Phi Kappa

Editor-in-Chief of LOTUS '40;
Associate Editor '39, Vice Presi-
dent of Society '40; President of
Sigma Pi Alpha '39, '40, Presi-
dent of Phi Theta Kappa '40;
Senior Superlative '40; May
Court '40, Papyrus Club '39, '40,
Representative to Student Legis-
lative Assembly '40, Vice Presi-
dent of State Intercollegiate
Press Association '40; Daughters
and Granddaughter's Club '39,
'40, Scholarship Club '39, '40

"Different," To talk, Doing
something, Donces, Perfume

GERALDINE SEWELL

Raleigh, North Carolina

Rho Delta Chi

Sigma Pi Alpha '40; Pi Theta
Kappa '39, '40, Dramatic Club
'39, Stunt Night '40; Scholar-
ship Club '39, '40, Papyrus
Club '39, '40

Studying, Dramatics, To sing



of Peace College

MARY FRANCES BURTON
Raleigh, North Carolina

Rho Delta Chi

Tennis Club
Bowling, Tennis, Sleeping, Ice cream.

FRANCES B. SOUTHERLAND
Wallace, North Carolina

Rho Delta Chi

Stunt Night '39, Christmas Pageant '39; Tennis '40, Sigma Phi Kappa '39, Glee Club '39, '40

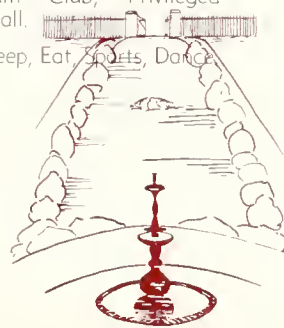
Classical music, Duke, Football, Snapshots.

ANNA PARKER SUTTON
Fayetteville, North Carolina

Pi Theta Mu

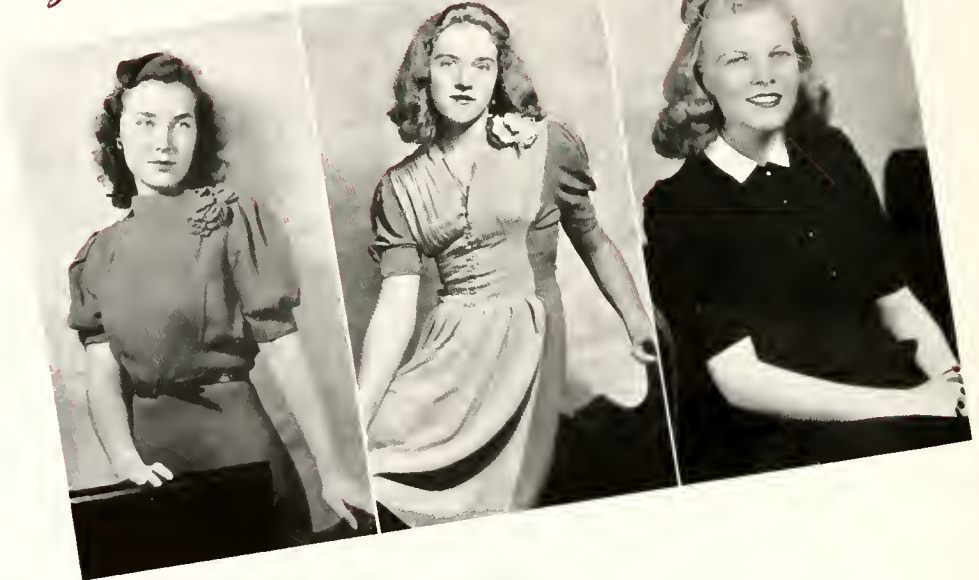
Marshal Sigma Phi Kappa '39, Hackey Team '39, '40, Captain '39, President of Student Council '40, P. S. C. A. Cabinet '40, May Court '40, Baseball Team; Business Staff of LOTUS; Monogram Club; Privileged Honor Roll.

Read, Sleep, Eat, Sports, Dance.





The Seniors



LOUISE F STIREWALT
High Point, North Carolina

Pi Theta Mu

Papyrus Club '39, '40, Editor of "Voices of Peace" '40; Secretary of Pi Theta Mu Society '40, Pi Theta Mu Society Play '39, Hockey Team '39, '40

323 Main, Rain, Guerrants, Colgate's Toothpaste, Ping pong

BETTY RUTH THOMPSON
Raleigh, North Carolina

Sigma Phi Kappa

St Petersburg Junior College '39.

Scottie dogs, Swimming, New hair do's, "Gone With the Wind"

MARY LOUISE THOMPSON
Fairmont, North Carolina

Sigma Phi Kappa

Maid of Honor in the May Court, '40

Glenn Miller, "Hedy," Sophistication, Dreams, Long red fingernails



of Peace College

DOROTHY VEREEN
Raleigh, North Carolina

Pi Theta Mu

Papyrus Club '39, '40
Flying, Reading, Boats, Bike
riding

CORA LEE WALLER
Raleigh, North Carolina

Pi Theta Mu

Skating, Candy, Wavy hair,
Babies, February 14, 1940

SUSIE BLANCH WEEKS
Clayton, North Carolina

Pi Theta Mu

Stunt Night '40
Walking, Sport clothes, Ice
cream, Movies, "Peace"





The Seniors



LAURA WELLONS

Raleigh, North Carolina

Pi Theta Mu

Work, Poise, Capability, State

CATHERINE WELSH

Owensboro, Kentucky

Pi Theta Mu

P.S.C.A. '39, Vice President '41,
Hackey Team '39, Stunt Night
'39, Business Staff LOTUS '39,
Sigma Phi Kappa '39, Glee
Club '39, Privileged Honor Roll

Fried chicken, Bond Street
perfume, Flowers, Wilmington

HANNAH CARTER WESKETT

New Bern, North Carolina

Sigma Phi Kappa

Stunt Night, '38, Sigma Pi
Alpha

Nelson Eddy, Chocolate, Base-
ball, Blue, Reading



Of Peace College

LUCILLE WHITLEY
Goldsboro, North Carolina

Sigma Phi Kappa

Camera Club '40, May Court
'40; Stunt Night '39

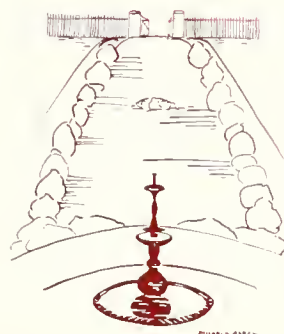
Music, Songs, Goldsboro, State

MARY COOKE WILLIFORD
Aulander, North Carolina

Pi Theta Mu

Glee Club '39, '40; Stunt Night
'39

Sleep, Going to town, "Star
Dust," Jaloppies.



1940 Signatures

Laura E. Helton
Sarah Porter

Betsy Hayes

Neil McDonald

Frances Brown
Henry McCreary

Myrtle Saunders
Mary Austin

Anna Conner
Mary Francis
Catherine Vaden
Anne Holmes
Ruth Craig

Virginia Barber

Laura Lantry

Mary Helen Shuler

Esther Tattis

Annie Lou Davis

Edith Ballance

Core Lee Waller

Ellen Cochran

Ed. Conner
Polly Guernsey
Dora Goodard
Louise Nierrell
Laura Stewart
Mary Frances Gering

Margaret Eskew
"Coke" Wilford

Lena Rose

Lusie Weeks

Lances Hudson

Lura Self

Jesse Edwards

Christina Greenmore

Phyllis McTulley
Laurie McTulley
Ann Evans

Betty Ruth Thompson

Hazel Hart
Hannah Wheelwright

Tennie Goodman

"Lan" Dunning

Jean Grant

"Beatie" McAfie

Lillian Johnson

Mary Louise Thompson

Lucille McTulley

The Juniors of Peace College

OFFICERS

ANN McCORKLE, President

CAROLINE CARLTON, Secretary

ALICE SAUNDERS, Vice President

MARY ELIZABETH BRAY, Treasurer

MRS. HARRY DIXON, Adviser



Bray

Dixon

Saunders

McCorkle

Carlton

THE LOTUS



Florence W Adams La Grange, N C Pi Theta Mu	Elizabeth Adams Skillman, N J. Sigma Phi Kappa	Jessie M Auten Huntersville, N C. Sigma Phi Kappa	Olive Baldwin Whiteville, N C Rho Delta Chi	Mary F Barnes Goldsboro, N C Pi Theta Mu
Jeanne Batchelor Aberdeen, N C Rho Delta Chi	Helen R Batchelor Nashville, N C Sigma Phi Kappa	Gladys Beatty Tomahawk, N C Pi Theta Mu	Ann Becton Kinston, N C Sigma Phi Kappa	Lena Blond Edward, N C. Pi Theta Mu
Julia Bland Pittsboro, N C Rho Delta Chi	Martha V Bowen Kerr, N C Rho Delta Chi	Edna Rae Bradshaw Burgow, N C Sigma Phi Kappa	Mary E Bray Plymouth, N C Sigma Phi Kappa	Anna Mae Bruin Henderson, N. C. Pi Theta Mu
Ruth Broadwell Holly Springs, N C Pi Theta Mu	Helen B Broughton Raleigh, N C Sigma Phi Kappa	Frances Brown Raleigh, N C Rho Delta Chi	Myrtle Lee Brown Raleigh, N C Sigma Phi Kappa	Ruth Brown Raleigh, N C Pi Theta Mu

THE LOTUS

Mary H. Bryon
Lillington, N C
Pi Theta Mu

Emmo Lewis Burch
Cary, N C
Rho Delta Chi

Doris E Burgess
Broadway, N C
Rho Delta Chi

Lea Brown
Fayetteville, N. C
Rho Delta Chi

Marie Burgwin
Wilmington, N C
Pi Theta Mu

Morgoret Callahan
Raleigh, N C
Pi Theta Mu

Caroline R Carlton
Raleigh, N C
Rho Delto Chi

Marion Caudle
Raleigh, N C
Pi Theta Mu

Jane Christian
Wilmington, N C
Pi Theta Mu

Vivian Cobb
Sharpsburg, N C
Sigma Phi Koppa

Marie Cox
Raleigh, N C.
Sigmo Phi Koppa

Mary Frances Cox
Kinston, N C
Sigma Phi Koppa

Ruth Croig
Raleigh, N C
Sigma Phi Kappo

Aileen Crawford
McCullers, N C
Pi Theta Mu

Sidney Ann Wilson
Raleigh, N C
Pi Theta Mu

Ellen Currie
Raeford, N C
Sigma Phi Kappa

Adelaide Dorden
Ayden, N C
Sigma Phi Kappo

Marjorie Davis
Wilmington, N C
Rho Delta Chi

Mary Dugger
Broadnax, Virginia
Sigma Phi Kappa

Beth Highsmith
Wilmington, N C
Rho Delta Chi



THE LOTUS



Julia Dupuy
Greensboro, N. C.
Rho Delta Chi

Elizabeth N. Edens
Washington, D. C.
Pi Theta Mu

Mary E. Edmondson
Greensboro, N. C.
Pi Theta Mu

Pearl Helen Evans
Raleigh, N. C.
Sigma Phi Kappa

Kathryn Elliott
Erwin, N. C.
Sigma Phi Kappa

Dorothy Farrell
Pittsboro, N. C.
Rho Delta Chi

Elizabeth Fields
Raleigh, N. C.
Rho Delta Chi

Elizabeth J. Frazier
Wake Forest, N. C.
Rho Delta Chi

Lemoine Fyne
Wake Forest, N. C.
Pi Theta Mu

Kathleen Goldston
Angier, N. C.
Pi Theta Mu

Moy Griffith
Washington, D. C.
Pi Theta Mu

Willie Lee Hicks
Raleigh, N. C.
Pi Theta Mu

Amelia Hinkle
Lexington, N. C.
Pi Theta Mu

Mildred Hobgood
Wake Forest, N. C.
Rho Delta Chi

Janie Hocutt
Whitakers, N. C.
Sigma Phi Kappa

Nell Holler
Union Mills, N. C.
Sigma Phi Kappa

Margaret Holloway
Raleigh, N. C.
Pi Theta Mu

Myra Huff
Henderson, N. C.
Rho Delta Chi

Blanche Hudson
Raleigh, N. C.
Rho Delta Chi

Elizabeth Jones
Wilmington, N. C.
Rho Delta Chi

THE LOTUS

Myra Jones
Raleigh, N. C.
Sigma Phi Kappa

Helen Jordan
Bronxville, N. Y.
Pi Theta Mu

Joyce Koonce
Richlands, N. C.
Rho Delta Chi

Marjorie Koonce
Raleigh, N. C.
Rho Delta Chi

Faye Kornegay
Mt. Olive, N. C.
Pi Theta Mu

Anne Langtry
Clayton, Missouri
Sigma Phi Kappa

Doris Lawrence
Raleigh, N. C.
Pi Theta Mu

Jean Lewis
Rocky Mount, N. C.
Sigma Phi Kappa

Mildred Lewis
Raleigh, N. C.
Rho Delta Chi

Evelyn Little
Wake Forest, N. C.
Rho Delta Chi

Ethel Lynn
Raleigh, N. C.
Sigma Phi Kappa

Emily Dale Marks
Whitakers, N. C.
Sigma Phi Kappa

Pauline Mason
Harrellsville, N. C.
Rho Delta Chi

Charlotte Matthews
Raleigh, N. C.
Pi Theta Mu

Daisy King Mayo
Greenville, N. C.
Rho Delta Chi

Ann M. McCorkle
Fountain City, Tenn.
Rho Delta Chi

Mary L. McCurston
Mount Olive, N. C.
Sigma Phi Kappa

Betty McEwen
Matthews, N. C.
Rho Delta Chi

Isabel McKeithen
Cameron, N. C.
Pi Theta Mu

Margaret McKenzie
Raleigh, N. C.
Rho Delta Chi



THE LOTUS



Mary McLaughlin Vass, N. C. Sigma Phi Kappa	Louise McLeod Lumberton, N. C. Pi Theta Mu	Margaret McLendon Kenansville, N. C. Rho Delta Chi	Ann Mebane Greensboro, N. C. Rho Delta Chi	Zeileama Medlin Bunn, N. C. Pi Theta Mu
Margaret G. Mercer Vidalia, Georgia Sigma Phi Kappa	Frances Mersereau Schenectady, N. Y. Rho Delta Chi	Isabelle Meyland Wilmington, N. C. Sigma Phi Kappa	Murrell Mills Raleigh, N. C. Sigma Phi Kappa	Frances Montjoy Chapel Hill, N. C. Pi Theta Mu
Mary Alice Moore Raleigh, N. C. Rho Delta Chi	Betty Rose Myatt Clayton, N. C. Pi Theta Mu	Mary Lynne Myatt Raleigh, N. C. Sigma Phi Kappa	Lucy Nobles Greenville, N. C. Rho Delta Chi	Marian Page Wilmington, N. C. Pi Theta Mu
Betty Parrish Raleigh, N. C. Rho Delta Chi	Margaret Faris Henderson, N. C. Sigma Phi Kappa	Marjorie Patterson Winston-S., N. C. Sigma Phi Kappa	Margaret Penn Carthage, N. C. Sigma Phi Kappa	Jean Perkins Stokes, N. C. Sigma Phi Kappa

THE LOTUS

Ruth Phillips Raleigh, N. C. Pi Theta Mu	Gladys Pittman Oak City, N. C. Rho Delta Chi	Sarah Prevatte Whiteville, N. C. Sigma Phi Kappa	Dorothy Prince Fair Bluff, N. C. Rho Delta Chi	Luzile Proctor Wilson Mills, N. C. Pi Theta Mu
Betty May Potts Charlotte, N. C. Pi Theta Mu	Mary F. Powell Raleigh, N. C. Sigma Phi Kappa	Betty Jo Purcell Pineville, N. C. Sigma Phi Kappa	Shelton Quinn Wallace, N. C. Pi Theta Mu	Maxine Redman Winston-S., N. C. Rho Delta Chi
Sarah Richardson Wendell, N. C. Rho Delta Chi	Dorothy Royster Statesville, N. C. Rho Delta Chi	Alice N. Saunders Reidsville, N. C. Rho Delta Chi	Phyllis Schwartz Raleigh, N. C. Rho Delta Chi	Elizabeth Schuilken Whiteville, N. C. Rho Delta Chi
Rebecca Shelden Raleigh, N. C. Pi Theta Mu	Rebecca Switzer Maxton, N. C. Rho Delta Chi	Betsy Skinner Littleton, N. C. Pi Theta Mu	Elizabeth M. Smith Raleigh, N. C. Pi Theta Mu	Gracie Sowers Lexington, N. C. Rho Delta Chi



THE LOTUS



Helen L. Sowers
Lexington, N. C.
Rho Delta Chi

Betty Lee Spruill
Kinston, N. C.
Pi Theta Mu

Catherine Stuart
Washington, D. C.
Sigma Phi Kappa

Peggy Sullivan
Raleigh, N. C.
Sigma Phi Kappa

Alene Tonisseri
Jacksonville, Fla.
Pi Theta Mu

Elise Trulove
Wilmington, N. C.
Rho Delta Chi

Virginia Tucker
Townsville, N. C.
Rho Delta Chi

Sophie Vass
Chattanooga, Tenn.
Pi Theta Mu

Ann Walton
Raleigh, N. C.
Rho Delta Chi

M. Foster Warren
Prospect Hill, N. C.
Sigma Phi Kappa

Martha F. Ward
Raleigh, N. C.
Pi Theta Mu

Betsy Wells
Raleigh, N. C.
Pi Theta Mu

Mary B. Wimbish
Greensboro, N. C.
Sigma Phi Kappa

Lillian M. Winston
Raleigh, N. C.
Sigma Phi Kappa

Becky Witherspoon
Raleigh, N. C.
Rho Delta Chi

Ruth Woltz
Raleigh, N. C.

Marie Yelverton
Eureka, N. C.
Rho Delta Chi

Molly Yelverton
Fremont, N. C.
Sigma Phi Kappa

THE LOTUS



Warren Luck
Osterwin Noble Dickinson

The Preps

OFFICERS

BETTY OSTERWIN, President
MARJORIE LUCK, Vice President
DIANE DICKINSON, Secretary
WILHELMENIA WARREN, Treasurer
MISS MARY NOBLE, Adviser

First row: Carey Barbour, Clayton, Sigma Phi Kappa, Betsy Barrow, Raleigh, Rho Delta Chi, Florence Crane, Pyongyang, Korea, Pi Theta Mu; Anne Cunningham, Thomasville, Rho Delta Chi

Second row: Anne Chunn, Fort Bragg, Rho Delta Chi, Jeanne Dickinson, Washington, D. C., Sigma Phi Kappa; Diane Dickinson, Washington, D. C., Pi Theta Mu; Marjorie Luck, Raleigh, Pi Theta Mu.

Third row: Mary Brooke Lucas, Fort Bragg, Sigma Phi Kappa; Mary Dawson McCotter, Grifton, Sigma Phi Kappa, Betty Osterwin, Maracaibo, Venezuela, Sigma Phi Kappa, Kathryn Page Aberdeen, Rho Delta Chi

Fourth row: Harriet Pressly, Raleigh, Rho Delta Chi, Frances Rainey, Raleigh, Sigma Phi Kappa; Gladys Satterwhite, Henderson, Sigma Phi Kappa; Wilhelmenia Warren, Bamberg, S. C., Sigma Phi Kappa

Fifth row: Mary Gardan Walters, Bladenboro, Rho Delta Chi; Kathryn Walser, Concord, Sigma Phi Kappa; Jean Cunningham, Thomasville, Rho Delta Chi



THE LOTUS



Bailey
Boone
Murphy

Scott
Sutton
Willis

Teague

Special Students

GERALDINE BAILEY
Raleigh, N C
Sigma Phi Kappa

VIRGINIA MURPHY
Lowell, N C
Pi Theta Mu

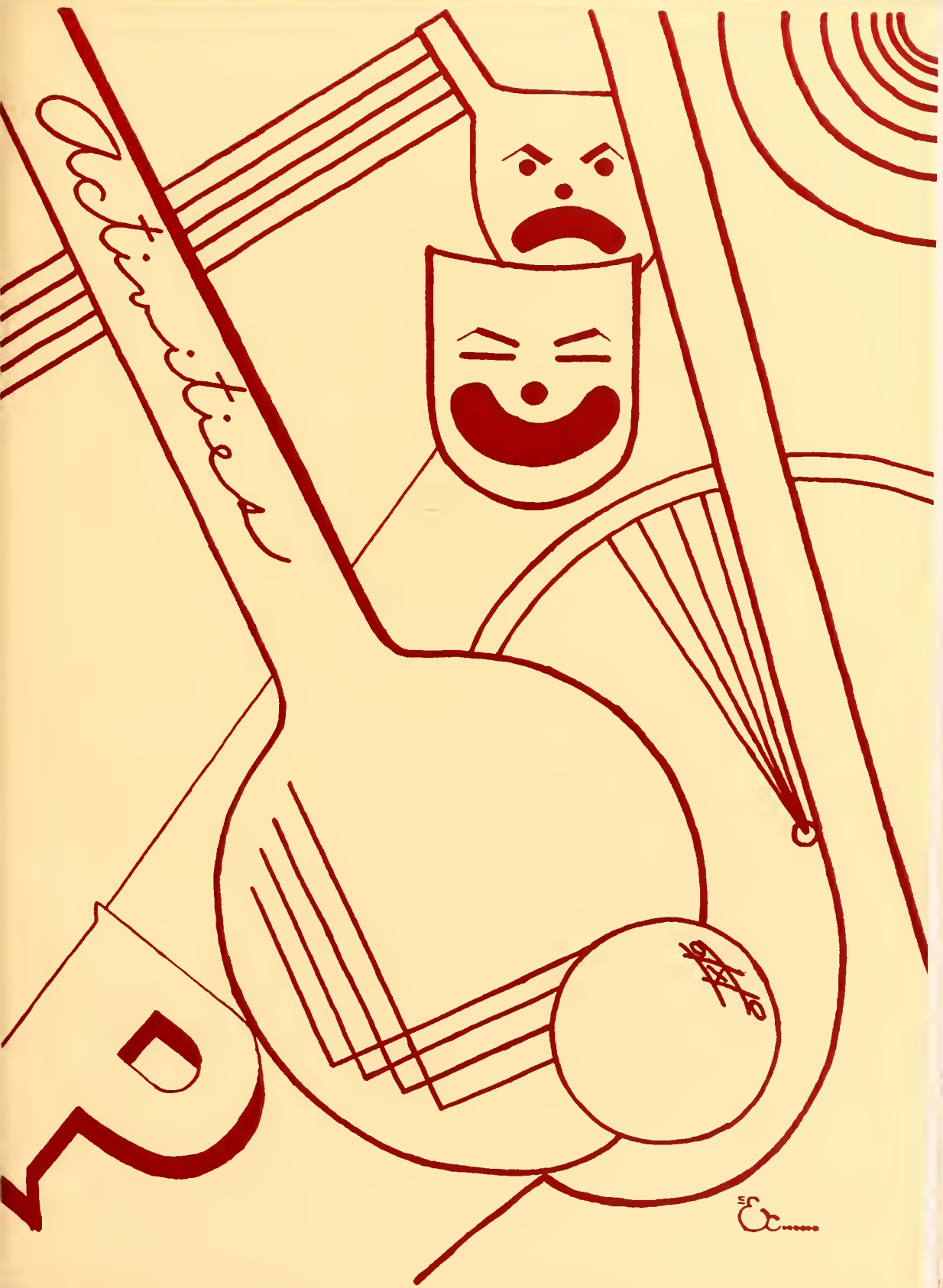
MARY BOONE
Raleigh, N C
Rho Delta Chi

SUSAN SCOTT
Raleigh, N C
Sigma Phi Kappa

SARAH SUTTON
Kinston, N C
Pi Theta Mu

KATHERINE WILLIS
Raleigh, N C
Rho Delta Chi

NANCY TEAGUE
Winston-Salem, N C
Sigma Phi Kappa







Back row. Welsh, Newbold, Niernsee, Sutton, Patterson, Gaddard, M. W. McNeely,
Guerrant, Jones.
Front row Rowe, Redman, Sneedden

Peace Christian Association



CAROLINE NEWBOLD
President

The Peace Christian Association is an organization to which every girl belongs all through the year. P. S. C. A., through its active cabinet of four officers and eight highway chairmen, arranges for religious services and entertainments which are designed to make religion a definite part of each girl's life. Thus its activities are varied, ranging from such social affairs as the party for the new girls, and the recreational activities in the cabin to the welfare work, discussion groups, and religious services.



S Sutton, Newbold, McNeely, Goddard, A Sutton, Prince, Guerrant, Fletcher, Knowles

Student Council



ANNA SUTTON
President of Student Body

The Student Council is a representative group of college girls who meet weekly to consider and act upon the problems of the school. All through the year these girls are the center of college life. They are active participants in Orientation Week. During this time they distribute the Student Handbook, which is edited by them, to the new girls and help them to a fuller understanding of their duties and privileges as members of the student body. In the early spring the council sponsors the Student Body Reception, a tradition of Peace, anticipated with pleasure by every Peace girl!



Pressly, Broughton, McCrorr, Fletcher, Askew, Phillip:

Day Student Council

The Day Student Council is a sister organization to the Student Council. It meets twice monthly to discuss problems relating to the day students themselves and to day student and boarding student relationships. They too participate in orientation week and assist new day students to find their places in the college life. In the spring of the year they sponsor an entertainment for the boarding students.



BETTY LOU FLETCHER
President of Day Students



Back row. Page, Myers, Vass, Potts, Practor.
Front row, seated Skinner, Marks, Self.

Granddaughters' Club

OFFICERS

BLANCHE HUDSON, President

HARRIET WEST, Secretary

The Daughters' and Granddaughters' Club is composed of those girls whose mothers or grandmothers are alumnae of Peace. These girls serve to carry on the traditions of Peace. Members are Edith and Sallie Bailey, daughters of Edith Pau, who are the fourth generation of their family to attend Peace; Mary Hughes Bryan, granddaughter of Katherine McKay; Eleanor Gattis, daughter of Philip Gattis; Blanche Hudson, daughter of Mary White; Emily Dale Marks, daughter of Mary Emily Ruffin; Margaret Helen McLenden, granddaughter of Sarah Polk; Martha Myers, daughter of Henrietta Anderson Booth; Marion Page, daughter of Lessie Abrams; Betty Mae Potts, granddaughter of May Burkhead, Lucille Proctor, daughter of Lottie Vinsan; Lura Self, daughter of Sara Cowles; Betsy Skinner, daughter of Sallie Watkins; Sophie Vass, daughter of Frances Sharp; Harriette West, daughter of Hattie Randolph; Sidney Ann Wilson, daughter of Elsie Stackard, Catherine Stuart, granddaughter of Katie Lipscomb.

Dees Camera Club

OFFICERS

FRANCES RAINEY, President

JEAN PERKINS, Vice President

JEAN CUNNINGHAM, Secretary-Treasurer

The Dees Camera Club, organized in 1938 by Georgie Dees of Greensboro, offers a new field of activity for students interested in photography. Its purpose is to further the knowledge and practice of the girl interested in amateur photography.

This year the constitution and by-laws have been drawn up and signed, a definite and permanent meeting place has been established, and, with the aid of new materials, progress has been made in the printing and developing processes. The club is now subscribing to a current photography magazine, and many reliable texts on this subject have been donated and are at the disposal of the members, who do much of the snapshot work for the school yearbook.

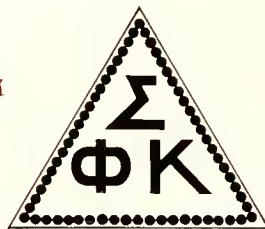


Back row Darden, McKeithen, Hudson, Nobles, Perkins, Burch, Mayo, Davis, A Cunningham, Luck.

Front row Denning, Whitley, Frozier, Pressly, Boone, Adams, Cunningham, Rainey.

Literary Societies

"Sigs, loyal Sigs,
We sing to you always -"



"Pi Theta Mu,
We pledge you our allegiance- -"

"Stand up and cheer
For Rho Delta Chi- -"

Peace girls join in the song of their societies almost as often as they sing the Alma Mater. Societies play an important part in the college life, as every girl belongs to one of the three. On the closed week-ends, from three different rooms come the

(Continued on page sixty-three)

Sigma Phi Kappa

OFFICERS

DORIS GODDARD, President

ANNIE LOU DENNING, Secretary

LUPA SELF, Vice President

NELL McDONALD, Treasurer

MISS MARTHA MYERS, Sponsor



McDonald

Goddard

Myers

Self

Denning



Stirewalt

Covington

McNeely

Noble

Cochran

Pi Theta Mu

OFFICERS

MARY WHITE McNEELY, President

LOUISE STIREWALT, Secretary

ELLEN COCHRAN, Vice President

ALICE COVINGTON, Treasurer

MISS MARY NOBLE, Sponsor

(Continued from page sixty-two)

strains of society songs as the girls begin their monthly meetings. Each society has its own officers, sponsors, ritual, and program. There is a friendly rivalry as the old girls rush the new girls and finally pledge them to a certain society. Then follow the



initiations and the banquets. The greatest society activity, however, goes on in the spring when each society presents a one-act play. All sit breathlessly waiting to see which society will win the coveted silver cup for the best production.

When Peace was first founded there was only one literary society, called Sigma Phi Kappa. Later the

(Continued on page sixty-four)



(Continued from page sixty-three)

Erosaphian society was formed. The society seems to have changed its name to Pi Theta Mu, for the 1906 LOTUS is the first to record Pi Theta Mu and Sigma Phi Kappa. The 1940 LOTUS welcomes the Rho Delta Chi Literary Society to our campus. We give you best wishes. There has been a real need for another society for a long time and the formation of one at this time indicates that Peace is heeding the words of another school song, "March, Onward March."

"March, onward March
The goal is straight before us
Bright is the light that guides us on our way;
Wide is the world and God's blue sky is o'er us
Daughters of Peace
Be strong for her today."

Rho Delta Chi

OFFICERS

SARAH BRUCE McAFEE, Secretary

LEOLA PRINCE, President

BLANCHE HUDSON, Treasurer

LOUISE NIERNSEE, Vice President

MISS LETITIA CURRIE, Sponsor



Hudson

Currie

Niernsee

McAfee

Prince



Back row Weskett, Cochran, Raynor, Sewell, Lewis, Goddard, Frazier, Edwards, Langtry
Front row Gerling, Creekmore, Fletcher, Self.

Sigma Pi Alpha

OFFICERS

Lura Self.....President
Betty Lou Fletcher.....Vice President
Christina Creekmore.....Secretary
Mary Frances Gerling.....Treasurer

Sigma Pi Alpha is a national honorary language fraternity in which membership may be obtained only by invitation after a student has excelled scholastically in a particular language.

The Theta chapter of this organization was first installed at Peace on May 5, 1939, and at that time Peace was the only junior college with the distinction of having a chapter.

It is the purpose of Sigma Pi Alpha to promote a keener interest in foreign language and to familiarize students with those languages.

The Theta chapter is fortunate in having as its adviser Miss Anne Raynor, the National Vice President of Sigma Pi Alpha for 1939-1940.



LURA SELF
President



Back row McAfee, Newbald, Gerling, Goddard, Fletcher,
Cochran.
Front row Self, Edwards, Sewell



Phi Theta Kappa

Gamma Phi Chapter of the national honorary society Phi Theta Kappa was established at Peace in 1939. There were at that time eighteen charter members. Girls were not accepted for membership this year until the third term. These girls are representative of the school from the standpoint of scholarship, character, and leadership. The society is fortunate in having as its sponsor the college president, Dr. William C. Pressly.



LURA SELF
President



Front row Hudson, Creekmore, Fletcher, Cochran, Hurt
Back row Langtry, Self, Newbold, McAfee, McCorkle, Potts, Densen, Saunders, Redman, Stirewalt, Early

Papyrus Club

OFFICERS

BETTY LOU FLETCHER

President

ELLEN COCHRAN

Vice President

CHRISTINA CREEKMORE

Secretary

LOUISE STIREWALT

HAZEL HURT

Editor of "Voices of Peace" Business Manager of "Voices of Peace"

The Papyrus Club, first organized in the fall of 1936, is an organization composed of carefully selected members of the Junior and Senior classes. It is supervised by the head of the English Department.

The purpose of this club is to effect an increasingly sympathetic relationship between the faculty and the students in the English Department, to stimulate interest in creative writing and in journalism, and to publish the school magazine, "The Voices of Peace," which is the official student literary publication.

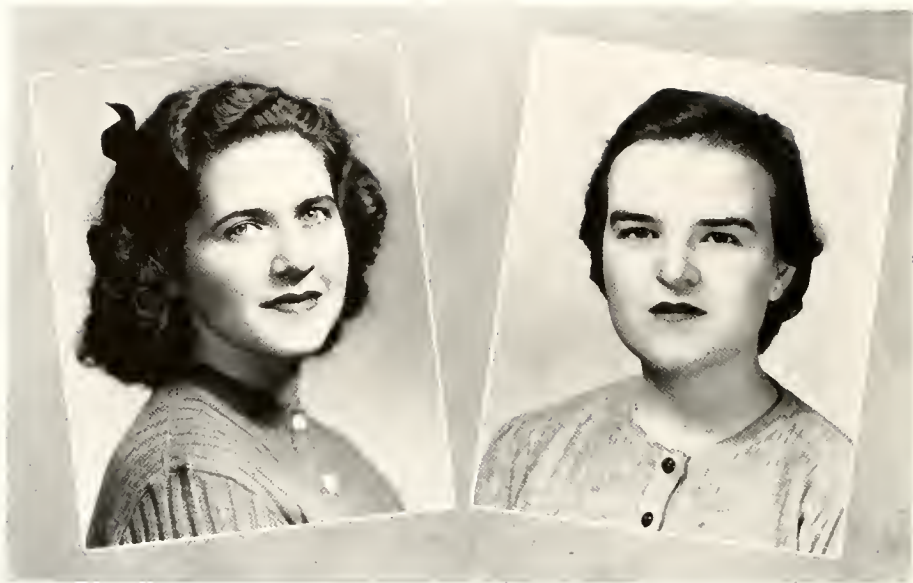
Staff "Voices of Peace"

"The Voices of Peace" has been published and read with interest since 1889, but in 1936 the Papyrus Club made the magazine its special project.

The contents of "The Voices of Peace" are entirely original, even to the designs which appear in it. The sketches this year, as well as the especially attractive, newly-designed cover, were done by art students who are members of the magazine staff.



Langtry, Stirewalt, McCorkle, Potts, Hurt



LURA SELF
Editor-in-Chief

JEAN GRANTHAM
Business Manager

The Lotus

This is your book! We have enjoyed compiling a record of your days at Peace for you. It is now your book to use, to renew your memories, or to occupy some idle moment.

We, the staff, wish to extend our appreciation to Dr. Pressly, who so willingly gave assistance in clarifying details and in helping on difficult problems. Mrs. Worth also deserves a vote of thanks for her efficiency in spurring the staff on to further duties and in directing our line of work.

I wish to express my appreciation to a capable staff: Louise Niernsee, Whitie McNeely, Christina Creekmore, Betty Lou Fletcher, and Polly Guerrant, associate editors; Sara Prevotte, Ann McCorkle, and Lib Jones, assistant editors; and Vivian Cobb, typist. Ellen Cochran capably directed the art work under the advisership of Miss Mabel Pugh, to whom we are deeply indebted.

Many thanks to the Business Staff for their splendid work. Under the guidance of Miss Kirkpatrick with her experienced and practical advice, they have done a good job.

We hope that you enjoy your book!

LURA SELF, Editor-in-Chief of LOTUS.



Back row. Porter, Fletcher, Niernsee, McNeely, Guerrant Front row Self, Cochran, Creekmore

EDITORIAL STAFF

LURA SELF, Editor-in-Chief

MILDRED ASKEW, Assistant Bus Manager

BETTY LOU FLETCHER

CHRISTINE CREEKMORE

LOUISE NIERNSEE

MARY WHITE McNEELY

POLLY GUERRANT

ELLEN COCHRAN, Art Editor

} Associate Editors

JEAN GRANTHAM, Business Manager

VIVIAN COBB, Typist

SARA PORTER, Snapshot Editor

ANN McCORKLE

LIB JONES

SARA PREVATTE

HELEN BROUGHTON

MRS. DAVID WORTH

MISS MARY KIRKPATRICK

} Assistant Editors

} Advisers

BUSINESS STAFF



Back row Currie, Johnson, Jordan

Front row Rowe, Purcell, Carlton, MacKenzie, Guerrant, Grantham, Hudson, Gerling, Askew, Prevatte, Bray, Jones

Glee Club

Throughout the year on different occasions the Glee Club presents concerts. Three special programs are given every year: the Christmas Carol Service, given the afternoon before the Christmas holidays begin; a spring concert in April; and the program for commencement and baccalaureate services. Each girl gets practical choir experience by participating for a time in the choir for the regular weekly chapel services. Occasional radio broadcasts, such as the Armistice Day program of patriotic music, are sent out over the local stations by remote control.

OFFICERS

MARY LILY DUNCAN, President MILDRED ASKEW, Vice President
FRANCES RAINEY, Secretary-Treasurer



Third row Craig, Williford, Covington, Murphy, Rainey, Newbold, Pressly, Walters
Second row Duncan, Luck, Fields, Craven, Rowe, Creekmore, Beatty, Cameron, Crane
First row Walden, Yelverton, Porter, Southerland, Askew, Holler, Lewis, Early, Lawrence.



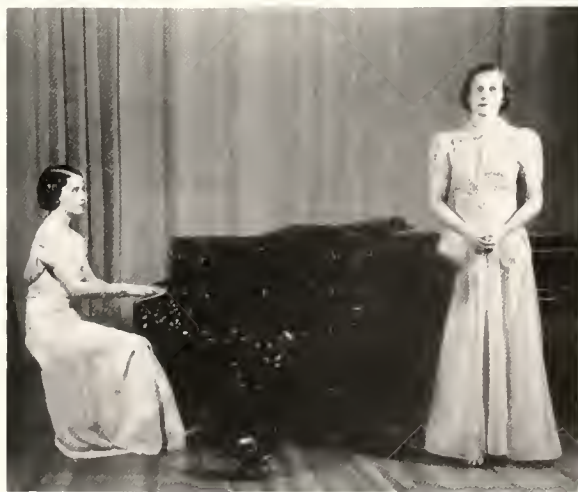
Mrs. Staudt at the organ

Faculty Recitals

During the school year, members of The Fine Arts faculty are presented in a series of concerts, the first of which is a joint recital given as a compliment to the new students

The 1939-40 series opened with the following program. Miss Lovie Jones, director of the Piano Department, opened the program with Schumann's "Romance in F Sharpe major"; Mrs. Charles F. Williams, associate teacher in the Voice Department, sang Bohm's "Calm as the Night" and "Sweethearts," from "Maytime." Mr. Herbert Bird, violinist, played "Variations in a Theme by Corelli," by Dreisler, and "Hungarian Dance" by Brahms.

Miss Helen Board, director of the Voice Department sang "Oh Love! But a Day," by Beach, and "Hark, Hark, the Lark," by Schubert. Miss Nelly Phillips Staudt was the accompanist.



Miss Helen Board in recital.

Miss Martha Myers, accompanist.



Scholastic Honors



First row Lura Self, Betty Ruth Thompson, Geraldine Sewell, Hannah Weskett, Betty Lou Fletcher, Joyce Edwards

Second row Mildred Askew, Caroline Newbold

Third row Anne Langtry, Vivian Cobb, Ruth Phillips, Mary Frances Powell, Alice Neal Saunders

Fourth row Beth Highsmith, Mildred Hobgood, Janie Hocutt, Virginia Murphy

Fifth row Harriet Pressly, Frances Rainey, Jeanne Dickinson, Florence Crane, Diane Dickinson



ATHLETICS *at Peace*



SARAH SUTTON
President of Athletic Association



Archery

Archery provides one of the most popular pastimes at Peace this year. Each girl has her own equipment, which usually consists of the standard English bow and arrow. During the spring monthly tournaments are held in which each girl competes individually.

Tennis

As spring arrives, the tennis courts become alive with activity as the students practice and prepare to play off the annual tournament. A great deal of enthusiastic interest is shown not only by the participants but also by the other students as these tournaments, both single and doubles, are played off during the early part of May.



Ping Pong

Ping Pong, a new indoor recreation at Peace in '39, is a favorite pastime with Peace girls. Two new tables and excellent equipment were offered to the students who have taken an enthusiastic interest in the game. Round Robin tournaments are held. It is a popular type in which every girl plays other participants.



Senior Hockey

Back row, Niernsee, Prince Guerrant, Goddard, McNeeli, Dav, Newbold
Front row: Sutton, McDonald, Denning, Rowe

Hockey

This popular sport each year assumes a more prominent place in the sports offered at Peace and it is fast becoming one of the most popular. During the first three months of the school year, hockey is offered to all the gym classes under the supervision and instruction of the Physical Education teacher. Those who show an enthusiastic interest are given the opportunity of playing hockey outside of the gym class. Teams made up of Preps, Juniors and Seniors are organized and exciting semi-final and final games are played. Those who do not participate in the lively action of the game are on hand to cheer on their teams.

Back row: Hinkle, Adams, Adams, Mercer, Vass, Switzer, Warren, Jones, Mason,
Patterson, Schulken
Front row: Bray, Patts, Redman, Frazier, Sneedan, Holler, Batchelor, McKeithen

Junior Hockey



Prep Hockey



Cunningham, Walters, Rainey, Pressly, Cunningham, Osterwin

Cheer Leaders

The Cheer Leaders add new pep and stirring spirit by writing new yells and songs. They lead the students in loyal support and encouragement of their respective class teams.



Denning, Purcell, Currie



The Marshals



Mar. Elizabeth Edmondson
Pi Theta Mu
Chief Marshal



Ann Moore McCorkle
Rho Delta Chi



Betty Jo Purcell
Sigma Phi Kappa



Mary Elizabeth Bray
Sigma Phi Kappa



Helen Jordan
Pi Theta Mu



Ann Mebane
Rho Delta Chi

May Day

MAY QUEEN
Doris Goddard

MAID OF HONOR
Mary Louise
Thompson



Standing Whitley, Edmonson, McLeod, Grantham, Fletcher, Thompson, Queen Goddard,
Parler, Sutton, McAfee, Self, Carlton
Seated Covington, Rowe, Saunders, Worth, Pressly, Hurt, Farlowe, Hobgood



Scenes of the Day

Recessional
Winding the May Pole
Queen Elizabeth and Court Gypsy
Court Minuet
The Flower Girl
Pyramid and Court-Jester

Presenting Peace Personalities





Doris Goldard

Miss Peace

Anna Sutton





Leola Prince

Lura Self





Mary White McNeely

Mary Knowles





Polly Guerrant



SCENES ON OUR CAMPUS



Why Annie Lou!	Praise Allah	Going home	Tut, Tut Miss Farlow, I
presume. . . . Milly.			
Out before dinner . . .	Gab session	Ironing day	Blanche. . . . Alice in the
snow	Waiting at the gate	Five on a bench	Three little juniors.
Greetings!	Silhouette in the hall	Harriet and Carey	Sara Emily, are
you hiding? . . . Just loafing			
Horrors of initiation week. . .	It Happened one day	On the porch . . . "B" and	
"Dupe" . . . Our backyard. . .	Between classes	The Craigs . . . On the	
court			
One at a time please	Sarah	Nell, with books!	"B" and Ed . . . Studying
in the sun			



Miss Pugh: Give me an example of period furniture.

Bootsie: Well, I should say an electric chair, because it ends sentences.

Hudson-Belk Company

Raleigh's Largest Department Store



***We Appreciate Your Patronage
and Look Forward
With Pleasure
to
Serving You
in the Future***

Certain boy to Pat Patterson: You're just like an icicle!

Pat: Well, you know an icicle melts when you squeeze it.

Ed: Beth's the most economical girl I know.
Bert: I'll say she is. Yesterday I gave her a marshmallow, and she powdered her nose with it.

JOHN ASKEW
PAINTING AND
INTERIOR DECORATING

Estimates made in and
out of town

Telephone 6824 402 Glenwood Ave.

Brogden Produce Co.

Wholesale
FRESH FRUITS and
VEGETABLES

409-15 West Martin Street
RALEIGH, N. C.

For Pure Clear Crystal

ICE
and High Grade

COAL

PHONE 5589

CAPITAL
ICE AND COAL CO.

Incorporated
600 West Hargett Street

THE FIRST PRESBYTERIAN CHURCH
AND
SUNDAY SCHOOL
OF RALEIGH, NORTH CAROLINA

Extends a welcome to college girls. It is our hope
that you will make this your church home during your
stay in Raleigh. There are special classes organized in
our Sunday school for college girls.

REV. P. D. MILLER, D.D., Pastor
DAVID WORTH, Superintendent of Bible School

Teeny Mebane: Do you type?
Julia Dupey: Sure, I use the Columbus system.
Teeny: What's that?
Dupey: You know, I discover a key; then land on it.

Can you imagine Teenie Goodman being a "Coward" where men are concerned?

**YOUR
BOON-ISELEY
DRUG COMPANY**

YOUR HEADQUARTERS

*We Carry a Complete Line of All
Well-known*

**PERFUMES, COLD CREAMS
and FACE POWDER**

**Cut Rate Drugs
Candies - Sodas**

WE DELIVER

PHONE 7728

W. E. TRULL

W. R. TRULL

**TRULL
Plumbing & Heating Co.**

*Plumbing - Heating
Coal Stokers - Roofing
Air Conditioning*

Phone 6353 411½ Fayetteville St.

ASK FOR

**GOLDEN TAP
GRAPEFRUIT JUICE**

*At the Soda Fountains. And insist
upon being served in
DIXIE CUPS*

Garland C. Norris Co.

TAYLOR'S

The Show Place of the Carolinas

**Buy all your needs at this good store and you will
never make a mistake**

**DRESSES : SUITS : COATS : COSTUMES : FURS : UNDERWEAR
GLOVES : HOSIERY : SCARFS : JEWELRY
BAGS : LUGGAGE : NOVELTIES**



TAYLOR'S

The Show Place of the Carolinas

Miss McLelland: Has your college education been of any real value?

Ellen Currie: Yes, indeed, it has entirely cured mother of bragging about me.

Mrs. Cavanaugh: Are you going to read all of these books, Betty Jo?
Betty Jo: Oh, no ma'am, I just want to hang my curtains!

PERSON STREET PHARMACY

PERSON STREET : Two Stores : HAYES BARTON

P. D. GATTIS, Proprietor

A COMPLETE LINE OF NATIONALLY ADVERTISED DRUGS

Plus a Selected Assortment of Toilet Items

SODA OUR SPECIALTY



DRINK

Coca-Cola

in Bottles

Raleigh

Wilson

G. S. TUCKER & BROS.
Incorporated

East Hargett Street
Raleigh, N. C.

Furniture and
Home Furnishings

We Appreciate Your
Patronage

Clayton

Smithfield

JOB P. WYATT & SONS COMPANY

HARDWARE : IMPLEMENTS

DU PONT PAINT : VARNISH : OIL

SEEDS : PLANTS : BULBS

RALEIGH, NORTH CAROLINA

Miss Perry Lee Jones: Sprechen Sie Deutsch?

Miss Pendleton: Who is he anyway? You're always talking about him.

Mrs. Sharp: Let me see your tongue?

Maud Faris: It's no use, Mrs. Sharp. No tongue can tell how bad I feel.

Your Patronage Appreciated

AMBASSADOR, STATE, PALACE and CAPITOL

Operated by

NORTH CAROLINA THEATRES, Inc.

THE BEST IN PHOTOPLAYS, VAUDEVILLE *and* STAGE SHOWS
AT POPULAR ADMISSION PRICES

**OAK CITY
LAUNDRY**

436 South Salisbury Street

TRICLENE
Odorless Dry Cleaning

Hats Cleaned and Blocked
Rugs Shampooed

PHONE 4478

ELLISBERG'S

Raleigh's Smartest Shop

**The Style Center for the
smart College Girl**

126 Fayetteville Street

GEO. MARSH CO.

(Incorporated)

Wholesale Distributors

FINE FOOD PRODUCTS

Raleigh, N. C.

CAROLINA COACH COMPANY

Carolina Owned and Operated

The Most Beautiful Coaches on the Highway

Low Fares

Frequent Schedules

NATION-WIDE SERVICE

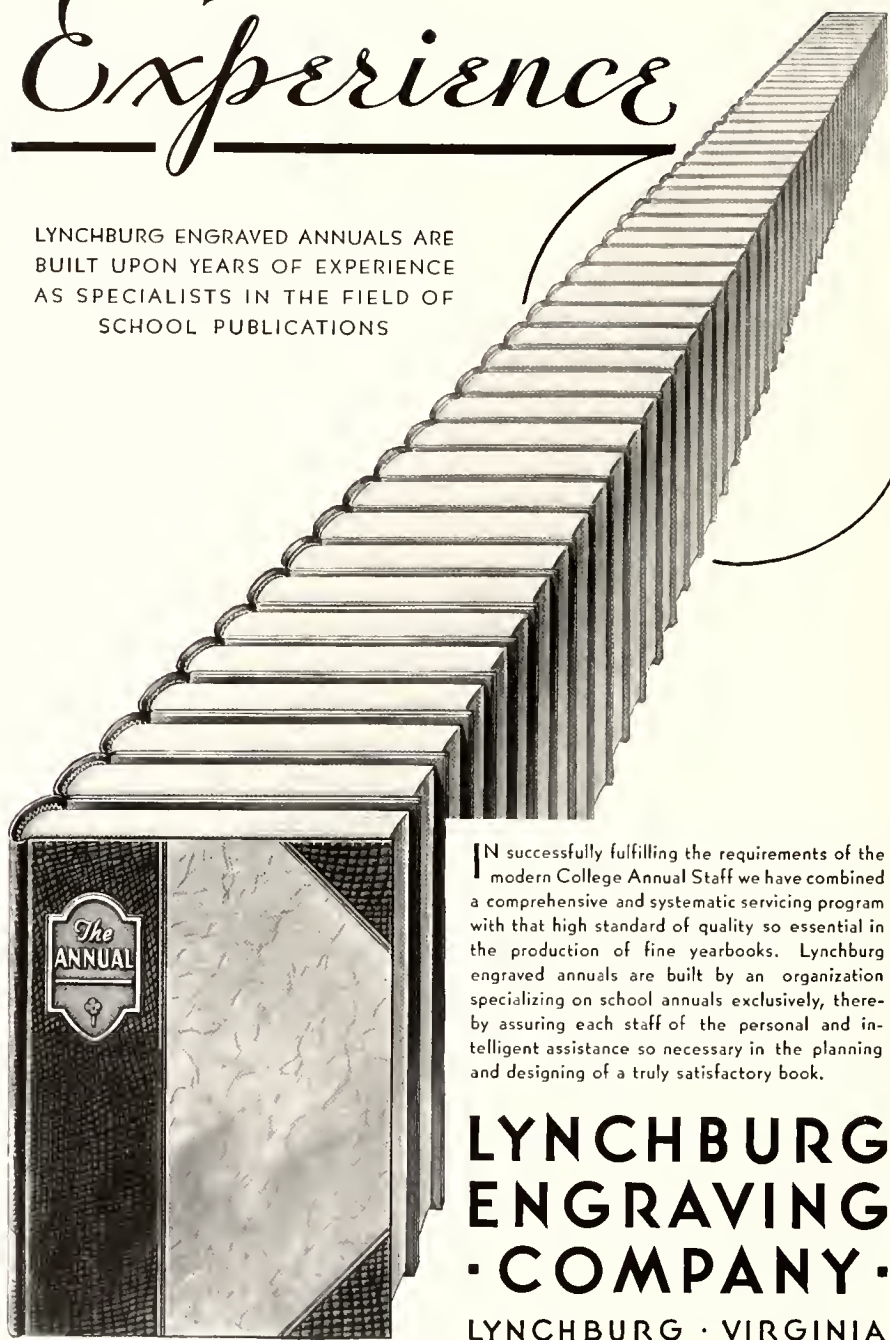
Mary L. Thompson: Daddy, I just found out that a girl at school has a hat like mine.

Father: Well, I suppose you want a new hat.

M. L. T.: Isn't that cheaper than changing schools?

Experience

LYNCHBURG ENGRAVED ANNUALS ARE
BUILT UPON YEARS OF EXPERIENCE
AS SPECIALISTS IN THE FIELD OF
SCHOOL PUBLICATIONS



IN successfully fulfilling the requirements of the modern College Annual Staff we have combined a comprehensive and systematic servicing program with that high standard of quality so essential in the production of fine yearbooks. Lynchburg engraved annuals are built by an organization specializing on school annuals exclusively, thereby assuring each staff of the personal and intelligent assistance so necessary in the planning and designing of a truly satisfactory book.

**LYNCHBURG
ENGRAVING
• COMPANY •**

LYNCHBURG • VIRGINIA

Builders of Better Annuals

A Career and Your Home

A promising future is often-times sacrificed on the altar of household drudgery. You have planned a career—yet, you, like all other women, will some day want the pleasures and comforts of a home of your own. Must you abandon the work for which you are prepared in favor of the home? Not in this age of electrical conveniences! You can manage a home successfully and at the same time carry on with your vocation or profession. Electrical appliances will provide you with the necessary time and perform your household tasks efficiently and economically.

CAROLNA POWER & LIGHT COMPANY

Mary Knowles: Why Lou, what an unusual expression on your face!
 Lou Denning: I was thinking.

CONVERSE COLLEGE

SPARTANBURG, S. C.

A four-year Liberal Arts College for Women. . . . Christian but not denominational. . . . Nationally accredited. . . . Complete Music School with faculty of ten. . . . Strong departments of Art and Dramatics. . . . High altitude and healthful climate. Write for descriptive booklet.

E. M. GWATHMEY, *President*

BRANTLEY & SON

Expert Druggists

1910

Fine Sodas

We Deliver

Dial 7588

Halifax Street Grocery

601 Halifax Street

Choice Meats - Quality Groceries
 Fresh Fruits and Vegetables

Raleigh, N. C.

Office Phone 2-3015 Plant Phone 2-2861

HOOD-MODEL DRY CLEANING COMPANY

"Ask the Folks We Serve"

Main Office: 13 S. Wilmington Street
 Plant: 606 N. Person Street

Raleigh, N. C.

THE PHOTOGRAPHS

in this Annual were made by

SIDDELL STUDIO

126½ Fayetteville Street

RALEIGH, NORTH CAROLINA

Ann Langtry: So your boy friend's on the "Black List," eh?
 Margaret Penn: Yea, he mistook the dean for one of the girls.

Miss Clark: This book will do half of your work for you.
Lib Eden: Good, I'll buy two.

**PROVIDENT MUTUAL LIFE
INSURANCE COMPANY**

OF PHILADELPHIA

Organized 1865

*Make your later years happy with
a retirement life income*

FRANK M. HARPER & SON

District Agents

RALEIGH, NORTH CAROLINA

Neiman's
INC

JEWELERS-SILVERSMITHS
RALEIGH, N.C.

Phone 5778

Free Delivery

Shoe Shines : Suede - White - Cleaned

Carolina-Shu-Fixery

Expert Shoe Rebuilding

While-U-Wait

Luggage Repairing : Bags Made to Order
Zippers Repaired

12 E. Hargett Street

Raleigh, N. C.

Efird's

A Good Place

To Shop For Those

Who Wish To Save Money

BYNUM PRINTING COMPANY

BETTER PRINTING

PHONE 6417

PEACE DREAM

Warm breath on my cheek,
Soft touch on my shoulder,
Little face pressed close to mine,
Eeek! Who let Henry in?

Louise Niernsee: I like that picture of the horse, Miss Pugh, but aren't you going to draw the wagon?

Miss Pugh: No, I'm going to let the horses do that.

Edenton Street Methodist Sunday School

**Welcomes the Peace
College Girls**

DR. JOHN C. GLENN, *Pastor*
C. A. DULON, *Supt. of Sunday School*

Lewis Sporting Goods Co.

112 West Hargett Street

DAIRY PRODUCTS

PASTEURIZED MILK

BUTTER - EGGS

BIERLEY'S ORANGEADE

ICE CREAM

at

Better Drug Stores
and

Soda Fountains

Pine State Creamery

Glenwood Avenue Telephone 2-3911

Person Street Sandwich Shop

610 North Person Street

TELEPHONE 5734

Vick Moore B. E. Dennis Earl Johnson

MOORE & JOHNSON CO.

"For 15 Years Raleigh's Leading
Insurance Agency"

INSURANCE : SURETY BONDS

Lawyers Building
RALEIGH, NORTH CAROLINA



W. H. KING DRUG CO.

Wholesale Drugs

Phone 2-0525

117 South Wilmington Street
RALEIGH, N. C.

Nell McDonald: I'm just like Washington, Lincoln, and Jefferson.

Mary Helen Farlow: How's that?

Nell: I'm going down in history.

Mrs. Dixon to Margaret Faris coming in study hall late: You should have been here at 7 o'clock.

Margaret: Why, what happened?

<p>PATRONIZE PIGGLY WIGGLY <i>For the Best GROCERIES - FRESH MEATS FRESH FRUITS and VEGETABLES</i> Attractive Stores - Courteous Service Reasonable Prices <i>Home Owned Home Managed</i> PIGGLY WIGGLY <i>Your Patronage Appreciated</i></p>	<p>Jeans of Raleigh Featuring Fashion Classics</p>
<p>WELCOME STUDENTS AND FACULTY — To — Womble's Beauty Shoppe <i>"Specialists in Permanent Waving"</i> ALL LICENSED BEAUTICIANS PHONE 2-3348 225 Pace Street : Raleigh, N. C.</p>	<p><i>You are</i> <i>always</i> WELCOME <i>at</i></p>
<p>WAKE THEATRE <i>Welcome Peace</i> Raleigh's Reasonable Price Theatre</p>	<p>WALGREEN'S <i>We appreciate your business</i></p>
<p>GOLDEN CRISP DOUGHNUT SHOP <i>"In the Shadow of the Campus" : 304 Pace Street</i> DELICIOUS HOT DOUGHNUTS AT OUR SHOP From Four in the Afternoon Until Eleven at Night <i>Always Insist on Golden Crisp Doughnuts at Your Favorite Soda Fountain or Lunch Counter</i></p>	

Jean Cunningham: Wonder how old Mrs. Worth is?

Ann Cunningham: I don't know, but she must be right old because she used to teach Caesar.

FLOWERS!

*Cut Flowers Corsages
Graduation Bouquets
Decorations*

PHONE 8347

J. J. FALLON CO., Inc.

"We Grow the Flowers We Sell"

Compliments of

T. H. BRIGGS & SONS, Inc.

*"Carolina's Oldest Wholesale
and
Retail Hardware House"*

Established 1865

Phone 2-2025

Say

B A M B Y
Bread

ROYAL BAKING CO.

Dial 4661 : Raleigh, N. C.

"INSIST ON LANCE'S"

LANCE PACKING CO., Inc.

Candies and Peanut Products

Phone 2-0728

R. E. GRAHAM, Representative

Raleigh, N. C.

I

Giggles from the closet—and more than just a few,
Six girls—there should be only two,
Sounds of laughter 'neath the bed,
A groan, a bump—poor head!

II

A forceful knock upon the door,
A frenzied dash across the floor,
A trip, a slip, a fateful fall,
Six new additions to study hall.

QUEENS COLLEGE

Charlotte, N. C.

An accredited four-year college for women which provides a combination of culture, vocational training, and Christian idealism.

Limited enrollment, personalized education, moderate expenses. For information and catalog, write

HUNTER B. BLAKELY, President

DRINK

ORANGE CRUSH

and

NU GRAPE

Two Outstanding Flavors

PHONE 2-1246

California Fruit Store

30 Years as the Headquarters
and Meeting Place for
College Students
Speaks for

Quality and Service

LUNCHES : CANDIES
SODAS : FRUIT

**DILLON SUPPLY CO.
MILL SUPPLIES**

Heating Equipment
Modern Machine Shop

RALEIGH DURHAM
ROCKY MOUNT

CONFIDENCE

The young ladies of Peace who are sensitive to quality appeal and those who instinctively buy where complete confidence may be placed are among our most welcome customers.

It is ever the policy of this Company to continue to merit such confidence by constant attention to the proper relations of quality and price.

BOYLAN-PEARCE, Inc.
"Raleigh's Shopping Center"

**Southern School Supply
Company**

School - Laboratory and
Library Supplies

Raleigh, N. C.

Peg Mercer: Did you see that boy smile at me?

Doris Goddard: That's nothing! I laughed out loud the first time I saw you.

Miss L. Currie reports that a real kiss kills all germs. We wonder at there being so much flu this winter.

Miss Steele was to teach the Sunday school lesson at the Methodist Church, substituting for Governor Hoey. While introducing her the speaker said, "We have one with us today who is very capable of filling the governor's shoes."

What size do you wear, Miss Steele?

Use Your Credit

— at —

HERBERT ROSENTHAL

BEAUTIFUL SHOES

Barbour Produce Co.

Dealer in

FRUITS and PRODUCE

Wholesale Only

Phone 4424 - Res. Phone 4866
At City Market

Louise Stirewalt: Love makes the world go round.
Nancy Teague: That's nothing; so does a good swallow of tobacco

MANGEL'S

UNDERWEAR : DRESSES

COATS

SWEATERS and SKIRTS

FAN TAN HOSIERY



"The Family Laundry Service which we are now using is Fine and my shirts are just right."

"Yes dear I wish I had known of the Capital City Laundry long ago." You too, can enjoy this fine laundry service, just dial 3373.

COXE - FERGUSON DRUGS

Prescriptions

Corner Salisbury and
Hillsboro Streets

RALEIGH, NORTH CAROLINA

PEACE COLLEGE CLASS RINGS AND PINS SOCIETY PINS AND NOVELTY JEWELRY

Walter B. Anderson

L. G. BALFOUR PRODUCTS

Richmond, Virginia

STROP TAXI COMPANY

— Day and Night Service —

25¢ a Trip in City Limits. 1 or 4 — Each Stop is a Full Trip

REASONABLE RATES for OUT OF TOWN TRIPS

ALWAYS — READY

5811 — PHONE — 5811

Call Us for the Correct Time

Miss Boswell: Can you define *nothing*?

Miss Langtry: It's a bladeless knife without a handle.

PEACE

A JUNIOR COLLEGE FOR WOMEN

RALEIGH, NORTH CAROLINA

For the Education and Culture of Young Women

- I. COLLEGE COURSES.
- II. COURSES PREPARATORY TO COLLEGE COURSES.
- III. SPECIAL COURSES IN ART, PIANO, VOICE, EXPRESSION,
HOME ECONOMICS, AND COMMERCIAL SUBJECTS.

SITUATION—Location in capital city affords special opportunities, delightful social advantages; athletics supervised indoor and outdoors by physical director. Special attention to individual development. Climate permits outdoor life all winter.

FOR CATALOGUE OR OTHER INFORMATION,
WRITE

THE PRESIDENT

PEACE

A Junior College for Women
RALEIGH, NORTH CAROLINA

Miss Amelia Clark: Your car is at the door.
Dr. Pressly: Yes, I know, I heard it knocking.

BELLE TEACHEY

READY - TO - WEAR MILLINERY

105 West Hargett Street
RALEIGH, N. C.

Shop Here and Save the Difference

Autographs

Miss Richards: What is the name of the principal river in Egypt?

Ruby Craige: The Nile?

Miss Richards: Yes, and what are the names of its smaller tributaries?

Ruby: Juveniles, I guess

Autographs



BUILDERS DREAMS

VISIONS created by the imagination precede the achievement of any really great accomplishment. The ability to weave the threads of imagination into the finished fabric is equally important.

It has been the privilege of the EDWARDS & BROUGHTON COMPANY to co-operate with the staff in creating their vision into material form.

Such coöperation is one of the "visions" which precede the building of a successful business, and is a part of the working policy of the EDWARDS & BROUGHTON COMPANY.

To those Staffs desiring complete co-operation, we offer unexcelled service.

You, too, may be proud of your annual.

Correspondence is Invited

EDWARDS & BROUGHTON CO
RALEIGH, NORTH CAROLINA

BURWELL LIBRARY
PEACE





7:30 AM



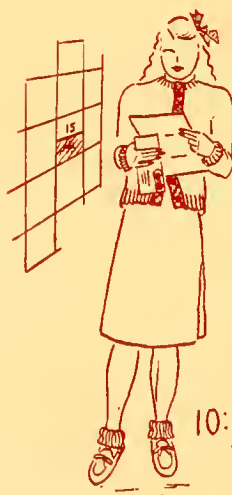
7:45 AM



7:55 AM



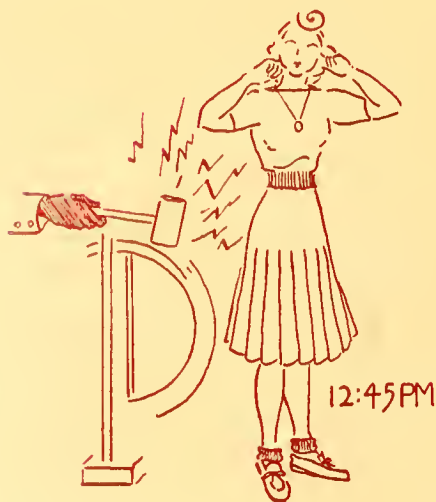
8:00 AM



10:30 AM



8:30 AM



12:45 PM

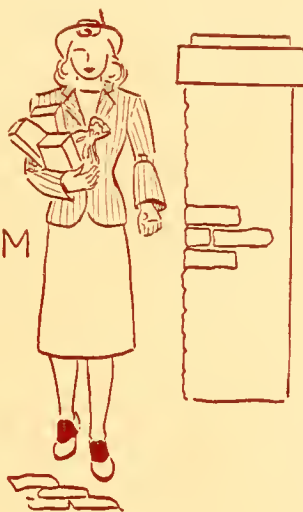


1:45 PM

2:30 PM



5:30 PM



9:00 PM



4:15 PM



9:45 PM



10:05 PM



10:15 PM



10:30 PM

Sarah Bruce McAfee

