



L
O
T
U
S

1942

BURWELL LIBRARY
PEACE

Ex Libris





P. Sullivan

THE 1942
LOTUS

Published by the Students of
Peace Junior College
Raleigh, North Carolina

FRANCES RAINEY
Editor

ANN CHUNN
Business Manager



Campus



BULLETIN BOARD

Announcements . . . assignments . . . posters . . .
"There's our Math A homework" . . . shoving
spectators . . . shifting . . . more coming . . .

TYPING ROOM

Click, click, click . . .
carriage . . . peck,
peck, peck . . . car-
riage . . . click, cl—
. . . rip!



COOKING LAB

Mixing . . . baking
. . . Miss Whitesides
. . . scorches and
burns . . . aprons and
smocks . . . the results
. . . ooh!



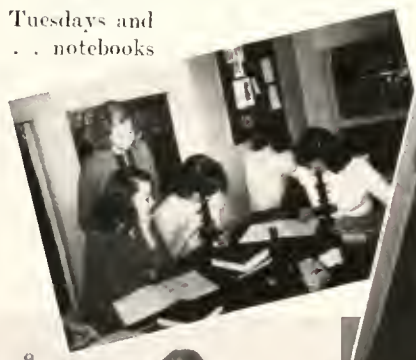
Life

GIRLS' LIVING ROOM

Noise . . . jitterbugging . . . laughing . . . whirls
'n' twirls . . . droves of 'em . . . more noise . . .

BIOLOGY LAB

Ish! Crayfish . . . dissections
. . . frogs . . . Tuesdays and
Wednesdays . . . notebooks
. . . formalde-
hyde.



SEWING ROOM

Cutting . . . stitching . . .
ripping . . . groans . . .
restitching . . . "If at
first you don't suc-
ceed—" . . . finished
products . . . oohs and
ahs!



DRAWING CLASS

Sketching . . . charcoal . . . color . . . informality . . . would-be artists. . . .

Campus

ART LAB

Modeling . . . sticky fingers . . . smocks . . . clay . . . Miss Pugh.

ARCHERY

Out-of-doors . . . muscle . . . aim, snap! . . . bull's-eyes . . . bows . . . arrows. . . .



Life

COMING FROM CHURCH

Double lines . . . Sunday finery . . . Capitol square . . . Wilmington Street . . . the Peace army . . . left, right, left.



POST OFFICE

Bedlam . . . chaos . . . left, 4; right, 2 . . . grab it 'n' run—if you can! . . . letters . . . packages . . . only the strong survive!



MISS RAYNOR'S CLASSROOM

Madame . . . *Parlez vous Francais?* . . . E-5 . . . conjugations . . . vocabularies . . . translations.



CONTENTS

Book I. *Faculty*

• • •

Book II. *Students*

• • •

Book III. *Societies*

• • •

Book IV. *Organizations*

• • •

Book V. *Athletics*

• • •

Book VI. *Advertisements*

FOREWORD

Out of the chaos and confusion of a noisy staff room, from the minds and hearts of the members of the annual staff, comes this Lotus of 1942—a scrapbook, diary, and photograph album to remind you of your years at Peace.



DEDICATED...



Mrs. J. MELVILLE BROUGHTON

...T O MRS. J. MELVILLE BROUGHTON

—A loyal friend, a Peace alumna, a worthy homemaker—we, the Senior Class, dedicate this LORRS of 1942—to the First Lady of our State.



Two Peace girls

At home with her family



Off to church





Executive Committee: R. Y. McPherson, Rev. M. O. Sommers, K. G. Hudson, chairman, William C. Pressly, B. W. Kilgore, *R. W. Dunn.

BOARD OF TRUSTEES

Owned and controlled by the Presbyterians of North Carolina, Peace is governed by a board of trustees. This group is appointed by five presbyteries—Albemarle, Orange, Granville, Kings Mountain, and Wilmington—by the First Presbyterian of Raleigh, and by the board itself.

The following, arranged in order of appointment to present position, comprise the board: K. G. Hudson, chairman, Raleigh, N. C.; B. W. Kilgore, Raleigh, N. C.; Mrs. Josephus Daniels, Raleigh, N. C.; R. Y. McPherson, Raleigh, N. C.; Mrs. C. C. McAlister, Fayetteville, N. C.; Mrs. W. N. Reynolds, Winston-Salem, N. C.; Mrs. B. R. Lacy, Raleigh, N. C.; Mrs. Robert Wyatt, Raleigh, N. C.; Mrs. George Avinger, Laurinburg, N. C.; Mrs. Anna Baker Fenner, Tarboro, N. C.; Rev. Harry Whitmore, D.D., Wilmington, N. C.; Mrs. B. Frank Mebane, Spray, N. C.; Mrs. E. L. McKee, Sylva, N. C.; Thomas O'Berry, Goldsboro, N. C.; Rev. W. M. Baker, Mebane, N. C.; J. M. Baird, Oxford, N. C.; Rev. R. A. White, D.D., Mooresville, N. C.; R. W. Dunn,* Raleigh, N. C.; H. H. Littrell, Rocky Mount, N. C.; Dr. F. L. Knight, Sanford, N. C.; Rev. L. R. Scott, D.D., Goldsboro, N. C.; Rev. W. S. Patterson, Lowell, N. C.; Rev. P. D. Patrick, Kings Mountain, N. C.; Rev. M. C. MacQueen, Clinton, N. C.; Rev. W. D. McInnis, Henderson, N. C.; Mr. W. E. Leggett, Durham, N. C.; Rev. M. O. Sommers, Raleigh, N. C.

William C. Pressly, secretary-treasurer.

* Deceased



P.S. and
E. Selp

TRIBUTE



to

WINIFRED M. KUHNS

Head of the Math Department; Sponsor of Pi Theta Mu

Miss Kuhns has endeared herself to many Peace girls because of her wholesome influence on them, not only in the classroom with its thoroughness, but in the everyday life of the college. Her stability and dignity give evidence of real mental and spiritual depth, which we as a group appreciate. Her loyalty to us and her understanding of us make us glad that we have known her. We, the Senior Class of 1942, wish for her many continued years of efficient and loving service at Peace.



DR. WILLIAM C. PRESSLY

This is our president. He fills his high position with efficiency and dignity, stimulating our thoughts and actions to higher planes, and increasing our efforts with his amiability and energy.



MISS MAY McLELLAND

... And this is our dean. Through her foresight and experience, she understands us; through her interest and sense of humor she inspires the friendship of students and faculty alike, lending them her advice and knowledge countless times.

FACULTY

MRS. DOROTHY PETERSON ALDEN, B.M., *Violin, History of Music*

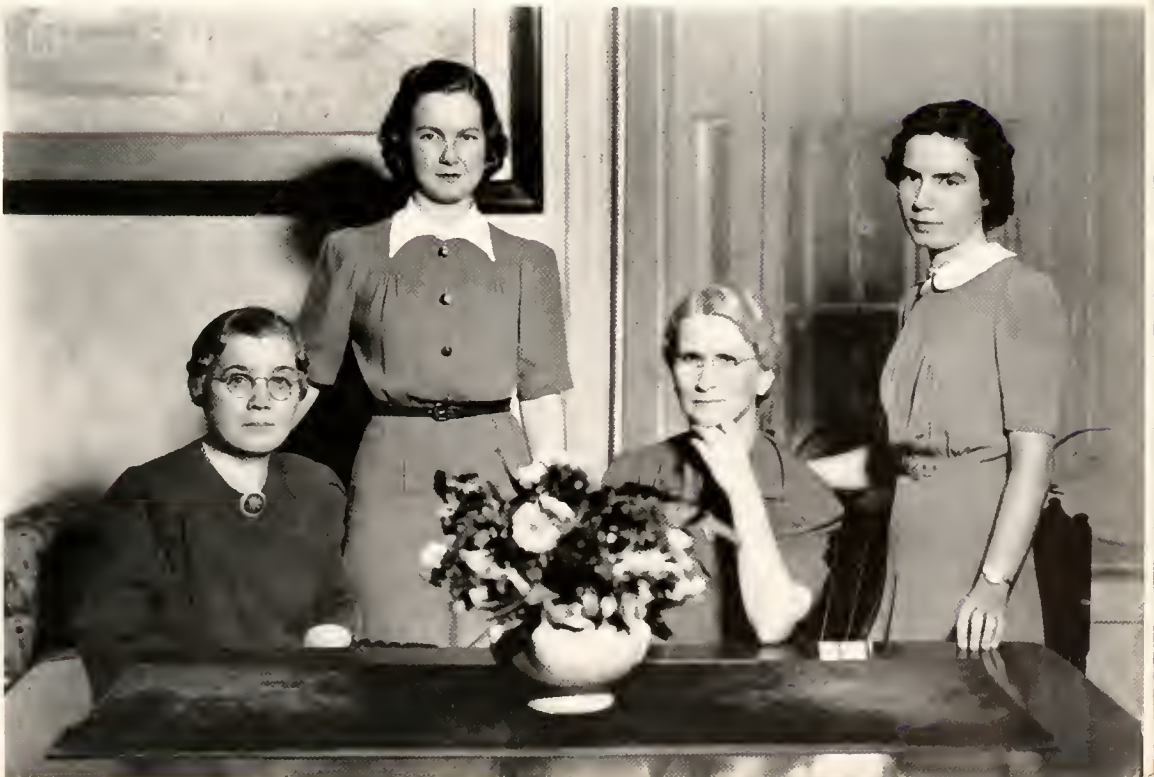
MRS. LUCILLE CAVENAUGH, B.P., A.B. in L.S., *Librarian*

MISS AMELIA CLARK, *Registrar*

MISS MARJORIE CLARK, *Secretary*

MRS. DAISY JONES COUCH, A.B., A.M., *Commercial Subjects*

Hewson, A. Clark, Kirkpatrick, M. Clark.



FACULTY

MISS IDA WITHERS CURRIE, A.B., A.M., *Commercial Subjects*

MISS LETTIE CURRIE, A.B., A.M., *Psychology, History, Economics*

MISS ETHEL GRAMMER, *Dictitian*

DR. HUBERT HAYWOOD, M.D., *Attending Physician*

MISS GEORGIA HEWSON, *Matron and Head of Infirmary*

Pugh, Turner, I. Currie, Thomas, Grammer, Couch.





Staudt, Williams, Manget, L. Jones, Alden.

FACULTY

MISS LOVIE JONES, *Piano*

MISS PERRY LEE JONES, A.B., *Science*

MISS MARY KIRKPATRICK, *Bursar*

MISS WINIFRED M. KUINS, A.B., B.E., M.S., *Mathematics*

MISS MARGARET T. LITTLE, B.S., M.S., *Physical Education*

MISS LOUISE MANGET, B.M., *Piano*

FACULTY

MISS MABEL PUGH, *Art, History of Art*

MISS ANNE W. RAYNOR, Ph.B., A.M., *French*

MRS. BIRDIE MCKINNEY ROWLAND, *Assistant Dean*

MISS HELEN HARRIET SALLS, A.B., A.M., *English*

MRS. NELLIE PHILLIPS STAUDT, B.M., *Organ, Accompanist*

MISS LUCY E. STEELE, A.B., A.M., *Bible, Spanish*

Seated: Steele, Kubns, Rowland. *Standing:* Whitesides, L. Currie, Wilkerson, P. L. Jones.





Worth, Raynor, Little, Salls, Cavenaugh.

FACULTY

MISS MARY ELIZABETH THOMAS, A.B., A.M., *History*

MRS. SARA GOFF TURNER, *Hostess*

MISS BERTIE LEE WHITESIDES, B.S., A.M., *Home Economics*

DR. ANNIE LOUISE WILKERSON, B.S., M.D., *Health*

MRS. BETTY VAIDEN WRIGHT WILLIAMS, B.M., *Voice*

MRS. OLIVE PITTMAN WORTH, A.B., M.S., *English*

FACULTY

COMMITTEES

Athletics: Miss Little, Miss Ida W. Currie, Miss Amelia Clark.

Entertainment: Miss Little, Mrs. Williams, Miss Pugh, Miss Lovie Jones, Miss Hewson, Miss Grammer, Mrs. Turner, Miss Whitesides, Mrs. Rowland.

Honor Societies: Phi Theta Kappa—Miss Perry Lee Jones, Miss Letitia Currie, Miss McLelland, Miss Thomas. Sigma Pi Alpha—Miss Raynor, Miss Salls, Miss Steele, Mrs. Worth.

Household Rules and Regulations: Miss McLelland, Miss Kirkpatrick, Miss Lovie Jones, Miss Kuhns, Miss Steele, Miss Little, Miss Letitia Currie, Mrs. Rowland, Miss Whitesides.

Library: Mrs. Cavenaugh, Miss Thomas, Miss Kuhns, Miss Raynor, Miss Salls, Mrs. Couch, Miss Perry Lee Jones.

Recital: Miss Lovie Jones, Mrs. Staudt, Mrs. Williams, Mrs. Alden, Miss Manget.

Religious Organizations: Miss Steele, Miss Amelia Clark, Miss Marjorie Clark, Miss Margaret Little.

Student Publications: Mrs. Worth, Miss Pugh, Miss Salls, Miss Kirkpatrick.

(The President and the Dean are ex officio members of all committees.)



Book Week Tea sponsored by the Library Committee.



JANE D. FRANCIS

CLASSES

And these are those who toil—

An assembly



The Seniors

Our revered Seniors, upon whose worthy shoulders fall the responsibilities of carrying on Peace traditions, upholding the student government, directing and encouraging those green Juniors.



MASCOT
Louis Glenn Rainey

ANN FOUNTAIN
President

JANE ROYSTER
Vice President

ELIZABETH KELLY
Secretary

MARGIE BAILEY
Treasurer

MISS IDA W. CURRIE
Sponsor



Left to right: Bailey, Fountain, Miss Currie, Kelly, Royster.



MARY LOIS ALLEN
Goldville, South Carolina
Floogie

Rho Delta Chi; Glee Club '41; Stunt Night '41, '42.
Poetry, "Trade Winds," State College, Blue, "Room-mate."

HELEN LOUISE ANDREWS
Raleigh, North Carolina
Hcl

Sigma Phi Kappa, Treasurer '42; President of Day Student Council '42; Phi Theta Kappa '41, Reporter '42; Business Staff of LOTS '41. *"MEN," Shoes, Red Roses, Cokes with Orange.*

MARGIE GERALDINE BAILEY
Chadbourn, North Carolina
Margie

Sigma Phi Kappa, Vice President '42; Tennis '41, '42; Ping Pong '41, '42; Hockey '41; Stunt Night '41, '42; Society Play '41; Treasurer Senior Class '42, Vice President.

Glenn Miller, Glamorous People, Red Strawberries, Chadbourn.

The Seniors

Forty-two Lotus

KATHRYN BISEGLIA
 Kansas City, Missouri
Kay

Rho Delta Chi, Secretary '42; P.S.C.A.; Chairman Home Missions '41, '42; Student Council Representative of Student Body '42; Editor-in-Chief *Voices of Peace* '42; Associate Editor *Lotus* '42; Papyrus Club '41, '42; Sigma Pi Alpha '41, '42; Christmas Pageant '41; Stunt Night '41, '42; Honor Roll '42.

Teddy bears, Blue, Horn-rimmed Glasses, Rommate, "Bailey."

MARTHA JEAN BLAYNEY
 Richmond, Virginia
Nikki

Sigma Phi Kappa; Glee Club '41, '42; Sigma Pi Alpha '41, '42; Stunt Night '41, '42; Christmas Pageant '41; Papyrus Club '41, '42, Editorial Board; Society Play '41.

Green Ink, "Jim," Dancing, Singing, 11 o'clock light cuts with "Lou."

MARGARET LINDA BREWER
 Kinston, North Carolina
Hag

Pi Theta Mu, Treasurer '42; Hockey '41, '42; Stunt Night '41, '42; Ping Pong '41, '42.

Ham sandwiches, George Washington, Peppermints, Four girl rooms.





MILDRED BRYSON
Raleigh, North Carolina
Sigma Phi Kappa



ANNE W. CHUNN
Fort Bragg, North Carolina
Chunny

Rho Delta Chi; Business Staff Lotus '41, Business Manager '42; Current Events Club '41; Stunt Night '41, '42; Society Play '41; Student Legislative Assembly '41; Scholarship Club '41, '42; Phi Theta Kappa '41, President '42; Outstanding Senior '42.

Army, West Point, Stuffed Animals, "These Things I Love," 3d floor main.



MARY EVELYN CLEMENT
Raleigh, North Carolina
Evie

Sigma Phi Kappa; Glee Club '41, '42.

Red Convertibles, Uniforms, "Anchors Aweigh," Sweaters, Holidays, Sandy hair.

The Seniors

Peace Junior College

GARNETTE MARIE DAVIS

Broadnax, Virginia

Garnette

Rho Delta Chi.

Virginia, 301 and 302 East, Midnight feasts, "Sunrise Serenade."

ANN SLOAN FOUNTAIN

Rocky Mount, N. C.

Ann

Sigma Phi Kappa, Marshal '41, '42; Christmas Pageant '41, '42; Business Staff Lorrys '41; Assistant Business Manager '42; Current Events Club '41; President Senior Class '42; Vice President Student Council '42; Senior Superlative '42; May Queen '42; Privileged Honor Roll, '42.

Knitting, Carolina, Sweaters.

SARA SHAW GENHEIMER

Roanoke, Virginia

Gennie

Pi Theta Mu, Vice President '42; Marshal '41, '42; Society Play '41; Stunt Night '42; Advertising Staff Lorrys '42; Tennis '41, '42; Papyrus Club '41, '42; Secretary Junior Class '41; Student Legislative Assembly '41.

Knitting, Greek gods, Cousins, Swansboro, My brother Bill.





JIMMY GRIGGS GRAY
Coinjock, North Carolina
James

Sigma Phi Kappa; Current Events Club '41; Dees Camera Club '41, '42, Secretary-Treasurer '42; Stunt Night '41, '42.

"Corkie," Nag's Head, Convertibles, "The Lost Colony," "Moon River."



MARY VIRGINIA GRIER
Gastonia, North Carolina
Virgie

Pi Theta Mu.
S.P.E., "Cocktails For Two," Glenn Miller, Bull Sessions, Henderson.



DOROTHY C. HARRISON
Henderson, North Carolina
Dot

Rho Delta Chi; Papyrus Club '41, '42; P.S.C.A. '41, '42; Vance-Granville Club '41, President '42; Society Play '41; Privileged Honor Roll '41, '42; Stunt Night '41, '42; Christmas Pageant '41, '42; Current Events Club '41; President of Student Council '42; Miss Peace '42; Table Hostess '42.

"Because," Chocolate, Red Roses, Blue.

The Seniors

Forty-two Lotus

MARY BLAND HOFFLER

Wallace, North Carolina

Ha-Ha

Sigma Phi Kappa; May Day '41; Dean's List '42; Stunt Night '42.

Blue, "Lou," Buick Convertibles, "I Don't Want to Set the World on Fire," Voices, Light Cuts.

CATHERINE JONES

Waynesville, North Carolina

Catherine

Sigma Phi Kappa; Papyrus Club '41, '42; Secretary Student Council '42; Christmas Pageant '41; Marshal '42; Editorial Staff of *LOTUS* '42.

Blue, Gardenias, U.S.M.A., Apples, "The Bells of San Raques," Home.

DOROTHY LYLE JONES

Franklin, North Carolina

Dot

Sigma Phi Kappa; Papyrus Club '41, '42; Camera Club '41, '42; Stunt Night '41, '42.

Blue, "Intermezzo," Tennis, Ford Symphony.





LILLIAN JONES
Franklin, North Carolina
Lillian
Sigma Phi Kappa.



CARLTON ELIZABETH KELLY
Raleigh, North Carolina
Lib
Sigma Phi Kappa; Senior
Class Secretary '42; Stunt
Night '42; Dees Camera Club
'42; Editorial Staff of
Lorus, Joke Editor '42.
*Dinah Shore, Red Roses,
Duke, Blue.*



JEAN LANE
Bloomsbury, New Jersey
Jean
Rho Delta Chi; Glee Club
'41; Christmas Pageant '41.
*Fraternalities, Letters, Foot-
ball, Glenn Miller.*

The Seniors

Peace Junior College

LOUISE LATHAM

Greensboro, North Carolina

Lou

Sigma Phi Kappa; Dees Camera Club '42; Glee Club '42; Stunt Night '42; Christmas Pageant '42.

Dancing, Blue, 11:00 o'clock Light Cuts with "Nikki," "Jim," Piano.

SARAH LOUISE LEATHERWOOD

Waynesville, North Carolina

Leatherhead

Pi Theta Mu, President '42; Cheer Leader '41; Hockey '41; Basketball '41; Softball '41; Archery '41; Monogram Club '41, '42; Stunt Night '41, '42; Current Events Club '41, President Third Term '41; Papyrus Club '41, '42; Business Staff of Lorrys '42; Phi Theta Kappa '41, '42, Vice President '42; Christmas Pageant '42; Senior Superlative '42; President Athletic Association '42; Privileged Honor Roll '42.

Mountaineers, "Time," Horses, "Tonight We Love."

MARJORIE LUCK

Raleigh, North Carolina

Bud

Pi Theta Mu; Glee Club, Librarian '41; Editorial Staff Lorrys '41, '42; Vice President Day Students '41, '42; Dees Camera Club '41, President '42; Sigma Pi Alpha '41, Secretary-Treasurer '42; Phi Theta Kappa '41, Secretary '42; Scholastic Honor Roll '42.

Blue, Red Roses, Music, French.





MILDRED PRYOR McCARY
Raleigh, North Carolina

Mildred

Sigma Phi Kappa; Guilford
College '41.

*Blue, First Star, Forget-me-
nots.*



LEILA MCKIMMON

Raleigh, North Carolina

Rho Delta Chi.

*Chow Mein, Orchids, T.
Dorsey, Pink, Earrings.*



MARGARET SUE MASSEY
Raleigh, North Carolina

Peggy

Sigma Phi Kappa; May
Court '41; Business Staff
Lots '41.

*Angora sweaters, Bangs,
Pop corn, Parades, Brace-
lets.*

The Seniors

Forty-two Lotus

CHARLOTTE W. MATTHEWS
Raleigh, North Carolina

Charlotte

Sigma Phi Kappa; May
Court '41; Business Staff
Lorus '41.

Swimming, Blue, Violets.

NANCY E. MIDDLETON
Raleigh, North Carolina

Nancy

Pi Theta Mu.

*Red Roses, Murrell, Choco-
late.*

LUCY MITCHNER
Wilson's Mills, N. C.

Sigma Phi Kappa, Secretary
'41; Stunt Night '41, '42;
Basketball '41, '42; Softball
'41, '42; Dean's List '42;
Stunt Night '41, '42.

*Sports, Week-ends, Wake
Forest.*





JANICE MULLEN
Raleigh, North Carolina
Janice

Sigma Phi Kappa.
*Red, "Sunrise Serenade,"
Uniforms, Chocolate Pudding.*



JESSIE HARPER NEWBOLD
Wilmington, North Carolina
Polly

Rho Delta Chi; P.S.C.A.
Cabinet '41, Vice President
'42; State Treasurer, S.C.A.
'42; Privileged Honor Roll
'41, '42; Phi Theta Kappa
'41, Treasurer '42; Sigma Pi
Alpha '42; Christmas
Pageant '42; Stunt Night
'42.

*Chocolate Ice Cream, Pink,
Davidson Boys, Conferences.*



DOROTHY DEAN OGBURN
Garner, North Carolina
Dot

Pi Theta Mu, Secretary '42;
Marshal '42.
*"Star Dust," Basketball,
Virginia, Red Roses, Blue.*

The Seniors

Peace Junior College

MARGARET GRAINGER PARKER
Washington, D. C.

Margaret

Pi Theta Mu; Stunt Night '41, '42; May Day Court '41; Junior Day Student Council Representative '41; Business Staff Lotus '42.

Blue, "This Love of Mine," "Dream Girl of Pi Kappa Alpha," Carolina, Tommy Dorsey.

ISABELLA LOUISA PEARSALL
Rocky Point, North Carolina
Izzie

Rho Delta Chi; P.S.C.A. Cabinet '41, President '42; Privileged Honor Roll '41, '42; Outstanding Senior '42; Student Council '42; Sigma Pi Alpha '42; Honor Roll '42; Table Hostess '42; Glee Club '42, Vice President; Christmas Pageant '41, '42; Student Legislature '41; Current Events Club '41, President, second term; Monogram Club '42; Rho Representative '42; Dees Camera Club '41, '42; Hockey Team '41, '42; Archery '41; Tennis '42; Stunt Night '42.

Mountains, "Bobby" Parrot, Blue, "Concerto in B Flat Minor," Starlight.

ALICE TILLEY PITCHFORD
Raleigh, North Carolina

Slinky

Sigma Phi Kappa; Glee Club '41, '42.

Uniforms, Sweets, "Green Eyes," Dancing, Jewelry, Vacations.





GLADYS PITTMAN

Oak City, North Carolina

Gladys

Rho Delta Chi; Dean's List '42; Stunt Night '42; Chief Marshal '42.

Red Roses, Virginia Beach, Music, Babies.



LEONA LANE PORTER

Franklin, North Carolina

Lane

Sigma Phi Kappa; Christmas Pageant '41, '42; Dees Camera Club '42; Business Staff LOTUS '42.

People, Brains, Tschaiikowsky, Books.



FRANCES GLENN RAINEY

Raleigh, North Carolina

Pokey

Sigma Phi Kappa, President '42, Treasurer '41; Hockey '41; Monogram Club '41, '42; Glee Club '41; Papyrus Club '41, '42; *Voices of Peace* Staff, Literary Editor '41; *Lotus* Editorial Staff '41, '42, Editor-in-Chief '42; Sigma Pi Alpha '42; Day Student Council Secretary '42; Stunt Night '41; Outstanding Senior '42; Phi Theta Kappa '42; Tennis '41, '42, Captain '42; Scholarship Club '41.

Blue, Lucien LeLong, "Indiscreet," Rain, Emily Dickenson, Gardenias, George Gershwin.

The Seniors

Forty-two Lotus

ELIZABETH TECKLA REINS

Lenoir, North Carolina

Teck

Rho Delta Chi, Vice President '42; Junior Representative Student Council '41; P.S.C.A. Cabinet, Secretary '42; Dean's List '41, '42; Papyrus Club '41, '42; Business Manager *Voices of Peace* '42; Business Staff *Lotus* '42; Current Events Club '41; Program Chairman, Third Term; Scholastic Club '41; Christmas Pageant '41; May Day '41; Student Legislature '41.

Sara, Quiet Hour, Air Mails, Cherry Cokes.

MARY MAYO RIKER

Statesville, North Carolina

Mary-O

Rho Delta Chi; Glee Club '42, Treasurer '42; Papyrus Club '42, Vice President '42; Granddaughter's Club '42; Christmas Pageant '42.

Glenn Miller, Walking in the Rain, Music, Kittens, Pink.

WINIFRED ROSE

Smithfield, North Carolina

Winnie

Pi Theta Mu; Christmas Pageant '41; Papyrus Club '41, President '42; Sigma Pi Alpha '41, '42; Pi Theta Kappa '42; Scholarship Club '42; Granddaughter's Club '41, '42; Current Events Club '41; Dean's List '42.

Open Fires, Steaks, Blue eyes, Sarcasm, "Suivez-Moi."





JANE ROYSTER
Fayetteville, North Carolina
Jane

Sigma Phi Kappa; Senior Class Vice President '42; Dean's List '42; Stunt Night '42.

Movies, Perfume, Convertibles, Food.



ZANA FLORENCE STUDEBAKER
Carrboro, North Carolina
Zana "Flo"

Rho Delta Chi; Student Council Treasurer '42; Current Events Club '41, Secretary, First Term; Glee Club '41; Table Hostess '42; Editorial Staff *LOTUS* '42; May Day '41; Christmas Pageant '41; Archery '42; Privileged Honor Roll '42.

Daddy, Vivian, Florida, Traveling, Radio, Red.



SARA GRIFFITH TATE
Gastonia, North Carolina
Sara

Rho Delta Chi; Student Council Representative Class of '42; Dean's List '42; Christmas Pageant '41; Society Play '41; Student Legislature '41; Honorary Peace Hockey Second Team '42.

Revel Ice Cream, "Time Was," "Evening-in-Paris," Picnics, "Teckie."

The Seniors

Peace Junior College

GRETCHEN TERRELL

Raleigh, North Carolina

Peggy

Sigma Phi Kappa; Papyrus Club Secretary '42; Sigma Pi Alpha '41, President '42; Phi Theta Kappa '42; Senior Stunt '42.

Frank Sinatra, "Blues In the Night," Butterscotch, Mountains.

JANET MILLER TOMLINSON

Black Creek, North Carolina

Janet

Pi Theta Mu; Glee Club '41; Stunt Night '42; Monogram Club '41, Equipment Manager '42; Basketball Captain '42; Hockey Team '41; Softball '41, '42; Basketball '41, '42; Dees Camera Club '42; Current Events Club '41; May Day '41; Christmas Pageant '41; Ping-pong '41, '42.

Yellow, J. J., "This Love of Mine," Jewelry, Flowers, Music.

LOUISE VAUGHAN

Rich Square, North Carolina

Louise

Rho Delta Chi; Papyrus Club '41, '42; P.S.C.A. Cabinet, Treasurer, '42; Stunt Night '41; Glee Club '41.

Eunice, Hospitals, Strauss Waltzes, Blue.





JANE JOHNSON WALTER
Burgaw, North Carolina
Jane

Rho Delta Chi, President '42; Marshal '41, '42; Society Play '41; Stunt Night '41, '42; Outstanding Senior '42; Current Events Club '41; Granddaughter's Club '41, '42.

Magazines, Brantley's Ice Cream, Swimming, Good Food, Burgaw.



MARY GORDON WALTERS
Bladenboro, North Carolina
Gordie

Rho Delta Chi, Treasurer '42; Riding Club '41; Christmas Pageant '41, '42; Stunt Night '41, '42; Glee Club '41; May Day '41; Hockey '41, '42; Tennis '41, '42.

Music, English Tweeds, Versatility, Dirty-faced Children, High Places.



NINA FANNIE WRENN
Cary, North Carolina
Nina

Pi Theta Mu; Dees Camera Club '42; Granddaughter's Club '41, '42; Stewart Robertson Art Scholarship '42.

Blue, Baseball.

The Seniors

AND these are our senior superlatives.
. . . Elected in the late fall by the popular
vote of the entire student body, these are the
girls we have chosen as the outstanding senior
women of the year.

Leatherhead . . . because she's President of Pi Theta Mu, a member of the Student Council, President of the Athletic Association . . . because she's served her offices faithfully and sincerely, and endeared herself to the student body with her Waynesville brogue.



Chunn . . . because she's President of Phi Theta Kappa, business manager of the Loretts, and a member of Rho Delta Chi . . . because her interest and enthusiasm for all undertakings of the Senior Class have been unparalleled, and her loyalty unflinching.

Fountain . . . because she's President of the Senior Class, a marshal from Sigma Phi Kappa, and a member of the Student Council . . . we elected her May Queen, which honor she accepted with her usual grace . . . because she's our "Hedy" of the Senior Class.

Outstanding





Pokey because she's President of Sigma Phi Kappa, editor-in-chief of the *Lore's*, a member of the Papyrus Club, and Secretary-Treasurer of the Day Student Council . . . because she's in Phi Theta Kappa and Sigma Pi Alpha . . . because of her brilliant ideas and energetic personality.

Seniors



Isabel . . . because of her outstanding leadership as President of the Peace Student Christian Association . . . because she's helped make the religious life at Peace more real to us . . . she's a member of Rho Delta Chi and of Sigma Pi Alpha; capable and amiable.



Jane . . . because she's proved herself capable of handling the difficult job of presiding over the new society, Rho Delta Chi . . . because she's had a leading part in our stunts both junior and senior years . . . because she's friendly, unselfish, and fun.

MAY QUEEN



MISS ANN FOUNTAIN

MISS PEACE

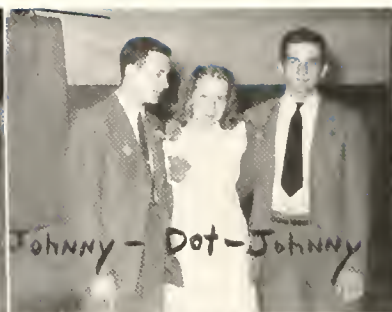


MISS DOROTHY HARRISON

THE SENIORS--AT EASE



Jean AND Dick



Johnny - Dot - Johnny



LIB



WIFE



W.L. AND JIMMY



GENNY AND CHARLIE



Cocky AND Pokey



MARY-O AND BILL

The Juniors

And these are our Juniors—who look up to the Seniors (until they're upperclassmen themselves) and who look down on the preps. . . . They slave over the Jr.-Sr.—well, once a year.

DOROTHY JEAN WILSON
President

BETTY RHODES
Vice President

MARTHA THORNTON
Secretary

LIB BEATY
Treasurer

MISS MARGARET LITTLE
Sponsor



Seated: Thornton, Beaty.
Standing: Wilson, Miss Little, Rhodes.



COURTNEY ALLEN, Goldville, S. C., *Rho Delta Chi*
 MARY MINTER AFSBON, Tarboro, N. C., *Rho Delta Chi*
 MARGARET ANN BAGLEY, Raleigh, N. C., *Pi Theta Mu*
 SARAH BAILEY, Fair Bluff, N. C., *Pi Theta Mu*
 BETSY BARROW, Raleigh, N. C., *Rho Delta Chi*
 HAZEL BAUCOM, Durham, N. C., *Pi Theta Mu*
 JANE BEAMAN, Raleigh, N. C., *Rho Delta Chi*
 JOSEPHINE BEATTY, Ivanhoe, N. C., *Pi Theta Mu*
 ELIZABETH BEATY, Raleigh, N. C., *Sigma Phi Kappa*
 DOROTHY BEDDINGFIELD, Raleigh, N. C., *Pi Theta Mu*
 FLORRIE BEST, Dobb, N. C., *Sigma Phi Kappa*
 BETTY BIBERSTEIN, Charlotte, N. C., *Rho Delta Chi*
 ELEANOR KATHRYN BLALOCK, Hazelwood, N. C., *Pi Theta Mu*
 NELL BOYETTE, Carthage, N. C., *Pi Theta Mu*
 MARGARET BRIGGS, Raleigh, N. C., *Rho Delta Chi*
 BEATRICE BRINKLEY, Stob, N. C.
 DOROTHY BRITT, Clinton, N. C., *Sigma Phi Kappa*
 MARGARET BROCKWELL, Raleigh, N. C., *Rho Delta Chi*
 MARGARET BRUTON, Biscoe, N. C., *Rho Delta Chi*
 JOYCE CARROLL, Turkey, N. C., *Pi Theta Mu*

The Juniors

1942 Lotus

- CARRIE CARTER, Henderson, N. C., *Sigma Phi Kappa*
 ELIZABETH CARTER, Wallace, N. C., *Sigma Phi Kappa*
 SUSAN CARTER, Wallace, N. C., *Pi Theta Mu*
 EDITH ANN CAVINESS, Lillington, N. C., *Sigma Phi Kappa*
 HELEN MARIE CAYTON, Kinston, N. C., *Pi Theta Mu*
 EVELYN CHEEK, Raleigh, N. C., *Sigma Phi Kappa*
 GRACE COATES, Raleigh, N. C., *Pi Theta Mu*
 KATHRYN CRECH, Bethesda, Md., *Pi Theta Mu*
 JANE CROMARTIE, Garland, N. C., *Pi Theta Mu*
 ELIZABETH CROOM, Knightdale, N. C., *Rho Delta Chi*
 BETTY CULBRETH, Fayetteville, N. C., *Pi Theta Mu*
 FLORINE CURRIN, Rowland, N. C., *Rho Delta Chi*
 JANE CUSICK, Kingsport, Tenn., *Rho Delta Chi*
 MARGARETTA DAIL, Kenansville, N. C., *Pi Theta Mu*
 MARY DALRYMPLE, Jonesboro, N. C., *Pi Theta Mu*
 ADELAIDE DARDEN, Ayden, N. C., *Sigma Phi Kappa*
 MARJORIE DEAN, Wendell, N. C., *Pi Theta Mu*
 BETTY JEAN DOWNES, Cape Charles, Va., *Sigma Phi Kappa*
 CORA DRAKE, Bennettsville, S. C., *Rho Delta Chi*
 DOROTHY DEKES, Ahoskie, N. C., *Rho Delta Chi*





DAPHNE DUNN, Raleigh, N. C., *Sigma Phi Kappa*
 BESSIE DWORSKY, Raleigh, N. C., *Pi Theta Mu*
 KATHERINE EMORY, Raleigh, N. C., *Sigma Phi Kappa*
 SARAH ENTSINGER, Boh Air, Va., *Sigma Phi Kappa*
 LAURA FAULKNER, Kinston, N. C., *Pi Theta Mu*
 JANE DUDLEY FRANCIS, Waynesville, N. C., *Pi Theta Mu*
 BETTY ANN FULGHUM, Kenly, N. C., *Rho Delta Chi*
 MARGARET FUQUAY, Lillington, N. C., *Sigma Phi Kappa*
 MARGUERITE GASKIN, Smithfield, N. C., *Pi Theta Mu*
 PEGGY GATTIS, Raleigh, N. C., *Pi Theta Mu*
 ANNE GLASS, Greensboro, N. C., *Rho Delta Chi*
 JEAN GLENN, Raleigh, N. C., *Sigma Phi Kappa*
 ANNE GODWIN, Raleigh, N. C., *Sigma Phi Kappa*
 ELIZABETH GORE, Raeford, N. C., *Sigma Phi Kappa*
 MARGARET GRANT, Mocksville, N. C., *Rho Delta Chi*
 JANE GUTHRIE, Pearisburg, Va., *Rho Delta Chi*
 MARY FRANCES HASKINS, Kinston, N. C., *Pi Theta Mu*
 JANE HENDRICKS, Raleigh, N. C., *Pi Theta Mu*
 ANN HENDRIX, Raleigh, N. C., *Sigma Phi Kappa*
 MARY HILL, Raleigh, N. C.

The Juniors

1942 Lotus

- LAURA HOLLAND, Raleigh, N. C., *Rho Delta Chi*
 FRANCES HUGHES, Halifax, Va.
 REBECCA HURT, North Tazewell, Va., *Sigma Phi Kappa*
 ELEANOR JOHNSON, Pittsboro, N. C., *Sigma Phi Kappa*
 BETSY JOHN JONES, Raleigh, N. C.
 KATHERINE JONES, Apex, N. C., *Rho Delta Chi*
 MARGARET JONES, Laurinburg, N. C., *Rho Delta Chi*
 ELEANOR KIRKPATRICK, Cary, N. C., *Pi Theta Mu*
 MAY GORDON LATHAM, Greensboro, N. C., *Sigma Phi Kappa*
 IDA B. LEESON, Rocky Mount, N. C., *Sigma Phi Kappa*
 NANCY LEWIS, Chadbourne, N. C., *Sigma Phi Kappa*
 ELLEN LEE LOVELACE, Goldsboro, N. C., *Pi Theta Mu*
 IRIS LYNCH, Fuquay Springs, N. C.
 ELLEN LYNDON, Raleigh, N. C., *Pi Theta Mu*
 DORIS LYON, Elizabethtown, N. C., *Pi Theta Mu*
 ELSIE McCAIN, Newport, N. C., *Pi Theta Mu*
 ANNIE LUCIA McCALLUM, Rowland, N. C., *Rho Delta Chi*
 MARGARET McClURKAN, Pineville, Ky., *Pi Theta Mu*
 ELLA BETH McCRERY, Colerain, N. C., *Rho Delta Chi*
 NANCY McCULLOCH, Elizabethtown, N. C., *Sigma Phi Kappa*



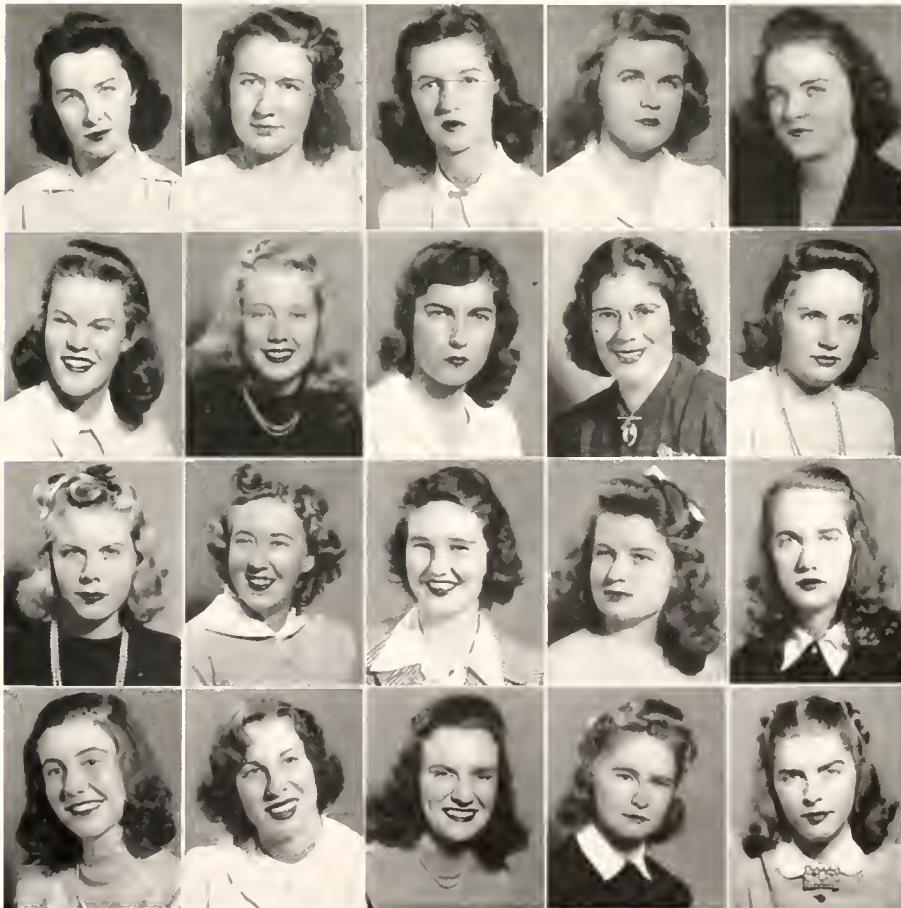


MARY ELIZABETH MCINTYRE, Laffinburg, N. C., *Sigma Phi Kappa*
 KATE MCKIMMON, Raleigh, N. C., *Rho Delta Chi*
 MILLIE MANN, Dobb, N. C., *Sigma Phi Kappa*
 MARY THAYNE MASSENGILL, Raleigh, N. C., *Pi Theta Mu*
 MARGARET MASSEY, Hampden-Sydney, Va., *Pi Theta Mu*
 BETTE MONTGOMERY, Salemi, Va., *Sigma Phi Kappa*
 MARION MORTON, Oxford, N. C., *Sigma Phi Kappa*
 REBECCA MORTON, Oxford, N. C., *Sigma Phi Kappa*
 CORA LEE MYATT, Clayton, N. C., *Pi Theta Mu*
 SUSAN NEWHAM, Raleigh, N. C., *Pi Theta Mu*
 EUNICE PARKER, Mohit Olive, N. C., *Rho Delta Chi*
 NELL PARKER, Lillington, N. C., *Sigma Phi Kappa*
 HELEN PATTERSON, Roseboro, N. C., *Pi Theta Mu*
 VIVIAN PEARSON, Kinston, N. C., *Pi Theta Mu*
 MARY PEELE, Goldsboro, N. C., *Pi Theta Mu*
 MARY ANNA PENCE, Wagram, N. C., *Pi Theta Mu*
 HARRIET PRESSLY, Raleigh, N. C., *Rho Delta Chi*
 BETTY RHODES, Lincolnton, N. C., *Rho Delta Chi*
 DOROTHY RICHESON, Hazelwood, N. C., *Pi Theta Mu*
 LOIS ROBERTSON, Henderson, N. C., *Sigma Phi Kappa*

The Juniors

1942 Lotus

- BETTY RUMBAUGH, Raleigh, N. C., *Sigma Phi Kappa*
 ELLA MAE SAULS, Raleigh, N. C., *Pi Theta Mu*
 ELEANOR SELF, Raleigh, N. C., *Sigma Phi Kappa*
 HELEN SHAW, Fayetteville, N. C., *Sigma Phi Kappa*
 MARY SHAW, Fayetteville, N. C., *Rho Delta Chi*
 VIRGINIA SHAW, Haverford, Pa., *Sigma Phi Kappa*
 PATSY SHORT, Shelby, N. C., *Sigma Phi Kappa*
 VIRGINIA SHORT, Elm City, N. C., *Pi Theta Mu*
 REBECCA SIMMONS, Wake Forest, N. C., *Sigma Phi Kappa*
 MARY ANN SLAUGHTER, Raleigh, N. C., *Pi Theta Mu*
 ANNE SMITH, Raleigh, N. C., *Pi Theta Mu*
 MARYANA SMITH, Kingsport, Tenn., *Sigma Phi Kappa*
 WILMA SMITH, Bay City, Mich., *Sigma Phi Kappa*
 YVONNE SMITH, Farmville, N. C., *Rho Delta Chi*
 BETSY SNIPES, Raleigh, N. C., *Rho Delta Chi*
 EMMA SOUTHERLAND, Smithfield, N. C., *Pi Theta Mu*
 MARILYN SPIERS, Raleigh, N. C., *Sigma Phi Kappa*
 HILDA STEPHENS, Fairmont, N. C., *Sigma Phi Kappa*
 BETTY STONEBANKS, Raleigh, N. C., *Sigma Phi Kappa*
 BETTY TATUM, Tatum, S. C., *Sigma Phi Kappa*





GLADYS TAYLOR, Raleigh, N. C., *Pi Theta Mu*
 JEAN TAYLOR, Raleigh, N. C., *Rho Delta Chi*
 PEGGY TAYLOR, Winston-Salem, N. C., *Sigma Phi Kappa*
 HELEN TEISER, Henderson, N. C., *Sigma Phi Kappa*
 GLORIA TEMPLE, Raleigh, N. C., *Sigma Phi Kappa*
 WILMA THOMPSON, Erwin, N. C., *Sigma Phi Kappa*
 MARTHA THORNTON, Durd, N. C., *Sigma Phi Kappa*
 BELLE THORP, Oxford, N. C., *Sigma Phi Kappa*
 FRANCES THURSTON, Raleigh, N. C., *Pi Theta Mu*
 ANN TRICE, Fayetteville, N. C., *Sigma Phi Kappa*
 MARGARET TUCKER, Winston-Salem, N. C., *Rho Delta Chi*
 GRACE WALKER, Ahsokie, N. C., *Pi Theta Mu*
 HELEN WALKER, Mocksville, N. C., *Rho Delta Chi*
 MARTHA WALLACE, Raleigh, N. C.
 VERA ESTELLE WATKINS, Wake Forest, N. C.
 MARTHA LOVE WEST, Marietta, Ga., *Sigma Phi Kappa*
 BETTY WHEELER, Louisburg, N. C., *Pi Theta Mu*
 GLENN WHITFIELD, Kinston, N. C., *Pi Theta Mu*
 COLLEEN WIDENHOUSE, Concord, N. C., *Sigma Phi Kappa*
 CAROLINE WILLIAMS, Inez, N. C., *Rho Delta Chi*

The Juniors

1942 Lotus

DOROTHY JEAN WILSON, Durham, N. C., *Sigma Phi Kappa*

JANE WILSON, Raleigh, N. C., *Pi Theta Mu*

MARY ALICE WILSON, Raleigh, N. C., *Pi Theta Mu*

ROSA WINBOURNE, Raleigh, N. C., *Rho Delta Chi*

BESSIE WOODARD, Raleigh, N. C., *Pi Theta Mu*

CECILE WOODRING, Easton, Pa., *Rho Delta Chi*

EMMA WRENN, Cary, N. C., *Pi Theta Mu*

SPECIAL STUDENTS

ANN CARTER, Wallace, N. C., *Pi Theta Mu*

MARGARET GLENN, Raleigh, N. C., *Pi Theta Mu*

BETTY PATRICK, Kings Mountain, N. C., *Pi Theta Mu*



The lowly ones . . . but invaluable for their fun-making, frolicsome ways, and good sportsmanship. Their officers are chosen from the Senior Preps, who, like the college girls, plan for graduation in June.

KATHERINE WALSER
President

MARY ANN FOUSHEE
Vice President

PATTY SILLIMAN
Secretary-Treasurer

MISS LOUISE MANGET
Sponsor

PREPS



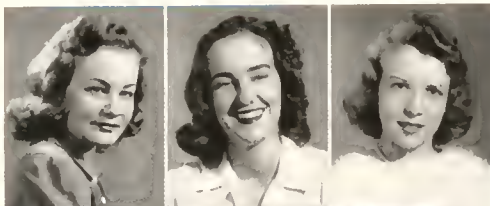
Left to right: Walser, Miss Manget, Silliman, Foushee.

Preps

MARY LOUISE ABERNETHY, Raleigh, N. C.

KATHERINE ACREE, Petersburg, Va.,
Sigma Phi Kappa

MARY ELIZABETH ANDREWS, Raleigh,
N. C., *Sigma Phi Kappa*



FANNIE COOPER, Henderson, N. C., *Sigma Phi Kappa*

JOANNE COUSART, Charlotte, N. C.,
Pi Theta Mu

MARY ANN FOUSHEE, Greensboro,
N. C., *Sigma Phi Kappa*



SARAH HOLMES, Greensboro, N. C., *Sigma Phi Kappa*

NANCY McCAULEY, Danville, Va., *Sigma Phi Kappa*

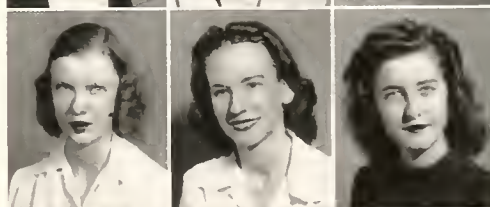
MARY FRANCES MITCHELL, Raleigh,
N. C., *Sigma Phi Kappa*



BETTY MORRISON, Charlotte, N. C., *Rho Delta Chi*

MARGARET MYATT, Smithfield, N. C.,
Pi Theta Mu

DORA PICKETT, Wallace, N. C., *Rho Delta Chi*



FRANCES SHOLES, Lynchburg, Va., *Sigma Phi Kappa*

ANABEL STANCILL, Raleigh, N. C.,
Sigma Phi Kappa

CHARLOTTE STANTON, Sanford, N. C.,
Rho Delta Chi



ANNE TODD, Raleigh, N. C., *Pi Theta Mu*

BETTY VREELAND, East Orange, N. J.,
Rho Delta Chi

KATHERINE WALSER, Concord, N. C.,
Sigma Phi Kappa

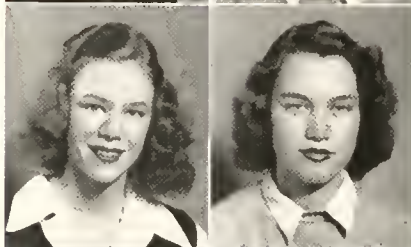


Preps



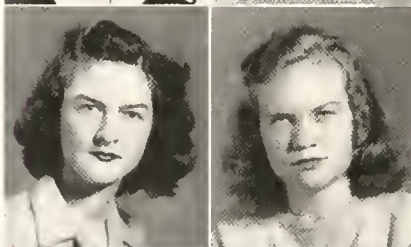
MARTHA ASKEW, Raleigh, N. C., *Sigma Phi Kappa*

JANE BROWN, Aruba, Curacao, N. W. I.,
Rho Delta Chi



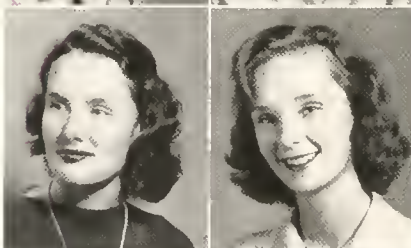
ANNE GRANT, Mocksville, N. C., *Rho Delta Chi*

JEAN HALL, Fayetteville, N. C., *Rho Delta Chi*



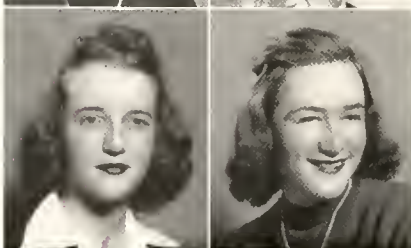
MILDRED KIRKLAND, Charlotte, N. C.,
Sigma Phi Kappa

LILLIAN LEGRAND, Shelby, N. C., *Sigma Phi Kappa*



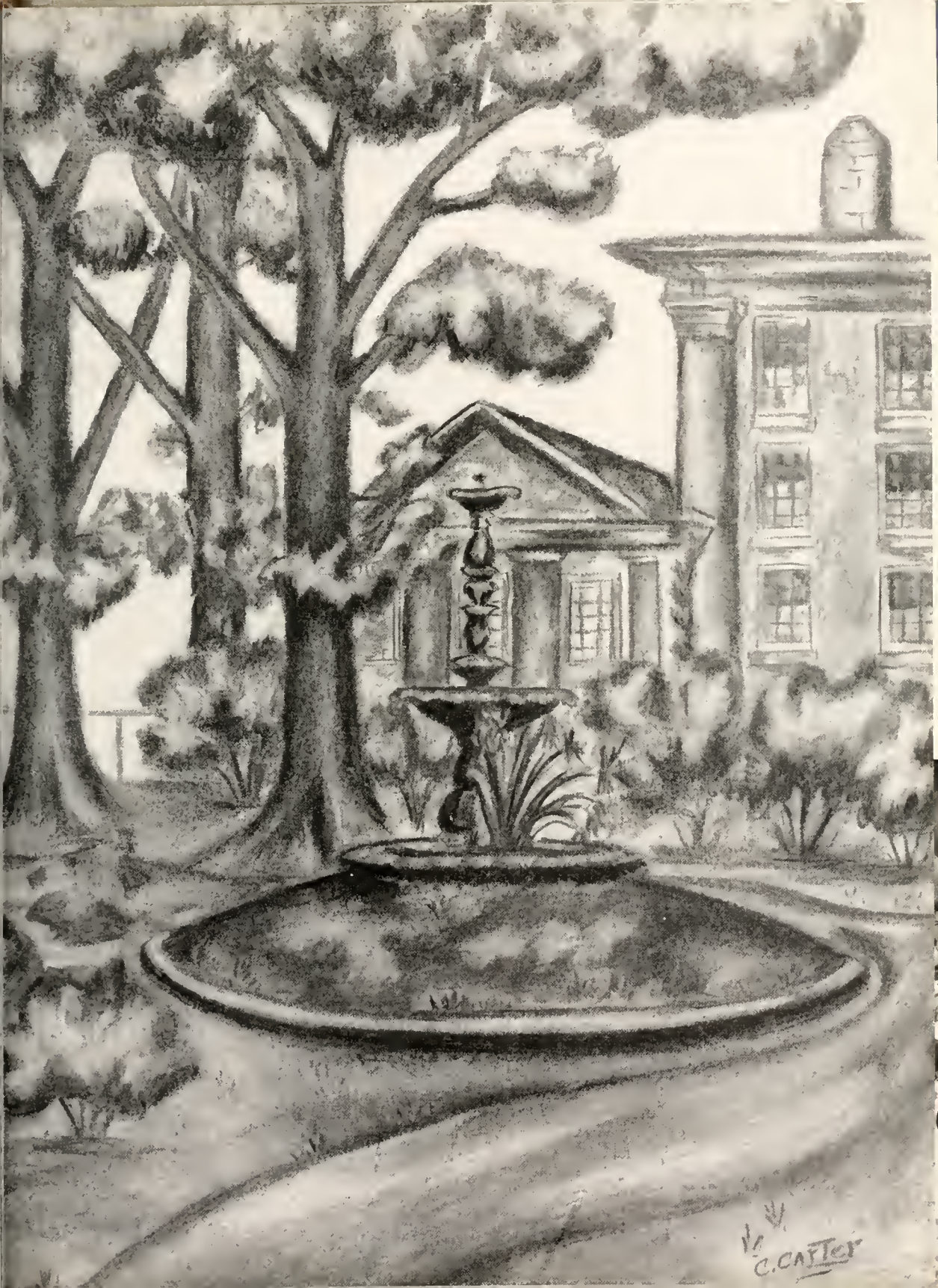
DOROTHEA SILLIMAN, Greensboro, N. C.,
Sigma Phi Kappa

PATRICIA SILLIMAN, Greensboro, N. C.,
Sigma Phi Kappa



MARIETTA SMITH, Mocksville, N. C.,
Sigma Phi Kappa

ALYCE WHITTED, Gallup, New Mexico,
Rho Delta Chi



C. CARTER

SOCIETIES

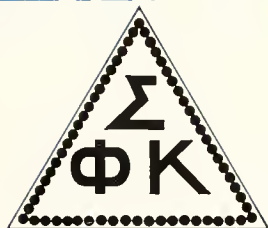
JANE WALTER
Rho Delta Chi
DOROTHY OGBURN
Pi Theta Mu

CATHERINE JONES
Sigma Phi Kappa
GLADYS PITTMAN
Rho Delta Chi

SARA GENHEIMER
Pi Theta Mu
ANN FOUNTAIN
Sigma Phi Kappa



SIGMA PHI KAPPA



FRAN RAINEY
President

MARJORIE BAILEY
Vice President

LUCY MITCHNER
Secretary

HELEN ANDREWS
Treasurer

MISS PERRY LEE JONES
Sponsor

MISS MARGARET LITTLE
Co-sponsor

"Sigs, loyal Sigs" . . . we're proud of being the oldest and largest society at Peace . . . and the only society to win permanently the silver cup for dramatic ability. . . . Remember the fun we had? Rush week . . . the Barnyard Brawl and M. B.'s "Old Faithful" . . . suspense of pledge day and our sixty-three new girls . . . initiation and the coal pile. . . . "I shall conform my conduct" . . . the banquet and dancing afterwards? . . . the Red Cross fund . . . Sig play . . . purple and gold.





SARA LEATHERWOOD
President

PI THETA MU



SARAH GENHEIMER
Vice President

DOROTHY OGBURN
Secretary

PEGGY BREWER
Treasurer

MISS WINIFRED KUHN
Sponsor

MRS. CHARLES WILLIAMS
Co-sponsor

"Pi Theta Mu, we pledge you our allegiance" . . . organized at Peace in 1906 . . . our "watchbird" posters . . . the pies we gave out in chapel . . . open house and too much food . . . molasses and flour at initiation . . . Glenn and Vivian at the banquet . . . and weren't we proud to win the inter-society hockey tournament? . . . Cherish the green and white.



RHO DELTA CHI



JANE WALTER
President

TECKLA REINS
Vice President

KATHRYN BISCEGLIA
Secretary

MARY GORDON WALTERS
Treasurer

Sponsor

MISS BERTIE LEE WHITESIDES

MISS LETITIA CURRIE

Co-sponsor

"Stand up and cheer for Rho Delta Chi" . . . school year begun . . . movie party . . . story telling with Mrs. Pressly . . . munching apples . . . roses for the Rho's . . . initiation . . . most honorable member of the Rho Delta Chi society . . . acorn pushing with noses . . . early morning jaunt . . . banquet at Sir Walter . . . poems for speeches . . . "I Love You Truly" by Miss Currie . . . calm after storm . . . sports competition . . . red and white.





GRETCHEN TERRELL
President

SIGMA PI ALPHA

On May 5, 1939, the Theta Chapter of Sigma Pi Alpha was established at Peace, and at that time, we were proud to be the only junior college with the distinction of having a chapter. Membership is obtained by invitation and is limited to those students with a high honor average in languages and an honor average in general scholastic work.

Miss Ann Raynor, our sponsor, is also the national vice president of this honorary language fraternity.



Left to right: Biscaglia, Luck, Blayney, Terrell, Rainey, Rose.

PHI THETA KAPPA



ANNE CHUNN
President

In 1939 the Gamma Phi Chapter of Phi Theta Kappa was established at Peace, the society being a national organization and functioning in the junior college as Phi Beta Kappa does in the four-year college.

Tapping services for new members are held twice during the year: in the early fall and again in the late spring. The members are chosen for scholarship, character, and leadership. At Peace the membership is limited to twelve.

This year the society has made excellent progress under the capable leadership of its president, Ann Chunn, and under the guiding influence of its sponsor, Miss Perry Lee Jones.



Front row: Rainey, Terrell.
Back row: Chunn, Luck, Newbold, Rose, Leatherwood.

Scholastic Honors

At the end of each term scholastic honors are announced in two honor rolls: the first being composed of those girls averaging ninety or above on each subject; the second being composed of those girls averaging ninety or above on all subjects. Thus this honorary group is made up of those girls who have maintained throughout the school year a high standard of work.

SENIORS

Isabelle Pearsall, Rocky Point, N. C.; Winifred Rose, Smithfield, N. C.; Anne Chum, Fort Bragg, N. C.; Marjorie Luck, Raleigh, N. C.; Frances Rainey, Raleigh, N. C.; Gretchen Terrell, Raleigh, N. C.

JUNIORS

Mary Hill, Raleigh, N. C.; Frances Thurston, Raleigh, N. C.; Elizabeth Croom, Raleigh, N. C.; Florine Currin, Rowland, N. C.; Jane Cusick, Kingsport, Tenn.; Cora Drake, Bennettsville, S. C.; Betsy John Jones, Raleigh, N. C.; Ida Belle Leeson, Rocky Mount, N. C.; Harriet Pressly, Raleigh, N. C.; Betty Rhodes, Lincolnton, N. C.; Jean Taylor, Raleigh, N. C.; Martha Wallace, Raleigh, N. C.; Martha Love West, Marietta, Ga.; Colleen Widenhouse, Concord, N. C.; Betty Patrick, Kings Mountain, N. C.

PREPS

Jane Brown, Aruba, Dutch West Indies; Fannie Cooper, Henderson, N. C.; Betty Lou Vreeland, East Orange, New Jersey.





E. SELF

ORGANIZATIONS

The P.S.C.A. Pageant.



PEACE CHRISTIAN ASSOCIATION

The Peace Student Christian Association is an organization to which every girl belongs all through the year. An active cabinet of four officers and eight highway chairmen, chosen from the junior and senior classes by the retiring cabinet and the sponsor, arranges for religious services and entertainments which are designed to make religion a definite part of each girl's life. The activities are varied: a party at the beginning of the year for new girls, regular Sunday night vespers, and morning watch services are sponsored by the P.S.C.A. The aim of the Christian Association is to "make Christ more real on our campus."



ISABELLE PEARSALL
President



Left to right: Massey, Richeson, Harrison, Rhodes, H. Shaw, Pearsall, Vaughn, M. Smith, Cusick, Biscaglia, Miss Steele, Newbold, Reins.



DOROTHY HARRISON
President

STUDENT COUNCIL

At Peace the student government is planned and executed by the Student Council, a group of girls elected by the students themselves. This group meets weekly to consider and act upon the problems of the students, and is also responsible for editing

the *Student Handbook*.

The Student Council works with the Day Student Council in sponsoring social activities, a traditional one being the Student Body Reception.



Seated: Biscaglia, C. Jones, Harrison, Fountain, Tate.
Standing: Leatherwood, Pearsall, Studebaker, H. Shaw.

DAY STUDENT COUNCIL

Important for promoting closer relationship between the boarding girls and the town students is the Day Student Council. Every two weeks the group meets to discuss the problems of the day students, and it is an invaluable aid in helping each new student to adjust herself to her new surroundings during Orientation Week.

There are five members on the Council, elected by the popular vote of the day student body. These girls also plan social events to draw the students into a closer unity.



HELEN ANDREWS
President



Seated: Rainey, Andrews, Luck.
Standing: J. Taylor, Check.



LOUISE LATHAM
President

GLEE CLUB

The Glee Club, under the direction of Mrs. Charles Williams, is an inspirational organization for the girls who desire to know more about choral singing and practical vocal music.

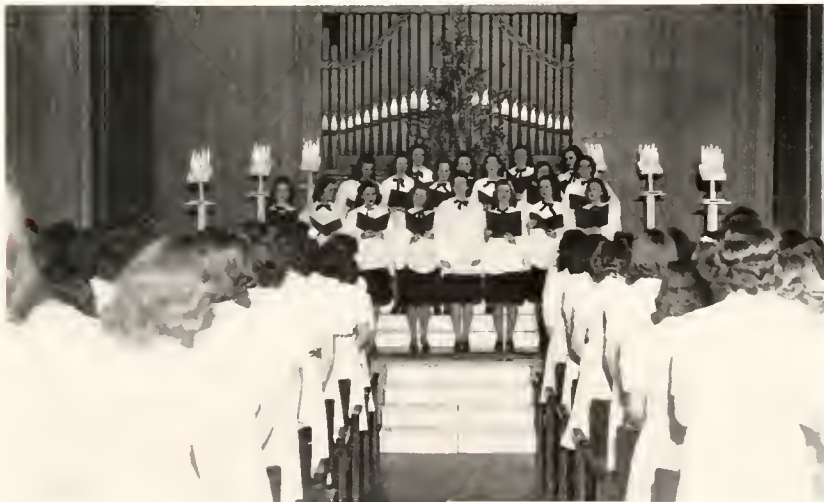
There are three major programs presented every year: the Christmas Carol Service, a spring concert in April, and the program for commencement and baccalaureate services. Each girl gets practical choir experience by participating in the choir for the regular weekly chapel services.



Left to right: Riker, Drake, M. G. Latham, Creech, P. Taylor, Pearsall, A. Grant, Temple, S. Carter, J. Wilson, H. Shaw, L. Latham, N. Parker, Tatum, M. Smith, Blayney, Patrick.

Peace is steeped in traditions. Among those best-loved by the student body is the annual carol service, presented the day before Christmas holidays by the Glee Club and the students. The following program was given in December 1941:

| | |
|---|----------------------------|
| PROCESSIONAL: O Come All Ye Faithful | <i>Adeste Fideles</i> |
| Silent Night, Holy Night | <i>Franz Gruber</i> |
| SCHOOL CHORUS | |
| God Rest Ye Merry Gentlemen | <i>Arr. by Edith Lang</i> |
| Holy Night, Peaceful Night | <i>Sir Joseph Barnby</i> |
| Sing Noel | <i>Bescancon Carol</i> |
| SCHOOL CHOIR | |
| Joy to the World | <i>Arr. from Handel</i> |
| SCHOOL CHORUS | |
| Slumber Song of the Infant Jesus | <i>F. A. Gevaert</i> |
| While By My Sheep (Christmas Hymn, 17th Century) | <i>Arr. by Max Spicker</i> |
| Hallelujah Chorus from "The Messiah" | <i>Handel</i> |
| SCHOOL CHOIR | |
| RECESSIONAL: Hark! The Herald Angels Sing | <i>Mendelssohn</i> |
| BETTY VAIDEN WILLIAMS, <i>Director</i> NELLY PHILLIPS STAUDT, <i>Accompanist</i> | |



THE LOTUS



FRAN RAINEY
Editor-in-Chief

EDITORIAL STAFF

Associate Editors

Kay Biscaglia, Zana Studebaker, Lib Kelly.

Assistant Editors

Cecile Woodring, Lib Beaty, Evelyn Check, Betty Stonebanks.

Art Editor

Peggy Sullivan

Assistant Art Editor

Eleanor Self

Typing Editor

Catherine Jones

Early last summer we began work on this—THE LOTUS of 1942—for you. The fall found all the staff members making schedules and supervising pictures, working constantly to complete photographs before Christmas. Then after the holidays, we plunged immediately into the task of preparing copy, writing, revising, typing—and the publications room was filled with the sound of the typewriter and cluttered with papers. Staff members cut out pictures, pasted, typed, read copy, checked proof. . . .

You and I are greatly indebted to a staff of willing and tireless workers, and especially to the art department for our charcoal drawings. Peggy Sullivan, art editor, and Eleanor Self, assistant art editor, deserve special mention for their splendid work, and we are grateful to our sponsor, Mrs. Worth, for directing our efforts and encouraging us.

We had fun working a lot, playing a little, joking now, and arguing then. And so—THE LOTUS of '42.



THE LOTUS

BUSINESS STAFF

Ann Fountain, *Assistant Business Manager*; Sarah Leatherwood, Sarah Entsminger, Grace Walker, Janet Tomlinson, Dorothy Britt, Margaret Parker, Teekla Reins, Sara Genheimer, Isabelle Pearsall, Peggy Brewer, Maryanna Smith, Lane Porter, Wilma Smith, Harriet Pressly.



ANNE CHUNX
Business Manager

Hot fall days found members of the business staff of the *LOTUS* already engaged in learning how to figure contracts, plan advertising layouts, and interview business executives. When it rained, we donned galoshes and continued our work of selling ads. We girls had fun, when under the guidance of Miss Mary Kirkpatrick, the adviser to the business staff, we made trips in the school car to all corners of Raleigh.





WINIFRED ROSE
President

PAPYRUS CLUB

The Papyrus Club was first organized in 1936 for those girls interested in creative writing. In the fall and again in the spring the girls who have high scholastic averages and who have successfully passed their try-outs are tapped into the club at a special assembly in chapel.

The student magazine, *The Voices of Peace*, is published by the club. It is issued quarterly and is entirely a student publication. The organization is sponsored by Miss Helen Salls, head of the English Department.



Seated: Rainey, Reims, Harrison, Riker, C. Jones, Leatherwood, Biscaglia.
Standing: Vaughn, D. Jones, Blayney, Rose, Genheimer, Drake.

DEES CAMERA CLUB

The one requirement for membership in the Dees Camera Club is an interest in photography. Organized in 1938, this group has made great progress with additional new equipment and books and magazines on photography which have been given to the library.

Early in the fall, the members are seen lurking behind pillar and post taking snapshots for the annual, while in the spring their work is devoted to printing and developing pictures.



MARJORIE LUCK
President



Seated: Gray, Luck, B. Smith.
Standing: Darden, V. Short, Porter, Tomlinson, Downs, L. Latham, M. G. Latham, D. Jones.

DAUGHTERS OF PEACE



CORA DRAKE, *President*

The aim of this club is to promote school spirit and to carry on the traditions of Peace. The membership requirement is that a parent or a grandparent be an alumna of Peace.

OFFICERS

CORA MACCORMAN DRAKE, *President*;
 KATHRYN MCKAY CREECH, *Vice President*;
 JANE JOHNSON WALTER, *Secretary*; MRS.
 CHARLES WILLIAMS (Betty Vaiden Wright),
Sponsor.

Front row: Martha Love West (daughter of Martha Love), Marietta, Ga.; Margaret Tucker (daughter of Virginia Myers and granddaughter of Margaret Steele), Winston-Salem, N. C.; Kathryn McKay Creech (granddaughter of Kathryn McKay), Bethesda, Md.; Mary Alice Wilson (daughter of Ruth Buffalo), Raleigh, N. C.; Doris Lyon (daughter of Bessie Robeson), Elizabethtown, N. C.; Mary Anna Pence (daughter of Mary Buie), Wagram, N. C.; Nancy Conn McCauley (daughter of Nancy Conn), Danville, Va.

Middle row: Emma Wrenn and Nina Wrenn (daughters of Wrennie Caudle), Cary, N. C.; Launa Faulkner (daughter of Bessie Wooteu), Kinston, N. C.; Florrie Vestal Best (granddaughter of Florence Vestal and granddaughter of Ross Smith), Dunn, N. C.; Jane Johnson Walter (daughter of Sallie Johnson), Burgaw, N. C.; Mary Shaw (daughter of Margaret Jennings), Fayetteville, N. C.; Cora McCormac Drake (granddaughter of Cora MacCormac), Bennettsville, S. C.; Mary Mayo Riker (daughter of Lois Long), Statesville, N. C.

Back row: Marguerite Gasken (daughter of Maggie Vinson), Smithfield, N. C.; Winifred Rose (daughter of Ruth Sanders and granddaughter of Lily Long), Smithfield, N. C.; Nell Parker (daughter of Blanche Johnson), Lillington, N. C.; Lillian LaGrand (granddaughter of Minna Torrence), Shelby, N. C.; Harriet Byrne Pressly (daughter of Dr. William C. Pressly), Raleigh, N. C.; Betty Tatum (daughter of Elizabeth Crown, granddaughter of Maude Dinwiddie and great-granddaughter of Dr. James Dinwiddie), Tatum, S. C.; Kate McKimmon (daughter of Willa Norris), Raleigh, N. C.

Not in picture: Peggy Gattis (daughter of Philip Gattis), Raleigh, N. C.; Annette Robinson (daughter of Llewellyn Williams), Wallace, N. C.; Eleanor Self (daughter of Sara Cowles), Raleigh, N. C.; Fannie Cooper (granddaughter of Mary Faucette), Henderson, N. C.





A Carter

ATHLETICS

Cheering and encouraging their teams to the victory line, the cheer leaders have been at arms' length all year long. Friendly competition magnified several times at the various games produced a result of fighting spirit—not only on the field, but also in the halls and in the classes—as to whose society was going to win the game. Then, on arriving on the scene of conflict, the spectators coöperated with the leaders with loud and emphatic enthusiasm. Almost any autumn afternoon, the rooters were found dashing to and fro, excitedly yelling to their teams.

Left to right: Betty Patrick, Pi Theta Mu; Mary Shaw, Rho Delta Chi; Betty Stonebanks, Sigma Phi Kappa.



Athletic Association

Although every girl studying physical education at Peace is a member of the Athletic Association, the active governing board is composed of the members of the Monogram Club. This board, at various times during the year, holds assembly meetings at which the point system is explained, awards are made, and health programs are presented. It also sponsors the various athletic tournaments and maintains the students' Little Store.

SARAH LEATHERWOOD
President



In the little store.



Top row: Leatherwood, Pressly, Quinn.
Bottom row: Rainey, Tomlinson, Walser.



HARRIET PRESSLY, *Head*

HOCKEY

Hockey spirit at Peace is high. The thrill of seeing the ball successfully evade the goalie and complete a point appeals to the girls. It appeals to them in such a way that the competition among the three societies is watched closely.

Each year a tournament is held in which each of the three societies plays the other two. In addition to the winning players' gaining points toward their monograms, their society is given points toward the society cup.



The Sigs fought a hard fight and managed to come in second place in the tournament—just a little harder next time, Sigs.



Left to right: Nell Parker, Sara Entsminger, Dorothy Jean Wilson, May Gordon Latham, Lois Robertson, Margaret Fuquay.



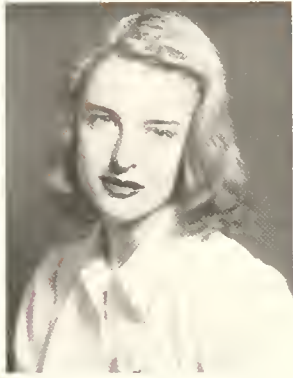
*Left to right: Virginia Short, Janet Tomlinson, Mary Dalrymple, Lee Love-
lace, Shelton Quinn, Helen Cayton.*

Congratulations to the Pi's for their honors in hockey this season . . . we're proud of your victory.

The Rho's provided stiff competition for the inter-society hockey games but in spite of their efforts were not able to beat the undefeatable Pi's.



Left to right: Courtney Allen, Jane Walter, Margaret Jones, Mary Shaw, Alyce Whitted, Isabelle Pearsall.



FRAN RAINY, *Head*

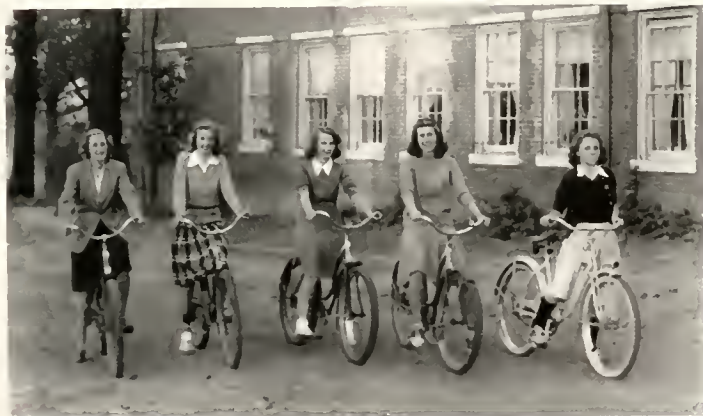
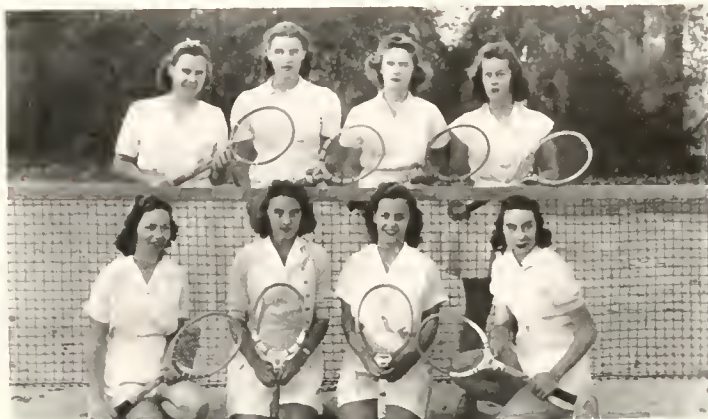
TENNIS

"Be my doubles partner" or "Have you signed up for the tournament?" rings out often before the tennis tournaments start. The ladder form tournament is used in both the singles and doubles. Medals are given to the winners in each, and they are coveted awards to P.A.A. girls. There is a tournament in the autumn and again in the spring. This autumn, Sara Genheimer won the singles finals.

Below is an action shot of the exciting autumn doubles finals, won by Jessie Newbold and Sara Genheimer.



Meet a typical group of tennis enthusiasts. Because of stiff competition, tennis seems to attract almost all of the student body — possibly for the love of the game, but more likely for a love-game. As a matter of fact, it is almost impossible to get the girls to stop playing long enough to put the long-since-gone lines back on the ground.



If Peace girls were suddenly allowed to have cars or even to ride in them, they would probably show their true athletic and patriotic colors and keep right on riding their bicycles. Who knows, perhaps these experts will have to teach their mothers and fathers the art.

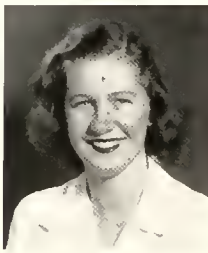
Golf is an up and coming sport at Peace, with good promises for the future. Although only a small number of students can take part at one time, the interest of a true golfer idles nor slows down in the heat of competition. It must be a good sport—the faculty likes it.





SHELTON QUINN
Head

Although none of our Peace "Robin Hoods" go around shooting apples from the tops of their classmates' heads, they do make the bull's-eye of their target look mistreated.



KATHERINE WALSER
Head

Softball teams are being formed all over the country now-a-days and the Peace Athletic Association is not behind. The girls really can send that ball down center field for a good run, too.



JANET TOMLINSON
Head

Basketball may be a little like tiddly-winks because of trying to bounce something through a hole of air encircled by something of a concrete nature, but it's no sissy game. It is a hard, fast, and exciting sport; and Peace girls love it.



Miss L. Currie: What is meant by the sentence, "Gladstone was admitted to the bar"?
Frances Sholes: I guess it means he was old enough to take a drink.

Carolina Coach Company

Carolino Owned and Operated

The Most Beautiful Coaches on the Highway

Low Fares

Frequent Schedules

NATION-WIDE SERVICE

• The task of Education is to look beyond the present and to prepare for the future. More than ever before, Queens is determined to undertake this task.

Sound education in the liberal arts and vocational subjects at moderate expense. Preparation for university graduate work.

Development of personal interests in extra-curricular activities.

For catalogue and further information, write HUNTER B. BLAKELY, President

QUEENS COLLEGE
CHARLOTTE, NORTH CAROLINA

JOHN ASKEW

PAINTING AND
INTERIOR DECORATING

*Estimates made in and
out of town*

Telephone 6824 402 Glenwood Ave.

For Pure Clear Crystal

ICE

and High Grade

COAL

PHONE 5589

CAPITAL

ICE AND COAL CO.

Incorporated

600 West Hargett Street

OAK CITY LAUNDRY

436 South Salisbury Street



TRICLENE

Odorless Dry Cleaning



HATS CLEANED *and* BLOCKED
RUGS SHAMPOOED

PHONE 4478

Miss Thomas: Who are Il Duce and der Fuhrer?
Dot Harrison: Well, Il Duce is dictator of Germany, and der Fuhrer is his wife.

BUWELL LIBRARY
PEACE

Carrie Carter: I never sleep on Sunday afternoons because I can't go through the agony of getting up twice in one day.

**THE FIRST PRESBYTERIAN CHURCH
AND
SUNDAY SCHOOL**

OF RALEIGH, NORTH CAROLINA

Extends a welcome to college girls. It is our hope that you will make this your church home during your stay in Raleigh. There are special classes organized in our Sunday school for college girls.

M. O. SOMMERS, Pastor

KARL G. HUDSON, Superintendent of Bible School

DAIRY PRODUCTS

**PASTEURIZED MILK
BUTTER - EGGS**

Insist on the Best—

**PINE STATE
ICE CREAM**

**PINE STATE
CREAMERY CO.**

Glenwood Avenue

Phone 2-3911

**SAY
BAMBY**

BREAD



ROYAL BAKING CO.

DIAL 4661

Raleigh, N. C.

Miss Perry Lee Jones: Give me an example of wasting energy.

Janet Tomlinson: Telling a hair-raising story to a baldheaded man.

Peggy Massey: What's the best way to open oysters?
Helen Andrews: Let Miss Currie tell a joke, and they will yawn themselves open.

"INSIST ON LANCE'S"
LANCE PACKING CO., Inc.

Candies and Peanut Products

Phone 2-0728

R. E. GRAHAM, Representative
Raleigh, N. C.



Raleigh's Smartest Shop
THE STYLE CENTER FOR THE
SMART COLLEGE GIRL
126 Fayetteville Street



"The Family Laundry Service which we are now using is Fine and my shirts are just right."

"Yes dear, I wish I had known of the Capital City Laundry long ago." You too, can enjoy this fine laundry service, just dial 8873.

You are always

WELCOME

at

WALGREEN'S

We appreciate your business

BYNUM PRINTING COMPANY

BETTER PRINTING

Phone 6417

Lib Beaty: Does that boy you had a date with last night talk much?
"Honey" Silliman: I was wondering about that myself.

BURWELL L.L.
PEACE

An examination at Peace is one of those affairs where you go in like a lamp and go out like a light.

**Edenton Street Methodist
Sunday School**

Welcomes the Peace
College Girls

DR. JOHN C. GLENN, *Pastor*
C. A. DILLON, *Supt. of Sunday School*

Neiman's
INC.
JEWELERS-SILVERSMITHS
RALEIGH, N.C.

GEO. MARSH CO.

(Incorporated)

Wholesale Distributors

Fine Food Products

Roleigh, N. C.

Vick Moore - B. E. Dennis - Earl Johnson

MOORE & JOHNSON CO.

"For 18 Years Raleigh's Leading
Insurance Agency"

Insurance : Surety Bonds

Lawyers Building
RALEIGH, NORTH CAROLINA

THE PHOTOGRAPHS

in this Annual were made by

DANIEL AND SMITH STUDIO

134 Fayetteville Street
RALEIGH, N. C.



College Annual Specialists



Fine Portraits

Prompt Service

Gladys Pittman: I'm going to take up horseback riding; it will increase my social standing.

Margaret Parker: I can't vouch for the social part, my dear, but it will increase your standing, no doubt.

Experience

LYNCHBURG ENGRAVED ANNUALS ARE
BUILT UPON YEARS OF EXPERIENCE
AS SPECIALISTS IN THE FIELD OF
SCHOOL PUBLICATIONS



IN successfully fulfilling the requirements of the modern College Annual Staff we have combined a comprehensive and systematic servicing program with that high standard of quality so essential in the production of fine yearbooks. Lynchburg engraved annuals are built by an organization specializing on school annuals exclusively, thereby assuring each staff of the personal and intelligent assistance so necessary in the planning and designing of a truly satisfactory book.

**LYNCHBURG
ENGRAVING
· COMPANY ·**

LYNCHBURG · VIRGINIA

Builders of Better Annuals

Jane Royster: Miss Currie, how long can a person live without brains?
Miss L. Currie: How old are you, Jane?

Hudson=Belk Company

Raleigh's Largest Department Store



***We Appreciate Your Patronage
and Look Forward
With Pleasure
to
Serving You
in the Future***

Charlotte Matthews: Tell me, Katherine, what has become of your ethics?
Katherine Jones: Oh, I traded it long ago for a Chevrolet.

Jane Walter: The first date in history is about 400 B.C.
Fountain: Who had it?

PERSON STREET PHARMACY

PERSON STREET : Two Stores : HAYES BARTON

P. D. GATTIS, Proprietor

A Complete Line of Nationally Advertised Drugs

Plus a Selected Assortment of Toilet Items

SODA OUR SPECIALTY

We Deliver Dial 7588

Halifax Street Grocery

601 Halifax Street

Choice Meats - Quality Groceries
Fresh Fruits and Vegetables

Raleigh, N. C.

DILLON SUPPLY CO.

Mill Supplies

Heating Equipment

Modern Machine Shop

RALEIGH DURHAM
ROCKY MOUNT

Ask for

GOLDEN TAP GRAPEFRUIT JUICE

At the Soda Fountains And insist
upon being served in
DIXIE CUPS

Garland C. Norris Co.

W. E. TRULL W. R. TRULL

TRULL PLUMBING & HEATING CO.

Plumbing : Heating

Coal Stokers

Air Conditioning

Phone 6353 411½ Fayetteville St.

STROP TAXI COMPANY

Day and Night Service

ALWAYS

READY

5811 — Phone — 5811

Oldest and Most Reliable

Miss Jones: Can anyone tell me what causes a tree to become petrified?
Betty Rhodes: The wind makes them rock!

BURWELL LIBRARY
PEACE

Miss Salls: Why is our language called the mother tongue?
Genny: Because father never gets a chance to use it!

MEREDITH COLLEGE

ACCREDITED liberal arts college: Southern Association of Colleges and Secondary Schools, American Association of University Women, Association of American Universities.

PROGRESSIVE educational program in terms of Christian character and service. Distinguished record of student honors. Excellent library facilities. Effective honor system.

ATTRACTIVE location in Raleigh, "the educational center of the State." Beautiful campus of 170 acres. Modern fireproof dormitories with generous provision for social activities.

Write for catalogue and folder of views.

CARLYLE CAMPBELL, President, Raleigh, North Carolina.

Compliments of

T. H. Briggs & Sons, Inc.

*"Carolina's Oldest Wholesale
and
Retail Hardware House"*

Established 1865 Phone 2-2025

Barbour Produce Co.

Dealer in

FRUITS and PRODUCE

Wholesale Only

Phone 4424 Res. Phone 4866

At City Market

FLOWERS!

*Cut Flowers - Corsages
Graduation Bouquets
Decorations*

PHONE 4070

J. J. FALLON CO., Inc.

"We Grow the Flowers We Sell"

Boylan-Pearce, Inc.

"Raleigh's

Shopping Center"



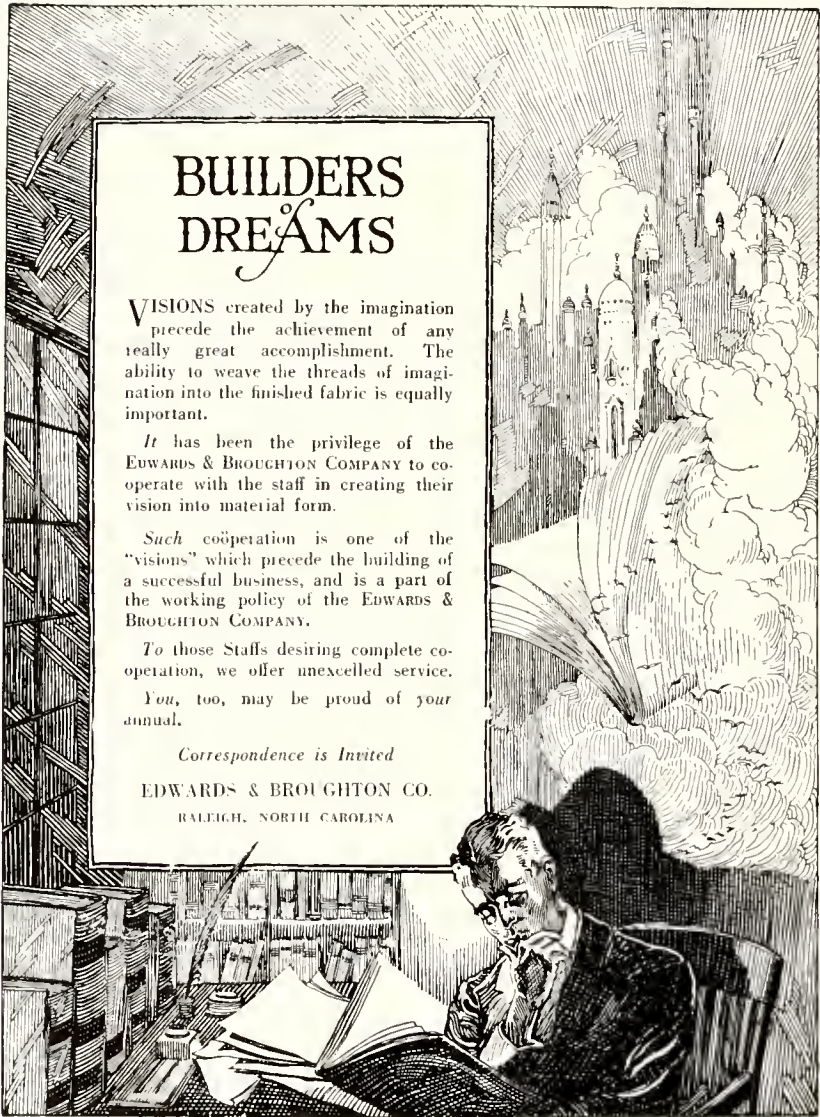
W. H. KING DRUG CO.

Wholesale Drugs

Phone 2-0525

117 South Wilmington Street
RALEIGH, N. C.

Fountain: What are you looking so sheepish about this morning?
Kacky: I couldn't sleep and was counting them all night.



BUILDERS DREAMS

VISIONS created by the imagination precede the achievement of any really great accomplishment. The ability to weave the threads of imagination into the finished fabric is equally important.

It has been the privilege of the EDWARDS & BROUGHTON COMPANY to cooperate with the staff in creating their vision into material form.

Such coöperation is one of the "visions" which precede the building of a successful business, and is a part of the working policy of the EDWARDS & BROUGHTON COMPANY.

To those Staffs desiring complete coöperation, we offer unexcelled service.

You, too, may be proud of your annual.

Correspondence is Invited

EDWARDS & BROUGHTON CO.
RALEIGH, NORTH CAROLINA

BURWELL LIBRARY
PEACE

Mrs. Worth: Fran, if that's Beaty, I'm not in.
Fran, returning: It was, ma'am, and she was very glad to hear it.

★ ★ ★ ★ ★ ★ ★ ★

"We're with you, Johnny!"

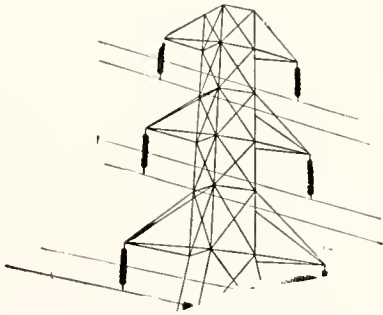


We mean that, Johnny, because some of the fellows in your outfit actually came from our organization. And a lot more of us would be there with you, but to make quick work of winning this war there are jobs which must be done back home.

The armed forces of which you are a part need various kinds of materials of war. Producing those materials is a job for industry. Our part of that job is to keep the factories in our territory supplied with electric power and you'd be surprised to know how much more power it takes today than during the last war.

It will take still more power as time goes along, so we're building new plant capacity, new lines, new substations.

We not only wish you luck, Johnny — we, and the folks back home, are working with you to defend the rights and privileges which we Americans enjoy.



**CAROLINA
Power & Light
Company**

★ ★ ★ ★ ★ ★ ★ ★

C. Jones: Why, are you going away already? There are two stunts to come.
Guest: Sorry; that's why I'm going.

FAMILIAR VOICES

Dunn (in the drug): He's in the air choir now.
Ha-Ha (on Spanish class): They won every squirmish they fought.
The Day Students: We are little squashes, tra-la.
Jinny: I haven't heard from Willie all day!

Lewis Sporting Goods Company

112 West Hargett Street

**BROGDEN
PRODUCE COMPANY**

Wholesale

**FRESH FRUITS and
VEGETABLES**

409-15 West Martin Street
RALEIGH, N. C.

**PATRONIZE
PIGGLY WIGGLY**

*For the Best GROCERIES - FRESH MEATS
FRESH FRUITS and VEGETABLES*

*Attractive Stores - Courteous Service
Reasonable Prices*

Home Owned - Home Managed

PIGGLY WIGGLY

Your Patronage Appreciated

Roleigh

Wilson

G. S. Tucker & Bros.

Incorporated

East Hargett Street
Raleigh, N. C.

**FURNITURE and
HOME FURNISHINGS**

We Appreciate Your
Patronage

Clayton

Smithfield

Brantley & Son

Expert Druggists

1910

Fine Sodas

**PROVIDENT MUTUAL LIFE
INSURANCE COMPANY**

OF PHILADELPHIA

Organized 1865

*Make your later years happy with
a retirement life income*

FRANK M. HARPER & SON

District Agents

RALEIGH, NORTH CAROLINA

JOB P. WYATT & SONS COMPANY

HARDWARE : IMPLEMENTS

DU PONT PAINT : VARNISH : OIL

SEEDS : PLANTS : BULBS

RALEIGH, NORTH CAROLINA

Use Your Credit

— at —

HERBERT ROSENTHAL
BEAUTIFUL SHOES

"ROTHMOOR COATS"
"KENMOOR COATS"

EXCLUSIVELY
IN RALEIGH AT

EFIRD'S
DEPARTMENT STORE

**Southern School
Supply Company**

*School - Laboratory and
Library Supplies*

Raleigh, N. C.

**CALIFORNIA
RESTAURANT**

Famous for

**BRUNSWICK STEW
FRIED CHICKEN
VIRGINIA HAM
and CORN BREAD**

also

**SANDWICHES and
SODA**

111 Fayetteville Street
Raleigh, N. C.

TRY
Staudt's
BUTTER-NUT
Bread
IT'S
Richer and Fresher

Your Patronage Appreciated
**Ambassador, State, Palace, Capitol
and Varsity**

Operated by
NORTH CAROLINA THEATRES, Inc.
THE BEST IN PHOTOPLAYS, VAUDEVILLE and STAGE SHOWS
AT POPULAR ADMISSION PRICES

A U T O G R A P H S

BURWELL LIBRARY
PEACE

PEACE COLLEGE CLASS RINGS AND PINS
Society Pins and Novelty Jewelry

Walter B. Anderson

L. G. BALFOUR PRODUCTS
RICHMOND, VIRGINIA

CONTRIBUTED

DRINK

Coca-Cola

in Bottles

For those smart,
young styles you
love to wear . . .



TAYLOR'S

*The Showplace of
the Carolinas*

FERGUSON

SERVICE DRUG

PHONE 3-1688

11 South Dowson Street
RALEIGH, NORTH CAROLINA

THE ALMA MATER

In the heart of Carolina,
 'Neath its skies of blue,
Stands our noble Alma Mater,
 Glorious to view.
Classic in her broad proportions,
 Looks she proudly down—
Reared against the arch of heaven,
 With the stars for crown.

Chorus

Lift the chorus, speed it onward;
 Let it never cease;
Hail to thee, our Alma Mater;
 Hail, all hail, to Peace!

Clambering o'er the walls and columns
 Historic ivies twine,
As pure love and tenderest memory
 In our hearts enshrine
Days of toil and days of pleasure,
 Happiness and joy,
Hardships, struggles without measure,
 Days without alloy.

Honored be our Alma Mater,
 Honored for her past;
Honored in the living present,
 Let her honors last.
Long as time shall tell the story,
 Long as hearts are true.
May her name be crowned with glory
 And honors ever new!

—MISS NANNIE DINWIDDIE.

BURWELL LIBRARY

PEACE



THE UNIVERSITY OF CHICAGO
PRESS



