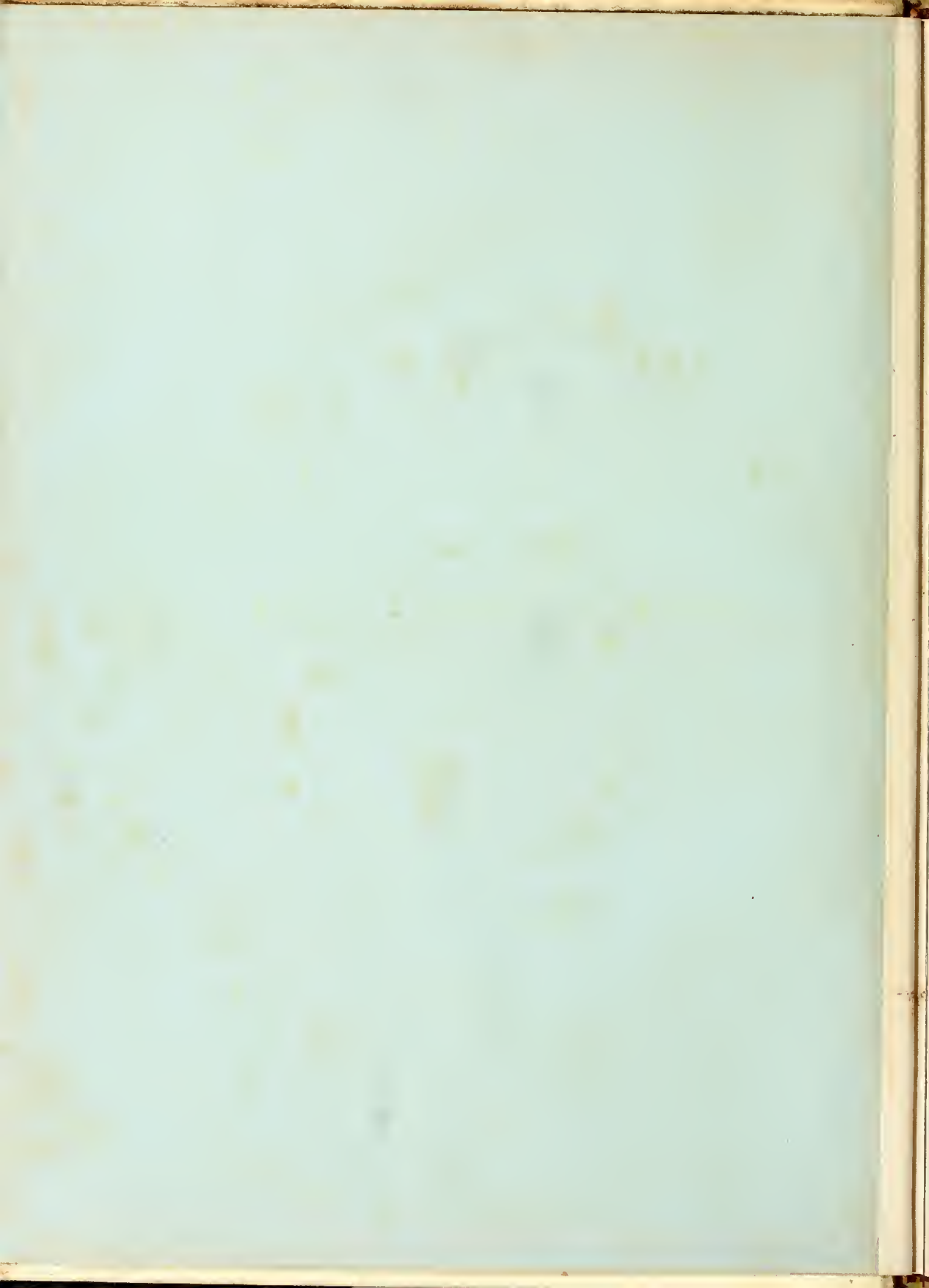




Lotus 1944









COPYRIGHT
1944



EX LIBRIS . . .



The 1944 Lotus

CATHERINE SLOAN - EDITOR

ANNE NEW



of Peace College

ART EDITOR

ELIZABETH PURCELL - BUSINESS MGR.



P O R T A L S O F P E A C E

F O R E W O R D

YOUR LOTUS of 1944 is not just any book, edited without thoughtful planning and consideration. We offer it in the earnest hope that it will serve, now and in later years, as a door through which you will enter again into the experiences, the fun, the life that you had at Peace.

THE STAFF.



DR. HUBERT HAYWOOD, JR.



DEDICATED TO . . .

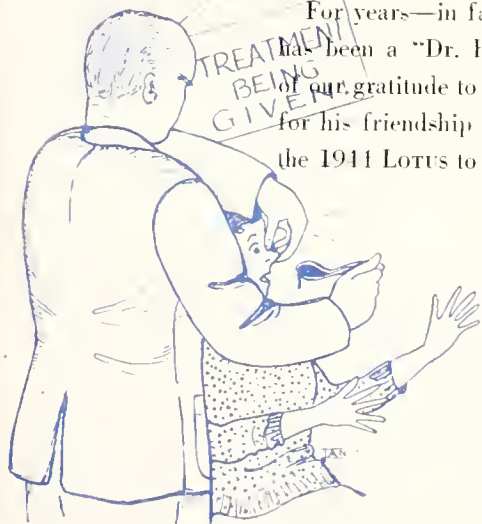
Dr. Hubert Haywood, Jr.

With a great deal of pride this volume of the LOTUS is dedicated to Dr. Haywood, our attending physician.

Dr. Haywood was educated at the University of North Carolina, the University of Pennsylvania, and Edinburgh University in Scotland, where, in 1914 and in 1923, he engaged in post-graduate work. For six years he was a professor of medicine at Wake Forest College.

An outstanding physician in North Carolina, Dr. Haywood has been a member of the North Carolina State Board of Health for eleven years; and in 1940 he was President of the State Medical Society.

For years—in fact, ever since Peace opened in 1872—there has been a “Dr. Haywood” in our midst. As an expression of our gratitude to Dr. Haywood for his interest in our welfare, for his friendship and his devotion, we are happy to dedicate the 1941 LOTUS to him.



Dr. W. C. Pressly and Miss May McLelland



PRESIDENT AND DEAN

A spirit of coöperation and harmony between the administration and the student body endears to all Peace girls their beloved President and Dean. The office door, which is always open, is symbolic of their ever present willingness to give freely of their time. It is for this—their understanding of our needs and their ready, unselfish services—that we are truly appreciative.



Executive Committee, seated: Mr. John Pasco, Mr. R. A. Snow, K. G. Hudson.
Chairman: Dr. John Rhodes, Mr. R. W. Kilgore (deceased).
Standing: Dr. W. C. Pressly, Mr. J. C. Allison, Rev. M. O. Sommers.

Board of Trustees

Owned and controlled by the Presbyterians of North Carolina, Peace is governed by a board of trustees. This group is appointed by five presbyteries—Albemarle, Orange, Granville, Kings Mountain, and Wilmington—by the First Presbyterian Church of Raleigh, and by the board itself.

According to appointment to the present position, the following constitute the board: Mr. K. G. Hudson, Chairman, Raleigh, N. C.; Mrs. C. C. McAlister, Fayetteville, N. C.; Mrs. W. N. Reynolds, Winston-Salem, N. C.; Mrs. B. R. Lacy, Raleigh, N. C.; Mrs. Robert Wyatt, Raleigh, N. C.; Mrs. George Avinger, Laurinburg, N. C.; Mrs. Anna Baker Fenner, Tarboro, N. C.; Rev. Harry Whitmore, D.D., Wilmington, N. C.; Mrs. E. L. McKee, Sylva, N. C.; Mr. Thomas O'Berry, Goldsboro, N. C.; Rev. W. M. Baker, Mebane, N. C.; Mr. J. M. Baird, Oxford, N. C.; Mr. H. H. Littrell, Rocky Mount, N. C.; Dr. F. L. Knight, Sanford, N. C.; Rev. W. S. Patterson, Lowell, N. C.; Rev. P. D. Patrick, Kings Mountain, N. C.; Rev. M. C. MacQueen, Clinton, N. C.; Rev. W. D. McInnis, Henderson, N. C.; Rev. M. O. Sommers, Raleigh, N. C.; Mr. J. C. Allison, Raleigh, N. C.; Mr. John Pasco, Raleigh, N. C.; Dr. John Rhodes, Raleigh, N. C.; Mr. R. A. Snow, Raleigh, N. C.; Dr. William C. Pressly, Secretary-Treasurer, Raleigh, N. C.



CANDID SHOTS
OF THE
CAMPUS



FACULTY



Seated: Miss Della Margaret Cortner, Mrs. Mary Bethune, Mrs. Lucile Cavenaugh
Standing: Mrs. Lula Beattie, Miss Marjorie Clark, Miss Ruth Gatlin, Mrs. Emmie
 J. Ansley, Mrs. Nelly Phillips Staudt, Mrs. Grace Humphrey Fulk.

FACULTY

Mrs. DOROTHY PETERSON ALDEN, B.M.	<i>Violin</i>
Mrs. EMMIE J. ANSLEY	<i>Registrar</i>
Mrs. LULA BEATTIE	<i>Housekeeper</i>
Mrs. LUCILE CAVENAUGH, B.P., A.B. in L.S.	<i>Librarian</i>
Miss MARJORIE CLARK	<i>Secretary</i>
Miss DELLA MARGARET CORTNER, A.B., M.A.	<i>English</i>
Mrs. GRACE HUMPHREY FULK, B.S., M.A.	<i>Commercial Subjects</i>
Miss RUTH GATLIN, A.B., Ed.M.	<i>Psychology, History</i>
Miss ETHEL GRAMMER	<i>Dietitian</i>
Dr. HUBERT HAYWOOD, M.D.	<i>Attending Physician</i>



Seated: Miss Mary Kirkpatrick, Miss Dorothy Knight, Mrs. Sara Goff Turner,
 Standing: Miss Lovie Jones, Miss Margaret Little, Mrs. Pearl Bowman Kincheloe,
 Miss Lucile Horne, Miss Tora Larsen, Miss Winifred M. Kuhns.

FACTULTY

MISS LUCILE HORNE, A.B., M.A.	English
MISS LOVIE JONES	Piano
MRS. PEARL BOWMAN KINCHELOE, B.S.	Spanish
MISS MARY KIRKPATRICK	Bursar
MRS. DOROTHY KNIGHT, B.M.	Voice
MISS WINIFRED M. KUHN, A.B., B.E., M.S.	Mathematics
MISS TORA MARIE LARSEN, A.B., M.A.	Commercial Subjects
MISS MARGARET T. LITTLE, B.S., M.S.	Physical Education
MISS MAXALYNN MOURANE, A.B., M.A.	French
MISS MABEL PUGH	Art



Left to right: Mrs. Birdie McKinney Rowland, Miss Ethel Grammer, Miss Helen Scoggins, Miss Beverly Steinert, Miss Mabel Pugh, Miss Bertie Lee Whitesides, Miss Lucy Steele.

FACULTY

MRS. BIRDIE MCKINNEY ROWLAND	<i>Assistant Dean</i>
MISS HELEN SCOGGINS, B.M.	<i>Piano</i>
MRS. NELLY PHILLIPS STAUDT, B.M.	<i>Organ</i>
MISS LUCY E. STEELE, A.B., M.A.	<i>Bible</i>
MISS BEVERLY STEINERT, A.B.	<i>Science</i>
MISS MARY ELIZABETH THOMAS, A.B., M.A.	<i>History</i>
MRS. SARA GOFF TURNER	<i>Hostess</i>
MISS BERTIE LEE WHITESIDES, B.S., M.A.	<i>Home Economics</i>

The Faculty — Off Guard



Dr. Pressly



Miss Seoggins and
Miss Horne



Our Alma Mater



Miss Knight



Miss Gatlin

STUDENT COUNCIL



Left to right: Sleam, Reins, Cobb, Kellogg, Patrick, Craig, Newbold, Faison, Weskett.



BETTY PATRICK
President

The members of the Student Council have been chosen from and by the student body and are thus representative of the group. The honor system, of which Peace is so proud, is strongly supported by the Student Council in full coöperation with the administration. Through corrective punishment the Council, which meets weekly, helps maintain order in the school and directs the girls in their search for higher standards.

DAY STUDENT COUNCIL

The six members of the Day Student Council meet regularly to discuss the problems of the day students and to help these students become a vital part of the Peace student body. This group works in cooperation with the Student Council in promoting good citizenship and well-being throughout the college.



NELL HARRIS
President



Left to right: Swain, K. Pleasants, E. Andrews, Harris, M. Andrews, Worley.

TRIBUTE TO . . .



MISS ETHEL GRAMMER

We, the Senior Class of '11, pay tribute to Miss Ethel Grammer. She is the one behind the scenes to whom we owe many of our memories—festive meals in candlelight, the tantalizing odor of soup on cold days, chocolate sauce on Sundays (which is an incentive to matrimony, as she divulges her recipe only to Peace brides). These memories blend into one, Miss Grammer, herself, with her efficiency, her quiet faithfulness, and her sincere friendliness.



... Up the steps to graduation.

CLASSES



Mitchener



Purcell and Patrick



Kellogg

Senior



Parham



Henderson

Strutters



Quincy and Rowland



Sholes



Brooks and Weskett

SENIOR CLASS



JOHN MARTIN CONNELL
Mascot



Officers: Batts, Cobb, Cooke, Mitchener.



MRS. EMMIE J. ANSLEY
Sponsor

LINDA COBB, *President*; JANIE MITCHENER, *Vice President*; DORA BATTS, *Secretary*; ALTA RUTH COOKE, *Treasurer*.

Together we, the Seniors, have laughed, loved, and learned;
but individually we must apply, adapt, and achieve.

LOTUS

MARY ELIZABETH ANDREWS
Raleigh, N. C.

Sigma Phi Kappa, Secretary '44, Marshal '44; Treasurer of Day Student Council '44; Business Staff of LOTUS '44; Stunt Night '42, '43; Glee Club '43; Society Play '42, '43.

A regular live wire; active enthusiasm for the Sig's, fellow day students, and the Air Corps; humorous, active, and alert.

DORA BLALOCK BATTIS
Fremont, N. C.

Sigma Phi Kappa, Marshal '44; Student Council '43; Alpha Pi Epsilon '43, '44; Secretary of Senior Class '44; Business Staff of LOTUS '44; Stunt Night '43, '44.

A dependable, conscientious, and thoughtful Peace beauty; silent, composed, gracious.

MRS. DOROTHY H. BLAND
Cary, N. C.

Flora Macdonald College '42.

Expressive, efficient, pleasant; an attractive person; a keen mind; a well-poised Peace girl.



CAMILLA ALLYN BOONE

Jackson, N. C.

Pi Theta Mu, Chief Marshal '44; Assistant Business Manager of LOTS '44; International Relations Club '44; May Queen '44; Privileged Honor Roll '44.

Poised and lovely; kind and thoughtful; clever, alert, and prompt.



HELEN ADELAIDE BRASWELL

Whitakers, N. C.

Sigma Phi Kappa; Stunt Night '43, '44.

Dry wit with a dash of sprightliness; always "facing life with Portia."



JANE MCGREGOR BROWN

Washington, D. C.

Rho Delta Chi, Cheer Leader '44; Society Play '42, '43; Stunt Night '42, '43, '44; Treasurer of Prep Class '42, '43; Sigma Pi Alpha '44; Monogram Club '44; Papyrus Club '42, '43, '44; Scholastic Honors '42.

Cosmopolite, charming, and witty; a world of personality in a turned-up nose; above average intelligence; good M.D. material.



PEACE

LOTUS

LINDA VINES COBB
Pinotops, N. C.

Pi Theta Mu; President of Junior Class '43; President of Senior Class '44; Vice President of Student Council '44; Vice President of P.S.C.A. '44; Privileged Honor Roll '43, '44; Editorial Staff of Lotus '43, '44; Christmas Pageant '43; Papyrus Club '43, President '44; Daughters and Granddaughters' Club '43, '44; Editor-in-Chief of *Voices of Peace* '44; Outstanding Senior '44; International Relations Club '44.

Self-possessed, deserving, sympathetic; influential, dependable, indispensable.



ALTA RUTH COOKE
Wendell, N. C.

Pi Theta Mu; Dees Camera Club '44; Treasurer of Senior Class '44; Stunt Night '44.

A contagious smile—not to mention quiet ways, perseverance, and kindness.



MARY LOUISE DIXON
Roxboro, N. C.

Sigma Phi Kappa; Stunt Night '43, '44; Scholastic Honors '43.

A blonde bombshell with latent energy (vitamin addict!); dignified, refined, polished.



MARTHA DAVIS FAISON

Faison, N. C.

Sigma Phi Kappa, President '44; Treasurer of Student Council '44; Editorial Staff of LOTUS '44; Daughters and Granddaughters' Club '43, '44; Christmas Pageant '43; Stunt Night '44; Hockey '44; Secretary of International Relations Club '44; Outstanding Senior '44.

Loyal Sig President; resourceful leader; an illuminating, lively, and lovable person.



RHODA FITZPATRICK

Rougemont, N. C.

Rho Delta Chi; Stunt Night '43, '44.

A touch of the serious behind a broad grin; quiet, unobtrusive ways; a ready friendliness.



MARY BRYAN FLEMING

Raleigh, N. C.

Pi Theta Mu; Daughters and Granddaughters' Club '43; Vice President '44; Business Staff of LOTUS '44.

Full of fun and good nature; a ready smile for all; determined, forceful.



PEACE

LOTUS

IRENE VIRGINIA FRYE
Athens, W. Va.

Sigma Phi Kappa; Papyrus Club '11;
Scholastic Honors '11.

*An interesting blend of intelligence (with
a capital I!), earnestness, keenness, and
sophistication.*

BETH GRISSOM
Kittrell, N. C.

Rho Delta Chi; Vance-Granville Club '43.

*Quiet, unassuming poise and attractive
manner; patient, good-natured, cooperative.*

CORNELIA CELESTIA GRISSOM
Kittrell, N. C.

Rho Delta Chi; Vance-Granville Club '43;
Stunt Night '44.

*A desirable combination of energy, ef-
ficiency, and laughter; a winsome smile
to top it all!*



MARY NELL HARRIS
Raleigh, N. C.

Pi Theta Mu; Day Student Council '43.
President '44; Alpha Pi Epsilon '43. Pres-
ident '44.

*A blonde with brains galore; a hard work-
ing commercial student; capable, clever,
charming.*



MARY FRANCES HASKINS
Kinston, N. C.

Pi Theta Mu; Stunt Night '44.

*Reliability personified, with a heart of
gold; cheerful, kind, unselfish.*



ELIZABETH MURPHY HENDERSON
Davidson, N. C.

Pi Theta Mu. President '44; Stunt Night
'43, '44; Christmas Pageant '43; Daughters
and Granddaughters' Club '43, '44; Adver-
tising Staff of LOTUS '43, '44; Elsie Robert-
son Art Club '44; Dees Camera Club '43,
'44; International Relations Club '44;
Hockey '44; Privileged Honor Roll '44.

*Hello, everybody!! Hello! Hello! Percy!!!
Persistent Pi President.*



PEACE

LOTUS

EVELYN WILLIAMS HILL
Orange, Va.

Rho Delta Chi, Marshal '44, Vice President '44; Privileged Honor Roll '43, '44; Sigma Pi Alpha '43, Vice President '44; P.S.C.A. Cabinet '44; Hockey '44.

A spirited creature! Memorable Virginia accent and mischievous grin. Buoyantly yours—Evelyn Hill.



MARGARET HOLLER
Union Mills, N. C.

Sigma Phi Kappa, Vice President '44; Christmas Pageant '43, '44; Hockey '44; Treasurer of Little Sisters' Club '44.

Hard working Vice President of the Sig's; a constant friend and a cheerful companion.



HELEN FREDERICK JONES
Fayetteville, N. C.

Pi Theta Mu.

Another interesting day student—with a ready smile; agreeable manner and enviable serenity.



MARY IRENE JONES
New Bern, N. C.

Sigma Phi Kappa; Glee Club '43, '44;
Choir '43, '44; Christmas Pageant '43, '44;
Stunt Night '44.

*Unmistakable interest in the Sig's (and the
U.S.M.C.!); amusing, unruffled, non-
chalant.*



ALTA BOYCE KELLOGG
Wilson, N. C.

Rho Delta Chi, Secretary '44, Marshal '44;
Student Council '43, '44; Secretary of
Athletic Association '44; Nominating
Committee '44; Typing Editor of the LOTUS
'44; Outstanding Senior '44; Privileged
Honor Roll '44.

*A mischievous smile that tells you she's fun
to be with; lovable, invaluable, really
different.*



JANIE GERTRUDE MITCHENER
Edenton, N. C.

Pi Theta Mu, Secretary '44; Daughters and
Granddaughters' Club '43, President '44;
Dees Camera Club '43, '44, Secretary '43;
Stunt Night '43, '44; Vice President of
Senior Class '44; Privileged Honor Roll
'44.

*An invaluable member of our group; an
accomplished pianist; reserved, respected.*



PEACE

LOTUS

ANNE DREW NEWBOLD
Wilmington, N. C.

Rho Delta Chi; P.S.C.A. Cabinet '43; President '44; Editorial Staff of LOTUS '43; Art Editor '44; Student Council '44; Privileged Honor Roll '43, '44; Sigma Pi Alpha '43, '44; Phi Theta Kappa '44; Christmas Pageant '43, '44; Stunt Night '43, '44; Glee Club '43, '44; Scholastic Honors '44.

Allergic to leisure and athletics; always helpful; pleasingly artistic (just see our LOTUS!); ingenious, witty, and talented.

MARY ELIZABETH PARHAM
Henderson, N. C.

Pi Theta Mu, Cheer Leader '44; Stunt Night '43, '44; Vance-Granville Club '43; Monogram Club '44; Hockey '44.

Censored!

ELIZABETH JAEGER PATRICK
Kings Mountain, N. C.

Pi Theta Mu, Cheer Leader '42, President '43, Vice President '44; Society Play '42, '43; Glee Club '42, '43, '44; Choir '42, '43; Orchestra '43, '44; Stunt Night '42, '43, '44; International Relations Club '44; P.S.C.A. Cabinet '43, '44; Christmas Pageant '42; President of Student Council '44; Sigma Pi Alpha '44; Phi Theta Kappa '44; Privileged Honor Roll '43, '44; Scholastic Honors '42, '44; Miss Peace '44.

Original, versatile, energetic; an intelligent and influential Student Body President.



ELIZABETH GRAHAM PURCELL
Lanfiburg, N. C.

Rho Delta Chi, Treasurer '44; Phi Theta Kappa '43, President '44; Business Manager of LOTUS '44; P.S.C.A. Cabinet '43, Secretary '44; Sigma Pi Alpha, Historian '43, Secretary and Treasurer '44; Privileged Honor Roll '43, '44; Daughters and Granddaughters' Club '43, Treasurer '44; Stunt Night '43, '44; Glee Club '43; Choir '43; Society Play '43; Christmas Pageant '43; Scholastic Honors '43; Nominating Committee '44; Outstanding Senior '44.

Unbelievably accommodating; intelligent, infinitely friendly, intrinsically fine.

BOBBIE REINS
Lenoir, N. C.

Rho Delta Chi, President '44; President of Athletic Association '44; P.S.C.A. Cabinet '43, '44; Privileged Honor Roll '43, '44; Glee Club '43; Orchestra '43, '44; Treasurer of Junior Class '43; Papyrus Club '43, '44; Outstanding Senior '44; Student Council '44.

Rho's her own boat—the society's too; lively, enthusiastic, and capable.

ANN HUNT ROWLAND
Henderson, N. C.

Sigma Phi Kappa; Stunt Night '44; Business Staff of LOTUS '44; Vance-Granville Club '43.

"This Is the Army" brat; pert and smart; explosively gay; intelligent and interesting.



PEACE

LOTUS

FRANCES MARIAN SHOLES
Lynchburg, Va.

Sigma Phi Kappa; Hockey '44; Stunt Night '41, '42; May Day '41, '42; Christmas Pageant '43; Art Club '43, '44; Papyrus Club '43, '44; Editorial Staff of LOTUS '43, '44; P.S.C.A. Cabinet '44; Glee Club '44; Choir '44.

Remarkably smart, deliciously haphazard, and breathlessly yours—with a leaning toward history and overseas sergeants.

CATHERINE BRYAN SLOAN
Garland, N. C.

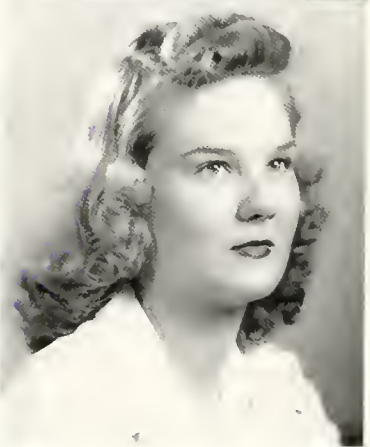
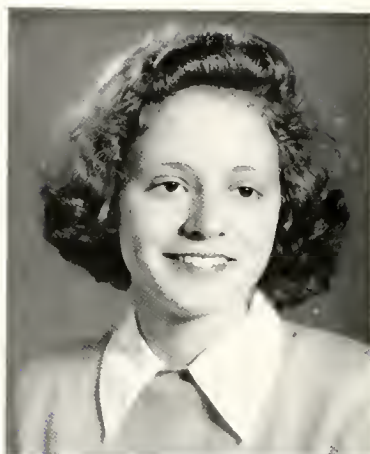
Sigma Phi Kappa; Editorial Staff of LOTUS '43, Editor-in-Chief '44; Phi Theta Kappa '43, Vice President '44; Sigma Pi Alpha '43, Historian '44; Student Council '44; Privileged Honor Roll '43, '44; Papyrus Club '44; Scholastic Honors '44; Daughters and Granddaughters' Club '43, '44; Stunt Night '44; Hockey '44; Christmas Pageant '43; International Relations Club, President '44; P.S.C.A. Cabinet '44; Outstanding Senior '44.

Firm ability to lead, subtle sense of humor, and striking individualism.

JEAN SMOLLEN
Beaumont, Texas

Pi Theta Mu; Daughters and Granddaughters' Club '44.

Heavens—another blonde. And we do mean blonde! A very versatile mess.



CHARLOTTE GRACE STANTON
Sanford, N. C.

Rho Delta Chi; Elsie Roberston Art Club.
Vice President '43. President '44; Papyrus
Club '43. Business Manager of *Voices of
Peace* '44; Stunt Night '42, '43; Society
Play '42, '43; May Day '42; Glee Club '44.

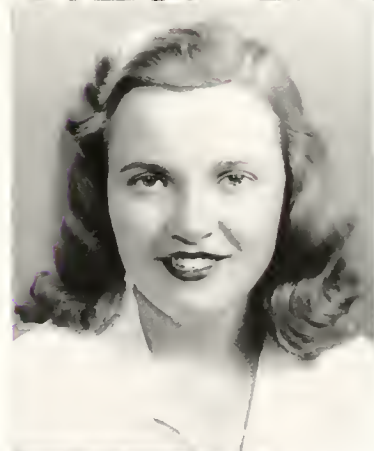
*Pleasant in personality, original in ideas,
handy with a paint brush, experienced in
travel.*



ANNE HATHAWAY TATE
Oakland, Fla.

Rho Delta Chi; Sigma Pi Alpha '43. Pres-
ident '44; Scholastic Honors '43, '44; Phi
Theta Kappa '43. Secretary '44; Little
Sisters' Club '44; International Relations
Club '44; Christmas Pageant '43; Stunt
Night '44.

*Exceptional intelligence, profound
thoughts, high standards, sweet and lovable
ways.*



MARY ANN THORNTON
Fountain City, Tenn.

Pi Theta Mu. Treasurer '44; Stunt Night
'43, '44; International Relations Club '44;
Christmas Pageant '43.

*A precious thing in a small package. Here
she is, diminutively yours--Ann Thornton.*



PEACE

LOTUS

MARTHA JANE THORPE
Chimney Rock, N. C.

Pi Theta Mu, Marshal '44.

Slim and smart; refreshingly gay; an asset to the class of '44.

LECY THURSTON
Taylorsville, N. C.

Pi Theta Mu; Stunt Night '44.

A worthy Peace girl with generosity to spare; runner-up for May Queen because of her fairness, frankness, and freshness.

JIMMIE ALICIA WELLS
Canton, N. C.

Pi Theta Mu; Business Staff of LOTUS '44; Stunt Night '44; International Relations Club '44.

Gay and gifted violinist; sweet and subtle; a distinctly modern mountaineer.



JULIA CAMPEN WESKETT
New Bern, N. C.

Sigma Phi Kappa; Student Council, Secretary '44; Privileged Honor Roll '43, '44; P.S.C.A. Cabinet '43, Treasurer '44; Stunt Night '43, '44; Dees Camera Club '43, '44; Christmas Pageant '43, '44.

Inclination for work, a good time, U.S.M.C.; determined, direct, deserving, undaunted.



GLORIA DOLORES WEST
New Bern, N. C.

Pi Theta Mu; Christmas Pageant '43; Glee Club, President '44.

A charm all her own; brimful of crinkly laughter; sparkling, carefree, merry.



VIRGINIA WHITAKER
Raleigh, N. C.

Pi Theta Mu; Editorial Staff of LOTUS '41;
International Relations Club '41.

*Flashing smiles; sparkling eyes; dazzling
red hair; talkative, expressive, congenial.*



EMMA LOUISE WRENN
Portsmouth, Va.

Pi Theta Mu; Daughters and Grand-
daughters' Club '42, '43, '44.

*Deceptively serious; polite, prudent,
patient; genial, witty, ambitious.*



And Now, the Outstanding Seniors of the Year . . .

BOONE . . . because she is Chief Marshal, Assistant Business Manager of the LOTUS, and a member of the Privileged Honor Roll and of the International Relations Club . . . because of her obvious beauty, her grace and charm, and her enviable good spirits.

PATRICK . . . because she is President of the Student Council, Vice President of the Pi's, and a member of the Privileged Honor Roll, Sigma Pi Alpha, Phi Theta Kappa, and the International Relations Club . . . because of her unbounding enthusiasm, her tireless energy, and her admirable qualities of leadership.

COBB . . . because she is President of the Papyrus Club, Vice President of the Student Council and of the P.S.C.A., and member of the Privileged Honor Roll, of the International Relations Club and of the Editorial Staff of the LOTUS . . . because of her unquestionable integrity and unvarnished sincerity, her thoughtfulness of others, and her complete loyalty. **SLOAN** . . . because she is Editor-in-Chief of the LOTUS, President of the International Relations Club, Vice President of Phi Theta Kappa, a member of the P.S.C.A. Cabinet, the Council, Sigma Pi Alpha, the Papyrus Club, and the Privileged Honor Roll . . . because she has the capacity for learning, the energy for sports, the time for friends. **PURCELL** . . . because she is Business Manager of the LOTUS, President of Phi Theta Kappa, Secretary and Treasurer of Sigma Pi Alpha, Secretary of the P.S.C.A. Cabinet, Treasurer of the Rho's, and member of the Privileged Honor Roll . . . because she encourages confidence and unconsciously gains favorable attention . . . because of her heart of gold, her contagious smile, and quiet grace.

FAISON . . . because she is President of the Sig's, Treasurer of the Student Council, member of the Editorial Staff of the LOTUS, and Secretary of the International Relations Club . . . because of her buoyant and vivacious spirit, her spontaneous good humor, her effective ability, and radiating charm. **REINS** . . . because she is President of the Athletic Association, President of the Rho's, a member of the P.S.C.A. Cabinet, the Council, the Papyrus Club, and the Privileged Honor Roll . . . because of her skill in and devotion to sports, her trustworthiness, her thoroughness . . . because she is keen, artful, and true. **KELLOGG** . . . because she is Secretary of the Rho's, Secretary of the Athletic Association, Typing Editor of the LOTUS, and a member of the Student Council for the second year . . . because of her exuberance, her enviable athletic ability, her charming manners, and her dependability.



May Queen
MISS CAMILLA BOONE

Miss Peace

MISS BETTY PATRICK





COBB

SLOAN

PURCELL



FAISON

REINS

KELLOGG



Cobb, Tate, Boone



Newbold



Reins

And Still More Seniors



Crimp, Weskett, Fleming



Wells, Teiser, Braswell, Batts



Thornton, Price, Billings



Holler

JUNIOR CLASS



Officers: Brooks, Craig, Golden, Swain.



MISS BEVERLY STEINERT
Sponsor

ELEANOR CRAIG, *President*; FRANCES GOLDEN, *Vice President*;
MARGARET BROOKS, *Secretary*; DOROTHY SWAIN, *Treasurer*.

Here are the Juniors, this year's "little sisters," next year's leaders.

JUNIORS



MARY ELIZABETH ALBRITTON, Calypso, N. C.,
Pi Theta Mu.

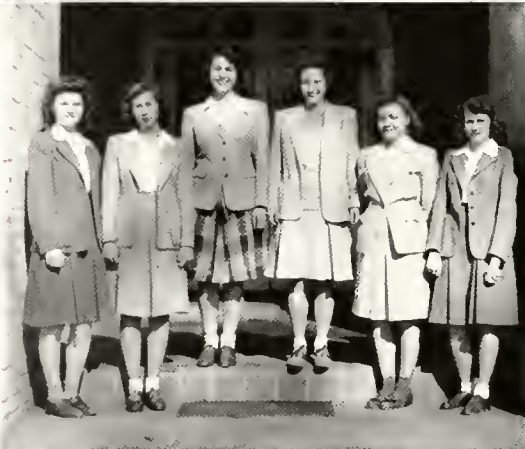
RACHEL ALLEN, Roanoke Rapids, N. C.,
Pi Theta Mu.

LOUISE ALSTON, Pitts-boro, N. C., *Pi Theta Mu.*

DOROTHY ANDREWS, Chapel Hill, N. C., *Pi Theta Mu.*

MARIE ANDREWS, Raleigh, N. C., *Pi Theta Mu.*

SARAH AUSTIN, Manton, N. C., *Rho Delta Chi.*



MARY ELIZABETH AVERETTE, Varina, N. C.,
Sigma Phi Kappa.

NORMA BAGLEY, Raleigh, N. C., *Pi Theta Mu.*

MARY RUTH BAILEY, Raleigh, N. C., *Rho Delta Chi.*

GLORIA BATCHELOR, Raleigh, N. C.

LOUISE BEST, Calypso, N. C., *Pi Theta Mu.*

LAURA BIBERSTEIN, Burgaw, N. C., *Pi Theta Mu.*



MARY FLORENCE BOONE, Raleigh, N. C., *Pi Theta Mu.*

MARGARET BRADLEY, Jackson, N. C., *Pi Theta Mu.*

BEVERLY BRANTLEY, Wendell, N. C., *Pi Theta Mu.*

HELLON BRAY, Raleigh, N. C., *Pi Theta Mu.*

MARGARET BROOKS, Burlington, N. C., *Sigma Phi Kappa.*

JANE BROWN, Washington, D. C., *Rho Delta Chi.*

1941

GRACE BRYAN, Henderson, N. C., *Pi Theta Mu.*

MILDRED BULLUCK, Rocky Mount, N. C.,
Rho Delta Chi.

DOROTHY CAIN, Fayetteville, N. C., *Rho
Delta Chi*

JESSIE CARTER, Wallace, N. C., *Pi Theta Mu.*

MILDRED CONYERS, Rocky Mount, N. C.,
Sigma Phi Kappa.

COLLEEN COOPER, Nashville, N. C., *Sigma
Phi Kappa.*



RUTH COOPER, Clinton, N. C., *Rho Delta Chi.*

PATSY COZART, Fuquay Springs, N. C., *Pi
Theta Mu.*

ELEANOR CRAIG, Jacksonville, N. C., *Rho
Delta Chi.*

LOIS CRUMP, New Bern, N. C., *Sigma Phi
Kappa.*

MARY LEWIS CURLEE, Raleigh, N. C., *Pi
Theta Mu.*

DOROTHY CURRIN, Oxford, N. C., *Rho Delta
Chi.*



LOTTIE CLRRON, Middleburg, N. C., *Rho Delta
Chi.*

MARY DANIELS, New Bern, N. C., *Sigma Phi
Kappa.*

HELEN DAVIS, Davidson, N. C., *Pi Theta
Mu.*

MARGARET DUKE, Greenville, N. C., *Sigma
Phi Kappa.*

STEVA DUPREE, Kinston, N. C., *Sigma Phi
Kappa.*

DICKEY ENNIS, Waxhaw, N. C., *Rho Delta
Chi.*



JUNIORS



MAE FLEMING, Blackshear, Ga., *Sigma Phi Kappa*.

TERRY FLANT, Charlotte, N. C., *Sigma Phi Kappa*.

KATHERINE GARDNER, Wilmington, N. C., *Pi Theta Mu*.

EVELYN GARNER, Pinehurst, N. C., *Pi Theta Mu*.

FRANCES GOAD, Raleigh, N. C., *Sigma Phi Kappa*.

FRANCES GOLDEN, Carthage, N. C., *Pi Theta Mu*.



CATHIE ANN GREEN, Raleigh, N. C., *Rho Delta Chi*.

JULIA GREER, Union City, Tenn., *Rho Delta Chi*.

SUSAN GRIFFIN, Goldsboro, N. C., *Sigma Phi Kappa*.

BETSY HALL, Rose Hill, N. C., *Rho Delta Chi*.

GERALDINE HAMILTON, Raleigh, N. C., *Pi Theta Mu*.

JOYCE HANSEN, Millville, N. J., *Rho Delta Chi*.



SADIE HARDY, La Grange, N. C., *Sigma Phi Kappa*.

VIRGINIA HICKS, Franklinton, N. C., *Sigma Phi Kappa*.

FRANCES HIGHT, Henderson, N. C., *Pi Theta Mu*.

JANIE HOLLIS, Clarkesville, Ga., *Rho Delta Chi*.

CORINNE HOLLOWAY, Farmville, N. C., *Rho Delta Chi*.

ELLEN HORNBUCKLE, Raleigh, N. C., *Sigma Phi Kappa*.

1944

BETSY JACKSON, Garner, N. C., *Pi Theta Mu*.

VIRGINIA JEFFREYS, Goldsboro, N. C., *Pi Theta Mu*.

ANNE JONES, Farmville, N. C., *Pi Theta Mu*.

DOROTHY KEEL, Oak City, N. C., *Pi Theta Mu*.

LILLIAN LEGRAND, Shelby, N. C., *Sigma Phi Kappa*.



LOU HELEN LLOYD, Raleigh, N. C., *Pi Theta Mu*.

SUSAN MCAFEE, Raleigh, N. C., *Pi Theta Mu*.

MARY ELIZABETH MCDIARMID, Greenville, N. C., *Pi Theta Mu*.

JOHNNIE McLELLAN, Dunn, N. C., *Rho Delta Chi*.

CATHERINE MARR, Fayetteville, N. C., *Pi Theta Mu*.

MARY MIDDLETON, Wilmington, N. C., *Sigma Phi Kappa*.



ELIZABETH MILLER, Wake Forest, N. C., *Pi Theta Mu*.

JOYCE MITCHELL, Fuquay Springs, N. C., *Rho Delta Chi*.

GENE NASIL, St. Pauls, N. C., *Pi Theta Mu*.

SYBIL NELSON, Morehead City, N. C., *Pi Theta Mu*.

FAUSTINE PAIR, Knightdale, N. C., *Pi Theta Mu*.



JUNIORS



MARTHA PEARSALL, Rocky Point, N. C., *Rho Delta Chi*.

ALICE PEBBLES, Carson, Va., *Pi Theta Mu*.

RUTH PEBBLES, Macclesfield, N. C., *Sigma Phi Kappa*.

MARY ANNA PENCE, Wagtam, N. C., *Pi Theta Mu*.

BILLIE PENNINGTON, Aberdeen, N. C., *Pi Theta Mu*.

JEAN PERRY, Raleigh, N. C., *Pi Theta Mu*.



FRANCES PLEASANTS, Elm City, N. C., *Pi Theta Mu*.

KAY PLEASANTS, Raleigh, N. C., *Pi Theta Mu*.

NANCY POPE, Richmond, Va., *Pi Theta Mu*.

JANET QUINCY, Chapanoke, N. C., *Pi Theta Mu*.

BETSY RAUHUT, Burlington, N. C., *Pi Theta Mu*.

DORIS JEAN REA, Charlotte, N. C., *Sigma Phi Kappa*.



BETH REED, Martinsville, Va., *Sigma Phi Kappa*.

LUCIE RICHARDSON, Raleigh, N. C., *Pi Theta Mu*.

LUCILLE SAULS, Raleigh, N. C., *Pi Theta Mu*.

ANNE SHARPE, Hartellsville, N. C., *Pi Theta Mu*.

FRANCES SIMPSON, Oakboro, N. C., *Rho Delta Chi*.

DORIS SOUTHARD, High Point, N. C., *Rho Delta Chi*.

1911

MARTHA SPARKMAN, Burgaw, N. C., *Pi Theta Mu.*

IRENE SPENCE, Goldsboro, N. C., *Pi Theta Mu.*

CHARLOTTE STEPHENSON, Wilson's Mills, N. C., *Rho Delta Chi.*

BLANCHE SUTTON, La Grange, N. C., *Sigma Phi Kappa.*

DOROTHY SWAIN, Raleigh, N. C., *Pi Theta Mu.*



HARRIET SWAIN, Neuse, N. C.

MARJORIE TEISER, Henderson, N. C., *Pi Theta Mu.*

ANN THOMAS, Warsaw, N. C., *Sigma Phi Kappa.*

FANNIE THOMAS, Warsaw, N. C., *Sigma Phi Kappa.*

JEAN THOMAS, Raleigh, N. C., *Pi Theta Mu.*



JEANNE TRENTMAN, Raleigh, N. C., *Pi Theta Mu.*

JEANETTE TURNER, Stanfield, N. C., *Sigma Phi Kappa.*

HAZEL TWISDALE, Halifax, N. C., *Sigma Phi Kappa.*

ANN TYSOR, Laurens, S. C., *Sigma Phi Kappa.*

MARTHA ANN VICK, Nashville, N. C., *Sigma Phi Kappa.*

VIRGINIA WALKER, Fayetteville, N. C., *Pi Theta Mu.*



FARISH WATLINGTON, Ruffin, N. C., *Pi Theta Mu.*

SOPHIA WEBB, Maclefield, N. C., *Rho Delta Chi.*

LOUISE WHITE, Raleigh, N. C., *Pi Theta Mu.*

MARY WETMORE, Raleigh, N. C., *Pi Theta Mu.*

HELEN WHELESS, Louisburg, N. C., *Rho Delta Chi.*

SARAH WORLEY, Raleigh, N. C., *Pi Theta Mu.*

DORIS YELVINGTON, Clayton, N. C., *Rho Delta Chi.*



Not pictured: MARGARET JOYNER, Goldsboro, N. C., *Pi Theta Mu.* ELIZABETH NORRIS, Raleigh, N. C., *Sigma Phi Kappa.* VIRGINIA PRICE, Chengtu, China. JEANNE SPIERS, Portsmouth, Va. JOY STOKES, Hamilton, N. C., *Rho Delta Chi.* EUNICE TAYLOR, Rich Square, N. C., *Rho Delta Chi.*



Wetmore, M. Andrews, J. Thomas



Reed, Duke, Brooks

This Year's



Austin, Peebles,
Pope, LeGrand



Hollis



Daniels, Walker, Brown

Little Sisters



Middleton, A. Thomas, Smith, Taylor



Wattington, Pennington, Vick, Cooper

PREPARATORY STUDENTS



PERSISTENT PREPS IN THE MERRY
MONTH of MAY



Officers: Suessmuth, McLelland, Hyman, Bobbit.

*MARY McLELLAND, President; JEANNE SUESSMUTH, Vice President;
MARGARET HYMAN, Secretary; ANNAIONETTE BOBBITT, Treasurer.*



MISS HELEN SCOGGINS
Sponsor

And these are the Preps—the girls who have added fun
and frolic to our life at Peace.

PREP IV



ESTHER LOU ALBRITTON, Maury, N. C., *Sigma Phi Kappa*.

GRACE BILLINGS, Lexington, N. C., *Pi Theta Mu*.

MILLY LOU BOWDEN, Raleigh, N. C., *Pi Theta Mu*.

PENN BUNN, Rocky Mount, N. C., *Sigma Phi Kappa*.

MARTHA ANN CHANDLER, Raleigh, N. C.

PATRICIA DEBRUILL, New Bern, N. C., *Rho Delta Chi*.



BETSY FRINK, Hallsboro, N. C., *Rho Delta Chi*.

PEGGY GAY, Atlanta, Ga., *Pi Theta Mu*.

LUCILE GIBSON, Atlanta, Ga., *Sigma Phi Kappa*.

THERESA GOODING, Kenansville, N. C., *Rho Delta Chi*.

JEAN GRAHAM, Greensboro, N. C., *Sigma Phi Kappa*.

MARGARET HYMAN, Dalton, N. C., *Rho Delta Chi*.

MARY McLELLAND, Mooresville, N. C., *Pi Theta Mu*.



EMILY MCKENZIE, Dillon, S. C., *Sigma Phi Kappa*.

VIRGINIA OLIVER, Wilmington, N. C., *Rho Delta Chi*.

JANE ROGERS, Chapel Hill, N. C., *Sigma Phi Kappa*.

THELMA STEED, Maxton, N. C., *Rho Delta Chi*.

JEANNE SUESSMUTH, Wilson, N. C., *Rho Delta Chi*.

MARY LEWIS THOMPSON, Raleigh, N. C., *Sigma Phi Kappa*.

ANNA WORTH, Charlottesville, Va., *Rho Delta Chi*.

Not pictured:

FRANCES ALFORD, Raleigh, N. C., *Sigma Phi Kappa*.

MARY FRANCES McDONALD, Durham, N. C.

PREP III

ANN ASKEW, Trenton, Ky., *Pi Theta Mu.*

ANNAIONETTE BOBBITT, Castalia, N. C., *Pi Theta Mu.*

JANE CASSTEVENS, Clemmons, N. C., *Rho Delta Chi.*

BETSY FOUNTAIN, Fountain, N. C., *Rho Delta Chi.*

MARY PAYNE FOWLE, Chattanooga, Tenn., *Rho Delta Chi.*

BETSIE GILMER, Hampden-Sydney, Va., *Rho Delta Chi.*



VIRGINIA HOOKER, Bayboro, N. C., *Pi Theta Mu.*

DOROTHY McCORMIC, Fort Pierce, Fla., *Rho Delta Chi.*

GLORIA MOORE, Raleigh, N. C., *Pi Theta Mu.*

NATALIE NEAL, Raleigh, N. C., *Pi Theta Mu.*

JEANNE PADBURY, Bramwell, W. Va., *Sigma Phi Kappa.*

RUTH PAGE, Aberdeen, N. C., *Pi Theta Mu.*

MARY LOU PRESSLY, Raleigh, N. C., *Rho Delta Chi.*



BETTY ROSSER, Sanford, N. C., *Rho Delta Chi.*

MARY SHERWOOD, Raleigh, N. C., *Pi Theta Mu.*

KITTY SMITH, Moncure, N. C., *Pi Theta Mu.*

AVERY SYLVESTER, Richlands, N. C., *Pi Theta Mu.*

ELAINE VURNAKES, Raleigh, N. C., *Pi Theta Mu.*

LA BRINE VURNAKES, Raleigh, N. C., *Pi Theta Mu.*

ANN WILLIAMS, Raleigh, N. C., *Rho Delta Chi.*



Not pictured:

JEAN FORRES, Greenville, N. C.



Oliver



You tell us!



Padbury, Griffin, Rogers

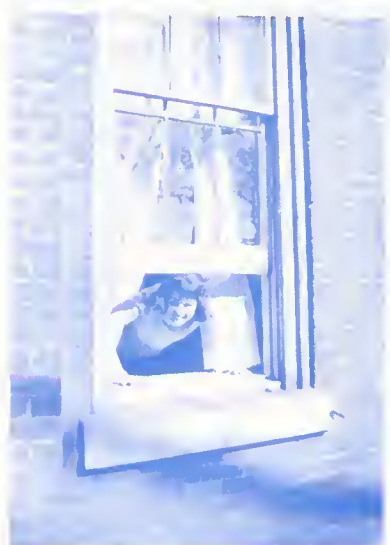


Reed, Albritton



Buun

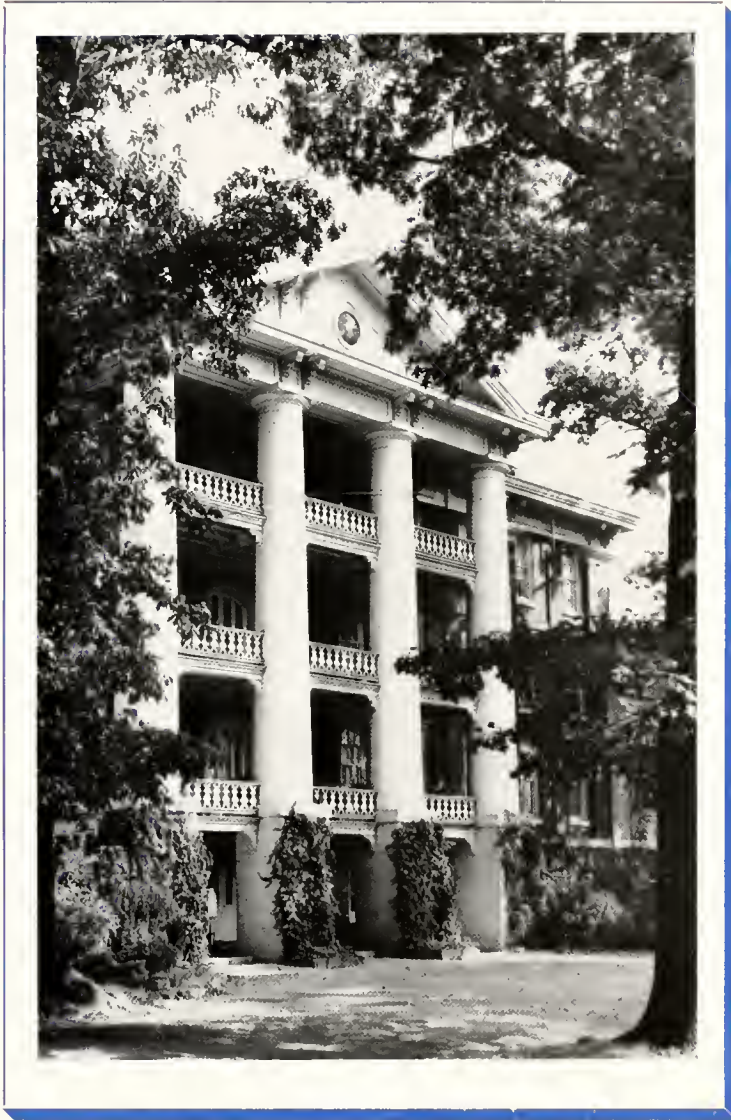
Promising Preps



Smith



Pressly



S O C I A L A C T I V I T I E S



PRIVILEGED HONOR ROLL

To this group of girls is given the name of Privileged Honor Roll, because they have been elected for character, scholarship, and integrity, to enjoy special privileges and assume certain responsibilities.



Left to right: Patrick, Newbold, Weskett, Cobb, Purcell, Hill, Reins, Sloan.

MARSHALS



MISS CAMILLA BOONE, *Chief Marshal, Pi Theta Mu.*

MISS MARTHA THORPE, *Pi Theta Mu.*

MISS ALTA KELLOGG, *Rho Delta Chi.*

MISS EVELYN HILL, *Rho Delta Chi.*

MISS ELIZABETH ANDREWS, *Sigma Phi Kappa.*

MISS DORA BATTIS, *Sigma Phi Kappa.*

PAPYRUS CLUB



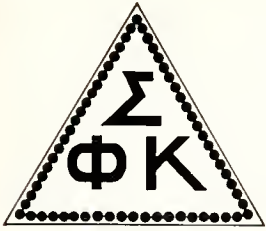
LINDA COBB
President

The Papyrus Club was formed in 1936 to stimulate interest in creative writing. Any Peace girl has the opportunity of trying out for membership by submitting an original composition.

Its carefully chosen members are responsible for getting out the literary magazine, *Voices of Peace*.



First row: Cobb, Stanton, Green, Brown, Suessmuth.
Second row: Pearsall, Fyfe, Crump, Allen.
Third row: M. F. Boone, Sloan, Garner, Bobbitt, McLelland, Swain, Tysor, Brooks.
Not pictured: Craig, Reins, Gibson.



SIGMA PHI KAPPA



Sig officers: Mattha Faison, President; Margaret Holler, Vice President; Lib Andrews, Secretary; Lois Crump, Treasurer.

The Sig Society Memory Book is filled with pleasant reminders. It opens with a scene from the rush party, with doughnuts and "cokes." Next are memories of our "Barnyard Brawl"—punch from an old well, candy and cookies in the General Store, and ice cream at our Dairy. Pledges were formally initiated by candlelight. Our Banquet was held at the Woman's Club with the other societies. Souvenirs of happy memories are many . . . parties with State boys . . . Hockey practices . . . War Fund Campaign . . . and the words we shall always sing: "We love you truly, Sig's!"

THE BARNYARD BRAWL.



PI THETA MU



Pi officers: Lib Henderson, President; Betty Patrick, Vice President; Janie Mitchener, Secretary; Ann Thornton, Treasurer.

For thirty-eight years the Pi Society has been at Peace, and this year, as usual, September found them eager to greet the new girls, who were soon "rushed" by all of the societies. The Pi's were unusually successful in their rushing procedures, and the large number of new members was formally initiated, with the old girls taking part. Possibly the greatest success of the year was the inter-society banquet. Our energy and enthusiasm then turned to athletics—hockey, basketball, and softball—with rather stiff competition from the Sig's and Rho's. With such vigor and interest as have been shown by the new members, we are assured that the green and white of Pi Theta Mu will always stand out—and "stand for the highest Peace can strive for."

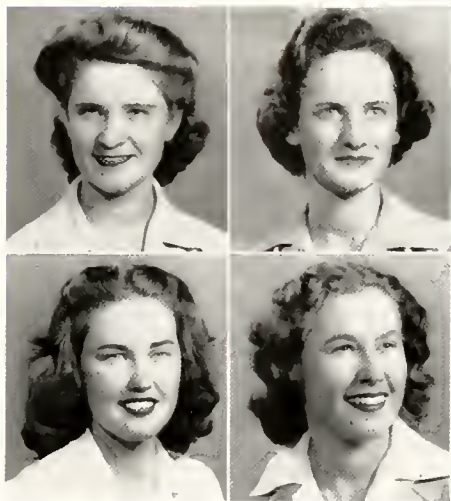
SCENE FROM THE
FORMAL INITIATION.





RHO DELTA CHI

Recipe for happiness: take one well-rounded Peace girl; flavor with fun; mix with good times and a lot of laughs; add a touch of interest and genuineness; sprinkle well with humor! What have you? Why, a Rho, of course. We have had a grand time this year. . . . Giving a comic-strip party with all the characters from Maggie and Jiggs to the "Dogpatchers." . . . Boasting because about fifty-two girls went "Rho." . . . Feeling proud that the Rho's came out on top of the United War Relief Fund, having contributed more per capita than any other society.

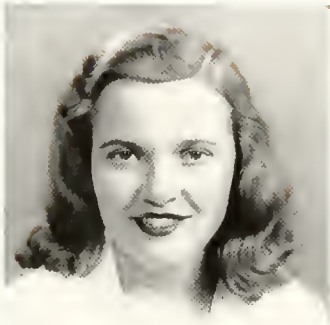


Rho officers: Bubbie Reins, President; Evelyn Hill, Vice President; Alta Kellogg, Secretary; Lib Purcell, Treasurer.



COMICAL GLIMPSSES.

SIGMA PI ALPHA



ANNE TATE
President

This, the Theta Chapter of Sigma Pi Alpha, is a part of a national honorary language fraternity which was founded by N. C. State College. The Theta Chapter, established in 1939, is the only chapter in the South which has been organized in a junior college. Eligibility for membership is based upon general scholastic honors as well as upon special abilities in languages.

The purpose of our society is to promote interest in, and to enlighten ourselves about, foreign lands and their languages. The members, of whom there are eight, meet every third Friday and present various interesting programs pertaining to foreign peoples.



Seated: Sloan, Tate, Hill, Purcell, Newbold.
Standing: Swain, Patrick, Brown.

PHI THETA KAPPA

Phi Theta Kappa is a national scholastic honor society which upholds the same high standards of scholarship, leadership, and character in a junior college as Phi Beta Kappa does in a four-year college.

The Gamma Phi Chapter at Peace, established in 1939, has become one of the most influential and inspiring organizations in our school. Members of this group are selected from the highest ten per cent of the academic student body and are admitted into the chapter by invitation only. Students who are privileged to become members of Phi Theta Kappa are representative of the best among Peace girls.



LIB PURCELL
President



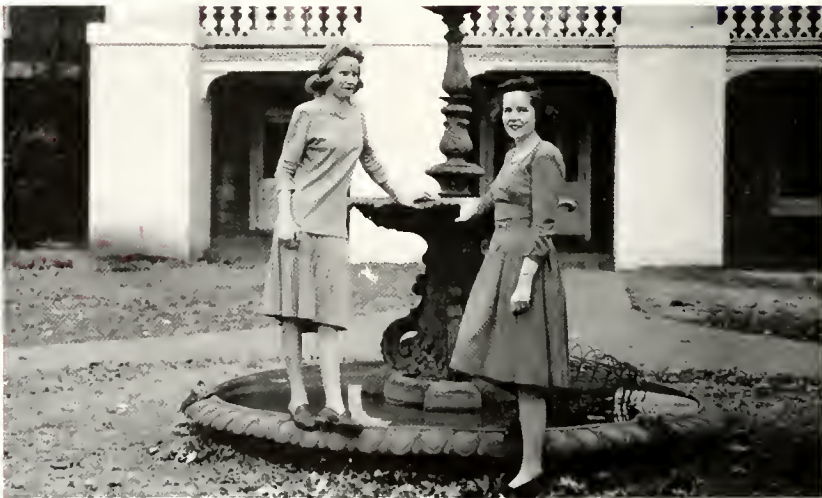
(Industrious Phi Theta Kappa's reading English B parallel!) *Left to right: Purcell, Tate, Newbold, Sloan, Patrick.*



NELL HARRIS
President

ALPHA PI EPSILON

In 1912 Peace organized a chapter of the National Honorary Secretarial Society, Alpha Pi Epsilon. The purpose of this society is to raise the standards of the college-trained secretary to the professional level. Only students of superior ability are admitted.



Harris, Batts.

SCHOLASTIC HONORS

Scholastic honors, which are announced at the conclusion of the first term, are presented in two honor rolls. The first is composed of students who make all grades of 90 or above, and the second is composed of those who make an average of 90 or above on all courses.



SENIORS

BETTY PATRICK, Kings Mountain, N. C.	ANNE NEWBOLD, Wilmington, N. C.
ANNE TATE, Oakland, Fla.	CATHERINE SLOAN, Garland, N. C.
IRENE FRYE, Raleigh, N. C.	

JUNIORS

CATHIE ANN GREEN, Raleigh, N. C.	KAY PLEASANTS, Raleigh, N. C.
ELEANOR CRAIG, Jacksonville, N. C.	MARIE ANDREWS, Raleigh, N. C.
DOROTHY SWAIN, Raleigh, N. C.	MARY LEWIS CURLEE, Raleigh, N. C.
MARGARET BROOKS, Burlington, N. C.	IRENE SPENCE, Goldsboro, N. C.
MARY RUTH BAILEY, Raleigh, N. C.	

PREPARATORY STUDENTS

NATALIE NEAL, Raleigh, N. C.	MARY LOU PRESSLY, Raleigh, N. C.
JANE CASSTEVEN, Clemmons, N. C.	JEANNE PADDERY, Bramwell, W. Va.

THE LOTUS



CATHERINE SLOAN
Editor-in-Chief

A great deal of time, effort, and money has been spent on this edition of the LOTUS in the hope that the resulting yearbook may be pleasing. Without the inexhaustible patience and help from our staffs, sponsors, printer, engraver, and photographer, we could never have completed our difficult job.

In spite of our obvious inexperience, the task is finished at last; we are relieved and happy in this realization, for it has not been easy. The 1944 LOTUS is yours—from us to you, with all our good wishes.

EDITORIAL STAFF

Associate Editors: Linda Cobb, Frances Sholes, Martha Faison, Virginia Whitaker.

Assistant Editors: Eleanor Craig, Dot Swain, Ann Tysor, Louise Alston.

Art Editor: Anne Newbold.

Typing Editor: Alta Kellogg.

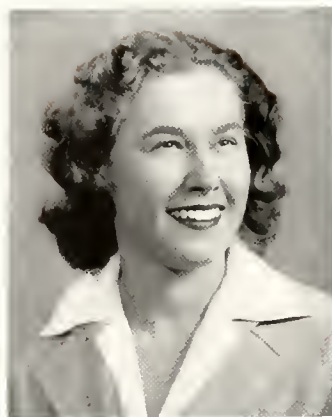


Seated: Sholes, Sloan, Cobb. *Standing:* Swain, Newbold, Alston, Faison, Tysor, Craig, Whitaker.
Not pictured: Alta Kellogg.

THE LOTUS

In the early fall we, the Business Staff of the LOTUS, set out to "get those ads." Enthusiastic and determined, we planned our campaign and, with the help of our adviser, Miss Kirkpatrick, made trips to town both on foot and in the school car. We have learned the "in's and out's" of the business world of this city and have enjoyed every experience.

We take great pride in the part we have had in giving you this 1944 LOTUS.



ELIZABETH PURCELL
Business Manager

BUSINESS STAFF



Left to right: Wells, Batts, M. Andrews, Wetmore, Henderson, Boone, Assistant Business Manager, Purcell, Business Manager, Fleming, Pearsall, Rowland, Andrews, Miss Mary Kirkpatrick.



JANIE MITCHENER
President

DAUGHTERS' AND GRAND- DAUGHTERS' CLUB

This club is composed of girls whose parent or grandparent is an alumna of Peace College. The purpose of the club is to carry on the traditions and to instill in each heart a deeper sense of loyalty to those things which make a "Peace Girl" love Peace. The officers are Janie Mitchener, President; Mary Bryan Fleming, Vice President; Dickie Ennis, Secretary; Elizabeth Purcell, Treasurer.



The sponsor is Miss Marjorie Clark and the members are: Mary Bates Sherwood, Fannie Thomas, Ann Thomas, Jean Smollen, Mary Bryan Fleming, Frances Pleasants, Mary Anna Pence, Lucie Richardson, Mary Badger Wetmore, Linda Cobb, Elizabeth Henderson, Joyce Hansen, Dickie Ennis, Emma Wrenn, Harriet Swain, Patsy Cozart, Jane Rogers, Penn Bunn, Elizabeth Purcell, Janie Mitchener, Catherine Sloan, Martha Faison, Lillian LeGrand, Mary Lou Pressly, Elizabeth Stallings.

DEES CAMERA CLUB

Organized in 1938, the Dees Camera Club gives an opportunity to girls who are interested in photography to work together. Since then it has made much progress. Some of the snapshots in this annual were contributed by various members of the groups. *The members pictured are:* Cooper, Vick, Watlington, Pennington, *President*, Jackson, Bryan, Albritton, Aycette, Twi-dale, Pressly, Best, Bray, Henderson, Davis, Andrews, Hamilton, Wetmore, Mitchener, Fleming, Bunn, Taylor, Cooke.



Seated: Boone, Hill, Henderson, Newbold, Patrick, Miss Mary Elizabeth Thomas, *Sponsor*, Faison, *Secretary*, Thornbn, Wells, Tate. *Standing:* Sloan, *President*, Whitaker, Cobb.

INTERNATIONAL RELATIONS CLUB

This year the International Relations Club was organized under the leadership of Miss Mary Elizabeth Thomas. Its purpose is to further interest in current world events, and its weekly programs are planned to give the members a broader outlook on, and a clearer understanding of, history in the making.



GLORIA WEST
President

GLEE CLUB

You are interested in singing—because you want training, because it's fun? Then the Glee Club is interested in you.

Organized this year under the direction of Miss Dorothy Knight, the voice teacher, the club elected Gloria West, President; Margaret Lee Duke, Vice President; and Margaret Hyman, Secretary and Treasurer. The regular accompanist is Miss Helen Seoggins of the music faculty.

The Glee Club is a source of pride and pleasure to the entire student body. It has given enjoyable musical programs during chapel services, on special occasions, and at Christmas time.



PROCESSIONAL: O Come, All Ye Faithful
Traditional

INVOCATION: The Reverend M. O. Sommers

SILENT NIGHT *Gruber*
 Audience and Glee Club

THE VIRGIN'S SLUMBER SONG *Reger*
 Avery Sylvester

HERE WE COME A-WASSAILING
Traditional English

THE BOAR'S HEAD CAROL
Traditional English
 Joyce Hansen, soloist

DECK THE HALLS *Old Welsh*
 Glee Club

HYMN NO. 64—O Little Town of Bethlehem
Redner
 Audience and Glee Club

O HOLY NIGHT *Adam*
 Billie Pennington

THE CHRISTMAS MESSIAH

(Arranged from G. Handel)

SOLOISTS: Anne Jones and Billy Pennington.

Comfort Ye My People } Glee Club
 And the Glory of the Lord }

He Shall Feed His Flock: Solo

For Unto Us a Child is Born: Choir and Glee
 Club

There Were Shepherds: Solo and Choir

Glory to God, Hallelujah! Glee Club

Recessional: Hark! the Herald Angels Sing
Mendelssohn

Director Dorothy Knight
 Accompanist Helen Scoggins
 Organist Nelly Phillips Staudt



ELSIE ROBERTSON ART CLUB



CHARLOTTE STANTON
President

Art and art appreciation, of much interest to many Peace girls, find an organized outlet of expression in the Elsie Robertson Art Club, formed in 1943. The simple requirement for membership is an interest in this creative activity.



Left to right: Bunn, Crump, Newbold, M. E. Albritton, Graham, Stanton, Golden, Miss Mabel Pugh, Henderson, Hyman, Pope, Griffin, Padbury.



. . . The open Book.

RELIGIOUS ACTIVITIES

PEACE STUDENT CHRISTIAN ASSOCIATION



ANNE NEWBOLD
President

"Religion and life are one—or neither is anything," and so the purpose of the Peace Student Christian Association is to make Christ a personal reality in the life of each girl here on the campus. Planned and directed by a Cabinet composed of girls from the junior and senior classes, with Miss Lucy Steele as Faculty Adviser, are daily morning watch, weekly hall prayers, and Sunday night vespers. Valuable experience is gained by the girls in planning and presenting these services. Informal discussions are favorites of the group, as the girls feel free to ask and discuss questions with the other students and the counselor. Through these activities each member makes this prayer . . .

"Day by day,

Dear Lord, of Thee three things I pray:

To see Thee more clearly,

Love Thee more dearly,

Follow Thee more nearly,

Day by day."



Seated: Brooks, Sholes, Cobb, Newbold, Purcell, Weskett, Pearsall.
Standing: Craig, Hollis, Hill, Miss Steele, Reins, Sloan, Patrick.

Morning watch,
the beginning
of our day.



The P.S.C.A. hut
receiving a fresh coat
of paint from these energetic
girls.



CHRISTMAS PAGEANT

The Christmas Pageant, an annual P.S.C.A. production and
every Peace girl's heritage.





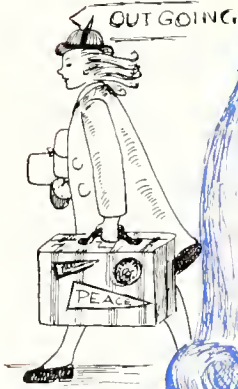
STUNT NIGHT



JUNIOR SENIOR



MAY DAY



NO MORE DAYS TILL VACATION



CLASS DAY



RUBB WEEK



Peaceful days



NIGHT OF NIGHTS



ATHLETICS

ATHLETIC ASSOCIATION



BOBBIE REINS
President

Each student at Peace is automatically a member of the Peace Athletic Association. The Athletic Board is made up of the President, Secretary and one representative elected from each of the three societies. Under the able and enthusiastic direction of our physical education instructor, Miss Little, sports have taken a prominent part in our school life, and an athletic letter has been the reward for many who have been faithful in going out for hockey, basketball, tennis, and all the other sports. The "Little Store," owned and operated by the Athletic Association, is one of the favorite spots for the students during the afternoons and "skipping periods."

CHEER LEADERS



Left to right: Mary Lib Pasham, Pi; Margaret Lee Duke, Sig; Jane Brown, Rho.

HOCKEY—PI GROUP

If you are in search of a really exciting game, we suggest hockey. The Pi's can "wham" that stick around and place that wooden ball in the goal. Hockey calls for rough-tough competition, especially when one is against the Pi society.



Tennis is still the all-round sport at Peace, and we must say that the Rho society has that strong grip and fine technique necessary for a "love-ly" game.

TENNIS—RHO GROUP



BASKETBALL—SIG GROUP

As for basketball, it is about the most exciting game at Peace! We can hand it to the Sig's, who go for a goal anytime—and, what's more, they get it.



ARCHERY

Archery is a game that must go right to the point and stick, too.



GOLF

Golf is really "up to par" on Peace Campus this year.

THE LOTUS OF 1944

Our two short years at Peace have gone, and soon we shall pass through the Portals of Peace. Some of us will go to other colleges and universities; some of us will begin working; a few of us will perhaps marry. But none of us will ever forget the years we spent here—years filled with joyous triumphs and victories, and bitter defeats, too. Nor can we, above all other things, forget the lasting friends we have made here—friends who have shared our experiences with us. As we leave Peace we know well that "When one door is shut, another opens."



Perfection: The absent-minded professor who would lecture to his steak and cut his classes.

<p><i>Ask for</i> GOLDEN TAP GRAPEFRUIT JUICE <i>At the Soda Fountains. And insist upon being served in DIXIE CUPS</i> Garland C. Norris Co.</p>	<p>DAIRY PRODUCTS PASTEURIZED MILK BUTTER - EGGS <i>Insist on the Best</i> PINE STATE ICE CREAM PINE STATE CREAMERY CO. Glenwood Avenue Phone 2-3911</p>
<p>Brantley & Son <i>Expert Druggists</i> 1910 <i>Fine Sodas</i></p>	
<p>THE FIRST PRESBYTERIAN CHURCH <i>and</i> THE FELLOWSHIP DEPARTMENT <i>of</i> THE CHURCH SCHOOL</p> <p>Extend a welcome to all college students. It is our hope that you will make this your church home during your stay in Raleigh.</p> <p>M. O. SOMMERS, <i>Minister</i> EIRENE HUDSON, <i>Director of Religious Education</i> K. G. HUDSON, <i>Superintendent of Church School</i></p>	

Miss Steinert: Can anyone tell me why trees become petrified?
Patrick: The wind makes them rock.

Miss Gatlin: Now watch the board while I run through it once more.

HUDSON-BELK COMPANY

RALEIGH'S LARGEST DEPARTMENT STORE



*We Appreciate Your Patronage
and Look Forward
With Pleasure
to
Serving You
in the Future*

Jean Graham, in a hurried trip to Peace from home, approaches what she thinks is a red cap and says: Say, call me a cab, will ya'?

Man: Sorry, young lady, but I'm not a red cap. I am a Rear Admiral.

Jean: All right, then call me a boat. I gotta get to Peace!

Bobbie Reins: Anne is always making such cutting remarks.
Alta Kellogg: Yeah. She must have been born with a silver knife in her mouth!

CAROLINA COACH COMPANY

Carolino Owned and Operated

Low Fares



Frequent Schedules

Member National Trailways Bus System

Compliments of

T. H. Briggs & Sons, Inc.

*"Carolinas' Oldest Wholesale
and
Retail Hardware House"*

Established 1865

Phone 2-2025

"INSIST ON LANCES"

LANCE PACKING CO., Inc.

Candies and Peanut Products

Phone 2-0728

R. E. GRAHAM, Representative

Raleigh, N. C.

BYNUM PRINTING COMPANY

BETTER PRINTING

Phone 6417

Mrs. Fulk in class: There's a young lady in this class making a monkey of herself. When she has finished, I'll start.

Margaret Brooks: You say you know a joke about crude oil. Let's have it.
Margaret Lee Duke: Can't. It's not refined.

Boylan-Pearce, Inc.

—
"Raleigh's
Shopping Center"

Neiman's
INC
JEWELERS-SILVERSMITHS
RALEIGH, N. C.

JOHN ASKEW

PAINTING AND
INTERIOR DECORATING

*Estimates made in and
out of town*

Telephone 6824 402 Glenwood Ave.

Office Phone 2-3015 Plant Phone 2-2861

HOOD-MODEL DRY CLEANING COMPANY

"Ask the Folks We Serve"

Main Office: 13 S. Wilmington Street
Plant: 606 N. Person Street
Raleigh, N. C.

MEREDITH COLLEGE

ACCREDITED liberal arts college: Southern Association of Colleges and Secondary Schools, American Association of University Women, Association of American Universities.

PROGRESSIVE educational program in terms of Christian character and service. Distinguished record of student honors. Excellent library facilities. Effective honor system.

ATTRACTIVE location in Raleigh. "the educational center of the State." Beautiful campus of 170 acres. Modern fireproof dormitories with generous provision for social activities.

Write for catalogue and folder of views.

CARLYLE CAMPBELL, President
Raleigh, North Carolina

Mae Fleming: In Georgia we have a lilac bush fifty feet high.
Lois Crump: Yeah, wish I could lilac that.

Eleanor Craig (one of those dear, sweet Council Members!), after light bell: Jeannette Turner, are you entertaining a girl in your room?
Turner: Wait a minute, and I'll ask her.

FLOWERS!

Cut Flowers *Corsages*
Graduation Bouquets
Decorations

PHONE 4070

J. J. FALLON CO., Inc.

"We Grow the Flowers We Sell"

DRINK



in Bottles

OCCIDENTAL LIFE INSURANCE COMPANY

LAURENCE F. LEE, PRESIDENT

HOME OFFICE: RALEIGH, NORTH CAROLINA

For those smart,
young styles you
love to wear . . .



TAYLOR'S

***The Showplace of
the Carolinas***

Evelyn Hill: What is it a sign of when your nose itches, roommate?

Anne Newbold: Someone is coming.

Evelyn: And what if your head itches?

Anne: They have arrived!

AMERICA WORSHIPS

WITHOUT fear or favor, members of any sound religious faith worship openly in America.

Because religion is important to so many of us, we and our forefathers fought and worked to keep our government free. Government for the people, which permitted us to worship in our faith, gave us courage to build great churches, thriving businesses, dynamic industries, diversified agriculture . . . a land of endless opportunities.

So long as no one man nor one group of men attempt to tell us how we shall worship, America can remain free and her people may continue to provide the strength and initiative to keep her great.



CAROLINA POWER & LIGHT COMPANY

Miss Kuhns (in math class): Now, Anne Rowland, if I subtract 25 from 37, what's the difference?

Rowland: That's what I say. Who cares!

W. E. TRULL W. R. TRULL

**TRULL PLUMBING
& HEATING CO.**

*Plumbing : Heating
Coal Stokers
Air Conditioning*

Phone 6353 411½ Fayetteville St.

**BROGDEN
PRODUCE COMPANY**

Wholesale
FRESH FRUITS and
VEGETABLES

409-15 West Martin Street
RALEIGH, N. C.

**OAK CITY
LAUNDRY**

436 South Salisbury Street



TRICLENE

Odorless Dry Cleaning



HATS CLEANED *and* BLOCKED
RUGS SHAMPOOED

PHONE 4478

Raleigh

Wilson

G. S. Tucker & Bros.

Incorporated

East Hargett Street
Raleigh, N. C.

**FURNITURE *and*
HOME FURNISHINGS**

We Appreciate Your
Patranage

Clayton

Smithfield

DILLON SUPPLY COMPANY

MILL SUPPLIES

HEATING EQUIPMENT

MODERN MACHINE SHOP

RALEIGH

ROCKY MOUNT

DURHAM

Martha Jane Pearsall (in Eckerd's Drug Store): Are you the girl who took my order?

Girl: Why, yes.

Pearsall: Well, I declare, you don't look a day older!

Mary McLelland: What's the penalty for bigamy?
Virginia Oliver: Two mothers-in-law.

<p>PATRONIZE PIGGLY WIGGLY <i>For the Best GROCERIES - FRESH MEATS FRESH FRUITS and VEGETABLES</i> Attractive Stores Courteous Service Reasonable Prices</p> <p><i>Home Owned Home Managed</i></p> <p>PIGGLY WIGGLY <i>Your Patronage Appreciated</i></p>	 <p><i>Raleigh's Smartest Shop</i> THE STYLE CENTER FOR THE SMART COLLEGE GIRL 126 Fayetteville Street</p>
<p>For Pure Clear Crystal</p> <p>ICE</p> <p>and High Grade</p> <p>COAL</p> <p>PHONE 5589</p> <p>CAPITAL ICE AND COAL CO.</p> <p>Incorporated 600 West Hargett Street</p>	<hr/> <hr/>  <p><i>"Largest Sporting Goods Store in South"</i></p> <hr/> <hr/>
<p>PERSON STREET PHARMACY</p> <p>PERSON STREET : Two Stores : HAYES BARTON</p> <p>P. D. GATTIS, <i>Proprietor</i></p> <p><i>A Complete Line of Nationally Advertised Drugs</i></p> <p><i>Plus a Selected Assortment of Toilet Items</i></p> <p>SODA OUR SPECIALTY</p>	

Mrs. Turner: Stop reaching across the table. It's bad manners; besides, don't you have a tongue?

Penn Bunn: Yes ma'am, but my arm is longer.

Helen Bras-well: What do you mean by saying Benedict Arnold was a janitor?
 Julia Weskett: Well, the history book says that after his exile he spent the rest of his life in abasement.

ALDREDGE & CO.

Wholesale Grocers

Phone 7540

RALEIGH DUNN

(Successors to Gen. Marsh Company)

J E A N ' S

*The Treasure House
of Fashion*

*For College Girls
and their Mothers*

**PROVIDENT MUTUAL LIFE
INSURANCE COMPANY**

OF PHILADELPHIA
Organized 1865

Make your later years hoppy with
a retirement life income

FRANK M. HARPER & SON
District Agents

RALEIGH, NORTH CAROLINA

CONTRIBUTED

FLORA MACDONALD COLLEGE

RED SPRINGS, N. C.

A SENIOR COLLEGE FOR WOMEN

Near Fayetteville, Southern Pines and Pinelhurst. Delightful climate, healthful mineral springs and remarkable health record. Bus and Railway connections.

A Standard Senior Grade A College for Women. Strong faculty. Graduates accepted for graduate work by leading universities. Class A teacher's certificates. Homelike atmosphere. Personal attention to students by teachers.

Courses offered: Bachelor of Arts, Bachelor of Music, Bachelor of Science (Home Economics) degrees. A Secretarial Course. Bachelor of Arts in Music.

Athletics. Skillful physical director and coach has general supervision of sports and physical training. Archery, basketball, hockey, swimming, tennis, hiking, etc., are enjoyed in season.

Social Activities. Receptions, teas, and many other social functions are provided at the college, while many hospitable homes of the citizens of Red Springs are open to the students.

Wide Patronage. Patronized at present by twelve states and two foreign countries. Five thousand alumnae are engaged successfully as home-makers, nurses, teachers, dietitians, home demonstration agents, social workers, missionaries, and in many other useful professions.

MODERATE CHARGES : FOR CATALOGUE WRITE

HENRY G. BEDINGER, *President*

FLORA MACDONALD COLLEGE : Red Springs, N. C.

Mary Lou Dixon: I'll give you \$10 to do all my worrying for me.

Martha Thorpe: You're on. Where's the \$10?

Mary Lou: That's your first worry.

Mary B. Fleming (looking up from paper): What does it mean here by "seasoned troops"?
Nell Harris: Mustered by the officers and peppered by the enemy.

THE PHOTOGRAPHS

in this Annual were made by

DANIEL AND SMITH STUDIO

134 Fayetteville Street
RALEIGH, N. C.



College Annual Specialists



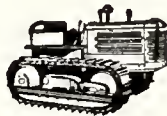
Fine Portraits

Prompt Service

NORTH CAROLINA EQUIPMENT CO.

ROAD MACHINERY : SUPPLIES
CONSTRUCTION EQUIPMENT

Raleigh
Phone 8836



Charlotte
Phone 4-4661

Miss Mourane (in French): Miss Davis, your explanation is as clear as mud.
Helen Davis: Well, it covers the ground, doesn't it?

Susan Griffin: Where are you going?

Jane Rogers: Going crazy, want to come along?

Susan: You're mighty dressed up to be going such a short way.

<p><i>Compliments</i></p> <p>ECKERD'S</p> <p>Prescription Drug Store</p>	<p>SAY</p> <p>BAMBY</p> <p>BREAD</p> <p>★</p> <p>ROYAL BAKING CO.</p> <p>DIAL 4661</p> <p>Raleigh, N. C.</p>
<p>MODERN SHOE REBUILDERS</p> <p>15 S. Wilmington Street</p> <p><i>Expert Repairs</i></p> <p>DIAL 2-2282</p>	<p>J. G. BALL COMPANY</p> <p><i>Wholesale Grocers</i></p> <hr/> <p>320 West Davie Street</p> <p>RALEIGH, N. C.</p>
<p>PEACE COLLEGE CLASS RINGS AND PINS</p> <p><i>Society Pins and Novelty Jewelry</i></p> <p>Walter B. Anderson</p> <p>L. G. BALFOUR PRODUCTS</p> <p>RICHMOND, VIRGINIA</p>	

Lib Andrews: What should I say about the two peroxide blondes who made such a fuss at the game?

Martha Faison: Oh, just say the bleachers went wild.

Mrs. Bethune: Are you doing anything for that cold of yours?
Ann Thornton: Yes, ma'am, I sneeze whenever it wants me to.

DUKE UNIVERSITY
SCHOOL OF NURSING
DURHAM, N. C.

The basic entrance requirements are intelligence, aptitude for nursing, and character. During the War, high school graduates who have not had college work, including chemistry, should enroll in the special Pre-Nursing Course offered in this School, which will begin July 3, 1944. Those who successfully complete this pre-nursing course, and other students with acceptable college work will begin September 29, 1944. Tuition for the pre-nursing course is \$100.00 and \$100.00 per year for the nursing. This covers the cost of instruction and maintenance. Students joining the United States Nurse Cadet Corps will have no tuition to pay and will receive uniforms and stipends. Kellogg Loan Funds for tuition are also available. Catalogue and application forms should be obtained from: The Dean of the School of Nursing, Durham, N. C.

"Rothmoor Coats"
and Suits

★

Exclusively
in Raleigh at

EFIRD'S
DEPARTMENT STORE

Southern School
Supply Company

School - Laboratory and
Library Supplies

Raleigh, N. C.

WHITE GATE FARM
POULTRY & EGG CO.

Milk Fed Poultry

Live and Dressed
STRICTLY FRESH EGGS

Dial 8013



W. H. KING DRUG CO.

Wholesale Drugs

Phone 2-0525
117 South Wilmington Street
RALEIGH, N. C.

Mrs. Rowland to Mary Lib Parham coming in study hall late: You should have been here at 7 o'clock.

Mary Lib: Why, what happened?

Miss Cortner: Why are you tardy this morning, Sophia?
Sophia Webb: Class started before I got here.

STROP TAXI COMPANY

Day and Night Service

ALWAYS

READY

5811 — PHONE — 5811

Oldest and Most Reliable

Barbour Produce Co.

Dealer in

FRUITS and PRODUCE

Arriving Daily by our own trucks

Wholesale Only

Phone 1121 Res. Phone 4366

At City Market

Diamonds

Watches

Jolly's

Leaders Since 1881

Jewelers

Jewelry

Silverware

The Home of

**"DORIS DODSON"
JUNIORS**

SUMMER DRESSES

*in Great Variety of
Tricky Styles*

**PLAY CLOTHES and
SWIM SUITS**

for Vacation Days



Vick Moore - B. E. Dennis - Earl Johnson

MOORE & JOHNSON CO.

*"For 20 Years Raleigh's Leading
Insurance Agency"*

Insurance : Surety Bonds

Insurance Building
RALEIGH, NORTH CAROLINA

**Edenton Street Methodist
Sunday School**

**Welcomes the Peace
College Girls**

Dr. A. J. Hobbs, *Pastor*
C. A. Dillon, *Supt. of Sunday School*

Miss Kulms: Anne, what kind of triangle are we using today?
Anne Tate: A three-sided one.

Linda Cobb: I don't see how these freshmen ever keep their hats on their heads.
Camilla Boone: Vacuum pressure.

JOB P. WYATT & SONS COMPANY

HARDWARE : IMPLEMENTS

DU PONT PAINT : VARNISH : OIL

SEEDS : PLANTS : BULBS

RALEIGH, NORTH CAROLINA



"The Family Laundry Service which we are now using is Fine and my shirts are just right."
"Yes dear, I wish I had known of the Capital City Laundry long ago." You too, can enjoy this fine laundry service, just dial 8873.

Combining culture and Christian faith. A standard, accredited four-year college for women offering B.A. and B.S. degrees.

QUEENS COLLEGE CHARLOTTE, N. C.

HUNTER B. BLAKELY, *President*

Dial 5721

Benj. F. McClamroch, Sr.

President

B. F. McCLAMROCH & CO.

122 S. Blount Street

Raleigh, N. C.

We Deliver

Dial 7588

Halifax Street Grocery

601 Halifax Street

Choice Meats - Quality Groceries

Fresh Fruits and Vegetables

Raleigh, N. C.

Your Patronage Appreciated

**Ambassador, State, Palace, Capitol
and Varsity**

Operated by

NORTH CAROLINA THEATRES, Inc.

**THE BEST IN PHOTOPLAYS, VAUDEVILLE and STAGE SHOWS
AT POPULAR ADMISSION PRICES**

Jane Brown (in English B, while attempting to read Milton): I do not pretend to know how to read poetry, Miss Horne.

Miss Horne: Well, I am not trying to make you think you do.

Experience

LYNCHBURG ENGRAVED ANNUALS ARE
BUILT UPON YEARS OF EXPERIENCE
AS SPECIALISTS IN THE FIELD OF
SCHOOL PUBLICATIONS



IN successfully fulfilling the requirements of the modern College Annual Staff we have combined a comprehensive and systematic servicing program with that high standard of quality so essential in the production of fine yearbooks. Lynchburg engraved annuals are built by an organization specializing on school annuals exclusively, thereby assuring each staff of the personal and intelligent assistance so necessary in the planning and designing of a truly satisfactory book.

**LYNCHBURG
ENGRAVING
· COMPANY ·**

LYNCHBURG · VIRGINIA

Builders of Better Annuals

THE ALMA MATER

In the heart of Carolina,
 'Neath its skies of blue,
Stands our noble Alma Mater,
 Glorious to view,
Classic in her broad proportions,
 Looks she proudly down—
Reared against the arch of heaven,
 With the stars for crown.

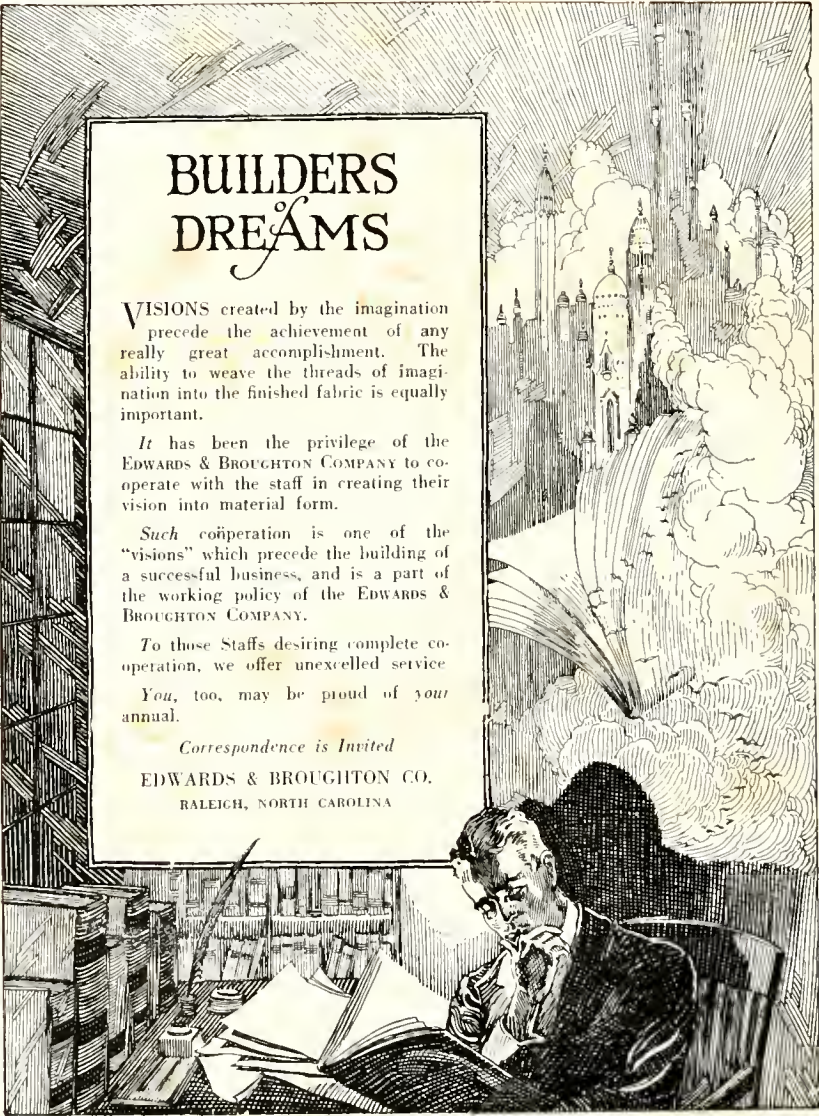
Chorus

Lift the chorus, speed it onward;
 Let it never cease;
Hail to thee, our Alma Mater;
 Hail, all hail, to Peace!

Clambering o'er the walls and columns
 Historic ivies twine,
As pure love and tenderest memory
 In our hearts enshrine
Days of toil and days of pleasure,
 Happiness and joy,
Hardships, struggles without measure,
 Days without alloy.

Honored be our Alma Mater,
 Honored for her past:
Honored in the living present,
 Let her honors last,
Long as time shall tell the story,
 Long as hearts are true,
May her name be crowned with glory
 And honors ever new!

—MISS NANNIE DINWIDDIE.



BUILDERS DREAMS

VISIONS created by the imagination precede the achievement of any really great accomplishment. The ability to weave the threads of imagination into the finished fabric is equally important.

It has been the privilege of the EDWARDS & BROUGHTON COMPANY to cooperate with the staff in creating their vision into material form.

Such cooperation is one of the "visions" which precede the building of a successful business, and is a part of the working policy of the EDWARDS & BROUGHTON COMPANY.

To those Staffs desiring complete cooperation, we offer unexcelled service.

You, too, may be proud of your annual.

Correspondence is Invited

EDWARDS & BROUGHTON CO.
RALEIGH, NORTH CAROLINA

