

THE

Lotus



1 9 5 4



Digitized by the Internet Archive
in 2010 with funding from
University of North Carolina at Chapel Hill

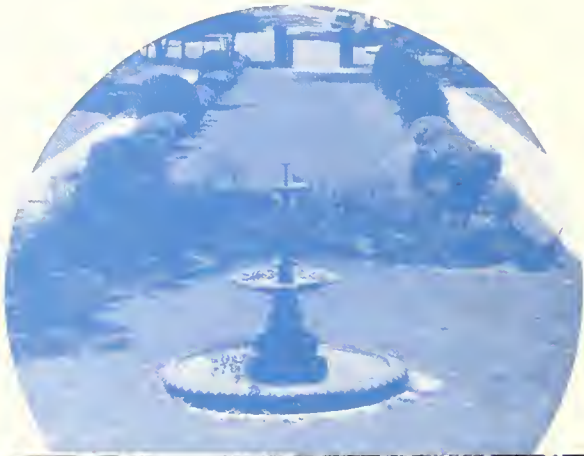
<http://www.archive.org/details/lotus1954peac>

BURWELL MEMORIAL LIBRARY
PEACE COLLEGE



PEACE COLLEGE

Raleigh, North Carolina





THE

Cotuit

OF 1954

Editor-in-Chief
ROSE DICKINSON

Business Manager
MARIE BROETZMAN

CONTENTS

The College * * * 9

The Classes * * * 15

Activities * * * 53

Features * * * 73

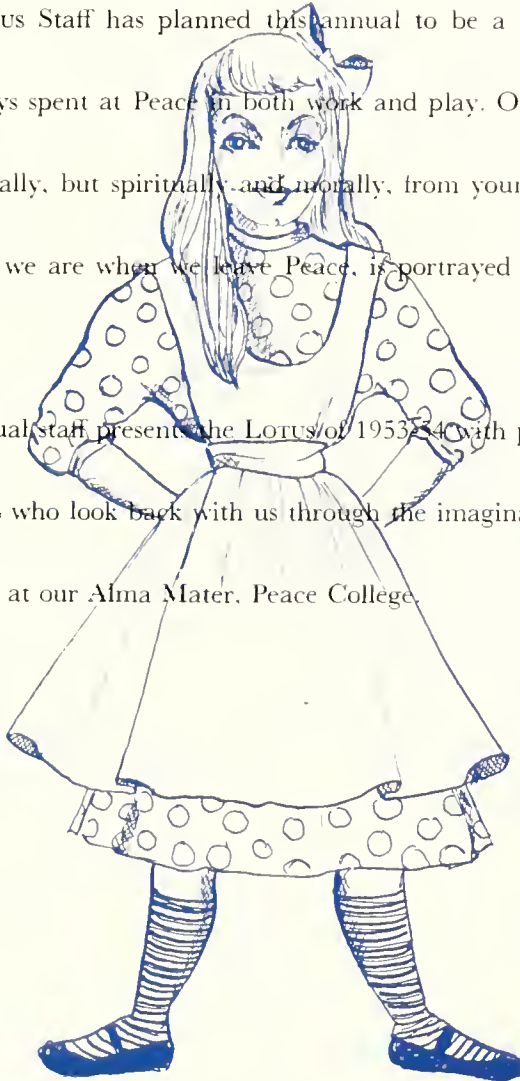
Advertisements * * * 85



FOREWORD

The Lotus Staff has planned this annual to be a picture of the exciting days spent at Peace in both work and play. Our growth not only physically, but spiritually and morally, from young girls to the adults that we are when we leave Peace, is portrayed in the Lotus.

The annual staff presents the Lotus of 1953-54 with pride and love for the girls who look back with us through the imaginary keyhole to happy days at our Alma Mater, Peace College.





TRIBUTE

A vision of Peace over the past twenty-two years is incomplete without the figure of one whose guidance has been a source of wholesome influence upon the lives of the girls. Miss Lucy Steele—a faithful and loving servant of her Lord—gave her years of service to Him through her efforts at Peace College. Although much of Miss Steele’s time was spent in many other places “speaking a piece” and “speaking of Peace,” we feel that she was ours, heart and soul.

We, her girls, knew Miss Steele as a teacher, counselor, and friend. In the capacity of instructor, she served in the classroom, teaching regular Bible classes and in chapel on Wednesdays teaching again so that those who were not enrolled in a regular Bible class were privileged to enjoy her wise instruction. As a counselor, Miss Steele’s role included that of adviser to the Peace Student Christian Association and personal counselor to those who sought her understanding advice. Miss Steele’s friendship to her girls is one of the most treasured memories that they hold of her. Her personal interest in each and their relationships toward God and others (especially the “true love”) has meant very much to all who sought opportunities to secure her guidance.

To one whose faith, ability, energy, sense of humor, and enthusiasm the students of Peace College will always admire and to one whose memory they will ever cherish—the Lotus of 1954 pays its highest tribute.





THE COLLEGE



ADMINISTRATION



DR. PRESSLY

To Peace girls, the King of Hearts is their president, for he is loved by them all. He sits on the throne in his office, humble and receptive, kind and understanding—their friend, their wise counselor. A truly regal personality is Dr. Pressly.

MISS HALL

It is with respect, admiration, and affection that we hail our Queen of Hearts, Miss Hall. Our dean, our Peace Mother, our true friend—Miss Hall has been our counselor in many difficult situations and our constant guardian. The 1954 student body of Peace College salutes her.



BOARD OF TRUSTEES

J. C. Allison Raleigh	The Rev. William B. Hood Wallace	The Rev. W. S. Patterson Davidson
Mrs. George F. Avinger Laurinburg	Karl G. Hudson, Jr. Raleigh	Dr. John Rhodes Raleigh
J. Archie Cannon Concord	Mrs. Julian Hutaff Fayetteville	R. A. Snow Raleigh
The Rev. Don Carson Raleigh	James D. Kilgore Raleigh	The Rev. James Sprunt, D.D. Raleigh
The Rev. Joseph Clower Morganton	Dr. F. L. Knight Sanford	Charles M. Sprinkle Winston-Salem
E. B. Crowe, Jr. Wilson	Rev. Charles E. S. Kraemer, D.D. Richmond, Va.	Mrs. Thomas Stamps Raleigh
The Rev. William Crowe, Jr., D.D. Wilmington	Mrs. B. R. Lacy Raleigh	The Rev. John Mack Walker Roanoke Rapids
Neill A. Currie, Jr. Fayetteville	H. H. Littrell Rocky Mount	Rev. Roy Watts, D.D. High Point
Mrs. George Finch, Jr. Thomasville	E. B. Manning Roanoke Rapids	The Rev. Harry Whitmore, D.D. Thomasville
Dr. Monroe Gilmour Charlotte	Mrs. C. C. McAllister Fayetteville	Mrs. Robert Wyatt Raleigh
Kelvin Gray Raleigh	The Rev. James McChesney, D.D. Goldsboro	
C. Spears Hicks Durham	Hector MacLean Lumberton	OFFICERS
John Hollbrook Lowell	William McPherson Raleigh	William McPherson <i>Chairman</i>
		James D. Kilgore <i>Vice-Chairman</i>
		William C. Pressly <i>Secretary-Treasurer</i>
		The Rev. Don Carson <i>Assistant Secretary</i>

WOMAN'S ADVISORY COMMITTEE

Mrs. J. E. Ballenger Wilson		Mrs. Frank Lea Wilson
Mrs. J. P. Barksdale Rocky Mount	Mrs. John Farris Burgaw	Mrs. George Matthis Durham
Mrs. C. B. Barrus Clinton	Mrs. Rudy Fonville Burlington	Mrs. Paul Mauney Kings Mountain
Mrs. Ralph Bruin Henderson	Mrs. W. C. Goley Graham	Mrs. Fred Moss Gastonia
Mrs. LeRoy Campbell Hickory	Mrs. Hoyt Hackney Sanford	Mrs. Sam McConkey Tarboro
Mrs. Dewitt Clark Clarkton	Mrs. C. H. Hand Lowell	Mrs. James R. Nisbet Waxhaw
Mrs. Herbert Combs Shelby	Mrs. J. K. Harper Pinetops	Mrs. W. D. Pearce Raleigh
Mrs. Hunter Dalton High Point	Mrs. J. H. Hogg High Point	Mrs. Earle Thompson Spencer
Mrs. Galen Elliot Willow Springs	Mrs. Boyce W. Hunter Charlotte	Mrs. Howard Whisnant Gastonia
Mrs. J. W. Farris Warsaw	Mrs. James Lamberson Wilmington	Mrs. David C. Worth Raleigh

THE FACULTY



MISS LYDA BAUCOM
Bursar

MRS. NELL BOOTH
Commercial Subjects, A.B.

MISS ELIZABETH CALDWELL
History, A.B., A.M.



MRS. FRANCES DARDEN
Hostess

MRS. SALLY DAVIS
Nurse, R.N.

MRS. ELEANOR DIXON
Commercial Subjects, A.B., A.M.



MISS JOYCE FOWLER
Health and Physical Education, A.B.

MISS ETHEL GRAMMER
Dietitian

MISS CHARLOTTE HOWE
Secretary to the President



MISS COLLEEN JOHNSON
Piano, B.Mus., M.Mus.

MRS. LILLIAN JONES
Home Economics, B.S., M.S.

MISS WINIFRED KUHN
Mathematics, A.B., B.E., M.S.



MISS WYNELLE LEWIS
Spanish, A.B., A.M.

MISS JANE MCDANIEL
Librarian, A.B., A.B. in L.S.

MR. J. N. MILLER
Bible, B.A., B.D.

PEACE COLLEGE

THE FACULTY

MISS JULIA OATES
English, A.B., A.M.



MISS MABEL PUGH
Art, History of Art



MRS. BESSIE RICHARDSON
Supervisor of Buildings and Grounds



MISS LUCY STEELE, deceased
Bible, A.B., A.M.



MISS FRANCES SUTER
Registrar, A.B., A.M.



MRS. MILDRED A. THIGPEN
Hostess



MISS ANN TYSOR
French, A.B., A.M.



MR. D. E. WARNER, JR.
Assistant to the President, B.S., M.Ed.



DR. SANFORD WINSTON
Psychology and Sociology, A.B., Ph.D.



MISS MARY E. WOOD
Science, A.B., M.A.



Not pictured:

MRS. DAISY J. COUCH
Commercial Subjects, A.B., A.M.

DR. CARL HJORTSVANG
Voice, Speech, B.A., B.Mus., M.Mus., D.S.M.

MRS. ANN E. C. THOMPSON
Organ, B.M.

FIFTY-FOUR

SNAPS



Mail to that male!



Peace lovelies



Big week-end



Outside contacts



Five minute coke

THE CLASSES



The Seniors



OFFICERS

ANN BOSTIC REYNOLDS. *President*
DINIE MCEWEN. *Vice-President*
FAY JACKSON. *Secretary*
BETTY REESE PRIDGEN. *Treasurer*
MISS SUTER. *Adviser*

CLASS POEM

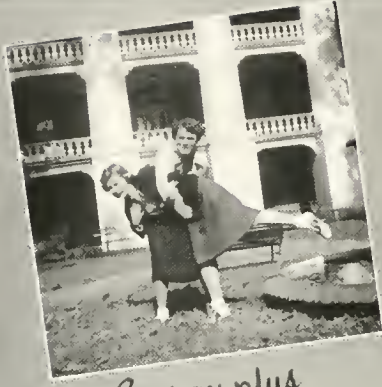
College is a wonderland
of books
and friends
and dreams
And dreams come true,
Of working times and playing times
and plots
and plans
and schemes
And how they grew:

A wonderland we soon must leave
But though we go away
The luster of this wonderland
Rubs off on us to stay;
The knowledge we have gained at Peace
Will linger with each girl
As we go from this wonderland
Into the wonderworld.



CLARK BARFIELD
Senior Mascot

SNAPS



Energy plus



Don't drop me



A necessity



Smile please



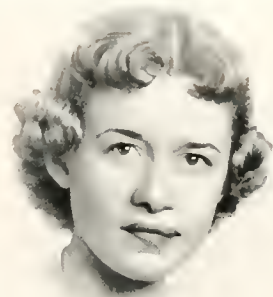
Sophisticated?

Class of Fifty-four

MARY ROSS ANDERSON Etowah, Tenn.
Rho Delta Chi

"It's always . . . barley, sugar and such things that make children sweet tempered."

I.R.C. '51, '52, '53, '54, Secretary and Treasurer '52, President '53; Phi Theta Kappa '53, '54; Sigma Pi Alpha '53, '54, Vice-President '54; Volleyball '54; Basketball '52, Glee Club '51, '52, '53, '54, President '52, '53; Vice-President Rho Delta Chi '53; Privileged Honor Roll '53, '54; Scholastic Honors '51, '52, '53, '54; National Honor Society '52; Pianist for May Day '51, '52, '53; Cabinet, Chairman of Hall Prayers '53, Ex Officio '54; Christmas Pageant '51, '52, '53, '54; Easter Pageant '51, '52, '53; President of Class '52; Secretary of Class '53; Senior Superlative, '52 (Prep. IV); President of Student Body '54; Business Staff of Lotus '54.



MARTHA LA VERNE BAGLEY
Raleigh, N. C.
Pi Theta Mu

These things called books get "curiouser and curiouser"

MARTHA GODFREY BLACK Sanford, N. C.
Sigma Phi Kappa

*"I wish they'd get the trial done," Alice thought,
"and hand around the refreshments."*

Student Council '54; Sigma Pi Kappa '53, '54; P.S.C.A. Cabinet, Secretary '54; Christmas Pageant '54; May Day '53; Annual Staff '54; Scholastic Honors '54; Daughters and Granddaughters Club '53, '54; Outstanding Senior '54.



Peace College

The Seniors



AGNES JACQUELIN BLACKMAN

Benson, N. C.

Rho Delta Chi

"I'm so very tired of all this nonsense," cried Alice.
Rho De ta Chi '53, '54; May Day '53.



MARY ELIZABETH BRIGHT

Elizabeth City, N. C.

Rho Delta Chi

"It seemed quite natural to Alice to find herself talking familiarly with them, as if she had known them all her life."

Rho Delta Chi '53, '54, Secretary '54; Christmas Pageant '53; Scholastic Honors '53; Secretary Student Council '54; Athletic Council '54, Treasurer; Business Staff '54; May Day '53; Volleyball '54.



MARIE MARGARET BROETZMAN

Norfolk, Va.

Rho Delta Chi

"She looked good natured," Alice thought, "still she felt she ought to be treated with respect."

May Day; Rho Delta Chi '51, '52, '53, '54, Treasurer '53; Athletic Council, Treasurer '54; Annual Staff '53; Business Manager of LOTUS '54; Christmas Pageant; Easter Pageant; Outstanding Senior; P.H.R.

Peace

Class of Fifty-four

SALLY ANN BULLOCK Stovall, N. C.
Sigma Phi Kappa

"She's kept none for herself."

P.S.C.A. Cabinet '53, President '54; Student Council '54; I.R.C. '53, '54; Sigma Phi Kappa '53, '54; Phi Theta Kappa, Vice-President '54; Christmas Pageant '53, '54; May Day '53; Sigma Pi Alpha '53; Stunt Night '53, '54; Junior Class Treasurer '53; Easter Pageant '53; P.H.R. '54; Scholastic Honors '53, '54; Miss Peace '54.



SYLVIA KATHRINE BURNETT
Burgaw, N. C.
Rho Delta Chi

"There ought to be a book written about me, that there ought!"

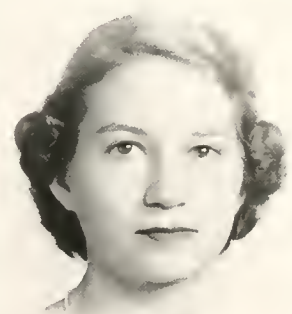
Stunt Night; Christmas Pageant; May Day '53, '54.



SHIRLEY LA VERNE CAMERON
Lillington, N. C.
Rho Delta Chi

"We can talk," said the Tiger-Lily, "where there's anybody worth talking to."

Scholastic Honors '53, '54; May Day '53; Annual Staff, Typist '54.



College

The Seniors



ALICE LOU CARTER Wallace, N. C.
Rho Delta Chi

*"Begin at the beginning," the King said, gravely,
"and go on till you come to the end; then stop."*

Daughters and Granddaughters '53, '54; Art
Club '54; Stunt Night '53.



JUNE MARILYN CHAMBLEE Raleigh, N. C.
Pi Theta Mu

*"Oh, how I wish I could shut up like a telescope!"
thought poor Alice.*

Pi Theta Mu, Treasurer; Day Student Council,
Treasurer.



ZELLA FRANCES CIVILS Kinston, N. C.
Sigma Phi Kappa

*"We are but older children, dear, who fret to find
our bedtime near."*

Stunt Night '54; May Day '53.

Peace

Class of Fifty-four

SHIRLEY FRANCES COUNCILMAN
Bonlee, N. C.

Rho Delta Chi

"Does the one that wins get the crown?"

P.S.C.A. Cabinet '53, Vice-President '54; Student Council '54; Phi Theta Kappa, President '54; Sigma Pi Alpha '54; I.R.C. '53, '54; Art Club '54; Papyrus Club '53, Treasurer; Outstanding Senior; Class Poet; P.H.R.; Christmas Pageant '52, '53; Easter Pageant '53, '54; May Day; Self Evaluation Study Committee.



ROSE MARIE DENNIS Louisburg, N. C.
Rho Delta Chi

"I never was so ordered about before in all my life: never!"

May Day '53, '54.



ROSE ADELE DICKINSON Raleigh, N. C.
Pi Theta Mu

"I can't manage this pencil; it writes all manner of things that I don't intend."

Art Club '53, '54; Outstanding Senior '54; Scholastic Honors '53, '54; Annual Staff, Editor-in-Chief '54; Sigma Pi Alpha '53, '54; Self Evaluation Study Committee.



College

The Seniors



PHOEBE ELEANOR FAIR Asheville, N. C.
Sigma Phi Kappa

"I don't know when I began it, but somehow I feel as if I've been singing a long, long time."

Sigma Phi Kappa, Secretary '53, '54; Glee Club '53, '54; Athletic Council; Stunt Night '53, '54; Scholastic Honors '53, '54; Christmas Pageant '53, '54; Easter Pageant '53, '54; Annual Staff '53, '54; May Day '53, '54; Volleyball '53, '54; Testator.



GWENDOLYN FUSSELL Rose Hill, N. C.
Rho Delta Chi

"Speak in French when you can't think of the English for it."

Phi Theta Kappa '54; Art Club '53; Outstanding Senior; P.S.C.A. Cabinet '54; Papyrus Club '53, '54, President '54; Christmas Pageant '53, '54; May Day '53; Annual Staff '54; Glee Club '53; Self Evaluation Study Committee '54.



JOYCE LEE GRANTHAM Four Oaks, N. C.
Sigma Phi Kappa

"In friendly chat with bird or beast or wonders wild and new."

Stunt Night '54; Committee for Junior-Senior Prom '53.

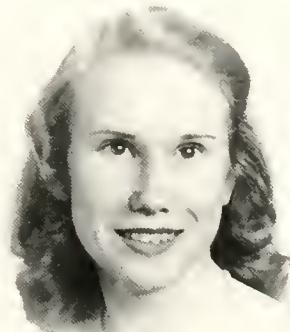
Peace

Class of Fifty-four

MARY NANCY HAMBRIGHT Shelby, N. C.
Rho Delta Chi

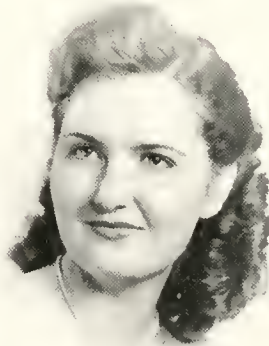
"You're thinking about something my dear, and that makes you forget to talk."

May Day '53; I.R.C. '53.



MRS. GAYLE DURHAM HAYES
Raleigh, N. C.

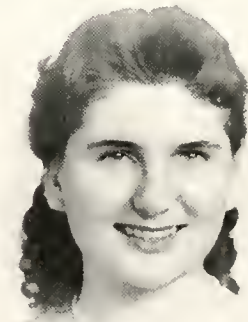
"I never saw such a house for getting in the way!"



HARRIETTA HEATON Roxboro, N. C.
Sigma Phi Kappa

"Child of the pure unclouded brow and dreaming eyes of wonder."

Scholastic Honors '53, '54; Christmas Pageant '52, '53; Easter Pageant '53, '54; Art Club '53, '54, President '54; Choir '52, '53; Papyrus Club '52, '53; May Day '53.



College

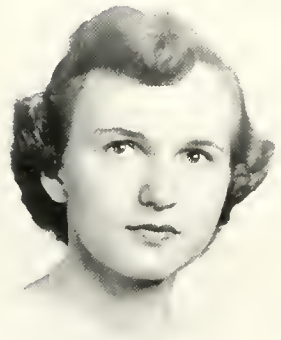
The Seniors



JANET HENRY HODGIN Raeford, N. C.
Sigma Phi Kappa

"Take care of the sense, and the sounds will take care of themselves."

Papyrus '54; Glee Club '54; Scholastic Honors '54.



PATSY ANN INMAN Laurinburg, N. C.
Rho Delta Chi

"Nobody can do two things at once, you know."

Scholastic Honors '53, '54; Christmas Pageant '54; Stunt Night '54; Alpha Pi Epsilon '53, President '54; Volleyball, Basketball '54; Student Council '54; Athletic Council, President '54; Outstanding Senior '54.



ELEANOR FAY JACKSON Dunn, N. C.
Sigma Phi Kappa

"She's coming! I hear her footsteps, thump, thump!"

Athletic Council, Vice-President '54; May Day '53; Christmas Pageant '53, '54; Easter Pageant '53; Scholastic Honors '53; Senior Class Secretary '54.

Peace

Class of Fifty-four

LINDA SUE JOHNSON Benson, N. C.
Rho Delta Chi

"I'm never sure what I'm going to be from one minute to another."

Athletic Association '53, '54; May Day '53;
Stunt Night '53, Marshal '53.



DIXIE GREY McEWEN Clarkton, N. C.
Sigma Phi Kappa

"Wake up, Alice dear! Why, what a long sleep you've had."

Papyrus Club '54, Vice-President '54; Vice-President of Senior Class '54; Athletic Council '53; Stunt Night '53, '54; Easter Pageant '53; Christmas Pageant '53, '54; Daughters and Granddaughters Club '54.



JUNE DALE McLAMB Benson, N. C.
Rho Delta Chi

"Why, there's hardly enough of me left to make one respectable person!"

Marshal '54; Fire Chief '54; May Day '53, '54;
Society Banquet Committee '53.



College

The Seniors



SYLVIA NEMON MORROW

Albemarle, N. C.

Sigma Phi Kappa

"Shall we be trotting home again?"

Sigma Phi Kappa, President '54; Sigma Pi Alpha '53, President '54; Choir '53; Christmas Pageant '53, '54; May Day '53; Business Staff of Annual '53, '54; Scholastic Honors '53, '54; Class Historian '54.



BETTY JEAN PARRISH

Raleigh, N. C.

Pi Theta Mu

"It was so kind of you to come! And you are very nice!"

Pi Theta Mu, Secretary '54.



MRS. JACKIE CLARK PATE

Rowland, N. C.

Rho Delta Chi

"I can't keep this house so tidy as the other," Alice thought to herself.

Scholastic Honors '53, '54.

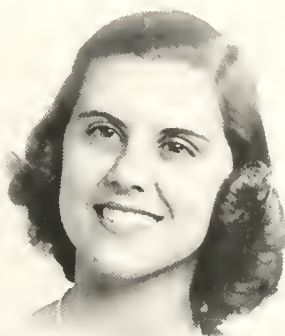
Peace

Class of Fifty-four

JEAN CAROL PEAKE Kinston, N. C.
Sigma Phi Kappa

"They're called lessons because they lessen from day to day."

Cheerleader '53; Sigma Phi Kappa, Treasurer '54; Marshal '54; Vice-President Junior Class '53; Christmas Pageant '53, '54; Stunt Night '53; May Court '53; Maid of Honor '54; Glee Club Treasurer '54; Scholastic Honors '54; Annual Staff '54; Nominating Committee '54; Athletic Council '53.



NANCY WALL RAGAN High Point, N. C.
Rho Delta Chi

"I must be shutting up like a telescope."

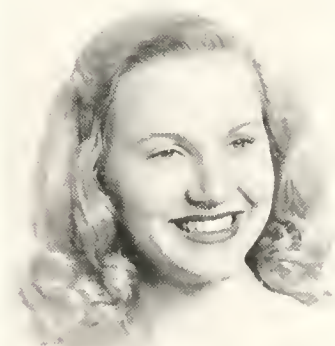
May Day '53; Christmas Pageant '53.



ANN BOSTIC REYNOLDS Clinton, N. C.
Sigma Phi Kappa

"I never expected I should be a Queen so soon!"

Cheerleader '53; Chief Marshal '54; Junior Class President '53; Student Council '53, '54; Vice-President '54; P.S.C.A. '54; Treasurer '54; Art Club '53; Secretary-Treasurer '53; Papyrus Club '53; Typist '53; I.R.C. '53, '54; Christmas Pageant '53, '54; Easter Pageant '53; Stunt Night '53, '54; Senior Class President '54; Alpha Pi Epsilon '53, '54; Vice-President '54; Scholastic Honors '53, '54; Annual Staff '53, '54; Nominating Committee '54; May Court '53; May Queen '54; Athletic Council '53; Volleyball '54; Privileged Honor Roll '54.



College

The Seniors



ROSLYN YORK SHELTON Badin, N. C.

Rho Delta Chi

"When I use a word it means just what I choose it to mean—neither more nor less."

Scholastic Honors; May Day '53.



MARGARET ELIZABETH STAFFORD

Fayetteville, N. C.

Rho Delta Chi

"The adventures first; explanations take such a dreadful time."

Rho Delta Chi, Treasurer '54; May Day '53.



BETTY REESE PRIDGEN Snow Hill, N. C.

Rho Delta Chi

"I suppose you don't want to loose your name?"

Rho Delta Chi, Vice-President '54; Business Staff of Lotus '54; Senior Class Treasurer '54; Choir '53; May Day '53.

Peace

Class of Fifty-four

SARAH ELLEN THOMPSON Raleigh, N. C.
Pi Theta Mu

"In my youth," she replied to someone, "I feared it might injure the brain; but now that I'm sure I have none, I do it again and again."

Day Student President '54; Art Club '54; Outstanding Senior '54.



SARAH ELIZABETH WARREN
Wilmington, N. C.
Sigma Phi Kappa

"Oh, 'tis love, 'tis love, that makes the world go round!"

Sigma Pi Alpha '53, '54; Art Club '53, '54; Phi Theta Kappa Secretary-Treasurer '54; I.R.C. '53, '54; Social Chairman of P.S.C.A. '53, '54; May Day '53, '54; Scholastic Honors '53, '54; Easter Pageant '53, '54; Christmas Pageant '53, '54; Art Editor of LOTUS.



CLASS HISTORY

It was like a dream, but nevertheless there I was—seated at a very confusing-looking table. The Mad Hatter and March Hare were engaged in a very heated argument over the crowded condition of the table around which we sat, but it was finally decided that there would be plenty of room for all if each would occupy only a small designated portion of the available space. I gazed around the table to see if the other guests were in the state of confusion which I maintained or if they were as peculiarly fitted to the environment as my two friends, the Mad Hatter and the March Hare. To my amazement, I recognized two of the guests as being my two former roommates at Peace College, Ann Bostic Reynolds and Martha Black; and we immediately fell into conversation which soon led to reminiscing of days at Peace.

"I remember that first day so well," said Ann, "because it was filled with registering, buying books, unpacking, and meeting everyone on the hall."

"Yes, and then that night we had a hall party," replied Martha. "I remember that Ann looked so sad. In fact, all of us looked like first-class sad sacks."

"Two days later the old girls arrived and the P.S.C.A. campus party took place," I remarked. "We played games and sang songs in order to meet everyone. Then, the next day classes began."

"Elections were held several weeks later," remarked Martha, "and Ann was elected president of our class. Jean Peake, Mary Ross Anderson, and Sally Bullock were our other officers."

"Don't forget Mrs. Rhodes, our sponsor," replied Ann. "She certainly was a big help to us in planning the Junior-Senior Prom the following April."

"Yes," replied Martha, "and the theme, *Under the Sea*, was beautifully carried out."

"Wait a minute," I said. "you're jumping ahead of time. Don't overlook Rush Week and making the choice of which society to join, and then Rat Day. I thought my knees would never be the same after crawling from the Rec room to the front door; and running around so early in the morning, taking exercises, picking up acorns and eating goo—blindfolded at that!—made me think I'd never live through the day! However, it was worth it when we took our vows during initiation. We were then full pledged members—not Rats or just lowly pledges!"

"And then came the Society Banquet at the Carolina Hotel. We had wonderful food and entertainment, and we rode in style, too—on city busses," said Martha laughing.

"Talking about food," said Ann, trying to get in a few words, "remember when the baskets of food were given to the maids, the laundry workers, and Irene and Mabel? It was on the day we were getting out for Thanksgiving holidays, and amid all the excitement of going home, the P.S.C.A. sponsored this sharing program. I thought it was a happy, even though tearful, event; it made me realize how thankful I should be. However, soon we were back, and we faced exams. Some of us took our minds off our books by having 'lion hunts' and 'beach parties.' Then we started looking forward to the Christmas holidays. Many of us took part in the traditional pageant, while others sang in the concert given by the choir on the day before we were to go home. After the concert we sang carols on the stairs and then marched into the dining room to eat our Christmas dinner. During the delicious turkey dinner we exchanged gifts at our tables, sang, and gave gifts to the waiters and cooks. Following a studyless closed study, we had hall parties and finally went to sleep dreaming about those wonderful days ahead."

"Coming back to Peace in a new year, we tried to stick our noses into our books once more

CLASS HISTORY

and settle down," recalled Martha, "but it was hard. There were so many other things to do, like practicing for Stunt Night; then when Stunt Night was held, our class won! We were so proud! We had beaten all the other classes, including the Seniors! Then, second quarter exams and visitation week ends rolled around. The 'Sigs' had a George Washington Ball; and the 'Rhos' had a dance in April, followed by spring holidays and the Junior-Senior."

"Yes," I replied, "and during this time elections were taking place and Jean Peake and Ann were elected to represent the Junior Class in May Day. Some of us did those crazy dances, and it was hilarious!"

"Then our future roommate was again elected to lead our class the coming year," reminded Martha.

"Yes, Ann was a 'big deal' now because this office automatically made her vice-president of the student body," I added.

"Well, don't forget that Mary Ross was elected president of the student body. She was so little to have all the brains and energy she possessed. Sally Bullock proved her capability by being elected president of the P.S.C.A.," said Ann, "and Rose Dickinson was chosen to be editor of the *Lotus*."

"Class Day rolled around and the Seniors pinned green and white ribbons on us, signifying that we were at long last Seniors ourselves!"

"Those summer months passed mighty fast," remarked Martha. "It was no time before we were back here unpacking, buying books, and greeting old friends. I remember that I felt so good—being a Senior and knowing so many people. I truly wasn't a lowly underclassman any more."

"Then came our turn to rush the new girls," I said. "It must have been difficult for the new girls to decide which of the three societies seemed more attractive. Rat Day soon arrived and the mean things we'd planned were rained

out. Those new girls just didn't realize how lucky they were."

"The entertainment at the Society Banquet was exceptionally good that year," remarked Ann; "and then the Thanksgiving holidays rolled around again, with exams following those four happy days of vacation. Then Christmas was here almost before we knew it."

"When annual picture-taking time rolled around, the elections for 'Miss Peace' and the eight outstanding Seniors kept us in suspense for a few days," I said. "Sally Bullock was elected 'Miss Peace'; and Mary Ross, Martha, Marie, Shirley, Gwen, and Patsy were chosen as other outstanding boarding students. We were so pleased to have Rose Dickinson and Sally Thompson, two of our day students, represented among that select few."

"Stunt night, visitation week ends, exams, and the daily routine of school took up our time until spring holidays. Following that came the Junior-Senior Prom. The Juniors really provided us with a good time."

"Let's not forget that our 'roomie' reigned as our May Queen. You really did look queenly, Ann," I said to her.

"Thanks," replied Ann, "but don't forget that Jean Peake was Maid of Honor. She looked so lovely in that beautiful dress."

"Then it was time to practice Class Day," Martha recalled, "and during those passing days we'd been ordering graduation invitations, picking out our white dresses, and getting ready for those final exams."

"Yes, and graduation was so exciting, yet sad," said Ann. "Walking down the aisle of the chapel with those red roses in our arms meant that we were truly leaving Peace and all its many experiences, both joyful and sorrowful."

"And all our friends," I added. "Those days will never be forgotten; they will live on forever in the hearts of the class of '54."

Sylvia Morrow, *Historian*.

LAST WILL AND TESTAMENT

We, the class of 1954, leave to those who need them certain valuable qualities and privileges, that we have in our possession, and, out of the kindness of our hearts, we leave this, our last will and testament.

ARTICLE I

Section 1

To the faculty we leave our thanks for their guidance and ever-ready willingness to help us, for without their leadership and inspiration we could not have succeeded.

Section 2

To Dr. Pressly we leave our heartfelt gratitude for the unflinching interest he has shown in each one of us. We can never adequately express our thanks for all that he has done for us and all that he has meant to us during our years at Peace.

Section 3

To Miss Hall, for her direction and for her warm sense of humor that has made our life here at Peace more like home, we leave our love and sincere thanks.

Section 4

To Miss Suter, our class sponsor, we leave a classful of thanks. We shall always remember her real interest in and enthusiasm for all our activities.

ARTICLE II

Section 1

To the Junior Class, who will be next year's Seniors, we leave our deepest sympathy and understanding. (Take it from us, they never had it so good!) We hope that the best will be theirs in every way, not only at Peace but also in the days to come.

ARTICLE III

Section 1

I, Mary Ross Anderson, leave to Barbara

Winfree my consolation in the fact that "diamonds aren't as big as bricks."

Section 2

I, LaVerne Bagley, leave my afternoons in the library to some hard-working day student.

Section 3

I, Martha Black, leave my sophisticated manner to Barbara Bell.

Section 4

I, Jackie Blackman, leave all my good-looking clothes to those who need them.

Section 5

I, Betty Bright, leave the checking of the General Privilege book to the next secretary of the Student Council, with deepest sympathy.

Section 6

I, Marie Broetzman, leave my quiet manner to Susanne Chamblee.

Section 7

I, Sally Bullock, leave my Tuesday afternoon meetings of the P.S.C.A. Cabinet to the next president.

Section 8

I, Sylvia Burnett, leave my fickleness to Nancy Davis.

Section 9

I, Shirley Cameron, leave to go to California.

Section 10

I, Lou Carter, leave for the "Little Drug."

Section 11

I, June Chamblee, leave my shorthand book and all its troubles.

Section 12

I, Frances Civils, leave all my many phone calls to some lonely Junior.

LAST WILL AND TESTAMENT

Section 13

I, Shirley Councilman, leave my patient disposition and sweet smile to one in need.

Section 14

I, Rose Marie Dennis, leave Mrs. Dixon screaming bloody murder.

Section 15

I, Rose Dickinson, leave my southern drawl to Betsy Bland.

Section 16

I, Phoebe Fair, leave to get my MRS. degree.

Section 17

I, Gwen Fussell, leave my place in the library to Susie Parsons.

Section 18

I, Joyce Grantham, leave my phone calls to Betty Jo Wilson.

Section 19

I, Nancy Hambright, leave my room in East in perfect order.

Section 20

I, Gayle Hayes, leave to cook dinner.

Section 21

I, Harri Heaton, leave my love for Duke to someone who feels as I do about it.

Section 22

I, Janet Hodgkin, leave my curly hair to Peggy Owens.

Section 23

I, Patsy Inman, leave my key to the "Little Store" to Mary Ann Munn. Don't eat too much, Mary Ann.

Section 24

I, Fay Jackson, leave my friendly grin to any girl.

Section 25

I, Linda Johnson, leave my way with the men to future Peace girls.

Section 26

I, Dixie McEwen, leave my place on the "Sig" basketball team to Lucy Blue.

Section 27

I, June Dale McLamb, leave to fill out the last initial in my ring.

Section 28

I, Sylvia Morrow, leave my position as president of the "Sigs" to some lucky Junior.

Section 29

I, Betty Jean Parrish, leave my empty Business Methods workbook so that some Junior won't have to buy one next year.

Section 30

I, Jean Peake, leave to make a million dollars and hope it won't take long.

Section 31

I, Nancy Ragan, leave my sweet disposition to anybody.

Section 32

I, Ann Reynolds, leave my place as president of the Senior Class to some energetic Junior.

Section 33

I, Roslyn Shelton, am glad to leave.

Section 34

I, Margaret Stafford, leave for Wake Forest!

Section 35

I, Betty Recse Sugg, leave to become the secretary to that big executive.

Section 36

I, Sally Thompson, leave my office as president of the day students to someone who can round them up.

Section 37

I, Sarah Warren, leave to live in High Point!

Witnesses:

The Goods

Rick-o-shay

PHOEBE FAIR, *Testator.*

CLASS PROPHECY

"Whoops!! I believe I am falling
down,
down,
down,
down,

Ohh!" such was my recent exclamation as I found myself accompanying Alice through the keyhole and down into the pit which led to the magic world of Wonderland. Everything was as I had imagined it—a dreamer's fairyland. I caught my breath and eagerly scanned the fabulous surroundings of my newly-found Utopia among the "glitter and the gold." I felt a thrill of excitement pass through me as Alice began to introduce me to her unique companions. The Walrus clasped my hand most affectionately, and I knew right away that it would be a friendly place indeed! I met many others in the next few minutes, but the shock of my life followed soon afterward. It was fine for one to be in Wonderland with the Mad Hatter, the Walrus, the March Hare, the Cheshire Cat, the Mock Turtle, and all the characters that one reads about; but can you imagine how it felt to see another human—and of all things an old Peace girl—Sylvia Morrow. I pushed my way through the group until I reached her side and we began to talk. She told me that she is head of the "Cham"-pions Corporation these days and really does like the work. I asked Sylvia about her old roommates, Ann Bostic Reynolds and Martha Black. She said that Ann is busy these days modeling Studebakers for her hubby, Bill, and that Martha is training tigers for an act in Barnum-Bailey Circus. The act, by the way, has the catchy name of "Claw and Son."

Sylvia Burnett was there too, surrounded by numerous Wonderland personalities. I was thrilled to hear about her opening at the Palladium in London. It seems that Sylvia has made quite a hit by taking Joan Crawford's place in "The Torch Song." Speaking of show business, Rose Marie Dennis, Ros Shelton, and

Jackie Blackman have signed a contract with the Ice Follies Show. Betty Reese Sugg was supposed to have starred with them, but she has a full-time job looking after a new generation of future Sigma Nu's.

I left Sylvia and was following Alice on through the group when I suddenly came upon more Peace girls. Shirley Councilman and Harri Heaton had detoured by Wonderland on their way home from Spain where Shirley has been brushing up on her title as the "first woman Matador." Shirley said she had a grand audience, but that her favorite fan was a fellow named Bobby. Harri had been engaged in giving dancing lessons to the chorus line of "Carmen." I was still talking to Harri when I glimpsed Sally Thompson, LaVerne Bagley, and Gayle Hayes. They had been to Egypt studying the hieroglyphics in the Nile River Valley, hoping to find a new formula for mud packs. Sally said they had not been too successful and had come to Wonderland because the Nile mud was a little "goocy." Frances Civils and Linda Johnson were busy styling "Alice haircuts" since the "Italian boy" has gone out of vogue. June Dale McLamb was supposed to join them, but she is still working on the "bowl cut." Her practice model, by the way, is Linda's brother.

Just at that moment I heard the sweetest sound that had come to my ears since the 10:00 p.m. bell at Peace. I looked all around, and to my astonishment found Mary Ross Anderson making "Wonder-wax" recordings of a nightingale's call for children's records. She makes her records under the name of Jenny Lind. I hear she really has "Hooked" a good deal!

Nancy Hambright and June Chamblee were absorbed in watching "Tweedledee" and "Tweedledum" teach the Lion to sing "A Very Happy Unbirthday." Nancy has just finished her new best-seller, "Why I Don't Eat Spinach!"

CLASS PROPHECY

Speaking of vegetables, Margaret Stafford was having a business conference with the March Hare as I approached. She told me that she was planning to expand her lettuce canning factory, and she thought that a rabbit's advice on the matter would be beneficial! Margaret said that she hadn't got much information since Mr. Hare was completely worn out from Lou Carter, Gwen Fussell, and Janet Hodgkin's efforts to teach him the "Bunny Hop."

I felt the need of some nourishment, and so Alice told me to go over to the concession stand. Patsy Inman and Joyce Grantham were found standing behind the counter. Patsy said that they made a good profit from "Big Orange Drinks" down in Wonderland.

As I stood talking to these two, I saw something which really did renew old memories. Over on the stairs leading into Wonderland sat Phoebe Fair and Jean Peake. One would never guess what they were doing—knitting the "goods," of course!! Phoebe keeps husband Dan well supplied, but Jean's problem is that Bryant has a football team. I am sure you have heard the expression "all brawn and no brain"—well, the quip for this situation is "eleven pairs of feet, but no socks!" There were all sorts of noises, "and I don't know what all," when I spied Sally Bullock steering her way through the deluge. It seems that she is quite a universal figure these days, and it was a real pleasure to see her. When I asked Sally what she was doing in Wonderland, she replied that she and Dixie McEwen, who is now a famous French designer and model, had come down to christen the new Wonder-ocean liner, "Her Majesty Stovall."

While I was still talking to Sally and Dixie, I saw Betty Bright and Shirley Cameron standing by a huge bonfire toasting chocolate-covered marshmallows. Inflation—American style—really has set in down here. They were selling them two for twenty cents—but when one is hungry . . .

Alice and I strolled on, and as we walked I

looked back in retrospect at some of the gay years at my Alma Mater. As we talked I heard the sound of a most familiar voice. Imagine my surprise to find my old "roomie," Nancy Ragan, entertaining the Wonderland menagerie with her rendition of the new hit song, "Jimmie A Little Kiss."

Speaking of hits, Fay Jackson was over in another group teaching the steps to the "Morehead City Bop." Because of this new rage I believe Squibb and Company will make a small fortune on vitamin pills. It takes energy, my friends!

The pedestrian traffic was getting rather involved, and Alice and I decided to fight our way through the crowd to get back to the entrance to Wonderland. Two Peace girls, Jackie Pate and Betty Parrish were helping in the direction of traffic. I asked them if they had seen my old friend, Rose Dickinson, and they told me that she could not come down since there would be no one to look after her big Jonathan and some other reasons—about four I think.

As Alice and I reached the gate, I was "shook" to see Marie Broetzman standing at the stairway to Wonderland, screaming through a huge red megaphone, "When you get to the states, go Seaboard!" I found out later that Seaboard doesn't have a Wonderland line yet, but they are working on it!

Sad as it makes me, I must close now. I hated to leave the magical Wonderland, Alice, all her friends, and the old Peace girls, but we all must go on with everyday jobs. Mine, by the way, is raising "Anteaters"—six by count, and it really is a full time occupation in the Woollen household. However, I do send you a sincere invitation to drop in and visit us any time you are near High Point. Let me add though that you should bring your spinning wheel 'cause "What it was was the textile business!"

As ever,

SARAH ELIZABETH WARREN

The Juniors



OFFICERS

BARBARA BELI *President*
NANCY RHODES *Vice-President*
JEAN CRAWFORD *Secretary*
JEWELL BUFFALO *Treasurer*
MISS FOWLER *Adviser*

Class of Fifty-five

ALMA JOYCE ADAMS Raleigh
Pi Theta Mu

ELGIE GRAY ALLEN Clayton
Rho Delta Chi

MARY OWEN ARMISTEAD Nathalie, Va.
Sigma Phi Kappa

PATTY SUE ARNOLD Raleigh
Pi Theta Mu

CAROLYN-LEE BASS Greensboro
Sigma Phi Kappa

MARY ANN BAYNES Hurdle Mills
Rho Delta Chi

BARBARA BELL Currie
Sigma Phi Kappa

KATHLEEN DAVIS BENSON Raleigh
Pi Theta Mu

BETSY ANN BLAND Pennington, N. J.
Rho Delta Chi

LUCY BLUE Sanford
Sigma Phi Kappa

JEAN ELEANOR BROWN Raleigh
Rho Delta Chi

JOAN ELIZABETH BROWN Raleigh
Rho Delta Chi

JEWELL WILSON BUFFALOE Raleigh
Pi Theta Mu

ANNE SCHUMAN BYERLY Dunn
Sigma Phi Kappa

MILDRED MOORE CAMERON Broadway
Sigma Phi Kappa



Peace College

The Juniors



ALICE JEAN CASTLEBERRY Sanford
Sigma Phi Kappa

SUSANNE CHAMBERE Greensboro
Sigma Phi Kappa

NANCY CAROLYN CHESSEON Louisburg
Rho Delta Chi

MARILYN LUBERTA CHESTER Roxboro
Sigma Phi Kappa

ALIE JANE CLICK Mocksville
Sigma Phi Kappa

BARBARA JEAN COLEY Rocky Mount
Sigma Phi Kappa

MARGARET ANN COVINGTON Mebane
Sigma Phi Kappa

MARY JANE CRAIG Durham
Rho Delta Chi

MARY JEAN CRAWFORD Rowland
Sigma Phi Kappa

BETTY BYRD CRUMPLER Dunn
Sigma Phi Kappa

KAY FRANCES DAVID Clinton
Sigma Phi Kappa

NANCY ELLEN DAVIS Sanford
Sigma Phi Kappa

ELIZABETH JANE DORSETT Siler City
Sigma Phi Kappa

JOY FRANCES EARP Raleigh
Pi Theta Mu

FRANCES MARIE ELLIS Raleigh
Pi Theta Mu

Peace

Class of Fifty-five

BETTY FAULK Lumberton
Rho Delta Chi

ANNIE MAE FOGLEMAN Raleigh
Rho Delta Chi

KATE FOGLEMAN Raleigh
Rho Delta Chi

JOYCE FUQUA Raleigh
Pi Theta Mu

MARGARET ANNE GODWIN Fayetteville
Rho Delta Chi

ELVA LOUISE GRIFFIN Rocky Mount
Rho Delta Chi

CAROLYN ELIZABETH HACKNLY Sanford
Sigma Phi Kappa

ANNIE JEAN HARDISON Jamesville
Sigma Phi Kappa

MARY LOU HARNSBERGER Waynesboro, Va.
Sigma Phi Kappa

PATSY ANN HAWKS Raleigh
Rho Delta Chi

SALLY VAN DYKE HEATH Raleigh
Rho Delta Chi

BETTY JEAN HINTON Henderson
Rho Delta Chi

SHIRLEY JOSEPHINE HOLLAND Sanford
Sigma Phi Kappa

GLORIA STEWART HOOD Raleigh

FRANCIS MARIE HUNT Durham
Rho Delta Chi



College

The Juniors



MARY JO AN HUTCHINS Raleigh
Pi Theta Mu

MARY ANNE JOBE Raleigh
Pi Theta Mu

DORIS PAGE JOHNSON Raleigh



NANCY ANN JOHNSON Raleigh
Pi Theta Mu

CAROL LORFIE JOINER Elkins, W. Va.
Sigma Phi Kappa

ANNETTE LOWE KARRIKER Durham
Sigma Phi Kappa



MARY ARGYIE KENT Mamaroneck, N. Y.
Rho Delta Chi

BILLIE JEAN KERN Star
Sigma Phi Kappa

HILDA JEAN LAMM Oxford



REBECCA ANN LEE Dunn
Sigma Phi Kappa

NANCY LINK Raleigh
Pi Theta Mu

MARY MARGARET MCCURDY DIXON
Raleigh
Pi Theta Mu



MARY ALLEN McDONALD Carthage
Sigma Phi Kappa

ANNGEANETTE MCGHEE Louisburg
Sigma Phi Kappa

MARY VANN McLAUGHLIN Fayetteville
Rho Delta Chi

Peace

Class of Fifty-five

- JAY CORINNE McMILLAN Raleigh
 Rho Delta Chi
- SHIRLEY LOIS MERRIMAN Raleigh
 Sigma Phi Kappa
- BARBARA GRACE MILES Raleigh
 Rho Delta Chi
- ROSE FAYE MONDS Dunn
 Sigma Phi Kappa
- FLORENCE WORTHAM MOORE Raleigh
 Pi Theta Mu
- SHIRLEY ANN MOORE Wallace
 Sigma Phi Kappa
- GLADYS ELIZABETH MORRISON New Bern
 Sigma Phi Kappa
- MARY ANN MUNN BRAY Candor
 Rho Delta Chi
- ANNIE JOSEPHINE MUSTIAN Raleigh
 Rho Delta Chi
- ANGELIA GENTRY MYERS Sparta
 Rho Delta Chi
- RITA GARLAND MYERS Sparta
 Rho Delta Chi
- MARY NELSON Robbins
 Sigma Phi Kappa
- BETSY ANNE NEWSOME Raleigh
 Rho Delta Chi
- SUSIE MARIE PARSONS Elizabeth City
 Sigma Phi Kappa
- PEGGY LOUISE PATTEKSON Sanford
 Rho Delta Chi



College

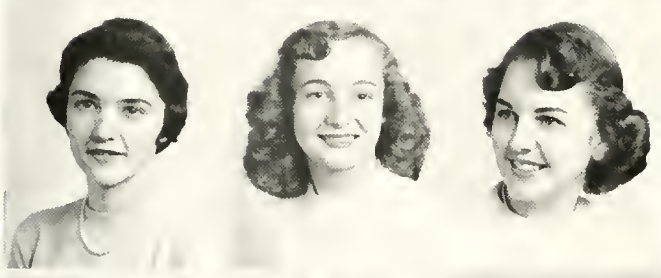
The Juniors



ELSIE FAYE PORTER Kelly
Rho Delta Chi
BETSY ANN POWELL Rocky Mount
Rho Delta Chi
NANCY ADRIAN RHODES Leesburg, Va.
Sigma Phi Kappa



PATRICIA MARIE RISLEY Raleigh
Rho Delta Chi
PATSY GAYLE ROGERS Lumberton
Rho Delta Chi
JO ANN RUSHING Oakboro
Sigma Phi Kappa



RUTH HANNAH SIDON Methuen, Mass.
Rho Delta Chi
BETTY SHIRLEY SMITH Goldsboro
Sigma Phi Kappa
EDNA ANNE SMITH Fairmont
Rho Delta Chi



JESSIE LEE SMITH Troy
Sigma Phi Kappa
KATHERINE JANE STEVENS Raleigh
Rho Delta Chi
SELETA ANN STEVENS Raleigh
Pi Theta Mu



BILLIE SUE STOKES Stokes
Rho Delta Chi
SHIRLEY ANN STONE Rocky Mount
Sigma Phi Kappa
PEGGY REYNOLDS STROTHER Raleigh

Peace

Class of Fifty-five

GLORIA LOUISE TAYLOR Williamiston
Rho Delta Chi

ANNETTE BRYAN THOMAS Raleigh
Pi Theta Mu

MARGARET ANNE THOMAS Raleigh
Rho Delta Chi



LILY IRENE THOMPSON Fayetteville
Rho Delta Chi

IRMA WAINWRIGHT Jamesville
Sigma Phi Kappa

ELOISE TAYLOR WALDROP Raleigh

NANCY ELOISE WALTON Jacksonville
Sigma Phi Kappa



MARGARET JEAN WELCH Harmony
Rho Delta Chi

POLLY ANN WILKERSON Kenly
Sigma Phi Kappa



BETTY LOUISE WILLIAMS Raleigh
Rho Delta Chi

MARGARET HAMILTON WILLIAMS Ararat, Va.
Sigma Phi Kappa



NORMA ROBERTA WILLIAMSON Bethel
Sigma Phi Kappa

TREASURE GORDON WILLIS Atlantic
Rho Delta Chi

MARY JANE DOUGLAS WILLSON Raleigh
Rho Delta Chi

ELIZABETH INEZ WILSON Roanoke Rapids
Sigma Phi Kappa



College

The Juniors



ELIZABETH ALLEN WOMACK
Richmond, Va.
Sigma Phi Kappa

BETTY JEAN WOOD Raeford
Rho Delta Chi

BARBARA JEAN WOODLIEF Sanford
Rho Delta Chi

Not pictured:

BETTY JANE BOONE Jackson

MARGARET LOUISE GRIFFIN Raleigh

SHIRLEY MAE MILLER Raleigh
Pi Theta Mu

PEGGY JUNE MOWERY Raleigh
Pi Theta Mu

JANET FRANCES WILLIAMS Rocky Mt.

Peace

Class of Fifty-five



Peace College Styles

Stunt Night



Knit one, Purl two



Campus Coqs



Master of Ceremony

College

Preparatory IV



OFFICERS

MARGARET BOYLAN *President*
ELAINE ROGERS *Vice-President*
JANE WILSON *Secretary*
EMILY SAPP *Treasurer*
MISS CALDWELL *Adviser*

Preparatory IV

Betty Lou Beasley Norfolk, Va.
Rho Delta Chi

Margaret Tucker Boylan Raleigh
Pi Theta Mu

Betty Jean Caudle Raleigh
Pi Theta Mu

Ann Aldridge Garner Morehead City
Sigma Phi Kappa

Mae Omie Hobby Holly Springs
Rho Delta Chi

Sylvia Jo Holmes Fayetteville
Rho Delta Chi

Peggy Lane Johnson Kipling
Rho Delta Chi

Mary Frances Joyner Farmville
Sigma Phi Kappa

Constance Ann McCachern Concord
Rho Delta Chi

Elizabeth Hall McKinnon Red Springs
Sigma Phi Kappa

Mary Helen Melvin Rocky Mount
Rho Delta Chi

Mary Muse Morgan Fayetteville
Sigma Phi Kappa

Patricia Ann Parker Maysville
Pi Theta Mu



Peace College

Preparatory IV



Anne Elaine Rogers Dillon, S. C.
Rho Delta Chi

Martha Winifred Rouse Kinston
Sigma Phi Kappa

Joyce Ann Russell Troy
Rho Delta Chi

Emily Kate Sapp Lancaster, S. C.
Sigma Phi Kappa

Mildred Howard Stevens Goldsboro
Sigma Phi Kappa

Olive Seagroves Tate Chadbourn
Rho Delta Chi

Mary Alice Tedrick Charleston, S. C.
Sigma Phi Kappa

Josephine Elizabeth Thore Pilot Mountain
Sigma Phi Kappa

Elizabeth Ann Watkins Waynesville
Rho Delta Chi

Betty Jo Wilson Granite Falls
Rho Delta Chi

Fayrene Joyce Wilson Pilot Mountain
Sigma Phi Kappa

Jane Livingston Wilson Camp Lejeune
Rho Delta Chi

Virginia Yelvington Cleveland, Ohio
Rho Delta Chi

Not pictured:
Shirley Helen Motley Estes

Peace College

High School Senior Superlatives



EMILY SAPP
MOST POPULAR



ELAINE ROGERS
SWEETEST



JOSEPHINE THORE
PRETTIEST



MILLIE STEVENS
MOST ATHLETIC



FAYRENE WILSON
MOST TALENTED



MARGARET BOYLAN
BEST ALL-AROUND



JANE WILSON
WITTIEST



ANN GARNER
MOST LIKELY TO SUCCEED

Prep III



OFFICERS

POLLY CAMERON, *President*
 ELIZABETH GRIFFIN *Vice-President*
 SHIRLEY BATEMAN *Secretary*
 ROSE BRACEY *Treasurer*
 MISS LEWIS *Adviser*

Mrs. Durward F. Bateman Tyner
 Pi Theta Mu
 Rose Ellen Bracey Fayetteville
 Rho Delta Chi
 Polly McDaniel Cameron
 Kipling
 Rho Delta Chi

Lula Elizabeth Griffin
 Fayetteville
 Sigma Phi Kappa
 Barbara Jo McKinnon
 Wilmington
 Rho Delta Chi
 Margaret Williams Owens
 Macesfield
 Rho Delta Chi

Becky Faye Surles Raleigh
 Pi Theta Mu
 Mary Ann Swanson Wendell
 Rho Delta Chi
 Barbara Jean Winfree
 Greensboro
 Sigma Phi Kappa
 Dorothy Ann Jones Miami, Fla.
Not Pictured



ACTIVITIES





Patsy Inman, *President Athletic Association*; Shirley Councilman, *Representative Class 1954*; Marie Broetzman, *Treasurer*; Betty Bright, *Secretary*; Mary Ross Anderson, *President*; Ann Bostic Reynolds, *Vice-President*; Sally Bullock, *President Peace Student Christian Association*; Martha Black, *Representative of Student Body*; Barbara Bell, *President Junior Class*.

BOARDING STUDENT COUNCIL



MARY ROSS ANDERSON
President

Nine girls chosen by popular vote make up the Boarding Student Council. Each girl is on her honor to maintain order and uphold the standards and ideals of Peace. The Council plans and sponsors many campus activities throughout the year. The desire of the Peace Student Government is to achieve a government BY and FOR the girls.

THE DAY STUDENT COUNCIL

To foster the interests of the day students so that they feel just as much a part of Peace as the boarding students is the purpose of the Day Student Council. The Council is made up of four girls who encourage the day students to uphold the morals, standards, and ideals characteristic of our beloved Alma Mater.



SALLY THOMPSON
President



June Chamblee
Treasurer

Joy Earp
Vice-President

Sally Thompson
President

Jo Mustian
Secretary

The 1954 Lotus



MARIE BROETZMAN

Business Manager

EDITORIAL STAFF

As you turn through the pages of the LOTUS of 1953-54, we of the Editorial Staff hope that you have as thrilling an adventure as Alice had in Wonderland. We have tried to give you an annual that you in years to come will read and one that will remind you of your days spent at Peace College.

We are grateful to Lewis Carroll for his assistance to our originality. To our adviser, Miss Oates, we extend our heartfelt thanks for giving us her time and guidance in preparing for you this Lotus.

BUSINESS STAFF

During the year of 1953-54, we the members of the Business Staff solicited money for the financing of the LOTUS. With the help of our adviser, Miss Lyda Baucom, we visited on foot and in the school car those business firms that are interested in the success of our annual.

It is our sincere hope that our efforts have not been in vain and that we have helped in some way to bring you an annual that you will cherish and enjoy forever.

EDITORIAL STAFF, *seated*: Sarah Warren, *Art Editor*; Rose Dickinson, *Editor-in-Chief*. *Standing*: Shirley Cameron, *Typing Editor*; Becky Lee; Nancy Link; Nancy Rhoads, *Assistant Editor*; Norma Williamson; Jean Crawford; Mary Ann Baynes; Joy Earp.



BUSINESS STAFF, *seated*: Martha Black; Gwen Fussell; Ann Bostie Reynolds; Mary Ann Baynes. *Standing*: Marie Broetzman, *Business Manager*; Jean Peake; Betty Reese Pridgen; Phoebe Fair; Mary Ross Anderson; Ann Smith, *Assistant Business Manager*; Mary Lou Harnsberger; June Chamblee; Sylvia Morrow; Barbara Bell; Mary Kent; Betty Bright.



Seated: Martha Black, Secretary; Sally Bullock, President; Shirley Councilman, Vice-President; Ann Bostic Reynolds, Treasurer. Standing: Mary Allen McDonald, World Missions Chairman; Norma Williamson, Church Extension Chairman; Nancy Rhoads, Off Campus Social Service Chairman; Barbara Bell, Hall Prayers Chairman; Mary Ross Anderson, Ex-Officio; Sarah Warren, Social Chairman; Gwen Fussell, On Campus Social Service Chairman; Mary Lou Harnsberger, Publicity Chairman.

P. S. C. A.



SALLY BULLOCK
President

The Peace Student Christian Association is composed of the entire student body and is the center of the religious activities on our campus. Its activities are under the leadership of a cabinet of twelve members, with Miss Lucy Steele as the adviser until her death in January.

It is the purpose of the P.S.C.A. to encourage each girl to know Christ as a real person in her life and to help her to grow in her faith. The P.S.C.A. programs and services are student planned and student presented, making the days here at Peace truly "days of preparation" for greater service as Christian women in our homes and churches.

PHI THETA KAPPA

The purpose of the Phi Theta Kappa Honorary Fraternity is to recognize scholarship and leadership among students of junior colleges. The members of the Peace chapter of this fraternity are recognized through their chapter and function through other campus organizations. Members are encouraged to attain greater heights and uphold the motto of wisdom, aspiration, and purity.



SHIRLEY COUNCILMAN
President



Seated: Sarah Warren, *Secretary-Treasurer*; Shirley Councilman, *President*; Sally Bullock, *Vice-President*.
Standing: Gwen Fussell; Mary Ross Anderson.



Seated: Shirley Councilman, Secretary-Treasurer; Mary Ross Anderson, Vice-President; Sarah Warren, Historian. Standing: Rose Dickinson; Sally Bullock; Sylvia Morrow, President.

SIGMA PI ALPHA



*SYLVIA MORROW
President*

The Theta Chapter of Sigma Pi Alpha, a National Honorary Language Fraternity, was established in 1939 at Peace in order to give recognition to the girls having a special interest in languages. The purpose of this organization is to promote a better understanding between America and other countries by acquiring a more intimate knowledge of the language, people, and customs of these countries.

ALPHA PI EPSILON

Alpha—Accuracy
Pi— Dependability
Epsilon— Efficiency

The Alpha Pi Epsilon is a National Honorary Secretarial Society, whose purpose is to professionalize the status of the college-trained secretary. Membership in this society is restricted to students of superior scholarship, personality, and character.



PATSY INMAN
President

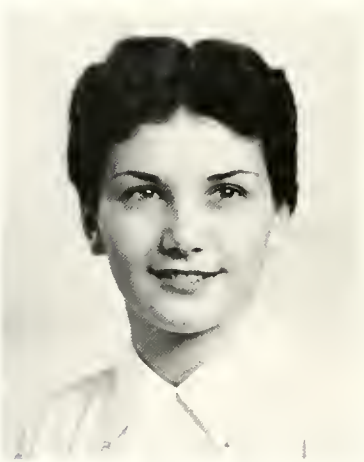


Ann Bostic Reynolds, Patsy Inman, *President*.



Front row: Martha Black; Carolyn Hackney; Angelia Myers; Rita Myers; Shirley Stone; Elizabeth Watkins, President. Back row: Dixie McEwen; Sally Heath; Lou Carter.

DAUGHTERS AND GRANDDAUGHTERS CLUB

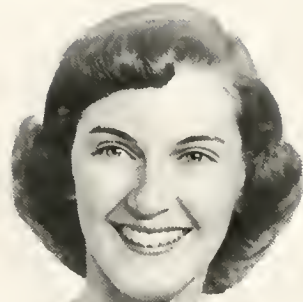


ELIZABETH WATKINS
President

The girls whose mothers or grandmothers were once "old girls" at Peace make up the members of the Daughters and Granddaughters Club. The club's functions are to act as hostess to visiting alumnae and help carry on all the traditions of Peace College.

INTERNATIONAL RELATIONS CLUB

The International Relations Club is composed of Peace girls who are interested in current events and world problems. The programs of the monthly meetings feature student discussions and outside speakers. The Club promotes interest in world affairs and encourages the study of present day world problems among the students.



SYLVIA MORROW
President

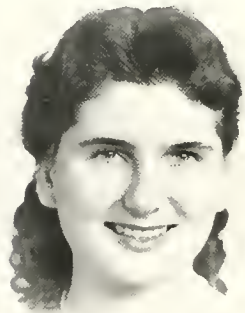


Seated: Elizabeth Watkins; Mary Kent, *Secretary-Treasurer*; Sylvia Morrow, *President*; Barbara Bell *Vice-President*; Miss Caldwell. *Standing, middle row:* Nancy Link; Mary Ross Anderson; Sally Bullock; Polly Wilkerson; Shirley Councilman; Ann Garner; Betsy Newsome; Mary Armistead; Ann Bostic Reynolds. *Back row:* Emily Sapp; Lucy Blue; Jean Crawford; Anne Smith; Nancy Rhoads; Sarah Warren; Lee Smith; Betsy McKinnon.



Harri Heaton, *President*; Betty Morrison, *Vice-President*; Polly Wilkerson, *Secretary-Treasurer*; Sarah Warren, *Historian*; Susie Parsons; Lucy Blue; Betty Reese Sugg; Margaret Williams; Sylvia Holmes; Lee Smith; Norma Williamson; Ann Garner; Nancy Rhoads; Shirley Councilman; Jean Crawford; Margaret Boylan; Mary Jane Craig; Lou Carter; Mary Morgan; Elizabeth Dorsett; Emily Sapp; Rose Dickinson; Marilyn Chester; Sally Thompson; Mildred Stevens; Betsy Bland; Betty Hinton; Florence Moore.

ART CLUB

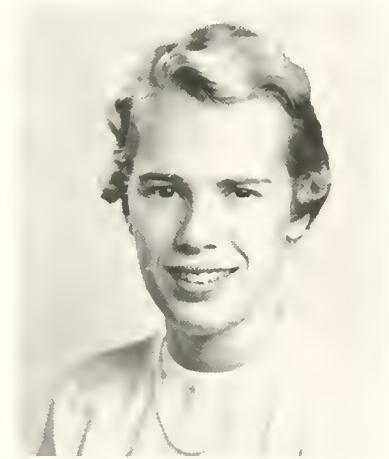


HARRI HEATON
President

The Elsie Robertson Art Club teaches its members to appreciate beauty by presenting lectures, films, and demonstrations in various phases of art. Visits to the State Art Gallery with Miss Pugh, the faculty adviser, and the campaign each year to raise money for the Art Scholarship Fund are activities which the club members enjoy.

THE CHOIR

The members of the Peace Choir have developed, through their work together, a fuller appreciation of good music. The director, Dr. Carl Hjortsvang, has made the Choir one of the most active organizations at Peace. This year's activities have included Christmas and Spring concerts and a broadcast of Christmas music. The Choir has also assisted several times at the Sunday morning service at the First Presbyterian Church and has contributed at various times to our own chapel services. It may be said that Peace has received laudable recognition in the community through the work of her Choir.



MARY KENT
President



Seated: Mary Ross Anderson; Phoebe Fair; Betty Crumpler; Janet Hodgkin; Betty Mac Faulk; Jeanie Hardison; Carol Joiner; Polly Wilkerson; Ruth Sidon; Polly Cameron. *Standing, middle row:* Carolyn Hackney; Peggy Johnson; Carolyn Lee Bass; Emily Sapp; Millie Stevens; Mary Ann Bray; Barbara Bell; Billie Sue Stokes; Gayle Hayes; Gloria Taylor; Betsy McKinnon. *Standing, back row:* Mae Omie Hobby; Irma Wainwright; Harri Heaton; Betsy Newsome; Elizabeth Watkins; Jean Peake; Mary Kent, *President*; Ann Garner; Nancy Rhoads.



Sated: Shirley Holland; Carolyn Hackney, *Secretary-Treasurer*; Gwen Fussell, *President*; Dixie McEwen, *Vice-President*; Connie McCachern, *Standing:* Olive Tate; Annette Karriker; Margaret Thomas; Janet Hodgkin; Ann Garner; Mary Morgan; Fay Monds; Jane Wilson; Sylvia Holmes; Betty Beasley; Mary Ann Swanson; Betty Wilson; Betsy McKinnon; Norma Williamson.

PAPYRUS CLUB

The Papyrus Club is a literary organization which serves as a channel through which student writers may present their creative work. The members of the Club publish many of their poems, stories, and essays in "Peace O' Paper" which is compiled by this Club and the Senior Prep Class. This group of students takes pride in presenting its work to the school, and its members enjoy working together as a club which promotes literary interest among the students.



GWEN FUSSELL
President

PI THETA MU

The Pi's have had great fun this year being together and helping each other with the various activities . . . initiation . . . rush party . . . society banquet . . . the Pi parties. The old Pi's of this year sincerely hope that the forthcoming Pi's will always stand for "The highest Peace can strive for."



MARGARET BOYLAN
President

Margaret Boylan
President

Joy Adams

Pattie Sue Arnold

La Verne Bagley

Shirley Bateman

Kathleen Benson

Jewell Buffaloe

Betty Caudle

June Chamblee

Joyce Dean

Rose Dickinson

Joy Earp

Joyce Fuqua

Mary Jo Hutchins

Mary Ann Jobe

Nancy Johnson

Naney Link

Florence Moore

Peggy Mowery

Patricia Parker

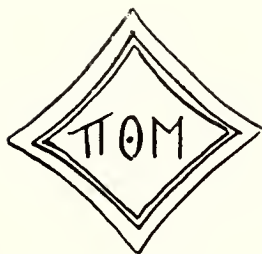
Betty Jean Parrish

Seleta Stevens

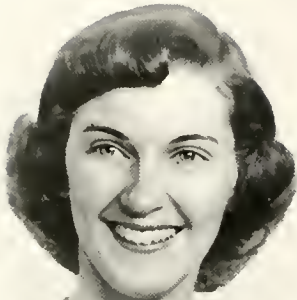
Becky Surles

Sally Thompson

Annette Thomas



SIGMA PHI KAPPA



SYLVIA MORROW
President

From the beginning of the school year, the old Sigs worked hard to get the best girls; and they got fifty of them on Pledge Day! The impressive formal initiation took place in the parlor in November, and several weeks later the exciting Society Banquet was held. Rush Week, Rat Day, dances, and sports tournaments—these events will always be treasured in the hearts of former Sigs when they reminisce about their days at Peace.

Sylvia Morrow
President

Barbara Bell
Vice-President

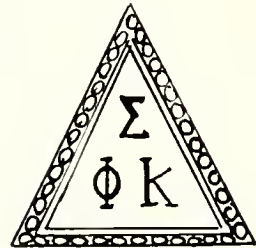
Phoebe Fair
Secretary

Jean Peake
Treasurer

Barbara Bell
Historian

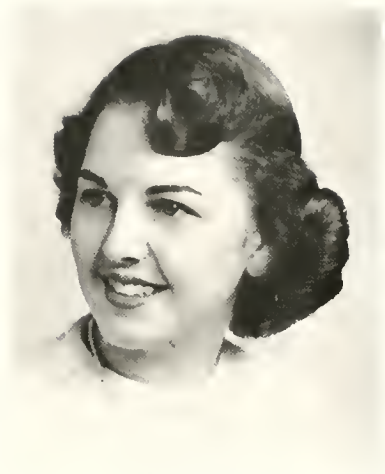
Joyner, Anne Karriker, Billie Kern, Becky Lee, Mary Allen McDonald, Dixie McEwen, Angeanette McGhee, Betsy McKinnon, Shirley Merriman, Fay Monds, Shirley Ann Moore, Mary Morgan, Betty Morrison, Sylvia Morrow, Mary Nelson, Susie Parsons, Jean Peake, Anne Bostic Reynolds, Nancy Rhoads, Winifred Rouse, Jo Ann Rushing, Emily Kate Sapp, Lee Smith, Shirley Smith, Millie Stevens, Shirley Stone, Mary Alice Tedrick, Josephine Thore, Irma Wainwright, Eloise Walton, Sarah Warren, Polly Wilkerson, Margaret Williams, Norma Williamson, Betty Wilson, Fayrene Wilson, Barbara Jean Winfree, Betty Womack.

MEMBERS: Mary Armistead, Carolyn-Lee Bass, Barbara Bell, Martha Black, Lucy Blue, Sally Bullock, Ann Byerly, Alice Jean Castleberry, Susanne Chamblee, Marilyn Chester, Frances Civils, Jane Click, Barbara Coley, Peggy Covington, Jean Crawford, Betty Byrd Crumpler, Kay David, Nancy Davis, Elizabeth Dorsett, Phoebe Fair, Ann Garner, Joyce Grantham, Elizabeth Griffin, Carolyn Hackney, Jeanie Hardison, Harri Heaton, Janet Hodgins, Shirley Holland, Mary Lou Harnsberger, Fay Jackson, Carol Joiner, Mary Frances



RHO DELTA CHI

This has been a great year for the Rhos. The rush week activities, which included a fashion show, a pet show, and a party at Club PΔX, were a big success, bringing in fifty-two loyal Rhos. The society banquet at the Woman's Club was a lot of fun too. Hearts of all Rhos swelled with pride when they could "Stand up and cheer for Rho Delta Chi!"



ANNE SMITH
President

Ann Smith
President

Betty Reese Sugg
Vice-President

Margaret Stafford
Treasurer

Betty Bright
Secretary

Elaine Rogers, Peggy Owens, Linda Johnson, Shirley Cameron, Jackie Blackman, Roslyn Shelton, Rose Marie Dennis, June Dale McLamb, Shirley Councilman, Marie Broetzman, Nancy Hambright, Sylvia Burnette, Mary Ross Anderson, Mary Ann Baynes, Mary Kent, Mary Ann Munn, Lou Carter, Gwen Fussell,

Patsy Inman, Nancy Ragan, Connie McCaehren, Olive Tate, Betty Jean Wood, Barbara Woodlief, Virginia Yelvington, Mary Helen Melvin, Annie Jo Mustian, Angelia Myers, Rita Myers, Betsy Newsome, Peggy Johnson, Jackie Pate, Peggy Patterson, Faye Porter, Betty Ann Powell, Patricia Risley, Patsy Rogers, Joyce Ann Russell, Ruth Sidon, Katherine Stevens, Billie Sue Stokes, Mary Swanson, Gloria Taylor, Margaret Thomas, Irene Thompson, Elizabeth Watkins, Jean Welch, Betty Williams, Treasure Willis, Mary Jane Wilson, Betty Jo Wilson, Jane Wilson, Barbara Miles, Jay McMillan, Mary Vann McLaughlin, Barbara McKinnon, Mary Jo Hutchins, Fran Hunt, Sylvia Holmes, Mae Omie Hobby, Betty Jean Hinton, Sally Heath, Patsy Hawks, Elva Griffin, Anne Godwin, Kate Fogleman, Annie Mae Fogleman, Betty Faulk, Joyce Dean, Mary Jane Craig, Polly Cameron, Nancy Chesson, Joan Brown, Jean Brown, Rose Bracey, Betsy Bland, Betty Beasley, Elgie Allen.





Seated: Mary Kent; Fay Jackson, *Vice-President*; Patsy Inman, *President*; Mary Ann Baynes, *Secretary*; Betty Bright, *Treasurer*; Lucy Blue. *Standing:* Becky Surles; Betty Reese Pridden, *Publicity Chairman*; Barbara Coley, *Folleyball Chairman*; Phoebe Fair, *Awards Chairman*; Billie Kern; Jean Crawford, *Tennis Chairman*; Mary Lou Harnsberger.

ATHLETIC ASSOCIATION



PAISY INMAN
President

The activities of the Athletic Association, an organization from which each girl receives recreation and fellowship, give us relaxation from our academic work. With the aid of our faculty sponsor and friend, Miss Joyce Fowler, the Association is able to maintain the "Little Store" to provide the girls with the treats they desire. May this organization serve as an inspiration for the continuation of good sportsmanship within Peace, from the underhand volley to the overhead pass.



Spotlight on Sports

SNAPS



Good old times



Nighty-Night



Ain't I purty



Howdy-Doody



Parties make the world go 'round

FEATURES





*Sally Bullock
Miss Peace*



May Queen

The Marshals



Seated: June Dale McLamb, Ann Bostic Reynolds, Jean Peake. *Standing:* Margaret Boylann, Anne Smith.

Privileged Honor Roll



Marie Broetzman; Shirley Councilman; Ann Reynolds; Sally Bullock, Mary Ross Anderson.

SCHOLASTIC HONORS

ACADEMIC: Anderson, Bullock, Councilman, Thomas, M.; Crawford, Wilkerson, Link, Kent, Williams, M.; Rhoads, Beverly, Newsome, Heaton, Dickinson, Earp, Fussell, Armistead, Blue, Williamson, McDonald, Thompson, S.; Chamblee, Warren, Sidon, Morgan, Garner, Holmes, Wilson, Estes, Sapp, Rogers, Hobby, Johnson, Bateman, Yelvington, Stevens.



COMMERCIAL: Allen, Wainwright, Click, Karriker, Peake, Taylor, Mustian, Myers, A.; Benson, Thomas, A.; Morrow, Black, Lee, Hackney, Johnson, D.; Hutchins, Johnson, N.; Stevens, K.; Womack, Miles, Monds, Fogleman, Smith, S.; Crumpler, Myers, R.; Strother, Reynolds, Covington, Inman, McLamb, Bland, Hawks, Merriman, Hood, Pate, Arnold, Fogleman, Hardison, McCurdy, Fair, Powell, Davis, Hodgin, Broetzman, Cameron, Ragan, Rogers, Coley, Brown, Hunt, Risley, Griffin, McGhee.

OUTSTANDING SENIORS

MARY ROSS ANDERSON

There is the saying, "Good things come in small packages," that could not be truer of any one than of Mary Ross. Mary Ross came to Peace as a junior in high school, and she has culminated three years of honors with her election to the most important office at Peace, President of the Student Council. Not only has Mary Ross been active in school affairs but she has gained the respect, admiration, and affection of all those who know her. Her influence has been felt by all of us, and even after we leave Peace, we will recall her friendliness and her quiet calm leadership.

MARTHA BLACK

Martha is a very active Peace girl who has proved over and over again her capabilities. As secretary of the P.S.C.A. Martha displays her ability to work with others. She is representative of the student body to the Student Council, a member of the business staff of the LOTUS, and a member of the Daughters and Granddaughters Club. We know that in whatever Martha decides to do, she will be successful.



OUTSTANDING SENIORS

MARIE BROETZMAN

A lovable friend to all who know her and a capable leader on our campus, Marie is hailed as one of our outstanding seniors. Serving as the Business Manager of the Lotus has required much effort and responsibility, which she has accepted enthusiastically. Such a friend and leader as Marie reflects our Peace spirit and ideals.

"We looked, admired, and measured, and still we could not sum her values."

SHIRLEY COUNCILMAN

Words cannot justly portray Shirley's outstanding qualities. Honored by all Peace girls for her versatility in campus activities and her capability in scholastic achievements, an ideal to many and a friend to all, Shirley is characterized by her warm smile and her affable disposition. Years shall not erase our memory of this girl who is loved and admired by each of us.



OUTSTANDING SENIORS

ROSE DICKINSON

Peace is certainly fortunate to have attracted such a day student as the Editor of the *LOTUS* of 1954. Rose Dickinson has stepped into the activities at Peace with the greatest of ease. She is superior, not only in editorial abilities but also in the field of painting. Rose is outstanding for her personal accomplishments and for her capacity to get others to work for her. Peace is proud of her day students when they can bring her a Rose Dickinson.



GWEN FUSSELL

A little Peace girl, a loyal Peace girl. Gwen is like a tiny ray of sunlight, brightening the day of all those she meets. She has endeared herself to everyone at Peace by her sweet air, her pleasant disposition, and her deep interest in the Cabinet and all academic activities. We know that she will, through her religious zeal and her ambition, become successful in the field she has chosen—Director of Christian Education.



OUTSTANDING SENIORS

PATSY INMAN

Quiet, steadfast, and faithful—that is Patsy, who has won a special place in all our hearts. Patsy is a girl of few words, but when she speaks we listen. As President of the Athletic Council and a member of many organizations, she takes an active interest in what goes on at Peace. Her strong dependability, good nature, and willingness to help others make her outstanding among her friends and respected by all.

SALLY THOMPSON

Wit, good humor, and wisdom are rarely found in one person. However, we believe that Peace has found one who exhibits such traits, Sally Thompson. Sally has served this year as President of the Day Student Council, and her interest in Peace is displayed in her efforts to strengthen the ties of our day students to Peace. Sally is talented in the field of painting, and her work has been a source of pleasure to us. Peace bows gratefully to Sally Thompson for her pleasing personality and academic accomplishments and wishes her all success.





TRADITIONAL SNAPSHOTS



ALMA MATER

In the heart of Carolina,
'Neath the skies of blue,

Stands our noble Alma Mater,
Glorious to view.

Classic in her broad proportions,
Looks she proudly down—

Reared against the arch of heaven,
With the stars for crown.

CHORUS

Lift the chorus, speed it onward;
Let it never cease;

Hail to thee, our Alma Mater;
Hail, all hail, to Peace!

ADVERTISEMENTS



The Following Firms Are Sponsoring
THE 1954 LOTUS
and We Gratefully Acknowledge Their Support:

T. H. Briggs & Sons, Inc.
Brogden Produce Company, Inc.
Leon Byrum Opticians
Carolina Power & Light Company
Eckerd Drugs, Inc.
Ellisberg's, Inc.
Garner's ESSO Service
Hilker Brothers
Jefferies Jewelers
The Knitting Nook, Mary J. Hadley, Mgr.
Lewis Sporting Goods
Merle Norman Cosmetic Studio
Mother and Daughter Stores, Inc.
North Carolina Theatres, Inc.
Pine State Creamery Co.
Royster's Candies
State Theatre
H. Steinmetz, Florist
Stephenson Music Company
Taylor Biscuit Company

VERY BEST WISHES

TO THE CLASS

OF 1954

HUDSON-BELK COMPANY

Eastern Carolina's Largest Store

VIRGINIA

Crabtree

at Cameron Village

*Jean's
of Raleigh*

**MORGAN JONES
COTTONS**

ARE

"Yours for a Lovely Home"

Bedspreads

Drapes

Rugs

Bath Sets

Dish Cloths

Dish Towels

PRODUCED IN NORTH CAROLINA
SOLD BY FINE STORES EVERYWHERE

MORGAN-JONES, INC.

58 Worth Street
NEW YORK, N. Y.

Compliments of

JOB P. WYATT AND SONS CO.

Founded in 1881

Box 631

RALEIGH, N. C.

B & C SUNDRY SHOP

705 North Person Street

SANDWICHES DRINKS
SUNDRIES

All Nationally Advertised Merchandise
at Minimum Fair Trade Prices

"The Friendly Shop"

NEIMAN'S

Jewelers - Silversmiths

RALEIGH, N. C.

Best Wishes From

**NORTH CAROLINA EQUIPMENT
COMPANY**

CONSTRUCTION, INDUSTRIAL & LOGGING EQUIPMENT
CONTRACTORS' & MUNICIPAL SUPPLIES

"International Diesel Power"



RALEIGH

GREENVILLE

WILMINGTON

GREENSBORO

CHARLOTTE

ASHEVILLE

ROSE'S 5-10-25c STORES

136 STORES SERVING THE SOUTH

In Raleigh at Cameron Village

BOYLAN-PEARCE



"Raleigh's Shopping Center"

CONGRATULATIONS
CLASS OF 1954

Miriam's

Cameron Village

Phone 3-3851

RALEIGH, N. C.

**HOOD-MODEL
DRY CLEANING COMPANY**

"Ask the Folks We Serve"

Main Office—117 E. Morgan St.
Plant—606 N. Person St.
PHONES 2-3015 - 2-2862

FOOD SERVICE EQUIPMENT
AND UTENSILS

**THE JOHN HOOS CO. OF
NORTH CAROLINA, Inc.**

1209 Hillsboro Street
RALEIGH, N. C.
Telephone 3-0062

"Smart things for Smart Women"

Dunn's

Over Thom McAn's Adjoining Ambassador

FINCH'S DRIVE IN, INC.

AIR CONDITIONED
DINING ROOM

Phone

4-7396

4-7397

FERGUSON'S HARDWARE
HARDWARE AND
HOUSEHOLD SUPPLIES

"We Specialize in Service"

2904 Hillshoro Street
Phones: 2-4877 - 2-3030

EARL JOHNSON B. E. DENNIS
HARRY MOORE BILL WARD

MOORE & JOHNSON CO.

*"For 30 Years Raleigh's Leading
Insurance Agency"*

INSURANCE - SURETY BONDS

Insurance Building
RALEIGH, N. C.

DILLON SUPPLY COMPANY

INDUSTRIAL MACHINERY & EQUIPMENT

Roleigh

Durhom

Rocky Mount

Goldsboro

FLOWERS!

Cut Flowers Corsages
Graduation Bouquets
Decorations

PHONES 8347 - 2-0795

J. J. FALLON CO.
Inc.

*"We Grow the Flowers
We Sell"*

Compliments of

CAPITAL
Ice and Coal Co.
Incorporated

600 West Hargett Street
PHONE 5589

Ice
Coal
Fuel Oil

WALLER AND SMITH STUDIO

Official Photographers for THE LOTUS

12 East Hargett Street

YELLOW CAB CO.



5811

DIAL

5811

Oldest and Most Reliable

Raleigh, N. C.

**McNair's Yield-Tested
Seed Company, Inc.**

WHOLESALE SEED GROWERS
OF FIELD SEED



*All of Our Seed Are Grown
on McNair's Own Farms*

By

**McNair's Yield-Tested
Seed Company, Inc.**

Phone 388
LAURINBURG, N. C.

Say

**BAMBY
BREAD**

Royal Baking Co.

Dial 2-4661

RALEIGH, N. C.

HALIFAX STREET GROCERY

601 Halifax Street

CHOICE MEATS : QUALITY GROCERIES

FRESH FRUITS AND VEGETABLES

RALEIGH, NORTH CAROLINA

BYNUM PRINTING COMPANY

BETTER PRINTING

Phone 6417

JOLLY'S

Established 1881

Jewelers

and

Silversmiths

DESOTO

PLYMOUTH

RAWLS MOTOR COMPANY

RALEIGH, N. C.

JOHN ASKEW

PAINTING AND
INTERIOR DECORATING

*Estimates Made in and
Out of Town*

Telephone 6824
110 Glenwood Avenue

HAYES BARTON PHARMACY

P. D. GATTIS H. I. GATTIS

2000 Fairview Road
DIAL 2-4641

J. S. BOWERS
President

BOWERS CONSTRUCTION COMPANY
Incorporated

WHITEVILLE and RALEIGH
NORTH CAROLINA



M. WATERS
Secretary-Treasurer

G. W. BOWERS
Vice-President

F. W. DICKINSON
Vice-President

R. E. LEACH
Vice-President



*Compliments
of*

=====
**TRU ADE
BOTTLING COMPANY**

**PROFESSIONAL
PHARMACY**

Professional Building
PHONE 5916 RALEIGH, N. C.

*"Prescriptions Are Our
Business"*

VILLAGE RESTAURANT

Cameron Village

RALEIGH, N. C.

ADLER'S OF RALEIGH

SHOES FOR WOMEN

*Who Love Elegance
in Footwear*

Two Stores

113 Fayetteville Street and Cameron Village

EFIRD'S Department Store

Raleigh, N. C.

A GOOD PLACE TO
SHOP

- IN PERSON
- BY PHONE
- BY MAIL

SUN CLOTHES

FUN CLOTHES

at

Grey Taylor Co.

College Shop

The Atlantic Fire Insurance Company

Home Office : Raleigh, North Carolina

Invites inquiries from all "Peace Girls" and their parents as to our policy covering World Wide insurance on Jewelry, Wedding Presents, and Furs from almost every type of damage to which these articles are subject at very low rates.

Phone Us Nos. 2-4671 or 2-4672 or Address Us at Box 150, Raleigh

CAUDLE'S SHOE SHOP

RALEIGH'S FINEST

Serving Raleigh Since 1928

Dial 5636

PERSON STREET PHARMACY

620 North Person Street

A Complete Line of Nationally Advertised Drugs
Plus a Selected Assortment of Toilet Items

Soda Our Specialty

PERSON STREET VARIETY STORE

702 North Person Street

School Supplies and Everyday Needs

Complete Five and Ten

J. E. TREADWELL, *Proprietor*

James H. Anderson Company

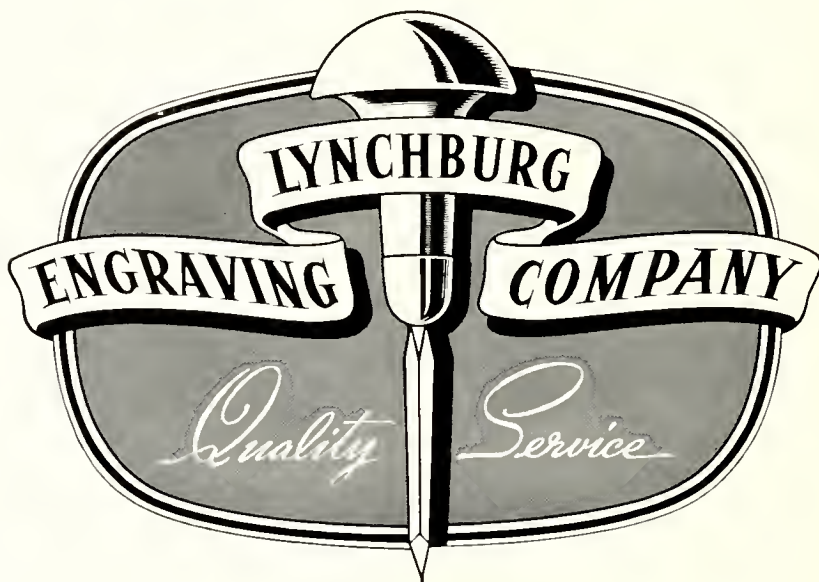
CLEANING SUPPLIES

P. O. Box 342

418 W. Peace Street

DIAL 3-2750

RALEIGH, NORTH CAROLINA



Designers and engravers of
the South's finest school
publications



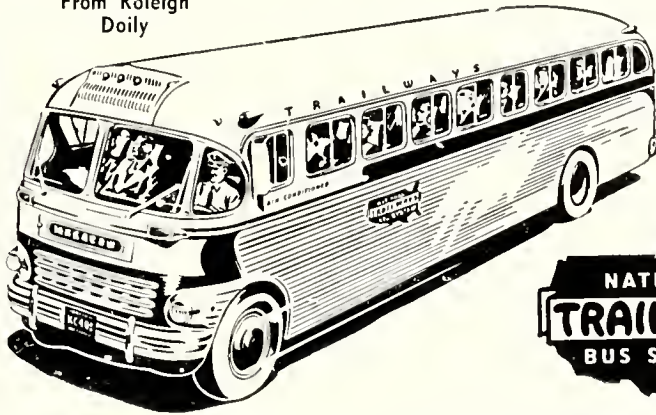
LYNCHBURG, VIRGINIA

PEACE COLLEGE CLASS RINGS AND PINS
SOCIETY PINS AND NOVELTY JEWELRY

WALTER B. ANDERSON

L. G. BALFOUR PRODUCTS
RICHMOND, VIRGINIA

Over
100 Departures
From Raleigh
Daily



Take Trailways. The Route of the Thru Liners



*Continuous Quality
Is Quality You Trust*

ALLISON-LEINSTER, INC.

Phone 2-1632 For Insurance

Raleigh B. and L. Building

RALEIGH, N. C.

Insurance Service Since 1908

J. C. ALLISON
President

MRS. SARAH L. COWPER
Vice-President

J. A. LEINSTER
Secretary-Treasurer



W. H. KING DRUG CO.

Wholesale Drugs

PHONE 2-0525

117 South Wilmington Street

RALEIGH, N. C.



BUILDERS DREAMS

THE ANNUAL STAFF
and the
EDWARDS & BROUGHTON
COMPANY

Cooperated to produce this Annual.

Printed or Lithographed Annuals
produced in our plant in
Raleigh.

Finest Quality
Engraved Commencement Invitations
Engraved Visiting Cards
Engraved and Lithographed
DIPLOMAS

Write for Samples and Prices

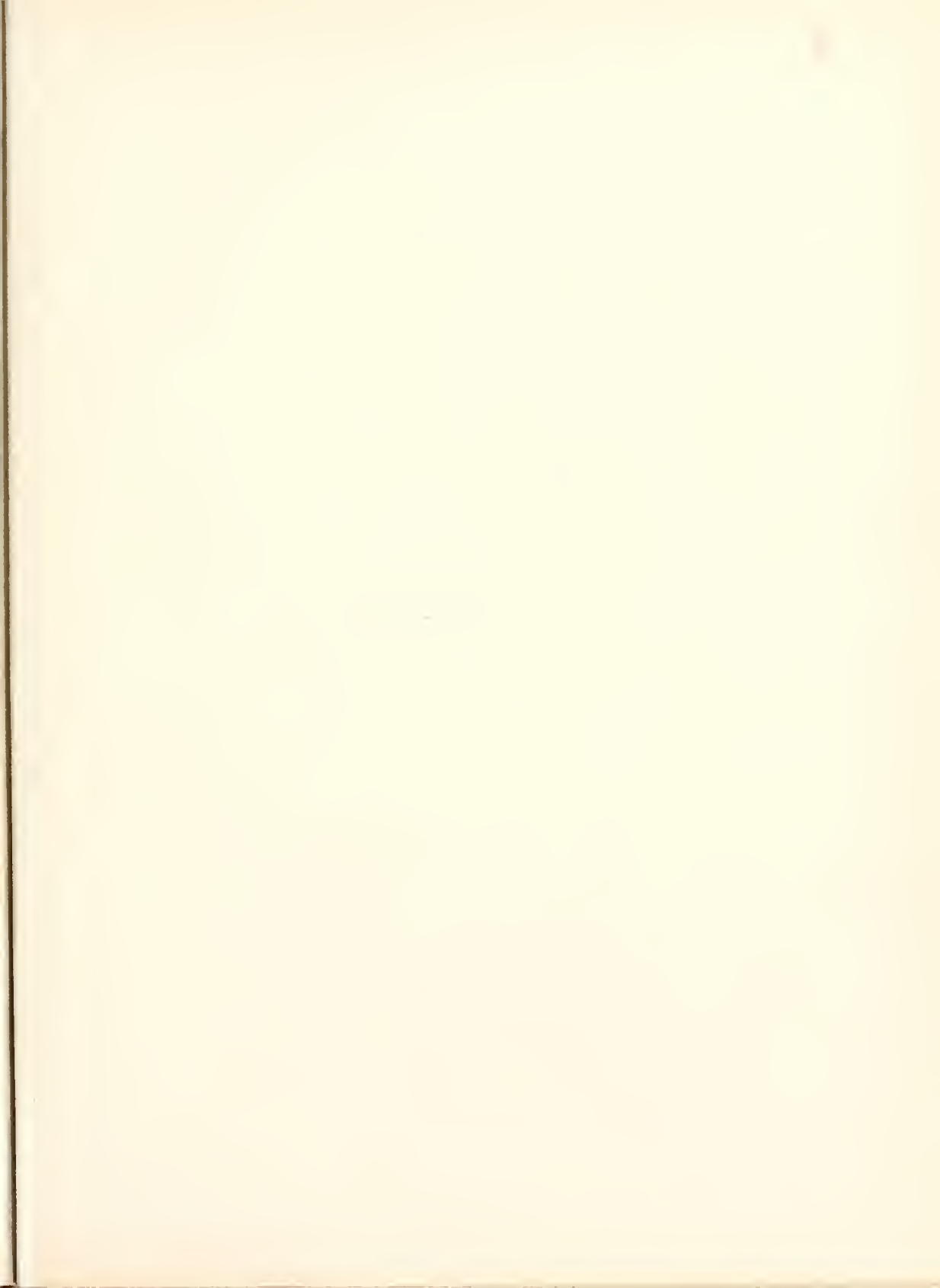
EDWARDS & BROUGHTON
COMPANY

Established in 1871
RALEIGH, NORTH CAROLINA

AUTOGRAPHS

AUTOGRAPHS

AUTOGRAPHS



FOR REFERENCE
Do Not Take From This Room

