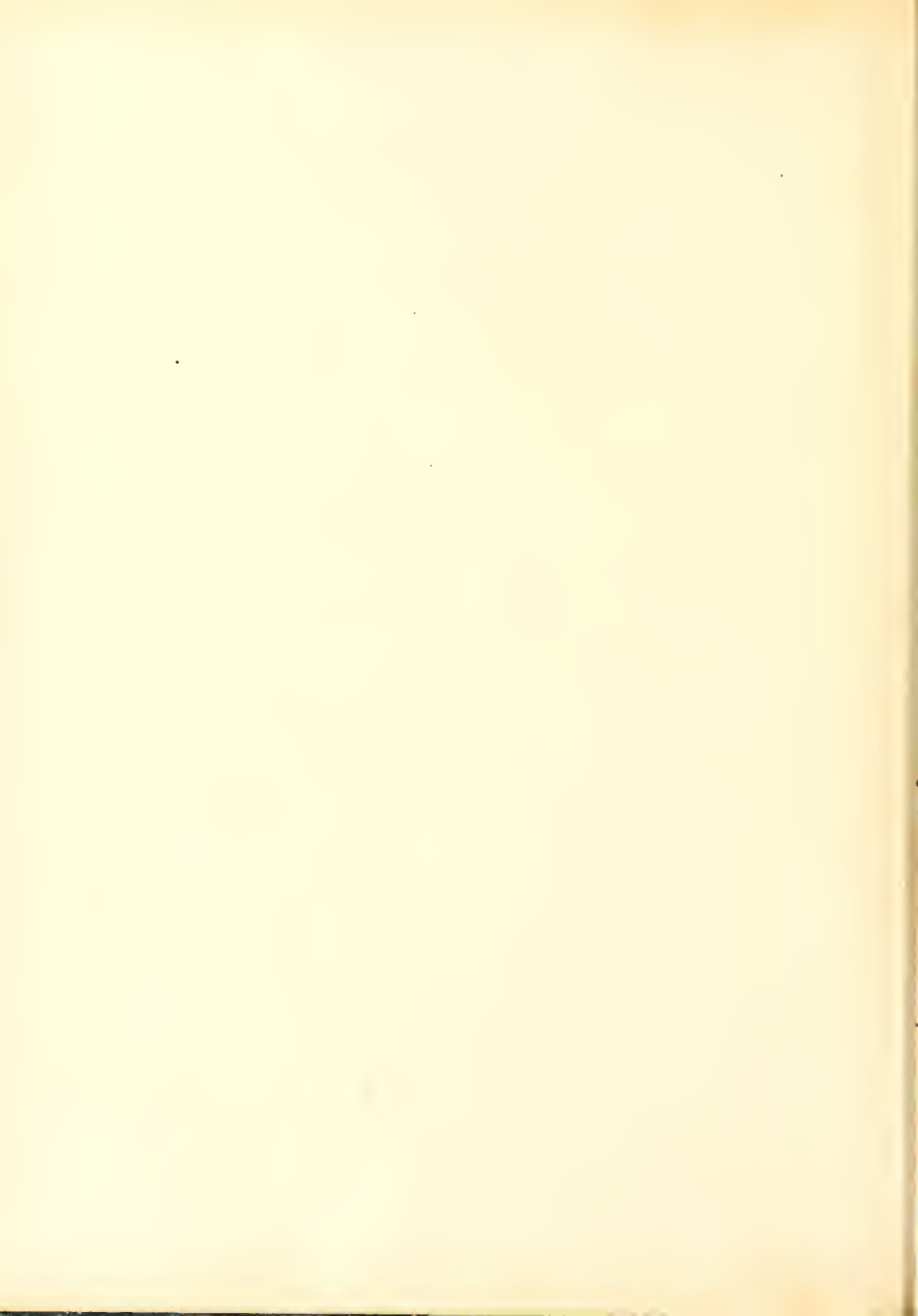





THE

Lexus

1955

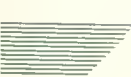




Digitized by the Internet Archive
in 2010 with funding from
University of North Carolina at Chapel Hill

<http://www.archive.org/details/lotus1955peac>





Peace College

RALEIGH, NORTH CAROLINA

Alma Mater

In the heart of Carolina
 'Neath its skies of blue
Stands our noble Alma Mater,
 Glorious to view
Classic in her broad proportions,
 Looks she proudly down—
Reared against the orch of heaven,
 With the stars for crown.

Lift the chorus, speed it onward;
 Let it never cease;
Hail to thee, our Alma Mater;
 Hail, all hail, to Peace!

Clombering o'er the walls and columns
 Historic ivies twine,
As pure love and tenderest memory
 In our hearts enshrine
Days of toil and days of pleasure
 Happiness and Joy.
Hardships, struggles without measure,
 Days without ailoy—

Honored be our Alma Mater,
 Honored for her past;
Honored in the living present,
 Let her honors last.
Long as time shall tell the story,
 Long as hearts are true,
May her name be crowned with glory
 And honors ever new!



CLASSIC IN HER BROAD PROPORTIONS . . .



The

Lotus

of 1955

Editor-in-Chief
JOY EARP

Business Manager
NANCY LINK

Contents

THE COLLEGE..... 9

THE CLASSES.....15

ACTIVITIES.....61

FEATURES.....81

ADVERTISEMENTS87



LONG AS TIME SHALL TELL THE STORY . . .

Foreword

This resumé of our life together at PEACE, THE LOTUS, has as its purpose to keep alive the memory of fleeting and precious college days and to hold close that part of PEACE which is most dear to our hearts.

Long will we recall and love the magnificent, noble columns of our edifice and long after graduation will the meaningful ALMA MATER make us remember the spirit and inspiration we all have received at PEACE.

The annual staff presents our colors, our song, our glorious columns . . . our school . . . our memories of PEACE.



. . . LONG AS HEARTS ARE TRUE

Dedication

With humble respect and admiration we dedicate to Miss Winifred Kuhns THE LOTUS of 1955.

For more than twenty-five years Miss Kuhns has taught at Peace—mixing humor with accounting, responsibility with algebra, and Christian service with geometry—for to Miss Kuhns no day is too long for extra assistance to a confused student and no class period too full for a student's question. Mathematics is illumined by her patient explanation and her kind understanding of difficulty.

The brilliant light of her character has lighted many a dark path for Peace girls. It is our privilege and honor to have such a torch to light our way—such a glow to keep in our hearts.



... HONORED IN THE LIVING PRESENT

Tribute

THE LOTUS of 1955 makes its tribute to you, Miss Ethel Grammer, for such devoted efforts toward making our years at Peace pleasant ones. Serving as our dietitian, you are a vital part of our day; however, those extras for which we thank you and your concern for which we love you have induced us to hail you as our friend.

We pay our tribute to you, Miss Grammer.



... MAY HER NAME BE CROWNED WITH GLORY



STANDS OUR NOBLE ALMA MATER
GLORIOUS TO VIEW . . .

The College



**CLAMBERING O'ER THE WALLS AND
COLUMNS HISTORIC IVIES TWINE . . .**

Administration



DR. WILLIAM C. PRESSLY

Like the columns of our school, Dr. Pressly shall long remain as one of our dearest memories of Peace. Noble in deed and magnificent in manner, he is our true, understanding friend. We proclaim our praise to him for his devoted thoughtfulness.

MISS MARGARET S. HALL

The melody which is Peace to us is personified in Miss Hall, a loyal alumna come back to serve her college as our Dean. The harmonious chords of loyalty, friendship, and service which make up our Miss Hall represent the qualities of Peace at her best.



Board of Trustees

OFFICERS

William McPherson *Chairman*
 James D. Kilgore *Vice-Chairman*
 William C. Pressly *Secretary-Treasurer*
 The Rev. Don Carson *Assistant Secretary*

J. C. Allison, Raleigh
 Mrs. George F. Avinger, Laurinburg
 Thomas M. Belk, Charlotte
 J. Archie Cannon, Concord
 The Rev. Don Carson, Raleigh
 A. P. Cates, Faison
 The Rev. Joseph Clower, Morganton
 E. B. Crow, Jr., Wilson
 The Rev. William Crowe, Jr., D.D.,
 Wilmington
 Neill A. Currie, Jr., Fayetteville
 Mrs. George Finch, Thomasville
 Dr. Monroe Gilmour, Charlotte
 Kelvin Gray, Raleigh
 C. Spears Hicks, Durham
 John Holbrook, Lowell
 The Rev. William B. Hood, Wallace

Karl G. Hudson, Jr., Raleigh
 Mrs. Julian Hutaff, Fayetteville
 James D. Kilgore, Raleigh
 Dr. F. L. Knight, Sanford
 The Rev. Charles E. S. Kraemer, D.D., Rich-
 mond, Virginia.
 Mrs. B. R. Lacy, Raleigh
 H. H. Littrell, Rocky Mount
 E. B. Manning, Roanoke Rapids
 Mrs. C. C. McAllister, Fayetteville
 The Rev. James McChesney, D.D., Goldsboro
 Hector MacLean, Lumberton
 William McPherson, Raleigh
 The Rev. W. S. Patterson, Davidson
 Dr. John Rhodes, Raleigh
 R. A. Snow, Raleigh
 The Rev. Thompson Southall, Statesville
 The Rev. James Sprunt, D.D., Raleigh
 Charles M. Sprinkle, Winston-Salem
 Mrs. Thomas Stamps, Raleigh
 The Rev. John Mack Walker, Roanoke Rapids
 The Rev. Roy Watts, D.D., High Point
 The Rev. Harry Whitmore, D.D., Thomasville
 Mrs. Robert Wyatt, Raleigh

The Woman's Advisory Committee

Mrs. Worth B. Baldwin, Greensboro
 Mrs. J. E. Ballanger, Wilson
 Mrs. W. O. Burgin, Lexington
 Mrs. LeRoy Campbell, Hickory
 Mrs. E. B. Crow, Jr., Wilson
 Mrs. C. Don Coffey, North Wilkesboro
 Mrs. John P. Cooper, Winston-Salem
 Mrs. J. B. A. Daughtridge, Rocky Mount
 Secretary
 Mrs. Guy Denney, West Jefferson
 Miss Grace Edmiston, Mt. Ulla
 Mrs. W. J. Elkins, Clarkton
 Mrs. Galen Elliott, Willow Springs
 Mrs. R. L. Ellis, Spindale
 Mrs. Rudy Fonville, Burlington
 Mrs. Emerson Fountain, Tarboro
 Mrs. J. W. Farrior, Warsaw, Vice-Chairman
 Mrs. Raleigh Griffin, Selma
 Mrs. W. C. Goley, Graham
 Mrs. W. M. Hall, Jr., Belmont
 Mrs. C. H. Hand, Lowell
 Mrs. James H. Hogg, High Point
 Mrs. Dan Holler, Raleigh
 Mrs. J. K. Harper, Pinetops
 Mrs. Boyce Hunter, Charlotte

Mrs. Julian Hutaff, Fayetteville
 Mrs. James Johnson, Lumberton
 Mrs. Victor King, Sanford
 Mrs. J. J. Kirksey, Morganton
 Mrs. J. W. Lamberson, Wilmington
 Mrs. J. Cecil Lawrence, Charlotte, Chairman
 Miss Cornelia McLaughlin, Lillington
 Mrs. George V. McLeod, Johns
 Mrs. A. J. Mayes, Taylorsville
 Mrs. J. W. Miller, Clarkton
 Mrs. George B. Moore, Tarboro
 Mrs. Fred Moss, Gastonia
 Mrs. James R. Nisbet, Waxhaw
 Mrs. E. N. Pittman, Elizabethtown
 Mrs. W. Scott Shepherd, Lumberton
 Mrs. Charles Sprinkle, Winston-Salem
 Mrs. Earle Thompson, Spencer
 Mrs. Myres Tilghman, Dunn
 Mrs. David Weaver, Raleigh
 Mrs. Howard Whisnant, Gastonia
 Mrs. Beaumont Whitten, Charlotte
 Mrs. R. A. Willis, Jr., Monroe
 Mrs. Rufus Wilson, Burlington
 Mrs. David Worth, Raleigh

The Faculty



MISS LYDA BAUGOM
Bursar

MRS. NELL WADE BOOTH
Commercial Subjects, A.B.

MISS ELIZABETH CALDWELL
History, A.B., A.M.

MRS. FRANCES DARDEN
Hostess

MRS. SALLY DAVIS
Nurse, R.N.

MRS. ELEANOR DIXON
Commercial Subjects, A.B., A.M.

MISS JOYCE FOWLER
*Health and Physical Education
A.B.*

MISS ETHEL GRAMMER
Dietitian

MISS GWENDOLYN HAMER
English, A.B., A.M.

MISS JANE HOIT
Science, B.S., M.S.

MISS CHARLOTTE HOWE
Secretary to the President

MISS COLLEEN JOHNSON
Piano, B.Mus., M.Mus.

MRS. LILLIAN JONES
Home Economics, B.S., M.S.

MISS WINIFRED KUHN
Mathematics, A.B., B.E., M.S.

MISS WYNELLE LEWIS
Spanish, A.B., A.M.

Peace College

The Faculty

MISS JANE McDANIEL
Librarian, A.B., A.B. in L.S.



MISS JULIA OATES
English, A.B., A.M.



DR. WILLIAM E. PHIPPS
Bible, B.S., B.D., and Ph.D.



MISS MABEL PUGH
Art, History of Art



MRS. BESSIE RICHARDSON
Supervisor of Buildings and Grounds



MRS. MARY RHODES
Commercial Subjects, A.B.



MISS FRANCES SUTER
Registrar, A.B., A.M.



MRS. MILDRED THIGPEN
Hostess



MRS. ANNE THOMPSON
Organ, B.M.



MISS ANN TYSOR
French, A.B., A.M.



MR. D. E. WARNER
Assistant to the President, B.S., M.Ed.



DR. SANFORD WINSTON
Psychology and Sociology, A.B., Ph.D.



Not pictured:

DR. CARL HJORTSVANG
Voice, Speech, A.B., B.Mus., M.Mus., D.S.M.

Fifty-five

Faculty Snaps



The Classes



**DAYS OF TOIL AND DAYS OF PLEASURE
HAPPINESS AND JOY**

Class Poem

'Tis the setting sun that sadly
Marks the end of these our college years.
Golden rays which once so gladly
Lighted all our hopes and fears
Have vanished.

But morrow brings a new sun
And we will follow its gilded hue
As down life's path well begun
We take knowledge, friendship, and love of you
Fair PEACE.

RUTH SIDON



SUSIE WARNER
Senior Mascot

The Seniors



OFFICERS

NORMA WILLIAMSON, *President*
MARY ARMISTEAD, *Vice-President*
RITA MYERS, *Secretary*
MARGARET THOMAS, *Treasurer*
MISS FRANCES SUTER, *Adviser*

Seniors of



MARY OWEN ARMISTEAD Nathalee, Va.
Sigma Phi Kappa

*"Just a bit better and just a bit truer.
Not quite so ready to censure and blame."*

Sigma Phi Kappa, Vice-President 4; Senior Class Vice-President; International Relations Club 3, 4; Choir 4; Home Economics Club 4, President 4.



PATTIE SUE ARNOLD Raleigh
Pi Theta Mu

"And had a face like a blessing,"

Scholastic Honors 3.



MARY ANN BAYNES Hurdle Mills
Rho Delta Chi

"Speak quietly . . . it is better by far to rule by love than fear."

Lotus Editorial Staff 3, 4, Business Staff 3, 4; Athletic Council 3, 4, Secretary 3, 4; Choir 4; Home Economics Club 4.

Peace

Fifty-five

BARBARA BELL

Currie

Sigma Phi Kappa

"I find earth not gray but rosy!"

Sigma Phi Kappa, Historian 3, 4; Peace Student Christian Association 2, 3, 4; Lotus Business Staff 4; Privileged Honor Roll 4; National Honor Society 2; Class Officer 2, Secretary; President 3; International Relations Club 2, 3, 4, Vice-President 4; Choir 2, 3, 4; Art Club 2, 3, 4; Recipient of Music Scholarship 3, 4.



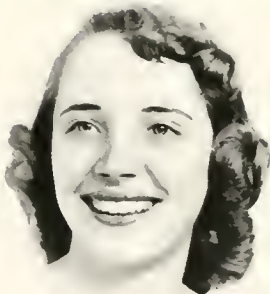
LUCY CATHERINE BLUE

Sanford

Sigma Phi Kappa

"In all her ways is grace."

Student Council 4; Peace Student Christian Association 4; Sigma Pi Alpha 3, Vice-President 4; Privileged Honor Roll 4; International Relations Club 3, President 4; Choir 4; Outstanding Senior; Home Economics Club 4; Art Club 3.



BETTY JANE BOONE

Jackson

Rho Delta Chi

*"And after her came jolly June,
Arrayed in green leaves as a player."*

Rho Delta Chi, Secretary 4; Athletic Council 4.



College



JEAN ELEANOR BROWN Raleigh
Rho Delta Chi
"Peace is happiness digesting."



JOAN ELIZABETH BROWN Raleigh
Rho Delta Chi
"An honest man's word is as good as his hand."
Non-Resident Student Council President.

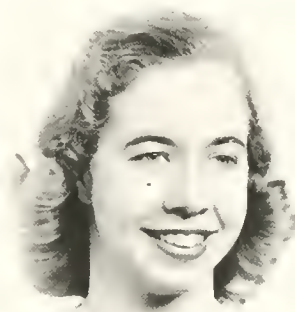


JEWEL WILSON BUFFALO Raleigh
Pi Theta Mu
"A sweeter, more gracious person is rarely found."
Pi Theta Mu, Vice-President 4; Peace Student
Christian Association 4; Lotus Editorial Staff
4, Chief Typist 4; Junior Class Treasurer;
International Relations Club 3.

Fifty-five

ANNE SCHUMAN BYERLY Dunn
Sigma Phi Kappa

"Well versed in all the art of friendship and of life."
Sigma Phi Kappa, President 4; Student Council 4; Lotus Staff 4; Sigma Pi Alpha, President 4; International Relations Club 3, 4; Papyrus Club 3, 4; Art Club 3; Inter-Society Council 4.



SUSANNE CHAMBLEE Greensboro
Sigma Pi Kappa

"The sweetest garland to the sweetest maid."
Marshal 3, 4, Chief 4; Daughters and Granddaughters Club 3, 4, May Court 4.



MARILYN LUBERTA CHESTER Roxboro
Sigma Phi Kappa

"From out her loving heart came deeds of kindness."
Lotus Editorial Staff 4, Snap Editor 4; Art Club 3, 4, Corresponding Secretary 4.



College

Seniors of



MARGARET ANN COVINGTON Mebane
Sigma Phi Kappa

"Pure as an angel, sweet as love."

Sigma Phi Kappa, Secretary 4.



MARY JEAN CRAWFORD Rowland
Sigma Phi Kappa

"Heard melodies are sweet, but those unheard are sweeter."

Student Council 4, President 4; Peace Student Christian Association 4; Lorus Editorial Staff 3; Phi Theta Kappa; Sigma Pi Alpha; Junior Class Secretary; International Relations Club 3, 4; Athletic Council 3; Art Club 3; Privileged Honor Roll; Outstanding Senior.



ELIZABETH JANE DORSETT Siler City
Sigma Phi Kappa

"The air around with beauty."

Choir 2; Art Club 2, 3, 4; Home Economics Club 4.

Peace

Seniors of



MARGARET ANNE GODWIN Fayetteville
Rho Delta Chi

"Talk happiness, the world is sad enough."

Papyrus Club 4; Home Economics Club 4;
Art Club 4.



CAROLYN ELIZABETH HACKNEY Sanford
Sigma Phi Kappa

"A daughter of the gods, divinely sweet and divinely fair."

Peace Student Christian Association 4, Treasurer 4; Lotus Staff 4, Class Editor 4; Alpha Pi Epsilon; Privileged Honor Roll 4; Papyrus Club 3, Treasurer 3; Choir 3, 4, Vice-President; Daughters and Granddaughters Club 3, 4.



MARY LOUISE HARNBERGER
Waynesboro, Va.

Sigma Phi Kappa

"Doing easily what others find difficult is talent."

Peace Student Christian Association 3, 4; Athletic Council 3, 4; Lotus Business Staff 3, 4; Outstanding Senior 4; Scholastic Honors 3.

Peace

Fifty-five

PATSY ANN HAWKS

Raleigh

Rho Delta Chi

"She was good as she was fair."



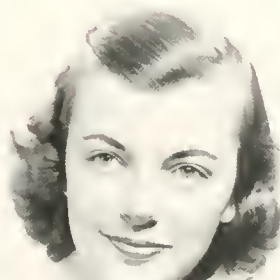
SALLY VAN DYKE HEATH

Hastings on Hudson, N. Y.

Rho Delta Chi

"Be patient, Our Playwright may show in some fifth act what this wild drama means."

Rho Delta Chi, President 4; Papyrus Club 4; Daughters and Granddaughters Club 3, 4; Art Club 4; Inter-Society Council 4, President 4.



CAROL LOREE JOINER

Staunton, Va.

Sigma Phi Kappa

"She has a voice of gladness and a smile and eloquence of beauty."

Lorus Editorial Staff 4; Home Economics Club 4; Art Club 4; Choir 3, 4.



College



BILLIE JEAN KERN
Sigma Phi Kappa
"The spice of life . . ."
Athletic Council 3, 4, Treasurer 4.

Star



NANCY ELIZABETH KING
Rho Delta Chi
"A valiant spirit surely hath its reward."
Woman's College of U.N.C. 3; Home Economics
Club 3; Y.W.C.A. 3; Peace College 4.

Raleigh



HILDA JEAN LAMM
Rho Delta Chi
"Sweet, quiet, with rare qualities possessed."

Oxford

ANNIE LEE LANGDON
Pi Theta Mu

Angier

"A true friend is forever a friend."

Campbell College 3; Peace College 4.



REBECCA ANN LEE
Sigma Phi Kappa

Dunn

*"If eyes were made for seeing, then beauty has its own
excuse for being."*

Lotus Business Staff 3, 4; Alpha Pi Epsilon;
Scholastic Honors 3.



NANCY ANN LINK
Pi Theta Mu

Raleigh

"Whose little body log'd a mighty mind."

Lotus Editorial Staff 3, Business Manager 4;
Phi Theta Kappa, President 4; Sigma Pi Alpha;
Privileged Honor Roll 4; International Re-
lations Club 3, 4; Papyrus Club 3, President 4.



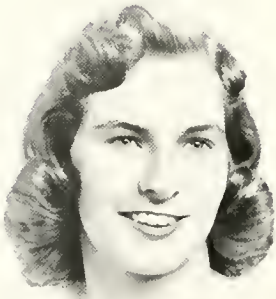
Seniors of



MARY ALLEN McDONALD Carthage
Sigma Phi Kappa

"There is no beautifier of complexion, or form, or behavior, like the hush to scatter joy and not pain around us."

Peace Student Christian Association 3, 4, Vice-President 4; Lotus Business Staff 4; International Relations Club 4; Miss Peace 4.



ROSE FAYE MONDS Dunn
Sigma Phi Kappa

*"Pretty, witty, full of fun
A brainy girl all in one."*

Lotus Business Staff 4; Alpha Pi Epsilon 3, 4; Papyrus Club 4; Athletic Council 4; Inter-Society Council 4.



CECILIA ANN MONTJOY Raleigh
Rho Delta Chi

"Her kind gentleness enkindles warmth in our hearts."

East Carolina College 3; Writers Club 3; Dramatics Club 3; Peace College 4.

Peace

Fifty-five

SHIRLEY ANN MOORE Wallace
Sigma Phi Kappa

"To know her is to love her."

Papyrus Club 4; Athletic Council 4; Home
Economics Club 4; Art Club 4.



PEGGY JUNE MOWERY Raleigh
Pi Theta Mu

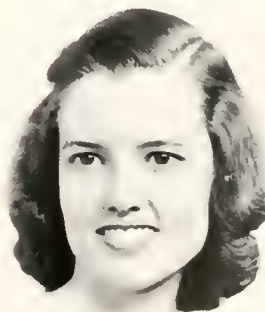
*"Rare compound of quality, noble and true,
With plenty of sense and good humor too."*



ANNIE JOSEPHINE MUSTIAN Raleigh
Rho Delta Chi

"Still waters run deep."

Non-Resident Student Council 3, Secretary;
Alpha Pi Epsilon 3, 4, Secretary 4.



College

Seniors of



RITA GARLAND MYERS
Rho Delta Chi

Sparta

"It's nice to be natural when one is naturally nice."

Lotus Business Staff 4; Alpha Pi Epsilon 3, 4, President 4; Senior Class Secretary; Daughters and Granddaughters Club 3, 4; Art Club 4; Marshal 4.



BETSY ANNE NEWSOME
Rho Delta Chi

Raleigh

"The song that nerves a nation is in itself a deed . . ."

Lotus Editorial Staff 4; Privileged Honor Roll 3, 4; International Relations Club 3, 4, President 4; Choir 3, 4.



SHERRY NOBLE
Rho Delta Chi

Greensboro

"Sparkling eyes, laughter, friendliness—a fitting combination."

Greensboro College 3; Peace College 4.

Peace

SUSIE MARIE PARSONS Elizabeth City
Sigma Phi Kappa

"In her tongue is the law of kindness."

Art Club 3; Home Economics Club 4, Secretary-Treasurer 4.



PEGGY LOUISE PATTERSON Sanford
Rho Delta Chi

"It seems the kindest battles fought are fought in silent ways."

Papyrus Club 4; Class Prophet.



NANCY ADRIAN RHOADS Leesburg, Va.
Sigma Phi Kappa

"In action faithful and honor clear."

Student Council 4; Peace Student Christian Association 3, 4, President 4; Lorus Editorial Staff 3, Assistant Editor 3; Phi Theta Kappa; Privileged Honor Roll 4; Junior Class Vice-President; International Relations Club 3, 4; Choir 3, 4, Vice-President 3; Art Club 3; Outstanding Senior 4.





PATRICIA MARIE RISLEY Raleigh
Rho Delta Chi

*"Rich in saving common sense,
And, as the greatest only are,
In his simplicity, sublimest."*

Non-Resident Student Council 4, Treasurer;
Scholastic Honors 3.



JO ANN RUSHING Oakboro
Sigma Phi Kappa

"A doer, not a dreamer."

Papyrus Club 4.



SARAH VINSON SAULS Raleigh
Pi Theta Mu

*"Her air, her manner, and neat attire,
She's a girl whom we all admire."*

Woman's Chorus 3; East Carolina College 3;
Peace 4.

fifty-five

JEAN CARROLL SHERRILL Fayetteville
Sigma Phi Kappa
"Hail to thee blithe Spirit."
Woman's College of U.N.C. 3; Peace College 4.



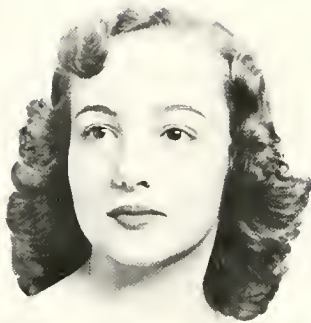
RUTH HANNAH SIDON Methuen, Mass.
Rho Delta Chi
*"Beauty is truth, truth beauty—
That is all ye know on earth, and all ye need to know."*
Student Council 4, Treasurer; Peace Student
Christian Association 4; LOTUS Business Staff 4;
Class Poet 4; Privileged Honor Roll 4; Inter-
Society Council 4; Choir 4, President; May
Court 3; May Queen 4; Proctor 3.



EDNA ANNE SMITH Fairmont
Rho Delta Chi
*"Her ways are ways of pleasantness, and all her
paths are peace."*
Class Treasurer 1; Papyrus Club 1, 2; Choir
1, 2, 4; International Relations 3, 4; Marshal
3; Rho Delta Chi, President 3, Treasurer 4;
Inter-Society Council 4; Privileged Honor Roll
4; Assistant Business Manager, LOTUS 3, 4;
Athletic Association, Vice-President 4; Out-
standing Senior; May Court, Maid of Honor.



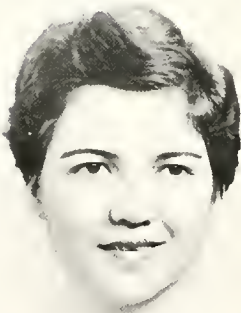
College



BETTY SHIRLEY SMITH Goldsboro
Sigma Phi Kappa
"Beauty like glimpses from forgotten dreams."



SELETA ANN STEVENS Raleigh
Pi Theta Mu
"A jest breaks no bones . . ."
Pi Theta Mu, President 4; Inter-Society Council
3, 4; Marshal 4.



MARGARET ANNE THOMAS Raleigh
Rho Delta Chi
*"It is the nature of a great mind to be calm and un-
disturbed."*
Lorus Editorial Staff, Assistant Editor 4; Sigma
Pi Alpha, Secretary-Treasurer 4; Phi Theta
Kappa, Treasurer 4; Outstanding Senior; Senior
Class Treasurer; Papyrus Club 3, 4.

Fifty-five

LILY IRENE THOMPSON Fayetteville
Rho Delta Chi

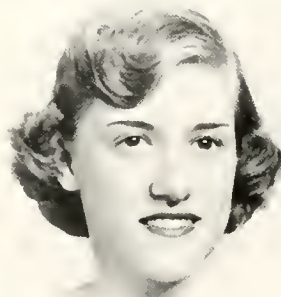
"Wit makes its own welcome, and levels all distinctions."

Athletic Council 4; Nominating Committee 4;
Home Economics Club 4; Art Club 3, 4, Vice-
President 4.



MARY VANN McLAUGHLIN TURNER Fayetteville
Rho Delta Chi

"A jolly unselfish personality is the greatest gift of all."



POLLY ANN WILKERSON Kenly
Sigma Phi Kappa

"Music, when soft voices die, vibrates in the memory."

National Honor Society 2; Scholastic Award 2;
International Relations Club 2, 3, 4, Vice-Presi-
dent 4; Papyrus Club 4; Choir 2, 3, 4, Accom-
panist 3, 4; Art Club 2, 3, 4, Secretary 3; Class
Historian 4.



College



MARGARET HAMILTON WILLIAMS

Ararat, Va.

Sigma Phi Kappa

"I see the right . . . and approve it too."

Pi Theta Kappa, Secretary-Treasurer 4; Sigma Pi Alpha, Historian 4; Lotus Editorial Staff 4; Papyrus Club 4; Art Club 3, 4.



NORMA ROBERTA WILLIAMSON Bethel

Sigma Phi Kappa

"And she has the truest, kindest heart."

Student Council 4, Vice-President; Peace Student Christian Association 3, 4, Secretary 4; Lotus Editorial Staff 3, 4; Nominating Committee 4; Privileged Honor Roll; Senior Class President; International Relations Club 4; Papyrus Club 3; Choir 4; Art Club 3; Marshal 4; Outstanding Senior.



ELIZABETH ALLEN WOMACK

Richmond, Va.

Sigma Phi Kappa

*"Brightens up a gloomy place
Then it sort o' vests your face—
Just smiling."*

Fifty-five

BARBARA JEAN WOODLIEF Benson

Rho Delta Chi

"A lovable girl with virtues many."



Not Pictured:

SUSIE LEE DENTON Raleigh

"A gay laughing face and a friendly heart."



College

Class History

It was a misty, rainy afternoon, a time when dreams and memories play around the heart. Instinctively, I turned toward the bookshelf, took down an old college scrapbook, and settled comfortably before the fireplace. Ribbons, programmes, and little snapshots scattered about the floor, and I smiled fondly as long-remembered scenes sprang from the musty pages.

Our first day at Peace was a flurry of new faces, flashing suitcases, new books to buy and stairs to climb. The P.S.C.A. Cabinet gave us a wonderful party on the campus that evening, and we began to remember names and forget homesickness.

After an outstanding faculty recital on Saturday night we were formally introduced to our "professors" and the administrative staff at the annual reception, but it was during the first vesper service as we stood with lighted candles by the fountain that we realized at last the true meaning of Peace.

Class elections were quickly held; and we were proud to have Barbara Bell, Nancy Rhoads, Jewel Bullaloe, and Jean Crawford to guide us through a successful and promising year.

As classes got under way, Rush Week took the spotlight; and the virtues of Sigma Phi Kappa, Rho Delta Chi, and Pi Theta Mu were extolled in every fashion imaginable. After the big decision and a grueling day of virtual serfdom, we gladly exchanged the title of "Rat" for "Sister" in the beautiful formal initiation ceremonies. Royal entertainment was provided at the Inter-Society Banquet, ending society activities with a brilliant flourish.

Soon November had come and we were introduced to two memorable Peace traditions, the Week of Sharing and the Thanksgiving chapel service. As baskets of food were pre-

sented to the maids, all of us were glad we had had a part in making their Thanksgiving a happy one.

Suddenly our first college exams were nipping at our heels; but, leaving them safely behind us, we could look forward eagerly to Christmas with the annual Pageant, Choir Concert, carol step singing, and a sumptuous Christmas dinner. What a lovely picture the girls made in their white dresses, eating by candlelight at tables with special little trees! There was much singing and laughter as gifts were presented to the dining room servants and greetings quite generously bestowed upon the faculty.

Having scurried off for a much-needed vacation and reunion with our families, we returned with renewed vigor and a resolve to keep the true Christmas spirit of love and sharing in our hearts throughout the year.

"What to do for Stunt Night" was now the main problem although discussed with much secrecy behind closed doors. Visitation weekend guests watched our performance of several "take-offs" on popular television shows.

Peanut Week, with its mysterious appearances of candy bars, and an inspirational Religious Emphasis Week tided us into March, when the Mid-Century Convocation was held at Peace, bringing many good lecturers and discussion leaders to talk on Christian education. Many internal and external improvements had been made on the campus which we proudly showed to the Convocation guests.

Now Spring was trying to get her foot in the door; it was time to make plans for the Junior-Senior Dance. An "April in Paris" was created at the Woman's Club, and special entertainment by a Raleigh dancing class provided the high spot of the evening.

Class History

May Day quickly followed with its lovely court and *Cinderella* pageant, then Class Day and Commencement when we were "pinned" with green ribbons. Seniors at last!

The next fall it was our turn to greet the expectant flock of new faces at the door. On hand were Nancy Rhoads, President of P.S.C.A.; Jean Crawford, President of the Student Body; Norma Williamson, President of the Senior Class; and our other cabinet and council officers.

Quickly we drew the "new girls" into our Peace family. Rush Week that year featured an Inter-Society Dance held in the Hotel Sir Walter Ballroom. Dr. Pressly also gave us a formal dance in November at the Woman's Club.

Once again we shared our thanks to God and were proud to be the class presenting the maids' baskets. We were also proud of the success of the new Christmas Pageant. As we sat on the floor in Central Hall for Christmas Hall Prayers, I'm sure there was more than one thoughtful heart as we began to realize what Peace had come to mean to us.

Exchanging gifts under the tiny dining room trees made us long for our own homes and

Christmas trees. Wonder if our girls had been expecting those diamonds?

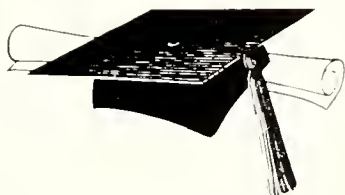
Stunt Night was the best ever, even though we lost one last chance for the Cup. Peanut Week and Religious Emphasis Week occupied our thoughts until the two long-awaited society dances in March (the new week-end dance).

After exams and Spring Vacation it was time to think of graduation. Invitation lists were finally made and last-minute college applications dispatched in time for the May Day activities, which featured lovely Ruth Sidon as Queen. Never had the May Court seemed more beautiful as the lovely girls strolled in the afternoon sun.

Class Day arrived and we pinned the new seniors as "PC" was spelled out with daisy chains. Organ strains swelled and faded as we passed finally through the doors, red roses in our arms. Our diplomas meant more than graduating from a school—we had been trained in a way of life that would prepare us for the years to come.

Suddenly the sun broke through and filtered its beams on the faded scrapbook—the specks of dust became flecks of gold.

POLLY WILKERSON, *Historian*



Last Will and Testament

ARTICLE I

SECTION 1

To Dr. Pressly, who has been an understanding father to each of us, we leave a deep appreciation for the Christlike philosophy of life he has instilled within our hearts.

ARTICLE II

SECTION 1

To Miss Hall, we leave our sincere thanks for her motherly concern. We have found in her friendship an overflowing cup of service, guidance, and love.

ARTICLE III

SECTION 1

To Miss Suter, our sponsor and adviser, we leave gratitude for the patient persistence and understanding she gave so liberally.

ARTICLE IV

SECTION 1

I, Jean Crawford, leave Peace with pleasant memories.

SECTION 2

I, Jo Ann Rushing, leave for Queens!

SECTION 3

I, Barbara Bell, leave my bottle of peroxide to Virginia Yelvington.

SECTION 4

I, Anne Smith, leave my Southern drawl to May Robertson.

SECTION 5

I, Carolyn Hackney, leave my voice to Carolyn Wilson.

SECTION 6

I, Susie Parsons, leave my petiteness to Rose Terrell.

SECTION 7

I, Nancy Link, keep every inch of my height because I need it more than anyone else.

SECTION 8

I, Margaret Thomas, leave my love of State to Llew Wells (provided she can pronounce those last names).

SECTION 9

I, Nancy Rhoads, leave my position in Miss Hall's office to Marilyn Watson.

SECTION 10

I, Mary Lou Harnsberger, leave my love of Virginia to Nancy Waterfield.

SECTION 11

I, Mary Armistead, leave my Home Economics Club duties to anyone who can make stuffed pig feet attractive.

SECTION 12

I, Joan Brown, leave that card table in the "Rec Room" for the use of some more fanatic bridge players.

SECTION 13

I, Marilyn Chester, leave my camera to some other shutter-bug.

SECTION 14

I, Joy Earp, leave the annual staff in the hands of anyone with lots of time.

SECTION 15

I, Peggy Mowery, leave my sense of humor to Martha Hudson.

SECTION 16

I, Sally Heath, leave my love of life to Nancy Harper.

SECTION 17

I, Carol Joiner, leave to get my "M.R.S." degree.

SECTION 18

I, Margaret Williams, leave my musical ability to Carol Carr.

SECTION 19

I, Betsy Newsome, leave my angel's voice to Ross Garner.

SECTION 20

I, Irene Thompson, leave my vivaciousness to Zula Slater.

SECTION 21

I, Susanne Chamblee, leave a certain SAE at Davidson to Chris Isenhower.

SECTION 22

I, Nancy Elizabeth King, leave my romantic worries to Lou Respess.

SECTION 23

I, Seleta Stevens, leave to devote all my time to doing research on German girls.

SECTION 24

I, Betty Womack, leave my Virginia accent

Last Will and Testament

to anyone who can learn to say "out" and "about" in a natural way.

SECTION 25

I, Cecelia Montjoy, leave my psychology worries to any poor victim of that course.

SECTION 26

I, Anne Godwin, leave to tour Europe.

SECTION 27

I, Sherry Noble, am making my bid for a "ring-side" seat so I won't miss anything at Norman's.

SECTION 28

I, Lucy Blue, leave my athletic ability to Becky Surles.

SECTION 29

I, Pat Risley, leave my curly hair to Jane Wilson, who could use a few curls.

SECTION 30

I, Anne Byerly, leave R. C. Colas to anyone who happens to love them and can afford to buy moon-pies.

SECTION 31

I, Jewel Buffalo, leave to be an ardent U.N.C. fan.

SECTION 32

I, Rita Myers, leave my popularity to Mary Miller Powers.

SECTION 33

I, Mary Ann Baynes, leave my quiet, meek little voice to Lynn Williamson.

SECTION 34

I, Pattie Sue Arnold, take my FRAT pin with me, but I will leave some trips to Davidson to a lucky dreamer.

SECTION 35

I, Shirley Smith, leave my long curls to Sharon Williams.

SECTION 36

I, Annie Jo Mustian, want to inform some day student that I'm no longer around to support the White Transportation Company.

SECTION 37

I, Mary Van McLaughlin Turner, want to leave the McLaughlin in my name here so I can use Turner instead.

SECTION 38

I, Barbara Woodlief, leave to play tag with the boss.

SECTION 39

I, Annie Mae Fogleman, leave with the hopes of finding a job real soon. Maybe I can buy a watch so I won't be late so much!

SECTION 40

I, Patsy Hawks, leave my neatness to Patty Denning.

SECTION 41

I, Mary Allen McDonald, leave my quiet ways to Rachel Harvell.

SECTION 42

I, Annie Lee Langdon, leave with fond memories of happy days at Peace.

SECTION 43

I, Faye Monds, leave my typewriter in Miss Suter's office to Anne Carver.

SECTION 44

I, Elizabeth Dorsett, leave my tardiness to Buzzy Watkins.

SECTION 45

I, Kitty Flowers, leave to become "The farmer's wife."

SECTION 46

I, Jean Brown, leave my secretarial abilities to Carol Nanney.

SECTION 47

I, Norma Williamson, leave my duties as senior class president to anyone with infinite patience and the wisdom of Solomon.

SECTION 48

I, Polly Wilkerson, leave my sincerity to Margaret Boylan.

SECTION 49

I, Billie Kern, leave my indecision to Kay Thomas.

SECTION 50

I, Ruth Sidon, take my blue eyes with me because I wouldn't be able to see "Yale" without them.

SECTION 51

I, Sarah Sauls, leave in a hurry cause I've got a vat of barbecue cooking!

SECTION 52

I, Nancy King, leave my hair to anyone who feels like living up to the temperament expected of a redhead.

BETTY WOMACK, *I estator*

Witness:

R. U. READY

Class Prophecy

As I climbed aboard the airplane, I was surprised to see that the stewardess was an old classmate, Anne Smith. Anne and I decided to have dinner together when we landed in San Francisco and swap information about our classmates at Peace.

The restaurant where we had dinner was one of a chain owned by Norma Williamson. We were delighted to find Norma there and asked her to join us. She told us that her old "roomie," Nancy Rhoads, is now superintendent of nurses at Duke. Anne said that Mary Vann Turner is the happy mother of twin girls, Jerri and Sherri, and she also added that Carol Joiner hears the patter of little "barefeet" around the house. Norma promised that she had a surprise for us later on (the McGuire Sisters had stepped out of the spotlight for a new trio) but first she wanted to hear about my world tour:

There had been much fanfare when I arrived in New York. The first rocket ship to the moon had just returned and who but our old friend Marilyn Chester had taken the on-the-spot photographs for *Life*. That night I went to Polly Wilkerson's debut at Carnegie Hall. Among the celebrities present were some of my old classmates at Peace. Polly's former roommate Margaret Williams, who has made quite a name for herself as ambassador to Ireland, was there along with noted psychologist Joy Earp, with her assistant and secretary, Pat Risley; Barbara Bell, whose best seller on public speaking, *When Not to Laugh*, was published by Nancy Link, successful book publisher; and Sally Heath, well-known art critic. The event was covered by Seleta Stevens, whose gossip column, "Your Business and Mine," is published in newspapers all over the country.

Before I left New York I had a visit with Anne Godwin. Yes, she has settled in New York and has a little shop on Madison Avenue

—specializes in Cashmere. Her models, Betty Womack and Susanne Chamblee, are a great asset in raising sales. While I was in Anne's shop, Peggy Covington and Kitty Flowers came in; they are on Broadway in a hit musical comedy which is produced by Hilda Lamm and directed by Jewel Buffaloe.

When I arrived in Paris, I was greeted by Jo Ann Rushing, Paris dress designer whose fashions have put Dior and his "new look" out of business. Jo Ann supplied me with information about two of the girls. Margaret Thomas is now living in Paris and has just completed her latest book, *Rose Marie and I*. Rose Marie, you may remember, is Margaret's cat. Shirley Smith is the latest "Halo" model, but, of course, you have seen her picture in all the leading magazines.

From Paris I went to London where Faye Monds and Rita Myers are secretaries. Rita has decided a business career is too "thick" and is thinking something or other about a school teacher. They told me that Peggy Mowery and Sarah Sauls are working on a new taste for Dr. Pepper at their lab in New Jersey.

It was not until I had arrived in Rome that I met other Peace girls. Lucy Blue, "Cookie" Armistead, and Susie Parsons are home economists in Rome and are teaching the Italians to cook spaghetti, American style. They told me that Irene Thompson is putting her home economics to use in her career as an Army wife. Betty and Anne of the "Boone and Byerly Detective Agency" were in Cairo tracking down a notorious diamond thief. Betty said that Mary Lou Harnsberger is making a big "profit" off her "Jim" in Richmond. She guarantees to make any weakling a he-man within two weeks. Annie Jo Mustian is her

Class Prophecy

efficient secretary. They told me that I should go to Hong Kong before I went back home.

At a night club in Hong Kong, Shirley Moore and Jean Sherrill were singing "Ling Ting Tong." They call themselves "The Bop Cats." Annie Mae Fogleman is their business manager.

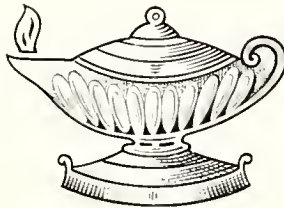
In Japan, Cecilia Montjoy, Pattie Sue Arnold, and Patsy Hawks climbed aboard the plane. They had given up teaching the Japanese to Mambo. They just don't dig that crazy music.

When the plane landed in Hawaii, I was pleased to see Billie Kern, who was there on a modeling assignment. Nancy King, Annie Lee Langdon, and Sherry Noble, who were just vacationing, stopped water skiing long enough to tell me that three girls—Lib Dorsett, Mary

Ann Baynes, and Barbara Woodlief had walked down the aisle to repeat the vows of matrimony with boys familiar to Peace girls. They also said that Mary Allen McDonald and Jean Crawford have plans for a television program, which will be sponsored by the Toni Company and that Jean and Joan Brown, the very popular Toni Twins, will appear on the show.

My tale of travels was ended when Norma broke in to tell us that the time for the surprise had come. The new trio she had been talking about was composed of Ruth Sidon, Carolyn Hackney, and Betsy Newsome. Judging from the ovation they received, they have surpassed the success of the McGuire Sisters. Norma wanted us to stay over longer but I had a big reason and two or three little ones that I should hurry home.

PEGGY PATTERSON, *Prophetess*



The Junior Class



OFFICERS

DOROTHY PRESSLY *President*
CHRISTINE ISENHOWER *Vice-President*
PEGGY KELLY *Secretary*
MARTHA HUDSON *Treasurer*
MARGARET DAUGHTRIDGE *Representative*

Class of Fifty-six

NANCY ELIZABETH ADAMS Greenville
Sigma Phi Kappa

BETTY JANE ASKEW Rocky Mount
Sigma Phi Kappa

LYDE WHITE BARBREY Clinton
Sigma Phi Kappa



ANN LANDEN BARRETT Raleigh
Rho Delta Chi

JANE GORDON BASS Charlotte
Rho Delta Chi

MITZI JEAN BOWLING Princeton, W. Va.
Sigma Phi Kappa



MARGARET TUCKER BOYLAN Raleigh
Pi Theta Mu

BARBARA BURKETT BRAWLEY Raleigh
Sigma Phi Kappa

BARBARA HOPE BROWN Carthage
Rho Delta Chi



CAROLYN MAE BUFFALOE Garner
Sigma Phi Kappa

MARY REBECCA BUIE Wagram
Sigma Phi Kappa

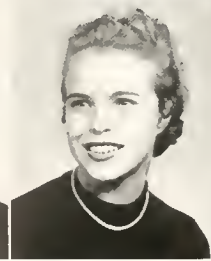
PEGGY JOANNE BULLARD Lumberton
Rho Delta Chi



SARAH LYNN CALHOUN Laurinburg
Rho Delta Chi

BARBARA JANE CARPENTER Raleigh
Sigma Phi Kappa

CAROL FAYE CARR Clinton
Rho Delta Chi



Peace College

Class o



ANNE MAINE CARVER Roxboro
Sigma Phi Kappa

CATHERINE ARUNDEL CASTEEN Goldsboro
Sigma Phi Kappa

NANCY LEE CHAMBERS Raleigh
Pi Theta Mu



CONSTANCE CHOATE Raleigh
Pi Theta Mu

BARBARA MARIE CLARK Raleigh
Pi Theta Mu

ERNESTINE STEVENS CLODFELTER Randleman
Sigma Phi Kappa



JOYCE ANN COATS Garner
Pi Theta Mu

JOAN DELL CROSBY Raleigh
Pi Theta Mu

MARGARET ETHEL DAUGHTRIDGE Rocky Mount
Rho Delta Chi



NANCY JOYCE DAUGHTRY Princeton
Sigma Phi Kappa

PATRICIA GROVER DENNING Benson
Rho Delta Chi

ESSIE MAE DODD Benson
Pi Theta Mu



SHIRLEY MOTLEY ESTES Raleigh

NANCY LEE EUBANKS Raleigh
Rho Delta Chi

ANNETTE EUGENIA FLEMING Fuquay Springs
Rho Delta Chi

Peac

Fifty-six

DORIS JEAN FRIZZELL Charlotte
 REBECCA ANNE FULLER Raleigh
 Rho Delta Chi
 JO ANNE FUSSELL Rose Hill
 Rho Delta Chi



BETTY ROSS GARNER Warsaw
 Rho Delta Chi
 PEGGY JANE GARNER Raleigh
 Pi Theta Mu
 DOROTHY LEE GATTIS Raleigh
 Rho Delta Chi



DOROTHY ANNETTE GRAHAM Raleigh
 Rho Delta Chi
 CAROLYN SHANDS GRIGGS Pageland, S. C.
 Sigma Phi Kappa

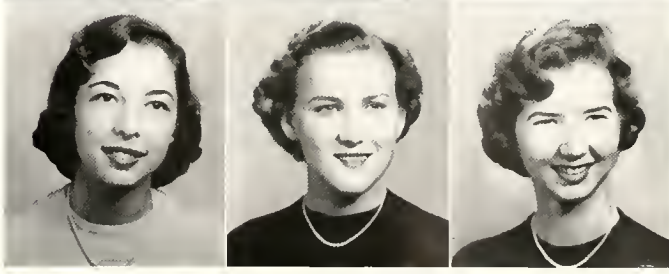


RACHEL ANN HAIR Autryville
 Sigma Phi Kappa

BARBARA HIGH HARRIS Raleigh
 PATRICIA ANNE HARRIS Rocky Mount
 Sigma Phi Kappa
 RACHEL LEE HARVELL Varina
 Sigma Phi Kappa



ELEANOR CUTHRELL HESTER Raleigh
 Pi Theta Mu
 RUBY LEE HINES Fountain
 Rho Delta Chi
 SYLVIA JO HOLMES Fayetteville
 Rho Delta Chi



College

Class of



ANN ELIZABETH HOLT Sanford
Sigma Phi Kappa

BETSY FELIX HOLT Princeton
Rho Delta Chi

MARTHA ANN HUDSON Clinton
Sigma Phi Kappa



ANN SMITH HUGHES Raleigh
Rho Delta Chi

ROBINETTE LEE IRVIN Reidsville
Rho Delta Chi

CHRISTINE SIERRILL ISENHOWER Conover
Sigma Phi Kappa



SYLVIA JOY JOHNSON Rose Hill
Sigma Phi Kappa

MARTHA HARRIETT JONES Fuquay Springs
Rho Delta Chi

PEGGY ANNE KELLY Sanford
Sigma Phi Kappa



ELIZABETH ANN KING Fair Bluff
Rho Delta Chi

REBECCA ROSLYN KING Raleigh
Sigma Phi Kappa

REBECCA ANNE LASSITER Raleigh
Pi Theta Mu



CHARLOTTE LUELLE LEDFORD Durham
Sigma Phi Kappa

MARY GASTON LEGGETT Raleigh
Rho Delta Chi

FRANCES ANNE LEWIS Whiteville
Sigma Phi Kappa

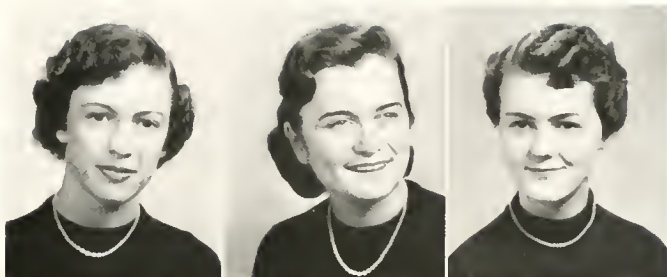
Peace

Fifty-six

SARA KATHERINE LOW Raleigh
Pi Theta Mu

ANNA ROSE McCANN Raleigh
Rho Delta Chi

ELIZABETH HALL MCKINNON Red Springs



MARGARET MAXINE McLOHON Morehead City
Sigma Phi Kappa

FLORA KATHERINE McNEILL Raeford
Sigma Phi Kappa

MARY GRACE MAUPIN Durham
Sigma Phi Kappa



MARY MUSE MORGAN Fayetteville

MARILYN ANN MURDOCK Raleigh
Pi Theta Mu

MARY CAROL NANNEY Canton
Rho Delta Chi



SHIRLEY RAE PAIT Lumberton
Rho Delta Chi

LINDA MAE PARKER Princeton
Sigma Phi Kappa

GRACE ELIZABETH PEARCE Raleigh
Rho Delta Chi



JOANNE KING PIPER Raleigh

ELSIE FAYE PORTER Old Fort
Rho Delta Chi

JANET HARRIET PORTER Winston-Salem
Sigma Phi Kappa



College

Class of



DOROTHY BRYNE PRESSLY Raleigh
Sigma Phi Kappa

BETTY LOU RESPASS Fayetteville
Rho Delta Chi

MERLE JACKSON RICHARDS Youngsville
Sigma Phi Kappa



MAY KIRKLAND ROBERTSON
Frederick, Md.
Rho Delta Chi

NANCY CAROL ROUNTREE Hobbsville
Rho Delta Chi

MARTHA WINIFRED ROUSE Kinston



ROSE MARIE SALLY Durham

PEGGY ANN SANDERS Raleigh
Pi Theta Mu

BEVERLY ANNE SENNA Raleigh
Sigma Phi Kappa



ANNE WINBORNE SHAW Wagram
Sigma Phi Kappa

BARBARA LOUISE SHIELDS
Niagara Falls, N. Y.
Sigma Phi Kappa

BETTY SUE SLATER Raleigh
Rho Delta Chi



JOANNE DELORIS SMITH Raleigh
Rho Delta Chi

SUE CAROLYN SORRELL Raleigh
Pi Theta Mu

MILDRED HOWARD STEVENS Goldsboro

Peace

Fifty-six

BILLIE SUE STOKES Stokes
Rho Delta Chi

KAY ZELMA THOMAS Raleigh
Pi Theta Mu

EDITH VERNELL THOMPSON Raleigh

REBECCA REID WALLACE Carthage
Rho Delta Chi

NANCY DINES WATERFIELD
Virginia Beach, Va.
Rho Delta Chi

ELIZABETH ANN WATKINS Waynesville
Rho Delta Chi

DOLLIE MARILYN WATSON
Portsmouth, Va.
Rho Delta Chi

ANNE DAVIS WELLS Rose Hill
Sigma Phi Kappa

ANNE GRIFFIN WHITE Halifax
Rho Delta Chi

SYLVIA LOCKHART WHITE Sanford
Sigma Phi Kappa

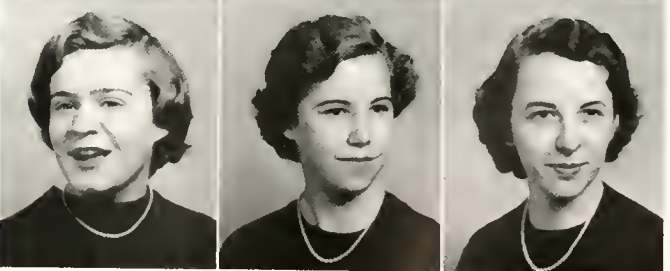
SUSANNE MERCEDES WICKERSHAM
Fernandina Beach, Fla.
Sigma Phi Kappa

CLAIRE ELIZABETH WILLIAMSON
Portsmouth, Va.
Sigma Phi Kappa

LYNN WILLIAMSON Westfield, N. J.
Sigma Phi Kappa

BETTY JO WILSON Jacksonville
Rho Delta Chi

CAROLYN JEAN WILSON Asheville
Sigma Phi Kappa



College



Class of Fifty-six

JANE LIVINGSTON WILSON Camp Lejeune
Rho Delta Chi

LILLIAN CAROLINE WOOTEN Hookerton
Sigma Phi Kappa

ARLENE SANDERS WRIGHT Raleigh
Rho Delta Chi



VIRGINIA YELVINGTON Asheville
Rho Delta Chi

Not pictured:

CAROLYN-LEE BASS Greensboro

HILDA FAYE RENFROW Kenly

EDNA FAYE BROWN Raleigh
Pi Theta Mu

MOLLY HOPE BARNES Raleigh
Pi Theta Mu

MARY JANE CRAIG Durham
Rho Delta Chi

MILDRED McRARY SMITH
San Bernardino, Cal.
Sigma Phi Kappa

FLORENCE WORTHAM MOORE Raleigh
Pi Theta Mu



Preparatory IV



OFFICERS

SHIRLEY BATEMAN *President*
ROSE BRACEY *Vice-President*
SHARON WILLIAMS *Secretary*
SANDRA STEVENS *Treasurer*

Preparatory IV

Shirley Byron Bateman Raleigh
Pi Theta Mu

Rose Ellen Bracey Fayetteville
Rho Delta Chi

Annette Tazewell Bradley Littleton
Rho Delta Chi

Polly McDaniel Cameron Kipling
Rho Delta Chi

Mildred Ann Diseker Raleigh
Rho Delta Chi

Nancy Elizabeth Dunbar Elizabeth City
Sigma Phi Kappa

Lula Elizabeth Griffin Fayetteville
Winifred Doris Gurley Durham
Rho Delta Chi

Nancy Lynn Harper Alexandria, Va.
Rho Delta Chi

Anne Marie Hinton Raleigh
Rho Delta Chi

Barbara Jo McKimmon Wilmington
Rho Delta Chi

Lillie Paulita Murdock Belgian Congo, Africa
Rho Delta Chi

Margaret Williams Owens Macclesfield
Rho Delta Chi

Stevanie Sandra Stevens Jacksonville, Fla.
Pi Theta Mu

Becky Faye Surles Raleigh
Pi Theta Mu

Mary Ann Swanson Wendell
Rho Delta Chi

Rose Marie Terrell Charlotte
Rho Delta Chi

Sharon June Williams Warwick, Va.
Rho Delta Chi

Lyell Harrison Wilson Crewe, Va.
Rho Delta Chi

Not pictured:

Barbara Ellen Clark Goldsboro
Marlyn Claire Rye Raleigh



High School Senior Superlatives



TUCKY HINTON
MOST ATHLETIC



BECKY SURLES
MOST LIKELY TO SUCCEED



LILLIE MURDOCK
BEST ALL-AROUND



LYLL WILSON
WITTIEST



SANDRA STEVENS
BEST-LOOKING
BEST DRESSED



NANCY HARPER
MOST INTELLECTUAL



MILDRED DISEKER
MOST TALENTED



ROSE BRACEY
CUTEST



SHARON WILLIAMS
BEST PERSONALITY



Preparatory III

- Mary Jo Atkins New Delhi, India
 Mary Jo Blanchard Wallace
 Rho Delta Chi
 Jo Maria Britton Raleigh
 Rho Delta Chi
 Vivian Kay Chandler Durham
 Rho Delta Chi
 Sheila Kay Dillard Hamlet
 Rho Delta Chi
 Charlotte June Frist Mobile, Ala.
 Sigma Phi Kappa
 Gloria Ann McDaniel Raleigh
 Pi Theta Mu
 Mary Miller Powers Raleigh
 Rho Delta Chi
 Llewlyn Wells Wilson
 Rho Delta Chi
 Betsy Virginia Wilder Raleigh
 Rho Delta Chi
 Frances Ann Winston Youngsville
 Sigma Phi Kappa
- Not pictured:*
 Rebecca Anne Chaffee
 Huntington, West Va.
 Judith Keene Harper Erwin
 Patricia Anne Malcolm
 Charleston, West Va.

OFFICERS

- CHARLOTTE FRIST.....*President*
 JO BRITTON.....*Vice-President*
 LLEW WELLS.....*Secretary*
 BETSY WILDER.....*Treasurer*



Activities



**LIFT THE CHORUS, SPEED IT ONWARD;
LET IT NEVER CEASE;**



Anne Smith, Anne Bverly, Ruth Sidon, *Treasurer*; Barbara Bell, *Secretary*; Jean Crawford, *President*; Norina Williamson, *Vice-President*; Nancy Rhoads, Lucy Blue, Dorothy Pressly, Margaret Daughtridge.

Boarding Student Council



JEAN CRAWFORD
President

The Boarding Student Council, made up of nine girls chosen by popular vote, is devoted to upholding the ideals of Peace. The Council plans and sponsors many activities during the school year, including a formal dance in the fall. The Council maintains order on the campus and sponsors the college honor system.

The ideal of the Boarding Student Council is to create a government led by the girls, designed for the girls.

Non-Resident Student Council

The primary purpose of the Non-resident Student Council is to interest Non-resident Students in all school activities and to encourage them to feel that they are an important part of the Peace Student Body. The Council also helps the girls to become better acquainted with each other by having social functions during the year. Through the efforts of the Council, the Non-resident Students have become a co-operative group united in the effort of upholding the standards and ideals of Peace.



JOAN BROWN
President



Patricia Risley, *Treasurer*; Joan Brown, *President*; Dorothy Pressly, *Vice-President*; Becky Surles, *Secretary*.



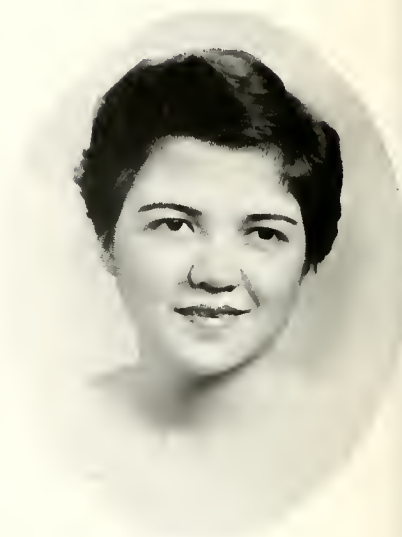
Joy EARP
Editor-in-Chief

EDITORIAL STAFF

All of our work—the careful planning, the picture-taking, the Wednesday meetings—is over. We have finished the year book. We hope that we have been able to bring to you an annual whose pages will bring back memories of the days that we have lived together—the days of fun and laughter, the hours of hard and earnest work and a deeper appreciation of the traditions and ideals that have become an essential part of the life of every Peace girl.

We present to you our 1955 LOTUS.

The 1955



MARGARET THOMAS
Assistant Editor



Seated: Joy Earp, *Editor-in-Chief*; Jewel Buffaloe, *Chief Typist*; Margaret Thomas, *Assistant Editor*; Sylvia Holmes, *Art Editor*; Peggy Kelly, Margaret Daughtridge, Marilyn Chester, *Picture Editor*; Margaret Williams, Dorothy Pressly, Betsy Newsome, Jo Anne Fussell, Betsy Wilder, Martha Jones, Cathy Casteen, Norma Williamson, Joyce Daughtry.

BUSINESS STAFF

Peace College opened her doors to a group of enthusiastic, energetic girls on the day of September 17, 1954. Soon after school opened some of these enthusiastic girls, members of the Business Staff of THE LOTUS, undertook the all-important task of financing the annual.

Though this task required many hours of "headaches" and hard work—it was fun. However, we feel the job could have never been completed without the help of our adviser, Miss Baucom.

The Business Staff sincerely hopes you will enjoy your annual, THE LOTUS.



ANNE SMITH
Assistant Business Manager



NANCY LINK
Business Manager



Front row: Ruth Sidon, Faye Monds, Anne Smith, *Assistant Business Manager*; Rebecca Lee, Rita Myers, Nancy Harper, Jane Wilson, *Second row:* Chris Isenhower, Betty Boone, Mary Lou Harnsberger, Barbara Bell, Mary Allen McDonald, Margaret Daughtridge, Mary Ann Baynes.



First row: Mary Allen McDonald, Vice-President; Nancy Rhoads, President; Norma Williamson, Secretary. Second row: Ann Holt, Church Extension; Lucy Blue, On-Campus Social; Jewel Buffaloe, Non-Resident Representative; Dr. William Phipps, Adviser; Barbara Bell, Social; Mary Lou Harnsberger, Publicity; Margaret Daughtridge, World Missions. Third row: Mary Morgan, Off-Campus Social; Ruth Sidon, Hall Prayers; Jean Crawford, Ex Officio; Carolyn Hackney, Treasurer.

P. S. C. A.



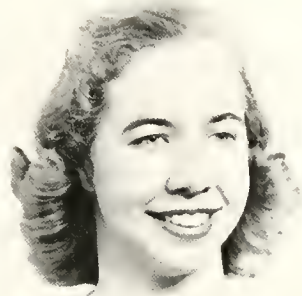
NANCY RHOADS
President

The Peace Student Christian Association is the organization at Peace which is charged with directing and co-ordinating the Christian activities. Under the able leadership of Nancy Rhoads the P.S.C.A., composed of all Peace Students, has participated in various activities this year. These activities were planned and carried out by the twelve girls who form the Cabinet of the Association. Well prepared and interesting Vesper programs, the Thanksgiving program with presentation to the maids of baskets of food given by the girls and faculty, the inspiring and beautiful Christmas pageant, the Week of Sharing, Peanut Week, and Religious Emphasis Week all these were undertakings of the Association.

Sigma Pi Alpha

Sigma Pi Alpha, the national language fraternity, seeks to promote interest in foreign lands and their languages. Members gain a greater knowledge of other countries by listening to and talking with people from other lands.

Membership in this organization is based on special language ability as well as on general scholastic work. The sponsors for the Theta Chapter of Sigma Pi Alpha are Miss Wynelle Lewis and Miss Ann Tysor.



ANNE BYERLY
President



Seated: Lucy Blue, Vice President; Anne Byerly, President. Standing: Nancy Link, Margaret Williams, Historian; Jean Crawford, Joy Earp.



Seated: Margaret Thomas, *Treasurer:* Nancy Link, *President:* Margaret Williams, *Vice-President,* *Standing:* Jean Crawford, Nancy Rhoads.

Phi Theta Kappa



NANCY LINK
President

The Phi Theta Kappa Fraternity is the National Junior College Honorary Scholastic Society. Membership in the Gamma Phi Chapter, which was organized at Peace in 1939, is limited to the highest ten per cent of the academic student body. The admirable traits of character—leadership, service, and scholarship—are recognized in its members. Their high ideals keep them ever moving to attain greater heights.

Alpha Pi Epsilon

The Tau chapter of Alpha Pi Epsilon, National Junior College Commercial Honor Society, was established at Peace in 1942. This society strives to promote skill and a wider knowledge in the field of secretarial work.

Membership in Alpha Pi Epsilon, which is by invitation, is based on character, leadership, and scholarship.

Sponsors of this society are Mrs. Nell Wade Booth, Mrs. Eleanor Dixon, and Mrs. Raymond Rhodes.



RIITA MYERS
President



Rebecca Lee, Faye Monds, Annie Jo Mustain, *Secretary*; Rita Myers, *President*.



Seated: Mildred Discker, Faye Monds, Mary Morgan, *Vice-President:* Becky Buie, *Secretary:* Nancy Link, *President:* Nancy Harper, *Treasurer:* Sheila Dillard, Peggy Patterson. *Standing:* Carol Carr, Mary Leggett, Shirley Moore, Anne Shaw, Margaret Williams, Margaret Thomas, Charlotte Frist, Llew Wells, Sylvia Holmes, Dorothy Pressly, Jo Ann Rushing, Anne Byerly, Sally Heath, Joy Earp.

Papyrus Club

The Papyrus Club is one of the oldest clubs at Peace. Its purpose is twofold: to stimulate interest in and a knowledge of good literature and to encourage creative writing.

This year a number of worth-while programs have been presented, among them "John Brown's Body"—a recording of the narrative drama directed by Charles Laughton—the reading of a number of original essays by club members on "Hurricane Hazel," and a discussion of the characterization in short stories.



NANCY LINK
President

Art Club

The Elsie Robertson Art Club, established in 1943 by Miss Mabel Pugh, is designed to promote interest in and appreciation of art among Peace students.

The club offers an Art Club Award and an Art Club Scholarship, presented annually to outstanding and deserving art students. Various projects sponsored by the members finance these awards.

The monthly meetings of the Art Club consist of programs given by the members themselves or lectures sponsored by other art organizations.

The Art Club helps to make all its members well-rounded students as well as to provide a source of informative and interesting study of art.



JANE WILSON
President



Seated: JoAnne Fussell, Shirley Moore, Irene Thompson, Pat Harris, Margaret Williams, Susie Parsons.
Standing: Mitzi Bowling, Mary Morgan, Marilyn Chester, Sally Heath, Sylvia Holmes, Nancy Harper, Elizabeth Dorsett, Miss Mable Pugh, *Advisor.*



Seated: Sally Heath, May Robertson, Rita Myers, Martha Jones. *Standing:* Mary Miller Powers, Rebecca King, Sue Sorrell.

Daughters and Granddaughters Club



MAY ROBERTSON
President

Many girls have followed in the footsteps of their mothers or grandmothers who attended Peace. According to tradition, the members of the Daughters and Granddaughters Club have served as hostesses for the visiting alumnae.

International Relations Club

The International Relations Club has been quite successful in its purpose of promoting interest and student participation in the discussion of world affairs. Slides, movies, and guest speakers have contributed to a greater knowledge of international problems, as well as a greater knowledge of other peoples and customs.



BETSY NEWSOME
President



Seated: Lucy Blue, *Secretary-Treasurer*; Polly Wilkerson, *Vice-President*; Betsy Newsome, *President*; Miss Elizabeth Caldwell, *Adviser*. *Standing, first row:* Joy Earp, Mary Leggett, Margaret Thomas, Norma Williamson, Edith Thompson, Mary Armistead, Mary Morgan, Nancy Link. *Second row:* Dorothy Pressly, Jean Crawford, Nancy Rhoads, Anne Byerly, Mary Allen McDonald, Mary Jo Atkins, Virginia Yelvington, Anne Smith, Margaret Daughtridge, Anne Shaw.



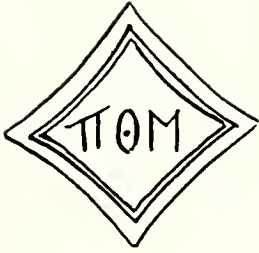
Front row: Elizabeth Griffin, Mary Ann Swanson, Carolyn Wilson, Ross Garner, Sylvia White, Annette Bradley, Betsy Newsome, Nancy Harper, Mary Ann Baynes, Carol Joiner, May Robertson, Jo Britton, Norma Williamson, Jo Blanchard, Polly Wilkerson, Ruth Sidon, Lee Smith. *Second row:* Polly Cameron, Lucy Blue, Llew Wells, Barbara Shields, Florence Moore, Carolyn-Lee Bass, Frances Winston, Carolyn Hackney, Sheila Dillard, Grace Maupin, Barbara Bell, Betsy Holt, Dorothy Pressly, Billie Sue Stokes, Anne Smith, Nancy Rheads, Carolyn Buffaloe, Betsy McKinnon.

The Choir



RUTH SIDON
President

The Choir, a source of great pride to Peace, adds the richness and fullness of good music to our activities. The lovely Christmas Program, one of our memorable highlights of the year together, expresses to each student the beauty of music which the Choir members enjoy. The many programs given in our Chapel will be cherished with fond remembrance.



Pi Theta Mu



SELETA STEVENS
President

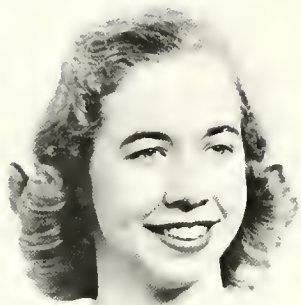
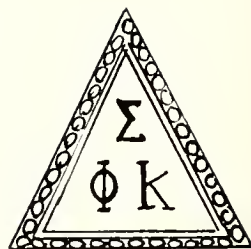
Since the beginning of the school year, the Pi's have had fun sharing work as well as play in planning for rush week, an inspiring initiation service, and Rat Day. Then old and new Pi's joined for their first social—a weiner roast.

The Pi's have been united in a special friendship which will endure long after they leave Peace.



Seated: Becky Surles, *Representative to Council;* Seleta Stevens, *President;* Jewel Buffalo, *Vice-President.*
Standing: Florence Moore, *Secretary;* Shirley Bateman, *Treasurer.*

Sigma Phi Kappa

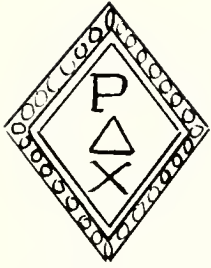


ANNE BYERLY
President

From the first day of the school year the old Sig's were seen scouting around for prospective members. On pledge day their efforts proved successful when forty-nine girls made Sigma Phi Kappa their choice. Then the excitement really began. Rat Day was a success with all the girls dressed in their conspicuous costumes. Next was the Inter-Society dance which proved to be a success also. The Sig's were determined to win the athletic cup again this year. They got off to a good start by winning the volley ball tournament. These and the other events which followed will long be cherished in the heart of every Sig.



Seated: Mary Armistead, Vice-President; Peggy Covington, Secretary; Faye Monds, Representative to Council; Betty Womack, Treasurer. Standing: Miss Gwen Hamer, Adviser; Anne Byerly, President.



Rho Delta Chi



SALLY HEATH
President

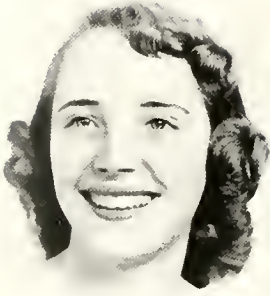
"Stand up and cheer for Rho Delta Chi" — for the Rho's have worked and laughed and found much to be proud of during the year! They enlisted sixty-two new girls (quantity and quality) who immediately pitched in to help make the year a success. They can look back with pride upon the rustic rush party, the smart fashion show, the formal initiation, the romantic inter-society dance, and the sentimental going-away party for old Rho's.

"To the end we'll follow through, for the glory of Rho Delta Chi."



Seated: Sally Heath, *President;* Miss Jane McDaniel, *Adviser;* Anne Smith, *Treasurer;* Betty Boone, *Secretary.*

Athletic Association



LUCY BLUE
President

Under the guidance and supervision of its adviser, Miss Joyce Fowler, the Athletic Association plans and carries out various sports activities for the Peace students throughout the year. Tournaments in basketball, ping-pong, and tennis offer the girls in every society an opportunity to engage in their favorite games; those who do not play enjoy standing on the side-lines and cheering for their classmates. Perhaps the most valuable contribution of the Athletic Association is that it promotes a healthy, friendly atmosphere among the student body.



Anne Shaw, Irene Thompson, *Representative of Rho Delta Chi*; Betty Boone, Mary Lou Harlsberger, *Awards Chairman*; Ann Holt, Faye Monds, *Representative of Sigma Phi Kappa*; Anne Smith, *Vice-President*; Mary Ann Baynes, *Secretary*; Billie Kern, *Treasurer*; Shirley Moore, *Publicity Chairman*; Lucy Blue, *President*; Sue Sorrell, *Representative of Pi Theta Mu*, not pictured.

Athletic Snapshots



Home Economics Club



MARY ARMISTEAD
President

A newly organized group, the objective of which is to better prepare our future home makers, is under the guidance of Mrs. Lillian Jones. Instruction in clothing, food preparation, diet, home decorations and home furnishings offers to Peace girls activities in which we all share an interest.



Seated: Mary Armistead, Susie Parsons. *Standing:* Elizabeth Dorsett, Jane Wilson, Anne Godwin, Lucy Blue, Carol Joiner, Mary Ann Baynes, Shirley Moore.

Features



AS PURE LOVE AND TENDEREST MEMORY
IN OUR HEARTS ENSHRINE . . .



Mary Allen McDonald

MISS PEACE



Ruth Sidon

MAY QUEEN



Outstanding

LUCY BLUE

If good things do come in little packages, imagine how much finer they would be in larger ones! Surely Lucy is one of the nicest "packages" ever, her bright smile lighting up with the kindness, friendliness, and warmth inside. She is a real "gift" to us, serving on the Council, Cabinet, Athletic Association, and in many other campus organizations. Lucy is truly a part of the spirit of Peace, and we wish her as much happiness in her own life as she has brought to ours.



JEAN CRAWFORD

Because of her sincerity of purpose, her gentle composure, and her tactful charm, Jean Crawford has found a special place in the heart of every Peace Girl. Recognition and approval of her traits of initiative, friendliness, and leadership were evident when she was elected to the important position of President of the Student Council. With a spirit of helpfulness and quiet dignity, Jean made this a successful year of Council work. In addition, she has used her variety of abilities in work with the P.S.C.A. Cabinet and the I.R.C.; her scholastic ability has made her a member of the Phi Theta Kappa and the Sigma Pi Alpha. Jean's achievements and warm personality prompt the admiration of all who know her.

Seniors

JOY EARP

To Peace, Joy has been a scintillating gem. She is cherished by all Peace girls for her bubbling personality, her capability in scholastic activities, and her perpetual energy. As Editor of *THE LOTUS* of 1955, she has, through her leadership, shown her steadfastness and her outstanding editorial ability. Joy shall truly be remembered for her high ideals and her Peace spirit.



MARY LOU HARNSBERGER

Calm, reliable, and active in school functions, Mary Lou has won the honor of being one of the outstanding seniors. As a member of the P.S.C.A. Cabinet, the Athletic Council, and other organizations, she has shown her interest in activities of Peace. Her quiet manner and warm smile have acquired for Mary Lou many friends at Peace; and, wherever the future might take her, we know that Mary Lou's conscientious application will win for her both laurels and admiration.



Outstanding

NANCY RHOADS

Words cannot express those qualities that make Nancy an outstanding senior. A loyal Peace girl, she has endeared herself to everyone here by her pleasing personality and deep interest in the P.S.C.A. Cabinet. Her willingness to help others, her dependability, and her good nature make her outstanding, loved and respected by all.

Her ways are ways of pleasantness and all her paths reflect the ways of Peace.



ANNE SMITH

The qualities which make Anne an outstanding senior are not those inherent qualities that are basic to her election to many responsible positions in school activities; rather they lie in the grace with which she accepts these tasks. Having been a student at Peace for four years, she has come to be admired by both faculty and students. Her pleasant personality, her charming appearance, and her true friendliness make her an outstanding Peace Senior.



Seniors

MARGARET THOMAS

Friendliness, kindness, and dependability—all this and more are expressed in that girl we all admire. As Editor of *Peace Times* and Assistant Editor of *THE LOTUS*, Margaret has proved her capabilities a number of times. As officer and member in several clubs, she has shown her interest in the activities at Peace and her willingness to help in all ways. Peace will not soon forget such an outstanding girl as Margaret Thomas.



NORMA WILLIAMSON

As we watch Norma go about her campus activities, we see every evidence of her friendliness, dependability, conscientiousness, and concern for those about her. A leader in academic, religious, social, and cultural life, Norma shows graceful poise in every situation. We will long recall and appreciate those hours spent in our behalf as the president of our graduating class. Peace will always smile with fond remembrance on Norma.

“She was—but room forbids to tell thee what—

Sum all perfection up, and she was that.”



The Marshals



Seated: Susanne Chamblee, Chief Marshal, *Sigma Phi Kappa*; Joy Earp, *Pi Theta Mu*; Norma Williamson, *Sigma Phi Kappa*; Rita Myers, *Rho Delta Chi*.

Privileged Honor Roll



Seated: Jean Crawford, Lucy Blue, Norma Williamson, Barbara Bell. *Standing:* Betsy Newsome, Ruth Sidon, Carolyn Hackney, Anne Smith, Nancy Link, Nancy Rhoads, Joy Earp.

Inter-Society Council



Advertisements



**HARDSHIPS, STRUGGLES WITHOUT MEASURE
DAYS WITHOUT ALLOY . . .**

★ The following firms are sponsoring The 1955 LOTUS
and we gratefully acknowledge their support:

Abbott & Pearce
Art Flower Shop
T. H. Briggs & Sons, Inc.
Brogden Produce Company, Inc.
Leon Byrum Opticians
Caudle's Shoe Shop
Eckerd Drugs, Inc.
Ellisberg's, Inc.
Garner Esso Service
Jeffries Jewelers, Inc.
The Knitting Nook, Mary J. Hadley, Mgr.
Merle Norman Cosmetics & Charm & Self Improve-
ment School
J. C. Penney Company in Raleigh's Cameron Village
Perry's Mobile Service Station, 600 N. Person Street
Pine State Creamery Company
Pointer Cigar Company
Sports Specialties
Stephenson Music Company
Table Supply Grocery in Raleigh's Cameron Village
Taylor Biscuit Company
Wayside Furniture House

VERY BEST WISHES

TO THE CLASS

OF 1955

HUDSON-BELK COMPANY

Serving in the Capital City for 40 Years

Kiddie Fashions

*For Boys and Girls
Infant to Twelve Years*

713 N. Person St. RALEIGH

NEWSOME ROOFING
COMPANY

S. Blount Street
RALEIGH, N. C.

ALLISON-LEINSTER, INC.

Phone 2-1632 For Insurance

Raleigh B. and L. Building

RALEIGH, N. C.

Insurance Service Since 1908

J. C. ALLISON
President

MRS. SARAH L. COWPER
Vice-President

J. A. LEINSTER
Secretary-Treasurer

YELLOW CAB CO.

5811

DIAL

5811

Oldest and Most Reliable

Raleigh, N. C.

B & C SUNDRY SHOP

705 North Person Street

SANDWICHES DRINKS
SUNDRIES

All Nationally Advertised Merchandise
at Minimum Fair Trade Prices

"The Friendly Shop"

NEIMAN'S

Jewelers - Silversmiths

RALEIGH, N. C.

Best Wishes From

**NORTH CAROLINA EQUIPMENT
COMPANY**

CONSTRUCTION, INDUSTRIAL & LOGGING EQUIPMENT
CONTRACTORS' & MUNICIPAL SUPPLIES

"International Diesel Power"

RALEIGH
GREENVILLE

WILMINGTON
GREENSBORO

CHARLOTTE
ASHEVILLE

Compliments of

JOB P. WYATT AND SONS CO.

Founded in 1881

Box 631

RALEIGH, N. C.

LEWIS SPORTING GOODS

*

HEADQUARTERS
for
TENNIS SUPPLIES

*Jean's
of Raleigh*

FINCH'S DRIVE IN, INC.

AIR CONDITIONED
DINING ROOM
CAFETERIA

Phone

4-7396

4-7397

FERGUSON'S HARDWARE
HARDWARE AND
HOUSEHOLD SUPPLIES

"We Specialize in Service"

2904 Hillsboro Street
Phones: 2-4877 - 2-3030

EART JOHNSON B. E. DENNIS
HARRY MOORE BILL WARD

MOORE & JOHNSON CO.

*"For 31 Years Raleigh's Leading
Insurance Agency"*

INSURANCE - SURETY BONDS

Insurance Building
RALEIGH, N. C.

CADILLAC - OLDSMOBILE

WILSON-UZZLE, Inc.

421 Fayetteville Street
RALEIGH, N. C.

ROYAL CROWN
REG. U. S. PAT. OFF.
COLA
BEST BY TASTE-TEST

MORGAN JONES COTTONS

ARE

"Yours for a Lovely Home"

The Minuet Bedspread

Texturtuff Bedspreads

Hobnail Bedspreads

Bath Sets

Kitchen Cottons

Scatter Rugs

PRODUCED IN NORTH CAROLINA
SOLD BY FINE STORES EVERYWHERE

MORGAN-JONES, INC.

58 Worth Street
NEW YORK, N. Y.

PROFESSIONAL PHARMACY

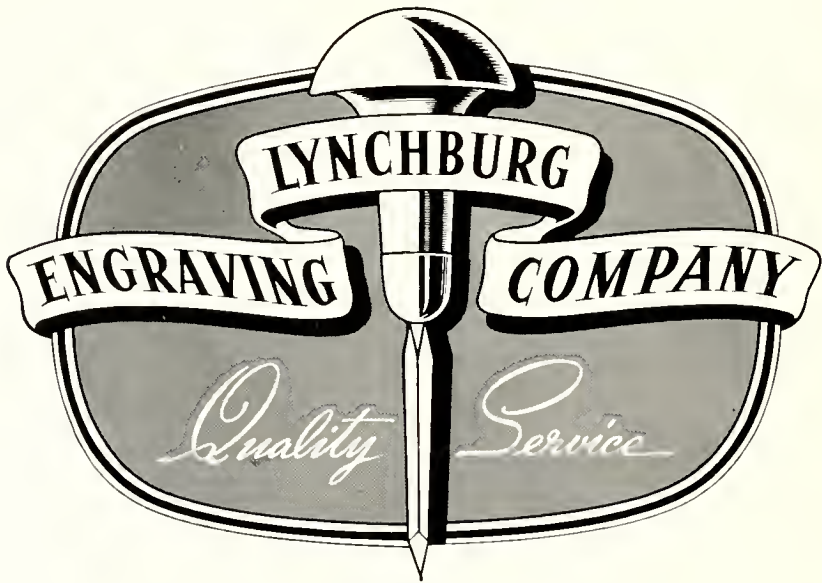
Professional Building
PHONE 5916 RALEIGH, N. C.

*"Prescriptions Are Our
Business"*

VILLAGE RESTAURANT

Cameron Village

RALEIGH, N. C.



Designers and engravers of
the South's finest school
publications



LYNCHBURG, VIRGINIA

PEACE COLLEGE CLASS RINGS AND PINS
SOCIETY PINS AND NOVELTY JEWELRY

WALTER B. ANDERSON

L. G. BALFOUR PRODUCTS
RICHMOND, VIRGINIA

PERSON STREET PHARMACY

620 North Person Street

A Complete Line of Nationally Advertised Drugs
Plus a Selected Assortment of Toilet Items

Soda Our Specialty

PERSON STREET VARIETY STORE

702 North Person Street

School Supplies and Everyday Needs

Complete Five and Ten

J. E. TREADWELL, *Proprietor*



*Continuous Quality
Is Quality You Trust*

DILLON SUPPLY COMPANY

INDUSTRIAL MACHINERY & EQUIPMENT

Raleigh

Durham

Rocky Mount

Goldsboro

FLOWERS!

Cut Flowers Corsages
Graduation Bouquets
Decorations

PHONES 8347 - 2-0795

J. J. FALLON CO.
Inc.

*"We Grow the Flowers
We Sell"*

Compliments of

CAPITAL
Ice and Coal Co.
Incorporated

600 West Hargett Street
PHONE 5589

Ice
Coal
Fuel Oil

SMITH STUDIO

Official Photographers for THE LOTUS

12 East Hargett Street

BEST WISHES
from
HOTEL SIR WALTER
Raleigh's Largest and Finest

A MEYER HOTEL

ARTHUR E. BUDDENHAGEN
Manager

EFIRD'S
Department Store

Raleigh, N. C.

**A GOOD PLACE TO
SHOP**

- IN PERSON
- BY PHONE
- BY MAIL

HOOD-MODEL
DRY CLEANING COMPANY

"Ask the Folks We Serve"

Main Office—117 E. Morgan St.
Plant—606 N. Person St.
PHONES 2-3015 - 2-2862

FOOD SERVICE EQUIPMENT
AND UTENSILS

**THE JOHN HOOS CO. OF
NORTH CAROLINA, Inc.**

1209 Hillsboro Street
RALEIGH, N. C.
Telephone 3-0062



PEPSI-COLA BOTTLING COMPANY OF RALEIGH

3705 Hillsboro Street

Tel. 3-1071

Compliments

of

TOOT-'N-TELL-IT

DRIVE-IN-GRILL

GARNER

MACK T. POOLE

BYNUM PRINTING COMPANY

BETTER PRINTING

Phone 6417

JOLLY'S

Established 1881

Jewelers

and

Silversmiths

DESOTO PLYMOUTH

RAWLS MOTOR COMPANY

RALEIGH, N. C.

JOHN ASKEW

PAINTING AND
INTERIOR DECORATING

*Estimates Made in and
Out of Town*

Telephone 6824
110 Glenwood Avenue

CANTON CAFE

CHINESE-AMERICAN FOODS

Air Conditioned

408 Hillsboro Street
DIAL 7867



Compliments
of

TRU ADE
BOTTLING COMPANY

HELPING TO BUILD

A Finer Carolina

Through —

- *Agricultural Development*
- *Community Improvement*
- *Industrial Expansion*

CAROLINA POWER & LIGHT COMPANY

Compliments
of

KRISPY CREME
DOUGHNUT CO.

618 N. Person Street



*Compliments
of*

**WARREN'S
RESTAURANT**

301 W. Martin St.
RALEIGH, N. C.

*Compliments
of*

NATIONAL ART SHOP

621 Hillsboro Street
RALEIGH, N. C.

**CONGRATULATIONS
CLASS OF 1955**

Miriam's

Cameron Village

Phone 3-3851

RALEIGH, N. C.

DAVID Q. FORT
Mutual Agent

*Writing Fire, Tornado,
Automobile, and other lines of
Insurance at substantial savings*

Capitol Cleaners
LAUNDRY — CLEANERS

709 N. Person Street
DIAL 3-4902

BOYLAN-PEARCE

★

"Raleigh's Shopping Center"

**PITTMAN
PRINTING COMPANY**

Quality Printing Service

4308 Western Blvd.
RALEIGH, N. C.

Compliments of

BOYLAN APARTMENTS

MRS. RUFUS TUCKER BOYLAN

DR. PEPPER

**HAYES BARTON
PHARMACY**

P. D. GATTIS H. I. GATTIS

200 Fairview Road
DIAL 2-4641

HONEYCUTT CLEANERS

128 W. Martin Street 605 Newbern Avenue
227 Pace Street
PHONE 3-1696

THE LOTUS

ANOTHER FINE QUALITY ANNUAL
PRINTED AND BOUND IN OUR MODERN PLANT
IN RALEIGH, NORTH CAROLINA



The Leading Quality Annual
Printers in North Carolina



EDWARDS & BROUGHTON COMPANY

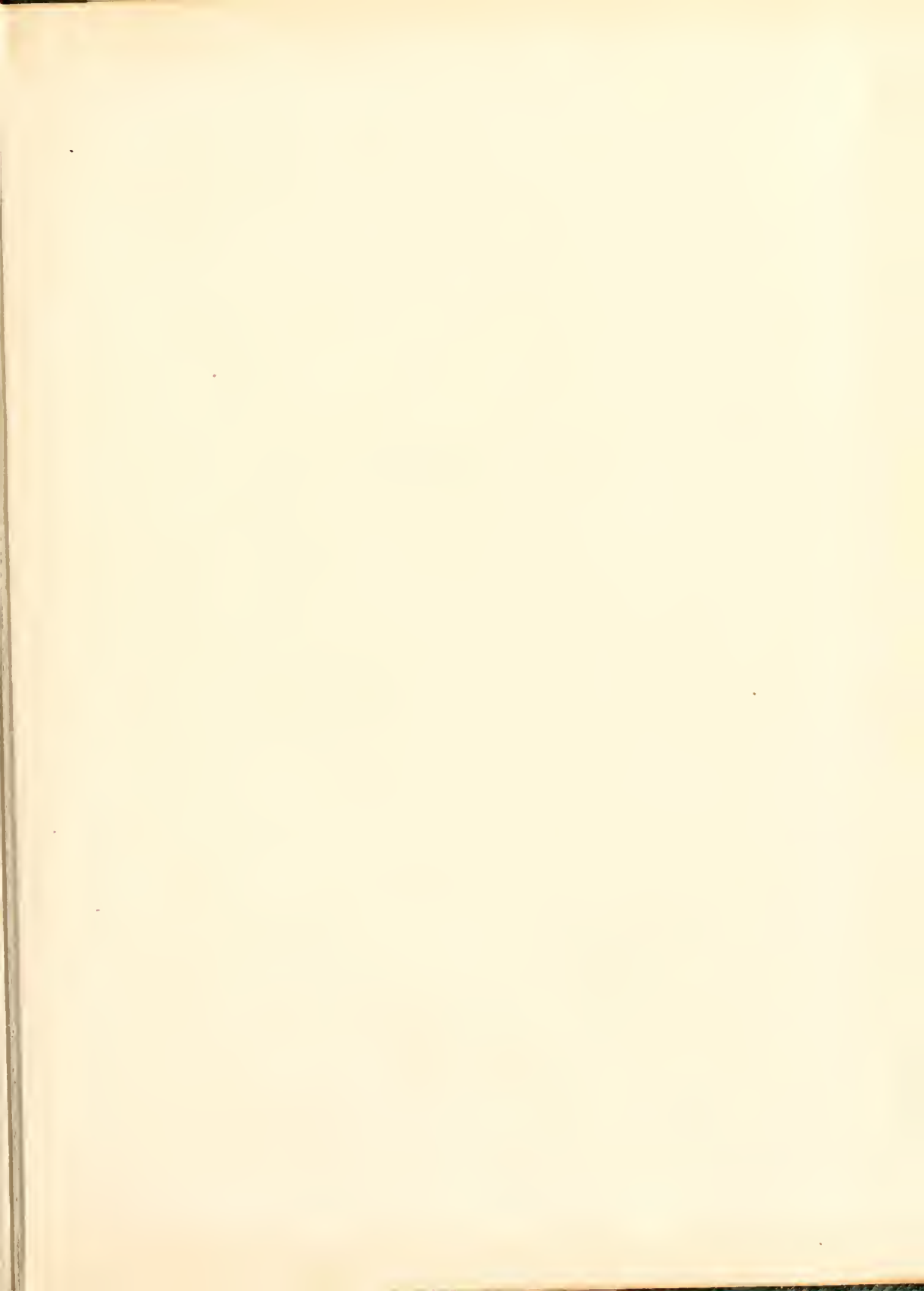
SINCE 1871
RALEIGH, NORTH CAROLINA













EDWARDS & BROUGHTON CO
ALEX-
NORTH CAROLINA
KINGCRAFTERS