


The
Lotus
1956







Digitized by the Internet Archive
in 2010 with funding from
University of North Carolina at Chapel Hill

<http://www.archive.org/details/lotus1956peac>

ANNUAL

P
U
B
L
I
C
A
T
I
O
N

O
F

P
E
A
C
E

C
O
L
L
E
G
E
- RALEIGH, NORTH CAROLINA

The 1956

LOTUS



SUE SORRELL
Editor-in-Chief

ANNA ROSE McCANN
Business Manager

JO ANNE FUSSELL
Assistant Editor

ANNETTE GRAHAM
Assistant Business Manager

CATHY CASTEEN
Art Editor

Contents

The College 7

The Classes 13

Activities 61

Features 81

Advertisements. 89



Foreword

An artist could paint of each girl at Peace a portrait that would reveal in a very special way the spirit of the traditional South; for the customs, beliefs, and ideals of our Alma Mater resemble the spirit of that colorful period in our history preceding the War Between the States.

The old fashioned girl, hoop skirts, and magnolias, traditional of the Old South, have long since departed; but the modern girl as a charming lady is comparable with the Southern belle, admired by all.

By recalling the Spirit of the Old South, the annual staff of 1956 paints for each of you a lasting picture of the spirit of PEACE.



Dedication

Dorothy, my hat wishes
go with you for the
very best at London.
Joyce Fowler



In esteem and with tender devotion we dedicate the 1956 Lotus to Miss Joyce Fowler.

Seldom during our collegiate years have we the privilege both to recognize and to be subjected to the understanding affection and gentle guidance of one who for nine years has given much time and ceaseless effort to help mold and strengthen the lives of Peace girls.

As Director of the Physical Education Department, Miss Fowler has ingeniously added to constant responsibility a simmering wit. And who among her students has not felt the pleasant glow of her warm personality? But the force which prompts Miss Fowler's every action is a Christian heart dedicated to our growth.

To Miss Fowler we offer our affection—yet more, a love that reflects the very example she has set for us.

Tribute



To Miss Elizabeth Caldwell THE LOTUS of 1956 pays tribute—for her patient and tireless efforts in teaching us not only to appreciate the past but also to look at the present world events with interest and open minds. She has, through her wholesome and Christian influence and personal interest in each student, challenged us to greater heights.

With affection, gratitude, and humble thanks, we pay our tribute to Miss Caldwell!



*Here Stands Our Noble Alma Mater
Proudly Looking Down . . .*



THE COLLEGE

Administration



DR. WILLIAM C. PRESSLY

A combination of friendliness, understanding, and thoughtfulness is personified in Dr. Pressly, who is not only our president and counselor, but our devoted friend as well. To us he will always remain an outstanding memory of our days at Peace.

Within the short time that Mrs. Fox has been our dean she has gained our admiration through her gracious manner, her charming humor, and her sincere interest in each girl. She has won our respect through her hours of diligent work that has helped to make our days at Peace happy ones.



MRS. LILLIAN M. FOX

Board of Trustees

OFFICERS

William McPherson.....*Chairman*
James D. Kilgore.....*Vice-Chairman*
Rev. Don Carson.....*Assistant Secretary*
William C. Pressly.....*Secretary-Treasurer*

J. C. Allison, Raleigh
Mrs. George F. Avinger, Laurinburg
Thomas M. Belk, Charlotte
Archie Cannon, Concord
The Rev. Don Carson, Raleigh
E. B. Crow, Jr., Wilson
Neill A. Currie, Jr., Fayetteville
Mrs. George Finch, Thomasville
Kelvin Gray, Raleigh
John Holbrook, Lowell
The Rev. William B. Hood, Wallace
Karl G. Hudson, Jr., Raleigh
Mrs. Julian B. Hutaff, Fayetteville
James D. Kilgore, Raleigh

Dr. F. L. Knight, Sanford
The Rev. Charles E. S. Kraemer, D.D., Richmond, Va.
Mrs. B. R. Lacy, Raleigh
H. H. Littrell, Rocky Mount
Hector MacLean, Lumberton
E. B. Manning, Roanoke Rapids
Mrs. C. C. McAllister, Fayetteville
The Rev. James McChesney, D.D., Goldsboro
William P. McPherson, Raleigh
The Rev. W. S. Patterson, Davidson
Dr. John Rhodes, Raleigh
The Rev. Ben Lacy Rose, Wilmington
Raymond A. Snow, Raleigh
The Rev. Thompson B. Southall, Statesville
Charles M. Sprinkle, Winston-Salem
The Rev. James Sprunt, D.D., Raleigh
Mrs. Thomas Stamps, Raleigh
The Rev. John Mack Walker, Roanoke Rapids
The Rev. Roy E. Watts, D.D., High Point
The Rev. J. Harry Whitmore, D.D., Thomasville
Mrs. Robert Wyatt, Raleigh

Woman's Advisory Committee

Mrs. Graham Abernathy, Stanly
Mrs. Loyd Ardrey, Pineville
Mrs. Isaac Avery, Statesville
Mrs. Worth Baldwin, Greensboro
Miss Mary Black, Davidson
Mrs. W. O. Burgin, Lexington
Mrs. George Chadwick, Wilmington
Mrs. C. Don Coffey, Jr., North Wilkesboro
Mrs. John P. Cooper, Winston-Salem
Mrs. E. B. Crow, Jr., Wilson
Mrs. J. B. A. Daughtridge, Rocky Mount
Miss Grace Edminston, Mt. Ulla
Mrs. W. J. Elkins, Clarkton
Mrs. R. L. Ellis, Spindale
Mrs. Johnson Ervin, Concord
Mrs. J. W. Farrior, Warsaw
Mrs. Rudy Fonville, Burlington
Mrs. W. C. Goley, Graham
Mrs. Raleigh Griffin, Selma
Mrs. W. M. Hall, Jr., Belmont
Mrs. C. H. Hand, Lowell
Mrs. J. K. Harper, Pinetops
Mrs. O. R. Hodgkin, Thomasville
Mrs. Dan Holler, Raleigh

Mrs. Julian Hutaff, Fayetteville
Mrs. R. C. Jenkins, Thomasville
Mrs. James Johnson, Lumberton
Mrs. Lee Johnson, High Point
Mrs. Victor King, Sanford
Mrs. A. J. Mayes, Taylorsville
Mrs. Terry McCarrell, Charlotte
Mrs. Neill McDonald, Raeford
Miss Cornelia McLauchlin, Lillington
Mrs. George V. McLeod, Johns
Mrs. J. W. Miller, Clarkton
Mrs. George B. Moore, Tarboro
Mrs. James R. Nisbet, Waxhaw
Mrs. Samuel L. Parker, Jr., Kinston
Mrs. Charles Parrish, Fuquay Springs
Mrs. E. N. Pittman, Elizabethtown
Mrs. M. H. Ridenhour, Charlotte
Mrs. W. Scott Shepherd, Lumberton
Mrs. Charles Sprinkle, Winston-Salem
Mrs. David Weaver, Raleigh
Mrs. Howard Whisnant, Gastonia
Mrs. Beaumont Whitten, Charlotte
Mrs. R. A. Willis, Monroe
Mrs. David Worth, Raleigh

The Faculty



MISS LYDA BAUGOM
Bursar

MRS. NELL WADE BOOTH
Commercial Subjects, A.B.

MISS ELIZABETH CALDWELL
History, A.B., A.M.



MRS. FRANCES DARDEN
Hostess

MRS. SALLY DAVIS
Nurse, R.N.

MRS. ELEANOR DIXON
Commercial Subjects, A.B., A.M.



MISS JOYCE FOWLER
*Health and Physical Education,
A.B., A.M.*

MISS ETHEL GRAMMER
Dietitian

MISS JANE HOLT
Science, B.S., M.S.

Oat, Hope you
can find something
to do on Thursdays
next are you next
year? I could
tell you how
much you would
have meant
with your
stave!



MISS CHARLOTTE HOWE
Secretary to the President

DR. CARL HJORTSVANG
*Voice, Speech, A.B., B.Mus.,
M.Mus., D.S.M.*

MISS COLLEEN JOHNSON
Piano, B.Mus., M.Mus.



MRS. LILLIAN JONES
Home Economics, B.S., M.S.

MISS WINIFRED KUHS
Mathematics, A.B., B.E., M.S.

MISS WYNELLE LEWIS
Spanish, A.B., A.M.

The Faculty

MRS. CATHERINE MILLER
Organ. A.B., A.M.

MISS JULIA OATES
English. A.B., A.M.

DR. WILLIAM E. PHIPPS
Bible. B.S., B.D., and Ph.D.



MISS MABEL PUGH
Art. History of Art

MRS. BESSIE RICHARDSON
Supervisor of Buildings and Grounds

MRS. MARY RHODES
Commercial Subjects. A.B.



MRS. ETHEL ROSE
Librarian, A.B., B.S. in L.S.

MISS FRANCES SUTER
Registrar. A.B., A.M.

MRS. MILDRED THIGPEN
Hostess



MISS ANN TYSOR
French, A.B., A.M.

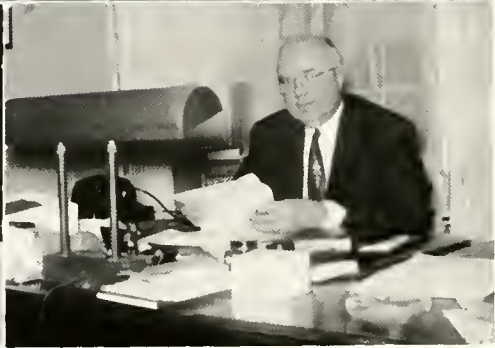
MR. D. E. WARNER
Assistant to the President, B.S., M.Ed.

DR. SANFORD WINSTON
Psychology and Sociology, A.B., Ph.D.



Not Pictured:

MRS. OLIVE WORTH
English. A.B., M.S.





THE CLASSES

Class Poem

Sentiment and thankfulness will fill our every heart.
Realizing, as we do, the gifts we gained in
whole and part, spiritually and knowledgewise,
throughout your daily giving.

We shall ever think of you in all our future days,
Grateful for your job accomplished, as we go our
sep'rate ways through life's channels practicing
your lessons in our living.

JANET PORTER
Class Poet



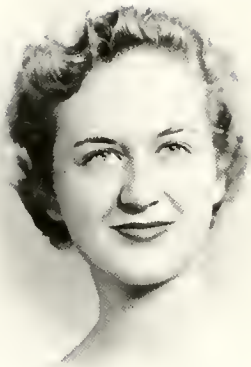
GILBERT HAY, III
Mascot



The Seniors

OFFICERS

BARBARA BROWN.....	<i>President</i>
MARY REBECCA BUIE.....	<i>Vice-President</i>
BETTY SUE SLATER.....	<i>Secretary</i>
BETSY MCKINNON.....	<i>Treasurer</i>



BETTY JANE ASKEW Rocky Mount
Sigma Phi Kappa

"A lovable girl with virtues many."

Sigma Phi Kappa, Treasurer 4; Group Chairman 4; Papyrus Club 4; Home Economics Club 4; *Peace Times* Staff 4; Chief Marshal 4.



LYDE WHITE BARBREY Clinton
Sigma Phi Kappa

"The knowledge of thyself preserves thee from vanity."

Home Economics Club 4; *Peace Times* Staff 4; Group Chairman 4; International Relations Club 4.



MOLLY HOPE BARNES Raleigh
Pi Theta Mu

"A merry heart doth good like sunshine."

Fifty-Six

ANN LANDER BARRETT Boston, Mass.
Rho Delta Chi

"A merry heart goes all the way."
Peace Times Staff 4.



BETTY LOU BLACKWELL Oxford
Sigma Phi Kappa

"Marvelous mercies and infinite love."
Home Economics Club 4.



BETTY JANE BOONE Jackson
Rho Delta Chi

*"To be admired are those who possess such
patience."*

Athletic Council 4; Rho Delta Chi, Secretary 4.



Seniors of



MITZI JEAN BOWLING Princeton, W. Va.
Sigma Phi Kappa

"Change lays not her hands upon truth."

Marshal 4; Art Club 3; Group Chairman 4.



MARGARET TUCKER BOYLAN Raleigh
Pi Theta Mu

"An angel! or, if not, an earthly paragon!"

Preparatory IV President 2; Glee Club 1; Preparatory III President 1; Pi Theta Mu President 2; Marshal 2; Lotus Staff 2, 3, 4; Art Club 3; Home Economics Club 3, 4, Vice-President 3; May Queen 4.



BARBARA BURKETT BRAWLEY Raleigh
Sigma Phi Kappa

"I am not a politician, and my other habits are good."

Alpha Pi Epsilon 3, 4, Vice-President 4; Privileged Honor Roll 3; Group Chairman 1; LOTUS Staff 3, 4.

PEACE

Fifty-Six

BARBARA HOPE BROWN Carthage
Rho Delta Chi

"She moves a goddess, and she looks a queen."

Athletic Council 3; Lotus Staff 3; Student Council 4; P.S.C.A. 4, Treasurer; International Relations Club 4; Senior Class President 4; Outstanding Senior.



CAROLYN MAE BUFFALOE Garner
Sigma Phi Kappa

"The times are big with tidings."

Choir 3, 4.



MARY REBECCA BUIE Wagram
Sigma Phi Kappa

"Silence more beautiful than any song."

Papyrus Club 3, Secretary 3; Senior Class Vice-President 4; Lotus Staff 3.



Seniors of



PEGGY JOANNE BULLARD Lumberton
Rho Delta Chi

"Thought alone is eternal."

Group Chairman 4.



CATHERINE ARUNDEL CASTEEN Goldsboro
Sigma Phi Kappa

"Life is short and the art long."

Peace Times 3, 4; Papyrus Club 3-4, Treasurer 4; Art Club 3, 4; Art Club Scholarship 4; Lorus Staff 3, 4; Art Editor 4; Daughters and Granddaughters Club 3, 4.



CONSTANCE CHOATE Raleigh
Pi Theta Mu

"She is herself the collection of all good things."

Group Chairman 4; Pi Theta Mu, President 4; Alpha Pi Epsilon 3, 4; Presidents Council 4.

PEACE

Fifty-Six

ERNESTINE STEVENS CLODFELTER
Randleman
Sigma Phi Kappa

"Proper words in proper places."

Sigma Phi Kappa Secretary 4; Choir 4.



JOAN EFFIE CRAWFORD
Raleigh
Pi Theta Mu

"And she has the truest, kindest heart."

High Point College 3; Kappa Delta National Sorority.



MARGARET ETHEL DAUGHTRIDGE
Rocky Mount
Rho Delta Chi

"Beauty is the only thing that time cannot harm."

Student Council 3, 4; P.S.C.A. 3, President 4;
Lotus Staff 3, 4; Phi Theta Kappa 4; Sigma Pi
Alpha 4; International Relations Club 3, 4;
Honor Court 4; Outstanding Senior; Presidents
Council 4.



Seniors of



PATRICIA GROVER DENNING Benson
Rho Delta Chi

"Not by years but by disposition is wisdom acquired."

Choir 4; Papyrus Club 4; *Peace Times* Staff 4.



NANCY LEE EUBANKS Raleigh
Rho Delta Chi

"Genius does what it must, talent does what it can."

Alpha Pi Epsilon 3, President 4; Privileged Honor Roll 3; LOTUS Staff 4; Secretary of Presidents Council 4; Day Student Treasurer 4.



ANNETTE FLEMING WHYTE (Mrs.)
Fuquay Springs
Rho Delta Chi

*"The game of life she plays fair,
Always with a distinguished air."*

PEACE

Fifty-Six

JO ANNE FUSSELL Rose Hill
Rho Delta Chi

*"The heart to conceive, the understanding to
direct, the hand to execute."*

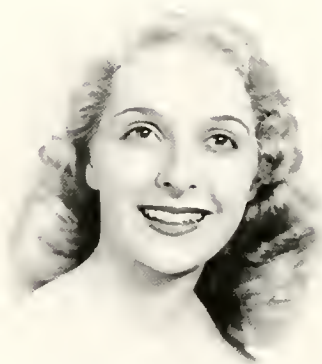
Peace Times Staff 3; Lotus Staff 3, 4, Associate
Editor 4; Art Club 3, 4; Papyrus Club 4; Inter-
national Relations Club 4; P.S.C.A. 4, Vice-
President; Outstanding Senior.



BETTY ROSS GARNER Warsaw
Rho Delta Chi

"The sweetest garland to the sweetest maid."

Choir 3, 4; Marshal 4; Group Chairman 1.



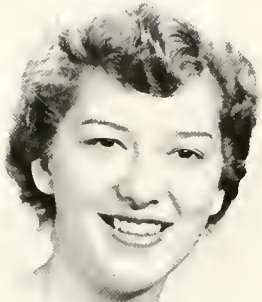
PEGGY JANE GARNER Raleigh
Pi Theta Mu

"Attractive, friendly, easy to know."

Pi Theta Mu Secretary 4.



Seniors of



DOROTHY LEE GATTIS Raleigh
Rho Delta Chi

"Virtue is bold, goodness never fearful."

Lotus Staff 4; Group Chairman 1; Secretary
Rho Delta Chi 4.



DOROTHY ANNETTE GRAHAM Raleigh
Rho Delta Chi

*"How vain is learning unless intelligence goes
with it."*

Papyrus Club 3; Lotus Staff 3, 4, Assistant
Business Manager 4; *Peace Times* Staff 3, 4;
International Relations Club 4; Student Council
1; President of Day Students 1.



WINIFRED DORIS GURLEY Durham
Rho Delta Chi

"And her familiar voice, a welcome sound."

Fifty-Six

SARAH LEE HAMRICK Bessemer City

"She wears a smile that won't come off."



BARBARA HIGH HARRIS Raleigh
Pi Theta Mu

"Laughing cheerfulness throws sunbeams on all paths of life."

Peace Times Staff 4; LOTUS Staff 4.



ANN ELIZABETH HOLT Sanford
Sigma Phi Kappa

"Honor lies in honest toil."

P.S.C.A. 3, 4; Athletic Council 3; Phi Theta Kappa 4, President; Sigma Pi Alpha 4, Vice-President; Choir 3, 4, President 4; Honor Court 4, Secretary 4; Outstanding Senior; Presidents Council 4.



*Love and Best Wishes,
Ann*

COLLEGE

Seniors of



MARTHA ANN HUDSON Clinton
Sigma Phi Kappa

"Pleasure and action make the hours seem short."

Junior Class Treasurer 3; Sigma Phi Kappa, Vice-President 4; Student Council 4, Vice-President; Chairman, Presidents Council 4.



ANN SMITH HUGHES Raleigh
Rho Delta Chi

"They are never alone that are accompanied by noble thoughts."



MARTHA HARRIET JONES Fuquay Springs
Rho Delta Chi

"Smooth runs the water where the brook is deep."

Lotus Staff 3, 4; P.S.C.A. 4, Secretary; Daughters and Granddaughters Club 3, 4.

Fifty-Six

REBECCA ROSOLYN KING Raleigh
Sigma Phi Kappa

"The enthusiastic and pleasing illusions of youth."

Daughters and Granddaughters Club 3, 4; Lotus Staff 4; Group Chairman 4.



CHARLOTTE LOUELLA LEDFORD Durham
Sigma Phi Kappa

"An attentive ear, an open mind."

International Relations Club 1; Papyrus Club 4; Athletic Council 4. Vice-President; Group Chairman 4.



MARY GASTON LEGGETT Raleigh
Rho Delta Chi

"Honest labor bears a lovely face."

Peace Times Staff 3, 4. Assistant Editor 3, Editor 4; Papyrus Club 3, 4, President 4; International Relations Club 3, 4. Vice-President 4; Lotus Staff 3, 4; Sigma Pi Alpha 4, President; Phi Theta Kappa 4. Vice-President; P.S.C.A. 4; Presidents Council 4; Outstanding Senior.



Seniors of



FRANCES ANNE LEWIS Whiteville
Sigma Phi Kappa
"A quiet grace."



ANNA ROSE McCANN Raleigh
Rho Delta Chi
"She hath a daily beauty in her life."
Alpha Pi Epsilon 3, 4; Lotus Staff 4, Business
Manager.



ELIZABETH HALL McKINNON Red Springs
Sigma Phi Kappa
"Second thoughts are ever wiser."
Preparatory III Secretary 1; National Honor
Society 1, 2; Papyrus Club 3; International Re-
lations Club 1, 2, 3, 4; Choir 1, 2, 3; Lotus Staff
4; Senior Class Treasurer 1.

PEACE

Fifty-Six

MARGARET MAXINE McLOHON
Morehead City
Sigma Phi Kappa

"Take care and speak with presence of mind."



MARY GRACE MAUPIN
Durham
Sigma Phi Kappa

"A loving life of sweet small works."

Choir 3; *Peace Times* Staff 4.



BETTY CAROL MOORE
Raleigh
Pi Theta Mu

"A tender heart, a loyal mind."



Seniors of



FLORENCE WORTHAM MOORE Raleigh
Pi Theta Mu

"But what she is and does is good."

Choir 3, 4; Art Club 3, 4; President 4; *Peace Times* Staff 4; Pi Theta Mu, Secretary 3, Treasurer 4; Presidents Council 4.



MARY MUSE MORGAN Fayetteville
Sigma Phi Kappa

"Could I but teach the hundredth part of which from thee I learn."

Papyrus Club 3; P.S.C.A. 3, 4; Lotus Staff 3; Sigma Phi Kappa, President 1; Inter-Society Council 3; International Relations Club 2, 3, 4; Art Club 2, 3, 4; Choir Accompanist 4; Presidents Council 4; Outstanding Senior.



MARILYN ANN MURDOCK Raleigh
Pi Theta Mu

"Questions are never indiscreet. Answers sometimes are."

PEACE

Fifty-Six

MARY CARROL NANNEY
Rho Delta Chi

Canton

"Amicably, if she can."

Group Chairman 4.



BETTY JEAN PHILLIPS
Pi Theta Mu

Raleigh

"She has a voice of gladness and a smile of joy."

Meredith College 3, Choir 4; Athletic Council 4



Dear Betty,
I can't possibly tell how much I love you, knowing you this far away from me. My one year at Peace has really been an outstanding one in my life, and I shall always remember the you as a part of it. I wish you the best of everything in life. I do hope to see you more often after we graduate. I love you.
B.J.

JOANNE KING PIPER

Raleigh

"A kind heart is a mountain of gladness."



Seniors of



JANET HARRIET PORTER Winston-Salem
Sigma Phi Kappa

"If there were many more like her, the stock of halos would give out."

Marshal 4; Lotus Staff 1. Typing Editor; *Peace Times* Staff 4; Papyrus Club 4; May Court 4, Maid of Honor.



DOROTHY BYRNE PRESSLY Raleigh
Sigma Phi Kappa

"Surely did there never live on earth a girl of kindlier nature."

Junior Class President 3; Vice-President Non-Resident Students 3; LOTUS Staff 3, 4; International Relations Club 3, 4; Papyrus Club 3; Choir 3, 4; Honor Court President 4; Phi Theta Kappa 3, 4; Sigma Pi Alpha 3, 4; *Miss Peace* 4.



BETTY LOU RESPASS Fayetteville
Rho Delta Chi

"Tradition wears a snowy beard, romance is always young."

Class Prophet 4.

PEACE

Fifty-Six

ANNE WINBORNE SHAW Wagram
Sigma Phi Kappa

"One of hope and forward-looking mind."

Student Council 4; President 4; P.S.C.A. 4;
Honor Court 4; LOTUS Staff 3; International
Relations Club 3; Athletic Council 3; Papyrus
Club 3; Outstanding Senior.



BETTY SUE SLATER Raleigh
Rho Delta Chi

*"A girl she seems of cheerful yesterdays and
confident tomorrows."*

LOTUS Staff 4; Group Chairman 4; Secretary
Senior Class 4; Rho Delta Chi Treasurer 4.



JOANNE DELORIS SMITH Raleigh
Pi Theta Mu

*"Possessing of great vitality and sheer enjoy-
ment of life."*

Group Chairman 4; Peace Times Staff 4.



Seniors of



MILDRED McRARY SMITH

San Bernardino, Calif.

Sigma Phi Kappa

"Immortal longings in me."

Athletic Council 4, President; Presidents Council 4; May Court 4.



SUE CAROLYN SORRELL

Raleigh

Pi Theta Mu

"And set her heart upon the goal, not on the prize."

Lotus Staff 4, Editor-in-Chief; Presidents Council 4; Athletic Council 3; Daughters and Granddaughters Club 3, 4; Alpha Pi Epsilon 3, 4; Outstanding Senior.



KAY ZELMA THOMAS

Raleigh

Pi Theta Mu

"Learning is ever in the freshness of its youth."

Marshal 4; Pi Theta Mu, Vice-President 4; Peace Times Staff 4; Papyrus Club 4; Lotus Staff 4; Group Chairman 4.

PEACE

Fifty-Six

EDITH VERNELL THOMPSON Raleigh

"The difficulty in life is the choice."

International Relations Club 2, 3, 4, President
1; Art Club 2; Senior Superlative 2; National
Honor Society 2; Alpha Pi Epsilon 3, 4; Bausch
& Lomb Honorary Science Award 2; Business
Staff, Lorus, 4; Presidents Council 1.



ANNE DAVIS WELLS Rose Hill

Sigma Phi Kappa

"Thoughts are mightier than strength of hand."

Group Chairman 4.



BETTY JO WILSON Winston-Salem

Rho Delta Chi

*"God gives us love. Something to love he lends
us."*



COLLEGE

Seniors of Fifty-Six



CAROLYN JEAN WILSON Asheville
Sigma Phi Kappa

"Youth is wholly experimental."

Home Economics Club 3, Secretary 4; *Peace Times* Staff 4; Papyrus Club 4; Choir 3, 4.



JANE LIVINGSTON WILSON Camp Lejeune
Rho Delta Chi

*"The mightiest lever known to the mortal world,
Imagination."*

Secretary Prep. IV Class 2; Art Club 2, 3, President 3; Papyrus Club 2, 3, 4; *Lott's* Staff 3, 4; Home Economics Club 3, 4, President 4; Marshal 3; Rho Delta Chi President 4; Group Chairman 4; Presidents Council 4.



VIRGINIA YELVINGTON Asheville
Rho Delta Chi

*"I ask only for a soul with which to remember
friends loved."*

International Relations Club 3, 4, Secretary 4; Papyrus Club 4; Athletic Council 4; National Honor Society 2; Rho Delta Chi Vice-President 4.

Not pictured:

MAY KIRKLAND ROBERTSON Frederick, Md.
Rho Delta Chi

"Peace more sweet than music, light more soft than shadow."
Daughters and Granddaughters Club 3, 4, President 3; Student Council 4; *Lott's* Staff 4; Choir 3, 4; Peace Representative to Ecumenical Conference in Athens, Ohio 4.

PEACE COLLEGE

Snapshots



Class History

It seems such a short time since I first walked into Peace College, excited and expectant. All about me were girls, attractive, smartly dressed, and more than a little scared.

After meeting Dr. Pressly, the Dean, and a few faculty members, I got my belongings placed in my room, took one short breath, and registered for my classes. Then I bought the books I would need—my first college texts.

To relieve some of the excitement and strain that first night, the P.S.C.A. gave a very informal party on front campus, giving us a chance to meet most of the girls.

Orientation week introduced us to our obligations and privileges; and at the end of the week we attended the faculty recital and reception, where we met the teachers and administrative staff who were to guide and instruct us for two years. The next night we became members of the P.S.C.A. in a heart-warming, fountain-side vesper program.

Soon class officers were elected, and I think it was a wonderful choice with Dot Pressly, President; and Chris Isenhower, vice-president. Then we had a few days of classes before the beginning of the Rush Weeks. The decisions were really hard to make as the Rho Delta Chi, Sigma Phi Kappa, and Pi Theta Mu societies vied for our pledges with energetic displays of their virtues. What followed was a typical "Rat Day" with all the evidences of virtual slavery. The highlight followed in the invitations through which we became society "sisters." And to top it all off, the Inter-Society Dance in the Hotel Sir Walter Ballroom was just great.

The next thing on the College calendar was a beautiful Peace tradition—the Thanksgiving Chapel program, part of which was the presentation of boxes to the maids. We were not, however, quite so favorably impressed with the exams that followed. A hurricane could not com-

pare with the flurry of page turning and note-shuffling that went along with the studying that week; but most of us came out all right and immediately turned our attention to Christmas. The Pageant, of course, was inspirational and wonderfully presented. The night before vacation, all the girls dressed in white dresses for the choir concert, carol singing on the steps, and the festive dinner. Recuperation from Christmas vacation took some weeks; but when we finally revived, we were all ready to begin secret preparations for "stunt night." Finally the big night came and everyone had a great time, especially us, because we won by presenting practically every kind of radio entertainment known, and some possibly not known.

Peanut week was fun with all the mysterious appearances of good things. Next came the Week of Sharing and Religious Emphasis Week. We won't forget what we learned from Dr. Frank Hall.

"The Weekend of the Green" was something new. I believe it was the first time Peace had had a week end of dances. They certainly were fun as I remember them.

The next two events were quite different in nature; the first was more exams, and the second, May Day. The first thing we knew, it was Class Day and the graduating seniors were pinning the little green and white ribbons on us, making us the upper-classmen.

I don't think too many of us minded the summer vacation, but no one denied that it was good to get back the next fall. We were the old girls, then, and it was our responsibility to see that the new girls stayed happy.

We really got off to a new start—a "right" start, we felt. The New Student Government and brand-spanking-new Honor System were well taken care of by Anne Shaw, president of the student body; Dot Pressly, president of the Honor Court; Margaret Daughtridge, president

Class History

of the P.S.C.A.; Barbara Hope Brown, president of the Senior Class; and many, many others.

Soon everything was lined up for another great year. The societies went wild in competing for the new girls' pledges and the parties were stupendous!

Each of us realized that she was sharing for the last time the traditions which had, the year before, been new to us; and we experienced each one to the fullest.

Peace really blossomed that year under its new Student Government. Why, it was hardly the same place. Everything seemed transformed into a harmonious song, played by musicians who knew their parts almost perfectly. I suppose that year was one of the best of my life, and I know the rest of my classmates felt the same way. All the extra special days and weeks were fun to experience again, and the great part of it was that the "new girls" loved it as much as we did.

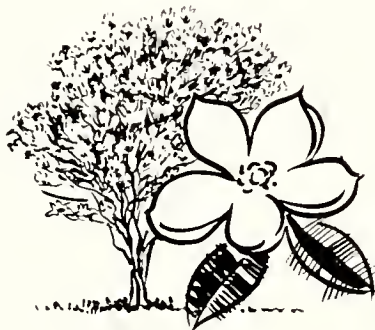
May Day was glorious, but of course, it had to be with Margaret Boylan as May Queen and Janet Porter as Maid of Honor. Come to think of it, we really had our share of pretty girls.

In the meantime, our thoughts had turned toward graduation. Invitations had to be ordered and sent, dresses had to be made, and exams had to be passed.

Eventually, Class Day rolled around and then graduation. The ceremony in which we received our diplomas was all too beautiful and touching. The diplomas we received represented two things—an end to a phase of our Academic life and the beginning of a way of life for which we had been well trained. Then we walked out of the chapel, red roses in our arms and tears in our eyes.

No, it doesn't seem that it was very long ago that I first entered this door, and now I am walking through it, going in the other direction. I leave, as I came, excited and expectant; but there is something else, too—a little voice in my heart that whispers to me that Peace was a wonderful place in which to have grown up.

VIRGINIA YELVINGTON,
Historian.



Last Will and Testament

ARTICLE 1

TO THE JUNIOR CLASS:

To you, we leave our love and friendship. May your future year at Peace be successful, as you work and play through the year, ever carrying with you the high ideals and standards of this Christian school.

SECTION 1

ARTICLE 2

To Dr. Pressly, we leave our sincere love and gratitude for all he has done for us and meant to us these past two years. His Christian manner of life and his bits of proverbial wisdom have been a constant guide.

SECTION 1

ARTICLE 3

To Mrs. Fox, we leave our deepest appreciation for the kindness, love, cheerfulness, and full understanding of young women that she has shown to us this past year.

SECTION 1

ARTICLE 4

To Miss Suter, our sponsor and adviser, we leave our gratitude for her interest and guidance. May she have the satisfaction that goes with a job well done.

SECTION 1

ARTICLE 5

To the faculty we leave our thanks. We are grateful to you now, and in later years we will be even more indebted.

SECTION 1

ARTICLE 6

I, Margaret Daughtridge, leave my ability to draw "you all" to Martha Elmore.

SECTION 2

I, Winifred Gurley, leave my love for a State basketball player to Grace Gawthrop.

SECTION 3

I, Mitzi Bowling, leave my roommate to some lucky girl!

SECTION 4

I, Joanne Smith, leave my haircut to Marlon Brando.

SECTION 5

I, Barbara Harris, leave my trips to State College three days a week to any State fan.

SECTION 6

I, "Zula" Slater, leave 6c and the coke machine to Angela Hilliard.

SECTION 7

I, Peggy Garner, leave my tardiness to Peace.

SECTION 8

I, Connie Choate, leave a package of "Fums" for any day student who thinks she can go to Finch's, eat lunch leisurely, and be back on time.

SECTION 9

I, Anne Davis Wells, leave my ability to marry

off my roommates to anyone who would like a change.

SECTION 10

I, Betty Jean Phillips, leave my broken desk in shorthand to Sandra Hodge in hope that it will last her through the year.

SECTION 11

I, Betty Jo Wilson, leave to join the Army under the command of Lieutenant Eickon as a "private."

SECTION 12

I, Molly Barnes, leave Sara Sue Long an ability to spell in syllables.

SECTION 13

I, Florence Moore, leave my art activities to Betsy Wilder.

SECTION 14

I, Joanne Bullard, leave my "goodnites" and "hrite lites" to Joanne Williams.

SECTION 15

I, Becky Buie, do leave room Main 325 to the Eskimos who are prepared for its cold climate in the winter.

SECTION 16

I, Mary Muse Morgan, alias "noose," "Jock," and "Motor Mouth," do leave my pillow to Ione Jones for the times when she has to play the piano; my lower plates to Mary Gilmore to aid in her conversation; my chair in the library to Gail Godwin for her fervent study; and do leave Peace College for the University of Madrid (I hope!). Adios Amigos!

SECTION 17

I, Barbara Brawley, leave the school.

SECTION 18

I, Ann Hughes, leave my interest in Carolina to Mary Jane Boydell in hope that she has as much fun as I did.

SECTION 19

I, Grace Maupin, leave for the backwoods with my forester (after June).

SECTION 20

I, Sue Sorrell, will the shade in the Science lecture room to a student with a strong arm and fair memory!

SECTION 21

I, Anne Shaw, leave for Carolina.

SECTION 22

I, Lou Respass, leave to Naney Maeder full ownership of Club 320 with the condition that its doors always be open to the love-lorn!

SECTION 23

I, Jane Wilson, leave the buttons the laundry washed off my shirts and blew through the toes of my socks to the Washerette on Person Street.

SECTION 24

I, Ann Holt, bequeath my quarters on third long to Mary Anne Manning, since it has some attraction to her.

SECTION 25

I, Ernestine Clodfelter, will my "First Baptist Boys" to Kitty Connors.

SECTION 26

I, Betty Boone, leave my love of life to Linda Williams.

SECTION 27

I, Betty Lou Blackwell, leave to collect MOSS around the well.

SECTION 28

I, Carolyn Wilson, will my place in the trio and my voice to Jenean Madre.

SECTION 29

I, Ross Garner, do will my love and great knowledge for "El Español" to "Blossom."

SECTION 30

I, Jo Anne Fussell, leave "Red" to Mary Glenn Johnson.

SECTION 31

I, Barbara Hope Brown, do will my height to Sara Weeks.

SECTION 32

I, Virginia Yelvington, leave my nick-name "Gin" to Virginia Reid.

SECTION 33

I, Patty Denning, will my seat in Spanish class to Nancy Maeder, hoping that she can get the swing of it better than I could.

SECTION 34

I, Edith Thompson, leave to go to work for that big executive.

SECTION 35

I, Anna Rose McCann, eagerly give a list of all the businesses in Raleigh, plus a pair of well-worn loafers, to my successors, but no regrets.

SECTION 36

I, Martha Harriet Jones, leave my ability to "get around" without my glasses to Gil Crowson.

SECTION 37

I, Betsy McKinnon, leave my place in the Biology lab to any Science major with loads of time and patience.

SECTION 38

I, Betty Jane Askew, leave my "natural" blond hair to Marty Barbrey.

SECTION 39

I, Betty Moore, leave my diploma to Barbara Paschall just in case she gets married before she gets her own.

SECTION 40

I, Cathy Casteen, bequeath my knowledge of handling parachutes (and their jumpers) to Rose Bracey who's learned to pull a few strings herself.

SECTION 41

I, Millie Smith, do hereby will to Claudine Hodgkin my ability to think before I act, on the condition that she will give me her ability to think before she speaks.

SECTION 42

I, Carolyn Buffaloe, leave my two lost fountain pens to the lucky girls taking shorthand.

SECTION 43

I, Lyde Barbrey, leave my weight to Lynn Ramsey.

SECTION 44

I, Carrol Nanney, do hereby will my place at the bridge table in the smoker to Sara Weeks, and hope she has better luck than I did.

SECTION 45

I, Becky King, leave Peace with a start to, I hope, a brighter future.

SECTION 46

I, Nancy Eubanks, leave all my sweet, complimentary remarks about Zula's taste in clothes to Bettie Sue Caviness.

SECTION 47

I, May Robertson, leave my "Yankee accent" to Becky Wallace.

SECTION 48

I, Maxine McLobon, leave Main 301 to anyone who likes living in closets.

SECTION 49

I, Martha Hudson, leave my quiet, meek personality to Mary Gilmore Parker.

SECTION 50

I, Marilyn Murdock, leave my happy-go-lucky disposition to Paula Ward.

SECTION 51

I, Joan Crawford, bequeath my be-draggled hand and sluggish mind to Sara Prickett for use in Mrs. Booth's Shorthand C class next year.

SECTION 52

I, Annette Graham, leave my "Parlez-vous français" to Shirley Tarlton.

SECTION 53

I, Kay Thomas, will my "spit-curls" to Mary Miller Powers.

SECTION 54

I, Margaret Boylan, leave my last year's burnt peas to next year's Home Ec class.

SECTION 55

I, Mary Leggett, leave my 125 grey hairs to the editor of next year's *Peace Times*.

SECTION 56

I, Charlotte Ledford, do will my guitar to any long-haired musician who appreciates the finer things in life.

SECTION 57

I, Janet Porter, leave my good time at the Lambda Chi Alpha House to Puddin' Dykes and her friends.

SECTION 58

I, Dot Pressly, will my ability to keep a secret to Patsy Askew and Kay Smith.

SECTION 59

I, Ann Barrett, will my central nervous system to Dr. Winston.

MARTHA HARRIET JONES,
Testator.

Witnesses:

LONG TING TONG

RAZZLE DAZZLE

Class Prophecy

1956 . . . It seems only a short time since we were all here at Peace together; and now the long awaited day has arrived when we're all meeting for our class reunion.

Wait a minute; here comes a strange face I don't seem to recognize. Why it's Ann Holt! No wonder I didn't know her—she's wearing dark glasses. I hear she's back in the states for a brief visit; she never quite made it back from one of her extended European tours! And there's her old roommate, Anne Shaw, with her. Anne is the head of a world famous psychiatric clinic, you know. The stunning girl standing in the background I remember as Betty Jane Askew, a top fashion model now. And here comes Betty Boone . . . with her six adorable children.

Why look . . . it's Ross Garner and Mary Morgan. I hear they're playing only the best clubs and are a sensational vocal and piano team. Their manager Ernestine Clodfelter is with them. Well, if there aren't Barbara Brawley and Zula Slater! They were voted the two most valuable secretaries by the businessmen of Raleigh last year. Coming in behind them are Kay Thomas and Annette Graham. Kay is the principal of Needham Broughton, and Annette is her assistant.

Here come some very successful members of our class: Margaret Daughtridge was recently installed as president of the Woman's Clubs of America; Mary Leggett has her own private school; Dot Pressly has received her Ph.D. and is teaching at Duke; Virginia Yelvington heads her own advertising agency; Jane Wilson is starring in the biggest Broadway musical in years; Carolyn Wilson is currently appearing at the Met; Betsy McKinnon is chief research scientist at Mayo clinic; and Charlotte Ledford has her own TV program.

Among the famous business women we find Molly Barnes, Nancy Eubanks, Marilyn Murdock and Betty Jean Phillips. I hear they've

really done well. And there is Martha Harriet Jones; imagine being voted "Mother of the Year"! With her are Dottie Gattis and Constance Choate who admire her greatly. They were the runners-up.

Jan Porter certainly does look lovely today . . . but then I'm not the only one who thinks so; she was Miss Cover Girl of 1960. All this and a family too! Well, if it isn't Millie Smith. . . . She's much in demand these days, and has become a recognized authority on psychiatric ills. Speaking of authority, Barbara Brown has just written a best seller; *New Approaches to Bridge*.

Betty Jo Wilson has a nice family now, too. I hear her husband has been very successful. She's also with her ex-roommate, Grace Maupin. Grace and her husband have both received their Master's and are teaching in the same school. Winifred Gurley is also teaching there and really seems to be having a good time.

Other authoresses from our class are Sue Sorrell and Anne Davis Wells. Sue has recently written a book entitled *The Great Outdoors*, and Anne Davis one entitled *The Advantages of a Small School*.

I'm sorry Patty Denning and Annette Fleming weren't able to be with us today, but they're so tied up with their families. I hear that they're very happy. Edith Thompson is another one who has really devoted herself to children. She had taken over the entire Sunday school of Christ's Church.

Margaret Boylan has just walked in . . . she's been living in Connecticut for the past several years and is having a wonderful life.

Barbara Harris is teaching at State, and her old friend Joanne Smith and her husband are visiting Barbara on their way back to Japan.

Ann Barrett is right at home at Peace, as she's been teaching Psychology here for several years.

Class Prophecy

Mitzi Bowling also decided to come back to Peace to teach; she just loves Raleigh.

Furnishing background music for the reception is Sarah Hamrick. She's one of the most outstanding pianists in the country.

Carolyn Buffalo, Joan Crawford, Peggy Garner, and Ann Smith Hughes are at Peace together soliciting new girls for their very successful accounting agency.

Here comes Jo Anne Fussell . . . She's the new editor of the *Raleigh Times*, you know; and Cathy Casteen, who's currently directing on Broadway, is with her.

"Becky" Buie has made a name for herself as an educator, with Joanne Bullard as her capable secretary.

Betty Lou Blackwell has been having a wonderful time touring the world, and Becky King is currently working for the President of Davidson . . . she loves it there.

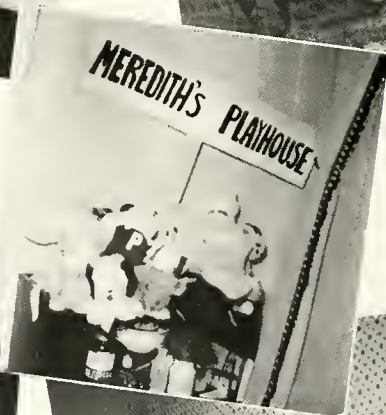
Maxine McLohon has been studying voice in Paris, and is currently the best in France. Carrol Nanney has settled down to live in Chapel Hill where, from all reports, she is happy in her job as a house mother.

Martha Hudson has come back to join us, although she is quite busy now in her position as Vice-President of one of the largest engineering concerns in the United States. Lyde Barbrey has gone on with her French studies and plans to teach at Columbia this fall.

Betty Moore is secretary to the Attorney General of the United States, and Anna Rose McCann is in the North Carolina legislature. And here is Ann Lewis, followed by Florence Moore. Ann is currently employed in the position as Bridal Consultant at Macey's, and Florence has her own dress shop.

Well, I think about everyone's here now—No, wait a minute, here comes Joanne Piper. Joanne has a wonderful position as head of the CARE foundation. And May Robertson is with her. May is now the Young People's Director at First Presbyterian Church in Raleigh—Well, that's about it, all present and accounted for. We've done pretty well, I think. Oh, me? I'm Lou Respass. It kind of embarrasses me to give an account of all of my old classmates, but I do like my job. I'm a neat dishwasher!

LOU RESPASS,
Prophet.





The Juniors

OFFICERS

CAROLYN BEATY *President*

LYNDIE JAMES..... *Vice-President*

SUE HARRIS..... *Secretary*

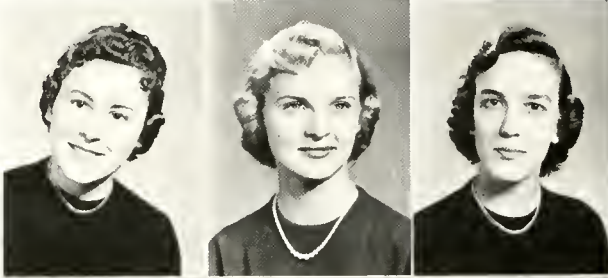
Class of



ETTA ELIZABETH ADCOCK Lillington
Rho Delta Chi

PATSY HUNTER ASKEW Wilson
Sigma Phi Kappa

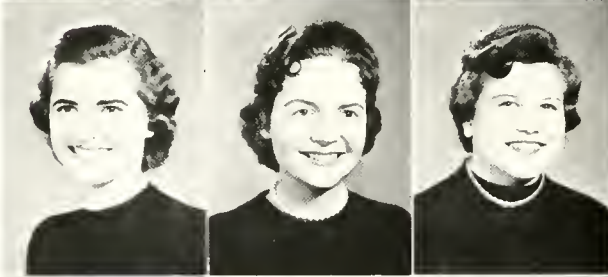
NANCY CAROLE AYCOCK Cary
Sigma Phi Kappa



BETSY LOU BALENTINE Raleigh
Rho Delta Chi

MARTHA FRANCES BARBREY Clinton
Sigma Phi Kappa

NANCY ANN BASS Raleigh
Rho Delta Chi



CAROLYN McNAUL BEATY Siler City
Rho Delta Chi

SANDRA KATHRYN BENTZ Greensboro
Sigma Phi Kappa

PATRICIA MAE BLACK Maxton
Sigma Phi Kappa



AGNES JACQUELIN BLACKMAN Benson

SUSAN FRANCES BLOOM Jackson
Rho Delta Chi

ELIZABETH ALLEN BOND Rowland
Rho Delta Chi



MARY ANNE BARNES CLARK (Mrs.) Littleton

MARY JANE BOYDELL Greensboro
Rho Delta Chi

ROSE ELLEN BRACEY Fayetteville
Rho Delta Chi

PEACE

Fifty-Seven

BARBARA ELLEN BREWER Arlington, Va.
Sigma Phi Kappa

LILLIAN BARROUR BRINKLEY Flint, Mich.
Rho Delta Chi

ELIZABETH IOLA BROWN Sanford

SHIRLEY JEAN BROWN Sanford

SHIRLEY ANN BROWNELL Charlotte
Rho Delta Chi

REBA ANNE BULLARD Raleigh
Pi Theta Mu

CARLA MAE BYRD Bunn Level
Sigma Phi Kappa

POLLY McDANIEL CAMERON Kipling
Rho Delta Chi

MARY CARELL CARLAN Candor
Rho Delta Chi

DORIS MARIE CARTER Raleigh
Rho Delta Chi

MARGARET GWENDOLYN CARTER Weldon
Rho Delta Chi

BETTY SUE CAVINESS Raleigh

ANNIE DONNAH CHESTER Pittsboro
Sigma Phi Kappa

MARY SUE COLEMAN Sanford
Sigma Phi Kappa

LUCY CATHERINE CONNOR Greensboro
Sigma Phi Kappa



COLLEGE

Class of



GERALDINE COOK Asheville
Rho Delta Chi

MARTHA LEE DANIEL Lawrenceville, Va.
Rho Delta Chi

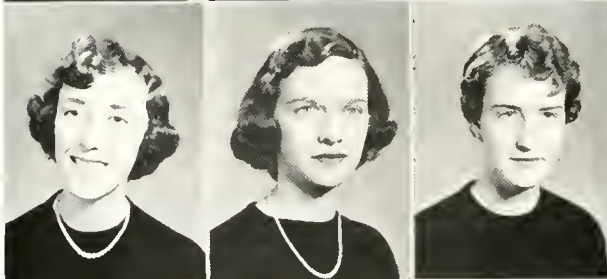
EVANGELINE ANN DAVIS Raleigh



MARTHA JENNIE ELMORE Suffolk, Va.
Rho Delta Chi

GRACE EDNA GAWTHROP Jacksonville
Rho Delta Chi

GAIL KATHLEEN GODWIN Smithfield
Rho Delta Chi



MARY FAYE GODWIN Raleigh
Pi Theta Mu

ANNE CANNON HAMMERSLA Hickory
Sigma Phi Kappa

BETTIE JUNE HANFORD Graham
Sigma Phi Kappa



MARGARET LEE HARDEE Laurinburg
Sigma Phi Kappa

VIRGINIA SUE HARRIS Laurinburg
Rho Delta Chi

MARY SUE HERRING Raleigh
Sigma Phi Kappa



VIRGINIA ROGERS HESTER Raleigh
Sigma Phi Kappa

ANGELA JEANNETTA HILLIARD Raleigh
Rho Delta Chi

SANDRA MAY HODGE Raleigh
Pi Theta Mu

PEACE

Fifty-Seven

CLAUDINE KRIDER HODGIN Raeford
Rho Delta Chi



PATRICIA WARREN HOLLAND Norfolk, Va.
Rho Delta Chi



BETSY FELIX HOLT Princeton
Rho Delta Chi

NANCY KNIGHT HORTON Raleigh
Rho Delta Chi



CHRISTINE SHERRILL ISENHOWER Conover
Sigma Phi Kappa

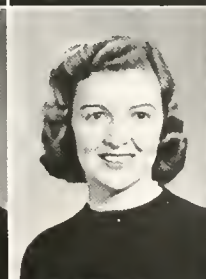
MARGARET LYNWOOD JAMES Franktown, Va.
Rho Delta Chi



PHYLLIS LOUISE JAMMER Charlotte
Rho Delta Chi

PATRICIA DARDEN JENKINS Goldsboro
Sigma Phi Kappa

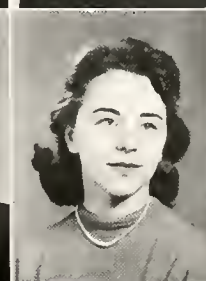
ANNIE RUTH JOHNSON Durham
Rho Delta Chi



JACQUELINE JOHNSON Calypso
Rho Delta Chi

KAY FRANCES JONES Raleigh
Rho Delta Chi

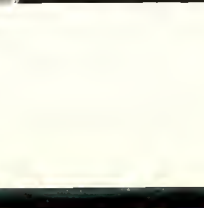
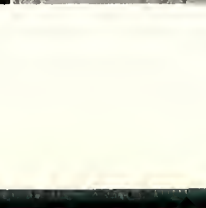
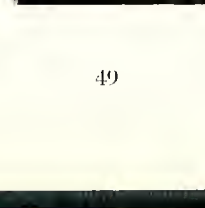
MARTHA SUE KARRIKER Durham
Sigma Phi Kappa



EVIE MAXINE KEARNEY Raleigh
Rho Delta Chi

BETTY IRENE KEY Sanford
Rho Delta Chi

LINDA GAIL LEE Benson
Rho Delta Chi



COLLEGE

Class of



SARAH CAROLYN LEWIS Burgaw
 PAULA LILES RIGGAN (Mrs.) Littleton
 Sigma Phi Kappa
 MARJORIE LOUISE LINZEY Raleigh
 Rho Delta Chi



JOYCE ANN LITTLE Raleigh
 Rho Delta Chi
 SARA SUE LONG Raleigh
 Pi Theta Mu
 JANE OWEN LOW Raleigh
 Sigma Phi Kappa



GLENDIA RUTH LOWE Elkin
 Rho Delta Chi
 MARGARET DILL LUCAS Greensboro
 Rho Delta Chi
 JUDITH ANNE McCUBBIN Raleigh
 Rho Delta Chi



NANCY JO McNEILL Nichols, S. C.
 Rho Delta Chi
 JAMES JENEAN MADRE Elizabeth City
 Rho Delta Chi
 NANCY HARRIET MAEDER Richmond, Va.
 Rho Delta Chi



HELEN GRACE MABONY Richmond, Va.
 Rho Delta Chi
 MARY ANNE MANNING Bethel
 Rho Delta Chi
 FRANCES MARIE MASSEY Raleigh
 Rho Delta Chi

Fifty-Seven

RHODA LINDA MAY Wilmington
Sigma Phi Kappa

CATHERINE LOUISE MILLER Raleigh
Rho Delta Chi

JO ANN MITCHELL Raleigh
Pi Theta Mu



EVALYN SELLERS MORGAN Manton
Rho Delta Chi

LILLIE PAULITA MURDOCK Belgium Congo, Africa
Rho Delta Chi

DOROTHY ELIZABETH NEWTON Southern Pines
Sigma Phi Kappa



ELLEN REYNOLDS NORTON Laurinburg
Rho Delta Chi

MARIA ANTONIETTA OLIVER Habana, Cuba
Sigma Phi Kappa

OLGA VASQUEZ ORTIZ Habana, Cuba
Sigma Phi Kappa



ESTHER MARIE PARRISH Raleigh
Sigma Phi Kappa

BARBARA ANN PASCHALL Raleigh
Pi Theta Mu

GLENDA LUCILE PEARCE Williamsburg, Va.
Rho Delta Chi



ELIZABETH ANN POLLARD Farmville
Rho Delta Chi

GAIL CONOVA PONS Wilmington
Rho Delta Chi

MARY ELLEN POOLE WOODLIEF (Mrs.)
Wendell



COLLEGE

Class of



CHARLOTTE JEAN POPE Durham
Sigma Phi Kappa

LORETTA FAYE POPE Fuquay Springs
Rho Delta Chi

PEGGY ANN PRATT Kinston
Rho Delta Chi



SARALYN FRANCES PRICKETT Raleigh
Sigma Phi Kappa

BARBARA JANE REDDISH Dunn
Rho Delta Chi

CHARLOTTE McQUEEN REGAN Fayetteville
Sigma Phi Kappa



VIRGINIA ELIZABETH REID Charleston, S. C.
Rho Delta Chi

PEGGY ANNE RIDEOUT Raleigh
Pi Theta Mu

MAY KIRKLAND ROBERTSON Frederick, Md.
Rho Delta Chi



SAMANTHA RAE ROBINSON Richmond, Va.
Rho Delta Chi

MARLYN CLAIRE RYE Raleigh
Rho Delta Chi

MARTHA ELIZABETH SALMON Sanford
Rho Delta Chi



RHETA GERTRUDE SALTER Raleigh
Pi Theta Mu

MARY ELIZABETH SCHURE CLARK (MRS.) Bound Brook, N. J.
Rho Delta Chi

MARGARET BROTHERS SIMONS Suffolk, Va.
Rho Delta Chi

PEACE

Fifty-Seven

JOANNE ELIZABETH SINK Raleigh
Pi Theta Mu

JOAN ARTHUR SMITH Greensboro
Sigma Phi Kappa

KAY HELEN SMITH Princeton
Rho Delta Chi

MARTHA ANN SOUTHERLAND Rose Hill
Rho Delta Chi

ELIZABETH SUNDY STEED Richlands
Sigma Phi Kappa

ELEANOR DUTY STEM Roxboro
Rho Delta Chi

ANNIE MARIE STEVENS Raleigh

SHIRLEY JEAN STUBBS Laurinburg
Rho Delta Chi

MARTHA HYAMS SULLIVAN Greensboro
Rho Delta Chi

SHIRLEY MARIE TARLTON Raleigh
Sigma Phi Kappa

JOANNE CAROL TEDDER Raleigh
Rho Delta Chi

MARY ELLEN TRIBBY Raleigh
Rho Delta Chi

MARY ANN TRUBNICK Raleigh
Rho Delta Chi

REBECCA REID WALLACE Carthage
Rho Delta Chi

CORA CAROLYN WALTERS Raleigh
Rho Delta Chi



At this time, it has been such a pleasure to know you this year. You are some girl that I shall never forget. With your personality, pleasant smile, and friendly ways, you will always succeed. I have never known but one last-one rule is the same each day never make us angry. Will miss you at Free next year, but I am sure you will enjoy Carolina. You are one of our proud girls. It will be a great pleasure to know you next year. Love, Mary Ellen Tribby

COLLEGE

I will miss you very much. Love, Mary Ellen Tribby

Class of Fifty-Seven



PAULA AUDREY WARD Raleigh
Rho Delta Chi

SARAH ELIZABETH WEEKS Durham
Rho Delta Chi

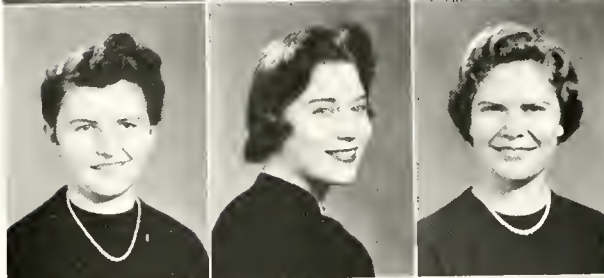
SUSAN MONA WEEKS Raleigh
Pi Theta Mu



LUCY ANNETTE WELDON Henderson
Sigma Phi Kappa

JOYCE FULLER WELDON Henderson
Rho Delta Chi

Betsy Virginia Wilder Raleigh
Rho Delta Chi



FRANCES MARTIN WILLIAMS Roxboro
Rho Delta Chi

JOANN WILLIAMS Suffolk, Va.
Rho Delta Chi

MARY ELIZABETH WILLIAMS Raleigh
Rho Delta Chi



KATY FRANCINE WILSON Clinton
Rho Delta Chi

CAROLYN ANNETTE WISE Kinston
Sigma Phi Kappa

MARTHA SUE WOOTEN Snow Hill
Rho Delta Chi



ADA CREECH WRIGHT Raleigh
Sigma Phi Kappa

ANNE BENNETT YATES Moncure
Sigma Phi Kappa

PEGGY JEANETTE YOUNG Fayetteville

PEACE COLLEGE



Preparatory IV

OFFICERS

CHARLOTTE FRIST.....	<i>President</i>
DEPPE BARKER.....	<i>Vice-President</i>
FRANCES WINSTON.....	<i>Secretary</i>
BETSY WELDON.....	<i>Treasurer</i>
JOYCE EDMINSTON.....	<i>Chaplain</i>
JOANNE BRIDGERS.....	<i>Sergeant-at-Arms</i>

Preparatory IV



Elizabeth Deppe Barker Trenton
Rho Delta Chi

Elizabeth Camden Blades Elizabeth City
Rho Delta Chi

Mary Jo Blanchard Wallace
Rho Delta Chi

Laura Joanne Bridgers Raleigh
Rho Delta Chi

Jo Maria Britton Raleigh
Sigma Phi Kappa

Gail Marie Dalmers Tungsten
Sigma Phi Kappa

Jacqueline Faye Edmisten Hickory
Rho Delta Chi

Joyce Rhay Edmisten Hickory
Rho Delta Chi

Charlotte June Frist Mobile, Ala.
Sigma Phi Kappa

Elizabeth Terry Gould Raleigh
Rho Delta Chi

Frances Taylor Hammersla Hickory
Sigma Phi Kappa

Cecile Walker Hayne Eastover, S. C.
Rho Delta Chi

Frances Raby Jacobs Norfolk, Va.
Rho Delta Chi

Mary Glenn Johnson Kipling
Rho Delta Chi

Amorette Ione Jones Pine Level
Rho Delta Chi

Not Pictured:
Mary Jo Atkins

Preparatory IV

Linda Knox Kirkman Jamesville
 Rho Delta Chi

Barbara Jane Medlin Melbane
 Rho Delta Chi

Mary Helen Moody Raleigh

Mary Gilmore Parker Raleigh
 Sigma Phi Kappa

Evalyn Earle Peterson Wilson
 Rho Delta Chi

Mary Miller Powers Raleigh
 Rho Delta Chi

Mary Ann Swanson Wendell
 Rho Delta Chi

Betsy Ceelia Weldon Louisburg
 Rho Delta Chi

Frances Ann Winston Youngsville
 Sigma Phi Kappa



COLLEGE

High School Senior Superlatives



EVALYN PETERSON
MOST TALENTED



FRANCES WINSTON
MOST LIKELY TO SUCCEED



JO BRITTON
MOST INTELLECTUAL



CECILE HAYNE
MOST ATHLETIC



TERRY GOULD
BEST DRESSED



CHARLOTTE FRIST
BEST ALL-AROUND
BEST LOOKING



BEE BLADES
CUTEST



FRANCES JACOBS
WITTIEST

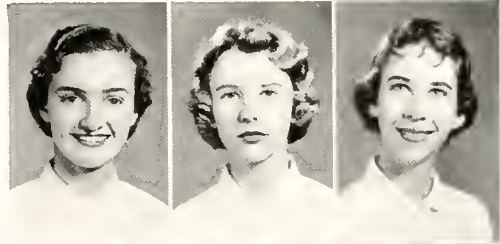


MARY GLENN JOHNSON
BEST PERSONALITY

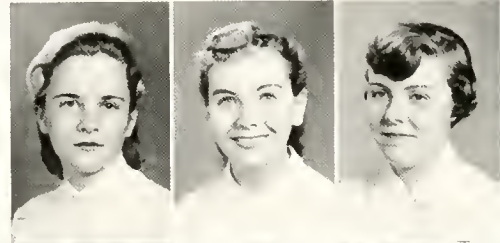
Preparatory III

OFFICERS

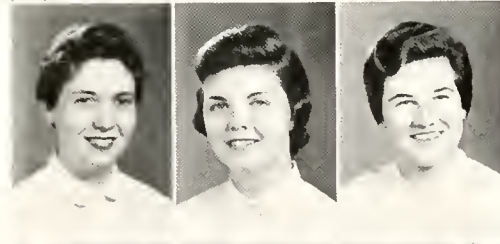
DONNA SMITH.....*President*
 SUSANNE WILSON.....*Vice-President*
 JEAN REYNOLDS.....*Secretary*
 JUDITH COOLEY.....*Treasurer*



Judith Ann Cooley Raleigh
 Rho Delta Chi
 Jayn Adville Croom Fayetteville
 Rho Delta Chi
 Kathryn Gill Crowson Richmond, Va.
 Rho Delta Chi



Natilu McKenney Dykes Columbus, Ga.
 Sigma Phi Kappa
 Ruth Dixon Hood Richlands
 Sigma Phi Kappa
 Karen Christine Kellgren Jamestown, N. Y.
 Rho Delta Chi



Peggy Anne Meintel Richlands
 Rho Delta Chi
 Ida Sue Neighbors Dunn
 Rho Delta Chi
 Lynn Jeneve Ramsey Knoxville, Tenn.
 Sigma Phi Kappa



Jean LaFuze Reynolds Elkins, W. Va.
 Rho Delta Chi
 Shirley Mae Rooks Currie
 Sigma Phi Kappa
 Sandra Dale Scott Fair Bluff
 Rho Delta Chi



Donna Anne Smith Lurama
 Sigma Phi Kappa
 Linda Ruth Williams Dunn
 Rho Delta Chi
 Susanne Wilson Charlotte
 Sigma Phi Kappa

Traditional Activities





ACTIVITIES



Front to back: Anne Shaw, Martha Hudson, Billie Simons, Margaret Daughtridge, Carolyn Beaty, Dot Pressly, Barbara Brown, Charlotte Frist, Annette Graham, May Robertson, Frances Massey, Martha Salmon, Polly Cameron, and Peggy Pratt.

Student Council



ANNE SHAW
President

Our Student Council has served us well this year, accomplishing much. By encouraging the participation of each student in our school government and activities, they have strengthened our characters and promoted a healthy school spirit. And in giving us effective guides for group living, they have given us a happy dorm life together.

Presidents Council

The Presidents Council is sponsored by the Student Council and is made up of the presiding officers of all student clubs and organizations except classes. The purpose of this Council is to promote a program of activities to include varied areas of student interest through the exchange of plans and ideas of the organizations and of the Student Council. As its special projects for the year, the Presidents Council has sponsored entertainment on week-ends for any girls who were interested and has asked every club to define its purpose and to present its constitution to the Student Council.



MARTHA HUDSON
Chairman



First row: Mildred Smith, Nancy Eubanks, Martha Hudson, Jane Wilson. *Second row:* Mary Leggett, Mary Morgan, Eleanor Stem, Ann Holt, Edith Thompson, Connie Choate.

Honor Court



DOROTHY PRESSLY
President

The Honor Court is made up of four standing members plus four chosen representatives from the Honor Roll. This Court upholds and promotes the Honor Code in all phases of life at Peace. To deal quietly with each individual case, giving consideration to the rights of the individual as well as to her personality, is the aim of the Honor Court.



First row: Anne Shaw, Dorothy Pressly, Ann Holt, and Margaret Daughtridge. *Second row:* Miss Holt and Miss Oates.



First row: Anne Shaw, Martha Jones, Margaret Daughtridge, Jo Anne Fussell, Barbara Brown, Mary Morgan. Second row: Sue Harris, Carolyn Beaty, Ann Holt, Dr. Phipps, Dorothy Pressly, Lyndie James, and Mary Leggett.

P. S. C. A.

One of the major aims of Peace College is to promote a wholesome religious atmosphere. With this in mind the Peace Student Christian Association, which is composed of all the Peace students, is the organization that directs the religious activities. The P.S.C.A. Cabinet is made up of twelve girls—a symbolic number—who are responsible for planning certain outstanding activities during the year, the Thanksgiving baskets for the maids, Vesper Programs, inspiring Christmas and Easter pageants, Religious Emphasis Week, Peanut Week, and the Week of Sharing. It is with an eager desire to serve God and with a love for God that these undertakings of the P.S.C.A. are carried out. Through all of its activities the P.S.C.A. strives to develop for each individual—faculty and students—the right personal attitudes, habits, and ideals.



MARGARET DAUGHTRIDGE
President

Peace Times



MARY LEGGETT
Editor

Amid the milling confusion of busy typewriters and voices shouting directions, familiar cries issue forth from the publications room of the *Peace Times* when the staff are working on another issue of the paper.

Editor, Mary Leggett; assistant editor, Eleanor Stem; and adviser, Miss Oates, hassel with ever-present last-minute problems, but through it all the staff has striven very hard to please the students.

It is the hope of the staff that the students enjoyed this year's issues of the *Peace Times*.



ELEANOR STEM
Assistant Editor



First row: Kay Thomas, Sandra Scott, Mary Beth Clark, Sandra Healey, Angela Hilliard, Sandra Hodge, Paula Ward, Ann Barrett. *Second row:* Gail Godwin, Carolyn Wilson, Lyde Barbrey, Barbara Harris, Shirley Brownell, Janet Porter, Virginia Yelvington, Betty Jane Askew, Patty Denning, Lyndie James, Mary Cabell Carlan. *Third row:* Evalyn Peterson, Judith McCubbin, Grace Maupin, Joan Smith, Rhoda May. *Fourth row:* Betsy Wilder, Shirley Stubbs, Jane Wilson, Florence Moore, Shirley Tarlton, Sarah Weeks, Eleanor Stem, Mary Leggett, Mary Ann Trubnick, Cathy Casteen, Joanne Tedder, Ginger Hester, Jo Britton, May Robertson.

Lotus



SUE SORRELL
Editor-in-Chief

We, the members of the annual staff, have tried to bring to you in the LOTUS of 1956 a lasting portrait of the ideals and standards that have become Peace Tradition. We hope that, as you turn its pages now and in the future, it will bring back all of your memories—the tears and laughter, the fun and joy, the work and play—of our school.



ANNA ROSE McCANN
Business Manager



First row: Cathy Casteen, Shirley Brownell, Mary Beth Clark, Carolyn Wise, Gail Godwin, Eleanor Stem, Ann Davis, Maxine Kearney. *Second row:* Mariba Jones, Jane Wilson, Janet Porter, Sandra Healey, Kay Thomas, Nancy Eulanks, Dottie Gattis, Betty Sue Slater, Becky King, Barbara Brawley. *Third row:* Sue Sorrell, Jo Anne Fussell, Angela Hilliard, Mary Leggett, Margaret Daughtridge, Dorothy Pressly, May Robertson, Betsy Holt, Jo Britton, Margaret Boylan, Ada Wright, Jane Low, Ginger Hester, Annette Graham, Anna Rose McCann.



Left to right: Mary Leggett, Dorothy Pressly, and Ann Holt.

Sigma Pi Alpha



MARY LEGGETT
President

An interesting and instructive club, the Theta Chapter of Sigma Pi Alpha has as its purpose the realization of a better understanding among students and among nations by studying together different languages and cultures. Members, who are chosen for their special ability in languages as well as in general scholastic work, receive knowledge that leads to understanding through their own study and through talks made by people of other countries.

Phi Theta Kappa



*ANN HOLT
President*

The purpose of the Phi Theta Kappa Honorary Fraternity is to recognize scholarship and leadership among students of junior colleges. The members of the Peace chapter of the fraternity strive to promote its standards and to uphold the motto of wisdom, aspiration, and purity.



Left to right: Mary Leggett, Margaret Daughtridge, Ann Holt, and Dorothy Pressly



Left to right: Edith Thompson, Connie Choate, Nancy Eubanks, Barbara Brawley, and Anna Rose McCann.

Alpha Pi Epsilon



NANCY EUBANKS
President

Alpha Pi Epsilon, a National Honorary Society, seeks to professionalize the status of the college trained secretary. The members are students of superior scholarship, personality, and character. Truly, it is considered an honor to be a member of such a club.

Daughters and Granddaughters Club

The Daughters and Granddaughters Club is composed of girls whose mothers and grandmothers were formerly "Peace Girls." The Club is organized to carry on the traditions as set by "Peace Girls" who have gone before and to set new standards for the girls who will come after.

The Club takes great interest in acting as hostesses to the visiting alumnae, serving at teas, and participating in various activities of the school.



ELEANOR STEM
President



First row: Becky King, May Robertson, Eleanor Stem, Cathy Casteen, Ruth Hood. *Second row:* Sue Sorrell, Elizabeth Bond, Martha Jones, Mary Miller Powers.



First row: Ginger Hester, Cathy Casteen, Mary Leggett, Mary Beth Schure Clark. *Second row:* Sarah Weeks, Marjorie Linzey, Shirley Tarlton, Betsy Wilder, Jane Wilson, Betty Jane Askew, Kay Thomas, Carolyn Wilson, Gail Godwin, Mary Cabell Carlan. *Third row:* Patty Denning, Lyndie James, Evalyn Peterson, Mary Ann Trulnick, Mary Miller Powers, Janet Porter, Eleanor Stem, Judith McCubbin, Rhoda May, Jo Anne Fussell, Charlotte Ledford, Angela Hilliard, Paula Ward, Maxine Kearney.

Papyrus Club



MARY LEGGETT
President

This year the members of the Papyrus Club have taken the project of the club's rejuvenation. They are drawing up a new constitution and are encouraging those girls with hidden talent for creative writing to put their efforts down on paper.

Also they hope to bring back the *Voices of Peace*, a literary magazine containing original short stories, poems, and essays by Peace girls. Such an effort to revive an old Peace tradition will indeed be worth while and rewarding.

Art Club



FLORENCE MOORE
President

The members of the Elsie Robertson Art Club strive to understand the different phases of art. With the help of our adviser, Miss Pugh, and through lectures, films, and exhibits, we have come to appreciate the beauty of art. The club's annual project of making money for the Art Scholarship Fund affords much fun for all those who take part.



Left to right: Betsy Wilder, Mary Morgan, Florence Moore, Paula Liles Riggan, Jo Anne Fussell, Mary Ann Swanson, Miss Pugh, Cathy Casteen.

International Relations Club



EDITH THOMPSON
President

The International Relations Club has done much to make its members aware of world affairs and the customs of other countries by lectures, movies, and guest speakers. The group has acquainted the student body with its work through guest speakers and chapel programs.



First row: Virginia Yelvington, Edith Thompson, Mary Leggett. *Second row:* Anne Shaw, Barbara Brown, Charlotte Frist, Carolyn Beaty, Dot Pressly, Mary Morgan, Annette Graham, Jo Britton, Gail Dahners. *Third row:* Jo Anne Fussell, Charlotte Ledford, Evalyn Peterson, Judith McCublin, Betsy McKinnon, Miss Caldwell, Margaret Daughtridge, Elizabeth Bond, Gail Godwin, Eleanor Stem.



Accompanist: Mary Morgan. *First row:* Beth Williams, Shirley Brownell, Carolyn Wilson, Irene Key, Ernestine Clodfelter, Donna Smith, Maxine McLohon, Loretta Pope, Betsy Holt, Jenean Madre, Claudine Hodgin. *Second row:* Ross Garner, Susan Bloom, Paula Liles Riggan, Florence Moore, Ann Holt, Betty Moore, Dot Pressly, May Robertson, Patty Denning, Mary Ellen Tribby, Carolyn Buffaloe, Betty Jean Phillips.

The Choir

The Choir, one of the most active organizations on campus, has received recognition in Raleigh through its excellent work under the direction of Dr. Carl Hjortsvang. The Choir provides a means of expression for those who enjoy music. Through participation in its many programs, the members have acquired a greater appreciation of good music.

This year the Choir has presented Christmas and Spring concerts, has broadcast over WPTF, and has sung in several of the morning services at the First Presbyterian Church.



ANN HOLT
President

Sigma Phi Kappa



MARY MORGAN
President

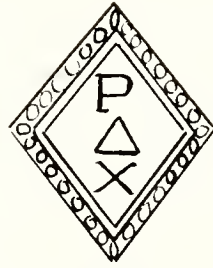
The Old Sigs were busy from the first of the school year with their Rush Week and Oriental Party, which proved a success according to results on Pledge Day. Then after the formal initiation both old and new Sigs were busy having fun, playing in sports tournaments, and taking part in their other activities throughout the year.



Ernestine Clodfelter, *Secretary*; Mary Morgan, *President*; Miss Howe, *Adviser*; Martha Hudson, *Vice-President*; Betty Jane Askew, *Treasurer*.



JANE WILSON
President



Rho Delta Chi

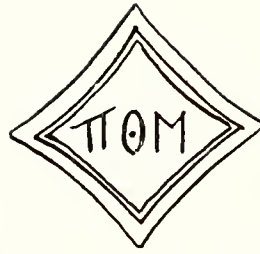
The Rhos have had much fun this year from the beginning of school to the end. Their many activities began with the annual fashion show and a South Seas Island Party for the new girls. Then came the impressive candlelight service in which new members took their vows and old members renewed theirs.



First row: Jane Wilson, President; Betty Sue Slater, Treasurer. Second row: Dottie Gattis, Secretary; Virginia Yelvington, Vice-President.



CONNIE CHOATE
President



Pi Theta Mu

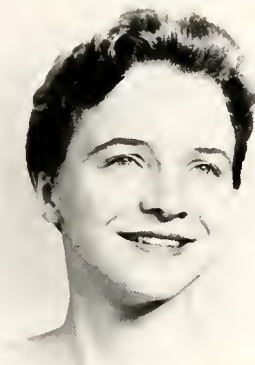
The Pi's started off Rush Week with a big masquerade party which really put everyone in the "swing" of things—with everyone trying desperately to follow the instructions on how to "mombo" and "somba," given by Mr. Leo Carter. Slowing down the pace but still having a lot of fun—the old Pi's gave their "Rats" quite a time on Rat Day. Long to be remembered was the more serious side of the picture—the candlelight formal initiation. Next in line came the wonderful Valentine Inter-Society Dance. The Pi's showed their domestic abilities soon after by having a cake, cookie, and candy sale. Then came the parties.

Yes, the Pi's have really had fun this year; but above all there reigned the warm friendliness and the co-operation of each girl, which are, after all, the true worth of Pi Theta Mu.



Left to right: Peggy Garner, Secretary; Connie Choate, President; Kay Thomas, Vice-President.

Athletic Association



MILDRED SMITH
President

This year the Athletic Association has sponsored basketball and volleyball tournaments, tennis and ping-pong tournaments for those who like to participate in sports and for those who enjoy cheering from the side lines. In these activities, the Association succeeded in achieving these aims: promoting interest in athletics, promoting good sportsmanship, encouraging a healthy school spirit.



First row: Millie Smith, Janet Porter, Charlotte Ledford, Virginia Yelvington. *Second row:* Susanne Wilson, Betty Jean Phillips, Mary Beth Clark, Claudine Hodgkin.

Home Economics Club



JANE WILSON
President

The Home Economics Club, having been organized only last year, has fast become a popular, as well as an educational, club for Peace Home Economic enthusiasts. Among the outstanding activities of the year have been interesting talks by Raleigh's leading economists and Miss North Carolina, chapel programs by the members, and teas for teachers, friends, and parents of the students.



First row: Mary Beth Schure Clark, Margaret Carter, Jane Wilson, Carolyn Wilson. *Second row:* Lyde Barbrey, Betsy Weldon, Lottie Kincaid, Sandra Healy, Margaret Boylan, Nancy Horton, Betty Jane Askew.



FEATURES



MISS PEACE

DOROTHY BYRNE PRESSLY



MAY QUEEN

MARGARET TUCKER BOYLAN

Outstanding Seniors



BARBARA BROWN

Barbara occupies an especially important place in the mind of each Senior. As the Senior Class President she has worked diligently and earnestly for each member of the class, helping to make our year successful and happy. But as a member of the Student Council and P.S.C.A. Cabinet Barbara has served not just the Seniors, but every girl in school. The best description of Barbara is that of All-American Girl—friendly, charming, and sincere—for that is what she is.

MARGARET DAUGHTRIDGE

As President of our P.S.C.A. Margaret has been a wonderful influence on our religious life. She worked hard and faithfully in her quiet, efficient way to bring us the true meaning of Christmas in the Pageant. She has taken part in many other school activities, always with the thought of serving others. Especially, she has been a friend to every girl at Peace, thus endearing herself to each of us.



Outstanding Seniors

JO ANNE FUSSELL

To know the gentle sincerity of our Jo Anne is to understand why she has won the affection of Peace students. Her quiet, successful work as Assistant Editor of *THE LOTUS* reflects an ability characteristic of her every activity. And, as Vice-President of the P.S.C.A., as a member of both the *Peace Times* staff and the Papyrus Club, Jo Anne has shown again remarkable interest and outstanding diligence. Christian leadership, truth, and humor in its most wholesome form are hers; to remember those qualities in Jo Anne will be a joy.



ANN HOLT

The many qualities that make Ann an outstanding senior can never be put into a few words. She has participated in various campus organizations, sports, and social events. Her scholastic ability is proved by the fact that she is a member of the Phi Theta Kappa and the Sigma Pi Alpha. Ann's sparkling personality and warm smile have won her many friends. Indeed "To know Ann is to love Ann."



Outstanding Seniors



MARY LEGGETT

Mary could well be called the ideal Peace student. Her friendly smile and charming ways have endeared her to both students and teachers alike. Her doll-like appearance and her graciousness tend to make her fit perfectly into the setting of Peace. No one could be busier than Mary. She has held many important offices including being editor of the *Peace Times*, a member of the P.S.C.A. Cabinet, president of the Papyrus Club, and Vice-President of the International Relations Club. The amazing fact is that she manages to do every job well. Mary Leggett is truly an outstanding senior.

MARY MORGAN

It takes a recipe of good qualities to sum up an outstanding girl. First, take a leader. Add two tablespoons of sincerity and a pinch of laughter. Mix in well the ability to get along with others. For best results, add a deep love for life and music. Sprinkle with good grammar; then bake in the oven of "activities." Makes one outstanding senior with charm—Mary!

Climb far, Mary, your goal the sky, your aim the star!

"Music is well said to be the speech of angels."

—CARLYLE



Outstanding Seniors

ANNE SHAW

As the saying goes—so many times the best things come in small packages. This is especially true when speaking of Anne Shaw. Forgetting herself and devoting all possible time to the problems of her fellow students, Anne has been not only the efficient president of the Student Government Association, but also a personal friend and adviser of each girl. Filling the offices ex-officio, she is a member of the P.S.C.A. Cabinet and a standing member of the Honor Court. A "Jack-of-all-trades," Anne is superior in athletics, as well as in scholastic ability. Never shall the warmth, spirit, and generosity of this small magnetic package of personality be forgotten in the annals of Peace College.



SUE SORRELL

Sue Sorrell has proved herself an outstanding senior, not only by her steadfast and successful work as editor-in-chief of the 1956 LOTUS, as member in Alpha Pi Epsilon and other school organizations, but by just being Sue—the Sue we all admire because of the warm and friendly smile, the lovable humor, the quiet charm, and the constant concern for others that make up her genuine personality. Sue, who in her own sincere manner does all that falls her lot—and more—will truly have a place in the memories of every Peace girl.

Dear Mother

Just thought I should mention how much I have enjoyed
you in some ways you have / it. Two years, you
are my first place in all of our hearts. You have
been a great friend of our home town. This year

You are a very good **Marshals** give with a beautiful
voice. I want to wish you the best of luck always to a
very loving girl.

Best wishes,
Love,

Betty Jane Askew

First row: Kay Thomas. Janet Porter. Second row: Rose Bracev. Betty Jane Askew. Ross Garner.





ADVERTISEMENTS

1956 SPONSORS

We gratefully acknowledge their support

A Friend
Brannan's Grill
Bishop's Phillips 66, 909 Downtown Blvd.
Byrum, Leon, Optical Company
Carolina Typewriter Company, 115 S. Salisbury Street
Caudle's Shoe Shop
Eckerd's Drug
Garner's Esso Service Station
Herring Sash and Door Company, Inc.
Ideal Cleaners
Jeffries Jewelers
Johnson and Lamb
Knitting Nook, 16 N. Boylan Avenue, M. J. Hadley, Manager
Newton's, Cameron Village
Person Street Esso
Pine State Creamery
Powers Baking Company
Randolph's
Suburban Market, 3001 Anderson Drive
T. H. Briggs & Sons, Inc.
Taylor Biscuit Company
Thompson and Lynch Company
Upchurch's Gulf Service in Raleigh's Cameron Village
Vogue Beauty Salon
Wayside Furniture House
Zelia's, Inc.

Ki Dot,

Well get I guess this about it, but it sure has been fun. I don't think I have to tell you how much my knowing you has meant to me. Your friendship has made this year one of the happiest years of my life and I am looking forward to seeing you again this summer that is, if you don't go to Montreal.

VERY BEST WISHES

TO THE CLASS.

OF 1956

I don't remember the first time I saw you. But I remember what I thought--I figured that you must be one of the most wonderful girls around anywhere, now I know I was right. Without out your sweet self around, Dot, I don't know what would have happened to me. You bright girl is just a guide, no right though she year, can't you imagine what I will be next year (Hm) Seriously, I you are one of the most wonderful girls I have ever known or that I will hope to know. You are beautiful, charming, you dependable, beauty as well. you have got to, charm, you dependable, set as a matter of fact, I guess you have all the qualities that a person looks for in their best friend. Enough of this!!!

HUDSON-BELK COMPANY

We have had some wonderful times together and with how + Volky W. as you like that night of you bit. We saw you in "Billboard" to you at the S.O.W. Those times of interrupted your service are "good morning" or something only like that. Well, you won't have to set us with it one much longer.

Serving in the Capital City for 41 Years

May you have the best life has to offer you always you certainly deserve it. (I hope you could read this.)
Love always,
Bates

... of which one this must stiff.
... hat ... that I must say
that really meant something you already know
... the ... believe simply can not be
... I love you and I love everything
... your good father and ...
... I shall forever give
... with a great deal of interest.

YELLOW CAB CO.

2-5811

TEmpLe

2-5811

OLDEST AND MOST RELIABLE

RALEIGH, N. C.



There's Nothing
Like a Coke
Fifty Million
Times a Day

Love,
Mary
"Moose"

Capital Coca-Cola
Bottling Company, Inc.

Raleigh, North Carolina



Compliments
of

**MITCHELL'S HAIR
STYLING**

May 28, 1956

Dearest Dot,

It does seem funny to be writing in a Peace College annual - our senior issue at that. Dot of all the girls I've been friends with I've felt closest to you all thru the years and I hope we'll always be close.

W. H. KING DRUG COMPANY

WHOLESALE DRUGGISTS

RALEIGH, N. C.

BYNUM PRINTING COMPANY

BETTER PRINTING

Phone 2-6417

BEST WISHES

from

HOTEL SIR WALTER

Raleigh's Largest and Finest

ARTHUR E. BUDDENHAGEN

Manager

Compliments

of

ADLER'S, Inc.

Buy At **LAND'S** And Save

Raleigh's Leading Credit Jewelers

Fayetteville Corner Hargett Street

*Building
Materials*



*of Every
Kind*

Capitol City Lumber Co.

Telephone 2-6492

HELPING TO BUILD

A Finer Carolina

Through —

- *Agricultural Development*
- *Community Improvement*
- *Industrial Expansion*

CAROLINA POWER & LIGHT COMPANY

*Compliments
of*

NATIONAL ART SHOP

621 Hillsboro Street
RALEIGH, N. C.

*Compliments
of*

**Cooper's
Furniture House**

Opposite WPTF Transmitter
Hwys. 1-64-70-A
CARY, NORTH CAROLINA

*Compliments
of*

**WRENN'S
SHELL SERVICE**

Corner St. Mary's and Peace

**BELTONE HEARING AIDS
Beltone-Maddrey Co.**

21 W. Hargett Street
RALEIGH, N. C.

ALLISON-LEINSTER, INC.

Phone 2-1632 For Insurance

Raleigh B. and L. Building
RALEIGH, N. C.

Insurance Service Since 1908

J. C. ALLISON
President

MRS. SARAH L. COWPER
Vice-President

J. A. LEINSTER
Secretary-Treasurer

**CAROLINA WHEEL
and
RIM COMPANY**

BOYLAN-PEARCE

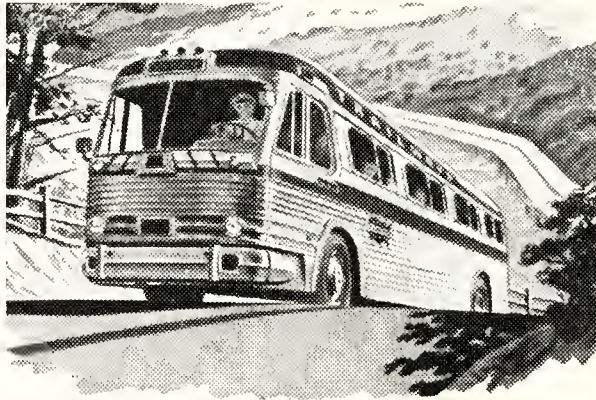
"In Raleigh's Cameron Village"

SMITH STUDIO

Official Photographers for THE LOTUS

Portraits and Application Pictures May
Be Ordered From Your School Negatives

12 East Hargett Street



**Your Trailways bus
travels as fast
as safety allows!**

PEACE COLLEGE CLASS RINGS AND PINS
SOCIETY PINS AND NOVELTY JEWELRY

WALTER B. ANDERSON

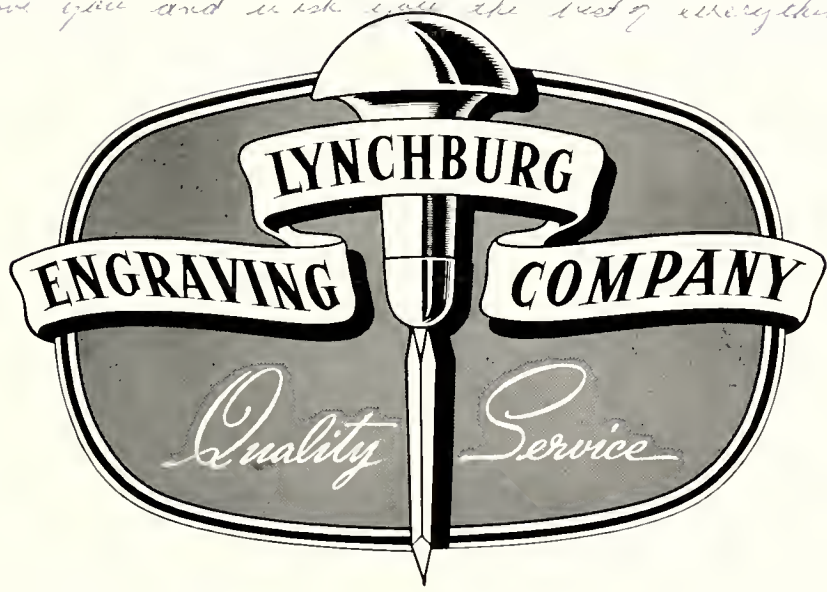
L. G. BALFOUR PRODUCTS
RICHMOND, VIRGINIA

Dear Dot,

I hardly know the right words to express my love and the meaning of my friendship for you. These two years at Peare have been wonderful and girls with love, understanding and a friendly smile like yours have left a memory of Peare in my heart which I'll never forget. But you are a wonderful girl and I can see why for with your understanding and helpful family you could be nothing else.

I love you and wish you the best of everything. Love you!

Lyn



Designers and engravers of
the South's finest school
publications



LYNCHBURG, VIRGINIA

[Faint, mostly illegible handwritten text at the bottom of the page, possibly bleed-through from the reverse side.]

Dear Mr. ...
to do ...
your ...
writing ...

... that you have been very patient and kind with me and I appreciate it so much. I can't believe this two fabulous years are over. Haven't we've had fun in chair, picnics and different little things done together. There I will always remember. Thanks for helping me out in W.F. Hope we can work together this summer. I want to come visit you next year at Carolina. Behave yourself - if possible! ha!!
May God bless you always,
Love,
Mary Robertson

Best Wishes From

NORTH CAROLINA EQUIPMENT COMPANY

CONSTRUCTION, INDUSTRIAL & LOGGING EQUIPMENT
CONTRACTORS' & MUNICIPAL SUPPLIES

"International Diesel Power"

RALEIGH
GREENVILLE

WILMINGTON
GREENSBORO

CHARLOTTE
ASHEVILLE

Compliments of

International Printing Pressmen & Assistants' Union of North America

WARREN W. McCANN
Special Representative

219 E. Drewry Lane
Raleigh, North Carolina



PEPSI-COLA BOTTLING COMPANY OF RALEIGH
3705 Hillsboro Street Tel. 3-1071

PERSON STREET PHARMACY

620 North Person Street

A Complete Line of Nationally Advertised Drugs
Plus a Selected Assortment of Toilet Items

Soda Our Specialty

PERSON STREET VARIETY STORE

702 North Person Street

School Supplies and Everyday Needs
Complete Five and Ten

J. E. TREADWELL, *Proprietor*

DILLON SUPPLY COMPANY

INDUSTRIAL MACHINERY & EQUIPMENT

Raleigh

Durham

Rocky Mount

Goldsboro

**HOOD-MODEL
DRY CLEANING COMPANY**

"Ask the Folks We Serve"

Office—117 E. Morgan Street
Plant—606 N. Person Street
PHONES 2-3015 - 2-2862

**PROFESSIONAL
PHARMACY**

Professional Building
PHONE 5916 RALEIGH, N. C.

*"Prescriptions Are Our
Business"*



JOLLY'S

Established 1881

JEWELERS
and
SILVERSMITHS

*Compliments
of*

**WARREN'S
RESTAURANT**

301 West Martin Street
RALEIGH, N. C.

MOTHER  **AND**  **DAUGHTER**
FASHIONS

Balentine's
Fayetteville Street

Compliments of
**MITCHELL
FUNERAL HOME**

St. Mary's at Johnson Street
DIAL 3-8678

BEST WISHES TO THE
CLASS OF 1956
**GARLAND C. NORRIS
COMPANY**

122 Glenwood Avenue
RALEIGH, N. C.

FLOWERS!

*Cut Flowers Corsages
Graduation Bouquets
Decorations*

PHONES 8347 - 2-0795

J. J. FALLON CO., Inc.

*"We Grow the Flowers
We Sell"*

HONEYCUTT CLEANERS

128 W. Martin Street
605 Newbern Avenue
227 Pace Street
PHONE 3-1696

FIRST-CITIZENS BANK & TRUST CO.

MEMBER FEDERAL DEPOSIT INSURANCE
CORPORATION

Three Offices in Raleigh

MODERN OIL COMPANY

Distributors Petroleum Products

902 North Dawson Street
RALEIGH, NORTH CAROLINA
DIAL 2-6681

Compliments of

**CAPITAL
Ice and Coal Co.**
Incorporated

600 West Hargett Street
PHONE 5589

**Ice
Coal
Fuel Oil**

EARL JOHNSON
HARRY MOORE

B. E. DENNIS
BILL WARD

MOORE & JOHNSON CO.

*"For 32 Years Raleigh's Leading
Insurance Agency"*

INSURANCE - SURETY BONDS

Insurance Building
RALEIGH, NORTH CAROLINA

Compliments of

**BRYAN-COOPER
OIL COMPANY**

Jobbers of PHILLIPS 66

RALEIGH, N. C.

CANTON CAFE

CHINESE-AMERICAN FOODS

Air Conditioned

408 Hillsboro Street
DIAL 2-7867

NEIMAN'S

Jewelers - Silversmiths

109 Fayetteville Street
RALEIGH, N. C.

Lewis Sporting Goods

HEADQUARTERS
for
TENNIS SUPPLIES

ROYAL CROWN
EST. 1872
COLA
BEST BY TASTE-TEST

FINCH'S DRIVE IN, INC.

AIR CONDITIONED
DINING ROOM
CAFETERIA

Phone

4-7396

4-7397

PITTMAN PRINTING COMPANY

Printing and Lithographing

4308 Western Blvd.
RALEIGH, N. C.

JOHN ASKEW

PAINTING AND
INTERIOR DECORATING

*Estimates Made in and
Out of Town*

Telephone 2-6824
110 Glenwood Avenue

Ferguson's Hardware

HARDWARE AND
HOUSEHOLD SUPPLIES

"We Specialize in Service"

2900 Hillsboro Street
PHONES: 2-4877 - 2-3030

J. F. WILLIS

SHEET METAL WORK & ROOFING
LENNOX FURNACES
TIN - SLATE - TILE

and

COMPOSITION ROOFING

Residential Air Conditioning

Phone 2-6921 7 W. Peace Street
RALEIGH, N. C.

MORGAN JONES COTTONS

ARE

"Yours for a Lovely Home"

The Minuet Bedspread
Texturtuff Bedspreads
Hobnail Bedspreads

Bath Sets
Kitchen Cottons
Scatter Rugs

PRODUCED IN NORTH CAROLINA
SOLD BY FINE STORES EVERYWHERE

MORGAN-JONES, INC.

58 Worth Street
NEW YORK, N. Y.

Compliments of

WARLICK'S RESTAURANT & DRIVE IN

CAMERON VILLAGE



For a *cool, clean*
taste...



Nothing does it
like
Seven-Up!

BROGDEN PRODUCE COMPANY, INC.

Wholesale

FRESH FRUITS AND PRODUCE

RALEIGH

Serving PEACE COLLEGE
for over Fifty Years

Compliments

Wyatt-Quarles Seed Co.

Seedsman

Box 2131

RALEIGH



Downtown and Cameron Village

BRITAIN'S
Beautiful Shoes

Thank you Bob

I thank you for looking after Bob for me all these years. I really do appreciate you have done.

FOOD SERVICE EQUIPMENT AND UTENSILS
THE JOHN HOOS CO. OF NORTH CAROLINA, Inc.
925 South Blount Street
RALEIGH, N. C.
Telephone 3-0062

Bob, I had always had a pattern in my life after I have had to see that the one who is Christ. You are a wonderful person and His light shines through you so much that no one could help but notice it. I hope that some day my life will be as full as yours.

Compliments of
BOYLAN APARTMENTS
A friend always
MRS. RUFUS TUCKER BOYLAN
Danna
P.S.

Repairing to Bob for me

THE LOTUS

ANOTHER FINE QUALITY ANNUAL
PRINTED AND BOUND IN OUR MODERN PLANT
IN RALEIGH, NORTH CAROLINA

The Leading Quality Annual
Printers in North Carolina

EDWARDS & BROUGHTON COMPANY

SINCE 1871
RALEIGH, NORTH CAROLINA

AUTOGRAPHS

Hi Dorothy,

I just can't make this end, for you and I are just on the threshold of our golden times together. Just think you'll have to put up with no such more! as 70 years some would say. "Gawd Child!" Please to go to "Peaced" this summer. I'll never see you are going to be with you. (Maybe that's it, though) Also, lets do come over about next year to see 71, ice water, 10 pies - 1500, and 71, ice, 1/2.

Dorothy, the experience of knowing, working, with you, as it were, your friend, I see meant so much to me, happiness and growth at home. I have admired you from the first day I saw you (the summer before I went to Peace) and my admiration grows every day. Thanks so much for this experience. Please help me to be more like you and be able to share responsibilities in the same manner that you do and be so sweet, understanding, and helpful to others' as you have been. Dorothy, your true beauty within shines on all around and I'm sure your life will be filled with love and fellows for all you have given to others. Thanks again for so much help and kindness this year. It has truly been a pleasure serving with you on the Peace Court and Cabinet. ^{Myself continue to bless} You, Love ^{you!} ^{Ann}

Dear Dot,

How can two to years pass so fast, and be such happy years? Dot, I hope we shall always be good friends because your friendship has meant so much to me. I'm glad that I'm not having to say goodbye, but I'm looking forward to our years together in Australia.

I really can't express myself in words, especially when it concerns someone that I admire so much. I've never seen anyone who seemed to radiate Christian living as you do.



Dot, you seem to appreciate and realize the real values in life. That's so much more than many of us do. In short, you have been a great inspiration to me. You are very fortunate too in having such wonderful aunts. Dr. Pressly will always be like a second Daddy to me. There is one thing I shall always keep - memories of all our experiences and activities. Have fun this summer! Lots of love, Margaret D.

Dear Dad.

I can't begin to tell you how much your friendship has meant to me these last two years. I'm sure the friends that one makes in college will be friends forever no matter where their separate paths take them. I want to thank you for just being my friend.

Dad, you have done a marvelous job as president of the first Honor Court. Not many people are as capable as you, and very few have your calm, gracious manner.

You will never know how much your being on Council has helped me. I think I was most fortunate to have been able to serve with you. Many things would have gone undone without your understanding help.

I surely am looking forward to two years at Carolina. I know our fun and friendship is just beginning. Honestly, I will try not to cause you too much worry.

Best of luck to you, Dad -
You are the most deserving I know.
Love always,
Tom

THE UNIVERSITY OF CHICAGO
PRESS
CHICAGO, ILLINOIS
1963