

LOTUS

1957









THE
L57
/

LOTUS

PEACE COLLEGE, RALEIGH, NORTH CAROLINA

FOREWORD

*"Fair Greece, sad relic
of departed worth!
Immortal, though no more;
though fallen, great!"*

—BRYAN

The wisdom, art, and beauty of the ancient Greeks still live in our modern world. The books containing the ideas of great men of Greece still adorn our library shelves. Her gods and goddesses personify to us the virtues and talents for which we all strive.

The ideals, the standards, and even the buildings of Peace College radiate that same aura of a love of learning, a sense of beauty, and a cultivation of talent that characterized that long ago civilization which has profusely influenced our culture.

In this Lore, we will adorn the praiseworthy with laurel leaves, prove the worth of various institutions and various people by the very words of the learned Greek philosophers, and endeavor to recapture the dignified classic splendor of an unequalled civilization.

The comparison of Greece with our college is the highest form of praise we can render.



13344





WILLIAM PEACE

One hundred years ago, William Peace gave the first money to begin the school which proudly bears his name. In this our 1957 LOTT'S we honor him.

CONTENTS

THE COLLEGE 9

THE CLASSES 13

ACTIVITIES 63

FEATURES 87

ADVERTISEMENTS 95





DEDICATION

To MISS FRANCES SUTER we dedicate the 1957 Lotus. In her quiet way she is a vital part of our college life at Peace. As the advisor to the Student Council, she has shown her interest in the growth of the individual girl. Her own actions are exemplary of the high principles which she has expected us to follow. Miss Suter's office and heart are opened to any girl who seeks her help. Because of her sincerity, intelligence, charm, and honor, we are proud to dedicate this annual to our Academic Dean—Miss Suter.

*"Manner, not gold, is woman's best
adornment."*

—MENANDER



TRIBUTE

To DR. CHARLES TURNER, who has enriched our lives both scholastically and spiritually in his first year at Peace—we pay tribute. He is one richly gifted and shares his knowledge and faith in a dynamic way. His chapel services have helped us to find ourselves and to become better acquainted with the spiritual values of life. Witty, wise, and always working—this is Dr. Turner to whom we pay our affection, gratitude, and—tribute.

*"Happy is the man possessing
The superior holy blessing
Of a judgment and a taste
Accurate, refined, and chaste."*

—ARISTOPHANES

Board of Trustees

OFFICERS

William P. McPherson	<i>Chairman</i>	Rev. Don Carson	<i>Assistant Secretary</i>
James D. Kilgore	<i>Vice-Chairman</i>	William C. Pressly	<i>Secretary-Treasurer</i>

J. C. Allison, Raleigh
Mrs. George F. Ayinger, Laurinburg
Thomas M. Belk, Charlotte
Archie Cannon, Concord
The Rev. Don Carson, Sanford
E. B. Crow, Jr., Wilson
Neill A. Currie, Jr., Fayetteville
Mrs. George Finch, Thomasville
Kelvin Gray, Raleigh
John Holbrook, Lowell
The Rev. William B. Hood, Wallace
Karl G. Hudson, Jr., Raleigh
Mrs. Julian B. Hutaff, Fayetteville
James D. Kilgore, Raleigh
Dr. F. L. Knight, Sanford
The Rev. Charles E. S. Kramer, D.D.,
Richmond, Va.
Mrs. B. R. Lacy, Raleigh

H. H. Littrell, Rocky Mount
Hector MacLean, Lumberton
E. B. Manning, Roanoke Rapids
Mrs. C. C. McAllister, Fayetteville
William P. McPherson, Raleigh
The Rev. W. S. Patterson, Davidson
Dr. John Rhodes, Raleigh
The Rev. Ben Lacy Rose, Richmond, Va.
Raymond A. Snow, Raleigh
The Rev. Thompson B. Southall, Statesville
Charles M. Sprinkle, Winston-Salem
The Rev. James Sprunt, D.D., Raleigh
Mrs. Thomas Stamps, Raleigh
The Rev. John Mack Walker, Roanoke Rapids
The Rev. Roy E. Watts, D.D., High Point
The Rev. J. Harry Whitmore, D.D., Thomasville
The Rev. Murphy Williams, Jr., Wilson
Mrs. Robert Wyatt, Raleigh

Woman's Advisory Committee

Mrs. Graham P. Abernathy, Stanly
Mrs. Loyd Ardrey, Charlotte
Mrs. Isaac Avery, Statesville
Mrs. E. L. Barber, Raleigh
Mrs. James R. Benson, Wilmington
Miss Mary Black, Davidson
Mrs. W. O. Burgin, Lexington
Mrs. Herman Campbell, Pinchurst
Mrs. Lawrence Cavenaugh, Wallace
Mrs. George Chadwick, Wilmington
Mrs. C. Don Coffey, North Wilkesboro
Mrs. J. B. A. Daughtridge, Rocky Mount
Miss Grace Edminston, Mt. Ulla
Mrs. G. R. Ennis, Jr., Leland
Mrs. J. W. Farrior, Warsaw
Mrs. Rudy Fonville, Burlington
Mrs. W. C. Goley, Graham
Mrs. Charles Grier, Carthage
Mrs. Hoyt M. Hackney, Sanford
Mrs. W. M. Hall, Belmont
Mrs. C. H. Hand, Lowell

Mrs. J. K. Harper, Pinetops
Mrs. Willis I. Henderson, Jr., Mecklenburg
Mrs. O. R. Hodgins, Thomasville
Mrs. Dan Holler, Raleigh
Mrs. Julian Hutaff, Fayetteville
Mrs. E. Johnston Irvin, Concord
Mrs. Emis Jackson, Gastonia
Mrs. R. C. Jenkins, Thomasville
Mrs. James Johnson, Lumberton
Mrs. Victor King, Sanford
Mrs. A. J. Mayes, Taylorsville
Mrs. Wallace Melver, Sanford
Mrs. H. C. McLaughlin, Rafter
Mrs. S. L. Parker, Jr., Kinston
Mrs. Parks H. Moore, Gastonia
Mrs. Charles Parrish, Fuquay Springs
Mrs. J. C. Prier, Pineville
Mrs. Eric Rodgers, Scotland Neck
Mrs. Beaumont Whitten, Charlotte
Mrs. R. A. Willis, Monroe
Mrs. James Wilson, Fayetteville

Mrs. David Worth, Raleigh



THE COLLEGE

Administration



DR. WILLIAM C. PRESSLY

One can hardly think of Peace without thinking of its beloved president, Dr. Pressly. Any college guided by a man who stresses personal contact with his students is indeed blessed. A rare combination of the benevolent father, the Southern gentleman, and a capable administrator, Dr. Pressly has a reserved section in the heart of every Peace girl.



MRS. LILLIAN M. FOX

We are all proud to introduce our parents, our friends and our visitors to our charming and lovely dean, who never fails to win them at once with her gracious New England smoothness and her animated conversation. Mrs. Fox spends many hours a day dealing with a network of social activities and household functions, yet still warms each girl who enters her office with a welcoming smile.

Faculty

MISS LYDA BAUCOM
Bursar



MRS. NELL WADE BOOTH
Commercial Subjects, A.B.

MISS ELIZABETH CALDWELL
History, A.B., A.M.

MRS. FRANCES DARDEN
Hostess



MRS. SALLY DAVIS
Nurse, R.N.

MRS. ELEANOR DIXON
*Commercial Subjects,
A.B., A.M.*

MISS NANCY EUBANKS
Secretary to the President



MISS JOYCE FOWLER
*Health and Physical Education,
A.B., A.M.*

MISS ETHEL GRAMMER
Dictitian

DR. CARL HJORTSVANG
*Voice, Speech, A.B., B.Mus.,
M.Mus., D.S.M.*



MISS EVELYN HOLLOMAN
Science, A.B.

MISS COLLEEN JOHNSON
Piano, B.Mus., M.Mus.

MRS. LILLIAN JONES
Home Economics, B.S., M.S.



MRS. ETHEL J. KIRKPATRICK
Commercial Subjects, A.B.

MISS WINIFRED KUHN
Mathematics, A.B., B.E., M.S.

Faculty



MISS WYNELLE LEWIS
Spanish, A.B., A.M.

MRS. CATHERINE MILLER
Organ, A.B., A.M.

MISS JULIA OATES
English, A.B., A.M.



MISS MABEL PUGH
Art, History of Art

MRS. MARY RHODES
Commercial Subjects, A.B.

MRS. BESSIE RICHARDSON
Supervisor of Buildings and Grounds



MRS. ETHEL ROSE
Librarian, A.B., B.A. in L.S.

MISS FRANCES SUTER
Registrar, A.B., A.M.

MRS. MILDRED THIIGPEN
Hostess



DR. CHARLES CASON TURNER
Bible, A.B., B.D., Ph.D.

MISS ANN TYSOR
French, A.B., A.M.

MR. D. E. WARNER
*Assistant to the President,
B.S., M.Ed.*



DR. SANFORD WINSTON
*Psychology and Sociology,
A.B., Ph.D.*



CLASSES





The Seniors

OFFICERS

ELLEN NORTON

Secretary

LYNDIE JAMES

President

CAROLYN TODD

Vice-President

DOROTHY NEWTON

Treasurer



BETSY BAENTINE Raleigh, N. C.

Pi Theta Mu

... *Petit Mademoiselle* ... "Jannie with the Light Brown Hair" ... *Apple Blossom Time* ... *quiet spirit* ...



MARTHA FRANCES BARBREY

Clinton, N. C.

Sigma Phi Kappa

... *sines and co-sines* ... *the golden girl* ... *enterprising* ... "straw hat." ...

President of Sigma Phi Kappa 4; Hall Chairman 4; Social Chairman 4; Presidents Council 4.



CAROLYN McNAUL BEATY

Siler City, N. C.

Rho Delta Chi

... *pearl* ... *classic* ... *pink organdy* ... *smile* ...

Junior Class President 3; May Court 3; International Relations Club 3, 4; P.S.C.A. Cabinet 3, 4, President 4; Student Council 3, 4; Honor Court 4; Presidents Council 4; Outstanding Senior 4.

MARY JANE BOYDELL

Greensboro, N. C.

Rho Delta Chi

... blue brocade ... well-groomed ...
settled ... "Quelques Fleurs." ...

Treasurer of Rho Delta Chi 4; Lotts
Staff 4.



MARY CABELL CARLAN

Candor, N. C.

Rho Delta Chi

... kitten ... blue cashmere ... Elizabeth
Barrett Browning ... youthful laughter.

Papyrus Club 3, 4, President 4; Vice-
President of P.S.C.A. 4; Dramatics Club
4; Peace Times 3, 4; Lotts Staff 4; Phi
Theta Kappa 3, 4, Secretary 4; Sigma
Pi Alpha 3, 4, Treasurer 4; Outstanding
Senior 4.



LUCY CATHERINE CONNOR

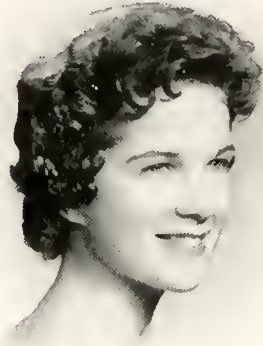
Greensboro, N. C.

Sigma Phi Kappa

... bubbles and bangles ... gregarious ...
"Written on the Wind" ... spring-
time. ...

Dramatics Club 4; Home Economics Club
4.





NANCY EVELYN CRUMP

Raleigh, N. C.

Phi Theta Mu

... "Tenderly" ... sapphire ... velvet ...
Venus.

Group Chairman 4; Marshal 4.



ANN EVANGELINE DAVIS

Raleigh, N. C.

Pi Theta Mu

... Mozart ... daffodils ... "Sweet Talk"
... likable. ...

Choir 3, 4; Lotts Staff 3.



MARTHA JENNIE ELMORE

Suffolk, Va.

Rho Delta Chi

... husky voice ... radiantly happy ...
"Singing the Blues" ... Bowd Street. ...

College

GRACE GAWTHROP

Jacksonville, N. C.

Rho Delta Chi

. . . *Lavender lace . . . Broadway . . .
champagne . . . "Stradovari."*

Lotus Staff 4; Dramatics Club 4, President
4; Choir 4.



GAIL KATHLEEN GODWIN

Ashville, N. C.

Rho Delta Chi

. . . *modern poetry . . . Cleopatra . . .
leather-bound books . . . "Fire and Ice."*

Phi Theta Kappa 3, 4, President 4; Sigma
Pi Alpha 3, 4, Secretary 4; Papyrus Club
3, 4, Secretary 4; Presidents Council 4;
International Relations Club 3, 4, Vice-
President 4; Outstanding Senior 4; Lorr's
Staff 3, 4; Associate Editor 4; *Peace Times*
3, 4.



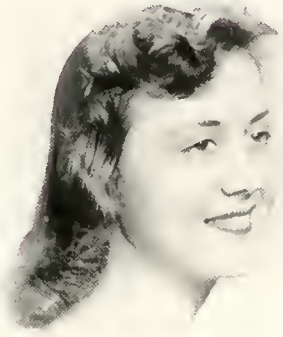
ANNE HAMMERSLA Hickory, N. C.

Sigma Phi Kappa

. . . *gazel . . . forest green . . . brisk . . .
open minded. . . .*

Student Council 4; President of Honor
Court 4; Phi Theta Kappa 3, 4; Sigma
Pi Alpha 3, 4; Presidents Council 4; Out-
standing Senior 4.





VIRGINIA SUE HARRIS
 Laurinburg, N. C.
 Rho Delta Chi
... honey and chestnuts ... diplomatic
... gentle ... "Claire de lune" ...
 Student Council 4; President of Student
 Body 4; P.S.C.A. Cabinet 3, 4; Honor
 Court 4; Junior Class Secretary 3; Presi-
 dents Council 4; Outstanding Senior 4.



ANGELA JEANNETTA HILLIARD
 Raleigh, N. C.
 Pi Theta Mu
... tango ... Rembrandt ... "Tigress"
... red velvet ...
 President of Pi Theta Mu 4; Vice-President
 of Art Club 4; International Relations
 Club 4; Papyrus Club 4; Business Staff
 of Lotus 3, 4; Assistant Business Manager
 of Lotus 4.



CLAUDINE KRIDER HODGIN
 Raeford, N. C.
 Rho Delta Chi
... Ivy League ... "Madame Butterfly"
... sturdy ... Diana.
 Athletic Council 3; Choir 3, 4, Treasurer 3,
 President 4; Lotus Staff 4; Vice-President
 of Rho Delta Chi 4; Presidents Council 4.

College

PATRICIA WARREN HOLLAND
Norfolk, Va.

Rho Delta Chi

. . . aristocrat . . . imported linen . . .
Chanel No. 5 . . . Mantorani . . .

Lotus Staff 4; Group Chairman 4; Secretary of Rho Delta Chi 4.



NANCY KNIGHT HORTON
Raleigh, N. C.

Rho Delta Chi

. . . royal blue . . . Peter Brugel . . .
jovial . . . tulips . . .

Home Economics Club 3, 4.



MARGARET LYNWOOD JAMES
Franktown, Va.

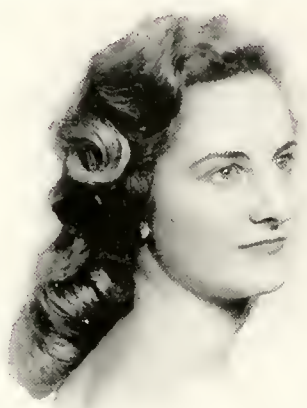
Rho Delta Chi

. . . satin coiffure . . . Comic . . . winning
. . . starched cotton . . .

P.S.C.A. Cabinet 3, Secretary 4; Student Council 4; Papyrus Club 3; Senior Class President 4; *Peace Times* Staff 3; Vice-President of Junior Class 3; Miss Peace 4.



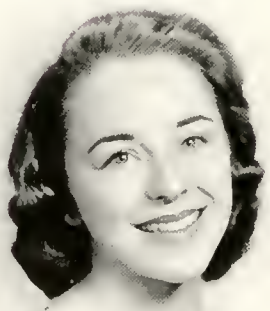
of '57



ANNIE RUTH JOHNSON
Durham, N. C.
Rho Delta Chi
... "Because" ... white satin ... neatness
... sincerity. ...



EVIE MAXINE KEARNEY
Raleigh, N. C.
Pi Theta Mu
... iris ... "The Sand and the Sea" ...
typewriter ribbons ... blythe. ...
Papyrus Club 3; Lotts Staff 3; Art Club
3; Secretary of Pi Theta Mu 4; Group
Chairman 4.



BETTY IRENE KEY Sanford, N. C.
Rho Delta Chi
... "Dance, Ballerina, Dance" ... sea
gulls ... gardenia ... Pandora. ...
Choir 3, 4.

College

CAROLYN KING (MRS.)

Raleigh, N. C.

Sigma Phi Kappa

... *English China* ... *band of gold* ...
Penelope ... *sure* ...



MARJORIE LOUISE LINZEY

Raleigh, N. C.

Rho Delta Chi

... *chic* ... "*Chantilly*" ... *pep* ... *Autumn leaves* ...

Home Economics Club 3; Papyrus Club 3;
Athletic Council 4; President 4; Presidents
Council 4; Chief Marshal 4; Lotrys Staff
4; *Peace Times* Staff 3.



JOYCE ANN LITTLE Raleigh, N. C.

Pi Theta Mu

... "*Song for a Summer Night*" ... *turquoise velvet* ... *white orchid* ... *shorthand pad* ...



of '57

Peace



GLEND A RUTH LOWE Elkin, N. C.

Rho Delta Chi

*... peaches and cream ... matter-of-fact
... dawn ... sneakers. ...*

Dramatics Club 3, 4.



MARGARET DILL LUCAS

Greensboro, N. C.

Rho Delta Chi

*... milk ... polish ... sunshine and
tweeds ... lunch on the terrace. ...*

Student Council 4.



JUDITH ANNE McCUBBIN

Raleigh, N. C.

Pi Theta Mu

*... Susan B. Anthony ... oak trees ...
beige silk ... rubies. ...*

Vice-President of Phi Theta Mu 4; International Relations Club 3, 4, Secretary 4; Papyrus Club 3, 4; *Peace Times* Staff 3, 4; Lorrys Staff 4; Group Chairman 4.

Seniors

College

NANCY JO McNEILL Nichols, S. C.

Rho Delta Chi

. . . daisies . . . pastoral . . . cheerful
. . . "Always." . . .



NANCY HARRIET MAEDER

Richmond, Va.

Rho Delta Chi

. . . parties . . . Stan Kenton . . . young
modern . . . red bermudas. . . .

President of Rho Delta Chi 4; Presidents
Council 4; International Relations Club 4;
Lorrs Staff 4.



HELENE GRACE MAHONY

Richmond, Va.

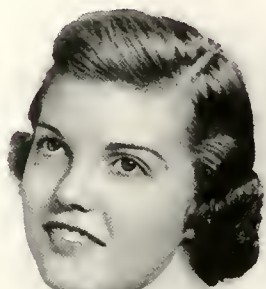
Rho Delta Chi

. . . mint green . . . dignity . . . every-
body's friend . . . Psyche. . . .

Secretary of Honor Court 4; Alpha Pi
Epsilon 3, 4; Vice-President 4; Lorrs
Staff 4.



of '57



MARY ANN MANNING

Bethel, N. C.

Rho Delta Chi

. . . *Heigh Ho!* . . . *American girl* . . .
champagne lace . . . *"Wind Song."* . . .

Secretary of Athletic Council 4; Lorus
Staff 4.



DOROTHY ELIZABETH NEWTON

Southern Pines, N. C.

Sigma Phi Kappa

. . . *"Stardust"* . . . *orchid* . . . *dark*
cool . . . *pensive.* . . .

Senior Class Treasurer 4; Alpha Pi Epsi-
lon 3, 4, President 4; Secretary of Student
Council 4.



ELLEN NORTON Laurinburg, N. C.

Rho Delta Chi

. . . *dynamic* . . . *"True Love"* . . . *Black-*
Eyed Susans . . . *peppermint candy.* . . .

Senior Class Secretary 4; Group Chairman
4.

College

GLEND A LUCILE PEARCE

Williamsburg, Va.

Rho Delta Chi

. . . *torcador pants* . . . "Glamour" . . .
knitting needles . . . *style* . . .

Lotus Staff 4.



EVELYN EARLE PETERSON

Raleigh, N. C.

Pi Theta Mu

. . . *Bach* . . . *strawberry blonde* . . .
opal . . . *duty* . . .

International Relations Club 3, 4; Papyrus
Club 3, 4; Group Chairman 4; *Peace Times*
Staff 3, 4; Lotus Staff 3, 4.



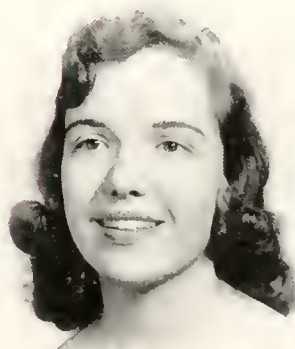
ELIZABETH ANN POLLARD

Farmville, N. C.

Rho Delta Chi

. . . *sterling silver* . . . *cinnamon* . . .
Florence Nightingale . . . *chocolate*
soda . . .

Group Chairman 4.



of '57



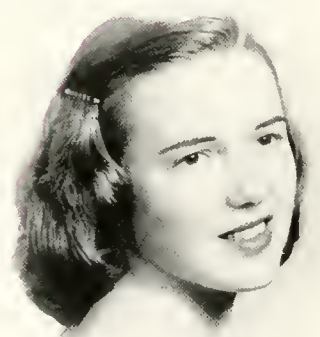
GAIL CANOVA PONS

Wilmington, N. C.

Rho Delta Chi

... amiable ... calico ... Glenn Miller
... black curls. ...

Art Club 4, Historian 4; Student Council 4.



PEGGY ANN PRATT

Kinston, N. C.

Rho Delta Chi

... bronze ... efficiency ... "Aida" ...
responsible. ...

Student Council 3; Lotts Staff 4, Typing
Editor 4.



SARALYN FRANCES PRICKETT

Raleigh, N. C.

Sigma Phi Kappa

... "My Fair Lady" ... russet ... charm
... executive. ...

President of Day Students 4; Student
Council 4; Presidents Council 4; Alpha Pi
Epsilon 3, 4, Secretary 4; Group Chair-
man 4.

College

BARBARA JANE REDDISH

Dunn, N. C.

Rho Delta Chi

. . . *Mona Lisa* . . . *white kid gloves* . . .
Shelley . . . *Princess* . . .

Vice-President of Student Council 4;
P.S.C.A. Cabinet 4; Art Club 4; Dramatics
Club 4; Papyrus Club 4; President of
Presidents Council 4; Outstanding Senior
4.



VIRGINIA ELIZABETH REID

Charleston, S. C.

Rho Delta Chi

. . . *wit* . . . *tan leather* . . . "*Arpege*"
. . . *careless effort* . . .

Choir 4; International Relations Club 4;
Art Club 4.



SAMANTHA RAE ROBINSON

Richmond, Va.

Rho Delta Chi

. . . *Paris in Raleigh* . . . *Persians* . . .
mystic . . . *long socks* . . .



of '57



RHETA GERTRUDE SALTER

Raleigh, N. C.

Pi Theta Mu

... "Rhapsody in Blue" ... hamburgers
and coffee ... red roses ... friend. ...

Marshal 4; Treasurer of Day Students 4;
Group Chairman 4; *Peace Times* Staff 4.



RITA BURKE SHERRER (Mrs.)

Raleigh, N. C.

Pi Theta Mu

... sports cars ... scarlet ... "Madmoi-
selle" ... Candlelight. ...

Peace Times Staff 4.



MARGARET SIMONS

Suffolk, Va.

Rho Delta Chi

... wholesome ... scotch plaid ... Southern
sweat talk ... "Woodhuc." ...

Student Council 3; Hall Chairman 4;
Lotts Staff 3, 4.

College

MARTHA ANN SOUTHERLAND

Rose Hill, N. C.

... *nightingale* ... *jeune amour* ... "Star-dust" ... "Woodluc." ...

Choir 4.



ELEANOR DUTY STEM

Roxboro, N. C.

Rho Delta Chi

... *regal* ... *Minerca* ... "Dancing in the Dark" ... *fire in the hearth.* ...

Lorr's Staff 3, 4, Editor 4; *Peace Times* 3, 4, Associate Editor 3; Papyrus Club 3, 4, Vice-President 4; Sigma Pi Alpha 3, 4, President 4; Dramatics Club 4, Vice-President 4; Presidents Council 3, 4; Daughters and Granddaughters Club 3, 4, President 3; International Relations Club 3, 4; Outstanding Senior 4.



SHIRLEY JEAN STUBBS

Laurinburg, N. C.

Rho Delta Chi

... *navy blue faille* ... *conscientious* ... *asters* ... "Desert Flower." ...

Peace Times Staff 4; Hall Chairman 4.



of '57



SHIRLEY MARIE TARLTON
Raleigh, N. C.

Sigma Phi Kappa

... noiseless ... Oxford gray ... printer's ink ... steady. ...

Peace Times Staff 3, 4, Editor 4; International Relations Club 3, 4; Sigma Pi Alpha 3, 4, Vice-President 4; Outstanding Senior 4, Group Chairman 4; Papyrus Club 4; Phi Theta Kappa 3, 4, Secretary 4.



CAROLYN RUBY TODD Norfolk, Va.

Rho Delta Chi

... patrician ... black velvet ... "Vogue" ... "Helen of Troy." ...

Vice-President of Senior Class 4.



MARY ELLEN TRIBBY
Raleigh, N. C.

Pi Theta Mu

... rosy cheeks ... bond paper ... checkered tablecloths ... lullaby. ...

Choir 3, 4; Group Chairman 4; Vice-President of Day Students 4.

REBECCA REID WALLACE
Carthage, N. C.

Rho Delta Chi

... jet black . . . rhinestones . . . *Calyпсо*
... independent. . . .

Choir 3, 4; Art Club 4.

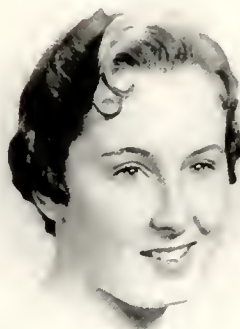


PAULA AUDREY WARD
Raleigh, N. C.

Pi Theta Mu

... cute . . . silk garters . . . "Flambeau"
... Eddie Fisher.

Art Club 3, 4; Home Economics Club 4;
Papyrus Club 3, 4; Secretary of Day Students 4; Lotts Staff 3, 4; *Peace Times* Staff 3.



FRANCES MARTIN WILLIAMS
Roxboro, N. C.

Rho Delta Chi

... Western saddle . . . October crispness
... tweed . . . "Carolina Moon." . . .

Home Economics Club 4.





MARY ELIZABETH WILLIAMS
Raleigh, N. C.
Rho Delta Chi
... *Beethoven* ... *picnic* ... "*Le Dandy*"
... *Longfellow* ...



KATY FRANCINE WILSON
Clinton, N. C.
Rho Delta Chi
... *caricest* ... *picture hats* ... *lilies of the valley* ... *Racine* ...
Art Club 3, 4; P.S.C.A. Cabinet 4.



CAROLYN ANNETTE WISE
Kinston, N. C.
Sigma Phi Kappa
... *white rose* ... *Keats* ... *dreams* ...
Cocker Spaniels ...
Lotus Staff 3.

College

BETTIE FAYE WOOTEN

Fayetteville, N. C.

Rho Delta Chi

... vibrant ... Southern Belle ... "April
Showers" ... Juliet. ...

Maid of Honor in May Court 4.



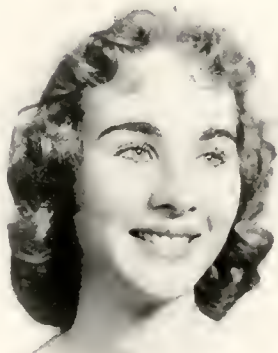
MARTHA SUE WOOTEN

Snow Hill, N. C.

Rho Delta Chi

... Spanish Moss ... evening shadows
... Jackie Gleason ... turquoise net. ...

Marshal 4; Dramatics Club 4; Lotus Staff
4; May Queen 4.



PEGGY JEANETTE YOUNG

Fayetteville, N. C.

Rho Delta Chi

... black watch plaid ... sea storms and
sunbursts ... enigmatic ... modern. ...



of '57

Last Will and Testament

ARTICLE I

To DR. PRESSLY:

To you, we leave our deepest appreciation for your guidance and kind words during the past two years. Your Christian teachings have added greatly to our spiritual lives.

ARTICLE II

To Mrs. Fox:

We thank you for all the help and advice which you have given us. May you feel that you have been a great influence in our lives. We are your children, for you have helped us grow.

ARTICLE III

To THE JUNIOR CLASS:

The past few years have been the most rewarding years of our lives, and we can only hope for as happy a future wherever we may go. To you, we leave this happiness and our love. We will never forget the joys, the laughs, the tears, and the fun that we have shared with you.

ARTICLE IV

To THE FACULTY:

You have made us and shaped us into what we are today. From you we have learned well and gained much. Our future success belongs to you.

ARTICLE V

SECTION 1

I, Joyce Little, do leave my seat in Short-hand C to Jackie Raynor.

SECTION 2

I, Lyndie James, do leave Peace with many happy memories and a hope that the future Seniors will experience the same feeling.

SECTION 3

I, Nancy Horton, leave my dust cloth to Carole Martin in hopes that next year she won't have to use it in her mailbox.

SECTION 4

I, Sue Wooten, leave my good times over at the Sigma Chi House and at Hayes Barton Pool to anyone who wants them.

SECTION 5

I, Carolyn Wise, leave my fabulous trips to Carolina to Penny Boone.

SECTION 6

I, Martha Southerland, leave my ability to have blind dates that really pay off to Frances Hammersla.

SECTION 7

I, Carolyn Todd, will to Betty Lee Johnson all the money that I have spent on long distance telephone calls this year so that she can buy the "Solid Gold Cadillac" that she has been wanting and also a book on "How to Pack the Trunks of Cars."

SECTION 8

I, Angela Hilliard, do hereby leave my love for Elvis Presly to all his other fans.

SECTION 9

I, Claudine Hodgkin, do hereby will my black windbreaker and skirt of many colors to Janelle McKinley so that she can have a uniform to wear to breakfast.

SECTION 10

I, Irene Key, do leave my well-warmed seat at the bridge table to Peggy Sutton.

SECTION 11

I, Aune Hammersla, leave for married life.

SECTION 12

I, Mickey Robinson, leave to Gill Crowson my bed in hopes that she will improve the sag.

SECTION 13

I, Glenda Pearce, do hereby bequeath my desire to have red hair to Pat Wilson.

SECTION 14

I, Becky Wallace, do leave my name as "Blossom" to the next Peace flower.

SECTION 15

I, Billie Simons, leave my Hall Chairman job to Gill Crowson who sets a perfect example of Third Main.

SECTION 16

I, Marty Barbrey, leave the mangled men at N. C. State to mingle with the men at Georgia Tech.

SECTION 17

I, Mary Cabell Carlan, leave my ability to play bridge to Gay Hudson in hopes that she makes many slams.

SECTION 18

I, Shirley Tarlton, leave my position as Editor of the *Peace Times* to anyone who loves premature gray hair.

SECTION 19

I, Peggy Pratt, do hereby leave my love for cadets to Alice Partin, who considers it worth

her while to thumb at least 197 miles to her destination.

SECTION 20

I, Kitty Connor, will some new telephones so that the girls next year can get their calls through.

SECTION 21

I, Ann Pollard, leave my long Monday night meeting to some fortunate Hall Chairman who doesn't have Tuesday classes.

SECTION 22

I, Paula Ward, leave my "no problems" disposition to Myrna Jones.

SECTION 23

I, Margaret Lucas, do hereby leave my big lunch box with the neat red thermos to the "luncher" next in line, Ann Taylor.

SECTION 24

I, Carolyn H. King, do leave my love for science to Penny Boone.

SECTION 25

I, Dorothy Newton, bequeath my sluggish hand, wandering mind, and typing eraser to Peggy Sutton and Elinor Salmon for their benefit in Shorthand C class next year.

SECTION 26

I, Gail Pons, leave my bed in Room 319 to Sue Denning.

SECTION 27

I, Nancy Maeder, do hereby leave my love for Richmond to Peggy Meintel in hopes that she may visit there more than I did.

SECTION 28

I, Mary Ann Manning, do leave my Central Nervous System to Dr. Winston and Miss Lewis.

SECTION 29

I, Margie Linzey, do bequeath my "bag of tricks" to Joyce Crocker to play on other innocent beechums and to Susie Wilson I do leave a box of powder (powder-time) and a hi-fi to play while in the shower.

SECTION 30

I, Patty Mahony, leave my place at the bridle table to Betty Bacon.

SECTION 31

I, Eleanor Stem, leave my presidency of the Sigma Pi Fan Club to Miriam Cates.

SECTION 32

I, Evelyn Peterson, leave my bed at home to Frances Jacobs. She always has wanted it by herself, and she insists upon kicking me out.

SECTION 33

I, Mary Jane Boydell, do hereby leave my

ability to be in bed with the "lights-out" to Betty Lee Johnson.

SECTION 34

I, Glenda Lowe, leave my pictures and love of Bob Seitz to my roomie, Gay Hudson, and hope she does better than I did.

SECTION 35

I, Barbara Reddish, do leave my outstanding ability to come in Saturday and Sunday nights "on time" to any rising Senior who likes to receive call downs.

SECTION 36

I, Martha Jennie Elmore, hate to leave my week ends in Raleigh but do hereby gladly leave my hours spent in studying to any poor Peace girl who really wants to study.

SECTION 37

I, Patsy Holland, do leave my ability to keep Third East quiet to Frances Wentz and the other cohorts in Suite 302.

SECTION 38

I, Frances Martin Williams, leave my nickname, "Martini," to Doris Sanders.

SECTION 39

I, Ann Davis, leave my voice lessons to Alice Partin.

SECTION 40

I, Sue Harris, do will my love and great knowledge for "El Espanol" to Pat Partin.

SECTION 41

I, Mary Ellen Tribby, leave my desk in Mr. Warner's office to somebody who has absolutely nothing to do!

SECTION 42

I, Judith McCubbin, do bequeath my ear to anyone who would like to be a bus driver.

SECTION 43

I, Gail Godwin, will my weakness for Wake Forest graduates to Polly Goodwin and my unquenchable thirst for knowledge to Frances Jacobs.

SECTION 44

I, Virginia Reid, leave my bus tickets to Charleston and luggage to Jane Sanders, in hopes that she makes good use of them.

SECTION 45

I, Jeanette Young, do hereby leave my charge account at Ellisberg's to Ginger Roney in hopes that she has more will power than I.

SECTION 46

I, Katy Wilson, leave my test tubes to Sandra Scott.

Class Prophecy

DEAR CLASS OF 1957:

As I traveled through modern Greece viewing some classic remains of the ancient Greek civilization, I felt from time to time a tinge of nostalgia. As I admired the Doric beauty of the columns of the Parthenon, it all came back to me—the Lotus of 1957—the classic theme—the members of the Class of '57, whose spirit I had been ten years ago. That memory prompted an insatiable desire for news of those Peace girls.

The Oracle at Delphi—I should hasten there and consult the oracle of Appolo. Surely I could learn much of what I wanted to know, the oracle willing! Being a spirit myself, I was able to make contact and it was revealed that on May 25, 1967, my class was to be holding its reunion at the Raleigh Country Club. I saw all just as it would be on that very day. There they were! Most of them, at any rate.

At one table sat VIRGINIA REID, who was telling NANCY MAEDER about her kindergarten in Charleston. Nancy is the wife of the president of Randolph-Macon College. CLAUDINE HODGIN has been directing research work in atom power plant, but she did not talk much of her work. ELEANOR STEM and GRACE GAWTHROP joined the table. Eleanor has written a play in which Grace is starring. It is the hit of the season.

CAROLYN WISE, who is a professional business woman, and LYNDDIE JAMES were discussing a career vs. marriage. Lyndie has four boys who, plus her activities as president of the P.T.A., keep her very busy. They both commented on the hat worn by MARY ANN MANNING. It seems that she is quite famous now and her "Manning Originals" are worn by all the best-dressed women.

The music which was directed by RIETA SALTER was especially good. The members of the orchestra included ANN POLLARD, CAROLYN KING, SHIRLEY TARLTON, and JOYCE LITTLE. The soloist for the group was ANN DAVIS. They have been playing lately in the hotels and night clubs owned by MARY JANE BOYDELL.

The excitement was too much for PAULA WARD, and she fainted. DR. JUDITH McCUBBIN called the ambulance for her. CAROLYN BEATY, a nurse, and her missionary husband rode with her.

Top performers were called in to entertain for the evening, and guess who they were? MARY CABELL CARLAN danced, MARTHA ELMORE told jokes about her life as a Peace girl, and GLENDA PEARCE did imitations.

When GAIL GODWIN, the famous novelist, walked in everyone was so excited that SUE WOOTEN, the film star, spilled her coffee on MICKEY ROBINSON. However, with Mickey's training in psychology, she was not at all upset. She and PATSY HOLLAND had a gay time psychoanalyzing each other. Patsy teaches psy at Duke. Speaking of Duke, PAT MAHONY married the heir to the Duke fortune. She has just returned from touring Europe. While she was there, she saw MAXINE KEARNEY, who has been on a lecture tour.

BARBARA REDDISH, a noted lawyer, and RITA SHERRER, the insurance agent, were talking with GAIL PONS, who is an airline hostess. They stopped talking business to chat with BETTIE WOOTEN, who has been modeling in New York.

At one table sat DOROTHY NEWTON, an FBI agent; IRENE KEY, who works in Reno; and EVELYN PETERSON, who is married to a minister. What a combination!

MARGIE LINZEY and BETSY BALENTINE are getting rich fast by test-driving new sports cars. I overheard BETH WILLIAMS telling MARTHA ANN SOUTHERLAND that she has just been elected president of the Woman's Club of Raleigh. Martha lives in Raleigh, too. Her husband is an assistant to the governor. Also in politics is MARGARET LUCAS, who is running for vice-president on the Democratic ticket. FRANCES WILLIAMS is in Washington as the Secretary of Agriculture. ANNE HAMMERSLA also is in the capital city. She is a Supreme Court Justice.

It seems that our class has been very successful. PEGGY PRATT owns a fur salon, and JEANETTE YOUNG has many oil wells. The first in North Carolina, in fact—for which she was awarded the million dollars offered by the State. BILLIE SIMONS is known by many because of her TV show, "Miss Billie's School Room." SHIRLEY STUBBS and NANCY McNEILL are receptionists at the TV station.

CAROLYN TODD and her husband were discussing with SUE HARRIS the fact that they now own a trucking firm that operates in all countries. Sue is now president of a school for girls in Virginia.

MARTY BARBREY is living in Atlanta with her husband and is Professor of calculus at Georgia Tech. KATY WILSON is leading a Bohemian life on the Left Bank in Paris and is lecturing at the Sorbonne. NANCY HORTON is winning acclaim for her American hot dogs sold in Naples.

SARALYN PRICKETT, KITTY CONNOR, and MARY ELLEN TRIBBY are professional business women. The new principal at Broughton High School is NANCY CRUMP. Her students enjoy the nightly program of ANGELA HILLIARD, who plays all of the latest records from WBHS.

BECKY WALLACE and her spouse were there with their six little mountain climbers tagging along behind them. GLENDA LOWE owns a resort in the White Mountains of New Hampshire where she divides her time between teaching bridge and skiing.

The sun was setting behind the olive groves,

and the countryside was bathed in orange light as I thanked the oracle and stepped out again into reality, happy in my new-found knowledge, yet filled with nostalgia. This time ten years ago, my Peace girls of 1957 would be sitting before other columns. Their colorful skirts would be spread gracefully on the green lawn, and their bright hair and youthful faces would be illumined by the same orange sun. Then the dinner bell would ring and they would all file inside, unaware of what the future held for them.

Dictated by the Spirit of '57
Recorded by GLENDA LOWE,
Class Prophet.



Class History

YESTERDAY we entered a formal, majestic building—alone and wondering what our lives as Peace girls would be.

TODAY we leave our home of the past years. So many things have happened that it would be impossible to record them all. However, we shall never forget:

. . . meeting Dr. Pressly, Mrs. Fox, and the faculty. We were a bit timid about it until we talked with each and learned how friendly and interested in us they were.

. . . the faculty recital and reception, the party on the front campus when we dressed as first-graders, and the taking of tests.

. . . the signing of the Honor Code. Our hands shook as we pledged to uphold the first Honor Code of Peace.

. . . the society Rush Parties, the fashion show, and the excitement of deciding whether to be a Sig, Rho, or a Pi.

. . . the election of class officers.

. . . the first serenade by the Sigma Chi's of State. They marched in front of the fountain and sang the college songs that we were beginning to know, too. We stood on the balconies and felt that we were each their queen.

. . . football games, Homecoming at Carolina, State, or Wake Forest, dances, Platter Parties, and Saturday night movies.

. . . Thanksgiving service in the Chapel. We shared our blessing with others and knew the joy of giving.

. . . going Christmas caroling, presenting the pageant, buying presents, and wondering how we could ever get our studying done.

. . . the thrill of going home for vacation. The dining room resounded with youthful voices singing, laughing, and making plans for those days at home.

. . . the Inter-Society Dance at the Woman's Club. We still have scraps of the red ruffle that decorated the paper hearts.

. . . winning Stunt Night (our satire on our life at Peace centered around our fun and our work)!

. . . voting for the officers for our Senior Year.

. . . the billowing pink net dresses of our May Day attendants. The dresses looked so typical of the Southern ladies that they adorned. The presentation of SWAN LAKE completed a perfect May Day.

. . . the Junior-Senior dance. The music was wonderful; nature had provided a beautiful night; the boys were handsome; the girls seemed charming and beautiful; and the decorations

for our theme—"The Sand and the Sea"—all blended into a night that would be long remembered.

. . . Graduation Night and leaving for the summer months. We cried and laughed together as each one left for vacation.

. . . September 11 and school again. Were we really Seniors? The new girls all looked so pretty and confident, but yet we remembered that many were homesick.

. . . the mock Convention to entertain the new students. We never did know just who was nominated at our convention, but everyone had a grand time.

. . . the days after dinner when we sat outside and sang and really began to know the new girls. As the sun crept behind the trees, we would look at the tall columns, the stone benches under the trees, and our friends sitting around us. We were happy.

. . . the winter months when we sat in the Rec Room and played bridge.

. . . the concerts at Memorial Auditorium.

. . . High School Visitation week end. Seeing the students for next year seemed to make us realize that this was our last year.

. . . Chapel speakers who seemed to give us new meaning to our lives. Never will we hear "Lead On, O King Eternal" without thinking of marching out of chapel.

. . . springtime filled with afternoon dates, going swimming, and trying to overcome our cases of spring fever.

. . . how the weeks flew by. It could not be—but it was almost time to graduate.

. . . those talks in the Rec Room the last few weeks of school. We seemed to be almost mature, as we talked of jobs, marriage, or school for next year.

. . . Graduation Night. We marched down the aisle in our white dresses, carrying the traditional red roses. We were so proud, but there was a sadness, too. This was another phase of our lives that would be no more. Memories that will live forever. Have we changed since that YESTERDAY when we first walked into this strange building? Yes, TODAY we are graduates of Peace College, TOMORROW—of that we do now know. However, as Epictetus of ancient Greece said, "Education is a possession which cannot be taken away from men." We have gained much; we cannot lose it.

ELEANOR STEM
Historian



Class Poem

Two fleeting years slipped quickly from our
lives,

Gently gathering up all visible traces of youth
Like a fond mother returning toys to the chest,
and laughter

But leaving unseen gifts of growth and wisdom
We may look back, and still we hold the core—
The markers on maturity's rocky road.

So much to learn in such a little time!
Imperfect structures cast from mold sublime,
Minute dots in God's great multitude
Will not all be underscored,
But have emerged steadier, stronger structures
Because of their growing here.

— GAIL GODWIN





The Juniors

OFFICERS

SUE DENNING

Secretary

BETTY LEE JOHNSON

President

BETSY WELDON

Vice-President

EMILY BAKER

Treasurer

Peace



VIRGINIA KEATON ADAMS Raleigh
Sigma Phi Kappa

PATRICIA RAE ALEXANDER Rocky Mount
Rho Delta Chi

PATRICIA ALLEN New Bern
Sigma Phi Kappa



ANNE CURTIS ALLISON Glade Spring
Sigma Phi Kappa

LOIS ELLEN ANDREWS Raleigh
Pi Theta Mu

NANCY CAROLE AYCOCK Cary



BETTY STAMPS BACON Raleigh
Rho Delta Chi

SHIRLEY JEAN BAGWELL Raleigh
Rho Delta Chi

ANN ELIZABETH BAILEY Raleigh
Pi Theta Mu



EMILY ANN BAKER Lumberton
Rho Delta Chi

JUDITH MARIE BAKER Raleigh
Pi Theta Mu

BETSY RAND BARDEN Raleigh
Pi Theta Mu



SHIRLEY OCTAVIA BARTHOLOMEW Raleigh
Pi Theta Mu

GERTUDE MARIE BECK Burlington
Rho Delta Chi

CAROLYN LOUISE BIRD Bland
Sigma Phi Kappa

Class

College

SUSAN FRANCES BLOOM Jackson
Rho Delta Chi

MARTHA PENELOPE BOONE Tryon
Sigma Phi Kappa

BARBARA ANN BOWEN Currie
Sigma Phi Kappa

JO MARIA BRITTON Raleigh
Pi Theta Mu

SANDRA VENDETTA BROADHURST Deep Run
Rho Delta Chi

EONA JOY BUFFALOE Raleigh
Pi Theta Mu

BARBARA THOMPSON BULLOCK Raleigh
Pi Theta Mu

KATHERINE SPIVEY BURDEN Aulander
Sigma Phi Kappa

SARA FRANCES BURKHEAD Asheboro
Pi Theta Mu

NANCY CAROLYN BUTLER Fayetteville
Sigma Phi Kappa

JUDITH ELAINE CARR Rocky Mount
Rho Delta Chi

JEWEL DIANE CATES Raleigh
Pi Theta Mu

JOAN CAUDLE Dunn
Rho Delta Chi

ANNA KATHRINE CHERRY Raleigh
Pi Theta Mu

ELIZABETH ANNE CLEMENT Raleigh
Pi Theta Mu



Peace



BARBARA ANN COTTINGHAM Maxton
Rho Delta Chi

PATRICIA PAULETTE CRIM Winston-Salem
Rho Delta Chi

DOROTHY JOYCE CROCKER Rocky Mount
Rho Delta Chi



LEONA CATHERINE CROSS Elizabethtown
Rho Delta Chi

MARTHA LEE DANIEL Lawrenceville
Rho Delta Chi

NANCY VIRGINIA DAVIS Fayetteville
Rho Delta Chi



THYRA EMILY DEBNAM Clinton
Sigma Phi Kappa

PATRICIA ANN DELANEY Woodland
Sigma Phi Kappa

SUE WHEELER DENNING Benson
Sigma Phi Kappa



EVA DUMAS Goldsboro
Rho Delta Chi

GERALDINE ENZOR Fair Bluff
Rho Delta Chi

GRETA LORRAINE EVANS Marion
Rho Delta Chi



AGNES CAROLYN GAINES Raleigh
Pi Theta Mu

SARA JO GAULT Raleigh
Pi Theta Mu

EDITH HERRING GOODWIN Clinton
Sigma Phi Kappa

Class

College

ALICE ANN GUTHRIE Fayetteville
Sigma Phi Kappa

FRANCES TAYLOR HAMMERSLA Hickory
Sigma Phi Kappa

ROSEMARY HAYES McCLAIN (Mrs.) Raleigh
Pi Theta Mu



ANNE JEWEL HEDGPETH Raleigh
Pi Theta Mu

BARBARA STEWART HOLT Raleigh
Pi Theta Mu

LOWA GRACE HOLTON Fort Bragg
Rho Delta Chi



PATSY CAROLYN IMKE Washington
Sigma Phi Kappa

CAROLINE ALLEN JACKSON Raleigh
Pi Theta Mu

CECILE KAY JACKSON Tarboro
Rho Delta Chi



FRANCES RABY JACOBS Norfolk
Rho Delta Chi

CAROLYN SUTPHIN JENKINS Greensboro
Sigma Phi Kappa

BETTY LEE JOHNSON Norfolk
Rho Delta Chi



ELVA CAROLYN JONES Raleigh
Pi Theta Mu

AMORETTE IONE JONES Pine Level
Rho Delta Chi

MYRNA KEITH JONES Cary
Pi Theta Mu



Peace



CAROL ANN KING Henderson
Rho Delta Chi
FRANCES MARIAN KINZIE Spindale
Rho Delta Chi
LINA KNOX KIRKMAN Jamesville
Rho Delta Chi



ROBERTA JEAN LANDIS Marion
Rho Delta Chi
SARA FRANCES LANGFORD Raleigh
Sigma Phi Kappa
EUGENIE FAYE LEONARD Raleigh
Sigma Phi Kappa



ELEANOR WICKLIFFE LEWIS Kinston
Rho Delta Chi
EMMA JANE LIMER Warrenton
Rho Delta Chi
PATRICIA JEAN LINEBERGER Charlotte
Rho Delta Chi



ANNIE LOUISE LOCKAMY Raleigh
Pi Theta Mu
AUDREY JEAN LOYD Macon
Rho Delta Chi
CAROLYN JOYCE LUDER Rocky Mount
Sigma Phi Kappa



JAMES JENEAN MADIE Elizabeth City
Rho Delta Chi
PEGGY SHARLEEN MARCOM Raleigh
Pi Theta Mu
CAROLE BLANCHE MARTIN Eagle Rock
Sigma Phi Kappa

Class

College

ELLEN GERTRUDE MARTIN Raleigh
Pi Theta Mu

BECKY LEE MATTHEWS Lillington
Rho Delta Chi

MARGARET JEANNE MACDONALD Raleigh
Pi Theta Mu



FRANKIE DIANNE MCDUGALD Raeford
Rho Delta Chi

ANN LOUISE MILLSAPS Mooresville
Sigma Phi Kappa

ELOISE MORGAN Suffolk
Rho Delta Chi



EVALYN SELLERS MORGAN Minton
Rho Delta Chi

SARAH JO MOSES Sanford
Sigma Phi Kappa

MARIANNE MULL Burlington
Rho Delta Chi



DORIS MARIE MUSTIAN Raleigh
Sigma Phi Kappa

MARGARET SCOTT NABORS High Point
Rho Delta Chi

CECELIA OGLESBY Morehead City
Rho Delta Chi



CLAUDIA JOAN O'NEAL Zebulon
Sigma Phi Kappa

MARY GILMOUR PARKER Raleigh
Sigma Phi Kappa

JOSEPHINE COLLINS PARSONS New Bern
Rho Delta Chi



of '58

Peace



ALICE APPLEWHITE PARTIN Enfield
Sigma Phi Kappa
PATRICIA SMITH PARTIN Edenton
Rho Delta Chi
BETSY ROSS PERRY Sanford
Rho Delta Chi



NANCY RUBLE PERRY Raleigh
Rho Delta Chi
BETTY LOUISE POWELL Raleigh
Pi Theta Mu
MARY MILLER POWERS Raleigh
Pi Theta Mu



SANDRA LUSK RAMSEY Raleigh
Pi Theta Mu
GRACE FRANCES RAY Cary
Sigma Phi Kappa
MARY ANN RAY Moncure
Pi Theta Mu



JACQUELINE LEIGH RAYNOR Raleigh
Pi Theta Mu
ROSE MARIE RICHARDSON Raleigh
Pi Theta Mu
THYRA ELIZABETH RIVENBARK Kinston
Sigma Phi Kappa



ROBERTA ANN ROBBINS Cedarville
Rho Delta Chi
JUDITH CAROL ROBINSON Jacksonville
Sigma Phi Kappa
VIRGINIA LEE RONEY Rocky Mount
Rho Delta Chi

Class

College

SARAH WINIFRED ROTHROCK Raleigh
Pi Theta Mu



ELINOR FRANCES SALMON Sanford
Rho Delta Chi

MARY JANE SANDERS Elizabeth City
Rho Delta Chi

JANE MAYO SCOTT Raleigh
Pi Theta Mu

CHLOE JEAN SETZER Cary
Pi Theta Mu

MARTHA ANN DILLON SIMON Raleigh
Rho Delta Chi



RUTH ANN SOUTHERN Raleigh
Pi Theta Mu

BERTHA LEE STANLEY Carthage
Sigma Phi Kappa

VIRGINIA ANN STATON Hendersonville
Sigma Phi Kappa



ELIZABETH SUNDY STEED Richlands
Sigma Phi Kappa

LUCINDA STOTT Raleigh
Pi Theta Mu

PEGGY ANN SUTTON Enfield
Rho Delta Chi



MYRA LUCILE TATUM Asheville
Rho Delta Chi

BARBARA JEAN TAYLOR Rocky Mount
Rho Delta Chi

ELIZABETH ANN TAYLOR Fayetteville
Rho Delta Chi



of '58

Peace College



FLORINE GEORGE THOMAS Raleigh
 Pi Theta Mu
 EUNICE LEA THOMPSON Blanche
 Sigma Phi Kappa
 SANDRA ROSALIE UPCHURCH Raleigh
 Pi Theta Mu



CAMILLA GOODE WARREN Union Level
 Rho Delta Chi
 REBECCA LEE WATKINS Neuse
 Pi Theta Mu
 BETSY CECELIA WELDON Louisburg
 Rho Delta Chi



FRANCES WARD WENTZ Norfolk
 Rho Delta Chi
 BETTY LOU MOORE WHITE Raleigh
 Pi Theta Mu
 SARA BLANCHE WHITE Rocky Mount
 Rho Delta Chi



MOLLY JANE WILEY Acme
 Rho Delta Chi
 ANN MARLOW WILLIAMS Fayetteville
 Sigma Phi Kappa
 FRANCES ANN WINSTON Youngsville
 Sigma Phi Kappa



FRANCES HAYNES WITHERS Raleigh
 Pi Theta Mu
 BETTY JOYCE WOODLIEP Wake Forest
 Pi Theta Mu

Class of '58



Prep IV Superlatives



Best All Round
SUZANNE WILSON



Most Likely To Succeed
DONNA SMITH



Most Attractive
Best Dressed
SUE BELL



Most Intellectual
SONDRA SCOTT



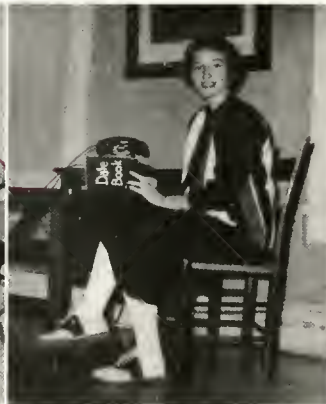
Most Talented
CHERYL STOWE



Wittiest
GILL CROWSON



Cutest
PUNKIN PIKE



Best Personality
GUSSIE CHAPMAN



Most Athletic
LYNNE RAMSEY



Preparatory IV

OFFICERS

NORFLEET PIKE

Vice-President

PEGGY MEINTEL

Secretary

IDA SUE NEIGHBORS

Treasurer

SUSIE WILSON

President

Peace



Sue Creel Bell (Mrs.) Raleigh
Pi Theta Mu

Miriam Elizabeth Cates
Washington, D. C.
Sigma Phi Kappa

Mary Augusta Chapman
Smithfield, Va.
Sigma Phi Kappa

Judith Ann Cooley Raleigh
Rho Delta Chi

Kathryn Gill Crowson Richmond, Va.
Rho Delta Chi

Carole Ann Dixon Warrenton
Sigma Phi Kappa

Ruth Dixon Hood Richlands
Sigma Phi Kappa

Thyra Della Howett Columbia
Sigma Phi Kappa

Cecelia Wade Jennette Swan Quarter
Pi Theta Mu

Karen Christine Kellgren
Jamestown, N. Y.
Rho Delta Chi

Sarah Young Key Richmond, Va.
Rho Delta Chi

Janelle McKinley Durango, Colo.
Sigma Phi Kappa

Mary Blanche Meekins Manteo
Sigma Phi Kappa

Peggy Anne Meintel Richmond, Va.
Rho Delta Chi

Ida Sue Neighbors Dunn
Rho Delta Chi

Preparatory IV

College

Norfleet Daniel Pike Washington
Sigma Phi Kappa

Lynne Jeneve Ramsey Knoxville, Tenn.
Sigma Phi Kappa

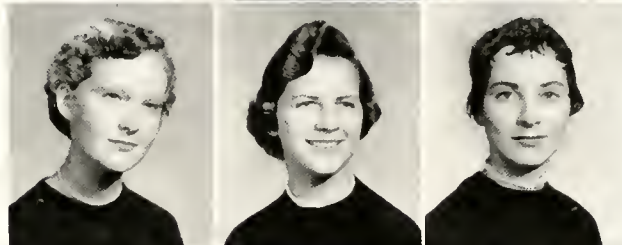
Shirley Mae Rooks Currie
Sigma Phi Kappa



Sondra Dale Scott Fair Bluff
Rho Delta Chi

Donna Anne Smith Lucama
Sigma Phi Kappa

Mary Grace Stansbury Chapel Hill
Sigma Phi Kappa



Cheryl Gay Stowe Raleigh
Pi Theta Mu

Clarita Clark Thomas Ontario, Canada
Sigma Phi Kappa

Jennie Parker Turlington Salenburgh
Sigma Phi Kappa



Suzanne Wilson Charlotte
Sigma Phi Kappa



Preparatory IV



Preparatory III

Virginia Louise Baunach Princeton, N. J.
Sigma Phi Kappa

Ray Benner Bethesda, Md.
Sigma Phi Kappa

Frances Meyer Evans Columbia, Tenn.
Sigma Phi Kappa

Mary Anne Fitch Chapel Hill
Sigma Phi Kappa

Sara Elizabeth Haisten Dillon, S. C.
Sigma Phi Kappa

Katharine Denny Horne Fayetteville
Rho Delta Chi

Lena Gay Hudson Grimesland
Rho Delta Chi

Peggy Lee Kern Star
Rho Delta Chi

Mary Karin Klausman Rupert, W. Va.
Sigma Phi Kappa

Jane Elma Morgan Mt. Holly
Sigma Phi Kappa

Sharon Ott Winter Haven, Fla.
Sigma Phi Kappa

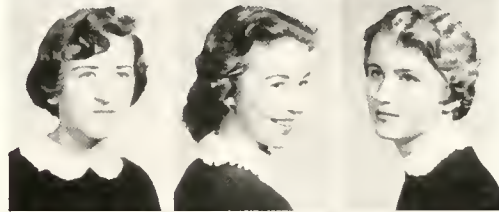
Doris Irene Sanders Wendell
Sigma Phi Kappa

Elizabeth Veta Saunders Hollywood, Fla.
Rho Delta Chi

Barbara Eleanor Stammah Cherry Point
Sigma Phi Kappa

Patricia Anne Wilson Fayetteville
Sigma Phi Kappa

Nancy Jo Zercher Hopewell, Va.
Sigma Phi Kappa



Traditional Activities



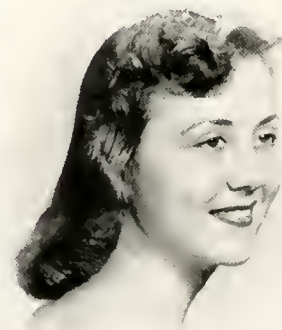


ACTIVITIES



The Student Council

The Student Council is the protector, the guide, and the strength of the students. It stands for loyalty and honor and works as one body with an objective mind. "We learn when we are young; we understand when we are old." The Student Council is the mainstay of students of Peace College.



SUE HARRIS



Honor Court



ANNE HAMMERSLA

The Honor Court is the highest judiciary body of Peace College and has jurisdiction in all instances of violations of the Honor Code. The Court has the power to render decisions which include reprimand, placing on probation, and suspension from school. In almost all cases the administration supports the decisions of the Court. The Honor Court also has an important part in the orientation of new students into the Honor System, a most important phase of campus life. The Court also tries to create an awareness in the students of their obligation to the Honor System.



P.S.C.A.

The P.S.C.A. typifies one of the main aims of Peace College and that is to promote a religious atmosphere on campus and in the hearts and minds of Peace girls. The P. S. C. A. Cabinet, composed of a symbolic number of twelve girls, is responsible for directing the religious activities of the year. Especially is the Cabinet concerned with Religious Emphasis Week, Vesper programs, Christmas and Easter pageants, Peanut Week, and the Week of Sharing. Through many prayers and earnest endeavors, the Peace Student Christian Association stands as an inspiration to those who come to Peace.



CAROLYN BEATY



Presidents Council



BARBARA REDDISH

The Presidents Council is sponsored by the Student Council and consists of the presiding officers of each club and organization. Promoting a program of activities that is interesting to the students, exchanging of plans and ideas of the organizations and of the Student Council is the purpose of this Council. The Council sponsors the entertainment on week ends for any girls who are visiting Peace.



ELEANOR STEM
Editor



GAIL GODWIN
Assistant Editor



JO BRITTON
Business Manager

The Lotus

It is the desire that the students will come to love and treasure the 1957 Lotus as those who compiled it do. Here are the thoughts, the hopes, the good times, the friends, the leaders and advisors. The students have made the history. The Lotus Staff has written it down.



ANGELA HILLIARD
Assistant Business Manager



JEAN SETZER
Art Editor



EDITORIAL STAFF

BUSINESS STAFF





The Peace Times Staff

Dedicated to work for pleasure and knowledge.
Dedicated to support and honor its Alma Mater.
Dedicated to give its time and patience so that the
students of Peace College may read about, learn
about, and love their "home away from home."



SHIRLEY TARTLTON



The Papyrus Club



MARY CABEL CARLAN

The oldest club at Peace, the Papyrus Club, is an organization of literary-minded students who are interested in furthering their knowledge of good writing and using their own creative ability.



Phi Theta Kappa

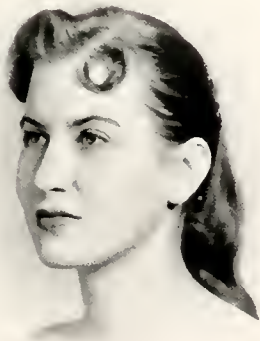
Phi Theta Kappa Fraternity is the National Junior College Honorary Scholastic Society. The Gamma Phi chapter at Pease College elects new members each spring on the basis of scholarship and leadership.



GAIL GODWIN



Sigma Pi Alpha



ELEANOR STEM

The Theta chapter of the Sigma Pi Alpha is made up of Peace girls who have shown special interest and ability in foreign languages as well as in other scholastic work.



Alpha Pi Epsilon

Alpha Pi Epsilon is the National Commercial Honorary Society. Members are chosen on the basis of leadership and commercial skill. Gaining a better knowledge of the opportunities and requirements of secretarial work is one of the major aims of this society.



DOROTHY NEWTON



The Daughters and Granddaughters Club



EUNICE LEE THOMPSON

The Daughters and Granddaughters Club strives to preserve the customs and traditions of the Peace girl, which have distinguished the College through the years. This Club is the connecting link between the charm and dignity of the past years and the modern world.

The members are daughters or granddaughters of former Peace girls.



The Art Club

The Elsie Robertson Art Club was established in 1943 by Miss Mabel Pugh. It was designed to promote interest in and appreciation of art among Peace students.

The Club offers annually an Art Club award and Art Club scholarship to outstanding and deserving students.

The Rembrandt showing this year at the North Carolina Art Museum was among the many interesting exhibits visited.



JEAN SETZER



The Home Economics Club



FRANCES WITHERS

This three-year-old club is constantly "on the go," making refreshments, giving teas, sponsoring chapel programs on etiquette and self-improvement, and just being useful in general. Such an enterprising organization adds a great deal to the reputation of the school.



The I. R. C.

The International Relations Club is one of the most active organizations of the college. Under the enthusiastic leadership of Miss Elizabeth Caldwell, the club has flourished, entertained able guest speakers, discussed world problems, and taken the lead in the United Fund and the World University Service drives here at Peace.



Jo Burrton



Athletic Association



MARGIE LINZEY

The purpose of the Athletic Association is to promote good sportsmanship, to further and to promote interest in intramural athletics, and to encourage school spirit. As in the years past, this Association has sponsored basketball and volleyball tournaments and tennis and ping-pong tournaments for those who enjoy sports. This year the Association has provided much entertainment in its well-rounded schedule.



Peace Dramateurs

The Peace Dramateurs is a new club at Peace this year. It is fostering many plans and high hopes for the year. Among other activities, the Dramateurs has put on several plays for the student body. The purpose is to increase interest and to provide experience in theatrical productions. Much interest has been shown, and it is predicted that the Club will continue to grow and to improve.



GRACE GAWTHROP



Pi Theta Mu Society



ANGELA HILLIARD

The Pi Theta Mu Society started the year rolling with a rock-and-roll show during assembly.

Following this big affair was a "Roman party," given in the Rec room, for which everyone dressed in togas to celebrate with "Caesar and his friends." Prizes were given for the best dressed Roman and refreshments were served.

After initiation, parties and socials began. The year 1956-57 has been a high light of good times for the Pi's.



Rho Delta Chi Society

"Go Rho! Go Rho!" These were the words on every old Rho's lips during the eventful rush week—favors on the tables, serenade from a well-known fraternity, the Hollywood fashion show, and the "Planet of Desire" party to top it off.

An etiquette program sponsored by the three societies was carried on throughout the year to bring about a closer relationship among the societies. The Rho's have felt this an important project.

Then there was the inter-society dance with all its headaches and worries but in the end a wonderful success.

As the year ends with many memories of good times, the members of this society say that they are glad to be Rho's.



NANCY MAEDER





Sigma Phi Kappa

After the initial rushing, Halloween party, and formal initiation, the Sigs settled down to a year of sports and parties. Their enthusiasm helped make the Society dance a success.

"I'm a Sig and proud of it;
I wear the colors purple and gold.
Ours is the spirit that will never die;
Come on and shout it to the sky.
We have vim, vigor, and vitality
And personality you bet!
We are the top cream of the crop
The rest are far behind us.
Sigs, you'll always be the best!"



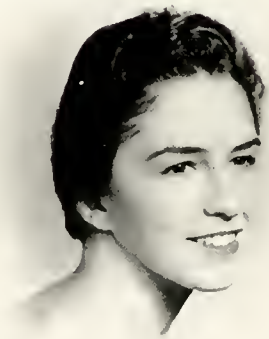
MARTY BARREY





The Choir

The choir, under the capable direction of Doctor Hjortsvang, boasts a noticeable increase in number of members and of activities during this school year. It has presented the annual Christmas and Spring concerts, has performed over television on several occasions, and has participated in the activities of Raleigh's churches and other churches of the state.



CLAUDINE HODGIN



FEATURES



May Queen

MARTHA SUE WOOTEN



Miss Peace

MARGARET LYNWOOD JAMES



CAROLYN BEATY

Carolyn Beaty rightfully takes place among the eight Outstanding Seniors. Carolyn has served with inspiration and devotion her office as President of the P.S.C.A. Her beauty and gracious charm endear her to those with whom she is associated. That she is a well rounded girl is evident by the varied activities on campus in which she has taken part.

"May the wind be at your back,
May the road rise up to meet you,
And may God always hold you in the
palm of his hand."

Outstanding



MARY CABELL CARLAN

While spreading the warmth and spirit of earnest endeavor among her fellow students, Mary Cabell has given of her time and ability to the functions of Peace College. Although petite in stature, she has made a place for herself in the hearts of all with her own heart-full of friendliness and sincerity.

Mary Cabell has set a profound example of unselfish discretion in dealing with others. She truly deserves recognition as an Outstanding Senior for her scholarship and for being just — Mary Cabell.

GAIL GODWIN

Gail is a unique combination of wisdom, talent, and beauty. She is the perfect contradiction of the popular theory that an intellectual girl must be minus charm. Her creative ability with both the paint brush and the pen has aided many organizations to which she belongs. Vivacious and witty, too, she is an Outstanding Senior who will be an example of the modern American woman.



Seniors

ANNE HAMMERSLA

Anne is a definite sort of person. She knows what to say, what to do, how to do it; she knows what she does today and what she will do tomorrow. She could be called the John Marshall of Peace College, because under her adept leadership, the two-year-old Honor Court has set many precedents for just discipline and wise decisions regarding each individual case.

Anne is not all work and no play. She is congenial with her classmates and loves a good time. One possessing such an attractive personality would naturally be an Outstanding Senior.





SUE HARRIS

The many wonderful qualities that make Sue an Outstanding Senior can never be put into a few words. She has shown remarkable leadership and outstanding diligence as the President of the Student Government Association. She is completely unselfish in devoting time to the problems of her fellow students. Sue's sparkling personality and warm smile have won her many friends. The spirit, generosity, reverence, and personality of Sue Harris will never be forgotten by her fellow students of Peace.

Outstanding



BARBARA REDDISH

A friendly smile, a warm heart, and a concern for others are just a few of the qualities that make Barbara a friend of all at Peace. She is never too busy with her duties as vice-president of the Student Government Association to help others along the way. Her sincere interest in her fellow students, her work, and her school is the basic quality of her personality which makes her truly an Outstanding Senior—so, Barbara, remember Peace in the respect that it remembers you.

ELEANOR STEM

Dignity and diplomaey characterize Eleanor. Peace will miss her soft-spoken words and her queenly bearing. Those who know her find a warmth which inspires confidence and trust. She has chosen Journalism as her professional career, and judging from her many talents and activities, she will be among the best journalists. Yet her personal qualities cause one to think of her as an ideal wife and mother. With these promising assets, it is no wonder that Eleanor was chosen an Outstanding Senior.



Seniors

SHIRLEY TARLTON

Shirley is one of the few people we meet in a lifetime who takes the responsibility of many activities and yet is never seen running around in a dither, pulling out hair, dropping bundles of paper, and "acting important." She does not have to. Her worth is self-evident.

Shirley is so organized, so neat in her work and in her dress, so courteously busy, and so conscientious that she was chosen as an Outstanding Senior without a question.

A salute to one so silently successful!





Marshals



ADVERTISEMENTS

1957 SPONSORS

We gratefully acknowledge their support

Abbott-Pierce Service Station, 531 Hillsboro

Brannan's Grill

Bishop's Phillips 66, 909 Downtown Blvd.

Byrum, Leon, Optical Company

Carolina Typewriter Company, 115 S. Salisbury Street

Eckerd's Drug

Ellisberg's, Inc.

Garner's Esso Service Station

Jeffries Jewelers

Knitting Nook, 16 N. Boylan Avenue, M. J. Hadley, Manager

Pine State Creamery

T. H. Briggs and Sons, Inc.

Taylor Biscuit Company

Thompson and Lynch Company

Wayside Furniture House

White's Phillips 66, 928 Downtown Blvd.

VERY BEST WISHES

TO THE CLASS

OF 1957

HUDSON-BELK COMPANY

Serving in the Capital City for 42 Years

**DILLON SUPPLY
COMPANY**

INDUSTRIAL MACHINERY
& EQUIPMENT



RALEIGH DURHAM
ROCKY MOUNT
GOLDSBORO

*BEST WISHES
from*

**SIR WALTER
BEAUTY SALON**

CANTON CAFE

CHINESE-AMERICAN FOODS

Air Conditioned

408 Hillsboro Street
DIAL TE 2-7867

Best Wishes From

**NORTH CAROLINA EQUIPMENT
COMPANY**



**INTERNATIONAL
Construction Equipment**

RALEIGH
GREENVILLE

WILMINGTON
GREENSBORO

CHARLOTTE
ASHEVILLE



There's Nothing
Like a Coke
Fifty Million
Times a Day

Capital Coca-Cola
Bottling Company, Inc.
Raleigh, North Carolina

FIRST-CITIZENS BANK & TRUST CO.

MEMBER FEDERAL DEPOSIT INSURANCE
CORPORATION

Three Offices in Raleigh

*Compliments
of*

**Cooper's
Furniture House**

Opposite WPTF Transmitter
Hwys. 1-64-70-A
CARY, NORTH CAROLINA

Compliments of

**BRYAN-COOPER
OIL COMPANY**

Jobbers of PHILLIPS 66 Products
TE 3-3853
1601 Wake Forest Road
RALEIGH, NORTH CAROLINA

BEST WISHES TO THE
CLASS OF 1957
**GARLAND C. NORRIS
COMPANY**

122 Glenwood Avenue
RALEIGH, N. C.

**GATTIS'
HAYES-BARTON
PHARMACY**

Phone TE 2-4641
2000 Fairview Road
RALEIGH, NORTH CAROLINA

Compliments of

**MITCHELL
FUNERAL HOME**

St. Mary's at Johnson Street
DIAL TE 3-8678

*Compliments
of*

NATIONAL ART SHOP

621 Hillsboro Street
RALEIGH, N. C.



Insurance Building

BRITAIN'S
Beautiful Shoes

HELPING TO BUILD

A Finer Carolina

Through —

- *Agricultural Development*
- *Community Improvement*
- *Industrial Expansion*

CAROLINA POWER & LIGHT COMPANY

BROGDEN PRODUCE COMPANY, INC.

Wholesale

FRESH FRUITS AND PRODUCE

RALEIGH

Serving PEACE COLLEGE
for over Fifty Years

YELLOW CAB CO.

2-5811

TEmples

2-5811

OLDEST AND MOST RELIABLE

RALEIGH, N. C.

Buy At **LAND'S** And Save

Raleigh's Leading Credit Jewelers

Phone TE 2-3751

Fayetteville Corner Hargett Street

FOOD SERVICE EQUIPMENT
AND UTENSILS

**THE JOHN HOOS CO. OF
NORTH CAROLINA, Inc.**

925 South Blount Street

RALEIGH, N. C.

Telephone TE 3-0062

*Compliments
of*

**MITCHELL'S HAIR
STYLING**

*Compliments
of*

**WARREN'S
RESTAURANT**

301 West Martin Street

RALEIGH, N. C.

*Compliments
of*

CROSS POULTRY CO.

TE 2-8434

TE 2-8013

SMITH STUDIO

Official Photographers for THE LOTUS

Portraits and Application Pictures May
Be Ordered From Your School Negatives

12 East Hargett Street



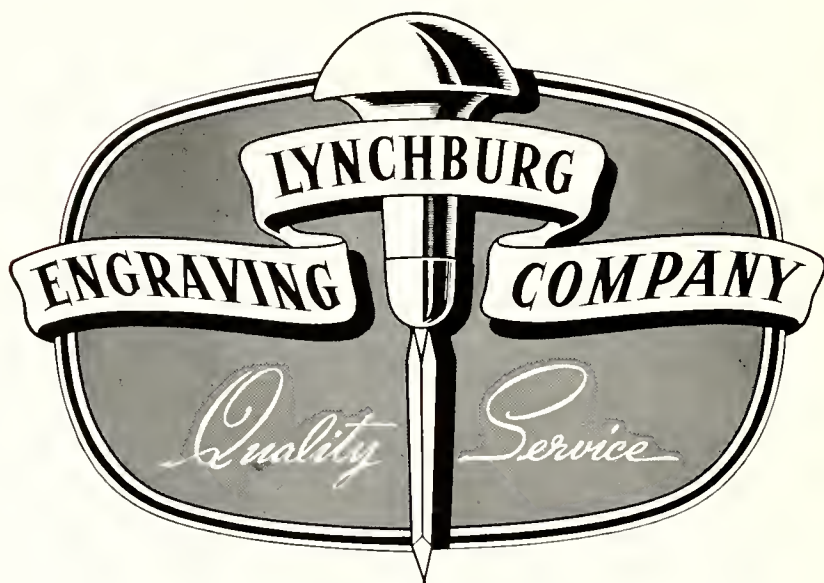
**Your Trailways bus
travels as fast
as safety allows!**

Compliments of

THE GRAPHIC PRESS, INC.

PRINTING AND LITHOGRAPHING

RALEIGH, N. C.



Designers and engravers of
the South's finest school
publications



LYNCHBURG, VIRGINIA

PEACE COLLEGE CLASS RINGS AND PINS
SOCIETY PINS AND NOVELTY JEWELRY

WALTER B. ANDERSON

L. G. BALFOUR PRODUCTS
RICHMOND, VIRGINIA

PERSON STREET PHARMACY

620 North Person Street

A Complete Line of Nationally Advertised Drugs
Plus a Selected Assortment of Toilet Items

Soda Our Specialty

PERSON STREET VARIETY STORE

702 North Person Street

School Supplies and Everyday Needs
Complete Five and Ten

J. E. TREADWELL, *Proprietor*

FINCH'S DRIVE-IN, INC.

AIR CONDITIONED

DINING ROOM
CAFETERIA

TE 4-7396

Phone

TE 4-7397

MORGAN JONES COTTONS

ARE

"Yours for a Lovely Home"

The Minuet Bedspread
Texturtuff Bedspreads
Hobnail Bedspreads

Bath Sets
Kitchen Cottons
Scatter Rugs

PRODUCED IN NORTH CAROLINA
SOLD BY FINE STORES EVERYWHERE

MORGAN-JONES, INC.

58 Worth Street
NEW YORK, N. Y.

Compliments of

Warlick's Restaurant
& Drive In

Cameron Village

BOYLAN-PEARCE

"In Raleigh's Cameron Village"

Lewis Sporting Goods

HEADQUARTERS
for
TENNIS SUPPLIES

JOHN ASKEW

PAINTING AND
INTERIOR DECORATING

*Estimates Made in and
Out of Town*

Telephone 2-6824
110 Glenwood Avenue



J. F. WILLIS
SHEET METAL WORK & ROOFING
LENNOX FURNACES
TIN - SLATE - TILE
and
COMPOSITION ROOFING
Residential Air Conditioning
Phone TE 2-6921 7 W. Peace Street
RALEIGH, N. C.

*Compliments
of*

VIRGINIA PILOT ASSOCIATION

NORFOLK, VA.

**HOOD-MODEL
DRY CLEANING COMPANY**

"Ask the Folks We Serve"

Office—117 E. Morgan Street
Plant—606 N. Person Street
PHONES TE 2-3015 - TE 2-2862

*Compliments
of*

**KRISPY CREME
DOUGHNUT
SHOP**

The classic Pepsi-Cola logo, featuring the word "PEPSI" in a bold, sans-serif font and "COLA" in a larger, stylized script font. A registered trademark symbol (®) is located at the bottom center of the logo.

PEPSI-COLA BOTTLING COMPANY OF RALEIGH
3705 Hillsboro Street Phone TE 3-1071

Ferguson's Hardware

HARDWARE AND
HOUSEHOLD SUPPLIES

"We Specialize in Service"

2900 Hillsboro Street
PHONES: TE 2-4877 - TE 2-3030



"Free Delivery In City"

Dial TE 2-0551

ALLISON-LEINSTER, INC.

Phone TE 2-1632 For Insurance

Raleigh Savings and Loan Building
RALEIGH, N. C.

Insurance Service Since 1908

J. C. ALLISON
President

MRS. SARAH L. COWPER
Vice-President

J. A. LEINSTER
Secretary-Treasurer

EARL JOHNSON
HARRY MOORE

B. E. DENNIS
BILL WARD

EARL JOHNSON, JR.

MOORE & JOHNSON CO.

*"For 33 Years Raleigh's Leading
Insurance Agency"*

INSURANCE - SURETY BONDS

Insurance Building
RALEIGH, NORTH CAROLINA

For a *cool, clean*
taste...



Nothing does it
like
Seven-Up!

*Compliments
of*

Bobertines
Fayetteville Street

RALEIGH, N. C.

BEST WISHES

from

HOTEL SIR WALTER

Raleigh's Largest and Finest

"100% Air-Conditioned"

ARTHUR E. BUDDENHAGEN
Manager

HONEYCUTT CLEANERS

128 W. Martin Street

605 Newbern Avenue

227 Pace Street

PHONE TE 3-1696

FLOWERS!

Cut Flowers Corsages

Graduation Bouquets

Decorations

PHONES

TE 2-8347

TE 2-0795

J. J. FALLON CO., Inc.

*"We Grow the Flowers
We Sell"*

*Compliments
of*

**PERSON STREET
RESTAURANT**

Compliments of

CAPITAL ICE AND COAL CO.

INCORPORATED

600 West Hargett Street

Phone TE 2-5589

**ICE COAL
FUEL OIL**

BYNUM PRINTING COMPANY

BETTER PRINTING

Phone TE 2-6417

Best Wishes
to the
Class of 1957

ELECTRICAL WHOLESALERS

INCORPORATED

RALEIGH, NORTH CAROLINA



BUILDERS DREAMS

THE ANNUAL STAFF
and the
EDWARDS & BROUGHTON
COMPANY
Cooperated to produce this Annual.

Finest Quality
Engraved Commencement Invitations
Engraved Visiting Cards
Engraved and Lithographed
DIPLOMAS

Write for Samples and Prices

EDWARDS & BROUGHTON
COMPANY

Oldest, Largest, and Best Equipped
Printing, Lithographing and Engraving
Plant in North Carolina.

Established in 1871

RALEIGH, NORTH CAROLINA

*Compliments
of*
ADLER'S, Inc.

PENNEY'S

"Always First Quality"

IN RALEIGH'S CAMERON VILLAGE
WHERE PARKING AND SHOPPING
IS A PLEASURE

AUTOGRAPHS

AUTOGRAPHS

