

*The  
Lotus  
1963*



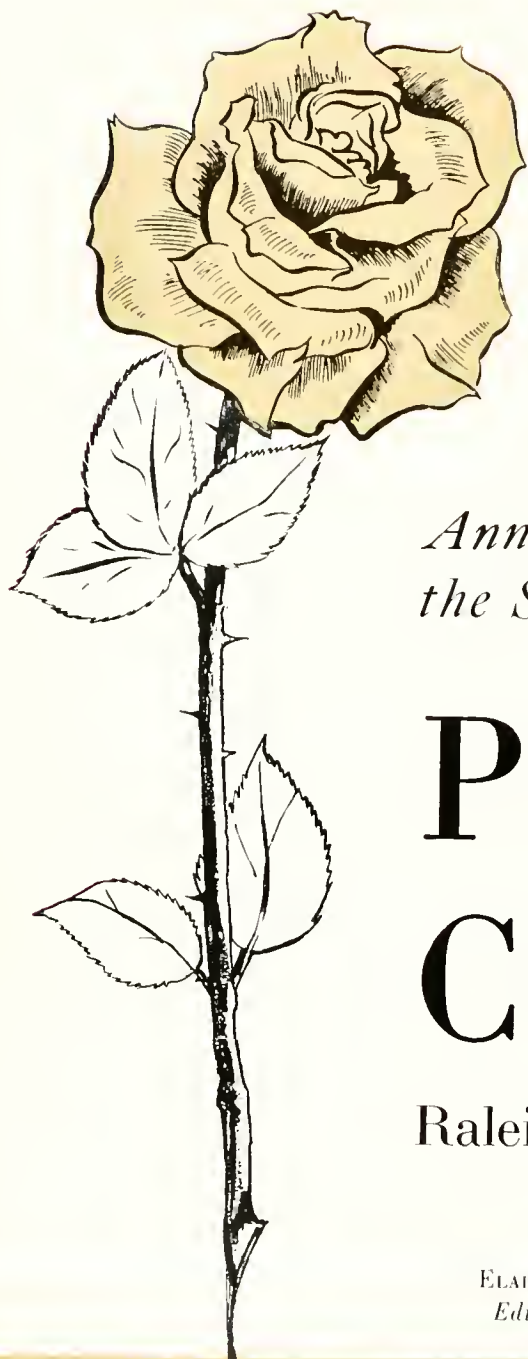








PEACE COLLEGE  
Raleigh, North Carolina



*Annual Publication by  
the Students of*

# PEACE COLLEGE

Raleigh, North Carolina

ELAINE STEWART  
*Editor-in-Chief*

CAROLYN TYNER  
*Business Manager*

1963 LOTUS







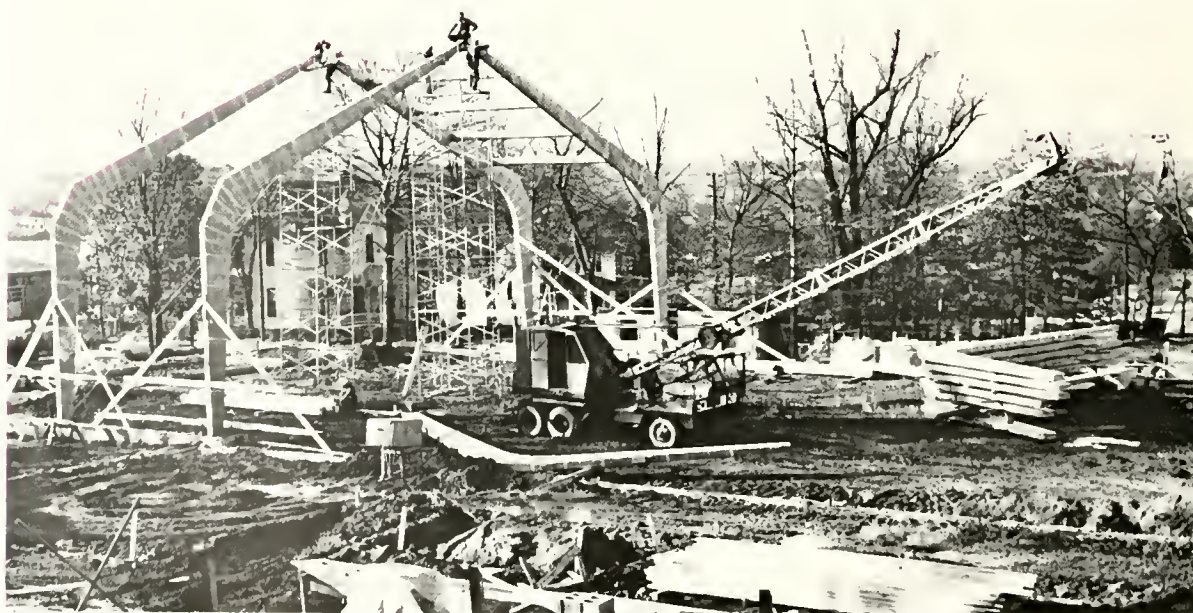
# Foreword

The LOTUS, named from the legend of the Lotophagi in the Odyssey who subsisted on lotus fruit and lived in the dreamy indolence it induced, is the name Peace students chose many years ago for their annual publication.

To represent the love of God, Botticelli used the rose. Especially does the lovely pink and gold Peace rose represent this love to us. As God loves and binds us together in this Christian community called Peace College, what more appropriate symbol could the LOTUS use than a Peace rose?

As you turn the pages of the 1963 LOTUS, we hope you will be reminded of the love and concern of others that have made this year at Peace College possible for us all and that in years to come the LOTUS will continue to remind you of a wonderful and fun-filled year at Peace.

THE EDITOR



# Contents

ADMINISTRATION and FACULTY	8
STUDENT BODY	11
ACTIVITIES	68
ATHLETICS	76
ORGANIZATIONS	80
SOCIETIES	88
STUDENT CLUBS	96
FEATURES	106
ADVERTISERS	116





Dedication





On March 21, 1962, Peace joyously received the news that a Chicago Presbyterian had given the college \$300,000 for the erection of a Student Center.

Like a transfusion of new blood to a convalescent, came the surprise gift of this man who believes that his money can best be used by "small, worthy colleges." His confidence in us has given us greater confidence in ourselves.

By strange coincidence last year a vigorous, striking new descendant of the Peace rose was named *Chicago Peace*. In gratitude for the love of God as it has been shown to us through this wonderfully generous *Chicago-Peace*, Christian gentleman, we dedicate the Lotus of 1963 to

MR. GROVER M. HERMANN



PEACE COLLEGE  
DALLAS, TEXAS

# Administration and Faculty

The 1963 LOTUS salutes the faculty and administration of Peace College. The students are grateful for the dignity and elegance in mind, manners, and tastes exemplified by you, our leaders. Conscious that the chief function of the past is to give life to the present, you have encouraged us to think as well as to learn. Your interest in the development of our lives here at Peace is a source of great pride among us, the students. We are grateful for your cheerful and intelligent response to our calls, and we feel that you have given us tangible demonstrations of your interest, love, and forbearance through service to us. Because of the wealth of things you have meant to us, we pay a special tribute to you, our administration and faculty.







DR. WILLIAM C. PRESSLY

## The President

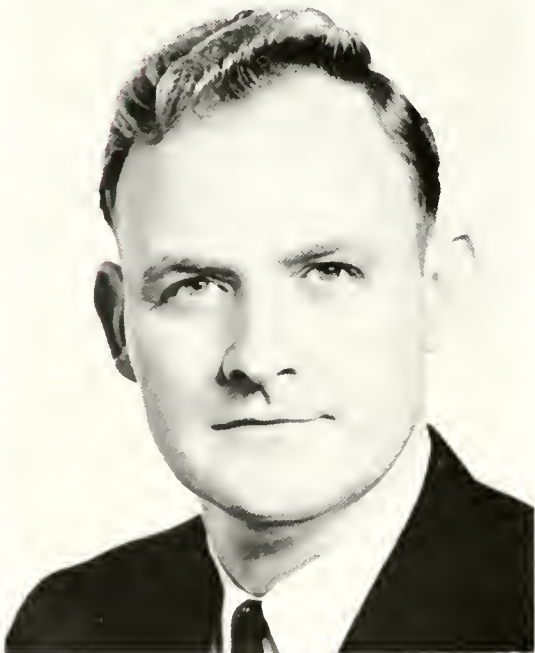
Dr. William C. Pressly, the president of Peace College, is firmly dedicated to the purpose of Christian education. Since 1926 he has been the guiding hand at Peace College, molding the thoughts and lives of thousands of young women.

His life has been devoted to the development of Peace College, and his enthusiasm pervades all aspects of our college life. "He is a man to every student dear."

# Administration



MISS MINNIE TURNER  
*Social Dean*



MR. NORMAN J. MILES  
*Academic Dean*



MR. DAVID WARNER  
*Assistant to the President*



MRS. J. R. BASINGER  
B.S., A.M.  
*Commercial Subjects*



MRS. J. NURNEY BOND  
A.B., A.M.  
*History*



MR. J. NURNEY BOND  
B.S., A.M.  
*Mathematics*



MRS. NELL BOOTH  
A.B.  
*Commercial Subjects*

## FACULTY



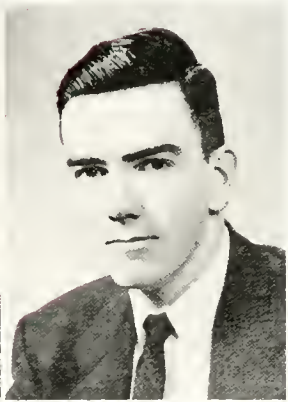
MISS MARGARET BUSSELL  
A.B., A.M.  
*Piano*



MISS PANSIE CAMBRON  
B.A.  
*Bible*



MISS PATRICIA DUNN  
B.S., M.S.  
*Health and Physical Education*



MR. GEORGE HARRIS  
A.B.  
*Laboratory Assistant*



MISS EVELYN HOLLOMAN  
A.B.  
*Science*



MRS. ROBERT JONES  
A.B.  
*Speech and Dramatics*



MR. RAYMOND KREINER  
B.M., M.M.  
*Voice and Choir Director*



MRS. WILLIAM MILLER  
A.B., A.M.  
*Organist*





MRS. DAVID OLMSTED  
A.B., A.M.  
*Art*



MRS. GLENN RANDALL  
B.S., A.M.  
*English*



MRS. E. G. SCHWERDTMAN  
A.B., A.M.  
*English*

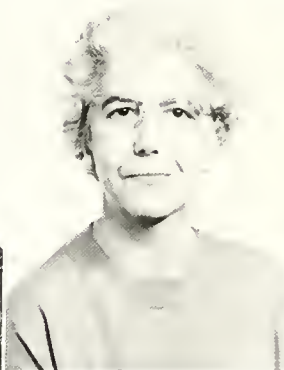


MRS. R. A. SHAW  
A.B., M.S.  
*English*

## FACULTY



MR. FLOYD SHELTON  
B.A., Ed.M.  
*French*



MISS JULIA SKINNER  
A.B., B.S.  
*Librarian*



MRS. H. P. STAFFORD, JR.  
B.S., A.M.  
*Commercial Subjects*



MR. GARY SURLIS  
B.A.  
*History*



DR. SANFORD WINSTON  
A.B., Ph.D.  
*Psychology and Sociology*



MISS WYNELLE LEWIS  
A.B., A.M.  
*Spanish*



MRS. MITTIE ALEXANDER  
R.N.  
Nurse

MISS LYDA BAUGOM  
Bursar

MRS. MELBA CASTLE  
Supervisor of Buildings

MRS. FRANCES DARDEN  
Hostess

MR. E. B. GOWER  
Night Watchman

## COLLEGE



Student Hostesses



Student Librarians

## STAFF



MRS. IRENE PASCAL  
Hostess

MISS GERRY STEPHENSON  
Secretary to the President

MRS. MILDRED THIGPEN  
Hostess

MRS. FAYE WILLIAMS  
Dietitian

MRS. L. A. WILSON  
Hostess

# Student Body

We Peace College students comprise a remarkable community. From the first moment of crossing the threshold into the now familiar entrance hall, we sensed an atmosphere of warm friendliness and rich tradition. Behind us were towns and homes, differing greatly in size and kind. Behind us were our families, large and small. At Peace we soon began forming strong new friendships. We developed a new loyalty and a higher standard in our lives. It didn't take long for us to know that we belonged, that we were a part of something traditional and worthwhile here at Peace.









## Senior Class Officers

NANCY KLISE  
*President*

MOLLY DEVRIES  
*Vice-President*

DIANE HERRING  
*Secretary*

PAM BOWRY  
*Treasurer*

MISS PATRICIA DUNN  
*Advisor*



## Class of '63

MARY FRANCES AMENDOLA

Salisbury

*Sigma Phi Kappa; Delta Chi.* President 2; Dramateers 1, 2; Spanish Club 1, 2; Chairman of Orientation Committee 2; Chairman of Class Day 2.



PRISCILLA RUTH ANDERSON

Wareham, Massachusetts

*Rho Delta Chi; Delta Chi* 1, 2; Choir 1, 2; Young Republicans Club 1, 2; Photographer, *Peace Times* 1.



JANE WELLINGTON BAKER

Charlotte

*Sigma Phi Kappa:* Hall Chairman 2; International Relations Club 1, 2; Dramateers 1, 2; Student Council Publicity Committee; *Delta Chi.* Secretary 2; Marshal 2.



## Class of '63



ANN EDWARDS BARRINGER

Robbins

Spanish Club; Papyrus Club; *Peace Times* Staff; *Phi Theta Kappa*; P.S.C.A. Cabinet; Westminster Fellowship Representative.



LINDA KATHRYN BENNETT

Mount Olive

*Sigma Phi Kappa*, Secretary 2; International Relations Club; Chairman of Awards Committee.



ANNE WILSON BILISOLY

Wendell

*Rho Delta Chi*; *Peace Times* 1; Dramateers 2; *Le Cercle Francais* 2; Home Economics Club 2; Young Democrats Club, President 2.

## Class of '63

KATIE RAE BOWEN

Pinetown

*Rho Delta Chi: Hall Chairman 2.*



CATHERINE MARSHALL BOWLES

Roxboro

*Rho Delta Chi: Delta Chi: THE LOTUS Staff.*



EMILY KATE BRADSHAW

Raleigh

*Phi Theta Mu: Delta Chi: Member of Non-Resident Group.*



## Class of '63



BARBARA LOUISE BROWN

Salisbury

*Sigma Phi Kappa: Student Council Representative;  
Delta Chi: THE LOTUS Staff.*



MARY LAVINIA BROWN

Mount Airy

*Rho Delta Chi: Alpha Pi Epsilon: THE LOTUS Staff.*



PAMELA HAVENS BOWRY

Richmond, Virginia

*Sigma Phi Kappa: International Relations Club; Span-  
ish Club; Senior Class Treasurer: THE LOTUS Staff.*

## Class of '63

JUDITH A. BURGESS

Garner

*Pi Theta Mu*, Treasurer 2; *Alpha Pi Epsilon*.



SARA EVANS BURNS

Lumberton

*Rho Delta Chi*; International Relations Club 2; Papyrus Club, Treasurer 1; *Peace Times* Staff 1; Intramurals Chairman 2.



JO ANN BURROWS

Charlotte

*Sigma Phi Kappa*; Dramateers, Secretary 1, President 2; Spanish Club 1, 2; *Delta Chi* 1, 2; International Relations Club 2; THE LOTUS Staff 2.





## Class of '63



CAROL ANN CANTER

North Wilkesboro

*Sigma Phi Kappa*; Spanish Club.



FREIDA A. CARPENTER

Shelby

*Sigma Phi Kappa*; President of Honor Court 2; Elections Committee 1, 2; Standards Committee 1; Student Council 2; Founders Day Committee 2; *Peace Times* Staff 1; *Delta Chi* 2; Outstanding Senior.



VALERIA CARR

Rose Hill

*Sigma Phi Kappa*; Home Economics Club, President 2; Art Club 2.

## Class of '63

### MARTHA MARTIN CHANDLER

Salisbury, Maryland

*Pi Theta Mu*: Choir 1, 2; *Le Cercle Francais* 1; Young Democrats Club 1, 2.



### BEVERLY JEAN COHOON

Elizabeth City

*Rho Delta Chi*: *Peace Times* Staff 1, 2; Spanish Club 1; Resident Group Chairman 2; International Relations Club 2; Marshal 2.



### FLORENCE STOKES CURRIE

Kenansville

*Sigma Phi Kappa*: THE LOTUS Staff 1; *Le Cercle Francais* 1, 2; Choir 1; Daughters and Granddaughters Club 1, 2.



## Class of '63



GLENDALOU DALY

Goldsboro

*Sigma Phi Kappa*; Home Economics Club 1, 2; *Le Cercle Francais* 1; THE LOTUS Staff 2; *Peace Times* Staff 2.



JANET KAE DALY

Goldsboro

*Sigma Phi Kappa*; THE LOTUS Staff 1; *Delta Chi* 1, 2; *Dramateers* 1, 2; *Le Cercle Francais* 1, 2.



MOLLY LOU DEVRIES

Framingham, Massachusetts

*Sigma Phi Kappa*; International Relations Club 2; *Le Cercle Francais* 1, 2; *Delta Chi* 1, 2; THE LOTUS Staff 2; Senior Class Vice-President.



## Class of '63

JUDITH ALLEN DILL

Devon, Pennsylvania

*Rho Delta Chi*: Home Economics Club, Treasurer 1;  
International Relations Club 1, 2; *Delta Chi* 1; P.S.C.A.,  
Episcopal Denominational Chairman 2; THE LOTUS  
Staff 1; *Le Cercle Francais*.



ANNE ELIZABETH DYSON

Raleigh

*Pi Theta Mu*: Home Economics Club 2.



PATRICIA AMELIA ECKOLS

Raleigh

*Pi Theta Mu*, President 2; Non-Resident Group Chair-  
man 2; Marshal.



## Class of '63



MARGARET ANN EDMUNDSON

Goldshoro

*Sigma Phi Kappa*: Queens College Transfer; International Relations Club 2; *Le Cercle Francais* 2.



BARBARA LOUISE EDWARDS

Clinton

*Sigma Phi Kappa*: *Le Cercle Francais* 1, 2; Choir 1, 2; *Peace Times* Staff 2.



MARY WINIFRED EVERETT

Robersonville

*Rho Delta Chi*: Art Club, President 2; *Le Cercle Francais* 2; Student Government Association 2; Young Democrats Club 2.

## Class of '63

JUDY LYNN FORBES

Rocky Mount  
*Rho Delta Chi.*



NANCY GERARD

Roxboro  
*Sigma Phi Kappa: Le Cercle Francais 2; Student Government Association, Parliamentarian 2.*



SARA LYNNETTE GOODEN

Elizabethtown  
*Sigma Phi Kappa: Le Cercle Francais 2.*



## Class of '63



REBA WALKER GRIFFIN

Kannapolis

*Sigma Phi Kappa*: Young Republicans Club, President 2; *Delta Chi*: Orientation Committee; Resident Group Chairman 2.



MARY ELAINE HADEN

Lumberton

*Sigma Phi Kappa*: Papyrus Club 1, President 2; *Peace Times* Staff 1, Editor 2; *The Lotus* Staff 1; Outstanding Senior.



LINDA GRAHAM HARRIS

Greenville

*Sigma Phi Kappa*: *Delta Chi* 1, 2.

## Class of '63

NANCY ROSE HARRIS

Warrenton

*Rho Delta Chi*: Spanish Club 1, 2; International Relations Club 1, Vice-President 2; *Peace Times* Staff 2; Resident Group Chairman 2; May Court 1.



TERRY LYNN HARRLES

Rocky Mount

*Sigma Phi Kappa*: Spanish Club 1, 2; *Delta Chi* 1, 2; THE LOTUS Staff 2; Standards Committee 1, 2.



DORIS SUZANNE HARPER

Fuquay Springs

*Sigma Phi Kappa*: Art Club 1, 2; Daughters and Granddaughters Club 1, 2; *Peace Times* Staff, Photographer 2; National Honor Society, President Prep IV; Choir 1; May Court Prep IV.





## Class of '63



LYDIA LENTZ HEARNE

Albemarle

*Sigma Phi Kappa*; Home Economics Club 2; Dramateers 2; Student Council Representative 1, 2; Chairman of Resident Group Chairman 2; Handbook Committee; Orientation Committee 2; Recreation Association, Secretary 2; Outstanding Senior.



MARGARET IRENE HEDGEPETH

Littleton

*Rho Delta Chi*; Spanish Club 1, 2; *Delta Chi* 1, 2.



DIANE CAROL HERRING

McLean, Virginia

*Rho Delta Chi*, Secretary-Treasurer 2; Spanish Club, Treasurer 2; Young Republicans Club, Secretary 2; International Relations Club 1, 2; Senior Class Secretary 2; *Delta Chi*; P.S.C.A., Methodist Denominational Chairman 2.

## Class of '63

MARY ANN HOFFMAN

Wilmington, Delaware

*Rho Delta Chi*: Home Economics Club 1, 2; Spanish Club 1, 2; Non-Resident Group Chairman 2.



LINDA MINA KELLY

Fayetteville

*Sigma Phi Kappa*: International Relations Club 1, 2; P.S.C.A., President 2; Honor Court 2; Student Council Representative 1, 2; *May Queen* 2.



NANCY WITCHER KLISE

Richmond, Virginia

*Sigma Phi Kappa*: Home Economics Club 2; *Peace Times* Staff 1; Student Council Representative 2; Social Committee 2; Junior Class President; Senior Class President 2; Founder's Day Committee; Outstanding Senior.



## Class of '63



WILLIE MAE KNOTT

Raleigh

*Pi Theta Mu; Phi Theta Kappa*, President 2; Spanish Club, Vice-President; Young Democrats Club 2; *Peace Times* Staff 1, Secretary 2.



SHIRLEY ANN KRIEGAL

Raleigh

*Sigma Phi Kappa; Le Cercle Francais* 1, 2; THE LOTUS Staff 2; Dramateers 2.



SUZANNE CLARY LANDIS

Chapel Hill

*Sigma Phi Kappa*; Daughters and Granddaughters Club 1, 2; International Relations Club 1, President 2; Young Republicans Club 1, 2; P.S.C.A., Social Chairman 2; Non-Resident Group Chairman 2.



## Class of '63

SUSAN ALICE LASALLA

Raleigh

*Sigma Phi Kappa*: Non-Resident Group Chairman 2.



MARILYN JUANITA LEE

Dunn

*Sigma Phi Kappa*: Art Club 1, 2; Spanish Club 1, Vice-President 2; Papyrus Club 1, 2; *Delta Chi* 1, 2; Recreation Association, Secretary 1; Dramateers 1, Secretary 2; *Peace Times* Staff 1, 2; Choir, President 1; Assistant Editor of *THE LOTUS* 2; Young Democrats Club 1, 2.



LINDA ELAINE LITTLE

Charlotte

*Sigma Phi Kappa*, President 2; Art Club 1, 2; *Delta Chi* 1, 2; International Relations Club 1; Social Committee 1; Handbook Committee.



## Class of '63



LUCILLE GERVAISE LOULA

Garner

*Sigma Phi Kappa: Alpha Pi Epsilon, Vice-President 2;  
Non-Resident Council Representative 2; Choir 1.*



EMILY ELIZABETH LOVE

Kannapolis

*Sigma Phi Kappa: Delta Chi 1, 2; Resident Group  
Chairman, Secretary 2; Standards Committee 2.*



LINDA FAYE LUTHER

Raleigh

*Phi Theta Mu, Secretary 2; Non-Resident Group Chair-  
man 2; Marshal.*

## Class of '63

DOROTHY MORRISON McDONALD

Raleigh

*Sigma Phi Kappa*: Non-Resident Group Chairman; May Court, Maid of Honor 2.



FRANCES CLARKE MANNING

Roanoke Rapids

*Sigma Phi Kappa*: THE LOTUS Staff; International Relations Club; Spanish Club.



MARGARET MICHAEL MANSOUR

Kinston

*Sigma Phi Kappa*.



## Class of '63



ANN RUSSELL MARTIN

Burlington

*Rho Delta Chi; THE LOTUS Staff; Delta Chi; Le Cercle Francais.*



LYNDA ANN MEARS

Rocky Mount

*Sigma Phi Kappa, Treasurer THE LOTUS Staff; Peace Times Staff; International Relations Club; Home Economics Club; Standards Committee 1, 2; Delta Chi; May Court 2.*



JUDITH ANN MERCER

Goldsboro

*Rho Delta Chi; Halifax House President.*

## Class of '63

PATRICIA LEA MILLNER

Raleigh

*Pi Theta Mu*; P.S.C.A. 1, 2; Art Club 1; Young Democrats Club 1, 2; *Delta Chi* 1, 2.



PHYLLIS ANN MYERS

Asheboro

*Sigma Phi Kappa*; P.S.C.A., Secretary 2; Junior Class Treasurer; International Relations Club; *Delta Chi* 1, 2; *Le Cercle Francais*; Dramateers.



ANN STUART NEWBERRY

Fayetteville

*Rho Delta Chi*; THE LOTUS Staff, Assistant Art Editor 1, 2; *Peace Times* Staff 1, Art Editor 2, Photographer 2; *Delta Chi* 1, 2; International Relations Club; Young Republicans Club 1, 2; Home Economics Club 1, 2; Papyrus Club 1, Secretary 2; *Le Cercle Francais*.





## Class of '63



ANITA FAYE NORRIS  
Newport News, Virginia  
*Pi Theta Mu.*



CAROLYN VICK O'TUEL  
Goldsboro  
*Sigma Phi Kappa.* Vice-President; Home Economics Club, Vice-President; Chairman of Social Committee 2.



CLAUDIA JUNE PAOLONI  
Greensboro  
*Sigma Phi Kappa;* International Relations Club; Dramateers; *Delta Chi;* Art Club.



## Class of '63

MARTHA KAY PATTERSON

Carthage

*Rho Delta Chi*; Student Government; Recreation Association President; Choir, President 2; Dramateers; *Le Cercle Francais* 1, Secretary 2.



KATHERINE CARTER POND

Suffolk, Virginia

*Sigma Phi Kappa*; Student Council; Secretary-Treasurer Student Government Association; Vice-President Recreation Association 1; *Le Cercle Francais*, Vice-President 1, President 2; Daughters and Granddaughters Club; *Delta Chi*.



JANE KATHERINE PRICE

Falls Church, Virginia

*Rho Delta Chi*; P.S.C.A., Publicity Chairman 1, Day Student Representative 1, Vice-President 2; International Relations Club 2; Standards Committee 1.



## Class of '63



PEGGY JO PROCTOR

Rocky Mount

*Rho Delta Chi*: President of Student Government Association 2; Peace Student Christian Association 2; Founder's Day Committee 2; Dramateers 1; *Le Cercle Francais*, Treasurer 2; *Miss Peace*: *Phi Theta Kappa*.



MARY KATE QUICK

New Bern

*Rho Delta Chi*: Spanish Club; *Delta Chi*.



JEAN LOUISE RAMEY

Lumberton

*Sigma Phi Kappa*: *Le Cercle Francais* 1.

## Class of '63

SUE CATHERINE REECE

Cramerton

*Sigma Phi Kappa*: Choir 1; Home Economics Club 2;  
*Le Cercle Francais* 1, 2; Art Club 2; Student Council  
Representative 2.



JULIA LOUISE RICHARDS

Currie

*Sigma Phi Kappa*: *Le Cercle Francais* 1, 2; *Peace Times*  
Staff 1; Young Democrats Club 1, 2.



SUSAN RICHARDSON

Rocky Mount

*Rho Delta Chi*: Dramateers 1, Treasurer; Baptist De-  
nominational Chairman 2; Handbook Committee Chair-  
man 2; Founder's Day Committee 2; Outstanding Senior  
2; Chief Marshal.



## Class of '63



GAY GILLIAM SEIBERT

Richmond, Virginia

*Sigma Phi Kappa*: Student Government Association, Vice-President 2; Home Economics Club 2; Papyrus Club 1; *Peace Times* Staff 1; Handbook Committee 2; Young Republicans Club 1, Vice-President 1, 2; Outstanding Senior.



JANET ALLEN SHAW

Asheboro

*Rho Delta Chi*; *Le Cercle Francais* 1, 2.



PAULA WALKER SHUTT

Raleigh

*Pi Theta Mu*, Vice-President 2; Non-Resident Group Chairman 2; THE LOTUS Staff 1, Business Staff 2; *Peace Times Staff*; Student Government, Non-Resident Representative 1.



## Class of '63

MARGARET EXUM SMITH

Raleigh

*Sigma Phi Kappa:* Young Democrats Club 1, Treasurer 2; Spanish Club 2.



SARAH JEFFERIES SMITH

Chester, South Carolina

*Rho Delta Chi:* Delta Chi 2.



PATRICIA ELAINE STEWART

Fayetteville

*Sigma Phi Kappa:* International Relations Club 1, Secretary-Treasurer 2; *Delta Chi* 1, 2; Spanish Club 1, 2; *THE LOTUS* Staff 1, Editor-in-Chief 2; Home Economics Club 1, 2; Student Council Representative 1; Recreation Association Awards Chairman 1; Marshal; Outstanding Senior.



## Class of '63



LINDA EARL SUMMERLIN

Goldsboro

*Rho Delta Chi*: Art Club 1, 2; Secretary of Honor Court 2; *Alpha Pi Epsilon* 2, Secretary 2; *Delta Chi* 2.



KATHY ANN TALLEY

Fuquay Springs

*Rho Delta Chi*: *Alpha Pi Epsilon* 2, President 2; Morning Watch Chairman 2; International Relations Club 2; *Peace Times* Staff 2; Outstanding Senior; Elections Committee Chairman 2.



JUDY GAYLE TAYLOR

Zebulon

*Rho Delta Chi*: THE LOTUS Staff 2; *Delta Chi* 2; Young Democrats Club, Vice-President 2; *Peace Times* Staff 1, 2; Dramateers 2; Home Economics Club 2.

## Class of '63

MARTHA CAROL TIMBERLAKE

Louisburg

*Sigma Phi Kappa*: Choir 1; Spanish Club 1, 2; Young Democrats Club 2.



JUDITH GAY TUCKER

Greenville

*Rho Delta Chi*, President 2; Resident Group Chairman 1, 2; *Delta Chi* 1, 2; May Court 2.



MARIAN CAROLYN TYNER

Raleigh

*Sigma Phi Kappa*: Business Manager of THE LOTS 2; *Le Cercle Francais* 1.



## Class of '63



JUDITH EVA WADFORD

Raleigh

*Sigma Phi Kappa*: Young Democrats Club 1, 2; Spanish Club, President 2.



SARAH WOOD WALKER

Windsor

*Sigma Phi Kappa*: Spanish Club 2; Home Economics Club 2; *Delta Chi* 1, 2; Dramateers 2.



JOYCE GARRETT WARD

Raleigh

*Sigma Phi Kappa*: Spanish Club 1; *Delta Chi* 1; Home Economics Club 1.



## Class of '63

ISABEL HARRIS

Thomasville

*Sigma Phi Kappa*; Choir 1; Home Economics Club 2;  
Spanish Club 2; International Relations Club 2; Treasurer, P.S.C.A.



SANDRA ALLEN ROGERS

Raleigh

Woman's College Transfer; *Alpha Pi Epsilon*.



SALLY ANNE WILLIAMS

Arlington, Virginia

*Sigma Phi Kappa*; International Relations Club 2;  
Home Economics Club 1, 2; *Delta Chi* 1, 2; Standards  
Committee 1; *Le Cercle Francais* 2.



## Outstanding



### FREIDA CARPENTER

Freida, as President of the Honor Court, is admired and respected by all who know her. Her character, her interest in others, and her leadership ability are only a few of the characteristics that have made her worthy of being named one of the most outstanding members of the Senior Class.

### ELAINE HADEN

Honest, friendly, and genuinely sincere, Elaine is a rare soul whose unselfish manner is revealed in everything she does. The sincere devotion and integrity she displays have distinguished her as a dependable leader and have made her one of the most outstanding members of her class. She has contributed much to Peace College.



# Seniors

## LYDIA HEARNE

Enthusiasm, ability, and a sincere friendliness make Lydia the outstanding girl she is. Her high character has aided her in her position as Chairman of the Resident Group Chairmen. We couldn't have done without her, for truly she has added much to our years at Peace.



## NANCY KLISE

Versatile and gifted, Nancy has shown her great ability for leadership as the Senior Class President. She has given of her time and self to help others and has proven herself worthy of becoming an outstanding senior. Her friendliness, good humor, and complete honesty have made her respected and admired by all.



## Outstanding



SUSAN RICHARDSON

With her generous attitude, genuine and ready smile, Susan has become a true example of Peace spirit. She is gay. Her high ideals make her one that is admired by all. She certainly deserves the honor of being chosen an outstanding senior.

GAY SEIBERT

As vice-president of the Peace Student Government Association, Gay has displayed qualities of character and leadership in putting all she could into making Peace a finer school in which to live. She is sincere and trustworthy and her many friends here at Peace give her their love and respect for her willingness to serve. She is truly an outstanding senior.





# Seniors

## ELAINE STEWART

With her conscientiousness and sincerity of purpose, Elaine has distinguished herself as a dependable and trustworthy leader. She has put much time and hard work into her job as *Editor-in-Chief* of the yearbook. Her genuine enthusiasm to help others has won for her the admiration and respect of her friends. She will always be remembered for her contributions to Peace.



## KATHY TALLEY

Kathy possesses many fine qualities which entitled her to be chosen an outstanding member of her class. Her willingness to do any job given her and to do it well has distinguished her as a trustworthy and dependable leader. She has given of her best service to Peace.





## Junior Class Officers

DIANA LIGETS  
*Secretary*

KATHY BAGBY  
*Treasurer*

GEORGIA DAVIS  
*President*

JODY VALACO  
*Vice-President*

MISS PANSIE CAMERON  
*Advisor*

# Class of '64

---

Jane Cornelia Adams  
Elizabeth Ann Aiken  
Janet Gail Alexander



Vicki Camille Allen  
Nancy Saunders Alston  
Cathy Ann Austin  
Cecilia Ann Austin



Katherine Hines Bagby  
Judith Gayle Bailey  
Shirley Gray Baker  
Carol Ann Baker



Elizabeth Willcox Beall  
Pamela Dianne Booth  
Sarah Elizabeth Bost  
Clara Ann Bradley



Olivia Linney Brewer  
Karen Elizabeth Brower  
Daisy McKay Bryan  
Marietta Josephine Broadfield



Camille Oliver Broadhurst  
Susan Relfe Broughton  
Betty Jo Bryant  
Sarah Virginia Bullock





## Class of '64



Lynda Faye Butler  
Louise Lynne Canady  
Patricia Ann Canup  
Sheryl Cameron



Jane Carol Campbell  
Judy Glenda Capps  
Jane Hayes Carico  
Dudley Nell Carter



Or'ana Manning Caughman  
Mary Ann Cavey  
Patricia Anne Cecil  
Jo Anne Elizabeth Chance



Judith Lynn Chestnutt  
Judy Kay Childress  
Nancy Gertrude Christian  
Jeri Sue Clark



Sandra Sue Cline  
Marilyn Delores Collins  
Frances Gail Cooper  
René Jeanne Cousino



Gloria Jean Cox  
Lillian Cheryl Daniels  
Carolyn LeGrand Davis  
Frances Moore Davis



# Class of '64

Georgia Lynne Davis  
Carole Danize Delbridge  
Elizabeth Ruth Dellinger  
Miriam Johnson Dorsey



Lucy Lorraine Duncan  
Jean Hunter Edwards  
Cheryl Leigh Erhard  
Katherine Lucille Erwin



Susan Patricia Ferrell  
Mary Frances Floyd  
Christine Josephine Garden  
Emma Louise Gardner



Marsha Lynn Garner  
Jill Eleanor Gilmore  
Nancy Elizabeth Godwin  
Toni Goessler



Jessie Penny Gooch  
Carol Elizabeth Gordon  
Betty Frances Greene  
Jane Marlyn Green



Carolyn Olivia Hackney  
Susan Lynne Hagwood  
Julia Lynn Hall



## Class of '64



Carol Dean Harris  
Susanne Herndon  
Sylvia Jean Hollowell  
Diana Jane Hooks



Mary Kathleen Houser  
Mary Scott Humphreys  
Diane West Humphries  
Mary Shelton Hunt



Jo Ann Johnson  
Anne Hardee Joyner  
Katherine Lee Kage  
Delores Kay Kelly



Linda Ann Kern  
Anne Grayson Klose  
Sarah Jane Knott  
Michele Joy LaBorwitt



Alice Catherine Lang  
Claudia Bane Lewis  
Diana Dare Ligets  
Linda Lee Liles



Suzanne Lochr  
Emmogene Dorothy Lorbacher  
Carol Zeigler Loring  
Paula Lee Lyman

# Class of '64

---

Mary Elissa McGowan  
Cranine Kette McAllister  
Marilyn Jane McKinney  
Mary Jacquelyn McLamb



Sharon Ann McLaughlin  
Carolyn Anne McLean  
Anne Marie Malloy  
Betty Kay Mangum



Linda Stevens Marshall  
Katherine MacLean Maxwell  
Phyllis Midgette Mayo  
Mary Karl Miller



Sally Jo Mullen  
Anne Frazier Murphy  
Joy McLean Newberry  
Susan Corrine Noble



Susan Morton Oldham  
Susan Maynard Osborne  
Margie Boyd Parrish  
Rosalyn Ellen Parrish



Margaret Ann Paschall  
Nancy Blackwell Parham  
Anne Wright Penland  
Susan Gray Penn





## Class of '64



Carolyn Eugenia Perry  
Judy Howard Phillips  
Kathleen Mary Powell  
Sandra Gail Primm



Virginia Caroline Prince  
Meredith Dean Prince  
Mary Alice Ray  
Linda Marie Roberts



Janice Faye Robertson  
Rebecca Carlton Roney  
Lucie Bristol Rouse  
Madeline Carol Sampson



Sandra Miriam Scarborough  
Wilma E. Schreuder  
Tona Carolyn Shoaf  
Nancy Pemberton Slade



Sandra Masteller Smith  
Sharon Eileen Smith  
Virginia Anne Spence  
Sandra Beth Stadiem



Susan Carol Stadiem  
Barbara Jo Stanton  
Judith Carol Stephens  
Alice Hunter Sugg



# Class of '64

---

Anne Ree Sumner  
Mary Anne Sutton  
Emily Jane Tanner  
Linda Dianne Tart



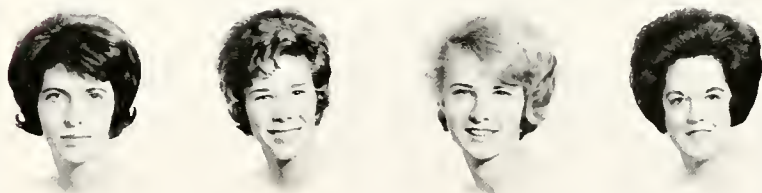
Jacqueline Louise Taylor  
Jane Elizabeth Taylor  
Myra Ann Thompson  
Billie Jo Thorburn



Katherine Ash Thorne  
Ellen Ann Tingen  
Roberta Payne Townsend  
Laurie Virginia Tucker



Jo Gay Valaco  
Betsy Ann Vick  
Libby Ann Warwick  
Patricia Dianne Watson



Betty Jean West  
Joan Carol Wilkerson  
Mary Elizabeth Wilkins  
Marian McRae Walker



Sandra Louise Walker  
Sarah Carolyn White  
Frances Love Williams  
Sarah Phyllis Wood





## Preparatory IV Officers

BEBE GRADY  
*Vice-President*

ANNE WHITE  
*Secretary*

SANDRA JOHNSON  
*President*

JULIA WOOD  
*Treasurer*

MR. J. N. BOND  
*Advisor*

# Class of '65

RUTH WEBB BAILEY

Morehead City

*Rho Delta Chi*; Choir 1, 2; *Le Cercle Francais* 1, 2; Daughters and Granddaughter's Club 1, 2; Art Club 1, 2; Dramateers 2; *Delta Chi* 2.



VIRGINIA VANCE CURRIE

Fayetteville

*Sigma Phi Kappa*; Choir 1, 2; Daughters and Granddaughter's Club 1, 2; *Le Cercle Francais* 2.



NINA MAUNEY BANNER

Morganton

*Sigma Phi Kappa*; *Le Cercle Francais* 2; Dramateers 2; Treasurer 2; Papyrus Club 2; THE LOTUS Staff 2.



KATHRYN WILCOX ELLIS

Rustburg, Virginia

*Rho Delta Chi*; *Le Cercle Francais* 1, 2; Dramateers 1.



SUSANNE BUNCH

Carolina Beach

*Sigma Phi Kappa*; National Honor Society 1, Secretary 2; May Court 1.



BETSY LEE FLOWERS

Mount Olive

*Rho Delta Chi*; Dramateers, Vice-President 2; *Le Cercle Francais* 2.



JO ANN BUNN

Zebulon

*Rho Delta Chi*; *Le Cercle Francais* 1, 2; Young Democrats Club 2.



ELIZABETH COWAN GRADY

Butner

*Sigma Phi Kappa*; Secretary, Prep III Class; Vice-President, Prep IV Class; National Honor Society 1, President 2; *Delta Chi* 1, 2.



CATHERINE BETHEA COOPER

Mallins, South Carolina

*Sigma Phi Kappa*; Dramateers 1, 2; *Delta Chi* 1; Spanish Club 1, 2; Choir 1.



ELIZABETH ANN HITE

Atlanta, Georgia

*Sigma Phi Kappa*; Standards Committee Chairman; Spanish Club 1, Secretary 2.



MARY MADISON COX

Mount Airy

*Rho Delta Chi*; Dramateers 2; *Le Cercle Francais* 2; International Relations Club 2; Art Club 2.



ELIZABETH HELEN HOWARD

Ocracoke Island

*Rho Delta Chi*; *Peace Times* Staff 2; *Delta Chi* 1, 2.





# Class of '65



SANDRA LEIGH JOHNSON  
Lillington

*Sigma Phi Kappa*: Student Council 2; President, Prep IV Class; P.S.C.A. Cabinet, Spiritual Life Chairman 1, Outreach Chairman 2; Orientation Committee 2; National Honor Society 1, Vice-President 2; Papyrus Club 1, 2.



MARY SPOTSWOOD POU  
Raleigh

*Sigma Phi Kappa*: THE LOTUS Staff 1, Editor of Prep IV Class 2; *Peace Times* Staff 1, 2; Spanish Club 1, 2; Dramateers 1; Young Democrats Club 1; *Delta Chi* 1, 2; International Relations Club 1.



LINDA LEE LUCAS  
Fort Belvoir, Virginia  
*Rho Delta Chi*.



CYNTHIA JANE SCOTT  
Fair Bluff

*Rho Delta Chi*: Student Council 1; President, Prep III Class; Dramateers 1, 2; May Court 2.



BETTY DAUGHN MATTHEWS  
Fuquay Springs  
*Rho Delta Chi*.



CAROLYN NEAL STRICKLAND  
Selma

*Rho Delta Chi*; *Delta Chi* 1, 2.



SANDRA LYNNE MOODY  
Bethel

*Sigma Phi Kappa*: Choir 2; *Le Cercle Francais* 2; Home Economics Club 2.



MILLIE FAYE THOMPSON  
Raleigh

*Phi Theta Mu*; Dramateers 2.



DOROTHY SHEPARD PARKER  
Raleigh

*Rho Delta Chi*; P.S.C.A. 1, 2; *Le Cercle Francais* 1, 2; Daughters and Granddaughter's Club 1, 2.



HELENE MYRA WAINER  
New Bern

*Sigma Phi Kappa*: THE LOTUS Staff 2; *Delta Chi* 2; Dramateers 2.



MARY JANE PARKER  
Emporia, Virginia

*Rho Delta Chi*; *Le Cercle Francais* 2; Choir 2.



MARJORIE ELIZABETH WEBB  
Sea Level

*Sigma Phi Kappa*: Treasurer, Prep III Class.



# Class of '65

---



MOLLY CHARLTON WELCH

Moyock

*Sigma Phi Kappa; Le Cercle Francais*  
2; *Peace Times* Staff 2; May Court 2.



CAROLYN CHRISTINE WELDON

Louisburg

*Rho Delta Chi; Spanish Club* 2; Choir  
2; Home Economics Club 2.



ANNE ELIZABETH WHITE

Hartsville, South Carolina

*Sigma Phi Kappa; Le Cercle Francais*  
2; Art Club 2; Choir 2; Secretary, Prep  
IV Class.



JULIA PAGE WOOD

Galax, Virginia

*Rho Delta Chi; Le Cercle Francais* 1, 2;  
Treasurer, Prep IV Class; Dramateers  
2; International Relations Club 1, 2.



JANE SCOTT  
*Best-All-Around*



## PREP IV SUPERLATIVES



*First row, left to right: Bebe Grady, Jean Spalding, Anne White, Second row, left to right: Ruth Bailey, Molly Welch, Jane Scott, Sandra Moody.*



RUTH BAILEY  
*Wittiest*



BEBE GRADY  
*Most Intellectual*



SANDRA MOODY  
*Most Talented*

JEAN SPALDING  
*Best Dressed*



MOLLY WELCH  
*Most Attractive*



ANNE WHITE  
*Most Congenial*







## Preparatory III Officers

EVELYN ANN McDANIEL  
*President*

KAY WALLACE  
*Treasurer*

FRANCES PREVATT  
*Secretary*

LINDA HARRIS  
*Vice-President*

MRS. GLENN RANDALL  
*Advisor*



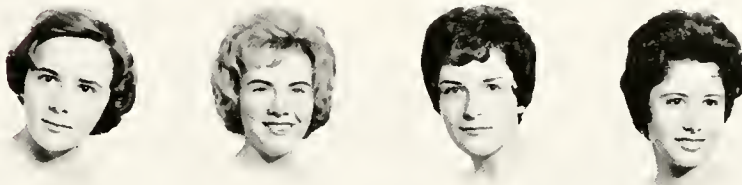
# Class of '65

---

JILLIE KATHERINE BETHEN  
 CONSTANCE FINCH CAMPBELL  
 CAROLINE WILEY CLEMENT  
 PATRICIA ANN COE



LAURA JEAN DAVIS  
 MARY ANNE FORD  
 LINDA TUNNELL HARRIS  
 JANET ELLEN HENDERSON



CAROLE KAY KISTLER  
 ANNE REW MCCAMMON  
 EVELYN ANN MCDANIEL  
 LUCINDA CATHERINE MOORE



RACHEL BUCHANAN NASH  
 MARILYN MARGARET OVERTON  
 FRANCES McLEAN PREVATT  
 MARY ANN SANDY



PEGGY MANSON SHARPE  
 BARBARA BLAKE TAYLOR  
 JUDY TURNER  
 ANNE CROSS WADE



CATHERINE CONWAY WALLACE



# Activities

Activities are a vital part of every student's school life; for they help in developing responsibility, thereby making for a more well-rounded person.

All of our activities are traditional functions of the school and are devised so that each girl may take an active part in each one. There are religious, academic, and social activities. Some of these activities are Peanut Week, Powder Puff Football, Week of Sharing, and May Day with its festivities. These promote a great deal of school spirit among the students and faculty.





Who said Beachcombers have to spell?



# Founders Day

The 1962 observance of Founder's Day celebrated the ninety-first year of Peace College. The purpose was that of honoring the founders and trustees and reminiscing about one of the past administrations.

The program took place in the Dinwiddie Memorial Chapel. Dr. Clyde Milner, President of Guilford College, delivered the main address. He stressed that we as young people live in a paradoxical age; yet our opportunities for service are greater than ever before. A short history of the Ramsey Administration (1912-16) was read by Mrs. Hubert Olive of Lexington.

Following the chapel program, a luncheon was held in the college dining room. Later in the afternoon the Founder's Day Tea was held in the Peace College parlors and dining room.



In an impressive ceremony led by the alumnae, Peace students and interested friends learn more about the beginning of Peace College.

Many old acquaintances were renewed at a tea in honor of all alumnae of Peace.



Dr. Pressly proudly recognizes the speakers and outstanding visitors at the annual Founders Day Program.







Students are intrigued by Dr. Adams's message.



Dr. Adams smiles for photographer.

## Religious Emphasis Week

The purpose of Religious Emphasis Week, held February 5, 6, and 7 in 1963, to give all students of our college community a designated week for concentrated emphasis on religious aspects of life that may aid them in their association with classmates and the outside community.

This year we were fortunate in having as our guest the Reverend Theodore Adams from Richmond, Virginia. He is well known to our group as an outstanding minister of the Baptist denomination. His chosen topic was "You and Your World." Three chapel services which further explored the main topic, plus evening discussion groups concerning anything the students wished to discuss, were held.

As a conclusion, the elders of the First Presbyterian Church assisted Dr. Pressly in the observance of the Sacrament of the Lord's Supper to students, faculty, and guests. The entire week meant a great deal to each girl present.



Dr. Adams held private conferences with the students every afternoon.

## Society Rush Parties

The three societies, Sigma Phi Kappa, Rho Delta Chi, and Pi Theta Mu had their rush parties in October. The "Sigs" had as their theme: "Modine Says: Go Sig!" The Embers filled the Rec Room with music. The Rho's had as their motto: "Go Rho!" The Corvettes entertained the guests with swinging popular sounds. Last but not least, the "Pi's" had as their theme "Lil Abner" in a "Dogpatch" setting. Their motto was "Say Hey, Man: Go Pi!" Their music was furnished by the Twi-lighters.



## Society Pledge Day

Society Pledge Day is probably anticipated more than any other day of the school year, for on this day each girl decides upon one of the societies which she wishes to join. First a campaign program, set aside to recruit the undecided, is presented in assembly followed by the pledge ceremony.

## Morning Watch

Ever heard the bell ring at 8:20? That's the signal to begin the day with a short meditation. This devotional is held in our meditation room and is led by student volunteers every morning except Saturdays and Sundays.







## Honor Society Tapping

The tapping service is designated to honor those students who have excelled in character, leadership and service, and have maintained a high scholastic average. The three societies which sponsor the service are Phi Theta Kappa for academic students; Alpha Pi Epsilon for commercial students; and The National Honor Society for Prep Students.

## Powder Puff Football Game

One of the most entertaining activities of the year is the Powder Puff Football Game in which the students in Main Building oppose those students who are in East Building and the Day Students. It really turns out to be a riotous affair!



## Delta Chi Dance Program

On December 14, 1962, the *Delta Chi's* present a program entitled "A Program in Dance." It was informative as well as entertaining. Before each dance a reading of the origin of the particular dance to be demonstrated was given. The five types of dances that were given were as follows: modern, tap, ballet, comedy, and jazz.

## May Day Activities

On May 2, 1962, May Day was held on front campus. The May Queen was crowned and next came the entertainment for the Queen and her Court. It was based around the theme "Through the Years with Pamela Peace." This theme was carried out by reminiscing the years of Pamela Peace, beginning with her first day at school, continuing through her college days, and finally to her marriage. The Court ended the May Day festivities with the May Pole Dance.



## Week of Sharing

"Going once, going twice, sold!" This is a familiar sound heard during The Week of Sharing, for it resounds from the auction sales which are held in order to give financial aid to some needy individual or individuals. This year we were happy to be able to help Mary and Martin Wong, a lovely young couple from Taiwan who are studying at the seminary in Richmond, Virginia. After studying there, they plan to return to their home as missionaries of the Gospel.

## Honor Code Pledge

At the beginning of each year, every student is required to learn the Honor Code of Peace College so that she may accurately repeat it to the Honor Council in a special service designated for this purpose. The real purpose for this is to make each girl see the importance of our Honor System and know that she has pledged to uphold it.







Top to bottom, clockwise: 10 minutes of bridge, 4 cigarettes - 8:30 break. Our own Four Flags. We've also got actresses. Trick or Treat. Dior comes to life. A most unfamiliar sight! That long walk to the bus. No school today! Third in hand play high as you can! The line up!

# Athletics

Our well-rounded physical education program, guided by its competent staff, is influential in the growth of our students. Physical growth is aided by participation in such classes as body conditioning, field hockey, horse-back riding, soccer, archery, badminton, tumbling, bowling, and folk dancing. Mental growth is promoted in the classroom through study of health and safety principles. Both of these areas of growth provide much enjoyment for everyone who participates, and at the same time they help to develop the very worthwhile qualities of good sportsmanship, co-operation, self-confidence, and leadership while building better citizens for the future.





## Body Conditioning

Body conditioning is one of the favorite courses for new girls at Peace. It offers exercises which enable them to keep their bodies fit while developing their strength and muscles.



## Field Hockey

Field hockey is an outdoor sport for some of the nature girls at Peace. This course requires speed, endurance, finesse, and good dodging.

## Folk Dancing

Folk dancing is one of the most enjoyable physical education courses, for it provides enjoyment and fun while it teaches dancing, a recreational activity for after-college days.





## Horse-Back Riding

Horse-back riding has become increasingly popular in the last few years. The girls at Peace receive their instruction from Horse-Shoe Acres Saddle Club in Raleigh.

## Soccer

Soccer requires ability and balance to play the ball with the body, legs, and feet. It is a game for recreation and fun as well as for improving the body's co-ordination.



## Archery

Archery is a sport that challenges a person's skill. It is one of the favorite physical education courses at Peace College.



## Badminton

Badminton, a game of pure skill, timing, and strategy, rather than a test of strength, can be played by all girls on a reasonably equal basis.



## Tumbling

During the past decade stunts and tumbling have come into their own as a constructive and significant part of the physical education program.

## Bowling

Real exercise in a healthful atmosphere, keen competition, and great fun with good friends—that's bowling, one of the most popular indoor sports.



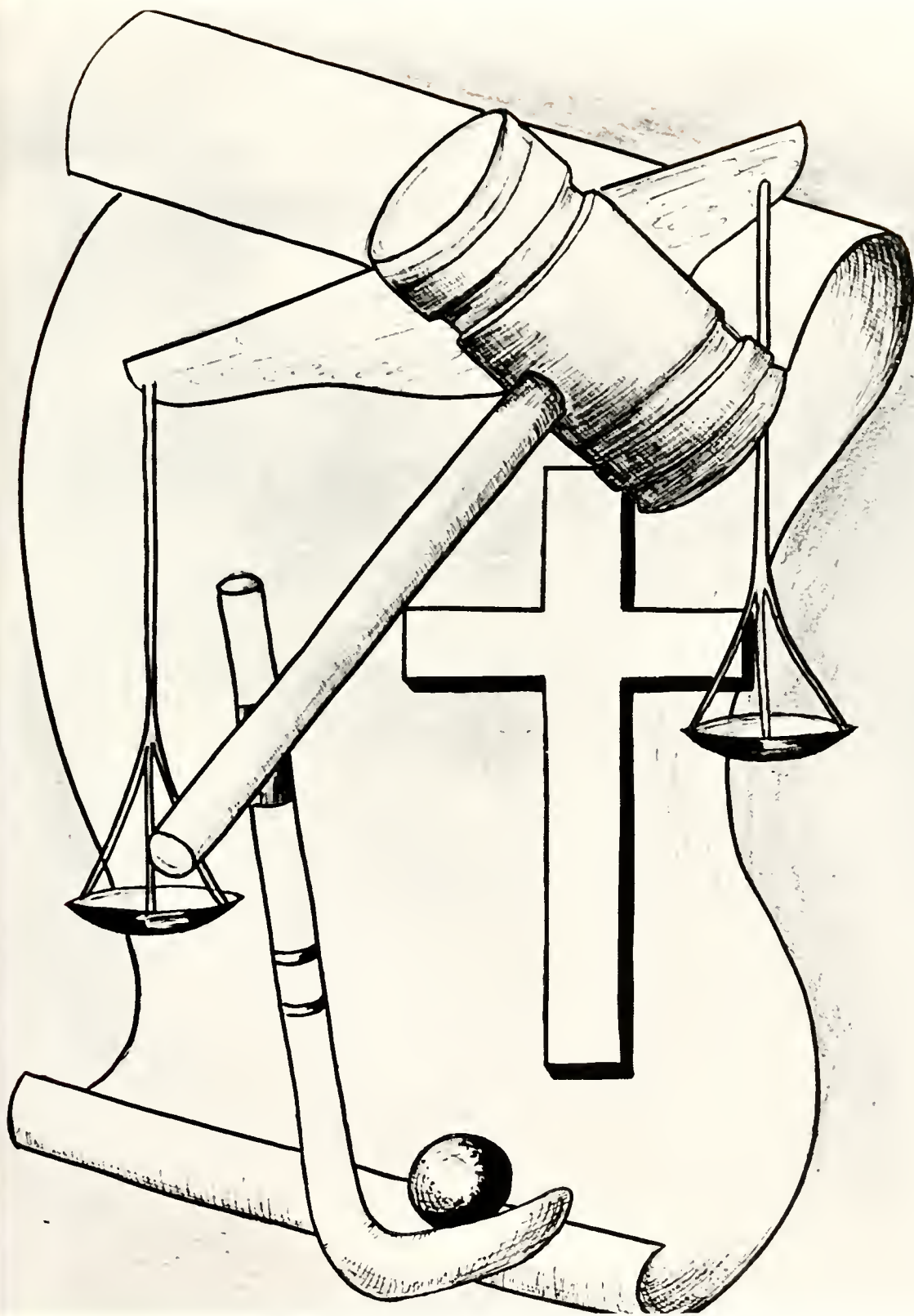
# Organizations

A fuller college life, a fuller life in general, may be enjoyed by students who participate in organizations. The experience that a girl gains through her work in an organization is just as much a part of her education as the knowledge she receives in the classroom.

The organizations at Peace afford all girls equal opportunity to grow physically, mentally, and spiritually through work and service. By their growth our college develops and becomes a richer ground in which other girls may blossom.

Whether religious, judicial, or legislative, the organizations at Peace need student support, and students need the organizations to strengthen their daily lives.







# Student Government



PEGGY JO PROCTOR  
*President*

## Peace Girls.

Although this past year, 1962-63, has not been a perfect year for the Peace Student Government, it has been one with successes and failures equally intermingled. If we had not failed in some ways, however, how would we have been inspired to work onward and upward to our successes?

It has been often said that a great chain is only as strong as each of its links; likewise, a student government association is only as strong as each of the members that support it. Its real strength, however, comes from the union of faculty and students who have accepted their responsibilities and are working toward common goals. It is like a piece of clay in the hands of a potter, to be molded and shaped into something of which we can be proud.

We can surely say that the attitude of co-operation and

ambition on the part of the majority of our students and the successful union of faculty and students have made our goals high and our achievements many. "Together we stand; divided we fall" should be the motto of every organization that wishes to aspire to greater heights spiritually, morally, intellectually, and physically as we do.

Of course, we may have not accomplished all that we have hoped for during this past year, but, perhaps, we have done the next best thing. We have tried to realize our mistakes and shortcomings in hopes that future Peace Student Government Associations will be able to profit by them and create an even more Christian and intellectual atmosphere in which young women may be educated.

Sincerely,

PEGGY JO PROCTOR

## Student Government Officers

*Seated, left to right: Kassie Pond, Secretary; Gay Seibert, Vice-President; Nancy Gerard, Parliamentarian.*



## Student Council

*Seated, left to right: Linda Kelly, Barbara Brown, Nancy Klise, Kay Patterson, Sandra Johnson, Peggy Jo Procter, Gay Seibert, Kassie Pond, Nancy Gerard, Carolyn Shoaf, Linda Marshall, Lucy Loula, Lydia Hearne, and Jane Price. Standing, left to right: Evelyn McDaniel, Georgia Davis, Linda Harris, Frieda Carpenter, Kitty Reece, and Linda Kern.*

## Branches of S.G.A.

The Resident Group Chairmen have the responsibility of keeping the boarding students informed about the new rules which are passed by the Student Council and on any revision of the old Guides for Living. They try to keep a spirit of good fellowship operating among the girls on their halls. They are elected in the spring of the preceding year by the resident students.

The Non-Resident Group Chairmen preside over the non-

resident group meetings, which occur once a week. The purpose of these meetings is to discuss any student government problem which arises and to state opinions on it.

The Recreation Council is organized to promote good sportsmanship, fellowship, and physical efficiency among the students. Recreation and athletic activities, in which all the students are invited to participate, are planned by the council during the year.

## Resident Group Chairmen

*Seated, left to right: Welly Baker, Mrs. Nell W. Booth, Advisor; Lydia Hearne, Chairman; Miss Minnie Turner, Advisor; Judy Tucker. Standing, left to right: Emily Love, Sandra Searbrough, Carol Harris, Reba Griffin, Nancy Harris, Katie Bowen. Not pictured: Beverly Cohoon.*





## NON-RESIDENT GROUP CHAIRMEN



*First row, seated left to right: Mickey McDonald, Polly Shutt, Linda Luther. Second row, seated left to right: Pattie Eckols, Susan La Salla, Chairman, and Suzanne Landis.*

## RECREATION COUNCIL

*Left to right: Kay Patterson, President; Vickie O'Tuel, Vice-President; Linda Bennett, Awards Chairman; Lydia Hearne, Secretary-Treasurer.*



The Peace Student Christian Association promotes for all Peace students growth in Christian faith, character, leadership, and service. Membership is extended to every student. A cabinet of twelve girls is chosen from this Association. These girls plan and lead outstanding activities during the year. The Big Sister-Little Sister program, which is designed by the P.S.C.A., is to help the new students become more familiar with Peace.

The Peace Student Christian Association Cabinet selects a project and a goal which the students, faculty, and administration try to attain. This is known as the Week of Sharing. Other outstanding activities of the year are Thanksgiving baskets for the maids, Morning Watch, Vesper programs, Hall Prayers, Hut discussions, Peanut Week, Religious Emphasis Week, World Day of Prayer, and Christmas and Easter programs. It is with a great desire to serve God and with a love for Him that these undertakings of the Peace Student Christian Association are carried out.



LINDA KELLY  
*President*

## Peace Student Christian Association

*Seated, first row, left to right: Linda Kelly, President; Jane Price, Vice-President; Phyllis Myers, Secretary; Bel Harris, Treasurer. Second row, left to right: Kathy Tally, Karen Brower, Suzanne Landis, Susan Richardson. Third row, left to right: Ann Battringer, Lucy Duncan, Carolyn Shoaf, Sandra Johnson. Fourth row, left to right: Judy Dill, Diane Herring, Miss Cameron, Advisor.*







FREIDA CARPENTER  
*President*

The Honor Court is the main judicial branch of the Student Government at Peace College. It tries all cases of violation of the Honor Code. Each student at the beginning of the year signs the Honor Pledge which places her on her honor not to lie, cheat, or steal, to abide by faculty regulations, and to report her own or another's violation of the Honor Code. The standing members of the Honor Court are the President, the Secretary, the President of the Peace Student Christian Association, and the President of the Student Government Association. The temporary members are chosen from the senior, junior, and preparatory classes and must have been on the Honor Roll at the end of the preceding grading period.

Throughout the year at Peace the Honor Court strives to raise the moral and social standards of each student. The honor system, which is made possible by the co-operation of all the students, has become an essential part of our college life, thereby making each girl feel closer to Peace and helping her to develop morally, spiritually, and socially.

## Honor Court

*Seated, left to right:* Linda Kelly, President of the Peace Student Christian Association; Mrs. Booth, Advisor; Peggy Jo Procter, President of the Student Government Association; Freida Carpenter, President of the Honor Court; Linda Summerlin, Secretary of the Honor Court; and Miss Turner, Advisor.





# The Societies

One of the best ways for a Peace student to meet and enjoy new friendships is to join one of the three social societies. The goal of the societies is to promote a better school spirit and to encourage unity among the students. Annually each organization sponsors a welfare project to help some needy person.

Rush Day is held in assembly each fall when each new girl is given the opportunity to decide which society she prefers to pledge. Later on, "Rat Court" is held thus making the pledges full-fledged members.

Long a tradition of Peace College is "Weekend of the Green" held each spring. One of the most entertaining events of this year's weekend was the lawn concert by the Huntsmen. The closing of this weekend marks one of the most memorable events of the year.





## Alpha Pi Epsilon

---

Promoting scholarship, leadership, and skill in secretarial achievement is the aim of the Alpha Pi Epsilon society. To encourage the college trained secretary in her chosen field is a main objective. In order for a student to hold membership in this society she must be of superior scholarship. Members are tapped in a ceremony following the end of the first semester each year.

*Front row, left to right:* Kathy Tally, President; Lucy Loula, Vice-President; Linda Summerlin, Secretary-Treasurer. *Second row, left to right:* Phyllis Wood, Judith Burgess, Lucie Rouse, Sherril Daniels, Jane Green. *Third row, left to right:* Carol Ann Baker, Nancy Klise, Georgia Davis, Marsha Garner, Patsy Watson, Judy Capps.

## Phi Theta Kappa

---

Phi Theta Kappa is the National Junior College Honorary Scholastic Society. The Peace College chapter of this organization is Gamma Phi. One must meet the requirements of being an outstanding student and citizen in order to become a member of the society.

The club endeavors to cultivate an awareness of the importance of good scholarship, leadership, and citizenship among the students and to inspire the students to achieve these ideals.

*First row, left to right:* Julia Hall, Jane Adams, Ann Barringer, Secretary; Willie Mae Knott, President; Anne Penland, Betty Wilkins. *Second row, left to right:* Susan Broughton, Mrs. Betty Coffey, Susan Oldham, Suzanne Harper, Sandra Scarborough, Peggy Jo Proctor, Carolyn White, Sarah Bost, not pictured.

## National Honor Society

---

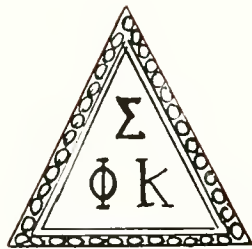
Those students maintaining at least a "B" average and approved by the faculty and present members of the society are eligible for membership in the National Honor Society. Presidents of the Honor Court and Student Government must also approve those eligible.

The Society recognizes members of the preparatory classes who have excelled in leadership, scholarship, character, and service to others.

*Front row, left to right:* Bebe Grady, President; Sandra Johnson, Vice-President; Suzanne Bunch, Secretary-Treasurer. *Second row, left to right:* Frances Prevatt, Marjorie Webb, Patricia Coe, Jane Scott, Rachel Nash, Catherine Wallace, Linda Harris.







LINDA LITTLE  
*President*

## SIGMA PHI KAPPA

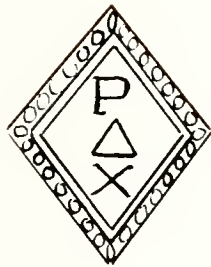
"Modine says—Go Sig" was the over-all theme carried out at the Sig rush party October 19, 1962. The Rec Room was decorated with funny papers with the theme carried out on them, and everyone danced to the music of the Embers.

The Sigma Phi Kappa Society is one of the outstanding organizations at Peace College. As Sigs, the girls strive to uphold the high standards of our college.

During the Easter season the Sigs gave a party for the orphans from the Methodist Orphanage.







JUDY TUCKER  
*President*

## RHO DELTA CHI

"Stand up and cheer for Rho Delta Chi— that's what they sing, and that's what they do. The Rho's are proud of their society and of their college and are willing to work for the good of both.

"Go—Go Rho" was the over-all theme that the Rho's used for their annual society dance held in the Rec Room November 2, 1962. Their theme was carried out with the decorations of a football field as the crowds and cheerleaders all cheered "Go-Rho—Go Rho!" Everyone enjoyed dancing to the music of the Corvettes.

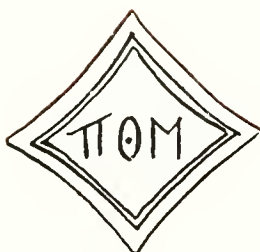
Rho's strive to uphold honor and loyalty and to serve our college to the best of their ability.

They show their good will during the Christmas season by helping two needy families, supplying them with toys, clothes, and food.

Once again this year, the Rho's were a success.







PATTIE ECKOLS  
*President*

## PI THETA MU

Pi Theta Mu Society is one of the outstanding organizations at Peace College. The society is centered around parties, bake sales, and a beach trip. These activities promote friendship among its members.

"Say Hey Man, Go Pi" was the over-all theme carried out at the Pi rush party November 16, 1962. Everyone enjoyed the music of the Twi-lighters.

During the Easter season the Pi's sponsor a welfare family and supply them with food, clothes, and Easter baskets.

Day students constitute a large part of our student body, and the joint activities of the societies enable the day students and the resident students to become better acquainted.





Just another one of those in-between meal snacks!  
 Always a cheery smile  
 I'm sorry, you're on a faculty line!  
 Soaking up that good old Sol

My own little study  
 Pledge Sig! Pledge Rho! Pledge Pi!

That's real determination!  
 11:29 P.M.  
 $12 \times 8 + 15 = 7 \times 27 = ?$   
 Typical Wednesday night



# Student Clubs

Our student clubs teach us how to work in a group, how to accept and carry out the viewpoints of others, and how to co-operate to achieve a common goal. Our club life centers around our social clubs, then branches out into many fields of interest. Each girl can pick the clubs she wishes to devote most of her time to. Picnics, get-togethers, worth-while money-making and service projects, and excellent speakers characterize the aims of these clubs. As is true in anything a person does, the clubs epitomize the truth of, "Give and you shall receive"; so the girls who devote much energy to these clubs get the satisfying reward of having many new friends and accomplishing a job well done.







may 1, 1963  
3 30 pm  
peace college  
campus

## MEETINGS

## CLUBS



SEE EUROPE



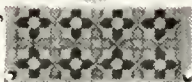
UNIVERSAL  
DAY OF PRAYER  
FOR SECURITY  
FEBRUARY 17, 1961  
PEACE AND THE EARTH

CAMP JOBS NOW OPEN

Summer Camp Employment for  
Men and Women 18 and Over



MADRID



# HI

**ART CLUB**  
MEETING  
SPEAKER: MRS. WALKER  
FROM ENGLAND  
TUES. FEB. 19 7-8 PM.  
GIRLS' LIVING  
ROOM

## Why Be A

## DEMOCRAT?

## MAY DAY

From Jefferson to Kennedy  
the Democratic Party has  
worked for Peace and Prosperity

Peace College Campus  
3 30 PM

## DON'T LITTERBUG



8  
Governor (Oregon)

## Spanish Club

The Spanish Club is composed of students who wish to gain greater knowledge of the people and customs of Spanish-speaking countries. It holds monthly meetings and undertakes a special project each year.



*First row, left to right: Pam Bowry, Diane Herring, Treasurer; Ann Hite, Secretary; Willie Mae Knott, Vice-President; Judy Wadford, President. Second row, left to right: Zackie Murphy, Margaret Smith, Ann Tingen, Judy Stephens, Carolyn Davis, Alice Lang, Diane Humphries. Third row, left to right: Joanne Burrows, Lissa McGowan, Ann Malloy, Linda Marshall, Claudia Lewis, Billie Jo Thorburn, Carolyn Weldon. Fourth row, left to right: Elaine Stewart, Kitty Erwin, Sarah Walker, Betty Green, Carol Timberlake, Catherine Cooper, Carole Dellbridge. Fifth row, left to right: Oriana Caughman, Claudia Paoloni, Rosalyn Parrish, Susie Herdon, Bel Harris, Ginger Tucker, Kathy Thorne, Sandy Walker. Not pictured: Miss Lewis, Advisor.*

## Le Cercle Francais

Students who take French are eligible for membership in this club which offers an interesting medium through which a keener understanding of France, its language, its traditions, its history, and its culture may be obtained.



*First row, left to right: Ann Newberry, Ann Cecil, Vickie O'Tuel, Nancy Gerard, Bett Aiken, Barbara Edwards, Huby Dellinger, Ann Wade, Judy Turner, Virginia Currie, Christine Garden. Second row, left to right: Julia Richards, Jo Ann Johnson, Kitty Reece, Phyllis Myers, Diana Hooks, Susan Oldham, Ann Bradley, Marilyn Overton, Evelyn McDaniel, Betsy Flowers, Margaret Edmundson. Third row, left to right: Daisy Bryan, Ann Martin, Pat Canup, Anne Penland, Nina Banner, Mary Everett, Mary Jane Parker, Rachel Nash, Patsy Cox, Connie Campbell, Kathy Ellis, Ruth Bailey. Fourth row, left to right: Florence Currie, Sally A. Williams, Kassie Pond, President; Mary Ann Ford, Vice-President; Peggy Jo Proctor, Secretary; Molly DeVries. Not pictured, Mr. Shelton, Advisor.*



## Art Club

Operating under a new constitution this year, the Art Club remains one of the most active and certainly one of the most interesting organizations at Peace. Members strive for a broader understanding of art and a greater appreciation of the beauty around us.



*First row, left to right, seated:* Mary Everett, President; Cranine McAllister, Vice-President; Suzanne Harper, Secretary; Ree Sumner, Treasurer. *Second row, left to right:* Anne White, Jane Adams, Shelton Hunt, Ann Newberry, Pat Coe, Jean Edwards, Linda Summerlin. *Third row, left to right:* Zackie Murphy, Valeria Carr, Jan Henderson, Oriana Caughman, Abby Dellinger, Mrs. Olmsted, Advisor.

## Choir

The choir, under the excellent direction of Mr. Raymond Kreiner, is an essential part of our worship services here at Peace. Besides participating in chapel services twice a week, these talented girls present several inspiring programs at special times throughout the school year.



*First row, left to right:* Sandra Moody, Linda Kern, Frankie Hatley, Virginia Prince, Ann Klose, Dudley Carter, Ruth Bailey. *Second row, left to right:* Anne White, Judy Turner, Anne McCammon, Virginia Currie, Martha Chandler, Kay Mangum, Jane Adams, Mr. Kreiner, Director. *Third row, left to right:* Carolyn Weldon, Linda Harris, Barbara Edwards, Kay Patterson, Lucy Loula, Priscilla Andersson, Mary Jane Parker, Pat Canup.



## Delta Chi

A fall Chapel program in dance, giving the history and example of Jazz, Tap, Modern, and Ballet, and the beautiful spring May Day were the events sponsored by the busy dance club. The club has as its main objective to give to students who have an interest and some ability an opportunity to express their creativity and to find pleasure in dance. As is seen by the large membership everyone has been encouraged to get more fun out of the dancing that they do.



First row, left to right: Mary Carl Miller, Kassie Pond, Lissa McGowan, Sally Jo Mullen, Mary S. Poul, Elaine Stewart, Bebe Grady, Connie Campbell, Sandra Johnson, Joanne Burrows, Susie Herndon, Claudia Pauloni, Diana Tigets, Christine Garden, Jody Volaro, Terry Lynn Harles, Mary Humphreys, Camille Broadhurst, Sandra Cline, Susan Oldham, Jeri Sue Clark, Reba Griffin, Janet Daly, Ruth Bailey, Judy Taylor, Ann Cecil, Ginger Tucker, Sally Anne Williams, Linda Mears, Ann Martin, Linda Summerlin, Emily Bradshaw, Jane Green, Sara Gooden, Molly DeVries, Barbara Brown, Betty Jo Bryant, Kitty Erwin, Mary McLamb, Fran Davis, Linda Harris, Sara Walker, Phyllis Myers, Freida Carpenter; center, Welly Baker, Secretary; Mary Frances Amendola, President; Miss Patricia Dunn, Advisor. Not pictured: Julie Bothea, Sarah Best, Karen Brower, Barbara Brown, Marilyn Lee, Paula Lyman, Zackie Murphy, Susan Penn, Margaret Paschall, Frances Prevatt.

## Dramateers

At Peace, Dramateers gain valuable experience in play production and co-operation through their participation in this well-known club. Interest is centered on giving and attending several plays throughout the year. In December the Dramateers presented "Early Frost," which was a success mainly attributed to the hard work of the girls and their advisor.



First row, left to right: Betsy Flowers, Judy Taylor, Anne Bradley, Evelyn McDaniel, Jan Taylor, Ruth Bailey, Tippy Cox, Sandra Cline. Second row, left to right: Mary Ann Ford, Christine Garden, Pat Canup, Nina Banner, Treasurer; Billie Jo Thorburn, Diana Hooks, President; Judy Childress. Third row, left to right: Joanne Burrows, Marilyn Overton, Hunter Suggs, Linda Roberts, Kathy Cooper, Mrs. Robert Jones, Advisor. Not pictured: Janet Daly, Vice-President; Marilyn Lee, Secretary.

## Home Economics Club

Home decorating, styling, grooming, and being a good hostess . . . these are things which a new member of the Home Economics Club can look forward to learning about. These girls also sponsored a fashion show and made the original decorations for Week-end of the Green.



*First row, left to right: Sarah Walker, Kitty Reece, Ann Newberry, Valeria Carr, President; Vickie O'Tuel, Vice-President; Linda Mears, Elaine Stewart, Sarah Bullock. Second row, left to right: Judy Taylor, Sally Anne Williams, Susan Oldham, Lydia Hearne, Glenda Daly, Gay Seibert, Carolyn Weldon, Judy Childress, Anne Bilisoly. Not pictured: Ibby Dellinger, Secretary; Pat Coggins, Treasurer.*

## Papyrus Club

The Papyrus Club, one of the oldest organizations at Peace, is made up of girls who like to write. Its purpose is to stimulate an interest in all forms of creative writing and to work with the other members toward the goal of producing.



*First row, left to right: Willie Mae Knott, Honey Roney, Miriam Dorsey, Dee Bryan. Second row, left to right: Ann Newberry, Secretary; Sally Jo Mullen, Vice-President; Jody Valaco, Treasurer. Not pictured: Elaine Haden, President.*



## International Relations Club

The International Relations Club meets once a month for lectures, discussions, and debates with somebody who knows more about the world affairs than we do and finds out what's going on and why.



*First row, left to right: Molly DeVries, Tippy Cox, Pat Coe, Carolyn Davis. Second row, left to right: Jane Price, Elaine Stewart, Secretary-Treasurer; Suzanne Landis, President; Welly Baker, Beverly Cohoon. Third row, left to right: Ann Newberry, Diane Humphries, Jo Anne Burrows, Sally Anne Williams, Linda Kelly, Diane Herring, Pam Bowry, Margaret Ann Edmundson, Frances Manning. Fourth row, left to right: Linda Marshall, Christine Garden, Claudia Paoloni, Alice Lang, Linda Bennetti, Sara Burns, Kathy Talley.*

## Daughters and Granddaughters Club

The Daughters and Granddaughters Club pays tribute to the many mothers and grandmothers who, throughout the years, have preserved and upheld the traditions and heritage of Peace College.



*First row, left to right: Kassie Pond, Vice-President; Cindy Moore, President; Suzanne Harper, Secretary-Treasurer. Second row, left to right: Ann Tingen, Sara Bullock, Bett Aiken, Virginia Currie, Jean Davis, Suzanne Landis. Third row, left to right: Daisy Bryan, Sandy Walker, Miriam Dorsey, Shelton Hunt, Ann Bradley.*



The college newspaper, the *Peace Times*, is an important mirror of college life throughout the year. While providing a record of such events as Peanut Week, The Week of Sharing, The Weekend of the Green, Election Day, and May Day, the *Times* also provides space for student editorial comment; here is a chance to evaluate ourselves and to constantly raise our standards.

The lighter side of campus life is reflected in such traditional features as Senior Scoops, Buttons and Beaux, and this year's innovations: a cartoon corner. Creative talent also finds an outlet in the pages of the *Times*: poetry particularly is always welcome, with each spring one issue partially devoted to creative writing.

The discipline of constantly meeting deadlines is arduous, but no reward is greater than the sense of accomplishment we feel each time we go to press on schedule.

## Peace Times



ELAINE HADEN  
*Editor-in-Chief*



ANN BARRINGER  
*Assistant Editor*



First row, left to right: Beverly Cohoon, Marilyn Lee, Mary Ann Ford, Fran Davis, Glenda Daly, Joy Newberry. Second row, left to right: Judy Taylor, Shelton Hunt, Ann Penland, Miriam Dorsey, Linda Mears, Ann McCammon. Third row, left to right: Camille Broadhurst, Kittv Erwin, Mary Pou, Ann Newberry, Suzanne Harper, Sara Burns, Zackie Murphy.



ELAINE STEWART  
*Editor-in-Chief*

The 1963 LOTUS staff proudly presents to you, the students and faculty of Peace College, this annual. We sincerely hope that you will enjoy it as much as we have enjoyed putting it together for you.

Each of the staff has worked hard and spent long hours to recapture the year's most outstanding memories, but our work was made easier by our knowing that we would help you maintain a vivid picture of your 1962-1963 year at Peace College.

The staff was fortunate to be under the leadership of Elaine Stewart and Mrs. Glenn Randall. Under the guidance and through the work of these two, we feel as though we can now give you a book you will long cherish: The LOTUS of 1963.

## '63 LOTUS



IBBEY DELLINGER  
*Art Editor*



MARDYN LEE  
*Assistant Editor*



CAROLYN TYNER  
*Business Manager*





#### LOTUS EDITORIAL STAFF

*First row, left to right:* Linda Mears, Molly DeVries, Ginger Prince, Editor of Activity Section; Rachel Nash, Editor of Prep III Section; Karen Brower, Editor of Athletics and Society Sections; Evelyn McDaniel. *Second row, left to right:* Miriam Dorsey, Diane Humphries, Kathy Thorne, Editor of Senior Class Section; Carolyn Sheaf, Editor of Feature Section; Sally Jo Mullen, Editor of Administration and Faculty Section; Ann Malloy, Editor of Junior Class Section; Zackie Murphy, Editor of Student Clubs and Organization Sections; Susan Broughton. *Third row, left to right:* Pam Bowry, Ann Newberry, Judy Taylor, Ann Martin, Mary Pou, Editor of Prep IV Section; Terry Lynn Harles. *Fourth row, left to right:* Diana Ligets, Claudia Lewis, Anne White, Jill Gilmore, Marilyn Overton, Billy Jo Thorburn. *Not pictured:* Bett Aiken, Mrs. Glenn Randall.



#### LOTUS BUSINESS STAFF

*First row, left to right:* Lavinia Brown, Ginger Tucker, Lissa McGowan, Barbara Brown. *Second row, left to right:* Polly Shutt, Paula Lyman, Helene Wainer. *Not pictured:* Miss Lyda Baucom, Advisor.



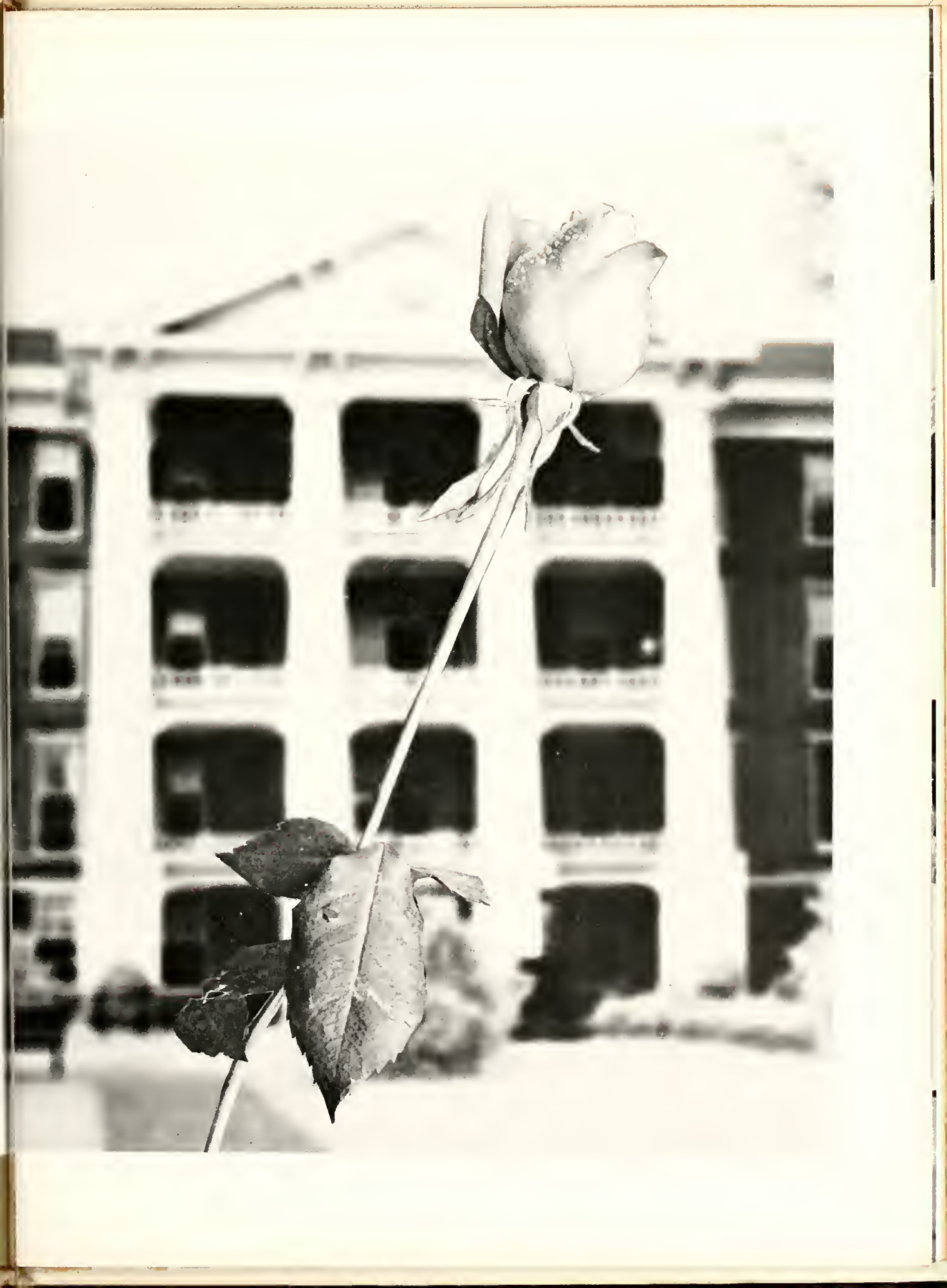
# Features

Extracurricular activities are significant in the growth of each Peace student's life, and it is the part most often remembered in her future. The girls who proudly receive these honors help to keep the tradition of Peace College high. These girls prove they have placed their school before self.

The highest honor bestowed on a girl is to be "Miss Peace." Each year the student body elects the girl most representative of a Peace student. In our annual May Day festivities, the May Queen and her Court are presented. Assisting in Vespers and all other special college events are the Marshals, elected by the societies. Weekend of the Green, social event of the year, is always eagerly looked forward to by Peace students.

These honors and events represent an important branch in our life here at Peace, and it is our pleasure to present them.







*Miss Peace*

PEGGY JO PROCTOR





*May Queen*

MISS LINDA KELLY



MICKIE McDONALD  
*Maid of Honor*



MAY  
COURT  
1963



MARY ALICE RAY  
*Junior Class*



MARY McLAMB  
*Junior Class*



MOLLIE WELCH  
*Prep IV*

May Day, 1963, proved to be one of the most enchanting and exciting events of the school year. More than forty students participated in the exercises, which were presented by the *Delta Chi* dance club. With the theme of "Our American Heritage," the dancers were able to act out many historical events, bringing in contributions to our American culture.

Representatives to the May Court were elected by the popular vote of their respective classes to be attendants to the May Queen, Linda Kelly. Linda was chosen by the entire student body in a mass election. She and her attendants reigned over the May Day celebration, making a very charming and beautiful picture.



LINDA MEARS  
*Senior Class*



JUDY TUCKER  
*Senior Class*



JANE SCOTT  
*Prep IV*



MARILYN OVERTON  
*Prep III*



JAN HENDERSON  
*Prep III*





WELLY BAKER



BEVERLY COHOON



PATTY ECHOLS

## The Marshals



LINDA LUTHER

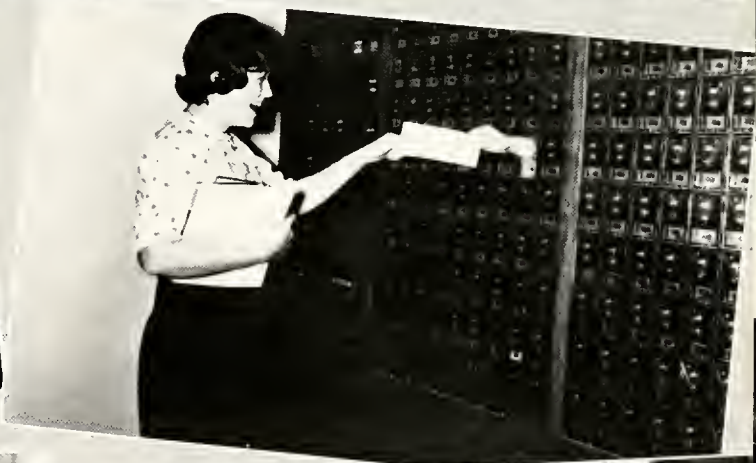


SUSAN RICHARDSON  
*Chief Marshal*



ELAINE STEWART





Goldfish Paradise!  
Put your money where your mouth is!  
The Pricilini Original.

We major in the Majors.

I got dismissed. Guess why?  
That's what I call special delivery!  
Get it while you can.





Enjoying the more informal atmosphere, these couples twist to the music of the Twilighters and the Turbines.



Taking advantage of the warm spring day, the girls and their dates enjoy the lawn concert.

## Weekend of

Theirs is a secret no more?



Obviously, the "magic hour" will come too soon for many of the couples at the semi-formal dance held at the Sir Walter Hotel.





Entertaining the students with popular ballads, the Huntsmen were enthusiastically received.



"Say, that the best 'dog' you ever had?"

## the Green



Following the lawn concert, a picnic was held in the Rec Room for the girls and their dates.



That a new dance?

# The Advertisers

The Peace College LOTUS has been published annually since 1902. The publishing of the LOTUS, as well as many other activities at Peace, have been made possible by business establishments in Raleigh and by other members of the community.

The selling of ads not only is a financial aid, but also is an aid to better citizenship. LOTUS members receive an opportunity to meet new people during the sales campaign, and they also receive valuable business experience.







*Pax vobiscum.*



DIAMOND JUBILEE  
**Hudson-Belk**  
**EFIRD'S**



*Eastern Carolina's Largest*

*Department Store*

*Congratulations. Class of '62*

## **KERR DRUGS**

**Cosmetics  
Tobaccos**

Reg. Pharmacist  
on duty at *All* times  
For Your Prescription Needs

**Luncheonette  
Magazines**

### **RALEIGH**

Cameron Village  
Ridgewood  
Shopping Center

### **GOLDSBORO**

Sunrise  
Shopping  
Center

### **DURHAM**

Willons Village  
Lakewood Shop. Center  
Northgate Shop. Center

Compliments of

## **COMMERCIAL PRINTING COMPANY**

DIAL TE 2-2828

RALEIGH, NORTH CAROLINA

### **HOFBRAU RESTAURANT, INC.**



CAMERON VILLAGE

### **PERSON ST. VARIETY STORE**

702 N. Person St.

—COMPLETE 5 & 10 STORE—

We Carry A Complete Line of  
School Supplies

OPEN 'TILL 9:00 P.M. EVERY NIGHT

*Compliments of*

**BROWN-WYNNE  
FUNERAL HOME**



**RALEIGH NEHI BOTTLING CO.**  
3210 Hillsboro St.  
Raleigh, N. C.

*Compliments of*

**THE GRAPHIC PRESS, INC.**  
**PRINTERS AND LITHOGRAPHERS**  
418 S. Dawson Street  
Raleigh, N. C.

**MITCHELL'S  
HAIR STYLING**

PHONE TE 4-8221  
CAMERON VILLAGE

**BYNUM PRINTING COMPANY**

*Better Printing*

PHONE TE 2-6417





We're proud of our part in  
designing and engraving the  
**LOTUS**

Schools that want outstanding annuals year after year have turned to us. We work hard to give each school every good reason to continue with our company. Our experience, art department and plant know-how, and continuous

personal service assure prompt attention to every detail. Let our representative tell you about the many satisfied schools, agencies, printers and editors we serve.

the  
**Lynchburg Engraving Company**  
incorporated

box 720 lynchburg, va.

*Compliments of*

**CAPITAL FUEL OIL, ICE  
AND COAL COMPANY, Inc.**

600 WEST HARGETT STREET

Phone TE 2-5589

ICE

COAL

ESSO FUEL OIL

**PERSON STREET  
PHARMACY**

and

**PERSON STREET  
VARIETY STORE**

ON

PERSON STREET

*Serving Peace College*

*for*

*31 Years*

**where there's NO smoke  
there's NO fire!**



**FLAMELESS  
ELECTRIC  
HEAT**

**SAFE..CLEAN..MODERN**

**CAROLINA POWER & LIGHT COMPANY**

*An investor-owned, taxpaying, public utility company*

***Smith's Studio***  
***Official Photographers for the***  
***1963 Lotus***

• • •

***Portraits, Glossy Prints, and***  
***Application Pictures May Be***  
***Ordered from Your School***  
***Negatives***

• • •

**We Have a Complete Line of Different**  
**Sizes and Styles of Frames**

• • •

14 East Hargett Street  
Raleigh, N. C.

**ROY'S DRIVE-IN CLEANERS**

One Hour Dry Cleaning

Three Hour Shirt Service

ROY M. HARRIS

719 N. Person Street  
Raleigh, N. C.  
Phone: VANCE 8-2223

**Dr Pepper<sup>®</sup>**



For Women who love  
elegance in Fashion

**ADLERS  
of  
Raleigh**

Downtown and Cameron Village

*Ellisberg's*

DOWNTOWN AND

CAMERON VILLAGE

**CUT FLOWERS      FLOWERS!      CORSAGES**  
**GRADUATION BOUQUETS**  
**DECORATIONS**

TE 2-8347

PHONES

TE 2-0795

**J. J. FALLON CO., INC.**

*"We Grow the Flowers We Sell"*



*Compliments  
of*

*Balentine's*

CAMERON VILLAGE

Raleigh, N. C.

Tel. TE 4-6561

**GINO'S ITALIAN RESTAURANT**

516 S. Salisbury St., Raleigh, N. C.

**ALL ITALIAN FOODS, STEAK & CHICKEN**  
**PIZZAS A SPECIALTY**

BREAKFAST  
7 a.m.-10 a.m.

LUNCH  
11:30 a.m.-2:30 p.m.

EVENING  
4 p.m.-11:30 p.m.

*"GINO YOUR HOST"*

SERVING FINE

North Carolina Communities

SINCE 1898

WITH

## COMPLETE BANKING SERVICE

Member Federal Deposit Insurance Corporation



*Jolly's*

Established 1881

LEADING JEWELERS

AND

SILVERSMITHS

IVEY'S

OF RALEIGH

for a Complete line of **DAIRY FOODS**



**MILK AND ICE CREAM**

★ At your nearby store

**MILK AND DAIRY FOODS**

★ By convenient home delivery

**PINE STATE**

RALEIGH • OXFORD • HENDERSON

DUNN • GOLDSBORO

SANFORD • ROANOKE RAPIDS

*North Carolina's Choice Since 1919*

## 1963 SPONSORS

LEON BYRUM OPTICIANS

NOWELL'S

BLACK STEER SUPPER CLUB

VILLA CAPRI

FAIRLANES SPORTLAND

JEFFRIES JEWELRY

GOODMAN'S LADIES SHOP

T. H. BRIGGS & SONS

TYNER MAGNETO and ELECTRIC CO.

POOLE'S PIE SHOP

PROFESSIONAL PHARMACY

WAKE REALTY CO.

WEATHERMAN'S JEWELERS

CROMLEY'S PHARMACY





## **FASHIONS**

Insurance Building

Raleigh, N. C.

*Compliments of*

## **THE ANDREW JOHNSON HOTEL**

Free Parking

Family Rate Plan

**FREE CONTINENTAL BREAKFAST**

*AIR CONDITIONED ROOMS*

*WITH T.V. OR RADIO*

# **BROGDEN PRODUCE COMPANY, INC.**

*WHOLESALE*

**Fresh Fruits and Produce**

**RALEIGH**

*Serving Peace for over Fifty-five years*

Buy At

## ***Land's***

and Save

*Raleigh's Leading Credit Jewelers*

PHONE TE 2-3751

FAYETTEVILLE ST. AT HARGETT ST.

## **PENNEY'S**

**"ALWAYS FIRST QUALITY"**

In Raleigh's Cameron Village

*WHERE PARKING AND SHOPPING  
IS A PLEASURE*

## **VILLAGE PHARMACY**

AND

## **RED WOLF RESTAURANT**

CAMERON VILLAGE

RALEIGH, N. C.

The Finest and Most  
Complete Cosmetic  
Department in Raleigh

**DRUGS — PRESCRIPTIONS**

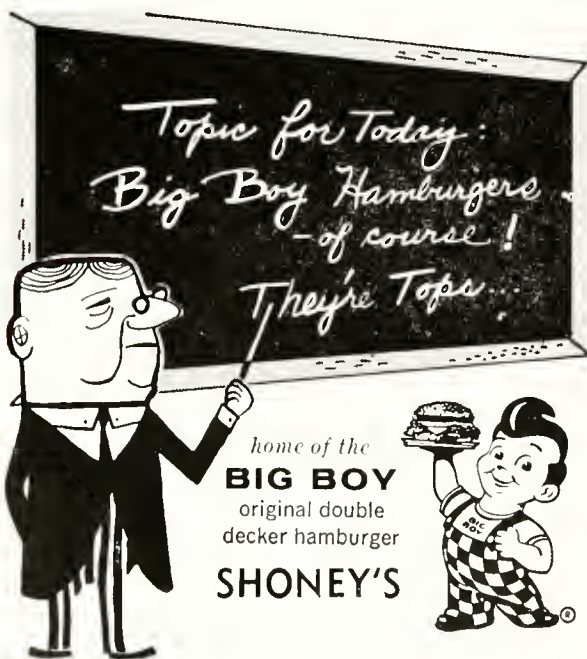
**SUNDRIES & GIFT WARE**

# Congratulations

to the  
graduating  
class



BOTTLED UNDER AUTHORITY OF THE COCA-COLA COMPANY BY  
THE CAPITAL COCA-COLA BOTTLING CO., INC.



## DILLON

### SUPPLY COMPANY



RALEIGH

ROCKY MOUNT

DURHAM

GOLDSBORO

CHARLOTTE

*Compliments of*

**SUNSHINE BAKING CO.**

We Specialize in Decorated,  
Wedding, Birthday and  
Party Cakes

107 S. WILMINGTON STREET



NASH-STEELE-WARREN, INC.

*Compliments of Storr Sales*

VISIT OUR NEW  
OFFICE EQUIPMENT  
SHOW ROOM

*Complete Office Planning*

**STORR SALES COMPANY**

**Gattis'**

**Hayes-Barton Pharmacy**

2000 FAIRVIEW ROAD

Raleigh, North Carolina

**Village** BOOK &  
STATIONERY, INC.

CAMERON VILLAGE  
RALEIGH, N. C.

BOOKS                      STATIONERY                      CARDS  
GIFTS    OFFICE SUPPLIES

Earl Johnson                      B. E. Dennis  
Harry Moore                      Bill Ward  
Earl Johnson, Jr.

**MOORE & JOHNSON CO.**

FOR 37 YEARS RALEIGH'S  
LEADING INSURANCE AGENCY  
INSURANCE — SURETY BONDS  
Insurance Building  
Raleigh, North Carolina

*L. G. Balfour Company*  
ATTLEBORO MASSACHUSETTS

*The Most  
Distinguished  
Name  
in School  
and College  
Jewelry*



THE

*Balfour*

MARK

YOUR  
GUARANTEE  
OF:

Perfect Satisfaction  
Unmatched Quality  
Dashing Style  
Complete Security



Best Wishes From



*Best Wishes  
from*

## **HOTEL SIR WALTER**

RALEIGH'S VERY FINEST  
100% AIR CONDITIONED  
FREE PARKING  
"A MEYER HOTEL"

Arthur E. Buddenhagen  
V.P.-General Manager

The word "PEPSI-COLA" in a bold, sans-serif font, centered within a circular frame that resembles a bottle cap with a serrated edge.

# **PEPSI-COLA**

Pepsi-Cola Bottling Co. of Raleigh, N. C., Inc.  
3707 Hillsboro Rd.

**JOHN ASKEW**

**Paints & Painters' Supplies**

PAINTING AND  
INTERIOR DECORATING

Dial TEmple 2-6824

110 Glenwood Avenue

*Compliments of*

**THE CONTINENTAL  
BAKING CO.**



CAMERON VILLAGE

DOWNTOWN RALEIGH

*Compliments of*

**THE COLLEGE INN**

*Compliments of*

**JOHNSON-LAMBE CO.**

SPORTING GOODS

FRIGIDAIRE APPLIANCES

**ROY'S DRIVE IN**

ON HILLSBORO ST.



"Free Delivery in City"

Dial TE 2-0551

**NORTH HICKORY DYEING**

AND

**PROCESSING COMPANY**

GLENN T. SHOAF  
TELEPHONE 33292

1129 - 2ND ST. N.E.  
HICKORY N.C.

ADAMS-BRYAN-COOPER PET. CO., Inc.  
A-B-C Petroleum Co., Inc.



"Keeping Raleigh Warm 25 Years"

Two-Way Radio  
Budget Terms

Degree Day System  
Burner Service

Wake Forest Road  
Dial TE 3-3853

RALEIGH, N. C.  
John F. Adams, President

## FINCH'S DRIVE-IN, INC.

401 W. PEACE ST.

Open 10:30 a.m.

## THE BROILER

Open 24 Hrs.

217 HILLSBORO ST.

Raleigh, N. C.

*Compliments of*

## WARREN'S RESTAURANT

301 West Martin Street

Raleigh, N. C.



MacGREGOR  
GOLF AND TENNIS  
EQUIPMENT  
SPORTING GOODS

Cameron Village

TE 2-4121

the

## College Shop

107 Oberlin Road near Hillsboro



the Most

"UNIQUE"

Ladies Sportswear Shop

in Raleigh

## FERGUSON'S HARDWARE

GARDEN SEED	GENERAL HARDWARE
FLOWER SEED	HOUSEHOLD SUPPLIES
FERTILIZERS	FLOOR WAXES
LAWN MOWERS — SALES AND SERVICE	

CITY-WIDE DELIVERY

2900 Hillsboro Street

TE 2-4877

## FISHERS BAKERY

AND

## SANDWICH COMPANY



**JAMES H. ANDERSON CO., INC.**  
**FLOOR MAINTENANCE MATERIALS**  
**and**  
**SANITARY SUPPLIES**

Phone TE 3-2750 - TE 4-3861

P. O. Box 342  
418 W. Peace Street  
Raleigh, North Carolina

**OAK CITY LAUNDRY**

DRY CLEANING

HATS CLEANED AND  
RUGS SHAMPOOED

436 S. Salisbury St. Phone TEmple 2-4478  
Raleigh, N. C.

**GARLAND C. NORRIS  
COMPANY**

TE 2-0324

NEW LOCATION: HILLSBORO RD.

GOLDEN TAP ORANGE JUICE

**MANGUM ELECTRIC**

**SERVICE**

**ALLISON-LEINSTER, INC.**

PHONE TE 2-1632 FOR INSURANCE

RALEIGH SAVINGS AND LOAN BUILDING  
RALEIGH, N. C.



*Insurance Service Since 1908*

J. A. LEINSTER  
President

NANCY C. LEINSTER  
Secretary-Treasurer

MRS. SARAH L. COWPER  
Vice-President

This year's  
yearbooks

... are produced at Edwards & Broughton. Since 1902 we have had quality as our first concern in the production of letterpress and lithographed annuals. Our new

large plant and our recently acquired equipment enables us to do an even better job without losing our personal touch. You

can be truly proud of your annual ... if it was produced by Edwards & Broughton.



We invite your inquiries



EDWARDS & BROUGHTON COMPANY

*Printers, lithographers, engravers*

1321 N. Boulevard, Raleigh, North Carolina

AUTOGRAPHS



# AUTOGRAPHS









