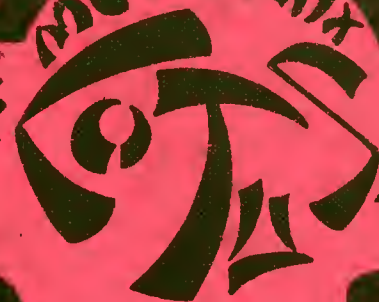




MCMCLXXIX







70 313



LOTUS 1969

Editor: Susan Lomax

Assoc. Editor: Ann Coppage

This above all: to thine own self
be true;
And it must follow, as the night
the day,
Thou canst not then be false to
any man.

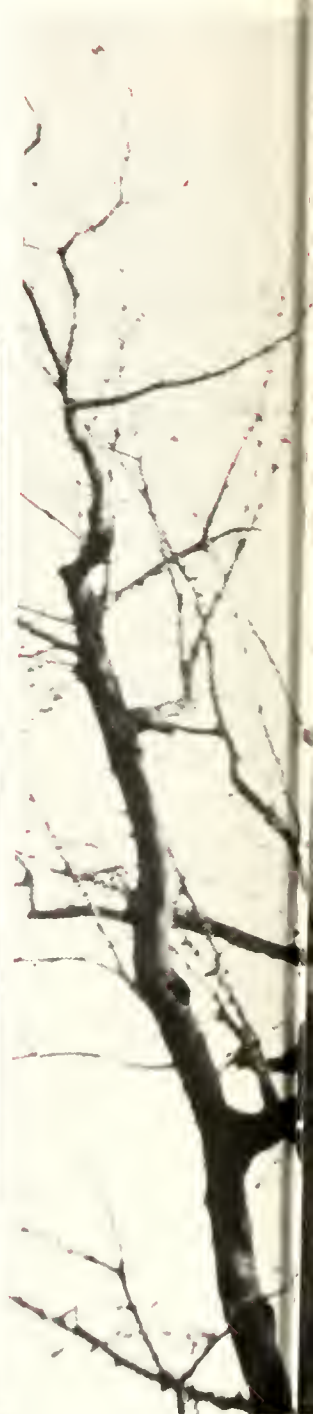






In the middle
of
the journey to our life
I came to
myself
in a dark wood
where
the straight way
was
Lost —







Now is the winter of our discontent



Fair be all thy hopes, And prosperous be thy life in peace and war!



Farwel my bok, and my devocioun.







Everything is only for a day.
Both that which remembers
And that which is remembered . . .



For, lo, the winter is past,
The rain is over and gone;
The flowers appear on the earth;
The time of the singing of birds is come.





May, 1969

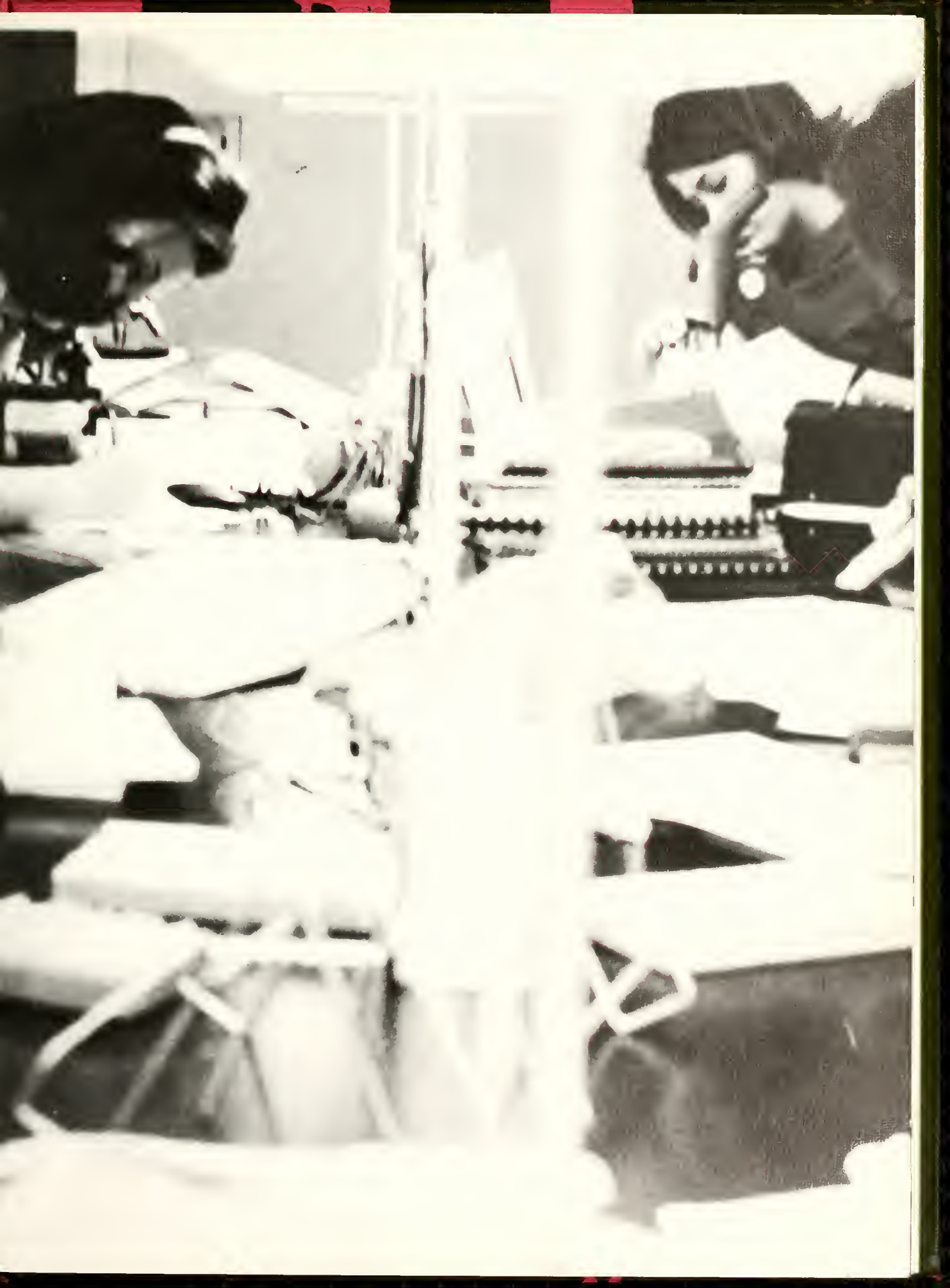
It would be easier to write this dedication if the thoughts which we must express were less important, or if we were less involved in what we will try to say. But it is inevitable that if a dedication has any significance whatsoever for those who present it, then words become insufficient. A dedication should be, most of all, honest and relevant. It should convey the representative opinion of the students who present the award. Many people make us what we are; the choice was a difficult one. Some, however, through their constant interest and limitless patience stand out as friends rather than superiors. They are the individuals, the uncommon few who give of their time and advice without hesitation. Most of all, they care.

In choosing this dedication we felt that we could not select any one person as the sole recipient, for there are two whose actions speak louder than the words printed here. Therefore, with all our gratitude and with the deep respect we, speaking for the students of Peace dedicate the 1969 Lotus to Michael and Ann Reynolds.

Academics . . .

We are not certain of anything we know —
the world changes and we change with it.
We have no knowledge of the past but only of the future.
We look for leaders but someone has shot them all.
We search for truth but find only slogans and empty promises.
We are the first of our kind, the generation of a new age,
and this is all we know.
We have come to college but not all of us know why.
And so we begin to begin again.

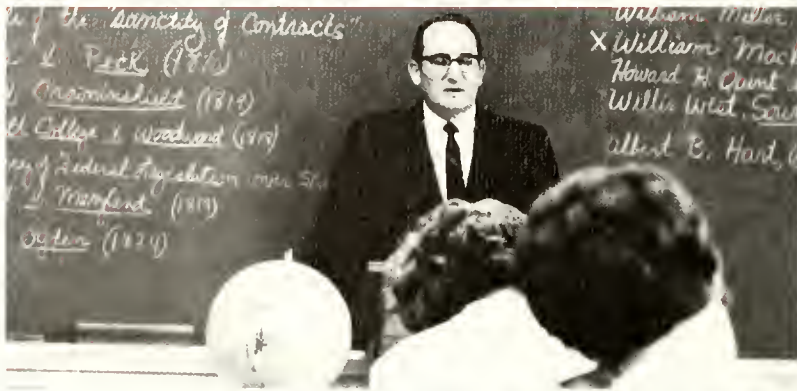




Ideas are new, and we question accepted truths.
Disillusioned with the facts we knew, we grasp at new ones,
and suddenly perceive the true meaning of our efforts –
We are learning to think.





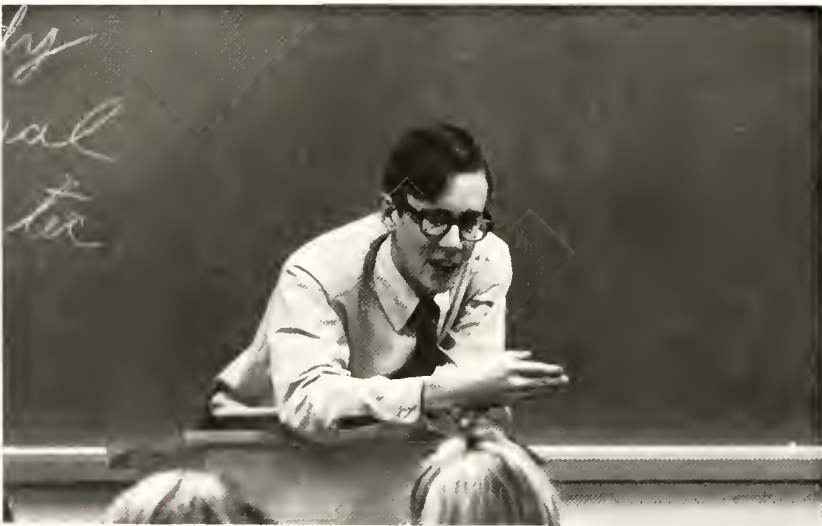


Names, titles run together in a new litany:

Joyce, James, Chaucer, Shakespeare, Beckett, Sartre;
deoxyribonucleic acid mixes with Methelyne blue to produce confusion,
and someone said the other day that the Virgin Mary ain't necessarily so.
This is school, this is college.

Classes that seem endless finally do, and others never last long enough.
Pencil in hand, students run between classes, gripe about busy-work,
and cut each other, the administration, and the faculty down.







But all the while we learn.
Faces stand out from the face of chaos . . .
people who care and don't mind saying so.
A professor who remembers your name on
the second day of class,
Who stops in the hall to explain away the
unexplainable and to ask about personal
problems.
Someone who cares about much more than
his own convenience stays till eleven on
weeknights to be certain everyone understands.





And we do understand, better than they know,
We understand that learning is not defined by tests,
that there are a few concerned about our problems,
interested in our ideas.
This is why we came to college –
and why we, too, still care.

rganizations Orga
nizations Organiz
ations Organizati
ons Organizations
Organizations Org
anizations Organi
zations Organizati
ions Organizations
s Organizations O
rganizations Orga
nizations Organiz
ations Organizati

izations Organizations
tutions Organizatio
ns Organizations
Organizations Org
nizations Organiz
ations Organizati
ons Organizations
Organizations Or
ganizations Organ
izations Organiza
tions Organizatio
ns Organizatio

Peace Student Government Association



Liz Collier
President



Anna Mills Scarborough
Secretary



Toni Strickland
Parliamentarian

This year the Peace Student Government Association strove to promote individuality, attempting to develop a higher sense of responsibility in students at Peace.

The year was earmarked by the concentrated efforts of both student council and the student body in general toward more progressive attitudes in the administration of the school. Peace students wanted to be heard, and they worked in a united effort to research and analyze situations which they felt might be in need of revision or modification. Though the results of these efforts will not be immediately realized, still the goals of the PSGA are realized.





The P.S.G.A. is active throughout the year, sponsoring many of the activities. Their money-raising projects are notorious, not for their purpose but for their reputation of being great fun. Among other projects, P.S.G.A. sponsored ANYTHING DAY so that students who purchased a ticket were not restricted in the type of clothes which they might wear on campus. Another campus activity was the Halloween Carnival, which turned out even better than last year! For the 2nd semester PSGA sponsors Weekend of the Green in March, and a dance. With projects like these constantly in the works, it is almost impossible to miss the fact that here we do have Student Government.



Student Council meetings can drag on despite the best of management and planning, but surely it can't possibly be as bad as the expression on these faces indicate! Caught thinking are: Susan Howell, Wortley

Herring, Frances (Pumpkin) Cline, Kay Kay Leemon, Anna Mills Scarborough, and Bettie Fontaine.

PSRA

The PSRA plays, works, contributes more than any other organization at Peace. Yet no one loves us! We have intramurals: team and individual. For example: Basketball, volleyball, tennis, ping pong, and bubble-blowing tournaments — just to name a few. We have something for everyone including those who detest sports.

We have campfires, hot dog sales, costume parties, swim meets and "little games." We have ample facilities — new tennis courts, good gymnasium and swimming pool. (We don't have the great equipment or

athletic field, but we do have our "play field".) We don't accomplish all we want, but we do have some very interesting discussions. We have the great intercollegiate participation in tennis and basketball (Jolly Green Giants, or should I say the "Green Peas"). President Marcia Edwards is a past president of the North Carolina Athletic and Recreation Federation for College Women. Peace can spiritually build you up, but the Peace Student Recreation Association can physically tear you down.



P.S.C.A.

At Peace there is a service organization which benefits both our students and our community. The Peace Student Christian Association is an integral part of Peace life because it coordinates many of the student activities throughout the year. Its real importance lies in the fact that it stands for religious life at Peace. With such activities as the Big sister - Little sister program and

Peanut Week ties between students are strengthened. The giving of Thanksgiving baskets, the Christmas party for the Methodist Home, and the Week of Sharing enabled the students to be of service to others. Through projects of this type, the P.S.C.A. meets the spiritual needs of the student body and strives to help the students in finding their places as Christians in the modern world.



Honor Court

"On my honor as a Peace College student, I will not lie, cheat, or steal, nor will I tolerate those who do. I also accept the responsibility to conduct myself socially and morally in a manner becoming a Peace student."



Peace College has long upheld the belief that students can and will accept the responsibility for their actions. Upon entering Peace as a freshman each girl pledges her acceptance of the rules and regulations which govern her and states that she will uphold them in a manner becoming a Peace student. An outgrowth of this honor system is the Honor Court, presided over by a student elected by a general vote of the students in assembly. She is responsible for the enforcement of the Honor Code and for the punitive action which must occasionally be taken in the case of infringements. The other members of the Honor Court include two students, — the secretary of the Court and the president of the Student Government Association. The faculty is represented by two professors chosen by general consent of the Court, and the Administration by the Dean of Women. The Honor Court is an effective, integral part of school life.

Judiciary Board is a fairly new addition to the Honor Code at Peace. Created by amendment to the constitution during 1967-68, it went into effect for the first time this year. Its purpose is to deal with lesser infringements of the Honor Code than does the Honor Court, and it's decisions often are not so serious as the higher court's. The Judiciary Board is presided over by the President of the Honor Court and, unlike Honor Court is composed of a majority of students. By virtue of their position, the Presidents of the Recreation Association, Christian Association, and Student Government are automatically members of the Board. The secretary of the Honor Court also attends Judiciary Board and three other members. Two freshmen and one sophomore, are elected from the student body. The Judiciary Board has proved itself to be a valuable addition to the Honor system, and is fast becoming a highly respected tradition.

Judiciary Board

Left: Seated — Ann B. Vinson, Janice Edwards, Faculty; Bertha M. Moore, Dean of Women; **Standing** — Joyce Hughes, President; Janet Mustard, Secretary; Liz Collier, P.S.G.A. Pres.

Below: First Row — Mackie Butler, Boney Garrison, Janet Mustard, **Second Row** — Liz Collier, Marcia Edwards, Janice Edwards, Advisor, Bertha M. Moore, Dean of Women; Joyce Hughes, Nancy Snipes, Trudy Nolan.



Publications Board



Liz Collier
 Anna Mills Scarborough
 Susan Lomax
 Barbara Taylor
 Ann Coppage



Advisory Board

Marsha Edwards
 Susan Lomax
 Betty Fontaine
 Nancy Suipes

Anna Mills Scarborough
 Susan Hedrick
 Joyce Hughes
 Liz Collier

Resident Group Chairmen



Susan Hedrick — Head

Beth Palmer
 Joy Davis
 Kay Collier
 Millie Wrenn
 Mackie Butler
 Susan Howell
 Beth Morton
 Susan Harper
 Beth Lawrence

Not pictured
 Susan Lomax
 Marsha Edwards
 Laura Bondurant



Betty Fontaine — Head

Avery Conkling
 Deb Harlan
 Blaine Broadwell
 Deborah Brantley
 Emily Hanson

Non-resident Group Chairmen

Choir

The Peace College Choir, under the direction of Raymond Kreiner, has long been well-known in the Raleigh area. The choir serves at all chapel services during the school year and, in addition, finds time to travel about, singing for civic groups and other schools. Traditionally the choir presents a concert during the Christmas season which is also a candlelight service. This and many other ceremonies which the choir participates in make it one of our finest assets.



Daughters And Granddaughters



I.R.C.
What does it mean?
It means concern.
Understanding.
Caring about
other people

International Relations

other nations.
Wanting to
understand the
problems of the
world. Not
just You.

Papyrus

June Stafford
Katherine Jolliff
Shannon Bailey

Jody Hanes
Margaret Ross
Barbara Taylor



DRAMATISTS



Ellen Palmer, Holly White, Susan Howell, Marsha Fleishman, Judy Pleasant
Susan Lomax, Bev Ophiem, Beth Winecoff, Ruth Faggart, Janice Bickett

Home Economics



Trudy Nowlan
 Elaine Curran
 Janice Gore
 Kay Kay Leemon
 Ann Miller
 Jane Hutchinson
 Susan Morgan
 Susan Bonds
 Brenda Cooley
 Sandra LeGrand

Not Pictured
 Trudy Brown
 Avery Conklog
 Barbara Connell
 Janet Duncan
 Gay Haywood
 Laura McGee
 Luda High
 Pam Henkin
 Luda Hoverton
 Catherine Parker
 Janet Pickler
 Susan Sherrill
 Brenda Stencil
 Sue Scarboro
 Cathy Saunders
 Ginny Vinson



Art

NOT PICTUBED
 Jane Metts
 Shannon Bailey
 Helen Bloodworth
 Jeanne Casteen
 Nancy Clemmons
 Brenda Cooley
 Kelly Cougheneur
 Judy Davidson
 Stephanie Davis
 Karen Downey
 Chris Early
 Becky Edwards
 Susan Hay
 Marion Little
 Sherry Lugar
 Carolyn Marks
 Anne Miller
 Beth Palmer
 Barbara Taylor
 Carol Walton
 Beth Winecoff
 Anne Wynns

After electing officers, the Young Republican's Club got off to an exciting start with the visit of Vice Presidential candidate Spiro Agnew. Many of the sixty members helped make countless calls announcing his arrival. A select few represented Peace as Nixonettes at the rally held here in his honor.

When the Peace Times held a mock election, the girls from Wynne Hall presented a surprise skit in assembly entitled "Nixon's The One", after the name of their equally original song. Throughout the year, the Carolina Hotel was a popular gathering place for the Y.R.C.

Stuffing envelopes and handing out fliers were only a few jobs performed by the hard-working volunteers.

Next, some appeared as Steele Girls at a rally here in Raleigh, and also participated in a parade. Another project the girls undertook was to help the N.C. Citizens for Nixon with a television broadcast. Election night several girls were privileged to be allowed to compute election returns at the Republican headquarters, and later attended victory celebrations when the results were in. All in all, it was quite a year!

YRC

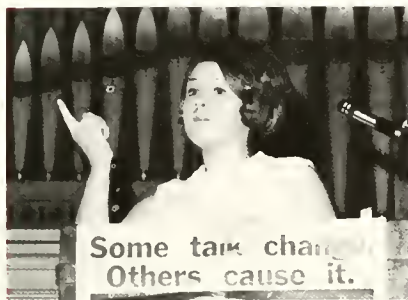


YDC



The Young Democrat Club is one of the most active clubs on campus. With many interested and enthusiastic members, the Y.D.C.'s volunteered many hours in the pre-election campaigns. The girls often were seen at the Bob Scott and Wake County Democratic headquarters making telephone calls, stuffing envelopes, and running errands.

On October 20th the Y.D.C.'s journeyed by bus to the Hubert Humphrey Rally at the Coliseum in Charlotte, N.C. The girls enjoyed a free barbecue supper, nationally known entertainment, and a rousing speech by the Presidential candidate, Mr. Humphrey.



During the State Fair the officers worked in the Democratic booth on the midway as "Bob Scott Campaign" girls. This volunteer work included distributing campaign buttons, brochures, and bumper stickers. The Y.D.C.'s also attended the Hubert Humphrey III Rally at the Raleigh-Durham airport where they conversed with Skip and Nancy H. The club president, Toni Strickland, was invited to accompany them to Greenville, N.C. that evening for a reception and several other formalities. The tour was continued at the State Fair when Mr. Humphrey spoke with enthused supporters. The Y.D.C. acted as hostesses on election night for the Democratic headquarters, making history by legally staying out all night in Raleigh! Though they were not completely victorious at the polls, the members of the Young Democrats Club can boast of satisfaction in a job well done.



The Delta Chi Dance Club is open to all students who have a genuine interest in dancing, and who show some degree of proficiency. The members go into depths of modern dance as an expressive art form, as entertainment and as a physical and mental discipline. The girls perform their own choreographic works throughout the year. The members have the advantage of learning new techniques, increasing body control and endurance, and gaining dance experience through club performances. The main performances of the year are the Christmas pageant and the May Day Celebration during the spring.

In addition, the dance club occasionally performs a chapel program: related to religious dancing with a spiritual theme. These performances offer creative students an excellent opportunity to express themselves. The club, furthermore, offers modern interpretations of age old themes to its members and audiences, these themes are related to the movement of the dance and projected to the audience.

Janet Mustard, Elizabeth Fussel, Linda Stone, Susan Hedrick, Susan Harrelson, Wortley Herring, Cecilia Webb, Susan Nutt, Kathy Royster, Marion Evans, Beth Wells, Becky Flowers, Carol Luter, Camille Bradford, Pam Walters, Susan Sherrill, Mary Cynthia Harris, Kathy Saunders, Debbie Nicholson, Ann McNeill, Jennifer Morris



Dance Club Dance Club Dance Club



Porpoise Club



Rachel Allred
 Laurie Magee
 Jane Towery
 Emily Mitchell
 Macon Moore
 Susan Hay
 Susan Clayton
 Kathy Reiersen
 Ruth Faggart
 Ann Coffin
 Logan Lovelace
 Wickie Stamps
 Alice Henderson
 Nancy Erickson
 Martha Barnes
 Lila Barnett
 Kay Kay Leemon
 Ginny Jones
 Susan Howell
 Ginny Vinson
 Jennifer Morris
 Laura Boudurant
 Sharon Shannon
 Deb Harlan
 Julia Lane
 Mary Beth Meachum
 Sallie Neal
 Lynda Turner
 Annette Adcock
 Jane Walters
 Kathy Lilyquist
 Grier Brown
 Nancy Owen

The Porpoise Club is a Peace College tradition as strong as May Day and Parents weekend. It is made up of those girls who are interested in swimming and water ballet. The girls learn to perform in the water with stunts, music, lighting, and choreography. Two shows are given during the year; the Christmas Show with the Dance Club, and the Porpoise Club Water Show. This year the water show was held in May on May Day Weekend.

This show is the highlight of the year for the members of the club. The girls spend most of their free time second semester in the water or around it, helping with scenery, lighting and the many other tasks that are required to put on the show.

The theme for this year was "Love Is A Many Splendored Thing." This was carried out through the music, costumes and choreography but mostly through the efforts of the girls themselves and their sponsor Miss Janice Edwards.





PEACE TIMES

VOL. XV

OCTOBER 1968

NUMBER 1

Anna Mills Scarborough
Editor

Gmuv Jones
Assistant Editor

Editorial Responsibility Of College Newspapers

It is the purpose of the college newspaper to be responsible to the majority of its reading public; that is, to the student body. A primary purpose is to express the news objectively, to inform its readers accurately, and to present both sides of all important issues. Through its editorial columns the college newspaper has a duty to take a stand on all matters which may affect the welfare of the students. Editorial comments which appear in these columns, however, or students views which are expressed throughout the newspaper in no way reflect the official view of the college administration.

The TIMES welcomes comments and criticism on all matters, from students, faculty, and administration alike. Signed letters to the editor which are written in good taste and good form will be printed when received.



THE PEACE TIMES
Published by the Students of
PEACE COLLEGE
Raleigh, N. C.

EDITOR IN CHIEF.....Anna Mills Scarborough
ASSISTANT EDITOR.....Ginny Jones
NEWS EDITOR.....Libby Lagg
NEWS WRITERS: Boney Garrison, Macon Moore, Betsy
 Heady, Lois Wilson, Nadine Baddour
FEATURE EDITOR.....Nancy Erichson
FEATURE STAFF: Susan Harrelson, Olane Funderburk,
 Lila Barnett, Liz Tuzzel, Jody Haynes,
 Janice Bickett, Martha Sandusky
SPORTS EDITOR.....Betty Fontaine
ART EDITOR.....Stephane Davis
LAYOUT EDITOR.....Frances Cline
BUSINESS MANAGER.....Susan Hedrick
CIRCULATION MANAGER.....Ann Coffin
CIRCULATION STAFF.....June Marle Jessup
 Linda Robbins
PHOTOGRAPHER.....Wortley Herring
TYPISTS.....Julia Lane
 Joyce Hughes
ADVISOR.....Mr. Ernest Hester



Students Voice Opinion

The Peace Times . . . symbol of the free interchange of ideas on campus, is an integral part of a student's life at Peace. The press has long been a standard by which one judges the intellectual level of a community, i.e. where a paper is really conservative, the spirit of the group is dampened and progress is slow, if present at all.

By the same token an overly liberal publication does little to aid constructive activity but rather sets a revolutionary mood not conducive to practical change. With this basic idea in mind, the Peace Times not only focuses on campus events but also features ideas from student leaders, setting up a ground for communication between students and administration. It affords equal opportunity for individual opinion and, as a result, serves as a testing ground for new ideas which often lead to change.

Experience is not a requirement for membership on the staff, for the Times feels that, as a part of an organization dedicated to the learning experience, it's own goal should go hand-in-hand.



Above: NEWS STAFF — Editor, L. Lagg, J. Pickler, B. Garrison, M. Sandusky, M. Moore, N. Baddour, B. Heady. NOT PICTURED Art Editor, S. Davis; Layout Editor, Fran Cline; Business Manager, Susan Hedrick, Circulation Manager, A. Coffin; Circulation staff, J. Jessup, L. Robbins; Photographer, W. Herring; Typists, J. Hughes, J. Lane. Advisor: Mr. Ernest Hester.

Left: FEATURE STAFF — Editor, N. Erichson; perched in tree: L. Barnett, D. Funderburk; grounded — S. Harrelson, B. Fontaine, J. Bickett, L. Wilson, J. Haynes.
"Go forth, my book, and take whatever pounding
The heavy-fisted destinies prepare
I know you are not anything astounding
And, to be quite sincere, I don't much care."



EDITOB



ASSOCIATE EDITOR

Lotus . . . Lotus . . . Lotus . . . Lotus . . . Lot



Ginny Jones
Art Editor



Helen Bloodworth
Business Manager



Carolyn Marks
Associate Business Manager



Because of their unblemished good conduct record, we present the "Fickle Finger of Fate" award to 2nd Finley. Congratulations, girls!



s . . . Lotus . . . Lotus . . . Lotus . . . Lotus .

Due to student
indifference, this space
left blank.



STAFF

ACTIVITIES HONORS
TIES HONORS ACTI
HONORS ACTIVITIE
S ACTIVITIES HOR
IVITIES HONORS A
ES HONORS ACTIVI
NORS ACTIVITIES
ACTIVITIES HONOR
ITIES HONORS ACT
HONORS ACTIVITIE
S ACTIVITIES HOR

Activities Hono
rities Honors Ac
s Honors Activit
ors Activities H
ctivities Honors
ties Honors Acti
honors Activitie
s Activities Hon
ivities Honors A
s Honors Activit
ors Activities H

Basketball

PLAYERS

Marsha Edwards
Katherine Daniel
Byrd Viverette
Beth Griffin
Betty Fontane
Nancy Adams
Mary Helen Stokes

Jewel Gray
Jeanne Tice
Mary Kea
Rauna Fuller
Deb Harlan
Susan Jones

MANAGERS

Laura Bondurant
SCOREKEEPER

Julia Lane
Susan Howell







Halloween Carnival



Marshalls

Liz Collier
Betty Fontaine
Marty Grady
Susan Harper

Beth Lawrence
Beth Palmer
Jeanne Tice



May Queen



Julia Ann Lane

Maid Of Honor



Bosalyn Elaine Brown

May Court



Annette Ferman Adcock



Carol Jean Cole



Marcia Ann Fleishman



Sallie Thorne Neal

May Court



Shelly Marie Flammia



Doris Anne Harrington



Marlene Manning



Mary Celeste Rodgers



Marsha Edwards



Chris Early



Anna Mills Scarborough



Joyce Hughes



OUTSTANDING



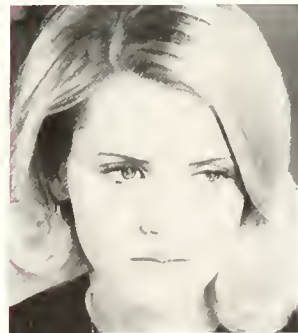


Betty Fontane



Nancy Snipes

SOPHOMORES



Liz Collier



Susan Lomax



Miss
Edwards
Marsha
Peace

Each year the students elect from the entire student body one person to receive the title Miss Peace. This is, of course, the highest honor which we hold the power to give, and this year Marsha Edwards was the recipient. Marsha is a fourth-year student and her active participation and support of all school activities have made her one of the most respected students on campus.





We, the LOTUS staff, wish to create a new award honoring our ideal, the typical "fraternity man."

mr. peace

e People People
ople People People
ole People People
ople People People
e People People
People People
ole People People
ople People People
ple People People
e People People
e People People

People People Pe
e People People
People People P
le People People
People People Pe
eople People Peo
People People P
le People People
le People People
People People Pe
People People Pe

Freshmen . . .



Jane Abernathy



Nancy Adams



Jane Allen



Mary E. Armstrong



Annis Arthur



Nadine Baddour



Shannon Bailey



Catherine Barnes



Deborah Bell



Robin Bell



Catherine Belmore



Emily Benton



Janis Bickett



Vickie Biggerstaff



Melissa Bishop



Georgia Bland



Kathy Bottoms



Julia Bowers



Camille Bradford



Doria Bradsher



Laura Bridges



Becky Briley



Dianne Broughton



Amelia Brown



Margaret Brown



Patricia Brown



Trudy Brown



Martha Bruce



Patricia Bruleson



Betsy Burnett



Julia Burwell



Dena Butler



Martha J. Carter



Donna Carver



Jeanne Casteen



Nancy Caulk



Sandra Chamblee



Brenda Chappell



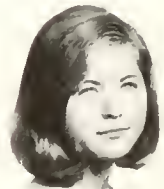
Susan Clayton



Deborah Coffee



Connie Coleman



Deborah Collins



Linda Coltrane



Barbara Connell



Sandra Covington



Kathryn Cox



Nancy Cox



Ruby Lee Creech

Characterized by violent fits . . .



Laura Scott



Elaine Currin



Ellen Cuthrell



Frances Dashiell



Judy Davidson



Carolyn Davis



Deborah Davis



Mary Davis



Deborah DeGabrielle



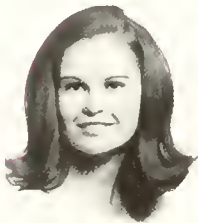
Sandra Dobbins



Karen Dominy



Marsha Donathan



Eva Dudley



Betsy Duffer



Janet Duncan



Camille Eckerd



Sue Edwards



Ruth Edwards



Shelly Flammia



Gail Fleming



Judith Flood



Rebecca Flowers



Joellen Folger



Blair Foreman



Patricia Franks



Sharon Fritts



Mary Fulp



Elizabeth Fussel



Rebecca Fussell



Barbara Gaddy



Amanda Gainey



Lesa Gantt



Sarah Gargis



Beverly Garrison



Julia Gilbert



Marsha Goodnight



Janice Gore



Sandra Gregory



Beth Griffin



Harriet Gurley



Mary Haigwood



Karen Hancock



Pamela Hankin



Anna Harper



Doris Harrington



Ellen Harris



Mary Harris



Susan Hay

Of College-itis.



Jody Haynes



Delma Hazzard



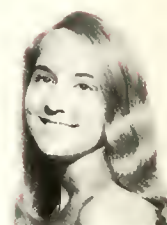
Mary Heady



Alice Henderson



Nancy Herring



Frances Holleman



Anne Honeycutt



Joanna Hoskins



Linda Howerton



Louise Hube



Ada Hunt



Judith Hunter



Jane Hutchison



Mary Hutton



Beverly Ingram



Donna Johnson



Barbara Jones



Susan Jones



Frances Jones



Mary Kea



Christina Kelly



Ruth King



Mary Kirk



Mary Lagg



Kathy Lilyquist



Ellen Linder



Harriet Link



Joan Little



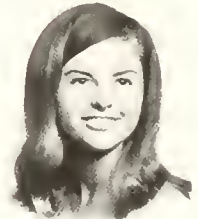
Edith Long



Cynthia Lovette



Alice Lowery



Barbara MacKesson



Nancy Macon



Marlene Manning



Jamie Matthews



Jean McCloskey



Liberty McCollough



Kathryn McCoy



Katherine McFarland



Margaret McNeill



Kate McTyre



Carol Medlin



Myra Medlin



Jeanne Menefee



Valerie Miles



Mary Miller



Ann Mitchner



Evelyn Montgomery

They Love It!



Jennifer Morris



Macon Moore



Edna Murray



Marsha Murray



Susan Neely



Debra Nicholson



Susan Nutt



Kathleen O'Bryan



Betty O'Daniel



Gail Ogden



Nancy Owen



Ann Parker



Catherine Parker



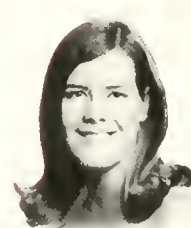
Melva Pearssall



Barbara Peele



Debbie Peele



Peggy Pendleton



Patricia Perkins



Janet Pickler



Janet Pierce



Judy Pleasant



Kathryn Pope



Ellen Price



Frances Pulliam



Brenda Radford



Jean Raney



Katherine Rierson



Carol Rhyne



Cheryl Richardson



Margaret Ritchie



Harriet Robbins



Elinor Rogers



Celeste Rogers



Robin Rogers



Nancy Rollins



Katherine Royster



Martha Sandusky



Harriet Sanford



Jane Saunders



Jeanne Servais



Missy Shafer



Sharon Shannon



Leigh Shelton



Susan Sherill



Bonnie Sides



Nancy Skidmore



Madelyn Sloan



Carol Smith

When They're Not Campused.



Elizabeth Smith



Martha Smith



Martha C. Smith



Sidney Smith



Jeanne Spivey



Julie Stallings



Emily Stamps



Libby Stanfield



Karen Starr



Wanda Stephens



Jane Stephenson



Mary H. Stokes



Donna Strother



Martha Stroud



Margaret Suddreth



Martha Switzer



Rebecca Taff



Vivian Tart



Brenda Taylor



Dana Taylor



Laura Taylor



Beverly Timberlake



Kay VanHecke



Nelly Vassilion



Jane Vatz



Mary Lee Wallin



Jane Walters



Pamela Walters



Ruth Walton



Rachel Warner



Frances Watson



Gail Weaver



Martha Webb



Deborah Welborn



Kathy Wheeler



Ann H. White



Nancy Whitford



Grant Williams



Gail Williamson



Kathy Willford



Lois Wilson



Margaret Winkler



Beth Wise



Harriet Wise



Kendall Wright



Savka Yoksimovich



Kathy Yow

NOT PICTURED

Rhee Brisson
Deborah Huggett
Elizabeth Johnson
Ann Lipscomb
Evelyn Lyon
Benita Robertson
Sarah Sparrow
Rebecca Taft
Brenda Taylor
Rosalee Ward
Beth Wells

Sophomores:

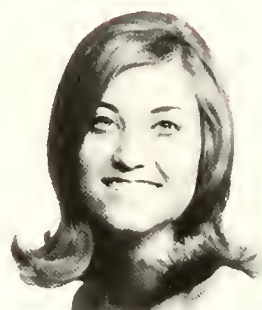
A Rose Is A Rose Is A Rose



Annette Ferman Adcock



Rachel Norwood Allred



Jane Stuart Armstrong



Susan Louise Awbrey



Mary Elizabeth Bales



Margaret Wilson Balsley



Martha Vickers Barnes



Lila Comelia Barnett



Helen Marguerite Bloodworth



Susan Cowart Bonds



Laura Sweet Bondurant



Deborah Sue Brantley



Blaine Marshall Broadwell



Virginia Lynn Brookshire



Lila Crier Brown



Rosalyn Elaine Brown



Carolyn Jean Brunnick



Joycee Ann Bunch



Nancy Whiting Burnette

But:

A Sophomore Is Not A Sophomore



Lela Gibson Burns



Gwen Ellen Cameron



Mary Lou Carpenter



Gail Eva Clements



Nancy Mebane Clemmons



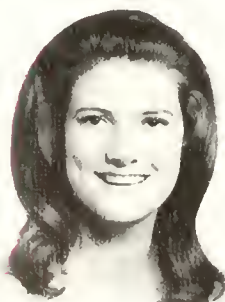
Frances Ruby Cline



Ann Ritchie Coffin



Carol Jean Cole



Nancy Berkeley Coleman



Katherine Collier



Elizabeth Manning Collier



Avery McFall Conklin



Donna Marie Cooke



Brenda Carol Cooley



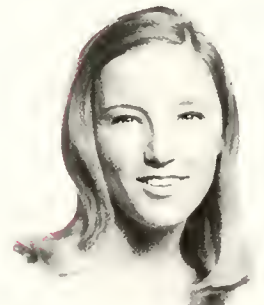
Merry Ann Coppage



Lucy Kelly Coughenour



Linda Parker Creech



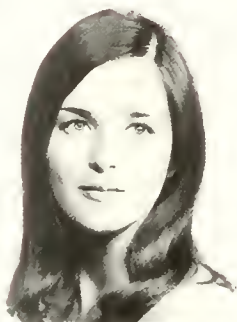
Mary Katherine Daniel



Abeta Joy Davis

Why? Well,

Either She's Down On Her Hours . . .



Stephanie Stuart Davis



Mary Blue dePrater



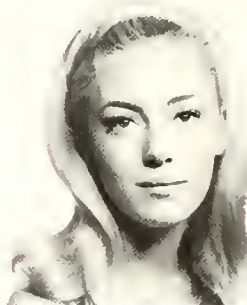
Carol Ann Dilling



Karen Marie Downey



Jeanette Walton Dunn



Erica Jean Dye



Cristie Ellan Early



Amy Rebecca Edwards



Marcia Winchester Edwards



Susan Eleanor Edwards



Mina Sue Ehrlich



Nancy Arnold Erichson



Marion Lennox Evans



Ruth Virginia Faggart



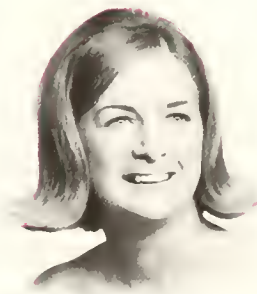
Judith Isabel Farris



Marcia Ann Fleishman



Bettie Trigg Fontaine



Rauna Carol Fuller



Martha Ann Fulp

Her Q.P.'s, Or Her Luck!



Diane Marie Funderburk



Jane Durham Gilbert



Martha Emily Grady



Frances Jewel Gray



Hilda Louellan Greene



Frances Hall Gregg



Nancy Jo Griffin



Emily Pardue Hanson



Deb Francinia Harlan



Susan Wilson Harper



Susan White Harrelson



Emily Barrows Havard



Mary Dell Hatcher



Beverly Elaine Hayes



Susan Christine Hedrick



Wortley Lawrence Herring



Linda Kay High



Catherine Jane Hinton



Shirley Jean Holland

But It Doesn't Really Matter.



Kaye Lynette House



Susan Lewis Howell



Joyce Winnifred Hughes



Nancy Jane Humphreys



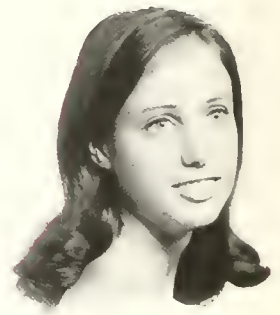
June Marie Jessup



Katherine Moore Jolliff



Virginia Orlean Jones



Emma Leora Lacy



Julia Ann Lane



Sarah Elizabeth Lane



Mary Elizabeth Lawrence



Virginia Lee



Mary Kathryn Leemon



Sandra Jean LeGrand



Marian Marsh Little



Effie Jonelle Logan



Susan Elizabeth Lomax



Paula Horner Long



Eleanor Logan Lovelace

After All,

She's Still Got Her Kindness Kit,



Mary Sherwood Lugar



Carol Cullifer Luter



Betty Driver Luton



Sarah Elizabeth McArthur



Linda Carol McClellan



Linda Ann McDonald



Jane Lenora McGee



Laura Kimber Magee



Carolyn Larue Marks



Mary Elizabeth Meachum



Anne DeVoe Meade



Jane Emison Metts



Mary Anne Miller



Carolina Allers Miller



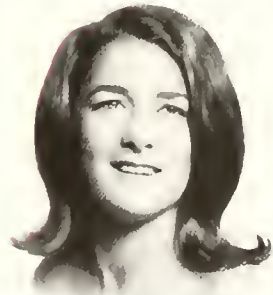
Emily Jane Mitchell



Linda Joyce Mitchner



Sandra Lee Monroe



Susan Elizabeth Morgan



Elizabeth Heilig Morton



Her Σ A E Nightshirt And Hope . . .



Janet Dunn Mustard



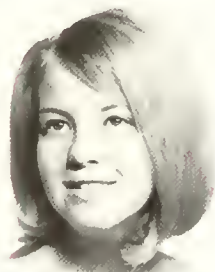
Sallie Thorne Neal



Georgia Ann Norwood



Trudi Nowlan



Beverly Suzzanne Opheim



Donna Ralene Overcash



Margaret Dianne Pace



Elizabeth Weeks Palmer



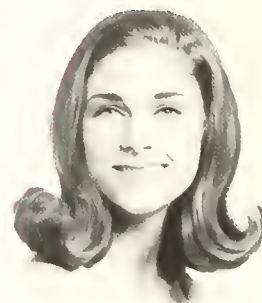
Ellen Taylor Palmer



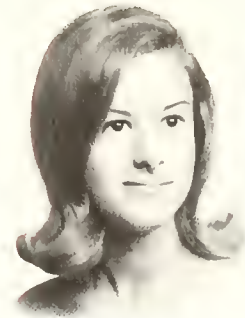
Shari Sue Philson



Patricia Blanche Pittman



Mary Lynn Porter



Sandra Jean Price



Sara Elizabeth Reese



Trudy Elizabeth Respass



Janis Carol Rhodes



Linda Jane Robbins



Margaret Murchison Ross



Patricia Virginia Ryan

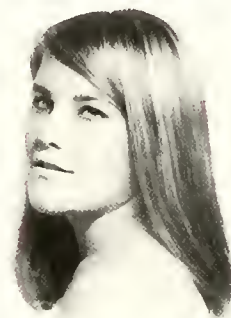
That Someday She'll Grow Up, Graduate, And . . .



Anna Mills Scarborough



Carolyn Sue Scarboro



Diane Lee Sheffield



Doris Ann Smith



Madelyn Smith



Nancy Robertson Snipes



Dora Weston Spady



June Hardin Stafford



Brenda Suzanne Stencil



Nancy Taylor Steed



Linda Irene Stone



Antonia Lynne Strickland



Sally Jo Tart



Barbara Jeanne Taylor



Sharon Fave Thomas



Marilyn Lois Thomerson



Jeanne Rose Tice



Jane Welbom Towery



Lynda Ann Turner

Become The Proud Recipient Of The Alumni Bulletin —



Amy Marleen Vick



Mary Virginia Vinson



Evelyn Byrd Viverette



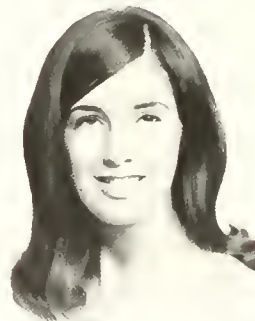
Sara Watson Wade



Trudy Barnis Walker



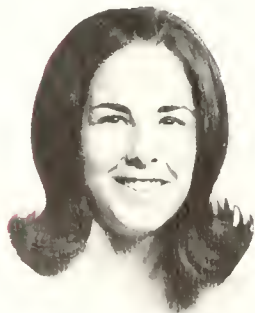
Linda Geraldine Whaley



Seable Olivia Whichard



Patty Elizabeth Wilker



Rinda Elizabeth Winecoff



Elizabeth Frances Woltz



Susan DeBerry Womble



Sarah Anne Wooten



Millie Willmoth Wrenn



Anne Hardison Wynns



Deborah Ann Yelverton



Administration:

The Performance Or Management Of Affairs.

"The administrative system exists primarily to render public services and exercise public controls of persons or property . . . The common element in experiences with the administrative area problem is the conflicting . . . claim of area and function."



S. David Frazier

President



Robert P. Andress

Academic Dean



Mrs. John C. Moore

Dean of Women



Thomas H. Johnson
Registrar



James R. Stewart, Jr.
Assistant to the President



Mrs. H. Glenn White
Assistant to the Registrar



F. Eugene Lilley
Business Manager

FACULTY



Shirley K. Basinger
Business



James R. Fink
Bible



Margaret B. Black
Music



Ernest C. Hester
English



Grace B. Bond
History



Lillian T. Jones
Home Economics



M. Janice Edwards
Physical Education



Raymond F. Kreiner
Music



Elizabeth J. Middleton
Social Sciences



Mary P. Schwertman, Ph.D.
English



Catherine R. Miller
Organ



Josephine L. Sutlive
Physical Education



Jeannette H. Olmsted
Art



George A. Thomas
Chaplain



L. Jean Osterman
Librarian



Bethel M. Thompson
English



Ann Tysor
French



Julia K. Williams
Business

Staff



Mrs. Mittie Alexander
Nurse



Mrs. Audrey Cordes
Secretary



Mrs. Gordon Andrews
Secretary



Mrs. John Flowe
Secretary



Mrs. W. F. Bossieux, R.N.
Nurse



Mrs. Joseph Grogan
Housekeeper



Mrs. Charles Holland
Secretary



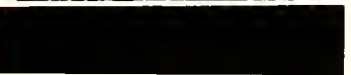
Mrs. R. R. Rushin
Secretary



Mrs. Harold Haun
Secretary



Mrs. Dale Starbuck
Secretary



Mrs. Helen Mellette
Dorm Counselor



Mrs. Howard Walters
Secretary



Mrs. Anne Morrow
Hostess

NOT PICTURED: Mrs. W. H. Basden
Mrs. Sara Claytor
Mrs. John Daniel
Mrs. Kenneth Dixon
Miss Wynelle Lewis
Mrs. Ann Reynolds
Mr. Archie Ritchie
Mrs. Scott Sudduth
Mr. Wayne Tyner
Mrs. Howard Walters
Dr. Mary Yarborough

ments Advertisement
vertisements Adve
nts Advertisement
tisements Adver ti
Advertisements Ad
ments Advertisement
vertisements Adve
ents Advertisement
rtisements Adver t
s Advertisement
sements Advertise
Advertisement Ad

nts Advertisement
rtisements Advert
s Advertisement
sements Advertise
vertisements Adve
nts Advertisement
rtisements Advert
ts Advertisement
isements Advertis
Advertisement Ad
ments Advertiseme
nts Advertisement

DURFEY-HOOVER INSURANCE AGENCY

Paul A. Hoover

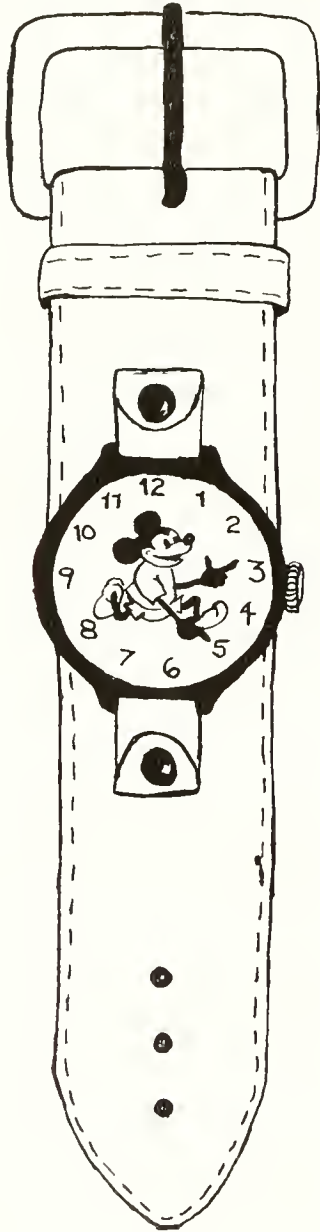
FIRE • AUTOMOBILE • CASUALTY

304-5 ODD FELLOWS BLDG.

PHONE 832-0977

P. O. BOX 2163

RALEIGH, N. C.



CAROLINA MAINTENANCE CO., INC.

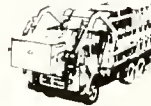
Ronnie Shavlik, Pres.
Steve Webb, Vice-Pres.



Specialized Cleaning Division

SOUTHEASTERN SALES CORP.

Complete Line of Janitorial
Supplies & Equipment
CHECK ORIENTAL SALES MGR



Trash Disposal, Inc.

COMMERCIAL REFUSE DISPOSAL featuring
DUMPER DUMPMASTER SYSTEM
CHIEF BUSSET MANAGER



Offices and Warehouse Facilities
Located
2225 Industrial Drive
RALEIGH, N. C.



Compliments
of

HACKNEY'S

NORTH HILLS

Congratulations, Class of '69"

RED BARN

HOME OF BIG BARNEY



2811 HILLSBORO STREET, RALEIGH, N. C.
2426 WAKE FOREST ROAD, RALEIGH, N. C. ~~X~~

Compliments of

JEAN'S
CAMERON VILLAGE

The Spot
Jr. and Petite Dresses

Sportswear
Accessories

PEACE ST. HARDWARE & GARDEN SUPPLY

CORNER PEACE ST. & DOWNTOWN BLVD.

RALEIGH'S NEWEST GARDEN SUPPLY

HOYLE CLAY, Owner-Manager has had 15 years' experience
selling Garden Supplies in Raleigh. See him for your Supplies.

Phone 834-2976

LAMAR'S HAIRSTYLING

Specializing in lamp
cuts. Our operators
are trained in the
latest hair styles.

Near Peace College

828-8143

STEPHENSON MUSIC CO.

EASTERN CAROLINA'S
MOST COMPLETE MUSIC STORE
PEACE ST. AT SALISBURY ST.

832-2019

PERSON STREET PHARMACY

and

PERSON STREET VARIETY STORE

ON

PERSON STREET
Serving Peace College

for

33 Years



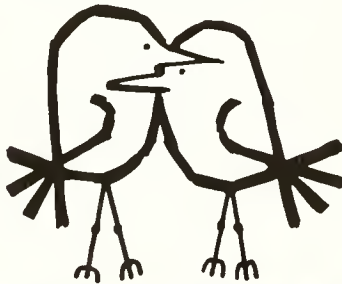
SANDER'S FORD

where the going thing is!
RALEIGH'S ONLY FULL LINE AUTHORIZED FORD DEALER
 A full line dealer means Authorized by Ford Motor Co. to service
 and sell the complete line of Ford Division Products such as
FALCON, MUSTANG, FAIRLANE, FORD, THUNDERBIRD,
CORTINA, SHELBY G.T.K.R.

Ford Light & Medium Duty Trucks, Ford Heavy & Extra Heavy
 Duty Trucks, Full Ford Line of Diesel Trucks
 The only dealer for hundreds of miles that has this Ford Franchise.
 This is one of many reasons why you Save Hundreds of Dollars
 over other deals When This Name Goes On

SANDER'S FORD
 329 S. BLOUNT ST. RALEIGH
 TE-47301 TE-47302 TE-47303

We're in love...



*with our work,
 that is.*

That's why we excell in
 printing, lithography and engraving
Edwards & Broughton Co.
 RALEIGH, NORTH CAROLINA

ROY'S DRIVE-IN CLEANERS

ONE HOUR DRY CLEANING
 3 HOUR SHIRT SERVICE
 70 LOCATIONS TO SERVE
 YOU

YOUR NEAREST LOCATION
 719 W. Person Street



- CORSAGES
- CUT FLOWERS
- GRADUATION BOUQUETS

"We Grow the Flowers We Sell"

J. J. FALLON CO., Inc.
Florists

205 FAYETTEVILLE STREET
TE 2-8347

**A Raleigh
Department Store
Since 1899 . . .**



IN RALEIGH'S
CAMERON VILLAGE



Carolina Typewriter Co., Inc.

Franchise Dealer for Stenograph Shortland Machines

Precision Equipment
Hermes Typewriters and
Adding and Dictating Machines



That's Swissmanship . . . the step beyond craftsmanship

**UNIROYAL TIRES - RECAPPING
WHEEL ALIGNMENT
BATTERIES & ACCESSORIES**

**ROYAL TIRE & ALIGNMENT
CO., INC.**

119 S. Harrington Street
P. O. Box 8033

RALEIGH, N. C. 27603
Phone 828-5729

Pepsi-Cola Bottling Co., Inc.



2838 Wake Forest Rd, Raleigh, N.C.



Moore & Johnson Agency

"for 44 years Raleigh's Leaders
Insurance Agency

Insurance Bldg.

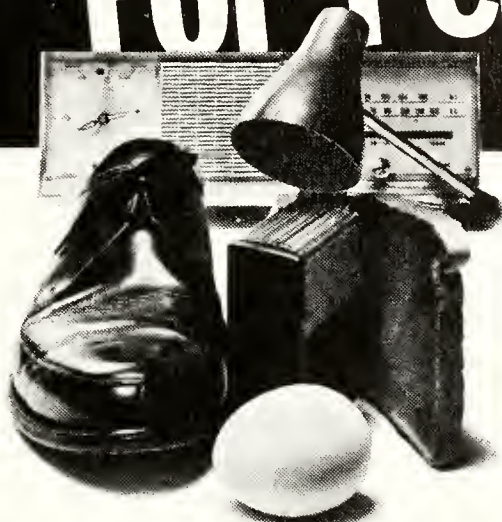
Raleigh, NC

*Best Wishes
to
Peace College*

Commercial Printing Company

RALEIGH, NORTH CAROLINA

For Pennies,



you can really turn it on . . . and keep it on.

Penny shaves, penny shoe shines. Electricity makes it all possible.

With a penny's worth of electricity, you can shave every day for a year.

Or toast 40 slices of bread.

Or listen to a radio an hour a day for a week.

Fact is, today you can get about twice as much electricity for your dollar as people did 30 years ago.

Your electric bill probably isn't just pennies — but then think of all the lights you use, toast you make and TV you watch (*not to mention clothes you wash, rugs you vacuum and teeth you brush.*)

Electricity.

It's a real value, no matter how much you use or how you use it.

Carolina Power & Light Company

An investor-owned, tax-paying public utility company



Congratulations and Best Wishes

Hudson Belk

“it's your store too!”

The

Cat's

Eye



FINEST IN LIVE ENTERTAINMENT — OPEN NIGHTLY



THE EMBERS CLUB

RALEIGH, N.C. — ATLANTIC BEACH

FEATURING THE
SOUTH'S BEST COMBOS
PLUS
ALL NATIONAL RECORDING ARTISTS
HOME OF

THE EMBERS

TRIANGLE
 "CHEVY CHEVROLET TOWN"
 1820 N. Blvd. Ph. 834-6441
 "The Most Complete Automotive Center in the Southeast"

RAMBLER MERCEDES-BENZ VOLVO

Compliments of

Weaver Bros. Rambler, Inc.

223 W. LENOIR ST.
 RALEIGH, N. C.

SALES

SERVICE

Compliments of . . .

WICKES

LUMBER and BUILDING
 SUPPLIES CENTER
 HOME OF QUALITY LUMBER,
 PAINTS, PLUMBING, TOOLS, AND
 HOTPOINT MAJOR APPLIANCES.
 1500 DOWNTOWN BLVD.
 RALEIGH—PHONE 833-6636
 DURHAM ST.—FUQUAY—VARINA
 PHONE 552-2291



DUNKIN' DONUTS PLEDGE

I pledge to make Dunkin' Donuts fresh every 4 hours.
 I will recreate all 52 varieties exactly as taught to me
 by the master chefs at Dunkin' Donuts University.

My Dunkin' Donuts coffee will never be more than
 18 minutes old.

My cream will not be milk.

And again I say, because it can never be said enough,
 I will make my Dunkin' Donuts fresh every 4 hours.

Dunkin' Donuts

1801 N. Boulevard

Open 24 hours

PIANOS
 Mason & Hamlin
 Geo. Steck
 Cable
 Lowrey

ORGANS
 Lowrey
 Thomas

STEREOS
 Fisher

GUITARS
 and
 AMPS



**F. P. Buchanan
 Music Co.**

Everything Musical
 North Hills Lower Mall

F.P. BUCHANAN
 President

787-4123

**MILL OUTLET
 VILLAGE**

GLENCOE CARPET SHOWROOM

MILL OUTLET SPORTSWEAR

SAVE — SAVE — SAVE — SAVE

U.S. Hwy. #1 NORTH

8 MILES OUT

things go
better
with
Coke



BOTTLED UNDER AUTHORITY OF THE COCA-COLA COMPANY BY

CAPITAL COCA COLA BOTTLING COMPANY

RALEIGH, NORTH CAROLINA

Lawn And Garden
Supplies
Raleigh FCX Service

301 W. Cabarrus St.

Tel. 833-1594

X



CHARLES FASHIONS, INC.

DBA

The Wig Wam of Raleigh

10 E. HARGETT ST.

400-A DOWNTOWN BLVD.

RALEIGH, N. C.

Wigs and Hairpieces

DIAL 833-3678

100% Human Hair

or 828-2186

X 9

*"A complete line of professional quality
housekeeping and janitorial supplies"*

**JAMES H.
ANDERSON CO., INC.**

FLOOR MAINTENANCE MATERIALS

SANITARY SUPPLIES — EQUIPMENT

418 W. PEACE STREET

RALEIGH, N. C.



CAMERON VILLAGE, RALEIGH

Parkwood Shopping Center – Wilson

Eutaw Shopping Center – Fayetteville

BEST WISHES

Garland C. Norris Company

"GOLDEN TAP"

PURE FLORIDA ORANGE JUICE



128 NORTH HILLS
SHOPPING CENTER

"The Martex
Excitement
Center"

With the Latest in
Fashion for the Bath and Boudoir

Village Opticians

BRYAN BUILDING SUITE 236
RALEIGH, N. C.

BILL BARBOUR

PHONE 828-2078

Compliments of

THE GRAPHIC PRESS, INC.

418 S. DAWSON ST.
RALEIGH, N. C.

Ellisberg's

CAMERON VILLAGE

DILLON
SUPPLY COMPANY
INDUSTRIAL SUPPLIES
MACHINERY

RALEIGH
ROCKY MOUNT • DURHAM
GOLDSBORO • CHARLOTTE
GREENVILLE, S. C.

A. E. Finley
And Associates, Inc.

CONSTRUCTION
INDUSTRIAL AND
MATERIAL - HANDLING
EQUIPMENT

Raleigh • Charlotte • Columbia

**Have a
sandwich
for
dessert.**

Pine State Ice Cream Sandwich.

Smith's Studio

Official Photographers for the
1968 Lotus

• • •
Portraits, Glossy Prints, and
Application Pictures May Be
Ordered from Your School
Negatives
• • •

We Have a Complete Line of Different
Sizes and Styles of Frames
• • •

14 East Hargett Street
Raleigh, N. C.

Penneys

ALWAYS FIRST QUALITY

THE PENNEY STORY

*Why make such a big, big
deal out of quality?*

By ROBERTA NASH

If you ever want to get a Penney man going, ask him why Penneys makes such a big deal out of quality. Then stand back.

I asked a Penney store manager the question once and when he finally decided I was serious, he said, "If I could use only one word to describe the phenomenon of Penney's, I'd pick the word, *quality*."

"Mr. Penney has always been a *fanatic* on the subject," he continued. "They say the only thing that still makes Mr. Penney angry is when someone suggests we compromise Penney quality to make a lower price."

SHOP PENNEYS IN RALEIGH'S CAMERON VILLAGE
MONDAY, THURSDAY, FRIDAY 'TIL 9

Burrage Music Company

"School Music Specialists"

PHONE 833-5793

428 N. SALISBURY ST.

RALEIGH, N. C. 27603

Jolly's

Established 1881

128 FAYETTEVILLE STREET

RALEIGH, N. C.

AND

NORTH HILLS SHOPPING CENTER



C. P. LANDT
President

"Get more education! How many times have you heard this? Do you get tired of hearing it? Don't — because you will be getting educated the rest of your life.

School is only the beginning. The more you learn, the happier and more interesting life you will lead. Always keep an active and inquisitive mind."

Cameron Brown



COMPANY

MORTGAGE BANKERS / INSURERS

900 Wade Avenue Raleigh, N. C. 828-2581
22 offices located in North Carolina,
South Carolina, Tennessee, Virginia and
Georgia

Compliments of

JOHNSON-LAMBE CO.

For the Best in Sporting Goods

FINCH'S DRIVE-IN, INC.

401 W. PEACE ST.

Open 10:30 a.m.

THE BROILER

Open 24 Hrs.

217 HILLSBORO ST.

Raleigh, N. C.

the DANCER'S shop

218 S. WILMINGTON ST. RALEIGH, N. C.

PHONE 832-8724

THE BEST IN TIGHTS & LEOTARDS

A LINEN, TOWEL & UNIFORM SERVICE FOR
EVERY NEED

RALEIGH LINEN SERVICE, INC.

3301 HILLSBORO STREET

RALEIGH, N. C.

828-7491

1969 Sponsors

Cavin's, Inc.
Mr. Chick Take Home And Dining Room
Mitchell Funeral Home
Village Book And Stationary ✕
Starmount Pharmacy ✕
Johnson's Jewelers
National Market ✕
Mill Outlet Sportswear, Inc.
Virginia Crabtree's, Inc.
Roy L. Watson Insurance Agency
Roy L. Watson Real Estate Agency
American Defender Life Insurance

To the Students:

It is tradition for the editor or editors of a college yearbook to say a few final words in conclusion, to wrap up their year's work, so to speak. And so we write this letter. But if we have succeeded in saying all we tried to in the pages which precede this one, there is no real need for a final summation. This is your book, one which we hope is real and good. We wanted to give you a small, concrete reminder of the finest Peace; we chose those ideas which we feel are best, and most of those persons who are valuable to us while we are here.

We may have gone wrong; we may have made mistakes; we may have failed you entirely. You are to be the judges, you will be the measure of our success. Before you judge, we ask that you read the book, that you not skip through but that you read the words and take from them all we've tried to put there.

We set out to portray Peace in her finest aspect. To do this we concentrated on people rather than walls, or ivy, or any of the other realities that are a part of this place. We believe that the true value of Peace's tradition lies in her students, the girls who now and always have been Peace, and this assumption formed the basis of our efforts. We tried to put here all the good times and good people, but attempted to include as well those doubts and fears, hopes and goals common to us all. We tried to show the mind and personality of Peace through you and, in doing so, learned much. For this knowledge we thank you, each and every one of you, and we wish you all happiness. We hope that through this book we have in some small way repaid your gifts of friendship.

Susan Lomax

Susan Lomax, Editor

Ann Coppage

Ann Coppage, Associate Editor.

May, 1969

Student Directory

- Abernathy, Jane Carol 732 Burton St. Rocky Mount
 Adams, Nancy Kilpatrick 224 W. Vance St. Laurinburg, S.C.
 Adcock, Annette Ferman 309 Pine St. Fuquay-Varina
 Allen, Jane Russell 2630 Parmele Rd. Wilmington
 Allred, Rachel Norwood 1401 E. Walnut Goldsboro
 Armstrong, Jane Stuart 315 Russell St. Troy
 Armstrong, Mary Elizabeth 185 Thompson P. Roswell, Ga.
 Arthur, Annis Lillian Old Mill Rd. Chapel Hill
 Awlrey, Susan Louise East Main Extension Bennettsville, S.C.
 Baddour, Nadine Kay 307 Midland Way Laurinburg
 Bailey, Mary Shannon Box 216 Hunters Hill Rocky Mount
 Bales, Mary Elizabeth Erwin Heights Thomasville
 Balsley, Margaret Wilson 825 Crescent Dr. Reidsville
 Barnes, Catherine Howard P.O. Box 236 Lewiston
 Barnes, Martha Vickers 1505 N. Walnut St. Lumberton
 Barnett, Lila Cornelia 860 W. Marion Shelby
 Bass, Barbara Jane 1400 Millbrook Rd. Raleigh
 Bell, Deborah Durand 924 Parkview St. Asheboro
 Bell, Robin Lee 2609 Old Cherry Pt. Road New Bern
 Belmore, Catherine Lee 206 3rd Ave., N.E. Hickory
 Benton, Emily Hall 525 Vance St. Roanoke Rapids
 Bickett, Edith Janis 303 N. Rowan Ave. Spencer
 Biggerstaff, Vickie Elizabeth 402 Victor St. Lincolnton
 Bishop, Melissa Jay 513 Riverside Dr. Belhaven
 Bland, Georgia Merritt 1322 Cross Link Rd. Raleigh
 Bloodworth, Helen Marguerite 3707 Baugh St. Raleigh
 Bonds, Susan Cowart 600 W. Harnett St. Benson
 Bondurant, Laura Sweet 2702 Wycliffe Roanoke, Va.
 Bottoms, Kathryn Nelson 1207 Raleigh Park Elizabeth City
 Bowers, Julia Alice 728 Salem St. Thomasville
 Bradford, Helen Camille 505 Unite St. - Box 250 Fort Mill, S.C.
 Bradsher, Doris Ann Rt. 7, Box 217 Raleigh
 Brantley, Deborah Sue 2209 Timber Dr. Raleigh
 Bridges, Laura Ann 4431 Laurel Hills Rd. Raleigh
 Briley, Becky Anne 1647 Crescent Dr. Henderson
 Brisson, Tilda Marie Box 158 Dublin
 Broadwell, Blaine Marshall 4311 Galax Dr. Raleigh
 Brookshire, Virginia Lynn 6038 Preston Lane Charlotte
 Broughton, Patricia Dianne 3510 Fernwood Dr. Raleigh
 Brown, Amelia Firth 608 W. 2nd St. Roanoke Rapids
 Brown, Lila Grier 376 Sunnyside Dr., S.E. Concord
 Brown, Margaret Ann 12 Twin Acres Dr. Lexington
 Brown, Patricia Ann Rt. 4, Box 565-B2 Greensboro
 Brown, Rosalyn Elaine 5112 Shamrock Dr. Raleigh
 Brown, Trudy Elizabeth 215 W. Chestnut St. Troy
 Bruce, Martha Fletcher P.O. Drawer C Farmville, Va.
 Brunnick, Carolyn Jean 409 Beaumont Shelby
 Bunch, Joyce Ann 154 Luther Rd. Raleigh
 Burleson, Patricia Ann 359 Palmer St. Albemarle
 Burnett, Betsy Lark P.O. Box 25 Kenansville
 Burnette, Nancy Whiting 405 Chelsea Rd. New Bern
 Burns, Lela Gibson Rt. 1 Riegelwood
 Burwell, Juba Page 138 Circle Dr. Thomasville
 Butler, Dena Grace Rt. 2 Rowland
 Cameron, Gwen Ellen P.O. Box 125 Broadway
 Carter, Martha Jane Boynton, Va.
 Carpenter, Mary Lou 100 Kathland Ave. Thomasville
 Carver, Donna Dale Westover Dr. Roxboro
 Casteen, Jeanne Kirby 2800 Mars St. Raleigh
 Caulk, Nancy Gail Rt. 1, Box 48 Jacksonville
 Chamblee, Sandra Faye Rt. 1 Wendell
 Chappell, Brenda Joyce P.O. Box 486 Rich Square
 Clayton, Susan Gaynor 1004 Pamela St. Tarboro
 Clements, Gail Eva 3430 Baugh St. Raleigh
 Clemmons, Nancy Mebane 26-D Valley Terrace Durham
 Cline, Frances Rubylee 212 W. Sycamore St. Lincolnton
 Coffee, Debby Farlow 505 Primm Circle Thomasville
 Coffin, Ann Ritchie 1143 Westover Terrace Asheboro
 Cole, Carol Jean Rt. 1, Box 157 Beaufort
 Coleman, Margie Ailene 1212 Brookside Dr. Raleigh
 Collier, Elizabeth Manning 707 Confederate Ave. Salisbury
 Collier, Katherine V. A. Hospital Salisbury
 Collins, Deborah Ruth 904 N. Rotary Dr. High Point
 Coltrane, Linda Mae Country Club Dr. Lexington
 Conkling, Avery McFall 4031 Converse Dr. Raleigh
 Connell, Barbara Frances 2627 Inverness Rd. Charlotte
 Cooke, Donna Marie 326 Jones Frankln Raleigh
 Cooley, Brenda Carol 621 King Richard Rd. Raleigh
 Coppage, Merry Ann 301 Green Springs Rd. New Bern
 Coughenour, Lucy Kelly 7 Mulberry Circle Salisbury
 Covington, Sandra Gelee 103 N. Rutherford Wadesboro
 Cox, Kathryn Vaughan 5409 Guildbrook Rd. Charlotte
 Cox, Martha Ann 109 W. Aycock St. Raleigh
 Cox, Nancy Fowler 318 McRae St. Laurinburg
 Creech, Linda Parker 304 Park Ave. Tarboro
 Creech, Ruby Lee Box 412 Zebulon
 Currence, Laura Scott 4108 Rowan St. Raleigh
 Currin, Elaine Carol 211 Forest Rd. Oxford
 Cuthrell, Ellen Parks 504 Broad St. Edenton
 Daniel, Mary Katherine 405 Westover Ave. Wilson
 Dashiell, Fran Lipscomb 1009 Virginia Ave. Suffolk, Va.
 Davidson, Judy Lynn 606 S. Washington Shelby
 Davis, Abeta Joy Rt. 2, Box 23-B Beaufort
 Davis, Carolyn Dianne 1305 Oakwood Drive Rocky Mount
 Davis, Deborah Carol 1109 Mabel Ave. Kannapolis
 Davis, Stephanie Stuart 2038 Sharon Rd. Charlotte
 DeGabrielle, Deborah Leah 200 Drummond Dr. Raleigh
 dePrater, Mary Blue 327 Valley Rd. Fayetteville
 Dilling, Carol Ann P.O. Box 187 Kings Mountain
 Dobbins, Sandra Myers 2816 O'Berry St. Raleigh
 Dominy, Karen Lynn Rt. 3, Box 86-C New Bern
 Donathan, Marsha Doreen Forest Hills Aberdeen
 Downey, Karen Marie P.O. Box 186 Elkton, Va.
 Dudley, Eva Ann 211 W. 11th St. Washington
 Duffer, Betsy Anne 2348 Grant Ave. Raleigh
 Duncan, Janet Leigh 2500 St. George Rd. Winston-Salem
 Dunn, Jeannette Walton 901 W. Jackson Salisbury
 Dye, Erica Jean 317 Robert St. Cary
 Early, Christie Allen S. Broad St. Aulander
 Eckerd, Anna Camille 523 W. Main Mocksville
 Edwards, Amy Rebecca 224 Ridgewood Charlotte
 Edwards, Marcia Winchester 504 W. Chatham St. Apex
 Edwards, Mary Sue 1513 McArthur Ave. New Bern
 Edwards, Ruth Octavia 208 Shady Circle Dr. Rocky Mount
 Edwards, Susan Eleanor 1531 Caswell St. Raleigh
 Ehrlich, Mina Sue 2516 Fordham Dr. Fayetteville
 Erichson, Nancy Arnold 400 Kimberly Ave. Asheville
 Evans, Marion Lennox 522 Walnut St. Statesville
 Faggart, Ruth Virginia W. Norton St. Yaupon Beach Southport
 Farris, Judith Isabel 509 S. Taylor St. Rocky Mount
 Flammia, Shelly Marie 1306 Dogwood Lane Raleigh
 Fleishman, Marcia Ann 414 W. 24th St. Lumberton
 Fleming, Gail Morris 1904 Bingham Dr. Tarboro
 Flood, Judith Christopher 1109 Chalk St. Elizabeth City
 Flowers, Rebecca Dell Rt. 2 Clayton
 Folger, Joellen P.O. Box 236 Dobson
 Fontaine, Bettie Trigg 1530 Iredell Dr. Raleigh
 Foreman, Blair 1009 Riverside Ave. Elizabeth City
 Franks, Patricia Gail 311 Grand Ave. Raleigh
 Fritts, Sharon Dawn 134 Maplewood Ave. Thomasville
 Fuller, Rauna Carol 2808 Glen Burnie Dr. Raleigh
 Fulp, Martha Ann 2246 Sherwood Dr. Winston-Salem
 Fulp, Mary Cynthia 22 Glendale Rd. Jacksonville
 Funderburk, Diane Marie 301 Mint Hill Rd. Matthews
 Fussell, Elizabeth Grey 191 Herring St. Rose Hill
 Fussell, Rebecca 118 E. Main St. Rose Hill
 Gaddy, Barbara Elizabeth 4408 Yadkin Dr. Raleigh
 Gainey, Amanda Jane Box 297 Pittsboro
 Gantt, Lesa Cheryl 120 Traditional Lane Charlotte

Gargis, Sarah Ann 306 Center St. Apex
Garrison, Beverly Kay Box 256 Ocean Drive Beach, S.C.
Gilbert, Jane Durham 2303 Lednum St., Apt. C-C Durham
Gilbert, Julia Tatam 823 Vermont St. Smithfield
Goodnight, Marsha Ray 1559 Ridge Ave. Concord
Gore, Janice Suggs Rt. 2, Box 72 Cary
Grady, Martha Emily 500 Central Ave. Butner
Gray, Frances Jewel Rt. 3, Box 170 Littleton
Greene, Hilda Lonellan 112 Waightstill St. Morganton
Gregg, Frances Hall 626 3rd St., N.E. Hickory
Gregory, Sandra Anne 2113 Pine Dr. Raleigh
Griffin, Beth Windley Route 1 Nashville
Griffin, Nancy Jo 506 Park Avenue Goldsboro
Gurley, Harriette McDowell 200 W. Main St. Cherryville
Haigwood, Mary Gay 953 Shady Lane Greenville
Hancock, Karen Lynn 2706 Regency Dr. Winston-Salem
Hankin, Pamela Ruth 237 Morris Ave. Mountain Lakes, N.J.
Hanson, Emily Pardue 1517 Caswell Dr. Raleigh
Harlan, Debra Francina 3709 Swan Dr. Raleigh
Harper, Anna Marie 600 Terminal St. Kinston
Harper, Nancy Faye 210 N. Main St. Franklinton
Harper, Susan Wilson 2306 Raeford Rd. Fayetteville
Harrelson, Susan White 206 W. Bay St. Southport
Harrington, Doris Anne 217 W. 17th St. Lumberton
Harris, Ellen Hurd 3910 Wyndhill Dr. Annandale, Va.
Harris, Mary Cynthia 112 W. Front St. Oxford
Hatcher, Mary Dell 115 E. Park Ave. Mt. Olive
Havard, Emily Barrows 302 Cherry St. Scotland Neck
Hay, Susan Blalock 3316 Rugby Rd. Durham
Hayes, Beverly Elaine 4309 Galaz Dr. Raleigh
Haynes, Jody Ellen 117 Brookshire Ave. Kannapolis
Hazzard, Delma Theda 329 Meeting St. Georgetown, S.C.
Heady, Mary Elizabeth 113 N. Kirkwood Dr. Rocky Mount
Hedrick, Susan Christine 604 W. Ray Ave. High Point
Henderson, Alice Bryant 1126 Providence Rd. Charlotte
Herring, Nancy Jane 1108 Oakwood Dr. Rocky Mount
Herring, Wortley Lawrence 1118 Sunset Crescent Wilson
High, Linda Kay P.O. Box 243 Gaston
Hinton, Catherine Jane Rt. 1 Zebulon
Holland, Shirley Jean P.O. Box 68 Windsor, Va.
Holleman, Frances Elaine 400 E. Chatham St. Cary
Honeycutt, Anne Gayle Dogwood Trail Wendell
Hoskins, Joanna Bland 1510 Pinehurst Dr. High Point
House, Kay Lynette Box 215 Hobgood
Howell, Susan Lewis Country Club Rd. Weldon
Howerton, Linda Lee 528 Riverview Dr. Suffolk, Va.
Hube, Louise Whitener 1505 Pineview St. Raleigh
Huggett, Deborah Lee 4929 Currituck Dr. Charlotte
Hughes, Joyce Winnifred Rt. 4, Box 273 New Bern
Humphreys, Nancy Jane 1317 N. King Charles Rd. Raleigh
Hunt, Ada Coley 408 Tyson Dr. Stantonburg
Hunter, Judith Ellen 104 Falcon Rd. Rocky Mount
Hutchison, Jane Ward 1511 Rutledge Ave. Charlotte
Hutton, Mary Pelham 205 Bosley Ave. Suffolk, Va.
Ingram, Beverly Byne 2258 Camellia Dr. Wilmington
Jessup, June Marie Box 524 Elizabethtown
Johnson, Donna Grace Route 2 Raleigh
Johnson, Elizabeth Stimpson Rt. 8, Box 105 Raleigh
Jolliff, Katherine Moore 303 Lee St. Smithfield
Jones, Barbara Allen 126 Cherry St. Mt. Airy
Jones, Elva Susan P.O. Box 6 Pine Level
Jones, Frances Bari 304 Granville Dr. Greenville
Jones, Virginia Orlean 209 Midland Dr. Asheville
Josey, Marion Adickes 1006 Church St. Scotland Neck
Kea, Mary Parham 1608 Marvelle Ave. Rocky Mount
Kelly, Christina Maria 1800 Pershing Rd. Raleigh
King, Ruth Stevens 409 N. Bloodworth St. Raleigh
Kirk, Mary Lynn 505 Breeze Rd. Cary
Lacy, Emma Leora 100 Salem Ave. Front Royal, Va.
Lagg, Mary Elizabeth 122 N. Milford Dr. Salisbury
Lane, Julia Ann 807 Lee St. Asheboro
Lane, Sarah Elizabeth 109 Ridge Ave. Salisbury
Lawrence, Mary Elizabeth 8903 River Rd. Richmond, Va.
Lee, Lynnette Raye 2223 Wheeler Rd. Raleigh
Lee, Virginia 408 Morgan St. Durham
Leemon, Mary Kathryn 17 Warwick Place Asheville
LeGrand, Sandra Jean 503 Peach St. Shelby
Lilyquist, Kathy Eileen 755 Currituck Dr. Raleigh
Linder, Ellen Marie 1220 Greensboro St. Lexington
Link, Harnet Frances 909 Canterbury Rd. Raleigh
Lipscomb, Ann Edge Staff Apts., V. A. Hosp. Durham
Little, Joan Edward 307 S. Andrews Ave. Goldsboro
Little, Marian Marsh 2720 Cambridge Rd. Raleigh
Logan, Effie Jonelle 5900 Providence Charlotte
Lomax, Susan Elizabeth 1125 Emerald St. Salisbury
Long, Edith 2402 Oakwood Rd. Burlington
Long, Paula Horner 909 North Brook Dr. Raleigh
Lovelace, Eleanor Logan 1223 W. Kenan St. Wilson
Lovette, Cynthia Anne 11th and Ivey Lillington
Lowery, Alice Faye Rt. 1 Box 13 Youngsville
Lugar, Mary Sherwood 822 Westhan Parkway Richmond, Va.
Luter, Carol Cullifer 2513 Fairway Dr. Greensboro
Luton, Betty Driver 700 Pryor Dr. West Memphis, Ark.
Lyon, Evelyn Taylor 3825 Somerset Dr. Durham
McArthur, Sarah Elizabeth Hasty Road Laurinburg
McClellan, Linda Carol 2512 Albemarle Ave. Raleigh
McCloskey, Jean Louise 194 Manes Ave. Red Springs
McCullough, Liberty Shaw 8200 Carrbridge Circle Towson, Md.
McCoy, Kathryn Lutie 2516 Edgewater Dr. Fayetteville
McDonald, Linda Ann Rt. 1 Bunnlevel
McFarland, Katharine Arufield 100 W. Newlyn St. Greensboro
McGee, Jane Lenora 405 E. Holt St. Smithfield
McNeill, Margaret Anne 503 Fulton St. Raeford
McTyre, Kage Moseley 800 Oaklawn Ave. Winston-Salem
MacKesson, Barbara Ann 516 Margaret Dr. Statesville
Macon, Nancy Marlene 215 Griffin St. Garner
Magee, Laurie Kimber 120 Euclid Ave. Glassboro, N.J.
Manning, Marlene 130 W. Colonial Dr. Salisbury
Marks, Carolyn LaRue 3300 Ashby Place Raleigh
Matthews, Jamie Ann Route 2 Nashville
Meachum, Mary Elizabeth 2112 Mountain View Bluefield, W. Va.
Meade, Anne Devoe 501 E. Center St. Lexington
Medlin, Carol Ann 1519 Dixie Trail Raleigh
Menefee, Jeanne Franklin 2205 Cranford Rd. Durham
Metts, Jane Emison 1307 S. Live Oak Pkwy. Wilmington
Miles, Valerie Ann 309 Harris St. Warenton
Miller, Caroline Allers 5335 C. Dana Dr. Raleigh
Miller, Mary Anne Route 3, Box 49 Tabor City
Miller, Mary Elizabeth 1702 Lucerne Way New Bern
Mitchell, Emily Jane 1715 E. Walnut Goldsboro
Mitchiner, Ann Howard P.O. Box 131 Wilson's Mills
Mitchiner, Linda Joyce 505 Barbour Clayton
Monroe, Sandra Lee Rt. 2, Box 75 Rockingham
Montgomery, Evelyn Rebecca 324 Buncombe St. Raleigh
Moore, Margaret Macon 3509 Alleghany Dr. Raleigh
Morgan, Susan Elizabeth Box 668 Sylva
Morris, Jennifer Daldwell 161 Hillcrest Ave. Concord
Morton, Elizabeth Heilig 507 S. Fulton St. Salisbury
Murray, Edna Ann Rt. 1, Fountain
Murray, Marsha Leigh 2222 Whitman Rd. Raleigh
Mustard, Janet Dunn 1759 Brooks Ave. Raleigh
Neal, Sallie Thorne 901 W. Third St. Roanoke Rapids
Neely, Susan Lee 4214 Tottenham Rd. Charlotte
Nicholson, Debra Kaye 1500 Banbury Rd. Raleigh
Nixon, Louise Everette 2630 Bedford Ave. Raleigh
Norwood, Georgia Ann Route 1 Raleigh
Nowlan, Trudi 911 Stanfield Dr. Charlotte
Nutt, Susan Ellen 4700 Morehead Dr. Raleigh
O'Bryan, Kathleen 2612 N.E. 24 St. Ft. Lauderdale, Fla.
O'Daniel, Betty Ann 3010 Lewis Farm Road Raleigh
Ogden, Gail Benegas 417 Forsyth St. Raleigh
Opheim, Beverly Suzanne Rt. 4, Box 165 Williamsburg, Va.
Overcash, Donna Ralene 1705 Mint Hill Rd. Matthews
Owen, Nancy Stuart 634 Maple Ave. Asheboro

Race, Margaret Dianne 608 Mills St. Raleigh
 Palmer, Elizabeth Weeks P.O. Box 232 Tarboro
 Palmer, Ellen Taylor 900 Montrose Circle Shelby
 Parker, Agnes Ann 615 Third Ave. Farmville, Va.
 Parker, Catherine Faye Box 92 Rolesville
 Pearsall, Melva Elizabeth 227 Forest Hills Dr. Wilmington
 Peele, Barbara Anne 1404 E. Pine St. Goldsboro
 Peele, Deborah Elizabeth Rt. 3, Box 509 Clayton
 Pendleton, Peggy Locke Tarboro Hwy. Scotland Neck
 Perkins, Patricia Gatliff 45 Hilltop Rd. Asheville
 Philson, Sharon Sue 128 Mary Jo Dr. Belleville, Ill.
 Pickler, Janet Ellen Route 1 New London
 Pierce, Janet Evelyn Route 1 Apex
 Pittman, Patricia Blanche Box 235 Rich Square
 Pleasant, Judy Corbett 2816 Manning Pl. Raleigh
 Pope, Kathryn Amanda Route 4 Dunn
 Porter, Mary Lynn 3419 Eastburn Rd. Charlotte
 Price, Sandra Jean 217 Cypress St. Wendell
 Price, Teresa Ellen Route 1, Box 15-B Thomasville
 Pulliam, Frances Corinne Route 1 Wendell
 Radford, Brenda Gayle Route 2, Box 354 Cary
 Ramey, Jean Cassel 2409 Pennsylvania Ave. Kannapolis
 Reese, Sara E. 625 Holly St. Asheboro
 Reiersen, Katherine Anne Box 665 Battleboro
 Respass, Trudy Elizabeth Rt. 1, Box 209 Pantego
 Rhodes, Janis Carol 1519 E. Polo Rd. Winston-Salem
 Rhyne, Patricia Carol 3922 Sulkark Rd. Charlotte
 Richardson, Cheryl Jean 642 Shelley Rd. Raleigh
 Ritchie, Margaret Amanda 433 Sunnyside Dr., S.E. Concord
 Robbins, Harriet Ann 607 Clark Dr. Tarboro
 Robbins, Linda Jane Box 423 Burgaw
 Robertson, Benita Gay 22 Dixie Trail Raleigh
 Rogers, Elinor Ray Box 214 Alberta, Va.
 Rogers, Mary Celeste 432 Westbury Rd. Charlotte
 Rogers, Robin Wayne 647 Davis Ave. Statesville
 Rollins, Nancy Leize 3010 Edgewater Greensboro
 Ross, Margaret Murchison Box 186 Lillington
 Royster, Katherine Quinn 901 W. Marion St. Shelby
 Ryan, Patricia Virginia 1238 Maxwell St. Salisbury
 Sandusky, Martha Louise 329 West Ave. Wake Forest
 Sanford, Harnet Elaine 5734 N. Sharon Dr. Raleigh
 Saunders, Cathy Jane 2647 Camelot Rd. Rock Hill, S.C.
 Scarboro, Carolyn Sue Route 2 Wake Forest
 Scarborough, Anna Mills 323 Richmond Rd. Salisbury
 Servais, Jeanne Marie 1007 Peach Street Tarboro
 Shafer, Melissa Anne 222 N. Mulberry Statesville
 Shannon, Sharon Louise 4537 W. Seminary Ave. Richmond, Va.
 Sheffield, Diane Lee Box 781 Warsaw
 Shelton, Leigh 1216 Welcome Circle Durham
 Sherrill, Susan Scott 1075 5th Ave., N.W. Hickory
 Sides, Bonnie Bennett 1228 Marshall St. Raleigh
 Skidmore, Nancy Ann 1300 Goodwin Ave. Charlotte
 Sledge, Cherry Smith 2353 Champion Ct. Raleigh
 Sloan, Madeline Faye Rt. 42, Box 27 Statesville
 Smith, Agnes Carol 3212 Sprunt Ave. Durham
 Smith, Doris Ann 342 E. 15th Washington
 Smith, Elizabeth Ann 529 Hedrick Dr. Statesville
 Smith, Madelyn Landt 2404 Holloway Terrace Raleigh
 Smith, Martha Ann Route 2, Box 162 Littleton
 Smith, Martha Carr 206 W. Main Wallace
 Smith, Sydney Anne 902 Kevin St. Richmond, Va.
 Snipes, Nancy Robertson 1101 W. Divine Dunn
 Spady, Dora Weston Box 104 Townsend, Va.
 Sparrow, Sarah Janet Route 2 Belhaven
 Spivey, Mary Jeanne Spivey Rd. Whiteville
 Stafford, June Hardin Box 156 Garland
 Stallings, Julie Dare 312 Newton
 Stamps, Emily Wicker 72 East St. Ipswich, Mass.
 Stancel, Brenda 825 S. First St. Smithfield
 Stanfield, Libby Cooper 700 Church St. Fairmont
 Starr, Karen Joanne 2437 Ansley Ct. Charlotte
 Steed, Nancy Taylor 1800 E. Beech Goldsboro
 Stephens, Wanda Sue 305 W. 16th Lumberton
 Stephenson, Jane Elizabeth Route 3, Box 546 Raleigh
 Stokes, Mary Helen P.O. Box 66 Colerain
 Stone, Linda Irene Rt. 2, Box 62A Lumberton
 Strickland, Tom Lynne 803 Forest Hill Shelby
 Strother, Donna Marie 1815 Ridge Rd. Raleigh
 Stroud, Martha Ann 1208 Country Club Dr. Greensboro
 Suddreth, Margaret Wall 136 Rosemary Lane Statesville
 Switzer, Martha Irene 1901 W. Nash St. Wilson
 Sykes, Carol Lynne P.O. Box 14113 Raleigh
 Taff, Rebecca 900 Forest Hill Cr. Greenville
 Tart, Edna Vivian 106 S. Washington Ave. Dunn
 Tart, Sally Jo 207 Glen Oak Dr. Goldsboro
 Taylor, Barbara Jeanne 4306 Continental Dr. Durham
 Taylor, Brenda Joyce Route 2 Wendell
 Taylor, Donna Maxine 1408 E. Walnut St. Goldsboro
 Taylor, Laura Lee 2002 Greenbriar Kinston
 Thomas, Sharon Frye Route 6 Sanford
 Thomerson, Marilyn Lois 923 Lockland Ave. Winston-Salem
 Tice, Jeanne Rose Moycock
 Timberlake, Beverly Allen 8506 Crown Pl. Alexandria, Va.
 Timberlake, Madline MacPhee 8506 Crown Pl. Alexandria, Va.
 Towery, Jane Welborn 250 Beverly Dr. Concord
 Treadwell, Judith Ann 2527 Glenwood Dr. Raleigh
 Turner, Lynda Ann P.O. Box 873 Elizabethtown
 Van Hecke, Catherine M. 213 Westover Terrace Greensboro
 Vassilion, Nelly 4912 Latimer Rd. Raleigh
 Vatz, Jane Elizabeth 1817 Tryon Rd. New Bern
 Vick, Amy Marlele 2401 E. Elm Goldsboro
 Vinson, Mary Virginia 1503 E. Beech Goldsboro
 Viverette, Evelyn Byrd 106 S. Church St. Enfield
 Wade, Sara Watson P.O. Box 22 Wildwood
 Walker, Trudy Barrus 417 Craven St. New Bern
 Wallin, Marie Lee 2123 St. Mary's St. Raleigh
 Walters, Jane Crawford 106 Penny St. Garner
 Walters, Pamela Heyward 405 Beechwood Dr. Richmond, Va.
 Walton, Ruth Carol Route 8, Box 283 Raleigh
 Ward, Rosalie 806 E. Mulberry Goldsboro
 Wanrer, Rachel Alice Route 2, Box 253-B Eden
 Watson, Frances Slade, 4660 Algonquin Jacksonville, Fla.
 Weaver, Cynthia Gail 225 Corriher Ave. Salisbury
 Webb, Martha Cecelia Route 2 Walstonburg
 Welborn, Deborah Denise 1404 Delk Dr. High Point
 Wells, Elizabeth Walker 106 W. Riverside Dr. Smithfield
 Whaley, Linda Geraldine 2765 Newbold St. Raleigh
 Wheeler, Katherine Adair 2615 Bennington Rd. Fayetteville
 Whichard, Seable Olivia Route 2 Robersonville
 White, Ann Holland 1079 Algonquin Rd. Norfolk, Va.
 Whitford, Nancy Hill P.O. Box 67 Washington
 Wilkerson, Patty Elizabeth 1111 Tremont Rd. Wilson
 Williams, Drewe Grant 929 Brookside Dr. Raleigh
 Williamson, Donna Gail 417 E. Rowan St. Raleigh
 Williford, Kathy Lane Route 1 Dunn
 Wilson, Lois Ann 341 Wilmot Dr. Raleigh
 Wilson, Yvonne Wyant Route 4, Box 651 Raleigh
 Winborne, Elma Hogin 2650 Davis St. Raleigh
 Winecoff, Rinda Elizabeth 919 5th Ave. Hickory
 Winkler, Margaret Ann Poplar Hill Dr. Boone
 Winsted, D. Joyce P.O. Box 185 Bunn
 Wise, Elizabeth Carter, P.O. Box 27 Cheriton, Va.
 Wise, Harriet 675 Sedgewood Rock Hill, S.C.
 Woltz, Elizabeth Frances Country Club Dr. Oxford
 Womble, Susan D. 1109 Dogwood Lane Raleigh
 Wooten, Sarah Ann 109 Julian Avenue Stantonsburg
 Wrenn, Millie Willmoth 629 Aiken Pkwy. Fuquay-Varina
 Wright, Anne Kendall 108 Magnolia Rd. Lexington
 Wynns, Anne Hardison, P.O. Box 6 Colerain
 Yelverton, Deborah Ann Box 96 Fremont
 Yoksimovitch, Savka Elizabeth 220 Drewry Lane Raleigh
 Yow, Katherine Tillman Route 1 Sanford

Sophomore Directory

- Annette Ferman Adcock** — Young Republicans Club 2; International Relations Club 1, Vice President 2; Porpoise Club 1, 2; LOTUS 1, 2.
- Rachel Norwood Allred** — Porpoise Club 1, 2.
- Jane Stuart Armstrong** — Young Democrats Club 1, 2; International Relations Club 1; Daughters and Granddaughters Club 1, 2; Dramateers 1.
- Susan Louise Awbrey** — Chairman, Orientation Committee 2.
- Mary Elizabeth Bales**
- Margaret Wilson Balsley** — Young Democrats Club 1; Art Club 1; Peace TIMES 1.
- Martha Vickers Barnes** — Porpoise Club 1, 2; LOTUS 1.
- Lila Cornelia Barnett** — Young Democrats Club 2; Porpoise Club 1, 2; Peace TIMES 2; Sophomore Class Secretary.
- Helen Marguerite Bloodworth** — Art Club 1; LOTUS 1, Business Manager 2.
- Susan Cowart Bonds** — Young Democrats Club 1, 2; Art Club 1, 2; Home Economics Club 1, Secretary-Treasurer 2; Orientation Committee 2.
- Laura Sweet Bondurant** — Hall Chairman 2; Student Hostess 2; Young Democrats Club 2; Orientation Committee 2.
- Deborah Sue Brantley** — Orientation Committee 2; Young Republicans Club 1; Non-Resident Group Chairman, Secretary 2.
- Blaine Marshall Broadwell** — Non-Resident Group Chairman 2; Art Club 2; LOTUS 2; Orientation Committee 2.
- Virginia Lynn Brookshire** — Young Republicans Club 1, 2; International Relations Club 1, Secretary-Treasurer 2; Spanish Club 1; LOTUS 2; Standards Committee 1; PSRD, ex-officio 2.
- Lila Grier Brown** — Porpoise Club 1, 2; Dramateers 1, 2; LOTUS 2.
- Rosalyn Elaine Brown**
- Carolyn Jean Brunnick** — LOTUS 1; Student Hostess 1; PSRA Secretary 2; Corresponding Secretary, NCARFCW 2.
- Joyce Ann Bunch** — Choir 1.
- Nancy Whiting Burnette** — Tri-Chairman of Religious Life, PSCA 2; Daughters and Granddaughters Club 1, Vice President 2; LOTUS 2; Young Democrats Club 1, 2; PSRD Entertainment Committee 2.
- Lela Gibson Burns**
- Gwen Ellen Cameron** — LOTUS 1.
- Mary Lou Carpenter** — Young Republicans Club 2.
- Gail Eva Clements**
- Nancy Mebane Clemmons** — Young Republicans 1, 2; Art Club 1; Daughters and Granddaughters 1.
- Frances Rubylee Cline** — Young Democrats Club 1, Treasurer, Publicity Chairman 2; Papyrus 2; Peace TIMES 1, Layout Editor 2; Dining Room Committee 2; Orientation Committee 2.
- Ann Ritchie Coffin** — Porpoise Club 1, 2; Peace TIMES 1, Circulation Manager 2.
- Carol Jean Cole**
- Nancy Berkeley Coleman**
- Elizabeth Manning Collier** — PSGA President 2; Porpoise Club 1; President, Phi Theta Kappa 2; Chief Marshall 2; Advisory Board 2; Orientation Committee 2; Judiciary Board 2; Honor Court 2.
- Katherine Collier** — Hall Chairman 2; Young Democrats 1; International Relations Club 1, President 2; LOTUS 1.
- Avery McFall Conkling** — Non-Resident Group Chairman 2; Home Economics Club 1; Daughters and Granddaughters 1, 2; LOTUS 2.
- Donna Marie Cooke** — Young Democrats Club 1, 2; Choir 1, 2.
- Brenda Carol Cooley** — Art Club 1, 2; Home Economics Club 2.
- Merry Ann Coppage** — PSCA Ecumenical Chairman 2; LOTUS Associate Editor 2; NCARFCW Housing Committee Chairman 2; Publications Board 2; Orientation Committee 2.
- Lucy Kelly Coughenour** — Young Democrats Club 2; Art Club 2.
- Linda Parker Creech** — Young Democrats Club 2; International Relations Club 1; LOTUS 1; Orientation Committee 2.
- Mary Katherine Daniel** — PSCA Tri-Chairman of Religious Life 2; Porpoise Club 1; Dramateers 1; LOTUS 2; Basketball 1, 2.
- Abeta Joy Davis** — Hall Chairman 2; LOTUS 2.
- Stephanie Stuart Davis**
- Mary Blue dePrater** — Daughters and Granddaughters 1, 2; Choir 1.
- Carol Dilling**
- Karen Marie Downey**
- Jeanette Walton Dunn** — Young Republicans Club 1.
- Erica Jean Dye.**
- Christie Allen Early** — Art Club 2; Freshman Class President 1; Outstanding Senior.
- Amy Rebecca Edwards**
- Marcia Winchester Edwards** — Student Council 2; Porpoise Club 1, 2; Dance Club 1; Recreation Association President 2; Outstanding Senior 2; Orientation Committee 2; Advisory Board 2; PSRD Decider 2; President of NCARFCW 2; Hall Chairman 2; Judiciary Board 2.
- Susan Eleanor Edwards** — Young Democrats Club 2; International Relations Club 1.
- Mina Sue Erlich** — Porpoise Club 1; LOTUS 2; Dance Club 2.
- Nancy Arnold Erichson** — Young Republicans Club 1; Porpoise Club 1, 2; LOTUS 2; Peace TIMES 1; PSRD ex-officio 2.
- Marion Lennox Evans**
- Ruth Virginia Faggart**
- Judith Isabel Farris** — LOTUS 2.
- Marcia Ann Fleishman** — Young Democrats Club 2; Dramateers 2.

- Bettie Trigg Fontaine – Chairman, Non-Resident Students 2; Peace TIMES Sports Editor; Student Council Non-Res. Representative; Phi Theta Kappa 1, 2; Marshall 2; Elections Committee 2; Orientation Committee 2; Outstanding Senior.
- Rauna Carol Fuller**
- Martha Ann Fulp** – Young Republicans Sec-Treas. 2; International Relations Club 2; Spanish Club 1, 2; Peace TIMES 1; Program Comm. Chairman NCARFCW 2; Orientation Committee 2.
- Diane Marie Funderburk** – Young Republicans Club 2; International Relations Club 1, 2; Papyrus Club 1; LOTUS 2; Peace TIMES 1, 2; PSRD ex-officio 2.
- Jane Durham Gilbert**
- Martha Emily Grady** – PSCA 1; Art Club 1; Alpha Phi Epsilon President 2; Marshall 2.
- Frances Jewel Gray** – Young Democrats Club 1; Art Club 1; International Relations Club 1; LOTUS 1; Basketball 1, 2.
- Hilda Louellen Greene**
- Frances Hall Gregg** – LOTUS 1.
- Nancy Jo Griffin**
- Emily Pardue Hanson** – Porpoise Club 1; Peace TIMES 1; Non-Resident Group Chairman 2.
- Debra Francina Harlan** – Porpoise Club 1, President 2; Student Hostess 1; PSRA Non-Resident Representative 1; Intramural Chairman 2; LOTUS photographer 2.
- Susan Wilson Harper**
- Susan White Harrelson** – Peace TIMES 1; Dance Club 2; Phi Theta Kappa 2.
- Mary Dell Hatcher** – Young Republicans Club 2; Porpoise Club 2; LOTUS 1.
- Emily Barrows Havad** – LOTUS 1, 2; Orientation Committee 2.
- Beverly Elaine Hayes** – LOTUS 1.
- Susan Christine Hedrick** – Young Democrats Club 1; Peace Choir 1; Peace TIMES 1, 2; Dance Club 1, 2; President's Advisory Board 2; Head of Residents 2; Co-Chairman of Handbook Committee 2; Orientation Committee 2.
- Wortley Lawrence Herring** – Chairman of Standards of Living Comm.; PSCA Chairman of Social Committee 2; Home Economics Club 1; Porpoise Club 1; Peace TIMES 2; Dance Club 2; Student Hostess 1; May Day Representative 1; Orientation Committee 2.
- Linda Kay High** – Home Economics Club 2.
- Catherine Jane Hinton** – Young Republicans Club 2; Student Hostess 1, 2.
- Shirley Jean Holland** – Young Republicans Club 2.
- Kaye Lynette House** – PSCA Cabinet Member 2; Young Democrats Club 2; Student Hostess 2; Cheerleader 1.
- Susan Lewis Howell**
- Joyce Winnifred Hughes** – Student Council 2; Honor Court President 2; Young Democrats Club 1; Peace TIMES 2; Student Hostess 1; Judiciary Board, President 2; Assistant for Dean of Women 1, 2; Outstanding Senior 2; PSRD Religious Life Leader 2; President's Advisory Board 2; Orientation Comm. 2.
- June Marie Jessup** – PSCA Vice-President 2; Young Democrats Club 1; Young Republicans Club 2; Peace TIMES 2; Cheerleader 1.
- Katherine Moore Jolliff**
- Virginia Orlean Jones** – Porpoise Club 2; LOTUS Art Editor 2; Peace TIMES Assistant Editor 2; PSRD Secretary.
- Marion Adickes Josey**
- Emma Leora Lacy**
- Julia Ann Lane** – Porpoise Club 1, Vice-President 2; LOTUS 1, 2; Peace TIMES 2; PSRA Awards Chairman 2; May Court Representative 1; Orientation Committee 2.
- Sarah Elizabeth Lane** – Young Democrats Club 2; Daughters and Granddaughters Club 2.
- Mary Elizabeth Lawrence** – PSCA Secretary 2; Daughters and Granddaughters 1, Secretary Treasurer 2; Papyrus Club 1; LOTUS 1; Dance Club 1; Phi Theta Kappa 1, Sec.-Treasurer 2; Marshall 1, 2; Hall Chairman 2; Orientation Committee 2.
- Lynnette Ray Lee**
- Virginia Lee**
- Mary Kathryn Leemon** – Sophomore Class President; Home Economics Club 1, 2; Porpoise Club 1, 2; Freshman Class Secretary.
- Sandra Jean LeGrand** – Publicity Chairman 2; Home Economics Club 1, President 2; Porpoise Club 1; Sophomore Class Treas.
- Marian Marsh Little** – Young Democrats Club 1; Art Club 1; Daughters and Granddaughters Club 1, 2; Student Hostess 1.
- Effie Jonelle Logan** – Young Republicans Club 1, 2.
- Susan Elizabeth Lomax** – Young Democrats Club 2; Peace College Choir 1; Dramateers 1, Sec.-Treasurer 2; Papyrus Club 1, Program Chairman 2; LOTUS Editor 2; Student Hostess 2; PSRD Dictator 2; Advisory Board 2; Publications Board 2; Mary Clark Howard Arts, Science, Lecture Series Committee 1; Hall Chairman 2; Orientation Committee 2.
- Eleanor Logan Lovelace** – Porpoise Club 1, 2.
- Mary Sherwood Lugar** – Young Republicans Club 1; LOTUS 1.
- Carol Cullifer Luter** – Young Republicans Club 1, Vice-President 2.
- Betty Driver Luton** – Young Republicans Club 1; Spanish Club 1.
- Sarah Elizabeth McArthur**
- Linda Ann McDonald**
- Jane Lenora McGee** – Young Democrats Club 2.
- Laurie Kimber Magee**
- Carolyn LaRue Marks** – Art Club 1; LOTUS 2.
- Mary Elizabeth Meachum**
- Anne DeVoe Meade**
- Jane Emison Metts** – Art Club 1, President 2; Young Republicans Club 1, 2.
- Caroline Allers Miller**
- Mary Anne Miller**
- Mary Elizabeth Miller**

- Emily Jane Mitchell — Young Democrats Club 1, 2; Art Club 2; International Relations Club 2; Porpoise Club 2; LOTUS Typing Staff Manager 2.
- Linda Joyce Mitchiner
- Sandra Lee Monroe — Porpoise Club 1, 2.
- Susan Elizabeth Morgan — Home Economics 1, Vice-President 2; Student Hostess 1, 2.
- Elizabeth Heilig Morton
- Janet Dunn Mustard — Honor Court Secretary 2; Student Hostess 1; Freshman Class Vice-President.
- Sallie Thorne Neal — Young Democrats Club 1; Porpoise Club 2; LOTUS 1; Cheerleader 1, Head 2.
- Georgia Ann Norwood
- Trudi Nowlan — PSCA Cabinet 2; Home Economics Club 2; Porpoise Club 1.
- Beverly Suzanne Opheim — Young Democrats Club 1; Young Republicans Club 2; International Relations Club 2; Dramateers 1, President 2; Student Hostess 1.
- Donna Ralene Overcash — International Relations Club 2; Young Republicans Club 2.
- Margaret Diane Pace
- Elizabeth Weeks Palmer — Young Republicans Club 1; Art Club Secretary-Treasurer 2; Student Hostess 1; Marshall 2; Hall Chairman 2.
- Ellen Taylor Palmer — Social Chairman 2; Young Democrats Club 1, Secretary 2; Porpoise Club 1; Dramateers 1; Sophomore Class Vice-President; Orientation Committee 2.
- Sharon Sue Philson
- Patricia Blanche Pittman — Young Republicans Club 1, 2; Peace College Choir 1; International Relations Club 1, 2; Dramateers 1, Historian 2.
- Mary Lynn Porter — Young Democrats Club 1; Papyrus Club 1.
- Sandra Jean Price — LOTUS 1.
- Sara Elizabeth Reese
- Trudy Elizabeth Respass
- Janis Carol Rhodes — Young Republicans Club 1; Student Hostess 1, 2.
- Linda Jane Robbins — PSCA Social Chairman 2; Young Democrats Club 2; Spanish Club 1, 2; Daughters and Granddaughters Club 1, 2; Peace TIMES 2; Student Hostess 2; Cheerleader 1.
- Margaret Murchinson Ross
- Patricia Virginia Ryan — Young Democrats Club 1; International Relations Publicity Chairman 2.
- Carolyn Sue Scarboro
- Anna Mills Scarborough — PSGA Sec-Treasurer 2; Young Republicans Club 2; Home Economics Club 2; Daughters and Granddaughters Club 1, 2; Papyrus Club 1, 2; Peace TIMES Editor 2; Freshman Class Treasurer; Advisory Board 2; Publications Board 2.
- Diane Lee Sheffield — Spanish Club 1, 2; Porpoise Club 1.
- Cherry Smith Sledge
- Doris Ann Smith — Young Republicans Club 2.
- Nancy Robertson Snipes — PSGA Representative 2; PSCA President 2; Young Democrats Club 1, 2; Daughters and Granddaughters 1, 2; Porpoise Club 2; Outstanding Senior 1; Judiciary Board 2; Orientation Committee 2.
- Dora Weston Spady
- June Hardin Stafford — Young Republicans Club 2; International Relations Club 2; Papyrus Club 2.
- Brenda Suzanne Stancil — Young Democrats Club 2; Home Economics Club 1; International Relations Club 2; Papyrus Club 1; LOTUS 1.
- Nancy Taylor Steed — Young Democrats Club 1; LOTUS 1.
- Linda Irene Stone — Young Republicans Club 2; Spanish Club 1, 2; Dance Club 1, President 2.
- Toni Lynne Strickland — PSGA Parliamentarian; Young Democrats Club President 2; International Relations Club 1; Dramateers 1; LOTUS 2; Outstanding Senior 1; PSRD ex-officio 2; Orientation Committee 2.
- Carol Lynne Sykes
- Sally Jo Tart
- Barbara Jeanne Taylor
- Sharon Faye Thomas
- Marilyn Lois Thomerson
- Jeanne Rose Tice — PSCA Outreach Chairman 2; Phi Theta Kappa 1, 2; Marshall 2; Basketball 1.
- Madeline MacPhee Timberlake — Young Republicans Club 2; Daughters and Granddaughters Club 1, 2; Student Hostess 1, 2.
- Jane Welborn Towery — Porpoise Club 2; Dramateers 1; LOTUS 1, 2; Dining Room Committee 2.
- Lynda Ann Turner
- Amy Marlene Vick
- Mary Virginia Vinson — PSCA Cabinet 2; Young Democrats Club 1, 2; Home Economics Club 1; Porpoise Club 1, 2; Orientation Comm. 2.
- Evelyn Byrd Viverette — Porpoise Club 1; LOTUS 2; PSRA Representative 2; Basketball 1, 2; Orientation Committee 2.
- Sara Watson Wade — LOTUS 1, Lay-out Editor; Porpoise Club 2.
- Trudy Barrus Walker — Daughters and Granddaughters Club 1, 2; LOTUS 2; Peace TIMES 2; Young Democrats Club 1, 2.
- Linda Geraldine Whaley
- Seable Olivia Whichard
- Patty Elizabeth Wilkerson — Young Democrats Club 1; LOTUS 1, 2; Basketball Manager 1, 2.
- Rinda Elizabeth Winecoff — Young Republicans Club 2; Art Club 1; Peace College Choir 1; Dramateers 2; Peace TIMES 1.
- Joyce D. Winstead
- Elizabeth Frances Woltz — Daughters and Granddaughters 1; Porpoise Club 1.
- Susan D. Womble — Daughters and Granddaughters 1.
- Sarah Anne Wooten
- Millie Willmoth Wrenn — Young Democrats Club 2; Student Hostess 2; Hall Chairman 2; Orientation Committee 2.
- Anne Hardison Wynns
- Deborah Anne Yelverton



*I can't be contented with yesterday's glories,
I can't live on promises winter to spring;
For now is my moment, and now is my glory,
I'll laugh and I'll cry and I'll sing . . .*

