

70 382

**THE
PEACE
STUDENT**



Our modern world is full of every extreme from Yuppies, Hippies, SDS, to the Holy Rollers and Silent Americans. Yet where in this world of extremes does the Peace Student fit? Is she, as many feel, the one who will simply vote for the next president, pay the taxes, and go unnoticed throughout her life? Is she the girl whose interests are confined only to social events, rather than the wars and poverty which plague our world? Is she the kind who'll try something different once, but only for curiosity, and then revert to being a conformist? Is she the apathetic American who would simply rather not get involved?

To all the above questions we can answer an apathetic NO. The Peace girl is an individual who is extreme-

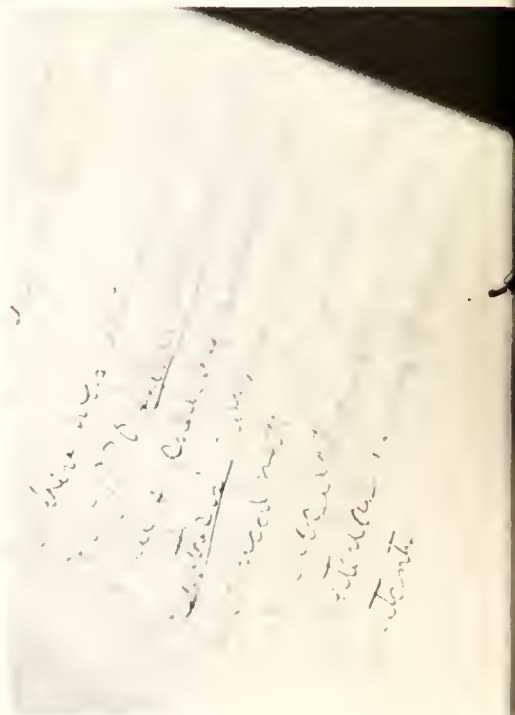
ly conscious of the world about her. She has the potential to do something about the world situation rather than simply letting things pass her by. She can be the one who takes a stand and fights for it, even if it is not the conventional or accepted thing to do. She can be the one who will strike a big blow for what she believes, or maybe just a little punch.

The Peace girl recognizes that extremes exist. She is aware that there is a Biafra; that there is a Mao Tse-tung. She sees apathy around her, but is not apathetic. She doesn't feel hunger, but knows that it exists. She is the future citizen and the world is in her hands. She will not let it fall.

STUDY . . .



Words I do not understand — They have no meaning — How can I study? — The room haunts me and so does my empty mind — Cramming — Grades — I'm cold, tired and discouraged — What am I doing here? — Tension — Exams — Heartbreak — Aloneness — Math, English, Biology — Empty symbols rolling around in my tin can brain — Term papers — Tests — Discouragement — Disillusionment, boneweary, endless cigarette smoke and cokes — on into the night — Closed Study — Failure — Fatigue, heavy eyelids, blurred print — My mind, I'm so tired I can't even . . . think? — Coffee, Coffee, Coffee — Study rooms, and No-Doz — I just can't seem to concentrate — Yet I want to learn — I want to study — I want . . . — Tears, frustration, again — confusion, muddled mind — Study, Grades, Panic. Hope? Miracles don't happen over night — or do they?

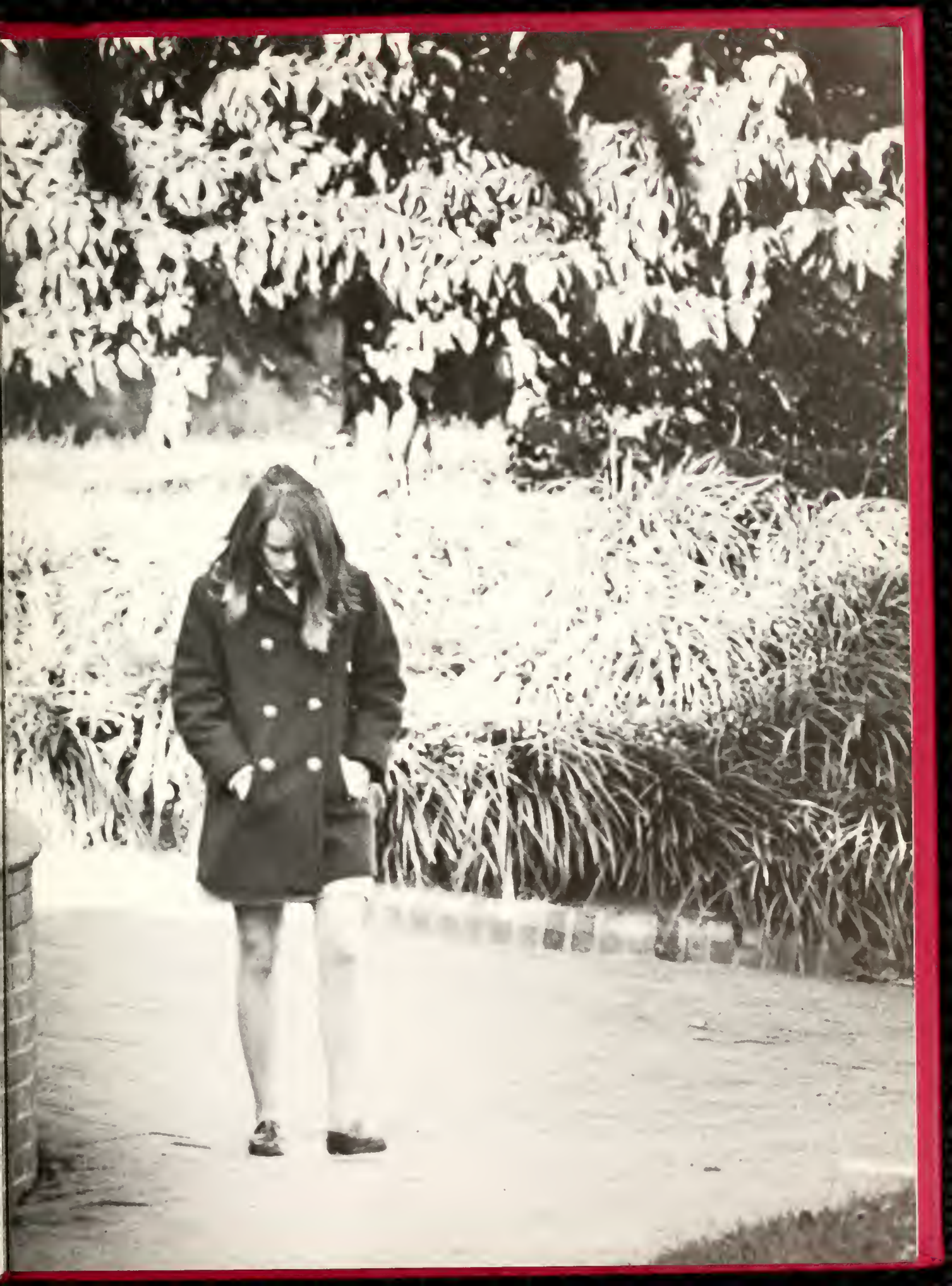






TENSION . . .

Tension — The first day of school
Tension — Homework and Studying to do
Tension — That intangible feeling that haunts us
Advisor — Advisee meetings — Blind dates — Carolina Weekends — First Bible and Biology tests — Grades, Grades, College acceptance — Half-smoked cigarettes — Rushing to classes — Going blank before entering your exam room — Expecting that important phone call and all the phones are being used — If you could just get away . . . somehow — Facing your parents — Marriage? — Grades, Grades, Grades — College life? — God? — Work and Time = Tension — Questions you ask yourself — Why? Tension seethes out of your pores and drips on to your empty blue book page — "If only I had studied a little bit longer . . ." the little voice inside your head — echos . . .





LOVE . . .

In these times of war and unrest we all carry many mixed feelings in our hearts — They can range from the strongest hatred and prejudices to the deepest compassion and love. The majority of the girls at Peace are more concerned with the latter, but to each of them, love has its own meaning and finds its own way of expression. At Peace love is found in many places both usual and unexpected. For some, it is in the letters from their boyfriends — for others it is in the windows on a Friday afternoon waiting for the one that will help them forget the unbearable past week. For those who have really found love they see it every time they turn a corner — a small child, a simple poem, a true friend, a certain song, but most of all that special person who understands, listens, forgives, shares his all. But with the beauty and warmth of love, often comes depression: fear little misunderstandings that crowd you in; hurt; tears and doubts. Then we begin measuring this feeling we have — but does it hold up to the test — for many it does — for those who find their love in the simple things: the letters; the waiting of Friday afternoons; sharing compassion for others; the desire to be a better person — This all comes from loving — Love is found most everywhere at Peace — look around you — it isn't hard to see.





LOVE

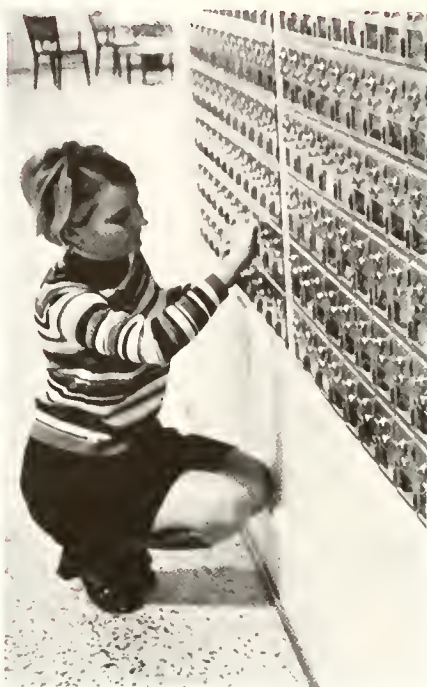
RELAXATION . . .

In working hard at our studies and at anything we do there must be some kind of welcome relief. We begin to long for a peace of mind which is the greatest peace possible. Everyone has his own way to break away from mounting anxieties.

The same holds true for the Peace College Student. She is no different from any other college student. She too is swamped with the endless worries of term papers, tests, and grades. To add to these anxieties she finds that unwelcome conflicts with her friends arise every now and then. The Peace Student realizes that her needs are those of relaxation — anything that gives her pleasure and relief.

Relaxation for a Peace Student ranges from reading a book she has always wanted to read, to a big fraternity beach or ski weekend. She too can lose her troubles and tensions in the Rec Room among the conversations and soap operas, coke machines and quick cigarettes. For other girls the daily trip to the mail boxes can put a moment of relaxation in their lives. She might find retreat in her room surrounded by records, food and a couple of friends. At these times of relaxation topics of tests, grades, and other study matters are barred from conversation.

There are times when relaxation calls for solitude. Those quiet moments when contemplation finds its way into the frantic days — these are the treasured moments when she does her mind blowing and soul searching. Everyone can and does find her own way of relaxation at Peace. She has to — in order to survive.



DORM . . .

New friendships — new faces — familiar faces and places — pop-corn poppers and dorm mothers — roommates and cigarette ashes — old sheets and late-night studying — sleeping through classes — noisy halls and telephone calls — party raids and school songs — midnight seances — gossip sessions and studying — studying — boyfriend problems and growling stomachs, new romances — infirmary visits — Christmas spirit and school togetherness — friendly, smiling, scrubbed faces and thoughtful little remembrances — first and last blind dates — frat pins and engagement rings — homesickness and sometimes loneliness — vacations and education — laughter, tears, and joy — everlasting friendships — dorm closeness — your roommate and the girls next door, each one alike yet each one different and totally unique — Dorm life — sisters sharing words, actions, and feelings — each a part of the complete whole of the dorm and Peace College — maturing — experiences and memories never forgotten, each shaping a girl's life — all a part of the dorm family — making the girl into the woman.



NON-RESIDENTS

Tables in the Rec Room shed their early morning emptiness to an armload of books — a before-class coke break — another cigarette — another day — Where's the rocking chair? — The non-resident perhaps deserves a better name — one not quite so negative — a wife, a mother, a daughter, a girlfriend, a friend by virtue of a morning drive transformed into a non-resident. The tables become submerged beneath a growing load — two sharing laughter — and gripes — and thoughts — Your date took you home last night at what time? (non-residency does have its benefits) — We have to do what? (and its problems) Late afternoon takes its toll — books and coats disappear — reappear somewhere in someone's car — the ride home is shorter.



PROGRESSION



INVOLVEMENT

law enforcement



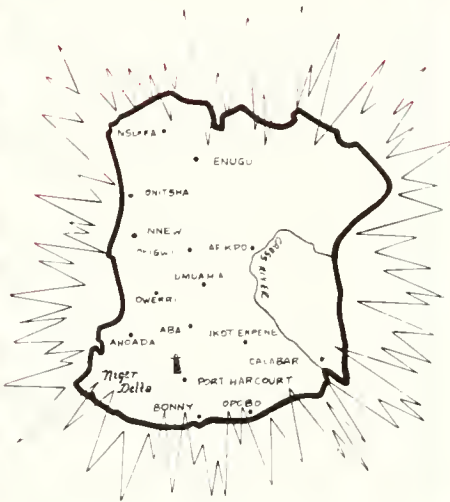
racial strife



war



Biafra — poverty



I
S
P
E
A
C
E
I
N
V
O
L
V
E
D
?

FRAZIER TALKS

In
INTERVIEW WITH LOTUS

LOTUS: The society of today has become a hard and fast moving one to keep up with. How do you believe Peace prepares her girls to face this often demanding society?

Frazier: We are definitely living in a fast moving, rapidly changing society, and this fact of change presents what may be higher education's most acute challenge. To tell the truth, we simply do not know what will be needed to meet the challenges of tomorrow, for we have little idea of what

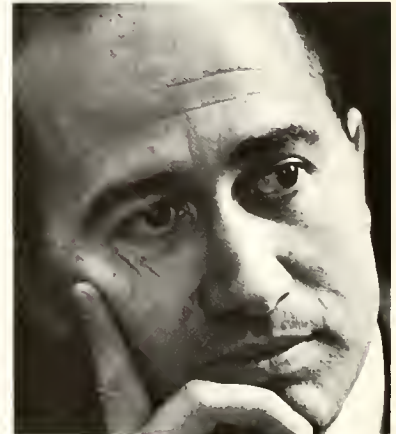
tomorrow's society will be like. I suppose, then, that one needs to acquire the attributes of flexibility and adaptability more than anything else — and the desire to continue learning the rest of one's life.

Students say that the academic pace at Peace has quickened. If this is the case, it would make sense that this would help prepare you to meet the demands of the future. And at the same time, the assurance and serenity that can come from a reasoned and vital faith in

God, in oneself, and in your fellow men will help us live in tomorrow's world. We believe this strongly, and I sincerely hope that Peace can make some contribution to the development of such a faith.

LOTUS: There is at present a strong trend toward co-educational schools, so much so that all-boy schools or all-girl schools are rapidly being pushed into the background. How does Peace plan to cope with this problem?

Frazier: I am well aware



2
Frazier
11/11

of this trend, which some people think has reached epidemic proportions. It is interesting to note, however, that this movement has achieved its present momentum only since 1965. And what happened in 1965? The number of high school graduates in the U.S. began to level off and many colleges found themselves with a declining volume of applications! This was especially true of those schools which were located in isolated geographical areas. I personally believe that many of the decisions to become co-educational were motivated more by geography than by a quest for academic excellence.

Many of us still believe that women can get a better education when she is not intimidated in the classroom and relegated to second-class citizenship outside the classroom by the more aggressive male. This is what happens in every co-educational college. And as every Peace girl knows, here in Raleigh we are not isolated from the masculine world. I will

not say that there are no advantages in attending college with males. But I believe the disadvantages outweigh the advantages.

Let me give you an example which may be significant. I am told that about ten years ago a survey was conducted in Greensboro to determine the alma maters of women who were serving as presidents of major women's organizations in that town. And what do you think they found? That every single president had attended a woman's college! I believe this tells us something about the experiences in leadership which you can have in a woman's college but which would never be possible in a co-educational school.

LOTUS: We hear so much about the "Peace Girl Image", yet today's youth stresses individuality. Do you think with this stress on individuality, girls can still be shaped into the Peace image? If so, why or how?

Frazier: I do not know what or where you hear

about this "image". Personally, I do not have an image of what every Peace girl should be like, but I do have some ideas about scholarship, ladyhood, good manners, gentility, respect for others, and similar matters. And I would hate to think that I did not. If good manners, self respect, and respect for our neighbor ever go out of style, then I want to turn in my card as a member of the human race!

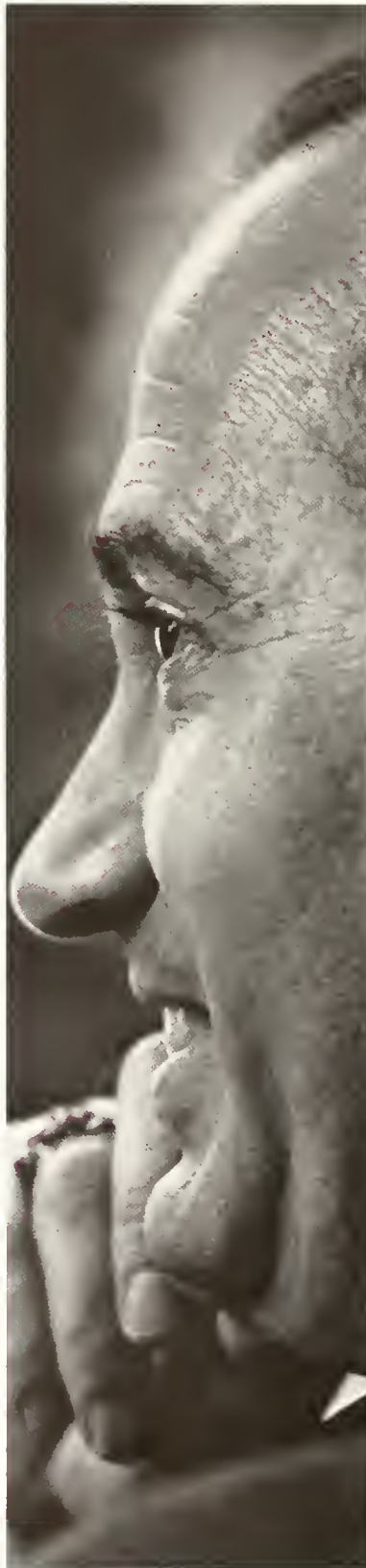
It may be that we tend to confuse bizarre behavior with individuality, but there is really no connection between the two. Every college worth its salt encourages creativity and individuality, but it also encourages harmonious living, self discipline, respect for other human beings, appreciation of the good and the beautiful, kindness — and we could go on and on. Our task is to seek a balance between individuality and other traits which are equally important. At least that is what we are trying to do at Peace.



LOTUS: A large segment of today's college students are dropping out of colleges before completion of their careers. Apparently something is wrong or missing in the academic community. Where do you feel this lack is and how do you feel it can be changed?

Frazier: There is something wrong with higher education, just as there is something wrong with every institution in the world and with every individual who helps make up these institutions. Courses have not been relevant in all cases, instruction frequently has not been stimulating, and the administration has often been near-sighted and unenlightened. However, it is not realistic to cast all the blame on colleges.

I have a brother who enrolled at the state university to major in a certain subject. He found that he was not happy in that field of study, so he dropped out of school for a year, and then registered in a second college where he very successfully completed a major and did graduate work in a totally different field. I have a sister who enrolled for graduate work only to find when she was half-way through the program that she was not well suited for that type of work. These drop-outs — these false starts — could not be blamed on anyone else. The individuals were to blame. This does not say at all that our system of



higher education is faultless, for it is not. It is only to say that there are other factors which contribute to our high attrition rate.

LOTUS: On college campuses throughout the United States there is a great deal of dissent and disturbance prevalent between students and administration. Do you feel there is much of a gap between students and administration here at Peace? If not, how do you feel Peace has managed to overcome this gap? What do you plan to do if you feel there is such a gap?

Frazier: You perhaps know better than I just how broad the generation gap is here at Peace. As the president, I do not have an awareness of a serious gap, but I may be wrong. Certainly a gap does exist any time individuals from different generations live and work together — this is normal and, within limits, to be expected.

I have frequently mentioned one reason I feel that gap is not so obvious at Peace. I believe very strongly that all of us at Peace have a deep respect for other members of the college community. You do not always agree with me nor I with you, but neither party sees the need to become belligerent and abusive. In a small community such as ours we can talk together, debate the issues at length, and understand one another. Why should intelligent, reasonable people find it impossible

to understand one another?

I cannot refrain from saying something else — something I feel very deeply. I strongly believe that the members of **this** community are quite a bit different from those found in many places. Former teachers, alumnae, former administrators, and others attest to this difference. Perhaps the **quality** of the people and of the relationships they develop is the most important requisite in the establishment of harmony and good will.

LOTUS: Each year Peace is faced with new girls who bring with them not only new clothes, but also newer and perhaps less restrictive values than Peace. What is your policy for handling the different viewpoints so that they do not conflict with the values of Peace?

Frazier: That question is very much like the one you asked me about individuality. Some of the statements I made in reply to that question might be a partial answer to this one.

Also, I think it is appropriate to say that we are looking for a special kind of girl to enroll at Peace — not just any girl who can meet the admissions standards. We try in every way possible to let the prospective student know what we stand for and to inform her of the

type school we are. At the same time, we all know that we are living in a 20th Century society, and this society is changing very rapidly. Obviously, Peace College will change as our society changes, but I believe that Peace will always take a firm stand on issues which are basic to the Christian and the American ways of life. (And I did not necessarily intend to equate those two.)

Let me say, too, that a conflict of values is not unique to our own community, for every segment of our society wrestles with disagreement over value structures. In fact, I would expect that nowhere is the conflict deeper and more divisive than it is in the Christian church. Even in very fine homes, between very sincere husbands and wives, there are frequently serious disagreements on what is right and what is wrong. As a part of the rapidly changing society of the 20th century, we cannot expect to be immune from this and other conflicts which persist in all generations and in all institutions.

LOTUS: The role of women is going through a change in all facets of life, so much so that demands are being placed upon her that never were before and the positions she must fill are increasing. Yet, in the

face of this Peace remains staid in her training of young women. How does the unchanging preparation that Peace gives her girls enable them to face these new roles?

Frazier: I will accept the premise that Peace remains "staid" in her training of young women — for staid means the opposite of frivolous. But I am afraid I cannot accept the proposition that we are "unchanging". If there are any courses in the curriculum that are really relevant, I believe they are some of those which have been added within the last three years. If there is a junior college faculty anywhere in the region which knows what is going on "out in the world," I believe it is the Peace College faculty. If there is a college anywhere whose spirit has been raised while its face was being lifted, then I believe it is Peace College.

Now I would say again that Peace is not "frivolous," so we might be a little slower in experimenting and innovating than some other colleges. I am sure, though, that Peace will always be ready to adapt new methods, new styles, and new programs as their merits are demonstrated, but never in a capricious manner. Your education is too important for that, and we take your education seriously.

ORGANIZATIONS

ORGANIZATIONS

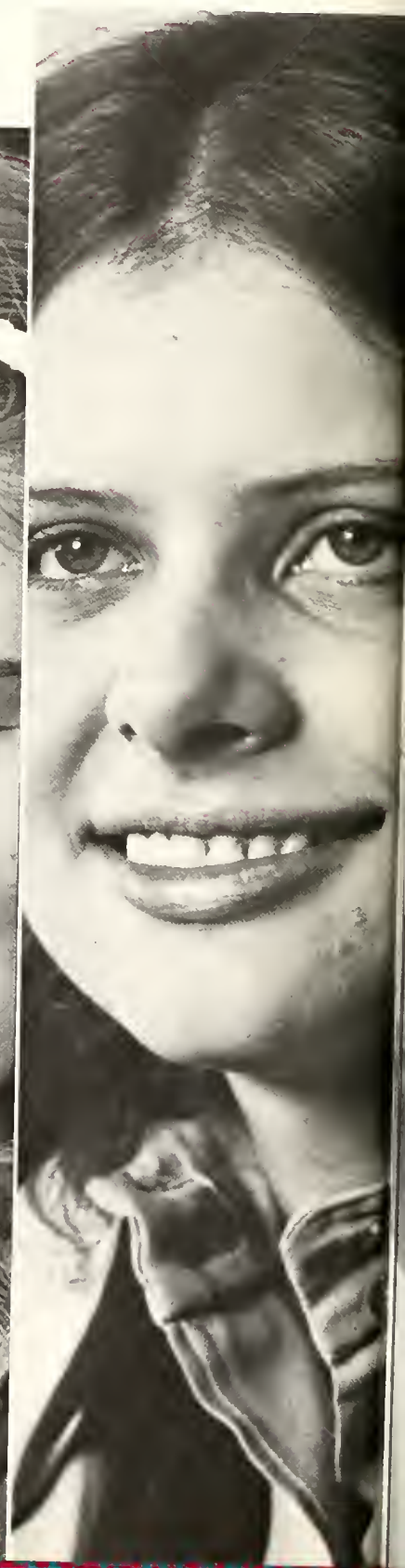
POWER —

PSCA

THE

PSGA

Dean of Students



— THEIR

PSRA

PROBLEMS

Honor Court

Advisor



Soph-Fresh Powderpuff Football

"Jolly Green Giants"

Hotdog Sales

Greek Olympic Day

Student-Faculty Basketball

Intramurals:

Volleyball

Basketball

Bridge

Tennis

PSRA



Susan Jones — President



Dr. Schwertman, Karen Hancock, Terri Price, Jeanne Casteen.

Integrity
Code
Law
Suspension
Enforcement
Expulsion
Guide

HONOR COURT

PSCA



- Big Sisters
- Fellowship
- Vespers
- Orphan Party
- Peanut Week
- Religion
- Thanksgiving Baskets



Top: Mackie Butler — President
Bottom: Nancy Rollins — Vice-President

PSGA



Karen Hancock, President; Jo Ellen Folger, Vice-President



Top: Julia Burwell, Secretary-Treasurer
Bottom: Wicky Stamps, Parliamentarian

- Organization
- Responsibility
- Progress
- Assembly
- Leadership
- "Anything Day"
- Halloween Carnival
- Candy Sales
- Dances





Decisions
Campus Code
Late Time
Restriction
Camping

Judiciary Board

CHOIR



PORPOISE CLUB



Daughters and Granddaughters





President — Camille Eckerd
V. President — Julia Burwell
Secretary — Debbie Welborn
Treasurer — Sandy Covington

YRC

YDC

President — Frances Kline
V. President — Doris Harrington
Secretary — Janis Bicket
Treasurer — Kay Van Hecke



MEMBERS:
President — Beth Wells
Vice President — Cathy Royster
Secretary-Treasurer — Pam Adams

Pat Mosley
Melinda Finch
Mildred Fincher
Diane Williams

Cindy Heffner
Cinderella Boyd
Linda Lewis
Margaret Fensel
Anne Crone
Lynne Owen

CLUB

DANCE

DANCE

CLUB



CLUB

DANCE

DANCE

CLUB

MEMBERS:

Editor — Kate McTyre
Assistant Editor — Lois Wilson
Layout Editors — Lee Belmore, Alice
Henderson, Francis
Kline
Business Manager — Debbie Bell
Circulation Manager — Libby McCollough
News Editor — Marsha Goodnight
Feature Editor — Jean Rainey
Sports Editor — Gail Weaver
Art Editor — Photographer — Judy Davidson
Typists — Ruby Creech
Advisor — Mrs. Mary Jo Cashion

Pictured:

Far left: Mrs. Cashion
Center: Lois Wilson
Top: Kate McTyre



EDITOR — Wicky Stamps
CO-EDITOR — Julia Burwell
ART EDITOR — Madeline
Harrell

BUSINESS MANAGER —
Jeannie Casteen

HELPERS:

Judd Davidson —
Cover and Figure Artist
Roy Royster
Cindy Nisbet
Dede McElwee
Anne Crone
Kate McTyre
Marabel Wilson
Cindy Edwards
Janis Bicket
Mary Kea
Vicky Temple

BUSINESS STAFF:

Naddine Baddour
Jamie Matthews
Elizabeth Moore
Gayle Honeycutt
Doris Harrington
Laura Wallace
Karen Cavanaugh
Betty Hatcher
Donna Strother
Dede Thiem
Barbara MacKesson
Jane Moore
Gay McCall
Rena Foster
Betsy Duffer



LOTUS





PIECES — Editor — Judd Davidson; Co-ed — Terri Price; Sec. Treas. — Bee Moore; Art Editor — Susan Hay; Publicity Manager — Anne Crome; Cathy Royster; Gail Caulk; Janis Bicket; Helen Wilmer; Patty Weber; Marsha Rominger; Martha Sandusky.



ART CLUB — President — Lee Belmore; V. President — Debbie Peele; Sec. Treas. — Madeline Hairrell; Martha Bruce; Joanna Hoskins; Susan Hay; Myra Lancaster; Erendia Chapel; Bryn Willett; Dianne Williams; Patricia Cathey.

BASKETBALL

Tri-Captains: Mary Kea
Beth Griffin
Mary Helen Stokes

Coach: Miss Janice Edwards

Team: Sue Austin
Julia Tillery
Ellen Andrews
Kathy Zachary
Jetta Lewis
Carolyn Crawley
Sandra Burnett
Gwyn Womble
Maude Bishop

Timekeeper: Nancy Adams

Scorekeeper: Mel Pearsall

Blackboard Scorekeepers: Jeanne Menefee
Lesa Gant





HONORS

HONORS



MEMBERS

Jeannie Casteen
Marsha Goodnight
Karen Hancock
Jean Rainey
Susan Nutt Adams
Jean Servais

ALPHA
PI
EPSILON

M
A
R
S
H
A
L
S

MEMBERS:

Jeannie Casteen
Susan Nutt Adams
Marsha Goodnight
Karen Hancock
Martha Carr Smith
Celeste Rogers
Susan Jones



OUTSTANDING SOPHOMORES



MACKIE BUTLER

TERRI PRICE



WICKY STAMPS

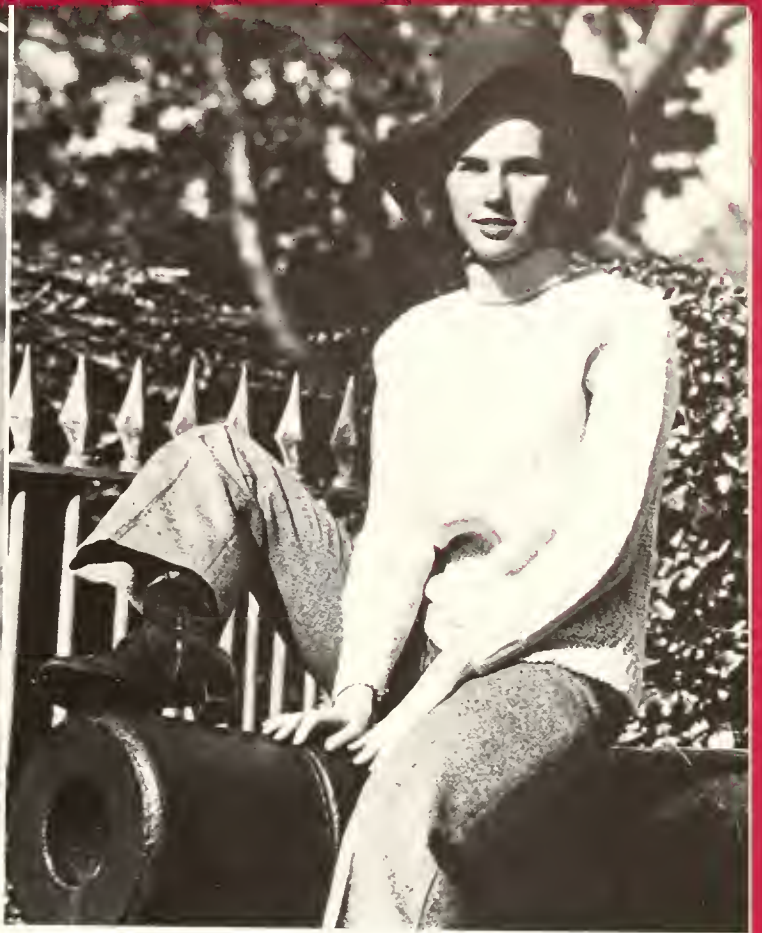
JULIA BURWELL





JOELLEN FOLGER

ROY ROYSTER



SUSAN JONES

KAREN HANCOCK



MAY QUEEN

BARBARA JONES



MAID
OF
HONOR



MISSY SHAFER



MAY COURT ATTENDANTS

SOPHOMORES



Beth Wells, Terri Price, Ann Brown



Celeste Rogers, Marlene Manning, Sandy Covington

FRESHMAN



Winnie White, Fran DeCaro, Peggy Bell, Libby Johnson

MISS PEACE 1970





What is **Karen Hancock**? A wide grin, large round blue-gray eyes, long brown hair, sometimes in pig-tails, sometimes in a knot . . . elected as secretary of her freshman class of 1968-69 — her battle for the students at Peace is born, she learns the ropes of a college student government, then the election of the 1969-70 officers with **Karen** as President of the student body — the struggle for the rights of the students is in full bloom now; she faces the administration and faculty with tactful determination, she sees the need for progress in the Peace College community and puts every ounce of her strength in bringing Peace up-to-date . . . a student in trouble for violating a rule, **Karen** has the hard task of being very impersonal and has to help make the decision for punishment of the girl . . . in assembly she is a president — business-like, serious, with thoughts of getting the messages across to 475 restless students . . . in the midst of keeping her high academic average and being head of the student government, thoughts of Ken and making plans for their August wedding provide one of the busiest schedules for a student at Peace . . . humility and honesty rule her life and she has a warmth that is felt by everyone who comes in contact with her . . . these qualities make up **Karen Hancock** and it is because of these very qualities that Karen is **MISS PEACE** of 1970.

K
A
R
E
N

H
A
N
C
O
C
K

M
I
S
S

P
E
A
C
E

1
9
7
0

FACULTY

ADMINISTRATION

ADMINISTRATION

Dr. S. David Frazier
President



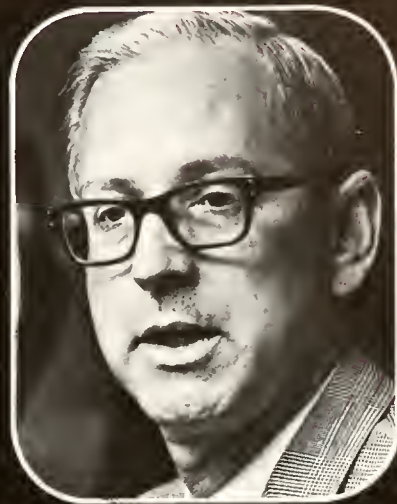
Mrs. H. Glenn White
Dean of Students



James Perry
Academic Dean



Mrs. Austine Evans
Assistant to the Registrar



Thomas H. Johnson
Registrar



James R. Stewart
Assistant to the President



F. Eugene Lilley
Business Manager



Mrs. Nancy Andrews
Secretary



Mrs. W. Bossieux
Nurse



Mrs. Hugh Cashin
News Director



Mrs. John Daniel
Dorm Counselor



Mrs. Elsie Fish
Housekeeper



Mrs. John Flowe
Secretary



Mrs. Righton McCallum
Assistant Librarian



Mrs. Helen Mellette
Dorm Counselor



Mrs. E. B. Morrow
Hostess



Mrs. L. Osterman
Librarian



Mr. Alfred Powers
Dining Hall Superintendent



Mrs. Raymond Fushin
Assistant to the
Business Manager



Mrs. May Shuford
Assistant Librarian



Mrs. Sandra Smith
Secretary



Mrs. Dale Starbuck, Jr.
Secretary



Mrs. Scott L. Sudduth
Secretary



Mrs. John Walker
Dorm Counselor



Mrs. Howard Walters
Bookstore Manager



Mrs. Kathryn Zetterlof
Dorm Counselor

Not Pictured:
Mrs. Edith Holland
Mr. J. T. Jordan

Mrs. Mable Moore
Mrs. Mamie Nelson
Dr. W. J. Senter

Faculty



Mrs. David Black
Piano



Mr. Donald Causey
English



Miss Patricia Caver
French



Mrs. Sara Claytor
English, Speech



Mr. Johnny Crossno
History



Miss Janice Edwards
Physical Education



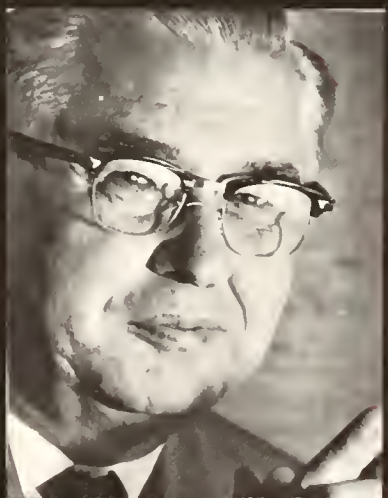
Miss Louise Farrior
Religion



Mrs. Art Hudson
Business



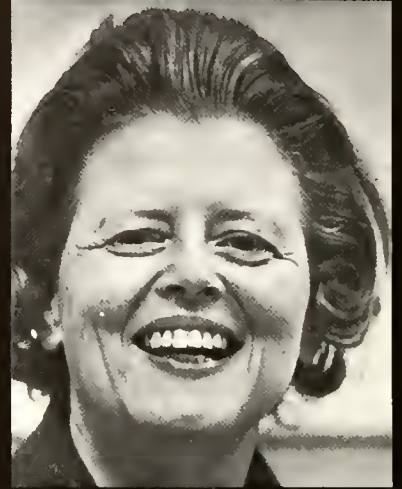
Mrs. Ivan Jones
Home Economics



Mr. Raymond Kreiner
Music



Miss Wynelle Lewis
Spanish



Mrs. J. L. Middleton
Psychology, Sociology



Mrs. William Miller
Organ



Mrs. Gayle O'Brien
History



Mrs. David Olmsted
Art



Mrs. Ann Reynolds
English



Mr. Archie Richie
Mathematics



Dr. Mary Schwertman
English



Dr. Richard G. Stone
Economics



Miss Jody Sutlive
Physical Education



Mr. George A. Thomas
Chaplain



Mr. Wayne Tyner
History

Not Pictured:

- Mrs. S. Collins Kilburn
- Mr. J. Arthur McRae
- Mrs. Flors Stannett
- Mrs. Julia Williams
- Dr. Mary Yarbrough

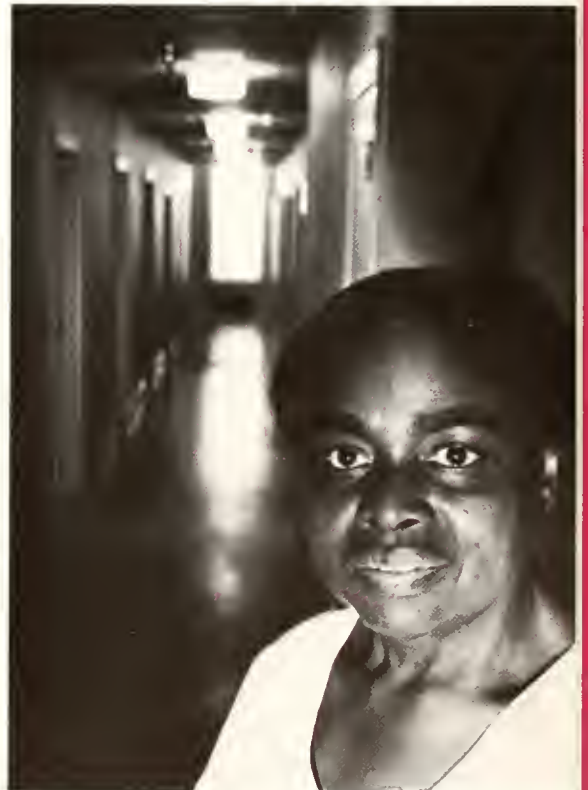
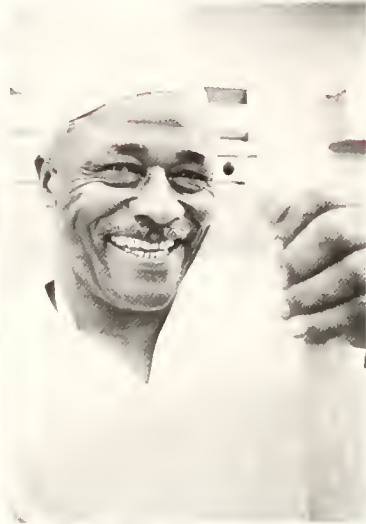


Mrs. Ann Vinson
Biology



Mr. William Wilkinson
English

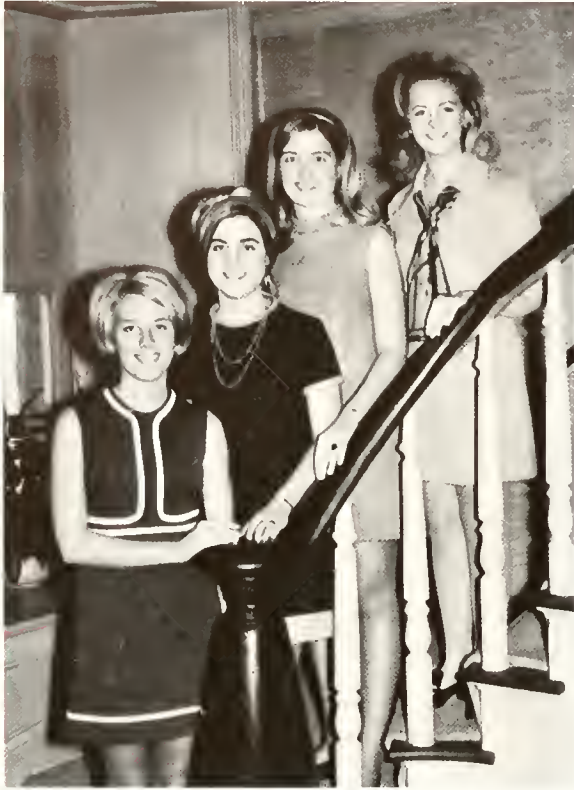
We Can't Live Without Their Help



STUDENTS

STUDENTS

SOPHOMORES



Nancy Cox, President; Kay Van Hecke, Vice-President; Martha Ann Stroud, Secretary; Ann Mitchiner, Treasurer.



Jane Abernathy



Nancy Adams



Mary Armstrong



Annis Arthur





Nadine Baddour



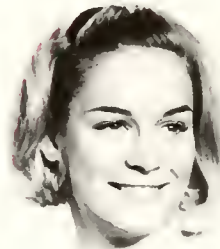
Deborah Baker



Catherine Barnes



Robin Bell



Lee Belmore



Janis Bickett



Melissa Bishop



Georgia Bland



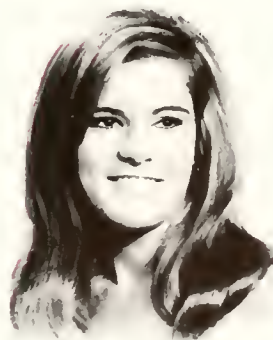
Kathy Bottoms



Julia Bowers



Ann Bradsher



Dianne Broughton



Ann Brown







Firth Brown



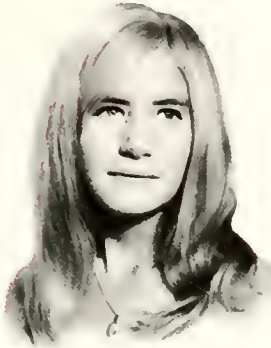
Pat Brown



Trudy Brown



Martha Bruce



Betsy Burnett



Julia Burwell



Mackie Butler



Donna Dale Carver



Jeanne Casteen



Gail Caulk



Brenda Chappell



Susan Clayton



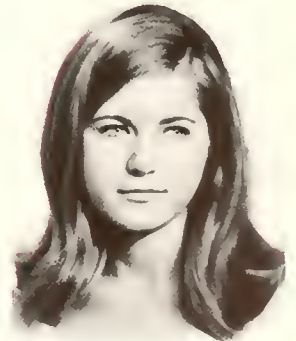
Frances Cline



Debby Coffee



Connie Coleman



Deborah Collins



Sandy Corington



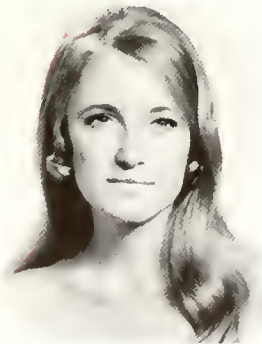
Kathy Cox



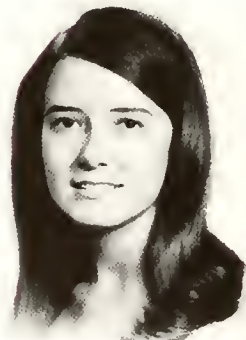
Nancy Cox



Ruby Creech



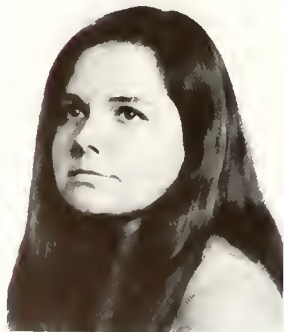
Laura Scott Currence



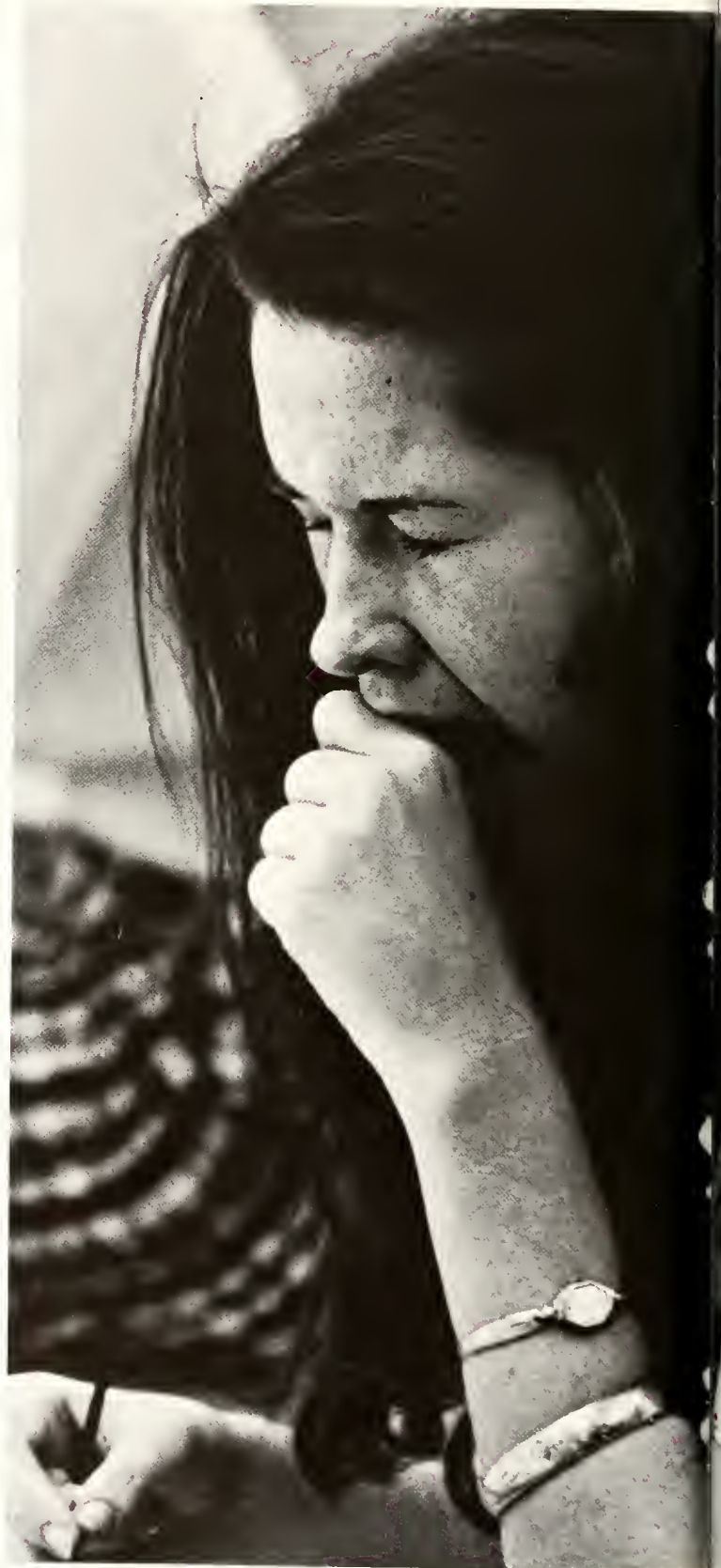
Elaine Currin



Fran Dashiell



Judy Davidson





Carolyn Davis



Debbie DeGabrielle



Karen Dominy



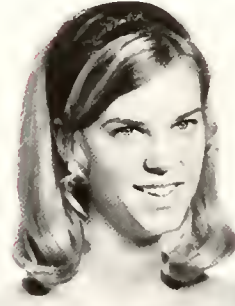
Doreen Donathan



Betsy Duffer



Camille Eckerd



Ruth Edwards



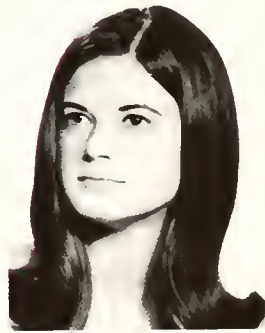
Sue Edwards



Gail Fleming



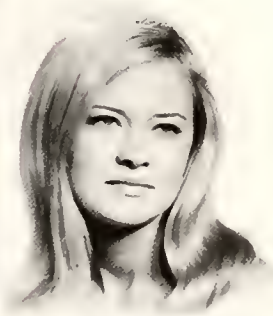
Judy Flood



JoEllen Folger



Sharon Fritts



Cynthia Fulp



Diane Funderburk



Becky Fussell



Barbara Gaddy



Amanda Gainey



Lesa Gantt



Cassandra Gardner



Sarah Ann Gargis



Barbara Garriss



Julia Gilbert



Marsha Goodnight



Beth Griffin



Harriette Gurley



Gay Haigwood



Karen Hancock



Pam Hankin



Anna Marie Harper



Doris Harrington



Mary Cynthia Harris



Ellen Harris



Delma Hazzard



Alice Henderson



Nancy Herring



Gayle Honeycutt



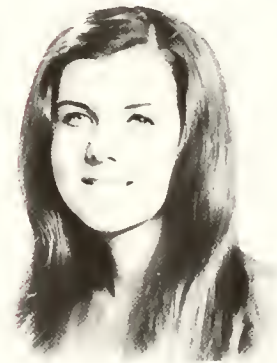
Joanna Hoskins



Linda Howerton



Louise Hube



Coley Hunt



Judy Hunter



Jane Hutchison



Mary Pelham Hutton



Beverly Ingram



Elizabeth Johnson



Barbara Jones



Bari Jones



Susan Jones





Ruth King



Jackie Leggett



Kathy Lilyquist



Joan Edward



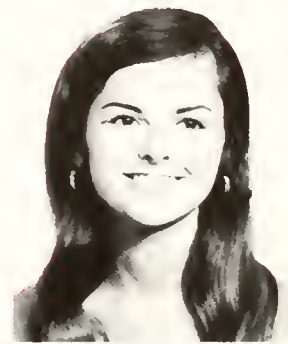
Cindy Lovette



Alice Lowery



Lynn Lyon



Barbara MacKesson



Jean McCloskey



Libby McCollough



Kathy McFarland



Kate McTyre



Nancy Macon



Marlene Manning



Carol Ann Medlin



Jeanne Menefee



Valerie Miles



Mary Beth Miller



Ann Mitchiner



Becky Montgomery



Macon Moore



Edna Murray



Susan Neely

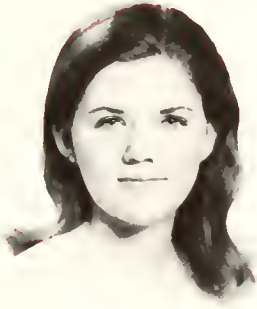


Susan Nutt





Kathleen O'Bryan



Betty O'Daniel



Nancy Owen



Catherine Parker



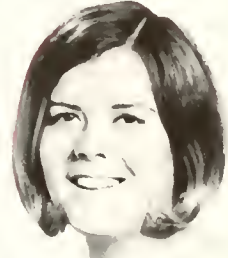
Mel Pearsall



Barbara Peele



Debbie Peele



Peggy Pendleton



Pat Perkins



Kathy Pope



Terri Price



Amanda Ritchie



Harriet Robbins



Elinor Ray Rogers



Celeste Rogers



Nancy Rollins



Kathie Royster



Martha Sandusky



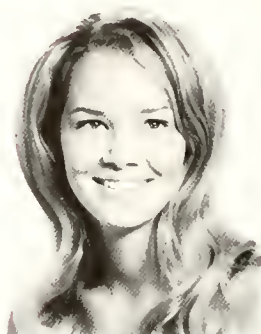
Cathy Saunders



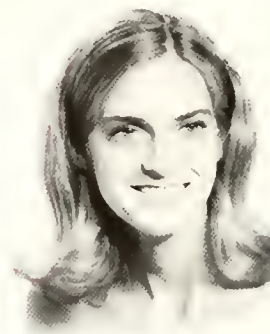
Jeanne Servais



Missy Shafer



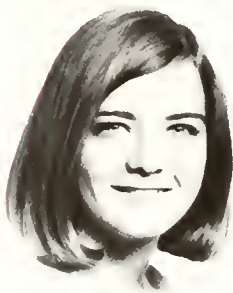
Sharon Shannon



Leigh Shelton



Madelyn Sloan



Jeanne Spivey



Becky Smith



Carol Smith



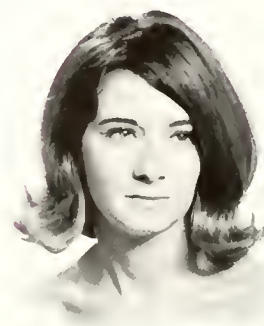
Lizzy Smith



Martha Ann Smith



Martha Carr Smith



Sidney Smith



Wicky Stamps



Libby Stanfield



Karen Starr



Wanda Stephens



Jane Stephenson



Mary Helen Stokes



Donna Strother



Martha Ann Stroud



Martha Switzer



Kay Van Hecke



Jane Vatz



Lois Wilson



Yvonne Wilson



Harriet Wise



Kendall Wright



Pam Walters



Carol Walton



Rachel Warner

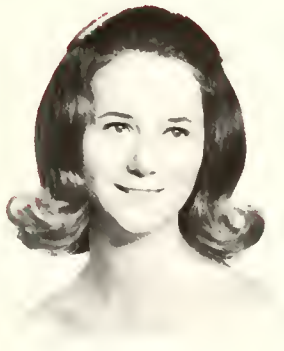


Fran Watson





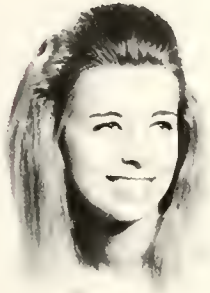
Gail Weaver



Cecelia Webb



Debbie Welborn



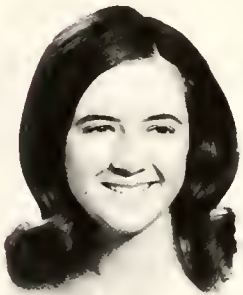
Beth Wells



Kathy Wheeler



Nancy Whitford



Donna Williamson



Kathy Williford



Babby Briley



Susan Hay



Jamie Matthews



Kathy Reiersen

FRESHMEN





Pam Adams



Becky Adams



Debbie Alexander



Ellen Andrews



Jean Auman



Jane Aubon



Deborah Austin



Joan Austin



Susan Austin



Margaret Baker



Emma Bandy



Ann Bass



Jane Bell



Peggy Bell



Teresa Bell



Elizabeth Bishop



Judy Blackwell



Chase Blanchard



Shirley Blaylock



Julie Blythe



Jane Bonds



Becky Bonds



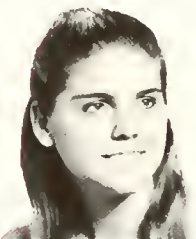
Jane Bondurant



Cinderella Boyd



Kathryn Bradley



Lyna Breedlove



Nan Brinson



Craig Broadhurst



Mary Ann Brown



Toppo Brown



Kathy Bullock



Laura Burgess



Sandra Burnett



Donna Byrd



Kathy Caldwell



Brem Callum



Deborah Campbell



Greta Campbell



Kay Carpenter



Mary Jane Carson



Carole Cashwell



Patricia Cathey



Angela Cato



Karen Cavanaugh



Carolyn Childs



Jennie Choi



Dale Christiansen



Diane Clement



Margaret Elks



Debbie Cone



Jane Connell



Suzanne Cook



Cathy Cooper



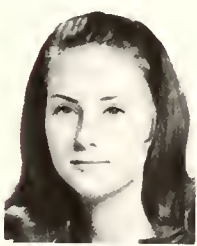
Suzanne Cotton



Carolyn Crawley



Nancy Critcher



Anne Crone



Ann Croom



Deborah Crowell



Anne Crumpler



Louise Currin



Debbie Darnell



Teresa Davidson



Jo Anne Deans



Fran DeCaro



Karen DeLuca



Debbie Deter



Gloria Drew



Mary Dunn



Mattie Durham



Mary Ann Dusenbury



Shirley Eatmon



Cindy Edwards



Donna Edwards



Barbara Eubanks



Mary Anne Eubanks



Nathalie Faucette



Margaret Fensel



Martha Fesperman



Melinda Finch



Mimi Fincher



Terri Flanagan



Rena Foster



Sandra Fowler



Deborah Gallagher



Karen Gallins



Margaret Gardner



Myra Garrett



Coleen Garska



Frances Gaston



Gaye Gilbert



Susan Godwin



Peggy Gosey



Cynthia Griffin



Gladys Griffin



Edith Grissom



Pam Grogan



Regina Grubb



Shelley Haag



Mary Ann Hagler



Marsha Ann Hailey



Katrina Haithcote



Mary Jo Hampton



Diane Harand



Madeline Harrell



Rachel Ann Harrelson



Betty Hatcher



Marsha Haywood



Cynthia Heffner



Susan Herman



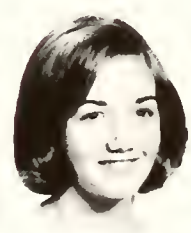
Beti Herring



Doris Herring



Rachel Herring



Betty High



Mary Hinton



Ann Hofreiter



Margaret Holland



Alice Holliday



Becky Holt



Sandra Hood



Scotty Hood



Anna Horton



Pamela Howell



Faye Howell



Helen Humphrey



Penny Hunt



Emily James



Joanne Jefferson



Becky Johnson



Carol Johnson



Joy Johnson



Deborah Jones



Jackie Jones



Margaret Jones



Mary Jones



Wanda Jones



Crystal Jordan



Patricia Jordan



Dana Kelly



Elizabeth King



Grace Knight



Myra Lancaster



Susan Leonard



Jetta Lewis



Linda Lewis



Sandra Love



Susan MacRae



Gay McCall



Peggy McClenny



Janet McColman



Pamela McCombs



Karen McCoy



Phyllis McCreary



Susan McCreary



Dede McElwee



Lois McLamb



Elizabeth McLean



Roberta Maddocks



Carol Mann



Elizabeth Marks



Carolyn Martin



Olivia Mason



Deborah Mattocks



Deborah Meadows



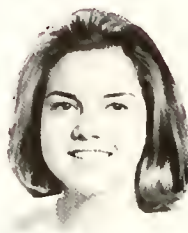
Patricia Mitchell



Elizabeth Moore



Evelyn Moore



Jane Moore



Paulette Moore



Patricia Morris



Patricia Mosley



Sheila Nassif



Mary Newbold



Alva Newton



Betty Nichols



Cindy Nisbet



Janice Nowlan



Rebecca Nowlin



Ann Pannill



Cameron Parker



Martha Parnell



Faye Parrish



Susan Perkinson



Elizabeth Perry



Mary Perry



Ruth Perry



Teala Pigg



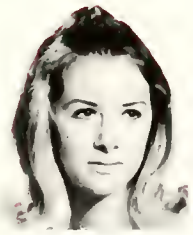
Susan Prince



Deborah Privette



Martha Ann Rand



Jane Rankin



Kathy Reese



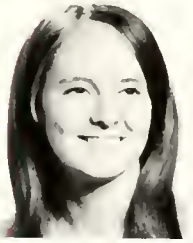
Joyce Reynolds



Marsha Richardson



Elizabeth Roach



Joyce Roberts



Judy Robinson



Florence Rogers



Marsha Rominger



Paula Rowe



Julie Rumley



Eva Russell



Dianne Scarborough



Nanette Schild



Kaye Scott



Faye Scott



Susan Shearin



Mary Anne Siewers



Deborah Sledd



Irene Smith



Suellen Smith



Deborah Smith



Linda Snipes



Jane Spangler



Cheryl Spencer



Monte Stokes



Meg Stovall



Susan Suiter



Betty Sumner



Mary Talton



Karen Tart



Janet Tart



Meg Taylor



Vicky Temple



Mary Dee Them



Jane Thomason



Janice Thompson



Rose Thorne



Julia Tillery



Frankie Tola



Gail Tostoe



Linda Trice



Carolyn Tucker



Sharon Ussery



Sarah Vick



Jean Wagner



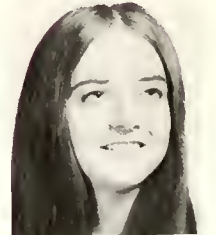
Kathryn Walker



Diane Wall



Laura Wallace



Victoria Wallace



Kathryn Walker



Deborah Walters



Frances Watson



Patricia Weber



Cathy Wheeler



Nettie White



Winifred White



Lynda Whittemore



Dean Wicker



Bryn Willett



Diane Williams



Helen Wilmer



Ellna Wilson



Marable Wilson



Susan Wilson



Gail Womack



Gwyn Womble



Nancy Worsley



Jodie Wrenn



Rhonda Wynn



Pamela Wyrick



Jane Wysocki



Debra Yelvington



Jennifer Younce



Catherine Zachary

ACADEMICS

ACADEMICS



Peace College
RALEIGH, NORTH CAROLINA

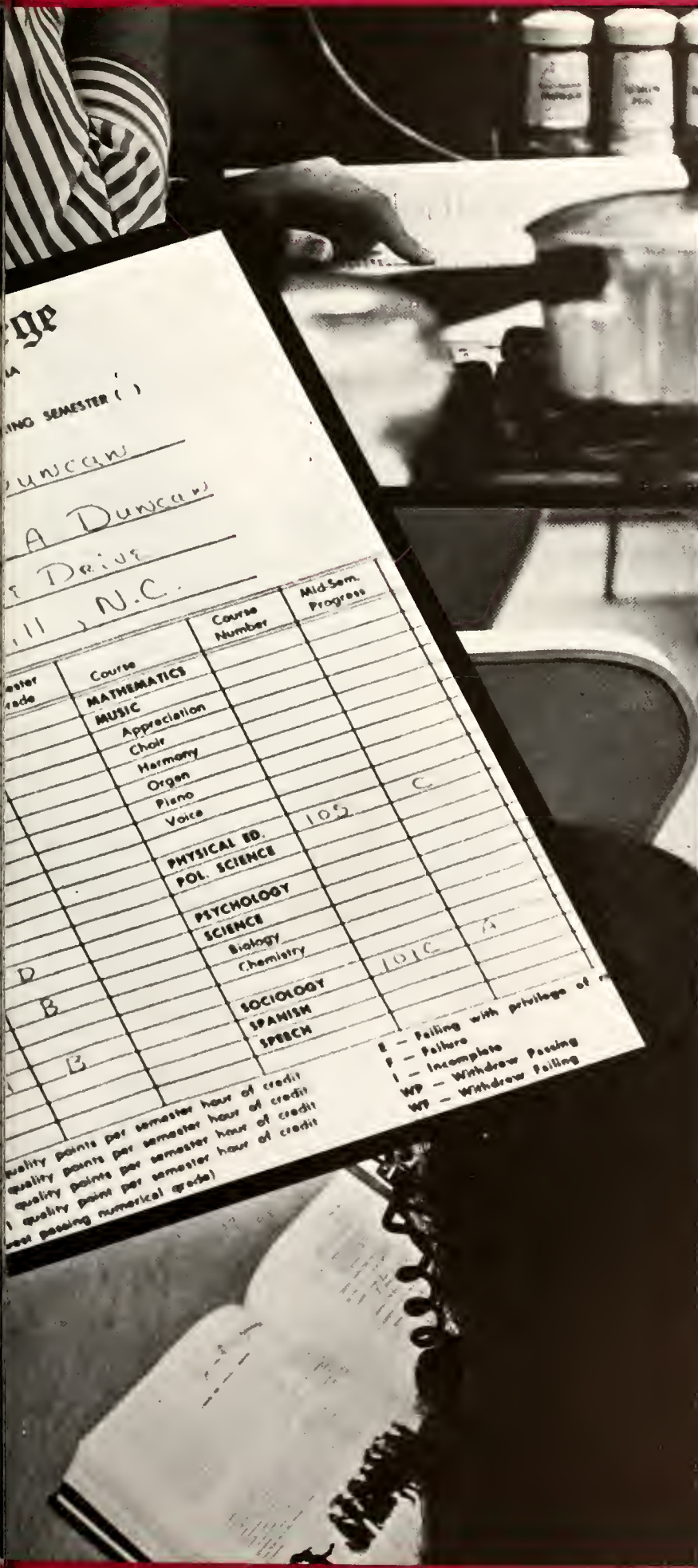
Report for: FALL SEMESTER

STUDENT Debbie

TO: MR. GIORIO
138 CIRCLE
SNOW

| Course | Course Number | Mid-Sem. Progress |
|---------------|---------------|-------------------|
| ART | | |
| BIBLE | | |
| BUSINESS | | |
| Accounting | | |
| Business Math | | |
| Economics | | |
| Soc. Pract. | | |
| Shorthand | | |
| Typewriting | | |
| DRAMATICS | | 101 B |
| ENGLISH | | 101 |
| FRENCH | | |
| HEALTH | | |
| HISTORY | | |
| HOME ECON. | | |

A - Excellent
B - Good
C - Average
D - Passing
70



Page

SEMESTER ()

DUNCAN

A Duncan

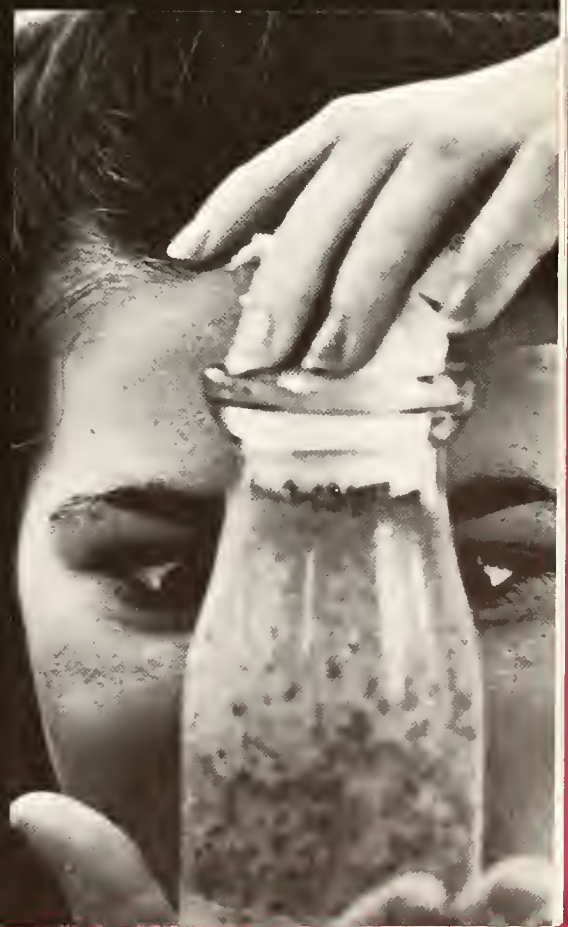
Drive

11, N.C.

| Grade | Course | Course Number | Mid-Sem. Progress |
|-------|---------------------|---------------|-------------------|
| | MATHEMATICS | | |
| | MUSIC | | |
| | Appreciation | | |
| | Choir | | |
| | Harmony | | |
| | Organ | | |
| | Piano | | |
| | Voice | | |
| | PHYSICAL ED. | 105 | C |
| | POL. SCIENCE | | |
| | PSYCHOLOGY | | |
| D | SCIENCE | | |
| | Biology | | |
| | Chemistry | | |
| B | SOCIOLOGY | 101C | A |
| | SPANISH | | |
| | SPEECH | | |

quality points per semester hour of credit
 quality points per semester hour of credit
 quality points per semester hour of credit
 quality point per semester hour of credit
 (not passing numerical grade)

E - Failing with privilege of
 F - Failure
 I - Incomplete
 WP - Withdraw Passing
 WF - Withdraw Failing



A
C
A
D
E
M
I
C
S





ADVERTISEMENTS

ADVERTISEMENTS

**A Raleigh
Department Store
Since 1899 . . .**



CAROLINA MAINTENANCE CO., INC.

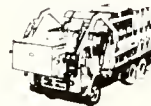
Ronnie Shavlik, Pres.
Steve Webb, Vice-Pres.



Specialized Cleaning Division

SOUTHEASTERN SALES CORP.

Complete Line of Janitorial
Supplies & Equipment
CHECK OUTLINE SALES MER.



Trash Disposal, Inc.

COMMERCIAL REFUSE DISPOSAL featuring
DUMPER DUMPMASTER SYSTEM
CHARLIE BUSSE, MANAGER



Offices and Warehouse Facilities
Located
2525 Industrial Drive
RALEIGH, N. C.



"A complete line of professional quality
housekeeping and janitorial supplies"

**JAMES H.
ANDERSON CO., INC.**

FLOOR MAINTENANCE MATERIALS
SANITARY SUPPLIES — EQUIPMENT
418 W. PEACE STREET
RALEIGH, N. C.

**PERSON STREET
PHARMACY
and
PERSON STREET
VARIETY STORE**

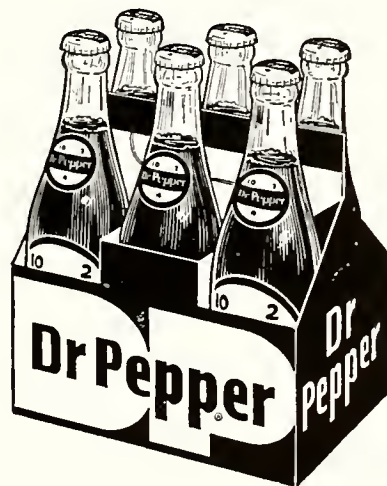
ON
PERSON STREET
Serving Peace College
for
33 Years

**DILLON
SUPPLY COMPANY**

INDUSTRIAL SUPPLIES
MACHINERY

RALEIGH
ROCKY MOUNT — DURHAM
GOLDSBORO • CHARLOTTE
GREENSBORO, N.C.

CONGRATULATIONS
CLASS of '70



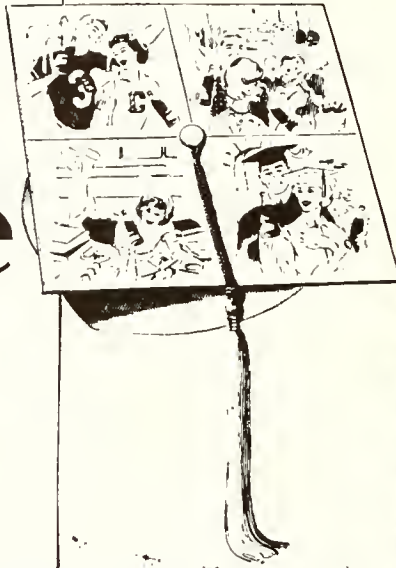
DR. PEPPER
of
RALEIGH

**DURFEY-HOOVER
INSURANCE AGENCY**

Paul A. Hoover
FIRE • AUTOMOBILE • CASUALTY

304-5 ODD FELLOWS BLDG.
PHONE 832-0977 P.O. Box 2163
RALEIGH, N. C.

things go
better
with
Coke



BOTTLED UNDER AUTHORITY OF THE COCA-COLA COMPANY BY

CAPITAL COCA COLA BOTTLING COMPANY

RALEIGH, NORTH CAROLINA

BEST WISHES

Garland C. Norris Company

"GOLDEN TAP"
PURE FLORIDA ORANGE JUICE



- CORSAGES
- CUT FLOWERS
- GRADUATION BOUQUETS

"We Grow the Flowers We Sell"

J. J. FALLON CO., Inc.
Florists

205 FAYETTEVILLE STREET
TE 2-8347

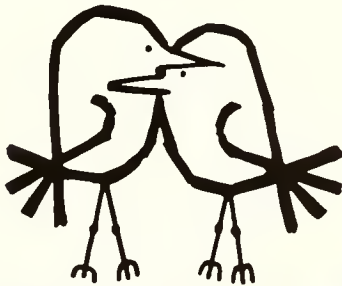


**A. E. Finley
And Associates, Inc.**

CONSTRUCTION
INDUSTRIAL AND
MATERIAL-HANDLING
EQUIPMENT

Raleigh • Charlotte • Columbia

We're in love...



*with our work,
that is.*

That's why we excel in
printing, lithography and engraving
Edwards & Broughton Co.
RALEIGH, NORTH CAROLINA

Jolly's

Established 1881

128 FAYETTEVILLE STREET
RALEIGH, N. C.
AND
NORTH HILLS SHOPPING CENTER


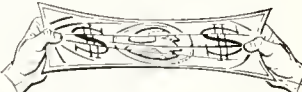

**CAT'S EYE
CLUB**

1626 Glenwood Ave.

Finest In Live
Entertainment

Phone: 755-9659



If you're planning to build a new home,  are you sure it will have all the value,  comfort  and convenience for modern living?

*It will if it's a
Total-Electric Home.*



Carolina Power & Light Company

COMPLIMENTS
of

Hudson & Belk

Bride's World

North Hills . . . Lower Mall
The Most Beautiful Bridal
And Formal Shop In The
Southeast . . . Featuring
Gowns By Americas
Foremost Designers

PIANOS
Mason & Hamlin
Geo. Steck
Cable
Lowrey

ORGANS
Lowrey
Thomas

STEREOS
Fisher

GUITARS
and
AMPS



F. P. Buchanan Music Co.

Everything Musical
North Hills Lower Mall

F.P. BUCHANAN
President

787-4123

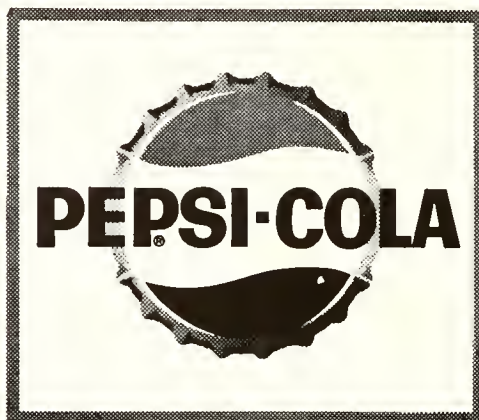
Compliments of
THE GRAPHIC PRESS, INC.

418 S. DAWSON ST.
RALEIGH, N. C.

MILL OUTLET VILLAGE

The Home of Mill End Textiles
Save — Save — Save — Save
U.S. Hwy. #1 North
8 Miles Out

Pepsi-Cola Bottling Co., Inc.



2838 Wake Forest Rd, Raleigh, N.C.

LAMAR'S HAIRSTYLING

Specializing in lamp
cuts. Our operators
are trained in the
latest hair styles.

Near Peace College

828-8143

We've Got Your Bag!



CAMERON VILLAGE, RALEIGH

Best Wishes
to
Peace College

•
Commercial Printing Company

Raleigh, North Carolina

FINCH'S DRIVE-IN, INC.

401 W PEACE ST
Open 6:00 a.m.

THE BROILER

Open 24 Hrs.
217 HILLSBORO ST.
Raleigh, N. C.

Carolina Typewriter Co., Inc.

Franchise Dealer for Stenograph Shortland Machines

Precision Equipment
Hermes Typewriters and
Adding and Dictating Machines



That's Swissmanship . . . the step beyond craftsmanship

Vickers & Ruth

PLUMBING AND HEATING CO.

306 GLENWOOD AVE.

833-5601

RALEIGH, NORTH CAROLINA

**PEACE ST. HARDWARE &
GARDEN SUPPLY**

CORNER PEACE ST. & DOWNTOWN BLVD.

RALEIGH'S NEWEST GARDEN SUPPLY

HOYLE CLAY, Owner-Manager has had 15 years' experience
selling Garden Supplies in Raleigh. See him for your
Supplies.

Phone 834-2976

STEPHENSON MUSIC CO.

EASTERN CAROLINA'S
MOST COMPLETE MUSIC STORE
PEACE ST. AT SALISBURY ST.

832-2019



ALMOST EVERYONE
LOVES PINE STATE

*the popular preference in
Dairy Products since 1919*

Pine State



UNIROYAL TIRES — RECAPPING
 WHEEL ALIGNMENT
 BATTERIES & ACCESSORIES
**ROYAL TIRE & ALIGNMENT
 CO., INC.**

119 S. Harrington Street RALEIGH, N. C. 27603
 P. O. Box 8033 Phone 828-5729

Compliments of
JOHNSON-LAMBE CO.

•
 For the Best in Sporting Goods

CONSOLIDATED CLEANERS

Laundry of America, LTD.
 411 South McDowell St.
 The Finest in Commercial
 Laundry and Professional
 Dry-cleaning

Compliments
 of
HACKNEY'S
 NORTH HILLS

MORDECAI FLORIST & GIFTS

709 N. Person St. Phone Day or Night
 832-6444
 RALEIGH, NORTH CAROLINA 27604
 ÷ We Wire Flowers Anywhere ÷



"CHEVY CHEVROLET TOWN"

1820 N. Blvd. Ph. 834-6441

"The Most Complete Automotive Center in the Southeast"

RAMBLER MERCEDES BENZ VOLVO
 Compliments of

American Motors — Rambler, Inc.

223 W. Lenoir St.
 Raleigh, N. C.

SALES

SERVICE

**Wedding
 Invitations**

*We have a
 Beautiful Selection
 of
 Invitations & Announcements
 at a
 Very Moderate Price*

FREE THANK YOU CARDS WITH
 ORDERS OF 100 OR MORE



Glover Printing, Inc.

201 New Bern Ave.
 RALEIGH, N. C.

Phone for Information 834-7343

"Ask Your Neighbor"

For

Complete Line of
OFFICE EQUIPMENT
AND SUPPLIES

CAPITAL PRINTING CO., INC.

111 Seaboard Ave., Raleigh, N.C.

Phone — 832-8316

the DANCER'S shop

218 S. WILMINGTON ST.

RALEIGH, N. C.

PHONE 832-8724

THE BEST IN TIGHTS & LEOTARDS

MOORE & JOHNSON AGENCY

"For 45 Years Raleigh's Leading
Insurance Agency"

Insurance Bldg.

Raleigh, N.C.



PHONE TE 3-2805
RALEIGH, N. C.

Roy L. Watson Insurance Agency
Roy L. Watson Real Estate Agency

ROY L. WATSON

ENTERPRISE BUILDING
204 N. PERSON ST.

1970 SPONSORS

Johnson's Jewelers

Mitchell Funeral Home

Calvin's, Inc.

Starmount Pharmacy

American Defender Life Insurance

Student Directory

- Abernathy, Jane Carol 732 Burton St. Rocky Mount
 Adams, Nancy Kilpatrick 224 W. Vance St. Laurinburg
 Adams, Pamela 40B Lee Street Smithfield
 Adams, Rebecca Willis 345 Northgate Blvd. Concord
 Alexander, Deborah Lee P.O. Box 85 Newport
 Andrews, Ruth Ellen 204 Woodcrest Dr. Smithfield
 Armstrong, Mary Elizabeth 75 Silverwood Rd., N. E. Atlanta, Ga.
 Arthur, Annis Lillian Old Mill Rd. Chapel Hill
 Auman, Jean Elizabeth West End, N. C.
 Ausbon, Janice Ray 3108 Clarendon Rd. Charlotte
 Austin, Deborah Claire 410 Butler Dr. Clinton
 Austin, Joan Marie 1019 Green St. Durham
 Austin, Susan Dail Rt. 2, Box 179 Aurora
 Baddour, Nadine Kay 307 Midland Way Laurinburg
 Baker, Deobrah Huggett 619 N. Blount St. Raleigh
 Baker, Margaret Leigh Rt. 3, Box 95 Windsor
 Bandy, Emma Swindell 107 Kimberly Dr. Greensboro
 Banks, Jean Kennon 101 Garner Rd. Garner
 Barnes, Catherine Howard P. O. Box 236 Lewiston
 Bass, Martha Ann P. O. Box 491 Farmville
 Bell, Alethia Jane 806 Gatling St. Windsor
 Bell, Deborah Durand 924 Parkview St. Asheboro
 Bell, Margaret Carter 806 Gatling St. Windsor
 Bell, Robin Lee P. O. Box 9 New Bern
 Bell, Teresa Ellen Rt. 2, Box 334 Newport
 Belmore, Catherine Lee 206 3rd Ave., N. E. Hickory
 Bickett, Edith Janis 303 N. Rowan Ave. Spencer
 Bishop, Maude Elizabeth Rt. 1, Box 155-A Pantego
 Bishop Melissa Jay 513 Riverside Dr. Belhaven
 Blackwell, Judy Gayle 325 Vincent Rd. Roanoke Rapids
 Blanchard, Evelyn Chase 1201 Meadowbrook Rd. Waynesboro, Va.
 Bland, Georgia Merritt 1322 Cross Link Rd. Raleigh
 Blaylock, Shirley Loretta 1025 Huntingdon Rd. Winston-Salem
 Blythe, Julie Anne 2200 Sharon Lane Charlotte
 Bonds, Jane Connelly 309 Dakota St. Kannapolis
 Bonds, Rebecca Allyson 600 W. Harnett St. Benson
 Bondurant, Jane Wall 2702 Wycliffe Ave. Roanoke, Va.
 Bottoms, Kathryn Nelson 1207 Raleigh Park Elizabeth City
 Bowers, Julia Alice 728 Salem St. Thomasville
 Boyd, Cinderella Mae Rt. 1, Box 365 Oxford
 Bradley, Elander Kathryn 511 St. Andrews St. Tarboro
 Bradsher, Doris Ann Rt. 7, Box 217 Raleigh
 Braswell, Phyllis Annette 120 North St. Zebulon
 Breedlove, Lyna Carol 420 Coggeshall St. Oxford
 Briley, Becky Anne 1647 Crescent Dr. Henderson
 Brinson, Mildred Nan 1100 Rockford Rd. High Point
 Broadhurst, Craig 1102 W. Carnwallis Dr. Greensboro
 Broughton, Patricia Dianne 3510 Fernwood Dr. Raleigh
 Brown, Amelia Firth 608 W. 2nd St. Roanoke Rapids
 Brown, Margaret Ann 12 Twin Acres Dr. Lexington
 Brown, Mary Ann 1609 Park Dr. Raleigh
 Brown, Patricia Ann Rt. 12, Box 69 Greensboro
 Brown, Thyra General Delivery Ivanhoe
 Brown, Trudy Elizabeth 215 W. Chestnut St. Troy
 Bruce, Martha Fletcher P. O. Box Drawer G Farmville, Va.
 Bullock, Kathleen Louise P. O. Box 632 Warrenton
 Burcham, Priscilla Rose 1000 Ruby St. #36 Durham
 Burgess, Laura Latham Dogwood Trail Wendell
 Burnett, Betsy Lark P. O. Box 25 Kenansville
 Burnett, Sandra Lynn P. O. Box 25 Kenansville
 Burwell, Julia Page 138 Circle Dr. Thomasville
 Butler, Dena Grace Route 2 Rowland
 Byrd, Donna Leigh 349 Burkewood Dr. Winston-Salem
 Caldwell, Katherine Gilbert 7700 Hampshire Rd. Richmond, Va.
 Callum, Helen Brem 2624 Chilton Place Charlotte
 Campbell, Deborah Ann 3323 Teakwood Tyler, Texas
 Campbell, Greta Jean 1050 Bolling Rd. Charlotte
 Carlson, Lillian Virginia 1320 Brooks Ave. Raleigh
 Carpenter, Nelleen Kay 930 E. Park Dr. Lincolnton
 Carroll, Marie Brisson Rt. 2, Box 70 Cary
 Carson, Mary Jane Qtrs. 7 Military Plaza Randolph AFB, Texas
 Carver, Donna Dale Westover Dr. Roxboro
 Cashwell, Carole 514 Brinn Dr. Sanford
 Casteen, Jeanne Kirby 2800 Mars St. Raleigh
 Cathey, Patricia Leigh 618 Riverview Dr. Suffolk, Va.
 Cato, Ruby Angela 909 N. Bount St. Raleigh
 Caulk, Nancy Gail 1854 Richlands Hwy. Jacksonville
 Cavanaugh, Karen Frances Weslerstrasse 20B Rynern, W. Germany
 Chappell, Brenda Joyce P. O. Box 486 Rich Square
 Childs, Carolyn Harper Rt. 10, Box 457 Raleigh
 Choi, Jennie Yuk Lee 6 Dixie Trail Raleigh
 Christiansen, Dale Suzette 6304 Robbins Rd. Greensboro
 Clark, Connie Chesson 412 Emerson Dr. Raleigh
 Clayton, Susan Gaynor 1004 Panola St. Tarboro
 Clement, Anita Dianne 1012-321 Bypass Hickory
 Cline, Frances Rubylee 212 W. Sycamore St. Lincolnton
 Coffee, Debby Farlow 505 Primm Circle Thomasville
 Coleman, Constance Lynn Box 432 Scotland Neck
 Coleman, Nancy Berkeley 800 Macon Place Raleigh
 Collins, Deborah Ruth 904 N. Rotary Dr. High Point
 Cone, Deborah Gail Route 2 Zebulon
 Connell, Barbara Frances 2627 Inverness Rd. Charlotte
 Connell, Jane Carol Macon Rd. Box 617 Warrenton
 Cook, Suzanne Willis Box 952 Concord
 Cooper, Cathy Amelia 3506 Normandy Rd. Greensboro
 Cotton, Suzanne Whirfield 1205 Clay St. Franklin, Va.
 Covington, Sandra Gelee 103 N. Rutherford St. Wadesboro
 Cox, Kathryn Vaughn 5408 Guildbrook Rd. Charlotte
 Cox, Nancy Fowler 318 McRae St. Laurinburg
 Crawley, Carolyn Leigh P. O. Box 55 Hollister
 Creech, Ruby Lee Box 412 Zebulon
 Critcher, Nancy Royster 405 Linden Ave. Oxford
 Crone, Anne Parker 846 Second St., N. W. Hickory
 Croom, Martha Ann 1311 Robin Hood Rd. High Point
 Crowell, Deborah Kathleen 4318 Camelot Dr. Raleigh
 Crumpler, Pettis Anne 802 Richardson Dr. Raleigh
 Currence, Laura Scott 410B Rowan St. Raleigh
 Currin, Elaine Carol 211 Forest Rd. Oxford
 Currin, Louise Clyde 5340 Yardley Terrace Durham
 Darnell, Deborah Ruth 613 Jefferson Dr. Charlotte
 Dashiell, Fran Lipscomb 1009 Virginia Ave. Suffolk, Va.
 Davidson, Judy Lynn 606 S. Washington St. Shelby
 Davidson, Teresa Lynn Apt. B-14 McKimmon Vill. Raleigh
 Davis, Carolyn Dianne 1305 Oakwood Dr. Rocky Mount
 Deans, Jo Anne 4014 Donegal Dr. Greensboro
 DeCaro, Frances Anne Holly Grove Plantation Plantersville, S. C.
 DeGabrielle, Deborah Leah 200 Drummond Dr. Raleigh

DeLuca, Karen Louise Box 911 Warsaw
Deter, Debra Jo 12639 Woody Grove St. St. Louis, Missouri
Dominy, Karen Lynn Rt. 3, Box 86-C New Bern
Donothan, Marsha Doreen Forest Hills Aberdeen
Drew, Gloria Ovelia 510 Forest Hill Dr. Goldsboro
Dudley, Eva Ann 211 W. 11th St. Washington
Duffer, Betsy Anne 2348 Grant Ave. Raleigh
Duncan, Janet Leigh 2800 St. George Rd. Winston-Salem
Dunn, Mary Julia 308 W. 5th Ave. Gastonia
Durham, Mattie Webster 2201 University Dr. Durham
Dusenbury, Mary Ann Box 123 Sanford
Eatmon, Shirley Ruth Rt. 2, Box 137 Cary
Eckerd, Anna Camille 523 N. Main St. Mocksville
Edwards, Cynthia Gail Dogwood Dr. Eden
Edwards, Donna Lynn 1220 Hill St. Rocky Mount
Edwards, Mary Sue 1513 McArthur Ave. New Bern
Edwards, Ruth Octavia 208 Shady Circle Dr. Rocky Mount
Edwards, Susan Eleanor 1531 Caswell St. Raleigh
Elks, Margaret Clinton P. O. Box 6 Grimesland
Eubanks, Barbara Alene 3107 Douglas St. Raleigh
Eubanks, Mary Anne 219 Northwood Cr. Durham
Faucette, Nathalie Viola Ann 73 Kimberly Dr. Durham
Fensel, Margaret Law 305 Forest Hills Dr. Wilmington
Fesperman, Martha Kirby 114 Brookdale Rd. Shelby
Finch, Mary Melinda 1235 Providence Rd. Charlotte
Fincher, Mildren Ann 1544 Clayton Dr. Charlotte
Flanagan, Jane Terrell Country Club Dr. Greenville
Fleming, Gail Morris 1904 Bingham Dr. Tarboro
Folger, Joellen P. O. Box 236 Dobson
Foster, Cora Rena Rt. 2, Box 178 Belhaven
Fowler, Sandra Alston Rt. 3, Box 86 Warrenton
Fritts, Sharon Dawn Box 717 Thomasville
Fulp, Mary Cynthia 22 Glendale Rd. Jacksonville
Funderburk, Diane Marie Box 275 Matthews
Fussell, Rebecca 118 E. Main St. Rose Hill
Gaddy, Barbara Elizabeth 4408 Yadkin Dr. Raleigh
Gainey, Amanda Jane Box 297 Pittsboro
Gallagher, Deborah Lynn 1411 Clarksville Scotland Neck
Gallins, Karen Ann 958 Belfast Place Winston-Salem
Gantt, Les Cheryl 2144 Princeton Ave. Charlotte
Garcher, Cassandra Harnet 520 Fairview Rd. Rocky Mount
Gardner, Margaret O'Brien 1005 Market St. Washington
Gargis, Sarah Ann 306 Center St. Apex
Garrett, Myra Dwight 110 Avon Lane Greenville
Garriss, Barbara Ann Rt. 1, Box 91F Roanoke Rapids
Garska, Coleen Joy 214 Wilmot Dr. Raleigh
Gaston, Frances Louisa 1604 Beaumont Dr. Greenville
Gilbert, Julia Tatum 823 Vermont St. Smithfield
Gilbert, Rebekah Gaye 2214 Winterlochen Rd. Fayetteville
Godwin, Susan Kay Rt. 4, Box 393-D Wilson
Goodnight, Marsha Ray 1559 Ridge Ave. Concord
Gosey, Margaret Allen 4128 Providence Rd. Apt K Charlotte
Griffin, Beth Windley Route 1 Nashville, N. C.
Griffin, Cynthia Leigh 400 Boddie St. Nashville, N. C.
Griffin, Gladys Elizabeth 265 Union St., S. Concord
Grissom, Edith Jeannine 713 Gaston St. Raleigh
Grogan, Pamela Ann 2118 Forest Dr., E. Charlotte
Grubb, Regina Ellen 1402 Sussex Lane Salisbury
Gurley, Harnette McDowell 200 W. Maint St. Cherryville
Haag, Shelley Ann 4101 W. Franklin St. Richmond, Va.
Hagler, Mary Ann 136 Academy Ave., N. W. Concord
Haigwood, Mary Gay 953 Shady Lane Greenville
Hailey, Marsha Ann 414 Hailey Dr. Raleigh
Haithcote, Nancy Katrina 308 Crown Point Rd. Greenville
Hampton, Mary Jo 410 West Blvd. Laurinburg
Hancock, Karen Lynn 2706 Regency Dr. Winston-Salem
Hankin, Pamela Ruth 237 Morris Ave. Mountain Lakes, N. J.
Harand, Diantha Klyman 220 Windsor Dr. Shelby
Harper, Anna Marie 600 Terminal St. Kinston
Harrell, Madeline Orr 506 2nd Ave., N. W. Hickory
Harrelson, Rachel Ann 206 W. Bay St. Southport
Harrington, Doris Anne 217 W. 17th St. Lumberton
Harris, Ellen Hurd 3910 Wyndhill Dr. Annandale, Va.
Harris, Mary Cynthia 112 W. Front St. Oxford
Hatcher, Betty Victoria 4617 Wake Forest Rd. Raleigh
Hay, Susan Blalock 3316 Rugby Rd. Durham
Haywood, Marsha Lynn 324 E. Allenton Mt. Gilead
Hazzard, Delma Theda 329 Meeting St. Georgetown, S. C.
Heffner, Cynthia Elaine 733 Park Ave. Mocksville
Henderson, Alice Bryant 1126 Providence Rd. Charlotte
Herman, Susan Carol 501 Albert Ave. Wilson
Herring, Beti Lois 825 Edenwood Dr. Fayetteville
Herring Doris Esther P. O. Box 811 Thomasville
Herring, Nancy Jane 1108 Oakwood Dr. Rocky Mount
Herring, Rachel Thompson 110 Dartmouth Rd. Raleigh
High, Betty Eliza 305 E. 14th St. Roanoke Rapids
Hinton, Mary Haywood RFD #3 Kenly
Hodges, Barbara Wright 2012 Nancy Ann Dr. Raleigh
Hofreiter, Ann Kathryn 2800 Brigadoon Dr., Apt 3 Raleigh
Holland, Margaret Elizabeth 1105 Peach St. Tarboro
Holliday, Alice Lynn 4228 Starmount Dr. Greensboro
Holt, Rebecca Morton 3240 Elk St. Lynchburg, Va.
Honeycutt, Anne Gayle Dogwood Trail Wendell
Hodd, Sandra Grace 323 Magnolia St. Raeford
Hood, Sara Scott 202 DeVane St. Fayetteville
Horton, Anna Elise 900 St. Andrews St. Tarboro
Hoskins, Joanna Bland 1510 Pinehurst Dr. High Point
Howell, Faye McMillan 4385 Halupa St. Honolulu, Hawaii
Howell, Pamela Anne Rt. 1, Box 178-D Marion
Hube, Louise Whitener 1505 Pineview St. Raleigh
Humphrey, Helen Louise 2831 Barmettler St. Raleigh
Hunt, Ada Coley 408 Tyson Dr. Stantonsburg
Hunt, Penny Ann 515 W. Warren St. Shelby
Hunter, Judith Ellen 104 Falcon Rd. Rocky Mount
Hutchinson, Jane Ward 1511 Rutledge Ave. Charlotte
Hutton, Mary Pelham 205 Bosley Ave. Suffolk, Va.
Ingram, Beverly Byne 2310 Camelia Dr. Wilmington
James, Emily Gail 407 S. Cumberland St. Wallace
Jefferson, Joanne Wilson St. Fountain
Johnson, Becky Ann 900 Pebblebrook Dr. Raleigh
Johnson, Carol Elizabeth Rt. , Box 175K Louisburg
Johnson, Donna Grace Rt. 2, Box 202E Raleigh
Johnson, Joy Elizabeth 1725 Clarksville Dr. Scotland Neck
Jones, Barbara Allen 126 Cherry St. Mt. Airy
Jones, Deborah Karen Rt. 4, Box 407 Raleigh
Jones, Elva Susan P. O. Box 6 Pine Level, N. C.
Jones, Frances Bari 304 Granville Dr. Greenville, N. C.
Jones, Jacqueline R. 2 Tyler Dr. Cherry Point
Jones, Margaret Newsome Main St. Winton
Jones, Mary Lisbeth 462 Litchford Rd. Raleigh
Jones, Wanda Grace Rt. 2, Box 227 Raleigh
Jordan, Crystal Elise 406S. Third St. Smithfield

Jordan, Patricia Raybon Route 2 Wendell
 Kea, Mary Parham 1608 Marvelle Ave. Rocky Mount
 Kelly, Dana Kent 300 Compton Rd. Raleigh
 King, Elizabeth Earle P. O. Box 725 Wilson
 King, Ruth Stevens 409 N. Bloodworth St. Raleigh
 Knight, Grace Lee 2100 E. Laburnum Ave. Richmond, Va.
 Lancaster, Myra Virginia 706 Westwood Ave. High Point
 Lee, Florence Brown 140 Fenton Place Danville, Va.
 Leggett, Jacquelyn Ree 633 Longstreet Dr. Manassas, Va.
 Leonard, Susan Elizabeth 1124 Boyden Rd. Salisbury
 Lewis, Jetta Karen Rt. 1, Box 182 Scotland Neck
 Lewis, Linda Christine 305 Midyette Ave. Morehead City
 Lilyquist, Kathy Eileen 755 Currituck Dr. Raleigh
 Little, Joan Edward 307 S. Andrews Ave. Goldsboro
 Love, Sandra Frances 609 Sampson Place Raleigh
 Lovette, Cynthia Anne 11th and Ivey Lillington
 Lowery, Alice Faye Rt. 1, Box 13 Youngsville
 MacKesson, Barbara Ann 516 Margaret Dr. Statesville
 MacRae, Susan Borden 75 Hillcrest Ave., S. E. Concord
 McCall, Gay Rt. 1, Box 104 Ellerbe
 McClenny, Peggy Lee 911 Lake Boone Trail Raleigh
 McCloskey, Jean Louise 220 N. Vance St. Red Springs
 McCollough, Liberty Shaw 503 Club Rd. Baltimore, Md.
 McColeman, Janet Helen 1303 Dogwood Lane Wilson
 McCombs, Pamela Jean Box 132 Faith
 McCoy, Karen Deane 1212 Hobbs Rd. Greensboro
 McCreary, Phyllis 228 Goforth Rd. Lenoir
 McCreary, Susan 228 Goforth Rd. Lenoir
 McElwee, Edith Edgar 2817 Belvedere Ave. Charlotte
 McFarland, Katharine Armfield 100 W. Newlyn St. Greensboro
 McLamb, Lois Neal 502 E. Main St. Benson
 McLean, Elizabeth Gale 400 Carolina Ave. Raleigh
 McTyre, Kate Moseley 800 Oaklawn Ave. Winston-Salem
 Macon, Nancy Marlene 215 Griffin St. Garner
 Maddocks, Roberta Jane 8 Hunters Dr. Cherry Hill, N. J.
 Mann, Carol Teresa Rt. 4 Sanford
 Manning, Marlene 130 W. Colonial Dr. Salisbury
 Marks, Elizabeth Anne 811 Park Ave. Sanford
 Marsh, Ellis Covington 2505 Beechridge Rd. Raleigh
 Martin, Carolyn Elizabeth Box 221, Maynard Rd. Cary
 Mason, Olivia Joyce 315 Ann Street Beaufort
 Matthews, Jamie Ann Route 2 Nashville, N. C.
 Mattocks, Deborah Ann Rt. 1, Box 120 Maysville
 Meadows, Deborah Lee 320 Banbury Rd. Winston-Salem
 Medlin, Carol Ann 1519 Dixie Trail Raleigh
 Medlin, Katherine Arrington 4214 Old Trinity Rd. Raleigh
 Menefee, Jeanne Franklin 2205 Cranford Rd. Durham
 Miles, Valerie Ann 309 Harris St. Warrenton
 Miller, Mary Elizabeth 1702 Lucerne Way New Bern
 Mitchell, Patricia Lane 215 Ridgeway Dr. Greensboro
 Mitchiner, Ann Howard P. O. Box 131 Wilson's Mill
 Mizelle, Carol P. O. Box 6 Newport
 Montgomery, Evelyn Rebecca 324 Buncombe St. Raleigh
 Moore, Elizabeth Gladding 806 Essex Rd. Wilmington, Delaware
 Moore, Evelyn Martin 627 Stacy St. Raleigh
 Moore, Jane Cromwell 1209 Arbor Dr. Salisbury
 Moore, Margaret Macon 3509 Alleghany Dr. Raleigh
 Moore, Paulette Anne 2325 Airlane Dr. Raleigh
 Morris, Patricia Ann P. O. Box 546, Forest Rd. Oxford
 Mosely, Patricia Ann 5701 Barrington Dr. Charlotte
 Murray, Edna Ann Rt. 1 Fountain
 Nassif, Mary Shelia Box 38 Wagram
 Neely, Susan Lee 4214 Tottenham Rd. Charlotte
 Newbold, Mary Rennie 2121 St. Mary's St. Raleigh
 Newton, Alva Dawn 709 Huntington St. High Point
 Nichols, Betty Gail Rt. 1, Box 243 South Hill, Va.
 Nicholson, Debra Kaye 1500 Banbury Rd. Raleigh
 Nisbet, Lucinda Rose 13609 Pleasant Lane Burnsville, Minn.
 Nowland, Janice 911 Stanfield Dr. Charlotte
 Nowlin, Rebecca Ann 110 Elgin Place Greensboro
 Nutt, Susan Ellen 4700 Morehead Dr. Raleigh
 O'Bryan, Kathleen 2616 N. E. 24 St. Fort Lauderdale, Florida
 O'Daniel, Betty Ann 3010 Lewis Farm Rd. Raleigh
 Owen, Nancy Stuart 634 Maple Ave. Asheboro
 Pannill, Ann Lavinder Box 2247 Martinsville, Va.
 Parker, Agnes Ann 615 3rd Ave. Farmville, Va.
 Parker, Catherine Faye Box 92 Rolesville
 Parker, Helen Elizabeth Cameron 2904 Carlingford, Louisville, Ky.
 Parnell, Martha Susan P. O. Box 100 Parkton
 Parrish, Julia Faye Rt. 2, Box 24 Edenton
 Pearsall, Melva Elizabeth 227 Forest Hills Dr. Wilmington
 Peele, Barbara Anne 1404 E. Pine St. Goldsboro
 Peele, Deborah Elizabeth Rt. 3 Clayton
 Pendleton, Peggy Locke P. O. Box 177 Scotland Neck
 Perkins, Patricia Gatliff 45 Hilltop Rd. Asheville
 Perkinson, Susan Morecock R. F. D. 2, Box 177 Halifax
 Perry, Ara Elizabeth 3105 W. Market St. Greensboro
 Perry, Mary Katherine 910 Wimbledon Place High Point
 Perry, Ruth McCullough 950 Cedar St. Chestfield, S. C.
 Plaski, Julianne Brown 527 Wayne Dr. Raleigh
 Pigg, Teala Davis 2201 Robin Dr. Tarboro
 Pope, Kathryn Amanda Rt. 4, Box 344 Dunn
 Powell, June Watson 203 Hoffer Ave. Windsor
 Price, Teresa Ellen Rt. 1, Box 15-B Thomasville
 Prince, Susan Hood 1740 Montclair Dr. Gastonia
 Privette, Deborah Duke 510 Arendell Ave. Zebulon
 Rainey, Jean Cassel 2409 Pennsylvania Ave. Kannapolis
 Rand, Martha Ann 911 Canterbury Rd. Raleigh
 Rankin, Jane Winfree Box 337 Ramseur
 Reese, Mary Katherine Rt. 3, Box 118 Smithfield
 Reierson, Katherine Anne Box 665 Battleboro
 Reynolds, Joyce Ann 650 Bruton St. Troy
 Richardson, Marcia Stuart 672 Hyde Park Dr. Concord
 Ritchie, Margaret Amanda 433 Sunnyside Dr., S. E. Concord
 Roach, Elizabeth Beck 201 S. Orange Ave. Dunn
 Robbins, Harriet Ann 607 Clark Dr. Tarboro
 Roberts, Joyce Ann 808 W. Knox St. Durham
 Robinson, Judy Rae Route 2 Whitakers
 Rogers, Elinor Ray Box 214 Alberta, Va.
 Rogers, Florence Wanner P. O. Box 128 Ruffin
 Rogers, Mary Celeste 432 Westbury Rd. Charlotte
 Rollins, Nancy Leize 3010 Edgewater Dr. Greensboro
 Rominger, Marsha Lynn 1400 Wildwood Dr. Chapel Hill
 Rowe, Paula Deloris 921 Woodruff Ave. Elizabeth City
 Royster, Katharine Quinn 308 Country Club Acres Shelby
 Rumley, Julie Thomas 621 W. Main St. Washington, N. C.
 Russell, Eva Mae Rt. 1, Box 560 Boomer
 Sandusky, Martha Louise 329 West Ave. Wake Forest
 Saunders, Cathy Jane 2647 Camelot Rd. Rock Hill, S. C.
 Scarborough, Patricia Dianne P. O. Box 61, River Rd. Fayetteville
 Schamberg, Julie Anne L-1 Royal Park Apts, 54 Carrboro
 Schild, Nanette Raye Anderso St. Tabor City

Scott, Dorothy Faye 202 Riverside Dr. Washington
 Scott, Sina Kaye 202 Riverside Dr. Washington
 Servais, Jeanne Marie 1007 Peach St. Tarboro
 Shafer, Melissa Anne 222 N. Mulberry St. Statesville
 Shannon, Sharon Louise 732 Burton St. Rocky Mount
 Shearin, Susan Page Rt. 2, Box 316 Edenton
 Shelton, Leigh 1216 Welcome Circle Durham
 Siewers, Mary Anne 1908 Winterlochen Rd. Fayetteville
 Sledd, Deborah Lee 224 Georgetown Rd. Raleigh
 Sloan, Madelyn Faye Rt. 2, Box 427 Statesville
 Smith, Agnes Carol 3212 Sprunt Ave. Durham
 Smith, Anne Irene 141 Jackson Rd. Mt. Airy
 Smith, Deborah Jean P. O. Box 72 Knightdale
 Smith, Elizabeth Ann 529 Hedrick Dr. Statesville
 Smith, Martha Ann Rt. 2, Box 162 Littleton
 Smith, Martha Carr 206 W. Main St. Wallace
 Smith, Rebecca Jane 202 W. Park Dr. Morganton
 Smith, Sidney Anne 902 Kevin Dr. Richmond, Va.
 Smith, Suellen Cothran 1805 Grace St. Wilmington
 Snipes, Linda Jayne 1503 E. Beech Goldsboro
 Spangler, Nina Jane 926 Elizabeth Rd. Shelby
 Spencer, Cheryl Anne 201 Lord Berkeley Rd. Raleigh
 Spivey, Mary Jeanne Spivey Road Whiteville
 Stamps, Emily Wicker 6A Garden Terrace Cambridge, Mass.
 Stanfield, Libby Cooper 700 Church St. Fairmont
 Starr, Karen Jeanne 2437 Ansley Court Charlotte
 Stephens, Theo Johnson Route 1 Holly Springs
 Stephens, Wanda Sue 305 W. 16th St. Lumberton
 Stephenson, Jane Stephens Rt. 3, Box 546 Raleigh
 Stokes, Mary Helen P. O. Box 66 Colerain
 Stokes, Virginia Montague 901 Indian Rocks Rd. Clearwater, Florida
 Stovall, Margaret Gilmer 3303 Woodridge Place Lynchburg, Va.
 Strother, Donna Marie 1815 Ridge Rd. Raleigh
 Stroud, Martha Ann 1208 Country Club Dr. Greensboro
 Suter, Susan Porter 508 Sycamore St. Weldon
 Sumner, Betty Louise 1831 Glenwood Ave. Raleigh
 Sutton, Elizabeth Thornton 624 Duke Dr. Raleigh
 Switzer, Martha Irene 1901 W. Nash St. Wilson
 Talton, Mary Wynona 605 Fayetteville St. Clayton
 Tart, Jamye Karen Fairfield Circle Dunn
 Tart, Janet Leigh Pine Street Benson
 Taylor, Margaret Clythe 106 Bauersfeld Ave. Hamlet
 Temple, Vicky Lynn 715 Church St. Zebulon
 Them, Mary Dee 512 Chesterfield Rd. Raleigh
 Thomason, Jane Pierce 2645 Bucknell Ave. Charlotte
 Thompson, Janice Lou Route 1 Farmville
 Thorne, Rose Annette Rt. 3, Box 179A Kenly
 Tillery, Julia Ann P. O. Box 142 Halifax
 Tola, Frankie Pauline 2625 Blue Ridge Blvd. Raleigh
 Tostoe, Wanda Gail 2613 Main St. Tarboro
 Tucker, Carolyn Transou 903 Caswell Dr. Greensboro
 Ussery, Edith Sheron 3212 Plantation Rd. Raleigh
 Van Hecke, Catherine M. 213 Westover Terrace Greensboro
 Vatz, Jane Elizabeth 1817 Tryon Rd. New Bern
 Vick, Sarah Connor 1135 Kenan St. Wilson
 Wagner, Jean Vaughn P. O. Box 495 Morehead City
 Walker, Kathryn Louise 3826 Larkston Dr. Charlotte
 Wall, Gerald Diane Smithfield Rd. Knightdale
 Wallace, Laura Eoline 2103 St. George Place Kinston
 Wallace, Victoria Ann 1502 Lake View Rd. Fairmont
 Waller, Carol Sue 704 Finsbury Rd. Winston-Salem
 Walters, Deborah Gay 407 Wayne Ave. Tarboro
 Walters, Pamela Heyward 405 Beechwood Dr. Richmond, Va.
 Walton, Ruth Carol Route 8, Box 283 Raleigh
 Ward, Rosalie 806 E. Mulberry St. Goldsboro
 Warner, Rachel Alice Rt. 2, Box 253B Eden
 Watson, Frances Slade 4660 Algonquin Jacksonville, Fla.
 Weaver, Cynthia Gail 225 Corriher Ave. Salisbury
 Webb, Martha Cecelia Route 2 Walstonburg
 Weber, Patricia Louise 2013 Arendell St. Morehead City
 Welborn, Deborah Denise 1404 Delk Dr. High Point
 Wells, Elizabeth Walker 106 W. Riverside Dr. Smithfield
 Wheeler, Cathy Louise Rt. 8, Box 313 Raleigh
 Wheeler, Katherine Adair 2615 Bennington Rd. Fayetteville
 White, Nettie Elam 107 Middle St. Louisburg
 White, Winifred 110 Shepherd St. Raleigh
 Whitford, Nancy Hill P. O. Box 67 Washington
 Whittemore, Lynda Kay 1532 Echo Lane Wilmington
 Wicker, Dean Adele 26 White St. Concord
 Willett, Bryn Lea Route 5 Hickory
 Williams, Diane Route 1 Kenly
 Williamson, Donna Gail 417 E. Rowan St. Raleigh
 Williford, Kathy Lane Route 1 Dunn
 Wilmer, Helen Parker 2136 Malvern Rd. Charlotte
 Wilson, Elna Simpson 640 Windsor Place, N.E. Concord
 Wilson, Lois Ann 341 Wilmot Dr. Raleigh
 Wilson, Marable Elizabeth 110 Barrus Ave. Clinton
 Wilson, Susan Hagan 1012 St. David St. Tarboro
 Wilson, Yvonne Wyant Rt. 4, Box 651 Raleigh
 Wise, Harriet 675 Sedgewood Rock Hill, S. C.
 Wolf, Pamela Rene Route 3 Dunn
 Womack, Gail Frances 205 McCoy Rd. Salisbury
 Wormble, Gwyn Martin Route 3 Fuquay-Varina, N. C.
 Worsley, Nancy Lee Highway 117 North Wallace
 Wrenn, Jodie Elizabeth 1710 Fairway Dr. Wilmington
 Wright, Anne Kendell 108 Magnolia Rd. Lexington
 Wynn, Rhonda Reece 3501 Palm Court Raleigh
 Wyrick, Pamela Jane 2821 Northampton Dr. Greensboro
 Wysocki, Theresa Jane 618 Mial St. Raleigh
 Yelvington, Debra Gail Box 86 Benson
 Younce, Jennifer Hiatt 5721 Deblyn Ave. Raleigh
 Zachary, Catherine Tatum 3501 Palms Ct., Apt 204 Raleigh

Sophomore Directory

Jane Carol Abernathey — PSCA 1; Young Republicans 1.
Nancy Kilpatrick Adams — Young Democrat's Club 1; Peace Basketball Team 1; Orientation Committee 2; Rec Council, Intramural Chairman 2.

Susan Nutt Adams — Dance Club 1; F.S.A. Future Secretaries Association 1, 2, Corresponding Sec. 2; Non-Resident Group Chairman 2, Secretary 2; Marshal 1, 2; Music Scholarship.

Annis Lillian Arthur — PSCA Treasurer 2; Cheerleader 1; Orientation Committee 2.

Nadine Kay Baddour — Annual Staff 1, 2; Newspaper Staff 1, 2; Democrat Club 1; Cheerleading .

Debrah Huggett Baker — Non-Resident Group Chairman 2.

Catherine Howard Barnes — Basketball Manager 2; Christmas Dance Committee 2; Young Democrat Club 1; International Relations Club 1.

Deborah Durand Bell — Peace Times Business Manager 2; Young Democrat Club 1; Independent Study English; Winner of Peace Essay Contest.

Janet Duncan Bell — Peace Times Reporter 2; Home Economics Club 1, 2; State Student Legislator 1. 2;

Robin Lee Bell — Dance Club 1; Prop Committee 1.

Catherine Lee Belmore — Art Club 1, 2; President 2; Porpoise Club 2; Young Republicans 1, 2; PSCA Cabinet Member 2; Rat 2.

Edith Janis Bickett — Dramateers, 1; Literary Magazine 2; Hall Chairman 2.

Melissa Joy Bishop.

Georgia Merritt Bland — Non-Resident Group Chairman 2; Phi Theta Kappa 1; President 2; President's Advisory Board 2.

Kathryn Nelson Bottons — Orientation Committee 2.

Julia Alice Bowers — Phi Theta Kappa 1, 2.

Doris Ann Bradsher — Choir 2.

Rebecca Anne Briley — International Relations Club 1; Lotus Staff 1; Hall chairman 2.

Patricia Dianne Broughton.

Amelia Fith Brown — Cheerleader 1; Porpoise Club 1; Rec Council 2.

Margaret Ann Brown.

Patricia Ann Brown — Future Secretaries Association 1, 2.

Trudy Elizabeth Brown — Home Economics Club 1, 2.

Martha Fletcher Bruce — Art Club 2; Republican Club 1, 2; Work Scholarship 1, 2.

Betsy Lark Burnett.

Julia Pae Burwell — Y. R. C. 1, 2, Vice Pres. 2; P.S.G.A.

2, Sec-Treas. 2; Lotus Staff 1, 2, Ass. Editor 2; Choir 2; Outstanding Sophomore 2; Rat 2.

Dena Grace Butler — Hall Chairman 2 P.S.C.A. 1, 2, Treas. 1, Pres. 2; Student Council 1, 2; Judiciary Board 1, 2; Advisory Board 2; Daughters and Granddaughters Club 1, 2.

Lillian Virginia Carlson —

Marie Brisson Carron.

Donna Dale Carver — Home Ec. Club 2.

Jeanne Kirby Casteen — Honor Court 2, Sec. Non-Resident Group Chairman 2.

Nancy Gail Caulk — Pieces Staff 2; Choir 2.

Brenda Joyce Chappell — YDC 1, 2; Art Club 2.

Chesson Connie Clark

Susan Gaynor Clayton — Porpoise Club 1, Cheerleader 1.

Frances Rubylee Cline — Peace Times 1, Layout Ed. 2; Lotus Staff 1, 2; YDC 1, 2, Sec-Treas. 2; Orientation Committee 2; Handbook Chairman PSGA 2; IRC 1.

Deborah Farlow Coffee — Peace Times 2.

Constance Lynn Coleman — Choir 1, 2; Ensemble 2; Cheerleading 1, 2, Chief 2; Social Chairman, PSGA 2.

Nancy Berkeley Coleman — F.S.A. 1, 2; YDC 1, 2.

Deborah Ruth Collins — Lotus Staff 1, 2; YDC 1, 2.

Barbara Frances Connell — Home Ec. Club 1, 2, Sec-Treas. 2; Daughters and Granddaughters Club 1.

Sandra Gelee Covington — Lotus Staff Business 2. Peace Times 1; YRC 1, 2, Treasurer 2.

Kathryn Vaughan Cox — Choir 2.

Nancy Cox — YDC 1, 2; Pres. Sophomore Class 2, Treas. Freshman Class 1; Porpoise Club 2; Orientation Committee 2; Rat 2.

Ruby Lee Creech — Peace Time Staff 2; Future Sec. Association 2.

Laura Scott Currence — Non-Resident Group Chairman 2.

Claine Carol Currin — Home Ec. Club 1; Future Sec. Association 1, 2, Recording Sec. 2; Orientation Committee 2.

Frances Lipscomb Dashill — YDC 1; Vice Pres. Freshman Class 1; Hall Chairman 2.

Judy Lynn Davidson: Pieces 2, Editor 2; Annual Staff 1, 2, Art Ed., Hall Chairman 2; Stunt Night Chairman 2; Literary Advisory Board 2; Peace Times Staff, 1, 2, Art Ed. 2, Photographer 2; Student Hostess 2; Orientation Committee 2; Art and Lecture Committee 1; Best Painting Award in Annual art Exhibit.

Carolyn Dianne Davis — F.S.A. 1.

Deborah Leah De Gabrielle — Chairman Non-Resident Students 2; PSCA 2, Ecumenical Chairman 2; Orientation Committee 2; Student Council 2; President Advisory Board 2.

Karen Lynn Dominy — Hall Chairman 2; Art Club 2.
Marsha Doreen Donathan — Choir 1, 2.
Eva Ann Dudley — Choir 2.
Ann Camille Eckerd — YRC Prep, 1, 2, Dance Club Prep., Student Council Election Committee 2; Lotus 1; Pieces 1, Orientation Committee 1, 2.
Mary Sue Edwards —
Ruth Octavia Edwards — Daughter and Granddaughters 1; Publicity Committee 2.
Gail Fleming — Cheerleader 1; Porpoise Club 2; YDC 1, 2.
Joellen Folger — PSGA 2, Vice Pres. Student Council 2; Elections Committee 2; YDC 1, 2; Rat. 2; Outstanding Senior.
Sharon Dawn Fritts — YRC 1; Choir 2.
Mary Cynthia Fulp — Porpoise Club 2; YRC 1, 2; Home Ec. Club 2.
Diane Marie Funderbuck — IRC 1, 2; Peace Times 1, 2, 3; YRC 1, 2, 3; Porpoise Club 2; Lotus Staff 1, 2; PSRC 1, 2.
Rebecca Fussell — Phi Theta Kappa 1, 2; Vice Pres. 2.
Barbara Elizabeth Gaddy.
Amanda Jane Gainey — Peace Times 2.
Lesia Cheryl Gantt — Porpoise Club 2; Lotus 2; Food Committee; Volleyball Team; Rat 2.
Cassandra Harriet Gardner.
Sarah Ann Gargis — F.S.A. 1, 2.
Barbara Ann Garris.
Julia Tatum Gilbert — Vice Pres. PSRA; Hall Chairman 2; Choir 2; Ensemble 2; Rat 2.
Marsha Ray Goodnight — Marshal 2; Alpha Pi Epsilon 2; Vice Pres. 2; FSA 1, 2; Vice Pres. 2; News Editor of Peace Times 2.
Beth Windley Griffin — Choir 2; PSRA 2; Basketball team 1, 2.
Harriette McDowell Gurley — Choir 1, 2; Ensemble 2; Food Committee 2; Organ Scholarship.
Mary Gay Haigwood — Home Economics Club 1, 2; Choir 2; Christmas Dance Committee 2.
Karen Lynn Hancock — FSA Treasurer 2; Freshman Class Secretary; Alpha Pi Epsilon 1, 2; PSGA President 2; Honor Court 2; Advisory Committee 2; Outstanding Sophomore 2; Rat 2.
Pamela Ruth Hankin — PSCA 2; Home Economics Club 1, 2.
Anne Marie Harper — Student Hostess 1, 2; Home Economics Club 2; YRC Club 2; Cheerleader 1.
Doris Harrington — PSRA 1; YDC Club 1, 2; Porpoise Club 2; Lotus 2; May Court Attendant 1.
Ellen Hurd Harris — PSCA 2.
Susan Blalock Hay — Art Club 1, 2; Daughters and Granddaughters Club 1, 2; Porpoise Club 1; Art Editor Pieces.
Nancy Jane Herring — Lotus 1; Orientation Committee 2; Christmas Dance Committee 2; YRC 1; Daughters and Granddaughters Club 1, 2; Pres. of Daughters and Granddaughters 2.
Anne Gayle Honeycutt — PSCA 2; Porpoise Club 2; YRC 2; Lotus 2.
Joanna Bland Hoskins — Art Club 2; Program Chairman 2.
Louise Whitener Hube — FSA 1; Art Club 2; YDC 2.
Judith Ellen Hunter — Choir 1, 2; Hall Chairman 2; Christmas Dance Committee 2.
Jane Ward Hutchinson — Lotus 1; Home Economics Club 1; FSA 1, 2; Orientation Committee 2.
Mary Pelham Hutton.
Beverly Byne Ingram — YRC 1; PSCA.
Donna Grace Johnson — Choir 1; FSA 1, 2.
Barbara Allen Jones — YDC 1, 2; Porpoise Club 2; PSCA 2.
Elva Susan Jones — YRC 1; Marshal 2; President PSRA.; Student Council 2; Judiciary Board 2; Hall Chairman 2; Outstanding Sophomore 2, Rat 2.
Mary Parham Kea — Basketball Team 1, 2; PSRA 2; YRC 2.
Ruth Stevens King — PSCA 2; FSA 2.
Jacquelyn Ree Leggett — PSCA.
Kathy Eileen Lilyquist — Porpoise 1, 2.
Joan Little — Choir 1, 2.
Cynthia Anne Lovette — Choir 2.
Alice Faye Lowery — FSA 1, 2;
Barbara Ann MacKesson — YRC 1; FSA 1; Lotus 2; Standards Committee 2.
Nancy Marlene Macon — FSA 11, Secretary 2.
Marlene Manning — May Court 1.
Jamie Ann Mathews — PSCA 2; Lotus 2.
Jean Louise McCloskey — YRC 1, 2.
Liberty Shaw McCollough — PSCA 2; Peace Times 2; Secretary PSCA 2.
Katherine Armfield McFarland — Standards Committee 1; YDC 2; Lotus 2.
Kate Moseley Mctyre — Editor Peace Times 2; Hall Chairman 2; Advisory Board 2.
Carol Ann Medlin.
Jeanne Faris Menefee — YDC 1, 2; Food Committee Chairman 2.
Valerie Ann Miles — PSCA Social Chairman 2; PSGA Handbook Chairman 2; Porpoise Club 1; YRC 2.*
Mary Elizabeth Miller — Home Economics Club 1; YRC 2.
Ann Howard Mitchiner — YDC 1; Cheerleader 1; Lotus 1, 2; Orientation Committee 1, 2; Sophomore Class Treasurer.
Evelyn Rebecca Montgomery.

Margaret Macon Moore — Porpoise Club Prep 3, 4, 1, President 2; YCD 1; Peace Time 1; Papyrus Prep 4; PSRA 1; Stunt Night Chairman 1. Publicity Chairman 2.

Susan Lee Neely — PSCA 2; Lotus 2.

Debra Kaye Nicholson — YRC 1; Dance Club 1; FSA 1, 2.

Kathleen O'Bryan — Home Economics Club 2.

Betty Ann O'Daniel.

Nancy Stuart Owen — Lotus 1; Choir 1.

Jean Cassel Rainey — Alpha Pi Epsilon 1, 2; Peace Times Feature Editor 2; Advisory Board 2.

Katherine Anne Reiersen — Daughters and Granddaughters Club 1, 2; Home Economics Club 2; Porpoise Club 1, 2; Orientation Committee 2; PSRA 2.

Margaret Amanda Ritchie — Peace Dramateers 1; YDC 1, 2; Daughters and Granddaughters Club 1, Treasurer 2.

Harriet Ann Robbins — YDC 1, 2; Corresponding Secretary 2; International Relation Club 1; Art Club 2.

Elinor Ray Rogers.

Mary Celeste Rogers — Porpoise Club 2; Marshal 2; May Court 1; F.N. Steele Bible Award 1; Rat 2.

Nancy Leize Rollins — Vice President PSCA 2; Orientation Committee 2; Lotus 2.

Katherine Quinn Royster — Dance Club 1, 2; Daughters and Granddaughters Club 2; Arts and Lectures series Club 1; Lotus 1, 2; Literary Magazine 2; Dramateers 1; Vice President of Dance Club 2; Outstanding Sophomore 2.

Martha Louise Sandusky — Literary Magazine 1, 2; Peace Times 1.

Cathy Jane Saunders — Dance Club 1, 2; YRC 1, 2; Art Club 1, 2; Home Economics Club 1, 2; International Relations Club 1; Orientation Committee 2.

Jeanne Marie Servais — FSA 1; Alpha Pi Epsilon 1, 2; Newspaper Staff 2.

Melissa Anne Shafer — YRC 1; Porpoise Club 1.

Sharon Louise Shannon — Orientation Committee 2; Porpoise Club 1, Hall Chairman 2.

Leigh Shelton — FS 1; Orientation Committee 2; International Relations Club 1; YRC 1.

Madelyn Faye Sloan — Home Economics Club 2.

Elizabeth Ann Smith.

Martha Ann Smith.

Martha Carr Smith — Resident Group Chairman 2; Advisory Board 2; Student Council 2; PSCA.

Rebecca Jane Smith — Porpoise Club 2.

Sidney Ann Smith.

Mary Jeanne Spivey — PSRA 2; Hall Chairman 2; YRC 1, 2.

Wicky Stamps — Class President 1; Editor of Lotus 2; Porpoise Club 1; Advisory Board 2; Publications Board 2; Parliamentarian of PSGA 2; Student Council 1, 2; Hall Chairman 2; Outstanding Sophomore 2; Rat 2.

Libby Cooper Stanfield — Orientation Committee 2; Phi Theta Kappa 1, 2; PSCA 2.

Karen Jeanne Starr — Orientation Committee 2.

Karen Jeanne Starr — Orientation Committee 2.

Wanda Stephens — YDC 1, 2; Lotus 2; Cheerleader 1; Orientation 2; Cafeteria Committee 2.

Jane Stephens Stephenson — FSA 1.

Mary Helen Stokes — Basketball 2; Standards Committee 2; PSRA 2.

Donna Marie Strother.

Martha Ann Stroud — PSCA 2; PSRA Secretary 2; Secretary Sophomore Class.

Martha Irene Switzer — Phi Theta Kappa 1, 2; YDC 1; Publicity Committee PSCA 2; Lotus 2.

Catherine Morrison Van Hecke — Daughters and Granddaughters 1, 2; Chairman of Standards Committee 2; PSCA 2; Vice President Sophomore Class.

Jane Elisabeth Vatz — YDC 1;

Pamela Heyward Walters — Orientation Committee 2; Choir 2; Hall Chairman 2; Dramateers 1; Dance Club 1. Peace Times 2.

Rosalie Ward.

Rachel Alice Warner — Choir 1; Home Economics Club 2; Vice President Home Economics 2.

Frances Slade Watson.

Cynthia Gail Weaver — PSCA; Peace Times Sports Editor; Orientation Committee 2.

Martha Cecelia Webb — YRC 1; Dance Club 1.

Deborah Denise Welborn — Art Club 1, 2; Lotus 2; Peace Times 2; YRC 2; Secretary YRC 2; Orientation Committee 2.

Elizabeth Walker Wells — Dance Club 1; President Dance Club 2; Lotus 1, 2; Peace Times 1; Literary Magazine 2; Dramateers 1; YDC 1; Orientation Committee 1; Glamour Representative 2.

Katherine Adair Wheeler.

Nancy Hill Whitford — YRC 2; Lotus 2; Spanish Club 1, 2.

Donna Gay Williamson — YRC 1; Spanish Club 1, 2

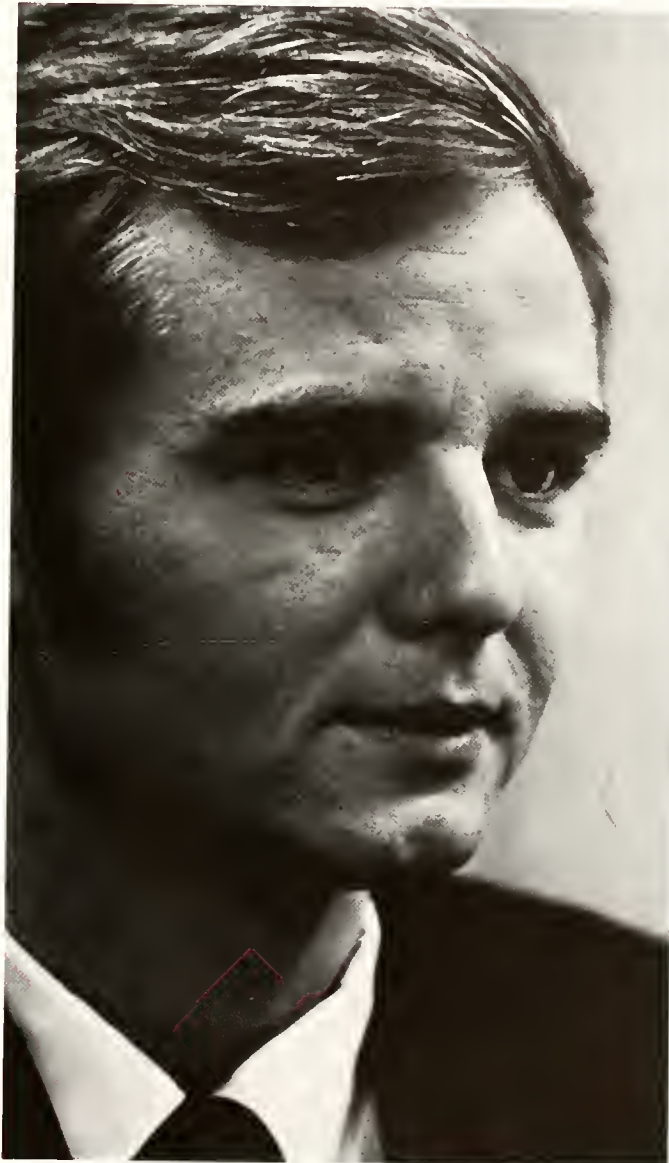
Lois Ann Wilson — Lotus 1; Peace Times 1, 2; Assistant Editor Peace Times 2.

Yvonne Wyant Wilson — FSA 1, 2; Music Scholarship Piano.

Harriet Wise — YRC 1, 2; Orientation Committee 2; Lotus 2.

Anne Kendall Wright — YDC 1; Volleyball Team 2; Rat 2.

Terri Price — President of Honor Court 2; Advisory Board 2; Outstanding Sophomore 2; Co-Editor Literary Magazine 2; Rat 2.



In deepest appreciation to a man and friend who has helped not only the yearbook, but many others including myself here at Peace. Quiet, but concerned, I shall never forget him. Thank you, Mr. Donald Causey — thank you for being you.

In admiration,

A handwritten signature in cursive script that reads "Wicky".

Wicky, Editor



I am a part of all
that I have touched
and that has touched
me, having for me no
existence save that
which I gave to it
became other than
itself by being mixed
with what I then was
and is now still
otherwise having fused
with what I now am,
which is itself a
cumulation of what I
have been becoming.
Why here? Why there?
Why Now? Why then?





70 382

