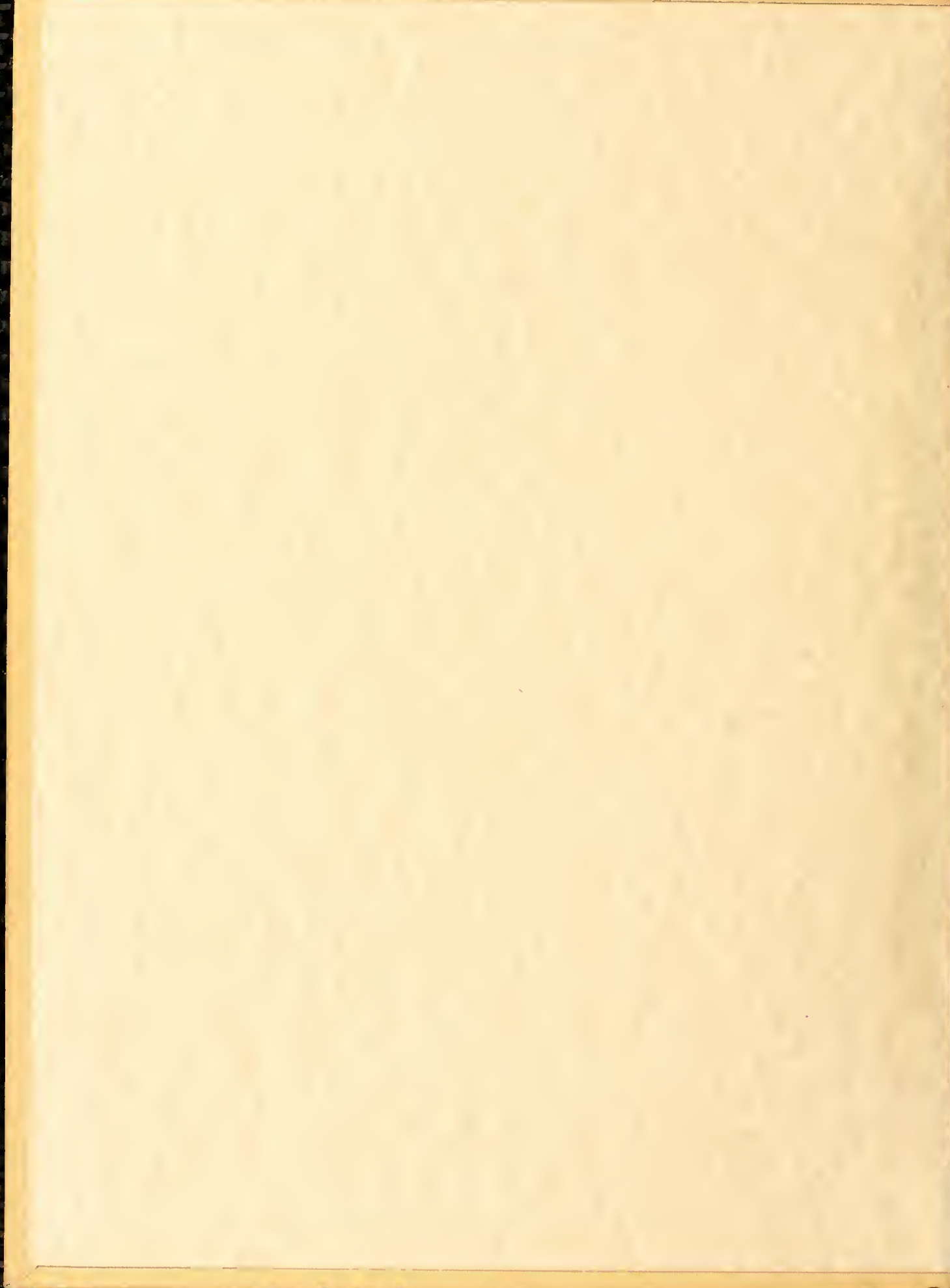


LOTUS 1980



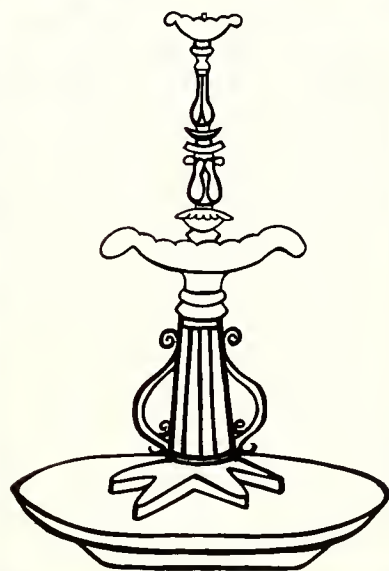








Lotus 1980  
Peace College  
Raleigh, N.C.

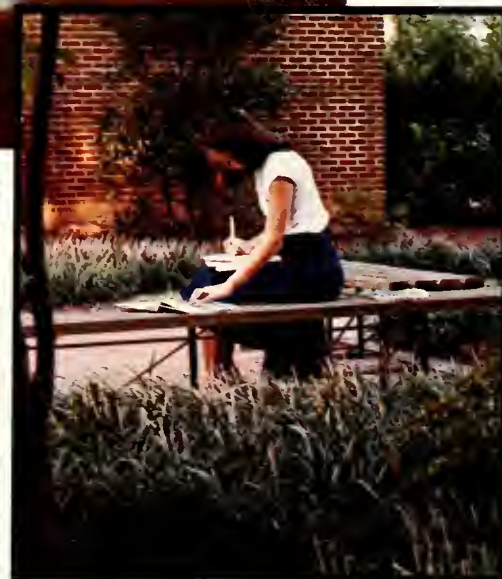
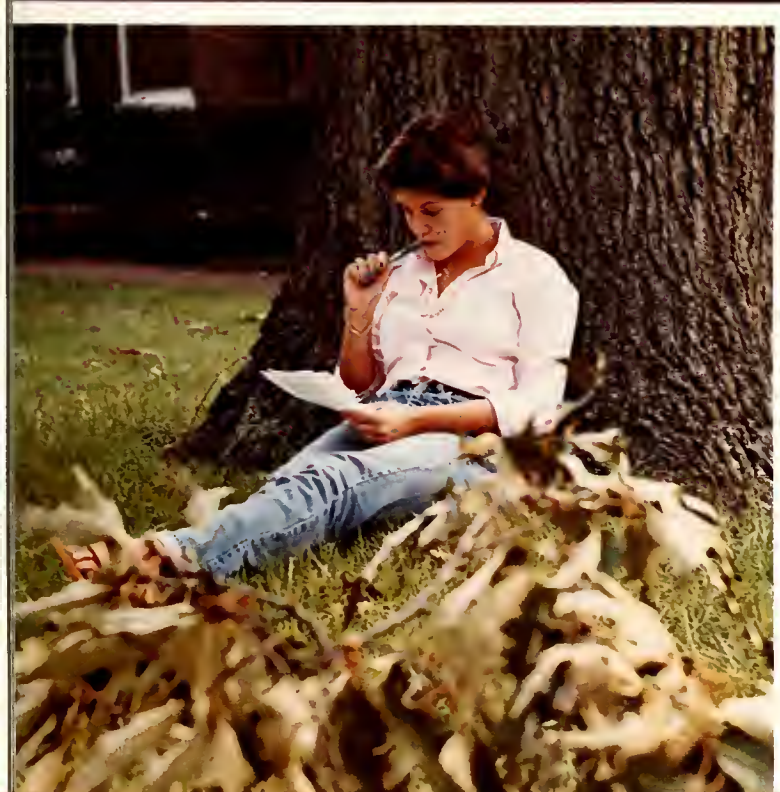




Nestled in the midst of this hustling, bustling city lies a shelter of warmth, security, and love — an oasis in the midst of a desert. Here we find a unique calmness and a sense of peace that lets us know we are set apart. In our homelike environment, we grow to accept responsibility, and we foster friendships that will follow us for the rest of our lives. There are many opportunities awaiting, many choices to make. Each of us must decide for herself which doors to open, which road to take, what seeds to plant. We are all unique in some way. Recognizing our uniqueness in a milieu of love, we can allow ourselves to unfold as individuals without losing the happiness of belonging together.



# Life at Peace





# Togetherness





During the time we spend at Peace, many things influence our lives. Involvement in organizations, friendships with both students and faculty, enthusiasm in student activities — all these experiences play an important role in shaping our lives. Sharing our experiences with each other contributes to the Peace spirit we will carry with us forever. Work, fun, fellowship, and success combine to make these shared events memorable.

# Special Times





Our days at Peace are enriched by the little events that make them special. Throwing friends into the fountain, waiting by the Phone for that special guy to call, going out with the gang, having serious talks at two a.m. — these

are the elements of campus life that merge and create those unforgettable memories. And in memory we will preserve the tears and laughter, the work and play, the highs and lows that are the ingredients of Peace life.

# Daily Dilemmas





Campus life is the force that makes each person a part of the whole college experience. Through joy and sorrow, attained goals and broken dreams, each of us strives to develop our own potential. Yet, in order to benefit from our experiences, we must sacrifice time, energy, patience, and thought. Whether our ambition is graduation or merely the completion of an English assignment, we strive to attain self-satisfaction. Whether we work to better our school or to succeed for ourselves, we are dedicated to achievement.





# Fun Fads



Our "togetherness" extends into every aspect of our lives. In much the same manner that we share feelings, attitudes, and thoughts, we share tastes. Somehow, at Peace fads and fashions are "catchy": Izod shirts, oxford button downs, Toppers tennis shoes, Calvin Klein jeans, and add-a-beads are all a part of student life.





The real uniqueness of Peace lies in its people — the individuals that make it so. Laughter, smiles, disappointments, sorrows, confusion, excitement — all of this, and much more, we share. Together we discover the meaning of life as we explore all it suddenly has to offer. Each of us is striving to make the most of herself and to fulfill her personal dreams. Yet we reach out to one another, and as one we explore life. Now we are at Peace, our oasis, and here we will become ready to move out into all the complexity that surrounds us.





# Peace People





WELCOME  
FRESHMEN

Features



The traditional graduation ceremony at Peace is an unforgettable experience with its white formals, long-stemmed red roses, and flood of tears. The happiness, love and compassion shared by Peace students come to a startling

halt. Graduation, however, is much more. Though it marks the end of our lives together, it denotes a new beginning — a true commencement.





# Graduation '79



# Freshmen Orientation

WELCOME  
MEN

Excitement, nervousness, frustration, anticipation — these were the feelings of the 1979 freshmen as they arrived at Peace. Through orientation — the President's reception, Convocation, advisor-advisee meetings, swimming

tests, and mini classes — they were swept into campus life at Peace. They immediately became a part of the Peace family because they experienced the warmth, love, and security that is known only to Peace students.



Parents' Weekend at Peace, a highlight of the school year, gives Peace students a chance to share their lifestyle with their parents. It includes activities such as mini classes, a powerpuff football game, a variety show, a make-your-own sundae party, Sunday morning worship service in Dinwiddie Chapel, and the President's breakfast. Moreover, it allows students to share with their parents the simple things that make Peace so special.





# Parents' Weekend







While witches, ghosts, and goblins haunted the surrounding neighborhood, some three hundred and fifty Peace girls, in the disguise of space cadets, clowns, and Hillsborough originals, safely gathered in Belk Dining Hall to begin their evening of Halloween festivities. The great pumpkin stole the day and the twenty dollar first place prize for the best costume. After the banquet, those who chose to trick-or-treat on campus were greeted with a special treat on third Ross: a haunted disco.

Christmas lights adorned the disco walls, and all sorts of strange characters could be seen dancing to the tune of "Dim All the Lights" and "I Love Beach Music." Others chose to keep Halloween away from Peace. At nine o'clock, girls in a myriad of costumes left Peace to haunt the fraternities, Edward's, and Crazy Zacks. Whether Halloween was spent here or away, the holiday was special because we shared it with friends.



# Halloween

Among the various forms of entertainment at Peace College is the theatre. The first production of the Peace College Theatre Arts Group was Jean Anouilh's **Antigone**. **Antigone** is the story of a young girl who chooses to die rather than allow her brother's body to remain unburied. During the course of the play, seven Peace students and four other actors took their audiences with them to classical Greece, Vichy France, and modern-day America. Nearly all who attended the production were deeply moved by the convincing actors and actresses. Their performance was greeted each evening with a standing ovation from appreciative spectators. The theater is just one example of the many forms of expression Peace offers young women.





# Antigone



# Medieval Banquet



Deep into the fall semester of 1979, Peace College turned back the tides of time to the days of castles and knights. One evening in early November, Dr. Emilie deLuca's French classes took part in a Medieval Banquet. The banquet room was decorated with hay, benches, and candles, and in attendance were members of the nobility, represented by the advanced French class, along with squires and clergy, represented by the beginning French

classes. Nobles, squires, and clergy alike washed their hands in a single basin and then sat down to feast on roast pig, fish, apples, and honeycomb. After everyone had eaten, members of the advanced class entertained with old French tales. The spirit of the Middle Ages was effectively recreated, and the students will never forget their glimpse back in time to a different culture and the customs that characterized it.



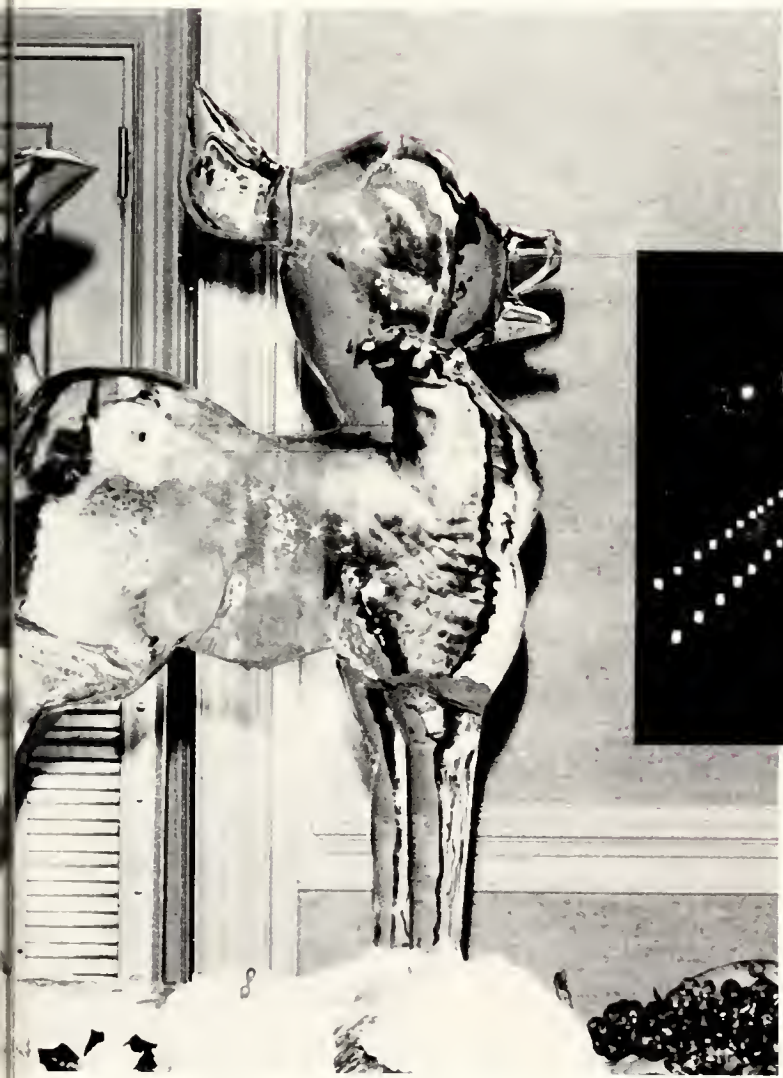
# Christmas







The Christmas season is especially exciting at Peace with caroling, hall parties, the Christmas dinner, the lighting of the luminaries, and the Christmas dance. Love shared throughout the year climaxes to make Christmastime at Peace unforgettable.



# Arts and Lectures



## The Mary Howard Clark Arts and Lecture Series 1979-80

- September 17** Film: *Lord of the Flies*
- October 22** Lecture: The New Realism in Art and Exhibition of Paintings by Annyce Alvarez (October 22 - November 2)
- November 19** Film: *Lies My Father Told Me*
- January 14** Film: *The Hellstrom Chronicles*
- February 11** Films: *Federico Garcia Lorca A Murder in Granada* (Spanish dialogue with English subtitles and narration)  
*The Inner World of Jorge Luis Borges* (English narration)
- March 17** Patricia Barnes, Pianist
- March 31** Film: *A Doll's House*
- April 14** Film: *Gervaise* (French with English subtitles)

Monday Evenings 8:00 p.m.  
Browne-McPherson Music Building, Recital Hall  
All programs open to the public without charge.



Art-of-the-month, sponsored by the Art Department at Peace, is designed to encourage artistic achievement among Peace students. The monthly contest includes selections from each division of the art department: painting,

drawing, ceramics, and mixed media. Selected works are displayed for the entire month and are admired and appreciated by students, faculty, and staff.



# Art of the Month

Every moment at Peace is special. The simple "hellos" that are spoken, the friendly smiles that are exchanged, the unique events that are shared highlight our days at Peace. Though there are bad times as well as good, the significance of them all is that we experience them together. For this reason, "we are Peace, we are one!"



# Peace





# Sports



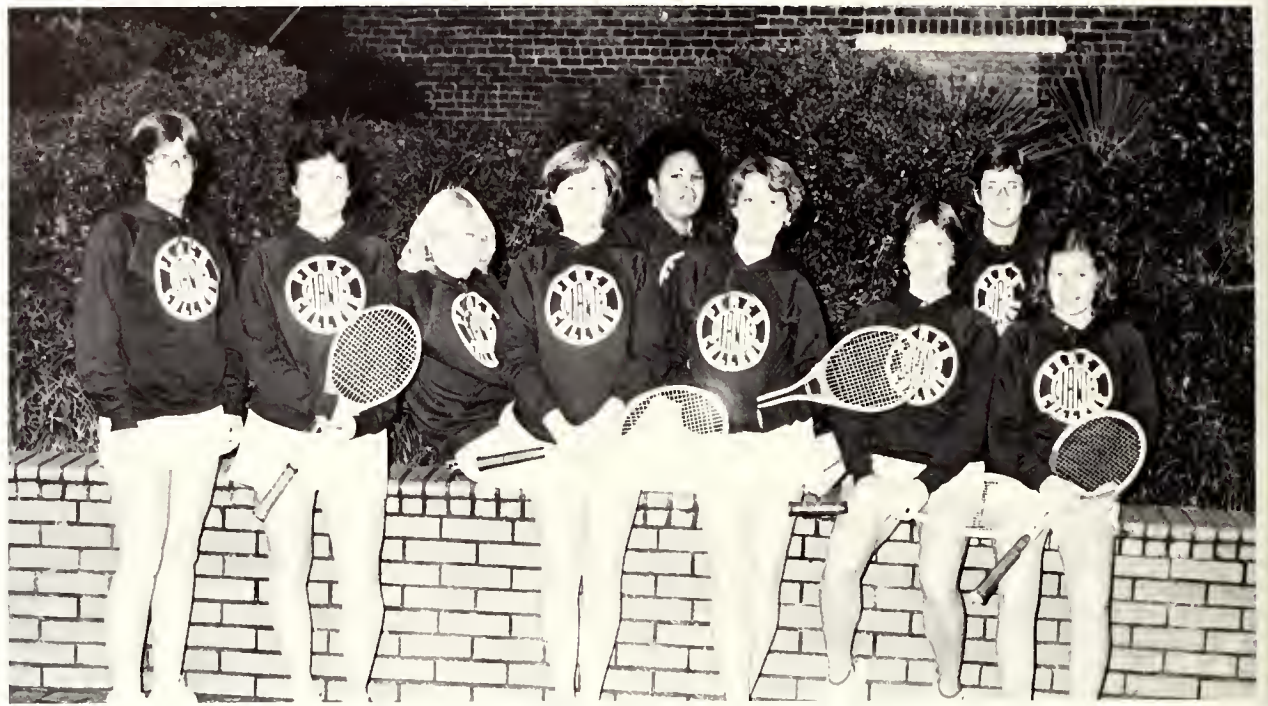
## Basketball

In mid October 1979, twelve enthusiastic young women began practicing with coach Susan Cox for the 1979-1980 basketball season. Their season began on December 1 with a victory over the junior varsity team of the University of North Carolina at Chapel Hill. Half way through their season they had also defeated Ferrum College, Lenoir Community College, Southeastern, Chowan, Brevard, and Spartanburg. They had also placed second in a Christmas tournament at Essex Community College. The 1979-1980 Peace College basketball team is composed of Susan Barrett, Lu Ann Gentry, Dorothy Hicks, Helen Jones, Laurie McNeil, Elizabeth Ramage, and Trish Taylor, all Sophomores this year. Freshmen team members include Debbie Benton, Betsy Covington, Cindy Morgon, and Liddy Swing. Co-captains for the team are Dorothy Hicks and Laurie McNeil.





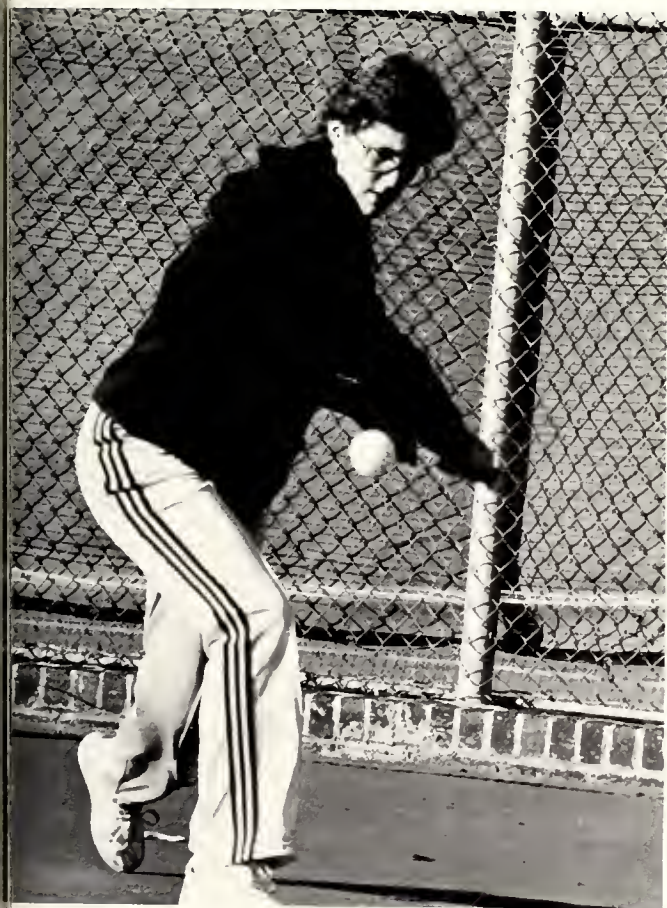
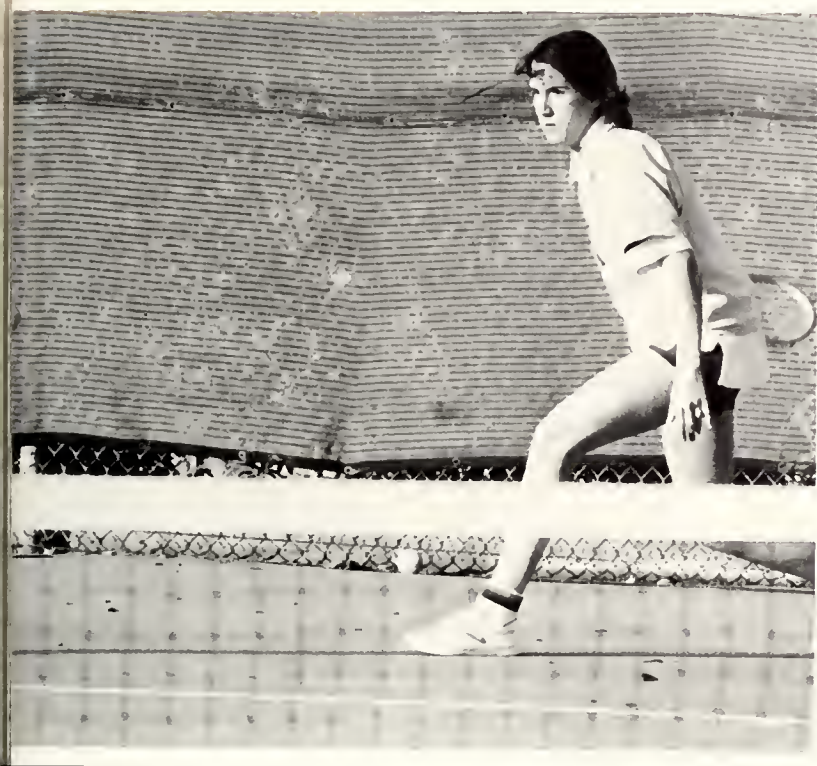




## Tennis

The outlet that sports provides is one in which all people may become involved — not just the players themselves, but also the entire student body and faculty. A cheering, rowdy crowd is often what encourages a team on to victory. A dedicated squad of tennis players is the key to that crowd's enthusiasm. In this respect, the Peace College tennis team draws everyone closer together as the entire school combines its efforts to make The Peace Green Giants a successful team of winners.

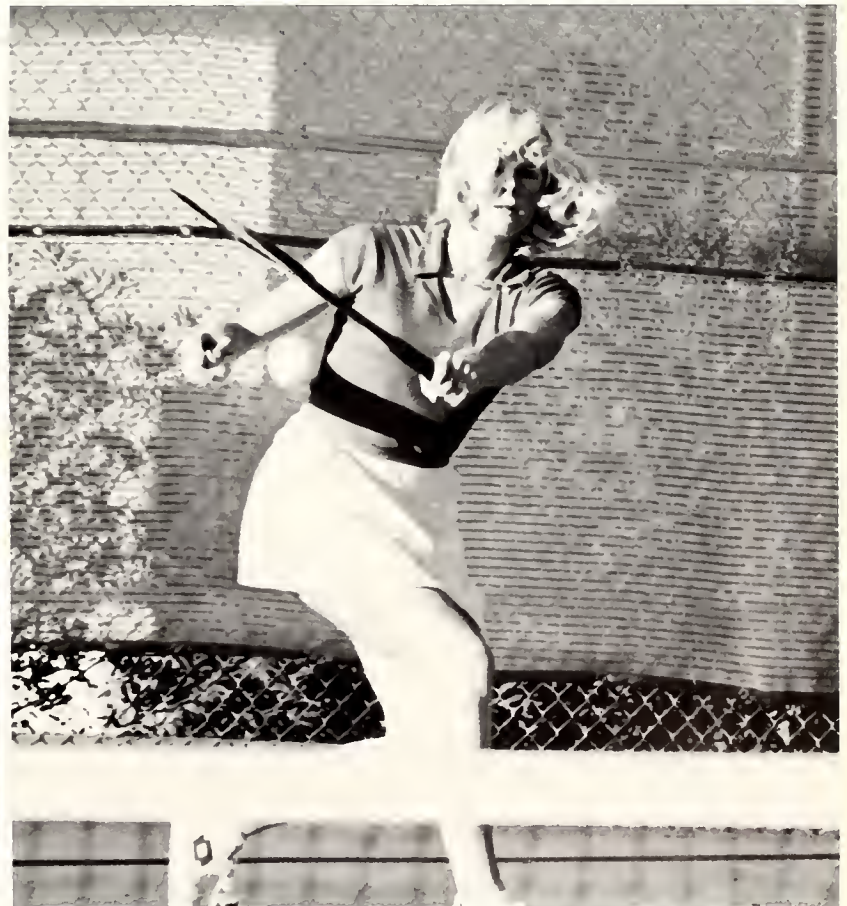






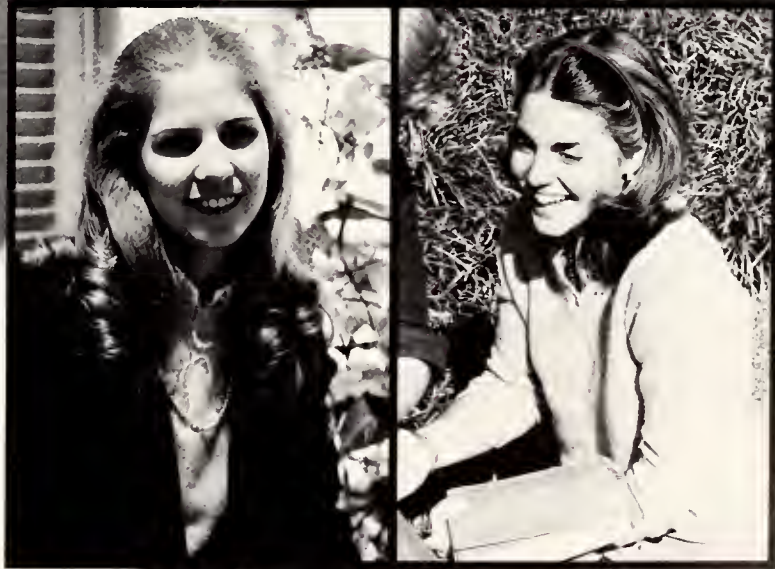
**Cheerleaders**







# Honors





*Miss Peace 1980*





Abbie Young is everything that Peace College stands for. She excels in every task she undertakes, whether it is in conducting a difficult Honor Court meeting or in simply making a new student feel welcome. Abbie seems to do the impossible, serving as Honor Court president, but even then she is able to make students less wary of what is perhaps the most frightening and forbidding association at Peace. Even in her face we see that Abbie loves life and all that it has to offer. Without a doubt, Abbie is also in love with Peace, and after two years Peace has come to love Abbie.



Cindy Sexton



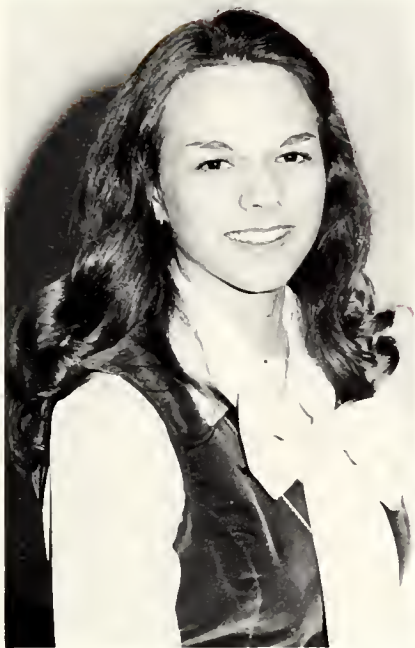
Anita Hughes



Gaye Griffin



# Outstanding



Lou Anne Cousins



Abbie Young



Lynn Davis



Laune McNeil



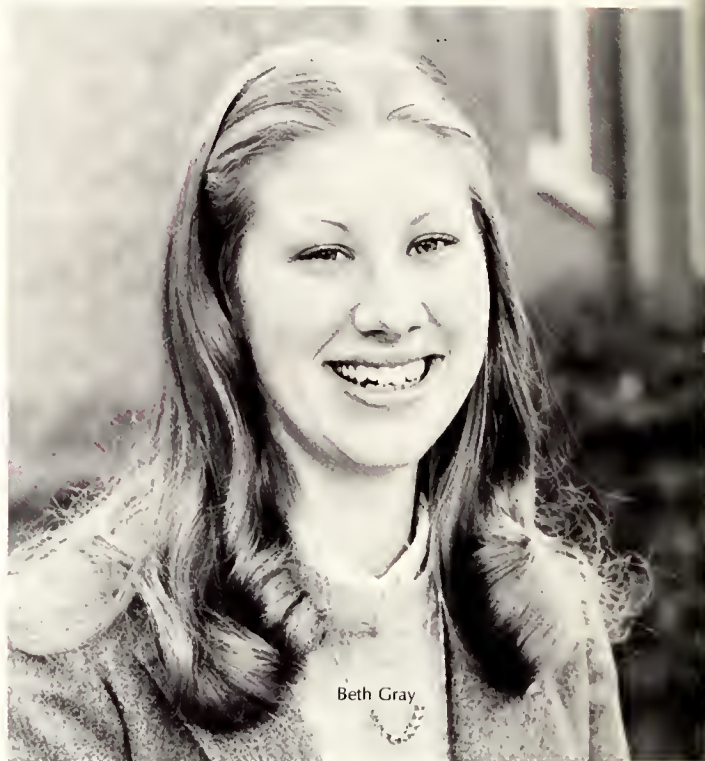
Rebecca McCormick

# Sophmores

# Who's Who



Lynn Davis



Beth Gray



Gaye Griffin



Donna Holt



Rebecca McCormick



Laune McNeil



Penny Odum



Alice Roberts



Cindy Sexton



Josie Vega

Eleven Peace College students have been selected to represent Peace in the 1980 edition of Who's Who in American Junior Colleges. They are a part of the distinguished group of students who have been chosen from fifty states, the District of Columbia, and Puerto Rico. Each of these sophomores has been recognized for her own contribution to Peace, as well as for maintaining a high academic average.





Front row L to R: Loulie Henderson, Gwyn Wallace, Clark Barringer, Susan Adcock, Laurie Price, Cindy Wooten, Alice Roberts, Jo Peeks, Donna Harris. Second row: Beth Chapman, Jane Bullock, Trisha Taylor, Laurie McNeil, Helen James, Martha Hancock, Nancy Onorato, Abbie Young, Joan Craft, Pam Berryman. Back row: Mary Margaret Herring, Lynn Davis, Josie Vega, Bettie Anne Jenkins, Cindy Sexton, Fran Hollowell, Cathy Cloukey, Sharon Smith, Patty Garland, Beth Gray, Donna Holt, Sarah Lambert, Judy Craft, Rebecca McCormick.

# Phi Theta Kappa



Officers: Cindy Sexton (Pres.), Donna Holt (V. Pres.), Clark Barringer (Sec.-Treas.).

Phi Theta Kappa is a National Honorary Fraternity whose membership is based mainly on the academic average of the young women. To be eligible for membership, a freshman must have a 3.5 average and sophomores must have a 3.3 cumulative average. But that is not all. These young women must be full-time students of good moral standing and character. The 24 continuing members and the 51 newly tapped members represent, not only the highest academic performances at Peace College, but also the basic idea that is Peace College.

Alpha Pi Epsilon is the National Junior College Secretarial Honor Society. The membership requirements consist of carrying a full-time course load and maintaining a high academic average, a 3.5 for freshman and a 3.3 cumulative for sopho-

mores. Good moral character and good citizenship as judged by the faculty are also very important. The two new members inducted this year are Ann Potter and Janice Stevens.



# Alpha Phi Epsilon



# Marshals



L to R: Standing: Donna Holt, Cindy Sexton, Laurie McNeil. Seated: Clark Barringer, Alice Roberts. Front: Beth Gray, Rebecca McCormick.

To be a marshal is a high achievement for a freshman, for the seven young women that are marshals are the seven with the highest academic averages in the freshman class. Throughout

the year these intelligent girls help at different college functions and end up their year of service by helping at the graduation ceremony.



Betsy Snipes



# May Queen and Maid of Honor



Gaye Griffin



This year's May Queen is Betsy Snipes, and her Maid of Honor is Gaye Griffin. Both of these charming young women were chosen by their fellow students on the basis of their appearance and personality. On May Day the Sophomore May Court and the Freshman May Court will honor the Queen and Maid of Honor by dancing the May Pole Dance around the May Pole.



Cameron Cutts



Lynn Davis



Stacy McCullough



Laine Neese

# *Sophomore May Court*





Emily Carlton



Sandra Day



Laurie Meats



Susan Trapp



# *Freshman May Court*







She is a former Peace student who has returned to enlighten the lives of other Peace girls. She is a photographer, a writer, an advisor, a teacher, a friend. Her patience is everlasting, and her warmth and compassion are reflected in her smile and her quick "Hello" as she hurries down the hall on another mission. As a teacher, she gently corrects our mistakes

and encourages us to achieve. She endlessly records our short biographies on her typewriter and snaps our posed smiles on film, but the flash of her camera cannot outshine the love that radiates from her heart. To express our appreciation for the time, friendship, and concern that she has bestowed on us, we dedicate the 1980 edition of the **Lotus** to Mary Jo Cashion.







Organizations



The Peace Student Government Association, the backbone of Peace, has the responsibility of upholding the high standards of Peace. The PSGA has a variety of functions: it serves to bridge the gap between faculty and students, promotes school spirit, handles

student affairs, and sponsors campus entertainment. The campus entertainment is a favorite of most of us at Peace. The spring dance, stunt night, and the faculty auction are just a few of the many activities sponsored by the PSGA.

PSGA



Lynn Davis — President of PSGA.



Front — Dorothy Hicks, Gaye Griffin, Lynn Davis, Penny Odom, Josie Vega, Miss Janice Edwards. Back — Anita Hughes, Lou Anne Cousins, Abbie Young, Vickie Holliday, Cathy Cloukey, Laurie McNeill.



Front — Michele Simmons, Martha Hancock, Cindy Wooten, Ann Dickson, McLean. Back — Lou Anne Cousins, Penny Odom, Donna Holt, Mimi Freid, Alice Roberts, Josie Vega.



## PSCA

Because Pease is a small, church-related junior college, the PSCA plays an import role in the establishment of a sense of Christian unity and sisterhood. The PSCA provides students with the opportunity for worship, both on and off-campus.

Lou Anne Cousins — President of PSCA.



Left to right — Leslie Dunn, Gaye Griffin, Miss Betty Ford, Cathy Cloukey, Sandy Warren.

## PSRA

A popular organization on campus, the Recreation Association, coordinates the intramural sports program. Students and faculty participating in intramurals compete in 25 different sports and activities, from which a campus champion is chosen. In addition, the PSRA also sponsors a concession stand at basketball games and a game room in the gym.



Gaye Griffin — President of PSRA



Abbie Young — President of Honor Court.

## HONOR COURT

Although the Honor Court is a very distinguished organization, the thought of appearing before it petrifies most of us. Honor Court members have perhaps the hardest job to fulfill. The function of the Honor Court is to enforce the honor code and pledge, and also to maintain the highest standards at Peace.



Top to bottom — Gaye Griffin, Lou Anne Cousins, Lynn Davis, Laurie McNeill, Miss Janice Edwards, Abbie Young.

## R.A.'s

During the first weeks of school, it is the resident assistants who make the adjustment to college life an easy one. They are the first to make us feel welcome and at home. Throughout the year the R.A.'s insure an open line of communication between the students and the administration. They keep us informed of all the happenings around Peace and encourage our involvement.



President of R.A.'s — Anita Hughes



Front row — Gwyn Wallace, Arlene Corbett, Anita Hughes, Janie Mackorell; Back row — Patricia Taylor, Louie Henderson, Leslie Dunn, Wendy Griffin, May Gayle Myers, Janice Edwards.





Cecelia Whitley, Sharon Smith, Sarah Lambert, Pam Pope, Melody Morgan.

## NON-RESIDENTS

Although the non-residents do not live on campus, they play a vital role at Peace. The non-residents are active in clubs and are often class leaders. The fun and close relationships which are formed among all students continue long after graduation.



# PORPOISE CLUB SWITCHBOARD OPERATORS

The Porpoise Club is composed of swimmers interested in synchronized swimming and water ballet. The swimmers learn a variety of water stunts and acrobatics. The Porpoise Club presents a spring show which incorporates numerous skills and much talent.



Bottom to Top: Susan Amos, Mary Cole, Stacy McCollough, Sylvia Wells, Sandra Day, Kelly Thompson, Sidney Gerrenger, Janie Mackorell, Cheryl Herdon, Payge Penson, Meg Potter, Sybil Smith, Elizabeth Baird, Beth Lancaster, Laurie Price, Becky Wilson, Cindy Wilder, Beth Sedberry.



Nancy Coghill, Julie Taylor, Josie Vega, Abbie Young, Martha Grubbs, Susan Hill, Bunny Whitfield, Marjorie Garner.

# HOME ECONOMICS AND FSA



Front Row: Ann Wilson, Gail Cherry, Allison Pittman, Frances Britt, Angela Brown, Donna Brown, Betty Ann Jenkins, Beth Cameron. Back Row: Kay Evens, Donna Holliday, Beth Gray, Sally Ruth Nahszer, Becky Harris, Dawn Parker, Angela Parott.

One of the oldest organizations at Peace, the Home Economics Club, meets monthly to enjoy a variety of programs. Meetings often involve visiting lecturers or discussing such topics as interior design and the latest fashions. Members occasionally participate in various activities. As members of the Home Economics Club, Peace girls enjoy the different activities while enriching their knowledge of home efficiency.



Front Row: Carol Lynn Allen, Rosa Ann Webb, Ann Potter, Catherine Oakley, Wanda Earp, Janice Stevens, Middle: Lisa Grun, Payge Penson, Lee Ann Wertis, Ann Bagwell, Third Row: Angela Brown, Penny Powell, Bess Gardner.

The Peace chapter of the Future Secretaries of America meets monthly to discuss topics of interest in the business world. Speakers at their meetings have included Governor Hunt's secretary, as well as the secretary of a Senator. Members enjoy fellowship and gain practical experience which may be used in later careers.

# PIANO ENSEMBLE AND THEATER ARTS

The Theater Arts Club promotes an interest in dramatics on campus. As students become involved in productions of the club, they gain experience in such areas as lighting, make-up, and acting. The club sponsors two major productions each year which are always enjoyed by students.

Often we do not realize the long, hard hours necessary for a performance of the Piano Ensemble. The students, as well as Mrs. Black, work tirelessly on preparation for concerts. Any student attending a concert will appreciate all the work that has been done.



Bottom: Amy Miller, Judy Craft, Nancy Ororato, Gaye Griffin, Middle: Janet Braxton, Vickey Holliday, Susan Boykin, Top: Julie Taylor, Tanner Weeks, Tara Humphries.



Robin Pulley and Karen Roberson.



Shelia Coates and Jane Morgan.



## CHOIR AND CHAMBER SINGERS

The Peace College Chamber Singers represent the college by performing at neighboring Presbyterian churches, civic functions, and college activities. The highlights of their performances this year include singing at the North Carolina Granger's convention and performing at the Governor's Mansion. The Chamber Singers also have special performances in chapel service.

Bottom: Clark Barringer, Anita Hughes, Betsy Norris, Bobbie Jo Taylor, Second Row: Sandy Vestal, Evelyn Sutton, Marjorie Garner, Third Row: Susanne Needham, Angela Thomas, Penny Odom, Fourth Row: Lisa Cashion, Sarah Vaughan.



Seated: Sandi Vestal, Angela Thomas, Penny Odom, Josie Vega. Standing: Ann Byrne, Tammi Russell, Evelyn Sutton, Betty Belle.

The Peace Choir performs Wednesdays, during the weekly chapel service. Their anthems and solos are a meaningful part of the service which we will remember for years after our graduation.

# DAUGHTERS AND GRANDDAUGHTERS



Front: Meg McPherson, Emily Carlton, Lynn Helms, Susan Maxwell, Jane Temple, Judy Smith, Stephany Phillips, Bunny Murphy, Harriett Bullock, Beth Cameron, Sarah Herring, Martha King, Sissy Grantham. Back: Kennetha Collins, Michele Mosely, Julia Hoyle, Ashlin Looney, Carol Wright, Candy Austin, Angela Horton, Anne Dixon McLean, Loulie Henderson, Beth Gray.

## FIRE MARSHALS

Representing the "Peace Tradition" is the Daughters and Granddaughters Club. Members in the club are daughters or granddaughters of women who have attended Peace. Like their mothers, they share a love for Peace, and they hope their own daughters will also attend Peace.

The Fire Marshals hold a special place in the hearts of all Peace girls. Who else would we let wake us up at 2:00 a.m.? Mentioning of the fire marshals always brings back memories of fire drills — scrambling out of the dorm at early hours of the morning with a flashlight, towel, raincoat, and a hard-soled pair of shoes, laughing at everyone else doing the same.



Bottom: Janet Braxton, Judy Craft, Sharon Floyd, Patty Garland, Joan Craft, Allison Pittman.

## ROSS HOSTESSES

Ross Hostesses serve in Ross as receptionists who answer our phone calls, take messages, and receive dates. Working as a hostess has its advantages; hostesses always know who's dating whom, and they are the first to know when a lucky girl gets flowers.

Mailroom workers courageously rise in the early morning to sort the day's eagerly awaited mail. As they work, girls check their mailbox, hoping for a letter from home or from a friend away at another school.



Left to Right: Marlys Pace, Alice Roberts, Carolyn Mason, Susan Stovall, Leslie Dunn, Bonnie Webb, Donna Holt, Gwenn Wallace.

## MAILROOM WORKERS



Genevive Etienne, Patricia Taylor, Robin Huffman.

## LIBRARY ASSISTANTS

Library assistants and office assistants are an indispensable asset to the college. Whether working in the library, the admissions office, or registrar's office, the girls provide a vital service for Peace which may sometimes go unnoticed. Without them, however, we would be much less efficient.



## OFFICE ASSISTANTS

Beth Chatman, Cindy Dole, Sherry Ferguson, Lisa Hardin, Cheryl Stallings, Donna Stovall, Jamie Bottoms, Lynn Small.



Laurie McNeil, Candy Austin, Betsy Norris, Cynthia Edwards, Sylvia Wells, Clark Barringer, Ginny Chamblee, Betty Ann Jenkins, Second Row: Angela Brown, Janet Britt, Debra Jo Peaks, Trudy Haddock, Betty Belle, Laine Neese, Cameron Cutts, Ann Bagwell, Wendy Curtis, Gaye Griffin, Vickie Holliday.



# BIBLE STUDY GROUP AND FCA



Betty Ford, Melody Brantley, Tara Humphries, Sarah Friday, Debbie Benton, Mitzie Corbin, Connie Crowder, Elizabeth Ramage, Bunny Winfield, Patricia Taylor, Carla Hadley, Garland Smith, Tamaria Gordon, Rhonda Winstead, Carol Griffin, Laurie McNeil, Cindy Morgan.



Front: Harriet Bullock, Isabel Albritton, Cara Burnette, Josie Vega, Robin Huffman, Connie Crowder, Middle: Jamie Bottoms, Alice Roberts, Cindy Wooten, Bunny Winfield, Back: Carmen Green, Ann Tunstall, Donna Holt.

The Bible Study group meets weekly on Wednesday nights with Miss Blackwell. Students are able to enjoy discussions on biblical topics, as well as current issues.

Members of the Fellowship of Christian Athletes share an interest in sports and Christian worship. Monthly meetings feature various sports figures as guest speakers. The Peace FCA visits chapters at neighboring colleges and universities.

# PEACE TIMES



Mrs. Cashion — Advisor.



Rebecca McCormick — Editor.



Front: Ann Potter, Rhonda Winstead, Cora Jones, Middle: Ann Lucas, Rebecca McCormick, Carol Wright, Standing: Angela Brown, Wendy Fisher.

Working on a newspaper staff is never easy, and no one knows this as well as the editor and the staff members. The constant search for stories, lay-out frustrations, and writing the stories may, at times, seem to be hopeless problems. But the hard work pays off, and somehow the newspaper all seems to come together.





Ashlin Looney and Cynthia Edwards — co-editors.

## PRISM

The **Prism** is the college literary magazine which is composed of selected art, photography, poetry, and fiction. The creative expressions of students give the Prism the sense of warmth and color that we all enjoy.



Josie Vega, Carmen Green, Penny Powell, Nancy Leslie, Laurie McNeil, Sitting: Laurie Price, Tara Humphries.

# LOTUS



Sitting: Cindy Wooten, Gaye Griffin, Stella McCullough, Lynn Davis, Martha King, Carla Hatley, Janet Britt, Standing: Donna Holt, Tammi Sigmon, Sheri Pedigo, Ann Lucas, Rebecca McCormick, Susan Stovall, Alice Roberts, Cathy Cloukey, Kyle Fuller, Mitzie Corbin.



Alice Roberts — Editor.



Mrs. Janet Wester — Advisor and Sponsor.



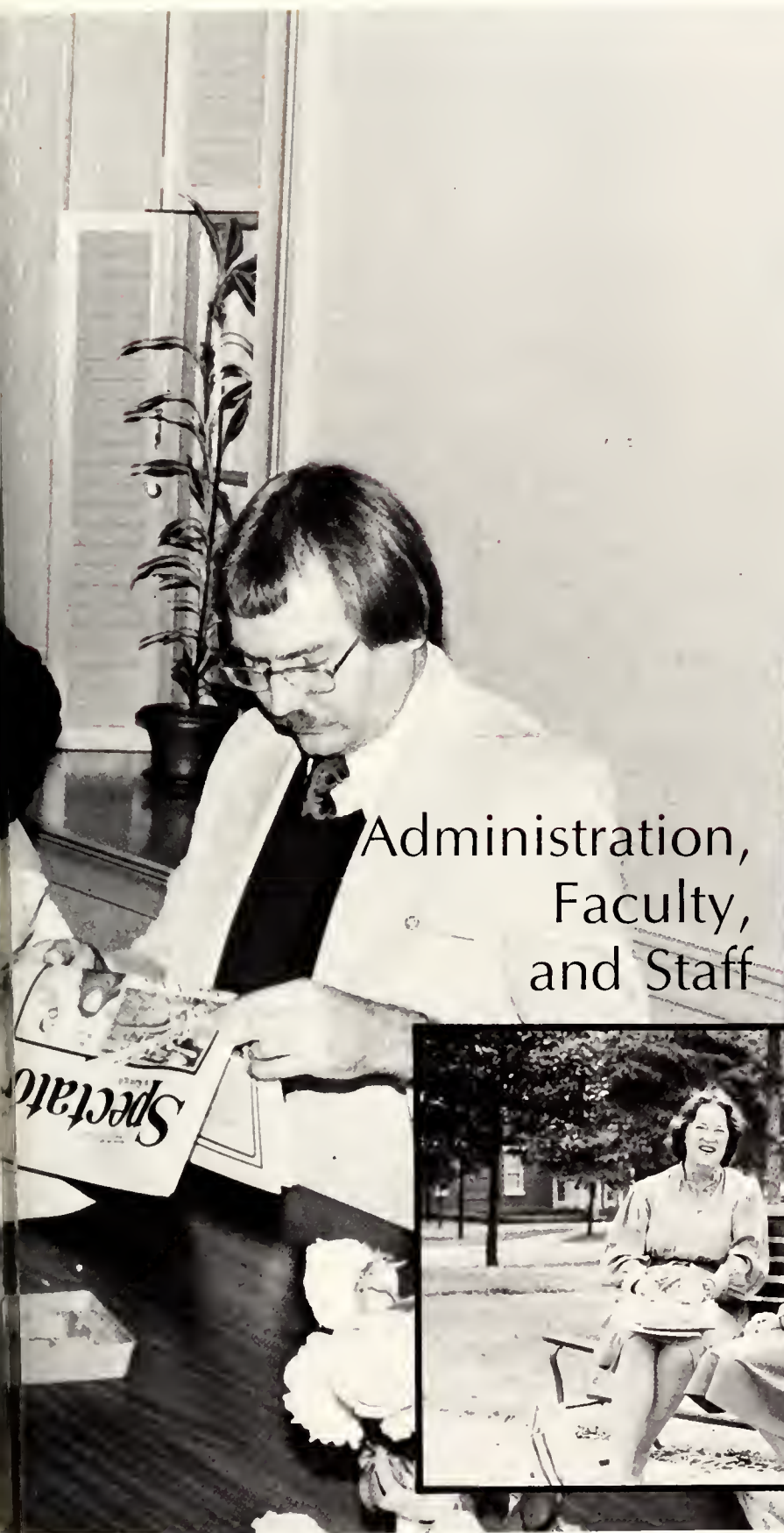
Cindy Wooten and Donna Holt — Business Managers.

The **Lotus** is our collection of memories — memories of friends, good times, and all the fun we had. Years from now, when we open the dusty cover, all the memories will come alive. We'll relive the weekly chapel services, the fire drills, the long class, the steak dinners, and the love and closeness we felt for one another.



Tami Sigmon — Sports.





Administration,  
Faculty,  
and Staff



# Administration

**Dr. Alfred Canon**  
Vice-President and  
Director Of  
Development



**Mrs. Mary Jo  
Cashion**  
News Director



**Mrs. Catherine  
Cutts**  
Director of  
Admissions



**Miss Janice  
Edwards**  
Dean of Students



**Mrs. Polly Flowe**  
Director of  
Alumnae Affairs





Dr. David Frazier  
President



Mrs. Jane Kanipe  
Registrar



Mr. Eugene Lilley  
Business Manager



Dr. James Perry  
Academic Dean





Mrs. Nancy  
Adamczyk  
PE



Mrs. Margaret  
Black  
Music



Miss Trudie  
Blackwell  
Biology



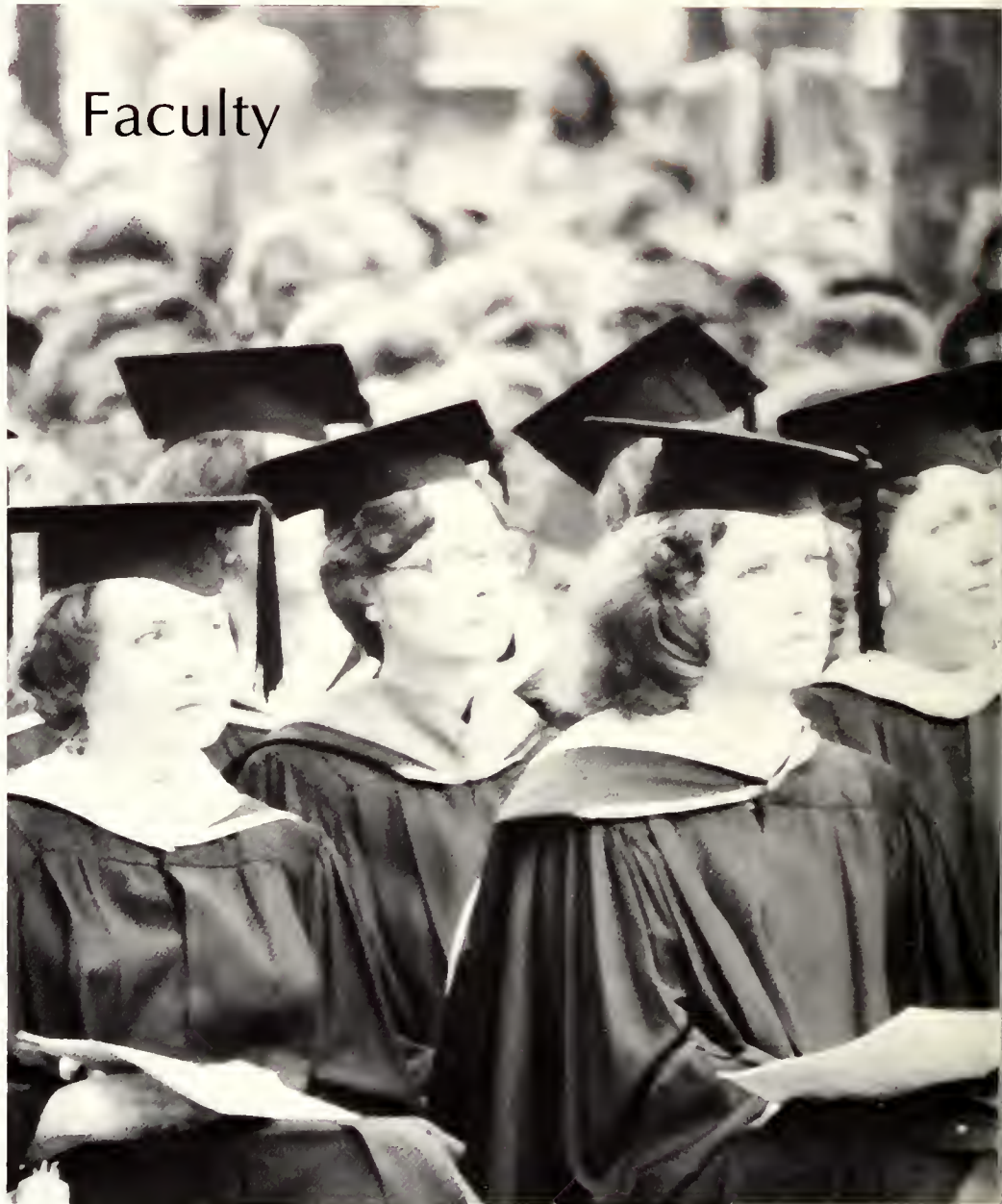
Mrs. Sally  
Buckner  
English



Mr. Ben  
Cochran  
Sociology



# Faculty





Miss Susan  
Cox  
PE



Mrs. Kaye  
Crook  
Mathematics



Mr. John  
Crossno  
History



Dr. Emilie  
DeLuca  
French



Mrs. Linda  
Fitz-simons  
Art

Miss Betty  
Ford  
PE



Dr. Anne  
Fountain  
Spanish



Dr. Margaret  
Giesbrecht  
Psychology



Mrs. Kathy  
Goolsby  
Biology



Mrs. Carol  
Hiscoe  
English



Mrs. Doris  
Kincade  
Home Economics



Ms. Pamela  
Lehnert  
Art



Dr. Terrence  
McGovern  
Drama

Mrs. Ann Reynolds  
English

Mr. Archie Ritchie  
Mathematics

Dr. Mary Schwertman  
English

Mr. James Smith  
Music

Dr. Robert Sturdivant  
Religion



Dr. Wayne  
Tyner  
History



Miss Virginia  
Vance  
Music



Mrs. Janet  
Wester  
English



Mr. Colon  
Willoughby  
Economics



Mrs. Julia  
Williams  
Business



# Student Services



Mrs. M.M.  
Burgwyn



Miss Eva  
Butler



Mrs. Barbara  
Hawkins



Mr. Paul  
King



Mr. Thomas  
Martin



Mrs. Jimmie  
Walters

Staff

Mrs. Sue  
Bailey



Mrs. Kim  
Barbour



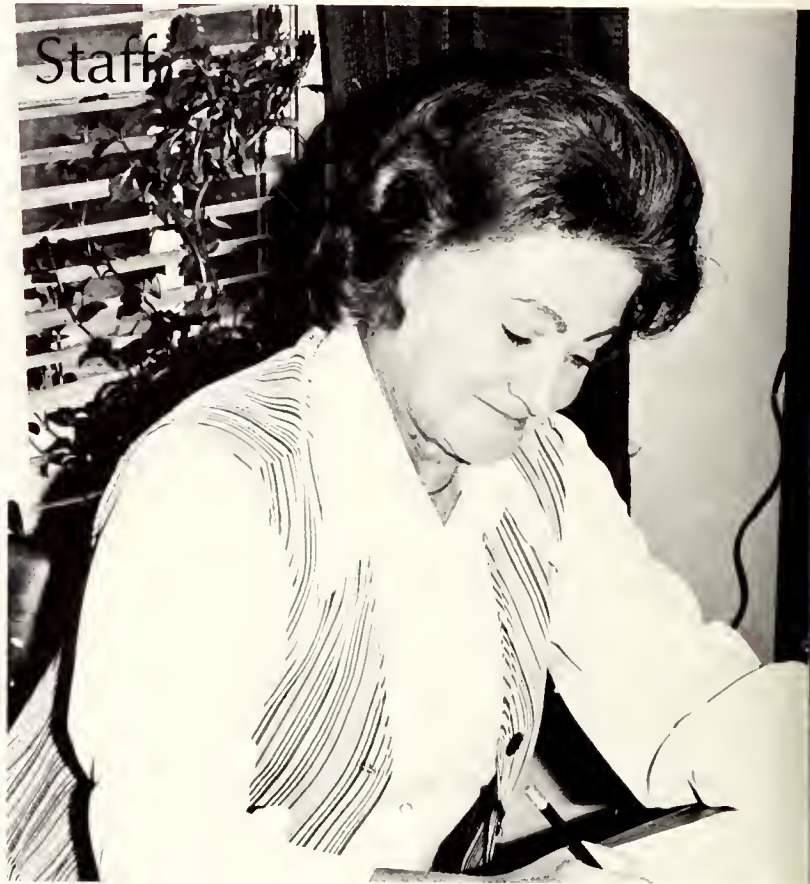
Mrs. Verne  
Futrell



Mrs. Carol  
Johnson



Mr. Paul  
Johnson







Mrs. Rachel Manning



Mrs. Doris Moser



Mrs. Gail Stephens



Mrs. Sandra Thach



Mrs. B.G. Wooley







Students

The Sophomore Year: This year marks the beginning of an end at Peace, but it is also a year to remember. This is the time for final memories to be formed and the time to cherish every new moment and experience that can be had. For now, all arrive at a crossroads, with each girl taking a different path, but never forgetting that tiny place she once called "home." Sophomore class officers are as follows: Stacy McCullough, President; Betsy Snipes, Vice-President; Connie Crowder, Secretary.



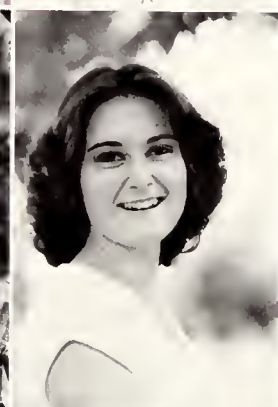
## SOPHOMORES 1980

Julia Adams  
Mary Adams  
Susan Adcock  
Deborah Akin

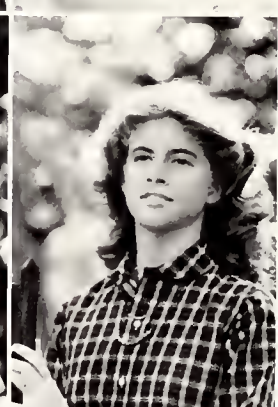




Wendy Albrecht  
Lyn Alford  
Meg Anderson  
Valerie Arnold



Angela Ash  
Marilyn Ashford  
Candace Austin  
Denise Ayers



Elizabeth Baird  
Frances Ballard  
Donna Barbour  
Karen Barnes



Susan Barrett  
Clark Barringer  
Cynthia Bass  
Leanne Bass

Diane Bazemore  
 Betty Bell  
 Ruth Bennett  
 Pam Berryman



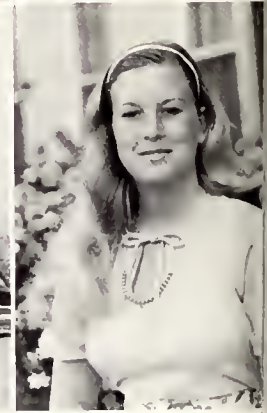
Kathy Biddy  
 Melanie Brantley  
 Janet Braxton  
 Jeannine Braxton



Lisa Brewington  
 Cindy Bower  
 Donna Brown  
 Jane Bullock



Rhonda Bullock  
 Lisa Bunting  
 Cara Burnette  
 Ashley Burton





Tammy Byrd  
Pam Casteen  
Beth Chapman  
Chris Clark



Cathy Cloukey  
Nancy Coghill  
Mary Cole  
Kennetha Collins



Donna Congleton  
Anne Constantine  
Arlene Corbett  
Mitzie Corbin



Susan Costilow  
Lou Anne Cousins  
Joan Craft  
Judy Craft

Connie Crowder  
Cameron Cutts  
Cynthia Connell  
Cindy Dale



Lynn Davis  
Eloise Dean  
Jeanne Dinger  
Mary Doyle



Wanda Driver  
Leslie Dunn  
Cynthia Edwards  
Janice Edwards



Lydia Edwards  
Leigh Elliott  
Martha Anne Emory  
Mary Lou Ester



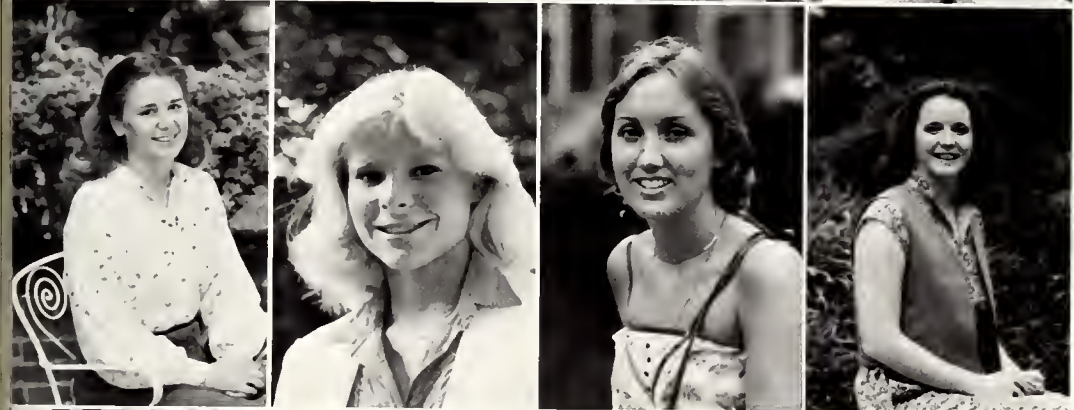




Genevieve Etienne  
 Anne Ferebee  
 Wendy Fischer  
 Sharon Floyd



Mimi Freid  
 Bess Gardner  
 Patty Garland  
 LuAnn Gentry



Sidney Gerring  
 Kristin Getz  
 Melony Girton  
 Jennifer Goodwin



Cindy Gower

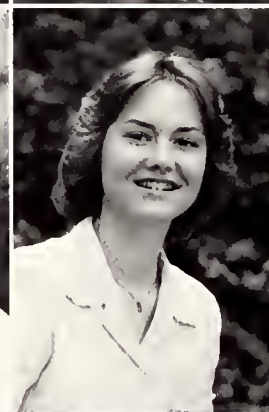
Beth Gray  
Carmen Green  
Delma Alexia Greene  
Glenda Greenleese



Gaye Griffin  
Wendy Griffin  
Trudy Haddock  
Jan Haga



Kim Hamerick  
Martha Hancock  
Donna Harris  
Susan Hasty



Dana Hawkins  
Loulie Henderson  
Mary Margaret Herring  
Dorothy Hicks





Gina Hicks  
 Julie Hill  
 Maria Hoffman  
 Jane Holcomb



Vickie Holliday  
 Ann Blair Holloman  
 Fran Hollowell  
 Donna Holt

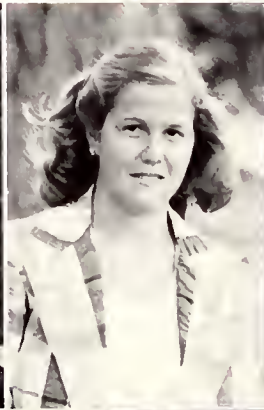


Mary Horan  
 Angela Horton  
 Julia Hoyle  
 Robin Huffman



Anita Hughes  
 Lynn Hunnings  
 Carolyn Ingram  
 Nancy Ivey

Amy Jackson  
Debbie Jacobs  
Sheri Jacobs  
Bettie Anne Jenkins



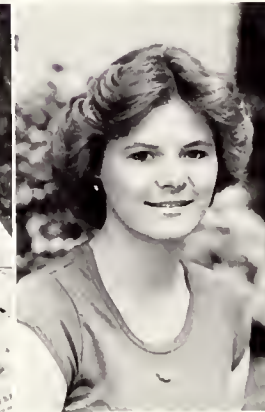
Ann Jernigan  
Helen Jones



Wendy Jones  
Judy Jordan



Teresa Keel  
Carolyn Kelly  
Anne Kent  
Sarah Lambert

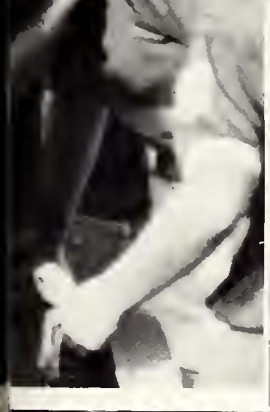




Patricia Langley  
Missy Lee  
Nancy Leslie  
Lisa Lewis



Ashlin Looney  
Janie Mackorell



Gwyn Mansfield  
Carolyn Mason  
Judith Matthis



Rebecca McCormick  
Lisa McCullough  
Stacy McCullough  
Shelia McDevett

Anne Dicken McLean  
 Karen McNeill  
 Laurie McNeill  
 Karen McPherson



Lauren Minier  
 Jenny Mitchell  
 Donna Mobley  
 Sandy Moore

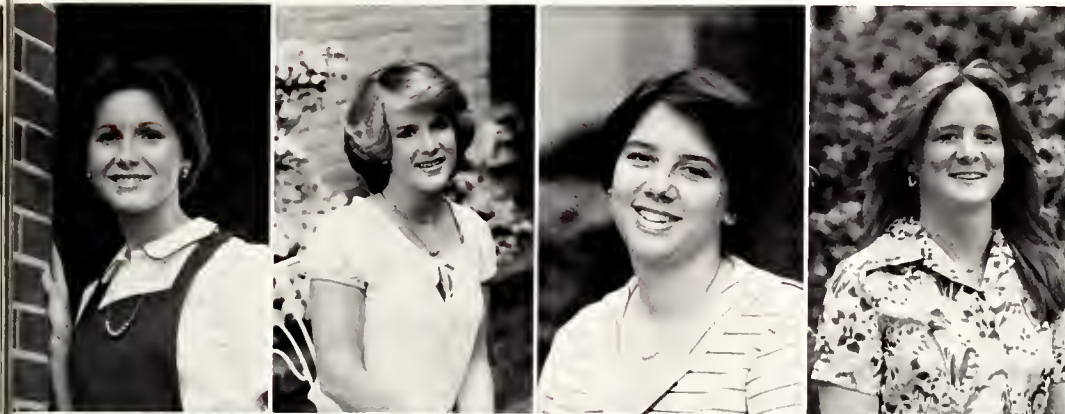


Dorothy Morgan  
 Melody Morgan  
 Cindy Morris  
 Michele Mosely

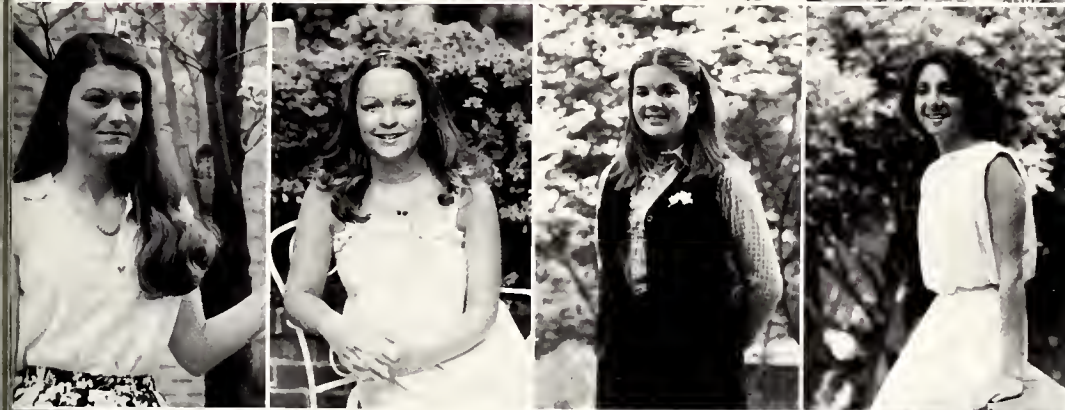


Elise Moskow  
 May Gayle Myers  
 Laine Neese  
 Julia Newton





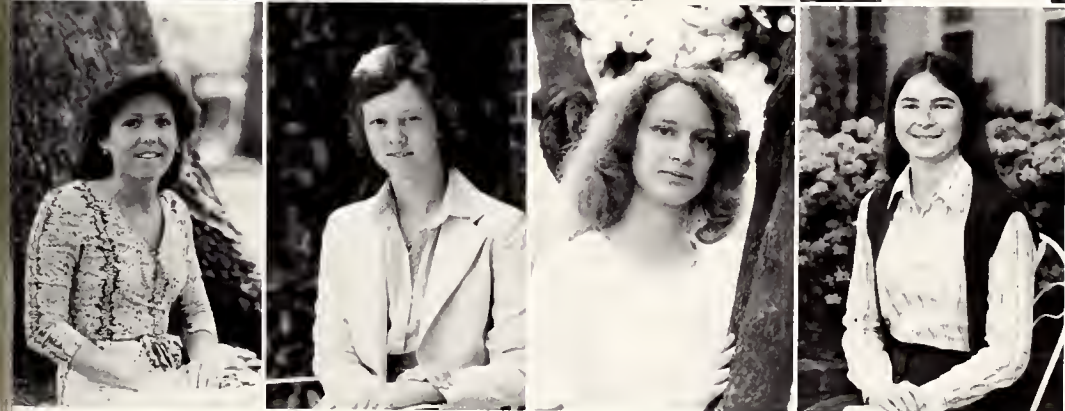
Cindi Nielsen  
Betsy Norris  
Penny Odom  
Nancy Onorato



Lou Ormond  
Wendy Overton  
Patricia Owen  
Cynthia Padgett



Debra Jo Peeks  
Nan Pearson  
Annette Pendleton  
Robin Pleasant



Nancy Poole  
Pam Pope  
Ann Potter  
Linda Powell

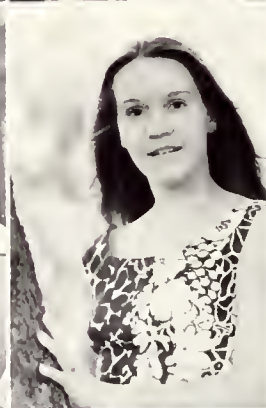
Penny Powell  
 Laurie Price  
 Suzie Price  
 Pam Proctor



Elizabeth Ramage  
 Jane Reynolds  
 Robin Ring  
 Alice Roberts



Sandie Salmons  
 Ann Saraceno  
 Jan Saraceno  
 Sandy Scaff



Kim Seale  
 Cindy Sexton  
 Sandy Shelley  
 Anne Shepard







Tami Sigmon  
Karen Sinclair  
Michele Simmons  
Keli Smith



Sharon E. Smith  
Sharron O. Smith  
Molly Snead  
Betsy Snipes



Leigh Spell  
Cheryl Stallings  
Kim Steed  
Mary Stephenson



Janice Stevens

Susan Stovall  
Tracey Sumner  
Evelyn Sutton  
Bobbie Jo Taylor



Patricia Taylor  
Pam Thompson  
Cathy Thorne  
Elizabeth Tolson



Wrenn Trotman  
LuAnne Tsumas  
Anne Tunstall  
Cindy Van Surdam



Josie Vega  
Sanky Warren  
Gwyn Wallace





Bonnie Webb  
 Rose Ann Webb  
 Sylvia Wells  
 Liane Wertis



Elaine White  
 Cecelia Whitley  
 Cindy Wilder  
 Sally Wilson

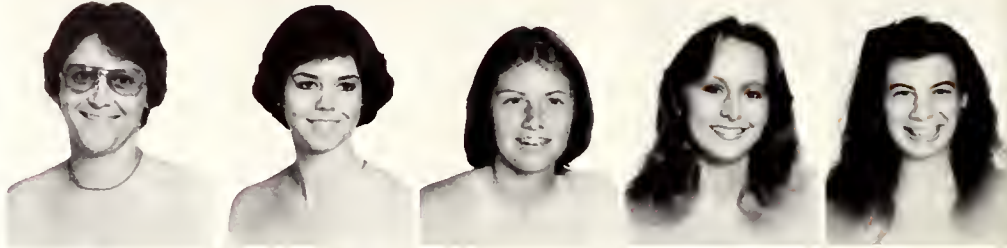


Sharon Wilson  
 Bunny Winfield  
 Charlotte Wolfe  
 Cindy Wooten



Carol Wright  
 Abbie Young  
 Lynda Young

Isabel Albritton  
 Carol Lynn Allen  
 Tammy Allen  
 Susan Amos  
 Dianne Anderson



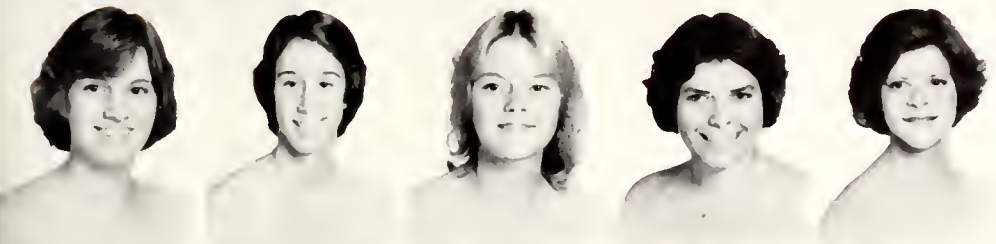
Anne Bagwell  
 Betsy Mac Ballou  
 Ann Barnes  
 Janis Baron  
 Jennifer Beasley



The Freshman Year: It seems as if a new world has opened up to those girls who are freshmen. They come to Peace naive and perhaps even a tiny bit frightened, unsure of what life has in store for them. But soon the year seems to simply fly by; the fear fades, and replacing it is the warm

glow of friendship and love that each girl feels for the place she now calls "home."

Freshman class officers are as follows: Ann Byrne, President; Megg Potter, Vice-President; Rhonda Winstead, Secretary.



Terri Benfield  
Debbie Benton  
Gwen Biggs  
Brenda Blackley  
Guyanne Boger



Beverly Bond  
Jamie Bottoms  
Donna Bowen  
Susan Boykin  
Jane Bramble



---

Gina Braswell  
Janet Britt  
Angela Brown  
Olivia Bryant  
Donna Bullard



Harriett Bullock  
Beverly Bunting  
Mary Bunton  
Nancy Burnette  
Katherine Byerly



Ann Byrne  
Gail Byrum  
Beth Cameron  
Anne Campbell  
Katherine Carlisle



Emily Carlton  
Lisa Cashion  
Ginny Chamblee  
Renee Chappell  
Gail Cherry

Betsy Clark  
 Page Clark  
 Shelia Coates  
 Betsy Covington  
 Karen Crowell



Wanda Crump  
 Cindy Cunningham  
 Cynthia Currin  
 Wendy Curtis  
 Susan Darnell



Sandra Day  
 Cathy Doyle  
 Robbie Dunbar  
 Ann Dunlap  
 Beth Early



Wanda Earp  
 Emily Easley  
 Belynda English  
 Kay Evans  
 Pam Evans

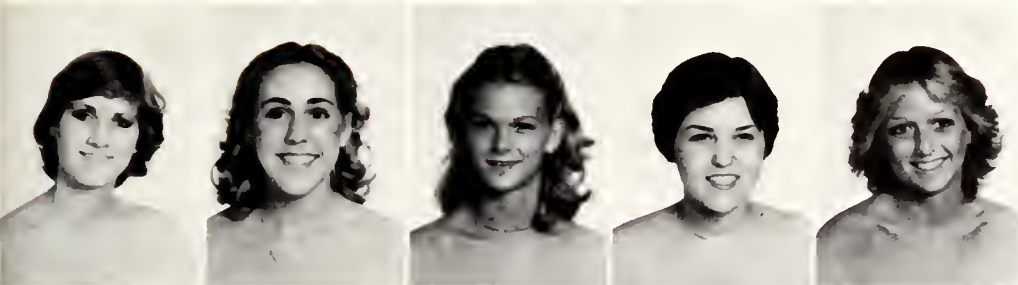


Sarah Farrior  
 Margaret Flythe  
 Beth Foushee  
 Wanda Freeman  
 Lisa Freytag



Sarah Friday  
 Kyle Fuller  
 Marjorie Garner  
 Ivy Garris  
 Ferreby Gay

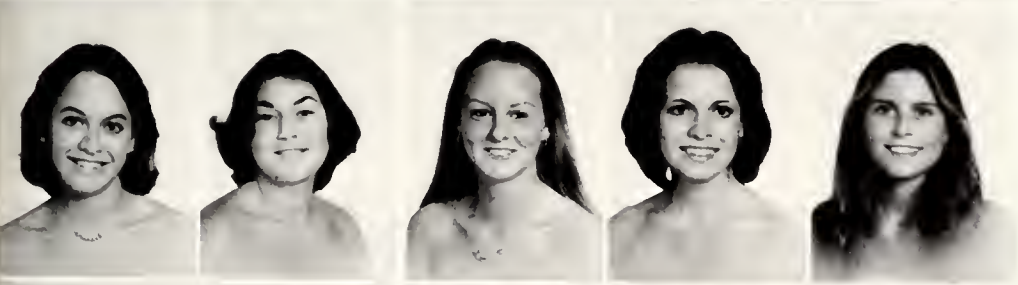




Kathy Gill  
 Tamara Gordon  
 Claudia Grant  
 Sissy Grantham  
 Jackie Gray



Lisa Greene  
 Paula Greer  
 Carol Griffin



Cindy Griffin  
 Martha Grubbs  
 Cindy Gunter  
 Mary Lynn Haddock  
 Kristan Hamer



Kelli Hamrick  
 Lisa Hanford  
 Lisa Hardin  
 Becky Harris  
 Jennifer Hartzog

Michelle Hatfield  
 Carla Hatley  
 Kathryn Hayes  
 Donna Heath  
 Sheree Hedrick



Lynn Helms  
 Cheryl Herndon  
 Sarah Herring  
 Cathy High  
 Susan Hill



Tracey Hocutt  
 Marian Hodges  
 Donna Holliday  
 Laura Hughes  
 Nancy Hughes



Tara Humphries  
 Melanie Hunt  
 Pam Ingle  
 Lisa Jezioranski  
 Elizabeth Johnson



Beth Jones  
 Cora Jones  
 Laura Jones  
 Donna Keel  
 Kim Kennedy



Karrie King  
 Martha King  
 Tammie King  
 Joe Ann Knuckley  
 Celia Kramer







Beth Lancaster  
Joy Lassiter  
Cora Lee  
Suzanne Lee  
Susan Loft



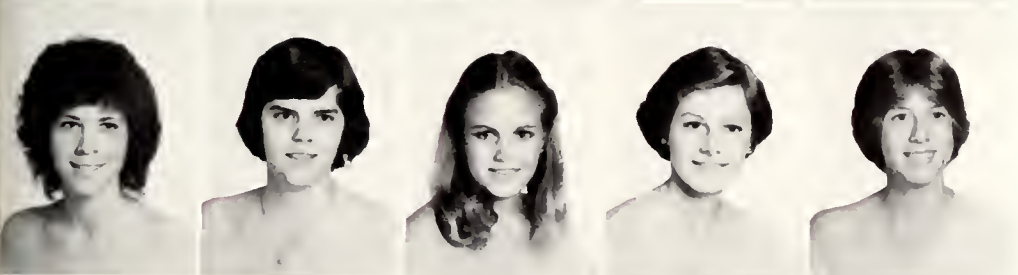
Kay Long  
Ann Lucas  
Lori Lucas  
Lisa Martin  
Paulette Martin



Grace Martin  
Susan Maxwell  
Ashley McAuley  
Agnes McCoy  
Stella McCullough



Caley McDonagh  
Cindy McGinnis  
Mary McPherson  
Laurie Mears  
Amy Miller



Renee Milton  
Susan Mitchell  
Lisa Monds  
Sherri Moore  
Cindy Morgan

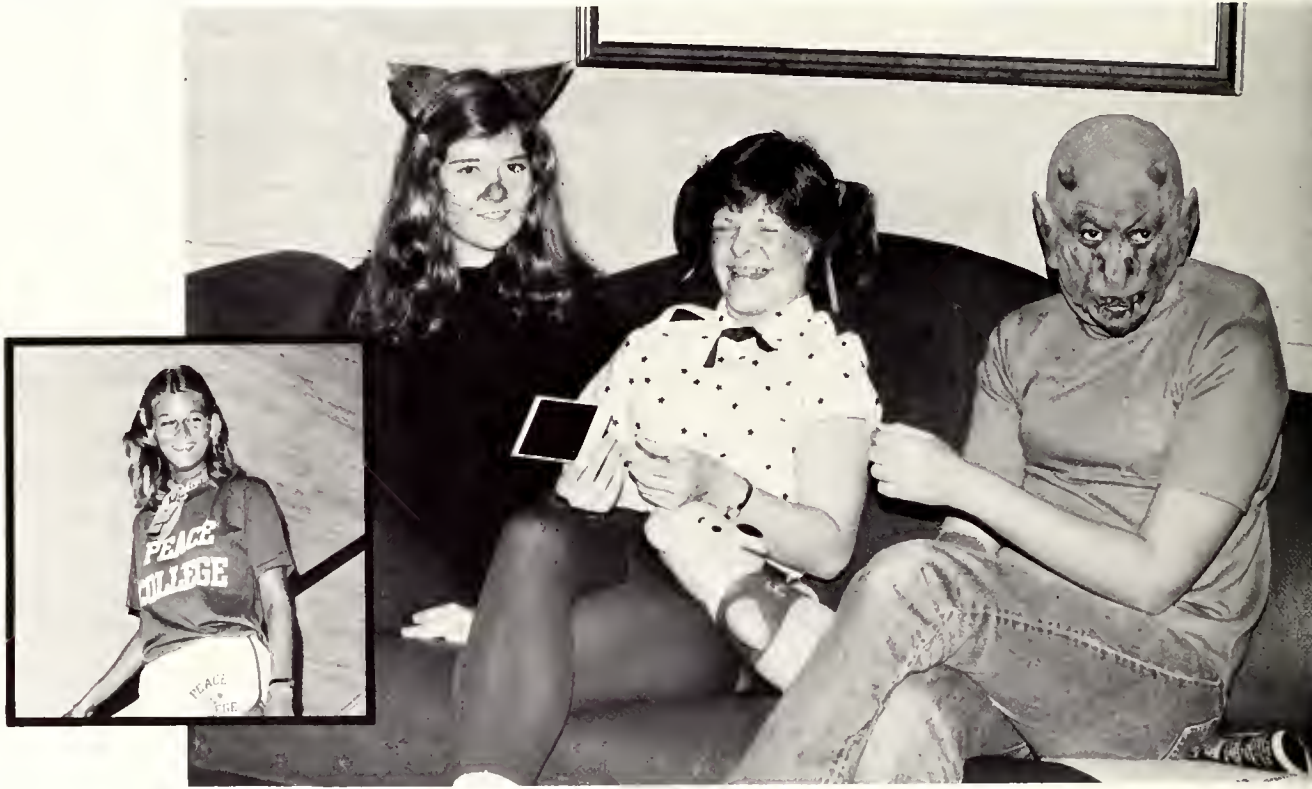


Jane Morgan  
Terri Morgan  
Beverly Morris  
Cindy Munsey  
Elizabeth Murphy

Leslie Muprhy  
 Teresa Murphy  
 Janet Murray  
 Sally Ruth Nahser  
 Suzanne Needham



Katherine Oakley  
 Cere Overby  
 Marlys Pace  
 Suzanne Pair  
 Stephanie Paradeses



Cathy Parker  
 Dawn Parker  
 Carrie Parks  
 Angela Parrott  
 Gaye Pearson





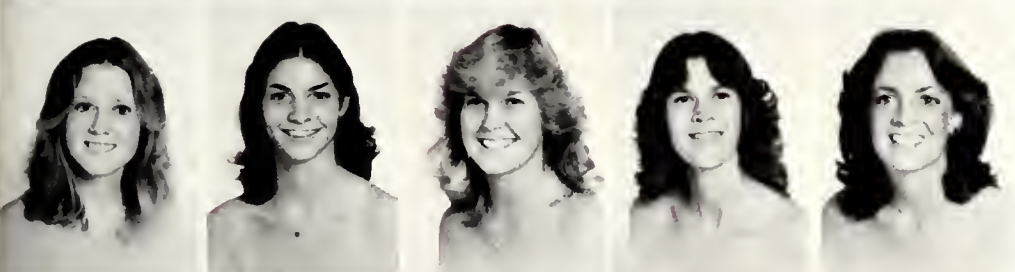
Sheri Pedigo  
Melinda Penny  
Melia Perry  
Stephanie Phillips  
Payge Pinson



Allison Pittman  
Cindy Pleasants  
Lisa Poplin  
Anne Porter  
Megg Potter



Lee Ann Price  
Robin Pulley  
Laura Rahn  
Kelly Raker  
Debbie Rawls



Kathy Richardson  
Karen Roberson  
Laurie Rogers  
Sherry Rogers  
Ruth Ann Rusher



Tammy Russell  
Debbie Sams  
Carolyn Sasser  
Becky Schultz  
Velvet Sealey



Carol Seche  
Beth Sedberry  
Lu Ann Seley  
Edie Shell  
Felicia Simmons

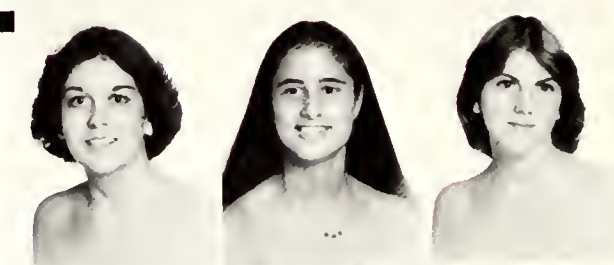
Norbeth Sloan  
Lynne Small  
Susan Small



Beth Smallwood  
Garland Smith  
Judy Smith



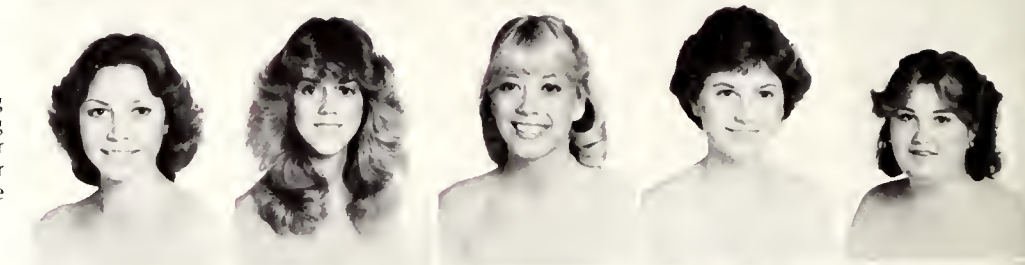
Lisa Smith  
Phyllis Smith  
Sybil Smith



Terri Smith  
Kim Stanley  
Lee Ann Story  
Donna Stovall  
Linda Stowitts

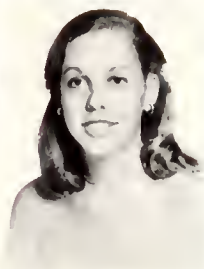


Georgia Sugg  
Liddy Swing  
Julie Taylor  
Olivia Taylor  
Jane Temple



Melody Tetterton  
Debbie Thompson  
Kelly Thompson  
Renay Thornton  
Susan Trapp





Liz Treacy



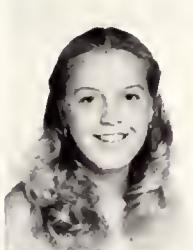
Ann Umstead



Shelia Valentine  
Sarah Vaughn



Shelby Vaughan  
Sandi Vestal  
Elizabeth Wall  
Vickie Lynn Walters  
Stephanie Watkins



Anna Dell Watts  
Tanner Weeks  
Mary Anna Whitehurst  
Lisa Wilhelm  
Valerie Wilkes



Ann Wilson  
Becky Wilson  
Rhonda Winstead  
Donna Woodlief  
Susan Yenney

# Sophomores

- Adams, Julie Erith Route 1, Box 99A Willow Springs, NC 27592  
Adams, Mary Louise 310 Downing St. Kings Mountain, NC 28086  
Adcock, Susan Edwards 309 Pine Street Fuquay-Varina, NC 27526  
Akin, Deborah Lynne 89 Barnes Street Greenville, NC 27834  
Albrecht, Wendy Sue 6700 Colony Ct. Raleigh, NC 27612  
Alford, Mary Lynette 2236 Rumson Road Raleigh, NC 27610  
Anderson, Maggie Grimes Route 1, Box 343 Whitakers, NC 27891  
Arnold, Valerie Lee 932 Parkview St. Asheboro, NC 27203  
Ash, Angela Kay 1313 Marshall St. Roanoke Rapids, NC 27870  
Ashford, Marilyn Katherine 307 Cherry Street Scotland Neck, NC 27874  
Austin, Candace Jeanne P.O. Box 255 Clayton, NC 27520  
Ayers, Mildred Denise Route 1, Box 116 Bennettsville, SC 29512  
Baird, Elizabeth Hodges 3133 Julian Drive Raleigh, NC 27604  
Ballard, Frances Caroline 118 Pine Cone Road Wilmington, NC 28403  
Barbour, Donna Lynn Route 3, Box 571 Smithfield, NC 27577  
Barnes, Karen Anne P.O. Box 1285 Lumberton, NC 28358  
Barrett, Susan Lee P.O. Box 95 Jackson, NC 27845  
Barringer, Ruth Clark Box 382 Carthage, NC 28327  
Bass, Cynthia Singletary 2209 Stephens Road Raleigh, NC 27606  
Bass, Vicki LeAnne 170 Bronwyn St. Southern Pines, NC 28387  
Bazemore, Diane White 701 Lakeview Drive Ahsokie, NC 27910  
Bell, Betty Jayne 107 N. Griffin St. Elizabeth City, NC 27909  
Bennett, Ruth Conyers 1205 Peachtree Rd. Wilson, NC 27893  
Berryman, Pamela Louise Route 1, Box 309 Hobbsville, NC 27946  
Biddy, Kathryn Anne 119 Montclair Cir. Durham, NC 27713  
Bowen, Elizabeth Anne 2349 Francine Rd. Richmond, Va 23235  
Brantley, Melanie Kay P.O. Box 88 Spring Hope, NC 27822  
Braxton, Janet Faye Route 2, Box 8J1 Pittsboro, NC 27312  
Braxton, Jeannine 212 Singleton Street Raleigh, NC 27606  
Brewington, Lisa Ann Route 1, Box 59-D Clinton, NC 28328  
Brower, Cynthia Leigh 312 Ralph Drive High Point, NC 27263  
Brown, Donna 203 Cedar Lane Williamston, NC 27892  
Bullock, Jane Sealy 3860 Kale Drive Lumberton, NC 28358  
Bullock, Rhonda Lynn Route 2 Lillington, NC 27546  
Burnette, Cara Harden P.O. Box 145 Fountain, NC 27829  
Burton, Ashley Dianne 1515-3 Village Wilmington, NC 28401  
Byrd, Tammy 354 Anita Drive Winston-Salem, NC 27104  
Casteen, Pamela Jean Route 6, Box 74-B Goldsboro, NC 27530  
Chapman, Elizabeth McLaurin 39 Forest Hills Circle Rutherfordton, NC 28139  
Clark, Christina Boyd 130 Salem Cr., A-3 Raleigh, NC 27609  
Cloukey, Catherine Louise 336 Marion Street Mt. Airy, NC 27030  
Coghill, Nancy Fuller 1612 Crescent Drive Henderson, NC 27536  
Cole, Mary Young 1625 Bane Avenue Henderson, NC 27536  
Collins, Kennetha Ann 1509 Chester Road Raleigh, NC 27536  
Congleton, Donna Elaine 4400 Drexel Drive Raleigh, NC 27609  
Connell, Cynthia Ellen 533 College Drive Raeford, NC 28376  
Constantine, Anne Thomas 4512 Tenella Road New Bern, NC 28660  
Corbett, Vicki Arlene 504 Holland Road Fuquay-Varina, NC 27526  
Corbin, Mitzie Renea 104 Brentwood Drive Wilson, NC 27893  
Cousins, Lou Anne Route 3, Box 144 Knightdale, NC 27545  
Craft, Joan Melody 4409 Drexel Drive Raleigh, NC 27609  
Craft, Judy Marilyn 4409 Drexel Drive Raleigh, NC 27609  
Crowder, Patricia Constance 627 N. Mecklenburg Ave. South Hill, VA 23970  
Cutts, Cameron Route 3, Box 134 Oxford, NC 27565  
Dale, Cindy L. Route 6, 10314 S. Ford Rd. Charlotte, NC 28208  
Davis, Angelia Lynne 2616 Pnelake Drive Greenshoro, NC 27410  
Davis, Laura Lynn P.O. Box 248 Bladenboro, NC 28320  
Dean, Eloise Bain 2309 Parham Drive Wilmington, NC 28403  
Dinger, Jeanne Elizabeth 2308 Colgate Drive Fayetteville, NC 28304  
Driver, Wanda Leigh Route 4, Box 11 Zebulon, NC 27597  
Dunn, Leslie Warlick 3521 Spicebush Trail Greensboro, NC 27410  
Edwards, Cynthia Kaye 1618 Lynne Avenue Henderson, NC 27536  
Edwards, Janice Lynn Route 2, Box 254 Creedmoor, NC 27522  
Edwards, Lydia Arden 430 Sherwood Forest Rd. Winston-Salem, NC 27104  
Elliott, Mary Leigh 308 Rustic Ridge Cary, NC 27511  
Emory, Martha Anne 1208 Dublin Road Raleigh, NC 27607  
Ester, Mary Louise 3019 Forestdale Drive Burlington, NC 27215  
Etienne, Genevieve J. 1377 Rue Carlstroem P.O. Box W128A P-AU-P Haiti, W.I.  
Ferebee, Anne Goodwin P.O. Box 14 Camden, NC  
Fischer, Wendy Jeanne 1605 Cone Ave. Apex, NC 27502  
Floyd, Sharon Faye Route 4, Box 254 Fairmont, NC 28340  
Freid, Miriam Eva 16 Stuart Circle Weldon, NC 27890  
Gardner, Elizabeth Badham 116 West Church Street Edenton, NC 27932  
Garland, Patricia Diane 807 Rockspring Rd. Fayetteville, NC 28304  
Gentry, Lu Ann Route 10, Box 46 Winston-Salem, NC 27107  
Gerringer, Sidney Leigh 2009 Pembroke Road Greensboro, NC 27408  
Getz, Kristin Anne 300 Robmont Charlotte, NC 28211  
Girton, Melony Sue 11601 Durant Road Raleigh, NC 27614  
Goodwin, Jennifer Lynne 362 8th Street, N.W. Hickory, NC 28601  
Gower, Cynthia Lynn 11109 Crestmont Drive Raleigh, NC 27612  
Gray, Elizabeth Williamson Route 3, Box 341-1 Mooreville, NC 28115  
Greene, Carmen Lee 513 Lancaster Drive Fayetteville, NC 28303  
Greene, Delma Alexia Box 550 Spring Hope, NC 27882  
Greenleese, Glenda Jan 715 Doris Ave. Jacksonville, NC 28540  
Griffin, Gaye Janet Route 1, Box 944 Williamston, NC 27892  
Griffin, Wendy Jane Route 2, Box 26 Fairmont, NC 28340  
Haddock, Trudy Deane 416 Winterlochen Road Raleigh, NC  
Haga, Jan Marie 2623 Wilshire Ave., S.W. Roanoke, VA 24015  
Hamrick, Mary Kimberly P.O. Box 244 Shelby, NC 28150  
Hancock, Marth Ann 1715 Broadmoor Drive Richmond, VA 23229  
Harris, Donna Jean Route 1, Box 1 Littleton, NC 27850  
Harris, Miriam Lisa Route 3, Box 251 G-1 Myrick Estate Littleton, NC 27850  
Hasty, Susan Frances 215 Chateau Road Durham, NC 27704  
Hawkins, Susan Dana 707 Ellyn Drive Cary, NC 27511  
Henderson, Loulie Burns 2706 Old Cherry Pt. Rd. New Bern, NC 28560  
Herring, Mary Margaret Route 2, Box 83 Kinston, NC 28501  
Hicks, Dorothy McGill 1804 Oxford Road Henderson, NC 27536  
Hicks, Gina Renee 303 D Hastings Drive Cary, NC 27511  
Hill, Judith Allison 808 South Street Ahsokie, NC 27910  
Holcomb, Jane Lowell 1501 Mt. Vernon Road Charleston, W. Va. 25314  
Holliday, Vickie Louise Route 3, Box 605 Williamston, NC 27892  
Holloman, Ann Blair 922 Stokes Street Ahsokie 27910  
Hollowell, Frances Scott 6 Queen Anne Drive Edenton, NC 27932  
Holt, Donna Jean 3512 Melrose Drive Raleigh, NC 27604  
Horan, Mary Catherine 3113 Shady Lawn Drive Greensboro, NC 27408  
Horton, Angela Renee Route 3, Box 156 Apex, NC 27502  
Hoyle, Julia Elizabeth 312 N. Vance Street Sanford, NC 27330  
Huffman, Robin Diane Route 2, Box 17 Elon College, NC 27244  
Hughes, Anita Hart 500 Forest Road Oxford, NC 27565  
Hunnings, Barbara Lynn 422 Dogwood Lane Eden, NC 27288  
Ingram, Carolyn Wall Route 1, Box 158-A Garner, NC 27529  
Ivey, Nancy P.O. Box 276 Golf Course Drive Fairmont, NC 28340  
Jackson, Amy Elizabeth 2917 Bedford Street Burlington, NC 27215  
Jacobs, Deborah Ann 4700 Quail Hollow Drive Raleigh, NC 27609  
Jenkins, Bettie Anne P.O. Box 682 Creedmoor, NC 27522  
Jernigan, Ann Louise 1327 Morningside Drive Charlottesville, W. Va. 25314  
Jones, Helen Lyn Route 2, Box 225 Pikeville, NC 27863  
Jones, Lisa A. 108 Perdue Street Garner, NC 27529  
Jones, Wendy Ann P.O. Box 93 Riegelwood, NC 28456

Jordan, Judith L. 1107 South 1st Street Smithfield, NC 27577  
 Kabrick, Katheryn Goode 1604 Sussex Lane Wilson, NC 27893  
 Keel, Teresa Ellen P.O. Box 307 Bethel, NC 27812  
 Kelley, Carolyn Marie 915 Larchmont Cres. Norfolk, VA 23508  
 Kent, Anne Torrence 3028 Carolina Avenue, S.W. Roanoke, VA 24014  
 Lambert, Sarah Louise 1208 Poplar Avenue Garner, NC 27529  
 Lee, Melissa Ellen 241 Cureton Street Greenville, SC 29605  
 Leroux, Martha A. P.O. Box A 191 Quito, Ecuador  
 Leslie, Nancy Elizabeth P.O. Box 68, 101 Overlook Road Skyland, NC 28776  
 Lewis, Lisa Route 2 Fairmont, NC 28340  
 Long, Debra Joe 2400 Fairview Rd. Raleigh, NC 27608  
 Looney, Stacy Ashlin 1816 Maryland Avenue Charlotte, NC 28209  
 McCormick, Rebecca Anne Route 1, Box 236 Earlysville, VA 22936  
 McCullough, Stacy Elizabeth 3921 Winfield Dr. Charlotte, NC 28205  
 McDevett, Sheila Hardison Route 2, Box 159 Washington, NC 27889  
 McLean, Anne Dickson 2204 Elm Street Lumberton, NC 28358  
 McNeill, Karen Lynn 2500 Hatherly Rd. Charlotte, NC 28209  
 McNeill, Laurie Ann 311 Elm Street Aberdeen, NC  
 McPherson, Karen Marie 430 Stoney Street Burlington, NC 27215  
 Mackorell, Janie Asbury 211 Riverside Dr. Morganton, NC 28655  
 Madden, Elizabeth Anne 7119 Enterprise Ave. McLean, VA 22101  
 Mansfield, Gwen P.O. Box 159 Carrboro, NC 27510  
 Mason, Carolyn Elizabeth 3697 Delmar Drive Woodbridge, VA 22193  
 Matthis, Judith Frances 1505 Lakeside Drive Wilson, NC 27893  
 Minier, Sara Lauren 829 Shannon Rd. Asheboro, NC 27203  
 Mitchell, Jennifer Leigh 2904 Ridgecrest Drive Rocky Mount, NC 27801  
 Mobley, Donna Kay Route 2, Box 798 Williamston, NC 27892  
 Moore, Sandra Colette 218 Oak Hill Drive Durham, NC 27712  
 Morgan, Dorothy Scott 418 W. Wellons Street Smithfield, NC  
 Morgan, Melody Anne 927 Pamlico Drive Cary, NC 27511  
 Morris, Cynthia Ann 2405 Taylor Street Durham, NC 27703  
 Mosely, Ellen Michele 1437 Larchmont Avenue Horseheads, NY 14845  
 Moskow, Elise Norma Box 190 Whiteville, NC 28472  
 Myers, May Gayle 414 Pineywood Rd. Thomasville, NC 27360  
 Neese, Kathryn Elaine 1901 West Lake Drive Burlington, NC 27215  
 Newton, Julia Leigh Route 1, Box 117 Franklinton, NC 27525  
 Nielsen, Cynthia Ann 1900 St. George Place Kinston, NC 28501  
 Norris, Elizabeth Johnson 621 N. Main Street Louisburg, NC 27549  
 Odom, Olivia Penny Box 187 Dublin, NC 28332  
 Olson, Audree 160 Castlemill Rd. Cary, NC 27511  
 Onorato, Nancy Ann 108 Woodhaven Drive Lexington, NC 27292  
 Ormond, Louise Holliday 104 Martinsborough Road Greenville, NC 27834  
 Overton, Wendy Ruth 900 Academy St. Ahoskie, NC 27910  
 Owen, Patricia Smith 205 Westridge Drive Raleigh, NC 27609  
 Padgett, Cynthia Patricia Route 3, Box 516 Kings Mountain, NC 28086  
 Peaks, Dehra Jo Route 2, Box 128 Williamston, NC 27892  
 Pearson, Nan Louise 617 Tanglewood Lane Goldsboro, NC 27530  
 Pendleton, Elizabeth Annette 2324 Indian Creek Road Chesapeake, VA 23322  
 Pleasant, Robin Ann Route 2 Angier, NC 27501  
 Poole, Nancy Amelia Route 8, Box 112 Lumberton, NC 28358  
 Pope, Pamela Yvonne Route 1, Box 822 Knightdale, NC 27545  
 Potter, Ann Marie 115 Wilmot Drive Raleigh, NC 27606  
 Powell, Linda Teresa 409 Quail Drive Raleigh, NC 27604  
 Powell, Penny Jo 206 North Broad Street Edenton, NC 27932  
 Price, Joan Suzanne Route 6, Box 555-L Mooresville, NC 28115  
 Price, Laurie Ann 1104 Kingswood Drive Raleigh, NC 27609  
 Proctor, Pamela Kay 1023 Sturdivant Drive Cary, NC 27511  
 Ramage, Elizabeth Ann 115 Sherwood Est. Lauren, SC 29360  
 Reynolds, Jane Lynn 101 Riley Place Washington, NC 27889

Ring, Robin Annette Route 3 Carthage, NC 28327  
 Roberts, Alice Lynne 272 Foxcroft Drive Asheville, NC 28806  
 Salmons, Sandra Lynn P.O. Box 542 Jefferson, NC 28640  
 Saraceno, Rebecca Janett 203 Northside Drive Lexington, NC 27292  
 Scaff, Sandra Gail 2100 Ann Street Raleigh, NC 27608  
 Sexton, Cynthia Deanne Route 1, Box 386 F Burlington, NC 27215  
 Shepard, Ann Walker 98 Pembroke Cir. Edenton, NC 27932  
 Sigmon, Tami Michele 215 Monroe Street Roanoke Rapids, NC 27870  
 Simmons, Edith Michele Route 1, Box 194 Courtland, VA 23837  
 Sinclair, Elizabeth Karen 3209 Arrowhead Drive Raleigh, NC 27604  
 Smith, Keli Annette 830 Spero Road Asheboro, NC 27203  
 Smith, Sharon Elisa 621 Maylands Avenue Raleigh, NC  
 Smith, Sharon O. 5313 Kaplan Drive Raleigh, NC 27606  
 Snead, Molly Scott 3616 Mansfield Drive Rocky Mount, NC 27801  
 Shelley, Sandra Lee 2004 Lake Drive Laurinburg, NC 28352  
 Snipes, Elizabeth Anne 1503 E. Beech Street Goldsboro, NC 27530  
 Spell, Vara Leigh 3504 Winslow Court Raleigh, NC 27604  
 Stallings, Cheryl Jean Box 732 Creedmoor, NC 27522  
 Stephenson, Mary Jane 210 S. Randolph Street Rockingham, NC 23279  
 Stevens, Janice Marlene 1428 Van Nuys Street Salisburg, NC 28144  
 Stovall, Susan Kaye 2940 Corbieshaw Road Roanoke, VA 24015  
 Sumner, Tracey Lynn 2315 Parkway Drive Raleigh, NC 27603  
 Sutton, Evelyn Sherron 4108 Galax Drive Raleigh, NC 27612  
 Taylor, Bobbie Jo 4621 Wake Forest Road Raleigh, NC 27609  
 Taylor, Patricia Lorraine Route 2, Box 169 Williamston, NC 27892  
 Thompson, Pamela Jean 1027 Gardner Street Raleigh, NC 27607  
 Thorne, Sarah Catherine 3213 Woodlawn Road Rocky Mount, NC 27801  
 Tolson, Elizabeth Guion 5100 Trentwoods Drive New Bern, NC 28560  
 Trotman, Dorothy Wrenn Route 1, Box 78 South Mills, NC 27976  
 Tsumas, Lu Anne 7105 Carosan Lane Charlotte, NC 28211  
 Tunstall, Anne Booth 1721 Irish Street So. Boston, VA 24592  
 Van Surdam, Cynthia Allison Route 1, Box 592-C Wilmington, NC 28405  
 Vega, Josephine 515 Elm Street Jacksonville, NC 28540  
 Wallace, Mary Gwyn Box 575 Carthage, NC 28327  
 Warren, Sandra Elizabeth Route 1, Box 211-A Merritt, NC 28556  
 Waters, Margit Kimberly 913 Ridge Top Road Richmond, VA 23229  
 Webb, Bonnie Kay 118 Hudson Street Rockingham, NC 28379  
 Webb, Rose Ann 200 Marlboro Street Hamlet, NC 28345  
 Wells, Sylvia Jean 3601 Greenhill Drive High Point, NC 27260  
 Wertis, Liane Marie 5333 Mayer Drive Raleigh, NC 27612  
 White, Margaret Elaine 822 2nd St., N.W. Hickory, NC 28601  
 Whitley, Cecelia Lynn Route 1, Box 39 Apex, NC 27502  
 Wilder, Cynthia Nancy 11705 Durant Road Raleigh, NC 27614  
 Wilson, Sharon Ayers 1208 Waverly Road Wilson, NC 27893  
 Winfield, Barbara Gordon 105 Whetstone Pl. Charlottesville, VA 22901  
 Wolfe, Charlotte Anne Route 1, Box 252 B Charlottesville, VA 22901  
 Wooten, Cynthia Denise 4608 Penberton Drive Raleigh, NC 27609  
 Wright, Dorothy Carl 2106 Timber Drive Raleigh, NC 27609  
 Young, Abbie Lynn Route 2, Box 220 Hamlet, NC 28345  
 Young, Linda 221 Shanon Drive Rockingham, NC 28379

## Freshmen

Albritton, Isabel Maria Route 3, Box 237 8 Newport, NC 28570  
 Allen, Carol Lynn 501 N. Waverly St. Farmville, NC 27828  
 Allen, Tamara Denise Route 2 Mocksville, NC 27028  
 Amos, Susan Elizabeth 231 Bellewood Dr. Henderson, NC 27536  
 Anderson, Dianne Lynn 4900 Auburn Rd. Raleigh, NC 27609  
 Bagwell, Anne Elizabeth Route 2, Box 166 Garner, NC 27529  
 Ballou, Elizabeth McNair 208 West 32nd. St. Lumberton, NC 28358  
 Barnes, Carla Ann Route 2, Box 357 Lucama, NC 27851

Baron, Janis Hazel 4417 Embleton Dr. Raleigh, NC 27612  
 Beasley, Jennifer Carol Route 1, Box 309 Dunn, NC 28334  
 Benfield, Teresa Ray P.O. Box 147 Fremont, NC 27830  
 Benton, Deborah Anne 2600 Ellis Rd. Durham, NC 27703  
 Biggs, Gwendolyn Anne Route 4, Box 287 Williamston, NC 27892  
 Blackley, Brenda Joyce Route 3, Box 109 A Zebulon, NC 27597  
 Boger, Beverly Darden 421 Chestnut St. Eden, NC 27288  
 Bottoms, Jamie Ann Route 5, Box 440-K Lounsburg, NC 27549  
 Bowen, Donna Jean P.O. Box 313 Bladenboro, NC 28320  
 Boykin, Susan Carol 1132 Knollwood Dr. Wilson, NC 27893  
 Bramble, Martha Jane 706 Shopton Ct. Fayetteville, NC 28303  
 Braswell, Gina Dare Route 2, Box 50 Nashville, NC 27856  
 Britt, Janet Elaine Route 1, Box 397 Bladenboro, NC 28320  
 Brown, Angela Route 4, Box 347 Newport NC 28570  
 Bryant, Olivia Dee P.O. Box 277 Boykins, VA 23827  
 Bullard, Donna Ruth Route 2, Box 71 Rockingham, NC 28379  
 Bullock, Harriett Grace Route 3, Box 875 Huntersville, NC 28078  
 Bunting, Beverly Carson Box 343 Bethel, NC 27812  
 Bunton, Mary Esther 3328 Hershridge Rd. Va Beach, VA 23452  
 Burnette, Nancy Kathleen Route 1, Box 124 Canton, NC 28716  
 Byerly, Katherine Lynn 3316 N. Rockingham Rd. Greensboro, NC 27407  
 Byrne, Daphne Ann 905 Dogwood Dr. Fairmont, NC 28340  
 Byrum, Gail Singletary 119 Pembroke Circle Edenton, NC 27932  
 Cameron, Elizabeth Blue 1011 North Fulton St. Raeford, NC 28376  
 Campbell, Anne Gurkin 1400 Lakeview Dr. Fayetteville, NC 28305  
 Carlisle, Katharine Annette 7615 Fayetteville Rd. Raleigh, NC 27603  
 Carlton, Emily Sue 405 East Southerland St. Wallace, NC 28466  
 Carvis, Patricia Severine 408 Fairfield Dr. Rocky Mount, NC 27801  
 Cashion, Lisa Charlene Route 9, Box 85 Sanford, NC 27330  
 Chamblee, Debbie R. Route 3, Box 1023 Wendell, NC 27591  
 Chamblee, Ginny Lou Route 3, Box 102 Wendell, NC 27591  
 Chappell, Teresa Renee 706 E. Horne St. Clayton, NC 27520  
 Cherry, Gail Leigh 802 Stokes St. Ahoskie, NC 27910  
 Clark, Helen Elizabeth 503 Forest Hill Dr. Shelby, NC 28150  
 Clark, Margaret Page 303 Canterbury Rd. Wilson, NC 27893  
 Cloukey, Laura Elizabeth 336 Marion St. Mount Airy, NC 27030  
 Coates, Sheila Yvonne 3904 Cobb St. Garner, NC 27529  
 Covington, Betsy Alice Route 1, Box 718 King, NC 27021  
 Crowell, Karen Sue 1541 Sharon Rd. Winston-Salem, NC 27103  
 Crump, Wanda Jane Route 1, Box 28 Aberdeen, NC 28315  
 Cunningham, Cindy Lou Route 1, Box 46 Walstonburg, NC 27888  
 Currin, Cynthia Douglas Route 2, Box 48 Oxford, NC 27565  
 Curtis, Wendy Anne Route 1, Box 13-A Manson, NC 27553  
 Darnell, Susan Leigh 613 Jefferson Drive. Charlotte, NC 28211  
 Day, Sandra Lynn 1196 Daybrook Drive. Kannapolis, NC 28081  
 Doyle, Catherine Dale Box 132 Wendell, NC 27591  
 Dunbar, Roberta Phillips 709 Morrison Lane Laurinburg, NC 28352  
 Dunlap, Ann Isabel 418 E. 52nd Street Savannah, Ga. 31405  
 Eakes, Linda Ann 2602 Ashe Street Durham, NC 27703  
 Early, Jean Elizabeth Armistead 1509 Maryland Avenue Charlotte, NC 28209  
 Earp, Wanda Lou Route 1, Box 139-A Wendell, NC 27591  
 Easley, Emily Shelton 106 Maybank Ct. Durham, NC 27713  
 English, Belynda Leigh Route 3, Box 429 Bladenboro, NC 28320  
 Evans, Martha Kay 121 Forest Circle Murreeshoro, NC 27855  
 Evans, Pamela Ann 226 Northview Drive Fayetteville, NC 28303  
 Farrior, Sarah Alice Route 1, Box 21 Wallace, NC 28466  
 Ferguson, Sherry Lynne 100 Seneca Trail, Maitland, Fla  
 Flythe, Margaret Leggett 1016 Morningside Lane Martinsville, Virginia 24112  
 Foushee, Maria Beth P.O. Box 147 Sanford, NC 27330  
 Freeman, Wanda Robinson Route 2, Candor, NC 27229  
 Freytag, Lisa Carol 5418 Kerry Glen Ln. Matthews, NC 28105  
 Friday, Sarah Mills P.O. Box 371 Lincolnton, NC 28092  
 Fuller, Ellen Kyle 1600 Fuller Drive Monroe, NC 28110  
 Garner, Marjorie Marie P.O. Box 194 Dublin, NC 28332  
 Garris, Ivy Louise 707 W. Wilson Cr. New Bern, NC 28560  
 Gay, Ferreby Anne 904 North High Street Franklin, Va. 23851  
 Gill, Katherine Ann Route 5 Raleigh, NC 27604  
 Gissiner, Esther Gayle Route 4, Box 306 Mehane, NC 27302  
 Gordon, Tamara Butler 203 Pineburr Rd. Greensboro, NC 27408  
 Grant, Claudia Marie 805 Lake Point New Bern, NC 28560  
 Grantham, Laura Anne 121 Best Drive Lumberton, NC 28358  
 Gray, Jackie Louise Box 88 Buxton, NC 27920  
 Greene, Lisa Annette Route 1, Box 27 Union Level, VA 23973  
 Greer, Paula Ruth 1704 Forest Valley Rd. Greensboro, NC 27410  
 Griffin, Cynthia Louise 108 N. Pine St. Wilson, NC 27893  
 Griffin, Harriet Carol 210 Dogwood Dr. Washington, NC 27889  
 Grubbs, Martha Victoria Ladeside Drive Walnut Cove, NC 27052  
 Gunter, Cindy Lou 508 Queens Rd. Sanford, NC 27330  
 Haddock, Mary Lynn 900 Westover Ave. Kinston, NC 28501  
 Haggard, Vettina Gail 904 Hemingway Dr. Raleigh, NC 27609  
 Hall, Debra Jean 1824 Hunting Ridge Rd. Raleigh, NC  
 Hamer, Kristan Ramsay 215 West Park Dr. Morganton, NC 28655  
 Hamrick, Kelli Jane 330 Woodside Dr. Shelby, NC 28150  
 Hanford, Lisa Ann 503 E. Harden St. Graham, NC 27253  
 Hardin, Myra Lisa Route 2, Box 197 Fairmont, NC 28340  
 Harris, Rebekah Ann 2447 Edgewood Ave. Burlington, NC 27215  
 Hartzog, Jennifer Lee 428 N. Stratford Rd. Winston-Salem, NC 27104  
 Hatfield, Elizabeth Michelle 5101 Beidlington Ln. Raleigh, NC 27612  
 Hatley, Carla Sue 4406 Lake Brandt Rd. Greensboro, NC 27405  
 Haynes, Kathryn Vanessa 2212 Tusculoosa St. Greensboro, NC 27401  
 Heath, Donna Lynn 503 Greenridge Rd. Snow Hill, NC 28580  
 Hedrick, Sherre Leigh 516 First Ave. Knightdale, NC 27545  
 Helms, Peggy Lynn 3333 Elk Drive Burlington, NC 27215  
 Herndon, Cheryl Young 1501 Overbrook St. High Point, NC 27262  
 Herring, Sarah Stephenson Route 2 LaGrange, NC 28551  
 High, Catherine Lynn 1601 Stronwood Dr. Wilson, NC 27893  
 Hill, Susan Elizabeth 109 North St. Oxford, NC 27565  
 Hodges, Marian Lane 1637 Banbury St. Fayetteville, NC 28304  
 Holliday, Donna Elizabeth Route 3, Box 604 Williamston, NC 27892  
 Holt, Shart Elizabeth 516 Kirby St. Raleigh, NC 27606  
 Holton, Janet Courtney 706 Erwin Rd. Sanford, NC 27330  
 Hughes, Laura Ruth Rt. 1, Box 15 Fairmont, NC 28340  
 Hughes, Nancy Gayle 1602 Westridge Rd. Greensboro, NC 27410  
 Humphries, Tara Lynn 801 Park Ave. Goldsboro, NC 27530  
 Hunt, Melamie Karen 3208 Hillman Rd. Kinston, NC 28501  
 Ingle, Pamela Diane Rt. 10, Box 527 Burlington, NC 27215  
 Jezioranski, Lisa Mary 920 Hemingway Dr. Raleigh, NC 27609  
 Johnson, Elizabeth Dawn 317 Hemlock St. Cary, NC 27511  
 Jones, Cora Maude Rt. 2 Newton Grove, NC 28366  
 Jones, Elizabeth Ann 4505 Revere Dr. Raleigh, NC 27609  
 Jones, Laura Eugenia 2002 Sedgefield Dr. Kinston, NC 28501  
 Joyce, Sara Wade 9 Hamilton Rd. Ridgefield, Conn. 06877  
 Keel, Donna Anne 203 Water St. Edenton, NC 27932  
 Kennedy, Kimberly Mason 2407 Hillwood Place Charlottesville, VA 22901  
 King, Karrie Elizabeth 711 Hanover Dr. Shelby, NC 28150  
 King, Martha Ann 3716 Marquette Rd. Richmond, VA 23234  
 King, Tammie Sue 907 Buckingham Rd. Garner, NC 27529  
 Knuckley, Joe Ann Box 57 Wendell, NC 27591  
 Kramer, Celia Lea 203 Maple St. Whiteville, NC 28472  
 Lancaster, Rebecca Elizabeth Drawer L New Bern, NC 28560



Langley, Patricia Jean 6116 Valley Estates Dr., Raleigh, NC 27612  
 Lassiter, Joy Lynn Rt. 3, Box 13 Williamston, NC 27892  
 Lee, Core Pauline 1202 Hillsdale Drive Greenville, NC 27834  
 Long, Joanna Kay 3770 Kings Cross Rd. Lumberton, NC 28358  
 Lucas, Janet Ann P.O. Box 295 Lucama, NC 27851  
 Lucas, Sybil Lori Box 87 Kenly, NC 27542  
 McAuley, Elizabeth Ashley G-4 Tau Valley Estates Rocky Mount, NC 27801  
 McCoy, Agnes Maloney 309 Sylvan Road Fayetteville, NC 28305  
 McCulloch, Stella Deane Route 4 Mocksville, NC 27028  
 McDonagh, Casey Ann 884 Thorn Street Sewickley, Pa. 15143  
 McPherson, Mary Margaret 400 Sunset Circle Elizabeth City, NC 27909  
 McSain, Deborah 705-A Hawes Ct., Raleigh, NC 28608  
 Martin, Lisa Marie P.O. Box 734 Troy, NC 27371  
 Martin, Paulette Rae 1709 Gracewood Drive Greensboro, NC 27408  
 Martin, Teresa Grace General Delivery Eagle Rock, NC 27523  
 Maxwell, Susan Carol 2107 Sutphin Drive Sanford, NC 27330  
 Mears, Laurie Anne 320 Charlotte St. Rocky Mount, NC 27801  
 Miller, Amelia Ann 406 Timberlane Drive Mt. Holly, NC 28120  
 Milton, Susan Renee Route 1 Franklinton, NC 27525  
 Mitchell, Susan Harriett 404 College Street Oxford, NC 27565  
 Monds, Lisa Anne Rt. 2 Dunn, NC 28334  
 Moore, Sherri Dee 514 Lennox Drive Fayetteville, NC 28303  
 Morgan, Cynthia Rose Rt. 9, Box 230 Salisbury, NC 28144  
 Morgan, Jane Creech 933 Worth Ext. Asheboro, NC 27203  
 Morgan, Terri Leigh 1316 Kingston Ridge Road Cary, NC 27511  
 Morris, Beverly Lynn 2006 Wentworth Avenue Wilson, NC 27893  
 Munsey, Cynthia Ann 2512 Morganton Rd. Fayetteville, NC 28303  
 Murphy, Elizabeth Gray Rt. 1, Box H Tomahawk, NC 28465  
 Murphy, Leslie Ann P.O. Box 445 Burgaw, NC 28425  
 Murphy, Teresa Lynn Rt. 1 Wake Forest, NC 27387  
 Murray, Janet Sue Rt. 1, Box 40 Snow Hill, NC 28580  
 Nahser, Sally Ruth 3131 Forestdale Drive Burlington, NC 27215  
 Needham, Suzanne Burns 112 Lattimore Lane Durham, NC 27713  
 Oakley, Katherine Lois 211 W. North Street Zebulon, NC 27597  
 Overy, Ida Cere 907 Long Shore Drive Snow Hill, NC 28580  
 Pace, Marlys Dean Rt. 3, Box 77 Wendell, NC 27591  
 Paradesse, Stephanie Denise 3624 Brinkley Drive Raleigh, NC 27604  
 Parker, Catherine Elaine 728 York Street Rocky Mount, NC 27910  
 Parker, Elizabeth Dawn 620 Pembroke Avenue Ahoskie, NC 27910  
 Parks, Carri Holland 1609 Ephesus Rd. Chapel Hill, NC 27514  
 Parrett, Angela Ruth Rt. 1, Box 284 Creedmoor, NC 27522  
 Patterson, Helen 404 Fairgreen Way Cary, NC 27511  
 Pearson, Miriam Gaye 209 Bertie Drive Raleigh, NC 27610  
 Pedigo, Sheri Dawn 2413 Frost Court Raleigh, NC 27609  
 Penny, Melinda Lucille Rt. 1, Box 195 Garner, NC 27529  
 Perry, Melia Montague 2515 Parrish Street Burlington, NC 27215  
 Phillips, Stephanie 3708 Woodlawn Road Rocky Mount, NC 27801  
 Pierce, Jessie Lynn 802 Raleigh Street Fuquav, NC 27526  
 Pinson, Allison Payge Rt. 4, Box 223 Mooresville, NC 28115  
 Pittman, Alison Jeanette 313 Englewood Drive Rocky Mount, NC 27801  
 Pleasants, Cynthia Ann Rt. 3, Box 298C Wake Forest, NC 27587  
 Pnplin, Lisa Karen 913 Fayetteville Road Rockingham, NC 28379  
 Porter, Elizabeth Anne 301 Canyon Trail Charlotte, NC 28211  
 Potter, Margaret Ann 509 Thorncleft Drive Fayetteville, NC 28303  
 Price, Lee Ann 4307 Chelsea Way Gastonia, NC 28052  
 Prom, Edith Cecilia 3519 Baugh Street Raleigh, NC 27604  
 Pulley, Robin Lang Rt. 2, Box 140 Wake Forest, NC 27587  
 Rahn, Laura Madeline P.O. Box 176 Pinehurst, NC 28374  
 Raker, Karen Kelly 421 Shamrock Road Asheboro, NC 27203  
 Rawls, Deborah Lynn Pine Ridge Drive Ahoskie, NC 27910  
 Richardson, Julia Kathryn 1005 Worth Street Ext. Asheboro, NC 27203  
 Roberson, Karen 1113 Buckingham Road Garner, NC 27529  
 Rogers, Laurie Jane P.O. Box 714 Albemarle, NC 28001  
 Rogers, Sherry Lynn 12005 Green Ct. Glenn Dale, MD 20769  
 Rusher, Ruth Ann 4213 Kinscrest Parkway Richmond, VA 23211  
 Russell, Tammy Renee Rt. 2, Box 69A Troy, NC 27371  
 Sams, Deborah Louise 550 Staffordshire Road Winston-Salem, NC 27104  
 Sasser, Nancy Carolyn 1759 NE 21 St. Ft. Lauderdale, Fla. 33305  
 Schulte, Becky Lynn 1908 Rolling Road Chapel Hill, NC 27514  
 Sealey, Catherine Velvet 1511 Lake View Road Fairmont, NC 28340  
 Seche, Carol Mary 5101 Bridlington Ln. Raleigh, NC 27612  
 Sedberry, Elizabeth Graven 510 Yarmouth Road Raleigh, NC 27608  
 Seely, Lu Ann Rt. 1, Box 152 Wendell, NC 27591  
 Shell, Edith Allison 1014 4th Ave. Dr. NW Hickory, NC 28601  
 Simmons, Felicia Dale 4704 Winterlochen Raleigh, NC 27603  
 Sloan, Norbeth Rt. 10, Box 3B Sanford, NC 27330  
 Small, Harriet Lynne 10 Queen Anne Drive Edenton, NC 27932  
 Small, Susan Claire Rt. 2 Edenton, NC 27932  
 Smallwood, Elizabeth 933 Rugby Road Charlottesville, VA 22903  
 Smith, Judy Christine 3110 Rouse Road Kinston, NC 28501  
 Smith, Lisa Kay Rt. 1, Box 290 Stoneville, NC 27048  
 Smith, Phyllis Zoeller 1507 Stonwood Drive Wilson, NC 27893  
 Smith, Sarah Garland 217 Neely Road Clover, SC 29710  
 Smith, Sybil Rae Rt. 2, Box 144 Elizabethtown, NC 28337  
 Smith, Terrie Lynn 1019 Brookwood Drive Kings Mountain, NC 28086  
 Stanley, Kimherly Lynn 2018 Summerdale Drive Raleigh, NC 27604  
 Stowitts, Linda Sue B Lee Lane Weldon, NC 27890  
 Stovall, Donna Marie 2940 Corbreshaw Road SW Roanoke, VA 24015  
 Story, LeeAnn Rt. 1, Box 278 Carrsville, VA 23315  
 Sugg, George Lelia Rt. 1, Box 90 Snow Hill, NC 28580  
 Swig, Ann Elizabeth 601 W School Street Maiden, NC 28650  
 Taylor, Julia Elizabeth Rt. 1 Luray, VA 22835  
 Taylor, Olivia Dale 304 Lumyer Drive Durham, NC 28379  
 Temple, Jane McNeill 2725 Hawthorne Lane Sanford, NC 27330  
 Tetterton, Melody Rt. 3, Box 100 Plymouth, NC 27962  
 Thomas, Angela Marie 5115 Bayberry Lane Greensboro, NC 27405  
 Thompson, Deborah Jo 6381 Newmarket Way Raleigh, NC 27609  
 Thompson, Kelly Dawn Pine View Rd. Rt. 4 Henderson, NC 27536  
 Thornton, Eilene Renay 2839 Oak Ridge Ct. Raleigh, NC 27603  
 Trapp, Susan Paige 6819 Folger Drive Charlotte, NC 28211  
 Treacy, Elizabeth Ann 515 A Wakefield Drive Charlotte, NC 28209  
 Umstead, Ann Macon Rt. 6, Box 15B Laurinburg, NC 28362  
 Valentine, Sheila Marie 1101 Shady Side Dr. Raleigh, NC 27612  
 Vaughan, Shelby Jean Rt. 1, Box 34A Wendell, NC 27591  
 Vestal, Sandra Ellen P.O. Box 297 New Bern, NC 28560  
 Wall, Elizabeth Lineberry 1241 Dovershire Pl. High Point, NC 27260  
 Watkins, Stephanie Paige Rt. 7, Box 158-C Raleigh, NC 27614  
 Watts, Anna Dell 1104 Wilkins Drive Sanford, NC 27330  
 Weeks, Katherine Tanner 231 Eastover Drive Concord, NC 28025  
 Whitehurst, Mary Anna Rt. 4, Box 430 Williamston, NC 27892  
 Wilkes, Valerie Leigh 1405 Westmoreland Drive Raleigh, NC 27612  
 Wilhelm, Lisa Ann P.O. Box 1304 Matthews, NC 28105  
 Wilson, Marsha Ann 11 Nottingham Rd. Salisbury, NC 28144  
 Wilson, Rebecca Anne 4404 Yadkin Drive Raleigh, NC 27609  
 Winstead, Rhonda Joy 2207 Somerset Drive Wilson, NC 27893  
 Woodlief, Donna Gail 2915 E. Geer Street Durham, NC 27704  
 Worthington, Heidi B. P.O. Box 31104 Raleigh, NC 27612  
 Yenney, Susan Leigh 3621 Winstead Road Rocky Mount, NC 27801

## Third East



## First Finley





Third Ross

Second Main



Non-Residents



Third Main





Second Ross

---

## Second East



---

## Second Finley





Third Finley

Blount House



First Ross



Fourth Main





---

# PERSON STREET PHARMACY

702 N. Person Street  
Raleigh, N.C. 27604  
Phone 832-6432

Serving Peace College for 40 Years

Monday — Saturday  
9 AM — 7 PM

Closed  
Sunday

---

**Protect  
your body  
from your  
appetite.**

**Pine State  
Sweet  
Acidophilus  
Lowfat Milk.**

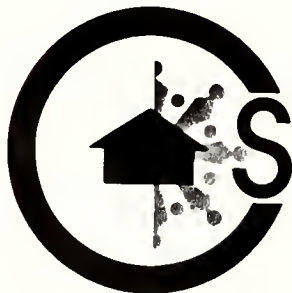




# DAVIDSON & JONES, INC.

1201 Front Street  
Raleigh, NC

Compliments of  
DILLON SUPPLY COMPANY



## The Common Sense House

An energy efficient home  
built to save energy and money.

If you are planning to build a  
new home, ask CP&L about the  
energy-saving features of the  
Common Sense House.

**CP&L**  
Carolina Power & Light Company



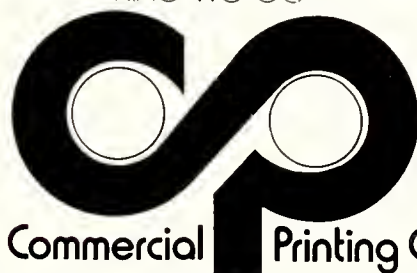
2838 Wake Forest Rd., Raleigh, N.C.

COMPLIMENTS  
OF

# Wachovia

Member FDIC

Outstanding printing,  
delivered on time, is the only  
kind we do



**Commercial Printing Co.**

P. O. Box 2319 Raleigh, N. C. 27602 919/832-2828

## Hudson & Belk



**Quality:**

The degree of  
Excellence which  
A thing possesses.



**Service:**

Friendly help;  
Professional help or  
Attention.



**Value:**

A fair price or  
Return for something sold or  
Exchanged.

On The Mall Downtown, Crabtree Valley And Cary Village

---

It was our pleasure to do the portrait photography for the  
Lotus

## SMITH STUDIO

Photographers  
14 E. Hargett St.  
Raleigh, North Carolina

---

Best Wishes To  
**Peace College**

---

**A. E. Finley & Associates, Inc.**



CONSTRUCTION EQUIPMENT DISTRIBUTORS

RALEIGH - CHARLOTTE - W.COLUMBIA



**hair**, by Nature's Way  
*specializing in natural hair cuts for men & women*

Redken Retail Center

612 Glenwood Avenue  
Raleigh, N.C. 27603  
834-1101

Downtown Mall  
Greenville, N.C.  
758-7841

Appointments Only



Compliments  
of

# UNITED CAROLINA BANK

ucb

2906 Brentwood Road and 12 South Person St.  
Raleigh, N.C.

## DURFEY-HOOVER INSURANCE AGENCY

Paul A. Hoover, III Paul A. Hoover  
FIRE • AUTOMOBILE • CASUALTY

Raleigh Building

Raleigh, N.C.

Phone 834-6239

P.O. Box 2163

Compliments of

Johnson-Lambe Co.

For the Best in Sporting Goods

*Bride's World*

THE SOUTH'S MOST  
BEAUTIFUL & COMPLETE  
BRIDAL & FORMAL SHOP  
NORTH HILLS SHOPPING CENTER  
RALEIGH, NORTH CAROLINA 27609  
PHONE 782-1183



- CORSAGES
- CUT FLOWERS
- GRADUATION  
BOUQUETS

*"We Grow the Flowers We Sell"*

Fallon's Florist

Established 1920

Corner of  
Peace & St. Mary's Streets

828-4134

---

# ARA

## FOOD SERVICE

---

**Coke** adds life...  
Trade mark ® *to everything  
that makes your livin' nice!*  
*Whether you're out with the gang having fun...  
or enjoying a quiet moment alone... no matter  
what makes for the good times... Coke adds life!*



Coca-Cola and 'Coke' are registered trade marks which identify the same product of The Coca-Cola Company

---

"A Complete line of professional  
quality housekeeping and  
janitorial supplies."

**JAMES H.  
ANDERSON  
CO., INC.**

FLOOR MAINTENANCE  
MATERIALS  
SANITARY SUPPLIES—  
EQUIPMENT  
418 W. PEACE STREET  
RALEIGH, N.C.

---

**McPherson Brothers  
Auto Supply Co., Inc.**

1332 W. Ervinghaus St.  
Elizabeth City, N.C. 27909  
Phone (919) 335-5421

---

**Moore & Johnson  
Insurance Co., Inc.**

828-8942

Pensions — Group Plans — Estate Analysis  
Individual & Business Life and A & H  
Earl Johnson     Harry Moore  
John Duncan     Bill Ward  
Merrit Jones     Vick Moore  
Herman Satterwhite

400 Oberlin Road  
Raleigh, NC





June, 1979 Color TV Picture Survey\*

**SYLVANIA  
BEATS  
RCA &  
ZENITH  
AGAIN!** ★



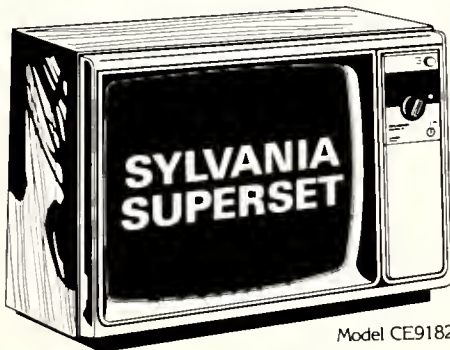
Model CX9172W

In two recent surveys (June 1979), over a thousand people saw three unidentified 19" diagonal and three unidentified 25" diagonal color TV pictures side by side. They were asked to pick the one with the best overall picture...and they picked **Sylvania Superset 2 to 1** over each of the others.

For the **third year** in a row, a Sylvania Superset beat RCA and Zenith.

The people's choice is clear. You don't have to be the biggest, to have the best picture.

**Come in and see other values  
from Sylvania. The Picture People.**



Model CE9182W

See your local Sylvania dealer

Sylvania Superset model CE9182W features big 21" diagonal picture, 100% solid-state chassis, Sylvania GT-Matic™ self-adjusting color system, electronic channel selector, Room Light Monitor...adjusts color and contrast when room lighting changes. Contemporary styling in a cabinet of Walnut grain finish on high-impact plastic. Stand available as optional extra.

---

*Mordecai Florist  
& Bridal Shop*



BRIDAL GOWNS — BRIDESMAID GOWNS  
MOTHER OF THE BRIDE  
FORMAL, PROM & COCKTAIL GOWNS  
TUXEDO RENTALS AND COMPLETE FLORAL SERVICES

WE HONOR  
ALL MAJOR  
CREDIT CARDS

**832-6447**

707 N. PERSON ST.

GIFTS &  
ACCESSORIES

---

SPONSORS

Mr. and Mrs. Joe S. Byerly  
Mr. and Mrs. John Coghill  
Mr. and Mrs. Alton R. Davis  
Mr. and Mrs. John R. Friday  
Mr. and Mrs. Joe Bynum Gay, III  
Mr. and Mrs. John M. Grantham  
Mr. and Mrs. Richard L. Holt

Mr. and Mrs. W.S. McCollough  
Mr. and Mrs. Fred McCormick  
Mr. and Mrs. W.F. Miller  
Mr. and Mrs. William Land Parks  
Mr. and Mrs. James H. Wall, Jr.  
Mr. and Mrs. John A. Van Surdam



**The Lotus Staff**

Janet Britt  
Ann Byrne  
Cathy Cloukey  
Mitzi Corbin  
Lynn Davis  
Sarah Friday  
Kyle Fuller  
Gaye Griffin  
Carolyn Ingram  
Martha King

Ann Lucas  
Stella McCullough  
Rebecca McCormick  
Laurie Mears  
Audree Olson  
Sherri Pedigo  
Ann Potter  
Alice Roberts  
Tami Sigmon  
Susan Stovall  
Bobbie Jo Taylor

**Editor**

Alice Roberts

**Assistant Editors**

Lynn Davis  
Gaye Griffin

**Business Managers**

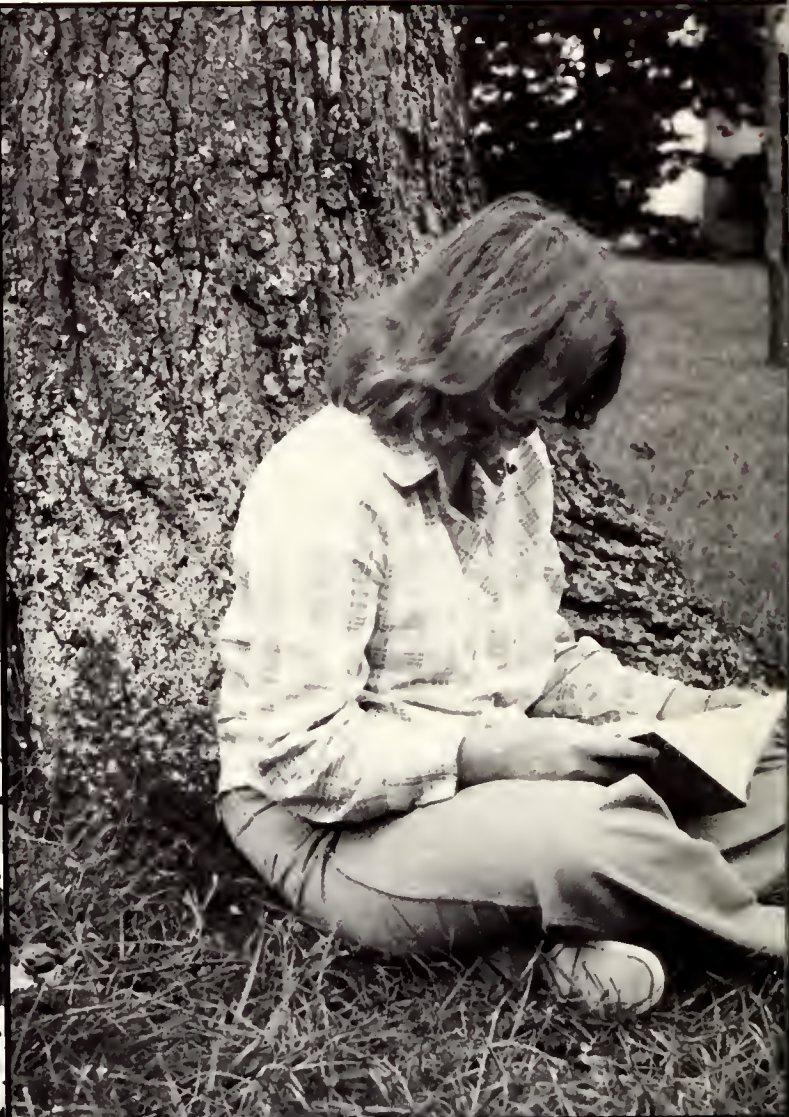
Donna Holt  
Cindy Wooten

**Sponsor**

Janet Wester

**Photography**

Tommy Babb  
Keith Barnes  
Mary Jo Cashion  
Martha King  
Rebecca McCormick  
Audree Olson  
Smith Studio















 • Winston-Salem  
**HUNTER PUBLISHING COMPANY**  
• North Carolina

MR. JOE ALLEGOOD, WILSON, NORTH CAROLINA

