

LOTUS

Peace College
Raleigh, N.C.





For two years of our lives, Peace College is the place we call "Home." The food is a little different and we have more sisters, but all in all, Peace becomes a vital part of each of us. And we become part of the Peace Family. For two special and all too short years, it's a place where professors care enough to take fifteen minutes out of their coffee break to explain a math problem, a moment in history, or a concept in psychology. It's where even the President takes time to talk or joke with you whenever you meet. It is the place where we are able to make many, many lifetime friends as we are growing, learning, and achieving goals we have set for ourselves and for our future. Peace College, "Home," offers the support, the encouragement, the time, and the love of a family. Peace helps each and every single one of us to become exactly what we wish to become.





Girls + Smiles = Peace







Everyday Life



Peace Is . . .

- A warm hug from a special friend
- The birds singing and fluttering around the fountain on a beautiful blue-sky day
- A fresh barrel of chocolate chip mint ice cream
- Finding an empty washer when you're down to your last clean pair of socks
- A caring faculty
- Getting a box full of mail
- The majestic, romantic columns at Main
- An understanding smile when you're down
- The Christmas love-chain
- Praise for even your smallest achievement
- 124 years of tradition
- A hall celebration for everything — from a birthday party to a long-awaited phone call
- Immaculate sidewalks
- The switchboard on Valentine's Day
- Awaiting your pizza at 11:58 p.m.
- Being able to be yourself

The little everyday things we often take for granted are sometimes what we end up appreciating the most in life. To us, this makes up an atmosphere of caring and sharing; to us — this makes up Peace.



Time Out

To a freshman, coming to Peace also means coming to Raleigh. As a sophomore, you're glad to be back to both after the summer. The capital city has many entertainment areas and several indispensable night spots to suit every type or taste. Here at Peace, a few of the more obvious favorites include Crazy Zacks, Edward's, and Fraternity row. Peace is as much a part of Raleigh as we are a part of Peace.

As Peace girls, however, we know that the fun can start right here on our own campus. Playing powder-puff football, sharing albums, taking walks, swapping clothes, and laughing and talking with friends are a few examples of the type of entertainment we all are able to find at school.

Wherever we may decide to spend those leisurely hours, after a long week of classes and persistent studying, we're always ready, on those oh-so-cherished weekends, to take some "Time Out."







The uniqueness of Peace College is expressed in many ways: its 124 year history, its traditional and unique graduating ceremony, its principles, and its people, all play a part in the total picture of Peace today. Nestled away, shielded by magnolias and white columns from the hustle and bustle of the capital city, we sometimes forget that we're in metropolitan North Carolina. This in itself is another virtue of Peace: it is located in the cultural, entertainment, and governmental center of the state. Peace would not be the same without all the extras that Raleigh can offer. There is a wide variety of places to go, people to see, and things to do. Museums, ballets, Broadway productions, ethnic restaurants, roller-skating rinks, and huge malls represent just a few of the many different attractions of Raleigh. This kind of life can actually be very educational. For example, did you know that khaki's are cheaper at Cameron village than at North Hills: (that's Economics)? And you can really observe the beauty of nature at Pullen Park: that's your biology and art. All these make Peace a special place and make the Peace family special people.





Raleigh Life





Did you know that in 1909 the Senior Class colors at Peace were — yes — pink and green? It seems that fads are repeating themselves, doesn't it? We're seeing yesterday's fads again — classic clothes, clogs, penny loafers, and French braiding.

However, the wave of the 80's washed in several of its own new styles. The country-western craze has had a definite influence in the South. Here at Peace, a cowboy hat, boots, and other western wear are frequently first choice for Ed's and for other occasions.

Who could fail to mention the latest in prep-style clothing — monogrammed everything, from pocketbooks to sweatshirts... L.L. Beans... Topsider tennis shoes... a canvas belt to suit your taste... coordinating ribbons? Then, to top it all off, gold, gold, gold.

The wardrobe wouldn't be complete without something bearing your favorite college insignia. Sweatshirts, gym shorts, t-shirts, and buttons can sport a purple and gold ECU pirate, a Davidson wildcat, a Wake Forest Deacon, a Duke Blue Devil, a Wolfpacker, a Carolina blue ram, and definitely — the Peace Green Giant!

All our fads here at Peace are not clothes fads, however. Some popular pastimes include sunning on Peace Beach, throwing friends in the fountain, popping popcorn, and playing beach music hour after hour. Keeping up with and taking part in all these crazy, fun fads make up a vital part of student life for us all here at Peace.



Main Attractions



Student Life



As little as some of us may like it, we are here at Peace College to study. But really, learning is more than merely studying. Coming to Peace is the fulfillment of the opportunity to learn. Most of us want to learn and therefore strive to understand and accept new concepts. Studying gives us the chance to prove that we are capable of applying ourselves and utilizing our time as needed. And in our achievement, new doors open to us, giving us confidence that we can go on.

An academically impressive staff carefully plans each class meeting to use our time to its fullest. In addition, each of them is dedicated to help any student outside class with concepts they do not understand. The close contact in our relatively small classes helps us grow. Teachers become real friends and not just people with chalk in their hands and tests in their briefcases. It is their hope, as well as ours, that we make the most of, and take part in, the benefits offered by Peace, that we get the most from the Peace experience.







Christianity in Practice



Since Peace is a Presbyterian college, it is dedicated to Christian principles. When we speak of Peace and its Christian purpose, we tend to think first of the Wednesday morning chapels or the freshman religion exams we've all taken. In reality, however, Peace emphasizes Christian ideals in every part of our daily lives. Each Wednesday morning, Mr. Thomas tells us colorful stories with thought-provoking ideas. His meaningful advice applies to all of us in some way. Often about unnamed Peace girls, his sermons could be talking about any of us.

Life at Peace reflects genuine Christian attitudes. Here we experience the love and concern of friends and faculty, and a high respect for moral principles. Admittedly, some of us complain about the rules, but many are glad that there are these rules and ideals to guide us. Without them, Peace would not be the special and unique place it is. It is for these virtues in themselves that many of us chose Peace College above all the others.





Here I am in Raleigh, only a phone call or a letter away from home. My thoughts and heart often drift towards that special place I love so much and to the people that make it so special, you, my parents.

I know that without your love for me, I would not be here at Peace. I thank you for offering me this opportunity to learn and to grow, and for continuing to support me throughout my college life. Thank you also for endlessly encouraging me and wanting me to be, not only your daughter, but also an independent, mature young woman.

I want you to know that the years of your patience, kindness, generosity, and discipline were not wasted, but have helped me to become the person I am today. Just listening to and sharing with me my experiences at Peace, which are so much a part of me, have shown me that you will always be there and can be counted on whenever I need you.

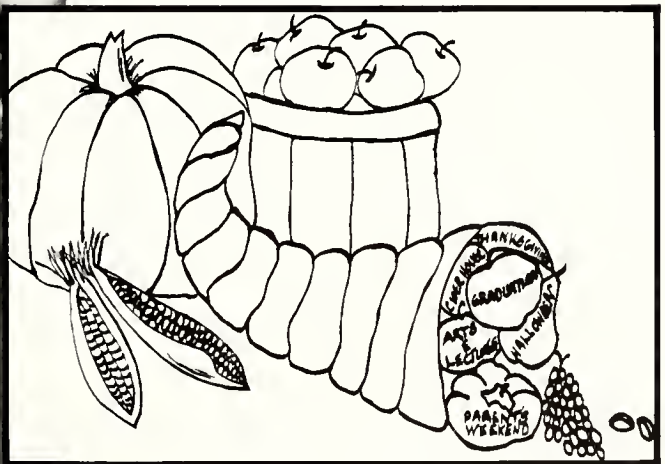
Therefore, it is to express our deep appreciation for the years of unceasing love you've given that we dedicate the 1981 edition of the Lotus to the ones we love most — you — Mom and Dad!

I love you!





FEATURES



Dear Mom and Dad,

It's hard for me to realize that my two years at Peace have finally come to a close. The beautiful graduation ceremony was really the way to top off these special years. Graduation 1980 was a lot like the ones of the previous 123 years — long, white dresses and red-rosebud bouquets, administration, faculty, and students filing down the sidewalks to find their seats, speeches, awards, tears, applause, hugs, more tears, applause, hugs, more tears, and lots of excitement. Yet this ceremony, this graduation, was different: it was especially for me and my class. It meant so

much to have you and the rest of the family there to share this honor with me.

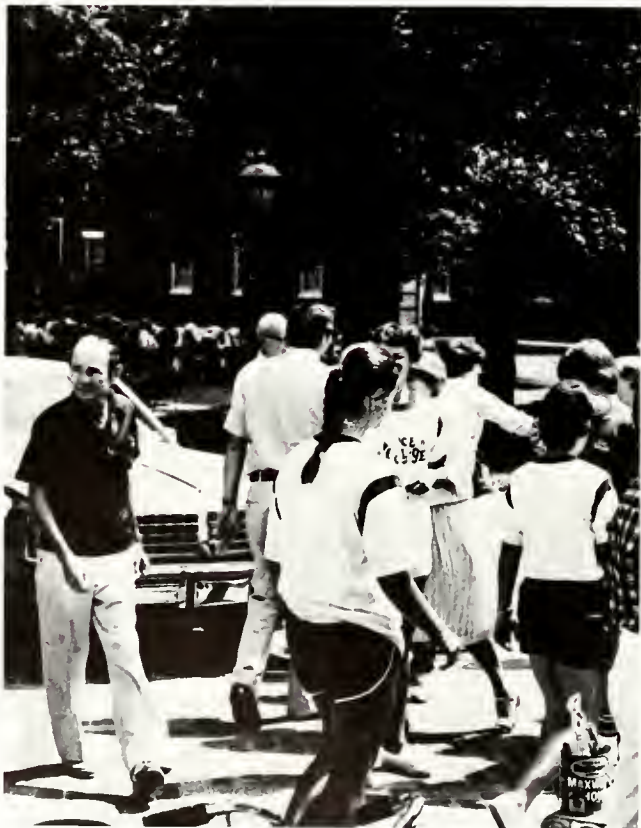
I can't say that the day was all happiness, though, because I hated saying good-bye to so many true friends. But, I know that what I'm taking with me as I leave Peace is more valuable than anything I could ever find again. Here, I've acquired knowledge, fellowship, confidence in my future, friends, and most of all, good memories, memories that I will always cherish and keep in a special place within my heart.

Love,
The Graduate

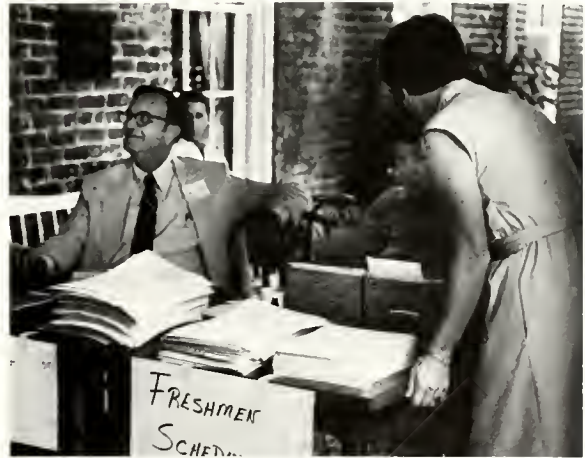
Graduation







Freshman Orientation



Dear Mom and Dad,

A year at Peace is filled with so many things, and it all begins with Freshman Orientation. Although those two words may have a different meaning to every girl at Peace, we know that much anticipated day has finally come! The day that we actually begin college! With this anticipation often comes a few frustrations and fears: for example, "How are we ever going to get all this stuff into our little room?" or "What meeting am I supposed to be in now?" Confusion, excitement, sadness, and surprises fill these first couple of weeks. But soon, things begin to settle down, we make friends, real friends, and we easily fit in and find our special place at Peace. During orientation, we are swiftly swept into the lifestyle here, but soon, we all discover that Peace becomes a part of us, and us — a part of Peace.

Periodically within the year, Peace is honored to have many special guests visit the campus through its Arts and Lectures series. The variety of programs scheduled includes speakers such as Guy Owen and William E. Leuchtenburg, and musicians such as the talented Soprano Penelope Jensen, Oboist J. M. A. Danby, and the Raleigh Chamber Players from the North Carolina Symphony. Each program offers Peace girls, and often the Raleigh community, the opportunity to hear enriching programs. Each performance proves to be, not only a lesson in the arts, but an hour or two of fine entertainment.



Arts and Lectures

Peace College Cordially Invites You to Attend The 1980-81 Mary Howard Clark Arts and Lectures Series

Peace College

The Mary Howard Clark Arts and Lectures Series
Monday Evenings* / 8 p.m.
Recital Hall / Browne-McPherson Music
Building / Peace Campus
All Programs are Open to the Public Without Charge

Sept. 15	Organ and Oboe Concert	W. David Lynch, Organist J. M. A. Danby, Oboist The Raleigh Chamber Players
Oct. 23*	Lecture: Reflections on Woodrow Wilson	Arthur S. Link Princeton University
Nov. 10	Piano Concert	John Ruggero, Pianist
Nov. 17	Voice Concert	Penelope Jensen, Soprano Michael W. Zenge, Pianist
Jan. 26	Chamber Music Concert	The Raleigh Chamber Players
Feb. 9	Organ and Trumpet Concert	Wylie S. Quinn III, Organist Douglas Meyers, Trumpeter Edward Hoffman, Trumpeter
Feb. 23	Lecture: Southern Language	Guy Owen N. C. State University
March 23	Lecture: John F. Kennedy: His Place in History	William E. Leuchtenburg Columbia University and The National Humanities Center
March 30	Concert and Lecture/Demonstration	Boaz Sharon, Pianist
April 6	Violin Concert	Joy Brown Wiener, Violinist

*The Oct. 23 lecture is on a Thursday evening.

Art of the Month



Unknown to most, many of the art students of Mrs. Linda Fitz-Simmons work hours each day in the lab developing their talents. A few of these girls are selected for the honor of having their work receive the title of Art of the Month. They are picked by all of the art students who vote in several categories for their choice of the best art work done during the preceding month. The winning works are then displayed for everyone to admire and enjoy. This honor not only recognizes lots of hard work, but also some of the many talented girls at Peace.



PARENT'S WEEKEND



One of the most fun-filled weekends I spent at school was Parent's Weekend. I was so glad that Mom and Dad could come up! There were so many things for us to do. We started off the morning going to mini-classes. This gave all the parents a chance to meet our teachers and get a sample of the types of classes we are taking. Then, we had a warm welcome by President Frazier, which was followed by a delicious luncheon. After our meal and some free time, the big event came — the Freshman-Sophomore powder-puff football game. I could not believe it; the freshman won! It was an exciting battle!

Ballgames always work up a hunger, so afterwards, we had a picnic on the back lawn. This gave each of the parents time to visit and to meet all of our friends. The Variety Show, on Saturday night, gave our parents a chance to see all the talent at Peace. To finish off the night, and the diets, we had a super make-your-own sundae party.

The next morning, Mom and Dad got to hear Mr. Thomas speak just as we do in Wednesday Chapel. This service was followed by the President's breakfast. It was hard to believe, as I downed my orange juice and scrambled eggs, that it was already time for my parents to leave. So glad they had the chance, this year, to join me and the Peace Family in a wonderful weekend especially for them.



Halloween

People say that the girls who go to Peace are very pretty; well, they would have had their doubts if they could have been here Halloween. Just on my hall alone we had a mummy and a baby mummy, a witch, a cowboy, a hula girl, a flapper, and one girl on crutches who went as a girl in a cast. I guess you might say that Peace College let its collective hair down for one wild supper. I must say that we had some original costumes. This was one time we didn't have to worry if we looked nice. It was fun being a kid again. I only wish that I could have gone Trick or Treating.

Hostages . . . Day 365



November 4, 1980, marked the one-year anniversary of the fifty-two American hostages held captive in Iran. This important date could not be and was not to be ignored by those of us at Peace College. A reverent and meaningful service, the only one of its kind in the Raleigh area, was held on this day in the James Dinwiddie Chapel. Student speakers gave concerned messages of hope to all who attended, and a collection was taken which was to be sent to the hostages' families. The service was followed by a candlelighting ceremony around the fountain in front of Main.

In addition to the Tuesday night service, everyone continued to show her concern by wearing the symbolic yellow ribbons. By each of these actions, the Peace family wanted to express the respect, hope, and love we all felt for the hostages during this difficult and trying time.



Cider House

Cider House is presented annually by the staff members of the Prism, Peace's literary magazine. This year's Cider House was held on the evening of November 18. Everyone attending enjoyed hot cider and gingerbread as student and professional poets recited, sang, and presented dramatic monologues. An impromptu sing-along was also featured. This program allows all of us at Peace College to see the creative talents we have on campus. It is for this reason that Cider House is one event you wouldn't want to miss.



Chicken Soup with Barley



For four exciting nights at the end of fall, the crowds came, the lights went up, and the stage filled with enthusiastic young actors and actresses. From October 29 to November 1, the Peace College Theatre Arts Group presented **Chicken Soup with Barley**. This play is a drama by Arnold Wesker, set in London in the mid-1930's to the late 50's. It involves a Jewish working-class family and other followers of the communist party and Socialist movements in England. Yet, as Beth Harris, who played the lead as "Sarah" comments, the play's underlying theme is "people's disillusionment with people." "As the years progress", Beth adds, "you see how the

characters lose their ideals and hopes for society." Sarah, however, is one who is able to maintain her strong conviction in her party.

An intriguing and sometimes complicated play, **Chicken Soup with Barley** was presented under the direction of Dr. Terrence McGovern. Others performing from Peace were Laurel Brooks, Mary Tully, Janis Baron, and Laura Lambert. Sophomore Marjorie Garner held the position of assistant director.

For all involved, the weeks of rehearsal, memorizing, and anticipation proved to be worthwhile, for the play was a success.



The Medieval Banquet here at Peace will take you back to the times of fair maidens, servants, surfs, and trolls. All of the French students, with the aid of Dr. Emily DeLuca, prepare and make this dinner as true to history as possible. For example, at this banquet, there are no china plates, napkins, or comfortable chairs. Instead, only wooden bowls and knives are used for eating, and everyone is seated on crude wooden benches. If you enjoy pig pickins and fish cookouts, then you may appreciate the unique way in which these main dishes were prepared, served, and eaten during Medieval times and for our dinner.

To add to the atmosphere, candles are used for light, and hay is spread across the floor. Also, little dogs scamper about while each of the advanced students tell a Medieval tale. With such an extraordinary setting, it is clear to see why, for most of us attending, this banquet was an unforgettable experience.

Medieval Banquet





Thanksgiving is supposed to be a time for giving thanks, and here at Peace it is no different. We had a huge and delicious buffet, but I felt like giving thanks for more than just the good food. I wanted to thank God for allowing me to be your daughter, and for allowing me the chance to come to Peace College. I know I gripe and complain about the homework and rules, but I really do love Peace. It is kind of hard to love any school with exams approaching, but one day I'll look back and appreciate the friends, the experiences, the education, and all the other things that make up the two years at Peace College. But for right now I am content and thankful for you, and for the chance to be living these days to the fullest so that one day I can look back on them with fond memories.

Thanksgiving

Well, before you know it I will be home for Christmas. I really am looking forward to it. But here at Peace, they have also made Christmas very special. The Chain that starts on the third floor of Ross and winds up and down every hall of every floor of every dorm, literally joins all of us together. It is sometimes tiring and a little scary, tearing down four flights of stairs, being pulled by 200 girls, and pulling 200 more, but it is a lot of fun. Then afterwards, we all gather around the fountain to sing Christmas carols. Everybody links arms and sways together as one group. I can really see what they mean now when they call Peace a family. And then, as we all head back to the books, I look back and see the beauty of the luminaries lining the walks in front of Main and really feel good about being a part of Peace College. Yes, Mom and Dad, I can't wait to get home, but I wouldn't have missed Christmas at Peace for anything.





Christmas











S P O R T S



BASKETBALL

ORIGIN — Basketball was founded in December 1891 by James A. Naismith in the Springfield, Massachusetts Y.M.C.A., where he was an instructor.

OBJECTIVE — To shoot the basketball into the opposition's basket by means of foul shots (one point) or from the field (two points).

PLAYING OF THE GAME — Enthusiastic, hardworking, and successful describe the 1980-81 Peace College Basketball team. The team, composed of twelve young women from North Carolina and Virginia, spent much time in sweat pants and jerseys practicing defensive moves and shooting skills in order to tower over their opponents.

"Although the team was young and inexperienced, we played hard and gave each game our best," stated Coach Susan Cox. Having only three seniors on the team was viewed as an asset because the freshmen gained quite a lot of experience at the college level. Miss Cox recognized the many contributions of the seniors who will be greatly missed: Debbie Benton (captain), Betsy Covington (captain), and Liddy Swing.



Sharon Dunston (50) and Betsy Covington (20) display their defensive talent in a win against Anderson.





BASKETBALL — (front row) Angela Brown (Manager), Sharon Dunston, Debbie Benton (captain), Ellen Essick, Wendy Bishop, Jan Rogerson, Liddy Swing, Coach Susan Cox. (back row) Chandra Franks (manager), Jeanie Tyson, Che Che Huffstetler, Tamara Franks, Peggy Alston, Betsy Covington (captain), Teresa Mueller.

Many long hours of practice pay off as the Giants warm up before a game.



Towering over Anderson's defense, sophomore Debbie Benton adds points to the Peace College scoreboard.



A great amount of concentration is obvious, while Kelly Key displays a unique style.



Tennis — Bernetta Sydnor (manager), Tammy Allen, Kathy Naples, Leslie Lewis, Starla Bunker,

Cindy Morgan, Rhonda Winstead, Laura Pileggi, Kelly Key, Coach Betty Ann Ford.

TENNIS

ORIGIN — In 1873, at a lawn party, Major Walter Clopton Wingfield introduced the sport to guests.

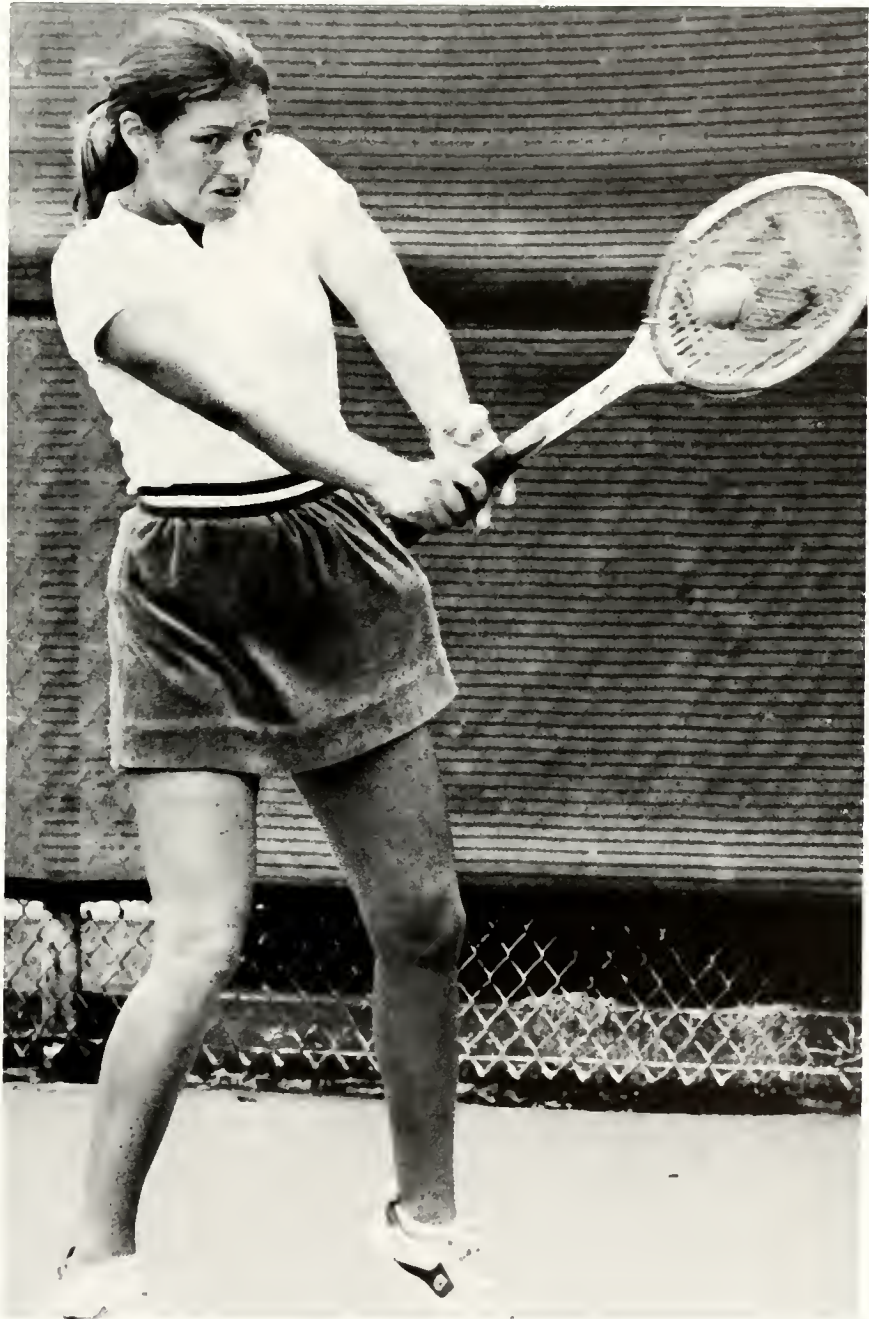
OBJECTIVE — To score points either by delivering an unreturnable shot or by forcing errors upon an opponent.

PLAYING OF THE GAME — Throughout the season, each of the eight players on the tennis team exhibited many important qualities. Two of these qualities were enthusiasm and a winning attitude. These characteristics led to the relative success of the Giant's season.

Coach Ford stated, "They were always willing to work hard, whether at practice or a match." The number three players were Starla Bunker, Kelly Key, and Leslie Lewis. Their many abilities, along with their accuracy, made them an asset to the team.



LEFT — With fierce determination, number one player, Starla Bunker, returns a forehand shot.



ABOVE — Sophomore Tammy Allen demonstrates her skillful two-handed backhand in a singles match.

CHEERLEADERS

The enthusiasm and abilities which the Peace College cheerleaders possessed were witnessed by many people. Each cheerleader was willing to put forth individual effort in order for the squad to be effective. Many evenings were spent practicing new cheers and mounts. Bunny Murphy and Phyllis Smith co-headed the cheering squad. Phyllis summed up the season when she stated: "With the combination of four freshmen and five sophomores, spirit, enthusiasm, and school pride were all achieved, along with a successful 1980-81 cheering year."



The Peace cheerleaders discuss final plans before the game begins.

In an early season home game, the squad displays the three-split mount.



CHEERLEADERS — (left to right) Michelle Steppe, Kim Kennedy, Susan Tadlock, Leslie Murphy, Phyllis Smith, Bunny Murphy, Joy Lassiter, Millicent Aldridge, Pam Norris, Catherine Smith.

TO EACH HER OWN

Here at Peace College, there is something for everyone in the way of sports. The girls find both individual and group activities to participate in. Swimming, jogging, exercising, and Aerobic dancing are a few popular pastimes that Peace girls enjoy.



ABOVE — Suzanne Davis and Connie Lambeth enjoy jogging, which is common among Peace girls.

ABOVE LEFT — In her free time, Danita Sells enjoys swimming.

INTRAMURALS

Over the past year, intramurals have been lots of fun. This year the interest shown was at a maximum level. There was volleyball, softball, and basketball for those girls who enjoy team sports. For those girls who like participating with a partner, there was ping-pong, tennis, spades, Uno, and badminton. And for the art of playing one-on-one, there was backgammon, golf, archery, and monopoly. A swim meet and the Powder-Puff Football game sparked enthusiasm and competition to see which class was the best.

RIGHT — Anne Clayton serves the volleyball while her teammate await its return.



LEFT — Skillfully playing ping-pong is sophomore Beverly Bunling, better known as "Bird".



LEFT — While drawing back her bow, Mary Bunton focuses on her target.

BELOW — Melanie Hunt Practices her golfing strokes.



ABOVE — Alicia Ramsey, Joy Lassiter, Susan Mitchell, and Jamie Bottoms round up their equipment before a softball game.







H
O
N
O
R
S

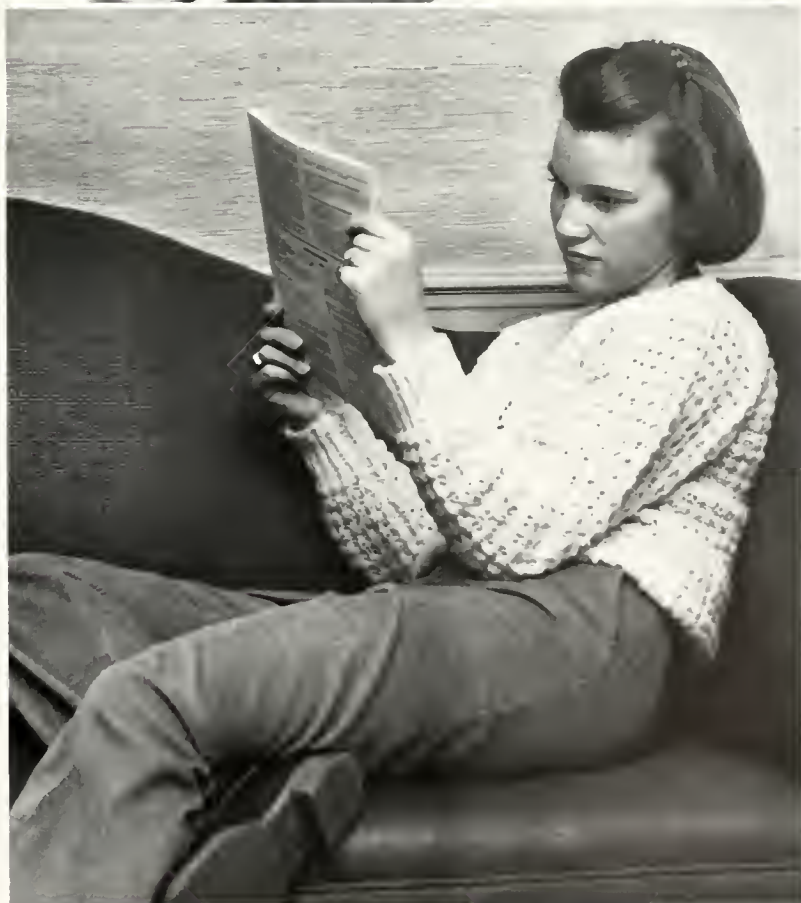


Miss Peace



Rhonda Winstead

When Rhonda Winstead was chosen Miss Peace 1981, we all knew that the right person had been chosen, for Rhonda truly deserves such an honor. All around Peace, we see her excelling in every aspect. She's outgoing and takes time to be a friend to all those in need. As president of the PSCA, she shows her dedication through all the responsibilities she encounters. Whether Rhonda is on or off campus, she is definitely a true representative of Peace College and all it stands for.



Outstanding Sophomores

In addition to other honors given at Peace each year, we students nominate eight outstanding sophomores. These girls are elected by their peers, both freshman and sophomore, on the basis of noteworthy contributions they have made to student life at Peace. Other attributes considered are leadership and academic, social, and personal qualities. Obviously, the girls chosen for this honor are highly thought of by all.



Standing left to right: Cindy Morgan, Liz Treacy, Sarah Friday, Phyllis Smith, Sitting: Janet Britt, Cindy McGinnis, Sally Ruth Nahser, Angela Brown.



Cindy Morgan



Liz Treacy



Sarah Friday



Phyllis Smith



Janet Britt



Sally Ruth Nahser



Cindy McGinnis



Angela Brown

Who's Who

This year, ten young women from Peace were named to Who's Who Among America's Junior Colleges. Selected by the administration and faculty, each girl was chosen on the basis of several requirements. These included her academic record, her participation and leadership in student activities, and her potential for the future. All of these girls have displayed their capabilities well in each area and have definitely made a marked contribution to life at Peace, making themselves well qualified for this special honor.



Ann Bagwell



Angela Brown



Harriett Bullock



Sarah Friday



Cindy McGinnis



Cindy Morgan



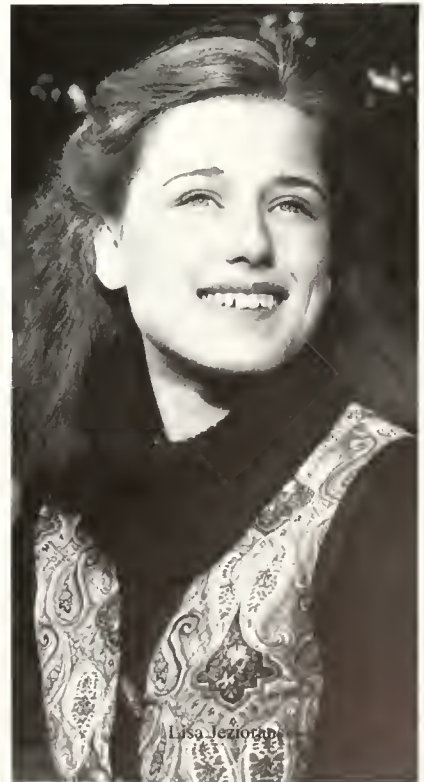
Sarah Vaughan



Phyllis Smith



Khonja Winstea



Lisa Leziogun

Phi Theta Kappa



Front row — Left to Right: Beth Early, Susan Maxwell, Sandra Day, Casey McDonough, Julie Taylor, Carla Hatley. Second row: Donna Heath, Carol Lynn Allen, Cindy McGinnis, Sarah Friday, Cindy Morgan, Tammy Allen, Wanda Freeman. Third row: Olivia Taylor, Harriett Bullock, Sarah Vaughan, Lisa Smith, Cynthia Currin, Lisa Greene, Kelly Thompson, Stephanie Phillips, Robin Pulley.



Cindy McGinnis — President

All that studying finally paid off: I was finally inducted into Phi Theta Kappa, the honor society here at Peace. This is my chance to be recognized for my scholastic achievements.

I'm excited about the activities we have planned for the year. We hope to donate something to the library to help other students obtain our same success. But being a member of this fraternity isn't all work; we recently paid a visit to the dinner theatre to see "Fiddler on the Roof." And the faculty has invited us to attend their monthly seminars where there always is an interesting guest speaker present. This is truly an opportunity for intellectual growth. Don't you think?

I guess the thing I like most about being a member of Phi Theta Kappa is simply the fellowship it provides. My fellow members are a very special group of girls.

Be sure to tell Grandma the good news.



As you know, one of the best parts of being a freshman comes at the very end of the year. All the days of going to classes, taking notes, studying and worrying about tests finally paid off. It was really a great honor to be selected as a marshal for graduation. Many of the sophomores were our friends and, as Beth Early said, "It was a good way to serve the sophomores and be a part of their graduation ceremonies." Another marshal, Karen Roberson, summed it all up in saying, "Being a marshal has been a lot of work, but has been a great joy." It was really nice to be recognized in this way. Karen, Beth, Olivia Taylor, Cindy McGinnis, Lisa Smith, Lisa Jesoranski, Wanda Crump, and Sarah Friday were selected on the basis of first-semester freshman averages. We helped usher the graduates during the Baccalaureate Service and at the beautiful graduation ceremony. I am sure this experience at Peace will be one we will always remember fondly.

Left to right: Karen Roberson, Beth Early, Cindy McGinnis, Sarah Friday, Olivia Taylor, Lisa Smith.

Marshals

May Queen



Miss Emily Carlton



For Emily Carlton — as May Queen — and Phyllis Smith — as Maid of Honor, the thrill and excitement of such an honor has been overwhelming. The two were chosen on the basis of their appearance and personality. Emily really feels privileged to have this honor bestowed upon her by her friends. As for Phyllis, she also feels it is an honor and such a pleasant surprise. Both Emily and Phyllis really deserve the honor, Mom, and we all think so too!

Maid of Honor



Miss Phyllis Smith



Freshman and Sophomore May Courts



Left to Right: Sophomores, Susan Amos, Sandra Day, Laurie Mears, and Joe Ann Knuckley



Left to Right: Freshmen, Mary George Davis, Annette Snow, Carolyn Gay, and Lib Johnson



Susan Amos



Sandra Day



Laurie Mears



Joe Ann Knuckley



Mary George Davis



Annette Snow



Carolyn Gay



Lib Johnson

Sigma Delta Mu



Left to right: Stephanie Phillips, Olivia Taylor, Linda Stowitts — Pres.

Sigma Delta Mu is a national honor society in Spanish for two-year colleges and the first three semesters of four-year colleges and universities. Its primary purpose is to honor those who seek and attain excellence in the study of Spanish and the literature and culture of Spanish-speaking people. The requirements for Sigma Delta Mu are very high. To be a member, a student must: be enrolled in the second semester or higher; be in good standing; be genuinely interested in things Hispanic; have a minimal grade-point average of 3.00 in Spanish; and rank in the upper 35% of her class or have at least a 2.75 overall. As you can see, being a member of this club is really an honor.

Well, Mom and Dad, this concludes my letter to you. I hope that by way of my descriptions of our organizations, honors, and events, I have helped you, as well as anyone else reading this, in getting to know and love Peace as much as I do.

All my love,
Your Peace girl





ORGANIZATIONS



PSGA

PSGA has really been going well so far this year. I think that a major reason for this is that so many people are participating in PSGA activities. This shows they really care about the welfare of others and the welfare of the College. These people willingly give their time so that they and other people involved in this institution might also benefit as much as possible. I feel privileged and proud to be a part of PSGA and to work with such a fine group of girls. It is amazing how much talent there is here at Peace, in so many different areas. There is a place for each individual to apply herself at Peace in her own unique way. Because of the existing enthusiasm, I am really excited about the remainder of events this year.



Cindy Morgan — President of PSGA



Front — Teresa Murphy, Beverly Bunting, Rhonda Winstead, Ferreby Gay, Tammy Allen, Cindy McGinnis. Back — Anne Bagwell, Belynda English, Susan Amos, Meg McPherson, Cindy Morgan, Susan Mitchell, Debbie Benton, Janet Britt, Sally Ruth Nasher, Joe Ann Knuckley, Liz Treacy, Angela Brown.



Front — Susan Amos, Rhonda Winstead, Harriett Bullock. Back — Jamie Bottoms, Debbie Rawls, Olivia Taylor, Katherine Byerly, Sarah Friday.

P S C A



Rhonda Winstead — President of PSCA

PSCA has been going great! Being president has really been a special part of my life this year. The projects PSCA sponsors give me and the other cabinet members a very warm feeling because we are able to lead in promoting Christian fellowship on the campus and within the Raleigh community. All of the cabinet members have been super! They always support me in my ideas and are constantly coming up with creative ideas. The Thanksgiving and Christmas services, along with activities such as "Peanut Week," help the students here to develop friendships and provide Christian growth.

Also, many girls represent Peace by being tutors for the Salvation Army and Halifax Court, and some work in volunteer services within the community. The PSCA has provided many services and activities to help students learn what it means to be a Christian.



Front — Meg McPherson, Beverly Bunting, Edie Shell, Susan Mitchell. Second Row — Lorie Tyson, Julie Heberle, Meg Barnes, Martha Johnson, Susan Meuser. Back — Joy Lassiter, Leslie Murphy, Carol Griffin, Gaye Pearson. Wendy Fisher, Gaye Fleming.

**P
S
R
A**

I have really enjoyed my time at Peace. I have grown and matured, but most of all I have learned about myself. They have a saying here, "We are Peace, we are one," and it does not only mean the basketball team, but also academics and other activities. Intramurals are not to be excluded from this; and being a member of PSRA, I have improved my own skills. I have also met many new friends that I might not have met otherwise. Being members of the PSRA, we have all seen the other side of the faculty through the participation in the intramurals. We try to spread enthusiasm, not only to the representatives, but also to the players. We have seen this by a handshake or a pat on the back after each activity. Mom and Dad, it is not only whether you play well or badly, but that you had fun with others. This semester, we have had volleyball, softball, ping-pong, tennis, plus other activities. I think it is going to be a close race this year.



Susan Mitchell — President of PSRA



Front — Rhonda Winstead, Liz Treacy, Janet Britt. Back — Cindy Morgan, Susan Mitchell.

Honor Court



Liz Treacy — President of Honor Court

I wanted to write and let you know now things are going. The other day I realized that being a member of the Honor Court at Peace has helped me to see more facets of life than I ever realized existed. Now I know how you felt when had to discipline me when I was at home. It isn't easy to decide on punishments for friends that I have come to

know. Yet in order to have an environment which will be pleasing to everyone, this job is necessary. I am sure everyone realizes that the purpose of the Honor Court is to uphold the Honor Code and pledge, and to maintain the highest standards at Peace, of which we are all proud.



Front — Countney Holten, Fay Johnson. Second Row — Carla Hatley, Kim Kennedy, Lee Anne Story, Katherine Byerly.
Back — Melia Perry, Phyllis Smith, Sally Rush Nasher, Martha Grubbs, Edie Shell, Kelly Thompson, Donna Holiday.

RESIDENTS ASSISTANTS

Just a quick note to let you know how things are going. First of all, my classes are getting tough, but this is to be expected. Now the good news! All of the Resident Assistants are doing great this year. You see, I have had many girls come to me and express their appreciation and gratitude for the jobs well done by the R.A.'s. It really makes me feel good to hear such praise for the girls because I am sure they deserve it. I think we have such a good group this year.

What is really the most pleasing is the many friendships each of us have developed through being Resident Assistants. Not to mention just the friendships between the R.A.'s, but all of the girls on our separate floors that we have gotten to know. It seems that each of us is in charge — or rather "Mothers" — to our girls on our floor. I know that I feel like a "mom" at times, but that is fun. We are to be there to listen, to guide if possible, and to just be a friend if nothing more. Sometimes it can get hectic, but somehow we all manage. Most of all, I can say that all of us are doing our best, and that is all anyone can do or ask for. Plus, just being ourselves is the best thing these girls need here.

Well, let me go. I have to go talk to Dean Edwards, our advisor. She can always help us when we have nowhere to turn. I guess you could call her our "Mom."



President of Resident Assistants — Phyllis Smith

NON-RESIDENTS

Most any day, when you pass by the Rec Room, the majority of the girls you see are non-residents. The Rec room is our headquarters for a quick snack in between classes or for catching up on the latest news about that gorgeous guy at State.

The non-residents at Peace are a busy group of girls. All of our time and energy is not spent chatting in the Rec Room. We place flowers in the Chapel at Thanksgiving, Christmas, and Easter, and we are active participants in clubs, intramurals, and athletics. In fact, one non-resident is a guard on the basketball team. The four bake sales we sponsor throughout the year are always heartily enjoyed by the student body.

During the fall we have a get-together with the faculty. Then in the spring, we have a cookout at Pullen Park for ourselves.

Obviously, the Peace College Family would not be the same without the non-residents.



Pam Vawter, Teresa Murphy, Anne Bagwell, Vicki Fields, Beth Sedberry.



Front — Sandra Parrish, Jeanne Blake, Cindy Rouse, Lisa Jezioranski, Teresa Murphy, Anne Bagwell, Vicki Fields. Second Row — Shelia Valentine, Kim Peoples, Roberta Hill. Third Row — Pam Hairr, Tammy Hunter, DeAnne Schneider, Lisa Tutor, Diane Bradley, Pam Vawter, Kathy Fahrenkamp, Debbie Chamblee, Kim Stanley, Beth Sedberry, Susan Finch, Louise Mulleney. Back — Sandy Luhn, Becky Hunter, Patti Pickard, Tamara Franks, Wanda Earp, Mary Doyle, Desiree Stover, Katherine Oakley, Renee Weaver, Chandra Franks, Katherine Johnson, Angela Churchill, Kathy Vinson.

CHAMBER SINGERS

This year's Chamber Singers are really going places. We are traveling again this year to many locations in North Carolina, including Lincolnton, Ahoskie, Charlotte, and Raleigh. We are a select group of girls, for each of us had to audition and then was chosen on the basis of her ability. We perform a high grade of music, sung mostly acapella.

We're all so excited about the European tour this summer. It will be a great chance to see another part of the world, and it will be wonderful to sing in some of Europe's most beautiful churches. I'm looking forward to sharing such a wonderful experience with such a great group of people. We're glad, too, to be under the leadership of Jim Smith, who makes hard work and long road trips fun.



Front — Janice Heath, April Snow, Lori Collins, Rhonda Hall, Mary George Davis. Back — Jane Bramble, Carol Lynn Allen, Susan Allen, Cindy Moore, Anne Schneider, Sarah Vaughan, Laura Ann Collins.

CHOIR

What would Wednesday morning chapel be without our own Peace College Choir? Or Christmas? This talented chorus of girls devote much of their time to practicing and performing for us at Peace and for others at various functions. Directed by Mr. Jim Smith, the choir adds flavor and entertainment to our sometimes hectic lives. The hard work they put into their weekly anthems always proves worthwhile! We are very lucky to have a choir such as this on campus.



Front — Leslie Murphy, Robin Lawson, Anne Clayton, Robin Pulley, Beth Cameron, Jane Morgan. Back — Sandra Moore, Sandy Brendell, Nina Beth Daughteridge, Jeannie Blake, Margaret McNeill, Cindy Munsey, Candy Lawrence, Tracey Edmundson, Karen Roberson.



Seated — April Snow, Quincy Foil. Standing — Sandra Moore, Margaret McNeill.

PIANO ENSEMBLE

At Peace, there is a wide variety of talent. One group of girls, especially, possesses a tremendous amount of musical ability. Years of lessons (the average number is nine or ten), practicing, and performing at the piano, have brought Sandra, Quincy, April, and Margaret much satisfaction. Lead by Mrs. Black, the group does sight-readings, goes to concerts, listens to music, plays duets, and performs at recitals throughout the year. The Piano Ensemble gives these girls the opportunity to share their gifts with the Peace family.



Top Row — Janice Barron, Marjorie Garner, Sarah Farnor. Middle Row — Laurel Brooks, Beth Harris, Marlene Clegg. Bottom Row — Mary Tulley, Laura Lambert, Angela Brown, Sarah Vaughan.

DRAMA CLUB

The drama club has been a real help this year in aiding the drama productions. The club's primary function is publicity for the shows. They've done a good job this year with ticket sales and with putting up posters in suggested store windows. Some members even helped at the last minute with set-building and arranging lights. Hopefully, the group will get into some extra activities, like going to The Village Dinner Theatre. Most of all, the drama club has given the group a sense of having helped with each production, even though their work is mainly behind the scenes.

DAUGHTERS AND GRANDDAUGHTERS

I feel that the Daughters and Granddaughters Club shows a great deal of school loyalty. We are a special group of girls who have had some of our family attend Peace in previous years. It has been fun this year sharing stories with new friends about how Peace was years ago. Trimming the traditional Christmas tree in Main, visiting the Governor's mansion, and eating in the President's dining room will be just some of the memories we will pass on to our children, with the hopes that they will love Peace as much as you and I did. Mom.



Front — Anne Rogers, Elizabeth Yarborough, Beth Jeanette, Caroline Jordan, Bernetta Sydnor, Beth Cameron. Second Row — Kelly Wells, Cindy Creech, Grayson Warren, Emily Carlton, Stephanie Phillips, Suzanne Pair, Sarah Herring, Mrs. Polly Flowe, Martha King, Harriett Bullock. Back — Meg Barnes, Bunny Murphy, Patsy Waronoff, Kathy Maxwell, Susan Maxwell, Kathy Richardson, Sissy Grantham, Katherine Smith, Lvnv Bisette, Eleanor Rogers, Katherine Byerly.

PORPOISE CLUB

The Porpoise Club has been a great way to exercise and perform swim routines throughout the year. We have spent such time practicing strokes, learning stunts, and sculling. The most rewarding aspect of this club is our water ballet show in the spring. Please try to make it to our show!



Front — Jean Morrison, Alison Poole, Caroline Butler, Barbara Hobson, Gaye Flemming, Guyanne Boger, Roberta Hill, Priscilla Harper, Candy Lawrence, Angela Brown. Back — Tara Humphries, Susan Amos, Sandra Day, Kelly Thompson, Beverly Bunting, Cissy Clark, Tracey Barnes, Martha McKown, Jill Summers, Mrs. Nancy Adamczyk.



Martha Grubbs, Candy Lawrence, Casey McDonagh; not pictured — Sandra Moore, Edie Shell, Tamara Gordon, Malia Perry, Laura Hughes, Kathrine Byerly, Donna Holiday, Kelly Thompson, Bonnie Mihovch, Carole Eakes, Michelle Steppe, Carla Rascoe, Martha Johnson, Lisa Edge, Allison Poole, Ellen Essick.

Fire Marshals

If you like surprises, Peace has really got a good one for you — our famed fire drills! One or two times a year, the fire marshals and only a few others are expecting a drill. It can come at any time, any hour, and in any weather. The job of the fire marshal is one of responsibility. We are to see that everyone has picked up the essentials as she runs outside — a towel, raincoat, flashlight, and hard-soled shoes. As a good safety practice, the fire drills serve an important function at Peace. The fire marshals are there to aid in this measure. Even if it's late at night and everyone's in bed, the fire drills usually prove to be a fun adventure.

Mailroom Workers

Edie Shell, Olivia Bryant, Stephanie Paradeses, Susan Vick, Gretchen Stephenson, Megg Potter.

ROSS HOSTESSES

The Ross hostesses are a group of girls who give their time, throughout the week, to carry out an important job at Peace. There isn't a night that goes by that no student has a visitor. The hostesses work in the evenings, in Ross Dormitory, greeting newcomers and old faithfuls to our campus, then announcing those words we often long to hear, "You have a caller in the lobby." With this duty, we can clearly see how essential these girls and their jobs are.



Left to right — Katherine Swinson, Ann Umstead, Liz Treacy, Robin Lawson, Carolyn Ritch, Sherry Parrish.

SWITCH — BOARD OPERATORS

Some of the most congenial girls at Peace College can be found right at our front door. Yes, the switchboard operators are always there and ready to assist in a call, give directions, or take a few minutes out for a friendly chat. These girls work periodically during the evening hours, helping others. Without them we Peace girls would never know that we had waiting a message, a date, or even flowers. Thus the service of the switchboard operators is very much appreciated by us all.



Left to right — Barbara Allen, Donna Stovall, Stella McCullough, Nancy Burnette, Lynn Cottrell, Marjorie Garner.

HOME ECONOMICS

We are doing exciting things in the Home Economics Club this year. We have had a bake sale, and believe it or not, we are learning to cook! Also, we have been on a cheese tour and got to sample lots of delicious cheeses! Now, we are going to begin planning a spring fashion show. The club has provided opportunities of fellowship with other girls and has given us new insight into the world of Home Economics.



Seated — Donna Holiday — president, Tamara Gordon — vice-president. Standing — Mrs. Kincade, Angela Brown, Dawn Parker, Melody Tetterton, Sherry Parrish, Pam Goss, Lynn Cottrell, Sally Ruth Nahser, Sandy Brendell, Carolyn Gay, Robin Lawson.

FBW

The Future Business Women's organization is new to our campus this year. Formerly the Future Secretaries of America, the club was reorganized to provide opportunities for all of the Business students at Peace and not just the secretarial ones. The FBW is sponsored by a panel of professional business men and women in the community. This panel meets with the members at certain times during the year to discuss specific areas within the working world. One exciting activity for the FBW is a field trip to a computer programming center in the Raleigh area. This club gives many girls the chance to see what careers and opportunities await them after their years at Peace.



Left to right — Martha Parker, Angela Churchill, Anita McGinnis, Patti Mitchell, Sandra Parish, Ginny Chamblee, Pam Goss, Tina Hall, Lynn Cottrell, Wanda Freeman, Debbie Chamblee, Kim Stanley.

OFFICE ASSISTANTS

Busy, that's one word that comes to mind when you think of the office assistants here at Peace. There are always letters to type, envelopes to address, tickets to sell, phones to answer, and hundreds of other things for us girls to do. Each of us spends several hours a week working for one of the faculty at school. Without office assistants, their job would be much more complicated. Being an office assistant does keep one busy, but most of us agree that, in the long run, it's actually a lot of fun.



Front — Debbie Chamblee, Angela Brown, Susan Patton, Ann Dunlap, Ferreby Gay, Karen Auten, Lisa Horne, Martha Parker. Second Row — Anne Bagwell, Angela Parrot, Janet Britt. Back — Brenda Strickland, Melanie Hunt, Ruth Ann Rusher, Terri Benfield, Pam Goss, Harriett Bullock.



Drew Barnes, Ann Barnes, Bonnie Mihovich, Tamara Gordon, Jamie Bottoms, Kim Vaughn, Elizabeth Johnson.

LIBRARY ASSISTANTS

There are several girls at Peace who give their time to work in the Lucy Cooper Finch Library. We girls, the library assistants, need to have much knowledge about the Dewey Decimal System. We also must become familiar with the placement of books, films, tapes, and magazines, to show the people who need them. Since we also type, our typing skills improve tremendously. The job proves very interesting, and the things we learn from our work will be helpful in the future.



Front — Connie Lambeth. Sherry Parrish. Back — Angela Brown, Robin Lawson, Sandy Brendell, Lisa Jackson.

BIBLE STUDY

Bible Study is a group of girls who get together once a week to share. It is a great way to meet our needs for Christian fellowship while in school. Through it, we can share our thoughts and feelings about subjects relative to our daily lives. We look up scriptures to see what the Bible has to say about them and then, we discuss how to accept and cope with them. By listening and talking with each other, we learn many things that we will be able to use throughout our lives.



First Row — Rhonda Winstead, Beth Lavender, Kelly Key, Connie Lambeth. Second Row — Susan Meuser, Jill Summers, Martha Johnson, Angela Brown. Third Row — Mary George Davis, Lori Johnson, Lib Johnson, Sherry Parrish. Fourth Row — Jan Baron, Jeannie Tyson, Teresa Mueller. Fifth Row — Betsy Covington, Debbie Benton, Tracey Barnes, Meg Barnes. Back Row — Wendy Bishop, Lorie Tyson, Susan McClean, Miss Betty Ford.

F.C.A.

The Fellowship of Christian Athletes is an exciting group on campus. Many of us are familiar with the fun of FCA from our high school days. Advised by Miss Betty Ford, the club invites anyone, not just athletes, to join in their programs. Having special speakers, sharing stories and songs, talking, listening, and enjoying fellowship make up some of their activities. Unique and meaningful friendships, with new acquaintances and especially with God, are able to grow here, making this group a vital part of many of us at Peace.



Front — Catherine Smith, Elizabeth Johnson, Mary Tully, Jackie Batson, Russelle Seibert. Second Row — Beth Lavender — news editor, Cora Jones — editor, Liz Colberg — sports editor, Suzanne Cannon — art editor. Back — Sonya Mabe, Alecia Ramsey, Cindy Cliett, Chase Teer, Tara Humphries, Paula Tugwell, Jean Blake, Cindy Pleasants, Lisa Martin, Julie Lassiter.

PEACE TIMES

The *Peace Times* is our way of expressing the various aspects of Peace College in print. It is hard work that only the editor and staff members know: the search for stories, meetings, deadlines, and the frustrations of layouts seem to be hopeless at times. But, when the final copy appears, the hard work and frustrations all seem worthwhile.



Cora Jones — Editor



Ann Rogers, Paige Clark, Tara Humpries, Carolyn Gay, Karen Crowell, Wanda Freeman, Sarah Farnior, Julie Taylor — editor.

PRISM

Since I started working with the Prism, I feel that I am almost in a totally different college. Nearly every day, I see a new talent and really come to know the sensitivity and depth of emotion that is usually hidden in day-to-day life. And, the best part of it all is that I am discovering all this in my own close friends. It is exhilarating to see a whole new side of someone you know suddenly open to you in their writings and art work.

But, I don't want you to think that I am just sitting around broadening my horizons and receiving spiritual gratifications or anything. We have really been working to raise funds. In October, we sold popcorn, cokes, and cookies, and we had our Cider House presentation on November 18. It was a terrific success.

Publication is not completed yet, but from the looks of things, we will have a first-rate magazine. There is a contest with cash prizes which 'yours truly' may be entering. I will let you know how things progress next letter.



Julie Taylor — Editor

LOTUS



First Row — Wanda Earp, Joy Lassiter, Carolyn Gay, Debbie Rawls, Cathy Swinson, Tammy Money, Harriett Bullock. Second Row — Laura Funck, Sandy Brendell, Susan Patton, Karen Crowell, Mary Bunton, Donna Bowen, Velvet Sealey. Third Row — Darlene Flynt, Connie Lambeth, Stella McCullough, Sarah Friday, Kirby McMillian, Wanda Freeman. Fourth Row — Lorie Tyson, Taina Moody, Wendy Bishop, Ann Clayton, Elaine Reid, Kelly Wells, Allison Evans, Saralyn Dean, Sarah Fariior, Suzanne Davis, Martha King, Russelle Seibert, Donna Woodlief, Kyle Fuller, Sarah Vaughan.



Sarah Friday, editor.



Mrs. Janet Wester, Lotus advisor



Stella McCullough, Sheri Pedigo — Assistant Editors



Kelly Wells, Martha King, Darlene Flynt, Allison Evans, Saralyn Dean, Wanda Freeman, Taina Moody, and Lorie Tyson — photographers.

I am really excited about this year's annual. We have a dedicated and willing staff of over forty people. Many of them have had experience in high school, and the others are interested enough to have quickly learned the ins and outs of annual-making.

We became a part of the Lotus staff for several reasons. Most of us came to help for the fun of doing something besides studying, to get involved in a student activity, and to have the chance to meet new friends. Wanda Freeman, who is working on the Organizations Section, says, "Working on the yearbook gives me a sense of achievement, responsibility, and pride in knowing that I helped to create a memory book for the Class of '81." And Kyle Fuller, Freshman Class section editor, adds, "It has given me a chance to set and reach personal goals. This hard work makes the finished product worthwhile." I think all of us would agree with both of these girls. Stella McCullough, co-editor, and Debbie Rawls added two other explanations. Stella comments, "This job helps me to begin to understand what life and work will be like in the 'outside' world." And Debbie, who is working with the art section, says, "I enjoy being a part of the annual staff because I have a need to express myself creatively."

Whatever the reason, we have all been very busy putting together the pages of our Lotus. One member, in speaking for all of us at Peace — freshmen and sophomores — notes, "We keep many memories in our hearts, but having a book that we can look back on always brings back a special feeling inside." She is right! I think the annual is for all of us. I hope you like it, too!



FACULTY



ADMINISTRATION

Dr. David Frazier
President



Dr. Alfred Canon
Vice-President and
Development Director



Ms. Carolyn Cogdell
Assistant Director
of Admissions



Mrs. Catherine Cutts
Admissions Director



Mrs. Kay Downing
Admissions



Miss Janice Edwards
Dean of Students



Mrs. Polly Flowe
Director of Alumane
Affairs





Mrs. Jane Kanipe
Registrar



Mr. Eugene Lilley
Business Manager



Mrs. Katherine McAdams
News Director



Ms. Elizabeth McNair
Student Affairs Director

Mrs. Cynthia Seymour
Registrar

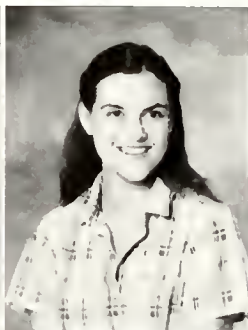


Dr. James Perry
Academic Dean

FACULTY



Mrs. Nancy Adameczyk
PE



Mrs. Rebecca Bailey
Art-History



Mrs. Margaret Black
Music



Miss Trudie Blackwell
Biology





Dr. Sally Buckner
English



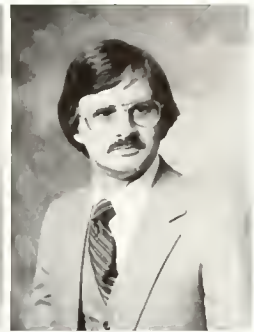
Mr. Ben Cochran
Sociology



Miss Susan Cox
PE



Mrs. Kaye Crook
Mathematics



Mr. John Crossno
History

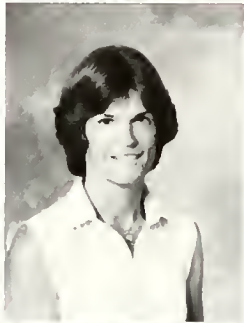


Dr. Emilie deLuca
French

Mrs. Linda P. Fitz-Simons
Art



Miss Betty Ford
PE



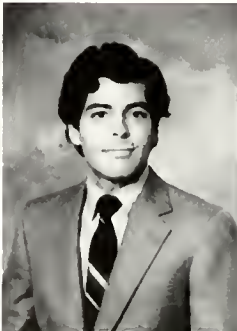
Dr. Anne Fountain
Spanish



Dr. Margaret Giesbrecht
Psychology



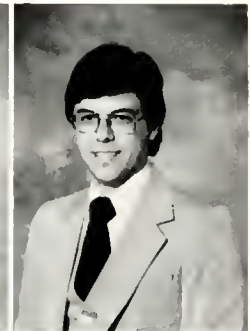
Mrs. Kathy Goolshy
Biology



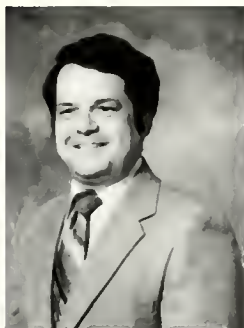
Mr. Paul Killebrew
Business



Mrs. Doris Kincade
Home Economics



Dr. Terrence McGovern
Drama



Mr. Archie Ritchie
Mathematics



Dr. Mary Schwertman
English



Mr. James Smith
Music



Dr. Robert Sturdivant
Religion



Mr. George A. Thomas
Religion



Dr. Wayne Tyner
History



Miss Virginia Vance
Music



Mrs. Janet Wester
English



Dr. Johnnie Whitfield
Chemistry





STUDENT SERVICES

Mrs. Michele Burgwyn
Counselor



Mrs. Connie Grant
Counselor



Mrs. Barbara Hawkins
Librarian



Mr. Paul King
Librarian



Mr. Tom Martin
Cafeteria



Mrs. Mable Moore
Infirmary



Mrs. Marion Arne



Mrs. Verne Futrell



Mrs. Carol Johnson



Mr. Paul Johnson



Mrs. Doris Moser



STAFF



Mrs. Jane Powell



Mrs. Milly Ryan



Ms. Gail Stephens



Mrs. Jimmie Lee Walters



Ms. Brenda Woodley



Mrs. Nancy Weekman





S T U D E N T S



Dear Mom and Dad,

Well, here I am, a sophomore. This is going to be a year of decisions. Should I go on to another college? If so, where? Should I get a job? Some of those responsibilities and difficulties you mentioned in connection with being an adult are starting to become evident. However, this is still college; and for now, I'm still a student, so I devote myself also to life here at Peace. Being a sophomore does not make school any easier, but it does mean that I am more comfortable at school. I still have plenty of work to do, and rules to abide by, but at least now this lifestyle is not totally new to me. As I said, this is a year of decisions, but with your strength and support behind me, I feel ready to begin stretching my wings, not away from you, but towards my future.

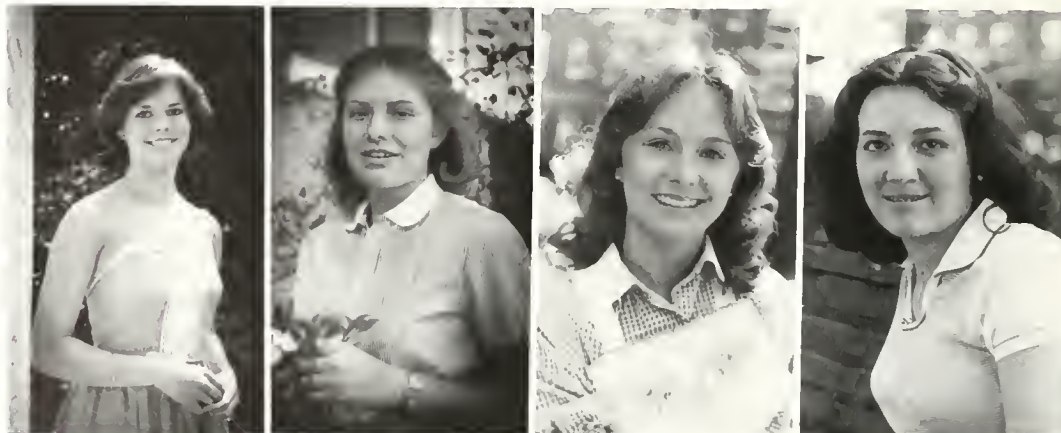
Love always,
Your little girl



Angela Brown — Pres., Betsy Covington — Vice-pres., Belinda English — Sec.

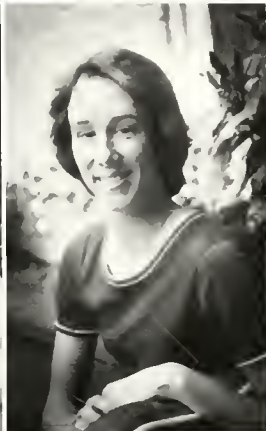
SOPHOMORES 1981

Carol Allen
Tamara Allen
Susan Amos
Anne Bagwell





Betsy Mac Ballou
Ann Barnes
Janis Baron
Jennifer Beasley



Terri Benfield
Debbie Benton
Gwen Biggs
Brenda Blackley



Guyanne Boger
Beverly Bond
Jamie Bottoms
Donna Bowen

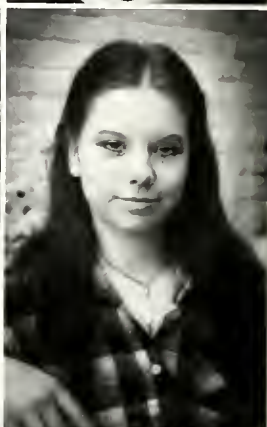


Jane Bramble
Janet Britt
Angela Brown
Olivia Bryant

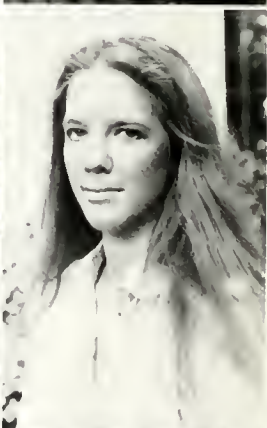
Harriett Bullock
 Beverly Bunting
 Mary Bunton
 Nancy Burnette



Katherine Byerly
 Gail Byron
 Beth Cameron
 Anne Campbell



Emily Carlton
 Trish Carvis
 Lisa Cashion
 Debbie Chamblee



Ginny Chamblee
 Teresa Chappell
 Gail Cherry
 Betsy Clark





Page Clark
Sheila Coates
Betsy Covington
Karen Crowell



Cynthia Currin
Wendy Curtis
Susan Darnell
Sandra Day



Mary Doyle
Robbie Dunbar
Ann Dunlop
Beth Early



Wanda Earp

Emily Easley
Belynda English
Kay Evans
Sarah Farrow



Vicki Fields
Margaret Flythe



Wanda Freeman
Lisa Freytag



Sarah Friday
Kyle Fuller
Marjorie Garner
Ivy Garris





Ferreby Gay
Kathy Gill
Nan Godwin
Tamara Gordon



Sissy Grantham
Lisa Greene



Paula Greer
Carol Griffin



Cindy Griffin
Martha Grubbs
Cindy Gunter
Debra Hall

Kristen Hamer
Kelli Hamrick
Lisa Hanford
Lisa Hardin



Jennifer Hartzog
Carla Hatley



Donna Heath
Cheryl Herndon



Sarah Herring
Cartherine High
Marian Hodges
Donna Holliday





Courtney Holton
Laura Hughes
Nancy Hughes
Tara Humphries



Melanie Hunt
Lisa Jezioranski



Elizabeth Johnson
Joy Johnson



Cora Jones
Laura Jones
Donna Keel
Kim Kennedy

Karrie King
Martha King
Joe Ann Knuckley
Celia Kramer



Rebecca Lancaster
Joy Lassiter
Kay Long
Ann Lucas





Lisa Martin
Paulette Martin
Susan Maxwell
Ashley McAuley



Stella McCullough
Casey McDonagh
Cindy McGinnis
Meg McPherson



Laurie Mears
Amy Miller
Susan Mitchell
Lisa Monds



Cynthia Moore
Cindy Morgan



Jane Morgan
Terri Morgan



Cindy Munsey
Elizabeth Murphy
Leslie Murphy
Teresa Murphy





Janet Murray
Sally Ruth Nahser
Suzanne Needham
Katherine Oakley



Cere Overby
Maryls Pace

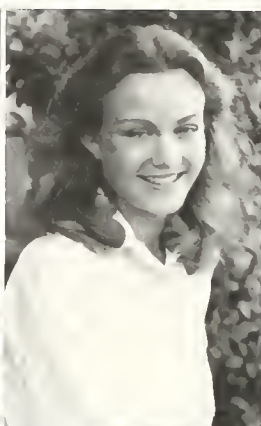


Suzanne Pair
Stephanie Paradeses



Dawn Parker
Angela Parrott
Gaye Pearson
Sheri Pedigo

Melinda Perry
 Melia Perry
 Stephanie Phillips
 Alison Pittman



Cynthia Pleasants
 Lisa Poplin



Meg Potter
 Lee Price



Robin Pulley
 Kelly Raker
 Debbie Rawls
 Kathy Richardson

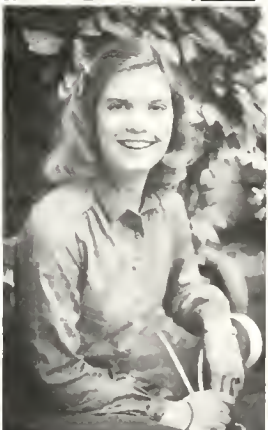




Karen Roberson
Ann Rogers
Laurie Rogers
Carolyn Sasser



Velvet Sealey
Beth Sedberry
LuAnn Seley



Edie Shell
Felicia Simmons
Norbeth Sloan



Lynne Small
Susan Small
Lisa Smith
Phyllis Smith

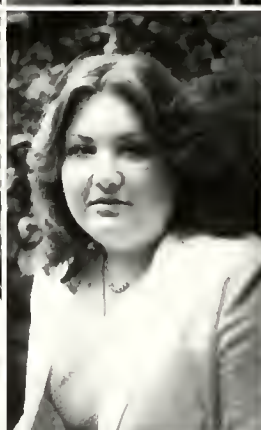
Kim Stanley
Lee Ann Story
Desiree Stover
Donna Stovall



Linda Stowitts
Georgia Suggs
Liddy Swing
Julie Taylor



Olivia Taylor
Jane Temple
Melody Tetterton
Angela Thomas



Kelly Thompson
Liz Treacy





Ann Umstead
Shelia Valentine
Sarah Vaughan
Shelby Vaughn



Pam Vawter
Elizabeth Wall
Stephanie Watkins
Anna Dell Watts



Mary Whitehurst
Lisa Wilhelm
Anne Wilson
Becky Wilson



Rhonda Winstead
Donna Woodlief

FRESHMEN



Freshmen officers: President, Carolyn Gay; Vice-President, Lou Johnson; Secretary, Lisa Jackson.

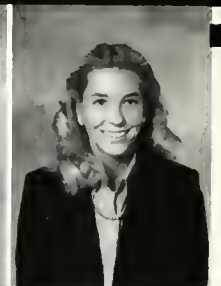
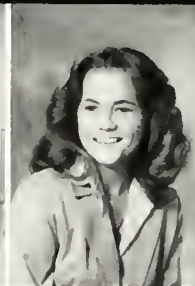
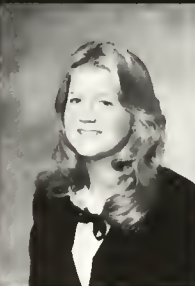
Dear Mom and Dad,

This year, I've found that a freshman is just what the name implies: everything is new and exciting! All of life bursts with the wonder of college. The academics and the social life combined form a well-rounded atmosphere at Peace. I remember driving up in our car that first day, when you and I were warmly greeted with the enthusiastic smiles of the

sophomores. They whisked my car-load of "necessities" for the coming year up to my room in no time. I have found that the whole attitude of Peace is just like that day was — very warm, sensitive to each student's needs, and expedient in action. Peace has made this freshman's transition from home to college very easy.

Love,
Your daughter

Millicent Aldridge
Annah Allen
Barbara Allen
Sonya Allen
Susan Allen



Carol Alligood
Peggy Alston
Laurie Altman
Cindy Arnette
Dianne Atkins





Karen Auten
Pam Bailey
Amanda Baker
Angela Barkas
Drew Barnes



Lisa Barnes
Meg Barnes
Tracy Barnes
Jackie Batson
Nancy Baucom



Wendy Bishop
Lynne Bissette
Kim Bissette
Jeanne Blake
Robin Bond



Georgeanna Boone
Diane Bradley
Margaret Branch
Sandy Brendell
Donna Brett

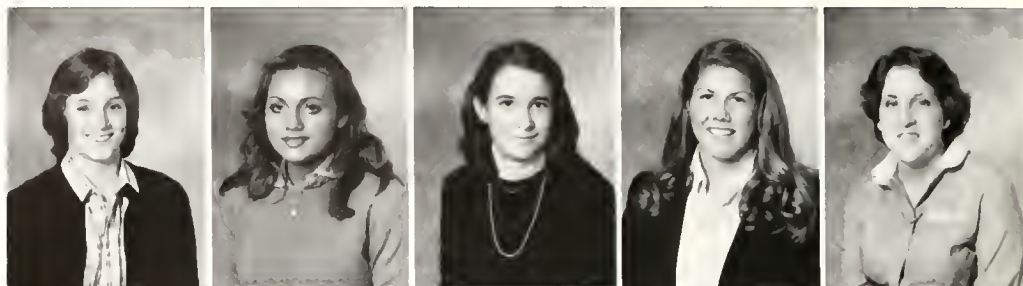


Kathy Briggs
Gayle Brinkley
Laurel Brooks
Angela Brown
Jere Brown



Mary Bullock
Starla Bunker
Tina Burden
Caroline Butler
Suzanne Cannon

Martha Sue Carroway
 Angie Churchill
 Cissy Clarke
 Anne Clayton
 Marlene Clegg



Cindy Cliett
 Laura Ann Cobb
 Liz Colberg
 Lori Collins
 Brigitte Conduret



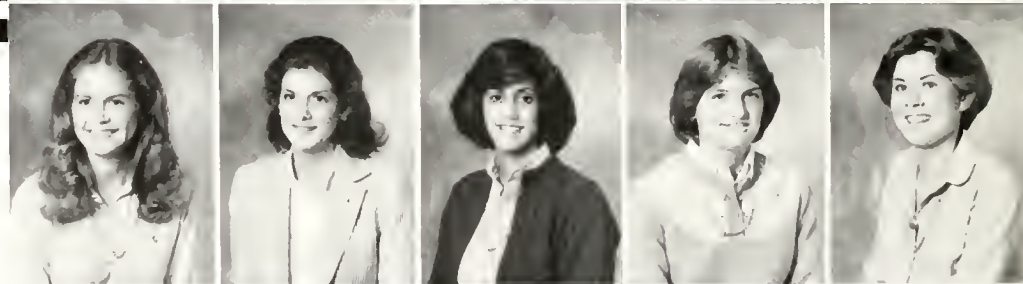
Ann Copeland
 Kathy Copeland



Lynn Cottrell
 Kim Cox
 Cindy Creech



Karen Currin
 Elizabeth Daniel
 Mary George Davis
 Suzanne Davis
 Nina Beth Daughtridge



Saralyn Dean
 Daisy DiMond
 Mary Doak
 Melody Dossenbach
 Sharon Dunston





Carole Eakes
 Laura Eason
 Lisa Edge
 Tracey Edmundson
 Danya Edwards



Ellen Essick
 Allison Evans
 Elizabeth Evans
 Marie Evans
 Pamela Jean Evans



Sandy Evans
 Tricia Everett
 Kathy Fahrenkamp
 Michelle Farabee
 Susan Finch



Gaye Fleming
 Darlene Flynt
 Quincy Foll
 Elizabeth Fountain
 Chandra Franks



Tamara Franks
 Jackie Freeman
 Randi Friday
 Laura Funck
 Carolyn Gay



Gina Gilbert
 Judy Gilmore
 Nell Glover
 Penny Gooden
 Sue Gooden

Diana Gordon
 Susan Gordon
 Pam Goss
 Beth Anne Graham
 Pam Hairr



Rhonda Hall
 Tina Hall
 Yasamine Hamad
 Suzanne Hardy
 Priscilla Harper



Caroline Harrell
 Beth Harris
 Allison Haynes
 Janice Heath
 Julie Heberle



Kim Helms
 Garnett Henson
 Roberta Hill
 Janice Hinson
 Barbara Hobson



Lisa Holt
 Sherry Honeycutt
 Lisa Horne
 Darla Hornsby
 Che-Che Huffstetler



Becky Hunter
 Tammy Hunter
 Lisa Jackson
 Susan Jackson
 Annette Jarvis





Beth Jennette
Elizabeth Johnson
Lib Johnson
Katherine Johnson
Lou Johnson



Martha Johnson
Caroline Jordan
Darline Joyner
Jamie Keeter
Vickie Kelly



Kelly Key
Donna Kirkland
Laura Lambert
Connie Lambert
Beth Lavender



Candy Lawrence
Robin Lawson
Robin Leonard
Jane Lindsay
Cynthia Lowdermilk

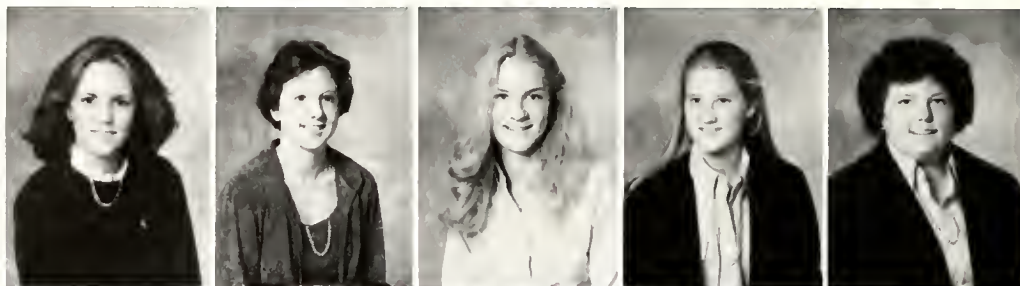


Terri Lyall
Sonya Mabe
Dianna Manning
Sally Marks
Michelle Martin

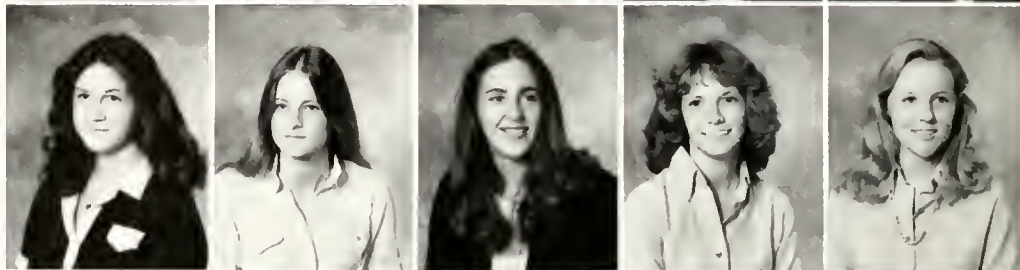


Donna Mason
Kathy Maxwell
Kim McCall
Beverly McCallum
Jane McCombs

Carol McGee
Anita McGhinnis
Martha McKown
Susan McLean
Kirby McMillian



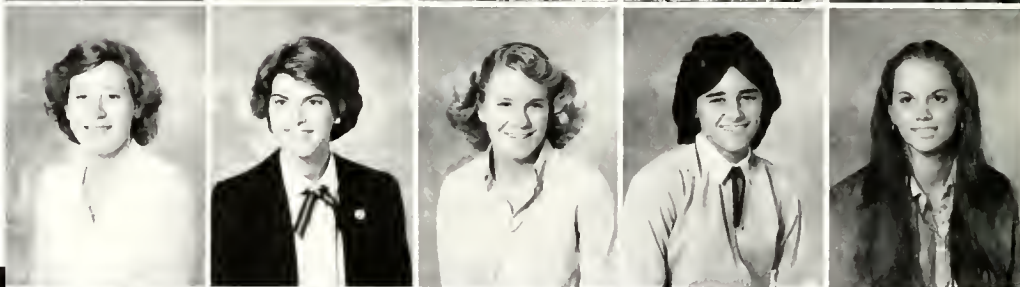
Margaret McNeill
Sheila Merritt
Susan Meuser
Bonnie Mihovch
Karen Minier



Patti Mitchell
Tammy Money
Taina Moody
Lynn Moore
Marchelle Moore



Martha Moore
Sandra Moore
Jean Morrison
Teresa Mueller
Pam Norris



Lisa Nye
Angela Parker
Lisa Parker
Martha Parker
Sandra Parrish



Sherry Parrish
Susan Patton
Tammy Payne
Kim Peoples
Cathy Peterson





Patti Pickard
Toni Pipkin
Allison Poole
Judy Poole
Tammy Price



Lisa Pridgen
Alecia Ramsey
Carol Rascoe
Elaine Reid
Sharlene Riddle



Carolyn Ritch
Tina Rivenbark
Eleanor Rogers
Becky Rogers
Jan Rogerson



Mary Rosser
Cindy Rouse
Susan Rucker
Jenny Sauls
DeAnne Schreider



Nancy Scroggin
Beth Sease
Russelle Seibert



Danita Sells
Bunny Shaw

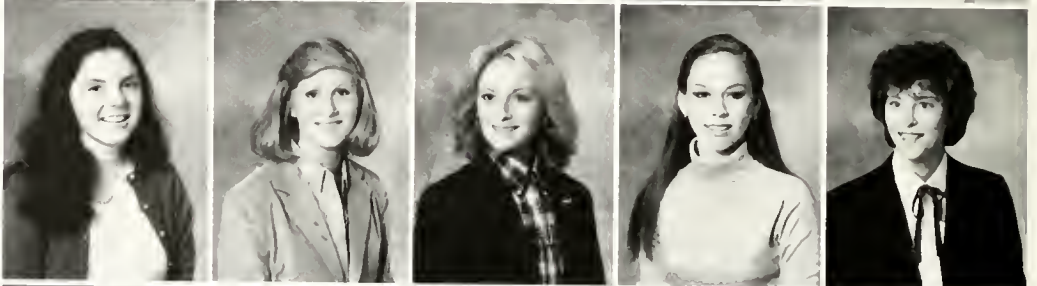
Betsy Sheely
 Nancy Sherrod
 Gayla Simmons
 Lou Simmons
 Eliza Sinclair



Susan Slater
 Betsy Smith
 Catherine Smith
 Edie Smith
 Martha Smith



Julie Sneed
 Ann Snell
 Annette Snow
 April Snow
 Lisa Stanley



Ann Starling
 Bridget Stephenson
 Gretchen Stephenson
 Michelle Steppe
 Jan Stone



Karen Stovall
 Iris Strader
 Brenda Strickland
 Jill Summers
 Katherine Swinson



Phyllis Swinson
 Bernetta Sydnor
 Susan Tadlock
 Chase Teer
 Louise Thomas





Jeanie Thorne
Wendy Thornton
Paula Tugwell
Mary Tully
Lisa Tutor



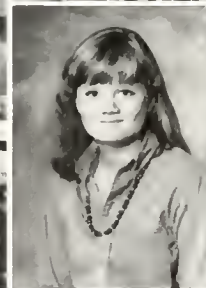
Jeanie Tyson
Lori Tyson
Rusty Ulrich
Kim Vaughan
Susan Vick



Kathy Vinson
Sybil Ward
Grayson Warren
Renee Weaver
Kelly Wells



Fran Wheless



Laura White



Paige Whitley
Susan Williams
Patsy Woronoff
Frances Wortman
Elizabeth Yarborough

Handwritten list of names including: Kamix Roberts, Kelly McConnell, Lynn Moore, Paige Whitley, Melissa Hardeman, Pam Yoss, Anna Belle Watts, Laura Furck, Barbara Allen, May Tully, Laurie Altman, Katherine S. Byerley, Karen Roberson, Donna M. Stovall, Sherri Moore, Kriston Hamer, Lisa Jarne, Allison Fode, Susan Thomas, Lisa Nyg, Mary Bulluck, Daral Hering, May George Davis, Martha McKeown, Kyle Fuller, Lynn Helms, Ruth Nahser, Meg Barneo, Betty Ulrich, Allison Haynes, Laurie George, Donna Heath, Lisa Jarne, Mary Bulluck, Priscilla Skaper, Kathryn Grigg, Daral Hering, May George Davis, Martha McKeown, Kyle Fuller, Lynn Helms, Ruth Nahser, Meg Barneo, Betty Ulrich, Allison Haynes, Laurie George, Donna Heath, Lisa Jarne, Mary Bulluck, Priscilla Skaper, Kathryn Grigg, Daral Hering, May George Davis, Martha McKeown, Kyle Fuller, Lynn Helms, Ruth Nahser, Meg Barneo, Betty Ulrich, Allison Haynes, Laurie George, Donna Heath.

SOPHOMORES

- Allen, Carol Lynn 501 N. Waverly Street Farmville, NC 27828
Allen, Tamara Denise Rt. 2 Box 166 Mocksville, NC 27028
Amos, Susan Elizabeth 231 Bellewood Dr. Henderson, NC 27536
Bagwell, Anne Elizabeth Rt. 2 Box 166 Garner, NC 27529
Ballou, Elizabeth McNair 208 West 32nd St. Lumberton, NC 28358
Barnes, Carla Ann Rt. 2 Box 357 Lucama, NC 27851
Baron, Janis Hazel 4417 Embleton Dr. Raleigh, NC 27612
Beasley, Jennifer Carol Rt. 1 Box 309 Dunn, NC 28334
Benfield, Teresa Ray P.O. Box 147 Fremont, NC 27830
Benton, Deborah Anne 2600 Ellis Rd. Durham, NC 27703
Biggs, Gwendolyn A. Rt. 4 Box 287 Williamston, NC 27892
Blackley, Brenda Joyce Rt. 3 Box 109A Zebulon, NC 27597
Boger, Beverley Guyanne 622 N. Vance St. Sanford, NC 27330
Bond, Beverly Darden 421 Chestnut St. Eden, NC 27288
Bottoms, Jamie Anne Rt. 5 Box 440-K Louisburg, NC 27549
Bowen, Donna Jean P.O. Box 313 Bladenboro, NC 28320
Bramble, Martha Jane 706 Shopton Ct. Fayetteville, NC 28303
Braxton, Jeannine Grace 212 Singleton St. Raleigh, NC 27606
Britt, Janet Elaine Rt. 1 Box 397 Bladenboro, NC 28320
Brown, Angela Rt. 4 Box 347 Newport, NC 28570
Bryant, Olivia Dee P.O. Box 277 Boykins, VA 23827
Bullock, Harriett Grace Rt. 3 Box 875 Huntersville, NC 28078
Bunting, Beverly Carson Box 343 Bethel, NC 27812
Bunton, Mary Esther 3328 Hershridge Rd. Virginia Beach, VA 23452
Burnette, Nancy Kathleen Rt. 1 Canton, NC 28716
Byerly, Katherine Lynn 3316 N. Rockingham Rd. Greensboro, NC 27407
Byrum, Gail S. 119 Pembroke Circle Edenton, NC 27932
Cameron, Elizabeth Blue 1011 N. Fulton St. Raeford, NC 28376
Campbell, Anne Gurkin 1400 Lakeview Fayetteville, NC 28305
Campbell, Teresa Marie 408 Latimore Rd. Raleigh, NC 27609
Carlisle, Katharine Annette 7615 Fayetteville Rd. Raleigh, NC 27603
Carlton, Emily Sue 405 E. Southerland St. Wallace, NC 28466
Carvis, Patricia Severine 408 Fairfield Dr. Rocky Mount, NC 27801
Cashion, Lisa Charlene Rt. 9 Box 85 Sanford, NC 27330
Chamblee, Debbie Ruth P.O. Box 1023 Wendell, NC 27591
Chamblee, Ginny Lou Rt. 3 Box 102 Wendell, NC 27591
Chappell, Teresa Renee 706 E. Horne St. Clayton, NC 27520
Cherry, Gail Leigh 802 Stokes St. Ahoskie, NC 27910
Clark, Helen Elizabeth 503 Forest Hill Drive Shelby, NC 28150
Clark, Margaret Page 303 Canterbury Rd. Wilson, NC 27893
Coates, Sheila Yvonne 3904 Cobb St. Garner, NC 27529
Covington, Betsy Alice Rt. 1 Box 718 King, NC 27021
Crowell, Karen Sue 1541 Sharon Rd. Winston-Salem, NC 27103
Currin, Cynthia Douglas Rt. 2 Box 48 Oxford, NC 27565
Curtis, Wendy Anne Rt. 1 Box 13-A Manson, NC 27553
Darnell, Susan Leigh 613 Jefferson Dr. Charlotte, NC 28211
Day, Sandra Lynn 1196 Daybrook Dr. Kannapolis, NC 28081
Doyle, Mary Ruth 3520 Harden Rd. Raleigh, NC 27606
Dunbar, Ruberta Phillips 709 Morrison Lane Laurinburg, NC 28352
Dunlap, Ann Isabel 418 E. 52nd St. Savannah, GA 31405
Earp, Wanda Lou Rt. 1 Box 149-A Wendell, NC 27591
Easley, Emily Shelton 106 Maybank Ct. Durham, NC 27713
English, Belynda Leigh Route 3, Box 429 Bladenboro, NC 28320
Evans, Martha Kay 121 Forest Circle Murfreesboro, NC 27855
Evans, Pamela Ann 226 Northview Drive Fayetteville, NC 28302
Farrior, Sarah Alice Rt. 1 Box 21 Wallace, NC 28466
Fields, Vicki Lea 3252 Octavia St. Raleigh, NC 27606
Flythe, Margaret Leggett 1016 Morningside Lane Martinsville, VA 24112
Freeman, Wanda Robinson P.O. Box 669 Candor, NC 27229
Freytag, Lisa Carol 5801 Ramblewood Ct. Brighton, Mich. 48116
Friday, Sarah Mills P.O. Box 371 Lincolnton, NC 28092
Fuller, Ellen Kyle 1600 Fuller Dr. Monroe, NC 28110
Garner, Marjorie Marie P.O. Box 194 Dublin, NC 28332
Garris, Ivy Louise 707 W. Wilson Creek Dr. New Bern, NC 28560
Gay, Ferreby Anne 904 N. High St. Franklin, VA 23851
Gill, Katherine Ann Rt. 5 Box 187A Raleigh, NC 27604
Godwin, Nan Elizabeth 3308 Six Forks Rd. Raleigh, NC 27609
Gordon, Tamara Butler 203 Pineburr Rd. Greensboro, NC 27408
Grantham, Laura Ann 121 Best Dr. Lumberton, NC 28358
Greene, Lisa Annette Rt. 1 Box 27 Union Level, VA 23973
Greer, Paula Ruth 1704 Forest Valley Rd. Greensboro, NC 27410
Griffin, Cynthia Louise 608 Fleming St. Wilson, NC 27893
Griffin, Harriet Carol 210 Dogwood Dr. Pamlico Village Washington, NC 27889
Grubbs, Martha Victoria Lakeside Dr. Walnut Cove, NC 27052
Gunter, Cindy Lou 508 Queens Rd. Sanford, NC 27330
Haggard, Vettina Gail 506 Northview Drive Fayetteville, NC 28303
Hall, Debra Jean 1824 Hunting Rdige Rd. Raleigh, NC 27609
Hamer, Kristan Ramsay 215 West Park Dr. Morganton, NC 28655
Hamrick, Kellie Jane 330 Woodside Dr. Shelby, NC 28150
Hanford, Lisa Anne 503 E. Harden St. Graham, NC 27253
Hardin, Myra Lisa Rt. 2 Box 197 Fairmont, NC 28340
Hartzog, Jennifer Lee 428 Stratford Rd. Winston-Salem, NC 27104
Hatley, Carla Sue P.O. Box 6014 Greensboro, NC 27405
Heath, Donna Lynn 503 Greeneridge Rd. Snow Hill, NC 28580
Helms, Peggy Lynn 3333 Elk Dr. Burlington, NC 27215
Herndon, Cheryl Young 1501 Overbrook Ct. High Point, NC 27262
Herring, Sarah Stephenson Rt. 2 Box 54 LaGrange, NC 28551
High, Catherine Lynn 1601 Stronwood Dr. Wilson, NC 27893
Hodges, Marion Lane P.O. Box 35823 Fayetteville, NC 28303
Holiday, Donna Elizabeth Rt. 4 Box 123A Williamston, NC 27892
Holtton, Janet Courtney 706 Erwin Rd. Sanford, NC 27330
Hughes, Laura Ruth Rt. 1 Box 15 Fairmont, NC 28340
Hughes, Nancy Gayle 1602 Westridge Rd. Greensboro, NC 27410
Humphries, Tara Lynn 801 Park Ave. Goldsboro, NC 27530
Hunt, Melanie Karen 3208 Hillman Rd. Kinston, NC 28501
Jeziorski, Lisa Mary 920 Hemingway Raleigh, NC 27609
Johnson, Elizabeth Dawn 509 Sunnybrook Rd. Raleigh, NC 27609
Johnson, Joy Lynn 627 Palmer Dr. Sanford, NC 27330
Jones, Cora Maude Rt. 2 Newton Grove, NC 28366
Jones, Laura Eugenia 2002 Sedgefield Dr. Kinston, NC 28501
Joyce, Sara W. 9 Hamilton Rd. Ridgefield, CN 06877
Keel, Donna Anne 203 Water St. Edenton, NC 27932
Kennedy, Kimberly Mason 2407 Hillwood Pl Charlottesville, VA 22901
King, Karrie Elizabeth 711 Hanover Dr. Shelby, NC 28150
King, Martha Ann 2716 Marquette Rd. Richmond, VA 23234
Knuckley, Joe Ann 210 Academy St. Wendell, NC 27591
Kramer, Celia Lea 203 Maple St. Whiteville, NC 28472
Lancaster, Rebecca Elizabeth Drawer L New Bern, NC 28560
Lassister, Joy Lynn Rt. 3 Box 13 Williamston, NC 27892
Long, Joanna Kay 2770 Kings Cross Rd. Lumberton, NC 28358
Lucas, Janet Ann P.O. Box 295 Lucama, NC 27851
McAuley, Elizabeth Ashley G-4 Tau Valley Rocky Mount, NC 27801
McCullough, Stella Dean Rt. 4 Box 32A1 Mocksville, NC 27028
McDonagh, Casey Ann 884 Thorn St. Sewickley, PA 15143
McGinnis, Cynthia Lynn 505 Talleyrand Ave. Monroe, NC 28110
McPherson, Mary Margaret 400 Sunset Circle Elizabeth City, NC 27909
McSain, Deborah 1225 Noble Rd. Raleigh, NC 27608
Martin, Lisa Marie P.O. Box 734 Troy, NC 27371
Martin, Paulette Rae 1709 Gracewood Dr. Greensboro, NC 27408
Maxwell, Susan Carol 2107 Sutphin Dr. Sanford, NC 27330
Miller, Amelia Ann 406 Timberlane Dr. Mount Holly, NC 28120
Mitchell, Susan Harriet 404 College St. Oxford, NC 27565
Monds, Lisa Anne Rt. 2 Dunn, NC 28334
Moore, Cynthia L. 3220 Methodist St. Durham, NC 27703
Morgan, Cynthia Rose Rt. 9 Box 230 Salisbury, NC 28144
Morgan, Jane Creech 933 Worth Ext. Asheboro, NC 27203
Morgan, Terri Leigh 1316 Kingston Ridge Rd. Cary, NC 27511
Munsey, Cynthia Ann 2512 Morganton Rd. Fayetteville, NC 28303
Murphy, Elizabeth G. Rt. 1 Box H Tomahawk, NC 28465
Murphy, Leslie Ann 203 Bickett St. Burgaw, NC 28425
Murphy, Teresa Lynn Rt. 1 Box 414 Wake Forest, NC 27587
Murray, Janet Sue Rt. 1 Box 40 Snow Hill, NC 28580

FRESHMEN

Nahser, Sally Ruth 3131 Forestdale Burlington, NC 27215
Needham, Suzanne Burns 112 Lattimore Lane Durham, NC 27713
Oakley, Katherine 211 W. North St. Zebulon, NC 27597
Overby, Ida Cere 907 Long Shore Dr. Snow Hill, NC 28580
Pace, Marlys Dean Rt. 3 Box 77 Wendell, NC 27591
Pair, Susanne Denise Box 254 Knightdale, NC 27545
Paradeses, Stephanie 3524 Brinkley Dr. Raleigh, NC 27604
Parker, Elizabeth D. 620 Pembroke Ave. Ahoskie, NC 27910
Parrott, Angela Ruth Rt. 1 Box 284 Creedmore, NC 27522
Pearson, Miriam Gaye 209 Bertie Dr. Raleigh, NC 27610
Pedigo, Sheri Dawne 4213 Frost Ct. Raleigh, NC 27609
Penny, Melinda Lucille Rt. 1 Box 195 Garner, NC 27529
Perry, Melia M. 2515 Parrish St. Burlington, NC 27215
Phillips, Stephanie 3708 Woodlawn Rd. Rocky Mount, NC 27801
Pittman, Alison J. 313 Englewood Dr. Rocky Mount, NC 27801
Pleasants, Cynthia Rt. 3 Box 298-C Wake Forest, NC 27587
Poplin, Lisa Karen 913 Fayetteville Rd. Rockingham, NC 28379
Potter, Margaret Ann 509 Thorncliff Dr. Fayetteville, NC 28303
Price, Lee Ann 4307 Chelsea Way Gastonia, NC 28052
Pulley, Robin Lang Rt. 2 Box 140 Wake Forest, NC 27587
Raker, Karen Kelly 421 Shamrock Rd. Asheboro, NC 27203
Rawls, Deborah Lynn Rt. 2 Box 7E Ahoskie, NC 27910
Richardson, Julia Kathryn 1005Worth St. Ext. Asheboro, NC 27203
Roberson, Karen 1113 Buckingham Rd. Garner, NC 27529
Rogers, Ann Dillon 2913 Fairview Rd. Raleigh, NC 27608
Rogers, Laurie Jane P.O. Box 714 Albemarle, NC 28001
Rusher, Ruth Ann 4213 Kingcrest Parkway Richmond, Virginia 23221
Sasser, Nancy Carolyn 1759 NE 21st St. Ft. Lauderdale, Fla. 33305
Sealey, Catherine Velvet 1511 Lake View Rd. Fairmont, NC 28340
Sedberry, Elizabeth Graven 510 Yarmouth Rd. Raleigh, NC 27609
Seley, Lu Ann Rt. 1 Box 152 Wendell, NC 27591
Shell, Edith 1014 4th Ave. Dr. NW Hickory, NC 28601
Simmons, Felicia Dale 4704 Winterlochen Rd. Raleigh, NC 27603
Sloan, Norbeth Rt. 10 Box 38 Sanford, NC 27330
Small, Harriet Lynne 10 Queen Anne Dr. Edenton, NC 27932
Small, Susan Claire Rt. 2 Box 333 Edenton, NC 27932
Smith, Lisa Kay Rt. 1 Box 290 Stoneville, NC 27048
Smith, Phyllis Zoeller 1507 Stronwood Dr. Wilson, NC 27893
Stanley, Kimberly Lynn 2018 Summerdale Dr. Raleigh, NC 276041
Story, Lee Ann Rt. 1 Box 278 Carrsville, VA 23315
Stovall, Donna Marie 2940 Corbieshaw Rd. SW Roanoke, VA 24015
Stover, Desiree 4112-J Cross Creek Ct. Raleigh, NC 27607
Stowitts, Linda Sue 8 Lee Lane Weldon, NC 27890
Sugg, Georgia Lelia Rt. 1 Box 90 Snow Hill, NC 28580
Swing, Ann Elizabeth 601 W. School St. Maiden, NC 28650
Taylor, Julia Elizabeth Rt. 1 Box 434 Luray, VA 22835
Taylor, Olivia Dale 304 Lumyer Dr. Rockingham, NC 28379
Temple, Jane McNeill 2725 Hawthorne Lane Sanford, NC 27330
Tetterton, Melody Virginia Rt. 3 Box 100 Plymouth, NC 27962
Thomas, Angela Marie 5115 Bayberry Lane Greensboro, NC 27405
Thompson, Kelly Dawn Pine View Rd. Rt. 4 Henderson, NC 27536
Treacy, Elizabeth Ann 1 Dartmouth Rd. Shoreham, NY 11786
Umstead, Ann Macon Rt. 6 Box 158 Laurinburg, NC 28362
Valentine, Sheila Marie 1101 Shady Side Drive Raleigh, NC 27609
Vaughan, Sarah Ellen 1404 E. Walnut St. Goldsboro, NC 27530
Vaughan, Shelby Jean Rt. 1 Wendell, NC 27591
Vawter, Pamela Denise 4205 Marvin Pl. Raleigh, NC 27609
Wall, Elizabeth Lineberry 1241 Dovershire Place High Point, NC 27260
Watkins, Stephanie Paige Rt. 7 Box 158c Raleigh, NC 27614
Watts, Anna Dell 1104 Wilkins Dr. Sanford, NC 27330
Whitehurst, Mary Anna Rt. 4 Box 430 Williamston, NC 27892
Wilhelm, Lisa Ann Box 1304 Matthews, NC 28105
Wilkes, Valerie Leigh 1405 Westmoreland Dr. Raleigh, NC 27612
Wilson, Marsha Ann 11 Nottingham Rd. Salisbury, NC 28144
Wilson, Rebecca Anne 4404 Yadkin Dr. Raleigh, NC 27609
Winstead, Rhonda Joy 2207 Somerset Dr. Wilson, NC 27893
Wooldief, Donna Gail 2915 E. Geer St. Durham, NC 27704

Aldridge, Millicent Edwards 601 Virginia St. Roanoke Rapids, NC 27870
Allen, Annah Wright P.O. Box 28 Kitty Hawk, NC 27949
Allen, Barbara Kaye Rt. 2 Box 858 Bladenboro, NC 28329
Allen, Robin Christina 5201 Carmel Rd. Charlotte, NC 28211
Allen, Susan Cole P.O. Box 708 Ramseur, NC 27316
Alley, Sonya Ann Rt. 2 Box 125B Louisburg, NC 27549
Allgood, Anita Carol 206 Wedgewood Dr. Washington, NC 27889
Alston, Peggy Mae P.O. Box 428 Littleton, NC 27850
Altman, Laurie Sue Rt. 1 Box 221 Godwin, NC 28344
Arnette, Cindy Lee Rt. 1 Box 11F West End, NC 27376
Atkins, Cynthia Dianne Rt. 1 Box 11N West End, NC 27376
Auten, Karen Elizabeth 865 Pineridge Pl. S.E. Concord, NC 28025
Bailey, Pamela Dora Rt. 8 Box 31 Lumberton, NC 28358
Baker, Amanda Carol 302 Winona Ave. Lumberton, NC 28358
Barkas, Angela Jerry 2127 Echo Lane Wilmington, NC 28403
Barnes, Betty Drew Rt. 2 Box 357 Lucama, NC 27851
Barnes, Kelly Alesia 500E Hillcrest Dr. Goldsboro, NC 27530
Barnes, Margaret Ethel P.O. Box 1417 Rocky Mount, NC 27801
Barnes, Tracy Lynne 1624 Ridgecrest Ave. Burlington, NC 27215
Batson, Jacquelyn Ann Rt. 1 Box 99B Hampstead, NC 28443
Baucom, Nancy Lynn 264-AA McKinnon Dr. Rockingham, NC 28379
Bishop, Wendy Gail P.O. Box 12 Roxobel, NC 27872
Bissette, Constance Lynn 3215 Cluny Dr. Fayetteville, NC 28303
Bissette, Kim Rt. 1 Box 52 Spring Hope, NC 27882
Blake, Jeanne Ruth 205 Crestview Rd. Raleigh, NC 27609
Bond, Robin Michelle 318 Old Farm Rd. Raeford, NC 28376
Boone, Georgeanna Louise 1903 Pawnee Dr. Kinston, NC 28501
Bradley, Diane Kathryn 5021 Sandlwood Dr. Raleigh, NC 27609
Branch, Margaret Elizabeth 104 Beechwood Dr. Franklin, VA 23851
Brendell, Sandra Wayne Box 516 7 Lakes West End, NC 27376
Brett, Donna Jean 204 Second St. Murfreesboro, NC 27855
Briggs, Kathryn Lang 646 Boyd St. Chase City, VA 23924
Brinkley, Edith Gayle P.O. Box 67 Teachey, NC 28464
Brooks, Laurel Denise Rt. 1 Box 310 Clayton, NC 27520
Brown, Jere Lyn 132 Woodvale Circle Lincolnton, NC 28092
Brown, Margaret Angela P.O. Box 572 Angier, NC 27501
Bulluck, Mary Ruth 2921 Berkley Dr. Rocky Mount, NC 27801
Bunker, Starla Elizabeth 1215 Maxwell St. Salisbury, NC 28144
Burden, Tina Frances 904 N. Smithwick St. Williamston, NC 27892
Butler, Caroline Warner 201 Riverside Dr. Morganton, NC 28655
Cannon, Suzanne Corry 1601 Providence Rd. Charlotte, NC 28207
Carraway, Martha Sue 511 Bazemore St. Windsor, NC 27983
Churchill, Angela Carole 1232 Trailwood Dr. Raleigh, NC 27606
Clarke, Cornelia Keyes 4232 E. Knob Oak Lane Charlotte, NC 28211
Clayton, Anne McCarrell 2712 Evans St. Morehead City, NC 28557
Clegg, Mary Marlene Rt. 2 Apex, NC 27502
Cliett, Cynthia Anne 933 Mashie Lane Rocky Mount, NC 27801
Cobb, Laura Ann 200 Holly Cove St. Franklin, VA 23851
Colberg, Lisbeth Tracy 1908 Overland Dr. Chapel Hill, NC 27514
Collins, Lori Angela 713 Dawnwood Ct. Raleigh, NC 27609
Condoret, Brigitte Rt. 2 Falls of New Hope Chapel Hill, NC 27514
Copeland, Carol Ann 915 W. Stokes St. Ahoskie, NC 27910
Copeland, Kathleen Annette 408 Cedar Hill Raleigh, NC 27609
Cotrell, Rebecca Lynn Rt. 1 Kittrell, NC 27544
Cox, Kimberly Maurasette Rt. 7 Clearwater Hills Chapel Hill, NC 27514
Crech, Cynthia Ione 206 W. Waddell St. Selma, NC 27576
Currin, Karen Sue 410 College St. Oxford, NC 27565
Daniel, Elizabeth Allen 611 Cherry St. Oxford, NC 27565
Daughtridge, Nina Elizabeth 3404 Woodlawn Rd. Rocky Mount, NC 28801
Davis, Marg George P.O. Box 112 Farmville, NC 27828
Davis Mary Suzanne 558 Rowland St. Henderson, NC 27536
Dean, Saralyn Pearl 2309 Parham Dr. Wilmington, NC 28001
DiMond, Daisy Elizabeth 203 College St. Oxford, NC 27565
Doak, Mary Glenn 632 Hill St. Rocky Mount, NC 27801
Donohoe, Karlyn Elizabeth 39 Laurie Lane Little Silver, NJ 07739
Dossenbach, Melody Elizabeth Rt. 2 Box 192 Siler City, NC 27344
Dunston, Sharon Jeanette P.O. Box 93 Macon, NC 27551

Eakes, Carole Louise 700 Vandora Dr. Garner, NC 27529
Eason, Laura Ann Rt. 3 Selma, NC 27576
Edge, Lisa Louise 317 Oakdale Rd. Rocky Mount, NC 27801
Edmundson, Tracey Dianne Rt. 2 Fremont, NC 27830
Edwards, Danya Lynn P.O. Box 619 Rich Square, NC 27869
Essick, Ellen Carol Rt. 13 Box 88 Lexington, NC 27292
Evans, Alison Renee 3504-H Colony Rd. Charlotte, NC 28211
Evans, Elizabeth Cawthorne 612 Falls Rd. Rocky Mount, NC 27801
Evans, Maria Lynn Rt. 4 Box 307 Oxford, NC 27565
Evans, Pamela Jean 1616 E. Greenville Blvd Greenville, NC 27834
Evans, Sandra Lyn 202 Williamsburg Dr. Greenville, NC 27834
Everett, Patricia Marie 2605 Graham Dr. Kinston, NC 28051
Farabee, Donna Michelle 1244 Jefferson Rd. Greensboro, NC 27410
Fahrenkamp, Kathleen Marie 3148 Ward Rd. Raleigh, NC 27604
Finch, Susan 501 Broughton St. Wilson, NC 27893
Fleming, Gaye Louvee Rt. 2 Box 339-M Kannapolis, NC 28081
Flynt, Darlene Rebecca 701 Weaver Dr. Lexington, NC 27292
Foil, Carolyn Quincy 556 Hermitage Dr. Concord, NC 28025
Fountain, Elizabeth Gordon 735 Hill Street Rocky Mount, NC 27801
Franks, Chandra Dawn 3208 Purland Dr. Raleigh, NC 27603
Freeman, Jacqueline Anne 3313 Hawthorne Rd. Rocky Mount, NC 27801
Friday, Mary Randolph 2924 Grampian Dr. Gastonia, NC 28052
Funck, Laura Elizabeth 3211 Cliffdale Road Fayetteville, NC 28303
Gay, Carolyn Sue 5313 Clear Run Dr. Wilmington, NC 28403
Gilbert, Gina Maria 51-28th Ave. Dr. NW Hickory, NC 28601
Gilmore, Judy Kaye Rt. 3 Box 121 Carthage, NC 28327
Glover, Nell Hart P.O. Box 476 Seaboard, NC 27876
Gooden, Penelope Ann Rt. 1 Box 146 Elizabethtown, NC 28337
Gooden, Wendy Sue Rt. 1 Box 159-B Elizabethtown, NC 28337
Gordon, Diana Wyn 406 N. Waverly St. Farmville, NC 27828
Gordon, Susan Carol 307 N. Main St. Mt. Pleasant, NC 278124
Goss, Pamela Kaye Rt. 2 Box 515 Creedmoor, NC 27522
Graham, Elizabeth Anne 2140 Woodland Ave. Burlington, NC 27215
Hairr, Pamela Claudett 108 Lowery Ct. Raleigh, NC 27614
Hall, Rhonda Lynn Rt. 8 Box 186 Raleigh, NC 27612
Hall, Tina Lynn Rt. 2 Box 19-A Rougemont, NC 27572
Hamad, Yasamine Sobhi 546 N. Mercer St. Rocky Mount, NC 27881
Hardeman, Melissa Ann 5500 Francisco Dr. Greensboro, NC 27410
Hardy, May Suzzane Rt. 2 Box 112 LaGrange, NC 28551
Harper, Priscilla Denise 411 Willowood Dr. Henderson, NC 27536
Harrell, Sara Caroline Rt. 1 Harrell, NC 28444
Harris, Beth Baucom 1720 Quail Valley Cola, SC 29210
Heath, Janis Elizabeth Rt. 1 Box 237 Council, NC 28434
Heberle, Julia Cavanaugh 7727 Comanche Dr. Richmond, VA 23225
Helms, Kimherly Dawn 1003 Club Dr. Monroe, NC 28110
Hensgen, Nancy Finch 1203 Clifton St. Raleigh, NC 27604
Henson, Garnett Ruth 3008 University Rd. Winston-Salem, NC 27104
Hill, Roberta Reid 918 Wimpleton Dr. Raleigh, NC 27609
Hinson, Janice Marie 1300 Cox Rd. Matthews, NC 28105
Hobson, Barbara Lynn 201 Labans Lane Lincolnton, NC 28092
Holt, Lisa Scott Rt. 8 Box 1052 Sanford, NC 27330
Honeycutt, Sherry Lynne Rt. 3 Angier, NC 27501
Horne, Lisa Gayle 3304 Hawthorne Rd. Rocky Mount, NC 27801
Hornshy, Darla Dee Rt. 3 Box 44-D Raeford, NC 28376
Huffstetler, Tina Robin 810 Lynn Dr. Sanford, NC 27330
Hunter, Rebecca Kay 3804-C Brentwood Vlg. Raleigh, NC 27604
Hunter, Tammy Jill 8509 Bay Rd. Raleigh, NC 27612
Jackson, Mary Elisa 3010 Houston, Branch Rd. Matthews, NC 28105
Jackson, Susan Lynn P.O. Box 1597 Henderson, NC 27536
Jarvis, Annette 714 Cape Fear Blve. Carolina Beach, NC 28428
Jennette, Marie Elizabeth 1102 Summit Ave. Washington, NC 27889
Johnson, Elizabeth Ross P.O. Box 1135 Robersonville, NC 27271
Johnson, Katherine Elaine 508 Driewood Ct. Raleigh, NC 27609
Johnson, Jan Allison 808 N.W. Blvd. Newton, NC 27658
Johnson, Louise Beverly P.O. Box 1135 Robersonville, NC 27871
Johnson, Martha Louise 1803 Hampton Rd. Kinston, NC 28501
Jordan, Caroline Lee 1006-H Village Greenway Cary, NC 27511
Joyner, Joy Darline P.O. Box 114 Gaston, NC 27832
Keeter, Jamie Lynne Rt. 1 Box 75 Halifax, NC 27839
Kelly, Vicki Renee 2203 Glover Rd. Durham, NC 27703
Key, Kelly Rehnee 2051 Walker Ave. Burlington, NC 27215
King, Tracy Leigh 628 Marshall St. Roanoke Rapids, NC 27870
Kinlaw, Helen Smith 1645 Oakdale Circle Henderson, NC 27536
Kirkland, Donna Angela 201 Daniel Dr. Goldsboro, NC 27530
Lambert, Laura Anne 655 W. Fox Grove Ct. Virginia Beach, VA 23464
Lambeth, Connie Lynn 7800 Netherlands Dr. Raleigh, NC 27606
Lavender, Margaret Elizabeth 1041-19th Ave. Pl. N.W. Hickory, NC 28601
Lawrence, Candace Lynn 469 Springfield Road Rocky Mount, NC 27801
Lawson, Robin Elizabeth General Delivery Cumcock, NC 27237
Leonard, Robin Dawn 1133 Paul St. Rocky Mount, NC 28303
Lewis, Leslie Elaine 229 Murray Hill Rd. Fayetteville, NC 28303
Lindsay, Jane Paulette 1111 Greenway Dr. High Point, NC 27262
Lowdermilk, Cynthia Myrtle 12 Butterwick Pl. Durham, NC 27705
Luihn, Sandra Jane 108 Duncansby Ct. Cary, NC 27511
Lyll, Teresa Lynn 2841 Delaney Dr. Burlington, NC 27215
McCall, Kim Renae 6000 Carpenter Dr. Charlotte, NC 28211
McCallu, Beverly Ophelia Rt. 2 Box 158 Rowland, NC 28383
McCombs, Jane Ellen 1629 Eastwood Rd. Kannapolis, NC 28081
McConnell, Kelly Denise 5726 Oak Tree Road Greensboro, NC 27405
McGee, Carol Anne 4209 Pin Oak Rd. Raleigh, NC 27604
McGhinnis, Annita Joy 435 Williamsboro St. Oxford, NC 27565
McKown, Martha Horton 2303 Thousand Oaks Dr. Richmond, VA 23229
McLean, Susan Berry 105 Harbor Dr. Washington, NC 27889
McMillan, Leone Kirhy 3202 Granville Dr. Fayetteville, NC 28303
McNeill, Margaret Coit 221 McPherson Church Rd. Fayetteville, NC 28303
Mabe, Sonya Leigh P.O. Box 1441 Albemarle, NC 28001
Maoning, Dianne Rt. 8 Box 609 Greenville, NC 27834
Maples, Kathy Ducharme 3501 Mountainbrook Rd. Charlotte, NC 28210
Marks, Sally Kim 3201 Jura Dr. Fayetteville, NC 28303
Martin, Carole Michelle 1524 Kenmar Dr. Martinsville, VA 24112
Mascia, Teresa Jeanette 409 Thorncliff Dr. Fayetteville, NC 28303
Mason, Donna Kyle Rt. 2 Box 360 Fremont, NC 27830
Maxwell, Kathryn Ann 2107 Sutphin Dr. Sanford, NC 27330
Merritt, Sheila Angelique 202 Allison Dr. Rt. 3 Knightdale, NC 27545
Meuser, Susan Alison P.O. Box 5123 Hickory, NC 28601
Mihoveh, Bonnie Kay P.O. Box 511 Manteo, NC 27954
Minier, Karne Lynn 829 Shannon Rd. Asheboro, NC 27203
Mitchell, Patricia Jean 2510 Columbine Lane Burlington, NC 27215
Money, Tamara Jeanne 3532 Kirby Smith Dr. Wilmington, NC 28403
Moody, Taina Darlene 2040 Tory Lane Asheboro, NC 27203
Moore, Elizabeth Marchelle 9008 Oneal Rd. Raleigh, NC 27612
Moore, Genie Marcelle Rt. 6 Box 933 Thomasville, NC 27360
Moore, Martha Ann 2703 Carver St. Durham, NC 27705
Moore, Sandra Denise 2610 Evans St. Morehead City, NC 28557
Moore, Virginia Lynn 716 Fleming St. Wilson, NC 27893
Morrison, Jean Elizabeth 2313 Parham Dr. Wilmington, NC 28403
Mueller, Teresa Anne Rt. 2 Box 6-H Disputanta, VA 23842
Mullaney, Adrienne Louise 1901 Quail Rdige Rd. Raleigh, NC 27609
Norris, Pamela Jean 1329 W. Main St. Clayton, NC 27520
Nye, Lisa Jeane 807 Dogwood Dr. Fairmont, NC 28340
Owens, Tracey Lyn 6501 Candlewood Dr. Charlotte, NC 28210
Parker, Angela Marie 104 East C Street Erwin, NC 28339
Parker, Lisa C. 5320 Inglewood Lane Raleigh, NC 27609
Parker, Martha Paige Rt. 1 Spring Hope, NC 27882
Parrish, Sandra Lynn 11813 Coachman's Way Raleigh, NC 27614
Parrish Sherry Annette Rt. 2 Fuquay-Varina, NC 27526
Patton, Susan Marie 5929 A Quail Hollow Rd. Charlotte, NC 28210
Payne, Tammy Carol Rt. 1 Box 71A Stokesdale, NC 27357
Peoples, Kimherly Lane 3616 Carolyn Dr. Raleigh, NC 27604
Peterson, Catherine Lynne 2700 Crestwood Dr. Burlington, NC 27215

Pickard, Sara Patricia 2502 Wake Dr. Raleigh, NC 27608
 Pilegge, Laura Lee 3300 Yorkshire Ct. Raleigh, NC 27604
 Pipkin, Toni Louise 108 Nellwood Ct. Durham, NC 27712
 Poole, Allison Lee P.O. Box 850 Raeford, NC 28376
 Poole, Judith Lucille 2628 Fairview Rd. Raleigh, NC 27608
 Price, Tammy Jo Indian Palms Apt. 135 13300 Walsingham Rd. Largo, FL 83540
 Pridden, Elizabeth Marie 3805 Ashley Cir. Wilmington, NC 28403
 Proctor, Jan Louise 1411 Carolyn Dr. Charlotte, NC 28205
 Ramsey, Alecia Ann P.O. Box 74 Riegelwood, NC 28456
 Rascoe, Carla Ann 601 Gatling St. Windsor, NC 27k83
 Reid, Elaine 8916 Honeycutt Rd. Raleigh, NC 27609
 Riddle, Sharlene Kay 1115 Offshore Dr. Fayetteville, NC 28305
 Ritch, Carolyn Leigh Rt. 6 Lakewood Hills Laurinburg, NC 28352
 Rivenbark, Mary Christina P.O. Box 151 Burgaw, NC 28425
 Roberts, Kamin Pat 1445 Pamalee Dr. Fayetteville, NC 28303
 Rogers, Eleanor Walker 303 Tyson Ave. Bennettsville, SC 29512
 Rogerson, Lisa Jan Rt. 2 Box 298 Williamston, NC 27892
 Rosser, Mary Linton 1230 Mulberry Rd. Martinsville, VA 27892
 Rouse, Cynthia Kay 1406 Kenbrook Dr. Garner, NC 27529
 Rucker, Susan Lee Box 1056 Rutherfordon, NC 28139
 Schneider, DeAnne Lynn 201 Bayleaf Dr. Raleigh, NC 27609
 Sease, Brenda Elizabeth Rt. 2 Box 355A Dunn, NC 28334
 Seibert, Russelle Cooper 2831 NE 26 PL Ft. Lauderdale, FL 33306
 Sells, Danita Kay 1918 Dundee Lane Martinsville, VA 24112
 Scroggin, Nancy Evelyn 115 Prestwood Heights Lenoir, NC 28645
 Shaw, Betsy Johnson 4901 Brookhaven Dr. Raleigh, NC 27612
 Shaw, Betty Lou P.O. Box 163 Pinehurst, NC 28374
 Sheely, Betsy Ann 1011 W. Church St. Elizabeth City, NC 27909
 Sherrod, Nancy Evelyn Rt. 10 Box 10 Sanford, NC 27330
 Sills, Teresa Lynn Rt. 2 Box 259-B Bunnlevel, NC 28323
 Simmons, Anna Louise 412 Beechwood Dr. Smithfield, NC 27577
 Simmons, Gayla Sue Rt. 1 Box 145-A Elizabethtown, NC 28337
 Sinclair, Elizabeth Forrest 324 Pinecrest Dr. Fayettevplwle, NC 28305
 Slater, Susan Leigh 3117 Amherst Rd. Rocky Mount, NC 27801
 Smith, Betsy Jean 1529 W. Thomas St. Rocky Mount, NC 27801
 Smith, Catherine Seabrook 207 S. Audubon Ave. Goldsboro, NC 27530
 Smith, Lillian Edith Rt. 3 Box 734 Fairmont, NC 28340
 Smith, Martha Elizabeth Box 1621 Southern Pines, NC 28387
 Sneed, Julie Karen 125 Pine Cone Dr. Oxford, NC 27565
 Snell, Ann Gayle 230 Pinecrest Dr. Fayetteville, NC 28305
 Snow, April Lizzette 221 Beechtree Circle, Mt. Airy, NC 27030
 Snow, Maria Annette 111 Oakview Dr. Elon College, NC 27244
 Stanley, Lisa Noble P.O. Box 471 Tabor City, NC 28463
 Starling, Sally Annette 85 Denise Dr. Burlington, NC 27215
 Stephenson, Bridget 640 SE 26th Ave. Ft. Lauderdale, Fla 33301
 Stephenson, Gretchen 640 SE 26th Ave. Ft. Lauderdale, Fla 33301
 Steppe, Georgia Michelle Rt. 1 Box 55B Farmville, NC 27828
 Stone, Tyron Janice 2605 Sumac Lane Burlington, NC 27215
 Stovall, Karen Michele 164 Woods St. Eden, NC 27288
 Strader, Iris Faith 401 Crescent Dr. Wilson, NC 27893
 Strickland, Brenda Kaye Rt. 2 Box 406 Roanoke Rapids, NC 27870
 Summers, Jill Louise 2808 Mountain Breeze Ct. Charlotte, NC 28210
 Swinson, Katherine Hope Rt. 2 Box 131 Jamesville, NC 27846
 Swinson, Phyllis Ann Rt. 2 Box 6 Jamesville, NC 27846
 Sydnor, Bernetta Ann 3005 Cardinal PL. Lynchburg, VA 24503
 Tadlock, Susan Edmondson Rt. 2 Box 251 Williamston, NC 27892
 Teer, Marian Chase 3511 Cambridge Rd. Durham, NC 27707
 Thomas, Susan Clark 1803 Griffith Road Monroe, NC 28110
 Thomas, Theresa Louise 183 Confederate Ave. Danville, VA 24541
 Thorne, Veanie Harrison 105 West End Ave. Wilson, NC 27893
 Thorton, Wendy Gayle 2508 Pine Needles Rd. Goldsboro, NC 27530
 Tutor, Lisa Miranda 113 Woodrow St. Fuquay, NC 27526
 Tyson, Dehorah Eugenia 5 Maple Court Clyde, NC 28721
 Tugwell, Paula Joyce P.O. Box 147 Maury, NC 28554
 Tully, Mary Louise 302 Sunset Ave. Louisburg, NC 27549

Tyson, Lori Ann Rt. 2 Box 48-E Creedmoor, NC 27522
 Ulrich, Mary Russell 444 N. Daughtry St. Rocky Mount, NC 27801
 Vaughan, Kimberly Hope P.O. Box 235 Lewiston, NC 27849
 Vick, Susan Story 106 Rawlsdale Rd. Franklin, VA 23851
 Vinson, Katherine Leclair 208 Gordon St. Cary, NC 27511
 Ward, Sybil Anne 3016 Berkley Dr. Rocky Mt. NC 27801
 Warren, Ann Grayson 665 Highland Dr. Eden, NC 27288
 Wells, Kelly Lynn 6405 Rodkrest Ct. Raleigh, NC 27612
 Wheelless, Frances Rochelle Rt. 2 Box 157 Spring Hope, NC 27882
 Weaver, Sharon Renee 800 Valerie Dr. Raleigh, NC 27606
 White, Laura 7102 Glen Pky. Richmond, VA 23229
 Whitley, Elizabeth Paige 300 Wilshire Blvd. Wilson, NC 27893
 Williams, Susan Elizabeth 168 Ellerslie Dr. Fayetteville, NC 28303
 Wood, Melody Jean 2901 Piney Plains Rd. Raleigh, NC 27606
 Woronoff, Patricia Daniels 2010 Running Springs Dr. Kingwood, Texas 77339
 Wortman, Frances Allyn Rt. 4 Box 412 Lillington, NC 27546
 Yarbrough, Ann Elizabeth Rt. 12 Wilkings Dr. Sanford, NC 27330



First Ross



Second Ross





Fourth Main

Second Main



Third Ross





Third Main

Ross Annex



Blount House





Second Finley

Second East



Third East





Third Finley

Non-Residents



First Finley



Sharpe's

BRIDE & GROOM



509 HILLSBOROUGH STREET
RALEIGH, NC
834-8804 or 832-1423

CRABTREE VALLEY MALL
RALEIGH, NC
782-3602

CARY VILLAGE MALL
CARY, NC
467-2764

BRIDAL GOWNS — BRIDESMAID GOWNS
MOTHER OF THE BRIDE
FORMAL, PROM & COCKTAIL GOWNS
TUXEDO RENTALS

WE HONOR ALL MAJOR CREDIT CARDS

PERSON STREET PHARMACY

702 N. Person Street
Raleigh, N.C. 27604
Phone 832-6432

Serving Peace College for 40 Years

Monday — Saturday
9 AM — 7 PM

Closed
Sunday

Hudson & Belk



Quality:
The degree of
Excellence which
A thing possesses.



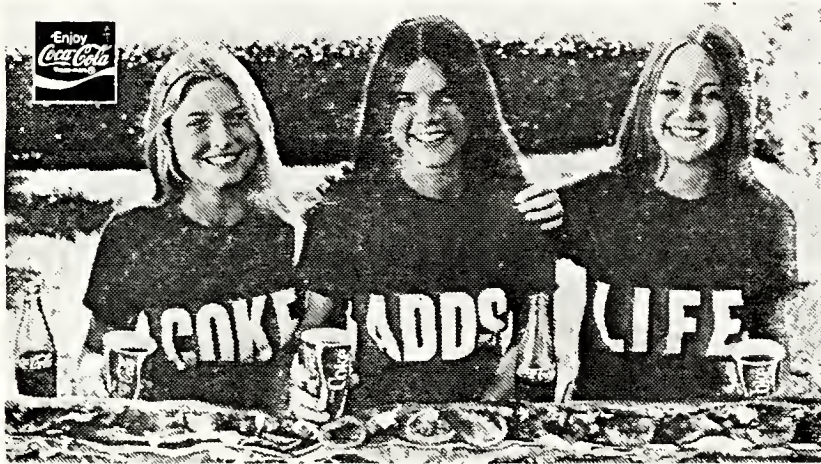
Service:
Friendly help;
Professional help or
Attention.



Value:
A fair price or
Return for something sold or
Exchanged.

On The Mall Downtown, Crabtree Valley And Cary Village

Coke adds life...
Trade mark ® *to everything
that makes your livin' nice!*
*Whether you're out with the gang having fun...
or enjoying a quiet moment alone... no matter
what makes for the good times...Coke adds life!*



Coca-Cola and "Coke" are registered trade-marks which identify the same product of The Coca-Cola Company

**Protect
your body
from your
appetite.**

**Pine State
Sweet
Acidophilus
Lowfat Milk.**



Best Wishes To
Peace College



A. E. Finley & Associates, Inc.

CONSTRUCTION EQUIPMENT DISTRIBUTORS

RALEIGH - CHARLOTTE - W.COLUMBIA



- CORSAGES
- CUT FLOWERS
- GRADUATION BOUQUETS

"We Grow the Flowers We Sell"

Fallon's Florist
Established 1920

Corner of
Peace & St. Mary's Streets

828-4134

**Moore & Johnson
Insurance Co., Inc.**

828-8942

Pensions — Group Plans — Estate Analysis
Individual & Business Life and A & H
Earl Johnson Harry Moore
John Duncan Bill Ward
Merrit Jones Vick Moore
Herman Satterwhite

400 Oberlin Road
Raleigh, NC

It was our pleasure to do the portrait photography for the
Lotus

SMITH STUDIO

Photographers
14 E. Hargett St.
Raleigh, North Carolina



DAVIDSON & JONES, INC.

1201 Front Street
Raleigh, NC



BRIDAL GOWNS – BRIDESMAID GOWNS
MOTHER OF THE BRIDE
FORMAL, PROM & COCKTAIL GOWNS
TUXEDO RENTALS AND COMPLETE FLORAL SERVICES

WE HONOR
ALL MAJOR
CREDIT CARDS

832-6447

707 N. PERSON ST.

GIFTS &
ACCESSORIES

The General Store

515 Front Street
Beaufort, N.C. 28576

Best Wishes

Barnes Tin Shop
Roofing and Sheet Metal, Inc.

Compliments
of

**UNITED
CAROLINA
BANK**

ucb

2906 Brentwood Road and 12 South Person St.
Raleigh, N.C.

R. D. LAMBERT & SON
INC.



968 Providence Road
Chesapeake, Virginia



BUILDING SYSTEMS

DURFEY-HOOVER INSURANCE AGENCY

Paul A. Hoover, III Paul A. Hoover
FIRE • AUTOMOBILE • CASUALTY

Raleigh Building

Raleigh, N.C.

Phone 834-6239

P.O. Box 2163

Bride's World

THE SOUTH'S MOST
BEAUTIFUL & COMPLETE
BRIDAL & FORMAL SHOP
NORTH HILLS SHOPPING CENTER
RALEIGH, NORTH CAROLINA 27609
PHONE 782-1183



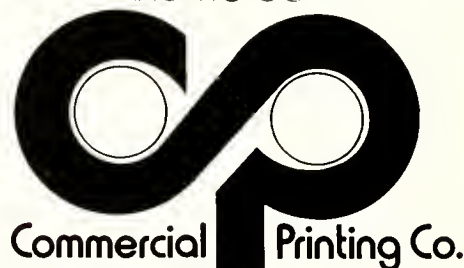
The Common Sense House

An energy efficient home
built to save energy and money.

If you are planning to build a
new home, ask CP&L about the
energy-saving features of the
Common Sense House.

CP&L
Carolina Power & Light Company

Outstanding printing,
delivered on time, is the only
kind we do



P. O. Box 2319 Raleigh, N. C. 27602 919/832-2828

Compliments of

Johnson-Lambe Co.

For the Best in Sporting Goods

SPONSORS

Fremont Pharmacy

Judge and Mrs. John R. Friday



*Parker's Engraving Company
request the pleasure of your company
to view their large selection of
Contemporary and Traditional
Wedding Invitations and Announcements
and complete line of
Wedding Accessories
at their Bridal Boutique
from eight until five o'clock
Saturday by appointment for your convenience
2123 Glascock Street
Raleigh, North Carolina*

*R. S. V. P.
(919) 833-8917*

*Raleigh's only
Stationery Engraver*

Parker's Engraving Company

Letterheads • Envelopes • Business Cards and Announcements • Personal Stationery • Wedding Invitations and Announcements

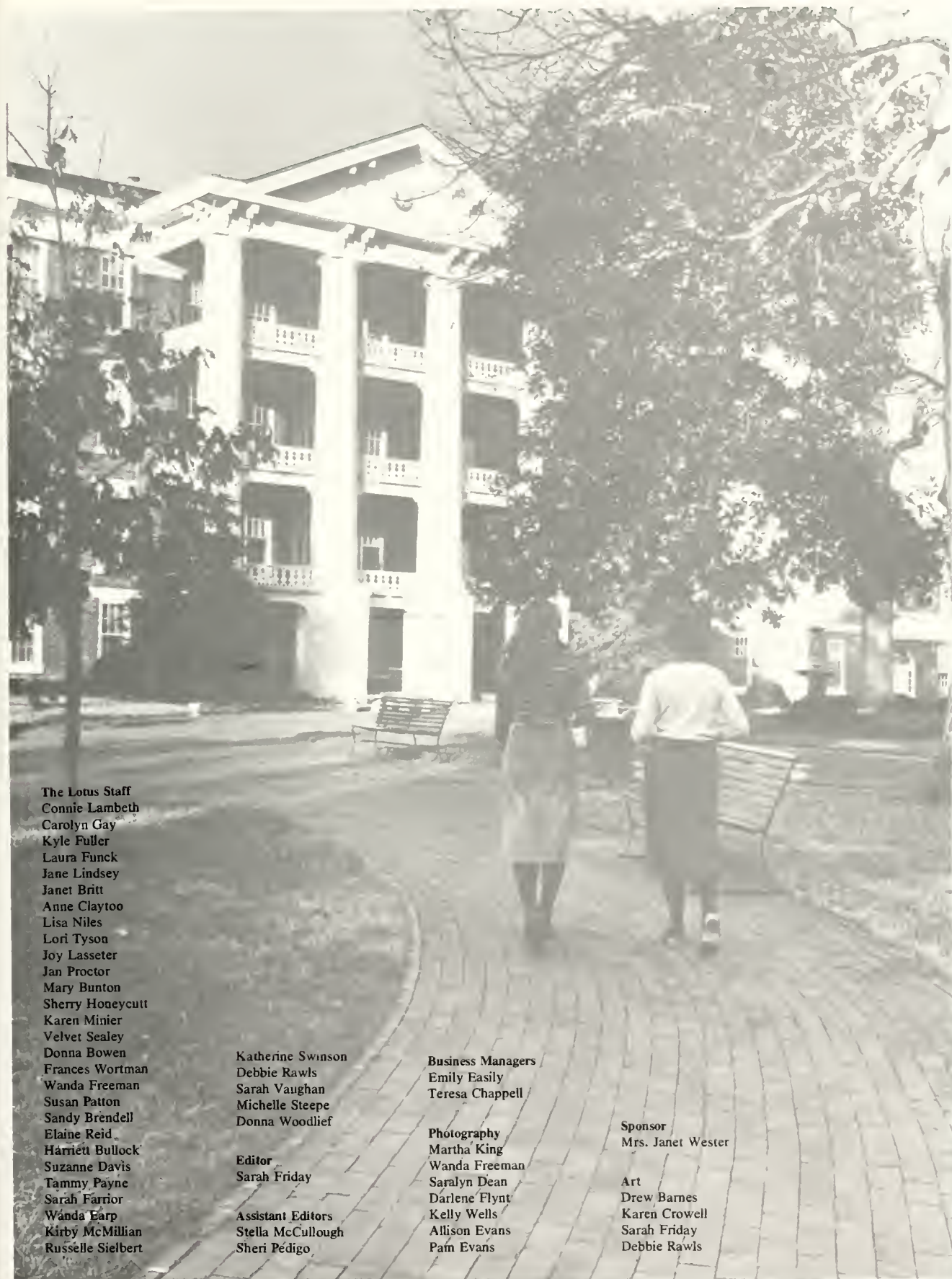
TELEPHONE 919/833-8917 • POST OFFICE BOX 14246 • GLASCOCK STREET AT KING CHARLES ROAD
RALEIGH, NORTH CAROLINA 27610

In tribute to



Mary Pogue Schwertman

Mom and Dad, one of the great privileges in coming to Peace is meeting someone like Dr. Schwertman — scholar, teacher, friend. As a part of the Peace family she taught us, through word and deed, what it means to love learning, to live as a Christian, to be fully human.



The Lotus Staff

Connie Lambeth
Carolyn Gay
Kyle Fuller
Laura Funck
Jane Lindsey
Janet Britt
Anne Claytoo
Lisa Niles
Lori Tyson
Joy Lasseter
Jan Proctor
Mary Bunton
Sherry Honeycutt
Karen Minier
Velvet Sealey
Donna Bowen
Frances Wortman
Wanda Freeman
Susan Patton
Sandy Brendell
Elaine Reid
Harriett Bullock
Suzanne Davis
Tammy Payne
Sarah Farrior
Wanda Earp
Kirby McMillian
Russelle Sielbert

Katherine Swinson
Debbie Rawls
Sarah Vaughan
Michelle Steepe
Donna Woodlief

Editor
Sarah Friday

Assistant Editors
Stella McCullough
Sheri Pédigo

Business Managers
Emily Easley
Teresa Chappell

Photography
Martha King
Wanda Freeman
Saralyn Dean
Darlene Flynt
Kelly Wells
Allison Evans
Pam Evans

Sponsor
Mrs. Janet Wester

Art
Drew Barnes
Karen Crowell
Sarah Friday
Debbie Rawls

