

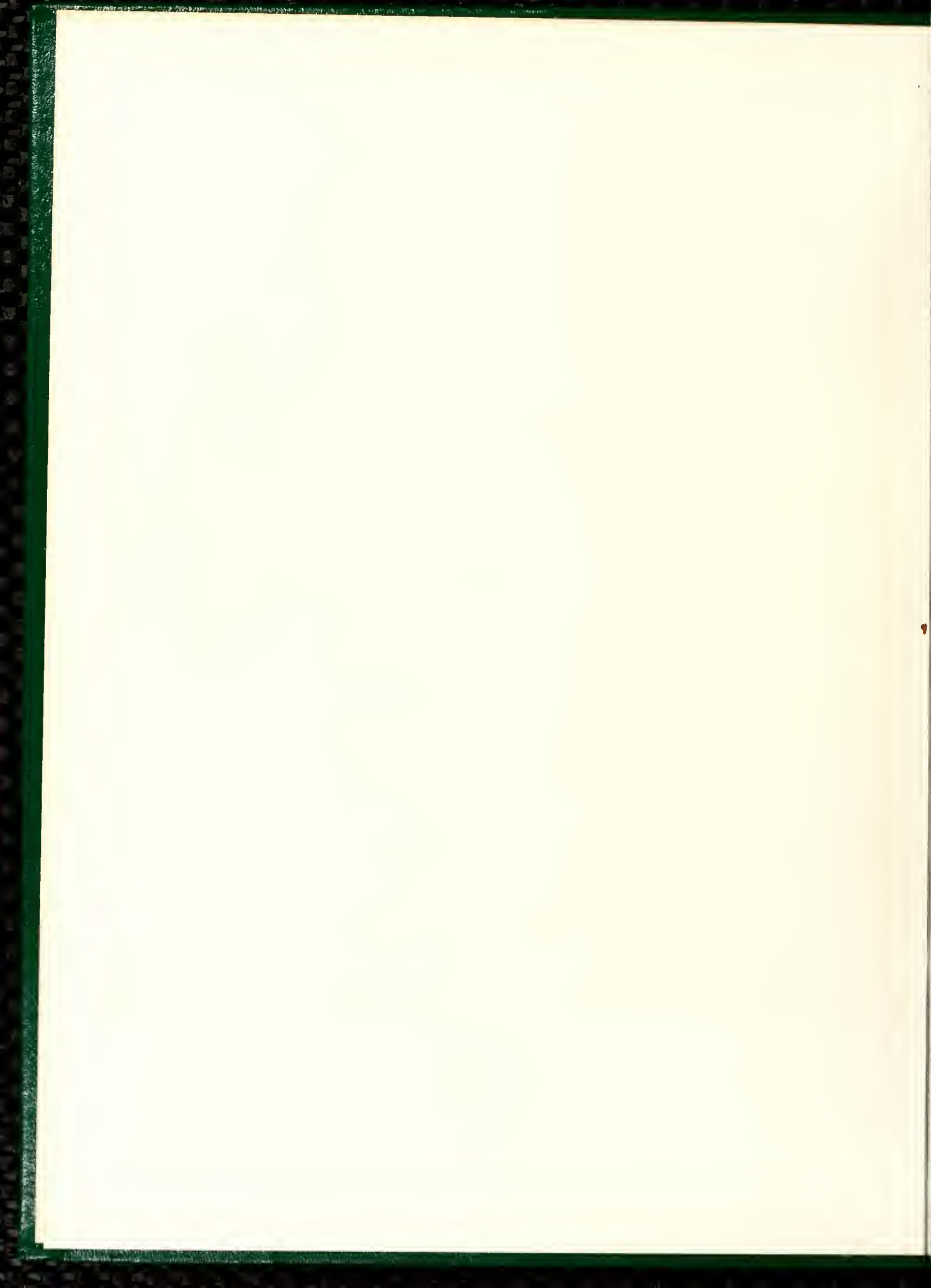


Lotus

1985



Alumnae Office



LOTUS 1985

Peace College
Raleigh, NC



Opening

Organizations

Features

Dorms

Sports

Faculty

Classes

Directory

Advertisements

Closing

Majestic, white columns on the front of Main serve as a perfect backdrop for activities on front campus. Some traditional activities associated only with Peace occur around the fountain, which is just steps away from the columns. The history of the fountain is as entertaining as the activities associated with it.

Before the fountain was moved to Peace, a mound of dirt occupied the place where it now stands. The fountain was brought to Peace around 1920. Miss Mary Owen Graham, who served as president at that time, particularly wanted this fountain, which had stood on the grounds of the old Andrews home on North Blount Street. When the fountain was purchased and was being moved, there was a slight problem. The fountain could not get through the fence. In order to get the fountain onto the campus, the fence had to be taken apart.

Few students know that story, but all know that one of the most popular traditions involving the fountain today is the event "honoring" a girl's birthday. On this particular day, a couple of her friends scheme to determine the best time of day (or night) to ceremoniously dunk her in the cool water of the fountain's basin. When the birthdaygirl thinks that her friends have forgotten about the tradition, they ambush her and carry her out in an unceremonious position to be baptized.

Occasionally, we witness another tradition involving the fountain. The fountain may be viewed as an elite bathtub. Whenever someone decides that the fountain is dirty, she pours enough detergent in the water so that soapsuds creep over the sides.

The fountain is the center for fun and practical jokes. It is one of the first landmarks people notice when they step onto the campus.

The fountain is also the most memorable object for a girl after she graduates. Because Main, itself, is considered the heart of Peace College, the nearby fountain is the focal point in this image.



A Splash in Time





Do you remember the first time you came to Peace? How those columns stared back at you, so grand, so tall? Nervousness, chills, fear of the challenges ahead — and yet, as soon as you walked inside those doors, you felt that you were welcome.

For many of us Main became more than just where the faculty and administrative offices were and more than just a place to go to chapel every Wednesday. Main became home. A place where we could each find a spot of our own, whether in the Rec. Room watching our favorite soap operas, or in the lobby on third or fourth, or on the balcony overlooking campus. Remember how we checked out everyone's dates as they came and went?

And how about those poor guys who had to call on you from the switchboard, the ones who waited on the couch pretending to read last year's *Lotus*? Did you ever think they might have been more nervous than you? Or was it more of a relief to them, because at least they didn't have to meet your parents ... this time

Yes, this old building brings back lots of memories — it's more than just a place. Main is the heart of Peace that also holds a piece of each Peace girl's heart.



The Heart of Peace College





Once In A Lifetime . . .

During the summer of 1984, Mr. Jim Smith took a group on a European Tour. The entire group consisted of 33 people, twenty of whom were in the performing Peace College Choir. Travelling in England, France, Germany, Switzerland, and Belgium, the choir gave seven concerts. The most exciting one was probably



the one in the famous Notre Dame Cathedral in Paris.

Our trip to Europe was truly a learning experience. Seeing the historical sites is one part of the total education; for example, the Tower of London, including the Crown Jewels; Windsor Castle; and the Glockenspeil, which means bells, in Munich.

Travelling by bus, the group was able to see much of each country. The scenic education was invaluable; we felt enriched from seeing the beautiful, fairy-tale castles and the countrysides of the Bavarian section of Germany. Little things, like the small shops along the streets of the cities and the

tulips of Brighton, remain as memories to everyone.

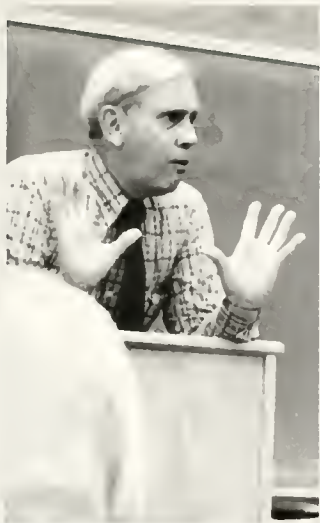
Each city visited was unique and picturesque. Newhaven is a beautiful port city on the coast of the English Channel. Berne and Lucerne are both enchanting cities in Switzerland which serve as a photographer's dream come true. The Swiss Alps are the

perfect backdrop for the city of Lucerne.

The pictures that remain from the trip are only physical moments of this once-in-a-lifetime event.



Going to Dinwiddie Chapel



PEACE COLLEGE IS A COMMUNITY
 OF CHRISTIAN TEACHERS AND LEARNERS
 ACKNOWLEDGING THE LORDSHIP OF CHRIST
 AND STRIVING TO LIVE ALL OF LIFE
 UNDER THE LIGHT OF GOD'S WORD

Religion as an integral part of a college student's life is not common in 1985, unless that college is Peace College. Religion 101 and 102 are required courses, and tough ones at that; but the religious traditions are more indicative of Peace life. Sure, we all complain occasionally about having to get dressed in "Sunday clothes" for chapel on Wednesday mornings. However, as Mr. George Thomas says, a half-hour per week is certainly not too much to ask students to set aside for the worship of God.

Music helps to set the reverent setting for the services. Ms. Virginia Vance's playing helps to quiet the murmurs of the students and draws their attention away from the everyday gossip. The choir enters from the back of the

chapel as their sweet soprano voices rise in unison. Joining the chorus, the congregation's happy voices lift in praise.

But what then really, aside from a requirement of the Handbook, impels students to attend chapel? For your answer, just eavesdrop on some conversation's among a few sophomores.

"You know, Deb, chapel will be one of the things I'll miss most about Peace after I transfer."

"Yeah, Beth, me, too. I mean, chapel is like a brief quiet in the chaos of the week."

"That's how I see it, too. Sure I go to services on Sunday; but, in the middle of the week, I welcome chapel as a time for reflection. And Mr. Thomas's sermons are so appropriate."

"Really! I think he bugs the halls. The sermons always touch some very present situation in our lives at Peace."

Reflecting on that conversation makes us realize how important those thirty minutes are to our week. Chapel is more than a requirement for Peace girls; it serves as a reminder of the foundations on which Peace College was built.

Although our campus is a haven, we still have to escape periodically. These late night escapades may take us to such exotic spots as Hillsborough St.'s legendary Char-Grill, to Krispy-Kreme, or even to Hardee's. Frat Row lures us away from homework with its promise of fun, parties, and MEN! On the campus of NCSU, Peace girls may be found at Dorm Parties or even D.H. Hill Library. Afternoons are a perfect time for a jog to the Capitol or to visit 'George,' the python at the museum. Pullen Park and picnics go together to make a fun outing for Peace girls and friends. But when the fun is over, Old Main draws us home, watching over us like a protective mother as we race in just before curfew.



The Great Escape

Hardee's





The adjustment from home life to dorm life is a big step for freshmen. Adapting to the change can include sharing a room, an experience that is both fun and rewarding, as late night gab sessions over popcorn prove. Here we live and study, surrounded by "stackers," beefcake posters, and our favorite stuffed animals.

Pictures and cards frame our mirrors, and "his" picture smiles from our desks. We talk to our droopy plants, watering them with homesick tears. Here we also play, as stories of stolen sheets or dumped drawers reveal. And what

Peace birthday is complete without the ritualistic dump into the fountain? Whose neighbors haven't jammed to Prince while we crammed for Calculus? Yes, here in our dorms we live, work, and play with our extended family. Goodnight, Lisbeth G'night, Sarah ... Goodnight, Anna



Dorm Sweet Dorm





Looking back on my graduation from Peace, I can see, even more so now than then, what a very special two years I had just finished. Graduation is a time when you begin to think about appreciation of so many things — of what you have learned and experienced, of all the things you will miss, but most of all, appreciation of people. Above all else, Peace College is people — people that make a difference and were the bright spot among so many things. With graduation comes the pervading feeling of knowing that you will be moving on, yet there is also a deep sense of pride you have for where you've been and what you're leaving behind. But, most of all, at graduation there is through all the emotions a good feeling, deep down inside, a comfort in knowing that even though you'll never pass this way again, there will always be a band among you linking you together and always to Peace.

I honestly cannot think of a more fitting way to commemorate graduation from Peace than the lovely ceremony we've followed adorned with long white gowns and red roses. My graduation day is a day I have tried to etch permanently in my memory. I'm not sure if it is the event I wish to capture or those personal milestones that the ceremony represents. It certainly is a day remembered with very mixed emotions. Unfortunately, graduation brings an end to friendships as well as courses of study. The door closes on a comfortable and secure way of life but opens to wonderful opportunities and great new adventures. It's one of those days filled with laughter and tears.



A Bittersweet Memory



Every year from the columns of Main I look down as the Peace graduates circle the fountain to sing the Alma Mater. This always brings back special memories for me. It seems like only yesterday that I was sitting on the front lawn of Peace in a long white dress holding a beautiful bouquet of red roses waiting for my name to be called to receive a Peace College degree. I remember that day well. I remember looking forward to new experiences at another school but also feeling anxious about leaving Peace.



Going to an exotic island for vacation or just going home for the weekend can mean something special. There are, however, little-noticed places on campus that can mean something special.

These places are not obsolete. They are just taken for granted.

One of these places is Peace Beach. This grassy area is used for many purposes. On several occasions, the cafeteria staff supplies picnic dinners to be eaten on the beach. After we devour these dinners, we play a series of games and take part in various events. In the spring, a special set of games played on Peace Beach are labeled "Spring Fling." But the main thing girls think about when Peace Beach is mentioned is getting a tan. Girls lie out in the sun in a variety of bathing suits to enhance the golden hue of their skins.

Another special place on campus is the front lawn. On a warm, sunny day, the likelihood of seeing a student reading a book on front campus is fairly high. Occasionally, if the sun is too bright or too hot, the students are seen sitting under a tree in the shade.

Sometimes, a student can be seen with her boyfriend, sitting in the shade or on a bench.

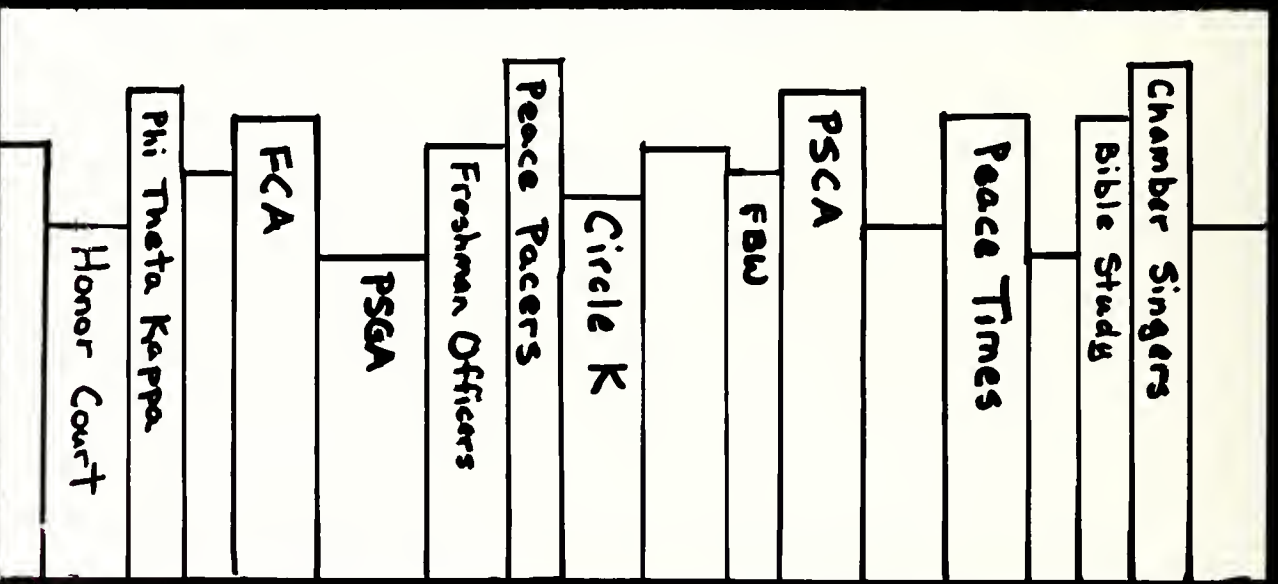
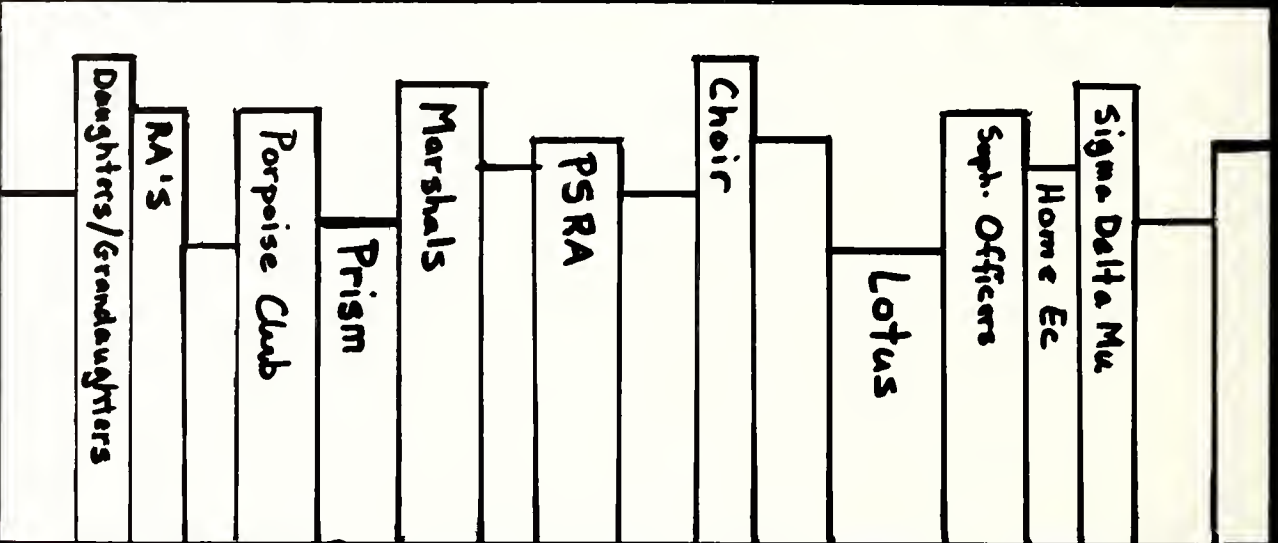
Finally, the most special place on campus is a girl's own room. This room is her solace and comfort. After a long day of classes, she can retreat to her room and relax. This is her home away from home. She decorates the room with posters and objects that reflect her personality. Usually, her roommate is a comfort in times of sorrow and a friend in times of happiness.

Her room, the front lawn, and Peace Beach are three places that mean something special to Peace students. These places may be labeled as little-noticed places just because people take them for granted and do not consider their true worth — yet these places are important. Their mere existence helps to shape the environment and add to the personality of Peace College.



The Peaceful Places







ORGANIZATIONS



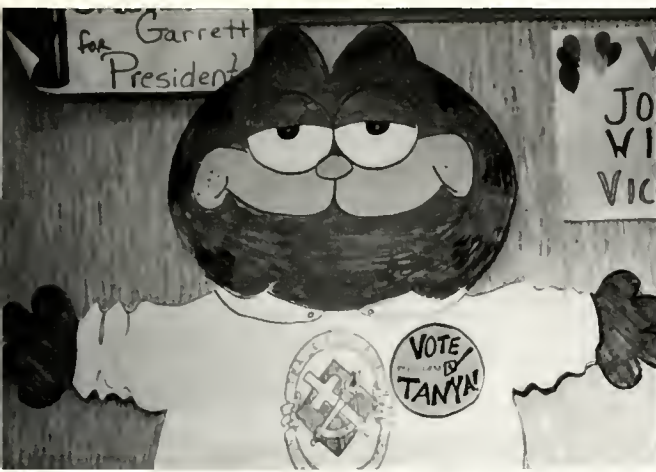
Peace Student Government Association



Beth Flye — President



Kim Boyette — Vice-President



The Peace Student Government Association (PSGA) is responsible for upholding the highest standards of college life by encouraging each student to cooperate and participate in the various phases of self-government. The Student Council meets weekly to discuss activities regarding students and

the college. Anyone who is interested is welcome to attend these meetings. On Thursdays, the PSGA presides over the assemblies making announcements relative to PSGA sponsored activities. These activities include orientation, the Christmas Dance, Spring Fling, and the Spring Dance.



Peace Student Government Association



Louise Price — Secretary



Margaret Cherry — Parliamentarian



DeAnna Henderson — President



Sharon Maynor — Secretary

Peace Student Christian Association Pea





The Peace Student Christian Association (PSCA) provides students opportunities for worship on and off campus. While maintaining Christian standards of living in all phases of college life, the PSCA encourages the development of the Christian character. PSCA promotes Christian fellowship among the students and faculty through many various activities. One of the main activities to promote fellowship among the students is the Big Sister/Little Sister program. This program allows a sophomore to

"adopt" one or more freshmen as her own little sister. The PSCA is responsible for several activities which encourage the fellowship of students, faculty, and administration. One of the more entertaining activities is Peanut Week. During this week, those who choose to participate secretly do nice things for their "Peanuts". At the end of the week, the secret is revealed. Some of the more serious activities of the PSCA include the Thanksgiving Baskets, Religious Enrichment Week, and Holy Week.



ce Student Christian Association Peace S



The Peace Student Recreation Association (PSRA) coordinates the 25 different intramural sports activities. Students of one dorm are able to compete with students of another dorm to determine the all-campus champions. The intramurals range from basketball to UNO. Other activities the PSRA sponsors

include a concession stand for home basketball games and a game room in the gym. This organization is also responsible for a slogan well-known on campus, which is based on the letters of the club, PSRA. This slogan is "Participate, Don't Spectate; Recreate, Associate."



Joan Davis — President

Peace Student Recreation Association Pe



Lynn Mills — Secretary





Angela Anthony — Vice-President



Peace Student Recreation Association Peace



Allison Dement — PSRA Assistant

Honor Court



DeAnna Henderson, Jodee Hibbs, Whitney Hinson, Joan Davis, Beth Fiye



Whitney Hinson — President



Jodee Hibbs — Secretary

The Honor Court enforces the rules governing Peace. These rules are established in order to keep the students from getting into any serious trouble. Once a week, the Court meets to discuss various situations which may result in camping, restrictions, or suspensions. The most important job the Honor Court does is to preside over the ceremony in which the freshmen repeat their Honor Code and sign the book. This ceremony is very serious. Some girls, though, may laugh and giggle because her roommate or herself stumbles over the words.



Resident Assistants



Carla Myers — Chairperson

Resident Assistants (RA) accept leadership responsibilities for their floor. They are selected from those girls that have completed an application and have undergone interviews. An RA provides her hall with information during hall meetings. She is to assist the freshmen in adjusting to college life and to become personally acquainted with each girl. An RA may be a mediator between a student and the Dean of Students' office. She must be fair and impartial when maintaining quiet on the halls. RA's come to

Peace a couple of days early to prepare for the freshmen's arrival. They spend several hours in meetings and seminars. This year the RA's went to a program called REACH. Here, they learned the importance of trust and communication. Then, the freshmen arrived. RA's were responsible for carrying the girls' possessions to their rooms. The work was strenuous at times, but the expressions on some of the girls' faces were well-worth the efforts put forth by all involved.



Sophomore Officers



Stacy Evans — President



The Freshmen and Sophomore Class Officers are a group of dedicated girls. The Freshmen Officers try to achieve unity among the newly formed class. The Sophomore Officers try to make the sophomore's last year at Peace a memorable one. Eligibility to hold an office is determined at the end of each semester. Officers must maintain a 2.0 grade point average in order to hold their positions. Failure to do so will result in a period of eight weeks in which the officer must reattain her C average. If, at the end of this period, she has not brought up her average, she will automatically be removed from her position.



Laura Henry — Vice-President

Freshman Officers



Lori Cupton — President



Amy Allen — Secretary



Phi Theta Kappa

Phi Theta Kappa (PTK) is a national honor society for junior Colleges. PTK serves as a goal for academic achievement. If a freshman has completed at least 12 hours of college courses with a grade point average of 3.5 or if a sophomore has a cumulative grade point average of 3.3, the student is eligible for this academic honor. The major service of PTK is the Preceptor's program. This program allows fellow students to receive help from tutors in their problem subjects. PTK also sponsors an activity, the holiday reception, to show the members' appreciation to the professors for all their help and encouragement.



Sigma Delta Mu



Sigma Delta Mu is a national honor society recognizing excellence in Spanish for junior colleges. This society provides a hispanic atmosphere for those students who are genuinely interested in hispanic culture and concepts. To be eligible for membership, the students must be enrolled in a second semester of a higher level of Spanish with an overall grade point average of 3.0 or better. Members participated in an annual Christmas Party. Later, they take part in the International Food Festival.



Patricia Martin, President — Martha Bowman, Vice-President

Marshals



Peace marshals are the five students who have the highest grade point average after the first semester of the freshman year. The marshals must be returning to Peace for their second year of college. This is required because the marshals serve at convocation for the next year's freshmen. Other functions the marshals serve at are the baccalaureate and commencement services.

Daughters and Grandaughters

The Daughters and Grandaughters Club includes any Peace student whose mother, grandmother, or great-grandmother graduated from Peace. Mrs. Fiowe sponsors the group, which is responsible for raising money for the college's scholarship fund. Selling key chains and cross-stitch patterns are two projects they sponsor to raise money.



Home Economics Club

Home Economics is a club that allows student members to execute their skills in fashion, cooking, and design. Projects are widely varied to meet the interests of all those involved. Acting as a service club to represent Peace, the members have small parties for the children of Halifax Court. Members display their creativity during the Christmas season by making crafts. They exercise their cooking talents when they have private dinners for members only. For the traditional Mother-Daughter weekend, the Home Economics Club is responsible for organizing and presenting a fashion show. Another activity this club engages in is inviting guest speakers to relate to the students the importance of nutrition.



Future Business Women



The Future Business Women's Club is an organization designed for Peace students planning to major in business. It offers them a chance to be exposed to businesses off campus. Also, the club hosts speakers on campus from businesses in the Triangle area. In order for a student to be considered a member of the club, she must attend at least two meetings. The club is enlightening for any student planning on a career in business.

Bible Study

Similar to the FCA, the Bible Study offers a time of fellowship for students. During the club's weekly meetings, students discuss problems and/or concerns in an informal setting. The Bible Study gives students an opportunity to express prayer concerns with each other.



Fellowship of Christian Athletes

The Fellowship of Christian Athletes (FCA) is an organization established to present to the athletes, coaches, and all whom they influence the challenge and adventure of receiving Jesus Christ as their savior and Lord. This club serves Him through their personal relationships and their fellowship in the Church. By taking a more physical approach, the FCA contributes to the spiritual growth of the students actively involved. Throughout the school year, the FCA helps with the high school huddle groups and performs several active service projects.



Circle K



Circle K is the world's largest collegiate service organization. Membership is open to anyone who is willing to participate in community services. Members bring cheer to many families. Circle K holds drives for canned food to take to the needy on Thanksgiving. The food students give are sometimes all that a family has for dinner. At Christmas, Circle K is responsible for a small child's delight and surprise. Members ask the student body to donate small inexpensive toys which may then be given to a less fortunate child. Besides services for the neighboring community, Circle K offers fellowship among its members. They plan activities such as dinners and conferences.



Choir

The Choir is similar to the Chamber Singers in that the choir sings in Chapel. They are dressed in their choir robes every Wednesday for Chapel (except when the Chamber Singers perform). Choir members meet on Tuesdays and Thursdays to practice the music so that they may be able to lead the congregation in hymns and give an outstanding performance.



Chamber Singers

The Chamber Singers consist of 14 girls. They perform at neighborhood Presbyterian churches, at civic functions, and at college activities. During the first semester, the Chamber Singers performed once at the First Presbyterian Church in Raleigh. The second semester allowed four opportunities for the Chamber Singers to perform in other churches in North Carolina.

Civic functions the Chamber Singers participated in occurred during the holidays. At Christmas they visited two rest homes and one convalescent home to brighten spirits through music. For Valentine's Day they sang at a banquet held at a neighborhood church. One particular civic function where they performed was held on a special day, although not a holiday. The Chamber Singers sang for a wedding held in Peace's Chapel.

Although the Chamber Singers sing for weddings in the Chapel, they also sing one Wednesday a month. A special Chapel is held in the Spring for high school students on campus for junior visitation. Other local activities the Chamber Singers are involved in are Cider House and Parents' Weekend.



Porpoise Club

Girls who liked to swim found that this club was an organization in which they could do just that — swim.

This club, however, was not like a swim team. Instead of racing to see who would swim the fastest, this organization allowed girls to display grace in synchronized swimming and water ballet. These girls were also able to display perfect form in water stunts and acrobatics.



Peace Pacers



The Peace Pacers are Peace College's performing dance troupe. The Pacers have found their second year on campus to be an exciting one. Under the direction of the new physical education and dance instructor, Miss Patricia Garrison, the Pacers have been exposed to new and intriguing dance styles. The group is primarily a jazz dance troupe, and they perform on campus as well as off campus. Although some of the girls have prior experience, anyone who loves to dance is welcome to try out for the group.





In the spring, the *Prism* staff publishes a literary magazine. This magazine serves as an outlet for the students' creative expressions in prose, poetry, photography, and art. On November 5, 1984, the *Prism* staff sponsored the event known as Cider House. This annual activity features faculty, students, and this year the two-time O. Henry Award-winning novelist, Lee Smith was a special guest. Each year literary works are read aloud and refreshments are provided.

The *Peace Times* is Peace College's newspaper, published six times a year for students, prospective students, and alumni. Under the direction of Mrs. Jenny Spiker, the staff works very hard at keeping up on all the latest Peace College news. The editors for 1985 are Carla Myers, Linda Koontz, and Amanda Webb. Working together, the staff always manages to produce an enlightening publication, and we certainly do appreciate their hard work.





Lotus

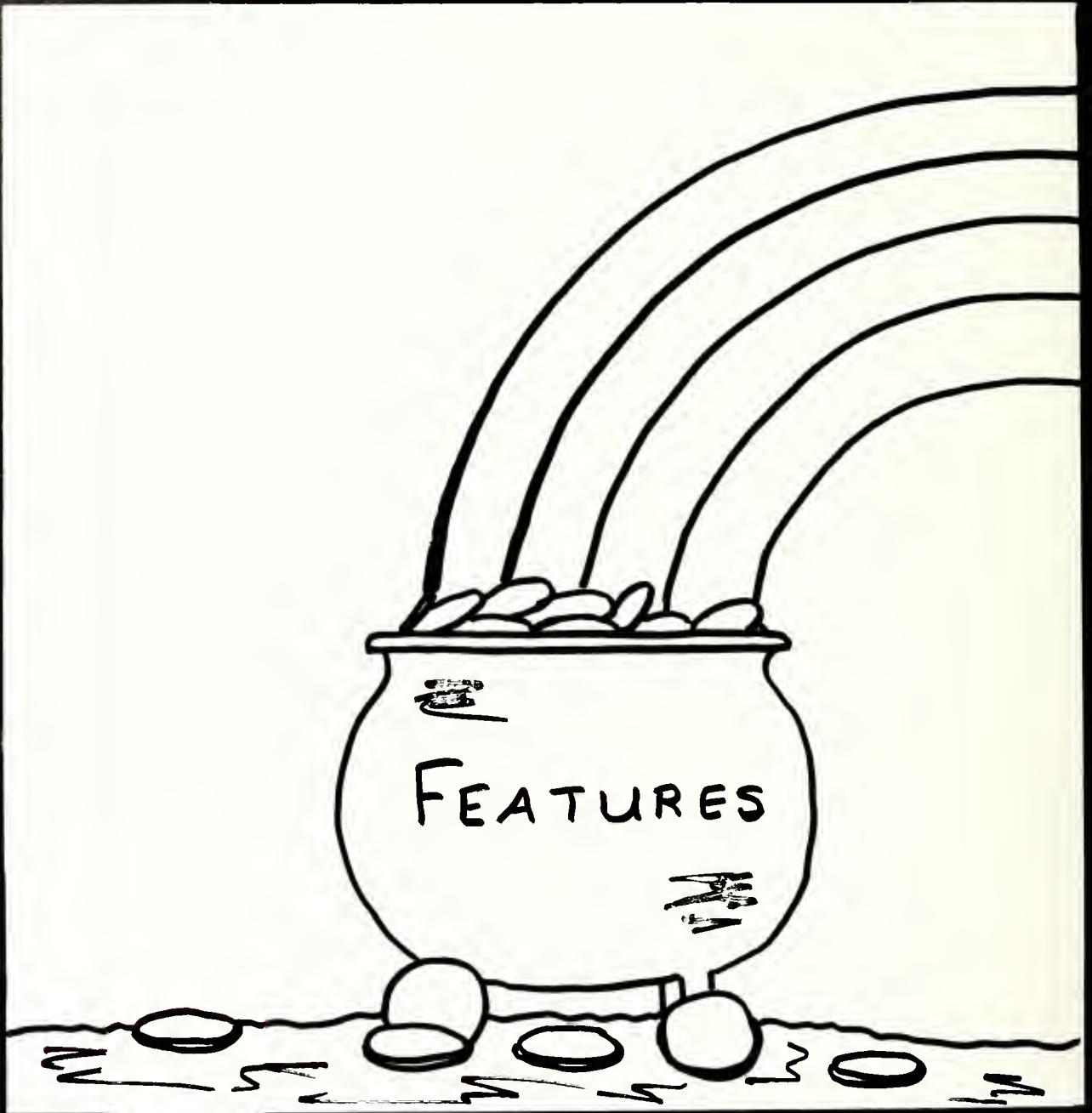
Editor-in-Chief — Kim Boyette
 Assistant Editor — Harriet Holloman
 Copy Editors — Lisa Cook
 Becky McQuain
 Jo Ellen Rose
 Business Managers — Allison
 Dement
 Theresa
 Mitchell
 Photographers — Linda Koontz
 Beth Goodson
 Organizations — Paige Revelle
 Features — Angela Wallace
 Melanie Leonard
 Melanie Saunders
 Dorms — Dana Watson
 Anne Garner Nelson
 Sports — Beth Spragins
 Faculty — Catherine Woolard
 Classes — Denise Huntley
 Michelle Courtney
 Directory — Pam Williams
 Tanya Womble
 Typing — Lisa Bowers
 Advisors — Janet Wester
 Liz Thurston
 Other Photographers
 Hugh Cashion
 Audrey Ward



The very book that you hold in your hands is evidence of the hard work of the 1985 Lotus staff. Each year a group of dedicated young women work very hard at producing a "book of memories" for the student body at Peace. Out of the hassle of getting pictures taken, getting copy written and typed, doing layouts, and mulling deadlines, has been created a book that you can keep forever. We hope that, for each and every Peace student, the 1985 Lotus will hold special significance. Our hard work has been dedicated to this goal, and we sincerely hope that we have accomplished what we set out to do.









FEATURES



Christie Perkins sits with her parents.

Sandy Zipsir plays at the game.



The half time highlight of the game.



Raygina Lentz stands with her mother.

Parents Weekend



October 6 and 7, the annual Parents Weekend, were busy days at Peace. The week before was spent preparing for the parents' arrival. Rooms were straightened (wasn't Mom surprised!) and great shopping sprees were anticipated. When the parents arrived Saturday, they registered in Main and were met by their daughters and Dr. Frazier. Later, while following a mini-schedule of their daughters' classes, parents met the professors. Sharing this first-hand was exciting and enlightening for parents as well as daughters. The powder-puff football game held on Peace Beach highlighted Saturday afternoon. The sophomore class won, though the freshmen gave them a good, fun fight. After the game ended, a picnic complete with fried chicken and potato salad was enjoyed by all. Saturday night sparkled as a group of Peace students performed in the Variety Show. The next morning after chapel service and breakfast with Dr. Frazier, parents bid their daughters good-bye. The fun-filled weekend of sharing had ended, but many dear memories had been made.



A father asks questions about the day.

Mr. Thomas and Mr. Tilley enjoy the halftime amusement.

Two parents are caught relaxing.

Mother-Daughter

Rrrring! Hello? Hi, Mom! You're where?! But I thought you weren't coming until 4:00? Yes, of course I'm pleased that you wanted to surprise me and get here early. No, don't come over yet! Why don't you shower and take a nap; I'm sure you're tired from the drive. I'll call you in awhile. Click. Leigh, Mom is here in Raleigh already. We've got to hurry and clean up this jungle. Here stuff my laundry bag under the bed — no she'll check there. Aha! Stuff it in my storage space above the closet. No single event can induce such panic in Peace College dorms except Mother-Daughter Weekend. Mothers arrived on Friday afternoon, November 9, and were served hors d'oeuvres before dinner. For the evening's entertainment, the mothers and daughters assembled in the Little Theater to view *The Diary of Anne Frank*. Saturday morning, the group enjoyed a speech entitled "The Ageless Woman" and a fashion show. After a delicious brunch, some mothers challenged their daughters in tennis while others opted for shopping sprees. The official activities concluded, the weekend was a treat for both generations.



Father-Daughter



"Remember to sign your dad up for Father-Daughter invitations "

It's that time again already? Wow! Dad and I had so much fun last year. He wore his gray suit with that paisley tie Mom and I always hide. Dinner at Red Lobster, then to Peace for the dance. I still can't believe he brought me flowers. I had never known he and Mom used to win shagging contests. "Ring, Hello? Oh, Hi David

A party at Lambda Chi February 9th? Sounds great, but I already have plans. I have a date with the main man in my life, my Dad."

Each year, Peace sets aside a weekend for fathers and their daughters to get together. The activities usually start on Saturday afternoon, with a basketball game, followed by a repeat performance of Stunt Night. Later in the evening, a dinner and dance are held in Belk Hall. Father-Daughter Day is just another example of the wonderful traditions that Peace College has established.



Peanut Week

AS students piled into the Recital Hall, filling every vacant seat and sitting along the floor, DeAnna Henderson, PSCA President, in an excited voice asked, "Would everyone please quiet down? The Peanut Week Assembly has officially begun!" And thus, the festivities of Peanut Week for 1984-85 began. After a mixed crowd of sophomores and freshmen quieted down, DeAnna explained that Peanut Week, which was September 10-13 this year, was an effort to promote unity and friendship here at Peace. She also gave examples of small gifts to give a person's secret pal, "her peanut."

Peanut Week is a time in which Peace students and faculty who wish to participate become secret

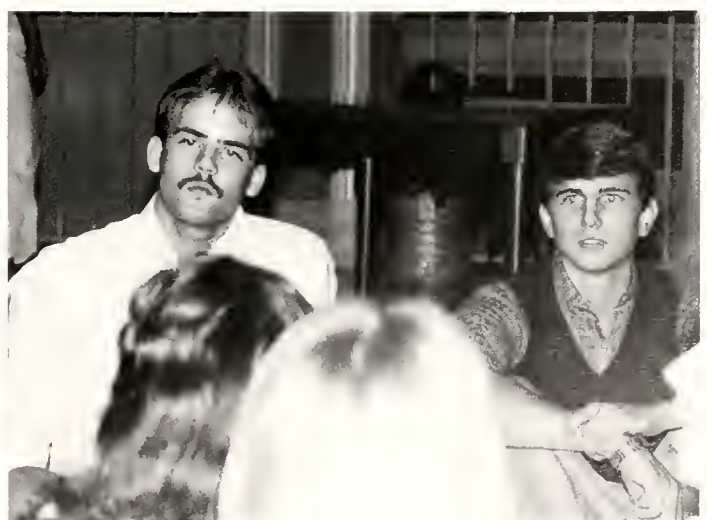
pals. Each person who chooses to participate places his or her name into a basket, and as each leaves the Recital Hall, he/she withdraws a name from the basket. As the week begins, the Monday after the Thursday morning assembly, small gifts are placed in areas, where the participants will find them. The creativity of the students in preparing the small treats was tremendous: posters, personalized mugs, goodie bags, and flowers are only a small sample of the treats found by each participant. The highlight of the week was Thursday morning, September 13, when each person's peanut was revealed, as everyone met in Belk Lounge for refreshments.



Dating Game Dating Seminar



At Peace, dating is primarily a weekend activity; however, dating was a hot campus activity two nights' in the fall. One event was the Dating Seminar, an annual question and answer session. The males who took part came from Bragaw dormitory at NCSU. The seminar was informative and enabled girls and guys to look at situations from one another's points of view. The second big event was the Dating Game. Four lucky Peace girls participated along with four guys from State and Campbell in a stage set-up like the TV version. Sarah Sylvant, Jennifer Engle, and Jeannie Ammons answered the questions of a handsome guy, each trying to win the date. Sarah won and received a dinner date. Sue Barbieri took the role of questioner and engaged in playful banter with three young men. Sue and her date were also treated to dinner. The biggest treat, however, was for the audience of laughing, cat-calling Peace girls.



Christmas

Christmas at Peace College is a holiday rich in tradition and celebration. The buildings are festively decorated, and the Christmas spirit lurks along the hallways. Some of the traditional activities include the Christmas meal, followed by the Christmas skit, and the Christmas chain. Dr. Frazier also helps in the celebration of Christmas by hosting a reception at his home on the last Sunday afternoon of the semester. Indeed, a Peace girl has plenty of reminders concerning the season at hand.

The Christmas meal is a tradition that most Peace girls thoroughly

enjoy — usually to the point of over-eating. The cafeteria staff prepares turkey, ham, stuffing and all the trimmings in generous portions for everyone. Immediately following the dinner, the Christmas skit is presented by the Programs Committee. For 1985 the skit involved a remake of "Twas The Night Before Christmas" — done Peace style.

Later in the evening, one of the most anticipated traditions at Peace takes place: The annual Christmas chain. Beginning with Ross Dorm, the Peace girls join hands and run





from dorm to dorm until they gather all the girls together in one long "human chain" encircling the fountain, where they sing Christmas carols.

The reception at Dr. Frazier's home is also a favorite "get together" for Peace girls. A variety of delicious hors d'oeuvres and desserts are provided — just what Peace girls need to get ready for exams.

Yes, indeed, Christmas is a special time at Peace College. Not only does it help ease the tension of exams, but it also offers us a chance to have some Christmas spirit with friends that we might not otherwise see during the Christmas holidays.



Meals

Have you ever eaten at another college cafeteria? If you have, I'm sure you can definitely appreciate the hard work of Peace's cafeteria staff. Not only do they provide us with good hot meals, but they are also especially friendly and genuinely interested in the students.

Dinner is a special meal at Peace because it is the time of day when everyone gets together. For this reason, special activities are often centered around the evening meal. At Halloween, there is the annual costume contest — with cash prizes awarded for the top three costumes. Thanksgiving meal is specially prepared by the cafeteria staff so that Peace girls can have their own Thanksgiving feast. The State-Carolina dinner is a special meal where Peace girls dress according to their loyalty — NCSU or UNC. And of course, how could we forget the Christmas dinner that allows everyone to celebrate Christmas together?



It is little wonder that the alumnae of Peace fondly remember the wonderful meals and friendly atmosphere of the cafeteria.



Miss Peace



Miss Peace is the individual that the student body chooses as exemplifying the characteristics of the ideal Peace girl. Most often, Miss Peace is one who has true devotion to Peace and is active in student life.

In a special assembly held on January 31 for the announcement of Miss Peace and Outstanding Sophomores, Whitney Hinson had the following to say about Miss Peace 1985: "This year's Miss Peace goes to a special young lady who is dedicated to her job. She is a very busy person who is hardly ever in her room because she is visiting others. This year's Miss Peace has had the opportunity to get to know the freshman and to develop a strong friendship among members of the freshman class. She greeted them the day they first set foot on campus and made them feel welcome and secure in their 'home away from Home.'" She has been able to help them adjust to college life and to get over being homesick because she herself was homesick at the beginning of her freshman year. Once she got involved in various activities of the school, she soon began to feel more comfortable. As a freshman and sophomore, she enjoys participating in intramurals, especially basketball, and is very active in the role she plays on campus. What stands out the most about Miss Peace is her love for Peace. Peace will always be a part of her no matter what she does in the future. In her freshman year, she served as President of the freshman class, and during her sophomore year, she was elected to Who's Who and is presently President of the Student Government. Miss Peace 1985 is . . ."

Beth Flye

Outstanding



Kimberly Annette Boyette is Vice-President of the PSGA, which includes being in charge of all the committees, and serves as Editor of the yearbook as well. Even though she is extremely busy, she does not know the meaning of the words quit or complain. Her famous laughter and willingness to listen to any problems make her a very special person.



Beatrice Joan Davis is constantly on the move with her job as President of the PSRA. Her work with intramurals has opened the door for many new friendships and pleasant rivalries at Peace. She is a member of Phi Theta Kappa and has worked on the Peace Times staff. Joan's availability in times of need have gained her much respect here at Peace.



DeAnna Henderson lends excitement and cheerfulness to the Peace campus. This spunky outstanding sophomore has been involved in student government during her two years at Peace. She is the President of the PSCA and a member of Who's Who. Her smile and personality make DeAnna a warm person and a great asset to Peace College.



Laura Lynne Henry this outstanding sophomore is someone that you all know. Her outgoing personality makes it easy to get to know her. She is never seen without a smile, and she always has a friendly hello for everyone she sees. To say the least, Laura is a special person to everyone here at Peace.

Sophomores



Stacy Larlannette Evans is known for her vivacious character and outgoing personality. She may be small, but her fun-loving character makes her tall among her peers. While at Peace, she has been involved in May Court, Circle K, and the Peace Choir. She also serves as Sophomore Class President.



Elizabeth Jean Flye has to run around campus to meet her busy schedule. She is involved in practically everything at Peace College. Despite her demanding schedule, she manages to share lots of good times with the student body of Peace. She was chosen May Queen and serves as President of the PSGA.



Harriet Elizabeth Holloman has qualities of friendliness, charm, and a sense of humor. She has been a great service to Peace College, serving as President of Phi Theta Kappa, assistant editor of the Lotus, marshal, and a member of Sigma Delta MU. Harriet is indeed a dedicated student and a good friend to us all.



Carla June Myers is a sweet, considerate girl, and she always carries a smile on her face which brightens up anyone's day. Carla is chairperson of the Resident Assistants, a member of Phi Theta Kappa, and was elected Maid of Honor of the May Court. She is always around to lend a friendly ear.



May Queen

Beth Flye's list of activities at Peace College are numerous — president of her freshman class and PSGA president as a sophomore, to name a few. However, the most remarkable thing about Beth is not her positions, but rather her disposition, a very open and friendly one! "Flye" has a personality that reaches out and says, "Hey, I care about you." It is Beth's concern for others and willingness to give of herself that has made Beth such a well-liked and well-loved individual.

Carla Myers' life at Peace is one of contrasts. Not only is Carla active in student government and the *Peace Times*, but she is an excellent student as well. Carla's personality also reflects contrasts. She is often busy, being active in many student affairs, yet as an RA, Carla is an ever-ready friend who's never too busy to listen. Carla Myers, May Court Maid of Honor, a woman of winning combinations.



Maid of Honor

May Court

Sophomores



Debbie Corley — To me, everything about Peace is special, but if I had to name the one most special thing it would be the special closeness that is shared by everyone who is a part of Peace College. There is a wonderful, close-knit bond between all the students at Peace and also one between the students and the faculty. Everyone is just like one big happy family, and I couldn't trade my two years here for anything in the world!"

Harriet Holloman — "One of the major reasons why Peace College is so special to me is the traditions that it maintains. These traditions help to unite the students who are now at Peace, and they also give us a sense of unity with previous Peace students. The May Court is one of these traditions upheld by Peace, and I am honored to have been selected to be a part of this tradition."

Elizabeth Kluttz — "Since I have been at Peace, the friendships I have made are what I value the most. Sharing, learning, and growing together are what I cherish when I look back on my years at Peace. The best part of the special friends is knowing that they will last many years longer than just the two we shared here. To me, these friendships are what college is all about and what I will always remember."

Robin McLean — "The friendships I have made at Peace have made my two years here very special. During high school everyone always told me that the best friends I would ever have would be those I made at college, though I did not believe that. But, the friendships I have made at Peace made their statements easy to believe. I will always cherish the special times shared with friends, and I know these friends will last a lifetime."

Freshman



Amy Allen — "The small, friendly environment is the one thing that makes Peace most special to me. Coming back to the pretty smiling faces after being at home on the weekends exemplifies this specialness, along with the weekly activities, including chapel and PSRA intramurals. These help the girls to become better acquainted with each other. Thus everyone speaks to everyone else, and this attitude can make any girl feel at home in this special place."

Geneva Carlton — "To me, Peace offers something extra special, with the religious background enhancing the academic atmosphere and giving Peace life a personality all its own. I feel I have grown in knowledge and spirit in this type of environment. I have found what I wanted for a college experience — total growth — at Peace. Academics, sports, and religion all make the school special, but the key ingredient seems to be the people."

Raygina Lentz — "My first semester at Peace I realized that we have all met as strangers, searching for meaning and fulfillment through people and experience. I still do not know what will happen to us, but I know that whatever happens will happen because we've cared enough to offer the most valuable things we have — ourselves. The friends I have made here at Peace will mold my memories of college into something very special."

Kim Price — "My favorite aspect of Peace College, one I will keep long after graduation, is the special togetherness I have experienced with my new friends. Meeting so many new friends with similar personalities, even from the beginning, made me happy to call Peace my home. I am proud to be a part of such a fine student body, and I will treasure my memories of our Peace family forever."

Who's Who Who's Who Who's Who Who's Who Who's Who

Each year a group of Peace's most outstanding students are selected to membership in "Who's Who Among Students in American Junior Colleges." The criteria for membership include scholarship, participation in academic and extracurricular activities, citizenship, service to the college, and potential for future achievement.



Kim Boyette

Kim Boyette certainly meets these criteria with her diversified activities. Kim serves as the PSGA vice president and also the editor-in-chief of the school yearbook. Kim does not let her positions interfere with her studies; she is a member of Peace's two honor fraternities Phi Theta Kappa and Sigma Delta Mu, a Spanish honorary club. Kim is the recipient of a Jones Scholarship and also a Valedictorian Scholarship.



Beth Flye

Beth Flye must "fly" to fulfill her busy schedule which keeps her in touch with Peace College life. When she isn't fulfilling her duties as President of PSGA or involved with the Honor Court, Beth enjoys participating in intramural sports. Aside from her studies, Beth also finds time to write for the college newspaper and to be a part of FCA and Circle K, service groups.



DeAnna Henderson

DeAnna Henderson is the peppy president of the Peace Student Christian Association. This position makes her a member of the PSGA and the Honor Court. DeAnna also makes time for the Fellowship of Christian Athletes. She is recipient of both an A.J. Fletcher Music Scholarship and a Special Merit Scholarship.



Vera Hockady

Vera Hockaday, a Jones Scholar at Peace and Dean's List student, is active in the Circle K Club as well as Phi Theta Kappa. She also serves as the co-editor of the literary magazine, the Prism, and is a member of the PSCA cabinet.



Lisa Cook

Lisa Cook has been active at Peace, serving as editor of the literary magazine, copy editor of the yearbook, and as a marshal. She holds membership in both Phi Theta Kappa and Sigma Delta Mu. Lisa is the recipient of a Jones Scholarship, a Salutatorian Scholarship, and Penny English and Poetry Awards.



Joan Davis

Joan Davis' many activities keep her on the go while she serves as president of the Peace Student Recreation Association. Even though PSRA is the busiest student organization on campus, Joan still finds time to excel in academics. Joan is a member of Phi Theta Kappa and a recipient of a Virginia W. Jones Scholarship.



Margaret Deem

Margaret Deem is involved with Circle K, in fact, she's the treasurer as well as being vice president of Phi Theta Kappa. For her academic achievement as a freshman, Margaret is a marshal. Margaret is also a member of the PSCA and a Special Recognition Scholarship recipient.



Harriet Holloman

Harriet Holloman is also a Jones Scholar and the recipient of a Valedictorian Scholarship and Penny English Award. She serves as a marshal, president of Phi Theta Kappa, and assistant editor of the yearbook. Harriet is also a member of Sigma Delta Mu, a Spanish honorary.



Carla Meyers

Carla Meyers' face is a familiar one at Peace, with her membership in PSGA, Future Business Women's Club, and Phi Theta Kappa. Carla also serves as Chairperson of the Resident Assistants and editor on the school newspaper staff. Carla is also an Honors Scholar.



Myra Stone

Myra Stone, an adult student at Peace, has certainly proved that day students can get involved in extra-curricular life. Myra is the Circle K president, member of Phi Theta Kappa, and also a marshal.

Adult Students

In the past decade, the spectrum of Peace students has changed drastically. One contributing factor is the increase in adult students. Who is the adult student? She may be a married mother and homemaker who has decided to pursue a career in business. She may be divorced and wants to augment her education. Maybe she began working straight out of high school but now desires a career requiring more formal education. Whomever she may be, she brings to the Peace environment her own, unique abilities and strengths.

Many of these "Peace Girls" have been living on their own and dealing with problems of "the real world." Their experiences add use-

ful input to class discussions by giving younger students a chance to view life as they will soon encounter it. Also many adult students are apprehensive of "going back to school" and are anxious over their scholastic performance. For most, however, their years out of school have taught them to manage their time and to be responsible of assignments. These tools smooth their transition into the school environment.

So what do young-adult students think of this new breed of "Peace Girls?" We welcome them into our Peace family and hope that they gain the respect for Peace that we have attained.



Stunt Night



Stunt Night is an annual competition between the freshman and sophomore classes at Peace. Each class performs a short skit, of no more than twenty minutes, in which they combine many talents. The presidents of each class are responsible for organizing the skit presented by her class. The 1985 Stunt Night competition was presented on February 7, with the sophomore class taking the victory.

The sophomore's skit was entitled "The Class of 1985 Goes to Broadway." In their skit, a group of Peace alumnae go to New York to audition for Broadway. They perform for two old classmates, played by Julie Carlson and Jo Rideout, who are direc-



tors on Broadway. The Peace girls present a variety of talents — including a mock gymnastics act by Rae Marie "Retton" (Hall), a Peace Pacers dance, two duets, a solo, and an impressionist act of Donald Duck done by Mary Lloyd Hodges. For the grand finale, the Peace girls perform a chorus line song about their success on Broadway.

The freshman class skit was a spin-off of the popular TV show "Star Search." Their star search included talents such as singing, dancing, and clogging. In each talent, Peace was compared to one of its rival girls' schools, and Peace ultimately received the maximum number of stars for the competition. They con-

Stunt Night

cluded their skit by announcing that indeed Peace did have the brightest stars in Raleigh.

Both skits were also presented on Saturday, February 9, for the annual Father-Daughter Day celebration. Once again the Peace girls proved that nothing is impossible with a little hard work and dedication.





Drama

The fall drama production was *The Diary of Anne Frank*, the story of a Jewish girl becoming a woman in the midst of Nazi Germany. The play was directed by Mr. Rich Rottschaeffer, Peace's new drama coach. Peace naturally has a problem casting male roles; actors must be found from off campus. Despite the tension added of the leading lady's,

Jennifer Smith, hospitalization two weeks before opening night, the play opened without delay. Opening the curtain to a sold-out house each night, the drama department is to be commended for excellent acting, superb costuming, set design, and an integrated troupe. Congratulations, Mr. Rottschaeffer, on your unforgettable initiation.

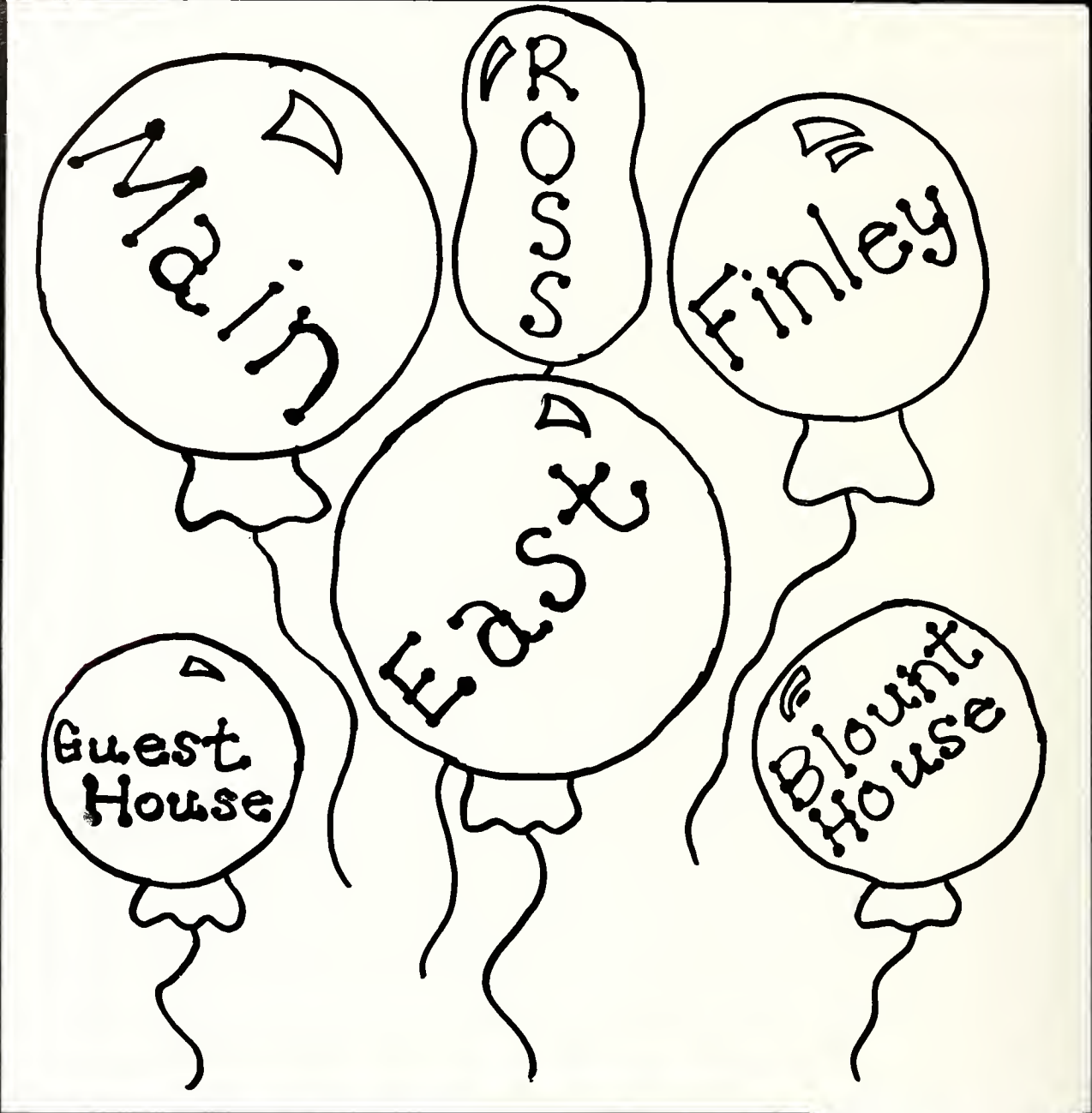


Big Sister, Little Sister

This year at Peace is going to be so exciting. I got a letter this summer from my Big Sister, and she sounded so happy about her past freshman year. As a sophomore, I'll bet she'll be a great source of advice: which houses have the best parties on the row; how do you survive Mr. Thomas' Religion class; where's the best place to shop for a Christmas Dance dress . . . Wow, my Big Sister is neat! She left this poster and note for me on move-in day saying that we'd get together at the Big Sis'/Lil Sis' picnic . . . The picnic was great. Wow, Kathy

and I have so much in common: Her babe is at ECU, too, so we're planning a road trip to see them both soon. We're both taking PSY 201 too, so we've decided to study together. Fall break's over and I've been so homesick. That little note from Kathy really cheered me up, though. I went by to thank her — gosh her corner room in Ross is big — and she was so sweet to listen. I feel a lot better now. I've never had a sister before, but then I guess it's just another adjustment to the Peace Family.







DORMS

First Ross North



Our cars practically bulging with "stuff", we arrive on move-in day. After too many panting trips up the stairs, our once-empty room is cluttered with boxes of school supplies, suitcases, stackers, posters, milk crates, stuffed animals, and anything else we could possibly bring. The dreaded task of unpacking and finding a place for everything is forgotten, as we gush and gossip, catching up on

First Ross South



Second Ross



summer fun and new romances. "Guess who's engaged? ... You won't believe what Amy did in Europe!" Somehow, after the last box is emptied and set into the hall — oh, no! we forgot ... ; we left something we

need at home. "Mom, could you please send me my ... and while you're mailing me something, some fudge would be great." After classes begin, our dorm room becomes a private library; propped

Third Ross



Blount House



Guest House



Against our husbands, surrounded by books, and listening to G105 (WKNC), we diligently study amidst mouthfuls of popcorn and Diet Coke. The lure of the television calls us to the lounge where we, along with the night-owls on our hall, laugh to Benny Hill's antics. Or, as curfew approaches, watch the frantic race against late time for those girls who have been out on the town.



Day Students



Second East



"Really, Mrs. Smith, this train had 50 cars at least, and we had to wait at the crossing . . ."

Laundry and boyfriend talk is a Saturday morning ritual; Ross basement is filled with the hum of washers, He-Man's Adventures, and the latest news and gossip. "Guess who was at KA last night? . . . Can you believe it! He asked me to the State-Carolina game . . . a month in advance!" And how many



Third East



Second Main



handbook rules did you break Friday night?

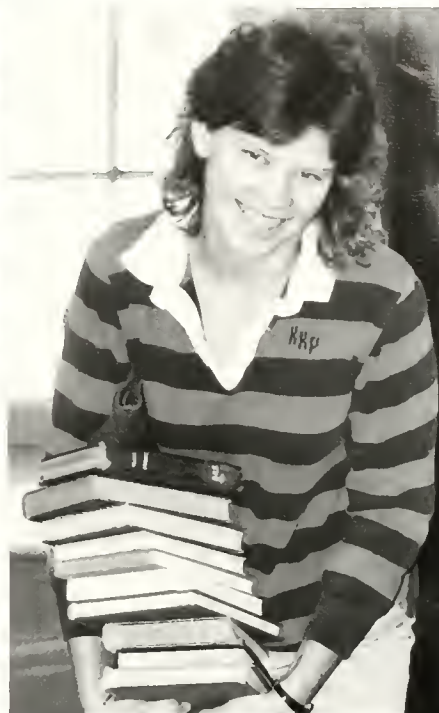
When it seems that everyone has either gone home for the weekend or has a date, here we sit; Saturday night and we're stuck in our dorm with a cold. Rah! After a weak stab at our WESTERN CIV Map Study, we decide to see who else is here. T.V. and conversation with Laurie clears our homesick-poor-little-me blues. "Wow, I didn't



Third Main



Fourth Main



know you ran track in high school? ... Wanna call Dominoes and munch-out?" Other Saturday nights, we join the RATE-A-MAN brigade on the balcony and score the incoming males: "Hey, Babe, have you got a brother?"
Dorm Life ... what hall is complete without that looming figure ... The

Resident Assistant, better known as our RA — that's an unassuming name for someone with ambiguous roles. As hall monitor, she tries to keep the noise and music at low decibels.



First Finley



"Come on, ya'll: some people are trying to study!" She is gopher for the administration. "Assembly is required, Gang. Please don't soap the fountain; this weekend we have visitors." She is a friend and confidant with a ready hug or listening ear. She's a great source of information about Raleigh nightlife. She's our RA; we think we'll keep her.

During final exams week, when we begin packing boxes to go home, the

Second Finley

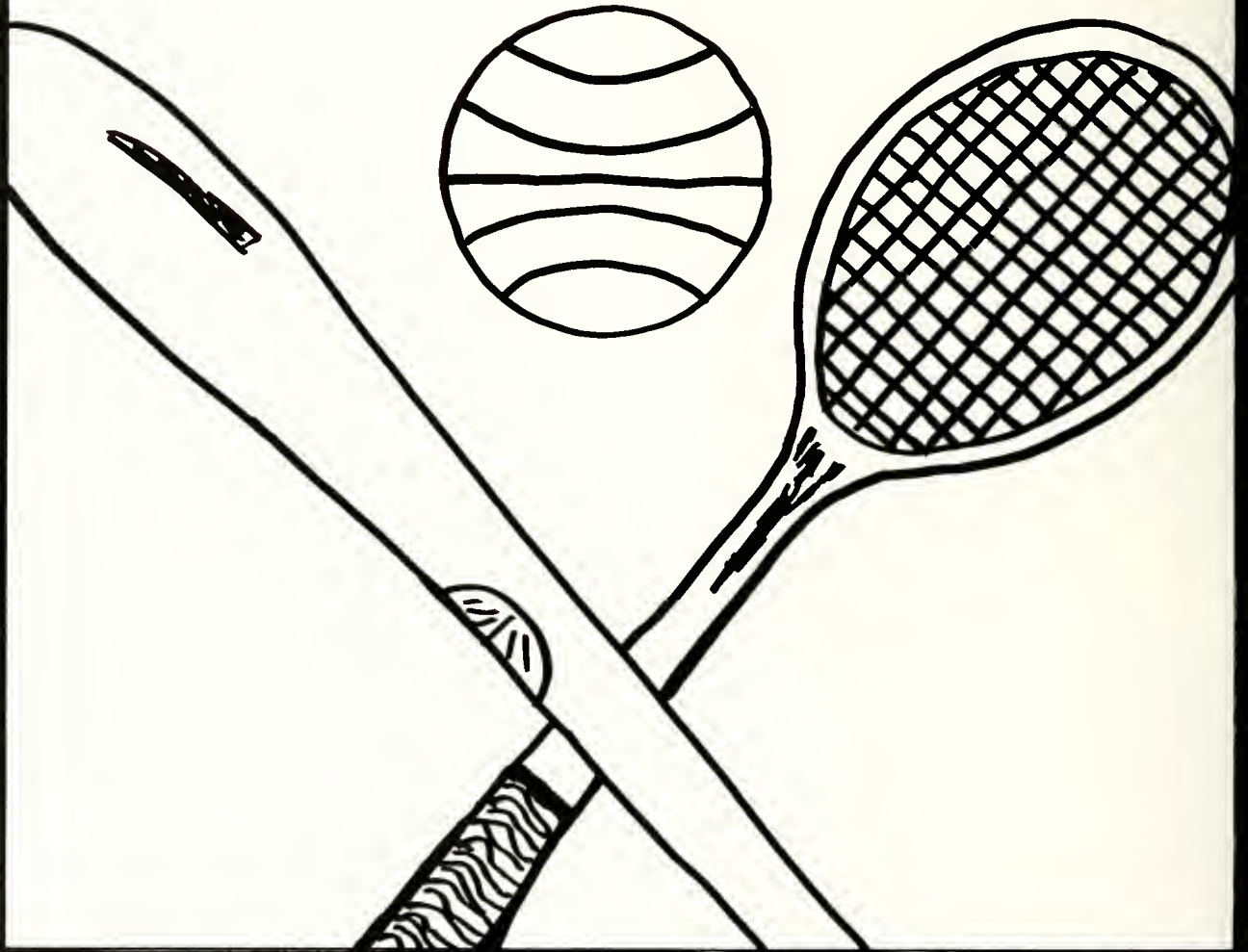


Third Finley



job isn't done without some nostalgic reminiscences. Have we really been here a year? Wow, here's my other blue sock. How long has it been under there? Goodbye room ... Boy, the secrets these walls have kept ... goodbye, Neighbors ... It's been a great year ... Keep in touch ...







SPORTS

Peace Tennis: Maintaining The Winning Tradition

Peace's tennis team succeeded with an impressive record of 8-3 for the fall season, despite the fact that the team lost two of last year's players. Two of the team's losses were close bouts — Peace vs. Guilford at 5-4, and Peace vs. Furmen at 6-3 while the College of Charleston won 7-2.

The team lined up with seven returning All National Team Sopho-

mores and two talented Freshmen this fall. The Freshmen, Kim Pennington and Tracy Fogarty, both performed excellently this season. While Pennington teamed with Crystal Barton at the number one doubles position and received a substantially successful record, Fogarty matched up with Jane Knapp at the number three doubles seeding to pull out quite a few

matches.

Everyone regretted that last year's number one player, Mary Lloyd Hodges, was knocked out of the fall season due to a personal battle with mononucleosis. However, the team greatly appreciated Hodges' enthusiasm and loyalty apparent by her consistency in cheering the team on at all the matches. All will be relieved to be

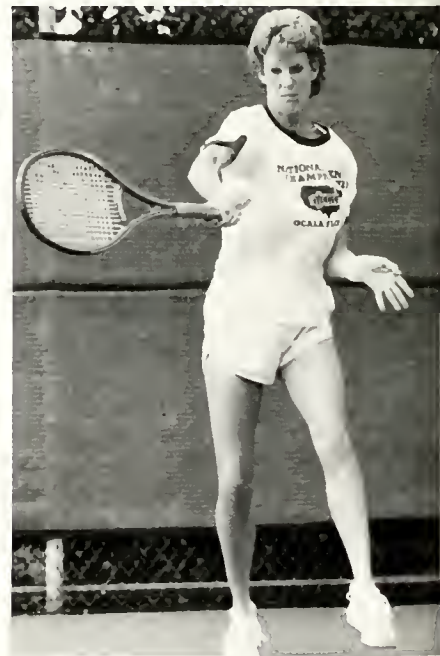
informed that Hodges, as well as number five singles seeder, Shawn Brickles, will return in the spring season to help the team's effort toward winning the National Championship! Everyone on the team is congratulated for a fine season, as defined by Coach Ruth Hopkins, who is anxiously optimistic about the upcoming spring session.

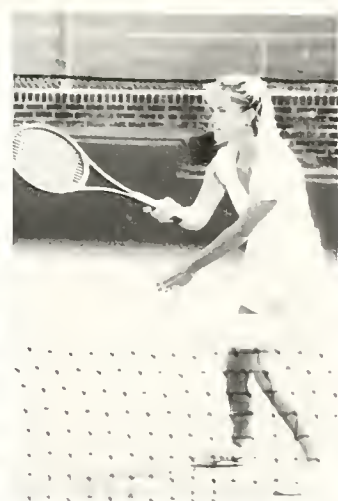
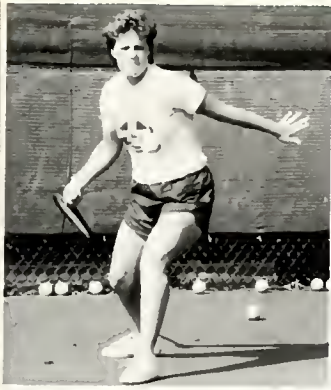


Peace Tennis Team Members consisted of (front row): Crystal Barton, Mandy Thayer, Mary Lloyd Hodges, Tracy Fogarty, Kim Pennington; (back row) Laura Yancey, Jane Knapp, Robin McLean, Shawn Brickles, and Coach Ruth Hopkins.



Chris and Mary are commended for receiving All-American Awards by the NJCA.





The girls exhibit some of their most fashionable poses!

Peace College Softball

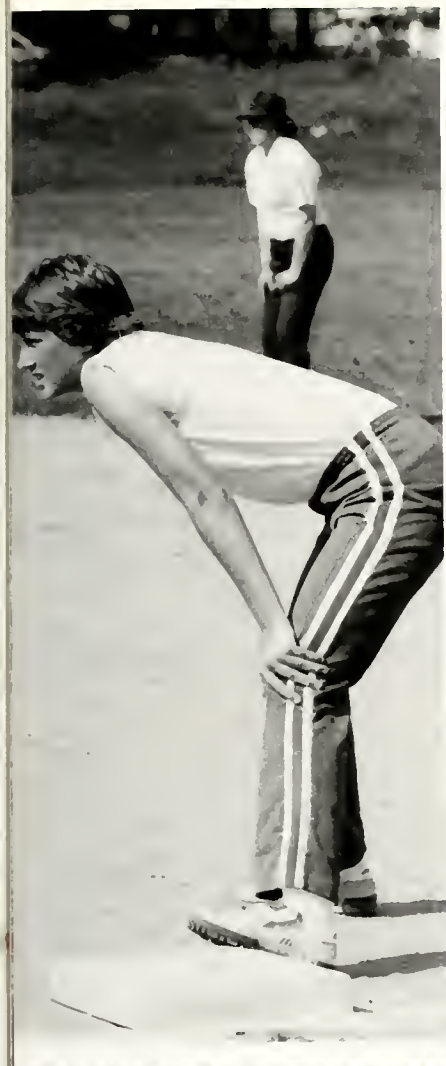
Peace's 1984 non-scholarship, volunteer softball team members admit to having had a very enthusiastic season, regardless of discouraging records. The girls, stressing their motto of "Purpose: FUN", all look back on the season with spunk and cheerfulness. The team played a combination of other two-year schools: Chowan, Louisburg, and Mount Olive; and a couple of four-year institutions, including Meredith and Duke.

After a season of continuous double headers, due to the short season, a few of the players, such as Kathy Carter and Lynn Mills, excelled in the action and were recruited for the All-Region Team. Other team members, Lisa Bryan and Denna Kennedy, may be congratulated for being selected for the All-Tournament Team while participating at the Regional Tournament.

Despite their discouraging record of 7 wins and 15 losses, former Peace student and Coach Diane Atkins looks forward to future fun-filled softball seasons.



Members of the 1984 Peace College Softball Team were (back row): Jan Rogerson, assistant coach; Cathy Carter, Lynn Mills, Ricky Early, Denna Kennedy, Kim Parrish, Amy Morgan, Mary Higdon, Audrey Ward, and Joan Davis, manager; (front row) Lynne Campbell, Allison Dement, Llewellyn Towe, Constance Griffin, Tatiana Haas-Castro, Lisa Bryan, and Coach Diane Atkins.



Ace doesn't play around! She swings and then "wings it"!



They don't call Cathy Carter "Slugger" for nothing!



New Faces and Sophomore Experience Lead the



Members of the 1984-85 Peace Giants are (kneeling) Sharon Bond, Amy Morgan, Denna Kennedy, Jeannie Bierce, Jane Knapp, Kim Parrish, Laura Stanley, (standing) Kathy Vernelson, manager; Lynne Campbell, Lynn Mills, Cathy Ellis, Jeanne Marvel, Jimmy Tilley, coach; Andrea Cannady, Karen Bond, Laurie McNeill, assistant coach; Beth Hopkins, manager. Reprinted by permission of Rolls Royce Motors.



Lynn "shows her stuff."



Coach Tilley and assistant coach, Laurie McNeill, review the game plan.

Giants Through a "Growing" Season



The Peace Giants opened the '84-'85 season with six new freshmen and a new head coach, Jimmy Tilley. Coach Tilley proved, throughout the season, to be a well-disciplined and respected leader. The new freshmen, combined with the sophomores who returned this season, provided room for experimentation and growth by the team as a whole.

Beginning the season with a tough tournament, the Giants faced defeat by an extremely strong Mount Olive team. With three freshmen starters, and encountering a trying schedule, the team developed slowly and improved with each game. Coach Tilley stated that "Positive strides have been made this year, and the future of Peace College basketball looks very bright." It is obvious that much excitement exists concerning the growth and direction of the basketball program at Peace.



Peace Cheerleaders Elevate Spirits As Usual!



Members of the 1984-85 Cheerleading Squad are (Front row): Wendy Kennedy, Yvette Pipes, Ara Pappendick, (Back row): Sarah Brake, Amy Allen, Wendy Kirby, Donna Allen, and Penny Kirkley.



The '84-'85 Peace Cheerleading squad rallied at rising spectators spirits again this season. Despite the loss of one of the squad's leading enthusiasts, the group went on to successfully boost Peace fans in a fashion of cheering worthy of recognition. However, the squad was limited to ground stunts due to an accident concerning a UNC cheerleader and advisor, Ruth Hopkins', wishes. This cheerleading squad, as previous ones, was in charge of dressing out and attending Peace Giants' basketball games. The girls were in charge of raising spirits and leading spectators in appropriate cheers during the basketball games and should be commended for a job well done.



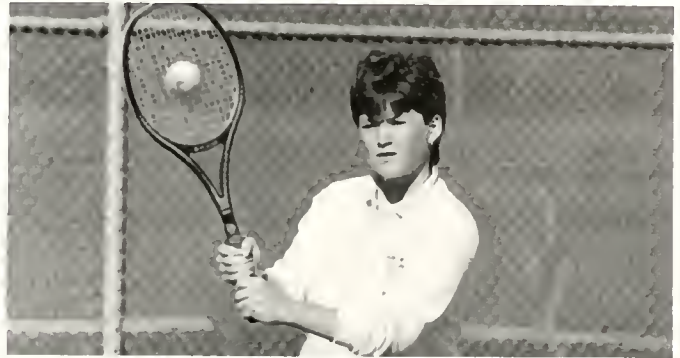
Peace Athletic Enhancement Produces a "Winning Picture"

In an effort to enhance sports at Peace, new advances are being made and excitement is in the air. Being named as athletic director at Peace, Ruth Hopkins is most ecstatic about Peace's growing athletic department. Hopkins explains that Peace is continually changing and growing in an effort to provide quality opportunities for student-athletes within a small college atmosphere. This is in order to keep up with the increase in emphasis being placed on college sports. Concerning this, Hopkins states that she "truly feels that our athletic programs are evidence of the commitment to excellence that governs all aspects of Peace College".

Hopkins also stressed the importance of the periods of growth and rebuilding involved with two-year athletic programs. In this way, she

emphasizes the importance of good athlete-coach combinations and relationships. Hopefully, Peace is producing winning combinations because with such, success is sure to be found. It is a process of student-athletes reaching athletic and personal maturity, while practicing the qualities deemed by their coach. It is agreed that character building is a must and is found well worthwhile!

Peace's growing process incorporates new athletic director, Ruth Hopkins; new head basketball coach, Jimmy Tilley; and new Peace Pacers director, Patricia Garrison. These outstanding leaders' grant both experience and enthusiasm to promise a bright future for the growth and blooming of Peace athletic outlooks! More exciting expectations abound for Peace's future.



Intramurals . . . Intramurals

Intramurals, an intricate part of the Peace Experience, are increasing in importance and are generating more and more enthusiasm each and every year. The activities include everything from UNO and backgammon to tennis and basketball; thus a wide variety of activities is always offered to the anxious Peace participant.

The team sports are always a favorite of the students, and dorm competitions tend to boost student participation and school enthusiasm. The Intramural "Specials" such as the Annual Swim Meet and the Powder-Puff game, always seem to draw the crowds. So don't forget to Participate, Spectate, Recreate, and Associate through intramurals.



The Haunted Run



As it was last year, Peace's Second Annual Haunted Run was a huge success. The run took place on October 29 and was sponsored by ACC Tavern. The 120 participants, including a few anxious Faculty-Staff members, braved the 2.5 mile track through the Mordecai neighborhood area. All of the participants received T-shirts for running or walking in the event; first, second, and third place winners received trophies. Cathy Eills took first place, followed closely by Ruth Hopkins at second and April Rayner at third. And, yes, Margaret Cherry must be congratulated for taking the last place prize which was a gift certificate for Spa Lady.



Applause please for the now-famous Margaret Cherry!





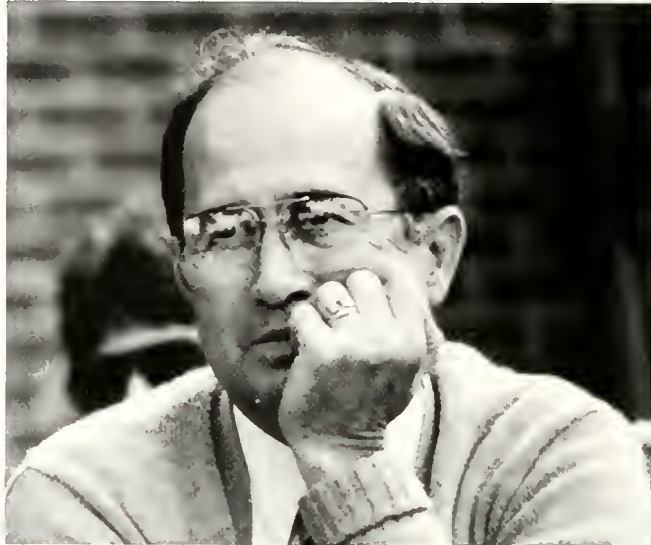
FACULTY

Administration

The Faculty and Administration at Peace are among the friendliest people in Raleigh. Although they are busy and in a hurry, they always find time to say, "Hello." They really take an interest and are concerned about the students. If a student has a problem or just wants to chat, the professors and administration will put aside whatever they are working on to listen. That is what makes Peace different from other colleges and universities. At Peace, the students are individuals, not numbers. Dr. S. David Frazier even knows most of the students by their first names, which is no small task.

Because the ratio of professors to students is fifteen to one, a student can always receive help on a project. Sometimes a student may have to set up an appointment with a teacher, but she usually can just drop by the office.

The administration is also very helpful. They are courteous when a student needs their assistance and willing to listen or offer advice when asked. With such a friendly and caring staff, it is no wonder students cry at graduation and remember Peace with genuine affection.



Dr. S. David Frazier, President



Sherry Shuller
President's Secretary



Dr. Helen Staples, Academic Dean



Betty Robertson, Registrar



Cynthia Seymour, Acting Registrar



Sue Raines, Academic Dean's Secretary



Jackie Brown, Registrar's Secretary



Janice Edwards, Dean of Students



Liz Thurston, Director of Student Activities



Rachel Manning, Dean of Student's Secretary



Jane Powell, Secretary of Development



Jane Kanipe, Director of Financial Aid



Nancy Kirby, Secretary of Alumnae



Jenny Spiker, News Director



Cynthia Ball, Director of Development



Polly Flowe, Director of Alumnae Affairs

Admissions



Cynthia Wyatt, Director of Admissions

Although very few of the students go into the Admissions Office once they arrive on campus, this office is probably the most important place on campus. If the people within the office did not do such hard work, very few of us would have come to Peace. These are the people who made sure each of us always got mail (at least once a week) when we were in high school. They made us feel impor-

tant because a college cared about us. That is probably the reason we chose Peace — because the admissions staff convinced us that we could call Peace College home. I am sure most of us do not think of thanking them for soliciting us, but we are all glad that they did. They were right. Peace is special, and we will always be grateful for having called it home.



Sally Davis, Assistant Director of Admissions



Carolyn Cogdell, Associate Director of Admissions



Martha Olson, Secretary



Kathy Copeland, Secretary

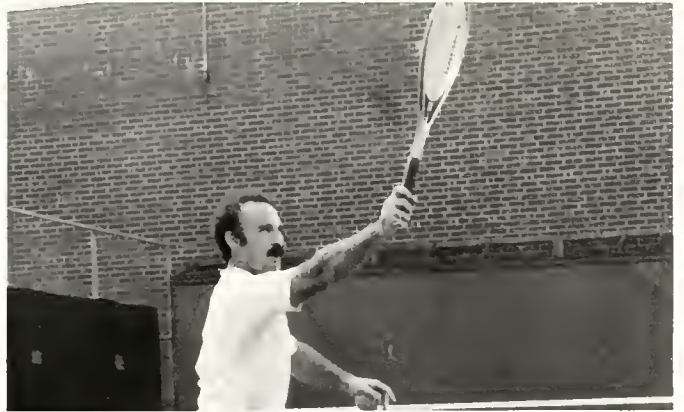


Nancy Weekman, Secretary

Business Office



Eugene Lilley, Business Manager



Paul Dupont, Accountant



Verne Futrell, Business Office Assistant



Rebecca Leggett, Business Office Secretary

Student Services



Paul King, Librarian



Madra Britt, Counselor



Barbra Hawkins, Assistant Librarian



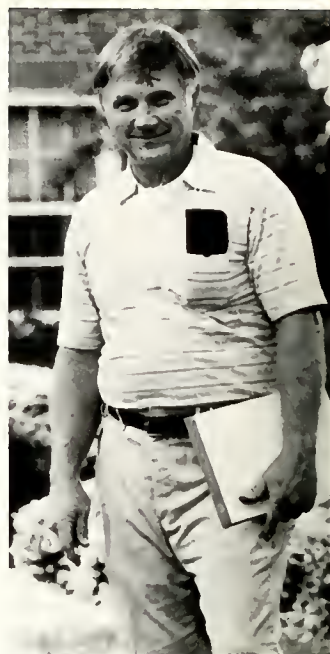
Connie Grant, Counselor

Student Services



Dawn Childers, Nurse

Not Pictured



Paul Johnson, Superintendent of Buildings



Cassie O'Neal, Assistant Manager of Food Services



Tom Martin, Manager of Food Services



Jo Thompson, Director of Housekeeping



Sallie Goad, Bookstore



Neal Andrews, Security



Betsy Mooneyham, Receptionist

English and Physical Education



Janet Wester, English



Dr. Jean Bauso, English



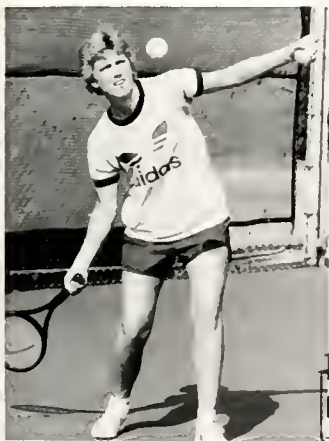
Dr. Sally Buckner, English



Dr. Bes Spangler, English



Judith Williams, English



Ruth Hopkins, Physical Education



James Tilley, Physical Education



Patricia Garrison, Physical Education

Math, Science, Foreign Language



Adair Robertson, Math



Dr. Anne Fountain, Spanish



Dr. Emille deLuca, French



Archie Ritchie, Math



Trudie Blackwell, Biology



Dr. Johnnie-Marie Whitfield, Chemistry



James Wolfe, Biology

History, Religion, Social Sciences



John Crossno, Western Civilization



Martha Harrison, Business



Dr. Wayne Tyner, History



Dr. Robert Sturdivant, Religion



Lee Carter, Economics



Dr. Korrell Kanoy, Psychology



Ben Cochran, Social Science



Rev. George Thomas, Religion

The Fine Arts



Carolyn Parker, Art



Doris Kincade, Home Economics



Margaret Black, Music



Richard Rottschaefer, Drama



Virginia Vance, Music



James Smith, Music

Caught in the Act



Our biggest fan



Saved you a seat

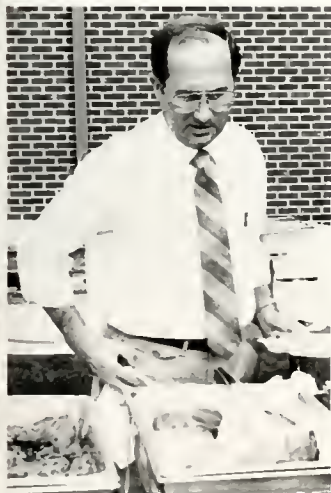
Someday It's hard to stay in to read
Especially when we can't see the need
There's always something other to do
Than math and science and history, too.
But you never ceased to make us try
Even when we always asked why.
You said there'd be time for fun
After all the work was done.
But now we have proof that sometimes you play
And do not work all through the day.
Thanks for the fun and thanks for the knowledge.
That was the purpose for coming to college.



Always the boss



Be patient with us, Dr. deLuca



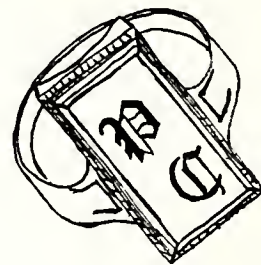
Big choice, huh?



Sorry, we couldn't resist



That's the way we feel about aerobics.





CLASSES



Angela Christine Anthony



Beth H.B. Arnold



Erin Elizabeth Bailey



SOPHOMORE



Betsy Dee Baker



Ginger Shawn Baker



Kimberly D. Baker

It seems like only the beginning,
But soon the end will be near.
To bid "farewell" to Peace College,
And the end of our sophomore year.

The time has seemed so short to us,
How did it fly by so fast?
Things we enjoy always do though,
But the wonderful memories will last.

Some of us came here all alone,
Apprehensive and somewhat unsure
That we would meet friends who were special,
And that those friendships would endure.

Those feelings disappeared quickly though,
And we realized our new friendships were true,
We cried in each other's benevolent arms,
Went to parties, and laughed and joked too.

The guys at State kept our hopes up high,
As we waited for them to call,
Then we could hardly wait for them to hang up,
So we could announce it to the whole hall.

Those nights in the library seemed a couple too many,
As we studied for that difficult exam,
But just one simple call to Dominoes,
And Relief! What a better way to cram.

The "best of times", the "worst of times,"
We shared them thick and thin,
But the very saddest of all these times,
Is our sophomore year at its end.

Carla Myers
Class of '85



Elizabeth Duke Baldrige



Patricia Diane Ballenger



Susan Alane Barbieri



Crystal Colette Barton



Rozalyn M. Beaver



Sharon Elizabeth Beeson



Ruth Blades



Jessica Ann Boggs



Sharon Leigh Boone



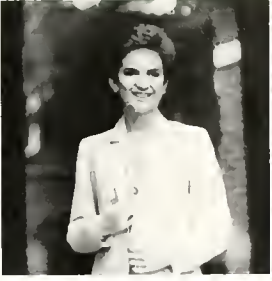
Lisa Marie Bowers



Martha Anne Bowman



Kimberly Annette Boyette



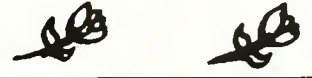
Christie Leigh Bradsher



Lisa Brafford



SOPHOMORE



Sarah Marie Brake



Shawn Allyson Brickles



Kimberly Dawn Bridges



Deborah Leigh Brittsan



Beth Hawthorne Bryan



Henrietta Louise Buchanan



Barbra Beth Burkot



Karen Tera Butler



Betty Jo Byrd



Stacie Leigh Calais



Lynne Campbell



Gayle Yvonne Capps



Julie Elizabeth Cariton



Anna Lucille Carson



Karen Diane Cash



Shelley Elizabeth Chambers



Margaret Wheeler Cherry



Nancy E. Cherry



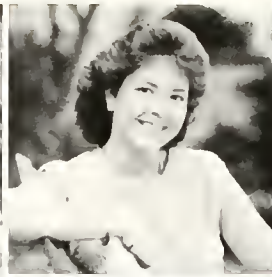
Jane Averette Clarke



Kelly Annette Collier



Lisa Ruth Cook



Lesa Michelle Corbin



Debra Lynn Corley



Gina K. Cox



Jody Crenshaw



SOPHOMORE



Beatrice Joan Davis



Margaret Hunter Deem



Allison Renee Dement



Stephanie Lanie Denmark



Kirsten Ruth Dettor



Dawn Huntress Douglas



Suzanne Scott Downs



Barbara Suzanne Drake



Frederica Young Earley



Cathy Anne Ellis



Jennifer Craig Ellis



Heidi Eure



Regina Hayes Evans



Stacy Larianette Evans



Jean Elizabeth Flye



Angela Renee Forrest



Beth A Forsythe



Jodi Lynn Freeze



Kathryn Louise Gaskin



Jane Bissette Gassaway



Jane Elizabeth Godwin



Patricia Allison Grant



Karen Lynn Green



Constance Marie Griffin



Frances Camilla Gulley



SOPHOMORE



Laura Lynn Hall



Rae Marie Hall



Deneen Hancock



Martha Scott Harless



Donna Jean Harris



Wendy Michelle Harris



Barbara Marie Heath



DeAnna Henderson



Laura Lynne Henry



Kelley A. Herrin



Jodee Elizabeth Hibbs



Mary Elizabeth Higdon



Jane Haywood Hinds



Whitney Hunter Hinson



Vera Fern Hockaday



Mary Lloyd Hodges



Harriet Elizabeth Holloman



Catherine Louise Hudgins



Elizabeth Ann Hudson



Pattie Humphrey



Martha Ipock



Angela Ruth Johnson



Shelly Marie Johnson



Jennifer Lynn Jones



Denna Annette Kennedy



SOPHOMORE



Sarah Lynne Kennedy



Wendolyn Ann Kennedy



Rochelle Faith Kick



Penny Nanette Kirkley



Elizabeth Yorke Kluttz



Linda Gail Koontz



Kimberly Leigh Lewis



Jane Carlton Lindsey



Lori Renee Little



Kimberly Gayle Long



Catherine H Marshall



Margaret K Marshall



Patricia Jo Martin



Sharon Renee Maynor



Carol Michele McCubbins



Jan Samantha McDonald



Kimberly White McGlohon



Nancy Robinson McLean



Deborah Joy McLendon



Mary Mason McLeod



Margie Jean McMullen



Carolyn Elliot McNeill



Rebecca Jane McQuain



L. Katherine Mills



Carol Lynn Mills



SOPHOMORE



Constance Theresa Mitchell



Noelle Monette



Amy Suzanne Morgan



Karen Estelle Morris



Caroline Allison Moss



Melanie Dean Murphy



Dana Nannette Mussewhite



Carla June Myers



Kimberly Jo Nash



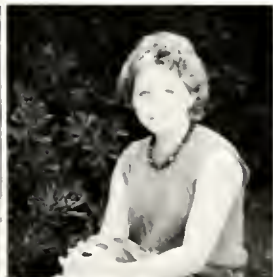
Elizabeth Boyette Neal



Donna D. Newton



Laura Ellen Owens



Paula Jean Parrish



Anna Corinne Peel



Linda Marie Penny



Janice Rose Perry



Lorita Dawn Piner



Yvette Lenore Pipes



Janice Marie Plain



Louise Sherrill Price



Trisha Prillaman



Terry L. Puckett



Patricia Ida Ragland



Katherine Dale Raynor



Kristin Michelle Reigelman



SOPHOMORE



Evelyn Paige Revelle



Joann Melis Ridout



Lucy Fitzpatrick Rodenbough



Jo Ellen Rose



Holly Jane Ryon



Jennifer Lee Sewell



Bonnie Jean Shaw



Jane Beard Shaw



Laurie Shaw



Deborah Ann Sheppard



Sharon Dawn Short



Sandi Jo Showerman



Paige Elizabeth Siner



Mary Melinda Skabo



Vicki Doreen Smith



Kathryn Elizabeth Spragins



Mary Bragg Speight



Myra Johnson Stone



Rhonda Sullivan



Sarah Frances Sylviant



Sherita Gay Taylor



Amanda Burke Thayer



Sherri Suzanne Thomas



Elizabeth Angles Tinnell



Becky Deanna Trogdon



SOPHOMORE



Stephanie Elaine Truesdale



Ashley Battie Tulloss



Selma Turlington



Kara Michelle Utter



Anna Elizabeth Valentine



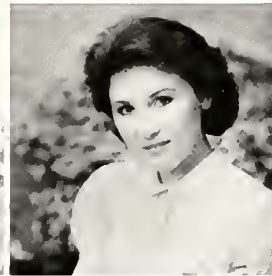
Cynthia Mae Vargas



Sharon Denise Vester



Dana Gayle Walden



Angela Lee Waldrop



Myra Beth Walker



Lauren Washburn



Jane Reids Watkins



Amanda Webb



Robyn Weinstein



Angela Wicker



Lori Ann Wilson



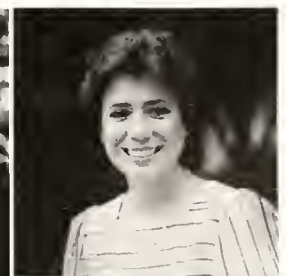
Ailsa Ann Windley



Terry Lynn Winstead



Cheri Lynn Wood



Teresa Dawn Woodard



Elizabeth Lynn Wrenn



Jane Wright



Laura Lang Yancey



Kimberly Lee Yancey



SOPHOMORE





FRESHMEN ... CONVOCATION ...

Heather Acasio
Robin Addison
Amy Allen
Donna Allen
Elizabeth Amella
Jane Ammons
Jeannie Ammons
Beth Avery
Jill Baker
Lura Baker
Melissa Bame



Carol Barefoot
Sherry Barham
Mary K Barrington
Angie Beckham
Jennifer Belch
Donna Bell
Jeannie Blerce
Laura Blishop
Belinda Blackwood
Julie Bond



Sharon Bond
Diann Bowen
Elizabeth Bracey
Kim Bright
Carolyn Brock
Shella Brown
Patricia Buck



SWIMMING TEST . . . ROOMMATE . . .



Photo not available



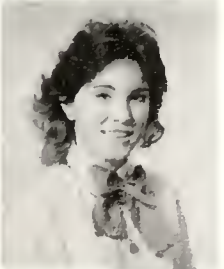
Lisa Cabler
 Andrea Canady
 Kim Capps
 Geneva Carlton
 Amy Clark
 Lisa Clark
 Johnice Comer



Mary Corpening
 Michelle Courtney
 Andy Davis
 Roberta Davis
 Sheila Davis
 Vonnie Dawson
 Dawn Dillon
 Cynthia Dixon
 Anne Doggett
 Monica Duncan
 Mary Dunning



Katherine Dupree
 Darcy Dye
 Tina Eakes
 Donna Edwards
 Elizabeth Edwards
 Jill Edwards
 Geri Ellis
 Robin Elmore
 Jennifer Engle
 Ann English
 Jill Falls

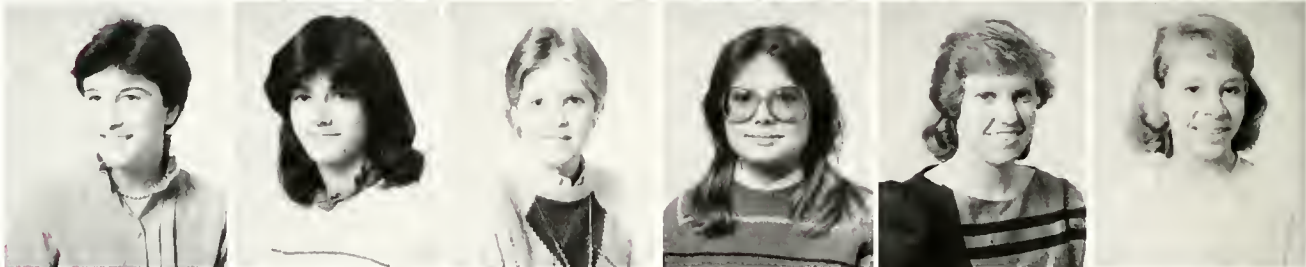


FRATERNITY PARTIES ... MAY COURT ...

April Faw
Tricia Fentress
Lisa Fitzgerald
Karen Flora
Tracy Fogarty
Carmen Fowler
Donna Frazier



Rebecca Frye
Tammy Fullbright
Cheryl Fulp
Mary Futrell
Shannon Garrett
Jenny Gibson
Elizabeth Gilliam
Pameia Gillikin
Patricia Glancy
Susan Gordon
SuSu Gordon



Donna Gore
Phyllis Grose
Sarah Grubbs
Lori Gupton
Rita Hamilton
Leigh Ann Harrison
Sherril Hastings
Jennifer Hatley
Kim Heath
Tracey Hedgpeth
Rebekah Henley



MOTHER/DAUGHTER WEEKEND . . .



Sarah Hickman
Deanna Holder
Margaret Holding
Margaret Hopkins
Nancy Howard
Lee Hughes
Frances Hunter
Denise Huntley
Shannon Hurt
Lea Inman
Myra Leigh Jackson



Rawn Jenkins
Shella Jenkins
Jennifer Jewell
Billie Johnson
Lettie Johnson
Lynette Johnson
Susan A Johnson
Susan S Johnson
Suzanne Johnson
Joy Jones
Lee Anne Jones



Melissa Jones
Jennifer Kendrick
Suellen Kiff
Susan Kincheloe
Wendy Kirby
Elizabeth Kivett
Jennifer Lall



DOMINO'S PIZZA ... PEACE PACERS ...

Marta Latta
 Tammy Lee
 Paige Lemmons
 Raygina Lentz
 Kathy Leonard
 Melanie Leonard
 Candy Little
 Jenna Long
 Rhonda Long
 Lisa Loworn
 Gina Lowery



Carla Lowry
 Elizabeth Lutz
 Donna Lynch
 Myra Maddocks
 Margaret Mahaney
 Noelle Marion
 Jeanne Marvel
 Donna Massengill
 Andrea McBride
 Lane McIntosh
 Michelle McLean



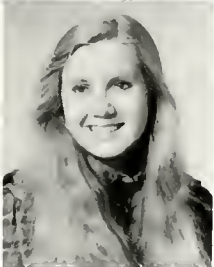
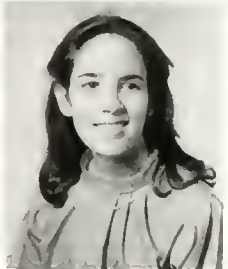
Laura McLeod
 Jackie Melvin
 Ann Michniak
 Melodee Moody
 Jan Moser
 Brenda Neel
 Lesia Nelighbors



CHRISTMAS CHAIN ... ACC TAVERN ...



Anne Garner Nelson
Jill Nies
Ara Pappendick
Kim Pennington
Christie Perkins
Wendy Petree
Angela Phillips



Lesa Pittman
Lisa Pollard
Frieda Powell
Kim Price
Kimberly Qualls
Tanya Quirk
Lisa Reaves
Cindy Register
Joy Reynolds
Susan Riddle
Kim Rist



Kim Roberson
Wyndi Roberson
Betsy Ross
Stacey Rotchford
Nicole Rowland
Serena Russoll
Rebecca Sandy
Melanie Saunders
Catherine Schenck
Kim Schenck
Kristyn Schmidt



CAROLINA/STATE DINNER . . . PARTIES . . .

Elizabeth Sechrist
 Paula Sewell
 Missy Sills
 Karen Sizemore
 Lisa Skinner
 Tracy Slane
 Amy Smith
 Elizabeth L. Smith
 Elizabeth Smith
 Julie Smith
 Lynn Smith



Wendy Smith
 Cindy Spear
 Shannon Stamey
 Laura Stanley
 Judith Steen
 Lisa Stevenson
 Elizabeth Steward
 Donna Stone
 Caroline Stovall
 Cathie Strickland
 Teresa Strickland



Julia Stuart
 Bridget Sutton
 Tracey Sutton
 Carol Tatum
 Lisa Tatore
 Patricia Taylor
 Charla Thomas
 Mary Thomas
 Paige Thomas
 Angela Thompson
 Nan Thompson



CLASS RINGS . . . PEACE COLLEGE.



Donna Torrence
Lynn Twiford
Deanna Vann
Kathy Verneison
Kim Wagoner
Angle Wallace
Jeanna Ward
Dawn Waters
Catherine Watkins
Dana Watson
Sharon Weaver

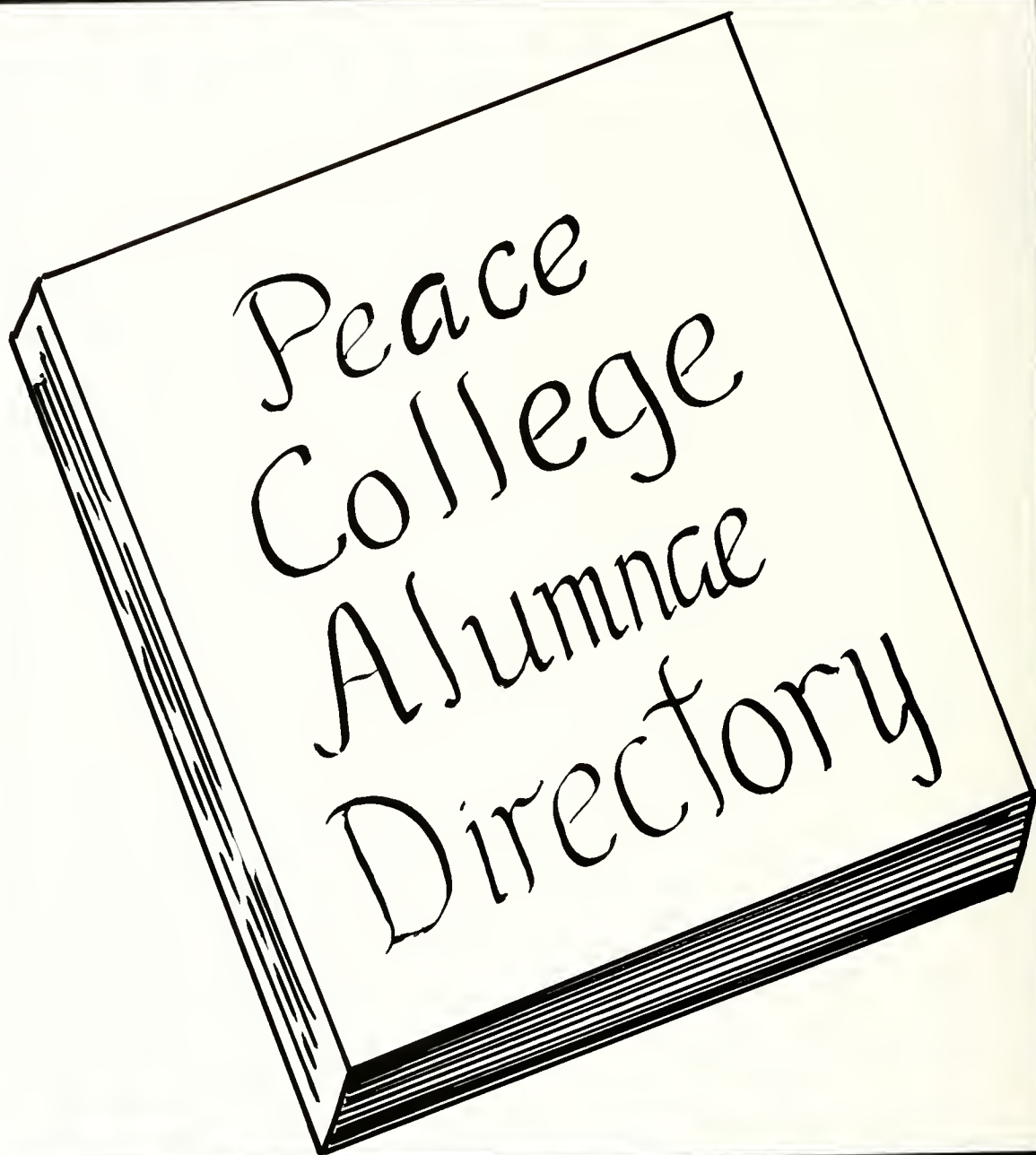


Donna Weavil
Charlotte Webb
Sherri Wentz
Deborah West
Marsha West
Lelgh Ann Wilder
Kristie Wilhelm
Anna Wilkerson
Beth Wilkerson
Amy Williams
Pam Williams



Johnna Wilson
Cynthia Withrow
Tanya Womble
Sandra Woods
Catherine Woolard
Sherri Worley
Shawna Yeomans
Sandy Zipsir







DIRECTORY

SOPHOMORES

Angela Christine Anthony, 5408 Alpine Drive, Raleigh, NC 27609; Elizabeth Howard Bennett Arnoig, 13610 Floris Street, Herndon, VA 22070; Erin Elizabeth Bailey, 3317 Rustourg Drive, Fayetteville, NC 28303; Betsy Dee Baker, 209 Rochelle Street, Courtland, VA 23637; Ginger Shawn Baker, 304 Hinton Street, Knightdale, NC 27545; Kimberly Diane Baker, 4909 Whitehall Avenue, Raleigh, NC 27604; Elizabeth Duke Baldrige, 774 Roslyn Road, Winston-Salem, NC 27104; Patricia Diane Ballenger, Route 2, Box 319, A. High Point, NC 27260; Susan Alane Barbieri, 27 Stoney Creek Road, Hilton Head Island, SC 29928; Crystal Colette Barton, 5 Wakefield Court, Greenville, SC 29615; Rozalyn Mechelle Beaver, 803 Marble Place, SC, Concord, NC 28025; Sharon Elizabeth Beeson, Route 1, Box 27, Sophia, NC 27350; Ruth Hines Blades, 1940 Rivershore Road, Elizabeth City, NC 27090; Jessica Ann Boggs, 1017 Brandon Road, Virginia Beach, VA 23451; Allison Marcella Bolin, 7700 Haymarket Lane, Raleigh, NC 27609; Sharon Leigh Boone, 3914 Glenridge Road, Fayetteville, NC 28304; Lisa Marie Bowers, 5680 Novack Street, Winston-Salem, NC 27015; Martha Anne Bowman, 6523 New Market Way, Raleigh, NC 27609; Kimberly Annette Boyette, Route 2, Box 882, Louisburg, NC 27549; Christie Leigh Brasher, P. O. Box 203, Rolesville, NC 27571; Peggie E. Lisa Bradford, 1606 Rickett Boulevard, Raleigh, NC 27608; Sarah Marie Brake, Route 2, Box 100, Battleboro, NC 27809; Shawn Alyson Brickels, 206 Pine Road, Davidson, NC 28036; Kimberly Dawn Bridges, 633 Clayton Street, Rocky

Mount, NC 27801; Deborah Leigh Brittsan, 3707 Hazel Lane, Greensboro, NC 27408; Margaret Hooks Brown, 7609 Elliott Drive, Raleigh, NC 27612; Beth Hawthorne Bryan, 3809 Henderson Road, Greensboro, NC 27410; Henrietta Louise Buchanan, Route 2, Box 240-B, Henderson, NC 27536; Barbara Beth Burkot, P. O. Box 124, Foy Street, Pollocksville, NC 28573; Karen Tara Butler, P. O. Box 428, Roseboro, NC 28382; Betty Jo Byrd, Route 1, Box 363, St. Pauls, NC 28384; Stacie Leigh Calais, 4705 Pemberton Drive, Raleigh, NC 27609; Lynne Campell, Route 3, Box 230, Mooresville, NC 28115; Gayle Yvonne Capps, 1406 N. Chester Street, Myrtle Beach, SC 29577; Julie Elizabeth Cartion, 402 Fox Ridge Road, Warsaw, NC 28398; Anna Lucille Carson, 12 Ivy Drive, Rutherfordton, NC 28139; Karen Diane Cash, Route 2, Box 526, Creedmoor, NC 27522; Shelley Elizabeth Chabers, 114 Morgan Drive, Roanoke Rapids, NC 27870; Margaret Wheeler Cherry, 115 Fairlane Road, Greenville, NC 27834; Nancy Elizabeth Cherry, 2104 Wigas Street, Raleigh, NC 27608; Jane Averette Clarke, 911 Kimmerly Road, Burlington, NC 27215; Kelly Annette Collier, P. O. Box 332, Zebulon, NC 27597; Lisa Ruth Cook, Route 3, Box 256-A, Granite Falls, NC 28630; Lesa Michelle Cortin, 206 Labans Lane, Lincolnton, NC 28092; Debra Lynn Corley, 1021 Folger Drive, Monroe, NC 28110; Gina Kathleen Cox, 125 Shannon Court, Rocky Mount, NC 27801; Billie Jo Crenshaw, 2637 Catherine Drive, Burlington, NC 27215; Beatrice Joan Davis, Route 10, Box 259, Kinston, NC 28501; Margaret Josephine Hunter Deem, 506



Dakridge Avenue, Fayetteville, NC 28305; Allison Renee Dement, Route 6, Box 272, Louisburg, NC 27549; Stephanie Laine Denmark, 702-H S. Caswell Street, LaGrange, NC 28551; Kristen Ruth Dettor, 5624 Condoller Drive, New Bern, NC 28560; Dawn Huntress Douglass, 6208 Lewinsand Court, Raleigh, NC 27609; Suzanne Scott Downs, 2014 Myron Drive, Raleigh, NC 27607; Barbara Suzanne Drake, 725 North Taylor Street, Rocky Mount, NC 27801; Frederica Young Earley, P. O. Box 177, Conway, NC 27820; Cathy Ann Ellis, 219 Westwood Drive, Goldsboro, NC 27530; Jennifer Craig Ellis, 1207 Dunbar Drive, Laurinburg, NC 28352; Heidi Marie Eure, 822 Pebble Drive, Greensboro, NC 27410; Regina Hayes Evans, 105 South Branch Road, Wilmington, NC 28405; Stacy Lariannette Evans, 117 Pine Cone Drive, Oxford, NC 27565; Jean Elizabeth Fiye, Route 2, Box 159, Battleboro, NC 27809; Angela Renee Forrest, Route 1, Box 314, Vanceboro, NC 28586; Elizabeth Ann Forsythe, 1716 Clarendon Drive, Greensboro, NC 27410; Jodi Lynn Freeze, 1405 Phillips Avenue, New Bern, NC 28560; Kathryn Louise Gaskin, 2633 Richardson Drive, Charlotte, NC 28211; Jane Bissette Gassaway, C-6 Harbour West, Rocky Mount, NC 27801; Jane Elizabeth Godwin, 3004 Ridge Road, Raleigh, NC 27612; Katherine Elizabeth Goodson, 1320 Kintyre Circle, Raleigh, NC 27612; Patricia Allison Grant, 2708 Kingsley Road, Raleigh, NC 27612; Karen Lynn Green, 108 Kimberly Drive, Greenville, NC 27834; Maria Paige Green, 1104 Bancroft Drive, Raleigh, NC 27612; Constance Maria Griffin, 11821 Olde Coach Drive, Midlothian, VA 23113; Frances Camilla Gully, P. O. Box 263, Bethel, NC 27812; Tatiana Haas-Castro, 2923 Millbrook Rd., Fayetteville, NC 28303; Laura Lynn Hall, 320 Northwood Drive, Raleigh, NC 27609; Rae Marie Hall, 220 Isabella Avenue, Washington, NC 27889; Sandra Deneen Hancock, P. O. Box 158, Dublin, NC 28332; Martha Scott Harless, 201 N. Granville Street, Edenton, NC 27932; Donna Jean Harris, P. O. Box 64, Rockingham, NC 28379





Wendy Michelle Harris, 738 Wilson Street, Roanoke Rapids, NC 27870. Edna Loren Haswell, Route 2, Box 198, Knightdale, NC 27545. Barbara Maria Heath, 2712 Simpkins Road, Raleigh, NC 27603. DeAnna Henderson, 107 Chatham Street, P.O. Box 11, Newport, NC 28570. Laura Lynn Henry, 1106 Laurel Lane, Wilson, NC 27893. Kelley Ann Herrin, 612 Fernwood Drive, Albemarle, NC 28001. Jodee Elizabeth Hibbs, Box 8, Newport, NC 28570. Mary Elizabeth Higdon, 2900 Rouse Road, Kinston, NC 28501. Jane Haywood Hinds, 29 Pompano Drive, Garden City, SC 29576. Whitney Hunter Hinson, 3021 Berkley Drive, Rocky Mount, NC 27801. Vera Fern Hockaday, Route 1, Box 111, Creedmoor, NC 27522. Mary Lloyd Hodges, 1715 Summitt Road, Henderson, NC 27536. Harriet Elizabeth Holloman, P.O. Box 1145, Wilson, NC 27893. Catherine Louise Huggins, Route 1, Box 279-A, Oriental, NC 28571. Elizabeth Ann Hudson, 100 Dogwood Lane, New Bern, NC 28560. Patricia Lynn Humphrey, 416 Martindale Drive, Raleigh, NC 27619. Marina Ellen Ippock, Route 2, Box 86, New Bern, NC 28560. Regina Kay Jackson, 925 William Street, Henderson, NC 27536. Angela Ruth Johnson, Route 3, Box 377, Dunn, NC 28334. Shelley Marie Johnson, 2920 Anherst Road, Rocky Mount, NC 27801. Jennifer Lynn Jones, Route 4, Box 761 Penny Lane, Raleigh, NC 27606. Denna Annette Kennedy, Route 2, Box 324-A, Pink Hill, NC 28572. Sarah Lynne Kennedy, 4008 Lochinvar Lane, Rocky Mount, NC 27801. Wendolyn Ann Kennedy, Route 2, Box C-1, Morrisville, NC 27560. Rochelle Faith Kick, 2215 Yorkgate Drive, Raleigh, NC 27612. Penny Nanette Kirkey, 307 Columbia Avenue, Hamlet, NC 28345. Anne Street Kirkman, 418 Augusta Drive, Statesville, NC 28677. Elizabeth Yorke Klutz, 311 William Street, Kannapolis, NC 28081. Jane Ann Knapp, 7 Rosebank Lane, Hilton Head Island, SC 29928. Linda Gail Kooztz, 108 N. Lord Street, Southport, NC 28461. Kimberly Leigh Lewis, P.O. Box 299, Whiteville, NC 28472. Jane Carlton Lindsey, 1917 N. Walnut

Street, Lumberton, NC 28358. Lori Renee Little, 110 Lord Ashley Drive, Greenville, NC 27834. Kimberly Gayle Long, 333 Somerset Avenue, Roxboro, NC 27573. Catherine Hunter Marshall, 3215 Glen Terrace, Charlotte, NC 28211. Margaret Keesler Marshall, 1200 Chardon Court, Raleigh, NC 27609. Patricia Jo Martin, Route 3, Box 677, Henderson, NC 27536. Sharon Renee Maynor, 215 Riverdell, Fayetteville, NC 28301. Carol Michelle McCubbins, 1718 Park Road, Salisbury, NC 28144. Jan Samaretha McDonald, 3505 Thamesford Road, Fayetteville, NC 28301. Kimberly White McGlohon, 203 Jamestown Road, Greenville, NC 27834. Nancy Robinson McLean, 105 Harbor Drive, Washington, NC 27889. Deborah Joy McLendon, 404 Frye Street, P.O. Box 141, Robbins, NC 27325. Mary Mason McLeod, 2841 Skye Drive, Fayetteville, NC 28303. Marjory Jean McMullen, 4505 Duall Hollow Drive, Raleigh, NC 27609. Carolyn Elliott McNeill, 219 Pine Ridge Drive, High Point, NC 27260. Rebecca Jane McDualin, 9224 Thayer Road, Charlotte, NC 28214. Carol Lynn Mills, Route 3, Box 170, Williamston, NC 27892. Katherine Mills, 1913 Forest Hill Drive, Greenville, NC 27834. Constance Theresa Mitcheil, Route 4, Box 74, Wake Forest, NC 27587. Noelle Chapman Monette, 879 Mustang Trail, Suffolk, VA 23432. Amelia Suzanne Morgan, 3626 Fox Chase Road, New Bern, NC 28560. Karen Estel Morris, Route 2, Box 516, Greenville, NC 27854. Caroline Allison Moss, P.O. Box 121, Cullowhee, NC 28723. Melanie Dean Murphy, P.O. Box 176, Willard, NC 28478. Dana Nannette Musseiwithe, 3701 N. Walnut Street, Lumberton, NC 28358. Carla June Myers, 304 S. Bethel Road, Raeford, NC 28376. Kimberly Jo Nash, 600 Sunnybrook Drive, Monroe, NC 28110. Elizabeth Boyette Neal, 1924 Shirley Drive, Burlington, NC 27215. Donna Denise Newton, 4-H Cambridge Arms, Fayetteville, NC 28303. Laura Ellen Owens, 757 Goldrock Road, Rocky Mount, NC 27801. Kimberly Kay Parrish, 407 Dixie Drive, Seima, NC 27576. Paula Jean Parrish, Route 2,





Box 176 Fuquay-Varina, NC 27526. Maria Celesta Patterson, 1310-3 Ephesus Church Road, Chapel Hill, NC 27514. Anna Corinne Peel, 2734 Saddle Drive, Durham, NC 27712. Linda Marie Penny, 1217 Lorimer Road, Raleigh, NC 27606. Janice Rose Perry, Route 3, Box 105, Louisburg, NC 27549. Lorita Dawn Piner, 2717 Homes Drive, Morehead City, NC 28557. Yvette Lenore Pipes, Route 6, Box 437, Boone, NC 28607. Janice Marie Plain, 4116 Spruce Drive, Raleigh, NC 27612. Louise Sherrill Price, 2203 N. Chestnut Street, Lumberton, NC 28358. Patricia Prillaman, 5 Cavendish Circle, Greensboro, NC 27405. Terry Lynn Puckett, 1025 Birchwood Drive, Nashville, NC 27856. Patricia Ida Ragland, Route 1, Box 572, Halifax, VA 24558. Kathy Dale Raynor, 3324 Winstead Road, Rocky Mount, NC 27801. Kirstin Michelle Reigelman, 141 Arlington Avenue, Concord, NC 28025. Evelyn Paige Revelle, Holly Hill Road, Murfreesboro, NC 27855. Joann Meils Ridout, 2448 Laurel Cove Drive, Virginia Beach, VA 23454. Lucy Fitzpatrick Rodenbough, 313 S. Market Street, Madison, NC 27025. Jo Ellen Rose, 1333 Canterbury Road, Raleigh, NC 27608. Holly Jayne Ryan, 84 Old White Trail, White Sulphur Springs, WV 24986. Shelley Owen Sanders, 330 Wilmot Drive, Raleigh, NC 27606. Jennifer Lee Sewell, 1613 Maple Creek Drive, Rocky Mount, NC 27801. Bonnie Jean Shaw, P. D. Box 163, Pinehurst, NC 28374. Jane Beard Shaw, Route 2, Box 185, St. Pauls, NC 28384. Laurie Claire Shaw, 413 Griffin Street, Nashville, NC 27856. Deborah Ann Shepard, 2758 Rolling Hills Drive, Monroe, NC 28110. Sharon Dawn Short, Route 1, Box 127, Bullock, NC 27507. Sandra Jo Showerman, 3317 Elk Drive, Burlington, NC 27215. Paige Elizabeth Siner, 1758 Parker Lane, Henderson, NC 27536. Mary Melinda Skabo, 12 Colonial Drive, Lexington, NC 27292. Vicki Doreen Smith, 108 McCoy Court, Cary, NC 27511. Mary Bragg Spelght, 2905 Westminster Drive, Rocky Mount, NC 27801. Kathryn Elizabeth Spragins, 502 Raleigh Street, Roanoke Rapids, NC 27870. Shannon Dall Stahl, P. D. Box 164, Currituck, NC 27929. Cynthia Lynn Stell,

Route 5, Box 202, Raleigh, NC 27604. Rhonda Lucretia Sullivan, Route 2, Box 400-C, Goldsboro, NC 27530. Sarah Frances Sylvant, 1004 Longshore Drive, Snow Hill, NC 28580. Diedre Kaye Taylor, 2300 Timber Drive, Raleigh, NC 27604. Shreita Gay Taylor, Route 1, Box 46A-1, St. Pauls, NC 28384. Amanda Burke Thayer, 601 Avondale Avenue, Rocky Mount, NC 27801. Sherril Suzanne Thomas, 7533 Red Oak Lane, Charlotte, NC 28226. Elizabeth Agnes Tinnell, Route 5, Box 668, Hartsville, SC 29550. Becky Deanna Trogdon, 902 N. Willow Street, Angier, NC 27501. Stephanie Elaine Trusedale, 5110 Trent Woods Drive, New Bern, NC 28560. Ashley Bartie Tullos, 512 Glenn Avenue, Rocky Mount, NC 27801. Selma Ward Turlington, P. D. Box 288, Clinton, NC 28328. Kara Michelle Utter, 5809 Timber Ridge Drive, Raleigh, NC 27609. Anna Elizabeth Valentine, P. D. Box MM, Nashville, NC 27856. Sharon Denise Vester, Route 3, 303 Hinton Street, Knightdale, NC 27545. Dana Cayle Walden, 500 Hillsdale Drive, Monroe, NC 28110. Angela Lee Waldrop, Route 1, Box 348-L, Broadway, NC 27505. Myra Beth Walker, 202 Homestead Drive, Cary, NC 27511. Jane Reid Watkins, 301 Main Street, Oxford, NC 27565. Rhonda Renee Watkins, Route 5, Box 206-J, Raleigh, NC 27604. Billie Jean Weathington, 6943 Staghorn Lane, Raleigh, NC 27609. Mary Amanda Webb, S.A.P.C. Box 763, Laurinburg, NC 28352. Robyn Melissa Weinstein, 504 West 21st Street, Lumberton, NC 28358. Angela Denise Wicker, 3016 Hickory Hill Drive, Sanford, NC 27330. Lori Ann Wilson, 504 N. Country Club Drive, Oxford, NC 27565. Ailsa Ann Windley, 4805 Whitetail Avenue, Raleigh, NC 27604. Terry Lynn Wintead, Route 1, Box 233-M, Burlington, NC 27215. Cheryl Lynn Wood, 2901 Piney Plains Road, Raleigh, NC 27606. Teresa Dawn Woodard, Route 1, Box 302, Fremont, NC 27630. Jane Spruill Wright, 152 Candlewood Road, Rocky Mount, NC 27801. Kimberly Lee Yancey, 128 West Front Street, Oxford, NC 27565. Laura Lang Yancey, P. D. Box 627, Oxford, NC 27565.





FRESHMEN



Heather Nickerson Acasio, 116 Meadow Lark Road, Goldsboro, NC 27530 Roberta Charlene Addison, 3510 Thamesford Road, Fayetteville, NC 28301, Amy Laura Allen, Route 6, Box 201, Laurinburg, NC 28352 Donna Ann Allen, Route 1, Box 187, Pantego, NC 27860 Elizabeth Jean Amelia, 1626 Briarcliffe Drive, Sanford, NC 27330 Jane Elizabeth Ammons, 4001 Daytona Road, Fayetteville, NC 28301, Laura Jean Ammons, 517 East 2nd Avenue, Red Springs, NC 28377 Beth Renee Avery, Route 4, Box 61-A, Morehead City, NC 28557 Cynthia Jill Baker, 212 33rd Avenue NW, Hickory, NC 28601, Melissa Lea Bame, P.O. Box 416, Carolina Beach, NC 28428 Carol Robin Barefoot, 1210 Brookside Drive, Wilson, NC 27893, Sherry Gwyn Barham, 637 Durham Road, Wake Forest, NC 27587, Mary Kathryn Barrington, 904 Lynn Street, New Bern, NC 28560, Angela Carol Beckham, Route 4, Box 151, Henderson, NC 27536 Jennifer Anne Belch, Route 1, Box 165, Roper, NC 27970, Donna Michelle Bell, 2021 St. Andrews Road, Greensboro, NC 27408, Jeannie Brey Bierce, 203 Dearing Drive, Knightdale, NC 27545, Laura Ann Bierce, 203 Dearing Drive, Knightdale, NC 27545, Laura Leigh Bishop, 735 Crater Street, Charlotte, NC 28205, Belinda Faye Blackwood, Route 7, Box 49, Burlington, NC 27215, Julie Elizabeth Bond, 906 Sharpe Street, Selma, NC 27576, Karen Evett Bond, 106 Weidon Drive, Dudley, NC 28333, Sharon Evon Bond, 105 Weidon Drive, Dudley, NC 28333, Rebecca Diann Bowen, Route 4, Box 86, Carthage, NC 28327, Elizabeth Barrington, Tracey, 2313 Foxcroft Road, Wilson, NC 27893, Kimberly Ann Bright, Route 6, Box 167, Elizabeth City, NC 27909, Carolyn Leigh Brock, 103 S. Magnolia Street, Raeford, NC 28376, Shella Annette Brown, P.O. Box 577, Sneads Ferry, NC 28460, Patricia Ann Buck, Route 1, Box 234, New Bern, NC 28560, Kimberly Ann Byrd, 103 Bluegrass Drive, Garner, NC 27529, Lisa Christine Cabler, P.O. Box 945, Highlands, NC 28741, Andrea Leigh Canady, Route 1, Box 149, Sneads Ferry, NC 28460, Geneva Ann Carlton, 405 E. Southerland Street, Wallace, NC 28466, Kimberly Joyce Capps, 5207 McAlpine Farm Road, Charlotte, NC 28226, Amy Elizabeth Clark, 4107 Foxcroft Road, Charlotte, NC 28211, Lisa Ann Clark, P.O. Box 631, Siler City, NC 27544, Johnice Ruth Comer, 821 Spence Avenue, Goldsboro, NC 27530, Mary Camille Corpening, P.O. Box 158, Youngsville, NC 27596, Angela Michelle Courtney, 3912 Gloucester Road, Rocky Mount, NC 27801, Lisa Harrison Darity, 2300 Woodmont Drive, Richmond, VA 23235, Cynthia Lucille Davis, Route 2, Box 97, Rowland, NC 28383, Roberta Carol Davis, Route 3, Box 387-B, Nashville, NC 27856, Shella Kay Davis, Route 4, Box 505F, Newton, NC 28658, Vonnie Lucile Dawson, Route 2, Box 137, Stantonburg, NC 27883, Dawn Marie Dillon, 109 Glenwood Trail, Southern Pines, NC 28387, Cynthia Gall Sixton, 409 Fletcher Drive, Raleigh, NC 27603, Anne Grace Doggett, 8416 Sawyer Drive, Raleigh, NC 27612, Monica Anne Duncan, 524 Parkwood Lane, Goldsboro, NC 27530, Mary Ellen Dunning, Route 1, Box 301, Garysburg, NC 27831, Katherine Mace Dupree, 226 Chick-

amauga Pike, Hampton, VA 23669, Darcy Ellen Dye, Route 6, Box 135, Laurinburg, NC 28352, Tina Elizabeth Eakes, 700 Vandora Avenue, Garner, NC 27529, Donna Jeanne Edwards, 6424 Brandywine Drive, Raleigh, NC 27607, Elizabeth Ann Edwards, 1266 Cambridge Drive, Gastonia, NC 28054, Jill Lynette Edwards, 43 Kinsington Street, Lumberton, NC 28358, Geri Laraine Ellis, 219 Westwood Drive, Goldsboro, NC 27530, Robin LaRae Elmore, 205 Three Road, Kinston, NC 28501, Jennifer Lynn Engle, 1916 Wandering Way, Charlotte, NC 28226, Virginiala Anne English, 1011 Pine Needle Lane, Thomasville, NC 27350, N. Jill Falls, 400 Pearis Avenue, Kannapolis, NC 28081, April Lynn Faw, P.O. Box 779, Wilkesboro, NC 28697, Tricia Churn Fentress, 506 River Road, Washington, NC 27889, Lisa Rogers Fitzgerald, 3030 Lake Forest Drive, Greensboro, NC 27408, Karen Ayn Flora, Route 1, Box 242, Wilkesboro, NC 28697, Tracy E. Fogarty, 9 Beneta Court, Savannah, GA 31406, Carmen Suzanne Fowler, 225 Harris Avenue, Raeford, NC 28376, Donna Michelle Frazier, P.O. Box 607, Main Street, Bladenboro, NC 28320, Rebecca M. Frye, 712-B Westchester Drive, High Point, NC 27260, Tammy Cheryl Fullbright, 348 South Royal Tower Drive, Irmo, SC 29063, Cheryl Kay Fulp, 905 Sloux Drive, Jacksonville, NC 28540, Mary Elliott Futrell, 1425 Lafayette Avenue, Rocky Mount, NC 27801, Elizabeth Shanon Garrett, P.O. Box 164, Louisville, NC 27549, Jennifer Lynn Gibson, 3161 Westminster Road, Lumberton, NC 28358, Elizabeth L. Gilliam, 1144 Banbury Road, Roxboro, NC 27573, Pamela Lee Gillikin, Olde Harbor Townes Apt #8, Beaufort, NC 28516, Patricia Diene Glancy, Route 5, Box 699-A, Newport, NC 28570, Alice Susan Gordon, 1305 Cloverdale Drive, Wilson, NC 27893, Susan Jill Gordon, 1102 Griffith Road, Monroe, NC 28110, Donna Jeanette Gore, Route 6, Box 197, Clinton, NC 28328, Shella Renee Greene, Route 6, Box 686, Lenoir, NC 28645, Sarah Smith Grubbs, Route 3, Lakeside Drive, Walnut Cove, NC 27052, Lorraine Salter Gupton, 813 Oakland Avenue, Rocky Mount, NC 27801, Rita Lynn Hamilton, Route 1, Box 17, Pantego, NC 27860, Leigh Ann Harrison, 600 S. Haughton Street, P.O. Box 851, Williamston, NC 27893, Sherri Dawn Hastings, 1107 Shamrock Road, Shelby, NC 28150, Jennifer Elaine Hatley, 6901 Folger Drive, Charlotte, NC 28226, Kimberly Lynn Heath, 1024 Indian Head Estates, Snow Hill, NC 28580, Tracey Lynn Hedgpeth, 3431 Sparrow Hawk Court, Wilmington, NC 28403, Rebekah Lynn Henley, 390 Saddlecreek, Fayetteville, NC 28301, Sarah Katherine Hickman, 19025 Stanton Road, Kinston, NC 28501, Deanna Leigh Holder, Route 11, Box 1084, Sanford, NC 27330, Margaret Hawkins Holding, 536 Caldwell Drive, Concord, NC 28025, Margaret E. Hopkins, 116 Sanday Lane, Southern Pines, NC 28387, Nancy Lynn Howard, Route 1, Box 117, Franklin, VA 23851, Margaret Lee Hughes, Box B, Parkton, NC 28371, Frances Elizabeth Hunter, 7703 Greenway Drive, High Point, NC 27262, Susan Denise Huntley, 2403 Hillcrest Drive, Monroe, NC 28110, Shannon Lynn Hurt, 519 Wood Duck Point, Monroe, NC 28110, Cheryl Lea Inman, 911

Meadow Lane, Martinsville, VA 24112 Myra Leigh Jackson, 414 Woodhaven Drive, Burlington, NC 27215 Dawn Michele Jenkins, 1827 Berkeley Avenue, Petersburg, VA 23805 Sheila Renee Jenkins, 333 West Boney Street, Wallace, NC 28466 Jennifer Lynn Jewell, 217 Williamsburg Lane, Wadesboro, NC 28170 Billie Maria Johnson, 1805 Lake Drive, Laurinburg, NC 28552 Leticia Marie Johnson, 905 Evans Street, Morehead City, NC 28557 Lynette Carol Johnson, 5449 Thompson Circle, Hope Mills, NC 28348 Susan Abernathy Johnson, 406 W Cumberland Street, Dunn, NC 28334 Susan Sherrard Johnson, 2804 Pinehurst Drive, Winston NC 28501 Suzanne Johnson, Box 7, Willetts, NC 28478 Lee Anne Jones, 531 S Lynne Street, Rocky Mount, NC 27801 Melissa Lane Jones, Route 2, Box 4, Ebony VA 23845 Jennifer Lynn Kendrick, 313 Bethany Drive, South Hill, VA 23970 Suellen Kiff, 801 Academy Street, Ahoskie, NC 27910 Susan Hatcher Kincheloe, 2909 Hawthorne Road, Rocky Mount, NC 27801 Wendy Dee Kirby, P. O. Box 794, Graham, NC 27253 Elizabeth Anne Kivett, 600 E Broad Street, Statesville, NC 28677 Jennifer Allison Lall, 137 34th Avenue, NW, Hickory, NC 28601 Marta Michelle Latta, P. O. Box 965, Nashville, NC 27856 Marcia Lynne Lee, 716 Plantation Road, Morehead City, NC 28557 Tammy Mae Lee, Route 1, Box 166, Roper, NC 27970 Paige Lorraline Lemons, Route 1, Box 414, Apex, NC 27502 Raygina Elizabeth Lentz, 250 Stonewall Circle, Concord, NC 28025 Kathryn Davis Leonard, 2213 Charlotte Drive, Charlotte, NC 28203 Melanie Dee Leonard, Route 18, Box 40, Lexington, NC 27292 Candy Denise Little, Route 4, Box 58-C, Greenville, NC 27834 Jennifer Anne Long, 101 O'Neill Court, Jamestown, NC 27282 Rhonda Gall Long, Route 5, Box 436-AA, Louisburg, NC 27549 Lisa Goodwin Lovvorn, 4917 Shadow Valley Drive, Fairfax, VA 22030 Gina Maria Lowery, 209 Seven Dakes Road, 27-E, Durham, NC 27708 Carla Kay Lowry, Route 3, Box 258, Rowland, NC 28383 Elizabeth Elmore Lutz, 801 Phillips Street, Shelby, NC 28150 Donna Elaine Lynch, Route 2, Box 110, Lawrenceville, VA 23868 Margaret Oliver Mahaney, P. O. Box 397, Kenbridge, VA 23944 Noelle Monteth Marion, Box 536, Glade Valley Road, Glade Valley, NC 28627 Jeanne Ann Marvel, 38-A Tara Drive, Laurinburg, NC 28352 Donna Carol Massengill, Route 3, Box 64, Four Oaks, NC 27524 Andrea Elizabeth McBride, 442 South



Main Street, Mocksville, NC 27028. Lesli Lane McIntosh, 600 Hickory Street, Troy, NC 27371 Michelle Yvette McLean, P. O. Box 949, Bladenboro, NC 28320 Laura Benton McLeod, 509 N. Main Street, Raeford, NC 28376 Jacqueline Marie Meivin, 335 Oberlin Court, Fayetteville, NC 28303 Ann Mary Michniak, 5013 Huntingdon Drive, Raleigh, NC 27606 Melodee Leigh Moody, Route 2, Box 319, Wake Forest, NC 27587 Jan Margaret Moser, 307 Larry Drive, Kannapolis, NC 28081 Brenda Cheryl Neel, Route 1, Box 305-A, Princeton, NC 27569 Lesli Kay Neighbors, Route 3, Box 389, Dunn, NC 28334 Anne Garner Nelson, P. O. Box 359, South Boston, VA 24592 Jill Carolyn Nies, P. O. Box 777, Seven Lakes, West End, NC 27576 Ara Carolyn Pappendick, Route 1, Box 419-B, Rocky Point, NC 28457 Kimberlee Ann Pennington, 302 Coalport Road, Richmond, VA 23229 Christie Michelle Perkins, 3639 Mill Run, Raleigh, NC 27612 Whitney Lynn Perkins, 408 Key West Drive, Charlotteville, VA 22901 Wendy Lee Petree, 2515 Cliffside Drive, Statesville, NC 28677 Angela Dawn Phillips, Route 1, Box 276-11, Burlington, NC 27215 Jeanne Susanne Pistone, P. O. Box 1029, Roanoke Rapids, NC 27870 Lesa Anne Pittman, 432 Westburry Road, Charlotte, NC 28211 Lisa Luanne Pollard, Route 2, Box 245, Newport, NC 28570 Frieda Grace Powell, 301 Fairfield Road, Fayetteville, NC 28305 Kimberly Lynn Price, 1703 Chelsea Drive, Wilson, NC 27893 Kimberly Lynne Qualls, 10 Mistipines, Littleton, NC 27850 Tanya Ann Quick, 211 S Hillcrest Drive, Goldsboro, NC 27530 April Foy Raynor, Route 1, Box 413, Garner, NC 27529 Elizabeth Elaine Reaves, 3617 Austin Road, Monroe, NC 28110 Cynthia Dawn Register, Route 1, Box 193A, Cove City, NC 28523 Stephanie Joy Reynolds, Route 6, Box 189-A, Clinton, NC 28328 Susan Freeman Riddle, 2119 Lakeland Drive, Sanford, NC 27330 Kimberly Anne Rist, 4360 Arborway, Charlotte, NC 28211, Kimberly Dawn Roberson, Route 1, Box 830, Williamston, NC 27892 Wynn Alden Roberson, 212 Sunset Drive, Williamston, NC 27892 Elizabeth Ballard Ross, P. O. Box 66, Ansonville, NC 28007 Stacey Michele Rotchford, 1340 Princeton Avenue, Gastonia, NC 28054 Nicole Louise Rowland, 831 Park Avenue, Roanold Rapids, NC 27870, Serena Hess Russell, 680 Peninsula Court, Ann Arbor, Mich 48105, Rebecca Lynn Sandy, 100 Valley Court, Jacksonville, NC 28540, Melanie Gray



AIM STUDENTS



Lura Sinclear Baker 106 Cougar Court, Cary NC 27511 Mildred Crystal Catlett, 10004 Sycamore Road, Durham, NC 27703 Mary Catherine Chappley 10112 Bushveld Lane Raleigh NC 27612 Allison Dahle, 3227 Birnamwood Road Raleigh, NC 27607 Jane Carol Danieley 2227 Bernard Street Raleigh, NC 27608 Susan Watkins David 2913 Hostetler Street Raleigh, NC 27609 Beverlly Long Goodwin 10004 Sycamore Road, Durham, NC 27703 Cynthia Grant, 100 Lowery Court Raleigh, NC 27614 Phyllis Allison Grose, 301 Ellen Drive, Knightdale, NC 27545 Joy Griffin Jones, 2016-E Quail Forest Drive Raleigh, NC 27609 Sheila Jean Langston, 4700-C Courtney Lane Raleigh, NC 27604 Michele Marion MacLeod 1434 8-2 New Castle Road Durham, NC 27707 Myra Smith Maddock 1108 Bernuda Run, Knightdale NC 27545 Peggy Medlin 4405 Leota Drive, Raleigh, NC 27603 Barbara Brigham Penny 617 Daniels Street Raleigh, NC 27605 Barbara Maultsby Shelley 103 Lisa Court Cary NC 27500 Myra Johnson Stone, 736 Smallwood A-5, Raleigh, NC 27605 Cynthia Mae Vargas 607 N. East Street, Raleigh, NC 27604 Lauren Elizabeth Wilson, 6401 Valley Estates Drive Raleigh, NC 27612 Elizabeth Lynn Wrenn, Route 3, Box 89-B, Fuquay-Varina, NC 27526 Margaret Lewis Wayne, 915 Holt Drive, Raleigh, NC 27608



Saunders, Route 1, Box 300, Nashville, NC 27856 Catherine Scott Schneck 120 Morton Street Shelby, NC 28150 Kimberly Lane Schenk, 812 Burning Bush Drive Pleasant Garden, NC 27313 Kristyn Marie Schmidt 2408 Williamsburg Drive, Wilson, NC 27893 Elizabeth Waring Sechrist, P.O. Box 1728 Statesville, NC 28677 Paula Ann Sewell, P.O. Box 836, Jacksonville NC 28540 Melissa Ann Silis, Route 1, Box 259-B, Bunnlevel, NC 28323 Karen Gray Sizemore, 105 Moore Street Graham NC 27253 Lisa Michelle Skinner Route 1, Box 431, Willard NC 28478 Anne Tracy Slane 3413 Pinehurst Road Statesville, NC 28677 Amy Christine Smith, 2300 Wolfe Ridge Road Charlotte, NC 28210 Elizabeth Labertson Smith, 507 Shady Circle Drive, Rocky Mount, NC 27801 Julie Ann Smith, 407 Waras Bridge Road, Warsaw NC 28398 Nancy Elizabeth Smith, Route 2, Box 65, Pleasant Garden, NC 27313 Patricia Lynn Smith, Route 1, Box 56, Eden, NC 27288 Wendy Wade Smith, 805 Garrison Drive, Kings Mountain, NC 28086 Cindy Ailsa Spear, Route 1, Box 51-A, Farmville, NC 27828 Shannon Rae Stamey, Route 2, Box 809B, Forest City NC 28433 Laura Jane Stanley 106 Crest Hill Road, Jamestown, NC 27282 Judith Dell Steen, 10049 Downeys Wood Court, Burke, VA 22015 Lisa Michelle Stevenson 6605 Brookhollow Drive, Raleigh, NC 27609 Mary Elizabeth Stewart, 310 Woodland Drive, Jacksonville, NC 28540 Donna Lisa Stone, Route 2, Box 346-B, Middlesex, NC 27557 Caroline Elizabeth Stovall, Route 5, Box 183, Oxford, NC 27565 Catherine Grant Strickland 1505 Wildlife Circle, Lexington, NC 27292 Teresa Ann Strickland, 3241 Vardaman Avenue, Hope Mills, NC 28348 Julia Wright Stuart, 1037 Greentree Drive, Charlotte, NC 28211 Bridget Dawn Sutton, Route 1, Box 103A, Cove City, NC 28523 Tracey Denise Sutton, 612 Avondale Avenue, Rocky Mount, NC 27801 Lisa Ann Tatone, 11712 Black Horse Run Road, Raleigh, NC 27609 Carol Marie Tatum, 1200 Dunbar Drive, Laurinburg, NC 28352 Patricia Jane Taylor, 6641 Lyncdale Drive, Raleigh, NC 27612 Charla Ann Thomas, 5922 Sunccreek Court, Raleigh, NC 27606 Elizabeth Paige Thomas, 1301 Rowan Street, Dunn, NC 28334 Mary Leigh Thomas,

608 Florham Drive, High Point, NC 27260 Angela McQueen Thompson 2601 McMillan Avenue, Lumberton, NC 28358 Nancy Ann Thompson, 200 Brinkley Road Greenville, NC 27834 Donna Lynn Torrence 210 Redcliff Road, Lenoir NC 28645 Andrea Lynn Twiford, 6208 Sugar & Wine Road, Monroe, NC 28110 Deanna Lea Vann, 101 Mourning Dove Goldsboro, NC 27530 Kathy Jo Venelson, Route 5, Box 261, Greenville, NC 27834 Kimberly Paige Wagoner, 5602 Belvidere Place, Greensboro NC 27410 Angela Marie Wallace Route 7, Box 19, Mocksville, NC 27028 Jeanina Elizabeth Ward, 2512 Evans Street, Morehead City, NC 28557 Lauren Leigh Washburn, Route 4, Box 755, Madison, NC 27025 Dawn Elizabeth Waters, P.O. Box 62, Seven Springs, NC 28578 Catherine Elizabeth Watkins 3537 Carolyn Drive, Raleigh, NC 27604 Dana Ann Watson, 2405 Hoffman Street, Gastonia, NC 28054 Sharon Renee Weaver, 1835 Garner Road, Clayton, NC 27520 Donna Kay Weavil, Route 2, Box 51, Clarkton, NC 28433 Charlotte Webb, P.O. Box 2033, Highlands, NC 28741 Sherri Denise Wentz 8405 Nathanael Green Lane, Charlotte, NC 28212 Deborah Lillian West, Route 1, Box 223E, Warsaw, NC 28393 Marsha Diane West, 3950 Kings Cross Road, Lumberton, NC 28358 Kristie Ann Wilhelm, P.O. Box 585, Edenton, NC 27932 Leigh Ann Wilder, 103 Ronaldsby Drive, Cary, NC 27511 Anna Elizabeth Wilkerson, Route 6, Box 232, Lumberton, NC 28358 Elizabeth Ann Wilkerson, 330 Washington Street, Roanoke Rapids, NC 27870 Amy Elizabeth Williams, 806 Ragsdale Road, Jamestown, NC 27282 Pamela Rae Williams, 130 North Hills Drive, Wilmington, NC 28405 Janna Lynn Wilson, 2519 Roberts Avenue, Lumberton, NC 28358 Cynthia Gayle Withrow, 523 Rosewood Drive, Smithfield, NC 27577 Tanya Ann Womble, P.O. Box 355, Warsaw, NC 28388 Sandra Lynn Woods 1618 Spencer Avenue, New Bern, NC 28560 Catherine Elizabeth Woolard, 106 Holly Circle, Ridgewood, Washington, NC 27889 Sherri Ann Worley, Route 6, Box 624-E, Henderson, NC 27536 Shawna Patricia Yeomans, 919 Etna Drive, Newport News, VA 23602 Casandra Paige Zipsir, 15 Powell Road Newport, NC 28570





ADVERTISEMENTS

Compliments of
JOHNSON-LAMBE CO.
For the Best in Sporting Goods

Franklin
LIFE INSURANCE COMPANY



Donald R. Holloman & Associates
Wilson, NC 27893



WATSON ELECTRICAL CONSTRUCTION CO.



Division Offices

Burlington, Fayetteville, Greenville, Raleigh/Durham
Rocky Mount, Wilmington, Wilson, Winston-Salem

Corporate Offices

PO Box 3105, 1000 Ward Blvd., SW, Wilson, NC 27893
(919) 237-7511

Equal Opportunity Employer



BARBECUE & CHICKEN RESTAURANT

*OVER 20 YEARS OF SERVING
FINE FOOD TO FINE PEOPLE*

— **BANQUET & PARTY CATERING SERVICE** —

Anywhere • Any Number • 15 Catering Trucks
Seating Capacity 820 • 7 Private Dining Rooms

— *"Pig Pickin' Our Specialty"* —

P.O. BOX 3509 • 2800 DOWNING STREET EXT. • WILSON, NORTH CAROLINA
PHONE 237-4372





DJ's Textbooks Supports Peace College
2416 Hillsborough Street 832-4125

Hudson Belk

We're here for you!

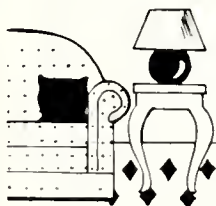
When you need an expert's advice on makeup, wedding planning, or decorating your first apartment, we're here to help!

Cosmetic makeovers. Let Hudson Belk point the way to better looking skin, new makeup techniques and fresh fragrance ideas. To arrange a complimentary makeover with a consultant from your favorite line, come by or call!



Bridal Registry. We want to help turn your "dream wedding" into reality. Our Bridal Consultants will help you choose the perfect wedding day fashions, answer all your etiquette questions, and enter your gift choices in Hudson Belk's Bridal Registry.

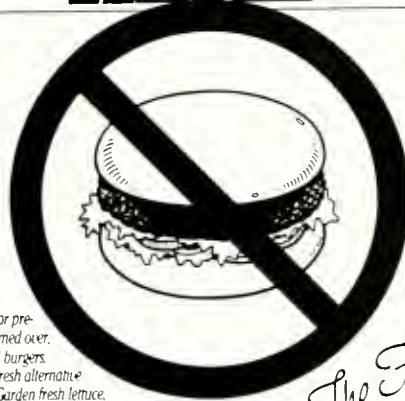
Table Top Plan. It's the easy way to pay for the china, crystal and flatware you'll soon be needing. With approved credit, you can take up to 24 months to pay... with no down payment, and no finance charges. Ask for complete details.



Interior Designers. Spend a few minutes with a Hudson Belk Interior Designer. You'll describe your decorating problems, she'll make a few suggestions... and together, you'll devise a workable plan for your home and budget! To arrange a complimentary consultation, call or come by our Crabtree Valley store.

SHOP DOWNTOWN, MONDAY AND FRIDAY 10:00 'TIL 9:00 TUESDAY THROUGH THURSDAY 10:00 'TIL 5:30 PHONE 832-5851 CRABTREE VALLEY AND CARY VILLAGE, MONDAY THROUGH SATURDAY 10:00 'TIL 9:30 PHONE CRABTREE VALLEY 782 7010 CARY VILLAGE 467-5050

NO STYROFOOD HERE



Don't settle for pre-cooked, warmed over, styro-packed burgers. You have a fresh alternative at Subway. Garden fresh lettuce, tomatoes, onions and all the "fixin's" are free. Choice sliced meats and cheeses, zesty hot meatballs and sausage, and freshly baked foot-long rolls. And every sandwich or salad at Subway is made to your order, not made in advance.

Get The Fresh Alternative



2808
Hillsborough St.

834-7407

open late 7 days a week

Best Wishes To
Peace College



A. E. Finley & Associates, Inc.

CONSTRUCTION EQUIPMENT DISTRIBUTORS

RALEIGH - CHARLOTTE - W.COLUMBIA



- CORSAGES
- CUT FLOWERS
- GRADUATION BOUQUETS

"We Grow the Flowers We Sell"

Fallon's Florist

Established 1920

Quail Corners
Shopping Center

878-8077

St. Mary's St.

828-4134

A complete line of professional quality
housekeeping and janitorial supplies

**JAMES H. ANDERSON
CO., INC.**

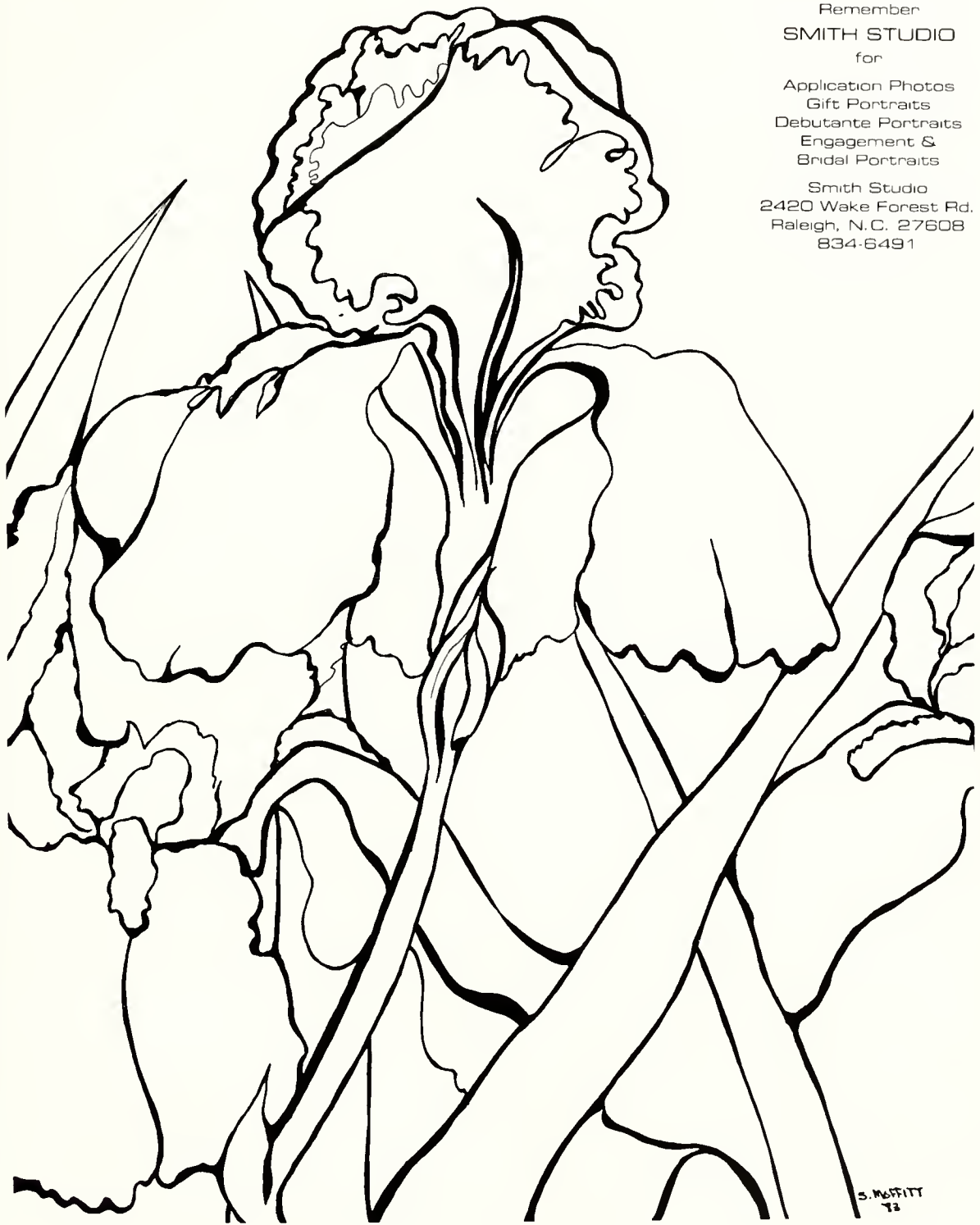
FLOOR MAINTENANCE MATERIAL
SANITARY SUPPLIES —
EQUIPMENT

418 W. PEACE STREET
RALEIGH, NC

Remember
SMITH STUDIO
for

Application Photos
Gift Portraits
Debutante Portraits
Engagement &
Bridal Portraits

Smith Studio
2420 Wake Forest Rd.
Raleigh, N.C. 27608
834-6491



S. McFITT
72

*Mordecai Florist
& Bridal Shop*



BRIDAL GOWNS — BRIDESMAID GOWNS
MOTHER OF THE BRIDE
FORMAL, PROM & COCKTAIL GOWNS
TUXEDO RENTALS AND COMPLETE FLORAL
SERVICES

832-6447
707 N. PERSON ST.

WE HONOR
ALL MAJOR
CREDIT CARDS

GIFTS &
ACCESSORIES

Mike Hutzler, photographer

Phone: 919 782-1183

Bride's World

North Hills Mall
RALEIGH, N.C. 27609

**PERSON STREET
PHARMACY**

702 N. Person Street
Raleigh, N.C. 27604
Phone 832-6432
Serving Peace College for 60 Years

Monday-Saturday
9AM-6PM

Closed
Sunday



Your
ol'
Buddy
Ernest!

Coke is it!

Capitol Coca-Cola Bottling Co.

Congratulations
to the
1985
graduating class
of
Peace College

Mr. & Mrs. James E.
Boyette, JR.

Congratulations and best wishes for continued
success to all the 1985 Peace College graduates.

Mr. & Mrs. Mikeal D.
Mitchell
Mitchell Heating &
Cooling

Wildwood Lamps

Sponsor: Village Book & Stationery

To Some Very Special Friends in Finley

Kim Roberson: Where did the top half of your biscuit go? Let's climb "Blowing Rock" roof again!!!

Wyndi Roberson: Hey, suite! Teddy Bears and Pigs XOXO

Stacey Rotchford: Thanks for the access in/out through F8B

DeDe Vann: What can I say? I am beyond words remember Tripodi's it all started that one bleak morning!

Christie Perkins: To Pat B. Love Sheila E.

To my Beannie: I'll never forget our "cigarette talks" at 2:00 a.m.
— FOREVER

Leigh Ann Harrison: 6:00 a.m. "Good morning Thomas . . . Thanks for everything!" You are the very best!

**** Ya'll please don't forget our freshman first semester
**** Love, Serena 1-01-85

Personals

Angela and Lynn: The six pack just won't be the same, when two of its buds are gone. But we wish you the best of luck as you both move on. We love you, Jenno, Laura, Beth and Jenny

Dana Walden: Having you as a friend has made this year extra special. Thanks for being there. You've been the best big sister ever! Love, Your little sister,

Margaret

Beth: "Hello Beth", "Good Morning Beth" (for all the times I didn't.) Hang ten with surfer boys, Resse cups, silver lakes and lite nites deaf with Def. C.U. by the Sea. "T"
Terry: My future roomie? How about a late night chat on men, P.G., Cap't Astro Steve, and do you really like brown top siders?? Thanks for being there when I need a friend, understanding me, and overlooking my often moody personality. C.U. in E.C.U.!!! "T"

Lori: Our friendship is immeasurable, you've put up with alot, and I love you for it. "Friendship is a single soul dwelling in two bodies" ((East 304, Ross 314). Indulge: 77, top, an S.T. in C.H., 'need, waited enough?, ILY my Roomie! C.U.?? "T"
Christie: W.F.-R. to Peace from the "Big R", where now? "T" 3rd
Ross, Jane "Right", Suzzie Q: You I will lose but memories I'll keep!!! "T"

Mr. Ritchie: Afra, beeta, and theeta want to send u this korallory; High d low minus low d high over low low (oops! our first mistake!) Q.E.D.

Kim Boyette and Allison Dement: Thanks for being such good friends and listeners. I could not have made it without you. Best wishes in all of your endeavors. Love, Shannon Garrett

Jo Ridout: Thanks for making this year special! Good luck at Hollins!

Love, Dana



Dr. William Cornelius Pressly

The year 1984-85 has been like any other year with its classes, homework, and campus activities, but some significant events have marked its passing. On November 1, 1984, the Peace College Student Body honored Dean Janice Edwards with an assembly commemorating her twenty years of service to Peace. A group of student leaders read a poem written by Beth Flye and presented Dean Edwards with

an engraved pewter tray.

In December, 1984, Peace College launched a major fundraising campaign with its "Voice Your Vote for Peace" Phonathon. Student and alumnae volunteers worked several weeks calling new and old donors, taking pledges for the campaign. The 1984-85 campaign exceeded the 1983-84 campaign and received 1300 gifts for a total of \$361,196.



A Phonathon volunteer works for Peace.



Dean Edwards receiving her pewter tray at November 1 assembly.

The year 1985 brought the news of the death of Dr. William Cornelius Pressly. Dr. Pressly served as President of Peace from 1926-1965. Peace College owes a great debt to Dr. Pressly, for had it not been for his efforts, Peace College might not be here today. In the late 1950's the Presbyterian Church voted to close Peace College; however with the aid of Dr. Pressly, a court battle was won and in 1962, ownership of Peace reverted to the First Presbyterian Church of Raleigh and later the Board of Trustees of Peace College. Dr. Pressly's contributions to Peace College are definitely worth commemorating.

The academic year 1984-85 has indeed been a year of reflection at Peace, a year of appreciating traditions, learning from past examples, and growing to meet the coming years.

1984-1985

Two years weighted against an entire lifetime seems insignificant now. Yet, with such wonderful memories entwined, how can we forget our two years spent at Peace College? The friends we've made, the traditions we've helped carry on, and the education we've obtained will all serve as constant reminders of our time at Peace.

From that first day when we were



scared "little freshman" 'til graduation day, we have grown in ways that we could have never imagined. Adjusting to being away from home, and having to rely on ourselves has made each of us realize the true value of friendship. No wonder it is said that the best friends are the ones you make in college.

The traditions at Peace have made us realize the importance of the establishment of values. Through our participation in the traditional activities at Peace, such as the Christmas Chain, Chapel, and Stunt Night, we have all shared in the "Peace family".

The faculty and administration at Peace College are a special breed in themselves. Truly dedicated to the ideals of Peace, they have inspired us to reach heights that we might not have otherwise realized. Their benevolence and willingness to go beyond the call of duty will contribute greatly to our remembrance of the uniqueness of Peace.



Time in a Crystal



Yes, indeed our time here has been brief but we must always remember that quality far outstrides quantity. The friends we have made — have been made forever. The times we have all shared together are the basis for our friendships. The education we have obtained will not be simply forgotten. It will serve as the foundation for our success. For these reasons, we owe a great debt to Peace College. The faculty and administration have strived to see us accomplish our greatest potential, and we have had our friends along the way to help us smooth out the rough edges. In reflection, we can proclaim that Peace College has indeed had a profound affect on our lives.



A Final Word.

So looking through your year-book, please keep in mind the hard work of the students, photographers, and advisors who made it all possible. A special thanks should go to Mrs. Janet Wester, who has dedicated many years to the production of the Lotus. It should also be noted that Miss Liz Thurston and Audrey Ward have contributed significantly to this production. Most of all, however, it was the hard work of a few dedicated students who made the 1985 Lotus available to you, the student body.

Best of luck for continued success.

Kim Boyette
Harriet Holloman



• Winston-Salem
HUNTER PUBLISHING COMPANY
• North Carolina

Joe Allegood, Wilson, North Carolina





