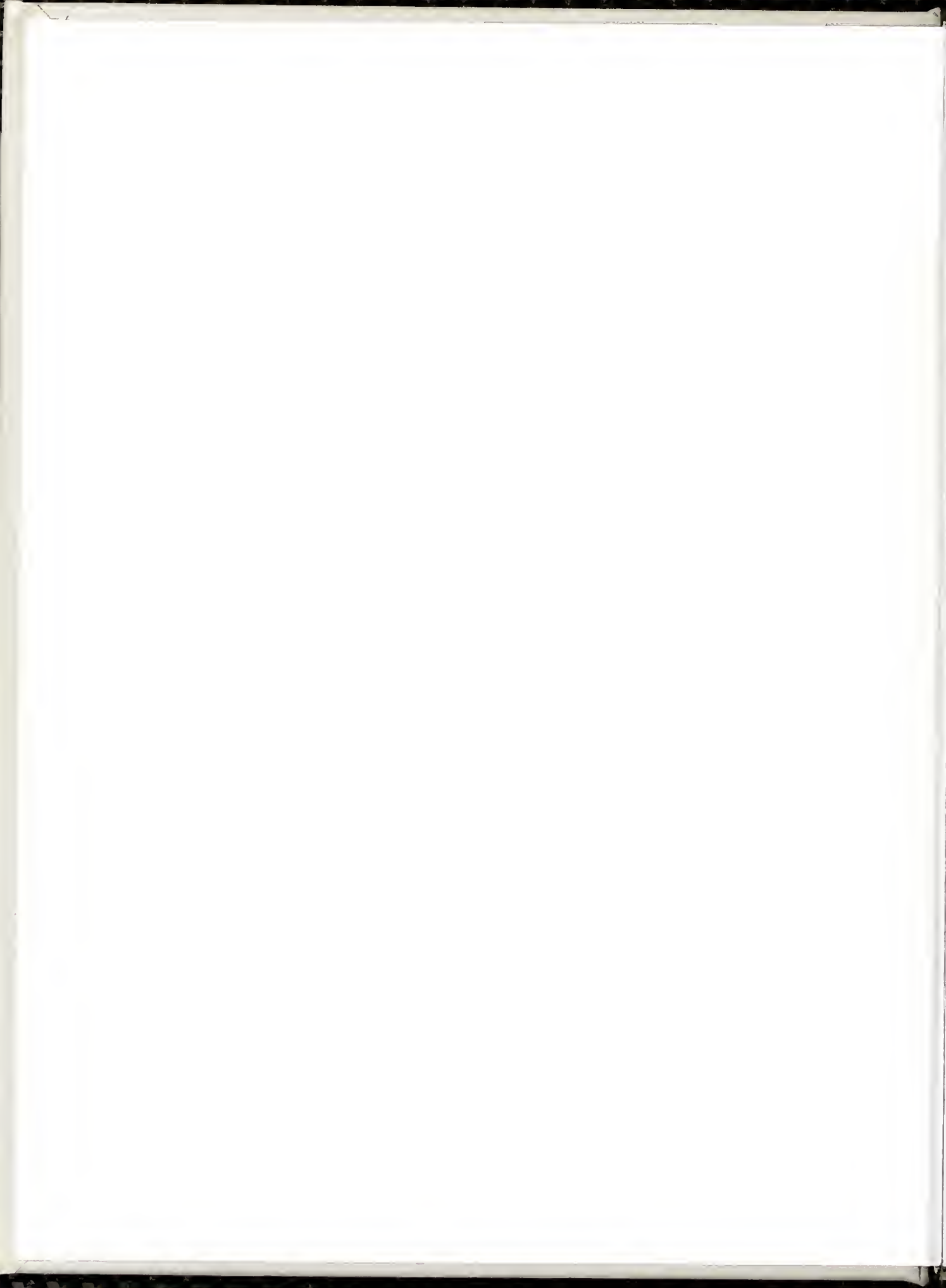




Peace College









Through the window I see my yesterdays, the fun, the friends, the carefree days of high school — the boredom, the struggle for independence, the belief that college would miraculously solve those problems.

As I turn to another pane, I see this campus — the walkways, the trees, and those ever-present squirrels. I feel the fear, immobilizing my decision-making, and I wish for the boredom of high school, for it spells safety.

But I can't go back. I don't want to, not really, so I look through another pane and try to see my future, but no picture comes because I haven't made those decisions; there is still that nagging little voice to deal with: What am I to do?

Shaking off the fear, I draw strength from the memories of my struggle to get thus far, and my success; I step back from the window, and look for the door in the wall!



On the cover —
Watercolor landscape of Peace College campus by
Liz McGee, sophomore from Winston-Salem, North
Carolina.



As Samuel Taylor Coleridge has said, "In today already walks tomorrow." Our yesterdays have made us who we are; our todays will determine who we become. That is why, though we want to be "in step with our times," we must consider the consequences, good and bad, of our actions and decisions.

We, as students, are "in transit." Freshmen are making the move from high school to college; sophomores are contemplating their futures at four year institutions or in the workplace. Our college experiences are providing us with "practice" for coping with the changes to come in society, in the business world, and in our religious lives.

As a college Peace is experiencing change. With a new president (and the twenty-first century clamoring at her door), all who constitute Peace are faced with decisions that will have an impact on more people than we perhaps realize. We all like to think that Peace, because

of her strong foundation in tradition, will never change; there can be no stagnation, lest we fall behind. What does the future hold for Peace? It is an election year here in North Carolina, and as of this writing, the race for governor is heating up. Each day we are bombarded with television ads telling the candidates' views. Issues of special interest are education and introducing a lottery. How do we determine who is on the correct side of those issues? Who will we choose? The education we receive at Peace, both academic and religious, will help us make these important decisions. The nation is also anxiously awaiting the November 8 elections. Where will our country head in this "post-Reagan" era? Will she maintain her world-wide reputation, better it, or perhaps worsen it? What new policies will take effect? There are those who want to continue our present course, with modifications, and others who are looking toward a different route. So-

cial security, abortion, welfare, education, and the deficit are all topics of discussion throughout the nation. Where will our new president lead us in these areas? So the years 1988-1989 are and will be a critical time of transition for students, Peace College, North Carolina, and the nation. Each of the latter three is experiencing a change in administration. The choices we make this year, as Peace students and as citizens, will determine if the torch of leadership will be passed on to leaders who will build on the policies of the recent past or take us in new directions. We are a society in transit; we are tomorrow's past — let us, as Peace College students, make it one we and our children will be proud of; let us create a fine future generations will look to and say, "They really make a difference. This world is a better place because of them."



Gazing into a window at Peace many students see the reflections of their past. Many others have looked out of those same windows and seen their futures.

Introducing . . . From a Student's

"I would like to take what my predecessor presidents have left for me and carry the torch that they've been carrying; make it a better place."



*The Trustees, Faculty and Students
of Peace College announce
the inauguration of
Garrett Briggs
as the eighth President of
the College
on Sunday afternoon, the nineteenth of March
nineteen hundred and eighty-nine*



. . . meeting his "peanut"



. . . talking with alumnae

VITAL STATISTICS:

Born: December 31, 1934; Dallas, Texas
 Married: September 6, 1957 to Susan Walters
 Children: 3 sons — Douglas, James, Paul
 1 daughter — Molly
 Education: B.S. and M.S. in Geology/Southern
 Methodist Univ.
 Ph.D. in Geology/University of Wisconsin
 Employment: Chevron Oil Company — New
 Orleans
 Tulane University 1965
 University of Tennessee — Knoxville 1968
 Dept. of Geological Sciences
 Assoc. Dean for Research/Liberal Arts College
 North Carolina State University 1981
 Dean of the College of Physical and Mathematical
 Sciences
 Professor of Geology
 Peace College: President 1988



Dr. Garrett Briggs

Perspective



When we first heard that the new president of Peace College was going to be announced, several of my friends and I went to the news conference to "check him out." I am afraid we did not go in a very open frame of mind; we were afraid of change. We had not heard much about him, so we were prepared to be skeptical. Did he ever surprise us! He and his wife actually said "Hello" to us as they walked by. We weren't quite sure what to make of that.

The days passed and I saw Dr. Briggs several times. Can you believe he said "Hello" to me every single time!? I saw him at graduation and went over to greet his wife and him. They were very personable. Three months later when I returned to Peace, Dr. Briggs remembered my name! I simply had to find out what this man was all about, so I went to interview him. I discovered that though Dr. Briggs is very serious about his job and the goals he wishes to accomplish in that job, he is also an interesting, fun-loving man. He is concerned about the people who make up Peace — students, faculty, and staff. Herein lies the heart of this man,

and the key to understanding him: he is a "people-person." People are his main concern. Dr. Briggs has many goals for Peace, and he is busy working to accomplish these goals. His vision is for Peace to remain uniquely what it is — a junior college for women, church affiliated, but to make it better at fulfilling that role. Students have been impressed by his willingness to talk with anyone. I see him in the halls talking with students or professors; his office door is almost always open. He always asks about your health, your studies, your family. Dr. Briggs is definitely people-oriented, and this orientation is evident in all aspects of his life.

When I asked Dr. Briggs what he thought the role of the president of Peace College was, he replied, "... to make everyone else feel that they are leaders in their respective roles, and that the president is sort of the coordinator." Having "checked him out," I am glad to report that Dr. Briggs is an asset to the college. His dynamic leadership will carry Peace soaring into the twenty-first century.

— Jeni Basham, Editor



... greeting Governor Martin

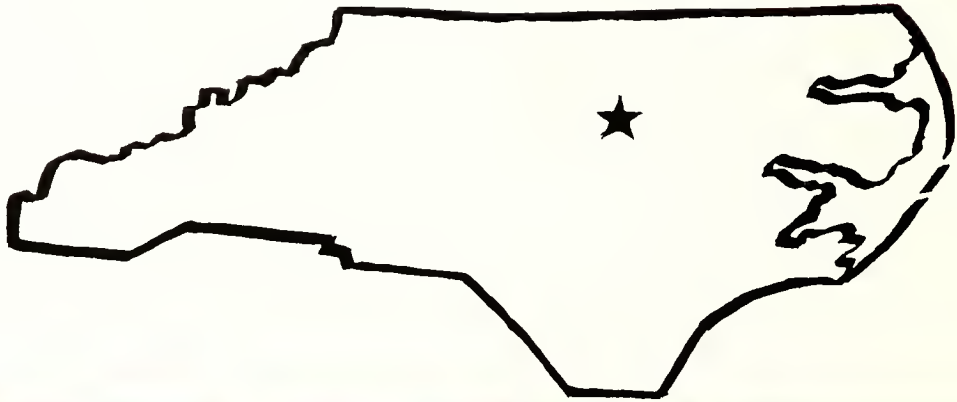


Dr. Briggs enjoys an informal dinner with faculty

"I would like to make Peace College more visible, and as a president I hope to be a visible person in the community, giving talks and keeping Peace constantly in front of people."

NEW DIRECTIONS

After months of planning, the exciting day of moving in finally came. Fathers, brothers, and boyfriends were put to work moving heavy stuff into the dorms. But the sophomores did the bulk of the moving by greeting the freshmen and toting boxes and suitcases, sometimes climbing three flights of stairs.



Testing was also a part of the orientation process. Some students were concerned about the swimming and hand-book tests.

GETTING ORIENTED



"Orientation is to help students adjust to college life," says Dean of Students Janice Edwards. During the assemblies and meetings, students and their parents learn about Peace College and what living here entails. The President's Reception gives students the opportunity to meet with the president of Peace and get better acquainted with the faculty.



Vespers, given in the chapel by Rev. Thomas, was shared by the students and their families at the end of the first day.



An important part of orientation is learning to live by the rules; remembering to sign in and out is a source of some anxiety for the first few weeks.

Rx FOR THE

For most freshmen, coming to Peace is the first experience being away from home for an extended length of time. Many freshmen say Big Sisters help them make the transition to college life. Freshmen were greeted on their first day with gifts and loving welcomes from their big sisters. Since then they have been someone to talk with, whether it is about friends, grades, parents, or that special guy. Freshmen also have fun with their big sisters at events, like the Big Sister/Little Sister Picnic. Big Sisters are one of the biggest helps in overcoming homesickness because they make freshmen feel as if they never left home.



"I'm glad my big sister loves me!" exclaims Anna Reid at the Big/Little Sister Picnic as Lucinda Howlett hopes she doesn't get Coke in her food.



Students sift through the gifts at the switchboard.

Every year, the PSCA sponsors what is known as Peanut Week. Faculty and students alike put their name in the box, then choose another name. The goal is to make your peanut feel special in some way each day of the week; the challenge is to keep your identity a secret from your peanut. Generally, "surprises" are left at the switchboard, office, or dorm room. Little notebooks, baskets, special bags, picture frames, and of course the ever-popular cup of candy, are traditional gifts. The week ends with a big picnic where everyone meets his or her peanut. This tradition often leads to fast friendships — an important goal of all Peace activities.



Mrs. Williams helps a student with a paper in the Writing Center.

Faculty often provide assistance in adjusting to the pressure of college work. Students receive personal attention and individual help with problems related to academics. Faculty encourage students to come by their offices to ask questions or just to say "hi." So get to know your professors.

HOMESICK



Krista Beam and parents talk with Dr. Fountain during Parents' Weekend.

When students start really cleaning their rooms for the first time in a month and taking anything resqué down from the walls, you know that Parents' Weekend is coming. Mom and Dad come to meet the professors (is that good or bad?), to see if their daughters are being neat (let's hope they don't look under the bed!), and just to see how their "little girls" adjusted to the big bad monster of college life. After a weekend of activities, parents leave reassured that their daughters are fine and most find leaving somewhat easier than in August. On Sunday afternoon they say their good-byes and, "Oh, Daddy, I don't have much cash, and we usually go out on Sunday night, so do you think . . .?"



Students perform a skit for parents at the variety show.

Of course, no day student has homesickness, but she still deals with many things that resident students deal with. There are the same fears about knowing what to do and where to go, finding friends, and making the grade. A day lounge in Main, complete with refrigerator, snack machines, microwave, and television provides a meeting place designed for the needs of day students.

Resident Ashley Westbrook visits day students Kim Brady and Christman Wolverton in the day lounge.

Good friends are an integral part of getting to feel at home once a student gets to college. Whether it is an old friend from high school, a roommate, a suitemate, or the girl down the hall, friends provide us with someone to talk to, to study with, or to go out and party with. It has been said that the friends you make in college are the friends you will keep for the rest of your life. Perhaps that's because of the close living quarters, or maybe having to help each other through bouts of homesickness, heartache, and other problems. But by the time graduation rolls around, each student has formed a close family of friends who will remain dear to her heart.



Close friends converse in front of Belk Hall.



Students attend chapel every Wednesday at either 9:15 or 10:15. Chapel allows students to gather quietly and gives them time to reflect and gather their thoughts. The sermons encourage students to keep pressures of college life in perspective.



"Peace College, because of its church affiliation, has a dimension that really creates the whole person . . ."
— Dr. Briggs

"I enjoy chapel more than I thought I would. The sermons are directly related to life here at Peace and help you deal with all the new feelings."
— Stacy Davenport



Chapel is important to the Peace College woman because it enhances and guides her values and beliefs. Rev. Thomas, inspired by everyday events, applies moral teaching to practical living. By talking to students, he can understand the problems college women face. A student's spiritual knowledge is also expanded in the classroom. Every student takes Religion 101 and 102 which involve the study of the Old and New Testaments. Students look at the Bible from new and historical perspectives. Mr. Thomas says, "I want the book to be real to the student, to make it a part of the individual."



The Peace Student Christian Association (PSCA) is an important organization to Peace College. The purpose of the PSCA is to provide opportunities for service to the community, for worship on campus, and for work with the administration. They work with the Peace Student Government Association setting and maintaining Christian standards of living at Peace and encouraging the development of Christian character among all members of the Peace College family.

To fulfill these requirements, the PSCA arranges for several activities to take place all through the year. On campus, students participate in special events such as Big/Little Sisters, Peanut Week, and Thanksgiving Communion. For the community's benefit, students participate in the Crop Walk, Pumpkin Patch, and at Christmas the Halifax Toy Drive.

PREPARING FOR THE BUSINESS WORLD

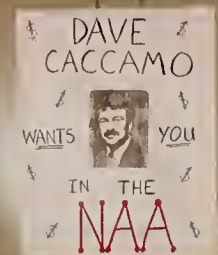
The business department is hard at work trying to insure that business students have plenty of interaction with people in the business world. Peace has a Business Advisory Council consisting of business leaders in the Raleigh area who offer advice, support, and leadership to the business department. Twice a year these leaders meet with business students in formal receptions and luncheons.

The business department also offers clubs. The Future Business Women, sponsored by Ms. Harrison, brings in prominent, entrepreneurial businesswomen to speak before the group. This year, Mr. Caccamo has been

instrumental in broadening the base of accounting and economic students by initiating a student chapter of the National Association of Accountants through the local Raleigh chapter. The association provides contact with professionals in management accounting, and information about issues in the financial world as well as information about educational opportunities.

Classes and internships provide further contact with business people. Ms. Harrison brings in several speakers each semester, and Ms. Woodard coordinates job placement opportunities both during the school year and during the summer.

The business department and its associated clubs and activities provide students with valuable information and contacts in the job market. It also encourages student involvement and leadership.



Advertising Assignment



Ms. Woodard discusses a possible internship with Tara Harvey.

Mr. Caccamo, who teaches accounting and economics, is concerned that his students be well-prepared for the competitive job market. He has also begun honors courses in economics to better equip interested students for higher level courses.



IN STEP WITH

In Politics

Just the words "election year" bring to mind campaign speeches, candidates, debates, issues, programs, accusations, counter-accusations, and the press in the thick of it all dissecting, analyzing, reporting. However, the most prevalent feeling of an election year is uncertainty. What will the future hold? Who will lead us?

Here at Peace, many have determined that they will not only ask these questions, they will do something to answer them! The Young Democrats and College Republicans have geared up to full speed. Posters hang all over campus encouraging students to register and, on November 8, to get out to the polls (or send

in your absentee ballot), and VOTE! Whatever party you support, get involved. A general sentiment is that if you want change, if you want things to stay the same, you must do something!

These two clubs are doing everything they can to help their chosen candidates get elected. They both have brought in speakers and done volunteer work. The Democrats have been working for Jordan and Dukakis and have even done some phone polling. The Republicans have helped with rallies, worked at campaign headquarters for Fetzer, Martin, and Bush, and attended press conferences and conventions.



We conducted a survey asking Peace students about fashion, and it seems that ANYTHING GOES! Skirts can be found in at least four different lengths; Outback Red wearers sit alongside tie-dyed shirts, sweatsuits are in the class-

room with Laura Ashley, and jeans can be found in a variety of colors, lengths, and styles. And Bucks go with everything. So this year, if you want to be in style, choose clothes that fit your personality — you can't miss.

THE TIMES



"Women Leaders and Politics" was a panel discussion of North Carolina legislators held on September 19 on Peace College campus. Moderated by Laura Carpenter Bingham, a Peace graduate, the panel consisted of Senators Helen R. Marvin, Mary P. Seymore, and

Laura Tally, and Representatives Judy F. Hunt, Peggy Stamey, and Sharon A. Tompson. During the evening, they spoke on several important issues such as Aids, alcoholism, better property rights for women, rape in marriages, and women in politics. The Recital Hall



was filled with faculty, students, and alumni, many of whom stayed to ask questions about issues which affect women. This panel discussion was one of the many educational opportunities offered to the Peace College woman.

The range of opportunity for personal expression in the fashion world is evident in other industries as well. For instance, in reply to questions about favorite movies, songs, bands, actors, actresses, and singers, Peace women chose almost as many of each as are in existence. However, of special note are the rising popularity of actor Michael Douglas and the band Def Leppard. Also, a favorite movie of more than a few students was "Who Framed Roger Rabbit." I dare say that no movie with a rating of less than "R" has received that distinction among college students since "E.T." came out!



There were many replies to the "dream car" question also, but it seems no matter what the make of the car, Porsche, Mercedes, BMW, or even Volkswagon, Peace girls want a convertible!



WEEKENDS ACTIVITIES:

1. Dates
 - a. at State, Frat Row
 - b. at UNC-CH
 - c. at "home"
2. Friends
 - a. dancing
 - b. cruising
 - c. parties
 - d. shopping
3. Football Games
4. Beach

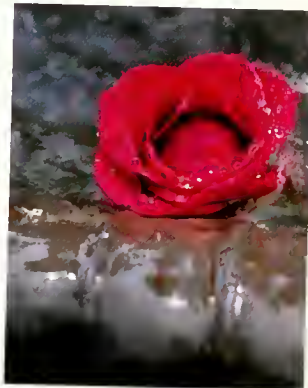
In the Eighties

Graduation Day

Dana McCain sheds a tear as the time to say good-bye draws near.

Every May a special event occurs. A group of young women, wearing white dresses carrying long-stemmed red roses, gather one last time. The event is graduation at Peace College. Graduates march one by one out of Main, onto the campus green and sit as a group to reflect on the past two years. The president speaks of the accomplishments and pride shared by everyone and of the promising future yet to come. The diplomas are awarded. The outstanding graduates are recognized. A graduate chosen by the student body delivers a final word to her classmates. Finally, the young women circle the fountain, sing the Alma Mater, and signify the end of their career at Peace by throwing one of their roses into the fountain. Everyone has tears of sadness for what has passed and tears of gladness for what is to come. They never forget the friends they made or that wonderful place called Peace.

Dr. Fraizer receives an honorary degree. He is the first, and only, male graduate of Peace.





Angela Reason, outstanding graduate, struck a cord in the hearts of every graduate in her commencement address. She spoke of the experiences she would carry with her from Peace. She spoke of education, not necessarily every fact, date or theory, but the desire to learn and the belief that "all knowledge is important in the development of the full individual." Another experience Angela wanted to remember from Peace was the "personal growth and maturity" that began by learning who she was and setting priorities. Last, Angela told graduates to remember the "most precious item" of the three — the spirit of friendship, love, and understanding.

REFLECTIONS



REFLECTIONS . . . reflections, echoes of the past . . . memories lead to nostalgia which leads to smiles and tears. Remembering freshman yesterdays, reliving sophomore today's, and anticipating tomorrows. A bench by the quiet pathway, a swing on a porch of Main, a particular cubby hole somewhere in the buildings . . . you return there time and time again. This is your special place . . . the place where you have thought out all your problems over these last two years . . . the place where you finally convinced yourself that guy was not really worth it, that you never really wanted him anyway, and there are other fish in the sea and all that. This is the place where you came to be alone. To hide from the hustle of the dorm and the turmoil of the "real world" and took to just *feel* . . . took time to just *be* . . . took *time*. There are no deadlines on this bench; this porch swing does not have an alarm clock; this cubby hole knows not the meaning of "map study." But still, this particular place is of great importance to the success of every Peace student. Your special place is a spiritual place, in a sense; it provides renewal and calms the soul. And now, it is quietly waiting for you to seek it out, to slow down enough to hear your heart cry for quietness, and just in time you sit down and wrap yourself in the warmth of its seclusion. Where do you go from here? What will you do when you leave Peace? And, of course, is that particular guy "the one?" So you think and you plan and perhaps you shed

a few tears, but even if you don't reach a conclusion to every one of your problems today, the bench, the swing, that 'special place' will be there . . . waiting. REFLECTIONS.



WHERE DO WE GO FROM HERE?

Peace College offers a liberal arts and sciences curriculum appropriate for college freshmen and sophomores. This curriculum qualifies its graduates to transfer as juniors in good standing to senior institutions. Peace not only endeavors to provide thorough instruction leading to sound intellectual preparation but also attempts to develop a well-rounded personality, a balanced sense of moral values, and personal integrity in its students. Specifically, Peace College aims to foster in its students the development of their full mental, emotional, spiritual and physical potential including:

- intellectual growth and autonomy
- capacity and desire for life-long learning
- creativity
- personal development
- self-awareness and personal integrity
- physical activity conducive to good health

Peace College students perform quite well academically at their transfer institutions. A recent study made by Transfer Student Performance Report shows how Peace students compare with other transfers in the UNC system:

<i>Transfers From —</i>	<i>GPA</i>	<i>In Good Standing</i>
Peace	2.68	91.0%
All Private Junior Colleges	2.38	74.0%
Technical Colleges	2.61	72.0%
UNC Institutions	2.66	78.1%
Military Centers	2.27	22.0%
Community Colleges	2.54	71.9%
Private Senior Colleges	2.46	74.1%
Two-year Business Colleges	2.47	52.9%
All Out-of-state Schools	2.76	74.9%
All Institutions	2.62	74.2%



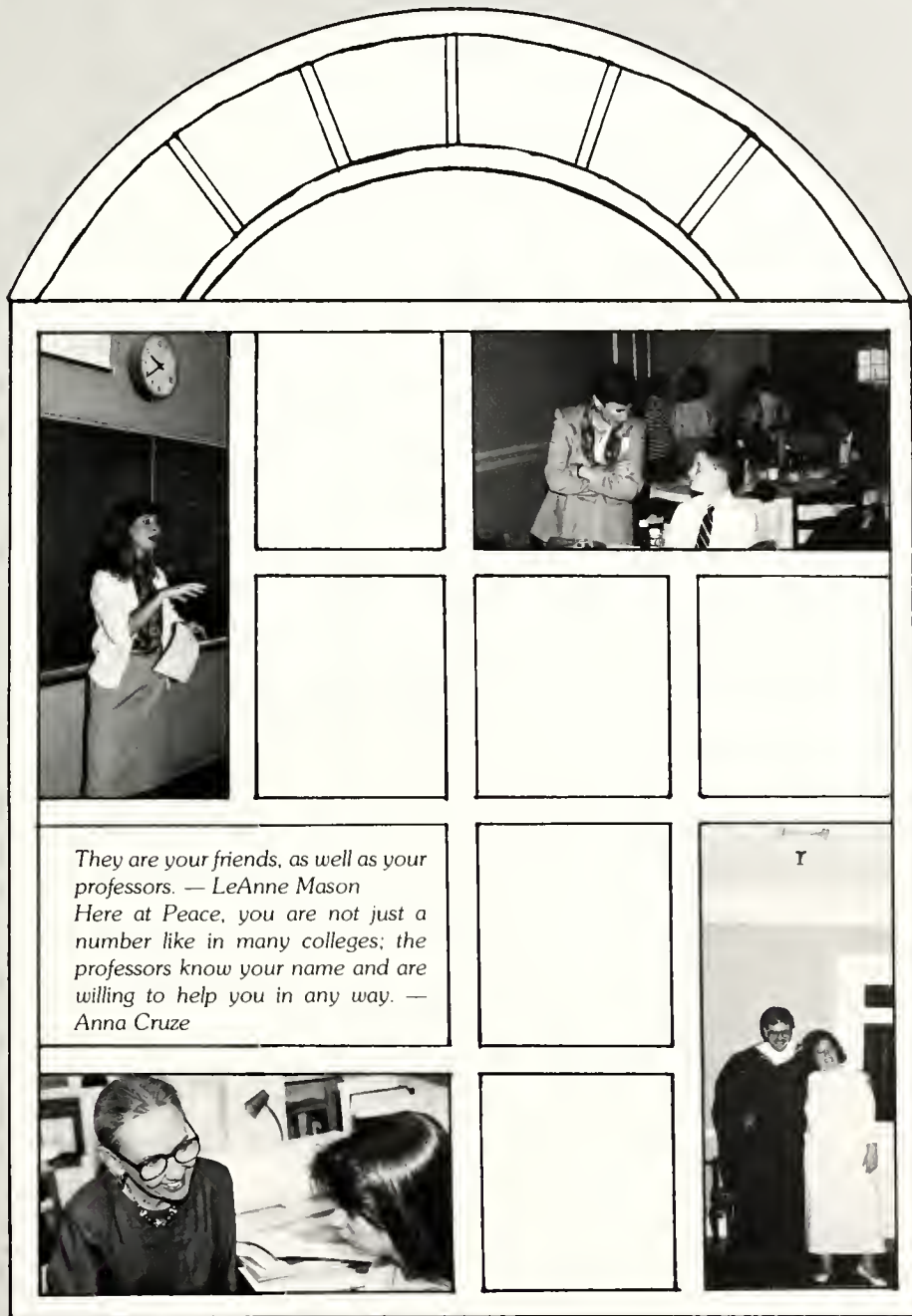
MOST POPULAR MAJORS FOR 1988 GRADUATES

Accounting
 Art
 Biological Sciences
 Business
 Elementary Education
 Special Education
 Fashion
 Merchandising/Design
 French
 History
 Information Systems
 Interior Design
 Journalism
 Music
 Pharmacy
 Physical Education
 Physical Therapy
 Psychology
 Public Relations
 Radio, Television,
 Motion Pictures
 Sociology
 Spanish
 Speech &
 Communication
 Speech Pathology

1988 GRADUATES TRANSFERRED TO THESE COLLEGES AND UNIVERSITIES:

Appalachian State University
 Atlantic Christian College
 Campbell University
 College of Charleston
 East Carolina University
 Elon College
 Fayetteville State University
 Florida State University
 Gardner-Webb College
 James Madison University
 Longwood College
 Mary Washington College
 Meredith College
 Methodist College
 North Carolina State University
 Radford University
 Salem College
 Sweet Briar College
 Université Paul Valéry, France
 University of Colorado
 University of Georgia
 UNC-Chapel Hill
 UNC-Charlotte
 UNC-Greensboro
 UNC-Wilmington
 University of South Carolina
 Virginia Polytechnic Institute
 Wake Technical College





They are your friends, as well as your professors. — LeAnne Mason
Here at Peace, you are not just a number like in many colleges; the professors know your name and are willing to help you in any way. — Anna Cruze



FACULTY AND STAFF

ADMINISTRATION



Dr. Garrett Briggs
President



Dr. Helen Staples
Academic Dean



Janice Edwards
Dean of Students



STAFF



Cynthia Wyatt
Director of Admissions



Mona Hill
Asst. Director of Admissions



Kathy Brown
Admissions Counselor



Joan Allen
Registrar



Sue Ann Curtis
Secretary to the Registrar



Jane Kanipe
Director of Financial Aid and
Asst. to the President



Muriel Evans
Secretary to the President



Cindy Stilwell
Secretary to the Academic Dean



Rachel Manning
Secretary to the Dean of
Students



Dawn Phillips
Admissions Secretary



Nancy Weekman
Admissions Secretary



Dan Beakey
Business Manager



Verne Futrell
Assistant to Business Manager



Larry Griffin
Accountant



Rebecca Leggett
Secretary to Business Manager



Sarah Marion
Counselor



Judy Woodson
Counselor



Janet Harvey
News Director



Chris Broughton
Director of Development



Norma Whitfield
Development Assistant





Kathy Hains
Student Activities Director



Liz Thurston
Alumnae Director



Nancy Kirby
Secretary to the Alumnae Director



Paul King
Librarian



Barbara Hawkins
Librarian



Lupe Chambers
Nurse



Dawn Childers
Nurse



Sue Rains
Secretary Admissions Office and
Phys. Ed.



Jack Hinkel
Maintenance Supervisor



Mary Vargas
Housekeeping Director



Neal Andrews
Safety and Security



Sallie Goad
Bookstore Manager



Dale Jersey
Dining Services Director



Jeff Gazda
Dining Services



Dorothy Casey
Switchboard



Estelle Bengtson
Switchboard



FACULTY



Ms. Katherine Arnott
Physical Education



Dr. Jean Bauso
English



Dr. Lisa Bonner
Biology



Dr. Sally Buckner
English



Mr. John Crossno
History



Ms. Connie Crowl
Music



Dr. Emilie de Luca
French



Mrs. Susan Eure
English



Dr. Korrel Kanoy
Psychology



Ms. Carolyn Parker
Art



Mr. David Caccamo
Accounting and Economics



Dr. Anne Fountain
Spanish



Dr. Kate Galligan
French



Ms. Ruth Hopkins
Physical Education



Mrs. Patricia Risk
Biology



Mr. Archie Ritchie
Math



Ms. Adair Robertson
Math



Ms. Debra Skinner
Sociology and Anthropology



Mr. Jim Smith
Music



Mrs. Lee Ann Spahr
Math



Dr. Bes Spangler
English



Dr. Robert Sturdivant
Religion and Philosophy



Mr. George Thomas
Religion



Mr. James Tilley
Physical Education



Dr. Wayne Tyner
History and Political Science



Mr. Rick Rottschafer
Drama and Speech



Mrs. Linda Stevens
Computer Science



Mrs. Edythe M. Stanislaw
Math



Dr. Karen St. Clair
Psychology



Ms. Virginia Vance
Music



Dr. Janet Wester
English



Dr. Linda Purnell
Chemistry



Mrs. Judy Williams
English



Ms. Ginger Woodard
Home Economics



Did You Know?

Jennie Vance and Ragland Scholars visit and study for three weeks at Warrborough College in Oxford, England



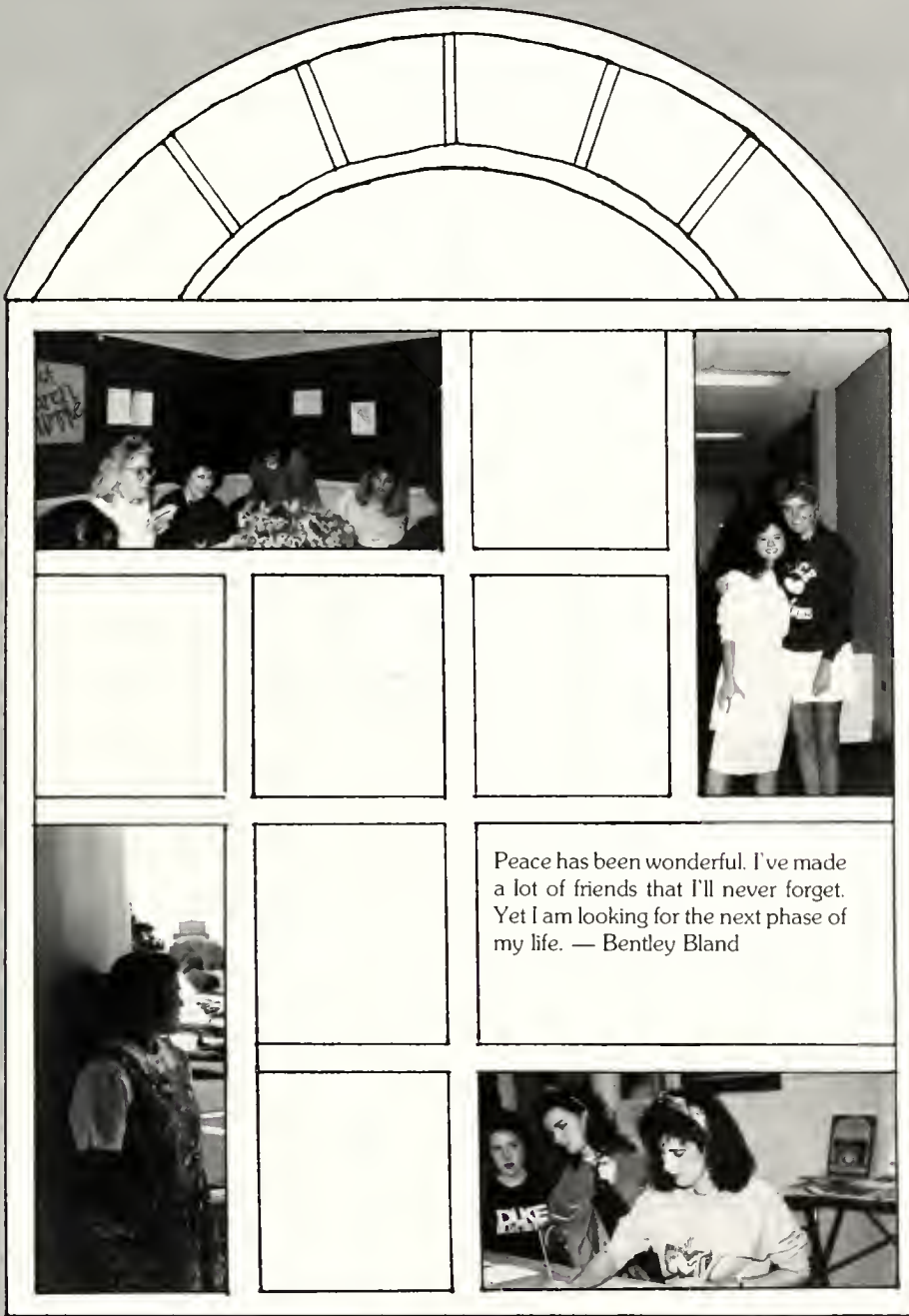
Debra Skinner takes a break from her anthropological fieldwork in a hill village in Nepal to trek through the Kali Gandaki gorge, the deepest valley in the world rimmed by the tallest mountains in the world.



This past summer Adair Robertson had the pleasure and privilege of making a special trip to Europe. Her trip included attendance at Third International Fibonacci Conference in Pisa and some exciting travel to Florence, Venice, Vienna, and Budapest



In July of 1988, Dr. Anne Fountain visited the Tijuca Forest in Brazil on her way to Argentina, the place where she was born



Peace has been wonderful. I've made a lot of friends that I'll never forget. Yet I am looking for the next phase of my life. — Bentley Bland



SOPHOMORES

SOPHOMORES

Sophomore Class Officers
 President — Reid Robertson
 Vice President — Tonya Hill
 Secretary — Andi Helms



Gina Graham Adams
 Michelle Leigh Ahern
 Chrste Marie Anderson
 Caroline Cole Atkinson
 Elizabeth Sutton Baker



Cynthia R. Balentine
 Margaret Lynn Barbee
 Laura Rainwater Barnes
 Mary Elizabeth Barnhill
 Jen Sue Basham



Rebekah Lynn Bennett
 Sara Bentley Bland
 Joyce Carol Blanton
 Mita E. Bondurant
 Marcia Ruth Bradshaw



Sarah Bass Bradsher
 Chrste Lynn Broadwell
 Julie Paige Broedlowe
 Andrea Michelle Brett
 Keli Dawn Bnght





Rebecca Kaye Bntt
Leigh Anne Brown
Melanee Jane Brown
Susan Carole Brown
Rebecca L. Bunker



Ashley Kay Butler
Amy Michelle Camp
Mary Kennerly Cashon
Lisa Claxton
Mary Nills Conkey



Cynthia Gail Conner
Amy Lynn Cowles
Kimberly Ann Davis
Mary Melissa Davis
Danielle Mane Deakin



Heather Bronwen Dees
Catherine Dixon DeVane
Jennifer Lynn Dixon
Lon Fernise Dulaney
Cynthia Ann Dunlow



Robin Ann Dwyer
Sarah Elizabeth Earle
Kelly Rose Edens
Cheryl Ann Ellis
Rhyie Lubeth Elmore



Kimberly Ann Ennis
Christine M. Ethendge
Kelle Dawn Fann
Susan Elizabeth Fodel
Deborah Lynn
Formyduval

Jennie Lewis Fowler
 Elizabeth Lee Foy
 Jessica Leigh Francis
 Denise Anne Frazier
 Monica Lynn Freeman



Sandy Fromm
 Cynthia Marie Fuller
 Jennifer Leigh Fulp
 Amy Susan Gloekler
 Kimberlee J. Gooden



Shannon Ashley Goodman
 Paula Dees Gurley
 Angilea Leigh Hale
 Jenee Halslip
 Linda Louise Hamilton



Lydia Hannah
 Kristin Lynn Hanson
 Denise Kaye Harms
 Tara Felicia Harvey
 Andrea Lee Helms



Melissa Dawn Henderson
 Cheryl Hem
 Susan Lynn Heston
 Tonya Elizabeth Hill
 Anna Kathleen Holcher



Jennifer Susan Holmes
 Claire Louise Honeycutt
 Kimberly Lynn Horton
 Tonya Lorece Housand
 Susanna C. Jarvis



Carolyn Shankle Expressing herself
at the Theme Dinner.



Elizabeth Jane Jernigan
Cornelia Lynch Johnson



Ashley Scott Johnston
Susan Slate Johnston



Lucy Caroline Kemp
Caren Kimball
Karen Michelle Kung
Neelie Marie Kitchin
Shern Vann Lee



Mary Caroline Lemon
Marlin Gray Leonard
Sylvia Ann Locklear
Stephanie Ann Malcolm
Emilie Blanding Mallard



Kimberly Dawn Mallard
Beverly Carol Mangum
Gina Josette May
Amy Kathleen Maynard
Anna Lynn McCullen

May 13th is coming.

Ann Wimberly McDonald
 Elizabeth F. McGee
 Melinda McGlohon
 Elizabeth M. McLeod



Jeanette E. Medlin
 Amy Lee Miller
 Chamberlee Ruth Miller
 Carolyn Lynn Miller
 Gina Lynn Minchew



Susan Baldwin Miner
 Anna Gretchen Monroe
 Melissa Caroline Monroe
 Meredith Moore
 Chanthapheng Nome



Nicole Mane Noms
 Mary Elizabeth Odom
 Lisa Diann Oliver
 Angela Mane Packer
 Lon K. Pappendick



Haden Wakefield Payne
 Diane Mane Pensabene
 Tina Perrou
 Carol E. Phillips
 Tammy Yvonne Phipps





Cathenne Frances Pike
 Virginia Lee Pittman
 Kristin Ann Preetonus
 Angela Lynn Propst
 Rhoda Lynn Raymond

Belinda Lou Reason
 Julia H. Rhinehart
 Melissa Ann Richardson
 Jori Ann Ruddick
 Bernice Alaine Ross

Shelly Hall Rovenbark
 Christina E. Roves
 Reid Adele Robertson
 Ashley Incia Ross
 Laura Lee Rush

Laura Leigh Schrader
 Alexis Brainers Scott
 Mary Spencer Seymour
 Carolyn Elizabeth Shankle
 Leigh Ann Shepard

Kelly Ann Sheppard
 Jennifer E. Shoaf
 Christy Michelle Smith
 Deborah Jean Smith
 Jean Mane Smith

Lisa Carol Smithson
 Mana Dei Carmen Soto
 Chanmaly Sounsak
 Lara Louise Spence
 Patricia M. Spencer



Regna Stallings
Elizabeth Anne Stark



Sunya Lee Stevens
Mana Ann Sturdivant
Pencie Clark Sutton
Tamra Sue Sutton
Nicole Elizabeth Swain



Gina Michelle Sweezy
Kimberly Renee Taylor
Melanie Dawn Teague
Delean Longley
Thomason
Elizabeth S. Thompson



Paige Lee Thompson
Jill Michelle Turner
Sarah Beth Turner
Tracey Arleen Vacca
Leigh Collins Waddell





Kelly Cameron Wall
 Holly Carol Wameck
 Chnstn Mana Waters
 Monica Leigh Watson
 Robin Lynn Welch

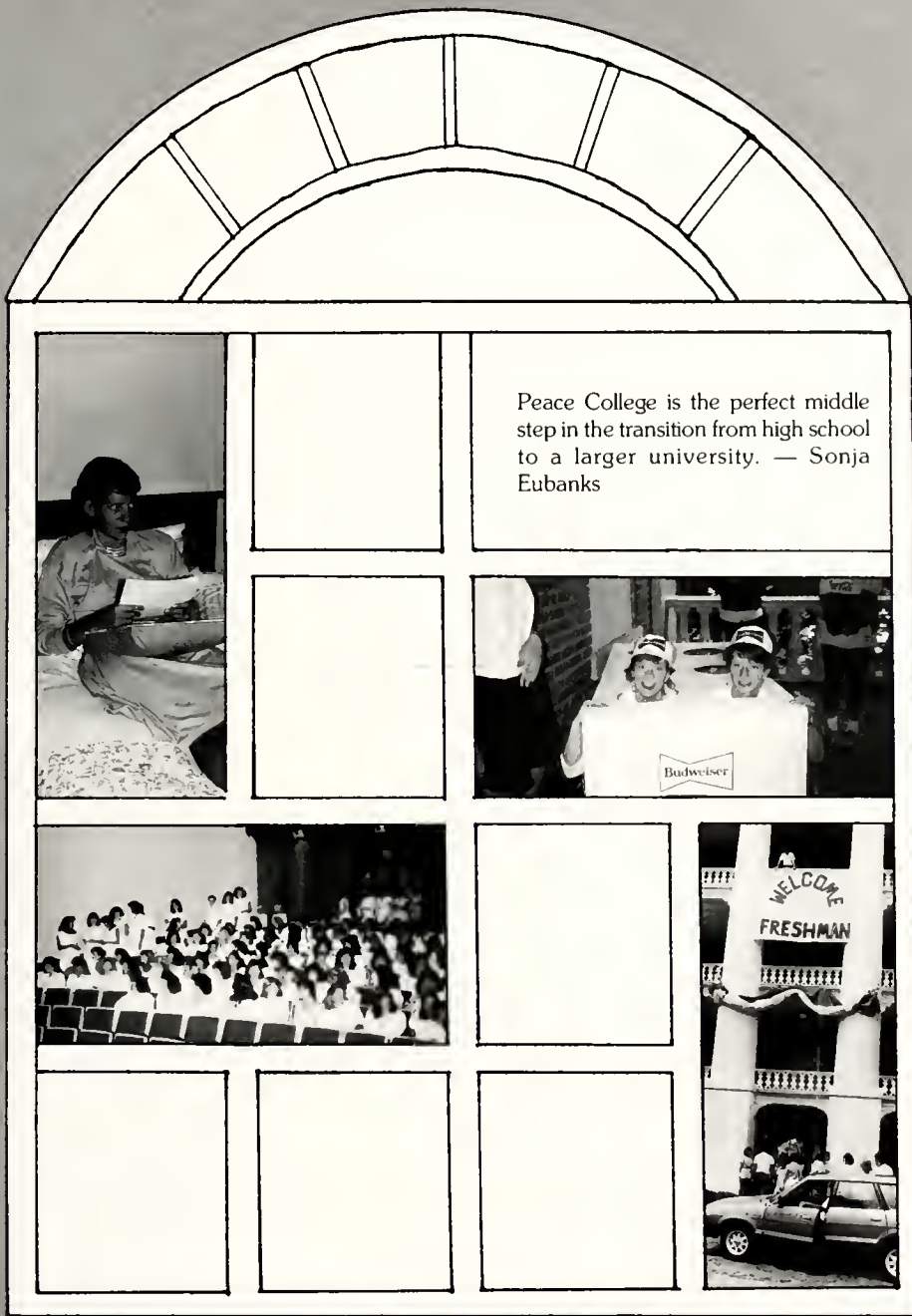
Rebecca Ellen Wells
 Cheryl Ann White
 Scarlett E. Whitley
 Donna Whittenour
 Cameron M. Williams

Dons Ann Williams
 Juli Williams
 Kelly Renee Williams
 Amy Janine Wrenn

BEST FRIENDS!







Peace College is the perfect middle step in the transition from high school to a larger university. — Sonja Eubanks

FRESHMEN

FRESHMEN

We Are Tomorrow's Future

Dhalyn Lee Adams
Jane Heather Allison
Kathleen C. Amelia
Martha Ann Ammons
Allison C. Anthony



Chrissie M. Anthony
Sharon Renee Atkins
Jody Laune Ballard
Lee Anne Barbee
Amy Kristen Barker



Dawn Patnce Barker
Krista Dianne Beam
Elizabeth B. Bennett
Katherine Berryman
Holly Ann Berryman



Julie Ann Best
Mary Catharine Bethune
Michelle Bettex
Stephanie Ann Biesecker
Tracey DDonne Bisette



Susan Mane Black
Tamara Elizabeth
Blackwelder
Lisa Gray Blue
Elizabeth Anne Boehm
Christine Mane Boles





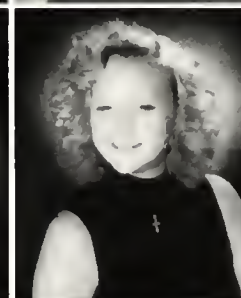
Amy Carol Borrell
 Mary Stuart Bowen
 Stephanie Quinn Bowen
 H. Keturah Boyette
 Adrienne Vanni Boyle



Nancy Samantha Bradley
 Jennifer Page Brannon
 Mary R. Bryan
 Dana Lynn Bryant
 Stephanie Buhaj



Jennifer Ann Bullock
 Leslie Markus Burnette
 Stacey Rae Byrd
 Cindy Rose Cain
 Janet Parks Caldwell



Kimberly Bayliss
 Dawn Campbell
 Dawn Raquel Carmichael
 Rachel B. Carpenter
 Andrea Leslie Carter
 Julia Ann Carter



Katherine F. Cash
 Catherine Lucille Clark



Deborah Lynn Clark
 Stephanie Faye Clark

Rebecca Anne Coggins
 Rebecca Ann Cole
 Kimberly Dawn Conner
 Sheila Diane Cooper
 Cnst Kay Copeland



Lisa Dianne Copell
 Chnsty Lee Covil
 Janice Ann Cowan
 Anne Mane Cox
 Joanna Lynne Crawford



Dns Lynn Creech
 Mary Joseph Creech



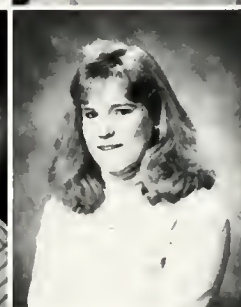
Karen Mane Crummie
 Kelly Michelle Crummie

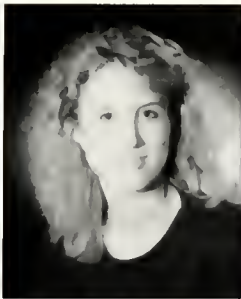


Annabel Chrstna Cruze
 Laura Allison Culp
 Ruth Nicole Daley
 Elizabeth English Darby
 Sonya Lynn Daniels



Stacy Lynn Davenport
 Pamela Jane Davis
 Pamela Ruth Davis
 Patricia Winsloe Deaner
 Faith Leigh Dixon





Melissa Lynn Dixon
Christine Kay Dohrmann
Pamela Sue Duecker
Edith Ashley Eaton
Sonja Reme Eubanks



Kathryn Paige Fisher
Leigh Anne Futrell
Kristin L. Frazier
Kumbery Bassett Fritts
Cynthia Jean Gardner



Sarah Lynn Gardner
Pamela Kristen Garner
Kristin Leigh Gay
Marguerite Kathenn Gay
Nancy Lynn Giblaro



Anna Jo Gilman
Rinnette Minor Godwin
Alice Louise Griffin



Allison M. Griffin
Kristine Datcher Grubbs
Heather Jo Hackney



Kristi Dayle Hager
Meredith Page Hamlett
Kathenne Chene Hardy

Melissa Queen Hargett
Lorraine R. Hamill
Lee Michele Harrington
Tiffany Leigh Harting
Mary Kathenne Hartine



Kelly Patricia Haskett
Kimberly Ann Hattaway
Jacki Barker Headspeth
Leigh Mane Hill
Susan Melody Hockaday



Dorothy Carol Hopkins
Jennifer Ann Howard
Laura Grace Howe
Lucinda Cole Howlett
Stephanie T. Hughes



Kelli Holland Jenkins
Lene Fnmødt Jespersen
Andrea Louise Johnson
Barbara Diane Johnson
Nancy E. Johnston



Amelia Hayne Johnstone
Alicia Gayle Jones



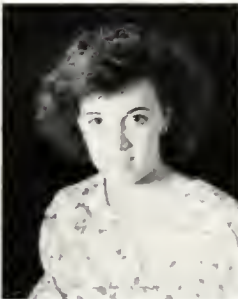
Amy Leigh Jones
Angela Paulette Jones



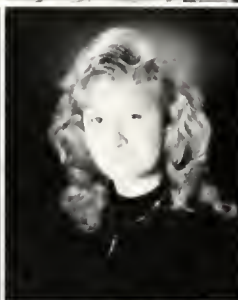


Kimberly Dyanne Jones
Nanette Jones

Angela Leigh Jordan
Joanna Renee Joyner



Tonya Michelle Key
Barbara Denise Kilbrew
Christe Marie Killian
Angelina Louise King
Suzette Danielle Kinney



Allison Mary Kron
Margaret Lancaster Lamm
Cathryn Avent
Lancaster
Ginger Carol Lancaster
Julie Elizabeth Land



Julia Rachel Landreth
Kelly Rae Langley
Paula Grey Langley
Pamela Lynne Lassiter
Christy Currie Leggette



Lisa Renee Lewis
Tiffany Irene Lewis
Sara Margaret Lilley
Lon Leigh Linebarger
Janet Lea Lively

Kathryn Caroline Lowe
 Mary Elizabeth Lowery
 Caroline G Mallard
 Jan Baldwin Marmott
 Leanne Mason



Mary Ethel Mason
 Lon Elizabeth Massingill
 Tonya Lynn Matthews
 Jennifer Lyn Maule
 Karen Lynn Mayo



Rachel Carla McIntyre
 Jennifer Ann McKenzie
 Frances Elizabeth McLean
 Lisa Michelle Meeks
 Kimberle Grae Melvin



Susan Laune Mendenhall
 Julie L. Millspaugh
 Amy Christine Mitchell
 Elizabeth Ann Moffitt
 Randi Leigh Mofield



Lara Christian Moore
 Suzanne Elizabeth
 Mosely



Jill Patricia Moser
 Traci Jean Moss





Virginia Caroline Murdock
Elizabeth E.J.P. Murray
Tina Renee Nations



Mene Margaret Neely
Hue Lam Ngo
Nicole Anne Nissley



Heather Megan Oldham
Harriet Oliver
Lisa Michelle Outlaw



Tracy Nicole Overton
Laura Suzanne Patterson
Margaret Elizabeth Peal
Donna Joyce Pearce
Amy Michelle Peele



Julia Carol Peppers
Kimberly Perry
Nicole Dorma Pharr
Stephanie K. Phillips
Marjone Helen Pitts



Ashley Elizabeth Potts
Meredith Ellen Potts
Kami Lane Powell
Blaire Branson Price
Cathie Lynne Pnest

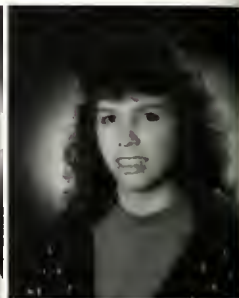
Elizabeth Pauline Ray
Kimberly Shawn Ray



Carolyn E. Raynor
Anna Carpenter Reid



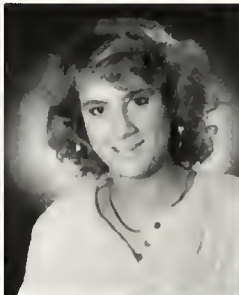
Sharon E. Rhodes
Linda Chea Richbourg
Carolyn Ashley Riggan
Jheban Hope Rigbee
Tammy Lynn Ringler



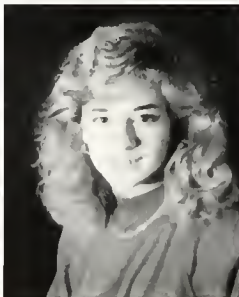
Wendy Sue Rings
Karen Patricia Rives
Amy Diane Roberson
Cynthia Rae Roberts
Gwendolyn Dee Roberts



Courtney Gwen Rogers
Marcie Alana Ross
Stephanie Wray Rouse
Kathleen L. Salmon
Betty Lynn Sauls



Christie Dawn Scott
Stefanie S. Seidler
Elizabeth Brand Shell
Lisa Alexandra Sherrill
Susan Elizabeth Shook





Kimberly N. Simmons
 Susan Beth Sloan
 Constance Helena Small
 Heather Leigh Smith
 Kimberly M. Smith



Laura Elizabeth Smith
 Mane Ann Smith
 Rebecca Ann Smith
 Sharon Mane Smith
 Karen Dee Southerland



Kirstana Spencer
 Laura Ruth Spencer
 Jennifer Leigh Spivey
 Mary Anne Stapleford
 Kelly Renee Starbuck



Anna Virginia Sinson
 Christina Kaye Stutts



Melodi Gwen Styron
 Wendy Renee Surratt



Meredith Allison Swang
 Leshe Annette Tart
 Perry Elaine Tatum
 Mary Margaret Tayloe
 Jeanne Diane Taylor

Shannon Ashley Taylor
 Tem Denise Taylor
 Leigh Ann Teal
 Kristy Jo Temple
 Torrey Cross Templeton



Amy Elizabeth Tesh
 June Watkins Thomas
 Gina Marie Tozz
 Ronda Faye Tracy
 Susan Lyn Travis



Mary Katherine Tropp
 Debbie Carol Tucker
 Kristin Davis Tyndall
 Leslie Carlson Tyner
 M. Elizabeth Upchurch



Lisa Gray Vick
 Angela Kay Wade
 Wendi Lyn Walker
 Angela Denise Watts
 Tracey Gail Waye



Caroline R. Weeks
 Claudia Joan Weir



Lucille Lee Weldon
 Tiffany Gaye West



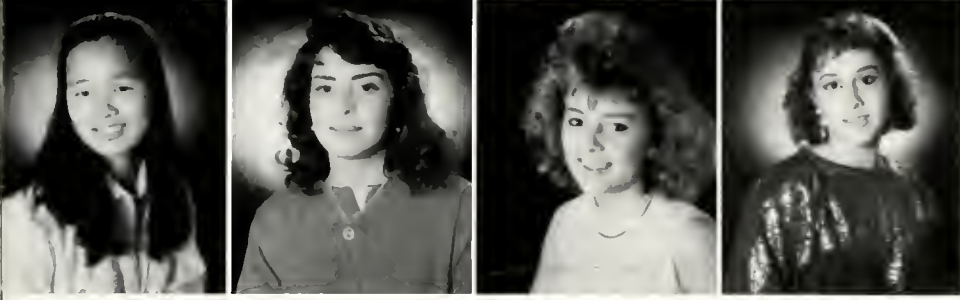
A COTTON PICKIN'
 GOOD CHOICE
 LISA VICK
 FRESHMAN CLASS SECRETARY



Ashley Ann Westbrook
Debra Gail White
Mary Catherine Wiggs
Amy Michelle Williams
Brandye Kay Williams



Lisa Mane Willis
Dana Lee Wilson
Johna Blair Winstead
Leigh Ann Winstead
Janet Mane Wobbleton



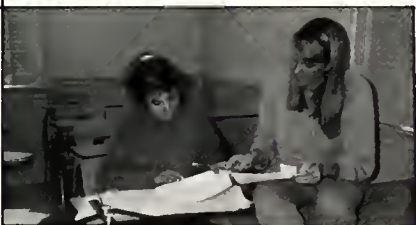
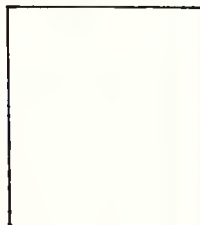
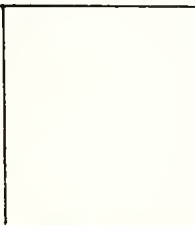
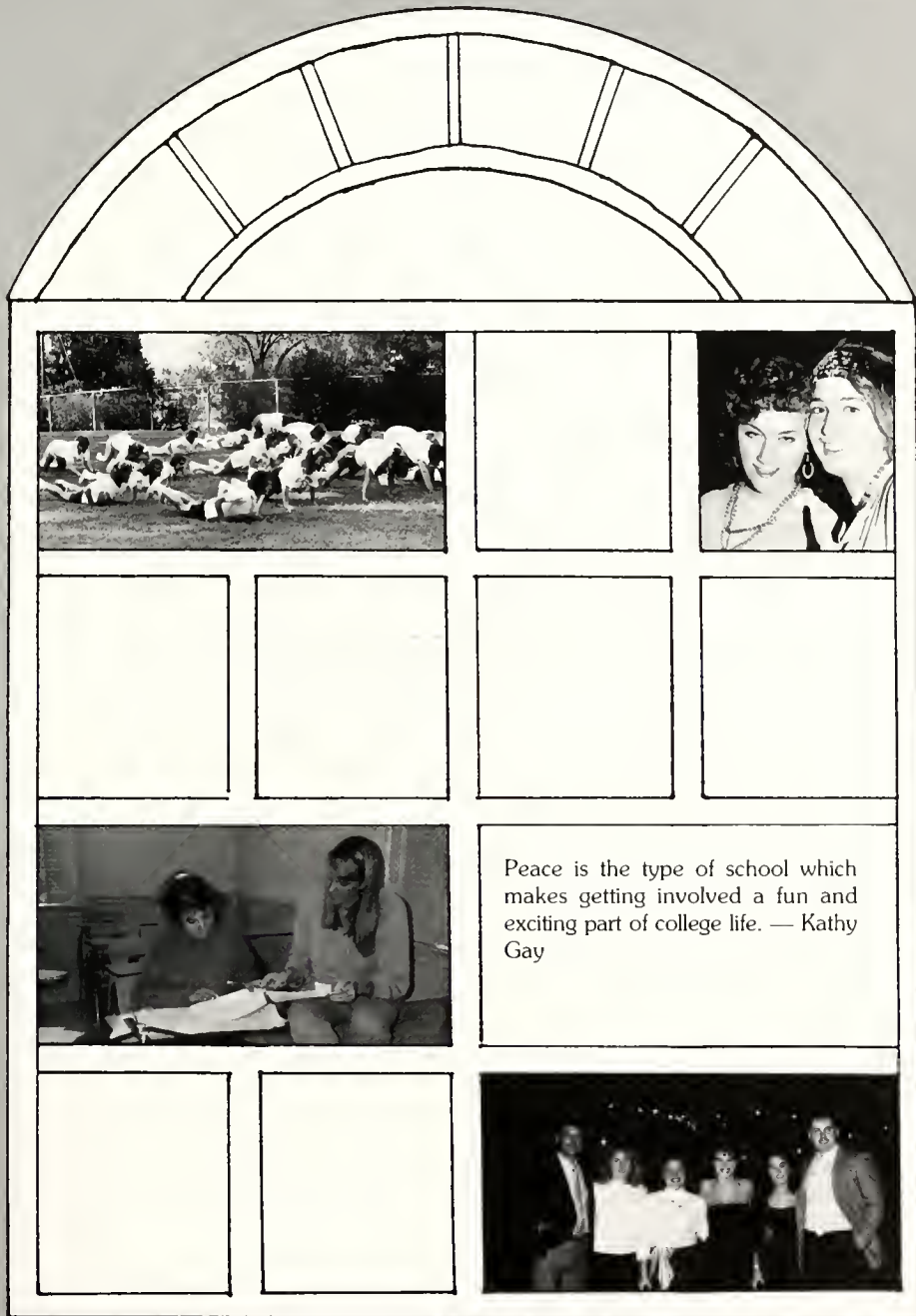
Soon Bok Woo
Jill Lynn Worsley
Mana Michelle Wyant
Elizabeth Mary Young

FRESHMAN CLASS OFFICERS



left to right — Ashley Potts, Vice President; Karen Crummie, President; Anna Reid, Secretary-Treasurer





Peace is the type of school which makes getting involved a fun and exciting part of college life. — Kathy Gay



ORGANIZATIONS

HONESTY IS

Honor Court

Mollie plays around during the Talent show skit.



The Honor court waits anxiously for the first freshman to arrive



Members of Court are Susanna Jarvis, Catsy DeVane, Mollie Conkey, Susan Hester, and Jennifer Dixon.



Lisa Outlaw is caught attempting to sneak out.

The Honor court consists of the presidents of PSGA, PSRA, PSCA, and an elected secretary and president of the court itself. These girls form a council whose purpose is to represent and uphold the Honor Code of Peace College. At the beginning of each year, Freshmen dress in white and go in pairs to recite the Honor Code:

On my honor as a Peace College student, I will not lie, cheat,

or steal; nor will I condone the actions of those who do. I also accept the responsibility to conduct myself socially and morally in a manner becoming a Peace student.

Nervous anticipation over comes each freshman as she signs her name and looks into the faces of a very serious Honor Court. This ceremony takes place because honor is felt to

be an important part of life at Peace. Because once a freshman enters college she is often confronted with choices to go along with the crowd or trust her own moral instincts. And sometimes the honorable thing to do is not the easiest thing to do. It is for this reason that Peace wishes to instill a sense of honor within each student at Peace College.

THE BEST POLICY

Mollie Conkey, President of Honor Court says, "The opportunity I have been given to serve on the Honor Court here at Peace has been an incredible asset to my life as a Peace College sophomore. But with every opportunity comes responsibility, and I feel with my office of Honor Court President that I have incurred more responsibility than I ever

before counted on. As a peer who is called on to judge the wrong doings on my friends, I've grown a great deal and matured as a fair, independent thinker. Balancing friendships with a commitment to the institution of Peace College has been a challenge I will draw on for years to come.



Checking those curfew slips



Jaren Southerland waits her turn to say the Honor Pledge.

CARING — THAT'S WHAT IT'S ALL ABOUT



Peace Student Christian Association

The Peace Student Christian Association is an enriching organization that helps to further unite the girls at Peace College. The main purpose of the organization is to provide an opportunity for worship, fellowship, and further the development of Christian character for students. Through various exciting and caring activities, the club obtains its goals. Holy Week, Religious Enrichment Week, Thanksgiving Baskets, and Toys for Halifax children are only a handful of sharing and helpful activities in which the PSCA partakes. The organization offered

monetary donation to the tornado victims of North Raleigh. They sponsor Peanut Week, this is a time for girls to have a secret pal to give gifts to and brighten her days. The Big Sister-Little Sister program allows a Freshman to feel the first warmth of Peace College with a sophomore friend. Student-Faculty Picnics allow the students and faculty to "kick back" and have fun. The activities that the Peace Student Christian Association sponsor enhance their tradition of expressing a likeness to Christ in activities.





P.S.C.A. president — Catsy DeVane

"Being involved with the Peace Student Christian Association this year has been perhaps one of, if not the, most challenging, yet rewarding experiences of my life. There is so much behind-the-scenes work, work that must be done by a team to be done well and on time. The Association as a whole was designed primarily to promote the Christian atmosphere at Peace. Perhaps my biggest goal this year has been to establish a solid base for Christian fellowship — an atmosphere that welcomes all in Christ's love and provides opportunities to fellowship beyond the weekly chapel services. Trying to lead P.S.C.A. this year brought many struggles but every struggle brought so much more joy as I learned to walk with Him and give everything to Him. I love every single one of you — you shine our Father to me!" — Catsy

God has not given us the spirit of fear but of power and of love, and of sound mind.
— 2 Timothy 1:7



FOLLOW Peace Student

The Peace Student Government Association is a key part of life at Peace College. The members meet weekly to discuss and vote on campus problems, such as curfew, parking, and several special community interests like pollution and charity projects. Besides being concerned with campus policies and social matters, PSGA organizes extracurricular activities to provide students with exciting opportunities for involvement during school. Because of the hard work of the PSGA, along with the help of the Dean of Students, Janice Edwards, and Director of Student Activities, Kathy Haines, Peace College successfully organizes, orientation, Fall Fest, Fall Dance, Stunt Night, Spring Fling, and the Spring Dance. This year's officers are President, Susanna Jarvis; Vice-President, Gina Minchew; Secretary, Maria Waters; and Treasurer, Julie Breedlove.



Members of PSGA link together to welcome in the Freshmen!



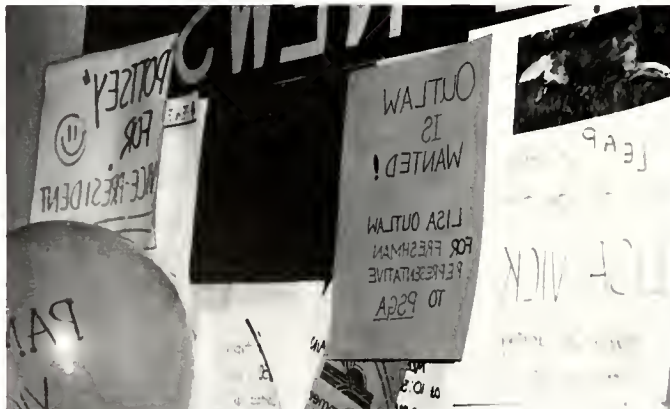
Marlin Leonard, the backbone of Peace College programs.



Members of Peace Student Government Association



President Susanna Jarvis working in Dean Edward's office.



Election hopefuls



All Smiles Summer Retreat

THE LEADERS

Government Association



"Being President of the Peace Student Government Association has been the highlight of my two years here and I can think of no other experience that has been as challenging or enjoyable to me. In holding this position, one gets to see not only how many aspects of life at Peace work, but also plan them. The office has taught me much about myself — my strengths and weaknesses — and I've learned more about what it takes to be a leader as well as a member of an organization. I have had talented and dedicated student government members working with me and I owe them many, many thanks. Serving you has been the best and a great honor, and I thank you for all the wonderful memories and lasting friendships I've gained from this experience."

Susanna Jarvis



Sophomores enjoy Fall Fest dinner.



PSGA officers



PSGA "beach girls" perform a skit for freshmen and parents.



Kathenne Lancaster poses with her Mom during Mother/Daughter Weekend.



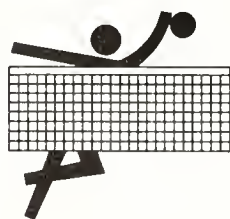
Members of PSGA on a summer retreat.

“GIRLS JUST Peace Student

The Peace Student Recreation Association encourages students to become involved in the college life. The activities promote new and everlasting friendships, strengthen old ones, and initiate involvement in good clean fun. When accepted to Peace, each girl is automatically a member of the PSRA. The organization sponsors a wide variety of intramural sports such as volleyball, ping-pong, football, softball, and basketball. The Peace Student Recreation Association provides fun, friendship, and physical activity year round.



P participate
S spectate
R recreate
A associate



WANNA HAVE FUN”

Recreation Association



“I think the single word to describe the PSRA is ‘togetherness,’ which to me, is what college life is all about. The PSRA accepts all people, regardless. You could be a world-class athlete like Chris Evert or a person with the ability equivalent to Charlie Brown. Over the past two years the PSRA has come to mean a lot to me. I will truly miss it next year. I would like to thank Kathy Hains, Melanie Teague, Kimberly

Gooden, and Tracy Bisette for keeping me in line and on time.” — Jennifer Dixon

Dean Edwards works hard to assist the faculty in a volleyball game

PSRA president — Jennifer Dixon

Powder-puff Football is completely exhausting.



EXERCISING THE

Young College Democrats

The Young College Democrats made a strong effort this year to enlarge their group. Most of their activities centered around the 1988 Presidential Election, in which they campaigned for Michael Dukakis and Lloyd Bentsen. The officers this year were President Maria Waters; Vice-President Paula Gurley; Secretary Amy Gloekler; and Treasurer Mary-Beth Odom. The executive committee members were Tracey Taylor, Bernice Rios, and Lisa Olliver.



Putting Dukakis/Bentsen in the spotlight



Members of Young Democrats



Maria Waters and other members get ready to campaign.

RIGHT TO VOTE

Peace College Republicans

The College Republicans is a new organization at Peace College, and it was federated this year. With one of the largest delegations from a girls' school, the club became a part of the North Carolina Federation of College Republicans. Through involvement in the community and the 1988 elections, the Republicans attracted several girls to become one of the largest organizations at Peace.

When Tom Fetzer attended the first meeting, the Republicans initiated a successful year. They invited Ambassador David Funderburk and Curtin Winsor to speak to Peace students. The club also attended rallies for Col. Oliver North, Dan Quayle, Pres. Ronald Reagan, and Gov. Jim Martin. The Republicans traveled to Washington D.C. for the inauguration of Pres. George Bush and Vice Pres. Dan Quayle and the ball that followed.

The College Republicans allow a further understanding of the party and permits students to participate in various political events.

During the campaign, Quayle visited the NCSU campus to speak to students.

DeLean and other PCR's meet with Guy Vanderjact and Tom Fetzer



Enjoying a campaign dinner.



POETRY AND PROSE

The Prism



Members of the Prism Staff



Editor Andi Helms intently proofreads work.



Christie Anderson sorts through cover ideas

Each year, the literary magazine, *PRISM*, publishes the outstanding student poems, essays, and artwork of the year. For the first time the *Prism* was partially done on computer with the help of PFS *Writers First Publisher*. The Prism Staff always works especially hard during the second semester of the year. Along with hard work, this year the Prism had new, original ideas. On Prism Day the English classes chose the best works of their class to be submitted to the judges. When asked earlier in the year about the thoughts on the magazine, Andi Helms, Editor, said, "When the magazine is distributed on Awards Day, I feel it will be a fantastic representative of Peace Students creativity and design. I can't wait."

A Peace Tradition

PRISM



WORDS OF WISDOM



Editor Laura Barnes takes time out to pose for a picture.

The Peace Times

"Words of Wisdom" is an appropriate title to give the Peace Times because of its reputation as an upbeat, informative newspaper. Articles usually range from parking problems at Peace to national concerns as the Presidential Election and environmental issues. The staff is composed of the Editor, Laura Barnes, the Managing Editor, Caroline Weeks; the Feature Editor, Mary Stuart Bowen; the campus Editors, Caroline Lowe and Nancy Johnston; and the columnist, Laura Schrader. The advisor Janet Harvey welcomes any student who expresses an interest to be on the staff.



Christie Scott is one of the many students who reads Peace Times



Peace Times Staff

PEACE TIMES

CARRYING ON THE TRADITION

Daughters and Granddaughters Club

The Daughters and Granddaughters Club consists of girls whose mothers and grandmothers, and/or great-grandmothers graduated from Peace College. Under the advising of Alumnae Director, Liz Thurston, the girls of this organization are responsible for fund raising for scholarship funds and decorating Main Parlor for the Christmas holiday. This close-knit club carries on the legacy of Peace College year after year.

Reaching high

Decorating for Christmas



DEBATING THE ISSUES

Student Legislature

The North Carolina Student Legislature at Peace College debates current issues similar to those debated in the North Carolina State Legislature. The organization is made up by a group of students who express an interest in politics and how our government functions. Being a fairly new club, the NCSL's main activity was to attend mock legislative sessions at other universities to promote a political awareness among students. It is a challenging opportunity in this politically aware year to form opinions concerning politics and debate them. The Student Legislature at Peace provides students with that opportunity.



NC Student Legislature Members



President Paula Gurley practices with other members of the legislature for an upcoming debate.

SETTING THE STAGE

Drama Club



Peace College offers a variety of clubs and organizations to her students as a form of active involvement and participation in the school. The Drama Club is an organization that provides students intrigued by drama to see plays in the community. The club travels to Memorial Auditorium for several productions

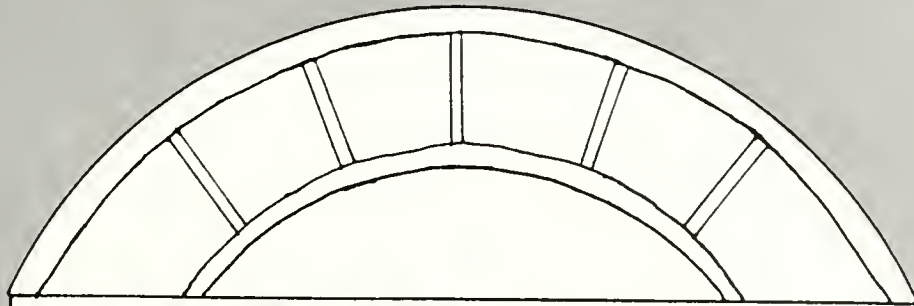
and attends the local Dinner Theater. Under the advising of Mr. Richard Rottschaefter and the guidance of president Christie Curly, the Drama Club has been a successful organization. It has offered Peace Students a cultural outlet to view theatrical events.

Crazy theater girls!

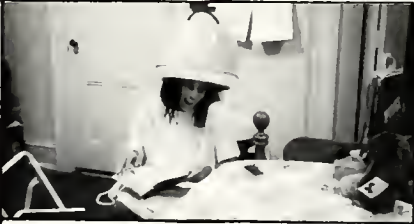
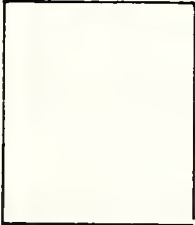


President, Christie Curly, is caught by the camera





Dorm life is half of college.

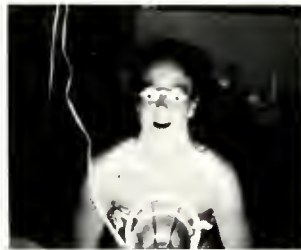


When 11:00 comes around, every night the dorms turn into a great big slumber party. — Christie Scott



DORM LIFE

Dorm Life



First Davidson



Second Davidson



Third Davidson



First Ross



Second Ross



Third Ross



Second East



Third East



Second Main



Third Main



Fourth Main



First Finley



Second Finley



Third Finley



Guest Quarters



Day Students



This year, Peace has one of its largest ever group of Day Students. They are represented in PSGA by Jeri Basham, President, and Ann Marie Cox, Vice-President. Though it is difficult to assemble the Day Students due to varying work and school schedules, Pi Delta Sigma sweatshirts, the "sorority" of Peace Day Students, can be seen all over campus.

First Row: Angela Packer, Tara Harvey, Christie Broadwell, Jennifer Holmes. Second Row: Rinnette Godwin, Maura Wiggs, Leigh Ann Futrell.

Resident Assistants



Resident Directors

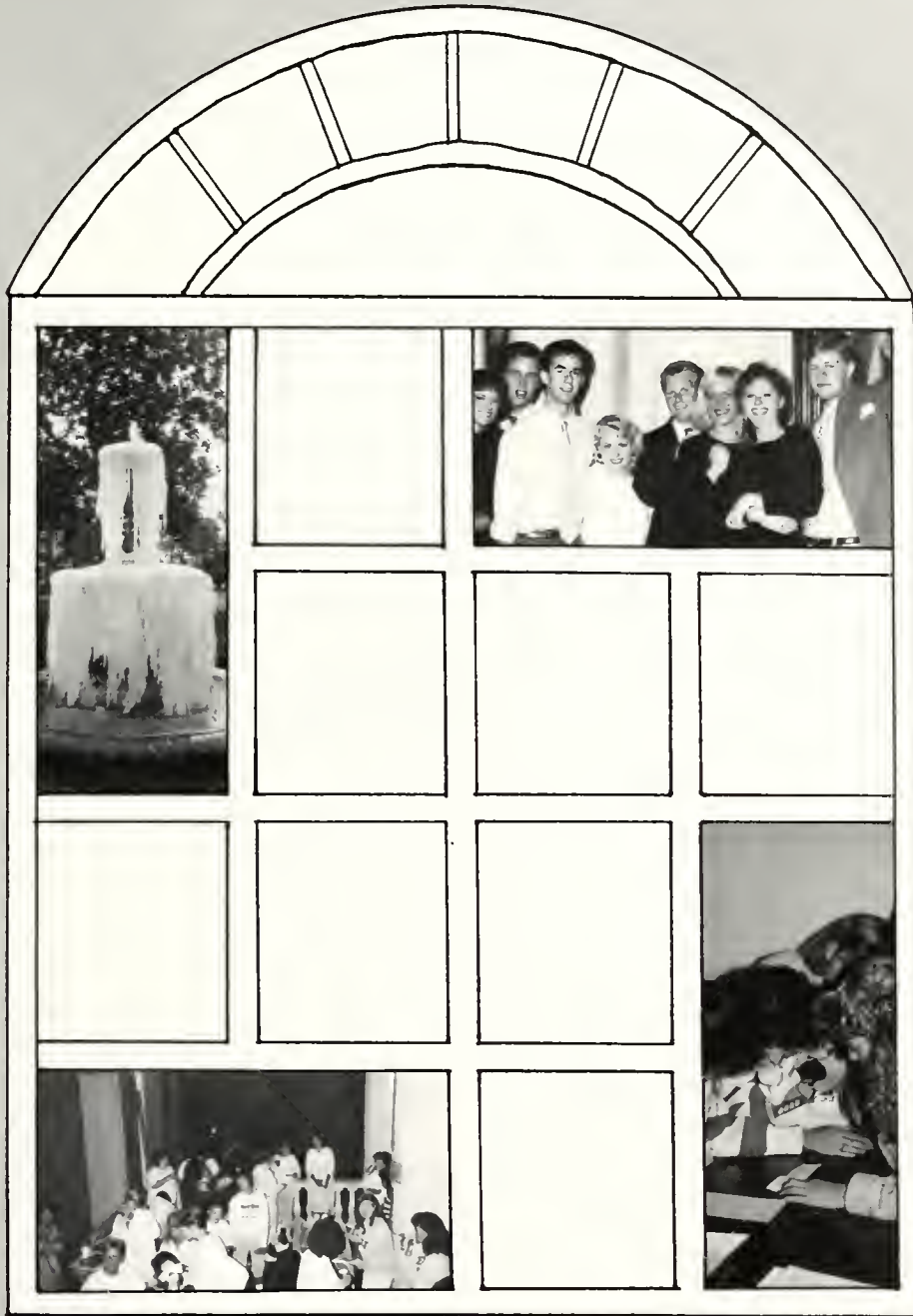


Above: Jeanette Smith — Finley, Yvonne Casto — Main, Doris Coates — Davidson. Right: Jean White — East, Cathy Miller — Ross.

Housekeeping







CAMPUS LIFE

PARENTS WEEKEND

As we all know Peace is filled with many traditions that make it the college that it is. One of these traditions is Parents Weekend. Each year parents come to Peace for a fun-filled weekend. This year, as usual, there were plenty of activities to keep the parents and students busy, starting with a Continental breakfast on Saturday morning. Beginning at 11:00 a.m. there were 15 minute mini-classes with the teachers to allow the parents a chance to meet and talk with the teachers about the classes. It also gave the teachers a chance to tell a little bit about what they do in their classes. "My dad really enjoyed the classes because they gave him a chance to see what I do every day," says freshman Amy Peele. At 4:00

that afternoon a variety show gave our Peace Girls a chance to show their many diverse talents. Says freshman Allison Griffin. "My parents and I really enjoyed the variety show. I never realized just how much talent there was in our school." Later on for dinner there was a pig-pickin' that proved to be both fun and delicious. Another activity that was enjoyable for all was the Sock Hop that night. This gave parents a chance to share with their children the excitement of the music from the fifties as they danced the night away. On Sunday morning there was a Chapel Service, followed by a delicious brunch. All in all, it was a weekend filled with fun to be remembered by all.



MOTHERS & DAUGHTERS & FATHERS TOO!



Some more of the great traditions that make up our school are the annual Mother-Daughter and Father-Daughter weekends. As usual, this year there was a tremendous response for both.

The Mother-Daughter weekend in the fall began with registration and hors d'ouvres in Belk Lounge, followed by a wonderful dinner. After dinner a welcome speech was given by Susanna Jarvis. Later on that night, there was a production of STEEL MAGNOLIAS. "My mother and I really enjoyed the play; it gave us something enjoyable to do together," said Chea Richbourg, freshman. On Saturday, there was a Continental breakfast, followed by a game of "Win, Lose or Draw," where the mothers and daughters played each other in groups of three. All of the words related to Peace, such as, "Lead On O King Eternal" and Fraternity Row. "The weekend ended with a brunch served in the Dining Hall. Says

Freshman Rebecca Smith, "My mother was so excited; she hadn't seen me in so long. The whole weekend she looked ten years younger, like one of the girls."

An equally anticipated event, the Father-Daughter Weekend in the spring began on Saturday with registration. The fathers and their daughters were then invited to the Peace-vs-Brevard basketball game. Later on, there was the annual "Stunt Night." As usual, our Peace girls were hilarious in their skits. From 7:00-10:00 there was dinner and dancing. Peace went all out this year with a band called "Charlie Burr and the Quartet." The band played tunes like The Twist, The Bunny Hop, Waltzes, and Beach Music. Fathers and daughters alike enjoyed the chance to dance, mingle, meet other fathers, and just share time together. Again Peace has made a success of the annual Mother-Daughter and Father-Daughter Weekends.



HALLOWEEN



For each occasion Peace has a different tradition. Halloween and Christmas are always filled with special times at Peace.

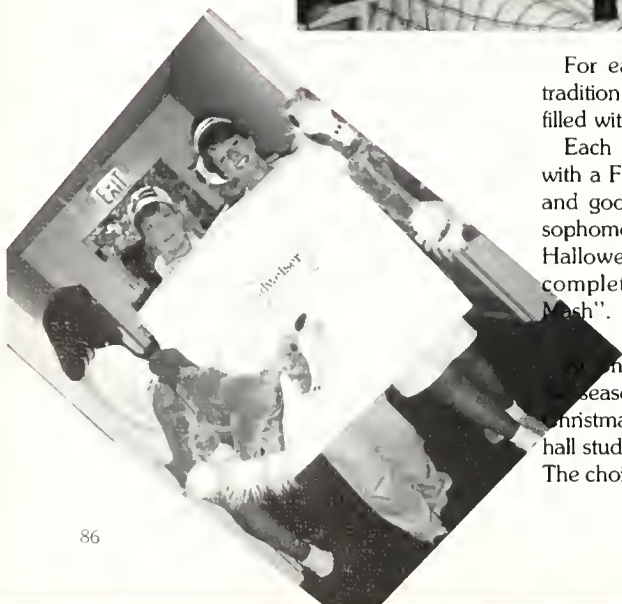
Each year at Halloween Peace celebrates with a Fall Fest, which includes lots of relays and good times with friends. This year the sophomores won the relay. Peace also has a Halloween dinner and Costume Contest, complete with songs like "The Monster Mash".

At Christmas time Peace comes alive with the season's spirit. Garlands are hung, and a Christmas tree is put in Main Parlor. On each hall students decorate their rooms with lights. The choir and chamber singers present a con-



cert of Christmas music complete with Santa and falling snow. Another Christmas tradition is the Christmas Chain. The students race through the halls gathering students, beginning on third Davidson, through to first Finley then circling around the fountain singing Christmas Carols. Each year at this time there is an Open House at the President's home equipped with hors d'oeuvres and hot apple cider. However, this year Mrs. Briggs managed to make the Open House even more spectacular. For each student, she made an ornament with her picture trimmed in red lace, and hung it on the tree. The beautiful ornaments showed lots of time and care.

Each tradition at Peace makes it all the more, a truly special place to be, especially on the holidays.



CHRISTMAS



THESE SHOES WERE FOR DANCIN'

FALL DANCE SPRING DANCE

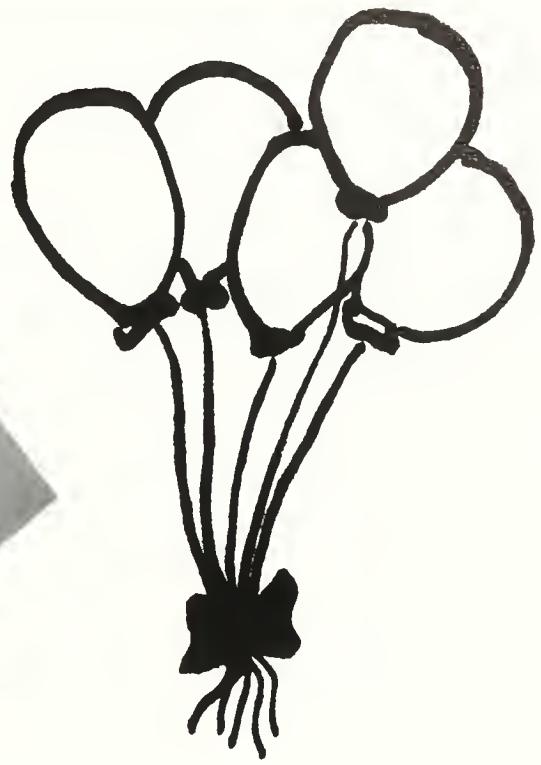


Though the stars were shining brightly through the trees on the nights of November 6 and April 15 on the outside, they were shining even brighter through the balloons and streamers inside Belk Dining Hall. These were the nights of the annual Fall and Spring dances at Peace College. These dances are as much a part of Peace College as the fountain and the white columns. They are magical affairs that transport the girls back in time to their high school proms. Everyone looks so beautiful it is almost like a dream. You have to look twice to make sure that is the girl who sits beside you in Religion. You've never seen her in anything but

sweats (and is that make-up!?) The other girls melt away as we go upstairs to dip into some of the sherbet punch the cafeteria staff so diligently prepares, (hoping that this year it will be spiked), and let's not forget those scrumptious sugar cookies!

The scene is so beautiful couples holding each other on the dance floor, looking lovingly into one another's eyes, or strolling around campus holding hands. Everything just seems so perfect no one wants to leave, but, just like in Cinderella, we all become pumpkins at 12:00 am (or 2:00 am in our case)!

MADE





YOU ARE MY PEANUT, MY ONLY PEANUT



P
E
A
N
U
T



W
E
E
K



"Peanuts forever." During Peanut Week at Peace College, students draw names and give little anonymous gifts to the one whose name they drew. Gifts range from painted picture frames to painted party cups. At any time of the day, you see a variety of gifts lined up in the foyer of Main just waiting to be claimed. This secret gift-giving goes on all week and on the last day, everyone congregates in front of Belk Dining Hall to find out who their "peanut" has been. Some know their peanuts; some don't. Everyone loves finding out who their peanut is (to see if they guessed right.) Peanut Week is always the beginning of many beautiful, long-lasting friendships. When Peace students need a friend, they find a peanut!



Do you want . . .
 Well, um . . .
 WOULD
 YOU PLEASE
 Gooutwithme?
 (whew!)



D
A
T
I
N
G



G
A
M
E

Have you ever had trouble getting dates? Have you ever gone out with someone, only to realize you have nothing in common? Have you ever thought that there were no guys left that weren't taken? Then you need to be on the Dating Game! In October, Peace College had its own version of the dating game. There were guys and girls and prizes, just like the real thing! (Yes, there were GUYS!) A committee selected four guys and four girls to be on the panel. In one case a guy asked three girls questions, and they answered and he chose his date. In the other case, a girl asked three guys questions and, judging from their answers, she picked her date. The couples got their choice of two dates, one was a trip to Rockola, and the other was to T.K. Tripps. Ashley Potts was the girl chosen. She and her date, Randy Pulley had a fun-filled evening at T.K. Tripps in which they stuffed their tummies. There was no lasting commitment, but they had a great time, and it was a fun experience for them both. So, next time you've got the "no-date-blues", come on over and we'll fix you up!



WRITING INSTITUTE

Each year at the end of the summer, Peace offers a two week program for entering freshman called "The Writing Institute." It is directed by Janet Wester, and has been in existence for seven years. Students who participate receive two hours of English credit for "Language and Thought." The students participate in many activities throughout the day, starting with "Feeling Fit," a twenty minute workout at 7:10 a.m., and ending with an evening work session from 7:00-10:00. The days are filled with small group sessions, a general meeting, special speakers, and ILA time (Independent Learning Activities). The students are required to attend five mini-classes, two required and three of their choice. Each day the assignments include 1 directed writing (a ten minute free write,) 1 250 word journal writing, and a maximum of three reading logs (each 250 words long that dealt with a different short story.) One 500 word paper is due each week. Says English professor Judy Williams, "Our purpose is to give students a taste of what college English is like, as well as become ori-

ented to the campus. Along with the hard work, we have fun, and become aware of all that Raleigh has to offer. As faculty, we hope that students come back to the fall semester better prepared, emotionally and academically." Although it sounds like a tremendous amount of work, the students found plenty of time to chat and make strong friendships. There were nights when students could be found chatting until three and four in the morning. Says Kim Simmons of the program, "It was definitely worth all the endless work because of the strong friendships that were made. It also prepared us for our freshman year. I'm really glad I went." Becky Wells and Katherine Hart served as the R.A.'s for the two weeks, supplying the students with support and plenty of tales about life as a "Peace Girl." Speaking from experience, I can definitely say that I would recommend this for all incoming freshmen. It gives them a chance to polish up their writing skills before entering their freshman year, and to make friendships that will last a lifetime.



Johna Winstead and Leigh Winstead sign in with Mrs. Woodson on the first day at the Writing Institute.



All dressed up and no place to go! Freshmen from the Writing Institute were ready for M.T.V. night



Dr. Janet Wester gives the opening welcome to freshmen at the Writing Institute.

CLASSES OFF CAMPUS/INTERNSHIPS



Sophomore Monica Watson stands in front of the "Design House" where she is doing an internship this semester.

Freshman Laura Culp practices the flute for her flute class at Meredith.

When applying for a job, it helps to have had some experience in that field. Some colleges even require experience for entrance into your major. At Peace there are many opportunities for placement in internships in your field of study. Three types of internships are available: SEEK, VOLUNTEER, and ACADEMIC. The SEEK and VOLUNTEER internships are placed by the Career Counseling Center and the ACADEMIC internships are placed by Ginger Woodard.

SEEK (Seeking Enrichment Through Employment and Knowledge) interns are placed in a job to help them with career choices and to increase their employment prospects. They are generally placed with women who will serve as sort of a mentor. They work from four to six hours a week each semester. At the end of the semester the students are required to write a short, descriptive paper summarizing their experience. Upon successful completion of their internships they receive a one hundred dollar stipend. Students must be sophomores, have a 2.00 GPA, and an interview with the internship coordinator.

The VOLUNTEER internships are designed to "REALLY TEST" the career the student is planning on pursuing. They also work four to six hours for one semester. At the end of the semester a short paper describing their experience is required. However, the requirements are not as stiff as those of the SEEK intern-

ships. Any Peace student in good academic standing who has the necessary commitment of time and energy for this program is eligible to participate.

Pat Marples, a recent addition to the Career and Counseling Center, and Coordinator of both internships, says of these programs, "I am looking forward to expanding the Volunteer internships at Peace. I think there are a lot of opportunities for these internships in Raleigh. I feel it is almost an obligation for us to get involved with our community."

There are also many Peace students involved in ACADEMIC internships. These internships require a 2.25 GPA, and are selected on the basis of their applications, faculty and staff references, and personal interviews with the internship coordinator. The students work 40 hours a semester and must keep a daily journal. At the end of the semester students give an oral presentation to an appropriate class at Peace. Students can receive transportation to and from the class. We are quite fortunate to have a program like this at our school.

Another one of the advantages of being a student at Peace is the opportunity to take courses at nearby colleges. Through "Cooperating Raleigh Colleges" (CRC), students can use the learning facilities, such as libraries and classes, at nearby colleges. Many Peace students have enrolled in off-campus classes this year. They take a variety of courses ranging from Organic Chemistry to Elementary German.

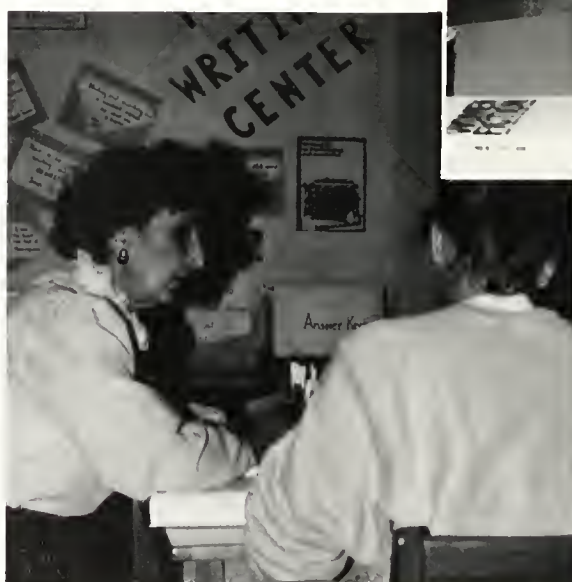
There are many advantages to taking off campus classes. The main advantage is that it allows you to acquire credits for your major that Peace does not offer. Taking courses at larger colleges also helps to prepare students for transfer to larger universities. Fran McLean cites a big advantage: "The CRC program enables people to go to a college like Peace and still get the credits they need for their major."

Peace pays for the class if you are taking twelve hours and you need the class for your major. Peace will also provide up to three hours of credit for these internships. Monica Watson who is an intern at Design House says, "I hope that just being around it I can learn the "Tricks of the Trade." Says Robin Welch, an intern at Vera Welburn Elementary School, "I feel that this experience will help me when I get into my major in Elementary Education. I'm looking forward to watching the teachers in action."

In a job there is no substitute for experience, and internships at Peace provide that experience.

WRITING CENTER

The Writing Center is one of many programs designed to help students strengthen their academic skills. In the Writing Center, students may receive help at any stage of the writing process. Various handouts and worksheets are available to promote independent study on grammar skills. Students may also come for consultations on specific writing assignments in any course as well as English. Computer-aided instruction and weekly grammar workshops are other opportunities made available in the Writing Center. Students have a very positive attitude toward the Writing Center. "The worksheets have really been a great help to me in polishing my grammar skills," says Allison Griffin, a freshman a Peace. Susan Travis adds, "I have been using the computer aids, and my grades have definitely improved. I'm glad they're there." The Writing Center is staffed by two English faculty members, Dr. Sally Buckner and Mrs. Judy Williams, as well as three student tutors who have completed a one-semester training course. Mrs. Williams comments on the mission of the Writing Center: "Our aim is to improve the writer so she can improve the writing." Many would agree that the Writing Center does just that!





This is the age of computers, and Peace will not be left behind. Our computer center has been a great aid to students on campus. This year the hours that the center is open have been extended due to the increased demand for computer access. "One of our goals at Peace is to have students use computers as a tool for producing their course work," said Ms. Stevens the faculty member in charge of the Computer Center.

There are several ways in which students use the Computer Center. The main reason, is for typing their papers for various classes. There is also a demand for the Computer Center from students in Programming, and from students leaving application programs, such as, Lotus 1-2-3, DisplayWrite, and Word-Perfect. Another reason that students are using

the Computer Center is for computer assisted instruction. The Computer Center has many programs for instruction in areas such as Biology, Chemistry, Math, and Nutrition. The students in Nutrition come in to analyze their diets. This program aids the students in determining where their extra calories are coming from and how to eliminate them.

The Computer Center has student tutors on duty during afternoon and evening hours. These students go through training in order to assist fellow students in the lab. Most take a class to learn how to operate a computer, then they are put in training to learn how to deal with problems that could arise with the computer equipment. "I enjoy the convenience of the computers; they are much easier to work with than typewriters. I've been working in the Computer Center since last spring semester. At first I just helped out in the classes, then I got into the training program. I've really enjoyed it," said Kim Mallard, a student tutor at the Computer Center. This year the parent project was to purchase new computers for the Computer Center. Parents provided us with four new computers. Peace is fortunate to have the Computer Center, since more and more, each day, our world is becoming a world that requires knowledge of computers.



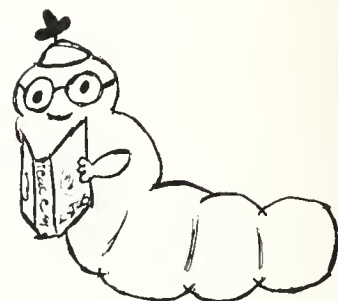
COMPUTER CENTER

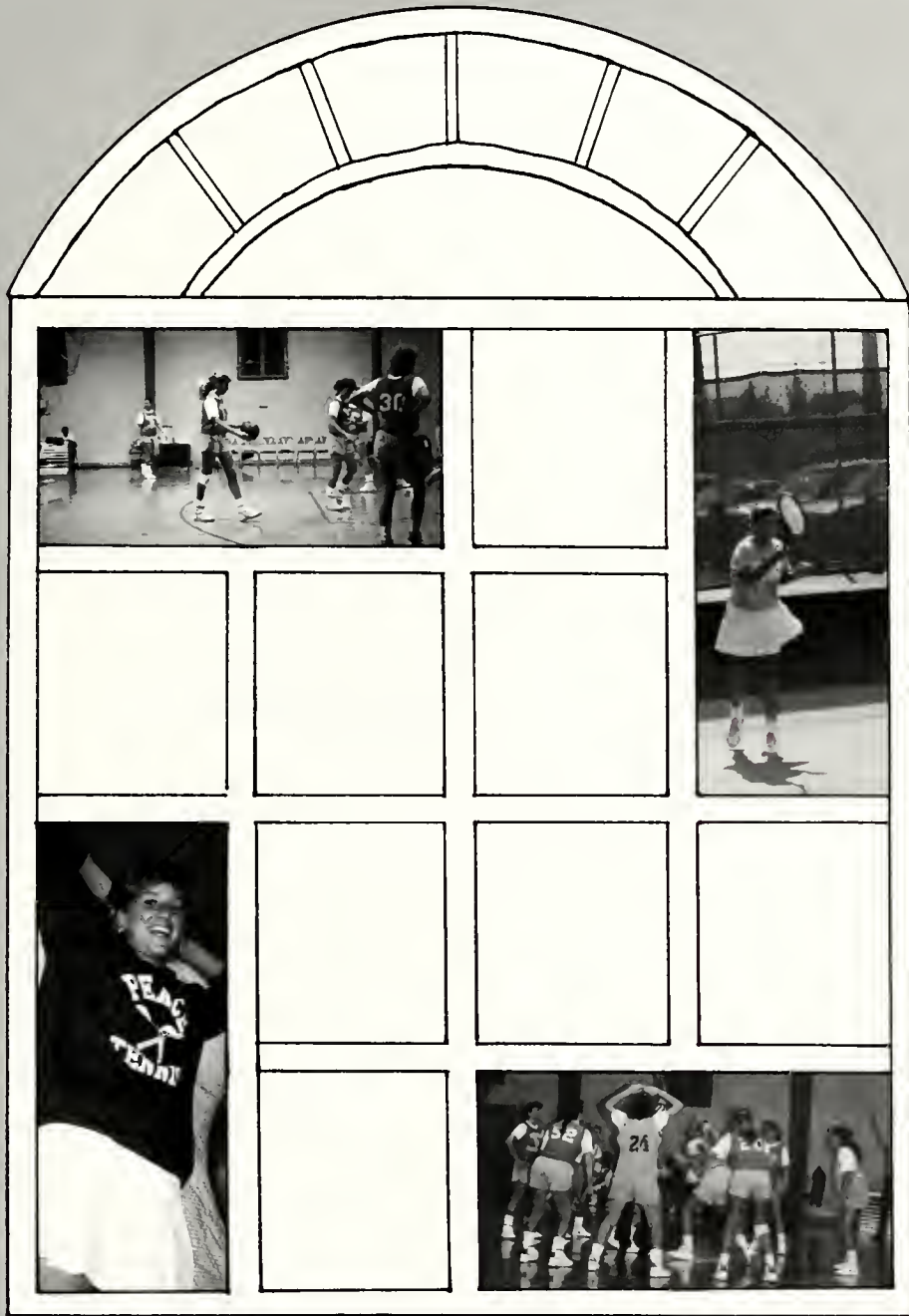




BOOK

WORMS





SPORTS

Intra



Intramurals, the tradition continues. It's that time again! Softball, volleyball and football are the games we play. The Sophomores vs. the Freshmen and dorm against dorm. We play hard, realizing it's only in fun.



murals



CHEERLEADERS

Pyramids, cheers, and practice are what we found the Peace College cheerleaders doing. Dottie Hopkins, Karen Crummie, Lisa Copell, Stephanie Hughes, Stephanie Bowen, Anna Reid, Cathryn Lancaster, Caroline Yount, and Sponsor, Tracey Lyn Taylor were all ready for the games of the Peace College basketball games. We caught them practicing some of their favorite cheers such as: Giant Beat, Spirit, P-E-A-C-E, Go Green, Go White, It's Time For You.



We've got spirit, how 'bout you?



Dottie Hopkins and Karen Crummie are putting in some extra practice the night before a string of three home games.



PEACE TENNIS

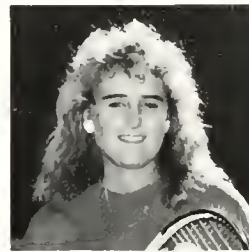
The tradition continues for Peace College's winning tennis team. The Giants are known as one of the best collegiate tennis programs in the nation. The 1988-89 team had an undefeated pre-season record of 8-0. Six team members — Bonnie Johnson, Susan Stanley, Nicole Nissley, Diane Pensabene, Lene Jespersen, and Marel Shaffer — were ranked in the top fifty singles for pre-season play. Three doubles' teams — Pensabene and Jespersen, Johnson and Stanley, and Nissley and Whitaker — were ranked in the top thirty. In her seventh year at Peace, Coach Ruth Hopkins, the athletic director, has acquired awards such as Region titles, Coach of the Year, and five NJCAA National finishes. Coach Hopkins also serves as the ranking chairperson in the eastern region for the Intercollegiate Tennis Coaches Association. Congratulations to ALL MEMBERS of the tennis team!



Sitting — Pam Davis and Nicole Nissley. Standing — Dana Bryant, Kim Bayliss Campbell, Diane Pensabene, Lene Jespersen, Dondi Whitaker, Coach Ruth Hopkins, Bonnie Johnson, Marel Shaffer, Susan Stanley, Tiffany Harting, and Kim Simmons



Sports News!



Peace edges State in tennis



Decisive victories at Nos. 1 and 3 doubles lifted Peace to a 5-4 women's tennis triumph over N.C. State on Wednesday.



Peace's win was its first over State since 1983 and lifted Coach Ruth Hopkins' team to 5-0.



Peace clinched the victory after the two teams had split the six singles matches. Lene Jespersen and Diane Pensabene of Peace defeated Jenny Sell and Susan Saunders 6-2, 6-1 at No. 1, and Dondi Whitaker and Nicole Nisley downed Delphine Karjala and Kerri Kohr 6-2, 6-4.

N.C. State won the No. 2 doubles match after Peace had won its fifth match.



Katie Fleming of N.C. State rallied to defeat Bonnie Johnson 0-6, 6-4, 6-2 at No. 1 singles. State also had victories from Sell and Saunders.



PEACE BASKETBALL



Sitting — Cindy Balentine, Kim Smith, Coach Jimmy Tilley, Sandi Fromm, and Ashley Ross. Standing — Mary Jo Creech (Manager), Mary Tayloe, Andrea Carter, Connie Small, Kathy Jones, Leigh Waddell, Susan Hockaday, Gail White, and Beth Moffitt.



PRACTICE . . . PRACTICE . . .
PRACTICE . . .



Coach Jimmy Tilley

1988-89 BASKETBALL

Nov. 18	Warren Wilson College	Swannanoa	7:30	
Nov. 20	Fort Bragg	Fayetteville	3:00	
Nov. 29	Virginia Union Univ.	Raleigh	6:00	
Dec. 2	North Greenville Coll.	Tigerville, SC	7:00	
Dec. 3	Brevard College	Brevard	2:00	
Dec. 27-28	Union County College			
	Tournament	Cranford, NJ	TBA	
Jan. 13	Truett-McConnell Coll.	Cleveland, GA	7:00	
Jan. 14	Anderson College	Anderson, SC	2:00	
Jan. 15	Hagerstown College	Raleigh	2:00	
Jan. 18	Chowan College	Murfreesboro	7:00	
Jan. 20	Lees-McRae College	Raleigh	6:00	
Jan. 21	Fort Bragg	Raleigh	7:00	
Jan. 23	Louisburg College	Louisburg	8:00	
Jan. 26	St. Pauls College	Raleigh	7:00	
Jan. 27	North Greenville Coll.	Raleigh	7:00	
Jan. 30	Louisburg College	Raleigh	7:00	
Feb. 3	Spartanburg Methodist	S'burg, SC	7:00	
Feb. 4	Anderson College	Raleigh	2:00	
Feb. 8	Chowan College	Raleigh	7:00	
Feb. 10	Lees-McRae College	Banner Elk	5:30	
Feb. 11	Brevard College	Raleigh	2:00	
Feb. 15	Spartanburg Methodist	S'burg, SC	5:30	
Feb. 24	Warren Wilson College	Raleigh	7:00	
Mar. 3-4	Region X Tournament	Brevard	TBA	
Mar. 14-18	NCAA National Tourn.	Tyler, TX	TBA	

CONTRACT ON A CHAMPIONSHIP



The 1988-89 Peace College Basketball Team defended its Eastern Division Regular Season title with four returning players and eight newcomers, as they shot for their fourth Regional Tournament berth under Coach Jimmy Tilley, who is in his fifth year at Peace. The four returnees were Leigh Waddell, Cindy Balentine, Kathy Jones, and Ashley Ross. The eight newcomers added strength, depth, and versatility: Connie Small, Gail White, Beth Moffitt, Andrea Carter, Mary Tayloe, Kim Smith, Susan Hockaday, and sophomore transfer Sandi Fromm. The newcomers brought to Peace many high school awards and honors such as MVP's, ALL CONFERENCE, ALL STATE and many more.

This year's team played in several tournaments including the Union County College Tournament in Cranford, New Jersey. In the first game of the tournament, Andrea Carter was the leading scorer. Overall, Connie Small was the Tournament's MVP. The team visited New York City and did some sightseeing and shopping at places like The Empire State Building and Macy's. Andrea Carter said, "The team's purpose was to win the tournament. The sightseeing and shopping was an extra bonus." Congratulations to ALL MEMBERS of the basketball team.



Basketball team members line up to receive their awards after winning tournament in N.J



Team members on a retreat.



PEACE ATHLETES

Game — set — match to Freshman Bonnie Johnson. Not only is this aspiring young tennis star seeded eleventh nationally in singles play, she is also seeded fourteenth with her doubles partner Susan Stanley. During her years at Cary High School, Bonnie acquired many awards and honors such as being voted MVP both her junior and senior years and playing on the Junior Wightman Cup Team for North Carolina in 1988. She also achieved fame by being ranked number five in Girls 18 Singles in 1987 in N.C. and number one in Girls' 18 Doubles. Last year Bonnie placed fifth in the Southern Open in Birmingham, Alabama. To top off her senior year, Bonnie won the North Carolina State Closed Girls' 18 Singles title. In a few years, people may see Peace College's Bonnie Johnson ranked among the world's best professional tennis players such as Chris Evert. KEEP UP THE GOOD WORK BONNIE.



Bonnie after winning another tournament.

Not only does Peace have great tennis stars, but the college also has outstanding basketball stars. One particular player that broke many records during her two years at Peace was Glenda Cunningham. Between 1986-88, Number Thirty Two, Glenda set two records in the area of individual performance. They were for scoring forty three points in one game and having twenty field goals in another game. In one season, Glenda scored seven hundred and seventy-four points setting another school record. Glenda was also the first player in Peace's history to score one thousand points. She ended her career with one thousand one hundred and fifty-one points. In April, 1988, the ALL AMERICAN signed a scholarship with Appalachian State University to continue her basketball career. Glenda's jersey, number thirty two, was retired and it and her picture are in the trophy case in the gym.



Glenda signing with ASU as Coach Tilley looks on.

International tennis has come to Peace College with Freshman Lene Jespersen from Copenhagen, Denmark. Lene is not new at tennis. She comes to Peace with a championship background. In the Danish National Championships, Lene earned a third place ranking while playing in the Girls' 16 and 18 in Denmark. In 1988, she played in the Senior (adult) Championships and received a ranking of tenth in Women's Doubles, and fifth place in Mixed Doubles. By coming to the United States, Lene has been ranked forty-third by the I.T.C.A. in the Women's Singles division, and in Doubles', Lene has been ranked eighth with her partner Diane Pensabene. Peace is proud to have such an outstanding champion amongst her ranks.





PERFORMING ARTS

Introducing the Pacers

Peace Pacers are: Melissa Hargett, Leigh Hill, Kelli Bright, Kathryn Fisher, Heather Allison, Angela Wade, Cece Atkinson, Mrs. Amott, Kristen Tindell, Patrice Baucom, Lisa Outlaw, Shannon Taylor, Amy Camp, Kristy Smith, Jennie Fowler, Beth Blackwelder, and Amy Williams.



P
E
A
C
E



Jazz Dance Company



Pacers perform for Kiwanis club at NCSU.



Catherine Amott gives last minute instructions.



Pacers do their rendition of the can-can.

P
A
C
E
R
S

Arts and Lectures Come to Peace

The Arts and Lectures series brought many interesting and new cultural differences to the Peace students. Women in Politics featured women legislators from North Carolina and pointed out to the Peace student that she too could have an impact on government. The Jess Trio, Vienna played Sonatas of Beethoven for us. Sun Ock Lee demonstrated several different Korean Dances. The Chamber Singers and the Chapel Singers of Peace College and an orchestra performed the annual Christmas Concert for Peace. The Arts and Lectures series is designed to give Peace students and the community of Raleigh a wide variety of cultural events. All are well attended and enjoyed by many.

The Mary Howard Clark Arts and Lectures Endowment was established in 1964 by the late Mrs. D. W. Woodard of Wilson in memory of her mother, the late Mrs. W. T. Clark of Wilson. Mrs. Clark and three of her sisters attended Peace.



Jess Trio, Vienna-Stefan, Elisabeth, and Johannes Kropfitch



PEACE COLLEGE

The Mary Howard Clark Arts & Lectures Series
Mondays Evenings
Sarah Graham Kenan Recital Hall in the
Browne-McPherson Music Building
Peace College Campus
All Programs are Open to the Public Without Charge

Panel Discussion

"Women Leaders and Politics"

Senators
Helen R. Murray, Gaston Co.
Mary P. Seymour, Guilford Co.
Lura Tilly, Cumberland Co.

Representatives
Ann O. Duncan, Forsyth Co.
Judy F. Hunt, Wake Co.
Peggy Stames, Wake Co.
Sharon A. Thompson, Durham Co.
Moderator
Laura Carpenter Bingham

Concert

Sonatas of Beethoven

Richard Luby, classical violin
Michael Zenge, fortepiano

Concert

THE JESS TRIO, VIENNA
Elisabeth Kropfitch, violin
Stefan Kropfitch, violincello
Johannes Kropfitch, piano

Dance

SUN OCK LEE
Korean Dance

Christmas Concert

Peace College and community
holiday celebration

Readings

Harry Clifton, poet
Dendre Madden, novelist
Betty Lou Fletcher Goodson
Visiting Scholars from Ireland

Lecture

"Just Say No
Temperance Propaganda
in Victorian Britain"

Robert L. Patten
Professor of English
Rice University

Lecture

"Art of the French
Revolution"

Joseph P. Covington
Director of Education
North Carolina Museum of Art

Jazz Festival

On the front campus

NCSU Jazz Ensemble
Frank Hammond, director



The Christmas Concert in progress.

Women in Politics, Music, and Dance



Laura Carpenter Bingham looks on as NC Legislators speak to Peace students.



Sun Ock Lee demonstrates many styles of Korean Dance.



Mary Seymour talks with students after the symposium.

PEACE is "OUR TOWN"

In the spring of 1988, Peace College presented Thornton Wilder's *Our Town*. The play was directed by Joedy Lister and starred Andra Reeve and Dana McClain from the class of '88, as well as Christie Kearley.

OUR TOWN

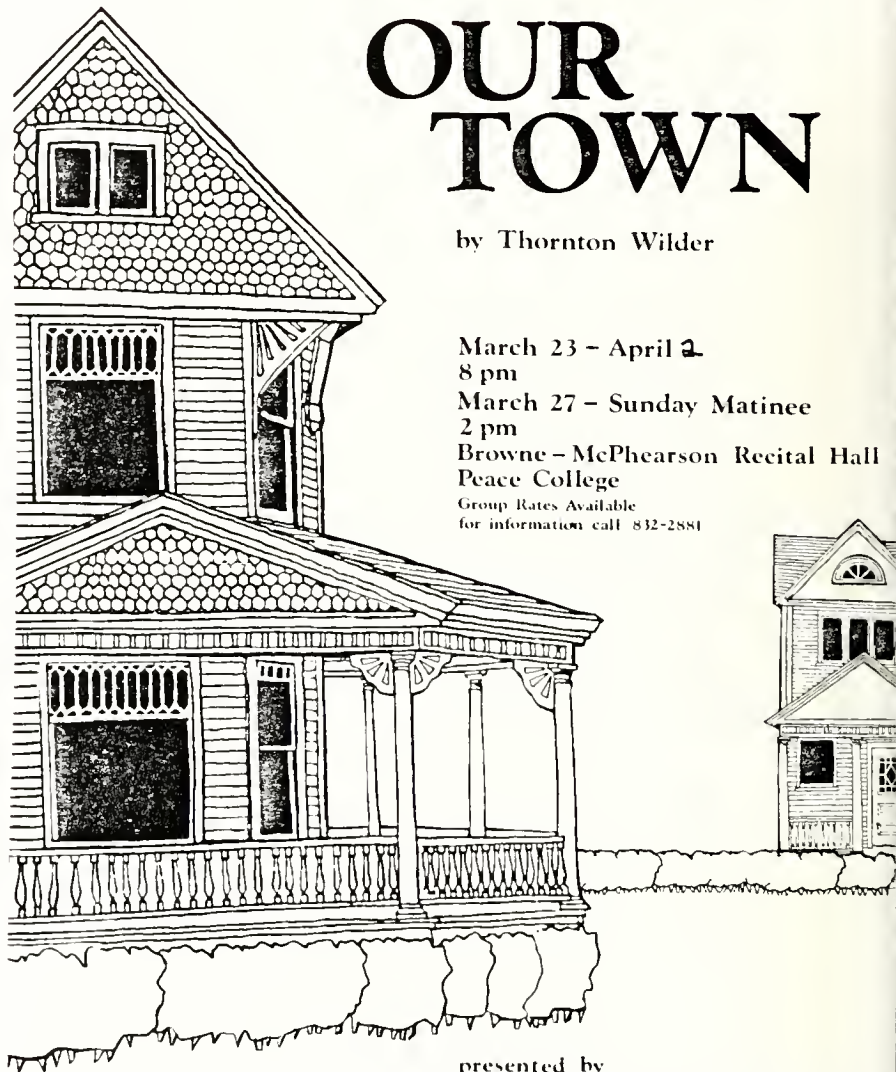
by Thornton Wilder

March 23 - April 2
8 pm

March 27 - Sunday Matinee
2 pm

Browne - McPhearson Recital Hall
Peace College

Group Rates Available
for information call 832-2884



presented by
The North Carolina Theatre Stage II
in association with
PEACE COLLEGE



Peace Times 3
March 1988

NC Theatre and Peace Cooperate in Production

Peace College Theatre students and professionals from North Carolina Theatre cooperated in their first play together this spring. "Our Town" by Thornton Wilder, ran a record 10 days at the Browne-McPherson Recital Hall in March.

The classic play explores the realization of the typical

New England townspeople that happiness is found outside their petty, everyday lives. The set comprises sparse props, which reflects the sometimes severity and emptiness of their lives.

Dana McCain and Andra Reeve made their fourth appearance on a Peace stage with this production.

Freshmen Christine Kerley who delighted audiences as "Babe" in "Crimes of the Heart" this past fall also appears in this production as a townspeople.

Playing opposite Andra Reeve in the lead as Emily is N.C. Theatre's Tom Schultz. N.C. Theatre also provided 15 other actors and actresses. The

production crew consists mainly of Peace talent.

The cooperative effort was designed primarily to provide Peace theatre students exposure to working with professional theatre people, said Peace Director Rick Rottscharfer.

By **HARRY HARGRAVE**
Correspondent

N.C. Theater, in association with the players at Peace College, has a nice, old-fashioned show in its production of Thornton Wilder's "Our Town."

Director Joedy Lister sets appropriate and varied tempos for the play's three distinct areas. But in the several breakfast scenes, as two families prepare and eat in pantomime, there is far too much "business." All the silent action with eight people on the small stage becomes distracting.

"Our Town" with its lack of scenery is supposed to be an ideal, typical town — indeed, "our" town. But scenic designer Rick Rottschaefer has crowded the stage with unnecessary screens and oversize platforms.

Still, a strong cast, speaking with perfect, clipped Yankee accents easily makes up for this fault.

The play is nicely cast with 20 strong actors who make up the

town's citizens. Rottschaefer is believable as Simon Stimson, the drunken choirmaster. Both Carolyn Foster and Marilyn O'Neil convey maturity as the mothers, Mrs. Webb and Mrs. Gibbs.

Rod Rich is a fatherly Mr. Webb, and Martin Grayer makes Doc Gibbs a strong old-time doctor. Besty Walters does a neat cameo as Mrs. Soames, the ebullient wedding guest.

As the courting couple, Emily Webb and George Gibbs, both Andra Reeve and George Schultz are attractive. Their best scene is the all-important soda fountain scene. Miss Reeve subtly and naively conveys her sudden realization of her power to manipulate George. And Schultz sweetly shows a lovable stupidity in her hands.

But the force that binds the show together is the versatile, talented Bob Dean, who as the Stage Manager with a twinkle in his eye and an authentic New Hampshire twang leads the audience through the events spanning some 15 years and arranges the furnishings and sets the props, in what in 1938 was a startling innovation.

Openly old fashioned and frankly sentimental, "Our Town" is a piece of the past. But this fine production makes the trip back worth the journey.

Drama review

OUR TOWN

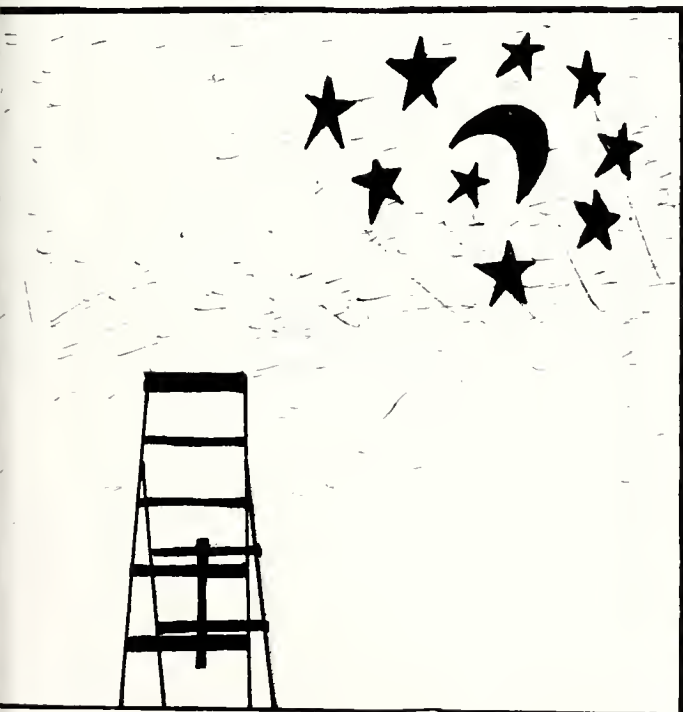
At: Browne-McPhearson Recital Hall,
Peace College.

Times: Tonight-Friday at 8 p.m.

Tickets: \$8, \$7 for N.C. Theater
subscribers, \$6 students

Reservations: 832-2881.

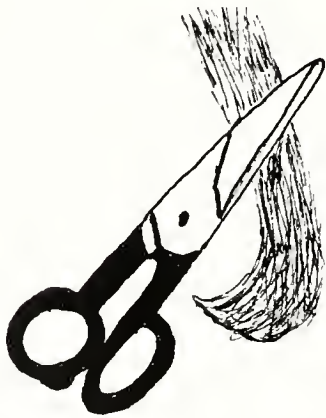
6-B
The Raleigh Times, Monday, March 28, 1988.
**Cast makes up for
flaws in 'Our Town'**



PLAY TIME

In the fall of 1988, Peace College presented the play *Steel Magnolias* by Robert Harling. Peace was the first amateur theater to perform the play since its success in New York. The play takes place in Chinquapin, Louisiana in a garage turned beauty shop. *Steel Magnolias* portrays the life of six women and their hardships during a two year period. The production starred our own Rebekah Bennett and Kristin Preetorius as well as a group of fine community actors. Mr. Rick Rottschaefer directed the play, with technical direction by Gina Coor, a former Peace student.

Chinquapin
Louisiana -
25 miles



ISN'T IT GOING
TO BE
WONDERFUL
WHEN YOU GET
A NEW PERM!?!





0010
 GEN. ADM. SEAT
 NOV 19, 1988
 COZ
 19
 8:00-9:01
 SATURDAY
 8:00 PM

 STEEL MAGNOLIAS

 PEACE COLLEGE-RENTAL HALL

 \$3.00 STUDENT
 \$5.00 PUBLIC
 GEN. ADM. SEAT
 0010

WOULD YOU LIKE
 YOUR NAILS DONE?

I LIKE YOUR NEW HAIR
 STYLE, DON'T YOU?

 CUT & St
 Inury's
 Curly \$20.00



Let There

The Choir: Elisa Murray, Mary Mason, Jennifer Fulp, Johnna Winstead, Beth Turner, Nome Chanthapheng, Lisa Willis, Elizabeth Bohem, Nanette Smith, Leigh Winstead, Susan Hester, Suzie Brown, Patricia Spencer, Kristin Frazier, Missy Dixon, Nancy Johnston, Anna Holcher, Carolyn Raynor, Ashley Potts, Amy Peele, Julie Milspaugh, Mandy Pits, Laura Culp, Susan Travis, Christy Tucker, Denise Frazier, Gina Minchew, Dina Creech, Kim Gooden. The choir sings in the Wednesday Chapel Services for the students.



CHOIR



Be Music



Chamber Singers: Julie Best, Maura Wiggs, Wendi Walker, Karen Rives, Felisha Westbrook, Deborah Smith, Kristen Hanson, Lori Linebarger, Kelly Williams, Cindy Roberts, Lara Rush, Julie Milspaugh, Kim Melvin, Andi Helms, Noelle Kitchen, Lara Spence, and Ginger Lancaster.



Director of both choirs, Mr. Jim Smith.



Chamber Singers perform at Parent's Weekend.

CHAMBER
SINGERS

STUNT NIGHT



Abigail before her Honor Court.



The stars were shining bright as Tinsel Town hit Stunt Night 1989. The sophomore and freshmen themes both reflected satires of major motion pictures.

Continuing the tradition of healthy competition the sophomores gave the freshmen a hard act to follow with their version of "A Nightmare On Elm St." as "A Nightmare on Peace St." with a twist of "Scrooged." Abigail Scrooge (played by Kim Horton, Gina Manchew and, Chris Rives) was campused for having 41 minutes late time. As Abigail stayed at Peace, she was visited by the Ghost of Peace Past, Present and, Future.

Not to be outdone, the freshmen gave an adaptation of "Grease" in "A Peace of Grease." The theme centered around the adjustment to college life and the changes friends go through when they go to different colleges. Mandy (Karen Rives) and Frizzo (Laura Smith) are best friends, with one going to Peace and the other to St. Harry's. As the year goes by, Frizzo changes and Mandy feels as if she doesn't know her. They begin to fight and Frizzo leaves Mandy stranded at St. Harry's. As the curtain falls, back at Peace Frizzo apologizes, and the cast breaks into a chorus of "We'll Stay Together."

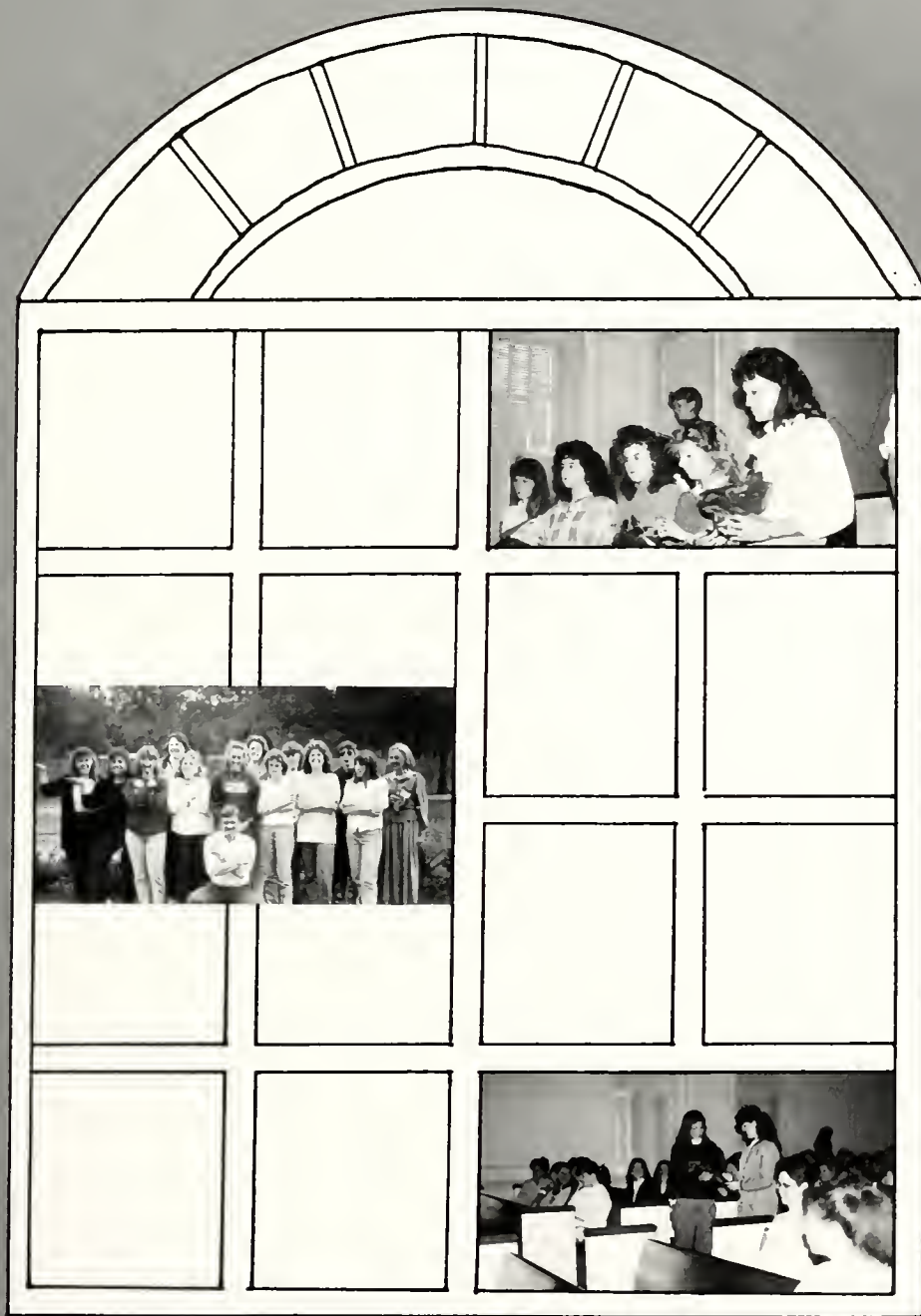
Although the decision was hard, the freshmen came out as winners.



Peace is the word!



We'll stay together . . .



HONORS

PHI THETA KAPPA



Officers:

Above left — DeLean Thomason, President

Above middle — Haden Payne,
Vice-President

Above right — Jenny Medlin, Secretary

Far right — Dr. Bauso, Sponsor



SOPHOMORES



Sophomore members include: Christie Marie Anderson, Jeri Sue Basham, Rebecca Kaye Britt, Ashley Kay Butler, Danielle Marie Deakin, Catherine Dixon DeVane, Deborah Lynn FormyDuval, Monica Lynn Freeman, Evelyn Laurann Hall, Denise Kaye Harris, Andrea Lee Helms, Tonya Elizabeth Hill, Jennifer Susan Holmes, Tonya Housand, Susanne Christine Jarvis, Jeanette Medlin, Haden Wakefield Payne, Rhoda Lynn Raymond, Joni Ann Riddick, Reid Adele Robertson, Alexis Bridges Scott, Pencie Clark Sutton, DeLean Longley Thomason.

Phi Theta Kappa is a national honor society for junior colleges. The chapter at Peace is Gamma Phi and its purpose is to formally recognize and encourage outstanding academic achievements. To be inducted into Phi Theta Kappa, a sophomore must have at least a 3.5 cumulative GPA, be a full-time student, and display good citizenship and good moral character.

FRESHMEN



To be eligible for Phi Theta Kappa as a freshman, a student must be full-time, exemplify good moral character and good citizenship, and achieve at least a 3.7 GPA during her first semester of academic work at Peace. All members must maintain at least a 3.3 cumulative GPA. The fraternity provides a free tutoring service.

Freshmen members include: Martha Ann Ammons, Laura Allison Culp, Kristine Dutcher Grubbs, Leigh Michelle Harrington, Linh Lam Hgo, Laura Grace Howe, Angela Paulette Jones, Nannette Jones, Karen Patricia Rives, Lisa Alexandra Sherrill, Susan Elizabeth Shook, Sharon Marie Smith, Lucille Lee Weldon.

SIGMA DELTA MU

Sigma Delta Mu is a national honor society for Spanish students in their first two years of college. To be an active member, a student must have at least a 3.0 in Spanish, be in the upper 35% of her class or have an overall average of at least 2.75, and have an interest in Hispanic culture and language.

During the induction ceremony, students receive a Bible in Spanish, a certificate, and a lapel pin.

The chapter at Peace College, the Beta chapter of North Carolina, is sponsored by

Dr. Anne Fountain who is the Vice-President of the national organization. In October 1981, Sigma Delta Mu initiated its first honorary member: Mr. W. Trent Ragland, Jr., a Peace College trustee. Sigma Delta Mu sponsors many activities designed to allow students to experience Hispanic culture. These activities include, among other things, viewing movies and visiting museums. The fraternity also sponsors a tutoring service for Spanish language students.



Every year, Sigma Delta Mu sells handmade, wool sweaters from the Otavalon, an Andean tribe of Ecuador.



Some Spanish students went to New York to experience Hispanic culture. While in New York City, students, pictured here in front of the famous sculpture, "El Cid" by Anna Hyatt Huntington, toured the museum Hispanic Society of America.



Catsy DeVane, Rhoda Raymond, Heather Dees, Tonya Housand, Joni Riddick, Shannon Shepherd, Danielle Deakin, Kelly Wall, Robin Dwyer, Jenny Medlin, Emilie Mallard, Andi Helms, Jennifer Shoaf.

MARSHALS



Susanna Jarvis, Catsy DeVane, Jenny Medlin, Debbie FormyDuval, and Jeri Basham
 Jeri and two graduates pause for a picture.



Debbie and Catsy pose for a picture following graduation.

Catsy and Susanna prepare to lead the graduates into Baccalaureate.

Each year Marshals are chosen from the Freshman class. They are the students who achieve the highest grade point average during their first semester at Peace College. During their second semester at Peace, the Marshals are responsible for programs and seating during Baccalaureate and at graduation. They are also responsible for serving at the post-Baccalaureate reception.

Fall brings with it the further responsibilities of Convocation and Honor Court. This year, Marshals had the added responsibility of serving at Dr. Briggs' inauguration as President of Peace.



OUTSTANDING

MOLLIE CONKEY has been involved in choir, cheerleading, Sigma Delta Mu, Student Government, Honor Court President, Stunt Night, May Court, Dean's List, and Special Merit Scholars.

OUTSTANDING SOPHOMORES are chosen by their peers on the basis of leadership qualities, academic achievements, contributions to campus life, as well as personality.



JENNIFER DIXON has been involved in Student Government, Honor Court, Stunt Night, and PSRA president.



ANDI HELMS has been involved in PSGA chamber singers, Phi Theta Kappa, Sigma Delta Mu, Dean's List, and Prism editor. She is an Honors scholar, a computer lab assistant, a Writing Center tutor, and she has received a church scholarship and the Elizabeth Gibbons Taylor Prose Award.



SUSANNA JARVIS has been involved in Honor Court, Phi Theta Kappa, PSCA, May Court, Who's Who, and College Republicans. She is PSGA president, Miss Peace, May Queen, A Marshal, Jones Scholar, Valedictorian Scholar, and is on Dean's list with Distinction.



SOPHOMORES



CATSY DEVANE has been involved in Phi Theta Kappa, Sigma Delta Mu, Who's Who, Dean's List with Distinction, PSCA president, Honor Court, Seek Internship, Freshman Vice-President.



DEBBIE FORMYDUVAL has been involved in Phi Theta Kappa, Who's Who, Dean's List with Distinction, PSCA, SEEK Internship, Marshal, Community service, Resident Assistant, Jones Scholarship, and Penny English Award.



TONYA HILL has been involved in Phi Theta Kappa, Who's Who, Dean's List, National Association of Accountants, Future Business Women of America, Stunt Night, and PSGA. She is a Merit Scholar and Vice-President of the Sophomore Class.



GINA MINCHEW has been involved in choir, PSGA Vice-President, Stunt Night, Freshman Class, Secretary, May Court.



WHO'S WHO AMONG STUDENTS

JERI SUE BASHAM



"I have been very impressed with the organizational skills and enthusiasm Jeri has as editor of the 1989 *LOTUS*. She has made an indelible print on Peace." — Mrs. Williams

CATHERINE DIXON DEVANE



"Catsy is a sparkling Christian presence on campus with an intense desire to learn and to serve her community and God." — Dr. Anne Fountain

DEBORAH LYNN FORMYDUVAL



"Debbie is very deserving of this honor. The hard work that she puts into all of her activities on our campus makes Peace a better place." — Mr. John Crossno

"Jenny is a stellar student with a great deal of personal elegance and charm." — Dr. Anne Fountain

"Haden has a drive to succeed and a positive attitude when the going gets rough. These qualities will continue to benefit her throughout her life." — Dr. Korrell Kanoy

"Reid is an outstanding, insightful student who contributes much to her college environment. In all her endeavors, she is never satisfied with less than her best." — Dr. Janet Weste



JEANETTE ELIZABETH MEDLIN



HADEN WAKEFIELD PAYNE



REID ADELE ROBERTSON

IN AMERICAN JUNIOR COLLEGES

ANDREA LEE HELMS



TONYA ELIZABETH HILL



SUSANNA CHRISTINE JARVIS



"Andi brings a quiet dignity to each of her activities. She is a dedicated, hardworking student who cares for all of us."

— Mr. Dave Caccamo

"Tonya is one of those rare individuals who handles the ups and down of life with consistent grace and charm. She is intelligent, mature, and has touched the lives of many."

— Mr. Dave Caccamo

"Susanna has the respect for knowledge and the intellectual curiosity to complete tasks intelligently and responsibly. She will find and give enrichment in all her endeavors."

— Dr. Spangler

"Through 'proper' in class, Susan is outspoken and an original thinker who has a gift for translating her thoughts into writing."

— Dr. Jean Bauso

"DeLean is a hard worker whose quiet receptiveness will take her a long way in life."

— Dr. Jean Bauso

The faculty and administrative staff of Peace College elect a group of unique young women each year to "Who's Who Among Students in American Junior Colleges." Members are selected for academic excellence, citizenship, dedicated service to their colleges and communities, participation in academic and extra-curricular activities, and unique potential for future success. This year, an outstanding group of Sophomores represents Peace College in this honorable tradition of recognition.

This year, Peace College's Who's Who includes Jones scholars, Honors scholars, Trustee scholars, and Merit scholars. Those selected have exhibited outstanding qualities through their service as PSGA officials, PSCA officials, Class officers, and Marshals. Also, many of this year's Who's Who are members of Phi Theta Kappa, Sigma Delta Mu, the Peace College and National Dean's Lists.

Milica Eve Fauntleroy was also chosen for "Who's Who." She was an adult student who was very involved in campus life. Milica graduated in December, 1988.



SUSAN ELIZABETH STANLEY



DELEAN LONGLEY THOMASON

May Court

Sophomores



Bottom Row: Mollie Coneky, Julie Breedlove, Sara Beth Earle, Top Row: Gina Michew, Susanna Jarvis, Noelle Kitchen

Freshmen



L to R: Karen Rives
Karen Crummie
Cathryn Lancaster
Lisa Outlaw

May Queen

Miss Susanna Jarvis

Susanna Jarvis has been elected as Peace's 1989 May Queen. During her 2 years here, she has been an asset to Peace College through her dedication to Peace's academic, social, and moral principles. As president of the Peace Student Government Association, her leadership abilities and her outgoing personality are evident in everything she does. No matter how busy she is, she always has time for a friendly conversation and a smile. Her positive attitude, encouragement, and sincerity make her peers proud to give her this honor.



Maid of Honor

Miss Mollie Conkey

Mollie Conkey was chosen by her peers as the Maid of Honor. As president of the Honor Court, she has set an outstanding role model for Peace College students this year. Her bubbly personality and her encouraging smile are infectious. Mollie has been an active participant in many activities on campus and has helped make Peace a better place.



Introducing . . .

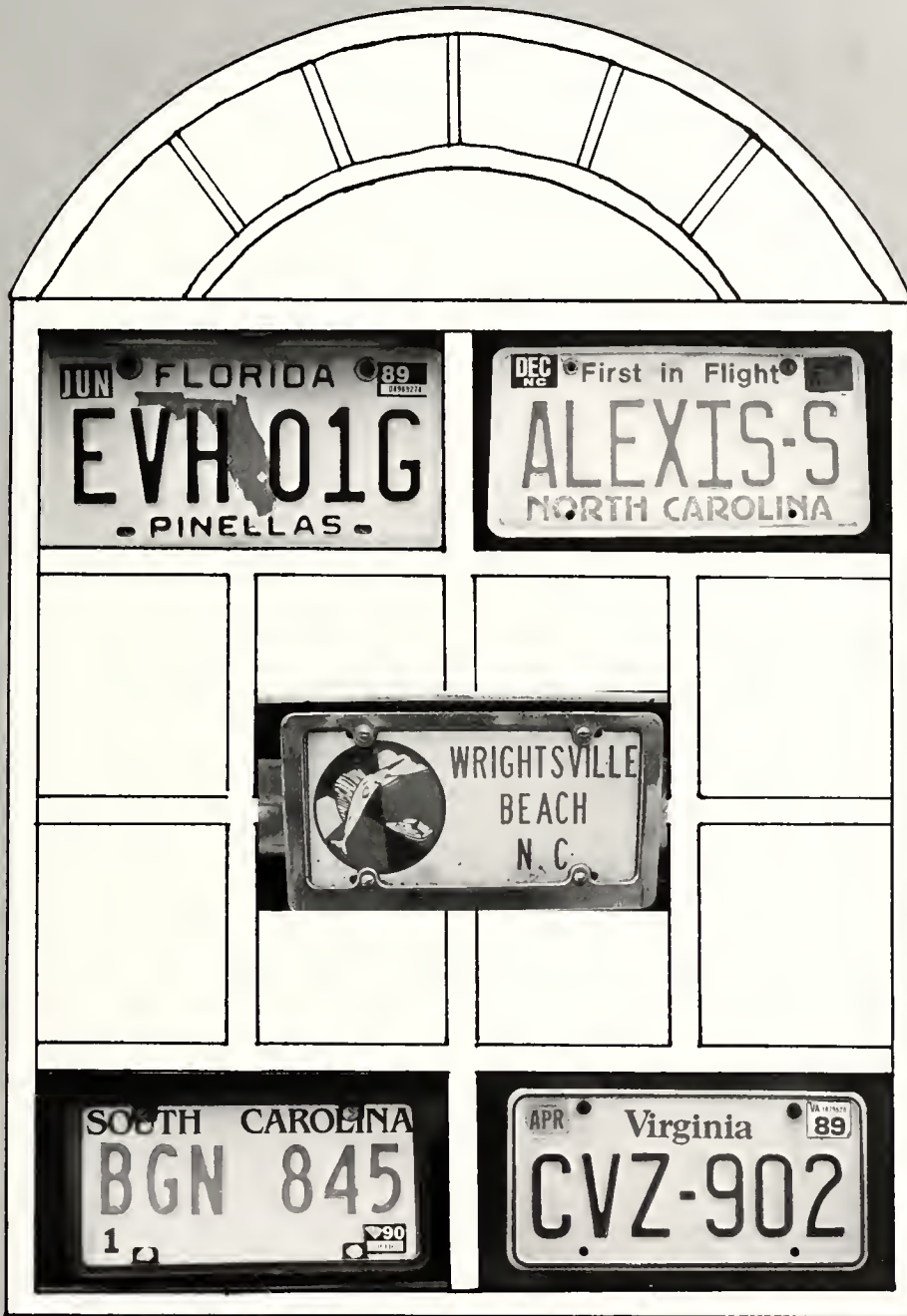


Susanna Jarvis
Miss Peace, 1989



"Miss Peace" is a title bestowed upon a sophomore of Peace College by the student body. The honored girl represents the very best of Peace life — in personality, friendliness, academics, and involvement. Susanna Jarvis has all of the qualities that make up the ideal Peace student. She has a soft-spoken, caring personality, is willing to help others, and she manages to balance work, study, student involvement, and a social life. A marshal and a Jones scholar, Susanna has been involved in student government since the beginning of her Freshman year and is presently student government president. Susanna says she feels "very lucky and happy to be chosen as Miss Peace. These two years at Peace College have been simply the best, and I'll always be proud to say that I am a "Peace Girl."





DIRECTORY

Adams, Dhalyn Lee 14534 Teal Court, Clearwater, FL 34622
Adams, Gina Graham 6308 Hawksbill Dr., Wilmington, NC 28403
Aheron, Michelle Leigh P.O. Box 394, Eden, NC 27288
Allen, Dedee Lynn 314 Dare St., Burlington, NC 27215
Allen, Laurie Ann 1702 Heathgate Pt., High Point, NC 27262
Allison, Jane Heather 4228-C Knob Oak Ln., Charlotte, NC 28211
Amelia, Kathleen C. 1626 Bnardcliffe Dr., Sanford, NC 27330
Ammons, Martha Ann 202 Eastbrook Dr., Red Spring, NC 28377
Anderson, Christie Marie Rt. 3 Box 805, Randleman, NC 27317
Anthony, Allison C. 5408 Alpine Dr., Raleigh, NC 27609
Anthony, Chrissie M. Rt. 12 Box 3768, Lexington, NC 27292
Atkins, Sharon Renee Rt. 17 Box 3428, Lexington, NC 27292
Atkinson, Caroline Cole 331 Robert E. Lee Dr., Wilmington, NC 28403
Baker, Elizabeth Sutton 17 Balmoray Ct. #6, Durham, NC 27707
Balentine, Cynthia R. 1416 Granada Drive, Raleigh, NC 27612
Ballard, Jody Laurie 4503 W Fairview Dr., New Bern, NC 28562
Barbee, Leeanne 553 Dogwood St. SE, Concord, NC 28025
Barbee, Margaret Lynn 553 Dogwood St. SE, Concord, NC 28025
Barker, Amy Kristen 4005 Yates Pond Rd., Raleigh, NC 27606
Barker, Amy Lee 1505 Lakepark Dr., Raleigh, NC 27612
Barnes, Laura Rainwater 1114 Jackson Ave., Florence, SC 29501
Barnhill, Mary Elizabeth 1704 Knollwood Dr., Greenville, NC 27858
Basham, Jeri Sue 5204 Swisswood Dr., Raleigh, NC 27612
Baucom, Dawn Patrice 3424 Oak Tree Trail Mathews, NC 28105
Beam, Krista Dianne 820 Surrey Drive, Shelby, NC 28150
Bennett, Elizabeth B. 3301 Round Hill Rd., Greensboro, NC 27408
Bennett, Rebekah Lynn 3615 Castleton Rd., Greensboro, NC 27406
Berryman, Holly Ann 604 Madison Ave., Hamlet, NC 28345
Berryman, Katherine 5016 B Windy Hill Dr., Raleigh, NC 27609
Best, Julie Anne P.O. Box 275 Rich Square, NC 27869
Bethune, Mary Catherine 288 Sunset Drive, Concord, NC 28025
Bettex, Michelle 5604E Falls of Neuse, Raleigh, NC 27609
Biesecker, Stephanie Ann 1203 Ascot Ct., High Point, NC 27260
Bissette, Tracey Dionne P.O. Box 216 Bailey, NC 27807
Black, Susan Marie 61 Fox Hollow Littleton, NC 27850
Blackwelder, Tamara E. 1108 Rice St., Hamlet, NC 28345
Bland, Sara Bentley 1022 H. South Main, Wake Forest, NC 27587
Blanton, Joyce Carol P.O. Box 185, Dudley, NC 28333
Blue, Lisa Gray P.O. Box 160, Rose Hill, NC 28458
Boehm, Elizabeth Anne 7109 Z-C Sandyforks, Raleigh, NC 27615
Boles, Christine Marie 8313 Harps Mill Rd., Raleigh, NC 27615
Bondurant, Mitzi E. 3420 3rd St. NW, Hickory, NC 28601
Borrell, Amy Carol 146 Devonshire Circle, Roanoke Rapids, NC 27870
Bowen, Mary Stuart 508 Smallwood Dr., Rocky Mount, NC 27804
Bowen, Stephanie Quinn P.O. Box 281, Rutherfordton, NC 28139
Boyette, Heather Keturah 6619 King Lawrence Raleigh, NC 27607
Boyle, Adrienne Vann 803 Raintree Court, Winston-Salem, NC 27106
Bradley, Nancy Samantha P.O. Box 2004, Atlantic Beach, NC 28512
Bradshaw, Marcia Ruth Rt. 3 Box 91, Clinton, NC 28328
Bradsher, Sarah Bass 2111 Medford Lane, Greensboro, NC 27408
Brady, Kimberley Hope P.O. Box 40667, Raleigh, NC 27629
Brannon, Jennifer Paige 105 Prince Place Greenville, NC 27858
Breedlove, Julie Paige 111 Crest Road, Henderson, NC 27536
Brett, Andrea Michelle 103 Nadine Street, Murfreesboro, NC 27855
Bright, Keli Dawn 1403 Kirkwood Dr., Durham, NC 27705
Britt, Rebecca Kaye 3203 Tucker Dr., Greenville, NC 27858
Britt, Sheila Elaine-CRC St. Mary's College, Raleigh, NC 27603
Broadwell, Christe Lynn 2330 Pony Farm Rd., Clayton, NC 27520
Brown, Leigh Ann 1208 Redwood Court, Kannapolis, NC 28081
Brown, Melanee Jane 621 Springbrook Ave., Concord, NC 28025
Brown, Susan Carole 540 Woodlawn Road, Mebane, NC 27302
Bryan, Mary R. Star Rt. Box 33, Maysville, NC 28555
Bryant, Dana Lynn Box 88 Courtland, VA 23837
Buljat, Stephenie 5124 Meadowbrook Dr., New Bern, NC 28562
Bullock, Jennifer Ann 503 Westchester Dr., Greenville, NC 27858
Bunker, Rebecca L. 105 Forest Dr., Clinton, NC 28328
Burnette, Leslie Markus Rt. 3, Box 139, Advance, NC 27006
Butler, Ashley Kay Rt. 2, Box 316 Lillington, NC 27546
Byrd, Stacey Rae 1922 Akins St., Asheboro, NC 27203
Cain, Cindy Rose P.O. Box 805, Blandenboro, NC 28320
Caldwell, Janet Parks 609 Blair Street, Greensboro, NC 27408
Camp, Amy Michelle 312 Blackwelder St., China Grove, NC 28023
Campbell, Kim Bayliss 122 Wildwood Dr., New Bern, NC 28562
Capell, Lisa Dianne 809 Bragg Dr., Wilmington, NC 28403
Carmichael, Dawn Racquel P.O. Box 3110 Atlantic Beach, NC 28512
Carpenter, Rachel B. P.O. Box 1106, Wendell, NC 27591
Carr, Tricia Louise P.O. Box 24, Buies Creek, NC 27506
Carter, Andrea Leslie Rt. 6 Stepp Mill Rd., Hendersonville, NC 28739
Carter, Julia Ann 195 Clinton Ave., Asheville, NC 28806
Cash, Katherine F. 101 Columbia Ave., Lynchburg, VA 24503
Cashion, Mary Kennerly P.O. Box J, Wendell, NC 27591
Cayton, Michele F. 209 Gloria St., Greenville, NC 27858
Chanthapheng, Chanthanome 920 Grover Rd., Kings Mountain, NC 28086
Clark, Catherine Lucille P.O. Box 535, Candor, NC 27229
Clark, Deborah Lynn 3641 Sugar Cane Circle, Fayetteville, NC 28303
Clark, Stephanie Faye 7312 #1, Stonediff, Raleigh, NC 27615
Claxton, Lisa Robette 7028 Rainwater Rd., Raleigh, NC 27615
Coggins, Rebecca Anne 102 Heritage Ct., Belmont, NC 28012
Coghill, Tamlyn Faye 601 Charleston Rd., Raleigh, NC 27606
Cole, Rebecca Ann 320 Bristol Rd., Wilmington, NC 28403
Conkey, Mary Mills 130 N. Mulberry St., Statesville, NC 28677
Conner, Cynthia Gail Rt. 2 Box 5, Halifax, VA 24558
Conner, Kimberly Dawn 209 Howland Ave., Cary, NC 27511
Cooper, Sheila Diane 503 McKay Street, Wagram, NC 28396
Copeland, Christi Kay Rt. 3, Box 305-C, Windsor, NC 27983
Covil, Christy Lee 4482 Beach Mtn. Ct., Wilmington, NC 28405
Cowan, Janice Ann P.O. Box 207, Webster, NC 28788
Cowles, Amy Lynn 2104 Wharton Lane, Charlotte, NC 28226
Cox, Anne Marie 1005 Twyla Rd., Morrisville, NC 27560
Crawford, Joanna Lynne P.O. Box 364, Vanceboro, NC 28586
Creech, Dina Lynn 111 Lochfield Drive, Cary, NC 27511
Creech, Mary Joseph 206 W. Waddell St., Selma, NC 27576
Crummie, Karen Marie 3405 Arboretum Place, Fayetteville, NC 28303
Crummie, Kelly Michelle 3405 Arboretum Place, Fayetteville, NC 28303
Cruze, Annabel Christina 1514 Ashburton Rd., Raleigh, NC 27606
Culp, Laura Allison 272 Heritage Place, Mooresville, NC 28115
Dailey, Ruth Nicole 3413 Elvin St., Raleigh, NC 27607
Daniels, Sonya Lynn Rt. 16, Box 118 Greenville, NC 27858
Darby, Elizabeth English 109 Ed Simmons Ct., Cary, NC 27511
Davenport, Stacy Lynn 37 Cypress Lane, Southern Shores, NC 27949
Davis, Kimberly Ann 105 Hearthside Dr., Greenville, NC 27834
Davis, Mary Melissa 233 Red Bud Circle Henderson, NC 27536
Davis, Pamela Jane Rt. 1, Box 416-C Raleigh, NC 27614
Davis, Pamela Ruth 630 St. Cloud Dr., Statesville, NC 28677
Deakin, Danielle Marie Rt. 3 Box 133, Rutherfordton, NC 28139
Deaner, Patricia Winsloe 104 Pine St., Washington, NC 27889
Dees, Heather Bronwen 72 Wayside Dr., Asheville, NC 28805
Dellinger, Allyson Ann 421 Canyon Trail, Charlotte, NC 28226
Devane, Catherine Dixon 3115 Cloverfield Rd., Charlotte, NC 28211
Dixon, Faith Leigh 324 Jay Trail, Murfreesboro, NC 27855
Dixon, Jennifer Lynn P.O. Box 718 Manteo, NC 27954
Dixon, Karen Renee 3302 Brook Lane, Wilson, NC 27893
Dixon, Melissa Lynn 1100 Brookside Dr., Wilson, NC 27893
Dohrmann, Christine Kay 5424 Clear Run Dr., Wilmington, NC 28403
Duecker, Pamela Sue P.O. Box 398 Hillsborough, NC 27278
Dulaney, Lori Ferrise 162 West Elm St., Mt. Airy, NC 27030
Dunlow, Cynthia Ann P.O. Box 296 Colerain, NC 27924
Dwyer, Robin Ann 7009 Robbie Dr., Raleigh, NC 27607
Earle, Sarah Elizabeth 810 Pine Valley Dr., Wilmington, NC 28403
Eaton, Edith Ashley 917 Benjamin Parkway, Greensboro, NC 27408
Eddins, Tammy Diane P.O. Box 73, Rolesville, NC 27571
Edens, Kelly Rose 5801 Morganton Rd., Fayetteville, NC 28314
Edgerton, Nancy Lynn 1612 Sherburg Ct., Raleigh, NC 27606
Ellis, Cheryl Ann Rt. 1 Box 14, Harrellsville, NC 27942
Elmore, Rhyle Lubeth 205 Tyree Rd., Kinston, NC 28501
Ennis, Kimberly Ann 216 33rd Ave., NW Hickory, NC 28601
Etheridge, Christine M. P.O. Box 72, Manteo, NC 27954
Eubanks, Sonja Rene 2004 Shiloh Dr., Fayetteville, NC 28304

Everette, Cheryl Lee 1130 E. Geer St., #5 Durham, NC 27704
 Fann, Kellie Dawn 307 Eden Dr., Washington, NC 27889
 Fauntleroy, Milica Eve 9413 Bartons Crk. Rd., Raleigh, NC 27615
 Ferris, Cheryl Ann 1008 Oxon Court, Cary, NC 27511
 Ferris, Mary Terese 1008 Oxon Ct., Cary, NC 27511
 Fisher, Kathryn Paige 613 Fayetteville Rd., Rockingham, NC 28379
 Fodel, Susan Elizabeth 4411 Longwood Dr., Charlotte, NC 28209
 Formyduval, Deborah Lynn Rt. 5, Box 93B, Southport, NC 28461
 Foster, Tracy Ann Box 66 North, VA 23128
 Fountain, Elizabeth M. 2620 Mayview Road, Raleigh, NC 27607
 Fowler, Jennie Lewis 1213 Steinbeck Dr., Raleigh, NC 27609
 Foy, Elizabeth Lee P.O. Box 180, Pollocksville, NC 28573
 Francis, Jessica Leigh Rt. 1 Box 383-A, Murfreesboro, NC 27855
 Frazier, Denise Anne 1124 S. Cambridge Dr., Rocky Mount, NC 27801
 Frazier, Kristin L. 4715 Charlottesville, Greensboro, NC 27410
 Freeman, Monica Lynn 1501 Brookfield Rd., Rockingham, NC 28379
 Fritts, Kimberly Bassett P.O. Box 862, Troy, NC 27371
 Fromm, Sandra J. 2235 Rocky Face Cir., Dalton, GA 30720
 Fuller, Cynthia Marie 1024 Chiswick Rd., Richmond, VA 23235
 Fulp, Jennifer Leigh 905 Sioux Dr., Jacksonville, NC 28540
 Futrell, Leigh Anne 3401 Cheyenne Dr., Raleigh, NC 27609
 Gardner, Cynthia Jean P.O. Box 554, Stanley, NC 28164
 Gardner, Sarah Lynn Rt. 4, Box 86, Laurinburg, NC 28352
 Garner, Pamela Kristen Rt. 4, Box 269-B, Newport, NC 28570
 Gay, Kristin Leigh 205 Walden Place, Raleigh, NC 27609
 Gay, Marguerite Katherin 117 Willow Oaks Ct., Rocky Mount, NC 27804
 Gerock, Julie Morgan 2219 Warrenton Way, Jacksonville, NC 28540
 Gibilaro, Nancy Lynn 813 N. Gurney St., Burlington, NC 27215
 Gilman, Ann Jo P.O. Box 432 Ashland, VA 23005
 Gloekler, Amy Susan 4248 Garden Spring, Clemmons, NC 27012
 Godwin, Rinnette Minor 4709 Scolly Ct., Raleigh, NC 27609
 Gooden, Kimberlee J. Rt. 1 Box 153, Elizabethtown, NC 28337
 Goodman, Shannon Ashley 810 Williamsburg Dr., Rockingham, NC 28379
 Greene, Stephanie Carol 3105 Foxridge Rd., Charlotte, NC 28226
 Griffin, Alice Louise 278 Sunset Dr., SE Concord, NC 28025
 Griffin, Allison M. 112 Woodland Circle, Franklin, VA 23851
 Griffin, Necole Rt. 4, Box 370 Williamston, NC 27892
 Grubbs, Kristine Dutcher 2015 Rock Ave., Fayetteville, NC 28303
 Gurley, Paula Dees 405 Lake Pines Dr., Lagrange, NC 28551
 Hackney, Heather Joe 114 Ashley Place, New Bern, NC 28562
 Hager, Kristi Dayle 4120 Redington Drive, Raleigh, NC 27609
 Haislip, Kathryn Jenee P.O. Box 1547 Elizabeth City, NC 27909
 Hale, Angela Leigh P.O. Box 209, Wendell, NC 27591
 Hales, Cynthia Louise 3408 Kilburn Rd., Raleigh, NC 27604
 Hall, Evelyn Laurann Rt. 4, Box 571 Warrenton, NC 27589
 Hamilton, Linda Louise 14225 Wyndfield Cir., Raleigh, NC 27615
 Hamlett, Meredith Page Rt. 1, Box 65-H, Victoria, VA 23974
 Hannah, Lydia Denise P.O. Box 283, Rolesville, NC 27571
 Hanson, Kristin Lynn 220 Larkin St., Morehead City, NC 28554
 Hardy, Katherine Cherie 500 Fairfield Drive, Rocky Mount, NC 27804
 Hargett, Melissa Queen 1106 Styx Drive, Monroe, NC 28110
 Harrill, Lorraine R. 928 Kearns Avenue, Winston-Salem, NC 27106
 Harrington, L. Michele 208 Dupont Circle, Greenville, NC 27858
 Harris, Catrina 525 Henry St., Wilmington, NC 28405
 Harris, Denise Kaye 204 Edgewood Dr., Louisburg, NC 27549
 Harris, Diane Ray 112 Elm St., Creedmoor, NC 27522
 Hart, Catherine Graham 6342 Marywood Drive, Wilmington, NC 28403
 Hart, Priscilla Fisher 9400 Litchford Rd., Raleigh, NC 27615
 Harting, Tiffany Leigh 444 Berkshire Drive, Danville, VA 24541
 Hartline, Mary Katherine 10118 Balmoral Circle, Charlotte, NC 28210
 Harvey, Tara Felicia 2920 Bolo Trail, Raleigh, NC 27615
 Haskett, Kelly Patricia Box 115, Webster, NC 28788
 Hattaway, Kimberly Ann 450 Ridgeview Drive, Mocksville, NC 27028
 Headspeth, Jacki Baker 1605 Alderman Drive, Greensboro, NC 27408
 Hearn, Cheryl Rene 9400 Doe's Run Court, Raleigh, NC 27612
 Helms, Andrea Lee 611 Mt. Vernon Ave., Charlotte, NC 28203
 Henderson, Melissa Dawn 1604 Seminole Trail, Raleigh, NC 27609
 Hester, Susan Lynn 2110 Woodland Rd., Henderson, NC 27536
 Hill, Leigh Marie 407 Rogers Court, Belmont, NC 28012
 Hill, Tonya Elizabeth 5006 Huntmaster Trail, Greensboro, NC 27407
 Hirsch, Lori Ann 6676 English Ivy Ln., Raleigh, NC 27609
 Hockaday, Susan Melody P.O. Box 1143 Roanoke Rapids, NC 27870
 Holcher, Anna Kathleen 201 Hibbitts Ave., Lenoir, NC 28645
 Holmes, Jennifer Susan 130 Wilkins Rd., #2-C, Durham, NC 27705
 Holmes, Laura Smith 3237 Octavia St., Raleigh, NC 27606
 Honeycutt, Claire Louise 347 Hatley Circle, Concord, NC 28025
 Hopkins, Dorothy Carol P.O. Box 1844, Elizabeth City, NC 27909
 Horton, Kimberly Lynn 2803 Deerfield Lane, Wilson, NC 27893
 Housand, Tonya Lorece 935 Hwy. 17, Hampstead, NC 28443
 Howard, Jennifer Ann 106 Live Oak Place, Roanoke Rapids, NC 27870
 Howe, Laura Grace 407 Glen Arbor Belmont, NC 28012
 Howlett, Lucinda Cole 4709 Woodridge Drive, Raleigh, NC 27612
 Hudson, Kimberly W. 216 S. Lake St., Cary, NC 27511
 Hughes, Stephanie T. 402 Oak Drive, Washington, NC 27889
 Jarvis, Susanna C. P.O. Box 248, Swan Quarter, NC 27885
 Jenkins, Kelli Holland 126 Fairway Drive, Rockingham, NC 28379
 Jenkins, Dawn M. 4565-B Hargrove St., Raleigh, NC 27604
 Jernigan, Elizabeth Jane P.O. Box 233-Main St., Winton, NC 27986
 Jespersen, Lene Frimodt Hyldeager 23 2650 Hvidovre, Denmark 00002
 Johnson, Andrea Louise 1370 5th St., Cl, N.W. Hickory, NC 28601
 Johnson, Barbara Diane 615 Union St., Cary, NC 27511
 Johnson, Cornelia Lynch 1128 Crdland Rd., Greensboro, NC 27408
 Johnston, Ashley Scott 410 Pine Crest Dr., Marion, NC 28752
 Johnston, Nancy E. 1502 Magnolia Place, Wilmington, NC 28403
 Johnston, Susan Slate 124 Asbury Rd., Greenville, NC 27858
 Johnstone, Amelia Hayne 2303 Byrd Street, Raleigh, NC 27608
 Jones, Alicia Gayle P.O. Box 211, Anger, NC 27501
 Jones, Amy Leigh Rt. 1, Box 406, Nashville, NC 27856
 Jones, Angela Paulette 4322 Batts Road, Raleigh, NC 27604
 Jones, Kathleen Nevada 12410 Cutler Ridge D, Richmond, VA 23233
 Jones, Kimberly Dyanne Box 85 Coburn Lane, Hardeeville, SC 29927
 Jones, Nanette 134 Stonybrook Road, Salisbury, NC 28144
 Jordan, Angela Leigh 5805-E Sharron Rd., Charlotte, NC 28211
 Jordan, Barbara Avent 4816C Tapers Dr., Raleigh, NC 27604
 Joyner, Joanna Renee Westgate Ter. Apt. B-3, Nashville, NC 27856
 Kemp, Lucy Caroline 319 Bossong Dr., Asheboro, NC 27203
 Kerley, Christie Ann 312 Hillcrest Dr., Lexington, NC 27292
 Key, Tonya Michelle 2051 Walker Avenue, Burlington, NC 27215
 Killebrew, B. Denise 4410 Lakenidge Dr., Raleigh, NC 27604
 Killian, Christie Marie 920 Oakmont Drive, Asheboro, NC 27203
 King, Angelina Louise Rt. 5, Box 548 JD, Jacksonville, NC 28546
 King, Karen Michelle 120 Tall Pine, Kitty Hawk, NC 27949
 Kinney, Suzette Danielle 1303 Cushing Street, Greensboro, NC 27405
 Kitchin, Noelle Marie 602 Curtis Rd., Warsaw, NC 28398
 Kron, Allison Mary 3801 Hawthorne Rd., Rocky Mount, NC 27804
 Lail, Jennifer Allison 180 BPW Club Rd., V-3, Carboro, NC 27510
 Lamm, Margaret Lancaster 1117 Watson Drive, Wilson, NC 27893
 Lancaster, Cathryn A. 303 Sylvan Road, Fayetteville, NC 28305
 Lancaster, Ginger Carol Rt. 1 Box 53, Pikeville, NC 27863
 Land, Julie Elizabeth 1210 Hampshire Drive, Kannapolis, NC 28081
 Landreth, Julia Rachel 200 Ward Road, Greensboro, NC 27405
 Langley, Kelly Rae 407 Danforth Drive, Gary, NC 27511
 Langley, Paula Grey 204 Alexander Drive, Rocky Mount, NC 27804
 Lassiter, Mary Lesene 3403 Round Hill Rd., Greensboro, NC 27408
 Lassiter, Pamela Lynne Rt. 1, Box 404-C, Hamlet, NC 28345
 Lee, Sherri Vann 5029 Celeste Ct., Matthews, NC 28105
 Leggette, Christy Currie 110 Floyd Street, Tabor City, NC 28463
 Lemon, Mary Caroline 7905 Wynewood Dr., Raleigh, NC 27604
 Leonard, Marlin Gray Rt. 13 Box 3354, Lexington, NC 27292
 Lewis, Lisa Renee 554 Olde Point Road, Hampstead, NC 28443
 Lewis, Tiffany Irene 101 Howland Rock Pky., Beaufort, NC 28516
 Liles, Mary Howerton 801 Whitmore Dr., Raleigh, NC 27606
 Lilley, Sara Margaret Route 2, Box 677, Williamston, NC 27892
 Linebarger, Lori Leigh County Rd. 1138, Newport, NC 28570
 Lively, Janet Lea 1408 Flat Rock Road, Louisville, KY 40223
 Locklear, Sylvia Ann 6047 McDougal Dr., Fayetteville, NC 28304
 Lowe, Kathryn Caroline 3704 Sheffield Dr., Rocky Mount, NC 27803
 Lowery, Mary Elizabeth 1802 Friendly Road, Goldsboro, NC 27530

Malcolm, Stephanie Ann 403 Kemp Ave., Roanoke Rapids, NC 27870
Mallard, Caroline G. 114 Harrell St., Greenville, NC 27858
Mallard, Emilie Blanding 114 Harrell St., Greenville, NC 27858
Mallard, Kimberly Dawn 110 Golf Rd., Plymouth, NC 27962
Mangum, Beverly Carol 3001 Winstead Rd., Rocky Mount, NC 27804
Marriott, Jan Baldwin 1801 Green Hill Rd., Virginia Beach, VA 23454
Mason, Leanne Route 2, Box 787, Newport, NC 28570
Mason, Mary Ethel P O Box 406, Murfreesboro, NC 27855
Massingill, L. Beth 513 Morningside Dr., Durham, NC 27713
Matlock, Andria Jo 2104 Tyson St., Raleigh, NC 27612
Matthews, Tonya Lynn Rt 2, Box 310, Angier, NC 27501
Maule, Jennifer Lyn 3209 Debra Lane, Sanford, NC 27330
Maxon, Nicole Eyrll 11 Jamestown, Greenville, NC 27834
May, Gina Josette 101 Williams St., Dunn, NC 28334
Maynard, Amy Kathleen 2501 Westover Dr., Henderson, NC 27536
Mayo, Karen Lynn 517 Baytree Road, Wilmington, NC 28403
McCullen, Anna Lynn 408 Winterlocken Dr., Sanford, NC 27330
McDonald, Ann Wimberly 3021 Ridgecrest Dr., Rocky Mount, NC 27803
McGee, Elizabeth F. 2540 Buena Vista Rd., Winston-Salem, NC 27104
McIntyre, Rachel Carla 2455 Morningside, Burlington, NC 27215
McKenzie, Jennifer Ann 414A W of Northbend, Raleigh, NC 27609
McLean, Frances E. 8820 Gotherstone Ct., Raleigh, NC 27615
McLeod, Elizabeth M. 509 N Main St., Raleigh, NC 28376
Medlin, Jeanette E. 1613 Curmtuck Ave., Dunn, NC 28334
Medlin, Kimberly Lynn 100 Tartan Court, Garner, NC 27529
Meeke, Lisa Michelle 302 Wesley Rd., Greenville, NC 27858
Melvin, Kimberle Grae 4148 Landover Lane, Raleigh, NC 27604
Melvin, Leigh Ann Rt 2, Box 734, Elizabethtown, NC 28337
Mendenhall, Susan L. 614 W Famms Ave., High Point, NC 27262
Miller, Amy Lee 611 W Cornwall Rd., Cary, NC 27511
Miller, Chamberlee Ruth 203 W Franklin St., Williamston, NC 27892
Millner, Carolyn Lynn P O Box 556, Providence, NC 27315
Millspaugh, Julie L. 2730 Sierra Dr., Colorado Springs, CO 80917
Minchew, Gina Lynn P O Box 429, Wallace, NC 28466
Minier, Susan Baldwin 829 Shannon Rd., Asheboro, NC 27203
Mitchell, Amy Christine 315 Melissa Way, Hendersonville, NC 28739
Mittelstadt, Kathryn D. 202 Hoffman Dr., Jacksonville, NC 28541
Moffitt, Elizabeth Anne 2507 Cardinal St., Asheboro, NC 27203
Mofield, Randi Leigh 607 McQueen Rd., Aberdeen, NC 28315
Monroe, Anne Gretchen P O Box 802, Atlantic Beach, NC 28512
Monroe, Melissa Caroline 305 Crown Pt Rd., Greenville, NC 27858
Moore, Lara Christian 1318 Sonata St., Greenville, NC 27858
Moore, Meredith Anne 7021 Robbie Dr., Raleigh, NC 27607
Moseley, Suzanne E. 4905 Hermitage Rd., New Bern, NC 28560
Moser, Jill Patricia 307 Larry Dr., Kannapolis, NC 28081
Moss, Traci Jean RT 2, Box 4-A, Nashville, NC 27856
Murdock, V. Caroline 415 Norwood St., SW Lenoir, NC 28645
Murray, Elisabeth E.J.P. Rt. 1, Box 165-4, Horsehoe, NC 28742
Murray, Megan E.M. 407 West 36th St., Lumberton, NC 28358
Nations, Tina Renee Rt. 2, Box 226A, Whittier, NC 28789
Naylor, Anjanette Lee 922 Pamlico Dr., Cary, NC 27511
Neely, Marie Margaret P O Box 336, N Myrtle Beach, SC 29597
Ngo, Hue Lam 2404 Tusket Ct., Raleigh, NC 27612
Ngo, Linh Lam 2404 Tusket Ct., Raleigh, NC 27612
Nissley, Nicole Anne Rt. 3, Box 53, Brevard, NC 28712
Norris, Nicole Marie P O Box 752, Candor, NC 27229
Odom, Mary Elizabeth 702 West 21 St., Lumberton, NC 28358
Ogburn, Anne Walker 534 Shannon Rd., Asheboro, NC 27203
Oldham, Heather Megan 547 Shannon Rd., Asheboro, NC 27203
Oliver, Harriet Lee Rt 3, Box 225E, Ahsokie, NC 27910
Olliver, Lisa Diann P O Box 584, Misenheimer, NC 28109
Outlaw, Lisa Michelle 5807 Bent Creek Rd., Midlothian, VA 23112
Overton, Tracy Nicole Rt. 1, Box 200A, Como, NC 27818
Owen, Laura Marie Rt 1, Box 3C, Skipwith, VA 23968
Packer, Angela Marie 1002 Vandora Ave., Garner, NC 27529
Pagura, Beverley Carina Rt. 5, Box 535, Burlington, NC 27215
Pappendick, Lori K. Rt 1, Box 419-B, Rocky Point, NC 28457
Patterson, Laura S. 1573 Timberlake Dr., Shelby, NC 28150
Payne, Haden Wakefield 1107 Cherokee Trail, Martinsville, VA 24112

Peal, Margaret Elizabeth P O Box 1586, Morehead City, NC 28557
Pearce, Donna Joyce Rt 3, Box 168-C, Zebulon, NC 27597
Peele, Amy Michelle Rt 1, Box 525, Lunnburg, NC 28352
Pensabene, Diane Marie 2201 Seth Thomas Rd., Charlotte, NC 28210
Peppers, Julia Carol 612 Peachtree St., Lexington, NC 27292
Perry, Dawn Michelle 1208 B Schaub Dr., Raleigh, NC 27606
Perry, Jacqueline Mann 3440 Apache Dr., Raleigh, NC 27609
Perry, Kimberly 5603 Denham Court, Fayetteville, NC 28304
Pharr, Nicole Dorma 845 Redding Rd., Asheboro, NC 27203
Phillips, Carol E. 1607 Efland Dr., Greensboro, NC 27408
Phillips, Stephanie K. 306 Holly Lane, Morehead City, NC 28557
Phipps, Tammy Yvonne 302 Brevard, St. Selma, NC 27576
Pike, Catherine Frances 4100 Norman Rd., New Bern, NC 28560
Pittman, Virginia Lee 1203 Brucemont, Dr. Garner, NC 27529
Pitts, Marjorie Helen 339 7th Ave. NE, Hickory, NC 28601
Potts, Ashley Elizabeth 1627 Paisley Ave., Fayetteville, NC 28304
Potts, Meredith Ellen Rt. 5, Box 20, Apex, NC 27502
Powell, Kami Lane 1110 Ralph Dr., Cary, NC 27511
Pretorius, Kristin Ann 723 Stillwater Dr., Augusta, GA 30907
Price, Blaire Branson 1810 Catawba St., Fayetteville, NC 28303
Priest, Cathie Lynne 2816 Fowler Ave., Raleigh, NC 27607
Propst, Angela Lynne Rt. 1, Box 59-P, China Grove, NC 28023
Pyscher, Alice Tate 4610 Jacqueline Ln., Raleigh, NC 27604
Rasmussen, Elizabeth M. 1317 Overland Dr., High Point, NC 27260
Ray, Elizabeth Pauline 925 Cleveland St., Roanoke Rapids, NC 27870
Ray, Kimberly Shawn 5429 Thompson Circle, Hope Mills, NC 28348
Raymond, Rhoda Lynn 108 E. Hunter's Tr., Elizabeth City, NC 27909
Reason, Carolyn E. Rt 1, Box 272-B, Youngsville, NC 27596
Reason, Belinda Lou 1905 Oakdale Dr., Wilson, NC 27893
Rehoie, Shamim 7005-3B Sandy Forks, Raleigh, NC 27615
Reid, Anna Carpenter 1423 Pine Valley L., Fayetteville, NC 28305
Rhinehart, Julia H. 206 Wayne Dr., Wilmington, NC 28405
Rhodes, Sharon E. 102 Queensbury Ct., Garner, NC 27529
Richardson, Melissa Ann Rt. 2, Box 354, North Wilkesboro, NC 28659
Richbourg, Amanda Chea 18206 Westminster Lake, Oswego, OR 97034
Riddick, Joni Ann Rt. 1 Box 194, Hobbsville, NC 27946
Riggan, Carolyn Ashley Rt 2, Box 808, Littleton, NC 27850
Rigsbee, Christian Hope 134 Tanbndge Rd., Wilmington, NC 28405
Riley, Kelly Diane 3038 Lake Forest Dr., Greensboro, NC 27408
Ringler, Tammy Lynn 3732 Dusty Lane, Raleigh, NC 27604
Rings, Wendy Sue 4420 Stonehenge Rd., Tampa, FL 33624
Rios, Bernice Elaine 313 Prairie Ct., Fayetteville, NC 28303
Rivenbark, Shelly Hall 3908 St. Regis Dr., Gastonia, NC 28054
Rives, Christina E. 9217 Shotgun Ct., Springfld, VA 22153
Rives, Karen Patricia 9217 Shotgun Ct., Springfield, VA 22153
Roberson, Amy Diane Rt 1, Box 794, Williamston, NC 27892
Roberts, Cynthia Rae 6021 Caledonia St., Raleigh, NC 27609
Roberts, Gwendolyn Dee 106 Myrtle Place, Jacksonville, NC 28540
Roberts, Kimberly Rene 4419 Forest Walk Dr., Greensboro, NC 27408
Roberts, Melissa Dee 1602 Wedgewood Dr., Graham, NC 27253
Robertson, Reid Adele 119 Canterbury Trail, Asheboro, NC 27203
Rogers, Courtney Gwen 1806 Anita Dr., Lunnburg, NC 28352
Ross, Ashley Tricia Rt. 3, Box 626, Hillsborough, NC 27278
Ross, Marcia Alana Rt. 1, Box 159, Creedmoor, NC 27522
Rouse, Stephanie Wray 1005 Walker Dr. Kinston, NC 28501
Rush, Laura Lee P O Box 58, Stedman, NC 28391
Salmon, Kathleen L. 3019 Cliffdale Rd., Fayetteville, NC 28303
Sauls, Betty Lynn Rt 1, Box 52B, Warsaw, NC 28398
Schrader, Laura Leigh 6 Anson Circle, Greensboro, NC 27407
Scott, Alexis Bridgers Rt. 4 Box 546, Tarboro, NC 27886
Scott, Christie Dawn Box 133, Fairway Rd., Morehead City, NC 28557
Seidler, Stefanie S. 2708 S. Lost Colony, Nagshead, NC 27959
Seymour, Mary Spencer P O Box 634, South Hill, VA 23970
Shaffer, Marel 3822 Nottaway Rd., Durham, NC 27707
Shankle, Carolyn E. 4104 Balsam Dr., Raleigh, NC 27612
Sharpe, Abigail Eva 102 Maybank Ct., Durham, NC 27713
Shell, Elizabeth Brand 312 S 3rd St., Wilmington, NC 28401
Shepard, Leigh Ann 212 Club Dnve, Kinston, NC 28501
Shepherd, E. Shannon 104 Darwin Court, Greenville, NC 27834

Sheppard, Kelly Ann 6013 Cobridge Sq., Raleigh, NC 27609
 Sherrill, Lisa Alexandra Rt. 9, Box 475, Mocksville, NC 27028
 Shoaf, Jennifer E. 108 Hemlock Dr., Lexington, NC 27292
 Shook, Susan Elizabeth 1208 Buckingham Rd., Greensboro, NC 27408
 Simmons, Kimberly N. 434 S. Countryside, Ashland, OH 44805
 Sloan, Susan Beth 110 Asbury Rd., Greenville, NC 27858
 Small, Constance Helena 1811 Dial Dr., Durham, NC 27713
 Smith, Christy Michelle 1209 Woodacre Cir., Kannapolis, NC 28081
 Smith, Deborah Jean 166 Buttonwood Dr., Hillsborough, NC 27278
 Smith, Heather Leigh 1907 W "B" St., Butner, NC 27509
 Smith, Jean Marie 4917 Dan David Dr., Raleigh, NC 27606
 Smith, Kimberley M. Rt. 3, Box 10, Pittsboro, NC 27312
 Smith, Laura Elizabeth 3003 Truitt Dr., Burlington, NC 27215
 Smith, Marie Ann Rt. 2, Box 454, Conway, NC 27820
 Smith, Rebecca Ann Rt. 3, Box 46, Bladenboro, NC 28320
 Smith, Sharon Marie 5726 State Rd., 1373 Goldsboro, NC 27530
 Smithson, Lisa Carol 3806 Parkwood Circle, Monroe, NC 28110
 Soto, Maria Del Carmen 2072 Poplar Dr., Fayetteville, NC 28304
 Sourisak, Chanmaly 707 Milbrook Rd., Raleigh, NC 27609
 Southerland, Karen Dee Rt. 1, Box 192A, Chinquapin, NC 28521
 Spence, Lara Louise 713 Kimbrough St., Raleigh, NC 27608
 Spencer, Kristana Rt. 2, Box 42, Creswell, NC 27928
 Spencer, Laura Ruth P.O. Box 628, Wake Forest, NC 27587
 Spencer, Patricia M. 2948 Wedgeview Dr., Fayetteville, NC 28306
 Spivey, Jennifer Leigh 3113 Baker St., Fayetteville, NC 28303
 Stanley, Susan E. 6419 Brookbury Court, Charlotte, NC 28226
 Stapleford, Mary Anne 1308 Par Drive, Kinston, NC 28501
 Starbuck, Kelly Renee 123 Cypress Ave., Wrightsville Beach, NC 28480
 Stark, Elizabeth Anne P.O. Box 78 Amelia, Courthouse, VA 23002
 Stevens, Linda Gregory 2200 Rangeprest Rd., Raleigh, NC 27612
 Stevens, Sunya Lee 105 New Kent St., Lumberton, NC 28358
 Stinson, Anne Virginia 3100 Flanders Court, High Point, NC 27260
 Strickland, Robin Renee 466 E. Duke St., Rocky Mount, NC 27804
 Sturdivant, Maria Ann Rt. 17 Box 300, Lexington, NC 27292
 Stutts, Christina Kaye 1343 Forest Dr., Graham, NC 27253
 Styron, Melodi Gwen Rt. 2, Box 6838, Beaufort, NC 28516
 Suehr, Jennifer Blair 8316 Old Deer Trail, Raleigh, NC 27615
 Surratt, Wendy Renée 302 Carter Road, Monroe, NC 28110
 Sutton, Pencie Clark 902 South Main St., Reidsville, NC 27320
 Sutton, Tamra Sue 400 Caroline Ave., Clinton, NC 28328
 Swain, Nicole Elizabeth P.O. Box 94, Creswell, NC 27928
 Sweezy, Gina Michelle P.O. 2226, Hickory, NC 28603
 Swing, Meredith Allison 113 Barcliff Terrace, Raleigh, NC 27606
 Taft, Martha Anna 106 Kenilworth Rd., Greenville, NC 27858
 Tart, Leslie Annette 9717 Lee Loop Road, Cameron, NC 28326
 Tatum, Perry Elaine Rt. 1, Box 91, Lumberton, NC 28358
 Tayloe, Mary Margaret 308 Commerce St., Aulander, NC 27805
 Tayloe, Tracy Lyn Rt. 2, Box 72, Ahoskie, NC 27910
 Taylor, Jeanne Diane 15 Alpine Way, Asheville, NC 28805
 Taylor, Kimberly Renee 1505 West Nash St., Wilson, NC 27893
 Taylor, Shannon Ashley 925 Athens Dr., Raleigh, NC 27606
 Taylor, Terri Denise 301 Old Coach Road, Rocky Mount, NC 27804
 Teague, Melanie Dawn 605 Birchwood Dr., Nashville, NC 27856
 Teal, Leigh Ann 408 Edgewood St., Ayden, NC 28513
 Telfer, Nancy G. 117 W. Park Dr., Raleigh, NC 27605
 Temple, Kristy Jo 104 Quail Run, Newport, NC 28570
 Templeton, Torrey Cross 220 N Edinborough, Red Springs, NC 28377
 Tesh, Amy Elizabeth 350 Lancelot Cir. NE, Concord, NC 28025
 Thomas, June Watkins 183 Confederate Ave., Danville, VA 24541
 Thomason, Delean Longley 489 Windwood On Skye, Fayetteville, NC 28303
 Thompson, Elizabeth S. Rt. 10 Box 307, Hickory, NC 28601
 Thompson, Paige Lee 117 Holly Lane, Morehead City, NC 28557
 Tozzi, Gina Marie 2319 Brices Creek Rd., New Bern, NC 28562
 Tracy, Ronda Faye Rt. 5, Box 339, Louisbury, NC 27549
 Travis, Susan Lyn 7025 Ceder Bend Ct., Raleigh, NC 27612
 Tripp, Mary Katherine 603 W. 24th St., Lumberton, NC 28358
 Tucker, Christina Dianne 2349 Churchill Rd., Raleigh, NC 27608
 Tucker, Debbie Carol 8109 Thordike Rd., Greensboro, NC 27409
 Turner, Jill Michelle 1702 Willow-Wick Dr., Greensboro, NC 27408
 Turner, Sarah Beth Rt. 1, Box 77-A, LaGrange, NC 28551
 Tyndall, Kristin Davis 502 Edgewood Cir., Whiteville, NC 28472
 Tyner, Leslie Carlson 2124 Hillock Dr., Raleigh, NC 27612
 Upchurch, M. Elizabeth Rt. 1, Box 169, Lillington, NC 27546
 Vacca, Tracey Arleen 125 North Elm St., Statesville, NC 28677
 Vick, Lisa Gray 3000 Wolf Trap Dr., Wilson, NC 27893
 Vuncannon, Jessica Paige 101 Parker Dr., Fuquay-Vanna, NC 27526
 Waddell, Leigh Collins Rt. 1 Box 34, Fair Bluff, NC 28439
 Wade, Angela Kay 886 E. Sunset Dr., #9 Monroe, NC 28110
 Walker, Wendi Lyn 3509 Campbell Rd., Raleigh, NC 27606
 Wall, Kelly Cameron 14 Upton Court, Greenville, NC 27858
 Warrick, Holly Carol 214 Springwood Rd., Asheboro, NC 27203
 Washer, Carolyn Diana 1048 15th Ave. NW, Hickory, NC 28601
 Waters, Christin Maria 112 Tomahawk Trail, Clinton, NC 28328
 Watson, Monica Leigh 5610 Sardis Rd., Charlotte, NC 28226
 Watts, Angela Denise Rt. 1, Box 363-C, Nakina, NC 28455
 Waye, Tracey Gail 1709 Aftonshire Dr., Greensboro, NC 27410
 Weathers, Jennifer Lynn 507 Arbutus Dr., W Roanoke Rapids, NC 27870
 Weeks, Caroline R. 207 Fairway Dr., Lexington, NC 27292
 Weir, Claudia Joan 291-Buckeye Core Rd., Swannanoa, NC 28778
 Welch, Robin Lynn 249 Heatherton Way, Winston-Salem, NC 27104
 Weldon, Lucille Lee P.O. Box 218, Norlina, NC 27563
 Wells, Rebecca Ellen Rt. 1 Box H-50, Whiteville, NC 28472
 West, Tiffany Gaye 248 Wythe Ln., Wendell, NC 27591
 Westbrook, Ashley Ann 3204 Hodges Rd., Kinston, NC 28501
 Westbrook, Felisha Ann 4434 Talcott Dr., Durham, NC 27705
 Whitaker, Dondi Michele 1526-I Spitoak Ln., Richmond, VA 23229
 White, Cheryl Ann Rt. 1, Box 159C, Elizabethtown, NC 28337
 White, Debra Gail Rt. 4, Box 208, Trinity, NC 27370
 White, Kelli Lynne 1802 Sara Lane, Raleigh, NC 27606
 Whitley, Scarlett E. 206 Breckenridge Dr., Knightdale, NC 27545
 Wiggs, Mary Catherine 2818 Anderson Dr., Raleigh, NC 27608
 Williams, Amy Michelle 566 Dogwood St., Concord, NC 28025
 Williams, Brandye Kay 200 N. Croom, Magnolia, NC 28453
 Williams, Cameron M. 204 Chestnut St., Lexington, NC 27292
 Williams, Doris Ann 308 Spring Branch Rd., Dunn, NC 28334
 Williams, Juli Ann 710 Runnymede Rd., Raleigh, NC 27607
 Williams, Kelly Renée 104 Merlin Dr., Knightdale, NC 27545
 Williams, Tina Lynn-Crc St. Mary's College, Raleigh, NC 27603
 Willis, Lisa Marie Rt. 1, Box 503, St. Pauls, NC 28384
 Wilson, Diana Lee 5505 Western Blvd., Raleigh, NC 27606
 Winstead, Johna Blair 1301 Lakeside Dr., Wilson, NC 27893
 Winstead, Leigh Ann 1111 Ensworth Rd., Wilson, NC 27893
 Wobbleton, Janet Marie Rt. 4, Box 1003, Williamston, NC 27892
 Wolverton, Christman 2100 Camrose Lane, Raleigh, NC 27608
 Woo, Soon Bok 5941 Wintergreen Dr., Raleigh, NC 27609
 Woods, Victoria Ashley Rt. 2, Box 214, Maxton, NC 28364
 Worsley, Jill Lynn P.O. Box 446, Elizabethtown, NC 28337
 Wrenn, Amy Janine Rt. 3, Box 89B, Fuquay-Vanna, NC 27526
 Wyant, Maria Michelle Rt. 2, Box 481, Dallas, NC 28034
 Young, Elizabeth Mary 1813 Longwood Drive, Raleigh, NC 27612
 Yount, Jane Caroline 3606 Trail 23, Durham, NC 27707
 Zipsir, Caren Leslie 1751 Ardley Rd., Juno Isles, FL 33408

PERSON STREET PHARMACY

702 N. Person Street
Raleigh, N.C. 27604
Phone 832-6432
Serving Peace College for 60 Years
Free Delivery
10% Discount for Peace Students

Monday-Saturday
9AM-6PM

Closed
Sunday

Nancy B. Bunting, CPA

P.O. Box 31584
5171 Glenwood Avenue
Raleigh, N.C. 27622
(919) 781-7096

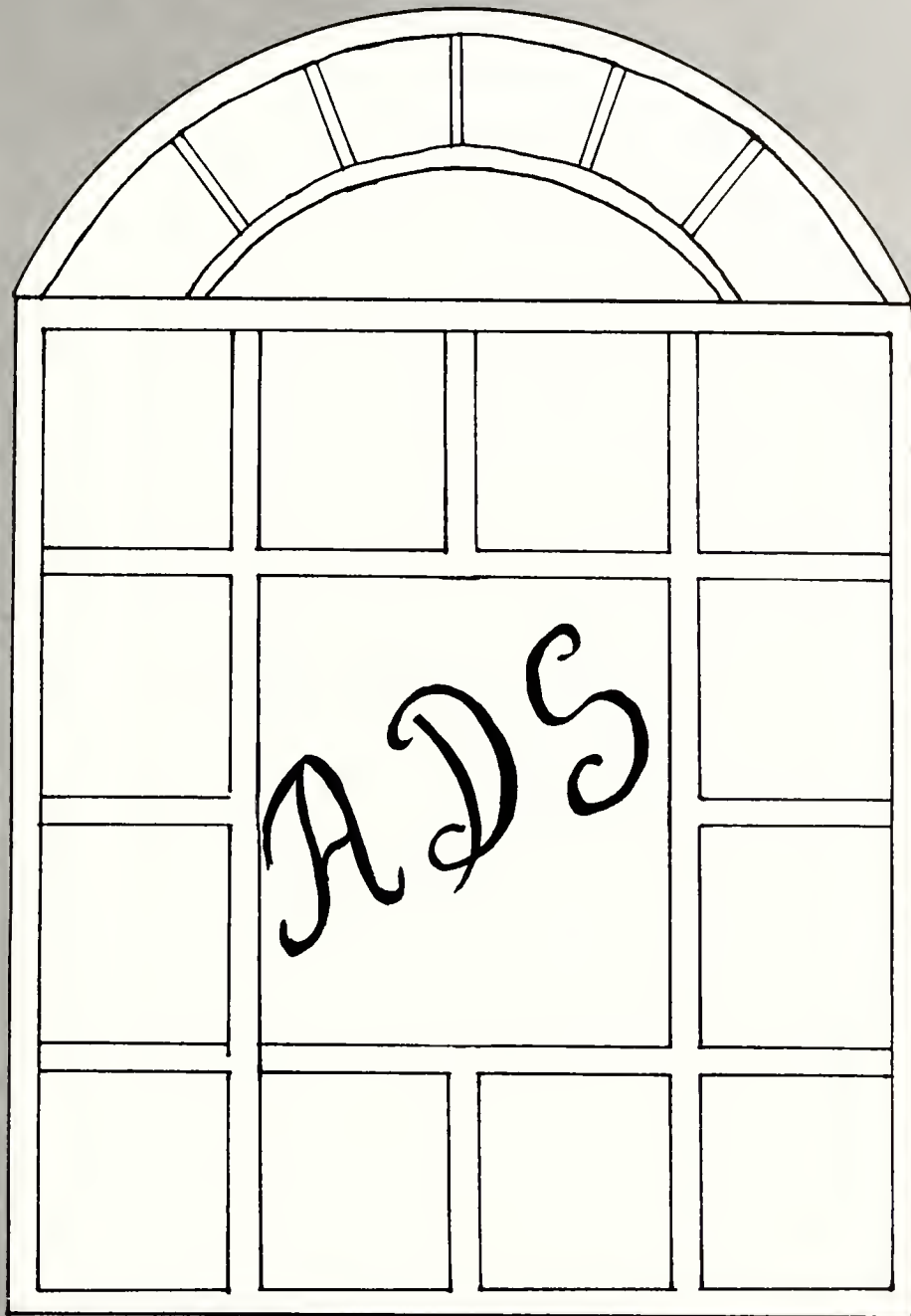
Individual and Business
Tax Preparation

Bride's World

North Hills Mall "Promenade"
Raleigh, N.C. 27609
Phone 919-782-1183

Raleigh's oldest and most reliable
bridal shop.

Specializing in bridal, formal
gowns, and graduation gowns.



ADS

Mordecai Bridal & Tuxedo

BRIDAL GOWNS — BRIDESMAID GOWNS
MOTHER OF THE BRIDE
FORMAL, PROM & COCKTAIL GOWNS
TUXEDO RENTALS AND COMPLETE FLORAL
SERVICES

832-6447
707 N. PERSON ST.

WE HONOR
ALL MAJOR
CREDIT CARDS

GIFTS &
ACCESSORIES

Mike Hutzler, photographer

JCPenney

We know what you're looking for.

Campus dining. ARA gives it the Olympic treatment.

Tailoring food service to students' needs is ever challenging.

And ARA loves challenges.

We're constantly developing new merchandising ideas that earn top grades such as our imaginative "board" service.

Or our Treat Yourself Right™ program convinces students that nutritious food also can taste good.

And our Itza Pizza™ service featuring fresh-baked, dormitory delivered pizza.

We treat students the same way we treat Olympic athletes. We give them our best.

Like the athletes, we're only as good as our last performance.

So we have to go for the gold every day. And we do.

Call 1-800-328-5200.

And let ARA do it!

ARA
services

Campus Dining Services





... X... "Oops! didn't mean to be mean"... Bat honey... "Coke" and "smoke"... Betty... Kelly's Mixers... Surf and turf... frumpy... Char Grill... "you can stay in the closet"... couldn't move... these eyes... "you might wake the birdies"... presh!... wooo... broken tree... head in the fence... Dale Jersey... Polyanna... Laffa... Mardy Tart... FIDEL!... sticky fingers... Lawn Party... jubee... stratchy couch... Mr. Scum... comakhazi... Velveeta x-tra thick... EEEZZZY!... Mud... Quinn and Chin... Mountain weekend... Cheek and chin fracture... Randy's couch... "nice position Polly!"... Avalon... Fat goo... sneakin' in... Texas... Rabbit ears... Bahamas... helpful natives... Lyle... Ready Freddie... New Year's Eve at Melissa's... spoonin... Mad trippers... Seee ya... Beer goggles... Rise and shine!... New crush... scammer... Mike called!!!... Can I borrow your car?... Whip its... Buzz stomper... all nighter on the boat... Wolfhead... "let's go face the world"... rabbit chasing... P.R.'s... Kepley's Barn... reeefrain... I'm not going out, I didn't have any thing to wear!... suitcase college... X... J.C. and the boys... Rachal... Market... "Just call me Katie"... Side Street

BASHAM & BASHAM

**CONSTRUCTION
COMPANY**

Custom Built Homes • Quality Construction

RON BASHAM
847-5715

LEON BASHAM
556-5209

Now Hiring —
Men & Women
SUMMER & CAREER OPPORTUNITIES
EXCELLENT PAY, WORLD TRAVEL.
**CRUISE SHIP
JOBS!**
\$12,000 to \$50,000
Call now!
1-206-736-7000
ext. 120C (Call refundable)
HAWAII • BAHAMAS • CARIBBEAN

Thank you
Randy Carraway
for his artwork



FOR JUST A MOMENT

*We laughed until we had to cry, and we
loved right down to our last goodbye.
We were the best I think we'll ever be —
Just you and me, for just a moment*

*We chased that dream we never found, and
Sometimes we let one another down,
But the love we made, made everything all right,
We shone so bright — For just a moment*

*Time goes on, people touch and then they're gone,
and You and I — We'll never love again, like we did then*

*Someday when we both reminisce, we'll both say
There wasn't too much we missed, and
Through the tears we'll smile when we recall,
We had it all, for just a moment*

*Time goes on, people touch and then they're gone,
But you and I, We'll never hear the end,
We'll never love again like we did then*

*We laughed until we had to cry, and
We loved right down to our last goodbye*

David Foster



LOTUS STAFF



Seated — Elizabeth Shell, Marie Smith, Jen Basham, Jennifer Holmes, Julie Landreth Standing — Beth Massengill, Suzette Kinney, Christie Scott, Stephanie Buljat, Melody Styron, Debbie Clark, Stephanie Hughes, Mrs. Williams. Not Pictured — Chrissie Anthony, Amy Jones, Traci Moss, Chea Richbourg, and Brandye Williams.

Copy



Layouts





This year we, the Lotus staff, have tried to capture the lives of the Peace women of 1988-89 within these pages. We have worked hard spending many late nights and even vacations meeting deadlines hoping to achieve our goal: to present a book that tells the whole story of our experiences this year — not only those experiences we faced here at Peace, but also the circumstances and events in our communities, state, and nation that have had an effect upon us. Our hope is that twenty years from now, you will be able to open this book and remember all the thoughts, feelings, and perceptions that have shaped your life this year. I sincerely hope we have succeeded. "May the road rise up to meet you; . . . may God hold you in the palm of His hand."

— Jen Basham
editor-in-chief

Putting together a yearbook can involve much hard work, some frustrations but many, many rewards. As faculty advisor, I would like to thank Janet Harvey, Publications Director, and all the students who shared pictures with us. Thanks also goes to Dan Beakey, Business Manager, for his financial and moral support. Without the cooperation of many people, our yearbook would not be the success it is. Last, I would like to thank my staff, for they worked together as a real team to produce a quality product, and I am proud of them

— Judy Williams
Faculty Advisor

The LOTUS Staff thanks the following photographers for their contributions. Simon Photography, Smith Studio, Becki Gray, Marie Smith, and Beth Massingill.







