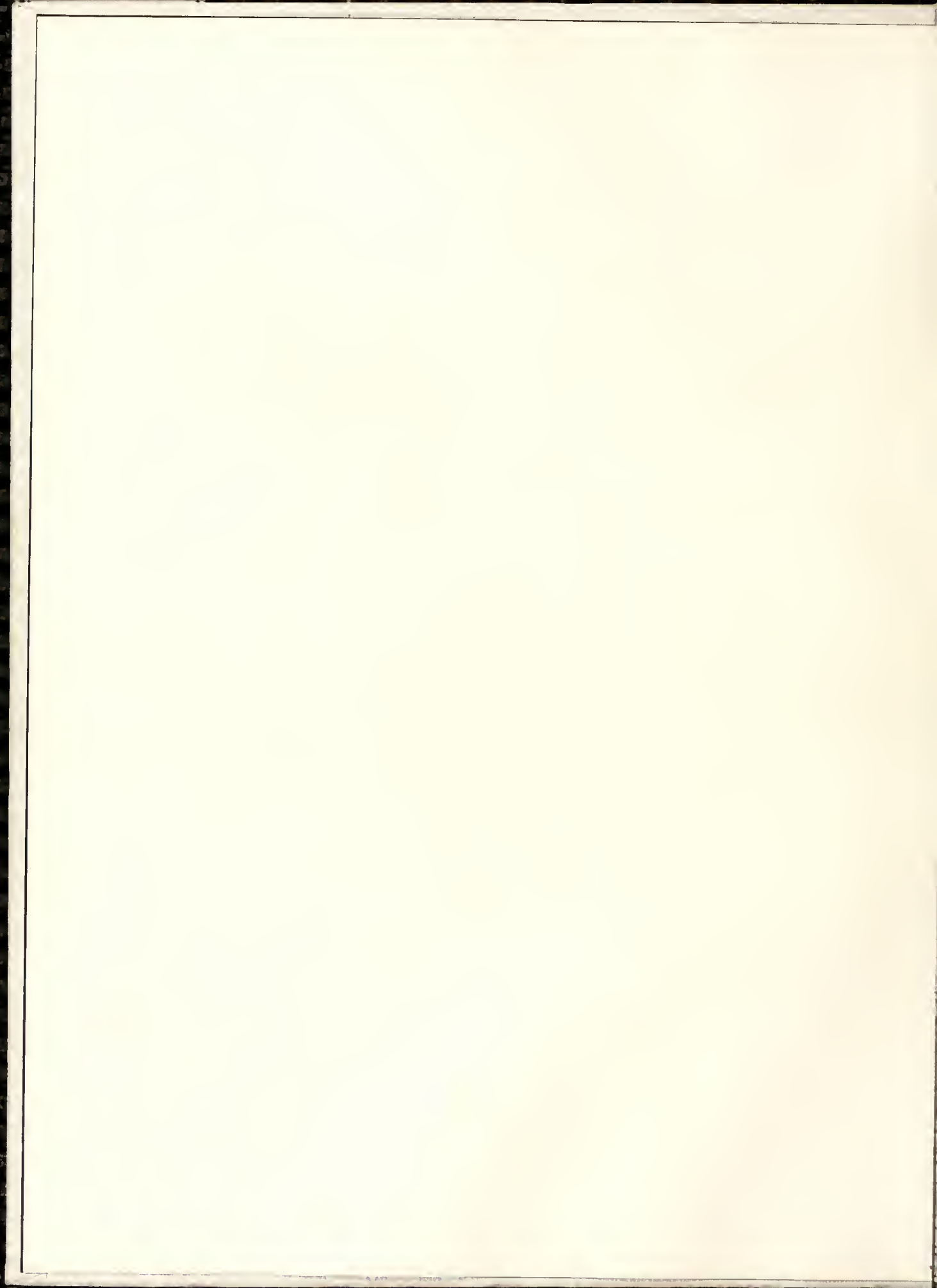




LOTUS
1994







LOTUS 1995

*I shall be telling this with a sigh
Somewhere ages and ages hence:
Two roads diverged in a wood, and I—
I took the one less traveled by,
And that has made all the difference.*

*—an excerpt from "The Road Not Taken"
by Robert Frost*

*Academics/Faculty- Roads to Success
Class- Off the Beaten Path
Organizations- Converging Paths
Dorm Life- Branching Out
Student Life- New Directions
Sports- Making Tracks
Arts- Marching to a Different Drummer
Honors- Pathmakers
Directory- The Road Home
Ads- Billboards
Closing- Charting a New Course*

Beginning the Road Less Traveled



Many Peace College students began their journey on July 31, 1994. A group of approximately twenty-five Peace College freshmen came together for twelve vibrant days of writing for the Peace College Writing Institute. They wrote creatively for twelve days except for when they were sleeping, and that did not happen very often. This group of students visited the North Carolina Museum of Art, went on a hopping spree, and viewed many classic films to break from their overwhelmed high school lives.

Then on August 23, 1994, students returned with some computer, clothes, and many other necessities, accompanied by warm hugs and friendly smiles from the freshmen class of Peace College, and their long journey of travel, hardship, and academic. Lisa Ann Oake remarked that coming to the Writing Institute has helped me to prepare for college. And that has made all the difference.

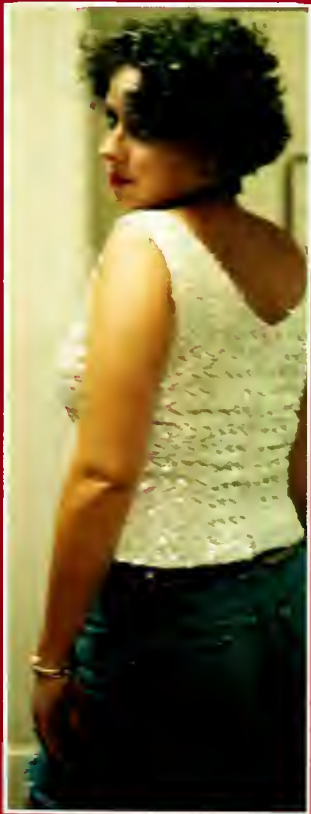


Photo: Amy Oake makes the last run to the car with supplies for the trip.



Photo: Student reading a book in the library.

Left: Student reading a book in the library.



The annual Freshman Academic Convocation took place in the Recital Hall on August 25, 1994 at 3:45 P.M. As the dignified ceremony began, students, wearing traditional white dresses, filed in and sat attentively. The Jones, Kenan, Beard, Trustee, Flowe, and Frazier Scholars were recognized by Dr. Robert Sturdivant who brought greetings from the faculty. Ten Honors Scholars as well as the Valedictorians and Salutatorians were introduced. Dr. Janice Edwards recognized the Leadership Scholars. Ms. Lillian Woo delivered the address, citing women's leadership in today's society.



Students from Second Finley prepare for the 1995 Peace College Convocation.

Convocation



Lesley Gaddy and Stevie McFadden appear to have gained a positive attitude from the speaker's remarks.

Kelly Carver, Merritt Reid, Kelly Woodell, Rebecca Elmore, Bethany Biesecher, Lindsey Joyner, and Caroline Martin seem relaxed after the Convocation ceremony.





Sophomores Caroline Owen, Megan Parpart, Dana Minshew, Normie Hiers, and Renee Crane show off their down-home spirit at the annual barbeque.

Members of the faculty take a break from the festivities in order to relax and enjoy the food provided by the cafeteria.

Country music could be heard all over campus during the annual Peace College barbeque. This event welcomed back the sophomores and introduced the freshmen to activities held by the school. It also provided the chance for the classes to come together for some food, races, and dancing.

Plenty of good eating was available thanks to the hard work by the cafeteria staff. They provided all the necessities for the occasion. Everyone found her own ideal spot on Peace Beach to enjoy the meal while conversing with new-found friends and catching up with

old ones.

The dorms divided up into relay teams to begin the activities following dinner. Tug-of-war not only determined the strongest dorm, but also the most sportsman-like since some teams let their opponents fall by letting go. The potato sack race caused a great deal of commotion. Many students found it difficult to jump as fast as they could without falling but kept a sense of humor about the whole ordeal.

A little bit of down-home flavor entertained all and made life at school seem more bearable for its newcomers.

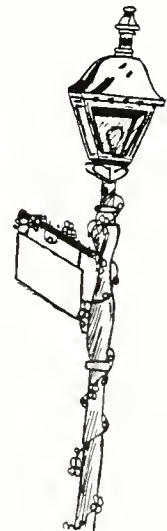
Down Home on Peace Beach



The girls of Davidson test their strength in the tug-of-war contest between the various dorms on campus. Unlike Main, who let go of the rope in order to win, these girls drag their competition across the line for a fair victory.

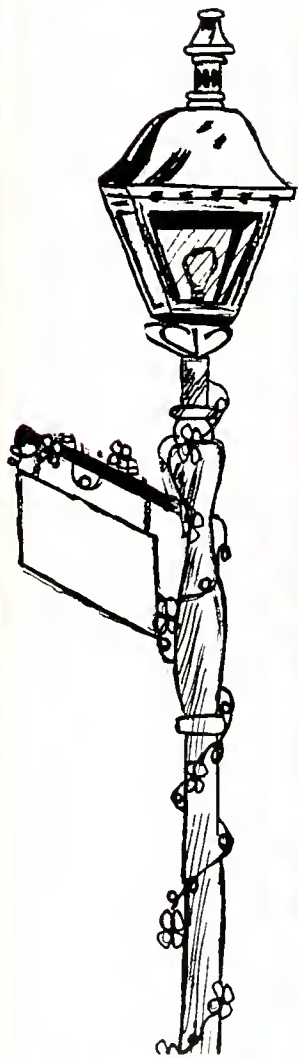


Racing in potato sacks ends up requiring more coordination than first thought. Many contests fell numerous times before crossing the finish line.



Mixing It Up!

Mixers are always an exciting part of nightlife at Peace College. Although Peace is a woman's college, students have the opportunity to participate in social functions with other universities including UNC, State, and Meredith. Annually, Peace College students mix with dorms during the first month of school and then with fraternities later on in the school year. Mixers provide a chance to meet other people—especially guys!!!!



A group of Peace students swing to the music at the Owen/Tucker Dorm mixer on Wednesday, August 24, 1994.



Bethany, Adrian, and Sarah show their enthusiasm for meeting new people



Amy Gray and Audra Norris are all smiles about the new guy they have met at this mixer

Maturing Spiritually

Ann Laird Jones' position as Peace College's new Chaplain began in late August.

As part of her duties, she oversees the spiritual life of Peace College's 450 students, which includes spiritual counseling, interactions with area churches as well as with chaplains of Raleigh area colleges and universities. She also coordinates the weekly worship service, and involvement in retreats, seminars, and other student activities.

Mrs. Jones received her B.A. in Community Studies from Eckerd College in Florida, and her Master's in Divinity degree from Louisville. She served for four years as the Associate Seminary Pastor of University Presbyterian Church in Baton Rouge, Louisiana before she moved to Raleigh in 1986. In Raleigh, she has held interim ministries at Trinity Presbyterian, North Raleigh Presbyterian, Kirk of Kildaire, St. Andrews Presbyterian, and West Raleigh Presbyterian churches. Mrs. Jones has also served in Presbyterian Campus Ministries at North Carolina State University.

Since 1991, she has been Interim Associate for Community Service and Outreach at White Memorial Presbyterian Church. Mrs. Jones participates as an active member in many community service organizations in the Triangle: Step-up Ministries, Migrant Ministry, Hustead House, and the Presbyterian Urban Council of Raleigh's crisis center and shelter. She is also active in both the New Hope Presbyterian and the Presbyterian General Assemblies. She has also worked in different capacities at Montreat, the Presbyterian Church USA's conference center in North Carolina.

In addition to all of Mrs. Jones' services and works, she is married to Michael Caulfield and has two children - Douglas, who is two, and Sally, who is five. We, at Peace, appreciate her services and want to extend a warm welcome to her.



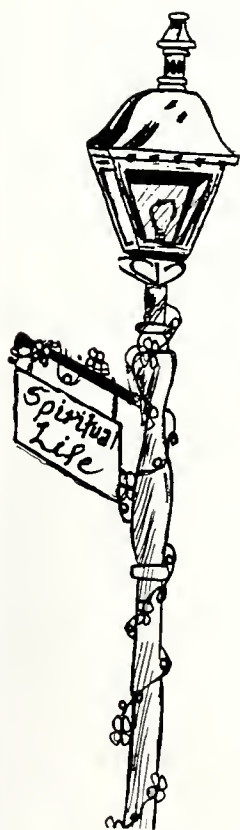
Sophomores are all smiles about the new Peace Chaplain, Mrs. Ann Jones.



Chapel is held every Monday at 6:00 p.m. Students participate regularly in the services. As the spiritual center of the college, the chapel is the site of many gatherings as well as weddings of former Peace students.



The freshmen somberly file out of their first chapel service of the school year. Students of various religious backgrounds all come to worship together each week.

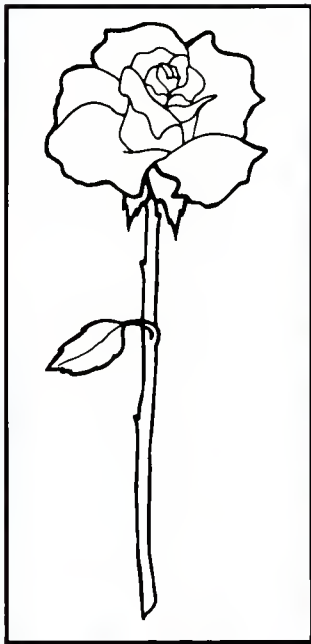


Peanut Week

Peanut week is a time when Peace students and faculty members share their warmth by giving gifts to make everybody feel welcome at the beginning of the school year. "Peanuts" are kept a secret until the end of the week and "peanuts" reveal their identities at a picnic for all who participated in this longstanding tradition.

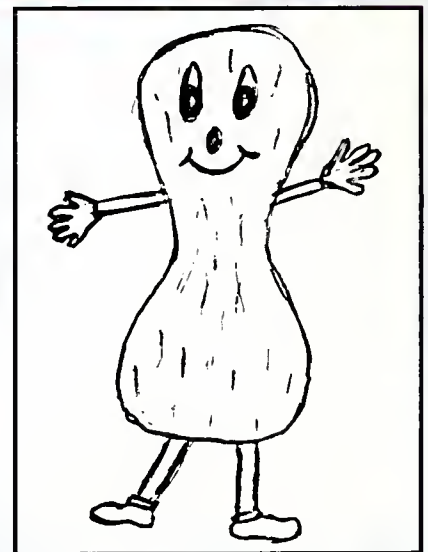


Leslie Roberson and her friends patiently look through the peanut presents to see if their name was on any of them.



Above: Peace students and faculty members gather around in front of Belk to meet their peanuts.

Left: Linda Sparrow, Cindy McDowell, and Karen Bass seem excited over the gifts they received from their peanuts.

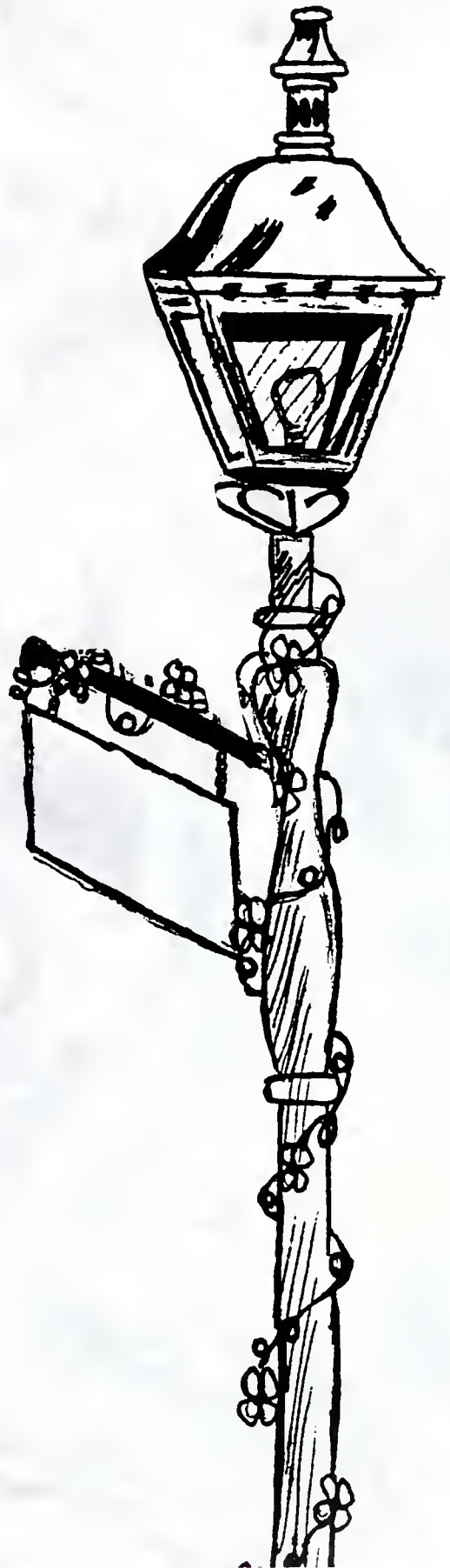




Sophomore, Erin Horne is Chris Trotter's big sister. PSCA organizes the Big Sister/Little Sister program so that the newly arriving freshmen will have a sophomore "sister" to help her adjust to life at college.

Big Sister / Little Sister

Going away to college is a big change in someone's life and sometimes it is a hard adjustment. This is why Peace has created the Big Sister/Little Sister program. It's designed to help freshmen feel at home. Freshmen are given a sophomore to show them around, to be a friend, and to have someone to talk to who has been here for a year.



Fraternity Court/Nightlife

Because of our convenient Raleigh location, it is never difficult for Peace students to find exciting off campus activities. One of the many benefits of coming to a woman's college is that students have the opportunity to participate in activities that they would not have had in other settings. Raleigh is the home of North Carolina State University and UNC is only thirty minutes away. In the fall, Peace students attend nearby football games, where tailgating before the game is a popular activity. There are also many planned functions with NCSU fraternities. These activities including mixers and a Powder Puff football game here at Peace College.



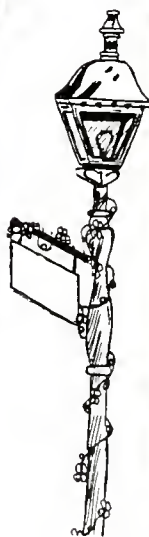
Donna Barnes, Cara Daniels, Leslie Messer, Tiffany Beard, Allison Herman, and Pricilla Watson prepare to leave for a Sigma Phi Epsilon party.



Dressed for an evening out, these Peace College women enjoy the nightlife at a popular location for many of the area's dance clubs on Hillsborough Street.



Peace students brave the rain at the NCSU versus Western Carolina football game.



North Carolina State football games provide entertainment on the weekends for many Peace students.

The Lawn Party



Above: Stevie McFadden, Lesley Gaddy, and Amy Gray enjoy an afternoon of music, dancing, and socializing at NCSU's Lawn Party.



Above: The featured band at the concert; Hootie and The Blowfish, perform an exciting show.



Left: Ready and waiting were a group of Peace students when the gates opened.

The real secret of happiness is not what you give or what you receive, it's what you share.

Author Unknown

We travel many roads to reach a destination. Graduation is the destination we strive for during our two years at Peace. A tradition at Peace for many years, graduation takes young women down the road less traveled. Peace expresses its uniqueness in that graduates wear white gowns and carry thirteen red roses, signifying the accomplishments during their two years at Peace. Unlike many universities where graduates receive their degrees as a group, Peace awards each young woman individually with a diploma and a Bible with her name inscribed on the inside cover. Peace adds a personal touch by having the sophomore class choose the speaker. Kathy Rissimiller, who served as this past year's speaker, spoke about "these days" spent at Peace as being the most cherished of our lives. The ceremony ends in symbolic fashion as each graduate tosses the thirteenth rose from her bouquet, into the fountain, leaving behind a part of herself and taking with her two years of memories. And in essence, traveling down the road not taken by many of our friends has made all the difference.



Destination: Graduation



A symbolic part of Peace, the fountain stands among Peace graduates as they embark on their future.

At the close of the ceremony, the graduates gather around the fountain to leave one last memory together.



An honored tradition at Peace, the tossing of a rose into the fountain signifies leaving a part of your class here forever.



Addressing the sophomore class, Kaitlynn Foster delivered her speech at the class annual dinner at Peace.

Peace seniors will be on the scene two more at Peace.



Friends in your life are like the pillars on your porch. Sometimes they hold you up and sometimes they

T
R
A
V
E
L
I
N
G
S

C
O
M
P
A
N
I
O
N
S



lean on you. Sometimes it's just enough to know they're standing by. Author Unknown



Roads to Success

*Long walks under the oaks
leading to our destination*

Hours spent in deep frustration

Pouring over endless books,

*Ignoring all the questioning
looks*

*As to why we put ourselves in
this situation*

*We find that all the trouble was
worth it at graduation.*

*Academics
Faculty/Staff*



Leading Peace Into the 21st Century



Dr. Garrett Briggs
President

Dr. Briggs serves as more than just the President of Peace College. He represents Peace in the community and will lead Peace College into the 21st century. His "open door" policy allows him to be accessible any time during the day, and his personality of warmth, caring, and concern shows that he really does take the students' aspects of the college into consideration. He is thought of as more than just "the president" of Peace College; he is also a friend who is available when students need someone to listen to their concerns.



Dr. Briggs and other staff members participate in the "Great Legs Contest" at the 1994 Faculty/Staff picnic on the front lawn.



Dr. Charles Yarbrough
Vice -President for
Academic Affairs



Mrs. Briggs plays a big part in the support for her husband and Peace. They are both seen attending many school functions on and off campus.



Dr. Janice Edwards
Vice -President for
Student Affairs



Jane Kanipe, Assistant to President/Director of Financial Aid



Patricia Stewart, Vice President for Institutional Advancement



Dan J. Beakey, Vice President for Business and Finance



Dr. Robert Page Registrar



Cynthia Wyatt Dean of Admissions



Martha Ammons, Assistant Director of Admissions



Pamela D. Williams, Administrative Assistant/Network Supervisor



Patricia Smith, Administrative Assistant to Dean of Admissions



Kelli Taylor, Assistant Director of Admissions



Christie B. Hill, Assistant Director of Admissions



Nancy Weekman Admissions Secretary

Administrative Staff



Nancy Kirby
Exec. Sec to the President



Annette Woodard
Admin. Asst. to the
Registrar



Sue Rains
Asst. Dir. of Financial Aid



Marie Hiott McEntire
Asst. to the Vice President
for Academic Affairs



Cindy McDowell
Dir. of Student Affairs



Sara McCorkle
Asst. to the Vice President
for Student Affairs



Paul King
Director of Library Services



Barbara Hawkins
Librarian



Viola Mullin
Librarian



Sallie Gryder
Bookstore Manager



Dawn Childers
Dir. of Student Health
Services



Ellen Grissett
Dir. of Media Relations



Carol Choplin
Dir. of Development



Beverly W. Cass
Admin. Asst. to
Development/Alumni
Affairs



Diann Steffen
Asst. to the Vice President
for Institutional
Advancement



Rebecca Leggett
Asst. to the Vice President
and Finance



Angel Blevins
Admin. Asst. for Bussiness
Office



Larry C. Griffin, CPA
Comptroller



Cindy Seymour
Coor. of Alumnae Student
Recruitment



Verne Futrell
Asst. Comptroller



Katie Beers
Asst. Food Service Director



Tim VanderMeersch
Food Service Director



Marie Bass
AM Switchboard/PM
Student Mail Room



Sherry Boykin
Dir. of Communications

Counseling Center

Peace offers a variety of professionals that can help in any way they can. The Counseling Center is one of the places where two professional counselors offer individual and group counseling sessions as well as ways to expand students' knowledge. They offer many seminars on career opportunities, including Career Paths Day, when representatives from different careers come and speak to the students on their profession.



Judy Woodson Bruhn
Counseling Center Director



Patricia Marples
Counselor

Security

Security Guards not pictured : Dwayne Worrell, Bill Haskins, Brian McClure, Ron Young, and Wesley Barber



Wayne Street
Director of Security



Jerry Allen
Security

Maintenance



Maintenance Staff : Jack Hinkel, Billy Blackmon, David Chappell, Randy Edwards, Charles Lyde, and Al Hester
Not Pictured : T.J. Glover, Alex Jones, and John Palmer



David Chappell gets some "helping hands" as he passes the hoola-hoop over his body during the annual Faculty/Staff picnic.

Environmental Services



Melvin Pender, Director of
Environmental Services



Wanda Hill



Junenell Upchurch Brodie



Millie Vick



Wanda Clax



Christine Tomlinson



Phyllis Cooper



Shirley Byrd



William Coates

Division of Fine Arts, Languages and Literature



The Division of Fine Arts, Languages and Literature sponsors many special activities and events at Peace. Prism, Cider House, Trips to Mexico and England, Speakers, Spring and Fall Plays, Art Shows, Arts and Lectures, and The Gibson Lecture Series are some of the cultural events Peace offers.



Carolyn Parker
Division Chair-Art



Marty Baird
Art



Jean Bauso
English



Sally Buckner
English



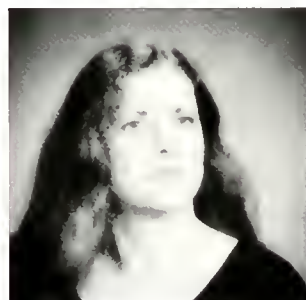
Jennie Vance
Music



Emilie deLuca
French



Anne Fountain
Spanish



Carol Hiscoe
English



Ray Kilburn
Music



Cynthia Mitchell
Drama



Jim Smith
Music



Sandra Stallings
Speech



Bes Spangler
English



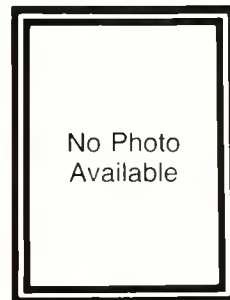
Janet Wester
English, Director of Summer
Programs



Judy Williams
Director of Academic
Support Services

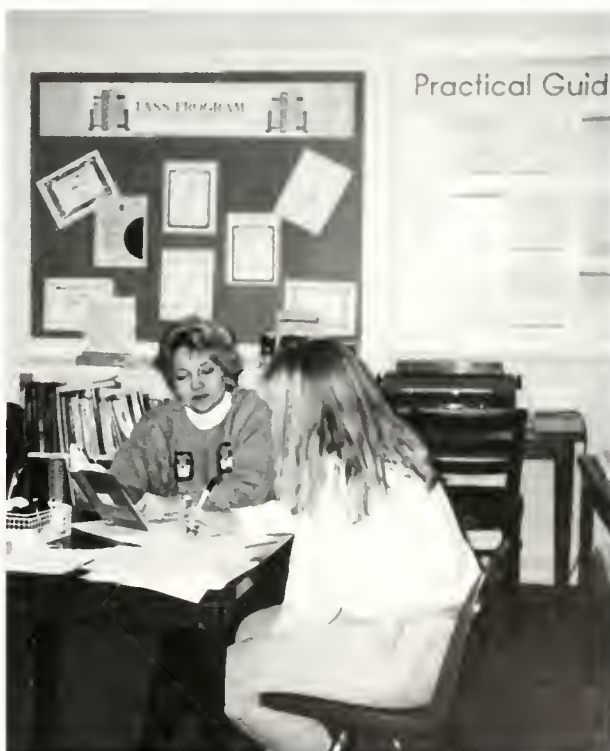


Sidney Johnson
Freshman Seminar
Writing Center



Candis Cox
Spanish

The Pass Program, Peace Academic Support Services is located in the Academic Resource Center. These services include Freshman Seminars, English and Math Lab Classes, The Writing Center, The Computer Center, Study, Grammar Workshops, Peer Tutor Training, Tutoring Center, and a program for students with learning disabilities.

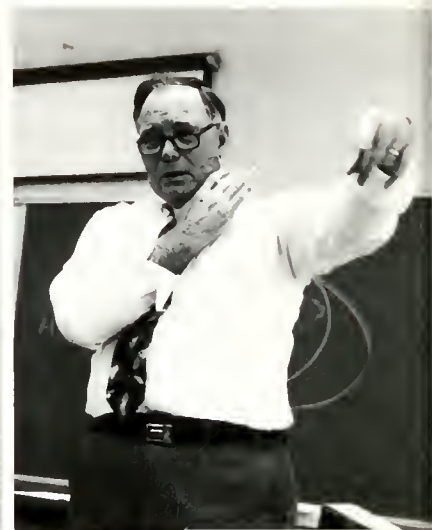


Above: Judy Williams, Director of Academic Support Services tutors in the Writing Center.

Left: Peer Tutor, Rachael Cleverly tutors Lee Thompson in French in the Tutoring Center.



Dr. Robert V. Sturdivant
Professor of Religion and Philosophy
Division Chair,
Religion



Dr. Sturdivant dramatically explains a new concept
in Religion.

Division of Religion, History, and Social Sciences



Lois Cooksey
Psychology



Dave Caccamo
Economics /Director of
Experiential Learning



Rev. George A. Thomas
Religion



Korrel Kanoy
Psychology



John Crossno
History



Laura Greer Vick
Sociology and Anthropology



Valerie Gordon Hall
History



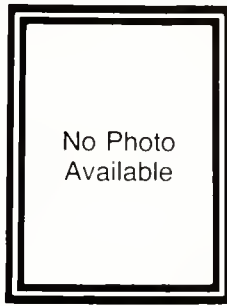
Robert Baird
Computer Science



Karen Johnson
History and Accounting



David Nanney
Business Law



Don Sowers
Business

Foreign Study Program



Allision Randall, Brooke Rudd, and Meghan McCleery overlook a fort in Mexico.

Suzanne Winslow stops in front of Ely Cathedral. She shows how exciting these trips really are.



Peace students take a break from touring sites in England.



Dr. Laura Vick instructs a student down the steps of a Mexican ruin.

Each summer Peace students are given the opportunity to participate in the Foreign Study Program. Students have a choice of traveling to Merida, Mexico, or Cambridge, England. These trips expose students to new cultures and environments. Not only are they adventurous and fun, they also provide students with three hours of academic credit.

Dr. Laura Vick and Dr. Anne Fountain coordinated and chaperoned the foreign study trips to Mexico for Peace students. Dr. Jean Bauso accompanied the students on the trip to England.

Division of Mathematical, Natural, and Health Sciences



Dr. Patricia Risk
Chair/Assoc. Prof. of Biology



Katherine Arnott
Dance



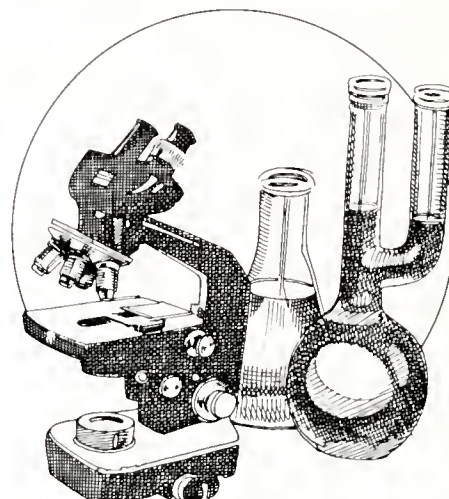
Lisa A. Bonner
Assoc. Prof. of Biology



Sue Fisher
Physical Education/
Dept. Coord.



Deb Houser
Athletics Dir./Tennis Coach/
PE Instructor





Linda Purnell
Chemistry



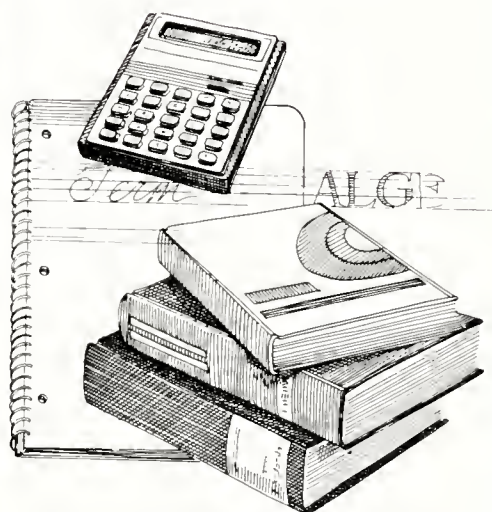
Archie L. Ritchie
Mathematics



Adair Robertson
Mathematics



Lynae E. Sakshaug
Mathematics





Off the Beaten Path

*High school friends chose to go
here and there*

But we did not show despair

*For we chose a place off the
beaten path*

*And came together to
form each class.*

*Good and bad times we shall
share*

*Helping each other with our
burdens to bear.*

Class '85

SOPHOMORES

Emily Alford
 Jenna Allen
 Melyssa Allen
 Jeneen Barbour



Donna Barnes
 Heather Barnes
 Barretta Batton
 Tiffany Beard



Sherrie Benton
 Yvonne Boumpani
 Melissa Brock
 Brittainy Brown



Claudia Brown
 Liza Bruton
 Carrie Jo Burnette
 Michele Bussey



Ashley Cabiness
 Abby Cavanaugh
 Amy Cavanaugh
 Jenny Cerney





Leigh Clark
Kristy Clark
Terri Clark
Rachael Cleverly



Christi Connor
Renee Crane
Kristan Creech
Emily Cunningham



Darcy Curl
Sallie Daniel
Cara Daniels
Jennifer Daniels



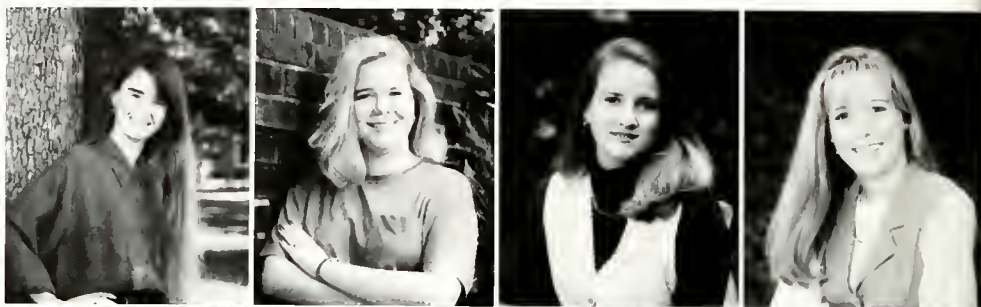
Nicole Davenport
Gretta Davis
Julie Dickerson
Shelly Dills



Megan Downing
Missy Drake
Kristi Eaves
Leslie Eden

SOPHOMORES

Tori Esten
Susan Forsgren
Val Freeman
Nicole Gardner



Erin Gardner
Ellen Giard
Catherine Giles
Jessalyn Gooden



Jamie Grubbs
Tracey Ham
Tacita Hamilton
Rhonda Hardee



Kelly Harden
Missy Harper
Kelly Hawks
Angela Heath

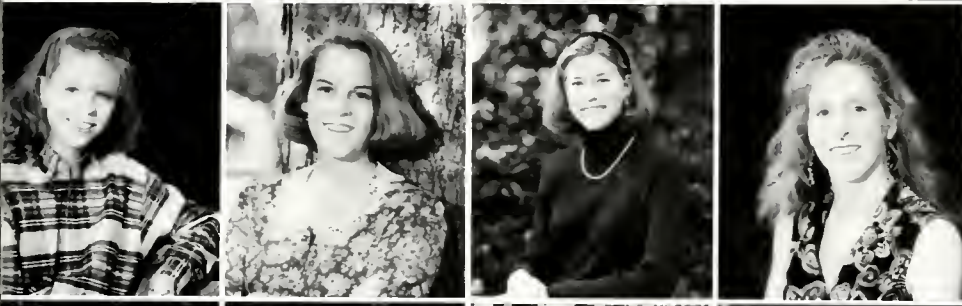


Becky Heely
Chasity Honeycutt
Erin Horne
Donna Houston





Gabrielle Howell
Kelly Inman
Renee Jarrett
Mary Jeter



Kristi Jones
Beth Jones
Caroline Keir
Peyton Jones



Helen Kerr
Sheffield King
Julie King
Allison Kingery



Alex Kinney
Catherine Lamm
Elizabeth Lamm
Melissa Lancaster



Sara Lavender
Brittaney Lee
Carolyn Lee
Debbie Lee

SOPHOMORES

Jenifer Logan
 Carrie Mayer
 Amy Metcalf
 Leigh Ann Midgett



Marti Mills
 Dana Minschew
 Amanda Mobley
 Vera Morris



Kim Musselwhite
 Arlinda McAdoo
 Keri McCahan
 Chelly McClamroch



Meghan McCleery
 Patch McCormick
 Jennifer McCurley
 Jennifer McGuire



Brandi Nelms
 Liza Nicholson
 Cheryl Oliver
 Caroline Owen





T. J. Pait
Anne Parker
Megan Parpart
Karen Parrish



Kelly Paszt
Shannon Pate
Laura Perry
Catherine Pierce



Heidi Plemmons
Sarah Pollack
Ivey Pope
Elizabeth Postlethwait



Carey Provost
Leslie Rand
Allison Randall
Angela Ray



Ingrid Reaves
Lauren Reaves
Lesley Roberson
Jennifer Roberts

SOPHOMORES

Gray Robinson
Sunshine Romola
Kristy Salem
Adrienne Shields



Christa Smith
Jill Smith
Lindsay Smith
Luci Smith



Joelle Snyder
Karey Sowers
Malen Sponenberg
Stephanie Stewart



Gina Stokes
Colista Sugg
Melissa Tatum
Heather Thomas



Lee Thompson
Mary Thompson
Carey Tingen
Susan Turner





Monique Van Harreveld
 Mary Hannah Vaughan
 Priscilla Watson
 Jennifer Webb



Wendy Wright
 Anne Currier
 Laura Ervin
 Courtney Gange



Sophomore Class Officers:
 Megan Downing, Leigh Clark,
 and Caroline Owen.



Freshman Class Officers: Dana
 Kielsingard, Kim Spencer and Lisa
 Hubbard.

S
T
U
N
T



The Freshman are "Movin' On Up!" to becoming Sophomores!



Gena and Dana flip through the channels to the next skit.



Heather Medd, Haley Hall and Carrie Bryant AKA Charlie's Angels!

N
I
G
H
T



It's where everyone knows your name...Peace!!



Megan McCleery or is it Ann Jones?

...And the winner is...
THE SOPHOMORES!!!!



All on stage - The sophomores join together for the last song.



The Peace Choir's "new-sound" conductor



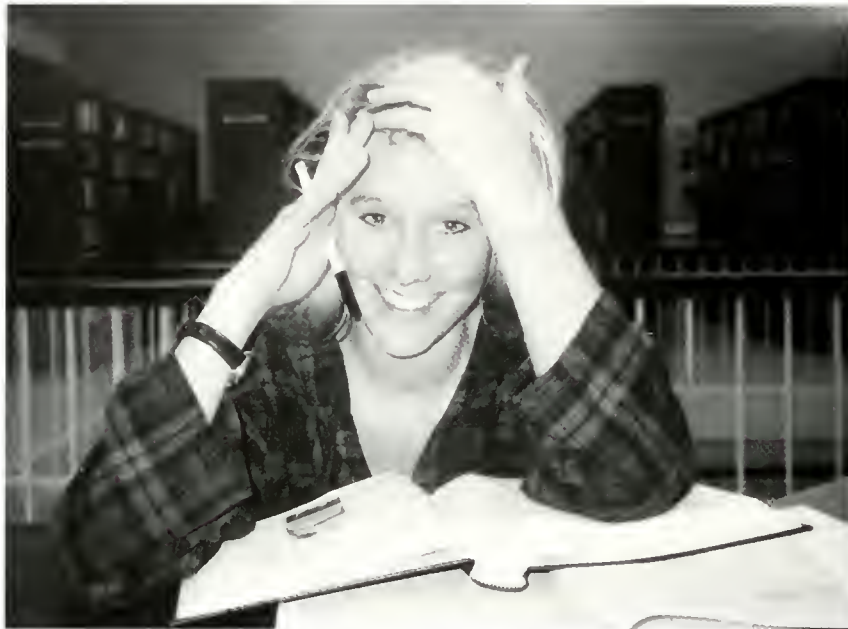
"We are family...I got all my sisters with me!!"

Stunt Night is a time when the freshman and sophomore classes go head to head in competition. Each class prepares a hilarious twenty five minute skit that is relevant to Peace College. This year the freshmen presented a skit on TV shows that focused on events here at Peace, whereas the sophomores did the story of Peace's past, present and future.

FRESHMEN

All stressed out by the demands on freshmen, Kelly Woodell manages to smile even when studying in the library.

Fishy, Fishy! Christy Blunting and Lisa Hubbard demonstrate how to give fish kisses.



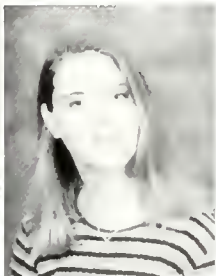
Sara Abshear



Jennifer Allen



Kim Alman



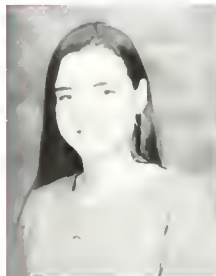
Amanda Annas



Sarah Arant



Shannon Arnett



Cherie Baggett



Valerie Barajas



Leigh Anne Barfield



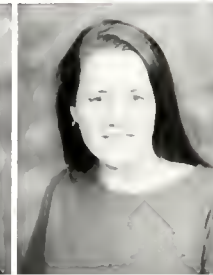
Kendra Barker



Jamie Barlow



Deana Baucom



Marsha Baxter

Merry Craig Belton

Anna Bernado

Holly Best

Bethany Biesecker

Shannon Blake



Stephanie Blott

Heather Bonser

Hollie Boone

Susan Bowers

Sara Bowman

Laura Breedon



Laura Britt

Anya Broderick

Kathy Brown

Lee Ann Brown

Melissa Brown

Carne Bryant



Emily Bucci

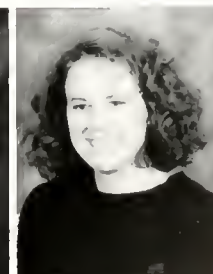
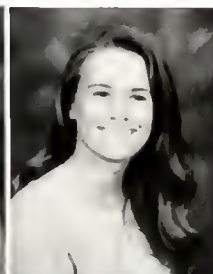
Bliss Bunce

Christy Bunting

Jodi Burge

Bethany Burgon

Sarah Bursley



Kimberly Butler

Stephanie Byerly

Sarah Calton

Michelle Campbell

Toni Carnagua

Paige Carter

No Photo Available



Kelly Carver



Marty Chamblee



Ryan Cobb



Annette Conard



Katherine Costa



Marissa Cutlip



Pilar D'Asto



Jennifer Daniels



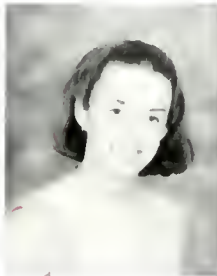
Samantha Daniels



Amanda Davis



Hunter Davis



Kimberly Davis



Stephanie Detter



Jennifer Dixon



Kimberly Drake



Laura Duncan



Clarissa Dunknel



Virginia DuFresne



Coreen Edwards



Rebecca Elmore



Adrienne Eure



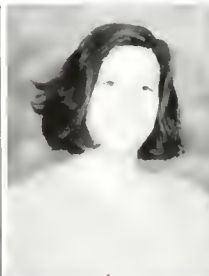
Heather Evans



Letitia Evans



Emily Farris



Kristine Feldsme



Kate Ficklin



Jessica Flowers



Tracie Foster



Nicole Frahm



Lesley Gaddy

FRESHMEN



Gretta Sutton and Reid Hartzoge, new found friends on third Finley, give a quick hug before beginning their evening.

Ryan Cobb, Kristen Midgett, and Kelly Carver enjoy an evening before the television.



Amanda Garry



Amy George



Heather Greer



Vivien Gyuris



Amanda Hall



Haley Hall



Sarah Hanson



Cara Hardister



Allison Hargrave



Cynthia Harris



Jennifer Harris



Reid Hartzoge

FRESHMEN

Ready for the Halloween festivities on Chapel Hill, these Peace girls get all dolled up for the event.

Finding a quiet spot, Polly Slaydon resorts to her closet for a private conversation.



Rebecca Hawk



Kathryn Hill



Anne Howell



Hellen Hubbard



Laura Hubbard



No Photo Available

Sarah Hudman



Candace Hughes



Allison James



Marjolijn Jansen



Angela Jones



Lindsay Joyner



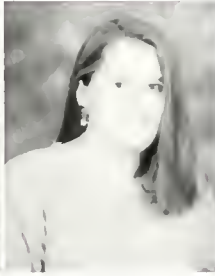
Kara Kapoor



Mary Nell Kearney



Dana Kielsgard



Karen Kite

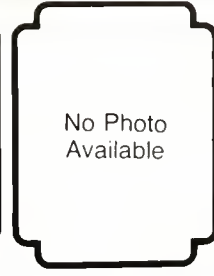


Natalie Kuchinic



No Photo Available

Dawn Kuhn



No Photo Available

Danielle Lampher



Paige Lathrop



Katy Lee



Amy Lewis



Alifison Martin



Caroline Martin



Mary Beth Martin



Sara Mathes



Megan Mayer



Heather Medd



Courtney Midgett



Fran Miller



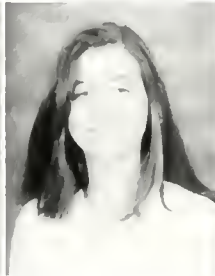
Tracy Moore



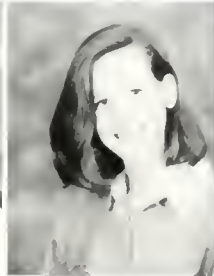
Michelle Morris



Christi Murphy



Kristin Murphy



George-Anne McElveen



Keri McGee



Alicia Newmann



Warren Newsome



Jamie Newsome



Amy Norris



Audra Norris



Lea Ann Oakes



Megan Page



Maja Paley



Julie Passmore



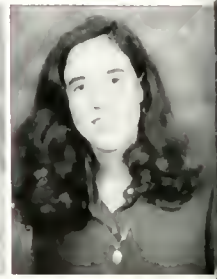
Hilary Pate



Janet Pate



Hunter Payne



George-Ann Peal



Heather Phelps



Kristi Pierce



Melissa Powers



Amy Reeves



Rebecca Riddick



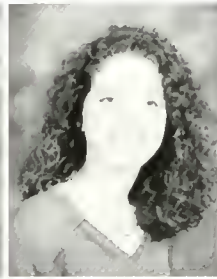
Amanda Ritter



Jennifer Roberts



Kar Rodgers



Stephane Russell



Kelly Sataraka



Melissa Schuchardt



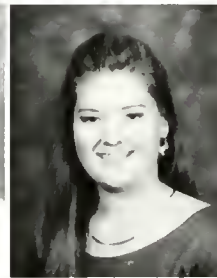
Erika Sexton



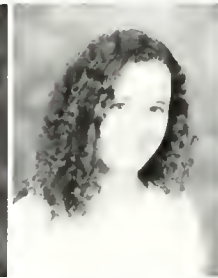
Courtney Shaw



Kristin Ssabula



Catherine Sineath



Christy Sink



Polly Slaydon



Jennifer Smith



Elizabeth Smith



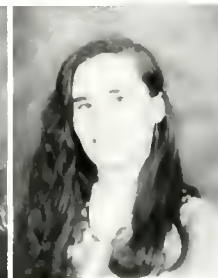
Nancy Smith



Virginia Smith



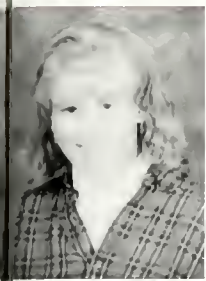
Kim Spencer



Maureen Stockton



Shelly Summerlin



Eva Sutton



Gretta Sutton



Courtney Swink



Amy Talley



Jennifer Thrower



Whitney Todd



Layla Traylor



Chris Trotter



Lindsey Tyler



Laura Ussery



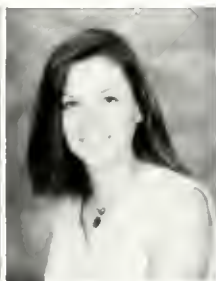
Lauren Vinters



Anna Vinson



Jennifer Walker



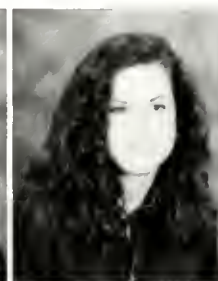
Kim Walker



Kristin Wall



Angela Ward



Angela Warmack



Diana Warner



Mary Warner



Shelly Warren



Jessica Webb



Kim Whitaker



Hannah Whitfield



Kelly Woodell



Amy Wulkiewicz



Amy Yount



Paula Gloekler



Amy Gray

Converging Paths

*On a small campus it's easy
to see*

*Just how involved we all can
be.*

*Leadership, vision, and partici-
pation*

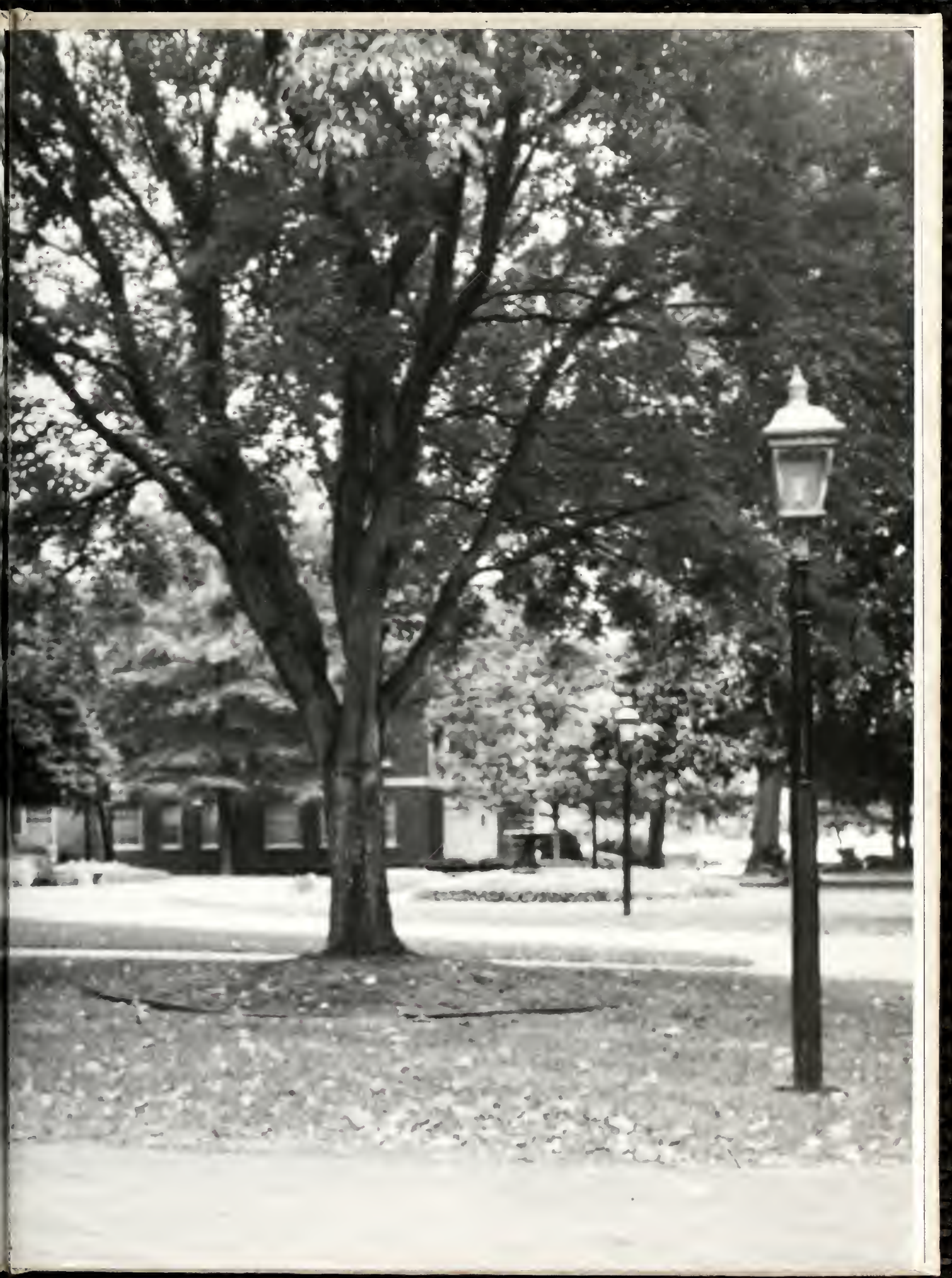
*Help us later in our life's
occupation.*

*So whether you join politics,
SEAC, or PSCA*

*You'll end up making a differ-
ence today.*

Organizations





Peace Student Government Association



Back Row: Debbie Lee, Ashley Cabiness, Fran Miller, Kristie Jones, Caroline Owen, Jenny Cerney, Mary Nell Kearney, Kelly Inman, Mary Thompson, Middle Row: Helen Kerr, Leshe Rand, Heidi Plemmons, Susanne Winslow, Kristi Eaves, Emily Cunningham, Karen Parrish, Christa Smith, Leslie Eden, Sarah Bursley, Alex Kinney, Front Row: George-Anne McElveen, Lisa Hubbard, Dana Minshew, Megan Parpart, Sarah Pollack, Kim Spencer, Dana Kielsgard, Megan Downing

The Student Government Association assumes responsibility for maintaining the highest standards of college life. It allows each member to include, in her own code of ethics, the highest standards of honor and integrity. In PSGA, students are encouraged to participate in various stages of self-government, and promote understanding and cooperation between students, faculty, and administration.



PSGA members seem excited about the upcoming events they discussed at the Student Government Leadership Retreat at Camp Seatarer.



Kimberly Drake and J.T. Belcher enjoy their night out "Dancin' In The Street", the theme of the 1994 Fall Cocktail sponsored by PSGA.

Officers of PSGA: Megan Parpart, Dana Minshew, Emily Cunningham, and Kristie Jones



Students enjoy the whitewater rafting trip sponsored by PSGA

PSCA Officers: Meghan McCleery, President, Jenny Cereney, V- Pres., Karen Parrish, Secretary.



At one of the PSCA meetings, Bob Bardin speaks to students about getting involved in the Special Olympics.

Peace Student Christian Association

The Peace Student Christian Association arranges many opportunities for students to worship and develop a strong Christian lifestyle. They sponsor Thanksgiving Baskets, Peanut Week, and the Big Sister-Little Sister program, which allows every freshman to have a new sophomore friend as soon as she arrives at Peace. In their activities, the PSCA promotes the tradition of expressing a likeness to Christ.



Members of the PSCA Cabinet: Heather Medd, Debbie Lee, Karey Sowers, Baretta Batton, Shelley Dills, Arlinda McAdoo, Beth Watson, Leslie Eden, Katherine Costa, T J Pait, Catherine Sineath, Kim Spencer, Marisa Cutlip, Tracy Ham, Karen Parrish, Diana Warner, Lea Ann Oakes, Amy Fain, and Meghan McCleery.



Dr. Jan Edwards, Vice President for Student Affairs, visits with Santa, as Sue Fisher, Deb Houser, and Cindy McDowell look on.



Chaplain Ann Jones, Advisor Linda Sparrow, Dean Edwards, and guest minister, Allen Proctor from N.C. State University Presbyterian Campus Ministries.



Susan Davis and her son John promote learning about Special Olympics. John is a student at Daniels Middle School and his mother is a Peace alumna.



Chaplain Ann Jones enjoys interacting with students one of the best parts of her job.



Sheffield King and Mary Nell Kearney find out who their peanuts are during the PSCA sponsored Peanut Week.

Peace Student Recreation Association



The Peace Student Recreation Association is designed to let students take a break from the normal routine and get some exercise too. The PSRA officers organize activities that they think the students would enjoy. Such events are the Carolina vs. NC State Powder Puff Football Game, the Faculty/Staff vs. Peace students softball game, the inter-dorm basketball games, the Turkey Trot, volleyball mixer, inter-dorm relay races, swim meets, the indoor soccer games, the tennis tournaments, and board games.



Members of PSRA: Caroline Owen, Kelly Inman, Kristy Clark, Leigh Clark, Heather White, Alex Kinney, Sarah Pollack, Megan Downing.



PSRA officers: Kristy Clark, Sarah Pollack, Kelly Inman



PSRA sponsored the picnic games that were held at the beginning of this year.



The battle of tug-a-war.



Students racing to the finish line in their sacks.



Laura Breeden and her grandmother, Marjorie Luck Jones, a 1942 Peace graduate, spend an enjoyable day decorating the Christmas tree in Main for the holidays.

Daughters and Granddaughters

As a member of the Peace College Daughters and Granddaughters Club

You are cordially invited

to attend the

Traditional Christmas Tree Trimming

in

Main Parlor

Monday, November 28th

at 3:30 p.m.

and a

Christmas Candlelight Communion Service

at 6 p.m.



R.S.V.P. to the Alumnae Office, 919-508-2227

by November 21st

The Daughters and Granddaughters Club is one of the most unique organizations at Peace. These students share a bond with their mothers, grandmothers, and even great-grandmothers who attended Peace College. Each understands the importance of carrying on a tradition in their families. One of the activities these students share is decorating the Christmas tree in Main Parlor every year. The tree is decorated with pictures of current Peace students. Many of the mothers and grandmothers enjoy coming on campus and sharing this event with their daughters as it brings back memories of their days at Peace.



Ashley Cotton and Greta Sutton put the finishing touches on the Christmas tree in Main for the 1994 holiday season.



The Daughters and Granddaughters Club

Back Row: Sheffield King, Laura Breeden, Merry Craig Belton Front Row: Suzanne Winslow, Lisa Hubbard, George-Anne McElveen, Greta Sutton

P
R
E
S
I
D
E
N
T
S



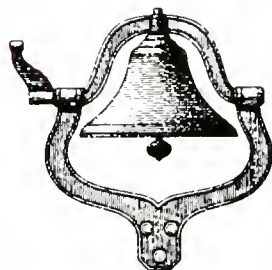
A
I
D
E
S

The President's Aides represent Peace College at many college functions. Welcoming students, giving tours, helping with admissions events and with Board of Trustee and Visitor's receptions are part of their responsibilities. Pictured above: Karen Parrish, Caroline Owen, Amy Reeves, Kristie Jones, and Shelly Pills.

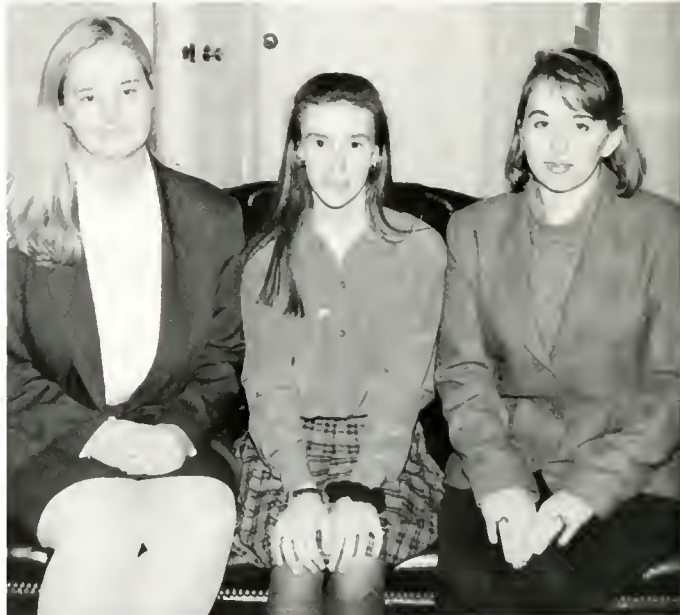
Young Democrats and College Republicans

Back Row: Susan Bowers, Crissy Dunckel, Heather Medd, Lee Postlethwait, Arlinda McAdoo, Middle Row: Kimberly Musslwhite, Jennifer McGuire, Colista Sugg, Melyssa Allen, Front Row: Eva Sutton, Anna Vinson, Holly Best, Michelle Campbell, Lesley Roberson.

The Young Democrats is a club that participates in local campaigns and attend debates in Raleigh regularly. This year they attended a fund raiser held at the Angus Barn where Vice President Al Gore spoke. This year was an election year; therefore, members were able to attend rallies and help out with campaigns.



Jennifer McGuire and Dr. Hall conduct a meeting concerning the upcoming David Price campaign



Officers of Young Democrats: Jennifer McGuire, Kimberly Musslwhite, Colista Sugg

College Republicans: Christa Smith, Adrienne Eure, Caroline Owen, Debbie Lee, Helen Kerr, Megan Parpart, Sheffield King, Whitney Todd, George-Anne McElveen, Melissa Brown.



Vice President Al Gore visits North Carolina.



BACCHUS

BACCHUS is a national organization found in numerous colleges and universities. Members of BACCHUS work hard to educate students about the responsibilities and choices involved in the use of alcohol. During the year, members do several activities to encourage people not to drink and drive. A big day for BACCHUS is Dead Day, where students dress in black and pretend they have been killed in an accident related to alcohol.



Members of BACCHUS made tombstones and placed them around campus to give students a more realistic feeling of Dead Day.



Back Row: T.J. Pait, Colista Sugg, Debbie Lee, Fran Miller, Lee Postlethwait, Kim Spencer First Row: Barretta Batton, Lesley Roberson, Leslie Eden, Peyton Jones, Susan Bowers, Maureen Stock



Allison Martin and Susan Bowers played the role of dead people on Dead Day. They could not speak to anyone and they carried pieces of paper that explained the tragic way they died, due to alcohol.



BACCHUS Officers: Susan Bowers, Peyton Jones, Leslie Eden

MINORITY STUDENT ASSOCIATION



The Minority Student Association is a new club that has just developed this year. Some of the purposes of this group are providing support for the intellectual, social, and moral growth of minority students, promoting multicultural awareness and appreciation for diversity through educational programming, guest speakers, and social programming. Some of the activities that these students recognize are Martin Luther King's birthday and Black History Month. Minority students come together to relate, have a good time, and to be with each other.



President: Tacita Hamilton, Vice President: Alisha Warren,
Treasurer: Coleenique Taylor, Historian: Arlinda McAdoo and Vera Morris

Future Business Women



Future Business Women is a group for students planning careers in business, such as accounting, personnel, management, sales, and information processing. They visit various business organizations and hear speakers from different types of businesses.

Back Row: T J. Pait, Barretta Batton, Lee Postlethwait First Row: Karey Sowers, Jill Liles, Christa Smith, Leslie Roberson

PRISM

PEACE'S LITERARY MAGAZINE

Published annually, Peace College's literary magazine, "Prism," is a collection of submitted material from both students and faculty. Every spring, an edition is printed and includes entries of prose, poetry, photography, and art. Two competitions conducted by "Prism" are The Celeste Penny Fund and The Eleanor Gibson Taylor Prose Award.



– *Ellen Giard*



Ellen Giard



– *Kathy Templeton*



Ellen Giard, Prism Editor

Mamma

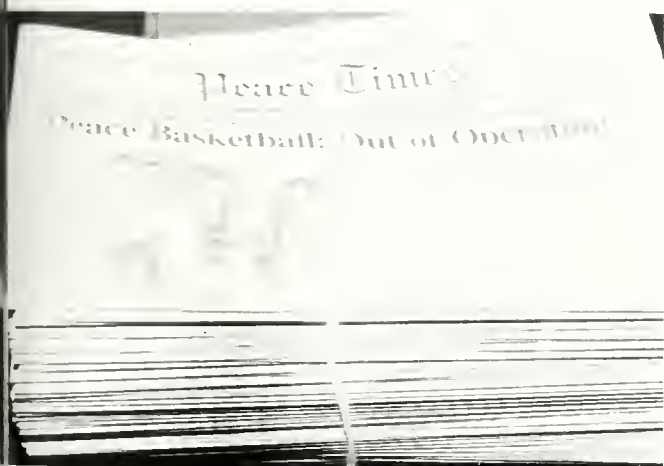
Mamma pushed the wisp of blond hair from her deep blue eyes and she delicately hung a red, shiny ball on the Christmas tree. People say I look like her. I hope so. To me, she is beautiful. Not beautiful like the plastic-looking models in magazines; but beautiful like a warm feeling. The kind of feeling you get when your family gathers by the fire to sing carols and to laugh at egg-nog mustaches.

– *Megan Downing*

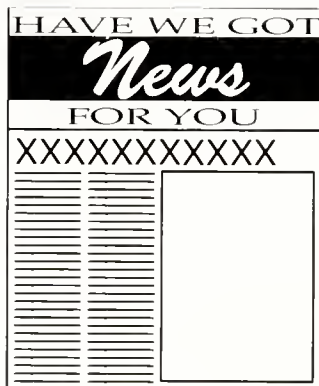
PEACE TIMES



y Cavanaugh, Abby Cavanaugh, Katherine Costa, Michelle Campbell (Not pictured: Hannah Whitfield)



Peace Times, Peace College's student newspaper, focuses on campus events, social concerns, and creative writing. Students schedule newspaper publications, create layouts, assign, write, and edit articles, and take their own pictures.



Judiciary Board

The Judiciary Board at Peace College is made up of the Freshman and Sophomore Class Presidents, a representative from the student body at large, the Student Body President, a day student representative, two faculty members, and the Dean of Student Affairs. The Board is responsible for the management of the disciplinary system and procedures. Each year, freshmen go before the Judiciary Board and take their pledge of the Honor Code. Anyone violating the pledge is dealt with by the Judiciary Board.



Back Row: Tracey Ham, Helen Kerr, Caroline Owen, Megan Parpart, Kim Spencer, Front Row: Leslie Rand, Stevie McFadden (President), Christa Smith.



Two freshmen approach the Judiciary Board to say their pledge.



Caroline Owen, Helen Kerr, Stevie McFadden, Megan Parpart, and Christa Smith seriously wait for the pledging of the Honor Code to begin.



Megan Parpart and Caroline Owen seem pleased with the results of their Judiciary Board meeting.

“On my honor as a Peace College student, I will not lie, cheat, or steal; nor will I condone the actions of those who do.”





Branching Out

*Once we had a room of our
own,*

*But that ended the day we left
home.*

*Clothing, secrets, and lives to
share*

*We discovered many things
inside our lairs.*

*Reaching out to a person who
may be alone.*

*We sought new ideas and
allowed ourselves to roam.*

Student Life

The Women of MAIN



2nd Main



3RD MAIN



Residents Assistants: 2nd Main: Barretta Batton, 3rd Main: Meghan McCleery and Carrie Mayer, 4th Main: Susanne Winslow and Keri McCahan.

Say.....Word, I'm wiggin', Homey, Alrighty Then, You need to wash, Let's go for a drive, If you don't know, you better ask somebody, Mama Chicken, FLUSH, Lil Honey, PRETTY GIRLS!, Meg Dog, Ya'll are going to State Again?, Precious, Well Duh, Do we get E.E.O.?, Is this required?, Skunk, You're dying your hair again?, Couch Crew!, I'm watching Days, I've got a question, What's for lunch?



4
T
H
M
A
I
N



Amy Reeves and Leigh Anne Barfield are preparing for a night of excitement, their first Halloween at Peace College.

Lisa Hubbard, Christy Bunting, Laura Britt, and Angie Ward enjoy spending time together on 4th Main.

'94 Finley '95



First Finley
Quotes:
Looser. . .
I miss Shannon!.
Ya'll, do you
think he will
call?. . .
Anybody want
to go to
Wilmington? . . .



Second Finley Quotes:

Do we get EEO credit? . .
Quiet Hours!!!!
Who borrowed my ____?
He is so hot!!!



Third Finley
Quotes:

Smokin. . .
Did I do that? . . .
Do we get credit
for this? . . .
Anybody want
to order fatty
sticks? . . .

FINLEY



1st R O S S



If our door is closed, that means we are working! It's the other window! Sheffield, what are you putting on your hair now? Jennifer's out with "Pebble" again. And these are the "Nights of Out Lives." Jennifer, Brad Pitt's on TV! Katherine: You have e-mail. Has Lindsey gone home again?? Julie, shh, stop snoring!! Is Babyface coming out with a Christmas album, Melissa? Kristina and Diona, this is your 1st warning, you are getting way out of hand!!! Shelley, you have to go to swimming!!!



"Fry it up Leslie"; "Wooch!" _____ Gina! Get on the grill! "Holey! Turn your stereo down"; "I'm a case of nerves"; "For Real"; We love being on VACATION!!!! Call 2123... You ain't scared girl just dew it!!!! Megan close your ears! Hook up action...

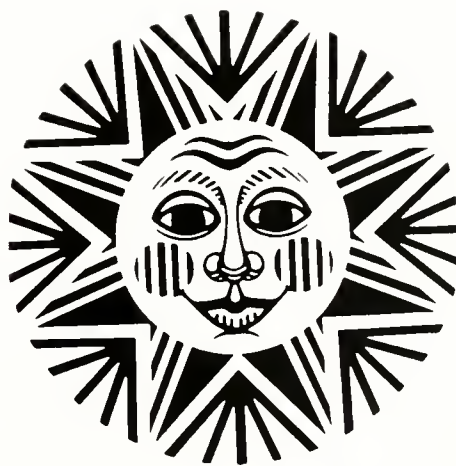
Thank you 2nd Ross for making this the best year ever!!!
Love Your R.A.,
Megan P.

2nd Ross

3rd Ross



Can I bum a cigarette? Has anybody got a light? That girl's a freak Mannnn! Do we get EEO for this? Aren't you proud of me. I didn't yak. Can I get a work order, Catherine? That's just Jan! Are you going to religion today? Chea what? Cheapus!! Jan's phone rings so loud! Another day at Peace College..



First Davidson

Duh!?
 El Burro
 Riding that Donkey
 Harleigh the "pus"
 pookey
 Get the tape off the door
 Maintenance
 We ain't scared
 BUSTED in 106!!
 Nip it
 S'up?
 Pruchetta...Petunia...Peaches
 Is that my phone?
 First times
 Rot
 odadoda
 De...de...de...
 toilet paper/short sheet
 Days!
 Patience Grasshopper
 handcramps



Second Davidson

Do you have any food?
 Silence!
 Did he call? Did he call?
 Who wants breadsticks?
 I can't take it anymore!
 What's for dinner?
 I NEED A MAN!!!
 I'm not motivated!
 Why are you calling me? I'm right down
 the hall!!
 GROSS!
 You're 11 minutes late!
 Mas que?
 I'm going to Wal-Mart. Anyone want to
 go?
 He called! He called! He
 finally called!!
 How fattening is it?
 How much EEO do we get?



Third Davidson

Is it blinkin'?
They are gone to give
Plasma!
O' - My!
And your point is?
Now see
You must be having a
moment



DAVIDSON



Resident Directors

Without Resident Directors, dorm life would not be the same. They are a vital part of each dorm and also the entire school. They are not only our friends, they also teach us how to live together in a respectful manner. They watch out for us when we are sick and always have a master key for all those times we lock ourselves out of our room. During the holidays, the RD's, along with the RA's, give their residence halls a funfilled party. WHAT WOULD WE DO WITHOUT OUR RESIDENT DIRECTORS?!?!?

Moving in (and out), loud cries of frustration, telephone rings, hall meetings, mushy movies, new friends, old friends, and the wonderful RA's--It's all a part of residence life! Living in a dorm is a new challenge for each Peace student. However, it provides us with a chance to meet new friends and have loads of fun!!!



Me-Maw can always be found roaming the halls or sitting on the breezeway laughing with Peace students.

Suzanne Page, George-Ann Peal, and Catherine Sineath show how much fun dorm life can be.



Karen Bass
Resident Director



Yovvne Casto
Resident Director



Doris Coats
Resident Director



Mildred Mitchell
Resident Director

Day Students

A Unique Division of the Student Body



The difference between resident and non-resident students may seem slim at first glance, but those who choose to live at home are in a class by themselves. Besides having to allot additional time for driving to and from classes, day students also find that they have to schedule their time more effectively. Not only do they take on a full course load, but the majority work off campus between twelve to forty hours per week.

As Peace moves into the four-year program, juniors and seniors may choose to live off campus. With the increased number of non-resident students, the structure of day student life will change dramatically. Belk Lounge will become crowded with students trying to take a break between classes as well as those who want a bite to eat before going to night courses. Whatever the outcome, some traditions at Peace will change as some residents move off campus and the student body becomes more diverse.

A portion of the day students gather for a hectic schedule of club pictures. The majority of the day students could not attend due to outside jobs and prior commitments.



Amantha Jones and Maja Palej enjoy an afternoon of food and socialization in Belk lounge. They take advantage of the area as a place to relax between classes.



At the biweekly meetings, day students hold their own hall meetings of sorts. This time is used to catch up on campus events and to make suggestions on how to improve life on campus for these students.

New Directions

*The parties begin for most on
Thursday*

*When people diverge in so
many ways.*

*Together we share in Fall Fest
and Spring Fling*

*And at Stunt Night we raise
our voices to sing.*

*Our talents we eagerly put on
display*

*And believe that each weekend
is a true holiday.*

Campus Life





Parent's Weekend



Parent's Weekend is an annual event and a tradition at Peace College. This is a weekend set aside for students and their parents to spend time together away from home. It's also a time when parents are able to talk with the faculty members and tour the school with their daughters. This year, Parent's Weekend was on October 1st and 2nd. Entertainment was provided by the Embers and a barbeque was held on the front lawn of Main on Saturday. On Sunday morning, families were invited to attend Chapel.

Above: Kim Spencer learns some "new moves" from her dad.
Left: Merry Craig Belton and her family sit back and enjoy the music provided by the Embers.

Mother/Daughter Weekend

Mother/Daughter Weekend was held on November 12-13. The girls and their moms played the mother/daughter game, which showed how well they knew one another. This weekend was a very enjoyable one for everyone. All the moms were finally able to meet their daughter's new friends and their parents.



Ryan Cobb and her mother take a break from the day's activities to spend some quality time together.

Father/Daughter Day



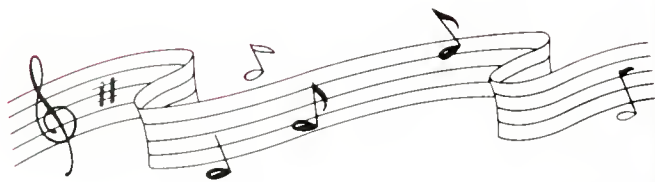
Father/Daughter Day is yet another important event in the life of a Peace student. This year, Father/Daughter Day was on February 11. The two enjoyed dinner in the cafeteria, and later, the girls were able to show off their dads on the dance floor.



Terri McCahan and her dad decide to sit this dance out.

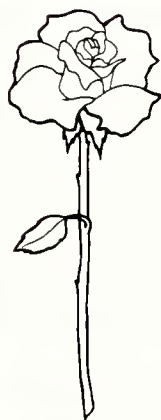
Fall Cocktail

This year's Fall Fest ended with the Fall Cocktail held on November 5 at the Raleigh Civic Center. The theme of the week was "Dancin' in the Streets." There was definitely a lot of dancing going on that Saturday night, but it wasn't in the streets! The evening was a very enjoyable one for all the girls and their dates!



Top: Meghan McCleery, Melissa Brock, and Keri McCahan - who needs guys when you have friends like these?!

Left: It is evident by the smiles on their faces that Ginna Bernard and Jason Kilby are enjoying themselves at the Fall Cocktail.



Spring Formal



Kristy Jones and her date enjoy a quiet moment before the dance.



Spring Fling



What is springtime without a celebration and a fling in the out of doors? Each year Peace College celebrates "spring fever" with a formal dance held off campus and then an afternoon of games with dates on Peace Beach. The entire weekend provides a welcome break before end of semester exams.

What are E.E.O.'s



Leadership Training

Educational Enrichment Opportunities

The purpose of Peace's program known as Educational Enrichment Opportunities, or E.E.O.'s, involved the students both in the inner community of the college as well as in the outer community of Raleigh. Each student must complete twenty-five hours per semester in order to fulfill this new school requirement. The students created personalized programs depending on the types of activities in which they wished to participate. Such activities included chapel, the Arts and Lectures series, various clubs and organizations, intramurals, and volunteer services.

Due to the addition of E.E.O.'s, the student involvement on campus rose significantly. Once students became accustomed to the routine, they enjoyed being directly involved in the new direction which Peace has taken. Peace instituted the program because it believed that, in the long run, such a program would generate more productive citizens who will contribute to society as a whole after they graduate from Peace.



Faculty/Student
Softball



Students sign up for E.E.O. credits

at Peace?



Stunt Night '95



Arts and Lectures Series



Chapel



White Water Rafting

Swim meet for Fall Fest



HOLIDAYS

a
l
l
o
w
e
e
n



AT PEACE



h
r
i
s
t
m
a
s

Alma Mater

*In the heart of Carolina
: Neath the skies of blue
Stands our noble
Alma Mater
Glorious to view.
Classic in her broad
proportions
Look she proudly down
Reared against the arch of
Heaven
With the stars for crown
Lift the chorus
Speed it onward
Let it never cease
Hail to thee, our Alma Mater
Hail! all Hail to Peace!*



The historic Main building stands proud in the center of campus.



*Experience the
feeling...at Peace!*



The fountain at Peace sits in front of Main in the center of campus and is the focal point of graduation.



The truly unique part of Peace is the beautiful graduation ceremony. Absent are the black robes and flat hats; Peace graduates wear long white gowns and carry thirteen red roses.



The roses carried by the graduates are a beautiful tradition.

TRADITIONS *at Peace*

The History... Peace College was founded in 1857 by William Peace. The Civil War postponed the school's opening and served as a Confederate hospital. In 1872 Peace opened its doors as an educational institution and in 1907 Peace was taken under ownership of the First Presbyterian Church of Raleigh.

The Campus... Located in downtown Raleigh, Peace maintains a tranquil and traditional campus. The huge brick buildings and majestic white columns stand stoically among fifteen acres of oak trees and sprawling green lawns.

The Ring... The gold and onyx ring has been a tradition at Peace since its beginnings. The pure elegance and simplicity of the ring allows it to stand out and be recognized as a symbol of Peace.

The Graduation... The graduation ceremony demonstrates the elegance and sophistication of Peace. The ceremony of beautiful white gowns and rich red roses sets Peace apart from all other college's graduation ceremonies.



The Peace College ring, beautiful and unique, stands out as symbol of Peace students.



Making Tracks

*Out on Peace Beach or within
the gym's walls*

*Athletics at school involve one
and all.*

*Team sports such as soccer,
volleyball, and tennis*

*Allow us to add challenges to
our list.*

*So whether it's winter, spring-
time or fall,*

*Come out and support Peace
Pride, you all!*

Sports

Tennis Pride



Adrienne Eure, Kelly Carver, Anna Donaldson, Whitney Todd, Coach Houser, Kristy Clark, Claudia Eche, Melissa Brown, and Leigh Clark.

The Peace College Tennis Team has spent another hard year at work. They diligently practice every afternoon in preparation for matches throughout the year.

The tennis team celebrated the induction of the late Ruth Hopkins into the NJCAA Women's Tennis Hall of Fame at the Ruth Hopkins Memorial Tournament, October 21-22, 1994.

The singles and doubles rankings are: Claudia Eche, Melissa Brown, Adrienne Eure, Kristy Clark, Leigh Clark, Whitney Todd, Sarah Mattix. Doubles: Eche/Brown, K. Clark/Eure, Todd/L. Clark.

Deb Houser is in her second year as the Peace College tennis coach. She prepares these players on and off the court, often working just as hard and diligently as her team.



Adrienne Eure leans back in preparation to return the serve to her opponent during a recent round of practice.



Claudia Eche and Melissa Brown learn new skills as doubles partners before a match with an opposing team.



Coach Houser explains the importance of strategy to Whitney Todd and Sarah Mattix.



Whitney Todd demonstrates the killer serve while Coach Houser critiques her performance.



Peace College Tennis Spring 1995 Schedule

February

25	North Greenville	Home	1 pm
27	UNC-Wilmington	Home	2:30 pm

March

4	Brevard College	Brevard	TBA
	Spartanburg Methodist		TBA
7	Pfeiffer College	Away	2:30 pm
11	Edinboro University	Hilton Head	TBA
	Slippery Rock		TBA
12	Missouri Southern	Hilton Head	TBA
13	TBA		
21	Meredith College	Home	2:30 pm
29	Methodist College	Home	2:30 pm
31	UNC-Charlotte	Away	2:30 pm

April

6	East Carolina Univ.	Away	2:30 pm
11	Appalachian State	Away	2:30 pm
13	Gardner-Webb Univ.	Away	2 pm
21-22	Region Ten Tourney	TBA	TBA

May

14-20	National Tourney	Tucson, AZ	TBA
-------	------------------	------------	-----



Claudia Eche is the champion for the Region Ten Rolex Tennis Tournament.





Determinism is the name of the game for Club Soccer at Peace College. The team knows all about practicing hard because that's what it takes to get the job done.

The team is a member of the Capital Area Soccer League, a very competitive league for women eighteen years or older. The Peace soccer team plays an eleven game season in the fall and spring, with all games taking place on Saturdays. With Peace College expanding its athletics program, Club Soccer will become more competitive with other universities and colleges.



C L U B S O C C E R

V O L L E Y B A L L



Polo PSRA KNOWS **IRONWOMAN** PSRA KNOWS

Softball PSRA KNOWS *Volleyball* PSRA KNOWS Pillo



Camping PSRA KNOWS **Basketball** PSRA KNOWS Board

KNOWS
102

PSRA KNOWS **Soccer** *Games*

With new mascot, Peace plots plunge into NCAA athletics

The school unveils its 'Peace
Pride' identity and plans to
add three teams by the end
of 1997.

BY STEVE POLTI
STAFF WRITER

RALEIGH — A school can't have an athletics program without a mascot. So when Peace College decided to expand its sports offerings, it also decided to add an identity.

The new name represents a lot, including the school's long battle to revitalize its athletics department.

"Peace Pride is the perfect mascot for Peace College," said coach Deb Houser. "The meaning is just wonderful."

It's Pride, as in a company of self-esteem. Women who attend Peace College should be proud of their school and of themselves.

And it's Pride, as in a company of lions. That's the new symbol for the school, three lionesses together on a forest green backdrop.

"As the Pride, students can feel part of a group inclusive to all and where each member is valued for students affairs and one of its first athletes," said Janice Edwards, the school's vice president.

"This concept can be uniquely Peace College. Athletics at the women's college consists of a tennis team that plays at a junior college status."

But in the 1996-97 season, Peace plans to add basketball and volleyball teams and upgrade the program to Division III under provisional status. By the end of the 1997 season, the school plans to add a swimming team. That means the school would have four teams, and could qualify as an active member of the NCAA.

Peace College used to have two scholarship sports — tennis team and a basketball team. But budget restrictions forced the school to do away with its basketball program in 1991.

The announcement of the pro-

gram's expansion was held, fittingly, on National Girls and Women in Sports Day. The reception included a stirring speech from Nora Lynn Finch, an associate athletics director at N.C. State who once coached for women to support women, both in athletics and in life.

"There are people out there who don't want you to play," she said, directing her comments at the Grover H. Hermann Student Center. "If women don't support women, we won't have successful college athletics."

Finch talked about how Peace College is unique, how athletes don't have to wait to use the gym, or use second-hand equipment left behind by the men's team.

In fact, in 1965, Edwards and her teammates selected a mascot — Peace Pride — because of our green color and we were a giant among big schools.

"We thought that would be just perfect for Peace College," Edwards said. "But somehow, the Green Giant was a little dated." She said. "Now the school has a new name and a new identity, and soon, new teams to go with it."



NATIONAL GIRLS & WOMEN

IN SPORTS DAY

"BELIEVE IT, ACHIEVE IT"

Marching to a Different Drum

*At the end of the play the red
curtain fell*

*And the players sighed, for all
had gone well.*

*Peace Pacers gave women a
creative chance*

*To entertain us with their
formidable dance.*

*The choir sang clearly, their
voices like bells*

*Peace and the arts together
excel.*

The Arts





Peace Pacers

Peace Pacers Jazz Company is a group of Peace College students dedicated to the art of dancing. Mrs. Katherine Arnott is the director of the Peace Pacers. These talented women choreograph and perform dances in tap, jazz, modern, and ballet.

Throughout the year, these women participate in community and school activities. They danced at the Governor's Tree Lighting Ceremony and in the Peace College Christmas Program. Also, they volunteer their time to teach young Girl Scouts dancing techniques. After their final performance March 24 and 25, they took part in several shows throughout Raleigh during the spring semester.



Director: Katherine Arnott

Peace Pacer Members: Nicole Davenport (Co-Captain), Megan Downing (Co-Captain), Ginny Blythe, Tracie Foster, Laura Britt, Heather Evans, Candace Hughes, Amanda Marshall, Suzanne Page, Jennifer Roberts, and Lauren Venters.





Heather Evans practices her dance for the spring concert.

The Pacers show that dancing is hard work but can also be fun. Their enthusiasm is evident throughout their dances.



Suzanne Page, Heather Evans and Jennifer Roberts display their talent of dancing.



As musical director, Mr. Smith's dedication and teaching ability are evident through his involvement with each group.



Peace College Chamber Singers

Jan Arnold
Jeneen Barbour
Heather Barnes
Emily Bucci
Jodi Burge
Hunter Davis
Laura Ervin
Val Freeman
Becca Hawk

Becky Heely
Katy Hill
Katy Lee
Keri McCahan
Jennifer Price
Sunshine Romola
Courtney Shaw
Shelley Dills

Director: Mr. Jim Smith



The Chamber Singers are invited to perform at the Biltmore House in Asheville, NC during the Christmas holidays.

Chamber Singers and Choir

Chamber Singers, a group of Peace vocal musicians, are chosen by audition to perform and represent Peace College at social events and churches. Mr. Jim Smith directs the group and organizes their appearances. At Christmas, they performed at the Biltmore House in Asheville and in many churches throughout Raleigh. These singers also represented Peace College in recruiting functions arranged by the Admissions Office and sing every Monday night in Chapel. Additionally, the Chamber Singers and Choir present a Christmas concert for students and the public.

For students interested in music and vocal careers, the Chamber Singers and Choir provide an avenue to showcase their talents. Along with having fun, the choir and Chamber Singers enrich our school and community as ambassadors of Peace.



The Chamber Singers express their enthusiasm and vocal talents through singing.



Sheffield King, Melissa Lancaster, Heidi Plemmons, and Terri Clark eagerly await a performance.

Chamber Music, a play written by Arthur Kopit, was performed at Peace November 9-12, 1994. The Peace College students in this production did a tremendous amount of preparation for their portrayals of the eight women in an asylum who think they are historical figures. The historical figures they portrayed were thought to be a little "crazy," and the multi-dimensional text led to endless possibilities. The overall moral of the play: "Any time a movement gets too militant, it runs the risk of oppressing the very individuals it means to liberate." This one-act ironic drama was directed by Serena Ebhardt.



The Production Staff

Lighting Designer	Richard Hess
Stage Manager	Jennifer Thrallkill
Assistant Stage Manager	Marjelyn Jensen
Assistant Director	Stephanie Blott
Box Office Manager	Kristi Eaves
Crew	Megan Downing Laura Duncan Jennifer Harris Carrie Jo Rogers Sheffield King Heather Phelps Jennifer Roberts Whitney Sue Todd

Special Thanks

Garrett Briggs, Dan Beakley, Sherry Boylan, Verne Furell,
T.J. Glover, David Chappell, Jack Hinkley, Carol Schreiber,
Glinda St. Carl Ebhardt, John Franklin and Raleigh Little
Theatre, Emil Holloway, Marie McIntyre, Carolyn Parker,
Rick Rottschaefer, Jon Smith, Pam Williams,
Charles Yarborough, David zum Brunnen

The Cast

Mozart Chorus	Heather Barnes Jennifer Price Sunshine Romola Courtney Shaw
Woman Who Plays Music	Lisa Hubbard
Woman in Safari Outfit	Amy Yount
Woman with Notebook	Melyssa Allen
Girl in Gossamer Dress	Heather Barnes
Woman in Avatrix Outfit	Anne Howell
Woman in Spanish Garb	Jennifer Thrallkill
Woman in Armour	Carrie Mayer
Woman with Gavel	Sunshine Romola
Woman in White	Jennifer Price
Her Assistant	Mary Melissa Jeter

(General Understudy - Marjelyn Jensen)

No photos or recordings may be made of this production without permission. Out of consideration for the actors and your fellow audience members, please avoid snapping candy and cough drops during the performance.

Chamber Music





The Search For Signs of Intelligent Life

CAST

Trudy.....Emily Ann Hilton
 Judith, Agnus, Edie....Carmen M. Rocha
 Chrissy, Lud, Brandy...Carrie Mayer
 Paul, Marie, Lyn.....Kristen Brackett
 Kate, Tina, Marge.....Sunshine Romola



Directed by Serena Ebhardt
 Designed by Peter Lach



Visual Arts

Art serves as a major part of the curriculum here at Peace College. Peace provides a large art department where one can let her art creativity flow freely. Students work with a variety of media from painting to sculpting, to drawing, and even to photography. The art courses offered at Peace are designed to meet the different levels of abilities and allow students to broaden their horizons in the world of art.









Pathmakers

*The numerous merits these
leaders possess*

Make the rest of us try to guess

*Where they find all the energy
and endless time*

*To be involved in activities of
every kind.*

*The shadows they cast fall east
to west*

*And encourage others to do
their best.*

Honors

Leadership Scholars

C
R
E
A
T
I
V
I
T
Y



T
E
N
A
C
I
T
Y

Among the leadership scholars for the 1994-1995 school year are: Susanne Winslow, Diana Warner, Katherine Costa, Sarah Bursley, Catherine Sineath, Haley Hall, Michelle Campbell, Emily Cunningham, Leslie Eden, Carrie Bryant, Heather Medd, George-Anne McElveen, Caroline Owen, Dana Minchew, and Stephanie Russell.

What makes a person a leadership scholar? Each applicant must demonstrate outstanding achievement in the areas of extracurricular activities, volunteer service, and church participation while maintaining a high level of academics. After undergoing a series of on-campus interviews with faculty and students, Dr. Janice Edwards offers scholarships to those who would best represent this leadership award.

From the time the recipient arrives in the fall, she becomes highly involved in student activities which appeal to her interests, such as PSGA, PSCA, and volunteer organizations. The leadership scholars meet several times over the semester to discuss their involvement and to explore ways in which they can achieve goals more effectively. Besides planning such programs as the

recognition of Women's History Month, these students demonstrate that women have the same, if not better, capabilities as their male counterparts.

As sophomores they take a three hour course entitled Leadership for Women instructed by Dr. Jan Edwards. Through this class the students explore the boundaries for women in the workplace and learn about their own limitations and abilities. Motivational speakers often challenge the young women to take more risks in their leadership styles.

Following their two years in this program, these scholars emerge as strong women who rely on themselves to achieve their goals through assertiveness and determination. Not only do they know how to be effective leaders, but they learn the importance of being followers as well.



Not only do leadership scholars excel academically, but they demonstrate a diversity of interests as well. These students become involved in the majority of on-campus activities while making significant contributions to the outer community through volunteer organizations such as the Food Bank of North Carolina.

VISION

College Scholars

A
C
A
D
E
M
I
C

E
X
C
E
L
L
E
N
C
E

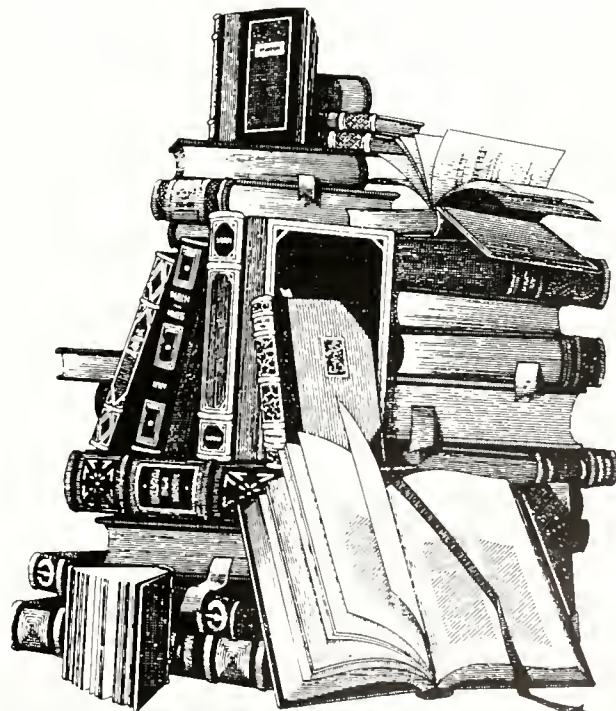


College scholars are: Lea Ann Oaks, Haley Hall, Michelle Campbell, Holly Best, Karey Sowers, Leslie Rand, Emily Cunningham, Heather Medd, Jill Liles, Sarah Pollack, Grey Robinson, Heather White, Lauren Reeves, Ginny Smith, Susan Turner, Leslie Eden, Kristi Eaves, Carne Lee, Shelley Dills, Kelly Hawks, Darcy Curl, Melissa Tatum, Jennifer McGuire, Kristy Clark, Susan Bowers, Leigh Clark, Susanne Winslow, Merry Craig Belton, Colista Sugg, George-Anne Peal, Hunter Payne, Annette Conrad, Candace Hughes Suzanne Page, Stephame Russell, Catherine Sineath, and Jamie Newsome.

Students qualify for the College Scholars program in one of two ways: freshmen who receive one of Peace's highest academic scholarships -- Jones, Frazier, Flowe, Kenan, or Honors, and sophomores who hold the top twenty cumulative grade point averages. Including the convenience of priority registration, these women have the opportunity to participate in cultural opportunities in Wake County such as the International Festival held each year in downtown Raleigh.

In January the College Scholars enjoyed an evening of dining and socialization at the home of President Briggs. A large portion of the faculty attended, providing the chance for the students to interact with these accomplished professors in an atmosphere outside of the classroom.

Members of the faculty provide "College Scholar Conversations" every five to six weeks that are exclusively for this select group of students. At these events the faculty member discusses with the students a topic in his area of specialization or one that currently exists in the media. These "conversations" have covered material such as career choices, earthquakes, illiteracy, and governmental issues in the past years.



Marshals

The five freshmen possessing the highest grade point averages after their first semester earn the title of college marshal. These students, by rising to the top, demonstrate the quality of education that Peace has to offer young women. Their responsibilities consist of officiating at commencement, baccalaureate, and convocation services.



Jennifer McGuire, Kristy Clark, Leigh Clark, Kristi Eaves, and Kelly Hawks serve as the 1994-1995 marshals.

Teaching Award



Dr. Laura Vick

Each year the McCormick Distinguished Teaching Award goes to a faculty member who has demonstrated a level of excellence both in and out of the classroom. This person, who has earned numerous outstanding achievements, displayed a genuine interest in the students' personal and intellectual growth. He or she lead by example and expected the best out of each person that entered the classroom.

Laura Vick, the 1994 recipient of the prestigious award, teaches courses in Anthropology and Sociology and joined the staff in 1990. In the following statement, Dr. Vick explains why she enjoys her profession: "I love research and love to go out in the field, but if I only did that I believe that I would miss out on one of the most enjoyable aspects--sharing what you are most interested in with the students. Teaching is gratifying, especially when you hear students discussing concepts you present in and out of the classroom. Then you hear students discussing those concepts with other students and they understand. You started a spark and they add to that by being interested enough to take the concept even further. Peace really does prepare young women for success and I enjoy contributing whatever I can." Peace is fortunate enough to reap the rewards of such a dedicated woman.

Phi Theta Kappa

Phi Theta Kappa, a national honor fraternity, recognizes the outstanding academic achievements made by students who attend junior colleges. In order to become a member, freshmen must receive a GPA of 3.7 or higher their first semester and sophomores need to have a cumulative GPA of 3.3. To maintain status in this organization, all members must keep a cumulative GPA of 3.3. Induction occurs each spring where the prospective members receive a rose after being tapped. Phi Theta Kappa sponsors campus-wide tutoring options, provides guest speakers throughout the year, and holds an annual dinner in the spring.



Phi Theta Kappa members are: Jill Liles, Leslie Rand, Sarah Pollack, Gray Robinson, Karey Sowers, Jennifer Daniels, Darcy Curl, Lauren Reaves, Susan Turner, Heather White, Kristi Eaves, Leslie Eden, Emily Cunningham, Kelly Hawks, Kelly Inman, Jennifer McGuire, Carrie Lee, Melissa Tatum, Jennifer Womble, Colista Sugg, Kristy Clark, Leigh Clark, Karen Philbeck, and Melyssa Allen.

Sigma Delta Mu

As a national honor society for those students who study Spanish, Sigma Delta Mu provides an opportunity for students to recognize those who excel. To become a member, a student must maintain a B average in Spanish with at least a 3.0 GPA in all of her classes, and continue to take courses in the language into the second semester. Peace's chapter of Sigma Delta Mu is known as the Beta Chapter of North Carolina.



Sigma Delta Mu members are: Lauren Reaves, Colista Sugg, Susanne Winslow, Kelly Paszt, Melyssa Allen, Kristi Eaves, Kristy Clark, Karey Sowers, Kristan Creech, Mary Thompson, Jill Liles, Carrie Lee, and Leigh Clark.



Sophomores Kristi Eaves and Kristy Clark fill the positions of president and vice-president of Sigma Delta Mu

Outstanding



Jenny Cerney

Resident Assistant, PSCA President, PSCA Cabinet, Bacchus, and Hall Council



Kristi Eaves

College Scholar, Academic Scholarship Recipient, Phi Theta Kappa, Sigma Delta Mu, Sigma Delta Mu President, Marshal, Bacchus, National Dean's List, Elections Committee Chairperson, Who's Who in American Junior Colleges, Student Telecounselor



Alex Kinney

Freshman Class Secretary, PSRA hall representative, Hall Council, PSGA, PSGA Student Life Committee Chairperson, Special Merit Scholarship, Loaves and Fishes volunteer, and Student Representative on Program Review Committee



Keri McCahan

Chamber Singers, President's Aide, Admissions Assistant, Hall Council Representative, Resident Assistant(Chairperson), PSGA Voting Member, Spring Formal/Spring Fling Committee, NC Special Olympics Volunteer, Who's Who in American Junior Colleges

Sophomores



Stevie McFadden

Choir, PSGA-Social Committee and Cabinet Member, PSCA-Cabinet Member, Student Admissions Assistant, President's Aide, Judiciary Board, Resident Assistant



Caroline Owen

Leadership Scholar, PSGA, Volunteer for Loaves and Fishes, Dean's List with Distinction, Sophomore Class President, Judiciary Board, Program Review Committee, Who's Who in American Junior Colleges, President's Aide, Admissions Assistant



Megan Parpart

Freshman Class Vice-President, Loaves and Fishes Volunteer, Special Olympics Volunteer, PSGA, PSCA, PSRA, Student Assistant, Resident Assistant, Student Government President, Judiciary Board, Who's Who in American Junior Colleges



Heidi Plemmons

Freshman Class President, Student Admissions Committee, Young Democrats, Leadership Scholar, Choir, Social and Foods Committee Chair, PSGA, Biology Lab Assistant



Susanne Winslow

Sigma Delta Mu, Leadership Scholar, College Scholar, National Dean's List, Bacchus, Foreign Study Program, Who's Who in American Junior Colleges, Phi Theta Kappa, Publicity Committee Chair, Resident Assistant, Biology Lab Assistant

Who's Who In



Karen Elizabeth Parrish

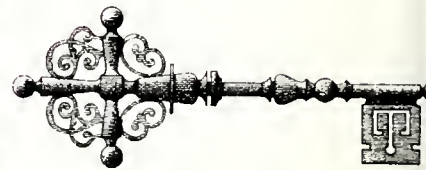
Emily Anne Cunningham



Caroline Elizabeth Owen



Keri Lyn McCahan



Karen Denise Philbeck



Leslie Camille Eden

American Junior Colleges



Susanne Relfe Winslow

Kristen Jeane Clark



Carolyn Hope Lee



Sarah Elizabeth Pollack



Leslie Carolyn Rand



Karey Marie Sowers

Who's Who



Sunshine Melody Romola



Kristi Lynn Eaves



Megan Leigh Parpart



Rachael Cleverly



Stefanie Brook McFadden

Miss Peace

Susanne Winslow



Elected by her peers, Miss Peace is an honorable and outstanding sophomore who displays excellent academic qualities and also commits her time to community services. The honor of Miss Peace for the 1994-1995 academic year is Susanne Winslow from Hertford, North Carolina.

Susanne has been an active member in Sigma Delta Mu and BACCHUS for two years. She also received a Leadership and College Scholarship. She participated in various school committees and was chosen to travel to Cambridge, England in the Foreign Study Program. Peace is proud to have a such an exemplary student represent our school.

Congratulations, Susanne!!!!

The Road Home

*"...then close you eyes and tap
your heels together three times
and think to yourself:*

*There's no place like home,
There's no place like home,
There's no place like home..."*

*Glinda the good witch
"The Wizard of Oz"*

Directory



EAST

WEST

INTERSTATE
40

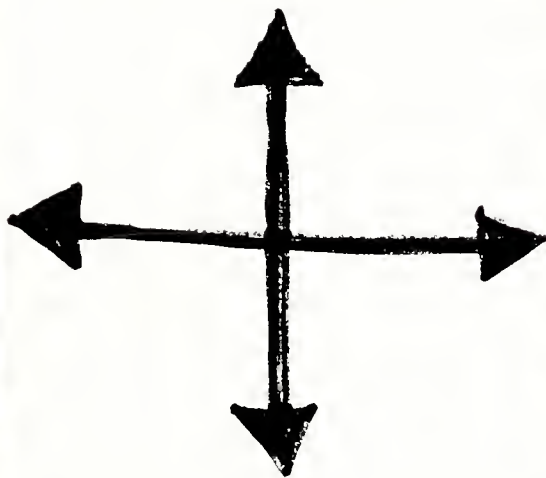
INTERSTATE
40



Abshear, Sara Elizabeth, 1803 Virginia Avenue, Kill Devil Hills, NC 27948
 Alford, Emily Jean, 6932 Mitchell Mill, Zebulon, NC 27597
 Allen, Jenna Elizabeth, 1245 Drivers Circle, Rocky Mount, NC 27804
 Allen, Jennifer Leigh, 126 Sir Gregory Dr., Shelby, NC 28152
 Allen, Melyssa Raye, 815 Clifftwood Drive, Siler City, NC 27344
 Alman, Kimberly Michelle, Route 2, Box 234-G, Siler City, NC 27344
 Annas, Amanda Marie, 1849 Ardmore Road, Winston-Salem, NC 27127
 Arant, Sarah Ruth, 2529 Win Road, Garner, NC 27529
 Armstrong, Laura Harris, 9407 White Hemlock, Charlotte, NC 28270
 Arnett, Shannon Rae, 306 Walnut Creek Ct., Jacksonville, NC 28546
 Arnold, Jan Elizabeth, 7004 Birchett Drive, Prince George, VA 23875
 Arnott, Sarah Jeannette, 411 Cutler Street, Raleigh, NC 27603
 Averette, Melissa Gayle, 4619 Berini Drive, Durham, NC 27705
 Babb, M. Elizabeth, 23415 Wyanoke Lane, Courtland, VA 23837
 Baggett, Cherie Nichole, #40 3703 Cotswold Tr., Greensboro, NC 27410
 Barajas, Valerie Jill, 9831 Sturgeon Drive, Leland, NC 28451
 Barbour, D. Jeneen, 4320 St. James Ch. #D, Raleigh, NC 27604
 Barfield, Leigh Anne, 624 Cobblestone Drive, Wilmington, NC 28405
 Barker, Kendra Michelle, 1625 Glengarry Drive, Cary, NC 27511
 Barlow, Jaime C., 4608 East Hampton Dr., Raleigh, NC 27604
 Barnes, Donna Marie, 7720 Brame Road, Kenly, NC 27542
 Barnes, Heather Nicole, Route 2, Box 277-I, Smithfield, NC 27577
 Bass, Karen Elizabeth, Rt. 4, Box 739, Bladenboro, NC 28320
 Batton, Barretta Louise, Route 3, Box 709, Bladenboro, NC 28320
 Baucum, Deana Elizabeth, 2668 Cold Springs Rd., Concord, NC 28025
 Baxter, Marsha Lee, 1028 Country Lane, Rocky Mount, NC 27803
 Beard, Tiffany Leah, 428-A Tremont Park, Lenoir, NC 28645
 Belton, Merry Craig, 208 Robin Road, Mount Airy, NC 27030
 Benton, Sherrie Lee, 1704 Townsend Forest Browns, Summit, NC 27214
 Bernardo, Anna Virginia, 1139 Oaklawn Drive, Culpepper, VA 22701
 Best, Holly Nicole, 2005 Azalea Drive, Goldsboro, NC 27530
 Best, Mary Harper, 5105 Huntington Dr., Raleigh, NC 27606
 Biesecker, Bethany Alice, 368 Iroquois Trail, Lexington, NC 27292
 Blake, Shannon Marie, 1207 Dove Road, Creedmoor, NC 27522
 Blott, Stephanie Lynn, 4017 Lochinvar Lane, Rocky Mount, NC 27804
 Blythe, Virginia V., 9531 Hitchgate Dr., Charlotte, NC 28227
 Bonser, Heather Marie, 418 Antoinette Drive, Wilmington, NC 28412
 Boone, Hollie Morris, 439 South Norwood St., Wallace, NC 28466
 Booth, Victoria Lynn, 201 Ashlyn Drive, Danville, VA 24541
 Boumpani, Yvonne Marie, 823 Prologue Road, Durham, NC 27712
 Bowers, Susan Marie, 575 Roger Drive, Salisbury, NC 28147
 Bowman, Sara Clark, 317 Wilbledon Court, Wilmington, NC 28412
 Boyette, Wendy Denise, 6525 Roosondall Ct., Apex, NC 27502
 Breeden, Laura Frances, 10700 Robert E. Lee, Spotsylvania, VA 22553
 Brewer, Amy Renee, 11000 Pioneer Mill, Concord, NC 28025
 Britt, Laura Lucy, 420 Kings Chapel Rd., Augusta, GA 30907
 Brock, Melissa Dawn, 5204 Olive Road, Raleigh, NC 27606
 Broderick, Annysa Nicole, 717 Point Court, New Bern, NC 28560
 Brown, Brittainy Carol, 25 Powers Road, Wallace, NC 28466
 Brown, Claudia Ann, 5401 Deep Valley Run, Raleigh, NC 27606
 Brown, Katherine Pell, 1126 Hanover Avenue, Norfolk, VA 23508
 Brown, Lee Ann, 1238 North Main St., Walnut Cove, NC 27052
 Brown, Melissa Jean, 2215 Pembroke Drive, Albany, GA 31707
 Bruton, Elizabeth W., 109 Wilshire Blvd., Wilson, NC 27893
 Bryant, Carrie Ellen, P.O. Box 1893, Manteo, NC 27954
 Bucci, Emily Suzanne, 9106 E. Cambridge Ct., Brentwood, TN 37027
 Bunce, Bliss Renee, 1947 Middle Road, Fayetteville, NC 28301
 Bunting, Christy Nicole, 222 West 12th Street, Scotland Neck, NC 27874
 Burge, Jodi Carlene, 5418 Fairview Church, Trinity, NC 27370
 Burgon, Bethany Ann, 228 Jansmith Lane, Raleigh, NC 27615
 Burnette, Carne Jo., P.O. Box 372, Roxboro, NC 27573
 Bursley, Sarah Ruth, 606 Asheton Way, Simpsonville, SC 29681
 Bussey, Michele Duncan, 105 Strange Lane, New Bern, NC 28560
 Butler, Kimberly C., 305 Trail 1, Burlington, NC 27215
 Byerly, Stephanie Carter, 1218 Fries Street, Salisbury, NC 28144
 Cabiness, Ashley Sims, 33 Heritage Lane, Shelby, NC 28150
 Calton, Sarah Elizabeth, 3310 Pollack Place, Raleigh, NC 27613
 Campbell, Michelle Lee, Rt. 4, Box 319 A, Statesville, NC 28677
 Carnagua, Toni Elaine, 110 West Gerrell Ct., Cary, NC 27511
 Carroll, Dana Michelle, 4827 Alliance Church, Pleasant Garden, NC 27313
 Carter, Jennifer Marie, 4707 Perquimans Rd., Greensboro, NC 27407
 Carter, Judith Paige, 107 Dublin Woods Dr., Cary, NC 27513
 Carver, Kelly Michelle, 2624 Briarcliff Pl., Charlotte, NC 28207
 Cavanaugh, Abby Marie, 3944 S. NC 41, Wallace, NC 28466
 Cavanaugh, Amy Beth, 3944 S. NC 41, Wallace, NC 28466
 Cerney, Jennifer C., 19 Creekside Drive, Hubert, NC 28539
 Chamblee, Margaret E., 1405 Cherry Lane, Wilson, NC 27896
 Clark, Anna Leigh, P.O. Box 523, Buies Creek, NC 27506
 Clark, Kristen Jeane, P.O. Box 523, Buies Creek, NC 27506
 Clark, Terri Lynn, P.O. Box 76, Cullowhee, NC 28723
 Cleverly, Rachael, 158 East, 1650 South., Bountiful, UT 84010
 Cobb, Monica Ryan, 1302 Linville Dr., #1, Reidsville, NC 27320
 Cobb, Sarah Baldwin, 1500 Northwood Circle, Lynchburg, VA 24503
 Conard, Annette Marie, 108 Elizabeth Dr. E., Hubert, NC 28539
 Connor, Christen C., 127 Circle Drive, Hampstead, NC 28443
 Corregan, Faye Elizabeth, 3101 Douglas Street, Raleigh, NC 27607
 Costa, Katherine Harris, 605 Noble Lane, Mount Pleasant, SC 29464
 Cotten, Ashley Elizabeth, 1948 Hillsboro Road, Wilmington, NC 28403
 Crane, Renee Lynn, 20 Old Highlands Rd., Franklin, NC 28734
 Crawshaw, Elisha Jean, P.O. Box 30084, Raleigh, NC 27622
 Creech, Kristan Marie, 3408 Arboretum Place, Fayetteville, NC 28303
 Cunningham, Emily Anne, 5531 Spring Road, Hendersonville, NC 28733
 Curl, Darcy Regan, 711 Dennis Avenue, Raleigh, NC 27604
 Currier, Ann Elizabeth, 303 Windhaven Street, Roxboro, NC 27573
 Cutlip, Marisa Madge, 863 Dolphin Street, Laurel Bay, SC 29902
 D'Asto, Pilar Iona, 3000 Wamath Drive, Charlotte, NC 28210
 Daniel, Jennifer Lorene, 3170 Sam Usry Road, Oxford, NC 27565
 Daniel, Sallie Byrd, P.O. Box 542, Warrenton, NC 27589
 Daniels, Cara Anne, 4600 Johnston Lane, Kitty Hawk, NC 27949
 Daniels, Jennifer Lynn, 2424 Pine Tree Lane, Rocky Mount, NC 27804
 Daniels, Samantha Jane, P.O. Box 14, Wanchese, NC 27981
 Davenport, Nicole, Box 192 Main Street, Creswell, NC 27928
 Davis, Amanda Larayne, 110 Patrick Street, Goldsboro, NC 27530
 Davis, Gretta Jane, 104 Yorkshire Lane, Rocky Mount, NC 27804
 Davis, Hunter Anderson, Route 1, Box 1049, Port Republic, VA 24471
 Davis, Kimberly Leigh, 1205 Tanglewood Dr., South Hill, VA 23970
 Dettler, Stephanie M., 3423 Youngstown Dr., Fayetteville, NC 28303
 Dickerson, Julie M., 901 North Haughton, Williamston, NC 27892
 Dills, Shelley Kaye, P.O. Box 316, Webster, NC 28788
 Dimmette, Margaret E., 949 North Shore Dr., Boiling Sp., Lake, NC 2846
 Dixon, Jennifer Jo., 312 Foxhall Drive, Rocky Mount, NC 27804
 Donaldson, Anna Lee, Route 2, Box 329B Kittrell, NC 27544
 Downing, Megan Jean, 706 South Point Road, Belmont, NC 28012
 Drake, Kimberly Lynn, 31147 Sands Road, Newsoms, VA 23874
 Drake, Marianna Miles, 614 Deepwood Drive, Henderson, NC 27536
 Dudak, Julie Lynn, 3422 Sandy Creek Dr., Durham, NC 27705
 Duncan, Laura Ann, Route 3, Box 128, Tabor City, NC 28463
 Duncel, Clarissa Ruth, 5320 Laurel Ridge Dr., Sanford, NC 27330
 Dufresne, Virginia Jean, 202 Westwood Drive, Goldsboro, NC 27530
 Eaves, Kristi Lynn, Route 1, Box 606, Henderson, NC 27536
 Eche, Claudia Pelegrino, R. Jacurici 166, Apt. 081, Sao Paulo, Brazil 145
 Eden, Leslie Camille, 7441 Capstone Drive, Raleigh, NC 27615
 Edwards, Coreen Michelle, 716 Grattan Road, Martinsville, VA 24112
 Elmore, Rebecca Barwick, 205 Tyree Road, Kinston, NC 28501
 Ervin, Laura Elizabeth, 503 Rush Road, Fayetteville, NC 28305
 Esten, Victoria Dawn, 8400 Penny Rd., Raleigh, NC 27606
 Eure, Adrienne Leigh, 5008 Wood Valley Dr., Raleigh, NC 27613
 Evans, Heather Elizabeth, Route 1, Box 297-C, Kinston, NC 28501
 Evans, Sallie Letitia, Rt. 1, Box 292-A, Shannon, NC 28386
 Everett, Andrea Zaneta, 515 Old Mill Road, Castle Hayne, NC 28429
 Fain, Amy Elizabeth, 9 Farmstead Dr., Shelburne, VT 5482
 Farnis, Emily Lynn, 2501 Little Cove Rd., Charlotte, NC 28270
 Feldsine, Kristina Dawn, 5104 Country Club Dr., Wilson, NC 27896
 Ferrell, Connie Rae, Route 1, Box 498, Louisburg, NC 27549
 Flickin, Mary Kathryn, 2483 Wesleyan Drive, Laurinburg, NC 28352
 Flowers, Jessica Joan, 606 S. Washington St., Shelby, NC 28150
 Fogle, Susan Marie, 2377 North Beston Rd., LaGrange, NC 28551
 Foley, Cameron Laine, 5401 Beaver Creek Ct., Greensboro, NC 27406
 Forsgren, Susan Stubbs, 708 Virginia Avenue, Raleigh, NC 27604
 Foster, Tracie Renee, 609 South Charles St., LaGrange, NC 28551
 Frahm, Nicole Laroche, 3714 Cardinal Downs, Greensboro, NC 27410
 Freeman, Valoree Haven, 4624 Lake Jennette, Greensboro, NC 27455
 Funderburk, Jennifer L., 8333 Potters Road, Matthews, NC 28105
 Gaddy, Lesley Michele, 2525 Pinetree Lane, Rocky Mount, NC 27804

agne, Courtney Danielle, P.O. Box 2902, Asheboro, NC 27203
 aines, Amanda Margaret, 801 Waverly Place, Statesville, NC 28677
 ardnar, Chandra Nicole, Route 1, Box 399, Castalia, NC 27816
 arnder, Erin Denise, 1211 Little Acres Dr., Durham, NC 27713
 arry, Amanda Sage, 1107 Forrest Hill Dr., High Point, NC 27262
 eorge, Amy Lee, 12708 Waterman Drive, Raleigh, NC 27614
 eessner, Jennifer Beth, 25970 Akins Road, Columbia Station, OH 44028
 eard, Ellen Gail, Route 8, Box 603, Henderson, NC 27536
 Giles, Catherine Claire, 27 Roanoke Shores, Littleton, NC 27850
 Gills, Joyce Lorraine, 3 Innisfree Drive, Durham, NC 27707
 Gloekler, Paula Mary, 4248 Garden Spring, Clemmons, NC 27012
 Gooden, Jessalyn Taylor, P.O. Box 1242, Elizabethtown, NC 28337
 Gray, Amy Louise, P.O. Box 1136, Robersonville, NC 27871
 Greer, Heather Michele, 504 Caprice Court, Raleigh, NC 27606
 Griffith, Kandy Cotten, 7898 James Austin Rd., Willow Spring, NC 27592
 Grubbs, Jamie Christine, 149 Picadilly Drive, Winston-Salem, NC 27104
 Gyuris, Vivien, 27 Zsindely Street, Budapest, Hungary 1025
 Habetz, Shelley Anne, 9505 Woodington, Ct., Raleigh, NC 27606
 Hales, Cynthia Louise, 3408 Kilburn Rd., Raleigh, NC 27604
 Hall, Amanda Elizabeth, 105 Autumn Trail, Whiteville, NC 28472
 Hall, Amanda Vanessa, 311 Poplar St., Mt. Carmel, TN 37645
 Hall, Haley Trask, 648 Bayshore Drive, Wilmington, NC 28405
 Ham, Tracey Michelle, 1308 SE Second St., Snow Hill, NC 28580
 Hamilton, Tacita Monique, 800 Weaver Drive, Goldsboro, NC 27530
 Hancock, Anna Bell, 113 Denard Street, Oxford, NC 27565
 Hanson, Sarah Marjorie, 211 Millwood Lane, Charlotte, NC 28270
 Hardee, Rhonda Gray, Route 3, Box 72, Enfield, NC 27823
 Harden, Kelly Catherine, 101 Charleston Court, Rocky Mount, NC 27803
 Hurdister, Cara Rebecca, 605 Williamsburg Dr., Tarboro, NC 27886
 Hargrave, Allison Leigh, 701 East Birchwood, Nashville, NC 27856
 Harper, Melissa Anne, 530 Wanda Ridge Dr., Durham, NC 27712
 Harris, Cynthia Lynn, 4519 Shock Overton, Oxford, NC 27565
 Harris, Jennifer B., 2004 Harris Street, Goldsboro, NC 27530
 Hartzoge, Julia Reid, 19 Loch Ridge Drive, Greensboro, NC 27408
 Hawk, Jennifer Ann, 7302 Fathom Court, Burke, VA 22015
 Hawk, Rebecca Carolyn, 7302 Fathom Court, Burke, VA 22015
 Hawks, Kelly Suzanne, 24 Ester Drive, Mount Airy, NC 27030
 Heath, Angela Mae, 103 Fox Court, Cary, NC 27513
 Heely, Rebecca West, 507 Westover Avenue, Norfolk, VA 23507
 Herman, Allison Jean, 227 McGinnis Avenue, Lincolnton, NC 28092
 Hiers, Norma Bunch, 204 Yacht Cove, Hilton Head, SC 29928
 Hill, Kathryn MacKenzie, 514 Carroll Street, Statesville, NC 28677
 Hoffman, Rachel Erin, 4329 Mill Village Rd., Raleigh, NC 26712
 Hollamon, April E., P.O. Box 2111, Smithfield, NC 27577
 Holt, Shannon Fawn, 1968 Ackerman Road, Garner, NC 27529
 Honeycutt, Chasity Jean, 400 Willow Road, Clinton, NC 28328
 Horne, Erin Leigh, 1507 Fox Hollow Road, Greensboro, NC 27410
 Houston, Donna Lynn, Route 1, Box 365, Pink Hill, NC 28572
 Howell, Anne Elizabeth, 126 Deernborn Drive, Goldsboro, NC 27534
 Howell, Gabrielle Louise, 6306 Jonquil Drive, Greensboro, NC 27407
 Howell, Margaret V., 8708 September Drive, Richmond, VA 23229
 Howorth, Jennifer Ann, 10009 Whitestone Rd., Raleigh, NC 27615
 Hubbard, Helen Elizabeth, 6509 Spring Terrace Falls, Church, VA 22042
 Hubbard, Laura Gayle, 100 Haywood Drive, Roanoke Rapids, NC 27870
 Hudman, Sarah D., 320 Westridge Drive, Raleigh, NC 27609
 Hughes, Candace Marie, P.O. Box 861, Siler City, NC 27344
 Hunt, Amy Jo., 1316 Meadow Lake Ck., Virginia Beach, VA 23454
 Inman, Kelly Dail, 134 Brentwood Drive, Mt. Airy, NC 27030
 James, Allison Wynne, Route 1, Box 157-B Robersonville, NC 27871
 Jansen, Marjolijn Renate, 8316 Running Cedar, Raleigh, NC 27615
 Jarrett, Catherine Renee, 3904 Ketch Point Dr., Rocky Mount, NC 27803
 Jeter, Mary Melissa, 4724 Connell Drive, Raleigh, NC 27612
 Jones, Angela Marie, P.O. Box 475, Maysville, NC 28555
 Jones, Kristie Dawn, 314 Tadlock Road, Mount Olive, NC 28365
 Jones, Mary Beth, 805 Nicole Lane, Rocky Mount, NC 27803
 Jones, Peyton Elizabeth, 2720 Clement Street, Winston-Salem, NC 27127
 Jones, Raeanne, 2503 Van Dyke Ave., Raleigh, NC 27607
 Jones, Samantha, 105 Trafalgar Lane, Cary, NC 27513
 Jordan, C. Dawn, 117 Fuller Avenue, Lumberton, NC 28358
 Joyner, Lindsay Wood, 611 Tanglewood Lane, Goldsboro, NC 27534
 Kapoor, Kara Kamalesh, 213 Leonda Drive, Beaufort, NC 28516
 Kearney, Mary Nell, Route 3, Box 157, Snow Hill, NC 28580
 Keir, Caroline Love, 108 S. Belvedere Ave., Gastonia, NC 28054
 Kerr, Helen Henagan, 22 Westridge Drive, Asheville, NC 28803
 Kielsgard, Dana Rochelle, 11109 Warren View Rd., Richmond, VA 23233
 King, Anna Sheffield, 1107 Marlowe Road, Raleigh, NC 27609
 King, Julie Elizabeth, Route 2, Box 266A Purcellville, VA 22132
 Kingery, Allison E., 6600 Graymont Place, Raleigh, NC 27615
 Kinney, Alexandria E., 131 West Lake Drive, Asheboro, NC 27203
 Kite, Karen Renee, 119 Lakeshore Drive, Rockingham, NC 28379
 Kloiber, Kara Ann, 602 Steiner Place, Charlotte, NC 28211
 Knisley, April Jeanine, 207-P Wrenn Drive, Cary, NC 27511
 Krepps, Tara Susanne, 31 Alex Street, Willow Springs, NC 27592
 Kuchinic, Natalie Anne, 108 Byrwood Drive, Jamestown, NC 27282
 Kuhn, Dawn Guy, 1209 Castalia Dr., Cary, NC 27513
 Lamm, Catherine Bryant, 1117 Watson Dr., Wilson, NC 27893
 Lamm, Elizabeth Williams, 1117 Watson Drive, Wilson, NC 27893
 Lancaster, Melissa Anne, 12201 Lockhart Lane, Raleigh, NC 27614
 Lanpher, Danielle M., 301 S. Main Street, Roxboro, NC 27573
 Lathrop, Allison Paige, 1911 San Fernando Dr., High Point, NC 27265
 Lavender, Sara Ann, 1041 19th Ave. Pl., N.W., Hickory, NC 28601
 Lee, Brittney Michael, P.O. Box 764, Ramseur, NC 27316
 Lee, Carolyn Hope, P.O. Box 135, Albertson, NC 28508
 Lee, Deborah Sharon, 203 Bordeaux Lane, Cary, NC 27511
 Lee, Katy Jane, 1033 Sturdivant Dr., Cary, NC 27511
 Leonard, Amy Honeycutt, 5337 Jack Jones Road, Wake Forest, NC 27587
 Lewis, Amy Carol, P.O. Box 946, Norlina, NC 27563
 Liles, Jill Livengood, 508 B Edgar Street, Lillington, NC 27546
 Little, Lori Michelle, 217 Pleasant Drive, Durham, NC 27703
 Logan, Jenifer Melena, 1220 Pinckney Street, Whiteville, NC 28472
 Lyons, Julia Heather, 10339 Cliff Mills Rd., Marshall, VA 22115
 Markette, Mary Ellen, 107 Jones Street, Clayton, NC 27520
 Marshall, Amanda Gaye, 448 Cobblestone Dr., Wilmington, NC 28405
 Martin, Allison Renee, 7001 Stella Drive, Whitsett, NC 27377
 Martin, Caroline Baker, 408 West 34th Street, Lumberton, NC 28358
 Martin, Mary Beth, 3907 Fox Grove Trail, Greensboro, NC 27406
 Marynak, Amy Laurel, 1319 Apache Lane, Apex, NC 27502
 Mathes, Sara Paige, 1691 South Main St., Laurinburg, NC 28352
 Mattix, Sarah Marie, 5037 Hunting Creek, Wake Forest, NC 27587
 Mayer, Caroline Ross, P.O. Box 750, Highlands, NC 28741
 Mayer, Megan Ansley, 603 Macon Place, Raleigh, NC 27609
 Medd, Heather Margaret, Route 6, Box 89-A, Hendersonville, NC 28792
 Messer, Leslie Leigh, 612 South Church St., Lowell, NC 28098
 Metcalf, Amy Brooke, 2203 So.-Hi. Drive, Durham, NC 27703
 Midgett, Courtney Lea, 1915 West First St., Winston-Salem, NC 27104
 Midgett, Leigh Ann, P.O. Box 85, Manteo, NC 27954
 Miller, Deborah Francine, 805 Roanoke Dr., Cary, NC 27513
 Mills, Martha Hand, 3615 Canterbury Rd., New Bern, NC 28562
 Minshew, Dana Elizabeth, 203 Cedar Hill Drive, Williamston, NC 27892
 Mobley, Amanda Carole, 624 Stokestown Rd., Wallace, NC 28466
 Mongold, Brooke Winship, 71 North Union St., Concord, NC 28025
 Moore, Tracy Annette, 912 Colony Drive, New Bern, NC 28562
 Morris, Michelle F., 202 Lavista Drive, Nashville, TN 37215
 Morris, Veranique Lashay, 535 East Park Avenue, Nashville, NC 27856
 Murphy, Christi Michele, P.O. Box 1684, Henderson, NC 27536
 Murphy, Kristin Marie, 1807 Tiffany Place, Greensboro, NC 27408
 Musselwhite, Kimberly D., Route 1, Box 206, Lumberton, NC 28358
 McAdoo, Arlinda Yvonne, P.O. Box 876, Siler City, NC 27344
 McCahan, Keri Lyn, 207A West Balfour Avenue, Asheboro, NC 27203
 McClamroch, Michelle J., 1705 Eiland Drive, Greensboro, NC 27408
 McCleery, Meghan Leah, 3713 Gloucester Road, Rocky Mount, NC 27803
 McCloskey, Delia P., 2622 Idlewood Circle, Charlotte, NC 28209
 McCormick, Susan Patch, 1003 Park Avenue, Fairmont, NC 28340
 McCurley, Jennifer Elise, 208 Point Crossing, Belmont, NC 28012
 McElveen, George-Anne, 529 Ellerslie Lane, Blenheim, SC 29516
 McFadden, Stefanie Brook, 1821 Castlebridge Rd., Midlothian, VA 23113
 McGee, Keri Nicole, 2101 Rich Lane, Creedmoor, NC 27522
 McGuire, Jennifer Sudi, 504 Clarendon Blvd., Carolina Beach, NC 28428
 McKinney, Elizabeth D., 1200-301 Westview Ln., Raleigh, NC 27605
 Nelsms, Brandi Dawn, Rt. 2, Box 402, Lousburg, NC 27549
 Neumann, Alicia Marie, 320 Greenbriar Dr., Jacksonville, NC 28546
 Newsom, Anne Warren, 701 Turnbull Street, Lawrenceville, VA 23868
 Newsome, Jamie Tanelle, 6029 Wintergreen Dr., Raleigh, NC 27609
 Nicholson, Elizabeth G., 11117 Farmwood Drive, Raleigh, NC 27612

Norns, Amy Sue, 417 East Carter St., Wallace, NC 28466
 Norris, Audra Marie, 2517 Old Aberdeen Rd., Rockingham, NC 28379
 Oakes, Lea Ann, 1968 Red Marshal Rd., Pelham, NC 27311
 Oliver, Cheryl Lynn, Route 3, Box 225 E, Ahoskie, NC 27910
 Owen, Caroline Elizabeth, 11144 Willow Oak Rd., Norwood, NC 28128
 Page, Megan Suzanne, 1947 Mid Sound Loop, Wilmington, NC 28405
 Pait, Tammy Jane, Route 4, Box 158 B, Bladenboro, NC 28320
 Palej, Maja Elzbieta, 822 Greenridge Dr., Raleigh, NC 27609
 Parker, Anne Elizabeth, 2209 Waverly Drive, Wilmington, NC 28403
 Parker, Carol Hudman, 2306 Anderson Drive, Raleigh, NC 27608
 Parpart, Megan Leigh, 9406 Pinebluff Dr., Richmond, VA 23229
 Parrish, Karen Elizabeth, 309 Brentwood Dr., Rocky Mount, NC 27804
 Passmore, Julie Lynn 202 Sourwood Rd., Goldsboro, NC 27534
 Paszt, Kelly Diane, P.O. Box 265, Washington, NC 27889
 Pate, Hilary Floyd, 907 Shearwater Drive, Hampstead, NC 28443
 Pate, Janet Ruth, 1900 Washington Post, New Bern, NC 28560
 Pate, Shannon Craig, 129 Woodland Road, Rockingham, NC 28379
 Payne, Nell Hunter, 340 Cedar Lane, Arden, NC 28704
 Peal, George-Ann W., P.O. Box 1586, Morehead City, NC 28557
 Perry, Laura Elizabeth, 932 Mashie Lane, Rocky Mount, NC 27804
 Person, Jennifer Lee, 200 Durlington Place, Cary, NC 27511
 Phelps, Heather Ann, Route 3, Box 692, Louisburg, NC 27549
 Philbeck, Karen Denise, 3225 Frank Grigg Dr., Shelby, NC 28150
 Pierce, Catherine Neal, 320 Baker Street, Ahoskie, NC 27910
 Pierce, Kristi Noelle, 1952 NC 45 North, Colerain, NC 27924
 Pike, Carla Dale, 7851 Silk Hope, Libersiler City, NC 27344
 Pleasant, Amy Campbell, 2918 Hybart Street, Fayetteville, NC 28303
 Plemmons, Heidi Renee, 14625 Raynham Dr., Charlotte, NC 28262
 Pollack, Sarah Elizabeth, 1800 Arendell Street, Morehead City, NC 28557
 Poole, Jeanne R., 220 Westover Drive, Knightdale, NC 27545
 Pope, Ivey Elizabeth, 245 Game Trail, Thomasville, NC 27360
 Pope, Susan Michelle, 3309 High Ridge Ct., Greensboro, NC 27410
 Postlethwait, Elizabeth, 3209 Cromwell Rd., Durham, NC 27705
 Powers, Melissa Hannah, Route 8, Box 205, Lumberton, NC 28358
 Price, Jennifer Ruth, 2473 Country Club, Blorange Park, FL 32073
 Provost, Carey Marie, 105 Legault Drive, Cary, NC 27513
 Rand, Leslie Carolyn, 101 Pecan Lane, Richlands, NC 28574
 Randall, Allison Renee, 1207 Meadowood Lane, Shelby, NC 28150
 Ray, Angela DeeAnn, 126 Fairway Drive, Rockingham, NC 28379
 Reaves, Ingrid Naomi, 505 Periwinkle Way, Caswell Beach, NC 28465
 Reaves, Lauren Elizabeth, 2304 Wheeler Road, Raleigh, NC 27612
 Reeves, Amy Elizabeth, 1426 Rosewood Hill, Vienna, VA 22182
 Reid, Merit Adele, 5423 Thompson Circle, Hope Mills, NC 28348
 Riddick, Rebecca Hope, 407 Locust Court, Suffolk, VA 23434
 Rigda, Nanette Marie, 212 Barefoot Dorm, Raleigh, NC 27607
 Ritter, Amanda Jade, 410 Piney Grove Ch. Rd., Siler City, NC 27344
 Roberson, Lesley Carson, P.O. Box 748, Robersonville, NC 27871
 Roberts, Jennifer Leigh, 128 Forest Hills Dr., Monroe, NC 28112
 Roberts, Jennifer M., 2215 Lakeshore Drive, Greensboro, NC 27407
 Robinson, Carlotta Gray, 1021 Keith Street, Williamston, NC 27892
 Rocha, Carmen McKee, 2590 Jaluit Place, Honolulu, Hawaii 96818
 Rodgers, Kari Marie, 3178 Hyde Park Drive, Clearwater, FL 34621
 Romola, Sunshine Melody, P.O. Box 494, Swansboro, NC 28584
 Rush, Jennifer Rose, 5805 Redwood Lane, Raleigh, NC 27606
 Russell, Stephanie Ann, 24464B River Loop Dr., Albemarle, NC 28001
 Sabol, Jacqueline Nicole, 7531-34 Cove Pt. Dr., Raleigh, NC 27613
 Sabula, Kristin N., 1313 Luray Court, Raleigh, NC 27609
 Salem, Kristy Anna, 5207 Moye Road, New Bern, NC 28562
 Sataraka, Kelly Shannon, 208 Bentley Drive, Newport News, VA 23602
 Schuchardt, Mary Melissa, 832 Roberts Chapel Stem, NC 27581
 Sexton, Erika Brent, 2824 Mayview Road, Raleigh, NC 27607
 Shaw, Courtney Leigh, 5201 Bridgestone Ct., Greensboro, NC 27406
 Shaw, Crystal Gayle, 2849 Sonnett Drive, Randleman, NC 27317
 Shields, Adrienne Louise, 5105 McCormick Road, Durham, NC 27713
 Simpson, Cherre Hope, 2617 Buffaloe Road, Garner, NC 27529
 Sineath, Catherine P. 17 Palmetto Drive, Wrightsville Beach, NC 28480
 Sink, Christy Lynn, 240 Country Club Cir., Shelby, NC 28150
 Slaydon, Mary Price, 1812 Fairway Drive, Reidsville, NC 27320
 Sloan, Carol Carson, 5528 Eagle Rock Road, Knightdale, NC 27545
 Smith, Christa Rene, 3522 Carriage Drive, Raleigh, NC 27612
 Smith, Jennifer Marie, Route 2, Box 682, Coats, NC 27521
 Smith, Jill Alicia, 647 Oak Grove Drive, Lehighton, PA 18235
 Smith, Lindsay Winning, 125 Cedar Circle, Washington, NC 27889
 Smith, Lucile, Route 4, Box 73, Beaufort, NC 28516
 Smith, Mary Elizabeth, 109 West Qualridge, Oxford, NC 27565
 Smith, Nancy Carol, Rt. 2, Box 349, Grifton, NC 28530
 Smith, Virginia Grace, 16111 Beach Road, Chesterfield, VA 23838
 Snyder, Sarah Joelle, 3559 Fountaintown Rd., Chinquapin, NC 28521
 Sowers, Karey Marie, 10 Spring Oak Court, Greensboro, NC 27410
 Speight, Amanda Dawn, Route 6, Box 72-K, Kinston, NC 28501
 Spencer, Kimberly Dawn, 5679 Windemere Circle, Trinity, NC 27370
 Sponenberg, Sarah Malen, 514 Cedar Rck. Est. Dr., Lenoir, NC 28645
 Stewart, Stephanie Jean, 1055 Avondale Rd., Lowell, NC 28098
 Stock, Maureen Elizabeth, 11 Forest Edge Drive, Asheville, NC 28806
 Stokes, Regina Michele, 205 Forrest Drive, Kinston, NC 28501
 Sugg, Colista Faye, Rt. 1, Box 237, Pikeville, NC 27863
 Summerlin, Shelley L., 1401 Greenbriar Rd., Kinston, NC 28501
 Sutton, Eva Ann, 1316 Waverly Road, Wilson, NC 27896
 Sutton, Greta Martin, 3008 Stewart Drive, Wilson, NC 27893
 Swink, Courtney McKethan, 806 Honeysuckle Dr., Greensboro, NC 27404
 Talley, Amy Rene'e, 2405 Farthing Street, Durham, NC 27704
 Tant, Joy Renee, 2811 Hope Drive, Wilson, NC 27896
 Tatum, Melissa Carol, 1314 Valley Rd., South Hill, VA 23970
 Taylor, Coleenique A., 532 Raintree Circle, Jacksonville, NC 28540
 Thomas, Heather Marie, 604 Sloan Drive, Cary, NC 27511
 Thompson, Laurie Lee, 9161 Twisted Hickory, Bladenboro, NC 28320
 Thompson, Mary Frances, 1460 Cumberland Cr., Rockingham, NC 28373
 Thrailkill, Jennifer Lynn, 12601 Birchfalls Dr., Raleigh, NC 27614
 Thrower, Jenifer Lee, 505 Glosson Road, Raleigh, NC 27606
 Tilley, Robbie Ellen, 2771 Toxey Street, Raleigh, NC 27609
 Tingen, Carey Ann, 4201 Live Oak Road, Raleigh, NC 27604
 Todd, Whitney Sue, 1630 Crescent Drive, Henderson, NC 27536
 Traylor, Layla Jeannine, 306 Balsam Place, Goldsboro, NC 27534
 Trotter, Chris Renee, 1209 Hammel Road, Greensboro, NC 27408
 Turner, Susan Paige, 909 Hazelwood Lane, Martinsville, VA 24112
 Tyler, Lindsey Olice, 308 Goldleaf Dr., Goldsboro, NC 27534
 Ussery, Laura Leigh, 124 Grey Fox Run, Rockingham, NC 28379
 Van Dyck, Ann, 1509 Basewood Dr., Raleigh, NC 27609
 Van Harreveld, Monique, 11024 Trappers Creek, Raleigh, NC 27614
 Vaughan, Mary Hannah, 1600 Morganton Road, Pinehurst, NC 28374
 Venters, Lauren Claire, 1425 Quadrant Circle, Wilmington, NC 28405
 Vinson, Anna Fonvielle, 809 Park Avenue, Goldsboro, NC 27530
 Walker, Jennifer Leigh, 144 Lakewood Drive, Rockingham, NC 28379
 Walker, Kimberly Lynn, 1400 Old Buckhorn Rd., Garner, NC 27529
 Wall, Kristin Cunningham, 344 Lawndale Drive, Winston-Salem, NC 27101
 Wallin, Rachel Elizabeth, 1118 Two Mile Cir. W., Wilmington, NC 28401
 Ward, Angela Jeanette, Route 5, Box 428, Lumberton, NC 28358
 Warmack, Angela Janice, P.O. Box 705, Rich Square, NC 27869
 Warner, Diana Marie, 2005 Misson Road, Edmond, OK 73034
 Warner, Mary Catherine, 414 Thorncliff Drive, Fayetteville, NC 28303
 Warren, Alisha Latrice, 1312A #10 Hookerton, Greenville, NC 27834
 Warren, Laura Shelly, Route 1, Box 378, Fayetteville, NC 28301
 Washburn, Michelle Marie, 2400 B Wesvill Ct., Raleigh, NC 27607
 Watson, Beth Alexandra, 515 Martine Road, Fayetteville, NC 28305
 Watson, Priscilla Ann, 6218 Lloyd Road, Lucama, NC 27851
 Webb, Jennifer Beth, 500 Clayton Carriker, Ellerbe, NC 28388
 Webb, Jessica Marie, 1018 Morningside Dr., Rockingham, NC 28379
 Wheless, Kristen Kaye, 1110 Country Club Dr., Martinsville, VA 24112
 Whitaker, Kimberly Jo, P.O. Box 7, Everetts, NC 27825
 White, Heather Rachelle, 3125 Huntleigh, Raleigh, NC 27604
 Whitfield, Hannah K., 77 E. Dogwood Trail, Kitty Hawk, NC 27949
 Wightman, Haley Braxton, 215 Archibald Road, Concord, NC 28025
 Wilder, Christy Leigh, 1002 Woodbriar St., Apex, NC 27502
 Wilson, Amy Ruth, 318 Woodland Drive, Jacksonville, NC 28540
 Winslow, Susanne Relfe, 201 Sunset Dr., Hertford, NC 27944
 Wolfe, Julie Morrison, 2522-102 Avent Ferry, Raleigh, NC 27606
 Womble, Jennifer Jane, P.O. Box 249, Plymouth, NC 27962
 Woodell, Kelly Grace, Route 4, Box 249, Dunn, NC 28334
 Wright, Wendy Paris, 1215 Merry Hill Dr., High Point 27262
 Wulkiewicz, Amy E., 6103 Twin Sail Drive, Greensboro, NC 27410
 Yount, Amy Michelle, 205 Haven Way, Washington, NC 27889




Applebee's **JUST
AHEAD
ON RIGHT**

BP
REGULAR 105⁹
DIESEL 109⁹

Auto Zone



Billboards

*Down the road less traveled
we sometimes spy*

A sign that acts as a guide

*To aid in making life's
decisions*

*And help avoid minor
collisions.*

*At Peace we've learned not
to sit quietly on the side*

*And watch our dreams
pass us by.*

Ads





Life is to be fortified
by many friendships.
To love and to be loved
is the greatest happiness
in existence.

Can miles truly separate
us from friends? If
we want to be with
someone we love, aren't
we already there?



Manna-chickens
 Trick
 Jon Bon Jovi Fan club
 The Beast
 Did you get any mail today?
 Ya got anything to eat?
 Hey Big Daddy!
 Can you turn it down, please
 What's that smell?
 834-PAPA

Anna
 Kim
 Kimberly
 Sarah
 Crystal
 Amy
 Jodi



COMMERCIAL & RESIDENTIAL



Boone Refrigeration, Inc.
 COOLING & HEATING

439 SOUTH NORWOOD STREET
 WALLACE, NORTH CAROLINA 28466

(919) 285-3879
 1-800-633-6865

FRIENDSHIP!





Members of the Lotus staff are provided the opportunity to increase their skills of writing copy, designing layouts, taking photographs, proofreading, and editing. These students gain useful experience with Pagemaker and desk top publishing. The staff must be able to meet deadlines and work well with others in order to produce a yearbook that every Peace College student will cherish.

1994-1995 Lotus Staff

Editors

Judy Williams- Advisor

Leslie Eden- Senior Editor

Caroline Keir- Senior Editor

Melissa Brock- Business Manager

*Chelly McClamrock- Photography

*Shannon Pate- Communications

Freshman Staff

Merry Craig Belton

Hollie Boone

Sara Bowman

Carrie Bryant

Kimberly Drake

Amanda Garry

Amy Gray

Angie Ward

(* not pictured)

Fall Semester:

Brooke Mangold

Angela Jones



Leslie Eden and Caroline Keir, Co-Editors of Lotus, are always full of enthusiasm in getting the job done.

Amanda Garry, always found sitting at the computer, is working hard to master Page Maker



Kimberly Drake makes sure she has all of her deadlines met by keeping up with dates in her daily organizer



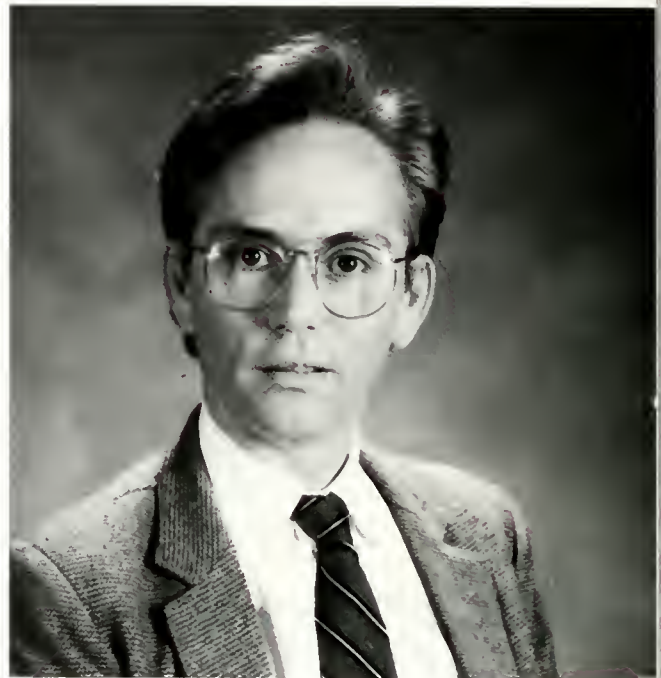
Angela Jones, Carrie Bryant, and Angie Ward work delgently on the class section to meet their deadline.

L O T U S

In Memoriam

In January of 1995, Peace College lost one of its most illustrious professors. Richard Rottschaefler, a member of the faculty for ten years, taught drama, acting, theater, and speech and directed many plays during his tenure. His energy, wit, creativity, and love for life affected everyone who knew him and who learned from him. His talents moved beyond acting- from set design and script adaptation to selecting plays appropriate for the students and the college community.

Students cite his ability to make them discover for themselves their talents and commitment to the theater. Under his direction, many students found their place on the stage, whether behind the scenes, directing, or as one of the principle players. Above all, he brought out the best in his students, as evidenced by the success many of his former students are now having in the fields of theater and stagecraft. He will be missed by students and colleagues alike and remembered for the contributions and commitment he made to Peace College and the theater world.



Mr. Richard Rottschaefler

Plays Performed at Peace during the Rottschaefler Years- 1984-1994:



- | | |
|-------------------------|---------------------------|
| The Diary of Anne Frank | Quilters |
| H.M.S.Pinafore | A Voice of My Own |
| Spoon River Anthology | Miss Firecracker |
| Blithe Spirit | Isn't It Romantic? |
| The Odd Couple | A Midsummer Night's Dream |
| The Imaginary Invalid | Agnes of God |
| Crimes of the Heart | Miracle Worker |
| Our Town | |
| Steel Magnolias | |



"Mr. Rottshaefer would tell us that drama is a wonderful life but a hard life. He really made me question myself. Through him I realized drama was what I wanted to do with my life. He was a serious, funny, and inspiring teacher who expected the same high standards from all his students. For that we will all miss him."

-Carrie Meyer

"He could do it all- act, direct, staging, costumes, lighting. In my opinion, he was a creative genius and one of the biggest influences in my career. He inspired me like I never imagined. It was his encouragement that gave me direction. He made me realize what doors were open to me and always asked me, 'Why not?' As a result of knowing this infinitely talented and remarkable man, I am now pursuing a career in directing and acting."

-Jennifer Price

"Mr. Rottschaefer was an intimidating man, not because of his personality, but because of the enormous amount of knowledge he possessed. He had all the abilities necessary to put on a play on his own. He was also very concerned that his students were happy here at Peace. When I worked for him my freshman year, he always wanted to be sure I wasn't homesick and that my classes were going well. I feel lucky to have known Mr. Rottschaefer, and I hope I will keep his influence with me forever."

-Melyssa Allen





Memories are too precious
to be saved in a cardboard box.





Because having fun never goes out of style

College

Why I chose a women's college"

Yes!!!



.and that has made all the difference...







