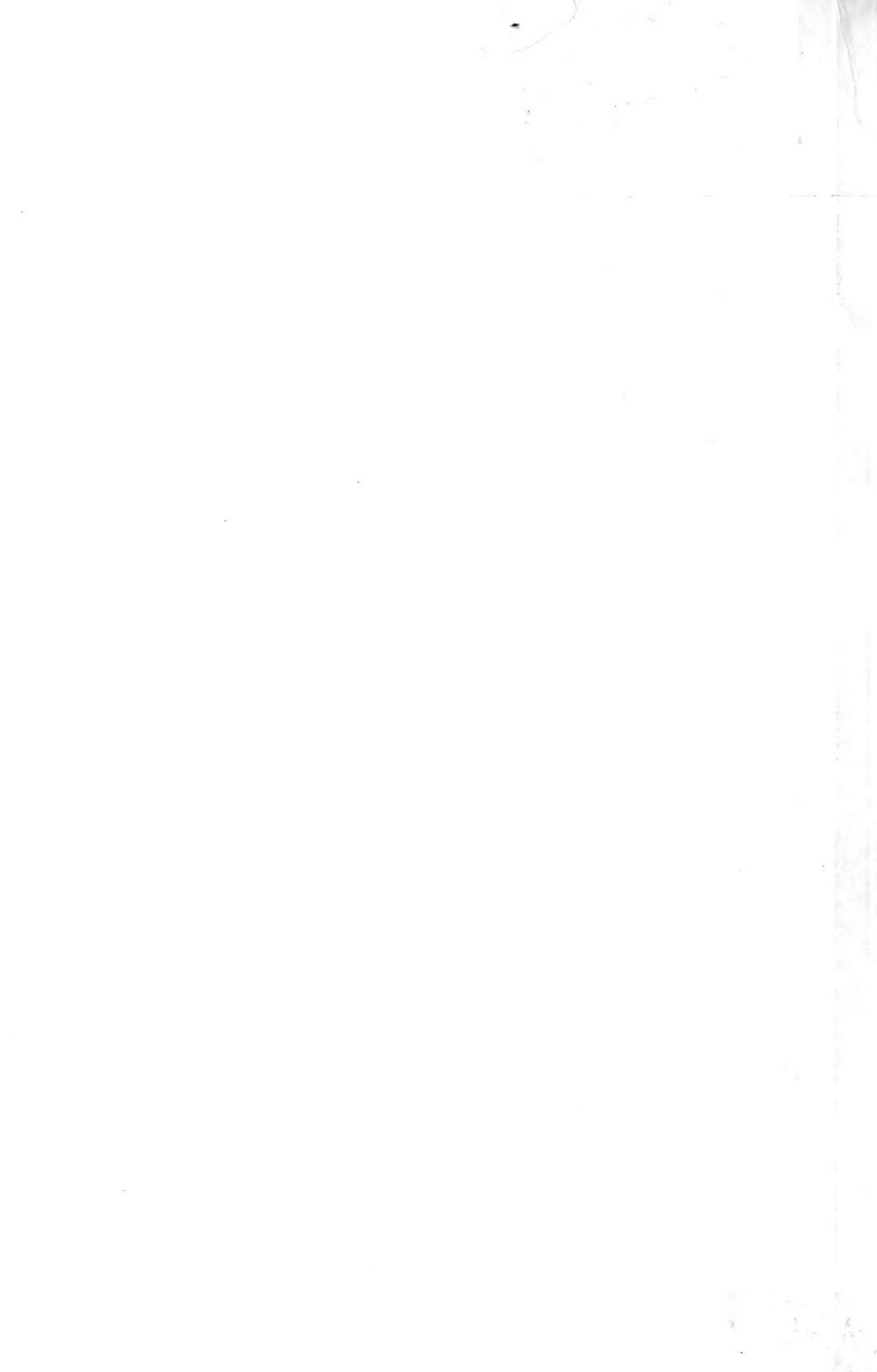


Historic, archived document

Do not assume content reflects current scientific knowledge, policies, or practices.



62.57

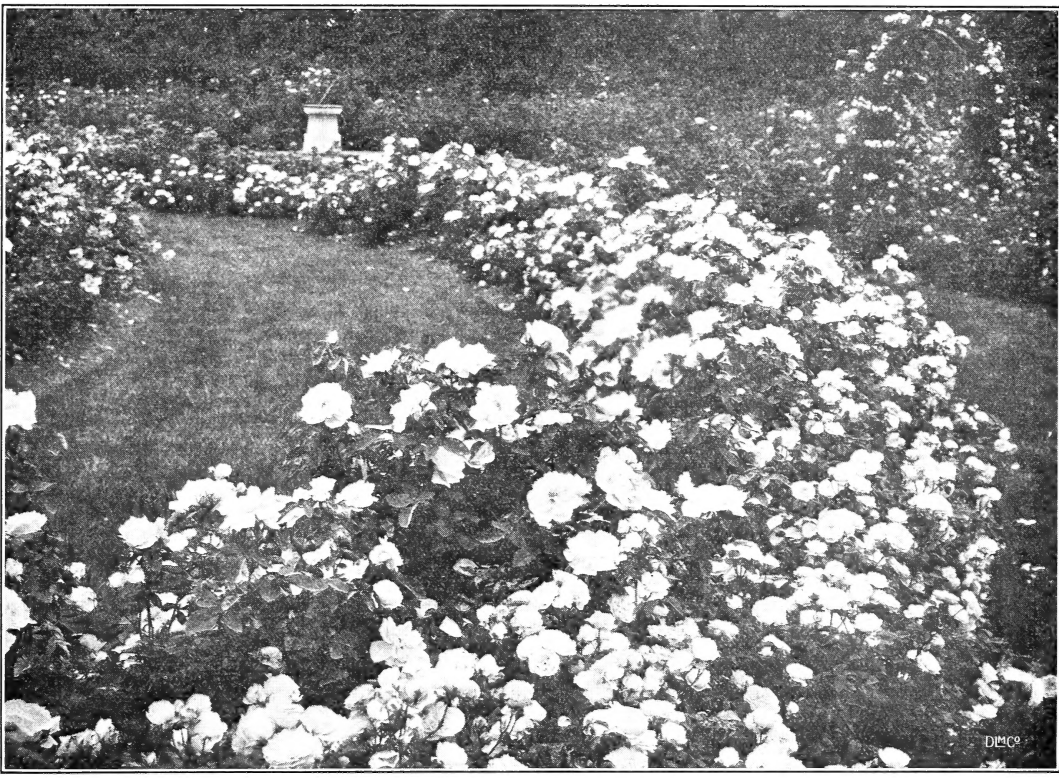
INDEXED

SEP 21 1934
U. S. Department of Agriculture

Lovett's

"Gain-a-Season"

CATALOG



FALL 1934

LOVETT'S NURSERY, INC.

LITTLE SILVER, NEW JERSEY

THE ADVANTAGES OF FALL PLANTING

While it is undoubtedly true that certain plants (not listed in this catalog) do not transplant well in the Fall, it is equally well known to nurserymen that the majority of Hardy Plants may be transplanted with greater assurance of satisfactory results in that season than in the Spring. A great many Shrubs and Perennials start to make their annual Spring root growth before the frost will allow us to move them. Then after this new growth has started, the shock of transplanting, before the tender new rootlets have had a chance to become established, may result in a mediocre bloom the first season. This is especially true of such early flowering perennials as Iris and Peonies, or such shrubs as Forsythia and Spiraea prunifolia, and so for all practical purposes Fall is the safest and surest season for the transplanting of such hardy stock as we list herein.

Our Terms of Sale—Please Read Carefully

Special Notice—*The greatest care is exercised to keep our stocks clean and true to name. Should any prove otherwise, we will return the money paid or replace it with other stock, but we are not liable for damage beyond that. A sure indication of the purity of our stock is the fact that customers of former years continue to deal with us. Certificate of inspection is attached to each shipment.*

HOW TO ORDER—To insure receipt of stock when wanted, order as early as possible. Be sure that your name and address are clearly written. In your address give post office, county and state, and state clearly to what points goods are to be sent. If shipping address is different than residence post office, be sure that you give us the correct shipping point. Small favors thankfully received always, **but we cannot undertake to fill an order of less amount than one dollar.**

SUBSTITUTION—It is our custom, should the supply of a variety become exhausted (which occasionally occurs in all nurseries), to substitute in its stead a similar sort, properly labeled, of course. When it is desired that we shall not do this, it must be so stated in the order. To simply affix the words "**No Substitution**" is all that is necessary.

SHIPPING—We deliver all goods to forwarders here without charge, after which our control ceases, consequently our responsibility also. We particularly caution patrons against ordering Perennial Plants and Strawberry Plants shipped by freight; they should always go by express, or in small lots by mail. Transportation charges on all goods shipped by freight or express are to be paid by the purchaser, unless arranged otherwise.

SHIPMENTS BY PARCEL POST—Many plants offered can be shipped to advantage by parcel post, especially to nearby points. If such method of shipment is desired, kindly consult the subheading of the desired article for cost of transportation. Any overpayment will be refunded by us immediately after shipment goes forward.

TERMS—Payment should be made at time of ordering or before shipment. We prefer to make no shipment **C.O.D.** but will when requested, ship in this way, provided 25 per cent of the amount of an order is sent with the order, with return charges added. **Please do not ask us to open accounts for less than \$10.00 orders.**

Prices in this catalog cancel previous quotations. The prices quoted are for the quantities specified, but six, fifty or five hundred of a variety will be supplied at dozen, hundred and thousand rates respectively. Hundred lots may not be made up at hundred rates of less than fifty of a variety.

CLAIMS, if any, should be made upon receipt of goods, when they will be carefully and cheerfully examined and, if just, all made satisfactory. Claims made after 15 days from receipt of goods, will not be entertained. We endeavor to send out only good stock in good condition, carefully packed in all cases; but success or failure depends in so large a degree upon the care and management after received, that we do not, because we cannot, undertake to guarantee stock to live.

LOCATION—Lovett's Nursery, Inc., is one mile from Little Silver Depot, two miles from Red Bank, forty miles from New York City and five miles from Long Branch. To reach it from New York, take the Central Railroad of New Jersey (foot of Liberty Street or 23rd Street) or the Pennsylvania Railroad (Hudson Terminal or 32nd Street and Seventh Avenue). From Philadelphia, take the Pennsylvania Railroad or the Philadelphia and Reading Railroad (Bound Brook Route).

WESTERN UNION TELEGRAPH, Red Bank, N. J. POSTAL TELEGRAPH, Red Bank, N. J.
LONG DISTANCE TELEPHONE, No. 2200, Red Bank, N. J.

THE DELIGHTFUL DOZEN

Our Best Everblooming Rose Collection

In well over half a century of nursery business, we have made some astounding offers. Here, however, is one that should take the breath away from our most astute clients. We are offering below the very best and the most dependable varieties of every color known to Rosarians. Run your eye over the following list and see if your favorite shade is omitted.

Autumn. Russet brown, bronzy red, rich yellow.

Betty Uprichard. Orange carmine.

Dame Edith Helen. Rich, clear pink.

Etoile de France. Dark, velvety crimson.

Ivy May. Rosy pink, edged with gold.

Los Angeles. Flame colored with coral over-tone.

Miss Rowena Thom. Rosy mauve, centered gold.

Mrs. G. A. Van Rossem. Deep yellow, apricot shading.

Pres. Herbert Hoover. Maroon, orange and gold.

Rapture. Pink and coral, tinted yellow.

Rev. F. Page-Roberts. Gold, stained red buff.

Talisman. Scarlet orange and rich yellow.

We will ship these 12 gorgeous Roses (selected, 2 years old, field grown plants) anywhere in the United States, postpaid, for only..... **\$8.50**

Late Fall is unquestionably the best time for planting Roses. However, their success will be more completely assured if earth is mounded to about 8 inches around each plant during the Winter, leveling this protection off, of course, in early Spring.

ROSES

HARDY EVERBLOOMING OR HYBRID TEA ROSES

The most popular of all Roses, blooming throughout the entire Summer, right up until the first severe frost. Although hardy, these Roses do best if given some protection in Winter. Simply heap soil to a height of 8 inches about each plant in the Fall and remove this guard in early Spring. It will not be much trouble, and the results will more than repay your few moments work.

Plant in rich, well drained soil, always in full sunlight. Space about 2 feet apart.

All Roses offered are extra strong, 2- to 3-year-old field grown plants, bound to make a splendid display next Summer.

Uniform prices for all varieties (unless quoted otherwise), heavy, field grown plants, each 75c., doz. \$7.50, 100 \$50.00. (Add 10 per cent to remittance if shipment is desired by parcel post).

Autumn. One of our favorite Roses. Bears in its petals all of the coloring of an Autumn leaf. Outer petals are tinged a burnt orange, and inner ones are a golden buff, streaked with scarlet hues. Very fragrant. Particularly attractive in the bud, and a generous producer of its distinctive blooms. Each \$1.00, doz. \$10.00.

Barbara Robinson. A profuse bloomer of shapely, creamy white Roses. Each \$1.00, doz. \$10.00.

Betty Uprichard. Many spicely fragrant buds of copper red hue, turn to orange carmine blooms; very shapely.

Briarcliff. Beautiful pink Roses from long-pointed buds.

Canary. Produces light golden Roses continuously through the season. Each \$1.00, doz. \$10.00.

Charles K. Douglas. Many flaming scarlet Roses, shapely and fragrant, from attractive buds, on a healthy bush.

Charles P. Kilham. Few thorns mar the loveliness of these red orange Roses, which are large, yet of attractive shape. Prolific in bloom and equally beautiful in your garden or your vase. Each \$1.00, doz. \$10.00.

Dame Edith Helen. A profuse and continuous bloomer of fragrant buds, large, full and double, which turn to lasting flowers of a pure glowing pink, borne individually on long, strong stems.



ROSE AUTUMN (About 2/3 natural size)

HARDY EVERBLOOMING ROSES

—Continued

Duchess of Luxembour. Long known as the "Rose of the South," nevertheless this producer of deep copper yellow blooms, does equally well in Northern soil. These blooms are large, and have many petals. A splendid sort.

Duchess of Wellington. Hardy, with large yellow blooms, marked carmine.

E. G. Hill. A free bloomer of pure, dazzling scarlet flowers, borne on long, strong stems, hence excellent for cutting. Each \$1.00, doz. \$10.00.

Etoile de France. An excellent Rose for a bed of bloom, with many vivid crimson flowers which are very fragrant, and last well when cut. Stiff stems hold these Roses well away from the beautiful foliage.

Etoile de Hollande. Shapely Roses of a deep, bright red, very fragrant, borne singly on long stems. Very popular. Each \$1.00, doz. \$10.00.

Francis Scott Key. A splendid sort which produces great masses of large, light crimson blooms. Very hardy and holds good foliage. At its best in the Fall season.

Frank W. Dunlap. Many double, fragrant flowers of a bright rose pink.

Gruss an Teplitz. A perfect Rose for the home garden, needing only a minimum of care. Always in bloom, with fragrant flowers of a dark, velvety scarlet produced in the greatest profusion.

Impress. Large, double flowers of salmon cerise, suffused with gold.

Ivy May. Blooms freely and continuously all season, with shapely buds and flowers of a delightful rose pink, with amber gold at the base and about the edges of each petal. One of the most fragrant Roses; ideal for bouquet or corsage.

J. C. Thornton. A tall bush which produces lasting crimson scarlet Roses in great abundance, on long, strong stems. Each \$1.00, doz. \$10.00.

Joanna Hill. Bears excellent cut flowers, which are a dark buff yellow, particularly beautiful in bud.



MISS ROWENA THOM (Greatly reduced)

Joyous Cavalier. Large, shapely and lasting flowers; brilliant scarlet. Each \$1.00, doz. \$10.00.

Julien Potin. Produces a multitude of deep yellow Roses, large, fragrant and perfect in shape, on a nearly thornless plant. These flowers are as delightful when cut as when on the bush. Our favorite yellow Rose, and one which has received the Gold Medal of the Paris Exposition. Each \$1.00, doz. \$10.00.

Kaiserin Auguste Viktoria. Most popular of all white Hybrid Tea Roses. One of the best of all Roses for a bed, being shapely, double and full. Blooms through the entire season in profusion.

Konigin Luise. Very large and shapely white buds turn to snowy white flowers, faintly tinted lemon at their centers. Very free flowering. Each \$1.00, doz. \$10.00.

Lady Ashtown. An abundant and a continuous bloomer of pale carmine pink Roses, shaded with yellow at their base. Beautiful in the bud, and ideal for corsage or bouquet, being borne singly on long, strong stems. Lasts well when cut.

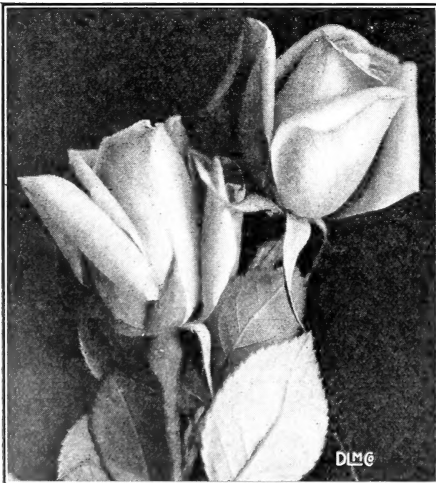
Lord Charlemont. Bears many clear deep crimson Roses, large, shapely, and extremely fragrant, from a hardy bush with few thorns. One of the best of all red Roses.

Los Angeles. The color of these popular Roses is hard to describe. An orange yellow shades into a flame pink, and the whole is toned with salmon. Good cut flower, and popular for city culture.

Mary Pickford. Bears many large, shapely orange yellow buds, which turn to fragrant blooms of a pale yellow. Each \$1.00, doz. \$10.00.

Miss Rowena Thom. The Roses borne by this remarkable sort bear all the colors of a gorgeous sunset in their petalage. Fiery rose and rosy mauve blend with old gold on their outer petals. Flowers are enormous and in continuous bloom all season.

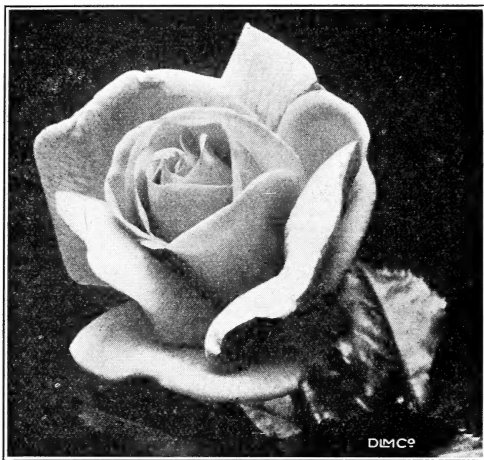
Mrs. Beatty. Many very fragrant Roses of a pale yellow, from outstanding buds. Each \$1.00, doz. \$10.00.



LADY ASHTOWN (About 1/2 natural size)

Prices for all varieties, unless otherwise noted, each 75c., doz. \$7.50, 100 \$50.00

(Add 10% to your remittance if shipment is desired by parcel post)



PRESIDENT HERBERT HOOVER

HARDY EVERBLOOMING ROSES

—Continued

Mrs. Charles Bell. Shell pink flowers, shaded salmon, and sweetly perfumed.

Mrs. Erskine Pembroke Thom. Clear deep canary yellow flowers on long stems from beautiful buds.

Mrs. G. A. Van Rossem. These Roses are always gorgeous, being large, double and most fragrant. They are a reddish gold in color, tinted lemon and orange, and veined with deep copper. Borne on long, strong stems, they will brighten any room in any house, or any spot in any garden. Each \$1.00, doz. \$10.00.

Mrs. Wakefield Christie-Miller. Enormous flowers, like Peonies, pearly blush, shaded salmon.

Norman Lambert. Showy and popular, with large, copper orange buds which turn to large, shapely, salmon copper blooms. Each \$1.00, doz. \$10.00.

Olympiad. Lovely large Roses of deep scarlet, with gold and copper at their bases. Beautiful in bud and continuous in bloom. Each \$1.00, doz. \$10.00.

Premier Supreme. Big, shapely buds turn to huge flowers of a rose pink, so deep that it approaches scarlet.

President Herbert Hoover. A perfect Rose, in garden or bouquet. Produces a mass of cerise pink blooms, shaded flame, scarlet and yellow. These blooms are exquisitely fragrant, and "keep" remarkably well when picked. We have long been urging our customers to try a few of these splendid Roses—their first order won't be their last. Each \$1.00, doz. \$10.00.

Radiance. Most popular Rose grown today, these bright pink giants will bring true radiance to any garden, with almost no care. A vigorous, upright bush, with deliciously fragrant blooms.

Red Radiance. Light crimson sport of Radiance, these beauties rival their parent in prolificacy, adaptability, and fragrance. They are the standard red Roses of our country.

Rapture. A deep pink Rose, shaded gold at base. Carries a great quantity of petals, is elegant in form, and distinct in coloring.

Rev. F. Page-Roberts. A Rose as gold as the medals it has received, stained copper and reddish buff, a glorious blending. The bush bears these individual gems in abundance all through the season, and their fragrance equals their appearance in charm. Each \$1.00, doz. \$10.00.

Roslyn. A free bloomer of deep orange buds which turn to many flowers of rich golden yellow, borne on long, strong stems.

Souvenir de Claudius Pernet. For many years this variety has been regarded as the standard pure yellow Rose. Fragrant and prolific.

Souvenir de Georges Pernet. Bears a continuous mass of large and shapely flowers, oriental red shaded yellow. A vigorous sort which is always in bloom, and an excellent Rose for bedding.

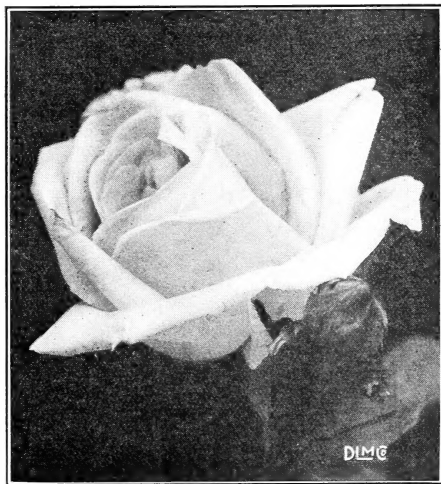
Sunkist. A recent sport of the popular Joanna Hill, with unusual brownish orange petals. Large flowers and most outstanding. Each \$1.00, doz. \$10.00.

Syracuse. Produces many outstanding blooms of a rich scarlet crimson, on long stems. These flowers are very large and last well when cut, holding both their color and shapeliness. Each \$1.00, doz. \$10.00.

Talisman. The brilliant buds of this most popular variety, red on outer side of petals and gold within, turn to shapely blooms of scarlet orange and rich yellow. Flowers freely throughout the season.

Wilhelm Kordes. A floral sunset of golden fawn and orange pink, bearing the delightful scent of ripened Apples; these Roses are produced in abundance on a vigorous bush.

Willowmere. A nearly thornless bush which produces many shapely coral red buds, turning to lasting flowers of a rich shrimp pink, shaded yellow at their centers. Ideal for planting in a Rose bed.



REV. F. PAGE-ROBERTS

Prices for all varieties, unless otherwise noted, each 75c., doz. \$7.50, 100 \$50.00
(Add 10% to your remittance if shipment is desired by parcel post)

HYBRID PERPETUAL ROSES

These hardiest of all Roses bring the beauty of their bloom into the world in June, and with the four gems we list below you may select a June garden which will be unsurpassable.

For best results, prune severely in early Spring, manure liberally and hoe often. Plant 2 to 3 feet apart.

Heavy, field grown plants, each 75c.,
doz. \$7.50, 100 \$50.00

Frau Karl Druschki. Unquestionably best of all white flowered roses.

Magna Charta. Produces an amazing quantity of huge, double, shapely pink flowers, suffused carmine. Moderately fragrant.

Mrs. John Laing. A Gold Medal Rose with large, yet delicate soft pink blooms, nearly as persistently in flower as a Hybrid Tea.

Soleil d'Or. Huge Roses of a gorgeous color, ruddy gold, shaded with Nasturtium red. Exceptionally fragrant, and probably the most strikingly colored of any Rose known.

BABY RAMBLER ROSES

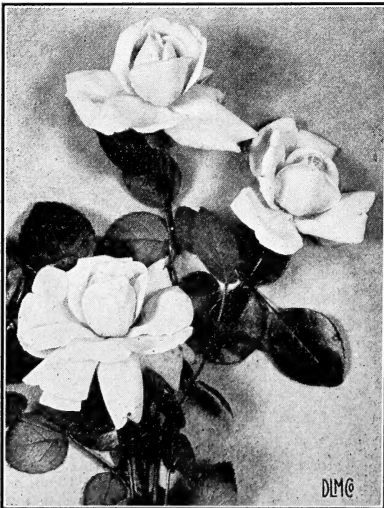
These miniature Roses start their glorious bloom in June, and continue to flower abundantly until late Fall.

Plant 2 to 3 feet apart. Our hardy sorts need no Winter protection.

Price (except as noted), strong, field grown plants, each 75c., doz. \$7.50, 100 \$50.00

Baby Alan. Very double and shining pink Roses, in great abundance from June until frost, grace this introduction of ours, which is our favorite bedding Polyantha, or Baby Rambler. Each \$1.00, doz. \$10.00.

Elsie Poulsen. Very hardy sort which produces clusters of large single rose pink flowers in profusion all season.



DR. W. VAN FLEET (See page 7)
(Greatly reduced)

(Add 10% to your remittance if shipment is desired by parcel post)



CLIMBING ROSE ALIDA LOVETT (Greatly reduced)

Gloria Mundi. Countless medals have been awarded this variety, with its clusters of orange scarlet flowers which bloom for ten weeks.

Golden Salmon. Produces huge trusses of pure orange flowers which open well in any weather, and are borne among healthy, mildewproof foliage. A vigorous and healthy baby Rose.

Ideal. Bears clusters of fragrant, dark velvety crimson blooms in abundance all season. Very hardy and beautiful.

Mrs. Norbert Levasseur. The original Baby Rambler, with its crimson flowers borne in big clusters on long, strong stems.

Triomphe Orleanais. Cherry red Roses, large for Baby Ramblers, are borne in huge clusters on this husky plant.

CLIMBING ROSES

We have long specialized in the production of these beautiful climbing varieties, as did our former neighbor, that famous hybridizer, Dr. Walter Van Fleet. Their utility rivals their beauty in merit, for they may clothe bare fences, grace trellises, and keep out intruders.

Price (except as noted), strong, 2-year, field grown plants, each 50c., doz. \$5.00, 100 \$35.00

Alberic Barbier. Many fragrant blooms, creamy white to yellow.

Alida Lovett. Best pink climber of which we have any knowledge. Dr. Van Fleet originated this delightful sort which produces many bright shell pink flowers, tinted yellow at base, and of Hybrid Tea size and shapeliness. Each 60c., doz. \$6.00.

American Pillar. Immense clusters of large single, lasting flowers which are a brilliant crimson pink with white centers and golden stamens.

Aviateur Bleriot. Vigorous, with many double Roses of a pale orange yellow, borne in profuse clusters in June.

Bess Lovett. Another Van Fleet introduction, and our favorite red climber. Flowers resemble those of Climbing American Beauty in shape, but are a much brighter crimson, and more fragrant. Each 60c., doz. \$6.00.

Chaplin's Pink Climber. Free bloomer of large, flat pink Roses, with golden stamens.

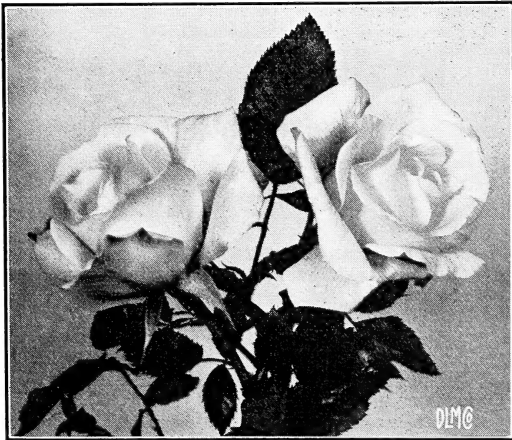
CLIMBING ROSES—Continued

- Christine Wright.** Produces huge, wild rose pink flowers, very fragrant.
- Climbing American Beauty.** One of the most popular of all Climbing Roses, with its countless carmine crimson blooms, shapely and fragrant. Climbs vigorously, and its flowers last well when cut or on the plant.
- Crimson Rambler.** The popular, hardy, bright crimson climber.
- Dr. Huey.** Bears many clusters of semi-double, large flowers of the deepest crimson maroon, on a hardy plant.
- Dr. W. Van Fleet.** Unquestionably the most popular of the pink climbers. Carries pale pink buds and flowers for over three weeks, borne individually on lengthy stems. Hardy and fragrant.
- Dorothy Perkins.** A beautiful and popular variety which carries many pendulous sprays of fragrant pink flowers, double and dainty. A striking sight in full bloom. Each 40c., doz. \$4.00, 100 \$25.00.
- Emily Gray.** Vigorous climber with beautiful ochre-buff buds which turn to fragrant salmon yellow flowers, borne in clusters. Good for a cut flower, though variety is not so hardy as some sorts. Each 60c., doz. \$6.00.
- Ernst Grandpierre.** Salmon buds turn to large, creamy white flowers.
- Eugene Jaquet.** An early blooming variety with many large and fragrant clusters of cherry red flowers. Few thorns.
- Excelsa.** Profuse bloomer of double and lasting, bright, rosy red flowers, in clusters on attractive foliage. A vigorous and hardy plant which has received gold medals for excellence. Each 40c., doz. \$4.00, 100 \$25.00.
- Flower of Fairfield.** A sport of the popular Crimson Rambler; like its parent, save for its ever-blooming qualities. Very hardy.
- Gardenia.** Pretty buds of nankeen yellow turn to well formed yellow blooms. By far the most popular climbing Rose of its color and undoubtedly worthy of its acclaim.



CLIMBING AMERICAN BEAUTY

- Jacotte.** Bears profuse clusters of large, semi-double orange yellow flowers, tinted reddish copper. Though unquestionably beautiful, this variety is not always hardy, unless protected, when north of Trenton, New Jersey. Each 75c., doz. \$7.50.
- Mary Lovett.** Third of the Van Fleet Lovett Sisters Climbers, this variety looms large in superiority above the other white sorts. Sweet-scented and free blooming, borne on long, strong stems, ideal for cutting. Each 60c., doz. \$6.00.
- Mme. Gregoire Staechelin (Spanish Beauty).** An abundant bloomer of opalescent pink flowers, overlaid with carmine, which are followed by unusual pear-shaped fruit. Vigorous grower. Each 60c., doz. \$6.00.
- Paul Scarlet.** Most popular Rose of its color, being a profuse bloomer of vivid scarlet flowers, which hold their color well and are borne in large clusters. Has received many gold and silver medals, which it undoubtedly deserves.
- Phyllis Bide.** Another and more recent gold medal Rose which produces myriads of gold and pink flowers throughout the entire summer. Each 75c., doz. \$7.50.
- Primrose.** A very hardy recent introduction which produces many large buds and flowers of bright primrose yellow, borne several together on a long stem. Blooms abundantly for four weeks in May and June. Each 60c., doz. \$6.00.
- Prosperity.** Extra large rosettes of attractive flowers, white, tinted pink. Truly everblooming. Each 75c., doz. \$7.50.
- Roserie.** Produces many flowers of velvety pink, veined darker, with white base.
- Silver Moon.** Large, shapely buds of a pale yellow turn to huge white flowers. An abundant June bloomer.
- The Beacon.** Big clusters of fiery red flowers with white "eyes."
- Wichuraiana.** Good trailer with many white blooms, single, fragrant and having prominent golden stamens. Each 35c., doz. \$3.50, 100 \$25.00.

MME. GREGOIRE STAEHELIN (Spanish Beauty)
(1/2 natural size)

Prices for all varieties, unless otherwise noted, each 50c., doz. \$5.00, 100 \$35.00
(Add 10% to your remittance if shipment is desired by parcel post)

HARDY SHRUBS AND TREES

Hardy Shrubs are the foundation about which every landscape is evolved. Beautiful in flower, foliage, or fruit, our assortment of Hardy Shrubs will challenge anyone's this season. We have here a complete assortment of the most beautiful and most dependable Shrubs which are suitable to our latitude.

ACER

Acer palmatum atropurpureum (*Bloodleaf Japanese Maple*). 6 to 8 ft. The aristocrat of any lawn, with graceful habit, and finely cut foliage of a beautiful wine red color all season. Our strain of these gems is the best we have ever seen. Each: 15 to 18 in. \$1.50, 18 to 24 in. \$2.00, 2 to 3 ft. \$3.75.

AMYGDALUS

Amygdalus nana (*Double Pink Almond*). 5 to 6 ft. Beautiful double pink flowers, like small Chrysanthemums, grace this old-fashioned shrub in profusion, in early Spring. Each: 18 to 24 in. 50c., 2 to 3 ft. 75c.

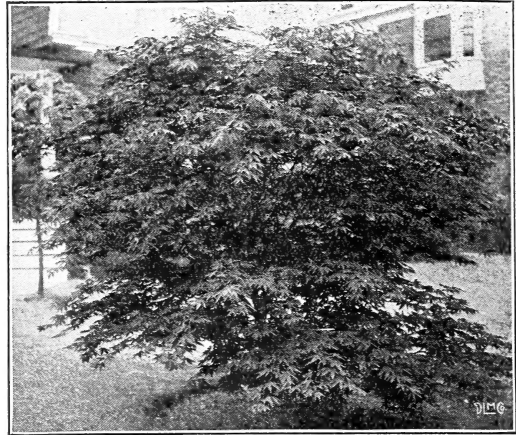
AZALEAS

Beautiful flowering shrubs which have long been the masterpieces of our nursery. We do not believe that better Azaleas can be bought anywhere.

Azalea amoena (*Amoena Azalea*). 3 to 4 ft. Conspicuous purple red flowers grace the evergreen foliage of this popular sort in April and May. A splendid rockery plant, with bronzy leaves in Winter. Each: 10 to 12 in. 90c., 12 to 15 in. \$1.25, 15 to 18 in. \$1.75, 18 to 24 in. \$2.50, 24 to 30 in. \$3.50.

A. calendulacea (*Flame Azalea*). 4 to 5 ft. A native plant, with masses of burnt orange flowers even before the foliage appears in May. Each: 18 to 24 in. \$3.00, 2 to 3 ft. \$4.00, 3 to 4 ft. \$5.00.

A. J. T. Lovett. 2 to 2½ ft. A spreading sort, broader than tall, with countless carmine blooms in early Summer on its evergreen foliage. Each: 12 to 15 in. \$3.00, 15 to 18 in. \$4.50.



ACER PALMATUM ATROPURPUREUM
(Bloodleaf Japanese Maple)

A. hinodegiri (*Hinodegiri Azalea*). 3 to 4 ft. Beyond any question, these are the most popular of all Azaleas, being covered with large, brilliant scarlet flowers, in late Spring and early Summer. Attractive, rounded evergreen foliage makes this shrub an object of beauty throughout the entire year. Our supply has never been better. Each: 6 to 8 in. 75c., 8 to 10 in. 90c., 10 to 12 in. \$1.25, 12 to 15 in. \$1.75, 15 to 18 in. \$2.50, 18 to 24 in. \$3.50, 24 to 30 in. \$5.00.

A. mollis (*Chinese Azalea*). 4 to 5 ft. Showy in late Spring, with large flowers of a brilliant red orange. Unforgettable in full bloom. Each: 12 to 18 in. \$1.75, 18 to 24 in. \$3.50.

A. yodogawa (*Yodogawa Azalea*). 3 to 4 ft. Double rosy lilac blooms in May. Each: 15 to 18 in. \$2.50, 18 to 24 in. \$3.50, 2 to 2½ ft. \$4.50.

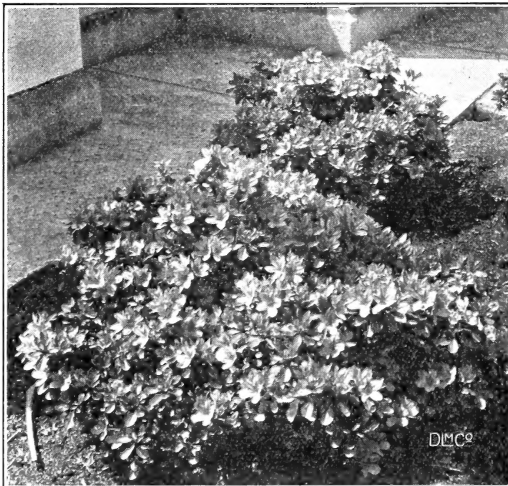
BERBERIS (Barberry)

Probably the most popular of all shrubs, for hedge plants, or specimens, the Barberry has succeeded for decades because of its beauty and hardiness.

Berberis thunbergi atropurpurea (*Red Japanese Barberry*). 4 to 5 ft. In Spring and Summer and Fall the striking plant carries probably the most beautiful foliage of any hardy shrub. It is a clear blazing red, if planted in full sunlight, and will stand out well against your green lawn. Our plants are true specimens. Each: 15 to 18 in. 25c., 18 to 24 in. 35c., 2 to 3 ft. 50c.

B. thunbergi (*Japanese Barberry*). See *Hedge Plants*, page 23.

B. thunbergi minor (*Box Barberry*). See *Hedge Plants*, page 23.



AZALEA HINODEGIRI

(Shipment by express or freight only, not by parcel post)

CALYCANTHUS

Calycanthus floridus (*Sweetsbrub*). 4 to 5 ft. Double chocolate colored, Strawberry scented, April blooms make this old-fashioned shrub as popular as it has ever been. Each: 18 to 24 in. 30c., 2 to 3 ft. 40c.

CERCIS

Cercis canadensis (*American Redbud*). 12 to 15 ft. This dwarf tree is a gaudy sight in Spring, with countless pink buds on its branches. Each: 2 to 3 ft. 50c., 3 to 4 ft. 75c.

CLETHRA

Clethra alnifolia (*Summersweet*). 4 to 5 ft. Fragrant, spicy white flowers in late Summer. Best in shady or moist spot. Each: 18 to 24 in. 50c.

FLOWERING CHERRY

See PRUNUS

CORNUS (Dogwood)

Cornus alba (*Red-branched Dogwood*). 8 to 10 ft. An excellent Winter tree, with porcelain blue fruit against a background of bright red bark. Each: 18 to 24 in. 25c., 2 to 3 ft. 35c.

C. florida (*Whiteflowering Dogwood*). 15 to 25 ft. Large, beautiful white flowers in Spring, brilliant red berries in late Summer, and rich Autumnal coloring all combine to make this our favorite native tree. Each: 3 to 4 ft. 75c., 4 to 5 ft. \$1.25, 5 to 6 ft. \$2.00, 6 to 8 ft. \$3.50, 8 to 10 ft. \$5.00.

C. florida rubra (*Pinkflowering Dogwood*). 15 to 20 ft. Our trees of this lovely sort will make the smallest plot of ground a striking sight in May and June. The flowers vary from blush pink to deep rose, and their beauty is nearly equaled in September by the red berries then borne. We have specialized in the production of this beautiful tree, as our splendid specimens will testify. Each: 2 to 3 ft. \$1.50, 3 to 4 ft. \$2.50, 4 to 5 ft. \$3.50.

C. mas (*Cornelian Cherry*). 15 to 18 ft. Small, yellow flowers in Spring; bright scarlet fruit in the Fall. Each: 2 to 3 ft. 75c., 3 to 4 ft. \$1.25, 4 to 5 ft. \$1.75.

CRATAEGUS (Hawthorn)

Crataegus oxyacantha pauli (*Paul's Scarlet Hawthorn*). Brilliant double scarlet flowers in June. Showy in Winter with its scarlet fruit. Each: 5 to 6 ft. \$2.50, 6 to 8 ft. \$3.50.

CYDONIA

Cydonia japonica (*Flowering Quince*). 4 to 5 ft. An excellent Spring shrub with large and showy scarlet flowers in May and June from its attractively glossy green leaves. Each: 18 to 24 in. 30c., 2 to 3 ft. 45c.

DAPHNE

Daphne cneorum (*Rose Daphne*). 1 ft. A beautiful dwarf evergreen, with attractive gray green foliage and fragrant pink flowers in early Spring and Fall. Each: 6 to 9 in. 75c., 9 to 12 in. \$1.00.

DESMODIUM

Desmodium penduliflorum (*Bush Clover*). 5 to 6 ft. Rosy purple flowers, like Sweet Peas, in late Summer. Strong, 2 yr. old plants, each 40c.

DEUTZIAS

Deutzia gracilis (*Slender Deutzia*). 2 ft. Earliest of all to bloom, with masses of attractive white flowers in May. Excellent border shrub. Each: 12 to 18 in. 25c., 18 to 24 in. 35c.

D. lemoinei (*Lemoine Deutzia*). 4 to 5 ft. June brings large clusters of graceful white blooms to the attractive foliage of this sort. Each: 18 to 24 in. 30c., 2 to 3 ft. 40c.

D. "Pride of Rochester." 9 to 10 ft. Vigorous and sturdy, with large, pinkish white flowers in early Summer. Each: 2 to 3 ft. 30c., 3 to 4 ft. 40c.

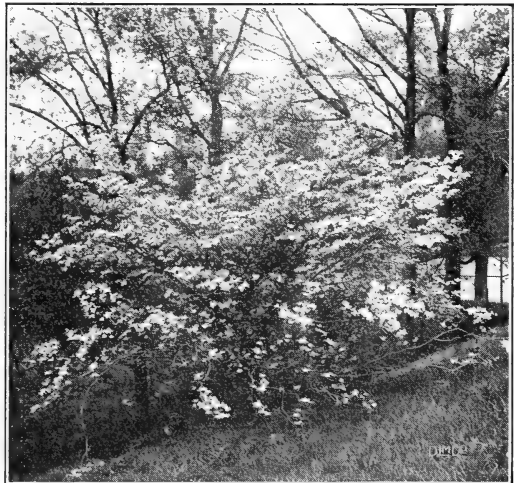
D. scabra crenata florepleno (*Double Pink Deutzia*). 6 to 8 ft. Beautiful and fragrant double pink flowers in June. Each: 2 to 3 ft. 30c., 3 to 4 ft. 40c.

EUONYMUS

Euonymus alatus (*Winged Euonymus*). 9 to 10 ft. A beautiful shrub with a corky layer of bark winging its branches and bright red berries from its warm, rosy foliage in Autumn. Each: 2 to 3 ft. 45c., 3 to 4 ft. 65c., 4 to 5 ft. 90c.

EXOCHORDA

Exochorda grandiflora (*Pearlbush*). 6 to 9 ft. Most dazzling May shrub, with white flowers like large pearls. Each: 2 to 3 ft. 35c., 3 to 4 ft. 45c., 4 to 5 ft. 60c.



CORNUS FLORIDA RUBRA (Pinkflowering Dogwood)

(Shipment by express or freight only, not by parcel post)

FORSYTHIAS

"Spring is here at last" is the song played on the golden bugle of Forsythia in late March and April.

Forsythia intermedia spectabilis (*Showy Border Forsythia*). 6 to 8 ft. Best of the Forsythias, with large flowers of a rich golden yellow in April, produced by the thousands. Each: 2 to 3 ft. 30c., 3 to 4 ft. 40c., 4 to 5 ft. 50c.

F. suspensa (*Weeping Forsythia*). 4 to 6 ft. Droops gracefully, bears yellow flowers in April, and is ideal for a mass planting. Each: 2 to 3 ft. 35c., 3 to 4 ft. 50c.

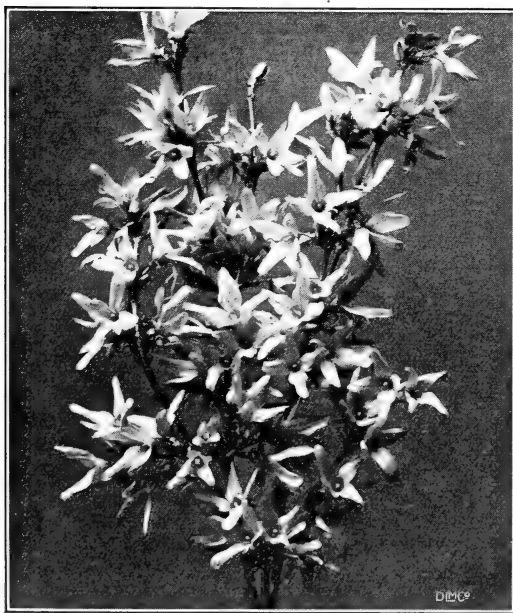
F. suspensa variegata (*Goldblotch Forsythia*). 6 to 7 ft. A delightful shrub whose golden foliage rivals its April flowers in brilliance. Each: 2 to 3 ft. 50c., 3 to 4 ft. 75c.

HYDRANGEAS

Hydrangea arborescens grandiflora (*Snowball Hydrangea*). 4 to 5 ft. From late June until August this popular shrub is glistening with great round heads of snowy white flowers. Excellent for a mass planting. Each: 18 to 24 in. 30c., 2 to 3 ft. 40c.

H. paniculata grandiflora (*Peegee Hydrangea*). 8 to 9 ft. One of the most popular and showy of all shrubs, which produces broad, pyramidal panicles of flowers, frequently a foot long, in August. These flowers change from white to a pinkish bronze and last until well into the Fall. Each: 18 to 24 in. 30c., 2 to 3 ft. 40c.

H. paniculata grandiflora (*Standard Form*). Grown on straight stems, these tree form Hydrangeas are excellent for formal garden work, or for lining a walk. Strong specimens, each 75c.



FORSYTHIA INTERMEDIA SPECTABILIS
(Showy Border Forsythia)

(Shipment by express or freight only, not by parcel post)

ILEX (Holly)

Ilex crenata (*Japanese Holly*). 8 to 10 ft. An attractive, broadleaved evergreen with small, dark green foliage and black berries. Hardy at the seashore and in the city. Each: 15 to 18 in. \$2.00, 18 to 24 in. \$3.00.

KALMIA

Kalmia latifolia (*Mountain-laurel*). 5 to 6 ft. Probably our most beautiful broadleaved evergreen; this attractive native shrub bears clusters of pink flowers in June. A charming plant that succeeds best in the shade. Each: 12 to 18 in. \$1.50, 18 to 24 in. \$2.00, 2 to 3 ft. \$2.50.

LEUCOTHOE

Leucothoe catesbaei (*Drooping Leucothoe*). 3 to 4 ft. Evergreen, with handsome white flowers in May and brilliant Fall foliage. Each: 12 to 18 in. \$1.50, 18 to 24 in. \$2.00.

LIGUSTRUM (Privet)

Globe and Pyramidal California Privet. We take the greatest care to insure our patrons of receiving splendid, compact plants. They are sheared carefully at least four times each season and the quality of their foliage resembles that of a fine Boxwood.

Beautiful Globes. Each: 12 in. 75c., 18 in. \$1.25, 24 in. \$1.75.

Pyramidal Shape. Each: 2 to 2½ ft. \$1.75, 2½ to 3 ft. \$2.50, 3 to 4 ft. \$3.50.

Ligustrum ovalifolium aureum (*Golden Privet*). 8 to 9 ft. Brilliant golden leaves make this sort an unusually beautiful shrub or hedge plant. Each: 18 to 24 in. 30c., 2 to 3 ft. 45c.

L. regelianum (*Regel Privet*). 5 to 6 ft. The true spreading Privet. A good shrub, with gracefully arching branches, and an equally desirable hedge plant. Each: 18 to 24 in. 25c., 2 to 3 ft. 35c.

For **L. amurense** (*Amur River Privet*), **L. ibolium** (*Ibolium Privet*), **L. ovalifolium** (*California Privet*), see *Hedge Plants*, page 23.

LONICERA (Honeysuckle)

Lonicera fragrantissima (*Winter Honeysuckle*). 6 to 8 ft. Very early to bloom with fragrant white flowers in early April and May.

L. morrowi (*Morrow Honeysuckle*). 7 to 8 ft., Spreading, with white flowers in late Spring, followed by red fruit.

L. tatarica rosea (*Rosy Tatarian Honeysuckle*). 9 to 10 ft. An abundance of rosy red flowers are followed by scarlet fruit.

Any of the above *Loniceras*—Each: 2-3 ft. 30c., 3 to 4 ft. 45c.

MALUS (Flowering Crab)

Malus ioensis plena (*Bechtel Crab*). 10 to 15 ft. Most popular of the flowering Crabs, with large, double pink flowers of noticeable fragrance. Our trees of this variety are the best we have ever had. Each: 2 to 3 ft. 50c., 3 to 4 ft. 75c., 4 to 5 ft. \$1.00.

PHILADELPHUS (Mockorange)

- Philadelphus coronarius** (*Sweet Mockorange*). 9 to 10 ft. Exceptionally fragrant creamy white flowers in May and June. Each: 2 to 3 ft. 30c., 3 to 4 ft. 40c.
- P. coronarius aurea** (*Goldenleaf Mockorange*). 4 to 5 ft. White flowers in May and June stand out well against the yellow leaves of this variety. Each: 12 to 18 in. 30c., 18 to 24 in. 40c.
- P. coronarius grandiflora** (*Big Mockorange*). 7 to 8 ft. Extra large white flowers in late Spring and early Summer. Each: 2 to 3 ft. 30c., 3 to 4 ft. 40c.
- P. virginialis** (*Virginal Mockorange*). 7 to 8 ft. Best of all the Mockoranges, with fragrant, semi-double white flowers in large clusters throughout the entire Summer. Each: 2 to 3 ft. 35c., 3 to 4 ft. 45c.

POPULUS (Poplar)

- Populus nigra italica** (*Lombardy Poplar*). 60 to 80 ft. Quick growing, tall, and spirelike trees, popular as a screen. Each: 6 to 8 ft. 50c., 8 to 10 ft. 75c., 10 to 12 ft. \$1.25.

PRUNUS (Cherry or Plum)

- Prunus kanzan** (*Kanzan Cherry*). Shapely and upright, with dark pink flowers in Spring against the young bronze leaves. Each: 5 to 6 ft. \$2.50, 6 to 8 ft. \$3.50.
- P. pendula** (*Weeping Japan Cherry*). A waterfall of single pink blooms cover the long, slender branches of this graceful, pendulous variety in early Spring. Selected trees with 2 yr. heads, each \$3.50.
- P. pendula florepleno** (*Doubleflowered Weeping Japan Cherry*). Similar to the preceding variety except for flowers, which are comparatively large and double. Selected trees with 2 yr. heads, each \$4.50.
- P. triloba plena** (*Doubleflowering Plum*). 14 to 16 ft. Double pink flowers like little Roses in late Spring. Each: 2 to 3 ft. 50c., 3 to 4 ft. 75c.

RHODODENDRONS

Most popular of the broadleaved evergreens, the Rhododendrons listed below will make your garden or border a spot of beauty in late Spring. Excellent in shade.

- Rhododendron maximum** (*Rosebay Rhododendron*). 8 to 12 ft. Beautiful pink flowers are produced freely in May and June. Each: 18 to 24 in. \$1.50, 2 to 3 ft. \$2.50, 3 to 4 ft. \$3.50.

RHODODENDRONS, Named Sorts

If planted in early Fall, our Hybrid Rhododendrons will make a blaze of colorful glory for your late Spring border.

- Rhododendron catawbiense album**. Pure white.
- R. catawbiense grandiflora**. Large lavender.
- R. Dresselhuys**. Bright red.
- R. Everest**. Lilac, spotted yellow.
- R. Ignatius Sargent**. Rosy scarlet.
- R. Lee's Dark Purple**. Dark purple.

(Shipment by express or freight only, not by parcel post)



PHILADELPHUS VIRGINIALIS
(Virginal Mockorange)

RHODODENDRONS—Continued

- R. Parson's Gloriosum**. Purplish rose.
- R. President Lincoln**. Lavender.
- R. roseum elegans**. Good rose color.

Any of the above Rhododendrons—
Each: 15 to 18 in. \$2.50, 18 to 24 in. \$3.50

RHUS

- Rhus cotinus** (*Smoketree*). 10 to 12 ft. Beautiful in Midsummer with purple hairlike flowers, which give a "smoky" effect to the tree. Good Autumnal foliage. Each: 2 to 3 ft. 50c., 3 to 4 ft. 75c., 4 to 5 ft. \$1.00, 5 to 6 ft. \$1.50.

ROSA (Rose)

- Rosa, Blanc Double de Coubert**. 4 to 5 ft. Large, double white flowered form of Rosa rugosa. Good for a contrast plant with R. rugosa. Each: 18 to 24 in. 40c., 2 to 3 ft. 60c.
- R. rubiginosa** (*Sweet Briar*). 5 to 6 ft. Bears shining pink flowers among its aromatic foliage in June. Each: 2 to 3 ft. 50c., 3 to 4 ft. 65c.
- R. rubrifolia** (*Redleaf Rose*). 5 to 6 ft. An all-season variety, with pink flowers in June, and purple red leaves and bark. Each: 18 to 24 in. 35c., 2 to 3 ft. 50c.
- R. rugosa** (*Rugosa Rose*). 4 to 5 ft. Large pink Roses all Summer, followed by big red fruits, and rich Autumn foliage. Best of all shrubs for a seaside hedge, standing salt air very well. Each: 18 to 24 in. 25c., 2 to 3 ft. 35c., 3 to 4 ft. 50c.
- R. setigera** (*Prairie Rose*). 5 to 6 ft. Vigorous grower, with deep, rose-colored flowers in June and July. Each: 2 to 3 ft. 50c., 3 to 4 ft. 65c.

SALIX

Salix discolor (*Pussy Willow*). 15 to 20 ft. Big, gray buds in early Spring grace our fine French strain of the familiar Pussy Willow. Good in wet or dry locations. Each: 2 to 3 ft. 30c., 3 to 4 ft. 40c., 4 to 5 ft. 60c.

SORBUS (Mountain-ash)

Sorbus aucuparia (*European Mountain-ash*). 25 to 30 ft. The beautiful orange and scarlet berries render this tree especially valuable for a small lawn. Dense in foliage, and regular in appearance. Each: 6 to 8 ft. \$1.25, 8 to 10 ft. \$1.75, 10 to 12 ft. \$2.50.

SPIRAEA

Familiar, but always welcome, are these charming shrubs.

Spiraea "Anthony Waterer" (*Waterer Spirea*). 3 ft. A compact shrub, with countless deep rose pink flower heads all Summer. Popular. Each: 12 to 18 in. 25c., 18 to 24 in. 35c., 2 to 3 ft. 50c.

S. billiardi (*Billiard Spirea*). 5 to 6 ft. Fluffy spikes of bright pink flowers, from July to October. Each: 2 to 3 ft. 30c., 3 to 4 ft. 40c.

S. callosa alba (*White Japanese Spirea*). 3 ft. White flowers in June and July, and purple foliage on the young plants. Each: 15 to 18 in. 30c., 18 to 24 in. 40c., 2 to 3 ft. 50c.

S. froebeli (*Frebel Spirea*). 4 ft. In early Summer appear the large rosy flower heads on this beautiful sort. Each: 15 to 18 in. 25c., 18 to 24 in. 35c., 2 to 3 ft. 45c.

S. prunifolia floreplena (*Bridalwreath*). 7 to 8 ft. The original Bridalwreath, with masses of white flowers in late Spring, takes rich Autumnal hues on its shiny foliage. Each: 2 to 3 ft. 35c., 3 to 4 ft. 50c.

S. trichocarpa (*Korean Spirea*). 5 to 6 ft. A round bush which is covered with snowy blooms in late June. Each: 2 to 3 ft. 35c., 3 to 4 ft. 50c.

S. vanhouttei (*Vanboute Spirea*). 7 to 8 ft. Probably the most popular of all flowering shrubs, the beautiful Vanboute Spirea fills our landscape with masses of white flowers in May and June. Free flowering, graceful, adaptable, and worthy of its acclaim in every way. Each: 2 to 3 ft. 25c., 3 to 4 ft. 35c.

STEPHANANDRA

Stephanandra flexuosa (*Cutleaf Stephanandra*). 5 to 6 ft. Gracefully compact, with short panicles of small white flowers in early Summer and handsome foliage that turns to a rich purple red in the Fall. A real buy. Each: 2 to 3 ft. 30c., 3 to 4 ft. 40c., 4 to 5 ft. 50c.

SYMPHORICARPOS (Snowberry)

Symphoricarpos racemosus (*Snowberry*). 5 to 6 ft. Large, glistening white berries in late Summer follow the small pink flowers of this variety. Each: 18 to 24 in. 25c., 2 to 3 ft. 35c.

S. vulgaris (*Coralberry*). 4 to 5 ft. Coral red berries, good in shady or dry places. Each: 18 to 24 in. 25c.



FLOWER HEADS OF SPIRAEA FROEBELI
(FROEBEL SPIREA)

SYRINGA (Lilac)

Those fragrant shrubs beloved by our grandmothers.

Syringa chinensis (*Chinese Lilac*). 8 to 9 ft. A mass of violet flowers grace the slender branches of this graceful plant in May. Each: 2 to 3 ft. 35c., 3 to 4 ft. 45c.

S. persica (*Persian Lilac*). 8 to 9 ft. Loose clusters of fragrant lilac flowers in late Spring, on a graceful, arching shrub. Each: 2 to 3 ft. 40c., 3 to 4 ft. 50c.

S. villosa (*Late Lilac*). 7 to 8 ft. A bushy, compact shrub, with masses of pale pinkish lilac flowers in June. Each: 2 to 3 ft. 35c., 3 to 4 ft. 50c.

S. vulgaris (*Purple Lilac*). 12 to 15 ft. The old-fashioned favorite, with deep purple heads of flowers, delightfully fragrant and beautiful, in May. Each: 2 to 3 ft. 25c., 3 to 4 ft. 35c., 4 to 5 ft. 50c.

S. vulgaris alba (*White Lilac*). 12 to 15 ft. White form of above. Each: 2 to 3 ft. 40c., 3 to 4 ft. 60c., 4 to 5 ft. 75c.

SYRINGA (Lilac), Named Sorts

S. Charles the Tenth. Large purple red flowers grace this upright bush in clusters. Single.

S. Jacques Callot. Mammoth panicles of dainty rose pink flowers, large, yet delicate in appearance. Single.

S. Le Gaulois. Double red blooms in abundance. An excellent sort.

S. Marc Micheli. A vigorous, upright sort, with double, deep blue flowers.

S. Marie Legraye. Pure ivory white, fragrant flowers. Single.

S. Michel Buchner. Clear lilac blooms, large and double, on a dwarf bush.

S. Pascal. A beautiful variety with violet hued flowers, splendid for cutting. Single.

Any of above, bushy, 2½ to 3½ ft. plants, each 65c.

SPECIAL OFFER

One each of the above seven (7) splendid Hybrid Lilacs for only \$3.00

(Shipment by express or freight only, not by parcel post)

TAMARIX

Tamarix africana (*African Tamarix*). 12 to 14 ft. Good for a seashore planting, with pink flowers in April and May from its feathery, gray green leaves. Each: 2 to 3 ft. 30c., 3 to 4 ft. 40c.

ULMUS (Elm)

Ulmus pumila (*Siberian or Chinese Elm*). 70 to 80 ft. The Siberian or Chinese Elm is undoubtedly the most rapid in growth of any tree with which we are acquainted. Tall, graceful, thoroughly beautiful in its dense foliage, absolutely hardy, and succeeding in any soil, wet or dry, there is no wonder that this magnificent variety has taken the country by storm. Each: 5 to 6 ft. 85c., 6 to 8 ft. \$1.25, 8 to 10 ft. \$1.75.

VIBURNUM

Viburnum carlesi (*Fragrant Viburnum*). 4 to 5 ft. A beautiful and delightfully perfumed shrub for the garden or shrub border. Bears its fragrant heads of pinkish flowers in early May. An instant favorite wherever it is planted. Each: 15 to 18 in. 75c., 18 to 24 in. \$1.00, 2 to 3 ft. \$1.50.

V. opulus (*European Cranberry*). 8 to 9 ft. Large bunches of bright red berries, all Winter long. Each: 2 to 3 ft. 35c., 3 to 4 ft. 50c.

V. opulus sterile (*Snowball*). 9 to 10 ft. Showy and popular with large, round heads of white bloom in late Spring. Each: 2 to 3 ft. 35c., 3 to 4 ft. 50c., 4 to 5 ft. 75c.

V. plicatum (*Japanese Snowball*). 7 to 8 ft. Holds its white snowballs of flower heads in June, and bears handsome purple Fall foliage. Each: 2 to 3 ft. 50c., 3 to 4 ft. 65c.

The Chrysanthemums arrived in good shape and all appear to be alive. Thanks for the good, bushy clumps. The Poppies were also fine.

CURTIS C. WHITE, Johnsville, Pa.



ULMUS PUMILA
(Siberian or Chinese Elm)

(Shipment by express or freight only, not by parcel post)



VIBURNUM OPULUS STERILE (Snowball)

WEIGELA

Weigela amabilis (*Rose Weigela*). 6 to 7 ft. Masses of light rosy flowers produced in June. Each: 2 to 3 ft. 35c., 3 to 4 ft. 50c.

W. candida (*Snow Weigela*). 6 to 7 ft. A snowfall of large white flowers on this beautiful Weigela throughout the early Summer. These flowers assume a pinkish tinge when older. Each: 2 to 3 ft. 30c., 3 to 4 ft. 40c., 4 to 5 ft. 50c.

W. "Eva Rathke." 4 to 5 ft. Most profusely flowered of any Weigela with masses of carmine flowers from June through August. Each: 18 to 24 in. 40c., 2 to 3 ft. 60c.

W. nana variegata (*Variiegated Weigela*). 4 to 5 ft. Of dwarf and compact growth with pale pink flowers produced from the variegated leaves in profusion in late May and through June. Each: 2 to 3 ft. 35c., 3 to 4 ft. 50c.

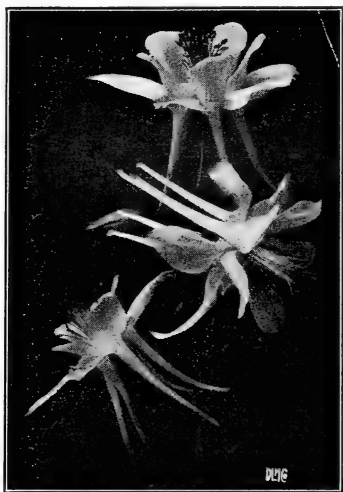
W. rosea foliis purpurea (*Purpleleaf Weigela*). A new and distinct variety, valuable alike for its rich, bronzy purple foliage, and its bright pink flowers in June. Each: 2 to 3 ft. 50c., 3 to 4 ft. 75c.

YUCCA

Exotic appearing plants, but as hardy as any shrub we know.

Yucca filamentosa (*Spanish-bayonet*). 4 to 5 ft. Stout flower stalks spring from the long, stiff, green leaves of this variety, producing white flowers in June. Strong, 2 year old plants, each 25c.

Y. filamentosa variegata (*Variiegated Yucca*). 4 to 5 ft. The most attractive of all hardy variegated plants. Leaves are broadly margined yellow and assume a purple tint in Winter. Same lily-like, creamy white flowers as Spanish-bayonet in June. Hardy and grows readily in any situation. Strong, 2 year old plants, each 35c. Extra large, 3 year old plants, 50c each.



MRS. SCOTT ELLIOTT'S LONG-SPURRED HYBRID COLUMBINE



DELPHINIUM BELLAMOSUM
(See page 15)



ASTILBE "PEACH BLOSSOM"
(See page 15)

HARDY PERENNIAL PLANTS

The value of a perennial garden is stupendous. Certainly every family wants to pick its own flowers in Spring, Summer and Autumn. Now is your chance to save a season by planting this very Fall, for you will be assured of flowers next Spring by so doing. The word "Perennial" is used to distinguish these lovely plants from those annual flowers which bloom for one season only. Our hardy perennials will increase in vigor for many years to come, assuring you of cheery home grounds and beauty for your vases.

We specialize in the production of perennials, and grow them by the million. Hence our amazingly low prices, which refer in all instances to perfect plants, with such flowers and foliage as will give your life a new zest and charm.

All varieties, strong field grown plants, unless otherwise noted, each 20c., doz. \$2.00, 100 \$12.00

Add 10 per cent to your remittance if shipment is desired by Parcel Post

(R) following descriptions indicates that such varieties are good for rock gardens

ACHILLEA (Yarrow)

Achillea, Boule de Neige. 15 to 18 in. Good cut flower with white blooms in early Summer on upright stalks. (R).

A. filipendula (Fernleaf Yarrow). 2 to 3 ft. Flat heads of golden flowers all Summer. Good for planting among shrubs.

ACONITUM (Monkshood)

Aconitum fischeri (Azure Monkshood). 1½ to 2 ft. Blue flower helmets in the Fall. Each 25c., doz. \$2.50.

AJUGA (Bugle)

Ajuga reptans (Carpet Bugle). Good prostrate ground cover; purple blue flowers in late Spring. (R). Each 25c., doz. \$2.50.

ANCHUSA (Bugloss)

Anchusa italica, "Dropmore" (Dropmore Bugloss). 5 ft. Large flower panicles, velvety blue, in June and July.

A. italica, "Opal" (Opal Bugloss). 4 ft. Large flowers of pale turquoise, all Summer.

ANTHEMIS (Camomile)

Anthemis tinctoria (Yellow Camomile). 2 ft. Large, golden flowers, excellent for cutting, all Summer long.

AQUILEGIA (Columbine)

The popular, little gaudy jesters of the Spring rockery.

Aquilegia caerulea (Colorado Columbine). 18 in. The blue and white May blooming plant which is Colorado's state flower. (R).

A. canadensis (American Columbine). 18 in. Our native bright red and yellow Columbine. (R).

A. chrysantha (Golden Columbine). 2½ ft. Bright golden flowers in late Spring. Fragrant. (R).

Mrs. Scott Elliott's Choice Long-spurred Hybrid Columbine. You will make no mistake in ordering as many of these colorful plants as your garden can accommodate. They are larger, brighter and more varied in color than are any other sorts, and will make your Spring garden the eye filler of your neighborhood. (R). Each 25c., doz. \$2.50.

ARABIS (Rockcress)

Arabis alpina (*Alpine Rockcress*). 8 to 12 in. White flowers, fragrant, from April to July. (R).

ARMERIA (Thrift)

Armeria formosa (*False Thrift*). 8 in. Attractive foliage, light pink flowers. May and June. (R).

ASCLEPIAS (Butterflyflower)

Asclepias tuberosa (*Butterflyflower*). 18 in. Large umbels of bright orange flowers in Midsummer.

ASTERS (Asters)

Beautiful border plants, blooming in late Summer and Fall excepting Goliath, the first mentioned.

Aster alpinus superbus, "Goliath." 6 to 10 in. Large, showy purple flowers in May and June. (R).

A. Anita Ballard. Double flowers of clear Pentunia violet.

A. Blue Beard. 2 to 3 ft. Azure blue, centered cream.

A. Fletham Blue. 3 ft. Many aniline blue flowers.

A. Louvain. 3 ft. Hoards of pink bloom.

A. novae-angliae (*New England Aster*). 4 ft. Masses of large, purple blue flowers.

A. novae-angliae rosea (*Rosy New England Aster*). 4 ft. Deep pink blooms, nearly red.

A. St. Egwin. 3 ft. Soft, rosy pink blooms.

A. tataricus (*Tatarian Aster*). 6 ft. Very late and tall, with large, violet blue flowers.

A. White Queen. 2 to 3 ft. White flowers, most attractive, on long stems.

ASTILBE (Astilbe)

Astilbe, Peach Blossom. 2 ft. Large and graceful spikes of soft pink blooms, all Summer. An addition to any rockery or hardy border. (R). Each 30c., doz. \$3.00.

BAPTISIA (Wild-indigo)

Baptisia australis (*Blue Wild-indigo*). 3 ft. June and July bring long racemes of deep blue flowers to this good border plant.

CENTAUREA (Centaurea)

Centaurea macrocephala (*Globe Centaurea*). 3 ft. Bright yellow flowers in July.

C. montana (*Mountain-bluet*). 2 ft. Dark blue flowers all Summer.

CHRYSANTHEMUMS

Chrysanthemum arcticum (*Arctic Daisy*). 2 to 2½ ft. Bears a multitude of white blooms, each flower being over 2 in. wide, from September until November. An excellent, large, rock garden flower. (R).

C. coreanum (*Korean Chrysanthemum*). 3 to 4 ft. Produces a mammoth supply of large, claret pink flowers, like Daisies, from October until December. Excellent for cutting, and gorgeous in full bloom.

C. maximum (*Sbasta Daisy*). 2 to 3 ft. Burbank's great hybrid, which resembles a field Daisy seen through a powerful magnifying glass.

CONVALLARIA (Lily-of-the-valley)

Convallaria majalis (*Lily-of-the-valley*). 8 to 10 in. Blooming early in Spring, this popular perennial is best in shade and is especially effective if planted with Gov. Herrick Violet. Strong clumps, each 35c., doz. \$3.50, 100 \$25.00.

COREOPSIS (Coreopsis)

Coreopsis lanceolata (*Lance Coreopsis*). 2 to 3 ft. Excellent for a mass planting, with large golden flowers on long stems from June until frost.

DELPHINIUM (Larkspur)

The acme of floral perfection, beautiful and stately for your hardy garden.

Delphinium Belladonna (*Blue Larkspur*). 3 ft. Produces large flowers of a pure, turquoise blue, from early June until the first hard frost. Justly popular since it is the most continuous in bloom of all Larkspurs.

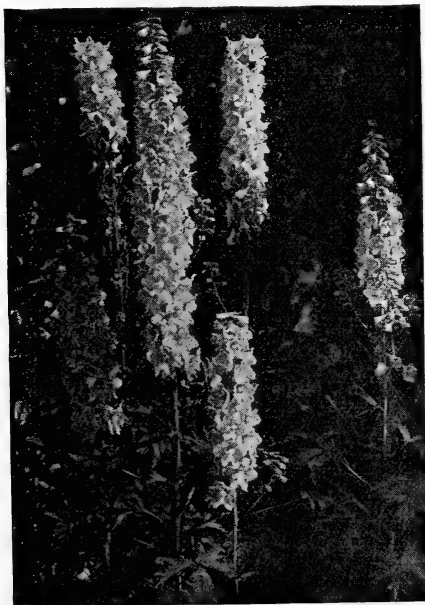
D. Bellamosum (*Deep Blue Larkspur*). 3 ft. Darker in color than the preceding, and particularly beautiful as a contrast plant, since it blooms over the same period.

D. hybridum (*Mountain Larkspur*). 3 to 4 ft. Large flowers in contrasting shades of blue.

D. chinense (*Slender Chinese Larkspur*). 18 in. Open panicles of deep gentian blue flowers. Each 20c., doz. \$2.00, 100 \$12.00.

WREXHAM HYBRID DELPHINIUM

These astounding Hybrid Delphiniums have surpassed all of their forerunners in size, range of color, and general beauty. All shades of blue are represented, from palest azure to deepest indigo. Absolutely the "cream of the cream" in any perennial garden. Each 35c., doz. \$3.50, 100 \$25.00



WREXHAM HYBRID DELPHINIUM

Prices for all varieties, unless otherwise noted, each 20c., doz. \$2.00, 100 \$12.00
(Add 10% to your remittance if shipment is desired by parcel post)

DIANTHUS (Hardy Pinks)

Splendid flowers for the rockery.

- Dianthus, "Beatrix."** 1 ft. An everblooming Pink, with lovely pink flowers all Summer. (R). Each 30c., doz. \$3.00.
- D. Furth Bismarck.** 1 ft. Like "Beatrix," but darker in color. (R). Each 30c., doz. \$3.00.
- D. plumarius florepleno (Double Grass Pink).** 1 ft. Early, fragrant, mixed colors. (R).
- D. semperflorens (Perpetual Pink).** 1 ft. Fragrant, double pink blooms.

GRENADIN PINKS (Hardy Carnations)

Grenadin Pinks. 2 ft. Excellent cut flowers, borne on longer stems than are most Pinks. We offer *Red, Pink and White* sorts.

DIANTHUS BARBATUS (Sweet-william)

Dianthus barbatus (Sweet-william). Sweetly clove-scented flowers in profusion in May and June. Mixed colors.

DICENTRA (Bleedingheart)

Dicentra spectabilis (Bleedingheart). 2 to 3 ft. Very popular, with rosy crimson "hearts" along its slender, arching stems, from April until June. Each 35c., doz. \$3.50.

DICTAMNUS (Gasplant)

Dictamnus fraxinella rubra (Purple Gasplant). 2½ ft. Red flowers in June and July rise above the fragrant foliage of this sort. Each 35c., doz. \$3.50.

FUNKIA (Plantainlily)

Attractive both in flower and foliage; ideal for margins of pools.

- Funkia caerulea (Blue Plantainlily).** 1½ to 2 ft. Blue flowers in late Summer.
- F. lancifolia undulata variegata (Variegated Wavyleaf Plantainlily).** 1 ft. A splendid plant for edging, with blue flowers in early Summer from graceful leaves with fluted white edge.
- F. marginata alba (Margined Plantainlily).** 1½ to 2 ft. Foliage distinctly margined white.
- F. subcordata grandiflora (Great White Plantainlily).** 12 to 18 in. Broad, pale green foliage, from which rise spikes of fragrant, very large, lily-like flowers in Midsummer. Each 25c., doz. \$2.50.



DICENTRA SPECTABILIS (Bleedingheart)

GRASSES, HARDY ORNAMENTAL

Spots of beauty against a short-grassed lawn.

- Eulalia gracillima (Maiden Grass).** 3 to 4 ft. Very graceful, with narrow foliage of bright green, with a silvery midrib.
- E. japonica (Japanese Eulalia).** Silvery gray plumes rise 6 to 7 ft. above the long, narrow, graceful green foliage.
- E. japonica variegata (Striped Eulalia).** 4 to 5 ft. Long, narrow leaves striped light green, creamy white, and frequently pink and yellow.
- E. japonica zebrina (Zebra Grass).** 6 to 7 ft. Silvery plumes spring from the variegated green and yellow leaves of this attractive grass.
- Festuca glauca (Blue Fescue).** 12 to 15 in. Dense tufts of narrow bluish leaves. Good for edging.
- Pennisetum japonicum (Fountain Grass).** 4 ft. Profusion of rich mahogany grass, tipped with white.
- Phalaris arundinacea picta (Ribbon Grass).** Attractively variegated green and white grass, 1 ft. tall.
- All varieties of Hardy Grasses, each 25c., doz. \$2.50, 100 \$18.00**

GYPSOPHILA (Babysbreath)

Gypsophila paniculata (Perennial Babysbreath). Late Summer finds this popular border plant covered with misty white flowers.

HELENIUM (Sneezeweed)

Beautiful flowers, despite their unattractive name.

- Helianthemum autumnale superbum (Great Sneezeweed).** 5 ft. Late Summer brings branching heads of deep gold to this strong plant.
- H. "Riverton Gem."** 2½ to 3 ft. Old gold flowers from August until October. Each 25c., doz. \$2.50.

HELIANTHEMUM (Sunrose)

Helianthemum croceum (Rock Sunrose). 6 in. Broadleaved evergreen with deep yellow flowers in late Summer. (R).

HELIANTHUS (Sunflower)

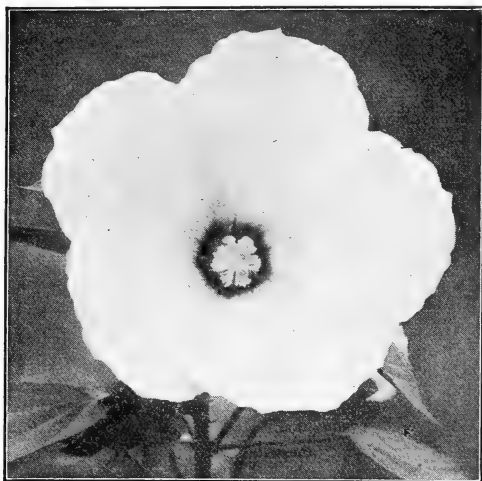
- Big gaudy blooms, which face the sun all day.
- Helianthus, "Miss Mellish."** 5 to 6 ft. Huge golden blooms in July and August.
- H. mollis (Ashy Sunflower).** 5 to 6 ft. Large golden Fall flowers.
- H. sparcifolius (Darkeye Sunflower).** 3 to 4 ft. Big yellow flowers all Summer.

HELIOPSIS

- Heliopsis pitcheriana (Pitcher Heliopsis).** 2 to 3 ft. Excellent as a cut flower, with deep, orange yellow blooms of leathery texture produced freely from July until Fall.
- H. scabra excelsa (Rough Heliopsis).** 3 ft. Golden yellow flowers like Zinnias, from mid-July until September's close. Each 25c., doz. \$2.50.

Prices for all varieties, unless otherwise noted, each 20c., doz. \$2.00, 100 \$12.00

(Add 10% to your remittance if shipment is desired by parcel post)



HIBISCUS (Rose Mallow)

HEMEROCALLIS (Daylily)

Showy in garden or border are these golden Summer Lilies.

Hemerocallis dumortieri (*Early Daylily*). 2 ft. Rich cadmium yellow blooms in June, with buds and reverse of petals bronze.

H. kwanso (*Double Daylily*). 3 ft. Large, double, copper yellow blooms in July.

H. "LOVETT'S LEMON." 3 to 4 ft. Largest lemon colored flowers of any Daylily we have ever seen. A magnificent sort of which we are very proud. Each 50c., doz. \$5.00.

H. "LOVETT'S ORANGE." 3 to 4 ft. Beautiful as a contrast plant with above, but with equally large flowers of a bright orange. Each 50c., doz. \$5.00.

H. "Orangeman." 2 to 3 ft. Large orange yellow flowers in midseason.

H. thunbergi (*Japanese Daylily*). 3 to 4 ft. Latest of all to bloom, with bright, fragrant flowers in September.

HEUCHERA (Coralbells)

Heuchera sanguinea (*Coralbells*). 18 in. Brilliant coral bells hang from the scalloped purple edged round leaves of this sort all Summer. (R). Each 30c., doz. \$3.00.

HIBISCUS (Rose Mallow)

Hibiscus, Meehan's Mallow Marvels. 6 to 8 ft. Strikingly beautiful flowers, 8 to 10 in. in diameter, appear on this tall plant from early August until frost. We offer these in mixed colors of Fiery Crimson, Blood Red, Pink, and White.

IBERIS (Candytuft)

Iberis sempervirens (*Evergreen Candytuft*). 8 to 10 in. Low growing, broadleaved evergreen, with Spring clusters of white flowers. Good in border or rockery. (R).

Prices for all varieties, unless otherwise noted, each 20c., doz. \$2.00, 100 \$12.00
(Add 10% to your remittance if shipment is desired by parcel post)

IRIS

Our list of Iris is unsurpassed this year, in quality or quantity.

IRIS GERMANICA (*German Iris*)

Most popular of all Iris, this Liberty Iris, or Fleur-de-lis, needs only sun to grow by, and is indifferent as to soil or location.

S—Stands, or upright petals; F—Falls or drooping petals.

Ab-Del-Kader (*Sambucina*). A regal sort. S., smoked yellow; F., yellow, veined plum.

Charles Dickens. S., light violet; F., indigo with white at base. A lovely blend.

Count St. Clair. S., pure white; F., deep violet, margined white. New, but worthy.

Donna Maria. S., azure; F., indigo, veined white at base. A dignified flower.

Florentina (*Florentina Alba*). Early sort with large, porcelain to white blooms. Refreshing.

H. Cramer (*Attraction, Celeste*). S., celestial blue; F., a shade darker. Two well matched colors.

Iris King. S., clear lemon yellow; F., maroon, bordered yellow. Justly popular. Each 25c., doz. \$2.50.

Pallida Dalmatica (*Dalmatica*). S., light lavender; F., deeper lavender, with shades of blue. One of the most fragrant. Each 25c., doz. \$2.50.

P. Bernot. S., golden; F., light yellow and white, densely veined red. Very gaudy.

Pecutem (*Swerti*). White flowers, penciled lilac towards outer edges. Delicately beautiful.

President Thiers. S., mauve with brown base; F., purple, based brown and white. A well matched combination of colors.

Queen of May. S., bright rosy lilac; F., darker, fragrant and free flowering.

Rebecca. S., golden; F., mahogany. A Spring blending of Autumnal shades.

All German Iris (except as noted),
each 15c., doz. \$1.50, 100 \$10.00

GERMAN IRIS, MIXED

All of the best colors in the world of Iris are represented in this glorious mixture. You may be amazed at their beauty, but you simply cannot be disappointed in them. Many rare sorts are included.

Each 12c., doz. \$1.25, 100 \$7.50

IRIS KAEMPFERI (*Japanese Iris*)

Carry large flowers on tall stems, in June and July, with delightful combination of clear colors.

Eleanor Parry. A patriotic color combination of claret red, white and blue.

Gold Bound. Best white Japanese Iris; deep yellow at base of petals.

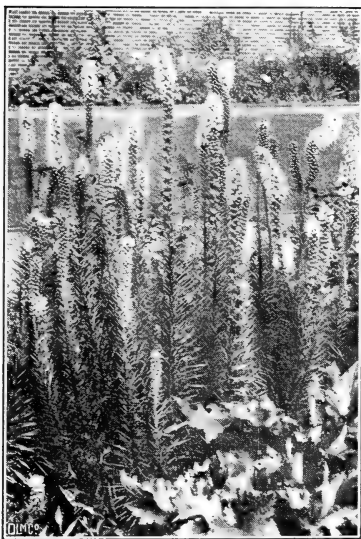
Peacock. Double, with violet purple petals veined white.

Purple and Gold. Violet purple, with showy golden throat. Many petals.

Pyramid. A clear indigo flower which is strikingly beautiful.

Stella. Violet flowers, veined white. Distinct and different.

Each 25c., doz. \$2.50, 100 \$15.00



LIATRIS (Gayfeather)



LUPINUS (Lupine)
(See page 19)



JAPANESE IRIS

JAPANESE IRIS, MIXED

This is not just a mixture of discarded sorts. A few years ago a hybridizer, specializing in Iris, gave us his surplus of unnamed seedlings, many so distinctively beautiful as to be well worth offering separately. To those we added a few good varieties, the labels of which had become lost in our nursery. We are here offering you this truly superb combination of the finest blood in the Iris family.

Each 20c., doz. \$2.00, 100 \$12.00

IRIS PUMILA (Crimean Iris)

More dwarf and compact than the better known German Iris, these Spring-blooming beauties will become perfect gems in your rockery. **Mixed**, in a splendid assortment. (R).

IRIS SIBIRICA (Siberian Iris)

Tall growing plants, 3 to 4 feet in height, and ideal alike for your stream's bank or your flower garden. They bloom all Summer.

Blue King. Large, rich blue flowers.

Snow Queen. Beautiful and hardy, with shapely snow white flowers.

IRIS PSEUDACORUS (Yellowflag Iris)

Iris pseudacorus. Tall plant with bright yellow flowers from May until September.

LIATRIS (Gayfeather)

Liatris pycnostachya (Cattail Gayfeather). 4 to 5 ft. A handsome flower for cutting, with tall, dense spikes of pale purple flowers, very showy, in July and August.

Prices for all varieties, unless otherwise noted, each 20c., doz. \$2.00, 100 \$12.00
(Add 10% to your remittance if shipment is desired by parcel post)

LILIUM (Lilies)

EXTRA! LILY COLLECTION
1 each of the 6 beautiful varieties listed below for only \$2.00

Hardy flowers to add touches of beauty to your garden.

Lilium auratum (Goldband Lily). 4 ft. Immense ivory white Lilies, dotted with chocolate and striped gold; all Summer. Protect north of Trenton, N. J.

L. henryi (Henry Lily). 3 to 5 ft. Orange yellow flowers in late Summer.

L. regale (Royal Lily). 4 to 5 ft. Pinkish Lilies, centered yellow and very fragrant.

L. speciosum album (White Lily). 3 to 4 ft. White flowers with a light green band through each petal, in late Summer.

L. speciosum magnificum (Great Speciosum Lily.) 3 to 5 ft. Charming, waxy white flowers, shaded and spotted rosy crimson in late Summer.

L. tigrinum florepleno (Double Tiger Lily). 5 ft. Late Summer brings the large and showy flowers of a rich flame color, spotted crimson brown to this robust plant.

All varieties, each 50c., doz. \$5.00, 100 \$35.00

LYSIMACHIA (Loosestrife)

Lysimachia clethroides (Cletbra Loosestrife). 2 ft. All through the late Summer the long, dense spikes of white, starry flowers are produced; excellent for cutting. Foliage takes on brilliant coloring in Autumn.

LUPINUS (Lupine)

Brightly colored flowers will lend a startling note to your border all Summer.

Lupinus polyphyllus (*Washington Lupine*). 3 to 4 ft. Popular, with clear, deep azure blue flowers through the Summer.

L. polyphyllus albus (*White Washington Lupine*). 3 to 4 ft. White form of the above.

L. polyphyllus moerheimi (*Moerbeim Lupine*). 3 to 4 ft. Produces long spikes of creamy pink flowers in June.

All Lupines, each 25c., doz. \$2.50

LYCHNIS (Campion)

Lychnis chalconica (*Maltese Cross*). 3 ft. Striking and brilliant, producing flat blooming heads of vivid scarlet flowers all Summer.

LYTHRUM (Lythrum)

Lythrum roseum superbum (*Rose Lythrum*). 4 to 5 ft. Good plant for banks of streams, with spikes of rosy purple flowers all Summer. Best in shade.

MONARDA (Beebalm)

Monarda didyma splendens (*Blazing Beebalm*). 2 to 3 ft. Splendid garden perennial, with large heads of the richest crimson flowers in late Summer and aromatic leaves.

MYOSOTIS (Forget-me-not)

Myosotis palustris semperflorens (*Perpetual Forget-me-not*). 4 to 8 in. Good in rockery, moist, or shady places, producing dainty pale blue flowers with yellow eyes; in early Spring. (R).

ORNITHOGALUM (Star-of-Bethlehem)

Ornithogalum umbellatum (*Star-of-Bethlehem*). 6 to 8 in. Brilliant white stars in Spring. Familiar, but always welcome. (R).



PEONY FESTIVA MAXIMA

PAEONIA (Peonies)

We have cut down our list of Peonies this Fall so that every variety listed is particularly outstanding. Try just a few of these gorgeous plants and watch your home grounds take on new life and beauty.

Price, all varieties of Peonies, extra large roots, each 40c., doz. \$4.00, 100 \$25.00

Avalanche. A delightful sort with large, blush white flowers.

Couronne d'Or. A late sort with pure white flowers, center petals tinged with carmine.

Duchesse de Nemours. Early and very fragrant, with outer petals white and centers lemon yellow, cup-shaped. Very free blooming.

Edulis Superba. Another fragrant early sort, but this one has large, loose flowers of a clear even pink.

Eugene Verdier. Midseason; with light Hydrangea-pink blooms.

Felix Crousse. Midseason; bears fragrant red flowers, very brilliant.

Festiva Maxima. Popular white sort with crimson markings in center. Early.

Floral Treasure. Fragrant Peonies of pale lilac rose.

James Kelway. Early to midseason, with pale pink flowers centered yellow.

Marie Lemoine. A late sort with sulphur white flowers tinged chamois.

Mme. de Verneville. An early white Peony, tipped with crimson.

Octave Demay. Early flowers of a delightful shade of old rose.

Suzette. Clear rose pink, deeper at center. Mid-season.

Triomphe de L'Exposition de Lille. Pale pink flecked violet rose.

Umbellata Rosea. Outer petals a rich deep pink, inner ones creamy white. An outstanding sort in any collection.

Special Offer of Hardy Perennial Plants

51 Strong field-grown, blooming age plants, 3 each of 17 thoroughly dependable varieties, including **Aquilegia** (*Columbine*), **Hardy Phlox**, **Hibiscus**, **Coreopsis**, **German Iris**, **Japanese Iris**, **Spiraea**, **Peach Blossom**, **Gorgeous Double Flowered Peonies**, and other equally desirable varieties, for only..... **\$4.50**

Delivered anywhere within
the United States.

100 Strong field-grown, blooming age Hardy Perennial Plants, 5 each of 20 splendid sorts for only **\$8.00**

Delivered anywhere within
the United States.

Prices for all varieties, unless otherwise noted, each 20c., doz. \$2.00, 100 \$12.00
(Add 10% to your remittance if shipment is desired by parcel post)

PACHYSANDRA

Pachysandra terminalis (*Japanese Spurge*). 6 to 9 in. Best and most popular of ground covers, especially in the shade. White flowers in late Spring arise from glossy evergreen foliage which branches freely into a dense mat. Each 20c., doz. \$2.00, 100 \$12.00, 1000 \$95.00.

PAPAVER (Poppy)

Beautiful gaudy flowers for border or garden.

Papaver nudicaule (*Iceland Poppy*). Many white-to-orange flowers on foot-long stems all Summer. (R).

P. Oriental (*Papaver orientale*). 3 to 3½ ft. Huge scarlet flowers on long stems in May and June in abundance.

PENTSTEMON (Pentstemon)

Pentstemon digitalis (*Foxglove Pentstemon*). 2 to 3 ft. In Midsummer, large spikes of purple white flowers with purple throats are produced on this plant.

P. torreyi (*Torrey Pentstemon*). 3 ft. Spikes of scarlet bloom all Summer.

HARDY PHLOX

Probably the most popular of all perennials, the Phlox family will make your home a spot of joy during the late Summer and early Fall. We have listed a perfect collection of the most gorgeously colored Phlox in the perennial world, this season, and you cannot be disappointed if you sample a few of them.

All varieties, unless otherwise noted, each 20c., doz. \$2.00, 100 \$12.00

Albion. White, pink eye.

Athis. Deep clear salmon.

Beacon. Bright cherry red.

Eclairer. Brilliant rosy carmine.

Elizabeth Campbell. Light salmon; best of its color. Each 30c., doz. \$3.00.

Enchantress. Salmon with dark pink eye. Each 25c., doz. \$2.50.

Europa. White with large carmine eye.

F. G. Von Lassburg. Largest pure white Phlox.

Fiance. Pure waxy white blooms.

Firebrand. Brilliant orange-scarlet blooms.

Gifron. Clear pink, large flowers.

Iris. Light purple.

L'Esperance. Lavender pink, white eye.

Miss Lingard. White with faint lavender eye. Early.

Miss Verboom. Beautiful rose pink flowers.

Mme. Paul Dutrie. Very soft pink.

Mrs. Chas. Dorr. A beautiful lavender.

Rijnstroom. Many bright rosy pink blooms.

R. P. Struthers. Rosy carmine and orange-scarlet.

Thor. Deep salmon pink, with scarlet glow.

PHYSALIS (Groundcherry)

Physalis francheti (*Chinese Lantern Plant*). 2 ft. Most popular because of its large, bright orange scarlet fruits like lanterns; in the Fall.

PHYSOSTEGIA (Dragonhead)

Physostegia virginiana (*Virginia Dragonhead*). 3 to 4 ft. Bears long spikes of delicate pink flowers in July and August.

P. "Vivid." Dwarf form of above, with much deeper pink flowers, in August and September. These flowers last well when cut, and are borne on long, strong stems.

PLATYCODON (Balloonflower)

Platycodon mariesi (*Maries Balloonflower*). Large, deep blue flowers like curled stars visit this plant all Summer long. Good border or rockery perennial. (R).

PYRETHRUM

Pyrethrum roseum hybridum (*Painted Ladies*). 12 to 18 in. All shades from white to deep scarlet are represented in these hardy, choice flowers, which bloom in May and June. Good foliage.

RUDBECKIA (Coneflowers)

Rudbeckia laciniata florepleno (*Double Cutleaf Coneflower*). 5 to 6 ft. Double golden yellow flowers, ideal for cutting, from July through September in abundance.

R. purpurea (*Purple Coneflower*). 2 to 3 ft. Large reddish purple flowers, frequently 4 in. across, from July to October.

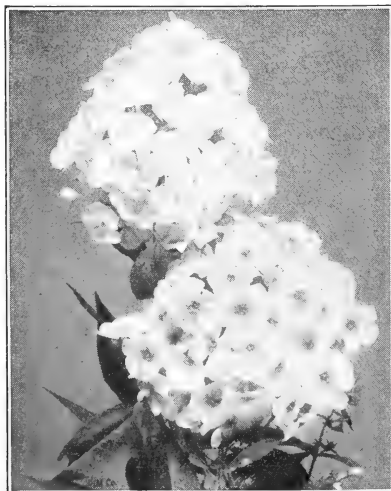
R. subtomentosa (*Sweet Coneflower*). 3 ft. Lemon yellow flowers, centered purple, envelop this attractive plant through the Summer.

SALVIA (Sage)

Not the familiar gaudy Scarlet Sage, but softer shades of blue.

Salvia azurea grandiflora (*Great Azure Sage*). 3 to 4 ft. Panicles of blue flowers in late Summer.

S. pratensis (*Meadow Sage*). 2 ft. Deep violet flowers, all Summer.



HARDY PHLOX

Prices for all varieties, unless otherwise noted, each 20c., doz. \$2.00, 100 \$12.00
(Add 10% to your remittance if shipment is desired by parcel post)

SCABIOSA (Scabiosa)

Scabiosa caucasica (*Caucasian Scabiosa*). 1½ to 2 ft. Lavender blue flowers. Good for cutting all Summer. Each 25c., doz. \$2.50.

SEDUM (Stonecrop)

With a collection of these unusual plants, you may have a rockery that will astound your neighborhood by its rugged beauty.

- Sedum acre** (*Goldmoss*). 4 in. Golden flowers from bright foliage in late Spring. (R).
S. album (*White Stonecrop*). 2 in. Thick, waxy, round foliage. White July bloom. (R).
S. dasyphyllum (*Leafy Stonecrop*). Small plants with attractive, glaucous foliage. (R).
S. kamtschaticum (*Orange Stonecrop*). 6 in. Variegated foliage, golden in Fall. Orange flowers in July and August. (R).
S. reflexum (*Jenny Stonecrop*). Trailing, with erect clusters of golden flowers in late Summer. (R).
S. sarmentosum (*Stringy Stonecrop*). Bright yellow flowers in early Summer. Trailing. (R).
S. sexangulare (*Hexagon Stonecrop*). 4 in. Yellow flowers in June from darkest foliage. (R).
S. sieboldi (*Siebold Stonecrop*). 5 in. Attractive, glaucous foliage, rimmed crimson. Pink flowers in September. (R).
S. spectabilis "Brilliant" (*Showy Stonecrop*). 18 in. Bright red flowers in late Summer. (R).
S. stoloniferum (*Running Stonecrop*). 6 in. Pink flowers in Midsummer. Evergreen foliage. (R).
S. stoloniferum coccineum (*Scarlet Running Stonecrop*). Like above, but with rosy crimson flowers. (R).

SEMPERVIVUM (Houseleeks)

Ideal plants for your rock garden, with attractive, Cactuslike foliage.

- Sempervivum alberti** (*Albert Houseleek*). 3 to 4 in. Pale yellow flowers on foot long stems with gray-green foliage in June. (R).
S. atlanticum (*Atlantic Houseleek*). 3 to 4 in. Yellow flowers in June. (R).
S. globiferum (*Globe Houseleek*). Large, globular rosettes of incurved leaves, from which spring pale yellow flowers in hairy panicles. (R).
S. tectorum (*Roof Houseleek*). Pale red flowers rise a foot above broad rosettes of foliage with brown red tips. (R).

SPECIAL OFFER

1 each of the above Sempervivums, just what you want to add the crowning touch to your rock garden, for only—90c.

SPIRAEA (Spirea)

Spiraea palmata elegans (*Showy Siberian Meadowsweet*). 3 ft. Good for the waterside, with nodding plumes of light pink flowers in early Summer. Each 30c., doz. \$3.00.

STATICE (Sea-lavender)

Statice latifolia (*Bigleaf Sea-lavender*). 12 to 18 in. Large heads of small lavender flowers in late Summer. (R).



VERONICA LONGIFOLIA SUBSESSILIS
(Clump Speedwell)

STOKESIA (Stokesia)

Stokesia laevis (*Cornflower-aster*). 18 to 24 in. Hardy, with delicate lavender blue flowers from July through October, attractively fringed.

THYMUS (Thyme)

Thymus serpyllum (*Mother-of-thyme*). Purple lilac flowers on fragrant foliage; all Summer. (R).

VALERIAN (Valeriana)

Valerian officinalis (*Garden Heliotrope*). 3 to 4 ft. Showy heads of rosy blooms, in early Summer, bearing the delicious odor of Heliotrope.

VERONICA (Speedwell)

Blue gems for the hardy border.

- Veronica amethystinum** (*Amethyst Speedwell*). 8 to 10 in. Skyblue flowers in early Summer. (R).
V. longifolia subsessilis (*Clump Speedwell*). 2 ft. Blooms abundantly in late Summer with long, compact spikes of deep blue flowers. Now quite scarce.
V. spicata (*Spike Speedwell*). Long spikes of bright violet blue flowers in early Summer.

VIOLA (Violet)

Viola, Double Russian. Very fragrant, with dark blue, double flowers in early Spring, returning in the Fall. (R). Each 30c., doz. \$3.00, 100 \$20.00.

V. Governor Herrick. Bright blue flowers in early Spring. Plant with Lilies-of-the-valley for a perfect combination. (R).

V. Jersey Gem. Pure, rich violet flowers from May until the season ends, borne on good, long stems. (R).

V. Rosina (*Pink Violet*). The pink flowers of this unusual sort are the most fragrant of any Violet we know. (R). Each 30c., doz. \$3.00, 100 \$20.00.

Prices for all varieties, unless otherwise noted, each 20c., doz. \$2.00, 100 \$12.00
(Add 10% to your remittance if shipment is desired by parcel post)

VINES

Our supply of Vines will prove a magician's wand, to transform the barren walls of your house into an everchanging tapestry of colorful beauty.

AKEBIA

Akebia quintata (*Fiveleaf Akebia*). 15 to 20 ft. Dainty, beautiful vine, purple flowers in May. Deep green leaves, persisting till Winter. 2 yrs., each 40c., doz. \$4.00, 100 \$25.00.

AMPELOPSIS

Ampelopsis quinquefolia (*Virginia Creeper*). 35 to 45 ft. Probably our most attractive native vine, with its brilliant crimson Fall foliage, and its rapidity and vigor of growth. 2 yrs., each 30c., doz. \$3.00, 100 \$20.00.

A. veitchi (*Boston Ivy*). 45 ft. Most popular of all Climbing Vines, this beautiful, rapid grower clings firmly to any type of wall with no artificial support. Foliage in Spring and Summer is a handsome, deep green in color, which changes to brilliant crimson and yellow in the Fall. Our plants are of the highest quality this season—healthy and vigorous—the finest, in fact, that we have ever seen. Strong, 3 yrs., each 40c., doz. \$4.00, 100 \$25.00.

BIGNONIA

Bignonia radicans (*Trumpet Vine*). 25 ft. Large, trumpet-shaped, scarlet orange flowers in July. 3 yrs., each 25c., doz. \$2.50.

CELASTRUS (Bittersweet)

Celastrus orbiculatus (*Oriental Bittersweet*). 15 to 20 ft. A rapid growing, twining vine, with bright, orange and scarlet fruits; splendid for Winter decorations. 3 yrs., each 40c., doz. \$4.00.

CLEMATIS

Clematis paniculata (*Sweet Autumn Clematis*). 20 to 30 ft. A quick grower and free spreader, covered in August and September with pure white, starlike flowers; unequalled for airy grace and beauty. 2 yrs., each 35c., doz. \$3.50.

EUONYMUS

Euonymus radicans vegetus (*Bigleaf Winter-creeper*). 3 to 4 ft. A low trailing evergreen, with showy red fruits and yellow pods among its round leaves. Clings firmly to any support. 2 yrs., each 60c., doz. \$6.00.

HEDERA (Ivy)

Hedera helix (*English Ivy*). 30 to 50 ft. Bears attractive, evergreen foliage, bright and glossy. Also good as a ground cover, or for a border edging. Strong plants from pots, each 35c., doz. \$3.50.

JASMINUM

Jasminum nudiflorum (*Winter-jasmine*). 3 ft. Yellow flowers in early Spring; needs protection in extreme climates. 2 yrs., each 50c., doz. \$5.00.

(Add 10% to your remittance if shipment is desired by parcel post)



WISTERIA SINENSIS (Chinese Wisteria)

LYCICERA (Honeysuckle)

Lonicera halliana (*Hall Japanese Honeysuckle*). 15 to 25 ft. We have long specialized in the production of this most popular evergreen vine. Quick growing, free blooming and deliciously fragrant. Flowers open white, and change to buff. Strong, 2 yrs., each 25c., doz. \$2.50, 100 \$15.00.

L. sempervirens (*Scarlet Trumpet Honeysuckle*). 15 to 20 ft. Showy bright scarlet flowers in profusion grace this evergreen climber from July through September. 2 yrs., each 30c., doz. \$3.00.

LYCIUM

Lycium barbarum (*Barberry Matrimony-vine*). 10 to 12 ft. Violet flowers in June, followed by conspicuous red fruit. Good for banks. 2 yrs., each 30c., doz. \$3.00.

PUERARIA

Pueraria thunbergiana (*Kudzu Vine*). 25 to 30 ft. The most rapid growing vine we know. Valuable for quick shade on porches or arbors, with large, tropical foliage. Selected, 3 yrs., each 30c., doz. \$3.00, 100 \$18.00.

VINCA

Vinca minor (*Periwinkle*). 4 in. An evergreen ground cover, with delicate lilac blue flowers in Spring. Best in shade. Strong plants from pots, each 25c., doz. \$2.50, 100 \$15.00.

WISTERIA

Wisteria sinensis (*Chinese Wisteria*). 40 to 50 ft. Of exceedingly rapid growth, with soft, dainty, lavender blue flowers in May, produced in pendulous racemes a foot or more long. Extra strong, 3 yrs., each 60c., doz. \$6.00.

HEDGE PLANTS

For hedge plants come to Lovett's—we are the leader in their production. Our low prices refer in every instance to economically, but carefully grown plants which are first-class in every way.

BERBERIS (Barberry)

Berberis thunbergii (*Japanese Barberry*). 3 to 4 ft. Ideal and most popular for a low, dense hedge, with slender arching branches, graceful, yet compact. Carries a wealth of beautiful scarlet berries through the Winter, and takes on a rich Autumnal shade of red. Most hardy and requires little pruning. For a hedge set plants 12 in. apart.

	Doz.	100	1000
9 to 12 in., extra bushy....	\$0.75	\$5.00	\$40.00
12 to 18 in., extra bushy....	1.25	7.50	60.00
18 to 24 in., extra bushy....	1.75	11.00	95.00
2 to 2½ ft., extra bushy....	3.00	17.50	150.00

B. thunbergii atropurpurea (*Redleaf Japanese Barberry*). 3 to 4 ft. Like the above, but with fiery red foliage throughout the entire Summer and Fall. We have the most brilliant plants of this variety that you have ever seen, and we are sure that the distinctive and "different" hedge you will obtain from some of them will make you a Barberry enthusiast for life.

	Doz.	100	1000
9 to 12 in., well branched.	\$2.00	\$12.00	\$100.00
12 to 18 in., well branched.	2.50	15.00	125.00
18 to 24 in., well branched.	3.50	20.00	175.00
2 to 3 ft., well branched.	5.00	35.00

B. thunbergii minor (*Box Barberry*). A very dwarf, compact form of *B. thunbergii*, which it equals in ironclad constitution. For edging, plant 4 in. apart; for a low hedge, plant 6 to 9 in. apart.

	Doz.	100	1000
9 to 12 in., bushy.....	\$2.00	\$14.00	\$120.00
12 to 18 in., bushy.....	3.00	20.00	180.00

BUXUS (Boxwood)

Buxus suffruticosa (*Truedwarf Box*). The rare evergreen Old English Boxwood, of exceedingly slow growth, very compact, and most attractive. Delights in partial shade. For edging, plant 3 to 6 in. apart. Extra bushy plants.

	Doz.	100	
3 to 4 in.....	\$2.00	\$12.00	
4 to 6 in.....	2.50	15.00	
6 to 8 in.....	4.50	30.00	
8 to 10 in.....	9.00	60.00	
10 to 12 in.....	12.50	90.00	
12 to 15 in.....	17.50	125.00	



BUXUS SUFFRUTICOSA (Truedwarf Box)

LIGUSTRUM (Privet)

Most easily grown, most adaptable, and most attractive of all Hedge Plants, small wonder that Privet is also the most popular. We have long been regarded as Privet headquarters, with an annual business considerably larger than our nearest competitor. Reason? Best stock, lowest prices.

Ligustrum amurense (*Amur River North Privet*).

15 ft. Hardest of the family, with handsome, olive green foliage. Best hedge plant for severe climates.

	Doz.	100	1000
12 to 18 in.....	\$0.60	\$3.50	\$30.00
18 to 24 in.....	.85	5.00	40.00
2 to 3 ft.....	1.25	7.50	60.00

L. ibolium (*Ibolium Privet*). 10 ft. A cross between California and Ibota Privet, with the beauty of the former and the hardiness of the latter. A good, all-around hedge plant.

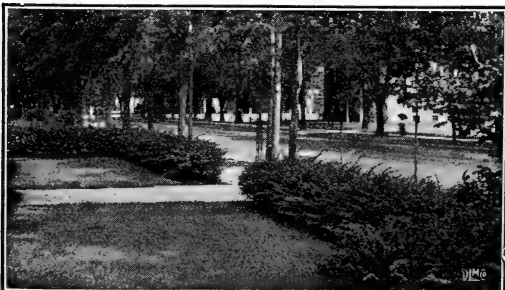
	Doz.	100	1000
12 to 18 in.....	\$0.75	\$4.00	\$35.00
18 to 24 in.....	1.00	5.50	45.00
2 to 3 ft.....	1.25	8.00	65.00

L. ovalifolium (*California Privet*). 10 ft. The popular hedge plant with glossy, deep green leaves. Introduced by us as a hedge plant in the early seventies, and now more largely planted for ornamental hedges than any other shrub. Its strong, quick, upright growth adapts it singularly well for being grown as a barrier or to hide unsightly objects. Here at Little Silver, N. J., California Privet is very nearly evergreen.

	Doz.	100	1000
12 to 18 in.....	\$0.50	\$2.50	\$20.00
18 to 24 in.....	.60	3.50	30.00
2 to 3 ft.....	.75	5.00	45.00
3 to 4 ft.....	1.25	8.00	70.00

Write for quotations covering large, bushy specimens, of which we have a splendid supply.

Note—A leaflet, giving instructions for the planting of Privet hedges, mailed upon request.



BERBERIS THUNBERGII (Japanese Barberry)

(Shipment by express or freight only, not by parcel post)



JUNIPERUS EXCELSA STRICTA
(Spiny Greek Juniper)



JUNIPERUS CHINENSIS PFITZERIANA
(Pfitzer Juniper)



JUNIPERUS SQUAMATA MEYERI
(Meyer Juniper) (See page 25)

EVERGREENS

For all-year embellishment to your grounds, be they large or small, nothing can surpass these hardy and beautiful green soldiers, whose verdant foliage will stand out against a Winter's snow like exclamation points.

Plant in early Fall for best results, and put a mulch of well decomposed cow manure, about the base of each plant to a height of perhaps 6 inches, as soon as planted.

(Our Evergreens are much too heavy for shipment by Parcel Post)

ABIES (Fir)

Abies concolor (*White Fir*). 80 to 100 ft. An excellent, symmetrical specimen for a lawn tree, with cheerful, blue-gray foliage. Each: 18 to 24 in. \$2.00, 2 to 2½ ft. \$3.00, 2½ to 3 ft. \$4.00, 3 to 4 ft. \$5.50, 4 to 5 ft. \$6.50, 5 to 6 ft. \$8.00.

BIOTA (Eastern Arborvitae)

Biota aurea nana (*Berckmans Golden Arborvitae*). 2½ to 3 ft. A compact oval, with rich, golden foliage in early Spring, arranged in vertical rows like cards in a filing cabinet. Splendid in a mixed planting. Each: 9 to 12 in. 65c., 12 to 15 in. \$1.00, 15 to 18 in. \$1.25, 18 to 24 in. \$1.50.

CRYPTOMERIA

Cryptomeria lobbi compacta (*Cave Cryptomeria*). 15 to 20 ft. A picturesque column of foliage which takes on a rich, bronze hue in Winter, looking like a mass of Fourth of July "sparklers" in full action. Each: 5 to 6 ft. \$6.00, 6 to 8 ft. \$7.50.

JUNIPERUS

Nearly every type of Evergreen tree is represented by the Juniper family.

Juniperus chinensis columnaris (*Columnar Chinese Juniper*). 15 to 20 ft. A beautiful sort which becomes a tall, narrow spire of deep gray green foliage, rendered very compact by annual trimming. Each: 2½ to 3 ft. \$2.25, 3 to 4 ft. \$3.00, 4 to 5 ft. \$4.00, 5 to 6 ft. \$5.00, 6 to 8 ft. \$7.00.

JUNIPERUS.—Continued

J. chinensis pfitzeriana (*Pfitzer Juniper*). 5 to 6 ft. Most popular of the vase-shaped Junipers, being both attractive and adaptable. Gray green, feathery foliage makes these specimens unsurpassed for a mass or a mixed planting. Each: 18 to 24 in. spread, \$1.25; 2 to 2½ ft. spread, \$2.00; 2½ to 3 ft. spread, \$3.00; 3 to 4 ft. spread, \$4.00.

J. communis aurea (*Golden Juniper*). 1 to 1½ ft. Low and spreading, with bright golden foliage. Another good rockery plant. Each: 15 to 18 in. spread, \$1.00; 18 to 24 in. spread, \$1.75; 2 to 2½ ft. spread, \$2.50; 2½ to 3 ft. spread, \$3.50.

J. communis canadensis (*Canada Juniper*). 2½ to 3 ft. Good vase-shaped evergreen for rockery, foliage deep green above, bluish beneath. Each: 2 to 3 ft. \$2.00, 3 to 4 ft. \$3.00.

J. communis hibernica (*Irish Juniper*). 7 to 8 ft. Striking and popular, with stiffly erect foliage of deep blue green. A narrow, dense, columnar tree. Each: 18 to 24 in. 75c., 2 to 2½ ft. \$1.25, 2½ to 3 ft. \$1.75, 3 to 4 ft. \$2.50.

J. excelsa stricta (*Spiny Greek Juniper*). 4 to 5 ft. Unusual variety, being a broad pyramid of stiff, erect branchlets of light, gray green foliage. Each: 9 to 12 in. 65c., 12 to 15 in. 90c., 15 to 18 in. \$1.25, 18 to 24 in. \$1.75, 2 to 2½ ft. \$2.50.

J. japonica (*Japanese Juniper*). 3 to 4 ft. Grows slowly, has dark green, spreading foliage and succeeds in the rockery. Each: 15 to 18 in. \$1.25, 18 to 24 in. \$1.75, 2 to 2½ ft. \$2.50.

JUNIPERUS.—Continued

- J. squamata meyeri** (*Meyer Juniper*). 3 to 4 ft. A dense, upright sort, with bizarre foliage of a blue white hue, stiff and irregular, the "fish tail" Juniper is ideal for a rockery specimen. Each: 12 to 18 in. \$1.50, 18 to 24 in. \$2.50, 2 to 2½ ft. \$3.00, 2½ to 3 ft. \$4.50.
- J. virginiana** (*Redcedar*). 25 to 30 ft. Most popular native evergreen, with foliage bright green in Summer and bronzy in Winter. Grows best in poor, sandy soil. Each: 4 to 5 ft. \$4.00, 5 to 6 ft. \$5.00, 6 to 8 ft. \$6.50.
- J. virginiana burki** (*Burks Juniper*). 10 to 12 ft. A dense column of blue gray foliage with metallic purple Winter coloring. Each: 2 to 3 ft. \$2.50, 3 to 4 ft. \$3.50, 4 to 5 ft. \$5.00.
- J. virginiana elegantissima** (*Goldtip Redcedar*). 12 to 15 ft. A beautiful pyramid, with yellow tipped foliage, turning bronze in Winter. Each: 18 to 24 in. \$1.50, 2 to 3 ft. \$2.50, 3 to 4 ft. \$3.50.
- J. virginiana glauca** (*Silver Redcedar*). 15 to 20 ft. Splendid as specimens or as contrast plants are these tall, narrow columns of blue gray foliage. Each: 3 to 3½ ft. \$3.50, 3½ to 4 ft. \$4.00, 4 to 5 ft. \$5.00, 5 to 6 ft. \$6.50, 6 to 8 ft. \$9.00.

PICEA (Spruce)

Attractive pyramids, familiar to us all.

- Picea excelsa** (*Norway Spruce*). 80 to 100 ft. The familiar Christmas tree, and an excellent windbreak. Most easily grown and hardiest of evergreens. We have an extremely large and fine supply of these trees this season, hence our attractive prices. Each: 15 to 18 in. 50c., 18 to 24 in. 75c., 2 to 3 ft. \$1.00, 3 to 4 ft. \$1.75, 4 to 5 ft. \$3.00.
- P. orientalis** (*Oriental Spruce*). 80 to 100 ft. A broad, graceful pyramid of deep green, with flowers like red candles. Spreading and ascending branches which start right from the ground. Each: 3 to 4 ft. \$4.50, 4 to 5 ft. \$6.00.
- P. pungens** (*Colorado Spruce*). 60 to 80 ft. Handsome and hardy lawn specimens, with gray green needles. Good for a shore planting. Each: 15 to 18 in. 65c., 18 to 24 in. 85c., 2 to 2½ ft. \$1.25, 2½ to 3 ft. \$1.75, 3 to 4 ft. \$2.50, 4 to 5 ft. \$3.50, 5 to 6 ft. \$5.00.
- P. pungens glauca** (*Blue Colorado Spruce*). 60 to 80 ft. Excellent for a contrast plant with above, having horizontal branches simply covered with thick steel blue needles. Each: 15 to 18 in. \$1.50, 18 to 24 in. \$2.25, 2 to 2½ ft. \$3.00, 2½ to 3 ft. \$4.50, 3 to 4 ft. \$6.50, 4 to 5 ft. \$8.50, 5 to 6 ft. \$10.50.
- P. pungens kosteri** (*Koster's Blue Spruce*). 60 to 80 ft. This gracefully pendulous variety, with its bluest of foliage, is ideal for a specimen against your green lawn. It can never be less expensive. Each: 15 to 18 in. \$3.00, 18 to 24 in. \$4.00, 2 to 2½ ft. \$6.00, 2½ to 3 ft. \$8.00, 3 to 4 ft. \$10.00, 4 to 5 ft. \$12.50.

PINUS (Pine)

Sturdy sentinels of the home.

- Pinus austriaca** (*Austrian Pine*). 60 to 70 ft. An excellent specimen tree or windbreak, especially for a shore planting. Very vigorous, with rich, dark green, dense needles. Each: 2 to 3 ft. \$1.50, 3 to 4 ft. \$2.50, 4 to 5 ft. \$4.00, 5 to 6 ft. \$5.50.
- P. montana mughus** (*Mugho Pine*). 2½ to 3 ft. A round-topped bush of bright green needles, invaluable for the rockery or border planting. Each: 10 to 12 in. spread, 65c.; 12 to 18 in. spread, \$1.00; 18 to 24 in. spread, \$1.50; 2 to 2½ ft. spread, \$2.50; 2½ to 3 ft. spread, \$4.50.
- P. resinosa** (*Red Pine*). 60 to 70 ft. An ornamental giant, with dark green, stiff needles, contrasting well with russet cones. Each: 18 to 24 in. \$1.00, 2 to 3 ft. \$1.50, 3 to 4 ft. \$2.50, 4 to 5 ft. \$4.00, 5 to 6 ft. \$6.00.
- P. sylvestris** (*Scotch Pine*). 60 to 70 ft. Most rugged of Pines, with short, blue green, twisted needles. Each: 18 to 24 in. 90c., 2 to 3 ft. \$1.25, 3 to 4 ft. \$2.00, 4 to 5 ft. \$3.50, 5 to 6 ft. \$5.00.
- P. tanyosho** (*Japanese Table Pine*). 5 ft. Exotic in appearance with a flat, broad head of slim, light green needles. Each: 2 to 3 ft. \$5.00, 3 to 3½ ft. \$6.50.

PSEUDOTSUGA

- Pseudotsuga douglasii** (*Douglas-fir*). 70 to 80 ft. A tall, hardy pyramid of gray green foliage on attractively graceful branches. Each: 2 to 3 ft. \$1.50, 3 to 4 ft. \$2.50.



PICEA PUNGENS KOSTERI
(Koster's Blue Spruce)

Our Evergreens are much too heavy for shipment by parcel post

RETINOSPORA (Cypress)

The name Cypress covers as wide a range of color and size as does any name in the evergreen group.

- Retinospora filifera** (*Thread Cypress*). 15 to 20 ft. Very decorative, with bright green foliage on long, drooping, threadlike branches. Each: 18 to 24 in. \$1.00, 2 to 3 ft. \$1.75, 3 to 4 ft. \$3.00, 4 to 5 ft. \$4.50, 5 to 6 ft. \$5.50.
- R. filifera aurea** (*Goldentbread Cypress*). 10 to 12 ft. Beautiful golden form of above, slow growing and very graceful. Each: 15 to 18 in. \$1.50, 18 to 24 in. \$2.50, 2 to 2½ ft. \$3.50, 2½ to 3 ft. \$4.50, 3 to 4 ft. \$6.00.
- R. obtusa compacta** (*Football Cypress*). 3 to 4 ft. Nearly spherical in shape, this bright green "football" holds its color well in Winter. A formal sort. Each: 18 to 24 in. \$1.50, 2 to 2½ ft. \$2.00, 2½ to 3 ft. \$3.00.
- R. obtusa crispis** (*Cripps Golden Cypress*). 10 to 12 ft. Slow growing, like all the Hinoki Cyresses, and holds rich golden foliage throughout the year. Very hardy. Each: 15 to 18 in. \$1.50, 18 to 24 in. \$2.00, 2 to 2½ ft. \$3.00, 2½ to 3 ft. \$4.00, 3 to 4 ft. \$5.00.
- R. obtusa gracilis** (*Slender Hinoki Cypress*). 12 to 15 ft. Tallest of the Hinoki Cyresses, this attractive variety becomes a narrow pyramid of rich, dark green foliage. Each: 2 to 2½ ft. \$3.00, 2½ to 3 ft. \$3.75, 3 to 3½ ft. \$5.00, 3½ to 4 ft. \$6.00, 4 to 5 ft. \$7.00, 5 to 6 ft. \$8.50.
- R. obtusa magnifica** (*Fleshy Hinoki Cypress*). 8 to 10 ft. Lustrous green, fleshy leaves in broad sprays all Winter. Distinct and vigorous. Each: 2 to 3 ft. \$2.50, 3 to 4 ft. \$3.50, 4 to 5 ft. \$4.50, 5 to 6 ft. \$6.50.



TAXUS CUSPIDATA CAPITATA
(Treeform Japanese Yew) (See page 27)



RETINOSPORA OBTUSA CRIPPSI
(Cripps Golden Cypress)

- R. obtusa nana** (*Dwarf Hinoki Cypress*). 2 ft. Most beautiful of the dwarf evergreens, with "fans" of rich green foliage. Succeeds alike in gardens or in pots. Each: 6 to 9 in. \$1.50, 9 to 12 in. \$2.00, 12 to 15 in. \$2.50.
- R. pisifera** (*Sawara Cypress*). 25 to 35 ft. Good for formal clipping, with lacy, light green foliage on a loosely pyramidal tree. Each: 18 to 24 in. 90c., 2 to 2½ ft. \$1.25, 2½ to 3 ft. \$1.75, 3 to 4 ft. \$2.50, 4 to 5 ft. \$3.50, 5 to 6 ft. \$5.00.
- R. pisifera aurea** (*Golden Sawara Cypress*). 25 to 35 ft. Golden form of above, especially bright in Spring, and a good "contrast" tree. Each: 18 to 24 in. 90c., 2 to 2½ ft. \$1.25, 2½ to 3 ft. \$1.75, 3 to 4 ft. \$2.50, 4 to 5 ft. \$3.50, 5 to 6 ft. \$5.00.
- R. plumosa** (*Plume Cypress*). 25 to 35 ft. Soft, feathery pyramids of fernlike, light green foliage; an unusual hedge plant. Each: 15 to 18 in. 60c., 18 to 24 in. 90c., 2 to 2½ ft. \$1.25, 2½ to 3 ft. \$1.75, 3 to 4 ft. \$2.50, 4 to 5 ft. \$3.50, 5 to 6 ft. \$5.00.
- R. plumosa aurea** (*Goldenplume Cypress*). 20 to 25 ft. Beautiful as hedge plant or specimen, with warm golden plumes all Summer. Each: 15 to 18 in. 60c., 18 to 24 in. 90c., 2 to 2½ ft. \$1.25, 2½ to 3 ft. \$1.75, 3 to 4 ft. \$2.50, 4 to 5 ft. \$3.50, 5 to 6 ft. \$5.00.
- R. plumosa aurea Lovetti** (*Golddust Cypress*). 20 to 25 ft. A glorified form of above, with what looks like a sheen of pure gold dust throughout its attractive foliage. A thoroughly beautiful variety, worthy of featuring on your lawn. Each: 9 to 12 in. 75c., 12 to 18 in. \$1.00, 18 to 24 in. \$1.50, 2 to 2½ ft. \$2.00, 2½ to 3 ft. \$2.50, 3 to 4 ft. \$3.50.

Our Evergreens are much too heavy for shipment by parcel post

RETINOSPORA—Continued

R. plumosa lutescens (*Dwarf Yellowplume Cypress*). 3 ft. A low, round-topped bush with bright, sulphur tipped branches. Each: 9 to 12 in. 50c., 12 to 15 in. 75c., 15 to 18 in. \$1.25, 18 to 24 in. \$1.75, 2 to 2½ ft. \$2.25, 2½ to 3 ft. \$2.75.

R. squarrosa veitchi (*Moss Cypress*). 25 to 30 ft. Midway between the Hinoki and the Sawara Cypress. A beautiful, broad pyramid of soft, blue gray foliage, dense and feathery, giving this evergreen a woolly, hazy appearance. Each: 12 to 18 in. 75c., 18 to 24 in. \$1.00, 2 to 2½ ft. \$1.50, 2½ to 3 ft. \$2.00, 3 to 3½ ft. \$3.00, 3½ to 4 ft. \$3.50.

TAXUS (Yew)

Deepest, in color, of any evergreen.

Taxus cuspidata (*Japanese Yew*). 5 to 6 ft. A spreading and bushy form, valuable alike for hedge or foundation planting, with rich, dark, green foliage and an unusual, almost bizarre ruggedness of shape. Each: 15 to 18 in. spread, \$1.25; 18 to 24 in. spread, \$2.00; 2 to 2½ ft. spread, \$3.00; 2½ to 3 ft. spread, \$4.00; 3 to 4 ft. spread, \$6.00; 4 to 5 ft. spread, \$8.00.

T. cuspidata brevifolia (*nana*) (*Dwarf Japanese Yew*). 2 to 3 ft. Very hardy and slow growing, with broad, thick, blackish green foliage. Irregular and spreading habit. Each: 9 to 12 in. \$1.25, 12 to 15 in. \$1.75, 15 to 18 in. \$2.50.

T. cuspidata capitata (*Treeform Japanese Yew*). 25 to 30 ft. An excellent and unusual hedge plant with brilliant scarlet berries. Each: 15 to 18 in. \$1.50, 18 to 24 in. \$2.00, 2 to 2½ ft. \$2.50, 2½ to 3 ft. \$3.50, 3 to 3½ ft. \$5.00.

T. media hicksi (*Hicks' Yew*). 8 to 10 ft. A splendid accent plant, being narrow and columnar, with dark green foliage. Good for formal work and well adapted for a "limited space" planting. Each: 18 to 24 in. \$2.50, 2 to 2½ ft. \$4.00, 2½ to 3 ft. \$6.00, 3 to 3½ ft. \$8.00.

THUJA (Arborvitae)

True "Trees of Life" are our specimens of *Arborvitae*, and they will bring life and color to the most barren spot on your grounds.

Thuja occidentalis (*American Arborvitae*). 25 to 30 ft. This attractive tree makes an excellent hedge plant, and thrives in moist soil—slender, broad based pyramids, very compact. Each: 18 to 24 in. 65c., 2 to 3 ft. \$1.00, 3 to 4 ft. \$1.50, 4 to 5 ft. \$2.25, 5 to 6 ft. \$3.50, 6 to 8 ft. \$5.00.

T. occidentalis elegantissima (*Yellow Column Arborvitae*). 10 to 15 ft. Columns of rich green foliage, tipped with rich golden yellow all Summer and Fall. Each: 18 to 24 in. 75c., 2 to 3 ft. \$1.25, 3 to 4 ft. \$1.75, 4 to 5 ft. \$2.50, 5 to 6 ft. \$4.00, 6 to 8 ft. \$5.50.

T. occidentalis globosa (*Globe Arborvitae*). 2½ to 3 ft. Perfect globes of dense, light green foliage. Each: 9 to 12 in. 60c., 12 to 15 in. 75c., 15 to 18 in. \$1.00, 18 to 24 in. \$1.25.

T. occidentalis lutea (*George Peabody Arborvitae*). 10 to 12 ft. A formal column of conspicuous golden foliage; best in full sun. Each: 18 to 24 in. 90c., 2 to 3 ft. \$1.50, 3 to 4 ft. \$2.50, 4 to 5 ft. \$3.50, 5 to 6 ft. \$4.50.



TSUGA CANADENSIS (Canada Hemlock)

T. occidentalis pyramidalis (*Pyramidal Arborvitae*). 20 to 30 ft. A popular evergreen in which we have long specialized. Of narrow, columnar shape, excellent for "accent" planting, with attractively formal foliage of a rich green. Each: 2 to 2½ ft. 90c., 2½ to 3 ft. \$1.35, 3 to 4 ft. \$1.75, 4 to 5 ft. \$2.75, 5 to 6 ft. \$3.50, 6 to 8 ft. \$5.00.

T. occidentalis rosenhali (*Rosenhal Arborvitae*). 8 to 10 ft. Grows slowly into an attractive column of lustrous, deep green foliage, with growths terminating in a little whitish ball. Very striking in Winter. Each: 18 to 24 in. \$1.00, 2 to 2½ ft. \$1.50, 2½ to 3 ft. \$2.00, 3 to 4 ft. \$2.50, 4 to 5 ft. \$4.00, 5 to 6 ft. \$5.50, 6 to 7 ft. \$7.50.

T. occidentalis vervaeneana (*Vervaeene Arborvitae*). 8 to 12 ft. A hardy pyramid of yellow-green foliage, which takes on a bronzy Winter coloring. Each: 15 to 18 in. 60c., 18 to 24 in. 80c., 2 to 2½ ft. \$1.00, 2½ to 3 ft. \$1.50, 3 to 4 ft. \$2.00, 4 to 5 ft. \$2.75.

T. occidentalis wareana (*Ware or Siberian Arborvitae*). 12 to 15 ft. Hardest of evergreens; a broad pyramid of rich dark blue green foliage all year. Each: 15 to 18 in. 60c., 18 to 24 in. 80c., 2 to 2½ ft. \$1.00, 2½ to 3 ft. \$1.50, 3 to 4 ft. \$2.00, 4 to 5 ft. \$3.00.

TSUGA (Hemlock)

Our most graceful native evergreen.

Tsuga canadensis (*Canada Hemlock*). 75 to 90 ft. Very hardy and rapid growing, the Canada Hemlock is successful either as a clipped hedge or as a lawn specimen, being both graceful and adaptable. Each: 15 to 18 in. 70c., 18 to 24 in. 90c., 2 to 3 ft. \$1.50, 3 to 4 ft. \$2.50, 4 to 5 ft. \$4.00.

T. canadensis pendula (*Sargent Weeping Hemlock*). Decidedly weeping in character, with slender, pendulous branches covered with rich green foliage. Each: 15 to 18 in. spread, \$3.00; 18 to 24 in. spread, \$4.50; 2 to 2½ ft. spread, \$6.50; 2½ to 3 ft. spread, \$8.50; 3 to 4 ft. spread, \$12.00.

Our Evergreens are much too heavy for shipment by parcel post

FRUIT TREES

Why send to your grocer for fruits when you can pick better, fresher ones from your own trees? Order some of our excellent fruit trees now. They can never be higher in quality than they are this season.

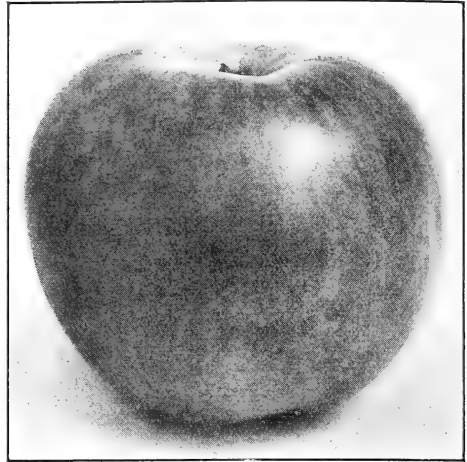
Apple Trees

All of the trees offered below are extra selected, extra heavy, 2-year-old stock. We can, however, supply a slightly lighter grade of tree (though equally well grown) which is even cheaper in price. If you will send us a list of your anticipated requirements in these trees, we will be glad to submit special prices on such a list.

Plant 30 feet apart each way, thus requiring 48 trees to properly set one acre.

Price of all varieties, each 75c., doz; \$7.50, 100 \$50.00

- Baldwin.** Standard Winter Apple. Adaptable good shipper and keeper. Red, streaked carmine.
- Delicious.** Trees are most productive of large, beautiful and "delicious" fruit. Early Winter.
- Duchess.** Excellent Summer cooking Apple. Large, attractive, good shipper.
- Gravenstein.** A Fall Apple with delightful flavor.
- Grimes Golden.** Best yellow early Winter Apple. Tasty and popular.
- Maiden Blush.** Fall cooking Apple, very attractive.
- McIntosh.** Most popular of Apples. Excellent to eat and very attractive. Early Winter variety.
- Red Astrachan.** Standard Summer Apple of our country.
- Rhode Island Greening.** Best green Winter Apple. Ideal for dessert.
- Rome Beauty.** Large, smooth, handsome, thick skinned Winter Apples.
- Stayman.** Popular, valuable, and of excellent flavor. Late Winter.



STAYMAN

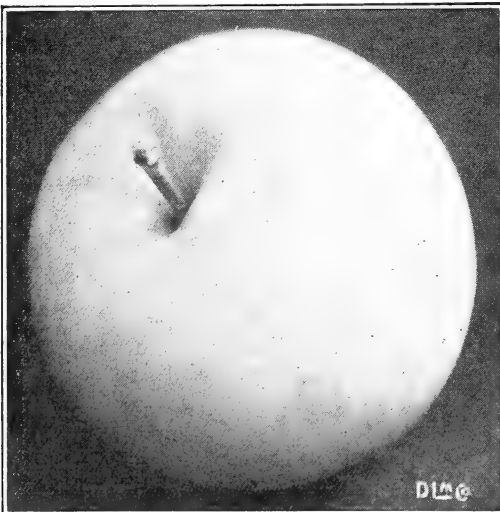
- Summer Rambo.** Tender, juicy, large Summer Apples.
- Wealthy.** Another good Summer variety of good flavor. A standard sort.
- Winter Banana.** Golden Apples, with flavor reminiscent of the Banana; a splendid Winter variety.
- Yellow Transparent.** Best yellow Summer Apple. Large, handsome, delicious.
- York Imperial.** Splendid cooking Apple. Prolific. Winter.

Crabapples

Good shade trees, and heavy yielders of fruit. Plant 30 feet apart each way.

First-class trees, each 75c., doz. \$7.50

- Hyslop.** Mid-Autumn. Dark red Apples in large clusters. Excellent for jelly.
- Transcendant.** Early. Handsome, popular, yellow red fruit.

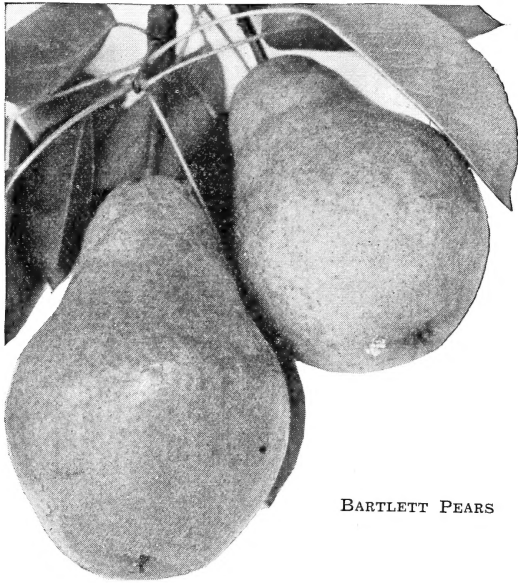


YELLOW TRANSPARENT



CRABAPPLE "HYSLOP"

Our Fruit Trees are much too large for shipment by Parcel Post



BARTLETT PEARS

Dwarf Fruit Trees

Dwarf fruit trees take up much less space than do the standard sorts, and come into bearing much sooner—frequently the same year they are planted. The fruit is, of course, not dwarf, but as large as that produced by trees of the standard sorts.

Splendid, 2-year-old trees, each 75c.,
doz. \$7.50

DWARF APPLES

Baldwin	Rhode Island Greening
Delicious	Stayman
Grimes Golden	Wealthy
McIntosh	Yellow Transparent

(For descriptions, see under "Apples")

DWARF PEARS

Duchesse d'Angouleme	Bartlett	Seckel
----------------------	----------	--------

(Described under "Pears")

Quinces

Plant 10 feet apart.

First-class trees, each 75c., doz. \$7.50

Champion. Popular, with abundant large, greenish yellow fruit. Late.

Orange. A heavy bearer of large fruits with orange yellow flesh. Early.

Layer Strawberry Plants

For shipment, Spring, 1935, we will have one of the largest supplies of well grown layer Strawberry plants to be found anywhere in this country, all varieties of which will be found offered in our Spring, 1935 Retail Catalog. For late Summer and early Fall planting we recommend Pot-grown Strawberries. Special price list of Pot-grown Strawberry plants will be mailed upon receipt of request.

Pear Trees

Excellent alike for canning or for eating out of hand are these delicious fruits. Plant 20 feet apart each way.

First-class trees, each 75c., doz. \$7.50,
100 \$50.00

Anjou. Large Pear, delicious and prolific. Green; red cheek. Fall.

Bartlett. Most popular of all Pears. A yellow Summer variety.

Clapp Favorite. Early Summer. Large and juicy. Green, red cheek.

Douglas. A sweet, sprightly flavor graces this juicy sort. Ripens early.

Duchesse d'Angouleme. A large, delicious Fall Pear.

Kieffer. Popular and prolific, large and late. Yellow, red cheek.

Seckel. Excellent eating Pear for the Summer. Yellow brown with brown red cheek.

Cherries

Throughout the early Summer, these trees produce the delicious fruit which is so popular in pies, or in beverages, or simply picked and eaten.

Plant sweet varieties 25 feet apart each way, and sour varieties 20 feet apart each way.

First-class trees, each 75c., doz. \$7.50,
100 \$50.00

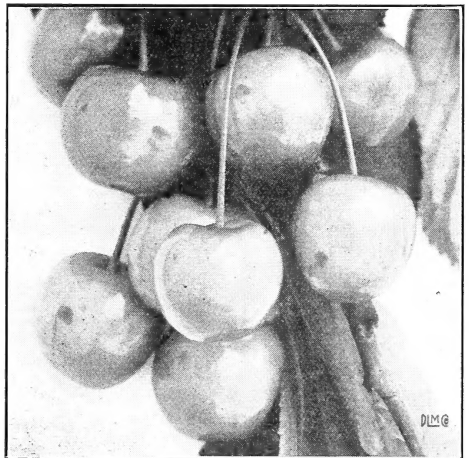
Black Tartarian. Black, large, sweet, productive. Ripens last of June.

Early Richmond (Sour). Dark red, juicy. Medium to large. June.

Gov. Wood. Yellow with red cheek, large and delicious. Productive and sweet. June.

Montmorency (Sour). Medium to large. Dark red with juicy flesh. Late.

Yellow Spanish. Vigorous with large fruit, yellow and sweet. Ripens in early June.



CHERRIES, YELLOW SPANISH

Our Fruit Trees are much too large for shipment by Parcel Post



ST. REGIS RASPBERRIES (Greatly reduced)

BERRY PLANTS

Raspberries

We do not believe that better Raspberries may be bought anywhere. Just pick a few from your own garden, and you will never buy any from your market again.

Culture—Plant in rows 6 feet apart, plants 3 feet apart in the rows, requiring 2,420 plants per acre; or 4 feet apart each way, if to be grown in hills. In the garden plant 4 feet apart each way, restrict to hills, permitting but 3 or 4 canes to remain in each hill.

Catherine. Firm red berries, very large, from early Spring to late Fall. Sucker plants, doz. \$1.00, 100 \$5.00; strong, transplanted plants, doz. \$2.00, 100 \$10.00.

Chief. Very hardy early sort, with delicious, firm red fruit. Sucker plants, doz. \$1.00, 100 \$6.00; strong, transplanted plants, doz. \$1.50, 100 \$10.00.

Columbian. Large, soft purple berries of excellent flavor, unrivaled for canning. Midseason to late. Transplanted plants, doz. \$2.00, 100 \$12.00.

Cuthbert. An old introduction of ours, this large, red, prolific berry is still a leader in the market. Midseason. Sucker plants, doz. 75c., 100 \$5.00, 1000 \$35.00; strong, transplanted plants, doz. \$1.50, 100 \$9.00.

King. Good "home" berry, huge, firm, beautiful bright red and early to ripen. Sucker plants, doz. 75c., 100 \$5.00; heavy, transplanted plants, doz. \$1.25, 100 \$8.00.

La France. An everbearing variety with huge crops of delicious, deep pink berries which are very juicy and have a distinctive flavor. Increasingly prolific as the season advances. Heavy transplanted plants, each 50c., doz. \$5.00.

Latham. Midseason to Late. Big crops of large, firm, round, hardy berries of a rich red. Heavy sucker plants, doz. \$1.00, 100 \$5.00; extra strong, transplanted plants, doz. \$2.00, 100 \$12.00.

Lloyd George. Huge clusters of huge red berries in great abundance. Selected sucker plants, doz. \$1.50, 100 \$7.50.

St. Regis (Everbearing). Starts to ripen with the earliest sorts and continues until late in the Fall, with bright crimson berries, firm, meaty and delicious. Another of our introductions, and the most popular everbearer. Selected sucker plants, doz. 75c., 100 \$4.00, 1000 \$25.00; transplanted plants, doz. \$1.25, 100 \$6.50, 1000 \$50.00; heavy fruiting plants, doz. \$2.50, 100 \$15.00.

Pot-grown Strawberry Plants can be depended upon to give satisfactory results when set out during the late Summer and early Fall months. Write for our special price list of Pot-grown Strawberry Plants. It is free.

(Add 10% to your remittance if shipment is desired by parcel post)

Blackberries

Take advantage of our low prices this year and purchase enough of these splendid plants to make your Summer meals perfect. Our prices, though unquestionably low, refer in all instances to **first-class plants grown from root cuttings.**

In field culture, plant in rows from 5 to 7 feet apart (according to the vigor of the variety) and 3 feet apart in the rows. In the garden, plant in rows 5 feet apart and the plants 3 feet apart in the rows.

Blowers. Midseason, producing tall canes which yield a premium crop of large, attractive, quality berries. Exceptionally hardy. Doz. 75c., 100 \$4.00, 1000 \$30.00.

Eldorado. Midseason. An extremely handsome and hardy delicacy of the best quality, with juicy, sweet flesh. Doz. 75c., 100 \$4.00.

Joy. Midseason. Huge in crop and berry, yet of unsurpassed quality. Doz. \$1.00, 100 \$6.00.

Macatawa. Hardy with sweet, coreless and nearly seedless fruit. Doz. \$1.00, 100 \$5.00.

Mersereau. Midseason. Tall, productive plants produce in abundance, tender, juicy, sweet, rich fruit of the highest quality. Doz. 75c., 100 \$4.00.

MT. POCONO. Large, fruit, of extra high quality, and extremely hardy, borne in the greatest profusion. We are extremely proud of our introduction and invite you to try some of these delightful berries. Doz. \$2.00, 100 \$10.00.

Taylor. Late. Popular with juicy, rich berries of high quality. Doz. 75c., 100 \$4.00, 1000 \$30.00.

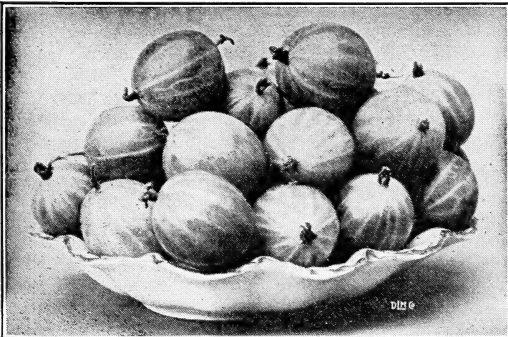
Ward. Popular for home garden or market, with large, handsome berries which bring top prices. Doz. 75c., 100 \$4.00, 1000 \$30.00.

Gooseberries

Cultural Directions—Same as for Currants.

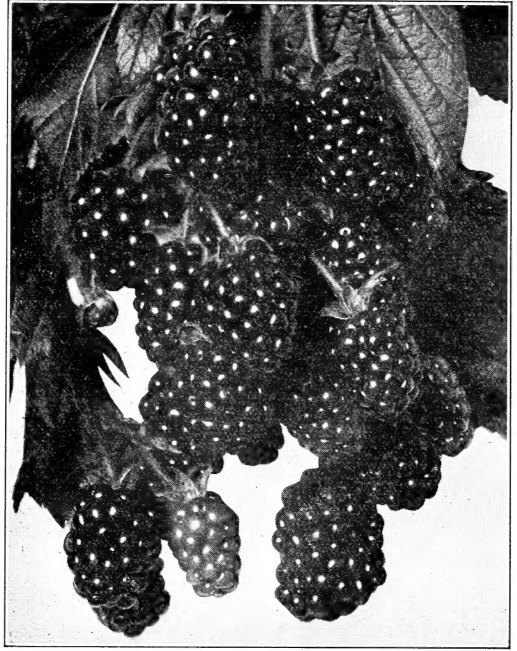
Downing. Wonderfully productive of attractive pale green berries, with a sprightly flavor. 2 yrs., each 25c., doz. \$2.50.

Oregon Champion. A productive plant which thrives under neglect, producing large, maroon berries in abundance. 2 yrs., each 35c., doz. \$3.50.



GOOSEBERRY "DOWNING"

(Add 10% to your remittance if shipment is desired by parcel post)



BLACKBERRIES MT. POCONO (About 1/2 natural size)

Currants

All strong, 2-year, A No. 1 plants

Cultural Directions—Plant either in sunlight or partial shade. Do not cultivate the plants too deeply. Best results are obtained by placing a fairly thick mulch of leaves or straw about the plants and doing no cultivating whatsoever.

Cherry. Large, crimson berries, sharply acid. 2 yrs., each 25c., doz. \$2.50.

Fay's Prolific. Huge, dark red berries in large clusters. 2 yrs., each 25c., doz. \$2.50.

Perfection. Bright red berries over a long period, positively the best of all red Currants. 2 yrs., each 35c., doz. \$3.50.

White Grape. White, mild and of good quality. 2 yrs., each 25c., doz. \$2.50.

May 8, 1934

Mrs. Starring was much pleased with the plants which you shipped her recently and your interest and consideration is greatly appreciated. Be kind enough to ship by express 60 plants more of the *Buxus suffruticosa*, 3 to 4 inch.
R. G. HANFORD, Norwalk, Conn.

April 10, 1934

This will serve to acknowledge receipt of plants you sent me, all of which arrived in excellent condition, for which accept my thanks. I am sorry that I am not in the market for any other plant material at present, but will certainly keep your firm in mind when the occasion arises.

JAMES BROWN, Park Ridge, N. J.

I have just received Order No. 2682-R all in perfect condition, and am very well pleased with same.

Thanking you for promptness in filling order, and for the nice healthy plants.

WILLIAM H. WILLIAMS, Iselin, N. J.

Grapes

Our assortment of Grapes is positively unsurpassed.

Cultural Directions—Where space permits, the vines may be set 8 feet apart each way, though in limited space, the rows can be as close as 4 feet apart with the plants 8 feet apart in the rows. After the first year's growth, each vine should be reduced to three strong branches, 18 to 24 inches long. After that, each season's growth should be pruned back, leaving only the strongest branches and bearing 3 to 4 buds or "eyes" each.

Agawam. Red, large, sweet, productive, very late. 2 yrs., each 20c., doz. \$2.00; heavy fruiting age, each 50c., doz. \$5.00.

Brighton. Wine red, large bunches, midseason; of high quality. 2 yrs., each 25c., doz. \$2.50.

CACO. The highest in quality of all hardy Grapes. Strong, vigorous growers, healthy and prolific. A great yielder of delicious fruit, clusters of fair size, individual berries firm, full of delicious flesh and juice; of attractive red and amber color overlaid with a beautiful bloom. 2 yrs., each 50c., doz. \$5.00, 100 \$30.00.

Catawba. Red, very late, large, firm and sweet. 2 yrs., each 25c., doz. \$2.50.

CHAMPAGNE. Prolific, amber colored, sweet, hardy; never winterkilled. 2 yrs., each 40c., doz. \$4.00; heavy fruiting age, each 75c., doz. \$7.50.

Concord. Most popular of all Grapes. Large, black, high quality berries. Midseason. 2 yrs., each 15c., doz. \$1.50, 100 \$10.00. Heavy fruiting age, each 50c., doz. \$5.00.

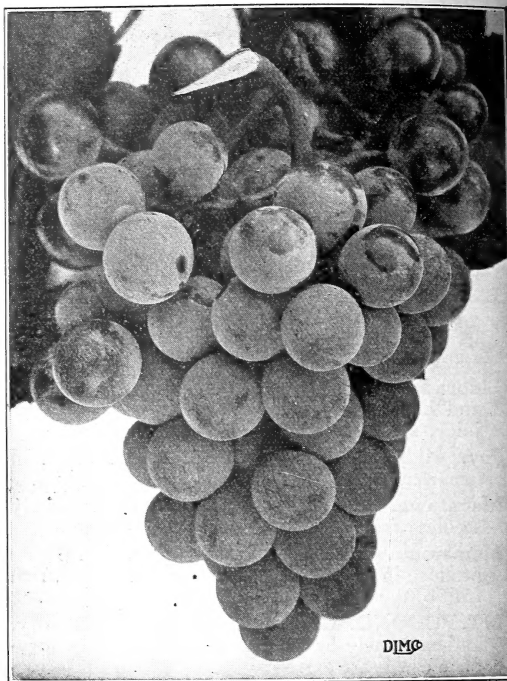
Delaware. Red, small, of high quality, prolific, rather weak growth. 2 yrs., each 30c., doz. \$3.00.

Diamond. Large, compact bunches of greenish white, large berries. Early and prolific. 2 yrs., each 30c., doz. \$3.00.

Green Mountain. White, very early, delightful in flavor. 2 yrs., each 40c., doz. \$4.00.

Moore's Early. Resembles Concord in color, hardness, and size of bunch and berry. Ripens two weeks earlier. 2 yrs., each 30c., doz. \$3.00, heavy fruiting age vines, each 50c., doz. \$5.00.

Niagara. Midseason; large white Grape, sweet and luscious. 2 yrs., each 30c., doz. \$3.00; heavy fruiting vines, each 75c., doz. \$7.50.



GRAPES, "WORDEN"

Ontario. Very early white Grape, juicy, tender and sweet. 2 yrs., each 50c., doz. \$5.00.

Portland. Another early white Grape, large in cluster and berry. 2 yrs., each 50c., doz. \$5.00.

Sheridan. Black, good shipper, of high quality. Ripens just after Concord. 2 yrs., each 50c., doz. \$5.00.

Worden. Of higher quality than Concord, earlier and bunch and berry larger. Black, 2 yrs., each 25c., doz. \$2.50, heavy fruiting vines, each 50c., doz. \$5.00.

Garden Roots

CHIVES. Prized for soups and seasoning. Medium size clumps, each 25c., doz. \$2.50, 100 \$15.00.

HORSERADISH. Easily grown in any garden soil. Doz. 50c., 100 \$2.50, 1000 \$20.00.

LAVENDER. The old favorite with its pleasant odor. Strong plants, each 25c., doz. \$2.50.

SPEARMINT. Splendid for seasoning. Strong plants, each 20c., doz. \$2.00, 100 \$12.00.

PEPPERMINT. Used largely for cooking but may be chewed "raw." Each 25c., doz. \$2.50, 100 \$15.00.

RHUBARB (Victoria). Best of the Rhubarb; large, tender stems of delightful flavor. Each 20c., doz. \$2.00, 100 \$12.00.

SAGE (Holt's Mammoth). Late Summer and Autumn flowers of lilac blue. A splendid seasoning plant. Each 20c., doz. \$2.00, 100 \$12.00.

THYME. Prized both for seasoning and as a dense ground cover. Clumps, each 25c., doz. \$2.50.

ONE HUNDRED DAYS OF PERFECT GRAPES AND HOW TO HAVE THEM

The desire to enjoy a liberal supply of luscious Grapes over a long period of time is easily gratified if you choose sorts maturing in succession. The problem of "Grapes over a long season," is solved by the

LOVETT HOME ARBOR COLLECTION

2 Caco	2 Concord
2 Moore's Early	2 Niagara
2 Champagne	

2 strong, 2-yr.-old vines of each of these 5 sorts for \$2.95

Delivered postage paid anywhere in the United States

(Add 10% to your remittance if shipment is desired by parcel post)