

Historic, archived document

Do not assume content reflects current scientific knowledge, policies, or practices.

57
60th Anniversary

LIBRARY
REIVED
24 1938 ☆
Dept. of Agriculture.



Lovett's Nursery
INCORPORATED

LITTLE SILVER, N. J.



1938

60th Anniversary Rose Collection



Autumn



Golden Dawn



E. G. Hill

THESE ten glorious Roses will make you a garden or border unsurpassed in colorful beauty. They are indeed triumphs, not only in their charm, but also in their adaptability, hardiness, and success with a minimum of care. The range of color is complete, embracing the best varieties of all popular Rose hues, with many new but well tested sorts added to the more familiar ones. We honestly feel that our collection this season is very nearly at the peak of perfection.

•
Ami Quinard. Fragrant blackish crimson-maroon.

Autumn. Burnt-orange, streaked with red and gold.

Condesa de Sastago. Copper-scarlet within, rich gold without.

Edith Nellie Perkins. Pinkish buff and coppery pink.

E. G. Hill. Pure, rich scarlet; shapely.

Golden Dawn. Sunflower-to-lemon-yellow blooms.

Miss Rowena Thom. Fiery rose flowers, enormous.

Mme. Jules Bouche. Our favorite white Rose.

Socur Therese. Hardy, chrome-yellow.

Talisman. Scarlet-orange and rich yellow, very popular.

•
OUR COLLECTION, comprising one strong 2 yr. old field grown plant of each of these sensational beauties is offered for only **\$5.95**

SIX REASONS ◆ ◆ ◆

Why **LOVETT'S NURSERY, INC.**, has been in business successfully for **SIXTY YEARS** at **Little Silver, N. J.**

- 1.** We carry, at all times, an extra wide range of ornamental and fruit stock, to fulfill all needs of the home owner, including the "tried and true" among the popular older sorts and the more promising of the carefully tested novelties.
- 2.** We have had this stock grown by specialists as carefully and as economically as is possible, on lands especially adapted to such plants, so that each individual item is a separate triumph.
- 3.** The economy of our production allows us to offer all of this splendid nurseryware at prices far below their true value—prices to fit the average man's purse comfortably.
- 4.** Each order receives the utmost of speedy efficiency, by men and women well trained in such service, from the opening of your letter to the wrapping and shipping of your stock.
- 5.** Our location on the Jersey Shore is easily reached from all points within an extra large radius, due to splendid roads, and to our central location between New York and Philadelphia.
- 6.** We have long believed in making a friend of our customers, and in giving his needs the benefit of expert advice at all times, welcoming opportunities to help as much as we can, with his horticultural problems, at no extra cost to him.

Try us this Spring; surely you need a touch of color on your lawn or in your border. Call Red Bank 2200, or write to Lovett's Nursery, Inc., at Little Silver, N. J., and we will give your order the prompt and proper attention that it merits.

Our Terms of Sale . . . Please Read Carefully

Special Notice—*The greatest care is exercised to keep our stock clean and true to name. Should any prove otherwise, we will return the money paid or replace it with other stock, but we are not liable for damage beyond that. A sure indication of the purity of our stock is the fact that customers of former years continue to deal with us. Certificate of inspection is attached to each shipment.*

HOW TO ORDER—To insure receipt of stock when wanted, order as early as possible. Be sure that your name and address are clearly written. In your address give post office, county and state, and state clearly to what point goods are to be sent. If shipping address is different than residence post office, be sure that you give us the correct shipping point. Small favors thankfully received always, **but we cannot undertake to fill an order of less amount than one dollar.**

SUBSTITUTION—It is our custom, should the supply of a variety become exhausted (which occasionally occurs in all nurseries), to substitute in its stead a similar sort, properly labeled, of course. When it is desired that we shall not do this, it must be so stated in the order. To simply affix the words "**No Substitution**" is all that is necessary.

SHIPPING—We deliver all goods to forwarders here without charge, after which our control ceases, consequently our responsibility also. We particularly caution patrons against ordering Perennial Plants and Strawberry Plants shipped by freight; they should always go by express, or in small lots by mail. Transportation charges on all goods shipped by freight or express are to be paid by the purchaser, unless arranged otherwise.

SHIPMENTS BY PARCEL POST—Many plants offered can be shipped to advantage by parcel post, especially to nearby points. If such method of shipment is desired, kindly consult the subheading of the desired article for cost of transportation. Any overpayment will be refunded by us immediately after shipment goes forward.

TERMS—Payment should be made at time of ordering or before shipment. We prefer to make no shipment **C.O.D.** but will, when requested, ship in this way, provided 25 per cent of the amount of an order is sent with the order, with return charges added. **Please do not ask us to open accounts for less than \$10.00 orders.**

Prices in this catalog cancel previous quotations. The prices quoted are for the quantities specified, but six, fifty or five hundred of a variety will be supplied at dozen, hundred and thousand rates, respectively. Hundred lots may not be made up at hundred rates for less than fifty of a variety.

CLAIMS, if any, should be made upon receipt of goods, when they will be carefully and cheerfully examined and, if just, all made satisfactory. Claims made after 15 days from receipt of goods will not be entertained. We endeavor to send out only good stock in good condition, carefully packed in all cases; but success or failure depends in so large a degree upon the care and management after received, that we do not, because we cannot, undertake to guarantee stock to live.

LOCATION—Lovett's Nursery, Inc., is one mile from Little Silver Depot, two miles from Red Bank, forty miles from New York City and five miles from Long Branch. To reach it from New York, take the Central Railroad of New Jersey (foot of Liberty Street or 23rd Street) or the Pennsylvania Railroad (Hudson Terminal or 32nd Street and Seventh Avenue). From Philadelphia, take the Pennsylvania Railroad or the Philadelphia and Reading Railroad (Bound Brook Route).

WESTERN UNION TELEGRAPH, Red Bank, N. J.

POSTAL TELEGRAPH, Red Bank, N. J.

LONG DISTANCE TELEPHONE, No. 2200, Red Bank, N. J.

ROSES

LONG esteemed as symbols of perfect beauty, Roses are not hard to grow, and will repay a minimum of effort with a maximum of charm. Our list is complete in its range of color, and we have omitted no worth while sort. Especially may we recommend our Collection (see inside front cover), for it combines sheer gorgeousness with a wide adaptability to varied climatic conditions. So plant Roses in your garden now, that you may enjoy their beauty and fragrance.

HARDY EVERBLOOMING, OR HYBRID TEA ROSES

These are the plants of which one thinks when the word "Rose" is mentioned. By far the most popular of all Roses and indeed of all flowers, they bloom continuously from June until frost.

Although hardy, these Roses do best if given some protection in Winter. Simply heap soil to a height of 8 inches about each plant in late Fall, and remove this guard in early Spring. It will not be much trouble, and the results will more than repay your few moments work.

Plant in rich, well drained soil, always in full sunlight. Space about 2 feet apart.

All Roses offered are extra strong, 2 to 3 years old, field-grown plants, bound to make a splendid display next Summer, and many succeeding Summers.

Uniform prices for all varieties (unless otherwise noted), heavy, field-grown plants: Each 70c, doz. \$7.00, 100 \$50.00. (Add 10 per cent to remittance if shipment is desired by Parcel Post.)

Ami Quinard. Many blackish crimson buds turn to deep velvety maroon flowers, with lovely old rose perfume, on a tall, vigorous bush. The petals of these Roses deepen in color, approaching black as the plant matures.

Autumn. Regarded by some authorities as the most colorful Rose grown today, Autumn is justly famous for its full, compact, firm buds of yellow, stained crimson, and centered burnt orange. These buds turn to very double cupped flowers of rich bronzy red on a golden background, delightfully fragrant, and never losing their clear, striking color. The Fall Roses are especially gorgeous, making the autumnal hues of the Maple leaves pale by comparison. The plants are not very tall, and should be planted in the front row.

Betty Uprichard. Among the most popular of the two-toned Roses, this prolific sort is a tireless producer of shapely copper-red buds which become lovely big blooms, with soft salmon-rose on the interior of their petals, and glowing orange-carmine on their outer sides. The color of these flowers is long-lasting and unfading, and the fragrance is rich and spicy. The plants themselves are tall and particularly vigorous.

Catherine Kordes. An amazing quantity of perfectly formed, long-pointed buds of a rich red, shaded black, turn to large long-lasting flowers of glowing deep scarlet, each petal faintly rimmed with silver. These Roses, being produced singly on long strong stems, are simply ideal for cutting, and keep well. Each 80c, doz. \$8.00.

Condesa de Sastago. The buds of this best of Spanish Roses are globes of gold, striped with brilliant red, turning to big flowers, distinctly bi-colored, with their petals a glowing copper-scarlet within and a rich gold without, alluringly fragrant. Each 90c, doz. \$9.00.

Dame Edith Helen. Among the best of all clear pink Roses for cutting or exhibition purposes, this vigorous sort bears many big, exceptionally double blooms on long, strong stems, delightfully fragrant, and lasting for a long while. The shapely flowers, with their attractively recurved petals, are produced from huge, yet well-formed buds, and are equally good in Spring and Fall.

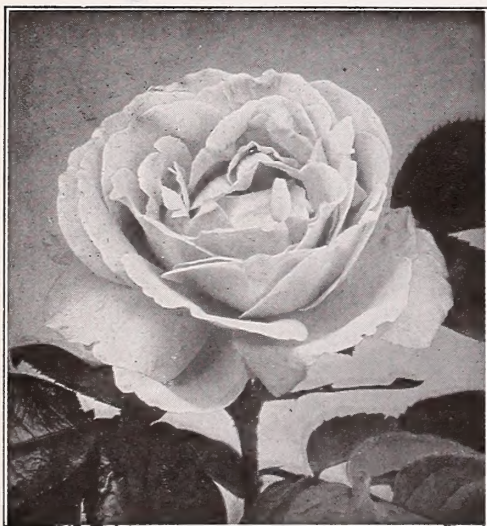
Duguesa de Penaranda. A glorious new Rose with two distinct types of bloom. The Spring buds are a blend of orange-apricot and pink, opening to lovely flowers of copper-orange, but the Fall blooms open from huge brownish buds to flowers of an unusual, lasting cinnamon-peach shade, sweetly perfumed, and as attractive as it is possible for a Rose to be. This novel beauty should be in everyone's garden this season, to bring joy to their rose beds and vases for many years to come.

Edith Nellie Perkins. This charming sort produces, early in the season, an amazing amount of shapely, two-toned flowers with copper-rose on the outer side of their petals, and soft salmon-pink, based golden salmon within. These glowing beauties are double and lasting, produced on exceptionally long, strong stems for cutting, from a healthy, vigorous bush.

Edouard Schill. An interestingly different variety, producing big semi-double Roses of rich brick red, shaded nasturtium yellow, standing out well against the glossy foliage.



Ami Quinard
(See Collection inside front cover)



Condesa de Sastago
(See Collection inside front cover)

EVERBLOOMING ROSES, *Continued*

E. G. Hill. This is our favorite red Rose, with its myriads of shapely long buds, a rich scarlet in color, that turn to immense, high-centered, very double blooms of dazzling red. The flowers often shade to a deeper hue as they mature, but they are subject to no unpleasant "blueing," even under the hot mid-Summer sun. These richly-perfumed Roses are equally magnificent in garden or vase, and are also good for forcing under glass.

Etoile de Hollande. Most popular red Rose in our country, this easily grown, healthy bush bears many perfect buds which open slowly into glorious great flowers, artistically loose in formation, of a brilliant scarlet-crimson, seemingly finished in velvet, and bearing incomparable fragrance. The Fall bloom is particularly charming, but it is always beautiful, and has no serious fault whatsoever.

Golden Dawn. This Australian beauty is the perfect yellow garden Rose, with big, oval buds of rich straw-yellow, heavily diffused with old rose, turning to extra large, shapely, double flowers of soft lemon-yellow, delightfully fragrant, and produced above lovely bronzy foliage. Though there is some variation in color among the individual blooms, there are many of them and each is perfect in its way.

Gruss an Teplitz. A worthy old favorite China or Bengal Rose, as heavy and continuous in bloom of its deep bright velvety crimson flowers as is any sort we know. These flowers, intensely fragrant, are borne on long stems, and the tall plant is particularly adapted for hedge work, bedding, or borders. Easily and successfully grown.

Heinrich Wendland. The richly fragrant flowers of this prolific variety are startling in the intensity of their coloring—an unfading fiery copper scarlet, reversed deep golden orange. Especially good for exhibition purposes, being borne singly on strong stems from shiny, leathery foliage, they are also highly perfumed, and come from extra shapely, big buds of deep reddish maroon. Each 80c, doz. \$8.00.

Hilda. Too little known is this lovely clear carmine beauty, which is equally charming in bouquet or bed, because of its many beautiful flowers, each an individual triumph.

Joanna Hill. Remember that lovely old favorite, Ophelia? Joanna Hill has quite taken its place as the best cut flower, with florists and amateurs, of its unusual color. The long, pointed orange-yellow buds turn to perfectly shaped, slender flowers of deep creamy yellow, tinged with salmon and buff, extremely fragrant, and borne on long, strong stems. Each bloom is a floral aristocrat and several together, in a big bouquet, are simply irresistible.

Kaiserin Auguste Viktoria. Produced nearly half a century ago, this hardy, strong growing sort is still the best white everblooming Rose. Long stems bear shapely creamy white buds which turn to big flowers, perfectly formed and extremely fragrant, slightly tinted lemon-yellow at their centers. A continuous bloomer in practically any location, needing almost no care for perfect results.

McGredy Scarlet. A tall bush which produces, heavily and continuously, long-stemmed scarlet buds of perfect form, which open slowly to big, loosely formed, but shapely flowers of vivid deep rose, with interior of petals a bright scarlet.

Mevrouw G. A. Van Rossem. A most brilliant and unusual Rose, which produces a mass of perfectly shaped buds of deep red-orange, heavily veined maroon, and turning slowly to orange-apricot flowers on a golden-yellow background, intensified by the deep bronzy maroon veins, which are distinct and unique. The flowers are very large, extremely shapely, and richly fragrant, being equally satisfactory in a Rose bed or when cut. Each 80c, doz. \$8.00.

Miss Rowena Thom. A dependable and heavy bloomer, with great, long-pointed pink buds, turning to shapely rose-pink flowers, based and suffused with golden yellow, sweetly fragrant and frequently five to six inches in diameter. If a bit of care is given the plant, each Rose will be worthy of exhibition.

Mme. Jules Bouche. This favorite white Rose of many experts bears many long-pointed buds which open slowly to big, double, shapely, and fragrant Roses, pure white with a slight rosy blush at their centers. Extraordinarily beautiful when half open, and particularly lovely when placed in a bed with other everblooming sorts.

Mrs. Charles Bell. Lovely sport of the popular Radiance, of a clear, clean, soft shell-pink, an exquisite and delicate color, lightly shaded with salmon. It is similar to its parent in shape, and deliciously fragrant. All of the Radiance type Roses are ideal for the amateur gardener, repaying a moment's care with many hours of satisfaction.



Golden Dawn



Mrs. Erskine Pembroke Thom

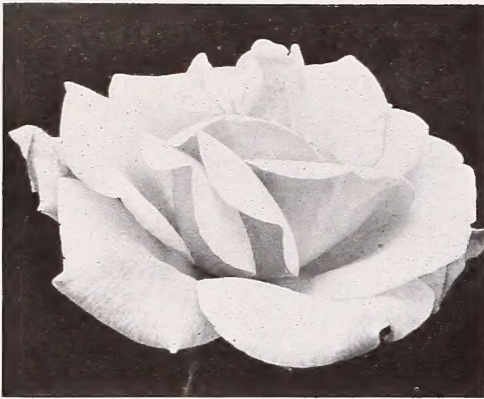


Dame Edith Helen

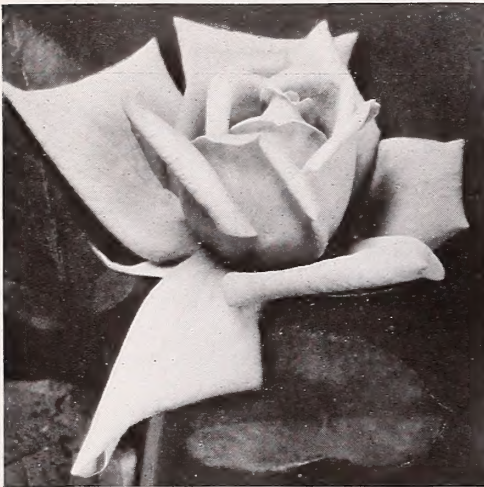
All varieties, unless otherwise noted, each 70c, doz. \$7.00, 100 \$50.00

(Add 10% to your remittance if shipment is desired by parcel post)

EVERBLOOMING ROSES, *Continued*



Mrs. Sam McGredy



Soeur Therese



Talisman
(See Collection inside front cover)

Mrs. Erskine Pembroke Thom. Considered by many experts to be the most valuable yellow Rose for garden or bedding purposes, this vigorous, hardy bush produces a continuous golden stream of big, well formed buds, becoming shapely double flowers of clear, bright canary yellow, sweetly scented. These flowers are as lovely when cut as on the deep bronzy foliage of the bush, for their color is unfading and untouched by any other hue.

Mrs. Sam McGredy. The loveliness of this low, spreading bush well merited its Certificate of Merit from the National Rose Society of England. The long-pointed buds turn to coppery-orange scarlet flowers, equally shapely, very double, and richly perfumed. The plant itself is formed of red canes, holding amazing reddish bronze foliage, making it unique in any rose bed. Each 80c, doz. \$8.00.

President Herbert Hoover. The perfect Rose for cutting, this nationally successful sort produces many long, beautifully formed buds of flame-scarlet and yellow, which open slowly to big, lasting flowers of this amazing blend with the lovely addition of cerise-pink, deliciously fragrant and produced on extra long stems.

Radiance. This has long been America's most popular Rose, producing more first-class blooms per plant than any other kind. These large, shapely, double flowers are a light silvery pink, with rich opaline tints, borne erect on a long stem from big brilliant buds, and carrying a delicious damask fragrance. They are borne in a seemingly endless procession, needing almost no care, on the most reliable bush with which the world is yet acquainted.

Rapture. Exquisite long, pointed buds turn to deep salmon-pink Roses, flushed with gold at their bases, and sweetly fragrant. Borne on long, nearly thornless stems, Rapture approaches the ideal cut flower as has no other Rose to date.

Red Radiance. Last but not least of the lovely Radiance type Roses, this vigorous plant bears a countless quantity of deep rosy red flowers, mammoth, yet shapely, and highly fragrant, on long rigid canes. Unexcelled for button-hole or small vase. Red Radiance, planted with Radiance and Mrs. Charles Bell in the amateurs' gardens, will be the realization of a beautiful dream.

Roslyn. Roslyn is truly a Golden Princess among Roses, with its lovely tapering buds, and half opened flowers, turning to glorious great ruffled blooms of rich golden yellow, shaded orange on the reverse sides of their petals. Indispensable for a cut flower and for decorative work, it is also one of the best bedding Roses.

Soeur Therese. One of the most gorgeous Roses ever introduced, Soeur Therese bears many long pointed buds, always perfect, of chrome-yellow, distinctly marked with carmine. These buds turn to open blooms of rich daffodil-yellow which hold their color well, and contain a spicy sweet-briar fragrance. They are borne in great quantity on long stems for cutting, and the plant itself resembles a living candelabra holding five or more "candles" in the form of golden Roses. The variety has won medals both abroad and in this country, and we are indeed proud to be so fortunate as to offer it for the first time in our Catalog this Spring. Each 80c, doz. \$8.00.

Souvenir de Claudius Pernet. First truly yellow everblooming Rose ever introduced, this is still the Rose thought of when yellow sorts are mentioned. Many long, pointed, exquisite buds on long, strong, stems turn to big shapely, full flowers of clear, unfading sunflower yellow, especially beautiful when half open, with the lovely golden flowers standing out well against the glossy, holly-like foliage. Sweetly fragrant, with an unusually good fall crop of flowers.

Sunkist (The Golden Rose). This glorious sport of the popular Joanna Hill bears long, beautifully formed buds which turn to full open blooms of a rich orange-copper, tinted buff and bronzy pink, and very sweetly fragrant. Their lasting quality when cut, the vigor of the plants, and the big handsome foliage combine to render this sort invaluable for a riot of color in garden or vase.

Talisman. Probably the most popular cut flower in our country, this hardy sort bears a continuous flood of lovely buds on long stems, turning to shapely Roses of orange, yellow and rosy red. The flowers sometimes vary in color, but are always beautiful. Best in the Fall, these sweetly scented floral cameos stand out at any time against any background, with an unequalled charm all their own.

Bridgeport, Conn.

The order of Rose bushes was received in good condition, and I wish to thank you for your courteous service, and especially for the "extras" included in the shipment.

Henry F. Bunce

All varieties, unless otherwise noted, each 70c, doz. \$7.00, 100 \$50.00
(Add 10% to your remittance if shipment is desired by parcel post)

JUNE ROSES

These hardiest of all Roses will make you a June garden which will be unequalled for beauty in your neighborhood. The cut blooms, also, will fill the vases of your house with fragrant charm for many Junes to come. For best results, prune severely in early Spring, manure liberally and hoe often. Plant 2 to 3 feet apart.

Heavy, field-grown plants, (except as noted) each 70c, doz. \$7.00,
100 \$50.00

American Beauty. Most outstanding Rose of our fathers' day, American Beauty is still among the favorites. Bears many extra large flowers of rich rosy-carmine, double, full, and globular in shape, lasting when cut, and carrying a delicious fragrance. Our plants of this famous old sort are frequently nearly as everblooming as are most Hybrid Tea Roses.

Druschki Rubra. Crimson blooms, similar in shapeliness and vigor to that best of white Roses, the popular Frau Karl Druschki. Each 90c, doz. \$9.00.

Frau Karl Druschki. Most popular of all white Roses, this magnificent variety produces many huge, long, pinkish buds, which turn to mammoth snow-white flowers, very shapely, with firm petals of wax-like texture. Repeats its bloom frequently. This vigorous, tall grower (often over six feet in height) is sometimes called the White American Beauty.

General Jacqueminot. Introduced in 1852, this lovely sort is the oldest Rose listed herein, with an early, abundant bloom of scarlet-crimson buds, turning to clear red Roses, hardy, and chiefly outstanding because of the unparalleled quality of their delightful perfume.

Magna Charta. Produces a great many bright, deep pink blooms, attractively suffused with carmine, big, double, cupshaped, and heavily perfumed. A hardy sort which is much used by florists for forcing in pots.

Mme. Albert Barbier. Nearest in color to yellow of any June Rose, this compact, dwarf bush bears many long, shapely pearl-white buds, suffused with soft salmon flesh, and turning to big well-formed flowers of fawn-yellow, very fragrant, and showing a center tinged with apricot-gold when bloom is fully open. Also, and even more important, it is absolutely everblooming in character.

Mrs. John Laing. A lovely old favorite which bears many big, double, shapely Roses of a solid, satiny pink, intensely fragrant, from extra-splendid buds.

Soliel d'Or. This famous ancestor of all the modern multicolored Roses is still unsurpassed in color, with orange-gold and pink struggling for supremacy upon its sweetly perfumed petals.

Ulrich Brunner. For well over half a century, this dependable sort has been most popular as a heavy producer of bright cherry-red blooms, big, cup-shaped, and intensely fragrant.

SHRUB ROSES

As hardy as the hardiest of Shrubs, but as beautiful as any Rose Bush.

Heavy, field-grown plants, (except as noted) each 70c, doz. \$7.00,
100 \$50.00

Rugosa Rose. 4 to 5 ft. Wonderful bush for a seashore hedge, with big, single flowers ranging from pink to rosy-carmine, followed by attractive red berries. Also good for specimen planting, in separate beds, or in a mixed group of shrubbery. Hardest of Roses. Each: 15 to 18 in. 35c, 18 to 24 in. 50c.

Conrad F. Meyer. 8 to 9 ft. Tallest of Rugosa hybrids, this hardy sort produces many big silvery-pink Roses, glowing and fragrant, through the season. They are good lawn specimens, and mix well with tall shrubs for screening an unsightly object.

F. J. Grootendorst. 4 ft. Most popular Rose for an everblooming hedge, being a continuous producer of small, bright crimson flowers, fringed like carnations, in great clusters. Also good in a shrub border, en masse in a Rose bed, or as individual specimen.

Pink Grootendorst. Similar to the above sort in all respects, save for the color of its blooms, which, a splendid clear pink, is preferred by many to the crimson of its parent.

The Golden Rose of China (*Rosa Hugonis*). 6 ft. This erect shrub from the Orient bears long, arching wands, covered with lovely flowers like delicate, fragrant, yellow Tulips, in early May. Even without its bloom, the feathery foliage renders these hardy Roses unsurpassable for a distinctive, nearly impenetrable hedge if planted from 15 to 18 inches apart.

SKYROCKET

This amazing new variety is really more of an everblooming shrub than a June Rose. It produces a carnival of blood-red flowers, a display that is hypnotizing in its beauty, from early June until frost. In addition to this desirable factor, its big seed pods will attract countless birds to your home grounds. Makes a gorgeous hedge plant. Strong, 2 year, field-grown plants, each 75c, doz. \$8.00.



Rugosa Rose

ROSA ROULETTI (R) THE ROCK GARDEN ROSE (R)



6 to 8 inches. This lovely necessity to any rock garden has met with tremendous appeal. The small, double, rose-pink flowers are in continuous bloom from early Summer until frost, from miniature, compact foliage. If taken out of the ground in mid-Fall, and placed in pots, they will furnish lovely Winter Blooms for your house or apartment. (R). Strong blooming-age plants, each 75c, doz. \$7.50.

All varieties, unless otherwise noted, each 70c, doz. \$7.00, 100 \$50.00

(Add 10% to your remittance if shipment is desired by parcel post)

*Baby Rambler***BABY RAMBLER ROSES**

These are the perfect Roses for bedding. Being the only truly everblooming sorts they actually hide their foliage beneath a carpet of lovely bloom from late May until frost. Try a few of these hardy gems, and transform your lawn into a spot of colorful beauty for many months.

Plant Polyanthas from 2 to 3 feet apart. They need no Winter protection.

Price (except as noted) strong, field-grown plants, each 70c, doz. \$7.00, 100 \$50.00

Baby Alan. Huge crops of rich, shining pink Roses, resembling double English Daisies, which they rival in charm. Blooms continuously from June until the first heavy frost, and is an introduction of which we feel we can be justly proud. Each 90c, doz. \$9.00.

Else Poulsen. 4 ft. A most popular pink-flowered Polyantha, with lasting clusters of extra-sized, fragrant, clear rosy pink flowers on good stems.

Gloria Mundi. 2 ft. A vigorous, bushy sort with many great brilliant clusters of full, double flowers, a glowing orange-scarlet in color, resembling baby pompon Chrysanthemums. Unexcelled for bedding.

Golden Salmon. 15 inches. A dwarf sort with large clusters of single orange flowers, a unique and pleasing color when the Roses are planted in big groups.

Improved Lafayette. 2½ to 3 ft. Lovely bedding Rose, which is a prolific producer of deep brilliant red flowers, richly suffused crimson. Striking in a mass planting. Each 75c, doz. \$7.50.

Marie Pavie. Best white Baby Rambler, with a great quantity of big, double waxy white flowers, centered flesh-pink when fully open, and sweetly fragrant.

Peach Blossom. An unusual sort with big clusters of scarlet-orange buds, turning to flowers of a soft rosy carmine, like Peach blooms.

CLIMBING ROSES

For many years our Nursery has specialized in the production of climbing Roses, those flowering vines that change barren trellises into ever-changing panoramas of beauty. Our late neighbor, Dr. Walter Van Fleet, was probably the most famous hybridizer in the field of climbing Roses, and we list with pride his lovely introductions, especially the three Lovett Sisters Roses, which we regard as the rulers of their respective colors.

Price (except as noted), strong, 2-year, field-grown plants, each 60c, doz. \$6.00, 100 \$40.00

Alida Lovett. See "Lovett Sisters Roses," page 7.

Apricot Glow. Described on page 7.

Bess Lovett. See "Lovett Sisters Roses," page 7.

Climbing American Beauty. Among the most popular of climbing Roses, this counterpart of its lovely namesake, the gorgeous American Beauty Rose, produces brilliant carmine buds which become shapely flowers of deepest rose-pink, on long stems for cutting. These flowers are often over three inches in diameter and bear an exquisite fragrance. The plant itself is a strong, vigorous, healthy grower, frequently climbing ten to fifteen feet in a season.

Dr. Huey. An unusual sort which bears tremendous clusters of big, semidouble flowers, with ruffled petals, of the deepest crimson-maroon imaginable, for an extra long bearing period. Still the nearest to a "black" climber known.

Dr. Walter Van Fleet. Best known and most popular of climbing Roses, this extra-vigorous sort bears a tremendous crop of long-pointed, rich, flesh-pink buds, turning to long-stemmed and shapely Roses of a soft Appleblossom-pink, delicately perfumed, and ideal for cutting. It is a strong, healthy bush which will grow to nearly any desired height.

Dorothy Perkins. An old favorite trailing Rose, this hardy sort produces, late in the season, huge trusses of small, double flowers, a bright shell-pink in color, surrounding the long, slender cones. Dependable for porches and simply perfect for holding banks. Each 50c, doz. \$5.00.

Excelsa. This vigorous grower has dethroned that old favorite, Crimson Rambler, with an immense crop of rosy-scarlet flowers in extra large clusters from glossy foliage, late in the season. Each 50c, doz. \$5.00.

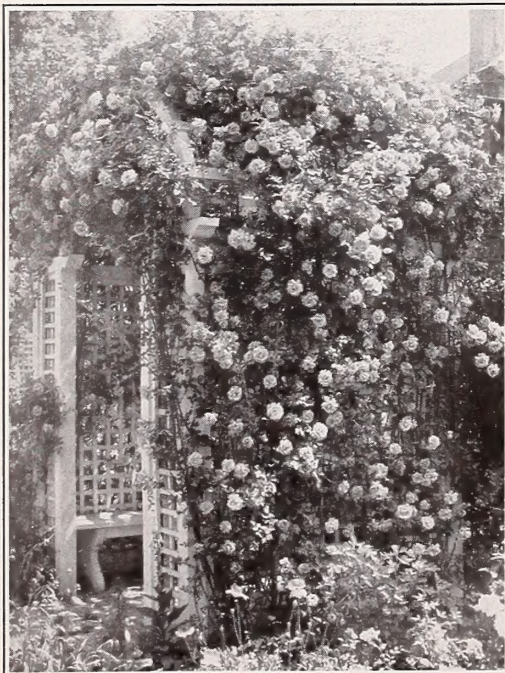
Gardenia. Long the most popular yellow-flowered climbing Rose, Gardenia bears many small clusters of big, pale, creamy yellow buds early in the season, which turn to old-ivory-hued flowers, centered a deeper shade, from handsome foliage.

Ghislaine de Feligonde. What a shame that so lovely a Rose should be weighted down with such a tongue-twisting name! Apricot-yellow buds, streaked with carmine, turn to pale buff flowers tinted pink at their petals' edges. These flowers, exceptionally large, are borne profusely at the season's beginning, with scattered blooms for several months thereafter.

Golden Glow. Described on page 7.

Mary Lovett. See "Lovett Sisters Roses," page 7.

Mme. Gregoire Staechelin. See "Spanish Beauty," page 7.

*Climbing American Beauty*

(Add 10% to your remittance if shipment is desired by parcel post)

Paul Scarlet. This most popular of red climbing Roses bears loose open clusters of fading scarlet flowers, blazing in their intensity, semidouble and borne on strong branched canes. The prolificacy of bloom renders it a mass of unfading color from top to bottom, and there is frequently a Fall repetition of floral charm. Especially effective on pillars or posts.

Phyllis Bide. A daintily lovely sort with shapely buds of pale gold and carmine-pink, turning to buff-yellow flowers, in loose clusters. Usually experiences a recurrence of bloom in the Fall and thrives with little care in any location. Each 75c, doz. \$7.50.

Prosperity. Many globular pinkish-white buds turn to clusters of big white Roses on this most everblooming of climbing sorts. Each 75c, doz. \$7.50.

Roserie. Nearly thornless, with big frilled flowers, of rich deep pink, borne in loose clusters.

Silver Moon. Most popular white climber yet introduced, with big buds of Naples yellow turning to gigantic single flowers, saucer-shaped, moon-white in color and centered brilliant yellow. These flowers, resembling large flowered Clematis, are borne in sprays on long stems, with lasting, delightful fragrance. Ideal for covering an otherwise unsightly fence.

Spanish Beauty (Mme. Gregoire Staechelin). A gorgeous variety which may be the forerunner of a new line of Roses. This erect climber bears an overwhelming abundance of long-pointed crimson buds, from three to five on a stem, opening one after the other to huge iridescent blooms of delicate pearl pink, splashed with carmine, and bearing delightful perfume. These floral gems are followed by seed pods as large as small pears, and very decorative. Each 75c, doz. \$7.50.

Thelma. An unusually beautiful climber, Thelma bears clusters of large yet delicate coral-pink flowers, produced in terrific quantity.

Memorial Rose of Japan (Rosa wichuraiana). An invaluable trailer, with many big clusters of pure white flowers. As each branch lies flat, it is ideal for covering banks with a dense mat of shining semi-evergreen foliage. Each 50c, doz. \$5.00, 100 \$35.00.

Price (except as noted), strong, 2-year, field-grown plants, each 60c, doz. \$6.00, 100 \$40.00

“LOVETT SISTERS” CLIMBING ROSES

Among rose hybridizers, few have to their credit a greater number of worth while creations than the late Dr. Van Fleet. All the Van Fleet hybrids are particularly valuable in having deep glossy mildew-proof foliage. In addition, the flowers are larger, of better substance, and more artistic form than those of most other climbing roses. We count the three Van Fleet Hybrids, offered on this page, among the really triumphant achievements of Dr. Van Fleet's life.

Alida Lovett. In habit it is quite like the popular Van Fleet, but with larger and more beautiful mildew-proof foliage, while the color of the flower is brighter. Both buds and flowers are large, of ideal form, and held on stiff stems a foot and a half to two feet long; and the color is a lively bright shell-pink with shadings of rich sulphur at the base of the petals—a combination that is both novel and beautiful. The plant is of strong growth, a free bloomer and of ironclad hardihood; flowering for a long season. It is also quite fragrant.

Bess Lovett. Is of strong growth, with large glossy Silver Moon-like foliage, and, what is remarkable in a climbing rose, the flowers are exquisitely fragrant. Flowers are lavishly produced; are of good size, double, full and cupped form, being similar in make-up to the Climbing American Beauty, but very much brighter red in color and more fragrant by far. The roses, which are very lasting, are also very beautiful in bud and are borne on long stems.

Mary Lovett. It is very much like the beautiful Dr. W. Van Fleet Rose, except in that the large full flowers are pure snow-white. They are held on long, strong stems and are delightfully sweet-scented. It blooms in late Summer and Autumn, as well as in June. It is a strong grower, with abundant mildew-proof foliage, and is exceedingly free flowering. The finest and most valuable climbing white rose as yet offered.

Any of these “Lovett Sisters” Roses, strong, 2-year, field-grown plants, each 75c, doz. \$7.50.

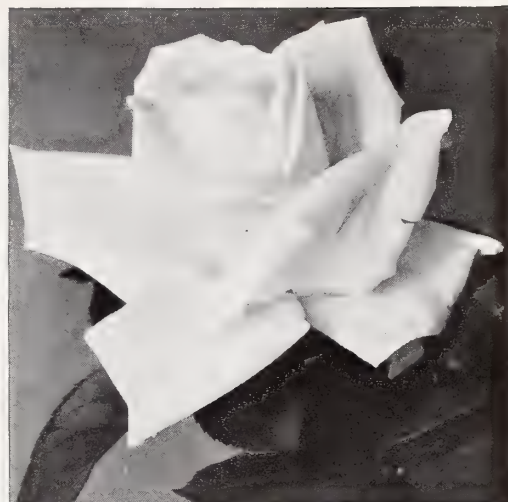
One each of the three sorts for only \$1.95.

TWO GLORIOUS NEW ROSES

Apricot Glow (Plant Patent No. 200). Magnificently gorgeous are the flowers produced by this distinctly different climber. They are of a luminous shade of pale apricot, based yellow, and borne in big, showy trusses. Not the least of their charms is their rich fruity perfume. Though a new climber, this sort is beyond question headed for the top of the list.

Golden Glow (Patent Applied for). Many amateur gardeners have complained of the scarcity of bloom on yellow-flowered hardy Climbing Roses. Here is one, however, which should please them, for a simply overwhelming number of golden flowers are produced, making the plant a riot of brilliancy in its June crop. All in all, Golden Glow is the most promising of all the newer Climbers, as proof of which it was recently awarded a medal for excellence, by the International Test Gardens of Portland, Oregon.

Either variety, strong, 2-year, field-grown plants, each \$1.50, doz. \$15.00



Frau Karl Druschki
(See page 5)



F. J. Grootendorst
(See page 5)



Spanish Beauty

(Add 10% to your remittance if shipment is desired by parcel post)



HARDY PERENNIAL FLOWERING PLANTS

THESE joys to the amateur gardener's heart are those hardy sorts that bloom year after year, differing from the annual types, which will bloom for one year only. Whether in your garden, border, rockery or vase, the charm of their flowers will brighten your whole home with sheer beauty. So buy some this Spring, while our prices are still low, and treat yourself to a touch of floral delight.

All varieties (unless otherwise noted), each 20c, doz. \$2.00, 100 \$14.00

All are strong blooming age plants

(Add 10 per cent to your remittance if shipment is desired by Parcel Post)

(R) following descriptions indicates that such varieties are especially adapted to the rock garden.

AGERATUM, HARDY

(*Eupatorium*)

Mistflower (*Eupatorium coelestinum*). 18-24 in. This easily grown border plant will give the unusual color of pale lavender-blue to your Fall months, with countless fluffy flower heads. Fine for cutting, and fond of the open woods. Group with Chrysanthemums for a lovely show.

Snow Thoroughwort (*Eupatorium ageratoides*). 3 ft. Ideal for massing, with many fuzzy broad flower heads of pure white in late Summer. Best in a moist, shady spot. A good cut flower.

ALUMROOT (*Heuchera*)

Coralbells (*Heuchera sanguinea*). 12-18 in. Immensely prolific of drooping coral red, bell-shaped flowers on slender, graceful stems, from June to September. A vivid border plant with big, scalloped, purple-green, heart shaped leaves. Also good as a cut flower, to decorate your table, and simply perfect in any rock garden. (R). Each 30c, doz. \$3.00.

ALYSSUM

Basket of Gold (*Alyssum saxatile compactum*). 8-10 in. Early Spring brings big flat clusters of bright golden flowers which completely hide the gray-green leaves of this showy, popular rockery or edging perennial. (R).

ANEMONE (*Windflower*)

Dwarf Anemone (*A. hupehensis*). 1½ to 2 ft. This lovely Chinese Anemone produces a startling quantity of big, bright mauve-rose flowers from early September until frost. Good in a semi-shaded rockery, and a choice Fall cut flower. (R). Each 30c, doz. \$3.00, 100 \$20.00.

JAPANESE ANEMONES

(*A. Japonica*)

Long-stemmed, attractive Oriental flowers, which bloom in the Fall and are lovely for cutting.

Alba. 2 ft. Many big single white blooms, centered yellow. August-September.

Queen Charlotte. 2 to 2½ ft. Delicate, shapely, semi-double pink sort. September-October.

Rubra Superba. 18 in. Rosy-red flowers, semi-double, centered yellow. September-October.

Whirlwind. 2½ ft. Very showy semi-double white Anemone. September-October.

All Anemones, each 30c, doz. \$3.00

ASTERS

Floral stars to give light to your Fall garden and vases.

NAMED SORTS

Anita Ballard. 2 to 3 ft. Many double flowers of a clear violet.

Feltham Blue. 3 ft. Popular, with many dark blue flowers.

Louvain. 3 ft. A mass of pink blooms, thoroughly gorgeous.

Novi-belgi, Climax. 4 to 5 ft. Big, pale lavender-blue flowers, centered gold.

White Queen. 2 to 3 ft. Long stems hold up attractive white flowers.

ASTER SPECIES

New England Aster (*A. novae-angliae*). 4 ft. Great masses of showy royal purple flowers in September.

Rock Aster (*A. alpinus superbus*). 6-10 in. Many big lavender-blue flowers, centered gold, in the Spring. Good for border edging. (R).

Rosy New England Aster (*A. novae-angliae rosea*). 4 ft. Rose-pink flowered form of the popular native.

Tatarian Aster (*A. tataricus*). 6 ft. Rugged Fall Aster, with violet-blue flowers.

SPECIAL OFFER

One strong plant of each of the above five hardy Anemones for only \$1.25.

(R) DWARF BORDER ASTERS (R)

This new class of flowers has increased steadily in popularity for three years. The foliage in September is completely hidden by lovely big Asters. Good for edging or grouping in front of borders, and simply ideal in the rock garden.

Name	Description	Hght.	Season
Countess of Dudley	Lavender-pink, yellow "eye"	10 in.	Late Sept. and Oct.
Lavanda	Pale blue, most attractive, new	12 in.	Sept. to Oct.
Lilac Time	Deep violet-blue, outstanding	12 in.	Mid-Sept.
Marjorie	Big bright rosy pink	10 in.	Mid-Sept.
Nancy	Many flesh-pink flowers	10 in.	Late Sept.
Snowsprite	Best white dwarf Aster	10 in.	Early Sept.
Victor	Clear lavender-blue, very dwarf	8 in.	Early Sept.

Each 30c, Dozen \$3.00, 100 \$22.00.

COLLECTION—1 Each of these 7 Perfect Rockery Plants for Only \$1.50



Dwarf Border Asters

BABYSBREATH (*Gypsophila*)

Popular, with misty grace and charm.

Babysbreath (*G. paniculata*). 2 to 3 ft. Wiry, symmetrical bush, covered with a cloud of tiny, gauzy white blooms in June and July, good in borders and perfect for cutting.

“**Bristol Fairy**” **Babysbreath**. 2 to 3 ft. Sensational new double *Gypsophila*, with big panicles of large white flowers throughout the Summer. Each 50c, doz. \$5.00.

Pink Babysbreath (*G. Oldhamiana*). 2 to 3 ft. This astounding new *Babysbreath* combines the airy grace and charm of the white sort with a mass of lovely soft pink flowers in late Summer. Each 30c, doz. \$3.00.



Babysbreath (*Gypsophila*)

BALLOONFLOWER (*Platycodon*)

Balloonflower (*Platycodon grandiflorum*). 3 ft. Lasting and beautiful sort, with purple-blue buds like balloons, opening to big flowers like deep blue cupped stars, through the Summer months.

BEEBALM (*Monarda*)

Blazing Beebalm (*Monarda didyma splendens*). 3 ft. The compact heads of showy scarlet flowers in mid-Summer, good for cutting, and the aromatic foliage, will attract bees and birds to your garden, especially if planted en masse in a semi-shaded spot.



Balloonflower (*Platycodon*)

BELLFLOWER (*Campanula*)

Floral bells to sound a charming note in your border.

Canterbury Bells (*Campanula medium*). 2 to 3 ft. This popular old-fashioned border biennial bears many big bell-shaped flowers with fluted edges, in early Summer. We can offer them in blue, white or pink.

Harebell (*C. carpatica*). 8 in. Valuable for border edging or rockery, with many compact tufts of big, single porcelain blue flowers, from June to October. (R). Each 25c, doz. \$2.50.

Peachleaf Harebell (*C. persicifolia*). 2 ft. Hardy, longlived sort, and very graceful in the border, with many big cupped blue flowers, good for cutting, in June and July. Each 25c, doz. \$2.50.

BETONY (*Stachys*)

Woolly Betony (*Stachys lanata*). 8 in. Light purple July bloom, from soft foliage covered with woolly hairs.

BISHOP'S WEED

Silveredged Bishop's Weed (*Aegopodium podagaria variegatum*). 1 ft. An easily grown rockery plant with white Summer flowers from lovely variegated foliage. (R).

BLANKETFLOWER (*Gaillardia*)

Blanketflower (*Gaillardia grandiflora*). 2 ft. Highly prized as a lasting cut flower, with countless big single blooms centered deep maroon, with orange-yellow petals banded crimson and maroon, borne above gray-green foliage from June until frost. Hardy, and needs little care.

BRIGHT RED GAILLARDIA
“Ruby”

2 ft. A newcomer which we are proud to include in our perennial list, Ruby produces many brilliant red flowers continuously through the Summer, a never-failing show in the border, and simply lovely for cutting. Each 50c, doz. \$5.00.

BOLTONIA

Impressive, tall, flowering plants for a border background.

Violet Boltonia (*B. latisquama*). 4 to 5 ft.

Good cut flower, with hundreds of lavender-pink flowers in late Summer.

White Boltonia (*B. asteroides*). 5 to 6 ft.

In August and September, these plants are buried under a snowfall of white, Aster-like flowers.



Blanket Flower (*Gaillardia*)

All varieties, unless otherwise noted, each 20c, doz. \$2.00, 100 \$14.00

(Add 10% to your remittance if shipment is desired by parcel post)

HARDY PERENNIALS



Candytuft (Iberis)

BLEEDING HEART
(*Dicentra*)

Bleeding Heart (*D. spectabilis*). 2 ft. Popular old garden favorite, producing long drooping stems, which hold up graceful, heart-shaped, rosy-red flowers from early Spring to early Summer. Good for semi-shaded border and an attractive cut flower. Each 40c, doz. \$4.00, 100 \$27.50.

Fringed Bleeding Heart (*D. eximia*). 1 ft. Excellent for border or rockery, this newer sort bears handsome pink heart-shaped flowers from late Spring until frost, from plummy, fern-like foliage, exceptionally beautiful even when not in bloom. (R). Each 30c, doz. \$3.00, 100 \$20.00.

BUGLE (*Ajuga*)

Carpet Bugle (*Ajuga reptans*). 3 to 4 in. Compact bronzy foliage yields many deep purple-blue flowers in late Spring. Good ground cover, succeeding in shade under trees. (R). Each 25c, doz. \$2.50.

BUGLOSS (*Anchusa*)

With clear blue flowers beloved by gardeners.

Dropmore Bugloss (*A. italica* "Dropmore"). 4 to 5 ft. Stately biennial, good for border background, with big spikes of intense gentian blue flowers in early Summer.

Opal Bugloss (*A. italica* "Opal"). 4 to 5 ft. Like Dropmore, save for the color of its bloom, which is an attractive pale blue.

Forget-me-not-Flowered Bugloss (*A. myosotidiflora*). 1 ft. Unique dwarf *Anchusa*, this charming Russian sort bears clusters of rich blue flowers like Forget-me-nots, in May, from broad mats of heavy, deep green foliage. Good ground cover, and succeeds admirably in shady locations. (R). Each 25c, doz. \$2.50.

BUTTERFLYFLOWER
(*Asclepias*)

Butterflyflower (*Asclepias tuberosa*). 2 ft. A showy native with erect heads of bright orange-scarlet in July and August. Good cut flower, and best in hot, dry locations.

CAMOMILE (*Anthemis*)

Perry's Camomile (*Anthemis tinctoria*, "Perry's Variety"). 15 to 18 in. Free-flowering border plant, with deep golden flowers, frequently three inches in diameter, from delicate fern-like foliage, all through the Summer. Popular as a cut flower. Each 25c, doz. \$2.50.

CANDYTUFT (*Iberis*)

Perfect for low borders, edging, rockery or wall planting.

Evergreen Candytuft (*I. sempervirens*). 8 to 10 in. In early Spring, the glossy evergreen foliage is completely hidden beneath clusters of fragrant white flowers. (R)

Gibraltar Candytuft (*I. gibraltarrica*). 8 to 10 in. Beautiful new Candytuft, with delicate pale pink blooms in April and May. (R)

CAMPION (*Lychnis*)

Campion, Maltese Cross (*Lychnis chalcadonica*). 2 to 3 ft. Old favorite border plant, startling in the intensity of its rich scarlet flowers in dense flat heads from June to September.

Cardinal Flower—See "Lobelia" page 14.

CERASTIUM

Cerastium, Snow in Summer (*C. biebersteini*). 10 to 12 in. Silvery foliage, covered with white flowers from June through August. A creeping Alpine plant, good for walls or rockery. (R).

Chinese Lantern Plant—See "Ground-cherry"—page 12.

CHRYSANTHEMUMS

Why should your garden cease blooming when Fall arrives? With some of those hardy "Mums" we list below, you may enjoy floral beauty in your borders and vases right up until the coming of Winter. Our carefully selected list of varieties can not be surpassed, and they are just waiting for the chance to brighten and beautify your Autumn home.

DISTINCTIVE TYPES

Arctic Chrysanthemum (*C. arcticum*). 1 ft. Good in border or rockery are these rosettes of shiny, deep green foliage, from which spring many white flowers, centered gold, and frequently tinged pale rose, from September until November. (R).

Korean Chrysanthemum (*C. coreanum*). 2 to 4 ft. Korea should be proud of her hardy Mums, which produce an amazing quantity of extra-large Daisy-like white flowers, centered bright yellow, and tinted pink with the frost, in October and November.

Pink Cushion Chrysanthemum. 1 to 1½ ft. Perfect rockery or border plant, forming a dense cushion, frequently three feet in diameter, covered with pink flowers from late Summer until frost. (R).



Pink Cushion Chrysanthemum

CHRYSANTHEMUMS

Hybrid Korean

These beautiful hybrids have taken the country by storm. They combine the stamina and attractiveness of the better hardy Mums with that of the lovely Korean Chrysanthemum. Blooming for a long time in the Fall months, they will add just that touch of gorgeousness to your border or garden for which you yearn at that time. All are centered golden yellow.

- Apollo**. Bronzy red petals.
 - Ceres**. Coppery bronze petals.
 - Daphne**. Soft pink petals.
 - Diana**. Salmon pink.
 - Mars**. Deep amaranth red.
- Each 35c, doz. \$3.50



Apollo

All varieties, unless otherwise noted, each 20c, doz. \$2.00, 100 \$14.00
(Add 10% to your remittance if shipment is desired by parcel post)

**HARDY NAMED
CHRYSANTHEMUMS**

All varieties, strong plants that will bloom freely this very year. Each 20c, doz. \$2.00, 100 \$14.00, unless otherwise noted.

Aladdin. Earliest flowering Mum, with big, bronze-gold blooms, stained pale red, from mid-Summer until frost.

ASTRID. New sort; countless semi-double pink flowers, centered gold; early. Each 30c, doz. \$3.00.

Cheerfulness. Probably the best yellow button Mum.

CHESTNUT BURR. Many big double flowers of rich chestnut red. Each 30c, doz. \$3.00.

Excelsior. Clusters of soft yellow blooms, ideal for cutting.

Francis Whittlesey. Big flowers of bronze and garnet red, lovely Fall colors.

HARBINGER. Lavender blue Mums, with a prominent white "halo." A new color for the species. Each 30c, doz. \$3.00.

Irene. Best white button Chrysanthemum.

L'Argentuillais. Early, with many big copper-scarlet flowers, tinted gold.

Little Bob. A mass of bronzy-red buttons.

Mrs. J. W. Martin. Drooping, with big crushed-Strawberry-colored blooms. (R).

Mrs. L. Birchard. Big shell-pink pompons.

Norine. Golden pompons in large sprays.

October Beauty. Large semi-double bronze sort.

Pink Dandy. Countless big pink pompons, simply gorgeous.

RAPTURE. Big double flowers, colored like a Talisman Rose, with bronzy orange, yellow, and carmine. Each 30c, doz. \$3.00.

Red Indian. Many scarlet-maroon pompons.

Ruth Cummings. Early, with many bronzy terra-cotta blooms.

Wanda. Late blooming, large-flowered white, tinged pink upon first opening.

Yellow Normandie. Many huge open flowers of pale bronze-yellow, early.

SPECIAL OFFER

HARDY CHRYSANTHEMUMS

Each Chrysanthemum that will be sent out on these special collections will be a thoroughly desirable, hardy variety, the collection to include one strong plant (that will bloom freely the same year planted) of each of our twelve most dependable hardy sorts.

To introduce our splendid Hardy Chrysanthemums, we will send 12 strong plants, each different and correctly labeled, for \$1.75. Choice of varieties must be left to us.

CLEMATIS

Fragrant Tube Clematis (*C. davidiana*). 2 to 3 ft. Good for shady borders, with many fragrant bell-shaped flowers of deep lavender blue in late Summer. Each 35c, doz. \$3.50.

COLUMBINE (*Aquilegia*)

To put pastel shades into your Spring garden or rockery.

Alpine C. (*A. alpina*). 10 to 12 in. Many blue flowers in April and May. (R).

Golden C. (*A. chrysantha*). 2 to 3 ft. Late blooming, with clear yellow flowers through the Summer.

**MRS. SCOTT ELLIOTT'S
CHOICE LONG-SPURRED
HYBRID COLUMBINES**

These loveliest of Columbines will make your Spring garden the envy of your neighbors. Every color and combination of color in the Aquilegia world is here represented, from red, blue and yellow to the subtler shades of lavender, mauve, purple, and cream. A necessity in any perennial collection. Flower stalks, 2 to 3 feet tall. Each 25c, doz. \$2.50, 100 \$16.00



Columbine

COREOPSIS

Big Double Coreopsis (*C. grandiflora fl. pl.*). 2 to 3 ft. The perfect cut flower, with big golden blooms all Summer long. Each 25c, doz. \$2.50, 100 \$16.00.

CORNFLOWER ASTER

(*Stokesia*)

Cornflower Aster (*Stokesia laevis*). 2 ft. Lovely native, good for cutting or border front, with huge sky-blue fringed flowers, exceedingly handsome, from July until frost.

CUPID'S DART (*Catananche*)

Cupid's Dart, or Love Plant (*Catananche caerulea*). 1½ to 2 ft. Summer brings many heads of pretty blue flowers, like Bachelor Buttons, to this attractive cut flower. Each 30c, doz. \$3.00.

DAISIES

Mid-Summer Daisy (*Erigeron speciosus*). 3 ft. Good in border or vase, with handsome flowers like violet-blue Daisies, centered gold, all Summer. Good lasting cut flower.

Shasta Daisy (*Chrysanthemum maximum*). 2 to 3 ft. Mammoth Daisies in countless array, all Summer and Fall.



Purple Coneflower

CONEFLOWER (*Rudbeckia*)

Colorful in Summer bouquets.

Black-eyed Susan (*R. subtomentosa*). 4 ft. Popular cut flower, with brilliant lemon-yellow petals about a purple center cone throughout the late Summer.

Golden Glow, or Double Cutleaf Coneflower (*R. laciniata fl. pl.*). 5 to 6 ft. Showy when massed in the hardy border, with many Dahlia-like golden blooms from July to September.

Purple Coneflower (*R. purpurea*). 3 ft. Indispensable in bed or border, and perfect for massing in front of shrubbery, this popular sort bears big flowers with drooping purple-red petals about a prominent cone of chocolate-brown, tinted gold.



Shasta Daisy

All varieties, unless otherwise noted, each 20c, doz. \$2.00, 100 \$14.00

(Add 10% to your remittance if shipment is desired by parcel post)

HARDY PERENNIALS

DAYLILY (*Hemerocallis*)

The far East brings us its golden charm.

Aurantiaca. 3 ft. Strong sort, with huge bright orange flowers in July.

Dr. Regel. 3 ft. Early blooming, with rich deep golden Lilies, fragrant and large, in June.

Double Daylily (*H. kwansa*). 4 ft. Many big double golden-bronze July flowers.

Early Daylily (*H. dumortieri*). 2 ft. Countless orange-yellow blooms in May and June.

Golddust. 2½ ft. Rich copper yellow buds become clear yellow flowers tinged with red, in early Summer.

Japanese Daylily (*H. thunbergi*). 3 ft. Last to bloom, with a wealth of shapely, fragrant, buttercup yellow flowers in mid-Summer. Good for back of border.

Orangeman. 2 to 3 ft. Big orange yellow flowers from mid-Summer until frost.

LOVETT'S LEMON. 3 to 4 ft.

Tallest, and with largest, most beautiful and most highly fragrant of all the lemon yellow sorts. Will charm your eyes from Mid-Summer to early Fall.

LOVETT'S ORANGE. 3 to 4 ft.

Leads the orange Daylilies by as great a margin as Lovett's Lemon leads the pure yellow sorts. Try a few of both sorts for a lovely and fragrant garden or border.

Each 50c, doz. \$5.00, 100 \$30.00

DRAGONHEAD (*Physostegia*)

Gorgeous pink floral spikes.

Virginia D. (*P. virginiana*). 3 to 5 ft. Showy in wild garden, border or vase, with branching spikes of delicate tubular rosy-pink flowers, in late Summer.

Vivid D. (*P. vivid*). 15 to 18 in. Dwarf sort with deep rosy purple flowers, larger than above, and two weeks later. Lasting when cut. (R). Each 25c, doz. \$2.50.

Evening Primrose—See "Sundrops," page 17.



Dragonhead (*Physostegia*)



Flax (*Linum*)

FLAX (*Linum*)

Indispensable to the rockery.

Golden Flax (*L. flavum*). 12 to 18 in. Big handsome yellow flowers in early Summer. (R).

Perennial Flax (*L. perenne*). 18 to 24 in. Airy feathery foliage, and flowers like porcelain-blue buttercups on graceful stems from May to August.

White Flax (*L. perenne album*). 18 to 24 in. White-flowered form of above. (R).

COLLECTION

Three each of these Colorful Rockery Plants (9 in All) for Only \$1.25

FORGET-ME-NOT (*Myosotis*)

Forget-me-not (*Myosotis palustris semperflorens*). 6 to 8 in. Lovely dwarf perennial with charming clusters of pale blue flowerets in continuous bloom from May to September. Good ground cover, splendid along the edge of a pool or in a shady border, and a perfect rockery plant. (R).

FOXGLOVE (*Digitalis*)

Gloxinia Foxglove (*Digitalis gloxiniaeflora*). 3 to 4 ft. Picturesque from June to August with their colorful flower thimbles pendant on long spikes, frequently dotted with crimson or chocolate brown. Our grandparents called them Witches' Thimbles. We offer the following colors—Pink, Purple, White or Mixed.

GASPLANT (*Dictamnus*)

Purple Gasplant (*Dictamnus fraxinella*). 2 ft. A very permanent border plant, with spikes of quaintly shaded deep pink blossoms, with deeper veins, in May and June. The entire plant emits a delicate lemon fragrance. Each 35c, doz. \$3.50.

GAYFEATHER (*Liatris*)

Kansas Gayfeather (*Liatris pycnostachya*). 4 to 5 ft. Excellent for massing or back of border, with big, dense, showy spikes of purple flowers, conspicuously tipped rosy lavender, lasting when cut.

HARDY ORNAMENTAL GRASSES

Beautiful as specimens or in groups on a short-grassed lawn.

Fountain Grass (*Pennisetum japonicum*). 4 to 5 ft. Beautiful grass with a profusion of mahogany floral heads, tipped white.

Maiden Grass (*Eulalia jap. gracillima*). 6 to 7 ft. Called "Japan Rush," with long narrow green leaves having a silver midrib, and bearing tall plumes in the Fall.

Ribbon Grass (*Phalaris arundinacea picta*). 12 to 15 in. These broad leaves, striped lengthwise with cream, are sometimes called "Gardener's Garters."

Striped Grass (*Eulalia jap. variegata*). 5 to 6 ft. Gaudy leaves are striped with white and paler green—frequently with yellow and pink.

Zebra Grass (*Eulalia jap. zebrina*). 6 to 7 ft. Silvery plumes grace the narrow blades, which are striped with many broad yellow bands.

All varieties of Hardy Grasses, Each 30c, doz. \$3.00, 100 \$20.00.

GROUNDCHERRY (*Physalis*)

Chinese Lantern Plant (*Physalis francheti*). 2 ft. Halloween favorite, with a Fall crop of orange scarlet fruits like gaudy lanterns. These fruits, cut and dried, make good household decorations.

HELENIUM

Ideal for late Summer bouquets.

Riverton Gem. 3 to 4 ft. Many old-gold flowers, from August until frost, turn slowly to a deep red as they mature. A glorious cut flower. Each 30c, doz. \$3.00.

HELIOPSIS

Rough Heliopsis (*H. scabra*). 3 ft. Many big golden semidouble flowers from mid-July until Fall, good for cutting. Each 25c, doz. \$2.50.



Heliopsis

All varieties, unless otherwise noted, each 20c, doz. \$2.00, 100 \$14.00
(Add 10% to your remittance if shipment is desired by parcel post)



Digitalis (page 12)

HOLLYHOCK (*Althaea rosea*)

Hollyhock, Double (*Althaea rosea fl. pl.*). 6 to 8 ft. Popular for years, with huge flowers which are attractive among shrubbery and in clumps on the lawn. A stately, exquisite old favorite, blooming in middle and late Summer. We offer the following colors: **Maroon, Pink, Salmon, Scarlet, White, and Yellow.**

HOUSELEEK (*Sempervivum*)

Miniature Cacti for your rockery.

- Albert H.** (*S. alberti*). 1 ft. Evergreen, with big, long stemmed, yellowish June flowers. (R).
- Atlantic H.** (*S. atlanticum*). 6 in. Pink flowers from lovely foliage in June. (R).
- Doell H.** (*S. doellianum*). 4 to 6 in. Good in mass, with panicles of red flowers from small hairy rosettes of pale green leaves, tipped with red. (R).
- Globe H.** (*S. globiferum*). 1 ft. Yellow-gray foliage, tipped brown; pale yellow June bloom. (R).
- Roof H.** (*S. tectorum*). 1 ft. Old favorite, with pale red flowers from broad foliage rosettes. Grandmother called it "Hen-and-chickens." (R).
- Spiderweb H.** (*S. arachnoideum*). 4 in. Hairy stars of foliage, pale purple June flowers. (R).

COLLECTION

No rock garden is complete without these six lovely sorts. We offer one strong plant of each variety for only 90c.

CRIMEAN IRIS (*I. pumila*) (R)

Miniature German Iris, never exceeding 4 or 5 inches in height, these Spring blooming sorts are perfect rock plants.
Blue Jay. Best blue sort.
Canary Bird. Best yellow sort.
Sea Gull. Unusual gray white sort.
Each 25c, doz. \$2.50, 100 \$16.00.

COLLECTION

These three lovely floral birds (one of each) for only 65c

GERMAN IRIS (*I. Germanica*)

2 to 3 feet.

We have cut down our list of these orchid-like perennials, frequently called Fleur-de-Lis or Liberty Iris, this season. Only the best sorts are included, so that you may bring charm and fragrance into your gardens and vases next Spring. There is no chance for disappointment in our present line-up of the best colors in the Iris kingdom.

- S.—"Stands" or upright petals.
- F.—"Falls" or drooping petals.

- Celeste** (**Attraction, H. Cramer**). S., clear blue; F., deeper blue.
 - Count St. Clair**. S., white; F., violet, white border.
 - Darius**. S., lemon yellow; F., light yellow, blotched and marbled with rosy lilac.
 - Delicata**. S., pale yellow, rosy tinge; F., deep lilac, paling to white. Free flowering.
 - Flavescens**. S., primrose yellow; F., paler, with base pencilled brown. Many blooms.
 - Florentina**. S. and F. white, flushed lavender, prominent orange beard. Good for cutting.
 - Iris King**. S., clear chamois yellow; F., rich velvety maroon, bordered yellow; large flowers. Each 25c, doz. \$2.50.
 - Pallida Dalmatica**. S. and F., clear lavender blue. Tall, fragrant. Each 25c, doz. \$2.50, 100 \$16.00.
 - Purple Queen** (**Florentine Blue**). S. and F., rich violet-purple. Very large and earliest of all.
 - Queen of May**. Very tall. S., rosy lilac; F., a shade darker. Best pink Iris.
 - Rebecca**. S., bright golden yellow; F., mahogany.
 - Rhein Nixe**. S., pale lavender with bronzy claw; F., true violet purple.
- All German Iris (except as noted), each 15c, doz. \$1.50, 100 \$10.00.**

COLLECTION

"The Dozen Hardy Orchids"

All twelve of the above gorgeous, fragrant Iris for Only \$1.35



Border of Iris



Japanese Iris

GERMAN IRIS, MIXED

Many rare sorts are included in this glorious mixture of the best colors in the Iris world. You can never be disappointed in the beauty of their flowers, for they are all varieties that have long given joy to connoisseurs for floral perfection.

Each 12c, doz. \$1.25, 100 \$7.50

JAPANESE IRIS (*I. Kaempferi*)

3 to 4 feet.

- Huge, shapely, beautiful flowers on tall stems in early Summer.
 - Dorothy**. Big, sky blue petals, splashed with French white.
 - Eleanor Parry**. Very patriotic red, white, and blue flowers.
 - Gold Bound**. Best double white Japanese Iris, with a creamy glow emanating from its center, and bands of gold on its petals.
 - Mahogany**. Last to bloom, with big, deep velvety mahogany red petals.
 - Patrocle**. Best single Japanese Iris, with three large deep purple petals.
 - Peacock**. Rich purple-violet petals, veined white. For garden or vase.
 - Pyramid**. Deep indigo petals, centered gold. Best in a mass planting.
 - Stella**. White-veined, violet-hued Iris, perfect in bouquets.
 - Templeton**. Shapely, double flowers, mottled crimson-purple and white.
 - Thompson Lovett**. Overlapping violet petals, each based with a band of gold.
- All varieties Japanese Iris, each 25c, doz. \$2.50, 100 \$16.00.**

COLLECTION

All 10 of these Midsummer glories for only \$2.00. With each collection ordered, we will include one "Mystery Japanese Iris" with flowers similar to those of Gold Bound, but with even larger petals, and more attractively waved and crinkled.

JAPANESE IRIS

(Continued on next Page)

All varieties, unless otherwise noted, each 20c, doz. \$2.00, 100 \$14.00

(Add 10% to your remittance if shipment is desired by parcel post)

HARDY PERENNIALS

JAPANESE IRIS—MIXED

A few years ago, a hybridizer, specializing in Iris, sold us his surplus of unnamed seedlings, many so distinctly beautiful as to be well worth offering separately. To those we added a few good varieties, the labels of which had become lost in our nursery. We are offering you this truly superb combination of the finest blood in the Iris family.

Each 15c, doz. \$1.50, 100 \$10.00

OTHER IRIS TYPES

Rabbit-Ear Iris (*Iris laevigata alba-purpurea*). 18 to 20 in. Excellent for the rockery is this six petaled Iris, in the attractive colors of deep blue and white, about the middle of June. A very attractive rare variety. (R). Each 90c, doz. \$9.00.

Siberian Iris, Blue King. 2 to 3 ft. Lovely blue Iris in early Summer, good for garden or bank of stream. Each 20c, doz. \$2.00, 100 \$14.00.

Siberian Iris, Snow Queen. 2 to 3 ft. A wealth of shapely white flowers. Each 20c, doz. \$2.00, 100 \$14.00.

Yellowband Iris (*I. ochroleuca*). 3 ft. Ideal for cutting, with tall June flowers. We offer in the following separate colors: **Lavender, Yellow, and Cream.** Each 50c, doz. \$5.00.

Yellowflag Iris (*I. pseudacorus*). 4 ft. Bright yellow blooms through the entire Summer. Each 20c, doz. \$2.00, 100 \$14.00.

KNAPWEED (*Centaurea*)

Many brilliant cut flowers, easily grown.

Golden Knapweed (*C. macrocephala*). 3 ft. A mass of flowers like golden thistle blooms through the Summer, lovely in bouquets.

Mountain Bluet (*C. montana*). 2 ft. Big violet-blue flowers in mid-Summer.

LARKSPUR (*Delphinium*)

Best of all the blue perennials.

Blue Larkspur (*D. belladonna*). 4 ft. Good for cutting, with big blue flowers on stately stems from late Spring until frost. Exceedingly popular.

Deep Blue Larkspur (*D. bellamosum*). 4 ft. A deeper blue variety, good for a contrast plant with the above sort.

Slender Larkspur (*D. chinense*). 18 in. Open panicles of bright gentian blue flowers in Summer. (R).

WREXHAM HYBRID DELPHINIUMS

3 to 5 feet.

The perfect perennial. These astoundingly gorgeous Hybrid Larkspurs have surpassed all their rivals in size, color range, and beauty. From palest azure to deepest indigo purple, no shade of blue is omitted.

They leave nothing to be desired by the most critical flower lover, for they have come as close to sheer perfection as have any perennials. Each 25c, doz. \$2.50, 100 \$16.00



Wrexham Hybrid Delphiniums

LILY (*Lilium*)

With unsurpassable beauty and fragrance.

Double Tiger Lily (*L. tigrinum fl. pl.*). 4 ft. Big double Lilies of bright orange-scarlet, spotted black, in late Summer. Borne in great clusters on tall stems, they are perfect for a shrubby foreground.

Goldband Lily (*L. auratum*). 4 ft. Big white Lilies, shapely and fragrant, studded thickly with deep crimson and striped in their centers with gold. Protect north of Trenton.

Great Speciosum Lily (*L. spec. magnificum*). 4 ft. Showy flowers of charming waxy white, richly shaded crimson in late Summer.

Henry Lily (*L. henryi*). 4 ft. Very hardy, with rich apricot-yellow Lilies, spotted golden-brown, in August and September.

Royal Lily (*L. regale*). 4 to 5 ft. Our favorite Lily, with many huge, shapely, fragrant white blooms, shaded heavily with pink on their exteriors, and golden yellow within. Lovely Summer cut flowers.

White Lily (*L. spec. album*). 3 to 4 ft. Huge glistening white Lilies in late Summer, banded green at their centers.

All varieties (Large Bulbs), each 35c, doz. \$3.50, 100 \$25.00

LILY COLLECTION

One each of these garden jewels to make your Summer border a spot of sheer charm, for only \$1.50

LILY-OF-THE-VALLEY

(*Convallaria majalis*)

8 to 10 inches.

Among the best of perennial flowering plants for a shady location, this popular sort bears sprays of fragrant, waxy white floral bells in late Spring. For a beautiful effect, plant with Violets. (R). Strong clumps, each 40c, doz. \$4.00, 100 \$27.50.

LOBELIA

Cardinal Flower (*Lobelia cardinalis*). 2 to 2½ ft. Long, dense spikes of rich cardinal-red flowers, strikingly brilliant in late Summer. Good for natural plantings along banks of streams, and best in shade. Each 25c, doz. \$2.50, 100 \$16.00.

LOOSESTRIFE (*Lysimachia*)

Clethra Loosestrife (*Lysimachia clethroides*). 2 ft. Many long, dense spikes of starry white flowers all Summer long. Good Autumn foliage.

LUPINES

3 to 4 feet.

Spikes of bright flowers like Sweet Peas, in early Summer.

Spots of brightest beauty for every border, with long flower spikes in early Summer, individual flowers resembling Sweet Peas.

Moerheim Lupine (*L. moerheimi*). Pink. **Washington Lupine** (*L. polyphyllum*). Blue.

White Washington Lupine (*L. polyphyllum albus*). White.

All Lupines, each 25c, doz. \$2.50, 100 \$16.00

COLLECTION OF LUPINES

One each of these three gorgeous flowering plants, for only 65c

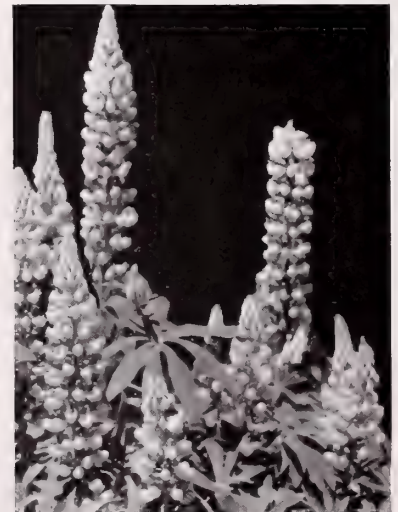
LYTHRUM

Rose Lythrum (*L. roseum superbum*). 4 ft. Showy in borders, with spikes of purple-rose flowers from mid-Summer until Fall.

MOURNING BRIDE

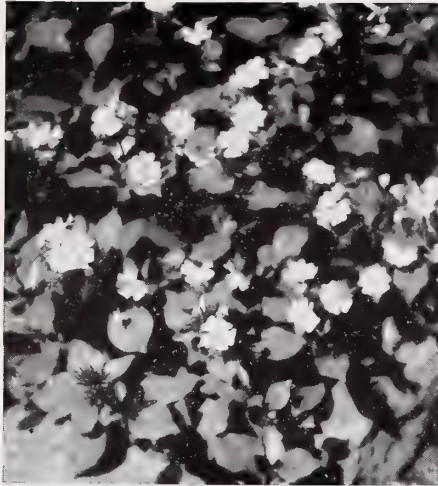
(*Scabiosa*)

Mourning Bride (*Scabiosa caucasica*). 2 ft. Charming sky-blue flowers, four inches across, lasting when cut, all Summer long. Each 25c, doz. \$2.50, 100 \$16.00.



Lupines

All varieties, unless otherwise noted, each 20c, doz. \$2.00, 100 \$14.00
(Add 10% to your remittance if shipment is desired by parcel post)



Plumbago, Larpente

Meadowsweet, Siberian—See "Spirea," page 17.

MOUNTAIN FRINGE (*Artemisia*)

Invaluable for their lovely foliage.

Silver King. 3 ft. An outstanding novelty with foliage like a frosted silver mist. Ideal for setting off bouquets, since it lasts well when cut, and is charming in the house as a "frame" or background for other floral pieces.

White Mountain Fringe (*A. lactiflora*). 5 ft. Good cut flowers of creamy white in August and September, in big, plummy, fragrant panicles.

MARSHMALLOW (*Hibiscus*)

Meehan's Crimson Mallow. 6 ft. Huge and startlingly gorgeous blooms of rich crimson, from late Summer until mid-Fall, good for accent or background plants. Each 40c, doz. \$4.00, 100 \$25.00.

Meehan's Mallow Marvels. 6 to 8 ft. Mammoth blooms grace these tall plants from August until frost. **Mixed colors only**—Fiery Crimson, Scarlet, Pink and White.

PAINTED DAISIES

Pyrethrum roseum hybridum

18 to 24 inches.

Lovely flowers in all the colors from deep crimson to white, like long-stemmed Daisies, excellent for cutting, in early Summer and intermittently thereafter.

PENTSTEMON

Torrey Pentstemon, or Firecracker Flower (*P. barbatus torreyi*). 4 ft. Long, loose spikes of bright scarlet flowers from June to August, very showy in the hardy border.

PLUMBAGO

Larpente Plumbago. 6 to 8 in. Spreading dwarf with many clusters of red buds turning to deep cobalt-blue flowers from late Summer to frost. Good for border or edging, and when planted among evergreens. Bronzy red Fall foliage. (R)

PEONIES

3 to 4 ft.

Perfect cut flowers, rivalling the Rose in charm, and long the show spots of any perennial collection.

Prices, all varieties of Peonies, extra large roots, each 40c, doz. \$4.00, 100 \$25.00

Couronne d'Or. Flowers like waterlilies hold white petals about a prominent circle of golden stamens, exceptionally fragrant and shapely.

Duchesse de Nemours. Early, with white petals guarding a center of sulphur. Large, full flowers on a dependable, lasting sort.

Claire du Bois. Many rose-pink blooms, very large and double, grace this popular late Peony.

Edulis Superba. Still the best early pink Peony, this lovely sort, with many big shapely blooms, reflexed silver, has held its popularity for well over a century.

Felix Crousse. Many fragrant globes of rich amaranth red grace this exceedingly popular variety in midseason.

Festiva Maxima. A very dependable sort, with clusters of huge, fragrant, waxy white flowers, flecked with crimson at their centers, very early. Probably the most popular Peony grown today.

Floral Treasure. Midseason. Rose type Peony, with delicate salmon pink petals.

Karl Rosenfeld. Early and very tall, with many flowers of a rich intense crimson, shapely and lasting.

Marechal MacMahon. Late. Deep vinous red flowers.

Umbellata Rosea. Very early. Outstanding in color and shapeliness, with guard petals of delicate salmon and La France pink, about an amber white center.

"PRIDE OF THE PEONY WORLD" COLLECTION

All ten of the fragrant beauties described above, for only \$3.50. With each order for this collection we will include free of charge a beautiful variety, of a deep, rich glowing red, known as **President Roosevelt**.

PINKS (*Dianthus*)

Lovely clove-perfumed rockery flowers.

Beatrix. 1 ft. Lovely salmon-rose blooms, from Spring to frost, highly fragrant. (R). Each 25c, doz. \$2.50, 100 \$16.00.

Grenadin Pinks. 2 ft. Beautiful and fragrant Summer cut flowers with biennial tendencies. We can offer in **Pink, Red, and White**.

Maiden Pink (*D. deltooides*). 6 in. Prostrate, with crimson blooms in early Summer. (R).

Perpetual Pink (*D. semperflorens*). 1 ft. Countless double, fragrant pink flowers all Summer. (R).

Sweet-William (*D. barbatus*). 1½ ft. Beautiful old favorites for the hardy border, with scarlet, crimson, salmon, pink and white flowers, spicily fragrant in May and June. We offer them in the following colors—**Pink, Red, White, and Mixed**.

PLANTAIN LILY

(*Hosta or Funkia*)

Beautiful flowers from broad, attractive foliage.

Blue Plantain Lily. (*F. caerulea*). 2 ft. Good edging plant, with drooping spikes of showy, deep blue flowers from symmetrical waxy big leaves in late Summer.

Great White P. L. (*F. subcordata grandiflora*). 2 to 2½ ft. Big fragrant flowers like white Lilies in August and September from bold, attractive pale green foliage. Each 30c, doz. \$3.00, 100 \$20.00.

Margined P. L. (*F. marginata alba*). 1½ to 2 ft. Pale lavender flowers from white margined leaves in late Summer.

Variiegated Wavyleaf P. L. (*F. lancifolia undulata variegata*). 12 to 15 in. Beautiful edging or border plant, with narrow green leaves striped creamy white, and blue flowers in July and August. (R).

COLLECTION OF AUGUST LILIES

One each of the above four lovely sorts, for only 75c



Peonies

All varieties, unless otherwise noted, each 20c, doz. \$2.00, 100 \$14.00
(Add 10% to your remittance if shipment is desired by parcel post)

HARDY PERENNIALS

PHLOX

Here is your chance to create beauty in your gardens and borders from mid-Summer until frost, with these most popular of all perennially flowering plants.

All Phlox, unless otherwise noted, each 20c, doz. \$2.00, 100 \$14.00

Columbia (U. S. Plant Patent No. 118). A glorious new Phlox, with many large blooms of a distinct color, soft cameo pink with a pale blue "eye." These Phlox last well when cut and are an unsurpassable addition to your border or to the vases of your home. Each 40c, 3 for \$1.10, 12 for \$3.30.

PHLOX

POPULAR SORTS

2 to 3 feet.

Beacon. Pleasing bright cherry-red flowers, suffused salmon.

Enchantress. Extra large blooms of bright salmon-pink, with deep red "eye." A strong grower. Each 25c, doz. \$2.50.

Europa. Huge in truss and flower, which is pure snow-white with a prominent crimson "eye."

Firebrand. Big flowers of glowing orange-scarlet, deeper at center.

Leo Schlageter. Most striking Phlox we know, with huge trusses of showy scarlet-carmine florets. Outstanding in any border. Each 25c, doz. \$2.50.

Miss Lingard. Popular early white flowered Phlox, tinged lavender, with a pale pink "eye," in loose, graceful spikes, very good for cutting, and exceptionally fragrant, from mid-June until Fall. Each 25c, doz. \$2.50.

Mrs. Jenkins. Tall, early, pure white Phlox with many immense panicles of showy flowers, lovely in a mass planting.

Rheinlander. Pale salmon-pink flowers, deep claret-red "eye."

Rijnstroom. Free bloomer, with many deep pink Phlox, very large, colored like Paul Neyron Roses.

R. P. Struthers. Bright, unfading salmon-flame flowers, tinged pale crimson, with claret-red "eye."

THE TEMPTING TEN

All of the popular sorts here listed (1 each of 10 sorts), a riot of color in your late Summer Garden, for only \$1.75. Columbia is not included.



Miss Lingard Phlox

BULE PHLOX (P. divaricata). 10 to 12 in.

Lovely for rockery or woodland planting, this Canadian sort bears large, fragrant flowers of rich lavender-blue throughout the Spring. (R).

MOSS PHLOX (P. subulata) (R)

4 inches.

Most popular Phlox for the rockery, or for a ground carpet, with hordes of bloom hiding the foliage in April and May. Very dwarf, with attractive mossy foliage. (R). **Alba** (white), **Lilacina** (lavender), and **Rosea** (pink).

NEWER MOSS PHLOX

Atropurpurea. Striking newer sort, with bright carmine-red flowers. Worthy of featuring in any rockery collection, or as a ground cover to draw all eyes. (R).

Major. Lovely pink Phlox, even larger than Rosea. A necessity to any collection of rockery perennials. (R).

Either variety, each 30c, doz. \$3.00, 100 \$20.00

POPPIES (Papaver)

Spots of color for garden or border.

Iceland Poppy (P. nudicaule). 1 ft. Gorgeous cupshaped Poppies in colors ranging from orange to pure white, lovely in bouquets, from the fern-like foliage of this charming plant all Summer. (R).

ORIENTAL POPPIES

3 ft. Huge flowers of satiny texture in May and June.

Oriental Poppy (P. orientale). Rich scarlet, blotched deep maroon-black at throat.

O. P. "Fairy." Lovely shell pink Poppies. Each 50c, doz. \$5.00.

O. P. "Mrs. Perry." Many big, deep apricot-rose flowers. Each 50c, doz. \$5.00.

O. P. "Perry's White." Pure white, with big crimson-maroon blotch at throat. Each 50c, doz. \$5.00.

ORIENTAL POPPY COLLECTION

All four of these gaudy garden gems, for only \$1.45.

PRIMROSE (Primula)

A yellow touch of Springtime in the rockery.

Cowslip Primrose (P. veris). 8 in. Late Spring brings yellow-to-maroon flowers. (R). Each 30c, doz. \$3.00, 100 \$20.00.

English Primrose (P. acaulis). 6 to 9 in. Good for a waterside planting, with bright lemon yellow flowers in the Spring. (R). Each 35c, doz. \$3.50, 100 \$25.00.

ROCKCRESS (Arabis)

Alpine Rockcress (Arabis alpina). 8 to 10 in. Good for wall or rockery, with dense clouds of snowy bloom, good for cutting, in early Spring. (R).

SAGE (Salvia)

Blue flowers, not over-gaudy like the Scarlet Sage.

Great Azure Sage (S. azurea grandiflora). 3 to 4 ft. Many long terminal racemes of bright sky-blue flowers grace this lovely border plant in late Summer, good for cutting.

Meadow Sage (S. pratensis). 2 ft. Our favorite Sage, with countless deep violet-blue flowers, equally at home in border or vase, in June and July.

Pitcher Sage (S. azurea pilcheri). 3 to 4 ft. Blooms last of all, with deep indigo flowers, attractive in mass, and good in bouquets, mixed with Babysbreath. Each 25c, doz. \$2.50, 100 \$16.00.

SEA HOLLY (Eryngium)

Amethyst Sea Holly (Eryngium amethystinum). 2 to 3 ft. Exceedingly ornamental, with flowers like globular blue thistles, from silver, blue-tipped stems in mid-Summer. Good for Winter bouquets when cut and dried.

SEA-LAVENDER (Statice)

Great Sea-Lavender (Statice latifolia). 2 ft. Huge flower heads like candelabra, covered with a mass of minute blue flowers in mid-Summer, like Forget-me-nots. These misty blooms last well when cut and dried, and blend beautifully in mixed bouquets. (R).

SPEEDWELL (Veronica)

Blue beauties for the Spring and Summer border.

Amethyst Speedwell (V. spuria). 8 to 10 in. Good in low border, with spikes of rich amethyst-blue flowers in Midsummer. (R).

Clump Speedwell (V. longifolia subsessilis). 2 to 2½ ft. Very hardy, with long spikes thickly studded with dusky blue flowers from July until Fall, good for cutting. Each 30c, doz. \$3.00, 100 \$20.00.

Rock Speedwell (V. rupestris). 3 to 4 in. Spreading rockery carpet, with many rich blue flowers from deep green foliage in May and June. Good in partial shade. (R).

Spike Speedwell (V. spicata). 1½ to 2 ft. Long sprays of bright blue flowers will add color to your early Summer border.

Woolly Speedwell (V. incana). 8 to 12 in. Ideal for edging garden paths, with daintily curving spikes of vivid violet blue flowers from the close mats of silver-gray foliage in July and August. (R).

All varieties, unless otherwise noted, each 20c, doz. \$2.00, 100 \$14.00

(Add 10% to your remittance if shipment is desired by parcel post)

SPIREA (*Astilbe, Spiraea*)

Many lovely flowers from attractive foliage in showy panicles, early Summer.
Siberian Meadowsweet (*Spiraea palmata elegans*). 3 ft. Nodding plumes of pale pink flowers from June until August. Good waterside perennial.

Peach Blossom. 2 ft. Graceful floral spikes of clear peach-blossom-pink.

Queen of Holland. 2 ft. Light pink, nearly white flowers.

Rheinland. 2 ft. Bright crimson flowers, shaded salmon.

Salmon Queen. 2 ft. An exquisite shade of salmon.

All varieties, each 40c, doz. \$4.00,
100 \$25.00

SPURGE, JAPANESE

(*Pachysandra terminalis*)

6 to 9 in.

Best and most popular of ground covers, especially in the shade, where grass will not give good results. Glossy, light evergreen leaves, branching freely into a dense mat and short spikes of greenish white flowers in May and June. Each 20c, doz. \$2.00, 100 \$12.00.

STONECROP (*Sedum*)

Eastern cacti for the rockery.

Gold Moss (*S. acre*). 3 to 4 in. Good ground cover for dry, rocky spots, with rich golden-green foliage covered with bright yellow flowers in early Summer. (R).

Hexagon Stonecrop (*S. sexangulare*). 4 to 5 in. Lovely yellow June bloom from rich evergreen leaves. (R).

Leafy Stonecrop (*S. dasyphyllum*). 2 in. Dwarf and compact, with blush-white foliage in early Summer from blue-gray foliage. (R).

Orange Stonecrop (*S. kantschaticum*). 6 in. Compact creeper, with glossy deep green leaves, turning yellow in Fall, covered with orange flowers in late Summer. (R).

Siebold Stonecrop (*S. sieboldi*). 8 in. Half erect wedges of creamy blue-green foliage, edged with coral-rose, bear flat clusters of pale pink flowers in September. (R).

White Stonecrop (*S. album*). 3 in. Evergreen from Northern Asia, with white flowers, dotted red at their centers in early Summer. (R).

SIX SENSATIONS FOR YOUR ROCKERY

One each of the above six beautiful Stonecrops, for only 90c.

Showy Stonecrop (*S. spectabilis* "Brilliant"). 15 to 18 in. Showy border plant, with huge flat heads of deep old rose flowers in late Summer, from ornamental fleshy foliage. Each 30c, doz. \$3.00, 100 \$20.00.

SUNDROPS (*Oenothera*)

Missouri Sundrops (*Oenothera missouriensis*). 12 in. Many copper-red buds turn to big golden flowers like Poppies, on Summer mornings and evenings. Each 25c, doz. \$2.50.

SUNFLOWER (*Helianthus*)

Big golden blooms which always face the sun.

Ashy Sunflower (*H. mollis*). 4 to 5 ft. Big, lemon yellow flowers in late Summer, from downy white foliage.

Miss Mellish Sunflower (*H. Miss Mellish*). 4 to 5 ft. Good border plant or cut flower with huge yellow semi-double flowers in late Summer.

Soliel d'Or (*H. multiflorus grandiplexus*). 4 ft. Lovely cut flowers, like golden-yellow Dahlias, large and very double, are produced on this best of Sunflowers in August and September.

SUNROSE

Rock Sunrose (*Helianthemum croceum*). 6 in. Free-flowering evergreen, with deep yellow blooms all Summer long. (R). Each 25c, doz. \$2.50.

THERMOPSIS

Carolina Thermopsis (*T. caroliniana*). 4 to 5 ft. Tall spikes of flowers like yellow Lupines or Sweet Peas in early Summer, from attractive Clover-like foliage. Each 25c, doz. \$2.50.

THRIFT (*Armeria*)

Rosalie Thrift (*Armeria laucheana*). 8 in. Good in mass, with rosy red flowers from May to July, from dense tufts of evergreen foliage. (R).

THYME (*Thymus*)

Crimson Thyme (*T. serpyllum coccineum*). 6 to 8 in. Fragrant creeping foliage with bright crimson flowers in early Summer. (R).

Mother-of-Thyme (*T. serpyllum*). 6 to 8 in. Like above, but with lilac-purple flowers. (R).



Yarrow, Boule de Neige

All varieties, unless otherwise noted, each 20c, doz. \$2.00, 100 \$14.00
(Add 10% to your remittance if shipment is desired by parcel post)

TORCHLILY (*Tritoma*)

True "Red Hot Pokers," with all the colors of flame.

"Bonfire" Torchlily. 3 to 4 ft. Good for cutting, with rich orange-scarlet blooms from August to October. Each 30c, doz. \$3.00.

"Mt. Etna" Torchlily. 3 to 4 ft. New. Enormous spikes of rich fiery red flowers. Each 50c, doz. \$5.00.

"Tower of Gold". 3 to 4 ft. New. Bright golden yellow flowers. Each 50c, doz. \$5.00.

FLAMING COLLECTION

One each of these startlingly gorgeous Torchlilies, for only \$1.10.

VALERIAN (*Valeriana*)

Garden Heliotrope (*V. officinalis*). 3 to 4 ft. Showy heads of rosy flowers in early Summer, with a strong Heliotrope fragrance.

Jupitersbeard (*V. coccinea*). 2 ft. Attractive, with its pink flowers all Summer, until October. Good for bouquets.

VIOLET (*Viola*)

Spring's main beauty of the woodland, ready to give more than satisfaction in your own garden. 3 to 6 inches.

Double Russian. Very hardy, with rich dark blue flowers, highly perfumed, in early Spring and Fall. Good in shade. Each 30c, doz. \$3.00, 100 \$22.00. (R).

Governor Herrick. Like above, but flowers are bright azure blue. (R).

Jersey Gem. Rich violet-purple, long stemmed flowers, very fragrant, from May until the end of Summer. (R).

Rosina. Hordes of dainty pink Violets, with overpowering fragrance, from Spring until late Fall. Good ground cover in sun or semi-shade. Each 30c, doz. \$3.00, 100 \$20.00. (R).

White Perfection. Best of the white Violets—a charming contrast plant. Each 30c, doz. \$3.00, 100 \$20.00. (R).

WILD-INDIGO (*Baptisia*)

Blue Wild-Indigo (*Baptisia australis*). 3 ft. Good for the border or informal garden, with long racemes of dark blue flowers like Sweet Peas, in June and July. Splendid cut flower and bears attractive foliage.

YARROW (*Achillea*)

Equally good in border or as fillers in bouquets.

Boule de Neige (*A. ptarmica, Boule de Neige*). 15 to 18 in. Good in garden or vase, with double white flowers like small Pompon Chrysanthemums in early Summer. (R).

Fernleaf Yarrow (*A. filipendulina*). 2 to 3 ft. Flat heads of bright golden flowers from lacy foliage, all Summer long.



HARDY SHRUBS (Deciduous)

HARDY Shrubs are the backbone of any ornamental planting. Our assortment of these beautiful bushes has reached the peak of perfection this Spring, as have our individual shrubs, for each and every one is grown in as careful a manner as is possible. Though carefully grown, the process is done most economically—hence our low prices, which refer in all instances to perfectly grown, well-developed plants, truly first-class in all respects. So here they are, waiting to be ordered, and sent to embellish your grounds to an extent that you would never believe possible.

A dozen of any variety will be supplied for ten times the price of one (six for five times the price of one), but this dozen rate may be used only when six or more of one variety are taken. The hundred rate of any variety will be promptly sent if desired.

We solicit an opportunity to give special quotations upon lists of Shrubs and Ornamental Trees for landscape planting.

Shipment should be made by express or freight, not by parcel post.

ALMOND (*Amygdalus*)

Flowering Almond (*Amygdalus nana*). 4 to 5 ft. A symmetrical, upright shrub, whose willowy branches are concealed by close-clutching rosy pink flowers like pompon Chrysanthemums in early Spring, even before the leaves appear. Beautifully showy in bloom, this ideal of specimen lawn ornaments merits a predominant spot on your grounds. Each: 18 to 24 in. 60c, 2 to 3 ft. 90c.

ALTHAEA (*Rose of Sharon*) (*Hibiscus*)

Althaea, Rose of Sharon (*Hibiscus syriacus*). 10 to 12 ft. From mid-August to October, when few flowers are in evidence, these sturdy shrubs produce their wealth of big, brightly colored blooms like tender Hibiscus, from handsome foliage. Useful in formal work, and delightful for a flowering hedge.

Anemonaeflora. Best double pink flowered sort.

Boule de Feu. Best double red flowered sort.

Jeanne d'Arc. Best double white flowered sort.

Purpurea Semi-plena. Best semi-double purple flowered sort.

All varieties each: 18 to 24 in. 30c, 2 to 3 ft. 40c, 3 to 4 ft. 50c.

Standard or Tree-Form Althaea. Our plants of these shrubs, indispensable for lining a formal walk, are at their peak this season. Any of the afore mentioned varieties, splendid specimens with stems 2 to 3 ft. tall, each: \$1.50.

Aronia—See "Chokeberry," page 19.

AZALEAS, DECIDUOUS

To intensify the loveliness of Spring.

Chinese Azalea (*A. mollis*). 4 ft. Tawny orange, red, and yellow flowers of extra large size, grace this gaudy sort in big clusters, during May and June. Good for foundation planting, lovely en masse, and good specimen plants for a large rockery. Each: 12 to 15 in. \$1.25, 15 to 18 in. \$1.75, 18 to 24 in. \$2.50.

Flame Azalea (*A. calendulacea*). 8 to 10 ft. Gaudiest native shrub, with many flowers from pale orange-yellow to rich flame-red, before the leaves appear, in late May. Each: 18 to 24 in. \$2.75, 2 to 3 ft. \$3.50, 3 to 4 ft. \$4.50.

Mongolian Azalea (*A. mucronulatum*). 5 to 6 ft. Lovely Asian sort, whose lavender pink flowers in March, charmingly frilled, form a perfect contrast with the gold of Forsythias. Each: 10 to 12 in. \$1.50, 12 to 15 in. \$2.00, 15 to 18 in. \$2.50.

Royal Azalea (*A. schlippenbachii*). 6 to 7 ft. Korea offers this glorious Azalea, with its big pink flowers, spotted brown, on purplish twigs, in Spring. Lovely Fall foliage of crimson and gold. Each: 10 to 12 in. \$1.50, 12 to 15 in. \$2.25, 15 to 18 in. \$2.75, 18 to 24 in. \$3.50.

Torch Azalea (*A. kaempferi*). 5 to 6 ft. Nearly evergreen, with flame-red-to-salmon-pink flowers lighting up its branches in May. Each: 15 to 18 in. \$1.75, 18 to 24 in. \$2.25, 2 to 2½ ft. \$2.75.

Yodogawa Azalea (*A. yodogawa*). 3 to 4 ft. Semi-evergreen and very hardy, this shrub is buried beneath a lovely covering of lavender-pink bloom in May. Each: 10 to 12 in. \$1.00, 12 to 15 in. \$1.40, 15 to 18 in. \$1.75, 18 to 24 in. \$2.50, 2 to 2½ ft. \$3.00.

For Evergreen Azaleas, see page 23. (Don't miss these !!)

BARBERRY (*Berberis*)

Red Japanese Barberry (*Berberis thunbergii atropurpurea*). 5 to 6 ft. Red-foliaged type of the popular Japanese Barberry, with rich bronzy-red foliage, valuable for color in the border and beautiful as a hedge plant. The color becomes more intense in Summer, and the dense twigs take on a mass of scarlet berries in the Fall. An invaluable shrub. Each: 9 to 12 in. 30c, 12 to 15 in. 35c, 15 to 18 in. 40c, 18 to 24 in. 50c, 2 to 3 ft. 75c.

For Mentor Barberry, Japanese Barberry, and that sensational new plant, True-hedge Columberry, see under "Hedge Plants," page 30.

BEAUTYBUSH (*Kolkwitzia*)

Beautybush (*Kolkwitzia amabilis*). 5 to 6 ft. Perfect for foundation groups or an informal border, this handsome, hardy, Chinese bush bears long, graceful, arching branches, covered in June with delicate pink, bellshaped flowers, veined orange at their throats. Improves with age. Each: 15 to 18 in. 45c, 18 to 24 in. 60c, 2 to 3 ft. 90c.

Berberis—See "Barberry," page 30.

BUSHCLOVER (*Lespedeza*)

Purple Bushclover (*Lespedeza bicolor*). 5 to 6 ft. Handsome and graceful, the arched branches, (with clover-like leaves hidden by long drooping racemes of rosy-purple flowers in July and August), die to the ground in Winter, but appear again in the Spring, none the worse. Strong, 3 yr. old plants, each 50c.

BUTTERFLY BUSH

(*Buddleia*)

Alternate Leaf B. (*B. alternifolia*). 8 to 10 ft. Purple-lilac flowers cluster against woolly gray foliage from July to October. Each: 2 to 3 ft. 60c, 3 to 4 ft. 90c.

Farquhar B. (*B. farquhari*). 5 ft. Pendulous and spreading, with many long racemes of lavender pink bloom in late Summer. Strong, 2 yr. plants, each 40c.



Althea
(See page 18)

Ile de France B. 4 to 5 ft. Best of the Butterfly Bushes with many long heavy sprays of brightest rosy-purple flowers, suffused violet, and each having a golden "eye," throughout the Summer. Especially fragrant. Strong, 2 yr. plants, each 50c.

CHOKEBERRY (*Aronia*)

Ideal shrubs for Winter effects.

Black C. (*A. melanocarpa*). 4 to 5 ft. Bushy sort, with white May flowers, followed by black fruit, and lovely autumnal foliage. Each: 12 to 18 in. 35c, 18 to 24 in. 50c.

Red C. (*A. arbutifolia*). 8 to 10 ft. Highly decorative, with bright red berries, from late Summer until Spring, to attract birds to your grounds. Each: 12 to 18 in. 45c, 18 to 24 in. 60c.

DAPHNE

February Daphne (*D. mezereum*). 3 ft. Among the first shrubs to bloom, with countless deliciously fragrant wine-colored flowers almost before the snow leaves. Bright scarlet fruit in late Summer adds to the pleasing features of this charming old-fashioned favorite. Each: 15 to 18 in. 90c, 18 to 24 in. \$1.25, 2 to 2½ ft. \$1.50.

DEUTZIA

Lovely blush and white Summer flowers.

Lemoine Deutzia (*D. lemoinei*). 2 to 3 ft. Bears an amazing abundance of cone-shaped floral heads, consisting of large, dazzling white flowers, in late Spring. Each: 12 to 15 in. 30c, 15 to 18 in. 40c, 18 to 24 in. 50c.

Pride of Rochester Deutzia. 6 to 8 ft. Most popular Deutzia, with clouds of lasting, double, rose-tinted bloom in late May. Vigorous and showy. Each: 2 to 3 ft. 35c, 3 to 4 ft. 50c, 4 to 5 ft. 65c.

Slender Deutzia (*D. gracilis*). 2 to 2½ ft. Forms a dense round-topped bush, covered with racemes of white flowers in May. Useful for edging a shrub border, or in small groups at entrance to walk. Each: 9 to 12 in. 30c, 12 to 15 in. 40c, 15 to 18 in. 50c.

DOGWOOD (*Cornus*)

Beautiful in flower, bark, and berry.

Goldentwig D. (*C. stolonifera lutea*). 6 to 8 ft. Useful for Winter color, with amazingly bright yellow bark and branches. Plant with Redbranched Dogwood for a lovely contrast. Each: 18 to 24 in. 40c, 2 to 3 ft. 60c.

Gray D. (*C. paniculata*). 10 to 12 ft. Compact shrubs, good for massing or screen, with white June flowers and myriad clusters of white berries on conspicuous red stems, later. Each: 2 to 3 ft. 65c, 3 to 4 ft. 90c.

Redbranched Dogwood (*C. alba sibirica*). 5 to 7 ft. Best rebarked, redbranched Winter specimen. Clusters of white Summer flowers, followed by pearly white fruits. Each: 18 to 24 in. 35c, 2 to 3 ft. 50c, 3 to 4 ft. 65c.

(For Flowering Dogwood, Redflowering Dogwood, see under Deciduous Trees, page 26).

ELDER (*Sambucus*)

Golden Elder (*S. canadensis aurea*). 8 to 10 ft. Excellent for massing, with large flat heads of white bloom, followed by edible purple-red berries, on its conspicuous golden foliage. A hardy native contrast plant. Each: 18 to 24 in. 35c, 2 to 3 ft. 50c.

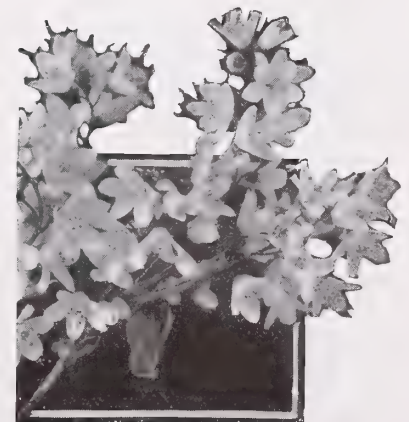
Scarlet Elder (*S. pubens*). 7 to 8 ft. Big white floral panicles, early Spring, are followed by red berries in mid-Summer. Good specimen shrub. Each: 2 to 3 ft. 50c, 3 to 4 ft. 75c.

EUONYMUS

Dwarf Winged Euonymus (*E. alatus compacta*). 4 to 5 ft. Very compact, and ideal for a low, wide hedge, with brilliant red berries among warm, rosy, Fall foliage. Each: 18 to 24 in. 60c, 2 to 3 ft. 75c, 3 to 4 ft. \$1.00.



Butterfly Bush



Slender Deutzia

(Shipment by express or freight only; not by parcel post)

HYDRANGEA

Popular, with huge heads of white bloom.

Peegee Hydrangea (*H. paniculata grandiflora*). 7 to 8 ft. Extremely popular, with showy conical flower heads frequently a foot in length, pure white at first, but turning to pink, and then to bronze and green. Indispensable for lawn or border, and perfect for Winter bouquets and decoration, if flowers are cut and dried. Each: 18 to 24 in. 45c, 2 to 3 ft. 60c, 3 to 4 ft. 75c.

Snowhill Hydrangea (*H. arborescens grandiflora*). 4 to 5 ft. Just after the Spring-flowering shrubs are gone, great round heads of white flowers appear among the heart-shaped foliage of this hardy sort. Good in a mass planting and will succeed in shade or sun. Each: 15 to 18 in. 35c, 18 to 24 in. 50c, 2 to 3 ft. 75c.

KERRIA

Double Kerria (*K. japonica floreplena*). 4 to 5 ft. Oldfashioned but still most popular is this slender, erect shrub with its long green stems supporting many rich deep golden flower-balls like Pompon Chrysanthemums in late Spring, and intermittently through the Summer. Each: 18 to 24 in. 60c, 2 to 3 ft. 90c.

LILAC (*Syringa*)

Sweetest scent in the May garden.

Late Lilac (*S. villosa*). 8 ft. Pale purple buds open to silvery rose flowers, in long loose fragrant panicles, from dark shiny foliage in June. Each: 2 to 3 ft. 50c, 3 to 4 ft. 75c, 4 to 5 ft. \$1.00.

Purple Lilac (*S. vulgaris*). 12 to 15 ft. The popular, sweetly fragrant old favorite, with many purple flower heads in May. Good as specimens or as a tall screen-like hedge. Succeeds in sun or shade and is indifferent to location. Each: 2 to 3 ft. 40c, 3 to 4 ft. 50c.

White Lilac (*S. vulgaris alba*). 12 to 15 ft. As fragrant flowers as the Purple Lilac, and a perfect contrast plant with it. Each: 2 to 3 ft. 50c, 3 to 4 ft. 75c.



Forsythia

(Shipment by express or freight only; not by parcel post)



Peegee Hydrangea

FORSYTHIA

Golden bugles announce the arrival of Spring.

Golden Forsythia (*F. suspensa variegata*). 6 to 7 ft. The gracefully pendulous branches have foliage of gold, with equally bright spring flowers. Each: 2 to 3 ft. 50c, 3 to 4 ft. 75c, 4 to 5 ft. \$1.00.

Showy Border Forsythia (*F. intermedia spectabilis*). 8 to 9 ft. Most spectacular of the Forsythia group, with big broad flowers of deepest yellow completely covering the arching branches in April. Each: 2 to 3 ft. 40c, 3 to 4 ft. 60c, 4 to 5 ft. 75c.

Weeping Forsythia (*F. suspensa*). 4 to 5 ft. Graceful shrub, indispensable for holding banks, and effective on walls, rocks, arches or trellises, with each willowy branch a slender arch of gold in early Spring. Each: 18 to 24 in. 35c, 2 to 3 ft. 50c.

Hawthorn—See under Deciduous Trees, page 26.

HONEYSUCKLE (*Lonicera*)

Oldfashioned favorites, delightfully perfumed.

Morrow Honeysuckle (*L. morrowi*). 6 ft. Useful for screening undesirable views, with wide spreading branches covered in June by creamy flowers, and later by many lasting bright crimson berries. Each: 2 to 3 ft. 50c, 3 to 4 ft. 65c.

Rosy Tatarian H. (*L. tatarica rosea*). 8 to 10 ft. Rapid growing, with many rosy-pink flowers in late Spring, followed by a wealth of orange-scarlet fruit in Summer and Fall. Its attractive foliage makes it gorgeous in a mass planting or as a hedge or screen. Each: 2 to 3 ft. 45c, 3 to 4 ft. 60c.

Winter H. (*L. fragrantissima*). 6 to 8 ft. Semi-evergreen, with highly perfumed pink and white flowers in early Spring, and red berries in the Summer. Each: 18 to 24 in. 35c, 2 to 3 ft. 45c, 3 to 4 ft. 60c, 4 to 5 ft. 75c.



Lilac, Marie Le Graye

NAMED HYBRID LILACS

12 to 15 ft.

Infinitely superior to the older, more familiar sorts, a border of these glorious hybrids will give you a June festival of fragrant charm. Our list of color approaches perfection this season.

Charles the Tenth. Single. Rich purple-red.

Edouard Andre. Double. Clear rosy pink.

Jean Mace. Double. Cobalt blue.

Ludwig Spaeth. Single. Deep purple blue.

Marie Le Graye. Single, creamy white; tall.

Michel Buchner. Double. Lilac-pink buds, lilac-blue flowers.

Mme. Casimir Perier. Best double white. Large clusters.

President Grevy. Double. Rosy mauve within, outside blue.

Rubra de Marley. Single, lavender-blue.

Ruhm von Horstenstein. New. Single lilac-red.

Any of the above sorts, 2 to 3 ft. plants, for \$1.00 each.

SPECIAL OFFER

One each of the above ten sweet-scented beauties, for only \$9.00

MAPLE (*Acer*)

Bloodleaf Japanese Maple (*Acer palmatum atropurpureum*). 10 to 12 ft. Most conspicuous and aristocratic of all lawn specimen shrubs, this compact, shapely, rounded bush is furnished to the ground with finely cut foliage, a brilliant wine-red in Spring and early Summer, and a striking bronzy purple in the Fall. Best in full sun, this peer among shrubs improves steadily with age, and is a perfect contrast plant with Evergreens. Each: 18 to 24 in. \$1.75, 2 to 3 ft. \$3.25, 3 to 4 ft. \$5.00.

MOCKORANGE (*Philadelphus*)

Late Spring's fragrant gift to the border.

Big M. (*P. coronarius grandiflora*). 7 to 8 ft. Rapid growing, with big showy white flowers centered gold in June. Each: 2 to 3 ft. 40c, 3 to 4 ft. 50c, 4 to 5 ft. 65c.

Sweet M. (*P. coronarius*). 9 to 10 ft. Highly fragrant old favorite, with graceful sprays of white May bloom. Good for backgrounds or for a tall flowering hedge. Each: 2 to 3 ft. 40c, 3 to 4 ft. 50c, 4 to 5 ft. 65c.

Virginal M. (*P. virginalis*). 6 to 7 ft. Best of the family, with many clusters of huge double flowers, sweetly perfumed, and seeming to shine, in Summer sunlight or moonlight. Each: 2 to 3 ft. 65c, 3 to 4 ft. 80c, 4 to 5 ft. \$1.00.

White Mountain M. (*P. Mont Blanc*). 4 to 5 ft. Useful hybrid with dazzling white June flowers. A vigorous sort. Each: 2 to 3 ft. 50c, 3 to 4 ft. 65c.

NINEBARK (*Physocarpus*)

Goldleaf N. (*P. opulifolius aureus*). 8 to 10 ft. Creamy white June flowers among golden leaves. Each: 2 to 3 ft. 35c, 3 to 4 ft. 45c.

Ninebark (*P. opulifolius*). 8 to 10 ft. Good in shade. Green leaved form of above. Each: 3 to 4 ft. 45c, 4 to 5 ft. 65c.

OLIVE (*Eleagnus*)

Russian Olive (*E. angustifolia*). 10 to 12 ft. Vigorous shrub with rich silvery gray leaves, fragrant golden flowers in June, and orange yellow fruits, sealed silver, later. Good for seashore planting, and an unusual, beautiful hedge. Each: 2 to 3 ft. 45c, 3 to 4 ft. 65c.

PEARLBUSH (*Exochorda*)

Pearlbush (*E. grandiflora*). 8 to 10 ft. Early buds like pearls on slender threads become loose clusters of dazzling white flowers, covering the entire bush in May. Each: 2 to 3 ft. 40c, 3 to 4 ft. 50c.



Virginal Mockorange



Pearlbush

PRIVET (*Ligustrum*)

Specimen types of the popular hedge plant.

For Amur River North Privet (*L. amurense*), California Privet (*L. ovalifolium*), and Ibolium Privet (*L. ibolium*), see "Hedge Plants," page 30.

Globe and Pyramidal California Privet. The well known semi-evergreen California Privet, with their glossy foliage carefully sheared four times a year until they are splendidly compact globes and pyramids. They resemble fine Boxwood in the luster of their glossy green leaves.

Beautiful Globes. Each: 12 in. 65c, 15 in. 85c, 18 in. \$1.25, 24 in. \$1.75, 30 in. \$2.25.

Slender Pyramids. Each: 2 to 2½ ft. \$1.50, 2½ to 3 ft. \$2.25, 3 to 4 ft. \$3.25, 4 to 5 ft. \$4.50.

Golden Privet (*L. ovalifolium aureum*). 8 to 9 ft. Good for specimen shrub, and excellent for an unusual hedge, with golden foliage. Each: 15 to 18 in. 25c, 18 to 24 in. 35c, 2 to 3 ft. 50c.

Regal Privet (*L. regelianum*). 5 to 6 ft. Gracefully arching green branches. Each: 15 to 18 in. 35c, 18 to 24 in. 50c, 2 to 3 ft. 75c.

PUSSYWILLOW (*Salix*)

Pussywillow (*S. discolor*). 15 ft. Charming fuzzy gray buds on long willowy branches in early Spring. good in bouquets. Each: 2 to 3 ft. 35c, 3 to 4 ft. 50c, 4 to 5 ft. 65c.

QUINCE (*Cydonia*)

Japanese Flowering Quince (*C. japonica*). 5 to 6 ft. This charming old-fashioned shrub bursts into bloom in early Spring, with a profusion of big, showy flowers, a rich scarlet in color. Also bears small golden quince-like fruit, spicily fragrant, in the Fall. Good for border edging or specimen plant on your lawn, and simply perfect for a hedge, with dense, deep green foliage. Each: 15 to 18 in. 30c, 18 to 24 in. 40c, 2 to 3 ft. 60c.

Rose—See under "Shrub Roses," page 5.

(Shipment by express or freight only; not by parcel post)

SMOKETREE (*Rhus*)

Smoke Tree (*R. cotinus*). 10 to 12 ft. Tree-like shrub of bold, rugged outline, whose clean flat leaves, stained pink when young, are seen through a filmy purple cloud of fruit clusters in July and August, and are touched with purple and yellow in Autumn. A No. 1 specimen shrub for the lawn. Each: 2 to 3 ft. 85c, 3 to 4 ft. \$1.25, 4 to 5 ft. \$1.75.

SNOWBERRY (*Symphoricarpos*)

Birds love the gaudy berries of this race.

Chenault Snowberry (*S. chenaulti*). 3 to 4 ft. Wider than tall, these neat shrubs bear many bunches of coral-red berries in Fall, lasting until mid-Winter, on slender, arching branches. Loves partial shade and is an amazingly lovely hedge plant. Each: 18 to 24 in. 30c, 2 to 3 ft. 40c, 3 to 4 ft. 50c.

Coralberry (*S. vulgaris*). 4 to 5 ft. Compact shrub, with many clusters of deep red berries through the Winter, good for Winter bouquets. Splendid in partly shaded borders and gravelly banks, and excellent for massing on hillsides. Each: 18 to 24 in. 30c, 2 to 3 ft. 40c.

Snowberry (*S. racemosus*). 4 to 5 ft. Small pink Summer flowers are followed by many marble-sized waxy-white berries on graceful drooping branches from September to mid-Winter. Grows under trees successfully and berries are popular for household decorations in Winter. Each: 18 to 24 in. 30c, 2 to 3 ft. 40c, 3 to 4 ft. 50c.

SPIREA

Probably the most popular of all shrubs.

Anthony Waterer S. (*S. Anthony Waterer*). 2 to 3 ft. Compact shrub with many broad, flat heads of deep crimson-pink flowers, from July until Fall, from small, dark green foliage. Popular in foundation plantings, as a facing shrub, and amazingly successful for a low hedge. Each: 12 to 18 in. 35c, 18 to 24 in. 45c, 2 to 2½ ft. 60c.

Billiard S. (*S. billiardi*). 4 to 5 ft. Bears many dense upright panicles, fuzzy with lilac-pink flowers, from July to October. Each: 2 to 3 ft. 35c, 3 to 4 ft. 45c, 4 to 5 ft. 60c.



Snowberry



Spirea Anthony Waterer
(See page 21)

SPIREA, Continued

- Bridalwreath** (*S. prunifolia floreplena*). 7 to 8 ft. This original Bridalwreath bears many double white flowers like miniature Roses in Spring, before the plum-like, shiny leaves appear. In Fall, these leaves assume a brilliant red coloring. Each: 2 to 3 ft. 50c, 3 to 4 ft. 65c.
- Froebel S.** (*S. froebeli*). 4 ft. Taller and more open than the Anthony Waterer Spirea, with pinkish crimson flower heads in early Summer and bronze-red foliage in Spring and Fall. Each: 18 to 24 in. 35c, 2 to 3 ft. 45c, 3 to 4 ft. 60c.
- Korean S.** (*S. trichocarpa*). 4 to 5 ft. Worthy new sort, a neat, spreading, globular bush with white flowers like those of the Van Houtte Spirea, but even larger, and holding a distinct "eye," in dome-shaped clusters. Each: 2 to 3 ft. 45c, 3 to 4 ft. 60c.
- Thunberg S.** (*S. thunbergi*). 5 to 6 ft. A dense, feathery bush, whose slender arching branches are covered with misty white flowers like snow in early Spring. The super-fine pale yellow-green foliage becomes orange-scarlet in Fall. Each: 18 to 24 in. 35c, 2 to 3 ft. 50c.
- Van Houtte S.** (*S. vanhouttei*). 7 to 8 ft. Most popular flowering shrub, whose graceful branches droop beneath their lovely burden of snowy flower garlands in May and June. A graceful, adaptable bush which needs no pruning. Each: 2 to 3 ft. 30c, 3 to 4 ft. 40c, 4 to 5 ft. 50c.
- White Japanese S.** (*S. callosa alba*). 2 to 3 ft. Beautiful for a flowering hedge, with white flowers all summer, from unusual purplish foliage. Each: 15 to 18 in. 35c, 18 to 24 in. 45c, 2 to 2½ ft. 55c.

STEPHANANDRA

- Cutleaf Stephanandra** (*S. flexuosa*). 4 to 5 ft. Graceful fountain-like shrub, with zigzag drooping branches covered with handsome, finely cut foliage, purple-red in the Fall. Good for borders, rocky banks, or as a facing for taller shrubs. Each: 2 to 3 ft. 40c, 3 to 4 ft. 50c, 4 to 5 ft. 65c.

ST. JOHNSWORT (*Hypericum*)

- Van Fleet St. Johnswort** (*H. vanfleeti*). 2 to 3 ft. Beautiful low growing shrub with countless golden flowers in mid-Summer. Succeeds in rocky or sandy soil, and is indispensable in the low border. Each: 18 to 24 in. 75c, 2 to 3 ft. \$1.00.

SWEETSHRUB (*Calycanthus*)

- Sweetshrub** (*C. floridus*). 4 to 5 ft. Hardy native with many double chocolate colored flowers in May, and intermittently thereafter. Flowers, leaves, and even the wood hold a spicy fragrance like that of crushed Strawberries. Each: 18 to 24 in. 40c, 2 to 3 ft. 50c.

TAMARIX

- African Tamarix** (*T. africana*). 10 to 12 ft. Best shrub for seashore planting, with incomparable feathery grayish foliage, and bearing many long drooping panicles of delicate pink flowers in May and June. Each: 2 to 3 ft. 35c, 3 to 4 ft. 50c.



Snowball

VIBURNUM

- Glorious in flower, fruit, and Fall foliage.
- Arrowwood** (*V. dentatum*). 10 to 12 ft. Creamy flowers in May, and intense blue-black fruit in the Fall. Purple-red Fall foliage. Each: 2 to 3 ft. 50c, 3 to 4 ft. 60c, 4 to 5 ft. 80c.
- European Cranberry** (*V. opulus*). 8 to 10 ft. Dense panicles of white flowers in late Spring, and long, hanging, clusters of rich crimson berries from coppery Fall foliage. Each: 2 to 3 ft. 50c, 3 to 4 ft. 65c.
- Japanese Snowball** (*V. tomentosum plicatum*). 7 to 8 ft. Indispensable shrub with showy compact white flower heads in June and beautiful deep green foliage, turning purple in the Fall. An erect shrub, extra hardy. Each: 2 to 3 ft. 65c, 3 to 4 ft. 95c.

- Mayflower Viburnum** (*V. carlesii*). 4 to 5 ft. Best of the family, this Korean sort bears lasting round flower-heads of delicate waxy pink bloom, like Arbutus, in early May, spicily fragrant. Broader than tall, this extra-hardy Viburnum is a necessity in your garden or low border. Each: 18 to 24 in. \$1.50, 2 to 3 ft. \$2.00, 3 to 4 ft. \$2.50.

- Nannyberry** (*V. lentago*). 15 ft. Fragrant white bloom in late Spring, followed by blue black berries on red stems, and crimson purple Fall foliage. Each: 2 to 3 ft. 75c, 3 to 4 ft. 90c, 4 to 5 ft. \$1.25, 5 to 6 ft. \$1.75.

- Snowball** (*V. opulus sterile*). 9 to 10 ft. Most popular of the species, with familiar big round heads of white flowers for Decoration Day. Succeeds in semi-shade. Each: 18 to 24 in. 45c, 2 to 3 ft. 60c, 3 to 4 ft. 75c, 4 to 5 ft. 95c.

- Wayfaring Tree** (*V. lantana*). 12 to 15 ft. Robust shrub tree with big leaves, silver on under side, white flowers in big clusters in May and June, and red fruit, maturing black in late Summer. Bold accent plant with red Fall foliage. Each: 2 to 3 ft. 60c, 3 to 4 ft. 75c.

WEIGELA

Beautiful Summer flowers.

- Eva Rathke W.** (*W. Eva Rathke*). 4 ft. Showiest and most popular, with a wealth of deep ruby blooms all Summer and Fall. Each: 18 to 24 in. 50c, 2 to 3 ft. 65c, 3 to 4 ft. 90c.
- Pink W.** (*W. rosea*). 5 to 6 ft. Popular Chinese Weigela, with countless intense rosy-carmine flowers in late Spring. Each: 2 to 3 ft. 35c, 3 to 4 ft. 50c, 4 to 5 ft. 65c, 5 to 6 ft. 90c.
- Purpleleaf W.** (*W. rosea foliis purpurea*). 5 to 6 ft. Distinct novelty, with bright pink flowers from its rich bronzy purple foliage in June. Each: 2 to 3 ft. 50c, 3 to 4 ft. 75c.
- Snow W.** (*W. candida*). 6 ft. Best white flowered sort. Creamy trumpets in May and June, extra large. Each: 3 to 4 ft. 50c, 4 to 5 ft. 65c, 5 to 6 ft. 90c.
- Variegated W.** (*W. variegata*). 5 to 6 ft. Pale pink blooms from late May to July, foliage variegated yellow and pink. Each: 18 to 24 in. 35c, 2 to 3 ft. 45c, 3 to 4 ft. 60c.

WINTERBERRY (*Ilex*)

- Winterberry** (*I. verticillata*). 8 to 10 ft. Lovely native with ornamental lustrous foliage, bearing bright sparkling red berries from October to mid-Winter, much prized for Christmas decorations. Each: 2 to 3 ft. 75c, 3 to 4 ft. \$1.00.

WITCH-HAZEL (*Hamamelis*)

- Witch-Hazel** (*H. virginiana*). 15 to 20 ft. Familiar to our native woods, the Witch-Hazel is the last shrub to bloom, throwing its fringy yellow flowers after the leaves have fallen in November. Lovely in mass. Each: 2 to 3 ft. 75c, 3 to 4 ft. \$1.00, 4 to 5 ft. \$1.50.

(Shipment by express or freight only; not by parcel post)

BROADLEAVED EVERGREEN SHRUBS

LET the beauty of your lawn be guarded through the Winter's rigor by these lovely sentinels, whose flowering charm is rivalled by the perpetual green of their foliage, at its best against the unrelieved whiteness of snow. Our varieties have been carefully chosen and each individual plant is a masterpiece of Nature.

A dozen of any variety will be supplied for ten times the price of one, or six for five times the price of one.

ANDROMEDA (*Pieris*)

Mountain Andromeda (*Pieris floribunda*). 2 to 3 ft. In early Spring, this low, compact shrub produces many dense upright panicles of delicate white flowers like Lilies-of-the-Valley, from its deep green foliage. If planted in the shade, it is perfect for foundation work and equally desirable in rockeries. Each: 9 to 12 in. \$1.50, 12 to 15 in. \$2.00, 15 to 18 in. \$2.50.

AZALEAS (Evergreen)

The greatest pride of our nursery.

Amoena Azalea. 4 to 5 ft. Good for the rockery and for lawn embellishment, with conspicuous rosy purple flowers in Spring, and evergreen foliage, turning bronze in Winter. Highly attractive, and justly popular. Each: 8 to 10 in. 60c, 10 to 12 in. 75c, 12 to 15 in. \$1.00, 15 to 18 in. \$1.35, 18 to 24 in. \$1.75, 24 to 30 in. \$2.50.

Blush Azalea (*A. ledifolia magnifica*). 4 to 5 ft. Many big blush white flowers covered with wine-red dots, in late Spring. Each: 18 to 24 in. \$2.50, 24 to 30 in. \$3.00, 30 to 36 in. \$3.50.

Hinamoyo Azalea. 4 to 5 ft. Clear pink flowers, differing only in color from the following sort. Each: 10 to 12 in. \$1.25, 12 to 15 in. \$1.75, 15 to 18 in. \$2.25, 18 to 24 in. \$3.00.

Hinodegiri Azalea. 4 to 5 ft. Most popular, by far, of the Evergreen Azaleas, this astounding sort bears a countless quantity of large, carmine red flowers in late Spring from its rounded glossy foliage. Beautiful alike in a mass or in an individual planting. Azalea hinodegiri has long merited its popularity. Each: 6 to 8 in. 70c, 8 to 10 in. 85c, 10 to 12 in. \$1.00, 12 to 15 in. \$1.50, 15 to 18 in. \$2.00, 18 to 24 in. \$3.00, 24 to 30 in. \$4.50.

J. T. Lovett Azalea. 2 to 3 ft. Broad, spreading plants, with big, rich carmine-lake flowers in late June and July. *The best of all late blooming sorts.* Each: 8 to 10 in. spread \$1.25, 10 to 12 in. spread \$1.50, 12 to 15 in. spread \$2.00, 15 to 18 in. spread \$3.00, 18 to 24 in. spread \$4.50.

Lilac Azalea (*A. ledifolia lilacina*). 4 to 5 ft. Big, clear lilac flowers in May. Each: 12 to 15 in. \$1.75, 15 to 18 in. \$2.50, 18 to 24 in. \$3.50.

Maxwell Azalea (*A. maxwelli*). 3 to 4 ft. Broad bush covered with huge carmine-red flowers in May. Very hardy. Each: 10 to 12 in. \$1.00, 12 to 15 in. \$1.25, 15 to 18 in. \$1.75, 18 to 24 in. \$2.50.

Pink Beauty Azalea. 3 to 4 ft. Salmon-pink blooms in large trusses, late Spring. Each: 12 to 15 in. \$2.00, 15 to 18 in. \$2.50, 18 to 24 in. \$3.00.

Scarlet Amoena Azalea (*A. amoena coccinea*). 4 to 5 ft. Unusual hybrid, as hardy as Azalea amoena, but with brilliant scarlet flowers over the same season. Each: 8 to 10 in. \$1.00, 10 to 12 in. \$1.40, 12 to 15 in. \$1.75, 15 to 18 in. \$2.50, 18 to 24 in. \$3.50.

BOXWOOD (*Buxus*)

Sweetly scented bushes with small, deep evergreen leaves.

Boxwood (*B. sempervirens*). 8 to 10 ft. Insurpassable for formal Colonial plantings, and will make a thick, large hedge. May be clipped into odd shapes, and is delightfully perfumed. Each: 12 to 15 in. \$1.00, 15 to 18 in. \$1.50, 18 to 24 in. \$2.25, 2 to 2½ ft. \$3.50.

Truedwarf Boxwood (*B. semp. suffruticosa*). 5 to 6 ft. Slowest to grow of any shrub, this sweet smelling edging or dwarf hedge plant is a synonym for permanent beauty.

Extra Bushy Plants	Doz.	100	1000
3 to 4 in.	\$ 1.75	\$ 10.00	\$ 90.00
4 to 6 in.	2.50	15.00	125.00
6 to 8 in.	4.00	25.00	225.00
8 to 10 in.	8.50	60.00	550.00
10 to 12 in.	12.00	90.00	850.00
12 to 15 in.	17.50	125.00	

COTONEASTER (*Cotoneaster*)

Rock Cotoneaster (*C. horizontalis*). 2 to 3 ft. Trailing dwarf for rockeries, with bright red berries in Fall and Winter, from box-like leaves. Each: 9 to 12 in. 90c, 12 to 15 in. \$1.25, 15 to 18 in. \$1.50.



Amoena Azalea

KURUME HYBRID AZALEAS

The island of Kyashu, Japan, is the habitat of these lovely sorts. Discovered by the famous naturalist, Dr. E. H. Wilson, they were brought to this country, and have been justly acclaimed for beauty and hardiness.

Flame. 3 ft. Beautiful red flowers, suffused with copper, stand out like fire against the glossy green foliage of this attractive sort. Blooms very early in the season. Each: 15 to 18 in. \$2.25, 18 to 24 in. \$3.00, 2 to 2½ ft. \$3.75.

Pink Pearl. 3 ft. Very beautiful evergreen variety with salmon pink flowers. Each: 12 to 15 in. \$1.75, 15 to 18 in. \$2.50, 18 to 24 in. \$3.50.

Sweetbriar. 3 ft. A glorious study in clear pink is this attractive plant when blooming. Each: 10 to 12 in. \$1.50, 12 to 15 in. \$2.00, 15 to 18 in. \$2.50, 18 to 24 in. \$3.00.

BARBERRY (*Berberis*)

Wintergreen Barberry (*Berberis julianae*). 4 to 5 ft. Erect yet compact, with glossy green foliage all year. Good when planted among Rhododendrons or Mountain Laurel. Each: 9 to 12 in. 80c, 12 to 15 in. \$1.00, 15 to 18 in. \$1.50.



Hinodegiri Azalea

(Shipment by express or freight only; not by parcel post)



Mountain Laurel



Rhododendron

**ASSORTED RHODODENDRON
HYBRIDS**

A magnificent collection, essential to any woodland planting, with no inferior sorts included. Mixed colors. Each: 15 to 18 in. \$1.75, 18 to 24 in. \$2.50, 2 to 2½ ft. \$3.50; 2½ to 3 ft. \$4.50.

VIBURNUM (*Viburnum*)

Leatherleaf Viburnum (*V. rhytidophyllum*). 6 to 8 ft. Lovely unusual oblong foliage, deep green above, glaucous beneath, and deeply veined. If planted in a half shady, sheltered spot, its red berries will add charm to the plant. Each: 2 to 3 ft. \$2.00, 3 to 4 ft. \$3.00.

YUCCA

Tropical in appearance, but extremely hardy.

Spanish Bayonet (*Y. filamentosa*). 4 to 5 ft. Nodding white June bells above long, rigid leaves. Strong, 3 yr. plants, each 35c.

Variiegated Yucca (*Y. filamentosa variegata*). 4 to 5 ft. The most attractive of all hardy variegated plants. Leaves are broadly margined yellow and assume a purple tint in Winter. Same Lily-like, creamy white flowers as the Spanish-bayonet in June. Hardy, and grows readily in any situation. Strong, 3 yr. plants, each 50c. Extra large clumps, each 75c.

DAPHNE (*Daphne*)

Rose Daphne (*D. cneorum*). 1 ft. Lovely dwarf evergreen, particularly suited to the rockery, with gray-green foliage and beautiful, fragrant pink flowers in the Spring. Each: 6 to 9 in. 75c, 9 to 12 in. 90c, 12 to 15 in. \$1.50, 15 to 18 in. \$2.00, 18 to 24 in. \$2.50.

HEATHER (*Calluna*)

Perfect Scottish gems for rockeries, or for covering banks, the low bushy shrubs are also invaluable in a mass planting, blooming in mid-Summer, with a multitude of floral bells. 18 to 24 in.

Alport H. (*C. alporti*). Crimson.

Great H. (*C. monstrosa*). Rosy lavender.

Hammond White H. (*C. alba hammondi*). Pure white.

Pink H. (*C. rosea*). Rose-pink.

Woolly H. (*C. hirsuta*). Lavender, unusual hairy foliage.

All varieties, 10 to 14 in. stocky plants, each, 75c.

HOLLY (*Ilex*)

Inkberry (*I. glabra*). 5 to 6 ft. Succeeds alike in sun or shade, with black berries on its shining, deep green leaves, purplish in Winter. Each: 15 to 18 in. \$2.50, 18 to 24 in. \$3.25, 2 to 3 ft. \$4.25.

Japanese Holly (*I. crenata*). 8 to 10 ft. Hardy at the seashore and in the city, the glossy, small evergreen leaves of this sort tend to make it one of the most desirable of all varieties for producing a dependable and beautiful evergreen hedge. Each: 15 to 18 in. \$1.75, 18 to 24 in. \$2.50, 2 to 3 ft. \$3.50.

LAUREL (*Kalmia*)

Mountain Laurel (*Kalmia latifolia*). 6 to 8 ft. Our favorite native evergreen shrub, with its June clusters of charming pink flowers. Best in shade, and lovely when planted close to one's house, as a border. Each: 12 to 18 in. \$1.50, 18 to 24 in. \$2.00, 2 to 3 ft. \$2.50.

LEUCOTHOE (*Leucothoe*)

Drooping Leucothoe (*L. cataesbaei*). 3 to 4 ft. Sprays of fragrant white bloom in May. Rich Fall foliage. Each: 15 to 18 in. \$1.50, 18 to 24 in. \$2.00.

RHODODENDRONS

Most familiar of all the broadleaved evergreens, with a wealth of lovely flowers in late Spring. Best in acid soil.

Carolina R. (*R. carolinianum*). 5 to 6 ft. This variety has bright pink flowers in May or June, and is one of the best for planting in open spaces. Each: 15 to 18 in. \$2.00, 18 to 24 in. \$2.50, 2 to 2½ ft. \$3.50.

Catawba R. (*R. catawbiense*). 7 to 9 ft. Hardest of the species, this big, bushy shrub bears many big rosy-purple blooms in late Spring. Best in semi-shade. Each: 18 to 24 in. \$2.50, 2 to 3 ft. \$3.50.

Korean R. (*R. mucronulatum*). 5 to 6 ft. Gorgeous in early Spring, when its graceful frilled flowers of lavender-pink form a pleasing contrast to the yellow of Forsythias. Each: 15 to 18 in. \$2.50, 18 to 24 in. \$3.50.

Piedmont R. (*R. minus*). 6 to 8 ft. Pink June flowers grace this open grower, with smaller, graceful foliage. Each: 12 to 15 in. \$1.75, 15 to 18 in. \$2.50.

Rosebay R. (*R. maximum*). 10 to 12 ft. Magnificent native, broadleaved evergreen, carrying a mass of beautiful pink flowers in May and June. Its dignified leathery foliage makes it perfect in a mass planting. Each: 18 to 24 in. \$2.00, 2 to 3 ft. \$2.50, 3 to 4 ft. \$3.50, 4 to 5 ft. \$4.50.

RHODODENDRONS—NAMED SORTS

These finest of Rhododendrons will create unforgettable spots of color in your shaded border in late Spring.

Albium Elegans. 10 to 12 ft. Tall and narrow, with blush-white blooms.

Amphion. 7 to 8 ft. Big, deep pink flowers, centered white.

Catawbiense Grandiflora. 6 to 8 ft. Good, compact hybrid, with big, rosy lilac flowers in great abundance. Lovely in a mass planting.

Dresselhuys (Dr. H. C. Dresselhuys). 8 to 10 ft. Gaudiest of the species, with huge bright red flowers on a stately plant.

Everest. 5 to 6 ft. Many lavender-pink flowers, attractively frilled.

Lee's Dark Purple. 6 to 8 ft. Best Rhododendron of its color, this sort produces many dark purple flowers.

Mrs. C. S. Sargent. 5 to 6 ft. A compact, bushy shrub with a wealth of gorgeous deep rose-colored flowers.

Parsons Gloriosum. 5 to 6 ft. Extremely hardy with beautiful rosy purple blooms.

President Lincoln. 6 to 8 ft. Tall plant with big, pure lavender flowers. Very hardy.

Any of the above Rhododendrons, Each: 15 to 18 in. \$2.50, 18 to 24 in. \$3.50, 2 to 2½ ft. \$4.50, 2½ to 3 ft. \$5.50

(Shipment by express or freight only; not by parcel post)

HARDY FLOWERING AND SHADE TREES

WHAT a part the tree has played in our American life! Every State, and nearly every town has its historic tree, to which the casual visitor is immediately and proudly directed. Charter Oak, the Elms of Connecticut, all of the lovely trees in history have their potential duplicates in our nursery, ready to be transplanted to your lawn, where they may grow to the size of their forefathers. We can recommend especially our flowering trees this season, which combine the comforts of shade with their blooming periods of astounding beauty.

BEECH (*Fagus*)

Especially graceful, with desirable foliage.

Fernleaf Beech (*F. sylvatica asplenifolia*). 50 to 60 ft. Graceful and slow growing, with long, narrow, deeply cut foliage. Each: 2 to 3 ft. \$3.00, 3 to 4 ft. \$4.00, 4 to 5 ft. \$6.00, 5 to 6 ft. \$8.50.

Rivers Purple Beech (*F. s. purpurea riversi*). 70 to 80 ft. The tree of all trees for a perfect lawn specimen, with indescribably beautiful purple foliage all season. Handsome and dignified in contour. Each: 2 to 3 ft. \$3.00, 3 to 4 ft. \$4.50, 4 to 5 ft. \$6.50, 5 to 6 ft. \$8.50, 6 to 8 ft. \$10.50.

Weeping Beech (*F. s. pendula*). 50 to 60 ft. Best of all "weeping" trees, with branches curving broadly to the ground. Excellent in rolling country. Each: 3 to 4 ft. \$5.00, 4 to 5 ft. \$7.00, 5 to 6 ft. \$9.00, 6 to 8 ft. \$11.00.

BIRCH (*Betula*)

Queens of the forest.

Cutleaf Weeping Birch (*B. alba laciniata*). 30 to 40 ft. Silver-white bark, and fountain-like branches, gracefully drooping beneath finely cut foliage, make this a true lawn specimen. Each: 8 to 10 ft. \$3.50.

European White Birch (*B. alba*). 40 to 50 ft. Charmingly graceful, with creamy white bark; good on the lawn or when backed by evergreens. Each: 5 to 6 ft. \$1.50.

CHERRIES, JAPANESE FLOWERING (*Prunus*)

The Orient's greatest gift to us.

Doubleflowered Weeping Cherry (*P. subhirtella pendula floreplena*). 12 to 15 ft. A waterfall of rose-like pink bloom covers the gracefully pendulous branches of this glorious lawn tree in early Spring—a breathtaking spectacle that will draw all eyes to your lawn. Selected trees with 3 yr. heads, each \$5.50.

NAMED SORTS

Amanogawa. 25 ft. Distinctly upright in growth, with lovely dense clusters of pink flowers, gracefully suspended from its branches in Spring. Each: 5 to 6 ft. \$2.50.

Beni Higan. 30 to 35 ft. This glorious tree is gradually enveloped in a beautiful veil of pale pink bloom, from March until May. Each: 3 to 4 ft. \$1.25.

Kofugen. 30 ft. Late blooming, with big, double pink flowers which expand with the attractively contrasting coppery young foliage in late Spring. Each: 6 to 8 ft. \$3.50.

Kwanzan. 30 ft. Most familiar of the species, with countless big, double deep pink flowers in May on an especially shapely tree. Each: 5 to 6 ft. \$2.50, 6 to 8 ft. \$3.50.

Mt. Fuji. 30 ft. Best white flowering Cherry, with drooping clusters of big, pure white flowers by the thousands in the Spring, like snow on the shapely tree. Each: 5 to 6 ft. \$2.50.

Naden. 30 to 40 ft. Among the showiest, with many short stemmed clusters of pale pink flowers in mid-Spring. Each: 5 to 6 ft. \$2.50.

Shirofugen. 30 ft. Vigorous, with striking three-toned flowers, pink in the bud, opening to pure white, and blushing as they mature. Each: 4 to 5 ft. \$1.75.

Yoshino. 40 to 45 ft. Best Japanese Cherry for a shade tree, with masses of pink bloom, tinged with purple before it falls. The Tidal Basin Cherry of Washington, D. C. Each: 4 to 5 ft. \$1.75.



Cutleaf Weeping Birch



Purple Beech

Kensington, Md.

I am much pleased with the quality of the Roses just rec'd. The root systems are splendid and show the results of careful digging and handling.

Lewis Meriam.

(Shipment by express or freight only; not by parcel post)



Flowering Crab



Whiteflowering Dogwood



Saucer Magnolia

CRABAPPLE, FLOWERING (*Malus*)

Lawn trees which rival and frequently surpass even the flowering Cherries in beauty.

- Bechtel Crab** (*M. ioensis plena*). 12 to 15 ft. Best known and most worthy of all the flowering Crabapples, with big, double pink flowers, like small Roses, deliciously fragrant, in late May. Quickly grows into a compact and formal little tree. Each: 2 to 3 ft. \$1.00, 3 to 4 ft. \$1.35, 4 to 5 ft. \$1.90.
- Carmine Crab** (*M. atrosanguinea*). 12 to 15 ft. A shapely lawn tree with a wealth of deep pink flowers shading to purplish crimson in May. Each: 3 to 4 ft. \$1.25.
- Japanese Flowering Crab** (*M. floribunda*). 12 to 15 ft. Handsome specimens with bright pink buds opening white, followed by yellow fruits, which turn red. Each: 3 to 4 ft. \$1.25.
- Redleaved Crab** (*M. eleyi*). 12 to 15 ft. Big clusters of purple flowers from purple red foliage in late Spring. Each: 3 to 4 ft. \$1.25, 4 to 5 ft. \$1.50, 5 to 6 ft. \$1.90, 6 to 8 ft. \$2.50.
- Redvein Crab** (*M. neidzwetzkyana*). 12 to 15 ft. Thoroughly red-purple tree, with leaves, fruit, bark and wood rivalling the flowers in the intensity of that unusual color. Each: 3 to 4 ft. \$1.25.
- Scheidecker Crab** (*M. scheideckeri*). 12 to 15 ft. Formal in appearance, with big lasting pink flowers, followed by extra large yellow fruits. Each: 3 to 4 ft. \$1.25, 4 to 5 ft. \$1.50, 5 to 6 ft. \$1.90.

DOGWOOD (*Cornus*)

Our loveliest native flowering trees.

- Flowering Dogwood** (*C. florida*). 20 to 25 ft. Huge white flowers appear on this gorgeous native tree even before the leaves, in April. Fall finds another riot of color on the tree's branches, with countless glittering red berries among its rich Autumnal foliage. Each: 3 to 4 ft. \$1.25, 4 to 5 ft. \$1.75, 5 to 6 ft. \$2.75, 6 to 8 ft. \$3.75.
- Redflowering Dogwood** (*C. florida rubra*). 15 to 20 ft. Undoubtedly the most superb of our native flowering trees, these Redflowered Dogwoods will turn the smallest plot of ground into a veritable fairyland in May and June, with their mammoth flowers, varying from blush to deep pink. Their red berries and Fall foliage equal those of the white flowered sorts in beauty. We have specialized in the production of these beautiful trees, as our splendid specimens will testify. Each: 2 to 3 ft. \$1.75, 3 to 4 ft. \$2.75, 4 to 5 ft. \$4.00, 5 to 6 ft. \$5.50, 6 to 8 ft. \$8.00.

HAWTHORN (*Crataegus*)

- Paul Scarlet Hawthorn** (*C. oxyacantha pauli*). 15 to 20 ft. Most popular of Hawthorns with a mass of vivid scarlet June flowers and colorful red fruit in Winter. Each: 4 to 5 ft. \$1.75, 5 to 6 ft. \$2.50, 6 to 8 ft. \$3.50.
- Pink Hawthorn**. 15 to 20 ft. Pink-flowered form of the above. Each: 5 to 6 ft. \$2.50, 6 to 8 ft. \$3.50.

HORSECHESTNUT (*Aesculus*)

- Flowering Horsechestnut** (*Aesculus hippocastanum*). 70 to 80 ft. A big, handsome tree with huge spikes of white bloom in early Summer, sweetly scented. Each: 4 to 5 ft. \$1.25, 5 to 6 ft. \$1.75, 6 to 8 ft. \$2.50.

LINDEN (*Tilia*)

- Pyramidal Linden** (*Tilia platyphyllus pyramidalis*). 40 to 50 ft. Good as accent tree or to border a narrow drive, with upward growing branches. Each: 6 to 8 ft. \$3.00, 8 to 10 ft. \$4.50.

MAGNOLIA

¶Lovely as the Southern Trees, but perfectly hardy.

- Kobus Magnolia**. 30 to 35 ft. Semi-double, fragrant white flowers like Gardenias, improving with age, in early Spring. Each: 5 to 6 ft. \$3.50, 6 to 8 ft. \$5.00.
- Saucer Magnolia** (*M. soulangeana*). 15 to 18 ft. Best and most popular of the hardy Magnolias, with huge flowers, purple pink without and creamy white within, before the foliage, in April. Thoroughly hardy, these trees increase in beauty every year. Each: 18 to 24 in. \$1.75, 2 to 3 ft. \$2.50, 3 to 4 ft. \$3.50, 4 to 5 ft. \$4.50.
- Star Magnolia** (*M. stellata*). 10 to 12 ft. Starry flowers of purest white adorn the branches of this sort in early Spring, delightfully perfumed. Each: 18 to 24 in. \$3.00, 2 to 3 ft. \$4.00.
- Sweetbay Magnolia** (*M. glauca*). 15 to 20 ft. May and June bring big creamy white flowers, amazingly lovely in scent, to the handsome leaves of this semi-evergreen. Each: 18 to 24 in. \$1.50, 2 to 3 ft. \$2.00, 3 to 4 ft. \$3.00.

MAIDENHAIR-TREE (*Ginkgo*)

- Chinese Maidenhair-tree** (*Ginkgo biloba*). 100 ft. Picturesque pyramidal trees, probably the oldest yet cultivated, with distinctive, fan-shaped leaves. May be successfully grown in a city. Each: 6 to 8 ft. \$3.50, 8 to 10 ft. \$4.50.

(Shipment by express or freight only; not by parcel post)

MAPLE (*Acer*)

In great demand for shade trees, both on lawns and streets.

- Norway Maple** (*A. platanoides*). 70 to 80 ft. Most popular of all trees for street planting, since even the larger sizes transplant well, and are tolerant of city conditions. A handsome and familiar roundheaded tree, whose green leaves turn to a golden yellow in late Autumn, contrasting well with the deep brown, nearly black bark. Each: 6 to 8 ft. \$1.50, 8 to 10 ft. \$2.00.
- Schwedler Maple** (*A. platanoides schwedleri*). 50 to 70 ft. Easily grown, with young leaves bright red, turning purplish green in Summer and brightening again in the Fall. Splendid lawn specimen. Each: 6 to 8 ft. \$2.00, 8 to 10 ft. \$3.00.
- Silver Maple** (*A. dasycarpum*). 70 to 80 ft. A quick growing and graceful shade tree. Popular for specimen or street planting, with leaves silver on under side. Each: 6 to 8 ft. 85c, 8 to 10 ft. \$1.25.
- Sugar Maple** (*A. saccharum*). 80 to 100 ft. Tallest of Maples, with lovely red, orange and yellow Fall foliage. Each: 6 to 8 ft. \$1.50, 8 to 10 ft. \$2.00.

MOUNTAIN-ASH (*Sorbus*)

- European Mountain-ash** (*Sorbus aucuparia*). 25 to 30 ft. Birds love the huge clusters of orange-scarlet fruit, from July to Winter. Each: 8 to 10 ft. \$2.75.

MULBERRY (*Morus*)

- Weeping Mulberry** (*Morus alba pendula*). 8 to 10 ft. Long, graceful green branches droop to the ground from the umbrella-shaped head. Improves with age. Splendid trees with well developed tops. Each \$2.50.

OAK (*Quercus*)

Symbols of rugged beauty through the ages.

- Pin Oak** (*Q. palustris*). 70 to 80 ft. Quickly assumes majestic proportions, with a symmetrical pyramidal head of deeply cut, shiny foliage which turns a rich scarlet in the Fall. Long-lived, popular, and the best Oak for street or lawn. Each: 5 to 6 ft. \$1.25, 6 to 8 ft. \$1.75, 8 to 10 ft. \$2.50.
- Red Oak** (*Q. rubra*). 70 to 80 ft. Rapid in growth, with wide spreading branches, good for shade. The attractive leaves, mottled with Fall crimson, remain until Spring. Each: 6 to 8 ft. \$2.75, 8 to 10 ft. \$4.00.
- Scarlet Oak** (*Q. coccinea*). 75 to 90 ft. Very handsome, with a rounded head of spreading branches, covered with foliage that takes on brilliant scarlet coloring in the Fall. Each: 6 to 8 ft. \$3.00, 8 to 10 ft. \$4.50.

PLANE (*Platanus*)

- Oriental Plane** (*Platanus orientalis*). 75 ft. Popular in this vicinity (though we miscall them Sycamores) these rapid growing trees are impressive in a street or seashore planting, with a broad rounded head on a thick trunk. Each: 6 to 8 ft. \$1.50, 8 to 10 ft. \$2.00.

PLUM (*Prunus*)

- Newport Purpleleaf Plum** (*Prunus pissardi* "Newport"). 12 to 15 ft. An exotic lawn tree with unusual and beautiful purple foliage. Each: 5 to 6 ft. \$1.50.

POPLAR (*Populus*)

- Carolina Poplar** (*P. monilifera*). 75 to 90 ft. Adaptable and rapid-growing, with gray green bark and heart shaped foliage. Each: 5 to 6 ft. 60c, 6 to 8 ft. 75c, 8 to 10 ft. \$1.00.
- Lombardy Poplar** (*P. nigra italica*). 60 to 80 ft. Unique among trees, the Lombardy Poplar rises, a tall, slender spire of green, excellent for an accent plant or a tall screen. Best and most popular of the family. Each: 5 to 6 ft. 50c, 6 to 8 ft. 75c, 8 to 10 ft. \$1.00.

REDBUD (*Cercis*)

- Chinese Redbud** (*Cercis chinensis*). 10 to 15 ft. Compact tree, with large blossoms of deepest pink before the foliage appears, in Spring. Plant with Dogwood, Cedars or Hemlock for a lovely effect. Each: 2 to 3 ft. \$1.25, 3 to 4 ft. \$1.75, 4 to 5 ft. \$2.50.

SOURWOOD (*Oxydendrum*)

- Sourwood** (*Oxydendrum arboreum*). 30 to 35 ft. Handsome year-round tree, with long bunches of white Summer flowers, followed by gray fruits and scarlet foliage in early Fall. Each: 3 to 4 ft. \$1.25, 4 to 5 ft. \$1.75, 5 to 6 ft. \$2.50.

WILLOW (*Salix*)

Most graceful of all our trees.

- Babylon Weeping Willow** (*S. babylonica*). 50 to 60 ft. Familiar along the banks of streams with its long, whip-like branches drooping to the ground. Each: 6 to 8 ft. \$1.50, 8 to 10 ft. \$2.50.
- Niobe Weeping Willow**. 30 to 40 ft. Hardest golden Willow for the North, with slender green and silver leaves upon its rich deep golden twigs and bark. Each: 6 to 8 ft. \$1.50, 8 to 10 ft. \$2.50.



Weeping Willow



Berries of Mountain Ash

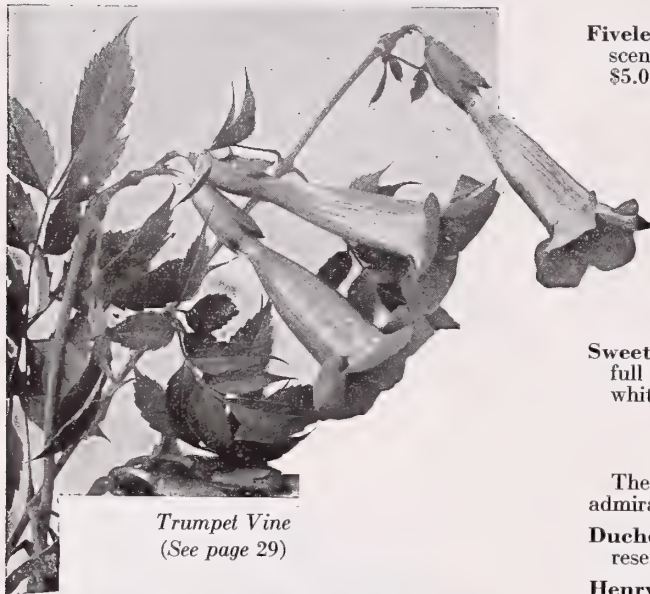


Norway Maple

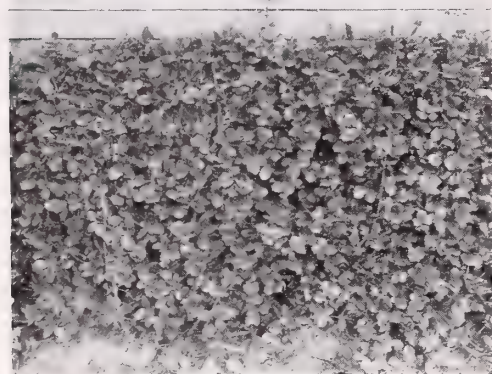
(Shipment by express or freight only; not by parcel post)

VINES

To change the monotony of barren walls into living pictures of insurpassable beauty.



Trumpet Vine
(See page 29)



Wintercreeper (See page 29)



Clematis Jackmani

AKEBIA

Fiveleaf Akebia (*Akebia quinata*). 15 to 20 ft. Violet-brown, cinnamon-scented flowers in late Spring. Graceful and hardy. 2 yrs., each 50c, doz. \$5.00, 100 \$35.00.

BITTERSWEET (*Celastrus*)

American B. (*C. scandens*). 20 ft. Shiny, rounded green leaves, holding fruit of a most intense scarlet orange. 2 yrs., each 50c, doz. \$5.00, 100 \$35.00.

Oriental B. (*C. orbiculatus*). 30 ft. Even more vigorous than the above sort, with clusters of bright red and yellow fruits, good for household ornaments. 2 yrs., each 50c, doz. \$5.00, 100 \$35.00.

CLEMATIS

Sweet Autumn Clematis (*C. paniculata*). 20 to 30 ft. Quickly attains its full height, and spreads rapidly, being covered in late Summer with pure white flowers like stars. 2 yrs., each 40c, doz. \$4.00, 100 \$25.00.

CLEMATIS, LARGE FLOWERED

The startling beauty of these large flowers will make all passersby gaze in admiration.

Duchess of Edinburgh. Good for pillars, with great double white flowers, resembling Gardenias.

Henryi. 10 to 12 ft. Mammoth blooms of a pure ivory white through the Summer months.

Jackmani. 10 to 12 ft. Best known of the large-flowered sorts, with great, purple Summer flowers, very showy.

Mme. Edouard Andre. 7 to 8 ft. An overwhelming producer of red flowers with rounded petals. Gorgeous in full bloom.

Ramona. 10 to 12 ft. Flowers with lavender-blue petals accentuated by deeper anthers, bury the foliage of this vigorous sort in Summer.

Texensis. Urnshaped, rosy scarlet flowers, unusual, but always lovely, grace this native Clematis, which is best when trailing over a fence or stone wall.

Strong vines, each 75c, doz. \$7.50

HONEYSUCKLE, CLIMBING (*Lonicera*)

Irresistible in beauty and fragrance.

Goldflame H. (*L. heckrotti* "Goldflame"). 15 to 20 ft. A gorgeous new Honeysuckle which we are more than proud to include in this catalog. Lovely and fragrant two-toned flowers, bright flame-pink on their exteriors, and creamy gold within are borne in great quantities from early Spring until frost. This sort may be sheared to make a glorious flowering hedge. 2 yrs., each 75c, doz. \$7.50.

Hall Japanese H. (*L. halliana*). 15 to 25 ft. Quick growing, with a great many deliciously fragrant flowers which open pure white and turn buff with age, in June and sparingly thereafter. 2 yrs., each 30c, doz. \$3.00, 100 \$20.00.

Scarlet Trumpet H. (*L. sempervirens*). 15 to 20 ft. Showy orange flowers in profusion stand out well against the deep green foliage of this lovely sort. 2 yrs., each 35c, doz. \$3.50, 100 \$25.00.

HYDRANGEA

Climbing Hydrangea (*H. petiolaris*). 35 to 40 ft. Lovely and vigorous vines, with bright green foliage, large and round, effectively shingling a wall. Carries an abundance of fragrant white flowers in early Spring. 3 yrs., each \$1.50, doz. \$15.00.

Brooklyn, N. Y.
10-21-37

Some twenty-five years ago I purchased some of your fruit trees, and they are still carrying on.

Frank Stoll,
Brooklyn Botanic Garden.

(Add 10% to your remittance if shipment is desired by parcel post)

IVY

Boston Ivy (*Ampelopsis veitchii*). 45 to 50 ft. Most popular vine we list, clinging without support to any type of wall. Handsome deep green foliage turns bright scarlet and yellow in the Fall, overlapping like shingles on brick, wood or stone. 2 yrs., each 50c, doz. \$5.00, 100 \$35.00.

English Ivy (*Hedera helix*). 40 to 50 ft. Hardy evergreen, good for vine or ground cover, with bright, attractive foliage. Strong plants from 3 inch pots, each 35c, doz. \$3.50, 100 \$25.00.

JASMINE (*Jasminum*)

Winter Jasmine (*Jasminum nudiflorum*). 4 to 5 ft. Best on a sunny wall with yellow star-like flowers in early Spring. (Protect North of Trenton, N. J.) 2 yrs., each 60c, doz. \$6.00.

KUDZU VINE (*Pueraria thunbergiana*)

Kudzu Vine (*Pueraria thunbergiana*). 30 ft. Most rapid growing vine we know, with big rounded dense green leaves, and rosy-purple flowers in August racemes. Good for shading porches. Selected, 3 yrs., each 30c, doz. \$3.00, 100 \$20.00.

MATRIMONY-VINE (*Lycium*)

Matrimony-Vine (*Lycium barbarum*). 10 to 12 ft. Violet flowers in June, followed by conspicuous red fruits. Good for banks. 2 yrs., each 30c, doz. \$3.00, 100 \$20.00.

PERIWINKLE (*Vinca minor*)

Periwinkle (*Vinca minor*). 4 in. An evergreen ground cover with delicate lilac blue flowers in Spring. Best in shade. Strong plants from pots, each 25c, doz. \$2.50, 100 \$15.00.

SILVER LACE VINE (*Polygonum*)

Silver Lace Vine (*Polygonum auberti*). 12 to 15 ft. Big, foamy sprays of silver white flowers are produced in unequalled abundance throughout the Summer and Fall on a vine that is vigorous and quick in growth. An unquestioned beauty which will make you catch your breath. 2 yrs., each 50c, doz. \$5.00, 100 \$35.00.

SWEET PEA VINE (*Lathyrus*)

Equally beautiful as vines or perennial plants.

Perennial Sweet Pea (*L. latifolius*). Deep rosy red flowers in June on a prostrate plant with climbing tendencies.

Pink Beauty. A lovely sort, with large racemes of pleasing rose pink blooms throughout the Summer.

White Pearl. Best of the white-flowered, hardy Sweet Peas.

All varieties, 2 yrs., each 30c, doz. \$3.00, 100 \$20.00.

TRUMPET VINE (*Bignonia*)

Trumpet Vine (*Bignonia radicans*). 30 to 40 ft. Robust, with scarlet-orange floral trumpets in July. 2 yrs., each 30c, doz. \$3.00, 100 \$20.00.

VIRGINIA CREEPER (*Ampelopsis*)

Virginia Creeper (*Ampelopsis quinquefolia*). 35 to 45 ft. Most charming of our native vines, this vigorous grower holds lovely leaves which turn bright crimson in the Fall. 2 yrs., each 30c, doz. \$3.00, 100 \$20.00.

WINTERCREEPER (*Euonymus*)

Bigleaf Wintercreeper (*Euonymus radicans vegetus*). 10 to 12 ft. Evergreen, with showy, yellow-podded red fruit in Winter. Hardy and reliable. 2 yrs., each 60c, doz. \$6.00.

WISTERIA

The Orient's most charming vines.

Chinese W. (*W. sinensis*). 40 to 50 ft. Rapid growing, with soft, dainty, lavender-blue flowers, highly perfumed, in May, borne in long pendulous racemes. 2 yrs., each 50c, doz. \$5.00, 100 \$35.00; extra strong, 3 yrs., each 75c, doz. \$7.50.

White Chinese W. (*W. s. alba*). 40 to 50 ft. White-flowered form of the Chinese Wisteria, equally dainty and glamorous. 2 yrs., each 60c, doz. \$6.00; 3 yrs., each 90c, doz. \$9.00.

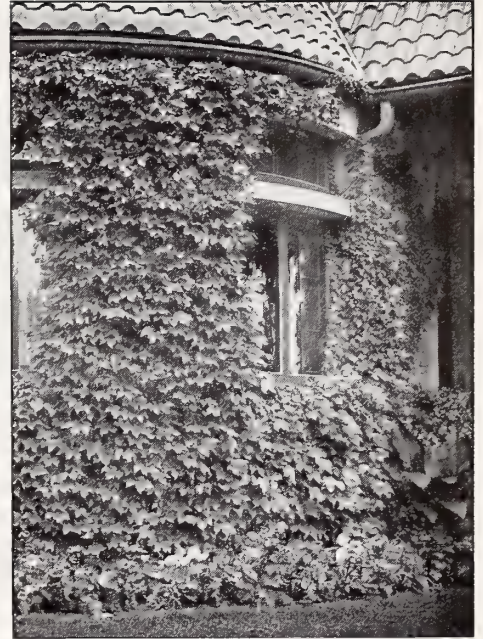
GORGEOUS NEW WISTERIAS

Will add perfection to porch, trellis or pergola.

Rosy Weeping Wisteria (*W. multi-juga rosea*). 35 to 50 ft. Fragrant clear pink flowers in big racemes from 1½ to 2 ft. in length, in late Spring. 3 yrs., each \$1.00, doz. \$10.00.

Long-clustered Pink Wisteria (*W. floribunda rosea*). 30 to 40 ft. Exceedingly long pink clusters for the early Summer. 3 yrs., each \$1.50, doz. \$15.00.

Long-clustered White Wisteria (*W. floribunda shironoda*). 30 to 40 ft. Graced by many long clusters of attractive white bloom, fairy-like in its dainty grace in May and June. 3 yrs., each \$1.50, doz. \$15.00.

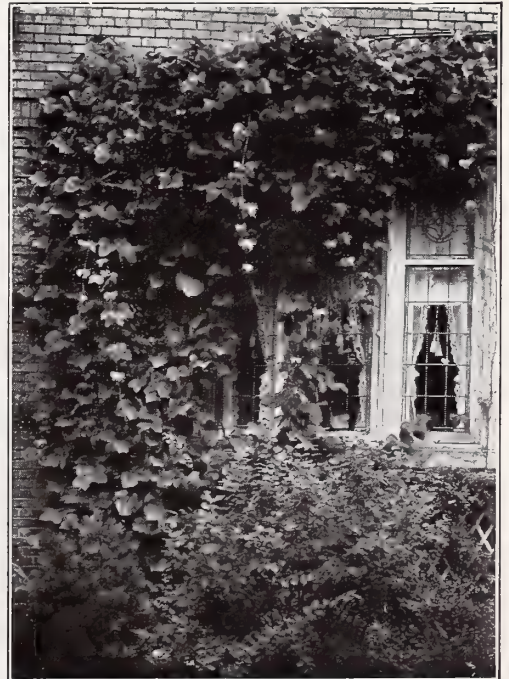


Boston Ivy

Cleveland, Ohio.
12-1-37

The shipment of November 23rd arrived today. All the trees came out fine. Thank you kindly.

Mrs. Lillie Peterson.



Kudzu Vine

HARDY HEDGE PLANTS

To frame adequately the lovely picture of your home.

BARBERRY (*Berberis*)

Most useful of the Nursery's products.

TWO OUTSTANDING NEW BARBERRIES

MENTOR BARBERRY (*Berberis mentorensis*) (U. S. Plant Patent No. 99)

This practically evergreen Barberry, with its abundant foliage hanging on all Winter, unless unusual severity of weather is experienced, is also more adaptable to intense heat and drought than is any other hedge plant we list. Its upright growth requires no pruning and carries the deep green foliage right down to the ground, and its thorny growth forms a formidable barrier to man or beast when it is used for a hedge. It is truly the lazy man's Barberry, needing no care when planted, and quite indifferent as to soil or climate.

	3	Doz.	100
12 to 15 in.	\$1.40	\$4.00	\$25.00
15 to 18 in.	1.50	4.50	30.00
18 to 24 in.	2.00	6.00	40.00
24 to 30 in.	2.60	7.25	50.00

TRUEHEDGE COLUMNBERRY

(*B. thunbergi pluriflora erecta*)
(U. S. Plant Patent No. 110)

Many competent nurserymen consider the Truehedge Columnberry to be the most valuable horticultural discovery of this decade. Brought out only three years ago, its worth was immediately realized, and the plants are selling at premium prices in nursery circles. The plant resembles Barberry only in the individual leaves. It is infinitely more compact and leafy than the older sort, and lends itself willingly to formal shearing, of which one treatment will be sufficient, since the plant itself is quite formal in appearance. It, too, is much more erect in growth than is Japanese Barberry, which sometimes becomes sprawling if not carefully and frequently trimmed. Also, its hardiness and adaptability are greater than those of its parent, and altogether it is much more desirable in every way. Be the first to try this sensational hedge plant in your neighborhood, for you won't be the last.

	Each	5	25	100
9 to 12 in. . . .	\$.30	\$1.25	\$ 5.00	\$18.00
12 to 15 in.35	1.45	6.00	22.00
15 to 18 in.45	1.75	7.50	28.00
18 to 24 in.60	2.25	9.75	36.00
2 to 2½ ft.75	3.00	13.75	50.00



Japanese Barberry

Japanese B. (*B. thunbergi*). 3 to 4 ft. Ideal and most popular for a low, dense hedge, with slender arching branches, graceful yet compact. Carries a wealth of beautiful scarlet berries through the Winter and takes on a rich, Autumnal shade of red. Most hardy, and requires little pruning. For a hedge, set plants 12 in. apart.

The following prices refer to splendid transplanted plants.

	Doz.	100	1000
3 yrs. 9 to 12 in.	\$1.25	\$ 8.00	\$ 65.00
3 yrs. 12 to 18 in.	2.00	12.00	90.00
5 yrs. 18 to 24 in.	2.75	17.50	150.00
5 yrs. 2 to 2½ ft.	3.75	25.00	200.00

Redleaf Japanese B. (*B. thunbergi atropurpurea*)—See under "Shrubs," page 19.

BOXWOOD (*Buxus*)

Boxwood (*B. sempervirens*)—See Evergreen Shrubs, page 23.

Boxooid (*B. semp. suffruticosa*)—See Evergreen Shrubs, page 23.

PRIVET (*Ligustrum*)

Most popular of all hedge plants, and a distinct specialty of our nursery.

Amur River North Privet (*L. amurense*). 15 ft. Hardest of the family, with handsome olive green foliage. Best hedge plant for severe climates.

	Doz.	100	1000
9 to 12 in.	\$.75	\$ 4.00	\$ 35.00
12 to 18 in.	1.00	6.00	50.00
18 to 24 in.	1.25	8.50	75.00
2 to 3 ft.	2.00	12.00	100.00
3 to 4 ft.	3.25	18.00	165.00

California Privet (*L. ovalifolium*). 10 ft. The popular hedge plant with glossy, deep green leaves, introduced by us as a hedge plant, in the early seventies and now more largely planted for ornamental hedges than any other shrub. Its strong, quick, upright growth adapts it singularly well for being grown as a barrier or to hide unsightly objects. Here at Little Silver, New Jersey, California Privet is very nearly evergreen.

	Doz.	100	1000
12 to 18 in.	\$.40	\$2.50	\$20.00
18 to 24 in.50	3.50	30.00
2 to 3 ft.65	4.50	40.00
3 to 4 ft.	1.00	7.00	65.00

Write for quotations covering large, bushy specimens, of which we have a splendid supply.

Ibodium Privet (*L. ibodium*). 10 ft. A cross between California and Ibota Privet, with the beauty of the former and the hardiness of the latter. A good, all-around hedge plant.

	Doz.	100	1000
9 to 12 in.	\$.50	\$3.50	\$30.00
12 to 18 in.80	5.50	45.00
18 to 24 in.	1.00	7.00	65.00
2 to 3 ft.	1.20	9.00	85.00

Note—A leaflet, giving instructions for the planting of Privet hedges will be mailed upon request.

FOR A "DIFFERENT" HEDGE

Any of the following will give you a hedge completely distinct, yet eminently suitable, and of amazing beauty:

Althaea (*Hibiscus syriacus*). See page 18.

Chenault Snowberry (*Symphoricarpos chenaulti*). See page 21.

Golden Privet (*Ligustrum ovalifolium aureum*). See page 21.

Hemlock (*Tsuga canadensis*). See page 32.

Japanese Holly (*Ilex crenata*). See page 24.

Rugosa Rose (*Rosa rugosa*). See page 5.

Vanhoutte Spirea (*Spiraea vanhouttei*). See page 22.

(Shipment by express or freight only; not by parcel post)



EVERGREEN TREES

NO other class of Nursery Stock can equal these evergreen specimens for year-round charm. Realizing this, we have long tried to produce just as perfect specimens as is possible, in all the immensely varied sorts below, be they tall columns, dwarf ovals, or creeping rockery-and-ground covers. Order a few this season, and you will agree with us as to their beauty, adaptability and hardiness.

(Our Evergreens are much too heavy for shipment by Parcel Post)

A dozen of any variety will be supplied for ten times the price of one, or six for five times the price of one.

ARBORVITAE (*Thuja or Biota*)

All of these lovely evergreens are greatly desired for specimens, groups, or mixed plantings.

American A. (*T. occidentalis*). 25 to 30 ft. Slender green pyramids, bronzy in Winter, excellent for a hedge, and especially good as accent plants. Each: 18 to 24 in. 75c, 2 to 3 ft. \$1.25, 3 to 4 ft. \$1.75, 4 to 5 ft. \$2.50, 5 to 6 ft. \$4.00, 6 to 8 ft. \$6.00.

Baker A. (*B. bakeri*). 6 to 8 ft. The ideal accent plant, a tall, compact column of beautiful green foliage, golden in Spring. New. Each: 15 to 18 in. 90c, 18 to 24 in. \$1.25, 2 to 2½ ft. \$1.75.

Berckman Golden A. (*B. aurea nana*). 3 to 4 ft. Compact oval, with golden foliage in vertical rows, in Spring, turning to a rich green through the Summer and Fall, and to reddish brown, tipped with gold, in Winter. Ideal for edging, and in great demand for window boxes and formal plantings. Each: 6 to 9 in. 60c, 9 to 12 in. 75c, 12 to 15 in. \$1.00, 15 to 18 in. \$1.35, 18 to 24 in. \$1.75, 2 to 2½ ft. \$2.75.

Bonita A. (*B. bonita*). 3 to 3½ ft. Another new evergreen which we welcome to our list; nearly globular, with rich, deep green foliage. Each: 9 to 12 in. 75c, 12 to 15 in. \$1.00.

Excelsa A. (*B. excelsa*). 20 ft. Very hardy are these columnar ovals of flat, fan-like, vertical, dark green branches, closely pressed together. The tree becomes, in time, a bushy, broad pyramid. Each: 15 to 18 in. 90c, 18 to 24 in. \$1.25, 2 to 2½ ft. \$1.75.

George Peabody A. (*T. occ. lutea*). 12 to 15 ft. Formal, shapely columns of lovely dense golden foliage. Each: 2 to 3 ft. \$1.50, 3 to 4 ft. \$2.00, 4 to 5 ft. \$3.00, 5 to 6 ft. \$4.50.

Globe A. (*T. occ. globosa*). 2½ to 3 ft. Any formal planting is incomplete without some of these beautiful, dense, green globes, which require no trimming. Each: 12 to 15 in. 85c, 15 to 18 in. \$1.25, 18 to 24 in. \$1.50.

Goldentipped A. (*T. occ. elegantissima*). 12 to 15 ft. Shapely, broad-based pyramids of lustrous green, tipped with gold in Spring. Each: 18 to 24 in. \$1.00, 2 to 3 ft. \$1.50, 3 to 4 ft. \$2.00.

Parson A. (*T. occ. compacta*). 4 to 5 ft. Longlived specimens, nearly spherical in shape, with bright green, attractive foliage. Each: 9 to 12 in. 60c, 12 to 15 in. 85c, 15 to 18 in. \$1.25, 18 to 24 in. \$1.50, 2 to 2½ ft. \$1.75.

Pyramidal A. (*T. occ. pyramidalis*). 25 ft. Popular old favorites, these rich green spires, narrow and formal, were often used to flank colonial stoops. Retain their color well. We have long specialized in the production of these best of accent plants. Each: 2 to 2½ ft. \$1.35, 2½ to 3 ft. \$1.90, 3 to 4 ft. \$2.65, 4 to 5 ft. \$3.25, 5 to 6 ft. \$4.50.

Rosenthal A. (*T. occ. rosenthali*). 8 to 10 ft. Slow growing, becoming more ruggedly picturesque with age, are these lustrous, deep green columns. Each: 2 to 2½ ft. \$1.50, 2½ to 3 ft. \$2.25, 3 to 4 ft. \$3.00, 4 to 5 ft. \$3.75.

Spiral A. (*T. occ. spiralis*). 20 to 25 ft. Narrow pyramids, with their branches covered with curiously curved and twisted fern-like foliage of shiny green, absolutely distinct. Each: 2½ to 3 ft. \$2.25, 3 to 4 ft. \$3.00, 4 to 5 ft. \$3.75.

Vervaeene A. (*T. occ. vervaeneana*). 10 to 12 ft. Broad pyramids of yellow-green foliage, bronze in Winter. Each: 18 to 24 in. \$1.00, 2 to 2½ ft. \$1.25, 2½ to 3 ft. \$1.50, 3 to 4 ft. \$2.00, 4 to 5 ft. \$2.75.

Ware A. (*T. occ. wareana*). 12 to 15 ft. Broadly pyramidal, with rich deep blue green foliage. This Siberian evergreen, hardiest of all, will make a lovely hedge. Each: 15 to 18 in. 75c, 18 to 24 in. \$1.00, 2 to 2½ ft. \$1.50, 2½ to 3 ft. \$2.00, 3 to 4 ft. \$2.50.

CEDAR (*Cedrus*)

Blue Atlas Cedar (*Cedrus atlantica glauca*). 60 to 70 ft. Slow growing specimen which merits a featured spot on your lawn. Becomes an erect, wide-spreading pyramid of glittering silver blue foliage. Each: 3 to 3½ ft. \$6.00, 3½ to 4 ft. \$7.00, 4 to 5 ft. \$8.50, 5 to 6 ft. \$10.00.

CRYPTOMERIA

Cave Cryptomeria (*C. lobbi compacta*). 30 ft. Wide, picturesque columns of deep green foliage, turning purple bronze in Winter. Good specimens and lovely in a mass planting. Each: 5 to 6 ft. \$6.00, 6 to 8 ft. \$8.00, 8 to 10 ft. \$12.50, 10 to 12 ft. \$17.50.



Berckman Golden Arborvitae



Golden Sawara Cypress



Golden Thread Cypress



Canada Hemlock

CYPRESS (*Retinospora* or *Chamaecyparis*)

Best of the lawn aristocrats.

- Cripps Golden C.** (*R. obtusa crippsi*). 10 to 12 ft. Among the best of specimen evergreens, with lovely lemon-yellow-to-gold foliage. Graceful, hardy, and ideal as a contrast plant. Each: 15 to 18 in. \$1.50, 18 to 24 in. \$2.00, 2 to 2½ ft. \$3.00, 2½ to 3 ft. \$4.00.
- Dwarf Hinoki C.** (*R. obtusa nana*). 2 ft. Richest in appearance of all the dwarf evergreens, with lovely "fans" of deep green foliage. Excellent for rockery, lovely in pots, and a wonderful low hedge plant. Each: 6 to 9 in. \$1.25, 9 to 12 in. \$1.75, 12 to 15 in. \$2.50, 15 to 18 in. \$3.00.
- Dwarf Yellow Plume C.** (*R. pisifera plumosa lutescens*). 3 to 4 ft. Round-topped bush, low and broad, with bright sulphur-tipped branches. Good for foundations. Each: 6 to 9 in. 60c, 9 to 12 in. 75c, 12 to 15 in. 90c, 15 to 18 in. \$1.25.
- Fleshy Hinoki C.** (*R. obtusa magnifica*). 8 to 10 ft. Vigorous and amazingly handsome specimens, with lustrous green, fleshy leaves. Each: 2 to 3 ft. \$2.50, 3 to 4 ft. \$3.50, 4 to 5 ft. \$4.50, 5 to 6 ft. \$6.50, 6 to 8 ft. \$8.50.
- Gold Dust C.** (*R. pisifera plumosa aurea lovetti*). 20 to 25 ft. Glorified form of the Goldenplume Cypress, with what appears to be a sheen of pure gold dust overlying its beautiful foliage. Probably the best of all evergreens for a lawn specimen. Each: 9 to 12 in. 75c, 12 to 18 in. \$1.00, 18 to 24 in. \$1.50, 2 to 2½ ft. \$2.00, 2½ to 3 ft. \$2.50, 3 to 4 ft. \$3.50.
- Golden Plume C.** (*R. pis. plum. aurea*). 25 to 30 ft. Warm plumes of gold, easily trimmed, make this perfect for contrast plant, specimen, or hedge. Each: 15 to 18 in. 80c, 18 to 24 in. \$1.00, 2 to 2½ ft. \$1.50, 2½ to 3 ft. \$2.00, 3 to 4 ft. \$2.50, 4 to 5 ft. \$3.50, 5 to 6 ft. \$4.75.
- Golden Sawara C.** (*R. pis. aurea*). 25 to 35 ft. Gorgeous as a specimen or contrast plant, with lacy golden foliage on a loose broadly pyramidal tree. Each: 18 to 24 in. \$1.00, 2 to 2½ ft. \$1.50, 2½ to 3 ft. \$2.00, 3 to 4 ft. \$2.50.
- Golden Thread C.** (*R. pis. filifera aurea*). 10 to 12 ft. Slow growing and very graceful, with slender, drooping branches of bright golden hue. Another excellent specimen evergreen. Each: 15 to 18 in. \$1.50, 18 to 24 in. \$2.50, 2 to 2½ ft. \$3.50, 2½ to 3 ft. \$4.50, 3 to 4 ft. \$6.00.
- Lawson C.** (*Cupressus lawsoniana*). 100 ft. Graceful and gorgeous specimens with horizontal, usually drooping branches, covered with bluish green foliage. Each: 2 to 2½ ft. \$2.00, 2½ to 3 ft. \$2.50, 3 to 4 ft. \$3.00, 4 to 5 ft. \$3.75.
- Moss C.** (*R. squarrosa veitchi*). 25 to 30 ft. A billowy pyramid of amazingly soft violet-gray foliage, giving it a hazy, woolly appearance. Each: 12 to 18 in. 75c, 18 to 24 in. \$1.00, 2 to 2½ ft. \$1.50, 2½ to 3 ft. \$2.00, 3 to 4 ft. \$3.00.
- Plume C.** (*R. pis. plumosa*). 25 to 35 ft. Soft, feathery pyramids of light green foliage, which resembles that of a fern. A distinctive hedge plant. Each: 15 to 18 in. 80c, 18 to 24 in. \$1.00, 2 to 2½ ft. \$1.50, 2½ to 3 ft. \$1.75, 3 to 4 ft. \$2.50, 4 to 5 ft. \$3.50, 5 to 6 ft. \$4.75.
- Sawara C.** (*R. pisifera*). 25 to 35 ft. The hardy father of all the Sawara types is this rapid growing broad pyramid of lacy, pale green foliage. Good for formal clipping. Each: 18 to 24 in. \$1.00, 2 to 2½ ft. \$1.50, 2½ to 3 ft. \$1.75, 3 to 4 ft. \$2.50, 4 to 5 ft. \$3.50, 5 to 6 ft. \$4.75.
- Thread C.** (*R. pisifera filifera*). 15 to 20 ft. Long, thread-like, drooping branches covered with decorative bright green foliage. Each: 18 to 24 in. \$1.25, 2 to 3 ft. \$2.00, 3 to 4 ft. \$3.00, 4 to 5 ft. \$4.00, 5 to 6 ft. \$5.50.

FIR

Majestic lawn specimens with gray-green foliage.

- Douglas Fir** (*Pseudotsuga douglasi*). 75 to 80 ft. Always handsome are these natives of our Rockies; tall hardy pyramids of grayish foliage. Each: 3 to 4 ft. \$2.25, 4 to 5 ft. \$3.50, 5 to 6 ft. \$4.50.
- White F.** (*Abies concolor*). 60 to 70 ft. Good specimen pyramidal tree, with increasingly lovely glaucous foliage. Perfect for accents, and excellent in drought and in city conditions. Each: 2 to 2½ ft. \$2.00, 2½ to 3 ft. \$3.00, 3 to 4 ft. \$4.50, 4 to 5 ft. \$6.50, 5 to 6 ft. \$8.00.

HEMLOCK (*Tsuga*)

Most graceful of our native evergreens.

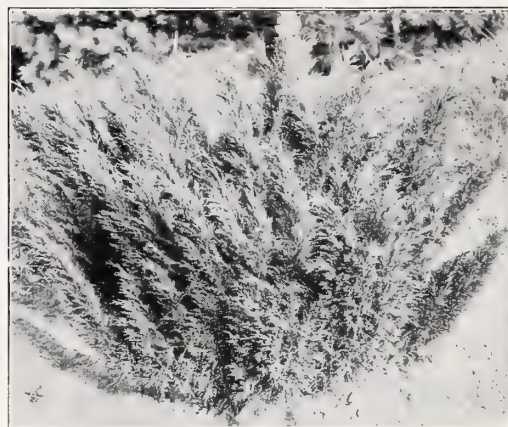
- Canada Hemlock** (*T. canadensis*). 75 to 85 ft. Magnificent trees, hardy and rapid growing, graceful and adaptable, and perfect for a specimen planting or a clipped hedge, with spreading horizontal branches of rich, deep green foliage. Each: 18 to 24 in. \$1.25, 2 to 2½ ft. \$1.75, 2½ to 3 ft. \$2.50, 3 to 4 ft. \$3.50, 4 to 5 ft. \$4.50, 5 to 6 ft. \$7.00, 6 to 8 ft. \$9.50.
- Sargent Weeping Hemlock** (*T. canadensis pendula*). 7 to 8 ft. Decidedly pendulous, with slender branches covered with rich green foliage. One of the best of all evergreen trees for a lawn specimen. Each: 18 to 24 in. spread \$4.50, 2 to 2½ ft. spread \$6.00, 2½ to 3 ft. spread \$8.50, 3 to 4 ft. spread \$12.00.

(Our Evergreens are much too heavy for shipment by parcel post)

JUNIPER (*Juniperus*)

Most popular and varied of the evergreen family.

- Burk Cedar** (*Juniperus virginiana burkii*). 10 to 12 ft. Shapely, dense column of gray-blue foliage with metallic purple coloring in Winter. Thoroughly lovely as a lawn specimen. Each: 2 to 3 ft. \$2.50, 3 to 4 ft. \$3.25.
- Cannart Redcedar** (*J. virg. cannarti*). 12 to 15 ft. Aristocratic specimens are these dense columns of black-green foliage, with steely blue berries in Autumn. Each: 2 to 2½ ft. \$2.00, 2½ to 3 ft. \$2.50, 3 to 4 ft. \$3.25.
- Columnar Chinese Juniper** (*J. chinensis columnaris*). 15 to 20 ft. A beautiful lawn sentinel which becomes a tall, narrow spire of deep grayish green foliage. If trimmed annually, lovely, compact specimens may be produced. Each: 2½ to 3 ft. \$2.00, 3 to 4 ft. \$3.00, 4 to 5 ft. \$4.00.
- Golden J.** (*J. communis aurea*). 2 ft. Good rockery or foundation plant, with bright golden foliage on low, spreading branches. Each: 15 to 18 in. spread \$1.00, 18 to 24 in. spread \$1.50, 2 to 2½ ft. spread \$2.25, 2½ to 3 ft. spread \$3.00.
- Goldtip Redcedar** (*J. virg. elegantissima*). 15 ft. A lovely pyramid of yellow tipped foliage, turning deep bronze as Fall wanes. Each: 2 to 2½ ft. \$2.00, 2½ to 3 ft. \$2.50, 3 to 4 ft. \$3.50, 4 to 5 ft. \$5.00.
- Green Column J.** (*J. chin. columnaris viridis*). 15 to 20 ft. Lovely light green form of Columnar Chinese Juniper, a bit slower in growth. Each: 2½ to 3 ft. \$2.00, 3 to 4 ft. \$3.00, 4 to 5 ft. \$4.00.
- Irish J.** (*J. hibernica*). 7 to 8 ft. Narrow, dense columns of bluish green foliage, compact and rigidly erect. Old favorites for accent plants and as boundaries for a formal garden. Each: 18 to 24 in. 75c, 2 to 2½ ft. \$1.25, 2½ to 3 ft. \$1.75, 3 to 4 ft. \$2.50, 4 to 5 ft. \$3.50, 5 to 6 ft. \$4.25.
- Meyer J.** (*J. squamata meyeri*). 3 to 4 ft. Upright and very dense, with unusual foliage of a silvery blue hue, stiff and irregular. A perfect rock garden plant and a splendid specimen because of its bizarre appearance. Each: 15 to 18 in. \$1.50, 18 to 24 in. \$2.00, 2 to 2½ ft. \$2.75, 2½ to 3 ft. \$4.00, 3 to 4 ft. \$5.00.
- Pfitzer J.** (*J. chin. pfitzeriana*). 5 to 6 ft. Most popular and satisfactory of the vase-shaped Junipers, with feathery gray green foliage. Withstands a city's dust and smoke, and is at home alike in a mass or a mixed planting. Each: 15 to 18 in. spread \$1.50, 18 to 24 in. spread \$2.00, 2 to 2½ ft. spread \$3.00, 2½ to 3 ft. spread \$3.50, 3 to 4 ft. spread \$4.50.
- Plumed Spreading J.** (*J. communis depressa plumosa*). 1 ft. Unusual prostrate evergreen with bright green foliage which turns an intense reddish purple in Winter, making it ideal as a contrast or rockery plant. Each: 15 to 18 in. spread \$1.25, 18 to 24 in. spread \$1.75, 2 to 2½ ft. spread \$2.50, 2½ to 3 ft. spread \$3.00.
- Savin J.** (*J. sabina*). 3 to 4 ft. Good for exposures or city planting, with spreading branches covered by dense, deepest green foliage. Each: 18 to 24 in. \$1.75, 2 to 2½ ft. \$2.50.
- Silver Redcedar** (*J. virg. glauca*). 15 to 20 ft. Good alike for specimens or for contrast plants are these narrow irregular columns of "frosted" blue-gray foliage. Each 3 to 3½ ft. \$2.50, 3½ to 4 ft. \$3.00, 4 to 5 ft. \$4.00, 5 to 6 ft. \$5.50, 6 to 8 ft. \$7.50.
- Spiny Greek J.** (*J. excelsa stricta*). 4 to 5 ft. A shapely, broad, compact pyramid of stiff, erect branchlets, which carry light, gray green foliage. Good for formal work and mixed plantings, and very popular. Each: 9 to 12 in. 75c, 12 to 15 in. 90c, 15 to 18 in. \$1.25, 18 to 24 in. \$1.50, 2 to 2½ ft. \$2.00, 2½ to 3 ft. \$2.75.
- Swedish J.** (*J. communis suecica*). 15 to 20 ft. Quickly grows to a narrow compact column of smoky light green foliage. Each: 15 to 18 in. \$1.00, 18 to 24 in. \$1.50, 2 to 2½ ft. \$2.00.
- Whiteleaf Chinese J.** (*J. chin. albariegata*). 7 to 8 ft. Stocky pyramids of pale blue-gray, interspersed with creamy white branches. Each: 12 to 15 in. 80c, 15 to 18 in. \$1.10, 18 to 24 in. \$1.50.



Savin Juniper



Burk Cedar

Irish Juniper

PINE (*Pinus*)

Majestic rulers of the evergreen empire.

- Austrian P.** (*P. nigra austriaca*). 60 to 70 ft. Upward curving boughs are covered with stiff dark green needles. Ideal for city or seashore planting, being indifferent to salt air or smoke. Each: 2 to 3 ft. \$2.50, 3 to 4 ft. \$3.50.
- Mugho P.** (*P. montana mughus*). 2½ to 3 ft. Dwarf round-topped cushion-like bushes of bright green needles, invaluable for rockery or low border. Each: 18 to 24 in. spread \$2.00, 2 to 2½ ft. spread \$3.00, 2½ to 3 ft. spread \$4.50.
- Scotch P.** (*P. sylvestris*). 60 to 70 ft. Most ruggedly picturesque of the family, with blue green, twisted needles. A European favorite. Each: 3 to 4 ft. \$2.50, 4 to 5 ft. \$3.50, 5 to 6 ft. \$5.00.
- Umbrella Pine** (*Sciadopitys verticillata*). 20 to 25 ft. Long, thick needles, arranged like umbrella ribs about the branches of this rare Pine make it a beautiful specimen evergreen, which succeeds universally if given drainage. Each: 18 to 24 in. \$6.00, 2 to 2½ ft. \$7.50, 2½ to 3 ft. \$9.50.



Dwarf Mugho Pine

(Our Evergreens are much too heavy for shipment by parcel post)



Japanese Yew



Japanese Treeform Yew



Koster Blue Spruce

SPRUCE (*Picea*)

Tall pyramids, handsome but not gross.

Colorado S. (*P. pungens*). 60 to 80 ft. Good bold pyramid with grayish green needles, handsome when young and picturesque when old. Adapted to seashore conditions. Each: 15 to 18 in. 75c, 18 to 24 in. \$1.00, 2 to 2½ ft. \$1.50, 2½ to 3 ft. \$2.00, 3 to 4 ft. \$2.50, 4 to 5 ft. \$4.00, 5 to 6 ft. \$6.00.

Colorado Blue S. (*P. pungens glauca*). 60 to 80 ft. Excellent, not only as a contrast tree with the above sort, but on its own merit. Its horizontal branches are simply covered with thick, steel-blue needles. Each: 15 to 18 in. \$1.25, 18 to 24 in. \$2.00, 2 to 2½ ft. \$2.75, 2½ to 3 ft. \$4.00, 3 to 4 ft. \$6.00, 4 to 5 ft. \$8.00, 5 to 6 ft. \$10.00.

Koster Blue S. (*P. pungens kosteri*). 50 to 70 ft. Most popular of all evergreen trees for a lawn specimen. This gracefully pendulous sort, with its foliage simply ideal in lovely blue coloring, has long been too expensive for the average purse. Now, however, it has come down to the reach of everyone, and you should no longer deprive yourself of the privilege and pleasure of possessing one or two of them—you owe it to your lawn. Each: 18 to 24 in. \$4.00, 2 to 2½ ft. \$6.00, 2½ to 3 ft. \$7.50, 3 to 4 ft. \$10.00, 4 to 5 ft. \$12.50, 5 to 6 ft. \$16.00, 6 to 7 ft. \$19.00.

Norway S. (*P. excelsa*). 80 to 100 ft. The popular Christmas tree, easily grown and amazingly hardy. Excellent for a windbreak, and good for a tall, green hedge. Each: 15 to 18 in. 50c, 18 to 24 in. 75c, 2 to 3 ft. \$1.00, 3 to 4 ft. \$1.75, 4 to 5 ft. \$3.00, 5 to 6 ft. \$4.00.

White S. (*P. canadensis*). 60 ft. Shapely, slow growing trees, exceptionally hardy and good for a seashore planting, with dense silvery foliage. Each: 15 to 18 in. 75c, 18 to 24 in. \$1.00, 2 to 2½ ft. \$1.50, 2½ to 3 ft. \$2.00, 3 to 4 ft. \$2.75.

YEW (*Taxus*)

Evergreen nobility, with deep, nearly black, foliage.

Hicks Y. (*T. media hicksi*). 8 to 10 ft. Good for hedge or accent plants are these narrow dark green columns, and extra fine in formal or "limited space" plantings. Extremely hardy. Each: 15 to 18 in. \$1.50, 18 to 24 in. \$2.00, 2 to 2½ ft. \$3.00, 2½ to 3 ft. \$5.00, 3 to 3½ ft. \$7.50, 3½ to 4 ft. \$9.50.

Hybrid Y. (*T. intermedia*). 12 to 15 ft. Compact and dense, this evergreen carries very deep, waxy green foliage, always shapely and colorful. Each: 12 to 15 in. \$1.65, 15 to 18 in. \$2.25, 18 to 24 in. \$3.50, 2 to 2½ ft. \$4.50.

Japanese Y. (*T. cuspidata*). 12 to 15 ft. Slow growing and most enduring, this spreading, bushy Yew is invaluable for foundation plantings or for an evergreen hedge, with its dark green leaves covered with bright crimson fruits in Autumn. Each: 15 to 18 in. \$1.75, 18 to 24 in. \$2.50, 2 to 2½ ft. \$3.50, 2½ to 3 ft. \$5.00, 3 to 4 ft. \$7.50.

Japanese Dwarf Y. (*T. cuspidata nana*). 4 to 5 ft. Best of all evergreens for your rockery, this dwarf form of the lovely Japanese Yew equals its parent in beauty. Leaves of blackish green, from which spring bright crimson fruit in Fall. Irregular and spreading in habit. Each: 9 to 12 in. \$1.40, 12 to 15 in. \$2.00, 15 to 18 in. \$2.75, 18 to 24 in. \$4.00.

Japanese Treeform Y. (*T. cusp. capitata*). 25 to 30 ft. Hardy and symmetrical pyramids, with brilliant scarlet fruits conspicuous against the black-green foliage, this sort makes a distinctive hedge and is particularly striking in Spring, when the young growth comes forth. Each: 18 to 24 in. \$3.00, 2 to 2½ ft. \$4.00, 2½ to 3 ft. \$5.50, 3 to 3½ ft. \$6.50, 3½ to 4 ft. \$8.00.



Norway Spruce



Ware Arborvitae (See page 31)

(Our Evergreens are much too heavy for shipment by parcel post)

FRUIT TREES

WELL grown fruit trees are now very scarce, and the opportunity to pick your own fresh fruit is rapidly disappearing. We still have a good quantity of the more popular and reliable sorts, but how long ours will last is another problem. So place your order early for some of these Better Fruit Trees, and we know that you'll never regret it.

In this catalog we are offering only those larger trees such as are ordinarily planted in home yards and gardens. Nevertheless, we will be very glad to submit attractive quotations to orchardists who are in the market for fairly large quantities of smaller trees, even trees only one year old. Send us a list of your requirements, and we will submit our surprisingly low prices on such material.

APPLE TREES

Most popular of all fruit trees, the Apple is at present in the shortest supply. Our list comprises the very best of varieties, however, and our individual trees have never been better.

All of the trees offered below are extra selected, extra heavy, 2-year-old stock. We can, however, supply a slightly lighter grade of tree (though equally well grown) which is even cheaper in price. If you will send us a list of your anticipated requirements in these trees, we will be glad to submit special prices on such a list.

Plant 30 feet apart each way, thus requiring 48 trees to set one acre.

Prices of all varieties, each \$1.00, doz. \$10.00, 100 \$75.00

- Arkansas Black.** Beautiful dark red Winter Apples, with luscious flesh.
Baldwin. Long the standard Winter Apple, with big, round, tasty fruit.
Delicious. A well named Apple tree with many big, handsome fruits, as delicious as those of any variety we know. The perfect dessert Apple, and one which has long headed every fruit growers list. Best in early Winter.
Gravenstein. Fall Apples striped red, with juicy rich flesh.
Grimes Golden. Yellow Apples, very tasty, and highly popular. Early Winter.
Hyslop Crabapple. Countless clusters of deep crimson Apples in the late Summer, excellent for jelly.
Jonathan. A splendid, brilliant red Apple for early Winter. Very highly flavored, attractive fruit, is produced in great quantities each year, on a long lived tree which bears when very young. One of the best buys in this catalog.
McIntosh. Popular late Fall red Apple, prolific, beautiful and delicious.
Northern Spy. Scarce sort, with many delicious and attractive Apples. Winter.
Rhode Island Greening. Mammoth, yellow-green Apples, with a red cheek. A delicious Winter sort.
Rome Beauty. Big, delicious red Winter Apples.
Stayman (Stayman Winesap). Best late Winter Apples, red, large, very juicy. As attractive to the eye as to the palate.
Wealthy. A good "keeper" and an excellent eating Apple for Fall.
Williams Early Red. Largest of all the early Summer red Apples.
Winter Banana. Golden Apples, with flavor reminiscent of the Banana; a splendid Winter variety.
Yellow Newtown. Delicious old Colonial Apple, with greenish yellow fruit in late Winter.
Yellow Transparent. Big, attractive, delicious yellow early Summer Apple.
York Imperial. Cooking Apples, by the hundreds. Winter.

PEAR TREES

A good ripe Pear cannot be surpassed for delicacy of flavor. Our trees are well selected for a maximum of tasty fruit.

Plant 20 ft. apart each way.

First-class trees, each \$1.25, doz. \$12.50, 100 \$90.00

- Anjou.** Produces a Fall crop of extra large green Pears with a red cheek, each fruit rivalling its fellows in delicious flavor.
Bartlett. Popular, with countless golden September Pears, each tastier than the last.
Beurre Bosc. Belgian sort with good Fall crop of yellow fruit, extra delicious and tinged crimson.
Clapp Favorite. Big, juicy fruit, green with blushed cheek, in early Summer.
Duchesse d'Angouleme. Many green and russet Pears, with lovely flavor, in the late Fall.
Kieffer. Most prolific of all Pear trees, with yellow fruit produced by the bushel in October.
Seckel. Best eating Pear for the Summer. Brownish yellow with red blush. Rather small but delicious.



Delicious



Stayman

DWARF PEAR TREES

Dwarf only in size of the tree itself, with fruit as large as that produced by the standard sorts, these lovely small trees come into bearing much sooner, and take up much less space than their larger cousins. Simply ideal for a suburban garden, where every bit of space is valuable. Plant 10 feet apart each way.

Splendid, 2-year-old trees, each \$1.50, doz. \$15.00

Bartlett **Duchess d'Angouleme**
Clapp Favorite **Seckel**

(For descriptions, see under "Pear Trees")

(Our Fruit Trees are much too large for shipment by parcel post)



Seckel Pear (See Page 35)



Elberta Peach



Reine Claude Plum

(Our Fruit Trees are much too large for shipment by parcel post)

CHERRY TREES

Here are the five best Cherry trees for the home garden—and don't miss that sensational new Fall-bearing sort—**Sweet September**. Plant sweet varieties 25 feet apart, sour ones 20 feet apart.

First-class trees, each \$1.00, doz. \$10.00, 100 \$75.00.

Black Tartarian. Late June. Black, prolific, sweet.

Montmorency. Late June, with big, dark red, sour Cherries, good for cooking.

Napoleon. Many large amber fruits, blushed bright red, and most delicious.

Yellow Spanish. Late June brings huge yellow Cherries, very sweet.

SWEET SEPTEMBER

U. S. Plant Patent No. 94.

(First successful Fall Cherry)

The accidental discovery of this amazing variety has filled a large gap in the fruit grower's list, and perhaps has started a new race of fruit—the Fall-bearing Cherry. Sweet September ripens its attractive dark red fruit in early Autumn and, unless picked, they will hang on the tree, without rotting, until the snow falls. The fruit itself is of excellent quality for canning or for eating out of hand, and the tree is exceptionally hardy and prolific. Every landowner should have some to extend his Cherry season until the Winter. Good strong trees, each \$2.50, doz. \$25.00.

PEACH TREES

Producing the prize fruit of our State.

Plant 18 feet apart each way.

First-class trees, each 60c, doz. \$6.00, 100 \$40.00

Belle (Belle of Georgia). Big white Peaches with red cheeks, delicious, in mid-August.

Carman. Pale yellow fruit, blushing on sunny side, with tasty white flesh, in late July.

Early Crawford (Crawford's Early). Big round fruit, bright yellow with red cheek, in mid-September.

Early Elberta. A week earlier than the popular Elberta, with similar fruit.

Elberta. The leading Eastern market variety, with many yellow Peaches in late August; firm and delicious.

Golden Jubilee. A lovely new Peach, destined to dethrone Elberta as the most popular early yellow sort. It is of better quality and ripens three weeks earlier, with blushed yellow skin, and juicy, tender, sweet yellow flesh. Freestone.

Hiley. Very hardy, with a late Summer's crop of huge white Peaches, distinctly blushed.

Iron Mountain. Ripens in early September, with big, tasty fruit.

J. H. Hale. Many huge, beautiful Peaches, simply delicious, in late Summer.

Late Crawford (Crawford's Late). Huge yellow fruit of the highest quality, in very late Summer.

Rochester. In late July this tree bears a mass of large yellow Peaches, sweeter than the fruits of any other variety. New, but very popular.

South Haven. Early to bear, with extra large, blushed yellow fruit of high quality.

QUINCE TREES

Plant 10 ft. apart each way.

Orange. Best by far of all the Quince family is this early sort, which produces huge bright yellow fruit, exceptionally delicious. First-class trees, each \$1.00, doz. \$10.00.

PLUM TREES

Plant 20 feet apart each way.

Strong, 3-year-old trees, each \$1.00, doz. \$10.00, 100 \$75.00

Abundance. Introduced in this country by the founder of our Nursery, this Japanese sort produces big, yellow, juicy, sweet fruit in August, in the greatest quantity.

Burbank. A mass of deep purple fruit in mid-August, aromatic and sweet.

Green Gage. Excellent old favorite, with pale green skin and tasty flesh. Midseason.

Lombard. Most popular American Plum. Deep purple red in color. Midseason.

Reine Claude. Green with red on sunny side. Midseason.

BERRY PLANTS

ALL home owners should have a plot of our delicious Small-Fruits. The varieties have been carefully chosen, with your satisfaction uppermost in our mind. At these amazingly low prices, anyone can afford a fruit garden that will provide a crowning touch to Summer.



Indian Summer

RASPBERRIES

Watch them mature, pick them yourself, no thrill is greater.

Culture—Plant in rows 6 feet apart, plants 3 feet apart in the rows, requiring 2,420 plants per acre; or 4 feet apart each way, if to be grown in hills. In the garden, plant 4 feet apart each way, restrict to hills, permitting but 3 or 4 canes to remain in each hill.

Chief. Big, tasty red berries, very early in the season. 1 yr. plants, doz. \$1.00, 100 \$5.00.

Columbian. Big purple berries, with delicious rich flavor, ideal for pies or canning. Midseason to late. 1 yr. plants, doz. \$1.00, 100 \$6.00; heavy 2 yr. plants, doz. \$1.75, 100 \$9.00.

Cumberland. Best and most popular of the black Raspberries, with many big berries of the highest quality, in late midseason. 1 yr. plants, doz. 75c, 100 \$4.00; heavy 2 yr. plants, doz. \$1.50, 100 \$7.50.

Cuthbert. Still leads the midseason red Raspberries, with countless, big, firm, delicious fruit. 1 yr. plants, doz. 75c, 100 \$5.00; heavy 2 yr. plants, doz. \$1.50, 100 \$9.00.

Donboro. Many red berries of true quality, earlier than most. 1 yr. plants, doz. \$1.00, 100 \$5.00; heavy 2 yr. plants, doz. \$2.00, 100 \$9.00.

Golden Queen. Our introduction of the last century, with big, beautiful golden fruit. 1 yr. plants, doz. \$2.00; heavy 2 yr. plants, doz. \$3.50.

Latham. Produces a wealth of huge red berries, firm and lasting, late in the season. 1 yr. plants, doz. \$1.00, 100 \$5.00; 2 yr. plants, doz. \$2.00, 100 \$9.00.

Newburgh. Distinctively flavored, big red fruit on a hardy, healthy bush. 1 yr. plants, doz. \$1.50, 100 \$7.50; heavy 2 yr. plants, doz. \$2.50, 100 \$12.00.

St. Regis. Most popular of the everbearing sorts, this wonderful introduction of ours produces its first crop in June, beginning to bear again from September until frost. Myriads of bright crimson Raspberries, firm, meaty and delicious. 1 yr. plants, doz. 75c, 100 \$4.00, 1000 \$25.00; heavy 2 yr. plants, doz. \$1.25, 100 \$6.50, 1000 \$50.00; heavy fruiting plants, doz. \$2.50, 100 \$15.00.

Viking. Wonderfully hardy sort, with bright red, extra firm, lasting berries. 1 yr. plants, doz. \$1.00, 100 \$5.00.

FOUR NEW RASPBERRIES

There is plenty of room at the top of any list—and here are three introductions of the New York Experimental Station of Agriculture, which reign supreme in their classes.

Marcy. Probably the most attractive of all red Raspberries, with extra large, firm fruit of the very highest quality. Strong 1 yr. plants, doz. \$2.00, 100 \$9.00.

Sodus. Best of the new purple Raspberries, with lovely big, delicious fruit even under adverse conditions, late in the season. Strong 1 yr. plants, doz. \$1.50, 100 \$7.50. Heavy 2 yr. plants, doz. \$2.50, 100 \$12.00.

Taylor. This best of the late red Raspberries bears a quantity of symmetrical cone-shaped berries, firm, and of extra fine quality. Strong 1 yr. plants, doz. \$2.00, 100 \$9.00. Heavy 2 yr. plants, doz. \$3.00, 100 \$15.00.

INDIAN SUMMER. Best by far of the new everbearing Raspberries, this hardy sort produces a mammoth crop of big, attractive fruit, simply delicious, in early Spring, and repeats again in late Summer until stopped by frost. Try a few with our old favorite, St. Regis, and take your pick—you cannot lose. Strong 1 yr. plants, doz. \$2.50, 100 \$12.00. Heavy 2 yr. plants, doz. \$3.50, 100 \$17.50.

STRAWBERRIES

(Layer Plants)

Orders calling for layer Strawberry plants will be filled from our extensive acreage in Southern Delaware, where we are growing this most popular small fruit in the best and most economical way. Hence our low prices, which refer in all instances to the best plants that we have ever seen.

All varieties offered have "perfect flowers."

For hill culture in the family garden, plant in rows 2 feet apart and the plants a foot apart in the rows, cutting off all runners as they appear. If to be allowed to grow in matted rows, set the plants in rows 3 feet apart and the plants 1 foot apart in the rows.

All varieties, unless otherwise noted, selected layer plants, 100 90c, 1000 \$5.00.

Blakemore. Very early, with a large quantity of very light red Strawberries, perfect for canning.

Big Joe. Late midseason. A healthy old favorite, easy to grow, with many big, attractive berries of good quality.

Big Late. Very late, with a good crop of beautiful berries, very high in quality.

CATSKILL. Midseason. A new comer whose excellence will force it to dominate its period in a few days. 100 \$1.00, 1000 \$6.00.

CHESAPEAKE. Most popular of the late Strawberries, with a big yield of highest quality fruit. 100 \$1.00, 1000 \$6.00.

DORSETT. Though but recently introduced, Dorsett has swept the field as an early berry. It is an unequaled producer of attractive fruits, with a wild-Strawberry flavor found in no other sort. 100 \$1.00, 1000 \$6.00.

Early Jersey Giant. Very early, with huge fruit of the highest quality.



Dorsett Strawberry

(Add 10% to your remittance if shipment is desired by parcel post)



Blowers Blackberry
(About 1/2 Natural Size)

THE BOYSENBERRY

This wonderful new berry is destined to dominate the small fruit world. It produces huge fruits, like Blackberries in general appearance, but frequently 2 inches in length. These berries are produced in abundance, and each one is an individual delight to the palate, whether eaten fresh, canned, or in jellies, or pies. Reliable growers claim them to be the highest in quality of all known small fruits. We feel that, once you have tested and tasted their flavor, you will become one of their greatest admirers. Should be grown the same as Grape Vines, that is, trained to stakes or along wires.

Strong plants, each 40c, doz. \$4.00, 100 \$25.00

DEWBERRIES

Valuable additions to the Small Fruit garden, the Dewberry ripens earlier than does the Blackberry, and fruit is larger, handsomer, and frequently of better flavor.

If to be staked, plant in rows 4 feet apart. If to be mulched, plant in rows 6 feet apart and the plants 3 feet apart in the rows.

Lucretia. Soft, sweet and delicious are the big glossy black berries produced in abundance on this hardy bush. Doz. 75c, 100 \$4.00, 1000 \$30.00. Extra strong, transplanted plants, doz. \$1.50, 100 \$7.50.

Young. Best of all Dewberries, with luscious, juicy fruit produced by the hundred; always attractive and always tasty. Doz. \$1.00, 100 \$6.00.

STRAWBERRIES, Continued

FAIRFAX. Introduced with Dorett, Fairfax ripens just after that lovely sort, with myriads of perfect berries, each one an individual delight to the eye and the palate. Some prefer it even to Dorsett. 100 \$1.00, 1000 \$6.00.

Lupton. Late. A very productive sort, which makes it perfect for a commercial berry. A distinct improvement on that popular old favorite, Gandy.

Marshall. Midseason. Probably our grandparents' favorite, with fruit of the highest quality.

New York. Midseason. Very sweet berries, succeeding in a multitude of soils and climates.

Premier. Satisfactory in every way, these delicious berries ruled the early market until the advent of Dorsett and Fairfax.

Senator Dunlap. Early midseason. Probably the most prolific producer of quality berries.

William Belt. Late midseason. Long the standard of Strawberry excellence, with the most delicious taste imaginable.

EVERBEARING STRAWBERRIES (Layer Plants)

Mastodon. The sensational variety which has taken the country by storm. Fruits three months after planting, and continues bearing until late Fall. Big bright red berries, delicious to eat and charming to look at. These berries hold their size to the very end of the season. The heaviest bearer of any Fall bearing Strawberry. 100 \$1.25, 1000 \$8.00.

Green Mountain (U. S. Plant Patent No. 112). Green Mountain is the only everbearing Strawberry we have thus far seen which bids fair to surpass Mastodon in popularity. It is a terrific producer, outyielding many Summer sorts in their own season, and bearing right up until after the first of November. Fruit is large and firm, making it a good commercial sort and of high enough quality for the most exacting home gardener. As for its hardiness, it was cultivated in the mountains of Vermont, which fact speaks for itself. We can only recommend that you try a few this Spring, planting them near the older favorite, Mastodon, and make your own choice. Doz. 75c, 100 \$3.00, 1000 \$20.00.

POT-GROWN STRAWBERRY PLANTS

Pot-grown Strawberries are a specialty of our Nursery. These plants are all well rooted, and may be set out much later in the season than layer Strawberries, with no danger of loss.

Write for Price List.

BLACKBERRIES

We list below what we honestly feel to be the seven best Blackberries for the home gardener.

Plant in rows about 6 ft. apart, placing the plants 3 ft. apart in the rows.

Blowers. Midseason, producing tall canes which yield a premium crop of large, attractive, quality berries. Exceptionally hardy. Doz. 75c, 100 \$4.00.

Eldorado. Late July and August bring handsome and tasty delicacies to this hardy bush, ideal for any home garden. Doz. 75c, 100 \$4.00.

Joy. Midseason, with large crops of large berries, of excellent quality. Doz. \$1.00, 100 \$6.00.

Mersereau. A huge crop of big brilliant Blackberries, with a sweet, rich flavor. Doz. 90c, 100 \$5.00.

Mt. Pocono. Resisting zero temperatures, this tireless producer of big, delicious berries is one of our introductions of which we are justly proud. Doz. \$2.00, 100 \$10.00.

Taylor. Late. Popular, with juicy, rich berries of high quality. Doz. 75c, 100 \$4.00.

Ward. Popular for home garden or market, with large handsome berries which bring top prices. Doz. 75c, 100 \$4.00.

CURRANTS

All strong, 2-year plants.

Cultural Directions—Plant either in sunlight or partial shade. Do not cultivate the plants too deeply. Best results are obtained by placing a fairly thick mulch of leaves or straw about the plants and doing no cultivating whatsoever.

Price, all varieties, except as noted otherwise, 40c each, \$4.00 per doz.

Cherry. Uniformly big crimson fruit, sharply acid.

Fay Prolific. Juicy big berries of deepest red, good for canning.

Perfection. Big clusters of easily picked red Currants over a long period make this the best of all varieties for the home garden. Each 50c, doz. \$5.00.

White Grape. Clear, translucent white berries in big clusters.

Wilder. Among the most prolific sorts—with bright red, attractive berries which are firm and of good flavor.

(Add 10% to your remittance if shipment is desired by parcel post)

GOOSEBERRIES

Cultural Directions—Same as for Currants. (See Page 38.)

Downing. Best of the family, with immense crops of huge pale green berries, carrying a sprightly flavor. Strong 2 yr. plants, each 50c, doz. \$5.00.

Houghton. A reliable producer of hardy Gooseberries, each as sweet and tender as one could wish. Strong, 2 yr. plants, each 40c, doz. \$4.00.

BLUEBERRIES

For best results, plant in slightly moist soil, not too sandy or full of clay, and more acid than alkaline—any soil in fact, that would be suitable for the culture of vegetables or Strawberries.

It is essential that plants of two or more varieties be planted, otherwise no fruit of consequence will be produced.

We are offering the following excellent sorts:

Cabot. Earliest, with a heavy crop of big, delicious blue fruit on a particularly attractive, highbranched bush. 5½ ft.

Pioneer. Ripens after Cabot, with great spikes of flattish, very blue berries, unsurpassable in quality. 6 ft.

Rubal. Latest and heaviest bearing of all, on an upright bush 7 to 8 ft. in height. Best variety for canning.

All varieties, 16 to 24 in. \$2.00 each, \$20.00 per doz.

GRAPE VINES

Our vines are better than ever this season, and are waiting for a chance to prove their worth, in your garden. They cannot be surpassed for a Summer dessert, for jellies, or for beverages.

Cultural Directions—Where space permits, the vines may be set 8 feet apart each way, though in limited space, the rows can be as close as 4 feet apart with the plants 8 feet apart in the rows. After the first year's growth, each vine should be reduced to three strong branches, 18 to 24 inches long. After that, each season's growth should be pruned back, leaving only the strongest branches and bearing 3 to 4 buds or "eyes" each.

Agawam. Delightfully aromatic grapes, of deep maroon, in large, loose bunches. 2 yrs., each 25c, doz. \$2.50.

CACO. Of all hardy Grapes, Caco is the most acceptable to both eye and palate. Bunches are large and attractive, with red amber Grapes, overlaid with a beautiful bloom, produced, early in the Grape season. Each berry is firm and full of delicious flesh and juicy, sweet and palatable even before fully ripe. Undoubtedly one of the best of all Grapes, and worthy of a featured place in your garden. 2 yrs., each 50c, doz. \$5.00, 100 \$30.00; heavy fruiting age, each \$1.00, doz. \$10.00.

Campbell Early. Deep blue Grapes of rich, sweet flavor, early in the season. (Best planted near another variety for cross-pollination). 2 yrs., each 40c, doz. \$4.00.

Champagne. Produces a wealth of amber colored Grapes, sugar sweet to taste and most hardy. 2 yrs., each 40c, doz. \$4.00.

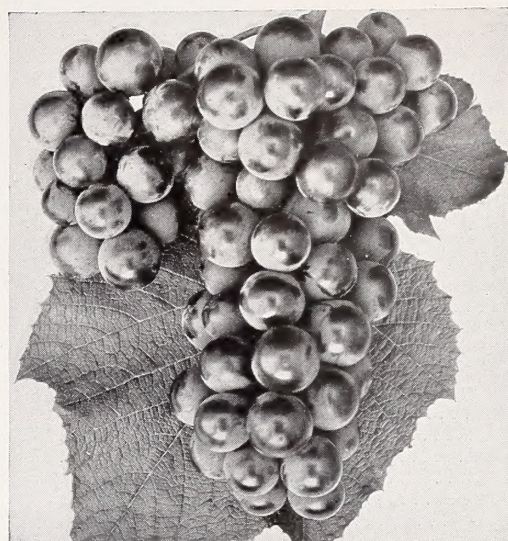
Concord. Most popular Grape, big in bunch and berry, which is black. Satisfactory on most soils, with pale green flesh. 2 yrs., each 15c, doz. \$1.50, 100 \$10.00; heavy fruiting age, each 50c, doz. \$5.00.

Delaware. Produces many bunches of red Grapes, small, but of lovely flavor. 2 yrs., each 30c, doz. \$3.00.

Moore's Early. A sport of Concord, which it resembles in color, hardiness and size. Ripens two weeks earlier, however. 2 yrs., each 35c, doz. \$3.50.

Niagara. Most popular of the white Grapes, with delicious berries at the same time as Concord. 2 yrs., each 25c, doz. \$2.50.

Worden. Early, with bunch and berry larger than Concord and of better quality. Otherwise similar to that popular sort. 2 yrs., each 25c, doz. \$2.50.



Concord Grapes

GARDEN ROOTS

Chives. Prized for soups and seasoning. Each 25c, doz. \$2.50, 100 \$15.00.

Hops. Bears large clusters of yellow green hops in such profusion as to completely envelop the plant in late Summer and early Autumn. Each 25c, doz. \$2.50, 100 \$15.00.

Horseradish. Easily grown in any garden soil. Doz. 50c, 100 \$2.50, 1000 \$20.00.

Lavender. The old favorite with its pleasant odor. Strong plants, each 25c, doz. \$2.50.

Spearmint. Splendid for seasoning. Strong plants, each 20c, doz. \$2.00, 100 \$12.00.

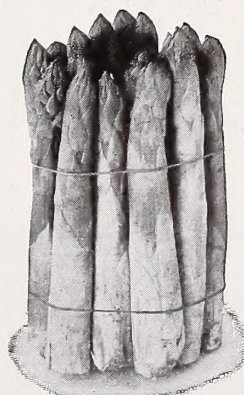
Peppermint. Used largely for cooking but may be chewed "raw." Strong plants, each 25c, doz. \$2.50, 100 \$15.00.

Rhubarb (Sutton's). Best of all the Rhubarbs, with large, tender stems of delightful, distinctive flavor, early in the season. Each 20c, doz. \$2.00, 100 \$12.00.

Sage (Holt's Mammoth). Useful and beautiful. Late Summer and Autumn flowers of lilac blue. A splendid seasoning plant. Strong plants, each 20c, doz. \$2.00, 100 \$12.00.

Tarragon. The leaves and young shoots are much prized as an ingredient in soups, salads, stews, pickles, etc. Each 35c, doz. \$3.50, 100 \$25.00.

Thyme. Prized both for seasoning and as a dense ground cover. Clumps, each 25c, doz. \$2.50.



Washington Asparagus

ASPARAGUS

We invite special attention to our large and splendid supply of Asparagus roots. We have specialized in growing one variety—

Washington—because of its decided points of superiority over the old varieties. A fine, heavy producer, does not rust, of highest quality and commands top prices. 1 yr., doz. 40c, 100 \$1.25, 1000 \$10.00; 2 yrs., doz. 50c, 100 \$1.75, 1000 \$15.00; extra large, 3 yrs., doz. \$1.00, 100 \$3.50, 1000 \$30.00.

LOVETT'S GRAPE COLLECTION

Four Famous Favorites

- 1 Caco—Best of the red Grapes.
- 1 Concord—Most popular of all sorts.
- 1 Niagara—Most popular white Grape.
- 1 Worden—Best black Grape.

4 of the finest Grapes in present horticulture, all 2 yrs. old, for only \$1.00

Delivered postage paid anywhere in the United States.

(Add 10% to your remittance if shipment is desired by parcel post)

INDEX

Roses.....	2- 7	Vines.....	28-29
Hardy Perennial Plants.....	8-17	Hedge Plants.....	30
Perennial Collections.....	Inside Back Cover	Evergreens.....	31-34
Hardy Deciduous Shrubs and Dwarf Trees.....	18-22	Fruit Trees.....	35-36
Broad-leaved Evergreen Shrubs.....	23-24	Berry Plants.....	37-39
Hardy Shade Trees.....	25-27	Grape Vines.....	39

<i>Page</i>	<i>Page</i>	<i>Page</i>	<i>Page</i>
Abies..... 32	Canterbury Bells..... 9	Hawthorn..... 26	Monarda..... 9
Acer..... 20, 27	Cardinal flower..... 14	Heather..... 24	Morus..... 27
Achillea..... 17	Catananche..... 11	Hedera. See Ivy,	Moss Phlox..... 16
Aegopodium..... 9	Cedar..... 31	English	Mountain-ash..... 27
Aesculus..... 26	Cedrus..... 31	Hedge Plants,	Mountain-fringe..... 15
Ageratum..... 8	Celastrus..... 28	Unusual..... 30	Mourning Bride..... 14
Ajuga..... 10	Centaurea..... 14	Helenium..... 12	Mulberry..... 27
Akebia..... 28	Cerastium..... 10	Helianthemum..... 17	Myosotis..... 12
Almond..... 18	Cercis..... 27	Helianthus..... 17	Ninebark..... 21
Althaea..... 18	Cherries..... 36	Heliopsis..... 12	Oak..... 27
rosea..... 13	Cherry, Japanese	Hemerocallis..... 12	Oenothera..... 17
Alumroot..... 8	Flowering..... 25	Hemlock..... 32	Olive, Russian..... 21
Alyssum..... 8	Chinese Lantern Plant 12	Heuchera..... 8	Oxydendrum..... 27
Ampelopsis..... 29	Chokeberry..... 19	Hibiscus..... 15	Pachysandra..... 17
Amygdalus..... 18	Chrysanthemums..... 10, 11	Holly..... 24	Paeonia..... 15
Anchusa..... 10	Clematis..... 11, 28	Hollyhock..... 13	Painted Daisies..... 15
Andromeda..... 23	Columbine..... 11	Honeysuckle..... 20, 28	Papaver..... 16
Anemone..... 8	Coneflower..... 11	Horsechestnut..... 26	Peaches..... 36
Anthemis..... 10	Convallaria majalis..... 14	Hosta..... 15	Pearlbush..... 21
Apples..... 35	Coral Bells..... 8	Houseleek..... 13	Pears..... 35
Crabapples..... 26	Coreopsis..... 11	Hydrangea..... 20	Dwarf..... 35
Aquilegia..... 11	Cornflower Aster..... 11	Climbing..... 28	Pennisetum..... 12
Arabis..... 16	Cornus..... 19, 26	Hypericum..... 22	Pentstemon..... 15
Arborvitae..... 31	Cotoneaster..... 23	Iberis..... 10	Peonies..... 15
Armeria..... 17	Crabapple, Flower-	Ilex..... 22, 24	Periwinkle..... 29
Aronia..... 19	ing..... 26	Iris, Crimean..... 13	Phalaris..... 12
Artemisia..... 15	Crataegus..... 26	German..... 13	Philadelphus..... 21
Asclepias..... 10	Cryptomeria..... 31	Japanese..... 13	Phlox..... 16
Asparagus..... 39	Cupids-dart..... 11	Kaempferi..... 13	Phlox subulata..... 16
Asters..... 8, 9	Currants..... 38	Pumila..... 13	Physalis..... 12
Astilbe..... 17	Cydonia..... 21	Siberian..... 14	Physocarpus..... 21
Azaleas:	Cypress..... 32	Yellowflag..... 14	Physostegia..... 12
Deciduous..... 18	Daisies..... 11	Ivy, Boston..... 29	Picea..... 34
Evergreen..... 23	Daphne..... 19, 24	English..... 29	Pieris..... 23
Kurume Hybrids..... 23	Daylily..... 12	Jasmine..... 29	Pine..... 33
Babysbreath..... 9	Delphinium..... 14	Jasminum..... 29	Pinks..... 15
Balloonflower..... 9	Deutzia..... 19	Juniper..... 33	Pinus..... 33
Baptisia..... 17	Dewberries..... 38	Juniperus..... 33	Plane..... 27
Barberry..... 19, 23, 30	Dianthus..... 15	Kalmia..... 24	Plantainlily..... 15
Beautybush..... 19	Dicentra..... 10	Kerria..... 20	Platanus..... 27
Beebalm..... 9	Dictamnus..... 12	Knapweed..... 14	Platycodon..... 9
Beech..... 25	Digitalis..... 12	Kolkwitzia..... 19	Plumbago..... 15
Bellflower..... 9	Dogwood..... 19, 26	Kudzu Vine..... 29	Plums..... 36
Berberis..... 23, 30	Dragonhead..... 12	Larkspur..... 14	Polygonum..... 29
Betony..... 9	Eleagnus..... 21	Lathyrus..... 29	Poplar..... 27
Betula..... 25	Elder..... 19	Laurel..... 24	Poppies..... 16
Bignonia..... 29	Euonymus..... 19, 29	Lespedeza..... 19	Populus..... 27
Biota..... 31	Erigeron..... 11	Leucothoe..... 24	Primrose..... 16
Birch..... 25	Eryngium..... 16	Liatris..... 12	Primula..... 16
Bishop's Weed..... 9	Eulalia..... 12	Ligustrum..... 21, 30	Privet..... 21, 30
Bittersweet..... 28	Eupatorium..... 8	Lilac..... 20	Prunus..... 25, 27
Blackberries..... 38	Eoxchorda..... 21	Lilium..... 14	Pseudotsuga douglasi 32
Blanketflower..... 9	Fagus..... 25	Lily..... 14	Pueraria..... 19
Bleedingheart..... 10	Fir..... 32	Lily-of-the-valley..... 14	Pussy Willow..... 21
Blueberries..... 39	Flax..... 12	Linden..... 26	Pyrethrum..... 15
Boltonia..... 9	Forget-me-not..... 12	Linum..... 12	Quercus..... 27
Boxwood..... 23	Forsythia..... 20	Lobelia..... 14	Quince..... 36
Boysenberry..... 38	Foxglove..... 12	Lonicera..... 20, 28	Quince, Flowering..... 21
Buddleia..... 19	Funkia..... 15	Loosestrife..... 14	Raspberries..... 37
Bugle..... 10	Gaillardia..... 9	Lupine..... 14	Redbud..... 27
Bugloss..... 10	Garden Roots..... 39	Lychnis..... 10	Retinospora..... 32
Bushclover..... 19	Gasplant..... 12	Lycium..... 29	Rhododendron..... 24
Butterflybush..... 19	Gayfeather..... 12	Lysimachia..... 14	Rhus cotinus..... 21
Butterflyflower..... 10	Ginkgo..... 26	Lythrum..... 14	Rockcress..... 16
Buxus..... 23	Gooseberries..... 39	Magnolia..... 26	Rose-of-Sharon—
Calycanthus..... 22	Grape Vines..... 39	Maidenhair-tree..... 26	See Althaea
Calluna..... 24	Grasses, Hardy	Malus..... 26	Rosa..... 2-7
Camomile..... 10	Ornamental..... 12	Maple..... 20, 27	Rudbeckia..... 11
Campanula..... 9	Groundcherry..... 12	Marshmallow..... 15	Sage..... 16
Campion..... 10	Gypsophila..... 9	Matrimony-vine..... 29	Salix..... 27
Candytuft..... 10	Hamamelis..... 22	Mockorange..... 21	Salix discolor..... 21
			Salvia..... 16
			Sambucus..... 19
			Scabiosa..... 14
			Seaholly..... 16
			Sea-lavender..... 16
			Sedum..... 17
			Sempervivum..... 13
			Shasta Daisy..... 11
			Silver Lace Vine..... 29
			Smoketree..... 21
			Snowball..... 22
			Snowberry..... 21
			Sorbus..... 27
			Sourwood..... 27
			Speedwell..... 16
			Spiraea..... 17, 21, 22
			Spruce..... 34
			Spurge..... 17
			Stachys..... 9
			Statice..... 16
			St. Johnswort..... 22
			Stephanandra..... 22
			Stokesia..... 11
			Stonecrop..... 17
			Strawberries..... 37
			Everbearing..... 38
			Pot-grown..... 38
			Sundrops..... 17
			Sunflower..... 17
			Sunrose..... 17
			Sweet Pea..... 29
			Sweetshrub..... 22
			Sweet-William
			Dianthus..... 15
			Symphoricarpos..... 21
			Syringa..... 20
			Tamarix..... 22
			Taxus..... 34
			Thermopsis..... 17
			Thrift..... 17
			Thuja..... 31
			Thyme..... 17
			Thymus..... 17
			Tilia..... 26
			Torchlily..... 17
			Tritoma..... 17
			Trumpet Vine..... 29
			Tsuga..... 32
			Valerian..... 17
			Valeriana..... 17
			Veronica..... 16
			Viburnum..... 22, 24
			Vinca minor..... 29
			Viola..... 17
			Violet..... 17
			Virginia creeper..... 29
			Weigela..... 22
			Wild-indigo..... 17
			Willow..... 27
			Windflower..... 8
			Winterberry..... 22
			Wintercreeper..... 29
			Wintergreen
			Barberry..... 23
			Wisteria..... 29
			Witch-Hazel..... 22
			Yarrow..... 17
			Yew..... 34
			Yucca..... 24

60th Anniversary Perennial Collection

HERE, in this catalog of our sixtieth year, we have the honor and pleasure of offering a perennial collection of beautiful and dependable sorts, complete as to color range, size of plant and season of bloom. All are carefully grown, carefully selected, and properly labeled. We list this gorgeous assortment at approximately half their individual prices, so that you will be sure to buy a few and thus to join our long list of satisfied customers.



Hollyhocks

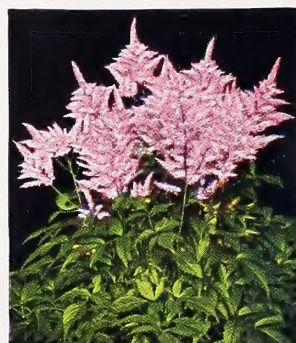
Name	Size of Plant	Color of Flower	Blooming Period
Babysbreath (<i>Gypsophila</i>)	3 ft.	White	Mid-Summer
Blanketflower (<i>Gaillardia</i>)	1½ to 2 ft.	Maroon, Orange, Crimson	Summer & Fall
Canterbury Bells (<i>Campanula medium</i>)	2 to 3 ft.	Blue, Pink, White	Late Spring Fall
Chrysanthemums	2½ to 4 ft.	Assorted	Fall
Columbine (<i>Aquilegia</i>), Long-spurred	2 to 3 ft.	Assorted	Spring
Foxglove (<i>Digitalis</i>)	3 ft.	Pink, Purple, White	Early Summer
Gayfeather, Kansas (<i>Liatris pycnostachya</i>)	5 ft.	Purple	Late Summer
Hollyhocks, Dbl.	6 to 8 ft.	Assorted	Summer
Iris, German	2 to 3 ft.	Assorted	Late Spring
Iris, Japanese	3 to 4 ft.	Assorted	Summer
Larkspur (<i>Delphinium</i>)	3 to 5 ft.	Shades of Blue	All Summer
Lupine	3 to 4 ft.	Blue, Pink, White	Early Summer
Marshmallow (<i>Hibiscus</i>)	6 to 8 ft.	Crimson to White	Late Summer
Peonies	3 to 4 ft.	Assorted	Late Spring
Phlox	4 ft.	Assorted	Late Summer
Pinks, Hardy (<i>Dianthus</i>)	1 to 2 ft.	Crimson to White	Spring, Summer
Spirea (<i>Astilbe</i>)	2 to 2½ ft.	Pink to White	Early Summer



Larkspur



Marshmallow



Spirea

3 Strong plants of each of the above **\$5.95**
 sorts for only

5 Strong plants of each of the above **\$9.45**
 sorts for only



Columbine



Gayfeather



Phlox



Canterbury Bells



German Iris



Hardy Pinks



Foxglove



Lupine



Landscape Department

LET US assist you with your planting problems. Our Landscape Department is maintained as a part of our service to our customers. To acquire satisfactory planting results, one must know the characteristics of plants, such as ultimate height, time of flowering, suitability for sun or shade, adaptation to soil, etc. Our landscape men are thoroughly trained and experienced and are ready to help you.

We will gladly draw sketches and plans to fit your particular needs. This service, in most cases, is rendered free, except where elaborate plans, specifications and special trips are necessary, in which case a small fee will be charged, which will be credited to customer's account when order is placed.

Appointments can be arranged for any day, including Sunday.

Telephone Number • Red Bank 2200

LOVETT'S NURSERY, INC. • LITTLE SILVER, N. J.