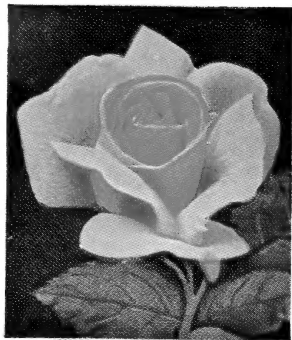


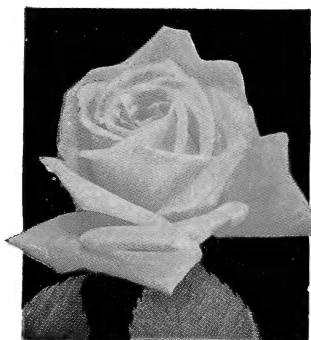
## Historic, archived document

Do not assume content reflects current scientific knowledge, policies, or practices.

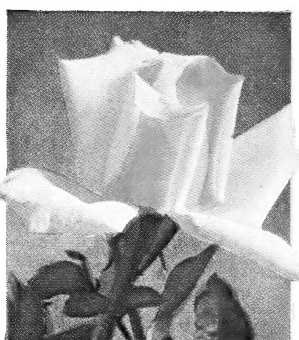




PRES. HERBERT HOOVER



DUCHESS OF LUXEMBOURG



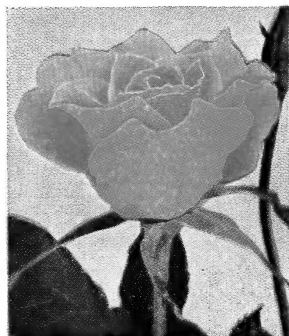
BETTY UPRICHARD



ETOILE DE FRANCE



MRS. W. C. MILLER



TALISMAN



LORD CHARLEMONT



LADY ASHTOWN

# Lovett's

## SPRING CATALOG

1933

### The Exquisite Collection

The Roses illustrated on this cover comprise our "Exquisite Collection". Eight of the finest Roses—one each of the eight varieties—strong, two years old, field grown plants, for

Only \$4.25

*Delivered postage paid anywhere in the United States*

**LOVETT'S NURSERY, INC.**  
**LITTLE SILVER**  
**NEW JERSEY**

# Please Help Us to Serve You Right by Reading This Page with Care!

**SPECIAL NOTICE**—*The greatest care is exercised to keep our stocks clean and true to name. Should any prove otherwise, we will return the money paid or replace it with other stock, but we are not liable for damage beyond that. A sure indication of the purity of our stock is the fact that customers of former years continue to deal with us. Certificate of inspection is attached to each shipment.*

**HOW TO ORDER**—Order early. Small favors thankfully received always, **but we cannot undertake to fill an order of less amount than one dollar**, as the cost of recording and filling it would exceed the small profit of same. Kindly use Order Sheet, and be sure to **write your name and address plainly**. Give Post Office, County and State—and do this every time you write. Be particular to state how the goods are to be shipped; whether by mail, express or freight, and state plainly to what point goods are to be sent. Keep a correct copy of the order and check off the plants, etc., when they arrive. People sometimes forget what they have ordered and make unjust complaint. Ladies will oblige us by prefixing their names with “Miss” or “Mrs.” as the case may be. We will do our utmost to comply with the wishes of patrons to pack additions to an order, or subsequent orders, in one package, or to make reasonable changes in any order, but we cannot promise to do so. During the rush of the shipping season, when many orders are received and dispatched in a day, it would, in some cases, be almost impossible to comply. No change or countermand of an order may be considered final without our written consent.

**SUBSTITUTION**—It is our custom, should the supply of a variety become exhausted (which occasionally occurs in all nurseries), to substitute in its stead a similar sort, properly labeled, of course. When it is desired that we shall not do this, it must be so stated in the order. To simply affix the words “**No Substitution**” is all that is necessary.

**PACKING** is executed with the utmost care. Special pains are taken to pack lightly, thereby reducing the expense of transportation to a minimum. All goods at prices quoted are packed free. Everything is labeled.

**SHIPPING**—We deliver all goods to forwarders here without charge, after which our control ceases, consequently our responsibility also. We particularly caution patrons against ordering Perennial Plants and Strawberry Plants shipped by freight; they should always go by express, or in small lots by mail. Transportation charges on all goods shipped by freight or express are paid by the purchaser, unless arranged otherwise.

**ALL CANADIAN SHIPMENTS**, either by express or mail, **must have transportation charges prepaid**. Customers will oblige us, therefore, by adding sufficient funds to cover this item.

**SHIPMENTS BY PARCEL POST**—Many plants offered can be shipped to advantage by parcel post, especially to nearby points. If such method of shipment is desired, kindly consult the subheading of the desired article for cost of transportation. Any over-payment will be refunded by us immediately after shipment goes forward.

**TERMS**—Payment should be made at time of ordering or before shipment. We prefer to make no shipment **C. O. D.**, but will, when requested, ship in this way, provided twenty-five per cent of the amount of an order is sent with the order, with return charges added. Kindly remit by Postal Money Order, Registered Letter, Draft, or Express Money Order. **Please do not ask us to open accounts for less than \$10.00 orders.**

Prices in this catalog cancel previous quotations. The prices quoted are for the quantities specified, but six, fifty or five hundred of a variety will be supplied at dozen, hundred, and thousand rates respectively. Hundred lots may not be made up at hundred rates of less than fifty of a variety; and thousand lots may not be made up at thousand rates of less than five hundred of a variety.

**CLAIMS**, if any, should be made upon receipt of goods, when they will be carefully and cheerfully examined and, if just, all made satisfactory. Claims made after fifteen days from receipt of goods will not be entertained. We endeavor to send out only good stock in good condition, carefully packed, in all cases; but success or failure depends in so large a degree upon the care and management after received, that we do not, because we cannot, undertake to guarantee stock to live.

**WE ISSUE THREE CATALOGS EACH YEAR**—This Spring Guide, the Midsummer List of Pot-grown Strawberry Plants, and a Fall catalog are sent free to all customers on record. If service rendered you has pleased you, we shall be delighted to have you say a good word about it to others.

**LOCATION**—Lovett’s Nursery, Inc., is one mile from Little Silver Depot, two miles from Red Bank, forty miles from New York City and five miles from Long Branch. To reach it from New York, take the Central Railroad of New Jersey (foot of Liberty Street or 23rd Street) or the Pennsylvania Railroad (Hudson Terminal or 32nd Street and Seventh Avenue). From Philadelphia, take the Pennsylvania Railroad (Broad and Market Streets) or the Philadelphia and Reading Railroad (Bound Brook Route).

---

**WESTERN UNION TELEGRAPH, Red Bank, N. J.**

**POSTAL TELEGRAPH, Red Bank, N. J.**

**LONG DISTANCE TELEPHONE, No. 2200, Red Bank, N. J.**







# Lovett's 55th Annual Catalog 1933

## What This Year Will Bring

**T**O YOU, if you are so far-sighted as to purchase some of our stock this season, 1933 will bring a contentment that you have never known before. This stock may now be bought at the lowest prices which we have quoted in over twenty years, yet the plants themselves are the best that we have ever had. Get a quantity of them while our low prices prevail—we do not see how they can ever be bettered. When you first get the thrill of realization that your own plants are blooming, or producing fruit, your pride of ownership will combine with your appreciation of their beauty, and will turn a temporary pleasure into a permanent happiness.

To us, if you are not already one of our valued patrons, and if you decide to take advantage of our 1933 prices to give us the opportunity of showing you our excellent merchandise and service, the year will bring a new addition to our long list of satisfied customers, who are as proud of our stock as we have been for well over half a century.

LITTLE SILVER, NEW JERSEY

LOVETT'S NURSERY, INC.

## Lovett's Exquisite Collection

All are true Everblooming (Hybrid Tea) Varieties

This is beyond all question the most beautiful and reasonable Collection that has ever been offered by any firm with which we are acquainted. It runs the complete gamut of colors, includes a great many new and scarce varieties, and provides you with a garden that will be the admiration and envy of any neighbor. Just run your eye over our list of varieties, and send in an order today, for this array of beauty simply cannot last at such a low price.

One each of these 8 beautiful, strong, 2 years old, field grown Rose bushes, \$4.25 delivered postpaid anywhere in the United States, for only.....

**BETTY UPRICHARD.** Brilliant orange carmine flowers.

**DUCHESS OF LUXEMBOURG.** Pure golden buds develop into gorgeous double flowers of a delightful coral-pink color, overlaid with golden yellow.

**ETOILE DE FRANCE.** Long blooms of dark crimson.

**LADY ASHTOWN.** Glossy pink Roses, with a golden underglow.

**LORD CHARLEMONT.** Large, deep scarlet crimson flowers with velvety veinings throughout the petals.

**MRS. W. C. MILLER.** Enormous pearly blush flowers which are tinged with rosy vermillion on the outside of the petals.

**PRESIDENT HERBERT HOOVER.** A sensational Rose of maroon, orange and gold.

**TALISMAN.** Scarlet orange and gold—most popular of the newer sorts.

## Lovett's Radiant Collection

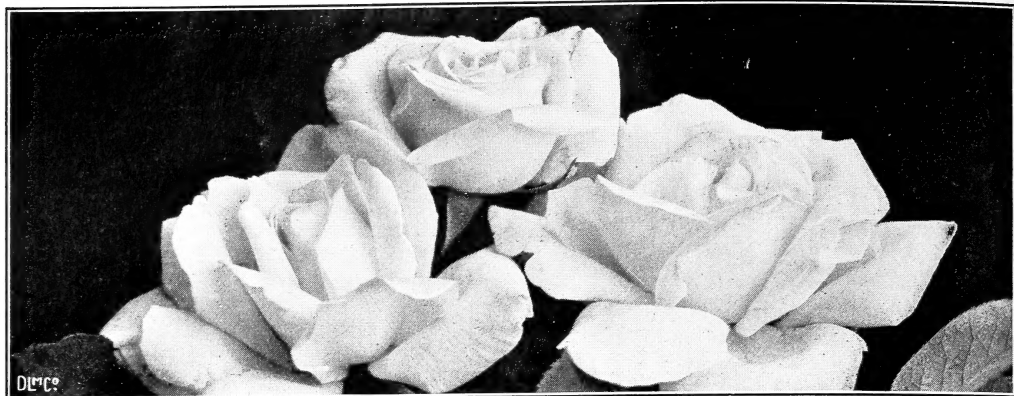
You will never regret your purchase of this Collection, for the Roses are the hardiest Hybrid Teas known, and need the least care. Just put them in the ground, and nature will do the rest.

**RADIANCE.** Most popular of all Roses. Bright pink, large, very hardy.

**RED RADIANCE.** Shining rosy red sport of Radiance, rivaling its sire in beauty.

**MRS. CHARLES BELL.** A shell pink sport of Radiance, toned with salmon, nearly flesh colored in the delicacy of its tinge.

All 3 of these sturdy, 2 years old, field grown Roses (1 of each), delivered post-age paid, for only..... \$1.50



BRIARCLIFF ROSES (Greatly reduced) (See page 3)

## ROSES

Roses are beyond all question the most beautiful of the garden flowers. They can take a place in your home grounds during the Summer that can be filled by no other variety of bloom. And our Roses are, this year, the most beautiful that they have ever been, which is to say that they are unexcelled by any Roses we have seen, and equalled only by a very few. Therefore, do not be deceived by our low prices, for they refer in every instance to the very cream of our crop—or, to speak boldly, to the cream of the world's Roses.

### Hardy Everblooming or Hybrid Tea Roses

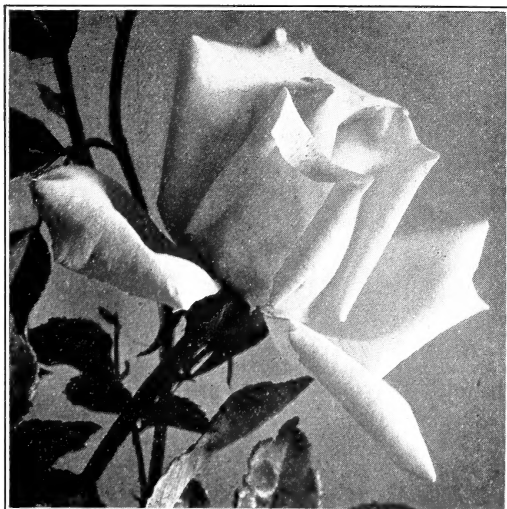
The most popular of all Roses, blooming throughout the entire Summer, right up until the first severe frost. Although hardy, these Roses do best if given some protection in Winter. Simply heap soil to a height of 8 inches about each plant in the Fall and remove this guard in early Spring. It will not be much trouble, and the results will more than repay your few moments work.

Plant in rich, well drained soil, always in full sunlight. Space about 2 feet apart.

Especially do we wish to call your attention to our Collections for Spring, 1933, they are the greatest that we have ever been able to offer at such low prices.

All Roses offered are extra strong, 2- to 3-year-old field grown plants, bound to make a splendid display this summer. When requested to do so, we will gladly ship Roses by parcel post, provided 10 per cent of cost of plants is added to remittance.

Uniform prices for all varieties (unless quoted otherwise), heavy, field grown plants, each 60c., doz. \$6.00, 100 \$40.00. (Add 10 per cent to remittance if shipment is desired by parcel post.)



ROSE BETTY UPRICHARD

#### AUTUMN

Gorgeous flowers which blend together the Autumnal shades of russet brown, bronzy red and rich yellow. A free bloomer, with myriads of delightful buds, shapely and beautiful. New and rare, but headed rapidly for the top.

Each \$1.25, doz. \$12.50

**Bedford Crimson.** Flowers are bright crimson, shapely, and very fragrant.

**Betty.** Produces very long buds, splendid in both shape and color, which is a striking coppery pink. The buds turn into large, loose flowers of a pale buff pink, especially effective in a mass planting.

**Betty Uprichard.** Bears a profusion of copper red buds, which open to large, brilliant orange carmine flowers of spicy fragrance. A persistent bloomer throughout the season, and bears healthy foliage. Equally attractive in bud or bloom, and equally fitting to garden, vase, or corsage because of its absolutely distinct color.

**HYBRID TEA ROSES—Continued**

**Briarcliff.** A profuse bearer of most attractive blooms, which are shapely in bud, high-centered in flower, and of a rich, even, pink. Very solid Roses are these specimens, and both fragrant and long lasting. A splendid flower for bouquets, being an improved form of that old favorite, Columbia, with more intense color and better habits of growth. Illustrated on page 2.

**Charles K. Douglas.** An excellent garden Rose, with countless flowers of a light, unfading, crimson scarlet. Vigorous and outstanding in any Rose collection.

**Cuba.** Among the showiest of all Roses, producing enormous, blazing, red orange blooms. A tall bush, with splendid foliage.

**Dainty Bess.** Pink with wine red stamens; single, broad petaled, fimbriated edges.

**Duchess of Luxembourg.** Pure golden buds turn to large and very double flowers of a delightful hue, coral pink overlaid with golden yellow.

**Duchess of York.** Large Roses, very full and shapely with pink at center and gold at base. Each 75c., doz. \$7.50.

**Etoile de Feu.** The globular buds are truly "stars of fire," being a flaming orange pink in color and opening to full blooms of reddish salmon. Healthy and very shapely.

**Etoile de France.** Best of all the dark crimson sorts. Always in bloom, with its fragrant and long-lasting Roses, shapely and high centered. Very popular, being excellent alike for a bedding Rose or a cut flower.

**Etoile de Hollande.** The world's leading red Rose with brilliant blooms of magnificent size. Popular in all climates and successful in any location. Each 75c., doz. \$7.50.



ETOILE DE FRANCE

**Gwyneth Jones.** A profuse and continuous bloomer of brilliant carmine orange Roses; semi-double, open, and very lasting.

**Irish Morn.** An attractive double Rose, with imperial pink petals that deepen to salmon in their centers.

**Irish Sweetness.** A large and double Rose of crimson lake, suffused with scarlet. Attractive and reliable.

**Ivy May.** One of our most attractive sorts, which produces a mass of beautiful long buds that turn to shapely rose pink flowers, edged and suffused with gold. Excellent for bouquet or corsage. Each 75c., doz. \$7.50.

**Joanna Hill.** Makes a splendid cut flower, with its center of Indian yellow and outer petals of buff. Very double and holds less thorns than most Roses. One of the strongest growing yellow Roses. Each \$1.00, doz. \$10.00.

**Jonkheer J. L. Mock.** Huge crimson buds turn into shapely blooms of carmine with a silver pink reflex.

**Kaiserin Auguste Viktoria.** Most popular of the white Hybrid Tea Roses, being large, full and unstained by any color. Has endured for years as the standard white Rose.

**Kardinal Piffel.** Large, double flower, inside prawn red orange, outside golden yellow, borne on strong stem. Each 90c., doz. \$9.00.

**Lady Alice Stanley.** A very fragrant and solid Rose, producing long pointed, large buds, which open to big, flat, blooms of flesh pink, reversed salmon coral. Very hardy.

**Lady Ashtown.** An old favorite which is, with the possible exception of "Radiance," the most satisfactory of all pink Roses for the amateur grower. Carries many exquisitely pointed flowers of a glossy, deep pink, with an underglow of gold. A strong grower, always in bloom, and superior to "Radiance" as a cut flower. Carries many petals. Illustrated on next page.

**Lady Forteviot.** A delightfully sweet scented Rose, saffron yellow in color, flushed with carmine and orange. Each \$1.00, doz. \$10.00.



ETOILE DE HOLLANDE

**Frank W. Dunlop.** Large, double, free blooming; buds and flowers deep rose pink. Fragrant.

**Frau Dr. Kruger.** Cream salmon on golden ground borne singly on long, strong stems. Each 75c., doz. \$7.50.

**Gruss an Teplitz.** Covered throughout the entire season with clusters of crimson maroon flowers in the greatest of abundance. Splendid either as a specimen or as a dividing hedge, and one of the best of all varieties for bedding purposes.

**Prices for all varieties, unless otherwise noted, each 60c., doz. \$6.00, 100 \$40.00**  
(Add 10% to your remittance if shipment is desired by parcel post)

**HYBRID TEA ROSES—Continued**

**Lady Hillingdon.** Very popular because of its beauty in both bud and open flower, being a charming apricot yellow in color and of exquisite shape. Best of the yellow Roses for bedding.

**Lord Charlemont.** Large, bright flowers of a deep scarlet crimson, with velvety streaks throughout its petalage, unlike any other Rose. Very shapely and lasting, and equally attractive in garden or bouquet. Each 75c., doz. \$7.50.

**Los Angeles.** An old favorite, which is justly popular. Produces a myriad of flame pink Roses with salmon and coral overtones. Excellent for city culture, and a splendid cut flower.

**Louise C. Breslau.** Coral red shaded chrome yellow in bud, with bloom of shrimp pink shaded reddish coppery orange.

**Marion Cran.** Cactuslike blooms, with many pointed petals of Geranium-scarlet, veined orange and yellow. Each 90c., doz. \$9.00.

**Mary, Countess of Ilchester.** Flowers of a deep, refreshingly clear rose pink, borne on long, strong stems.

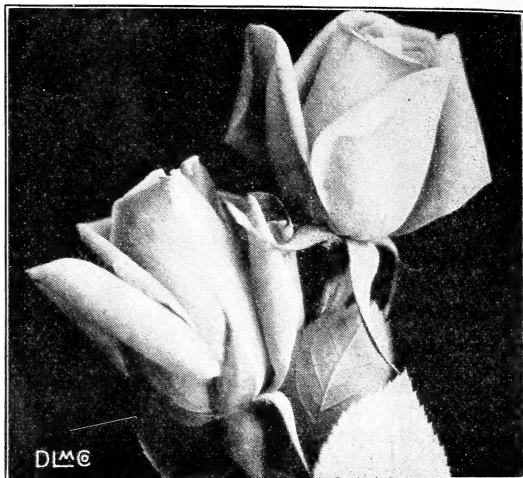
**Mary Pickford.** Very fragrant, large, long-pointed orange yellow buds turn to yellow flowers which are full and lasting. A profuse bloomer. Each 75c., doz. \$7.50.

**Miss Rowena Thorn.** Huge, flaming rosy mauve flowers, centered with old gold, are produced continuously on this bush throughout the season. Each 75c., doz. \$7.50.

**Mme. Leon Pain.** Flesh pink Roses, centered orange yellow in an abundance of continuous bloom throughout the season. A distinctive and interesting sort.

**Mrs. A. R. Barraclough.** Profuse in its display of large, carmine pink flowers which develop from extra large buds. Few thorns, hence good for bouquet or corsage.

**Mrs. Aaron Ward.** Very fragrant Roses of an unusual color—Indian yellow, shaded salmon, grace this compact bush in abundance all Summer. Each 75c., doz. \$7.50.



LADY ASHTOWN (See page 3)

**Mrs. Beatty.** A splendid creamy yellow Rose, especially good in the bud. Solid and shapely, and most delightfully fragrant. Larger than most Roses of its type. Each 75c., doz. \$7.50.

**Mrs. Charles Bell.** An interesting sport of that most popular of all Roses, Radiance, and like it in all respects, save for its finer and softer shade of salmon pink.

**Mrs. Lovell Swisher.** A remarkable Rose which is a delicate salmon pink in color, edged with flesh and of huge proportions. One of the most lasting of all varieties.

**Mrs. MacKellar.** Flower large, finely formed, solid, deep citron or delicate pure canary, passing to pearly primrose.

**Mrs. Wakefield Christie-Miller.** Another famous McGredy introduction, which produces enormous flowers of a pearly blush, tinged with rosy vermilion on the outside of the petals.

**Mrs. W. E. Nickerson.** Rosy salmon to deep chrome yellow, veined on reverse side with golden pink.

**Norman Lambert.** Deep salmon orange flowers, suffused with bronze and yellow, and very lasting. Hardy and bears few thorns. Each 75c., doz. \$7.50.

**Padre.** An abundant producer of shapely Roses which are bright coppery scarlet in color. Semi-double.

**Premier Supreme.** A striking improvement on Premier, and one of the most brilliantly attractive Roses that we have ever seen. This healthy bush bears myriads of large, long-pointed flowers of a rose pink so deep in its intensity as to approach scarlet. These flowers are borne continuously throughout the entire season and are nearly thornless. You can make no mistake in ordering some of them now, while they are being offered at so low a price. Illustrated on next page.

**President Cherioux.** An amazing Rose which is orange yellow in the bud and bright salmon pink, tinged with prawn red, in full bloom. The bud seems to have come from a different bush than the open flower. Each 75c., doz. \$7.50.



MRS. A. R. BARRACLOUGH

Prices for all varieties, unless otherwise noted, each 60c., doz. \$6.00, 100 \$40.00  
(Add 10% to your remittance if shipment is desired by parcel post)

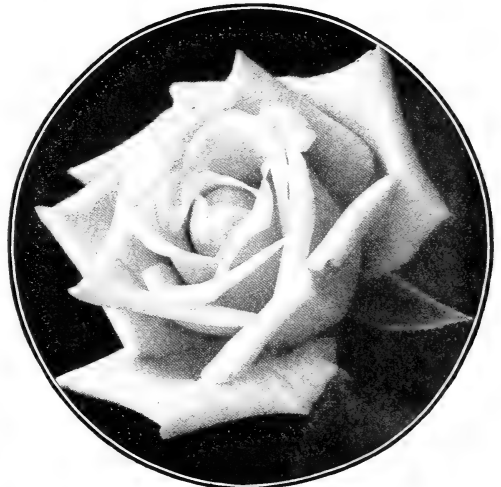


## HYBRID TEA ROSES—Continued

**President Herbert Hoover.** An outstanding novelty of maroon, orange and gold, which we have long been advertising as a perfect Rose for the florist or the home garden. A good Fall as well as Summer bloomer. Each \$1.00, doz. \$10.00.

**Radiance.** Infinitely the most popular of all Roses, with its bright pink, huge blooms by the score, intensely fragrant, and with wonderful foliage. Vigorous.

**Rapture.** A sport of Mme. Butterfly with even better shades of pink and coral. Especially good in Autumn with tints of pink and gold on a background of flesh. Each 75c., doz. \$7.50.



RADIANCE

**Souvenir de George Beckwith.** Shapely and large blooms of salmon pink, flushed with yellow. Fragrant, vigorous, and very double. Splendid as a bedding Rose, and delightful as a cut flower.

**Sybil.** Silvery salmon rose flowers, centered orange salmon, bloom in the greatest profusion on this new sort. Especially pleasing in the bud, and good for corsage or bouquet. Each 75c., doz. \$7.50.

**Talisman.** Most popular of the introductions of recent years. Brilliant buds, red on outer side of petals, and gold on inner side, turn to well-shaped blooms, scarlet orange and rich yellow. Each 75c., doz. \$7.50.

**William R. Smith.** Long, pointed buds turn to double flowers of white, stained pink and crimson.

**Willowmere.** Enchanting in the richness of its pink, with a yellow glow which seems to spread from its heart. A perfect Rose for bedding.



PREMIER SUPREME (See page 4)

**Red Radiance.** A bright rosy red sport of Radiance, and like its sire in blooming qualities, shapeliness, foliage and fragrance.

**Rev. F. Page-Roberts.** A Rose of marvelous color, golden yellow stained copper and with reddish buff overlaying its outer petals. Has rapidly come to be one of the most popular of all Roses. Each 75c., doz. \$7.50.

**Roslyn.** One of the best of the newer varieties. Bud medium size, long pointed, deep orange; flower large, full, very lasting, slightly fragrant, golden yellow, back of petals orange, borne singly on long, strong stem. Growth vigorous; compact, free bloomer. Each \$1.00, doz. \$10.00.

**Souvenir de Claudius Pernet.** Produces the purest yellow Roses known, in the greatest of abundance, early and late. Most popular of all yellow Roses.

**Souvenir de Georges Pernet.** An unusually beautiful Rose, with large brick red buds which open to mammoth flowers of a pleasing orange pink. An excellent variety for bouquets.



REV. F. PAGE-ROBERTS

Prices for all varieties, unless otherwise noted, each 60c., doz. \$6.00, 100 \$40.00  
(Add 10% to your remittance if shipment is desired by parcel post)

## HYBRID PERPETUAL AND MISCELLANEOUS ROSES

Heavy, field grown plants, each 60c., doz. \$6.00,  
100 \$40.00 (except as noted)

(Add 10 per cent to remittance if shipment is desired  
by parcel post)

With the possible exception of *Rosa rugosa*, these are the hardiest of all Roses. They bring the beauty of their bloom into the world in June, and from our list you may select a June garden which will be the most delightful spot in your town at that season.

In order to obtain the finest flowers, prune severely in early Spring, manure liberally and hoe often; plant 2 to 3 feet apart.

**Agnes.** A beautiful Rose, pale amber in color which deepens toward its center. Very hardy, very fragrant, and very profuse in its blooms. Each 75c., doz. \$7.50.

**Conrad F. Meyer.** Vigorous and showy, with large, fragrant flowers of a clear silvery rose. Excellent as a cut flower.

**Druschki Rubra.** Blooms have the delightful appearance and shapeliness of Frau Karl Druschki but are a bright crimson red in color. Quite fragrant. Each \$1.00, doz. \$10.00.

**F. J. Grootendorst.** Large clusters of bright orange red flowers freely borne throughout the Summer. Makes a splendid hedge.

**Frau Karl Druschki.** Best of all whiteflowered Roses, blooming profusely in May and June and frequently again in the Fall. Very hardy.

**Magna Charta.** Exceptionally large blooms of a bright pink, overlaid with carmine. Very double and full are these Roses, and last well when cut.

**Mme. Albert Barbier.** This is something rare, a Hybrid Perpetual Rose that blooms all Summer. Flowers are truly beautiful, being salmon, tinted nankeen yellow, and centered with orange and old rose. Shapely and lasting.

**Mrs. John Laing.** Large flowers, though they give an appearance of delicacy. They are a soft pink, fragrant, and a continuous profusion of bloom.



MAGNA CHARTA

**Paul Neyron.** The largest Rose known, a veritable mammoth. Clear pink in color, sweetly scented, and very double.

**Pink Grootendorst.** A Killarney pink sport of the popular F. J. Grootendorst, which blooms profusely throughout the entire season and is very hardy.

**Ulrich Brunner.** A vigorous bloomer of large, cup-shaped Roses, cherry red in color. Sometimes called Hardy American Beauty.

### PERPETUAL COLLECTION

Here we have the honor of offering a collection that will make your June garden a riot of color, truly the "show" place of your street.

**Frau Karl Druschki.** Best of all whiteflowered Roses.

**Magna Charta.** Bright deep pink bloom, huge and lasting.

**Mme. Albert Barbier.** One of the few Hybrid Perpetual Roses which blooms all Summer. Salmon bloom, tinted yellow and centered orange and old rose.

**Ulrich Brunner.** Large cherry red blooms.

---: EXTRA :---

With each of these collections we will give, free of charge, a Rose which has been called by many experts "the most gorgeously colored of all Roses." This Rose, known as *Soleil d'Or* (or, in English, *Sun of Gold*), produces very fragrant flowers shaded orange-gold and pink. So beautiful are the blooms of this splendid variety, that one of these bushes alone would make a Rose enthusiast of anyone. So send in your order today, and we will select your bushes from the cream of our marvelous crop.

All 5 (1 of each) in strong, 2 years old, field grown plants, for only \$1.95

Delivered postage paid



FRAU KARL DRUSCHKI

Prices for all varieties, unless otherwise noted, each 60c., doz. \$6.00, 100 \$40.00  
(Add 10% to your remittance if shipment is desired by parcel post)



## POLYANTHA, or "BABY" ROSES

Price (except as noted), strong, field grown plants, each 60c., doz. \$6.00, 100 \$40.00

(Add 10 per cent to your remittance if shipment is desired by parcel post)

Baby Ramblers, or Polyantas, are true ever-blooming Roses, starting their glorious bloom in June, and continuing to bloom in abundance all through the Summer and Fall. These miniature Roses add a dainty touch to any garden, and rival the larger sorts in their colorful flowers.

For best results plant about 2 to 3 feet apart. None of our splendid varieties need Winter protection.

**Baby Alan.** Blooms almost continuously from June until freezing weather, with an overwhelming profusion of very double, rich shining pink Roses, resembling the pinkflowered double English Daisies. A striking and beautiful ornament to any garden. Each \$1.00, doz. \$10.00.

**Elsie Poulsen.** Large clusters of single, bright pink flowers on long stems, excellent for cutting. Very lasting, most fragrant, and a profuse bloomer.

**Golden Salmon.** Reddish orange buds in large clusters turn to salmon blooms. A vigorous sort, which is splendid for a mass planting.

**Ideal.** The best dark red baby Rose that has yet been introduced, with its velvety, dark crimson bloom in the greatest profusion throughout the entire season.

**Marie Pavie.** One of the best, with perfect, miniature buds and dainty, waxy white flowers, centered flesh pink and often over 2 in. across.

**Mme. Norbert Levasasseur.** Semi-double Roses of a bright purple crimson, an abundant, continuous bloomer on a most hardy bush. The original "Baby Rambler."

**Triomphe Orleanais.** Large cherry red flowers, borne in clusters all Summer.

## STANDARD OR TREE ROSES

Roses grown in Standard or Tree Form are seldom seen in this country, though they have been grown extensively in France and Belgium for the past several years. We are fortunate in having a splendid assortment of varieties this season, they having been budded on standards (stems) 3 to 4 feet above the ground. Be the first in your neighborhood to make a planting of these unusual Roses—we are sure that you won't be the last. Our assortment of varieties consists of the following:

**Alida Lovett** (Climbing).  
**Bess Lovett** (Climbing).  
**Chas. K. Douglas** (Everblooming).  
**Conrad F. Meyer** (Hybrid Rugosa).  
**Elsie Poulsen** (Baby Rambler).  
**Etoile de France** (Everblooming).  
**Etoile de Hollande** (Everblooming).  
**Kaiserin Auguste Viktoria** (Everblooming).  
**Lady Alice Stanley** (Everblooming).  
**Lady Ashtown** (Everblooming).  
**Mary Lovett** (Climbing).  
**Mme. Butterfly** (Everblooming).  
**Mrs. Lovell Swisher** (Everblooming).  
**President Hoover** (Everblooming).  
**Radiance** (Everblooming).  
**Red Radiance** (Everblooming).

(Add 10% to your remittance if shipment is desired by parcel post)



STANDARD OR TREE ROSES

**Rev. F. Page-Roberts** (Everblooming).

**Sensation** (Everblooming).

**Souvenir de Claudius Pernet** (Everblooming).

**Talisman** (Everblooming).

Each \$2.00, dozen \$20.00

## CLIMBING ROSES

Lovett's Nursery has long been the "last word" in these Roses. They are not only exquisite in appearance, but useful also, as they may clothe unsightly fences, grace trellises and keep out intruders.

The late Dr. Van Fleet, who was our neighbor, was the most famous hybridizer in this class of nursery stock. His hybrids, many of which we are offering in this catalog, surpass all other Climbers in both size of flower and luxuriousness of foliage. We would like especially to call your attention to the Lovett Sisters Climbers—Alida, Bess, and Mary—offered in these pages, which represent the acme of desirability in their respective colors. They are positively the greatest of Dr. Van Fleet's many introductions.

Price (except as noted), strong, 2-year, field-grown plants, 50c. each, \$5.00 per doz., \$35.00 per 100

(If shipment by parcel post is desired, increase remittance 10 percent to pay for postage)

**Alberic Barbier.** Full, double flowers, creamy white in color, shaded yellow in center.

**ALIDA LOVETT.** The best pink climber. An extra strong sort, introduced by the late Dr. Van Fleet, producing bright, shell pink flowers, tinted sulphur yellow at base and of Hybrid Tea size. Each 60c., doz. \$6.00. Illustrated page 8.

**American Pillar.** A profuse bloomer of large, single flowers, brilliant crimson pink with white centers and golden stamens.

**Aviateur Bleriot.** A splendid yellow climber, with orange pink and apricot buds which turn to pale yellow blooms.

**BESS LOVETT.** The best red climber. A Van Fleet introduction with cup-shaped, light crimson blooms, full and large, in long-stemmed clusters, good for cutting. Each 60c., doz. \$6.00.

**Chaplin's Pink.** Clear soft pink borne in large clusters. Each 60c., doz. \$6.00.



CLIMBING ROSE ALIDA LOVETT (See page 7)

**CLIMBING ROSES—Continued**

**Climbing American Beauty.** Brilliant carmine flowers, more beautiful in shape and more highly perfumed than any other climber. Very popular.

**Christine Wright.** Very large, cupped blooms of a wild Rose pink, borne several together on a long, strong stem.

**Dorothy Perkins.** A most popular climbing Rose, with many pendulous sprays of beautiful miniature shell pink flowers.

**Dr. Huey.** Semi-double, large flowers of crimson maroon, shaded black, borne in many clusters on a hardy plant.

**Dr. W. Van Fleet.** Most popular of all climbing Roses, with its shapely pink buds and blooms in profusion for over three weeks.

**Emily Gray.** Fragrant Roses of a light buff, tinted salmon on center petals and amber at base. A beautiful sort which should, however, be protected in Winter. Each 60c., doz. \$6.00.

**Ernst Grandpierre.** Creamy yellow buds turn to large and double blooms of a glistening white. Very fragrant.

**Excelsa.** Scarlet crimson blooms in large, profuse clusters grace this vigorous plant. A striking and splendid sort.



DR. W. VAN FLEET



SPANISH BEAUTY

**Flower of Fairfield.** A very hardy sort, resembling the Crimson Rambler in color, with one important difference—this variety is almost everblooming.

**Gardenia.** Long pointed nankeen yellow buds on long stems turn to creamy white flowers, centered yellow.

**Jacotte.** Large, semi-double, orange yellow flowers, tinted a reddish copper, and borne in clusters. A beautiful sight in full bloom. Not entirely hardy in the far North. For a gorgeous color combination plant this variety with the variety Dr. Huey. Each 75c., doz. \$7.50.

**Lady Gay.** Soft cherry pink Roses, with attractively crinkled petals, produced in large, loose clusters.

**MARY LOVETT.** A splendid white climber, sweet scented and nearly everblooming. Each 60c., doz. \$6.00.

**Mary Wallace.** Vigorous, with many large, semi-double blooms of a warm rose pink, climbing 8 to 12 ft. Very hardy.

**Mme. Gregoire Staechelin.** See "Spanish Beauty."

**Paul's Scarlet.** The plant literally blazes with its intense, fiery scarlet flowers of excellent shape, borne in small trusses. The most brilliant of all climbers.

**Primrose.** Bright primrose yellow flowers borne several together on a long stem; an abundant bloomer for four weeks in May and June. Vigorous climber and trailer and very hardy. Each 75c., doz. \$7.50.

**Roserie.** Large, frilled flowers of a deep, even pink, borne in a profusion of loose clusters.

**Silver Moon.** Long, creamy buds turn to huge, saucer shaped flowers in small sprays.

**Spanish Beauty.** A true beauty, which has lived up to and even surpassed the most optimistic predictions made for it when it was introduced only a few years ago. Opalescent pink flowers, attractively curled and overlaid with claret carmine, are followed by unusual Pear-shaped fruit. Each 75c., doz. \$7.50.

**The Beacon.** A promising fiery red Pillar Rose, with a bright white eye, produced in large clusters.

**White Dorothy Perkins.** A pure white form of the popular "Dorothy" and even stronger in growth.

**Wichuraiana.** A perfect trailer, with single white flowers which have prominent golden yellow stamens, and are delightfully fragrant.

Prices for above varieties, unless otherwise noted, each 50c., doz. \$5.00, 100 \$35.00  
(Add 10% to your remittance if shipment is desired by parcel post)



# HARDY PERENNIAL PLANTS

And now we come to that branch of our nursery which will be of primary interest to all of you. The flowers listed below, and on the following pages, are not those annual plants which bloom for one year only. They are all perennials, whose beauty increases with each succeeding year, to make your flower garden a spot of joy from earliest Spring until the late Fall. So treat yourself to some of these magnificent flowering plants now, and we will see that you never regret it.

All varieties (unless otherwise noted), each 20c., doz. \$2.00, 100 \$12.00

(Add 10 per cent to your remittance if shipment is desired by parcel post)

(R) following descriptions is intended to indicate that such varieties are good rock garden plants

## ACHILLEA · Yarrow

**Achillea ptarmica**, "Boule de Neige" (*Boule de Neige Sneezewort*). 15 to 18 in. Large, perfectly formed white flowers, more compact than those of "The Pearl," and excellent for cutting. Blooms all Summer.

**A. ptarmica**, "The Pearl" (*The Pearl Sneezewort*). 15 to 18 in. White, very double, blooms all Summer. (R.)

## ACONITUM · Monkshood

**Aconitum autumnale** (*Autumn Monkshood*). 3 to 4 ft. Produces racemes of large, dark blue flowers like hoods, in September and October.

**A. fischeri** (*Azure Monkshood*). 18 to 24 in. Best and hardiest of the Monkshoods, with blue, helmet-shaped flowers in late September and October.

Either variety, each 25c., doz. \$2.50

## AJUGA · Bugle

**Ajuga reptans** (*Carpet Bugle*). Prostrate, a good ground cover, with deep purple blue flowers in May and June. (R.) Each 25c., doz. \$2.50.

## ALYSSUM · Alyssum

**Alyssum saxatile compactum** (*Dwarf Goldentuft*). Broad masses of bright yellow flowers in early Spring. Good for the rock garden or for border edgings. 1 ft. (R.)

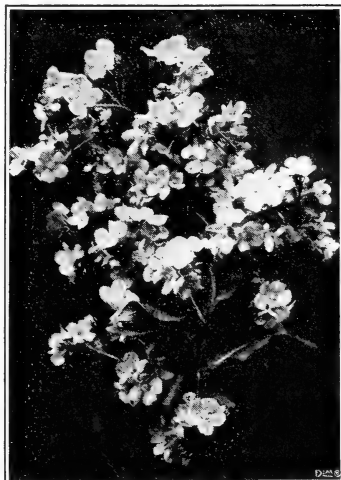
**A. argenteum** (*Silver Alyssum*). 15-18 in. Clustered heads of yellow flowers spring all Summer from a dense mass of silvery leaves. (R.)

## ANCHUSA

### Bugloss

**Anchusa italica**, "Dropmore" (*Dropmore Bugloss*). 4 to 5 ft. Deep green foliage, broad and hairy, from which velvety blue flowers bloom in June and July in large panicles.

**A. italica**, "Opal" (*Opal Bugloss*). 3 to 4 ft. Large flowers of a pale turquoise blue all Summer.



ANCHUSA ITALICA "Opal"

## ANEMONE · Anemone

**Anemone hupehensis** (*Dwarf Japanese Anemone*). 1 ft. These mauve rose flowers will draw all eyes to your garden from August until late Fall. Dainty, yet brilliant, they are true miniature Japanese Anemones. An abundance of bloom. 12-14 in. (R.) Each 25c., doz. \$2.50.

ANEMONE JAPONICA (*Japanese Anemone*)

These flowers are the joys of Autumn, reigning in the garden from September until well into November. We are fortunate in having a good supply of these plants this season.

- A. **alba**. 2 ft. Large, single, white flowers with stamens of brightest gold. (R.)
- A. **"Alice."** 2 to 3 ft. Large, rose pink flowers.
- A. **"Queen Charlotte."** 2 ft. Beautiful, large, semi-double flowers of a delightful even pink. An especially attractive variety.
- A. **Rubra Superba**. 2 ft. Deep wine red with yellow stamens.
- A. **"Whirlwind."** 2 ft. Double flowers which are true whirlwinds of snowy petals.

Each 25c., doz. \$2.50

## ANTHEMIS · Camomile

**Anthemis tinctoria** (*Yellow Camomile*). 2 ft. Large golden, Daisylike flowers all Summer; good for cutting.

- A. **tinctoria**, **"Perry's Variety."** 1½ to 2 ft. A greatly improved variety of Camomile. It is most compact, and bears much larger golden blooms all Summer than does the ordinary yellow Camomile. Succeeds in the poorest soil, and bears handsome, finely cut foliage. Each 35c., doz. \$3.50.

## AQUILEGIA · Columbine

Among the most beautiful flowers which bloom in early Spring, with their gay, nodding heads of the gaudiest colors.

- Aquilegia chrysantha** (*Golden Columbine*). 2 ft. Fragrant, with bright golden, long spurred flowers in May and June. (R.)
- A. **caerulea** (*Colorado Columbine*). 18 in. State flower of Colorado. A lovely blue flower with long blue spurs. (R.)
- A. **canadensis** (*American Columbine*). 18 in. Early Spring brings this charming native plant into its gorgeous blaze of scarlet and gold flowers. (R.)



HARDY ASTER (See page 11)

All varieties, unless otherwise noted, each 20c., doz. \$2.00, 100 \$12.00  
(Add 10% to your remittance if shipment is desired by parcel post)



AQUILEGIA  
(*Columbine*)  
MRS. SCOTT  
ELLIOTT'S  
HYBRIDS

MRS. SCOTT ELLIOTT'S LONGSPURRED  
HYBRID COLUMBINES

Words are inapt to describe the beauty of these colorful perennials. Individual flowers are larger, spurs are more pronounced, colors are brighter and more varied—well, you just can't go wrong if you order Mrs. Scott Elliott's Hybrids. (R.) Each 25c., doz. \$2.50.

## ARABIS · Rockcress

**Arabis alpina** (*Alpine Rockcress*). 8 to 12 in. Rock plant with dense masses of pure white, fragrant flowers from early Spring to Midsummer. (R.)

## ARTEMISIA · Southernwood

- Artemisia lactiflora** (*White Mugwort*). 4 to 5 ft. A most fragrant sort, with heads of small white flowers in late Summer. Splendid as a cut flower.
- A. **stelleriana** (*Old Woman*). 18 in. Deeply cut, silvery foliage. Of trailing habit, hence good for covering barren places.
- A. **"Silver King."** 3 ft. An outstanding novelty, with dainty foliage like frosted silver. Ideal as a contrast plant, and especially good for "setting off" bouquets. Lasts well when cut, and is charming in the house as a Winter "frame" for other floral pieces.

## ASCLEPIAS · Butterflyflower

**Asclepias tuberosa** (*Native Butterflyflower*). 18 in. Highly attractive native plants, which bear large umbels of brilliant orange colored flowers throughout the late Summer.

## ASTERS

Our garden stars will add charm to your home grounds for many years. All varieties bloom in late Summer and early Fall, save for "Goliath," the first on our list.

**Aster alpinus superbus**, **"Goliath."** 6 to 10 in. May and June bring large, showy, purple flowers to this most beautiful plant. Dwarf and excellent for your rock garden. (R.)

**HARDY ASTERS—Continued**

- A. "Blue Beard."** 2 to 3 ft. Azure blue flowers, centered creamy white.
- A. "Feltham Blue."** 3 ft. A free blooming sort, with many aniline blue flowers.
- A. "Louvain."** 3 ft. Bushlike with hordes of delicate pink flowers.
- A. "Mons."** 2 to 3 ft. Showy, reddish violet flowers.
- A. novae-angliae** (*New England Aster*). Large showy, bluish purple flowers in masses. 4 ft.
- A. novae-angliae rosea.** 4 ft. Startling in the intensity of its pink bloom.
- A. "St. Egwin."** 2 ft. Free blooming, with many rosy pink flowers.
- A. tataricus.** 6 ft. Very late and very strong growing with large, blue violet flowers.
- A. "White Queen."** 2 to 3 ft. Pure white, attractive flowers on strong stems.

**ASTILBE · Astilbe**

Handsome border or rock garden plants with most attractive foliage and long-lasting, plumelike spikes of flowers.

- Astilbe "Gladstone."** 2 ft. Long spikes of graceful, snow white flowers in June. (R.)
- A. moerheimi** (*Moerheim Astilbe*). 2 to 2½ ft. Large plumes of snowy flowers through the entire Summer. (R.)
- A. "Peach Blossom."** 2 ft. Large and graceful spikes of bright, soft, pink flowers throughout the early Summer. Beautiful when planted either by itself or as a contrast plant. (R.)

Each 35c., doz. \$3.50

**BAPTISIA · Wild-indigo**

**Baptisia australis** (*Blue Wild-indigo*). 3 ft. Long racemes of deep blue flowers, like Sweet Peas, grace the attractive foliage of this desirable border or garden perennial in June and July.



CAMPANULA MEDIUM (*Canterbury-bells*)



BAPTISIA AUSTRALIS (*Blue Wild-indigo*)

**BOCCONIA · Plumepoppy**

**Bocconia cordata** (*Pink Plumepoppy*). 6 to 8 ft. Beautiful, large tropical appearing leaves, from which sprout long terminal panicles of creamy white flowers through the Summer.

**BOLTONIA · Starwort**

- Boltonia asteroides** (*White Starwort*). 5 to 6 ft. Myriads of white flowers like Asters on tall stems in August and September.
- B. latisquama** (*Violet Starwort*). 4 to 5 ft. Pink flowers, tinged lavender, grace this charming plant from late Summer through early Fall.

**CAMPANULA · Bellflower**

- Campanula medium** (*Canterbury-bells*). 2 to 3 ft. During late June and July, this plant is covered with the large and beautiful "cup-and-saucer" flowers, so like bells that one nearly expects a chime from them. Very showy in a mixed border. **Blue, Pink or White, or Mixed Colors**, just as you prefer.
- C. carpatica** (*Carpathian Bellflower*). 9 in. A beautiful variety, which produces large, dark blue flowers in July and August on slender, graceful stems. (R.)
- C. persicifolia** (*Peacbleaf Bellflower*). 2 ft. Large, blue, bell-shaped flowers in July and August.

**CENTAUREA · Centaurea**

- Centaurea macrocephala** (*Globe Centaurea*). 3 ft. Bright golden yellow, thistlelike flowers in late Summer.
- C. montana** (*Mountain-bluet*). 2 ft. Good border plant, with blue flowers like the Cornflower, throughout the entire Summer, springing from its woolly leaves.

All varieties, unless otherwise noted, each 20c., doz. \$2.00, 100 \$12.00  
(Add 10% to your remittance if shipment is desired by parcel post)

**CENTRANTHUS** · Jupitersbeard

**Centranthus ruber** (*Red Jupitersbeard*). 2 ft. Spreading, with many clusters of reddish purple flowers from June to October.

**CERASTIUM** · Cerastium

**Cerastium biebersteini** (*Taurus Cerastium*). 5 to 6 in. Creeping sort, with long, silvery foliage and countless small white flowers in May and June. (R.)

**C. tomentosum** (*Snow-in-summer*). A splendid trailer, with cottony white foliage which is covered with dainty white flowers in the late Spring and early Summer. (R.)



CHRYSANTHEMUM MAXIMUM (*Shasta Daisy*)

**CHRYSANTHEMUMS**  
DISTINCT TYPES

**Chrysanthemum arcticum** (*Arctic Daisy*). 2 to 2½ ft. One of the best of all Fall-flowering perennials, with its attractive, rosettelike clumps of foliage completely covered in September and October by a dense mass of white flowers, centered golden, and from 2 to 2½ in. in diameter. Each 25c., doz. \$2.50.

**C. coreanum** (*Korean Chrysanthemum*). 3 to 4 ft. Flowers like large Daisies, with golden centers and claret pink petals, burst forth in October and November in the greatest of profusion. Just the flower for the most fastidious people, who want a perennial to be extremely beautiful, extremely hardy, and as much at home in a vase as it is in their garden. Each 25c., doz. \$2.50.

**C. maximum** (*Shasta Daisy*). One of the great hybrids of that greatest of all hybridizers, Luther Burbank. In June and July come the myriads of flowers which resemble field Daisies seen through a powerful magnifying glass. A beautiful spectacle when in full bloom.

**Chrysanthemums, Hardy Named Varieties**

This list of varieties is much the finest that we have ever offered. You will find no disappointments below, but only those varieties that are hardiest, and that have given our patrons the satisfactory results which they have a right to expect.

**Strong plants that will bloom freely this year, each 20c., doz. \$2.00 (unless quoted otherwise)**

**ALADDIN**

A beautiful new early flowering sort, **blooming from early August until frost**. Produces a multitude of beautiful flowers which are orange red, a deep "fire" color, with inner petals cadmium yellow. Received eight gold medals last Summer and is generally considered 1932's foremost perennial introduction. **Strong, blooming age plants, each 60c., doz. \$6.00**

**Alice Howell.** Large, semi-double, orange yellow flowers.

**Beaumont.** A medium late variety, but well worth waiting for. Many large flowers of a deep mauve red, striking and beautiful.

**Clorinda.** Very late bronze Pompon, and most attractive.

**Cometo.** Mauve pink, centered gold. Early to mid-season. Pompon.

**Ethel.** A deep crimson bronze Pompon.

**Field of Snow.** Creamy white flowers with a pinkish tinge make a planting of this variety a true field of snow from early Fall until the first real frost. Large Pompon.

**Golden Queen.** Large and double flowers of an intense golden yellow are produced en masse on this beautiful variety. An early sort, and especially striking.

**Harvard.** The sons of Harvard may well be proud of their large, dark crimson namesakes.

**L. Argentuillais.** Shapely scarlet bronze flowers, tipped with gold. Very hardy. Large flowered.

**Mrs. Calvin Coolidge.** Early to midseason. A large, single flower of a rich, pure, scarlet, centered with brightest gold. A beautiful combination of distinct colors.

**Mrs. L. Birchard.** Many medium-to-large flowers of a deep claret pink which approaches mauve. Early to midseason.

**Old Homestead.** A late variety, which produces large, bright rose pink blooms in a striking display.

**October Girl.** Early sort with many pale mauve flowers with thick petals, semi-double.



HARDY CHRYSANTHEMUMS

**All varieties, unless otherwise noted, each 20c., doz. \$2.00, 100 \$12.00**  
(Add 10% to your remittance if shipment is desired by parcel post)



**HARDY CHRYSANTHEMUMS—Continued**

**Pink Dandy.** A beautiful sort with many large, brilliant pink Pompons. One of the very best of all hardy "Mums."

**Red Indian.** Very late, with many large blooms of an unusual color, copper, flushed with strawberry red.

**Rowena.** Large flowers in a multitude of bronzy shades.

**Ruth Cummings.** Very double and floriferous, with fiery orange blooms. Large flowered.

**Scarlet Beauty.** A late sort which produces a myriad of beautiful pure scarlet flowers. Deserves a place in every garden.

**Skibo.** Early blooming golden button.

**Victory.** A medium late sort with large, double flowers of a pure white, borne on long stems which lie along the ground.

**Wanda.** Midseason. Flowers a blend of pale pink and cream, very double and produced in abundance. Large flowered.

**Yellow Normandie.** Early variety with many decorative flowers of a light bronzy yellow, large and open.



COREOPSIS LANCEOLATA (*Lance Coreopsis*)

**CONVALLARIA MAJALIS**

Lily-of-the-valley

One of the earliest perennials to bloom, with beautiful, small white blossoms. Best in shade, and especially beautiful when planted with Gov. Her- rick Violets. 8 to 10 in. Strong clumps, each 35c., doz. \$3.50.

**COREOPSIS · Coreopsis**

**Coreopsis lanceolata** (*Lance Coreopsis*). 2 to 3 ft. Countless large golden blooms from early Summer until frost on long, wiry stems. Excellent as a cut flower.

**SHASTA DAISY.** See "Chrysanthemum maxi- mum."

**DELPHINIUM · Larkspur**

The acme of floral perfection. If only one peren- nial is to be bought, let it be this blue flower, beau- tiful and stately, and the best is yours.

**Delphinium Belladonna** (*Blue Larkspur*). 3 ft. Pure turquoise blue; a free bloomer from July until frost. Most popular and desirable of the standard varieties of Larkspur.

**D. Bellamosum.** 3 to 4 ft. Popular dark blue hy- brid of Belladonna and Formosum, with the best points of both parents.

**D. sinensis** (*Chinese Larkspur*). 18 in. Semi-dwarf, open panicles of intense gentian blue.

**DELPHINIUM WREXHAM HYBRIDS**

3 to 5 ft. tall. These hybrids have sur- passed all their forerunners in size, range of color and general beauty. Absolutely the "cream of the cream" in any perennial garden.

Each 35c., doz. \$3.50, 100 \$22.00

**SPECIAL OFFER**  
**Hardy Chrysanthemums**

Each Chrysanthemum that will be sent out on these special collections will be a thor- oughly desirable, hardy variety, the collec- tion to include one strong plant, that will bloom freely the same year planted, of each of our twelve most dependable hardy sorts. To introduce our splendid Hardy Chrys- anthemums, we will send 12 strong plants, each different and correctly labeled, for \$1.75  
 Choice of varieties must be left to us



DELPHINIUM WREXHAM HYBRIDS

All varieties, unless otherwise noted, each 20c., doz. \$2.00, 100 \$12.00  
 (Add 10% to your remittance if shipment is desired by parcel post)

## DIANTHUS · Hardy Pinks

One of the few perennials which are ideal alike for the rockery or the border. May and June bring the dwarf, clove-scented flowers to the foliage of this favorite variety. Also splendid as edging plants. 1 foot.

**Dianthus "Abbotsford."** Large, deep carmine to crimson flowers with white markings. (R.)

**D. "Beatrix."** A new hardy Pink, which is one of the best of recent introductions. Semi-double, rose pink flowers, with delightful fragrance, are produced in abundance throughout the entire Summer, several on each stem. A marvelous cut flower. Each 35c., doz. \$3.50.

**D. deltoides (Maiden Pink).** Splendid for the rock garden are these prostrate plants with their crimson flowers in June and July. Easily grown. (R.)

**D. "Gladys Cranfield."** An especially fragrant sort, rose pink in color, centered maroon. (R.)

**D. "Her Majesty."** A large white and very fragrant pink.

**D. semperflorens (Perpetual Pink).** 10 to 12 in. Fragrant and double pink flowers are produced throughout the entire Summer. (R.)

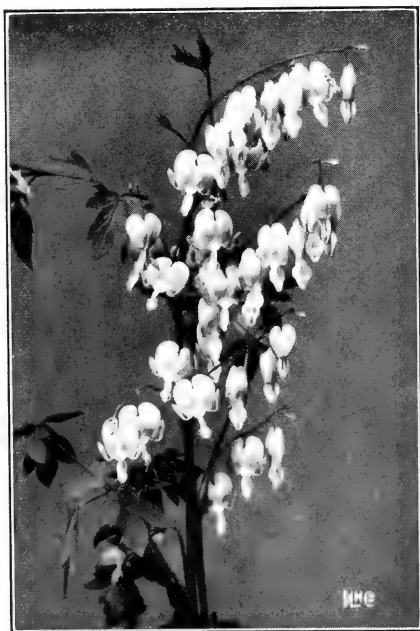
**D. "White Reserve."** A splendid everblooming pink, very large and snowy white. (R.)

GRENADIN PINKS (*Hardy Carnations*)

These delightful flowers are ideal for cutting, being very fragrant and borne on much longer stems than the standard Pinks, which they resemble in the perfection of their form. Separate colors—Pink, Red, and White.

DIANTHUS BARBATUS (*Sweet-william*)

We have a great many splendid plants of this old favorite, with its sweet, clove-scented flowers in profusion in May and June. Mixed colors.



DICENTRA SPECTABILIS (*Bleedingheart*)

## DICENTRA

**Dicentra eximia (Fringed Bleedingheart).** 10 to 12 in. Dwarf growing, this beautiful perennial throws showy racemes of pretty pink flowers throughout the season. (R.) Each 25c., doz. \$2.50.

**D. spectabilis (Bleedingheart).** 2 ft. A splendid old-fashioned favorite, producing graceful racemes of heart-shaped pink flowers in early June, which continue for nearly a month. Excellent for either the hardy border or for forcing in the house. Each 35c., doz. \$3.50.

## DICTAMNUS · Gasplant

**Dictamnus fraxinella (Gasplant).** 2½ ft. Rosy pink flowers in June and July. Fragrant foliage.

**D. fraxinella alba (White Gasplant).** White form of above.

Either variety, each 35c., doz. \$3.50

## DIGITALIS · Foxglove

**Digitalis gloxiniaeflora (Gloxinia Foxglove).** 3 ft. A beautiful and exotic variety, with a wide color range of large, thimblelike flowers in attractive hoods on the sides of tall stems in June and July. Pink, Purple, White and Mixed. Illustrated on page 15.

## ERYNGIUM · Eryngo

**Eryngium amethystinum (Amethyst Eryngo).** 3 to 5 ft. Amethyst flowers, equally good as cut flowers or when massed on the lawn.

## EUPATORIUM

**Eupatorium coelestinum (Mistflower).** 2 ft. in height, with rich blue flowers from early August to October. Good as a cut flower.

**E. urticaefolium (ageratoides) (Snow Thoroughwort).** 3 to 4 ft. White, fuzzy flowers, produced profusely in September.

## FUNKIA · Plantainlily

**Funkia caerulea (Blue Plantainlily).** 1½ to 2 ft. Attractive mauve blue flowers spring in July and August from the decorate foliage of this variety. (R.)

**F. lancifolia undulata variegata (Waryleaf Plantainlily).** 12 to 15 in. A beautiful edging plant with blue flowers springing from its graceful, fluted, and variegated leaves, in late Summer. Conspicuous in the hardy border.

**F. marginata (Cream-bordered Plantainlily).** Wide leaves, broadly margined creamy white, make this an exceptional border plant.

**F. subcordata grandiflora (Great White Plantainlily).** 2½ to 3 ft. Bears very large and fragrant flowers in August and September, resembling Lilies. A beautiful addition to the border. Each 25c., doz. \$2.50.

## GAILLARDIA

**Gaillardia grandiflora (Perennial Gaillardia).** Blooms throughout the Summer, succeeding in any soil if location is sunny. Red brown centers, and petals ringed crimson, orange and vermilion.

Prices for all varieties, unless otherwise noted, each 20c., doz. \$2.00, 100 \$12.00  
(Add 10% to your remittance if shipment is desired by parcel post)



## GRASSES • Hardy Ornamental

Our assortment comprises the very best of those decorative grasses which will form a delightful contrast, and stand out well against the background of your short-grassed lawn.

**Eulalia gracillima** (*Maiden Grass*). 6 ft. Very narrow, graceful foliage, deep green with white midrib.

**Eulalia japonica** (*Japanese Grass*). 6 ft. Long, broad and graceful green grass, with attractive silvery plumes.

**Eulalia japonica variegata** (*Striped Eulalia*). 4 to 5 ft. A most attractive contrasting grass plant, with its long, narrow leaves striped longitudinally with light green, creamy white, and frequently pink and yellow.

**Eulalia japonica zebrina** (*Zebra Grass*). 6 to 7 ft. An attractive specimen plant for your lawn, with silvery plumes springing from its horizontally variegated yellow and green leaves.

**Pennisetum japonicum** (*Fountain Grass*). 4 ft. Narrow green leaves with bronzy purple flower heads.

**Phalaris arundinacea picta** (*Ribbon Grass*). 1 to 1½ ft. Ornamental grass with leaves longitudinally striped white.

All varieties of Hardy Grasses, each 25c., doz. \$2.50, 100 \$18.00

## GYPSOPHILA

**Gypsophila ehrlei** (*Ehrle's Babysbreath*). 3 ft. Best of all doubleflowering Gypsophila. Very valuable for cutting, with flowers nearly as large as Achilleas, on a compact, symmetrical bush. Vigorous grower and sure to please. Each 60c., doz. \$6.00.

**G. paniculata** (*Babysbreath*). 3 ft. An old favorite, with attractive loose panicles of dainty white flowers in late Summer.

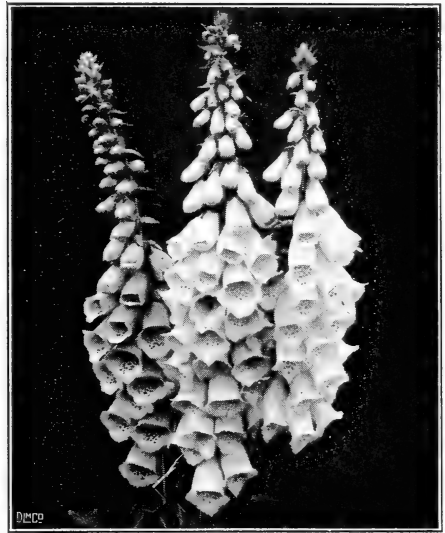
## HELENIUM • Helenium

**Helenium autumnale superbum** (*Great Fall Helenium*). 5 ft. Strong grower with branching heads of deep gold in late Summer.

**H. Riverton Gem**. 2½ to 3 ft. From August to October, this plant is covered with old gold flowers which change to deep red as they mature. Each 25c., doz. \$2.50.



HEMEROCALLIS, GOLD DUST



DIGITALIS (*Foxglove*) (See page 14)

## HELIANTHEMUM • Sunrose

**Helianthemum croceum** (*Sunrose*). 6 in. A broadleaved, dwarf evergreen with deep yellow flowers in late Summer. (R.)

## HELIANTHUS • Sunflower

Tall and stately old favorites to welcome the sun to your garden.

**Helianthus, Miss Mellish**. 5 to 6 ft. A large golden Sunflower, blooming in July and August.

**H. multiflorus grandiplenus** (*Soleil d'Or*). 3 to 4 ft. Best of the double Sunflowers. Clear yellow, resembling a fine Dahlia in shape and finish.

## HELIOPSIS • Heliopsis

**Heliopsis pitcheriana** (*Pitcher Heliopsis*). 2 to 3 ft. A good cut flower, with deep golden yellow flowers of leathery texture, freely produced throughout the Summer.

**H. scabra excelsa** (*Rough Heliopsis*). Double, golden yellow flowers resembling a Zinnia, from a plant 3 ft. high, in mid-July, continuing until the end of September. Each 25c., doz. \$2.50.

## HEMEROCALLIS • Daylily

Very showy in the garden are these dazzling perennials, with their great numbers of golden yellow, Lilylike flowers throughout the Summer months. Our stock is very fine this year, and our assortment is unsurpassed.

**Hemerocallis, Gold Dust**. 2½ ft. Bright yellow flowers, tinged red, with buds a rich coppery yellow.

**H. flava** (*Lemon Daylily*). 2½ to 3 ft. Large, waxy, lemon yellow flowers of great fragrance in June

**H. kwanso** (*Double Daylily*). 3 ft. Large, double, coppery yellow flowers in July.

**H. LOVETT'S LEMON**. 3 to 4 ft. Largest lemon-colored variety of which we have any knowledge. Gorgeous beyond words. Each 50c., doz. \$5.00.

**H. LOVETT'S ORANGE**. 3 to 4 ft. A tall growing sort, with extra large orange flowers, bright and beautiful for your garden. Each 50c., doz. \$5.00.

**H. Orangeman**. 2 to 3 ft. Large, orange yellow flowers.

Prices for all varieties, unless otherwise noted, each 20c., doz. \$2.00, 100 \$12.00  
(Add 10% to your remittance if shipment is desired by parcel post)

**HEUCHERA** · Alumroot

**Heuchera sanguinea** (*Coralbells*). 18 in. Brilliant coral blooms in loose umbels throughout the Summer. Scalloped, purple tinged, round leaves. Each 30c., doz. \$3.00.

**HIBISCUS** · Rose Mallow

**Hibiscus, Meehan's Mallow Marvels**. 6 to 8 ft. The huge flowers, 8 to 10 in. in diameter appear in early August and continue until frost. **Fiery Crimson, Blood Red, Pink, and White**, also **Mixed Colors**.

**HOLLYHOCK** · Althea Rose

**Hollyhocks, Double** (*Althaea rosea florepleno*). Not only are the flowers very large and wonderfully perfect in make up, but they are produced in far greater numbers and for a much longer season than the old fashioned Hollyhocks. We grow them in separate colors, namely: **Maroon, Pink, Red, Salmon, White and Yellow**.

**IBERIS** · Candytuft

**Iberis sempervirens** (*Evergreen Candytuft*). 8 to 10 in. A low growing, broadleaved evergreen, with rich, dark green foliage completely covered with a mass of white flowers in Spring. (R.)

**IRIS****IRIS GERMANICA** (*German Iris*)

One of our finest hardy plants, asking only sun to grow by, and being indifferent as to soil or location. Marvelous, delicate spikes of bloom with dainty blendings of color.

S.—Stands, or upright petals; F—Falls, or drooping petals.

**Ab-del-Kader** (*Sambucina*). S., smoked yellow; F., yellow, veined plum.

**Celeste** (*H. Cramer, Sir Robert Peel*). S., celestial blue; F., a shade darker.

**Darius**. S., lemon yellow; F., light yellow, marbled a rosy lilac.

**Delicata**. S., straw, tinted rose; F., deep lilac to white.

**Donna Maria**. S., azure; F., indigo, with veined white base.

**Florentina alba**. S. and F., porcelain to white, early blooming, large flowers.

**Gracchus**. S., lemon; F., delicate yellow, striped wine red.

**Iris King**. S., clear lemon yellow; F., rich maroon, bordered yellow. Flowers large and brilliant. Each 25c., doz. \$2.50.

**Pallida Dalmatica** (*Dalmatica*). S., light lavender; F., deeper lavender with blue shadings. Very fragrant. Each 25c., doz. \$2.50.

**Pauline**. S., bright blue; F., darker blue.

**P. Bernot**. S., golden; F., light yellow and white, densely veined wine red.

**Pecutem**. S. and F., white, distinctly penciled lilac toward outer edges.

**President Thiers**. S., mauve, brown base; F., purple, brown and white base.

**Queen of May**. S., bright rosy lilac; F., darker.

**Rebecca**. S., golden; F., mahogany.

**All German Iris (except as noted), each 15c., doz. \$1.50, 100 \$10.00**



**IRIS GERMANICA** (*German Iris*)

**IRIS GERMANICA**

**Mixed**. A gorgeous mixture of the best colors in the Iris world. Each 12c., doz. \$1.25, 100 \$7.50.

**IRIS KAEMPFFERI** (*Japanese Iris*)

Carrying, in June and July, enormous flowers on top of their stately stems in the most gorgeous of colors.

**Gold Bound** (**Double White**). Large, open, milk white petals; deep yellow at base.

**Peacock**. Double, with violet purple petals, veined white.

**Purple and Gold**. Double; violet purple, showy golden throat.

**Purple Queen**. A beautiful sort, very double, with rich, dark purple petals, ruling the Summer garden.

**Pyramid**. Double; indigo blue.

**Stella**. Single; violet, veined white.

Each 25c., doz. \$2.50, 100 \$15.00

**IRIS KAEMPFFERI** (*Japanese Iris*). **Mixed**.

Sometime ago, a specialist and hybridizer offered us his surplus of unnamed seedlings—some so unique and beautiful as to be well worth naming and offering separately. To these we added other good varieties of which the labels had become lost in the nursery. The entire lot is offered to you in this mixture—a truly superb combination of the finest blood. Each 20c., doz. \$2.00, 100 \$12.00.

**IRIS PSEUDACORUS** (*Yellowflag Iris*). 2 to 3 ft.

Tall, with golden yellow flowers in June. Best in a moist situation.

**IRIS PUMILA** (*Crimean Iris*). **Mixed**. 6 to 10 in.

A well chosen mixture, carrying the brilliant colors of German Iris, but much more compact and dwarf. Very early to bloom. (R.)

Prices for all varieties, unless otherwise noted, each 20c., doz. \$2.00, 100 \$12.00  
(Add 10% to your remittance if shipment is desired by parcel post)

## IRIS—Continued

IRIS SIBIRICA (*Siberian Iris*)

Tall plants with most attractive flowers and foliage.

**Blue King.** 2½ ft. Large, rich blue flowers, good for cutting.

**Orientalis.** 2 to 2½ ft. Attractive violet blooms.

**Snow Queen.** 3 ft. An exquisite sort, with snowy white, shapely flowers in great abundance. Splendid for waterside planting or for the hardy border.

## LATHYRUS · Hardy Sweet Pea

Splendid trailing perennial.

**Lathyrus, latifolius** (*Perennial Pea*). Deep rosy red flowers.

**L. Mary Lovett.** A beautiful variety which originated at our nursery, with soft, rosy carmine flowers. A splendid addition to any garden.

**L. White Pearl.** Snow-white flowers in large trusses through the late Summer.

## LIATRIS · Blazing Star

**Liatrix pycnostachya** (*Cattail Gayfeather*). 4 to 5 ft. Very handsome and showy with its long spikes of purple flowers in July and August, which last for a long while. An excellent cut flower and particularly effective when planted with Hollyhocks.

## LILIUM · Lily

These familiar garden beauties constitute the chief glory of the hardy border when in bloom.

## EXTRA !!! LILY COLLECTION

1 each of the 6 beautiful varieties listed below for only \$2.00

**Lilium auratum** (*Goldband Lily*). 3 to 5 ft. Immense and very fragrant, bell-shaped flowers of an ivory white, with chocolate dots, and a bright yellow stripe through the center of each petal. Protect in northern latitudes.

**L. henryi** (*Henry Lily*). 3 to 5 ft. A sensational Japanese introduction, with bright orange yellow flowers of great hardiness. Easily grown and a permanent variety.

**L. magnificum** (*Great Speciosum Lily*). Waxy white petals, shaded and spotted with rosy carmine.



LILIUM REGALE (*Royal Lily*)



L. HENRYI (*Henry Lily*)

**L. regale** (*Royal Lily*). 4 to 5 ft. Delightful, jasminelike perfume graces the most attractive blooms of this variety, early in July. Flowers are of a pinkish tinge, centered canary yellow. A delightful sort.

**L. speciosum album** (*White Lily*). 3 to 4 ft. White, with a light green band through center of each petal.

**L. tigrinum florepleno** (*Double Tiger Lily*). 5 ft. A robust sort, with many large and showy flowers of a rich flame color, spotted crimson brown, in August and September.

All varieties, extra large bulbs, each 50c., doz. \$5.00, 100 \$35.00

## LOBELIA · Lobelia

**Lobelia cardinalis** (*Cardinalflower*). 1½ to 2 ft. Startling in the brilliancy of its cardinal red flowers, borne in dense spikes in Autumn.

## LUPINUS · Lupines

These brightly colored, exotic flowers lend a touch of oriental barbarism to the calm of your garden in the Summer months.

**Lupinus polyphyllus** (*Washington Lupine*). 3 to 4 ft. Popular, with clear, deep azure blue flowers from June until September.

**L. polyphyllus albus** (*White Washington Lupine*). 3 to 4 ft. White form of above.

**L. polyphyllus moerheimi** (*Moerheim Lupine*). Long spires of creamy pink flowers in June.

## LYCHNIS · Campion

**Lychnis chalconica** (*Maltese Cross*). 3 ft. Flat, blooming heads of vivid scarlet flowers all Summer.

**L. viscaria splendens florepleno** (*Double Rose-pink Campion*). Double, deep red, fragrant flowers come up from a dense tuft of evergreen foliage in June.

Prices for all varieties, unless otherwise noted, each 20c., doz. \$2.00, 100 \$12.00  
(Add 10% to your remittance if shipment is desired by parcel post)

## LYSIMACHIA · Loosestrife

**Lysimachia clethroides** (*Clebra Loosestrife*). 2 ft. Long, dense spikes of white starry flowers from July to September; excellent for cutting. Good foliage, with brilliant Autumn coloring.

## LYTHRUM · Lythrum

**Lythrum roseum superbum** (*Rose Loosestrife*). 4 to 5 ft. A perfect plant for the moist, shady border or for the bank of a stream or pond. Beautiful spikes of showy rosy purple flowers grace its strong, erect stems in profusion all Summer.

## MONARDA · Beebalm

**Monarda didyma splendens** (*Blazing Beebalm*). 2 to 3 ft. Large heads of intensely rich crimson scarlet flowers from July through August. Succeeds well in the city.

## MYOSOTIS · Forget-me-not

**Myosotis palustris semperflorens** (*Perpetual Forget-me-not*). 4 to 8 in. Good for rocky or moist situations with small, pale blue flowers, with a yellow eye in early Spring. (R.)

## OENOTHERA · Sundrops

**Oenothera pilgrimi** (*Pilgrim Sundrops*). 1 ft. Pale yellow flowers throughout the entire Summer in profusion. (R.)

## PACHYSANDRA · Spurge

**Pachysandra terminalis** (*Japanese Spurge*). 6 to 9 in. Infinitely the best and surely the most popular of all ground covers, especially for shady places. Carries bright, glossy evergreen foliage and branches freely into a dense mat. White flowers in late Spring and early Summer. Each 20c., doz. \$2.00, 100 \$12.00, 1000 \$95.00.

Prices for all varieties, unless otherwise noted, each 20c., doz. \$2.00, 100 \$12.00.

## PAEONIA · Peonies

Our "garden glories" this year comprise a list so varied that no type of color in the Peony world is omitted. Just sample a few of our large and excellent supply; we are sure that they will add so much to your home grounds that you will never regret your purchase.

(A beautiful effect may be obtained by mixing Japanese Lilies with Peonies in your planting.)

Price, all varieties of Peonies, extra large roots, each 50c., doz. \$5.00, 100 \$35.00, except where noted

**Albatre.** A late Peony, large and free blooming. White, frequently flecked with crimson.

**Albert Crousse.** A late variety, with beautiful rose pink blooms.

**Avalanche.** Blush white petals constitute the charm of this late sort.

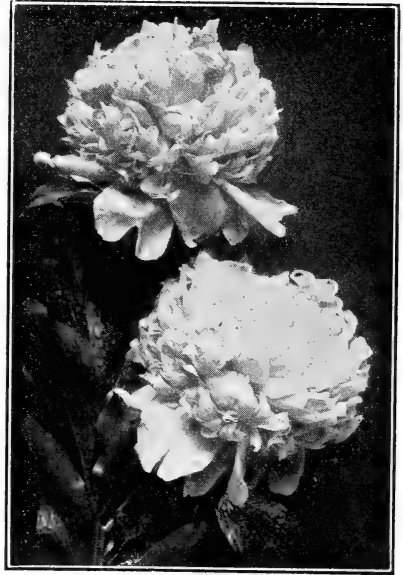
**Claire Dubois.** Late bloomer producing enormous flowers, rich pink with silvery sheen.

**Couronne d'Or.** Bright yellow with golden stamens. Keeps well when cut. Late flowering.

**Duchesse de Nemours.** An early white Peony, centered pale yellow.

**Edulis superba.** Early, mauve pink, with a silvery reflex. Very free flowering.

(Add 10% to your remittance if shipment is desired by parcel post)



PEONY EDULIS SUPERBA

**Felix Crousse.** Brilliant crimson, late midseason. One of the best. Each 60c., doz. \$6.00.

**Festiva Maxima.** An early and most popular sort. White, flecked crimson on inner petals.

**Floral Treasure.** A very fragrant sort with pale lilac rose blooms.

**La Perle.** Light old rose pink, slightly darker center; midseason.

**La Tulipe.** Very fragrant, blush white, flowers streaked carmine.

**Marechal MacMahon.** Flowers of a deep vinous red. Late.

**Marie Crousse.** Midseason; with beautiful salmon pink blooms.

**Marie Lemoine.** Very late, very compact, and very fragrant. Sulphur white shaded chamois.

**Mme. de Verneville.** White, blush white center, crimson marks on tips of several petals. Early.

**Mme. Geissler.** Enormous and a beautiful deep pink in color.

**Marguerite Gerard.** Pale Hydrangea pink; midseason.

**Modeste Guerin.** Dark rose pink; early.

**Mons. Dupont.** White, yellow glow at center; late midseason.

**Pottsi.** Early with very fragrant flowers of a rich dark crimson.

**Rose Here.** Late, with unusual flowers of dark rose red, striped white.

**Rubra Superba.** Dark crimson flowers, large and most fragrant.

**Ruth Brand.** Soft lavender pink flowers, splashed with darker lavender. Good cut flower.

**Triomphe de L'Exposition de Lille.** Splendid for cut flowers, being large and compact, a pale Hydrangea pink, flecked with violet rose.

**Umbellata rosea.** Violet rose, center amber white; very early.

**Venus.** Pale old rose pink, midseason.

## PAPAVER • Poppy

- Papaver nudicaule** (*Iceland Poppy*). 12 in. Great numbers of flowers, white to orange, on footlong stems throughout the entire season.
- P. orientale** (*Oriental Poppy*). 3 to 3½ ft. Blazing scarlet flowers, 5 to 7 in. across, centered black, are produced on long stems throughout the late Spring and early Summer.
- P. orientale**, "Mrs. Perry." A splendid variety, with flowers of a beautiful salmon rose shade. Each 30c., doz. \$3.00.

## PENTSTEMON

- Pentstemon torreyi** (*Torrey Pentstemon*). 3 ft. Showy scarlet red flowers in spikes from June till August.
- P. digitalis** (*Foxglove Pentstemon*). 2 to 3 ft. Large spikes of purple white flowers with purple throats in June and July.

## HARDY PHLOX

Probably the most popular of all hardy perennials and justly so, for they represent the acme of beauty and hardiness. Our Phloxes are all well rooted, field grown plants such as can be depended on to produce a splendid display of bloom this very year and for many years to come. So fine are our Phloxes, in fact, that they were awarded a special prize by the American Institute of New York. All bloom in July and August.

**Price, all varieties, strong field grown plants, each 20c., doz. \$2.00, 100 \$12.00, except where noted**

- Albion.** Beautiful large flowered sort, white with a pink eye.
- Athens.** One of the best pink Phloxes, with huge flowers.
- Beacon.** Immense flower heads of brilliant cherry red, striking and satiny. Grows 3 ft. tall and is probably the best of its color.
- B. Comte.** Brilliant purple, crimson shadings.
- Bridesmaid.** Large white flowers with rich crimson eye.
- Champs Elysees.** Fine, big flowers of a rich purple.
- Commander.** Brilliant crimson red and darker eye.
- Deutschland.** A splendid comparatively new bright red flowering variety.
- Eclairer.** Bright rosy carmine. A splendid variety.
- Elizabeth Campbell.** A most beautiful salmon pink Phlox, shaded lighter toward center of flower. Each 30c., doz. \$3.00.
- Enchantress.** Salmon pink, with a dark pink eye. A vigorous grower and one of the best of all varieties. Each 25c., doz. \$2.50.
- F. G. von Lassburg.** Largest pure white.
- Frau Anton Buchner.** A delightful glistening white Phlox.
- Independence.** Pure white; early.
- Iris.** Purplish blue flowers, very shapely.
- L'Esperance.** Small flower, lavender with a white eye.
- Miss Lingard.** White, faint lavender eye; early.
- Miss Verboom.** New. Rose pink, free flowering. Early.



PHLOX F. G. VON LASSBURG

- Mrs. Charles Dorr.** A beautiful lavender sort.
- Mrs. Jenkins.** Late bloomer, and the best white Phlox known.
- Orchid Queen.** One of the most attractive of the Phlox family. A huge salmon pink variety. Each 50c., doz. \$5.00.
- Rhineland.** Salmon pink with a claret red eye, in very large trusses.
- Rijnstroom.** A splendid bright rosy pink variety.
- R. P. Struthers.** Rosy carmine sort, shaded orange scarlet, with crimson eye.

PHLOX SUBULATA (*Moss Phlox*)

This type of the ever popular Phlox family is very dwarf, and very attractive, being hidden in masses of bloom in April and May. Excellent alike for the rockery, for the border or for carpeting the ground. Attractive mossy foliage. (R.)

**Alba** (white), **Lilacina** (lavender), and **Rosea** (pink).

**HARDY PINKS.** See *Dianthus*.

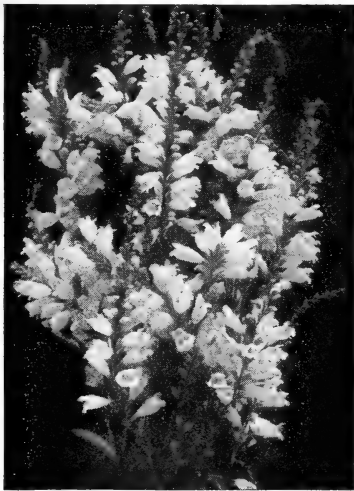
**GRENADIN PINKS.** See *Dianthus*.

## ROCK GARDEN COLLECTION

People have at last come under the spell of the rock garden, with its flowers, peeping out between rocks, and having a charm all their own by contrast with the stony background. We are therefore pleased to offer this Spring what we consider to be a perfect rock garden, with plants that are as different from each other as they can be, and yet all are eminently suitable for your rockery.

**Fifty-one plants, 3 each of 17 delightful rock garden favorites, for only \$6.50**

**Prices for all varieties, unless otherwise noted, each 20c., doz. \$2.00, 100 \$12.00**  
(Add 10% to your remittance if shipment is desired by parcel post)



PHYSOSTEGIA (Dragonhead)

## PHYSALIS • Groundcherry

**Physalis francheti** (*Lantern Groundcherry*). 2 ft. An unusual and striking sort, which carries large, bright orange scarlet fruits, like Japanese lanterns, in the Fall. Attractive in Winter bouquets, mixed with *Artemisia Silver King*.

## PHYSOSTEGIA • Dragonhead

**Physostegia virginiana** (*Virginia Dragonhead*). 3 to 4 ft. Shell pink flowers from June until frost.

**P. virginiana alba** (*White Dragonhead*). White form of above.

**P. "Vivid."** 18 to 24 in. Very dwarf and compact. A heavy bloomer of deep pink flowers which are splendid for cutting; last well in water and are much larger than the type. (R.) Each 25c., doz. \$2.50.

## PLATYCODON • Balloonflower

**Platycodon grandiflorum mariesi** (*Maries Balloonflower*). 18 in. Deep blue flowers shaped like cupped stars, all Summer. Successful in either rock garden or border. (R.)

## PLUMBAGO • Plumbago

**Plumbago larpentae** (*Larpentae Plumbago*). 6 in. A spreading dwarf, with pretty, deep blue flowers in Summer and Fall. Excellent for the rockery and particularly good as a carpet planting among evergreens. (R.)

## PYRETHRUM

**Pyrethrum roseum hybridum** (*Painted Ladies*). 12 to 18 in. May-June. Very hardy, and one of the choicest of perennials, unsurpassed for beauty of flower or foliage. All shades of white to red are represented. Plant in full sun, in beds or borders.

## PRIMROSE • Primula

**Primula veris** (*Cowslip Primrose*). 12 to 15 in. Flowers are a brilliant canary yellow. (R.) Each 30c., doz. \$3.00.

## RUDBECKIA • Coneflower

**Rudbeckia laciniata florepleno** (*Double Cutleaf Coneflower*, or *Golden Glow*). 5 to 6 ft. Double golden yellow flowers, excellent for cutting; from July through September.

**R. purpurea** (*Purple Coneflower*). 2 to 3 ft. Reddish purple flowers. 4 in. across; from July to October.

**R. subtomentosa** (*Sweet Coneflower*). 3 ft. Lemon yellow flowers, with purplish centers envelop this pyramidal plant throughout the Summer.

## SALVIA • Sage

**Salvia azurea grandiflora** (*Great Azure Sage*). 3 to 4 ft. Beautiful sky blue flowers grace this Rocky Mountain native in untold profusion during the late Summer. Beautiful in a mass planting.

**S. pratensis** (*Meadow Sage*). 2 ft., with branching stems of deep violet blue flowers throughout the Summer months.

## SANTOLINA • Lavender-Cotton

**Santolina incana** (*Hoary Lavender-cotton*). 6 to 9 in. Evergreen and very hardy. Splendid for the rockery. Sweet smelling, with silvery foliage.

## SCABIOSA

**Scabiosa caucasica** (*Caucasian Scabiosa*). 18 to 24 in. Soft lavender blue flowers, starting to bloom in June, and continuing until September. Fine for cutting. Each 25c., doz. \$2.50.

## SEDUM • Stonecrop

Probably the best of all rock garden plants are these hardy Sedums, with their thick, glaucous foliage. Very drought-resistant and succeed best if planted in full sun.

**Sedum acre** (*Goldmoss*). 4 in. Bright green foliage and golden yellow flowers. (R.)

**S. album** (*White Stonecrop*). Very vigorous grower, with thick, waxy, green foliage and white flowers; 2 to 3 in. high from May through July. (R.)

**S. kantschaticum**. 6 in. Orange yellow flowers; prostrate green foliage. (R.)

**S. reflexum**. 6 in. Resembles a dwarf Spruce; flowers yellow. (R.)

**S. sarmentosum**. 6 in. A pretty trailing variety, with yellow flowers in July. Rapid grower and splendid for filling seams between rocks in a rock garden. (R.)

**S. sexangulare**. 4 in. Habit much like Acre. Yellow flowers; very dark green foliage. (R.)

**S. sieboldi**. 10 in. Round, glaucous leaves, edged carmine. Bright pink flowers in September. (R.)

**S. spectabilis**, "Brilliant." 18 in. An improved variety with immense heads of red flowers in the Fall. Erect growing.

**S. spurium coccineum**. 6 in. Beautiful rosy crimson flowers in July and August. Spreads rapidly. (R.)

**S. stoloniferum**. 6 in. Evergreen leaves; flowers purplish pink. July and August. Very desirable. (R.)

Prices for all varieties, unless otherwise noted, each 20c., doz. \$2.00, 100 \$12.00  
(Add 10% to your remittance if shipment is desired by parcel post)



## SEMPERVIVUM · Houseleek

Rock garden plants with delightful Cactuslike foliage.

**Sempervivum alberti** (*Albert Houseleek*). A pale yellow flower, about an inch in diameter, is produced on a foot-long stem from the grayish-green leaves of this variety in June. (R.)

**S. globiferum** (*Globe Houseleek*). Rosettes of gray green leaves 2 to 3 in. in diameter, tipped brown, throw up pale yellow flowers in hairy panicles in June. 1 ft. (R.)

**S. soboliferum** (*Hen-and-chickens*). Perfect plants for the rock garden, like small, stiff Cacti in their highly unusual appearance. (R.)

**S. tectorum** (*Roof Houseleek*). Pale red flowers spring on foot-long stalks from broad rosettes of foliage, with leaves tipped a reddish brown. (R.)

All Sempervivums, each 25c., doz. \$2.50

## SPECIAL OFFER

1 each of the above Sempervivums, just what you want to add the crowning touch to your rock garden for only 90c.

## SPIREA · Meadowsweet

**Spirea palmata elegans** (*Showy Siberian Meadowsweet*). 3 ft. Splendid for a waterside planting with nodding plumes of graceful light pink flowers in early Summer. Each 30c.; doz. \$3.00.

## STACHYS · Betony

**Stachys lanata** (*Woolly Betony*). A fine dwarf rock garden plant with silvery white, woolly foliage and clusters of light purple flowers. 4 in. (R.)

## STATICE · Thrift

**Statice latifolia** (*Bigleaf Sea-lavender*). 12 to 18 in. Large heads of small, lavender blue flowers in July and August. Lacelike and lasting as cut flowers. (R.)

## STOKESIA

**Stokesia laevis** (*Cornflower Aster*). 18 to 24 in. Delicate lavender blue flowers from July through October, with attractively fringed petals. A splendid cut flower.

**SWEET WILLIAM.** See "*Dianthus barbatus*."

## THYMUS · Thyme

Perfect plants for the rock garden.

**Thymus serpyllum** (*Mother-of-thyme*). A splendid variety with small lilac flowers throughout the Summer on a close, fragrant carpet of foliage.

**T. serpyllum album** (*White Mountain Thyme*). Swarms of white flowers grace the dark green foliage of this creeping sort.

**T. serpyllum coccineum** (*Crimson Thyme*). Brilliant crimson flowers completely hide these plants in the Summer.

## TRITOMA · Torchlily

**Tritoma, "Express."** Similar to *Tritoma pfitzeri*, but more continuous in bloom and slightly lighter in color. Protect in Winter.

**T. pfitzeri** (*Bonfire Torchlily*). 3 ft. Rich orange scarlet blooms on tall stems from August to October. Succeeds in any soil, but should be protected in Winter at points north of Philadelphia. Each 25c., doz. \$2.50.



VERONICA LONGIFOLIA SUBSESSILIS (*Clump Speedwell*)

## VALERIANA · Valerian

**Valeriana officinalis** (*Garden Heliotrope*). 3 to 4 ft. Showy heads of rose tinted flowers in June and July with a delicious odor of Heliotrope. An excellent cut flower.

## VERONICA · Speedwell

**Veronica longifolia subsessilis** (*Clump Speedwell*). 2 ft. This variety, one of the best of all blue-flowered perennials, is now quite scarce. Bears long, compact spikes of deep blue flowers in late Summer.

**V. spicata** (*Spike Speedwell*). 18 in. Long spikes of bright violet blue flowers in June and July.

## VIOLA · Violet

**Viola, Double Russian.** Beautiful flowers, dark blue and very double, appear on this plant as soon as the frost leaves the ground, and repeat their arrival in the Fall. Especially fragrant. (R.) Each 30c., doz. \$3.00, 100 \$20.00.

**V. Gov. Herrick.** The best single-flowered sort for out-of-door growing. Early Spring. (R.)

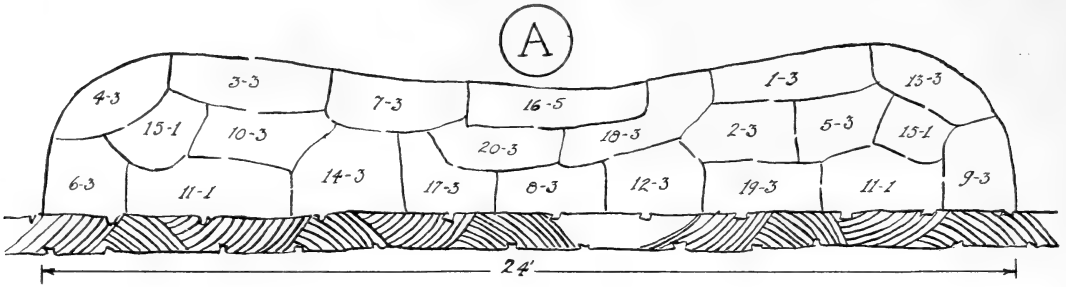
**V. Jersey Gem.** Dwarf in habit and continuous in bloom. Color is a pure, rich violet and flowers slightly perfumed. Blooms from May to the end of the season. Succeeds in any soil with plenty of sun. Plants are compact and sturdy, with flowers borne on good stems about 6 in. long. (R.)

VIOLA ROSINA (*Pink Violet*)

Six in. A beautiful new Violet which will soon be in every garden. Flowers are a bright rosy pink, and more fragrant than those of any other Violet with which we are familiar. Makes an ideal cut flower, and is most hardy. Be the first in your neighborhood to possess some of these charming plants, which bloom in early Spring. (R.)

Each 35c., doz. \$3.50, 100 \$25.00

Prices for all varieties, unless otherwise noted, each 20c., doz. \$2.00, 100 \$12.00  
(Add 10% to your remittance if shipment is desired by parcel post)



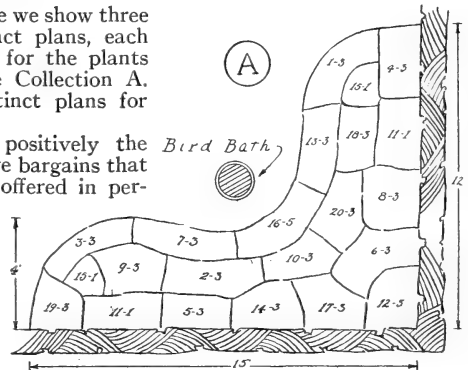
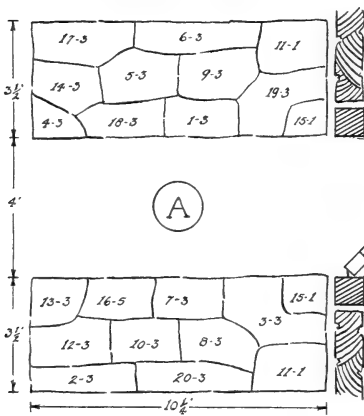
# Perennial Collections

First numbers mentioned on the planting plans are Key Numbers, the second numbers referring to quantities of plants required in each area.

On this page we show three entirely distinct plans, each of which call for the plants that comprise Collection A. Also two distinct plans for Collection B.

These are positively the most attractive bargains that we have ever offered in perennial plants.

Another very attractive offer will be found on back cover of this Catalog.



## COLLECTION "A"

- | Key | Quan. | Plant Name                         |
|-----|-------|------------------------------------|
| 1   | 3     | Dwarf Goldentuft Alyssums          |
| 2   | 3     | Japanese Anemone (Pink)            |
| 3   | 3     | Columbines (Mrs. Scott Elliott's)  |
| 4   | 3     | Astilbes (Peach Blossom)           |
| 5   | 3     | Canterbury-bells                   |
| 6   | 3     | Chrysanthemums (outdoor varieties) |

- | Key | Quan. | Plant Name                                     |
|-----|-------|--|
| 7   | 3     | Shasta Daisies                                 |
| 8   | 3     | Larkspur (Wrexham Hybrids)                     |
| 9   | 3     | Perennial Gaillardias                          |
| 10  | 3     | Babysbreath                                    |
| 11  | 2     | Rose Mallows (Meehan's Mal-low Marvels, Mixed) |
| 12  | 3     | Hollyhocks (Double, Mixed)                     |

- | Key | Quan. | Plant Name                    |
|-----|-------|-------------------------------|
| 13  | 3     | German Iris (Choice colors)   |
| 14  | 3     | Cattail Gayfeathers           |
| 15  | 2     | Peonies (Double, Mixed)       |
| 16  | 5     | Pinks                         |
| 17  | 3     | Phlox (tall, hardy varieties) |
| 18  | 3     | "Painted Ladies"              |
| 19  | 3     | Purple Coneflowers            |
| 20  | 3     | Spike Speedwells              |

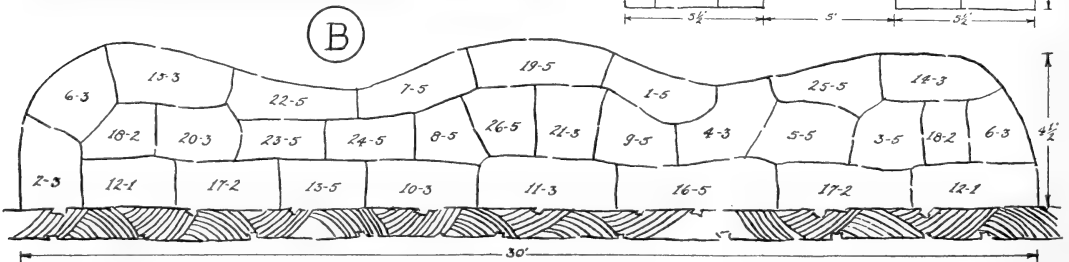
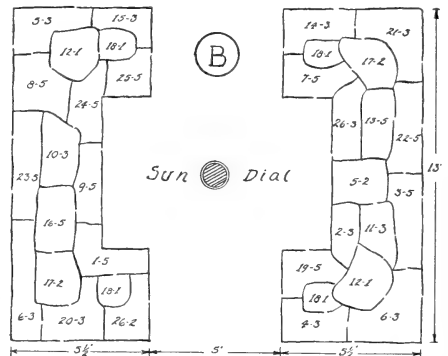
60 Strong field grown plants delivered to your door for only **\$5.50**

## COLLECTION "B"

- | Key | Quan. | Plant Name                             |
|-----|-------|--|
| 1   | 5     | Dwarf Goldentuft Alyssums              |
| 2   | 3     | Japanese Anemone (Pink)                |
| 3   | 5     | Yellow Camomile                        |
| 4   | 3     | Astilbe "Peach Blossom"                |
| 5   | 5     | Canterbury-bells                       |
| 6   | 6     | Chrysanthemums (two colors)            |
| 7   | 5     | Shasta Daisies                         |
| 8   | 5     | Larkspur (Wrexham Hybrids)             |
| 9   | 5     | Perennial Gaillardias                  |
| 10  | 3     | Pitcher Helioipsis                     |
| 11  | 3     | Miss Millish Sunflowers                |
| 12  | 2     | Rose Mallows (Meehan's Mallow Marvels) |
| 13  | 5     | Hollyhocks                             |

- | Key | Quan. | Plant Name                               |
|-----|-------|--|
| 14  | 3     | German Iris                              |
| 15  | 3     | Japanese Iris                            |
| 16  | 5     | Cattail Gayfeathers                      |
| 17  | 4     | Rose Loosetrife                          |
| 18  | 4     | Peonies (Double, Mixed)                  |
| 19  | 5     | Pinks                                    |
| 20  | 3     | Phlox (Scarlet)                          |
| 21  | 3     | Phlox (Pure white)                       |
| 22  | 5     | "Painted Ladies"                         |
| 23  | 5     | Purple Coneflowers                       |
| 24  | 5     | Spike Speedwells                         |
| 25  | 5     | Viola (Jersey Gem)                       |
| 26  | 5     | Columbine (Mrs. Scott Elliott's Hybrids) |

110 Strong field grown plants delivered to your door for only **\$9.50**







AN ATTRACTIVE FOUNDATION PLANTING OF SNOWHILL HYDRANGEAS

## HARDY SHRUBS AND DWARF TREES

The backbone of any planting. All of our shrubs are carefully grown, in wide rows, so that they can develop into sturdy and bushy plants. All are carefully graded and cannot help giving our patrons the utmost of satisfaction.

The prices quoted are for well developed, stocky plants. A dozen of any variety will be supplied for ten times the price of one (six for five times the price of one), but this dozen rate may be used only when six or more of one variety are taken. The hundred rate of any variety will be promptly sent if desired.

We solicit an opportunity to give special quotations upon lists of Shrubs and Ornamental Trees for landscape planting. Shipment should be made by express or freight; not by parcel post.

### ABELIA

**Abelia grandiflora** (*Glossy Abelia*). 6 to 8 ft. A broad-leaved evergreen with pink blossoms all Summer. Splendid for planting with other broad-leaved evergreens; also desirable as a hedge plant. Not absolutely hardy north of Trenton. Each: 18-24 in. 40c., 2-3 ft. 60c.

### ACANTHOPANAX

**Acanthopanax pentaphyllum** (*Fiveleaf Aralia*). 7 to 8 ft. Glossy, deep green leaves grace the light gray twigs of this shrub, which survives either in deep shade or sunlight. An ideal plant to withstand the smoke and dust of a city. Each: 3-4 ft. 40c., 4-5 ft. 60c.

### ACER

**Acer palmatum atropurpureum** (*Bloodleaf Japanese Maple*). 6 to 8 ft. Our strain of this striking variety is the very best of its kind. The foliage is not only wine red in early Spring, but it retains this unusual color throughout nearly the entire season. Each: 15-18 in. \$1.75, 18-24 in. \$2.50, 2-3 ft. \$4.50.

### AMYGDALUS

**Amygdalus nana** (*Double Pink Almond*). 5 to 6 ft. Spring is ushered in with the pink flowers of this beautiful sort, which resembles a dwarf flowering Cherry. We can also supply the Double White variety in same grades and prices as we are asking for Double Pink-flowered. Each: 18-24 in. 40c., 2-3 ft. 60c.

**A. persica** (*Flowering Peach*). 8 to 10 ft. We cannot think of any variety of dwarf tree which are more striking when in flower than are these. We are now able to supply trees with *double white, double pink or double red flowers*, all of which bloom before the leaves come forth in the Spring. Each: 4 to 5 ft. \$1.00.

### ARONIA

**Aronia arbutifolia** (*Red Chokeberry*). 7 to 8 ft. A slender tree-like shrub, with showy spikes of white flowers in the Spring and large red berries to grace its attractive Fall foliage. Each: 18-24 in. 40c., 2-3 ft. 60c., 3-4 ft. 75c.

## AZALEAS

These beautiful flowering shrubs have long been a major specialty of our nursery. We grow our Azaleas in wide rows. They consequently have more branches and, as a result, more flowers than do those produced by most nurseries.

**Azalea amoena** (*Amoena Azalea*). 3 to 4 ft. A splendid and most popular Azalea, excellent for rockery or mixed planting, with conspicuous purplish red flowers in April and May. Its evergreen foliage takes on a rich, bronzy tint in the Winter months, making it an all year attraction: Each: 10-12 in. 90c., 12-15 in. \$1.25, 15-18 in. \$2.00, 18-24 in. \$2.75.

**A. calendulacea** (*Flame Azalea*). 4 to 5 ft. Swarms of burnt-orange flowers appear on this native Azalea even before the foliage, and make it a gaudy sight in late May. Each: 18-24 in. \$3.00, 2-3 ft. \$4.00, 3-4 ft. \$5.00.

**A. Christmas Cheer**. Real Christmas red flowers grace the glossy evergreen foliage of this charming variety. Each: 8-10 in. \$1.25, 10-12 in. \$2.00, 12-15 in. \$2.75, 15-18 in. \$3.75.

**A. hinodegiri** (*Hinodegiri Azalea*). 3 to 4 ft. Undoubtedly the most popular of all Azaleas, with many large, bright scarlet flowers gracing its attractive evergreen foliage throughout the early Summer. We are exceptionally fortunate this season in having by far the largest and finest supply of these beautiful plants that we have ever seen, and we are offering them at prices which do not begin to indicate their true worth. Each: 8-10 in. \$1.00, 10-12 in. \$1.25, 12-15 in. \$2.00, 15-18 in. \$3.00, 18-24 in. \$4.50.

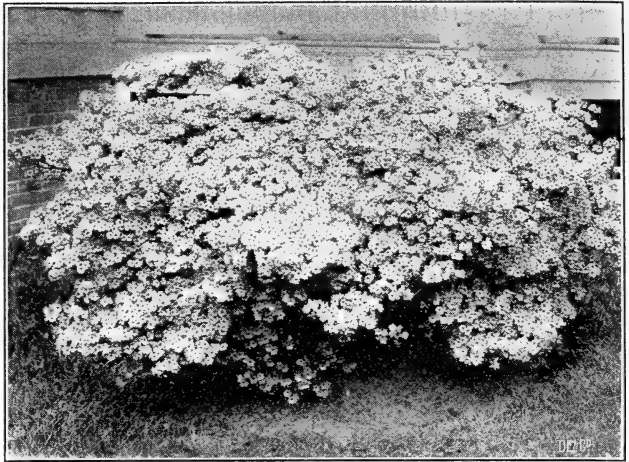
**A. indica alba** (*Snow Azalea*). 4 to 5 ft. Evergreen, with large, white flowers produced freely. Blooms with Azalea hinodegiri and forms a striking contrast when planted with it. Each: 12-15 in. \$2.50, 15-18 in. \$3.00.

**A. J. T. Lovett**. 2 to 2½ ft. In late June and July, the evergreen leaves of this plant are completely covered with very large, rich carmine-lake flowers. Decidedly spreading in habit, plants being frequently twice as broad as they are tall. Each: 10-12 in. \$2.00, 12-15 in. \$3.00, 15-18 in. \$4.50, 18-24 in. \$6.50.

**A. mollis** (*Chinese Azalea*). 4 to 6 ft. In May and June this showy plant produces large, brilliant flowers in attractive shades of red, lemon and orange. Our plants are very bushy, with large and hairy leaves. One of the most striking of all Azaleas. For best results, plant in full sunlight. Each: 12-18 in. \$1.75.

**A. viscosa** (*Swamp Azalea*). 4 to 5 ft. Extremely fragrant, rosy white flowers in late June and July. Each: 18-24 in. \$2.50, 2-3 ft. \$3.50.

**A. yodogawa** (*Yodogawa Azalea*). 3 to 4 ft. One of the hardest of all Azaleas, producing a great mass of double rosy lilac blooms in May. Semi-evergreen and very conspicuous. Each: 15-18 in. \$2.50, 18-24 in. \$3.50.



AZALEA AMOENA—GORGEOUS BEYOND WORDS

## BENZOIN

**Benzoin aestivale** (*Spicebush*). 10 to 12 ft. Yellow flowers in the Spring, scarlet berries in the Summer, beautiful foliage in the Fall, and highly aromatic leaves. Each: 2-3 ft. 50c., 3-4 ft. 65c., 4-5 ft. 90c.

## BERBERIS • Barberry

**Berberis thunbergii** (*Japanese Barberry*). See Hedge Plants.

**B. thunbergii atropurpurea** (*Red Japanese Barberry*). 4 to 5 ft. Probably the most striking of all shrubs, with its fiery red foliage throughout the entire Summer and Fall. Our plants of this variety are the most brilliant that we have ever seen. Plant in full sunlight. Each: 12 to 18 in. 30c., 18-24 in. 40c., 2-3 ft. 60c.

**B. thunbergii minor** (*Box Barberry*). See Hedge Plants.

## BETULA • Birch

**Betula alba laciniata** (*Culeaf Weeping Birch*). 30 to 40 ft. The deeply cut leaves and "weeping" habit make this one of the most graceful of trees for the lawn. Each: 5 to 6 ft. \$1.35.

## BUDDLEIA • Butterflybush

**Buddleia alternifolia** (*Chinese Butterflybush*). 8 ft. Tall, arching shrubs, with clusters of purple lilac flowers gracing their distinctive, woolly gray foliage. Each. 3-4 ft. 75c.

**B. farquhari** (*Farquhar Butterflybush*). 5 ft. A recent introduction, but already very popular, with its myriads of delicate lavender-pink flowers, centered an intense orange and very fragrant. Splendid, strong, 2 yr. old plants. Each 50c.

**B. magnifica** (*Oxeye Butterflybush*). 5 to 6 ft. Large racemes of deep lilac flowers contrast effectively with the gray-green foliage of this bush from June to September. Best when planted in full sunlight. Splendid, strong, 2 yr. old plants. Each 40c.

(Shipment by express or freight only; not by parcel post)

## BUXUS · Boxwood

**Buxus sempervirens** (*Boxwood*). 12 to 15 ft. An evergreen shrub, excellent for formal hedges. Our plants of this variety, having been frequently sheared, are very dense; truly specimen plants. Each: 12 to 18 in. 90c., 18-24 in. \$1.50, 2-2½ ft. \$2.50.

**B. suffruticosa** (*True Dwarf Box*). 3 to 4 ft. See Hedge Plants.

## CALYCANTHUS

**Calycanthus floridus** (*Sweetsbrub*). 4 to 5 ft. This old-fashioned shrub still retains its popularity through its double, chocolate-colored, strawberry-scented flowers in April. Each: 18-24 in. 30c., 2-3 ft. 40c.

## CHIONANTHUS

**Chionanthus virginica** (*White Fringe Tree*). 15 ft. Bears conspicuous tassel-like flowers in May and June, lacy and most fragrant. Each: 2-3 ft. 90c., 3-4 ft. \$1.25.

## CLETHRA

**Clethra alnifolia** (*Summer Sweet*). 4 to 5 ft. Best in moist, shady places, with fragrant spikes of white flowers in late Summer. Each: 18-24 in. 50c., 2-2½ ft. 65c.

## CORNUS · Dogwood

**Cornus alba** (*Redbranched Dogwood*). 8 to 10 ft. Useful for the Winter time, with its bright red bark and fruits of porcelain blue. Each: 2-3 ft. 30c.

**C. florida** (*Flowering Dogwood*). 15 to 25 ft. A "three season" tree. Spring brings large, beautiful white flowers before the leaves; late Summer brings brilliant red berries to attract the birds, and Fall brings rich scarlet coloring to the foliage. Each: 3-4 ft. 90c., 4-5 ft. \$1.25, 5-6 ft. \$2.00, 6-8 ft. \$3.50.

**C. florida rubra** (*Pink Flowering Dogwood*). 15 to 20 ft. A tree which merits featuring in every nursery list. Its flowers, varying from blush pink to deep rose, make it a lovely sight in May and June, and its red fruits in September almost equal the blooms in beauty. Our trees, even in the smaller grades, are bushy and attractive. Each: 2-3 ft. \$1.50, 3-4 ft. \$2.50, 4-5 ft. \$3.50, 5-6 ft. \$5.50.

**C. kousa** (*Kousa Dogwood*). 15 to 20 ft. Native of Japan, Korea and northern China. This Dogwood is unusually attractive, with its dense, creamy-white floral heads blooming in mid June and lasting for over a month. Each: 2-3 ft. 75c., 3-4 ft. 90c.

**C. mas** (*Cornelian Cherry*). 15 to 18 ft. Small yellow flowers in Spring and bright scarlet fruit in the Fall. Each: 2-3 ft. 65c., 3-4 ft. \$1.00, 4-5 ft. \$1.50.

**C. paniculata** (*Gray Dogwood*). 10 to 12 ft. Popularized by its many white fruits on red stems—a gaudy sight in June. Each: 3-4 ft. 50c., 4-5 ft. 75c.

**C. stolonifera lutea** (*Goldentwig Dogwood*). 6 to 7 ft. Excellent for Winter effects, with its bright yellow bark. Each: 18-24 in. 30c., 2-3 ft. 40c.

(Shipment by express or freight only; not by parcel post)

## CRATAEGUS · Hawthorn

**Crataegus oxyacantha pauli** (*Paul's Scarlet Hawthorn*). Brilliant double scarlet flowers in June. Showy in Winter with its scarlet fruit. Each: 4 to 5 ft., well branched, \$1.50.

## CYDONIA

**Cydonia japonica** (*Flowering Quince*). 4 to 5 ft. One of our best early flowering shrubs, its sturdy branches being graced in May and June with large, showy scarlet flowers. Each: 18-24 in. 30c., 2-3 ft. 45c.

## DAPHNE

**Daphne cneorum** (*Rose Daphne*). 1 ft. A delightful evergreen dwarf, with gray-green foliage, low and spreading, and most fragrant and beautiful pink flowers in the Spring. The aristocrat of any rock garden. Each: 9-12 in. 90c., 12-15 in. \$1.50.

## DESMODIUM

**Desmodium penduliflorum** (*Bush Clover*). 5 to 6 ft. Slender and graceful, with rosy purple flowers in the late Summer. Strong, 2 yr. old plants. Each: 40c.

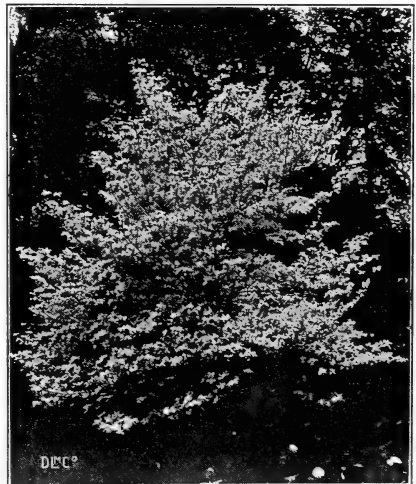
## DEUTZIA

**Deutzia gracilis** (*Slender Deutzia*). 3 ft. A dwarf variety, splendid in the hardy border, with a mass of attractive white flowers in May. Each: 12-18 in. 25c.

**D. lemoinei** (*Lemoine Deutzia*). 4 to 5 ft. Large clusters of graceful white flowers spring from the slender, bright foliage of this beautiful sort in June. Each: 18-24 in. 25c., 2-3 ft. 35c.

**D. "Pride of Rochester."** 9 to 10 ft. A vigorous and sturdy shrub, with extra large pinkish flowers in June. Each: 2-3 ft. 25c., 3-4 ft. 35c., 4-5 ft. 50c.

**D. scabra crenata fl. pl.** (*Double Pink Deutzia*). 6 to 8 ft. June brings the beauty and fragrance of this shrub's double pink flowers. Each: 2-3 ft. 25c., 3-4 ft. 35c., 4-5 ft. 50c.



CORNUS FLORIDA RUBRA

## EUONYMUS

*Euonymus alatus* (*Winged Euonymus*). 9 to 10 ft. Branches are winged, with an interesting corky layer of bark, and foliage is a splendid warm rose color in Autumn with bright red berries. Take advantage of our low prices this year and give yourself the opportunity of owning some of these delightful shrubs. Each: 2-3 ft. 45c., 3-4 ft. 75c., 4-5 ft. \$1.00.

## EXOCHORDA

*Exochorda grandiflora* (*Pearlbush*). 6 to 9 ft. The most dazzling white flowers of any shrub in May. Each: 2-3 ft. 35c.

## FORSYTHIA

*Forsythia intermedia spectabilis* (*Showy Border Forsythia*). 6 to 8 ft. Showiest and most profuse bloomer of the Forsythia family, with large flowers of a rich golden yellow in early Spring. Neat and bushy in habit. Each: 2-3 ft. 30c.

*F. suspensa* (*Weeping Forsythia*). 4 to 6 ft. Excellent for mass planting or for holding banks. Gracefully drooping in habit, with yellow flowers in April. Each: 2-3 ft. 35c.

*F. suspensa fortunei* (*Fortune Forsythia*). 7 to 8 ft. Tall, arching branches bear attractive golden blooms in early Spring. Each: 2-3 ft. 25c.

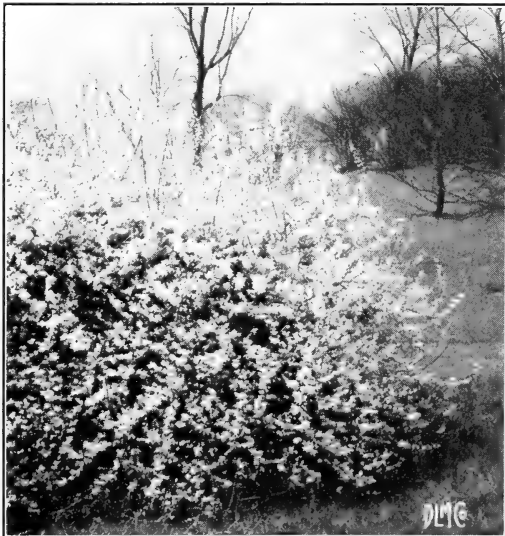
*F. suspensa variegata* (*Goldblotch Forsythia*). 5 to 7 ft. A delightful shrub, golden in foliage and flower. Blooms appear in April. Each: 2-3 ft. 50c.

## HIBISCUS SYRIACUS • Althaea

"*Boule de Feu*." 10 to 12 ft. Formal plant with deep crimson flowers in late Summer.

"*Jeanne d'Arc*." 10 to 12 ft. Like the above, but with double pure white flowers. Each: 2-3 ft. 30c., 3-4 ft. 40c.

**Tree Form.** The quality of these tree form or standard Althaeas is unsurpassed. They are true specimens. In **red, pink or purple**, with straight stems, 4-5 ft. high. Each: \$1.25.



FORSYTHIA INTERMEDIA SPECTABILIS  
(*Showy Border Forsythia*)

(Shipment by express or freight only; not by parcel post)

## HYDRANGEA

*Hydrangea arborescens grandiflora* (*Snowbill Hydrangea*). 4 to 5 ft. Great round heads of glistening white flowers grace this familiar shrub from late June until August. Splendid as a specimen or in mass planting. Our "Snowhill" are particularly fine this year. Each: 18-24 in. 25c., 2-3 ft. 35c., 3-4 ft. 50c.

*H. paniculata grandiflora* (*Peegee Hydrangea*). 8 to 9 ft. One of the showiest and most popular of all shrubs, with its broad, pyramidal panicles of flowers, frequently a foot long. Flowers bloom in August, changing from pure white to a pinkish bronze. Our strain is the true large flowered variety. Each: 18-24 in. 25c., 2-3 ft. 35c., 3-4 ft. 50c.

*H. paniculata grandiflora*. **Standard form.** Grown on straight stems from 3 to 4 ft. high. Appropriate for formal garden work, or for planting along a walk. Each 90c.

## HYPERICUM

*Hypericum vanfleeti* (*Van Fleet St. Johnswort*). 3 ft. A compact grower, bearing bright yellow blossoms in late Summer. Each: 18-24 in. 75c., 2-3 ft. \$1.00, 3-4 ft. \$1.50.

## ILEX

*Ilex verticillata* (*Winterberry*). 6 to 8 ft. The bright red berries of this variety persist until Midwinter. Best in moist soil. Each: 18-24 in. 60c., 2-3 ft. 75c.

## KALMIA

*Kalmia latifolia* (*Mountain-laurel*). 5 to 6 ft. Probably our most beautiful broadleaved evergreen, with clusters of bright pink flowers in June. Bears attractive foliage and succeeds best in a shady situation. Our collected plants are extremely bushy, being for the most part broader than they are tall. Each: 12-18 in. \$1.50, 18-24 in. \$2.50, 2-3 ft. \$3.00.

## KERRIA

*Kerria japonica flore pleno* (*Globeflower*). A handsome green-leaved shrub, growing 3 to 5 ft. Graceful, slender, drooping branches, covered with a wealth of rich, dark, double yellow flowers in June, and to some extent all Summer. Each: 18-24 in. 60c., 2-3 ft. 75c.

## KOLKWITZIA

*Kolkwitzia amabilis* (*Beautybush*). 4 to 6 ft. Early May finds these bushes a mass of gorgeous pink flowers, similar to Weigela, but finer in every way. Each: 1½-2 ft. 35c., 2-3 ft. 50c. Illustrated on page 27.

## LEUCOTHOE

*Leucothoe catesbaei* (*Drooping Leucothoe*). 3 to 4 ft. An evergreen shrub with handsome white flowers in May, and brilliant Fall foliage. Especially good in the shade. Each: 12-18 in. \$1.75, 18-24 in. \$2.50.

## LIGUSTRUM · Privet

**Globe and Pyramidal California Privet.** We take the greatest care to insure our patrons of receiving splendid, compact plants. They are sheared carefully at least four times each season and the quality of their foliage resembles that of a fine Boxwood.

**Beautiful Globes.** Each: 12 in. 85c., 18 in. \$1.25, 24 in. \$1.75.

**Pyramidal Shape.** Each: 2-2½ ft. \$1.75, 2½-3 ft. \$2.50, 3-4 ft. \$3.50.

**Ligustrum ovalifolium aureum (Golden Privet).** 8 to 9 ft. A striking sort for either a shrub or a hedge plant, retaining its brilliant golden hue throughout the entire season. Ours are exceptionally fine specimens of this beautiful variety. Each: 1½-2 ft. 35c., 2-3 ft. 50c.

**L. regelianum (Regel Privet).** 5 to 6 ft. The true "spreading Privet"; excellent for a low, dense hedge, exceptionally sturdy and grown carefully from cuttings. Equally valuable as a shrub, because of its graceful arching branches. Each: 1½-2 ft. 25c., 2-3 ft. 35c., 3-4 ft. 50c.

For **Ligustrum amurense (Amur River Privet)**, **L. ibolium (Ibolium Privet)**, **L. ovalifolium (California Privet)**, see Hedge Plants, page 32.

## LONICERA · Honeysuckle

**Lonicera fragrantissima (Winter Honeysuckle).** 6 to 8 ft. Fragrant white flowers from early April through May grace this half evergreen plant

**L. morrowi (Morrow Honeysuckle).** 7 to 8 ft. Of spreading habit with white flowers in May and June, followed by red fruits. Good foliage.

**L. tatarica rosea (Rosy Tatarian Honeysuckle).** 9 to 10 ft. Fragrant, rosy red flowers in May, followed by scarlet fruit.

Any of the above **Loniceras**, each: 2-3 ft. 30c., 3-4 ft. 45c.

## MAGNOLIA

**Magnolia kobus (Kobus Magnolia).** 50 to 60 ft. A Japanese tree, with narrow and pyramidal head. Bears large white flowers in April and May, frequently 4 and 5 in. across. Each: 2 to 3 ft. \$4.50, 3 to 4 ft. \$6.00.

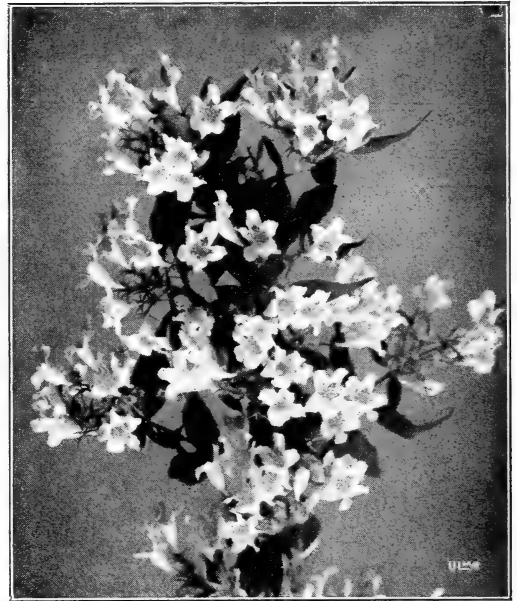
**M. soulangeana (Saucer Magnolia).** 15 to 18 ft. Best of all the hardy Magnolias with large, purple, pink, and white flowers which frequently envelop the plant completely in May. Each: 2 to 3 ft. \$4.00, 3 to 4 ft. \$6.50, 4 to 5 ft. \$9.50.

## MALUS · Flowering Crab

**Malus ioensis plena (Bechtel Crab).** 10 to 15 ft. Most popular of the Flowering Crabs, with large, double pink flowers of noticeable fragrance. Our trees of this variety are the best we have ever had. Each: 3 to 4 ft. 75c., 4 to 5 ft. \$1.00.

**M. eleyi (Redleaved Crab).** 10 to 15 ft. A new variety, with brilliant purple-red foliage and large clusters of purple flowers. Best in full sunlight. Each: 6 to 8 ft. \$2.50.

(Shipment by express or freight only; not by parcel post)



KOLKWITZIA AMABILIS (*Beautybush*)  
(Offered on page 26)

## PHILADELPHUS · Mock Orange

**Philadelphus coronarius (Sweet Mockorange).** 9 to 10 ft. Flowers are the most fragrant of any Mockorange, are creamy white and produced in May and June. Each: 2-3 ft. 30c.

**P. coronarius aurea (Goldenleaf Mockorange).** 4 to 5 ft. A dwarf form of *Philadelphus coronarius*, with yellow leaves and a profusion of fragrant white flowers in May and June. Each: 12-18 in. 30c.

**P. coronarius grandiflora (Big Mockorange).** 7 to 8 ft. A very vigorous shrub, producing extra large scentless flowers. Each: 2-3 ft. 25c., 3-4 ft. 35c.

**P. virginalis (Virginal Mockorange).** 7 to 8 ft. The best of all Mockoranges with very fragrant semi-double flowers produced throughout the entire Summer in large clusters. Each: 2-3 ft. 35c., 3-4 ft. 45c.

## PHYSOCARPUS

**Physocarpus opulifolius (Ninebark).** 9 to 10 ft. Creamy white flowers in June. Vigorous, and good for shady location. Each: 2-3 ft. 30c., 3-4 ft. 40c., 4-5 ft. 50c.

## PIERIS · Andromeda

**Pieris floribunda (Mountain Andromeda).** 4 ft. Evergreen and very hardy, with waxy white flowers in May. Excellent for rockeries or for planting in front of larger evergreens. Each: 12-18 in. \$2.50, 18-24 in. \$3.50.

**P. japonica (Japanese Andromeda).** 5 to 6 ft. Evergreen. Grows best in partial shade and damp ground. Drooping clusters of white flowers in May. Each: 12-18 in. \$2.00, 18-24 in. \$3.00.

## POPULUS • Poplar

**Populus nigra italica** (*Lombardy Poplar*). 60 to 80 ft. A well known and very picturesque tree, frequently used to screen unsightly objects. Quick growing, tall, and spire-like. Each: 6 to 8 ft. 40c., 8 to 10 ft. 65c., 10 to 12 ft. \$1.00.

## PRUNUS

**Prunus Kanzan** (*Kanzan Cherry*). Best of the upright growing Japanese Cherries. Attractive in shape and very beautiful in Spring, when the dark pink flowers and young bronze leaves appear simultaneously, making an effective color combination. Each: 4 to 5 ft. \$1.50, 5 to 6 ft., extra fine trees, \$2.50.

**P. Naden** (*Siebold Cherry*). Very double, light pink flowers grace this Japanese Cherry in bewildering abundance in the Spring. Becomes very dense and compact when pruned. Sturdy, 6 to 8 ft. trees, \$3.50 each.

**P. pendula** (*Weeping Japan Cherry*). A waterfall of pink blooms cover the long, slender branches of this graceful, pendulous variety in early Spring. Selected trees with 2 year heads, each \$3.50.

**P. pissardi** (*Purpleleaf Plum*). 12 to 15 ft. Beautiful purple foliage graces this exotic tree. Color is improved by yearly pruning. Each: 3-4 ft. 50c., 4-5 ft. 75c.

**P. triloba plena** (*Double Flowering Plum*). 16 ft. Produces double pink flowers in May about an inch in diameter, resembling little Roses. Each: 2-3 ft. 50c., 3-4 ft. 75c.

## RHODODENDRONS

**Rhododendron Hybrids** (*Hybrid Rhododendron*). 4 to 8 ft. Our hybrid plants of this variety are all grown from seed which has been selected from the choicest named varieties. You will be amazed at the range of colors presented in our Hybrid Rhododendrons, but you can never be disappointed in them. Mixed colors, each: 12-15 in. \$1.75, 15-18 in. \$2.50, 18-24 in. \$3.50.

**R. maximum** (*Rosebay Rhododendron*). 8 to 12 ft. Carefully selected plants, evergreen, with beautiful blush-pink flowers produced freely in May and June. Selected, collected clumps. Each: 1½-2 ft. \$1.50, 2-3 ft. \$2.50, 3-4 ft. \$3.50.

## RHODOTYPOS

**Rhodotypos kerrioides** (*White Kerria*). 4 to 5 ft. An all year round decoration, with fresh green foliage; white flowers in May and June, and brilliant black berries throughout the Winter. Each: 1½-2 ft. 25c., 2-3 ft. 35c.

## RHUS

**Rhus cotinus** (*Smoketree*). 10 to 12 ft. A beautiful sight in Midsummer, with its purple, hair-like flowers giving a "smoky" effect to the densely foliated tree. Leaves turn orange and scarlet in Autumn. Each: 2-3 ft. 50c., 3-4 ft. 75c., 4-5 ft. \$1.00.

## ROSA • Rose

**Rosa multiflora** (*Japanese Rose*). 9 to 10 ft. A most satisfactory shrub, with fragrant white flowers in June, followed by myriads of brilliant red seed pods which remain until Midwinter. Each: 2-3 ft. 35c., 3-4 ft. 45c.

**R. rubrifolia** (*Redleaf Rose*). 5 to 6 ft. Pink flowers in June. The purple red leaves and bark render this an excellent all season variety. Each: 1½-2 ft. 35c., 2-3 ft. 50c.

**R. rugosa** (*Rugosa Rose*). 4 to 5 ft. A good all year shrub, with large pink flowers throughout the Summer, followed by large red fruits. Rich green foliage takes on good Autumn color. This plant stands the salt air very well and is the best of all plants for a seashore hedge. Each: 1½-2 ft. 25c., 2-3 ft. 35c.

**R. setigera** (*Prairie Rose*). 5 to 6 ft. A vigorous grower with deep rose flowers in June and July. Each: 1½-2 ft. 35c., 2-3 ft. 50c.

## SALIX

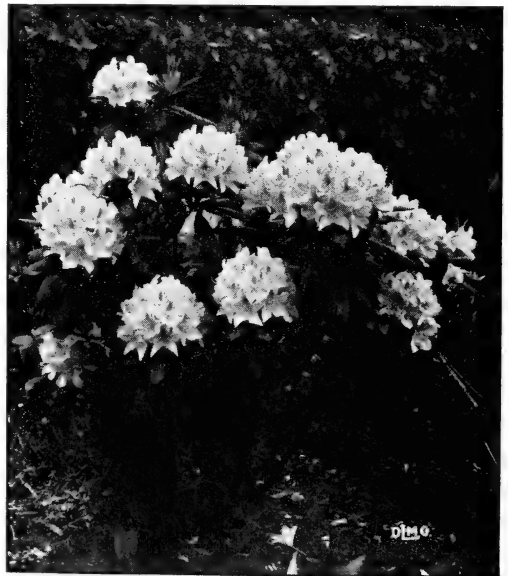
**Salix discolor** (*Pussy Willow*). 15 to 20 ft. Ours is the best of all French strains of this variety, with big buds in early Spring. Good in wet or dry locations. Each: 2-3 ft. 35c., 3-4 ft. 45c.

## SAMBUCUS

**Sambucus canadensis aurea** (*Golden Elder*). 8 to 9 ft. Conspicuous yellow foliage and fragrant flowers in June and July. Each: 1½-2 ft. 30c., 2-3 ft. 45c.

## SORBUS • Mountain-ash

**Sorbus aucuparia** (*European Mountain-ash*). 25 to 30 ft. The beautiful orange and scarlet berries render this tree especially valuable for a small lawn. Dense in foliage and regular in appearance. Each: 6 to 8 ft. \$1.25, 8 to 10 ft. \$1.75.



HYBRID RHODODENDRONS

(Shipment by express or freight only; not by parcel post)



## SPIRAEA · Spirea

**Spiraea Anthony Waterer** (*Waterer Spirea*). 3 ft. We have an exceptionally fine lot of these splendid and popular plants this year. A compact shrub, very free flowering all Summer, with its deep rose-pink blooms. Each: 12-18 in. 25c., 18-24 in. 35c.

**S. arguta** (*Garland Spirea*). 5 to 6 ft. In late Spring this plant literally explodes into bloom, and is covered with its attractive white flowers. Each: 3-4 ft. 40c., 4-5 ft. 50c.

**S. billardi** (*Billiard Spirea*). 5 to 6 ft. Spikes of fluffy bright pink flowers from July to October. Each: 4-5 ft. 45c.

**S. billardi alba** (*White Billiard Spirea*). 5 to 6 ft. White form of the above. Each: 2-3 ft. 30c.

**S. callosa alba** (*White Japanese Spirea*). 3 ft. Purplish foliage when young, and white flowers in June and July. Each: 18-24 in. 30c., 2-3 ft. 45c.

**S. douglasi** (*Douglas Spirea*). 5 to 6 ft. Similar to *Spiraea billardi*, but produces larger, more intensely colored flower spikes. Each: 3-4 ft. 35c.

**S. froebeli** (*Froebel Spirea*). 4 ft. Blooms in early Summer with large "bracts" or flower heads of rosy bloom. Resembles Anthony Waterer, but is a taller growing variety and flowers are slightly lighter in color. Each: 15-18 in. 25c., 18-24 in. 35c., 2-3 ft. 45c.

**S. prunifolia fl. pl.** (*Bridalwreath*). 7 to 8 ft. The original Bridalwreath, with its masses of very double white flowers in late Spring. Handsome shining foliage takes on a delightful orange shade in Autumn. Each: 2-3 ft. 35c., 3-4 ft. 45c., 4-5 ft. 60c.

**S. thunbergi** (*Thunberg Spirea*). 4 to 5 ft. Early Spring brings masses of white flowers to the slender, arching branches of this feathery shrub. Each: 2-3 ft. 35c., 3-4 ft. 50c.

**S. trichocarpa** (*Korean Spirea*). 5 to 6 ft. A round bush covered with umbels of snowy flowers in late June, two to three weeks later than *Vanhouttei*. Each: 2-3 ft. 35c., 3-4 ft. 50c.

**S. vanhouttei** (*Van Houtte Spirea*). 7 to 8 ft. The most popular of all flowering shrubs, which fills our landscape with masses of white flowers in May and June. Free flowering, adaptable and very graceful. Each: 2-3 ft. 25c., 3-4 ft. 35c.

## SYRINGA · Lilac

**Syringa chinensis** (*Chinese Lilac*). 8 to 9 ft. A graceful plant with slender branches and countless violet flowers in May. Each: 3-4 ft. 45c., 4-5 ft. 60c.

**S. persica** (*Persian Lilac*). 8 to 9 ft. Hardy, arching and graceful, with many loose clusters of fragrant lilac flowers in May and June. Each: 2-3 ft. 40c., 3-4 ft. 50c.

**S. villosa** (*Late Lilac*). 7 to 8 ft. Masses of pale, pinkish lilac flowers grace this bushy, compact shrub in June. Each: 18-24 in. 30c., 2-3 ft. 40c.

**S. vulgaris** (*Purple Lilac*). 12 to 15 ft. At the head of all the old-fashioned shrub lists, this beautiful and fragrant bush won its popularity through its deep purple heads of bloom in May, highly perfumed and most beautiful. Each: 2-3 ft. 25c., 3-4 ft. 35c., 4-5 ft. 50c.

(Shipment by express or freight only; not by parcel post)



HYBRID LILAC CHARLES THE TENTH

**S. vulgaris alba** (*White Lilac*). 12 to 15 ft. White form of above. Equally attractive, hardy and fragrant, and makes a splendid contrast plant with the purple-flowered variety. Each: 2-3 ft. 40c., 3-4 ft. 60c., 4-5 ft. 80c.

## NAMED SORTS

We are pleased to offer this Spring a wide range of colors in our Hybrid Lilacs. Try a few of them in your home grounds and you will understand why they have superseded the old varieties in popularity.

**Charles the Tenth.** Large, purple flowers grace this upright bush. Single.

**Le Gaulois.** Double red. One of the best.

**Marie Legraye.** An excellent variety, with pure ivory white flowers. Single.

**Michel Buchner.** Large, double flowers of clear lilac, with petal interior shaded blue.

**Red Marley.** Pink buds turn to lilac flowers in large, full clusters. Single.

**Waldeck-Rousseau.** Long, branching clusters of double, medium-sized flowers. Soft, pinkish amethyst of a distinct shade.

Any of above, bushy, 2-3 ft. plants, each 65c.

## SPECIAL OFFER

One each of the above 6 splendid Hybrid Lilacs for only \$2.75

## STEPHANANDRA

**Stephanandra flexuosa** (*Cutleaf Stephanandra*). 5 to 6 ft. Of graceful, compact habit, with handsome foliage that turns to a purplish red in Autumn. Tiny white flowers in short panicles in June. Each: 2-3 ft. 30c., 3-4 ft. 40c., 4-5 ft. 50c.

## SYMPHORICARPOS • Snowberry

**Symphoricarpos chenaulti** (*Cbenault Snowberry*). 5 ft. A very beautiful hybrid which originated at the Arnold Arboretum. This graceful, shapely shrub, with its dense twiggy branches and small foliage, bears a mass of fruits ranging from white to pink in the Fall, which last throughout the Winter. A splendid variety for the forming of hedges. Each: 2-3 ft. 30c., 3-4 ft. 40c.

**S. racemosus** (*Snowberry*). 5 to 6 ft. Inconspicuous pink flowers in Summer are followed by the large, glistening white berries which make this variety so popular. Each: 1½-2 ft. 25c., 2-3 ft. 35c.

**S. vulgaris** (*Coralberry*). 4 to 5 ft. Good for shady, dry places; coral-red berries. Each: 1½-2 ft. 25c.

## TAMARIX

**Tamarix africana** (*African Tamarix*). 12 to 14 ft. Good for seashore planting, with feathery gray-green leaves and pink flowers in April and May. Each: 2-3 ft. 30c.

## ULMUS • Elm

**Ulmus pumila** (*Siberian Elm*). 70 to 80 ft. The Siberian Elm is undoubtedly the most rapid in growth of any tree with which we are acquainted. Tall, graceful, thoroughly beautiful in its dense foliage, absolutely hardy and succeeding in any soil, wet or dry, there is no wonder that this magnificent variety has taken the country by storm. Each: 4 to 5 ft. 75c., 5 to 6 ft. \$1.00, 6 to 8 ft. \$1.50.

## VIBURNUM

**Viburnum americanum** (*American Cranberry Bush*). 9 to 10 ft. Large bunches of bright scarlet berries persist throughout the Winter months on this attractive shrub. Each: 1½-2 ft. 30c., 2-3 ft. 40c.

**V. carlesi** (*Fragrant Viburnum*). 4 to 5 ft. Especially desirable in the garden, or shrub border, with very fragrant pinkish flowers opening in clusters in early May. A favorite wherever it is planted. Each: 15-18 in. 80c., 18-24 in. \$1.00, 2-3 ft. \$1.50.

**V. dentatum** (*Arrowwood*). 10 to 12 ft. White flowers in May and June are followed by blue-black berries. Good Fall coloring. Each: 2-3 ft. 35c., 3-4 ft. 50c., 4-5 ft. 75c.

**V. opulus** (*European Cranberry*). 8 to 9 ft. Bright scarlet berries persist in large bunches all Winter. Each: 2-3 ft. 35c.

**V. opulus sterile** (*Snowball*). 9 to 10 ft. A showy and popular shrub, with large round heads of snowy white flowers in May and June. A strong grower and slightly spreading in habit. Each: 1½-2 ft. 25c., 2-3 ft. 35c., 3-4 ft. 45c.

**V. plicatum** (*Japanese Snowball*). 7 to 8 ft. Balls of showy white flowers in June and handsome purple Autumn foliage. Each: 1½-2 ft. 40c., 2-3 ft. 60c.

## VITEX

**Vitex agnus-castus** (*Lilac Chaste-tree*). 5 ft. Grayish, star-like leaves grace this dainty shrub, which bears Lilac flowers in late Summer. Each: 18-24 in. 35c.

(Shipment by express or freight only; not by parcel post)



VIBURNUM CARLESI (*Fragrant Viburnum*)

## WEIGELA

**Weigela amabilis** (*Rose Weigela*). 6 to 7 ft. Masses of light rosy flowers produced in June. Each: 2 to 3 ft. 35c.

**W. candida** (*Snow Weigela*). 6 to 7 ft. A snowfall of large white flowers on this beautiful Weigela throughout the early Summer. These flowers assume a pinkish tinge when older. Each: 2-3 ft. 30c., 3-4 ft. 40c.

**W. "Eva Rathke."** 4 to 5 ft. Most profusely flowered of any Weigela, with masses of carmine flowers from June through August. Each: 1½-2 ft. 35c., 2-3 ft. 50c.

**W. nana variegata** (*Variegated Weigela*). 4 to 5 ft. Of dwarf and compact growth with pale pink flowers produced from the variegated leaves in profusion in late May and through June. Each: 2-3 ft. 35c., 3-4 ft. 50c.

**W. rosea** (*Pink Weigela*). 7 to 8 ft. Showy pink flowers produced in June. A vigorous grower. Each: 2-3 ft. 30c., 3-4 ft. 40c.

**W. rosea foliis purpurea** (*Purpleleaf Weigela*). A new and distinct variety, valuable alike for its rich, bronzy purple foliage and its bright pink flowers in June. Each: 2-3 ft. 50c.

## YUCCA

**Yucca filamentosa** (*Spanish Bayonet*). 4 to 5 ft. Stout flower stalks spring from the long, stiff green leaves of this variety, producing white flowers in June. Strong, 2 yr. old plants, each 25c.

**Y. filamentosa variegata** (*Variegated Yucca*). 4 to 5 ft. The most attractive of all hardy variegated plants. Leaves are broadly margined yellow and assume a purple tint in Winter. Same Lily-like, creamy white flowers as Spanish Bayonet in June. Hardy and grows readily in any situation. Strong, 2 year old plants, each 35c.. Extra large 3 yr. old plants, each 50c.





HEDGE OF BERBERIS THUNBERGI—GRACEFUL AND ABSOLUTELY HARDY

# HEDGE PLANTS

Lovett's Nursery has long been recognized as the leader in hedge plant production. We are now growing at Little Silver and in southern Delaware, more hedge plants than any other nursery in this country. Do not, therefore, let our low prices deceive you into thinking that our stock is inferior in any way. These prices are a direct result of our economical production, and refer in all cases to strictly first-class plants, carefully and properly grown in every respect.

## BERBERIS • Barberry

**Berberis thunbergii** (*Japanese Barberry*). Very popular for a low, dense hedge, with its arching branches, slender and gracefully compact. Carries a wealth of scarlet berries in Winter and takes on rich Autumnal shadings of red. Very hardy, ornamental and shapely, requiring but little pruning. For a hedge, set plants 12 inches apart.

	Doz.	100	1000
9 to 12 in.....	\$1.00	\$6.00	\$50.00
12 to 18 in.....	1.50	8.00	70.00
18 to 24 in.....	2.00	14.00	120.00
2 to 2½ ft.....	3.50	22.50	200.00

**B. thunbergii atropurpurea** (*Redleaf Japanese Barberry*). 4 to 5 ft. Develops into a splendid and striking hedge, with its fiery red foliage throughout the entire Summer and Fall. We have the most brilliant plants of this variety that have ever been seen. Will make a distinctive and a "different" hedge.

	Doz.	100
9 to 12 in., trans.....	\$2.00	\$14.00
12 to 18 in., trans.....	3.00	20.00
18 to 24 in., trans.....	4.00	27.50

**B. thunbergii minor** (*Box Barberry*). A very dwarf, compact form of Berberis thunbergii, which it equals in ironclad constitution. For edging, plant 4 inches apart; for a low hedge, plant 6 to 9 inches apart.

	Doz.	100	1000
9 to 12 in., trans.....	\$2.00	\$14.00	\$120.00
12 to 18 in., trans.....	3.00	20.00	180.00



BUXUS SUFFRUTICOSA (*True Dwarf Box*) (See page 32)  
(Note the sturdiness of these plants)

(Shipment by express or freight only; not by parcel post)



HEDGE OF CALIFORNIA PRIVET (*Ligustrum ovalifolium*)

**BUXUS · Boxwood**

**Buxus suffruticosa** (*True Dwarf Box*). This is of exceedingly slow growth, but becomes very compact and is most attractive. Delights in a partially shaded situation. For edging, plant 3 to 4 inches apart. Extra bushy plants.

	Doz.	100
3 to 4 in.....	\$2.00	\$14.00
4 to 6 in.....	2.50	18.00
6 to 8 in.....	4.50	35.00
8 to 10 in.....	10.00	75.00
10 to 12 in.....	16.00	115.00
12 to 15 in.....	20.00	150.00

**LIGUSTRUM · Privet**

The best plant for hedges

Ligustrum, or Privet, is the supreme favorite for hedge work, due to its supremacy in hardiness, beauty and adaptability. Our sales of these well known plants approximate six million every year, larger than those of any other nurseryman. Our reputation for splendid stock at low prices is responsible for our handling so great a quantity of these hedge plants.

**Ligustrum amurense** (*Amur River North Privet*). Hardest of all the Privet family, with handsome olive-green foliage, forming a dense hedge. Best of hedge plants for severe climates.

	Doz.	100	1000
12 to 18 in.....	\$0.60	\$3.50	\$30.00
18 to 24 in.....	.75	5.00	40.00
2 to 3 ft.....	1.00	7.50	60.00
3 to 4 ft.....	1.50	9.50	80.00

**L. ovalifolium** (*California Privet*). The popular hedge plant with glossy, deep green leaves. Introduced by us as a hedge plant in the early seventies and now more largely planted for ornamental hedges than any other shrub. Its strong, quick, upright growth adapts it singularly well for being grown as a barrier or to hide unsightly objects. Here at Little Silver, New Jersey, California Privet is very nearly evergreen.

	Doz.	100	1000
12 to 18 in.....	\$0.50	\$2.50	\$20.00
18 to 24 in.....	.60	3.50	30.00
2 to 3 ft.....	.75	5.00	45.00
3 to 4 ft.....	1.25	8.00	70.00

(Shipment by express or freight only; not by parcel post)

**L. ibolium** (*Ibolium Privet*). A cross between California Privet and Iбота. Very desirable for Northern climates, where it has stood zero temperature without injury. With us, it is almost an evergreen, retaining its foliage until after Christmas.

	Doz.	100	1000
12 to 18 in.....	\$0.75	\$4.00	\$35.00
18 to 24 in.....	1.00	5.50	45.00
2 to 3 ft.....	1.25	8.00	65.00

Write for quotations covering large, bushy specimens, of which we have a splendid supply.

Note—A leaflet, giving instructions for the planting of Privet hedges, mailed upon request.

For **Ligustrum ovalifolium aureum** (*Golden Privet*), and **Ligustrum regelianum** (*Regal Privet*), see **Shrubs**, page 27.

**OTHER DESIRABLE HEDGE PLANTS**

For descriptions and prices, see under **Shrubs**.

- ALTHAEA** (*Hibiscus syriacus*).
- SYMPHORICARPOS chenaulti** (*Chenault Snowberry*).
- STEPHANANDRA flexuosa** (*Cutleaf Stephanandra*)
- SPIRAEA vanhouttei** (*Vanhoutte Spirea*).

**EVERGREENS FOR A HEDGE**

- See under **Evergreens** for descriptions and prices.
- AMERICAN ARBORVITAE** (*Thuja occidentalis*).
- HEMLOCK** (*Tsuga canadensis*).
- NORWAY SPRUCE** (*Picea excelsa*).

**ROSES FOR HEDGE PLANTS**

- Rugosa Rose** (*Rosa rugosa*). See page 28.
- R. Rose, F. J. Grootendorst**. See page 6.
- R. Rose, Pink Grootendorst**. See page 6.

# CLIMBING VINES

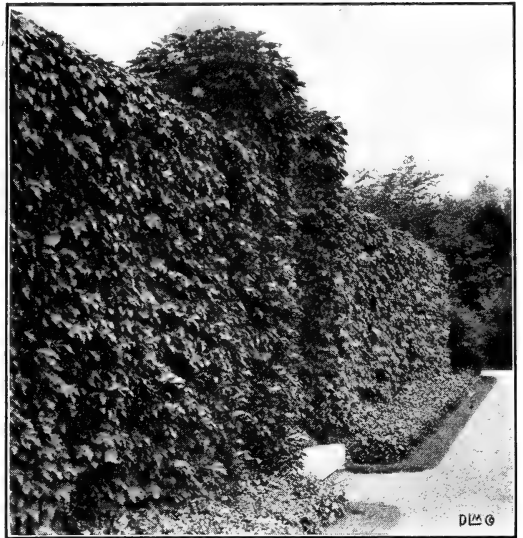
Why not clothe the walls of your house with Nature's garments, those climbing vines which constitute an ever changing tapestry of beauty throughout the year? We have more and better vines this season than ever before, and they are just what a house needs to give it a sense of true charm and to substitute for the tawdriness of man-built brick or wood, the glorious handiwork of Mother Nature herself.

## AMPELOPSIS • Creeper

**Ampelopsis quinquefolia** (*Virginia Creeper*). 35 to 45 ft. Probably our most attractive native vine, with its brilliant crimson Fall foliage, and its rapidity and vigor of growth. 2 yrs. Each: 30c., doz. \$3.00, 100 \$18.00.

**A. quinquefolia engelmanni** (*Engelmann Creeper*). 30 to 40 ft. Smaller foliage and denser than that of the Virginia Creeper, but, equally attractive and hardy, and with equally vivid coloring in Autumn. 2 yrs. Each 30c., doz. \$3.00, 100 \$18.00.

**A. veitchi** (*Parthenocissus tricuspidata*) (**Boston Ivy**). 40 to 50 ft. Most popular of all climbing vines, this beautiful, rapid grower clings firmly to any type of wall with no artificial support. Foliage in Spring and Summer is a handsome deep green in color, which changes to brilliant crimson and yellow in the Fall. Our plants are of the highest quality this season, healthy and vigorous—the finest in fact that we have ever seen. Extra strong, 2 yrs. Each 40c., doz. \$4.00, 100 \$25.00.



AMPELOPSIS VEITCHI (*Boston Ivy*)

## ARISTOLOCHIA

**Aristolochia siphon** (*Dutchmans-pipe*). 20 ft. Striking, brownish, pipe-shaped flowers grace the tropical-appearing, large, round leaves of this vigorous climber. Extra strong, 3 yrs. Each 65c., doz. \$6.50.

## BIGNONIA

**Bignonia radicans** (*Trumpet-creeper*). 20 to 30 ft. Large, trumpet-shaped, scarlet-orange flowers in July. 2 yrs. Each 25c., doz. \$2.50.

## CELASTRUS

**Celastrus orbiculatus** (*Oriental Bittersweet*). 15 to 20 ft. A rapid growing, twining vine with bright orange and scarlet fruits; splendid for Winter decoration. 2 yrs. Each 35c., doz. \$3.50.

## CLEMATIS

**Clematis henryi** (*Henry Clematis*). 10 to 12 ft. Large, ivory-white flowers, produced freely throughout the Summer.

**C. jackmani** (*Jackman Clematis*). 10 to 12 ft. Very popular and showy, with large, rich, violet-purple flowers.

**C. Mme. Baron Veillard**. 10 to 12 ft. A late bloomer and strong grower, with large satiny-pink flowers.

**C. Mme. Edouard Andre**. 10 to 12 ft. Large, rosy carmine flowers grace this vigorous sort.

Any of above, each 75c., doz. \$7.50

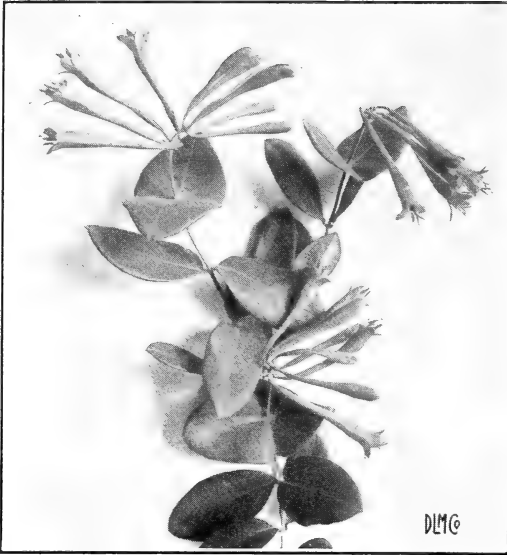
**SPECIAL OFFER**—One each of the four large flowered Clematis for \$2.50

**C. paniculata** (*Sweet Autumn Clematis*). 20 to 30 ft. A quick grower and free spreader, covered in August and September with pure white, star-like flowers; unequalled for airy grace and beauty. 2 yrs. Each 35c., doz. \$3.50.



CLEMATIS JACKMANI (*Jackman Clematis*)

(Add 10% to your remittance if shipment is desired by parcel post)



*LONICERA SEMPERVIRENS* (*Trumpet Honeysuckle*)

### EUONYMUS

*Euonymus radicans* (*Wintercreeper*). 15 ft. A self clinging evergreen vine, good for covering low walls. 2 yrs. Each 50c., doz. \$5.00.

*E. radicans vegetus* (*Bigleaf Wintercreeper*). A low, trailing evergreen with showy red fruits and yellow pods among its round leaves. Clings firmly to any support. 2 yrs. Each 65c., doz. \$6.50.

### HEDERA IVY

*Hedera Helix* (*English Ivy*). 30 to 50 ft. Bears attractive evergreen foliage, bright and glossy. Also good as a ground cover, or for a border edging. Strong plants from pots. Each 35c., doz. \$3.50.

### JASMINUM

*Jasminum nudiflorum* (*Winter Jasmine*). 3 ft. Yellow flowers in early Spring; needs protection in extreme climates. 2 yrs. Each 50c., doz. \$5.00.

### LONICERA · Honeysuckle

*Lonicera halliana* (*Hall Japanese Honeysuckle*). 15 to 25 ft. We have long specialized in the production of this most popular evergreen vine. Quick growing, free blooming and deliciously fragrant. Flowers open white and change to buff. Strong, 2 yrs. Each 25c., doz. \$2.50, 100 \$16.00.

*L. sempervirens* (*Trumpet Honeysuckle*). 15 to 20 ft. Showy bright scarlet flowers in profusion grace this evergreen climber from July to September. Strong, 3 yrs. Each 30c., doz. \$3.00.

### LYCIUM

*Lycium barbarum* (*Barberry Matrimony-vine*). 10 to 12 ft. Violet flowers in June followed by conspicuous red fruits. Good for banks. Strong, 3 yrs. Each 35c., doz. \$3.50.

### POLYGONUM

*Polygonum auberti* (*Silver Lace Vine*). A vigorous, decorative climber blooming all Summer and throughout the Fall, bearing sprays of pure white flowers. Strong, 2 yr. Each 75c., doz. \$7.50.

(Add 10% to your remittance if shipment is desired by parcel post)

### PUERARIA

*Pueraria thunbergiana* (*Kudzu Vine*). 25 to 30 ft. The most rapid growing vine we know. Valuable for quick shade on porches or arbors, with large, tropical foliage. Selected, 2 yrs. Each 25c., doz. \$2.50, 100 \$15.00.

### VINCA

*Vinca minor* (*Periwinkle*). 4 in. An evergreen ground cover, with delicate lilac-blue flowers in Spring. Best in shade. Strong plants from pots, each 25c., doz. \$2.50, 100 \$15.00.

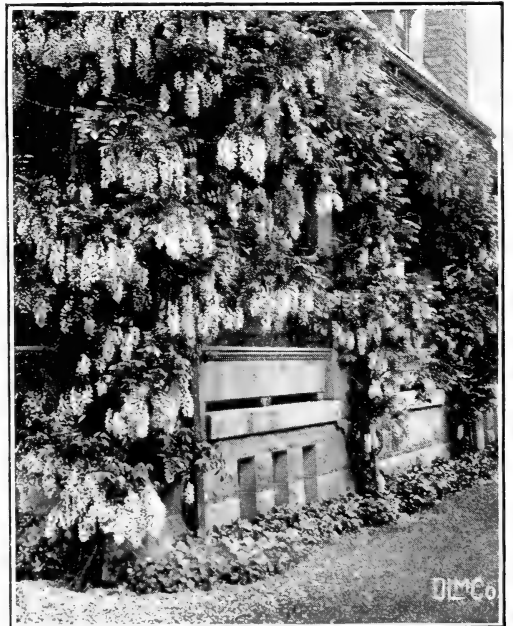
### WISTERIA

*Wisteria sinensis* (*Chinese Wisteria*). 40 to 50 ft. Of exceedingly rapid growth, with soft, dainty, lavender-blue flowers in May, produced in pendulous racemes a foot or more long. Extra strong, 3 yrs. Each 60c., doz. \$6.00.

*W. sinensis alba* (*White Wisteria*). 40 to 50 ft. White form of above. Strong, 2 yrs. Each 75c., doz. \$7.50.



*POLYGONUM AUBERTI* (*Silver Lace Vine*)



*WISTERIA SINENSIS* (*Chinese Wisteria*)



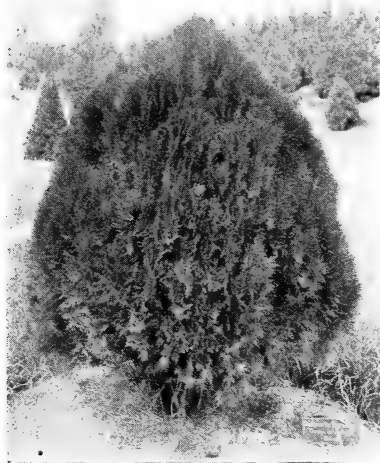
## EVERGREENS

Only with these verdant soldiers can your home grounds be draped in beauty through the entire year. The frost and snow of Winter have no effect on the shining green of their foliage; in fact, they appear brighter in the cold months, by contrast with the bareness of those other plants which are green only in Spring, Summer and Fall. We have an exceptionally large and splendid supply of these "all-year-round" trees this season, and our low prices refer in all instances to perfectly grown specimens.

(Our Evergreens are much too heavy for shipment by parcel post)

### ABIES · Fir

**Abies concolor** (*White Fir*). 80 to 100 ft. A splendid, symmetrical specimen for a lawn tree, with its blue-gray foliage. Resists heat and drought well. Each: 18 to 24 in. \$2.00, 2 to 2½ ft. \$3.00, 2½ to 3 ft. \$4.00, 3 to 4 ft. \$6.00, 4 to 5 ft. \$7.50, 5 to 6 ft. \$9.00.



**BIOTA AUREA NANA**  
(*Berckman's Golden Arborvitae*)

### BIOTA · Thuja, Eastern Arborvitae

**Biota aurea nana** (*Berckman's Golden Arborvitae*) 2½ to 3 ft. A compact oval with bright golden foliage. Splendid in a mixed or a foundation planting, and especially good as a border or edging plant for larger plants of evergreens. Our plants are very broad and dense this season. Each: 9 to 12 in. 65c., 12 to 15 in. 90c., 15 to 18 in. \$1.25, 18 to 24 in. \$1.75.

**B. orientalis** (*Oriental Arborvitae*). 20 to 25 ft. A distinct sort, with light, bright green foliage arranged in vertical rows, and assuming a bronzy tint in Winter. Of formal columnar habit. Each: 18 to 24 in. 75c., 2 to 3 ft. \$1.00, 3 to 4 ft. \$1.75.

### CRYPTOMERIA

**Cryptomeria lobbii compacta** (*Cave Cryptomeria*). 15 to 20 ft. Makes a compact and picturesque column, narrow and irregular in shape. Takes on a rich bronze hue in Winter weather. Best in a moist but well drained situation. Each: 2 to 3 ft. \$2.75, 3 to 4 ft. \$4.00, 4 to 5 ft. \$6.00, 5 to 6 ft. \$7.50, 6 to 8 ft. \$9.00.

South Bound Brook, N. J., Sept. 30, 1932

I beg to report, although we had unusually dry Summer, very hard on shrubbery, all the nursery stock from you lived and grew. My neighbors state most of their's died. Your stock is vigorous and well rooted and can withstand a drought.

ELMER E. BEAMS



## JUNIPERUS • Juniper

**Juniperus chinensis columnaris** (*Columnar Chinese Juniper*). 15 to 20 ft. This extremely hardy evergreen grows rapidly into a tall, narrow spire of dark gray-green foliage, extremely individual. Becomes very compact if trimmed annually. Each: 2½ to 3 ft. \$2.50, 3 to 4 ft. \$3.50, 4 to 5 ft. \$4.50, 5 to 6 ft. \$6.00, 6 to 8 ft. \$8.00.

**J. chinensis pfitzeriana** (*Pfitzer Juniper*). 5 to 6 ft. Most popular of the spreading Junipers, being both attractive and adaptable. Gray-green foliage gives a feathery appearance to these beautiful plants, which we cannot recommend too highly, either for mass or mixed plantings. Our supply of these plants this year is especially large and fine. Each: 18 to 24 in. spread \$1.50, 2 to 2½ ft. spread \$2.50, 2½ to 3 ft. spread \$3.50, 3 to 4 ft. spread \$5.00.

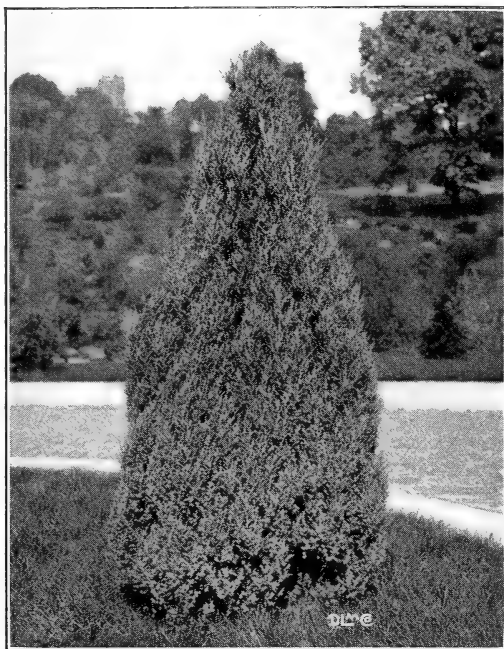
**J. communis aurea** (*Golden Juniper*). 1 to 1½ ft. Of low, spreading habit, with foliage of a particularly brilliant golden hue, especially in the Spring. Each: 15 to 18 in. spread \$1.25, 18 to 24 in. spread \$2.00, 2 to 2½ ft. spread \$3.00, 2½-3 ft. spread \$3.75.

**J. communis canadensis** (*Canada Juniper*). 2½ to 3 ft. Unsurpassed for the rockery is this hardy, vase-shaped bush, with its leaves, dark green above and glaucous underneath. Each: 18 to 24 in. \$1.25, 2 to 3 ft. \$2.00, 3 to 4 ft. \$3.00, 4 to 5 ft. \$4.00.

**J. communis depressa plumosa** (*Plumed Spreading Juniper*). A dwarf growing sort, with Winter foliage of a unique and intense reddish purple. Splendid contrast plant. Each: 18 to 24 in. spread \$1.75, 2 to 2½ ft. spread \$2.50, 2½ to 3 ft. spread \$3.00.

**J. communis hibernica** (*Irish Juniper*). 7 to 8 ft. A striking and popular sort, very erect and formal in a narrow, dense column of deep glaucous green foliage. Needs no shearing. Each: 18 to 24 in. 75c., 2 to 2½ ft. \$1.25, 2½ to 3 ft. \$1.75, 3 to 4 ft. \$2.50.

**J. excelsa stricta** (*Spiny Greek Juniper*). 4 to 5 ft. Differs from type in its stiff, erect branchlets and unusual light gray-green foliage. Very compact and vigorous. Broadly pyramidal in character of growth. Each: 9 to 12 in. 65c., 12 to 15 in. 90c., 15 to 18 in. \$1.25, 18 to 24 in. \$1.75, 2 to 2½ ft. \$2.50.



JUNIPERUS EXCELSA STRICTA (*Spiny Greek Juniper*)

**J. sabina** (*Savin Juniper*). 6 to 7 ft. An irregular, vase-shaped bush, with dense, dark green foliage. Spreading branches. Each: 12 to 18 in. \$1.00, 18 to 24 in. \$1.50, 2 to 2½ ft. \$2.00, 2½ to 3 ft. \$2.50.

**J. squamata meyeri** (*Meyer Juniper*). 3 to 4 ft. Upright and very dense, with unusual foliage of a blue white hue, stiff and irregular. A perfect rock garden plant and a splendid specimen because of its bizarre appearance. Each: 12 to 18 in. \$2.00, 18 to 24 in. \$3.50, 2 to 2½ ft. \$4.50, 2½ to 3 ft. \$6.00.

**J. virginiana** (*Redcedar*). 25 to 30 ft. Compact in growth, with bright green leaves thickly enclosing the branches in Summer, and turning a bronzy color in Winter. Each: 3 to 4 ft. \$2.75, 4 to 5 ft. \$4.00, 5 to 6 ft. \$5.50, 6 to 8 ft. \$7.50.



A FOUNDATION PLANTING OF EVERGREENS WITH COLUMNAR CHINESE JUNIPER USED AS ACCENT POINTS  
(Our Evergreens are much too heavy for shipment by parcel post)

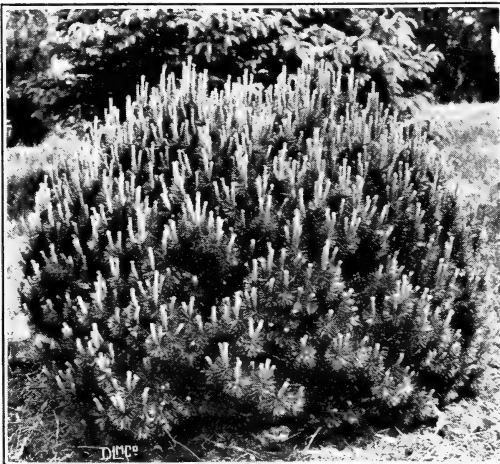


**JUNIPERUS—Continued**

- J. virginiana burki** (*Burk's Juniper*). 10 to 12 ft. Distinct blue, forming a dense column. Winter coloring is metallic purple. Each: 2 to 3 ft. \$2.75, 3 to 4 ft. \$4.50.
- J. virginiana glauca** (*Silver Redcedar*). 15 to 20 ft. A most popular, tall, narrow column with distinct foliage of a bluish gray hue. Splendid as a specimen or contrast plant. We have some splendid plants of this variety this season. Each: 2½ to 3 ft. \$3.00, 3 to 3½ ft. \$4.00, 3½ to 4 ft. \$4.50, 4 to 5 ft. \$6.00, 5 to 6 ft. \$7.50, 6 to 8 ft. \$9.50.

**PICEA · Spruce**

- Picea canadensis albertiana glauca conica** (*Dwarf Alberta Spruce*). 4 ft. A dense cone of blue green, very hardy. A gem for small scale work and rock gardens. Each: 15 to 18 in. \$2.50, 18 to 24 in. \$3.50.
- P. excelsa** (*Norway Spruce*). 80 to 100 ft. These are probably the most popular of all evergreens. They are extremely hardy and easily grown and transplanted. Our supply of these "living Christmas trees" is the largest and most beautiful of which we have any knowledge. Each: 15 to 18 in. 50c., 18 to 24 in. 75c., 2 to 3 ft. \$1.25, 3 to 4 ft. \$2.50, 4 to 5 ft. \$4.00.
- P. orientalis** (*Oriental Spruce*). 80 to 100 ft. A broad and graceful green pyramid, which branches right down to the ground. Each: 3 to 4 ft. \$4.50.
- P. pungens** (*Colorado Spruce*). 60 to 80 ft. Gray-green needles grace the whorled branches of this handsome lawn specimen. Excellent for seashore planting, standing salt air very well. Each: 15 to 18 in. 90c., 18 to 24 in. \$1.25, 2 to 2½ ft. \$2.00, 2½ to 3 ft. \$3.25, 3 to 4 ft. \$4.25, 4 to 5 ft. \$6.00, 5 to 6 ft. \$7.50.
- P. pungens glauca** (*Blue Colorado Spruce*). 60 to 80 ft. A delightful plant for a lawn specimen, with its horizontal branches holding countless thick, steel-blue needles. Splendid for a contrast plant with the green Colorado Spruce. Each: 15 to 18 in. \$2.25, 18 to 24 in. \$3.50, 2 to 2½ ft. \$5.00, 2½ to 3 ft. \$6.50, 3 to 4 ft. \$9.00, 4 to 5 ft. \$12.00, 5 to 6 ft. \$14.00.

PINUS MONTANA MUGHUS (*Mugho Pine*)

(Our Evergreens are much too heavy for shipment by parcel post)

PICEA PUNGENS KOSTERI (*Koster Blue Spruce*)

- P. pungens kosteri** (*Koster Blue Spruce*). 60 to 100 ft. This beautiful tree, gracefully pendulous, with its bluest of all blue foliage, may now be purchased at less than half its former price. Symmetrical and shapely, it is the ideal tree to stand out as a contrast against your green lawn. Each: 15 to 18 in. \$3.50, 18 to 24 in. \$5.00, 2 to 2½ ft. \$7.50, 2½ to 3 ft. \$9.00, 3 to 4 ft. \$12.50, 4 to 5 ft. \$15.00.

**PINUS · Pine**

- Pinus austriaca** (*Austrian Pine*). 60 to 70 ft. Splendid as a specimen tree or a windbreak, especially on the seashore, with its rich dark green, dense needles. Very vigorous, standing an enormous quantity of snow and wind in the Winter. Each: 18 to 24 in. \$1.25, 2 to 3 ft. \$1.75, 3 to 4 ft. \$3.50, 4 to 5 ft. \$5.00, 5 to 6 ft. \$6.50.
- P. densiflora** (*Japanese Red Pine*). 40 to 50 ft. Another good seashore evergreen and a quick grower. Becomes beautifully bushy, with long, bright green needles. Each: 18 to 24 in. \$1.00, 2 to 3 ft. \$1.50, 3 to 4 ft. \$2.50.
- P. montana mughus** (*Mugho Pine*). 2½ to 3 ft. A round topped bush, invaluable for the rockery and for foundation planting. Our plants are exceptionally hardy and beautiful this season. Each: 10 to 12 in. spread 75c., 12 to 18 in. spread \$1.25, 18 to 24 in. spread \$2.50, 2 to 2½ ft. spread \$4.00, 2½ to 3 ft. spread \$5.50.
- P. resinosa** (*Red Pine*). 60 to 70 ft. A hardy and vigorous sort, with dark green, stiff needles, contrasting well with the russet cones. Very ornamental. Each: 18 to 24 in. \$1.25, 2 to 3 ft. \$2.00, 3 to 4 ft. \$3.00, 4 to 5 ft. \$4.50.
- P. sylvestris** (*Scotch Pine*). 60 to 70 ft., with short blue-green twisted needles. Each: 18 to 24 in. 90c., 2 to 3 ft. \$1.25, 3 to 4 ft. \$2.00, 4 to 5 ft. \$3.00, 5 to 6 ft. \$4.50.
- P. tanyosho** (*Japanese Table Pine*). 2 ft. A flat, table-like top of branches covered with long, slim, light green needles; spreads for 3 or 4 ft. above a short, stout trunk. Unusual and interesting. Each: 18 to 24 in. \$4.50, 2 to 3 ft. \$6.00.

PSEUDOTSUGA DOUGLASII (*Douglas Fir*)

## PSEUDOTSUGA

**Pseudotsuga douglasii** (*Douglas Fir*). 70 to 80 ft. Very hardy, this pyramidal tree becomes a handsome specimen, with its gray-green foliage. Each: 2 to 3 ft. \$1.75, 3 to 4 ft. \$3.00, 4 to 5 ft. \$4.50, 5 to 6 ft. \$7.00.

RETINOSPORA FILIFERA (*Thread Cypress*)

**R. obtusa compacta** (*Football Cypress*). 3 to 4 ft. A splendid variety for the formal planting. Nearly spherical in shape and holds its bright green color well throughout the chill of Winter. Each: 15 to 18 in. \$1.00, 18 to 24 in. \$1.50, 2 to 2½ ft. \$2.25, 2½ to 3 ft. \$3.50.

**R. obtusa crippsi** (*Cripps Golden Cypress*). 10 to 12 ft. A particularly good, slow growing, golden leaved form, retaining its bright, cheerful hue through the entire year. Very hardy. Our plants of this variety are literally "gems" this season. Each: 15 to 18 in. \$1.75, 18 to 24 in. \$2.50, 2 to 2½ ft. \$3.50, 2½ to 3 ft. \$4.50, 3 to 4 ft. \$6.00.

**R. obtusa gracilis** (*Slender Hinoki Cypress*). 12 to 15 ft. A picturesque, slow growing evergreen, becoming a narrow, irregular pyramid of rich dark green foliage. Each: 18 to 24 in. \$2.25, 2 to 2½ ft. \$3.00, 2½ to 3 ft. \$3.75, 3 to 3½ ft. \$5.00, 3½ to 4 ft. \$6.00, 4 to 5 ft. \$7.00, 5 to 6 ft. \$8.50.

**R. obtusa magnifica**. A distinct and vigorous form, with lustrous green, fleshy leaves throughout the entire Winter. Each: 2 to 3 ft. \$2.50, 3 to 4 ft. \$3.50, 4 to 5 ft. \$4.50, 5 to 6 ft. \$6.50.

RETINOSPORA PLUMOSA (See page 39)

(Our Evergreens are much too heavy for shipment by parcel post)

## RETINOSPORA—Continued

**R. obtusa nana** (*Dwarf Hinoki Cypress*). 2 ft. A slow growing dwarf, with beautiful, rich green foliage, equally successful in pots or in gardens. Each: 6 to 9 in. \$1.50, 9 to 12 in. \$2.25, 12 to 15 in. \$3.25.

**R. pisifera** (*Sawara Cypress*). 25 to 35 ft. A tall grower, loosely pyramidal in shape, with graceful lacy, light green foliage. Lends itself splendidly to formal clipping. Each: 18 to 24 in. 90c., 2 to 2½ ft. \$1.25, 2½ to 3 ft. \$1.75, 3 to 4 ft. \$2.50, 4 to 5 ft. \$3.50, 5 to 6 ft. \$5.00.

**R. pisifera aurea** (*Golden Sawara Cypress*). 25 to 35 ft. Bright golden foliage, especially in Spring. A quick grower, with drooping branches when older. A splendid contrast plant with the Sawara Cypress. Each: 18 to 24 in. 90c., 2 to 2½ ft. \$1.25, 2½ to 3 ft. \$1.75, 3 to 4 ft. \$2.50, 4 to 5 ft. \$3.50, 5 to 6 ft. \$5.00.

**R. plumosa** (*Plume Cypress*). 25 to 30 ft. This soft, feathery evergreen, with its broad, pyramidal shape and its fern-like, light green foliage, is just what you want for that unusual hedge or formal planting. Each: 15 to 18 in. 65c., 18 to 24 in. 90c., 2 to 2½ ft. \$1.25, 2½ to 3 ft. \$1.75, 3 to 4 ft. \$2.50, 4 to 5 ft. \$3.50, 5 to 6 ft. \$5.00. Illustrated on page 38.

**R. plumosa aurea** (*Goldenplume Cypress*). 20 to 25 ft. A splendid sort for either a hedge plant or a specimen. Its warm, golden plumes hold their color well throughout the Summer. Each: 15 to 18 in. 65c., 18 to 24 in. 90c., 2 to 2½ ft. \$1.25, 2½ to 3 ft. \$1.75, 3 to 4 ft. \$2.50, 4 to 5 ft. \$3.50, 5 to 6 ft. \$5.00.

**R. plumosa aurea lovetti** (*Golddust Cypress*). 20 to 25 ft. A glorified *Retinospora plumosa aurea*; very compact and carrying what looks like a sheen of pure gold dust throughout its foliage. One of the most beautiful of all evergreens and worthy of featuring in any catalog. Each: 9 to 12 in. 90c., 12 to 18 in. \$1.25, 18 to 24 in. \$1.75, 2 to 2½ ft. \$2.50, 2½ to 3 ft. \$3.00, 3 to 4 ft. \$4.00.

**R. plumosa lutescens** (*Dwarf Yellow Plume Cypress*). 3 ft. Bright, sulphur-tipped branches grace this low, broad, round-topped bush. A most attractive dwarf evergreen. Each: 9 to 12 in. 50c., 12 to 15 in. 75c., 15 to 18 in. \$1.25, 18 to 24 in. \$1.75, 2 to 2½ ft. \$2.25, 2½ to 3 ft. \$2.75.



RETINOSPORA PLUMOSA AUREA LOVETTI  
(*Golddust Cypress*)

**R. squarrosa veitchi** (*Moss Cypress*). 25 to 30 ft. Beautiful specimens with the softest of blue-gray foliage, feathery and dense, giving a hazy, woolly appearance to this broadly pyramidal evergreen. Each: 12 to 18 in. 90c., 18 to 24 in. \$1.25, 2 to 2½ ft. \$1.75, 2½ to 3 ft. \$2.25, 3 to 3½ ft. \$3.50, 3½ to 4 ft. \$4.50.

## TAXUS · Yew

**Taxus cuspidata** (*Japanese Yew*). 5 to 6 ft. A spreading and bushy form, valuable alike for hedge or foundation planting, with rich, dark green foliage. Each: 15 to 18 in. spread \$1.50, 18 to 24 in. spread \$2.50, 2 to 2½ ft. spread \$4.00, 2½ to 3 ft. spread \$5.50, 3 to 4 ft. spread \$7.00, 4 to 5 ft. spread \$9.50.

**T. cuspidata brevifolia** (*nana*) (*Dwarf Japanese Yew*). 2 to 3 ft. Very hardy and slow growing, with broad, thick, blackish green foliage. Irregular and spreading in habit. Each: 9 to 12 in. \$1.50, 12 to 15 in. \$2.00, 15 to 18 in. \$3.00.

**T. cuspidata capitata** (*Tree Form Japanese Yew*). 25 to 30 ft. Splendid as a hedge plant, with brilliant scarlet berries conspicuous against its rich, blackish-green foliage. Exceptionally hardy, stands shade well, and develops into a beautiful, symmetrical pyramid. Each: 15 to 18 in. \$2.50, 18 to 24 in. \$3.00, 2 to 2½ ft. \$4.00, 2½ to 3 ft. \$5.50, 3 to 3½ ft. \$7.50.

**T. media hicksi** (*Hicks' Yew*). 8 to 10 ft. A splendid accent plant, being narrow and columnar with dark green foliage. Good for formal work and well adapted for a "limited space" planting. Our plants of this variety are better than ever this year. Each: 18 to 24 in. \$3.50, 2 to 2½ ft. \$5.50, 2½ to 3 ft. \$7.50, 3 to 3½ ft. \$9.50.



TAXUS CUSPIDATA (*Japanese Yew*)

(Our Evergreens are much too heavy for shipment by parcel post)

## THUJA · Arborvitae

**Thuja occidentalis** (*American Arborvitae*). 20 to 30 ft. We have this year an exceptionally large and fine supply of these slender, broad-based pyramids. They are all most compact, having been sheared each year for the past several years. Each: 18 to 24 in. 65c., 2 to 3 ft. \$1.00, 3 to 4 ft. \$1.50, 4 to 5 ft. \$2.50, 5 to 6 ft. \$4.00, 6 to 8 ft. \$6.50.

**T. occidentalis compacta** (*Parson's Arborvitae*). 2½ to 4 ft. A bright, light green variety, nearly globular in shape. Particularly good in formal, plantings. Each: 9 to 12 in. 60c., 12 to 15 in. 75c., 15 to 18 in. \$1.00, 18 to 24 in. \$1.50.

**T. occidentalis elegantissima** (*Yellow Column Arborvitae*). 10 to 15 ft. A column of rich, lustrous green branches, all tipped with golden yellow during Summer and Fall. Of low, columnar habit. Each: 18 to 24 in. 90c., 2 to 3 ft. \$1.25, 3 to 4 ft. \$2.00, 4 to 5 ft. \$3.00, 5 to 6 ft. \$4.50, 6 to 8 ft. \$6.00.

**T. occidentalis globosa** (*Globe Arborvitae*). 2½ to 3 ft. Perfect globes of dense, light green foliage, lower and smaller than Thuja occidentalis compacta. Excellent in a formal planting. Each: 9 to 12 in. 60c., 12 to 15 in. 75c., 15 to 18 in. \$1.00.

**T. occidentalis "Little Gem"** (*Little Gem Arborvitae*). 2 ft. Particularly valuable for rock gardens, with growth smaller and finer than most Occidental Arborvitae. Broader than high and very hardy. Each: 12 to 15 in. \$1.50, 15 to 18 in. \$2.50.

**T. occidentalis lutea** (*George Peabody Arborvitae*). 10 to 12 ft. Columnar in outline, with conspicuous golden yellow foliage, which is best when exposed to full sun. Each: 18 to 24 in. \$1.00, 2 to 3 ft. \$1.75, 3 to 4 ft. \$3.00, 4 to 5 ft. \$4.00, 5 to 6 ft. \$5.50.

**T. occidentalis pyramidalis** (*Pyramidal Arborvitae*). 20 to 30 ft. This popular evergreen, the best by far of all the upright growing Thujas, is of narrow, columnar shape, splendid for accents or for formal planting. We have long specialized in its production, so that you cannot be disappointed in our gorgeous trees. Each: 2 to 2½ ft. \$1.00, 2½ to 3 ft. \$1.50, 3 to 4 ft. \$2.00, 4 to 5 ft. \$3.00, 5 to 6 ft. \$4.00, 6 to 8 ft. \$5.50.



THUJA OCCIDENTALIS PYRAMIDALIS  
(*Pyramidal Arborvitae*)

**T. occidentalis rosenthali** (*Rosenthal Arborvitae*). 6 to 10 ft. Grows slowly into a rugged, dense column. Bears lustrous, dark green foliage, especially attractive in the Winter. Growths terminate with a little whitish ball. Each: 18 to 24 in. \$1.50, 2 to 2½ ft. \$2.00, 2½ to 3 ft. \$2.75, 3 to 4 ft. \$3.75, 4 to 5 ft. \$5.50, 5 to 6 ft. \$7.00.

**T. occidentalis spiralis** (*Spiral Arborvitae*). 10 to 15 ft. An erect and formal plant, with peculiarly twisted foliage; a rich green in color. Each: 18 to 24 in. \$1.50, 2 to 2½ ft. \$2.25, 2½ to 3 ft. \$3.25, 3 to 4 ft. \$4.50, 4 to 5 ft. \$5.50, 5 to 6 ft. \$7.00.

**T. occidentalis vervaeneana** (*Vervaeke Arborvitae*). 8 to 12 ft. Broadly pyramidal, with foliage variegated greenish yellow and taking on a bronze tint in Winter. Very hardy. Each: 15 to 18 in. 75c., 18 to 24 in. \$1.00, 2 to 2½ ft. \$1.25, 2½ to 3 ft. \$1.75, 3 to 4 ft. \$2.50, 4 to 5 ft. \$3.50.

**T. occidentalis wareana** (*Ware or Siberian Arborvitae*). 12 to 15 ft. Probably the hardest of all evergreens, with rich, dark glaucous green foliage throughout the entire year. Broadly pyramidal. Each: 15 to 18 in. 75c., 18 to 24 in. \$1.00, 2 to 2½ ft. \$1.50, 2½ to 3 ft. \$2.00, 3 to 4 ft. \$3.00, 4 to 5 ft. \$4.50.

## TSUGA · Hemlock

**Tsuga canadensis** (*Canada Hemlock*). 75 to 90 ft. Equally splendid for a clipped hedge or an informal planting, being both graceful and adaptable. Slender branches, softly pendulous. A rapid grower, and very hardy, with rich, deep green foliage. We are fortunate in having an especially large and fine supply of these popular Hemlocks this season. Each: 15 to 18 in. 90c., 18 to 24 in. \$1.25, 2 to 3 ft. \$2.25, 3 to 4 ft. \$3.50, 4 to 5 ft. \$6.00, 5 to 6 ft. \$8.50.

**T. canadensis pendula** (*Sargent Weeping Hemlock*). A very beautiful variety, decidedly pendulous in habit. Slender branches, covered with rich green foliage. Be the first to get your plants of this attractive Hemlock from our large and splendid supply. Each: 15 to 18 in. spread \$3.50, 3 to 4 ft. (extra choice specimen) \$12.00.



TSUGA CANADENSIS (*Canada Hemlock*)

(Our Evergreens are much too heavy for shipment by parcel post)

# FRUIT TREES

Our supply of sturdy fruit trees is at its peak this season, in both quantity and quality. You will make no mistake to order some of them now, so that you may realize the thrill of picking your own sweet fruit on your own home grounds.

(Our Fruit Trees are much too large for shipment by parcel post)

## APPLE TREES

Just run your eye down the list of splendid Apple trees which we are able to offer you this season. Never before has our Apple list been so complete, and yet had so few "weak sisters" in it. Try a few of these wonderful trees, and we are sure that you will come back for more. **All of the trees offered below are extra selected, extra heavy, 2-year-old stock.** Please note, however, that we can supply well grown trees of a slightly lighter grade which are even cheaper in price. If you are so kind as to send us a list of your anticipated requirements in these trees, we will be glad to quote you special prices on such a list.

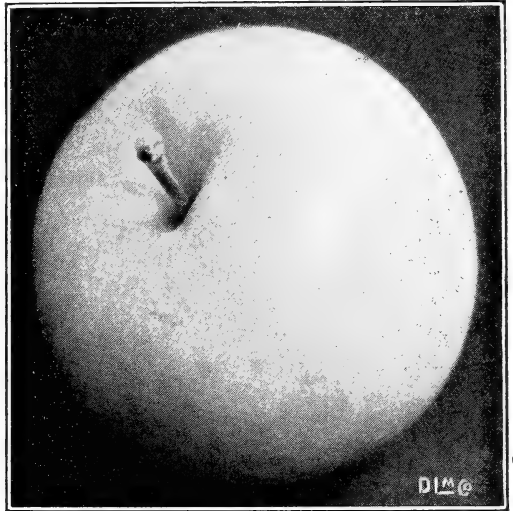
Plant these trees 30 feet apart each way, thus requiring 48 trees to properly set one acre.

**Price of all varieties (except Lovett), each 50c., doz. \$5.00, 100 \$30.00**

**Baldwin.** The standard Winter Apple of Eastern America. Adaptable to soil and climate, with fruits that keep long, stand handling well, and are a pleasing color of light red, streaked carmine.

**Cortland.** Fruits of Cortland ripen later than those of McIntosh, keep longer, are larger and brighter in color. In other respects the Apples are identical.

**Delicious.** Rich and distinctive in flavor, with fruit that improves in size and color as the tree grows older. Trees are most productive of these Apples, uniformly large and shapely. A dark, attractive red in color, and truly "delicious" as an eating Apple. Early Winter.



YELLOW TRANSPARENT (See page 42)

**Duchess.** Splendid Summer Apple for cooking. Large, attractive, and a good shipper.

**Early McIntosh.** An early ripening variety of McIntosh, equally attractive and delicious.

**Grimes Golden.** One of the best yellow Winter Apples, with delicious flesh and rich skin. A universal favorite wherever it can be grown.

**Jonathan.** A small but beautiful dessert Apple, pleasing alike to eye and palate. Brilliant red, and very regular in shape. Late Winter.

**King David.** A heavy bearer annually of dark red Apples; at their best in early Winter.

### LOVETT APPLE

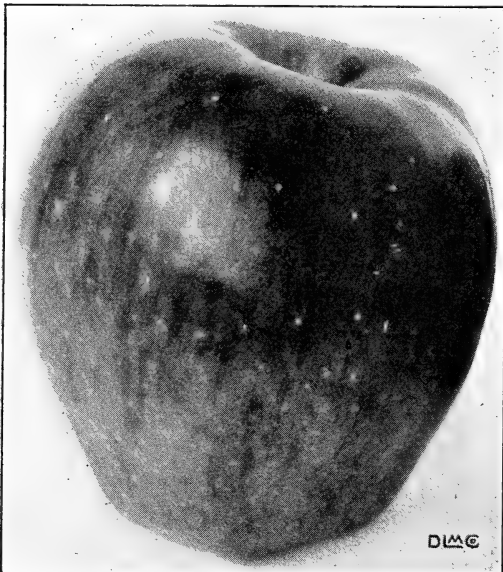
We are proud of our namesake, which we regard as the queen of Summer Apples. The fruit is regularly round and red, prolific and delicious. Big crops are produced in early August every year. Each 75c., doz. \$7.50.

**Maiden Blush.** A distinctive and very handsome cooking Apple, ripening in the Fall.

**Mammoth Black Twig.** Almost identical with Paragon in size, shape, season and flavor.

**McIntosh.** Probably the best of all Apples, certainly the most popular at the present time. Every Apple, from October until well into the Winter months, seems to be turned out of the same mold, deep red in color, with white, delicious flesh, rimmed with red. Truly a splendid Apple for the home or the market.

**Paragon.** A large Winter Apple, of deep red, blotched deeper purple, splendid for eating.



DELICIOUS APPLE



**APPLES—Continued**

- Rhode Island Greening.** America's favorite green Apple. A Winter sort and a good dessert Apple.
- Rome Beauty.** Large, smooth, handsome, and thick skinned, keeping well through the Winter. Best in rich soil.
- Smokehouse.** Large Apples of a greenish yellow color, mottled with red; tender and juicy. October to March.
- Stayman.** A popular and valuable Apple, with dull red skin splashed with carmine. Of excellent flavor. December to May.
- Summer Rambo.** Splendid large Apples, striped prominently with carmine. Very tender and juicy.
- Wealthy.** One of America's standard Winter Apples. Produces bright red fruit in abundance.
- Williams Early Red.** Splendid for a home Summer Apple, being bright red and delicious.
- Winter Banana.** Large, shapely Winter Apples with a distinctive flavor reminiscent of the fruit for which it is named. Golden yellow with a red cheek.
- Wolf River.** Produces mammoth Apples of a bright, deep red in color; excellent alike in flavor and appearance.
- Yellow Transparent.** Best yellow Summer Apple, for either cooking or eating "raw." Large, handsome, and delicious.
- York Imperial.** A splendid cooking Apple. Bright red, truncate in shape, produced in abundance. One of the best Winter keeping varieties.

**CRABAPPLES**

Besides being regular and heavy yielders of fruit useful for jellies, these are quite ornamental as shade trees. Plant 30 feet apart each way.

**First-class trees, each 50c., doz. \$5.00**

- Hyslop.** Mid-Autumn. Dark red Apples in large clusters. Excellent for jelly.
- Transcendent.** Early Autumn. Handsome and popular red and yellow fruit.



CRABAPPLE HYSLOP

**PEARS • Standard**

Excellent alike for canning or for eating out of hand are these delicious fruits. Plant 20 feet apart each way.

**First-class trees, each 50c., doz. \$5.00, 100 \$30.00**

- Anjou.** Large Pear, highly flavored and very productive. Green with red cheek. Late Fall.
- Bartlett.** Summer. Yellow, most popular of all Pears.
- Clapp Favorite.** Early Summer. Large and juicy. Green, red cheek.
- Duchesse d'Angouleme.** Very large, irregularly shaped at times; delicious. October and November.
- Kieffer.** Most prolific. Large fruit, yellow, red cheek. Good shipper and most popular. Late Fall.
- Seckel.** One of the best of all "eating" Pears. Yellow brown with brown red cheek. Summer.

**DWARF FRUIT TREES**

The advantages of planting Dwarf Fruit Trees are countless, especially in a suburban garden. They take up much less space than do the standard sorts, and come into bearing much sooner. A fair crop of fruit may be anticipated the year after the trees are planted—and sometimes in the very year they are planted. This fruit is not dwarf, but as large as that produced by trees of the regular size.

We have a delightful assortment of these trees this year, which we are glad to offer at unprecedented economy of price.

**Splendid, 2-year-old trees, each 60c., doz. \$6.00**

**DWARF APPLES**

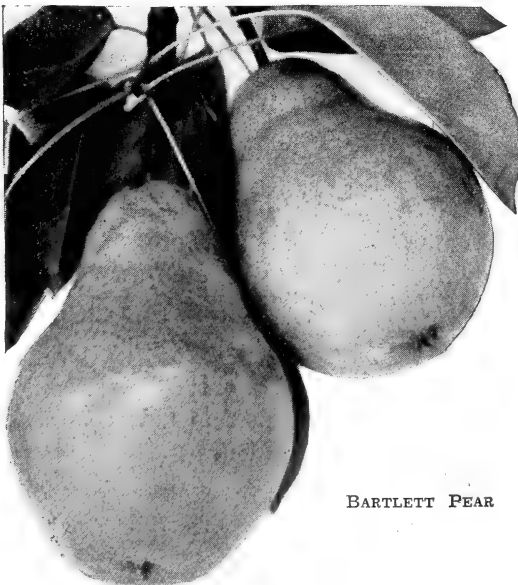
- |               |                       |
|---------------|-----------------------|
| Baldwin       | Rhode Island Greening |
| Delicious     | Stayman               |
| Grimes Golden | Wealthy               |
| McIntosh      | Yellow Transparent    |

(For descriptions, see under "Apples")

**DWARF PEARS**

- |                      |          |
|----------------------|----------|
| Duchesse d'Angouleme | Bartlett |
| Anjou                | Seckel   |

(For descriptions, see under "Pears")



BARTLETT PEAR

*(Our Fruit Trees are much too large for shipment by parcel post)*



## CHERRIES

Throughout the early Summer, these trees produce the delicious fruit which is so popular in pies, or in beverages, or simply picked and eaten.

Plant sweet varieties 25 feet apart each way, and sour varieties 20 feet apart each way.

**First-class trees, each 60c., doz. \$6.00, 100, \$40.00**

**Black Tartarian.** Black, large, sweet, productive. Ripens last of June.

**Early Richmond.** Sour, dark red, juicy. Medium to large. June.

**Gov. Wood.** Yellow with red cheek, large and delicious. Productive and sweet.

**Lambert.** Black with red flesh. Sweet, immense bearer and good shipper.

**Montmorency (Sour).** Medium to large. Dark red, with juicy flesh. Late.

**Yellow Spanish.** Vigorous with large fruit, yellow and sweet. Ripens in early June.



LAMBERT CHERRIES  
(About 2/3  
natural size)

## PEACHES

New Jersey's prize fruit, and the fruit for which she is most noted. We offer this season all the old favorites, as well as the more recent introductions, and you may choose without fear from our list of the best varieties.

Plant 18 feet apart each way.

**First-class trees, each 45c., doz. \$4.50, 100 \$25.00**

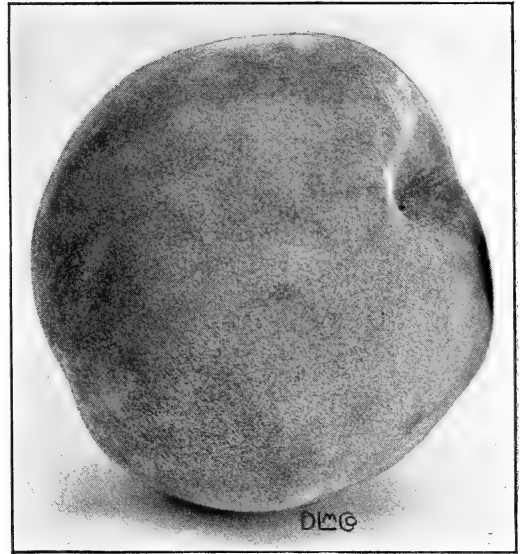
**Belle (Belle of Georgia).** Late August. Large white fruit, red cheek. Excellent flavor. Productive. Freestone.

**Carman.** Best early market Peach. Yellow with blush on sunny side. Good shipper. Late July. Delicious white flesh.

**Champion.** Western Peach of good size and quality. Creamy white with blush cheek. Late July.

**Early Crawford (Crawford's Early).** Large, yellow with red cheek. Delicious flesh. Freestone.

**Elberta.** Leading market variety. Ripens in late August. Freestone. Juicy and tasty yellow flesh.



CARMAN PEACH

**Golden Jubilee.** A splendid new Peach, which you will be proud to have in your garden. Ripens between Carman and Belle, and is firm, hardy and delicious.

**Hiley.** Large, creamy white Peach with a heavy blush on the sunny side. Midseason, freestone.

**J. H. Hale.** Excellent for garden or market. Large and of superb quality. Ripens just before Elberta. Yellow and red with yellow flesh.

**Late Crawford (Crawford's Late).** Of highest quality and greatest size. Freestone. Ripens after Elberta. Yellow flesh.

**Rochester.** Sweetest of all Peaches. Ripens in late July; large, yellow and freestone with golden yellow flesh.

## PLUMS

Plant 20 feet apart each way.

**Strong, 2- and 3-year-old, symmetrical trees, each 60c., doz. \$6.00, 100 \$40.00**

**Abundance.** Large, yellow fruit, juicy and sweet. Good market variety. Early.

**Bradshaw.** Very large, reddish purple fruit, excellent for canning. Early.

**Burbank.** Large, cherry red fruit, with aromatic, sweet flesh. Early August.

**Green Gage.** Pale green skin and excellent flesh. An old worthy variety.

**Red June.** Very productive and delicious. Ripens a week before Abundance.

**Shropshire.** Bears thick clusters of dark purple fruit in October. Strong grower.

## QUINCES

Plant 10 feet apart.

**First-class trees, each 60c., doz. \$6.00**

**Champion.** Popular, with abundant large, greenish yellow fruit. Late.

**Orange.** A heavy bearer of large fruits with orange yellow flesh. Early.

*(Our Fruit Trees are much too large for shipment by parcel post)*

# BERRY PLANTS

## RASPBERRIES

Pick Raspberries from your own garden this year, and you will never buy them at a market again. Any of the luscious fruits which we list below will make you a Raspberry enthusiast for life. Our plants have been carefully examined and are all free of mosaic; we do not believe that better Raspberries may be bought anywhere.

**Culture**—Plant in rows 6 feet apart, plants 3 feet apart in the rows, requiring 2,420 plants per acre; or 4 feet apart each way, if to be grown in hills. In the garden plant 4 feet apart each way, restrict to hills, permitting but 3 or 4 canes to remain in each hill.

**Black Beauty.** A new introduction which bids fair to assume the leadership of the midseason black cap Raspberries. Berries are produced in the greatest abundance, and each berry is a large, attractive "black cap" of the highest quality. A hardy and disease-resistant sort, and one that should be featured in every garden. Tips, doz. \$1.25, 100 \$6.00.

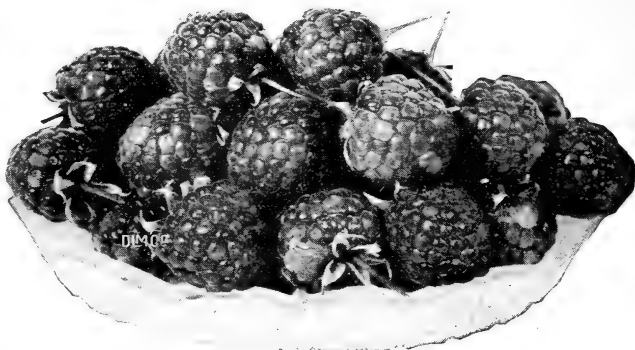
**Catherine.** Produces large, firm red berries from early Spring to late Fall. Strong, transplanted plants, doz. \$2.00, 100 \$10.00.

**Chief.** One of the hardiest and most productive of all Raspberries. Fruit is firm, and flavor is simply delicious. Selected sucker plants, doz. \$1.00, 100 \$6.00. Strong, transplanted plants, doz. \$1.50, 100 \$10.00.

**Columbian.** Large, soft purple berries of excellent flavor, unrivaled for canning. Midseason to late. Heavy tip plants, doz. \$1.00, 100 \$6.00. Transplanted plants, doz. \$2.00, 100 \$12.00.

**Cumberland.** A healthy and vigorous black Raspberry, with large, delicious fruit. Tip plants, doz. \$1.00, 100 \$5.00. Transplanted plants, doz. \$2.00, 100 \$10.00.

**Cuthbert.** We introduced this large, red, prolific berry over 50 years ago. Still among the market "leaders." Sucker plants, doz. 75c., 100 \$5.00, 1000 \$35.00. Strong, transplanted plants, doz. \$1.50, 100 \$9.00.



ST. REGIS RASPBERRIES (Greatly reduced)

**Golden Queen.** Introduced by us in 1885, this beautiful, large golden berry is the leader of its class. Sucker plants, doz. \$1.50, 100 \$8.00.

**Kansas.** An old favorite with large, jet black berries; firm, and of excellent quality. Early to mid-season. Tip plants, doz. \$1.00, 100 \$5.00. Heavy, transplanted plants, doz. \$2.00, 100 \$10.00.

**King.** A splendid sort for the home garden, being beautiful in appearance, simply huge, firm, and early to ripen. Heavy, transplanted plants, doz. \$1.25, 100 \$8.00.

**La France.** An everbearing variety that bears huge crops of delicious deep pink berries, in even more abundance as the season progresses. These berries are most juicy, and have a flavor all their own. A splendid Raspberry for the home garden. Strong sucker plants, each 50c., doz. \$5.00.

**Latham.** Large, round, firm berries of a rich, brilliant red in late June and well into July. Very hardy and productive. Heavy sucker plants, doz. \$1.00, 100 \$7.00. Extra strong, transplanted plants, doz. \$2.00, 100 \$12.00.

**Lloyd George.** A recent introduction which is said to produce the largest red Raspberries known. Yields heavily, with tremendous clusters of delicious fruits. Selected sucker plants, doz. \$1.50, 100 \$7.50.

**New Logan.** Probably the most prolific of all early Raspberries. A blackcap variety of the highest quality and with great resistance to mosaic. Strong tip plants, doz. \$1.25, 100 \$6.00.

**St. Regis.** We have the distinct honor of introducing the St. Regis Everbearing Raspberry, over 20 years ago, and it is still our prime favorite. Its ripening period starts with the earliest sorts and continues until late in the Fall. Bright crimson berries, firm, meaty and delicious. Selected sucker plants, doz. 75c., 100 \$4.00, 1000 \$25.00. Transplanted plants, doz. \$1.25, 100 \$6.50, 1000 \$50.00. Heavy fruiting plants, doz. \$2.50, 100 \$15.00.

**Viking.** Best of the recent introductions, the Viking is undoubtedly the hardiest of all Raspberries. A strong and vigorous grower, with masses of large, bright red, delicious berries, which are firm enough to ship to your friends. We cannot help enthusing over this addition to our Raspberry list, which combines hardiness with excellence of flavor to a maximum degree. Selected sucker plants, doz. \$1.50, 100 \$7.50. Extra selected transplanted plants, doz. \$2.50, 100 \$12.50.



BLACK CAP RASPBERRIES "BLACK BEAUTY"  
(½ natural size)

(Add 10% to your remittance if shipment is desired by parcel post)

## BLACKBERRIES

Take advantage of our low prices this year, and purchase enough of these splendid plants to make your Summer meals perfect. Our prices, though unquestionably low, refer in all instances to first-class plants.

In field culture, plant in rows from 5 to 7 feet apart (according to the vigor of the variety) and 3 feet apart in the rows. In the garden, plant in rows 5 feet apart and the plants 3 feet apart in the rows.

**Blowers.** Midseason, producing tall canes which yield a premium crop of large, attractive, quality berries. Exceptionally hardy. Selected root cutting plants, doz. 75c., 100 \$4.00, 1000 \$30.00. Transplanted plants, doz. \$1.50, 100 \$7.50.

**Early Harvest.** Early, with mild, sweet berries, rather small, but firm and shapely. Transplanted plants, doz. \$1.25, 100 \$6.00.

**Eldorado.** An extremely handsome and hardy delicacy of the best quality, with juicy, sweet flesh. Selected root cutting plants, doz. 75c., 100 \$4.00, 1000 \$30.00.

**Joy.** Midseason. Produces a mammoth crop of huge berries, nearly as thick as they are long, and of unsurpassed quality. Selected root cutting plants, doz. \$1.00, 100 \$6.00, 1000 \$50.00.

**La Grange.** Early and one of the hardiest of all, with a long bearing period. A super-quality berry. Selected root cutting plants, doz. \$1.00, 100 \$6.00, 1000 \$50.00.

**Macatawa.** Hardy with sweet, coreless and nearly seedless fruit. Selected root cutting plants, doz. \$1.00, 100 \$5.00, 1000 \$40.00. Transplanted plants, doz. \$1.50, 100 \$8.00.

**Mersereau.** Tall, productive plants produce in abundance, tender, juicy, sweet, rich fruit of the highest quality. Selected root cutting plants, doz. 75c., 100 \$4.00, 1000 \$30.00. Transplanted plants, doz. \$1.50, 100 \$7.50.

**MT. POCONO.** Large fruit, of extra high quality, and extremely hardy, borne in the greatest profusion. We are extremely proud of our introduction and invite you to try some of these delightful berries. Selected root cutting plants, doz. \$2.00, 100 \$10.00. Transplanted plants, doz. \$3.00, 100 \$15.00.

**Star, or Wonder.** Very late, rich in flavor, and firm for distant shipments. A climbing or trailing variety; should be grown in same manner as Grapes. Selected root cutting plants, doz. \$1.00, 100 \$6.00.

**Taylor.** Late. Popular with juicy, rich berries of high quality. Selected, root cutting plants, doz. 75c., 100 \$4.00, 1000 \$30.00. Transplanted plants, doz. \$1.50, 100 \$6.00.

**Texas Everbearing.** Bears continuously from early August till late Fall, with myriads of delicious berries. Transplanted plants, doz. \$1.50, 100 \$8.00.

**Ward.** Popular for home garden or market, with large, handsome berries which bring top prices. Selected root cutting plants, doz. 75c., 100 \$4.00, 1000 \$30.00. Transplanted plants, doz. \$1.50, 100 \$7.50.

## CURRANTS

All strong, 2 yr., A No. 1 plants

*Cultural Directions*—Plant either in sunlight or partial shade. Do not cultivate the plants too deeply. Best results are obtained by placing a fairly thick mulch of leaves or straw about the plants and doing no cultivating whatsoever.

**Cherry.** Large, crimson berries, sharply acid. 2 yrs., each 25c., doz. \$2.50.

**Fay's Prolific.** Huge, dark red berries in large clusters. 2 yrs., each 25c., doz. \$2.50.

**Perfection.** Bright red berries over a long period, positively the best of all red Currants. 2 yrs., each 35c., doz. \$3.50.

**White Grape.** White, mild and of good quality. 2 yrs., each 25c., doz. \$2.50.

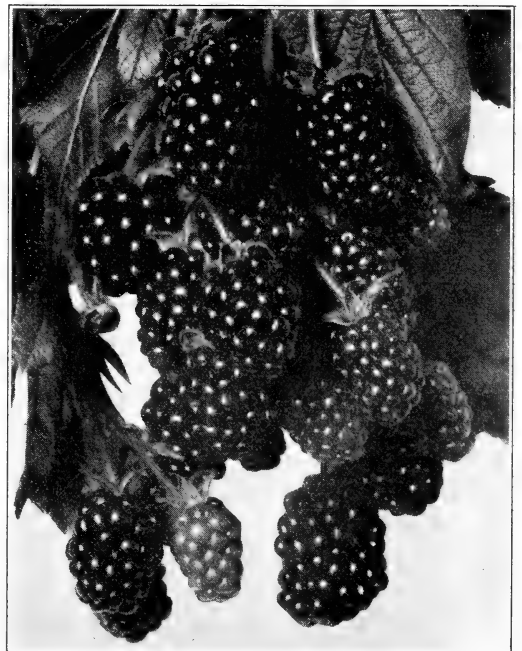
## DEWBERRIES

These plants are a very valuable addition to the small Fruit family. They ripen earlier than Blackberries, and are larger, handsomer, and, as a rule, of better flavor.

If to be staked, plant in rows 4 feet apart. If to be mulched, plant in rows 6 feet apart and the plants 3 feet apart in the rows.

**Lucretia.** Very prolific, and the sweetest of any Dewberry we know. Doz. 75c., 100 \$4.00, 1000 \$30.00. Extra strong, transplanted plants, doz. \$1.50, 100 \$7.50.

**Young.** A splendid sort, producing fruit the first year. By far the best of all Dewberries. Doz. \$1.00, 100 \$6.00.



MT. POCONO BLACKBERRIES  
(About ½ natural size)

(Add 10% to your remittance if shipment is desired by parcel post)

## GOOSEBERRIES

*Cultural Directions*—Same as for Currants.

**Downing.** Wonderfully productive of attractive pale green berries, with a sprightly flavor. 2 yrs., each 25c., doz. \$2.50.

**Oregon Champion.** A productive plant which thrives under neglect, producing large maroon berries in abundance. 2 yrs., each 35c., doz. \$3.50.

## JAPANESE WINEBERRY

A handsome, ornamental shrub with attractive fruits, similar to Raspberries in appearance, and useful for dessert, canning and wine making.

**Heavy plants.** Doz. \$2.00, 100 \$12.00.

## STRAWBERRY-RASPBERRY

A splendid novelty. Cook with Raspberries for best results.

**Heavy plants.** Doz. \$2.00, 100 \$12.00.

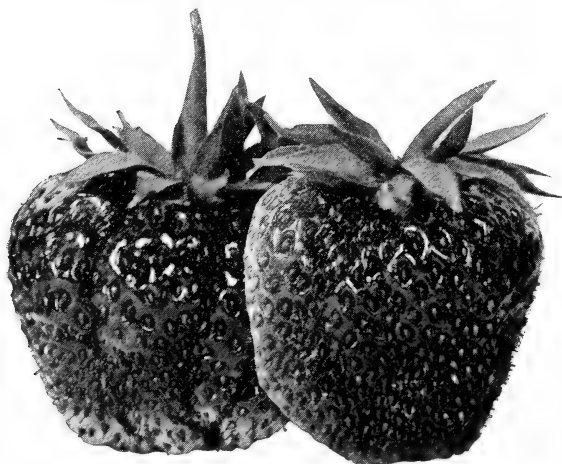
## STRAWBERRIES · Layers

We have long been Strawberry specialists and each year finds us striking a new high level of quality in these popular plants. Our Strawberries will be shipped direct from our nurseries in Southern Delaware this year, where we are growing them very economically, though, of course, carefully and properly. Hence our low prices, which do not refer in any instance to inferior plants, but to the cream of the Strawberry crop.

For hill culture in the family garden, plant in rows 2 feet apart and the plants a foot apart in the rows, cutting off all runners as they appear. If to be allowed to grow in matted rows, set the plants in rows 3 feet apart and the plants 1 foot apart in the rows.

**All varieties, unless otherwise noted, selected layer plants, 100 \$1.00, 1000 \$6.00**

**Aberdeen.** Immensely productive of huge, light red berries in midseason. Not affected by weather or soil conditions, is picked frequently.



SUCCESS (See page 47)

(Add 10% to your remittance if shipment is desired by parcel post)



GOOSEBERRIES DOWNING

**Aroma.** Late. Large, round, glossy red berries. Very productive.

**Bellmar.** Early. Originated by the U. S. Dept. of Agriculture. Vigorous grower, good plant maker, and produces heavy yield of fine quality fruit. 100 \$1.25, 1000 \$8.00.

**Blakemore.** A new variety, originated by the U. S. Dept. of Agriculture. A splendid market sort, being equally attractive to the senses of sight and taste. No weaknesses are apparent in this husky Strawberry, save perhaps that our customers just won't be able to get enough of them. Ripens a week to 10 days ahead of Premier. 100 \$1.25, 1000 \$8.00.

**Brandywine.** Midseason; with large, bright crimson berries of high quality.

**Bubach.** Midseason. Old-time favorite with big, red berries.

**Campbell Early.** Very early with beautiful big berries, ripening evenly all over.

**Chesapeake.** Midseason to late. Splendid sort, though demanding high culture for best results. 100 \$1.25, 1000 \$8.00.

**Cooper.** Early. Large berries of high quality, too soft for shipping.

**Corsican.** Midseason. Large, well colored fruit, even on poor soil. A good, all-around sort.

**Dr. Burrill.** Second early. Bears for a long season. Delicious eating berry.

**Early Jersey Giant.** As good to look at as they are to taste, being large, shapely, and of the highest quality. Extra early. 100 \$1.25, 1000 \$8.00.

**Gandy.** Our introduction of 38 years ago, still the most popular late fruiting sort.

**Gibson.** Midseason. A large crop each season. Uniform large berries. Good pollinizer.

**Glen Mary.** Midseason. Very productive. Plant near a good pollinizer such as Joe.

**Haverland.** Very productive of light red berries, large and drought withstanding. Midseason.

**Hellin Early.** Very early. Good for table or nearby markets. Productive.

**Howard No. 17.** Practically identical with Premier in beauty, quality and season.

**Joe.** Late; succeeding on all soils and under all conditions. Splendid in size of yield and berry.

**Klondyke.** Early. Dark red, mild and delicious berries. Uniform in size and shape.

**STRAWBERRIES—Continued**

**Lupton.** Ripens just before Gandy, but is much more productive.

**Marshall.** Midseason. A justly popular berry of high quality.

**Missionary.** Early to midseason. Well colored, large firm berries. Early to mature.

**New York.** Midseason. Large, well colored fruit, even on poor soil. A good all-around sort.

**Nick Ohmer.** Medium late. Handsome, glossy red globes with bright green caps.

**Premier.** Extra early. Good sized, delicious berries in vast quantities.

**Ridgley.** Early to midseason. Excellent shipper, with large, firm fruit.

**Sample.** Medium late. Large and firm, an excellent berry north of the Carolinas.

**Senator Dunlap.** Early to midseason. Probably the most productive of all quality Strawberries.

**Success.** Very early. Good for the home garden, with a mild, rich, sweet flavor.

**Tennessee.** Midseason. Large, bright red, firm berries. One of the heaviest croppers.

**Uncle Jim.** Midseason. Large, well colored fruit, even on poor soil. A good, all-round sort.

**Warfield.** Early. A grand old variety with firm fruit, for shipping.

**William Belt.** Midseason to late. Popular because of its high quality and success on all soils.

**EVERBEARING STRAWBERRIES****Layers**

**Champion.** An abundant producer of good sized red berries, hardier than most other sorts. 100 \$1.50, 1000 \$10.00.

**Progressive.** Very hardy, producing large crops of fruit from July until heavy frost. 100 \$1.50, 1000 \$10.00.

**Mastodon.** The sensational variety which has taken the country by storm. Stands supreme among everbearers, both for the market and the home garden. Fruits three months after planting, and continues bearing until late Fall. Big, bright red berries, delicious to eat and charming to look at. These berries hold their size to the very end of the season. The heaviest bearer of any Fall bearing Strawberry, and headed for first place on everybody's Strawberry list. 100 \$1.75, 1000 \$12.00.

**STRAWBERRIES · Pot-grown**

Pot-grown Strawberries are the specialty of our nursery. These plants are all well rooted, and may be set out much later in the season than layer Strawberries, with no danger of loss.

Pot-grown Strawberry plants can be satisfactorily shipped by Parcel Post.

**Pot-grown plants, all sorts (except as noted), doz. \$1.00, 100 \$6.00**

For descriptions of varieties not described here-with, see Strawberries (Layers).

**Barrymore.** Midseason to late. A beautiful dark crimson, large, fine berry of high quality.

*(Add 10% to your remittance if shipment is desired by parcel post)*



MARSHALL STRAWBERRIES

**Blakemore.** Pot-grown plants, doz. \$1.25, 100 \$8.00.

**Bun Special.** A glorified "Senator Dunlap" producing far more fruit than that popular old variety, and the fruit is larger. Early to midseason.

**Chesapeake.** Pot-grown plants. Doz. \$1.25, 100 \$8.00.

**Early Jersey Giant.** Pot-grown plants. Doz. \$1.25, 100 \$8.00.

**Gandy.**

**Hundred Dollar.** Midseason, with large, light scarlet berries, of high quality.

**Joe.**

**Lupton.**

**McKinley.** Of extra high quality. Midseason.

**New York.**

**Premier.**

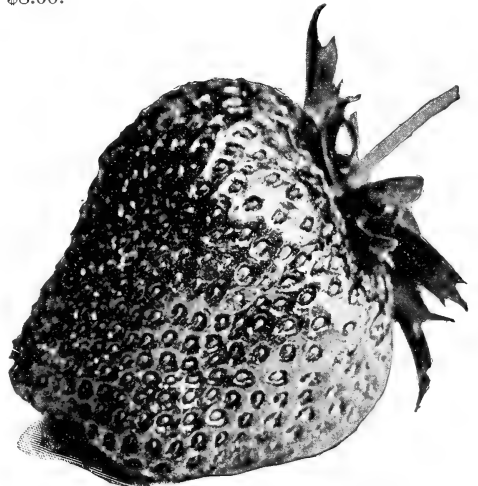
**Senator Dunlap.**

**William Belt.**

**FALL BEARING OR EVERBEARING STRAWBERRIES**

**Mastodon.** Pot-grown plants. Doz. \$2.00, 100 \$12.00.

**Progressive.** Pot-grown plants. Doz. \$1.25, 100 \$8.00.



FALL BEARING STRAWBERRY MASTODON



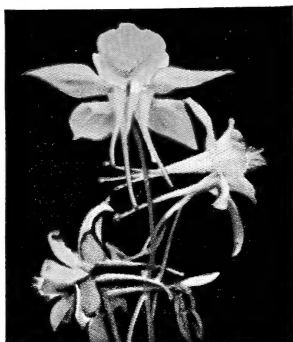






# INDEX

	Page		Page		Page
Abelia.....	23	Coreopsis.....	13	Kolkwitzia.....	26
Abies.....	35	Cornus.....	25	Larkspur.....	13
Acanthopanax.....	23	Crabapples.....	42	Lathyrus.....	17
Acer.....	23	Crab, Flowering.....	27	Lavender-Cotton.....	20
Achillea.....	9	Crataegus.....	25	Leucothoe.....	26
Aconitum.....	9	Creepers.....	33	Liatris.....	17
Ajuga.....	9	Cryptomeria.....	35	Ligustrum.....	27, 32
Althaea.....	26, 32	Currants.....	45	Lilac.....	29
Althaea rose.....	16	Cydonia.....	25	Lilium.....	17
Alumroot.....	16	Cypress.....	38, 39	Lily.....	17
Alyssum.....	9	Daphne.....	25	Lily-of-the-valley.....	13
Ampelopsis.....	33	Daylily.....	15	Lobelia.....	17
Amygdalus.....	23	Delphinium.....	13	Lonicera.....	27, 34
Anchusa.....	9	Desmodium.....	25	Loosestrife.....	18
Andromeda.....	27	Deutzia.....	25	Lupine.....	17
Anemone.....	10	Dewberries.....	45	Lupinus.....	17
Anthemis.....	10	Dianthus.....	14	Lychnis.....	17
Apples.....	41, 42	Dicentra.....	14	Lycium.....	34
Aquilegia.....	10	Dictamnus.....	14	Lysimachia.....	18
Arabis.....	10	Digitalis.....	14	Lythrum.....	18
Arborvitae.....	35, 34	Dogwood.....	25	Magnolia.....	27
Aristolochia.....	33	Dragonhead.....	20	Malus.....	27
Aronia.....	23	Elm.....	30	Meadowsweet.....	21
Artemisia.....	10	Eryngium.....	14	Mockorange.....	27
Asclepias.....	10	Eryngo.....	14	Monarda.....	18
Asters.....	10, 11	Euonymus.....	26, 34	Monkshood.....	9
Astilbe.....	11	Eupatorium.....	14	Mountain-ash.....	28
Azaleas.....	24	Evergreens.....	35-40	Myosotis.....	18
Balloonflower.....	20	Exochorda.....	26	Oenothera.....	18
Baptisia.....	11	Fir.....	35	Pachysandra.....	18
Barberry.....	24, 31	Forget-me-not.....	18	Paeonia.....	18
Bee Balm.....	18	Forsythia.....	26	Papaver.....	19
Bellflower.....	11	Foxglove.....	14	Peaches.....	43
Benzoin.....	24	Fruit Trees.....	41-43	Pears.....	42
Berberis.....	24, 31	Funkia.....	14	Pentstemon.....	19
Berry Plants.....	44	Gaillardia.....	14	Peonies.....	18
Betony.....	21	Garden Roots.....	48	Perennial Collections.....	22
Betula.....	24	Gasplant.....	14	Philadelphia.....	27
Bignonia.....	33	Gooseberries.....	46	Phlox.....	19
Biota.....	35	Grapes.....	48	Physalis.....	20
Birch.....	24	Grasses, Ornamental.....	15	Physocarpus.....	27
Blackberries.....	45	Groundcherry.....	19	Physostegia.....	20
Blazing Star.....	17	Gypsophila.....	15	Picea.....	32, 37
Bocconia.....	11	Hardy Perennial Plants.....	9-22	Pieris.....	27
Boltonia.....	11	Hawthorn.....	25	Pine.....	37, 38
Boxwood.....	25, 32	Hedge Plants.....	31, 32	Pinus.....	37, 38
Buddleia.....	24	Helanium.....	15	Pinks.....	13
Bugle.....	9	Helianthemum.....	15	Plantainlily.....	14
Bugloss.....	9	Helianthus.....	15	Platycodon.....	20
Butterflybush.....	24	Heliopsis.....	15	Plumbago.....	20
Butterflyflower.....	10	Hemerocallis.....	15	Plumepoppy.....	11
Buxus.....	25, 32	Hemlock.....	32, 40	Plums.....	43
Calycanthus.....	25	Heuchera.....	16	Polygonum.....	34
Camomile.....	10	Hibiscus.....	16, 26, 32	Poplar.....	28
Campanula.....	11	Hollyhock.....	16	Poppy.....	19
Campion.....	17	Honeysuckle.....	27, 34	Populus.....	28
Candytuft.....	16	Houseleek.....	21	Primrose.....	20
Celastrus.....	33	Hydrangea.....	26	Primula.....	20
Centaurea.....	11	Hypericum.....	26	Privet.....	27, 32
Centranthus.....	12	Iberis.....	16	Prunus.....	28
Cerastium.....	12	Ilex.....	26	Pseudotsuga.....	38
Cerastium.....	43	Iris.....	16, 17	Pueraria.....	34
Chionanthus.....	25	Japanese Wineberry.....	46	Pyrethrum.....	20
Chrysanthemums.....	12, 13	Jasminum.....	34	Quinces.....	43
Clematis.....	33	Juniper.....	36, 37	Raspberries.....	44
Clethra.....	25	Juniperus.....	36, 37	Retinospora.....	38, 39
Climbing Vines.....	33, 34	Jupitersbeard.....	12	Rhododendron.....	28
Columbine.....	10	Kalmia.....	26	Rhodotypos.....	28
Coneflower.....	20	Kerria.....	26	Rhus.....	28
Convallaria.....	13			Rockcress.....	10
				Rosa.....	28
				Rose.....	28
				Rosemallow.....	16
				Roses:	
				Climbing.....	7, 8
				Collections.....	1, 6
				Hybrid Perpetuals	
				and Miscellaneous.....	6
				Hybrid Teas.....	2-5
				Polyantha.....	7
				Standard or Tree.....	7
				Rudbeckia.....	20
				Rugosa Rose.....	32
				Sage.....	20
				Salix.....	28
				Salvia.....	20
				Sambucus.....	28
				Santolina.....	20
				Scabiosa.....	20
				Sedum.....	20
				Sempervivum.....	21
				Shrubs.....	23-30
				Snowberry.....	30
				Sorbus.....	28
				Southernwood.....	10
				Speedwell.....	21
				Spiraea.....	29
				Spiraea.....	21, 29, 32
				Spruce.....	32, 37
				Spurge.....	18
				Stachys.....	21
				Starwort.....	11
				Statice.....	21
				Stephanandra.....	29, 32
				Stokesia.....	21
				Stonecrop.....	20
				Strawberries.....	46, 47
				Strawberry-Raspberry.....	46
				Sundrops.....	18
				Sunflower.....	15
				Sunrose.....	15
				Sweet Pea, Hardy.....	17
				Sweet-william.....	14
				Symphoricarpos.....	30, 32
				Syringa.....	29
				Tamarix.....	30
				Taxus.....	39
				Thrift.....	21
				Thuja.....	35, 40
				Thyme.....	21
				Thymus.....	21
				Torchlily.....	21
				Trees, Dwarf.....	23-30
				Tritoma.....	21
				Tsuga.....	32, 40
				Ulmus.....	30
				Valerian.....	21
				Valeriana.....	21
				Veronica.....	21
				Viburnum.....	30
				Vinca.....	34
				Viola.....	31
				Violet.....	21
				Vitex.....	30
				Weigela.....	30
				Wild-indigo.....	11
				Wisteria.....	34
				Yarrow.....	9
				Yew.....	39
				Yucca.....	30



AQUILEGIA (*Columbine*)  
Long Spurred Hybrids

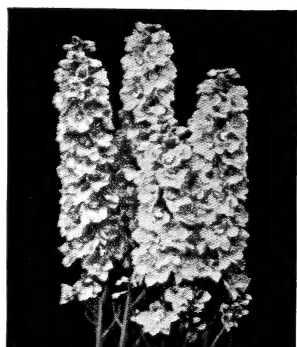


COREOPSIS (*Golden Wave*)



PYRETHRUM (*Painted Ladies*)  
(Mixed Colors)

# LOVETT'S 1933 SPRING CATALOG



DELPHINIUM (*Hardy Larkspur*)  
(Wrexham Hybrids)

## The Perfect Perennial Collection

Twenty-four plants, three each of the eight splendid varieties here pictured, to make your garden a spot of beauty for many years. Strong, field grown, ready-to-bloom plants.

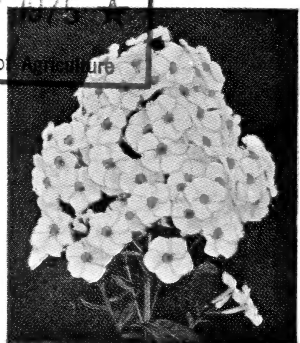
Only \$2.35

Delivered postage paid anywhere in the United States

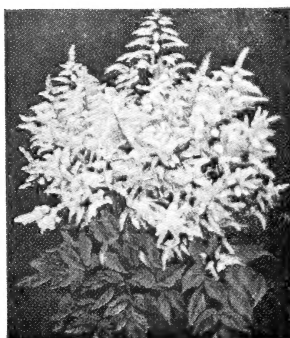
Agricultural Library  
RECEIVED  
NOV 17 1935  
U. S. Department of Agriculture

# LOVETT'S NURSERY, INC.

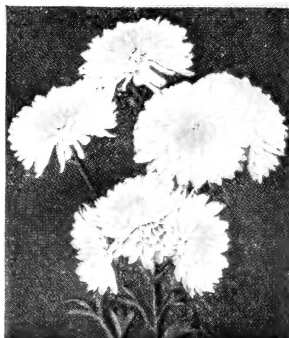
## LITTLE SILVER NEW JERSEY



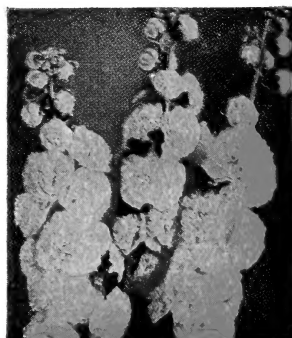
HARDY PHLOX  
(Glorious Color Range)



ASTILBE "PEACH BLOSSOM"  
(Brilliant Pink)



HARDY CHRYSANTHEMUMS  
(Mixed Colors)



DOUBLE HOLLYHOCKS  
(Mixed Colors)