



Cage
LD
4481
.P4625
L8
c.2

Pembroke State College

027, 366

Library

LIVERMORE LIBRARY - PEMBROKE STATE



3 3511 0180875 2

Cage
LD
4481
.P4625
L8
c.2

Cage
LD
4481
.P4625
L8
c.2

27366

SAMPSON - LIVERMORE LIBRARY
UNC PEMBROKE
PEMBROKE, NC 28372-1510



ANNUS MIRABILIS

SAMPSON - LIVERMORE LIBRARY
UNC PEMBROKE
PEMBROKE, NC 28372-1510



WINTER ON THE CAMPUS



Cage
LD
4481
P4625
LS
C.2



TO THE MEN IN SERVICE

In the armed forces of the United States, whose life and work are precepts and examples; whose zeal and enthusiasm for their country are showing through each succeeding day with increasing vigor and bravery; whose youthful years are filled with love of home and country, - a love graven in the hearts of the students in the College TODAY and YESTERDAY; to the men of patriotic fortitude,

TO THE MEN IN THE ARMED FORCES

The Class of 1942

Affectionately dedicates this volume

27,366 acc 4/26/59



Clifton Oxendine,
B.A., M.A.
Dean of College



Owens Hand Browne,
B.S., Ph.D.
Acting President

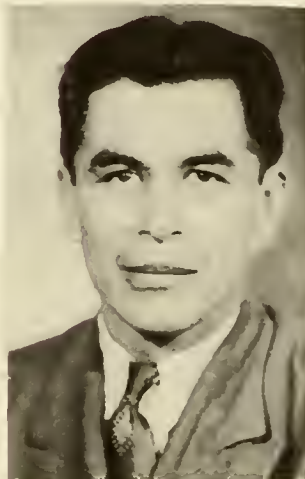


Mary Livermore, B.A.
Dean of Women

THE ADMINISTRATION



James A. Jacobs,
B.S., M. Ed.
Registrar



Walter Pinchbeck
Superintendent of
Grounds & Buildings



Fossie Maynor, B. A.
Bookkeeper

Frances Stinebring

English

B.S., Kent State University
M.A., Ohio State University



Mary Sharp

Primary Critic Teacher

B.A., Winthrop College
M.A., Teachers College,
Columbia University.



John Preston Ingle

Education - Psychology

B.S., William and Mary College;
M.A., The University of Chicago;
Ph.D., University of Va.



Herbert H. Todd

History

B.A., Ohio University
M.A., Peabody College
Ph.D., Vanderbilt University



Reba Millsaps Lowry

Romance Languages

B.A., Maryville College
M.A., University of Tennessee.



Ida TenEyck O'Keeffe

Fine Art

B.S., M.A., Columbia University.



Ira Pate Lowry

Music

B.S., Dakota Wesleyan University.



Roger Nathaniel LeFevre

Science

B.S., Virginia Polytechnic Institute; M.S., University of Virginia; Ph.D., W.Va. University.



Mary Clay

Home Economics

B.A., Michigan State Normal College
M.A., Teachers College, Columbia University.



Jerold C. Weissfeld

Physical Education

B.S., City College of New York
M.A., Columbia University.



Abner Wellington Kelley

English

B.A., Beloit College
M.A., Ph.D., University of North Carolina.



Fredric H. Thorne

Industrial Art

B.S., Earlam College
D.O., American College.



TEACHING STAFF



THE

TATTLER

STAFF

Ila Oxendine EDITOR
 Lucy Jane Chavis BUSINESS MANAGER
 Carlton Chavis SPORTS EDITOR
 Tessie Lee Hunt PHOTOGRAPHIC EDITOR
 Crida Mae Oxendine LITERARY EDITOR
 Roscoe Brewer CIRCULATION MANAGER
 Parree Chavis FEATURE EDITOR
 Dr. J. P. Ingle TECHNICAL ADVISER

Horace Paul - - - - - Assistant Editor
 Eurania Oxendine - - - - - Assistant Editor
 Georgia Locklear - - - - - Assistant Editor
 Irene Cummings - - - - - Assistant Editor
 Seavie Lowry - - - - - Assistant Manager
 Mary Delisse Wilkins - - - - - Assistant Manager

SENIOR CLASS PROPHECY

A PROPHECY! One shudders at the word! It is uncanny, ghostly, that one individual has such mysterious powers to read the future of one's fellowmen. Who but a god can have the insight to foresee the glories that the Class of 1942 may attain! "It is useless," the prophet cries, "still, I find myself in a battle with the unseen forces- the geni whose mesmeric tricks are taking away my footing."

Lost in thought, the prophet wanders through the halls of the college, through the classrooms, over the campus and, in a state of confusion, seeks a quiet, lonely place to dream.

'Tis a beautiful springtime day. The sun shines warm, the odor of the early flowers flood the campus, the birds overhead raise their voices in jubilant songs, the sighing of the wind in the pines- all entrance the prophet. The prophet dreams; dreams of the past- how the savage red man used to roam this very spot, slaying his adversary at will; and then the prophet's mind vacillates between past and present. Faintly now the present is remembered: the college mates, the homes from which came the fellow workers, the pinching news of the Second World War, the youth of the land called to the colors. Then the stuff of consciousness turns to the future and, behold the scene, the history yet to be made, the nebular makers of that history just beginning to stir. They seem to be saying, "I'd like to know you-NOW!"

In my little home in the Capital City, after working hours, I began to write letters to some of the members of the Class of 1942, asking the addresses of other members. Later, to my astonishment, my mail was heavy with the information concerning the history-in-the-making and the makers of that history.

Seavie, the State Director of Safety and Patrol, directs much of the activities on the highways from a specially designed car, operated by his private chauffeur. Joining me in the quest, Seavie took the controls of the ROCKET, gave her the gun, and by hops we made contacts at various places on the earth. Grace could not leave her budding movie dancers to accompany us in our quest for Certainty. She did tell us that we might find Ella Mae in Hollywood busily engaged in her beauty culture work.

Landing for the first stop at Fayetteville, we immediately contacted Georgia Carol whose work with the State Missions Board had carried her to every nook and corner of the Old North State. Carlton had worked with the medical division of Fort Bragg during the latter part of the Second World War, had equipped an office with modern surgical instruments in the City of Fayetteville, and had become famous as a specialist in surgery. Cammie had been selected as the fastest of the country's stenographers to make the appropriate transactions for the discharging of the men returning from service abroad. Wayne, a Sergeant at Fort Bragg, stated that he and his men had completed the job that was begun December 7, 1941. A.G. had attached himself to the State Department of Education and, in that capacity, was absorbing the shocks that were coming from the recruits in the teaching profession throughout the State.

By short-wave radio we communicated with the management at the New Pembroke Air Port, got permission to land, and very quickly contacted Ancil, who had become the manager of a large department store in Pembroke. Horace, in for a visit in the old town, reported that he was improving all the time in his wares as a "man of stocks."

Martha was doing a good job in the office as Dean of Women at the College. Roscoe, in assuming the duties of the administrator as he succeeded the late President of the College, found that his memory served him well while he was there as a student: some things ought to be done, some things had to be done, and some things might just as well be forgotten. But he determined to build into the old College an 'esprit de corps' - a need which had been indelibly stamped upon his youthful mind.

An hour after we left Pembroke we were hovering over the municipal air field at Charlotte. Her Honor Mayor Ila Oxendine was at the air port to welcome us to the city. Crida, the city attorney, was the most important personage in Ila's coterie of advisers. They both had found that "Political Science" could be made a useful tool in the hands of intelligent people. Ila and Crida had the tickets for the opera for the evening, insisted that we defer our departure a day, and to go with them to the opera. Madam Butterfly was sung by Parree and Mrs. Pinkerton was played by Wilma. The two girls had risen to fame and fortune through years of hard practice of their talents.

When we left Charlotte for Oklahoma City, where we were to meet several class mates, we were permitted to relax for the few hours it took us to glide through the air. Leopold gave a running account of her rise to the Presidency of the University. Tessie Lee gave a serial of her successes in making formulae for diets. Bertie was writing her fourth book on Home Making and Interior Decoration. Leola, in her role of ornithologist and florist, had collected and identified numerous specimen from the Carolinas to Texas. Eurania has just completed her doctorate in English in the University of Texas, had been employed in the same institution, and was anticipating a visit to her old home in Robeson.

In Denver we found Irene doing the business manager's work for R K O Pictures. Denver was the distributing station for the entire West. Christine was painting the West in purple. She, among many who had tried, was able to see the real hue of the Rockies.

We were landing our ROCKET at the municipal air port in the outskirts of Washington, only a few blocks from my work as head nurse in the Gallinger Hospital, when I woke up to find the girls returning from breakfast.

Lucy Jane





HORACE PAUL
President

Major: English, Social Science

President of Pontiac Literary Society; Assistant Editor of Lumbee Tattler; member College Orchestra; student in Maryville College, 1939-1940.



LUCY JANE CHAVIS
Vice-President

Major: Liberal Arts

Business Manager of Lumbee Tattler; Secretary of Y.W.A.; member of Glee Club, Pontiac Literary Society, B.S.U.

CLASS OF 1942

It is hard for us, as seniors, to bid the College farewell. We have seen the College grow from that of a Normal School to a four-year institution. We have faced our problems together, and have pushed forward to the final stand, graduation. We are now ready to face our problems as individuals, as personalities.

PICTURES NOT AVAILABLE

Eurania Oxendine

Wayne Maynor

A. G. Dial

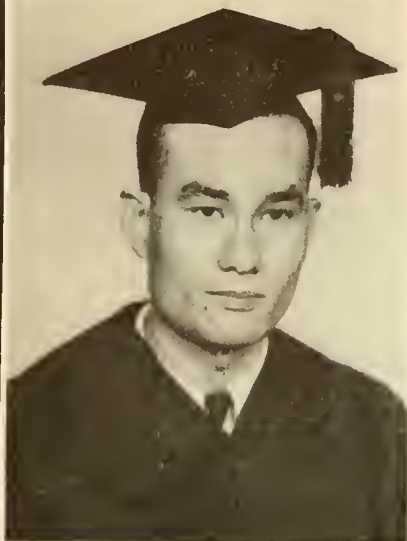
Leola Hatcher

ROSCOE BREWER

"Egotist"

Major: English and French

Activities: College Orchestra, Closed Recital,
B. S. U. Council, Pontiac Literary Society.



CARLTON CHAVIS

"Spunky"

Major: Science and Social Studies

Activities: President of Emeritan Literary
Society; member of basketball team, 1940-1941.

PARREE CHAVIS

"Timid"

Major: Elementary Education

Activities: Pontiac Literary Society, Y. W. A.
Art Club, Dramatics Club, Wesley Foundation.



CAMMIE CUMMINGS

"Complacence"

Major: Elementary Education

Activities: Emeritan Literary Society, Glee
Club, B. S. U. Council, Closed Recital.



IRENE CUMMLINGS

"Dependable"

Major: Elementary Education

Activities: Pontiac Literary Society, Spanish Club, Glee Club, B.S.U.Council.



GRACE SMITH EPPS

"Rhythm"

Major: Elementary Education

Activities: Emeritan Literary Society, Y. W. A. Nurse.



REECE GRAHAM

"Coquette"

Major: Elementary Education

Activities: Pontiac Literary Society, B. S. U. Council, Glee Club, Dramatics Club, Art Club, Y. W. A.



CHRISTINE HUNT

"Mousy"

Major: Elementary Education

Completed requirements for graduation in Extension work and Summer School courses.

LEONEL HUNT

"Easy going"

Major: Elementary Education

Completed requirements for graduation in Summer School work and in Extension work.



TESSIE LEE HUNT

"Tomboy"

Major: Mathematics

Activities: Emeritan Literary Society, Closed Recital, Orchestra, Glee Club, Band, Tattler Staff.



ELLA MAE JONES

"Conservative"

Major: Elementary Education

Activities: Emeritan Literary Society, Spanish Club, Glee Club, Wesley Foundation.



GEORGIA CAROL LOCKLEAR

"Sarcastic"

Major: Elementary Education

Activities: Emeritan Literary Society, B. S. U. Council, Glee Club, President of Y. W. A.





SEAVIE LOWRY

"Big Chief"

Major: Social Studies

Activities: President of B.S.U., Chairman of the College Forum, Emeritan Literary Society, College Orchestra, Band, Glee Club.



CRIDA MAE OXENDINE

"Studios"

Major: Elementary Education

Activities: Emeritan Literary Society, Y. W. A., Glee Club, B. S. U. Council, President of Art Club.



ILA OXENDINE

"Stilted"

Major: French, Science, English
Activities: President of Science Club, French Club, Dramatics Club; Editor, Lumbee Tattler; Who's Who among Students in American Colleges; member of College Orchestra, B. S. U. Council, Pontiac Literary Society.



BERTIE THOMAS REVELS

"Tiny"

Major: Elementary Education

Completed requirements for graduation in Summer School work and by Extension courses.



MARTHA SAMPSON

"Sleeping Beauty"

Major: English and Social Studies

Activities: Emeritan Literary Society, Girls' basketball team.



WILMA SAMPSON

"Shy"

Major: Elementary Education

Activities: Pontiac Literary Society, Glee Club, Spanish Club, B. S. U. Council.



ANCIL SANDERSON

"quick"

Major: Elementary Education

Completed requirements for graduation in Summer School work and by Extension work.



MARY DELISSIE WILKINS

"Naughty"

Major: Elementary Education

Activities: Vice-President of Pontiac Literary Society, member of Wesley Foundation.



JUNIOR CLASS

PRESIDENT Reba Chavis
VICE-PRESIDENT Clellier Godwin
SECRETARY-TREASURER Alice Maynard

MEMBERS

Reading left to right, first row: Reba Chavis, Adolph Dial, Murrill Lowry, Clellier Godwin; second row: Mary Ann Spaulding, Adief Bell Oxendine, Margaret Locklear, Martha Dimery, Alice Maynard, Carrie Lee Dial, Ziatta Dial, FRANCES STINEBRING, Sponsor.



SOPHOMORE CLASS

PRESIDENT Macy Dial
VICE-PRESIDENT Annie Vic Smith
SECRETARY-TREASURER R. B. Jacobs

MEMBERS

Reading left to right, first row: Helen Emanuel, Golda Blue, Eva Lois Hunt; second row: Macy Dial, Latha Lowry, Annie Vic Smith, Maudie Wilkins; third row: Reece Bullard, R. B. Jacobs.



FRESHMAN CLASS

PRESIDENT Ledger Locklear
 VICE-PRESIDENT Berteen Oxendine
 SECRETARY-TREASURER. Inez Thompson

MEMBERS

Reading from left to right, first row: Mattie Bell Locklear, Gertrude Mitchel, Catherine Brooks, Lettie Mae Harris, Katie Lee Clark, Margaret Locklear; second row: Sadie Ray Locklear, Ira Lee Thomas, Mary Jacobs, Maurneice Locklear, Luscendia Locklear, Lillian Ruth Chavis, Fairella Lucas, Welton Jacobs; third row: Clinton Hammonds, Prathen Oxendine, Verle Thompson, Delton Jacobs, Worford Maynor, Ledger Locklear.



PONTIAC LITERARY SOCIETY

PRESIDENT. Albert Hunt

VICE-PRESIDENT Lessie Wilkins

SECRETARY-TREASURER Sadie Ray Locklear

Reading left to right, first row: Ira Lee Thomas, Mary Ann Spaulding, Albert Hunt, Margaret Locklear, Adief Oxendine; second row: J.C.WEISSFELD, sponsor, Macy Dial, Reba Chavis, Lucy Jane Chavis, Verle Thompson, Reece Graham, Ila Oxendine, Maurneice Locklear, Lessie Wilkins; third row: James Locklear, Roscoe Brewer.

The purpose of the Pontiac Literary Society is that of developing the various talents and abilities in public speaking, dramatics, and leadership.

Public speaking is emphasized and practiced more than any other activity. Each year a debating team from the Pontiac Literary Society meets with a debating team from the Emeritan Literary Society as a climax of the year's work.



EMERITAN SOCIETY

PRESIDENT Lucile Oxendine Lowry
VICE-PRESIDENT Carleton Chavis
SECRETARY-TREASURER Georgia Carol Locklear

MEMBERS

Reading left to right, first row: Carleton Chavis, Ella Mae Jones, Katie Lee Clark, Adolph Dial, Lettie Mae Harris, Cammie Cummings, Mary Jacobs, Fairella Lucas; second row: Carrie Lee Dial, Georgia Carol Locklear, Alice Maynard, Crida Mae Oxendine, Tessie Hunt, Mattie Bell Locklear, Welton Jacobs; third row: Vincent Lowry, Gertrude Mitchel, Delton Jacobs, Worford Maynor, Dotie Bullard, Ledger Locklear.

The Emeritan Literary Society was organized in order to promote clear thinking, sound reasoning, and intelligent expression in public speaking, dramatic ability, and leadership.

Members of the Emeritan Literary Society are noted for their leadership and participation in the different activities in the College.



BAPTIST STUDENT UNION

Reading from left to right, front row: Reba Chavis, Lucy Jane Chavis*, Marneice Locklear, Helen Emanuel*, Margaret Locklear, Tessie Lee Hunt*, Ira Lee Thomas, Eva Lois Hunt; second row: Cammie Cummings, Lucendia Locklear, Mattie Bell Locklear, Georgia Carol Locklear, Lillian Ruth Chavis*, Crida Mae Oxendine, Reece Graham, Wilma Sampson, Prathen Oxendine; third row: Ila Oxendine*, Adief Oxendine, Worford Maynor, Albert Hunt, Seavie Lowry*, Alice Maynard, Rev. L.W. Jacobs, Roscoe Brewer.



B. S. U. COUNCIL

* Officers in the Council.



Y. W. A.

The Y. W. A. was organized on the campus in January 1942, to train young women for more effective work and service in the woman's missionary union, for the enrichment of the social life of the girls on the campus, and for initiative and leadership.

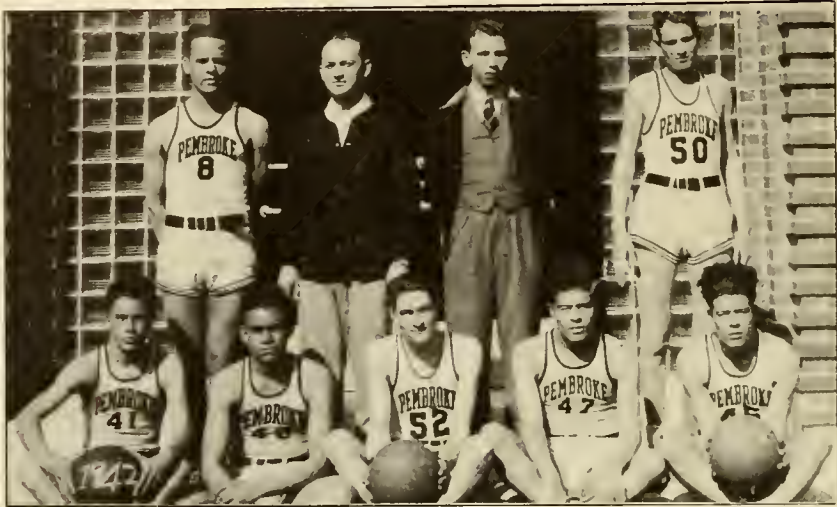
The Y. W. A. meets bi-monthly for a program and social hour.



DRAMATICS CLUB

Members are admitted into the club on the basis of their ability to perform in plays and other programs.

27, 366



BASKETBALL TEAM

Reading from left to right, first row: James F. Oxendine, Verle Thompson, Ledger Locklear, Welton Jacobs, Delton Jacobs; second row: Vincent Lowry, J.C. WEISSFELD, coach, Albert Hunt, business Manager, and Reese Bullard.



ART
and
HANDICRAFT



BASKETBALL TEAM

Reading left to right, front row: Mary Ann Spaulding, Lettie Mae Harris, Reba Chavis, Margaret Locklear, Adief Bell Oxendine, Mauneice Locklear, Lillian Ruth Chavis, Delissie Wilkins; second row: Mary Jacobs, Ira Lee Thomas, Gertrude Mitchel, Wilma Sampson, Parree Chavis, Mattie Bell Locklear, Lucy Jane Chavis.

GIRLS' ATHLETICS

The leading sports among the girls in the College are basketball, soft ball, and tennis. By far the most outstanding sport is that of basketball, an activity that may be engaged in regardless of the weather. Soft ball and tennis are usually associated with the open field or court, however both these games may be played on the main floor of the gymnasium. They are not generally played inside.



HOME ECONOMICS CLUB

Reading left to right, front row: Catherine Brooks, Lettie Mae Harris; second row: Crida Mae Oxendine, Ella Mae Jones, Reece Graham, Lucy Jane Chavis, Helen Emmanuel; third row: Delissie Wilkins, Gertrude Mitchel, Georgia Carol Locklear, Ila Oxendine; fourth row: Parree Chavis, Wilma Sampson, MISS MARY CLAY, Cammie Cummings, Adief Bell Oxendine, Irene Cummings.

HOME ECONOMICS DEPARTMENT

The Home Economics Department of the College was organized for the first time this year to give training in Home Making. Courses have been offered in clothing selection and construction, food preparation and selection, child development and home management.

Much interest has been shown in construction of clothing and in knitting, crocheting, and in other forms of handiwork.

The group has sponsored a number of teas and a banquet along with other events of the year.



ART CLUB

Reading from left to right, front row: Ola Locklear, Farree Chavis, Doty Bullard, Georgia Carol Locklear, Sadie Ray Locklear; second row: Ella Mae Jones, Reba Chavis, Reece Graham, Lucy Jane Chavis, Mary Ann Spaulding, Adief Bell Oxendine; thirs row: Delissie Wilkins, Catherine Brooks, Wilma Sampson, MISS IDA O'KEEFE, Reese Bullard, Cammie Cummings, Irene Cummings, Mary Jacobs, Crida Mae Oxendine.

ART DEPARTMENT

Here is where the impossible is achieved; in other words, where things are done which were never dreamed of being done. Creative abilities have been portrayed in the painting of murals. The Bird of Peace and The Resurrection have been the most impressive. Water coloring, weaving, basketry, and many other useful activities have been outstanding in the work of this, the first year.

The Art Club has sponsored several exhibits during the year, among which was one for the parents of the students.



GLEE CLUB

Reading left to right, front row: Lillian Ruth Chavis, Tessie Lee Hunt, Carrie Lee Dial, Macy Lee Dial, Reba Chavis, Clellier Godwin, Crida Oxendine, Reece Graham; second row: Berteen Oxendine, Ila Oxendine, Cammie Cummings, Wilma Sampson; third row: Georgia Carol Locklear, Alice Maynard, Letha Lowry, Farree Chavis.

COLLEGE GLEE CLUB AND ORCHESTRA

The college glee club is the outstanding choral organization on the campus. Programs are given by the glee club throughout the year, reaching the climax at the Spring Music Festival which is an annual affair on the campus.

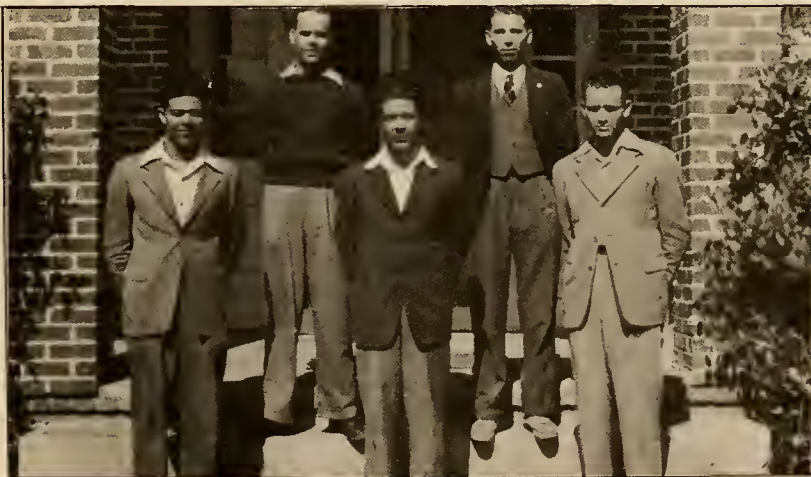
The college orchestra renders several concerts each year. It serves as a stimulus for the beginning student to try his ability in the skills of instrument manipulation and to test for the evidence of talent for playing instrumental music.



EL AMARILIS

The purpose of the Spanish Club is that of stimulating interest in and feeling for the people and their culture in Mexico, Central America, and South America. The music and the literature of the Spanish people have been means of increasing interest in our Southern neighbors.

The club has manifested considerable interest in the Pan American Union, which has been operating to bring about greater understanding between the various countries in the Western hemisphere.



DORMITORY QUINTET

CONGRATULATIONS
To the students of Pembroke College

We invite you to visit our "FIVE STORES IN ONE"

Robeson County's most modern Dry Goods, Clothing, and Shoe Store.
Rossie Britt, our new manager.

New Furniture Store enlarged to meet the demands for fine furniture at reasonable prices with easy payments
"The Home Comes First"

Jack Morrison and Jimmie Dial will take care of your needs.

The New Electric Appliance Store, stocked with refrigerators, electric ranges, washing machines, and electric appliances to make the work of the home easy. Largest stock of radios in the County. Herbert Culbreth at your service.

An important unit is the Grocery Store- Stable and fancy groceries, meat market, sea foods, and dairy products. Do not fail to visit us here. Kirby Kilpatrick, manager.

In the Hardware Store you will find everything for the farm. Call on us to furnish you with hardware, farm implements, and building materials. Marvin Dorman, always on the job.

FARM PRODUCTS

We pay highest market prices for your cotton seed, peas, corn and other farm products.

FERTILIZERS

We carry a full supply of fertilizer materials and mixed fertilizers, manufactured by old, well-known, and reliable companies.

FUEL

Our bins are stocked with a good grade of coal to warm your home on cold days.

All connected with the Pates Supply Company pledge to serve you to the very best of our abilities. Call on us when we can be of service- call often.

PATES SUPPLY COMPANY, INC.

GENERAL MERCHANTS

PEMBROKE, N.C.

PEMBROKE DRUG CO.

PRESCRIPTIONS A SPECIALTY

STUDENTS SUPPLIES

A Full Line of Fountain Pens

PEMBROKE, N. C.

*"I'm
the fourth generation saying...
delicious and refreshing!"*



- but don't forget the

PEPSI-COLA

JACK PAIT FURNITURE COMPANY

"Expert Radio Service"

Chestnut Street

Lumberton



HUNT'S HATCHERY

Baby chicks. N. C. U.S.
Approved. Pullorum
Tested.

Pembroke

N. C.

B. B. FEED STORE

Compliments of

Fertilizers - Groceries - Hardware

WOOD'S 5 & 10c STORES, Inc.

Burney Locklear

Elm Street

Lumberton, N.C.

"Cash if you have it

- - - -

Credit if you want it"

FURNITURE

Be sure to see us first for everything for the home. We give special prices to Newly Married Couples. "Let us feather your nest, for less".

Red Springs

A M O S A N D S O N S

North Carolina

PHOTOGRAPHS in this annual were made by HUGHES STUDIOS

UNDERWEAR AND HOSIERY

DRY GOODS AND NOTIONS

"Home of Curlee Clothes"

B. C. MOORE AND SONS

Red Springs

North Carolina

RAYLASS DEPARTMENT STORE

Head Quarters
for Smart Ready-to-wear
Lumberton, N.C.

RIVERSIDE THEATRE

"The Home of Better Pictures"
J. Paul Lewis, Jr., Mgr.
Lumberton, N.C.

WE EXTEND GREETINGS

To the members of the graduating
class of Pembroke College. The ROBE-
SONIAN deeply appreciates the work
you are doing in the field of educa-
tion, and gladly cooperates with you.

THE ROBESONIAN
Lumberton, N. C.

Compliments of
BELKS-HENSDALE COMPANY
Elm Street
Lumberton, N.C.

Compliments of
A. WEINSTEIN and SON

"Lumberton's Leading Department Store"
Lumberton, N. C.

WELSH BROTHERS
Distributors

Delco Light Products- - Superflex
Refrigerators. G.E. Dealers.
Lumberton, N. C.

BULLARD WOODWORKING CO.

Equipment for windows, doors, mantels,
cabinets, tables, stairways, stores;
fixtures for barber shops, bathrooms;
construction of most articles made of
wood. Lumberton, N. C.

ROSE'S 5-10-25c STORE
"Lumberton's Leading Dime Store"
Lumberton, N.C.

LUMBERTON TRADING COMPANY, Inc.
General Merchants

Fertilizers, Live Stock, Cotton, and
Farm Machinery. Phone 217
J. Leroy Townsend, Mgr., Lumberton, N.C.

CONGRATULATIONS TO THE CLASS OF '42
Compliments of SUGAR'S MEN'S SHOP
"Lumberton's Leading Clothiers"

1903 K. M. BIGGS, Inc. 1942
General Merchandise, Hardware, Cotton,
Farm Supplies and Fertilizers. Ph. 80.
Lumberton, N.C.

LUMBERTON FLORAL COMPANY
We wire flowers anywhere. F.F.D.
Phone 320 Lumberton, N. C.

W. J. PACE HARDWARE
All kinds of seeds and hardware
Maxton, N.C.

DRINK
PEPSI- COLA

Since 1912, we have been serving the Indians in Pembroke and vicinity. We are justly proud of the many friends we have made among them. No race has ever made more progress than the Indians of Robeson County. We rejoice in their achievements and predict even greater progress for them in the years to come. Much of this progress will be accomplished by the aid of the College.

THE SCOTTISH BANK

"Better Banking"

PEMBROKE

LUMBERTON

RED SPRINGS

GARLAND

Member of Federal Deposit Insurance Corporation

Fen.broke State College
Library



