

MAMMALS

OF

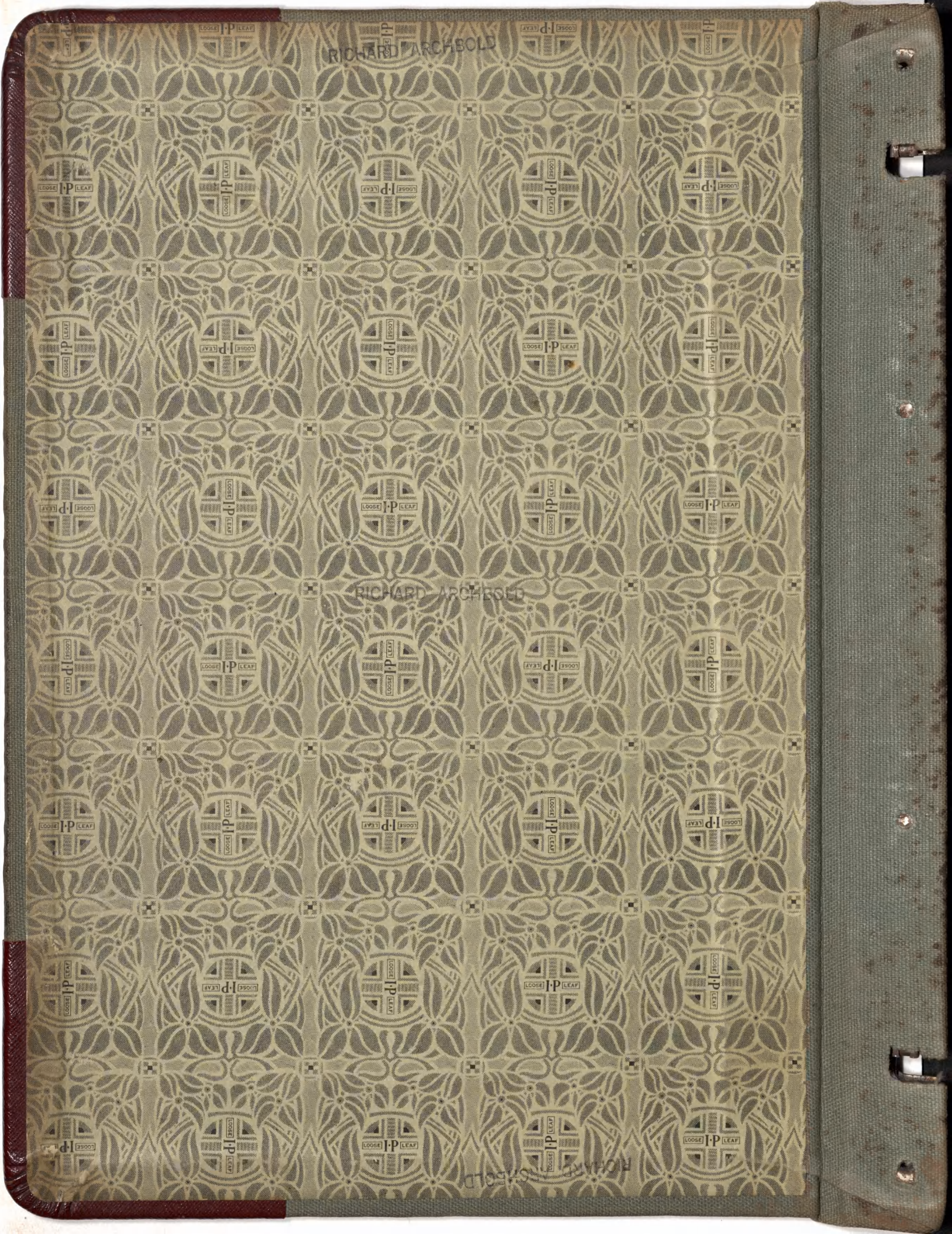
NEW

GUINEA

RICHARD ARCHBOLD

RICHARD ARCHBOLD

RICHARD ARCHBOLD



MAMMAL CATALOGUE

RICHARD ARCHBOLD.

Mammal Catalogue

Of Richard Archbold,

1
2
3
4
5
6
7
8
9
10
11
12
13
14
15
16
17
18
19
20
21
22
23
24
25
26
27
28
29
30
31
32
33
34
35
36
37
38
39
40

Smithsonian
Museum
Number

Field No. Sex

Name

Skull Length Tail H.F. C.H. Ear F.

91698	1	♀	<i>Sciurus carolinensis</i> Gray Squirrel	440	200	63	23
91699	2	♀	<i>Peromyscus gambelii</i> Reddish Brown Wood Mouse	186	77	23	—
91700	3	—	Rat	Skull			
Discarded	4	♂	Black mouse	208	99	30	13
91700	5	♀	Gray Squirrel	430	188	62	23
91700	6	♂	<i>Sciurus carolinensis</i>	458	210	65	23
93125	7	♂	<i>Didelphis virginiana</i>	825	345	68	54
83141	8	♂	<i>Scalopus aquaticus</i>	139	27	19	—
93126	9	♀?	" "	131	22	18	—
93142	10		" " In Spirit				
93127	11	♂?	" "	145	21	15	—
93138	12	♀?	<i>Odocoileus s. s. scrofa</i>	Skull only			
93131	13	♂	<i>Sciurus niger</i>	550	285	83	16
91029	14	♂	<i>Odocoileus</i>	1.676	425.3	457.5	145
93145	15	♂	<i>Procyon lotor</i>	720	235	113	57
93143	16		<i>Scalopus aquaticus</i>	In Spirit			
	17		Owl pellets				
83128	18	♂	<i>Sigmodon hispidus</i> Sigmodon	[166]	[27]	28	11
93130	19	♀	<i>Peromyscus</i>	156	65	22	15
93129	20	♂ im.	"	147	57	22	16
93132	21	♀	<i>Sciurus carolinensis</i>	465	218	60	22
93146	22	?	<i>Scalopus aquaticus</i>	Skeleton only			
93233	23	♂	Black Shrew	81	17	12	
100088	24	♀	<i>Didelphys virginiana</i>	750	290	55	42
100194	25	♂	<i>Procyon lotor</i>	Skull only			
100199	26	♂	<i>Cryptotis parva</i>	82	20		
100201	27		<i>Hypsiglena torquata</i>	In spirit			
100196	28		"				
	29		"				
100197	30		<i>Peromyscus</i> (Black)	138	56	24	13
100198	31		" (Brown)	146	70	19	11
100200	32	♀	<i>Didelphys virginiana</i>				
97555	33	♂	<i>Neotoma floridana</i> Red Backed Mouse	124	38	19	10?
97562	34	♀	<i>Blarina brevicauda talpoides</i> Blarina	114	23	15	—
97554	35	♀	<i>Peromyscus maniculatus gracilis</i> Peromyscus	184	90	22	16
97556	36	♂	<i>Neotoma floridana</i> Red Backed Mouse	135	32	19	9
97563	37	♂	<i>Blarina brevicauda talpoides</i> Blarina	119	24	15	—
97564	38		<i>Blarina brevicauda talpoides</i> ditto	112	20	15	—
97557	39	♀	<i>Napaeozapus insignis</i> Napaeozapus	232	141	32	12
97558	40	♂	<i>Napaeozapus insignis</i> ditto	229	141	33	14

Locality	Date Collector	Remarks
1 Chinquapin Plantation Thomasville Ga. U.S.A.	Sept. 22, 1930 R. Archbold	In woods by stream eaten by ants? but ears and out meat's jaws?
2 Chinquapin Plantation Thomasville Ga. U.S.A.	Sept. 24, 1930 R. Archbold	" wallowed by Oak ticks
3 Chinquapin Plantation Thomasville Ga. U.S.A.	Sept. 25, 1930 R. Archbold	Same set as #2
4 Chinquapin Plantation Thomasville Ga. U.S.A.	Sept. 25, 1930 R. Archbold	Hair was worn off left ribs
5 " "	" "	
6 " "	" "	
7 " "	" "	
8 Chinquapin Plantation Thomasville, Ga. U.S.A.	Sept. 25, 1930 R. Archbold	Skull only
9 Chinquapin Plantation Thomasville, Ga. U.S.A.	Sept. 25, 1930 R. Archbold	In Spirit
10 Chinquapin Plantation Thomasville, Ga. U.S.A.	Nov. 19, 1930 R. Archbold	Slipped on left side
11 Chinquapin Plantation Thomasville, Ga. U.S.A.	Nov. 19, 1930 R. Archbold	Odd skull only
12 Chinquapin Plantation Oscilla Plantation	Nov. 24, 1930 R. Archbold	
13 Thomasville, Ga. U.S.A.	R. Archbold	
14 12 miles S.W. of Thomasville Ga.	Nov. 27, 1930 R. Archbold	Caught & mutilated by hawk Weight 75 kilograms. Circumference of neck just back of collar 6.00 cm
15 Oscilla Plantation Thomasville, Ga. U.S.A.	Dec. 3, 1930 R. Archbold	Weight 7 1/2 lbs skin & skeleton
16 Chinquapin Plantation Thomasville, Ga. U.S.A.	Dec. 4, 1930 R. Archbold	In alcohol
17 Chinquapin Plantation Thomasville, Ga. U.S.A.	Dec. 4, 1930 R. Archbold	Beef Barn
18 Chinquapin Plantation Thomasville, Ga. U.S.A.	Dec. 7, 1930 R. Archbold	Skull in complete
19 " "	" "	
20 " "	" "	
21 " "	" "	
22 Chinquapin Plantation Thomasville, Ga. U.S.A.	Dec. 7, 1930 R. Archbold	Skeleton only
23 Chinquapin Plantation Thomasville, Ga. U.S.A.	Jan. 7, 1931 R. Archbold	Caught in swimming pool last night (Jan. 6, 1931) tail & hind short some color as body above, pulled off in swimming pool incomplete skeleton saved
24 " "	Jan. 4, 1931 R. Archbold	
25 " "	Jan. 27, 1931 R. Archbold	sent alive to mammal
26 Sherwood Plantation Beachton Ga.	Jan. 16, 1932 H. F. Stoddard	skull only measured in inch & 3/4 in 7. 7/8
27 Chinquapin Plantation Thomasville, Ga. U.S.A.	Feb. 1932 H. F. Stoddard	
28 Chinquapin Plantation Thomasville, Ga. U.S.A.	Feb. 1932 H. F. Stoddard	
29 Chinquapin Plantation Thomasville, Ga. U.S.A.	Feb. 1932 H. F. Stoddard	
30 Chinquapin Plantation Thomasville, Ga. U.S.A.	Feb. 1932 H. F. Stoddard	In woods Rocky Branch
31 Chinquapin Plantation Thomasville, Ga. U.S.A.	Feb. 1932 H. F. Stoddard	In woods by log
32 Beachton S of Thomasville Ga	140 met. 1932 H. F. Stoddard	6 young in trench
33 Paradise School. G. Moore Pond	Sept. 19, 1932 H. F. Stoddard	Caught between 3 & 3:00 under log in woods trap set there with some live, as above
34 Paradise School. G. Moore Pond	Sept. 20, 1932 H. F. Stoddard	
35 ditto	ditto	
36 ditto	Sept 21, 1932	
37 ditto	Sept. 22, 1932	
38 ditto	Sept. 23, 1932	
39 ditto	Sept 24, 1932	
40 ditto	ditto	

97559
97560
97561

41
42
43
44
45
46
47
48
49
50
51
52
53
54
55
56
57
58
59
60
61
62
63
64
65
66
67
68
69
70
71
72
73
74
75
76
77
78
79
80

♂
Napaeozapus insignis
Napaeozapus
Napaeozapus i. insignis
ditto
Napaeozapus i. insignis
ditto

222 138 31 13
223 136 30 14
215 139 31 13

41	Morse Pond	Sept. 25, 1932
42	Saranac Lake N.Y.	ditto
43	ditto	ditto
44		
45		
46		
47		
48		
49		
50		
51		
52		
53		
54		
55		
56		
57		
58		
59		
60		
61		
62		
63		
64		
65		
66		
67		
68		
69		
70		
71		
72		
73		
74		
75		
76		
77		
78		
79		
80		

81
82
83
84
85
86
87
88
89
90
91
92
93
94
95
96
97
98
99
100
101
102
103
104
105
106
107
108
109
110
111
112
113
114
115
116
117
118
119
120

81
82
83
84
85
86
87
88
89
90
91
92
93
94
95
96
97
98
99
100
101
102
103
104
105
106
107
108
109
110
111
112
113
114
115
116
117
118
119
120

181
182
183
184
185
186
187
188
189
190
191
192
193
194
195
196
197
198
199
200
201
202
203
204
205
206
207
208
209
210
211
212
213
214
215
216
217
218
219
220

121
122
123
124
125
126
127
128
129
130
131
132
133
134
135
136
137
138
139
140
141
142
143
144
145
146
147
148
149
150
151
152
153
154
155
156
157
158
159
160

121
122
123
124
125
126
127
128
129
130
131
132
133
134
135
136
137
138
139
140
141
142
143
144
145
146
147
148
149
150
151
152

153

154
155
156
157
158
159
160

181
182
183
184
185
186
187
188
189
190
191
192
193
194
195
196
197
198
199
200
201
202
203
204
205
206
207
208
209
210
211
212
213
214
215
216
217
218
219
220
221
222
223
224
225
226
227
228
229
230
231
232
233
234
235
236
237
238
239
240
241
242
243
244
245
246
247
248
249
250
251
252
253
254
255
256
257
258
259
260

161
162
163
164
165
166
167
168
169
170
171
172
173
174
175
176
177
178
179
180
181
182
183
184
185
186
187
188
189
190
191
192
193
194
195
196
197
198
199
200

161
162
163
164
165
166
167
168
169
170
171
172
173
174
175
176
177
178
179
180
181
182
183
184
185
186
187
188
189
190
191
192
193
194
195
196
197
198
199
200

100
101
102
103
104
105
106
107
108
109
110
111
112
113
114
115
116
117
118
119
120
121
122
123
124
125
126
127
128
129
130
131
132
133
134
135
136
137
138
139
140
141
142
143
144
145
146
147
148
149
150
151
152
153
154
155
156
157
158
159
160

201
202
203
204
205
206
207
208
209
210
211
212
213
214
215
216
217
218
219
220
221
222
223
224
225
226
227
228
229
230
231
232
233
234
235
236
237
238
239
240

18
19
20
21
22
23
24
25
26
27
28
29
30
31
32
33
34
35
36
37
38
39
40
41
42
43
44
45
46
47
48
49
50
51
52
53
54
55
56
57
58
59
60
61
62
63
64
65
66
67
68
69
70
71
72
73
74
75
76
77
78
79
80
81
82
83
84
85
86
87
88
89
90
91
92
93
94
95
96
97
98
99
100

201
202
203
204
205
206
207
208
209
210
211
212
213
214
215
216
217
218
219
220
221
222
223
224
225
226
227
228
229
230
231
232
233
234
235
236
237
238
239
240

	241						
	242						
	243						
	244						
	245						
	246						
	247						
	248						
	249						
	250						
95227	251	♂	Red swamp mouse	98	27	18	8.5
95249	252	♂	Sciurus hudsonicus	305	125	46	14
95277	253	♀	" "	Spirit			
95216	254	♀	Peromyscus ^{leucopus} maniculatus	173	72	20.5	11.5
95226	255	♀	Red swamp mouse	142	41	18.5	10
95261	256		" "	Spirit			
95259	257		Peromyscus	"			
95247	258	♀	Tamias striatus	240	97	34	12.5
95251	259	♀	Blarina ^(20g) hirscauda ^{rochet}	119	24	14.5	—
95278	260		Vole	163	49	22	12
95258	261		Peromyscus	Spirit			
95213	262	♀	" "	183	95	20	16
95243	263	♀	Blarina. tex. bur.	113	26	14	—
95218	264	♀	Napaeozapus	232	141	30	13
95233	265	♂	Sorex	107	44	12.5	4.5
95234	266	♀	" "	96	43	11.5	4.5
95244	267		Blarina	115	25	14	—
95231	268		Neosorex palustris	139	68	18	3.5
95219	269	♂	Napaeozapus	235	148	30	12
95252	270		Peromyscus	148	85	20	14.5
95254	271	♀	Napaeozapus	230	133	30	12
95214	272		Peromyscus	198	97	21.5	15.5
95253	273		" "	187	80	22	15
95255	274		Vole	167	44	21	7.5
95220	275	♀	Napaeozapus	234	146	30.5	12.5
95215	276		Peromyscus	185	92	21	15
95265	277		Napaeozapus	Spirit			
95224	278	♀	Zapus	210	122	30	10
95221	279	♀	Napaeozapus	249	155	31	14
95229	280		Vole	152	47	21	9.5

241
242
243
244
245
246
247
248
249
250
251
252
253
254
255
256
257
258
259
260
261
262
263
264
265
266
267
268
269
270
271
272
273
274
275
276
277
278
279
280

swamp foot of R. Archibald
St. Regis Mt. N.Y. Aug 17, 1931

" " " "

Saranac Lake New York Aug 19, 1931

swamp foot of St. Regis Mt. N.Y. Aug 19, 1931

" "

" "

Spectacle Pond New York Aug 19, 1931

" " Aug 20, 1931

Spectacle Pond New York Aug 21, 1931

" "

" " Aug 22, 1931

" "

" "

" " Aug 23, 1931

" "

" "

" "

" "

" "

" "

" "

" "

" "

" "

" "

" "

" "

caught under log ledge of swamp
between 10 A.M. & 4 P.M.

beside rock dry woods

same place as No. 259
from swamp tree in water

Eaten skeleton only

" "
" "
" "

Aug 24, 1931

Aug 25, 1931

95225	281	♂	Red Swamp mouse	139	35	17.5	12
95235	282	♂	Sorex	114	43	12	3.5
95266	283		Napaeozapus	Spirit			
95267	284		"	"			
95222	285	♀	"	243	150	30.5	14.5
95236	286	♂	Sorex	99	40	12	3.5
95271	Spirit 287		Blarina	129	30	15	-
95268	Sp. 288		juv Napaeozapus	Spirit			
95223	289	juv	"	161	98	27.5	9.5
95275	Sp. 290		Sorex	Spirit			
95232	291	?	Neosorex	149	63	18.5	5
95245	292	♂	Blarina	110	27	14	-
95230	293	♂	Vole	149	46	21.5	8
95250	294	?	Bat	92	37	13.5	11.5
95256	Sp. 295		Blarina	132	28	15.5	-
95257	Sp. 296		"	126	25	15	-
95269	Sp. 297		Napaeozapus	Spirit			
95262	Sp. 298		Red Swamp Rat	"			
95263	Sp. 299		" " "	"			
95246	300	♂	Blarina	111	18	14.5	-
95237	Sp. 301	♂	Sorex	107	42	15	12.5 3.5
95270	Sp. 302		Napaeozapus	Spirit			
95272	Sp. 303		Blarina	"			
95264	Sp. 304		Red swamp mouse	"			
95229	305	?	Blarina	121	30	15	-
95217	306	♀	Peromyscus	163	71	21.5	15
95241	307	♂	Blarina ?	136	28	14.5	-
95240	308	♂	"	123	28	14.8	-
95260	Sp. 309	♂	Peromyscus	Spirit			
95238	310	♂?	Long tailed shrew	92	43	11	3
95248	311		Tamias	217	84	32	11
95276	Sp. 312		"	Spirit			
95273	313		Blarina	"			
95274	314		"	"			
95208	315	♀	Per	167	65	23	13
95209	316	♂		169	70	19	15
95210	317	♂		165	69	22	12
95211	318	♂		162	67	23	16
95212	319	♀		170	76	20	16
100202	320		Peromyscus g. gossypinus	in spirit			

- 281 Spectacle Pond New York Aug 25 1931
 282 Aug 26, 1931
 283
 284
 285 Caught in swamp during the
 286 interior my trip up and return
 Aug 27, 1931 11.2. 7+8 AM The morning is cloudy
 Spirit
 287
 288
 289
 290 Aug 28, 1931
 291
 292
 293
 294 Saranac Lake New York Aug 28 1931 caught on motherhead 6:30 P.M.
 295 Spectacle Pond New York Aug 29, 1931 Skeleton
 296 Spectacle Pond New York Aug 29, 1931 Skeleton
 297
 298
 299
 300 Aug 30 1931 1 central ventral and 2 side gland
 301 Aug 31, 1931 patches. testes enlarged
 302
 303
 304
 305 Mt. Pisgah Pisgah Sept 4 foot of rocky ledge
 306 Saranac Lake New York Sept 4, 1931 cleft of rocky ledge mammae filled
 307 Sept 5, 1931 with milk uterus empty first foetus
 308 ~~testes enlarged~~
 309
 310 Sept 6, 1931
 311 Sept 7, 1931
 312 Sept 8, 1931
 313
 314
 315 Chingapin Plantation Adonessville Ga Nov. 8, 1931, | 4 embryos not saved
 316 " E. Mayr " |
 317 " " " |
 318 " " " |
 319 " " " |
 320 " " " |

321

322

323

324

325

326

327

328

329

330

331

332

333

334

335

336

337

338

339

340

341

342

343

344

345

346

347

348

349

350

351

352

353

354

355

356

357

358

359

360

183

828

889

189

289

889

789

889

889

889

189

889

889

109

889

889

789

889

889

808

108

808

808

408

808

808

708

808

808

018

118

518

818

118

818

818

718

818

818

889

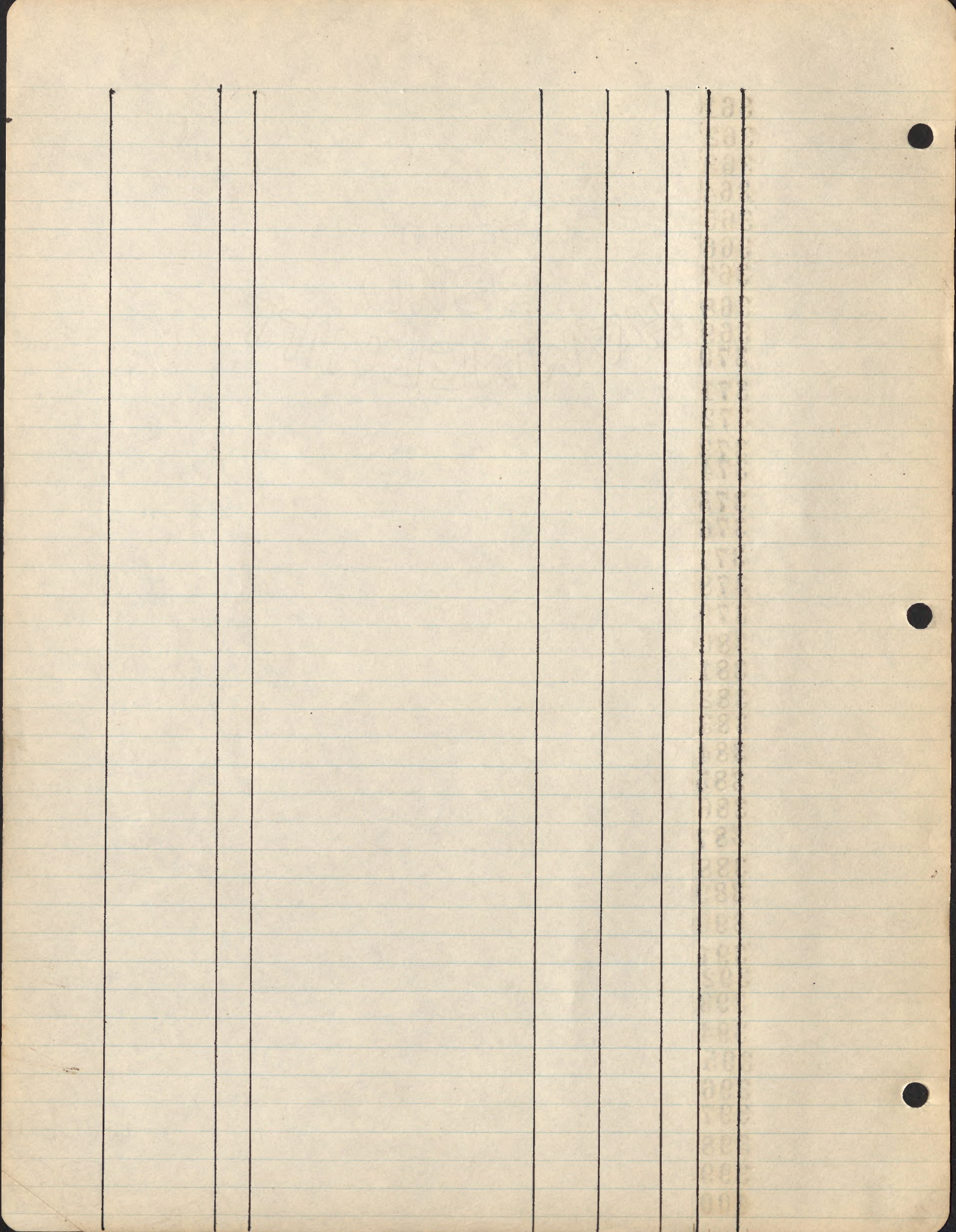
321
322
323
324
325
326
327
328
329
330
331
332
333
334
335
336
337
338
339
340
341
342
343
344
345
346
347
348
349
350
351
352
353
354
355
356
357
358
359
360

361
362
363
364
365
366
367
368
369
370
371
372
373
374
375
376
377
378
379
380
381
382
383
384
385
386
387
388
389
390
391
392
393
394
395
396
397
398
399
400

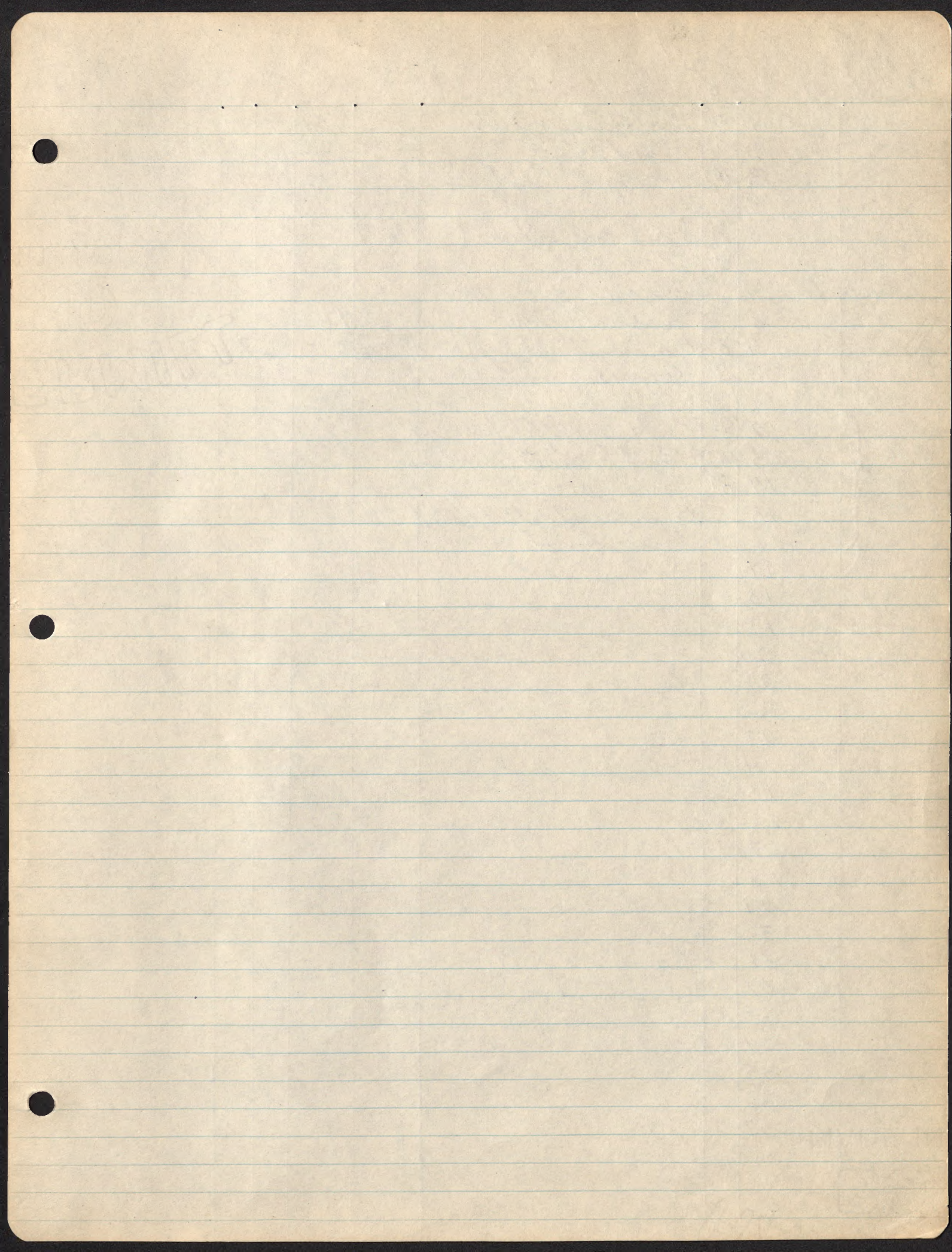
LL 377

198
298
398
498
598
698
798
898
998
1098
1198
1298
1398
1498
1598
1698
1798
1898
1998
2098
2198
2298
2398
2498
2598
2698
2798
2898
2998
3098
3198
3298
3398
3498
3598
3698
3798
3898
3998
4098

361
362
363
364
365
366
367
368
369
370
371
372
373
374
375
376
377
378
379
380
381
382
383
384
385
386
387
388
389
390
391
392
393
394
395
396
397
398
399
400



1942
MAY 10
MALLINUS



American
Museum of
Natural History
No.

Field
No

Sex

Name

Iris

Wing

Beak

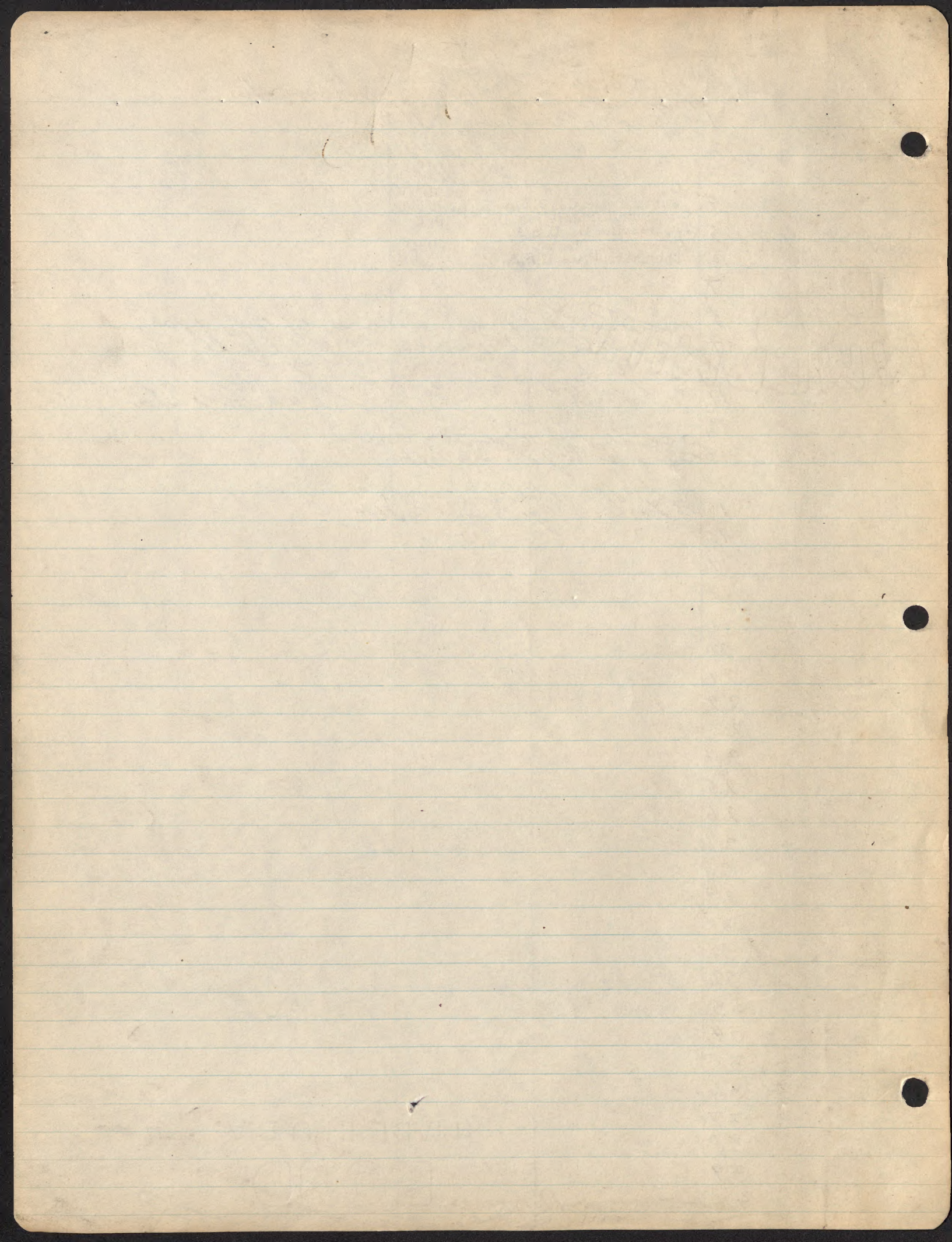
Tail

Discarded

Given to
Cornell Univ.

Field No	Sex	Name	Iris	Wing	Beak	Tail
1	?	Belted Kingfisher	—	158	—	—
2	?	Marsh Hawk	—	—	—	—
3	♂?	Redwinged Black-bird	—	117		
4		Hawk				
5	♂	Sparrow Hawk				
6	♂	Towhee				
7		Wren				
8		Screech Owl		160		
9	♂	American Bald Eagle	yellow orange	540	orange yellow	
10	♀?	Grouse				
11						
12	♀	Redwinged Black Bird				
13	♂	Bob White (Colinus)				
14	♂	" " "				
15		Brownheaded Nuthatch				
16		Bluebird				
17						
18						
19						
20						
21						
22						
23						
24						
25						
26						
27						
28						
29						
30						
31						
32						
33						
34						
35						
36						
37						
38						
39						
40						

Field No.	Locality	Date	Collector	Remarks
1	Micosuckee Lake Jefferson Co. Ga.	Nov. 3, 1930	Richard Archbold	
2	"	Nov. 5, 1930	R. Archbold	
3	"	Nov. 14, 1930	R. Archbold	
4	Oscilla Plantation Thomasville, Ga. U.S.A.	Nov. 24, 1930	A. R. Archbold	
5	Chinquapin Plantation Thomasville, Ga. U.S.A.	Dec. 4, 1930	R. Archbold	
6	Chinquapin Plantation Thomasville, Ga. U.S.A.	Dec. 7, 1930	R. Archbold	
7	"	"	"	
8	"	"	"	
9	Micosuckee Lake Jefferson Co. Ga.	Jan. 1931	gn	wing tip to tip 1800 mm
10	St. Regis Lake New York	Aug 23, 1931	W. H. S. S.	weight 7 1/4 lbs. young killed by car
11	Spectacle Pond New York	Aug 30, 1931		caught in mouse trap outdoors, bacon & peanut butter, had moulted
12	Chinquapin Plantation Thomasville, Ga. U.S.A.	29 Jan. 1930		
13	Oscilla Plantation Thomasville Ga	Feb 5 1930	R. Archbold	
14	Oscilla Plantation Thomasville Ga	Feb 4 1930	R. Archbold	
15	"	"	"	
16	"	"	"	
17				
18				
19				
20				
21				
22				
23				
24				
25				
26				
27				
28				
29				
30				
31				
32				
33				
34				
35				
36				
37				
38				
39				
40				



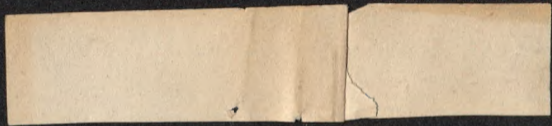
American Museum of Natural History
British Papua
Matsilla C.D.
24 Nov 1933
9:0 M.
1935
30 M.

Labels of
in Field

Labels destroyed

1296	Brown Coarse haired Rat	♀	March 9, 1933	Rosario Central Division alt 450 m.
1297	Brown soft " "	"	" " "	ditto alt.
1298	White footed mouse	—		alt 450
1299	<i>Hesperomys Macroopus</i>	♀		450
1300	" young of above	0		550

Labels of skins destroyed
in Field



American Museum

of Natural History

British Papua

Matsika

C.D

24 Nov 1933

95-0 M.

Collectors
R. Archbold
and
A. L. Rand
No.

10 7-11-51

113

of Natural History

37

William D. Duran Feb 14 1934

River Dogwa

M.

306
Total L. 157
Tail Vert. 45
Hind Foot 21
Ear l. ~~Grown~~ 21

1800

American Museum

of Natural History

British Papua

Baroka, Bioto Creek

18 Apr 1933

30 M.

♀

Collectors
R. Archbold
and

A. L. Rand

No. 1351

8-4-33

A
no embryos
skull badly broken

Total L. *mutilated*
Tail Vert 110
Hind Foot 26 s.u.
Ear f. Crown 27.5
f.o.

American Museum

of Natural History

77

British Papua Western Division No. 201934

Orionno River Dogwa

M.

Collectors
R. Archbold
and
A. L. Rand
No. 2626

Total L. 226
Tail Vert. 105
Hind Foot 22.2
Ear f. Crown 13.6

American Museum

of Natural History

British Papua

Central Division June 5 1933

Mt. Mafu Eastern Slope 2070M

Collectors
R. Archbold
and
A. L. Rand

No. 1396

see
#1395


Total L.	490
Tail Vert.	258
Hind Foot	33.6
Ear f. Crown	15.1

American Museum

of Natural History

British Papua *Western Division Feb 15* 1934 ^f

Oriomo River, Doguwa M.



Collectors
R. Archbold
and

A. L. Hand

No. 1847

Total L.
Tail Vert.
Hind Foot
Ear f. Crown

220
110
21.2
12.8

American Museum

of Natural History

British Papua *Western Division, Oct 14 1934*

Oruono River Dogua

M.

Collectors

R. Archbold

and

A. L. Rand

No. 1783

Total L.

227

Tail Vert.

116

Hind Foot

22.0

Ear f. Crown

13.4

American Museum

of Natural History

7

British Papua Western Division Feb 15 1934

Oroimo River Dogwa

M.

Collectors

R. Archbold

and

A. L. Rand

No. 1846

Total L.
Tail Vert.
Hind Foot
Ear f. Crown

212
109
21.2
130

American Museum

of Natural History

7

British Papua *Western Division* *Feb-19 1934*

Orimo River Dogva

M.

Collectors
R. Archbold
and
A. L. Rand
No. 1784

Total L.	195
Tail Vert.	97
Hind Foot	23.7
Ear f. Crown	13.2

American Museum

of Natural History

31

British Papua Western Division Feb 14 1934

Oriomo River Dogwa

M.

Collectors
R. Archbold
and
A. L. Rand
No. 1801

Total L. 311
Tail Vert. 154
Hind Foot 42.6
Ear f. Crown 195

American Museum

of Natural History

British Papua *Western Division Feb 15 1934* ♀

Oriomo River Dogwa

M.

Collectors

R. Archbold

and

A. L. Rand

No. 1840

Total L.

200*

Tail Vert.

97

Hind Foot

21.

Ear f. Crown

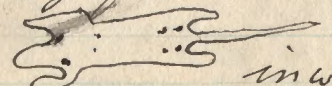
11-9

1296	360	176	41.8	213	under rock at edge of forest + grassland
1297	257	124	33.0	172	under rock on grass slope
1298	male ^{11/18}	108	26.1	193	under same rock as #1296 body eaten by ants I. n. t. l. c. m. o.
1299	1020	475	193	68	shot in same place, hairless young #1300 in pouch stomach full of grass also lots of worms (parasite)
1300	3190	131	73.7		young of above

J. J. Flannery

1301	Black Brown Rat	♂	March 10, 1933	Jolohi River Rona Central Division alt. 550 590
1302	" " "	♀	" " "	" " "
1303	Light Brown Rat	♂	March 11, 1933	ditto
1304	Pelaurus	♂	" 10 "	alt. 350
1305	Dorcopsis Macropus	♀	" "	alt. 450
1306	Dorcopsis young of above	♂		
1307	Light Brown Rat	♂	March 12, 1933	Jolohi River alt. 490 m.
1308	Brown Coarse hair Rat	♀	13	450 "
1309	Brown woodrat	♂		450 "
1310	Black Brown rat	♂		590 "
1311	" " "	♀		595 "
1312	Light Brown Rat	♀		490
1313	Uromiaia Rat	♀	14	450
1314	Light Brown Rat	♂		
1315	Brown Coarse hair Rat	♂		
1316	Light Brown Rat	♂		
1317	Phalanger	♀	17	alt. 750
1318	Phalanger			
1319	rat	♂	April 3	Siote. mekeo Dist INAYALI
1320		♂	April 4	Siote Mekeo District Central Division Beroha 30.m
1321		♀		
1322		♂		
1323		♀		
1324	Red forest rat	♀	April 5	
1325	Stomach contents of owl			
1326	Black Brown rat	♂	April 6	
1327	Pteropus	♂		
1328	rat	♂		
1329		♂	April 7	
1330		♂		
1331	rat			
1332		♂	April 8	
1333		♂		
1334		♂		
1335		♀		
1336		♂	April 9	
1337	Bandicoot	♂		
1338	rat	♂		
1339		♂	April 10	
1340		♀		

3

1301	317	142	33	19.9	grass slope
1302	278	128	29.7	19.2	" "
1303	241 ⁹	121	25.7	13	grass slope
1304	315	164	28.5	17.2	Native name Mekoia skull badly smashed (Crassicaea sp?)
1305	1150	525	200	82	Native name Wadiko shot old of Umbrella tree
1306	188	67	34.1	19.6	Native name Iwilo one young #1304 in pouch
1307	255	178	26.4	14.3	young of above in alcold. grass slope near stream
1308	352	159	35.1	18.9	in woods
1309	306	136	34.5	19.8	in woods
1310	317	135	32.6	20.4	grass slope
1311	277	124	32.1	18.6	
1312	mislabelled	109	25.1	13.9	
1313	226	98	21	21	measured by O. J. Rand; 3 pr of mamma in pouch
1314	238	113	27	18	" " " 4 lb
1315	—	—	36	20	" " " HVB. 180 g
1316	295	135	32	21	" " " 15
1317	1040	540	94	30.1	1 young in pouch #1318 native name Wadaku
1318	34.5	—	—	—	Rain forest will up in tree scolded by Parrots
1319	248	1405	25.9	15.8	young of above brought in by natives who said he caught it in house
1320	252	135	23.4	15.0	Native name Inema Motu Beta brought in by natives
1321	250	123	23.1	14.9	ditto tail apparently broken and healed 4 embryos left hand, 2 right hand of uterus
1322	263	135	24.4	15	ditto skull only
1323	234	123	23.3	14	ditto ditto
1324	261	119	24.8	18.3	caught in trap in swampy forest 2 embryos one each hand in spirit
1325	281	129	32.2	19.7	edge of woods
1326	287	129	32.0	19.7	
1327	200	—	39.2	34.0	Brought in by natives
1328	—	—	—	—	edge of woods eaten in skull trap set by grass
1329	285	128	32.6	20.	edge of woods set no 5 edge of stream in swamp
1330	345	145	28.5	17.	brought in by natives
1331	274	122	32.2	18.5	
1332	328	141	30.0	20.7	
1333	—	—	34.0	19	HVB 200 tail damaged during life
1334	314	132	31.2	17.6	
1335	—	—	33.8	22.	HVB Tail broken  in woods
1336	361	159	35.0	21.6	in woods
1337	323	102	47.8	28.	grass swamp by coconut tree
1338	272	125	27.7	17.5	
1339	307	132	27.9	17.0	
1340	281	121	25.6	17.6	

Boroka Mepo District
Central Division

1341	rat	♂	April 10 1933
1342		♂	April 11
1343	Long tailed rat	♂	
1344		♂	
1345		♂	
1346	some as ¹⁸³² rat	♂	
1347	coarsent rat	♀	
1348		♂	
1349	Banded rat	♂	April 17
1350	Light brown rat	♂	
1351	Dark brown rat	♀	April 18
1352	Wood rat	♀	
1353	Long haired brown rat	♂	April 19
1354	Pteropus No 1		April 24
1355	Pteropus No 1	♀	April 25
1356		♂	
1357	Dactylopsila	♀	
1358	Petaurus	♂	
1359	Phalanger dark brown	♂	May 14
1360	Mallomys	♂	May 14
1361	Pseudochirus	♂	17
1362	Petaurus	♂	May 18
1363	Long footed mouse	♂	
1364	White footed mouse	♀	
1365		♂	
1366		♀	
1367		♀	
1368		♀	May 21
1369		♀	22
1370	Mallomys	♂	
1371	White footed mouse	♀	23
1372	Peromyscus	♂	
1373	White footed mouse	♂	24
1374	Phalanger dark brown	♀	
1375	Phalanger Golden brown	♂	
1376	dark brown	♂	
1377		♀	
1378	Manisid ^{juv} dark brown	♂	24
1379	Marshfield mouse	♀	25
1380	Red mouse ^{mouse} white footed mouse	♀	26

MT 100 for Eastern slope
Cent. Div. alt. 7070 meters

		1933		
1381	White footed mouse	♀	May 27	Central Division Mt. Tapa Eastern Slope Niwalia 2070m
1382	Black tailed Red white footed mouse	♂		
1383	White footed mouse	♀	28	
1384	Pseudochirus	♂		
1385	White footed mouse	♂	30	
1386		♀		
1387		♀		
1388		♂		
1389	White-tailed Red-white footed mouse	♂	31	
1390	White footed mouse	♀		
1391	Black Brown mouse	♂		
1392	White-tailed Red White footed mouse	♂	June 1	
1393		♀		
1394		♀	2	
1395	Pseudochirus	♂	5	
1396	Phalanger	♀	7	Central Division Orange 1860 m
1397	Pseudochirus	♂	8	
1398	Hairy tailed Mountain rat	♂	17	Mt. Albert-Edward S.W. slope Gairdner 3680
1399		♀		
1400		♀	18	↓ Gundera (S. J. Middleton)
1401		♂		
1402		♀		
1403		♂		
1404		♀		
1405		♀		
1406		♂	19	
1407		♂		
1408	Cornis	♂	20	
1409	Hairy tailed Mountain rat	♂	21	
1410		♂		
1411		♂	22	
1412		♀		
1413		♂	23	
1414		♀		
1415		♀		
1416		♀		
1417		♀	24	
1418		♀		
1419		♀		
1420	Peroryctes (New guineanensis)	♀	25	

1381	246	135	26.5	19.4	
1382	313	180	27.8	16.6	Brought in by native probably killed while clearing for native garden. test broken during life. Testes slightly enlarged
1383	245	135	27.4	19.0	
1384	635	315	43.7	21.1	Brought in by a native Iris Brown
1385	260	132	26.8	19.9	
1386	274	146	26.1	18.2	
1387	229	122	25.7	17.3	
1388	224	118	26.3	18.1	
1389	313	156	34.4	20.0	testes enlarged.
1390	255	129	27.4	18.4	
1391	—	119	24.0	16.0	head badly smashed into of testes enlarged
1392	318	160	35.4	21.1	
1393	316	153	34.4	20.9	
1394	315	156	34.2	20.9	
1395	490	258	33.6	15.1	caught by carrier in front of camp skin destroyed in field
1396	622	275	50	31	measured by A. S. Rand brought in by natives
1397	616	313	—	75	ditto.
1398	265	131	26.9	21.0	By hole under root at edge of forest
1399	249	137	26.5	18.9	ditto same set as #1398
1400	244	113	26.2	21.4	Grass slope
1401	226	110	27.4	19.2	" " in the same trap as #1400
1402	244	117	26.2	18.2	under low bush in grass slope
1403	240	121	26.4	20.1	ditto same trap as #1400
1404	257	122	27.1	21.0	by tree edge of forest & grass
1405	—	—	26.5	20.5	ditto tail mutilated H413. 122 tail 98
1406	225	111	27.9	18.9	grass runway by ^{shallow} pond
1407	234	118	27.0	18.8	same trap as #1406
1408	800	270	155.0	72.	
1409	—	—	26.8	22.0	no tail mutilated H413. 136
1410	216	101	26.6	18.2	Grass on edge of forest
1411	249	110	26.2	21.7	Forest testes enlarged
1412	247	122	26.1	19.8	Forest Kiamu name Sewi
1413	268	129	30.2	21.5	
1414	256	123	29.2	17.7	} Grass on edge of forest
1415	233	113	26.5	20.5	
1416	259	127	25.6	19.9	
1417	258	127	27.3	20.0	edge of grass?
1418	238	117	26.2	19.7	Forest
1419	249	122	25.2	19.1	
1420	482	185	57.0	28.6	snared by Rand in run way at edge of forest 1 embryo in pouch Monda place name Manda - Motu-Motu Mowei

1933

1421	Young of above		June 25	Mt. Albert-Edward S.W. slope, Garinda 3680
1422	<i>Peroryzetes garindaensis</i>	♂	29	
1423		♀	30	
1424	Heavy tailed mountain rat	♂	July 3	
1425	<i>Peroryzetes</i>	♂	12	
1426	<i>Dorcopsis</i>	♂	19	Murray Pass-Wharton Camp Ero Creek alt 2860
1427	Thalanger Black Brown	♀	22	
1428	woodrat	♀	24	
1429	<i>Pseudochinus</i> No 1	♀		
1430	" young of above	♂		
1431	Brownish woodrat	♀	25	
1432		♀		
1433		♂		
1434		♂	26	
1435		♂		
1436	Blackish woodrat	♂	27	
1437	Brownish woodrat	♂		
1438	Blackish	♀	28	
1439	B	♂		
1440		♀	29	
1441		♂		
1442		♀		
1443		♂		
1444		♂		
1445	<i>Peroryzetes Eudensis</i>	♂	August 31	
1446	<i>Pseudochinus</i> No 1	♂	1 st	
1447	Thalanger	♂		
1448		♀		
1449	<i>Dorcopsis</i>	♂		
1450	Woodrat	♂		
1451		♂		
1452		♀		
1453		♂		
1454	<i>Zaglossus bruijnii</i>	♂	2	
1455	Thalanger	♂	3	
1456	Brown woodmouse	♀	4	
1457	<i>Peroryzetes</i> No 1	♂		
1458	<i>Perameles</i>	♂	5	
1459	woodrat	♂		
1460	Sex	♀	July 31	Mt Albert-Edward S.W. slope 3680

1421	In spirit				attached to mammae in pouch of 1420
1422	456	162	57.5	26.1	caught in snare by hand, Kuamu Suringa
1423	400	161	51.3	24.5	caught in net trap in stunted high mountain forest, caput moose. Skull broken
1424	254	113	27.1	20.8	grass swamp tail broken in trap.
1425	476	173	56.1	28.6	caught in snare by hole in root of tree edge of forest
1426	875	350	133.0	57.0	shot & measured by O. Brand in bushy grass see Band's notes Kuamu name Soga
1427	873	345	57.3	21.0	shot by native hunter scared out of hole in tree Kuamu name "Mondon" set no 2 in post
1428	226	117	24.7	17.9	
1429	737	322	52.9	16.4	shot by native hunter, with young as #1430 Kuamu name Ave
1430	831	156	35.6	15.7	
1431	260	123	26.5	—	caught in trap in fork of tree about 2m above ground skull & tail damaged by trap, set no 3 caught in fork of tree about 2m above ground in bushy
1432	257	127	26.9	18.8	
1433	269	132	27.9	21.3	In spirit
1434	255	131	28.1	18.6	Kuamu name Sui (Probably ^{small} imp. rat)
1435	not measured				
1436	240	127	26.8	19.7	
1437	258	127	27.1	19.9	
1438	213	107	25.0	16.8	caught in some trap as #1432
1439	258	127	25.7	19.4	No skull
1440	248	136	27.4	20.3	
1441	253	125	26.1	19.6	
1442	267	136	27.5	17.7	
1443	282	130	26.1	18.8	
1444	248	120	27.3	17.8	
1445	522	168	73.6	32.5	
1446	754	324	52.9	19.9	caught by native said to have been caught by dog on ground
1447	758	335	57.6	20.7	ditto
1448	743	309	51.8	20.0	ditto
1449	802	348	121.0	48.2	ditto
1450	244	116	26.9	19.4	ditto
1451	248	131	28.8	19.8	ditto
1452	261	141	25.8	18.8	
1453	269	140	28.1	20.4	
1454	800	—	73.5	—	Kuamu name Sengi caught by Sivi & dogs
1455	769	337	56.2	19.1	caught by Sivi & his dogs
1456	257	131	27.4	17.8	
1457	401	143	63.0	28.8	
1458	267	127	24.9	18.9	
1459	250	124	26.8	19.0	
1460	Odd skull				picked up by Mr. Brown in the Curuca valley near road

1933

1461	Woodrat	♀	August 6	Wharton Range Murray Pass, Ero Creek 2860m
1462		♂		
1463		♀	7	
1464		♂	8	
1465		♀		
1466	Dorcopsis	♂	18	intergrade Western } Central slope 2400 m } Division
1467	White Tailed Red ^{mouse} White footed	♀	24	
1468		♂		
1469	White footed mouse	♂		
1470		♀		
1471	White Tailed Red White footed mouse	♀	25	
1472	White footed mouse	♀		
1473		♂	26	
1474	Long tailed Rat	♀	27	
1475	White footed mouse	♂		
1476		♂		
1477		♂		
1478		♀		
1479		♀		
1480		♀		
1481		♀	28	
1482	Pseudochirus	♂	30	
1483	White Tailed Red ^{mouse} White footed	♂		
1484	White footed mouse	♀		
1485		♀	31	
1486		♂		
1487		♀		
1488		♂		
1489		♀		
1490	stiff haired rat	♂	September 1	
1491	White tailed Red White footed mouse	♀		
1492	White footed mouse	♂		
1493		♀		
1494	White tailed Red white footed mouse	♀	2	
1495	White footed mouse	♀		
1496		♂	3	
1497		♂		
1498		♀		
1499		♂		
1500		♂		

1461	254	157	27.1	19.5
1462	259	134	24.2	19.9
1463	274	141	27.6	18.8
1464	245	115	28.0	18.4
1465	249	119	25.8	20.1
1466				
1467	295	141	34.4	21.1
1468	312	143	34.1	20.9
1469	253	131	27.0	16.8
1470	261	136	25.8	20.1
1471	272	140	29.2	18.7
1472	243	129	25.9	19.3
1473	—	—	25.0	20.0
1474	708	373	73.0	26.0
1475	247	118	27.4	18.5
1476	243	115	25.7	18.9
1477	249	130	27.8	19.0
1478	241	130	25.6	19.0
1479	232	114	25.1	19.3
1480	248	179	28.1	18.8
1481	236	119	25.2	17.4
1482	505	241	32.5	15.0
1483	319	156	34.9	20.7
1484	253	127	26.1	19.8
1485	256	133	26.7	19.5
1486	243	116	25.5	19.8
1487	250	118	26.6	18.5
1488	252	124	27.6	18.7
1489	255	132	27.3	20.0
1490	317	133	30.8	17.0
1491	256	126	28.3	16.9
1492	251	120	26.4	19.6
1493	251	129	24.7	18.3
1494	271	143	30.3	18.7
1495	273	140	27.4	21.1
1496	270	131	27.0	20.0
1497	270	133	26.5	18.5
1498	245	120	26.4	19.6
1499	259	117	27.4	19.0
1500	258	132	26.9	19.0

shot by mission hunter

*tail mutilated in trap H.V.B. 132
caught in the jump in path in open ground forest*

*tip of tail mutilated
ditto*

shot last night 4/16 shot in clump of bamboo

		1933		
1501	Whitefooted mouse	♀	September 4	Central Division Mt. Tafa; West slope 2400m
1502		♂		
1503		♂	5	
1504	<i>Peromyscus tyas</i>	♂	6	Central Division 7500
1505	<i>Pseudochirus</i> large	♂		Tafa Range Merve 2225m.
1506	<i>Phalanger</i> grey	♂		
1507	reddish grey mouse	♂	7	
1508		♀		
1509	^{mouse} whitetail called red whitefooted	♂		
1510	reddish grey mouse	♂		
1511	<i>Pseudochirus</i> small	♂	6	Central Division
1512	<i>Dorcopsis</i>	♂	7	Mt. Tafa West slope 2400
1513	Grey long nosed Bat	♂	7	Central Division Tafa Range Merve 2225
1514	<i>Dorcopsis</i>	♂	10	Central Division Mt. Tafa West slope 2401
1515	Olive grey rat		11	
1516	^{mouse} whitetailed red whitefooted	♂		
1517		♀	12	
1518	whitetailed mouse	♂		
1519		♀	13	
1520	^{mouse} Whitetailed red whitefooted	♂		
1521	Whitetailed red mouse	♂?		
1522	Spotted Marsupial Cat	♂		
1523	<i>Perameles</i>	♀	14	
1524	" " "	♀?	16	
1525	Little Brown Bat	♀		
1526	" " "			
1527	<i>Pseudochirus</i>	♀	17	
1528		♀		
1529	^{mouse} Whitetailed red whitefooted	♀		
1530	Spotted Mars. Cat	♂	18	
1531	<i>Canis</i>	♀	20	
1532	house mouse	♂	October 1	Mafala Central Division (Galat) 1253
1533		♂		
1534		♂		
1535	<i>Phalanga</i> grey black dard.	♂	2	
1536	<i>Petaurus</i>	♀		
1537	<i>Phalanga</i> grey black dard.	♀	3	
1538	<i>Perameles</i>	♂	5	
1539	<i>Phalanga</i>	♂	6	
1540			7	

1501	247	118	25.8	20.0
1502	246	141	28.0	21.0
1503	248	129	26.4	18.1
1504	502	218	42.0	29.0
1505	700	308	45.0	35.0
1506	701	318	46.0	33.0
1507	273	138	31.0	18.0
1508	271	142	28.7	18.8
1509	307	151	35.8	20.2
1510	304 ⁹	140	27.8	18.5
1511	515	259	35.6	17.6
1512	418	224	73.2	30.8
1513	65	—	11.7	15.7
1514	650	273	95.0	38
1515	265	145	26.8	17.6
1516	269	136	30.5	18.6
1517	270	138	29.1	18.2
1518	268	140	27.9	20.4
1519	254	124	25.9	17.6
1520	247	109	24.9	19.0
1521	236	128	27.4	17.8
1522	570	265	48.7	36
1523	246	116	21.9	16.2
1524	237	120	23.0	16.0
1525	89	42	8.0	12.0
1526	705			
1527	705	310	49	20.
1528	173	36		
1529	254	121	28.5	17.0
1530	555	265	50.0	22.0
1531	915	225	133	77
1532	223	107	28.5	17.0
1533	211	101	26.5	17.7
1534	235	124	24.7	16.0
1535	885	360	65.1	—
1536	304	142	23.6	21.0
1537				
1538	243	134	21.0	14.5
1539	835	370	58.0	32.0
1540	800	365	51.0	28.0

2 embryos 30 cm long in spirit

♂ Sull only

42.7

3 small embryos in pouch

shot at dusk by O. J. Ford

In Spirit Wato

In Spirit young of above

caught in trap in junction of next old by comp.

caught in trap in main trail

bought from native said to have been caught by in garden

ditto

shot last night by native hunter seen mutilated

Kuni name D
Kuni name ~~Jim-a-no~~ Jim-a-no Same name gitom

shot last night, badly mutilated by dog accompanied by young about 20 cm not shaved

shot by native hunter in small tree in woods

shot last night by Kuni hunter mutilated by shot in brown

1541	large brown rat	♀	Oct. 5	Mafala Central Division 1253m (falls)
1542	<i>Petaurus</i>	♀		
1543	Coarse haired rat	♀		
1544	ditto but white feet	♀		
1545	Coarse haired rat	♀	9	
1546	<i>Petaurus</i>	♂	10	
1547	<i>Dorcopsis</i>	♂		
1548	house mouse	♂		
1549	<i>Dorcopsis</i>	♀	11	
1550	<i>Phalanger tristissima</i>	♀	12	Dera Dera Central Division alt about 770 m
1551	<i>Dendrolagus</i>	♀	15	Mafala Central Division above 1253?
1552		♂ ^{new}		
1553	<i>Pseudochinus</i>	♂		
1554	Reddish long nosed bat	♀	16	alt 1253
1555	" " "	-		
1556	small sooty bat	♀		
1557	<i>Lactylopsila</i>	♀	17	Dera Dera Central Division alt about 770 m
1558	Coarse haired Rat	♂	18	Mafala Central Division alt 1253
1559	" " "	♀	19	
1560	" " "	♂	22	
1561	Reddish white footed mouse	♀		
1562		♂	23	
1563	dark mouse	♀		
1564	<i>Phalanger gyrodactylus</i>	♂	24	
1565	rat	♀		
1566		♂		
1567	long tailed mouse	♂	26	
1568	Bandicoot	♀		alt.?
1569	Reddish white footed mouse	♂		1253
1570	Coarse haired Rat	♀		
1571		♂		
1572	Fruit Bat	♂		alt.?
1573	<i>Lactylopsila</i>	♂		
1574	<i>Dorcopsis</i>	♀	28	1253
1575	Bandicoot	♀		alt.?
1576	Reddish ^{white footed} mouse	♂		1253
1577	Coarse haired rat	♀	31	
1578		♀		
1579		♀	November 1	
1580	House mouse	♀	2	

1541	585	325	53.7	25.2	shot by Kuni hunter malitohed by shot
1542	233	124	22.5	20.1	caught by high carrier in tree above camp.
1543	290	187	31.1	18.0	caught in trap on grass ridge
1544	340	176	34.6	19.8	caught in trap in woods eaten by ants.
1545	291	132?	31.5	19.6	caught in trap on grass ridge
1546	334	175	26.2	21.8	shot last night while feeding in tree Bot. No
1547	750	355	105.0	42	shot by Kuni hunter in woods. Motu - Motu. BELA-SELA proceeded tsela-tela (gull)
1548	264	131	25.8	13.5	caught in trap on grass ridge same set as 1543-1545 trap visited last night about 9:00 PM. No bait not rebaited
1549	730	329	97.0	42	shot by native hunter in woods
1550	630	320	46.0	24	Kuni name DEWA brought in by native
1551	1235	540	111.0	58.0	brought in by native Kuni name I FOLA said to come from high on top above Mapuleu
1552	830	435	95.0	55.0	ditto
1553	500	236	41.0	17.9	Kuni name GONEMA ditto
1554	73	—	10.9	14.7	Kuni name GUSUMUQA Fore arm 44.1
1555	—	—	—	—	—
1556	61	14	7.0	11.5	2 pr spirit embryos of 1554 shot at bush from lower part of 4 (3 others) Fore arm 38.7. Flange height 4.8 - width 2.3 Kuni name BUKU Bought from Kuni native
1557	617	362	41.7	27.7	in trap on grass ridge same set as 1543
1558	312	133	31.6	20.0	same set as 1558
1559	296	134	31.0	19.2	2 embryos in left horn + 1 in right than largest left horn 15.9 same set as 1559
1560	306	141	34.8	17.0	by tree edge of grass forest
1561	242	113	24.8	14.8	same set as 1561
1562	231	106	23.3	14.2	caught in trap in day light by a. s. hand
1563	180	92	23.8	17.3	brought in by a native tangi theuge
1564	835	395	57.0	32.0	same set 1560
1565	251	111	30.1	17.1	same set 1565
1566	248	113	30.3	17.2	by tree in open forest
1567	242	132	27.8	16.1	brought in by a tangi Kuni name Katio
1568	407	79	54.4	27.8	caught on grass ridge
1569	233	119	25.4	14.8	caught on grass ridge
1570	287	135	34.3	18.3	same set as 1567
1571	286	158	32.0	18.4	brought in by a tangi Kuni name Ue. Flange same
1572	276	25	38.4	32.9	Fore arm 149.5 brought in by a tangi
1573	607	353	43.8	28.9	shot by Meowa native hunter in woods
1574	616	284	82.0	40.0	brought in by a tangi native
1575	—	—	51.0	24.6	H & B 3 ft. - tail missing caught on grass ridge
1576	221	100	23.5	15.1	caught on grass ridge
1577	133	109	28.3	17.6	caught on grass ridge
1578	212	97	27.0	17.1	caught on grass ridge
1579	282	127	32.3	18.3	2 pr. feet + 2 pr. of inguinal mammae brought in by tangi native
1580	231	103	24.0	16.1	—

1581	Reddish Trilled Mouse	♂	November 2	Central Division Mafuku 1253 m.
1582	Pseudochirus	♂	3	alt.?
1583	Reddish Trilled mouse	♂		1253
1584	Dorcopsis	♂	4	alt.?
1585	Reddish white footed	♂	6	1253
1586	Long legged Rat	♂	7	1253
1587	Peromyscus	♂	8	
1588	Dorcopsis	♀		alt.?
1589	High white footed mouse	♀		1253
1590	Long legged Rat	♂	9	
1591	Coarse haired Rat	♀		
✓ 1592	Pseudochirus small	♂	7	Central Division Bellavista 1450?
✓ 1593		♂		
✓ 1594		♀	8	
1595		♀		
1596	Phalanger golden brown	♂		
1597	Dark brown	♀		
1598		♂		
1599	small mouse	♀?		
1600	Coarse haired mouse	♂	10	Central Division Mafuku 1253
1601	Reddish Trilled mouse	♂	11	
1602	Coarse haired rat	♂		
1603	Phalanger	♂		alt.?
1604	Coarse haired rat	♂	12	1253
1605	Reddish Trilled rat			
1606	Dorcopsis	♂	15	
1607	Dark Trilled mouse	♂		
1608	Dactylopsila	♀		Central Division Deva Deva about 770
1609	Reddish field mouse	♂	17	Central Division Mafuku 1253
1610	Coarse haired Rat	♂	18	
1611		♂		
1612	Dactylopsila	♂		Central Division Deva Deva about 770
1613	Pseudochirus	♂	21	Mattika Central Division 1250
1614	Pseudochirus	♀		
1615		♂	22	
1616	Reddish long tailed mouse	♂	21	
1617		♂	21	
1618	Dromicia	♂	22	
1619	Petaurus	♂	22	
1620	Phalanger	♂	22	

Reserve of 1900

1581	233	117	24.7	14.7	caught on grass ridge
1582	656	314	43.6	23.3	Brought in by trapping native name FMBURE Kuni name BONEMH
1583	191	91	27.0	16.7	caught on grass ridge
1584	699	314	98	41	Brought in by native
1585	272	125	29.3	15.7	in trap edges of woods & grass
1586	306	154	40.0	17.9	in steel trap by main trail in woods
1587	524	182	79.0	35.1	beside main trail in woods (steel trap)
1588	748	233	98	44	Brought in by a native
1589	218	102	27.5	15.2	beside main trail in woods steel trap same as #1586
1590	320	161	41.0	19.4	beside main trail by cut off by steel trap
1591	308	137	32.1	18.2	in spirit on grass ridge
1592	535	270	38	21	collected by Rand. Brought in by a native
1593	555	283	40	22	collected by A. F. Rand. Brought in by a native
1594	497	246	33	21	collected by A. F. Rand. Brought in by native with one young #1595 in pouch
1595					in pouch of 1594
1596	670	315	59	30	collected by A. F. Rand. Brought in by a native
1597	850	375	60	30	collected by A. F. Rand. Brought in by a native with one young #1598 in pouch
1598					in pouch of 1597
1599					collected by A. F. Rand
1600	196	95	23.5	13.3	in spirit caught on grass ridge
1601	235	117	24.8	14.8	caught on grass ridge
1602	321	172	32.4	18.7	caught on grass ridge
1603	604	310	41	26	Brought in by a native
1604	314	137	34.6	21.6	caught on grass ridge
1605					
1606	780	330	108	42	shot by native hunter too tail mutilated
1607	206	103	24.0	15.2	caught on grass ridge tail mutilated
1608	594	347	44.3	28.5	Brought in by a native
1609	207	104	23.4	14.2	caught on grass ridge tail mutilated
1610	256	120	32.4	17.8	caught on grass ridge
1611	265	129	26.4	-	ears mutilated
1612	598	446	46.8	27.6	Brought in by a native
1613	420	195	35	18	Collected by O. F. Rand
1614	500	245	31	20	" " " 2 young in pouch labeled A 1614
1615	485	207	32	19	" " " " A 1615
1616	258	157	22	15	" " " "
1617	258	137	22	15	" " " " labeled # 1617
1618	272	185	20	19	" " " " labeled # A 1618
1619	280	157	28	28	" " " "
1620	695	323	54	38	" " " " labeled A 1620

19.33

Central Division
Matsika 950

1621	<i>Pseudochirus</i>	♂	November 22
1622	Reddish mouse	♂	21
1623	<i>Pseudochirus</i>	♀	22
1624	<i>Dromicia</i>	♂	22
1625	Large brown rat	♂	22
1626	<i>Phalanger</i>	♀	22
1627	<i>Pseudochirus</i>	♂	22
1628	<i>Phalanger</i>	♀	22
1629	<i>Pseudochirus</i>	♀	22
1630		♂	22
1631	Reddish long tailed mouse	♂	22
1632		♂	22
1633	Reddish long tailed mouse	♂	22
1634	Reddish long tailed mouse	♂	22
1635	Reddish long tailed mouse	♂	22
1636		♂	23
1637	<i>Pseudochirus</i>	♂	23
1638	<i>Pseudochirus</i>	♂	23
1639	<i>Pseudochirus</i>	♂	23
1640	<i>Dromicia</i>	♂	23
1641		♀	23
1642	<i>Dactylopsala</i>	♀	
1643	"	♀	23
1644	<i>Strigocauscus gymnotis leucippus</i>		
1645	Grey mouse	♀	23
1646	rat	♂	23
1647	Grey brown mouse	♂	23
1648	<i>Pseudochirus</i>	♂	23
1649		♀	23
1650	<i>Phalanger</i>	♀	23
1651	<i>Rattus</i>		
1652	Reddish long tailed mouse	♀	24
1653	Reddish long tailed mouse	♂	24
1654	Grey brown mouse	♂	24
1655	Reddish long tailed mouse	♂	24
1656	Reddish long tailed mouse	♂	24
1657	Grey brown mouse	♂	24
1658	<i>Pseudochirus</i>	♀	24
1659	Reddish long tailed mouse	♀	24
1660			

Planned by hand

1621	485	220	34	19	Collected by A. J. Rand labeled # A 1621		
1622	294	168	21	16	"	"	"
1623	418	94	21	16	"	"	"
1624	278	170	19	21	"	"	"
1625	585	302	59	28	"	"	"
1626	633	316	53	28	"	"	"
1627	455	213	33	19	"	"	"
1628	775	373	58	30	"	"	" 1 young in pouch
1629	492	237	30	21	"	"	" 1 young in pouch labeled A 1629
1630	537	270	34	20	"	"	"
1631	242	145	22	14.5	"	"	"
1632	246	156	22	14.5	"	"	"
1633	292	175	21	15	"	"	"
1634	285	170	21	16	"	"	"
1635	287	172	22	15	"	"	" 4 labeled A 1635
1636	205	125	21	12.5	"	"	" A 1636
1637	579	278	39	21	"	"	" A 1637
1638	510	245	32	21	"	"	" A 1638
1639	485	245	—	18	"	"	"
1640	220	116	21	15	"	"	"
1641	344	178	29	18	"	"	"
1642	585	335	45	30	"	"	" 1 young in pouch very firmly attached to nipple
1643	555	328	48	28	"	"	"
1644					"	"	"
1645	353	206	25	16	"	"	"
1646	—	—	36	22	"	"	" #B 60
1647	364	218	28	16	"	"	"
1648	368	175	27	18	"	"	"
1649	453	226	32	20	"	"	" 1 young in pouch
1650	507	240	50	26	"	"	"
1651					"	"	" In Alcohol
1652	304	181	23	16.5	"	"	"
1653	281	168	22	14	"	"	"
1654	242	144	24	13	"	"	"
1655	209	125	20	13	"	"	"
1656	213	128	20	13	"	"	"
1657	240	143	24.5	12	"	"	"
1658	500	218	34	20	"	"	" 1 young in pouch
1659	292	172	22	16	"	"	"
1660					"	"	" In Alcohol Embryo of above

1661	<i>Pseudochirus</i>	♀	November 24
1662	<i>Dromicia</i>	♀	24
1663		♂	
1664	<i>Pseudochirus</i>	♀	24
1665	Grey brown long tailed mouse	♂	23
1666	" " "		
1667	Small Bat		
1668	" "		
1669	" "		
1670	" "		
1671	" "		
1672	Rat		
1673	"		
1674	"		
1675	"		
1676	Large rat		
1677	Large Rat	♀	26
1678	" "	♂	26
1679	"		
1680	small Bat		
1681	young Bandicoot		28
1682			"
1683	<i>Dorcopsis</i>		
1684	"		
1685	"		
1686	<i>Dromicia caudata</i>	♀	Dec 6
1687			
1688	<i>Dromicia</i>	♂	6
1689	Bat		1934
1690	<i>Macropus Brown</i>	♂	Jan 17
1691	"	♀	18
1692	"	♀	
1693	"	—	
1694	"	—	
1695	"	—	
1696	"	—	
1697	"	—	
1698	"		
1699	"		
1700	"	♂	18

Central Division

Diene
Central Division
Kabumu

Western Division
Oreomo River Wurui sub-area

1661	395	198	30	18	Collected by A. J. Rand
1662	272	168	19	19	" " "
1663	203	125	17	15.5	" " "
1664	470	218	33	19	" " " with small young
1665	395	236	28	16	" " "
1666					Skull only collected by A. J. Rand
1667					In spirit " " "
1668					" " "
1669					" " "
1670					" " "
1671					" " "
1672					} Skull only 4 others not saved similar to small rat of Matsika
1673					
1674					
1675					
1676					Skull only half of tail white coll. by A. J. Rand
1677	525	275	56	28	collected by A. J. Rand
1678	585	300	38	29	" " "
1679					" " "
1680					" " " In spirit
1681					" " "
1682					" " "
1683					" " "
1684					" " " In spirit young of above
1685	860				
1686	753	147	21	11	One young in pouch Collected by A. J. Rand
1687					Collected by A. J. Rand
1688	177	99	16	10	" " "
1689					" " "
1690	1560	700	220	80	shot by native hunter savannah
1691					" " " " "
1692					
1693					} shot by native hunter & skinned in hurry before labels could be procured
1694					
1695					
1696					
1697					Skulls only
1698					In spirit young taken from pouch adult not saved
1699					In spirit " " " " "
1700	638	310	132	55	young adult not saved

1934

Western Division

Oroumo River Wairoa

1701	Short-tailed Rat	♂	January 19
1702	Petaurus	♀	20
1703	Long haired Rat	♂	
1704	Macropus Brown	♂	
1705		♀	
1706	Macropus Black	♂	21
1707	Macropus Dark	♂	
1708	Long haired Rat	♂	
1709	Macropus Black	♂	22
1710		♂	
1711	Red Brown	♂	
1712	Red Brown mouse	♀	24
1713	Macropus Brown	♀	25
1714		♀	
1715	Large grizzled Rat	♀	26
1716	Rat	♀	
1717	Macropus Black	♀	27
1718	Brown	♀	
1719	Rat	♀	
1720		♂	
1721	Large grizzled Rat	♀	28
1722		♀	
1723	Bristly Rat	♀	
1724	Notched ear Rat	♀	
1725	Macropus Brown	♀	
1726		♂	29
1727	Rat	♂	
1728		♀	
1729	Large Grizzled Rat	♂	30
1730	Short-tailed Black Mouse	♂	
1731	Bristly Rat	♀	
1732	Long haired Rat	♂	
1733	Rat	♂	
1734	Macropus Black	♀	
1735	" "		
1736	Long haired Rat	♂	31
1737	Rat	♀	
1738	Long haired Rat	♂	February 1
1739	Rat	♀	
1740	Black rat	♂	

1701	266	122	297	17.9	caught by dead stump in savannah short grass
1702			202	20.1	shot last night in tea tree tail shot off.
1703	33.4	142	317	19.2	caught last night night in savannah
1704	823	354	116	6.5	shot last night eyes & horn dull white nipples some Cherigo
1705	660	265	103	57	Wet to shot with some shot.
1706	665	263	112	57	shot by Meana in woods
1707	754	345	150	60	caught alive by natives in company with A.S. Rand
1708	293	121	286	18.8	} shot by Meana Meana in woods
1709	880	356	130	65	
1710	870	379	120	66	
1711	630	258	107	54	} caught by tree in savannah long grass head & tail damaged in trap shot in tall grass #1714 in pouch
1712			257	15.6	
1713	1170	510	195	78	young of #1713
1714	645	304	134	55	caught in woods by savannah
1715	522	265	535	28.9	caught in savannah by small clump of tall grass in
1716	293	128	302	18.0	shot by Meana in woods
1717	637	265	101	52	shot & picked up by J. J. Brass killed by hawk Bird No. See Note P. 9. Jan 27, 1934
1718	1025	455	185	76	caught in tall grass savannah
1719	284	125	30.0	19.1	caught in medium grassed savannah
1720	244	106	28.2	18.5	caught in front of forest
1721	468	237	51.7	26.8	caught in front of forest
1722	326	144	34.7	18.0	caught in tall grass of savannah
1723	299	141	34.7	19.6	caught in tall grass of savannah
1724	249	121	27.7	17.6	shot by Meana
1725	1170	523	195	80	shot by R. A. in tall grass (right)
1726	1550	727	256	92	same as #1723 + 1724
1727	347	162	373	90.7	same as 1723 + 1724 + 1727
1728	322	150	34.8	19.8	caught in front of woods same as sit as 1715 + 1721
1729	563	273	55.8	26.8	caught in same as #1716
1730	215	92	27.0	18.2	caught in woods in same sit with 2 similar not saved on account of bad boy eaten off.
1731	318	152	34.7	21.2	caught in savannah same as #1723
1732	322	155	35.2	19.5	caught in savannah
1733	311	135	28.8	11.9	shot by meana.
1734	856	360	117	66.2	} Taken from pouch of #1734 In Spirit caught in savannah near camp
1735					
1736	352	160	32.1	20.7	caught in savannah
1737	251	112	31.2	19.9	caught at edge of woods
1738	352	168	36.6	22.0	caught in savannah
1739	274	113	27.4	19.1	caught in savannah
1740	243	99	27.5	18.7	

1934

Western Division
Orono River W. W. I.

1741	Brown House mouse	♀	
1742	Macropus Brown	♂	
1743	Black	♀	
1744	"	♂	
1745	Dark	♂	2
1746		♂	
1747	Brown	♀	
1748	Black mouse	♂	
1749	Black mouse	♂	
1750	Long Haired Rat	♂	
1751		♂	
1752	Rat	♂	
1753	Macropus Black	♂	3
1754	Brown	♀	
1755		♂	
1756		♂	
1757	Black	♀	
1758		♂	
1759		♂	
1760	Dark	♀	
1761		♂	
1762	Macropus Black	♂	
1763		♂	4
1764	Dark	♂	
1765	Red-Brown mouse	♀	
1766		♂	
1767	large rat	♂	5
1768		♂	6
1769		♂	
1770		♀	
1771	Macropus Dark	♂	
1772	Phalanger maculatus	-	
1773		♂	
1774	large rat	♂	7
	smaller haired rat	♂	
1775	Macropus Brown	♀	8
1776		♂	
1777	Large Rat	♀	
1778	small Rat	♀	
1779	Macropus Brown	♀	9
1780	Rat	♀	

1741					caught in house
1742	281	136	31.7	15.6	shot in savannah by R.A.
1743	1191	552	197	71.	shot by Meaco in woods
1744	910	342	114	62	
1745					Young of 1743 In Spirit
1746	965	390	117	63	Shot by Meaco in woods
1747	896	344	115	57	
1748	1125	499	185	75	Shot by Meaco in savannah together
1749	811	353	143	64	
1750	118	98	27.4	16.8	caught in savannah
1751	344	166	35.3	20.4	caught in edge of woods
1752	341	161	34.6	20.2	caught in point of woods
1753	303	136	28.3	18.3	shot last night in woods
1754	934	385	130	66.	shot last night in savannah long grass
1755	1171	539	198	71.	shot last night in savannah short grass
1756	1466	672	222	85	shot last night in savannah short grass
1757	1506	694	228	83	with young # 1758 + 1762 in hand
1758	872	331	112	63	
1759					young of 1757. In Spirit
1760	676	260	107	58	
1761	664	279	92	57	caught in edge of woods
1762	291	139	35.7	18.8	
1763					Young of 1757. In Spirit
1764	1050	427	137	77	
1765	782	338	118	63	caught in woods
1766	246	126	25.0	15.5	
1767	306	141	31.5	18.4	caught in savannah near edge.
1768	316	118	30.8	21.0	see notes K.O.
1769	257	108	28.4	17.6	see notes A.G.
1770	287	127	29.5	18.2	see notes A.G.
1771	303	130	28.5	20.9	
1772					Young brought in by a native
1773					part of shot brought in by native see notes of
1774					caught in savannah
1775	314	132	29	20.3	has no tail lost. caught in savannah
1776			32.8	18.5	
1777	1032	485	184	71.	shot by R.A. shot grass ridge in savannah
1778	1221	574	207	83	
1779			33.7	22.4	caught in long grass savannah
1780	284	136	35.1	18.9	caught in long grass savannah
1781	1064	476	168	77	shot in long grass of savannah
1782	335	144	36.0	19.8	caught in long grass savannah

1781
1782
1783
1784
1785
1786
1787
1788
1789
1790
1791
1792
1793
1794
1795
1796
1797
1798
1799
1800
1801
1802
1803
1804
1805
1806
1807
1808
1809
1810
1811
1812
1813
1814
1815
1816
1817
1818
1819
1820

Bat ♂
 Large grizzled Bat ♂
 small mouse ♂
 ♂
 Petaurus ♀
 "
 "
 ♀
 small mouse ♂
 ♀
 ♂
 ♀
 ♀
 ♂
 Large grizzled Bat ♂
 ♀
 ♂
 Medium grey Bat ♂
 ♂
 smaller grey Bat ♂
 ♂
 Sm Brown Bat
 Large grizzled Bat ♀
 ♂
 Medium grey Bat ♂
 smaller grey Bat ♀
 Short-tailed Bat ♀
 Bandicoot ♂
 Sm. Brown Bat

1934

February 11
14

Western Division
 Oriomo River, W. Div
 Western Division
 Oriomo River, Dogwa

1781	314	132	32.0	19.8	Caught in savannah
1782	567	289	57.0	27.5	Brought in yesterday by native
1783	227	116	22.0	13.4	Brought in yesterday by native
1784	195	97	23.7	13.2	Brought in yesterday by native
1785	314	142	23.3	21.7	Brought in by natives with # 1786-1787 (climbing to belly) at mammal
1786					In spirit young of 1785
1787					In spirit young of 1785
1788	322	169	24.1	20.4	
1789	219	114	23.8	14.0	Brought in by a native
1790	189	102	22.0	12.1	"
1791	177	93	20.9	11.2	"
1792	192	98	23.0	12.8	"
1793	200	103	21.9	14.0	"
1794	212	109	23.0	14.0	"
1795	565	295	57.9	25.8	"
1796	567	296	57.8	28.5	"
1797	563	279	55.2	25.2	"
1798	388	200	49.7	23.0	"
1799	396	201	49.0	23.1	"
1800	306	157	45.0	21.0	" Skull only skin destroyed in Field
1801	311	154	42.6	19.5	" Skull only skin destroyed in Field
1802					In spirit
1803	527	257	53.9	28.1	"
1804	-	-	56.8	27.4	" Tail mutilated
1805	433	222	53.7	26.0	"
1806	308	152	45.9	20.0	"
1807	266	94	28.7	18.2	"
1808	522	144	62.0	30.0	"
1809					In spirit
1810					"
1811					"
1812					"
1813					"
1814					"
1815					"
1816					"
1817					"
1818					"
1819					"
1820					"

1934

Western Division

Am. Brown Oct.

February 14

Orono River Dogwa

- 1821
- 1822
- 1823
- 1824
- 1825
- 1826
- 1827
- 1828
- 1829
- 1830
- 1831
- 1832
- 1833
- 1834
- 1835
- 1836
- 1837
- 1838
- 1839
- 1840
- 1841
- 1842
- 1843
- 1844
- 1845
- 1846
- 1847
- 1848
- 1849
- 1850
- 1851
- 1852
- 1853
- 1854
- 1855
- 1856
- 1857
- 1858
- 1859
- 1860

1835 ¹¹ Large Gizzled Rat ♀

1839 Small mouse ♂

1841 Rat ♂

1842 Small mouse ♀

1843 Small mouse ♀

1844 Large Gizzled Rat ♀

1845 Small mouse ♂

1846 Small mouse ♂

1847 Small mouse ♀

1848 Small mouse ♀

1849 Small mouse ♀

1850 Small mouse ♀

1851 Small mouse ♀

1852 Small mouse ♂

1853 Small mouse ♂

1854 Small mouse ♂

1855 Small mouse ♂

1856 Small mouse ♂

1857 Small mouse ♂

1858 *Juglans* ♂

1859 Large Gizzled Rat ♀

1860 Medium Gray Rat ♂

15

1821

Brought in by a Native. In spirit

1822

"

"

1823

"

"

1824

"

"

1825

"

"

1826

"

"

1827

"

"

1828

"

"

1829

"

"

1830

"

"

1831

"

"

1832

"

"

1833

"

"

1834

"

"

1835 567 298 53.5 15.5

"

With young # 1856 & 1837 clinging to belly

1836

"

young of 1835 In spirit

1837

"

young of 1835 In spirit

1838 414 207 51.4 24.2

"

1839 195 103 22.6 13.5

"

1840 200 97 21.0 11.9

"

Skull only skin destroyed in field

1841 317 166 45.2 23.6

"

1842 270 110 21.2 12.8

"

skin destroyed in field skull only

1843 215 103 22.0 13.5

"

1844 547 267 54.7 25.2

"

1845 219 112 23.2 12.0

"

1846 212 109 21.2 13.0

"

skin destroyed in field skull only

1847 219 108 22.0 14.6

"

Skull only

1848 208 105 21.5 13.4

"

1849 207 106 23.0 13.4

"

1850 228 119 22.9 14.8

"

1851 205 102 21.8 11.4

"

1852 232 110 25.2 12.5

"

1853 250 126 24.4

"

1854 224 109 22.8 13.6

"

1855 223 112 23.0 13.9

"

1856 218 114 23.5 13.0

"

1857 223 111 23.1 12.4

"

1858 330 - 32.

"

Skull only

1859 564 297 57.2 1.0

"

1860 338 169 47.1 22.9

"

"

1861
1862
1863
1864
1865
1866
1867
1868
1869
1870
1871
1872
1873
1874
1875
1876
1877
1878
1879
1880
1881
1882
1883
1884
1885
1886
1887
1888
1889
1890
1891
1892
1893
1894
1895
1896
1897
1898
1899
1900

Large Brown Bat

1934
February 16

Western Division
Orinoco River Dogon

Small Bandicoot

Petaurus

♀

17

♀

♂

♀

♂

♂

♂

♀

♀

♂

♀

♀

♂

~~Small mouse~~

♂

Small mouse

♂

♂

♂

♂

♂

♀

Dactylopsila

Leaf-nosed Bat

18

1861					Brought in by a native In Spirit	
1862					"	"
1863					"	"
1864					"	"
1865					"	"
1866					"	"
1867					"	"
1868					"	"
1869					"	"
1870					"	"
1871					"	"
1872	246	76	366	19.8	Caught in open dry grass by Kandi boy <i>malajo</i> electrically on Feb. 16	
1873	305	160	23.6	21.8	Brought in by a native & kept alive two or three days	
1874	328	173	24.3	21.3	"	Iris Dark Brown
1875	335	180	25.6	23.0	"	with two young in pouch
1876	335	180	25.6	22.0	"	
1877					Young of 1875 taken from pouch	
1878					"	"
1879	330	178	23.6	21.5	Brought in by a native & kept alive	"
1880	337	180	25.4	23.2	"	"
1881	280	162	22.7	20.8	"	"
1882	328	177	25.6	22.4	"	"
1883	300	157	23.7	20.8	"	"
1884	323	167	24.9	21.4	"	"
1885	320	171	24.3	22.5	"	"
1886	296	156	24.3	21.3	"	"
1887	213	98	20.2	14.3	Brought in by a native.	
1888	232	123	21.4	13.8	"	
1889	212	107	23.0	14.6	"	
1890	195	96	22.1	23.0	"	
1891	199	107	21.5	15.9	"	
1892	515	291	44.8	27.4	"	
1893					Brought in by a native In Spirit	
1894					"	"
1895					"	"
1896					"	"
1897					"	"
1898					"	"
1899					"	"
1900					"	"

1901
1902
1903
1904
1905
1906
1907
1908
1909
1910
1911
1912
1913
1914
1915
1916
1917
1918
1919
1920
1921
1922
1923
1924
1925
1926
1927
1928
1929
1930
1931
1932
1933
1934
1935
1936
1937
1938
1939
1940

Leaf Nosed Bat

1934
February 18

*Western Division
Cucuma River Dogwa*

1941
1942
1943
1944
1945
1946
1947
1948
1949
1950
1951
1952
1953
1954
1955
1956
1957
1958
1959
1960
1961
1962
1963
1964
1965
1966
1967
1968
1969
1970
1971
1972
1973
1974
1975
1976
1977
1978
1979
1980

Leafhopper Bat

1934
February 18

*Western Division
Orono River Pogue*

Year	Species	Sex	Date	Location			
1981	Leaf Nosed Bat		1934	Western Division			
1982					February 18	Orono River Wagon	
1983							
1984							
1985							
1986							
1987							
1988							
1989							
1990							
1991							
1992							
1993							
1994							
1995							
1996							
1997							
1998							
1999							♂
2000							♀
2001		♀					
2002		♂					
2003		♂					
2004		♂					
2005	Conchared Bat	♀					
2006		♀					
2007				19			
2008		♂					
2009		♀					
2010		♂					
2011		♀					
2012		♂					
2013		♂					
2014	Dactylopsila	♂					
2015		small mouse	♂				
2016		♂					
2017	Dactylopsila	♂					
2018		large grizzled rat small mouse	♂				
2019	Bandicoot	♂					
2020		large grizzled rat	♀				

1981					Brought in by a native. In Spirit
1982					"
1983					"
1984					"
1985					"
1986					"
1987					"
1988					"
1989					"
1990					"
1991					"
1992					"
1993					"
1994					"
1995					"
1996					"
1997					"
1998					"
1999	85	23	8.9	16.7	"
2000	83	22	9.1	14.7	"
2001	82	25	9.4	14.3	"
2002	87	28	9.8	14.3	"
2003	88	29	8.8	15.6	"
2004	86	27	9.7	15.8	"
2005	290	151	33.5	26.3	"
2006	308	164	22.5	21.5	"
2007					With on young in pouch young of # 2006. In Spirit. Wounded Brought in by a native
2008	300	172	23.9	19.7	"
2009	299	163	23.0	20.9	"
2010	259	143	22.6	19.0	"
2011	303	165	23.5	21.4	"
2012	315	169	23.7	21.9	"
2013	233	125	20.7	16.0	"
2014	552	310	42.8	28.1	"
2015	234	122	23.8	15.8	"
2016	227	115	22.5	13.1	"
2017	525	291	44.9	29.1	"
2018	571	288	57.6	31.5	"
2019	505	154	65.4	30.6	"
2020	533	276	57.1	26.2	"

		1934	Western Division
2021	<i>Dactylopsila</i>	♂	February 19. Cremins River, Dogwa
2022	<i>Petaurus</i>	♀	
2023	<i>Dactylopsila</i>	♂	20
2024	<i>Pteropus</i>	♀	
2025	<i>Petaurus</i>	♀	
2026	Small mouse	♂	
2027	Bandicoot	♂	
2028		♀	
2029			
2030	<i>Zaglossus</i>	?	
2031	<i>Dactylopsila</i>	♀	
2032	<i>Macropus</i> brown	♂	21
2033	Small mouse	♂	
2034	<i>Phalanger</i> golden	♀	
2035			
2036	<i>maculatus</i> gold	♂	
2037	Rouffou's Rat	♂	
2038		♀	
2039	<i>Phalanger maculatus</i>	♂	22
2040	Bandicoot	♂	
2041	<i>Phalanger maculatus</i>	♂	
2042		♀	23
2043		♂	
2044		♀	
2045		♂	
2046	Bandicoot	♂	24
2047		♀	
2048			
2049	<i>Dactylopsila</i>	♂	
2050	<i>Petaurus</i>	♀	
2051	Sm. Brown Bat		
2052			
2053			
2054			
2055			
2056			
2057			
2058			
2059			
2060			

2021	508	292	44.9	26.7	Brought in by a native
2022	302	169	13.7	20.8	"
2023	558	299	47.8	31.0	"
2024	151	-	39.7	30.2	Shot by Mr. Cross out of Pandanus
2025	298	156	23.5	19.6	Brought in by a native
2026	221	105	22.2	13.6	" skin destroyed in field skull only
2027	481	131	66.9	31.3	" with few young in pouch
2028	478	133	62.9	30.9	" see note R. 9 Oct 20 1974
2029					" their young of # 2029
2030	405	-	32.5		"
2031	533	307	42.1	15.8	"
2032	1640	770	230.8	85.7	shot by meadow in grassland
2033	220	114	24.5	14.6	Brought in by a native
2034	695	310	50.7	28.7	" With 2 young in pouch 2035
2035					two young of 2034 In spirit
2036	990	420	80	25.0	Brought in by a native
2037	355	177	48.1	26.2	"
2038	330	169	46.5	25.0	"
2039	1350	491	90	35	"
2040	620	173	76.4	26.5	"
2041	820	382	68	25.5	"
2042	1110	525	85	25	"
2043	1045	490	85	30	"
2044	920	425	76	28	"
2045	945	450	70	22	"
2046	455	138	61.0	37	"
2047	470	133	58.5	30.8	" With one young # 2048 in pouch
2048					" young of 2047 In spirit
2049	505	260	45.9	29.6	"
2050	328	180	24.7	21.0	"
2051					" In spirit
2052					" "
2053					" "
2054					" "
2055					" "
2056					" "
2057					" "
2058					" "
2059					" "
2060					" "

1934

Western Division 40 m.
Oriono River Dogwa

February 24
25

2061 Small Brown Bat

2062 *Phalanger maculatus* ♀

2063 ~~♀~~

2064 ♂

2065 *Pteropus* Large ♂ 26

2066 *Phalanger maculatus* ♀

2067 *Coarse haired Bat* ♀

2068 *Pteropus* No. 2. ♂ 27

2069 *Phalanger maculatus* ♀

2070 *White-breasted Bat* ♂

2071 *Pteropus* ♂

2072 *Phalanger golden* ♀

2073 ♂

2074

2075 ♀

2076 *Pteropus* Large ♀

2077 *Phalanger maculatus* ♂

2078 ♀

2079 *Short tailed Bandicoot* ♀

2080 *Phalanger golden* ♂

2081 *Phalanger maculatus* ♂ 28

2082 *Short tailed Bandicoot* ♂

2083 *Tailed Fruit Bat* ♀

2084 *Phalanger golden* ♂ March 1

2085 *Short tailed Bandicoot* ♂ 1

2086 ♂

2087 ♀

2088 ♀

2089 *Dactylopsila* ♀

2090 ♀

2091 ♀ 2

2092 *Dugong* ♂ 8

2093 *Phalanger* ♂

2094

2095

2096

2097

2098

2099

2100

2061			
2062	1080	505	80.7 32.7
2063	1085	506	79.4 31.5
2064	876	401	71.7 26.5
2065	320	—	56.1 29.6
2066	1135	550	81.4 32.1
2067	296	136	33.8 20.5
2068	220	—	38.0 31.0
2069	1115	520	78.3 26
2070			
2071	218	—	39.6 32.0
2072	690	295	53.0 24.0
2073			
2074			
2075	720	324	59.5 27.0
2076	306	—	50.6 27
2077	755	362	64.1 21.
2078	810	390	67.5 21.9
2079	252	54	39.0 27.9
2080	451	115	39.3 21.8
2081	920	420	74.7 26.5
2082	345	72	50.5 29.8
2083	215	22	36.8 33.8
2084	543	264	46.8 28.4
2085	311	67	47.9 27.5
2086	380	70	53.9 30.4
2087			
2088			
2089			
2090			
2091	515	302	43.7 28.6
2092			
2093	801	383	71.7 23
2094			
2095			
2096			
2097			
2098			
2099			
2100			

Brought in by a native In spirit

11

11

11

Arrow arm 186.-

Arrow arm 127

In Spirit

Arrow arm 178.5

With two young in pouch ²⁰⁷⁴ 2073

Wing spread 1450 Arrow arm 192.

Probable young of 2075

Arrow arm 107.8

In spirit

In spirit

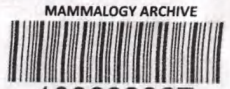
11 11

11 11

See Notes of B.A. for March 7 & 8, 1934

Brought in alive and kept on rice & fruit


2101
2102
2103
2104
2105
2106
2107
2108
2109
2110
2111
2112
2113
2114
2115
2116
2117
2118
2119
2120
2121
2122
2123
2124
2125
2126
2127
2128
2129
2130
2131
2132
2133
2134
2135
2136
2137
2138
2139
2140

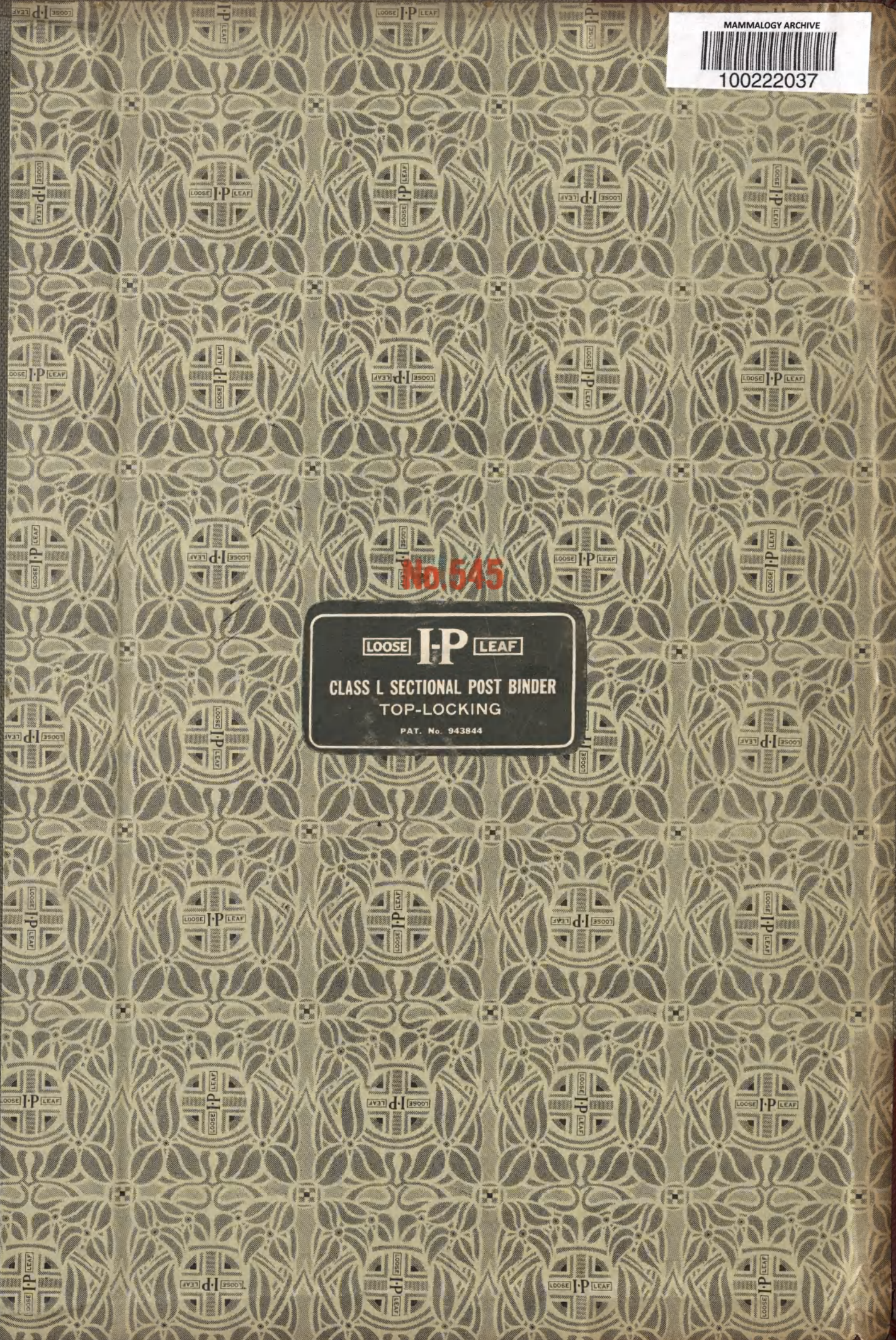


MAMMALOGY ARCHIVE

100222037

No. 545


 CLASS I SECTIONAL POST BINDER
 TOP-LOCKING
 PAT. No. 943844



PERSONAL
NOTES
OF
RICHARD
ARCHBOLD