

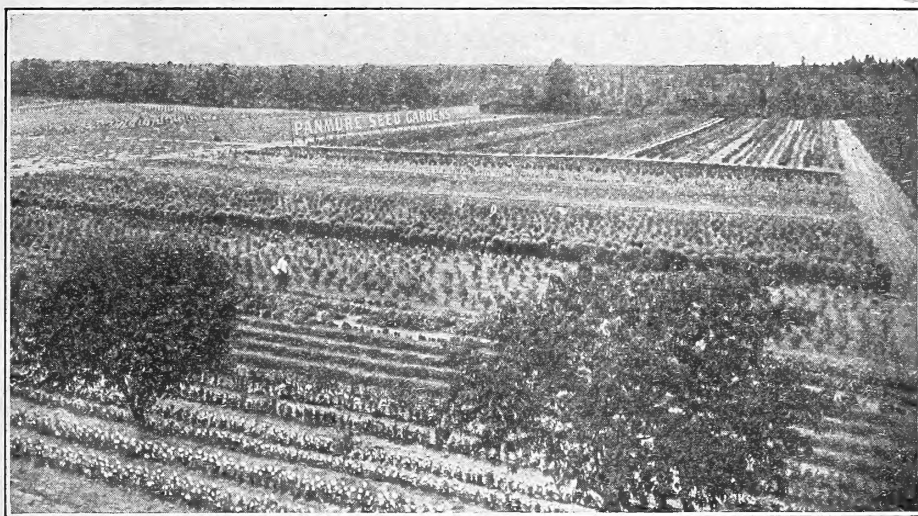
Historic, archived document

Do not assume content reflects current scientific knowledge, policies, or practices.

6273 70 50

MAULE'S SPECIAL

U. S. Department of Agriculture
LIBRARY
Washington, D. C.



BIRD'S EYE VIEW OF MY PANMURE TRIAL GROUNDS

WHOLESALE PRICE LIST FOR MARKET GARDENERS 1 9 1 2

From Wm. Henry Maule
Seedsman, Philadelphia, Pa., U.S.A.

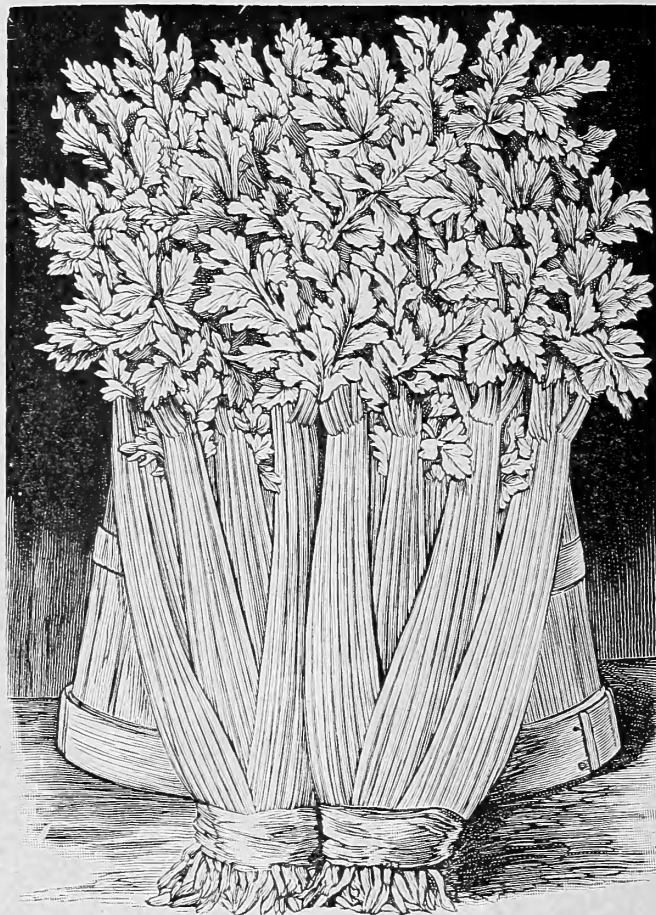
C

Golden Self-Blanching Celery

I consider myself headquarters for what is today the most popular and profitable celery in cultivation. Unfortunately the crop is shorter than ever, and prices are astonishingly high. My first order for this variety in 1911 was booked in Aug., 1910, 100 pounds for \$700, and the only reason I accepted this order was because it was from one of my oldest and best customers. This year my first order was from the same customer, 100 pounds for \$1,000, a special price made for the same reason as I made it in 1911.

One of my representatives last September sold to 43 of my customers, old celery growers, in Arkport, N. Y., 54½ pounds of this seed in one day at \$12.00 per pound. I found out in the fall that if I continued selling my XX Golden Self Blanching Celery at \$12.00 per pound, I would not have a pound left by January, owing to the limited supply, consequently it was compulsory to advance the price to \$15.00. When this price list goes to press I will have about 400 pounds left to sell.

All my old friends know I have not sold a pound of anything but French grown Golden Self Blanching Celery for years. I have paid ten times as much to my French growers as I could get this seed grown for in America. I would not touch California grown seed as a gift. The short crop in France last year was occasioned by the floods which we all know about; this year's failure was occasioned by the dry weather. I do not want to appear alarming, but from present appearances I will have less seed to sell next year than I have this. Notwithstanding the high price I have to ask for this seed, it seems to be in greater demand than when I got only \$4.00 and \$5.00 a pound for it. The reason is that XX Golden Self Blanching Celery is always in demand wherever good celery is appreciated. It gives the best money returns for the labor. In quality it ranks with the highest. It is equally in favor with the amateur and market gardener. It is dwarf



MAULE'S XX SELECTED STRAIN GOLDEN SELF-BLANCHING CELERY.

to half dwarf, growing 18 to 20 inches in height, wonderfully stocky, very heavy, perfectly solid, of delicate flavor and a good keeper. Added to these points is its great distinctive feature of being almost literally self-blanching. Early orders are solicited, for as stated above, my supply is even more limited than last year. As long as it holds out, I shall sell what I have at \$14.75 per pound; 10 pounds or more \$14.00 per pound by express at purchaser's expense.

Prices of Maule's XX Selected Strain Golden Self-Blanching Celery for 1912 :

Packet, 15 cents; quarter ounce, 50 cents; half ounce, 80 cents; ounce, \$1.50; quarter pound, \$5.00; pound, \$14.75.

The Maule Seed Book for 1912

is pronounced by one and all the most complete seed catalogue ever published in this country. It not only contains a full list of everything worth growing in Garden, Field and Flower Seeds, but also a complete list of Summer Flowering Bulbs, Plants, Small Fruits, Garden Tools, Fertilizers, etc. Tell your friends who do not know Maule's Seeds to send me their address on a postal, and I will be only too glad to mail them a copy.

Wm. Henry Maule, 1707-09-11 Filbert Street, Philadelphia, Pa.

A Plain Price List for Busy People Who Are Raising Truck for Sale

This list contains all the varieties listed in The Maule Seed Book for 1912, to which you can refer for a full and accurate description. The prices named herein, which are a reduction from my catalogue prices, are intended for MARKET GARDENERS and TRUCKERS only, and not for private gardeners.

The past season has been the most disastrous one I have ever experienced in the growth of many stocks planted for seed. This is especially true of Beets, Cabbage, Carrots, Celery (French grown), Peas, Parsley and Parsnips; crops in many cases being an absolute failure and in no case averaging over 25 to 30 %. In consequence, I have had to raise my prices on some of these items, and had it not been for my enormous acreage am afraid I would have been compelled to do as many of my brother seedsmen are doing: Mark in this list "sold out" or offer in very small quantities only. On many items I have been able to reduce my prices or make prices same as last year. This is especially noticeable on onion; the crop warrants quite an advance, but I am offering it at about the same price as 1911 and expect a very heavy demand for seed, having at this early date, booked several thousand pounds for deliverey in January and February. My old customers know I always favor them wherever possible and do not raise prices except when absolutely necessary.

I wish to impress on one and all the importance of sending in your orders early, especially in a year like this, of so many shortages, because when stocks are exhausted they cannot be duplicated, no matter what price is offered.

This year I have decided that on all orders from this price list, amounting to \$10.00 or more, I will prepay all of the freight charges to your nearest railroad station, provided your order is for small seeds only. This does not include peas, beans, corn, potatoes and onion sets, as these are not small seeds.

Prices on Peas, Beans, Corn, Potatoes and Onion Sets include bags or boxes delivered free on board cars or boat in Philadelphia, but customer must pay transportation charges.

My business the past season was very satisfactory, and I feel that the high quality of the seeds I send out has been the keystone of success to my vast business, and has been the cause of so many of my customers saying: "Maule Seeds Once Grown Always Grown."

Wishing you all health, happiness and prosperity in 1912, and thanking one and all of my customer for their very liberal patronage in the past, I remain

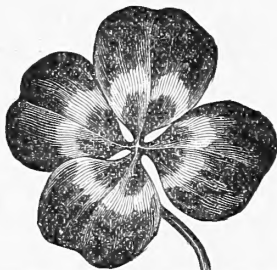
Always yours to command

Philadelphia
January 1, 1912.

Wm. H. Maule

Maule's Special 1912 Price List FOR TRUCKERS ONLY

The figures quoted in the following pages are intended for those in the business of raising truck for sale, and are not intended under any circumstances for *private planters*. Please remember that since 1889 Maule's Seeds have not been sold to dealers to sell again at a profit. If wanted, they must be ordered direct from Wm. Henry Maule, of Philadelphia.



My Four-Leaf Clover Guarantee.

FIRST: Safe Arrival.—I guarantee that all goods sold by me shall reach my customers in good condition.

SECOND: Money Insured.—I guarantee to hold myself responsible for the safe arrival of all remittances sent to me by post office money order, express money order, draft, check or registered letter.

THIRD: Free by Mail or Express.—I guarantee to deliver free of all charges, all garden seeds, when 10 cents per pound, on garden seeds, 10 cents per quart for sweet corn, and 15 cents per quart for peas and beans are added to prices quoted in this list, unless your order amounts to \$10.00 or more for small seeds when they will be delivered free at your nearest freight station.

FOURTH: As Represented.—I guarantee my seeds to be as represented, if they prove otherwise I will refill your order free of charge, or return your money; but it must be understood I do not guarantee the crop any further than to refill the order, or return your money.

What More Could be Asked?

I guarantee everything but the crop. Protected from loss by this most liberal of guarantees, every one can rest assured of the most entire satisfaction.



The prices quoted in this list, if your order amounts to \$10.00 or over for small seeds, are for the seeds carefully packed and delivered at your nearest freight station, freight prepaid anywhere, provided your order does not contain any peas, beans, corn, potatoes or onion sets. Prices on these are net delivered f. o. b. Philadelphia, *customers in all cases paying the freight on these heavy goods.*

To those who have never had this little Price List, I would say my idea in omitting descriptions (which can always be found in my regular seed book) and printing the list in good size type is what my customers appreciate. There are no frills on this list; it is simply a wholesale price list for busy men, of such seeds as are bound to give satisfaction and make profits on the market stall.

TERMS: Cash with order, or satisfactory bank reference. Money can be sent by post office money order, draft or check. If you do not remit in any of these ways, register your letter. I will send C. O. D. by express on orders exceeding \$15.00, if 25 per cent. of the amount is remitted with the order. I cannot send C. O. D. by freight. I accept postage stamps the same as cash. *Half pounds may be ordered at the pound rates, half pecks at the peck rates, half bushels at the bushel rates.*

FREIGHT PAID on all orders amounting to \$10.00 and upwards, provided the order is for small seed only. Peas, beans, corn, potatoes and onion sets are not small seeds, and prices given on same are for delivery f. o. b. cars or boat in Philadelphia, customers in all cases to pay the transportation charges from Philadelphia to their own R. R. Station.

ASPARAGUS SEED.

	Oz.	¼ lb.	Lb.
1 Palmetto	10	15	45
2 Giant Argenteuil	10	25	75
3 Barr's Philadelphia Mammoth	10	15	45
4 Columbian Mammoth White	10	15	45
5 Conover's Colossal	10	15	40

ASPARAGUS ROOTS.

	Per 100	Per 1000
Giant Argenteuil, 1 year	40	3.50
Giant Argenteuil, 2 year	45	4.00
Palmetto, 1 year	40	3.50
Palmetto, 2 year	45	4.00
Barr's Philadelphia Mammoth, 1 year	40	3.50
Barr's Philadelphia Mammoth, 2 year	45	4.00
Columbian Mammoth White, 1 year	40	3.50
Columbian Mammoth White, 2 year	45	4.00
Conover's Colossal, 1 year	40	3.50
Conover's Colossal, 2 year	45	4.00

BEANS.—Dwarf or Bush.*Green Podded Varieties.*

	Qt.	Pk.	Bu.
6 Dwarf Horticultural or Cranberry	25	1.65	6.00
7 Round Pod Refugee or 1000 to 1	20	1.10	4.00
8 Extra Early Refugee	20	1.10	4.25
11 Black Valentine	20	1.10	4.00
12 Henderson's Bountiful	20	1.25	4.50
13 Earliest Improved Valentine	20	1.10	4.00
14 Stringless Green Pod	30	1.75	6.50
15 Full Measure	20	1.25	4.50
16 Giant Podded Valentine	20	1.10	4.00
17 Hodson Green Pod	20	1.25	4.75
18 Longfellow	20	1.25	4.75
20 Keeney's New Stringless Refugee	40	2.25	8.00
22 Burlingame Medium Field	20	1.10	4.00
23 Improved Yellow Six Weeks	20	1.10	4.25

Wax or Yellow Podded Varieties.

24 Silver or Crystal White Wax	20	1.40	5.00
25 Wardwell's Kidney Wax	20	1.40	5.25
26 Davis Kidney Wax	20	1.25	4.50

BEANS.—Continued.

	Qt.	Pk.	Bu.
27 Maule's Wingold Wax	40	2.50	9.00
28 Hodson Wax	20	1.25	4.75
29 Refugee Stringless Wax	25	1.50	5.50
30 Currie's Rust Proof Wax	20	1.25	4.50
31 New Stringless White Wax	25	1.65	6.25
32 Maule's Profusion Wax	25	1.50	5.75
33 Imperial Wax or Golden Crown	25	1.65	6.00
34 Michigan White Wax	25	1.65	6.25
35 Improved Rust Proof Golden Wax	20	1.40	5.50
36 Prolific Black Wax	20	1.25	4.50
37 Pencil Pod Black Wax	20	1.25	4.75

BEANS.—Pole or Climbing.

38 Golden Cluster Wax	30	2.00	7.50
41 Golden Carmine	30	1.75	6.50
42 Kentucky Wonder Wax	35	2.00	7.00
43 Kentucky Wonder (Green Pod)	25	1.50	5.50
45 Lazy Wives	25	1.65	6.00
46 Maule's Noxall	30	2.00	7.50
47 White Creaseback	20	1.40	5.00

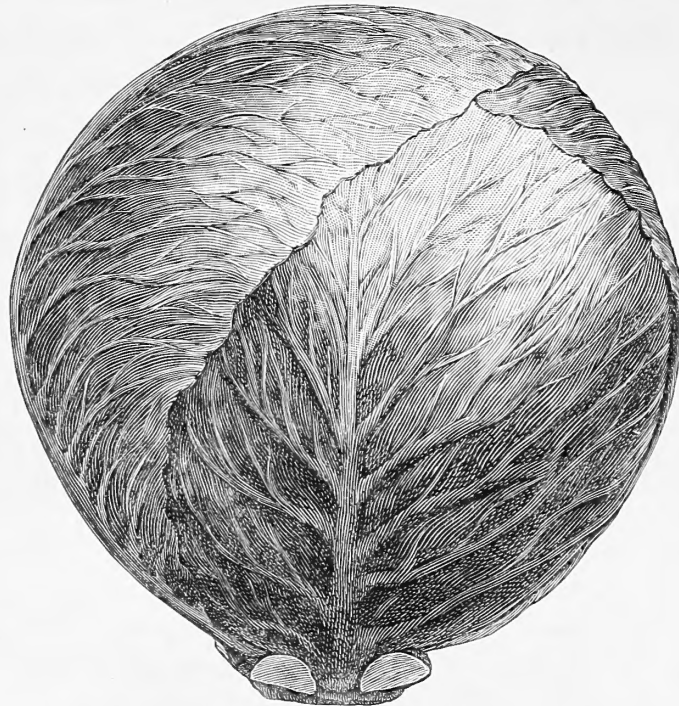
BEANS.—Bush Lima.

58 Fordhook	35	2.25	8.00
60 Drear's or Thorburn's	30	2.00	7.00
61 Wood's Prolific	30	2.00	7.00
62 Burpee's	25	1.65	6.00
63 Henderson's	30	2.00	7.00
64 Burpee's Improved	35	2.25	8.50

BEANS.—Pole Lima.

48 New Early Leviathan	25	1.75	6.75
49 Large White	25	1.50	5.50
51 Panmure Extra Early	30	1.85	7.00
52 Maule's Evergreen	30	1.85	7.00
53 King of the Garden	25	1.75	6.75
54 New Ideal	25	1.65	6.00
55 Salem Improved	25	1.50	5.75
56 Drear's Improved or Challenger	25	1.65	6.00
57 Carolina or Sieva (Small Lima)	25	1.50	5.50
59 New Carpinteria	30	1.85	7.00

*If you want
the
highest price
per ton
in car lots
you must plant
Maule's Seeds
of
this cabbage*



DANISH BALL HEAD CABBAGE.

*2,500 cars
at least of my
Danish Ball
Head Cabbage
are sold
every fall and
winter in
New York City
at top prices*

¹²⁵ *Danish Ball Head Cabbage*

**The Cabbage that is Swelling the Bank Account of Thousands of my Customers Every Year
My Strain of this Seed is Simply Unsurpassed**

The wide and unfailing popularity of the Danish Ball Head cabbage is simply wonderful. It seems to adapt itself to all soils and conditions.

The leading characteristics of Danish Ball Head cabbage are: First, that it is a sure header; second, that it is of unapproachable solidity and weight; third, that it is an extra good keeper; and fourth, that it is a good seller.

It is a medium to late cabbage, but is generally grown as a late crop. It is sure to head, the heads being round, hard and extremely heavy, though not extra large. It can be grown in close quarters, on account of its compact habit. As to its keeping qualities, it comes out of the pit in March or April as fresh as when put in, and with absolutely no waste. It is popular in the markets of all the large cities.

My crop of Danish Ball Head is the best in five years, so I have been able to reduce my prices.

Packet, 10 cents; ounce, 25 cents; quarter pound, 75 cents. pound, \$2.25.

CABBAGE and ONION SEED

of the highest grade have been leading specialties with me for years. For 1912 I am offering at most reasonable prices, seed crop of 1911 unsurpassed in quality.

You can always purchase your bank draft, or express money order, or post office money order, or register your letter

At My Expense

GARDEN BEETS.

	Oz.	¼ lb.	Lb.
66 Maule's Blood Turnip	15	40	1.50
67 Maule's Alpha	15	40	1.50
71 Maule's Market King	10	30	1.00
72 Electric	10	30	1.00
73 Bastian's Early Red Turnip	10	30	1.00
74 Eclipse	10	30	1.00
75 Early Bassano	10	30	1.00
76 Philadelphia Early Turnip or Lentz	10	30	1.00
77 Crosby's Egyptian	15	40	1.40
78 Crimson Globe	15	40	1.40
80 Black Queen	10	30	1.00
81 Maule's Dark Red Egyptian	10	30	1.00
82 Maule's Market Gardeners	15	40	1.50
84 Detroit Dark Red	15	40	1.40
85 Cardinal	10	35	1.25
86 Maule's Improved Long Red	10	30	1.00
87 Midsummer (Half Long Blood)	10	30	1.00
88 Improved Swiss Chard, or Silver	10	25	85
89 Lucullus Swiss Chard	10	30	1.00

SUGAR BEETS AND MANGELS.

92 Imperial Sugar	10	15	40
93 Klein Wanzleben Sugar	10	15	40
94 The Jumbo	10	15	45
95 Maule's Gate Post	10	15	40
96 Yellow Tankard	10	15	40
98 Mammoth Prize Long Red	10	15	40
101 Giant Half Sugar	10	20	60
102 Maule's Champion Yellow Globe	10	15	40

BROCCOLI.

103 Early Angiers	40	1.50	5.00
-----------------------------	----	------	------

BRUSSELS SPROUTS.

107 Dwarf Paris Market	10	35	1.25
108 New Danish Prize	35	1.00	3.50

CABBAGE

Extra Early Varieties.

	Oz.	¼ lb.	Lb.
111 Maule's First Early	45	1.25	4.50
112 Earliest Express	15	50	1.75
113 Maule's Prize Wakefield	30	85	3.00
114 Earliest Etampes	15	50	1.75
115 Maule's Winningstadt	25	75	2.50
118 Charleston Wakefield	30	85	3.00

Second Early or Summer Varieties.

116 All Head Early	30	85	3.00
117 Maule's Early Flat Dutch	30	85	3.00
119 Copenhagen Market	60	1.75	6.00
120 All Seasons	25	75	2.50
121 Early Spring	25	75	2.50
122 Early Summer	25	75	2.50
123 Fottler's Improved Brunswick	15	55	2.00
126 Maule's Midsummer	35	1.00	3.50
127 Glory of Enkhousen	30	85	3.00
129 Danish Summer Ball Head	30	85	3.00
132 Henderson's Succession	30	85	3.00
138 Volga or Early Stonehead	30	85	3.00

Late or Winter Varieties.

125 Danish Ball Head	25	75	2.25
128 The Lupton	30	85	3.00
131 Maule's Genuine Surehead	30	85	3.00
133 Maule's Prize Drumhead	25	75	2.50
134 Maule's Prize Flat Dutch	25	75	2.25
135 Houser	30	85	3.00
136 Marblehead Mammoth	25	75	2.50
137 Red Polish Short Stemmed	45	1.25	4.50
139 Hollander (Danish grown)	25	75	2.25
140 New Red Danish Round Head	45	1.25	4.50
141 Improved Drumhead Savoy	25	75	2.50
142 Felderkraut	25	75	2.50
143 Mammoth Red Rock	30	75	2.75

Order by Name

or order by number whichever you prefer, it is all the same to me.

MAULE'S SEEDS

ONCE GROWN ALWAYS GROWN

Think it Over

It Means a Lot

205 **Maule's Colossal
Early Sugar Corn**
First Offered in 1911
***The Finest Sugar Corn
in Existence***

The first real rival of the Shoe Peg or Country Gentlemen, as large as Stowell's Evergreen, and of delicious flavor.

Frequently matures fine large ears ten weeks from planting.

Maule's Colossal has three principal points that especially recommend it:

First—Earliness. It has matured a crop in from 58 to 62 days under extraordinary circumstances, but can generally be depended on to come to maturity inside of 70 days.

Second—Flavor. It is the most delicious sugary corn you have ever eaten.

Third—Size. It is undoubtedly the largest eared early sugar corn in existence, as the ears average from 7 to 9 inches in length, and frequently $2\frac{1}{2}$ to 3 inches in diameter, with 12 to 14 rows of large sweet kernels that fairly melt in your mouth.

Two or three ears are generally found on every stalk; it grows from 6 to 7 feet tall, which furnishes a most desirable fodder.

Mr. C. S. Clark, of Ohio, one of the largest growers of sweet corn in America has this to say:

"Your Colossal Sweet Corn planted May 14th, 1910, laid in the cold ground one month before it came up. This was due to the fact that May and the fore part of last June hold the record as the coldest months ever known in Ohio at this season of the year. During all those four weeks of cold, this corn stuck and hung to life and grew, and we got a good stand of it, and it came on and made the best crop of sweet corn in Northern Ohio where hundreds of acres of all sorts are grown.

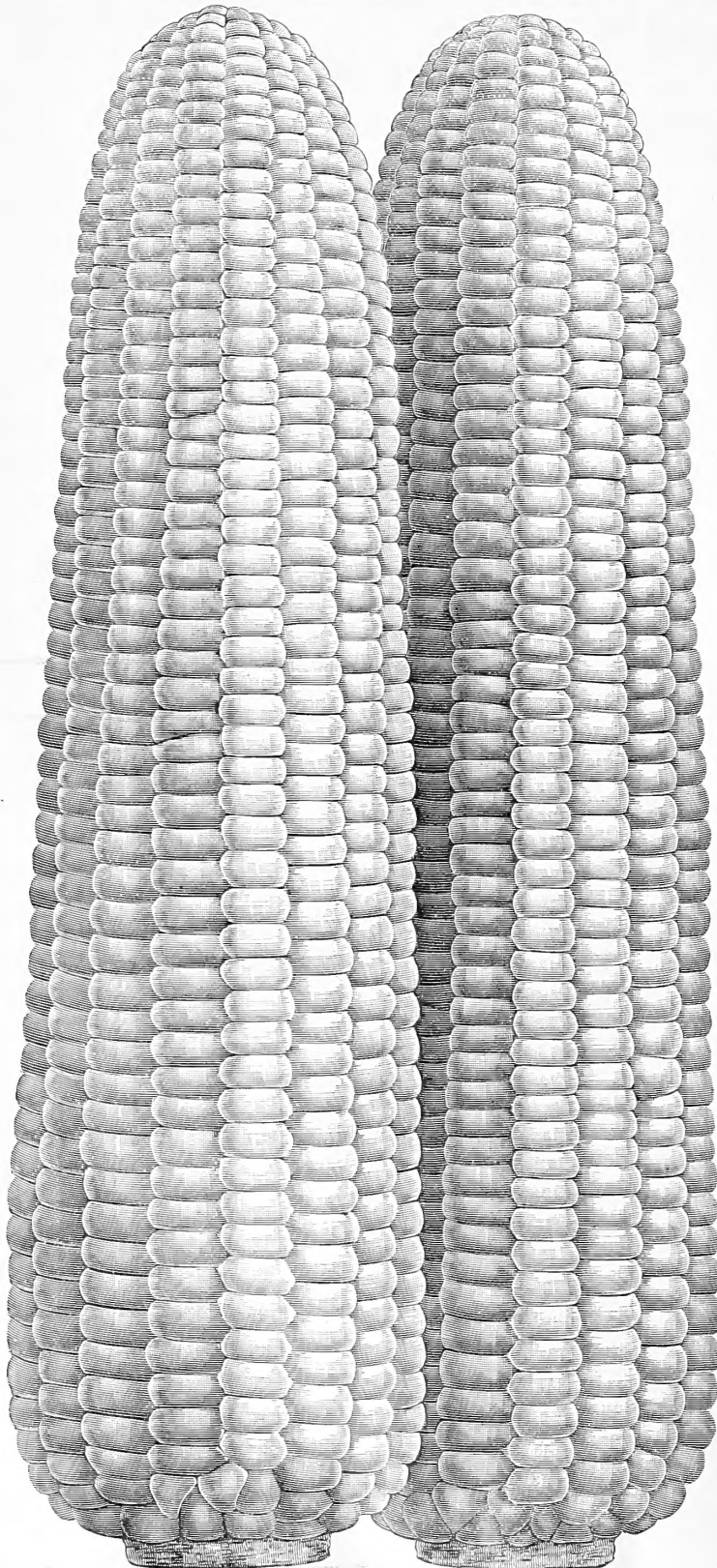
"This is a fact, that it is the best field of sweet corn today in all this section. Therefore, we have a right to be more than pleased with this corn. The ears are nearly as large as Stowell's, and it is sweet and tender and of fine quality, with fodder just as large and more ears per stalk on the average.

"Market gardeners, canners, hotels and the sweet corn growers will appreciate having this variety to come in just after the early sorts are gone and before the late sorts are ready. It is a very strong grower, and I have never seen a sweet corn which grows the ears so far away from the stalk on a long strong shank, ears up 3 feet from the ground, making it the most convenient corn to pick off the stalk I ever saw."

***Colossal is a Genuine Money-Maker
if There Ever Was One***

Read this story. A prominent market gardener of Philadelphia brought his first load of Colossal to market. It sold like hot cakes. The next time he came to town he had to put it under his stall so as not to disappoint his customers of the week before. It sold as quickly as before. With his second planting people would not take good Stowell's or Country Gentlemen until they found him sold out of Colossal. Last year this market gardener planted one-half peck. This coming year he will sow a bushel. This is only one case; there were hundreds similar. Already, Oct. 1911, we are promised a large demand, and in consequence solicit early orders.

Packet, 10 cents; pint, 25 cents; quart, 45 cents; 2 quarts, 90 cents, postpaid. By express, or freight, not prepaid, quart, 35 cents; peck, \$1.75; bushel, \$6.00.



MAULE'S COLOSSAL EARLY SUGAR CORN.

CAULIFLOWER.

	¼ oz.	Oz.	¼ lb.	Lb.
164 Maule's Prize Earliest	85	3.00	7.50	30.00
165 Dry Weather	75	2.50	6.25	25.00
166 Maule's Always Heads	75	2.50	6.25	25.00
167 Earliest Dwarf Erfurt	75	2.50	6.25	25.00
168 Early Snowball	75	2.75	7.00	27.50
171 Extra Early Paris	20	60	1.75	6.00
173 Autumn Giant	20	50	1.50	5.00

CARROT.

	Oz.	¼ lb.	Lb.
144 Extra Early Parisian Forcing	10	35	1.35
145 Maule's Golden Rod	20	75	2.40
146 Oxheart or Guerande	15	55	2.00
147 Early Half Long Scarlet	15	55	2.00
148 Early Scarlet Horn	15	55	2.00
151 Chantenay or Model	15	55	2.15
152 Maule's Danvers	20	75	2.40
153 Maule's Improved Long Orange	15	55	2.00
154 Lobberich's Agricultural	15	45	1.60
155 Red St. Valery or Intermediate	15	55	2.00
156 Long Lemon Stump Rooted	15	45	1.60
157 Mastodon	10	35	1.25
158 Improved Short White	10	35	1.25
161 Large White Belgian	10	35	1.25
162 Large Yellow Belgian	10	35	1.25

CELERY.

175 Golden Self-Blanching. <i>Maule's XX</i>	1.50	5.00	14.75
176 Pink Plume	25	75	2.50
177 Perle Le Grand	20	60	2.00
178 Dwarf Golden Heart	20	60	2.00
179 Giant Golden Heart	20	60	2.00
181 Perfected White Plume. <i>XX Strain</i>	30	85	3.00
182 Giant Pascal or Winter King	20	60	2.00
183 Rose Ribbed Paris Self-Blanching	25	75	2.50
184 Boston Market	20	60	2.00
185 Winter Queen	20	60	2.00
186 Kalamazoo or Dwarf Large Ribbed	20	60	2.00
187 Fin de Siecle	20	60	2.00
188 Celeriac, Turnip Rooted Celery	10	35	1.25

CHERVIL.

	Oz.	¼ lb.	Lb.
191 Curled	10	25	85

CHICORY.

193 Large Rooted or Coffee	10	25	75
194 Witloof or French Endive	15	55	1.90

COLLARDS.

201 True Georgia	10	25	75
----------------------------	----	----	----

SWEET CORN.*First Early Varieties.*

	Qt.	Pk.	Bu.
205 Maule's Colossal Early	35	1.75	6.00
206 Maule's Ideal Early	35	1.75	6.00
207 Golden Bantam	35	1.75	6.00
208 Kendel's Early Giant	25	1.25	4.00 ⁰
209 The Cory (Red cob)	25	1.10	4.00
212 Maule's XX	25	1.25	4.00
213 Early Champion	25	1.25	4.00
214 First of All	25	1.10	4.00
224 Premo	25	1.25	4.00
226 Mammoth White Cory	25	1.50	5.00
227 Adam's Extra Early	20	90	3.25

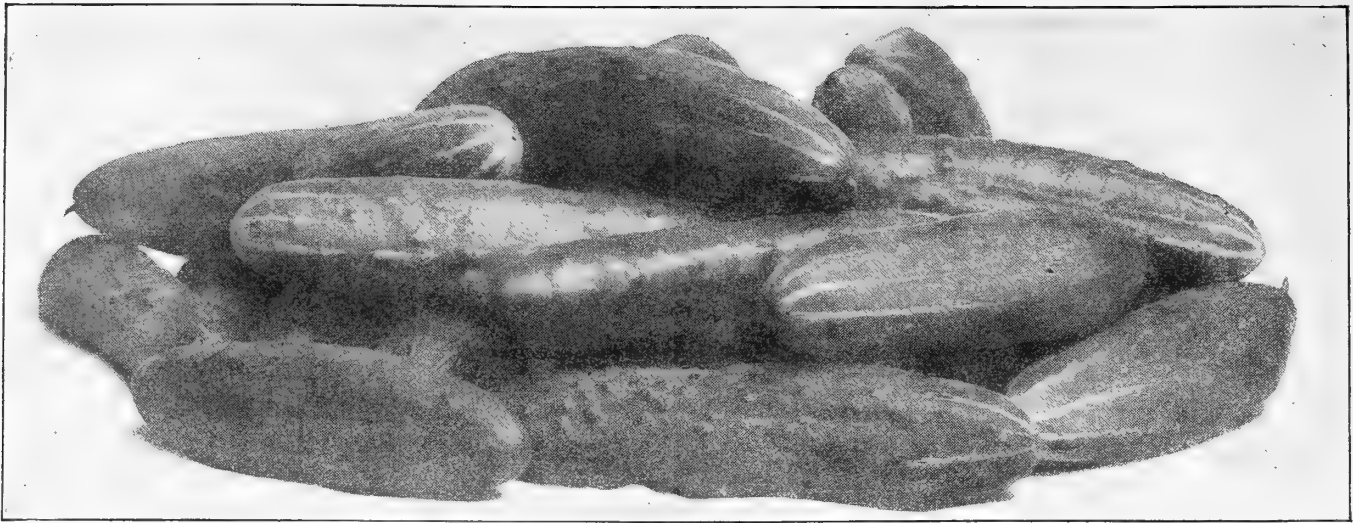
Medium Early Varieties.

211 Metropolitan	25	1.50	5.00
215 Maule's None Such	25	1.50	5.00
216 Country Gentleman	25	1.50	5.00
218 Black Mexican	20	1.10	4.00

Main Crop or Late Varieties.

217 Zig Zag Evergreen	25	1.50	5.00
221 Stowell's Evergreen	20	1.10	4.00
222 White Evergreen	20	1.10	4.00
225 Maule's Improved Giant	25	1.50	5.00
228 Maule's Late Mammoth	25	1.25	4.50
232 Sugar Corn for Green Forage	15	75	2.50

Bear in mind you can order half pounds at pound rates, half pecks at peck rates, and half bushels at bushel rates.



THE NEW DAVIS PERFECT CUCUMBER.

246 The New Davis Perfect Cucumber

Plant the Davis Perfect, and you will raise in the open ground, cucumbers that will sell in any market at same price as the high priced hot house forcing cucumbers.

Mr. Davis needs no introduction; as the originator of the Davis Wax Bean and Grand Rapids Forcing Lettuce, he has a reputation as a market gardener for knowing what is what, second to none. Mr. Davis has for years been forcing cucumbers under glass for the Chicago and Detroit markets, and it has been his ambition to produce a cucumber that would be as handsome in appearance and sell as well grown in the ordinary way in the open ground. He has at last succeeded in perfecting a cucumber that beats anything I have ever seen; Davis Perfect is bound to become the most popular cucumber both for forcing under glass and growing outside, for the following reasons:

First. It has an ideal shape, and the handsomest color of all cucumbers.

Second. It is a type of the most perfect size.

Third. Eating qualities surpass anything I have ever tried.

Fourth. It is almost seedless one-third of its length from the stem end, and the seeds when it is in slicing condition are so small and tender that they are unnoticed.

Fifth. It is enormously productive, in fact, beats anything I have ever tried.

Sixth. It does not change its dark, rich color when grown outdoors; in fact, it resembles a hothouse cucumber so closely that dealers cannot tell the difference, and are willing to pay as much for it as the hothouse production. Mr. Davis has tried every strain of new cucumber that has been introduced in the last few years; while a number of them have

been very good, he is frank in saying that his cucumber beats anything he has ever tried, and other growers in Grand Rapids are of the same opinion. The facts boiled down are simply these: I believe this is the greatest cucumber ever introduced, and it is bound to become popular everywhere when it is known. Local market gardeners in Grand Rapids, Mr. Davis' home, who make a specialty of growing cucumbers under glass, have tried in vain to get this seed to sow in the open ground. It will be a big money maker for anyone engaged in growing cucumbers in the open ground, for Mr. Davis could have sold the cucumbers represented in this seed crop for more than double the price of any outdoor grown cucumber on the market. Mr. Davis sold Davis Perfect for \$1.00 a bushel, both in the Grand Rapids market and Chicago, at the same time the best of the other outdoor grown cucumbers were bringing 40 to 50 cents. The dealers who handled these cucumbers for Mr. Davis wanted him to ship them in large quantities, as they could sell at \$1.00 all he could send them, no matter how large the quantity. It stands to reason a cucumber that can be grown outdoors and resembles a hot house cucumber so closely that the trade will pay the same price they are paying for the hot house product is worth a great deal, and it is. I predict the greatest sale any cucumber novelty has ever had for the new Davis Perfect, and every grower, whether for home consumption or for market, to be abreast of the times, must plant this variety. Further comment seems unnecessary.

Prices for 1912: Ounce, 10 cents; quarter pound, 35 cents; pound, \$1.25.

FIELD CORN.

	Pk.	Bu.
Maule's Improved Early Mastodon	60	2.00
Droughtproof Yellow Dent	65	2.25
Improved Mastodon from India	65	2.25
Reid's Yellow Dent	60	2:00
Improved Leaming	50	1.75
Improved Golden Beauty	50	1.75
Minnesota King	60	2.00
Johnson County White Dent	65	2.25
Hickory King	60	2.00
Boone County White	60	2.00
Red Cob Ensilage	50	1.75
Canada Early Yellow Flint	60	2.00

CORN SALAD OR FETTICUS.

	Oz.	¼ lb.	Lb.
203 Large Round Leaved	10	20	60

CRESS OR PEPPER GRASS.

238 Extra Curled	10	15	35
241 Upland	25	75	2.25
242 Water	25	75	2.50

CUCUMBER.

244 Maule's Extra Early	10	30	1.00
245 Fordhook Famous	10	30	1.00
246 The New Davis Perfect	10	35	1.25
247 Maule's Shamrock	10	30	1.00
248 Extra Early White Spine or Cyclone	10	25	85
250 Improved Arlington White Spine .	10	25	85
251 Klondike	10	25	85
252 Maule's Early White Spine	10	25	85
253 The Cumberland	10	25	80
254 Giant Pera	10	25	85
255 Emerald	10	30	1.00
256 Green Prolific or Boston Pickling .	10	25	80
257 Maule's Improved Long Green . .	10	25	85
258 Nichol's Medium Green	10	25	80
261 Westerfield's Chicago Pickling . .	10	25	80
262 Perfected Jersey Pickle	10	25	85
263 Early Green Cluster	10	25	80
264 Cool and Crisp	10	25	80
265 Evergreen, or Ex. Long White Spine	10	25	85

CUCUMBER. Continued.

	Oz.	¼ lb.	Lb.
266 Thorburn's Everbearing	10	25	80
268 Short Green or Early Frame	10	25	80
271 Snake	20	60	2.25
272 Japanese Climbing	15	40	1.25
273 Small Gherkin	15	40	1.50

DANDELION.

275 Large Leaved	35	1.00	3.50
276 Cultivated or French Common . .	15	40	1.50

EGG PLANT.

277 Maule's Excelsior	35	1.00	3.50
281 New York Imp. Purple Spineless .	30	85	3.00
282 Black Beauty	45	1.10	4.25

ENDIVE.

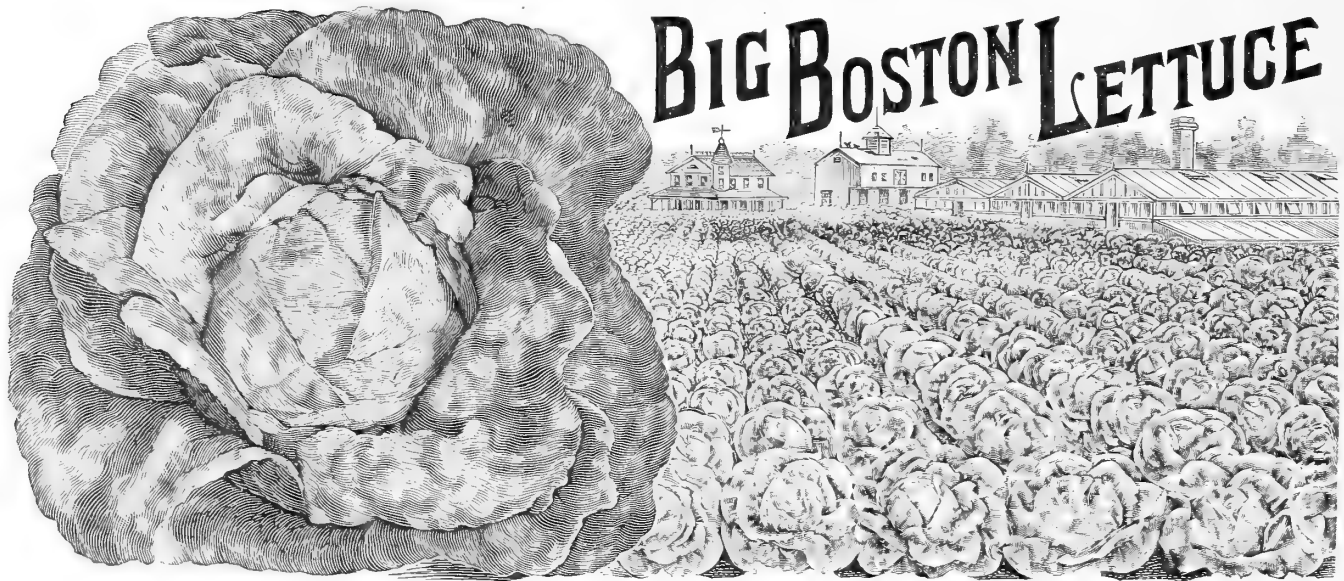
284 Green Curled	10	35	1.25
285 Ever White Curled	10	35	1.25
287 Broad Leaved Batavian	10	35	1.25

GARLIC SETS.

Selected Sets			20
-------------------------	--	--	----

HERBS.—Pot and Medicinal.

732 Anise	10	25	75
734 Balm	15	50	1.75
736 Basil, Sweet	10	30	1.00
740 Borage	10	30	1.00
742 Caraway	10	25	60
744 Catnip	25	85	3.00
746 Coriander	10	25	60
750 Dill	10	20	50
752 Fennel, Sweet	10	25	60
754 Horehound	15	50	1.75
756 Lavender	10	30	1.00
758 Marjoram, Sweet	10	30	1.00
760 Mint	Packet, 20 cts.		
762 Pennyroyal	50		
764 Rosemary	35	1.00	3.50
766 Rue	15	50	1.75
768 Saffron	10	25	75
770 Sage	10	30	1.00



BIG BOSTON LETTUCE

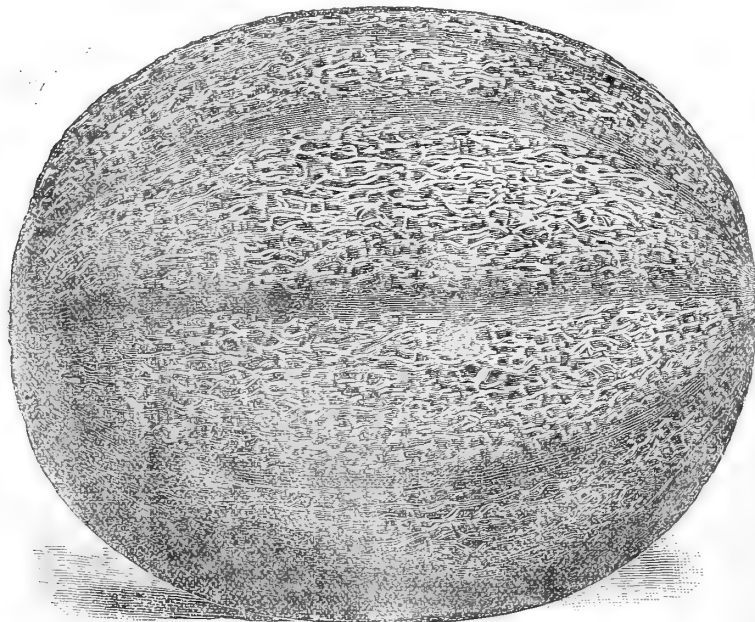
334 Big Boston Lettuce

A Great Favorite With Many of My Trucking Friends

There is no question that this large cabbage lettuce is constantly gaining in popular favor in all sections of the country, whether grown in the open ground for summer and fall use or in frames for use in early spring, as well as for forcing in the greenhouse during the winter. Its large, compact white heads, which

are always crisp and tender, are attractive either upon the market stall or on the table. My strain of seed is carefully grown and is the best that can be had. It is recommended to all home and market gardeners desiring a fine, big, crisp and tender cabbage lettuce, and is one of the best shippers.

Prices for 1912: Packet, 10 cents; ounce, 15 cents; $\frac{1}{4}$ pound, 40 cents; pound, \$1.50.



MAULE'S SELECT ROCKY FORD MUSKMELON.

347 Maule's Select Rocky Ford Muskmelon

(Green flesh.) In this Rocky Ford Melon I offer my customers a strain of seed grown for me by one of the very best, if not the best, growers of melons in Rocky Ford, Colo. The seed is saved from a field in which not a single melon has been sold, in other words only the best and choicest melons have been retained for seed. These melons if shipped to the Eastern markets would have brought the highest prices, consequently the seed I offer costs me an unusually high price. This strain of Rocky Ford is equal to any small green fleshed melon now on the market, and between ourselves while this is the best green fleshed, Bowman's Gold Coin offered on page 53 is the best Salmon fleshed variety of this character.

I have less than 1,000 pounds of this special strain of Maule's Select Rocky Ford on hand, but as long as it lasts will be glad to furnish it to my customers at the following reasonable prices:

Packet, 5 cents; ounce, 10 cents;
 $\frac{1}{4}$ pound, 20 cents; pound, 50 cents.

HERBS.—Continued.

	Oz.	¼ lb.	Lb.
772 Summer Savory	10	25	75
774 Tansy	20	75	2.75
778 Thyme	25	85	3.00
780 Winter Savory	15	40	1.50
782 Wormwood	10	50	1.75

HORSE RADISH SETS.

	Per 100	Per 1000
Maliner Kren	60	5.00
Common Variety	50	4.00

KALE, OR BORECOLE.

	Oz.	¼ lb.	Lb.
303 Emerald Isle	10	30	1.00
304 Dwarf Siberian	10	20	60
305 Drumhead	10	30	1.00
306 Dwarf Green Curled	10	20	60
307 Tall Green Curled Scotch	10	25	70

KOHL RABI.

309 Early White Vienna	15	50	1.75
310 Improved Imperial	15	55	2.00
311 Large White	10	25	85

LEEK.

313 Giant Italian	15	50	1.75
314 Broad Flag	15	50	1.60

LETTUCE.*Heading Varieties.*

316 Immensity	15	40	1.50
317 Maule's Success	10	35	1.25
318 May King	10	35	1.25
321 Maule's New Gotte	10	35	1.25
322 Maule's Silver Anniversary	10	35	1.25
323 Iceberg	10	30	1.00
324 The Forty Day	10	30	1.00
325 Denver Market	10	30	1.00
327 Philadelphia Dutch Speckled Butter	10	35	1.25
328 Maule's Improved Hanson	15	40	1.50
330 California Cream Butter	10	30	1.00
331 Crisp as Ice	10	30	1.00
332 Maule's New Rosette	15	40	1.50
333 Maule's Unrivalled	10	35	1.25
334 Big Boston	15	40	1.50

LETTUCE.—Continued.

	Oz.	¼ lb.	Lb.
335 Perfected Salamander	10	30	1.00
336 All Seasons	10	30	1.00
338 Stubborn Seeder or Imp. Perpignan	10	35	1.25
339 Mixed	10	30	1.00
340 Golden Queen	10	30	1.00
341 Giant Crystal Head	10	30	1.00
343 White Heart Cos or Romaine	10	35	1.25
345 New York or Wonderful	10	35	1.25
346 All the Year Round	10	30	1.00

Loose Leaved or Cutting Varieties.

326 Early Prize Head	10	30	1.00
342 Grand Rapids	10	35	1.25
344 Black Seeded Simpson	10	30	1.00

MUSTARD.

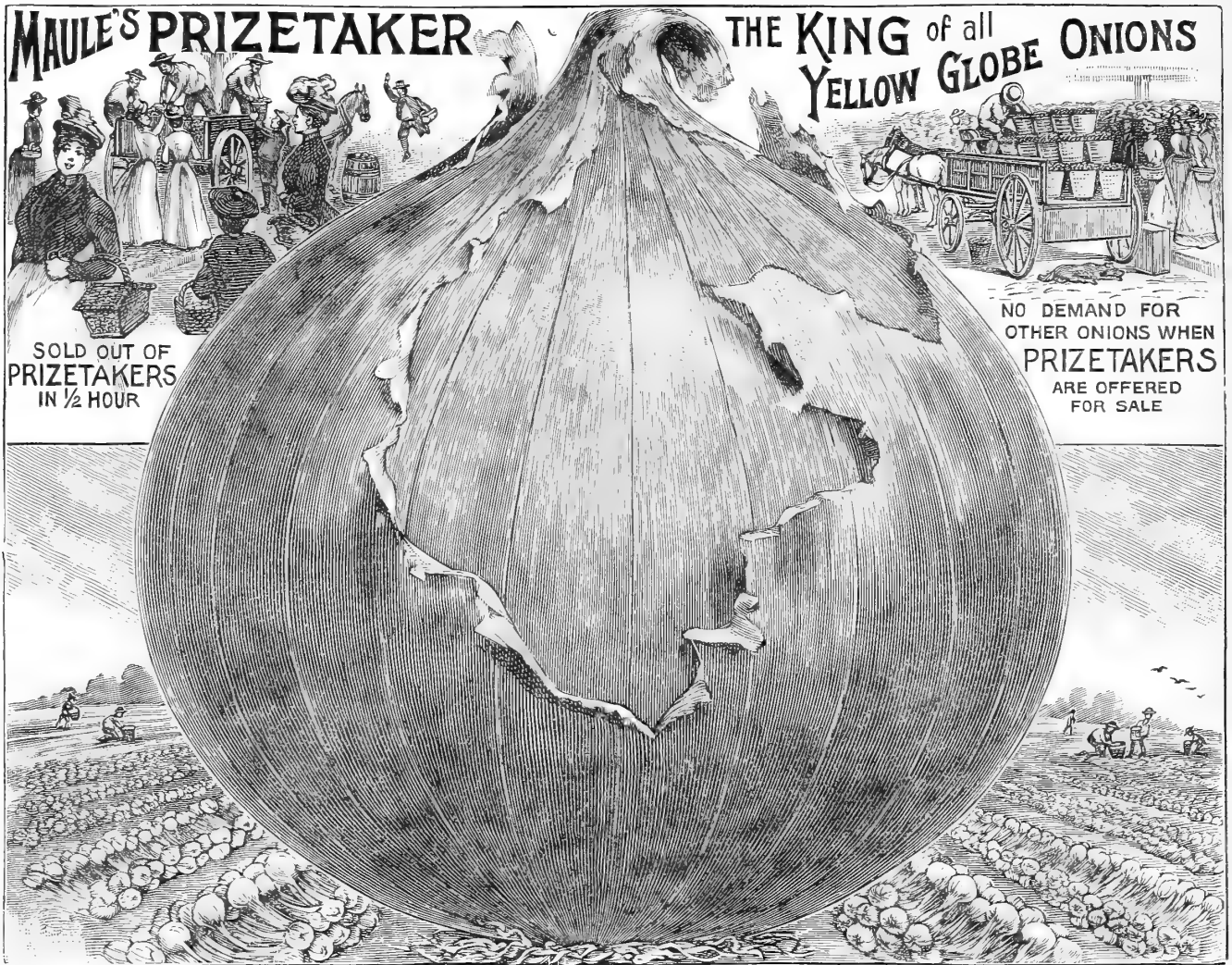
421 Chinese or Southern Giant Curled	10	20	50
423 Fordhook Fancy	10	20	50
424 White	5	10	25

MUSKMELON.*Green Fleshed Varieties.*

347 Maule's Select Rocky Ford	10	20	50
351 Maule's Model	15	40	1.25
354 Maule's Netted Gem	10	20	50
355 Maule's Honey	10	30	1.00
361 New Ice King	10	30	1.00
364 Imp. Watter's Solid Net Rocky Ford	10	20	65
367 Champion Market	10	25	75
368 Baltimore or Acme	10	25	75
369 Pollock's Solid Rock	10	25	75
372 Extra Early Hackensack	10	20	65
375 Montreal	10	25	75
377 Hackensack or Turk's Cap	10	25	75
378 Bay View or Sweet Home	10	25	75
381 Early Nutmeg	10	20	65
382 Maule's Prize Jenny Lind	10	25	75

Salmon Fleshed Varieties.

348 Bowman's New Gold Coin	10	30	1.00
352 Petoskey or Paul Rose	10	25	75
357 Hoodoo	10	30	1.00
358 New Fordhook	10	30	1.00



441 Maule's Prizetaker Onion

I have, personally, looked in various parts of Europe and America for an onion surpassing Prizetaker in beauty, productiveness and general merit, and believe there is nothing better in the whole world, unless it be the New Commercial. Prizetaker is unexcelled either for home use or as a money maker.

Headquarters Stock can be obtained only from Wm. Henry Maule

I named and introduced this great onion in 1888, and ever since have given it special prominence in every catalogue I have issued. Today, twenty-four years after it was named by me, it will be found prominently illustrated in almost every catalogue. Some call it Smith's Prizetaker, Brown's Prizetaker, and Robinson's Prizetaker; but no matter how many seedsmen put their names in front of Prizetaker, there is only one Prizetaker, and that is Maule's, named and introduced by me, and for five years catalogued by myself exclusively.

Prizetaker is by far the handsomest, most productive, most popular and best of all Yellow Globe Onions. It is a bright, clear straw color, and always grows to a uniform shape, which is a perfect globe. It has a very small neck, and ripens up

without stiffness of the neck. In market it never fails to attract attention on account of its beauty, and is sure to bring a far better price than any other onion. It is even more attractive in appearance than the large Spanish onions sold on the city fruit stands—in fact, takes the place of that variety.

My predictions made years ago, at the time of its introduction, that Prizetaker would supplant all others of its class, has long since been verified. *It has attracted more attention and awakened wider and more cordial enthusiasm than any other onion ever introduced to the American public.* It has proven itself a great acquisition to farmers and gardeners, and is today admitted to be the largest, finest flavored and most superior Yellow Globe Onion under cultivation.

Packet, 10 cents; ounce, 15 cents; quarter pound, 40 cents; pound, \$1.50.

MUSKMELON.—Continued.

Salmon Fleshed Varieties.

	Oz.	¼ lb.	Lb.
362 Burrell's Gem	10	20	65
365 Extra Early Grand Rapids	10	30	1.00
366 Tip Top	10	25	75
371 Maule's Perfection	10	35	1.25
373 Emerald Gem	10	30	1.00
374 Osage or Miller's Cream	10	35	1.25
383 Banana	15	40	1.50

WATERMELON.

387 Panmure All Heart	15	50	1.75
388 Wonderful Sugar or McIver	10	20	60
391 Fordhook Early	10	20	60
392 Cuban Queen	10	20	60
393 Kleckley Sweets or Monte Cristo	10	25	85
394 Gray Monarch or Long White Icing	10	20	60
395 Tom Watson	10	30	1.00
396 Branch's Imp. Georgia Rattlesnake	10	25	75
397 Harris' Earliest	10	30	1.00
398 Maule's New National	10	20	60
401 Angel's Kiss	10	25	75
402 Dixie	10	20	50
403 Florida Favorite	10	20	50
404 Kolb's Gem	10	20	50
405 True Dark Icing	10	20	50
406 Black Boulder or Black Diamond	10	25	75
407 Triumph	10	20	50
408 Peerless or Ice Cream	10	20	60
410 Shaker Blue	10	25	75
411 Iceberg or Blue Gem	10	20	50
412 Phinney's Early	10	20	50
413 Halbert Honey	10	25	85
414 Alabama Sweet or Carolina Bradford	10	20	50
415 Sweet Heart	10	20	50
416 Mammoth Ironclad	10	20	65
417 The Jones (Duke Jones)	10	20	50
418 Seminole	10	20	50

MUSHROOM SPAWN.

Pure Culture Brand Brick, 20c.
 10 bricks, \$1.75; 25 bricks, \$3.75; 100 bricks, \$14.00

NASTURTIUM.

	Oz.	¼ lb.	Lb.
426 Dwarf	10	20	60
427 Tall	10	15	50

OKRA OR GUMBO.

430 Kleckley's Favorite	10	15	35
431 Perkin's Perfected Long Pod	10	15	30
432 Dwarf Green	10	15	30
434 White Velvet	10	15	35

ONION.

436 Maule's Large Red Wethersfield	10	35	1.25
437 Maule's Yellow Globe Danvers	10	35	1.15
438 Extra Early Red	10	35	1.25
440 Yellow Welsh	20	60	2.25
441 Maule's Prizetaker	15	40	1.50
442 White Welsh	20	60	2.25
443 Maule's New Commercial	15	50	1.75
444 Southport Red Globe	15	45	1.65
445 Southport White Globe	15	55	2.00
446 Southport Yellow Globe	10	35	1.25
447 Crystal White Wax (Teneriffe seed)	}	Sold out. Expect my 1912 crop next September. Write for prices.	
448 White Bermuda (Teneriffe seed)			
451 Red Bermuda (Teneriffe seed)			
452 Yellow Dutch or Strasburg	10	35	1.10
453 Red Globe Wethersfield	15	40	1.40
456 Silver Skin or White Portugal	15	50	1.75
457 Australian Brown	10	35	1.25
458 Ohio Yellow Globe	15	40	1.40
461 Mammoth Silver King	15	50	1.75
462 Giant Pompeii	15	40	1.40
463 White Barletta or White Queen	15	40	1.50
464 Neapolitan Marzajola	10	35	1.15
465 Mammoth Red Tripoli	10	35	1.25
466 Extra Early Pearl	10	35	1.15
467 Giant Rocca of Naples	10	35	1.10

This Year I am in better position than ever to supply the finest strains of all the best musk and watermelons. Owing to the immense acreage planted and the excellence of my crops I have been able to reduce prices considerably on these seeds over last year. Truckers will make no mistake in sending me all of their melon seed orders this year.

ONION SETS.

(Subject to market changes.)

White	Per bushel of 32 lbs.	3.75
Yellow	" "	3.25
Red	" "	3.75
White Multiplier	" "	4.00
Yellow Potato	" "	4.00
Egyptian or Perennial Tree	" 28 lbs.	3.00

PARSLEY.

	Oz.	¼ lb.	1 lb.
471 Champion Moss Curled	10	25	90
472 Plain or Single	10	25	75
473 Fern Leaved	10	30	1.00
474 Double Curled	10	25	90
475 Hamburg or Turnip Rooted	10	35	1.15

PARSNIP.

477 White Lisbon	10	35	1.25
478 Improved Half Long	10	25	90
481 New Round Flat Short Leaved	15	40	1.50
482 Early Short Round	10	25	75
483 Imp. Long Smooth or Hollow Crown	10	25	80

PEAS.

Smooth Extra Early Varieties.

	Qt.	Pk.	Bu.
488 Maule's Earliest of All	30	2.00	7.50
490 First and Best	30	2.10	8.00
499 Ameer or Large Podded Alaska	50	3.00	12.00
501 Alaska	25	1.85	7.00
505 Maule's Improved Extra Early	30	2.10	8.00
506 New Velocity	25	1.85	7.00
508 Prolific Early Market	35	2.40	9.00

Wrinkled Extra Early Varieties.

491 American Wonder	50	3.00	11.50
492 Nott's Excelsior	45	2.75	11.00
493 Surprise	40	2.50	9.00
494 Prosperity or Gradus	60	4.00	15.00
496 Thomas Laxton	60	4.00	16.00
500 McLean's Little Gem	35	2.25	8.50
502 Premium Gem	35	2.25	8.50
507 Potlatch or Big Dinner	60	4.50	18.00

PEAS.—Continued.

	Qt.	Pk.	Bu.
509 Laxtonian	60	4.00	16.00
510 Little Marvel	75		
512 Sutton's Excelsior	60	4.00	16.00

Second Early and Main Crop Varieties.

495 Perpetual	75		
497 Dwarf Telephone	50	3.00	12.00
498 Dwarf Champion	50	3.00	12.00
503 Bliss' Everbearing	40	2.50	9.00
504 Horsford's Market Garden	30	2.10	8.00
511 Alderman	55	4.00	16.00
513 Maule's Prodigious or Prince Edward	60	4.00	16.00
515 Improved Stratagem	60	4.00	15.00
516 Long Island Mammoth	45	2.75	10.50
517 Telephone	50	3.00	12.00
518 White Marrowfat	25	1.50	5.50
521 Black-Eyed Marrowfat	25	1.50	5.50
522 Pride of the Market	60	4.00	16.00
523 Shropshire Hero	35	2.25	8.00
524 Champion of England	45	2.75	10.00

PEAS.—Sugar.

514 Mammoth Luscious . Pkt., 15 cts.	
525 Dwarf Grey	75
526 Melting Pkt., 15 cts.	

PEPPERS.

	Oz.	¼ lb.	Lb.
531 Maule's Neapolitan	40	1.10	4.00
532 Chinese Giant	35	1.00	3.75
533 Maule's Improved Ruby King	35	1.00	3.25
534 Maule's Tomato	30	85	3.00
535 Maule's New Red Hot	45	1.40	5.00
536 Golden Queen	25	75	2.50
537 Tobasco	40	1.10	4.00
538 Tom Thumb	40		
539 Ruby Giant	35	1.00	3.50
543 Red Chili	25	75	2.50
545 Large Bell or Bull Nose	20	65	2.25
546 Sweet Mountain or Mammoth	25	75	2.50
547 Long Red Cayenne (True)	25	75	2.50
548 Red Cluster	25	75	2.50

POTATOES.

	Pk.	Bu.	Bbl.
Eureka Extra Early	75	2.50	6.00
Bliss' Red Triumph	60	2.25	5.50
Irish Cobbler	60	2.25	5.25
Pure Early Rose	60	2.00	5.00
Maule's Early Thoroughbred	60	2.25	5.50
The Freeman	75	2.50	6.00
The New Snow	75	2.50	6.00
Green Mountain (Imp. State of Maine)	60	2.00	5.00
Sir Walter Raleigh	60	2.25	5.25

PUMPKIN.

	Oz.	¼ lb.	Lb.
554 Maule's Yellow Sweet Potato Pie	15	40	1.50
555 Small Sugar	10	20	50
556 Maule's Prize Potiron	15	40	1.25
557 Connecticut Field or Common Yellow	10	15	35
558 Large Cheese or Kentucky Field	10	20	50
561 Hundred Weight	40	1.10	4.00
562 Tennessee Sweet Potato	10	25	75
563 Cashaw or Crookneck	10	25	75
564 Japanese Pie	10	25	75
565 Winter Luxury or Pie Squash	10	20	50
566 Golden Oblong	10	20	50

RADISH.

Early Round and Olive Shaped Varieties.

570 Improved Scarlet Button	10	20	50
572 Crimson Giant	10	25	75
573 Maule's Just So	10	30	1.00
574 Lightning Scarlet Turnip	10	20	60
575 Triumph or Scarlet Striped Forcing	10	30	1.00
578 Oak Leaved Rose Salmon	10	20	50
582 Scarlet Turnip White Tipped	10	20	50
583 Maule's Earliest Scarlet	10	20	60
585 Maule's Earliest White	10	30	1.00
588 White Box	10	20	60
592 French Breakfast	10	20	50
594 Early Scarlet Erfurt	10	20	60
595 Early Round Dark Red	10	20	50
596 Early Scarlet Turnip	10	20	50

RADISH. Continued.

	Oz.	¼ lb.	Lb.
597 Vick's Scarlet Globe	10	20	50
598 Early Scarlet Olive Shaped	10	20	50

Early Half Long and Long Varieties.

581 Maule's Imp. Long Scarlet Short Top	10	20	65
584 White Icicle	10	25	85
586 Cincinnati Market or Glass	10	20	65
591 Long Cardinal	10	20	50
600 Half Long Deep Scarlet	10	20	60
601 White Lady Finger	10	20	50

Summer and Autumn Varieties.

571 Maule's 1834 or All the Year Round	10	30	1.00
576 Red Delicious	10	20	60
577 White Delicious	10	20	50
587 Chartiers or Shepherd	10	20	50
593 White Strasburg	10	20	50
602 Giant Stuttgart	10	20	60

Winter Varieties.

603 Maule's Winter	10	30	90
604 Japanese Colossal Winter	15	30	90
605 Long Black Spanish Winter	10	20	60
606 Long White Spanish Winter	10	20	60
607 China Rose Winter	10	25	75
608 Celestial or White Chinese Winter	10	25	75

RHUBARB.

611 Victoria	10	35	1.25
Victoria Rhubarb Roots . \$4.50 per 100			

SALSIFY OR OYSTER PLANT.

614 Mammoth Sandwich Island	10	35	1.25
---------------------------------------	----	----	------

SPINACH.

	Lb.	10 lbs.	100 lbs.
618 Victoria	18	1.70	16.00
621 Bloomsdale or Norfolk Savoy Leaved	18	1.70	16.00
622 Everlasting or Imp. New Zealand	75		
623 Long Standing or Imp. Thick Leaved	18	1.70	16.00
624 Round Leaved	18	1.70	16.00
625 Long Season	22	2.10	20.00

SORREL.

	Oz.	¼ lb	Lb.
616 Large Leaved	10	30	1.00

SQUASH.*Summer Varieties.*

628 Earliest White Bush	10	20	50
631 Early Yellow Bush	10	20	50
632 Mam. Golden Summer Crookneck	10	25	75
633 Giant White Summer Crookneck	10	20	50
646 Fordhook	10	30	1.00
647 Fordhook Bush	10	35	1.25

Autumn and Winter Varieties.

635 Maule's Improved Hubbard	10	30	1.00
636 Mammoth Whale	15	40	1.50
637 Essex Hybrid	10	30	1.00
638 Delicious	10	30	1.00
641 Prolific Marrow	10	25	75
642 Boston Marrow	10	20	60
643 The Faxon	10	25	75
644 Mammoth Chili	10	35	1.25
645 Red or Golden Hubbard	15	40	1.25
648 Chicago Warted Hubbard	10	30	1.00
649 Golden Bronze	10	20	60

TOMATO.*Red Varieties.*

651 Maule's Earliest of All	45	1.25	4.50
652 Maule's Success	40	1.10	4.00
653 Maule's Magnificent	30	85	3.00
656 Maule's Enormous	35	1.00	3.75
653 Spark's Earliana	30	85	3.00
659 Greater Baltimore	25	75	2.75
661 The Coreless	30	85	3.00
663 Chalk's Early Jewel	30	85	3.00
664 Matchless	25	75	2.50
665 Paragon (<i>Extra selected</i>)	20	60	2.00
666 Dwarf Stone	30	85	3.00
672 Stone	20	60	2.00
673 Livingston's Hummer	20	60	2.00

TOMATO. Continued.

	Oz.	¼ Lb.	Lb.
675 Maule's Trophy	20	60	2.00
676 Pear Shaped Red	25	75	2.50
683 Bonny Best Early	20	60	2.00

Pink or Purple Varieties.

657 Maule's Imperial (Truckers' Favorite)	25	75	2.50
662 June Pink	30	85	3.00
667 Selected Acme	20	60	2.00
668 Beauty	20	60	2.00
678 Dwarf Champion	25	75	2.50
679 Livingston's Globe	25	75	2.50
681 Turner Hybrid or Mikado	30	85	3.00
682 Ponderosa	45	1.25	4.50

Yellow Varieties.

674 Golden Queen	30	85	3.00
677 Pear Shaped Yellow	25	75	2.50

TURNIP.

686 Red or Purple Top White Globe	10	20	50
687 Red or Purple Top Strap Leaved	10	15	45
688 Large White Norfolk	10	15	45
690 Little Marvel	10	30	90
691 Southern Seven Top	10	15	40
692 Yellow Aberdeen	10	15	45
693 Extra Early Purple Top Milan	10	25	75
694 Extra Early White Milan	10	25	75
695 Early White Flat Dutch	10	15	45
696 White Six Weeks	10	20	60
697 Cow Horn	10	15	45
698 Golden Ball	10	20	50
701 White Egg	10	20	60
702 Large Yellow Globe	10	20	50
703 White Globe	10	20	50
704 Japanese	10	25	75

RUTA BAGA OR SWEDE TURNIPS.

707 Maule's Heavy Cropping	10	20	50
708 Improved Purple Top	10	15	45
711 Large White French	10	15	45
713 White Rock	10	15	45

MAULE'S EARLIEST OF ALL TOMATO

651

(Bright Red)

The Greatest of all Early Tomatoes

Today, 20 years after its introduction to the American public, it is still the leading extra early tomato, and all its name implies:

Four Days to a Week Earlier Than Earliana or any Other Extra Early Tomato

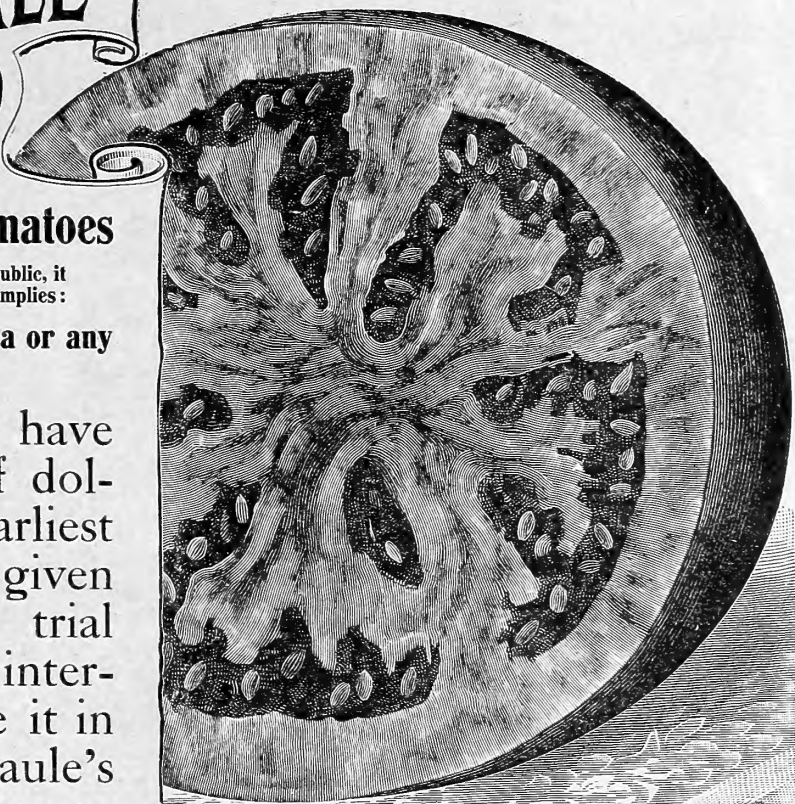
Since 1892 my friends have made tens of thousands of dollars by planting Maule's Earliest of All, and if you have not given this wonderful variety a trial you will neglect your own interests if you do not include it in your order for 1912. Maule's Earliest of All is the best tomato in America for truckers, market gardeners and money makers.

Nor is its extreme earliness its only virtue, for it is of large size, good color and delicious flavor. It does not crack and has no hard core. Color is a bright red, and though a little irregular in shape, the fruit is not rough.

Pages of this price list could be filled with statements and comments about the money value of this fine, early tomato; but the best testimonial that I can present in regard to its worth is the fact that my customers, especially the New Jersey truckers, have again and again exhausted my supply of seed, even when I had imagined it to be sufficient for all demands.

Maule's Earliest of All is all its name implies, namely: *the earliest tomato in existence*, notwithstanding the claims made for June Pink, Earliana, Early Jewel, Early Richmond, etc., etc.

Packet, 15 cents; half ounce, 25 cents; ounce, 45 cents; quarter pound, \$1.25; pound, \$4.50.



Freight Prepaid Anywhere

on all orders from this price list amounting to \$10.00 or over, I will prepay all the freight charges to your nearest railroad station, **provided your order is for small seeds only.** Peas, beans, corn, potatoes, onion sets, are not small seeds.



A TYPICAL EXHIBIT
OF MAULE'S SEEDS
AT A COUNTY FAIR

**MAULE'S SEEDS
ONCE GROWN
ALWAYS GROWN**