

Historic, Archive Document

Do not assume content reflects current scientific knowledge, policies, or practices

62.73

LIBRARY
RECEIVED
☆ ☆
U. S. Department of Agriculture

1893
MERRILL'S
NURSERIES
GERMANTOWN,
PA.

Preface to Twenty-fifth Edition.

IN presenting this edition of our catalogue to our patrons and the public, we are pleased to be able to say that it will be found even better than the last, so many new and desirable trees and shrubs having been added to the list. The descriptions, except in the cases of perhaps some of the very newest things, are from notes taken with the specimens before us, so that their accuracy may be relied on. For this reason as well as that we are careful as to the accuracy of our names, many public gardens and libraries keep copies of our catalogue for reference.

We have to keep adding to our acres continually as our business increases. Three acres originally held all we had. We now have seventy-five, and all within the city limits of Philadelphia; and our collection of 750 kinds of trees, shrubs and vines, for which we received the Centennial award in 1876, has grown to nearly double by this time.

A great deal of the success of transplanting trees and shrubs comes from their possessing an abundance of good roots and the care in handling them. While young we transplant our stock frequently, and as we use care in digging and packing it is rare, indeed, that any complaints of our stock are received. On the contrary, letters like the following, from a patron two hundred miles from here, are often received:

“The car with evergreens and other shrubs arrived safely, and I write to tell you how very pleased I am with all you have forwarded me. I never have seen more vigorous, healthy, fine trees sent to any one, and I trust they will all thrive and grow well for me. It will certainly not be your fault if they do not.”

The attention of our customers is requested to the following:

Customers are advised to always have a box, which is charged for at cost, as accidental delays of many weeks do not then hurt the stock, and freight charges are less on boxed goods than on baled.

Parties are requested to state the mode of conveyance by which they desire their goods forwarded. In the absence of this, we forward to the best of our judgment; but in no case do we assume any responsibility after the goods are shipped, unless for our own mistakes.

We desire to be notified at once of any errors that may occur in filling orders, so that they may be rectified, and that our customers may be fully satisfied in their dealings with us. For the convenience of those living at long distances, packages of *small* articles will be sent free by mail at the *full* retail prices.

Post Office Orders Payable at Station G, Philadelphia.

Visitors are cordially invited to inspect our stock. They should take the train at Ninth and Green Streets, Philadelphia, for Chestnut Hill, getting off at Walnut Lane Station; or at Broad and Filbert Streets, getting out at Carpenter Street Station, to either of which our nursery is quite close.

This catalogue is sent *free* to all of our *customers*, and to others on receipt of six cents in postage stamps.



Tricolor-leaved Privet.

a highly ornamental hedge, as well as a pretty specimen. Price, 50 cents each. Plants for hedging, 8 to 12 inches, \$10 per 100; 18 to 24 inches, \$15 per 100.

Magnolia Frazeri (*auriculata*). We take great pleasure in offering this scarce and beautiful tree to our patrons. Although known for many years to be one of the most desirable of all Magnolias, by the few fortunate enough to possess a specimen, it has been almost unknown in collections, because of its great scarcity. It has been our good fortune to propagate it to some extent, enabling us to offer it in this way for the first time. In growth it is of stately form, growing rapidly into a large-sized tree. The foliage is large and handsome. But it is *its flowers* which give it such great claims to distinction. Besides being of large size, they are of a *canary yellow color* and *deliciously fragrant*, almost, if not quite as much so as the famed Swamp Magnolia, *glauca*. They expand, too, later than some of the more early kinds, and open one after the other, keeping up a display for some time. It gives us great satisfaction in being able to offer and recommend it to our customers. Price, \$2 each.

Pterostyrax corymbosum. This is a new tree of much beauty and quite distinct from any other hardy one grown. It forms an open headed small tree. The leaves are round and large; but best of all are its long racemes of white flowers, in June. Price, 75 cents each.

Pinus densiflora. **Japanese Pine**. This Pine has proved with us one of the fastest growers of all we have. The growth has some resemblance to the Austrian, in being of a heavy character, but the foliage is of a livelier green. Price, \$1 each.

Pyrus baccata Parkmanni. Customers are generally wary of new things, and it is right they should be, for newness is no recommendation by itself. But this double flowering apple possesses merit which will content every one who buys it. Towards the close of April it is freely covered with the loveliest rosy pink flowers imaginable. When in the bud, they are even prettier than when expanded, being about two inches long, and hanging in clumps of about four flowers each. The leaves are of a shining green color. Price, \$1.00 each.

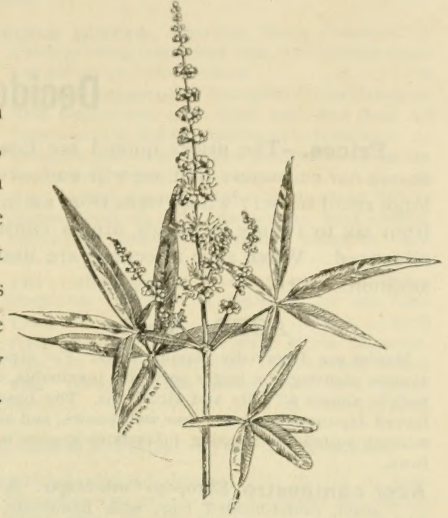
Rosa Wichuriana. This is a new rose, which is well suited where a hardy one of low growth is required, being of a spreading nature and quite hardy. The foliage is small, shining green, not unlike the old *microphylla*. The flowers are white, single, and borne in clusters. Price, 50 cents each.

Syringa rubra insignis—Red-flowered lilac. We have tried very many new lilacs as they have been introduced. But few have proved much better than the common one. We except the *rubra insignis*, for this is truly a good, distinct sort. Before the buds open they are of a bright red. They are lighter when expanded, but still much darker than the ordinary one, and the flower spikes are of a much larger size. Price, 75 cents each.

Styrax Japonica. This is a Japan species of more tree-like growth than our native sorts. It is the most beautiful of all the family. The flowers are white, bell-shaped, on long stems, produced abundantly, and drooping from the branches. It flowers in June, making a most attractive display. Price, \$1 each. See illustration, page 20.

Viburnum reticulatum. This beautiful large shrub proves to be almost evergreen here, and in some localities it will probably be entirely so. The leaves are very large. Heads of white flowers come in May, and are of much beauty, then clusters of berries follow which ripen in early August, being at that time of a bright red color. Price, \$1 each.

Vitex agnus-castus. When people return from their summer travels, in September, the dearth of flowering shrubs on the lawn is always noticeable. In this vitex—chaste shrub, as it is called—there is one at least that blooms and pleases them. It bears panicles of lilac blue flowers, which are much appreciated, and the foliage is nicely scented. See illustration. Price, 50 cents.



VITEX AGNUS-CASTUS.



Pæonies. Single and Double. Within a few years past there has been a revival in the demand for these grand old flowers. And well they deserve this attention, for there is nothing approaches the gorgeous display they make when in flower. It must be remembered, too, that while an old flower, there have been great improvements made in them. Double flowers, perfect globes in themselves, and of almost all colors now exist; and in single blooming kinds there are great numbers, many of them rivalling Oriental poppies. We have an unsurpassed collection, which we offer as follows: **PRICE**, 60 cents each, \$5.00 for 10.

SINGLE FLOWERING.

- | | |
|-----------------------|--------------------|
| Abrupolis, pink. | Endymion, sulphur. |
| Catulus, purple. | Lucrinus, crimson. |
| Collina, cherry rose. | Quintilius, white. |

DOUBLE FLOWERING.

- | | |
|---------------------------------|-------------------------------------|
| Cabrera, purple crimson. | Maxentius, crimson. |
| Delia, white. | Princess Beatrice, pink and yellow. |
| Formosa, white. | Plutarch, light crimson. |
| Globosa, flesh. | Phormis, purple. |
| Harpasus, white. | Raphael, cherry. |
| Labolas, purple rose. | Saturnalia, lilac rose. |
| Leonora Bramwell, silvery rose. | Stentor, pink. |
| Maria Kelway, blush and yellow. | Vittata, large rose. |

Deciduous Trees.

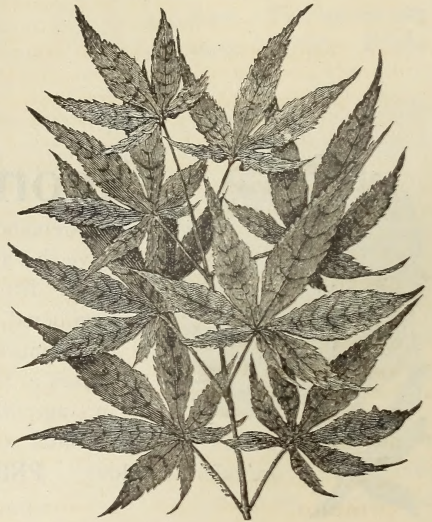
Prices.—The prices quoted are for what are known as the usual planting sizes, and we assure our customers that we will endeavor to give them the full worth of their money. In a large retail nursery where trees from an inch or so to ten or twelve inches in circumference, and from six to twenty feet high, are in constant demand, prices will naturally be proportionately advanced. When such selections are desired, we will do our best to give the full worth of the additional price.

ACER. Maple.

Maples are deservedly popular trees. For street or avenue planting the larger sorts are invaluable, doing well in almost all soils and situations. The beautiful leaved Japanese sorts are now well known, and are admirably suited for massing in beds or groups on the lawn.

- Acer campestre**, European Cork Maple. A small sized, round-headed tree, with handsome, neat foliage and corky bark.....\$ 50
- “ **dasycarpum**, Silver Maple. One of the best of trees where large size, quick growth and light foliage are required..... 50
- “ **var. Weirii**, Weir's Cut-leaved Silver Maple. A remarkable and beautiful tree of drooping habit and, finely divided leaves. As a single specimen on a lawn, it could not be dispensed with. 75
- “ **lætum (Colchicum rubrum)**. A Japanese tree of spreading growth and rounded form. The young growth of wood and foliage is of a brilliant red; the mature leaves of a rich shining green. The bark is light and striped..... \$1 00
- “ **macrophyllum**, Oregon Maple. A tree of large growth and large, dark green foliage .. \$1 00
- “ **obtusatum**. A species of moderate growth, from Southern Europe..... 75
- “ **platanoides**, Norway Maple. A large, handsome, round-headed tree, with large, numerous dark green leaves. Invaluable for street planting, and one of the best to plant on a lawn to place seats under..... 75
- “ **var. laciniatum**, Cut-leaved Norway Maple. This variety has deeply lobed and sharp-pointed leaves..... \$1 00
- “ **var. Reitenbachi**. A variety with dark purple leaves, which retain their color through the season..... \$1 00
- “ **var. Schweidlerii**. This has young foliage of bright purplish crimson, changing to a purplish green in the older leaves..... \$1 00
- “ **Japonicum aureum**, Golden-leaved Japan Maple. A most beautiful variety, the foliage being shaded with gold and green. This, with its good habit of growth, makes it a most desirable species..... \$3 00

Acer polymorphum, Japan Maple. A small sized, shrubby growing tree, with small, deeply lobed foliage, of bright green, changing to a purplish hue in autumn..... \$1 00



Acer polymorphum atropurpureum.
(Blood-leaved Japan Maple.)

- Acer var. atropurpureum**, Blood-leaved Japan Maple. (See cut.) A bushy shrub, with dark purple, deeply cut leaves. The young growth is of a brilliant crimson. As a bushy shrub of brilliant foliage it cannot be dispensed with..... \$1 50
- “ **var. lætum**. Another interesting variety from Japan. The young growth is a deep red, changing to a shining green..... \$1 00
- “ **var. pinnatifolium atropurpureum**, Cut-leaved Japan Blood-leaved Maple. A striking variety, with finely dissected blood leaves, and long, slender, fern-like growth..... \$2 00

Acer var. roseo marginatum. (See cut.) In this variety the growth is slow, but its small leaves, with their rosy pink margin, make it a particularly distinct sort..... \$2 00



Acer polymorphum roseo marginatum.

- Acer pseudo-platanus,** European Sycamore Maple. A well-known tree of large, spreading growth and dark green leaves..... 50
- " **var. Douglasii.** With smaller and more pointed leaves than the parent type..... \$1 00
- " **var. purpureum,** Purple-leaved Sycamore Maple. The purple is on the underside of the leaf; the upper surface is green..... \$1 00
- " **var. tricolor.** A beautiful variety, with foliage distinctly marked with white, red and green. \$1 00
- " **rubrum,** Red or Scarlet Maple. A tree of large size, conspicuous for its red blossoms in spring, and its still redder leaves in autumn..... 75
- " **saccharinum,** Sugar Maple. Of stately growth and fine habit. Its reddish yellow leaves in the fall cause it to be largely planted. One of the best park and avenue trees..... 50
- " **var. nigrum,** Black Sugar Maple. Of rougher bark and more spreading outline than the former..... 75
- " **spicatum,** Mountain Maple. A low growing, shrub-like species, with good sized leaves, flowering when but three feet high..... 75
- " **striatum,** Striped Maple. A medium sized tree, of good shape, and beautifully striped bark. The latter feature renders it of much value when the foliage falls..... 75
- " **Tataricum,** Tartarian Maple. A small sized, distinct looking species, from Southern Europe..... 75
- " **var. Cinnala.** Of still smaller size than the preceding..... \$1 00
- " **tauricum.** A dwarf Maple; distinct.... 75
- " **trilobatum (monspessulanum).** A medium sized European tree, with lobed leaves..... 75

ACACIA. Mimosa Tree.

Acacia julibrissin. A pretty, low-growing tree, with feathery foliage..... 50

ÆSCULUS. Horse Chestnut.

The magnificent foliage and large, handsome spikes of flowers, make these trees justly celebrated. The double sorts are valued by many because of producing no seeds.

- Æsculus glabra,** American Horse Chestnut. A quick growing large sized tree, with reddish wood and yellowish white flowers..... 75
- " **hippocastanum,** European Horse Chestnut. This magnificent large sized tree, free from all insects as it is, has no superior as a lawn tree. In spring its profusion of white paniced flowers make it a striking object..... 75
- " **var. alba plena,** Double flowered White Horse Chestnut. The flowers are very double, making of this a distinct and beautiful variety..... \$1 25
- " **var. rubra plena,** Double flowered Red Horse Chestnut. Equally as desirable as the foregoing..... \$1 25
- " **rubicunda,** Red flowering Horse Chestnut. This has large, handsome red flowers, tinged with yellow in the centre, and dark green leaves \$1 25

AILANTHUS. Tree of Heaven.

Ailanthus glandulosa. This thrives in poor ground as well as in better situations, and makes a large tree. The disagreeable odor of the flowers is confined to the male trees..... 50

ALNUS. Alder.

The European Alder is useful where a quick growing large sized tree is required. The cut-leaved variety is a very handsome tree.

- Alnus firma.** A Japanese sort, with large catkins of flowers and green leaves..... 75
- " **glutinosa,** European Alder. Quick growing, erect; likes a moist situation..... 50
- " **var. laciniata imperialis,** Cut-leaved Alder. A large tree of good shape, with deeply lacinate foliage; well adapted for a lawn.... \$1 00
- " **maritima.** A more shrub-like sort than the foregoing, with large foliage..... 75
- " **Oregona,** Oregon Alder. A distinct species..... \$1 00
- " **serrulata.** A bushy form, growing best in wet places 50

AMELANCHIER.

June Berry, Snowy Mespilus, &c.

- Amelanchier Botryapium.** A small tree, bearing snow white blossoms in early spring, followed by pleasant tasting fruit, sometimes called Indian Cherry..... 75
- " **alnifolia (nana).** A dwarf form of much beauty, flowering when less than a foot high..... 50

AMYGDALUS. Flowering Peach.

Amygdalus Persica. Double flowered white, crimson and rose. These are among the most valued of early spring flowers..... 50

Amygdalus var. purpurea, Blood-leaved Peach. The leaves are blood-red in spring, and keep of a dark shade all summer..... 50

ANDROMEDA. Sorrel Tree.

Andromeda arborea. The only "tree" of all Andromedas. It bears racemes of white flowers of uncommon beauty, and in autumn the foliage turns to a brilliant scarlet. A distinct and beautiful tree..... \$1 25

ANONA. Pawpaw.

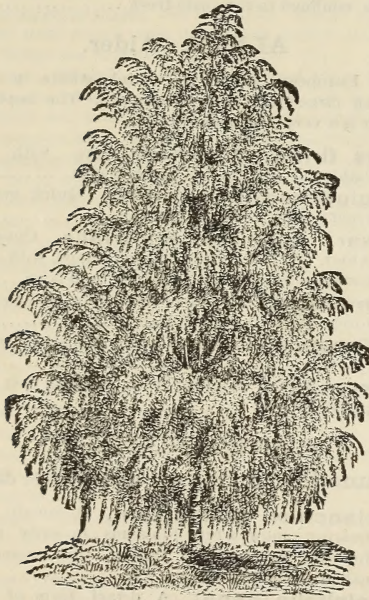
Anona triloba. A small sized tree, having bright green leaves, and bearing edible fruit somewhat resembling the banana 75

ARALIA. Hercules Club.

Aralia spinosa. A singular looking small-sized tree, bearing panicles of white flowers in August. The stems are very prickly. Does well in mixed clumps 50

BETULA. Birch.

Birches possess a character peculiarly their own; of quick growth, light branches, small leaves and airy appearance, nothing can take their place in landscape work. In addition, nearly all have beautiful, peculiar looking bark, and the trees thrive in even the poorest soils. In some species the colored bark does not show until the trees are about six years old.



Betula alba laciniata.
(Cut-leaved Weeping Birch.)

Betula alba, European White Birch. Of rapid and upright growth, which becomes drooping when the tree is four or five years old. The bark is very white, hence its name..... 75

Betula var. fastigiata, Upright Birch. This has a close, compact, upright growth, quite unusual in Birches, besides its white bark..... \$1 00

" **var. laciniata**, Cut-leaved Weeping Birch. (See cut.) This is beyond question the most esteemed of weeping trees. It is of slender, yet vigorous growth, drooping, with finely dissected leaves, and white bark..... \$1 00

" **var. pendula Youngii**, Young's Weeping Birch. This forms pendulous heads of much beauty, and is quite distinct from the preceding one..... \$1 50

" **var. purpurea**, Purple leaved Birch. The purple foliage of this tree, with its purple and white bark, make it unusually distinct..... \$1 00

" **costata**. This is an erect growing tree, from the Amoor River. The leaves are larger than with most Birches. Distinct..... \$1 50

" **lenta**, Sweet or Cherry Birch. A noble, spreading tree, of large and shapely growth. 75

" **lutea**, Yellow Birch. A large, upright tree, with some of the characteristics of the preceding, but with peculiar yellow bark, which alone would distinguish it..... 75

" **nana**, Dwarf Birch. A low-growing, distinct native sort, making but a large bush..... \$1 00

" **papyracea**. Canoe or Paper Birch. A shapely tree, with handsome foliage and beautiful white bark; not exceeded by the famed English White..... 75

" **populifolia**, Poplar Birch. This is known as the American White Birch, and is largely planted..... 75

" **rubra**, Red Birch. The shaggy red bark of this species is what gives it its distinction. It is much sought after by planters..... 75

BUMELIA.

Bumelia lanuginosa. A small native tree, with spiny branches and shining leaves..... 75

CARPINUS. Hornbeam.

Carpinus Americana, American Hornbeam 50
" **Betulus**, European Hornbeam..... 50

These grow thick and bushy, with branches close to the ground, and are admirably suited for planting for screens and hedges. They will grow in the shade where nothing else will.

CARYA. Hickory.

Hickories are among the most useful of our native trees. The Pecan and Shellbark are well known for their well-flavored nuts, and for timber many are invaluable. All grow to a very large size.

Carya alba, Shellbark Hickory. The nuts are only excelled by the Pecan, while the wood has no superior 75

" **amara**, Bitternut Hickory. The nuts are very bitter, but the wood is of the greatest use in commerce..... 75

" **aquatica**, Southern Hickory..... 75

" **microcarpa**, Small Fruited Hickory.... 75

" **olivæformis**, Pecan Nut. This heads the list for the quality of its nuts..... 75

" **porcina**, Pig Nut Hickory. The nuts are of no value, but its timber is equal to the best.... 75

- Carya sulcata**, Large Fruited Hickory. But little inferior to the Shellbark in the quality of its nuts, which are also very large..... 75
- " **tomentosa**, White Hickory. Also of much value for timber purposes..... 75

CASTANEA. Sweet Chestnut.

- Castanea Americana**, American Chestnut. This leads all the sorts in the quality of its nuts and its valuable timber..... 50
- " **Japonica**, Japan Chestnut. In general appearance this is like the Spanish, but the fruit is larger and produced when the tree is quite young.. \$1 00
- " **pumila**, Chinquapin. This grows in shrub shape, producing small nuts of excellent quality..... 75
- " **vesca**, Spanish Chestnut. A large, spreading tree, bearing very large nuts..... 75

CATALPA.

Catalpas have very large, tropical looking leaves, and bear large panicles of white and purple flowers in July. The wood is hard and durable.

- Catalpa bignonioides**, Catalpa. A rapid growing, spreading tree, bearing large panicles of flowers, often a foot long..... 50
- " **var. aurea**, Golden-leaved Catalpa. A slow growing variety, with golden foliage..... 75
- " **var. nana**, Dwarf Catalpa. Grows into a flat-headed bush of thick growth. A novel form.. 75
- " **Kaempferi**, Japan Catalpa. A small tree, flowering early, bearing cream colored, purplish flowers..... 75
- " **speciosa**, Western Catalpa. An upright, fast growing species, flowering earlier than the others, and much esteemed for forestry planting.... 50

CELTIS. Nettle Tree.

- Celtis occidentalis**, Nettle Tree. An uncommon looking tree, of fantastic, spreading growth, elm-like leaves, and corky bark 50
- " **pumila**, Dwarf Nettle Tree. A dwarf form of the above..... 75

CERASUS. Cherry.

Neither flowering nor weeping cherries can be dispensed with in ornamental gardening; the former are needed for their large, double, early flowers, and the latter for various situations where weepers are so suitable.

- Cerasus avium alba plena**, Double-flowering Cherry. The flowers of this are particularly large, double and handsome..... 75
- " **Padus**, European Bird Cherry. Whether in spring, when full of its racemes of white flowers, or when full of its ripe fruit in August, there are but few nicer things on a lawn. It can be grown as bush or standard..... 75
- " **Pennsylvanica**, Wild Red Cherry. A medium sized native tree, remarkable for its red wood and fruit..... 75
- " **pumila pendula**, Dwarf Weeping Cherry. Grafted standard high, this makes a twiggy, close head of slender branches, unlike any other tree..... \$1 00

- Cerasus ranunculæflora**. This has small, pretty double white flowers, and grows in bush shape, as Morellos do..... 75
- " **serotina**, American Bird Cherry. The well-known "Wild Cherry," useful medicinally for its bark and fruit, as well as for its beauty as a lawn tree..... 50
- " **var. pendula**, Weeping Wild Cherry. (See cut page 22.) A new weeper of great merit, combining with the flowers and fruit of the ordinary form, a graceful pendent habit. New and distinct.. \$3 00
- " **rosea pendula**, Japan Weeping Cherry. A very fine pendulous tree, having slender branches which fall gracefully to the ground, and rose-colored flowers..... \$1 50
- " **Sieboldii rubra plena**, Siebold's Double-flowering Cherry. This has large semi-double flowers; white, tinged pink..... \$1 00

CERCIDIPHYLLUM. Katsura.

Cercidiphyllum Japonicum. A newly introduced tree from Japan, of great beauty and extremely rapid growth, which we take pleasure in illustrating. The leaves are heart-shaped, dark green above and silvery green beneath. The leaf stalks are dark red, a tint of the same color is in the veins, which, with the dark brown of the young bark, gives most unusual attractions. While of upright habit, there is no stiffness of growth, such as often accompanies such an outline. It is perfectly hardy, free from diseases, and a valuable addition to our list of trees. In Japan it is called Katsura, and it is believed to belong to the Magnolia family. (See cut on back of cover.) \$1 50

CERCIS. Judas Tree, or Red Bud.

- Cercis Canadensis**, American Judas Tree. A small sized tree, somewhat round-headed when given full room, bright green leaves, and bearing a profusion of pink flowers very early in spring..... 50
- " **Japonica**, Japan Judas. Not so large as the foregoing, making only a large shrub, but its foliage is a very bright green and its flowers dark rosy pink. It is remarkable for flowering when but a foot high..... 75

CLADASTRIS.

(*Virgilia lutea*) **Yellow Wood.**

Cladastris tinctoria. A small sized, round-headed native tree, with compound leaves, and racemes of pea-shaped, white, sweet-scented flowers in June..... \$1 00

CORNUS. Dogwood.

- Cornus florida**, White or Large Flowering Dogwood. (See cut next page.) Although this beautiful small tree is justly esteemed for its large, showy flowers in spring and its deep scarlet berries and foliage in the fall, we believe it will yet be more called for, though the present demand is large..... 75
- " **var. flore rubro**, Red-flowering Dogwood. (See colored plate, frontispiece.) We have much pleasure in offering this valuable new *red flowering variety*. The common sort often has flowers

tinged with pink, and when this one was introduced, many supposed it but one of these pink-tinged ones. But this is not the case. In addition to all the valuable qualities of the parent form it has *deep red* flowers, and the foliage even, is of a darker tint than usual. We cordially recommend it to our customers \$1 50



Cornus florida.
(White-Flowering Dogwood.)

Cornus var. pendula, Weeping Dogwood. (See cut page 23.) This now well-known weeper, which was found wild in Maryland, is one of our introductions. As with the common one it also has handsome flowers, scarlet fruit and foliage in the fall, together with a pendulous growth, which soon reaches the ground. It differs from almost all other weepers in having an upright central shoot from which pendulous side branches emerge as it grows. (The three together—the weeper in the background—form a beautiful group) \$1 50

CYTISUS. Laburnum.

Cytisus Laburnum. A small sized tree, with shining green leaves, and racemes of yellow flowers, which appear in June..... 75

DIOSPYROS. Persimon.

Diospyros Kaki, Japan Persimon. A small sized tree, bearing large fruit of excellent quality. Hardy south of Philadelphia, and grown in tubs in the North..... \$1 00

“ **Virginiana**, American Persimon. A tree of large size, bearing fruit liked by many persons after being well frosted..... 50

DIMORPHANTHUS.

Dimorphanthus Mandshurica. A new tree, closely approaching the Aralia..... \$1 00

FAGUS, Beech.

Beeches have long been deemed indispensable to the landscape gardener. Their glossy foliage; the pendulous habit of the *weeping*; finely cut leaves of the *fern leaved*; the purple of the *blood leaved*; light bark of the American as contrasted with the English; make an array of good points not easily equalled by the varieties of any other tree. The foliage, though dying when winter comes, often remains on until spring returns.

- Fagus Americana**, American Beech. Well known for its large size, compact growth, and whitish bark..... 75
- “ **sylvatica**, European Beech. Its dark green foliage, bushy growth, and the ease of transplanting, make this a favorite in all plantings.... 75
- “ **var. asplenifolia**, Fern-leaved Beech. With finely divided, fern-like foliage, and twiggy, well-formed habit, it is universally popular..... \$1 00
- “ **var. heterophylla**, Cut-leaved Beech. While the leaves are much divided, they are not so fern-like as the preceding; still it is a desirable and good variety..... \$1 00



Fagus sylvatica pendula.
(Weeping Beech.)

- Fagus sylvatica pendula**, Weeping Beech. (See cut.) This, while distinctly a weeper, has a twisted, odd growth, just the thing to break the sameness which too many “straight, well proportioned trees” give to a place..... \$1 00
- “ **var. purpurea**, Blood-leaved Beech. Where a large growing tree of dark foliage is required, this will always be in demand. From early spring until late fall, though varying in intensity of coloring at times—sometimes being almost black,—there is always a rich purple foliage..... \$1 00

FRAXINUS. Ash.

All of this family have much the same general growth: light airy foliage and good shape, but there are great distinctions in foliage, bark, etc.

- Fraxinus Americana**, White Ash. A good sized tree, with straight trunk and feathery foliage. 75
- " **var. aucubæfolia**, Aucuba-leaved Ash. The foliage is golden-blotched, the variegation being permanent through the summer. 75
- " **var. Boscii**. A new variety, with woolly shoots and dark, glossy foliage. 75
- " **var. spectabilis**. With large, thick, shining green leaves. 75
- " **anomala**. This is a rare species from Utah. The foliage is unlike an ash, being broader than usual, and it has square stems. \$1 00
- " **elonga Japonica**. This makes rather slim branches, and has finer foliage than many other sorts. \$1 00
- " **excelsior**, European Ash. More spreading than the American, and with, generally, a smaller trunk. 50
- " **var. aurea**, Golden-barked Ash. A peculiar tree on account of its twisted growth and yellow bark. \$1 00
- " **var. aurea nana**, Dwarf Golden Ash. A small sized variety of the foregoing. 75
- " **var. heterophylla**, Cut-leaved Ash. This is a quite distinct sort, with fine cut foliage. 75
- " **var. jaspidea**, Striped-bark Ash. This and similar trees with peculiar bark, are much appreciated when bare of foliage in winter. 75
- " **var. pendula**, Weeping Ash. \$1 25
- " **var. pendula aurea**, Golden Weeping Ash. This has golden, the preceding, green, bark. Both form large, spreading heads; making excellent arbors. \$1 25
- " **var. salicifolia**, Willow-leaved Ash. Foliage narrow, wavy. Tree of quick growth. 75
- " **Oregona**, Oregon Ash. This is a large native tree, with a quite dark bark, and leaflets not so fine as many others. \$1 00
- " **Ornus**, Flowering Ash. A small sized tree, bearing fringe-like, greenish white flowers in June. 75
- " **platycarpa**, Water Ash. A Southern species, forming a low-growing tree in the Northern States. 75
- " **quadrangulata**, Blue Ash. A distinct, fast growing sort, with square or four angled stems. 75
- " **sambucifolia**, Black Ash. This forms one of the largest trees of all the Ashes. 50
- " **viridis**, Green Ash. Not so large a tree as the last, but quite desirable. 50

GLEDITSCHIA. Honey Locust.

- Gleditschia monosperma**, Water Locust. A small sized tree, native of the South. 75
- " **sinensis**, Chinese Honey Locust. A distinct, small sized tree. 75
- " **triacanthos**, Honey Locust. A rapid growing tree, with light foliage and strong spines. 50
- " **var. Bujoti pendula**, Weeping Honey Locust. \$1 50

GLYPTOSTROBUS.

Chinese Weeping Cypress.

- Glyptostrobus sinensis pendula**. A fast growing coniferous tree, resembling the Deciduous Cypress, but pendulous; foliage much finer. \$1 00

GORDONIA. Loblolly Bay.

- Gordonia Lasianthus**. This species is not so hardy as the next, but it lives out in Philadelphia, with protection. \$1 25
- " **pubescens**, Franklin Tree. A small sized tree of exceeding beauty. The leaves are of a shining green; flowers large, white, with yellow stamens, and sweet scented; very scarce. \$2 50

GYMNOCLADUS. Kentucky Coffee.

- Gymnocladus Canadensis**. This, though of irregular growth when young, becomes a tree of good shape in time. It has stiff, blunt shoots, with feathery foliage, and quite rough bark. Bears large, thick brown pods of seed in the fall. 50

HOVENIA.

- Hovenia dulcis**. A new Japanese tree, with large leaves, and corymbs of white flowers in July, followed later by fruit which is said to be edible. \$1 50

IDESIA.

- Idesia polycarpa**. A new tree, having very large leaves and long reddish leaf stalks. \$2 00

JUGLANS. Walnut.

- Juglans cinerea**, Butternut. Well known for its quick, clean growth, smooth bark, and nuts, which, however, contain but little "meat". 50
- " **nigra**, Black Walnut. A majestic native tree, with fine foliage and bearing nuts of commercial value. 50
- " **regia**, English Walnut or Madeira Nut. A spreading tree of large size, well known and esteemed for its fine flavored nuts. 75
- " **var. præparturiens**. A dwarf sort, which bears fruit when the tree is quite young. \$1 00

KOELREUTERIA.

- Koelreuteria paniculata**. A small tree from China, bearing pinnate leaves, and large panicles of yellow flowers, in July. A very ornamental tree. 75

LARIX. Larch.

- Larix Europæa**, European Larch. An elegant, rapid growing coniferous tree, of pyramidal growth, and drooping branches. 50
- " **Kæmpferi**, Japan Larch. Broad foliage and reddish wood. \$1 00

LAURUS.

- Laurus Benzoin**, Spice Wood. This has bright green leaves, and scarlet berries in the fall, both of spicy fragrance. 50
- " **Sassafras**. This has peculiar, deep green foliage, which turns to a deep yellow in the fall. Well known for its aromatic bark and roots. 50

LIQUIDAMBAR. Sweet Gum.

- Liquidambar styraciflua**. A stately tree, with star shaped leaves, which change to a deep crimson in the fall. It has also corky bark. 75

LIRIODENDRON. Tulip Tree.

- Liriodendron integrifolia**, Entire Leaved Tulip Tree. One of the largest and fastest growing native trees..... 75
- “ **tulipifera**, Common Tulip Tree or Tulip Poplar. Like the preceding one it is fast growing and of large size. Its large, tulip-like flowers, of a yellowish white color, are very handsome... 75

MACLURA. Osage Orange.

- Maclura aurantiaca**. The deep green leaves, round-headed growth and large seed balls, make this a really ornamental tree. It is much used for farm and division hedges..... 50

MAGNOLIA.

It is hardly possible to say enough in favor of Magnolias. The richness of their fresh green foliage and the splendor of their bloom, stand unequalled among trees and shrubs. The majority of them flower before the leaves appear in spring. About many old residences it is not unusual to see specimens twenty feet high, on which the expanded flowers will be so thickly set that hardly a twig can be seen. All have fragrant flowers to some degree, but the *glauca* surpasses them all in this respect. All the shrub forms can be grown as standards, if desired, by cutting away all but one stem.

- Magnolia acuminata**, Cucumber Tree. One of the largest growing of the species. It forms a fine pyramidal-shaped tree. The flowers are yellowish white, medium sized, appearing in June. The fruit when green resembles a small cucumber, but when ripe it is of a deep scarlet..... 75
- “ **Alexandrina**. Of shrub-like growth, with white, shaded with pink flowers..... \$1 00
- “ **cordata**. A smaller tree than the foregoing, but resembling it in some particulars..... \$1 00
- “ **conspicua**, Chinese White Magnolia. A highly prized species, on account of its large white flowers, which come before the leaves in spring..... \$1 00
- “ **Frazeri (auriculata)**. A rare native tree, with large ear-shaped leaves and large yellowish white flowers of delightful fragrance..... \$2 00
- “ **glauca**, Sweet White Magnolia. Everywhere esteemed for the delicious fragrance of its white flowers, which are produced through May and June..... \$1 00
- “ **gracilis**. A shrub-like kind, flowering early in the season. Flowers dark purple, lighter within..... 75
- “ **Lennei**. Flowers, cup-shaped, dark rose, lighter within; shrub-shaped. Blooms in May... \$1 00
- “ **Norbertiana**. One of the shrubby growing sorts, having reddish purple flowers..... \$1 00
- “ **macrophylla**. A superb species, of medium height and rounded growth. The leaves are of immense size, often two feet in length. The flowers are also very large, sometimes ten to twelve inches in diameter. Its tropical appearance—a character all possess to more or less extent—its leaves, flowers, and scarlet fruit, make it most effective..... \$1 00

- Magnolia purpurea**, Purple Magnolia. A large shrub-like species, producing light purple blossoms very early in spring..... 75
- “ **Soulangeana**. Large glossy foliage, hardy, vigorous grower, perhaps the best of what are called shrub magnolias. Flowers large, white, with purple inside 75
- “ **speciosa**. Resembling the Soulangeana in most respects, but the flowers come later, thus prolonging the blooming season..... 75
- “ **stellata (Halleana)**. A dwarf species, with small leaves and bush-like growth. The flowers are white, semi-double, quite fragrant, and, perhaps, the earliest of all to appear in spring.. \$1 50
- “ **Thurberi**. A bushy species, of regular outline, and pretty, neat foliage. The flowers are white, and appear early in spring. It does not flower so freely as others, in our experience..... \$1 50
- “ **tripetala**, Umbrella Tree. One of the most esteemed and useful trees. It forms a small, or at most a medium sized tree; has large, fresh green looking foliage; large white flowers, and brilliant scarlet fruit in August. It has also clean, smooth bark \$1 00

MORUS. Mulberry.

- Morus alba**, White Mulberry. A round-headed, fair sized tree, bearing pinkish white fruit. Leaves much used for silk-worms..... 50
- “ **Downingi**, Downing's Everbearing. Large leaves and strong growth, dark red or black fruit, which does not ripen all at once as most do.. 75
- “ **Japonica**, Japan Mulberry. The foliage of this is more shining and deeply lobed than the others. The fruit is black..... \$1 00
- “ **rubra**, American Red Mulberry. A strong grower, with large leaves, and bright red fruit. 50

NEGUNDO. Box Elder.

- Negundo Californicum**, California Ash-leaved Maple. A small sized tree, from the Pacific coast..... 75
- “ **fraxinæfolium**, Ash-leaved Maple. A native tree, with much the appearance of a Maple in growth, but with leaves of an Ash..... 50

NYSSA. Sour Gum.

- Nyssa multiflora**. One of the most ornamental of trees. During the summer the foliage is of a most shining green. In the autumn, this changes to a flaming red or scarlet. The growth is somewhat pendulous..... 75

OSTRYA. Ironwood.

- Ostrya Virginica**. A small sized tree, with elm-like foliage..... 75

PALIURUS. Christ Thorn.

- Paliurus aculeatus**. Small foliage and shiny shoots 75

PAULOWNIA. Empress Tree.

- Paulownia imperialis**. A magnificent tree, of large proportions and tropical appearance. Sometimes the leaves are eighteen inches in diameter. The flowers are blue, trumpet shaped, and deliciously fragrant..... 75

PAVIA. Buckeye.

- Pavia flava**, Yellow Buckeye. Grows to large size. It has pale green, downy leaves and yellow flowers..... 75
 " **Lyoni**. A sort with large, deep green leaves and yellowish white flowers, blotched rose inside, with projecting stamens..... \$1 00

PHELLODENDRON.

Chinese Cork Tree.

- Phellodendron amurense**. Makes a large, spreading tree. A rapid grower, having pinnate foliage, and bearing clusters of dark berries in the fall, not unlike loose clusters of grapes. It deserves to be more largely planted than it is..... \$1 00

PLANERA.

- Planera cuspidata**. A small tree, with elm-like foliage..... 75

PLATANUS. Buttonwood, Plane.

- Platanus occidentalis**, American Plane. A fast growing tree, of large dimensions; generally known in cultivation..... 50
 " **orientalis**, Oriental Plane. Similar to the above in general appearance. Both of these are being largely planted along avenues and in situations not cramped for room. They are thought to be well suited for street trees in large cities, as they are entirely free from worms and other insects..... 50

POPULUS. Poplar.

Trees of very quick growth, flourishing well in almost all situations.

- Populus alba**, Silver Poplar. Foliage, dark green above, silvery beneath. Very ornamental, especially when young..... 50
 " **var. Boileana**. A variety differing from the parent in its pyramidal growth; not unlike a Lombardy Poplar..... \$1 00
 " **angustifolia**. A native species, with long narrow leaves..... 50
 " **balsamifera**, Balsam Poplar. Glossy foliage and strong, rapid growth..... 50
 " **crispa**. The bark of this kind is furrowed. 75
 " **Eugenie**. Pyramidal growth and yellowish green leaves..... 75
 " **fastigiata**, Lombardy Poplar. This grows to an immense height, and is remarkable for its columnar growth. It is largely used in planting..... \$0
 " **grandidentata**. Large and serrated leaves, on long slender branches..... 50
 " **monilifera**, Carolina Poplar. Of good form and robust growth, and desirable where a very large tree is required..... 50
 " **var. Van Ceertii**, Golden Poplar. The foliage has a decided golden tint, which lasts throughout the season..... 75

PTELEA. Hop Tree.

- Ptelea trifoliata**. A small sized tree, with clustered flowers and hop-like seeds..... 50

PYRUS. Crab and Mountain Ash.

- Pyrus aucuparia**, European Mountain Ash. A small-growing tree, with ash-like foliage, and bunches of bright red berries..... 75
 " **var. laciniata**, Cut-leaved Mountain Ash. Like the foregoing, but with attractive cut-leaved foliage..... 75
 " **var. nana**. A dwarf variety, bearing flowers and berries when quite young..... \$1 00
 " **coronaria**, Sweet-scented Crab. A small sized native tree, famous for its fragrant flowers 75
 " **malis flexilis**. This is a species in demand for its clusters of beautiful small scarlet fruit 75
 " **var. floribunda**. A dwarf sort, bearing a profusion of quite small red berries..... 75
 " **var. Toringo**, Japan Apple. These trees have quite small apples, yellow, borne in clusters. \$1 00
 " **var. spectabilis**, Chinese Double-flowering Apple. Double white, fragrant flowers..... 75

QUERCUS. Oak.

On account of a reputed slow growth, which reputation comes from the old world, Oaks have not been so extensively planted as they deserve. The fact is, they are not at all slow growing, being equally as fast as most other trees. Our own country is rich in Oaks and of these we are pleased to offer every species that will grow in Philadelphia. Many are of uncommon beauty, some making the largest trees, others mere bushes. For avenue planting they are very effective, and in many other situations they will be found most desirable trees to plant. (See cut next page.)

- Quercus alba**, White Oak. One of the largest of American trees, with pale green foliage and white furrowed bark..... 75
 " **aquatica**, Lowland Oak. A Southern species, with leaves varying from entire to lacinate. Does not make but a small bushy tree, North..... \$1 00
 " **Bannisteri**, Scrub or Shrub Oak. Grows to but a few feet in height. It is odd to see acorns on a three-foot Oak bush..... 75
 " **bicolor**. A massive native species, with large green leaves, and loose bark..... 75
 " **Catesbæi**. From the South. The leaves are finely divided. It makes but a bush in the North..... 75
 " **cerris**, Turkey Oak. There is a resemblance to the English, but the dusty looking, brownish shoots and other characters easily distinguish it..... 75
 " **cinerea**, Upland Willow Oak. This has some resemblance to the Willow Oak, but does not make such a large tree in the North..... 75
 " **coccinea**, Scarlet Oak. This is the well known sort that so enriches the autumn landscape with its brilliant scarlet leaves..... 75
 " **dentata (Daimio)**, Japan Oak. A rich addition to our list of Oaks. The leaves are very large, larger than any other sort, the stems are of a brownish color. In May the yellow flowers, in long aments, make it attractive in a way no other oak is; small trees but a few feet high, flower profusely..... \$1 50
 " **falcata**, Spanish Oak. In contradiction to its name it is a native species, and one of much beau-

- ty. It forms a large, spreading head. The leaves are finely divided, and the acorns very small. \$1 00
- Quercus heterophylla.** A rare native species, with much divided leaves..... \$1 50
- “ **imbricaria,** Laurel Oak. A beautiful kind, with entire, laurel-like leaves, which turn in the autumn to a rich carmine color..... \$1 00
- “ **lobata.** A Pacific coast species, which has proved hardy here 75
- “ **lyrata,** Lyre-leaved Oak. A rare native sort, with small, lyre shaped leaves, and bearing acorns *entirely enclosed* in a mossy-looking cup \$1 00
- “ **macrocarpa,** Mossy Cup. Burr Oak. One of the most beautiful of oaks. The leaves are very large, also the acorns, the latter enclosed in a fringed, mossy cup. An attractive feature is its furrowed, corky bark..... 75
- “ **nigra,** Black Jack Oak. A medium sized tree, with large, shining green leaves 75
- “ **obtusiloba,** Post Oak. Forms a spreading, round-headed tree..... 75
- “ **olivæformis.** Approaching the Mossy Cup in general character, but distinct, and rare in cultivation .. \$1 00
- “ **palustris,** Pin Oak. (See cut.) An oak distinguished from all others by its peculiar beauty. The leaves are deep green and finely divided. As the tree grows, the branches droop until the lower ones touch the ground. It is also easily transplanted. But few persons have an idea of its great beauty when well developed..... 75
- “ **var. compacta.** A compact variety of the above \$1 00
- “ **palustri-imbricaria.** A Hybrid Oak \$1 00
- “ **Pannonica,** Hungarian Oak. This has pretty foliage of the order of the English, and it forms a very handsome tree..... \$1 50
- “ **Phellos,** Willow Oak. So named on account of its willow-like leaves, so peculiar in an oak. It makes a tall, shapely and airy tree..... \$1 00
- “ **prinoides,** Dwarf Chestnut Oak. This is one of the dwarf sorts, growing but four to six feet high. It has shining, chestnut-like, entire leaves.. 75
- “ **Prinus,** Rock Chestnut Oak. There is no prettier one than this. The leaves are more like a chestnut than an oak, and the tree grows to beautiful proportions..... 75
- “ **var. laciniata,** Cut-leaved Chestnut Oak, \$1 00
- “ **robur,** English Oak. This differs in foliage and appearance from our native sorts. It has a spreading, graceful habit when matured. A very fast growing sort..... 75
- “ **var. crispa.** Crisped leaved..... \$1 00
- “ **var. concordia.** Golden leaved. Golden-tinted foliage..... \$1 50
- “ **var. fastigiata viridis.** Grows upright like a poplar \$1 50

- Quercus var. Hartwissiana.** Foliage of a wavy outline \$1 50
- “ **var. Louetta.** The leaves are long and lanceolate. A beautiful variety..... \$1 50
- “ **var. pectinata.** Foliage finely divided.. 1 50
- “ **var. rubicunda.** The leaves are reddish purple \$1 50



Quercus palustris. (Pin Oak.)
10 years growth; 20 ft. high.

- Quercus var. Thomasii.** Distinct from the species in form and leaf..... \$1 50
- “ **var. tricolor.** Foliage white and green, with shade of yellow \$1 50
- “ **var. variegata.** Leaves of a clear variegation..... \$1 50
- “ **rubra,** Red Oak. One of the largest and fastest growers of all. The young shoots are reddish, as are the leaf stems when matured.... 75
- “ **tinctoria,** Black Oak. The foliage is variable, in some trees almost entire, in others much divided 75
- “ **undulata.** A rare native species, foliage somewhat resembling the scarlet..... \$1 00

ROBINIA. Locust, Acacia.

- Robinia hispida**, Rose Acacia. This is valued for its elegant clusters of rose colored flowers in early June. The branches resemble a moss rose... 50
- " **Pseud-acacia**, Yellow Locust. A fair sized tree, with feathery foliage, bearing racemes of yellowish fragrant flowers. Its timber is hard and valuable..... 50
- " **viscosa**, Viscid Locust. Delicate rose-colored flowers, in short racemes. Very showy when in bloom..... 50

SALISBURIA.

Maiden Hair Tree. Ginkgo.

- Salisburia adiantifolia**. A Japanese tree of large size and rather erect growth. The leaves resemble the Maiden Hair Fern, hence its name. One of the most beautiful of ornamental trees..... \$1 00

SALIX. Willow.

- Salix alba**, White Willow. A European sort, with light-colored leaves. Grows to a good size.. 50
- " **annularis**, Curled, or Ring Willow. The leaves curl, forming rings. A pretty tree.... 50
- " **Babylonica**, Weeping Willow. Too well known to need description. Like all willows it need not be confined to damp situations only. 50
- " **var. Salamoni**. More vigorous and upright than the common sort, while retaining much of its weeping habit..... 75
- " **candida**, Silvery-leaved Willow..... 50
- " **caprea**, Goat Willow. A really ornamental species when its catkins are expanded in early spring..... 50
- " **var. pendula**, Kilmarnock Weeping Willow. Now regarded as an indispensable ornamental tree..... \$1 25
- " **cordata vestita**. A native species valued in the West for its timber..... 50
- " **Forbyana**. A much valued sort for baskets 50
- " **Japanica**, Japan Willow. This has broad, shining green leaves and is quite ornamental.... 50
- " **myricoides**. A species, with greenish yellow bark..... 50
- " **pentandra**, Laurel-leaved Willow. One of the best for its foliage, which is of a broad shining nature..... 50
- " **purpurea**. A useful sort for tying purposes..... 50
- " **var. pendula** (New American). A weeping form, which makes a graceful tree. Grafted on tall stems..... \$1 00
- " **rosmarinifolia**, Rosemary Willow. The foliage is very small. This is often grafted standard high, forming pretty, bushy heads..... \$1 00
- " **Russelliana**. Another sort much used for tying..... 50
- " **Sieboldiana**. A Japan species, with bright shining leaves..... 50
- " **Villarsiana**. This has yellow wood, and almost white leaves..... 50
- " **vitellina**, Golden Bark Willow. This has golden bark, making it much planted for its beauty in winter time..... 50

SOPHORA.

- Sophora Japonica**. A small sized tree, with dark green foliage and bark, and racemes of cream colored, pea-shaped flowers..... 75
- " **violacea**. Similar to the above, but with violet colored flowers..... 75

STAPHYLEA. Bladder Nut.

- Staphylea Bumalda**, Japan Bladder Nut. A valuable small tree, bearing sweet scented sprays of white flowers early in May..... 75
- " **colchica**, Asiatic Bladder Nut. A small tree of shrub-like growth, having clusters of white flowers..... 75
- " **trifolia**, American Bladder Nut. Flowers not so conspicuous as the two others, but still beautiful. Bladder-like pods of seeds succeed the flowers 50

STUARTIA.

- Stuartia pentagynae**. A beautiful, low growing tree, compact and with handsome leaves. Flowers white, with purplish centre..... \$1 50

TAXODIUM. Deciduous Cypress.

- Taxodium distychnum**. The delicate feathery foliage of this sturdy tree, its rapid growth, and its beauty when in full leaf, find for it a place in every collection..... 50

TILIA. Linden.

- Tilia Americana**, American Linden. A quick growing and very large tree, with ample foliage, and fragrant flowers. Very desirable for park and avenue planting..... 50
- " **Europæa**, European Linden. Smaller leaves, but more twiggy growth than the preceding. 50
- " **var. argentea**, Silver-leaved Linden. It makes a very thick round-headed growth. The leaves are of a silvery whiteness underneath \$1 00
- " **var. aurea**, Golden-barked Linden. The golden yellow twigs of this variety give it great beauty..... \$1 00
- " **var. laciniata rubra**. This is a beautiful and distinct sort. Its cut leaves and red twigs are what give it its character..... \$1 00

ULMUS. Elm.

Elms are of much use in landscape planting. While mostly of large growth, there is a spreading, pendent habit shared in by no other tree. For avenue planting as well as for single specimens they are much used.

- Ulmus Americana**, American Elm. A tree of lofty growth, and sweeping, drooping branches..... 75
- " **campestris**, English Elm. This has smaller leaves than the preceding..... 75
- " **var. montana**, Scotch Elm..... 75
- " **var. monumentalis fastigiata**. This variety grows singularly upright, the branches crowding each other in their upward growth. The foliage grows very close to the stems, giving the tree a very odd appearance..... \$1 00
- " **var. purpurea**, Purple Elm. The purple in this, while not so pronounced as in some other things, is enough to give it value as a purple leaved tree..... \$1 00

Ulmus var. variegata , Variegated Elm. In this the leaves are sprinkled with white spots....	\$1 00
" fulva , Slippery Elm. A tree of medium size, large leaves and spreading head.....	75
" racemosa , American Cork Elm. This has the branches corky in deep fissures. It is an interesting tree to plant.....	\$1 00
" Sibirica , Siberian Elm. A sort so dwarf that it is really but a shrub.....	75

ZANTHOXYLON. Prickly Ash.	
Zanthoxylon fraxineum . A low sized tree, with pinnate leaves, yellowish flowers and prickly branches.....	75
ZELKOVA.	
Zelkova crenata . An elm-like tree of fair size. Rare in cultivation.....	75

Deciduous Shrubs.

Prices.—The size furnished will vary somewhat as the shrub may be rare or common, but will be about from two to three feet; and in all cases good, satisfactory plants will be supplied. Larger, selected specimens charged for according to size.

AMORPHA. Indigo Shrub.

Amorpha canescens	35
" fruticosa	35

Amorphas have dense panicles of bluish purple flowers in June. The **Canescens** is rather lighter in color than the other. Both flower after most of the spring flowering shrubs are over.

AMYGDALUS. Flowering Almond.

Amygdalus nana . Pink.....	35
" alba . White.....	35

The Flowering Almonds could be the least spared of any of our early spring flowers. They are in bloom by May 1st.

ANDROMEDA.

Andromeda calyculata	50
" Mariana	50
" racemosa	50

These Andromedas are native shrubs, blooming about the end of May, bearing beautiful racemes of white flowers. The flowers of **Mariana** are larger than the others and are tinged with red. These should not be overlooked in planting.

AZALEA. Wood Honeysuckle.

Azalea amœna . An Evergreen species.....	50
" arborescens , Large Growing Azalea....	50
" mollis , Japan Azalea.....	\$1 25
" pontica , Ghent.....	1 25
" nudiflora	50
" viscosa	50

These are among the most valued of shrubs. The **Mollis** and **Pontica** are from Japan and Asia, and both are indispensable for their large and beautiful flowers of varied colors. The **Amœna** is a dwarf evergreen species, with small leaves and pink flowers. It is planted in beds, separately, with other Azaleas or with Rhododendrons. The other three are natives. **Nudiflora** flowers before its foliage is expanded, but **Arborescens** and **Viscosa** do not bloom before the middle of June, or later. All three have white or pinkish flowers. **Arborescens** has large flowers, with purplish, projecting stamens.

BERBERIS. Berberry.

Berberis dulcis	50
" Thunbergii , Japan Berberry.....	50
" vulgaris , Common Berberry.....	35
" purpurea , Purple Berberry.....	35

For their scented yellow flowers, dark red fruit, and neat growth, Berberies are prized. All have small, neat leaves, especially the **Thunbergii**, which is also admired for its close compact growth. The flowers come about the 20th of May, and the fruit becomes ornamental in July, continuing up to winter time. All make good ornamental hedges, and are very hardy.

CALLICARPA.

Callicarpa purpurea . A shrub bearing small, light purplish flowers in May, followed by handsome bluish purple berries in the fall, thickly set along the stems.....	35
---	----

CALYCANTHUS. Sweet Shrub.

Calycanthus floridus , Sweet Shrub.....	35
" occidentalis , Western Sweet Shrub....	50

There is no better known garden shrub than this. It is the "Shrub Bush" so well known everywhere.

CARAGANA. Siberian Pea.

Caragana arborescens . A very hardy, tall growing shrub; not unlike the Laburnum in appearance, bearing pea-shaped, yellow flowers in bunches of two to three, in May.....	35
---	----

CEANOTHUS.

Ceanothus Americana	50
" multiflora	50

These have spreading panicles of white flowers, flowering profusely; the **Multiflora** in May, the **Americana** in June.

CEPHALANTHUS. Dwarf Buttonwood

Cephalanthus occidentalis . A too much overlooked native shrub. The flowers are in round, white heads; the stamens giving them a fuzzy appearance. It flowers late in July, when flowering shrubs are scarce.....	35
--	----

CERASUS.

Cerasus pumila. A Dwarf Cerasus, with white flowers..... 35

CHIMONANTHUS.

Chimonanthus præcox. A rare Chinese shrub, having the peculiarity of producing its purplish-yellow flowers the first few sunny days of winter. Of remarkably pleasing odor..... 50



Chionanthus Virginia.
(White Fringe.)

CHIONANTHUS. White Fringe.

Chionanthus maritima..... 50
" **Virginia** (see cut)..... 50

One of the most ornamental of shrubs, bearing racemes of fringe-like white flowers in early June, succeeded by fruit of a purplish color, hanging like loose bunches of grapes. **Maritima** differs chiefly in having larger, dark-green leaves.

CLETHRA. Sweet Pepper Bush.

Clethra acuminata..... 50
" **alnifolia**..... 50

There are no more valuable shrubs than these, flowering as they do in August, when flowering shrubs are scarce. The **Alnifolia** has erect spikes of white flowers, while those of **Acuminata** are drooping. Both have a spicy scent.

COLUTEA. Bladder Senna.

Colutea arborescens. A large shrub, with delicate foliage, bearing yellow, pea-shaped blossoms in early June, followed by bladder-like pods. 35

COMPTONIA. Sweet Fern.

Comptonia asplenifolia. A native shrub, with fern-like pretty foliage and brownish heads of flowers..... 35

CORCHORUS. Kerria.

Corchorus Japonica..... 35
" **variegata**..... 50

Weil known, old time shrubs, having yellow flowers. **Japonica** is sometimes used to cover arbors, as it makes long shoots. **Variegata** has neat, variegated leaves. Blooms middle of May.

CORNUS. Dogwood.

Cornus alba, Red twigged Dogwood..... 35
" **alternifolia** "..... 35
" **Mas,** Cornelian Cherry "..... 50
" **sanguinea,** English "..... 35
" " **variegata,** "..... 35
" **sericea,** Silky "..... 35
" **stricta,** White-Fruited "..... 35

(NOTE.—For *Cornus florida, pendula* and *rubro*, see Trees, pages 7 and 8.)

Dogwoods afford a rich variety to the planter. **Alba** and **Sanguinea** are valued for their red wood; **Alternifolia, Sanguinea** and **Stricta** for their pretty growth, flowers and berries. **Mas** flowers as soon as the frost goes in early April, and in August is clothed with large, red fruit of exceeding brilliancy, hence its name, "Cornelian Cherry." Other Dogwoods bloom in May.

CORYLOPSIS.

Corylopsis spicata. A new shrub, bearing small racemes of yellow flowers in early May..... \$1 00

CORYLUS. Hazel.

Corylus avellana, Common Hazel..... 35
" **laciniata,** Cut-leaved "..... 50
" **purpurea,** Purple-leaved "..... 75
" **colurna,** Filbert..... 50
" **pontica,** "..... 50
" **rostrata,** Native Hazel..... 35

Hazels are valued for their catkins of flowers in early spring, as well as for their nuts. The Filberts bear much larger nuts. The leaves of the purple are of a deep, dark red color, almost black.

COTONEASTER.

Cotoneaster acuminata..... 50
" **baccularis**..... 50
" **floribunda**..... 50
" **granatensis**..... 50
" **obtusa**..... 50
" **Simmondsi**..... 50
" **uva-ursi**..... 50
" **Wheeleri**..... 50

Cotoneasters are very neat looking shrubs, having small leaves, white flowers, and bright colored berries in the fall. South of Philadelphia they approach an evergreen character.

CRATÆGUS. Hawthorn.

Cratægus arborescens, Large Growing Hawthorn..... 50
" **coccinea,** American White Thorn..... 35
" **cordata,** Washington Thorn..... 35
" **crus-galli,** Cockspur Hawthorn..... 35

Crataegus flava , Southern Hawthorn.....	35
" Oxyantha , English "	35
" " apiifolia , Parsley "	50
" " Double Rose "	75
" " White "	75
" " Douglasii	50
" " grandiflora , Large White Hawthorn.....	50
" " macrocarpa	35
" " rubra splendens	50
" sanguinea , Russian Hawthorn.....	50
" spatulata , Southern Hawthorn.....	50

Hawthorns are so well known, they hardly need a description. The sweet scent of their blossoms applies to those of our country as well as to those of Europe. All have white or whitish flowers, except the **Double Rose** and **Rubra splendens**, the latter a rosy crimson. The flowers appear the latter end of May, bright red fruit succeeding.

CYTISUS.

Cytisus capitatus. A small shrub, bearing white, pea-shaped flowers in June..... 35

DAPHNE.

Daphne Mezereum. Pink Mezereon..... 50
 " **alba.** White "

Daphnes are erect growing, small shrubs, with neat green leaves, and flowers clustered along the stems. It is, perhaps, the earliest flowering shrub of all, and the blossoms are exceedingly fragrant.

DESMODIUM. (Lespedeza.)

Desmodium Japonicum. White..... 50
 " **penduliflorum.** Pink

These are new shrubs, covered in autumn with a mass of pea-shaped flowers at the end of the shoots. They die to the ground every winter, but comes up stronger than before in spring. New and very desirable, as at the period of blooming there are but few other flowers out.



Deutzia crenata, Double.

DEUTZIA. (See cut.)

Deutzia crenata. White.....	35
" " plena. Double Pink...	35
" " " " White..	35
" Fortuni. White.....	35
" gracilis. White.....	35
" Pride of Rochester. Double white, tinged rose.....	35
" scabra. White.....	35

Well known shrubs for their general usefulness in shrubbery plantings. **Cracilis** is a dwarf sort, of slender, but perfectly hardy growth. It flowers in the latter part of May, while the others do not until the middle of June.

DIERVILLA.

Diervilla sessilifolia	50
" trifida	50

Two native shrubs, but rarely seen in cultivation. Both have heads of greenish yellow flowers, which appear in July and August.

DIRCA. Leatherwood.

Dirca palustris..... 50

A native shrub, with neat foliage, clusters of white flowers and supple shoots.

ELEAGNUS. Silver Thorn.

Eleagnus hortensis, Oleaster.....	35
" longipes, Japanese	35
" parvifolius, Silver Thorn.....	35

Shrubs with neat silvery foliage and handsome marbled red berries. The flowers are yellowish white, sweet-scented, and come in May. Silver Thorns make pretty hedges.

EUONYMUS. Strawberry Bush.

Euonymus Americanus, American Burning Bush.....	35
" atropurpureus, American Burning Bush	35
" Europaeus, European " "	35
" " albus, White Fruited " "	35
" " variegata, Variegated Leaved Burning Bush.....	35
" " nanus, Dwarf Burning Bush.....	50
" latifolius, Broad-leaved " "	35

These shrubs are valued for their flame-colored seed pods in the fall. The names, Burning Bush and Strawberry Tree, come from its bright colored seed pods. The **Nana** is a new very dwarf sort, of slender growth and foliage.

EXOCHORDA.

Exochorda grandiflora. A beautiful flowering shrub, being clothed in May with a profusion of pure white flowers..... 75

FORSYTHEA. Golden Bell.

Forsythea suspensa	35
" viridissima	35

The golden blossoms of these shrubs are the first of those of spring. The **Suspensa** has a somewhat drooping habit. They are very pretty grown as standards.

FOTHERGILLA.

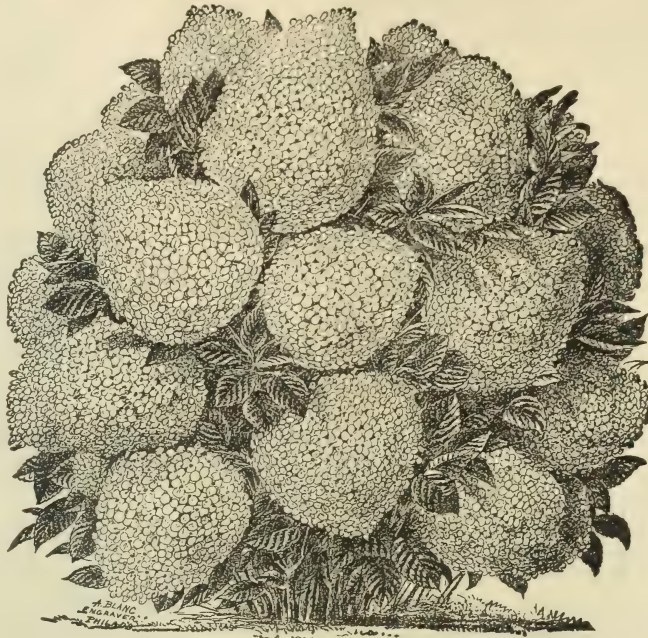
Fothergilla alnifolia. A native shrub, but quite scarce in cultivation. It bears small heads of white flowers in May..... 50

GENISTA. Scotch Broom.

Genista scoparius. The well known **Scotch Broom** of Europe, bearing yellow blossoms in May in great profusion..... 35

Hibiscus syriacus Comte de Flanders.

Double Purple	35
" " camellœflora. D'ble White, Pink centre	35
" " Duc de Brabant. Double Rosy Lilac	35
" " purpurea. Double Purple....	35
" " rubra. Double Red.....	35
" " totus albus. Single White...	35



Hydrangea paniculata grandiflora.

HALESIA.

Snowdrop Shrub, or Silver Bell.

Halesia diptera	50
" tetraptera	50
" Meehani	50

The **Tetraptera** is the best known of these. It grows large, making almost a small tree. All are beautiful when loaded with their silver blossoms in early May. Though alike in general character, the three sorts are quite distinct.

HAMAMELIS. Witch Hazel.

Hamamelis Virginica. This deserves much more notice than it has received. It forms a large flat-headed growth, and *the last thing in fall* it is covered with curious yellow flowers..... 50

HIBISCUS. Althæa.

Rose of Sharon.

Hibiscus syriacus alba. Double White ..	35
" " boule de Feu. " Violet Red	35
" " cœrulea. " Blue.....	35

Hibiscus syriacus variegata. Purplish Pink,

single, foliage variegated ...	50
" " " flore plena. Double Rose, foliage variegated	50

Hardly enough use is made of these in planting. They bloom in the month of August, and their great variety afford the chief attraction in many places in that month. They need good soil and vigorous growth to give their best display. They make a beautiful, tall growing ornamental hedge.

HIPPOPHÆA. Sea Buckthorn.

Hippophæa rhamnoides. A plant of stiff growth and silvery foliage..... 50

HYDRANGEA.

Hydrangea arborescens. White.....	50
" flavescens. Light Pink.....	50
" paniculata. White.....	50
" " grandiflora. Large White trusses. (See cut).....	50
" quercifolia. White.....	50
" Thunbergii. Violet.....	75

Arborescens and **Quercifolia** are both natives. The first has corymbs of white flowers and large green leaves, flowering about June 25th. The latter also has white flowers, which appear about July 1st, and very large leaves. The **Paniculata grandiflora** has large heads of white flowers. Its magnificent appearance when fully expanded in August, makes the demand for it very great. It is pretty as a shrub or as a standard.

HYPERICUM. St. John's Wort.

Hypericum aureum	35
" ascyron	35
" calycinum	35
" Kalmianum	35
" patulum	35
" prolificum	35

All **Hypericums** have yellow flowers. They commence flowering in early July, continuing on until fall. **Aureum, Calycinum** and **Patulum** have very large flowers, and bright green foliage. They are very desirable for fall flowering.

ILEX. (Prinos.) Deciduous Holly.

Ilex decidua	50
" monticola	50

These are uncommon in cultivation. They are prized for their red berries in fall.

ITEA.

Itea Virginica. A very pretty native shrub, not at all common, bearing heads of white flowers in June.....	50
---	----

INDIGOFERA.

Indigofera dosua. A shrub from Nepal, bearing rosy, pea-shaped flowers in June, in small spikes.....	50
---	----

LIGUSTRUM. Privet.

Ligustrum buxifolium, Box-leaved Privet.	35
" myrtifolium, Myrtle-leaved	35
" ovalifolium, Japan or California	35
" tricolor, Golden Variegated Japan	50
" Stauntoni	35
" vulgare	35

Privets have always been esteemed for their neat foliage and flowers and for ornamental hedging, and this has strengthened since the introduction of the Japanese species, as this one excels all others for the purpose. It has larger leaves than others, and they are of a bright shining green, and the shrub itself is of compact growth and is almost evergreen. The **Tricolor** is destined to become popular, as it stands the sun well and forms a good bush. The young growth is a beautiful golden yellow and green, changing to a clear white and green as it develops. It is entirely hardy.

LONICERA. Bush Honeysuckle.

Lonicera Ledebouri	50
" Orientalis	35
" Philomelæ	35
" Sibirica	35
" Tatarica, Tartarian Honeysuckle.....	35
" " grandiflora, Large Fl. ".....	50
" Xylosteum, Fly Honeysuckle.....	35

Bush or Shrub Honeysuckles are old-time favorites in gardens. They have a well shaped, pretty growth, bear an abundance of small flowers, which are succeeded by bright berries. Excepting **Ledebouri**, which flowers in June, they bloom in May. **Ledebouri** has reddish orange flowers, the others, though distinct from one another, have white or pink ones. **Grandiflora** has large pink colored blooms, and is distinct and good, probably the best.

MAGNOLIAS. (See Trees.)

MYRICA. Wax Myrtle.

Myrica cerifera. A native shrub, bearing small seeds covered with a wax-like substance..... 50

NEVIUSIA.

Nevisia Alabamensis. A recently introduced shrub from Alabama, quite hardy, bearing fringe-like white flowers in the latter part of May.. 75

PAVIA. Dwarf Horse Chestnut.

Pavia parviflora. This is really an indispensable shrub, flowering about the middle of July, bearing long spikes of yellowish white flowers, the rose-colored stamens projecting from them. It forms a regular, though rather flat head, from which ascend numerous flower spikes..... 75

PÆONIA.

Pæonia Mouton, Tree Pæony. Pink flowered \$1 00

This makes a good sized bush in time, as it does not die down in winter as the garden variety does. The flowers are very large.

PHILADELPHUS. Mock Orange.

Philadelphus Columbianus	35
" coronarius	35
" Cordonianus	35
" grandiflorus (specissima)	35
" Zeyheri	35

Mock Oranges are often called Syringas, and are well known and appreciated for their sweet-scented white flowers in June. **Coronarius** has the most perfume, though all have more or less, and **Cordonianus** is rather later flowering than the rest.

POTENTILLA. Shrubby Cinquefoil.

Potentilla fruticosa. A useful shrub, flowering throughout the summer. Flowers yellow... 35

PRINOS.

Prinos verticillatus. This is a deciduous holly. It bears red berries, as hollies do, which are beautiful in late fall..... 50

PRUNUS. Plum.

Prunus Americana, Wild Plum.....	50
" myrobolana, Myrobolan Plum.....	35
" " acutifolia	50
" " Pissardi, Purple-leaved Plum	50
" spinosa flore pleno, Double Flowering Sloe.....	75
" triloba, Double Flowering Plum.....	50

The above are all used for ornamental purposes. The **Myrobolan** forms a good sized shrub and bears small

white flowers in May. **Acutifolia** has cut leaves, rendering it of additional value. **Pissardi** is one of the finest purple-leaved shrubs there is. It is a dark purple from first to last. No other tree keeps up its purple until the leaves drop, as this one does. Every one should have it. **Triloba** is the well known **Double Pink Flowering Plum**.

PTEROSTYRAX.

Pterostyrax corymbosum	75
" hispidum	75

Japanese shrubs, with large handsome leaves and creamy white, sweet-scented flowers.

PYRUS. Japan Quince.

Pyrus arbutifolia , Choke Berry.....	50
" floribunda , Japan ".....	50
" Japonica , Japan Quince, Fire Bush.....	35
" " alba , Pink.....	50
" " nivalis , White.....	75
" " cardinalis , Scarlet.....	50
" " variegata , Variegated.....	50
" " Maulei	50
" rivularis	75
" sinensis	50

The red flowers of the **Pyrus Japonica** are a welcome sight to all in early spring, and the varieties are welcome additions. These shrubs make excellent hedges.

RHAMNUS. Buckthorn.

Rhamnus Carolinianus , Car. Buckthorn,	35
" catharticus , Common ".....	35
" lanceolatus , Western ".....	35
" Wicheli	35

Buckthorns are at their best when the berries are ripe, in the fall. The **Carolina**, with its shining green leaves and scarlet berries, is particularly ornamental. Being of a stiff growth, hedges are sometimes made of them.

RHODOTYPUS.

Rhodotypus Kerrioides. A new Japanese shrub, bearing large white flowers in May. The foliage is plaited, and the whole shrub a good addition to our list.....	50
--	----

RHUS. Sumach.

Rhus aromatica	50
" copallina	50
" cotinus , Mist Shrub.....	50
" glabra	35
" " laciniata , Cut leaved Sumach... ..	75
" Osbecki , Chinese ".....	75
" trilobata	50
" typhina , Stag's Horn Sumach.....	35

Sumachs, generally, are of odd growths. The foliage of all turns to a scarlet in the fall; the cut-leaved is a much sought for variety, the foliage both when green and when changed to scarlet being much admired. **Osbecki** bears large panicles of light flowers in August.

RIBES. Flowering Currant.

Ribes aureum , Yellow Flowering Currant..	35
" " nigrum , Black Utah " ..	35
" floridum , Wild Black " ..	35

Ribes Gordonianum	35
" sanguineum , Crimson Fl. Currant....	50
" " albidum	50

Flowering currants are much prized for their pendent bunches of flowers, the prevailing color of which is yellow. **Gordonianum**, however, is crimson and yellow, and **Sanguineum** red.

ROSA. Rose.

Rosa Arkansana	35
" arvensis , White.....	35
" " Ayrshirea , Ayrshire Rose. White.....	35
" " blanda	35
" " Boursaultii , Boursault Rose. Crimson.....	35
" " canina , Dog Rose. Pink.....	35
" " Carolina , Carolina Rose. Pink.....	35
" " cinnamomea , Pink.....	35
" " gymnocarpa	50
" " Harrisoni , Persian Yellow Rose. Yellow.....	35
" " lucida , Pink.....	35
" " rugosa rubra (Kamtchatica), Russian Rose. Rosy Crimson.....	50
" " " alba , White.....	50
" " " rubiginosa , Sweet Briar. Pink.....	35
" " " rubifolia	35
" " " setigera , Wild Prairie Rose. Pink.....	35
" " " villosa , Light Pink.....	35

Excepting the **Boursault**, which is partly double, these are all single roses. The **Persian, Rugosa** and **Villosa** flower about the 25th of May, the rest follow until about the 1st of July, when most are over. But then the handsome fruit follows, the **Cinnamomea, Villosa** and **Rugosa** being especially fine. The **Rugosa** has beautiful hardy green leaves, and its flowers often measure four inches in diameter, resembling somewhat a shell in shape.

NEW HARDY MONTHLY ROSE.

"Madame Geo. Bruant."

This promises to be the forerunner of an entirely new and popular race of roses, having for one of its parents the beautiful Japan Rose, **Rosa rugosa**, and the Tea **Sombrieul** for the female parent, by which it gets its sweet and ever-blooming character.

We believe we are the first to offer this pleasing novelty in this country. Price, \$1.00 each.

RUBUS. Flowering Bramble.

Rubus fruticosus , Double Flowering Bramble.....	35
" laciniatus , Cut-leaved Bramble.....	35

SAMBUCUS. Elder.

Sambucus Canadensis , Elderberry.....	35
" " racemosa , Red Berried Elder.....	35
" " variegata , Variegated Elder.....	35

SPIRÆA.

Spiræa Bumalda , Pink flowers, variegated leaves.....	50
" " Billardi , Pink flowered, panicked heads..	35
" " " callosa , Pink " flat heads.....	35
" " " " alba , White flowered, flat heads.....	35
" " " " " superba , White " pink centre.....	50
" " " " " carpinæfolia , White flowered, panicked heads.....	35

Spiræa chamædrifolia. White, bunched heads along the branches.....	35
" crenata. White, bunched heads along the branches.....	35
" Hookeri. White, bunched heads along the branches.....	35
" lævigata. White, bunched heads.....	50
" opulifolia. White, flat heads.....	35
" " aurea. White, flat heads.....	35
" paniculata. Pink, panicled heads.....	35
" prunifolia. White, arranged along the branches.....	35
" Reevesii. White, arranged along the branches.....	35
" Reevesii, Double. White, arranged along the branches.....	35
" Regeliana. Pink, panicled.....	35
" salicifolia. White, ".....	35
" sorbifolia. White, ".....	35
" Thunbergii. White, arranged along the branches.....	35
" tomentosa. Pink, panicled.....	35

Although the list of Spiræas is large, all are distinct from each other in flower and habit of growth, and there is not one of them but is worthy of cultivation. We have marked them Pink and White, but in color there is quite a variation in shades. The first to flower is **Thunbergii**; next, **Prunifolia** and **Reevesii**. **Billardi** and **Paniculata** flower about the middle of June, while **Callosa**, **Alba** and **Salicifolia** are about the latest of all. **Bumalda**, **Callosa** **supurba** and **Lævigata** are new, and really good additions. A group composed of the whole or part of the list would have a very striking effect.



Styrax Japonica

STYRAX.

Styrax Americana	75
" grandifolia	75
" Japonica	\$1 00

These shrubs have been and are scarce in cultivation, as they are not readily propagated. All have white flowers, and blooming profusely in June are much admired. The white flowers are not unlike those of the Silver Bell, hanging on long peduncles along the branches. **Japonica** is especially fine, the growth is more tree-like and its flowering more profuse. The blooms are larger than the others, and exceedingly white. (See cut)

SYMPHORICARPUS. Snowberry.

Symphoricarpus occidentalis, White-fruited.....	35
" racemosus, White-fruited.....	35
" vulgaris, Red-fruited.....	35
" " variegata, Variegated Leaved.....	35

These are valued for their ornamental berries in the fall and winter.

SYRINGA. Lilac.

Syringa Amurense. White.....	\$1 00
" Emodi. White.....	75
" Japonica. White.....	\$1 50
" Josikæa. Lilac.....	50
" oblata. Purple.....	\$1 50
" Persica. Purple.....	50
" " alba. White.....	50
" Rothmagenis. Reddish Purple.....	50
" vulgaris. Purple.....	35
" " alba. White.....	35
" " Ambrose Verschaffelt. Light Purple.....	50
" " Charles X. Purple.....	35
" " Dr. Stockhardt. White, very fine.....	35
" " Gloire de Moulins. Purple.....	35
" " plena. Dark Lilac.....	35
" " Princess Marie. Purple.....	35
" " rubra insignis. Deep reddish purple.....	75
" " vallettiana. Dark purple.....	50
" " villosa. Lilac.....	75

The well known Lilac needs no introduction or recommendation. Every garden has it, and every new garden will need it. There are three types of lilacs in the above list. First the old lilac familiar to us all. **Oblata**, **Vulgaris**, and all the varieties of the latter are in this list. Next are the Persian type. Of this there are the **Rothmagenis** and the **Persian**, purple and white. These flower at the same time as ordinary lilacs, but the foliage more resembles a privet than a lilac. The flowers are more abundant and the clusters looser than the others. The third class embraces sorts with handsome foliage and flowers, but having no resemblance to ordinary lilacs in either way. The flowers too, come later; some are white, in large clustered heads, appearing in early June. The sorts comprise **Amurense**, **Emodi**, and **Japonica**; and **Josikæa** and **Villosa**, with lilac-colored flowers. Of the old kinds spoken of, **Rubra insignis** is particularly fine, having large heads of reddish purple flowers. It is undoubtedly the best of the dark colored lilacs. **Oblata** flowers very early, and its foliage changes to a russet

red in the fall. **Ambrose Verschaffelt** is also a decided improvement. **Amurense** and **Japonica** are quite new, and as yet but little disseminated, but they will be in good demand.

TAMARIX. Tamarisk.

Tamarix Callica	50
“ Indica	50
“ tetrandra	50

Good sized shrubs, of rather loose growth, bearing pinkish flowers in July and August. The leaves being very small, they escape injury in high winds, which fits it for sea-coast planting, for which purpose it has proved admirably adapted.

VACCINIUM.

Vaccinium corymbosum , Blueberry.....	50
“ vacillans , Huckleberry.....	50

Corymbosum grows to a large shrub. Its beautiful white flowers in early spring are much admired. **Vacillans** is not so large. It also has white flowers. Both have edible fruit.



Viburnum plicatum.
(Japan Snowball.)

VIBURNUM. Snowball.

Viburnum acerifolium , Maple Leaved Viburnum.....	35
“ dentatum , Arrow Wood.....	35
“ Japonicum latifolium , from Japan..	\$1 50
“ Lantana , Way-faring Tree.....	35
“ lantanoïdes , Hobble Bush.....	35
“ Lentago , Sweet Viburnum.....	35
“ macrocephalum , from Japan.....	75
“ Nepalensis	75
“ nudum	50
“ cassinoides	50
“ opulus , Common Snowball.....	35
“ nana , Dwarf Snowball.....	75

Viburnum oxycoccos , Cranberry Bush....	35
“ phlebotrychium , from Japan.....	\$1 00
“ plicatum , Japan Snowball.....	50
“ prunifolium	35
“ reticulatum , from Japan.....	1 00

There are but few shrubs possessing more desirable qualities, and, at the same time, so different one from another as the **Viburnums**. The most of the native sorts, such as **Acerifolium**, **Prunifolium**, **Nudum**, &c., when in bloom resemble hawthorns, both in look and scent. Those marked “from Japan” are comparatively new, with handsome foliage and white flowers, and will add much to our list of valuable shrubs. Everybody knows the common Snowball. The **Plicatum**, or “Japan Snowball” is a better one. Distinct in every way, of upright, bushy growth, with plaited leaves and a large number of pure white heads of flowers, it stands unrivalled among shrubs. **Opulus nana**, quite a dwarf, may become useful for bordering paths or beds. It does not grow over six or eight inches high and is extremely bushy.

VITEX. Chaste Shrub.

Vitex agnus-castus. This is a valuable summer flowering shrub, bearing numerous panicles of lilac blue flowers in August. Not often seen, but deserves to be in every collection..... 50



Weigela floribunda.
(Crimson Weigela.)

Weigela amabilis , Light Rose.....	35
“ variegata , Light rose, foliage variegated.....	35
“ arborea versicolor , Dark Rose.....	35
“ candida , White.....	75
“ Desboisii , Deep Rose.....	35
“ floribunda , Crimson.....	50
“ Grœnewegenii , Dark Rose.....	35
“ hortensis nivea , White.....	35
“ rosea , Rose.....	35

It would be extremely hard to get along in the ornamentation of grounds without **Weigelas**. The rose colored ones are magnificent when in bloom. **Flori-**

bunda is crimson, with projecting white stamens, quite distinct and valuable. **Hortensis nivea** and **Candida** are white, the former rather spreading, the latter erect in growth. All flower about the end of May, and **Floribunda** and **Hortensis nivea** also occasionally through the summer.

XANTHOCERAS.

(See cut.)

Xanthoceras sorbifolia. A rich acquisition from China, and destined to become an extremely popular shrub. The foliage is not unlike the Mountain Ash. The flowers are white, of a red dish hue at base, produced in terminal racemes in numerous clusters. It blooms profusely, even quite small plants, the flowers expanding with the leaves in early spring \$1 00



Weeping Trees.



Cerasus serotina pendula.
(Weeping Wild Cherry.)

- Ash, Fraxinus excelsior pendula.** Green barked..... \$1 25
- " **Fraxinus excelsior pendula aurea.** Golden Barked..... \$1 25
- " **Fraxinus excelsior lenticifolia pendula** \$1 25

These form wide heads, in time allowing of the use of seats under them if desired, or they can be pruned to form more compact tops.

- Beech, Fagus sylvatica pendula**..... \$1 00

This has the shining green leaves of the ordinary sort, with an odd, irregular, weeping growth. It is a striking object either in summer or winter.

- Birch, Betula alba laciniata.** Cut-leaved \$1 00
- " " " **Youngii**..... 1 50

The Cut-leaved Weeping Birch is now known far and wide for its graceful weeping habit, white bark, and pyramidal growth. The most popular weeper of all. **Youngii** does not make an upright growth; it is grafted on stems from four to six feet high, when it forms thick, round heads, but does not grow any taller. Although comparatively new, it is very popular.

- Cherry, Cerasus Japonica rosea pendula** \$1 25
- " **Cerasus serotina pendula**..... 3 00
- " " **pumila** " 1 00

The two first named are beautiful and new, and among the best of weeping trees, forming fine drooping heads. The **Pumila pendula** makes a shrubby head of small, twiggy branches.

Chinese Cypress, Glyptostrobus pendula..... \$1 00

A beautiful tree, with pendulous habit, and much of the gracefulness of the Deciduous Cypress.

Dogwood, Cornus Florida pendula, (See cut)..... \$1 50

This weeping Dogwood is one of our own introductions. Its pendulous habit, upright leader, large white flowers, and scarlet fruit and foliage in the fall, place it in the foremost rank of weepers.

Elm, Ulmus fulva pendula..... \$1 00

This has wide spreading branches of a drooping nature, and forms a good sized tree.

Hornbeam, Carpinus Betulus pendula \$1 00

A pendulous variety of the English Hornbeam.

Laburnum, Cytisus Laburnum pendula..... \$1 00

Larch, Larix Europæa..... 50

Linden, Tilia Parmentieri..... 1 50

This is a decided acquisition to the list of weepers, being distinct and of bold growth.

Maple, Acer dasycarpum Weiri..... 75

This is the Weir's Cut-leaved, than which a prettier or more useful tree does not exist.

Oak, Quercus robur pendula..... \$1 00

Planera, P. Richardi " 1 00

Willow, Salix Babylonica..... 50

" " **Salamoni**..... 75

" " **caprea pendula**, Kilmarnock..... 1 25

" " **purpurea pendula**, New American..... 1 00

Babylonica is the common Weeping Willow. **Salamoni** resembles it a good deal, but is hardly as pendulous. **Caprea pendula** is the well known Kilmarnock Willow, and **Purpurea pendula** is a new Weeper of merit.



Cornus florida pendula.
(Weeping Dogwood.)

Evergreens.

Prices.—While nice trees of all will be furnished at prices given, selected specimens can be had which have received extra care in pruning and transplanting, the price depending on rarity and size.

ABIES. Spruce.

Abies Alba, White Spruce..... \$ 50
 " **Alcoquiana**, Alcock's Spruce..... 1 00
 " **Canadensis**, Hemlock " 50
 " **Caroliniana**, Carolina Hemlock..... 1 50

Abies Douglasii, Douglas Spruce..... \$1 00
 " **excelsa**, Norway " 50
 " " **inverta**, Pendulous " 1 00
 " **Orientalis**, Oriental " 1 00
 " **polita**, Japan " 1 00
 " **pungens**, Colorado Blue " 2 00

Of the Spruces on the above list, the **Norway** is the most used, on account of its hardy character and sturdy growth. The **Oriental** resembles it to some extent, but has darker and finer foliage. There are none surpass the **Hemlock** in beauty of outline and general good points. The **Douglas** and the **Colorado Blue** are of the hardy Colorado form. They are both known as most beautiful trees. The Carolina Hemlock is rare, and though resembling in some degree, is quite distinct from the ordinary kind.

ANDROMEDA.

Andromeda Catesbæi	75
" floribunda	75

There are many **Andromedas**, but these two are of the evergreen class. Both have bright green foliage, and that of **Catesbæi** turns to a bright red in the fall and winter. The flowers are white, sweet-scented, appearing very early in spring.

ARCTOSTAPHYLOS. Bearberry.

Arctostaphylos uva-ursi. A prostrate evergreen, with copper-colored leaves and small white flowers. Excellent for planting under trees, covering rock work, and for winter effect. 50

AZALEA.

Azalea amoena. A beautiful evergreen Azalea, bearing numerous small, purplish-red double flowers in May. A most desirable shrub. Beautiful for massing with Rhododendrons 50

BIOTA. Chinese Arbor-Vitæ.

Biota Orientalis , Common Chinese.....	50
" aurea , Golden "	75
" elegantissima , Rollinson's Golden.....	75

The Common Chinese is noted for its upright, rapid growth and deep green foliage. **Aurea** has golden foliage and a rounded, slower growth. **Elegantissima** has its tips golden, the rest green. This section of Arbor-Vitæ does better in the South than the American.

BUXUS. Box.

Buxus sempervirens , Dwarf Box.....	25
" aborescens , Tree "	50
" rotundifolia , Round-leaved Box.....	50

CALLUNA. Scotch Heath.

Calluna vulgaris. A low-growing evergreen, with small white flowers in July..... 50

CEDRUS.

Cedrus Deodara , Deodar Cedar.....	\$1 00
" Libani , Cedar of Lebanon.....	1 00

These beautiful evergreens are hardy in this latitude, but further North should have a sheltered place.

CEPHALOTAXUS.

Cephalotaxus Fortunei. A small growing, distinct, hardy Chinese shrub. In appearance not unlike the Yews, but having broader foliage, and not such a compact habit. It is extremely hardy and should be more planted..... \$1 00

CUNNINGHAMIA.

Cunninghamia lanceolata. This choice tree thrives well where other trees will give it a little shelter in winter time..... 75

CUPRESSUS. Cedar, Cypress.

Cupressus Lawsoniana , Lawson's Cypress	£0
" lutescens	75
" stricta viridis	75
" thyoides , White Cedar.....	50
" variegata , Variegated Cedar	\$1 00

The **Lawson's Cypress** and its two varieties are extremely beautiful evergreens. They are quite hardy here, but better for being set among other trees for protection in colder places.

CRYPTOMERIA.

Cryptomeria Japonica. Like the above named tree, this needs setting in a sheltered place, speaking for this latitude..... 75

DAPHNE.

Daphne cneorum. A choice, low-growing **Daphne**, bearing its sweet-scented, rosy-white flowers in great profusion, for several weeks of midsummer 75

ERICA. Heath.

Erica stricta , Purple.....	50
" vagens capitata , White.....	50

These are compact little evergreens, blooming profusely in July and August.

EUONYMUS.

Euonymus Japonicus	50
" aureus	50
" variegatus	50

These shrubs have broad, shining leaves and are well suited for sheltered positions about dwellings.

ILEX. Holly.

Ilex aquifolium , English Holly.....	75
" cornuta , Japan "	75
" opaca , American "	75

The American Holly is hardy almost everywhere, but in this locality the Japan and the English will thrive only when well sheltered.

JUNIPERUS. Juniper, Cedar.

Juniperus Chinensis , Chinese Juniper	50
" communis , Native "	50
" aurea , Golden "	\$1 00
" pendula , Weeping "	75
" Hibernica , Irish "	50
" prostrata , Trailing "	50
" sabina , Savin "	50
" tamariscifolia "	75
" suecica , Swedish "	50
" compacta	75
" stricta	50
" Virginiana , Red Cedar.....	50
" Waukegan , Trailing.....	50

Of these the **Prostrata**, **Sabina**, **Tamariscifolia** and **Waukegan** are trailing, the rest are

upright, and all distinct from one another. The Aurea is a very pretty, slow-growing, dwarf variety.

KALMIA. Laurel.

- Kalmia angustifolia.**
- “ **latifolia.**

These Laurels thrive well in almost all situations. The flowers of **Angustifolia** are dark pink. **Latifolia** has rosy pink, crimped buds, which change to a creamy white when expanded, rose-colored dots encircling the petals. Both flower in June.

LIBOCEDRUS.

Libocedrus decurrens. A California evergreen of much beauty. It does best when given some shelter in winter..... \$1 00

MAGNOLIA.

Magnolia grandiflora, Large flowered Magnolia. This requires protection north of Philadelphia..... \$1 00

MAHONIA.

- Mahonia aquifolia,** American..... 50
- “ **Japonica,** Japan..... 75

These are valued for their bright, shining foliage and yellow blossoms. They do well under the shade of large trees. The leaves of the Japan are larger than the American, and are of a yellowish green color.

PACHYSTIMA.

Pachystima Canbyi. A compact, low growing evergreen, with leaves like a small myrtle... 75

PICEA. Fir.

- Picea appolonica**..... 50
- “ **balsamea,** Balsam Fir..... 50
- “ **Cephalonica,** Cephalonian “..... \$1 50
- “ **cilicica**..... 1 50
- “ **concolor**..... 2 00
- “ **firma,** Japan Fir..... 1 50
- “ **Frazeri,** Frazer's “..... 1 00
- “ **grandis**..... 2 00
- “ **lasiocarpa**..... 1 50
- “ **nobilis**..... 2 00
- “ **Nordmanniana,** Nordman Fir..... 1 50
- “ **pectinata,** European Silver “..... 75
- “ **Pichta,** Siberian “..... \$1 50
- “ **pinsapo**..... 1 50

Firs are among the best of evergreens, growing to a large size, and having foliage soft to the touch. **Nordmanniana, Pectinata, Pichta** and **Balsamea** form a hardy and beautiful group.

PINUS. Pine.

- Pinus Austriaca,** Austrian Pine..... 50
- “ **Banksiana**..... 75
- “ **Benthamiana**..... 50
- “ **cembra,** Swiss Pine..... \$1 00
- “ **contorta**..... 75
- “ **Coulteri**..... 75
- “ **densiflora,** Japan Pine..... 1 00
- “ **edulis,** Pinyon “..... 1 00
- “ **excelsa,** Himalayan “..... 75
- “ **Jeffreyi**..... 50

- Pinus Laricio,** Corsican Pine..... 50
- “ **Mandshurica**..... \$1 00
- “ **Massoniana**..... 1 00
- “ **mitis,** Yellow Pine..... 50
- “ **monticola**..... 75
- “ **Mughus** Dwarf Pine..... 50
- “ **ponderosa**..... 50
- “ **pungens**..... 50
- “ **resinosa,** Red Pine..... 1 00
- “ **rigida,** Pitch “..... 50
- “ **strobus,** White “..... 50
- “ “ **compacta**..... 1 00
- “ **sylvestris,** Scotch Pine..... 50



Pinus cembra.
(Swiss Pine.)

Of the strong growing, hardy pines, doing well in almost all situations, we would name the **Austriaca, Densiflora, Excelsa, Laricio, Mitis, Pungens, Resinosa, Rigida** and **Strobus.** The **Excelsa** is a magnificent Pine, with long, light green, silvery foliage. **Densiflora** and **Resinosa** are very fast growers, hardy, rare and beautiful. The **Mughus** is the dwarf bush Pine, much called for for situations where a low growing, spreading evergreen is required. **Cembra** is a most valuable sort. It does not grow fast nor to be a large tree, so that it suits where no other one would. Of silvery green foliage and pyramidal outline, it is a most beautiful sort.

PODOCARPUS.

Podocarpus Japonica, Japan Yew. A hardy evergreen, of upright growth, in form not unlike the Irish Yew..... \$1 00

PRINOS. Ink Berry.

Prinos glaber. A native shrub, with neat, green foliage, and bearing dark berries in the fall. 75

RHODO ENDRON.

Mountain Laurel.

Rhododendron maximum	75
" punctatum	\$1 00
" Vaseyi	1 00

(A full list of named hybrids is given further on.)

Maximum is the Northern species, with purplish pink flowers. **Punctatum** comes from the mountains of North Carolina. It has small, rosy red flowers, and foliage of lesser size than the foregoing. **Vaseyi** is a new one, differing from an Azalea only in botanical features. It is really deciduous, but we have kept it here to be under the head of Rhododendrons.

RETINISPORA. Japan Cypress.

Retinispora ericoides	50
" filifera	75
" leptoclada	75
" obtusa	50
" " nana	75
" pisifera	50
" plumosa	50
" " aurea	50
" " compacta	75
" " variegata	75
" squarrosa	50
" " glauca	75

These Japanese evergreens have proved to be amongst the hardiest of all, standing uninjured our severest winters. While all are good, we look on **Filifera**, **Obtusa**, **Pisifera**, **Plumosa**, **Aurea** and **Squarrosa** as particularly desirable. The golden tint of the **Aurea** and the silvery green of the **Squarrosa** place them in the front rank. In winter the **Glauca** has a remarkable purplish color. As the best color is on the young growth, frequent shearing is desirable; this also keeps them compact and in good shape.

SCIADOPITYS. Umbrella Pine.

Sciadopitys Verticillata. A remarkably beautiful, very hardy Japanese evergreen, with dark shining green foliage, arranged in whorls of umbrella like tufts. Grows slowly while young. It is extremely rare, and should be in every collection. (See cut)..... \$3 00

TAXUS. Yew.

Taxus adpressa , Japanese	Yew....	\$1 00
" baccata , English	".....	75
" " elegantissima , Golden	".....	1 00
" " fastigiata , Irish	".....	1 25
" " nana , Dwarf	".....	1 50
" " stricta , Erect	".....	1 00
" Canadensis , American	".....	75
" cuspidata	1 00

The upright growth of the Irish Yew makes it much sought for for planting. The English is more bush-like, while the American has a low, spreading habit. **Adpressa** and **Cuspidata** are Japanese sorts of much beauty, and quite hardy.



Sciadopitys Verticillata.
(Umbrella Pine.)

THUJA. Arbor-Vitæ.

Thuja gigantea , Pacific Coast Arbor-Vitæ	75
" occidentalis , American	50
" " aurea , George Peabody	" \$1 00
" " ericoides , Heath leaved	" 50
" " filifolia , Fern	" 75
" " globosa , Globe	" 75
" " Hoopesii	50
" " horizontalis	50
" " Hoveyi	50
" " Little Gem , Dwarf Arbor-Vitæ	1 00
" " Meehani , Meehan's Golden Arbor-Vitæ.....	1 00
" " pumila , German Globe Arbor-Vitæ.....	75
" " pyramidalis	50
" " Sibirica , Siberian Arbor-Vitæ	50
" " " variegata	75
" " spiralis	75
" " Tatarica	50
" " Tom Thumb , Dwarf Arbor-Vitæ.....	50
" " Victoria , Silver-tipped Arbor-Vitæ.....	1 00

Among the larger growing of these are the **Cigan- tea**, **Occidentalis**, **Aurea**, **Meehani**, **Pyramidalis**, **Spiralis** and **Victoria**. The dwarf forms are **Globosa**, **Hoopesii**, **Hoveyi**, **Pumila**, **Sibirica** and **Tom Thumb**, all with a more or less rounded outline. The **Little Gem** is a complete dwarf, only about an inch of growth a year being made.

The **Aurea** and **Meehani** have golden foliage, while that of **Victoria** is silver.

THUJOPSIS. Nootka Sound Cypress.

Thujopsis borealis	75
“ dolobrata	75

ULEX. Furze.

Ulex Europæa. A prickly, odd plant from Europe, which bears yellow flowers..... 50

YUCCA. Adam's Needle.

Yucca angustifolia	75
“ filamentosa	50
“ var. præcox	50
“ gloriosa	75

These plants have bayonet-like leaves, and a scape 5 to 6 feet high, bearing panicles of large white flowers. The **Præcox** blooms a week or ten days earlier than the others.



Yucca.

Vines and Climbers.

Prices.—Whenever extra selected plants are required the prices will correspond to what are sent. For the prices quoted, nice, satisfactory stock will be furnished.

ACTINIDIA.

Actinidia polygama. A Japanese vine, with rather large leaves, and bearing white, purple-centred flowers..... 50

AKEBIA.

Akebia quinata. Of extremely rapid growth, “five-fingered” leaves, plum colored, sweet-scented flowers, which appear in early May.. 35

AMPELOPSIS.

Ampelopsis bipinnata	35
“ Roylii	35
“ Veitchii , Japan Ivy.....	35
“ Virginica , Virginia Creeper... 35	
“ laciniata , Cut-leaved 35	

The Japan Ivy is the best vine there is for covering dwelling-houses, being a bright-green in summer, changing to a crimson scarlet in autumn. The Virginia Creeper is needed for coarser walls, as are all the others.

ARISTOLOCHIA.

Aristolochia Sipho , Dutchman's Pipe.....	75
“ tomentosa	50

These are rapid growing native vines, producing an abundance of large green leaves. Sipho has yellowish brown, pipe-shaped flowers. Those of tomentosa are purple.

BERCHEMIA.

Berchemia volubilis. A native, but rare vine, having shining green leaves, and making a quick growth..... 50

BIGNONIA. Trumpet Vine.

Bignonia capreolata , Evergreen Trumpet Vine.....	50
“ grandiflora , Chinese Trumpet Vine.....	50
“ radicans , Common “ “.....	35
“ Thunbergii , Crimson “ “.....	35

Capreolata is evergreen, and the blossoms are light orange. The **Chinese** has large yellowish crimson flowers; **Radicans** scarlet, and **Thunbergii** crimson. **Capreolata** clings with tendrils; the rest as ivy does.

CELASTRUS. Staff Vine.

Celastrus articulata	35
“ scandens	35

Large growing climbers, which bear orange capsuled fruit in late fall.

CLEMATIS. Virgin's Bower.

FOR DESCRIPTIVE LIST

OF

CLEMATIS,

SEE PAGE 31.

DECUMARIA.

Decumaria barbara. A beautiful native climber, with thick, smooth green leaves, of the greatest utility for climbing purposes, yet, strange as it is, it is almost unknown in cultivation. It is closely related to the Hydrangea, and by some writers has been called "American Climbing Hydrangea." It clings as Ivy does. The flowers are white, fragrant; produced in cymes, or heads..... 75

DIOSCOREA. Chinese Yam.

Dioscorea batatas..... 35

DOLICHOS.

Dolichos Japonicus. A strong growing, large leaved vine, which for rapidity of growth has no equal. Strong plants will run fifty feet a season. It dies to the ground every fall, but shoots up from the root again in the spring 75



Euonymus radicans.
(Climbing Euonymus.)

EUONYMUS. Climbing Euonymus.

Euonymus radicans..... 35
" **variegata**..... 35

GELSIMIUM. Carolina Jasmine.

Celsium sempervirens..... 50
" " **plena**, DLL Car. Jasmine 50

This beautiful climber of the Southern forests is quite hardy in this latitude. Flowers yellow.

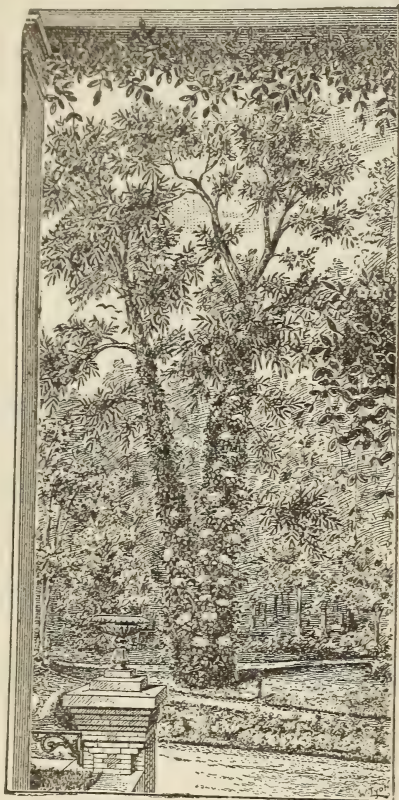
HEDERA. Ivy.

Hedera Helix, English Ivy..... 35
" **taurica**, Russian Ivy..... 35

Planted on the north or east side of buildings, Ivies do very well here. It is the bright sun and light in winter that kills them.

HYDRANGEA. Climbing Hydrangea.

Hydrangea scandens. A vine from Japan, with shining green leaves and white flowers, in loose clusters in June. It must have something to cling to before it will run, being like the common Ivy in this respect..... 75



Hydrangea scandens.
(Climbing Hydrangea.)

JASMINUM.

Jasminum nudiflorum, Yellow Jasmine... 35
" **officinale**, White " 35

The Yellow Jasmine flowers in early spring, often before the frosts of winter have hardly left us.

LONICERA. Honeysuckle.

Lonicera Belgica, Monthly Honeysuckle 35
" **brachypoda**, Japan " 35
" **aurea reticulata**, Golden " 35
" **flava**, Yellow " 35
" **fuchsioides**, New Scarlet " 75
" **Halleana**, Hall's Japan " 35
" **Magnevillæ**, " 35
" **sempervirens**, Scarlet Coral " 35
" **sinensis**, Chinese " 35

Where shade as well as sweet odor is the object, the **Japan, Halleana** and **Chinese** are usually planted, the others not growing so dense. The **Chinese** flowers about the 10th of June, followed closely by the **Japan**, then by **Halleana**. The latter blooms a long while and with extreme profusion. **Fuchsoides** is a new sort, with handsome foliage and brilliant scarlet flowers.

LYCIUM. Washington's Bower.

Lycium barbarum. A very pretty climber, often planted about doorways. It bears greenish-purple flowers and orange-colored berries..... 35

MENISPERMUM. Moon Seed.

Menispermum Canadense. A native vine, bearing clusters of small yellow flowers..... 35

PASSIFLORA. Passion Flower.

Passiflora incarnata..... 35
South of Philadelphia this variety is hardy, but here and further North it needs a little mulching to carry it safely through the winter. The vine dies to the ground every fall, but comes up again in the spring. Flowers, white, with purple centre.

PERIPLUCA. Silk Vine.

Periploca græca. A beautiful vine, having bright green leaves, and loose bunches of star shaped, purple flowers of much beauty..... 50

SCHIZOPHRAGMA.

Schizophragma hydrangeoides. A new vine resembling the *Hydrangea Scandens*, but quite distinct..... 75

SMILAX.

Smilax hispida..... 35

VITIS. Grape.

Vitis heterophylla variegata, Variegated Grape..... 35
" **incisa**..... 35
" **indivisa**..... 35
" **riparia,** Flowering Grape..... 35

The Flowering Grape has no fruit, but is planted for its delicious fragrance when in bloom. **Heterophylla variegata** has beautiful foliage, and blue berries in fall.

WISTARIA. Glycine.

Wistaria frutescens, American Wistaria	50
" " alba, White "	75
" magnifica,	50
" multijuga, Japan	\$1 00
" sinensis, Chinese	50
" " alba, Chinese White	75
" " plena, " Double "	75



Wistaria.

Wistarias are famed for their beauty and fragrance when in flower. The **Chinese** flowers first, and when in full bloom, about the 1st of June, is a magnificent sight. The **American** and **Magnifica** come next, in about two weeks later. The latter bears a larger bunch than **Frutescens**. **Multijuga** has clusters of flowers two to two and a half feet long.

SELF CLIMBERS.

Of the above mentioned vines, the **Ampelopsis, Bignonia, Decumaria, Euonymus, Hedera, Hydrangea** and **Schizophragma** are self-climbers, attaching themselves to walls as ivy does.

Hardy Azaleas.

These beautiful plants are becoming well known in connection with the Rhododendron, mixed with which they are often planted. They thrive well under the same treatment as the latter, though doing well in any fairly good situation. Of the Ghent, our collection consists of nearly all colors. The **Mollis** is a new species from Japan, having larger flowers and blooming before the Ghent. The chief colors in cultivation are red and yellow. When planted in partial shade, the flowers last longer than when in the full sun.

We offer an assortment 1 to 2 feet at \$1.25 each; \$10 per 10.

Hardy Rhododendrons.

Prices.—12 to 18 inches, without flower buds, \$1 each; with buds, \$1.50;
18 to 24 inches, without buds, \$1.50 each; with buds, \$2.



Rhododendron.

Album elegans. A large white, of fine shape.
Chancellor. Dark purplish lilac.
Charles Bagley. Bright red.
Cyaneum. Bluish purple, large.
Delicatissimum. Clear white, tinted pink.
Everestianum. Rosy lilac. Very good.

Cloriosum. White, shaded velvet.

H. W. Sargent. Crimson.

Lady Armstrong. Pale rose.

Minnie. Bluish white, lilac in the bud.

Mrs. Milner. Crimson.

Perspicuum. Good creamy white.

Pictum. Clear white, orange spotted.

Purpureum grandiflorum. Large purple.

Roseum elegans. Fine rose.

Rhododendrons do well in almost all situations, provided the soil is deep, cool and moist. Where these conditions do not exist naturally, they may be produced by digging out the soil four feet deep, filling in two feet with stones, sticks and rubbish, and finishing with good, light soil. The sorts offered are among the hardiest of all, standing our winters very well. It is, however, time well spent to fill in forest leaves about the plants for the winter. It keeps frost out of the ground, breaks the wind, and keeps the sun from the foliage, all of which benefit the plants at that period.

PERENNIAL PHLOX.

Assorted colors..... 30 cents each. \$2.50 per 10

LILY OF THE VALLEY.

Besides its use for forcing for winter, and for planting in the open garden, it is an excellent plant for shady places in woods or under trees. Strong plants, \$1.00 per 10; \$7.00 per 100.

Hardy Herbaceous Plants.

We have a very good assortment of these desirable plants, and should be glad to select a good variety for our customers, at \$2.50 per 10.

Hedge Plants.

DIRECTIONS FOR PLANTING.

The following varieties of Evergreens, running in sizes from 12 to 24 inches, can be planted about 12 inches apart in the rows; but the larger ones, from 2½ to 3½ feet high, must be set about 18 inches apart. They should be given a severe pruning when planted; it tends to bushiness, making the shapening of the hedge an easy matter afterwards; and as the roots have less top to supply, the check from transplanting is sooner overcome.

For short ornamental hedges deciduous shrubs are used; these should be planted from 12 to 18 inches apart, according to the size. A good pruning will also benefit them, and make them bushier at the bottom.

For defensive hedges, the Osage Orange and Honey Locust are mostly used. These should be planted in double rows, each row 6 inches apart, and the plants 10 inches apart in the rows. By setting two rows, the plants can be alternated, making a much thicker and more protective hedge.

While all of the above make beautiful hedges, we think the California Privet takes the lead for a short, ornamental, deciduous hedge.

EVERGREENS.

		Per 100
American Arbor-Vitæ,	12-18 in.....	\$15 00
"	" 2-2½ ft.....	25 00
"	" 3-3½ ft.....	40 00
Siberian	" 1 ft.....	15 00
"	" 2 ft.....	25 00
Hemlock Spruce,	2-2½ ft.....	30 00
"	" 2½-3 ft.....	40 00
Norway	" 1½-2 ft.....	25 00
"	" 2-3 ft.....	40 00

DECIDUOUS.

		Per 100
Athæas,	2-3 ft.....	\$20 00
Berberry, Common,	1-2 ft.....	15 00
" Purple-leaved,	1½-2 ft.....	20 00

		Per 100
Buckthorn,	1-2 ft.....	\$15 00
Honey Locust,	1-2 ft, \$6 per 1000	1 00
Osage Orange,	1-year size, 4 "	75
"	2-year " 6 "	1 00
Privet, California,	2 ft.....	15 00
" Common,	2 ft.....	12 00
Plum, myrobolan,	1-year size.....	3 00
Pyrus Japonica,	1½-2 ft.....	20 00
Shrubs, Assorted,	2 ft.....	20 00
Spiræas,	" 2 ft.....	20 00

MISCELLANEOUS.

Box Edging, per running yard.....	35
Periwinkle, " " ".....	35

THE CLEMATIS.

The Clematis, always a great favorite, because of its usefulness for purposes where vines are required, as well as for the beauty of its flowers, has gained even a firmer foothold than before, within a few years past, and chiefly because of the great strides made in the production of kinds with large and handsome flowers. It is now a good many years ago since the magnificent Jackmanni was introduced, and, though unequalled yet in its general usefulness and large purple flowers, there are other kinds of different colors which command universal admiration. And it must not be forgotten that these large flowered ones do not end their display with the one course of flowers, but have occasional blossoms at intervals throughout the season.

The small flowered section, represented by the flammula and Virginiana are in demand always, for their rapid growth and clusters of flowers.



CLEMATIS.

LARGE FLOWERED.

- Albert Victor, deep lavender, with pale bars.
- Jackmanni, deep violet purple.
- Miss Bateman, white, dark red anthers.

- Henryi, white, fine.
- Lawsoniana, rose, purple veined.
- Star of India, reddish plum, red bars.

Prices, extra large, two and three year old, @ \$1.00 each. Strong, one year old, @ 75 cents each.

SMALL FLOWERED.

- Flammula, white, very sweet scented.
- Vitalba, white, feathery clusters.

- Virginiana, white, feathery clusters.
- Viticella, purple.

PRICE, 35 cents each.

Hardy Ferns.

Price, 30 cents each ; \$2.50 per 10.

Evergreen sorts are marked (E).

- Adiantum pedatum*, Maiden Hair Fern. (E)
- Antigramma rhizophylla*, Walking " (E)
- " *pinnatifida* (E)



Ferns.

- Asplenium ebeneum*, Ebony Spleenwort. (E)
- " *Filix-fœmina*.
- " *Thelypteroides*, Silvery "

- Aspidium acrostichoides*, Christmas Fern. (E)
- " *cristatum* (E)
- " *marginale*, Marginal " (E)
- " *Noveboracense*, New York " (E)
- " *spinulosum*.
- " *Thelyptera*, Lady " (E)
- Cystopteris fragilis*, Bladder " (E)
- Dicksonia pilosiuscula*, Mountain " (E)
- Onoclea sensibilis*, Sensitive " (E)
- Osmunda Claytoniana*, Flowering " (E)
- " *cinnamomea*, Cinnamon " (E)
- " *regalis*, King " (E)
- Polypodium hexagonopterum*.
- " *vulgare*. (E)
- Pteris aquilina*, Brake " (E)
- Woodsia obtusa*, Rock Polypod " (E)

Ferns might be used in gardens much more than they are, for not only are they beautiful in summer, but many of them are evergreen, affording something green for rock work and other places in winter time. Ferns like shade, but at the same time must have some air. Damp, shady places, are the ones they prefer, and as such spots do not suit many plants, ferns are especially valuable for the purpose.

FRUIT TREES AND SMALL FRUITS.

Standard Apples.

Price, 35 cents each. Extra Sizes, 50 and 75 cents.

- Baldwin.** A well-known market kind. The fruit is crimson striped and of a rich saccharine acid flavor. Winter.
- Ben Davis.** A Western apple, becoming popular in the East on account of its free bearing qualities. The fruit is yellowish, splashed with red, of sub-acid flavor and fair quality. Winter.
- Cornell's Fancy.** A very beautiful apple, waxen yellow, shaded crimson, of a juicy sub-acid flavor. Fall.
- Early Harvest.** One of the best of early varieties. The fruit is bright straw colored, of an agreeable tart quality. July.
- Early Red June.** An excellent early sort, ripening after the Early Harvest. Fruit greenish yellow with dark red stripes, sub-acid flavor. July.
- Esopus Spitzenburg.** The Spitzenburgs are somewhat delicate in growth and do not do as well in every location as some others. The flavor is rich and peculiar, and so much appreciated that people willingly give 50 cents per barrel more for them in Philadelphia market. Fruit yellowish, striped red. Winter.
- Fallwater.** The immense size of the fruit and other good qualities make this a favorite. Flavor pleasant tart. Winter.

- Fall Pippin.** A large, yellowish, rich, aromatic fruit, well known in collections. October.
- Crimes' Golden Pippin.** A medium-sized golden apple, native of the West, but not nearly as well known in the East as its many good qualities warrant. Rich, spicy, sub-acid flavor. Winter.
- Gravenstein.** A superb German apple, as much esteemed here as it is in the Faderland. Productive and satisfactory. Bright yellow splashed and marbled with red, of high flavor. September and October.
- Golden Russet.** A thrifty and early bearing sort, doing well in almost all situations. Yellow and russet. Mild tart. Winter.
- Hubbardston Nonsuch.** This excellent apple is one of the standard kinds in Western New York and succeeds well everywhere. Yellow and red splashed, sweet mingled with acid. Winter.
- King of Tompkins Co.** A much planted kind, regular and early bearing. Yellowish, juicy, with an agreeable aromatic flavor. Winter.
- Lady.** A small red rosy apple, popular as a dessert fruit. Winter.
- Maiden's Blush.** There is no more popular apple in its season than this. It is of a bright straw color shaded with crimson, and pleasant acid flavor. August and September.
- Northern Spy.** One of the best of winter apples. large, showy, greenish yellow in color, and sub-acid flavor.

- Peck's Pleasant.** A regular and good bearer. Yellow, bluish on sunny side. Flavor sub-acid. Winter.
- Primate.** Greenish white, crimson shaded, sub-acid. August to October.
- Porter.** A yellow oval, medium-sized apple, easy to grow and an early bearer. It is one of the most popular apples in its season. Fruit large, bright yellow, of rich flavor. September.
- Red Astrachan.** Undoubtedly the best early apple of large size and for table use. Everybody wants this beauty who has use for early fruit. The color is deep crimson, streaked with yellow, with partly tart flavor. July to August.
- Rhode Island Greening.** One of the most popular of apples, on account of its productiveness and good quality. Dark green. Early Winter.
- Ridge Pippin.** An exceedingly popular, well-known apple, bearing well and regularly and a good keeper. Fruit yellowish, juicy, mild aromatic flavor. Late Winter.
- Roxbury Russet.** The well-known "Russet." Keeps until June.
- Smith's Cider.** This is becoming more popular every day on account of its regular and abundant bearing and good keeping qualities. It is yellow shaded with red, juicy and pleasant acid flavor. Winter.
- Swaar.** Of the largest size and particularly fine flavor. Light golden color, dotted brown. Winter.
- Smoke House.** Also of the best quality and productive. Yellow shaded, crimson. Good for cooking or eating. September to February.
- Sweet Bough.** A very popular early apple with old-fashioned people, and quite good enough yet for the average man. Color yellow, partly tart. July to August.
- Twenty Ounce.** Very large fruit, greenish yellow, splashed purple. Sprightly sub-acid flavor. Winter.
- Tetofsky.** A hardy Russian apple, getting to be largely planted. Yellow, striped red, tart. August.
- White Winter Pearmain.** A well-known sort of thrifty habit, productive and regular. Yellow, striped red. Winter.
- Winesap.** Dark red; rich, high flavor. Winter.
- White Doctor.** An excellent sort for either cooking or eating fresh. Fruit large, greenish yellow. Sub-acid. September and October.
- Yellow Bellefleur.** As well-known as any sort there is. Fruit large, pale lemon, at its best when quite ripe. Tart. Winter.
- Yellow Transparent.** A newly introduced early apple of decided merit. It is yellowish white without and white within; bears when but three or four years old, and ripens early in July. Price, 75 cents each.

New Varieties.

The following varieties have been introduced within the last few years, have been well tested by prominent fruit growers and been found worthy of planting. We feel from this that we can safely recommend them.

**Belmont,
Colvert,
Mann,
Sutton,
Walbridge,
White Pippin.**

Crab Apples.

Even as ornamental trees, nothing exceeds the Crab, either in flower or fruit. For cider, vinegar, or preserving, they have great utility, and a few trees should be in every garden. The old Siberian and the Golden are yet in great demand. Among the newer ones, the **Transcendent** and **Montreal Beauty** are large and handsome.

Price, 50c. each; larger size 75c.

Colden. Golden yellow.
Hewes' Virginia. Yellow and red.
Hyslop. Deep crimson.
Montreal Beauty. Yellow and red.
Soulard. Greenish yellow.
Siberian Red. Red.
 " **Yellow.** Yellow.
Transcendent. Red and yellow.

Apricots.

The Apricot is among the most delicious fruits we have. It should be treated like the Plum for curculio. It does very well trained as a vine would be along a wall, so that a tree can often be grown where there would not be room for it otherwise. Its golden yellow fruit is much valued, and the tree thrives very well hereabouts.

Price, 50c. each. Extra size, 75c.

**Breda
Early Colden
Hemskirk
Moor Park
St. Ambrose**

Asparagus.

Strong roots per 100..... \$1 25

Blackberries.

The well-known varieties of blackberries which we enumerate below are yet so esteemed for general planting that we have not yet discarded any of them for newer sorts, though there are many of the latter before the public.

Price, 75c. per 10. \$5.00 per 100.

**Dorchester
Kittatiny
Lawton
Snyder
Wilson's Early**

Cherries.

The **Cherry** is a popular fruit because of its adaptability to almost all soils, though preferring a dry one to any other. Cherries are divided into three sections—**Heart, Bigarreau, and Duke and Morello.** In the **Heart** section are such well-known sweet kinds as the **Black Tartarian, Coe's Transparent, Downer's Late, Elton and Governor Wood.** Among the **Bigar-**

reans, or hard fleshed cherries, are the **Cleveland**, **Napoleon**, **Rockport**, **Holland** and **Yellow Spanish**. The **Dukes** and **Morellos** embrace those with tart fruit, though the **Dukes** are much less tart than the **Morellos**. **Mezel**, **Windsor** and **Smith's** are new varieties of decided merit.

We name some of the best of our collection.

Price, 50c. each. Extra size, 75c. and \$1.00 each.

Black Tartarian. This is a popular kind in all parts of the country. Black.

Butner's Yellow. A favorite sort with transparent fruit.

Coe's Transparent. A reliable sort, one of the best; sweet and fine. Pale amber.

Cleveland Bigarreau. Red and yellow.

Downer's Late. A very good late Heart cherry of rather large size. Red.

Early Purple. The earliest of all our cherries, ripening long before the famed **May Duke**. Purple.

Early Richmond. Perhaps the most largely planted of all cherries on account of its hardiness and productiveness. It is the earliest of all the **Morello**, or **Pie Cherries**. Deep red.

Elton. Yellowish red.

English Morello. A dwarf-growing sort and reliable bearer. Ripens late and keeps a good while. Almost black.

Governor Wood. Vigorous and productive, and always in demand. Every one wants one in his collection. Light yellow, shaded red.

Holland Bigarreau. A large and valuable fruit, though as yet not so well known as some others. Dark red.

Kentish Morello. A "Pie Cherry," resembling in many respects the **Early Richmond**. Dark red.

Late Duke. On account of its late ripening it is the most esteemed on the list. Dark red.

May Duke. Everybody still asks for this one, though it is not the earliest, as some suppose. Dark red.

Mezel. A French Bigarreau, large, dark brown fruit.

Montmorency. A new dark red Morello, with more sweetness than most Pie cherries have.

Napoleon Bigarreau. This sort is esteemed wherever planted. The fruit is large and sweet, and large crops of it are borne. Pale yellow, red cheek.

Ohio Beauty. Another sort found to do well wherever planted. Red.

Rockport Bigarreau. Pale red.

Royal Duke. One of the largest and finest of its class, ripening after **May Duke**. Dark red.

Smith's Bigarreau. A choice sort of good repute among large growers. Fruit large, black; flesh dark, rich flavor, small stone. Good.

White Ox-Heart. An esteemed old sort, noted for its firm flesh. White.

Windsor. One of the best. Large, dark red, heart, firm flesh. Late.

Yellow Spanish. A very beautiful and popular Cherry, bearing juicy and delicious fruit. Light yellow.

Chestnuts.

The **Chinquapin** fruits when but a few feet high. The **Japan** bears early and has very large nuts.

American	50
Chinquapin	75

Spanish	75
Japan	\$1 00

Currants.

The **Black Currant** makes excellent tarts and preserves. For general purposes the **Red** and the **White Dutch** continue popular. The **Cherry** and the **Versailles** have larger berries and bunches, and are very desirable. **Fay's Prolific** is as large as **Versailles** and a longer bunch.

Price, \$1.50 per 10.

Black Naples

Cherry

Red Dutch

Versailles

White Versailles, 25c. each.

White Dutch

Fay's Prolific, 30c. each, \$2.50 per 10.

Figs.

The Fig does very well here, if bent over and covered with earth in winter, as **Raspberries** are done, or protected from very severe weather in some other way. It is an excellent plant for tubs, to winter in cellar.

Price, 75c. each.

Filberts, or Hazel.

Common Hazel	35
Filbert	50

Gooseberries.

Many plant the common **Cluster** and the **Houghton** **Gooseberries** yet, as they are very productive. But for



New Gooseberry, "Industry."

larger size the **Smith's Improved**, a white one, and the **Industry**, a red one, are far superior. The latter is of the English race, and if it keeps clear of the mildew that English kinds generally suffer from, it will be very valuable.

Cluster and Houghton	\$1 50 per 10
Smith's Improved	1 50 " 10
Industry (see cut), 35c. each.....	3 00 " 10

Grapes.

Although there are numerous new grapes continually added to the list, **Concord** is still more largely planted than any other sort, it is such a healthy grower and productive variety. Still, there are better flavored ones, as well as those of a different color, and those who have room for them will want to plant a variety.

Among newer ones, the **Berckmans** is one of the best for those who want an improvement on the **Delaware**. It is at least equal in flavor, and of much more vigorous growth. **Niagara** and **Empire State** are new white ones.

Price, 35c. each. Extra size, 50c., except where otherwise priced.

- Agawam** (Rogers 15). Red.
- Barry** (Rogers 43). Black.
- Berckmans**. A valuable new grape, combining the quality of the Delaware, with the vigor of the Clinton. Red..... 75
- Black Eagle**. A fine table sort, ripening with Concord. Black.
- Brighton**. A justly esteemed grape of strong growth and hardy character. Early. Dark purple.
- Clinton**. This is esteemed as a late grape; at its best after most other sorts are over. Black.
- Concord**. Black.
- Delaware**. Popular on account of its excellent flavor. Red.
- Duchess**. This takes rank as one of the sweetest of White Grapes, and it succeeds fairly in most all localities. Early. White.
- Empire State**. A new White Grape, hardy and productive, and producing large bunches of excellent flavor..... 75
- Hartford Prolific**. Too well known as a reliable early sort to need describing. Black.
- Iona**. Late. Red.
- Lady**. A vigorous grower, with medium-sized bunches. Early. White.
- Lady Washington**. A hardy and productive sort, with large and good fruit. Late. White.
- Lindley** (Rogers No. 9). By some, this is thought to be the best Red Grape in cultivation. It is certainly a very valuable sort. Red.
- Martha**. This, although one of our oldest White Grapes, is indispensable yet. It is reliable, and of excellent flavor. White.
- Massasoit** (Rogers No. 3). A fine flavored variety, almost as early as the Hartford. Red.
- Merrimack** (Rogers 19). Vigorous and good. Early. Black.
- Moore's Early**. This proves to be an excellent early grape, with large bunches and berries. Ripens with Hartford. Black..... 50
- Niagara**. A new kind, of hardy, healthy character, and excellent flavor. White..... \$1 00

Pocklington. Although hardly as sweet as some White Grapes, it is so valuable in every other respect that everyone wants it. Late. White.

Prentiss. This is now well-known as a sweet and pleasant-flavored Grape. Late. White.

Salem (Rogers No. 53). Perhaps the most esteemed of all Rogers' seedlings, being an excellent sort in every way. Red.

Telegraph. Very thick clusters. Early. Black.

Wildor (Rogers 4). An excellent Grape, ripening with the Concord. Black.

Worden. An early Black Grape, ripening before the Concord. Very good.

Hickories.

Price, 75 cts. each.

Pecan Nut Shellbark

Mulberries.

The **Downing** is an improvement on ordinary kinds. The fruit is larger and is not so soon over, from whence comes its name, *Everbearing*. The **Japan** is said to have very large fruit.

American Red50 cts.
Downing's Everbearing50 "
Italian50 "
Japan75 "

Nectarines.

Price, 50 cts. each.

Pawpaw.

Price, 50 cts. each.

Peaches.

Peaches do well in all situations, except low, damp ones, and even in these they succeed for a time. It is a mistaken idea some have that they do not thrive in this district. Few fruits give more satisfaction for the time it lasts than a peach tree.

Price, 25 cts. each.

- Alexander Early**. One of the earliest, and very good. July.
- Amsden's June**. Very similar to the above. July.
- Crawford's Early**. A well-known, large yellow sort. Early Sept.
- Crawford's Late**. Much the same as the one above, but later. Last Sept.
- Hale's Early**. A standard early sort. Middle Aug.
- Mountain Rose**. Large, reddish fruit, excellent sort. Early Sept.
- Morris White**. An esteemed old sort; still of the best. Middle Sept.
- Oldmixon**. Large, White and Red. Succeeds Crawford's Early.
- Salway**. An English sort, of great merit; large yellow. Late Oct.
- Susquehanna**. A magnificent yellow Peach. Early Oct.

Stump the World. A handsome Red and White sort. End Sept.

Troth's Early. Well-known in market as a good red, early sort. Early Aug.

Wager. A new, very late, lemon colored Peach. Oct.

Ward's Late. A fine late Peach. Succeeds Crawford's Early. Late Sept.

Pears.

There are but few fruit trees give more satisfaction than pears. They take but little room to grow, always bear more or less, and have troubles from but few insects or diseases. No one would regret planting any of those we offer, but for a half-dozen we should incline to select them in the following order: **Bartlett, Seckel, Sheldon, Clapp's Favorite, Beurre d' Anjou, Howell.**

Standard Pears.

Price, 75 cts. to \$1.00 each, according to size and age. Extra sized trees of some varieties, \$1.50 to \$2.00 each.

Bartlett. Deservedly the most popular of all pears, bears young and abundantly. Sept.

Belle Lucrative. A fair-sized pear, melting and sweet, good bearer. Sept., Oct.

Beurre d' Anjou. One of the best winter pears known, both for flavor and keeping qualities. Winter.

Beurre Clairgeau. While not of the very best quality, it is good; and bearing early and having such handsome-looking fruit make it a favorite sort. Oct., Nov.

Beurre Superfin. A very good pear, which should be better known. Productive, juicy and melting. Oct.

Clapp's Favorite. A splendid large pear, of excellent quality, ripening three weeks before the Bartlett. Requires gathering ten days before ripening on the tree, and close watching to tell just when it is ripe. Middle of August.

Doyenne Boussock. Large and good. Sept.

Flemish Beauty. Still valued as a reliable sort, old as it is. Sept., Oct.

Howell. This is gaining in public favor. It is of good size, good flavor, and waxy-yellow color, doing well everywhere. Oct.

Kieffer. A place in collections is being found for this pear. It is variable in quality, sometimes very good, at other times not so good, but it bears young, always abundantly, and is beautiful. Oct.

Lawrence. Well-known as a reliable sort, of excellent flavor. Early Winter.

Seckel. Everywhere recognized as the standard of excellence in the pear. Sept., Oct.

Sheldon. Of the first quality, rich and delicious. A splendid pear. Oct., Nov.

Tyson. Valued for its earliness as well as for its good qualities. Aug.

Vicar of Winkfield. Still in demand for its productiveness and usefulness for the kitchen, and when in perfection an excellent winter fruit.

Dwarf Pears.

The most of these Pears are described above, in the list of Standards.

Price, 50c. Large sizes, 75c. to \$1.

Bartlett. Sept.

Beurre d' Anjou. Winter.

Clapp's Favorite. Middle of Aug.

Duchesse d' Angouleme. End of Oct.

Howell. Oct.

Louise Bonne. Oct.

Seckel. Sept., Oct.

Persimmon.

The Japan Persimmon is a very different fruit from the common one. It bears fruit of large size and excellent flavor, and on young trees. Many are growing them as tub plants, as oranges are, but they live out doors as far north as Philadelphia, with a little protection in winter.

Price, \$1.50 each.

Plums.

Since it has been shown that the curculio insects can be destroyed by jarring them from the trees, plum culture is much easier than it was. Those who thus attend to their trees about flowering time raise all the fruit they need.

Price, \$1.00 each.

Coe's Golden Drop. Golden yellow. Very late.

General Hand. Golden yellow. Late.

Cerman Prune. Purple.

Green Cage. Greenish yellow. Early.

Imperial Cage. Greenish yellow. Late.

Jefferson. Golden yellow, purplish cheek.

Lombard. Violet red.

Prunus Simoni. Chinese Plum. This is a recent introduction, with bright vermilion colored fruit of great beauty. Pronounced a great acquisition, but it has not yet fruited with us. \$1.50.

Reino Claude. Greenish yellow.

Smith's Orleans. Reddish purple.

Washington. Dull yellow.

Yellow Egg. Yellow.

Quince.

The quince needs good, moist, cool, well-drained soil to grow in. The borer is troublesome at the base of the stem if not attended to, but with close watching can be prevented from doing any injury.

Price, 50 cents each; extra sized 75 cents.

Angers. The popular common sort.

Champion. A new variety of much promise. Ripens late.

Meech's Prolific. A popular new sort, 75c.

Orange. Extensively cultivated for market.

Raspberries.

Raspberries are often said to run out, but with attention to enriching the ground, keeping the soil cool, and cutting out of weak canes, to strengthen the others, the good old kinds are as good yet as many of the

newer ones. Although generally unnecessary, some think it pays to cover the canes in winter, either by tying with straw, or bending down and covering with a few inches of earth.

The **Catawissa** is worthy of more attention than received, as it bears in August a fine crop of fruit.

Price, \$1.00 per 10; \$6.00 per 100.

Brinckle's Orange. The best yellow in cultivation.

Caroline. Yellow. Canes very hardy.

Cuthbert. Hardy, sweet and productive. Deep crimson.

Catawissa. Valued for its fall-bearing character, which is brought about or aided by cutting down the canes in spring. Crimson.

Gregg. We grow this for those who like our native black raspberries. This is an improved sort, and prolific bearer.

Herstine. Perhaps the best flavored of all; but the canes need protection in the winter. Crimson.

Philadelphia. Well-known as always reliable. Dark red.

Rancocas. A good bearer, and reliable hardy red sort.

Prolific. Similar in character to the Philadelphia.

Reliance. Rather large, productive and hardy. Red.

Turner. A very hardy kind, which character makes it the favorite in the West. Red.

Rhubarb.

Per single root..... 25

Strawberries.



Longfellow.

What may be thought of a certain kind of strawberry depends very much on soil and situation. Still, some

are nearly always good, and as such we would name, **Sharpless, Captain Jack, Cumberland, and Charles Downing.** Belmont has made a good name where tried.

Price, Ordinary Runners, \$1.00 per 100, except where noted.

Albany Seedling

Bidwell

Boyden

Belmont. \$2.00 per 100 (from pots, \$3.50 per 100).

Charles Downing

Crescent

Captain Jack

Cumberland Triumph

Downer's Kentucky

Longfellow

Sharpless

We have also on trial the following European sorts at 75 cts. per 10.

Eleanor

King of the Earlies

Marguerite

Sir Charles Napier

Sir Joseph Paxton



Pot-grown Strawberry Plant.

Strawberry Plants from Pots.

We again desire to call attention to the great superiority of the potted plants over the ordinary runner. While runners set in September give no fruit until the second season following, potted plants set at the same time, give a good crop the next June. Even when not set until spring, plants from pots give some fruit the same season, besides making much stronger plants for the following year than runners planted at the same time.

Price, from pots, \$2.50 per 100.

Walnut.

English..... 75c. to \$1.00
Black..... 50 to 75c.

MEEHANS' MONTHLY

A Magazine for every Garden Library

Gardening derives its chief pleasure from the wide scope of intelligence it involves. A real lover of gardening is usually one of the best informed on general topics in the whole community. **Meehans' Monthly** devotes its energies to the cultivation of this general intelligence, and the publishers endeavor to make it of such a character that no one who has a library of any pretension can afford to be without it.

It is an octavo magazine of 16 pages, with a colored plate made by L. Prang & Co., of Boston, of a *wild flower* of some portion of the United States; with a chapter on wild flowers, and others on the more intelligent features of *general gardening*. Illustrated with numerous wood cuts. Issued monthly.

Price, \$2.00 per year, \$1.00 for six months, in advance

SAMPLE COPY FREE

Assisted by

THOS. B., J. FRANK and S. M. MEEHAN

Conducted by THOMAS MEEHAN

Formerly Editor of the "Gardeners' Monthly," and the "Flowers and Ferns" of the U. S.

From the *Gardeners' Chronicle* (London).

"Mr. Meehan has not only the faculty of always seeing something worth seeing, but he is impelled by the desire of making others see and appreciate also."

From the *Cincinnati Gazette*:

"MEEHANS' MONTHLY is a dainty little publication devoted to general gardening and wild flowers. It is superbly illustrated with colored plates, and the other contents, though limited as to quantity, are choice, entertaining and instructive."

From the *Public Ledger*, Philadelphia.

"American wild flowers receive in MEEHANS' MONTHLY the recognition of which they are worthy, but which they seldom obtain in other directions."

THOMAS MEEHAN & SONS, Publishers, Germantown, Philadelphia

Special Clubbing Offers!

Meehans Monthly and Garden and Forest, one year for	\$5.00
Meehans' Monthly and Gardening, one year for	2.25
Meehans' Monthly and American Gardening, one year for	2.25
Meehans' Monthly, Garden and Forest, and Gardening, one year for	5.75
Meehans' Monthly, Garden and Forest, Gardening, and American Gardening, one year for	6.50
Meehans' Monthly, Garden and Forest, and American Gardening, one year for	5.75

SEND ORDERS AND REMITTANCES TO

THOMAS MEEHAN & SONS, Publishers
Germantown, Philadelphia

The best journal of its important kind.—*Philadelphia Press.*

GARDEN AND FOREST

WEEKLY

Handsomely Illustrated

SIXTH YEAR

GARDEN AND FOREST is the only periodical which treats comprehensively of Horticulture, Landscape Art and Forestry. Its contents are original throughout, and its illustrations of new plants, representative trees, and landscapes are unequalled.

GARDEN AND FOREST enters upon its sixth year with the first issue in January 1893, and will maintain the reputation it has established as the foremost journal of its class in literary quality, scientific accuracy, and practical value.

It is one of the most dignified and creditable publications of which we can boast.—*Chicago Evening Journal.*

The engravings afford a rich variety of remarkable or rare trees, flowers, shrubs and landscapes.—*N. Y. Evening Post.*

It easily leads all similar journals in this country, if not in all countries.—*Boston Transcript.*

It sustains the high character which it assumed from its commencement, and has no rival in its field.—*Springfield Republican.*

SUBSCRIPTION, \$3.00 A YEAR.

IN CLUB WITH MEEHAN'S MONTHLY \$5.00.

Send for specimen copy and net clubbing rates with other periodicals.

Address,

Garden and Forest Publishing Co.,

Tribune Building, New York.

GARDENING

THIS is a new semi-monthly magazine edited by William Falconer, a landscape, practical and scientific gardener of the widest experience and highest ability in his profession, assisted by a staff of specialists in the several branches of gardening. It is superbly illustrated from life and in the most artistic manner; it is the leader in whatever is new, true and desirable in horticulture, and it will tell you honestly about the value of new plants, what to plant and when to plant. And besides telling you all about hardy and window and greenhouse flowers, it will be your guide in the selecting, planting and growing of ornamental trees and shrubs, fruit trees, bushes and vines, and garden vegetables. It will show you how to build, heat, stock and care for greenhouses and hotbeds, and aim to instruct you in all things pertaining to the care of a country place, large or small. It will be what no other gardening paper has ever been.

Have you ever wanted such a paper? Are you still looking for it—one that will give you the absolute unbiased truth? We will mail you a sample copy free on request. Get it now. The price of the paper is \$1.00 a year, twenty-four (24) numbers.

THE GARDENING CO., Monon Building, Chicago.

A
K
E
B
I
A

American Gardening

-: A PRETTY GARDEN HOME FOR \$1.00. :-

A Great Dollar's Worth.

IS THE COUNT RIGHT ?

1. More than 800 beautifully printed pages of fresh, bright, readable, practical matter.
2. About 900 choice illustrations that illustrate.
3. The benefit of several large experiment gardens and orchards in widely separate localities.
4. The work of scholarly editors who are skillful horticulturists.
5. A magazine for every lover of nature ; the man or woman who owns a geranium, a flower bed, or a costly lawn ; every one who "sits under his own vine and fig tree ;" the suburban resident and country gentleman ; the commercial florist, the fruit grower, and the gardener.
6. Artistic plans by landscape architects for laying out readers' grounds, in every issue, such as cost hundreds of dollars in the usual way.
7. An inquiry department which answers all questions from readers.
8. All in all the most complete and profusely illustrated gardening journal in the world. Yet it costs only \$1 a year.

THE RURAL PUBLISHING COMPANY,
TIMES BUILDING, NEW YORK.

CONTENTS.

	PAGE		PAGE
Crysanthemums	32	Hardy Herbaceous Plants	30
Dahlia	32	" Ornamental Grasses	32
Deciduous Trees	4	" Rhododendrons	26, 30
" Shrubs	14	Hedge Plants	30
Evergreen Trees and Shrubs	23	Paeonies	30
Fruits	33	Perennial Phlox	30
Hardy Azaleas	29	Vines and Climbers	27
" Ferns	33	Weeping Trees	22

INDEX OF COMMON NAMES.

	PAGE		PAGE		PAGE
A ctinidia	27	Decumaria	28	Japan Maple	4
Adam's Needle	27	Deodar Cedar	24	" Persimmon	8
Ailanthus	5	Desmodium	16	" Quince	19
Akebia	27	Deutzia	16	" Snowball	21
Alder	5	Diervilla	16	" Yew	25
Althaea	17	Dogwood	7, 15	Jasmine	28
Ampel. psis.	27	Dolichos	28	Judas Tree	7
Andromeda	6, 11, 24	Dutchman's Pipe	27	Juniper	24
Arbor-Vitae	26	Dwarf Buttonwood	14	K entucky Coffee	9
Ash	8	" Horse Chestnut	18	Koeleuteria	9
Ash Maple	10	E lder	13	L aburnum	9
Azalea	14, 24	" Elm	13	L arch	9
B alsam Fir	25	Empress Tree	10	Laurel	25
Bearberry	25	English Walnut	9	Lawson's Cypress	24
Beech	8	Evergreen Enonymus	24	Leatherwood	16
Berberis	14	" Trees & Shrubs	23	Lilac	20
Berberia	27	Exochorda	16	Lily of Valley	20
Birch	6	F ir	25	Linden	31
Bird Cherry	7	" Flowering Almond	14	M agnolia	10, 25
Black Walnut	9	" " Apple	11	" Mahonia	25
Bladder Nut	13	" " Ash	9	Maiden Hair Tree	13
" Senna	15	" " Cherry	7	Maple	4
Blood-leaved Peach	6	" " Currant	19	Mimosa	5
Blueberry	21	" " Grape	29	Mist Shrub	19
Box Edging	31	" " " Peach	5	Mock Orange	18
Buckeye	11	" " " Plum	18	Moon Seed	29
Buckthorn	19	Fly Honey-suckle	18	Mountain Laurel	26
Bumelia	6	" Fothergilla	17	" Ash	11
Burning Bush	16	Franklin Tree	9	Mulberry	10
Bush Honey-suckle	18	Fruits	34	N ettle Tree	7
Butternut	9	F urze	27	" Nevisia	18
Buttonwood	11	G olden Bell	16	Nootka Sound Cypress	27
C allicarpa	14	Hardy Azaleas	29	Nordman's Fir	25
Carolina Jasmine	28	H ardy Azaleas	29	Norway Spruce	23
Catalpa	7	" Ferns	33	O aks	11
Ceanothus	14	" Herbaceous Plants	30	" Oleaster	16
Cedar of Lebanon	24	Hawthorn	15	Osage Orange	10
Cephalotaxus	24	Hazel	15	P achystima	25
Cercidiphyllum	7	Hedge	24	" Passion Flower	29
Chaste Shrub	21	Hedge Plants	30	Pawpaw	6
Chimonanthus	15	Hemlock	23	Pecan	6
Chinese Arbor Vitae	24	Hercules Club	6	Perennial Phlox	30
" Cypress	9	Hibiscus	17	Persian Yellow Rose	19
" Yam	28	Hickory	6	Persimmon	8
Chinquapin	7	High Bush Cranberry	21	Phellodendron	11
Christ Thorn	10	Holly	24	Pine	25
Cinquefoil	18	Honey Locust	9	Plane	11
Clematis	27	Honeysuckle	28	Planera	11
Climbing Enonymus	28	Hop Tree	11	Podocarpus	25
" Hydrangea	28	Hornbeam	6	Poplar	11
Corchorus	15	Horse Chestnut	5	Prickly Ash	14
Corylopsis	15	Hovenia	9	Privet	18
Cotoneaster	15	Huckleberry	17	Pterostyrax	19
Cryptomeria	24	Hydrangea	21	Purple Hazel	15
Cucumber Tree	10	" desia	9	Purple-leaved Plum	18
Cunninghamia	24	" Indigofera	18	R ed Berried Elder	19
Cut-leaved Bramble	19	Indigo Shrub	14	" Red Cedar	24
D ahlia	32	Intk Berry	14	" Flowering Dogwood	7
" Daphne	16, 24	Ironwood	10	Retinispora	26
Deciduous Cypress	13	Itea	18	Rhododendron	26, 30
" Holly	18	Ivy	28	Rhodotyptus	19
" Shrubs	14	J apan Cypress	26	Rose	19, 31
" Trees	4	" Ivy	27	" Acacia	13
				S assafras	9
				" Schizophragma	29
				Scotch Broom	17
				" Heath	24
				Sea Buckthorn	17
				Shellbark	6
				Siberian Pea	14
				Silk Vine	29
				Silver Fir	25
				" Thorn	16
				Smilax	29
				Snowball	21
				Snowberry	20
				Snowdrop Tree	17
				Snowy Mespilus	5
				Sophora	13
				Sour Gum	10
				Spice Bush	9
				Spiraea	19
				Spruce	23
				Staff Vine	27
				St. John's Wort	18
				Strawberry Bush	16
				Stuartia	13
				Styrax	20
				Sumach	19
				Sweet Briar	19
				" Chestnut	7
				" Fern	15
				" Gum	9
				" Pepper Bush	15
				" Scented Crab	11
				" Shrub	14
				T amarisk	21
				Tartarian Honeysuckle	16
				Tree Andromeda	8
				" Box	24
				" Peony	18
				Trumpet Flower	27
				Tulip Tree	10
				U mbrella Pine	26
				" Tree	10
				V iburnum	21
				" Virginia Creeper	27
				W ashington's Bower	29
				" Wax Myrtle	18
				Weeping Trees	22
				Weigela	21
				White Fringe	15
				Wild Grape	29
				" Plum	18
				Willow	13
				Wistaria	20
				Witch Hazel	17
				X anthoceras	22
				Y ellow Locust	13
				" Wood	7
				Yew	26
				Yucca	27
				Z elkova	14

