

Rotary
General Notes



C. W. Nelson

The common ash tree found
about towns on the table-land is
Fraxinus orlandina.

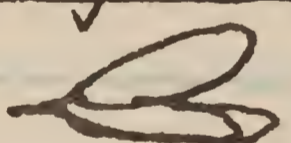
The Fan Palm growing at
5000 ft. on limestone ridges
near Yautepac Morlas is probably
a Brahea. Also near Tehuacan
Puebla & Las Sedas, Oax. at about
same altitude - & San Luis Potosi.

Viznaga mammillaris - the
large barrel-like cactus near
Tehuacan - used for making
"dulce" by boiling flesh in sugar.

The coarse "Saccator" grass
of which roots are dug for brushes
on Voluca, Pops. Sgt. & other mts.
is Cyrtocarpus stricta. Four -

The common Cypress of valley of
Mex. also near city Oaxaca Taxodium mucro-
natum

The fine bunch grass above ←
timber-line on mt. Orizaba is

Acacia riparia = pink flower balls ←
leaves  double ovate -

Calliandra Acacia-like
shrub with white or purple spikes of
flowers with long hairy filaments of
same color

Cupressus branthamii is the Cypress
found growing as a small tree
at base of Mt. Pop. from 9000-10000 ft.

Ceanothus azureus = Blue flowered
shrub in mts. Upper Sonoran -
Leaves slightly more below green above -

Asclepias glaucescens is the
common milkweed val. of Oaxaca
at Jalalag - Lower Sonoran


Acacia forbesiana. Has long
double spikes of round yellow flower balls
Pinnate leaves -

Juchisia Pink-flowered shrub
found near upper limit of oaks on
Mt. Zump.

Pentstemon. Has a spike
of long tubular purple flowers that
dry dead yellow. Found near top of Mt.
Zump. & on other high mts -

Selaginella = fern-like ground pine ←

The plant seen at 10000 ft. on Mt. Zempoaltepe with fern-like leaves & short, stump-like trunk is a Cycad. Another seen on Mt. above Dolores near St. Teresa, Tepic.

Cornus . Shrub with flowers or seeds in an umbel - seeds green & shaped  one found on Zempoaltepe = Dogwood

Lycopodium = round stemmed ground-pine -

#672 Quercus . Small leaved oak of forest high up on Mt. Zemp.

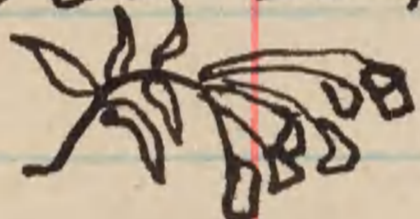
Chamaedorea . The little palm saved at Choapan.


Solanum . Shrubs or herbs with flowers like a potato & seeds in little balls like potato balls -

Lantana . The herb with flowers on end of branch in bunches one taken at Yalalag had outer ring of flowers red & middle ones yellow.

Bouvardia Bright
Scarlet-flowered herb with flowers
in bunches on top of plant.
Common.

Amaranthus spinosus = pigweed

Bomarea acutifolia. The tall
herb with head of many hanging
bell-like flowers of various color


Alchemilla The small
massy looking plant - runs like
a strawberry & has leaves  much
indented.

Arbutus = the Madroños
Has the fruit as a berry with many
fine seeds.

Arctostaphylos is like Arbutus
but has one or more hard-nut-like seeds
of a large size in the berry.
= manzanitas

Anoda

= Annona Inn

Bletia . Tall-tulip-
like orchids such as along
roadside near Comaltepec

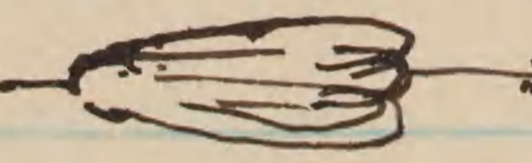
Isochilus An orchid.
Es the grass like plant with
pink or red flowers growing
on trees -

Psidium - Guava -

Passiflora Vine with
moss-like flowers -

Achimenes . The fine
purple flower so abundant
on banks along road near
Comaltepec -

~~It is~~ Antigonon = the fine
pink flowered vine found
growing over coffee trees in
Comaltepec -

Malva viscus = the handsome
tubular red-flowered bush
growing near Comaltepec &
elsewhere in hot country
flowers = 

Ipomoea nelsoni, Rose. Small
yellow morning glory - Orizaba
ninder = "Ojo de Venus"

Enterolobium cyclocarpum,
Grisb. Ear pad Fern "necasta"
sea level to 1000 ft

Inga jinicuil, Schlecht. Hiniquili
Fr (349)

Inga leptoloba, Schlecht. Hiniquili

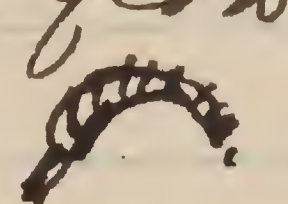
Ex Castalia anjala, Solms. Pond
Lily from Lake Catemaco

~~Arund.~~ Parthenium hysterophorus L.
Plant around Sartoria by Sartorius.

Tradescantia = ordinary Spider-
worts.

Commelina = Spiderworts with
a sheath or capsule for the flowers.

Sambucus mexicana. = The
Common mountain Elder.

Phacelia circinata. The bushy
headed flower taken at Nueva
Grande  Found from Colorado
to San Felipe in Oax.

Buddleia Humboldtiana.
Tree 10-30 ft. on San Felipe. Has
large leaves whitish below & a large
head of small yellowish flowers
at ends of branches. Common -

Jatropha = the bush known
as the "mala mujer". It is
an Euphorbiaceous plant.

Jatropha: = Euphorbiaceous plants
Pliable stem shrubs on plains of San L.
Potosi, Jalisco, &c.

Cnicus = The large thistles
of the mountains.

Parthenium^{um} hystrophorum = plant
called Santonica by Santonus.

The "Cecropia" tree is a species
of Piper?

Asclepias = milkweed.

Prunus = Cherry.

Crataegus Thorn Apple.

Fragaria = Strawberry.

Ribes = Gooseberry.

Dahlia = large purple or red
flowers ^{of tuberos} ~~of tuberos~~ roots.

Eryngium = The thistle-like un-
folliferous.

Senecio = the Goldenrods

Liquidambar styraciflua. Sweet
Gum.

Erigeron = Daisy -

Axalis = Sheep sorrel -

Coccoloba = the Gourd tree
taken at Tlacotalpan.

Tabernaemontana nelsoni, Rose-
Shrub 12-18 ft dry hillsides
near Tuxtla = double fruited
milk-juiced plant.

Nymphaea ampla. Water lily of
Lake Catemaco

Erythrina. The red bean trees.

Platanus sycamore.

Taraxacum - Dandelion

Spina discolor - Small leaved
shrub 6-10ft. with straggling heads of
small white flowers 9000-10000 ft. on
San Felipe -

Spondias lutea - "Cisnelá"
The yellow plum-like fruit
of hot country.

Stevia a genus of
Composite plants with fine slender
flower heads. 4 spines on the seed -

Dictyanthus Fish-net
flowers (vine).

Salvia = The Sages - all
have 2 stamens.

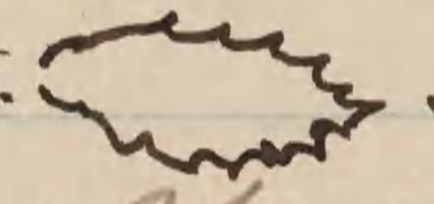
Delphinium = Larkspur.

Dalea = a genus of small flowered
blue, purple & red leguminous flowers.

Acacia cochliacantha.
Inflated thorn acacia —

Festuca livida ? Highest grass
on Mt. Orizaba

Hectia Agave-like
plant abundant on road to Cuicatlan.

Agave megalacantha ? The Agave
from val. of Oax. to Cuicatlan with short
stout leaves thus  - How Rose
look up my spec's of this.

Bursera is the genus to which
the Copal trees belong (including
palo mulato)

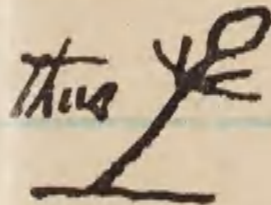
Hymenocallis is the genus of
lily-like white flowers with long
filaments which grow in damp
places.

Tabebuia ^{donaldsmithii, Rose.} = white Mahogany
or Primavera tree.

Jatropha montana = The milky
juiced plants with double fruit



Randia = The thorny shrubs
with white flowers ~~the~~ gourd
like fruit on end of spiny branches



Cuphea = shrubs & herbs
with a tubular flower having
two ^{large} wing-like petals developed
on one side & usually brilliantly
colored.

Bombax = a scrubby, short-
trunked tree with ~~leaves~~ **leaves**
divided into fingers on ends
of twigs - thus:

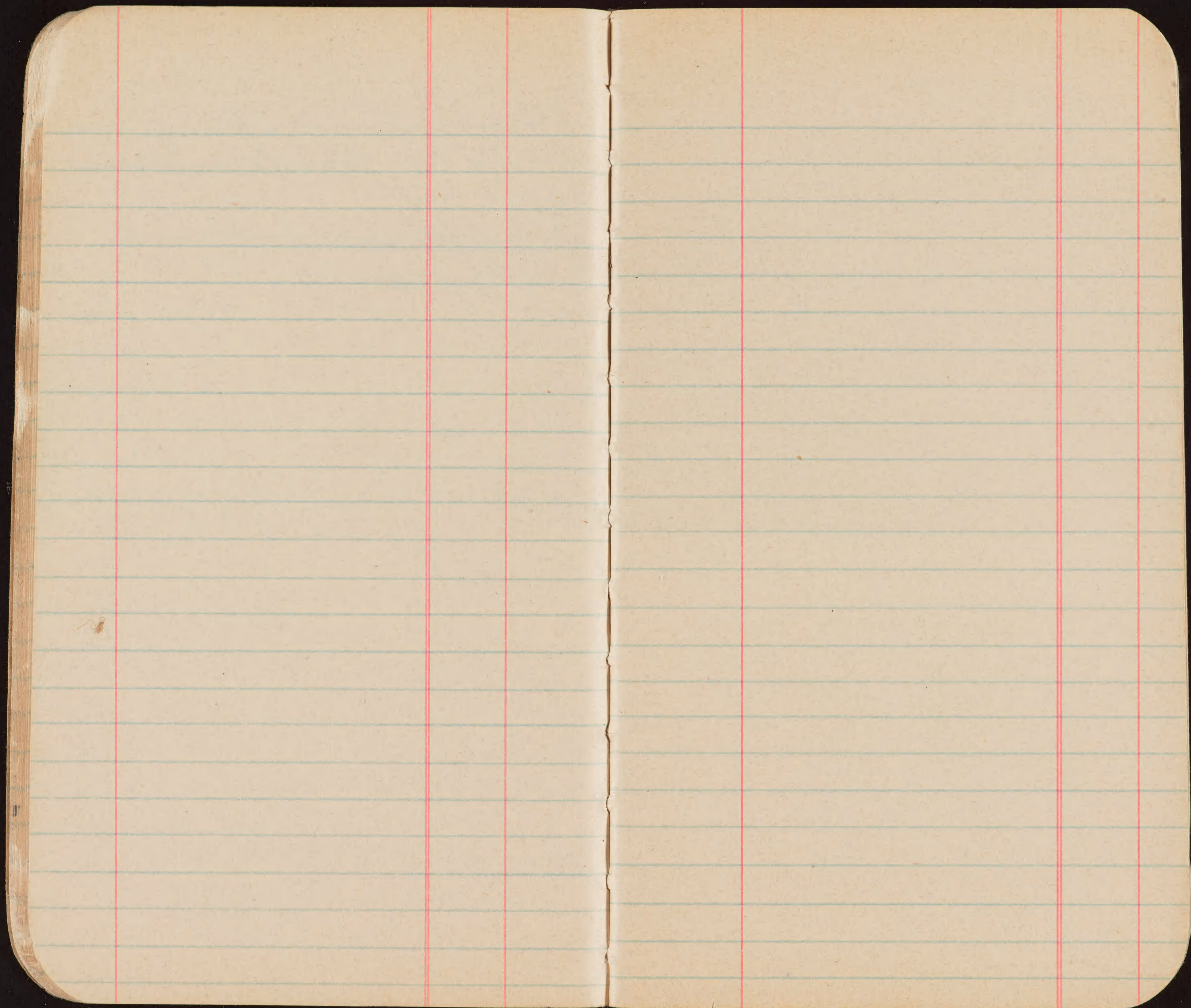
Ceiba = thorny branched tree
with cotton pods.

Begonias = irregularly leaved
& flowered plants in wet places.

Tillandsias = tree parasites with
fleshy, non-sprined leaves.

Bromelia = Spring-leaved
Agave-like plants on trees.

Pithecolobium dulce, = The
edible bean tree.



Village of Coloma

Marsichus

Aquila

close to Valenzuela

Mine - on road to

Blomosas -

35 or 40 miles out from

Rosario -

Go to Palmita on

first day about 20

miles -

Sept 10 sent checks

SN # 49674 Aug 31 by Evans on Oct 7. NY 15160

9. 49543 Aug 18 " " "100

49673 Aug 31 " " "100

Sept 10 sent checks

EWN #	49674	aug 31	by Evans on	Oct 7, 1915	1.60
E.A.G.	49543	aug 18	" "	"	1.00
"	49673	aug 31	" "	"	1.00

Village of Coloma

Mascullus

Aquilar

close to Valenzuela

mine - on road to

Blomosas -

35 or 40 miles out of

Rosario -

Go to Palmita on

first day about 25

miles -

60:1