





51



52

53







222



226



301



301



302



306



308



303





413



408



415



414



414



411



414



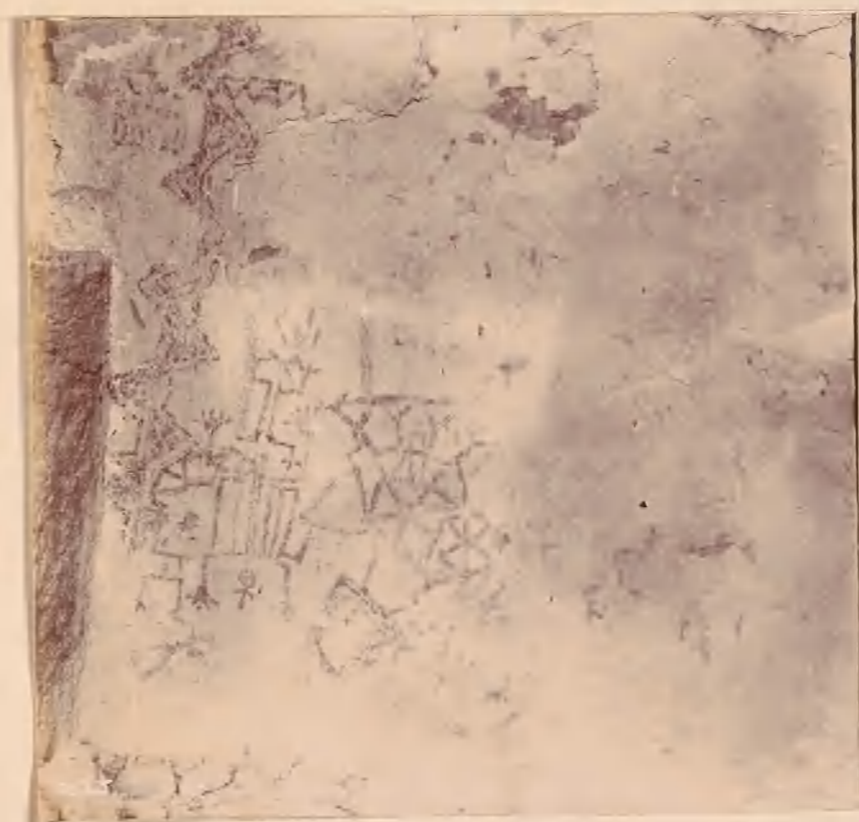
422



425





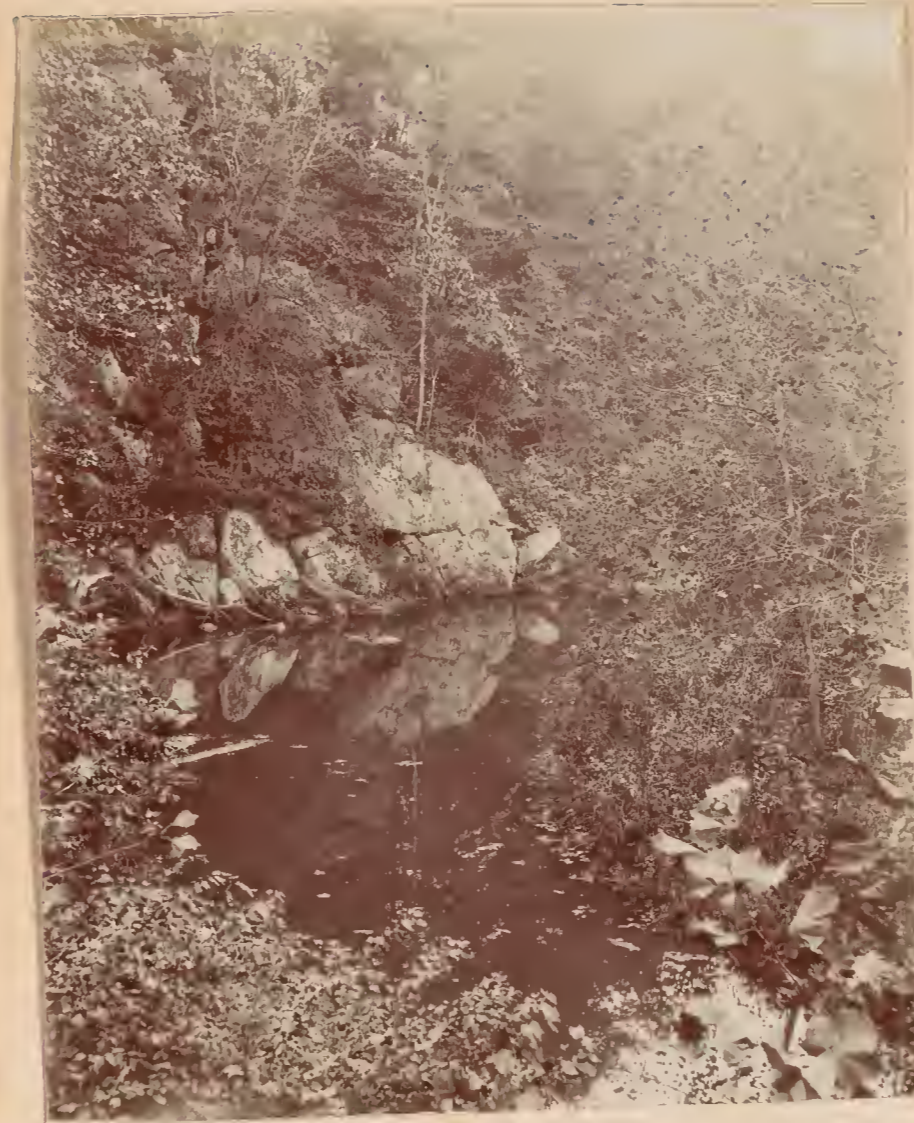
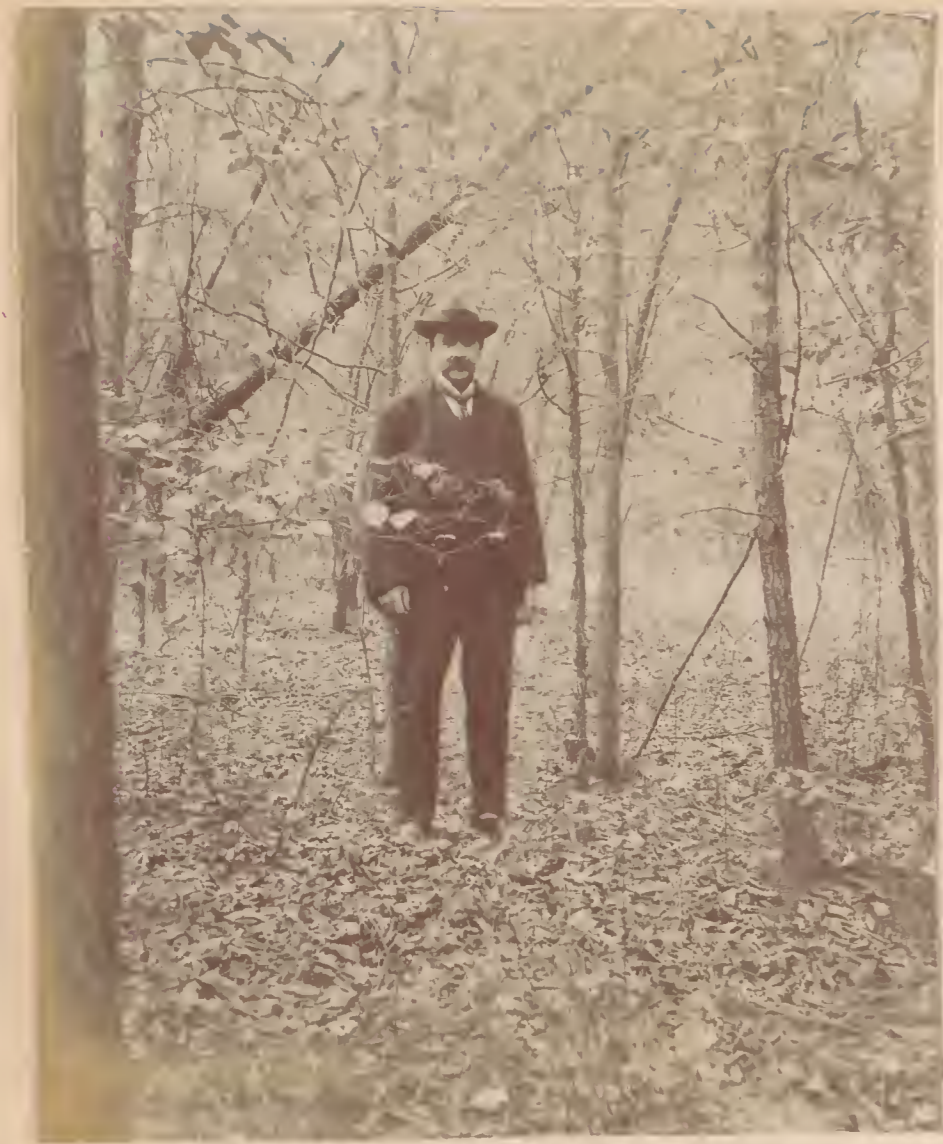












E. A. Goldman





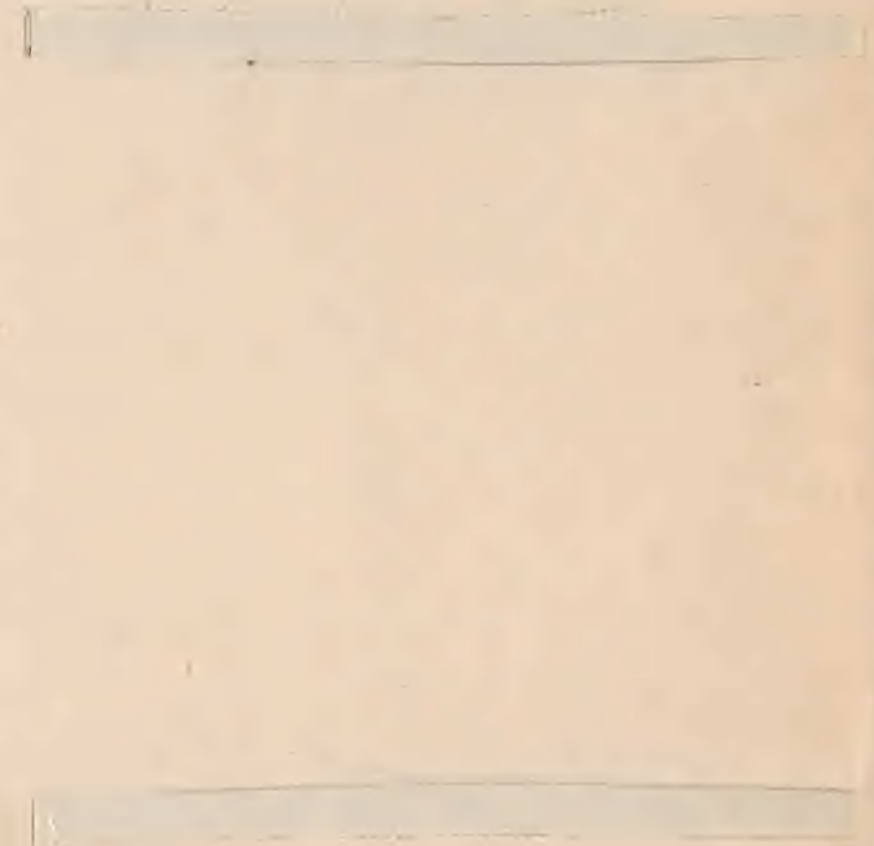


Abies venusta

Pine Valley Sta. Sierra Mts. Calif.









57

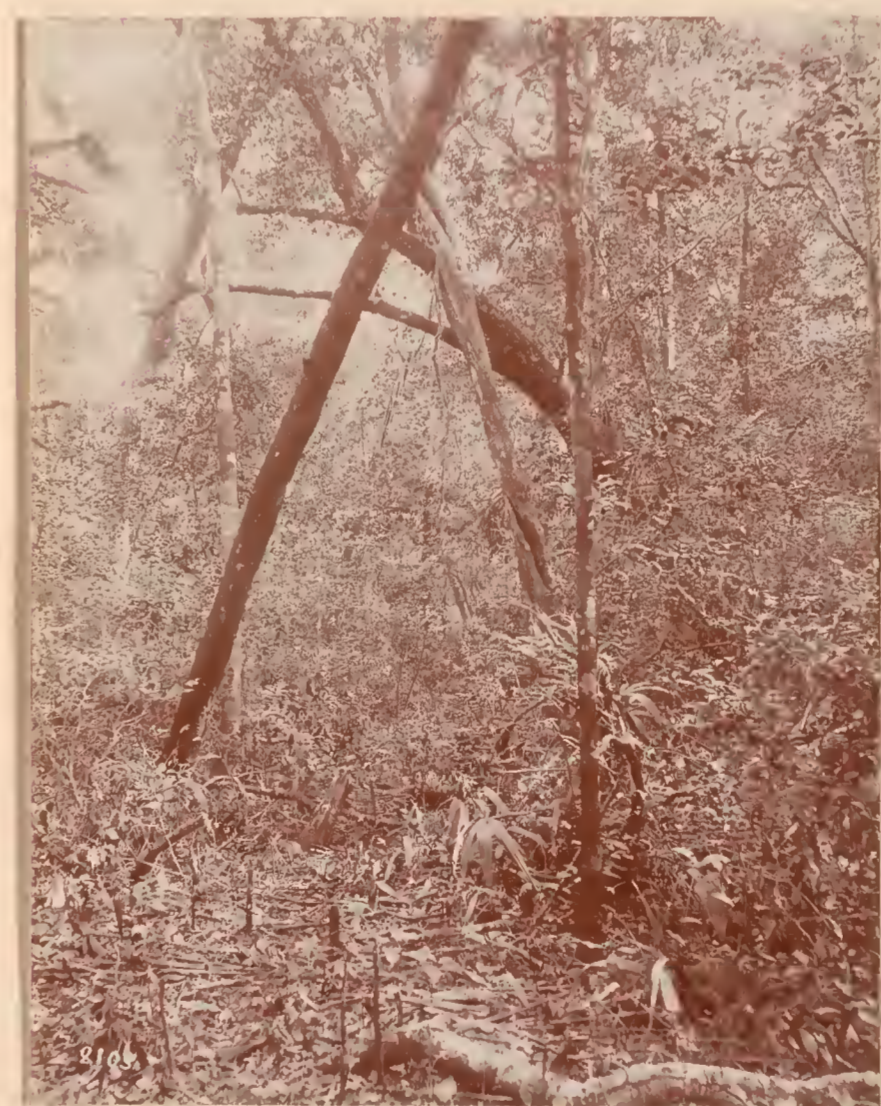






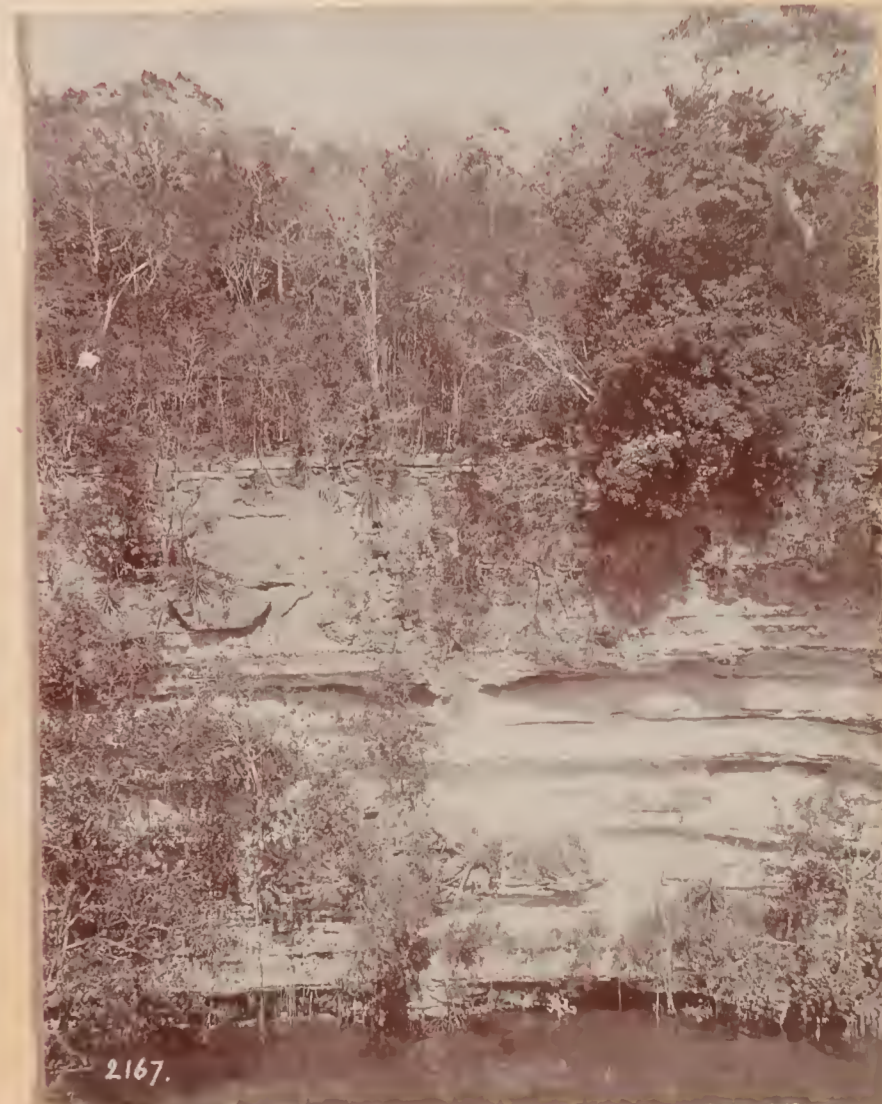
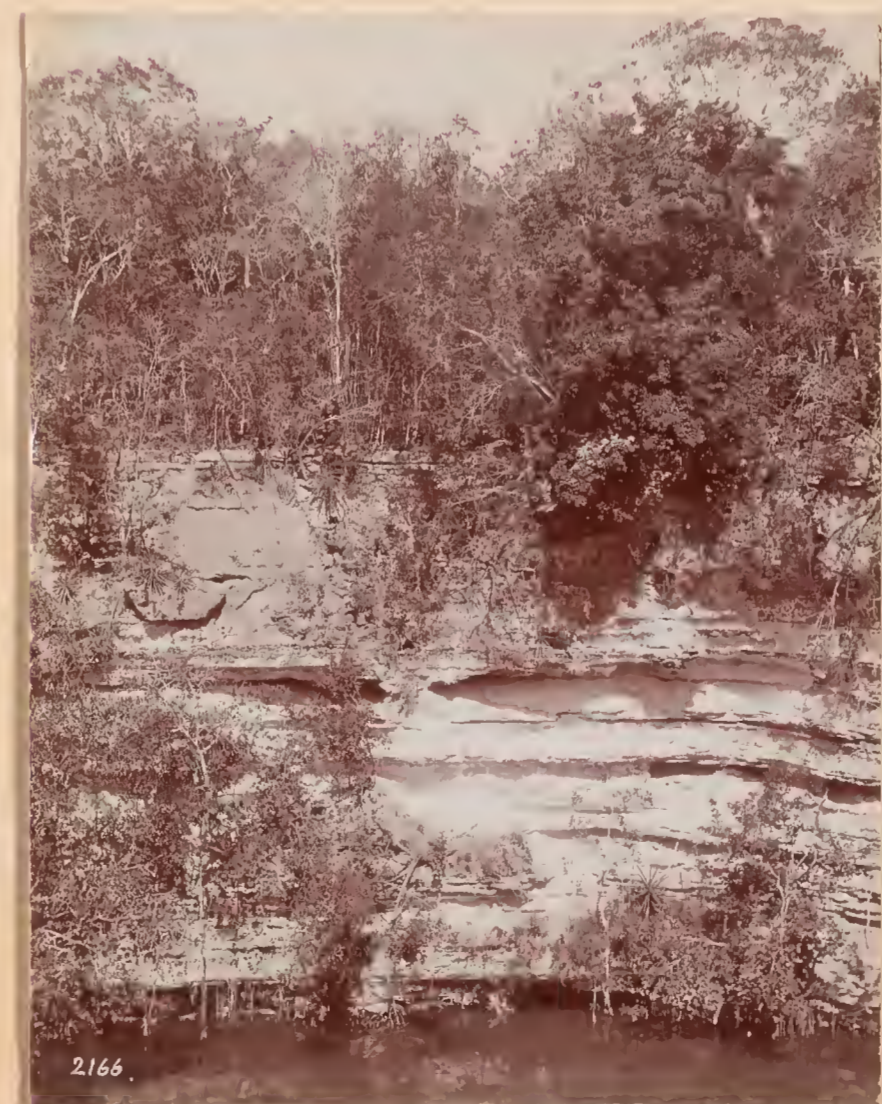




















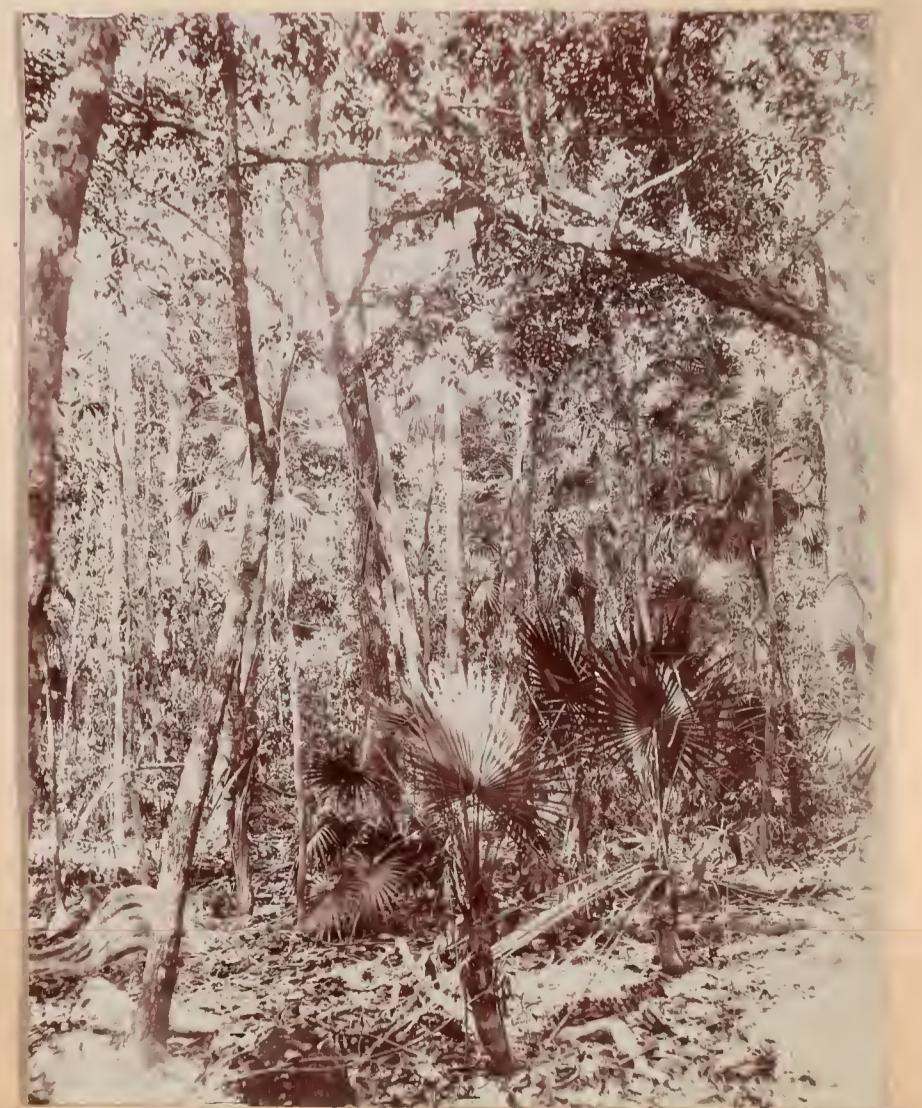
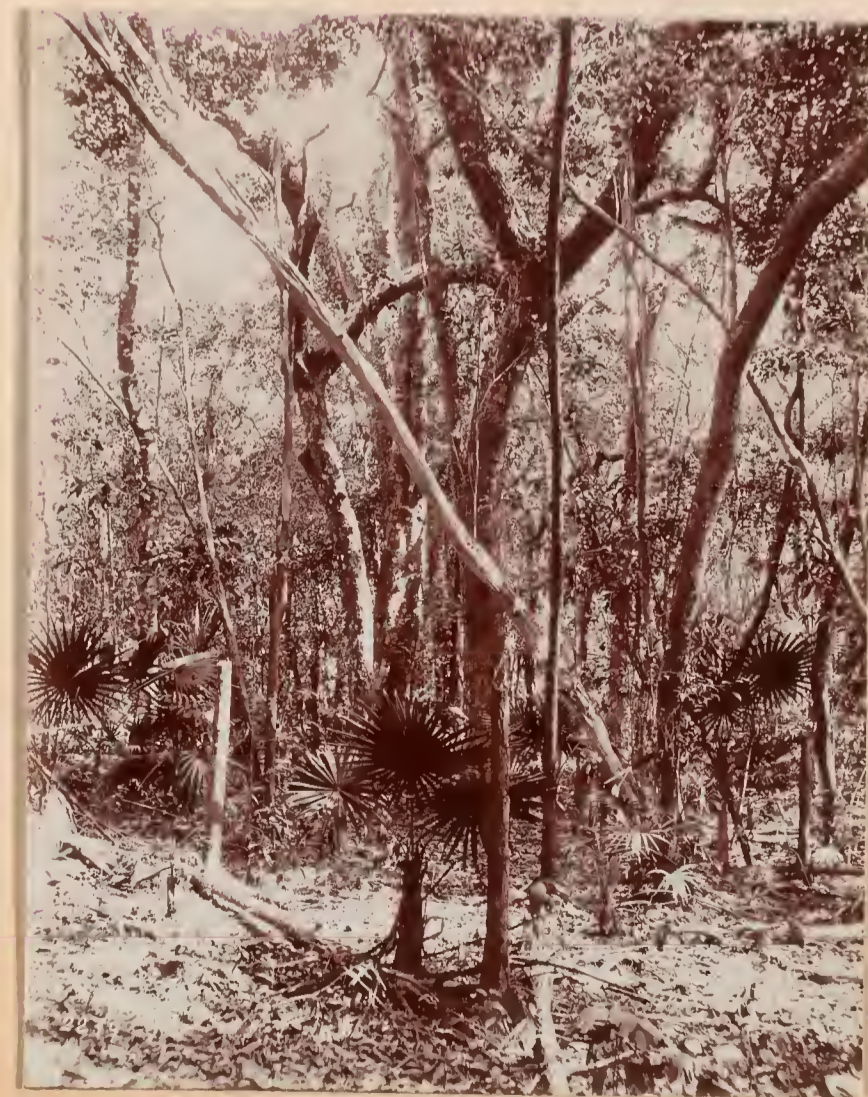
2220



2227

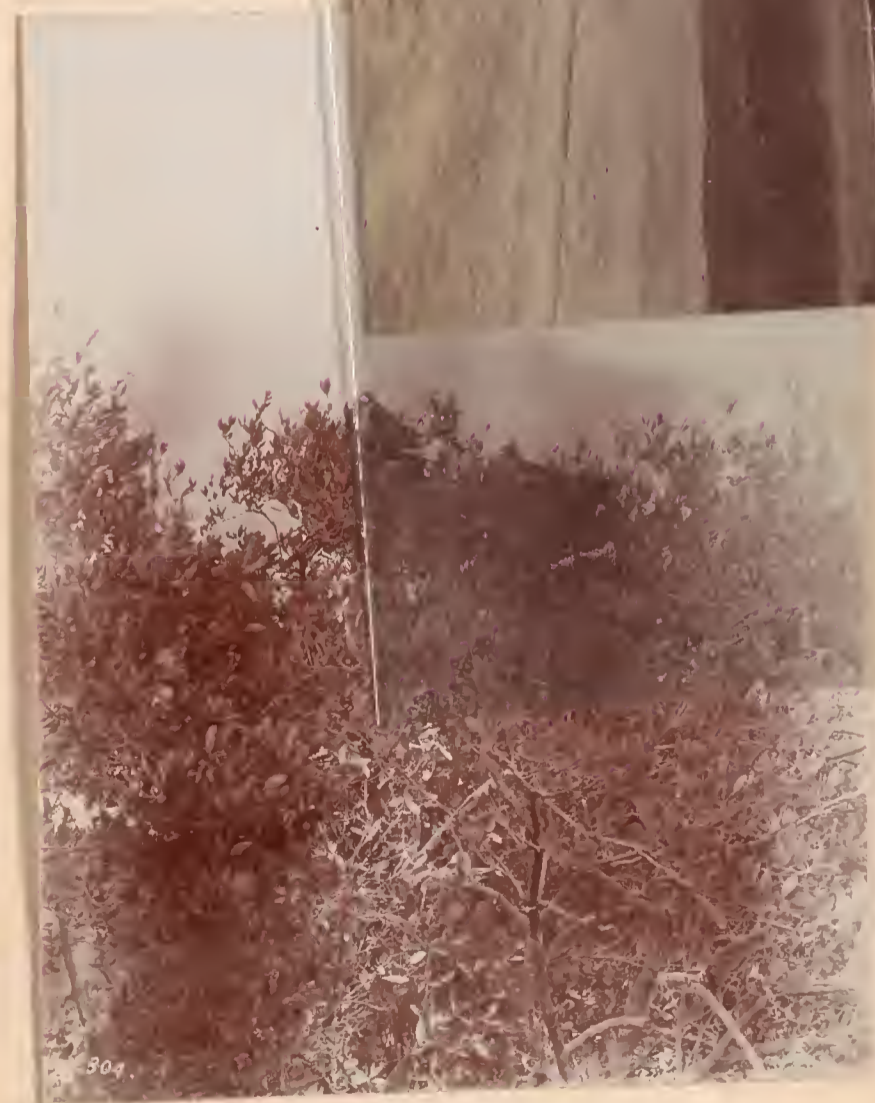


2228











2071

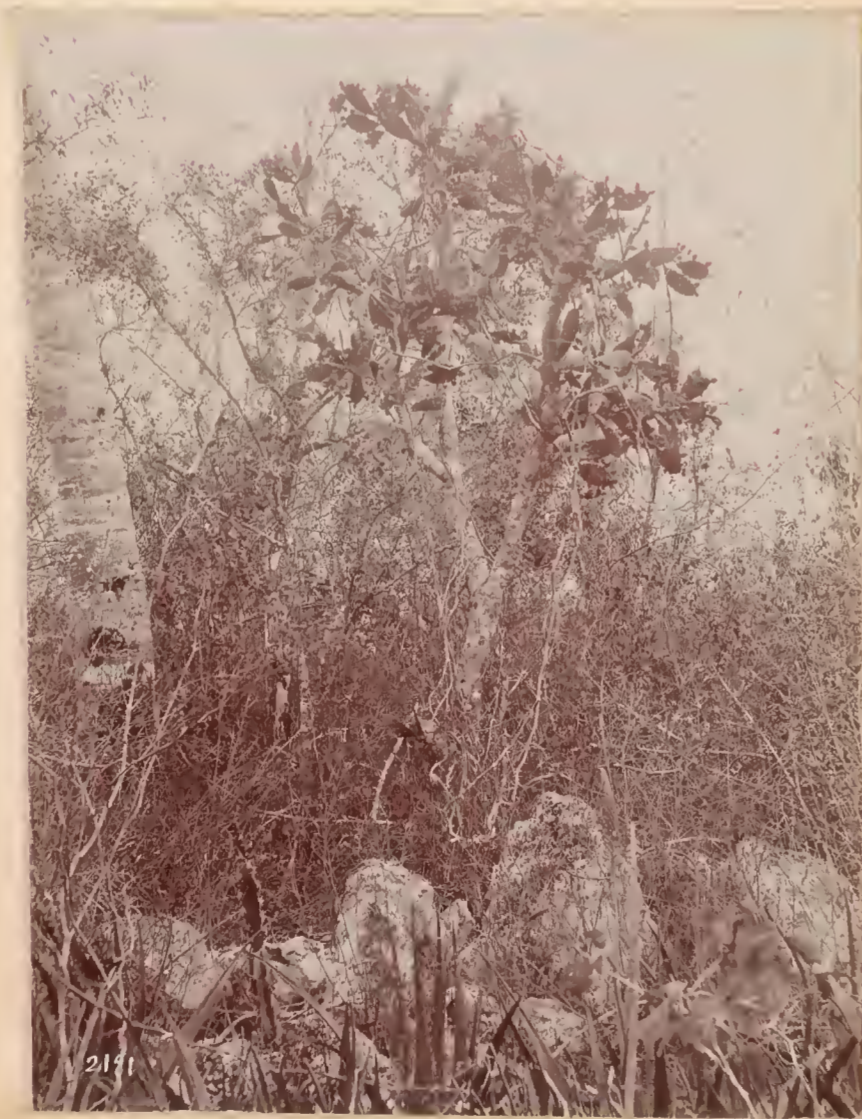




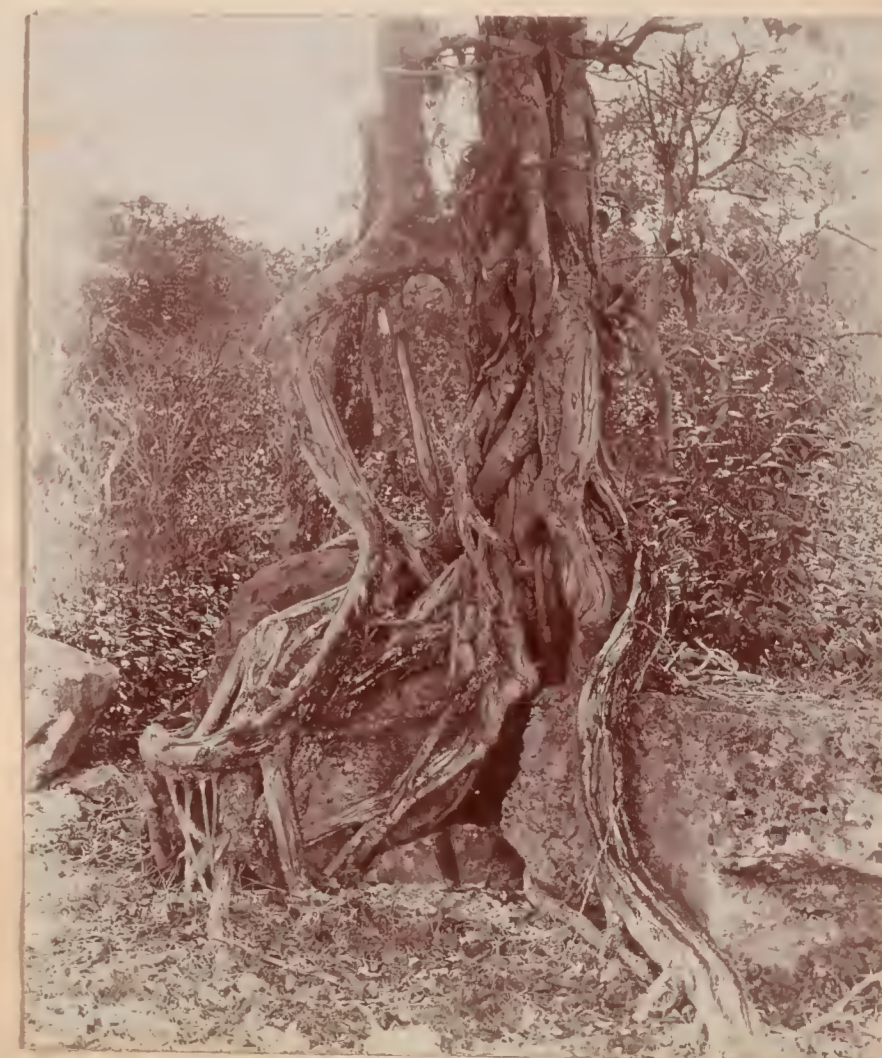




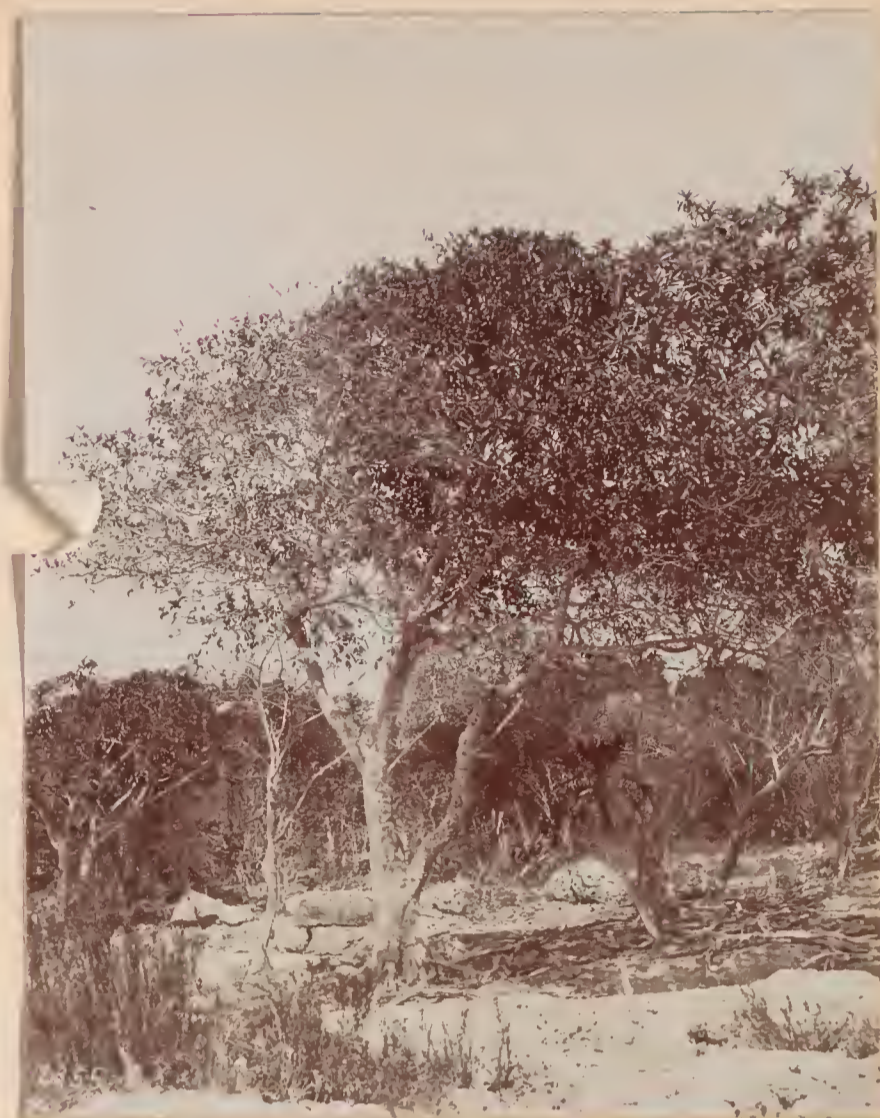




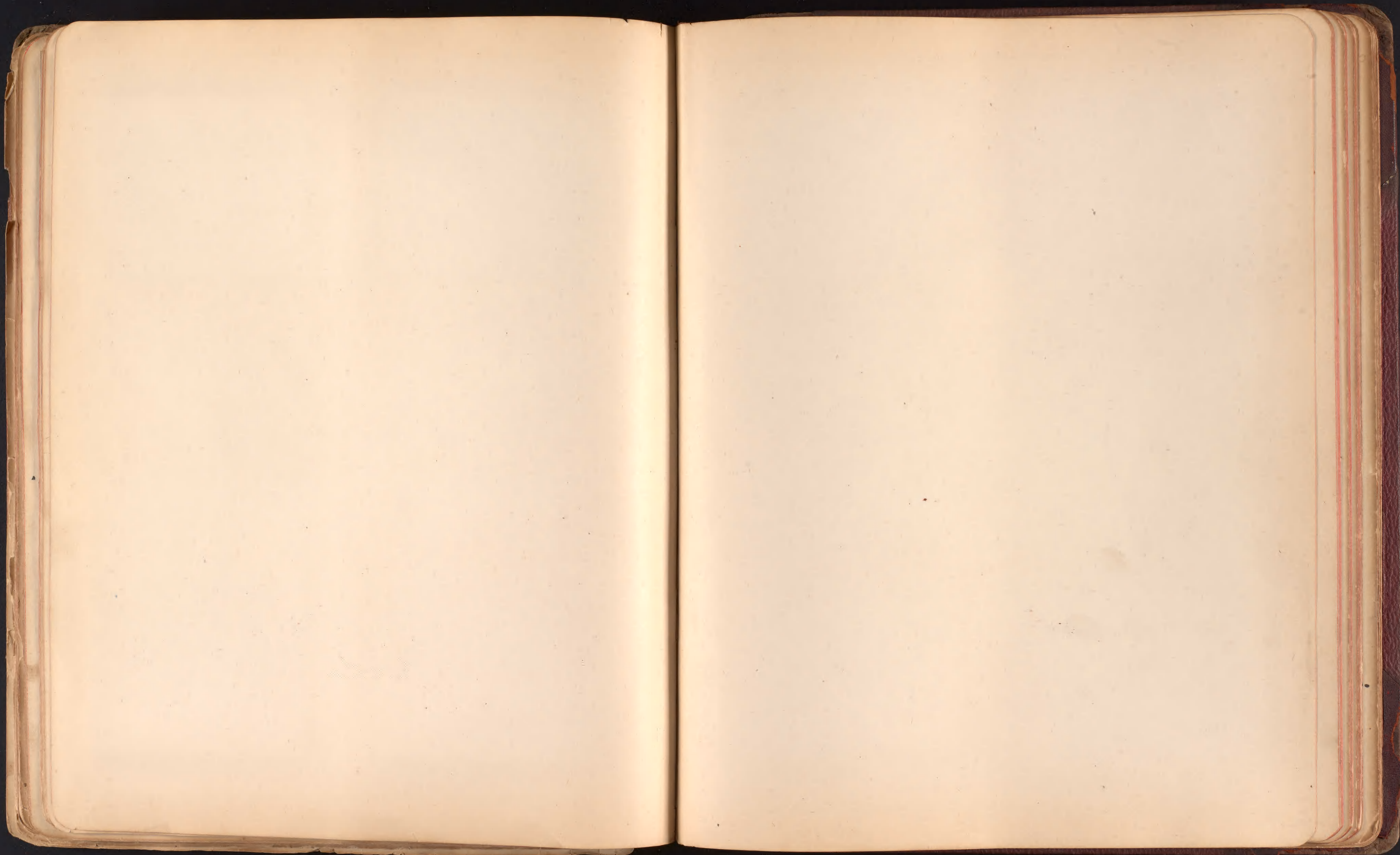


















277



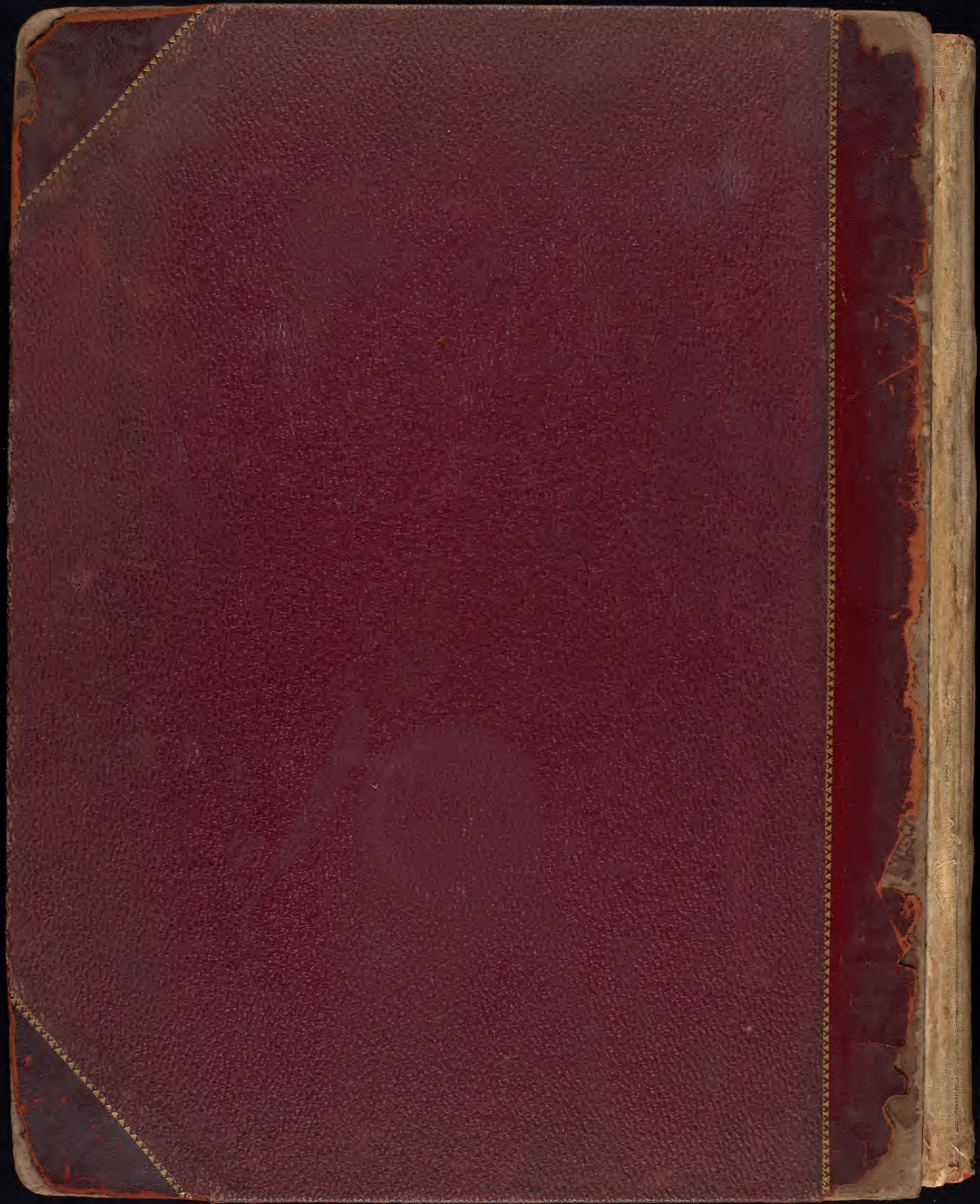




















28-7



1-10-20



10-2



141



21-7



n
n-a



611

LAS BARRANCAS

SCOTT

Parramon Iboma near
Guadalupe

E. H. Nelson

1-2



C. H. Nelson

Turnback



On Tampico branch
Mex. Cent. in San L. Potosi

E. W. Nelson

—
—
H



F 5-25-



44-7

~~44-7~~



11-11-11



529



3









72-7913