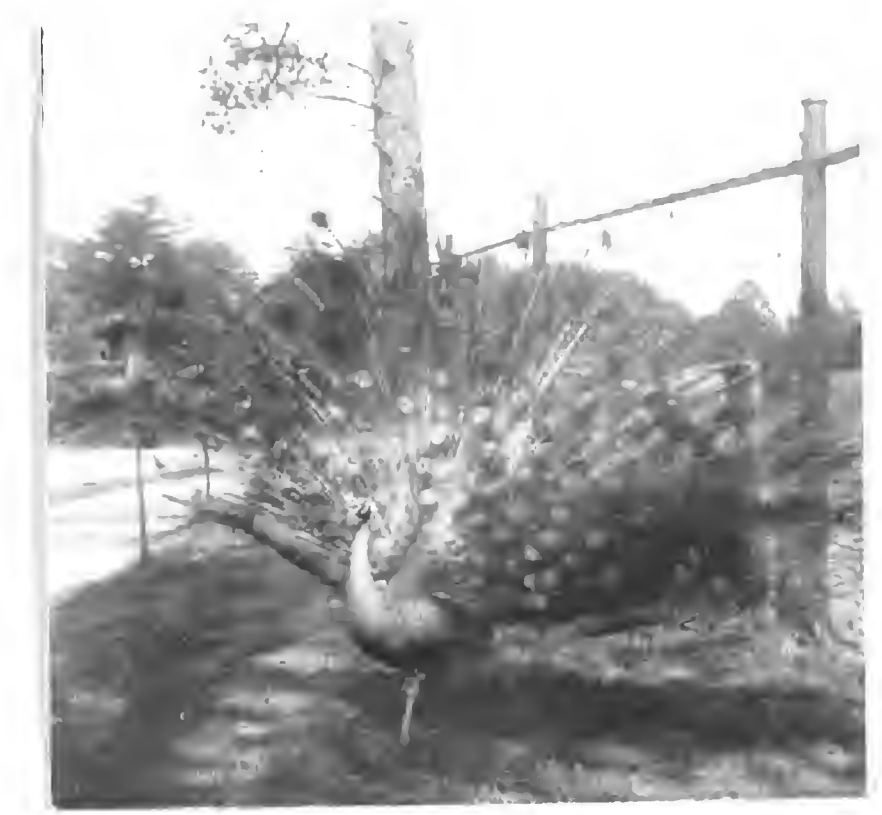


E. Goldman







Abies venusta

Pine Valley. Sta. Sierra Mts. Calif.





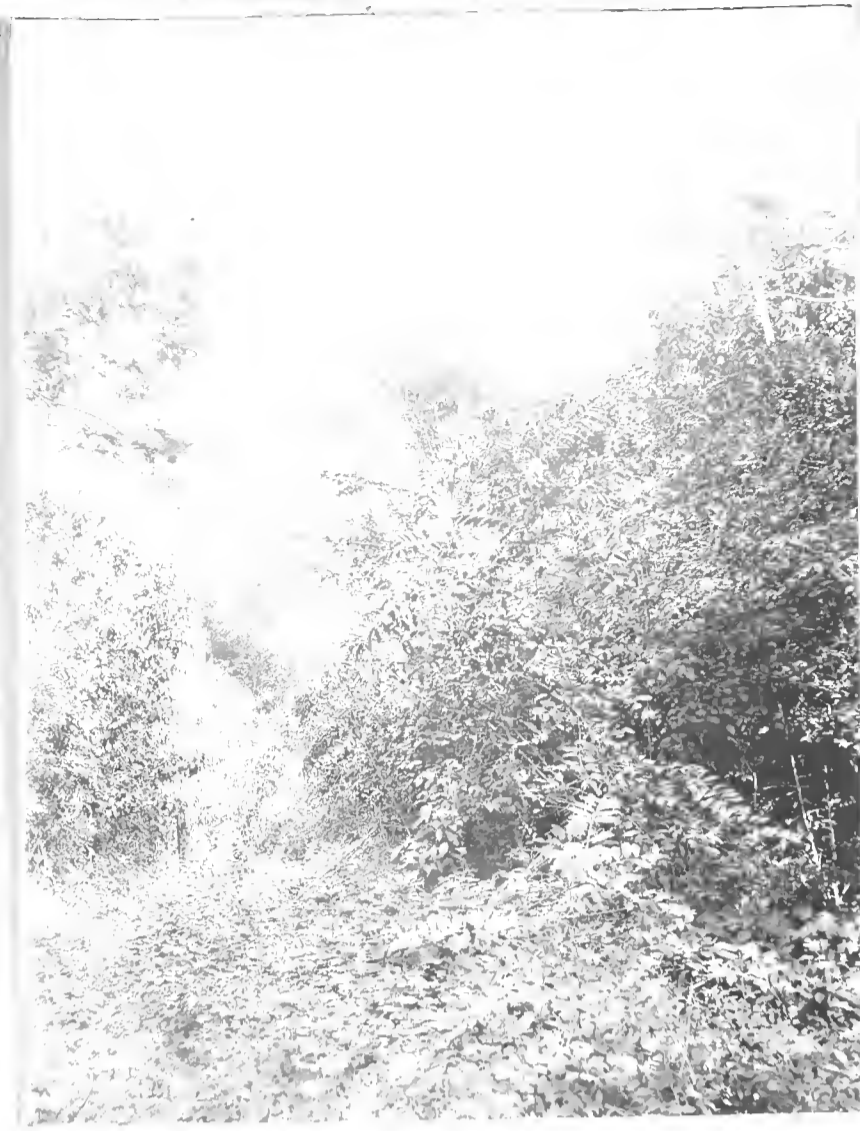
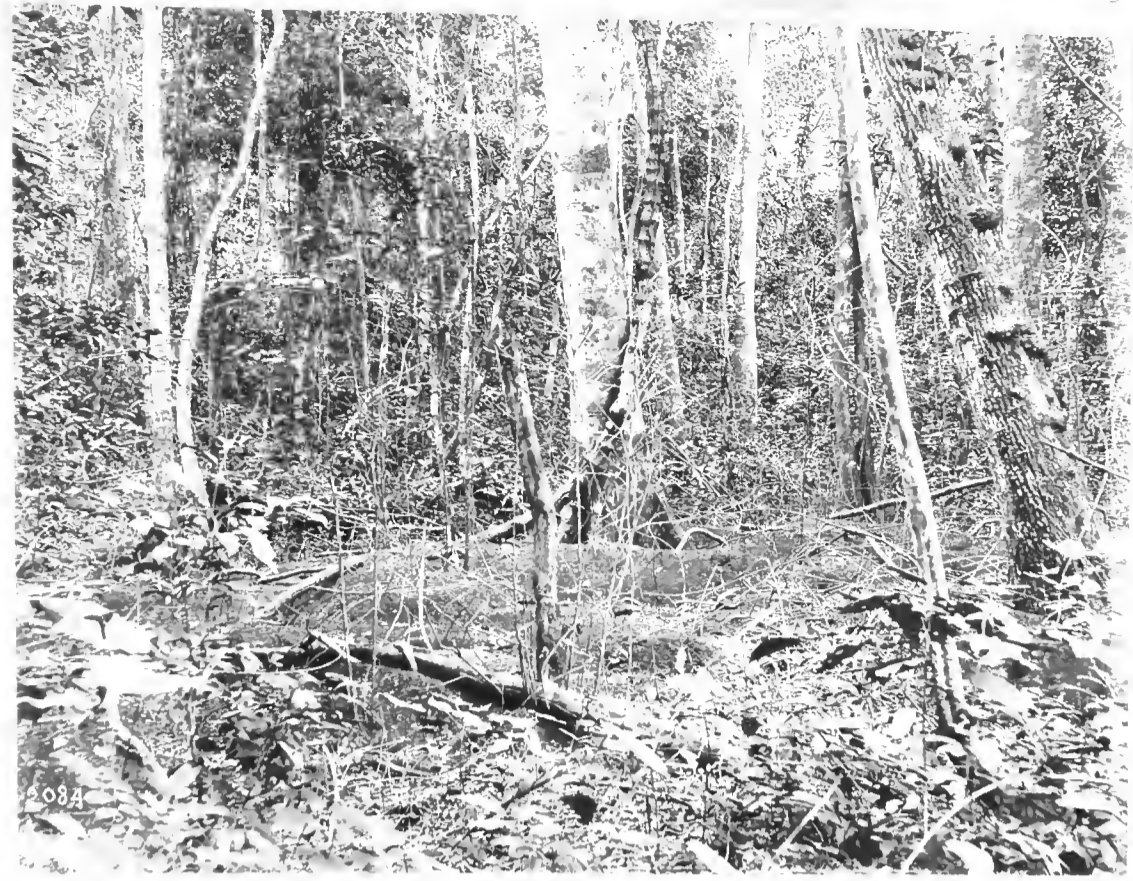


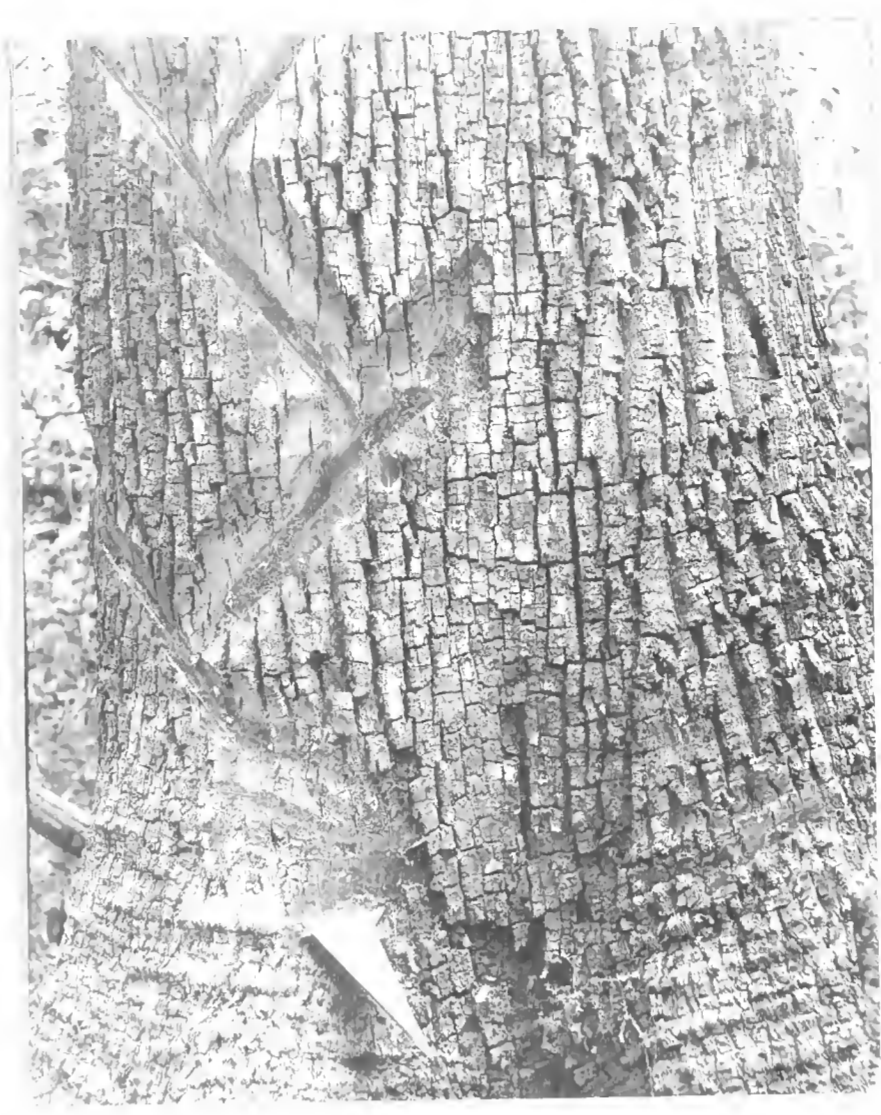
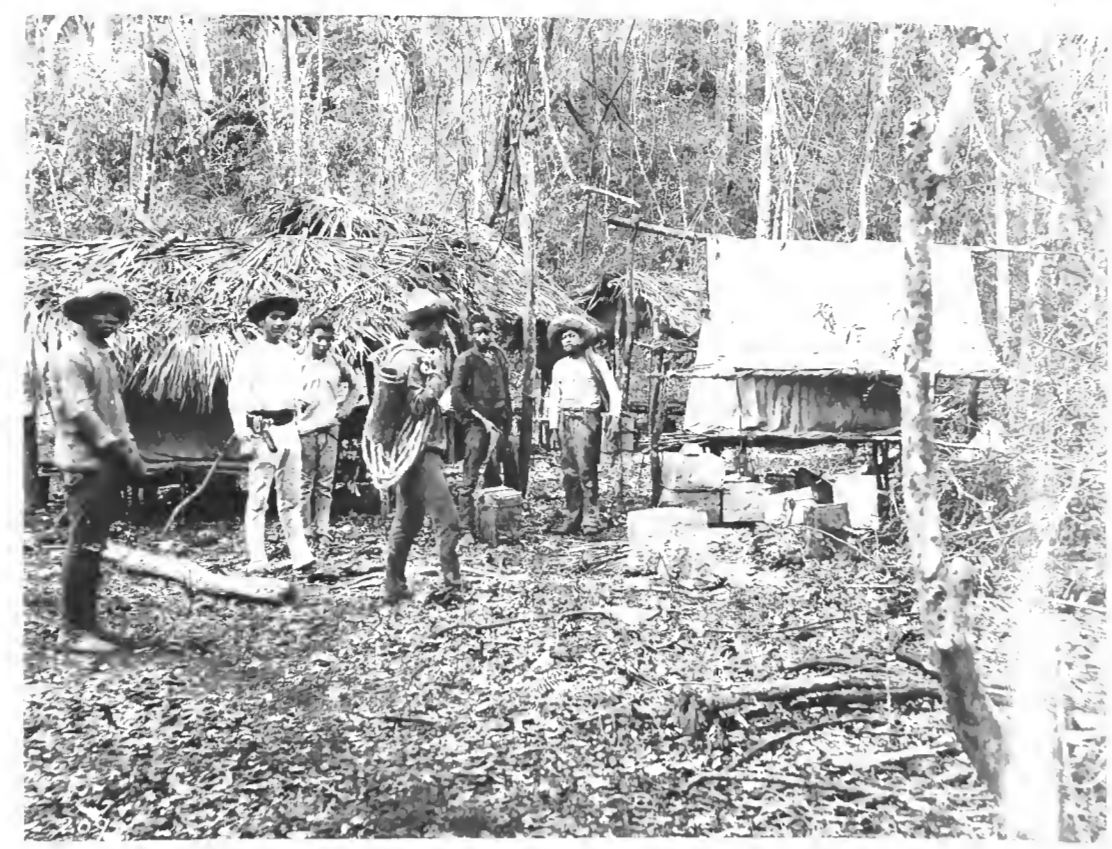






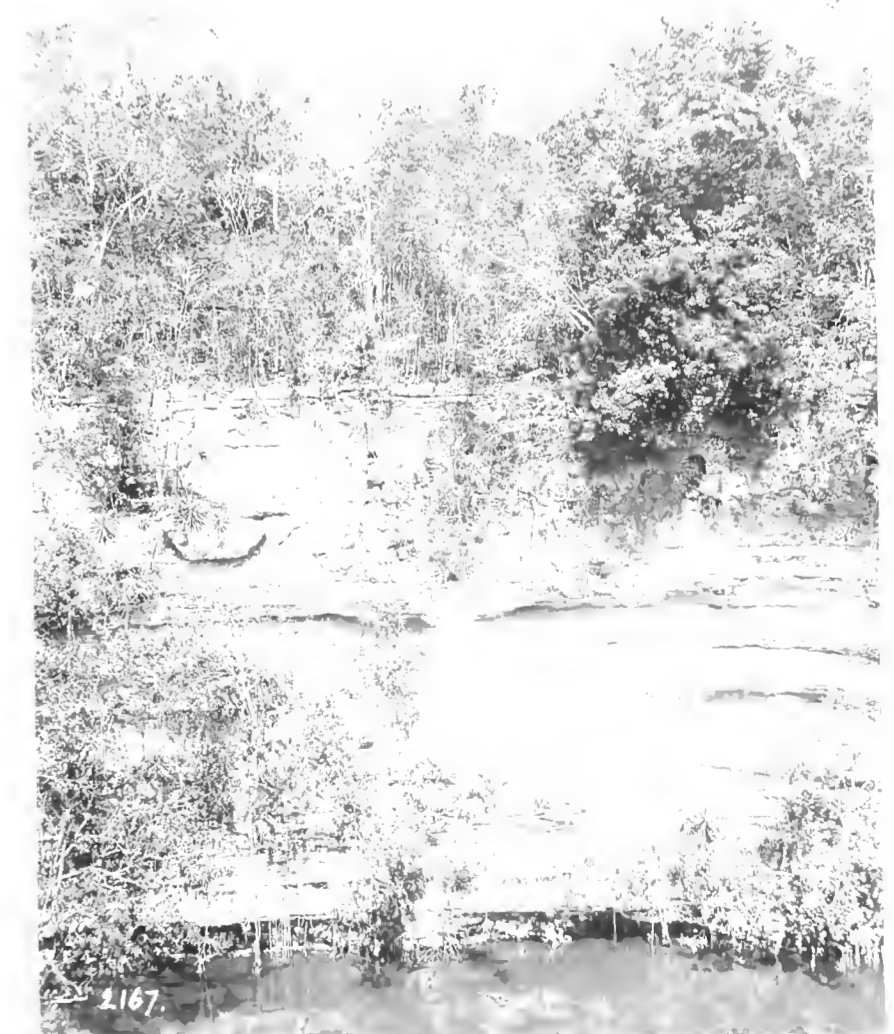
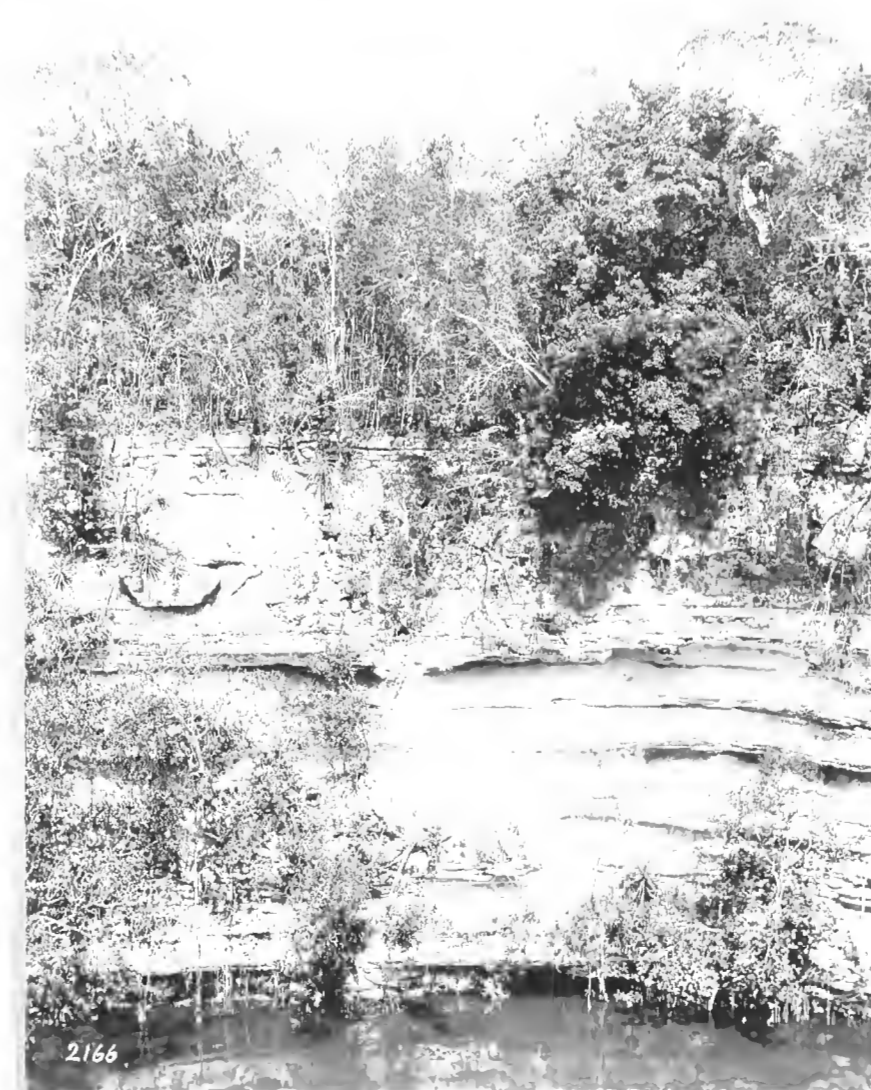
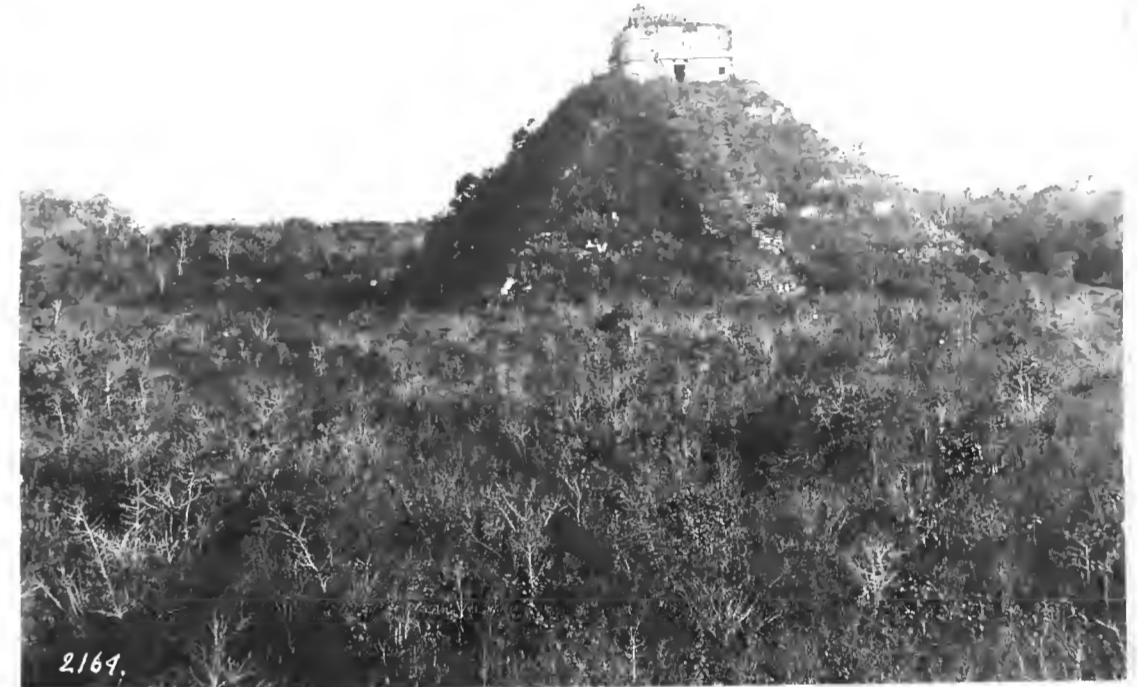


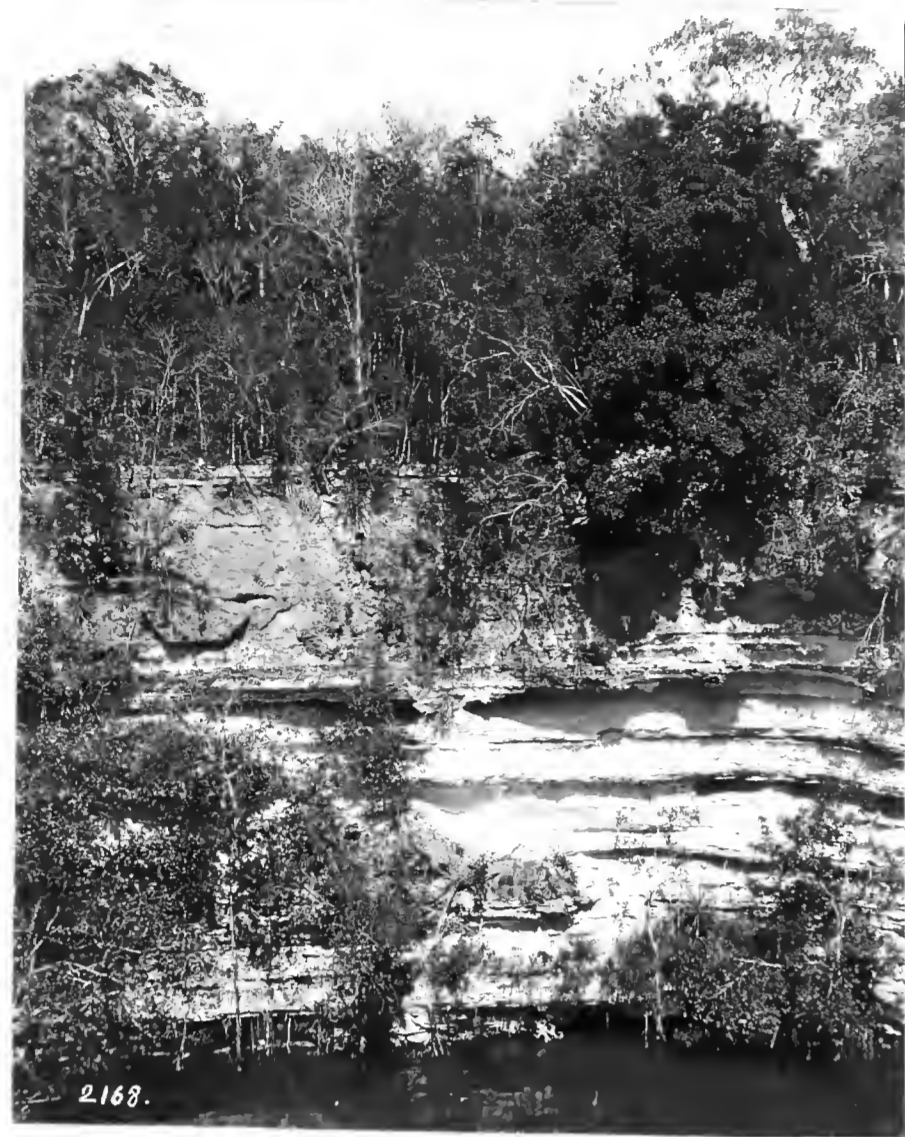




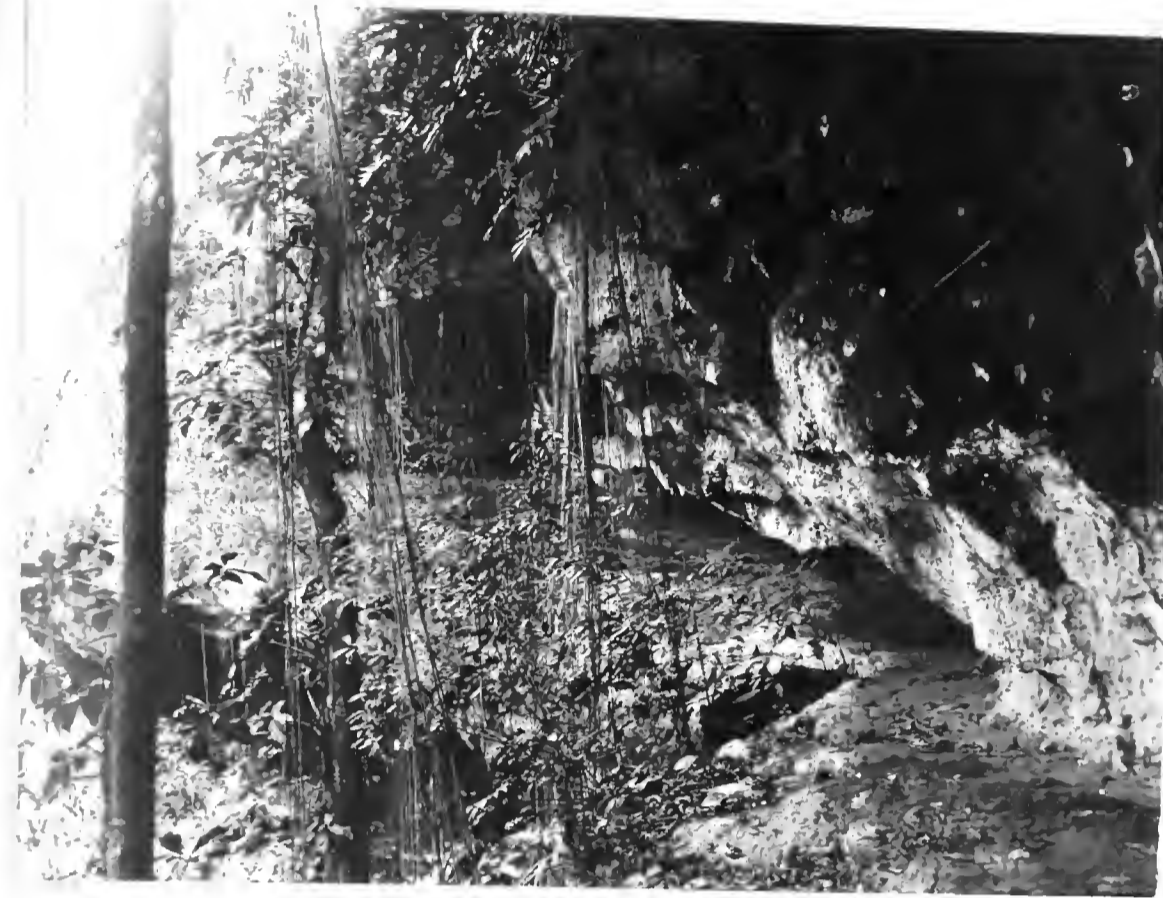










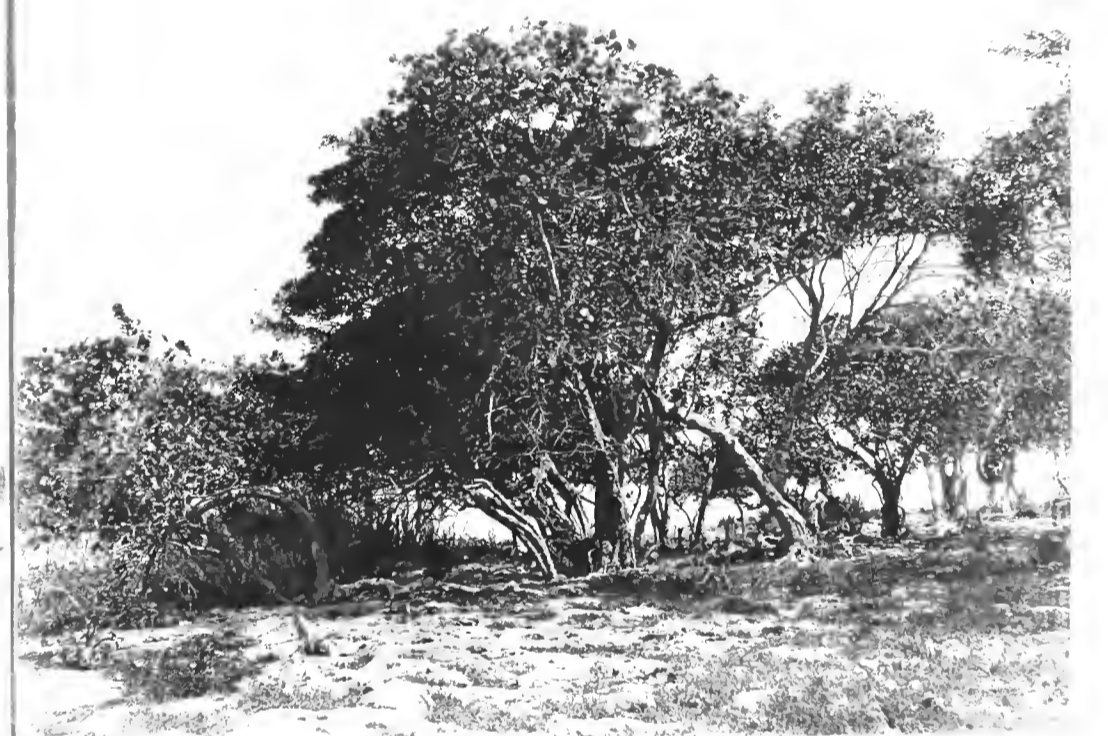
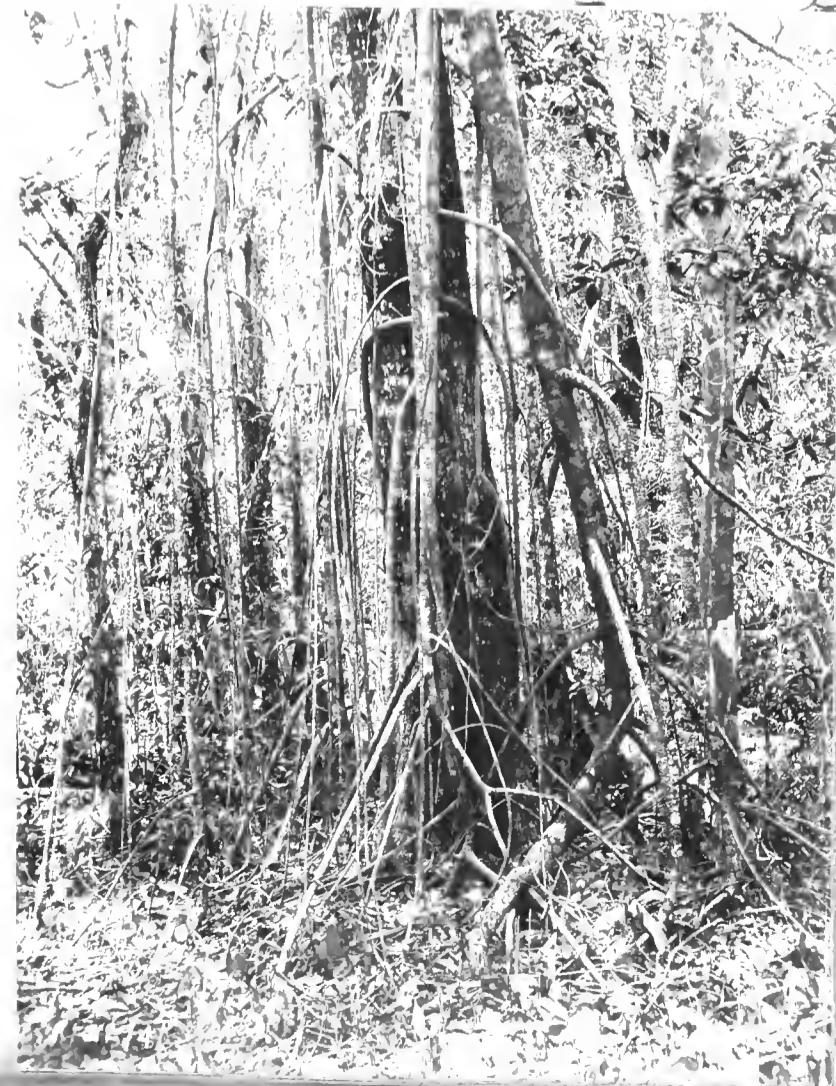




2210





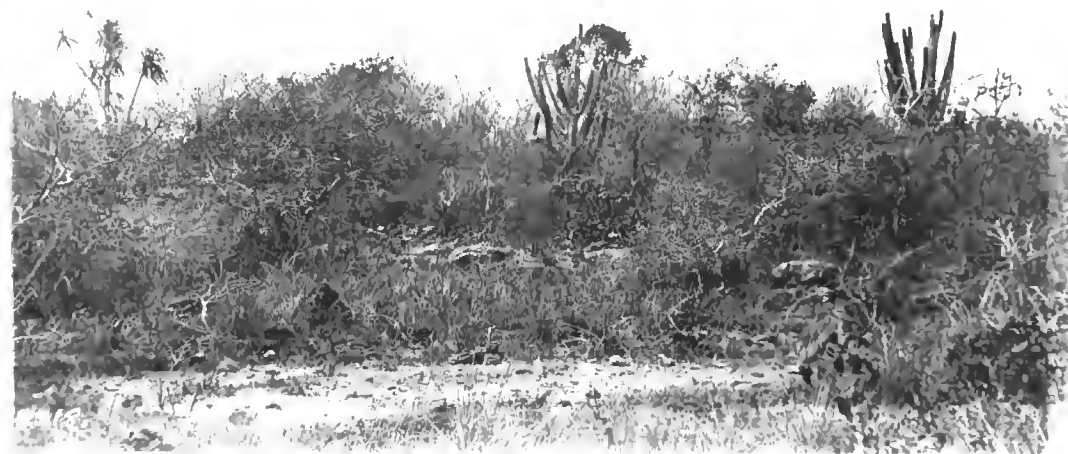


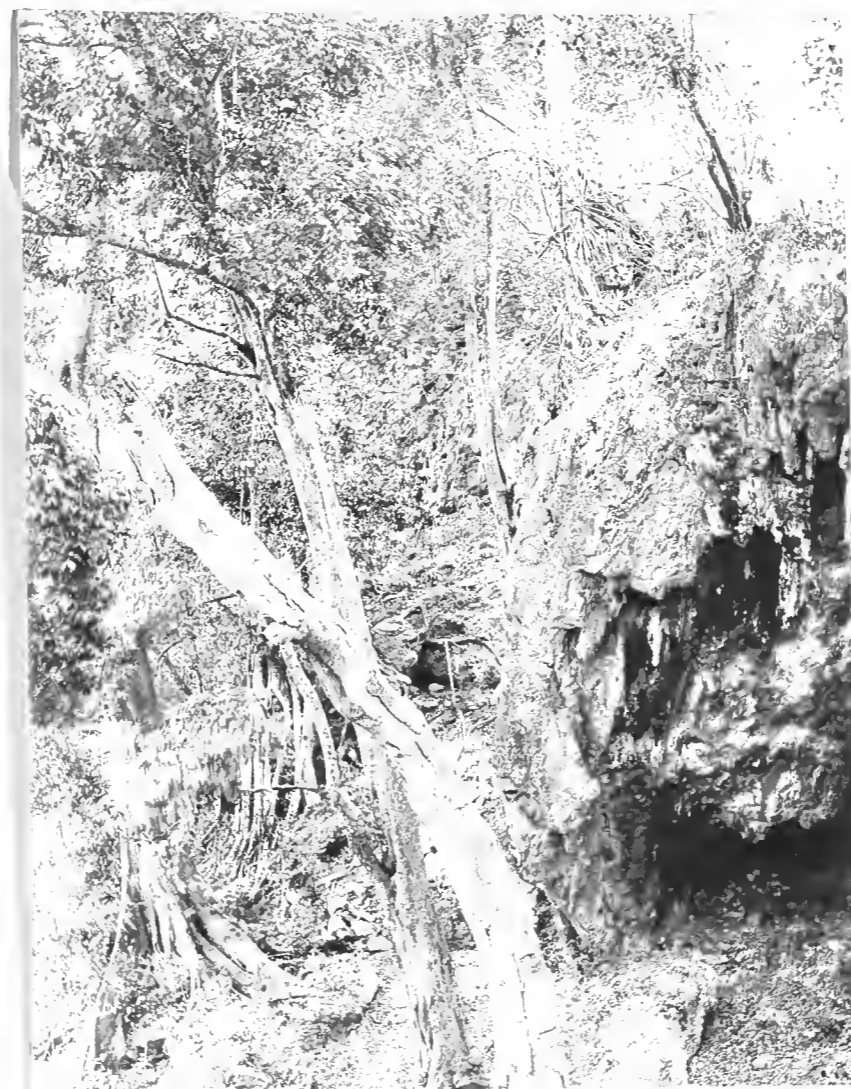
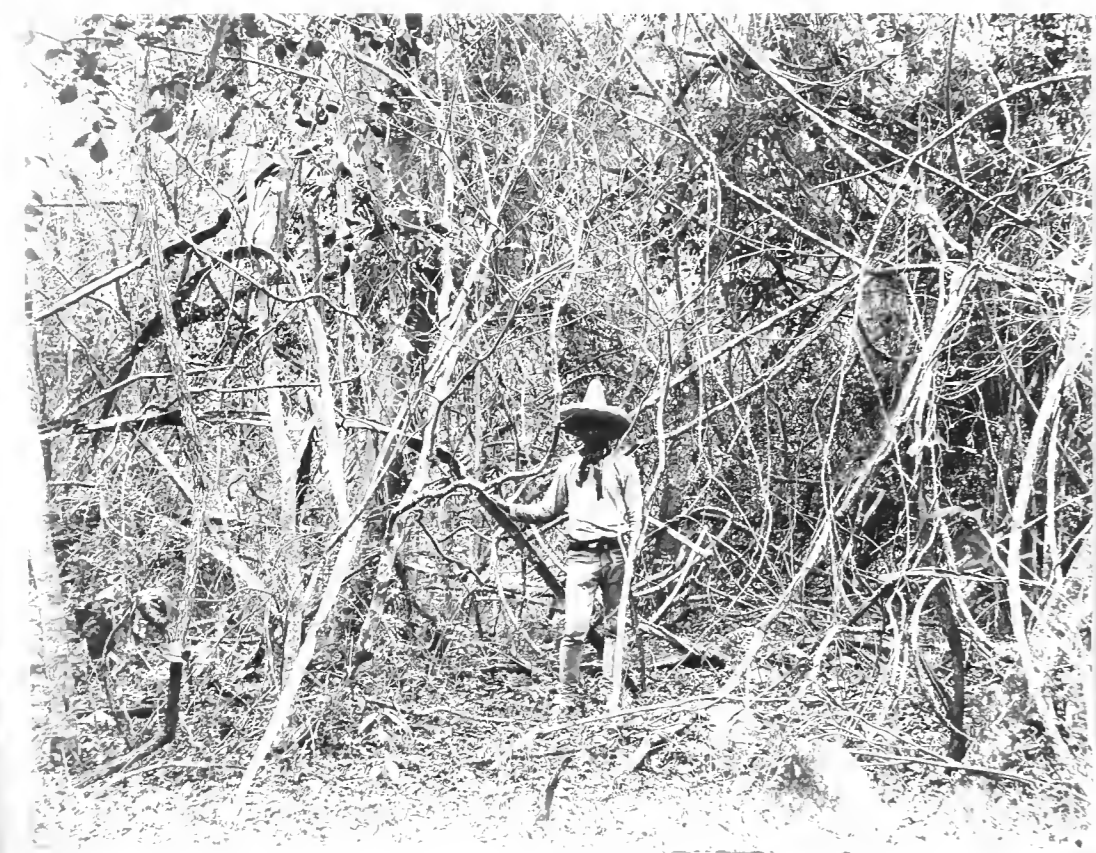
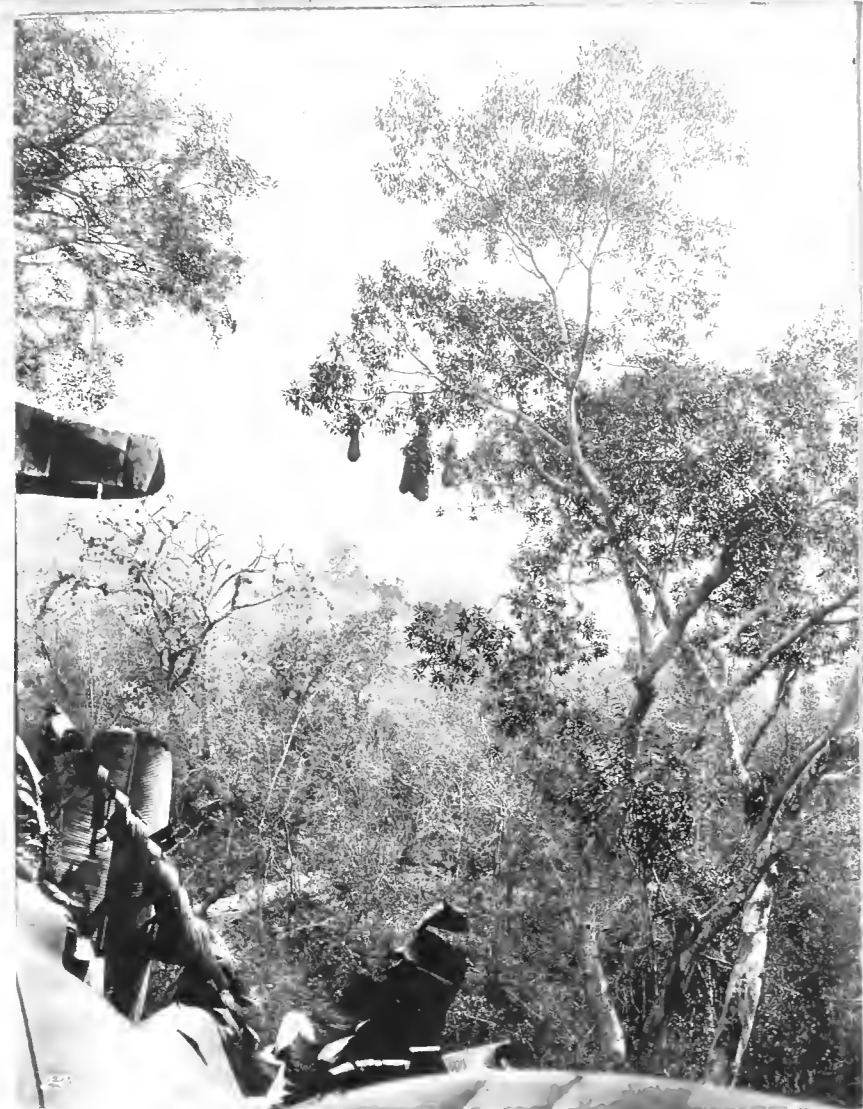




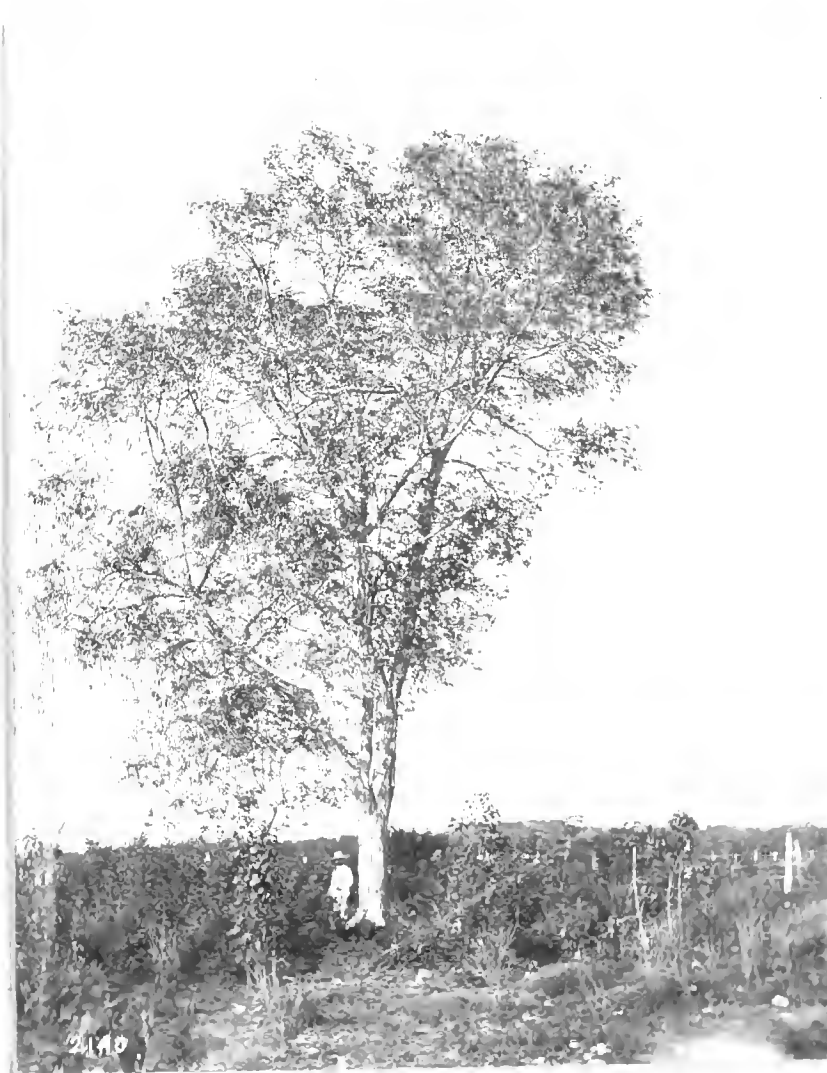
2071

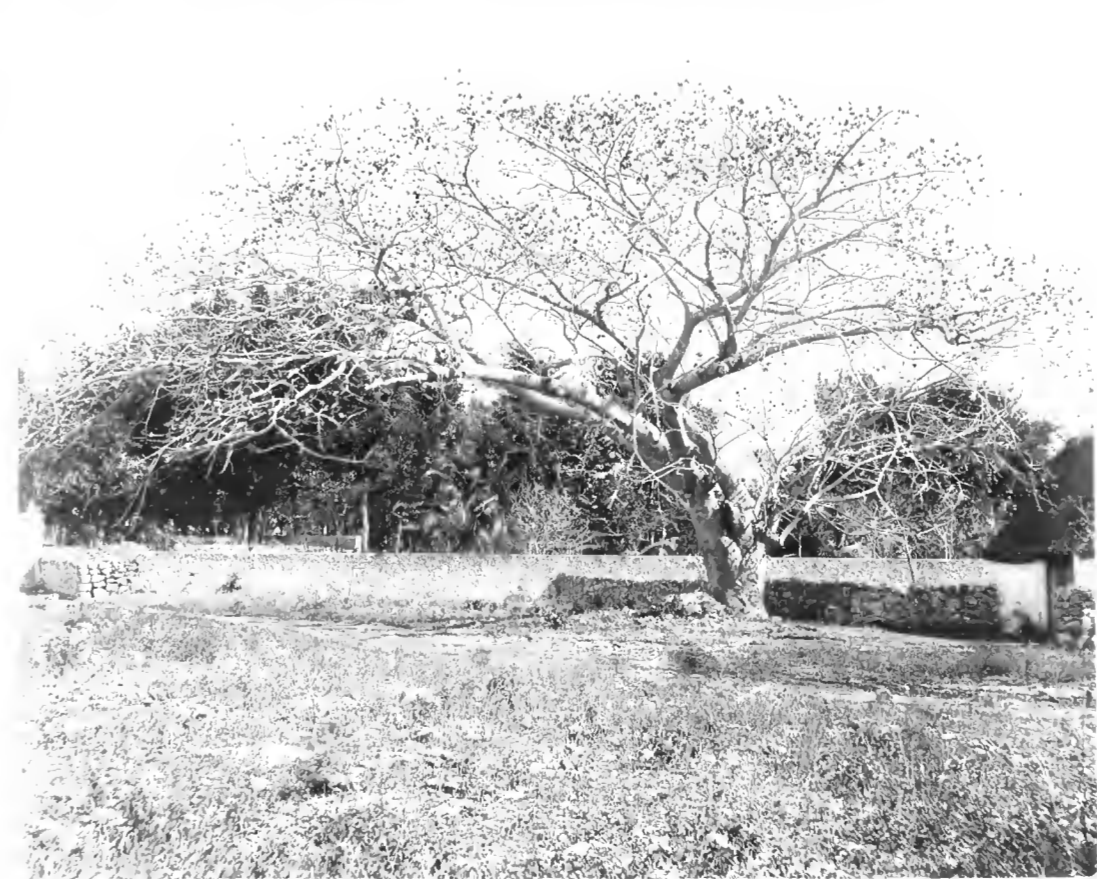
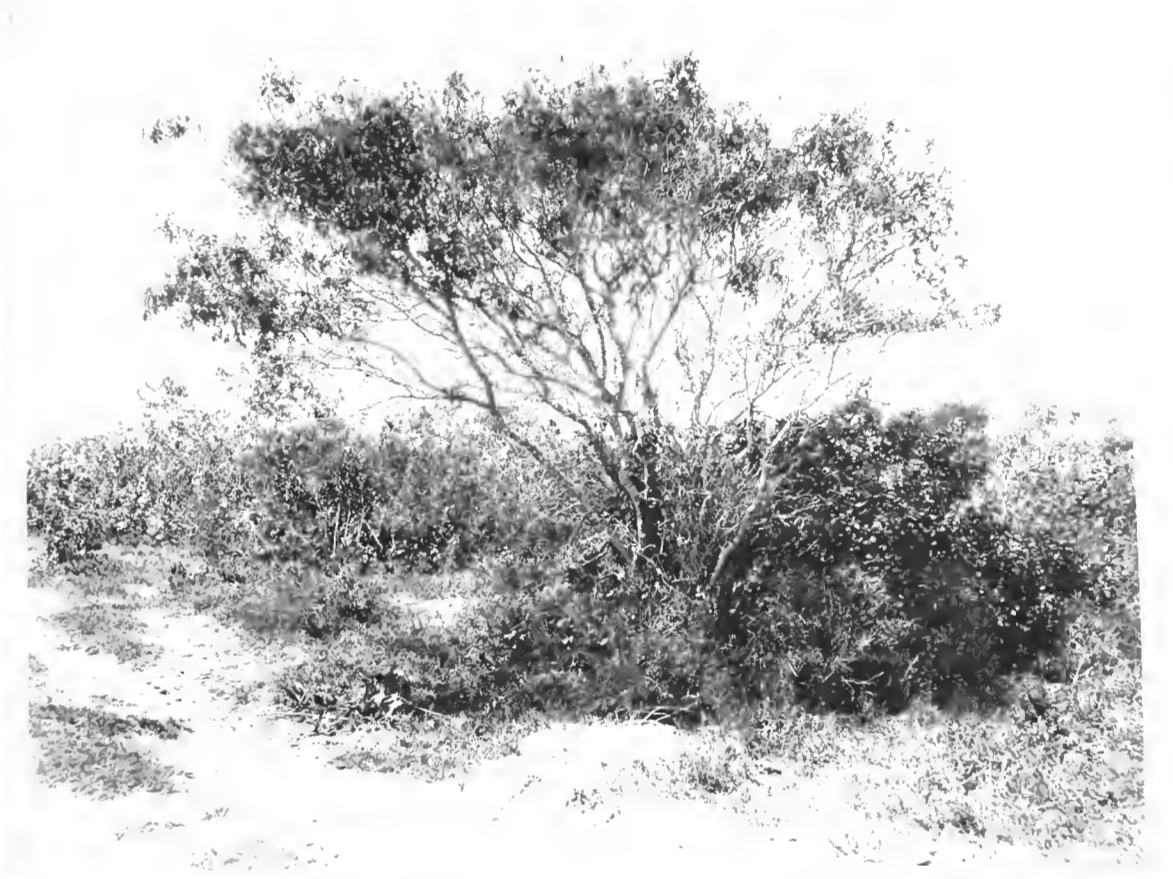


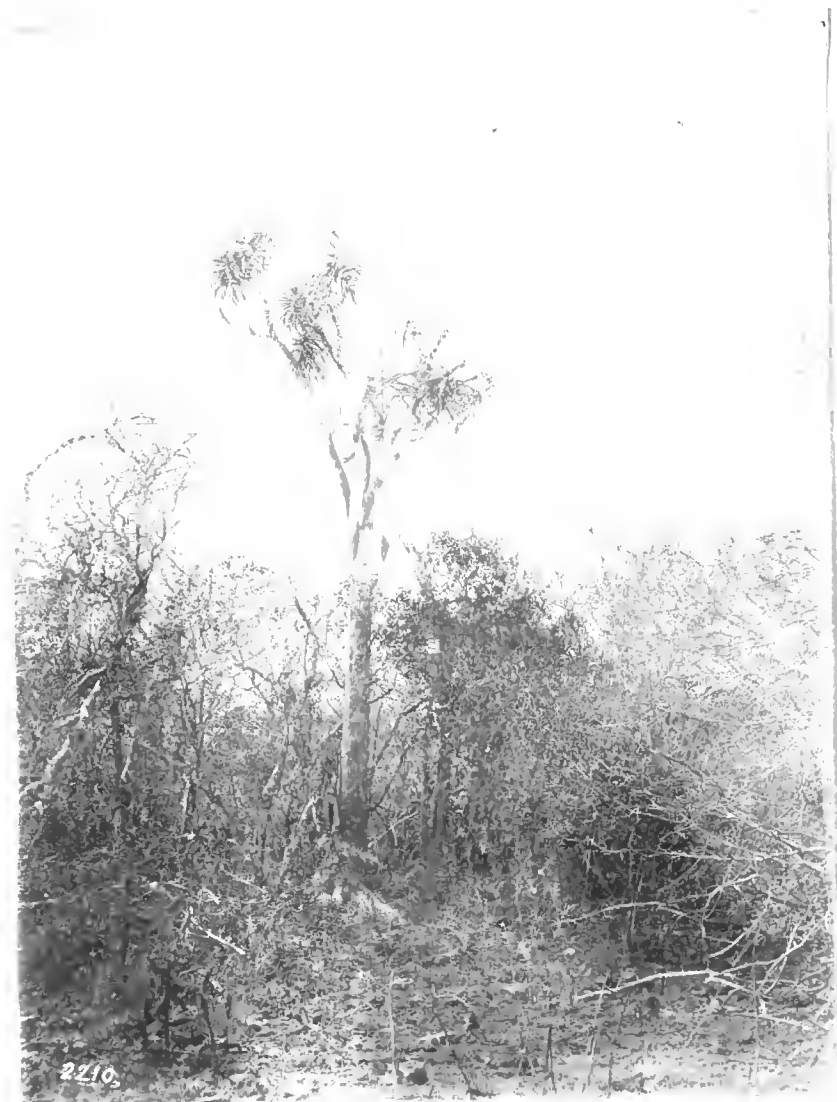


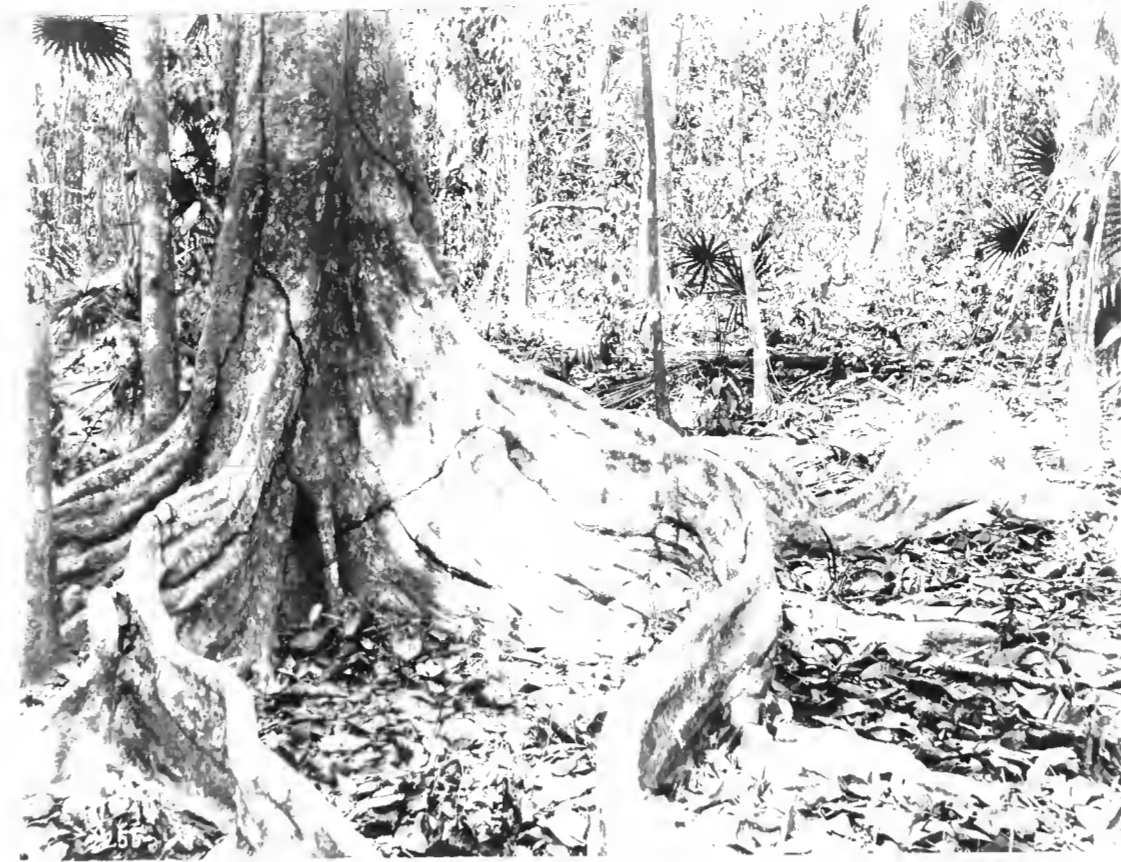


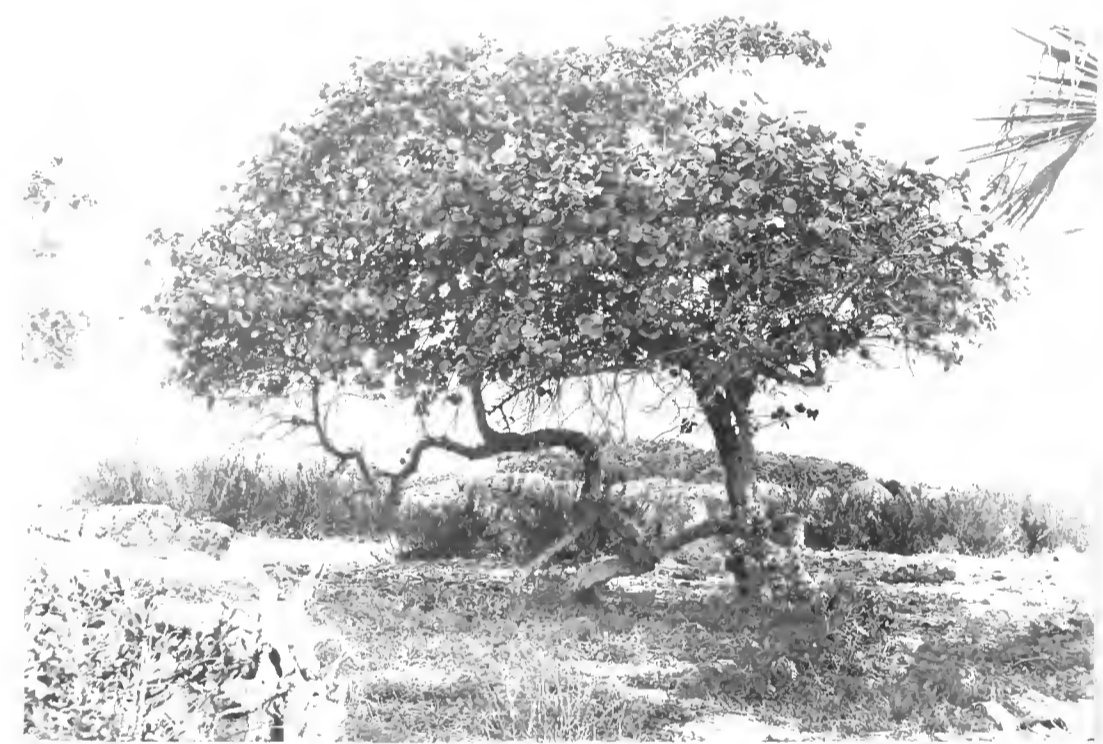
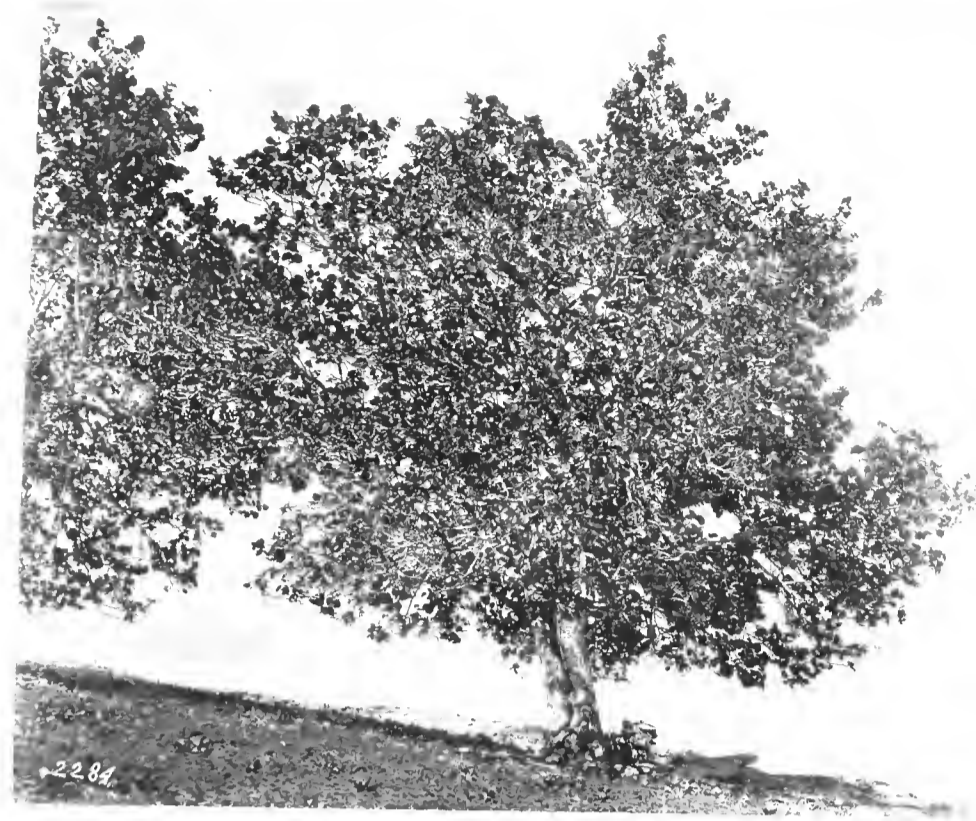


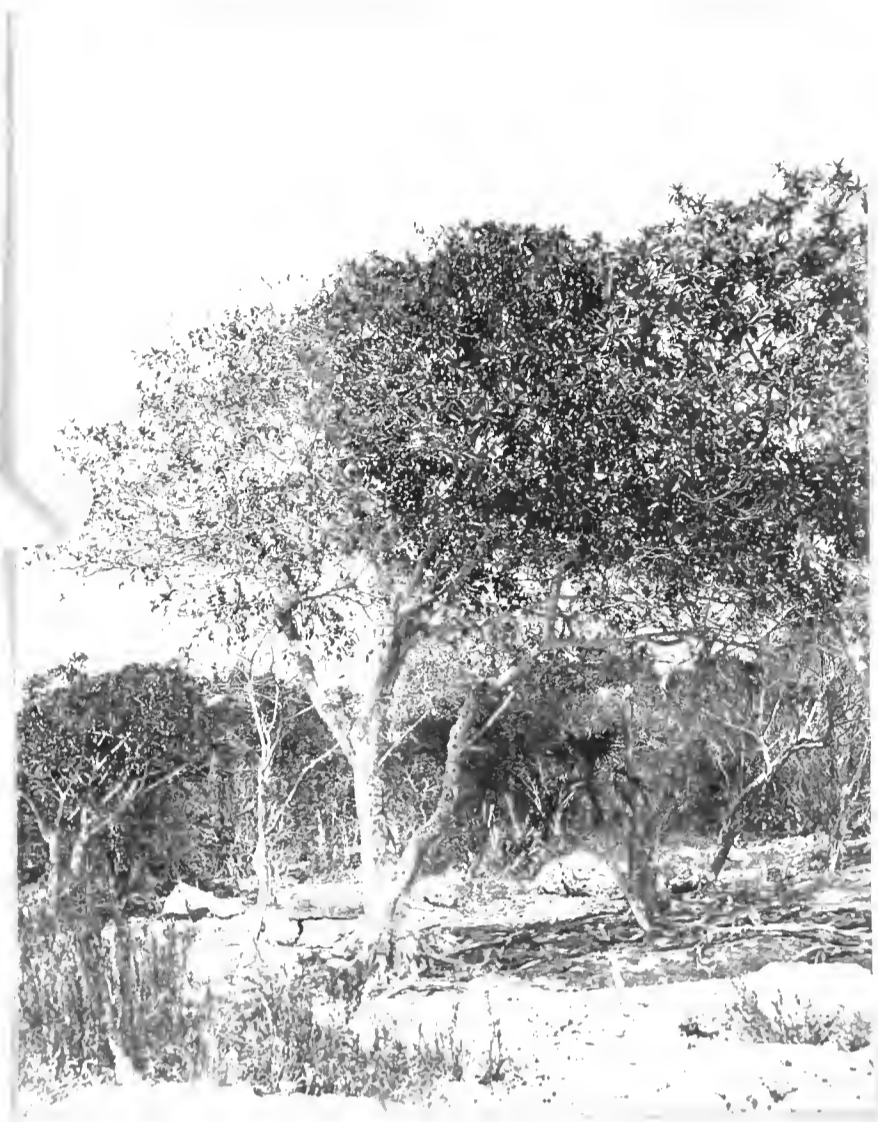










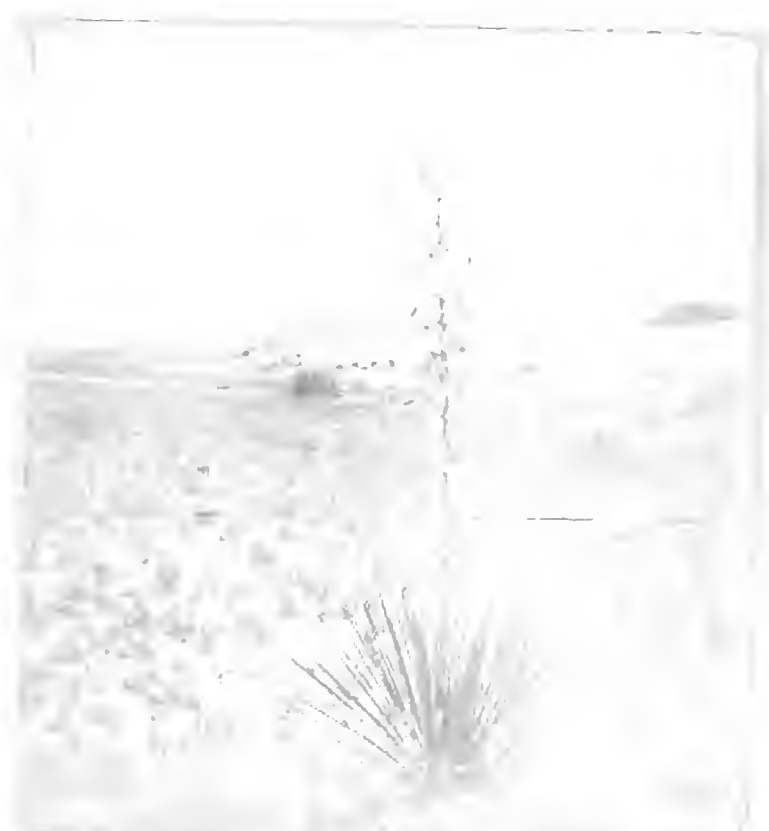


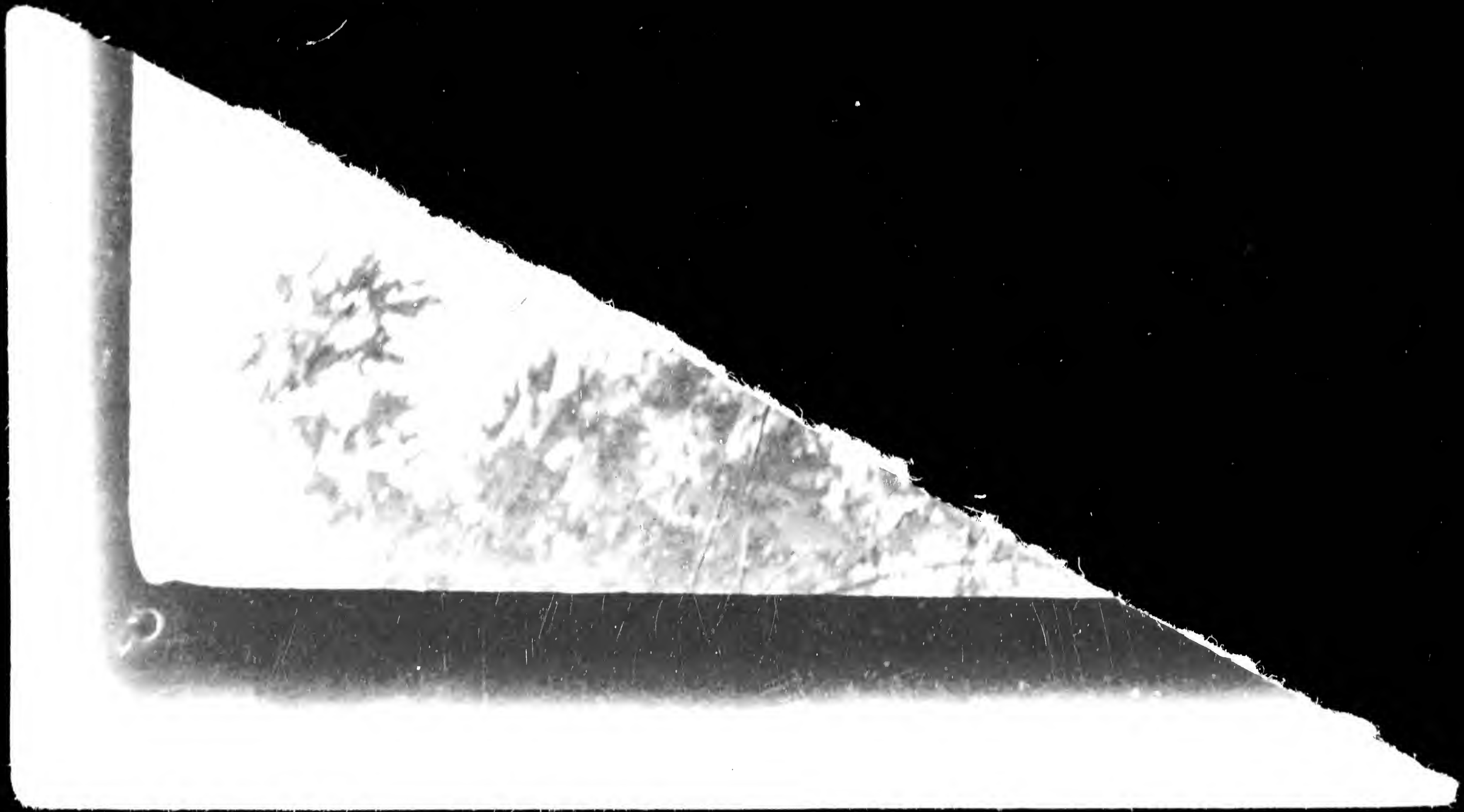






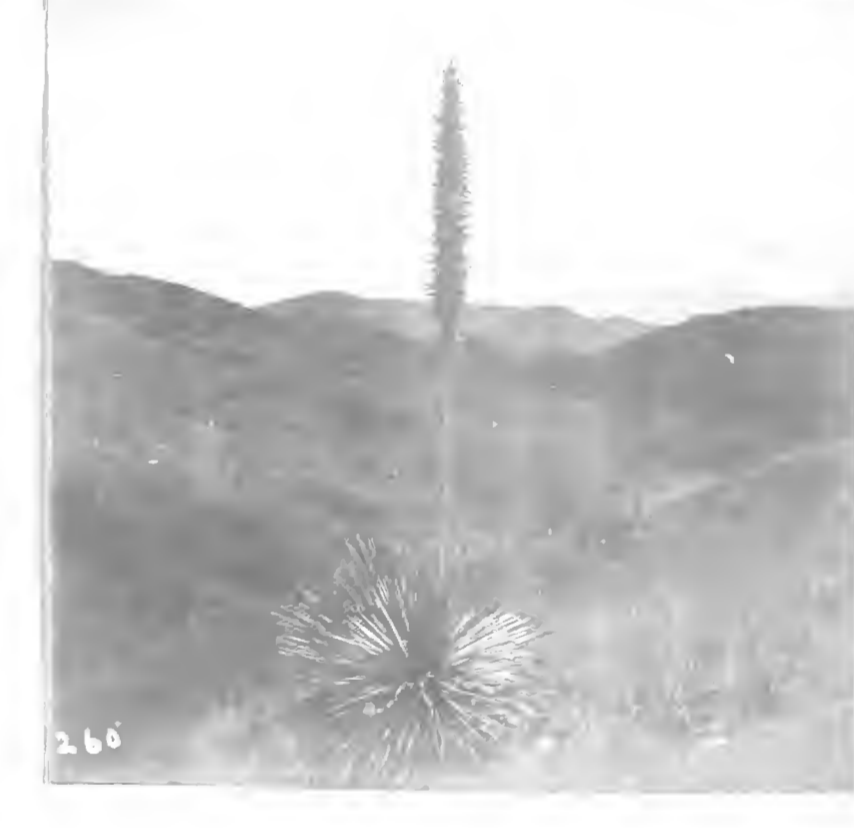
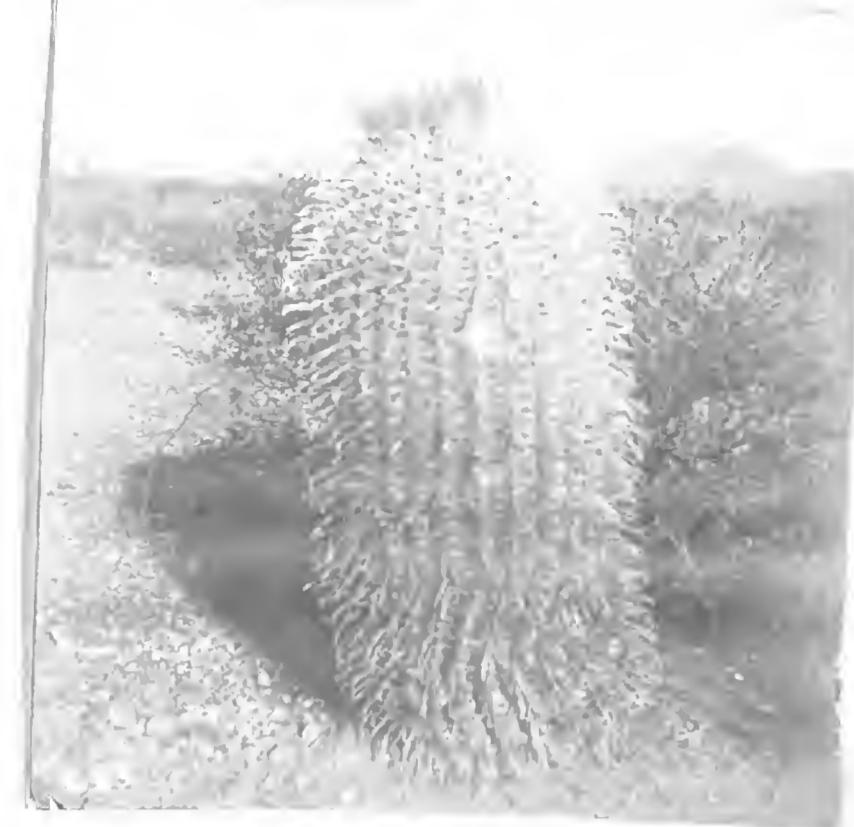


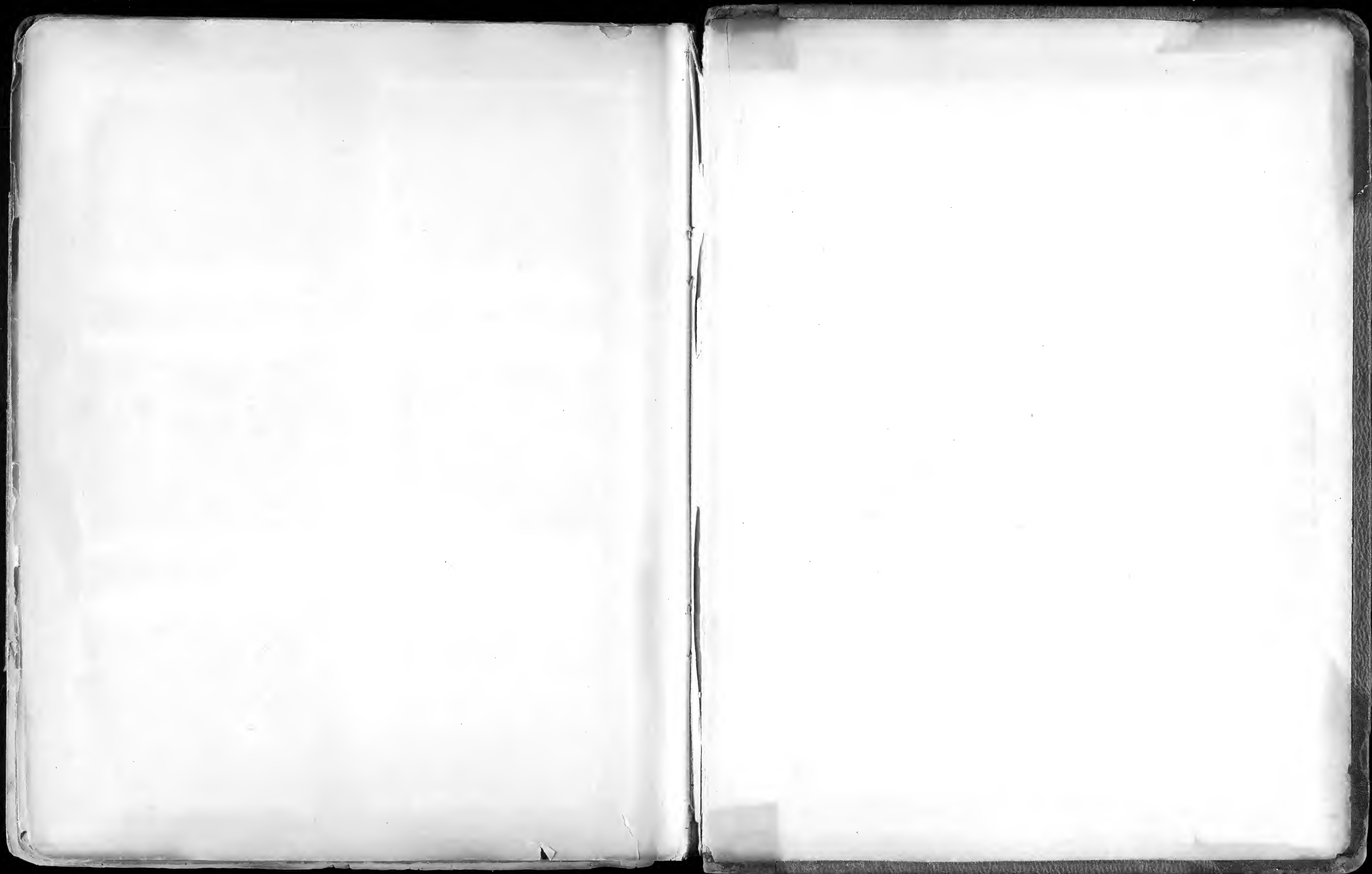






















28-7



1-10
No



10-22



147



21-7



no. 10



677

LAS BARRANCAS

SCOTT

Parramon Ibama near
Guadalupe

E. H. Nelson

1-2



E. H. Nelson

Turnback



48

On Tampico branch
Mex. Cent. in San L. Potosi

E. V. Nelson

—
—
H



8525



44-7

~~44-7~~



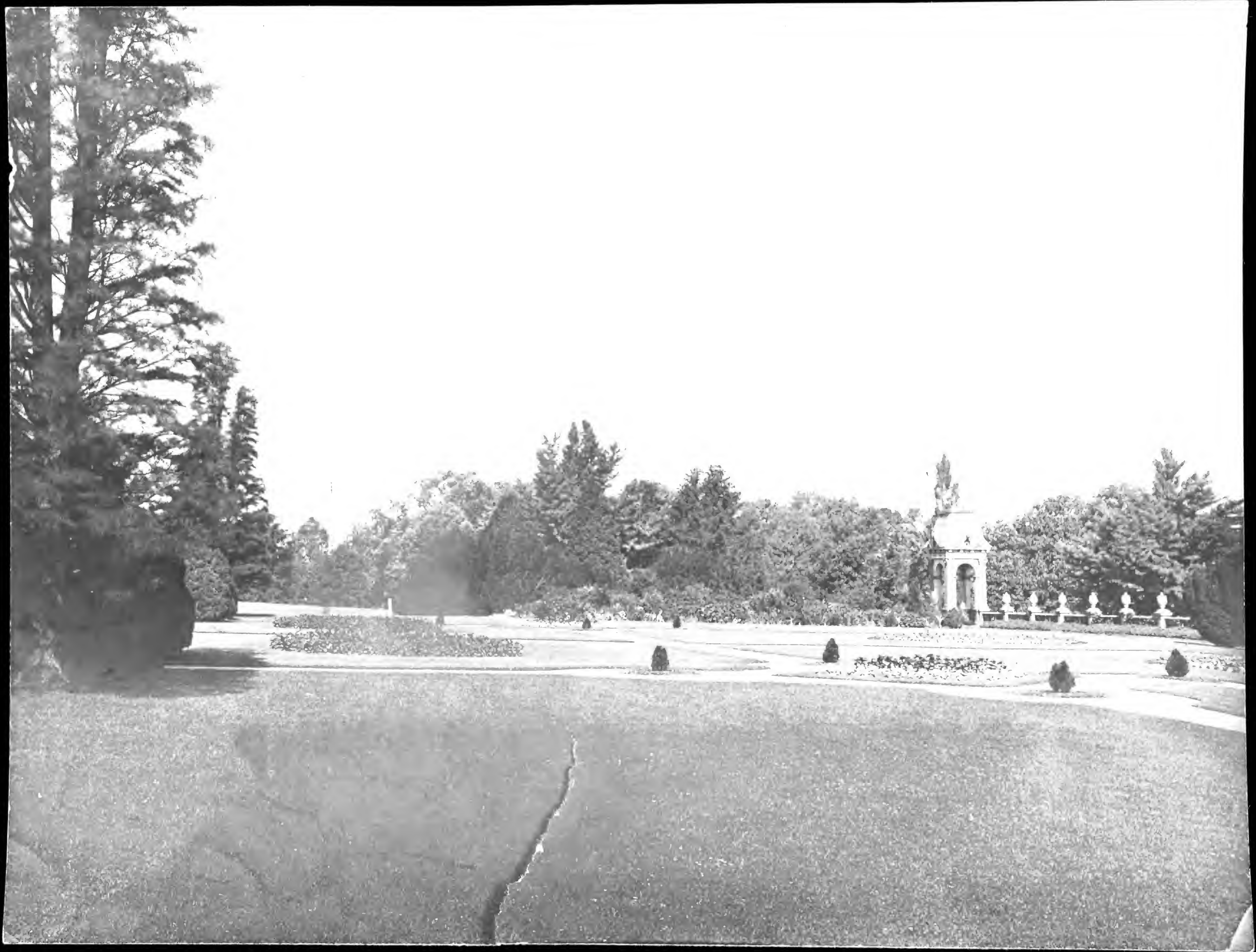
1875





3









512-72-7913