



7293 B. 18
(1914)

Not as comfortable as

it takes -

1.50



← copy

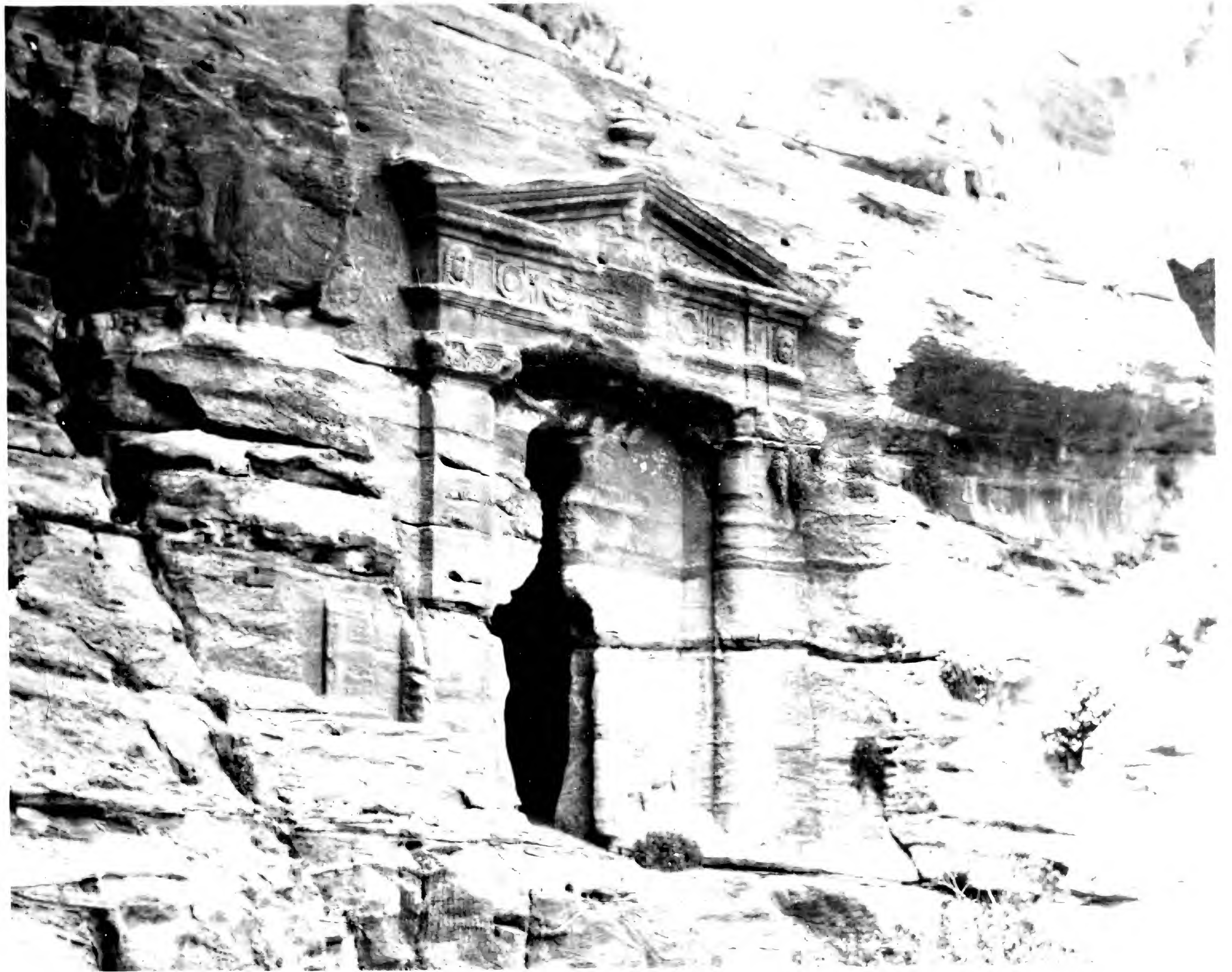
4 3/4

W. M. M.

Sinai Peninsula

648 A

1914



1914

648 A

4200

133

0920

(5-6)

Patron

← 4110



U.S. DEPARTMENT OF AGRICULTURE
BUREAU OF PLANT INDUSTRY

10-10-1914



Arab & horse by Jordan River
1914



89-13384

89-13384

COMMUNICATIONS SECTION
WASHINGTON, D.C. 20535
REPRODUCTION FOR RESALE
PROHIBITED WITHOUT
WRITTEN PERMISSION
NEGATIVE #