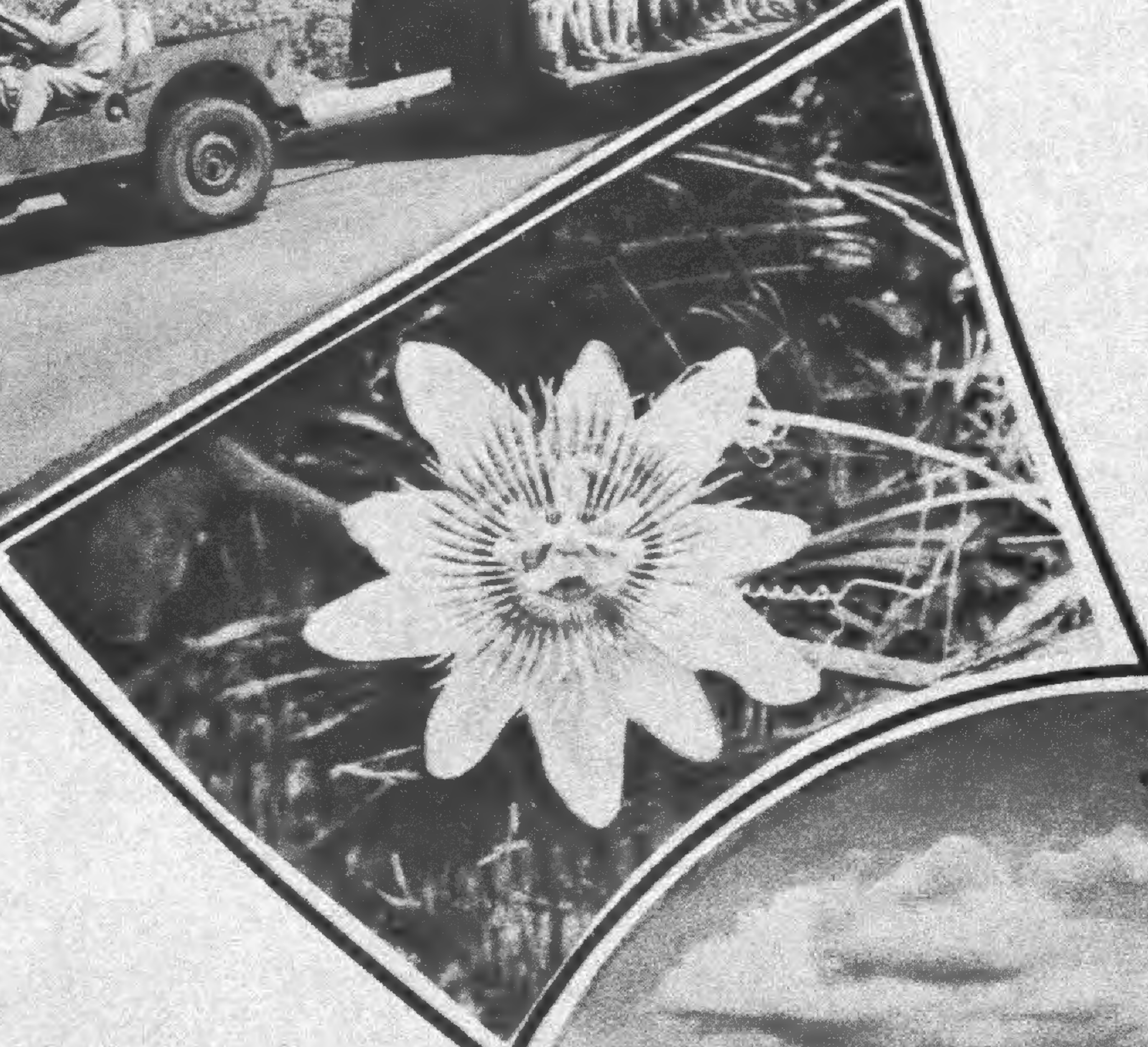
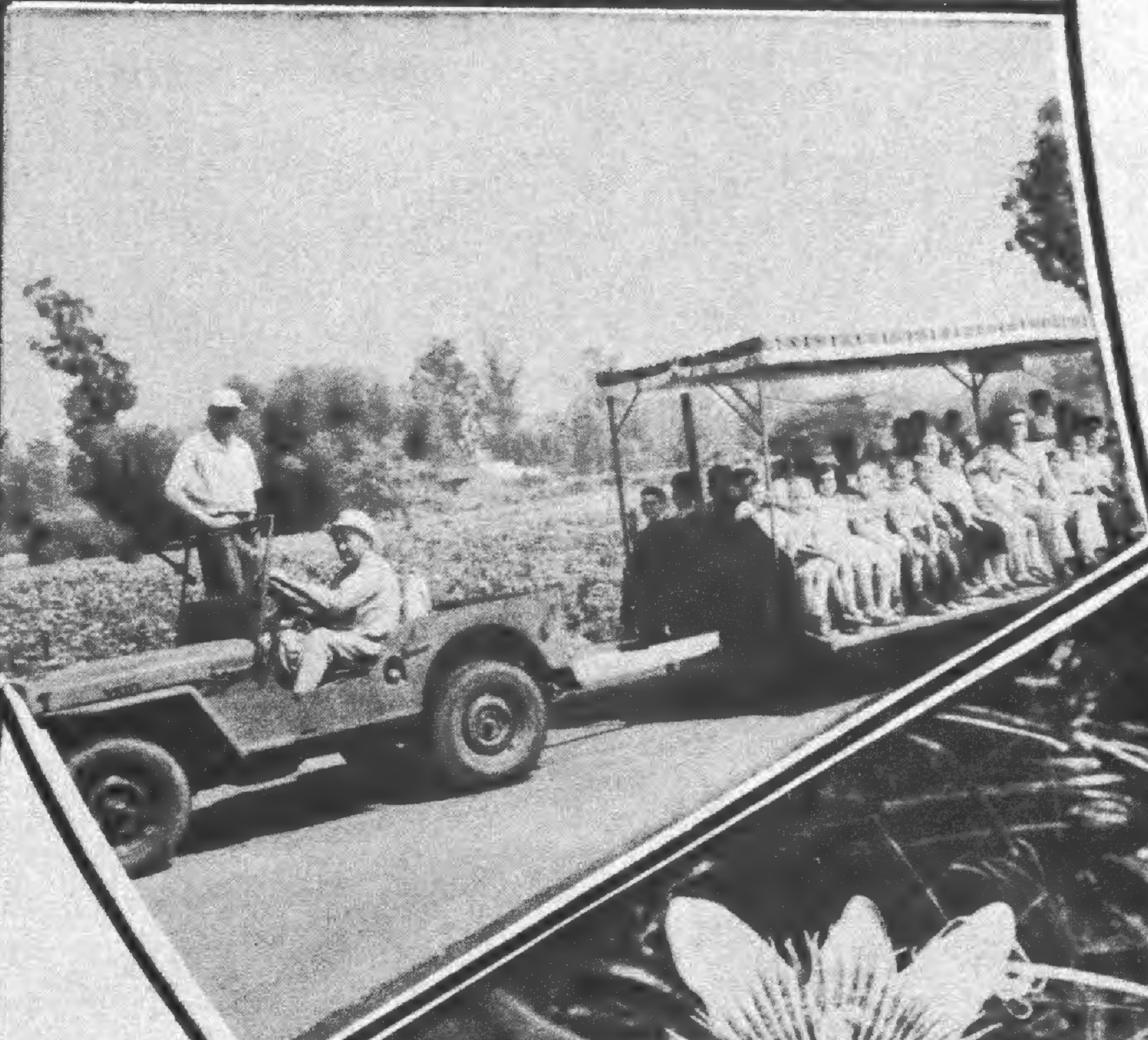
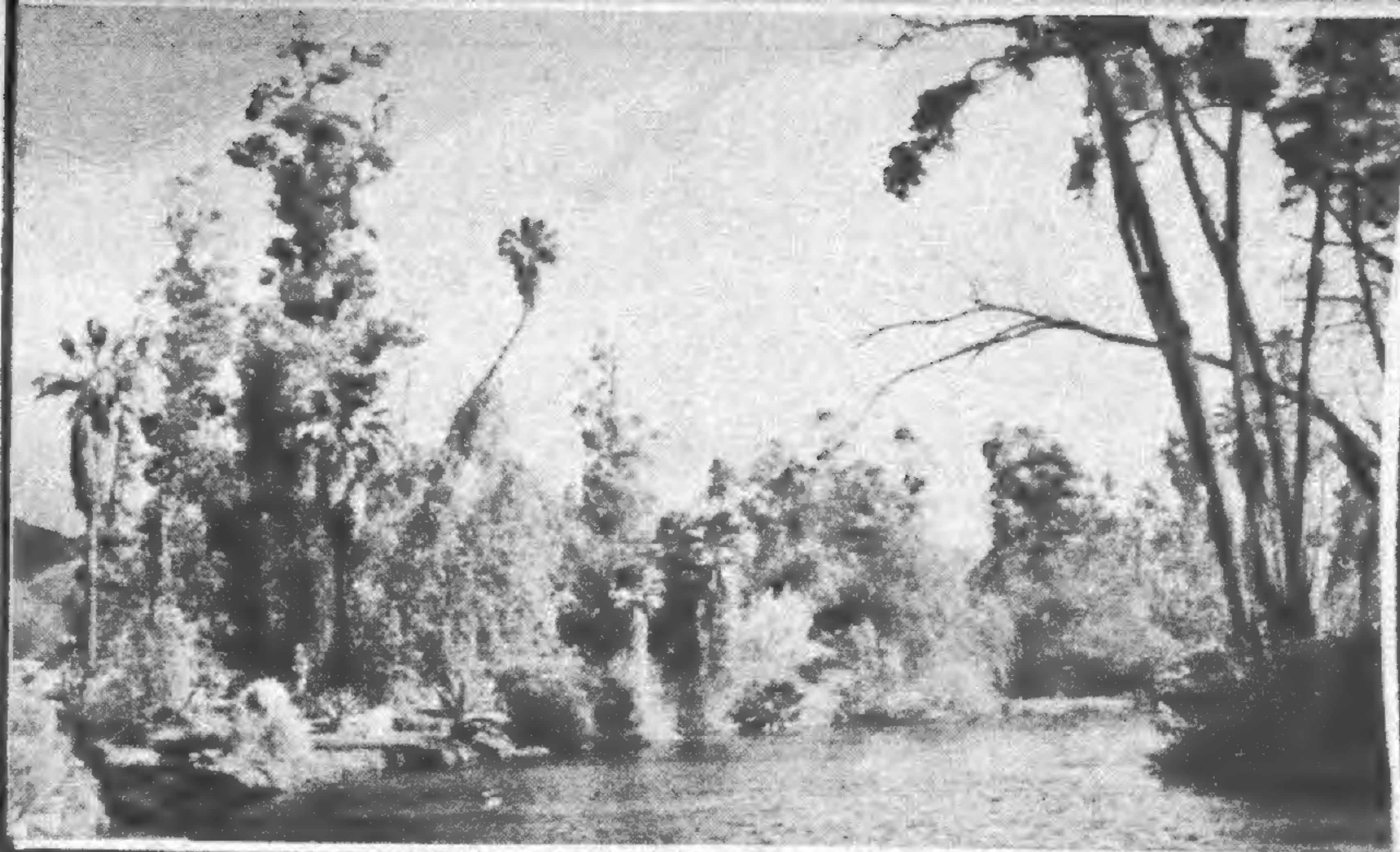


LOS ANGELES STATE and COUNTY ARBORETUM



LASCA

MISCELLANEA

VOL. 3 ✓

OCT. 1955

QK3  
439

ANNUAL REPORT

1954-55

LOS ANGELES COUNTY



## THE COVER -- A SYMBOLISM

TO THE PEOPLE WHO VISIT THE ARBORETUM, IT IS MANY THINGS.

IT'S A LAGOON, ALONG WHOSE SHORE ONE SEES TALL EUCALYPTUS, CLUMPS OF PAPYRUS, A BANANA TREE OR TWO, A DENSE WILD GRAPEVINE AS A GROWING MANTLE ON THE ASCENDING AND SLIGHTLY BENDING TRUNK OF A PALM. AT TIMES, WHITE WATER LILIES GRACE THE SURFACE OF THE LAGOON. WILD BIRDS OF EVERY SORT FIND FOOD AND SHELTER IN THE JUNGLE BORDER OR ON THE SURFACE OF THE WATER. IT'S AN EVER-CHANGING SCENE OF BEAUTY. IT'S NATURE'S MOST NATURAL CORNER.

IT'S A SIGHTSEERS MECCA. SUNDAY VISITORS COME FOR AN UNHURRIED RIDE ON THE "JEEP" TRAIN TO SEE LIVING PLANTS OR LEARN A LITTLE EARLY CALIFORNIA HISTORY OR JOURNEY THROUGH THE PLANT WORLD OF AUSTRALIA, SOUTH AFRICA, OR SOUTH AMERICA IN MINIATURE. SCHOOL CHILDREN OF ALL AGES AND THEIR TEACHERS USE THE ARBORETUM AS AN OUT-OF-DOOR CLASSROOM. GARDEN CLUBS SEE THE "NEW" IN HORTICULTURE. IF FOR NONE OF THE ABOVE REASONS, ONE CAN ENJOY BEAUTY AND PEACE OF MIND AWAY FROM THE TRAFFIC AND HUSTLE OF EVERYDAY LIFE.

PASSIFLORA ALATO-CAERULEA OR THE PASSION FLOWER, SYMBOLIZES THE EXOTIC OR UNUSUAL IN FLOWER FORM. NEW AND UNTRIED SPECIES OF EUCALYPTUS, ACACIAS, BOTTLEBRUSHES, BAMBOOS, PALMS, AND MANY OTHERS, ARE OFFERED FOR STUDY. BOTANISTS AND HORTICULTURALISTS THE WORLD OVER WATCH WITH INTEREST AND ENCOURAGEMENT THE DEVELOPMENT OF THIS NEW PLANT MUSEUM.

TO MANY, THE GREENHOUSE AND PLANT RECORDS KEPT THEREIN ARE OF PRIME IMPORTANCE. THIS IS THE DOOR THROUGH WHICH EVERY SEED, CUTTING, OR PLANT, OFFICIALLY ENTERS THE ARBORETUM. IN ORDER, A SEED IS GIVEN A LIFETIME NUMBER, PLANTED IN THE GREENHOUSE, MOVED TO THE LATHHOUSE, AND FINALLY TRANSFERRED TO THE FIELD. THERE ITS ABILITY TO GROW, FLOWER AND SET FRUIT IN SOUTHERN CALIFORNIA IS OBSERVED AND RECORDED. TO DATE, THE GREENHOUSE HAS BEEN THE TEMPORARY HOME OF 12,836 PLANTS. BEING ONE OF THE VERY FIRST ALL ALUMINUM GLASSHOUSES IN THIS AREA, ITS CONSTRUCTION AND OPERATION IS A SOURCE OF STUDY FOR THE NURSERY TRADE.

LAST, WE SEE THE ARBORETUM LOCATED AT THE VERY FOOT OF OCCASIONALLY SNOW CAPPED MOUNTAINS. SUCH A LOCATION IS A VERY REAL CHALLENGE TO PLANT INTRODUCTION AND MANAGEMENT. SOUTHERN CALIFORNIA DOES ENJOY SEASONAL CHANGES. FOR A PART OF THE YEAR AT LEAST, WE EXPERIENCE SMOG FREE, CRISP WEATHER WHICH EXCITES US TO CONTEMPLATIONS COMPARING OUR OWN SMALLNESS WITH HIS GREATNESS IN THINGS NATURAL.

THE EDITOR





# LOS ANGELES STATE and COUNTY ARBORETUM

291 No. Old Ranch Road, Arcadia, California

R. J. SEIBERT, DIRECTOR

Telephone: DOuglas 7-3444

July 5, 1955

Honorable Board of Supervisors  
County of Los Angeles  
Los Angeles 12, California

Gentlemen:

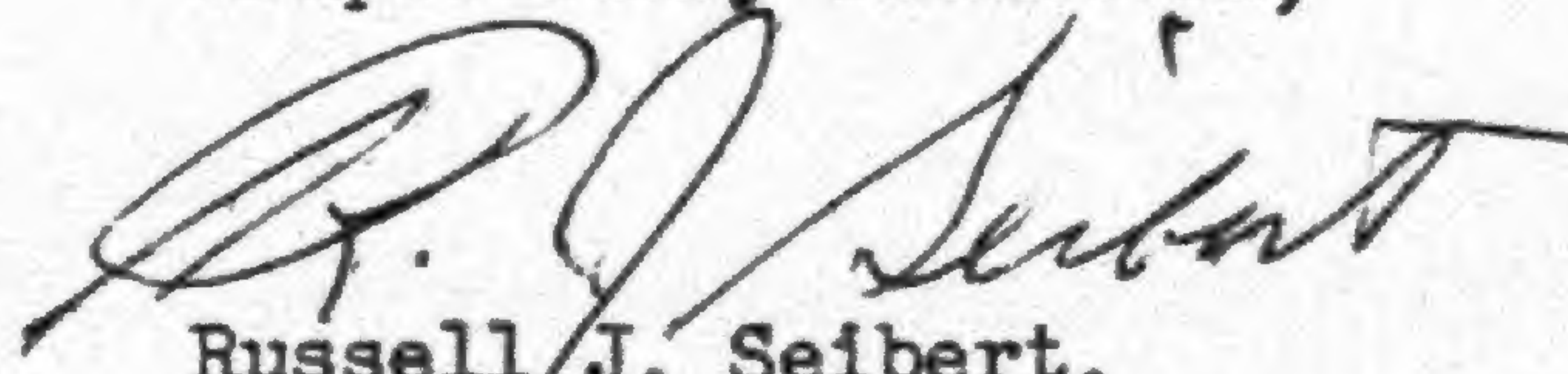
It is a pleasure to submit herewith the second Annual Report of the Department of Arboreta and Botanic Gardens, County of Los Angeles.

With sincere regrets, the submission of this report will terminate my official capacity as Arboretum director for this Department. It is hoped, however, that in my new capacity as director of Longwood Gardens, Kennett Square, Pennsylvania, I may continue to share with you a feeling of real accomplishment through the development of a potentially great Horticultural institution.

In this age of mechanical, chemical, electronic and atomic miracles, we need not fear a decline in the powers of nature. Rather, that a feeling of closeness to nature through Horticulture and Gardening shall be one of the potent stabilizers of our civilization. The veracity of this statement is fully evidenced by the fact that home gardening is the "No. 1" hobby of the American today. In a climatically unique area such as you have in southern California, your honorable board may consider with pride, the great part you are contributing to the expansion, understanding and enjoyment of ornamental horticulture. Through the Arboretum and its program over the coming years, every resident of Los Angeles County shall stand to gain culturally and spiritually a better peace of mind.

May I take this opportunity of expressing deepest appreciation to my staff in whose hands the writing, compiling and assembling of the following report will fall, as will the operation of the Arboretum until the installment of my successor. I consider it one of the highlights and privileges of my experience to have worked with this team of men and women who have always looked upon their positions as careers not "jobs" and held the aims of the Arboretum above those of self.

Respectfully submitted,

  
Russell J. Seibert,  
Director

RJS:P



LOS ANGELES COUNTY

DEPARTMENT OF ARBORETA AND BOTANIC GARDENS

BOARD OF SUPERVISORS

HERBERT C. LEGG,           -           1ST DISTRICT  
CHAIRMAN

KENNETH HAHN           -           2ND DISTRICT

JOHN ANSON FORD       -           3RD DISTRICT

BURTON W. CHACE       -           4TH DISTRICT

ROGER W. JESSUP       -           5TH DISTRICT

ARTHUR J. WILL, CHIEF ADMINISTRATIVE OFFICER



LOS ANGELES COUNTY

DEPARTMENT OF ARBORETA AND BOTANIC GARDENS

BOARD OF GOVERNORS

SAMUEL AYRES, JR., PRESIDENT  
MRS. HARRY J. BAUER, VICE PRESIDENT  
ROBERT CASAMAJOR, VICE PRESIDENT  
HOWARD A. MILLER, TREASURER

VARNEY BANCROFT  
RALPH D. CORNELL  
MRS. HAROLD CROZIER  
MRS. RICHARD Y. DAKIN

MRS. IVEY DARBY  
JOHN ANSON FORD  
J. D. FUNK  
WILLIAM HERTRICH

LIONEL LOUIS HOFFMANN  
HENRY ISHIDA  
CHARLES S. JONES  
MRS. JOHN R. MAGE

SAMUEL MOSHER  
MRS. RUDOLPH J. RICHARDS  
F. HAROLD ROACH  
MRS. WILLIAM D. SHEARER

PAUL S. SMITH  
HENRY C. SOTO  
MRS. EUNICE SPRINGER  
GEORGE P. TAUBMAN, JR.

FRANK E. TITUS  
FRITS W. WENT



## T A B L E O F C O N T E N T S

ARBORETUM STAFF	1
ARBORETUM OBJECTIVES	2
ARBORETUM LOCATION	3
CALIFORNIA ARBORETUM FOUNDATION, INC.	4
DR. SEIBERT - AN APPRECIATION	5
GROUNDS DEVELOPMENT and CAPITAL IMPROVEMENTS	6
NEW BUILDINGS	11
HORTICULTURAL	12
SPECIAL PROJECTS	14
LIBRARY	17
INVITATION and DEDICATION	18
SUNDAY TOURS	20
DAILY TOURS	21
SPECIAL GROUNDS PERMITS	23
A PARTY - A PLANTING	24
ARBORETUM LECTURE PROGRAMS	25
STAFF ARTICLES	26
T V - RADIO	27
NEWSPAPERS	27
"IN PRAISE OF NATURE"	28



ALTHOUGH THE DEPARTMENT OF ARBORETA AND BOTANIC GARDENS IS A YOUNG-  
STER IN THE EYES OF THE COUNTY, WE DO HAVE A SIZABLE STAFF. THE STAFF WILL  
GROW WITH THE ARBORETUM. FOR THE YEAR, 1954-55, WE PROUDLY PRESENT:

DR. RUSSELL J. SEIBERT, DIRECTOR

GEORGE E. ALLEN ALBERT BARDELLI THELMA G. BLANCHARD W. QUINN BUCK	ARBORETUM INFORMATION AID (AN) PARK MAINTENANCE MAN HELPER INT. STENOGRAPHIC SECRETARY ARBORETUM PLANT PROPAGATOR
DANIEL V. CASSIDY JAMES W. CAUFFIELD JOHN D. DANCER JOYCE E. DAY	PARK MAINTENANCE MAN HELPER ARBORETUM NURSERYMAN ARBORETUM INFORMATION AID (AN) INTERMEDIATE STENOGRAPHER
JOHN W. DOUTHIT, JR. WARREN W. FARRELL EDWIN J. FAWCETT HARRY A. FAWCETT	ARBORETUM INFORMATION AID (AN) GUARD (AN) ARBORETUM CARETAKER GUARD
GEORGE H. FISHER GERALD GINNELLY ROSCOE C. GOODRICH CHARLES A. HALLBERG	GUARD (AN) TREE TRIMMER ARBORETUM GARDENER ARBORETUM GARDENER
WINFRED L. HAWK JOSE L. HERNANDEZ JUVENTINO O. HERRERA DALE C. JOHNSON	EQUIPMENT MAINTENANCE HELPER PARK MAINTENANCE MAN HELPER PARK MAINTENANCE MAN HELPER STUDENT WORKER
DENIS E. KUCERA LOUIS B. MARTIN JOHN T. MCGAH RUSSELLA K. MCGAH	ARBORETUM INFORMATION AID PLANT PHYSIOLOGIST PLANT RECORDER LIBRARIAN (AN)
BERNICE L. MCKEEN DEWEY E. NELSON EDWARD R. O'REILLY CHARLES O. POTTHAST, SR.	INTERMEDIATE TYPIST CLERK ARBORETUM CURATOR GUARD UTILITY EQUIPMENT OPERATOR
EDWARD J. PUGH GEORGE L. REUTER JOHN B. RICHARDSON FRANK SIMERLY	ARBORETUM GARDENER ARBORETUM INFORMATION AID (AN) STUDENT WORKER PARK MAINTENANCE MAN HELPER
GEORGE H. SPALDING RUTH F. SPALDING HAROLD R. STAFF JOHN E. STUMBO	ARBORETUM SUPERINTENDENT TYPIST CLERK (AN) PARK MAINTENANCE MAN HELPER ARBORETUM GARDENER
C. A. SULLIVAN FRED E. WALTERS ROBERT H. WHITSELL	SENIOR PARK MAINTENANCE MAN PARK MAINTENANCE MAN HELPER PARK MAINTENANCE MAN HELPER



## LOS ANGELES STATE AND COUNTY ARBORETUM OBJECTIVES

1. THE HORTICULTURAL CENTER FOR SOUTHERN CALIFORNIA, PROVIDING FACILITIES FOR THE PROMOTION OF HORTICULTURE AND FLORICULTURE, FOSTERING MORE EXTENSIVE AND INTELLIGENT USE OF ORNAMENTAL PLANTS AND TREES TO ENHANCE THE BEAUTY OF SOUTHERN CALIFORNIA'S GARDENS, PARKS, AND PARKWAYS.
2. A CENTER FOR THE INTRODUCTION, TESTING AND IMPROVEMENT OF PLANTS ADAPTABLE TO SOUTHERN CALIFORNIA.
3. A GARDENING SCHOOL FOR TRAINING GARDENERS, GARDEN SUPERINTENDENTS, PROPAGATORS AND OTHER SKILLED PERSONNEL REQUIRED BY COMMERCIAL AND PRIVATE NURSERIES AND GARDENS, WITH SPECIAL EVENTS AND A PORTION OF THE CURRICULUM OF INTEREST TO AMATEURS.
4. A CENTER OF RESEARCH AND SCIENTIFIC STUDY, WORKING IN COLLABORATION WITH EDUCATIONAL INSTITUTIONS AND WITH FEDERAL, STATE AND COUNTY DEPARTMENTS OF AGRICULTURE. AN INFORMATION CENTER, MAINTAINING A CATALOGUE OF PLANTS CULTIVATED IN SOUTHERN CALIFORNIA. HERE SPECIMENS CAN BE READILY IDENTIFIED, AND PRACTICAL ADVICE GIVEN ON PLANTING, PROPAGATION AND CULTIVATION.
5. A LIBRARY AND HERBARIUM.
6. A PUBLICATION CENTER FOR BULLETINS, BOOKS AND PAMPHLETS OF HORTICULTURAL, BOTANICAL AND HISTORICAL INTEREST.
7. A PRESERVE OF EARLY CALIFORNIA BUILDINGS AND AUTHENTIC HISTORICAL GARDENS.
8. A BIRD SANCTUARY.



LOS ANGELES STATE AND COUNTY ARBORETUM

(Founded through the efforts of the Southern California Horticultural Institute). Sponsored by California Arboretum Foundation, Inc., and the Los Angeles County Board of Supervisors.

ADDRESS: 291 NORTH OLD RANCH ROAD. P.O. BOX 688

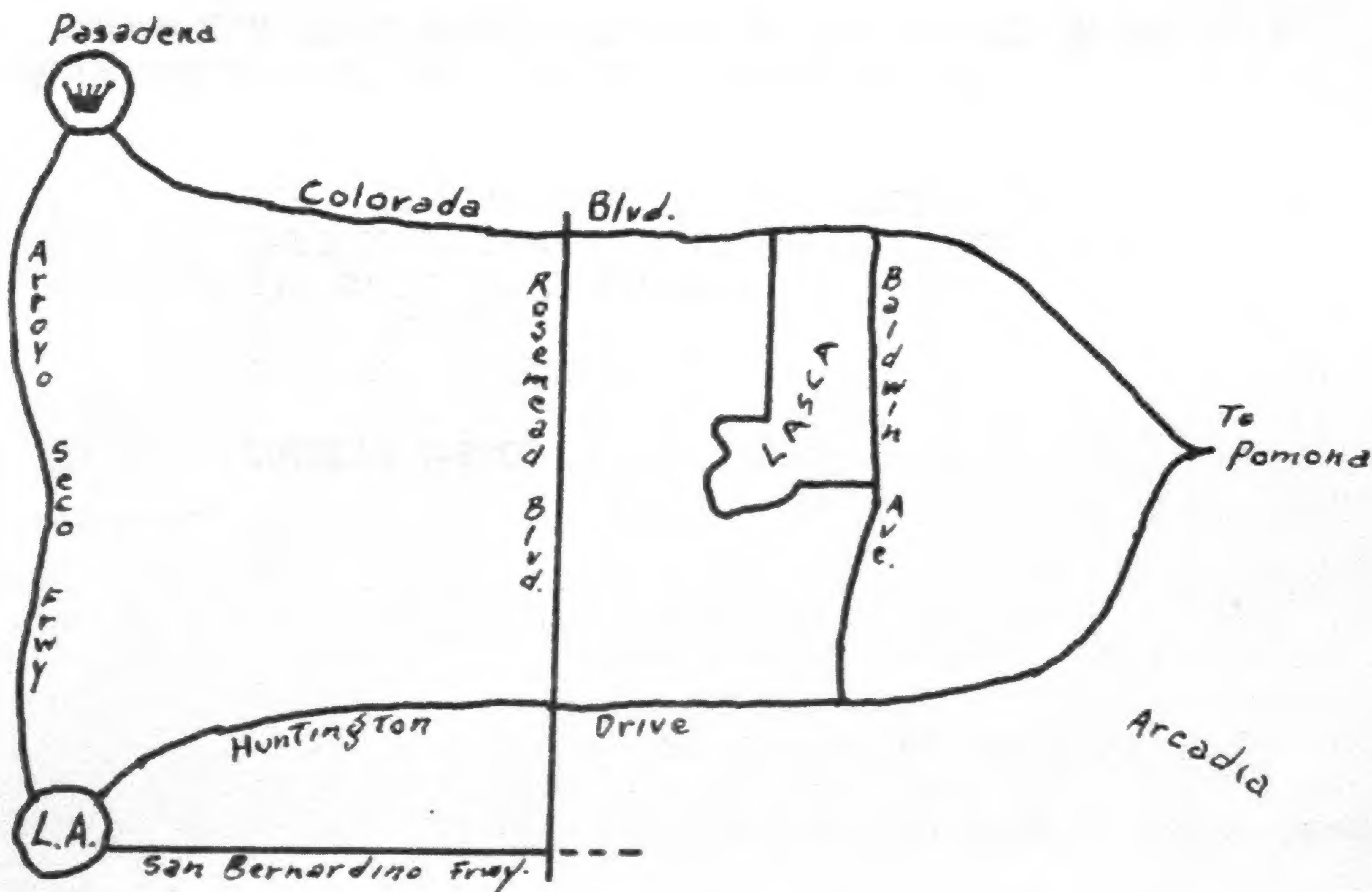
LOCATION: ARCADIA, CALIFORNIA

TELEPHONE: DOUGLAS 7-3444

PUBLIC ENTRANCE: 301 N. BALDWIN AVE.

ACCESSIBILITY

LOCATED IN THE CITY OF ARCADIA, THE LOS ANGELES STATE AND COUNTY ARBORETUM LIES SOUTH OF COLORADO BOULEVARD AND WEST OF THE NEW EXTENSION OF BALDWIN AVENUE. IT IS LESS THAN 40 MINUTES RIDE BY AUTOMOBILE FROM THE LOS ANGELES CIVIC CENTER AND ONLY 20 MINUTES FROM PASADENA'S CITY HALL. THE MAIN PUBLIC ENTRANCE FOR THE SUNDAY AND DAILY TOURS IS AT 301 N. BALDWIN AVENUE.





CALIFORNIA ARBORETUM FOUNDATION, INC.

A NON-PROFIT CORPORATION INCORPORATED UNDER THE LAWS OF CALIFORNIA, FEBRUARY 20, 1948. FROM ITS INCEPTION UNTIL JUNE 30, 1953 THE FOUNDATION, UNDER AGREEMENT WITH THE LOS ANGELES COUNTY BOARD OF SUPERVISORS, WAS CHARGED WITH THE RESPONSIBILITY OF OPERATING AND DEVELOPING THE ARBORETUM.

ON JULY 1, 1953, THE COUNTY DEPARTMENT OF ARBORETA AND BOTANIC GARDENS WAS CREATED FOR THE PURPOSE OF OPERATING, MAINTAINING AND DEVELOPING THE ARBORETUM. CALIFORNIA ARBORETUM FOUNDATION, INC., AS OF JULY 1, 1953, HAS THE FUNCTION OF CONDUCTING SPECIAL HISTORICAL, HORTICULTURAL, RESEARCH AND EDUCATIONAL PROJECTS AT THE LOS ANGELES STATE AND COUNTY ARBORETUM FOR THE BENEFIT OF THE PUBLIC.

THE FOUNDATION IS ORGANIZED TO MAKE AVAILABLE MEMBERSHIPS OF VARYING CLASSIFICATIONS TO INDIVIDUALS, GARDEN CLUBS, PLANT SOCIETIES, OTHER SPONSORED GROUPS AND COMPANIES INTERESTED IN THE ARBORETUM'S ACTIVITIES. THE FOUNDATION PUBLISHES JOINTLY WITH THE SOUTHERN CALIFORNIA HORTICULTURAL INSTITUTE A QUARTERLY JOURNAL, "LASCA LEAVES" DEVOTED TO HORTICULTURAL SUBJECTS OF INTEREST TO SOUTHERN CALIFORNIA, WHICH IS SENT TO ALL MEMBERS. ANNUAL PLANT AND SEED DISTRIBUTIONS ARE MADE TO ALL MEMBERS EXCEPT ANNUAL ASSOCIATE MEMBERS.

THE ARBORETUM FOUNDATION RECEIVES CONTRIBUTIONS, GRANTS, BEQUESTS, AND DONATIONS TOWARD ITS SPECIAL PROJECTS. ALL CONTRIBUTIONS DEDUCTIBLE UNDER FEDERAL INCOME TAX LAWS.

FOR INFORMATION ABOUT MEMBERSHIP AND THE ACTIVITIES OF THE CALIFORNIA ARBORETUM FOUNDATION, INC., WRITE OR TELEPHONE TO:

MRS. LEE WRAY TURNER, EXEC. SECY.  
CALIFORNIA ARBORETUM FOUNDATION, INC.  
291 NORTH OLD RANCH ROAD  
P. O. BOX 688  
ARCADIA, CALIFORNIA

DOUGLAS 7-3207



DR. RUSSELL J. SEIBERT

- AN APPRECIATION -

BY SAMUEL AYRES, JR.

CONFLICTING EMOTIONS ARE THE ORDER OF THE DAY AT THE LOS ANGELES STATE AND COUNTY ARBORETUM - REGRET AT THE LOSS OF DR. SEIBERT AND PRIDE IN THE FACT THAT OUR DIRECTOR WAS CHOSEN ABOVE ALL AVAILABLE CANDIDATES IN THE FIELD TO BECOME THE NEW DIRECTOR OF LONGWOOD GARDENS, THE FAMOUS ESTATE OF THE LATE PIERRE DU PONT, NEAR PHILADELPHIA.



THE RESPONSIBILITY WHICH DR. SEIBERT HAS ASSUMED IN HIS NEW DUTIES IS PROBABLY GREATER THAN THAT OF ANYONE IN THE FIELD OF BOTANY AND HORTICULTURE IN THE HISTORY OF THIS COUNTRY. NOT ONLY WILL HE HAVE CHARGE OF FURTHER DEVELOPING THE ALREADY BEAUTIFUL AND FAMOUS LONGWOOD GARDENS, BUT HE WILL DIRECT SYSTEMATIC WORLD-WIDE PLANT EXPLORATIONS IN SEARCH OF ORNAMENTAL PLANTS (SOME OF WHICH WE HOPE MAY ULTIMATELY LAND IN OUR ARBORETUM).

OUR REGRET AT LOSING DR. SEIBERT IS BASED UPON OUR AFFECTION FOR HIM, HIS BEAUTIFUL AND TALENTED WIFE AND HIS THREE ATTRACTIVE CHILDREN, AND FOR HIS EXCELLENT PERFORMANCE AS DIRECTOR DURING THESE PAST FIVE YEARS. OF PRIMARY IMPORTANCE IS DR. SEIBERT'S FRIENDLY PERSONALITY WHICH HAS INSURED CORDIAL RELATIONS WITH THE COUNTY BOARD OF SUPERVISORS AND OTHER COUNTY OFFICIALS AND WITH ALL MEMBERS OF THE STAFF, THE GOVERNING BOARD AND THE BOARD OF THE ARBORETUM FOUNDATION.

PARALLELING HIS FINE PERSONALITY, DR. SEIBERT'S SCIENTIFIC BACKGROUND HAS LAUNCHED THE ARBORETUM ON A CAREER WHICH SHOULD PLACE IT AMONG THE BEST IN THE WORLD. A NUMBER OF IMPORTANT RESEARCH PROJECTS HAVE BEEN UNDERTAKEN DURING THE PAST FIVE YEARS, SOME OF THEM IN COOPERATION WITH CALIFORNIA INSTITUTE OF TECHNOLOGY. ONE VERY PRACTICAL RESEARCH PROBLEM HAS HAD TO DO WITH THE STUDY AND PROPAGATION OF FIRE-RESISTANT PLANTS FOR USE ALONG FIRE-BREAKS AND IN BURNED-OVER AREAS. THE RESULTS OF THIS RESEARCH PROJECT ARE NOW BEING UTILIZED BY THE COUNTY AND NATIONAL FORESTRY SERVICES.

FINALLY, DR. SEIBERT HAS DIRECTED AN EXTENSIVE PROPAGATION AND PLANTING PROGRAM ON THE ARBORETUM GROUNDS AND HAS SET THE STAGE FOR A LIVING MUSEUM OF BEAUTY AND OF EDUCATIONAL VALUE, A STAGE WHICH IS DESTINED TO BECOME ONE OF THE OUTSTANDING SHOW PLACES IN SOUTHERN CALIFORNIA.

SO WE REGRETFULLY BID DR. SEIBERT A TEMPORARY FAREWELL. WE ARE CERTAIN THAT IT IS ONLY TEMPORARY BECAUSE HE HAS PROMISED TO KEEP US ON HIS VISITING LIST AND WE BELIEVE HE WILL FIND IT POSSIBLE TO MAKE AVAILABLE TO THE ARBORETUM SOME OF THE PLANT TREASURES WHICH HIS TEAMS OF EXPLORERS WILL SEND BACK TO THIS COUNTRY.

SO LONG, RUSS, AND THE BEST OF LUCK.



## GROUNDS DEVELOPMENT AND CAPITAL IMPROVEMENTS

THE LOS ANGELES STATE AND COUNTY ARBORETUM HAS JUST PAST THROUGH ANOTHER SUCCESSFUL YEAR --- A YEAR MARKED BY CONSIDERABLE ADVANCEMENT TOWARDS BRINGING INTO LIVING REALITY, MORE AND MORE OF THE MASTER PLAN.

A BRIEF SURVEY COVERING THE VARIOUS GEOGRAPHICAL AND SPECIAL SECTIONS OF THE ARBORETUM WILL INDICATE THAT OUR HORTICULTURAL PROGRAM HAS BEEN CARRIED ON TO THE FULLEST PRACTICAL EXTENT WITH THE EXISTING FACILITIES.

### BALDWIN AVENUE ESPLANADE

THE FORTY FOOT WIDE STRIP ON THE EAST SIDE OF BALDWIN AVENUE, FROM COLORADO BOULEVARD SOUTH TO THE RACE TRACK FENCE, BELONGS TO THE ARBORETUM. TWO YEARS AGO, WE PLANTED A HEDGE OF CEANOTHUS AND ACACIAS BETWEEN THIS AREA AND THE ADJACENT PRIVATE PROPERTIES TO THE EAST. THIS HEDGE IS APPROXIMATELY SIX FEET HIGH NOW, AND GIVES PROMISE OF EXCELLENT BLOOM NEXT SPRING. WE'VE RECEIVED NUMEROUS COMMENTS OF APPROVAL AND REAL PLEASURE FROM THE RESIDENTS WHOSE PROPERTY BORDERS THIS PLANTING.

ON THE WEST SIDE OF BALDWIN AVENUE, FROM COLORADO BOULEVARD SOUTH TO THE MAIN ENTRANCE, THERE ARE TWO TYPES OF DECORATIVE AND VALUABLE HORTICULTURAL DISPLAY PLANTINGS.

FIRST, IN THE NORTHWEST CORNER (COLORADO & BALDWIN) IS A COLLECTION OF SPECIMEN ACACIAS. THE STRIKING GLOW OF COLOR PRODUCED BY THE MYRIADS OF YELLOW BALLS OF FLOWERS THIS SPRING, RESULTED IN MANY INQUIRIES BY THE PUBLIC FOR INFORMATION CONCERNING THE KIND OF PLANTS AND METHODS FOR THEIR CULTURE. ALTHO, THIS PLANTING IS BUT TWO YEARS OLD, IT HAS NEEDED THINNING, AND WILL AGAIN BE A BEAUTY SPOT NEXT YEAR.

SECOND, THE DIVIDING STRIP, BETWEEN PARKING LOT AND BALDWIN AVENUE, AND THE FENCE LINE AREA JUST WEST OF THE PARKING LOT, HAS BEEN ENHANCED BY LOW MAINTENANCE PLANTINGS. THE DIVERSIFICATION IN PLANT SPECIES OF WIDE RANGE GIVES COLOR HERE AND THERE ALONG THE ESPLANADE THROUGHOUT THE YEAR.

WE'RE JUSTLY PROUD OF THE GARDENER WHO HAS BEEN IN CHARGE OF THIS PARTICULAR AREA FOR THE PRIDE HE OBVIOUSLY TAKES IN MAINTAINING THE ATTRACTIVE "FRONT YARD" OF THE ARBORETUM.

### AUSTRALIAN SECTION

MORE THAN 200 EUCALYPTUS (IN SOME 30 SPECIES AND VARIETIES) WERE ADDED TO THIS BIT OF AUSTRALIA IN ARCADIA. MEASUREMENTS OF SOME OF THE ESTABLISHED



## GROUNDS DEVELOPMENT AND CAPITAL IMPROVEMENTS - continued

TREES, INDICATED THAT CERTAIN SPECIMENS GREW MORE THAN SIX FEET IN A SINGLE YEAR. WE'VE BEEN A LITTLE SHY OF ADEQUATE WATER LINES IN THIS AREA --- 500 FEET OF HOSE WERE NEEDED TO REACH CERTAIN NEW PLANTINGS --- HOWEVER, THIS DID NOT DETER OUR PROGRESS. NEXT YEAR WE FEEL CERTAIN SUCH CONDITIONS WILL BE CORRECTED.

LAST YEAR, THE COLORFUL BOTTLEBRUSH GROUP WAS ALMOST UNNOTICED. THIS YEAR, NO ONE COULD MISS THE LACY, NEEDLE-LIKE FOLIAGE OR THE VIVID REDS, SOFT PINKS, THE MAGENTAS, OR WHITE "BRUSHES" (THE FLOWERS) OF THIS COLLECTION. WE HAVE LEARNED SOMETHING OF THE WATER REQUIREMENTS OF THESE PLANTS WHILE ENJOYING THEIR BLOOMS.

ANOTHER AUSTRALIAN NATIVE -- ANIGOZANTHUS -- WAS TRANSPLANTED FROM A FIELD NURSERY TO ITS PERMANENT HOME IN THIS SECTION. RE-ESTABLISHMENT WAS RAPID AND EXTREMELY SUCCESSFUL.

THERE IS AN ACACIA COLLECTION INSIDE THE GROUNDS, AS WELL AS, OUTSIDE. SOME OF THE MORE RARE SPECIES OF THIS GROUP BLOOMED FOR THE FIRST TIME. RESULTING SEED WILL BE COLLECTED FOR OUR OWN USE AND FOR EXCHANGE PURPOSES.

### SOUTH AFRICAN SECTION

SOUTH AFRICA IS THE HOME OF MANY BRIGHTLY FLOWERING PLANTS BELONGING TO THE COMPOSITE FAMILY. A VIGOROUS BEGINNING HAS BEEN MADE IN BRINGING THIS SECTION UP TO SUCH COLOR. BOTH WATERING PROBLEMS AND SOIL STUBBORNNESS HAVE PLAGUED THIS AREA FROM THE BEGINNING. THE YOUNG ARBORETUM GARDENER IN CHARGE OF THIS SECTION HAS DONE VERY COMMENDABLE WORK IN THE INITIAL STAGES OF DEVELOPING "SOUTH AFRICA".

### MEDITERRANEAN SECTION

THIS SECTION IS THE LEAST DEVELOPED AND MOST OBVIOUSLY SO. BUT THERE'S AN EXCELLENT REASON. THROUGH A GREATER PORTION OF THIS AREA, THE ARCADIA WASH FLOOD CONTROL CHANNEL WILL BE CONSTRUCTED, DURING 1956. WE HAVE TRIED TO ADD SOME INTEREST HERE, NEVERTHELESS, BY PLANTING NATIVE CISTUS OR ROCK ROSE SPECIES IN SMALL BAYS ALONG THE ROAD EDGE.

### JUNGLE SECTION

THE SCREECHING OF MONKEYS, THE HOOTING OF OWLS, THE ROAR OF A LION AND POSSIBLY A HYENA'S LAUGH ARE SOUNDS OFTEN HEARD FROM THE JUNGLE. TRUELY, THESE NOISES ARE EXPRESSIONS OF IMAGINATION BY THE CHILDREN TOURING THE



## GROUNDS DEVELOPMENT AND CAPITAL IMPROVEMENTS - continued

JUNGLE. IT'S A FASCINATING, UNIQUE, AND EVER POPULAR SPOT. IT'S THE ONLY REAL JUNGLE IN SOUTHERN CALIFORNIA. EACH YEAR, WE ADD SPECIMEN PLANTS OF A TROPICAL NATURE -- COFFEE TREES, GINGER, SWAMP IRIS, BIRDS-OF-PARADISE, BEGONIAS, EPIPHYLLUMS -- TO HIGH LIGHT WITH COLOR (ALSO TO TEST FOR HARDINESS) THIS AREA LIGHTED IN SHADES OF GREEN.

APPROACHES TO THE EAST AND WEST ENDS OF THE JUNGLE HAVE BEEN PLANTED WITH ADDITIONAL TROPICAL SPECIES THIS YEAR, AND IN TIME THESE PLANTS WILL BECOME THE "LOW" JUNGLE.

A SPECIMEN COLLECTION OF ORNAMENTAL GRASSES -- PAPYRUS, PAMPUS, LEMON -- LEAD AWAY FROM THE WEST END OF THE JUNGLE ALONG THE EDGE OF THE LAGOON.

### BAMBOO & PALM SECTION

SOUTH ALONG BALDWIN AVENUE FROM THE MAIN ENTRANCE OF THE ARBORETUM AND CONTINUING WEST ALONG THE SOUTH FENCE TO THE FOOT OF TALLAC KNOLL, SINOCALAMUS OLDHAMI, ONE OF THE TALLER BAMBOOS, WAS PLANTED THREE YEARS AGO TO FORM A HEDGE. THIS PLANTING IS RAPIDLY FILLING IN, SCREENING FROM THE ARBORETUM VISITOR BOTH HIGHWAY NOISE AND THE WORKING END OF A LOCAL RACE TRACK.

ADDITIONAL SPECIES OF BAMBOOS AND PALMS (SEE ARBOR WEEK) HAVE BEEN PLANTED IN THIS SECTION, INCREASING THE VALUE AND INTEREST OF THESE TWO PLANT TYPES WHICH ARE NOT OF THE SHOWY FLOWER VARIETY.

### DOMESTIC LANDSCAPE SECTION

THIS AREA, PLANTED EARLY IN THE ARBORETUM'S DEVELOPMENT IS BEGINNING TO TAKE ON THE LOOK OF MATURITY. PLANTS FROM ALL PARTS OF THE WORLD WHICH GIVE PROMISE OF LANDSCAPE VALUE ARE BEING PLANTED TOGETHER. SOME OF THEM WILL BE FOUND ELSEWHERE IN THEIR PROPER GEOGRAPHICAL SETTINGS.

IN THIS AREA ALSO IS A LESSON IN GENETICS COMBINED IN ONE PLANTING. ONE PACKET OF SEED PRODUCED BOTH LOW AND HIGH GROWING SHRUBS. A FORM OF ICE PLANT, THE FLOWERS OF WHICH BLAZE WHEN TOUCHED BY THE BRIGHT SUN. REDS, YELLOWS, ORANGE, MAGENTA, LAVANDER, AND PINK FAIRLY BLIND THE OBSERVER AT NOON. THE MANY PETALLED FLOWERS SEEM COATED WITH A WAXY SUBSTANCE WHICH ACCOUNTS FOR THE GLITTER AND SPARKLE. CUTTINGS FROM THESE PLANTS HAVE BEEN PLANTED TO FORM LOW BORDERS ALONG THE MAIN ENTRANCE AND SPOTS IN THE NORTH BALDWIN PARKING STRIP.

### OLD FASHIONED ROSE GARDEN

A COMPANION OF THE HERB GARDEN, BUT AS YET VERY EMBRYONIC. THIS GARDEN WILL FEATURE ROSES INTRODUCED PRIOR TO 1905.



## HERB GARDEN



IT MAY WELL BE THAT THE HERB GARDEN IS THE "STAR" OF THE ARBORETUM THIS YEAR.

BASIC GRADING WAS COMPLETED IN APRIL AND AS WE REACH THE END OF JUNE, THE GENERAL PATTERN IS CLEARLY EVIDENT. THE OUTLINE OF THE KNOT GARDEN HAS EMERGED AND THE KITCHEN GARDEN IS WELL ALONG. PRELIMINARY SKETCHES FOR A DIPPING WELL IN THE KITCHEN GARDEN HAVE BEEN DRAWN AND THE OUTLINE FOR THE MEDIEVAL WALLED GARDEN HAS BEEN DEVELOPED. THE HEADERS FOR THE PATHS THROUGHOUT THE GARDEN HAVE

BEEN PUT IN AND THE MAJOR PATHS COVERED WITH CRUSHED ROCK. THE PATTERN AND PLAN OF SUCH A DIFFERENT GARDEN WILL, IN ITSELF, STRIKE THE MODERN VISITOR AS UNIQUE AND PLEASURABLE: BUT MORE THAN THIS --- HERE'S A USEFUL BIT OF HORTICULTURE WHICH REACHES BACK TO THE VERY EARLIEST OF BOTANY AND PLANT LORE. THIS GARDEN IS A LIVING SYMBOL OF MAN'S PROGRESS (HORTICULTURALLY AT LEAST) THROUGH THE AGES.

WE ARE ALL GRATEFUL TO MEMBERS OF THE SOUTHERN CALIFORNIA UNIT OF THE HERB SOCIETY OF AMERICA FOR THEIR WILLINGNESS AND ACTUAL ASSISTANCE IN DEVELOPING THIS GARDEN. THEY NOT ONLY SHOULDERED THE FINANCIAL BURDEN OF THE BOXWOOD PLANTS, THE REDWOOD HEADERS, AND THE CRUSHED ROCK; BUT IN ADDITION, FURNISHED DATA ON THE CULTURE OF HERBS. MISS EDNA NEUGABAUER GAVE US AN OUTSTANDING COLLECTION OF LAVANDER SPECIES AND VARIETIES. MRS. A. D. RICHARDSON, 1954-55 PRESIDENT, HAS DIRECTED THE SOCIETY'S WORK, GIVING CONSTANT ENCOURAGEMENT TO THE ARBORETUM COMMITTEE ABLY HEADED BY MISS RUTH RANDALL. WE EXTEND OUR SINCERE THANKS TO ALL THE MEMBERS AND LOOK FORWARD TO ANOTHER FINE YEAR OF COOPERATION WITH THE SOUTHERN CALIFORNIA UNIT UNDER THEIR NEW PRESIDENT, MRS. CECELIA WILLARD WILCOX.

## TROPICAL GARDEN

HERE, WE REALLY ARE EXPERIMENTING! IN THIS ABANDONED EARTH RESERVOIR, ATOP TALLAC KNOLL, THE CYMBIDIUMS PLANTED ON THE SLOPING INNER WALL BLOOMED PROFUSELY THIS YEAR. FURTHER, AROUND THE SIDE, THE SPECIES BEGONIAS IMPART YEAR AROUND COLOR. WIRED TO TRUNK AND LIMB, HARDY ORCHIDS AND BROMELIADS ARE BEING TESTED FOR A LIFE OUT-OF-DOORS, UNDER SOME PROTECTION. SOME OF THESE



## GROUNDS DEVELOPMENT AND CAPITAL IMPROVEMENTS - continued

ALSO BLOOMED THIS YEAR. IN VARIOUS SPOTS ARE PLANTED TREE SPECIMENS OF THE FIGUS GROUP --- A DONATION OF DR. CONDIT ---.

THE REALLY OUTSTANDING EVENT IN THIS AREA WAS THE LEAFING OUT AND BLOOMING OF THE SOUTH AMERICAN TABEBUIAS (SEE ARBORETUM PUBLICATIONS, DR. SEIBERT). IF THESE TREES CAN BE GROWN TO MATURITY, THE ARBORETUM WILL HAVE BROUGHT A SPECTACULAR SPLASH OF COLOR AND GRACEFUL BEAUTY TO SOUTHERN CALIFORNIA.

MUCH INFORMATION WILL BE GLEANED FROM THIS SPECIAL SECTION, VALUABLE TO THE HOME OWNER WHO WISHES COLOR AND INTERESTING FOLIAGE WITH HARDINESS.

### THE BUILDINGS

THIS FISCAL YEAR SAW THE COMPLETION OF THREE PERMANENT BUILDINGS. 1) THE HEADHOUSE, CONTAINING A POTTING ROOM, SHOWER AND LOCKER ROOM, PLANT RECORDS OFFICE AND UTILITY ROOM WHICH HOUSES THE STEAM GENERATING PLANT USED FOR STERILIZING SOIL, POTS, AND OTHER EQUIPMENT. 2) THE PUBLIC RESTROOMS. 3) THE FIRST WING OF OUR SERVICE UNIT. THIS UNIT CONTAINS DOUBLE GARAGES, A TOOL ROOM, RESTROOM, AND AN ELECTRICAL VAULT. ALL ELECTRICAL AND TELEPHONE WIRES ON THE ARBORETUM GROUNDS WILL ENTER FROM THIS VAULT. THESE NEW BUILDINGS HAVE ENABLED US TO INCREASE OUR EFFICIENCY OF OPERATION AND THE PLANTS WILL MOVE INTO THE PERMANENT PLANTINGS AT AN EVER INCREASING PACE.

AS WITH ANY VIGOROUSLY GROWING ORGANIZATION, BUILDING FACILITIES ALWAYS SEEM TO LAG BEHIND THE IDEAS AND AMBITIONS OF THE PERSONNEL. ADDITIONAL GREENHOUSE AND SERVICE SPACE AND EQUIPMENT ARE URGENTLY NEEDED IN SPITE OF THE NEWNESS OF THE ABOVE CONSTRUCTIONS.

WE FEEL CONFIDENT THAT A FORWARD LOOKING COUNTY ADMINISTRATION AND INCREASING PUBLIC USE AND INTEREST PRESAGES A BRIGHT FUTURE FOR THE ARBORETUM.



SERVICE  
BUILDING



HEADHOUSE  
AND  
GREENHOUSE

PUBLIC  
RESTROOM









## HORTICULTURAL

THE PUBLIC IS UNAWARE OF MUCH OF THE REAL WORK GOING ON IN THE ARBORETUM. INCREASE OF OUR PLANT COLLECTIONS IS CARRIED OUT AT A STEADY DAY BY DAY PACE, MUCH AS A PLANT ITSELF GROWS. THE FOLLOWING DATA ILLUSTRATES THE EFFORTS OF THE PROPAGATION, PLANT RECORDS, AND SECTION GARDEN DIVISIONS OF THE ARBORETUM:

### 1. ACCESSIONS

ACCESSIONS OF 2,276 SEED AND PLANT MATERIALS WERE RECEIVED DURING THE FISCAL YEAR 1954-1955, FROM VARIOUS SOURCES BOTH FOREIGN AND DOMESTIC. THIS FIGURE BRINGS THE TOTAL OF 12,836 ACCESSIONS HANDLED SINCE THE ARBORETUM'S INCEPTION IN 1948.

### 2. PROPAGATION, SEED AND PLANT CONTROL

	<u>1ST QTR.</u>	<u>2ND QTR.</u>	<u>3RD QTR.</u>	<u>4TH QTR.</u>	<u>TOTALS</u>
ACCESSIONS	432	402	725	717	2276
SEED PLANTED	391	277	281	334	1483
CUTTINGS INSERTED	2586	152	673	1083	4494
INTO 1 GALLON CANS	2666	3067	1305	1425	8463
INTO 5 GALLON CANS	65	89	18	200	372
PERMANENT FIELD PLANTING	2402	3937	4223	5523	16185
EXPERIMENTAL & TEST PLANTING	99	---	484	---	583

### 3. SEED AND PLANT EXCHANGE

AS DURING PREVIOUS YEARS, SURPLUS SEED AND PLANTS WERE DISTRIBUTED TO VARIOUS BOTANICAL GARDENS, ARBORETA, UNIVERSITIES AND GOVERNMENT INSTITUTIONS ON AN EXCHANGE BASIS. MANY OF OUR LOS ANGELES COUNTY INSTITUTIONS WERE GIVEN PLANTS FOR LANDSCAPING PURPOSES.

THE FOLLOWING QUANTITIES WERE DISTRIBUTED OR EXCHANGED:

	<u>RECEIVED</u>	<u>SEED</u> <u>SENT</u>	<u>RECEIVED</u>	<u>PLANTS</u> <u>SENT</u>
FOREIGN	483	111	4	NONE
DOMESTIC	364	239	1379	3148



HORTICULTURAL - continued

4. CONDITION AND SURVIVAL REPORTS

IN ACCORDANCE WITH REQUESTS, REPORTS HAVE BEEN FORWARDED TO THOSE INSTITUTIONS ASKING FOR INFORMATION. IN MOST CASES, THESE REPORTS APPLIED TO MATERIAL RECEIVED FROM THE UNITED STATES DEPARTMENT OF AGRICULTURE PLANT INTRODUCTION GARDENS. WE DID, HOWEVER, FORWARD REPORTS TO OTHER INSTITUTIONS BOTH FOREIGN AND DOMESTIC.

5. GIFTS

ALWAYS, THE IMPORTANCE OF A PUBLIC INSTITUTION TO ITS COMMUNITY IS MEASURED, IN PART, BY THE GIFTS IT RECEIVES. EACH YEAR, THE ARBORETUM HAS PROSPERED THROUGH GIFTS FROM THE CALIFORNIA ARBORETUM FOUNDATION, INC. THEIR DONATIONS INCLUDED: ROSES, BEGONIAS, AZALEA HYBRIDS, ORCHIDS, SEEDS, AND VARIOUS SPECIMEN PLANTS.

WEATHER

DAILY READINGS OF TEMPERATURES, RAINFALL AND EVAPORATION HAVE BEEN RENDERED MONTHLY TO THE LOS ANGELES COUNTY FLOOD CONTROL DISTRICT OFFICE FROM THE ARBORETUM WEATHER STATION NO. 1037-E. IN ADDITION, WEATHER INFORMATION IS GIVEN TO THE CITY OF ARCADIA WATER DEPARTMENT AND ARCADIA CITY HALL. DAILY WEATHER REPORTS ARE OF CONSIDERABLE IMPORTANCE TO THE SUCCESS OF PLANT MANAGEMENT. ONE OF THE MANY SERVICES TO THE COMMUNITIES OF SOUTHERN CALIFORNIA IS EMBODIED IN THIS TYPE OF REPORT:

LASCA WEATHER FOR THE FISCAL YEAR 1954-1955

MONTH	TEMPERATURES					RAINFALL INCHES MONTH	EVAPORATION INCHES MONTH
	AVERAGE		PEAKS		MEAN		
	MIN.	MAX.	MIN.	MAX.			
JULY	61.3	97.5	51.	106.	79.4	-----	6.515
AUGUST	58.0	90.4	50.	106.	74.2	-----	5.780
SEPTEMBER	53.7	93.5	47.	104.	73.7	-----	5.260
OCTOBER	47.1	83.5	41.	106.	65.3	-----	3.735
NOVEMBER	44.9	82.6	35.	90.	63.7	2.07	2.025
DECEMBER	39.1	69.7	27.	84.	54.4	.66	1.540
JANUARY	34.1	64.6	31.	80.	49.6	5.82	.885
FEBRUARY	38.0	69.2	30.	87.	53.6	1.26	2.580
MARCH	43.9	73.8	35.	89.	58.8	1.06	3.570
APRIL	43.9	75.6	36.	88.	59.7	1.50	5.135
MAY	49.2	75.7	39.	92.	62.4	1.51	3.700
JUNE	53.4	81.7	45.	94.	67.5	.03	5.440
TOTAL INCHES - - - -						13.91	46.165



## SPECIAL PROJECTS

### EXPERIMENTAL

#### FIRE RESISTANT PLANTS

THIS EXPERIMENTAL PROGRAM, STARTED A YEAR AGO, HAS BEEN CONTINUED. THE CISTUS OR ROCK ROSE PLANT WAS STILL THE PRIMARY RESEARCH SUBJECT. TWO PHASES OF WORK WERE CONSIDERED.

FIRST, GERMINATION AND SURVIVAL OF FIELD SOWN SEED.

IN JANUARY, 1954, TEN CISTUS SPECIES WERE SEEDED ON A FIRE BREAK IN THE MOUNTAINS ABOVE MONROVIA, CALIF. THE FIRST SEEDLING COUNT WAS MADE IN MAY, 1954. A SECOND AND THIRD COUNT WAS MADE IN SEPTEMBER, 1954 AND MARCH 1955, RESPECTIVELY. SEEDLINGS WERE IN EVIDENCE AT EACH COUNT. GROWTH OF THE SEEDLINGS INDICATED THAT a) SOME HAD SURVIVED FROM THE MAY COUNT: WHILE b) OTHERS HAD DIED, BUT WERE REPLACED BY A NEW CROP BETWEEN THE SEPTEMBER AND MARCH COUNT.

FROM THESE OBSERVATIONS, THE FOLLOWING ASSUMPTIONS SEEM JUSTIFIABLE: 1) CISTUS SEEDS WILL GERMINATE UNDER CONDITIONS OF POOR SOIL AND MINIMUM RAINFALL; 2) FROM A LARGE ENOUGH SEEDING, SOME SEEDLINGS WILL SURVIVE THE RIGORS OF FIELD LIFE; AND 3) THE LENGTH OF TIME THAT THE SEED IS VIABLE PERMITS ONE SEEDING TO PRODUCE PLANTS FOR MORE THAN ONE SEASON.

IN ADDITION TO DIRECT SEEDING, THE FLOOD CONTROL DIVISION OF THE U. S. FOREST SERVICE IS TESTING TRANSPLANTED SEEDLINGS (SUPPLIED BY THE ARBORETUM) IN VARIOUS MOUNTAIN LOCATIONS. OF PARTICULAR NOTE ARE THE PLANTINGS ON THE LANNON CANYON EARTH DAM, ARCADIA, CALIF. THESE PLANTS ESTABLISHED A YEAR AGO, HAVE THIS YEAR FLOWERED AND PRODUCED SEED. THE RE-SEEDING POTENTIALS OF THESE PLANTS WILL BE WATCHED WITH GREAT INTEREST BY BOTH FEDERAL AND COUNTY INVESTIGATORS.

SECOND, A FLUCTUATION IN THE NUMBER OF SEEDS GERMINATING WAS NOTICED DURING GREENHOUSE TRIALS WITH CISTUS. IN THE SAME POT OR FLAT OF SEEDS, PERIODS OF MUCH GERMINATION FOLLOWED BY PERIODS OF LITTLE GERMINATION. THUS THE TIME OF GERMINATION OF A GIVEN LOT OF SEED WAS QUITE EXTENSIVE. AN UNDERSTANDING OF THIS PHENOMENA COULD BE USEFUL IN THE ESTABLISHMENT OF CISTUS IN THE FIELD. A SERIES OF GERMINATION EXPERIMENTS WERE CONDUCTED. VARIOUS PRE-TREATMENTS WERE GIVEN THE SEED. TESTS WERE ALSO ARRANGED AT THE EARHART LABORATORY, CAL TECH, PASADENA. TO DATE NO CLEAR CONCLUSION CAN BE DRAWN FROM THESE VARIOUS TESTS WHICH WOULD SHED LIGHT ON THIS PECULIAR GERMINATION ACTION. THE ONE FACT DEMONSTRATED TO DATE IS THAT CISTUS IS CAPABLE OF GERMINATION UNDER EXTREMELY VARIED CONDITIONS.

FURTHER WORK IS IN PROGRESS.



## SPECIAL PROJECTS - continued

### HERBICIDE TRIALS

THREE CHEMICALS SEEM PARTICULARLY USEFUL FOR FURTHER TESTING, FOLLOWING SMALL PLOT TESTS.

ALNAP-1 (NAUGATUCK CHEMICAL CO.) EFFECTIVE AGAINST SUCH WEEDS AS RAGWEED, CHICKWEED, ETC., WITHOUT APPARENT DAMAGE TO ZOYSIA MATRELLA, A STOLONIFEROUS GRASS.

DALAPON (DOW CHEMICAL CO.) EFFECTIVE ON WEEDS AND GRASSES. KILLED BERMUDA GRASS AT ALL CONCENTRATIONS: SOME BERMUDA REGROWTH AT LOWEST CONCENTRATION OF CHEMICAL. IF CAREFULLY APPLIED THIS CHEMICAL MAY BE USEFUL FOR EDGING BERMUDA GRASS PLOTS, LAWNS, OR GRASS BREAKING THROUGH ASPHALT PAVING.

PREMERGE (DOW CHEMICAL CO.) A GENERAL WEED KILLER, APPLIED BEFORE EMERGENCE OF CROP PLANT. CAREFUL APPLICATIONS TO PLANT CONTAINERS CHOKED WITH YOUNG WEEDS WAS PARTLY SUCCESSFUL REDUCING WEEDING BY HAND. APPLIED AS A POST-EMERGENT SPRAY, WEEDS ARE KILLED, BUT REGROWTH IS SOON APPARENT.

### HERBICIDE AND SOIL STERILANT

VAPAN (STAUFFER CHEMICAL CO.) IS A NEW SOIL STERILANT AND HERBICIDE. APPLIED TO PLOTS OF PURE RAGWEED OR PURE BINDWEED, 100% KILL WAS ACHIEVED. NO REGROWTH IN THESE PLOTS WAS APPARENT TWO MONTHS AFTER TREATMENT. TESTS OF SOIL STERILIZATION FOR BOTH POTTING AND CANNING SOIL ARE UNDER OBSERVATION.

A MAJOR DISADVANTAGE OF ALL THE PRESENT WEED KILLERS AND SOIL STERILANTS WHICH DIRECTLY CONCERN THE ARBORETUM, IS THAT FEW CAN BE USED AROUND ESTABLISHED PLANTINGS FOR WEED CONTROL WITHOUT THE FEAR OF DAMAGE TO THE PLANT SPECIMEN.

ALL THE ABOVE CHEMICALS WERE SUPPLIED BY THE MANUFACTURER AS EXPERIMENTAL SAMPLES FREE OF CHARGE. THE MANUFACTURER'S NAMES ARE INCLUDED FOR CLARITY AND DOES NOT INDICATE ENDORSEMENT OF PRODUCT.

### TURFGRASS

STUDIES CONCERNED WITH TURFGRASSES FOR THE HOME WERE CONTINUED. THE FOLLOWING GRASSES ARE GROWING AS PURE PLOTS AT THE ARBORETUM:

ZOYSIA MATRELLA 445	BERMUDA, EVERGLADES #3
ZOYSIA MATRELLA 1304	BERMUDA, HALL'S U-3
ZOYSIA MATRELLA #73	BERMUDA, "MAGENNISII"
ZOYSIA MATRELLA "FLAWN"	MICROLAENA STIPOIDES
ZOYSIA JAPONICA	AGROSTIS STOLONIFERA
ZOYSIA JAPONICA VAR. "MEYER"	VAR. STOLONIFERA
ZOYSIA TENUIFOLIA	"LUCKY" BALDWIN BLUE GRASS
BERMUDA, EVERGLADES #2	ALTA FESCUE
	MEADOW FESCUE



## SPECIAL PROJECTS - continued

CUTTING HEIGHT CHANGE FROM 3" TO 3/4" IMPROVED QUALITY OF BOTH THE BERMUDA AND ZOYSIA TURFS. IN ADDITION, CLOSE MOWING REDUCED MAT BUILD-UP, THUS ELIMINATING FALL SCALPING OF THESE LAWNS.

A QUICK METHOD OF PLANTING ZOYSIA MATRELLA PROVED SUCCESSFUL. NO SEED SOURCE OF THIS GRASS IS AVAILABLE. VEGETATIVE PROPAGATION IS MANDATORY. SMALL SPRIGS OF THIS GRASS TAKE YEARS TO COVER AN AREA. TRIALS HERE SHOWED THAT BY SCATTERING QUANTITIES OF SMALL CLUMPS OF STOLONS OVER THE SURFACE OF THE PROPOSED LAWN AREAS, COVERING WITH ONE OR TWO INCHES OF SAWDUST, AND KEEPING THE WHOLE AREA WELL WATERED THAT ESTABLISHMENT OF SUCH A LAWN IS POSSIBLE. GRASS COVERAGE PRODUCED BY SUCH A PROCEDURE IS VERY MUCH ACCELERATED.

COMPATIBILITY TRIALS OF EVERGLADES BERMUDA #2 AND #3 AND HALL'S U-3 BERMUDA PLUGGED INTO ESTABLISHED MERION BLUE GRASS TURF, RESULTED IN A COMPLETE RUN-OUT OF THE BLUE GRASS IN A LITTLE OVER A YEAR'S TIME.

THE NEW ZEALAND GRASS, MICROLAENA STIPOIDES, MAINTAINED ITS GREEN COLOR THROUGHOUT THE YEAR. IT APPEARS TO BE MORE GREEN DURING THE COOLER SEASONS, HOWEVER. THIS YEAR'S MAINTENANCE OF THE LAWN AT A 1 1/2" CUT APPEARED SUCCESSFUL. CLOSER CUTTING WILL BE ATTEMPTED THIS NEXT YEAR. SEED WAS COLLECTED FOR FURTHER TRIALS, BOTH AT THE ARBORETUM AND ELSEWHERE IN THE WEST.

INFORMATION WAS AGAIN COLLECTED AS TO THE TIME OF YEAR THAT THE VARIOUS BERMUDAS AND ZOYSIA TURNED BROWN AND WHEN REGROWTH APPEARED. THESE DATA ARE USEFUL WHEN CONSIDERING BREEDING AND SELECTION FOR BETTER GRASS STRAINS.

## MEASUREMENTS

THE ANNUAL MEASUREMENT OF THE RATE OF GROWTH OF SELECTED TREES AND SHRUBS WAS REPEATED. IN MANY CASES, THE INCREASE IN GROWTH WAS CONSIDERABLE OVER THE PREVIOUS YEAR'S MEASUREMENTS. THIS WOULD INDICATE THAT THE PLANTS WERE SUCCESSFULLY ESTABLISHED IN THE FIELD POSITIONS. THESE AND SIMILAR DATA ARE ADDED TO THE INDIVIDUAL PLANT RECORD CARDS WHICH BEAR PROPAGATION AND GROWING INFORMATION AS WELL. SUCH KNOWLEDGE IS VALUABLE TO BOTH THE HOME OWNER AND PROFESSIONAL PLANTSMAN WHEN CONSIDERING LANDSCAPING PROBLEMS USING NEW OR UNTRIED PLANT MATERIAL.





## LIBRARY

AMONG THE 71 VOLUMES PURCHASED FOR THE LIBRARY, THREE WERE PARTICULARLY OUTSTANDING IN THEIR CONTRIBUTION TO THE FIELD OF BOTANY AND HORTICULTURE.

THE FIRST, CURTIS'S BOTANICAL MAGAZINE, 51 BOUND VOLUMES. AN ENGLISH PUBLICATION, MR. CURTIS BEGAN HIS SERIES IN 1793. OUR COLLECTION COVERS THE YEARS FROM 1793-1831. THESE ORIGINAL RARE VOLUMES OF PLANT DESCRIPTION AND PROPAGATION INFORMATION CONTAIN MANY BEAUTIFUL, HAND COLORED ILLUSTRATIONS. THIS MAGAZINE HAS BEEN IN CONTINUOUS PUBLICATION FROM THE BEGINNING, THE ARBORETUM RECEIVING THE CURRENT EDITIONS.

SECOND, ONE OF THE 10 REMAINING COPIES OF J. J. OCHSE'S FRUIT AND FRUIT-CULTURE IN THE DUTCH EAST INDIES WAS OBTAINED. BECAUSE OF WORLD WAR II AND IMPRISONMENT OF THE OCHSE FAMILY, ALL HOPES FOR HIS BOOK WERE LOST. AFTER THE WAR, A SEARCH FOR COPIES WAS MADE; FINALLY IN AN OBSCURE BOOK STORE IN THE ORIENT, 10 VOLUMES WERE DISCOVERED. THE VALUE OF THE PLANT MATERIAL DESCRIBED AND THE HAND COLORED PLATES ARE INESTIMABLE TO THE FIELD OF HORTICULTURE.

LAST, FROM SPAIN CAME THE FIRST VOLUME OF THE "FLORA DE LA REAL EXPEDICION BOTANICA DEL NUEVO REINO DE GRANADA". SPONSORED BY CHARLES III OF SPAIN IN 1760, THE EXPEDITION WAS UNDER THE LEADERSHIP OF A DOCTOR-BOTANIST NAMED MUTIS. THE PRESENT GOVERNMENTS OF SPAIN AND COLOMBIA ARE UNDERTAKING THE PUBLICATION OF THE NOTES OF MUTIS CONCERNING THE FLORA OF NEW SPAIN, NOTES WHICH HAVE BEEN "SLEEPING" SINCE THE END OF THE EXPEDITION.

OF THE GIFTS TO THE LIBRARY, THE 17 BOUND VOLUMES OF THE U.S.D.A. PLANT INTRODUCTION INVENTORIES, 1-126 SHOULD BE NOTED. WE THANK THE U. S. DEPARTMENT OF AGRICULTURE FOR THEIR GENEROSITY.

STATISTICALLY, THE LIBRARY GREW AS FOLLOWS:

CURRENT PERIODICALS	
EXCHANGE	66
SUBSCRIPTIONS	33
GIFTS	9
NEW BINDINGS	
BOOKS	2
PERIODICALS	71

THE IMPORTANCE OF THE LIBRARY, INDICATED BY INCREASING REQUESTS FOR ASSISTANCE BY STAFF AND THE GENERAL PUBLIC AS THE ARBORETUM CONTINUES TO GROW, RESULTED IN THE APPOINTMENT OF A FULL TIME LIBRARIAN.



Supervisor John Anson Ford  
and the  
Board of Supervisors of Los Angeles County  
The Board of Governors of the  
Department of Arboreta and Botanic Gardens  
The Board of Trustees of  
California Arboretum Foundation, Inc.

Cordially invite your attendance

at the

Formal Opening and Tour

of the

LOS ANGELES STATE and COUNTY ARBORETUM

301 N. Baldwin Avenue, Arcadia Calif.

on

Saturday, January 8, 1955 at 2:00 p.m.

NO INVITATION HAS EVER BEEN SENT OFF WITH AS JOYOUS A FEELING AND PRIDE AS THIS, ANNOUNCING THE OPENING OF THE LOS ANGELES STATE AND COUNTY ARBORETUM TO THE CITIZENS OF SOUTHERN CALIFORNIA AND OF THE WORLD.

DIGNITARIES, BOTH OF THE BOTANICAL WORLD, AS WELL AS, IN PUBLIC SERVICE FROM ALL AREAS OF THE STATE OF CALIFORNIA ATTENDED THE FORMAL OPENING.

THE INVOCATION BY DR. J. DAVIS BARNARD, PASTOR OF THE ARCADIA PRESBYTERIAN CHURCH, OPENED THE SPECIAL CEREMONY COMMEMORATING THIS EVENT. DR. FRITS W. WENT OF CALIFORNIA INSTITUTE OF TECHNOLOGY AND FIRST PRESIDENT OF THE CALIFORNIA ARBORETUM FOUNDATION, INC., ACTED AS MASTER OF CEREMONIES.

DR. SAMUEL AYRES, JR., PRESIDENT OF THE BOARD OF GOVERNORS OF THE DEPARTMENT OF ARBORETA AND BOTANIC GARDENS OF LOS ANGELES COUNTY, GAVE THE WELCOMING ADDRESS.

DR. WENT THEN INTRODUCED SUPERVISOR JOHN ANSON FORD, CHAIRMAN OF THE ARBORETA AND BOTANIC GARDENS BOARD: SUPERVISORS ROGER JESSUP, BURTON W. CHACE, AND KENNETH HAHN; NEWTON DRURY AND AUBREY NESHAM, CHIEF EXECUTIVES OF THE STATE DIVISION OF BEACHES AND PARKS.

MR. JOSEPH KNOWLAND, CHAIRMAN OF THE STATE PARK COMMISSION AND PRESIDENT OF THE CALIFORNIA HISTORICAL SOCIETY, GAVE AN ADDRESS IN DEDICATION OF THE ESTABLISHMENT OF THE ARBORETUM.



A FEELING OF JUSTIFIABLE PRIDE PREVAILED OVER THE WHOLE OF THE ASSEMBLED GROUP FOR THE PART EACH CONTRIBUTED IN THE ESTABLISHMENT OF THIS FUTURE WORLD CENTER OF BOTANICAL AND HORTICULTURAL SCIENCE.



MR. JOSEPH KNOWLAND SPEAKING AT THE DEDICATION CEREMONY OF THE INVITATIONAL PUBLIC OPENING OF THE LOS ANGELES STATE AND COUNTY ARBORETUM, JANUARY 8, 1955.



## SUNDAY TOURS

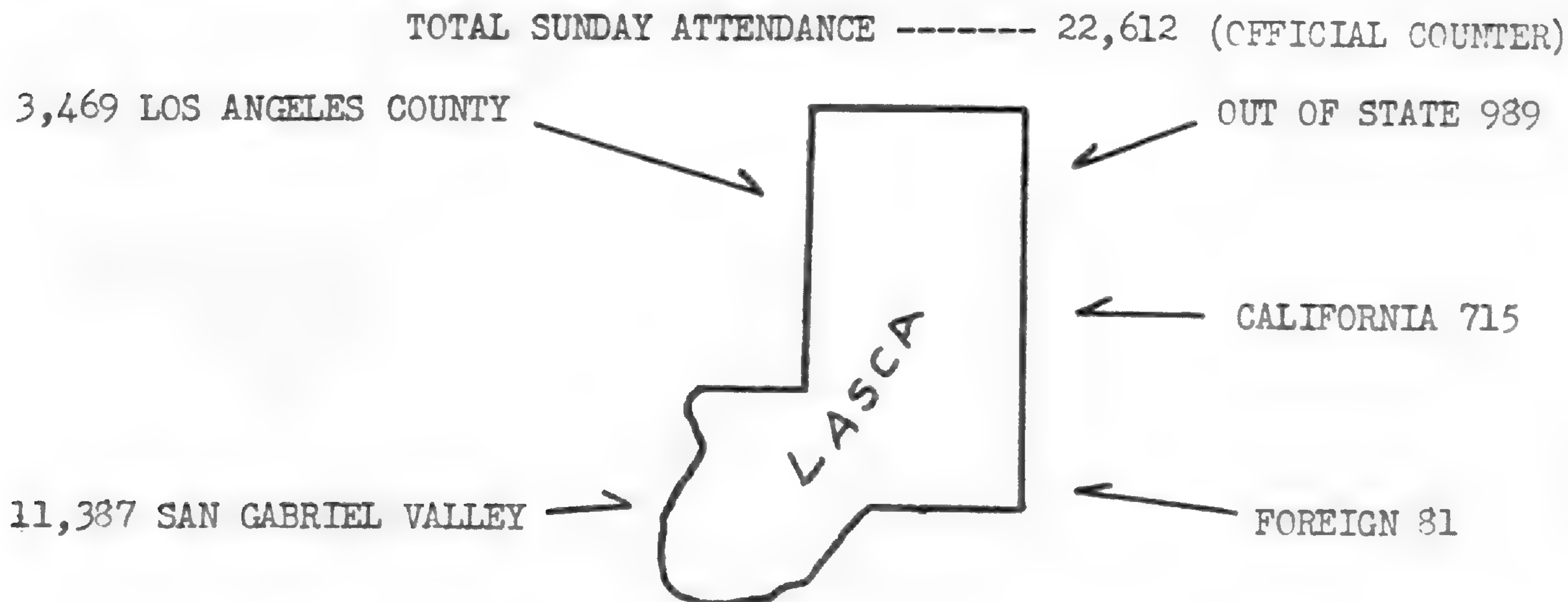
BEGINNING SUNDAY, JANUARY 9, 1955, AND EACH SUNDAY THEREAFTER, THE GROUNDS OF THE ARBORETUM HAVE BEEN OPEN TO THE PUBLIC FOR FREE TOURS WITHOUT APPOINTMENTS.

THE CONDUCTED TOUR, AT PRESENT THE ONLY WAY ANYONE SEES THE ARBORETUM, IS ACCOMPLISHED BY JEEP DRAWN, SIGHT-SEEING TRAMS WHICH LEAVE THE BALDWIN AVENUE GATE APPROXIMATELY EVERY HALF HOUR BETWEEN 10:30 A.M. AND 4:00 P.M. WHILE RIDING, THE VISITOR PASSES THROUGH ALL SECTIONS OF THE ARBORETUM (SOUTH AFRICA, AUSTRALIA, SOUTH AMERICA, ETC.). A SHORT WALKING-LECTURE TAKES ONE THROUGH THE COACH BARN, THE RESTORED AND FURNISHED "QUEEN ANNE" COTTAGE, THE REID ADOBE HOUSE, AND THE JUNGLE. THROUGHOUT THE WHOLE OF THE JOURNEY COMPETENT ARBORETUM NATURALISTS EXPLAIN THE HISTORY AND DEVELOPMENT OF THE ARBORETUM, AS WELL AS, INFORM THEIR LISTENERS ABOUT THE PLANTS GROWING IN THE VARIOUS SECTIONS.

AS OUR VISITORS LEAVE, EACH IS ASKED TO FILL OUT A REGISTRATION CARD. AFTER REVIEWING THE "REMARKS" COLUMN OF THOUSANDS OF THESE CARDS, WE KNOW THAT OUR VISITORS HAVE SPENT AN ENJOYABLE AND EDUCATIONAL HOUR WITH US, THAT MANY HAVE MADE THE TOUR AGAIN AND AGAIN, AND THAT THE PURPOSE AND PROGRAM OF THE ARBORETUM IS UNDERSTOOD AND APPRECIATED BY THE PEOPLE WHO ACTUALLY SUPPORT OUR ENDEAVORS.

THE DIRECTOR, MEMBERS OF THE BOARD OF GOVERNORS, AND THE ARBORETUM STAFF ARE ENTHUSIASTIC OVER THE RESPONSE TO OUR EFFORTS IN OUR YOUNG ARBORETUM.

THESE FIGURES ARE OF PARTICULAR INTEREST:



THE "OUT OF STATE" GROUP REPRESENTED EVERY STATE IN THE UNION, WITH THE EXCEPTION OF SOUTH DAKOTA, ARKANSAS, VIRGINIA AND DELAWARE. (MAP DATA FROM VISITOR CARD).



Lincoln School.  
La Verne, Calif.  
April 15, 1955

Dear Mr. Kucera,

I am one of the boys of the Eighth Grade Class that you guided around the Arboretum on April 14<sup>th</sup>.

I'd like to thank you for your time and for guiding us around the Arboretum and making the trip very interesting.

I especially liked the Queen Ann Cottage, the furniture and the ways they lived in those days.

I liked the trip very much and my class thought it was very interesting.

Sincerely,  
John Marconi



## DAILY TOURS

THE "FOREWORD" TO THIS SECTION, IN THE HANDWRITING OF AN EIGHTH GRADER, EXPRESSES POINTEDLY THE VALUE OF THE ARBORETUM TO ONE GROUP OF VISITORS. THIS GROUP REPRESENTS THE SECOND LARGEST OF THE DAILY TOUR ATTENDANCE.

TO ORGANIZATIONS SUCH AS THE SCOUTS, BROWNIES, BLUE BIRDS, ETC., THE ARBORETUM MEANS NATURE EXPERIENCES, OUT-OF-DOOR LORE, AND HISTORICAL CALIFORNIA.

OUR COLLEGE LEVEL VISITORS COME GENERALLY TO BROADEN THEIR BOTANICAL KNOWLEDGE OF PLANT MATERIAL AND THE MANAGEMENT OF NURSERY, LATHHOUSE, AND GREENHOUSE.

RELIGIOUS GROUPS FIND INSPIRATION IN OBSERVING THE MANY BEAUTIFUL EXAMPLES OF GOD'S HANDIWORK IN NATURE.

GARDEN CLUB MEMBERS WANT TO SEE WHAT IS "NEW" AND USEFUL IN THE WORLD OF HORTICULTURE AND GARDENING.

THE TOURS, AS THEY ARE NOW CONDUCTED, SUPPLY THE GREATEST SERVICE IN THE FORM OF HORTICULTURAL AND HISTORICAL INFORMATION TO THE MOST NUMBER OF VISITORS.

ARE DAILY TOURS DIFFERENT FROM THE SUNDAY TOURS?

ONLY WITH THE EXCEPTION THAT APPOINTMENTS IN ADVANCE MUST BE MADE THROUGH OUR ARBORETUM OFFICE. COMPETENT LEADERSHIP PREVAILS FOR BOTH SUNDAY AND DAILY TOUR SCHEDULES.

FOR

TOUR

STATISTICS,

PLEASE

TURN

THE

PAGE.



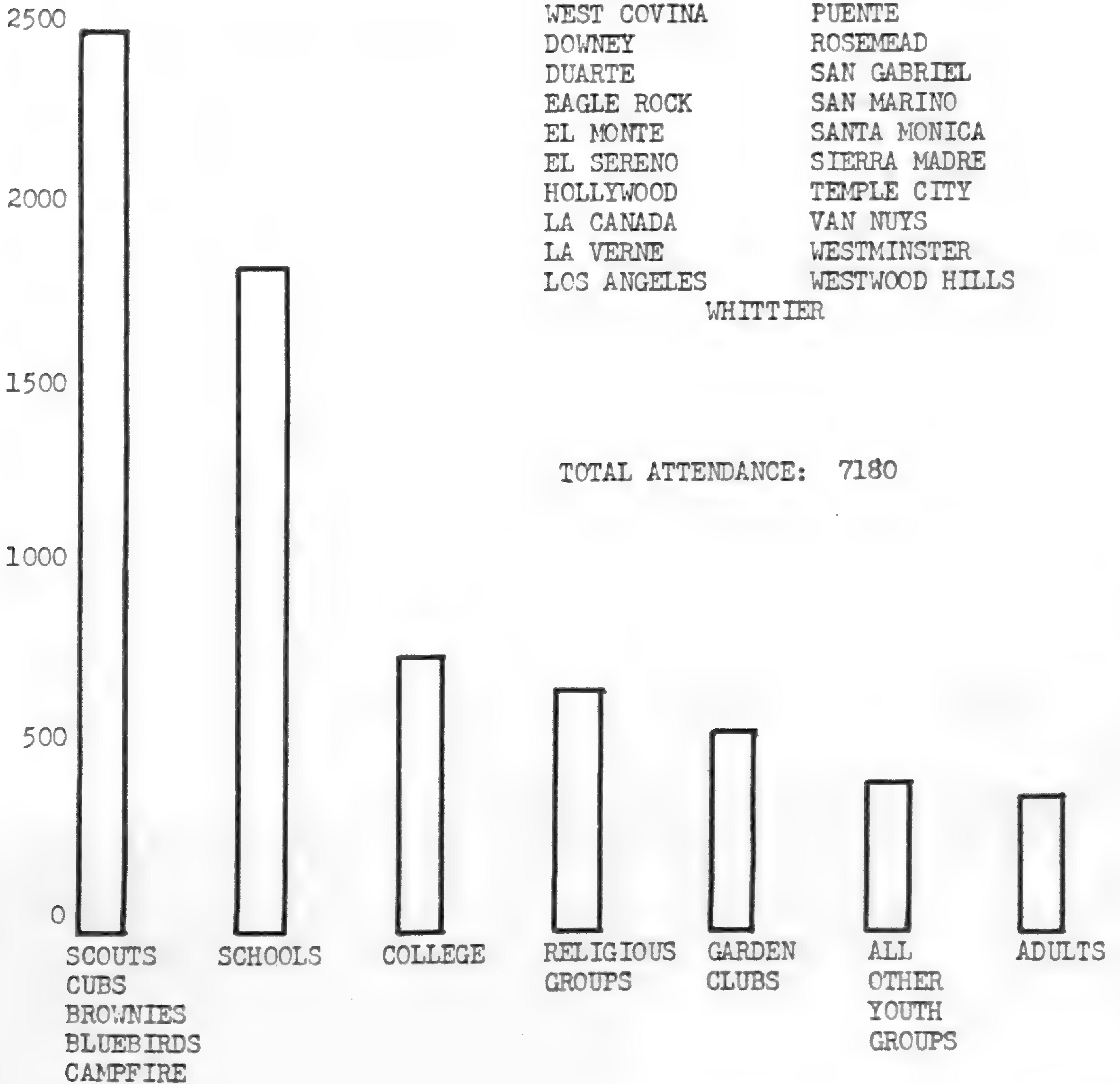
DAILY ARBORETUM TOURS

ATTENDANCE FOR JULY 1954 TO JUNE 1955

TOWNS REPRESENTED

- |              |                |
|--------------|----------------|
| ALHAMBRA     | MONTEBELLO     |
| ALTADENA     | MONTEREY PARK  |
| ARCADIA      | MONROVIA       |
| ARTESIA      | NEWPORT BEACH  |
| BALDWIN PARK | ONTARIO        |
| BURBANK      | PASADENA       |
| CLAREMONT    | SO. PASADENA   |
| COVINA       | POMONA         |
| WEST COVINA  | PUENTE         |
| DOWNEY       | ROSEMEAD       |
| DUARTE       | SAN GABRIEL    |
| EAGLE ROCK   | SAN MARINO     |
| EL MONTE     | SANTA MONICA   |
| EL SERENO    | SIERRA MADRE   |
| HOLLYWOOD    | TEMPLE CITY    |
| LA CANADA    | VAN NUYS       |
| LA VERNE     | WESTMINSTER    |
| LOS ANGELES  | WESTWOOD HILLS |
|              | WHITTIER       |

NUMBERS IN THE  
MAJOR INTEREST GROUPS





SPECIAL GROUNDS PERMITS

<u>PERMIT TO BE RETURNED TO</u>	<u>GROUNDS PERMIT</u>
<u>OFFICE SAME DATE OF ISSUE</u>	_____
	is permitted to:
	_____
	_____
Date: _____	

EXCHANGE OF PLANT MATERIAL  
PLANT IDENTIFICATION  
GREENHOUSE OR LATHHOUSE CONSTRUCTION  
ORNITHOLOGY  
DISTINGUISHED BOTANISTS, ETC.  
PUBLICITY FOR THE ARBORETUM  
ARBORETUM FOUNDATION MEMBERS

IF ONE QUALIFIES UNDER ANY OF THE ABOVE OR SIMILAR TYPES OF SPECIALIZED TRAINING OR INTERESTS, OUR RECEPTIONIST GLADLY ISSUES A SPECIAL GROUNDS PERMIT. THIS PERMIT ALLOWS THE INDIVIDUAL TO USE THE ARBORETUM FACILITIES WITHOUT THE ASSISTANCE OF A GUIDE.

SINCE THESE PERMITS ARE RETURNED TO THE OFFICE AT THE CONCLUSION OF ONE'S BUSINESS, WE HAVE A PERMANENT RECORD OF SUCH PUBLIC SERVICE RENDERED. THE TOTAL NUMBER OF SUCH VISITORS WAS -

-  
-  
- 141.





A PARTY

THE STAFF ENTERTAINS DR. AND MRS. SEIBERT AT A FAREWELL PARTY IN THE MALL AND WISHES SUCCESS TO DR. SEIBERT IN HIS NEW POSITION AS DIRECTOR OF LONGWOOD GARDENS.

#### ARBOR WEEK

WHILE DR. R. J. SEIBERT WATCHES WITH SMILING APPROVAL, MRS. WALDO HANDY, PRESIDENT OF THE LOS ANGELES GARDEN CLUB ASSISTED BY SUPERVISOR JOHN ANSON FORD PLANTS A NEW MEMBER OF OUR PALM COLLECTION. THROUGH THE GENEROSITY OF THE LOS ANGELES GARDEN CLUB IN COMMEMORATION OF ARBOR WEEK, FIVE PALM SPECIES WERE ADDED TO OUR COLLECTION. THESE PALMS WERE: LIVISTONA MARIAE, A BRONZE LEAVED PALM; ERYTHEA ELEGANS, A DWARF PALM; BUTIA CAPITATA, THE "PINDO" PALM OF BRAZIL; PARAJUBEA COCOIDES, OF ECUADOR AND LIVISTONA AUSTRALIS.

A PLANTING





ARBORETUM LECTURE PROGRAMS

IN ADDITION TO THE SUNDAY AND DAILY TOURS OF THE ARBORETUM, THERE HAS ALWAYS BEEN AVAILABLE ILLUSTRATED LECTURES, TITLED "THE ARBORETUM STORY". THESE LECTURES, EXTREMELY POPULAR, ARE FREE OF CHARGE AND HAVE BEEN GIVEN BY THE FOLLOWING MEMBERS OF THE STAFF:

D. E. NELSON  
H. H. BENSON  
D. E. KUCERA  
R. J. SEIBERT  
G. H. SPALDING  
L. B. MARTIN

THE TOTAL NUMBER OF SUCH LECTURES PRESENTED WAS ----- 44

THE FOLLOWING ORGANIZATIONS ARE OF THE TYPE MOST FREQUENTLY REQUESTING THESE LECTURES:

SERVICE CLUBS  
FRATERNAL ORGANIZATIONS  
CHURCHES  
GARDEN CLUBS  
WOMENS CLUBS  
YOUTH ORGANIZATIONS

AND THESE WERE THE SOUTHERN CALIFORNIA TOWNS MOST FREQUENTLY VISITED:

ARCADIA  
AZUSA  
DUARTE  
EL SERENA  
GLENDALE  
LOS ANGELES  
MONROVIA  
NORTHRIDGE  
PASADENA  
SAN MARINO  
SOUTH LAGUNA  
SOUTH PASADENA  
TEMPLE CITY



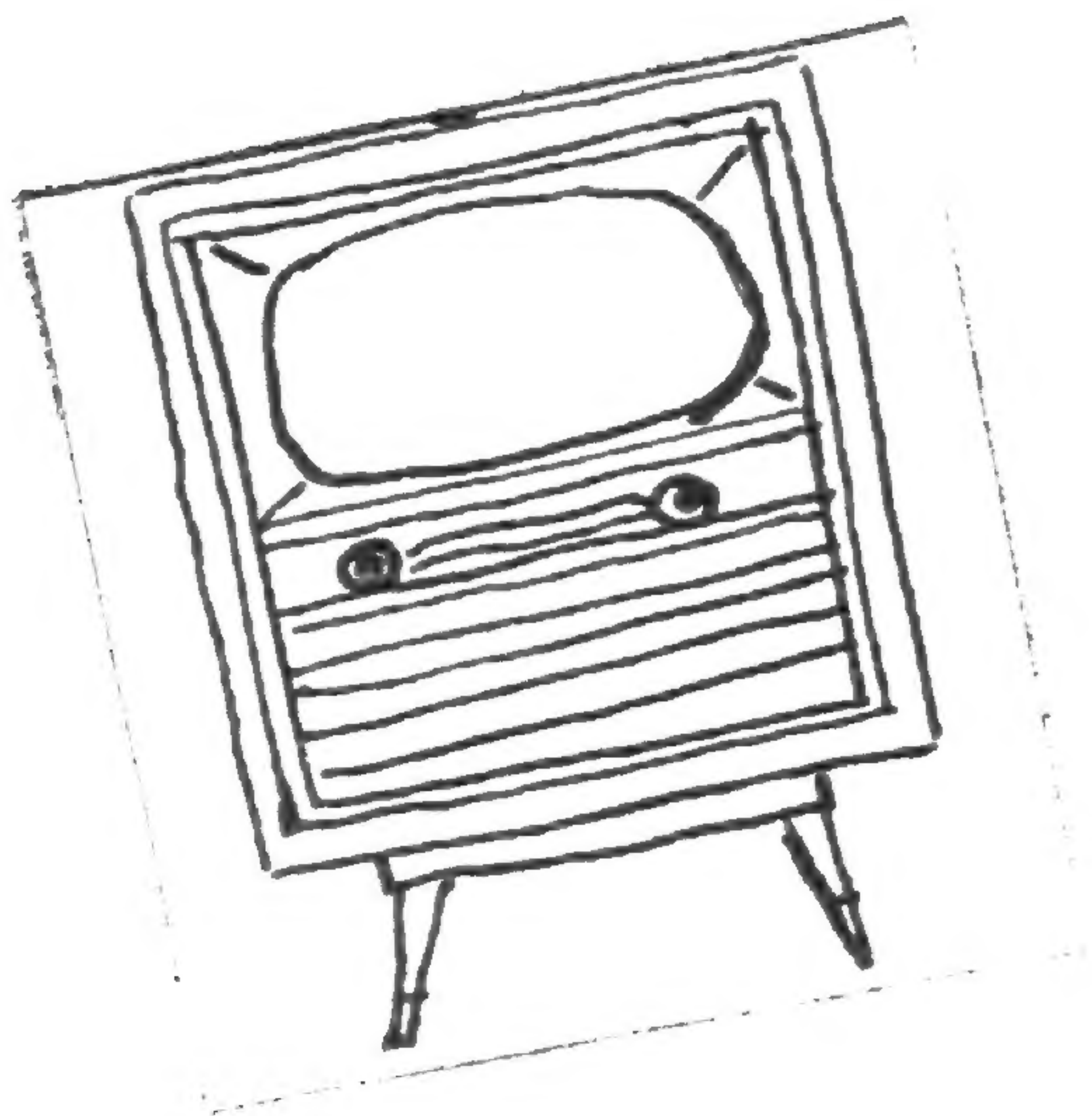
## STAFF ARTICLES

### ARBORETUM PUBLICITY

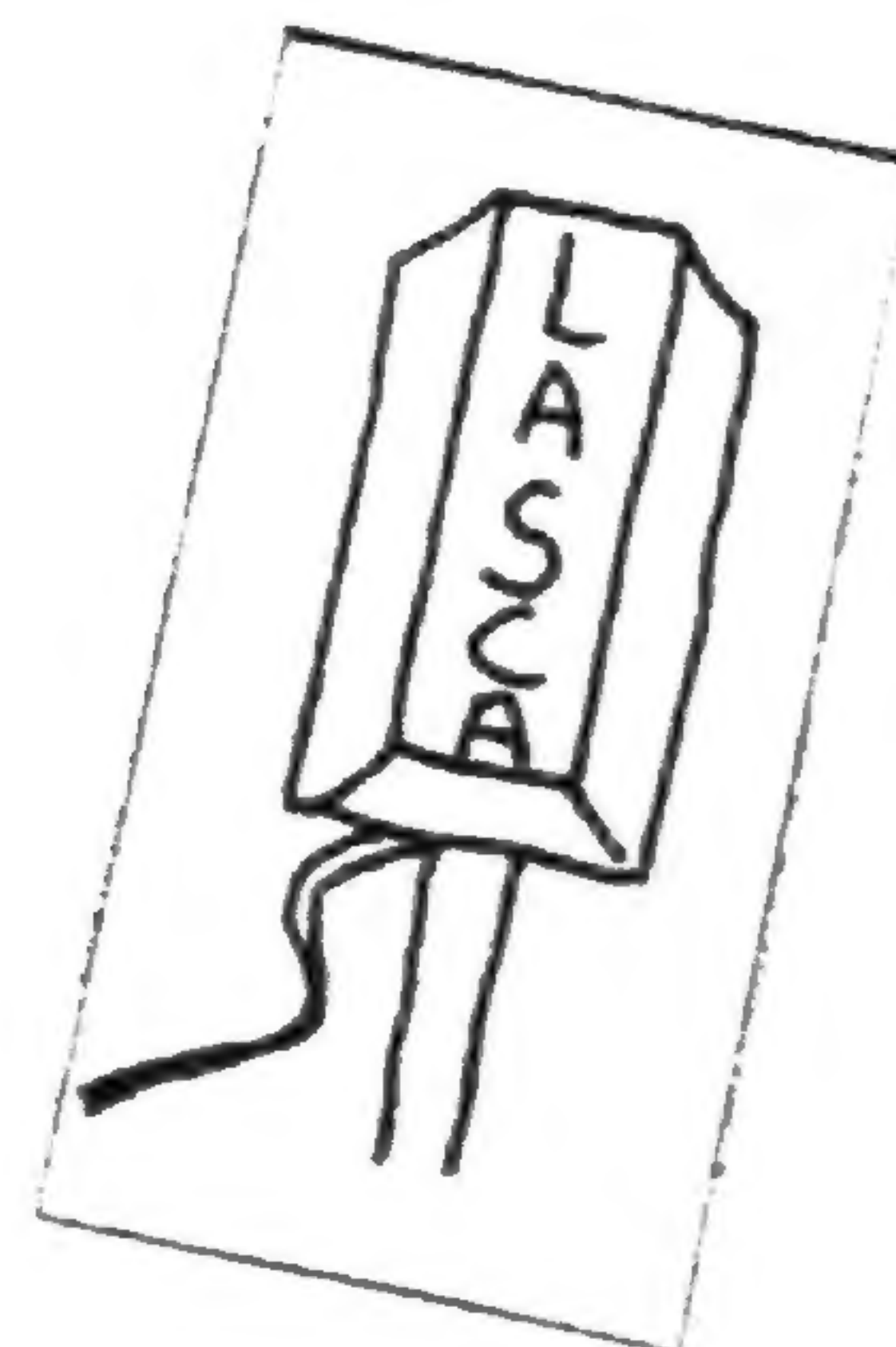
IN LINE WITH THE POLICY OF THE ARBORETUM TO REPORT TO THE PUBLIC THE RESULTS OF PLANT INTRODUCTION AND PLANT MANAGEMENT AS OBSERVED HERE, THE FOLLOWING ARTICLES BY THE STAFF WERE PUBLISHED:

- BENSON, H. H.      THE LASCA LAGOON  
L. A. COUNTY EMPLOYEES MAGAZINE, DECEMBER 1954
- BUCK, W. QUINN    PROGRESS OF THE DAYLILY TEST GARDEN AT LOS ANGELES  
STATE AND COUNTY ARBORETUM  
LASCA LEAVES, VOL. IV, NO. 3, 1954
- MARTIN, L. B.     A TURFGRASS FROM "DOWN UNDER"  
LASCA LEAVES, VOL. V, NO. 1, 1955
- MARTIN, L. B.     DEW RESEARCH AT THE ARBORETUM  
LASCA LEAVES, VOL. V, NO. 2, 1955
- MARTIN, L. B. & SEIBERT, R. J.    MICROLAENA STIPOIDES (R. BR.)  
SOUTHERN CALIFORNIA TURFGRASS CULTURE, VOL. 5, NO. 2,  
APRIL 1955
- NELSON, DEWEY E. LUCKY BALDWIN'S "QUEEN ANNE COTTAGE"  
L. A. COUNTY EMPLOYEES MAGAZINE, MARCH 1955
- SEIBERT, R. J.    TABEBUIA UMBELLATA  
LASCA LEAVES, VOL. V, NO. 1, 1955
- SEIBERT, R. J.    ARBORETUM MILESTONE  
LASCA LEAVES, VOL. V, NO. 1, 1955
- SEIBERT, R. J.    SOME BAMBOO FOR WESTERN GARDENS  
SUNSET MAGAZINE, 1954
- SEIBERT, R. J.    THE LOS ANGELES STATE & COUNTY ARBORETUM  
GOLDEN GARDENS, VOL. 19, NO. 8, JUNE-JULY 1955
- SPALDING, G. H.   GROWING NOTES  
LASCA LEAVES VOL. IV, NO. 3, 1954  
"                "                VOL. IV, NO. 4, 1954  
"                "                VOL. V, NO. 1, 1955  
"                "                VOL. V, NO. 2, 1955





## TV — RADIO



THE ARBORETUM' STORY' AND STAFF MEMBERS WERE GUESTS OF THESE TV AND RADIO PROGRAMS:

KCOP - TV	"CONGLAMORAMA" (15 MIN.)	- MR. SPALDING, DR. MARTIN
KRCA - NBC TV	NORVELL GILLESPIE SHOW	- DR. SEIBERT, SUPERVISOR FORD
NBC - RADIO	NORVELL GILLESPIE SHOW	- DR. MARTIN
KWKW - RADIO	VALLEY PARTY LINE	- MR. SPALDING

### NEWS PAPERS

COMMUNITY AND METROPOLITAN NEWSPAPERS DEVOTED MANY INCHES OF SPACE, BOTH TEXT AND PICTURES, CONCERNING THE ARBORETUM OR ARBORETUM SPONSORED ACTIVITIES. IN ALL, AS INDICATED BY OUR CLIPPING SERVICE, SOME 73 DIFFERENT PAPERS CARRIED OUR NEWS. THE NUMBER AND MONTHLY DISTRIBUTION OF SUCH NEWS APPEARED AS FOLLOWS:

JULY	1954	29	JANUARY	1955	78
AUGUST	"	34	FEBRUARY	"	33
SEPTEMBER	"	20	MARCH	"	50
OCTOBER	"	23	APRIL	"	49
NOVEMBER	"	25	MAY	"	56
DECEMBER	"	55	JUNE	"	37

TOTAL ITEMS - 494

### SPECIAL FEATURE ARTICLES:

DR. LOUIS B. MARTIN HAS BEEN WRITING A WEEKLY FEATURE ARTICLE FOR THE ARBORETUM. THESE ARTICLES ARE PLANNED TO ENCOURAGE THE PUBLIC TO VISIT THE ARBORETUM. ALL SECTIONS OF THE ARBORETUM AND PARTICULARLY THOSE PLANTS IN FLOWER ARE BROUGHT TO THE PUBLIC'S ATTENTION. IN ADDITION, BRIEF NATURAL HISTORY LESSONS CONCERNING BOTANY, HORTICULTURE, BIRD LIFE, FLORA AND FAUNA OF THE LAGOON, ETC., ARE INCLUDED.

SINCE THE OPENING, SUNDAY, JANUARY 9, 1955, APPROXIMATELY 22 OF THESE ARTICLES HAVE BEEN FEATURED IN THE PASADENA STAR NEWS AND THE ARCADIA TRIBUNE.





"TO-DAY MOST OF US ARE BANISHED TO THE CITIES,  
NOT WITHOUT DELETERIOUS EFFECTS ON IMAGINATION,  
INSPIRATION AND CREATIVE POWER. BUT SOME STILL  
LIVE IN THE COUNTRY, AND SOME STILL COME OUT ON  
HOLIDAYS TO THE COUNTRY AND DRINK IN WITH ZEST  
OF A THIRSTY MAN THE DELIGHTS OF BEAUTY AND RE-  
TURN TO TOWN RE-INVIGORATED IN SOUL."

IN PRAISE OF NATURE

DR. G. M. TREVELYAN, O. M.



