

GEORGE ENGELMANN
BOTANICAL NOTEBOOKS

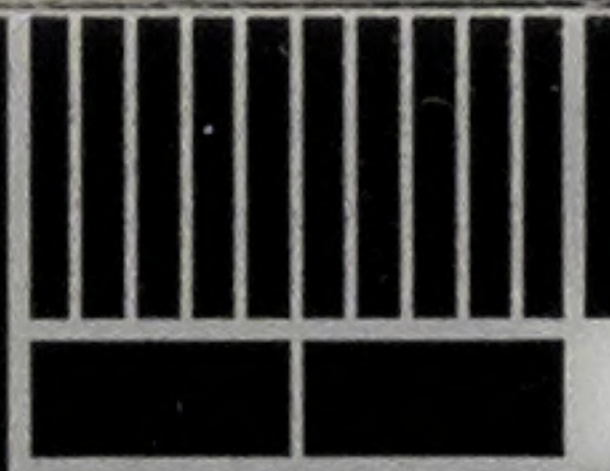
Pagination Note:

Since many of the items lack a specific page number, the page number displayed online refers to the sequentially created number each item was given upon cataloging the materials.

7. Curt p. 468

C. Europaea L.

- a.
6.
118 (Piemont)
158 brachystyla C. Koch Pontus
191 holophyta Fries Norway
197 upsala
198 Germany
199 Piemont
200 Italy, Germany, France
201 Switzerland, Persia, Kotschy 692
202 var conocarpa, Freiburg, Voges
203 " " Carlsruhe
204 St Domingo
205 var Viciae
284 hyalina Boiss et Hausskn
Asia Europe - Schkubriana
b
mongana Pyrene
301 C. capillaris Edgeworth Himalaya
C. europaea nepens Hallan
(Enclosed 138-143)



0 1 2 3 4 5 6 7 8 9 10

cm

copyright reserved



MISSOURI
BOTANICAL
GARDEN

4470

C. ...

MISSOURI BOTANICAL GARDEN
GEORGE ENGELMANN PAPERS

Faint handwritten notes, possibly describing botanical specimens.

Faint handwritten notes, possibly describing botanical specimens.



0 1 2 3 4 5 6 7 8 9 10

cm

copyright reserved



MISSOURI
BOTANICAL
GARDEN

1.2



style



0.45-0.5

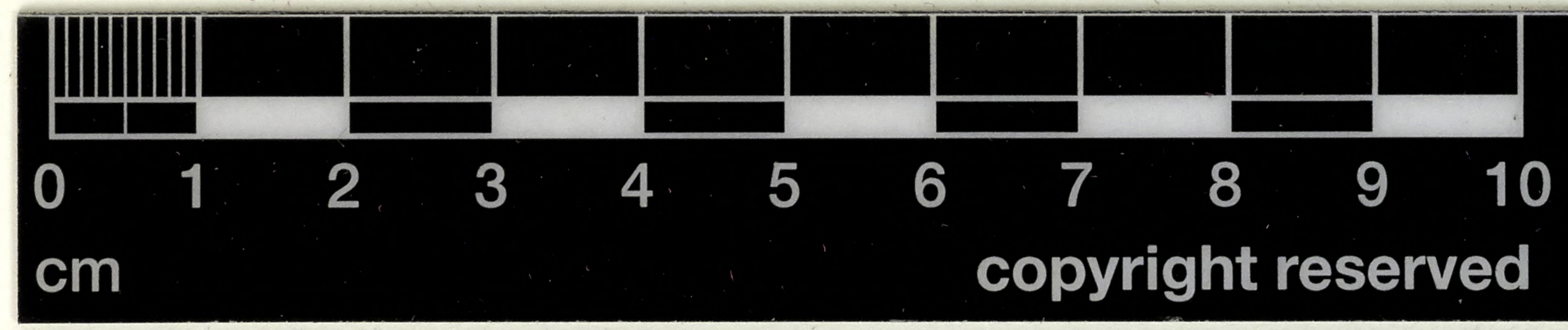
0.45



scales

Cuscuta
Reichenbach fil. N. 4.

Plum on *Taxonia scorodora*
floribus breviter pedicellatis
ovate glomeratis saepe 5fidis
lobis calycis tubo aequo
p. pallis superd. —
filament. anbulat
antheris oblongis
aeq. l.
caps. globos
sem. unilobis
rugulos subglobos
parum compressis
minoribus.
sq. medietate adnatis
fascis stragulisq.
varis — saepe rectis truncatis



copyright reserved

truncatis *glandulis* *neo* *G. f. d.*

4471

MISSOURI BOTANICAL GARDEN
GEORGE ENGELMANN PAPERS



0
cm

1

2

3

4

5

6

7

8

9

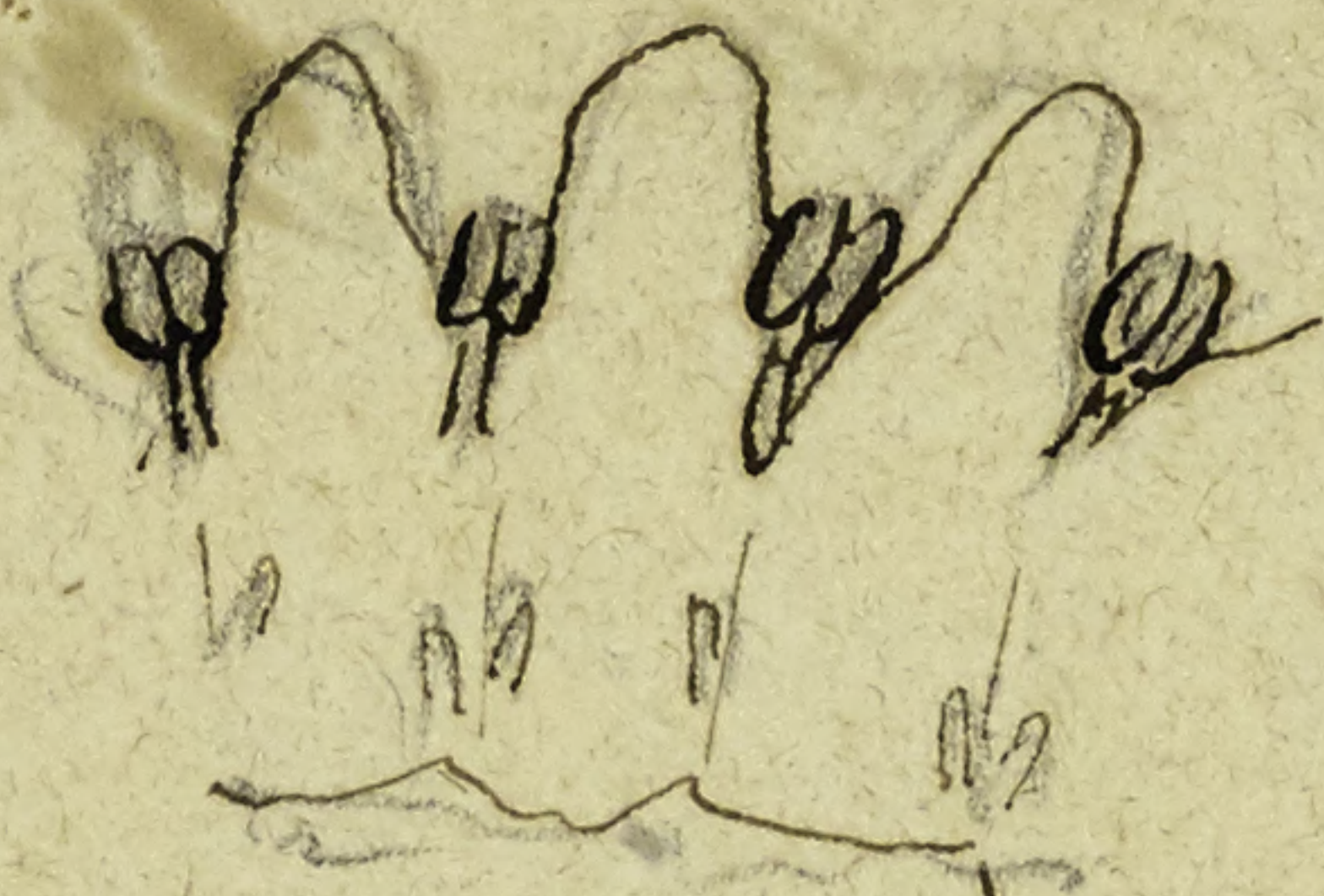
10

copyright reserved



MISSOURI
BOTANICAL
GARDEN

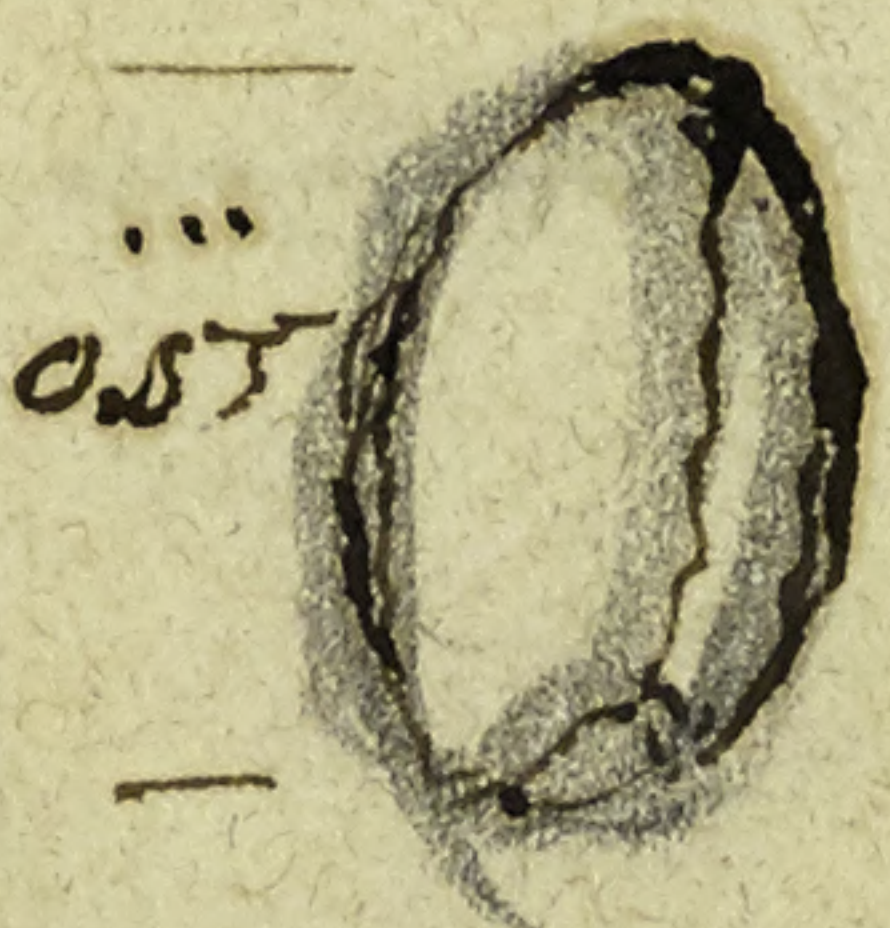
110



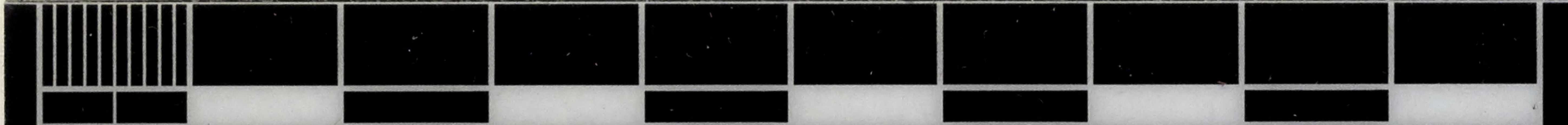
Cuscuta brachystyla C. Koch
 Pontus ^{Armenia} ~~Mus~~ minor Koch
 ex Herb. reg. Berlin
 in Umbelliferis sup. *Erivan* (Koch)



Caule filiformi, glomerulis
 minoribus; floribus parvis, breviter
 pedicellatis, 4-fidis (raro trifidis)
 calycis lobis late ovatis (ultra medium
 fissis) basi sol. connatis vix im-
 bricatis, obtusis; tubo corollae
 longioribus; lobis ovatis obtusis,
 erectis, dum patulis, deinde
 in capsula matura plerumque
 aequalibus; tubis aequantibus;
 staminibus dimidiis brevioribus;
 antheris orbiculatis; squamis subnullis



et duntaxat ^{clavum} ~~unum~~ sive squamula in fundo
 adnatae foraminibus; ovario crasso, stylis



0 1 2 3 4 5 6 7 8 9 10

cm

copyright reserved



MISSOURI BOTANICAL GARDEN

trioribus; capsula rugiscula conoides, arifida inter stylis
maior; (nulla obliqua apice gerata)
semita long. angustis 3 angulatis -

Koch in Linnaea XXII. p. 747: Caulis filiformis ramosus, flavescens
capitula serilia 8-12 florum - fl. subsessil - calyx rugosus
4-5 part., lacini ovati obtusiusculis demum involu. d. mid.
superioribus - involu. uncinato, lobis tubum ex
longitudine aequale; lobis ovatis ovatis obtusiusculis
stamina vix lobos attingentibus; squam. oblonga ovata
stylis vix lin. longis inclusis.

MISSOURI BOTANICAL GARDEN
GEORGE ENGELMANN PAPERS

4472



0
cm

1

2

3

4

5

6

7

8

9

10

copyright reserved



MISSOURI
BOTANICAL
GARDEN

191 Cass. halophyta Fides Nov. Mantiss I p. 8.

Summa veget. Scand I. p. 191 :

Caule simpliciter, glomer. multifloris subbracteatis, corollae
tubo globoso limbum aequante basi rotundato

Olytt Stip Christ. Lund. Christiania p. 50.

In plant. marinis scrofulentis, Chenopodiaceis
Cuph. palustris etc. prope Christiania. Caules scrofulentis
flores purpurei.

191



0
cm

1

2

3

4

5

6

7

8

9

10

copyright reserved



MISSOURI
BOTANICAL
GARDEN

4473

[Faint, illegible handwritten text, likely bleed-through from the reverse side of the page]

MISSOURI BOTANICAL GARDEN
GEORGE ENGELMANN PAPERS



0 1 2 3 4 5 6 7 8 9 10

cm

copyright reserved



MISSOURI
BOTANICAL
GARDEN

197.



Coccoloba Europaea

Uppsala, Andersson
Herb Berlin

floribus pedicellatis
squamis vix ullis,
ferruginis, bifidis
s. nullis.



caput globosum
seeds very slightly reticulated
scarcely angled, but compressed

öb
fo-



0 1 2 3 4 5 6 7 8 9 10

cm

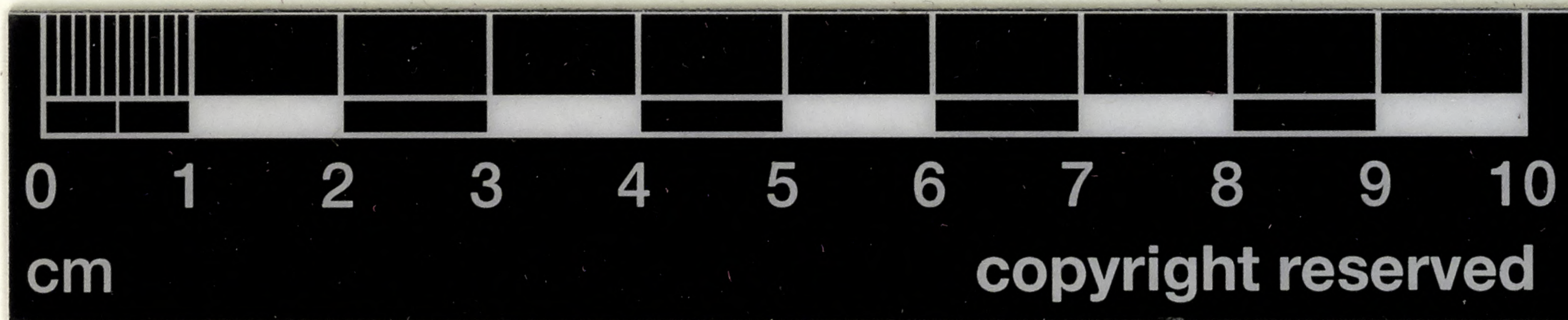
copyright reserved



MISSOURI
BOTANICAL
GARDEN

4474

MISSOURI BOTANICAL GARDEN
GEORGE ENGELMANN PAPERS



0

1

2

3

4

5

6

7

8

9

10

cm

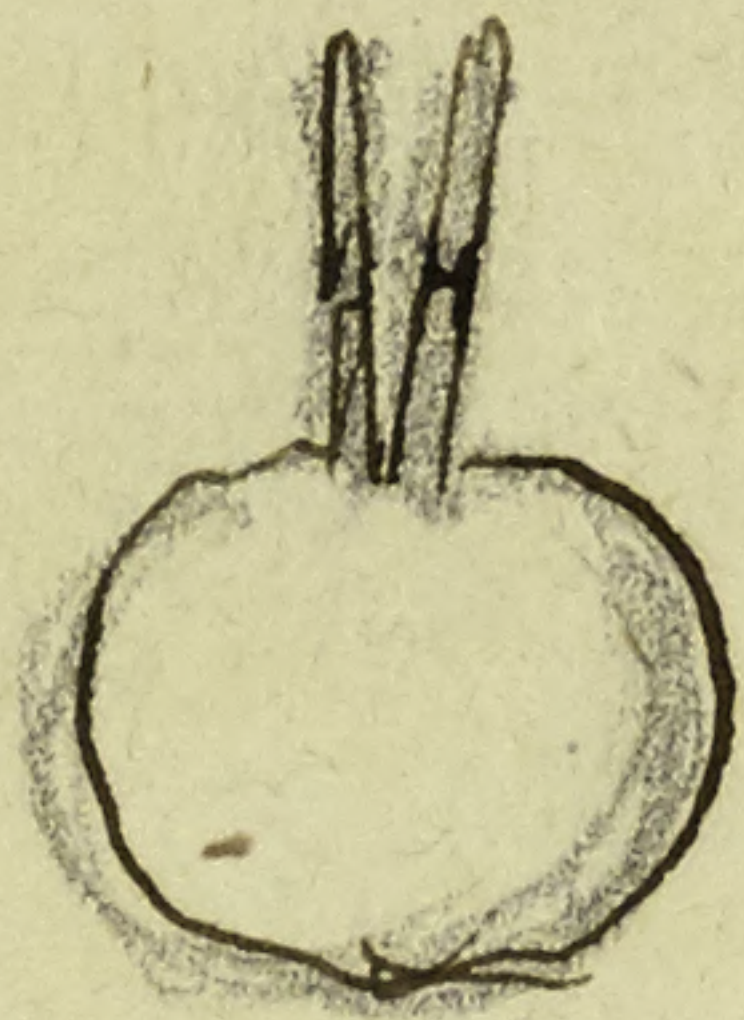
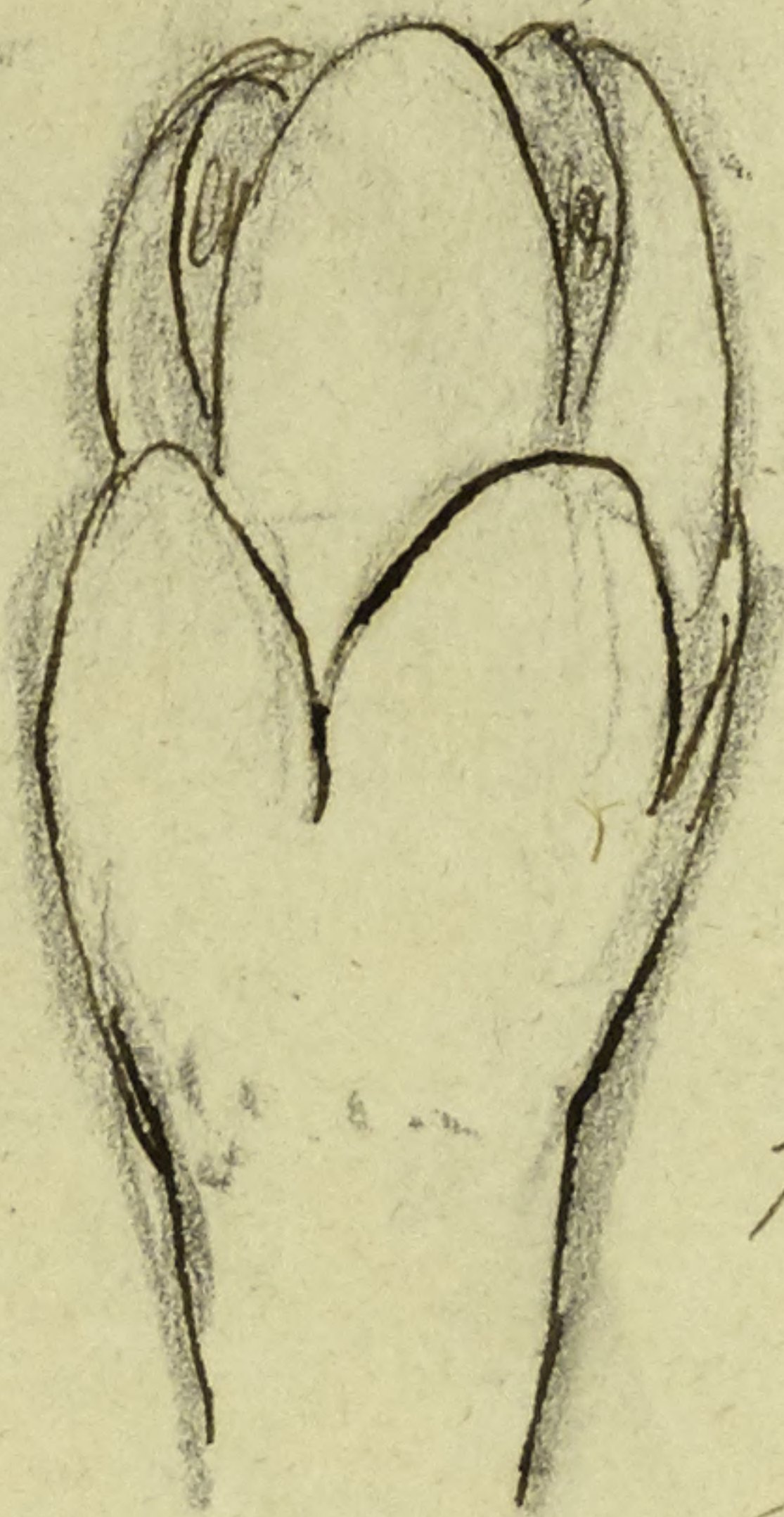
copyright reserved



MISSOURI
BOTANICAL
GARDEN

198

1.717
1.2

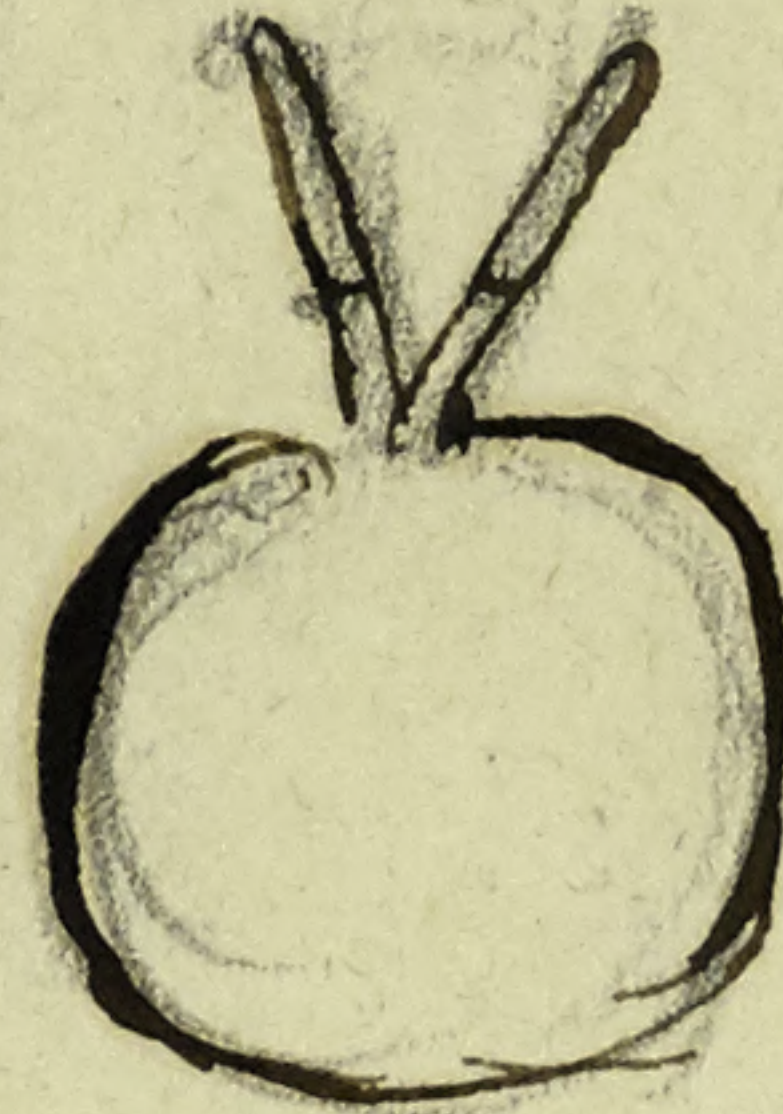


ovary
flower before opening

1.4
14



5 parted fl.



Cucurbita europaea

Ex herb. Mus. v. Casbeck
ontarioensis

floribus pedicellatis;

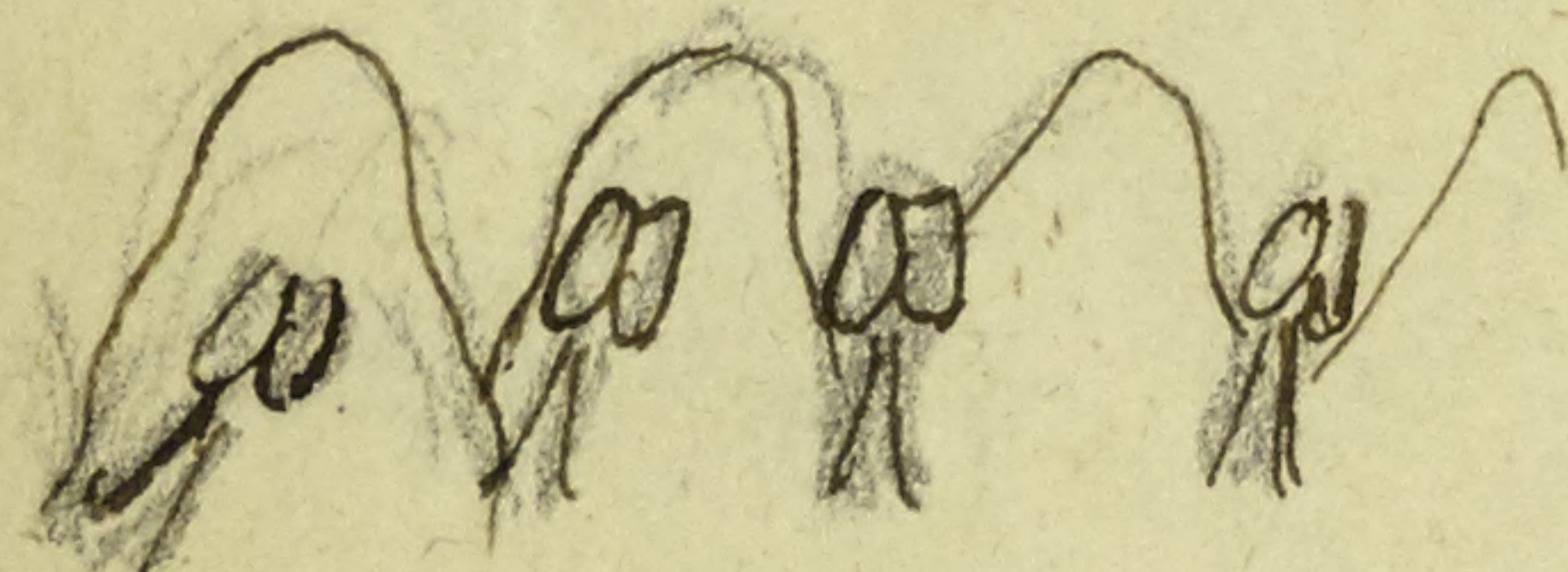
seminibus bipartitis, laciniosis

subnullis, 1-3 dentatis

stylis ovario crasso brevibus
ultra medium stigmatosis;

capsula subovata

sepe 5-angula



M3 M3 M3 M3



Even in the bud the ovary is very
large and style short



0 1 2 3 4 5 6 7 8 9 10

cm

copyright reserved



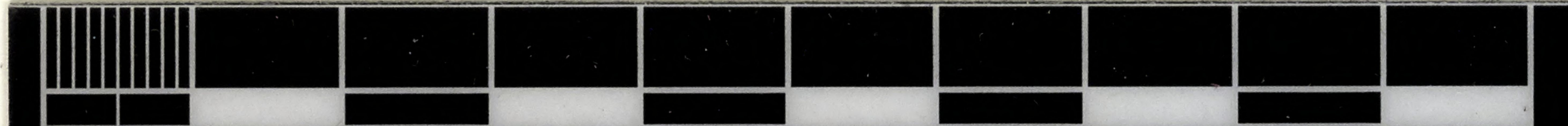
MISSOURI
BOTANICAL
GARDEN

4475



MISSOURI BOTANICAL GARDEN
GEORGE ENGELMANN PAPERS

[Faint, illegible handwritten notes in pencil]



0 1 2 3 4 5 6 7 8 9 10

cm

copyright reserved



MISSOURI
BOTANICAL
GARDEN

199



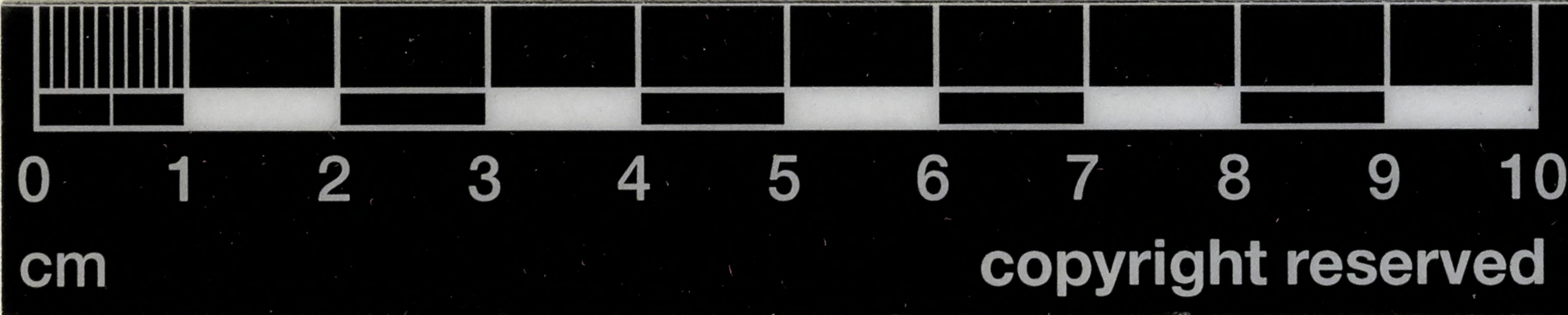
N.S.

Eur. European
 Reichb. fil. leg.
~~Piedmont~~ from
 'urtica'

Scales for one
 flower, more or less
 bifid

calyx longer than
 small tube of flower.
 sut. angled on
 inside

fl. off. 5-6 lines

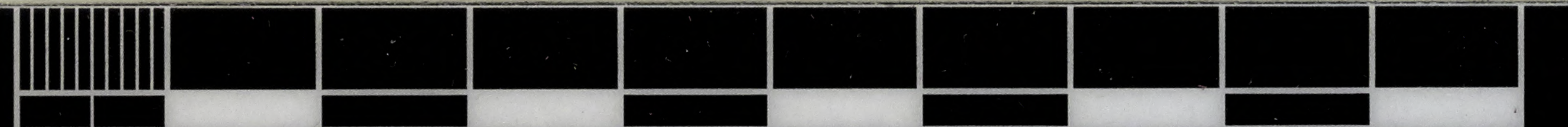


MISSOURI
 BOTANICAL
 GARDEN

copyright reserved

4476

MISSOURI BOTANICAL GARDEN
GEORGE ENGELMANN PAPERS



0 1 2 3 4 5 6 7 8 9 10

cm

copyright reserved



MISSOURI
BOTANICAL
GARDEN

394 Hunt de Paull, Abruzzi, Naples, 1856. Hb. Griseb.

is a small flowered form with very thin depressed
Capsule, but very distinct scales —
seeds small and rough 0.45 f. m. m.

C. tetrasperma Jacq! (fide A. Br.) is the same thing.
seeds not ripe — scales distinct

C. longica A. Br. Carlsh. July 1846 has the same
scales but stouter capsule; pointed, with larger
and rougher seeds — flowers with long pedicels

C. longica. Vire, Normandy, long pedicels, stout brown,
pointed capsules, rather stout well marked scales,
(not bifid) — large rough seeds 0.6

C. longica. ^{A. Br.} scales extremely small, often wanting



0

1

2

3

4

5

6

7

8

9

10

cm

copyright reserved



MISSOURI
BOTANICAL
GARDEN

as it appears, — or only a tooth or two. — flowers always
4 parted — caps apparently obtuse

MISSOURI BOTANICAL GARDEN
GEORGE ENGELMANN PAPERS

4477



0 1 2 3 4 5 6 7 8 9 10

cm

copyright reserved



MISSOURI
BOTANICAL
GARDEN

Cuscuta on *Urtica* & *Croci* — squam. tenuibus; capsula Depressa
 Carter Wallis, *Lebanon* — Col de Balun is the
 same

~~Cuscuta on *Urtica setosa* — filled, Katze bushel
 Aug. 1844 — is the same; capsule
 a little more firm, slightly convex — scales attach
 to the middle of the tube thin, membranous, often
 (in the half ripe fruit) invisible~~

Morphol — *Urtica* sq. truncatis dentatis, unguis tubo affixis
 caps. firmis.

Kotschy, 692. — *Dipsacum*, *Persia borealis* ad sud. ius
 Mont. Demawend (1842); seems to have
 smaller flowers, larger more fimbriate scales
 and longer styles — I find no other difference

0
cm

1

2

3

4

5

6

7

8

9

10

copyright reserved

MISSOURI
BOTANICAL
GARDEN

4478

MISSOURI BOTANICAL GARDEN
GEORGE ENGELMANN PAPERS



0 1 2 3 4 5 6 7 8 9 10

cm

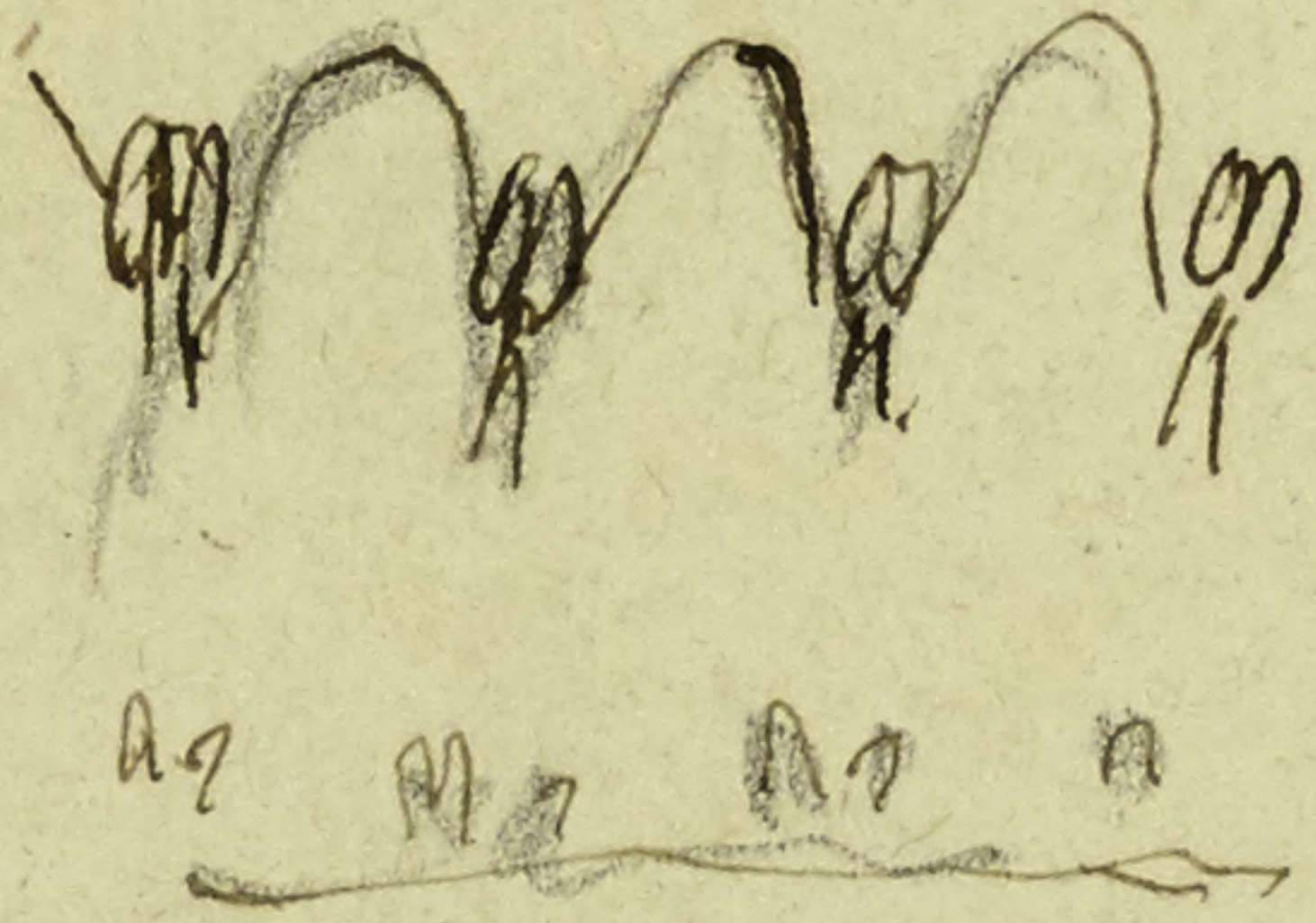
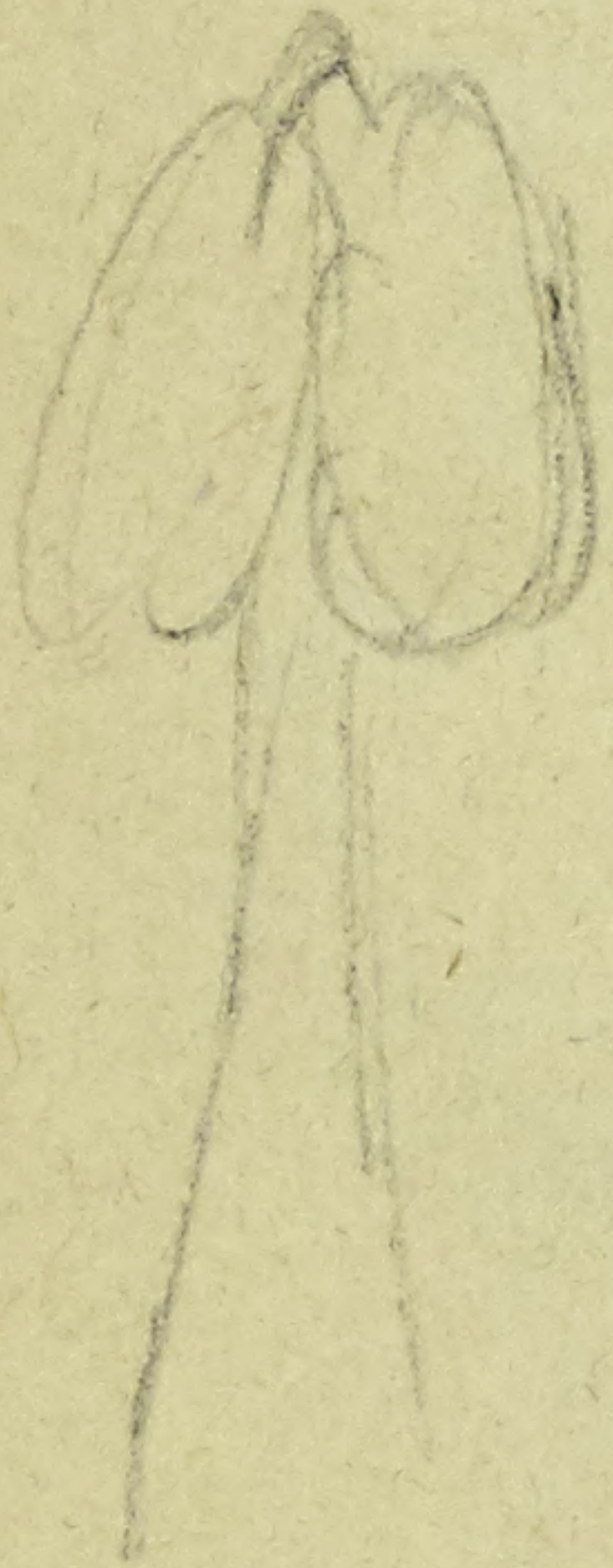
copyright reserved



MISSOURI
BOTANICAL
GARDEN

= 203

var. *conoveri*



young fruit

Cucurbit

on *Asteris vulgaris*

Hayden A. Brown

sq. vix illis basi adnatis
caps. comit., stylis in capsul
exsertis



Vogesen

LeNormand

caps comit. sq. parviter
unde tubo adnatis



0 1 2 3 4 5 6 7 8 9 10

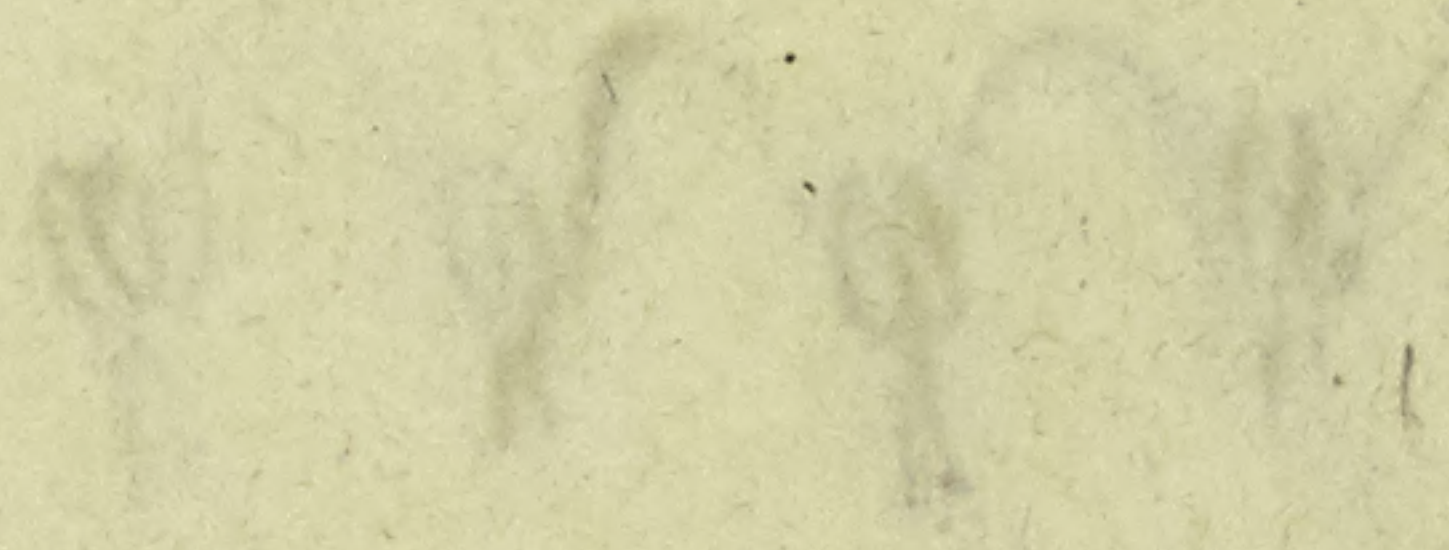
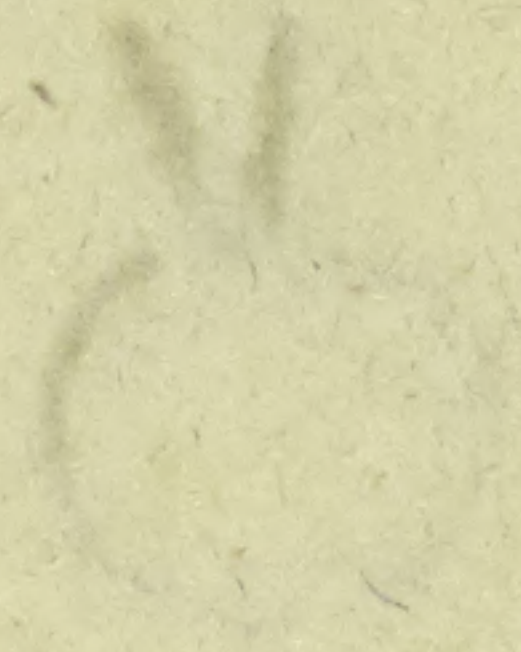
cm

copyright reserved

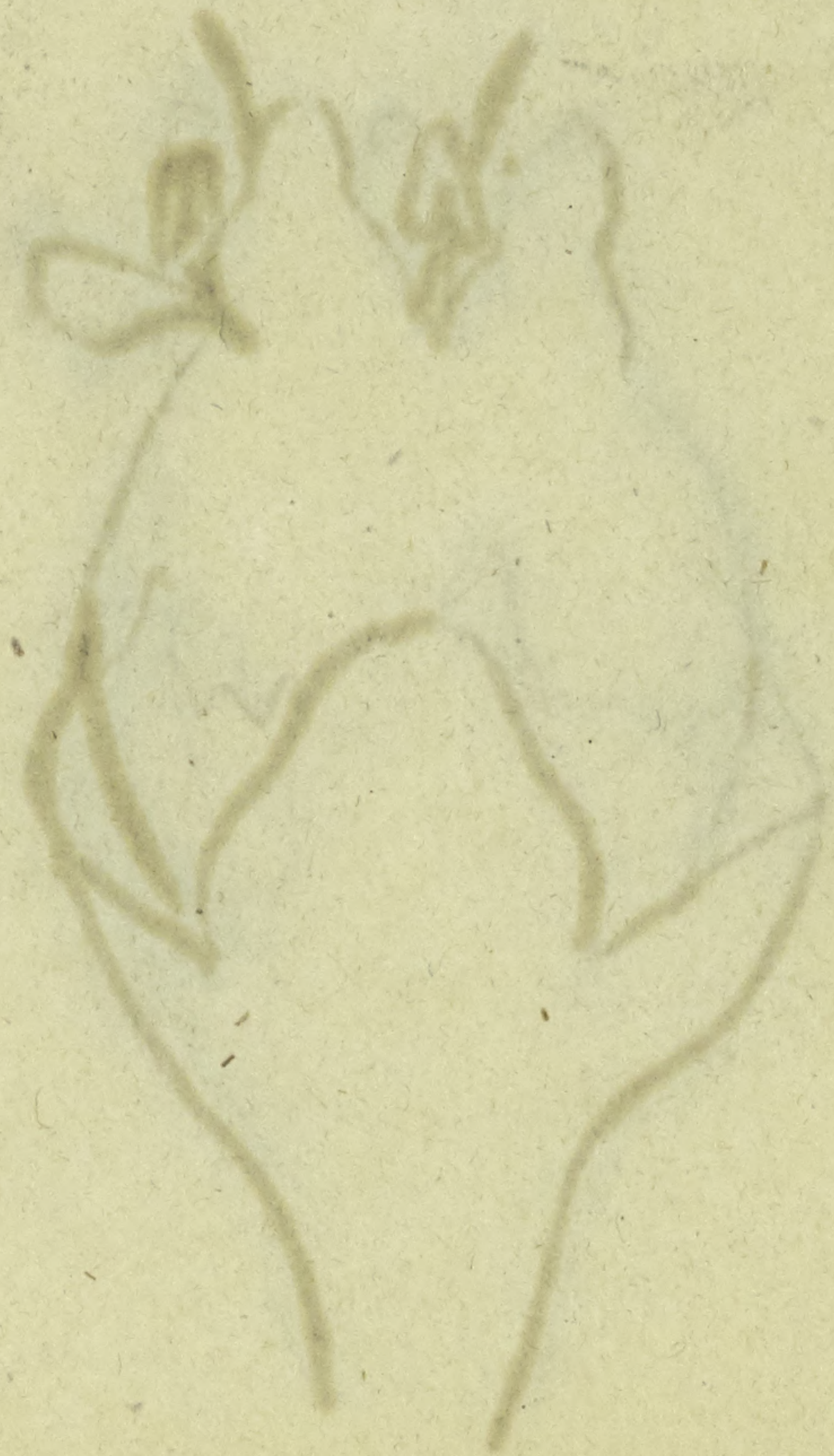


MISSOURI
BOTANICAL
GARDEN

4479



MISSOURI BOTANICAL GARDEN
GEORGE ENGELMANN PAPERS



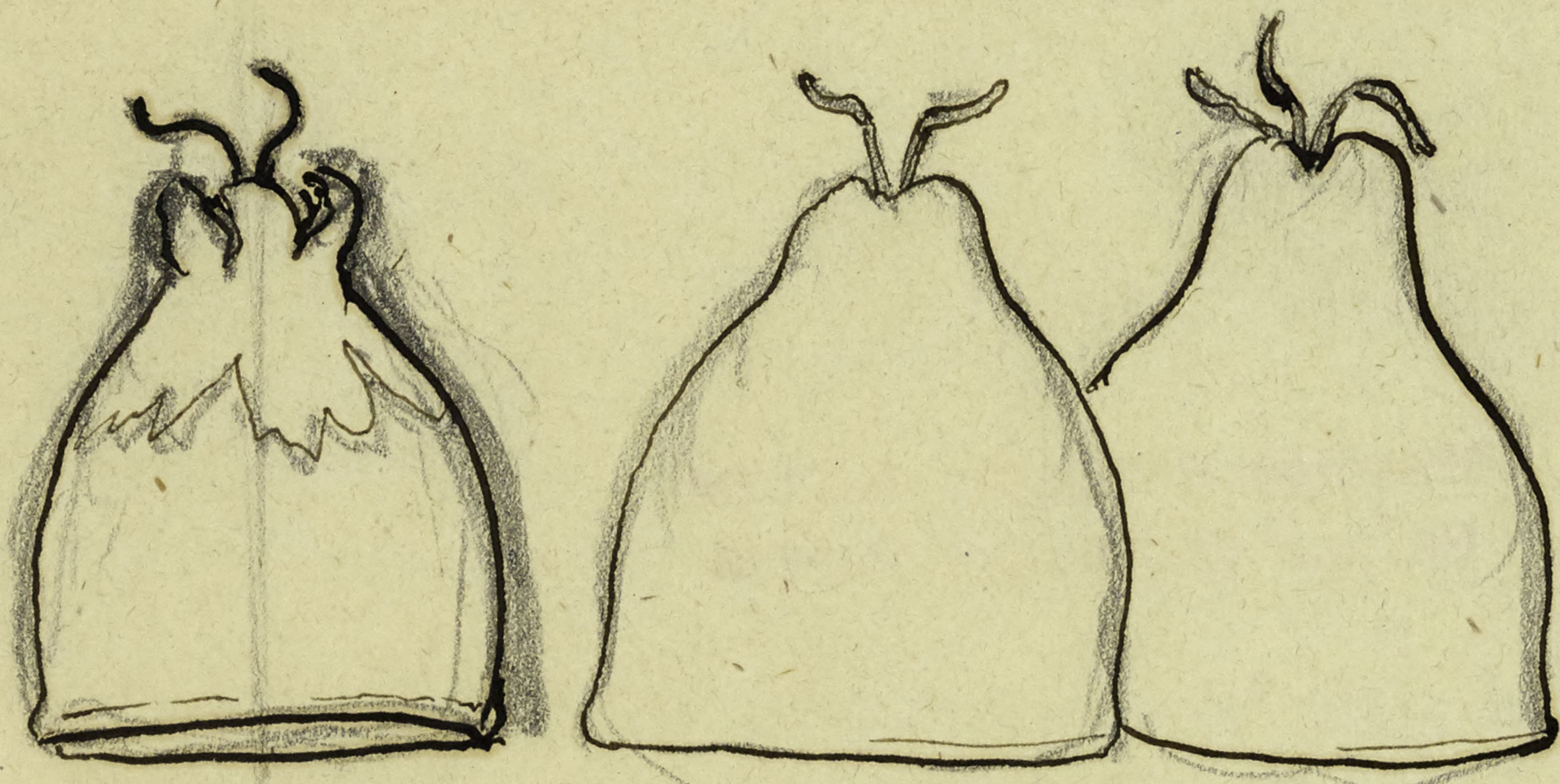
0 1 2 3 4 5 6 7 8 9 10

cm

copyright reserved



MISSOURI
BOTANICAL
GARDEN



17
100
4.5

Cucurbita Europaea

(monocarpa)

on water in Polygonum

Castroville 1845

Adrian



M/B 1 M/B 2 M/B 3 M/B 4



Scales irregular, beaked,
truncate, only a single tooth
(or sometimes wanting?)



0 1 2 3 4 5 6 7 8 9 10

cm

copyright reserved



MISSOURI
BOTANICAL
GARDEN

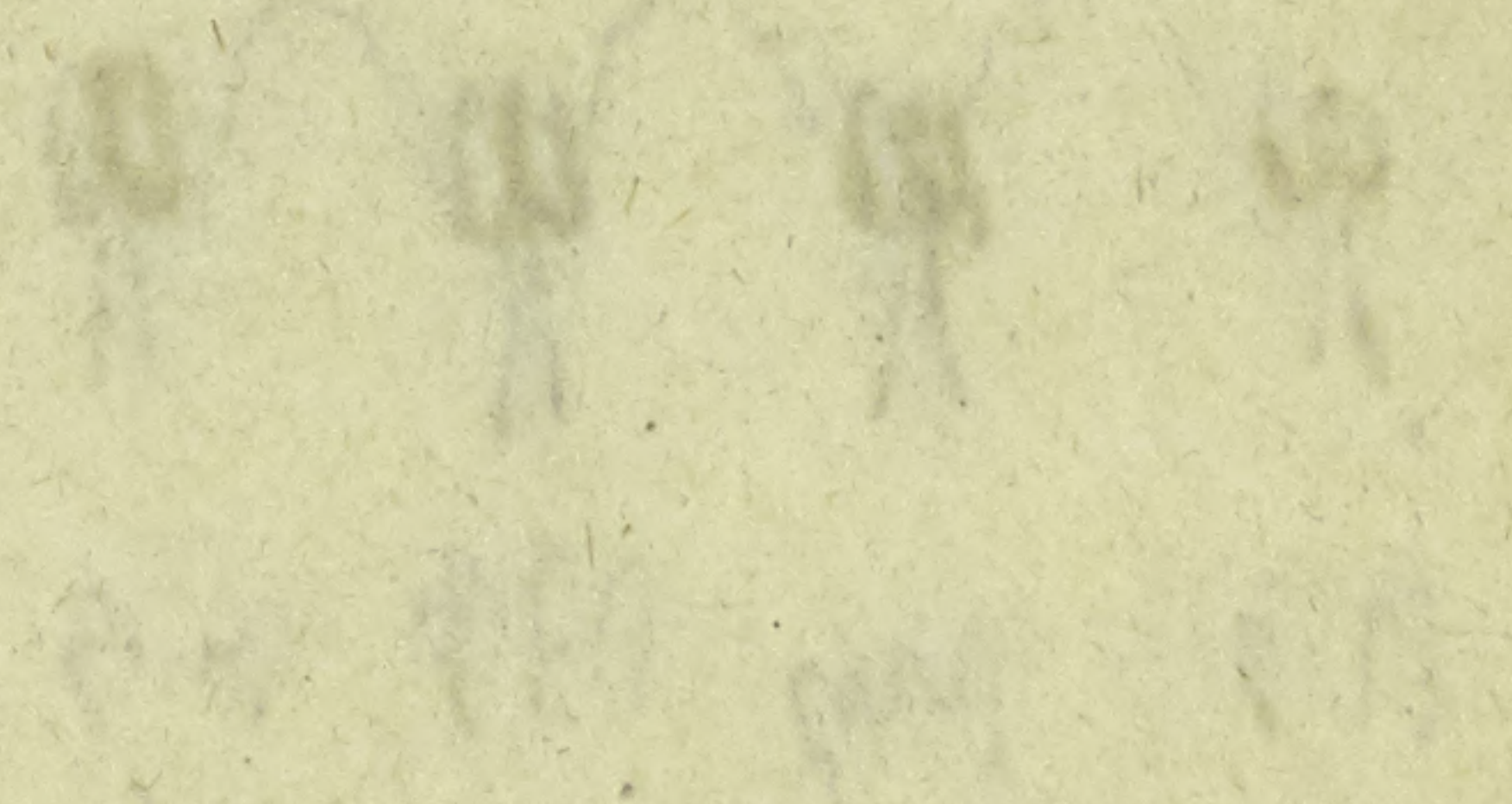
4480

Faint handwritten notes, possibly bleed-through from the reverse side of the paper.



MISSOURI BOTANICAL GARDEN
GEORGE ENGELMANN PAPERS

Faint handwritten notes, possibly bleed-through from the reverse side of the paper.



0 1 2 3 4 5 6 7 8 9 10

cm

copyright reserved



MISSOURI
BOTANICAL
GARDEN

204
205

= 205



0.7
- 0.8



Cucurbit
var. quadriflor
on Vidua

L. Downing, Poiteau

- Herb. Neomense

This is C. Europaea;
glomerulis pedicello longiore
umbelliformibus; squamis
ut in Europaea; capsula
vix ovata scissa, basi carnosam
dem contracta in calyce fere
stipitata; ~~fructu~~ per immaturam
persistens — cum majoribus

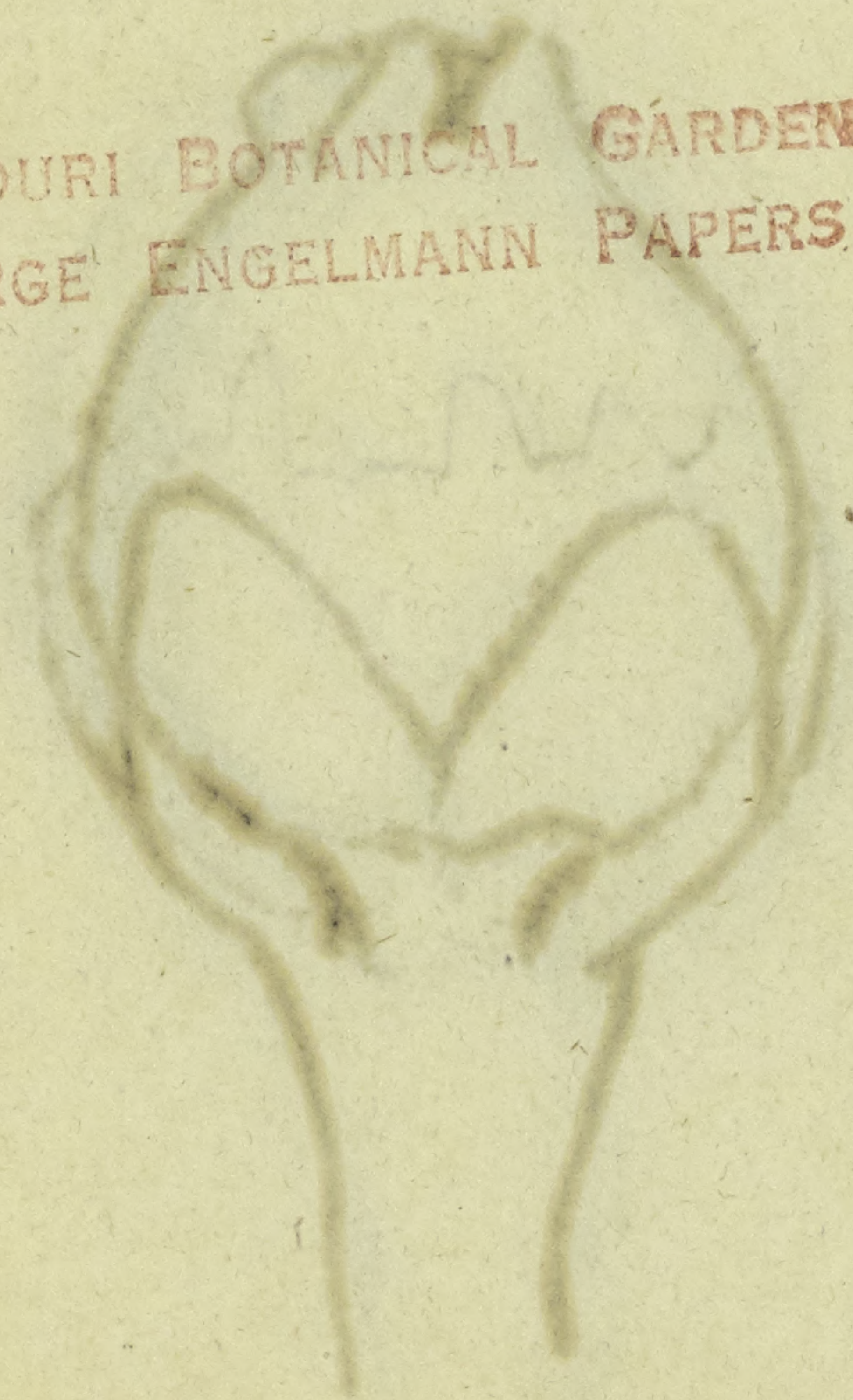


4481

[Faint, illegible handwritten notes in pencil]



MISSOURI BOTANICAL GARDEN
GEORGE ENGELMANN PAPERS



0 1 2 3 4 5 6 7 8 9 10
cm copyright reserved



MISSOURI
BOTANICAL
GARDEN

Caps. firmior, fusca perfoliata
solum dehiscentia

Cucurbita Urticae

or Urtica setosa

in field Kagen buckel at Braun.

Aug 1844

capsule more firm, base contracted in to a stipe
and not dehiscent on transverse! scarcely
scales attached to the middle, small few teeth
off invisible (in the half ripe fruit) —
almost sessile

Freyling — Urtica Sepium has longer pedicels, else the
same!

Magdeburg, Urtica Aschmannii has a very thin
capsule and is regularly dehiscent

Hildersheim, Scheele, on Urtica & Tabac is the
same, not easily dehiscent



0 1 2 3 4 5 6 7 8 9 10

cm

copyright reserved



MISSOURI
BOTANICAL
GARDEN

4482

MISSOURI BOTANICAL GARDEN
GEORGE ENGELMANN PAPERS



0 1 2 3 4 5 6 7 8 9 10
cm copyright reserved



MISSOURI
BOTANICAL
GARDEN

Curcuma Europea

Paris July 1857



Curcuma hyalina Boiss in sched. Regni alpina inferiore
du Jaurus, Balnearum 15 Sept 1855
squamis bifidis Hb. Con. Hb. Gay

Curcuma Europea, Altai, Ledebour, Hb. P. squamis subbifidis
caulibus crassiusculis

Curcuma halophyta Fries Christiania Norma.
squamis quadratis, incis

Curcuma Europea Pyrenaei Hispaniae, Vella, Aug 1847
Douryeux N. 606

Curcuma Epithymum Apennina Paris Aug 1845 H. P.
squamis truncatis inciso-crenatis; caps. conda

C. Schkubneriana Bohemia Lorrinser Hb. C. - squamulae!

C. caulibus rubellis squamis tenuissimis bifidis caps.
cond. - floribus paulo minoribus.



4483

MISSOURI BOTANICAL GARDEN
GEORGE ENGELMANN PAPERS



0 1 2 3 4 5 6 7 8 9 10

cm

copyright reserved



MISSOURI
BOTANICAL
GARDEN

Kew Aug 1857



half ripe capsule



9/3 2.9 157

451. *Cuscuta capillaris*
Edgeworth Lin Transact.
20 p. 86

Himalaya 11,000 feet high.
M. P. Edgeworth 1844
in Herb. Kew olim *Benthonia*



This seems to be closely allied to
C. Europaea if not the same. Specimen
very incomplete, small, marked etc.
lobes of corolla shorter than tube —
scales very indistinct indeed — anthers
broader than long, cordate, apiculate.



0 1 2 3 4 5 6 7 8 9 10

cm

copyright reserved

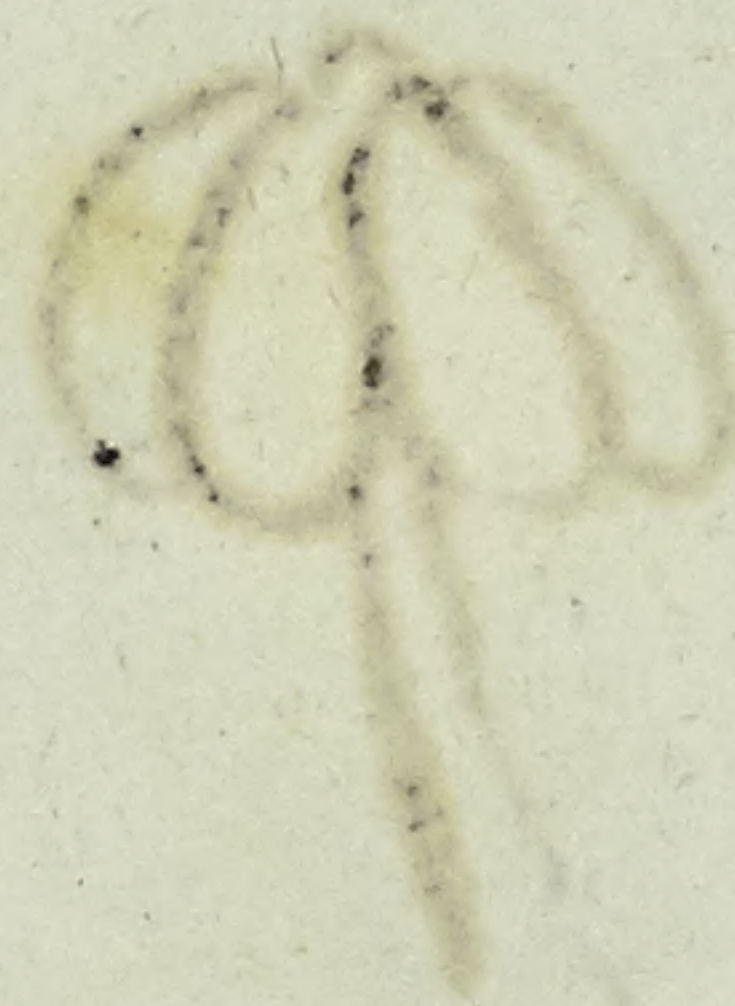
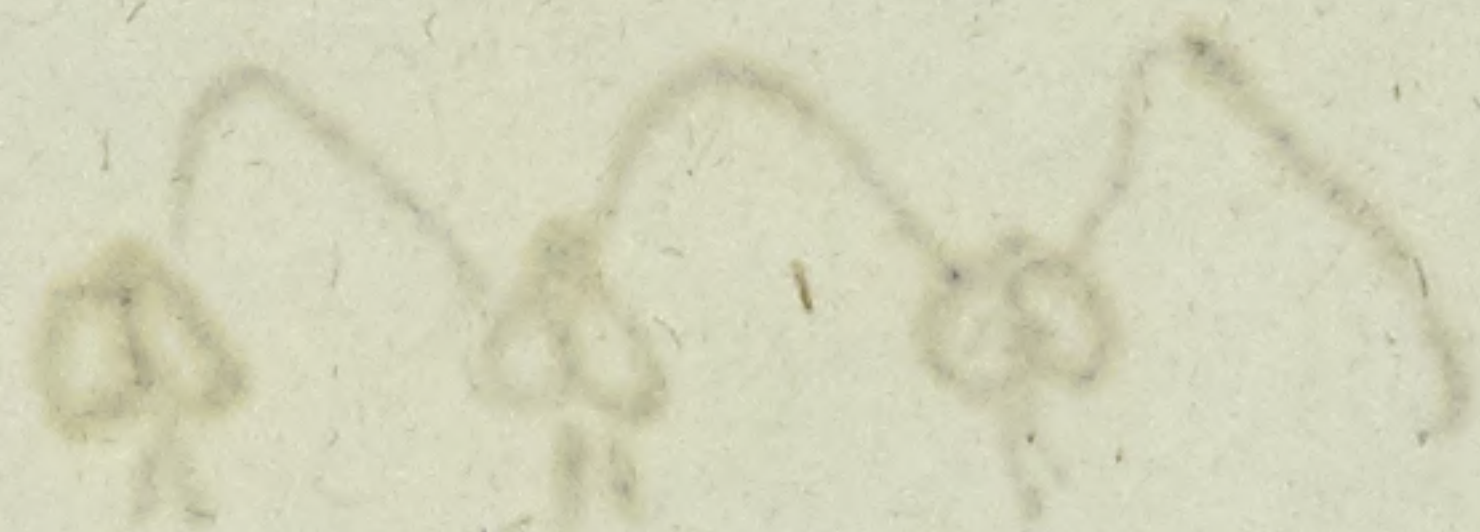


MISSOURI
BOTANICAL
GARDEN

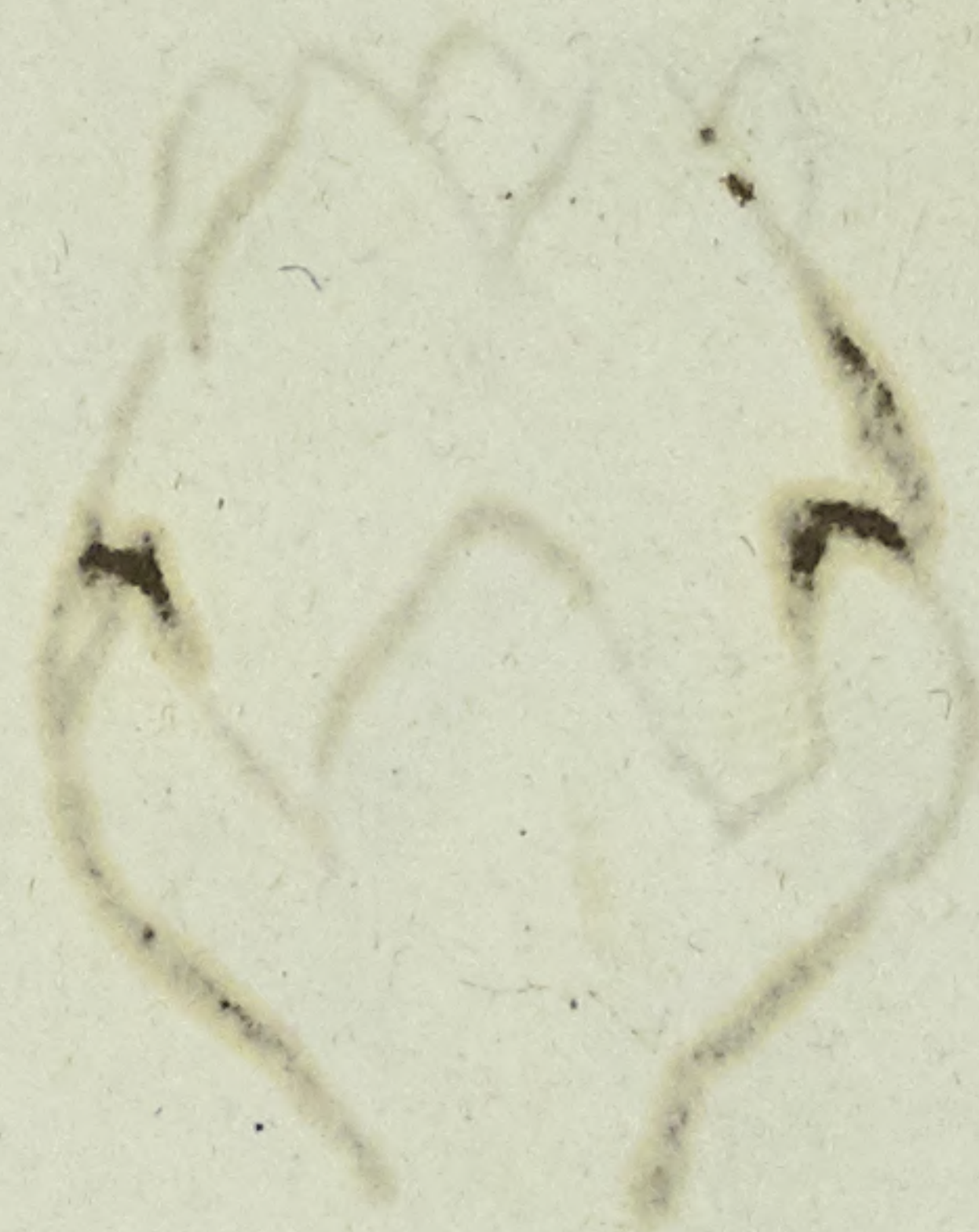
4484

100

[Faint, illegible handwritten notes in cursive script, likely bleed-through from the reverse side of the page.]



MISSOURI BOTANICAL GARDEN
GEORGE ENGELMANN PAPERS



0 1 2 3 4 5 6 7 8 9 10

cm

copyright reserved



MISSOURI
BOTANICAL
GARDEN

201.6.

Cuscuta europaea. var. *refrens* Fries *Summa veget.*

Scand. I. p. 191.

in *Orbis sibirica* - Halland - "side squamulig"

Specimens examined by me in Fries Herb. normale in
Mus. Paris, and in Hb. Hooker have both some
scales



0
cm

1

2

3

4

5

6

7

8

9

10

copyright reserved



MISSOURI
BOTANICAL
GARDEN

4485

MISSOURI BOTANICAL GARDEN
GEORGE ENGELMANN PAPERS



0 1 2 3 4 5 6 7 8 9 10

cm

copyright reserved



MISSOURI
BOTANICAL
GARDEN

284.6

Paris July 1857

Curcuma monogyna
var. *normalis*

[i.e. *distyla*]

Naudin leg. Pyrenées

Hb. Delessert

Julii 1843

This is *Curcuma europaea* capsule
depressed, squamis umbilicis, bifidis
ligulatis, variis crenatis.



0 1 2 3 4 5 6 7 8 9 10

cm

copyright reserved



MISSOURI
BOTANICAL
GARDEN

4486

MISSOURI BOTANICAL GARDEN
GEORGE ENGELMANN PAPERS



0 1 2 3 4 5 6 7 8 9 10

cm

copyright reserved



MISSOURI
BOTANICAL
GARDEN

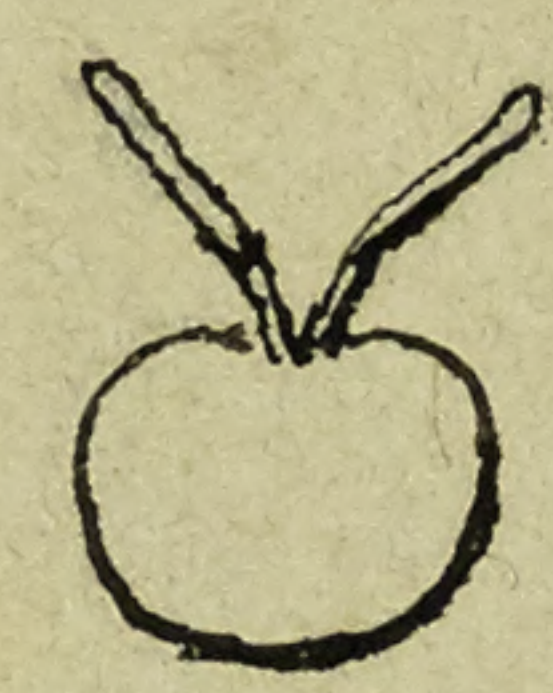
1843



C. europaea

Herb. Acad. Philad

a



unripe fruit

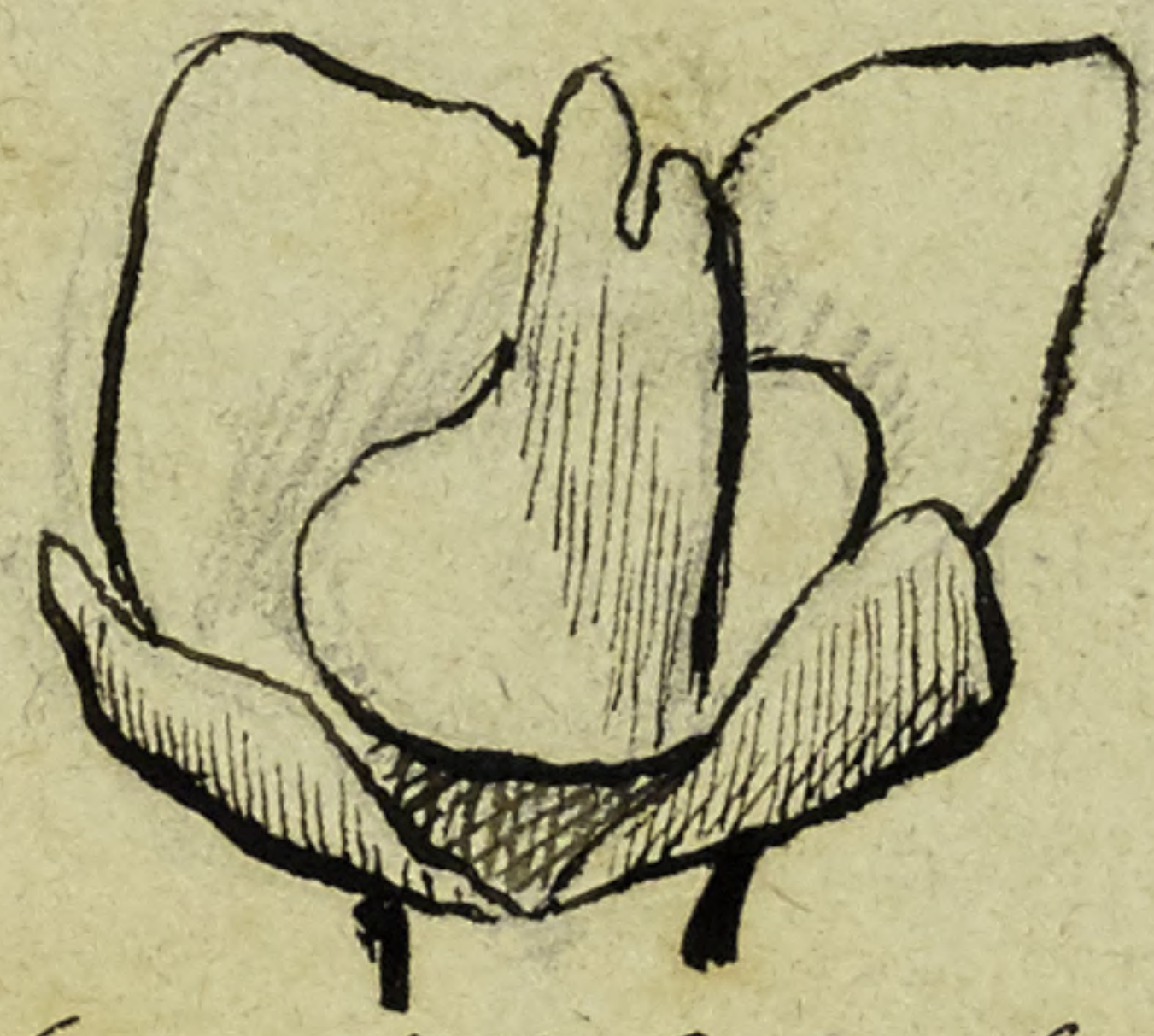
Cuscuta europaea

Frankf. a.

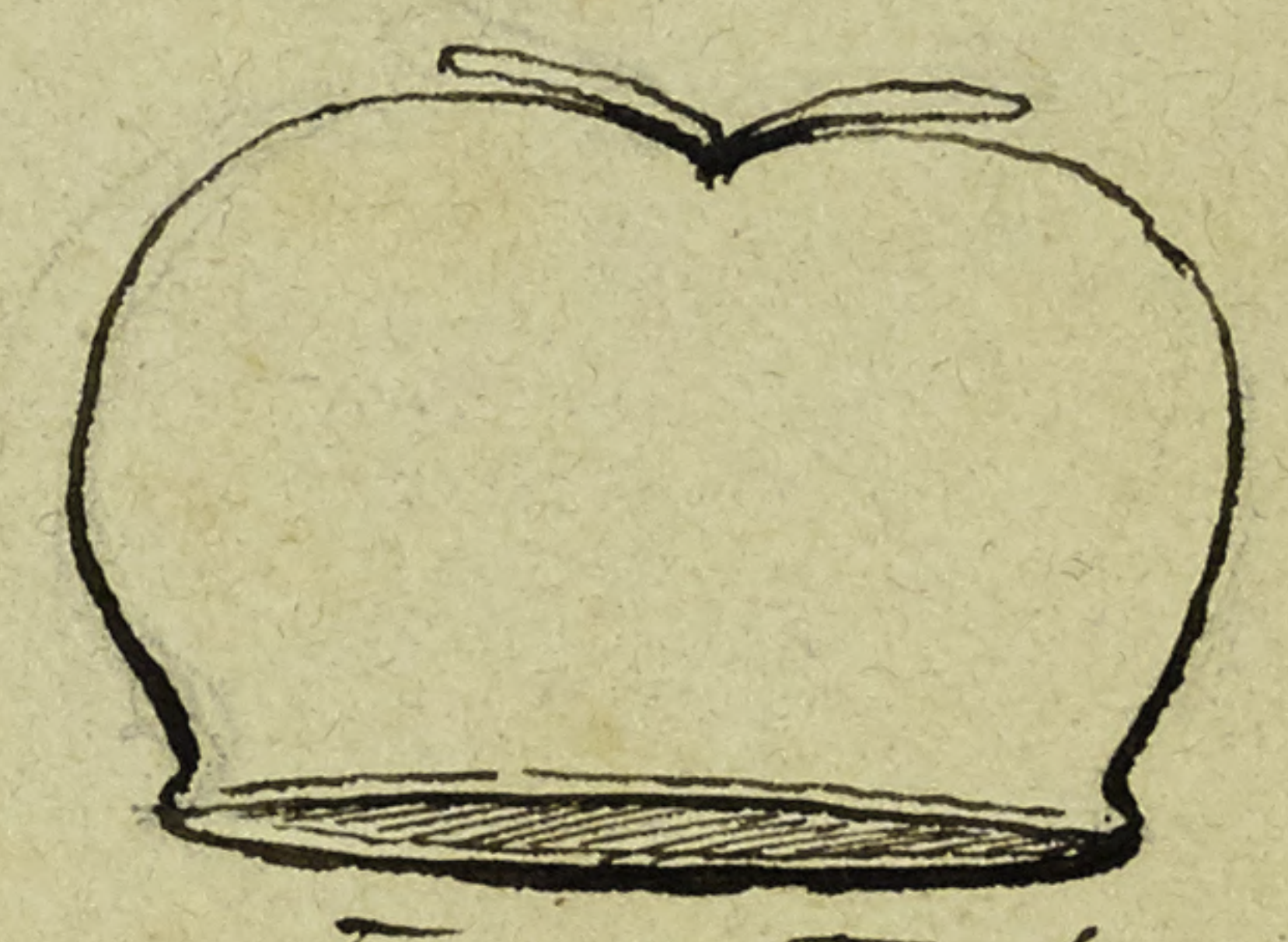


trilocular ovary

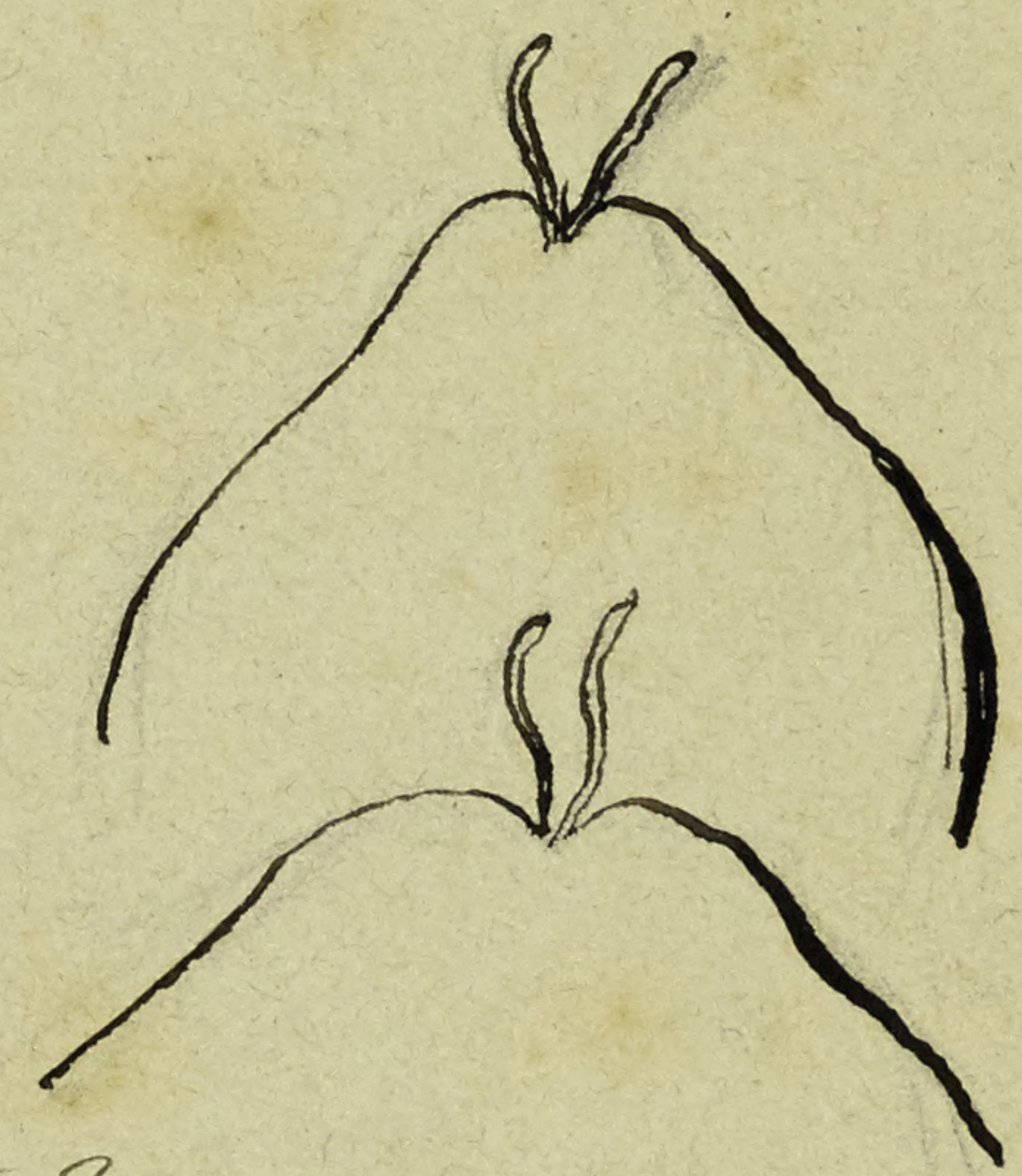
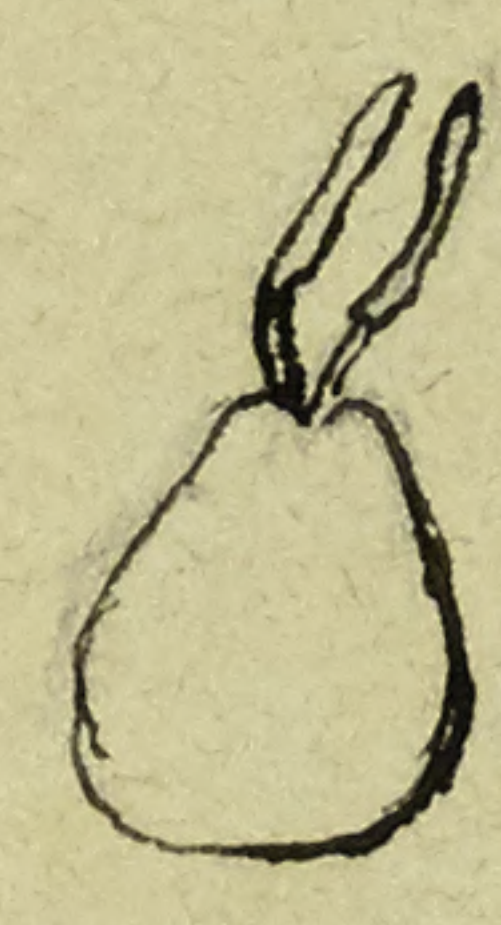
Frankf. a.



calyx, and base of capsule with dissepiment



top part of capsule



Cuscuta europaea conica

Carlsruhe



0 1 2 3 4 5 6 7 8 9 10 cm copyright reserved



MISSOURI BOTANICAL GARDEN

4487

MISSOURI BOTANICAL GARDEN
GEORGE ENGELMANN PAPERS



0

1

2

3

4

5

6

7

8

9

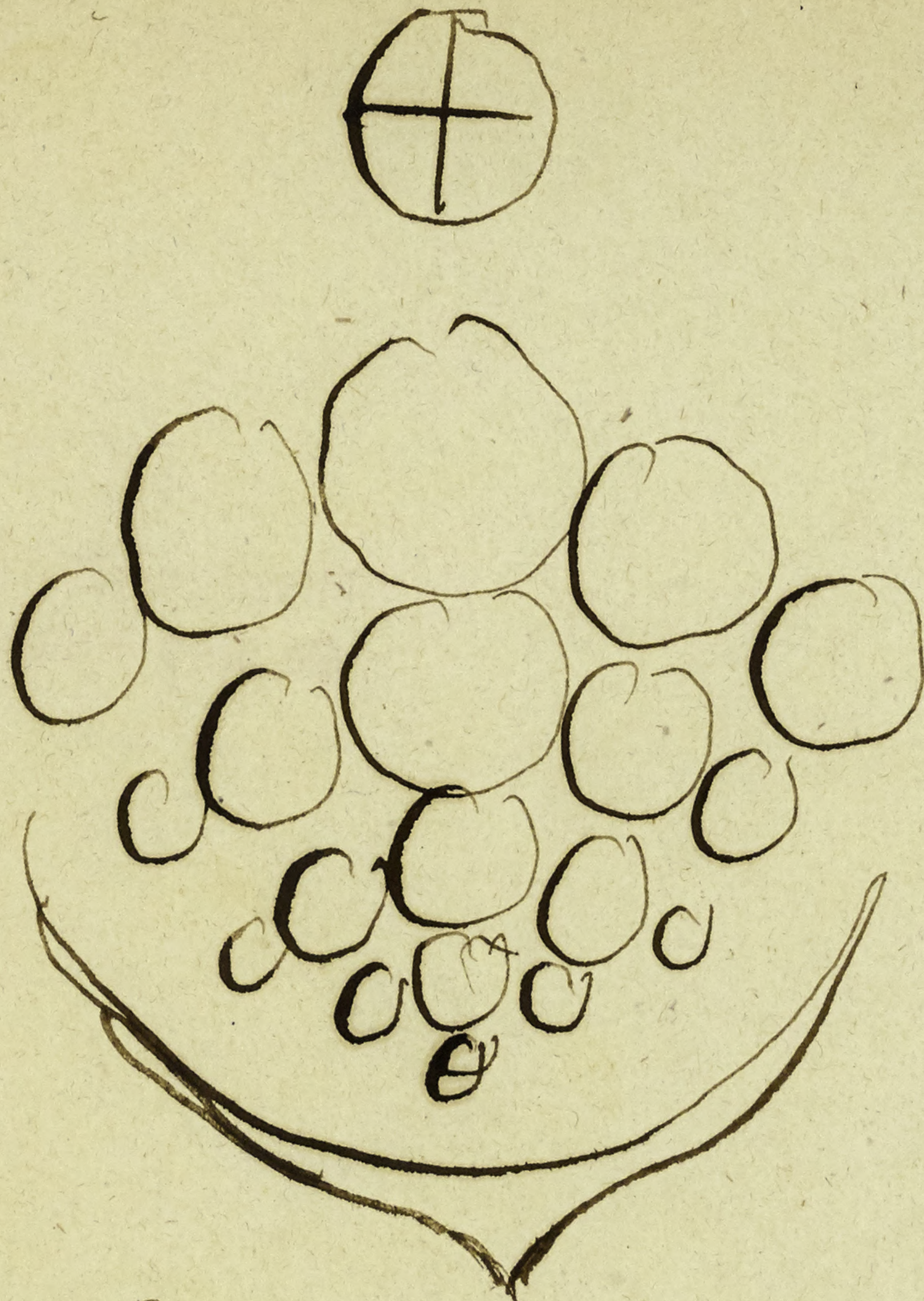
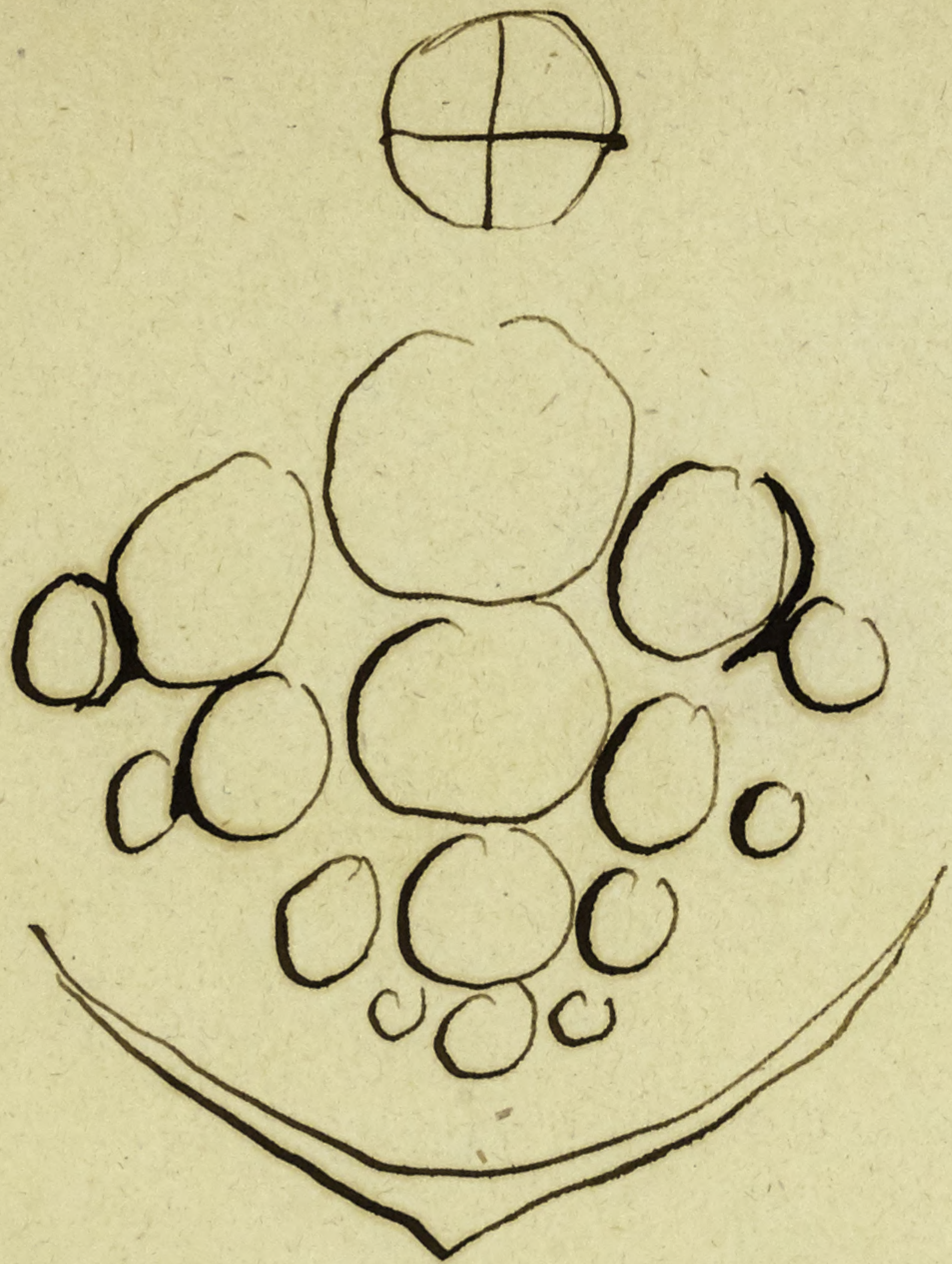
10

cm

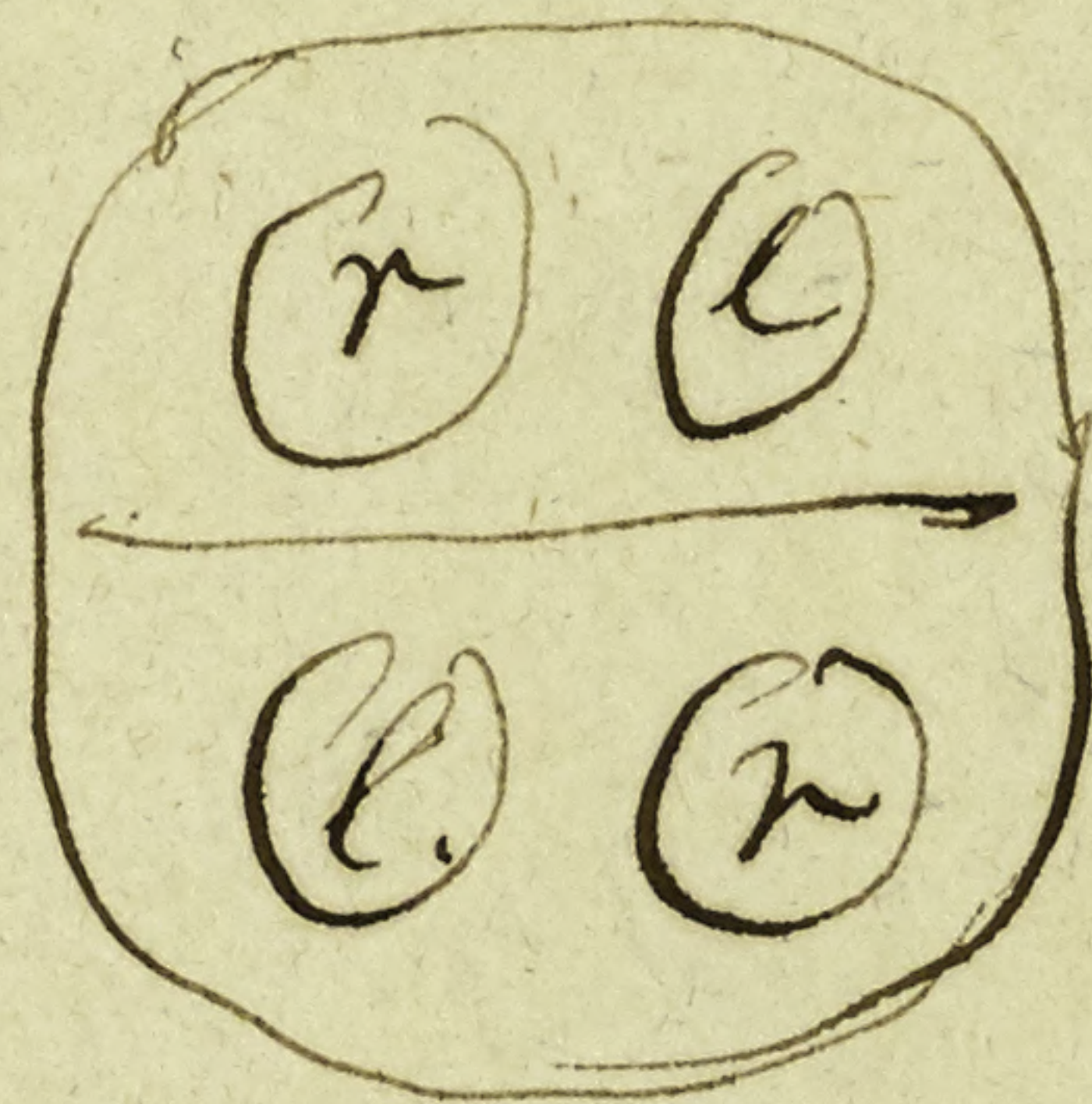
copyright reserved



MISSOURI
BOTANICAL
GARDEN



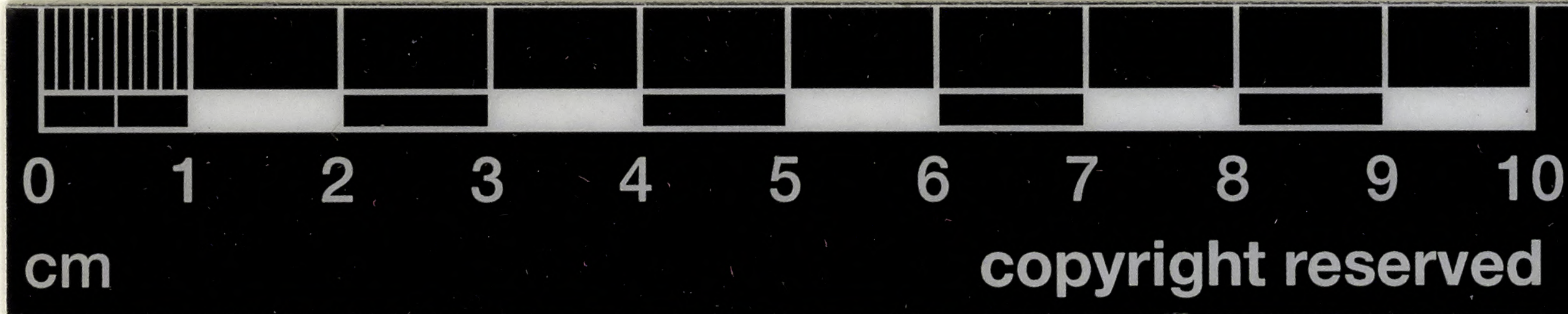
Embryo
 Had right or
 left twisted!



Embryo
 right!
 left!

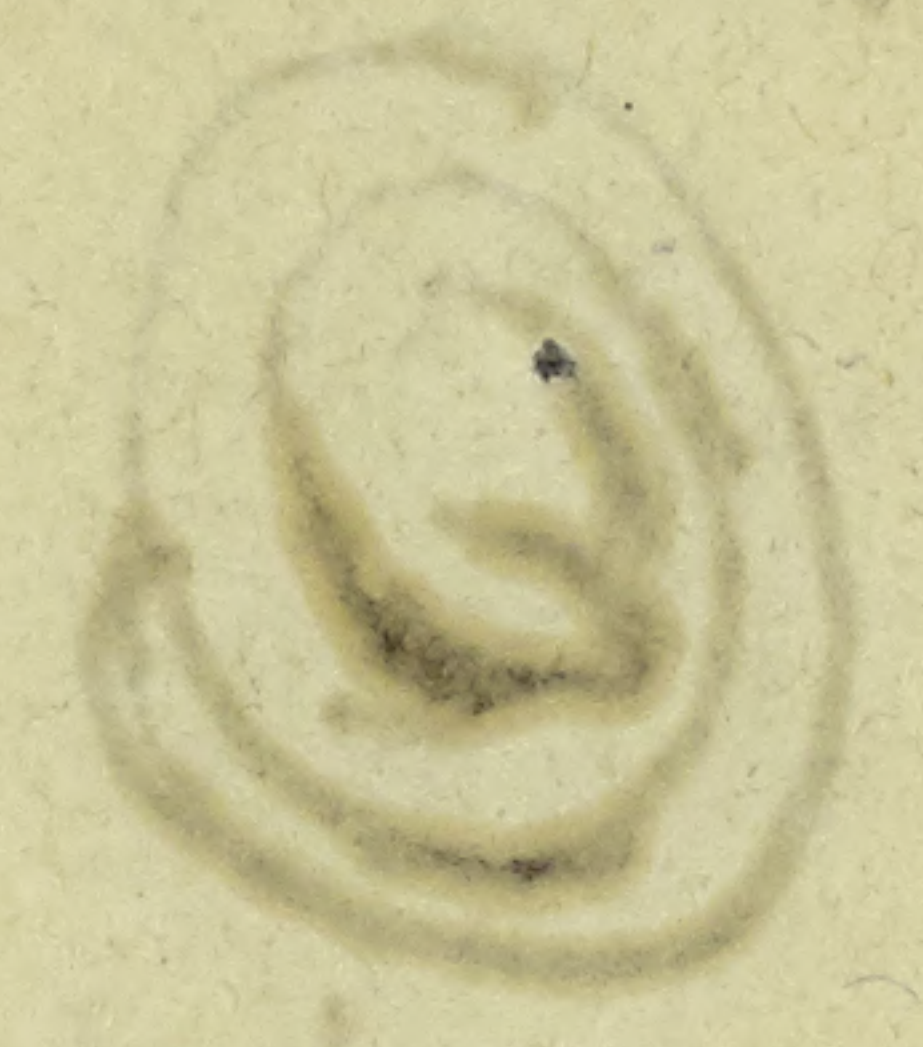
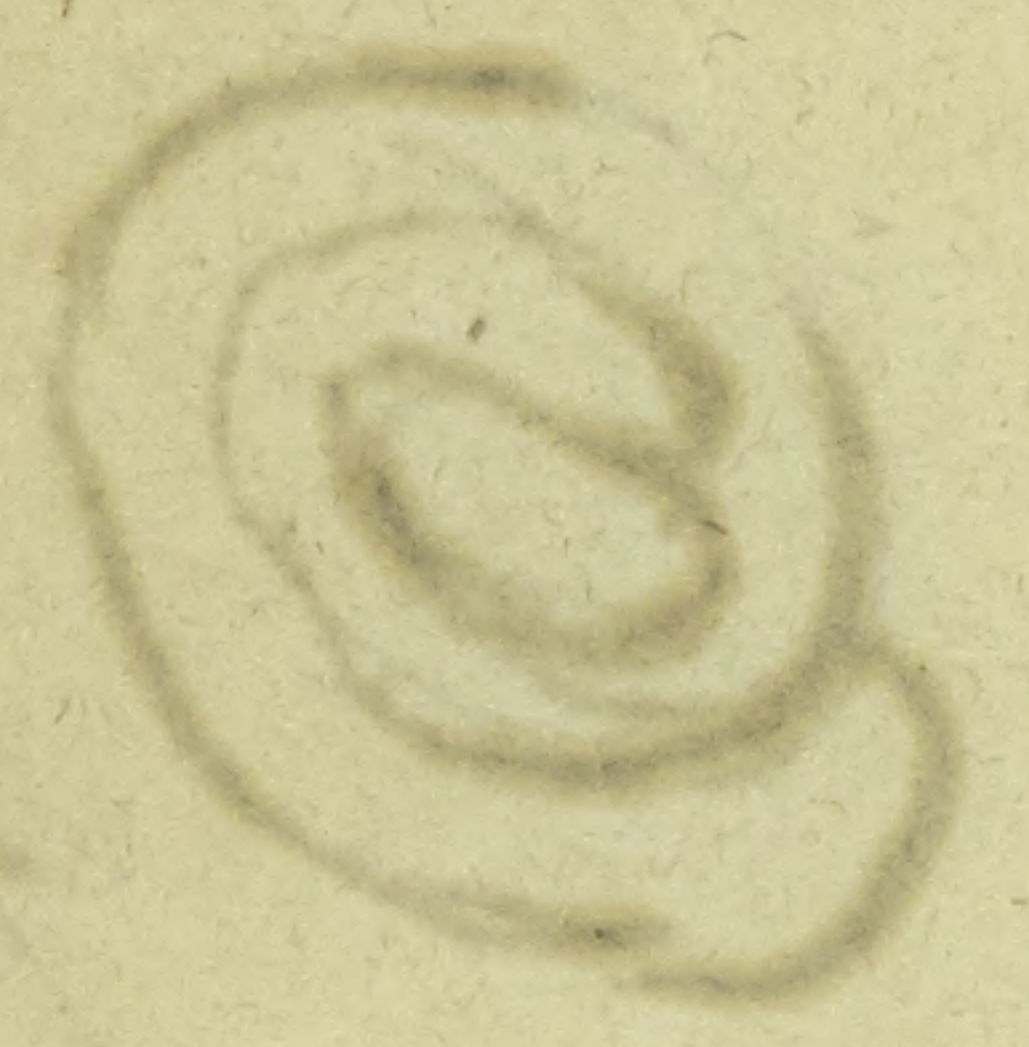
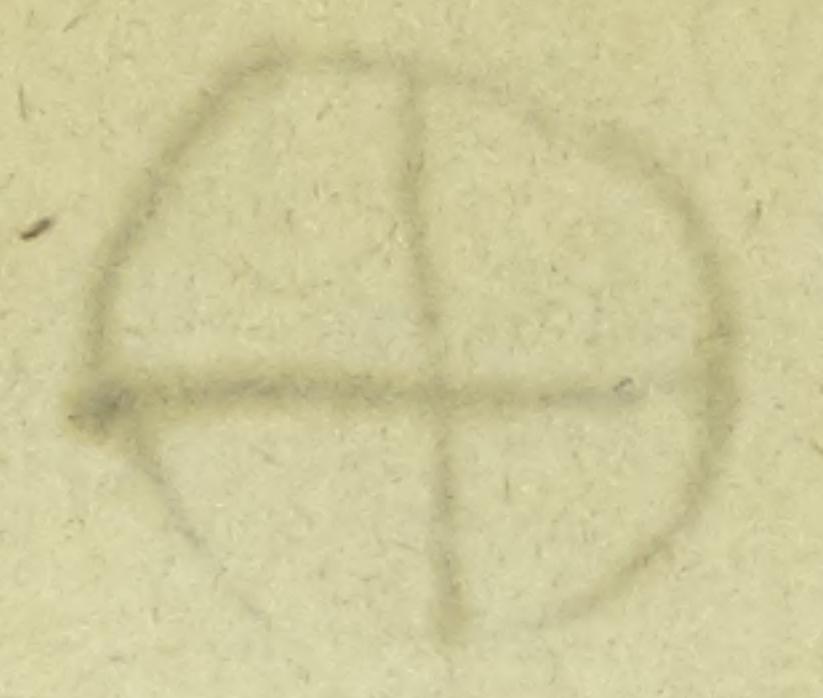
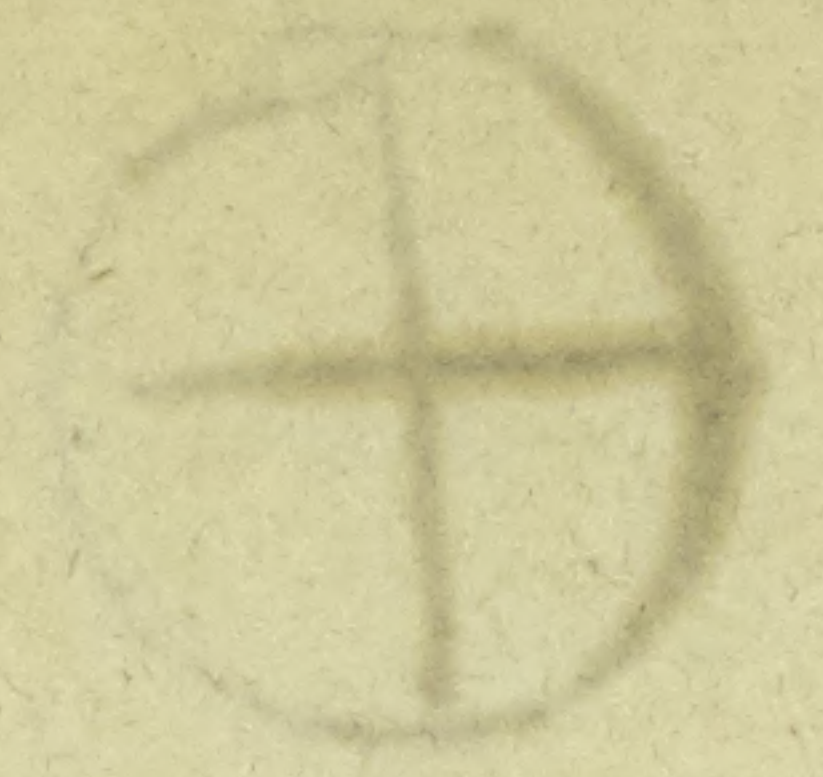
right on the right side
 left on the left side
 part of seed downward

Inflorescence of *C. europaea*
 at Bremen Sept 1832

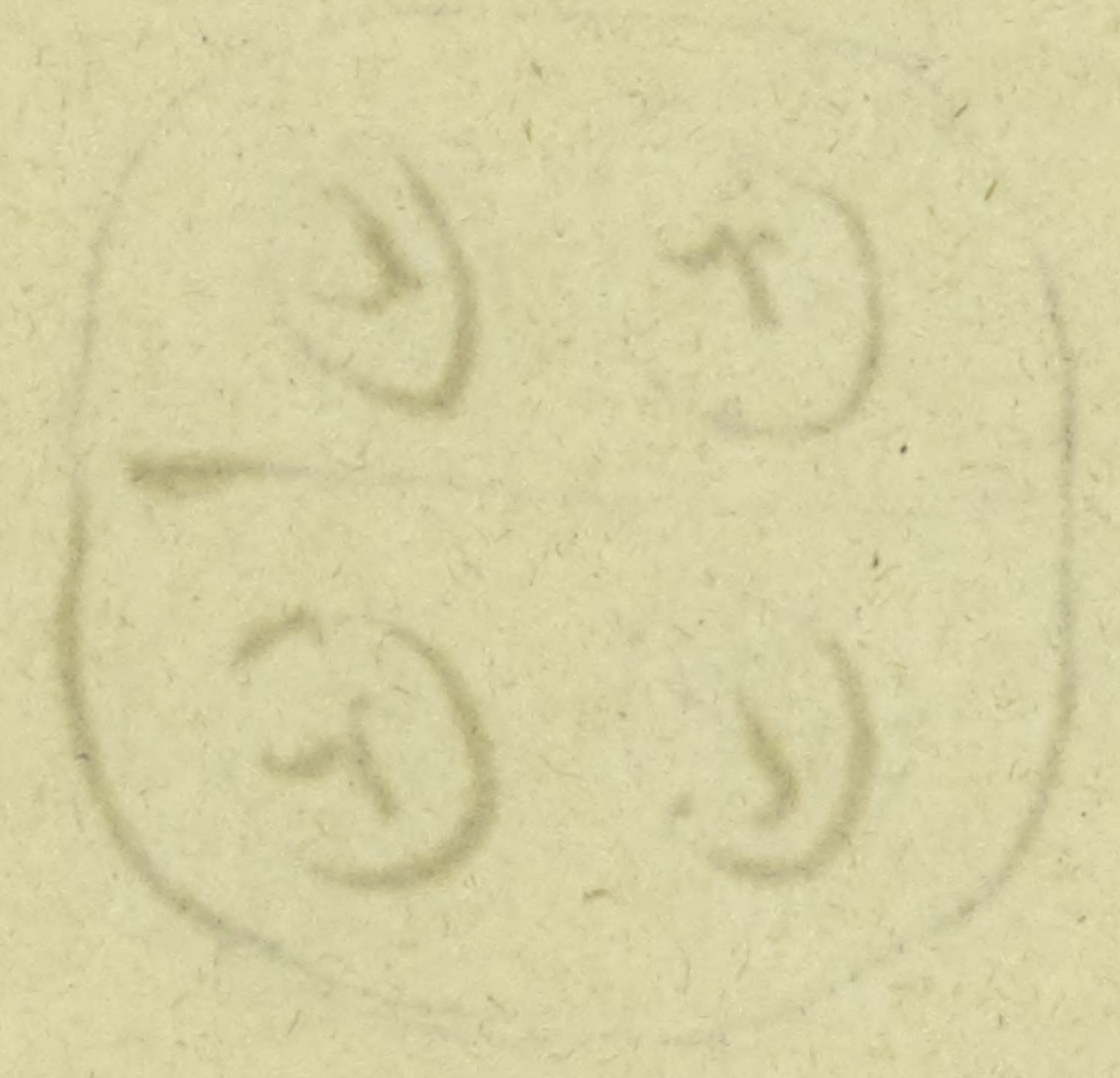


copyright reserved

4488



MISSOURI BOTANICAL GARDEN
GEORGE ENGELMANN PAPERS



0 1 2 3 4 5 6 7 8 9 10
cm copyright reserved



MISSOURI
BOTANICAL
GARDEN

Cuscuta Europaea

with out scales or with only a lateral tooth there and
there, — fruit conical — upper part hollow —

Reufekattel Sept 1844 (Adrian)

Beiersheim on Urtica, July 1845 — Adrian — Scales

erect, lacinate, often 2 parted, separated two lateral
stipules of the staminate leaf!! (Adrian)

In the same flower lacinate or bifid scales



0
cm

1

2

3

4

5

6

7

8

9

10

copyright reserved



MISSOURI
BOTANICAL
GARDEN

4489

[Faint, mostly illegible handwritten text in cursive script, possibly bleed-through from the reverse side of the page.]

MISSOURI BOTANICAL GARDEN
GEORGE ENGELMANN PAPERS



0 1 2 3 4 5 6 7 8 9 10

cm

copyright reserved

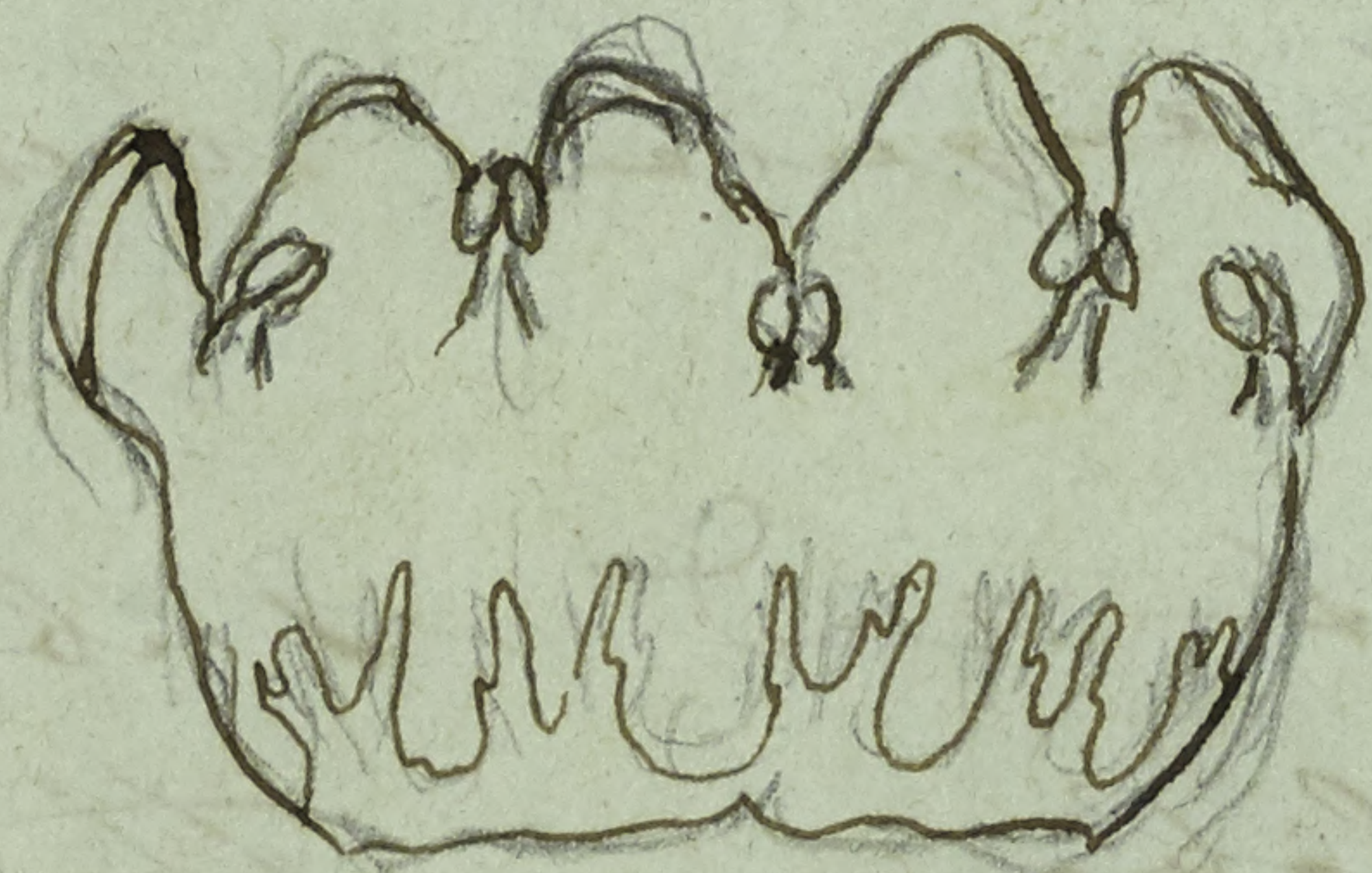
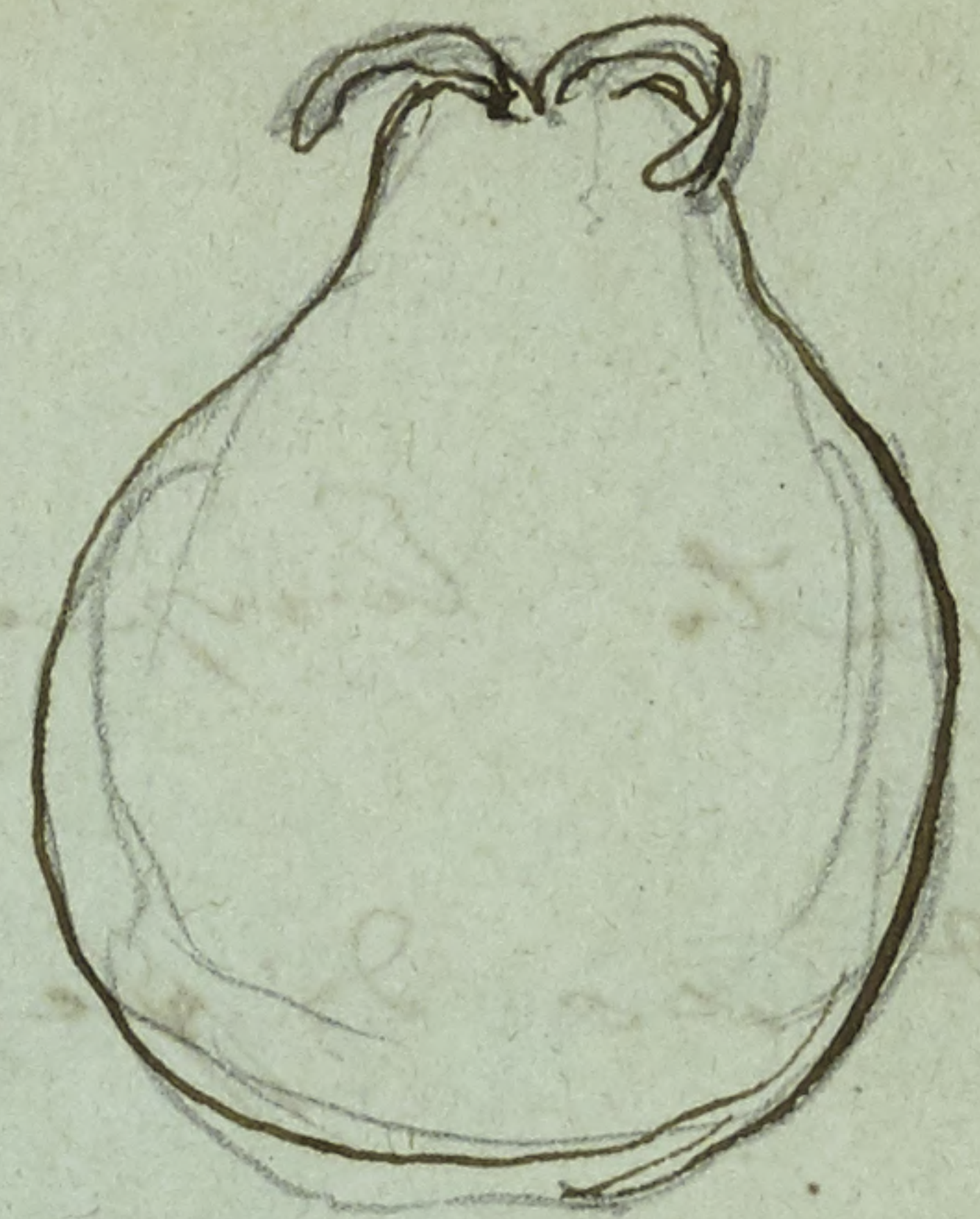


MISSOURI
BOTANICAL
GARDEN

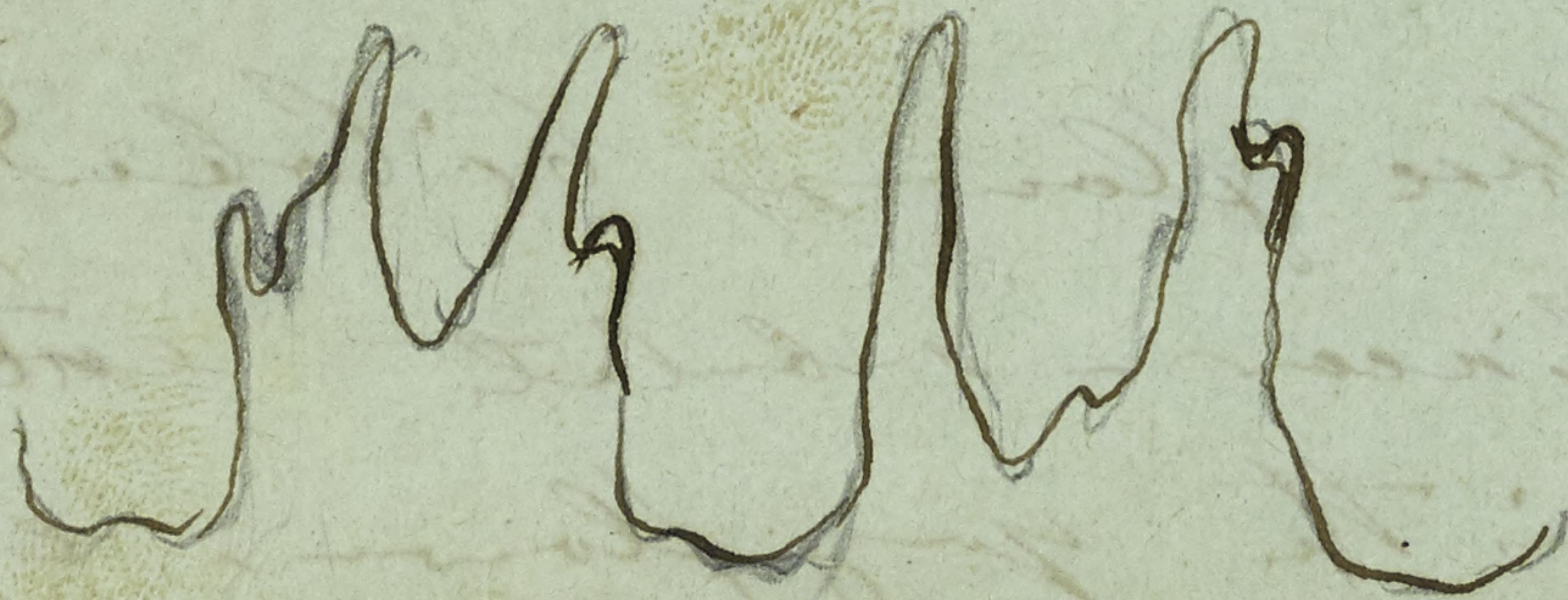
Cuscuta Europaea
on Artica in the valley of the Arve below

Geneva Octob 15 1857

Chamouney



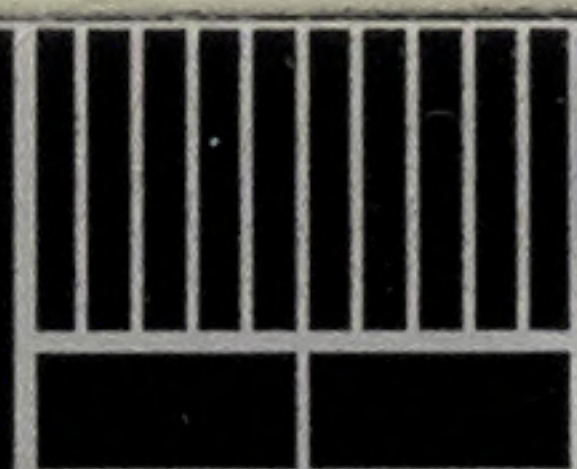
scales of a withered flower



scales of a flower in
full bloom



over



0 1 2 3 4 5 6 7 8 9 10

cm

copyright reserved



MISSOURI
BOTANICAL
GARDEN

4490

MISSOURI BOTANICAL GARDEN
GEORGE ENGELMANN PAPERS

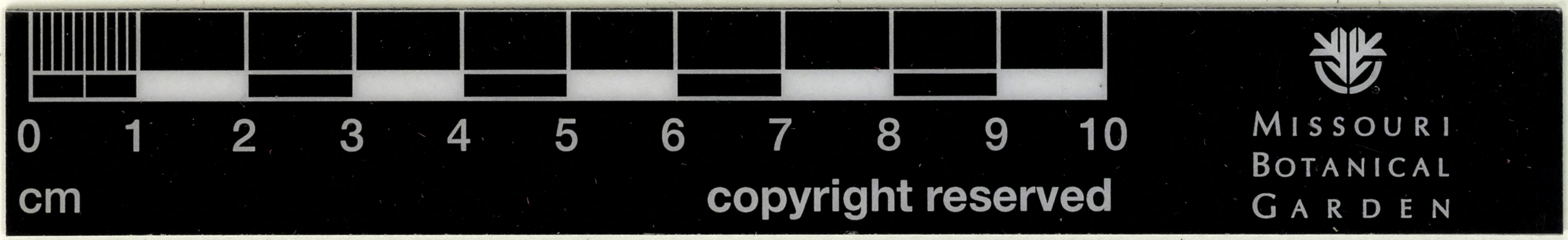
Cuscuta lanqum varietas capsula pyriformi.

I find no difference from their fresh and the dried flowers I have examined.

The lobes of the corolla has short angular numerous cells the tube elongated linear ones.

The filaments are certainly flat and subulate the anthers almost uniform - globose, the commissure broad, obtuse

scales in tall these flowers bilobed and connate at base; lobes linear-subulate entire, or more or less toothed; - in the young flowers erect, in the old withered and stretched corolla divaricate, styles in the former erect, in the capsule divaricate & recurved.



Cuscuta europaea var *indica*
glanibus densis multifloris
floribus minoribus, ~~densioribus~~
squamis ²⁻³ majoribus
stylis pediculis longioribus
Thibet de Thomson



0 1 2 3 4 5 6 7 8 9 10

cm

copyright reserved



MISSOURI
BOTANICAL
GARDEN

4491

[Faint, illegible handwriting]

MISSOURI BOTANICAL GARDEN
GEORGE ENGELMANN PAPERS



0

1

2

3

4

5

6

7

8

9

10

cm

copyright reserved



MISSOURI
BOTANICAL
GARDEN

Cuscuta Europaea ex Hb. Tenore & Gussone 1858

generally only in the Mountain districts of South Italy

" *C. planiflora* " in parte Hb. Tenore
base of Abbruzzi in Sambucus ~~Cuscuta~~
Napul on Basilicum (Herb Tenore)

Meadows near Naples on *Heracleum sphon-*
dylium Herb. Gussone
Apulia on Sambucus *ebulus* (Hb Tenore)

~~Abbruzzi~~ " " " " "



0 1 2 3 4 5 6 7 8 9 10

cm

copyright reserved



MISSOURI
BOTANICAL
GARDEN

4492

[Faint, illegible handwritten text, likely bleed-through from the reverse side of the page]

MISSOURI BOTANICAL GARDEN
GEORGE ENGELMANN PAPERS



0 1 2 3 4 5 6 7 8 9 10

cm

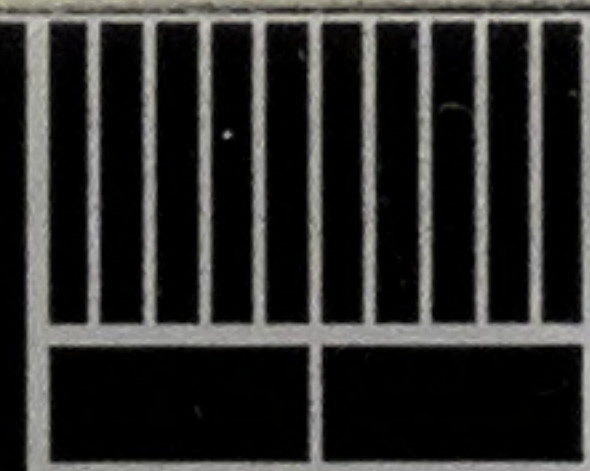
copyright reserved



MISSOURI
BOTANICAL
GARDEN

C. Europea

caule filif.
flor brevis crasseque pedicellata, glomeris multifloris
inympanulos congestas; 4-5 partitis
cal. lobis ovatis obtusis (hyalinis) (siccis) corollae tub
globosa breviter campanulata aequilobis s. superobliq;
vix ad basin subvittis
lacina cor ovatis obtusis ^{conicis} tubo aequilongis, cretatis
s. patulis, ~~desse~~ plerumque connatis. — basi ^{sub} vitta
stamens brevioribus; antheris ovatis s. subrotatis ^{antheris} fila
subulata aeq. simpliciter s. brevibus; — squamis
secundis hyalinis mediis tubis adnatis, dentatis
rotundatis, tenuioribus s. bifidis dentatis s. saepe
subnullis ~~caerentibus~~ ^{dentatis} singulis foribus
subnullis s. omnino caerentibus; ovario magno, tubo



0
cm

1

2

3

4

5

6

7

8

9

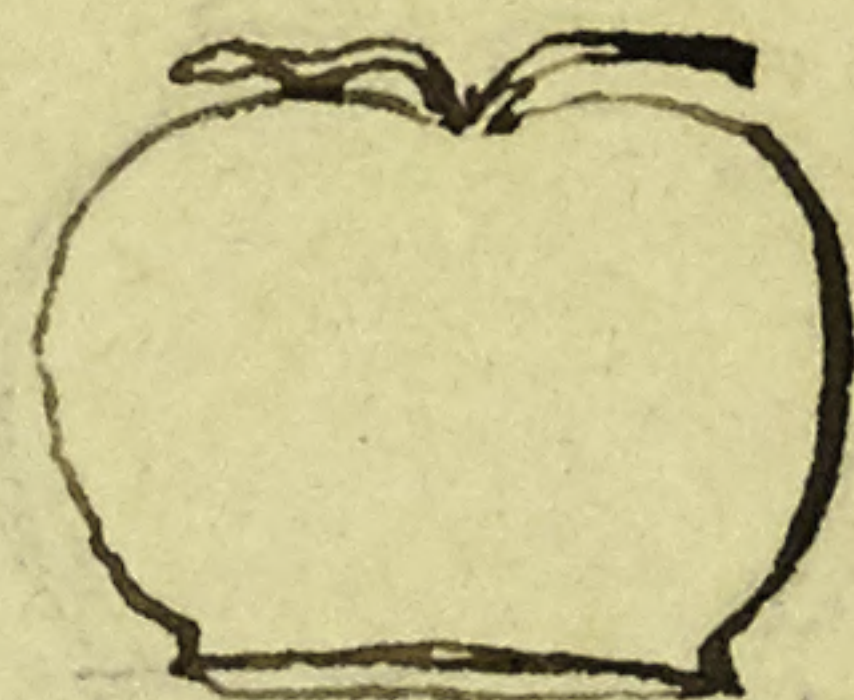
10

copyright reserved



MISSOURI
BOTANICAL
GARDEN

b.



Cuscuta europaea?
Herb. Acad. Philad.
on *Abies*?



0 1 2 3 4 5 6 7 8 9 10

cm

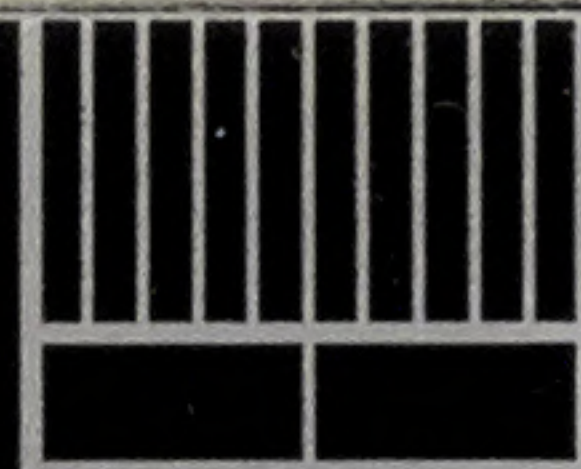
copyright reserved



MISSOURI
BOTANICAL
GARDEN

4494

MISSOURI BOTANICAL GARDEN
GEORGE ENGELMANN PAPERS



0

1

2

3

4

5

6

7

8

9

10

cm

copyright reserved

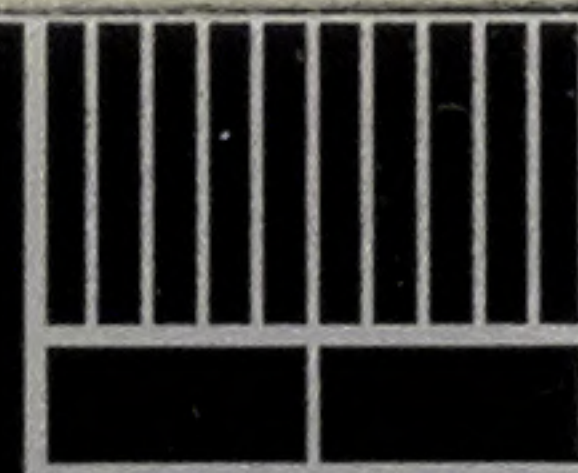


MISSOURI
BOTANICAL
GARDEN

Cuscuta globulosa Pursh & Reul

(Dig. or. th. 3. p. 126)

capitulis; capit. minutis globosis pauciflor. basi bractea
ovata acuta fultis; flor. steril. ad basi - capituli nonnullis
squamiformibus; fl. fertilibus minutis sessil. calycis
brevissimi. obconico - exsepuliformi corolla dimidiata
brevi ultra tert. part. 4-fida, lob. triangul. acut.
patent. corollae vix ad tert. part. lob. 3 angul.
3 angul. acutus lob. erectos fissa fructiferam
6 lobos super. apicem capsulae subconniventes
ovata globosa squamis nullis? filamentis sine
loborum orbis antheris ^{breviter} ovata aequilongis. stigmat.
capsula 4-plex breviter; sem. minut. reticulata areolatis
— Corolla globosa — capsula nec areolata.



0

1

2

3

4

5

6

7

8

9

10

cm

copyright reserved



MISSOURI
BOTANICAL
GARDEN

4495

MISSOURI BOTANICAL GARDEN
GEORGE ENGELMANN PAPERS



0

1

2

3

4

5

6

7

8

9

10

cm

copyright reserved



MISSOURI
BOTANICAL
GARDEN

Europei fl. minutis

Cucurbit

on Ahagi Camulor

fl. ~~recepte~~

fl. pedicellatis parvis,
Cul lobis 4-5 acutis

Cul lobis obtusis

in part reflexis petalis

stylis brevissimis



0 1 2 3 4 5 6 7 8 9 10

cm

copyright reserved



MISSOURI
BOTANICAL
GARDEN

4496

[Faint, illegible handwritten text]

MISSOURI BOTANICAL GARDEN
GEORGE ENGELMANN PAPERS

ALEX. LEITCH,
APOTHECARY & PHARMACEUTIST,

Marble Building, Cor. Fourth & Olive Sts., St. Louis, Mo.



0 1 2 3 4 5 6 7 8 9 10

cm

copyright reserved



MISSOURI
BOTANICAL
GARDEN