



MISSOURI BOTANICAL GARDEN  
PETER H. RAVEN LIBRARY



GEORGE ENGELMANN  
BOTANICAL NOTEBOOKS

*Pagination Note:*

*Since many of the items lack a specific page number, the page number displayed online refers to the sequentially created number each item was given upon cataloging the materials.*



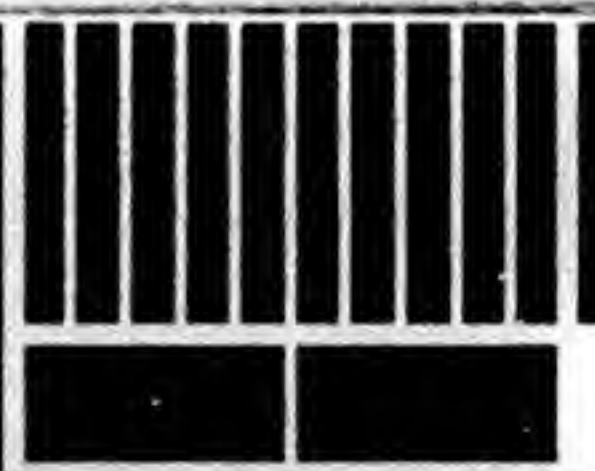
III. Articulati

2. Pauciflori

Collected Aug. 9<sup>th</sup> 1855

with *J. alpinus*

393-526



0 1 2 3 4 5 6 7 8 9 10

cm

copyright reserved



MISSOURI  
BOTANICAL  
GARDEN



9367

MISSOURI BOTANICAL GARDEN  
GEORGE ENG

Winds. . . . .  
storms. . . . .  
0 2 3 2 5 7 3 5 3 1 1 0  
& S. . . . .  
& N.W. . . . .  
& S.W. . . . .  
& E. . . . .  
& S.E. . . . .



0 1 2 3 4 5 6 7 8 9 10

cm

copyright reserved



MISSOURI  
BOTANICAL  
GARDEN



NEED VAG  
BOTANICAL  
MISSOURI



peavreser thgijrdoc

01 6 8 2 9 9 4 3 2 1 0

cm



Meyer  
J. pakesoens (non Lam)  
Enyo 3. 268)  
J. acuminatus Michx  
non Gray

116

TRANS. OF THE ACAD. OF SCIENCE.

IV. Direction of Winds and number of Thunderstorms in '61 & '62.

1861.												1862.	
	E.	N.	N.E.	S.W.	N.W.	S.	N.W.	S.E.	S.E.	Prevailing Winds.		Th. st's.	
January.....	11	3	12	22	38	18	28	61	S.E.	S.E. ....		0	
February.....	4	2	2	35	24	19	41	60	S.E.	S.E. ....		2	
March.....	12	11	10	23	30	19	42	40	W. & S.E.	W. & S.E. ....		3	
April.....	16	10	9	26	21	35	34	26	S. & W.	S. & W. ....		2	
May.....	26	10	23	21	8	13	49	35	W. & S.E.	W. & S.E. ....		5	
June.....	12	21	22	20	25	26	8	41	S.E.	S.E. ....		7	
July.....	3	31	14	21	26	46	15	29	S.	S. ....		3	
August.....	18	24	58	17	11	18	3	37	N.E.	N.E. ....		5	
September.....	6	14	18	26	30	13	21	52	S.E. & N.W.	S.E. & N.W. ....		3	
October.....	12	9	5	21	30	33	30	46	S.E. & S.	S.E. & S. ....		1	
November.....	7	15	8	22	27	20	36	44	S.E. & W.	S.E. & W. ....		1	
December.....	9	19	9	25	23	33	17	51	S.E. & S.	S.E. & S. ....		0	
	136	169	190	279	293	293	324	522	S.E.	S.E. ....		32	

393-  
439



*Additional Remarks on ATMOSPHERIC ELECTRICITY.*

By A. WISLIZENUS, M.D.

The delay in the publication of this volume enables me to add to my observations of atmospheric electricity in 1861, the result of my observations in 1862. The latter observations have been made in the same manner and by means of the same fine glass thread, which, after many thousand torsions, proves as good as ever. I present herewith in tabular form the general result of my observations in 1861 and 1862.

I. *Monthly mean of Positive Atmospheric Electricity in 1861 and 1862, at St. Louis, Mo., based upon daily observations at 6, 9, 12, 3, 6 and 9 o'clock, from morning till night.*

	Jan.	Feb.	Mar.	Ap'l.	May.	Jun.	Jul.	Aug.	Sept.	Oct.	Nov.	Dec.	Mean of Year.
1861*	16.5	12.1	9.8	8.8	7.8	4.0	3.7	3.4	3.0	7.1	10.0	14.3	8.4
1862	12.1	16.0	9.4	10.6	7.5	3.0	2.2	2.3	3.0	7.7	12.6	13.9	8.4

BOTANICAL GARDEN  
ENGELMANN PAPERS

9368



0 1 2 3 4 5 6 7 8 9 10

cm



MISSOURI  
BOTANICAL  
GARDEN

copyright reserved



Juncus pellescens Lam Ench. III. 268

ap. Meyer Syn. June p. 31 N<sup>o</sup> 27

who places it next to his *J. paradoxus* N<sup>o</sup> 26

Folia caulis tereti - compressis nodulosis

Anthela capitulis paucifloris compositis

Pedicellis laciniis subaequalibus lanceolatis  
acuminatis

(Capsulae acutae? [immaturae] aequitibus)  
staminibus 3 dividim perianthium vix  
representans.

*J. acuminatus* Kunth, Proch. Ell. 84

*J. sylvaticus* Muhl. Cat p. 36

In utroque America

*Lamarckii* specimena plura vidisse (Meyer  
contigit.)

*J. pellescens* Lam syn of *J. acuminatus* Mich fide Kunth En 3. 235  
sp. 4-6 flor. sep. aequal. lob. lanceol. capsulae ellipsoideae

— syn of *J. acuminatus* Mitchx. fide Steudl Ges 2. 301.  
capit. globos. multiflor. sep lanceol. breviter subaristato acuminatis  
capsulae oblongae acutae triquetrae subbrevisibus



0 1 2 3 4 5 6 7 8 9 10

cm

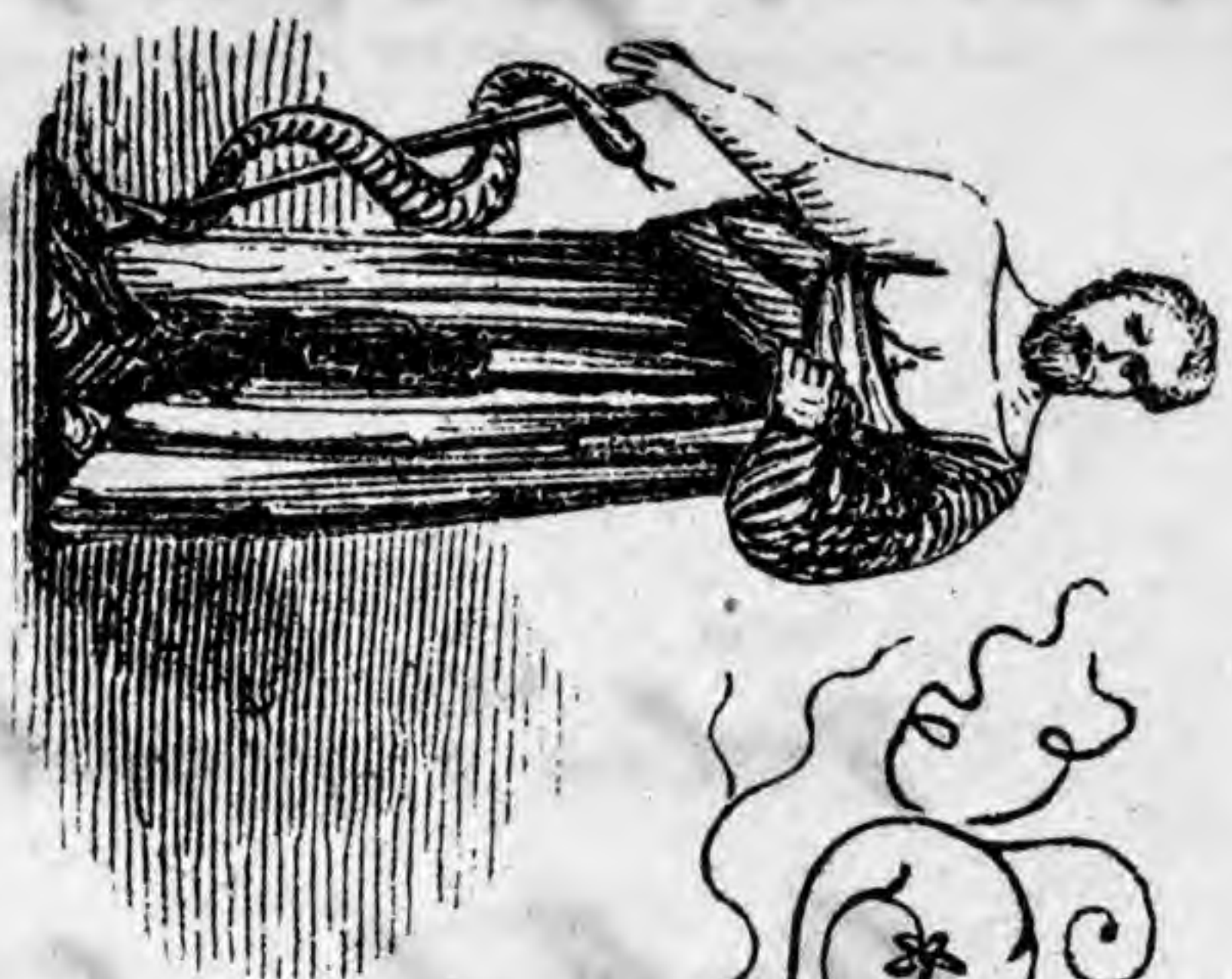
copyright reserved



MISSOURI  
BOTANICAL  
GARDEN



9369



**HALEX WILSON**

**APOTHECARY & PHARMACEUTIST,**

**COR. 4TH & OLIVE STS., ST. LOUIS.**

MISSOURI BOTANICAL GARDEN  
GEORGE ENGELMANN PAPERS



0 1 2 3 4 5 6 7 8 9 10

cm

copyright reserved



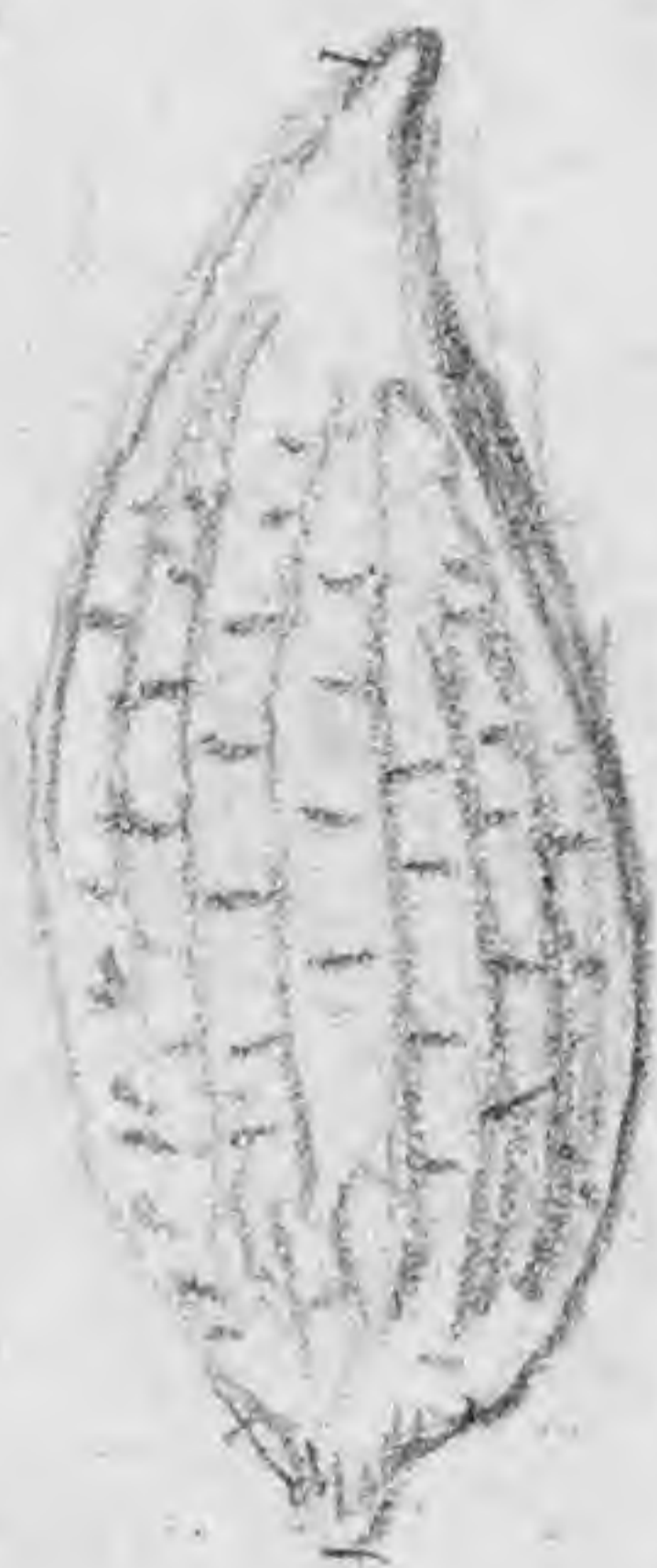
MISSOURI  
BOTANICAL  
GARDEN



*Juncus acuminatus* Mx? Aug 10 1865  
*debilis* Gray??  
 3 stamens

capitulum 5-8 florum  
 3 feet high, stout  
 x10

seed  
 x60



inner sepals as long  
 or a little  
 longer than outer ones

dry open capsule



Sect of Caps.



Caps collected

All my sp. pollinaria & stamens!



0 1 2 3 4 5 6 7 8 9 10

cm

copyright reserved



MISSOURI  
 BOTANICAL  
 GARDEN



**ALEX. LEITCH,**  
**APOTHECARY & PHARMACEUTIST,**

Marble Building Cor. Fourth & Olive Sts. St. Louis, Mo.

9370

MISSOURI BOTANICAL GARDEN  
GEORGE ENGELMANN PAPERS



0 1 2 3 4 5 6 7 8 9 10

cm

copyright reserved



MISSOURI  
BOTANICAL  
GARDEN

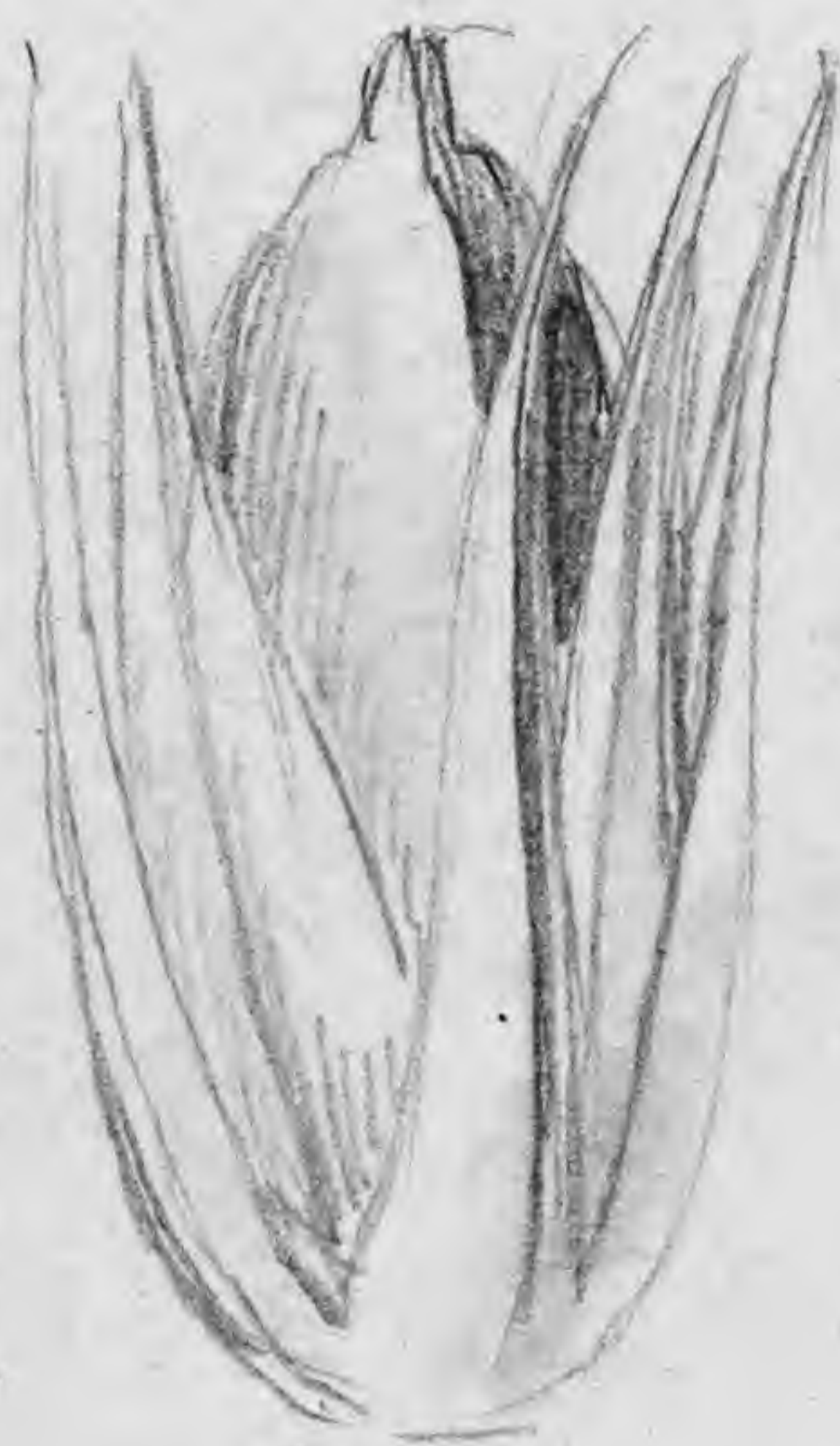


*Juncus acuminatus*

Aug 31 1865

Dr Vasey, Ringwood, Ill.

capitula 4-12 florum  
planta pedalis



Styl. subullo



0 1 2 3 4 5 6 7 8 9 10

cm

copyright reserved



MISSOURI  
BOTANICAL  
GARDEN



**ALEX. LEITCH & CO.**

**APOTHECARY AND CHEMIST.**

Marble Building, cor. 4<sup>th</sup> and Olive Sts.,

**ST. LOUIS, MO.**

9371

MISSOURI BOTANICAL GARDEN  
GEORGE ENGELMANN PAPERS



0 1 2 3 4 5 6 7 8 9 10

cm

copyright reserved



MISSOURI  
BOTANICAL  
GARDEN



"*Juncus acuminatus*"

Sept 25 1865

C. J. Moser, June 1832

Pennsylvania. H. B. Mill.

Mons Pocono

8-10 inches high - capit. 5-8 fl.

x 60



seed not quite ripe



sepal acutia



inside of a capsule with lower part pleruliferous



Incomplete development of *J. acuminatus*?



0 1 2 3 4 5 6 7 8 9 10

cm

copyright reserved



MISSOURI  
BOTANICAL  
GARDEN



**ALEX. LEITCH,**  
**APOTHECARY & PHARMACEUTIST,**

Marble Building Cor. Fourth & Olive Sts. St. Louis, Mo.

MISSOURI BOTANICAL GARDEN  
GEORGE ENGELMANN PAPERS

9372



0 1 2 3 4 5 6 7 8 9 10

cm

copyright reserved



MISSOURI  
BOTANICAL  
GARDEN



"*J. acuminatus*"

Oct 7 1865

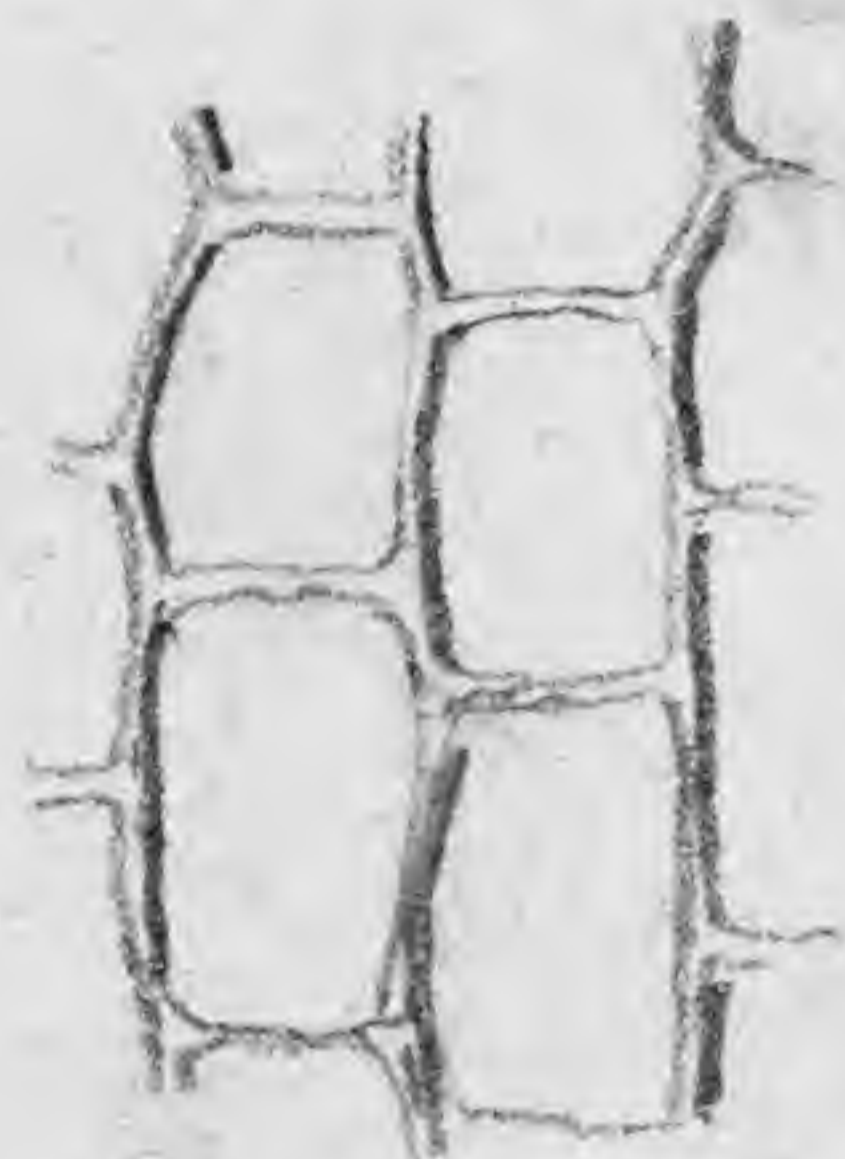
Florida, Chas. - Hb Gray

x 60



red brown, ripe

x 150



March 29 1866  
area smooth

pits very deep

GEORGE ENGELMANN PAPERS  
GEORGE ENGELMANN PAPERS



0 1 2 3 4 5 6 7 8 9 10

cm

copyright reserved



MISSOURI  
BOTANICAL  
GARDEN



**ALEX. LEITCH,**  
**APOTHECARY & PHARMACEUTIST,**

Marble Building Cor. Fourth & Olive Sts. St. Louis, Mo.

9373

MISSOURI BOTANICAL GARDEN  
GEORGE ENGELMANN PAPERS



0 1 2 3 4 5 6 7 8 9 10

cm

copyright reserved



MISSOURI  
BOTANICAL  
GARDEN



*Juncus acuminatus* Michx!

Febr 6 1867

E. Hb. Michaux

1866

x60



unripe seed

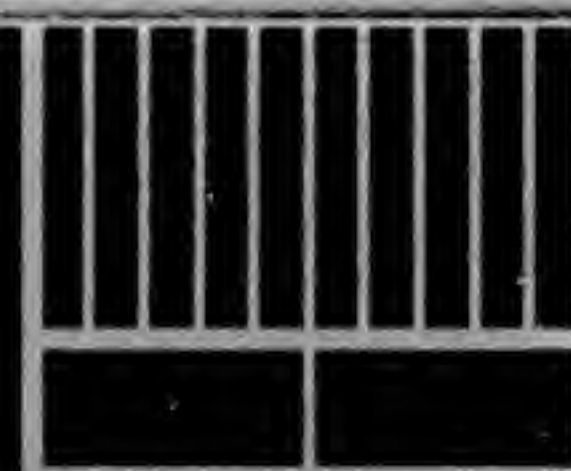
x10



unripe capsule



5 flowers in capitulum,  
flower  $3\frac{1}{2}$  mm long



0

1

2

3

4

5

6

7

8

9

10

cm

copyright reserved



MISSOURI  
BOTANICAL  
GARDEN



**Alex. Leitch,**

**APOTHECARY & CHEMIST,**

Cor. 4<sup>th</sup> & Olive Sts., St. Louis.

9374

MISSOURI BOTANICAL GARDEN  
GEORGE ENGELMANN PAPERS



0

1

2

3

4

5

6

7

8

9

10

cm

copyright reserved



MISSOURI  
BOTANICAL  
GARDEN



*Juncus bulbosus* ~~Aluacretus~~ Octob 24 1870

~~capula longior~~

Indiana, Texas, H.W. Ravenel N. 124

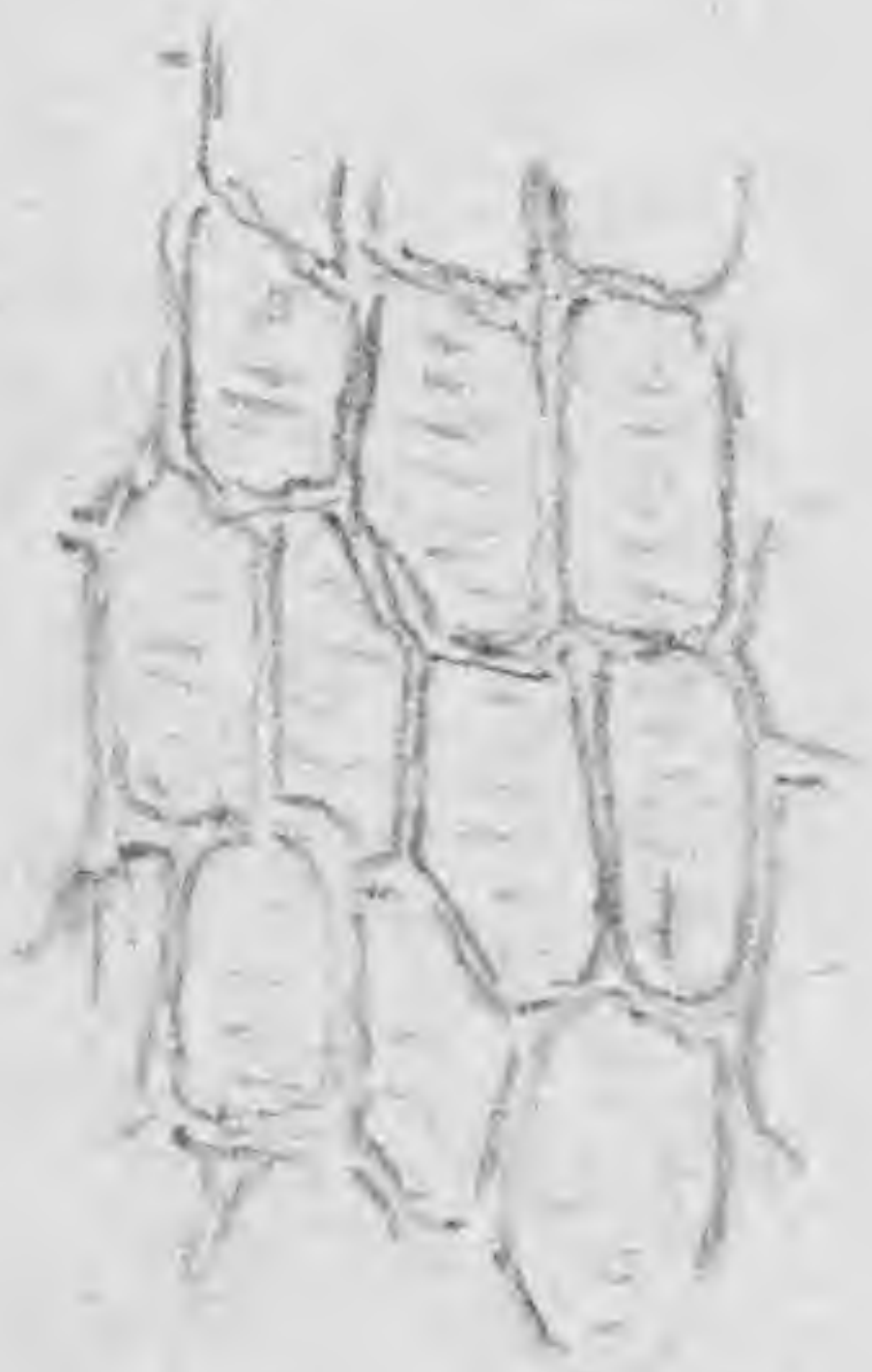
May 3 1869

x 10

x 60



x 150



Общество Гибралтарского

ON STUOL. TS  
Исторический музей  
Политехнического института  
№ 12 Алексеевского  
Т. О. МАШИНОСТРОИТЕЛЬНОГО  
И. И. МАШИНОСТРОИТЕЛЬНОГО



0 1 2 3 4 5 6 7 8 9 10

cm

copyright reserved



MISSOURI  
BOTANICAL  
GARDEN

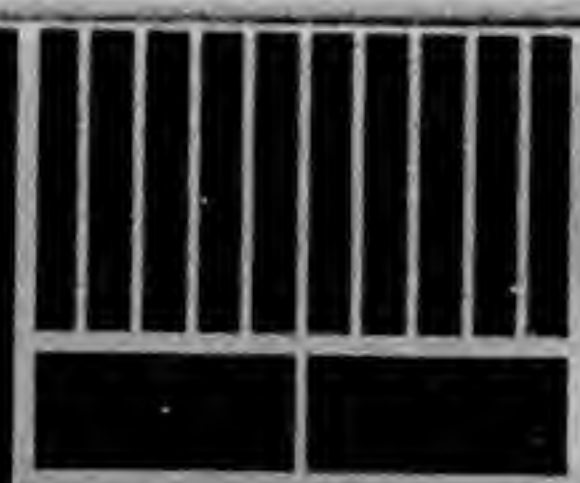


L. O. WOODRUFF,  
Printer,  
Cor. Sixth St. & Washington Ave.,  
ST. LOUIS, MO.

Opposite Lindell Hotel,

MISSOURI BOTANICAL GARDEN  
GEORGE ENGELMANN PAPERS

9375



0 1 2 3 4 5 6 7 8 9 10

cm

copyright reserved



MISSOURI  
BOTANICAL  
GARDEN





*Juncus acuminatus* Michx.

Hab. in Carolina, Georgia

top of

Michxaux original plant

in Herb. Mus. Paris

24

(1867)



0 1 2 3 4 5 6 7 8 9 10

cm

copyright reserved



MISSOURI  
BOTANICAL  
GARDEN



9376

MISSOURI BOTANICAL GARDEN  
GEORGE ENGELMANN PAPERS

*Faint handwritten text, likely bleed-through from the reverse side of the paper.*



0 1 2 3 4 5 6 7 8 9 10

cm

copyright reserved



MISSOURI  
BOTANICAL  
GARDEN



Michaux Flor Bor Am. I. 192

Juncus acuminatus

Culmo foliato erecto

Foliis quasi nodoso-articulatis

Panicula terminali composita

glomerulis subtrifloris pedunculatis

semitibusque

calycibus gracilibus acuminatis

triantris

Habitus omnino J. articulati

Hab. Carolina superiore

= J. ~~decoloratus~~ ?



0 1 2 3 4 5 6 7 8 9 10

cm

copyright reserved

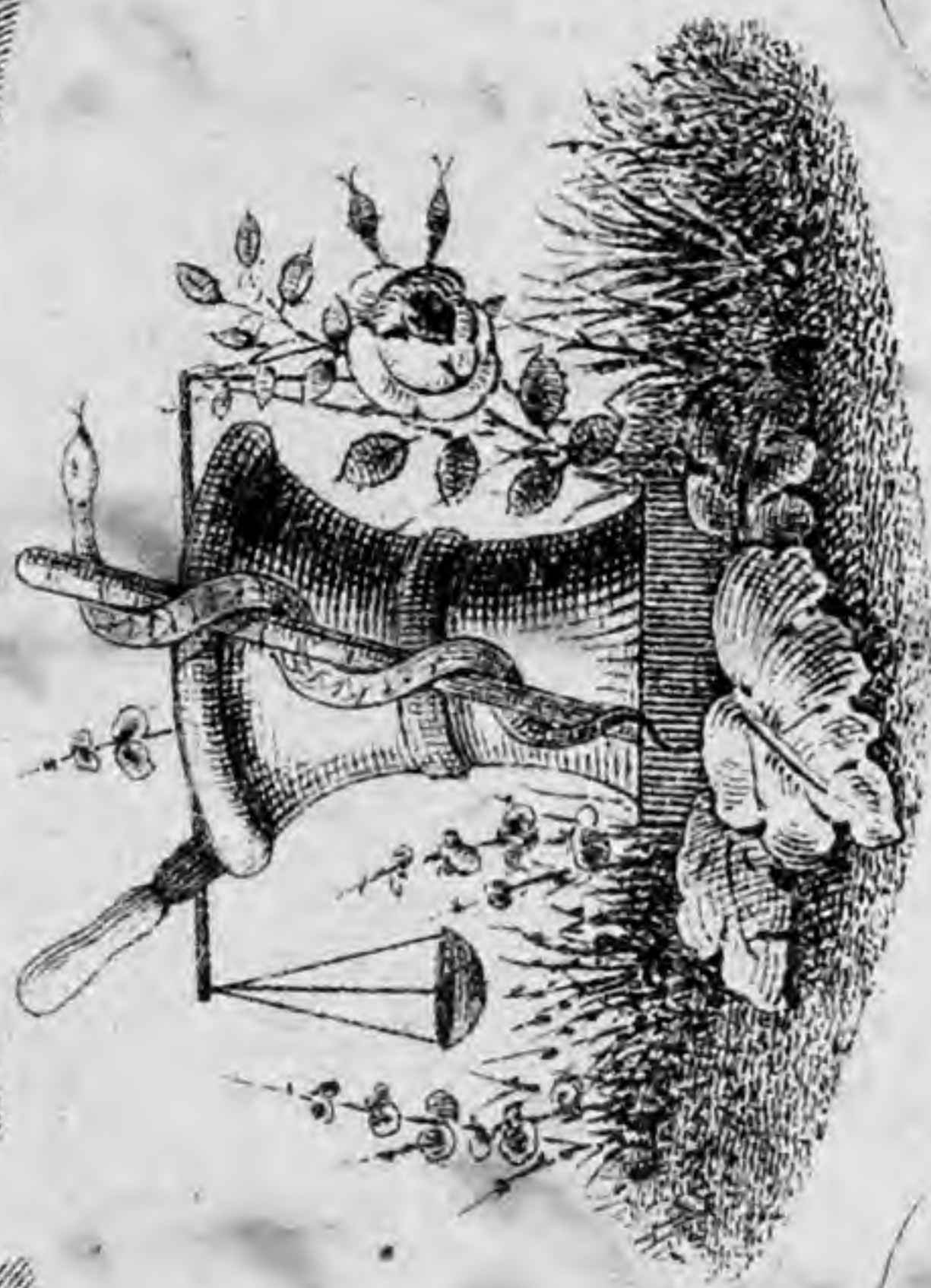


MISSOURI  
BOTANICAL  
GARDEN



EDWIN R. SWANN & CO.

Apothecaries &



Pharmacentists,

S.W. CORNER OF TWELFTH & OLIVE STS

ST. LOUIS.

*[Faint, illegible handwritten text, likely bleed-through from the reverse side of the paper.]*

MISSOURI BOTANICAL GARDEN  
GEORGE ENGELMANN PAPERS

9377



0 1 2 3 4 5 6 7 8 9 10

cm

copyright reserved



MISSOURI  
BOTANICAL  
GARDEN



Juncus, acuminatus Mich Flor. I. 192  
(1803)

Culmo foliatis cruce  
Folii's quasi nodoso-articulati  
Panícula terminali composita  
glomerulis subtrifloris pedunculatis  
sessilibusque  
Calycibus gracilibus acuminatis  
triandris.

Habitus omnino J. articulati

Hab. in Carolina inferiore

Why not J. debilis ?



0 1 2 3 4 5 6 7 8 9 10

cm

copyright reserved



MISSOURI  
BOTANICAL  
GARDEN



9378

ALEX. LEITCH

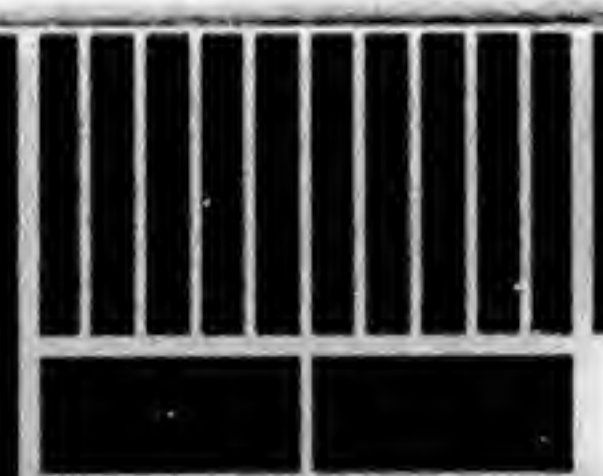
APOTHECARY & PHARMACEUTIST,

COR. 4TH & OLIVE STS., ST. LOUIS.



MISSOURI BOTANICAL GARDEN  
GEORGE ENGELMANN PAPERS

*[Faint, illegible handwritten text, likely bleed-through from the reverse side of the page.]*



0 1 2 3 4 5 6 7 8 9 10

cm

copyright reserved



MISSOURI  
BOTANICAL  
GARDEN



*J. abortivus* Chapm

*folia septata parvula*

1863—January	173	7	55	6
February	150	9	54	8
March	165	11	50	6
April	144	12	31	26
May	116	6	25	59
June	81	5	12	93
July	95	6	16	85
August	124	13	23	49
September	138	5	25	37
October	151	6	40	25
November	146	3	36	30
December	144	5	43	37
	1627	88	55	461
1864—January	158	3	65	23
February	130	4	45	39
March	144	9	42	29
April	117	6	60	55
May	152	2	45	32
June	138	3	18	35
July	108	11	18	71
August	61	4	14	119
September	75	14	22	90
October	121	1	40	60
November	101	3	55	76
December	105	1	44	80
	1410	61	65	709

390-1



0 1 2 3 4 5 6 7 8 9 10

cm

copyright reserved



MISSOURI  
BOTANICAL  
GARDEN



8278

MISSOURI BOTANICAL GARDEN  
GEORGE ENGELMANN PAPERS

The foregoing tables contain the numerical abstract of my observations on Atmospheric Electricity with other meteorological phenomena for the last four years. The observations have been made in the same locality and in the same manner as mentioned in my first report on the subject in Vol. II, No. 1, of the Transactions. One and the same glass thread has been used in all of them, proving thus its superiority over cocoon threads and other fibrous substances.

The first table and diagram No. 2 give the monthly mean of positive atmospheric electricity in the four years, and show a more or less regular descending and ascending line for every year from January to December. The monthly mean of the four years together exhibits a most regular descent from January to July and August, and a regular ascent up to December. The greatest quantity of positive atmospheric

REMARKS.



0 1 2 3 4 5 6 7 8 9 10

cm

copyright reserved



MISSOURI  
BOTANICAL  
GARDEN



Nov 14 1865

*Juncus abortivus*

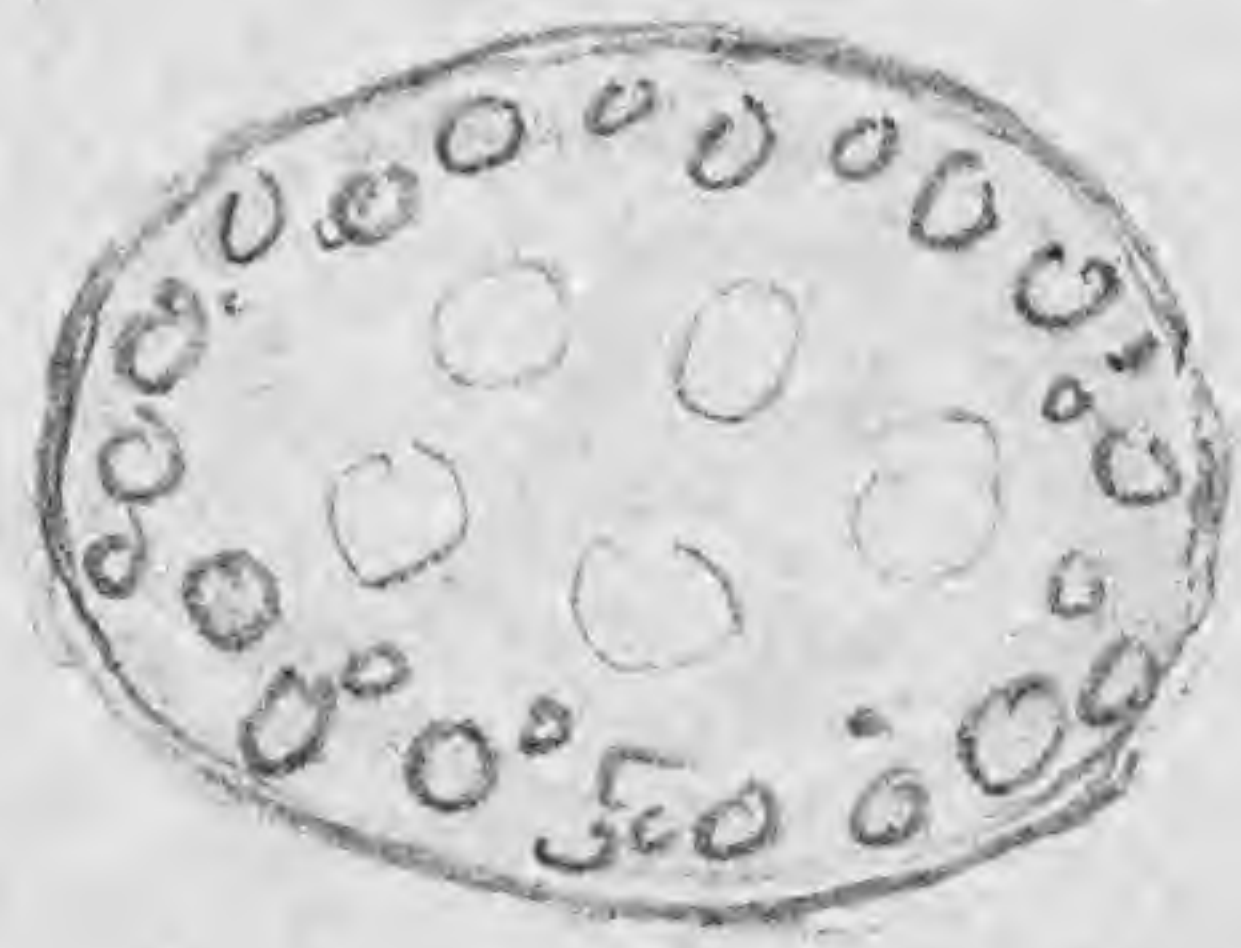
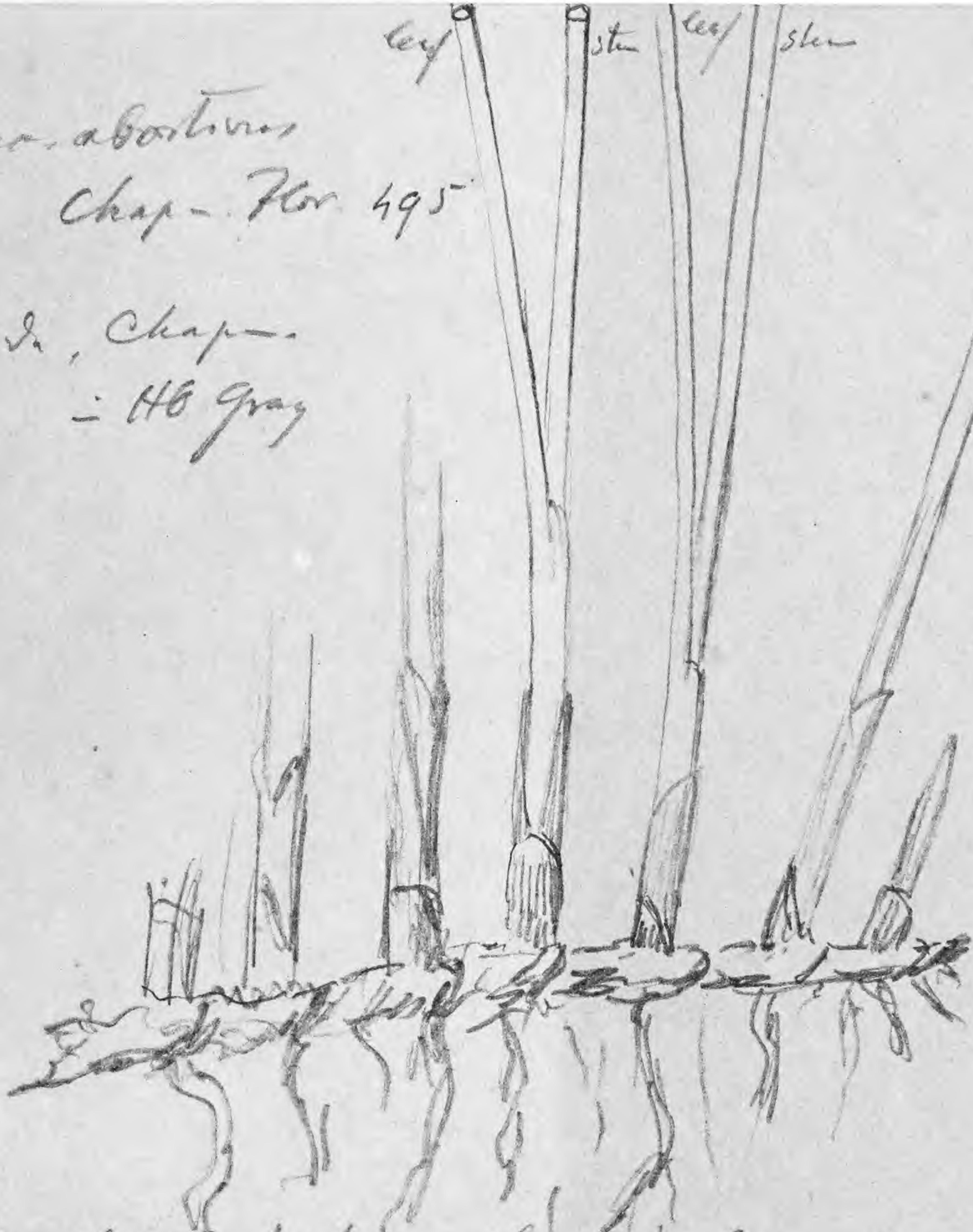
Chap. Flor 495

Florida, Chap.

- HB Gray

leaf stem leaf stem

sterile stem



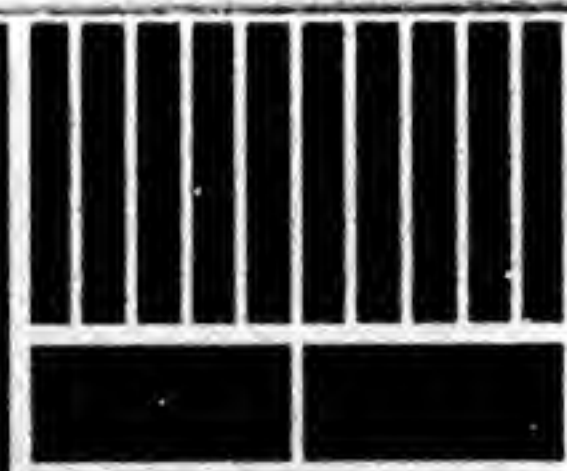
sect of stem x 10



sect of leaf

base of leaf x 10

14-16 inches high one leaf at base, and one  
in middle of stem; panicle decumbent, distichiflorous,  
4-5 inch long; invol. short, pointed -



0 1 2 3 4 5 6 7 8 9 10  
cm

copyright reserved



MISSOURI  
BOTANICAL  
GARDEN



ALEX. LEITCH,

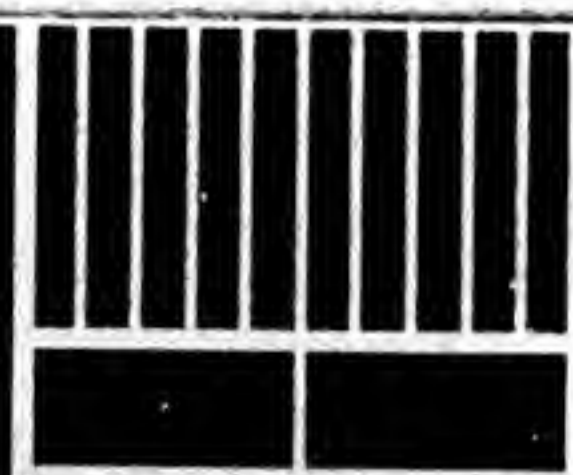
APOTHECARY & PHARMACEUTIST,

COR. 4TH & OLIVE STS., ST. LOUIS.



MISSOURI BOTANICAL GARDEN  
GEORGE ENGELMANN PAPERS

9379



0 1 2 3 4 5 6 7 8 9 10

cm

copyright reserved



MISSOURI  
BOTANICAL  
GARDEN



*Juncus abortivus* Chap.!

Nov 14 1865

Nov. 495

Chapman, Florida

- Hb Gray

folia teretia, ferepta  
incomplete septata



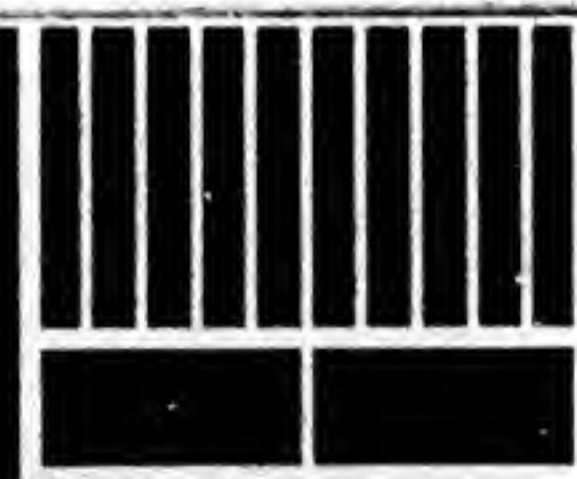
x10

sect of leaf  
with incomplete  
divisions,  
septa



very good  
seed for this  
capsule

capsula acuminata exserta



0 1 2 3 4 5 6 7 8 9 10

cm

copyright reserved



MISSOURI  
BOTANICAL  
GARDEN



ALEX. LEITCH,

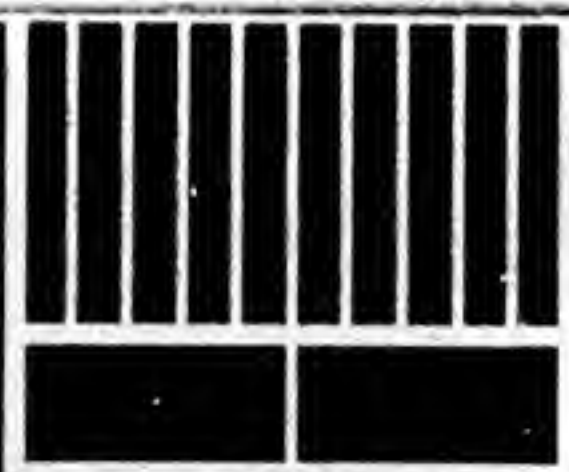
APOTHECARY & PHARMACEUTIST,

COR. 4TH & OLIVE STS., ST. LOUIS.



9380

MISSOURI BOTANICAL GARDEN  
GEORGE ENGELMANN PAPERS



0 1 2 3 4 5 6 7 8 9 10

cm

copyright reserved



MISSOURI  
BOTANICAL  
GARDEN







1886

MISSOURI BOTANICAL GARDEN  
GEORGE ENGELMANN PAPERS

30° west of Greenwich, west of South of ...  
as' range of mountains, on Capt. Simpson's return trail. Circumstances prevented me from obtaining more than a few crystals, which are now deposited in the collection of the Smithsonian Institute; a few others are also in the hands of members of the party. We were travelling at the time by forced night marches with nearly worn out animals, seeking to gain a spring of water in a distant range of mountains. This desert was then entirely unexplored. I have but little doubt that more interesting materials are to be found at the same point.

The mountains of the former Territory of Utah promise a rich yield to the mineralogist. We know already of gold and silver ores in the east, west and south part of that district; of copper and lead ores in the south, and I have discovered the latter also in the centre of it; of specular iron ores and native sulphur in the Rocky Mountains and near Little Salt Lake; of rock salt in the mountains south-east of Utah Lake; of native alum near Salt Lake; of various other salts in the deserts; and of silicates, composing the granites, porphyries, diorites, trachytes, and lavas, nearly over the whole area.



0 1 2 3 4 5 6 7 8 9 10

cm

copyright reserved



MISSOURI  
BOTANICAL  
GARDEN



J. paradoxus in Herb. E. Meyer - ex litt. Caspary  
Koenigsberg. Dec. 1865

In a sheet, marked "J. paradoxus Meyer" is found

- 1, a drawing of which a copy accompanies this - specimen - Lehmann's Herbarium.
- 2, a drawing of the fruit - copy also sent
- 3, In three capsules are remnants of dissected flowers, from different Herbaria

4, 2 specimens of a Junonia, labelled: Junonia - Alabama  
Apr. Sept.  
Stive

and: Junonia acuminata Michx. Alabama  
Etolfik.

5, An atriculi bearing specimen (Yugoslavia) with ~~the~~ flower heads also sent by Gray: labelled by Meyer: Junonia paradoxus Michx  
[Flower sent shows this to be fraternus] } Junonia polycephala nomine Michx  
to Gray

6, another Junonia, marked by a strange hand: Junonia acutiflora  
Philadelphia  
von Reichenbach 1828  
 and Meyer has added:

7, 2 specimens of a Junonia, apparently a N. 5, marked: Did. Martens 1845 Junonia cognata  
Kuntze  
flora Mex. coll Linden 66.

8, A specimen of a very different Junonia labelled in Meyer's handwriting: Junonia acuminata Michx  
leg. Beyrich Carolina  
in uliginosis  
cf. Kuntze en. III, 335  
[this is also in Hb. Bernharti and is  
= J. Canadensis var subcandata]

9, 3 specimens of a Junonia labelled: Pennsylvanica  
Miss. Meisner 1845



0 1 2 3 4 5 6 7 8 9 10  
cm copyright reserved



MISSOURI  
BOTANICAL  
GARDEN



9382

**ALEX. LEITCH,**  
 APOTHECARY & PHARMACEUTIST,  
 COR. 4TH & OLIVE STS., ST. LOUIS.



**LEITCH,**  
 & PHARMACEUTIST,  
 & OLIVE STS., ST. LOUIS.

*[Faint, illegible handwritten text, likely bleed-through from the reverse side of the paper.]*

*[Faint, illegible handwritten text, likely bleed-through from the reverse side of the paper.]*

MISSOURI BOTANICAL GARDEN  
 GEORGE ENGELMANN PAPERS



0 1 2 3 4 5 6 7 8 9 10  
 cm

copyright reserved



MISSOURI  
 BOTANICAL  
 GARDEN



Sharpe Juncus, . . . . . ex Kunth Enum. III. 341  
nota

Juncus paradoxus

Panicula subsimplex composita ve laxa  
Spiculae 4-10 florum sparsae  
Sepala exteriora paulo longiora  
capsulae pyramidatae oblongae  
vix attenuatae  
subaequantia

---

This is evidently *J. fraternus*, though  
the capsule cannot be called: pyramidata-  
oblonga - but rather, with Meyer; trigonata-  
ovata acuta mucronata.



0 1 2 3 4 5 6 7 8 9 10

cm

copyright reserved



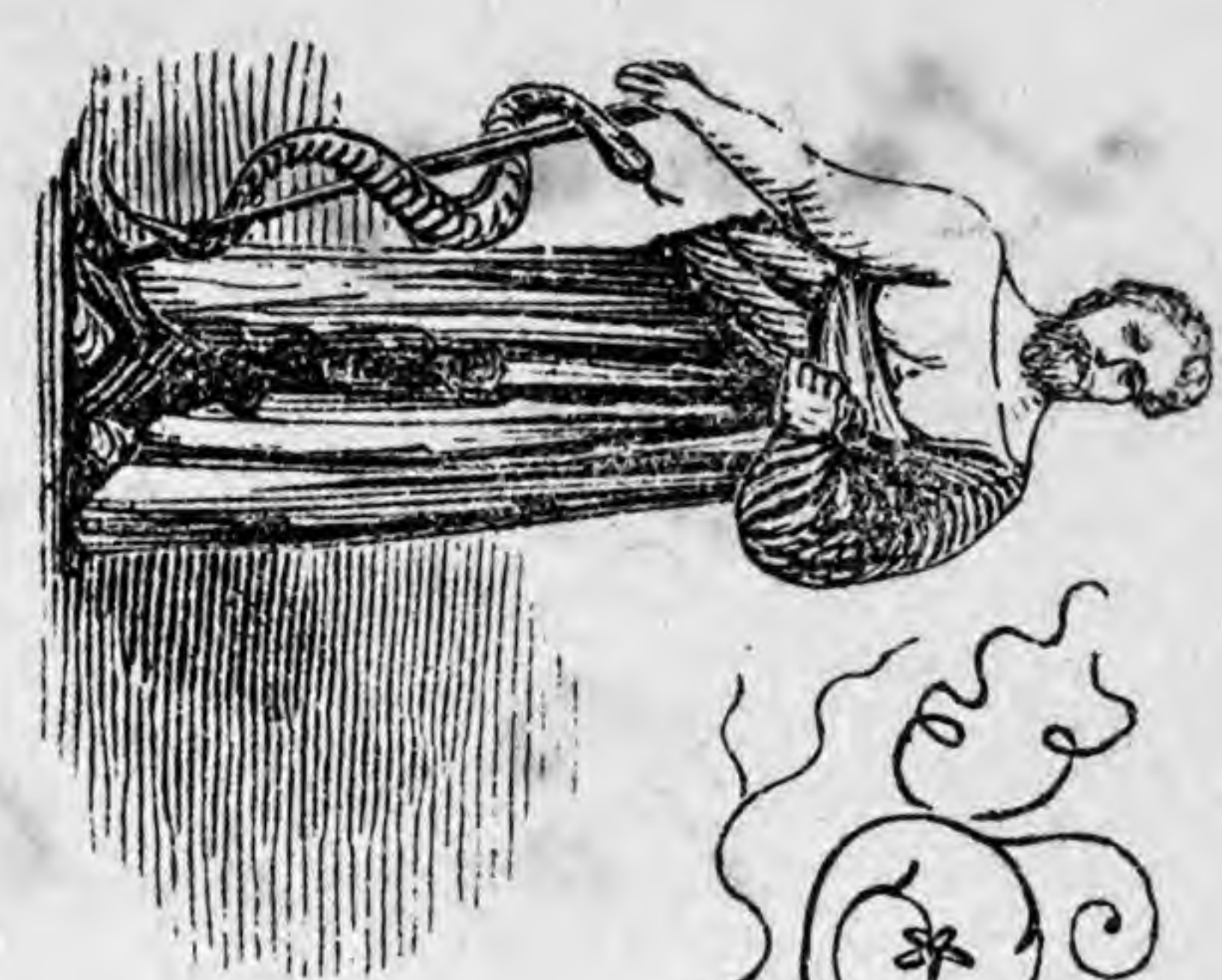
MISSOURI  
BOTANICAL  
GARDEN



9383

*[Faint, illegible handwriting]*

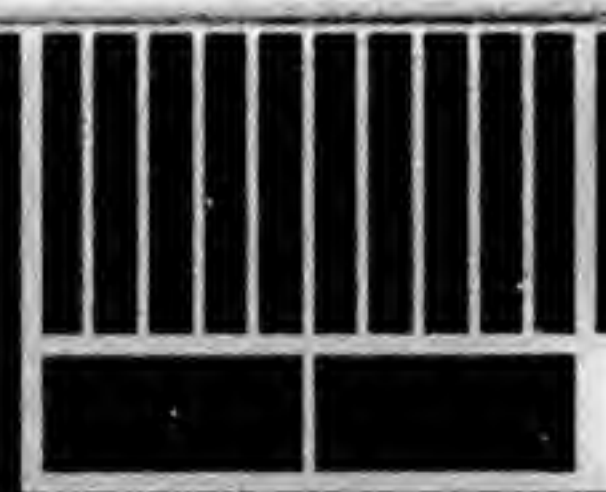
MISSOURI BOTANICAL GARDEN  
GEORGE ENGELMANN PAPERS



Alex. Leitch

APOTHECARY & PHARMACEUTIST,

COR. 4TH & OLIVE STS., ST. LOUIS.



0 1 2 3 4 5 6 7 8 9 10

cm

copyright reserved



MISSOURI  
BOTANICAL  
GARDEN



Junonia pernix. E. Meyer June. 30

Folia caulibus tereti- compressis nodulosis  
stictis

Anthela capitulis paucifloris superdecussatis

Perianthii laciniis lanceolatis - aequalibus

exterioribus longioribus capsulae triquetrae

Capsulam triquetra - ovata acutam

micronatam subuniocularum

non sequentibus

Staminibus 3 perianthii vix brevioribus

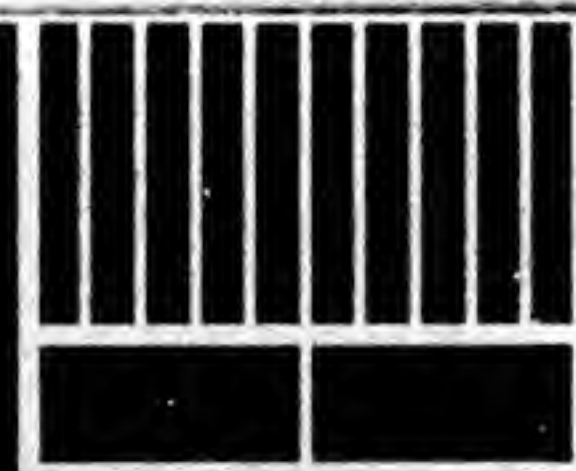
antheris curvatis (Meyer)

Kuntze p. 341

Pennsylvan - Georgia

Meyer compares it with J. campocarpa & J. acutiflora

3 antheris exterioribus longioribus interioribus, shorter than Capsula  
all lanceolate - aequalitate



0 1 2 3 4 5 6 7 8 9 10

cm

copyright reserved



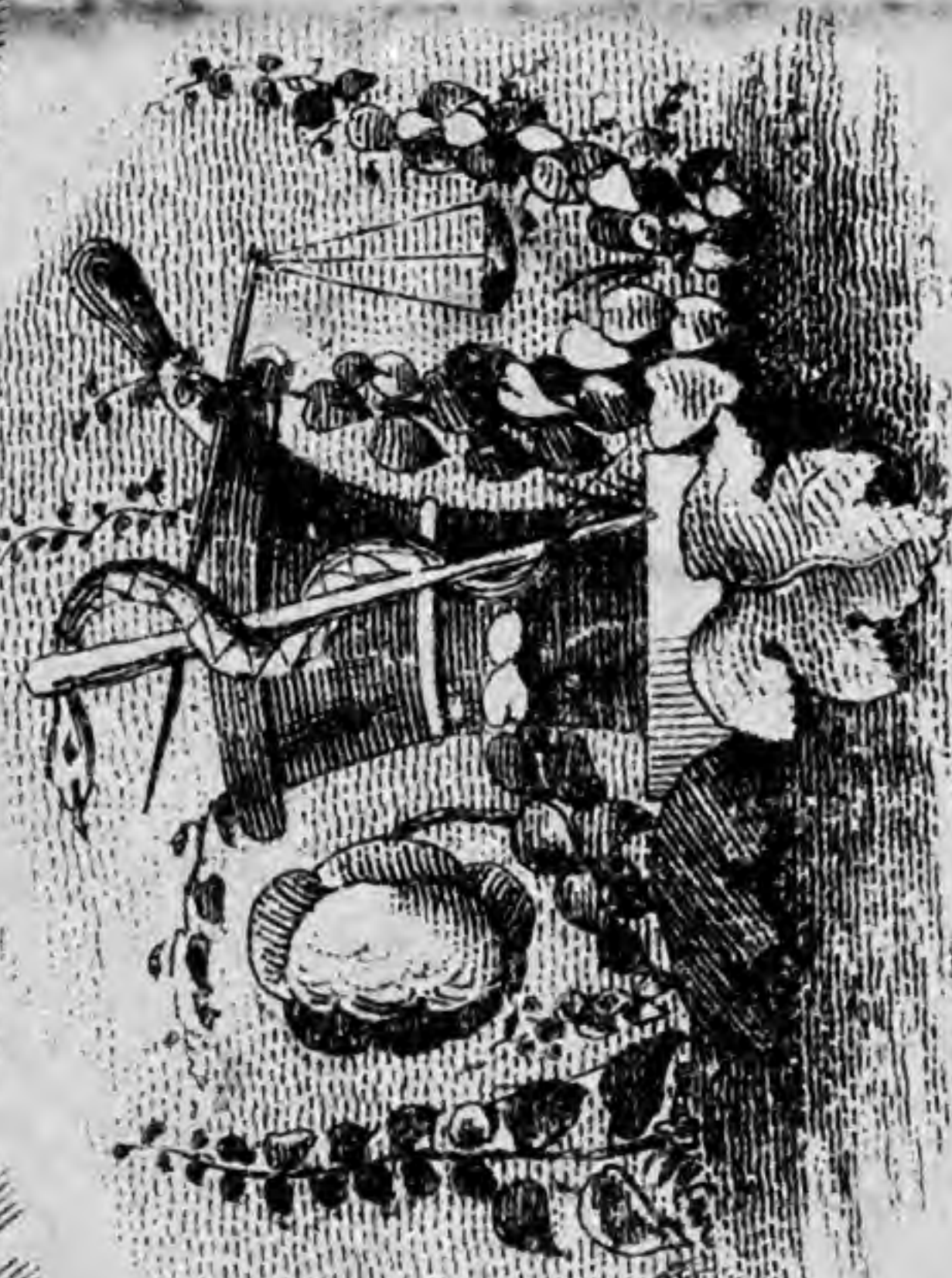
MISSOURI  
BOTANICAL  
GARDEN



9384

FRIDWYN B. SWANN & CO

Pharmacentists.



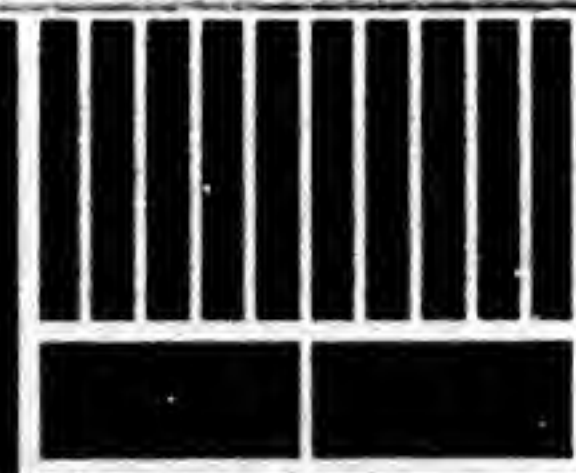
Apothecaries &

S. W. CORNER OF TWELFTH & OLIVE STREETS,

ST. LOUIS, MO.

*J.C. Wood, Olive St.*

MISSOURI BOTANICAL GARDEN  
GEORGE ENGELMANN PAPERS



0 1 2 3 4 5 6 7 8 9 10

cm

copyright reserved



MISSOURI  
BOTANICAL  
GARDEN



26. Juncus paradoxus E. Meyer. Synops. Juncorum.  
Götting. 1822 pag 30

Folii caulinis tereti-compressis nodulosis  
Anthoda capitulis paniculatis <sup>strictis</sup> supradecompositis  
Perianthii laciniis lanceolatis - acuminatis  
exterioribus longioribus capsulam  
triquetro-ovata acuta mucronatam  
subunioculararem non aequantibus  
staminibus tribus perianthio vix  
brevioribus antheris minutis.

J. sylvestris Puffsch <sup>1.2.37</sup> J. polycephalus Ell 1.409  
<sub>cap. int. longioribus</sub> <sub>is what we now call polycephalus</sub>  
Georgia Carolina Pennsylvania

J. longipes similis J. lampocarpus majori, cujus  
nervo quoque obnox. est. Floribus 3-antidis et capsulis  
subuniocularibus jam a plerisque congeneribus facile  
distinguitur. A Juncis acutifloris praeter capsulae formam  
etiam perianthii laciniis exterioribus longioribus differt



0 1 2 3 4 5 6 7 8 9 10

cm

copyright reserved

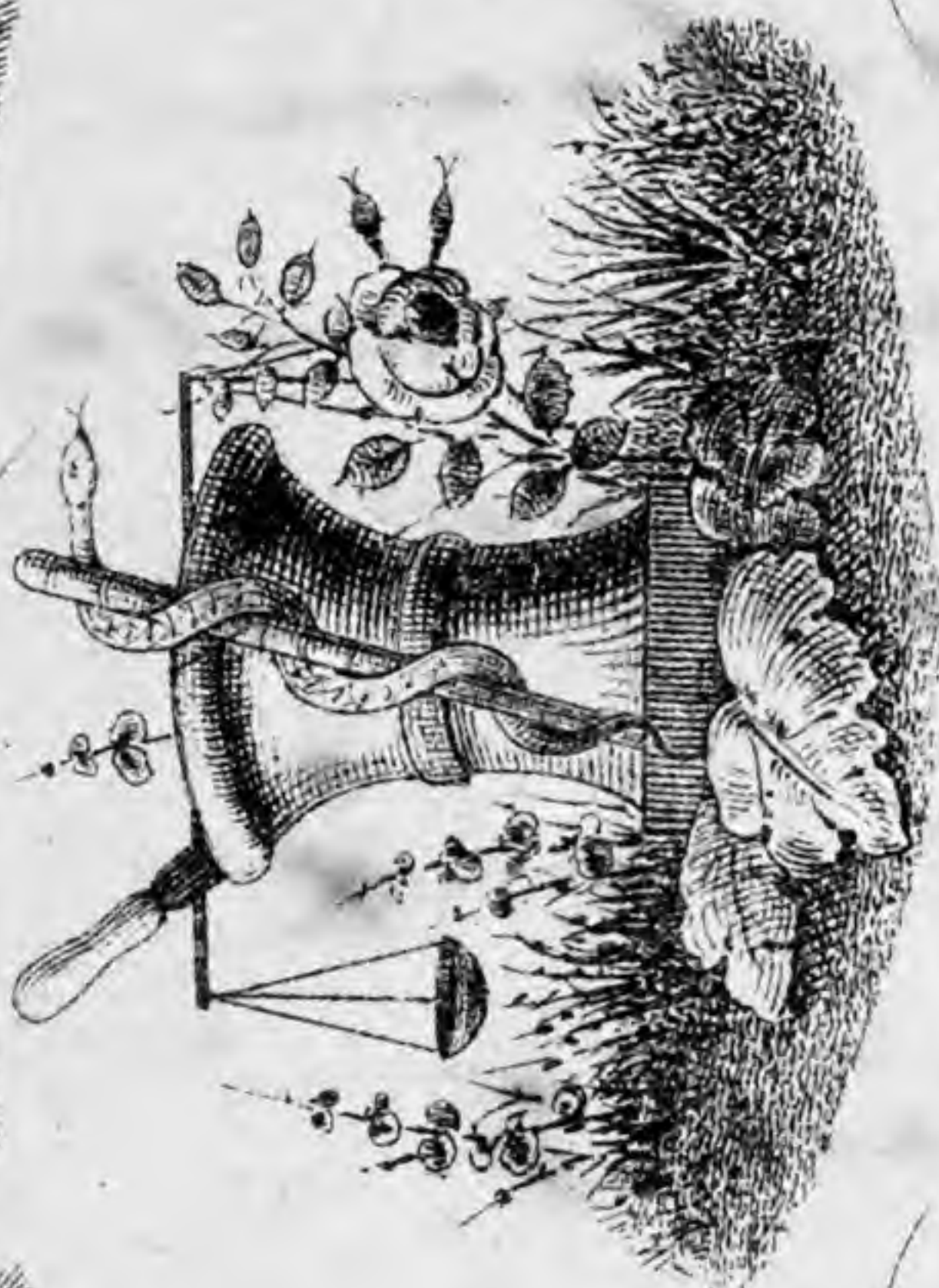


MISSOURI  
BOTANICAL  
GARDEN



9385

**EDWIN R. SWANN & CO.**



**Apothecaries &**

**Pharmacentists,**

S.W. CORNER OF TWELFTH & OLIVE STS.  
**ST. LOUIS.**

MISSOURI BOTANICAL GARDEN  
GEORGE ENGELMANN PAPERS



0 1 2 3 4 5 6 7 8 9 10

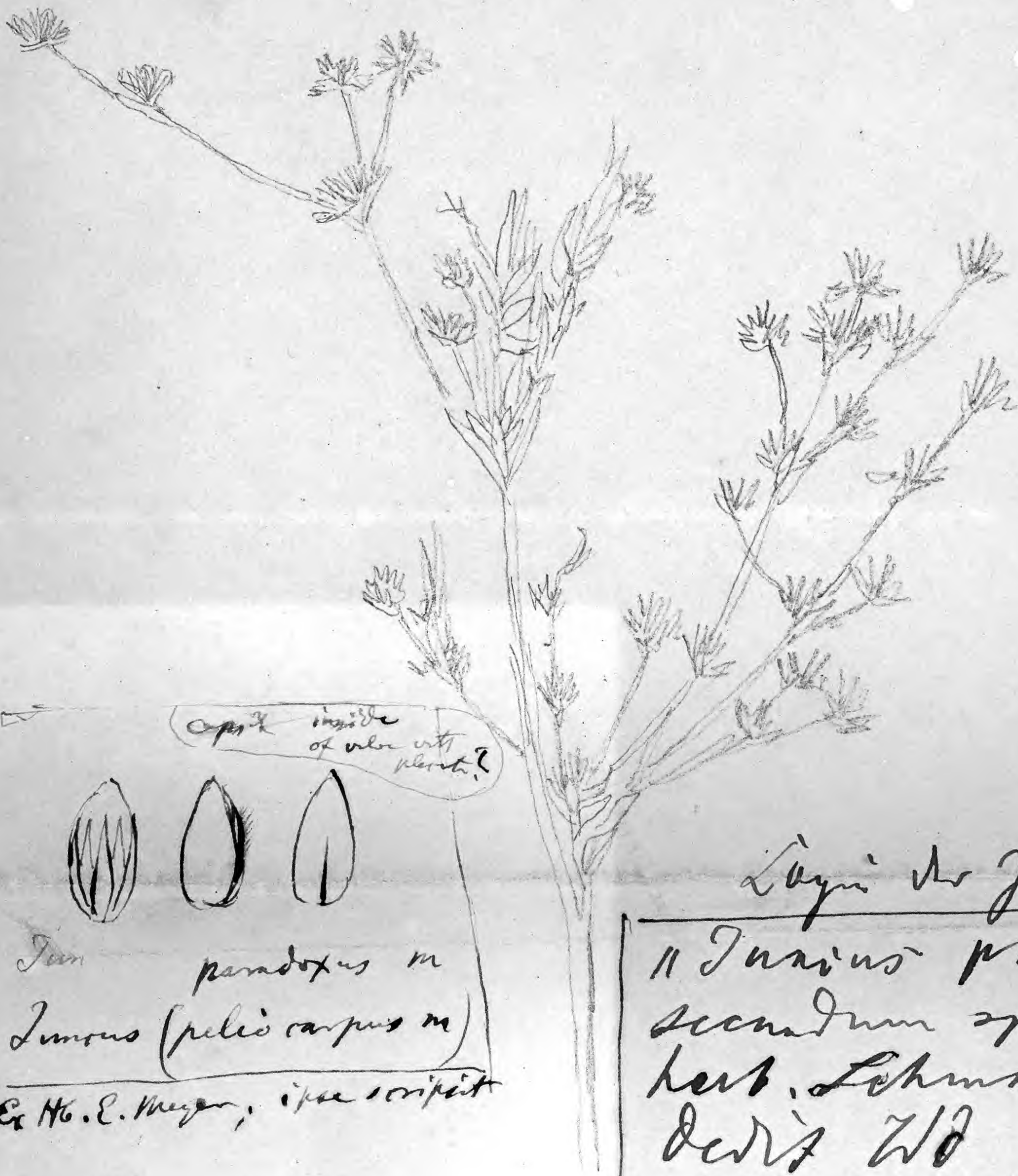
cm

copyright reserved



MISSOURI  
BOTANICAL  
GARDEN





Jan paradoxus in  
 Linnæus (pelio carpus in)  
 Ex Hb. E. Meyer, ipse scripsit

Lagen des Junglings  
 // *Janus procerus* - nicht  
 secundum specimen  
 herb. Schumanni, quod  
 dedit Wd pro *J.*  
*polycephalus*?  
 herb. G. Meyer.

Auf Janus Jungling ist  
 ein Junge das man  
 für *Janus procerus* der  
 Herb. Schumanni. In der  
 Herb. Meyer'schen  
 ist offenbar nicht, es  
 ist ein *Janus* (ein  
 das nicht anders.

Prof Rob. Caspary scripsit, Dec 1865-

*J. canadensis* sctior, and still more *J. paradoxus*  
 from Philadelphia is exactly like this drawing!  
*J. frutescens* Massachusetts Pickering looks also like it.



9386

MISSOURI BOTANICAL GARDEN  
GEORGE ENGELMANN PAPERS

*[Faint handwritten text, likely bleed-through from the reverse side of the page. The text is illegible due to fading and bleed-through.]*



0 1 2 3 4 5 6 7 8 9 10

cm

copyright reserved



MISSOURI  
BOTANICAL  
GARDEN