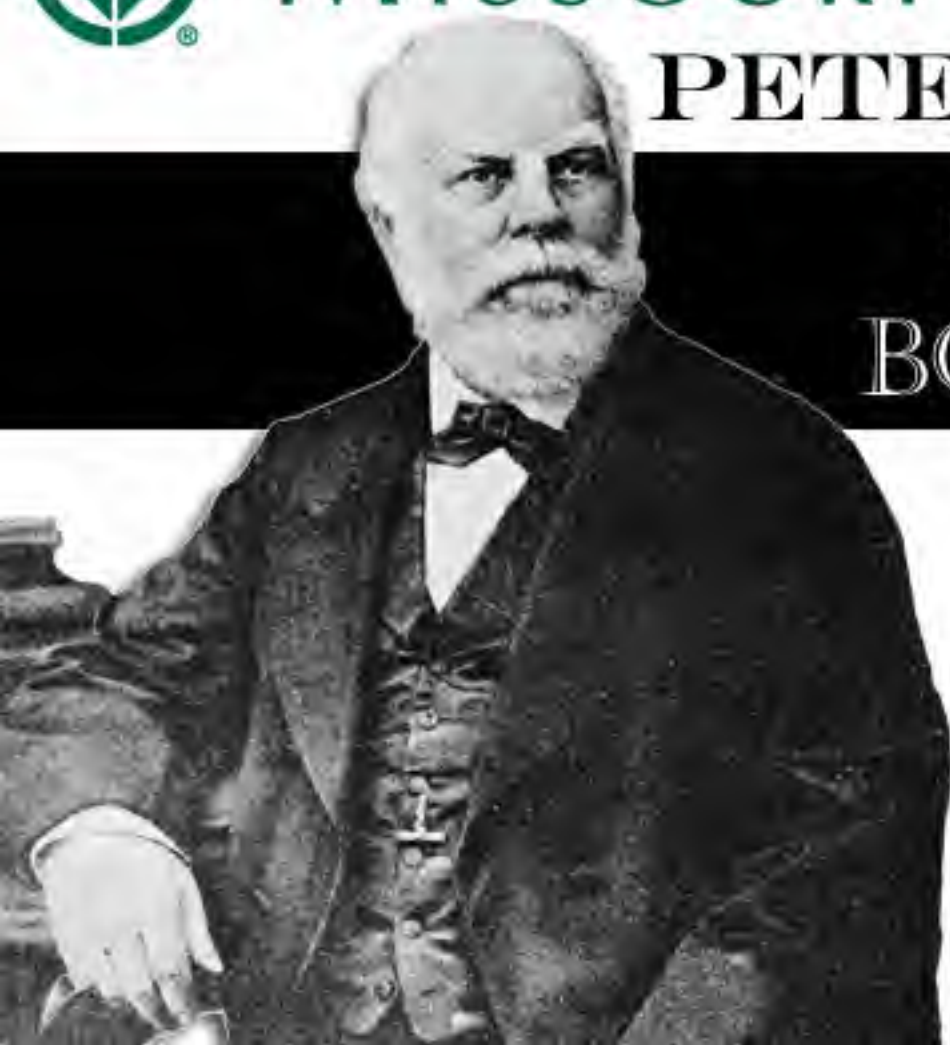




MISSOURI BOTANICAL GARDEN

PETER H. RAVEN



GEORGE ENGELMANN
BOTANICAL

*Since
page
online
nu*

111

= *Echispida* Burff. no 111

Euphorbia *Hugeliana* 4 sp.

Himalaya Hugel No 653

Hb. Vindob.

anthera erecta pedalis habitu Euph.

hypericifoliae; pilosa

foliis oblongis obtusis basi vix

obliqua subcordatis ^{dentata} fereatis ve

utroque latere serratis s. super

versus basi integris

stipulis obasi lanceolatae subultra

subultrae, utrumque distinctis

antheris in cymulas lateralibus

terminalibusque ^{aggregatis} ~~dispositis~~

levis; appressis albis

magnis obovatis orbiculatis ^{partibus}

ovis villosis stylis ^{orbibus majoribus}

capsula pilosa

secundis panis roseis ovatis

acute angulatis transversis rugosis

Proxima Euph. hypericifolia

antheris sessilibus, stipulis

inflorescentia diversa



0 1 2 3 4 5 6 7 8 9 10

cm

copyright reserved



MISSOURI
BOTANICAL
GARDEN

MISSOURI BOTANICAL GARDEN
GEORGE ENGELMANN PAPERS

[Faint, mostly illegible handwritten text in cursive script, likely bleed-through from the reverse side of the page.]



0 1 2 3 4 5 6 7 8 9 10
cm

copyright reserved



MISSOURI
BOTANICAL
GARDEN

97

8.6

E. Arabica Hochst & Steud!

467



0 1 2 3 4 5 6 7 8 9 10

cm

copyright reserved



MISSOURI
BOTANICAL
GARDEN

2014

MISSOURI BOTANICAL GARDEN
GEORGE ENGELMANN PAPERS



0 1 2 3 4 5 6 7 8 9 10
cm

copyright reserved



MISSOURI
BOTANICAL
GARDEN

98

28

E. granulata
Euph. Forskueii J. Gay.

468-472

28.a *P. Botta*

Brisson :

<i>Forskueii</i>	& Gay	= 102	Aegypt.
"	Gay	= 98	granulata
"	Gay	98	"
"	Benny	158	prostrata



0 1 2 3 4 5 6 7 8 9 10
cm

copyright reserved



MISSOURI
BOTANICAL
GARDEN

7015

MISSOURI BOTANICAL GARDEN
GEORGE ENGELMANN PAPERS



0 1 2 3 4 5 6 7 8 9 10
cm

copyright reserved



MISSOURI
BOTANICAL
GARDEN

98

E. granulata Forsk

N. 69. Kotschy pl. Nub.

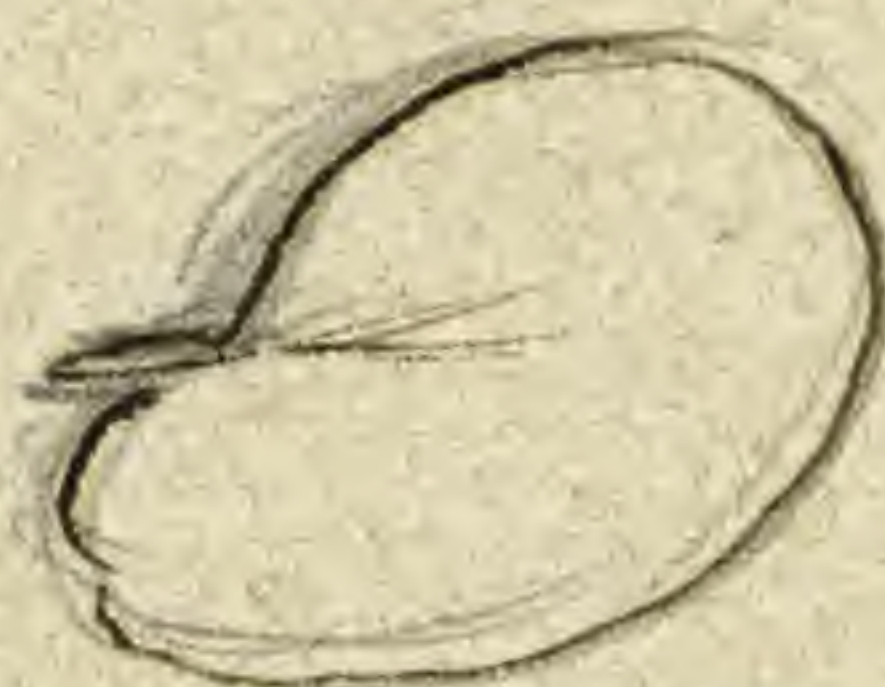
sem angusta 0.6 - 0.7 longa acuta
 angulata punctata - undulata
 corticosa,

villosa

foliis ovatis s. ovatis

obliquissimis, integris obtusis

glomerulis foliis lateralibus



stylis brevissimis,

glandulis bilobatis - compressis,
 anguste applicatis.

E. Forskali var *integriplicis*

= *E. gran.* var *deserti* Hochst.

but seeds larger



0 1 2 3 4 5 6 7 8 9 10

cm

copyright reserved



MISSOURI
 BOTANICAL
 GARDEN

7016

[Faint, illegible handwriting]



MISSOURI BOTANICAL GARDEN
GEORGE ENGELMANN PAPERS

[Faint, illegible handwriting]



0 1 2 3 4 5 6 7 8 9 10

cm

copyright reserved



MISSOURI
BOTANICAL
GARDEN

78.73

Euph. Frankii var



2. Chamisso



0.45

seed not quite rip

Euph. granulata var *deserti* Hooker & Grev. ined.

Lennox Koltsch 309

ramosissima ^(anther) coarctata strigoso-pubescentis;
 foliis parvulis ~~ovatis~~ ^{obovatis} integris
 stipulis subulatis minutis densis
 involucris ~~parvis~~ ^{paucis}; glandulis
 bilobatis - compressis argentis
^{dentis} marginatis; lacinis lanceolatis ^{trijugis}
~~obtusis~~;
 stylis brevibus, exsertis patulis, apice
 bifidis;
 capsula ~~paucis~~ ^(inertibus) ~~semitibus~~
 acutis angulatis angustioribus
 brevibus undulatis;

Leaves 1-2 l. long; half as wide
 involucre only 0.3 l. long; seed 0.45
 l. long;



0 1 2 3 4 5 6 7 8 9 10
cm

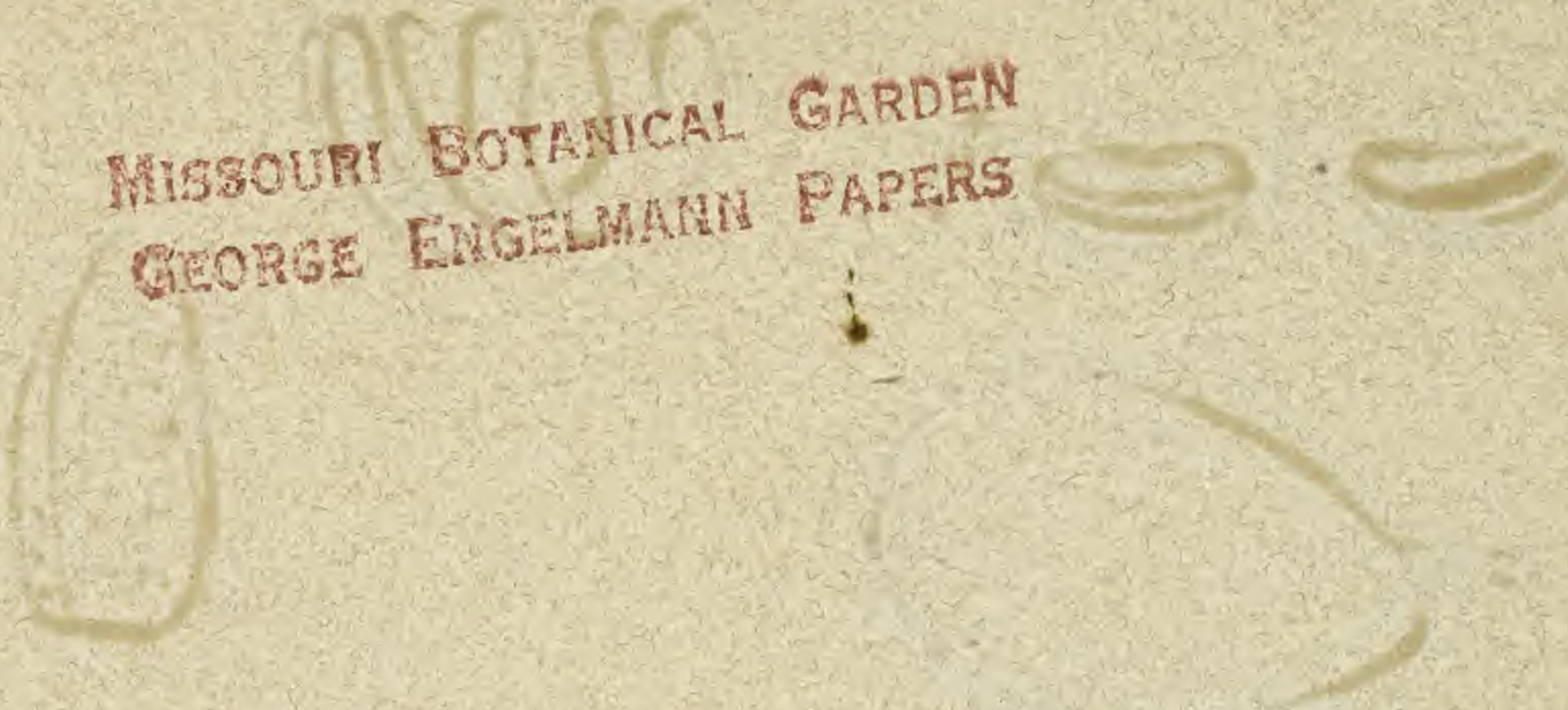
copyright reserved



MISSOURI
BOTANICAL
GARDEN

7017

MISSOURI BOTANICAL GARDEN
GEORGE ENGELMANN PAPERS



0 1 2 3 4 5 6 7 8 9 10
cm

copyright reserved



MISSOURI
BOTANICAL
GARDEN

101

31.2

Ceph. Chamnesyrea Lin

P. ramosa L.

P. massiliensis ↑

473-4



0 1 2 3 4 5 6 7 8 9 10
cm

copyright reserved



MISSOURI
BOTANICAL
GARDEN

Faint, illegible handwriting, possibly bleed-through from the reverse side of the page.



0 1 2 3 4 5 6 7 8 9 10
cm

copyright reserved



MISSOURI
BOTANICAL
GARDEN

[Faint, illegible handwritten text]



0 1 2 3 4 5 6 7 8 9 10
cm

copyright reserved



MISSOURI
BOTANICAL
GARDEN

7018

MISSOURI BOTANICAL GARDEN
GEORGE ENGELMANN PAPERS

*Missouri
Engelmann*

*Engelmann
Missouri*

4



0 1 2 3 4 5 6 7 8 9 10
cm

copyright reserved



MISSOURI
BOTANICAL
GARDEN

102

P. Aegyptiaca Boiss

475-8



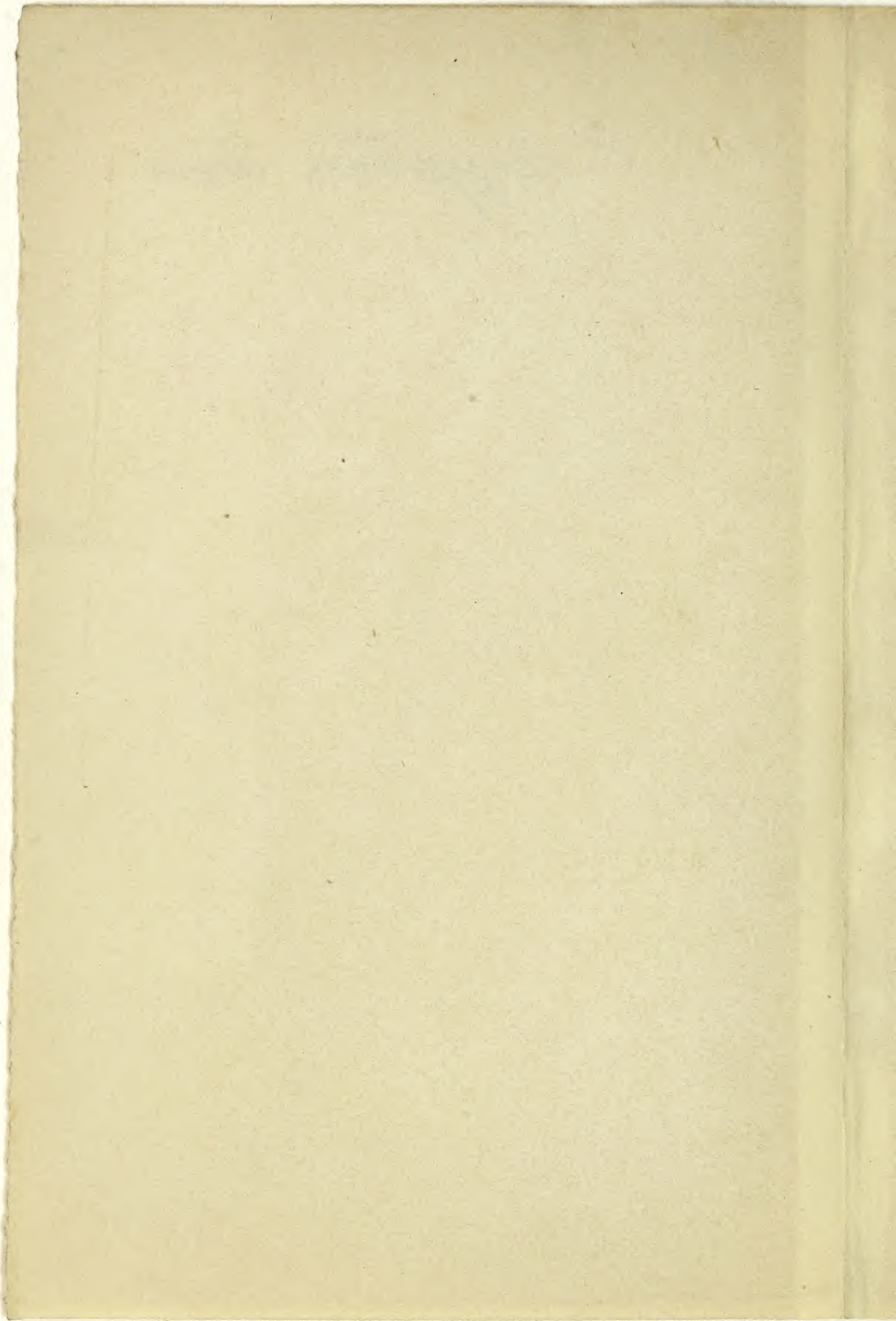
0 1 2 3 4 5 6 7 8 9 10

cm

copyright reserved



MISSOURI
BOTANICAL
GARDEN



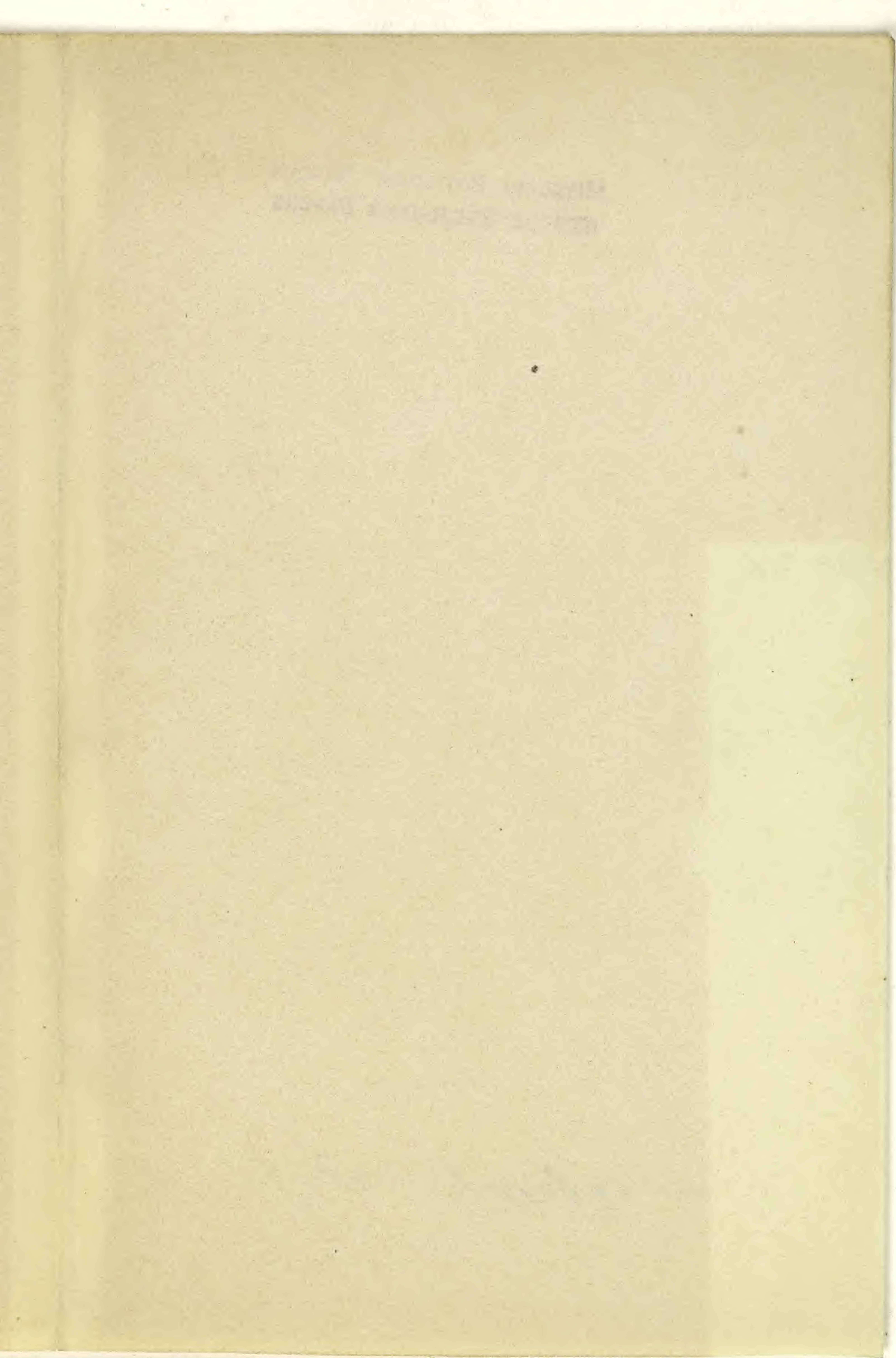
0 1 2 3 4 5 6 7 8 9 10

cm

copyright reserved



MISSOURI
BOTANICAL
GARDEN



0 1 2 3 4 5 6 7 8 9 10

cm

copyright reserved



MISSOURI
BOTANICAL
GARDEN

7019

MISSOURI BOTANICAL GARDEN
GEORGE ENGELMANN PAPERS

Lept. cyathiflora



0 1 2 3 4 5 6 7 8 9 10

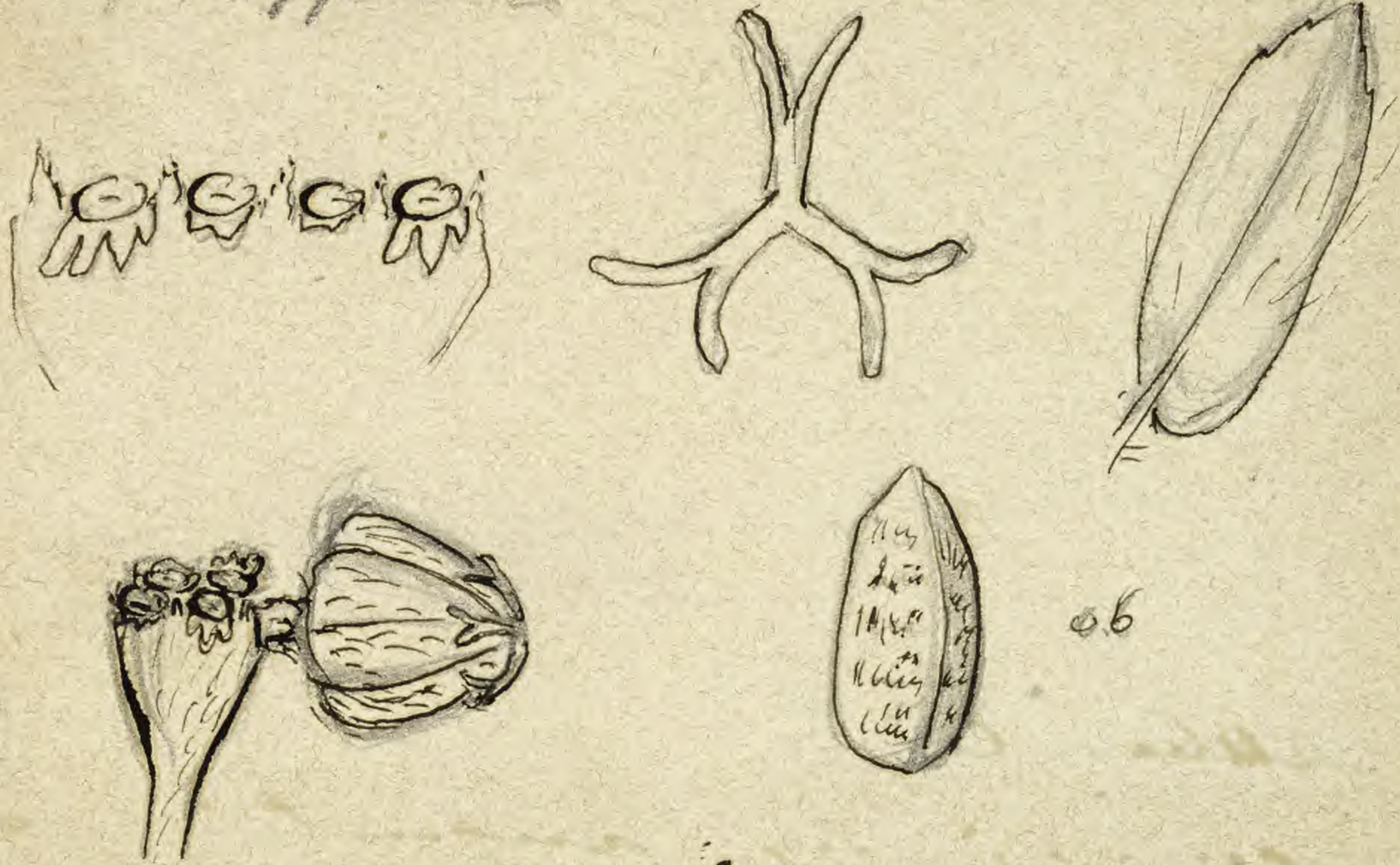
cm

copyright reserved



MISSOURI
BOTANICAL
GARDEN

102 *E. Aegyptium* Boiss Cap. verde



Euph. Forskælii Gay, fide Schum. & Th
Cap Verde Schum. & Th

Croton pubescens

foliis linearibus oblongis acutis
 versus apicem serrulatis
 stipulis lanceolatis reticulatis
 anthodii in glomerulos foliosos
 cincinnos congestis
 involucri turbinate, pubescenti
 geminis paleiformibus perianthiis
 anterioribus vix appendiculatis
 subnullis, posterioribus 3-4
 lobatis appendiculatis,
 lobis triangularibus reticulatis
 stylibus ad medium bifidis reflexis
 capsulis acutis angulatis
 pyramidalibus



0 1 2 3 4 5 6 7 8 9 10
cm

copyright reserved



MISSOURI
BOTANICAL
GARDEN

MISSOURI BOTANICAL GARDEN
GEORGE ENGELMANN PAPERS

pedunculis
seminibus angustis, articulis
transverse undulatis

Habit of *E. maculata* americana
but shape of capsule & seed
different.

leaves 4-5 l long 1-1 1/2 wide;
seeds ^{0.55-} 0.6 x 0.4 l. by very narrow



0 1 2 3 4 5 6 7 8 9 10

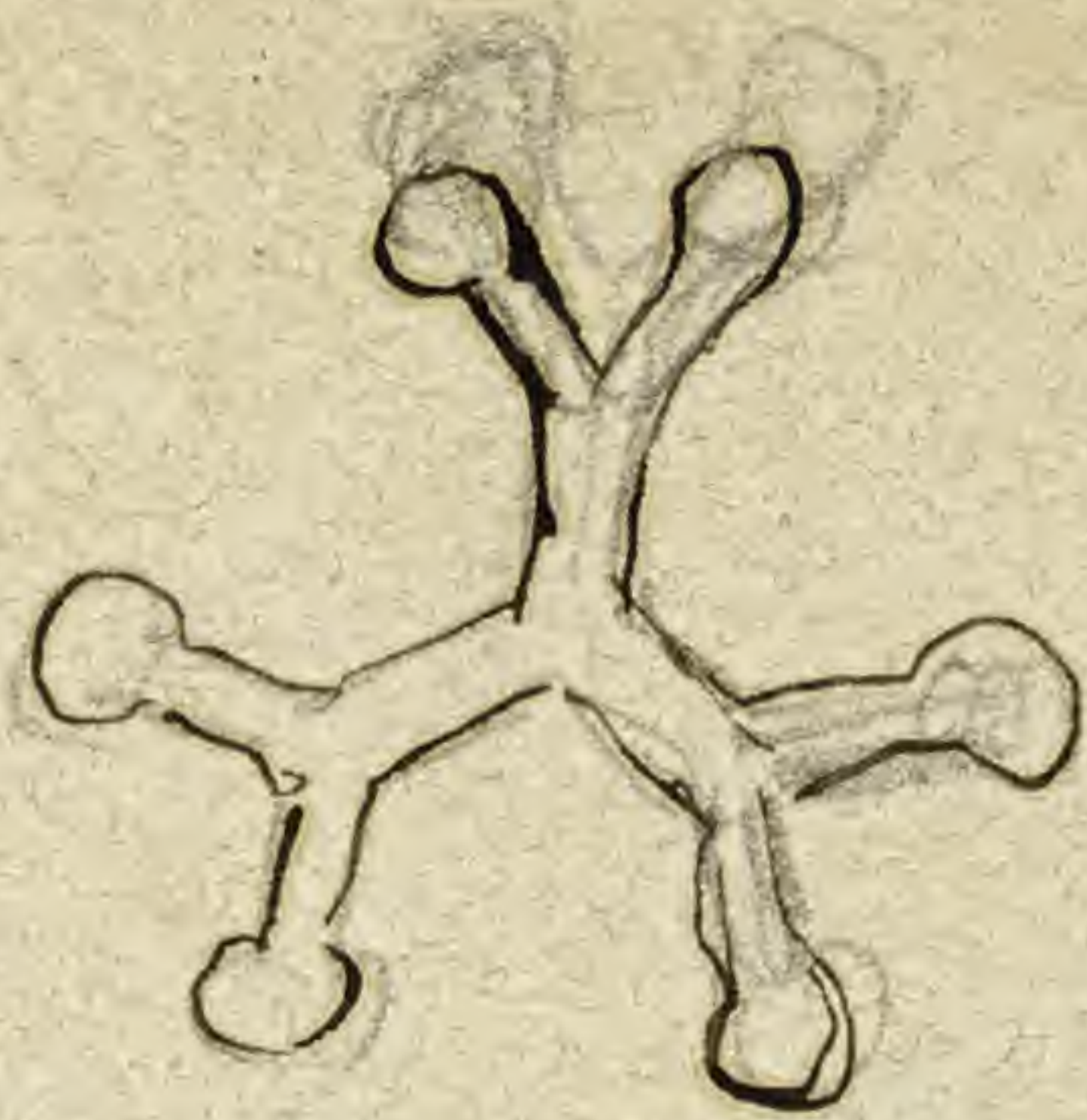
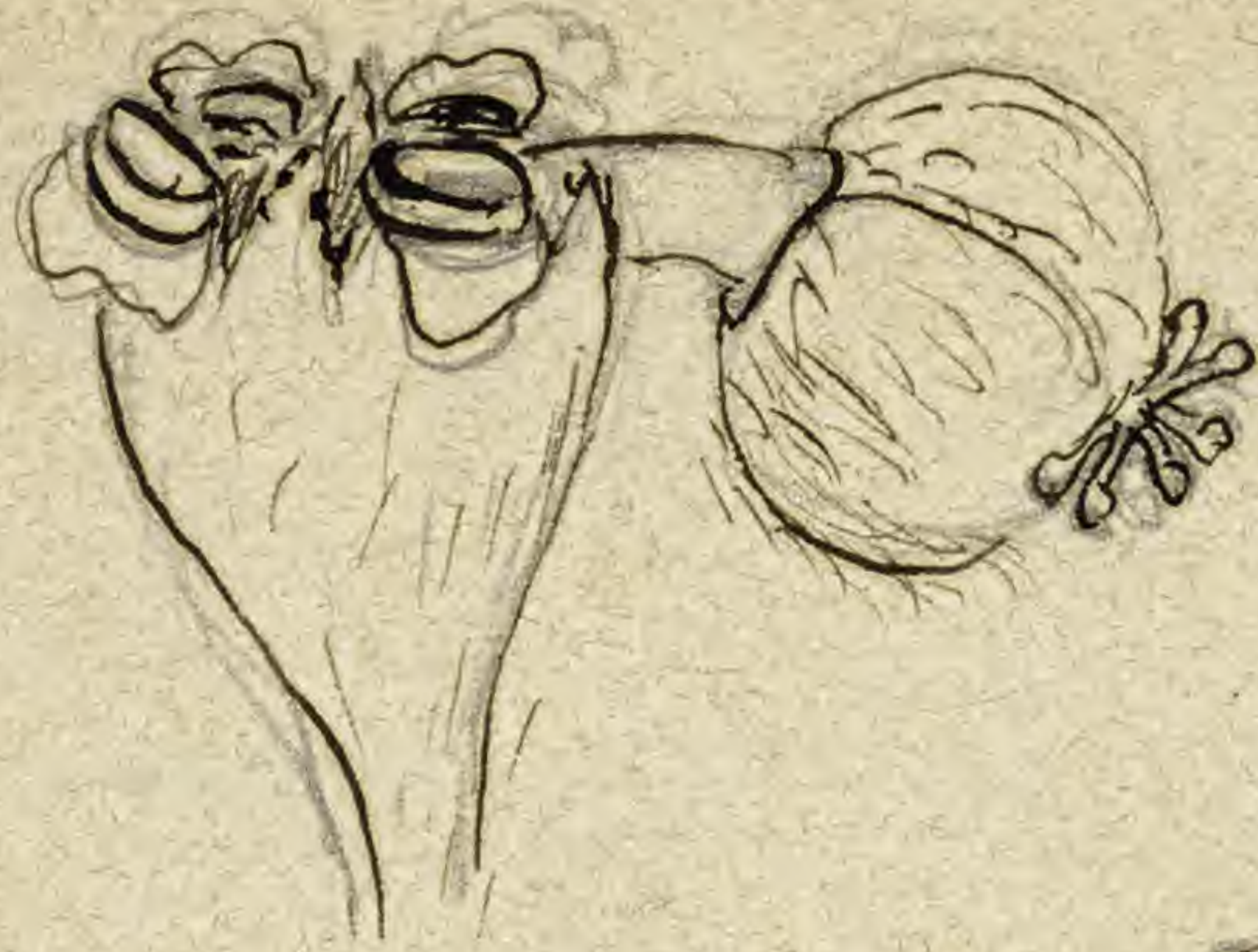
cm

copyright reserved



MISSOURI
BOTANICAL
GARDEN

Fraxinifolia var



0.55



interfoliar
sessile or stipitate glands
gradually giving way to flowers
see figure of *Ethyusifolia*

Scaph.

Mexico Kotschy No. 155 Herb. Griseb.

caulium prostratum, puberulum
foliis oblongis subintegris, supra nudis
stipulis lanceolatis subulatis pilosis
involucris turbinatis suboblongis
glandis bilobatis - cyathiformibus
apertis appendiculatis
laciniis triangularibus pilatis
stylis patulis ovario raro brevioribus
ad medium bifidis, stig. - capitelletis
- clavellatis;

seminibus angustius acutis
angulatis granulatis et sculptis
que.

Involucrum not quite 0.4 l. long;
styles short, but patent long;
seeds 0.5 - 0.6 long, sharp
angled, with uneven surface.



0 1 2 3 4 5 6 7 8 9 10
cm

copyright reserved



MISSOURI
BOTANICAL
GARDEN

7021

MISSOURI BOTANICAL GARDEN
GEORGE ENGELMANN PAPERS

Kotschy No 69 is a more
perfect form with larger
appendages - and almost
entire leaves



0 1 2 3 4 5 6 7 8 9 10

cm

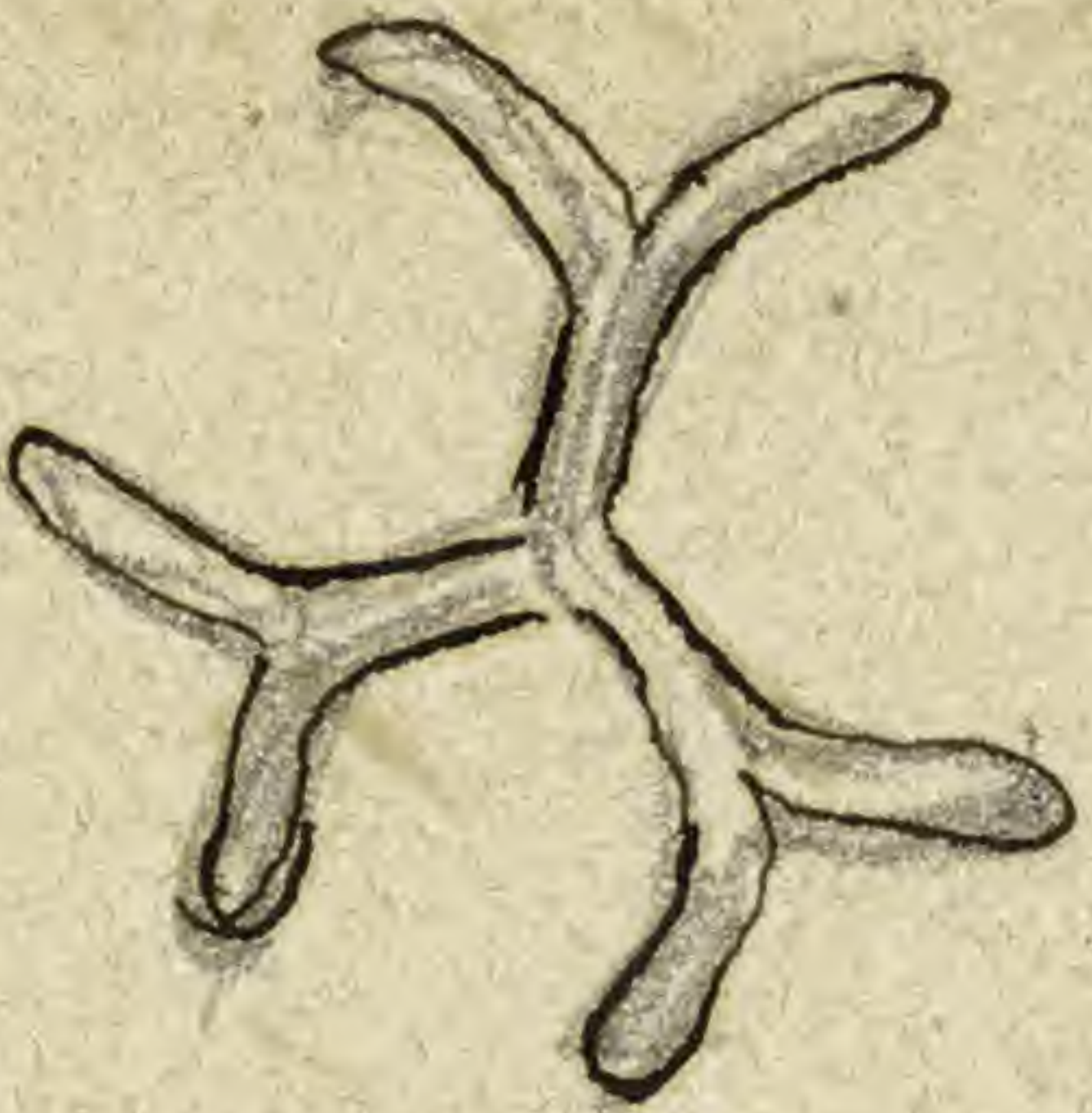
copyright reserved



MISSOURI
BOTANICAL
GARDEN

103
88

Sanguinaria



ad semperfolium

0.6-07

Euph. sanguinea Hochst. & Steud.
Arabia

annua glaberrima diffusa, ramis
elongatis

foliis glaucis reticulatis,
linearibus oblongis oblongo-ovatis,
obtusis, supra & versus apicem angulato
serratis

stipulis subulatis
setaceo-fimbriatis.

methodis sparsis
versus apicem ramulorum



lateralibus subsingulis
invol. turbidat; glandulis compressis
cyathiformibus; appendicibus 3-5 dentatis
albis; lobis lanceolatis setaceo-fimbriatis

stylis ad modum bifidis ab initio
recurvis, stigmate divaricatis

sepalis acutangulis

semimajoribus, ovatis acute angulatis



obovate, nigro-aurantibus transversis
undulatis

Stems 8-90 inches long
leaves 2-5 l. long, 1-2 wide

ad serrulipolii ?

7022

MISSOURI BOTANICAL GARDEN
GEORGE ENGELMANN PAPERS



0 1 2 3 4 5 6 7 8 9 10

cm

copyright reserved



MISSOURI
BOTANICAL
GARDEN

103/5

34 —

in Fernwood

Abyis

ad Juncyflora 3.

480



0 1 2 3 4 5 6 7 8 9 10

cm

copyright reserved



MISSOURI
BOTANICAL
GARDEN

7023

MISSOURI BOTANICAL GARDEN
GEORGE ENGELMANN PAPERS



0 1 2 3 4 5 6 7 8 9 10

cm

copyright reserved



MISSOURI
BOTANICAL
GARDEN

103y

21

E. nitaginica Nees.

Ind. or

4 81-2



0 1 2 3 4 5 6 7 8 9 10

cm

copyright reserved



MISSOURI
BOTANICAL
GARDEN

7024

MISSOURI BOTANICAL GARDEN
GEORGE ENGELMANN PAPERS



0 1 2 3 4 5 6 7 8 9 10
cm

copyright reserved



MISSOURI
BOTANICAL
GARDEN

105

28 au

E. Mozambicensis

= *granulata*

= *callitrichoides* fide Kluge

485



0 1 2 3 4 5 6 7 8 9 10

cm

copyright reserved



MISSOURI
BOTANICAL
GARDEN

7025

MISSOURI BOTANICAL GARDEN
GEORGE ENGELMANN PAPERS



0 1 2 3 4 5 6 7 8 9 10

cm

copyright reserved



MISSOURI
BOTANICAL
GARDEN

110

30

Euph. scordifolia Jacq.

E. tomentos. Pers.

484-5



0 1 2 3 4 5 6 7 8 9 10

cm

copyright reserved



MISSOURI
BOTANICAL
GARDEN

7026

MISSOURI BOTANICAL GARDEN
GEORGE ENGELMANN PAPERS



0 1 2 3 4 5 6 7 8 9 10
cm

copyright reserved



MISSOURI
BOTANICAL
GARDEN

111

N 972

Pir Panjohl

Kaschmer

Asia

= Hb Mus Vindob.

Euph. ^{hispidula Boiss} calliadenae ^{Hügel} L



Zord, Bonner

= hispidula Boiss in Leyh no 111

Ann. prostrata (pilosum) sparse
 foliis linearibus-oblongis subsulcatis
 basi valde obliqua subcordatis
 obtusis, apice obtusis
 anguste serratis, subtus pilosis
 supra glabris
 stipulis subulatis laciniatis
 glomeris latulibus laxifloris
 paucis

involucri late emarginato-
 diducto, magnis campanulatis
 pedicellis ^{appetit irregularibus} ~~vascularibus~~ exsertis
 capsula pilis paucis adpersa
 & glabrata
 sem. ovatis, angulatis
 obscuris, leviter undulatis

non rosca?



0 1 2 3 4 5 6 7 8 9 10

cm

copyright reserved



MISSOURI
BOTANICAL
GARDEN

7027

MISSOURI BOTANICAL GARDEN
GEORGE ENGELMANN PAPERS

[Faint, illegible handwritten text, likely bleed-through from the reverse side of the page]



0 1 2 3 4 5 6 7 8 9 10

cm

copyright reserved



MISSOURI
BOTANICAL
GARDEN