



60 Years of Abundant Gardens



The Arboretum
LOS ANGELES COUNTY ARBORETUM & BOTANIC GARDEN

ARBORETUM MEMBERS' MAGAZINE

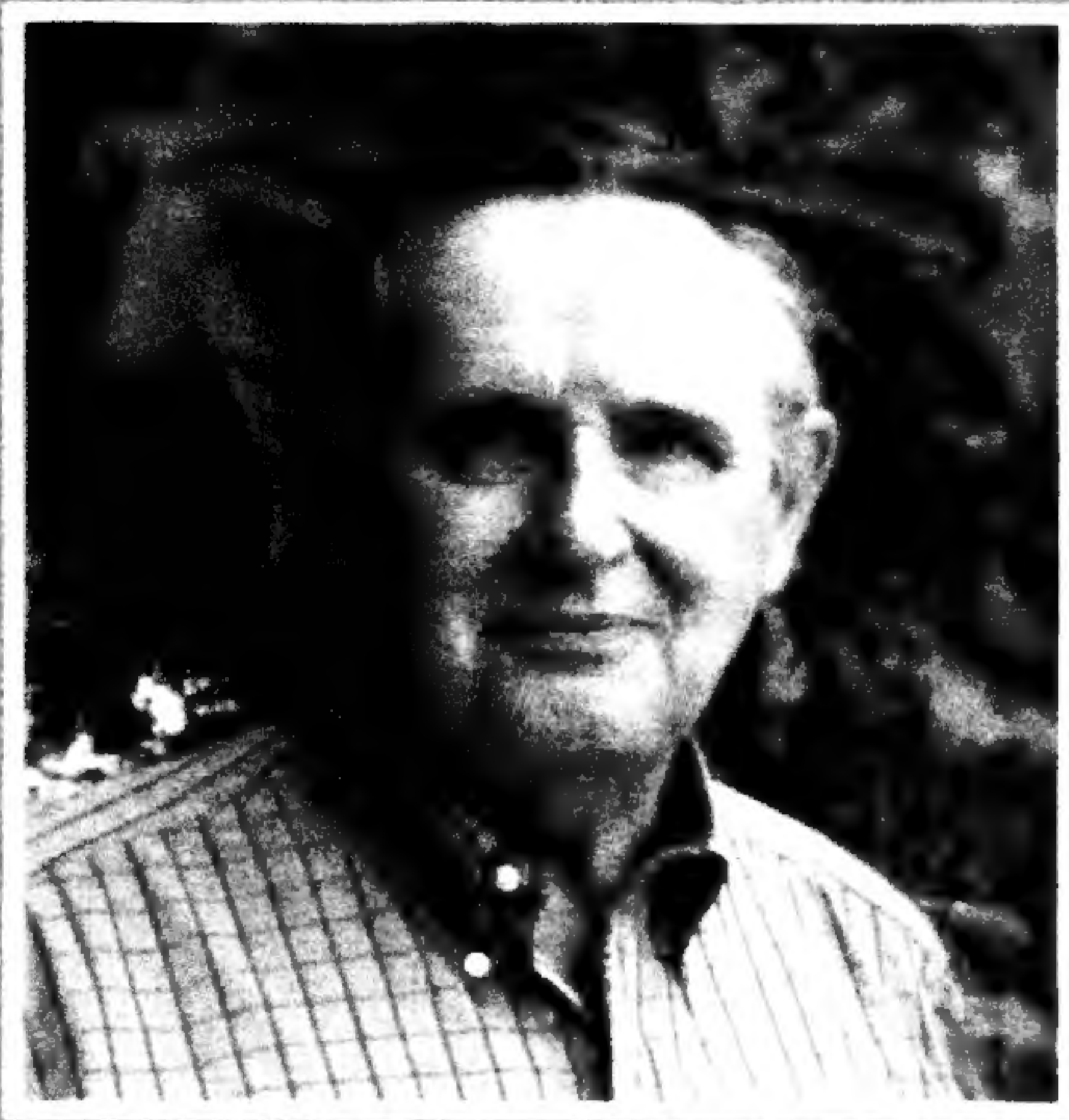
Issue 12, April, May, June 2008

MESSAGE FROM THE BOARD

G. Arnold Mulder, M.D., President

LOS ANGELES ARBORETUM FOUNDATION

BOARD OF TRUSTEES



On behalf of the Board of Trustees of the Los Angeles Arboretum Foundation, we thank you for a very successful Annual Giving Campaign. In the back of this Members' Magazine, you will see a listing of those that contributed to the 2007-2008 campaign. Your generosity supports The Arboretum's future and allows us to further enhance educational programming and the gardens.

Please visit The Arboretum soon. We look forward to your next visit.



Board Officers

President, G. Arnold Mulder, M.D.
1st Vice President, Jane R. Herrmann
2nd Vice President, Burks L. Hamner
Treasurer, Timothy K. McCarthy

Entire Board

Bernhard H. Babcock, II
James I. Bang
Carolyn D. Bennett
George A. Brumder
William W. Ellinger, III
Marlene C. Griffith
Russ Guiney
Burks L. Hamner
Shelley D. Harter
Austin H. Hathaway
Brian D. Helgoe
Jane R. Herrmann
Kenneth D. Hill, Ph.D.
Judy M. Horton
David D. Hu
George Kinkle
Virginia Lincoln
Nancy McDonald
Arnold Mulder, M.D.
Donivee Nash
Peg Rahn
Gilbert N. Resendez
Jim Rhodes
Leslie H. Abramson Rutten
Hayden Sohm
Rose B. Sorensen
Lauragene Swenson
Sho Tay
Alan R. Tekerlek

Chief Executive Officer

Mark K. Wourms, Ph.D.

Superintendent

Timothy R. Phillips

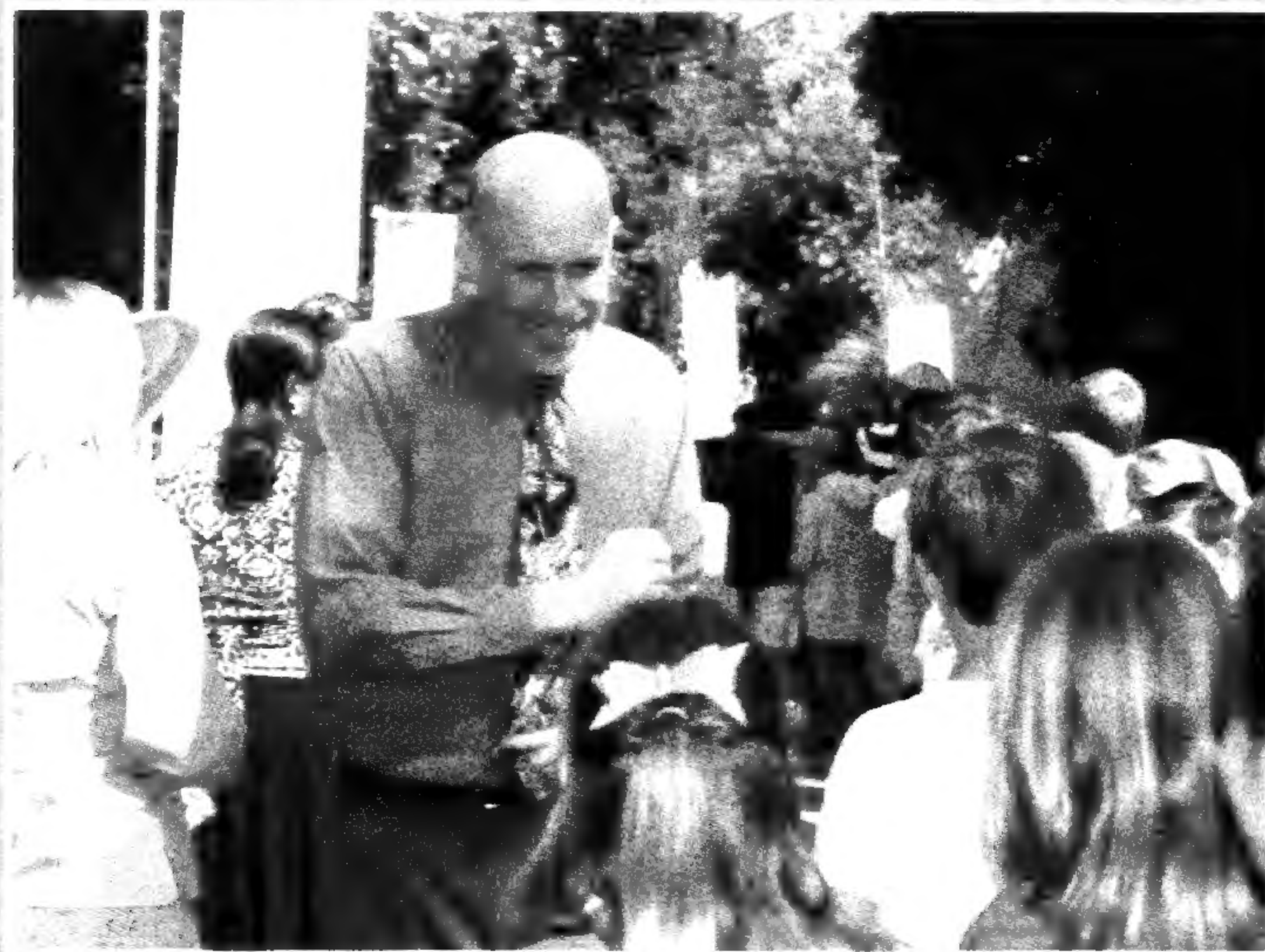
The Arboretum's mission is to cultivate our natural, horticultural and historic resources for learning, enjoyment and inspiration. Our vision is to be one of the world's truly great arboreta and botanic gardens: the garden which best reflects Southern California's distinct climate, community and openness to new ideas.

DEAR ARBORETUM MEMBERS

60 Years of Abundant Support

Mark K. Wourms, Ph.D., CEO

The Los Angeles Arboretum Foundation, Inc. is celebrating 60 years of support to The Arboretum in 2008. We are actually celebrating 60 years of "YOUR SUPPORT" to The Arboretum, for the Foundation has been the vehicle to solicit and deliver financial and other support over those decades. Not only are we providing a growing share of the operating revenues and project funds, but the Foundation is also jointly operating the facility and programs, providing over 30% of personnel needed. We have an excellent partnership with Los Angeles County Parks & Recreation and anticipate continued activities and improvements at The Arboretum.



Your advocacy throughout the community is priceless.

Your support takes many forms, all of which are very important to the growth of The Arboretum. Your annual membership is a key element not only to provide much needed funds, but also to enable you to become an active participant. We strive to provide our members useful and fun information in every edition of the Member's Magazine and are re-vamping our website to be a resource of information on Arboretum activities and the natural world. Your advocacy throughout the community is priceless.

The Annual Giving Campaign is another show of your love and support for The Arboretum. Each fall and winter we solicit funds to allow us to deliver our mission. This last campaign was quite successful and has already helped provide more children's programs and is contributing to the website re-vamp. Thank you for the 60th year of giving to the Annual Campaign.

As advocates, invite friends to join you at the Designer's Reception and Preview Party on the evening of May 1 – tickets are on sale now

Since there are always needs, we have our Patron's Appeal occurring right now. This campaign supports spring programming activities and is focused around the LA Garden Show. Thank you to the sponsors of this year's show and to all of you who give year after year to the Patron's Appeal. To all 12,000 of you, who attended the LA Garden Show last year, I encourage you to send in a little something right now to show your support and to help us continue offering the best garden show in all of Southern California. As advocates, invite friends to join you at the Designer's Reception and Preview Party on the evening of May 1 – tickets are on sale now. Or have them join you for a day of plants, beautiful design, workshops, food and fun at the show on May 2 - 4. Remember, members are admitted at 8am, one hour before the general public.

As we celebrate 60 years of The Arboretum Foundation, we are proud of our accomplishments and even more proud that our role in The Arboretum is even stronger today due to your involvement and support of The Arboretum.

Thank you.

PLANTS & PEOPLE

An Interview With Patrick Dougherty

Susan C. Eubank, Arboretum Librarian

Patrick Dougherty kicked off The Arboretum's Art-in-the-Garden program with his willow sculpture installation titled "Catawampus." See it change with the seasons through 2010.



Tell us about your process you use during your site visit and how you integrate a work into the given setting?

I escaped Palm Springs, California in July, where I was working on large interior sculptures at the Palm Springs Art Museum, and I made the short hop over to a cooler temperature and the Los Angeles County Arboretum & Botanic Garden to meet with the staff and discuss my upcoming installation slated for February 2008. I should explain that I use saplings, that is, small trees, in my work and weave very large elaborate forms from them. On one level these sculptures give the impression that a flock of birds have been sneaking performance enhancing drugs, but I am reminded that before the phenomena of the building supply store, humans simply went to the woods to gather saplings for tool handles, basket supplies and building materials. I am

convinced that in the deep recesses of our minds, everyone knows about sticks and how to use them. My work plays with that familiarity and attempts to stir the imagination of passersby and reminds them of childhood play, an experience with a favorite tree, or perhaps a special moment on a garden path.

The Arboretum has many beautiful spots for a sculpture, but ultimately I decided on a lawn near the Meyerberg waterfall where garden goers and wedding parties already gather and might find in a sapling sculpture an additional surprise. I discussed the potential of the site with the staff and paid particular attention to the scale that might be required to compete with surrounding trees and shrubs. The final form of the sculpture is developed during the building process, but I decided that the space called for a sculpture that would allow the viewer to amble around and explore its interior. In an attempt to glean building materials from the garden, I looked at the bamboo patches, and at the scrub in the Australian outback, but finally decided to obtain a tractor-trailer load of saplings from a willow farm in Pescadero, California.

Have the installations you've done in the West differed significantly from your installations in the Midwest, East or Europe? Does the western landscape alter your visions, methods, or materials? How?

I look for starting points when imagining a new sculpture for a particular site. In Ireland for example, the "Irish round towers" originally built by monks in the 8th to the 10th Centuries and still dotted throughout the countryside, became an inspiration for my own 42' version in the front yard of Taillight Community Art Center, Dublin, Ireland. Last February I worked at the Desert Botanical Garden in Phoenix, Arizona and was inspired by the barrel cacti that grow throughout the garden. At the Santa Barbara Botanical Garden, the sculpture reflected my infatuation with the early Spanish missions along the California coast. Weather, light, differences in sapling species and the willingness of local volunteers to help me, all become important to the final outcome of a sapling sculpture.

Have you found that working and exhibiting in botanic gardens and arboreta have been different from your other sites such as museums, buildings or college campuses? If so, tell us how it differs.

I work with many different kinds of organizations: art centers, museums, colleges, public art commissions and lately, for gardens and arboretums. Every sponsor has its strength, but I have particularly enjoyed working with people who know the value of a pair of Felco pruners and how saplings grow. I have seen how important gardens have become in providing an opportunity to find a private moment with nature. And garden enthusiasts, as a group, enjoy the cyclical nature of a flower bed and seem to understand why I work so hard for beauty and whimsy despite the fact that my sculptures are temporary and will decline over the seasons.

Do you draw inspiration from other environmental artists? What about their work gives you inspiration?

I look for inspirations and starting points everywhere I go. The public often informs me about my work and provides additional direction. I imagine that building a sculpture is a problem solving event and, in that, I enjoy looking at other sculptors' work. I find answers while trying to understand how other makers approach a visual or technical problem. I am particularly interested in how other builders whether artist, architects or designers, handle issues of scaling an effort to a particular site.

Do you garden? What other activities do you do that relate to the natural world? Do they influence your work? How?

My wife, Linda, and I garden and together we attempt to ward the deer off our tender plants. I enjoy working with stone and when I am home, I try to spend as much time as I can outside digging and fixing up. My sculpture is a natural extension of my hunting and gathering impulses, and I thrive on my connection to the natural world. Like a shrub I have also been shaped by the elements.

How do you train your volunteers that assist you with the work? What is the best part about working with volunteers?

I always try to find volunteers to help with the sculpture. and I do more guiding than training. I am convinced that with 100,000 years of ancestors who foraged, modern

humans take to working with sticks quite easily. You can see the relish for sticks in childhood play, as sticks become walls, weapons, tools and magic wands. Adults have to sneak around to justify working with sticks and often find a way to incorporate their favorites in trellis and other garden supports.

What do you see as unique at the Los Angeles County Arboretum and Botanic Garden that will influence your installation here?

I believe in a world of imminent possibility. I see the characteristics of a particular pile of saplings I have to work with and I look carefully at the visual cues of the space my sculpture will occupy. Generally something clicks and ideas arise. The Los Angeles County Arboretum and Botanic Garden has many beautiful vistas and I can't wait to try my hand at building a compelling sculpture during the month of February. I invite the public to drop by and enjoy the drama of building and I hope a number of brave souls will volunteer to get their hands dirty and let their "inner stick" out.



BLOOM

Buy plants to your hearts content at the LA Garden Show

Expect to find some rare and unusual specimen plants as well as some hearty favorites from The Arboretum's own collections. Here is a few great plants to be expected at the LA Garden Show this year.

Clausena lansium wampee

Native to Southeast Asia, this unusual member of the citrus family is known in China as huang-p'i-kuo, and in Malaysia as wampi. Its foliage resembles that of a Gardenia, and its grape-sized fruit have a mature resinous taste; just peel and eat seeds and all. Clausena is very high in Vitamin C, with over 30 milligrams per fruit. It has been used medicinally for stomach aches and bronchitis. Like other members of the Citrus family it has sweet scented flowers. Clausena grows to about 20 feet tall, tolerates many soils as long as its watered regularly, and is hardy to about 28 degrees F.



Doryopteris cordata – 'Antenna fern'

An unusual and eye-catching, showy little tropical fern, with a unique look originating from South America. Its lower fronds have rounded lobbed leaves that lay rather flat and remain compact. It sends up fertile fronds on dark, shiny stalks, from the center of the plant. They have their own look and are antenna shaped. Grows well under medium light in moist, well drained potting soil. Can be grown in either a pot or in the ground. This species produces buds at the base of the blade on either side of the stripe on the under side of the infertile frond. This attractive fern can be grown indoors if gradually hardened before being planted in a drier atmosphere. Take care not to over water this plant in cooler months and protect from the cold.

For more information on the LA Garden Show visit lagardenshow.com.



Cycas thouarsii

This palm-like plant (it is not a palm) is a fossil among fossils. It is thought to be the most ancient of the surviving cycads; with a fossil record dating back over 140 million years. It is also one of the tallest cycads in the world –growing over 30 to 40 feet. It can 'pup,' that is produce clones of itself, all along its trunk. It is native to the tropical parts of Madagascar, the East Coast of Africa and the Seychelles Islands. It prefers light shade, although it can be grown in full sun in the milder areas of the Los Angeles Basin, including areas of the San Gabriel Valley. *Cycas thouarsii* can grow rapidly if it likes its location, so give it some room. It also prefers a moist spot with good drainage, so don't plant out in heavy, sun-baked adobe clay.

BLOOM

Succulent Salad Selections: Details on Selected Stonecrops

Frank McDonough, Plant Information Specialist

The Stonecrop family (*Crassulaceae*) contains many members that make excellent subjects for 'salad' type succulent plantings. Let's take a look at a few.

Echevaria hybrid. There are hundreds of varieties of *Echevaria*, many with colorful leaves; this one shows tinges of pink along with yellow variegations.

Another *Echevaria*, possibly *E. elegans* or a variety of *E. gibbiflora*. This variety will tolerate more sunshine than green-leaved *Echevarias*. Sun-tolerant succulents can generally be selected by looking at them while you squint your eyes; those that look whitish or blue-grey are generally ok to plant in full sun.

Aeonium tabuliforme has a large flat 'table' like rosette of leaves on top of a short stalk. Partial shade is best for this Stonecrop family member; it can burn in full sun.



LA GARDEN SHOW 2008

ABUNDANT GARDENS
A VISION FOR SUSTAINABILITY
presented by Monrovia Growers

May 2 – 4, 2008

Learn how to design your garden from
the best designers in Southern California

Buy one-of-a-kind plants

Shop at the Marketplace

Lectures given by garden experts and authors

Ongoing demonstrations, entertainment
and food all weekend long

Enjoy an evening honoring innovative
garden designers from Southern California

May 1

PREVIEW RECEPTION

Stroll through their extraordinary gardens
with wine, hors d'oeuvres and music

Preview and Purchase
4pm – 6pm

Reception 6pm – 9pm
Silent Auction for specimen plants

\$75 per person
RSVP by April 18, 2008

For more information, please visit arboretum.org

A special thank you to our 2008 LA Garden Show partners

MONROVIA
LIVE PLANT MATERIAL SUPPLIERS

Armstrong
Garden Centers

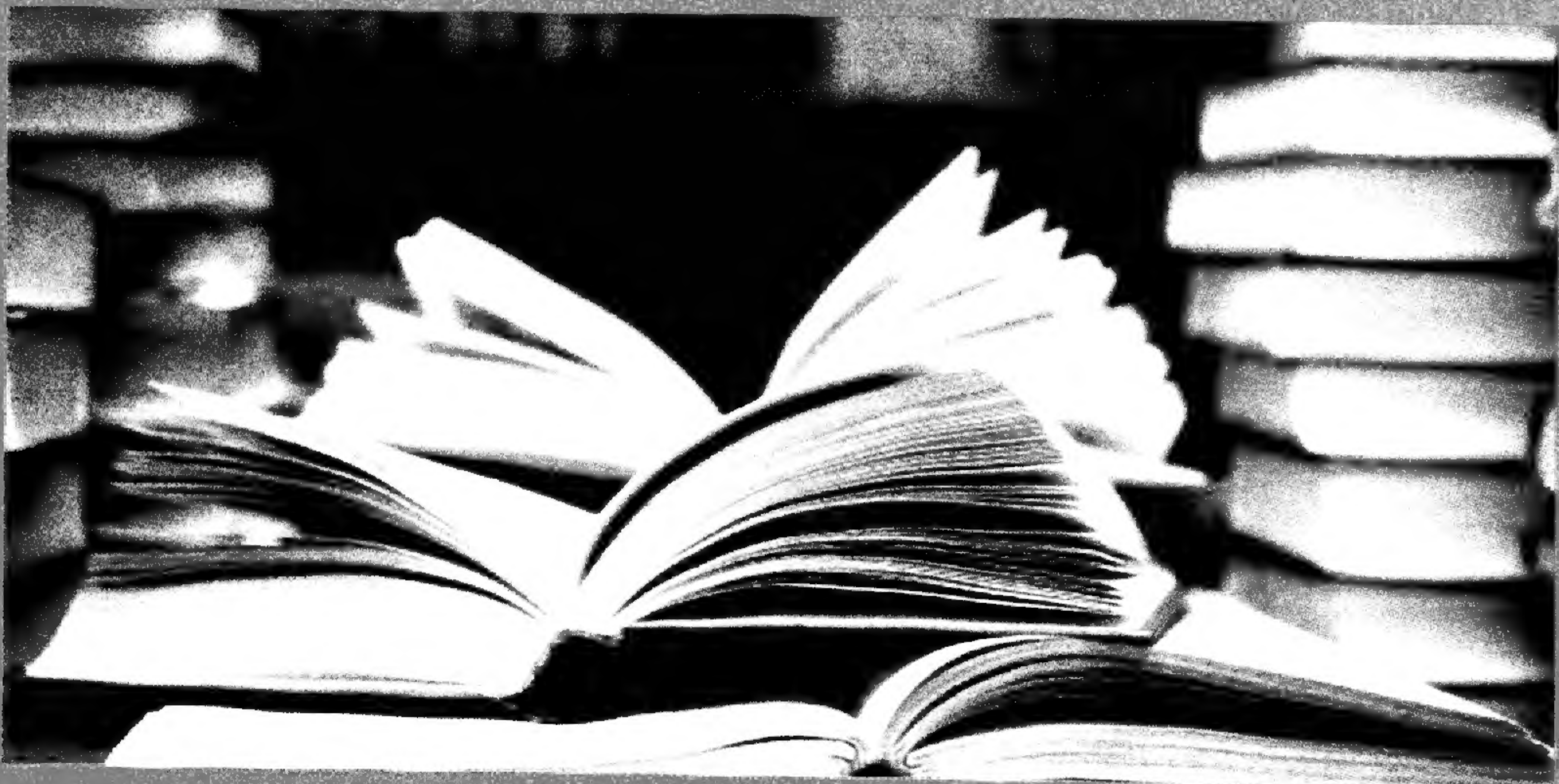
GARDEN
DESIGN

Smith & Hawken
IN THE GARDEN SINCE 1978

GRAPEVINE *Check It Out*

Check It Out

Great things are happening at The Arboretum Library thanks to a grant from The Good Family Foundation. The new integrated library system software (ILS) has given us the opportunity to create an electronic card catalog, which is now accessible from arboretum.org in the Library section. New additions are being done daily with over 3,500 already searchable books. What does this mean to you? As an Arboretum Member, you can check items out from The Arboretum Library. Take the books home with you for 3 weeks with two renewal options.



If you want to keep in touch through our process of creating the online catalog and hear the latest on circulation, subscribe to Susan's e-mail newsletter by sending an email to susan.eubank@arboretum.org. You'll receive the latest news on Library developments, lists of recent interesting magazine articles, new acquisitions (books, DVDs, etc.), and plant-related websites.

The Arboretum Library welcomes all and wants you to "check it out!"

A Cappuccino Please

The Peacock Café is serving a new menu with the arrival of our new caterer, The Fresh Gourmet. Among the hot and cold cappuccino and mocha drinks, the new menu offers a varied selection of warm and cold dishes. For catering at The Arboretum call 626.821.3222.

GIGABYTE GARDENING

I Can Garden and So Can You

One of the new and different features of the 2008 LA Garden Show: Abundant Gardens – A Vision for Sustainability will be the exhibition-- I CAN GARDEN-- that says to the visitors: "I CAN GARDEN ... and so can you: on the patio, porch or balcony; in the sun or in the shade..."

The I CAN GARDEN project is designed for non-gardeners who are being challenged to plant a small garden in a shiny new 42 gallon galvanized trash can with whatever material they choose. The creation may contain colorful inventive items, but must have at least one living plant. This fun activity will show everyone that people who do not regularly garden can create a wonderful small garden in a shiny can.

The I CAN GARDEN exhibition at the LA Garden Show is intended to involve people throughout the Greater Los Angeles area from all walks of life. The creations will be on display throughout the grounds. Look for them all!

The I CAN GARDEN exhibitions runs through the LA Garden Show May 2-4, 2008. For more information visit lagardenshow.com



2008

April | May | June

LA GARDEN SHOW

the
is here



301 N. Baldwin Avenue, Arcadia, CA 91007 | www.arboretum.org

**THE 2008 LA GARDEN SHOW DAZZLES WITH ABUNDANT DISPLAY GARDENS
at THE LOS ANGELES COUNTY ARBORETUM & BOTANIC GARDEN**

MAY 2-4, 2008

Sustainability and "green" choices are "hot button" issues all over the world with the ever increasing concern for our environment. The 2008 LA Garden Show presented by Monrovia Growers at The Los Angeles County Arboretum & Botanic Garden May 2nd, 3rd and 4th will showcase twelve garden displays by leading landscape architects and garden designers, as well as present lectures by noted landscape and garden experts. Specimen plants will also be offered for sale by leading major California growers. From planting climate appropriate plants to conserving water and energy, the LA Garden Show will inspire you to "green" your home garden.

The LA Garden Show runs from Friday, May 2nd through Sunday, May 4th from 9am to 4.30pm. Admission is \$2.50-\$7.00. Those that become Arboretum Members – or already are Arboretum

Members – will be admitted free and allowed to enter the Show one hour prior to opening to the public. Parking is free. For additional information, please call (626) 821-4623 or visit www.lagardenshow.com.

A special V.I.P. May Day preview reception will be held on Thursday, May 1, 4pm-9pm; those attending will be given the first opportunity to purchase specimen plants. Preview and purchase 4pm-6pm; Reception 6pm-9pm. Tickets are \$75 per person. Please call 626.821.3208 to purchase tickets.

The 2008 LA Garden Show is presented by Monrovia Growers with Garden Design Magazine, Armstrong Garden Centers, and Smith & Hawken.

For additional information call 626.821.3243 or visit lagardenshow.com

April events — Please call 626.821.4623 for class reservations and information

01 TUE Urban Arboriculture-Mt. SAC

02 WED Introduction to Colored Pencil Techniques in Botanical Illustration

4 Wednesdays, April 2, 9, 23, 30
9.30am-1pm
Olga Eysymontt, Instructor
\$165 members/\$181 non-members

03 THU Garden Talks with Lili Singer

Spring (April 3-May 8); 9.30 am-Noon
Unusual Plants in the Arboretum Collection with Marc Hall
The Arboretum includes many lovely yet lesser-known species. A sampler of plants will be shown with details on their heritage, peculiar traits, and how to use them in gardens. \$100 for series, or \$20 per class payable at the door.

Music Tree

10 am -10.45 am

04 FRI Ikebana

8 Fridays, March 28-May 23 (no class on May 2)
9.30-11.30 am Advanced; 12-2 pm Basic
Reiko Kawamura & Yumiko Kikkawa,
Learn about Japanese cultural traditions while practicing Ikebana. \$65 members/\$80 non-members; \$24 materials fee payable directly to instructor.

Compulsive Gardeners Class is full

05 SAT Family Bird Walk – 8am

Family Adventures

9am-Noon
Meet under the BIG Oak tree in front of Ayres Hall. Adventure Guide: Colleen Biles
First Saturday of each month beginning April 5; each Saturday will have a different theme, and will include a variety of activities such as a short story or talk, a walk to a special part of The Arboretum, and a take-home nature craft. (no class May 3). Family Fee: \$15 per family for members; \$20 per family for non-members. Individuals: Members \$5/ non members \$6.

Santa Anita Derby Day 5K

Spring Iris Show and Sale

9am to 4.30pm

Flower Arranging Show Las Artistas de Flores

Sat. 10am to 5pm

Kids' Art

12pm-1pm

06 SUN Spring Iris Show and Sale

9am to 4.30 pm

Flower Arranging Show/ Las Artistas de Flores

10am to 3pm

07 MON Botanical Watercolor Workshop

8 Mondays, Mar 3-Apr 21; 9.30-11.30 am
This is a self-directed workshop that provides an encouraging and supportive environment for those wishing to concentrate on their painting. \$35 members/\$42 non-members

Tai Chi Chuan

8 Mondays, Mar 31-May19 Beginning and Intermediate: 6.30- 7.30pm Master Mo Chi Sasian Yau. Tai Chi exercises can increase your energy, balance control, flexibility and mobility. It helps to develop self-discipline, release stress, lose weight, lower your blood pressure, and bolster your self-confidence. \$48 members / \$52 non-members

08 TUE Urban Arboriculture-Mt. SAC

09 WED Introduction to Colored Pencil Techniques

Fresh-Celebrating the Table: Cooking at The Arboretum

Bistro 45 with Executive Chef Damon Brady 3-5pm
\$35 members/\$40 non-members. Reservations required; seating limited.

10 THU Garden Talks with Lili Singer

9.30 am-Noon

Spring Stars with Stephen Sommer

Sommer Wholesale Nursery in Templeton specializes in "unusual varieties of common plants." A sale of species and varieties hand-picked for this climate follows the lecture. \$100 for series, or \$20 per class payable at the door.

Evening Hikes at The Arboretum

Thursdays, April 10 - September 25
5 - 7.30 pm

Meet in front of the Main Entrance
Leader: Eric Foemmel, Senior Tour Guide at The Arboretum. Fee: \$8 members / \$10 non-members per hike; maximum 15 people
Join Eric for a fun and informative trek around The Arboretum. Each evening will focus on a different section of the grounds. Wear sturdy shoes, a hat and bring water. Pre-registration requested.

Music Tree

11 FRI Ikebana

Compulsive Gardeners

12 SAT 5th Annual Korean Garden Festival

9 am to 4.30pm

14 MON Extreme Boot Camp

Apr 14 – May 23
6-week course/5 days a week (2 days a week held at The Arboretum); 5.30-6.30 am. This is a highly motivating, confidence, and camaraderie-building fitness and nutritional program. Please call instructor Joe Stone at 626.755.1884 for further information.

Botanical Watercolor Workshop

Tai Chi Chuan

15 TUE Urban Arboriculture-Mt. SAC

17 THU Garden Talks with Lili Singer

Field Trip: Jackson & Perkins Research Facility, Somis 10:00 am-12.30 pm
A tour of the private research facility of Jackson & Perkins. Visit the breeding greenhouse and trial gardens, get a first-hand look at the mysterious genetically modified blue rose and a sneak preview of new Suntory bedding plants. Pre-registration required. \$100 for series, or \$20 per class

Music Tree

Evening Hikes at The Arboretum

18 FRI Ikebana

Compulsive Gardeners

19 SAT Celebrate Nature

9am-12pm

Celebrate Earth & Arbor Day. We will visit some very special and unusual trees in The Arboretum, create a piece of art to commemorate the day, and take home a tree! Family Fee: \$15 per family for members; \$20 per family for non-members. Individuals: Members \$5/ non members \$6.

Kids' Art

12 pm-1pm

21 MON Botanical Watercolor Workshop

Tai Chi Chuan

22 TUE Urban Arboriculture-Mt. SAC

23 WED Introduction to Colored Pencil Techniques

24 THU Garden Talks with Lili Singer

Designing Great Gardens with Heather Lenkin
9.30 am-Noon

This illustrated lecture reveals 12 principles of design that can generate gorgeous individualized landscapes – and how concepts of space, color and texture can be used to best effect. \$100 for series, or \$20 per class payable at the door.

Music Tree

Evening Hikes at The Arboretum

25 FRI Ikebana

Compulsive Gardeners.

26 SAT Rose Show and Sale

1pm to 5pm

Kids' Art

12pm-1pm

27 SUN Rose Show and Sale

10am to 3pm

28 MON Botanical Watercolor Workshop

Tai Chi Chuan

29 TUE Urban Arboriculture-Mt. SAC

30 WED Introduction to Colored Pencil Techniques

April events — Please call 626.821.4623 for class reservations and information

01
TUE

Urban Arboriculture-Mt. SAC

02
WED

Introduction to Colored Pencil Techniques in Botanical Illustration

4 Wednesdays, April 2, 9, 23, 30
9:30am-1pm
Olga Eysymontt, Instructor
\$165 members/\$181 non-members

03
THU

Garden Talks with Lili Singer

Spring (April 3-May 8); 9:30 am-Noon
Unusual Plants in the Arboretum Collection with Marc Hall
The Arboretum includes many lovely yet lesser-known species. A sampler of plants will be shown with details on their heritage, peculiar traits, and how to use them in gardens. \$100 for series, or \$20 per class payable at the door.

Music Tree

10 am - 10:45 am

04
FRI

Ikebana

March 28-May 23 (no class on May 2)
9:30-11:30 am Advanced; 12-2 pm Basic
Reiko Kawamura & Yumiko Kikkawa.
Learn about Japanese cultural traditions while practicing Ikebana. \$65 members/\$80 non-members; \$24 materials fee payable directly to instructor.

Compulsive Gardeners Class is full

05
SAT

Family Bird Walk - 8am

Family Adventures

9am-Noon
Meet under the BIG Oak tree in front of Ayres Hall. Adventure Guide: Colleen Biles
First Saturday of each month beginning April 5; each Saturday will have a different theme, and will include a variety of activities such as a short story or talk, a walk to a special part of The Arboretum, and a take-home nature craft. (no class May 3). Family Fee: \$15 per family for members; \$20 per family for non-members. Individuals: Members \$5/ non members \$6.

Santa Anita Derby Day 5K

Spring Iris Show and Sale

9am to 4:30pm

Flower Arranging Show Las Artistas de Flores

Sat. 10am to 5pm

Kids' Art

12pm-1 pm

06
SUN

Spring Iris Show and Sale

9am to 4:30 pm

Flower Arranging Show Las Artistas de Flores

10am to 5pm

07
MON

Botanical Watercolor Workshop

8 Mondays, Mar 3-Apr 21; 9:30-11:30 am
This is a self-directed workshop that provides an encouraging and supportive environment for those wishing to concentrate on their painting. \$35 members/\$42 non-members

Tai Chi Chuan

8 Mondays, Mar 31-May 19 Beginning and Intermediate: 6:30- 7:30pm Master Mo Chi Sasian Yau. Tai Chi exercises can increase your energy, balance control, flexibility and mobility. It helps to develop self-discipline, release stress, lose weight, lower your blood pressure, and bolster your self-confidence. \$48 members / \$52 non-members

08
TUE

Urban Arboriculture-Mt. SAC

09
WED

Introduction to Colored Pencil Techniques

Fresh-Celebrating the Table:

Cooking at The Arboretum

Bistro 45 with Executive Chef Damon Brady 3-5pm
\$35 members/\$40 non-members. Reservations required; seating limited.

10
THU

Garden Talks with Lili Singer

9:30 am-Noon

Spring Stars with Stephen Sommer

Sommer Wholesale Nursery in Templeton specializes in "unusual varieties of common plants." A sale of species and varieties hand-picked for this climate follows the lecture. \$100 for series, or \$20 per class payable at the door.

Evening Hikes at The Arboretum

Thursdays, April 10 - September 25
5 - 7:30 pm

Meet in front of the Main Entrance

Leader: Eric Foemmel, Senior Tour Guide at The Arboretum. Fee: \$8 members / \$10 non-members per hike; maximum 15 people

Join Eric for a fun and informative trek around The Arboretum. Each evening will focus on a different section of the grounds. **Wear sturdy shoes, a hat and bring water.** Pre-registration requested.

Music Tree

11
FRI

Ikebana

Compulsive Gardeners

12
SAT

5th Annual Korean Garden Festival

9 am to 4:30pm

13
MON

Extreme FISH Camp

Apr 14 - May 23

6-week course/5 days a week (2 days a week held at The Arboretum); 5:30-6:30 am. This is a highly motivating, confidence, and camaraderie-building fitness and nutritional program. Please call instructor Joe Stone at 626.755.1884 for further information.

Botanical Watercolor Workshop

Tai Chi Chuan

15
TUE

Urban Arboriculture-Mt. SAC

16
THU

Garden Talks with Lili Singer

Field Trip: Jackson & Perkins Research Facility, Somis 10:00 am-12:30 pm
A tour of the private research facility of Jackson & Perkins. Visit the breeding greenhouse and trial gardens; get a first-hand look at the mysterious genetically modified blue rose and a sneak preview of new Suntory bedding plants. Pre-registration required. \$100 for series, or \$20 per class.

Music Tree

Evening Hikes at The Arboretum

18
FRI

Ikebana

Compulsive Gardeners

19
SAT

Celebrate Nature

9am-12pm

Celebrate Earth & Arbor Day. We will visit some very special and unusual trees in The Arboretum, create a piece of art to commemorate the day, and take home a tree! Family Fee: \$15 per family for members; \$20 per family for non-members. Individuals: Members \$5/ non members \$6.

Kids' Art

12 pm-1pm

21
MON

Botanical Watercolor Workshop

Tai Chi Chuan

22
TUE

Urban Arboriculture-Mt. SAC

23
WED

Introduction to Colored Pencil Techniques

24
THU

Garden Talks with Lili Singer

Designing Great Gardens with Heather Lenkin

9:30 am-Noon

This illustrated lecture reveals 12 principles of design that can generate gorgeous individualized landscapes — and how concepts of space, color and texture can be used to best effect. \$100 for series, or \$20 per class payable at the door.

Music Tree

Evening Hikes at The Arboretum

26
FRI

Ikebana

Compulsive Gardeners

28
SUN

Rose Show and Sale

1pm to 5pm

Kids' Art

12pm-1 pm

27
SAT

Rose Show and Sale

10am to 3pm

28
SUN

Botanical Watercolor Workshop

Tai Chi Chuan

29
TUE

Urban Arboriculture-Mt. SAC

30
WED

Introduction to Colored Pencil Techniques

May events — Please call 626.821.4623 for class reservations and information

Garden Talks with Lili Singer

9.30 am-Noon

Field Trip: Lenkin Gardens, Pasadena

10am-Noon

Spend May Day in one of the nation's best private landscapes, accompanied by its owner/designer, landscape architect Heather Lenkin. The sloping one-acre property includes 21 distinct gardens containing a wide range of perennials, roses, shrubs and trees. Heather is the first two-time recipient of Garden Design magazine's "Golden Trowel" award, and Lenkin Gardens was selected by Fine Gardening magazine as one of the "Top Ten Great Gardens" in the United States. Pre-registration required. \$100 for series, or \$20 per class.

No Evening Hike

No Music Tree

LA Garden Show

Preview Reception



02
FRI

LA Garden Show

03
SAT

LA Garden Show

04
SUN

LA Garden Show

05
MON

Botanical Watercolor Workshop

Tai Chi Class

06
TUE

Urban Arboriculture-Mt. SAC

07
WED

Plants in Colored Pencil

Olga Eysymontt, Instructor; Students will illustrate at least three or more specimens from 2 plant families using various viewpoints and dissections. The goal of these classes is to demonstrate correct placement of light on form using colored pencil as well as exploring how plants are similar in the same family. \$165 member / \$181 non-member

18
THU

Garden Talks with Lili Singer

9.30 am-Noon

Gardening in Small Spaces and Containers with Lili Singer

The series ends with a tribute to tiny landscapes and container gardens. In such tight spaces, detail and proper scale become crucial – and scent, shadow, movement and color are intensified by proximity. The presentation includes images of cozy little gardens and imaginative containers, plant suggestions, pruning and care tips, and a potting demonstration. \$100 for series, or \$20 per class payable at the door

Music Tree

Evening Hikes at The Arboretum

08
FRI

Ikebana

Compulsive Gardeners

10
SUN

Geranium Show

9am to 4pm

Mother's Day Hike & Tea

9am-12pm

Come take a short hike out to the Herb Garden! We'll learn about the many plants there used to make teas, and return to our beautiful celebration garden for our own tea party. While we are sampling different teas, we will make a plant-able card from home-made paper to send to a very special person. Family Fee: \$15 per family for members; \$20 per family for non-members. Individuals: Members \$5/ non members \$6.

Kids' Art

12pm-1pm

11
SUN

Geranium Show

9am to 4pm

Queen Anne Open House

10am to 4pm

12
MON

Botanical Watercolor Workshop

Tai Chi Class

13
TUE

Urban Arboriculture-Mt. SAC

14
WED

Plants in Colored Pencil

15
THU

Music Tree

10am

Evening Hikes at The Arboretum

16
FRI

Ikebana

Compulsive Gardeners

18
SUN

49th Annual Epiphyllum Show and Sale

9am to 4pm

Kids' Art

12pm-1pm

19
MON

Botanical Watercolor Workshop

Tai Chi Class

20
TUE

Urban Arboriculture-Mt. SAC

21
WED

Plants in Colored Pencil

22
THU

Music Tree

Evening Hikes at The Arboretum

23
FRI

Ikebana

24
SAT

Santa Anita Bonsai Show

9.30 am - 5pm

Kids' Art

25
SUN

Santa Anita Bonsai Show

9.30 am - 5pm

26
MON

Memorial Day

Santa Anita Bonsai Show

9.30 am - 5pm

Botanical Watercolor Workshop

27
TUE

Urban Arboriculture-Mt. SAC

28
WED

Plants in Colored Pencil

29
THU

Music Tree

Evening Hikes at The Arboretum

30
FRI

Ikebana

8 Fridays, May 30-July 25 (no class on 7/4)
9.30-11.30 am Advanced;
11.30am-1.30pm Basic (note time change)



Reiko Kawamura & Yumiko Kikkawa, Instructors
Learn about Japanese cultural traditions while practicing the techniques of Moribana, Heika and landscape arrangements. \$65 members/ \$80 non-members; \$32 materials fee payable directly to instructor.

30
SAT

Kids' Art

12pm-1pm

June events — Please call 626.821.4623 for class reservations and information

01 SUN **Members may enter The Arboretum at 7am for the months of June, July & August.**

02 MON **Botanical Watercolor Workshop**

03 TUE **Urban Arboriculture-Mt. SAC**

05 THU **Evening Hikes at The Arboretum**

07 SAT **Family Bird Walk**
8am

Daylily Show & Sale
10am to 4pm

Family Adventures
9am-12pm

Kids' Art

08 MON **Tai Chi Chuan**
8 Mondays, June 9 – July 28



Beginner and Intermediate: 6:30-7:30pm
Master Mo Chi-Sasian Yau, instructor
Benefits of Tai Chi exercises: increased energy, balance control, enhanced flexibility and mobility. It will help you develop self-discipline, release stress, lose weight, lower your blood pressure, and bolster your self-confidence. \$48 members / \$52 non-members

Botanical Watercolor Workshop

10 TUE **Urban Arboriculture-Mt. SAC**

11 WED **The Arboretum is open until 7pm for members only.**

12 THU **Evening Hikes at The Arboretum**

14 SAT **Fern & Exotic Plant Show & Sale**
9am-4:30pm

Kids' Art



15 SUN **Fern & Exotic Plant Show & Sale**
9am-4:30pm

16 MON **Botanical Watercolor Workshop**

Arboretum Nature Camp – Session I.

Come explore nature this summer at the Arboretum Nature Camp. This is where fun and education meet! Campers ages 5-12 can join us to go on nature explorations, laugh, play, create, and discover. Our camp combines themes related plant and animal ecology with hands-on activities, gardening, cooking and art. Fees: Half Days: \$200 members/ \$250 non-members. Full Days: \$400 members/ \$450 non-members. We also offer extended morning and afternoon hours: Members: \$40 for AM/ \$40 for PM. Non-members: \$50 for AM/ \$50 for PM. T-shirt included in the price of registration.

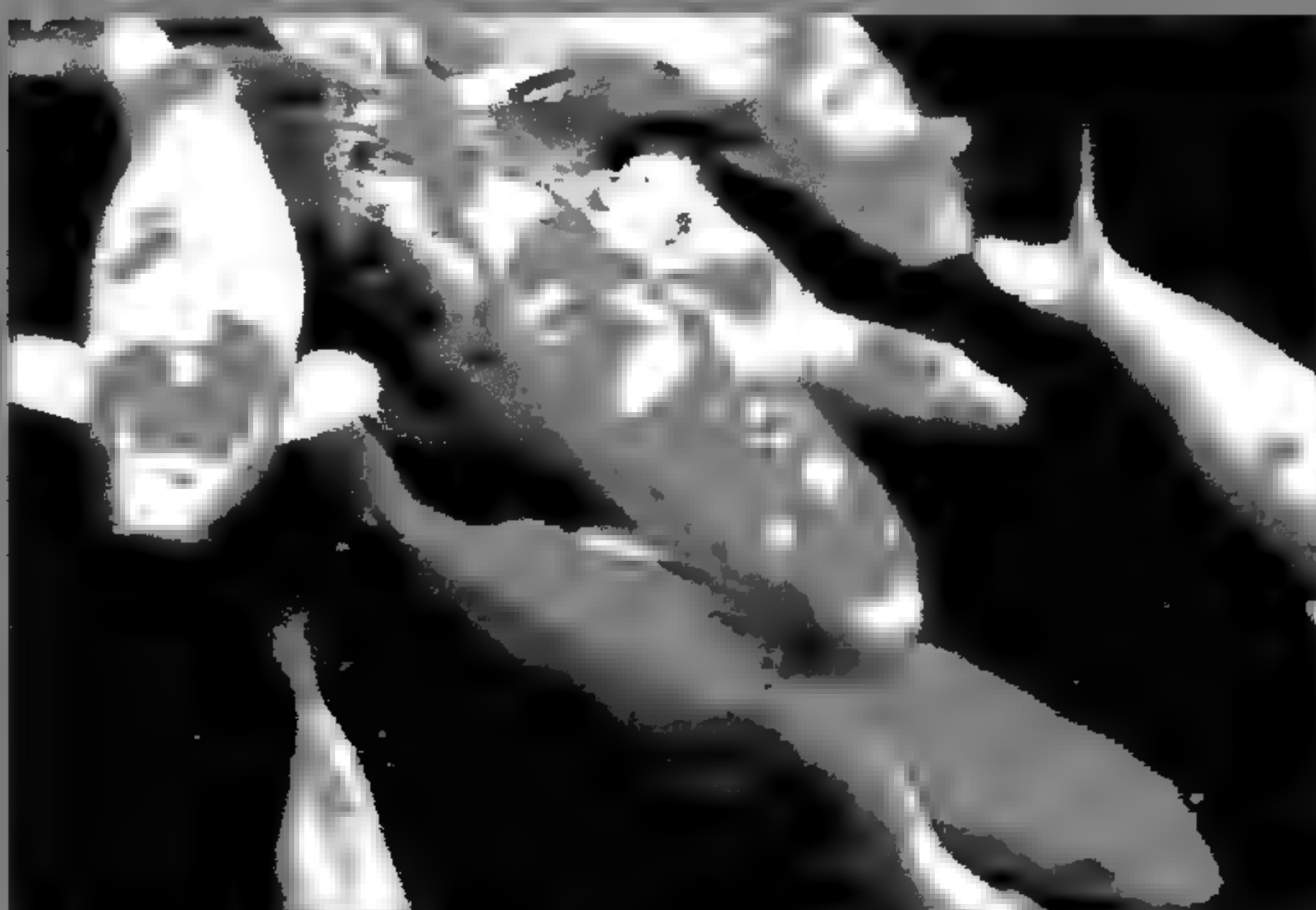
Register early as class space is limited.

17 TUE **Urban Arboriculture-Mt. SAC**

19 THU **Evening Hikes at The Arboretum**

21 SAT **The Seasonal Gardener with Steve Gerischer: Summer**

1:30-4:30 pm
Mulch, irrigation and shade. (Oh my!) Water features in the garden (we're not talking Versailles here) Vegetable garden bounty (how many zucchini do you need?) Looking good when it's 100 degrees outside (me or my garden?) Getting ready to start the Gardening Year all over again (opportunities, not problems-trying something new); \$22 members/\$25 non-members per class; you may pay at the door.



Printed Fish & Fish Painting

Let's venture out to the ponds near the Zen Deck to visit, feed, and learn about the colorful Koi Fish. Bring a T-shirt and make yourself a painted fish-shirt! 9am-12noon. Family Fee: \$15 per family for members; \$20 per family for non-members. Members \$5; non-members \$6.

Kids' Art

12pm-1pm

22 SUN **Hypertufa Workshop – Again!**

Saturday, June 22 – 10am-noon
Steve Gerischer, instructor
you will be making a hypertufa planting pot! Hypertufa: a mixture of cement, peat moss and perlite molded to resemble tufa or crumbling granite. Is a fun process for creating "instant antiques" for the garden. \$25 members, \$30 non-members. Reservations required

23 MON **Botanical Watercolor Workshop**

24 TUE **Urban Arboriculture-Mt. SAC**

25 WED **The Arboretum is open until 7pm for members only.**

26 THU **Evening Hikes at The Arboretum**

28 SAT **Cal Phil Concert on the Green**

Kids' Art
12 pm-1 pm

29 MON **Botanical Watercolor Workshop**

Arboretum Nature Camp – Session II.

Come explore nature this summer at the Arboretum Nature Camp. This is where fun and education meet! Campers ages 5-12 can join us to go on nature explorations, laugh, play, create, and discover. Our camp combines themes related plant and animal ecology with hands-on activities, gardening, cooking and art. Fees: Half Days: \$200 members/ \$250 non-members. Full Days: \$400 members/ \$450 non-members. We also offer extended morning and afternoon hours: Members: \$40 for AM/ \$40 for PM. Non-members: \$50 for AM/ \$50 for PM. T-shirt included in the price of registration.

Register early as class space is limited.

Kids and Families

Arboretum Nature Camp

June 16-27 & June 30-July 11th. Come explore nature this summer at the Arboretum Nature Camp. This is where fun and education meet! Campers ages 5-12 can join us to go on nature explorations, laugh, play, create, and discover. Our camp combines themes related plant and animal ecology with hands-on activities, gardening, cooking and art. Fees: Half Days: \$200 members/ \$250 non-members. Full Days: \$400 members/ \$450 non-members. We also offer extended morning and afternoon hours: Members: \$40 for AM/ \$40 for PM. Non-members: \$50 for AM/ \$50 for PM. T-shirt included in the price of registration. For more information or to register, please call 626.821.4623 or email colleen.biles@arboretum.org. Register early as class space is limited.

Family Adventures

Every Saturday adventure has a different theme relating to nature and the environment, and will include a variety of activities such as storytelling, talk, walk to special areas of The Arboretum, and a take-home nature craft. We will be meeting the first Saturday of the month beginning April 5 at 9 am. (No Class May 3). Family Fee: \$15 per family for members; \$20 per family for non-members. Individuals: Members \$5/ non members \$6. For more information or to register call 626.821.4623 or email colleen.biles@arboretum.org.



Family Fun

Celebrate Nature- April 19th

Celebrate Earth & Arbor Day by learning about very special and unusual trees in The Arboretum create a piece of art to commemorate the day, and take home a tree. Add Family Adventure fees apply. For more information or to register call 626.821.4623 or email colleen.biles@arboretum.org.

Mother's Day Hike & Tea-May 10th

Learn about the many plants in the Herbs of the World Garden and those used to make for our own tea party. While we are sampling different teas, we will make a plant-able card to send to a very special person. Family Adventure fees apply. For more information or to register call 626.821.4623 or email colleen.biles@arboretum.org.

Painted Fish & Fish Painting- June 21st

Trek to the Zen Deck to visit, feed, and learn about the colorful Koi Fish. Bring a T-shirt and make yourself a painted fish-shirt! Family Adventure fees apply. For more information or to register call 626.821.4623 or email colleen.biles@arboretum.org.

Arboretum Bookworms



Sundays at 2pm and Wednesdays at 10am

This is a FREE storytelling program. Come explore The Arboretum Library and our great story trees. Enjoy plant & nature stories with a new theme every month. After story time create a great take-home craft. Ages 3-8. Meet in The Arboretum Main Entrance. . It is an indoor/ outdoor program; please dress appropriately. This program goes on rain or shine

April: The Green Planet on Earth Day. April: 20 & 23

May: Bate, Bate, Chocolate! May: 18 & 21.

June: Gettin' Buggy. June 15 & 18

Music Tree

A parent-child class for children ages 3-5 play simple percussion instruments, dance and sing songs habitats found at The Arboretum and beyond. For more information visit musicreehome.com or call (626) 398-7058.

10 Thursdays 10.00-10:45 a.m. beginning March 6th. (no class March 20th or May 1st). Fees \$205 per parent/child pair for Arboretum members, \$215 for non-members, discounts available for siblings. Fees include 2 CDs ,songbook, and animal cards.

KidsArt at The Arboretum

Fine Art Drawing classes are designed to help develop attention, ability, and self-confidence, while learning fundamental skills.

Saturdays, January 19-April 5 & April 19 - June 21 (No class May 3) from 12-1pm. Cost per session: \$145.00. For more information or to register, please call 818.248.2764..

Just some of the 2008 LA Garden Show Participants

Designers

Christopher Bysshe of Christopher Bysshe Landscape Design
Paul Contreras of Tierra Verde Design
Steve Gerischer of Larkspur Garden Design
Laramie Haynes of Haynes Landscape Design
George Hull of Mountain States Wholesale Nursery and student design team from the ASU School of Landscape Architecture
Craig Ruggless of Tall Poppy
Jae Soon Song of The Korean Garden Society
Lew Watanabe of Good Earth Enterprises
Nick Williams of Nick Williams and Associates

Plants

Greenwood Daylily Gardens
Bountiful Gardens
San Gabriel Nursery & Florist
Estrada's Palms
Sunnyslope Gardens
Tomatomania!
Rainforest Bamboos
Fantasy Nursery
Fern Central
Los Angeles International Fern Society
MAS Plumerias
San Gabriel Valley Cactus and Succulent Society
California Rare Fruit Growers
American Begonia Society Orange County Branch
Monalisa's Tropical Plants
Epiphyllum Society of America

Marketplace

Artplantae Books
Asian Ceramics, Inc.
Botanical Artists Guild of S. California
Australian Hats
Collectibles Birdhouses
Codina's Clay Creation
Eye of the Day
Floradora Hats
POT-TED
Iron Furniture Design
Leaf Motif
Libby's Vintage Home & Garden
More Than Mermaids
Newtiques Inc.
Susan's Keepsake
Smith & Hawken
The Garden Party
The Elegant Garden

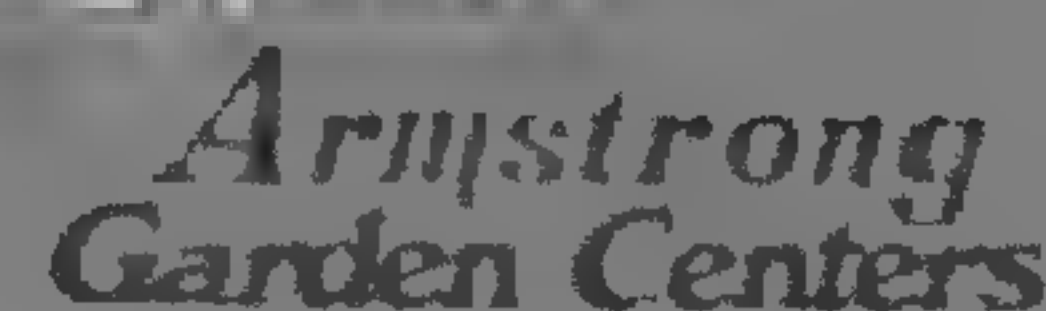
Lectures

Lectures by garden experts and authors occurring May 2-4 from 11am through 3pm daily.

We thank our participating sponsors

 MONROVIA
THE ART OF GARDENING

 GARDEN

 Armstrong
Garden Centers

 Smith & Hawken
IN THE GARDEN SINCE 1878

KIDS IN NATURE

Summer Camp

Jill Berry, Education Program Manager

Plan activities for your kids this summer right here at The Arboretum. The Arboretum Nature Camp for kids ages 5-12 begins in June. Campers will go on nature explorations that combine themes related to and animal ecology with hands-on activities, gardening, cooking and art. Remember to register early as class space is limited and fills up quickly. Session 1 runs June 16-27 and session 2 runs June 30-July 11. Extended morning and afternoon hours are also available.

Half Days: \$200 members/ \$250 non-members.

Full Days: \$400 members/ \$450 non-members.

Extended Hours: Members: \$40 for AM/ \$40 for PM.

Non-members: \$50 for AM/ \$50 for PM.

T-shirt included in the price of registration. For more information or to register, please call 626.821.4623 or email colleen.biles@arboretum.org.



Early Mornings and Late Evening

Early Mornings and Late Evening at The Arboretum this Spring and Summer.

During the entire months of June, July and August enter as early as 7am. And, on selected evenings, enjoy a late evening visit until 7pm.

Late evenings

June 11 & 25; 7am - 7pm

July 9 & 23; 7am - 7pm

August 13 & 27; 7am - 7pm

MAKING A DIFFERENCE

Leave A Legacy For Generations to Come

Kathy M. Kwan, Development Manager

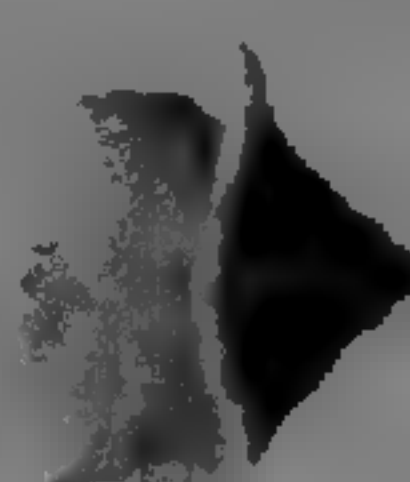
The possibilities of making a difference at The Arboretum are endless. We offer various types of planned gifts.

Bequests: a will can benefit you and The Arboretum

Charitable Trusts: learn how to make a gift that provides lifetime benefits such as income or reduction of capital gains tax liability while supporting The Arboretum

Planning ahead means giving future generations the opportunity to see The Arboretum flourish. Your generosity ensures the enjoyment of The Arboretum for the children of tomorrow.

For more information on The Arboretum's gift planning program, please call at 626.821.3208.



You are invited to the
THURSDAY EVENING PREVIEW RECEPTION
MAY 1, 2008

Enjoy an evening honoring innovative
garden designers from Southern California

Stroll through their extraordinary gardens
with wine, hors d'oeuvres and music

Preview and Purchase
4pm– 6pm

Reception 6pm – 9pm

\$75 per person
RSVP by April 18, 2008
626.821.3208

LA GARDEN SHOW

Designers, Speakers & Committee

Designers

Christopher Bysshe
Christopher Bysshe Landscape Design

Paul Contreras
Tierra Verde Design

Erin Corbal
Sea of Green Gardening

Steve Gerischer
Larkspur Garden Design

Laramee Haynes
Haynes Landscape Design

Andreas Hessing

William Hynek
Tierra Verde Design

Damon Mori
Mel-O-Dee Garden Center and
Landscaping

Craig Ruggless
Tall Poppy

Steve Sandalis
Mystic Water Gardens

Jae Soon Song
Korean Garden Society

Lew Watanabe
Good Earth Enterprises

Nick Williams
Nick Williams and Associates

Speakers

Steve Goto
Coast Nursery

Joe Brosius
Magic Growers

Jan Smithen
Wholesale Nursery
Author & Teacher Extraordinaire!

Jeff Moore
Solana Succulents Nursery

Stephanie Georgieff
Naturopath & Herbalist

Steve Gerischer
Larkspur Design
Landscape Designer

Lili Singer
Special Projects Coordinator for
Theodore Payne
Horticultural Consultant

Dr. Jerry Turney
Plant Pathologist: Certified Arborist

Pamela Berstler
Flower To The People
Landscape Designer

Mayita Dinos
Mayita Dinos Garden Design
Landscape Designer

Nicholas Staddon
Monrovia Growers
Director of New Plant Introductions,

Susanne Jett
Jettscapes Landscape
Landscape Designer

Amy Stewart
Author

Chairperson

Jane Herrmann

Committee

Bernard H. Babcock, II
Carolyn D. Bennett
Marcia Bent
Carol Cupp
Marlene Griffith
Suzanne Haller
Burks Hamner
Shelly Harter
Judy Horton
Ginger Lincoln
Nancy McDonald
Peg Rahn
Peggy Stewart



DISCOVERY TRAILS

Vegetable Gardening Naturally: An interview with Leigh Talmo

Marcela L. Singleton, Grace Kallum Perennial Garden Curator

Leigh Talmo is one of my garden heroes, and I am sure I am not alone. Leigh has been involved at The Arboretum since 1994. First as a volunteer and then as the dedicated and inspiring teacher of the kid's gardening program in The Arboretum's Roots and Shoots Children's Discovery Node. Leigh also manages her community garden in Sierra Madre and runs her own uniquely styled garden care business locally. Her philosophy on gardening is definitely in keeping with the trend toward organic and sustainable garden practices—but with a twist.

MS: How long have you been growing vegetables?

LT: I actually started working in vegetable gardens when I was a very young child in my grandmother's garden. Also, my father was an avid vegetable gardener. So, I pretty much grew up in the vegetable garden.

MS: So, you're a third generation Southern California gardener?

LT: Actually fourth, my maternal great grandmother gardened in Pasadena also. My dad's garden was in Sierra Madre. I started in the early 70's in my own garden in Sierra Madre.

MS: Did you learn organic practices from them?

LT: Yes. That was all they used. That was the way you did it back then.

MS: It's interesting that people have had to get so far away from organic gardening in order to come back around and start practicing it again. There's a definite trend toward organics that has been moving into the mainstream for the last decade at least. But, you refer to your garden practices as "natural gardening" techniques rather than organic gardening. What is the difference?

LT: I try to imitate nature instead of using store bought products. That means things like recycling garden clippings, etc., in the compost to add amendments and nutrients to the soil, encouraging earthworms in the compost and the garden, and encouraging beneficial insects as natural pest control.

MS: How do you encourage earthworms and beneficial insects?

LT: Well, earthworms would be encouraged by having plenty of organic matter in the soil and also using it as mulch or topdressing. Beneficial insects are encouraged by having plant diversity and by not using any kind of sprays or poisons,

including insecticidal soaps, which are considered approved organic gardening practices.

MS: So, you don't use copper sprays or insecticidal soaps or BT or any of those other recognized organic products?

LT: No, because it would be fatal to the larval stages of beneficials as well as "pests".

MS: What do you do for cabbage loopers or aphids or run-of-the-mill pests that plague most gardeners?

LT: I use the hand pick and "gently press back into the earth" method or feed them to the birds, if handy.

MS: In my experience there are fewer "pests" in organic or naturally cared for gardens, anyway. Do you think that is true?

LT: Definitely, because that is how nature works when it is in balance. I strive for a balance of beneficials and pests in the garden so that the pests will naturally be taken care of as part of the food chain.

MS: Do you ever let plants go to seed in the garden rather than buying new seeds each season?

LT: Yes, you can have great success allowing many plants to reseed. Although there are some plants you don't want to allow to reseed, such as crops that would cross-pollinate: tomatoes, squash, peppers that kind of thing. You might not care if they cross-pollinated, but you would not always get a plant that was true to the original. It might have different characteristics than those that the seeds were selected for—specifically flavor, color, etc.

MS: What are some plants where cross-pollination would not be an issue and reseeding would be encouraged?

LT: Lettuces, arugula, anything in the Cole family such as cabbage, broccoli, collards, cauliflower. Peas and beans are fine too. Root crops too, beets, radishes, carrots.

MS: So that's a lot of money saved on seeds.

LT: Yes, but it takes a little more patience that way because you have to wait for the plants to go to seed, leave them in the garden longer than you normally would, until the seeds are mature. There's also the possibility of having to move seedlings to more desirable locations.

MS: What about the idea that it's important to put crops in different places from year to year. Crop rotation to prevent soil fungus, die-back, damping off, that sort of thing.

LT: It's not a problem with any of the crops that I let reseed. It would only be a problem with the ones that I would worry about cross-pollinating anyway.

MS: Why do you think that is?

LT: I'm not sure but perhaps that is just one example of using gardening practices learned from observing nature.

MS: You mentioned succession planting to me as one of your gardening methods. Could you explain to me what that is?

LT: You plant one type of crop that takes longer with another type that matures faster in between rows in order to utilize more garden space. So by the time you harvest the faster maturing crop you have more room for the slower maturing crop.

MS: What are some good companions for this method for the summer season?

LT: It is an easier method for the winter garden because all of the summer crops are so fast and we have such a long growing season that often you have tomatoes still producing in December and interplanted basil lasting just as long. Something to save room in the summer garden though is to plant vertically.

MS: So, staking and trellises are important for gardeners with limited space. A lot of the summer plants require staking and support anyway, though don't they?

LT: Yes, however there are bush varieties of beans, for example that take up more space. Also, some people grow their squash crops (cucumber, zucchini, mini pumpkins, etc) on the ground rather than utilizing vertical space. One of my favorite summer crops is a squash called zuccetta that will grow as tall as whatever trellis you put it on!

MS: Didn't you once tell me about using zuccetta in lieu of pumpkins for carving jack o' lanterns with your kids when they were little?

LT: Yes, if you leave them on the vine until they mature they make very interesting creatures for carving. However, my

favorite thing about zuccetta is eating it when it is young and tender (although that might be a 2-3 foot long squash)!

MS: What does it taste like?

LT: Mild zucchini-like, light green with no seeds except in one end. They are good fresh, steamed or in soups.

MS: So what are some good things for Southern California gardeners to be planting right now?

LT: Tomatoes, peppers, squash, eggplant, okra. All above ground, fruiting plants. Beans. Annual herbs such as basil. You might want to have perennial herbs and edible flowers mixed in for diversity.

MS: What are some edible flowers people can plant right now?

LT: Nasturtiums, carnations, roses (I like to use mini-roses), daylilies, calendula, marigolds, any flowers from the herb garden (rosemary, thyme, fennel, sage). Pansies and violas are good too, but better planted in the fall and lasting through the spring into early summer.

MS: Any last thoughts on the topic?

LT: Don't be afraid to have fun experimenting in the garden. Remember to think of the Southern California garden differently from the rest of the US because we can grow all year round here and everything can overlap and you can have food from your efforts all year long. The more you cook from your garden the more you will enjoy the fruits of your labor.

MS: Literally.



HEROES

Thank you for your continued support.

The 2007 Annual Giving Campaign was a great success!

2007 ANNUAL GIVING & GENERAL DONATIONS

Founders

\$5,000 +

Amanda Goodan & William Koelsch
Edgerton Foundation

Benefactors

\$2,500-\$4,999

George & Caroline Kinkle
Mrs. Elise M. Marvin
G. Arnold & Gretl Mulder

Garden Partners

\$1,200-\$2,499

Carolyn & Jamie Bennett
Marlene & Frank Griffith
Julie Goodell
Burks Hammer
Shelley & Tom Harter
Austin & Soma Hathaway
Carl & Jane Herrmann
Kenneth & Freddi Hill
Li Yang & David D. Hu
William & Ginger Lincoln
Nancy & William McDonald
Donivee & Merrill Nash
Gilbert & Terese Resendez
Virginia N. Russell
Alan Tekerlek
Greg Stone & Cindy Vail

Friends

\$600-\$1,199

Anonymous
High Temp Metals
Santa Anita Park
Mary Anne Cunningham
Brack & Betty Duker
Joe & Diana Eisele
Dianne Flood
William & Riki Frea
Rise Johnson
C. Douglas & Susan Kranwinkle
Mrs. Ruth S. Martin
Lee & Peggy Rahn
Marco & Angela Sillus
Sho & Sherry Tay
Thomas & Laney Teichert

Supporters

\$300-\$599

Oak Tree Charitable Foundation
Hinton, Kreditor & Grontoos, LLP
James & Helen Bang
Mrs. Hannah G. Bradley

Douglas & Lynn Brengel
Mel & Renate Cohen
Mr. & Mrs. Richard Cupp
Charles & Ruth Gilb
Brian & Dryden Helgoe
David & Virginia Helm
Sherry & Edward Heyman
Richard & Tracy Hirrel
Judy M. Horton
Carolyn & Roscoe Moss, Jr.
Wendy Munger & Leonard Gumport
Joe O'Daly
Jim & Susie Rhodes
Philip & Sara Swan
Clara Tien & Lionel Zhang
Tim & Margot Vickery
Dave & Monica Walsh
Alan & Karen Wang
Ian & Barbara White-Thomson
Petrie & Hugh H. Wilson, Jr.
Alan S. Wood
Mark Wourms & Patty Johnson

Contributors

Up to \$299

Anonymous (7)

Arboretum District of California Garden Club, Inc.
Australian Native Plants Nursery
Jack & Alexis Bilheimer
Melinda J. Blackway
Kathy Brandes & John Tyler
Virginia B. Braun
Mrs. Helen Chen
Glen Dake
Daniel Busbin Landscape Architecture
Debra Daniels
Bryant & Judith Danner
Thomas & Angelina Dante
Robert & Diane Davies
Mrs. William H. Doheny
Rosalie Dunham
Michael Feibish & Julia Newton
Kirby W. Fong
Walter & June Garrison
Drs. Hyman & Vivian Gildenhorn
Monte & Evelyne Glaser
Teresa Gonzales
Gloria & John Goss
Dr. Judith B. Handley
Jon & Edna Hartmann
Dr. Bert Hassler & Dr. Olga Hassler
Boyd Higgins
Toby M. Horn
Mrs. Jane Houle
Janice Housh

Mrs. Natalie A. Howard
Vern & Eileen Hubbard
Mrs. Susie Jensen
Dorothy J. Johnson
Marie & Louis W. Jones, Jr.
Mr. & Mrs. W. Keller
Maurice Kent
Lucille & Harold Kettell
Robert & Diana Kincart
Dorena Krepper
Mr. & Mrs. R. David Kummer
Kathy Kwan & Morton Price
Alvin & Sharon Milder
Lynn Russell & Diane E. Miller
Mrs. Gloria J. Miller
Eudorah M. Moore
Mr. & Mrs. David Narver, Jr.
Mrs. Louise Neiby
Norman & Carolyn Newberry
Robert & Sharon Novell
Thomas & Carol O'Toole
David Okihara
Janelle Wynn Peck & Alan Peck
Carol Plotkin
William & Harriet Plunkett
Klaus & Ileana Putter
Mrs. Joanne G. Reese
Lorraine & Ted Richter
Jud & Marilyn Roberts
Stella L. Ross
Mrs. Janet Rulec
James & Patricia Ryan
Mr. & Mrs. Tim Scheidler
Mrs. Miriam Schwartz
Janet L. Segal
David Senske & Kari Magee
Robert & Dawnette Skemp
Betsy & Sidney Tyler, Jr.
Southern California Garden Club
Mrs. Patricia Van Koetsueld
Paul & Charlene Vert
Susan A. Walker
Dr. Nancy E. Warner
C. David Watson, Jr. & Alice O'Donnell
Richard & Virginia Winslow
Mrs. Jess Witt
Mitchell & Earle Wright
David & Leang Yang
David & Sharon Yonashiro

Grants & Programs

Arboretum Library
\$10,000+
The George and Marcia Good Family Foundation

Roots & Shoots Program
\$25,000
Ben & Christen Garrett

Rose Garden Fund
\$1,000
Ron & Marcia Radelet

In Honor of Esther S.M. Chui-Chao
Maria & Jesse Covarrubias III
Delfina A. Fernandez
Jack L. Hung
Sandra J. Ball Rokeach
Clara K. Tom

In Memory of Walt Drown
Including Memorial Bench
Mrs. Wanda J. Drown

In Memory of Hattie Grieve
Marlene Coult
Michael Mendelsohn
Donald & Sandra Palmer

In Memory of Mr. Bih Shung Hah
Mrs. Yu Ying Hu

In Memory of Ted Hansen
Louis & Susanne Troise
Kenneth & Vivien Wyse

In Memory of Duane Laubenstein
Virginia A. Callan

In Memory of Peg Lencioni
Including Memorial Bench
George W. Kiel
Randall & Amanda Lencioni

In Memory of Alice L. Robinson
Including Memorial Bench
Larry & Catherine Robinson

In Memory of Beverly Short
Including Memorial Tree
Ronald & Karen Short

In Memory of Ruth Gordon Turner
Virginia A. Callan

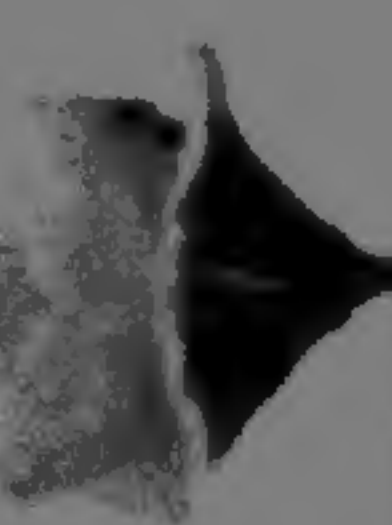
Community Partners

Carrillo's Garden & Landscape
KCRW 89.9
Rainbow Garden Nursery
Seso Media Group
Subtractive, Inc.

In-Kind Donations

Gale Kohl & Gale's Restaurant
Susan Kranwinkle
Peggy Rahn
Jay Terauchi
Mike & Grace Terauchi
Los Voluntarios (In Memory of Elaine Hoffman)
Virginia Stein
Sandy Snider
Mary McGrath
Carol Cuthbertson
Joyce Travis
Dorothy Lynn
Mildred Rider
Bonnie Hames
Phoebe Wyland
Margaret Page
Helen LaRue
Lauragene Swenson

The Arboretum's mission is to cultivate our natural, horticultural and historic resources for learning, enjoyment and inspiration. We appreciate your year round support. Listed above are donations received between September 5, 2007 and February 29, 2008. Please call 626-821-3208 and let us know if we inadvertently misspelled or omitted your name.



DEPARTMENT CONTACTS

Office of the CEO	626.821.3250
Superintendent of Grounds	626.821.3234
Education	626.821.4623
Plant Information	626.821.3239
Schools Tours	626.821.3216
Group Rates	626.821.3208
Communications	626.821.3208
Development	626.821.3208
Memorials	626.821.3208
Membership	626.821.3233
Volunteers	626.821.5897
Filming/Commercial Shoots	626.821.3204
Weddings/Photography	626.821.3211
Peacock Cafe	626.447.0641
Garden & Gift Shop	626.447.8751
Library	626.821.3213

Open daily from 9am-5pm;
admission closes at 4:30 pm.

Free parking.

Picnic area is available outside of the main entrance.

626.821.3222
www.arboretum.org

Cover image: California Poppy



By buying products with the FSC label you are supporting the growth of responsible forest management worldwide

SW-COC-1530

© 1996 Forest Stewardship Council A.C.



Please pass this on to a friend and recycle

LA GARDEN SHOW 2008

ABUNDANT GARDENS – A VISION FOR SUSTAINABILITY

presented by Monrovia Growers

May 2 – 4, 2008

A special thank you to our 2008 LA Garden Show partners

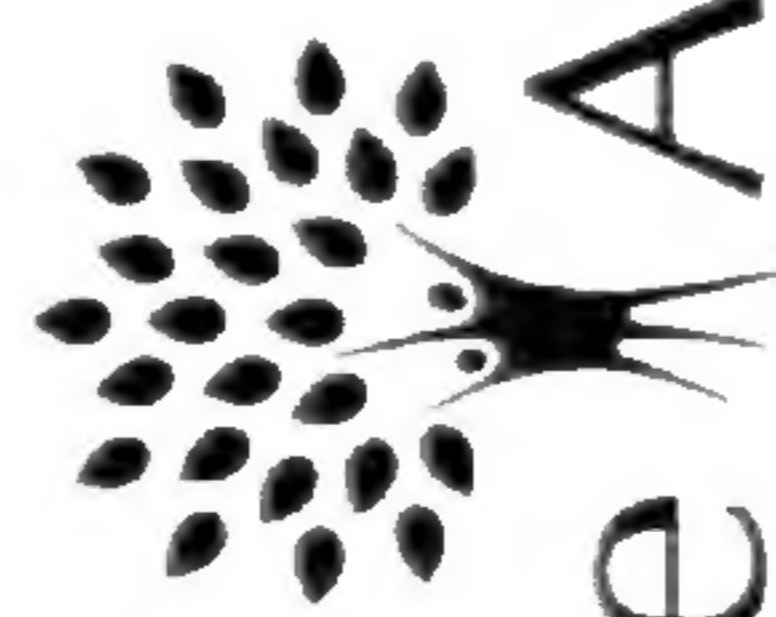
MONROVIA
AGRICULTURAL CRAFTSMEN SINCE 1920

Armstrong
Garden Centers

GARDEN
D E S I G N

Smith & Hawken
IN THE GARDEN SINCE 1979

NON PROFIT
ORGANIZATION
U.S. POSTAGE
PAID
ARCADIA, CA
No. 528

The Arboretum
LOS ANGELES COUNTY ARBORETUM & BOTANIC GARDEN

301 NORTH BALDWIN AVENUE, ARCADIA, CA, 91007