

News from The Arboretum

of Los Angeles County

PUBLISHED BY THE LOS ANGELES ARBORETUM FOUNDATION

BALDWIN BONANZA 2002: MAY 3-4-5

*This year's Baldwin Bonanza
has something for everyone...*

for gardeners of all ages, for gardens of all sizes, from the beginner to the experienced gardener, from flowers to vegetables, from soil to garden tools, from simple gardening tips to scientific techy stuff...

*This year's Baldwin Bonanza
has something for you!*

Festivities begin Friday, May 3 with the reservation-only Preview Party Fundraiser from 4:30 to 8:00 pm.

Preview Party guests enjoy first pick of thousands of exciting and hard-to-find plants, and will be able to meet and talk with 18 of Southern California's prominent landscape designers. The Silent Auction will feature a wide array of exciting items worthy of competitive bid and banter activities.

Foods and flavors from around the globe will be served by AU79 Tea House, Bistro 45, Burger Continental, Café Bizou, Chandra Thai Restaurant, Chez Sateau, Claro's Italian Markets, Cozy Cactus, Il Fornaio, Patina Catering, Simply Unique Catering, The Grill at The Ritz-Carlton, and The Kitchen for Exploring Foods.

Tickets to this event are limited and are available for purchase from The Arboretum.

A "World of Plants" Sale

The public Plant Sale on Saturday, May 4 and Sunday, May 5 is from 9:00 am to 4:30 pm each day. Thousands of plants from The Arboretum Collection and participating nurseries, along with a treasure-trove of interesting garden accessories, will be available for purchase.

Among the thousands of plants for sale, unique treasures include *Acacia sieberiana* 'Woodii', *Agave tequilana* 'Azul' (with 7' blue leaves), *Caesalpinia gilliesii* (Yellow Bird of Paradise, 8-15' shrub, yellow flowers with red stamens), *Combretum fruticosum* (very rare and choice), and *Senna* 'Butter and Cream' (a dense spreading shrub to 6 feet, with soft yellow flowers).

Continued on page three



Thousands of unique plants will be available.



The Gabrieleno-Tongva Tribal Council and Dance Company will perform at Baldwin Bonanza 2002.

Preview Party & Plant Sale

Friday, May 3 from 4:30 - 8:00 pm

Members Only Plant Sale

Saturday, May 4 from 8:00 - 9:00 am

Public Plant Sale

Saturday, May 4 from 9:00 am - 4:30 pm

Sunday, May 5 from 9:00 am - 4:30 pm

IN THIS ISSUE:

CEO's Message 2
Baldwin Bonanza 3

Mediterranean Symposium 4
Ethnobotany Celebration 4

About Palms 5
Art at The Arboretum 5
Tour and Taste 6

Mother's Day at Queen Anne Cottage 7
...AND a Summer Classes & Activities Calendar

SPRING AT THE ARBORETUM

I know nothing whatever of many aspects of gardening and very little of a great many more. But I never saw a garden from which I did not learn something and seldom met a gardener who did not, in one way or another, help me.

Russell Page, *The Education of a Gardener*

The Arboretum is undergoing its yearly renaissance...getting ready for another wonderful year of mother nature sharing with us her seasonal beauty, whether it be a riot of colorful flowers, the glorious sounds of water, wildlife or silence, as well as the comfort and nurturing from our old friend...the sun.

Spring at The Arboretum begins with news that we have received several noteworthy grants. We have received two grants for support in operations, one grant being a two-year grant. We have also received a grant specific to the historic area that will help ensure the ongoing integrity of our structures making them more accessible to visitors.

The Annual Appeal and The Baldwin Bonanza Patrons' Letter are ongoing and successful campaigns, further encouraging us all to continue our redevelopment and positive changes for the greater community. Visitors, corporations and foundations tell us that we have improved our programs and

our plans for the future, enhanced the grounds and are more culturally inclusive. This show of confidence is very far reaching.

This year's Baldwin Bonanza will be a great festival. Its success will depend upon a great participation of visitors, members, volunteers and other friends. This annual event is our biggest fundraiser of the year and it needs YOU to buy plants, garden accessories and join us for all the fun. On Friday, May 3rd we will have a glorious preview party with food, drink and, of course, guests will have the first opportunity to buy plants and items at the Silent Auction.

The conceptual long-range plan is making headway. We have completed Phase I, an inventory of our existing facilities and grounds, as well as establishing the scope and programs of the Plan. Phase II is underway: analyzing, critiquing and moving on to more creative opportunities for The Arboretum. We are preparing to hold public

meetings where all will have an opportunity to contribute input. Keep a look out for meeting announcements. In the meanwhile, please stop by the office for a look at Phase I and, if you would like, make suggestions that you might have.

I look forward to seeing you at Baldwin Bonanza.



Peter C. Atkins, CEO



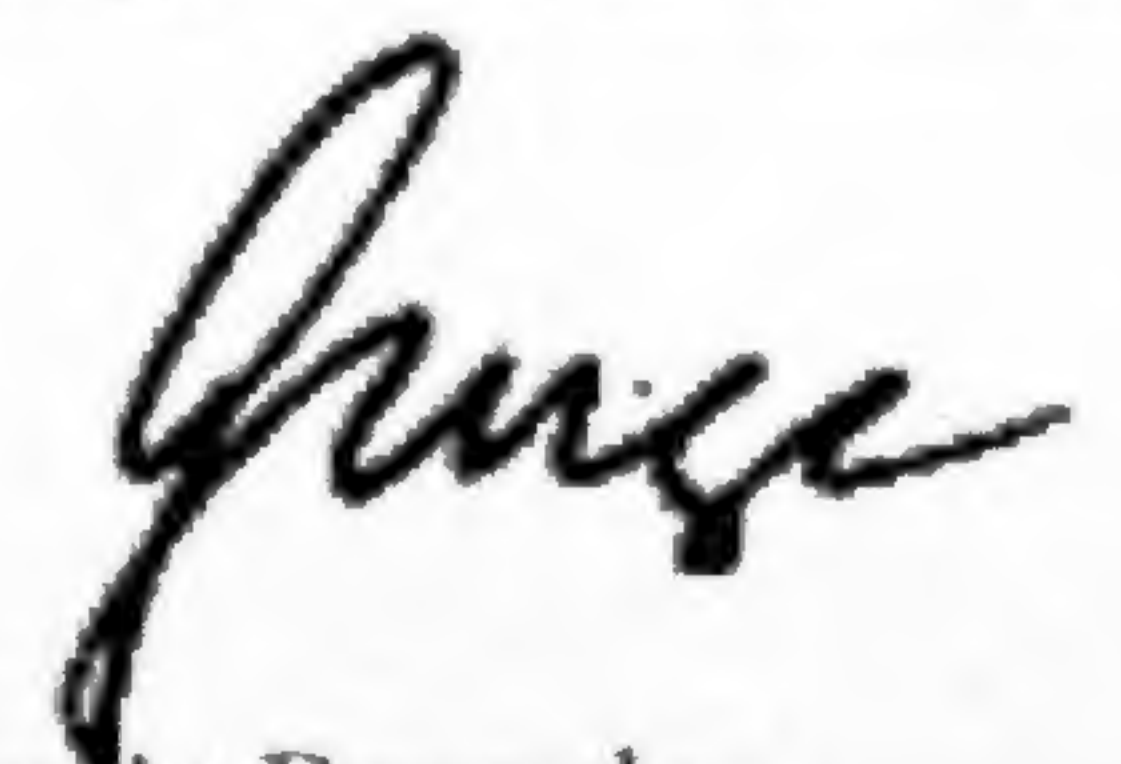
DEAR ARBORETUM FRIENDS,

On behalf of the foundation's board of trustees, I thank all of you — listed in the last newsletter and on the insert in this newsletter — for the wonderful success of our year-end appeal. With your support we've already passed the \$50,000 mark — substantially ahead of last year, and donations are still coming in!

The conceptual long-range plan is progressing well. Nancy Goslee Power & Associates has completed the first phase of work. Their report, including a statement of Arboretum goals and handsome graphics, is available through Peter Atkin's office if you want to see it. Please look for announcements of our community workshops, whose input — with your help, we hope — is sure to enrich the plan.

I hope to see you in the gardens at this year's Baldwin Bonanza Preview Party on Friday, May 3rd and at the Plant Sale and Garden Chat events over that weekend. We expect this to be the greatest Bonanza yet!

Spring is here and The Arboretum's looking great. Please join me and the foundation trustees in congratulating Peter and his staff on their excellent work as ours becomes one of the very best arboretums and botanic gardens in the world.



George A. Brumder
Foundation Board President

LOS ANGELES ARBORETUM FOUNDATION BOARD OF TRUSTEES 2002-2003

George A. Brumder
President

Donald R. Deise
First Vice President

G. Arnold Mulder
Second Vice President

Perry W. Wilder III
Secretary/Treasurer

John R. Fee
Austin H. Hathaway
William L. Hildeburn
David D. Hu
Louis W. Jones, Jr.
Hank Maarse
Alexander D. Mallace

Timothy K. McCarthy
Maribeth W. McGinley
M. Brian Nash
Peggy Rahn
Virginia M. Stein
Elayne G. Techentin
Petrie M. Wilson

The Arboretum Newsletter is published by the Los Angeles Arboretum Foundation. The Arboretum of Los Angeles County is jointly operated by the Los Angeles Arboretum Foundation and the County of Los Angeles.

Baldwin Bonanza 2002

Continued from Cover

Garden Galleries

Garden Galleries 2002:

"In Search of Our Roots", an ethnobotanical exploration, will feature garden design ideas that illustrate man's relationship with plants. Featured designers include:

■ **A World of Plants**

designed by Gary Butters, Persson's Nursery

■ **Tea Garden** designed by Tony Kienitz, Vegetare

■ **California Dreaming** designed by David V. Osti, D.V.Osti Landscaping

■ **A Tranquil Retreat in the Garden** designed by Lew Watanabe, Good Earth Enterprises

■ **Garden of the 4 Elements** designed by Tricia Worman with Robert Newburger

■ **Aleupkingna: a Gabrieleno-Tongva Village Garden** designed by Mark Acuña & the Gabrieleno-Tongva Tribal Council

■ **Quiet in the Country** designed by Brent Woody Woodgrift, Woody's Waterworld Landscape

■ **California Prairie: Past, Present and Future** designed by John Greenlee, Greenlee Nursery, Inc.

■ **Tasty Tuscany: An Edible Italian Garden** designed by Nick Williams, Nick Williams & Associates

■ **Plaza de la Fuente** designed by Suzy Moon, Blue Moon Designs, with Al's Garden Art

■ **Medieval Cloister Garden** designed by Barbara Lampson, Land Design

■ **Domus Italia** designed by Tom Poplin, Horizon Landscape, with Loren Tripp

■ **A Chinese Garden with a Bamboo Shadowed Path** designed by Hsiao-Ling Ting, Kenny Tuyen, with L.A. Web, Inc.

■ **Goodview Garden** designed by Paul Y. Zou, Goodview Landscape Design & Construction

■ **Nurture Nature: Making a Garden in the City** designed by Judy Kameon, Elysian Landscapes

■ **The Best of the West** designed by Nancy Goslee Power & Associates



Chalk art fun

■ **Mediterranean Retreat: Sophisticated and Tranquil** designed by Phyllis Snyder, The Garden Palette with Dave's Landscaping

■ **el jardin de soledad** designed by Toby MacElroy, Toby MacElroy Landscape Design

■ **The Korean Garden** designed by Jae Soon Song, J.S. Nursery

Garden Chats

Garden Chats and demonstrations will be on-going throughout the weekend. Palms & cycads, orchids, gourds, bamboo, bonsai, succulents, roses, & gardening in Southern California will be among the featured chats. All Garden Chats will take place at the Mediterranean Retreat Garden and are free with general admission. For details see the Garden Chats schedule below.

Just For Kids:

11:00am to 2:00pm

A special Children's area will be featured during the festival. On Saturday and Sunday create chalk art and on Sunday learn to pot a plant.

Menus & Music:

A new feature of Baldwin Bonanza 2002, The World Café Food Court of Ethnic Eateries, will continue the exploration of the "plant-people" ethnobotanical relationship. Food from cultures around the world will be presented and served throughout the weekend by AU79 TeaHouse, Burger Continental, California Pizza Kitchen, Chandra Thai Restaurant, Claro's Italian Markets, Cactus, Jamba Juice, and Simply Unique Catering.

Song, ceremonial dance and storytelling performed by the Gabrieleno-Tongva Tribal Council & Dance Company, Ancestral Music from the Maya, Aztec and other indigenous pre-Hispanic peoples of Meso-America performed by Xavier Quijas Yxayotl, and Mexika-Sounds of Ancient Mexico performed by Martin Espino and Jesus Nava will complete the ethnobotanical backdrop of this most impressive festival weekend.

BALDWIN BONANZA 2002 GARDEN CHATS

Saturday, May 4

10 am: Wonderful World of Palms Phil Bergman (Jungle Music Palms and Cycads)

11 am: Gardening in the Mediterranean Style Jan Smithen

Noon: Unusual Garden Plants Tom Jesch (Designed II)

1 pm: Chinese Cymbidium Orchids Teresa Fung (Maise Orchid Nursery)

1:30 pm: Gardening in the Shade Lili Singer (*The Gardener's Companion*)

2 pm: Gourds and Their Infinite Uses Leigh Adams (California Gourd Society)

3 pm: Amazing Bamboos

Ralph Evans (American Bamboo Society)

4 pm: What Makes a "Good" Orchid Ned Nash (Cal-Orchid, Inc.)

Sunday, May 5

10 am: Beautiful Easy Bonsai Ray Blasingame (Santa Anita Bonsai Society)

11 am: Successful Southern California Gardening Robert Smaus (The Los Angeles Times)

Noon: Culture of Tree Aloes Tom Glavich (San Gabriel Valley Cactus and Succulent Society)

1 pm: Succulents and Their Intricate Containers Peter Sharp/Rita Gerlach (San

Gabriel Valley Cactus and Succulent Society)

1:30 pm: Gardening in the Shade Lili Singer (*The Gardener's Companion*)

2 pm: Plants and People through the Ages Wolfram Alderson (The Sycamores)

3 pm: Coming Up Roses! Bruce "Red" Collard (Pacific Rose Society)

Additional Demonstrations by California Gourd Society in Ayres Hall: Saturday and Sunday

Getting Started Techniques and tools for cutting and cleaning hard shell gourds and gourd varieties discussion.

Woodburning Demonstrates woodburning tools to embellish hard shell gourds.

Goldleafing How to create dazzling effects on gourds.

Knotless Netting Waxed linen weaving enhances the beauty of gourds. Techniques will be demonstrated.

Huichol Beading Learn to create traditional Huichol Indian bead designs.

Dyes Get amazing results using leather dyes as a color medium on hard shell gourds.

Enameling A unique process of embellishment, using paints and embossing powders.

AN HERB GARDEN ETHNOBOTANICAL SOLSTICE CELEBRATION

Internationally renowned herbalist and author Amanda McQuade Crawford will headline The Arboretum's Herb Garden Celebration and Rededication on Saturday, June 22, with her lecture, "Highlights of Plant Medicine: From Neanderthal Graves to Present". A common thread runs throughout herbal history, from magical healing rites to pharmaceutical pill production.

Integrated Health Care & Plant Medicine Expert

After earning a Bachelor's Degree in Medieval History from Vassar College, Ms. Crawford studied in Scotland's Findhorn community and attended the School of Herbal Medicine in England, earning both a Diploma in Phytotherapy and membership in the National Institute of Medical Herbalists (NIMH).

She is a founding member of the American Herbalists Guild, and serves on the monograph review committee for the *American Herbal Pharmacopoeia*.

Along with offering her insights on the modern use of traditional therapies in magazines, TV and radio, Amanda is also the author of two popular books on women's health, *The Herbal Menopause Book* and *Herbal Remedies for Women*.

Reception Celebration

Following the lecture, guests will have the opportunity to celebrate the onset of summer. To the background music of the Arcadia High School String Quartet, guests can join a guided herb walk through the newly renovated

Herb Garden and enjoy the many herb related exhibits and demonstrations.

Exhibits and demonstrations will include various herb specialists featuring unusual herbal beverages, sweeteners, and herbal products. Don't miss the opportunity to taste Kava Kava, Stevia, Maté or Sugar Leaf.

In addition, the Gift Shop

will be selling books and herb-related items.

Tickets can be purchased at the door the afternoon of the lecture or in advance by calling 626-821-4623. Cost: \$15 members, \$18 non-members and \$12 for students with identification. A complimentary shuttle service to and from the Herb Garden will be provided.



Amanda McQuade Crawford

AT THE ARBORETUM ON OCTOBER 5 & 6

GARDENING UNDER MEDITERRANEAN SKIES III: DESIGN WITH PURPOSE

A Symposium co-sponsored by Pacific Horticulture magazine, The Arboretum of Los Angeles County, Strybing Arboretum and Botanical Gardens and The Mediterranean Gardening Society.

Gardening under Mediterranean Skies III will take place on September 27 & 28 at the Strybing Arboretum in San Francisco and on October 5 & 6 at The Arboretum of Los Angeles County. The two-day symposium features a stellar line-up of international and Northern and Southern California speakers, including:

■ Highly regarded nurserymen **Olivier Filippi** from France and **David Fross** from California

■ **Jim Folsom**, Director of The Huntington Botanical Gardens

■ Renowned West Coast architect **Bob Ray Offenhauser**

■ Garden designers **Susan Van Atta**, **Nancy Goslee Power** and **Bernard Trainor** in a panel moderated by landscape architect **Russ Beatty**

■ Horticulturist **Carol Bornstein**, Santa Barbara Botanic Gardens

■ **Jan Smithen**, author of *Sun Drenched Gardens*, *The Mediterranean Style*

Advance registration is recommended. For the Los Angeles program, call 626-821-3242 or visit www.arboretum.org. Cost for subscribers of *Pacific Horticulture* magazine or members of Strybing Arboretum Society, The Los Angeles Arboretum Foundation or The Mediterranean Garden Society is \$165 before September 1,

\$195 after September 1 and \$125 for the garden tour. For non-subscribers or non-members, cost is \$195 before September 1, \$225 after September 1 and \$140 for the garden tour.





CLASSES AND ACTIVITIES

MAY, JUNE AND JULY 2002

PLEASE CALL (626) 821-4623 FOR RESERVATIONS.

DON'T MISS THIS! HEIRLOOM TOMATO SEMINAR & SUPER SALE

Thursday, April 25

10:30 am

Friday, April 26

10:30 am

Lecture Hall A

Free with Arboretum admission

Steve Goto (Goto Nursery), instructor

Join us for an absolutely fascinating lecture, slide show and Steve Goto's Top 25 Tomato Picks for 2002! Learn all the tricks to successful planting and harvesting of the best tomatoes for this area. After the class, attend The Great Tomato Sale in the patio behind the Gift Shop. You'll never believe the large selection of tomato plants from Goto Nursery. They also supply plants to Burkard's, Hortus and Persson's nurseries.

MAY

COLOR PENCIL FOR ILLUSTRATION

5 Wednesdays,
May 1, 8, 15, 22, 29

9 am - 1 pm

Lecture Hall A

Olga Eysymontt, Instructor

\$180 / \$200 non-members

Apply color pencil techniques to botanical illustrations. Demonstrations include color mixing exercises, textural techniques, paper selection for specific looks and color application to leaves, flowers and natural forms.

GARDEN SPROUTS - SATURDAY KIDS GARDENING CLUB! FOR KIDS AGES 5 - 8

1st Saturday of each month May and June
9:00 am - 11:00 am

Roots and Shoots Garden enter at Old Ranch Rd. (off of Colorado Blvd.)

Lisa Beach, Instructor

Members:

\$10 each Saturday

Non-Members:

\$12 each Saturday

We'll be spending our days planting and tending our garden, playing nature games, and learning gardening crafts!



SPRING QUARTER:

YUMMY FLOWERS!

May 4

Learn to make tasty treats from our flower friends!

HARVEST PARTY!

June 1

Come and enjoy the food you grew and the friends you made!

BALDWIN BONANZA GARDEN CHATS

May 5 - 6

See newsletter for schedule of fabulous and exciting speakers!

BIRD WALK

Saturday, May 11

8 am - 11 am

Meet on the steps of The Arboretum entrance

Nelson Holmes, Guide, Birder and Naturalist

\$10 / \$12 non-members

Join Nelson Holmes, Arboretum Senior Tour Guide, for a spring birding tour of The Arboretum. The Arboretum is host to any number of bird species. Bring a field guide, optics and water bottle. All birders are encouraged to come.

INTRODUCTION TO WATERCOLOR FOR BOTANICAL ILLUSTRATORS

5 Thursdays,

May 30, June 6, 13, 20, 27

9 am - 1 pm

Lecture Hall A

Olga Eysymontt, Instructor

\$180 / \$200 non-members

Learn fundamental methods for rendering three-dimensional plant forms on paper in transparent watercolor. Supply list will be sent upon registration.

SUMMER IKEBANA

7 Fridays

May 31 - July 12

9:30 - 11:30 am

Lecture Hall B

Reiko Kawamura, Instructor

\$57 / \$70 non-members

\$21 materials fee payable to the instructor

Learn Japanese traditions and practice Moribana, Heika and landscape arrangement techniques. Bring a 10"-12" shallow container, clippers and a needle holder (frog) to the first class.

JUNE

TAI - CHI: TAUGHT IN CHINESE

Every Sunday afternoon:

June, July and August

1 pm - 3 pm

Lecture Hall B

Marvin Quon, Instructor

\$3 per class, payable to instructor in class

No reservations necessary.

Join Marvin, our weekday Tai Chi instructor for this weekend class. Tai Chi Chuan, a moving form of meditation, is a form of martial arts. Most Tai Chi movements help to foster a calm and clear mind. Health and vitality are enhanced.

BOTANICAL ILLUSTRATION I - BASIC DRAWING

4 Mondays & Wednesdays,
June 3, 5, 10, 12

9 am - Noon

Lecture Hall A

Olga Eysymontt, Instructor

\$120 / \$140 nonmembers

This course focuses on learning to observe and to draw accurately. This class will help both beginning and experienced students, who wish to fine-tune their drawing skills.



**GREEN SIDE UP:
THE BASICS OF
GARDENING**

Wednesday Afternoons
2:30 - 4:30 pm
Education Greenhouse
Lisa Beach,
Instructor

**GREEN SIDE UP:
THE BASICS
OF PERENNIALS**

6 Wednesdays,
June 5 - July 10
\$65 / \$80 non-members
6/5 Roses Are Red:
Roses - history, care,
varieties

6/12 Roots for You:
All about bulbs,
rhizomes, tubers, &
stolons

**6/19 Eat'ums and
Smellies:** Herbs -
history, care, varieties

**6/26 The Tall and
the Small:** Trees &
shrubs - varieties &
care for your yard

7/3 Go Native!:
Learn about our native
Californians

7/10 Easy Does it:
Top 20 easy care
perennials for our
region

**CONTAINER
GARDENING
WORKSHOP**

Sunday, June 9
1 pm - 3 pm
Education Greenhouse
Heather Jackson,
Instructor
\$15 / \$18 non-members

In this interactive class participants will learn to plan, plant, and maintain container gardens. Topics include fertilizing, maintenance, cuttings, re-potting and pest control. Bring a container (not bigger than 1 gallon or 6"x6") and gloves. Plants and soil will be provided.

**EN ESPAÑOL:
VALVE & SPRINKLER
TROUBLESHOOTING**

Saturday, June 29
10 am - Noon
Lecture Hall A
Juan DeLaTorre, Instructor
(from J. Harold Mitchell
Co., an irrigation and
landscape company)
\$8 / \$10 non-members

Learn to repair and replace broken valves and sprinklers, and gain valuable installation tips. Extensive handouts and descriptions will be distributed. In addition, models of actual pipes and fittings will be on display for a complete understanding of the repair process. Taught in Spanish.

**BOTANICAL
ILLUSTRATION II:
DRAWING PLANTS**

6 Mondays & Wednesdays:
June 17, 19, 24, 26,
July 1, 3
9 am - Noon
Lecture Hall A
Olga Eysymontt,
Instructor
\$180 / \$200 non-members

A continuation of Botanical Illustration I: Basic Drawing. Learn to accurately draw plant and leaves. Topics include: leaf anatomy, leaves and attachments, flower dissection, drawing in different viewpoints, flower with leaves, and roots. Pencil techniques are also demonstrated.

JULY

**BOTANICAL
ILLUSTRATION III:
COMPOSITION**

6 Mondays & Wednesdays,
July 8, 10, 15, 17, 22, 24
9 am - Noon
Lecture Hall B
Olga Eysymontt,
Instructor
\$180 / \$200 non-members

Create a pleasing and interesting composition for your botanical sketches. Five layouts will be produced. The Botanical Illustration II: Drawing Plants course is recommended prior to composition. Bring your sketches to the first class meeting.

INTRODUCING A NEW SERIES:

"FRESH": CELEBRATING THE TABLE!

This new Arboretum series encompasses all things wonderful about the kitchen table - from the garden that grows the food to recipes, seasons, and festive decorations that celebrate our love for eating. Join cookbook authors, restaurant chefs, caterers, florists, gardeners and other "foodies" as they instruct two-hour workshops.

Sessions include demonstrations, tastings, some hands-on, and loads of scrumptious ideas. From barbecuing to setting a decorative holiday table, this series will inspire you and give you the tools to re-create your own magic. Sign-up for individual courses. Discounted fee for series registration.



SPRING SERIES

Thursdays: 4 - 6 pm
Saturdays: 10 am - Noon
Class:
\$45 / \$50 non-members
**Thursday, May 16:
Life's a Picnic**
Peggy Dark, Kitchen
for Exploring Foods &
Sue Campoy, Julienne's
**Thursday, May 30:
Innovative Chinese
Cuisine for the
Western Table**
Michael Yeung,
Executive Chef,
P.F. Chang's

SUMMER SERIES

Thursdays: 4 - 6 pm
Saturdays: 10 am - Noon
Class:
\$45 / \$50 non-members
Series:
\$160 / \$190 non-members
Saturday, June 15:
BBQ Sauces and
Outdoor Cooking
Thursday, June 27:
Celebrating the
4th of July
Thursday, July 11:
Summer Jams
Thursday, July 25:
Cooking Cool

INFORMATION: Call (626) 821-4623 or (626) 821-4624 for information or to register for a class. Please fax to (626) 821-4642 or mail your registration form with your payment to: Los Angeles Arboretum Foundation, 301 N. Baldwin Ave., Arcadia, CA 91007-2697, Att. Jill Berry

Reservations are required for most classes, programs and events. Registration on the day of the program is allowed if space is available.

NO CONFIRMATION IS SENT. ALL FEES ARE NON-REFUNDABLE AND NON-TRANSFERRABLE. However, classes may be cancelled due to low registration. Cancelled classes are fully refunded.

Special assistance is available for people with disabilities. Call the Program Manager at (626) 821-4623 at least one week prior to the program for specific requests.

REGISTRATION ONE CLASS/EVENT PER FORM PLEASE

Class/Event	LAAF Member	No. of people	Total
_____	\$ _____	_____	\$ _____
Please make checks payable to: Los Angeles Arboretum Foundation (LAAF)	Non-member	No. of people	Total
Signature required for all credit card charges _____	\$ _____	_____	\$ _____
Discover/MC/Visa/Amex # _____ Exp. _____ Member No. _____ (if applicable)			
Name _____ Address _____ City _____ State _____ Zip _____ Telephone (____) _____			



A *Pacific Horticulture* Symposium
cosponsored by
Strybing Arboretum & Botanical Gardens
The Arboretum of Los Angeles County
The Mediterranean Garden Society



Photo by [unreadable]

Gardening Under Mediterranean Skies III: Design With Purpose

Sept 27–29 at Strybing Arboretum, San Francisco

Oct 4–6 at The Arboretum of Los Angeles County

This two-day symposium features a stellar line-up of international and local speakers from Northern and Southern California. Highly regarded nurserymen **OLIVIER FILIPPI** from France and **DAVID FROSS** from California compare plant communities from Southern Europe and California, and focus on two prominent mediterranean plant genera—cistus and ceanothus. **JIM FOLSOM**, director of Huntington Botanical Gardens, provides an overview of climates. Renowned West Coast architect **BOB RAY OFFENHAUSER** interprets design features of the blue-sky regions of Europe for California.

Garden designers **SUSAN VAN ATTA**, **NANCY GOSLEE POWER**, and **BERNARD TRAINOR** present their own work responsive to a mediterranean climate in a panel moderated by landscape architect **RUSS BEATTY**. Horticulturist **CAROL BORNSTEIN**, Santa Barbara Botanic Garden, brings a fresh approach to gardening with natives. **JAN SMITHEN**, author of *Sun-Drenched Gardens: The Mediterranean Style*, provides a riveting and inspirational finale.

Workshop topics include landscape sustainability, plants for inland gardens, containers for seasonal interest, appropriate horticultural practices, and the productive garden. Other highlights include a symposium bookstore/gift shop and a plant sale featuring California's best nurseries offering native and mediterranean plants. Each venue offers an optional all-day garden tour (Sept 29 in SF; Oct 4 in LA) that brings to life the essence of *Gardening Under Mediterranean Skies*.

Pacific Horticulture magazine, one of the country's top garden journals, is devoted entirely to the art and science of gardening in the summer-dry climates of the West Coast. (www.pacifichorticulture.org)



Explore the mediterranean plant collections at Strybing Arboretum & Botanical Gardens in Golden Gate Park, and at The Arboretum of Los Angeles County. Become a member of either garden; benefits include discounts on classes, purchases at the bookstore/gift shop, and a quarterly newsletter and calendar of horticultural events.

The Mediterranean Garden Society is an international organization that serves as a forum for anyone with a special interest in the plants and gardens of the mediterranean climates of the world. (www.MediterraneanGardenSociety.org)



1997 Cindy Lewis. All Rights Reserved

Advance Registration for Symposium

(same price for SF or LA; lunch is included)

Subscribers/Members (PH/SAS/LAAF/MGS)

- \$165 before September 1
- \$195 after September 1
- \$125 Garden Tour
(limited availability)

Non-subscribers/Nonmembers

- \$195 before September 1
- \$225 after September 1
- \$140 Garden Tour
(limited availability)

Student groups of 5 or more (registered by their instructor)

- \$125 per person

To register for the SAN FRANCISCO SYMPOSIUM, complete this form and mail with payment to Education Office, Strybing Arboretum Society, Ninth Avenue at Lincoln Way, SF, CA 94122, or fax to 415/661-7427 (credit card payments only). For more info on the program or garden tour, call 415/661-1316 x354 or visit www.strybing.org.

To register for the LOS ANGELES SYMPOSIUM, complete this form and mail with payment to Education Department, The Arboretum of Los Angeles County, 301 North Baldwin Avenue, Arcadia, CA 91707, or fax to Education Department 626/821-4641 (credit card payments only). For more info on the program or garden tour, call 626/821-3242, or visit www.arboretum.org.

Registration fees (less 20% processing charge) will be refunded only if cancellation is made seven days or more before the event.

Save on registration! JOIN Strybing Arboretum Society (SAS), The Los Angeles Arboretum Foundation (LAAF), The Mediterranean Garden Society (MGS) **OR SUBSCRIBE** to *Pacific Horticulture* magazine

SAS Membership: \$50 Individual \$60 Family \$125 Garden Lover (separate payment payable to Strybing Arboretum Society)

LAAF Membership: \$40 Individual \$60 Family \$125 Family Sustainer (separate payment payable to Los Angeles Arboretum Foundation)

MGS Membership: \$30 Individual (separate payment payable to Mediterranean Garden Society)

Subscription to *Pacific Horticulture* magazine: \$25 (separate payment payable to *Pacific Horticulture*)

Name _____

Address _____

City, State, Zip _____

Telephone (area) _____

Evening _____

Fax _____

E-mail address _____

Payment: Check payable to SAS Check payable to LAAF VISA MasterCard

Card Number _____

Exp. Date _____

Signature as it appears on card _____

Total Enclosed \$ _____

Welcome Members

December 2001- February 2002

The Los Angeles Arboretum Foundation welcomes new and renewing members to The Arboretum family. A sincere thank you to everyone listed here!

- | | | | | |
|------------------------------------|-----------------------------------|----------------------------------|-----------------------------------|-------------------------------------|
| David P. & Nancy Abernathy | George A. & Marilyn Brumder | Lorraine Daly | Henry K.W. Fong | John C. Holmes |
| Albert Abramyan | Harry & Karen Brumer | Jo Ellen Daniell | Audrey Foran | Mrs. Carl E. Holmes |
| Carl Acosta | Sandra Buchan | Meridel Daniels | George B. & Marilyn R. Forbes | Dorcas Hooker |
| Florine Alexander | Phil & Linda Wagner Buerk | Thomas & Shelly Dante | Maria D.R. Foye | O. L. & Ruth Hooper |
| Bob Allen | Mr. & Mrs. Jack D. Burk | Gayle N. Dare-Plunkett | Dennis & Judy Frank | Dennis A. & Andrea H. Hopkins |
| James D. & Pat Allen | Frank Burkard, Jr. | Chrissy Darrow & Jui Pal | Margaret H. Fratt | Mark S. Horie |
| Liz & Freeman Allen | Brent D. Burley & Patricia J. Erb | Jim & Marie Dashwood | Jerry & Myra Fridenberg | Irene Horiuchi |
| Ruben R. & Prose Almanzan | Mark & Carol Burrill | Nora Dashwood | Cyle Frutchey & Scott McCollister | Jean W. Horton |
| Lupe Alvarez | Richard & Charlotte C. Burrows | Ruth D. Davis | Edward Fujimoto | Carole M. Hossan & Harry Rose |
| Beverly Anderson | Robert Buschmann | John Davn | Mr. & Mrs. Edgar Fukutaki | Jane Hou & Fang-Chen Hou |
| Cindy Anderson | Ingrid Bustamonte-Lupton | Mr. & Mrs. Dayan | Sarah E. Fuller | Brian & Richelle Houck |
| Dian P. Anderson | Cheryl Butler | Mr. & Mrs. Michael De Leon | Charles W. & Carol S. Gabel | Patricia J. Houghton |
| Lori Anderson | Donald & Sally Butler | Virginia De Zell | Shannon Gallagher | Bonnie H-Reese |
| Madeline Anderson | Joan Caley | Harry W. & Georgene D. Degner | Julio Gallud & Patricia Reyes | John & Elizabeth Hrovat |
| Dann & JoJeanne Angeloff | Larry & Marilyn J. Callahan | Donald R. & Suzanne D. Deise | Mr. & Mrs. Robert Galvan | Betty Hsieh |
| Rima Angkasa | Christina R. Carlisle | Lucas & Johanna C. Dekker | Albert M. Gardea, Jr. | Tao-Ming Hsieh & Wen-Mei Lin |
| Antonio G. Arbini | Jerry & Nan Carlton | Evangelina Del Rio | Mark J. Gaudino | Chia-Chieh & Carol H. Hu |
| Paul & Patricia Arkosy | John L. & Nancy L. Carlton | Ann Sari Deno | Peter E. Geissler | Joseph & Margaret Huang |
| Annabelle Aylmer | Jack W. & Sheila Carlyle | Brian Der Vartanian | Rita Genouzos | Michael Huang |
| Guilford C. & Gwen Babcock | Jaynita Carney | Gene & Gail Dermody | David R. & Gayle B. Gess | Margery Huff |
| Stephen A. Babcock | Mark C. & Jaynita Carney | Allen C. Dexter | Anthony & Marilyn Giandomenico | Darrell H. Hughes |
| Jeffrey Baefsky | Mary Carney | & Phyllis Graham Dexter | Imelda Giangrande | June Hughes |
| David M. & Blanca E. Baldwin | Margaret Carothers | John M. & Jane Dick | & Daniel Giangrande | Ray Huitric |
| Ray Ballarini | Marian Carpenter | Lola Dickerson | Henry Gibbons & Chris Olsen | Ira Hurvitz & Szu-Wei Yang |
| W. H. & D.V. Bangert | Tanya Carroll | Earl & Patricia Dietrich | Bruce Gibson | Natalia Husyn & James B. Hicks |
| Valerie Banks | Gail Carstens | Mayita Dinos | Hyman L. & Vivian B. Gildenhorn | David & Eva I. Hutton |
| Merle H. & June M. Banta | Alfred A. & Minnie S. Casler | Karen S. DiNoto | Anita M. Gilfillan | Angelina Iarossi |
| Adrienne L. Barclay | E. Betty Cassidy | Mr. & Mrs. James Dolan | Paul F. Gill | Edward & Corinne Imlay |
| Jerry Barham | Tim Cassutt & Tracy Cassutt | Craig & Nancy Dollase | Patricia & James Gladson | Steven R. & Linda Ioerger |
| John A. & LaVonne Barnes | Mr. & Mrs. Harold Chamberlin | Anthony & Rita W. Donato | Mr. & Mrs. Estabrook Glosser, Jr. | Sally R. Irving |
| C. Barnett | Kathy Chambers | Muriel E. Dooling | Richard A. & Patricia Goddard | Charles & Geri Isara |
| Leanne Baroldi | Paula Champion | Ellie Dorrance | Jack & Eva Gold | Claire R. Jackson |
| Marion H. Barry | Bruce C. Chan | Mr. & Mrs. James E. Doty | Bruce A. Goldberg | Mrs. Calvin W. Jackson |
| Frank & Shelby Basso | David Chan & Hsiuchen Chen | Stacy Dover | Chito & Irma Gonzales | Yong & Heidi Jarenwattananon |
| Trissia Baughman | Ron & Nancy Chapman | Tom & Nena Rhea Dragoo | Jessie M. Good | Mr. & Mrs. Edward Jeffery |
| Thomas & Devota Bayless | Mr. & Mrs. Charles R. Chavez | Thaya duBois | Marcia Good | Alex & Ursula Jegoroff |
| John Beckett & Kathleen Nolan | Mr. & Mrs. Che Jen Chen | Cathy Duggan | Amanda Goodan | Mr. & Mrs. Darwin Jenkins |
| William & Pat Bedford | Polly Cheng | R. & Irane J. Dugger | John & Sara Goodno | William R. & Beatrice E. Jennings |
| Denice Behdad | Christine M. Chesney | Carol Dunn | Rowena A. Gordon | Gerry Jensen & Linda Jensen |
| Frank & Ramona Bell | & Nancy Valentine | Celeste Dunn & Bertha Muller | Mr. & Mrs. Douglas Graff | Susie Jensen |
| Mary Bell | William & Ruby Chiang | Michael & Eveleen Dunne | David & Carolyn Grant | Mary Jessup |
| Robert E. & Ruth M. Bell | Lihu Chiu | Bill & Carol Durban | Richard A. & Maria O. Grant | Lawrence & Arleen Johannsen |
| Bernice Benak | Pek Ean Chong | Mr. & Mrs. Eddie Dutt | Gary T. & Becky Green | Barbara A. Johansen |
| Iona Benson | Doris B. Chretien-Wartman | Joe & Millicent M. Dypiangco | Diana Greene | David & Marilyn Johnson |
| George H. Benter, Jr. | Elizabeth Christopher | Mrs. Bernard Ecker | William & Jane R. Gustafson | Dorothy J. Johnson |
| & Christine C. Benter | John & Connie Ciranna | Howard & Brigitte Edelman | Ruth Hadley | Frederick D. & Nancy H. K. Johnson |
| Amber N. Bergherm | Ray Ciranna | Roger & Carolyn Egenes | Susanne Haffner | Joanne Johnson |
| James R. & Jill Berry | Richard Clark & Caroline Skidmore | Barbara P. Eisenstein | Willard & Ruth M. Hagen | Joyce Johnson |
| Wesley Beverlin | Ralph T. & Pat Clarkson | Sam & Julie El Bard | Wesley H. Haines | Lois E. Johnson |
| H. M. & L. M. Bickett | John T. Clawson & Annette Roth | Sharon Ellis | Kellie Hale & Sally & David Cook | Margaret Johnson |
| Dan Bittle | Mr. & Mrs. Dorian Cohen | David & Cynthia Ely | Thomas L. Hale | Louis W. & Marie C. Jones |
| Ann Bixel | Walter M. & Marlene J. Colley | John Emmons & Kelli Kallenborn | Roberta Hales & Jock Scott | Nelson D. & Miriam Jones |
| Barbara Black | Caroline Collins | Foster E. & Patricia A. Endacott | Cynthia Holcomb Hall | Ronald & Irma Kaelble |
| Marilyn M. Blanck | June Collins | Richard Engels | Joanne Hall | Mrs. Michael Kaiser |
| Barbara S. Blindeman | David H. & Patricia A. Colville | John & Joan Engman | Mr. & Mrs. Robley Hall | Patricia Kalebaba |
| Caroline Bloomer | Nancy Connelly & Scott Connelly | Edward W. & Joyce G. Engs | Anna S. Hallstrom | Bridget Kallman |
| Harley & Kathryn Bogle | Florence Conner | Judith P. Ennis | Saleh & Sakineh Hamdan | Kathryn Kaminski |
| H. Abigail Bok | William D. & Marlene Connors | Carol L. Epp | Ronald J. Hamilton | Montra M. Kanok |
| Joan E. Bolley & Jim Olsen | Bernie Contreras | John L. & Mary B. Erickson | James J. & Borinka Hanrahan | Harumi Kasamatsu |
| Matt & Holly Booth | Michael J. Converse | Jeane C. Escherich | Paul E. & Jo M. Hanson | Ms. Viki Kederean |
| Henry A. & Betty Jo Botzbach | William L. & Kathleen Corbin | Tom L. Ewing | Donna Hardy | Inger-Jane Keen |
| Brett & Julie Bourgeois | Anthony Cordova | Fred & Karol M. Fabbri | Kirsten Harnum | Liz Kelleher |
| John & Beverly Bowling | Mr. & Mrs. George Cornish | Beth Fabinsky | Donald F. & Linda Harris | Jean Kelley |
| Gordon & Suellen Bowman | Mr. & Mrs. Walter Corson | Nancy Faibis | Mr. & Mrs. Irving Harrison | Rose Kelley |
| Lauree Bradley | Steven Corvelo & Sophia Bicos | John Fata | Rayma Harrison | George M. & Mary E. Kent |
| Amelia Brady & Justin Lyon | Robin Corwin | Mr. & Mrs. Peter Fay | Robert & Pamela Harrison | Maurice Kent |
| Robert & Peggy Brain | Mr. & Mrs. D. Costarella | John J. Feldin | Jack A. & Beatrice N. Hart | Harold & Sandy Kern |
| Nancy Brainard | David M. Cousino | Lorraine Ferguson | Austin & Sonia Hathaway | Eve Kessler |
| Richard E. Brandes | Hilary Cowart | Angelica Fernandez | Earl F. & Ellen M. Haverstock | Mr. & Mrs. Robert Kievit |
| David Breen & Cynthia Skripak | Zella Cramer | Eleanor R. Fevog | Rudy & Susanne Hayek | Judith T. Kildow & Alfred Kildow |
| Phyllis Brewster | Linda A. Crawford | Eddie & Patricia Field | Rob & Mary Beth Hayes | Han P. Kim |
| Claire Brian | Mary Jo Crawshaw | Caleb & Doris T. Finch | Paul & Holly Hayward | Donald H. & Diane J. King |
| Bill Bridges & Linda McManus | John T. & Alice Crissey | Rebecca Fisher | Joseph He & Sharon Xing-He | Rudi King |
| Ruth M. Brodie | William & Ellen Crowell | Peter L. Fitzpatrick | Murph & Dori Heacox | Albert & Jennifer Kirchoff |
| Christine M. Brow & Margaret Rogan | Joseph A. Crowley | Julia M. Fletcher & M. Borger | Jane Hefflefinger | Dolores Kirkland & Rebecca Kirkland |
| J. Kenneth & Carol A. Brown | Frederick L. & Helen Curtis | Louis A. & Janet K. Fletcher | Mr. & Mrs. Richard E. Held | Connie Kissack |
| Janet Berg Brown | Kenneth W. & Willa M. Dalrymple | Bettie L. Flint | Mike Herceg | Susan A. Kitchens |
| | | | Al Hernandez | Harriet Kittle |
| | | | Edward M. Herrera | Mr. & Mrs. Robert Klein |
| | | | Mr. & Mrs. Albert Hess | Shirley M. Klein |
| | | | Yoshimi & Doris M. Hirata | Polly Klemmer |
| | | | Mr. & Mrs. Todd Hiskey | Bill & Leslie Klipstein |
| | | | Nancy Hitchcock | Michael D. & Catherine Klose |
| | | | George S. Hjelte | Mr. & Mrs. William N. Klove |
| | | | Penny Hlavac & Priscilla Stead | Jonathan & Helen Knecht |
| | | | George K. Ho & Lan Quing Zhang | Elizabeth Knego |
| | | | Florence Hoekenga | Beverly Kniest |
| | | | Cheryl Hoelting | Laura Kotani |
| | | | Dorothy C. Hoffman | Mrs. Gary A. Kovacic |
| | | | Sheila M. Hogan | Sonoe Koyasu |
| | | | C. H. & Janet Holladay | Frances Krasner |

THANK YOU FOR YOUR GENEROUS SUPPORT

Trudy Kruse
 James & Jacki Kushner
 Mr. & Mrs. Nes Kusnierz
 Suzanne Kuuskmae
 David Kvisler
 Frances S. La Mar
 Norman J. Labby
 Jack & Jacquie Lamb
 Ruby Lambarena
 Norman & Jean Landesman
 Fred & Patricia Landis
 Chris Lane
 Cheryl A. Lanning
 Mr. & Mrs. Jim Larsh
 James M. & Paula Laschober
 Leo Y. Lau & Jenny M. Yeung
 Wei Ping Lau & You Jian Chen
 Brian C. & Candida B. League
 Ruth Leder
 Mr. & Mrs. Chuen H. Lee
 Mrs. Olin A. Lee
 Mr. & Mrs. Julius A. Leatham
 Sharon J. Lefler
 Carol Leighton
 Ronald Leino & Rhonda Swain
 Frederick Lesemann
 Michael H. & Prudence L. Levine
 Victor D. Levine
 Joy Lewis
 Norma Leyva & Scott Gibson
 Harold D. & Carol Libby
 Lynn Liebig
 Mr. & Mrs. Carl Liebig
 Nancy Lilly
 Mr. & Mrs. Ho-Sen Lin
 Gerta Lind
 Sean & Jennifer Linderman
 Mr. & Mrs. R. G. Lippross
 George & Ginny Liskow
 Bob & Lynne Litjen
 Ralph & Barbara Little
 Mary F. Livengood
 Warren H. & Virginia Lockyear
 Elizabeth Logsdon
 Mr. & Mrs. James Logsdon
 Jesus Lopez
 Joseph & Laura LoPiccolo
 Charles E. & Gloria J. Lortz
 Mary E. Lotz
 Richard E. & Fran Lowe
 Dick & Mary Lownes
 Myron M. & Allene R. Loyet
 T. M. Lucero
 Clinton Ludecke
 Curtis & Mary Luthy
 Inez Lydy
 Li-Sheng Ma & Chiann Shih
 Michael & Lori Macchia
 Donald & Diane MacFarland
 John R. & Mary MacFarland
 Amanda Macintosh
 Mr. & Mrs. William H. Mack
 Michelle Mackel
 Bruce & Delina Malinoff
 Lola Malone
 Elizabeth L. Mancuso
 Mahjuba Mansoori
 Doug & Sue Maple
 Helen Marcellus
 Dorothy Marconi
 Vera L. Marine & Forrest M. Harold
 Jerrold E. & Barbara Marsden
 Teresa Martin
 Carmen Martinez
 Susan D. Martynec
 Evelyn Mason
 Michael Masta & Cynthia Vlasters
 Stephanie Masterman
 Donna J. Mathisen
 Frank & Emy Matsuno
 Jamie C. Mawhorter
 David & Karen May
 Mr. & Mrs. Tadashi Mayeda
 Zora Maynard
 Rex Mayreis & Joan Kaplan
 R. David & Theresa Maystead
 Donald G. McBride
 Betty B. McCarron
 Richard H. McCauley
 Daniel & AnnJanette McCorkle
 Doria M. McDonald

Kevin & Susan McDonnell
 Jim & Mary Lowe McDougal
 Charles B. & Carole McElwee
 Shirley B. McGillicuddy
 Mary McGinnis & Mark McGinnis
 Joan McGuire & Emmett McGuire
 Maggie McGuire & Elin T. Friend
 John J. McKeon
 Aleda D. McKinzie
 Greg & Debra McLemore
 Gary W. & Barbara J. McMillan
 Cassandra Meagher & James R. White
 Charles A. & Dorian Meehan
 Lynn Mikami
 Birthe Miller
 Marjorie L. Miller
 Mr. & Mrs. Todd L. Miller
 Andy & Lisa Milne
 Jeff & Carol Misakian
 Marianne Mitchell
 Mr. & Mrs. S. Mizukami
 Kimie Monden
 Mr. & Mrs. David Monty
 Cliff & Janice Moore
 Dorothy Moore
 Diane C. Moos
 Angela Morales
 Jim & Deana Morentin
 Janet M. Moreton
 Robert D. & Pamela A. Morgan
 Paul & Jane Morrison
 Robert & Elizabeth Morton
 Laura Morton-Dunas
 Jason & Teryn Mowry
 Marc & Allison Mueller
 Richard Muller & Danielle Gladding
 Kathleen Mulligan
 Giles R. & Lorraine M. Munsey
 Mr. & Mrs. Jim Munson
 Nanette Murakami
 Kathleen Murphy
 Merrill L. & Donivee Nash
 Anita Navarro
 Gloria & Steve Nestlerode
 Andrew Neushul
 Margie M. Nicholson
 Norma Nino
 Sister Patricia Noble
 Dan Nugent & Sabina Zenklich
 Michael & Gladys Oberholtz
 Andy & Emma Ocampo
 Kazuko Ochiai
 Richard Oesterling
 Don & Pam Olender
 Mary Ann O'Neil
 Mrs. Pat V. Osenbaugh
 Thaddeus O'Shea & Vivian Luther
 Joan Oshita
 Michiko Otaya
 Robert G. & Beverly J. Owens
 Mrs. Carmel R. Padgett
 Dennis & Paula Paggi
 Hyun & Grace Paik
 Jennifer Paik
 Claryce M. Palmer
 Dennis & Lisa Papini
 John I. & Tammy Park
 Bonnie Pastor & Ben Pomerantz
 Trupti Patel
 James E. & Frances T. Peabody
 Frank P. & Helen C. Pekny
 Roberta S. Penafuerte
 & Leonardo Penafuerte
 Walter & Violet Persson
 Richard Petersen
 Jennifer Peterson
 Mr. & Mrs. Alistair Philip
 Rae Pidoux & Marcel Pidoux
 Marita Pinkel
 Barbara Pirovano
 George Pitzer
 Alfred Pooler
 Mae Poppen
 James & Germaine J. Potter
 David O. & Joyce G. Powell
 Mr. & Mrs. John Pruitt
 William & Terry Pruitt
 R. Glenn & Amy J. Putnam
 Klaus & Ilcana Putter
 Bonnie J. Quaintance
 Susan Quinn

Marcus & Sonya Quintanilla
 S. Rader
 John S. & Frances A. Ragin
 Supoj Rangsipat
 J. Paul & Barbara Ransom
 Joaquin & Martina Rascon
 Joyce Rehffuss
 Tom P. & Shirley J. Reifer
 Ellen Rennick
 Judith Rettich
 Joseph & Karen Reuter
 Barbara Reynolds
 Jack G. & Randi C. Reynolds
 Yolanda Reza
 Mr. & Mrs. Hans L. Richter
 Walter & Verna R. Richter
 Kenneth A. Ridenour
 William & Mildred D. Rider
 Tom Rike
 Carole Riordan
 Jorginna Rios
 Al Rivera & Renee Hope
 Jack G. Robb
 Dean & Ann Roberts
 Mr. & Mrs. Don Robinson
 Sandy Robinson
 Suzana Roelord
 Martin S. Roden
 Augusto & Fanny Rodriguez
 Mr. & Mrs. Norman H. Rogers
 Rosalia Rojo
 Pedro H. & Omega Roldan
 Jim C. & Shelly G. Romo
 Tullio & Janyce Ronzoni
 David Rosenbaum & Joanne
 Mogannam
 Leigh Rosenberg & Nancy Leon
 Ray & Dorothy Ross
 Tom Rossi & Ron Stinnett
 Mr. & Mrs. R. K. Roskopf
 Mr. & Mrs. Vern Royle
 James & Janet Rulec
 Liz Rupp
 Rick Rupp
 Mary Ann Rush
 Camille Rutkowski
 Robert F. & Bette Rutten
 Robert D. Ryan
 Carolyn Ryden
 Rob Rye & Elizabeth Rye
 Kenneth E. & Marilyn W. Sain
 Art Sajecki
 Jeff & Deanna Sakamoto
 Richard & Margo Salsbury
 Helen S. Saltman, Ph.D.
 Robert E. & Laura B. Sandiford
 Todd Sandler
 Ronnie Sansome
 Ronald M. & Sharon G. Saqui
 Mrs. Phillip Saurenman
 Larry & Lisa Schall
 Ann Scheid
 Kenneth R. & Donna R. Schmidt
 Veda L. Schmidt
 Steven & Linda Schnell
 Michael Schnittke
 J. Fred & Eileen Schoellkopf
 Marcia D. Schoettle
 Thelma Schooley
 Edwin J. & Ann Bloor Schryver
 Erin Schuman & Ana Maria Lust
 Miriam Schwartz
 Sharon Scollard
 James H. & Shirley Scott
 Janet L. Segal
 Mickey & Lee Segal
 Gary & Melinda Sego
 Roland & Terry Seidler
 Bill & Wilma Selling
 Sylvester R. & Colleen J. Senart
 Ellen T. Seppanen
 Tadas & Kathleen Sesplaukis
 Mr. & Mrs. Ronald D. Severa
 Janice Severson
 Janice Sharp
 Mr. & Mrs. David F. Shaver
 Don & Fran Shellgren
 Lilly Shen
 Arlene Sherman
 Gerald & Anne Shircore
 Charles & Norma Jean Shirk

Paul & Carolyn U. Shively
 Amiel Shulsinger
 Mr. & Mrs. Tad Sikora
 Bettie Sill
 Michael Siller
 Ron & Diana Simmer
 Barbara Simpson
 Jean M. Sink
 Joseph D. & Joan Sintov
 Robert & Dawnette Skemp
 James L. & Gwen Slater
 Walter L. Slavik
 Douglas & Nancy Smiley
 Alvin & Suzanne Smith
 Grant B. & Elizabeth V. Smith
 Inez T. Smith
 Mary S. Smith
 Sara Smith
 Ruth C. Smoot
 Diola M. Snell
 Byron C. & Betty Snelling
 Steven R. & Glenda Snyder
 Diane Soldwedel & Rita Davis
 George M. Sonneborn
 Philip K. Sotel
 Val Spain & Julio Cervantes
 Lois Spielman
 Marianne Spielmann
 Mr. & Mrs. Spigai-Perez
 Roger A. & Jacqueline Staebler
 Mr. & Mrs. Thomas Stahl
 Charles & Frances Starr
 Bernard S. & Dorothy Steg
 Margaret Steinpfad
 Mr. & Mrs. T. Edward Stemshorn III
 Mr. & Mrs. R. E. Sterling
 Ralph & Diane Stewart
 Bryan & Bangyan Stiles
 H. Randall & Marilyn Stoke
 Donna Storms
 Rene Quenell
 Julian & Mia Strassle
 Herbert V. & Esther Stroh
 Lisa Stronsick
 Lynn Stubblefield
 Robin Stull
 William E. & Dorothy R. Stumbo
 Mark & Carolyn Stussi
 William & Ann Stussi
 Spencer & Sherrie Su
 Elizabeth Y. Suffer
 Larry E. & Henrietta C. Sullivan
 Nagai Sumiko
 Cruz-Elena Sundquist
 John D. & Helen J. Swanfeldt
 Margaret Switzer
 Laisheung Tang
 Mr. & Mrs. Xueming Tang
 Ms. Kathlene H. Tanimoto
 Jan Tarble
 Mamoru Tashima
 Jane Tawel & Raoul Tawel
 Mona Emanuel te Groen
 R. James & Shirley Teal
 Mr. & Mrs. S.C. Tellechea
 Galvin & Sylvia Templar
 Pete & Diane Temple
 Elizabeth Terlip
 Peter & Rosemary Terplan
 Robert & Florence Terwilliger
 Elizabeth Thomas
 Gloria Thomas
 Audrey I. Thompson
 William H. & Anita Thompson
 Jonathan & Johanna H. Thomsen
 Sharon L. Thomure
 Vivian M. Throckmorton
 Ana Maria Tiburzio
 Judy Tinkess & Patricia Cordova
 Ann Tirapelle
 Nancilu Todd
 Anna May Tomaszewski
 Lily Tom-Wong
 Kellene Torry
 Carmen Tostado
 Robert L. & Joyce Travis
 Mr. & Mrs. Wallace Tripp
 Rebecca Trounson
 Yaochuan Tsai
 Matthew Tsushima & Kim Tanaka
 William Tucker

Samuel & Marie Tulchinsky
 Craig E. & Barbara Tyler
 Sidney & Betsey Tyler
 John & Kitten Tymkowich
 Peter H. & Carol A. Ulrich
 Alexander & Laura Lynn Ur
 Mr. & Mrs. J.A. Uribe
 Jeff Utter & Sharon Whittle
 Raymond E. & Grace C. Valdez
 James W. & Kristine Valentine
 John H. & Mary Jane Van Amringe
 Mr. & Mrs. A. Van Rooyen
 Mr. & Mrs. John Vandenberg
 John & Shannon Vandeveld
 Stephen A. Varela & Phillip Varela
 Dris Vazagov
 Joe & Lynn Velazquez
 Amy Ver Burg
 Josef & Berta Vierheilg
 Howard L. & Jill Wagner
 Dorothy L. Walker
 Susan A. Walker
 Ken Walling
 Tzu-Yi Wang
 King Wang
 Scott Wardlaw & Priscilla Brown
 V.G. Warren
 Elizabeth M. Watson
 Gordon & Sherrie Watson
 Merryrose Watson & Linda Watson
 Vanessa V. Watters
 Allan Weber
 Randy & Jennie Webster
 George & Moyra Weide
 Joana & Gregory Weingart
 Dorothy Weiss & Jean Weiss
 Jonathon Weisz
 Retha M. Wells & Doreen Fritsch
 Stephen S. L. & Pauline Wen
 Carl J. & Jeannine F. Wendt
 Cheryl West
 Vaughn & Kerri Whalen
 June Whang
 Priscilla White
 Robin White
 Karen Whitehill
 Patricia A. Wholley
 Eleanor Wilber
 Sue Wilcox & Edna M. Wilcox
 Martha W. Williams
 David F. & Elizabeth Wilson
 Howard Wilson
 F. Allan & Isabel S. Winchester
 Tim & Mary T. Winners
 Richard G. & Virginia Winslow
 Tamra Wisniewski
 Benjamin Wiswall
 William & Lilli Sznaper Witzak
 John Wojcik & Ha Le
 Paul H. & Ann E. Wolfe
 Jay & Pam Wolkoff
 Ann Wollen
 Alan S. Wood
 Glenna M. Wood
 Alicia S. Woodall
 Karl & Carol Woodrow
 Mike & Karen Worle
 Geri Wright
 Mr. & Mrs. Gerald E. Wuenschell
 Lanny & Mary Wulf
 Mary Jo Wynne
 Chiyoko Yamashiro
 Mr. & Mrs. Sam Yamashita
 Mr. & Mrs. David Yang
 Mary Anne Yeager
 Stephen M. Yee
 Madalyn Youell
 Christina Young & Philip Soto
 Glenn & Peggy Young
 Janice Zhang
 Mr. & Mrs. George P. Zimmerman
 Robert A. & Charlene N. Zoller
 John E. Zubrick
 Frank & Linda Zych
 Hillsides Education Center
 Santa Anita Bonsai Society
 Southern California Hemerocallis
 & Amaryllis Society
 US Courts Library
 Year Around Garden Club

SPECIAL THANKS TO OUR DONORS WHO CONTRIBUTED GENEROUSLY DURING OUR ANNUAL APPEAL

OCTOBER 1, 2001 - MARCH 1, 2002

Grand Arboretum Underwriter

Harold Y. Spector

Arboretum Underwriter

Seeley W. Mudd Foundation
Anonymous
George & Marilyn Brumder

Grand Arboretum Benefactor

The Femino Foundation
Peter & Susan Atkins
Mr. & Mrs. Olin Barrett
Dr. & Mrs. John M. Dick
Yoshio & Hiroko Fujioka
Mr. & Mrs. James N. Gamble
Catherine & Michael Heflin
Mr. & Mrs. Donald
MacFarland
Arnold & Gretl Mulder
David & Susan Oberman
Mickey & Lee Segal
Mr. & Mrs. Tom Techentin
Elizabeth S. Wall

Arboretum Benefactor

The Winnick
Family Foundation
Mr. & Mrs. Robert J. Banning
Hannah G. Bradley
Arthur L. Crowe
Suzanne & Donald Deise
Mr. & Mrs. Paul A. Erskine
John & June Fee
Mr. & Mrs. Charles
W. Hammond
David D. Hu CFP
Mr. & Mrs. Louis W. Jones Jr.
Mr. & Mrs. Alexander Mallace
Ruth Martin
Margot & Mitch Milias
The Merrill Nash Family
Eileen & Fred Schoellkopf
Mr. & Mrs. H. Russell Smith
Sherm & Marge Telleen

Arboretum Sponsor

Lovell Landscape Service, Inc.
Richard & Mary Beth Bensen
Richard E. Brandes
Don & Sally Clark
Mr. & Mrs. Michael J. Crowley
Ruby K. Frenchick
Jill & Gerben Hoeksma
Susan & Doug Kranwinkle
Mr. & Mrs. Wayne Licher Sr.
Dorothy Marconi
Peter & Kacey McCoy
Carole McElwee
Richard & Suzanne Miller
Paul W. O'Meara
Kay & Steve Onderdonk
Mr. & Mrs.
William L. Plunkett
Mrs. Robert O. Ragsdale
Mr. & Mrs. Wallace Reaume
Marcia & Mike Schoettle
Mr. & Mrs. Howard B. Schow
H. Randall & Marilyn Stoke
Ian & Barbara
White-Thomson
Mr. & Mrs. Lawrence Wilson
Robert E. & Deborah Wycoff

Arboretum Donor

Mary Jo Andrews
JoJeanne & Dann Angeloff
Hugh A. Baird
June & Merle Banta
Mr. & Mrs. Marc Beddawi
Mary E. Bell
Mary Lou Bonner
Dorothy M. Bossert
Judith & Fred Brandt
Elissa DeAngelo
Mrs. A.L. Burford
Cheryl Ann Butler
Elizabeth Brown Calleton
Mary Jean Carlson
John & Ileana Cataldo
Daniel R. &
Beatrice W. Chute
Barbara L. Coleman
Mr. & Mrs. John Cornell
Joan & Bruce Crow
Mary Davidson
Stanton W. Davies, II
Mr. & Mrs. William Davila
Alice L. Deliman
Mrs. Richard J. Dobbins
Mrs. William H. Doheny
Nancy Dorn
Louise O. Dougherty
Natalie M. Eckel
Nancy Faibis
Jean & Louis Fleming
Mr. & Mrs. James
M. Galbraith
Teresa Gonzales
Gloria J. Goss
Harlene A. Hamann
Karen Hansen
Mr. & Mrs. Austin
H. Hathaway
Dan & Linda Heil
Mr. & Mrs. Held
Edward M. Herrera
Mr. & Mrs. Boyd Higgins
Dorcas Hooker
Mr & Mrs. Richard Hotaling
Mr. & Mrs. Roger G. Jones
Emi Kamikawa
Patricia H. Ketchum
Yoshiko P. Kubota
Hannah S. Kully
Mrs. William G. Lawson

Mr. & Mrs. William
M. Lustberg
Mr. & Mrs. Robert Malone
Mr. & Mrs. Malcolm McDuffie
Mr. & Mrs. Kingston McKee
Dr. & Mrs. Millard McLain
Mrs. E.H. McLaughlin, Jr.
David & Linda Medley
Mrs. Herschel K. Mitchell
Thomas & Demetria Moritz
Wendell Mortimer Jr.
Mrs. Fred Nason
Marvin & Barbara Nelson
Helen C. Nutten
Desiree & Lou Ocampo
Joseph William Oliver
Mae Powell
Mr. & Mrs. Claude
Rademacher
Michael J. Rademacher
Billie J. Reynolds
Mr. & Mrs. J. Holt Rose
Patricia C. Ryan
Mr. & Mrs. George Sabin
Mr. & Mrs. Edwin J. Schryver
John & Gina Shaw
Dr. Dennis S. Shillam
Mr. & Mrs. Sum H. Shum
R.G.S. Silten
Robert & Dawnette Skemp
Peter & Adele Skibba
Diola M. Snell
P.K. Sotel
Susan ten Grotenhuis
Audrey Thompson
Kim Vollstedt
Susan A. Walker
Mr. & Mrs. James D. Walsh
Mr. & Mrs. Richard J. Ward
Nancy E. Warner, MD
Nancy W. Wheat
Perry & Deborah Wilder
Mrs. Jess Witt
Mitchell E. & Carrie M. Wright



A SINCERE THANKS TO OUR MANY BALDWIN BONANZA PATRONS

THROUGH MARCH 5, 2002

Tropical Forest Plants

Mr. & Mrs. Guilford Babcock
George & Marilyn Brumder
Mary Elena Goodan
The Nash Family

Fragrant Roses

Peter & Susan Atkins
Bob & Joan Banning
Suzanne & Donald Deise
Katherine & Robert Gillespie
David D. Hu, CFP
Amanda Goodan
& William Koelsch
Mrs. Elise Mudd Marvin
Gretl & Arnold Mulder
Mickey & Lee Segal
Mr. & Mrs. T. Techentin

Robust Perennials

Willard & Marilyn Bochte
Henry & Virginia Braun
Jo Ellen Daniell
Susan Dawson
Jakie & Ted Engs
Yoshio & Hiroko Fujioka
Christie & Ben Garrett
Suzanne & Larry Haller
Jane & Carl Herrmann
Pris & Gary Hoecker
Mr. & Mrs. Louis W. Jones, Jr.
Carolyn P. Moss
Leroy & Adele Rahn
Bingo & Gino Roncelli
Fred Schoellkopf
Mr. & Mrs. Cedric Scott
Dorothy Scully
Mr. & Mrs. Philip V. Swan
L. S. Telleen
Victor Vener

Colorful Annuals

Cynthia Bennett
& Associates, Inc.
Mr. & Mrs. Charles B. Ames, Jr.
Mr. & Mrs. Richard Baird
June & Merle Banta
Richard E. Brandes
Carol S. Bressler
Marianne Browning
Mrs. Betty J. Buschmann
Elizabeth Brown Calleton
Catherine "Tink" Cheney
Kay Fun Cho
Arthur L. Crowe

John & Bonnie DeWitt
Peg Dorr
Louise O. Dougherty
Paul & Georgianna Erskine
Mary & Bill Escherich
Mr. & Mrs. Gordon Fish
Ruby K. Frenchick
Richard & Maria Grant
Judge Cynthia Holcomb Hall
Dan W. Heil
The Hess Family
& The Chou Family
Mr. & Mrs. Boyd Higgins
Bitsy & Dick Hotaling
Eileen & Vern Hubbard
Robert W. & Linda M. Johnson
Stephen A. Kanter, M.D.
Maria Low

Mary Marsh
Elise M. Marvin
Dr. & Mrs. Allen W. Mathies, Jr.
Mr. & Mrs. Tim McCarthy
Deborah & Lary Mielke
Nancy Alayne Mills
Don & Pat Moreland
Sussy Nemer
Bill & Judy Opel
Mr. & Mrs. Thomas O'Toole
Stanley & Melody Pinta
Mr. & Mrs. William L. Plunkett
Janet Segal
R.G.S. Silten
Mr. & Mrs. Franklin Simmons
Mrs. Jean M. Sink
Denise Smith
William & Peggy Still
Dolores & Michael Weatherbie
Barbara White-Thomson
André & Erica Vener
Bruce & Betsy Whitmore
Norm & Shirley Wigglesworth
Dr. & Mrs. Jerry Yaffe
Eileen & William Zimmerman

Ladybugs

San Gabriel Valley Branch,
American Begonia Society
Mrs. Adolph L. Antonio
Neoma Berger
Ms. Barbara Bernstein
Barbara & Joseph Birman
Mary Lou Bonner
Dorothy M. Bossert
Ms. Violet T. Burton

Tom & Nancy Delahooke
Mr. & Mrs. Robert Denne
The Erickson Family Trust
Ms. Nancy Faibis
Mr. & Mrs. Howard Farris
Leslie & Beverly Fedor
Fred & Nadine Feldheim
Barbara A. Garrett-Summers
Asa Nomura Golden
Dusty Greene
Art Harlem
Yoshiko Kubota
Michelle Leddel
Susan McCreary

Desiree & Lou Ocampo
Olivia Prizzi
Linda Rourman
Don & Lee Sales
Mrs. W.E. Schulz
B. Sheld
Robert & Dawnette Skemp
Rhonda Stone
Don & Lauragene Swenson
Howard & Fran Syverson
Drew & Diane Taylor
Dr. Lynn & Mr. Joe Velazquez
Mrs. Jess Witt
Ms. Louise Zawadzki

A LIVING TRUST: IS IT FOR YOU?

The living trust has been called the most flexible estate-planning device available and people of all ages can benefit from creating one. Creating a living trust involves transferring assets you own into a trust, which then holds title to the assets.

The trust is a written legal document that allows you, as the trustee(s), unlimited access to and full control of your assets during your lifetime. It also enables you to pass property after your death to family, friends and/or loved ones — and to appoint a successor trustee to ensure that your wishes are carried out.

The distribution of your assets through a living trust allows you to avoid probate and its resultant costs and delays. You can also revise your will so that any estate residue goes to the trust after your lifetime.

You may choose to name one or more charitable causes, such as the

Los Angeles Arboretum Foundation, as beneficiaries of your living trust — and assets so designated will escape estate tax. In addition, you'll have the satisfaction of making a difference to the future of your community.

A living trust also allows you to arrange in advance for someone to manage your affairs in case illness or injury prevents you from managing things on your own. A growing number of older Americans are placing assets into living trusts to avoid the risk of a court-appointed guardian or conservator making decisions for them in the future.

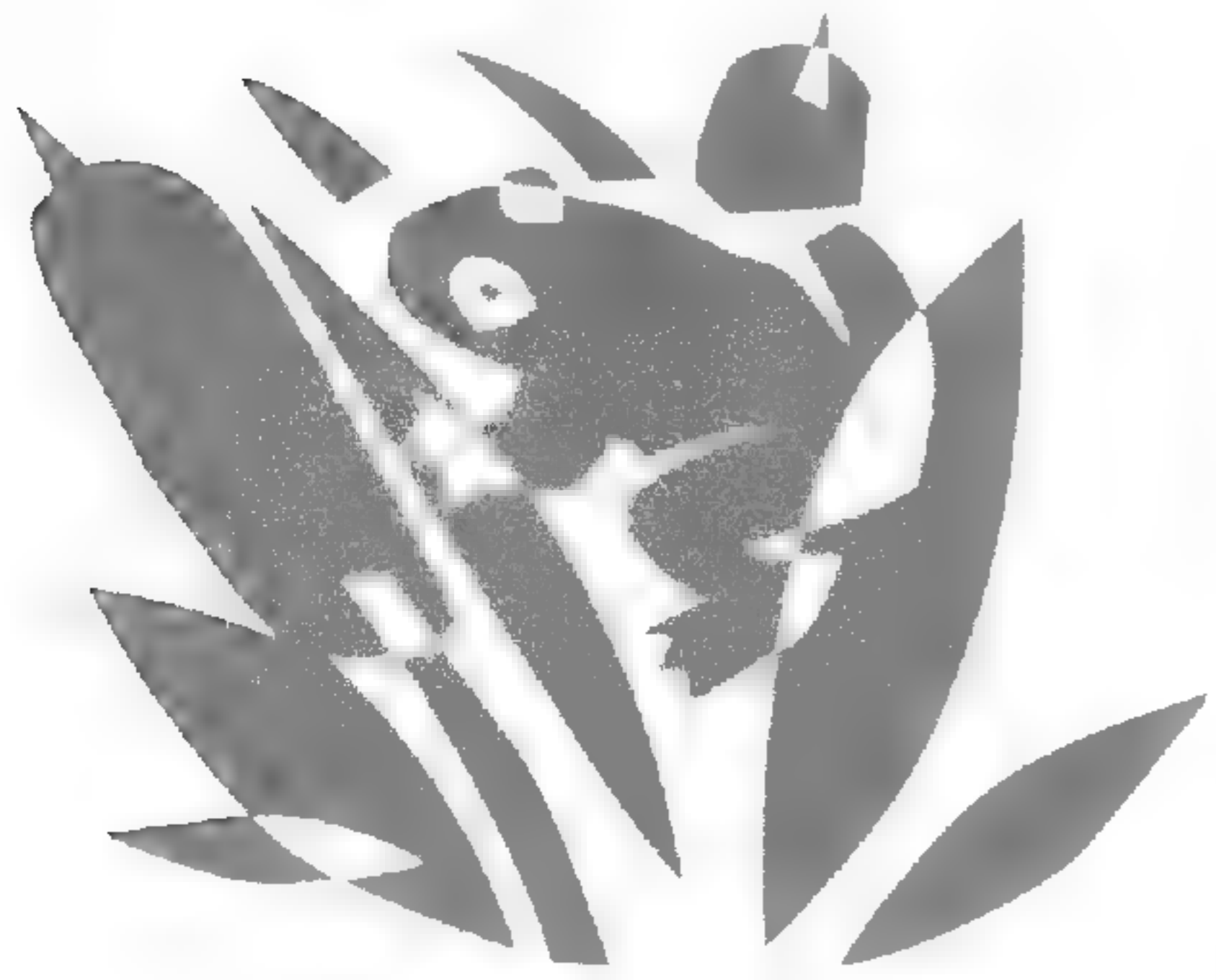
The Los Angeles Arboretum Foundation would be pleased to help you explore the best ways to blend your personal and philanthropic goals. Call us for information (626-821-3231) provided at no obligation to you.

*Contributed by
Victoria Thurlow*

ARBORETUM

ADVENTURES FOR KIDS

Summer Fun! Find out about strange and wonderful plants and water features, play nature games, learn about music of the garden, hike, make cool natural arts and crafts, sing songs, seek out creatures in the garden, take a special private tram ride, make musical instruments and meet mystery guests! Bring a hat and a water bottle and be prepared to have tons of fun!!!



PUDDLES, PONDS, POOLS AND POLLIWOGS FOR AGES 6 - 10

Monday, July 8 - Friday, July 12

9 - 11:30 am

Celena Turney, Instructor

\$85 / \$100 non-members

Join us for a great water adventure! During this exciting summer camp, we'll search The Arboretum to discover the many different ways water helps plants and animals to survive. We'll investigate the tiny world that lives in a drop of pond water; we'll marvel at the life that thrives in the magnificence of our roaring waterfall; and we'll experience the peacefulness of the stream that meanders through the garden. Each day, explore one of The Arboretum's signature water features, make a craft, and have lots of fun!!

LOST AND FOUND: ART FROM THE GARDEN FOR AGES 6 - 10

Celena Turney, instructor

Monday, July 15 - Friday, July 19

9 am to 11:30 am

\$85 / \$100 non-members

Have you ever wanted to create your own animal out of seed pods, berries, and pine cones? Or make a little house adorned with bark, leaves, and seeds for your special garden friends? During this creative camp adventure, we'll use our imaginations to make natural collages, sculptures, and paintings from garden treasures and other found objects. Each day we'll explore the garden, seeking out hidden nooks and crannies, collect unique natural materials, and craft something cool!

MUSIC OF THE GARDEN FOR AGES 6 - 9

Monday, July 22 - Friday, July 26

9 am to 11:30 am

Vena Luthey, music coordinator for Pasadena Unified School District, and Angela Maria Sepulveda, Instructors

\$85 / \$100 non-members

Sing a song and dance to the rhythms of the garden! Create your own instruments; make rainsticks, shakers from gourds, rhythm sticks from bamboo; design your own paper flowers, and plant flower or vegetable seeds to take home with you. AND, each child will receive a CD of all the fun songs learned during camp!

Summer Evenings in the Garden



JULY 25 MURDER IN THE GARDEN

Stephanie Georgieff, Herbalist

Back by popular demand is our bardic host and herbalist,

Stephanie Georgieff, to once again enlighten you with tales of Brother Cadfael in an evening of medieval mystery. Utilizing his experience in the Crusades, sharp wit and deep love of nature, Brother Cadfael solved murder mysteries by noting the herbs found in each case. Ride the tram to investigate suspicious locations, pursue clues and set the stage for the final act on the terrace of the Peacock Cafe.

AUGUST 8 INSIDE THE ARBORETUM

Nelson Holmes, Senior Tour Guide

Join naturalist Nelson Holmes as he provides an introduction to and overview of The Arboretum. Because The Arboretum segregates its collections geographically, you will also travel from one continent to another as Nelson leads you on a journey through the gardens of Australia, North and South America, as well as the Asiatic, African and Mediterranean sections. Discover the bowl at Tallac Knoll; understand that Baldwin Lake is actually a sag pond, created by an earth-

quake fault; hear about wonderful and rare trees living here. View now-common flowering trees (such as the *tabebuia*, also known as the golden trumpet tree and the pink trumpet tree) that were actually introduced by The Arboretum over the last fifty years. Don't miss this delightful way to increase your knowledge and understanding of this 127 - acre botanical garden.

AUGUST 22 ORCHID AND TROPICAL GREENHOUSE TOUR

Julie Norman, Orchid Curator

The tour begins with a tram ride to the Tropical Greenhouse where you will hear about the culture and uses of rain forest plants, and marvel at the displays. Then, on to the "behind the scenes" orchid growing area of over 13,000 square feet of glass greenhouses and 2,000 square feet of covered outdoor space. The orchid collection, over 10,000 plants, comprises over 200 genera and over 1,500 species. Julie will talk about the care and culture of orchids and answer any questions. Due to space, we will divide the group in half, and one group will tour the grounds while the other goes through the greenhouses, and then switch!

May

			1 Color Pencil	2 Fanatic Gardeners	3 Tai Chi Fanatic Gardeners Ikebana Baldwin Bonanza Preview Party	4 Baldwin Bonanza Plant Sale Garden Sprouts Flower Arranging Show
5 Baldwin Bonanza Plant Sale Flower Arranging Show	6 Landscape Design	7 Tai Chi	8 Color Pencil	9 Fanatic Gardeners	10 Fanatic Gardeners Ikebana Tai Chi	11 Bird Walk
12 Mother's Day Queen Anne Cottage Open House	13 Landscape Design	14 Tai Chi	15 Color Pencil	16 Fanatic Gardeners Fresh: Life's A Picnic	17 Fanatic Gardeners Ikebana Tai Chi	18
19 Epiphyllum Show Garden Conservancy Open House-Nash Garden	20 Landscape Design	21 Tai Chi	22 Color Pencil	23	24 Tai Chi	25 Smart Gardening Workshop Santa Anita Bonsai Show
26 Santa Anita Bonsai Show	27	28 Tai Chi	29 Color Pencil	30 Fresh: Innovative Chinese Cuisine Introduction to Watercolor	31 Summer Ikebana Tai Chi	1 Daylily Show and Plant Sale Garden Sprouts
2 Tai Chi in Chinese	3 Basic Drawing	4 Tai Chi	5 Basic Drawing Green Side Up - Perennials	6 Introduction to Watercolor	7 Summer Ikebana Tai Chi	8 California Clay 2002 Show & Sale
9 Container Gardening Workshop California Clay 2002 Show & Sale Tai Chi in Chinese	10 Basic Drawing	11 Tai Chi	12 Basic Drawing Green Side Up - Perennials	13 Introduction to Watercolor	14 Summer Ikebana Tai Chi	15 Fresh: BBQ Sauces & Outdoor Cooking Bonsai & Rare Stones Show
16 Bonsai & Rare Stones Show Tai Chi in Chinese	17 Drawing Plants	18 Tai Chi	19 Green Side Up - Perennials Drawing Plants	20 Introduction to Watercolor	21 Summer Ikebana Tai Chi	22 Amanda McQuade Crawford Ethnobotanical Lecture
23 Tai Chi in Chinese	24 Drawing Plants	25 Tai Chi	26 Green Side Up - Perennials Drawing Plants	27 Fresh: Celebrating the 4th of July Introduction to Watercolor	28 Summer Ikebana Tai Chi	29 En Español - Sprinkler Troubleshooting
30 Tai Chi in Chinese	1 Drawing Plants	2 Tai Chi	3 Green Side Up - Perennials Drawing Plants	4	5 Summer Ikebana Tai Chi	6 Festival on the Green
7 Tai Chi in Chinese	8 Arboretum Adventures Composition	9 Arboretum Adventures Tai Chi	10 Arboretum Adventures Green Side Up - Perennials Composition	11 Arboretum Adventures Fresh: Summer Jams Tour & Taste: Bamboos & Palms	12 Arboretum Adventures Summer Ikebana Tai Chi	13
14 Tai Chi in Chinese	15 Arboretum Adventures Composition	16 Arboretum Adventures Tai Chi	17 Arboretum Adventures Composition	18 Arboretum Adventures	19 Arboretum Adventures Tai Chi	20 Festival on the Green
21 Tai Chi in Chinese	22 Arboretum Adventures Composition	23 Arboretum Adventures Tai Chi	24 Arboretum Adventures Composition	25 Arboretum Adventures Fresh: Cooking Cool Tour & Taste: Murder in the Garden	26 Arboretum Adventures Tai Chi	27
28 Checker Car Club Show Tai Chi in Chinese	29	30 Tai Chi	31	<p>Free Arboretum Admission: Third Tuesday of each month. Bird Watching: First Sunday of each month, meet at the entrance (rotunda) at 8 am for a guided walk to identify birds in The Arboretum. Free with admission. Santa Anita Depot: Open Tues. and Weds, 10 am-4 pm; Sundays, 1-4 pm. Free with admission. Tai Chi: Every Tuesday and Friday from 7:30 - 8:30 am; meet on the lawn near Baldwin Avenue entrance. Free for members.</p>		

“OF ALL THE GROUPS OF PLANTS,
NONE HAVE IMPRESSED ME MORE
THAN THE GROUP KNOWN AS PALMS.”

Palms, all of which belong to the family Palmae or Arecaceae, are most widely recognized by their flagship species, the Coconut Palm or *Cocos nucifera* (all coconuts are palms but not all palms are coconuts). This family contains close to 3000 different species which range in size from the diminutive, as with *Chamaedorea minima* (literally translates into “the smallest”) that reaches a mature height of 10 inches, to majestic giants, like the towering California Fan Palms (*Washingtonia robusta*) that line The Arboretum’s Baldwin Lake.

The vast majority of palms are wet tropics, meaning they occur between the Tropic of Cancer and the Tropic of Capricorn and are not suitable for our climate. However, of those that will grow here, only a handful are actually being utilized by the home gardener and or by the landscape industry.

A small number of palms can be called “true” Mediterranean palms, meaning they are native to the Mediterranean regions of the world.

In fact, only five species of palms are native to the Mediterranean zones: The

Guadalupe palm (*Brabea edulis*) from Guadeloupe Island, the massive Chilean wine palm (*Jubaea chilensis*) the Mediterranean/European



Fan Palm (*Chamaerops humilis*), the commonly planted Canary Island Date Palm (*Phoenix canariensis*), and the Cretan Date Palm (*Phoenix theophrasti*) which is native to Greece, Crete and Turkey.

Other palms are extremely hardy, such as the Mazari Palm (*Nannorrhops ritchieana*) from the Middle-East, Afghanistan, and Pakistan. The Mazari palm is probably the toughest of the lot, so tough that freezes,

snow, droughts and floods do little to deter it from thriving.

The palm family is second only to the grasses in economic importance.

Especially in the tropics, palms are used for virtually everything: rattan furniture, coconut fiber (the new miracle product in the horticultural industry), palm oil, deliciously sweet fruit, timber, thatch for roofs, “sago” or starch, fermented palm sugars for alcoholic beverages, waxes (in 1935 H.F. Johnson Jr. led the original “carnauba” expedition into South America seeking the legendary Carnauba Palm (*Copernicia prunifera*) for the waxy cuticle that is produced on its leaves) and my favorite – heart of palm (excellent in

salads and it can even be deep fried).

You can learn more about my favorite group of plants by attending the July 11 Tour and Taste where I will address “Grasses Made of Wood and Trees That Are Not Trees”.

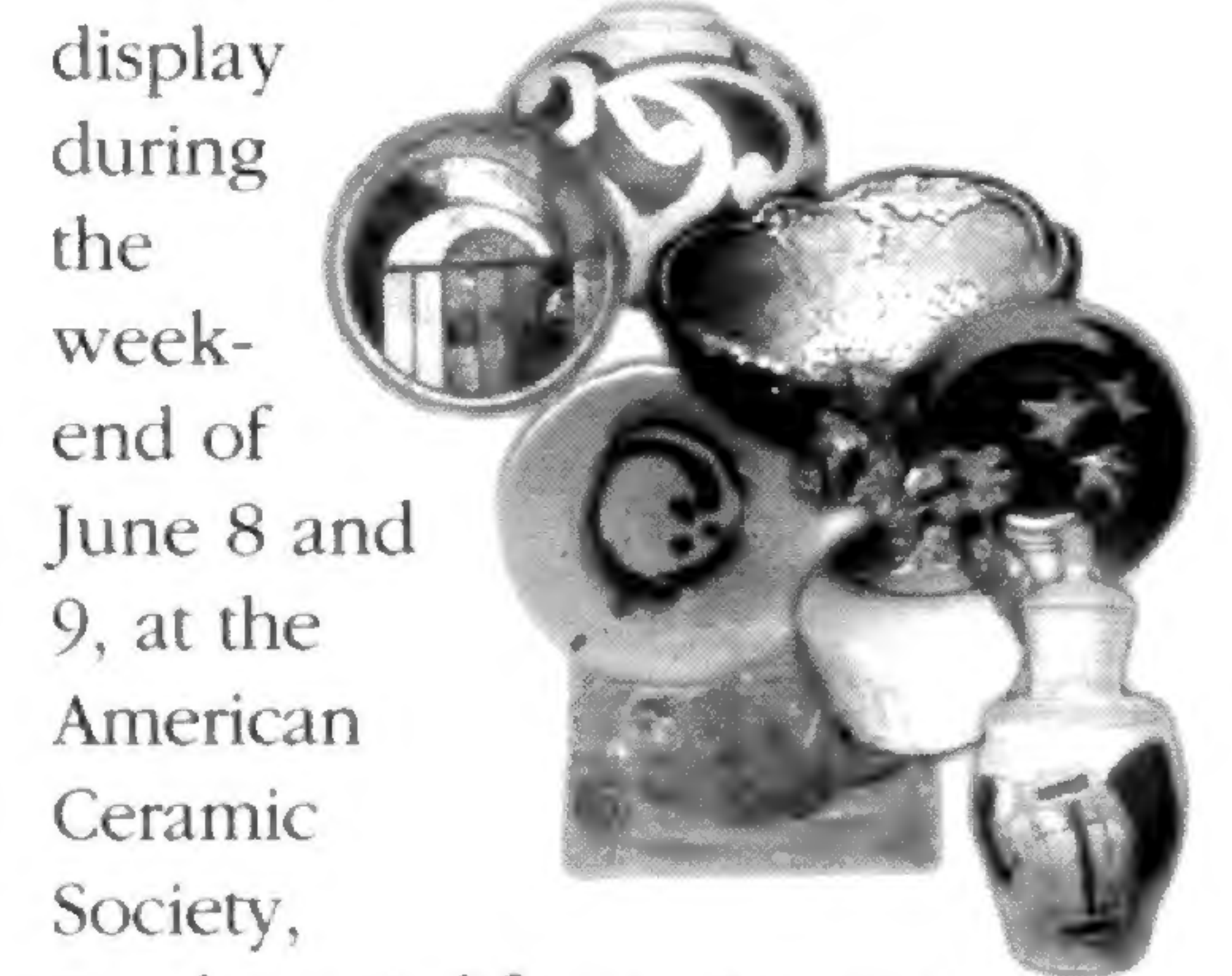
All the palms mentioned above, with the exception of the Carnauba Palm, can be seen at The Arboretum of Los Angeles County.

Contributed by Timothy Phillips, Superintendent

CALIFORNIA
CLAY 2002

SHOWCASE
& SALE

An exciting mix of artistic energy and originality will be on display during the week-



end of June 8 and 9, at the American Ceramic Society, Southern California Section, Design Chapter annual California Clay Showcase and Sale. Showcase hours will be 10:00 am to 4:00 pm each day. On Friday evening, June 7, from 6:00 pm to 9:00 pm, an opening reception is planned. For more information visit

www.peacecity1.com.

JUST
FOR
KIDS

**Arboretum
Adventures
Summer Camp**

July 8-12
**Puddles, Ponds,
Pools & Polliwogs**

July 15-19
**Lost and Found—
Art from the Garden**

July 22-26
Music of the Garden

For complete details,
see the calendar insert.

TOUR & TASTE 2002:

WOODY MONOCOTS, CONTINENTS, KNOLLS, LAKES, ORCHIDS, TROPICAL RAINFORESTS... AND ANOTHER GARDEN MURDER ...

The 9th Annual Tour & Taste Thursdays series will once again be an Arboretum summer highlight. Four terrific programs are planned, so make sure they are on your calendar. This series offers an entertaining way to learn about The Arboretum and it's many noteworthy collections.

Each evening the tram tour & talk begins at 6:00 pm, followed by dinner at 7:30 pm on the terrace of the Peacock Café. Reservations are required. Cost is \$40 per person per program. Call 626-821-4624 or 626-821-4623 to reserve your place.

**JULY 11
BAMBOOS & PALMS**

Join Superintendent Timothy Phillips on a brief yet fascinating tour exploring The Arboretum's little known palm and bamboo collection.

**JULY 25
MURDER IN THE GARDEN**

A Tour & Taste favorite, Stephanie Georgieff, our bardic host and herbalist, will again entertain with tales of Brother Cadfael in an evening of medieval mystery.

**AUGUST 8
INSIDE THE ARBORETUM**

Join naturalist and Senior Tour Guide, Nelson Holmes,

as he provides an introduction to and overview of The Arboretum.

**AUGUST 22
ORCHID AND TROPICAL GREENHOUSE TOUR**

Join Julie Norman, Orchid Curator, on a tram tour to the Tropical Greenhouse and a "behind the scenes" tour of The Arboretum orchid collection.

For complete program details, see the enclosed classes and activities calendar.



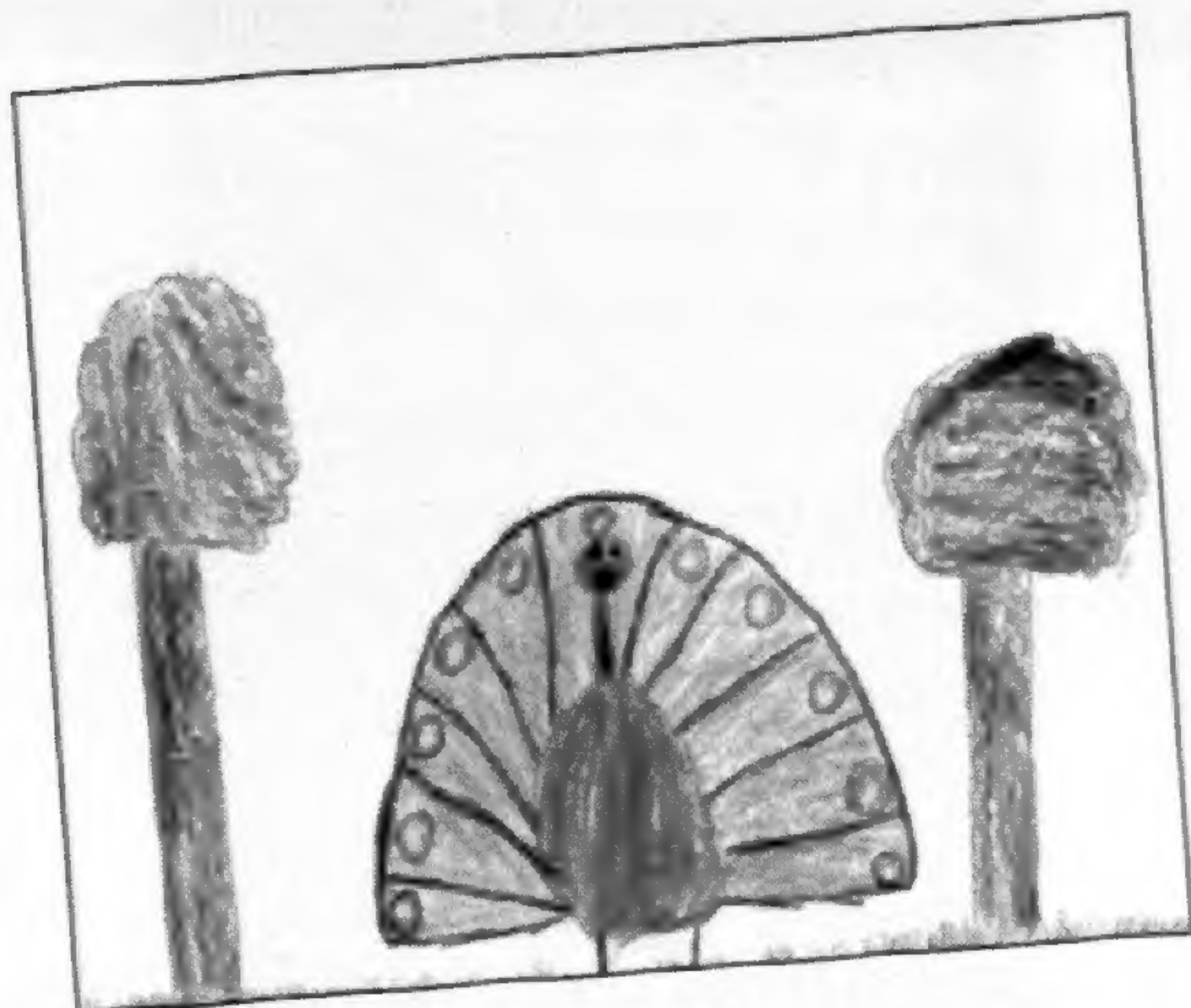
Los Voluntarios, Bob Weber, visits with Stephanie Georgieff, bardic host for Murder in the Garden.

MISSION EDUCATION

YOUTH VOLUNTEERS

By visiting and volunteering, today's youth play a vital role in our education mission.

Grade-school-aged children participate



Postcard art from student to John Barnes, field docent and junior volunteer placement chair.

in educational tours that expose them to the environment and also to the fascinat-

ing subjects of Early California History and Plants in Our World. Arboretum docent volunteers generously donate time to conduct these tours.

The junior volunteer program satisfies community service requirements and also provides many learning experiences. Today, over 50 junior volunteers are active in The Arboretum's junior program, helping out in the Gift Shop, with classes "just for kids," such as the Garden Sprouts series, and at special Arboretum events.

For more information about the volunteer program at The Arboretum, please call Nancy Pirovano at 626-821-4623.

*Contributed by
Nancy Pirovano*

MID-MAY TO LATE JUNE

EVERYTHING IS COMING UP...IRISES!

A visit to The Arboretum's drip wall between mid-May and late June is a must! That is when the Japanese Iris Garden is expected to be at the height of color.

Developed by the world renowned Kamo Nurseries, in Japan, and made available to The Arboretum from the Donald M. Kendall Sculpture Gardens

at PepsiCo's World Headquarters, the collection includes over 35 varieties of *Iris ensata*, the largest of all Iris. Some flowers reach 12 inches in diameter with lovely forms, colors and patterns.

In addition to the "real life" display, from April though the end of June, a "still life" iris poster will be given free with any new membership. What a perfect time to present the gift of a membership to a close friend or family member and give them a most colorful introduction to The Arboretum.



NO PEEKING -YOU CAN COME INSIDE!

California-Philharmonic 2002 Season

JULY 6:
Sir Andrew Lloyd Webber

JULY 20:
Tchaikovsky Spectacular

AUGUST 3:
Beethoven Blockbuster

AUGUST 17:
Rodgers & Hammerstein

AUGUST 31:
World Tour

SEPTEMBER 14:
March Madness

For more information
call 626.300.8200
or visit www.calphil.org

QUEEN ANNE COTTAGE TO OPEN FOR MOTHER'S DAY, MAY 12

An old-fashioned Mother's Day is planned at The Arboretum on Sunday, May 12, with the opening of the historic Queen Anne Cottage. The biannual open house provides visitors with an opportunity to stroll down memory lane and view treasures and furnishings in the cottage, normally seen only through its windows.

The Queen Anne Cottage will be open from 10:00 am to 4:00 pm, along with the companion Coach Barn and the historic Santa Anita Depot.

Docent-led tours will take place throughout the day. No reservations required. Bring the family. Free with general Arboretum admission.

This yearly open house is made possible by Los Voluntarios, the volunteer arm of The Arboretum.

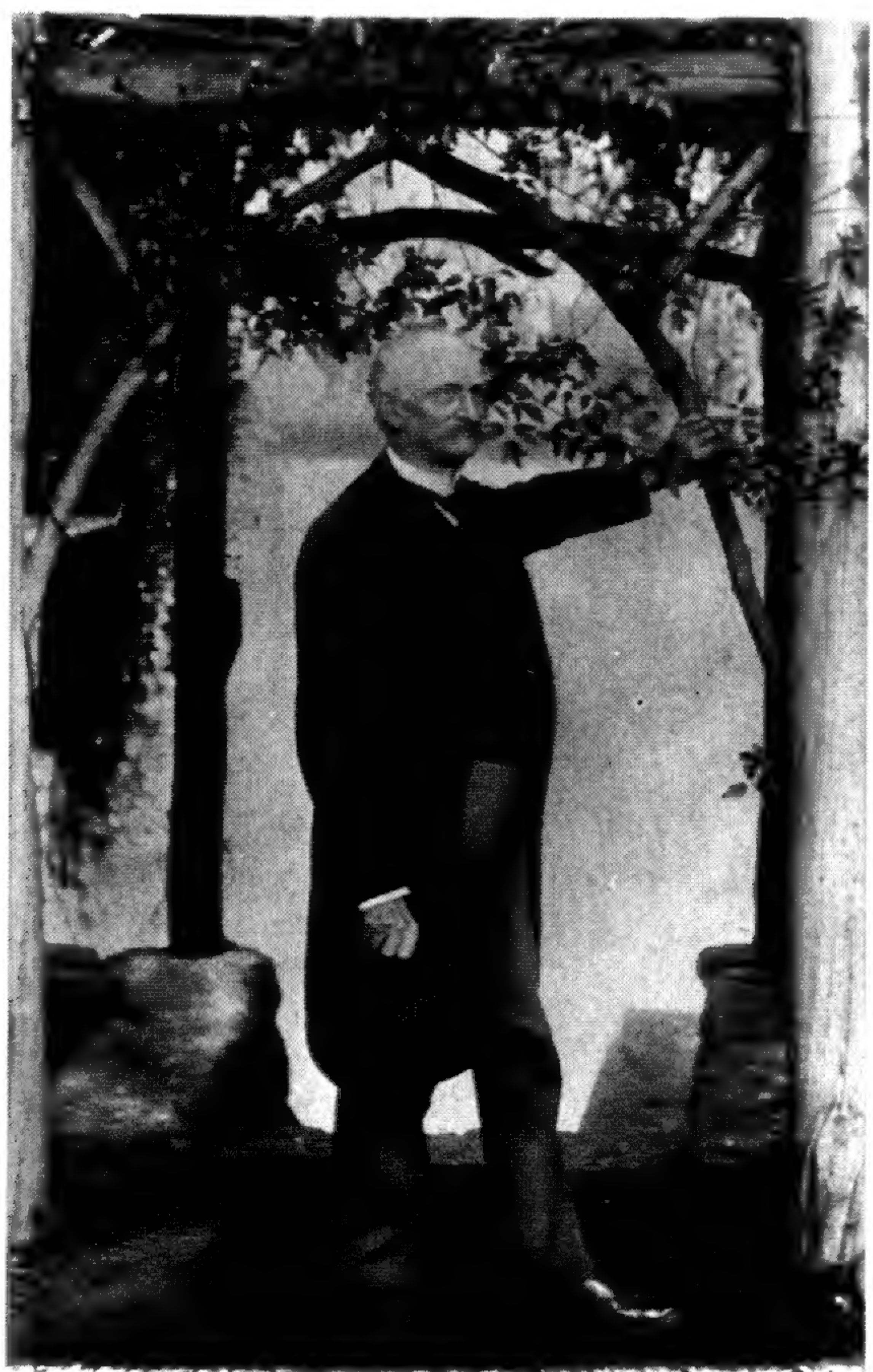


FROM THE ARBORETUM ARCHIVES

HISTORY HIGHLIGHTS

1893

This photo appeared in the Los Angeles Times on June 11, 1893. Journalist Frank G. Carpenter's description of "Lucky" Baldwin in the article: "He is not extraordinary in any of his features, but behind his plain face, I am told, exists one of the highest business brains in the country." And of the Baldwin estate: "The soil is as rich as guano and as black as your hat. It will produce anything under the sun, and 50,000 acres of it belongs to this one man."



"Lucky" Baldwin at home, Baldwin's Ranch, Cal.

"Lucky" Baldwin, standing in the doorway of the Boathouse (no longer standing) which was located just south of the Queen Anne Cottage on Baldwin Lake.

Special gifts from The Arboretum gift shop

- Teapots, S & P Shakers & Serving Pieces
- Santa Barbara Ceramics Nature Clocks
- Birdfeeders and Hummingbird Guides
- Moonlight Serenade and Easy Listening CD's
- Collectible Lisse Kaplans
- Mimi's Garden porcelain tableware
- Crabtree & Evelyn Body Products

Garden Plaques and Flags

30% off Book Sale

For your shopping convenience during the Cal Phil Concerts Saturdays, we have extended the gift shop hours from 5:30-7:30 pm each concert evening.

Save an additional 5% on purchases over \$25 by bringing this ad with you to the gift shop.

Highlights

NASH GARDEN TO RAISE FUNDS FOR THE ARBORETUM

The private garden of Merrill and Donivee Nash in Arcadia will be open to the public on May 19, 2002, from

10 am-4 pm to help raise funds for the Los Angeles Arboretum Foundation and the Garden Conservancy. The Nash garden is a constantly evolving entity whose backbone is several hundred roses – Austins, hybrid teas, and old English. A formal pool, tennis court, and Dumbarton Oaks inspired summerhouse provide a framework for many perennials, including climbing roses, clematis, and many varieties of trees. The garden is designed with the opportunity of year-round outdoor living in mind, but is most beautiful during the roses' first bloom in mid-spring.

Admission to the garden is \$5 for adults; children 12 and under are free. Call the Garden Conservancy toll free at 1-888-842-2442 to order tickets or purchase them at Baldwin Bonanza.



10 am-4 pm to help raise funds for the Los Angeles Arboretum Foundation and the Garden Conservancy.

The Nash garden is a

MARK YOUR CALENDAR

LAS ARTISTAS DE FLORES FLOWER ARRANGING SHOW

May 4 & 5 10 am - 4 pm

43RD ANNUAL EPIPHYLLUM SHOW

May 19 9 am - 4 pm

SMART GARDENING WORKSHOP

May 25 9 am - 11 am

SANTA ANITA BONSAI SHOW

May 25 & 26 9:30 am - 5 pm

DAYLILY SHOW & PLANT SALE

June 1 9 am - 4 pm

CHONG HOA BONSAI & RARE STONES SHOW

June 15 & 16 10 am - 4 pm

CHECKER CAR CLUB SHOW

July 28 10 am - 3 pm

SCIENCE ADVENTURES DAY CAMP

June 17 — August 30

The Arboretum of Los Angeles County

301 North Baldwin Avenue
Arcadia, CA 91007-2697
(626) 821-3222

ADMISSION:

\$5 Adults, \$3 Students
and Seniors, \$1 Children 5-12,
Free for children under 5
and Arboretum members

SUMMER HOURS - June 3 to August 30, 2002:

Monday through Friday: Opens at 9 am;
members may enter at 8 am; rotunda closes at
6:30 pm; visitors must exit grounds by 7 pm.

Saturday and Sunday: Opens at 9 am; members
may enter at 8 am; rotunda closes at 4:30 pm;
visitors must exit grounds by 5 pm.

Festival on the Green Saturdays: July 6, July 20,
August 3, August 17, August 31 and September
14: Rotunda closes at 2:30 pm.; visitors must
exit grounds by 3 pm.

WEBSITE: www.arboretum.org

Non Profit
Organization
U.S. Postage
PAID
Arcadia, CA
No. 528