

Rec Aug 7  
Ans Aug 8

Philad<sup>a</sup> Aug. 3/66.  
Dr. Engelmann

Dear Sir

Please send me  
a copy of your "revision of the  
genus *Juncus*", for which I enclose  
one doll. I would like very much  
to subscribe for a set of the *Junci*  
which I understand you intend  
to distribute

If I collect anything in this line  
which I think will interest you  
I will send them this fall

Yours truly

C. F. Parker

Care L. A. Godley Esq,  
Philad<sup>a</sup> Pa.

send copy of manuscript.  
will send remaining 2 sheets as soon as out  
Herb. norm. not for sale



0 1 2 3 4 5 6 7 8 9 10  
cm

copyright reserved



MISSOURI  
BOTANICAL  
GARDEN

*[Faint, illegible handwritten text, likely bleed-through from the reverse side of the page.]*

MISSOURI BOTANICAL GARDEN  
GEORGE ENGELMANN PAPERS



0 1 2 3 4 5 6 7 8 9 10  
cm

copyright reserved



MISSOURI  
BOTANICAL  
GARDEN

Rec: Aug 22

Camden, N.J. Aug. 18/86.

Dr. Geo. Engelmann

Dear Sir

I have rec'd your note  
and also the Proceedings. I shall  
be most happy to put you up a  
package of plants this fall,  
and hope to send some things  
that will interest you. My  
collections are mostly from the  
state of N.J.

Yours truly

C. L. Parker

MISSOURI BOTANICAL GARDEN  
GEORGE ENGELMANN PAPERS

Schnell 69  
~~54~~  
15



0 1 2 3 4 5 6 7 8 9 10  
cm

copyright reserved



MISSOURI  
BOTANICAL  
GARDEN

Ernst  
Steph  
L. H. C. O. H.  
Mount Eaton  
Corner, Memphis.  
Sp. Mt.



0 1 2 3 4 5 6 7 8 9 10

cm

copyright reserved



MISSOURI  
BOTANICAL  
GARDEN

Rec<sup>d</sup> Nov 16<sup>th</sup>

Rec<sup>d</sup> Nov 18 Philad<sup>a</sup> Nov. 12/66

Dear Sir

In your note Aug 8/you expressed a desire for anything of botanical interest I might have to send, I have therefore made up a package of such things as I thought would most interest you, and I send them with a good deal of diffidence I assume you and I hope you will correct all errors &c. I have enclosed in the package some of my fungi, which you will find marked with my name, I would esteem it a very great favor if you would name them for me if it is not too much trouble

Yours truly  
C. F. Parker

Dr. Engelmann

Care L. A. Godey Esq  
Philad<sup>a</sup>

22



0 1 2 3 4 5 6 7 8 9 10  
cm

copyright reserved



MISSOURI  
BOTANICAL  
GARDEN

*[Faint, illegible handwriting on lined paper]*

MISSOURI BOTANICAL GARDEN  
GEORGE ENGELMANN PAPERS



0 1 2 3 4 5 6 7 8 9 10  
cm copyright reserved



MISSOURI  
BOTANICAL  
GARDEN

Rec Dec 7  
Ans June 22

Philad<sup>a</sup> Dec. 4/66

Dr. G. Engelmann

Dear Sir

I have been so busy the last fortnight that I have not had time to answer your valuable and instructive letter until to day.

The *J. dichotomus* you speak of is undoubtedly from N.J. but I could not say when or where I collected it without seeing it, however on looking my *J. tenuis* again I found 4 specimens collected at Dennisville, N.J. which looks to me very much like the above specie, I send three of them to you also, *J. scirpoides* from Staten Island *Helenium microcephalum*, Dr. Gray says is *H. quadridentatum*, please correct. Yours truly  
C. F. Parker



0 1 2 3 4 5 6 7 8 9 10  
cm

copyright reserved



MISSOURI  
BOTANICAL  
GARDEN

MISSOURI BOTANICAL GARDEN  
GEORGE ENGELMANN PAPERS



0 1 2 3 4 5 6 7 8 9 10  
cm

copyright reserved



MISSOURI  
BOTANICAL  
GARDEN



Rec<sup>d</sup> June 22

Ans Gami day

Office of the "Lady's Book"  
Philad<sup>a</sup> June 18/67.

Dr. Engelmann

Dear Sir

Last fall I sent you  
a package of Junci to be named,  
you wrote me word that you  
would send them soon, not  
hearing from them since that  
time and supposing that in the  
hurry of professional duties &c  
you had forgotten them, I thought  
I would take the liberty of writing  
to you on the subject.

If I find anything interesting in  
the Juncus line, I will send  
you a package this fall if  
you wish them

Yours truly

P. F. Parker

Care L. A. Godley Esq,

Philad<sup>a</sup> Pa -



0 1 2 3 4 5 6 7 8 9 10  
cm

copyright reserved



MISSOURI  
BOTANICAL  
GARDEN

*[Faint handwritten text at the top of the page, possibly including a date or recipient's name.]*

*[The main body of the page contains several lines of very faint, illegible handwritten text.]*

MISSOURI BOTANICAL GARDEN  
GEORGE ENGELMANN PAPERS



0 1 2 3 4 5 6 7 8 9 10  
cm copyright reserved



MISSOURI  
BOTANICAL  
GARDEN

Rec<sup>d</sup> July 15

Ans July 21

Philad<sup>a</sup> July 11/67.

Mr. Engelmann

Dear Sir

The package came all night, I have forwarded Mr. Austin's parcel to day. That spec<sup>m</sup> of *J. leucodichotomus* you found mixed with *J. tenuis*, was coll. at Dennisville, N.J. July 15/66 - I have found it this season very abundant in Burlington Co. N.J. I enclose a spec<sup>m</sup>, if you want any I will be happy to send them. *J. militaris*, I will try and get for you it is in flower but the streams are so high they could not be got at very well at present, I generally find them growing in shallow water and extending to the borders of deep running streams, I have not noticed them in the swift part of the current, the finest specimens are found in say 3 or 4 feet water on the edge or border of the stream and



0 1 2 3 4 5 6 7 8 9 10  
cm

copyright reserved



MISSOURI  
BOTANICAL  
GARDEN

are very hard to get with the roots &c.  
which accounts for your finding  
them generally without those append-  
ages, I have never seen them  
with those floating leaves, you  
mentioned in your letter until  
this summer, I send you a couple  
of spec<sup>ms</sup> which I found close to the  
shore and if they will suit you  
I will try and send the number  
you want in better flowering  
condition &c.

I also send you a specimen  
of *Busceta*, is it *chlorocarpa*? Engel  
coll. in Cumberland Co. N. J. Aug.  
8/66.

Yours truly

C. F. Parker

care L. A. Godey Esq,

Philad<sup>a</sup>



0 1 2 3 4 5 6 7 8 9 10  
cm

copyright reserved

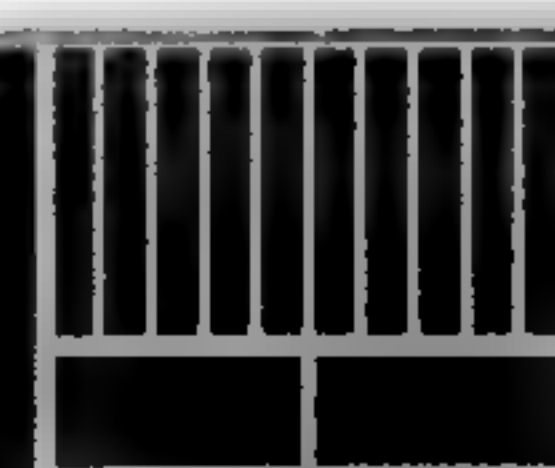


MISSOURI  
BOTANICAL  
GARDEN

e-

dr

~~el~~



0 1 2 3 4 5 6 7 8 9 10

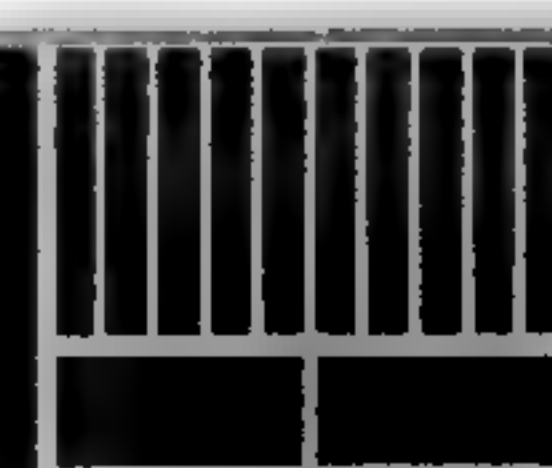
cm

copyright reserved



MISSOURI  
BOTANICAL  
GARDEN

MISSOURI BOTANICAL GARDEN  
GEORGE ENGELMANN PAPERS



0 1 2 3 4 5 6 7 8 9 10  
cm

copyright reserved



MISSOURI  
BOTANICAL  
GARDEN

Rec<sup>d</sup> July 19  
ans July 21  
Lady's Book Office, N. E. Cor. Chestnut  
& 6th Sts.,

Philad<sup>a</sup> July 16/67.

Dr. Engelmann

Dear Sir

Last week I sent  
you a couple specimens of *Juncus*  
*dictyotomus* from Aston, Burlington  
Co. N. J., did you get them?  
I enclose a specimen collected  
near Camden, Camden Co. N. J.  
where I found it very abundant,  
there is no doubt but it is common  
from Burlington to Cape May Cos.  
Do you want any?

Yours truly  
C. F. Parker

MISSOURI BOTANICAL GARDEN  
GEORGE ENGELMANN PAPERS



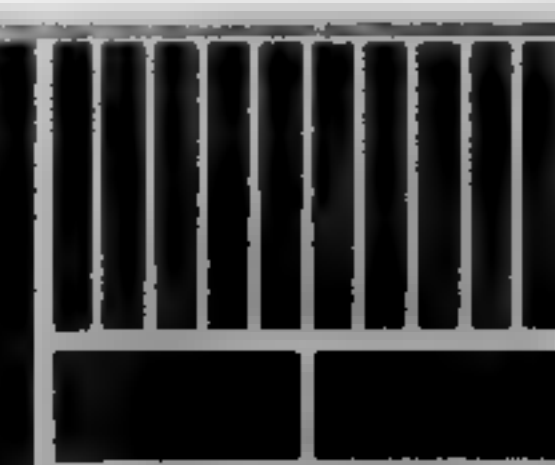
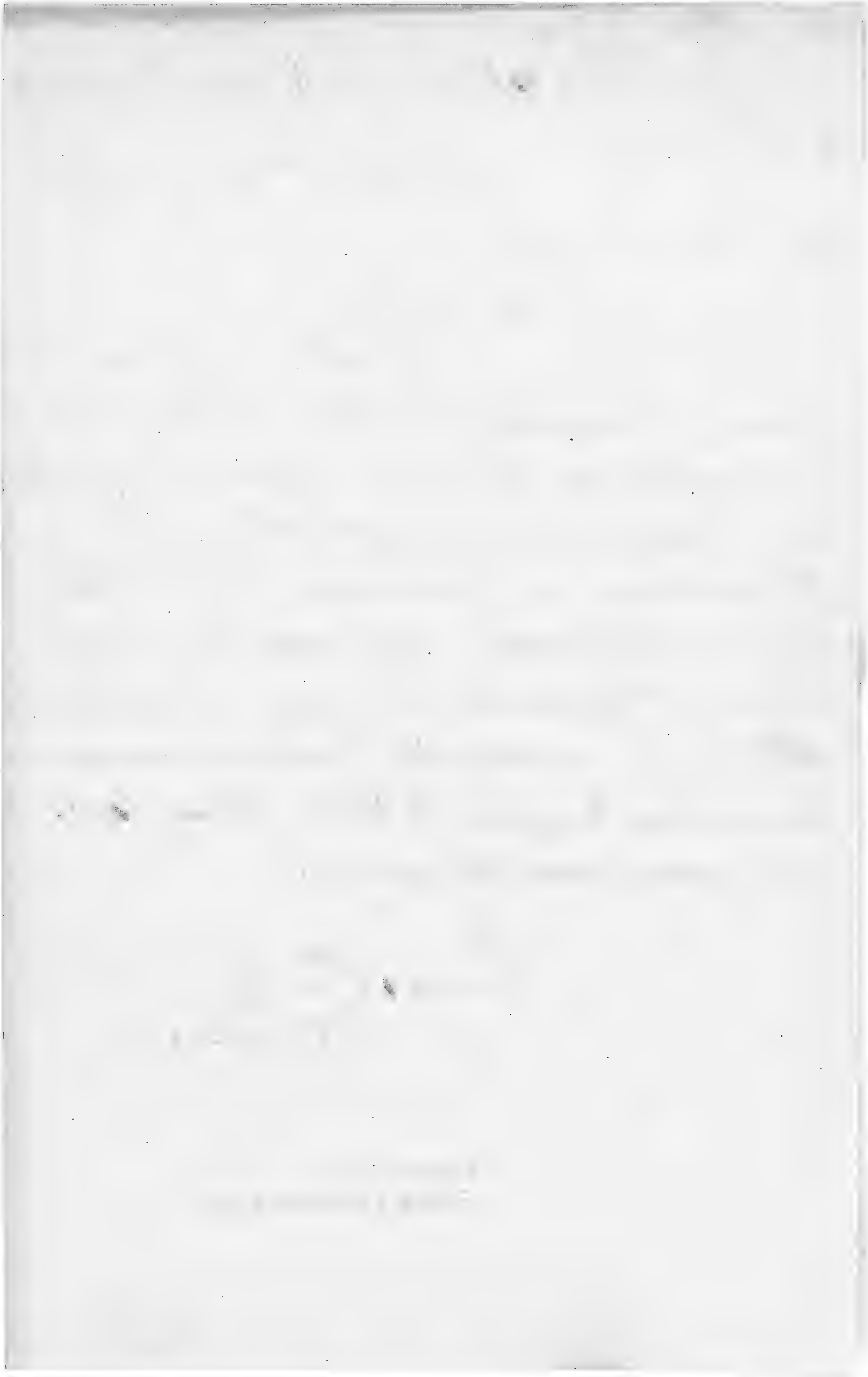
0 1 2 3 4 5 6 7 8 9 10

cm

copyright reserved



MISSOURI  
BOTANICAL  
GARDEN



0 1 2 3 4 5 6 7 8 9 10  
cm

copyright reserved



MISSOURI  
BOTANICAL  
GARDEN



Recd - Dec 7

Am Dec 13

Camden, N. J. Nov 8/67.

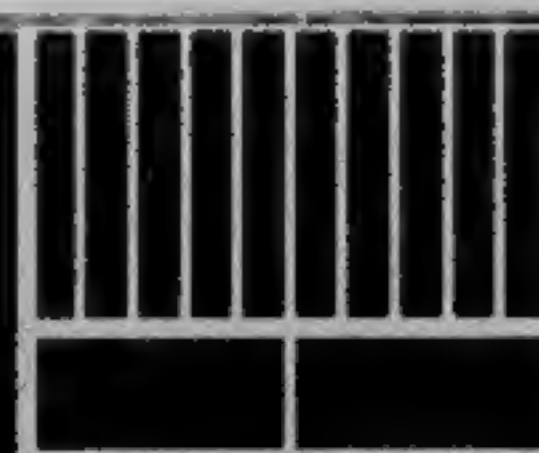
Dr. Geo. Engelmann

Recd of Cyp. copressum

Dear Sir

I send you a small package of *Junci*, which I hope will be acceptable to you, I regret very much that I was unable to obtain *J. militaris*, for you this summer, the swamps were so high about the flowering time that the plants were under water some two or three weeks, turning them black so that they were unfit for collection. You will find in the bundle *J. asper*, Eng from near Quaker Bridge, N. J. - growing in "Wet Iron-ore bogs," a very different kind of locality from Griffitt's Swamps, where C. E. Smith, finds his plant. I also send a few specimens of *J. Smithii* Engelm. which I collected this summer on Broad Mt.

You wished me to send you specimens



0 1 2 3 4 5 6 7 8 9 10

cm

copyright reserved



MISSOURI  
BOTANICAL  
GARDEN

Dear Sir,  
I have the pleasure to acknowledge the receipt of your letter of the 17th inst. in relation to the specimens of *Asplenium platyneuron* which you were good enough to send me. I regret very much that I was unable to obtain facilities for your trip to the mountains, but the following time that the plants were made available to me was such, turning them back so that they were unfit for collection. You will find in the bundle of papers from our *Asplenium*, a copy of a paper in "Botanical Paper" a very different kind of locality from Griffith's. Under B. B. Smith, find his plant. I also send a few specimens of *Asplenium* which I collected in the mountains on the 17th. I am, Sir, very respectfully,  
Yours,  
Wm. H. Raven



0 1 2 3 4 5 6 7 8 9 10  
cm copyright reserved



MISSOURI  
BOTANICAL  
GARDEN

of *J. dichotomus*, which I have done  
from Burlington and Camden Co. -  
it appears to be a very abundant  
species all through the middle and  
lower part of the state -

I send you some *Isoetes*, which I  
collected in company with A. H. Smith  
in the bed of Tom's River, Ocean  
Co. N. J. - Sept. 16/67. I wish you  
would send me the name,  
Mr. C. E. Smith thinks it is *Isoetes*  
*echinospora*. I would state that it  
was growing along with *Scirpus sub-*  
*terminalis*, and very abundant -  
you will find a couple of specimens  
of *Cyperus fusca*, L. - which is  
growing very abundant in wet ballast,  
Camden - Dr. Jos. Leidy found a  
few specimens in 1865 -

I was unable to find *J. Roemerianus*  
in the State, it must be a very rare  
plant, or we have overlooked it -

Yours truly C. F. Parker -



0 1 2 3 4 5 6 7 8 9 10  
cm

copyright reserved



MISSOURI  
BOTANICAL  
GARDEN

*[Faint, mirrored handwriting, likely bleed-through from the reverse side of the page. The text is illegible due to its orientation and fading.]*

MISSOURI BOTANICAL GARDEN  
GEORGE ENGELMANN PAPERS

C. Z. Parker



0 1 2 3 4 5 6 7 8 9 10

cm

copyright reserved



MISSOURI  
BOTANICAL  
GARDEN