

Rec^d Sept 29
ans Oct 5

Oliver

14 Sept 1871

My dear Dr Engelmann

My friend Mr Hiern
has been working at the
Herbarium here for a
considerable time on a
monograph of Ebenaceae.
He has taken great pains
with the difficult subjects
of his study - too often
fragmentary & visited the
principal European Herb.



0 1 2 3 4 5 6 7 8 9 10

cm

copyright reserved



MISSOURI
BOTANICAL
GARDEN

aria hunting up Herodotus.
Now, he is finishing up
his memoir - & is confronted
by an old difficulty in the
nature of Ornithoglossum virginianum
its relation to orn. - old-
world - O. Liliifolium. ^{are} Allee
Here fair grounds of specific
distinction? - Here are
several minor points of
difference, but each species
would seem to vary as much

MISSOURI BOTANICAL GARDEN
GEORGE ENGELMANN PAPERS



0 1 2 3 4 5 6 7 8 9 10
cm

copyright reserved



MISSOURI
BOTANICAL
GARDEN

MISSOURI BOTANICAL GARDEN
GEORGE ENGELMANN PAPERS

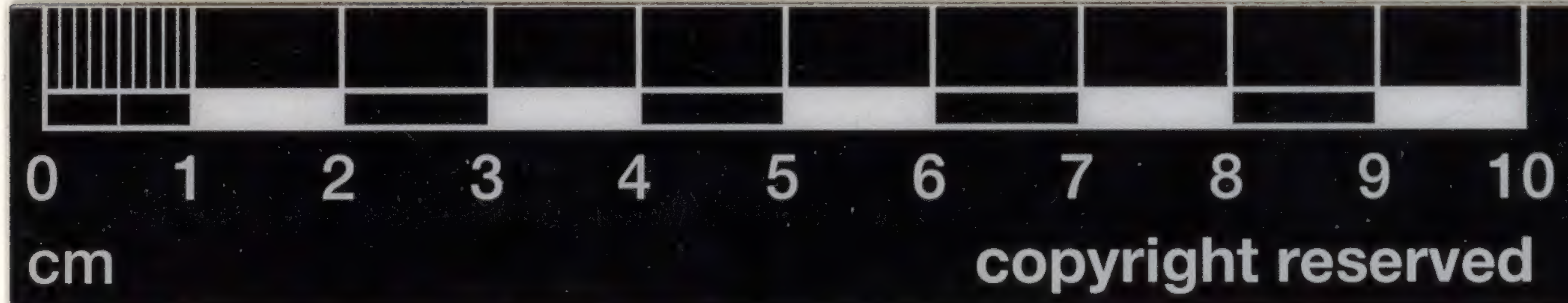
or name than is required to
bridge over the diff^o between the
typical (or usual) forms of ~~each~~
the two.

Have you seen
O. virginiana any height?

How far do you know it to
vary? In respect of form,
(direction)

flexion, & relative size of
cups? ^{relative} Relat. size of corolla
in ♀? Length of pedicel of ♀?
etc. Would it be

handle to pickle for an
herbarium a series of fruits
of O. virginiana, showing any
variation? We have ^{very} valued
such very greatly. Have



is at least one tree? of "D. Veris
iana" in the W. Col. by
Drummond at St. Louis the case
of which has much of D.
Solen about it.

If you can tell me
I shall be very much obliged
to you.

Remain

Very sincerely yours

Dr. Oliver



0 1 2 3 4 5 6 7 8 9 10

cm

copyright reserved



MISSOURI
BOTANICAL
GARDEN

Rec^d Nov 24th

7 Nov 1871



My dear Dr. Rupelmann
I have to thank you
much for your kind reply
to my enquiry as to Dis-
pensas. A railway Tax
sent us a few fresh
prints, — tho' still a series
showing tendency to variation
w^d. be very valuable. We
don't want good Lohes in
fruit, but for this we must
trudge our old-world fields.



0 1 2 3 4 5 6 7 8 9 10

cm

copyright reserved



MISSOURI
BOTANICAL
GARDEN

1891 2387
1893 3
Ever this I trust you may
have heard from Dr. Hooker
direct, acknowledging the receipt
of the box, with cases of
Sp. leuc Picus, &c.

Our Museum Curator tells
me we have no Glypto-
sterns cases at Kew.

G. pseudus - what I
took for it - was figured in
Nat. Mag. 5103 from a
tree at Kew which was



0 1 2 3 4 5 6 7 8 9 10

cm

copyright reserved



MISSOURI
BOTANICAL
GARDEN

♀ fl. a few yrs ago, but
then the life cone was
said to be unknown.

Have you seen this plant?

If not I can send you
tracing. It was treated

as Juniperus articata β
mutans, by C. S. in Bot.

Kew. ed. ii. 323.

Of course you know P. in
Prodr. because it is var. of
Juniperus articatum.

Believe me

very sincerely yours

David Oliver



[Faint, mirrored handwritten text, likely bleed-through from the reverse side of the page. The text is illegible due to fading and bleed-through.]



0 1 2 3 4 5 6 7 8 9 10
cm

copyright reserved



MISSOURI
BOTANICAL
GARDEN

Acad² Washington Sept 14

O



18 Aug 1874

Dear Dr. Engelmann

Let me thank you
very much for kind
sending copies of your
papers on *Asa* &
American *Bats*.

I have placed them in
the Acad² Lib².

Very truly
yours

D. Oliver



0 1 2 3 4 5 6 7 8 9 10

cm

copyright reserved



MISSOURI
BOTANICAL
GARDEN

18 Aug 1874



[Faint, illegible handwritten text, likely bleed-through from the reverse side of the page.]



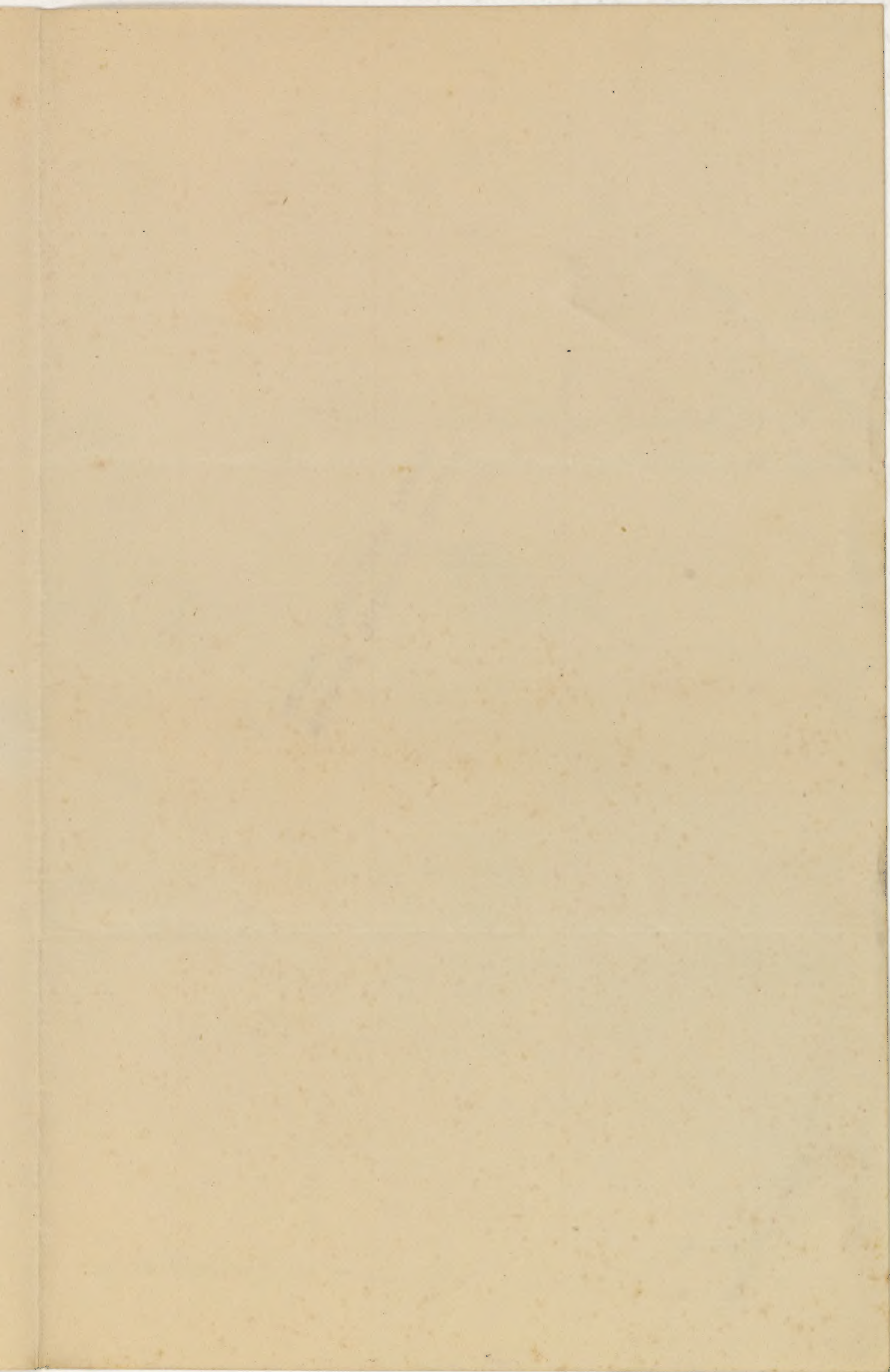
0 1 2 3 4 5 6 7 8 9 10

cm

copyright reserved



MISSOURI
BOTANICAL
GARDEN



0 1 2 3 4 5 6 7 8 9 10

cm

copyright reserved



MISSOURI
BOTANICAL
GARDEN

MISSOURI BOTANICAL GARDEN
GEORGE ENGELMANN PAPERS



0 1 2 3 4 5 6 7 8 9 10

cm

copyright reserved



MISSOURI
BOTANICAL
GARDEN