

Rec<sup>d</sup> Sept 29  
ans Oct 5

Oliver

14 Sept 1871

My dear Dr Engelmann

My friend Mr Hieron  
has been working at the  
Herbarium here for a  
considerable time on a  
manuscript of Ebenaceae.  
He has taken great pains  
with the difficult subjects  
of his study - too often  
fragmentary & visited the  
principal European Herb.



0 1 2 3 4 5 6 7 8 9 10

cm

copyright reserved



MISSOURI  
BOTANICAL  
GARDEN



aria hunting up Herard.  
Now, he is finishing up  
his memoir - & is confronted  
by an old difficulty in the  
nature of Ornithopus virginiana  
its relation to orn - old-  
world - O. Lilius. <sup>are</sup> Alce  
Here are grounds of specific  
distinction? - Here are  
several minor points of  
difference, but each species  
would seem to vary as much

MISSOURI BOTANICAL GARDEN  
GEORGE ENGELMANN PAPERS



0 1 2 3 4 5 6 7 8 9 10  
cm

copyright reserved



MISSOURI  
BOTANICAL  
GARDEN



MISSOURI BOTANICAL GARDEN  
GEORGE ENGELMANN PAPERS

or name than is required to  
bridge over the diff<sup>o</sup> between the  
typical (or usual) forms of ~~each~~  
the two. Have you seen

*O. virginiana* any height?

How far do you know it to  
vary? In respect of form,  
(direction)

flexion, & relative size of  
cups? <sup>relative</sup> Relat. size of corolla  
in ♀? Length of pedicel of ♀?  
De. Would it be

handle to pickle for an  
herbarium a series of fruits  
of *O. virginiana*, showing any  
variation? <sup>we should value</sup> We should value  
each very greatly. Have  
<sup>very</sup>



0 1 2 3 4 5 6 7 8 9 10  
cm copyright reserved



MISSOURI  
BOTANICAL  
GARDEN



is at least one tree? of "*D. Veris  
iana*" in the Hb. Col. by  
Drummond at St. Louis the case  
of which has much of D.  
Solen about it.

If you can help me  
I shall be very much obliged  
to you.

Remain

Very sincerely yours

Dea. Oliver

---



0 1 2 3 4 5 6 7 8 9 10

cm

copyright reserved



MISSOURI  
BOTANICAL  
GARDEN



Rec<sup>d</sup> Nov 24<sup>th</sup>

7 Nov 1871



My dear Dr. Rupelmann  
I have to thank you  
much for your kind reply  
to my enquiry as to Dis-  
sepas. A railway Tax  
sent us a few fresh  
prints, — tho' still a series  
showing tendency to variation  
w. be very valuable. We  
don't want good Lohes in  
fruit, but for this we must  
trudge our old-world fields.



0 1 2 3 4 5 6 7 8 9 10

cm

copyright reserved



MISSOURI  
BOTANICAL  
GARDEN



Ever this I trust you may  
have heard from Dr. Hooker  
direct acknowledging the receipt  
of the box, with copies of  
Dr. Kew's Papers, &c.

Our Museum Curator tells  
me we have no Glypto-  
stems cases at Kew.

G. pseudus - what I  
took for it - was figured in  
Nat. Mag. 5103 from a  
tree at Kew which bore



0 1 2 3 4 5 6 7 8 9 10

cm

copyright reserved



MISSOURI  
BOTANICAL  
GARDEN



♀ fl. a few yrs ago, but  
then the life cone was  
said to be unknown.

Have you seen this plant?

If not I can send you  
tracings. It was treated

as Juniperus articata  $\beta$

mutans, by C. S. in Bot.

Rev. ed. ii. 323.

Of course you know P. in  
Prodr. because it is var. of  
Juniperus articata.

Believe me

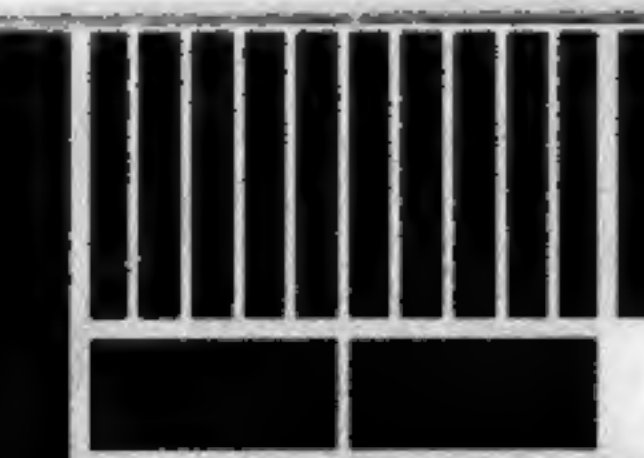
very sincerely yours

David Oliver





*[Faint, mirrored handwritten text, likely bleed-through from the reverse side of the page. The text is mostly illegible due to fading and bleed-through.]*



0 1 2 3 4 5 6 7 8 9 10

cm

copyright reserved



MISSOURI  
BOTANICAL  
GARDEN



Rec<sup>d</sup> Washington Sept 14

*O*

18 Aug 1874

Dear Dr. Engelmann

Let me thank you  
very much for kind

sending copies of your  
papers on *Asa* &

*American* *Bats*.

I have placed them in  
the Acad<sup>?</sup> Lib<sup>?</sup>.

Very truly yours

D. Oliver.



0 1 2 3 4 5 6 7 8 9 10

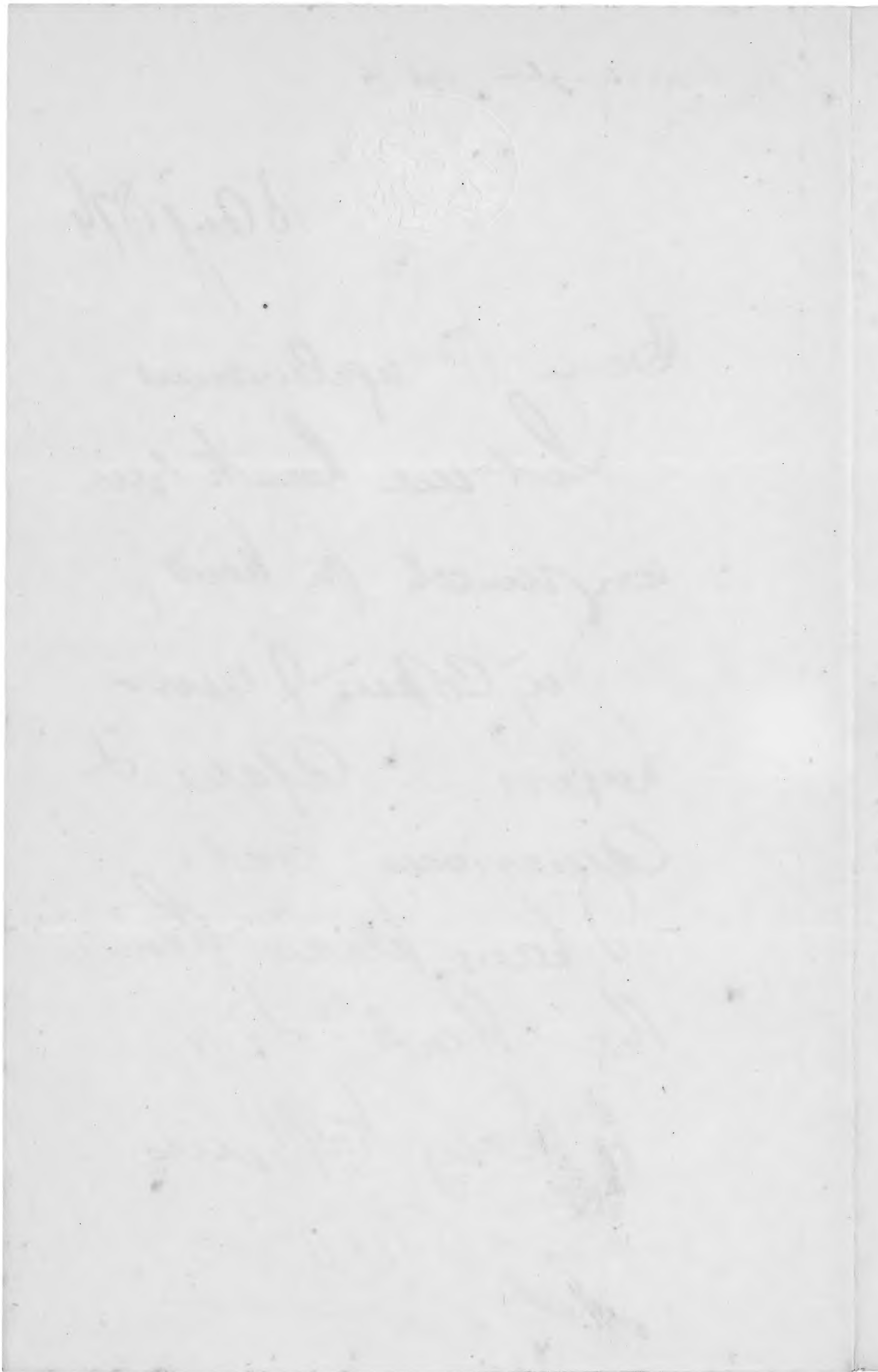
cm

copyright reserved



MISSOURI  
BOTANICAL  
GARDEN





0 1 2 3 4 5 6 7 8 9 10

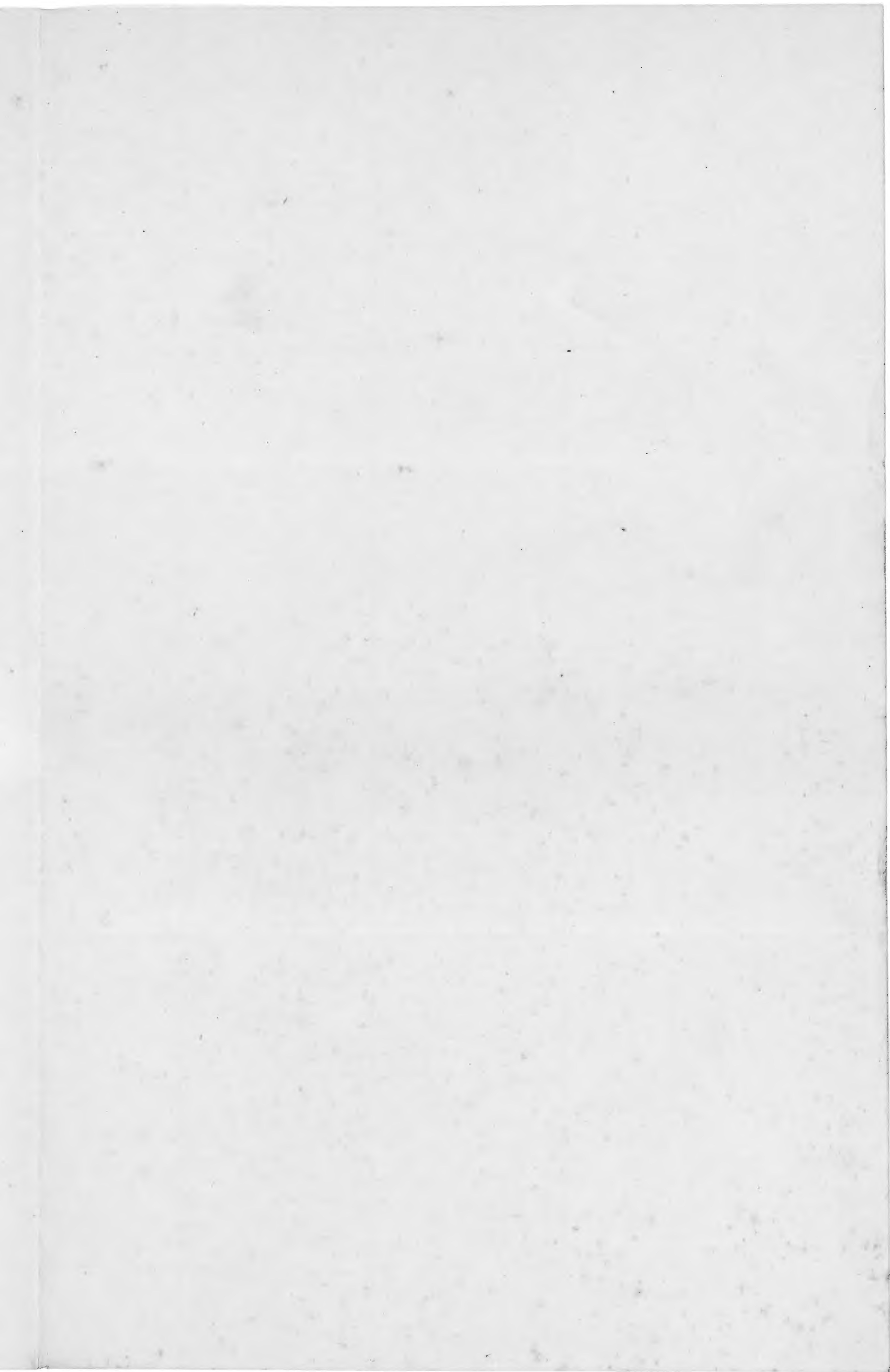
cm

copyright reserved



MISSOURI  
BOTANICAL  
GARDEN





0 1 2 3 4 5 6 7 8 9 10

cm

copyright reserved



MISSOURI  
BOTANICAL  
GARDEN



MISSOURI BOTANICAL GARDEN  
GEORGE ENGELMANN PAPERS



0 1 2 3 4 5 6 7 8 9 10

cm

copyright reserved



MISSOURI  
BOTANICAL  
GARDEN