



LASCA LEAVES

Los Angeles County Department of Arboreta and Botanic Gardens

BALDWIN BONANZA OFFERS NEW PLANTS FOR HOME, GARDEN

LIKE A GOOD LANDSCAPE, plans for Baldwin Bonanza XVIII at the Los Angeles State and County Arboretum are taking shape around a framework of trees and shrubs. By the time the sale arrives on May 1, a wide selection of unusual plants in many different categories will have been added for shoppers who want their gardens to reflect their own individual interests.

For the woody backbone of the garden, the Arboretum has been growing several types of small trees with distinctive features for Baldwin Bonanza. Among those with conspicuous flowers are the Chinese fringe trees (*Chionanthus retusus*) with masses of white flowers and the *Tabebuia* species that have yellow or lavender trumpet-shaped flowers each spring. Other trees on sale have other unusual features like the graceful weeping branches of *Acacia pendula* and *A. saligna* or

subtle bark patterns like the snake-bark maple (*Acer capillipes*) which provides guaranteed fall color in Southern California.

During field trials on the Arboretum grounds these trees have proven that they grow well in Southern California, but few nurseries in the area carry them. Baldwin Bonanza offers the best opportunity to obtain these unique plants without searching for them.

Among the shrubs and vines, other staples of a beautiful garden will be a selection of hibiscus including 'Double Red,' originally collected in Hawaii. This small-leaved, tidy bush has ruffled, clear red flowers. Other hibiscus for sale will be *H. cooperii* cultivars with leaves that are either splotched with green and white or have a novel metallic sheen.

The Arboretum introduction *Combretum fruticosum*, a vigorous vine that produces flowers shaped like fluffy orange caterpillars, will be available in both one and five gallon size containers. An even newer introduction from the Arboretum is a relative *Combretum coccineum*, on sale for the first time. Another vine with unusual flowers is the glorybower (*Clerodendrum sp.*) with ribbed foliage and heart-shaped flowers.



LuAnn B. Munns

The unusual plant *Hydnophytum formicarum*, for sale at the Baldwin Bonanza, develops its lumpy trunk when it is quite young.

Because gardeners are always looking for new plants for the home or landscape, there will be an eclectic assortment at the Bonanza. From the Arboretum introduction list comes the agapanthus hybrid 'Walter Doty,' a tall, sky-blue lily of the Nile. An unusual bulb *Habranthus robustus* with trumpet-shaped flowers like its relatives within the amaryllis family, adapts so well to California gardens that it may naturalize.

Part of the fun shopping at Baldwin Bonanza is looking for plant oddities that show up unannounced each year. The first one chosen is *Hydnophytum formicarum*, a peculiar epiphytic shrub from Malaya. Raised indoors, the globular base grows to about a foot in diameter, eventually looking like a melted extraterrestrial creature with a green top-knot of leaves.

Palms will be well represented, both with hardy types like *Pritchardia* and tropical *Chamaedorea* species for indoors. Other indoor specimens include several lobster-claw plant species (*Heliconia*) including the red-leaved *H. indica*. At Baldwin Bonanza, serious collectors always compete with casual plant lovers for staghorn ferns (*Platycerium*), collectors because they know that unusual species are available every year, and plant lovers because they admire the dramatic look of the flaring, antler-like fronds.

This is just a sampling of the noteworthy plants, both essential landscape specimens and extraordinary accent pieces, that will be for sale in limited quantities at Baldwin Bonanza XVIII. To have the best chance of obtaining a particular plant, plan to be at the Arboretum for the preview party the evening of April 30. Invitations will soon be in the mail to California Arboretum Foundation members. Call the Foundation at (818) 447-8207 for further information.



LuAnn B. Munns

Lorraine Saylor looks over some of the staghorn fern (*Platycerium*) species that will be offered at Baldwin Bonanza XVIII.

FOUNDATION MEMBER TRAVEL PROGRAM ANNOUNCED

“THE ARBORETUM Foundation’s list of membership benefits will be enhanced in a very meaningful way with the addition of a Foundation-sponsored travel program,” according to Board of Trustees President Alice Frost Thomas.

After a comprehensive review of travel agencies, the Foundation has selected Ask Mr. Foster/Friendly Hills Travel Center in Whittier, California to be its officially designated travel program coordinator. “In business since 1974, Ask Mr. Foster/Friendly Hills Travel Center has specialized in leisure travel, and brings a truly professional as well as personal touch to travel arrangements, which is so important to client satisfaction,” said Alice Thomas.

The premiere offering of the Foundation’s new travel program will be a deluxe, in-depth study tour of Hawaii, hosted by a representative from the Arboretum. The two week adventure and learning experience is scheduled for February of next year, and will include stays on three or four of Hawaii’s major islands. Many unique and special arrangements are planned including

visits to horticultural sights not usually available to the general public.

The “Hawaii in Depth” program will be followed in September, 1989, by a fall foliage study tour to one of America’s most popular destinations, Eastern Canada and the New England states.

“All tours to be offered through the Foundation’s program will be deluxe and built around our members’ common interest in horticulture and nature’s beauty,” Alice Thomas said. “As a bonus, a portion of the revenue from each booking will be donated to our Foundation building fund.”

Detailed information pertaining to the program’s initial study tour to Hawaii in February, 1989, will appear in the June/July issue of Garden Magazine, to allow for advance travel planning.

Questions regarding the travel program should be directed to Ask Mr. Foster/Friendly Hills Travel Center, located at 14831 East Whittier Blvd., Whittier, CA 90605. The telephone number is (213) 698-0511, and collect calls from out of the area will be accepted.

OLD OAK, XMAS OPEN HOUSE CASUALTIES OF WINDSTORM

FLYING PALM FRONDS, downed trees and broken branches forced closure of the Los Angeles State and County Arboretum and cancellation of the Queen Anne Cottage Christmas open house on Dec. 13. For the first time in three years, the Arboretum was closed by debris from a windstorm that blocked roadways and made the grounds too dangerous for visitors.

An arctic storm with winds up to 80 miles per hour swept into Southern California late Saturday night and continued Sunday, felling several significant trees at the Arboretum and damaging a number of other important specimens. Bill Hawkinson, Arboretum assistant superintendent, noted that unlike most winter storms, these December winds damaged trees throughout the grounds.

"Usually the Australian Section on

the north takes the brunt of it," Mr. Hawkinson said, "but this time the winds hit all over, causing damage in the Jungle and on Tallac Knoll as

well as in the Australian Section." Trees lost to the storm included the large Engelman oak beside the Aquatic Garden, a 30-year old Eu-



LuAnn B. Munns

When they were flying through the air on Dec. 13, thousands of palm fronds like these stacked near the Queen Anne Cottage forced the Arboretum to close for the day.



LuAnn B. Munns

The Arboretum staff spent weeks removing debris from damaged trees.

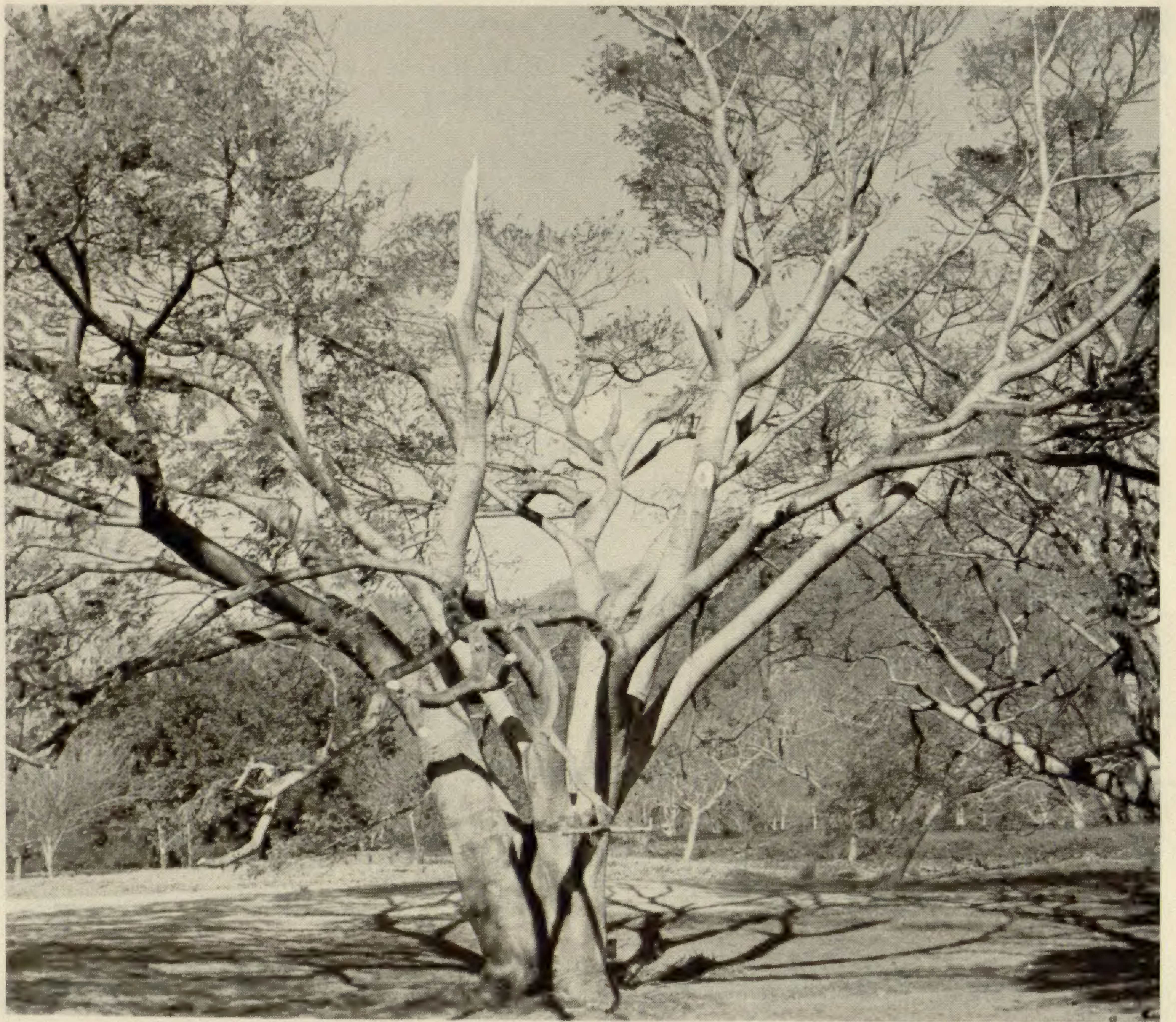
calyptus microcorys and two trees by the Santa Anita Depot — a 30-foot *Acacia baileyana* and a 25-foot *Paulownia tomentosa*. Major limbs were torn from the *Enterolobium contortisiliquum* on the main lawn and many other trees. Final counts showed that 25 trees were destroyed and at least 20 noticeably damaged. About 25 shrubs were also destroyed.

While the staff was still assessing damage done by the winds, a record-setting cold snap set in. On 14 of the 19 days immediately after the wind-storm, nighttime low temperatures hovered near freezing, with a low of 27 degrees on the night of Dec. 26.

John Provine, Arboretum superintendent, said that it seemed by mid-January that most of the damage to the plant collections was superficial. Fronds on some cycads in the Pre-historic and Jungle Garden were frosted, he said, but the trunks remained firm, not mushy, indicating that the plants are basically sound.

Although extent of the frost-caused dieback on the rest of the grounds can not be determined until later in the spring when specimens begin leafing out, the cold may not have caused much damage to the established plantings. Lifeless leaves on subtropical trees like the erythras and withered gingers, papyrus and banana leaves made the Arboretum grounds look devastated even after the weather began to warm. But the resiliency of the collections is an indication of how well specimens have been chosen for field trials at the Arboretum. By the time a plant is selected for introduction into the nursery trade, it will probably have endured at least one winter like the one just past. Only by surviving all the vagaries of Southern California weather can a plant take its place among the select plants introduced by the Arboretum.

LuAnn B. Munns



Winds wrenched major limbs from this ear tree (Enterolobium contortisiliquum) on the main lawn.

LuAnn B. Munns



Electrical circuits on Tallac Knoll were disrupted when the old oak tree supporting the wiring blew over.

Coloring California for Forty Years

CAF NEWS

CALIFORNIA ARBORETUM FOUNDATION NEWSLETTER



SAMUEL AYRES JR., A MAN WHO LOVED COLOR

WITH THE PASSING of Dr. Samuel Ayres Jr. on Nov. 16, 1987 at the age of 94, the Arboretum lost a long-standing and most dedicated friend.

During a recent interview at the California Arboretum Foundation office, Dr. Ayres' son, Dr. Samuel Ayres, III, provided a personal



Dr. Samuel Ayres Jr.

glimpse of his father's life. This article is based on those recollections.

Dr. Ayres Jr. began his association with the Los Angeles State and County Arboretum in 1947. A love of color, sparked during his childhood when young Ayres sold flowers while other young friends were selling lemonade, grew when he

and Mrs. Ayres discovered the flowering trees of Hawaii during a trip there in 1939. Upon his return to Los Angeles, he began to search for an area that would nurture a new arboretum in Southern California. This led to his discovery of an expanse of land in Arcadia. The parcel of land was perfect. Developed by E.J. "Lucky" Baldwin at the turn of the century, the beautiful estate of 127 acres had been cultivated by a man who appreciated nature's beauty.

Harry Chandler, at that time the publisher of the Los Angeles Times, owned the estate and was preparing to subdivide the area into residential lots. Dr. Ayres approached Mr. Chandler with the proposition of establishing an arboretum on the Baldwin estate. Mr. Chandler agreed, and in the fall of 1947 with the help of County Supervisor John Anson Ford the Los Angeles State and County Arboretum was officially established. An area was to be created where residents and visitors to the greater Los Angeles area could enjoy the splendor of nature and benefit from the studies and research planned for the new arboretum. Finally, Dr. Ayres' dream — to introduce flowering plants into the Southern California landscape—began to unfold. During the 40 years that followed about 100 flowering trees, shrubs, vines and groundcovers were introduced by the Los Angeles State and County Arboretum.

Dr. Ayres' support and participation in Arboretum projects continued throughout his life and was a great source of pride to him. In 1982 a new building on the Arboretum grounds was dedicated to Samuel Ayres Jr. and Helen Ayres.

Dr. Ayres' partnership with the Arboretum has not ended with his death.

As a tribute to Dr. Ayres, a memorial fund has been created in his name. Contributions are welcome. Please make checks payable to the California Arboretum Foundation and send them to the Foundation office at 301 North Baldwin Avenue, Arcadia, CA 91006. For further information, contact Beverly Rouse, Director of Development at (818) 447-0184.

CAF ANNOUNCES FORTIETH ANNIVERSARY CELEBRATION

Coloring California for Forty Years is the theme of the fortieth anniversary celebration of the California Arboretum Foundation. Created in 1948 to support the Arboretum's growing needs, the Foundation is proud of its many accomplishments and contributions to the Los Angeles State and County Arboretum's development.

We look forward to a yearlong celebration beginning with a Birthday Party at our Annual Meeting, Wednesday, June 8th. Watch your mail for announcements of our upcoming events.

CAF MEMBERSHIP DUES INCREASE IN 1988

It has been years since members of the California Arboretum Foundation experienced an increase in their annual membership dues. However, it became necessary in 1988 to raise the cost of annual memberships because of the escalating costs faced by the Foundation.

Joan Malafrente, Office Manager for the Foundation Office, reported that virtually all operating expenses have risen dramatically from just five years ago. "In order to continue to provide quality service and programs for our members, we must increase the cost of our annual memberships." The new rates have been

in effect since January 1, 1988 and are reflected in our members' 1988 renewal notices.

There have also been new membership categories added along with the changes in the benefits which CAF members enjoy. A new Senior Citizen category has been added which includes special rates for members 62 and older.

1988 celebrates the Foundation's Fortieth Anniversary. We hope you will continue to support the Arboretum by renewing your CAF membership. Our membership categories and corresponding benefits are listed below.

Individual	Couple	Family	Sr. Citizen	
			Individual	Couple
\$30	\$40	\$50	\$25	\$30

- Free admission to the Arboretum
- One year's subscription to Garden Magazine
- 10% discount in the Arboretum Gift Shop on most items
- Special rates for special presentations and lectures at the Arboretum

Sustaining Member — \$100 All benefits listed above plus:

- 4 GARDEN EXPRESS CARD that provides free admission to the four gardens maintained by the Department of Arboreta and Botanic Gardens: Arboretum, Descanso Gardens, South Coast Botanic Garden, and one free admission per year by reservation only to the Virginia Robinson Garden; 10% discount in all Gift Shops
- Private docent-guided tour of the Arboretum

Sponsor Member — \$250. All benefits listed above plus:

- Two free tickets to the Baldwin Bonanza Preview
- VIP tickets to special presentations and lectures

Affiliate Member — \$500. All benefits listed above plus:

- Invitation to a private tour of the annual Los Angeles Garden Show
- Reserved parking during the Baldwin Bonanza

Benefactor — \$1,000. All benefits listed above plus:

- Two complimentary tickets to the annual Benefactor Party
- Your name inscribed on a handsome Benefactors' plaque in the Arboretum's Rotunda Entry way.

CAF SETS THE MOST BEAUTIFUL TABLE

Las Voluntarias of the California Arboretum Foundation were given the "Most Beautiful-First" award at the St. Edmund's Table Fashions Tea held at the San Marino Woman's Club. "Happy Ruby Anniversary" was the title of the prize winning table design which comple-

mented the theme of "Forty Years of Fun and Fancy."

Las Voluntarias member, Joan Fagan, created an elegant table setting by combining the colors of ruby, pink and white. Mrs. Fagan has participated in the St. Edmund's Tea for many years, and this year was assisted by her daughter, and Eva Shepard, a Las Voluntarias member.

LET CAF HELP YOU . . .

When you need to celebrate a birthday, an anniversary, a graduation or another special occasion for a relative, friend, or business acquaintance, give a gift that will bring an entire year of continuing education and pleasure.

A California Arboretum Foundation gift membership will open a new "window of discovery and exploration" of the botanical collections and historical buildings found at the Los Angeles Arboretum. A beautiful card will be sent to inform the recipient of the gift. Please call the Membership Office at 818/447-8207 to find out how to give the special gift of an Arboretum Foundation Membership.

For someone who is already a member, consider a gift in his or her name to the Arboretum's Capital Campaign. A memorial fund, a lasting tribute that honors the memory of friends or family members, can also be established. For additional information, please call the Development Office at 818/447-0184.



Gerry Phinder — San Marino Tribune

"Happy Ruby Anniversary," the prize-winning table designed by Las Voluntarias, received the "Most Beautiful-First" award.



Mrs. George Brumder



Mrs. John Hopfield



Mrs. Ray T. McCullough

THREE PASADENA TRUSTEES ADDED TO FOUNDATION BOARD

THREE PASADENA residents have agreed to serve on the Board of Trustees for the California Arboretum Foundation. Their appointments were approved by the Executive Committee during the November meeting. With the addition of Nancy (Mrs. Ray) McCullough, Marilyn (Mrs. George) Brumder and Mrs. John Hopfield, the Board of Trustees now has 26 members.

Mrs. McCullough, a graduate of the University of Southern California, is owner of the F.T. Property Development Company, Inc. The busy mother of two young sons is also a member of the Childrens Chain at Childrens Hospital, the Marlborough Alumnae Council and the Junior League of Pasadena.

Mrs. Brumder and her husband have been involved with the Pacific Asia Museum for many years, pursuing an interest in Oriental culture developed during the years they lived in Japan. As a member of the Pasadena Garden Club, Mrs. Brumder staged the smog exhibition at

the 1987 Los Angeles Garden Show. She is also past president and currently active in the Pasadena Smith College Club.

Mrs. Hopfield, a native of Princeton, N.J., moved to the area about

eight years ago with her husband who is a professor of chemistry and biology at Caltech. She is treasurer of the Pasadena Junior League Garden Club and active on The Women's Committee at Caltech.



William Aplin

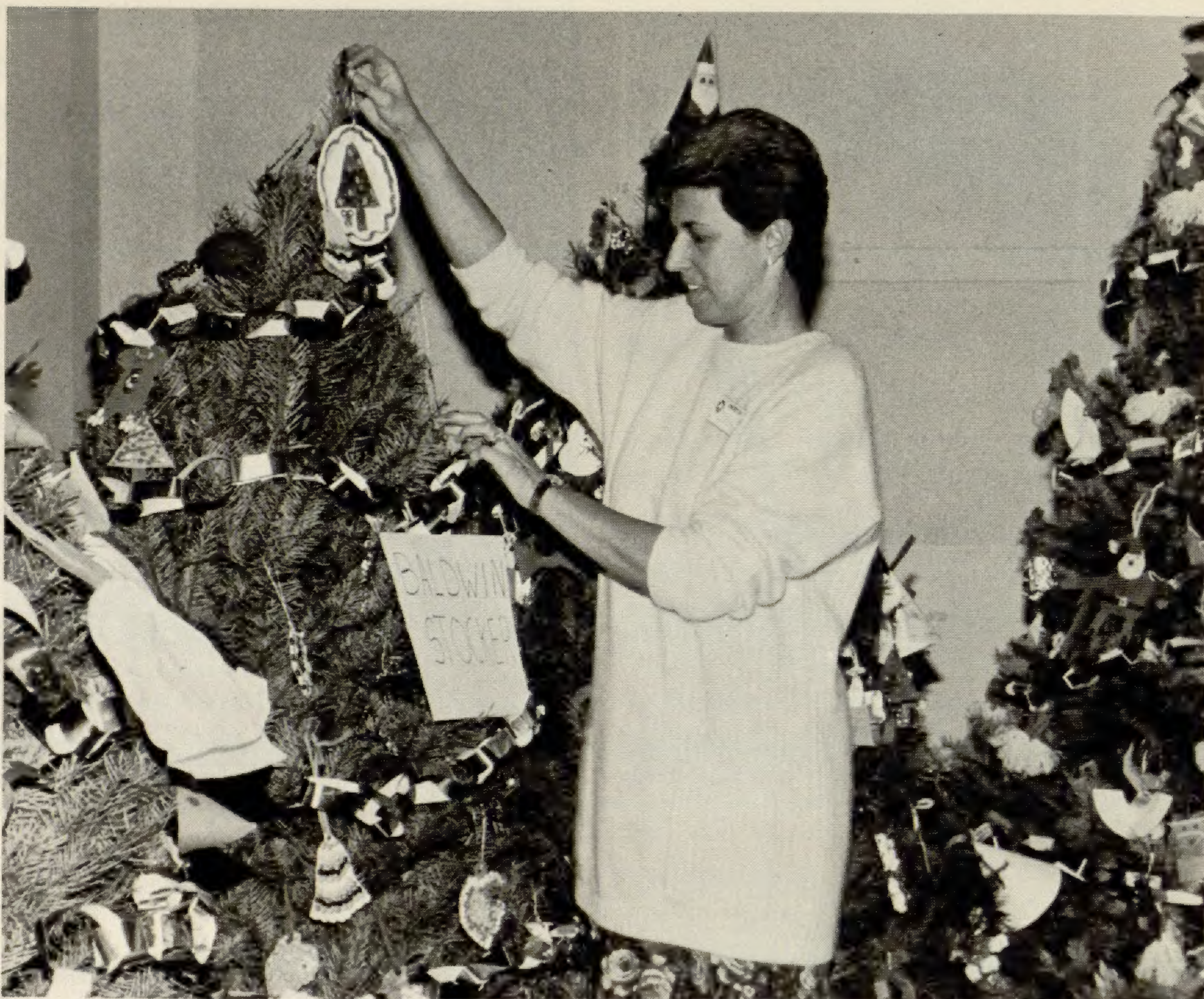
Baldwin Bonanza XVIII features several Arboretum introductions such as Agapanthus 'Walter Doty' with tall stems and sky blue flowers.

"A MERRY LITTLE CHRISTMAS" THEME FOR HOLIDAY PARTY

Holiday cheer filled Ayres Hall and overflowed onto the grounds the week before and the week after Christmas. Ayres Hall was decorated with trees festooned with ornaments handmade by students at six Arcadia elementary schools. Other displays illustrated Yuletide customs from other countries as distant as Armenia and Denmark.

Mitzi (Mrs. Robert) Gilmartin coordinated the Christmas show which began with a tree lighting ceremony and caroling on Dec. 17 and continued through Jan. 1.

Mrs. Gilmartin also scheduled a full program of entertainment for three-day weekends before and after Christmas day. Beginning at 10 a.m. each day, singers, bellringers, bands, magicians and handicraft experts, among others, shared the Christmas spirit at the Arboretum.



LuAnn B. Munns

Mitzi Gilmartin stands in the midst of a forest of Christmas trees decorated with ornaments hand made by Arcadia school children.

LOS ANGELES STATE AND COUNTY ARBORETUM, Arcadia

MARCH 6 — 9 a.m. to 4:30 p.m.
Insect Fair
Lorquin Entomological Society

MARCH 19 — 9 a.m. to 4:00 p.m.
Environmental Education Fair
State Department of Education

APRIL 2-3 — Sat. 1 p.m. to 4:30 p.m.
Sun. 9 a.m. to 4:30 p.m.

Iris Show
Southern California Iris Society

APRIL 9-10 — Sat. 10 a.m. to 4:30 p.m.
Sun. 9 a.m. to 4:30 p.m.

Bonsai Show
Shohin Bonsai Society

APRIL 16-17 — Sat. 12 noon to 4:30 p.m.
Sun. 9 a.m. to 4:30 p.m.

Amaryllis Show
Southern California Amaryllis &
Hemerocallis Society

APRIL 23-24 Sat. 1 p.m. to 4:30 p.m.
Sun. 9 a.m. to 4:30 p.m.

Pacific Rose Show
Pacific Rose Society

APRIL 30 — 5 p.m. to 7:30 p.m.
Baldwin Bonanza Preview Party
California Arboretum Foundation

MAY 1 — 9 a.m. to 4:30 p.m.
Baldwin Bonanza Plant Sale
California Arboretum Foundation

MAY 15 — 9 a.m. to 4:30 p.m.
Epiphyllum Show
Epiphyllum Society of America

MAY 28-30 — 9 a.m. to 4:30 p.m.
Bonsai Show
Santa Anita Bonsai Society

CALENDAR OF EVENTS

MARCH, APRIL, MAY

SOUTH COAST BOTANIC GARDEN, Palos Verdes Peninsula

MARCH 6 — 2 p.m.
Making a Moss Lined Basket for
Summer Bloom
Virginia Carlson

MARCH 13 — 2 p.m.
Epiphyllum Culture
South Bay Epiphyllum Society

MARCH 20 — 2 p.m.
Growing Geraniums in Pots
Susan Tufenkian

MARCH 27 — 2 p.m.
Orchids Around the World
Dr. Robert Streeter

APRIL 3 — 2 p.m.
Slide Show
Bromeliad Society

APRIL 10 — 2 p.m.
Miniature Terrariums
Bea Sutton

APRIL 17 — 2 p.m.
How to Grow Better Houseplants
Shelagh Moore

APRIL 24 — 2 p.m.
Music Concert
Palos Verdes Symphonic Band

DESCANSO GARDENS, La Canada Flintridge

MARCH 5-6 — 10 a.m. to 4:30 p.m.
Flower Show
Flower Arrangers Guild

MARCH 12-13 — 9 a.m. to 4:30 p.m.
Daffodil Show
Southern California Daffodil Society

MARCH 26 through APRIL 3 —
9 a.m. to 4:30 p.m.

Spring Garden Show
Descanso Gardens Guild

APRIL 16-17 — Sat. 1 p.m. to 4:30 p.m.
Sun. 9 a.m. to 4:30 p.m.

Rose Show
San Fernando Valley Rose Society

MAY 7-8 — 9 a.m. to 4:30 p.m.
Geranium Show
Los Angeles International Geranium
Society

MAY 21-22 — Sat. 1 p.m. to 4:30 p.m.
Sun. 9 a.m. to 4:30 p.m.

Rose Show
Los Angeles Rose Society

MAY 24 — 1 p.m. to 4:30 p.m.
Flower Show
Judges Council of Southern California

MAY 28-29 — 9 a.m. to 4:30 p.m.
Chrysanthemum Plant Sale
Glendale Chrysanthemum Society