

# LASCA LEAVES



Los Angeles County Department of Arboreta and Botanic Gardens

## HORTICULTURAL INTERNS

**A**LTHOUGH THE HORTICULTURAL internship program is only one of many projects the California Arboretum Foundation funds in its efforts to aid in the development and maintenance of the Los Angeles

State and County Arboretum, this program results in some of the most immediately visible improvements. Almost all sections of the garden benefit from the program that provides not only practical experience for students but also much-needed manpower for projects at the Arboretum.

Until the 1983 interns started work in July, the north shore of LASCA Lagoon looked like a jungle with rampant vines, trees and underbrush choking the area beside the narrow paths. Under the direction of John Provine, Arboretum superintendent, the 13 students attacked an overgrown area near the footbridge,



*The 1983 horticultural interns gather for an orientation meeting. Left to right, front row: Margaret Griffin, Andrea Grehan, Pamela Sullivan, Cynthia Sunberg, John Bee, Steve Tomory and Frank Lewicki. Back row: Maresa Archer, Carrie Scott, Sarah McClellan, Paul Sandoval and Gregory Johnson.*



chopping out the brush, pulling vines out of the trees and generally preparing the site for the planned shade garden.

After they had cleared the area and installed a sprinkler system, they planted azaleas donated by Milfeld's Nursery, Inc. in Monrovia. Nick Milfeld suggested a naturalistic setting for the plants with bush and tree azaleas massed around a large cycad (*Cycas revoluta*) and a backdrop of the weathered roots of a tree that blew down years ago. Mr. Provine pointed out that since most of the azaleas are southern indica cultivars such as 'George Tabor' and 'Formosa,' the shade garden should have blossoms during almost every month of the year. The interns finished off the project with a split rail fence around the azaleas and a bridge nearby that they built of timber bamboo sections from the Arboretum grounds.

Whether they were wading through the muck cleaning pools in the aquatic garden or wielding chain saws in the South American and Australian sections, the students all said they were pleased by the variety of technical, manual and mental tasks assigned to them during the 10-week program.

In the Demonstration Home Gardens they replaced the fence around one patio and installed railroad ties to make beds for changing displays of potted plants. They also improved two walkways on the grounds; after laying concrete walks near the Historical Section restrooms, they moved on to the Herb Garden where they worked on an extension of the flagstone walks there.

Installing sprinklers and drip irrigation emitters in the jungle, greenhouse, Depot area and lath houses gave the students practice in adapting different irrigation systems to varied growing conditions. In the South African section, two large specimen plants had to be moved, so the interns helped build boxes

around the roots of a cabbage tree (*Cussonia spicata*) and a cycad (*Cycas revoluta*) before the plants were lifted.

The students returned to academic work during the week they each spent in the herbarium. Few of them had experience in identifying cultivated ornamentals systematically, so Suzanne Granger, herbarium curator, guided the students from the time they collected interesting plants on the grounds until the plants were identified, pressed and labeled. The current name was then verified and recorded both in plant records and on a tag attached to the plant on the grounds. Ms. Granger said the students especially enjoyed sharpening their observation skills as they "keyed out" a plant. In this process they compared the traits of an unidentified plant with those on a list or "key" that begins with the most obvious characteristics and gradually makes finer and finer distinctions, leading the searcher eventually to

the correct genus and species of the plant.

Humboldt State University supplied the most students this year. Gregory Johnson, Pamela Sullivan, Frank Lewicki, Steve Tomory and Cynthia Sunberg are all either now attending or have already graduated from the northern California school. The California state college system also produced two other Arboretum interns: Carrie Scott from Cal Poly Pomona and John Bee, Cal Poly San Luis Obispo. The academic background of the other students varied widely. Sarah McClellan attends the University of Kentucky and Andrea Grehan hails from U.C. Davis while Maresa Archer is a student at Mt. San Antonio Community College and Paul Sandoval Jr. returns to Pasadena City College this fall. Margaret Griffin added an international touch to the group, claiming the University College of Dublin, Ireland as her alma mater.

When the summer ended, the stu-





dents returned to college, but four of them will continue to work at the Arboretum part-time during the coming year. They are: Margaret Griffin, Carrie Scott, Sarah McClellan and Maresa Archer.

*LOWER LEFT Gregory Johnson (left) and Frank Lewicki build a fence around the shade garden.*

*UPPER RIGHT The interns practice using the skip loader to clear ground in the jungle.*

*BELOW Steve Tomory glues a pressed plant specimen for the herbarium collection.*

*LOWER RIGHT Interns box a large cabbage tree (Cussonia spicata) before it is moved.*

Photos by William Aplin







*Pamela Sullivan (left) and Maresa Archer prepare hanging plant baskets during their stint in the nursery.*



*Andrea Grehan (left) and Cynthia Sunberg examine details of papyrus flowers held by Suzanne Granger, herbarium curator.*

### **New reference works in the Plant Science Library**

*Kirstenbosch*

by Ray Ryan and Brian Rycroft  
*Giant Sequoias*

by H. T. Harvey and others  
*Guarding the Forests of Southern California*

by Ronald F. Lockmann  
*The Lore and Legends of Flowers*  
by Robert L. Crowell and Anne Ophelia Dowden

*Royal Botanic Gardens, Kew: Gardens for Science and Pleasure*  
edited by F. Nigel Hepper

*Green Pharmacy*  
by Barbara Griggs

*The Classical Gardens of China*  
by Yang Hongxun

*Geraniums for Home and Garden*  
by Alan Shellard

*A Field Guide to Tropical and Subtropical Plants*  
by Frances Perry and Roy Hay

*Park's Success with Bulbs*  
by Alfred F. Schneider

*A Vegetative Guide to Perennial Plants of Southern California, Vol. 1*  
by Frank C. Vasek

*Pocket Flora of the Redwood Forest*  
by Rudolph W. Becking

*Flowers and Plants of New South Wales and Southern Queensland*  
edited by E. R. Rotherham and others.

*Flowers and Plants of Western Australia*  
by Rica Erickson and others

*Nature Photography*  
by Stan Osolinski  
*Nature with Children of All Ages*  
by Edith A. Sisson

*Eucalypts for Planting*  
Revised edition by M. R. Jacobs

*My World of Old Roses*  
by Trevor Griffiths

*Nature's Design*  
by Carol A. Smyser

*The Complete Handbook of Cacti and Succulents*  
by Clive Innes

*Agaves of Continental North America*

by Howard Scott Gentry  
*Majesty: the Exceptional Trees of Hawaii*

by Jodi Parry Belknap and others  
*The Ortho Problem Solver*  
edited by Michael D. Smith  
*The Art of the Plant World*  
by Martyn Rix

*The Enchanted Garden*  
by Bryan Holme

*Plant Extinction*  
by Harold Koopowitz and Hilary Kaye

*The Biology of Nectaries*  
edited by Barbara Bentley and Thomas Elias

*The Fragrant Garden*  
by Kay N. Sanecki

*Tuberous Begonias*  
by J. Haegeman

*Nature Drawing*  
by Clare Walker Leslie



---

# Queen Anne Frolic

---



THE WAXING MOON had not quite risen above the palm trees when the California Arboretum Foundation members and their guests began arriving at the Los Angeles State and County Arboretum for the Queen Anne Frolic on Sept. 16. By the time it was high overhead, the sell-out crowd of more than 800 celebrants were enjoying Director Francis Ching's traditional beef barbeque and rides in horse drawn surreys and antique cars. Costumed cyclists on vintage highwheelers gliding along the paths added to the Victorian atmosphere, and dancing to the music of Kimbi Goltry and the Dick Emmons Orchestra rounded out the evening.

Success of the gala benefit was due mostly to the leadership of the 1983 Queen Anne Frolic Chairman Joan (Mrs. Patrick) Fagan, her co-chairman, Jo Iske, and the long hours of work by the committee chairmen who handled the different facets of the party.

Members of the local business community again this year generously donated cash and a wide variety of the goods and services that added a great deal to the evening's festivities.



*From left, Wendy Minton, Janine Atkinson and Jane Ruddick model gowns from the Arboretum's collection of Baldwin era apparel for the Queen Anne Frolic.*

Photos by William Aplin





*Marilyn (Mrs. John) Llewellyn and Carol (Mrs. Gary) Overturf take a lighthearted approach in their Victorian bathing costumes.*



*California Assemblyman Richard Mountjoy and Dorothy (Mrs. Milton) Murset announce the winning number for the table centerpieces.*







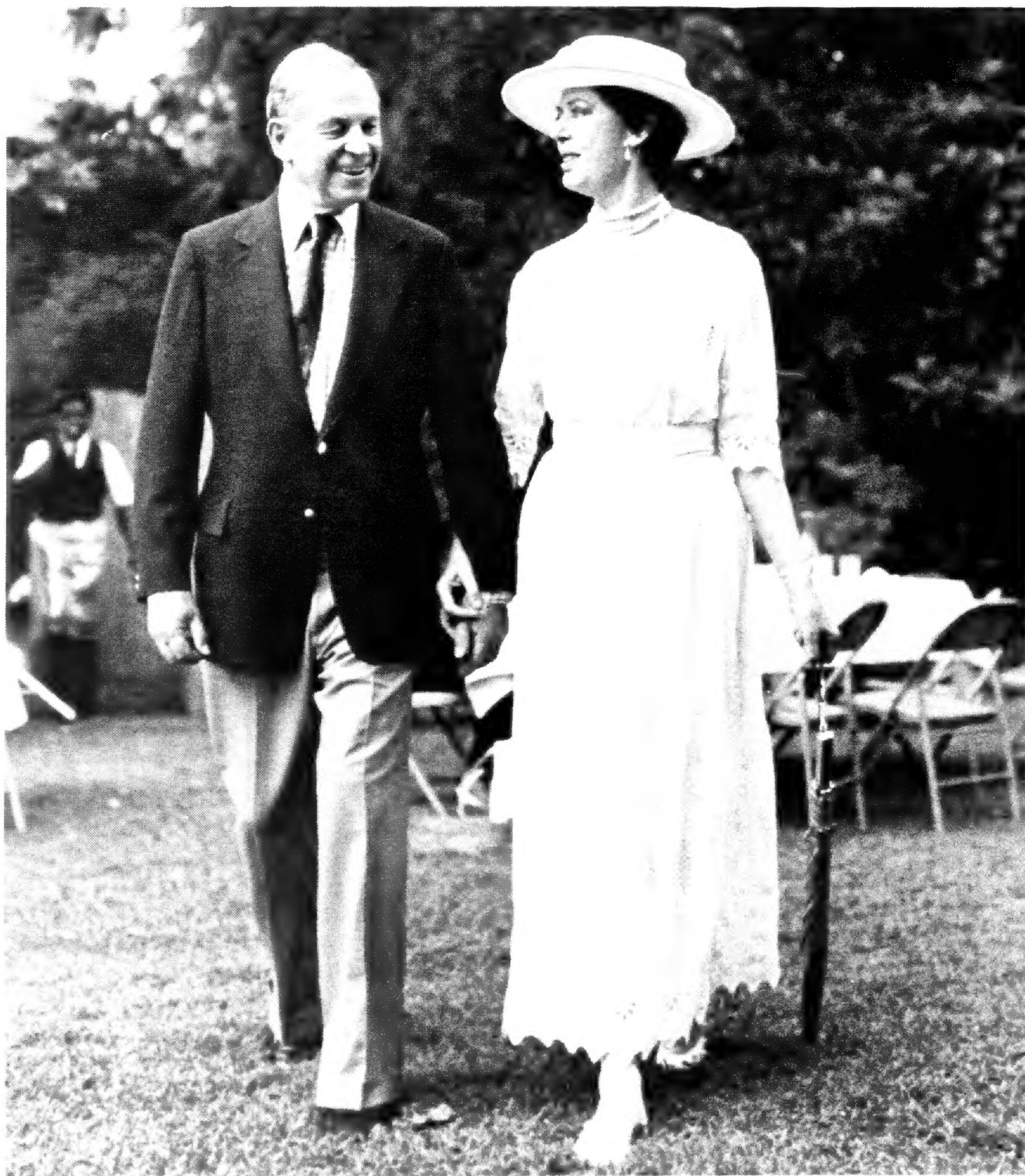
*Jo Iske, Queen Anne Frolic co-chairman and John Shepherd, CAF president survey the capacity crowd. Mrs. Iske handled final details when chairman Joan (Mrs. Patrick) Fagan became ill.*



*Model Janine Atkinson catches a breath of fresh air.*

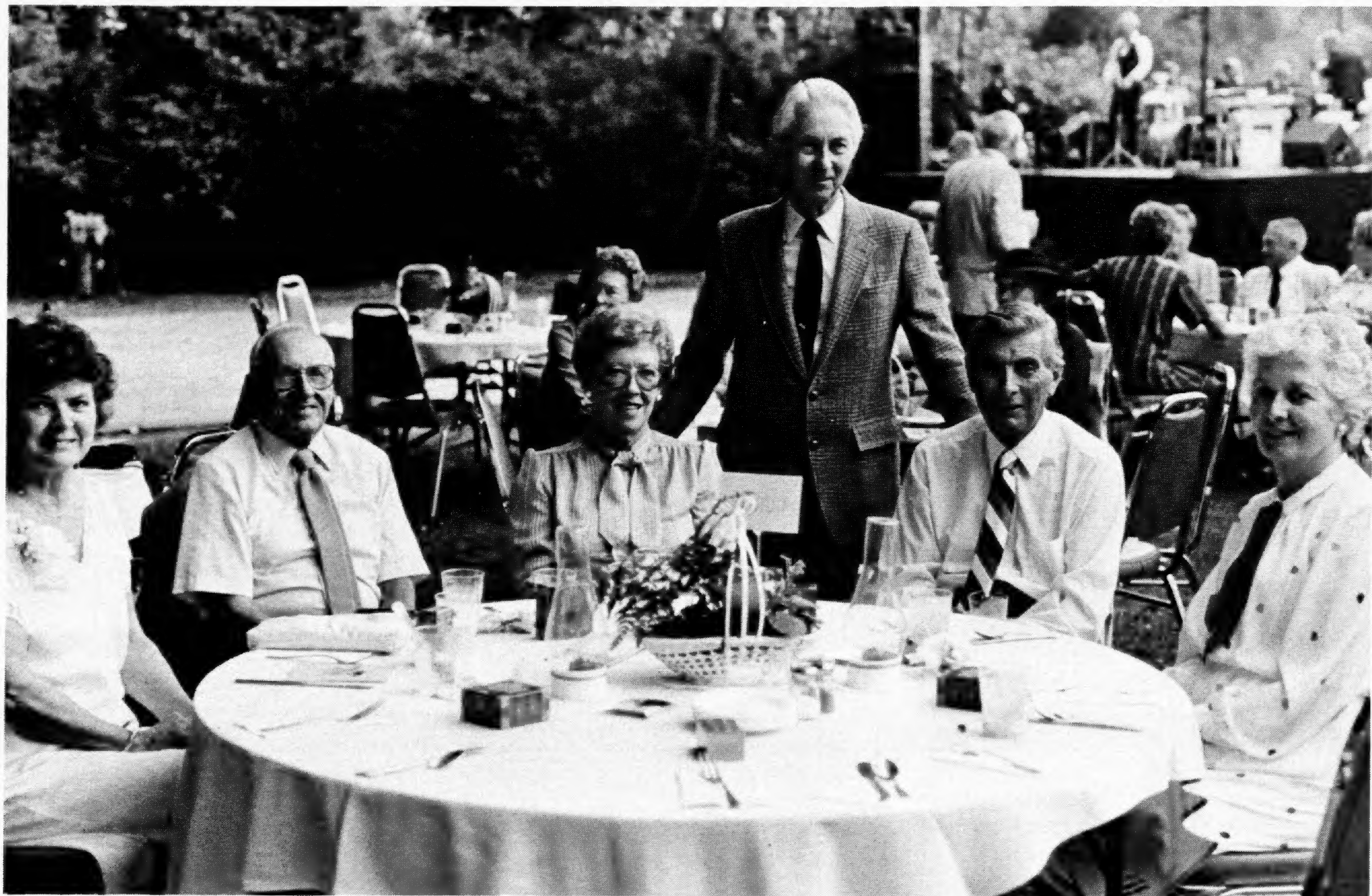
*LEFT Steven Thomas from Vintage Cyclery explains his highwheeler to Robin (Mrs. Benjamin) Stafford.*

*BELOW Guests enjoy trips through the Arboretum in a horse-drawn carriage.*



*Mr. and Mrs. Hugh MacNeil stroll in the warm dusk during the Queen Anne Frolic.*





From left, Mrs. James Curry; Mr. and Mrs. Eugene Walsh; John Shepherd; Mr. Curry; and Mrs. Shepherd gather for the biennial Queen Anne Frolic. Mr. Shepherd is the current president of the California Arboretum Foundation and Mr. Curry is the immediate past-president.

## CALENDAR OF EVENTS

NOVEMBER, DECEMBER 1983  
JANUARY 1984

### LOS ANGELES STATE AND COUNTY ARBORETUM, Arcadia

**DECEMBER 3 — 9 a.m. to 4 p.m.**  
Rare Fruit Show  
California Rare Fruit Growers

**DECEMBER 10, 11 — Saturday 1-4:30  
Sunday 9-4:30**

Camellia Show  
Southern California Camellia Council

**JANUARY 28, 29—10 a.m. to 4:30 p.m.**  
Bonsai Show  
Baikoen Kenkyukai Bonsai Society  
*All events sponsored by the California Arboretum Foundation*

### DESCANSO GARDENS, La Canada

**DECEMBER 3 through 11**  
9:00 a.m. to 5 p.m.  
Christmas Show

**JANUARY 2 through FEBRUARY 2 —**  
9 a.m. to 5 p.m.  
Membership Art Show

**JANUARY 14 — 1 p.m. to 4 p.m.**  
Rose Pruning Demonstration  
George Lewis and staff  
*All events sponsored by the Descanso Gardens Guild*

### SOUTH COAST BOTANIC GARDEN, Palos Verdes Peninsula

**NOVEMBER 5, 6 — 9 a.m. to 5 p.m.**  
Orchid Show  
South Bay Orchid Society

**NOVEMBER 13 — 2 p.m.**  
Gardens of Japan in Fall Color  
Don Walker

**NOVEMBER 20 — 2 p.m.**  
Talk/Demonstration — A Herb Affaire  
Kirby Davis

**NOVEMBER 27 — 2 p.m.**  
Gardens of the World  
Lorena Bach

**DECEMBER 1 — noon to 4 p.m.**  
Holiday Fashion Show

**DECEMBER 2, 3, 4 — 10 a.m. to 4 p.m.**  
Holiday in the Gardens

**JANUARY 15 — noon to 4 p.m.**  
Fruit tree pruning demonstration  
Ed Hartnagel and staff

**JANUARY 28, 29 — Sat. 1 to 4:30 p.m.  
Sun. 9 a.m. to 4:30**

Camellia Show  
South Coast Camellia Society  
*All events sponsored by the South Coast Botanic Garden Foundation*