



Coloring California

Lily of the Nile Agapanthus

Native to South Africa

Queen Anne, introduced April 1965
Mood Indigo, introduced May 1979
Walter Doty, introduced May 1981
Rhapsody, introduced May 1982
Ellamae, introduced September 1985

Agapanthus, the formidable botanical name of the beautiful Lily of the Nile, is most appropriate for the Summer selection of Arboretum introductions. "Agape" and "panthus" (Greek) mean love and flower. Equally romantic is the use of the plant by Xhosabrides of the Bantus of South Africa who wear pieces of the root as necklaces, to insure fertility and easy childbirth.

The agapanthus is a native of South Africa, not the banks of the Nile. There are some twenty different types, from different areas, each with different characteristics. Those of the lowland (Capetown to Durban) are evergreen and non-hardy, while those of the inland mountains and high table lands

continued on page 7

CALIFORNIA ARBORETUM FOUNDATION

N · E · W · S

Published by the California Arboretum Foundation, a non profit corporation supporting the Los Angeles State and County Arboretum.

Summer
1989

Xeriscape for Homeowners



The Water Conservation Garden at the Arboretum features many examples of drought tolerant plants.

A Water Conservation Symposium – "Xeriscape for Homeowners" – has been designed and cooperatively sponsored by the California Arboretum Foundation, the City of Pasadena Department of Water and Power, the Los Angeles State and County Arboretum, and the Metropolitan Water District of Southern California. To be held on Saturday, July 22, the purpose of the day long seminar is to introduce the public to xeriscape, water conservation through creative landscaping.

Those attending the Water Conservation Symposium will learn how to use and care for plants that can be maintained with low water application, and also provide a green and colorful garden. Symposium participants

include: Randall Ismay presenting a National Xeriscape Video; Lisa Iwata - "Xeriscape Designs for Homeowners"; John Dourley - "Plant Materials"; Tour of LASCA's Water Conservation Garden by Steve Cohan, Assistant Superintendent of the Arboretum; William Caplinger - "Irrigation Design"; and Bob Baier - "Xeriscape Maintenance." Water conserving plants will be on display and available for sale.

Registration for the Water Conservation Symposium is \$15 per person and includes a box lunch. Please contact the California Arboretum Foundation office at (818) 447-8207 for information.

Board Notes from Alice Frost Thomas, President

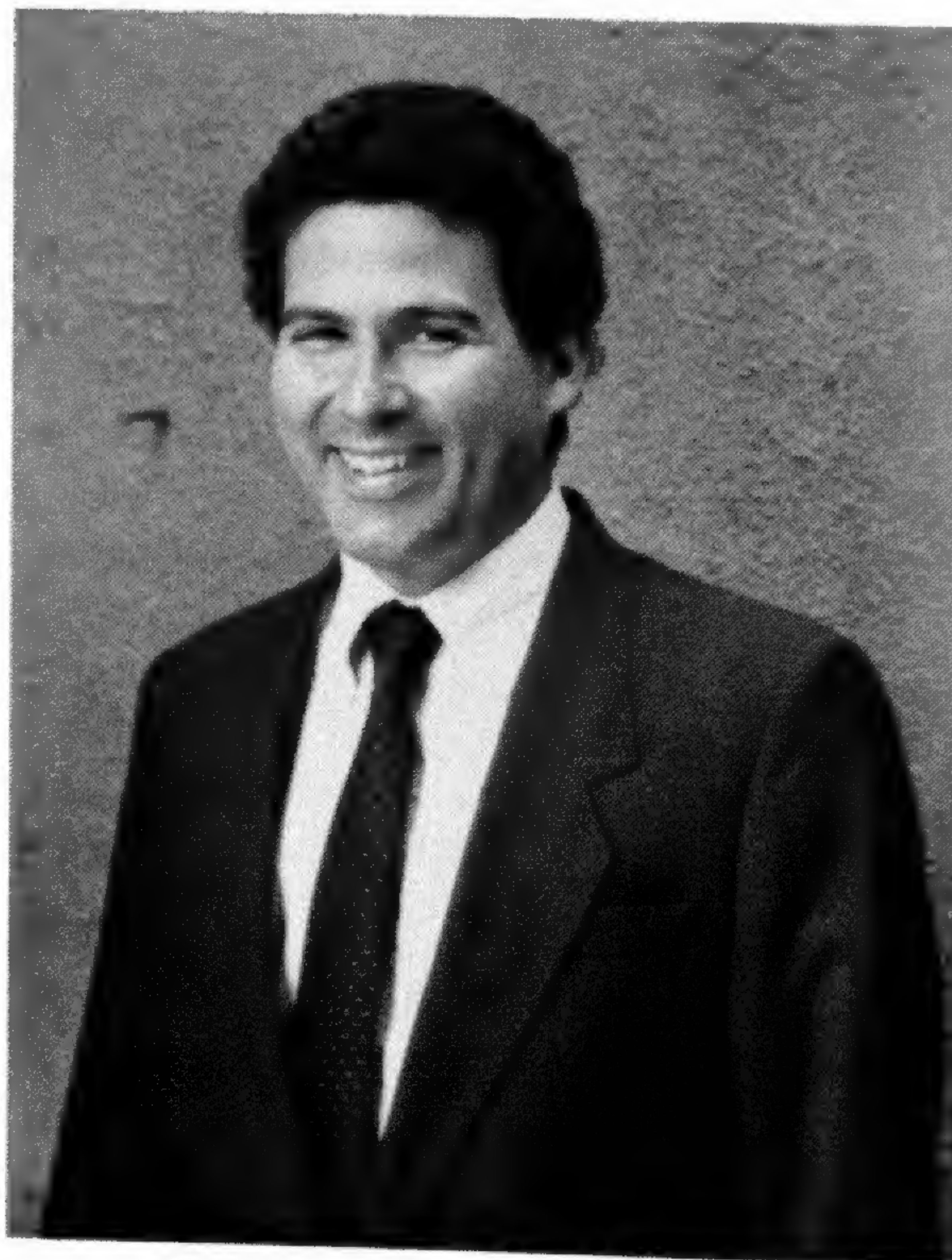
As the Foundation's fiscal year draws to a close and a new one commences, I want to extend great appreciation to members of the staff, the board of trustees and all the volunteers for their many valuable contributions of hours, creative ideas, drudgery, humor - all the stuff that has to be done and all the wonderful things that happen to make the Foundation grow bigger and better in its non-profit supporting role for the Los Angeles State and County Arboretum. My gratitude also goes to the many Foundation members who give books, plants, dues, donations, helpful hints, compliments and complaints. We like to hear from you. Many thanks also to members of the county staff who make the Foundation's work easier with their cheerful help, cooperation, greetings and smiles. We look forward to our 42nd year of teamwork supporting the Los Angeles State and County Arboretum.

Welcome Nicholas George Rodriguez

The California Arboretum Foundation welcomes Nicholas George Rodriguez to the Foundation's Board of Trustees. Mr. Rodriguez, a partner with the law firm of Gronemeier and Barker, is an active member of the Pasadena community. He was Staff Attorney for El Centro De Accion Social from 1977-1983. He brings to the Foundation the experience of serving on the following Pasadena boards and commissions: Cal Tech Y, Finance Council St. Andrews Catholic Church, City of Pasadena Planning Commissioner; Charter Study Committee, Committee on Affordable Housing, and Overall Economic Development Program Committee.



David Fraser, President of Swarthmore College, Pennsylvania, congratulates Director Francis Ching, 1989 recipient of the Arthur Hoyt Scott Garden and Horticulture Award.



Nicholas George Rodriguez joins the California Arboretum Foundation Board of Trustees.

Director Francis Ching Receives Scott Award

A very significant honor has come to the Arboretum family with the announcement that our Director, Francis Ching, was awarded the Arthur Hoyt Scott Garden and Horticulture Award. The ceremony took place on Sunday, May 21st at the Scott Arboretum of Swarthmore College in Pennsylvania.

Established in 1929, the Arthur Hoyt Scott Award is given as an acknowledgement of "achievement of great merit, recognition of work in creating and developing a wider interest in gardening." The award, a gold medal together with \$2,000, is made from time to time to an individual who, in the opinion of the selection committee, has made an outstanding contribution to the science and art of gardening. This is the first time the award has been given to someone west of the Appalachian mountains.

The California Arboretum Foundation is proud that Director Francis Ching was selected and that his many contributions to public horticulture have been recognized with this award.

Thank you to the Metropolitan Water District

CAF Benefactor, Affiliate, Sponsor and Sustaining members were recently treated to a tour of Southern California's water system as guests of the Metropolitan Water District. Guests began the trip with a stop at the Jensen Filtration Plant in Granada Hills. At the Tehachapi Pumping Station everyone donned a hard hat and descended several floors to see the enormous turbines. The final stop was at Castaic Dam, the terminal reservoir of the California Aqueduct's West Branch. Trustee Suzie Miller summed up the expedition saying, "I learned that the MWD is a wholesale seller of water to 27 member agencies with 100 sub-agencies serving some 13 million consumers. When you see where your water comes from, you appreciate more than ever the compelling need to conserve it."

Development News



The Santa Anita Foundation and the Los Angeles Turf Club, Inc. presented a \$10,000 grant to the California Arboretum Foundation at a ceremony in the Director's Room at Santa Anita Park. Attending the presentation are (l to r): Ignacio E. Lozano, Santa Anita Foundation; Beverly Rouse, Director of Development California Arboretum Foundation; Gordon B. Crary, Jr., Santa Anita Foundation; Nancy McCullough, CAF Trustee; Alice Frost Thomas, President CAF Board of Trustees; Francis Ching, Director Department of Arboreta and Botanic Gardens; and Robert P. Strub, president and CEO of Los Angeles Turf Club, Inc.



Students at Holly Avenue Elementary School in Arcadia plant their 1989 Arbor Day tree.

Oak Tree Foundation Continues Its Support of the Arboretum Arbor Day Program With \$5,300 Grant

For the past nine years, Oak Tree Foundation has provided generous support of the Arbor Day program sponsored by the Arboretum. Through this program, trees are provided to approximately 700 elementary schools in the Los Angeles Unified School District. Information packets are

distributed to each participating school. The "hands-on" experience children receive, while planting a tree on the school grounds, is designed to emphasize the importance of man's relationship to plant life and encourage interest in plant sciences as a career path.

Arboretum Campaign Receives \$50,000 Gift From The Stanley Smith Horticultural Trust

The Stanley Smith Horticultural Trust recently donated \$50,000 in support of the Master Plan Campaign to enhance the Los Angeles State and County Arboretum.

In making the contribution, Trustee, John P. Collins noted, the gift is "in support of your Master Plan, comprising a high element of practical instruction."

The Smith Horticultural Trust is located in San Francisco and provides grants to organizations for horticultural programs including education and research.

The Master Plan Campaign is designed to upgrade Arboretum facilities through renovation and new capital construction and to establish an endowment fund for educational and research programs.



LASCA introduction, Rabermachera sinica or Glory Astabell tree, native to China was planted at Clairbourn School on Arbor Day.

With the ongoing support of Oak Tree Foundation, the Arboretum has been able to build an excellent educational program for local school children.

Highlights of Recent Events

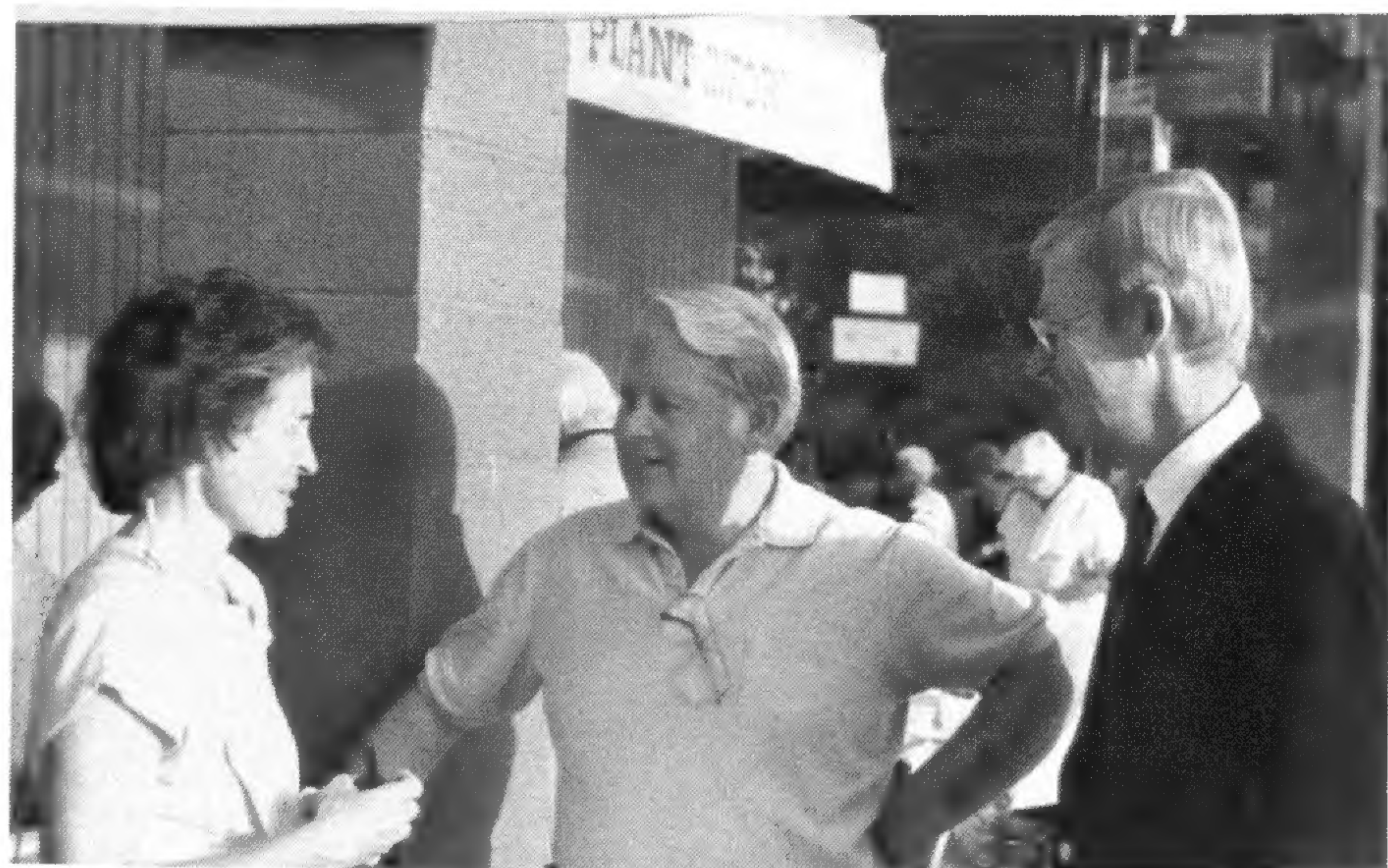
Baldwin Bonanza a Successful Sale

The 19th Baldwin Bonanza, under Tom McDuffie's able leadership, was a great success. The Members' Preview Party was held on a balmy Saturday evening with 1100 attending. Veteran shoppers, on Saturday and Sunday, brought their own red wagons or dollies to wheel away their purchases. Plants featured this year included many edible plants: fruits, vegetables and an immediate sell-out, papaya "Babaco" that sets fruit in the Los Angeles area despite smog and winter cold. Xerophytic plants were also popular and were sold near the Arboretum's colorful Water Conservation Garden. Buyers could match their purchases with the flowers in the display.



Once again our special thanks to the many (over 200) Arboretum volunteers that each year make the Baldwin Bonanza possible.

Dedicated volunteers prepare for the Baldwin Bonanza plant sale.



Foundation Trustee, Marilyn Brumder (l) visits with Hon. Richard Mountjoy (c) and George Brumder (r) at the Baldwin Bonanza Preview Party.



During the Baldwin Bonanza Preview Party, Guilford Babcock, (l) visits with CAF Trustee, Fred Schoellkopf and his wife Eileen, and Gwen Babcock (r).

Drip Wall Bog Garden Dedication



Landscape architect Frederick M. Lang, designed the Entryway Vista, completed in the Spring of 1989. The Terrace is a popular site for weddings at the Arboretum.



The Drip Wall Bog Garden under construction.

Virginia and Charles Stein, Benefactor Members of the Foundation, enjoy the reception honoring donors to the Entryway Vista project. Mrs. Stein is seated by a lamp designed for the Bog Garden Terrace by the Arroyo Craftsman.



Foundation Annual Meeting



Foundation Trustees, Hannah Bradley (Second Vice President) and Alice Thomas (President) celebrate the completion of the Entryway Vista at the Foundation's Annual Meeting in June.

Topiary Day a Terrific Success – Barbara Gallup of Totally Topiary visits the Arboretum



Following her lecture and workshop at the Arboretum, Barbara Gallup (r) autographs her book, The Complete Book of Topiary, for Tischia and Jennifer O'Farrior of O'Farrior Topiary.

February Orchid Sale



Earl Ross, the Arboretum's Orchidist, was on hand to answer questions at the February Orchid Sale.

Tea in the Garden



Karen Webb, Cheryl Amestoy of the Herb Society and Arboretum volunteer Betty Houke were three of the volunteers who prepared and served a lovely English tea in the Meadowbrook lawn. Proceeds from Tea in the Garden will go to support the Arboretum's Herb Garden. The event was co-sponsored by the Herb Society of America, Southern California Unit and the California Arboretum Foundation.



This young boy and his family are members of the stringed quartet that provided the music for Tea in the Garden.

Calendar of Events

July

Saturday, July 22
Water Conservation Symposium –
see cover story

Saturday and Sunday, July 29, 30
American Begonia Society Show
9:00 – 4:30 p.m.

August

August 5 – 13
Mid Valley Art League Show & Sale
9:00 – 4:30 p.m.

Monday, August 7
Volunteer Board Meeting
9 A.M. – Noon; Lecture Hall B

Tuesday, August 15
California Arboretum Foundation
Board of Trustees Meeting
4 P.M. ; Seminar Room

Saturday and Sunday, August 19, 20
Long Beach, San Gabriel, & Los
Angeles Cactus and Succulent Societies
Show and Sale; 9:00 – 4:30 p.m.

September

Saturday – Monday, September 2-4
Los Angeles International Fern Society
Show & Sale; 9:00 – 4:30 p.m.

Thursday, September 7
Volunteer Fall Open House
9:00 a.m. – 3:00 p.m.

Monday, September 11
Volunteer General Meeting
Ayres Hall ; 9 a.m. – Noon

Tuesday and Saturday, September 12
and September 16
Las Voluntarias Fall Orientation
Lecture Hall B ; 9 – 3 p.m.

Tuesday, September 16
Orchid Symposium; 9:00 – 4:00 p.m.

Tuesday, Thursday, September 19, 21,
26, 28 Volunteer Field Leader Training
9:00 – Noon; Lecture Hall B

Tuesday, September 19
California Arboretum Foundation
Board of Trustees Meeting
4 p.m.; Seminar Room

Saturday and Sunday, September 23, 24
Akebono Bonsai Show; 9:00 – 4:30 p.m.

October

Monday, October 2
Volunteer Board Meeting
9:00 – Noon; Lecture Hall B

Tuesday, Thursday, October 3, 5, 10,
12, 17, & 19
Volunteer Field Leader Training
9:00 – Noon; Lecture Hall B

Tuesday, October 17
California Arboretum Foundation
Board of Trustees Meeting
4 p.m. – Seminar Room

Thursday and Friday, October 19, 20
Los Angeles Garden Show
Preview Parties

October 20-29
Los Angeles Garden Show

Notice Early Morning Arboretum Walkers/Joggers

One of the privileges of CAF membership is accessibility to the Arboretum for early morning exercise. Please note that members are welcome to come on the grounds to exercise beginning at 8:00 am by using the gate next to the Rotunda entrance. Admittance to the grounds cannot be permitted before 8:00 am.

The following organizations and societies meet monthly at the Arboretum. The meetings are open to Foundation members:

Akebono Bonsai Society
Second Friday, 7:30-10 pm

Arcadia Garden Club
Second Wednesday, 9-12:30 pm

Arboretum District Garden Club
First Monday, 9:30-12 noon

California Rare Fruit Growers,
Foothill Chapter
Second Sunday, 10:00-12 noon
Cymbidium Society of America
Fourth Tuesday, 7-10 pm

Epiphyllum Society of America
First Tuesday, 7:30-10 pm

Herb Society of America
First Thursday, 8:00 am-3:00 pm

International Geranium Society
Third Thursday, 6:30-10 pm

Los Angeles International
Fern Society
Third Friday, 7:00-10:00 pm

Pacific Rose Society
First Thursday, 5:00 - 10:00 pm

San Gabriel Valley
Orchid Hobbyists, Inc.
Third Thursday, 6:00 - 10:00 pm

San Gabriel Valley Cactus
& Succulent Society
Second Thursday, 7:30-10:00 pm

Santa Anita Bonsai Society
Second Sunday, 7:30 - 10 pm

Shohin Bonsai Society of
Southern California
Second Wednesday, 7:30 - 10 pm

Southern California
Camellia Society
Second Tuesday, 6:30 - 10 pm

Southern California Hemerocallis
and Amaryllis Society
Third Saturday, 9:00 - 3:00

Southern California Iris Society
First Saturday, 9:00 - 4:00

Special Events at the Arboretum

All Foundation members will receive invitations and reservation information to all of the following events in the Fall CAF NEWS.

Orchid Symposium Saturday, September 16

To celebrate the opening of the Arboretum's new, state-of-the-art orchid greenhouse, a day-long symposium will be held. Specialists in the field include: Denis Duveen - "Adventures on the Trail of *Cattleya dormiana*;" Jim Folsom - "Heyday of Orchid Discovery;" Jack Fowlie - "China: Awash in the Bitter Sea;" and Earl Ross, the Arboretum's Orchid Specialist, - "Orchids: Their Botany and Culture." Following the talks, tours of the Arboretum greenhouses will be offered. More than 10,000 orchids are on display.

Registration is \$17.50 and includes lunch. Please contact the CAF office at (818) 447-8207. Flyers will be sent to all CAF members later in the summer.

1989 Los Angeles Garden Show October 20 - October 29

"At Home in the Garden" is the theme for this year's Los Angeles Garden Show to be held at the Los Angeles State and County Arboretum. The show will feature exhibits by landscape architects and designers, that will be located on the Arboretum grounds. In the early Fall, Foundation members will be sent two complimentary tickets to the Garden Show. The tickets may be used for admission to the grounds any time during the show except for the Preview and Opening Night festivities. Extra tickets for the show will be available for \$6 per person for adults and \$3 for children, students and seniors.

Preview Party of the Los Angeles Garden Show

Thursday evening, October 19, is the date set for the annual Preview Party of the Los Angeles Garden Show. "The evening will celebrate the extensive exhibits of the Garden Show," says Suzie Miller, Foundation Trustee and

Preview Party Chairman. The party will begin at 5:30 p.m. with cocktails and hors d'oeuvres and guided tours of the garden show exhibits. Dinner catered by Julienne of San Marino will follow at 6:30 p.m.

The gala is a major fundraiser sponsored by the California Arboretum Foundation. Please call the Foundation office at (818) 447-8207 for invitations and reservations.



Christmas Floral Demonstration and Workshop

by Rene van Rems

Wednesday, November 29, 1989

Floral designer, Rene van Rems, will present a two-part Christmas floral demonstration and workshop. The morning program will offer a lecture/demonstration of Christmas decorating ideas. The afternoon workshop, with limited registration, will be hands-on work with the resulting arrangements becoming the student's own.

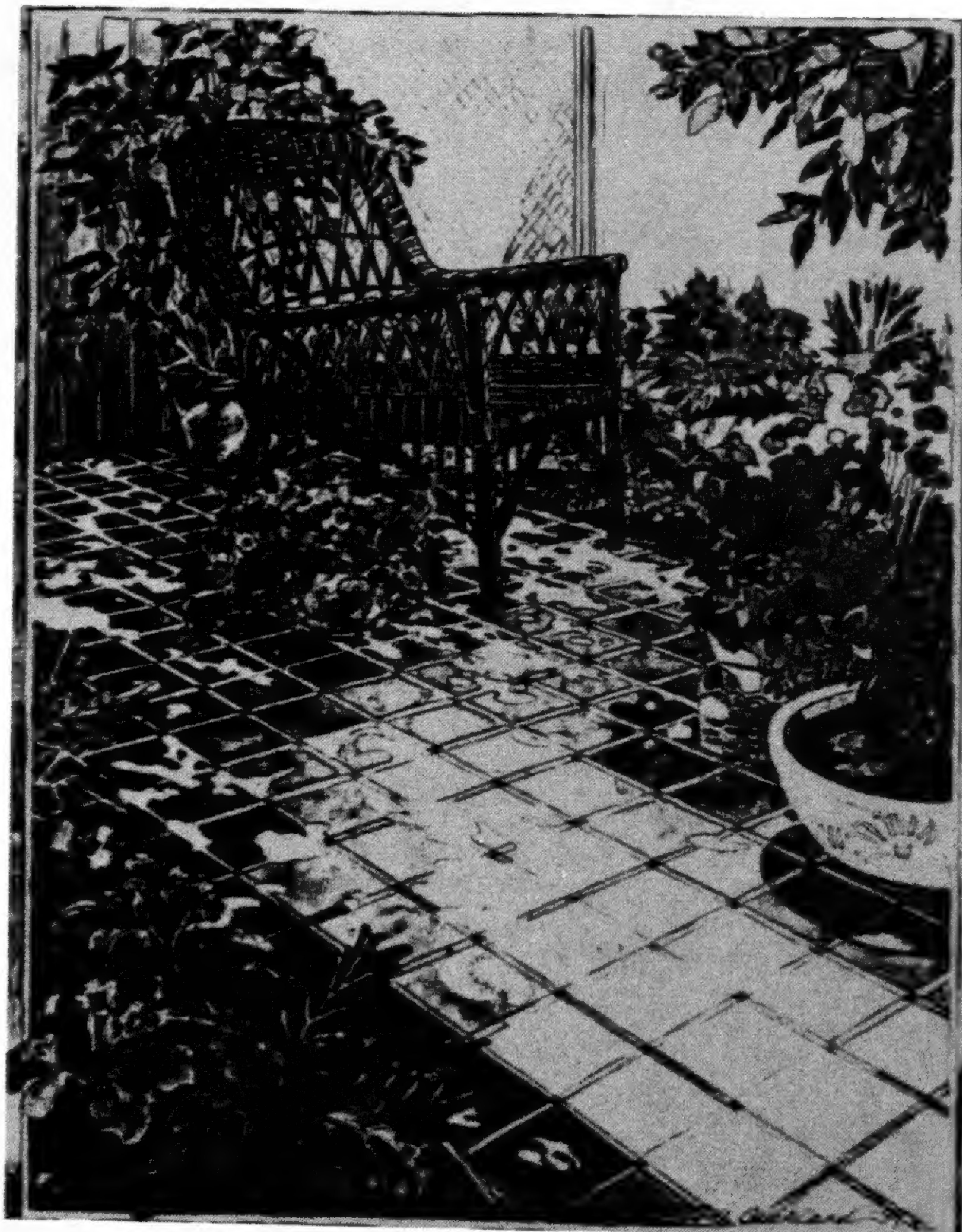
Mr. van Rems is the founder of Bloomen International, a floral design studio located in Encinitas. Originally from Holland, he has been teaching classes in European floral design at UCSD and has lectured across the United States and in Europe.

March 3, - 6, 1990
Flower Show Tour

Spend a weekend touring historical Philadelphia and its beautiful gardens culminating in a visit to the incomparable Philadelphia Flower Show, March 3 - 5. For those interested, extensions to the New York and Boston Flower

Shows will be available.
Look for details in the Fall newsletter.

LOS ANGELES GARDEN SHOW



AT HOME IN THE GARDEN

SEPTEMBER 16, 1989



ORCHID

SYMPOSIUM



9 a.m. - 2 p.m. SPECIALISTS SPEAK

- Denis Duveen - "Adventures on the Trail of *Cattleya dormaniana*"
- Jim Folsom - "Heyday of Orchid Discovery"
- Jack Fowlie - "China: Awash in the Bitter Sea"
- Earl Ross - "Orchids: Their Botany and Culture"

2 p.m. - 4 p.m.

Tours of greenhouses, more than 10,000 orchids on display

Los Angeles State and County Arboretum
 301 N. Baldwin Ave., Arcadia, CA
 (818) 446-8251

\$17.50 Registration - includes box lunch

ORCHID SYMPOSIUM

Please return this registration form by Sept. 8, 1989

Please reserve _____ seats at \$17.50 per person. Total enclosed \$ _____.

Registration fee includes one boxed lunch.

Name _____

Address _____

City _____ State _____ Zip _____

Make check payable to: California Arboretum Foundation
 301 North Baldwin Avenue
 Arcadia, CA 91006-2697



COME – GET ACQUAINTED
FOR A YEAR OF LEARNING,
A LIFETIME OF INTERESTS

YOU CAN:

- Lead Tours
- Garden
- Arrange Flowers
- Propagate Plants
- Preserve History
- Make Craft Items
- Map the Grounds
- Meet People
- Organize
- Receive Training
- Assist Staff
- Enrich your knowledge at General Meetings

WHILE YOU SERVE YOUR COMMUNITY BY BECOMING AN ARBORETUM VOLUNTEER

For more information, call (818) 447-8207
Or write: Las Voluntarias y Los Ayudantes
301 North Baldwin Avenue
Arcadia, California 91006

Volunteer Open House at the Arboretum:

Thursday, September 7, 1989; 9 am – 3 pm

Fall Orientation dates at the Arboretum:

Tuesday, September 12, 9 am-3 pm

Saturday, September 16, 9 am-3 pm

Field Leader Training:

**Tuesdays and Thursdays, 9 am – Noon
September 19 – October 19**

New Members

The California Arboretum Foundation welcomes the following members:

Groundskeeping Family • Robert C. Ackerman, Sr. • Mr. and Mrs. Charles Adolph • Mr. and Mrs. Kenneth Agress • Ms. Jeanne J. Alexander • Dr. and Mrs. Anthony Allen • Ms. Nichole Alves • V. R. Alves • Ms. Haifaa Al-Moammar • William C. Amdrew • Mrs. Cheryl Amestoy • William J. Anagnost • Mr. and Mrs. John W. Anderberg • Mr. and Mrs. Steve Appleford Cudlitz • Ms. Mary M. Arakawa • David R. Arndt • Mrs. Lydia Aten • Mr. and Mrs. Richard Azuma • Mr. and Mrs. Philip Bagenski • David C. Barbour • Mrs. Tippi Henren Barreneschea • Mrs. Nary E. Barthelmy • Ms. Tamera Baumberger • Mr. and Mrs. Robert B. Behnke • Ms. Nina Bellman • Bruce W. Bennett • Ms. Elizabeth A. Bensinger • Dr. Mary Beth Bewersdorf • Mrs. Betty Bimmerman • Mr. and Mrs. Colin Bing • Craig Black • Mrs. F. Rene Blalock • Mrs. Helen E. Blanchard • Mr. and Mrs. Stephen Bolin • Mr. and Mrs. Gordon Bowman • Mr. and Mrs. Naurice A. Bowman • Mr. and Mrs. H. P. Boyington • Mr. and Mrs. James O. Bradish • Robert Brandes • Mr. and Mrs. Thomas L. Brastoff • Mrs. Nurith Brier • Hardy Brogdon • Kurt J. Brotherson • Mr. and Mrs. Andres Brown • Mr. and Mrs. George Brown • Mrs. Elizabeth Bruckner • Mr. and Mrs. William Brulla • Mr. and Mrs. E. F. Bulmahn • Ms. Carol S. Burdick • John W. Burgess • John Michael Burke • Ms. Patricia S. Burnside • Ms. Carol Burrill • Ms. Betty Busby • Ms. Mary R. Butler • Mr. and Mrs. Joseph Byrne • Sidney W. Caplan • Mrs. Angela Capobianco • Mr. and Mrs. Nino Carbe • Mrs. Corella Carhartt • Mr. and Mrs. Don Chamberlain • W. P. Chang • Ms. Anna Chilcoat • Ms. J. Chungfung • Donald Clark • Mr. and Mrs. Ross Clark • Mrs. Susan Clark • Nel Cohen • Ms. Beverly A. Cottrell • Mr. and Mrs. Joseph H. Coulombe • Dr. and Mrs. John Court • Mr. Donald Cowper • Mr. and Mrs. Frederick L. Curtis • Mr. and Mrs. Roy Czernicki • Ms. Arlette L. Davies • Mrs. Golden W. Davis • Mr. and Mrs. Robert Z. Denman • Eiko DeQuattro • Mark Dixon • Mr. and Mrs. Charles Donovan • Mr. and Mrs. Robert E. Douglas • Ms. Zana Douglas • Mr. and Mrs. Charles E. Dowd • Ms. Ratharine Dreschler • Mr. and Mrs. Les Duffield-Jones • Ms. Shirley Dunton • Mr. and Mrs. Richard J. D'Amato • Nancy Yoshihara and Earl Gustkey • Mr. and Mrs. Gregory Eller • Mrs. Jean B. Erich • Mr. and Mrs. Estrada • Mr. and Mrs. Thomas Everhart • Mr. and Mrs. Jim Fagelson • Mr. and Mrs. Tom D. Farris • Ms. Langdon Faust • Ms. Marsha Feinhandler • Mr. and Mrs. William C. Ferguson • Ms. Anna M. Ferraro • Mr. and Mrs. E. O. Feuerhelm • Mr. and Mrs. Bradley J. Fickes • Mr. and Mrs. David E. Fickewirth • Mr. and Mrs. Richard Firestone • Ms. Belinda Fischer • Mr. and Mrs. Felix Fischer • Mrs. Roberta A. Forest • Mr. and Mrs. Gary Foster • Ms. Judy Franklin • Mr. and Mrs. Robert Fredericks • Mr. and Mrs. Joseph Fuchs • Ms. Monica Gardenier • Ms. Karen Gelb • Ms. Marilyn Geleris • Jeffrey Patterson and Gerald Flynn • Philip L. Giroux • Mr. and Mrs. Irwin L. Gorman • Mr. and Mrs. Randall W. Graham • Ms. Suzanne Granger • Ms. Violeta Gratianne • Ms. Lillian Greenup • John S. Gregg, III • Ms. June A. Gregson • Mrs. Margaret G. Grossman • Ms. Olga Guerra • Leo A. Guevara • Richard Gump • Mrs. Marshall Gurney • Mr. and Mrs. John Gutierrez • Mr. and Mrs. C. N. Haeske • Mr. and Mrs. Martin Haines • Ms. Harlene A. Hamann • Ms. Deanna K. Hamilton • Mrs. Patricia G. Hanft • Mr. and Mrs. H. William Happel • Mr. and Mrs. Martin A. Harrison • Mrs. Pamela Harrison • Mr. and Mrs. Stephen Harrison • Mrs. Beatrice Hart • Rev. and Mrs. Earle R. Harvey • Mr. and Mrs. John Allan Hawes • Judge and Mrs. R. F. C. Hayden • Ms. Lynne Heilman • I. V. Henning • Mr. and Mrs. Bill Herberts • Ms. Suzanne Hermann • Ms. Helen H. Herrera • Mrs. Perry S. Herst, Jr. • Mrs. Irmgard Hertel • Mr. and Mrs. Robert H. Heuerman • Mr. and Mrs. Robert Heuser • Ms. Lois Hildebrandt • Ms. Barbara Hilliard • N. Kent Hodson • Ms. Deena Noffman • Richard Hoye • Mr. and Mrs. Wilbur R. Noyt • Dr. and Mrs. Amos Hsia • Mr. and Mrs. Philip Hsu • Mr. and Mrs. Robert H. Hudson • Ms. Kathleen Hughes • Ms. Dianne Humphrey • Ms. Caroline Hunter • James H. Hunter • Mrs. Hopkins Huntington • Ms. Peggy Ingham • Tack Inouye • Ms. Cherry Isaac • Ms. Michele Jacknik • Ms. Kathy Jackson • Mr. and Mrs. Steve Jacobs • Mr. Michael R. Jacob • Ms. Georgia Jallo • Claudia Donally and James Doig • Ms. Lucille Jarvis • Mr. and Mrs. Robert Jefchak • George J. Jeffries • Ms. Betty Jelen • Mrs. Helen Jeng • Ms. Joan Jenkins • Ms. Katherine E. Jenkins • Dr. and Mrs. Charles W. Jenner • Naza Wolde Johannes • Mr. and Mrs. David Johannsen • Mr. and Mrs. Lawrence Johannsen • Elizabeth Leone and John Haydukovic • Ernest P. Johnson • Misses Eunice and Beth Johnson • Mr. and Mrs. Walter Johnson • Ms. Janice B. Jones • L. A. Jordan • Mrs. Yvonne Jorgensen • Mr. and Mrs. Richard Jung • Mr. and Mrs. Larry Kachaturian • Mrs. Jeanne Kadish • Ms. Deanna Kanner • Mr. and Mrs. Eldon Raser • Ms. Jackie Kassoria • Mr. and Mrs. Steve Keber • Mr. and Mrs. Richard Kee • Mr. and Mrs. Paul Keese • Mr. and Mrs. Douglas J. Killian • Ms. Kelly Kimball • Mr. and Mrs. William Kincade • Charlie Kirchner • Al Kisner • Mrs. Anne P. Knoll • Mr. and Mrs. Alrich Kong • Charles Kraft • Ms. Linda Kranen • Mrs. Erica Meyer Kurta • Francis E. La Roche • Ms. Deborah Lamb • Mrs. Paul Lambert • Ms. Jessica Larden • Mr. and Mrs. Adrian Lane • Mr. and Mrs. Ralph Lang • Mr. and Mrs. Robert Lanham • Mr. and Mrs. Gustav Larson • Mr. and Mrs. Charles F. Law • George M. Leach • Mr. and Ms. Lauren W. Lees • Ms. Lillian Lessa • Mr. and Mrs. Thomas Levine • Mrs. Juanita J. Lewis • Mr. and Mrs. Robert E. Linnan • Michael Lipshultz • Russ A. Loar • Mr. and Mrs. Warren H. Lockyear • Don Lorenzini • Alex Lundring •

Mr. and Mrs. Larry Lyon • Mrs. Mary Ellen Nacfas • Frank Nagee • Ms. Marlene Maginski • Mr. and Mrs. John J. Mance • Ms. Kathleen M. Martin • Mr. and Mrs. Larry Nartin • Ms. Nancy Nartin • Ms. Loraine S. Mason • Mr. and Mrs. Warren Mason • Robert R. Matas • Mr. and Mrs. Ron Matta • Everett G. McDonough, Jr. • Donald McIntyre • Drieux McNairy • Mr. and Mrs. Orin J. Mead • Mr. and Mrs. Bruce Metro • Linda Eagan and Mike Heacock • Gregory Miller • Ms. Kathryn A. Miller • Ms. Madeline L. Milne • Ms. Lynn Miner • Mr. and Mrs. Greg Mitchell • Ms. Catherine Montoro • Mr. and Mrs. George Moran • Ms. Henny Moskowitz • Ms. Victoria Bennett Murray • Mr. and Mrs. Milton Myers • Ms. Sumi Nagai • Mr. and Mrs. Joseph R. Nederburgh • Mr. and Mrs. George F. Neilson • Steven Nestle • Ms. Nancy Newton • Mr. and Mrs. Jay Niehaus • Ms. Linda Ninomiya • Mrs. Bevbery Nix • Ms. Wanda Noble • Mr. and Mrs. Maurice J. Nocle • Mr. and Mrs. Ken Norkus • Ms. Julie Ann Norman • Ms. Shirley A. Norman • Ms. Caroline S. Norris • Mr. and Mrs. Novakow • Mr. and Mrs. Tom Olin • Mr. and Mrs. Robert B. Olson, Jr. • Mrs. Judy Opel • Mrs. Amelia Oyer • Ms. Ruth O'Grady • Mr. and Mrs. George Paepegem • Mr. and Mrs. Paul Pagnone • Mr. and Mrs. A. D. Palmer • Mr. and Mrs. Jeed Palmer • Ms. Mary Ann Paullin • Mr. and Mrs. Kent Pelz • Fred Peters • Ms. Kimberley A. Petersen • Ms. Joan Humphrey Pierce • Ms. Satoe Pierce • Ms. Susan Piper • Ms. Susan Poster • Ms. Pat Potter • Ms. Roberta G. Preskill • Mr. and Mrs. Samuel W. Price • Ms. Nancy Priestley • Mr. and Mrs. George W. Prim • Ms. Jean Pullen • Mr. and Mrs. Jay Ramaker • Mr. and Mrs. Carl Wheelers Rand • Mr. and Mrs. Edward Rayl • Mrs. Ann Read • Mr. and Mrs. Kirk Reinholtz • Ms. Julie M. Reiz • Mrs. Clareen Rich • Roxanne Aquilla and Robert DePalma • Christine Beale and Robert Rogers • Mr. and Mrs. R. O. Robinson • Mr. and Mrs. Frank Robitaille • Ms. Rachel Robledo • Mr. Louis M. Robles • Mr. Hector N. Rodriguez • Mr. Kenneth Rosengrant • Mrs. Robert Ross • Ms. Stella R. Ross • Ms. Masy Rounds • Ms. Leslie Rue • Ms. Lorelei Ruhonis • Mr. and Mrs. Norman Rutkowski • Ms. Stacey L. Sago • Mr. Jose Salcedo • Ms. Kosene Santo • Ms. Maribelle N. Sarmiento • Mr. George Sauer • Mr. Carl Sautter • Mr. and Mrs. Charles Savage • Mr. and Mrs. Edward J. Savage • Mrs. Mitchell Scaff • Mrs. Dusanka Schmidt • Ms. Louise Schmidt • Mr. Richard L. Schober • Mr. and Mrs. Rolf Schuhr • Ms. Rose Marie Schumacher • Mr. and Mrs. Henry Schwarz • Mr. and Mrs. Leonard Searle • Mr. and Mrs. Walter Shatford • Mr. and Mrs. Russell Shears • Mr. T.K. Shen • Ms. Hisae Shiba • Ms. Sheryll Shipley • Mr. and Mrs. Lee Shumberger • Mr. James A. Signorelli • Ms. Jane Sigopna • Ms. Ailette Silva • Mr. and Mrs. Joseph Sintov • Mr. Robert M. Sklar • Ms. Marilyn L. Slovak • Ms. Claudia Smith • Mr. and Mrs. Tim P. Smith • Mr. and Mrs. Carleton Solloway • Mr. and Mrs. Bobby D. Spaid • Mr. and Mrs. Perry Stahlman • Ms. B. Starr • Mr. and Mrs. Ed Steinbacher • Mr. and Mrs. Douglas O. Stewart • Ms. Nichemene N. Stewart • Dr. Suzanne A. Nennine Stokes • Mr. and Mrs. David Stoloff • Mr. and Mrs. Roger Strangeland • Mr. and Mrs. Edward Strongin • George David Sturges • Mr. and Mrs. Tsai-Mei Sy • L. E. Tannas, Jr. • Mrs. Reese H. Taylor • Mrs. Huston W. Taylor • Mr. Robert Teller • Mr. and Mrs. Ralph Templar • Mr. Thomas • Mrs. Mark Tiffany • Mr. and Mrs. Michael D. Tims • Mr. and Mrs. Kenneth E. Tompkins • Fred Traggio • Mr. and Mrs. Nick J. Tripodes • Chan Feng Tsai • Ms. Yvonne Tsai • Mr. and Mrs. Scott A. Turpel • Ms. Kathleen Ulrich • Mrs. Carol Lapham Valentine • Mr. and Mrs. James Valentine • Mrs. Marcia H. Valeo • Tot Van Phan • Kurt B. Vangelish • Mrs. Linda Vaughan • Mr. and Mrs. Thomas D. Verti • Ms. Antonette M. Vinock • Craig Warner • Ms. Susan K. Weaver • Ms. Sigrid Weingold • Ms. Dima Weiss • Mr. and Mrs. Harvey Weitz • Ms. Muriel Wells • Ms. Blanche F. Wentworth • Scott A. Whitaker • Troy Williams • Mr. and Mrs. Rodney Williamson • Mr. and Mrs. Nartin A. Woll • Mr. and Mrs. Robert Wolman • Mr. and Mrs. Lee Wong • Mr. and Mrs. Wai-Ming Wong • Ms. Laurel Woodley • Mrs. Helen L. Woroniecki • Mr. and Mrs. Conrad Wozney • Mr. and Mrs. Richard Yapkowitz • Mr. and Mrs. Lewis Yedinak, Jr. • Milton A. Young • William J. Yurik • Dr. D. Colin Zavitz • Dale D. Zizzi

Coloring California *continued from page 1*

(Cape peninsula east into the Transkei) are deciduous and quite hardy. The agapanthus is seen in almost every garden in South Africa.

The agapanthus was one of the first plants from South Africa to be grown in Europe. The earliest record of the plant described it as "Hyacinthus

africanus tuberosus" in 1679. The second, in 1687, was a listing in the Catalogue of Plants, the Leyden Botanic Gardens. The third, in 1692, was an illustration published by Plunkenet, of an agapanthus that flowered at Hampton Court Palace Gardens in England. In 1753, Linnaeus listed "Crinum africanum" in his "Species Planitarium." Genus agapanthus was established by L'Heriter in 1788 and was placed in the lily family (*Liliaceae*tribus *Allieae*) by Bentham and Hooker.

The plant is spectacular. The flowers are beautiful, long lasting and wonderful in floral arrangements. It is one of the most rewarding and adaptable of summer flowering plants. The agapanthus grows from a fleshy root stalk, and as it grows, it accumulates masses of roots that enable it to survive long periods without water. It is suitable for container planting. Wooden tubs, not ceramic are recommended. Agapanthus are known as "pot busters!"

Agapanthus are easy to grow. They need good soil, good drainage, sun or slight shade, and little attention. The clumps should be divided every few years. The flower is a rounded, umbrella-like cluster of from fifty to one hundred blossoms, either erect and short with widely spreading petals, or long and pendulous with slightly flaring petals. The many varieties give one a choice of height from one to five feet; colors from white to almost every shade of blue. The flowers produce many small black winged seeds in capsules. The dark green strap-like leaves grow in a tuft at the base of the plant with no apparent stem. The deciduous varieties are without leaves for a brief time.

Agapanthus, prolific in the production of seeds, and with a propensity to hybridize, germinate freely around parents and farther afield, if subjected to wind. Agapanthus now come in a variety of colors, sizes and even leaves (striped). There are dainty agapanthus from one foot in height (rock gardens) to five foot giants with flower heads as large as salad bowls!

The resource material for this article has been provided by Joan deFato, librarian of the Los Angeles State and County Arboretum.

Demonstration Smog Greenhouses

For the third year, the Los Angeles State and County Arboretum opened the doors to the demonstration smog greenhouses where plants offer a close-up view of the damage caused by air pollution. April through October, visitors to the Arboretum can walk through the two side-by-side greenhouses. Air in one greenhouse is cleaned by charcoal filters that remove about 90 percent of pollutant gases, mostly ozone. The other greenhouse pulls air directly from the outside, the same air that people in Southern California breathe.

Ozone, a pungent but colorless gas, is highly toxic. It forms in the atmosphere when unburned fuels mix with nitrogen oxides. Automobiles, powerplants, oil refineries and industrial processes are just a few sources of this highly reactive gas.

Last year a renewed grant from the California State Air Resources Board provided a new digital readout screen that illustrates the ozone level numbers registered on monitors inside the greenhouses. For the 1989 display a new Macintosh computer screen will be hooked up to the air pollution monitor to provide color graphics of the levels of air pollution in each greenhouse.

"The greenhouses are educational displays showing the varying degrees of smog damage. They are not meant to tell people what plants to plant or not to plant," says Superintendent John Provine. The purpose of the exhibit is to make people more aware of air pollution and how it affects plants. The demonstration greenhouses will also provide information and photographic documentation on the effects of air pollution. Workers in the greenhouses are available to answer questions seven days a week.

Gloria Shams works in the Arboretum nursery and has helped prepare the demonstration greenhouses since they opened. According to Ms. Shams many common garden flowers are grown – camellias, carnations, hibiscus, roses and petunias – for the demonstration. Camellias, miniature roses and pansies showed little smog damage while

regular roses, petunias and marigolds have shown damage in the past. Shams explained, "The petunias suffer the most. Damage to the plant and flowers is usually visible within a couple of weeks after a smog episode."

Those interested in vegetable gardens can see the effects of smog on some commonly grown vegetables. Celery, carrots, parsley, beans, corn and tomatoes are just a few that will be on display. All of these have shown damage in the past. Squash was one of the few vegetables that wasn't affected.

Although the greenhouses only show the damage air pollution inflicts on plants, people should also realize that it can affect their health. Not only does

the smog directly affect people's health by making it more difficult to breathe, but people are also indirectly affected as our food supply is lowered. Smog damaged plants not only produce less vibrant foods, they produce lesser amounts. Therefore, a long range effect of smog can be a diminished economy due to poorer food supply.

The California Air Resources Board and the Arboretum hope that visitors to the greenhouses realize the implications of smog. The new equipment will help visitors to better understand the effects of smog by gaining insights about the deadly pollutants hovering above our city.



The leaf on the left shows the severe effects of growing in smog conditions.



The begonia on the left grown in the unfiltered air greenhouse is one half the size of the plant grown in filtered air.

Ask Rose Green

Q. My tomato plants were producing but in hot weather the blossoms dry up and fall off. What is wrong?

A. Blossoms don't set fruit if temperatures are near 100 degrees F.

Q. My orange tree leaves are black and mildewed. How can I correct the problem?

A. The problem is sooty mold which grows on honeydew excreted by aphids, scales and whiteflies. Spray with an appropriate insecticide to solve the problem.

Q. Why are the leaves on my Palo Verde tree turning yellow and dropping off?

A. It is perfectly normal for the leaves of the Palo Verde to be early deciduous. They drop off as soon as they encounter drought to conserve water.

Q. My persimmons are falling off the tree. How do I prevent fruit drop?

A. Early fruit drop is normal, however, later fruit drop is not. Most late fruit drop is caused by overwatering. Deep water an established tree about once a month. Don't water after June.

Q. I'm thinking of planting an ornamental fig tree near my house. What is the nature of the root system? Could it endanger my house?

A. YES! Don't plant Weeping Chinese Banyan, Rubber Plant, Bo-Tree or any ornamental tree with fig or ficus in the name. The edible fig is not a problem.

Q. My *Agave victoriae-reginae* bloomed. The leaves have died and all I have left is a stalk with seed pods. Why didn't it have pups?

A. *Agave victoriae-reginae* does not form pups, but the seeds germinate readily.

Q. I'm growing Gazanias and some plants turn yellow and die. I have had this problem for two or three years.

A. You either have Phytophthora, which can be controlled with Subdue, or Rhizoctonia, which can be controlled with Benomyl. To avoid using these chemicals, water less, ie. once a week or even longer intervals.

Q. Is the Cast-Iron plant, *Aspidistra elatior*, poisonous?

A. No.

Q. My ground cover *Myoporum parvifolium* is dying. I have maintained the same care schedule as before. What is the problem?

A. *Myoporum parvifolium* is drought resistant. Gradually cut back watering to once every two weeks.

The Great Egret



The Great Egret on the edge of Arboretum lagoon.

It is unusual to bird the lagoon or upper pond at the Arboretum without seeing a member of the Heron family (Family Ardeidae).

For months a Great Egret - a 39" tall white heron with heavy yellow bill and long dark legs has been provoking much curiosity, comment and amusement. This patient and sometimes fearless stalker may be seen wading, perched at water's edge, in the reeds or on branches overhanging the lagoon or pond. If one is fortunate to see the Great Egret catch a fish and juggle it into position for "the big swallow," it is not only interesting but usually very amusing!

Photographers find this heron an excellent subject with its striking appearance; it often remains motionless for long periods of time.

Other members of the heron family that have been seen at the Arboretum include: Least Bittern, American Bittern, Black-crowned Night Heron*, Green-backed Heron*, Cattle Egret, Snowy Egret and Great Blue Heron*.

The Arboretum provides an unusual opportunity for observation at close range of this interesting group of birds with their fascinating variations of behavior.

*(Seen throughout much of the year).

Gift Shop News

For the Summer season, the Arboretum Gift Shop will feature books for the Southern California gardener interested in drought tolerant plants.

Trees and Shrubs for Dry California Landscapes, Plants for Water Conservation; author, Bob Perry; \$23.50 is an introduction to 360 California native and introduced plants that survive with limited water. The book is designed to provide the information necessary to help Californians achieve successful landscapes within the limits of water conservation. A wide range of plants are discussed and documented by more than 500 color photographs. Listed and illustrated are many of the plants growing in LASCA'S Water Conservation Garden. For a drought resistant colorful perennial garden, buy this paperback.

HP Books has published "*Plants for Dry Climates*," by Mary Rose Duffield and Warren D. Jones, \$12.95. Offered are complete descriptions and color illustrations of more than 300 species, including many low maintenance and drought resistant plants.

Not emphasizing drought tolerance, but a good reference for California gardeners is "*Trees and Shrubs for Temperate Climates*," by Gordon Courtright, \$45. For those living in Zones 6 through 10, this new edition contains more than 770 color photographs that clearly illustrate the important characteristics of the chosen plants.

For mail order information, please contact the Arboretum Gift Shop manager or the Foundation Office at (818)-447-8207.

Volunteer News

Volunteers Induct New President at Earthshaking Meeting

As a 4.5 earthquake, followed by a 4.3 aftershock shook Ayres Hall on Monday, June 12th, Jane Feldstein, outgoing President of the Arboretum volunteers, handed the ceremonial gavel to her successor, Betty Watson. What this earthshaking induction portends for the future will only be revealed with the passage of time. Following the installation of the new Board of Las Voluntarias y Los Ayudantes, volunteers who have served 10, 15 and 20 years were rewarded with special nametags and pins.

While statistics show that five years is the average duration of a volunteer's service with one institution, dedicated Arboretum volunteers continue to defy any attempt to label them as average. They work in a wide variety of jobs and have a low rate of attrition.



Jane Feldstein, outgoing president of the volunteers hands gavel to Betty Watson, 1989-90 president.

Alice Thomas, President of the California Arboretum Foundation, expressed great appreciation to Jane Feldstein, Jane Kaler, Betty Watson, Bea Miller and all the committee chairman for their fine leadership and many hours of toil this past year.

Our congratulations to the new Executive Board of Las Voluntarias y Los Ayudantes:

Executive Committee:

Betty Watson, President
Virginia Stein, First Vice President
Betty Houke, Second Vice President
Eileen Hubbard, Secretary
Jane Feldstein, President's Advisor

Committee Chairmen:

Carol Overturf, Volunteer Newsletter
Eileen Hume, Assistant
John Shepard, Baldwin Bonanza
Aileen Martin, Botanical Information
Ruthe Betti, Assistant
Jean O'Toole, Courtesy
Inger Dix, Crafts
Barbara Williams, Depot
Marlene Saccaro, Field Leaders
Dorothyjean Spoelstra,
Flower Arranging
Bill & Mary Hager,
Garden for All Seasons
Beatrice Hart, Assistant
Harry Nissen, Assistant
Adeline McElroy, Gift Shop Co-chair
Dee Uhl, Gift Shop Co-chair
Gordon Smith, Historical Garden
Ginny French, Historical Preservation
Co-chair
Joyce Travis, Historical Preservation
Co-chair
Jane Kaler, Hospitality
Betty O'Neill, Hours
Carol Butler, Library
Marie Ryan, Mailings
Dorothy Murset, Mapping, Programs
Dolores Keller, Programs Co-chair
Dorothy Lynn, Propagation Nursery
Perry Minton, Publicity
Betty Sheld, Rotunda
Siby Minton, Speakers' Bureau
Laveta Strong, Tropical Greenhouse
Eva Shepard, Volunteer Greenhouse
Frances Beck, Assistant
Cora Raybin, Assistant
Leslie Larson, Walking Tours

Twenty year volunteers receiving their pins are: (l to r) Grace Robinson, Jean O'Toole, Marilyn Bochte, Winifred Henke, Louise Jackson, Aileen Martin and Mary McBroom.

*Not pictured:
Ruth-Mary Larson, Margaret Dean,
Phyllis Soza and Betty Wall.*



Arboretum Volunteers Honored

The Volunteer Recognition Luncheon was a great success. Over 200 volunteers and staff were honored for their commitment to the Arboretum by the Foundation's Trustees. Trustee Susan Kranwinkle was in charge of the food and brought her talented friend, Annamarie Mitchell to help.

Annamarie Mitchell's Rosemary Raisin Rolls were appreciated by all who attended, and she has graciously shared the recipe with us.

Annamarie's Rosemary Raisin Bread

1 1/2 cups buttermilk
1 package or 1 tablespoon dry yeast
1/4 cup sugar
2 eggs slightly beaten
1/2 cup butter, melted
5 to 5 1/2 cups unbleached white flour
1 1/2 teaspoons salt
1/2 teaspoon baking soda
1 cup golden raisins
2 tablespoons fresh rosemary, chopped
3 tablespoons melted butter

Heat buttermilk to warm (105 to 110 degrees), add yeast and sugar, stir until yeast is dissolved. Mix together eggs and cooled butter. Stir into yeast mixture. Sift dry ingredients together, add by thirds to yeast-egg mixture, beating well after each addition.

Remove to well-floured board and knead until dough is smooth and elastic. Knead in raisins and rosemary at the last. Place dough in oiled bowl, brush with melted butter, cover, let rise in a warm place until double in bulk (about 1 hour).

Punch down, divide in half and place on floured board. Shape into loaves or rolls, let rise again. Put on cookie sheet, paint with egg mixture and bake in preheated oven (375 degrees) for about 20 minutes or until golden brown. Loaves of bread will take longer to bake. If you like you can slash the rolls with a razor blade before baking.



Volunteer Field Leader Alice Ferl (r) chats with Suzanne Granger, LASCA Herbarium Curator at the Annual Field Leaders Luncheon. Marlene Saccaro will become the new Field Leader Chairman.

Letters to the Editor

Dorothy Bohannon writes, "In answer to the questions on lilacs, [CAF News Spring 1989] I have found the attached articles to be very helpful. I work as a volunteer at South Coast Botanic Garden and have had beautiful lilacs for years."

Ms. Bohannon sent a copy of the article, "Lilacs for Warm Climates," by George Lewis, Superintendent of Descanso Gardens, published in the Winter 1988 issue of *Pacific Horticulture*. The following paragraphs are reprinted from that article.

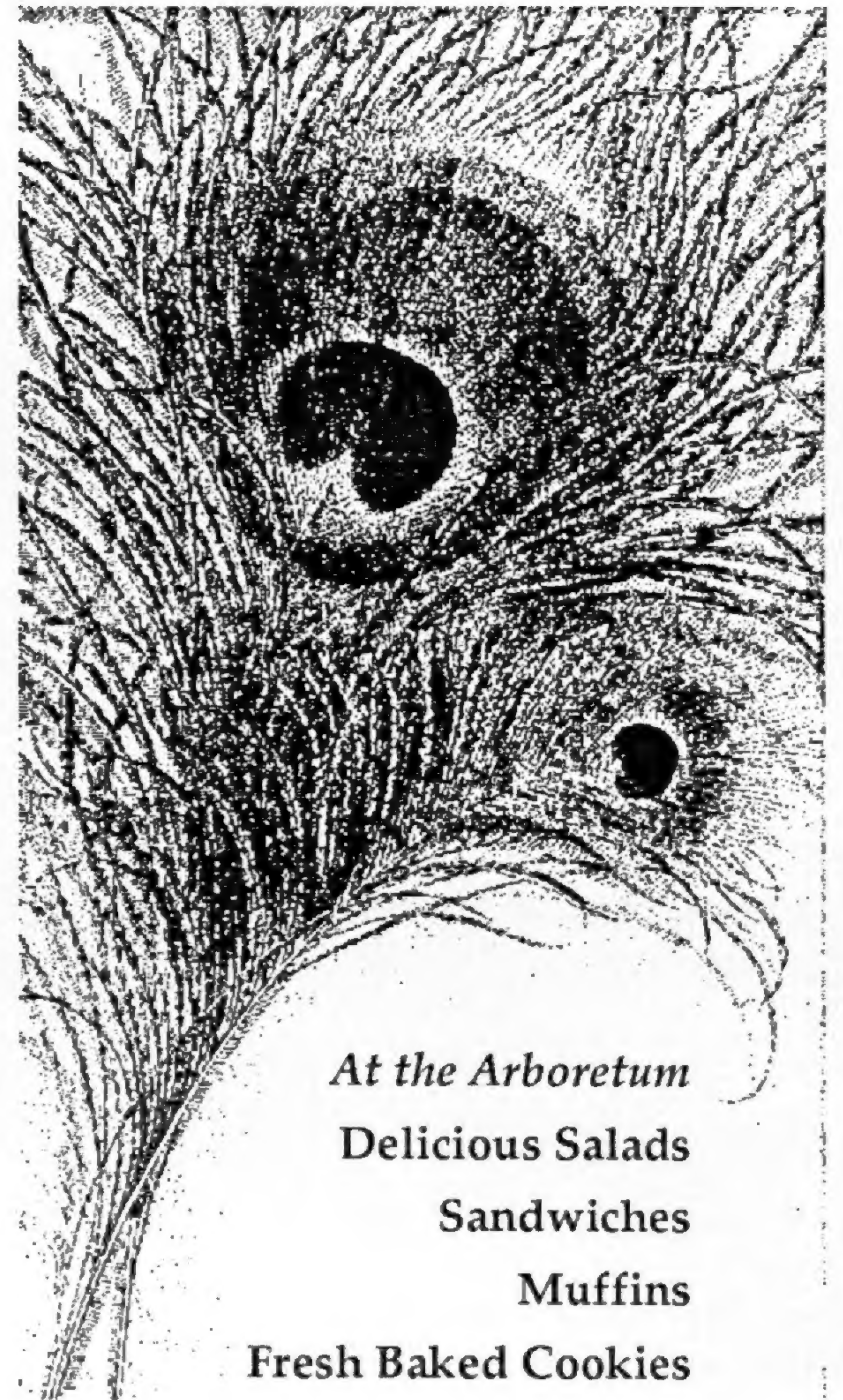
"To ensure good blooms, old flower spikes should be removed immediately after flowering in spring. If they are allowed to go to seed the flowering crop will be reduced the following season. After Labor Day, do not water the lilacs at all until the first feeding around the beginning of February. Withholding water forces the plants into a state of dormancy, ensuring a good flowering crop next season.

Because of the need to restrict water, it is best to avoid planting lilacs near lawns or in any other area that receives regular irrigation. Lilacs require alkaline soil and benefit from an application of agricultural lime broadcast each fall. This intensifies the color of the flowers. Lilacs also thrive with applications of barnyard manure or packaged nitrohumus applied four inches thick around each shrub. Fertilize three times a year, beginning in February at the onset of watering and then twice more at five week intervals. A 5-3-1- formula is suitable."

Peacock Café



At home in the Arboretum lagoon are two Tasmanian black swans donated by Megan Timothy.



At the Arboretum
Delicious Salads
Sandwiches
Muffins
Fresh Baked Cookies

*The view is unequalled.
Watch the Peacock Parade.
Open daily 9:00 am - 4:00 pm*

California Arboretum Foundation
Board of Trustees

Mrs. Dudley W. Thomas, President
Richard A. Grant, Jr., Vice President
Mrs. Hannah G. Bradley, Vice President
Robert L. Powell, Secretary/Treasurer
Mrs. John Hopfield, Asst. Secretary/Treasurer

Ron Bettenhausen
Mrs. George Brumder
Mrs. James T. Carter
Clifton Comstock, Sr.
Mrs. James Caillouette
Arthur L. Crowe
James Curry
David M. Davis
Paul B. Engler
Robert Henigson
Mrs. Schuyler Hollingsworth
Mrs. C. Douglas Kranwinkle
Gary Matus
Mrs. Ray T. McCullough
Mrs. A. Kingston McKee
Mrs. Richard F. Miller
Edward S. Renwick
Nicholas George Rodriguez
Beth Rogers
Fred Schoellkopf III
Philip L. Silcox
Mrs. Elizabeth Watson, Volunteer President

California Arboretum Foundation
301 North Baldwin Avenue
Arcadia, California 91006

Newsletter Staff

Contributors

Lonna Brock
Joan DeFato
Barbara Cohen
Norma Johanson

Joan Malafrente
Beverly Rouse
Virginia Stein
Alice Frost Thomas
Constance Wood

Photographs

Brooke Larsen Garlock
Ken Quigley
Alex Scettrini
Alice Frost Thomas

Design

Tom Mossman

Editor

Brooke Larsen Garlock

Non Profit
Organization
U. S. Postage
PAID
Permit No. 528
Arcadia, California