

# CALIFORNIA ARBORETUM FOUNDATION

# N ■ E ■ W ■ S

Published twice a year by the California Arboretum Foundation, a non profit corporation supporting the Los Angeles State and County Arboretum.

Fall/Winter  
1991



## Coloring California

### Floss-Silk Trees

"Floss-silk tree" is the common name applied to the South American genus *Chorisia*. The two species cultivated at the Arboretum perform well under Southern California conditions and produce a dependable annual show of spectacular blooms in fall and winter when showy flowers are at a premium.

White floss-silk tree (*Chorisia insignis*) is native to Peru. This species varies greatly in size, from fifteen to forty feet, and even in the branching structure, from low, wide-spreading branches to longer, upright ones. The dull greenish trunk is bulbous or bottle-shaped which presumably provides a means of storing water for use during periods of drought. The trunk is typically armed with numerous stout thorns which may be a defense against animals that would devour its flowers and fruits. The creamy-white flowers with yellowish centers are very attractive against the blue skies of winter. It is not recommended over asphalt or pavement, as both the fleshy flowers, avocado-shaped fruits, and even airborne seeds pose a potential litter problem. As with many fast-growing trees, limbs may be brittle.

*continued on page 2*

## The Arboretum's Disappearing Lake

In August, the Arboretum's lake adjacent to the Queen Anne Cottage went dry. A prominent feature of the Historical Section of the grounds, the lake is a natural body of water fed by an underground spring. After filling to the rim from the rains last March, the lake dropped from a surface area of three acres of water to dry cracked mud. Over the years it has varied in size but to our knowledge it has never gone dry.

Loss of the lower lake has meant the loss of much of the Arboretum's water fowl, including ducks. While some of the bird life has moved to the smaller upper lake, much of it has already left the grounds.

A severe drop in the water table, combined with several feet of silt on the lake's floor has hampered the water's ability to bubble up into the lake. Although the Arboretum can do

nothing to replenish the water table, it will take steps to dredge out the layers of sediment that have built up over the years. The lower lake was first dredged 100 years ago by "Lucky" Baldwin deepening it by 10 feet.

Currently, a thorough analysis by an engineering firm is being undertaken to determine why the lake has gone dry and to recommend steps to re-establish the Arboretum's beloved lake. We know this will be a costly project and welcome your gift to "Restore the Lake" – a project that you will be hearing about during the coming months. Gifts may be sent to:  
Restore the Lake  
c/o California Arboretum Foundation  
301 N. Baldwin Avenue  
Arcadia, California 91007

John Provine  
Arboretum Superintendent



CAF News is printed on recycled paper for a greener future



## President's Message



*Richard A. Grant, Jr., President, California Arboretum Foundation*

### New Times – New Ways

In this time of reduced government support it is vital to look for new ways to build support for the Arboretum's programs and plant collections. Three elements are critical to making these new directions happen:

- Increasing attendance by making more people aware of the Arboretum's uniqueness as a horticultural, educational and historical resource.
- Increasing private sector support by giving private support groups more say in the governance of the garden.
- Achieving better operating efficiencies through greater cooperation among staff, volunteers and the CAF.

Thanks to the leadership of our new Director Ken Smith there are already some initiatives underway:

A brochure is being developed to promote visits to the County gardens.

An attendance survey is in the works to determine who visits the Arboretum and why.

A series of monthly lectures by Arboretum staff members is underway to better acquaint visitors with the significance of the Arboretum collections.

Finally, a most important ingredient is the current effort to add 1,000 new Arboretum members by June 1992. This project has been sparked by a \$25,000 challenge grant. Every Arboretum member is asked to help meet this challenge by inviting a friend to join today!



*Kenneth C. Smith is the newly appointed director of the Department of Arboreta and Botanic Gardens*

### Welcome to Mr. Kenneth C. Smith!

Mr. Kenneth C. Smith was named the new director of the Los Angeles County Department of Arboreta and Botanic Gardens in June.

"I am pleased to be part of such a great organization," he said. "The gardens of Los Angeles County have unlimited potential. Each with its own personality, and together they reflect the attention and care that have been lavished upon them throughout the years."

"I am totally committed to supporting the efforts to make this group of gardens one of the finest botanic organizations in the United States," he added.

Mr. Smith, 58, worked at Cypress Gardens in Winter Haven, Florida, from 1950 to 1990, the last eight years as president. He became executive vice-president in 1972 at the time the company became publicly held. He is credited with the attraction's expansion which doubled the size of the park in 1979.

While in Florida, he served as vice-president of the Southeast Tourism Society and president of the Florida Attractions Association.

Ken and his wife, Bette, maintain two homes, one in Arcadia and the other in La Jolla.

A true southern gentleman, Ken has quickly earned the respect and friendship of staff, volunteers and guests alike with his broad smile and vast knowledge.

## Coloring California, continued from page 1

The Pink floss-silk tree (*Chorisia speciosa*) is native to Brazil and Argentina. It may reach 50 feet after many years of growth. The trunk is similarly dull greenish, more or less bulbous to conserve water and heavily armed or almost thornless. Like the White floss-silk tree, it has compound leaves comprised of five to seven leaflets. The trees shed their leaves with the onset of cold weather. The flowers are 3 to 5 inches in diameter; the petals may be variously colored from white or yellow to a more typical pink or red. The inner side of the petals is usually streaked with colored markings and a creamy-yellow shade towards the center. The large fruits are up to eight inches long and shaped somewhat like an avocado. They split open in the spring exposing masses of the cottony white fibers that cling to each black, pea-shaped seed. These downy puffs carry the seeds by air some distance from the mother tree. As young trees the pink floss silk may grow at the rate of four to six feet per year. The tree is certainly a conversation piece and attracts more than its share of visitor attention from August or September through February. The same precautions apply here as to the White floss-silk tree.

Over the years, outstanding forms of the Pink floss-silk tree have been selected and named at the Arboretum. 'Arcadia' has deep pink flowers from November through February. It was introduced by the Arboretum in 1978 and was promptly offered to the City of Arcadia for street planting as well as to the members of the California Arboretum Foundation. 'Lasca Beauty' was introduced by the Arboretum in 1976. It has five-inch deep rose-pink flowers in mid- to late autumn. In 1974, 'Los Angeles Beautiful' was introduced by the Arboretum for its unusually beautiful dark red flowers produced from October through November. It is almost thornless. 'September Splendour' is a 1976 Arboretum introduction which is the earliest to flower.

A fall or winter visit to the Arboretum will certainly include the enjoyment of discovering again or for the first time, the large, eye-catching flowers of the floss-silk trees.



## Development News

### YOUR WILL – AN EXCELLENT WAY TO HELP THE ARBORETUM

A practical and realistic method of making a gift to the Los Angeles Arboretum is through your will. Bequests qualify for an estate tax deduction equal to the value of the gift and can significantly reduce your estate tax burden.

Four general categories represent the opportunities available within thoughtful bequest planning:

**Outright Bequests** – Through an outright bequest, the Arboretum would receive a specified dollar amount or fractional portion of the estate.

**Residual Bequests** – After each specific heir has been provided for, the Arboretum would receive all or a fractional portion of the estate's remainder.

**Contingent Bequests** – The Arboretum would receive all or a designated portion of the estate only in the event of the death of another beneficiary.

**Trust Remainder Bequests** – A trust can be created by will that first provides a lifetime income to a loved one. The Arboretum would receive all or a part of the remaining trust principal after the passing of the income beneficiary.

With careful planning of your will it is possible to achieve many objectives of your overall estate planning. The entire bequest is eligible for a charitable estate tax deduction which can significantly reduce your estate tax burden.

Please don't hesitate to contact Beverly Rouse at (818) 447-0184 if you wish to discuss naming the Arboretum as a beneficiary in your will.

*Beverly Rouse*  
Director of Development

## Baldwin Bonanza



*Robert Smaus (l), honorary chairman of the 1991 Baldwin Bonanza and CAF Trustee Veva McKee (r) enjoy the members' preview party plant sale. The Baldwin Bonanza raised \$30,000 to support the Arboretum.*

## Recent Grants to the Foundation

**SECURITY PACIFIC FOUNDATION** provided a grant of \$8,000 to the Arboretum recently. This grant is the first of five annual gifts - a \$40,000 pledge to strengthen the educational facilities at the Los Angeles Arboretum. This grant will be most helpful as the Arboretum builds a broad educational program designed to reach thousands of people each year with practical information about gardening, botany, ecology, environmental topics and the many, many other useful and necessary roles plants play in our lives.

**ARCO FOUNDATION** announced a \$10,000 grant in support of the Arboretum education program. In presenting the check to Richard Grant, President of the California Arboretum Foundation, Philip Silcox, ARCO Manager of Employee Relations (and Trustee of the California Arboretum Foundation), noted ARCO's

continuing interest in helping to create an education program at the Arboretum that distributes information about the environment to Los Angeles' many diverse communities.

**NESTLE, U.S.A.** has announced a \$10,000 donation part of which will be used to sponsor a comprehensive workshop on the topic of water conservation in Southern California. "Nestle, U.S.A. is providing the Arboretum with sponsorship of a program that is of utmost importance to most residents" according to John Provine, Superintendent, Los Angeles County Arboretum. We are now planning a comprehensive program to distribute information of interest to all ages about ways to conserve water and still enjoy horticultural successes!"



## Education News



*Our sincere thanks go to Volunteer Field Leader Maris Grannell for his leadership of the Children's Summer Program.*



*Pruning specialist Cass Turnbull will present "Pruning Horrors" lecture.*

### Pruning Horrors Lecture

Seattle horticulturalist Cass Turnbull will be the featured speaker at the Arboretum on Sunday, November 17 at 2:00 p.m. Ms. Turnbull, the founder of PlantAmnesty, will present her slide show of pruning horrors which has impacted hundreds of community groups. In it she takes such impressive acts as poodle balling, hat racking, mistaking banzai for bonsai and offers healthy caring tree pruning alternatives.

We are pleased to offer Ms. Turnbull's presentation to our members and the community at \$5 for CAF members and \$10 for non-members. Please contact the CAF office for reservations.

### Floriade Trip

The California Arboretum Foundation will jointly sponsor a trip to Holland to see the FLORIADÉ - the horticultural extravaganza of the decade. The trip will take place from May 3 through May 14, 1992 and includes a 5 day Rhine cruise through Germany, France and Switzerland.

During the month of May Europe is a flower garden in full bloom. In Holland, where the growing of flowers is an important commercial enterprise, it is possible to drive for miles through fields of blooming bulb flowers at their springtime best. Participants on the trip will visit many beautiful flower-filled parks and extraordinary private gardens, highlighted by a full day's visit to the world-famous Floriade.

Offered in our tour are flight, deluxe hotel accommodations, most meals, comprehensive sightseeing and a relaxing 5 day cruise. All for \$3318 per person, double occupancy. Participation on this trip will also support the Arboretum with a \$300 tax deductible donation (included in your trip fee).

You are cordially invited to a slide preview of this trip on Tuesday evening, November 12 at 7:00 pm at Descanso Gardens. Please RSVP through the CAF office at 818 447-8207. Trip itineraries are available through All-Ways Travel Service at 213 553-8707.

### Arboretum Discovery '91

The California Arboretum Foundation summer children's education program was a great success due to the dedication and enthusiasm of our volunteer field leader, Maris Grannell. The Children's Discovery Program was offered for three weeks, each focusing on a different age group. Students were taken on daily lectures in the garden to learn basic botany and the story of ecology. Two mornings were dedicated to botanical illustration and watercolor painting under the guidance of instructor, Pat Brame.

### Around the Grounds

#### *Taming the Jungle:*

Even Tarzan would have had trouble swinging through our jungle as it stood last month. Since then, Ray Raymos, with other arboretum staff, and workfare workers, have slashed and carved their way through the overgrowth. They removed grapevine that was engulfing and smothering trees, and also, cut down unwanted seedlings that were competing for resources with more desirable trees. The job isn't finished, but after three weeks of intensive work, the jungle is a more inviting place to visit, is less of a fire hazard, and a bit tamer.

When visiting the jungle (Prehistoric Area) be sure to check on our cycad collection that has now recovered after last winter's freeze.

#### *Interns Leave Their Mark:*

This year the 6 student interns, mainly graduate level students from Cal Poly, studying landscape architecture, worked and completed over a dozen projects.

One project was a comprehensive map of the Arboretum with a proposed signage program to help guide visitors through the Arboretum and to enhance the visitor's experience. Other projects focused on re-designing areas in and adjacent to the Home Demonstration Garden. One area was redesigned with the purpose of expanding the usable space for special functions. The brick surface was enlarged, and the plantings were planned so something is in bloom every season of the year.



## Upcoming Events

### Holiday Decorations Lecture/ Workshop

Internationally known floral designer, Rene van Rems, AIFD, PFCI, will make a return appearance to the Arboretum on Thursday, December 5. His morning lecture will feature a variety of Holiday decorations in the latest trends. The "renaissance look" will be shown in arrangements, garlands, swags and wreaths. White combined with metallics is a popular look for New Year's Eve celebrations.

The afternoon workshop will be a hands-on program where participants will decorate a 24 inch noble fir wreath to bring home. Rene's programs have been very popular and reservations for the afternoon workshop are limited.

Fees are as follows:

10:00 am Lecture	M - \$15	0 - \$20
Ayres Hall		
1:00 pm Workshop	M - \$50	0 - \$65
(Materials included)		
All Day	M - \$75	0 - \$90
(Materials and Luncheon)		

Please contact the Foundation office at 447-8207 for further information.



*Floral designer René van Rems creates a Christmas centerpiece.*

## Chinese Art and Garden Lectures

The California Arboretum Foundation, in cooperation with Pasadena's Pacific Asia Museum, will sponsor two lectures by Dr. William Wu. The first lecture, "Art and Design in the Chinese Garden," will be held on Saturday, January 11 at 2:00 P.M. at the Pacific Asia Museum. "Landscaping and Architecture in the Chinese Garden" will be presented on Sunday, January 12 at 2:00 P.M. at the Arboretum.

"Art and Design in the Chinese Garden" introduces the essential features of the Chinese garden comparing them to paintings and images evoked in poems and showing their common roots in Chinese philosophical concepts and aesthetic values. The lecture will be illustrated with slides of the most elegant gardens in the Yangzi river delta area.

The Chinese scholar's garden is a beautiful orchestration of pavilions, plants, reflecting pools and rockeries. The lecture, "Landscaping and Architecture in the Chinese Garden," introduces the guiding principles of horticulture and landscaping as well as the craft of constructing the Chinese garden. Love of nature and sensitivity to the environment is a major theme reflected in every detail of garden design including the rich variety of architectural forms.

Dr. William Wu has a PhD in Chinese Art and Archaeology from Princeton University. He is the former co-chairman of the Cultural Relations Committee, San Francisco. He has also been a faculty member of Mills College, Oberlin College, Dartmouth College and UC Berkeley.

危  
機



## Gift Shop News



*The 1990  
Arboretum Gift  
shop Christmas tree  
decorated by Lew  
Edwards.*

### New Gift Shop Manager

Terry Bible is the newest addition to the Arboretum Gift Shop staff. As the new Gift Shop manager, he comes to the Arboretum with 21 years of retail experience. His most recent position was Gift Shop Buyer for the Huntington Library.

Terry is a rare breed, a native Southern Californian. He grew up in Venice with his five brothers and one sister, until he was nineteen and went to work at the Sugarbowl ski lodge in Northern California. He spent two years in the Army and has since lived in various Southern California locations.

Terry is very interested in architectural preservation. He lives in the Historic West Adams neighborhood of Los Angeles and has restored two homes there. He is also an avid gardener and received the 1990 West Adams Heritage Association garden award. Terry is the current President of the Friends of Hollyhock House, designed and built by Frank Lloyd Wright in 1921.

We welcome Terry to the Arboretum!

## Holiday Shopping at the Gift Shop:

### An invitation to the Gift Shop Open House

**November 1 – 3 • Friday, Saturday and Sunday • 9:00 a.m. to 4:30p.m.**

### Demonstrations • 1:00 to 4:00 p.m. each day

The annual Holiday Open House at the Arboretum Gift Shop will feature several afternoon demonstrations of crafts in easy to follow fashion. Currently scheduled are: painting garden hats, creating succulent wreaths and constructing tabletop topiaries from ivy and fragrant herbs.

Featured will be miniature Christmas trees decorated with tiny cones and pods gathered from the garden, along with decorated grapevine wreaths.

Holiday shoppers will have the opportunity to select personalized gifts from a wide selection of unusual garden books, sundials, garden equipment, ceramics, botanical stationery and greeting cards. New gift items are Pimpernel place mats and coasters, puzzles and boxed notecards.

Plants make wonderful gifts and the shop has an excellent selection including hanging baskets.

Designer Lew Edwards will decorate the centerpiece Christmas tree and refreshments will be served.

Just a reminder – all Arboretum members receive a 10% discount – and all proceeds support the Arboretum!

Happy Shopping!



## Membership News

# ARBORETUM \$25,000 CHALLENGE GRANT

Invite a friend to become an ARBORETUM MEMBER – help reach the goal of 1000 new members by June 1, 1992.

The Arboretum has received a \$25,000 Challenge Grant designed to encourage new members for the Los Angeles Arboretum. This grant provides \$1 for every \$2 given by a new member. Current members who increase their membership to the \$100 category or more also qualify.

Give this form to a friend!

## M E M B E R S H I P F O R M

*Please begin my membership at the following level*

Name \_\_\_\_\_ Phone \_\_\_\_\_

Address \_\_\_\_\_

Senior Individual \$25

Individual \$30

Senior Couple \$30

Couple \$40

Family \$50

Sustaining \$100

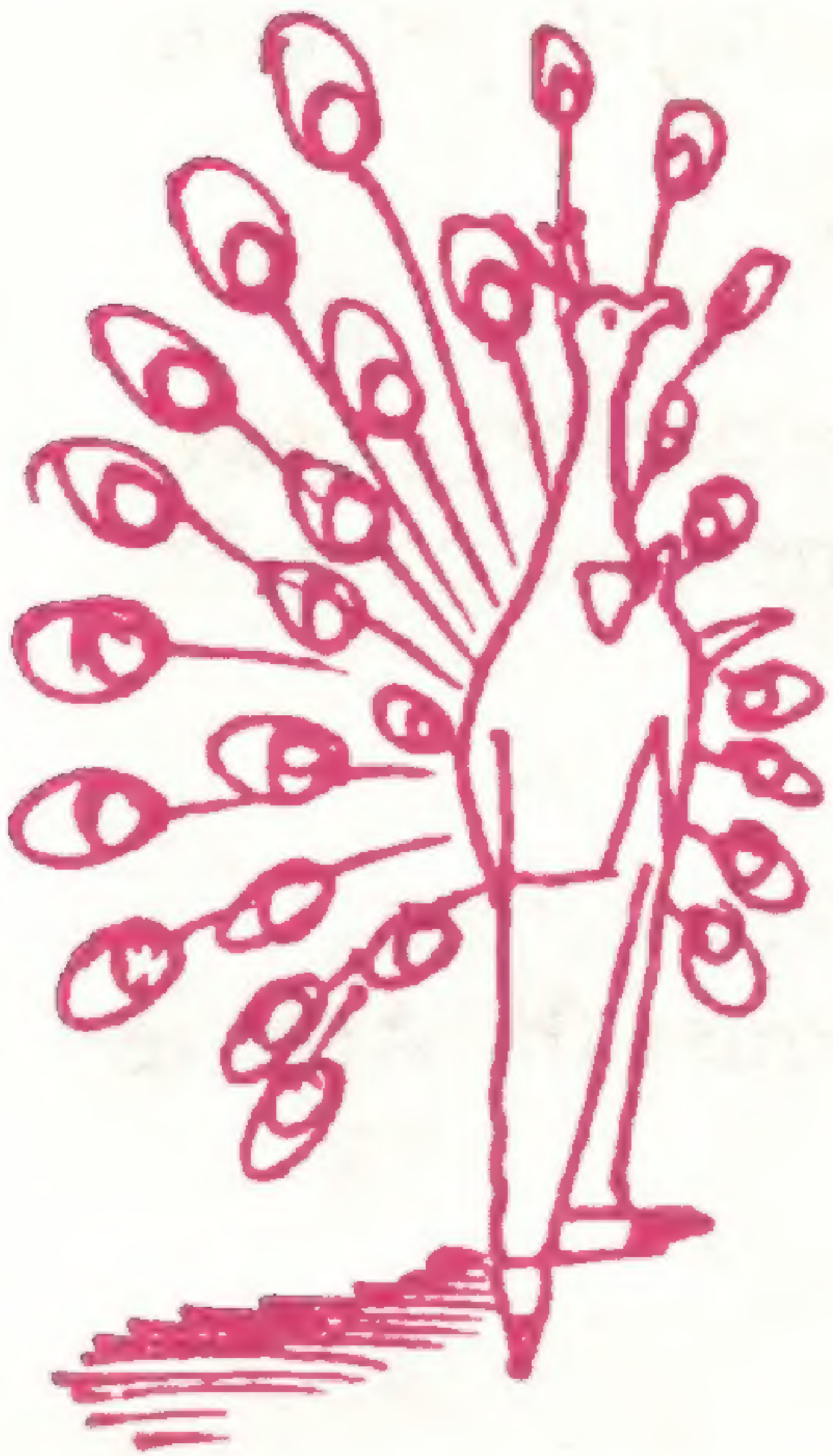
City \_\_\_\_\_ State \_\_\_\_\_ Zip \_\_\_\_\_

Make check payable and send to California Arboretum Foundation, 301 N. Baldwin, Arcadia, CA 91007

MC/VISA \_\_\_\_\_ Exp. Date \_\_\_\_\_

Signature \_\_\_\_\_

Total Membership Payment \$ \_\_\_\_\_



### Annual Meeting and Kallam Garden Dedication

The Kallam Garden, designed by Landscape Architect Shirley Kerins, was dedicated Wednesday, June 5 at the Annual meeting of the California Arboretum Foundation.

The garden is one of the few perennial gardens in Southern California and is designed not only for beauty, but also as a teaching garden for the home gardener. Perennial plants are grouped according to color to create a rainbow effect and to give constant color areas throughout the year.

Home gardeners can use this garden to adapt information to their own garden, to learn the size and shape of the fully grown plants, and to observe the color and size of the flowers which can be used for cutting.



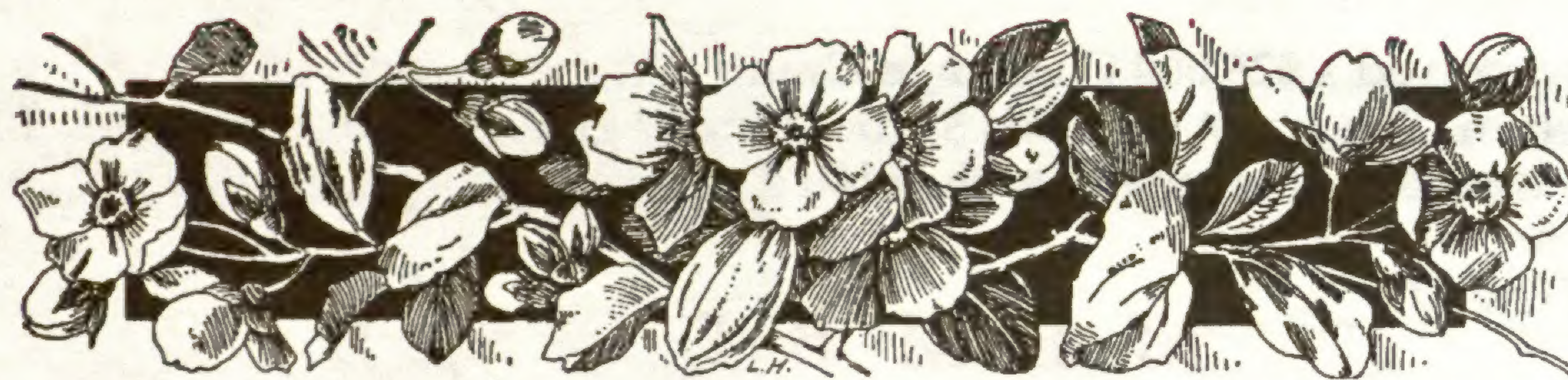
*Foundation president Richard A. Grant, Jr. and Shirley Kerins ASLA in the Arboretum's new Kallam Garden.*

Richard Grant, President of the CAF and Barbara Cohen, daughter of Grace Kallam, officially dedicated the garden to the memory of Mrs. Kallam. Mrs. Kallam was instrumental in developing and hybridizing irises and other perennials in Southern California.

Members who attended the meeting had an opportunity to ask questions of Mrs. Kerins and were given a plant featured in the garden.



# MEMBER APPRECIATION MONTH



*To demonstrate appreciation for you, Arboretum members, the following special benefits for your enjoyment have been added.*

- The Arboretum Gift Shop has a great supply of gift and garden related items. Free parking, easy entrance, complimentary gift wrapping will make your shopping enjoyable. Use the enclosed coupon for any purchase of \$25.00 or more and save \$5.
- Blockbuster Video in Arcadia has identified 22 movies which were filmed at the Arboretum. These films will be available for \$1 off the rental price for Arboretum members. Don't miss the **Arboretum Section** of special videos!
- The participating nursery list is growing!  
A list of nurseries is printed on the opposite page – clip it and put in your garden book!
- **The California Arboretum Foundation announces reciprocal admission privileges with members of the American Horticultural Society. CAF MEMBERSHIP CARDS WILL BE HONORED AT THE FOLLOWING INSTITUTIONS:**

## ■ Alabama

Huntsville-Madison County  
Botanical Garden  
4747 Bob Wallace Drive  
Huntsville, AL 35805

## ■ Arizona

Tucson Botanical Gardens  
2150 North Alvernon  
Tucson, AZ 85711

## ■ California

The Living Desert  
47-900 Portola Avenue  
Palm Desert, CA 92260

Quail Botanical Gardens  
230 Quail Gardens Drive  
Encinitas, CA 92024

Rancho Santa Ana Botanic Garden  
1500 North College Avenue  
Claremont, CA 91711

Santa Barbara Botanic Garden  
1212 Mission Canyon Road  
Santa Barbara, CA 93105

Strybing Arboretum  
and Botanic Gardens  
9th Avenue at Lincoln Way  
San Francisco, CA 94122

## ■ Colorado

Denver Botanic Garden  
909 York Street  
Denver, CO 80206

## ■ District of Columbia

U.S. National Arboretum  
3501 New York Avenue  
Washington, DC 20002

## ■ Florida

Flamingo Gardens  
3750 Flamingo Road  
Fort Lauderdale, FL 33330

Leu Botanical Gardens  
1730 North Forest Avenue  
Orlando, FL 32803

## ■ Georgia

Atlanta Botanical Garden  
P.O. Box 77246  
Atlanta, GA 30357

State Botanical Garden of Georgia  
2450 South Milledge Avenue  
Athens, GA 30605

## ■ Hawaii

Lyon Arboretum  
University of Hawaii-Manoa  
3860 Manoa Road  
Honolulu, HI 96822

## ■ Idaho

Idaho Botanical Garden  
2355 Old Penitentiary Road  
Boise, ID 83712

## ■ Illinois

Chicago Botanic Garden  
P.O. Box 400  
Glencoe, IL 60022-0400

Washington Park Botanical Garden  
P.O. Box 5052  
Springfield, IL 62705

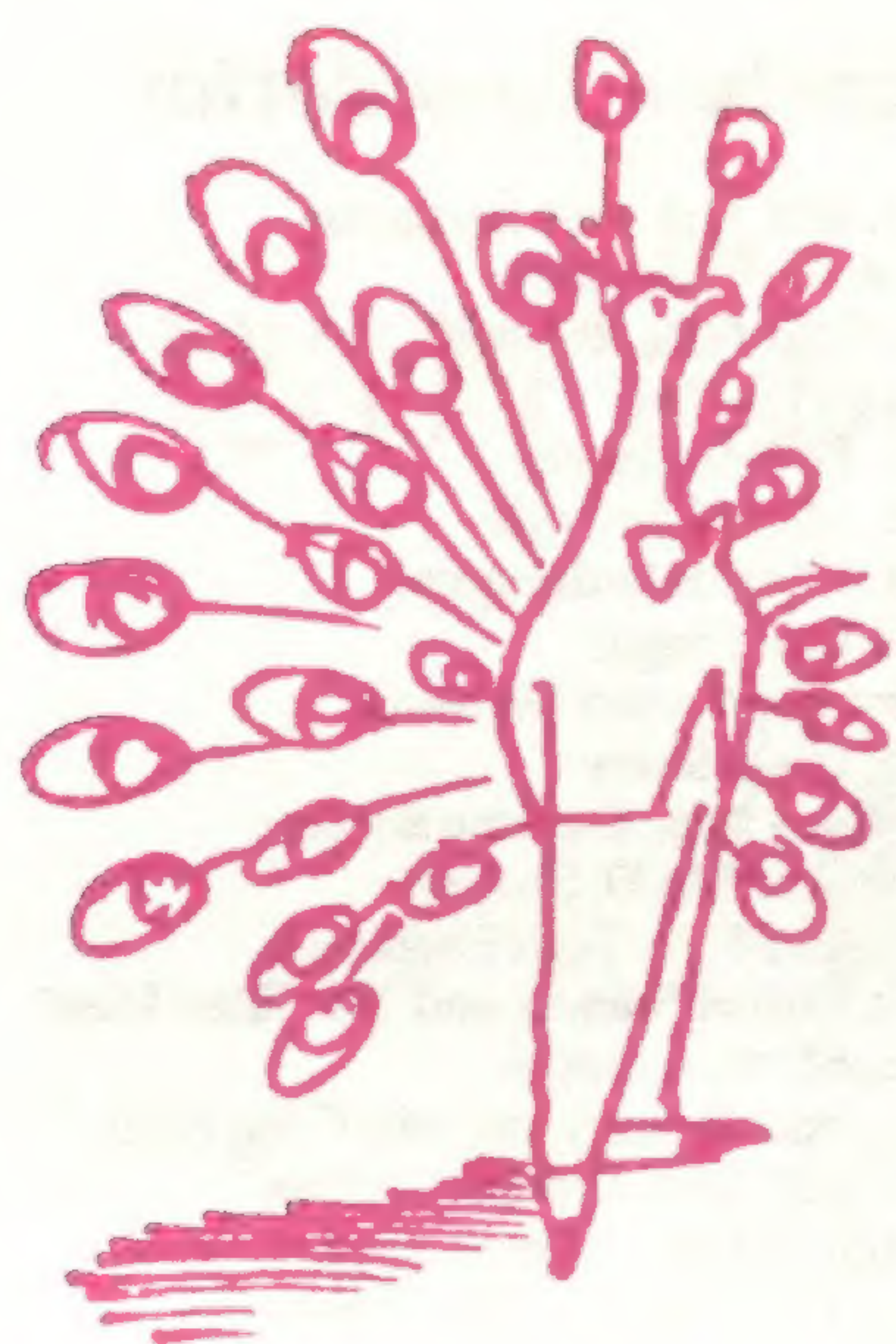
## ■ Indiana

Hayes Regional Arboretum  
801 Elks Road  
Richmond, IN 47374

## ■ New Jersey

Reves-Reed Arboretum  
165 Hobart Avenue  
Summit, NJ 07901





## Member Appreciation Gift Shop Coupon

*This coupon entitles the member to \$5 off any purchase of \$25 or more at the Arboretum Gift Shop.*

*Valid October 1, 1991 – October 30, 1991*

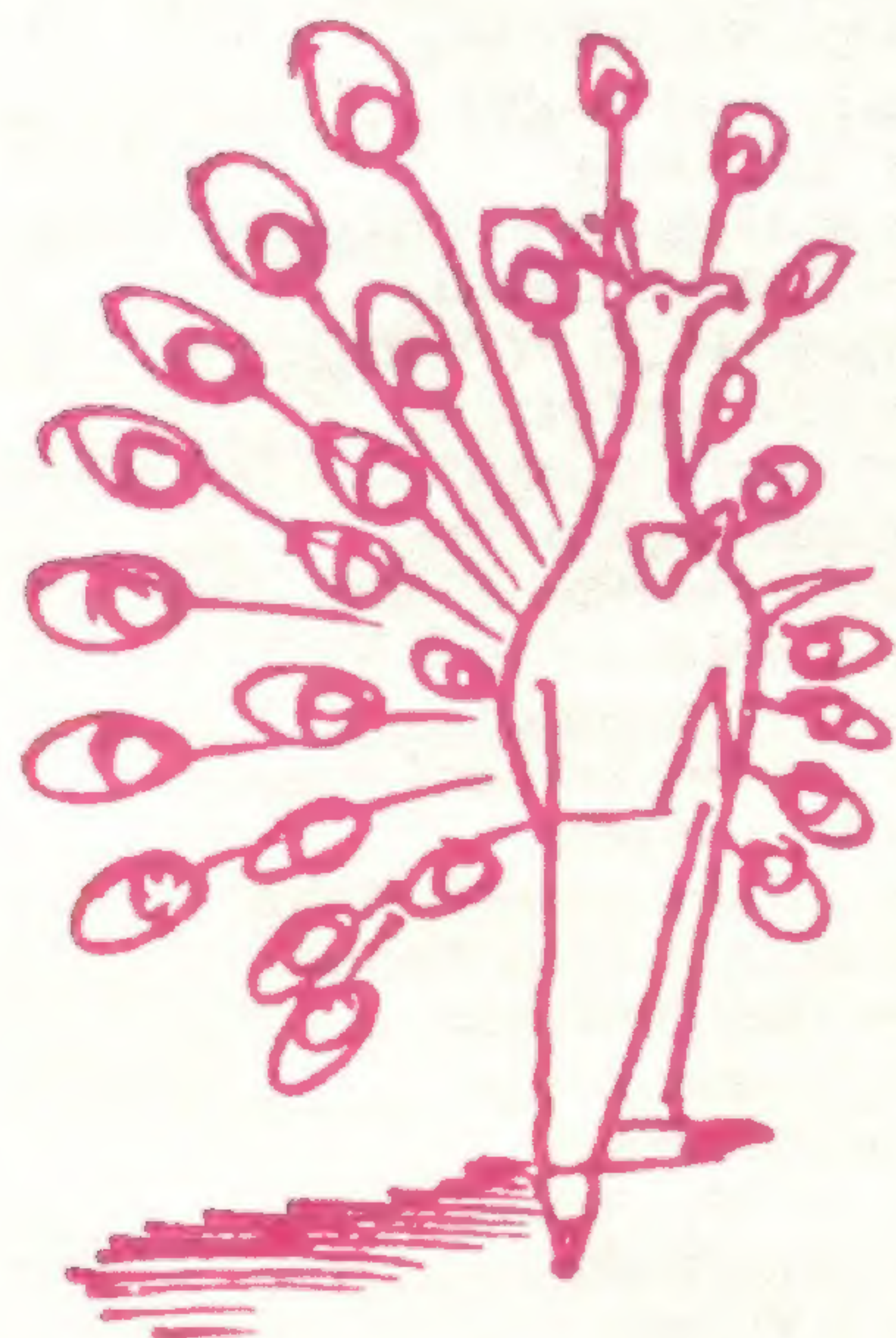


## Member Appreciation Peacock Café Coupon

*This coupon entitles the member to a FREE drink with lunch at the Peacock Café.*

*For Breakfast or Lunch reservations call 818-445-4267.*

*Valid October 1, 1991 – October 30, 1991*



## Member Appreciation Blockbuster Video Coupon

*Good for \$1 off rental of Arboretum Special Video  
Please show your CAF membership card.*

*Blockbuster Video 1107 S. Baldwin Avenue Arcadia*

*Valid October 1, 1991 – October 30, 1991*



## NURSERIES PARTICIPATING IN CAF DISCOUNT PROGRAM

*10% discount on plant material (sale items excluded)*

**Desert to Jungle Nursery**  
3211 West Beverly Boulevard  
Montebello

**Garden View Nursery**  
12901 Lower Azusa  
Irwindale

**Mel-O-Dee**  
7934 Lankershim Blvd., N. Hollywood

**San Gabriel Nursery**  
632 S. San Gabriel Blvd., San Gabriel

**San Marino Nursery**  
2143 Huntington Drive, South Pasadena

**South Pasadena Nursery**  
1507 El Centro, South Pasadena

**Stewart Orchids**  
1212 East Las Tunas, San Gabriel  
3838 Sepulveda Blvd., Culver City  
3376 Foothill Blvd., Carpinteria



## *New Members - A warm welcome to the New Members of the California Arboretum Foundation*

- Mr. and Mrs. Richard T. Abraham  
 Mr. and Mrs. Charles Adams  
 Mrs. Dorothy Ahrens  
 Mrs. Donald Albrecht  
 Dr. and Mrs. Lew Allen, Jr.  
 Mrs. Erna Andersen  
 Mr. and Mrs. Richard V. Anderson  
 Mr. and Mrs. Robert Anderson  
 Mr. James Andrews  
 Ms. Susan Lio Arcaris  
 Dr. and Mrs. Edgardo L. Arcinue  
 Dr. and Mrs. Donald Armstrong  
 Ms. Terre Ashmore  
 Mr. and Mrs. Larry Atkins  
 Mr. and Mrs. William G. Bach  
 Ms. Ollie Backus  
 Mr. and Mrs. Bruce Barr  
 Ms. Vivian Barthelemy  
 Ms. June Bartholomew  
 Mr. and Mrs. Fritz L. Beckman  
 Mr. and Mrs. Eugene U. Bell  
 Mr. and Mrs. Robert G. Berger  
 Ms. Amelia Berry  
 Mr. and Mrs. Oren D. Bird  
 Mr. Luis Bohon  
 Mr. and Mrs. Kearney Bothwell  
 Dr. and Mrs. Henry A. Botzbach  
 Mrs. Delbert Bradford  
 Ms. Kathleen Branton  
 Mr. and Mrs. Frank Bristing  
 Mrs. Mildred Broking  
 Mr. L. Gordon Brooks  
 and Ms. Dianne Maccary  
 Mr. Gil Brown  
 Mr. and Mrs. Udo Brunet  
 Mr. James Brunner  
 Mr. and Mrs. Francis S. Buck  
 Mr. Phillip Buffalo  
 Mr. James Carpenter  
 Mrs. Maggie Causey  
 Mr. and Mrs. Jeffery Cavallaro  
 Ms. Joanne Cech  
 Mr. and Mrs. Henry S. Challenger  
 Misses Jenny & Kathy Chan  
 Ms. Letitia Chan  
 Mrs. Cherry Chang  
 Mrs. Grace Chang  
 Mr. and Mrs. Lu Ying Chang  
 Ms. Jeanne Chernev  
 Ms. Maren Child  
 Mr. and Mrs. James F. Childs, Jr.  
 Mr. and Mrs. Joseph C. Ciraulo  
 Ms. Carnzu Clark  
 Ms. Patricia Ann Clark  
 Mr. and Mrs. Robert Clark  
 Mr. and Mrs. Brett Clausen  
 Mrs. Julie Cogorno  
 Dr. and Mrs. Richard B. Compton  
 Mr. and Mrs. A. P. Consalvi  
 Ms. Zell Cook and Ms. Sarah Josselet  
 Mr. and Mrs. Nigel Cooper  
 Mr. and Mrs. George Cornish  
 Mr. and Mrs. Ray Coth  
 Mr. and Mrs. Harold R. Couch  
 Mr. Robert Crandall  
 Mr. and Mrs. Arthur Crittenden  
 Ms. Ros Cross  
 Dr. and Mrs. Roger J. Crossley  
 Mrs. William E. Cunningham  
 Mr. and Mrs. James F. Curry  
 Mr. and Mrs. George A. Dabbagian  
 Mr. and Mrs. John Daeges  
 Mrs. Edith Dane  
 Mr. and Mrs. Andrew Davis  
 Mr. Robert Day  
 Mr. Richard De Meir  
 Ms. Yolande De Renesse  
 Mr. David Diaz  
 Mrs. Lola Dickerson  
 Mr. Darrell Dion  
 Mrs. Louise O. Dougherty  
 Mr. Scott Lee Eidson  
 Mr. and Mrs. Mark Elliott  
 Mr. Lawrence Emme  
 Ms. Debi Emslie  
 Ms. Cathy English  
 Ms. Frances Erickson  
 Ms. Katarina Eriksson  
 Mr. Harris Farber  
 Ms. Elsa Farkas  
 Mr. and Mrs. John Fee  
 Mr. John Fiumos  
 Mr. and Mrs. William E. Forbes  
 Mr. and Mrs. Stuart Forden  
 Mr. and Mrs. Stanard Funsten  
 Ms. Freda Gable  
 Mr. and Mrs. James M. Galbraith  
 Mr. and Mrs. Edward C. Gatz  
 Ms. Louise Gelber  
 Mr. and Mrs. David Gendron  
 Mrs. Salpi Ghazarian  
 Mr. and Mrs. Joseph Gibson  
 Mr. and Mrs. Stewart Gibson  
 Mr. and Mrs. Robert B. Gifford  
 Mr. and Mrs. L. Giroto  
 Mrs. Marilyn Gladle-Paup  
 Mr. and Mrs. Richard D. Gloor  
 Mr. and Mrs. H. L. Goeckner  
 Mr. and Mrs. Raul Gonzalez  
 Mrs. Wilma Goodcell  
 Ms. Ginger Grafues  
 Ms. S. Grandics  
 Mr. and Mrs. John F. Gray  
 Mrs. Sally Green  
 Mrs. Patricia Greutert  
 Ms. Jennie Guard  
 Mr. and Mrs. Sherwood Hall III  
 Mr. and Mrs. Foster Hames  
 Mr. Ronald Hamilton  
 Mr. James Harkrider  
 Mrs. Ellen Stern Harris  
 Ms. Sandra Harris  
 Mr. F. George Harrison, Jr.  
 Ms. Janice Hart  
 Ms. Kathleen Hayes  
 Mrs. Phyllis Heath  
 Mrs. Michael Heflin  
 Mr. and Mrs. Roger S. Helizon  
 Ms. Sandra Hemstock  
 Ms. Cindra Lee Henry  
 Ms. Kathleen Hext  
 Gordon E. Higbee  
 Mr. and Mrs. Anthony Hill  
 D. L. Hornasay and M. J. Rodriguez  
 Mr. and Mrs. Steve Horswill Johnston  
 Mr. and Mrs. James L. Hotvet  
 Mr. and David H. Howard  
 Mr. and Mrs. Andrew Hsu  
 Ms. Miranda Hu  
 Mrs. Sheryl Hunter  
 Mr. and Mrs. Arthur Hyde  
 Mr. Paul Iwahashi  
 Mr. Milio Iwano  
 Mr. and Mrs. Dennis L. Jackson  
 Mr. K. Scott Johnson  
 and Ms. Nina Lazutin  
 Mr. and Mrs. Kevin T. Johnson  
 Dr. and Mrs. Robert Johnson  
 Mrs. Sekiena Jonas  
 Ms. Beverly Kearney  
 Mr. and Mrs. Paul Keller  
 Mr. and Mrs. Rueben Kenis  
 Mr. William Kennedy  
 Ms. Florence A. Kerechuk  
 Miss Sallie Kiefer  
 Mrs. Frances Killins  
 Mr. Young Sook Kim  
 Ms. Lena Kingsbrook  
 Ms. Shirley Klein  
 Mr. and Mrs. Byron Kluss  
 Ms. Elizabeth Knego  
 Ms. Frances Knight  
 Mr. Don Knipp  
 Mr. and Mrs. Masahiro Kobayashi  
 Ms. Barbara Koenig  
 Mr. and Mrs. Richard Kombrink  
 Ms. Janneke Koole  
 Mr. and Mrs. Bernard Krems  
 Ms. Nelly Kuber  
 Ms. Ann Lake  
 Ms. Ellen Lamel  
 Mrs. Rosemary Lantz  
 Mr. and Mrs. Clifford C. Lasken  
 Mr. and Mrs. Hubert F. Laugharn, Jr.  
 Ms. Debbie Lawrence  
 Mr. and Mrs. Gerald R. Lawton  
 Chanel Le Monz  
 Dr. Allan Lee  
 Ms. Bonnie Lee  
 Dr. and Mrs. A. R. Leonard  
 Mr. and Mrs. Joe Lima  
 Mr. Howard Lipshitz  
 and Ms. Susanna Lewis  
 Dr. and Mrs. Leslie Lisnek  
 Ms. Kathleen Liu  
 Mr. and Mrs. Dennis Maaske  
 Dr. Charles Macri  
 Mr. and Mrs. Howard Maculsay  
 Ms. Geraldine Manlin  
 Mr. and Mrs. Pasqual Marra  
 Mr. Patrick Martin and  
 Ms. Dallis Hardwick  
 Ms. Susan Martinez  
 and Dr. Greg Aldering  
 Mr. and Mrs. George B. Massey  
 Mr. and Mrs. David Mathews  
 Mr. and Mrs. Ross Matranga  
 Mrs. James McCarthy  
 Mr. and Mrs. Timothy McCarthy  
 Ray McClure  
 Ms. Rose McCreary  
 Mr. and Alfred Selis McDonald  
 Mrs. Donald McGilvray  
 Mr. and Mrs. Greg McVey  
 R. L. Mees  
 Mr. Michael Mendelle  
 Mr. and Mrs. David Merrill  
 Leslie Metcalfe  
 Mr. Elliot Meyerowitz  
 and Ms. Joan Kobor  
 Mr. and Mrs. Ronald A. Morrow  
 Mr. James Munson  
 Mr. and Mrs. Charles Murphy  
 Mrs. G. Roger Myers  
 Mr. and Mrs. Eugene D. Newton  
 Mrs. Carlyle Nielsen  
 Ms. Adele Nieto  
 Mrs. Marilyn Nixon  
 Ms. Gail Norman  
 Mrs. Barbara O'Hanlon  
 Mr. Andrew Ogden  
 and Ms. Shelley Short  
 Mr. and Mrs. Joe Ohno  
 Mrs. Virginia Orton  
 Mr. and Mrs. Russell J. Osterman  
 Mrs. Carmel Padgett  
 Dr. Wendy Padgett  
 Ms. Lakshmi Pai  
 Mr. and Mrs. Gary Palmer  
 Mrs. Virginia Palmerston  
 Mr. Michael Parker  
 Ms. Mary Ann Paullin  
 Mr. and Mrs. Michael Pepe  
 Mr. and Mrs. C. L. Peterson  
 Mr. and Mrs. John G. Petrovich  
 Mr. and Mrs. Douglas Pittman  
 Mr. and Mrs. Gerald Plunk  
 Mr. and Mrs. Walter Podres  
 Mr. and Mrs. M. J. Poister  
 Mr. and Mrs. Frank Polefka  
 Ms. Pauline Pon  
 Ms. Leila Gonzalez Posakony  
 Mr. and Mrs. David O. Powell  
 Mr. and Mrs. Gregory A. Powell  
 Mr. and Mrs. William R. Prang  
 Mr. and Mrs. A. J. Prieto  
 Mr. and Mrs. Frank Quinn  
 Mr. and Mrs. R. Quinn  
 Mr. and Mrs. Charles Quintieri  
 Ms. Martina Ramirez  
 Mr. and Mrs. J. Paul Ransom  
 Mrs. Angela Reed  
 Mr. Mark Rice  
 and Ms. Cecilia Lauerman  
 Ms. Jane Richter  
 Jack G. Robb  
 Ms. Linda Robb  
 Mr. and Mrs. Stephan B. Robinson  
 Mr. and Mrs. Michael Ruscio  
 Mrs. Bonnie Sabott  
 Mr. and Mrs. Dominick Salomone  
 Mr. and Mrs. Saleem Samia  
 Mrs. Mara Sanders  
 Mr. and Mrs. Robert E. Sandiford  
 Charyl Sarber  
 Mr. H. J. Schlueter  
 Ms. Merrill Scoville  
 Mr. Charles Sedenquist  
 Ms. Janet Segal  
 Mrs. Esperanza Seymour  
 Mr. Dave Share  
 and Mrs. Darlene Squires  
 Mrs. Merble D. Shaver  
 Mr. and Mrs. Tom Shephard  
 Mr. Daniel Siebert and Ms. Ellen Heed  
 Mr. Michael Siegel  
 Ms. Lisa Sievers and Mr. Greg Neat  
 Mr. and Mrs. Philip L. Silcox  
 Mr. and Mrs. Andres Silva  
 Mr. and Mrs. Douglas Simpson  
 Mrs. Barbara Smith  
 Ms. E. Lisa Smith  
 Mr. and Mrs. Kenneth C. Smith  
 Mr. William Smith  
 Mr. and Mrs. Robrt F. Snowden  
 So. Calif. Edison Company  
 Ms. Karila Somer  
 Roger and Robin Sonnenberg  
 Mr. Philip K. Sotel  
 Mr. and Mrs. John R. Speyer  
 Mr. and Mrs. Ed Steinbacher  
 Ms. Barbara Stewart  
 Mr. and Mrs. R. Bruce Stewart  
 Mr. and Mrs. Russell Stewart  
 Mr. Thomas Sullivan  
 Mr. and Mrs. Robert Summers  
 Mrs. Philip Swan  
 Mr. S. Swaney  
 Mr. and Mrs. Frank Swiadek A.H.T.  
 Mr. and Mrs. Edward R. Switzer  
 Mr. Sumio Takahashi  
 Ms. Karen Takatani  
 Mr. and Mrs. James Tanis  
 Mr. and Mrs. Kip Tashiro  
 Mr. Roland Tcheng  
 and Ms. Jean Pfaffinger  
 Mrs. Karen Teaford  
 Mr. and Mrs. Thomas A. Techentin  
 Ms. Nancilu Todd  
 Toluca Lake Garden Club  
 Mr. Rex Townner  
 Mr. Thomas Turelli  
 Mr. Allen Uhrig  
 Mr. and Mrs. James Ukropina  
 Mrs. Kathleen Ulinski  
 Dr. and Mrs. M. W. Valois  
 Ms. Julie Van Iwaarden  
 Mrs. Paul Verburg  
 Mr. and Mrs. Don Viray  
 Mr. and Mrs. Robert Virza  
 Mr. and Mrs. Robert D. Volk  
 Charlotte Vrooman  
 Mr. and Mrs. William J. Wagner  
 Mr. Mark Walder  
 Mr. and Mrs. James D. Walsh  
 Mr. and Mrs. Craig Warden  
 Mrs. Marilyn Watson  
 Mrs. Charles Weeks  
 Mrs. Dima Weiss  
 Mr. and Mrs. William Weiss  
 Ms. Retha Wells  
 Kevin Wescott  
 Mr. and Mrs. James Wesevich  
 Ms. Kay Whang  
 Mr. and Mrs. L. Michael Whetsel  
 Ms. Eda White and Mr. Jeff Wendell  
 Ms. Rosemarie Wilson  
 Mr. Winkelmann  
 Mrs. Pei Winter  
 Ms. Jeanne Wolgemuth  
 Ms. Eller. Wong  
 Ms. Hanna Wood  
 Mr. Mike Yeh  
 Mrs. Beverly Yelich  
 Mr. Jerry Zapata  
 Ms. Shirley Zirpolo



New Education Class Offered

# *Gardening Basics by the Season*



October 8, 15, 22, 29, 1991

9:30 a.m. – 11:30 a.m. (Tuesday mornings)

Los Angeles County Arboretum

\$30 Members      \$40 Others

Basics of gardening will be taught by demonstration and presented by the season. Students garden now to prepare for a beautiful and colorful garden next spring. What plant material can be used during the fall and winter months to add color to your garden? Basics of preparing soil, selecting plants, focusing upon a "design" or "theme" for your garden, propagation techniques with emphasis upon division of plants, and pruning techniques will be covered by Ms. Shirley Kerins, one of the areas most accomplished and sought-after landscape architects.

---

## Registration Form

Name \_\_\_\_\_

Address \_\_\_\_\_

City \_\_\_\_\_ Zip \_\_\_\_\_ Phone \_\_\_\_\_

Emergency contact \_\_\_\_\_

Session I Gardening Basics

\_\_\_\_\_ CAF Member @ \$30

\_\_\_\_\_ Non-Member @ \$40

Please return this form with your check to: **California Arboretum Foundation**  
301 North Baldwin Avenue  
Arcadia, California 91007



## 1991 FANDANGO



*above – Jacob and Clara Maarse, left – Donovee and Merrill Nash (l) with Director Ken Smith (c) and Celia and Arne Kalm (r), below left – Bill Croxton (l), Martha Chandler (c) and Ron Jernigan (r).*



**Our special thanks to the Fandango Committee for a successful benefit – \$35,000 was raised to support the Arboretum Education Program.**

*Co-Chairmen*

Mrs. A. Kingston McKee  
Mrs. Richard F. Miller

Mrs. Henry Braun  
Mrs. Harrison Chandler  
Mrs. George Jagels  
Mrs. C. Douglas Kranwinkle  
Mrs. Joseph Ryan  
Fred Schoellkopf III  
Mrs. Warren Williamson

Brooke Larsen Garlock, *Staff Liaison*  
Beverly Rouse, *Director of Development*

*below left – George and Maggie Jagels, below – Ginny and Henry Braun.*







*above left – Committee chairs Suzie Miller and Veoa McKee greet Arboretum Director Ken Smith and his wife, Bette, above – Fuego Flamenco entertained the guests following dinner, below left – Bill and Delores Keller.*



#### Special Acknowledgements

Howie's San Gabriel Market  
 Rococo Catering  
 Jacob Maarse, floral designs  
 Lisa Williamson, invitation illustrations  
 Licher Direct Mail, Inc., paper & invitation printing  
 Theatre Vision, lighting  
 John Provine, Arboretum Superintendent  
 Bristol Farms, Raffle Prize  
 E. E. Jensen Sprinklers, Raffle Prize  
 Shirley Kerins, Raffle Prize  
 Smith & Hawken, Raffle Prize



*left – Christine McCarthy and Michael McCormick, right – Connie and Gordon Fish.*





## Volunteer News

### New President for Las Vols



Elizabeth (Betty) O'Neill of Arcadia was elected president of Las Voluntarias y Los Ayudantes at its April general meeting.

The 300 member organization of volunteers, from many communities in Southern California, gives time, financial assistance, and expertise to help support the Los Angeles County Arboretum. O'Neill is the thirteenth president of the group which was founded in the 60's to help maintain the restored historic buildings. She succeeds retired banker, Betty Watson, also of Arcadia, who has served as president for two years.

Born and raised in Los Angeles, the president elect has lived in Arcadia for the past seven years. An upbeat leader, with a special appreciation for volunteerism, she was, for thirty years, an insurance underwriter in the Bay Area.

In 1984, after visiting the Arboretum with her wine-broker husband, George, she signed up to volunteer and he followed suit a year later. She has since chaired the crafts, historical preservation and hours committees, and served as first vice president in charge of membership.

As president, O'Neill has designated community involvement as her top priority, she says. She will concentrate, also, on the project started by her predecessor: a revitalized Visitor Center.

Officers elected to serve with O'Neill are Elaine Hoffman of Arcadia, first vice president; Joyce Travis also of Arcadia, second vice president; and Ginny French of Glendora, secretary.

*Dr. Daryl Koutnik, Curator of Ornamental Horticulture, trains a group of Arboretum volunteers.*



### New Training for Volunteers

The executive board of Las Voluntarias y Los Ayudantes met with Arboretum staff this summer to initiate an educational course for new volunteers which will replace the orientation originally scheduled for September. This new course entitled "Meet the Arboretum: The Volunteer Discovery Program," will be held on Tuesday mornings beginning October 1 and will continue for eight weeks.

Included in the course will be a tram tour of the grounds, slide shows, walking tours led by staff scientists and curators through the gardens and greenhouses, and a scavenger hunt in the herb garden. In the historical section, groups will be guided through the Queen Anne Cottage, Hugo Reid Adobe, and the coach barn. Other areas such as the library, herbarium, and gift shop will also be on the itinerary.

Among staff members who will participate are: History Curator, Sandy Snider; Associate Herbarium Curator, Suzanne Granger; Senior Biologist, Jim Bauml; Curator, Ornamental Horticulture, Dr. Daryl Koutnik and Botanist, Allen Howard. Botanist, David Lofgren who manages the plant information service, will also take part in the training, as will Librarian, Joan De Fato; Superintendent, John Provine and Assistant Superintendent, Tim Lindsay.

Volunteers who opt to lead school tours will then receive four weeks of additional training in January 1992, bringing the total number of hours of training to approximately 50. This figure measures favorably with the requirements of some of the major arboretums and museums in the country.

Las Vols board members and County staff are looking forward with enthusiasm to making this educational opportunity available to all new volunteers on an annual basis.

### Las Vols In Need Of Field Leaders

For many years the Arboretum Field Leader program has given third through sixth grade students an introduction to the wonders of a living museum of plants, flowers and birds. It has also provided an on-site summary of California history from Native American to Victorian times. These tours are scheduled from November to June every year. They attract children from public and private schools from as far away as Palmdale.

At this time, less than 30% of the requests for guided school tours can be filled by the Arboretum's small group of committed Field Leaders. Last year only twenty-eight leaders and one substitute were available for the seven month tour season.

As a result, it was decided to target certain groups for the solicitation of tour guides this fall. Potentially, the best group for this purpose is the California Arboretum Foundation whose members already have a vested interest in the Arboretum and its activities. Individual fees have been paid, and all that is required is an interest in young people and the time to enjoy the new volunteer Discovery Program in October. The Field Leader Training will follow in January. Upon completion of these two courses, volunteers may give as few as two tours a month on the days of their choice.

Surely, increased knowledge of the Arboretum gained through the training, together with the fun of sharing that knowledge with youngsters, should be worth the gift of personal time.

To sign up for the Discovery Program or for further information, please call the Volunteer Coordinator's office at (818) 821-3244.



## Historical Section News



*Historical section volunteers Jocelyn Pitts and Marnie Norvell arrange a display of antique Santas for the December Queen Anne Cottage Open House.*

### Special Queen Anne Cottage Tours for Foundation Members and Guests

Enjoy the Victorian Queen Anne Cottage in its Christmas finery!

This year for the first time, members and their guests may enjoy small tours led by the Curator of History at the Arboretum or a highly trained docent.

There will be no lines to wait through! Groups of up to 10 individuals are welcome. Explore the Cottage interior at a leisurely pace.

Space is limited and reservations are required. Here's how:

Call Ms. Sandy Snider at (818) 821-3241 to make your reservation for:

Monday through Friday only,  
December 9th - 20th

Tour times are: 10:00 a.m.  
11:30 a.m.  
1:00 p.m.

The cost is a \$10 donation per person. These tax deductible donations will be used to benefit the Historical Preservation Fund.

A special holiday luncheon served in the beautiful new Peacock Cafe is also available for your group at a cost of \$12.50 per person.

## Historical Section News

Dr. and Mrs. Benton Corley, forty year residents of Arcadia, recently donated a beautiful, walnut-framed reed organ to the Arboretum Historical Section. The organ joins a rosewood square grand piano, an Erard salon harp and a rosewood melodeon in the Music Room of the Queen Anne Cottage.

The Corley's organ was manufactured by C. B. Hunt and Co. of Boston, Mass. who made "Bay State" organs for only twenty years, from 1870 to 1890. Reed organs were popular parlor accessories in Victorian homes - some 39,000 were turned out by C. B. Hunt and Co. alone by 1886, the year the Cottage was completed.

The Queen Anne Cottage is available for "through-the-window" viewing daily, but will be opened for tours of the interior during a Christmas Open House on Saturday and Sunday, December 7 and 8 from 10:00 a.m. - 3:00 p.m. for those wanting a closer look at the furnishings.

The many faces of Santa Claus will highlight this year's Christmas Open

House with more than 100 images of the holiday benefactor depicted in everything from paper to wood, cast iron, blown glass, ceramics, papier mache and postwar plastics. In the Cottage parlor a collection of old, new and unusual Santas will decorate and surround the Christmas tree.

In the Coach Barn a dozen Duncan Royale facsimiles, handpainted by local artist Roni Eventov, will trace the evolution of the gift giver down through the centuries. A legend beside each of the foot tall figures - the Bavarian Christkindt, the English Sir Christmas, St. Nicholas of Myra, the Dutch Kris Kringle and his evil slave Black Peter, even the Coca Cola Santa - will tell the folk tale that each illustrates. A textile exhibit featuring laces, crochet, tatting and embroidery on everything from doilies to Gibson Girl dresses will also be set up in the Barn.

Tours of the Santa Anita Depot, decorated in its Christmas finery as well, will complete the Open House weekend. All tours and exhibits are free of charge. Donation baskets will be available for those who would like to support the History Preservation Fund.



*Dr. and Mrs. Benton Corley recently donated a reed organ now located in the Music Room of the Queen Anne Cottage.*

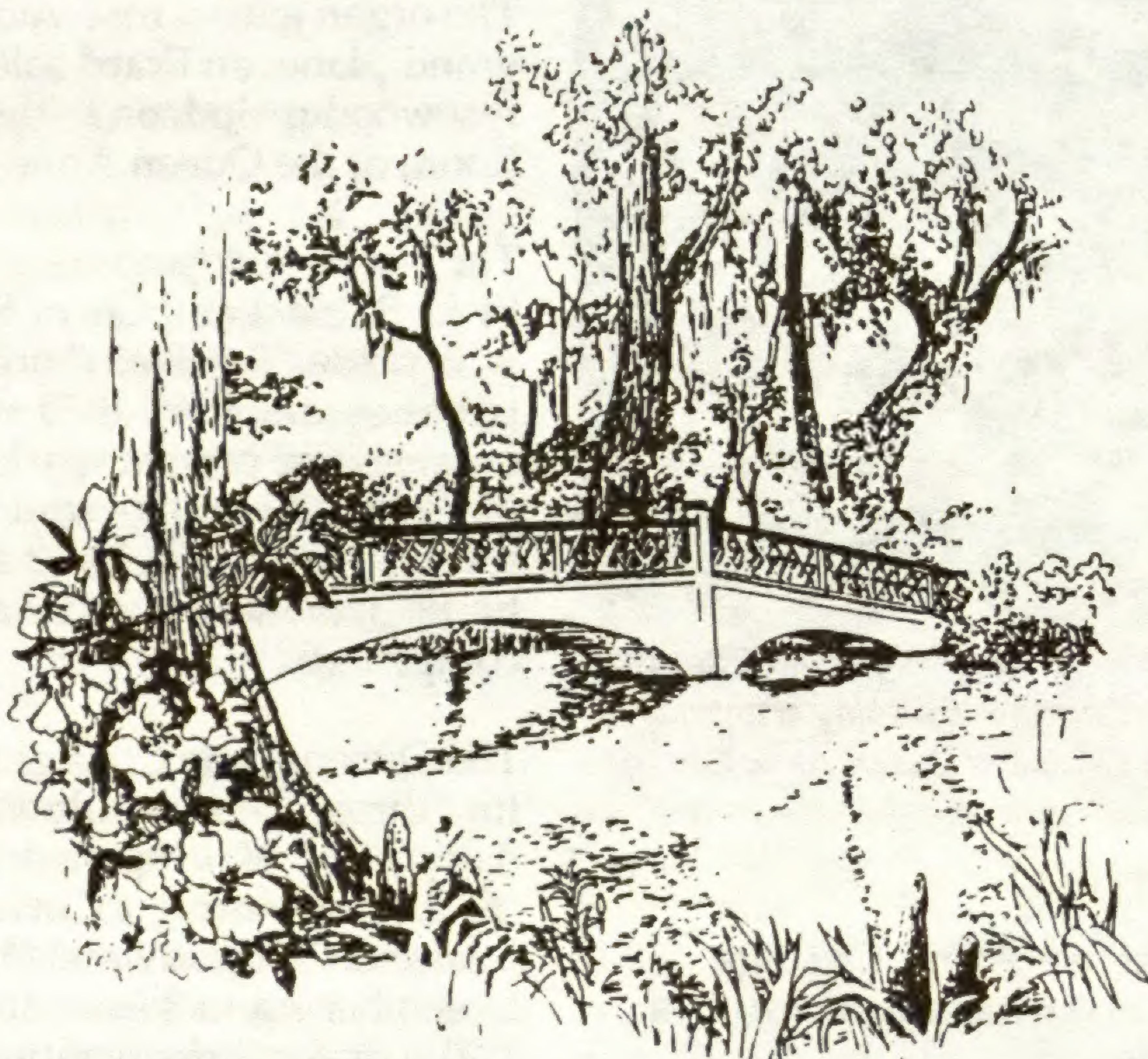


# Springtime Gardens of the Old South: Historic Homes and Plantations

March 26 – April 3, 1992

*Pine Mountain - Savannah - Charleston - Beaufort - Murrell's Inlet*

- Callaway Gardens & Butterfly Center
- Historic Homes & Gardens
- Middleton Place
- Magnolia Plantation
- Brookgreen Gardens
- Special Seminars & Lectures



For a detailed itinerary, contact California Arboretum Foundation, (818) 447-8207 or call the tour coordinator at (800) 682-6191. You are invited to attend a slide-lecture preview at 2:00PM, Sunday, October 27. Call the Arboretum for reservations.

## California Arboretum Foundation Board of Trustees

Richard A. Grant, Jr., President  
Mrs. C. Douglas Kranwinkle, Vice President  
William Keller, Vice President  
Mrs. John Hopfield, Secretary/Treasurer  
George L. Nicholas, Asst. Secretary/Treasurer

Robert Bermingham  
Hannah G. Bradley  
Mrs. George Brumder  
Mrs. James T. Carter  
Clifton Comstock, Sr.  
Arthur L. Crowe  
David M. Davis  
Harry Hufford  
Mrs. Arne Kalm  
Roy Leisure  
Gary Matus  
Mrs. A. Kingston McKee  
Robert L. Powell  
Edward S. Renwick  
Mrs. Joseph Ryan  
J. Fred Schoellkopf III  
Philip L. Silcox  
Mrs. Dudley W. Thomas  
Mrs. George O'Neill, Volunteer President

California Arboretum Foundation  
301 North Baldwin Avenue  
Arcadia, California 91007

*Address Correction Requested*

Non Profit  
Organization  
U. S. Postage  
**PAID**  
Permit No. 528  
Arcadia, California

## Newsletter Staff

### Editor

Brooke Larsen Garlock

### Contributors

Eileen Ames  
James Bauml  
Pat Bergen  
Terry Bible  
Nancy Fuller  
Brooke Larsen Garlock

Richard A. Grant, Jr.  
Tim Lindsay  
Joan Malafronte  
John Provine  
Beverly Rouse  
Sandy Snider

### Photographs

Eileen Ames  
Brooke Larsen Garlock  
LuAnn Munns

### Design

Tom Mossman