

Historic, archived document

Do not assume content reflects current scientific knowledge, policies, or practices.

62.37

Money In Fruit Growing

Leading Orchardists Prefer
**Harrison Grown
FRUIT TREES**

GROW FRUIT FOR PROFIT

Each season there are millions of dollars made in growing fruits. It is a well known fact a few acres of fruit will give you a bigger cash profit than any other crop you can grow. There is a big opportunity in growing fruit crops for the big markets and an equal opportunity to grow fruit for the nearby or roadside market.

HARRISONS' TREES ARE DEPENDABLE

Leading fruit growers prefer Harrison Grown Trees. They have learned they are dependable not from claims in a catalogue or talk from a salesman, but from actual performance on their own land. Each season we hear from many of our old customers expressing their praise of the fruit trees which they bought from us, even thirty, forty and fifty years ago.

HARRISONS' TREES ARE HARDY

Harrisons' Trees by the tens of thousands have been planted in every fruit section of the Nation, as well as foreign countries and invariably they give satisfactory results. Tests run by leading experimental stations throughout the Northern States and Canada definitely prove Harrison Grown Trees, variety for variety, are as hardy and sometimes harder than trees grown in northern localities.

BETTER TREES FOR LESS MONEY

It is true our method of propagation from parent trees that bear extraordinary crops of finest quality fruits for their respective varieties cost us more money per tree than the non-bearing scion block method used by most nurserymen. By growing trees in extra large quantities we can practice certain economies that are utterly impossible for the smaller grower and results in our trees, size for size, being no higher in price than trees that are produced in a haphazardly manner. We wish everyone who is interested in Fruit Trees could come to Berlin and personally look over the trees we are growing, you would soon see the reason why we are known as the "World's Largest Growers of Fruit Trees."

The Most Modern and Scientific Methods Are Used In The Growing, Digging and Packing of Harrison Grown Nursery Products Trees.

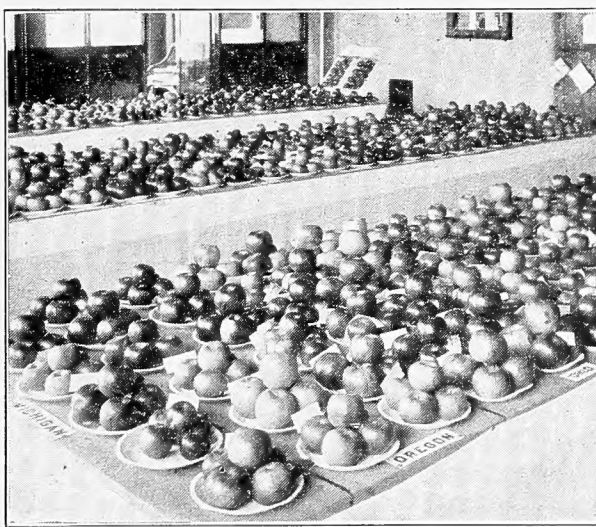
A Tip

Buy Now. Prices of Nursery Stock Are Rising But We Will Book All Orders Received Up Until February 1st, 1933 At The Prices Quoted In This Catalog.

If You Are Unable To Plant Now We Will Reserve The Stock That You Desire And Make Shipment During The Spring Of 1933 Provided 1/2 Remittance Is Sent With The Order.

Its Your Chance To Make A Big Saving.

HARRISONS' NURSERIES, Inc.
BERLIN MARYLAND



Harrisons' Fruit Trees Bear Prize Winning Fruits All Over The World

Greetings

To Our Friends and Customers.

For fifty-four years Harrisons have been actively engaged in growing enormous quantities of Hi Quality Nursery Products priced within the reach of everyone.

This season we have without a doubt the finest assortment of Hi Quality Fruit and Ornamental Nursery Stock we have ever offered and we are well prepared to take care of your orders, for most any quantity you may desire.

To our customers, old and new, we extend the assurance of our most faithful service and careful attention, whether your order is large or small. We are deeply grateful to our old friends for their continued patronage and confidence and we know that our new customers will find equal satisfaction in their relations with us.

Sincerely yours,
HARRISONS' NURSERIES, Inc.

IMPROVE THE APPEARANCE OF YOUR HOME GROUNDS

The vogue for beauty, outside the home, as well as within, is upon us—and this new vogue finds its most charming expression in the modern outdoor living room.

This new fashion results from more than the public's consciousness of "back-yard" barrenness. It is the home-owner's own solution to the problem of how to get the most value out of his property and the most enjoyment out of living. The charm of evergreens, flowering plants and trees, tastefully arranged to create a veritable living room outdoors is irresistible; and the prospect of planting a place outdoors which is attractive, livable and comfortable—where the family can find countless hours of enjoyable pleasure.

Plant Now.

If they are dug before the sap flow normally stops there is a possibility that much damage will be done to the plants in transplanting.

In states bordering and just south of the Mason-Dixon line practically all items can be planted anytime during the winter that the ground is free from frost.

Do Not Let A Few Light Frosts And Freezes Delay Your Planting This Year.

Fall and winter planted stock has one great advantage over spring planted stock in that it will start to grow earlier in the spring. It is a well known fact that the roots on all trees, plants and shrubs grow during the winter time and get well established before the late spring droughts.

It is a mistaken idea among many planters that nursery stock should be planted early in the fall. However, this is naturally wrong as it is necessary to let the stock be fully matured before it can be safely planted. After a few cold periods and before the ground is frozen is the ideal time for planting deciduous stock.

ESTABLISHED
1884



BERLIN, MARYLAND

LARGEST GROWERS OF FRUIT TREES IN THE WORLD.

5000
ACRES



Plant With Harrisons' Bud Selected Super Strain FRUIT TREES They Give Results

SELECTED STRAINS—TRUE TO NAME

Every fruit grower is or should be interested whether or not the trees he is buying are true to name, and propagated direct from bearing trees that show superior fixed characteristics as to size, color, yield, quality, growth and resistance to disease and insects. There is only one way that these characteristics can be controlled and passed on to the young trees and that is by selecting for the parent trees at fruiting time year after year those trees that produce the most bushels of the Highest Quality Fruit. Years ago Harrisons originated this Bud Selection idea and began making comparisons of the fruiting qualities of the same varieties and found that a wide variation existed as well as a great difference in the degree of red coloring and size. At that time we selected our propagating wood and grew thousands of young trees that were planted here at Berlin. At the present time we have over 100,000 fruit trees in bearing in Harrisons' Orchards. Now remember these trees in our orchards were of known improved parentage and now we select our propagating wood from the best trees in our own planting, which results in trees that are really Triple Bud Selected Super Strain fruit trees. We know of no other concern in America who is equipped to propagate trees in this manner to any extent.

BIGGER YIELDS—BETTER COLOR

If there is any one thing that plays such importance in profit making from fruit it is the matter of the yield. Harrison Trees are known as the heaviest yielding strains obtainable, which is directly due to the bearing habits of their parent trees. Next to yield is the matter of color, most fruit growers realize if their apples were more highly colored they would sell for more money. You can depend on Harrison Super Strain Trees to produce crops that have the finest color for their respective varieties.

YOUNGER BEARING

Do you want your trees to come into bearing at an early age? It is a recognized fact that trees propagated direct from bearing trees will commence to fruit at an earlier age than trees that are propagated from non-bearing scions. Harrison Grown Fruit Trees, due to the fact they are propagated from bearing trees, will produce profit paying crops in the earliest possible time.

HEALTHY—VIGOROUS

All Harrison Grown Trees are healthy and vigorous growing. Every possible precaution is taken to eliminate any dangerous insects or disease and a Certificate of Nursery Inspection accompanies each shipment. Vigorous growing healthy young trees can only come from parent trees that show these same characteristics. Thousands of dollars yearly are spent by us in improving the fertility of our soil to produce the best trees to be found in America.



Harrisons' Red Delicious

A Real Money-Maker For Growers Everywhere

This Apple was introduced by us several seasons ago and since introduced it has been bought and fruited by the tens of thousands by leading fruit growers throughout the country. It is a new sport of pronounced superior merits. Being triple-red colored and the earliest red coloring strain known.

It has all the fine qualities of the regular Delicious with the exception that it colors up weeks earlier than the ordinary strain. It is conceded to be the most beautiful of all apples and commands highest prices at local and city markets.

The flavor is delicious, fresh, crisp and juicy. Whether you wish to plant a thousand or if you have room for only one tree Harrisons' Red Delicious will give full value.



HARRISONS' RED DELICIOUS

Winter Apples, continued

- ROXBURY RUSSET.** Large yellow brown russet. Best variety of all Russets. (Small 1 yr. trees only).
- RHODE ISLAND GREENING.** Extra large greenish yellow. Should be included in all commercial orchards in New England and other Northern States.
- ROME BEAUTY.** Large, round, red, flavor and quality above the average, appearance and size are its valuable points, brings good prices.
- STAYMAN WINESAP.** Large, bright red, bud selected superior red strain, extra good flavor, juicy and quality ranking with the best. Fine keeper and one of the most popular apples on the large Eastern markets, demanding high prices. Planted extensively in the East.
- STARK.** Extra large greenish yellow with red blush. Good keeper. Popular as a baking apple.
- TURLEY.** A seedling of the Winesap which it somewhat resembles. Fruit rounded conical in shape, much larger than Winesap, smoother skinned and deeper and richer in color, juicy and rich flavor. Tree very hardy and comes into bearing early.
- TWENTY OUNCE.** Very large, fine quality, yellow striped red. (Small 1 yr. trees only).
- WOLF RIVER.** Extra large red. (Small 1 yr. trees only).
- WINESAP.** Medium size, dark red, well colored, highly flavored, one of the best and longest keepers.
- WINTER BANANA.** Extra large golden yellow shaded with red. Very rich flavored. (1 yr. trees only).
- WAGENER.** Bright red, excellent quality. (2 yr. trees only).
- WINTER RAMBO.** Medium size, greenish yellow color. (1 yr. trees only).
- YELLOW BELLEFLOWER.** Large, yellow, good flavor.
- YORK IMPERIAL.** Medium to large size, widely planted in the Appalachian area. We consider Red Yorking much superior.

CRAB APPLES

- HYSLOP.** Crisp, juicy, large crab apple.
- TRANSCENDENT.** Best of all crab apples, good size, yellow skin, striped with red.

PRICES OF HARRISON GROWN APPLE TREES

Except as otherwise noted)

Trees	1 to 2 ft.	2 to 3 ft.	3 to 4 ft.	4 to 5 ft.	5 to 6 ft.
One Year	\$1.25	\$1.50	\$1.75	\$2.00	\$2.25
Two Year	\$2.00	\$2.50	\$3.00	\$3.50	\$4.00

(Can be assorted Apples or other Fruit Trees)

CERTIFIED OR INSPECTED

Harrison Grown Apple Trees are all certified or inspected for truthness to name by Dr. J. K. Shaw, Research Professor of Pomology of the Massachusetts State College, Amherst, Massachusetts.

Harrisons' APPLE Trees FOR THE FRUIT INDUSTRY

SUMMER APPLES

- DUCHESS** (Duchess of Oldenburg). Large, red striped, heavy bearing. (1 yr. trees only).
- EARLY HARVEST.** Medium size, yellow.
- EARLY MCINTOSH.** Red, attractive, good size, flesh white, fine tender juicy and fine flavor, being similar to McIntosh Red, tree vigorous, hardy, healthy and productive.
- LODI.** An improved Yellow Transparent, large fruits earlier in the season. (10c per tree extra).
- MILTON.** Fruit a beautiful pinkish red with tender, crisp, white flesh of excellent flavor. (Small 1 yr. trees only).
- RED ASTRACHAN.** Medium size, red striped, heavy bearing.
- RED JUNE (CAROLINA).** Medium size, red.
- STARR.** Large yellowish smooth skin, sometimes marked with a faint blush and numerous russet dots. Flesh yellow, very tender, crisp, juicy, aromatic and fine quality, brings high prices. (1 yr. trees only).
- SWEET BOUGH.** Pale yellow, large, tender, sweet. (Small 1 yr. trees only).
- SPITZENBURG.** Deep red. (Small 1 yr. trees only).
- SUMMER RAMBO.** Large yellowish green, splashed with red, crisp and tender. Very good.
- WILLIAMS EARLY RED.** Medium to large size, golden red, flesh is crisp, tender, juicy and sub-acid, good quality. Its bright attractive red coloring with satisfactory size and firmness makes the Williams Early Red a popular summer variety. (Small 1 yr. trees only).
- WILSON RED JUNE.** Fancy large, red, good quality. (1 yr. trees only).
- YELLOW TRANSPARENT.** Medium size, greenish yellow, very heavy bearing, always in demand for pie and cooking purposes in general, it being the first early variety to drop into the markets.

AUTUMN APPLES

- FAMEUSE** (Small 1 yr. trees only).
- GRAVENSTEIN.** Large, streaked and colored with red.
- GRIMES GOLDEN.** Medium size, heavy bearing, somewhat later, popular in Maryland, West Virginia and Virginia. The best candidate for Stayman Winesap and many other varieties.
- JONATHAN.** Medium to large, golden red, very fine flavored, good keeper, one of the best. Tree does not bear much and cannot keep weight and produce a quantity of fruit. (Small 1 yr. trees only).

Autumn Apples, continued

- KING DAVID.** Very dark red, medium size, good flavor. (Small 1 yr. trees only).
- KENDALL.** A McIntosh seedling, very handsome. Same season as McIntosh, but keeps longer. (Small 1 yr. trees only).
- LOBO.** Similar to McIntosh but colors earlier.
- MAIDENS BLUSH.** Large, red blush.
- MCINTOSH RED.** An exceedingly valuable hardy, attractive apple, medium large size; 100 percent red color when ripe. Flesh white, fine tender, juicy, sub-acid and refreshing, and generally considered as the highest and best flavored apple grown; splendid appearance which sells it on sight.
- NORTHWESTERN GREENING.** Very large greenish yellow, good shipper. Popular for baking. (1 yr. trees only).
- RED GRAVENSTEIN.** An improvement on the regular Gravenstein, with better and higher red color.
- SMOKEHOUSE.** Large yellow-green mottled with a dull red line flavor.
- WEALTHY.** Medium to large size, fruits very juicy. Trees very hardy, bears regularly.
- YELLOW DELICIOUS.** A golden yellow apple with decided delicious characteristics. Yellow Delicious has a remarkably good flavor, and is most popular for eating during the fall and winter months. Late September and January finds the flavor and condition at its best. Many people think it superior to the famous Delicious.

WINTER APPLES

- ARKANSAS BLACK.** Dark red. Good keeper. (Small 1 yr. trees only).
- ALBEMARLE PIPPIN** (Yellow Newton). Large round ribbed and somewhat irregular.
- BALDWIN.** Large, bright red, yields big crops, good keeper. There are more bearing trees of Baldwin in New York, Northern Pennsylvania, the New England States and Canada than any other commercial variety.
- BEN DAVIS.** Large, extra good color, one of the best keepers. (1 yr. trees only).
- CORTLAND** Red, new variety. Cross between McIntosh Red and Ben Davis.
- DELICIOUS.** Red, large, very highly flavored. One of the most popular and highest priced apples grown.
- GANO** (Black Ben Davis). Bright red, medium to large. (Small 1 yr. trees only).
- GALLIA BEAUTY.** A Fame Beauty type of apple, beautiful in every respect, except its earlier maturing qualities.
- LOWRY.** Beautiful mahogany red, very popular in Virginia. (1 yr. trees only).
- MACOUN.** Similar quality and texture as McIntosh but ripens earlier. (Small 1 yr. trees only).
- MAMMOTH BLACK TWIG** (Paragon). Extra fine dark red, the only one of the sort. Good flavor, too appetizing.
- NERO.** Striped red, with good color and fine flavor.
- NORTHERN SPY.** Large, dark red with yellow markings.
- OPAESCENT.** Very handsome dark mahogany apple. (1 yr. trees only).
- RED SPY.** Extra large, bright red, red with yellow markings. Good keeper, very desirable for cooking purposes and brings high prices in the markets.
- RED ROME BEAUTY.** An improved Rome Beauty, identical in flavor and production. Color of fruit much brighter and solid red. Produces much higher percentage of fancy apples and also superior in quality than the ordinary strain of Rome Beauty. This bud selected superior strain of Red Rome Beauty makes 100% red color and can be picked for markets three weeks earlier than Rome Beauty.
- RED YORKING.** U. S. Plant Patent No. 105. Triple red, earlier coloring, York Imperial. The Red Yorking is similar to its parent in size and shape but its chief distinction is that it has very much better red color, being mostly 100 percent bright red color. The Red Yorking takes on high red color from three to five weeks earlier in the fall than York Imperial, which is a distinct advantage in selling as the earliness in season and high red color will command much higher prices. (15c per tree extra).



STAYMANS WINESAP



BUD SELECTED—TRUE TO NAME— EARLIER TO BEAR
YIELD GREATER PROFITS



Make Money With Peaches



Hiley Bears Bumper Crops.

VERY EARLY VARIETIES

- EARLY ROSE.** Another Favorite Commercial Peach. Early, white, cling, medium large size for an early Peach, high bright red skin, sweet, delicious flavor. Good shipper, making it a new favorite among commercial varieties.
- GREENSBORO.** White, freestone, hardy, big crops.
- JUNE ELBERTA.** Yellow, semi-freestone, big handsome Peach, high red color, delicious flavor and a good shipper.
- MAYFLOWER.** White, cling, small size with red all over.
- MT. ROSE.** White, cling. (June buds only).
- RED BIRD CLING.** White, cling, extra large with a bright red blush, the first peach of large size to ripen; the greatest very early money maker.
- UNEEDA.** Cling. Skin creamy white, with red blush.

EARLY VARIETIES

- CARMAN.** Semi-freestone, medium size white.
- CUMBERLAND.** White, semi-freestone, new variety.
- EARLY HILEY.** An earlier maturing strain of Hiley. (June buds only).
- ECLIPSE.** Yellow freestone, bears large crops.
- GOLDEN JUBILEE.** The Supreme Early Yellow Peach. Commercial peach orchardists for a century have been looking for an early peach of high quality, fine flavor, yellow, freestone, attractive color, and firm texture, and eventually they have found it in the marvelous Golden Jubilee. This variety is a sensation of recent introduction of new varieties and is by far better than any early variety of commercial importance which has been introduced in many years. It ripens about four days ahead of Carman.
- HILEY.** Bears huge crops of fancy peaches. Early, white freestone, medium size, highly red colored and is a very handsome peach of exceptionally good flavor. Tree is strong grower, very healthy and an extra heavy bearer. You can depend on Hiley to bear heavy crops year after year. The marvelous color and wonderful flavor have made it popular on the markets.
- MAMIE ROSS.** White, freestone, large size.

Rio Oso Gem

Patented

World's Largest Peach

Late yellow, freestone, ripening about two weeks later than Elberta. The coloring is unique as it starts to take on its beautiful dark crimson red color about one week before it begins to ripen. Its size is larger than J. H. Hale and resembles that variety to a certain extent. Bears heavy crops annually and has already become a great late peach. We recommend every peach grower to plant this variety.

Exclusive propagation and sales rights of Rio Oso Gem in the following states granted to Harrison's: Alabama, Arkansas, Connecticut, Delaware, District of Columbia, Florida, Georgia, Kansas, Kentucky, Louisiana, Maryland, Maine, Massachusetts, Mississippi, New Hampshire, New Jersey, New York, North Carolina, Oklahoma, Pennsylvania, Rhode Island, South Carolina, Tennessee, Texas, Vermont, Virginia and West Virginia.

PRICES OF RIO OSO GEM

U. S. Plant Patent No. 84

	1 to 9 trees	10 to 49 trees	50 or more trees
June Buds			
6 to 12 in.	\$0.40	\$0.30	\$0.20
12 to 18 in.55	.40	.30
18 to 24 in.65	.50	.35
One Year			
2 to 3 ft.	\$0.70	\$0.55	\$0.40
3 to 4 ft.75	.60	.45
4 to 5 ft.80	.65	.50
5 to 6 ft.85	.70	.55
6 to 7 ft.90	.75	.60

Prices apply only to the quantities of Rio Oso Gem Peach trees ordered and cannot be assorted varieties of other Peaches and other fruits.

Supply of Rio Oso Gem Peach Trees is Limited.

Early Varieties, Continued

- SOUTH HAVEN.** Yellow, freestone, large, handsome, uniform size, delicate flavor, ripens about 15 to 18 days ahead of Elberta. Tree is very hardy, good grower and a consistent heavy bearer, adapted to cold climates; produces bumper crops in mild climates.
- VALIANT.** Seedling of Elberta, yellow freestone, productive.
- VEDETTE.** Yellow, freestone, highly colored, very productive.

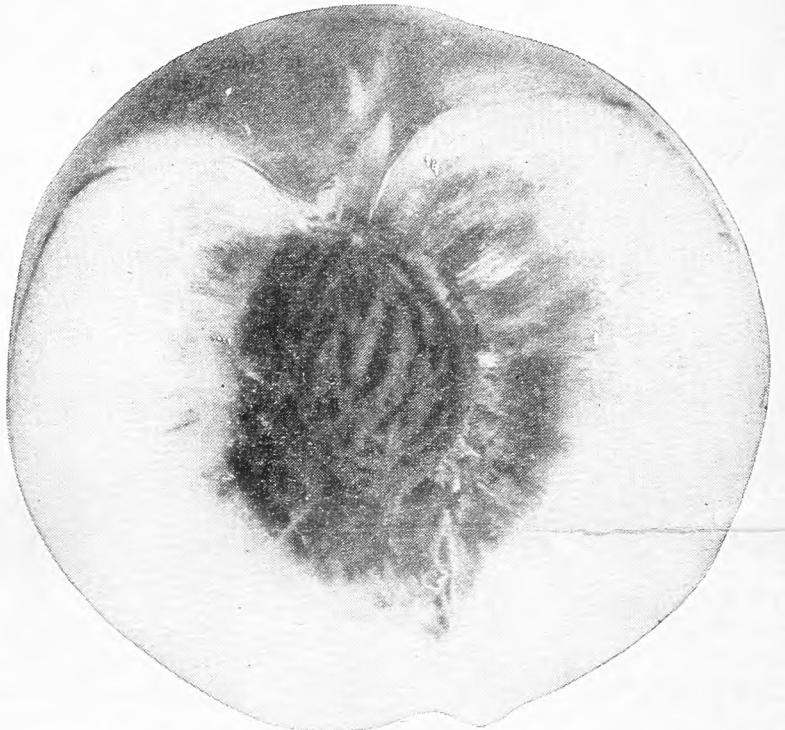
EARLY MIDSEASON VARIETIES

- CHAMPION.** White, freestone, very large, creamy white with red cheek, sweet, juicy; very high flavor.
- CRAWFORDS EARLY.** Yellow freestone, juicy, sweet flavored, prolific bearer.
- EARLY ELBERTA.** Yellow, freestone, large, lemon yellow with a dark cast, blush with vivid red. Beautiful appearance, high quality, being somewhat similar to Elberta, although a trifle better flavor; rich golden tender flesh, yet firm and has a delightful flavor; excellent for canning.
- HALE HAVEN.** Yellow freestone, colors before ripening, heavy bearer. Being planted in every peach section. 10c per tree extra.
- ROCHESTER.** Yellow, freestone, large, covered with mottled red blush; flesh yellow stained with red at pit, very good quality, prolific bearer. One of the best early midseason yellow freestone peaches for nearby markets, and highly desirable for canning.
- SLAPPEY.** Yellow, freestone, rich juicy and extra good flavor.
- VETERAN.** Yellow freestone, large, new variety.

MIDSEASON VARIETIES

- BELLE OF GEORGIA (Belle).** Large, white freestone, recognized as the best all around white peach. Should be included in every planting. Very hardy and productive.
- ELBERTA.** The Greatest and Best Money-making Peach. Yellow, freestone, Midseason. Fruit is large to extra large; golden yellow with brilliant shades of red; firm, juicy, rich, sweet and good flavor. Elberta has the greatest international reputation of any peach. It has been the standard for all other peaches almost since the date of its introduction. The coloring of Elberta is practically perfect. The rich, yellow skin is almost entirely covered with dark red blush upon the sunny side. This attractive appearance and the uniform large size serve to sell it almost on sight. We offer original strain trees which is the best strain obtainable.
- J. H. HALE.** Extra Large Size. Yellow, freestone, extra large, beautiful red coloring, firm and of the highest quality and enticing flavor. J. H. Hale ripens about two or three days prior to Elberta. We offer original strain trees.
- OLD MIXON.** White freestone, good flavor.
- RAY.** A highly popular peach, bears when other peaches fail. Ideal for nearby markets and roadside stands.

World's Largest Peach



RIO OSO GEM

World's Largest Peach

MIDSEASON LATE VARIETIES

- BRACKETT.** The fruit is rich yellow with dark carmine cheek. Size is as large or larger than Elberta and much better flavored. Begins to ripen a few days after Elberta.
- CRAWFORD LATE.** Yellow, freestone, an old commercial favorite.
- ROBERTA (Augbert).** A comparatively new variety of great merit. Resembles the Elberta in many respects, but ripens about a week to ten days later. An excellent sort to prolong the Elberta season.
- SHIPPERS LATE RED.** Large, round, yellow, freestone, very attractive.
- WILMA.** Yellow freestone.

LATE VARIETIES

- BEER SMOCK.** Yellow, freestone.
- BERKS FAVORITE.** White, freestone.
- FOX SEEDLING.** White, freestone.
- IRON MOUNTAIN.** White, freestone.
- SALBERTA.** Yellow, freestone, large, being a satisfactory cross between Elberta and Salwey. Salberta inherited the size, quality and productiveness of Elberta, and inherited the lateness in season of Salwey.

VERY LATE VARIETIES

- KRUMMELS (Krummels Late October).** Yellow freestone, round, fine flavor.
- SALWEY.** Yellow, freestone.
- WHITE HEATH CLING (Heath).** White, round, cling. Favorite for canning and pickling.

IT PAYS TO PLANT THE BEST TREES

Harrison's peach trees are the best peach trees you can plant in your orchard. Our superior Berlin climate and soil plus Harrison's method of propagating, planting, budding, spraying, pruning, digging, grading and packing are what make the fine trees. If we could get you to come to Berlin we would show you all the details. If you cannot come and will send us your order we will stake our reputation on the promise that you will get the very best trees that can be grown.

PRICES OF HARRISON GROWN PEACH TREES

(Except Rio Oso Gem and Hale Haven)

	1 to 9 trees	10 to 49 trees	50 to 299 trees	300 to 599 trees	600 or more trees
June Buds					
6 to 12 in.	\$0.15	\$0.12	\$0.08	\$0.07	\$0.06
12 to 18 in.18	.15	.10	.09	.07
18 to 24 in.20	.17	.12	.10	.09
One Year					
1 1/2 to 2 ft.	\$0.25	\$0.20	\$0.15	\$0.12	\$0.10
2 to 3 ft.30	.25	.20	.17	.15
3 to 4 ft.35	.30	.25	.22	.20
4 to 5 ft.40	.35	.30	.27	.25
5 to 6 ft.50	.40	.35	.32	.30
6 to 7 ft.60	.50	.40	.37	.35

(Can be assorted Peaches or other fruit trees).
(Hale Haven, add 10c per tree to above prices).



YOU PAY NO MORE FOR HARRISON'S BUD SELECTED FRUIT TREES



ELBERTA

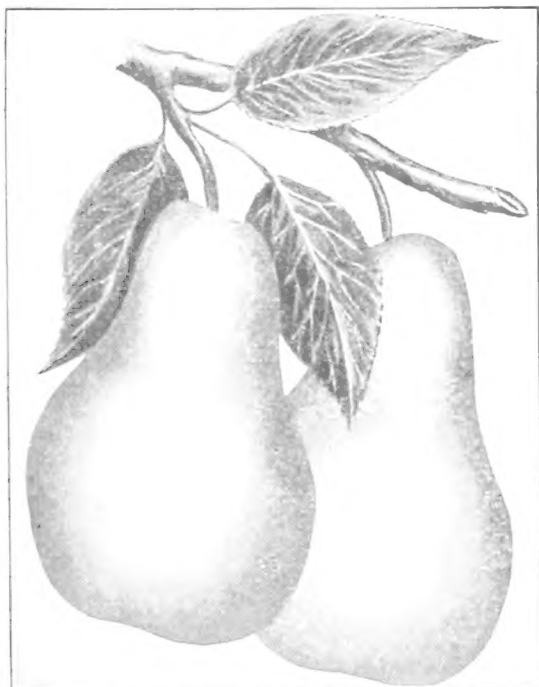
Luscious Fruits That Are Easily Grown



HARRISONS' HI-QUALITY GRAPE VINES

A SPECIALTY WITH US

	1 to 9 vines	10 to 49 vines	50 to 299 vines	300 to 599 vines	600 or more vines
CONCORD. Dark purple-black. Most popular grape grown.					
2 yr. No. 1	\$0.15	\$0.12	\$0.08	\$0.06	\$0.05
1 yr. No. 1	.10	.07	.05	.04	.03
AGAWAM. Red.					
2 yr. No. 1	.20	.15	.10	.08	.07
1 yr. No. 1	.15	.12	.08	.06	.05
CATAWBA. Red.					
2 yr. No. 1	.20	.15	.10	.08	.07
1 yr. No. 1	.15	.12	.08	.06	.05
DELAWARE. Red.					
2 yr. No. 1	.25	.20	.15	.10	.08
1 yr. No. 1	.20	.15	.10	.08	.06
IVES. Purple.					
2 yr. No. 1	.20	.15	.10	.08	.06
1 yr. No. 1	.15	.12	.08	.06	.05
MOORE'S EARLY. Black.					
2 yr. No. 1	.20	.15	.10	.08	.07
1 yr. No. 1	.15	.12	.08	.06	.05
NIAGARA. White.					
2 yr. No. 1	.18	.13	.08	.07	.06
1 yr. No. 1	.15	.12	.08	.06	.04
PORTLAND. White.					
1 yr. No. 1	.25	.20	.15	.10	.08
SALEM.					
1 yr. No. 1	.20	.15	.10	.08	.07
WORDEN. Purple.					
2 yr. No. 1	.20	.15	.10	.08	.07
1 yr. No. 1	.15	.12	.08	.06	.05



BARTLETT PEARS

SWEET CHERRIES

BING. Very large dark brown, best firm, sweet.
BLACK TARTARIAN. Very large sweet, purplish-black color, juicy rich flavor, heavy bearer and most profitable sweet variety grown.
GOVERNOR WOOD. Large, light yellow, marked with red, sweet flavor.
LAMBERT. Extra large, sweet, jet black, very popular.
NAPOLEON (Royal Anne) Large, pale yellow, bright red cheek, sweet, excellent flavor, prolific bearer.
SCHMIDT (Schmidt's Bigarreau). Large, sweet, deep black tender, fine flavor.
WINDSOR. Large, sweet, almost black, fine quality. Valuable late variety.
YELLOW SPANISH. Large, sweet, yellow with red tinge. One of the most beautiful and popular of the light colored cherries. Heavy bearer.

PRICES OF SWEET CHERRIES

	1 to 9 trees	10 to 49 trees	50 to 299 trees	300 to 599 trees	600 or more trees
1 to 2 ft.	\$0.35	\$0.30	\$0.25	\$0.22	\$0.20
2 to 3 ft.	.40	.35	.30	.27	.25
3 to 4 ft.	.50	.40	.35	.32	.30
4 to 5 ft.	.60	.50	.45	.42	.40
5 to 6 ft.	.70	.60	.55	.52	.50

(Can be assorted Cherries or other fruit trees.)

SOUR CHERRIES

FOR HOME AND MARKET

DYEHOUSE. Ripens a week ahead of Early Richmond. The earliest good sour cherry.
EARLY RICHMOND. Exceedingly hardy and productive.
ENGLISH MORELLO. Large blackish-red cherry. Hardy and productive.
MAY DUKE. Very early, productive, and old time favorite.
MONTMORENCY (Large Montmorency). Midseason, sour, large, sound and red, slightly acid; flesh is very tender and of unusually good quality, being by far the best variety of sour cherry grown. The best shipper of all sour, which with its wonderful carrying ability for long distance shipments, along with its handsome, appetizing appearance and large size, has made Montmorency in a class by itself, always commanding the highest market prices.
RICHMORENCY. A Montmorency type that ripens a week or more earlier than Large Montmorency. Produces heavy crops and the size of the fruit is large.

PRICES OF SOUR CHERRIES

	1 to 9 trees	10 to 49 trees	50 to 299 trees	300 to 599 trees	600 or more trees
1 to 2 ft.	\$0.30	\$0.25	\$0.22	\$0.18	\$0.15
2 to 3 ft.	.35	.30	.25	.22	.20
3 to 4 ft.	.40	.35	.30	.27	.25
4 to 5 ft.	.50	.45	.40	.35	.30

(Can be assorted Cherries or other fruit trees.)

HARRISON GROWN PLUMS

EARLY TO BEAR

ABUNDANCE. Early, large, lemon-yellow, hardy, productive.
BRADSHAW. Midseason, large, dark violet-red, juicy, excellent flavor. Desirable for canning.
BURBANK. Midseason, large cherry-red, high quality, very productive. Popular commercial variety.
ITALIAN PRUNE (Fellenberg). Late, medium size, dark purple, delicious. Fine for drying.
RED JUNE. Very early, medium size, deep vermilion-red; good.
SHROPSHIRE DAMSON. Late, medium size, dark purple. Very productive. The best for preserving. The popular old-fashioned Damson variety.
WICKSON. Late, very large, deep maroon-red covered with white bloom, flesh firm, meaty, yellow, rich, aromatic, cling.

DELICIOUS NECTARINES

QUETTA. One of the newer nectarines that is being tested for commercial possibilities in the East. Fruit large, greenish-white, splashed with red. Plant some out this year.
SURE CROP. Very vigorous and productive. The fruits are large, roundish, white and overlaid with very attractive red. Very pleasing flavor.

APRICOTS

ALEXANDER. Early, prolific, freestone, orange with red blush. Russian variety. Hardy where peaches cannot be grown.
EARLY GOLDEN. Small, pale orange, juicy and sweet. It is a hardy, prolific bearer; ripens first of July.
SUPERB. Medium size, light salmon colored fruit; hardy.

PRICES OF PLUMS, APRICOTS AND NECTARINES

	1 to 9 trees	10 to 49 trees	50 to 299 trees	300 or more trees
1 to 2 ft.	\$0.30	\$0.25	\$0.20	\$0.18
2 to 3 ft.	.35	.30	.25	.22
3 to 4 ft.	.40	.35	.30	.27
4 to 5 ft.	.50	.45	.40	.35
5 to 6 ft.	.60	.50	.45	.40

(Can be assorted Plums, Apricots, Nectarines or other Fruit Trees.)

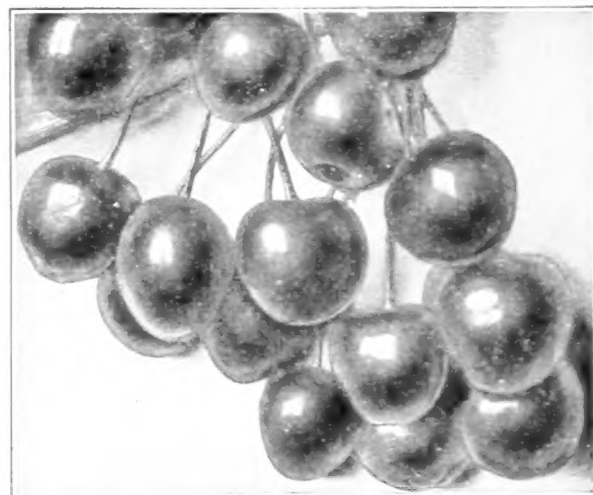
PEARS

PRICES OF HARRISONS' PEAR TREES

	1 to 9 trees	10 to 49 trees	50 or more trees
1 to 2 ft.	\$0.40	\$0.30	\$0.25
2 to 3 ft.	.50	.40	.30
3 to 4 ft.	.60	.50	.40
4 to 5 ft.	.70	.60	.50

(Can be assorted Pears or other Fruit Trees.)

ANJOU. Large, green in color, somewhat yellow when ripe, buttery melting, rich vinous, good flavor. Tree vigorous, hardy, prolific bearer.
BARTLETT. Large, rich golden-yellow, with a light red blush when ripe; buttery, juicy, melting, with a very rich, pleasing flavor. Bartlett is without a peer, having won an international reputation as the best and the most profitable commercial pear and also the finest home-orchard variety.
CLAPPS FAVORITE. Large size, hardy and very productive. Thrives where other varieties fail.
DOUGLASS. Very resistant to blight. A winter pear of wonderful quality, golden yellow with a faint blush on the cheek. Bears early.
DUCHESS. Very large, dull greenish-yellow. Tree somewhat dwarf but a dependable bearer.
KIEFFER. Fruit large, skin yellow with light vermilion cheek. Most popular canning pear.
SECKEL. A beautiful and delicious little pear. One of the richest and highest flavored pears grown. Tree dwarf, bears prolific crops.
WORDEN SECKEL. A seedling of Seckel. Superior in size and color.



Large Montmorency—greatest sour cherry

ASPARAGUS IS A PROFITABLE CROP

MARY WASHINGTON. There is no variety of asparagus as good as Mary Washington and whether you are growing for home use only or for market you cannot afford to grow any other. It is rust resistant and growers are discarding all other varieties in favor of the famous Mary Washington because it is earlier, stalks are larger, more tender and more productive. Plant this Pedigreed strain.

Prices of Genuine Pedigreed Mary Washington Asparagus Roots

	25 plants	50 plants	100 plants	250 plants	500 plants	1,000 plants	5,000 plants
1 yr. No. 1	\$0.40	\$0.60	\$1.00	\$2.00	\$3.25	\$5.50	\$22.50
2 yr. No. 1	.60	.90	1.50	2.75	4.25	7.50	32.50

RED RASPBERRIES

	12 plants	25 plants	50 plants	100 plants	250 plants	500 plants	1,000 plants
Chief	\$0.75	\$1.25	\$2.00	\$3.50	\$6.50	\$12.00	\$22.00

Latham and St. Regis same prices as Chief.

BLACK RASPBERRIES

	12 plants	25 plants	50 plants	100 plants	250 plants	500 plants	1,000 plants
Cumberland	\$0.50	\$0.65	\$1.40	\$2.50	\$4.75	\$9.50	\$16.00
New Logan	.55	.90	1.50	2.60	5.00	9.00	17.00
Plum Farmer	.55	.90	1.50	2.60	5.00	9.00	17.00

BLACKBERRIES

	12 plants	25 plants	50 plants	100 plants	250 plants	500 plants	1,000 plants
Alfred	\$0.75	\$1.25	\$2.00	\$3.25	\$6.00	\$11.00	\$21.00
Eldorado	.70	1.10	1.85	3.15	5.75	10.50	20.00

Early Harvest and Mersereau same prices as Alfred.

Harrisons' Selected Strawberry Plants FOR SPRING PLANTING

We have several million strawberry plants in over twenty varieties to offer our customers this season. These plants were grown on our own farms and are of the finest quality obtainable. You can expect bigger crops and profits from our selected heavy bearing strains. Grown, dug and packed by men with years of experience, we are well prepared to take care of your needs. Let us quote you on your requirements.



BUY BUD SELECTED SUPER STRAIN FRUITS—IT PAYS



Ornamentals

Improve the Appearance
of YOUR HOME GROUNDS

**HARRISON'S
GROWN**



Take Advantage of Our Lifetime Experience In Growing Evergreens

QUALITY PLANTS AT A LOW PRICE

AMERICAN ARBORVITAE. The largest seller of all Arborvitae. Erect, pyramidal habit, bright green foliage, dense from ground up. Rapid grower.

CHINESE ARBORVITAE (*Biota orientalis*). Rather stiff columnar habit, bright green foliage. Very attractive.

IRISH JUNIPER. Forms a narrow and dense column, compact, bluish-green foliage. Most attractive when planted around the foundation of a home, at corners and entrances. Widely used in formal gardens.

Prices of the above Varieties: 15 to 18 in. \$0.60 each, 3 for \$1.20, 6 for \$2.10, 10 for \$3.00; 18 to 24 in. 90c each, 3 for \$1.95, 6 for \$3.30, 10 for \$5.00; 2 to 3 ft. \$1.25, 3 for \$3.00, 6 for \$5.40, 10 for \$8.00; 3 to 4 ft. \$1.75 each, 3 for \$3.75, 6 for \$6.90, 10 for \$10.00; 4 to 5 ft. \$2.50 each, 3 for \$6.00, 6 for \$11.40, 10 for \$17.50.

COMPACT GLOBULAR ARBORVITAE (*Thuja occidentalis compacta*). Natural compact globe-shaped. Needs no trimming. 12 to 15 in. 60c each, 3 for \$1.20, 6 for \$2.10; 15 to 18 in. 75c each, 3 for \$1.65, 6 for \$3.00; 18 to 21 in. \$1.00 each, 3 for \$2.10, 6 for \$3.90; 21 to 24 in. \$1.35 each, 3 for \$3.30, 6 for \$6.00; 2 to 2½ ft. \$1.75 each, 3 for \$3.75, 6 for \$6.90; 2½ to 3 ft. \$2.50 each, 3 for \$6.00, 6 for \$11.40.

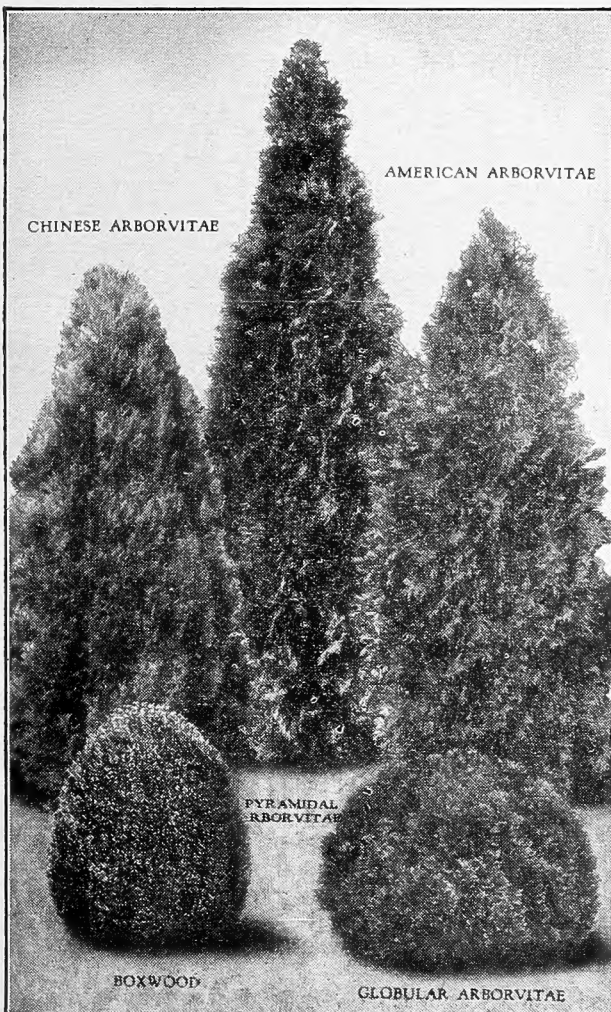
SPREADING EVERGREENS

ANDORRA JUNIPER. Low spreading type, purple bronze color during winter.

PFITZERS JUNIPER. Most popular spreading evergreen.

SAVIN JUNIPER. Spreading vase shaped growth. One of the most attractive spreading evergreens.

Prices of above Varieties: 12 to 15 in. spread 75c each, 3 for \$1.65, 6 for \$3.00, 10 for \$4.50; 15 to 18 in. spread \$1.25 each, 3 for \$3.00, 6 for \$5.40, 10 for \$8.00; 18 to 24 in. spread \$1.75 each, 3 for \$4.50, 6 for \$8.40, 10 for \$12.50.



EVERGREENS THAT ARE NOT EXPENSIVE

FERN LIKE ARBORVITAE (*Thuja occidentalis filicoides*). Pyramidal shape, dark green foliage.

HINOKI RETINOSPORA (*Retinospora obtusa*). Compact pyramidal form slightly drooping tips, dark green flat foliage.

LEE GOLDEN ARBORVITAE (*Thuja occidentalis elegantissima*). Compact, pyramidal shape; golden green foliage, hardy.

NORWAY SPRUCE (*Picea excelsa*). Open pyramidal growth, planted everywhere, hardy.

PLUME-LIKE RETINOSPORA. A handsome evergreen from Japan with feathery foliage. Upright grower, broad at base, excellent for foundation plantings. We offer it in green or golden foliage.

PISIFERA RETINOSPORA. A handsome loose growing pyramidal type. We offer it in either green or golden.

PYRAMIDAL ARBORVITAE (*Thuja occidentalis pyramidalis*). A really beautiful evergreen that should be included in every planting. It grows tall and narrow, requires no trimming and retains its bright green color throughout the whole year. A pair of them placed at the entrance or at the corner of a house makes a superb showing.

SWEDISH JUNIPER. Tall, columnar habit, dense, fairly broad foliage, drooping tips.

SIBERIAN ARBORVITAE. Dark green foliage, dense, compact upright grower.

THREAD LIKE RETINOSPORA (*Retinospora filifera*). Has long stringy droopy branches, slow grower.

TOM THUMB ARBORVITAE (*Thuja occidentalis ellwangeriana*). A low, broad pyramidal form of evergreen with slender branches and feathery foliage.

VEITCH'S JAPANESE RETINOSPORA (*Retinospora squarrosa veitchii*). Foliage silvery blue, feathery and dense, giving soft woolly appearance. Broad pyramidal outline. One of the best Retinosporas.

Prices on above Varieties: 18 to 24 in. 90c each, 3 for \$1.95, 6 for \$3.30, 10 for \$5.00; 2 to 3 ft. \$1.50 each, 3 for \$3.75, 6 for \$6.90, 10 for \$10.00; 3 to 4 ft. \$2.25 each, 3 for \$5.25, 6 for \$9.90, 10 for \$15.00; 4 to 5 ft. \$3.00 each, 3 for \$7.50, 6 for \$13.80, 10 for \$22.00.

BLUE TINTED EVERGREENS

MEYERS JUNIPER. Grows irregular, blue color, handsome.

SPINY GREEK JUNIPER. A tall grower of upright columnar habit and bluish-green foliage. The growth is so slow that the tree is well adapted for foundation plantings and other situations requiring dwarf trees.

VIRGINIA BLUE JUNIPER. Broadly conical form and beautiful glaucous-blue foliage make it one of the choicest evergreens.

Prices on 3 varieties above: 15 to 18 in. \$1.00 each, 3 for \$2.25, 6 for \$4.20, 10 for \$6.00; 18 to 24 in. \$1.40 each, 3 for \$3.45, 6 for \$6.30, 10 for \$9.00; 2 to 3 ft. \$2.00 each, 3 for \$4.50, 6 for \$8.40, 10 for \$13.00.

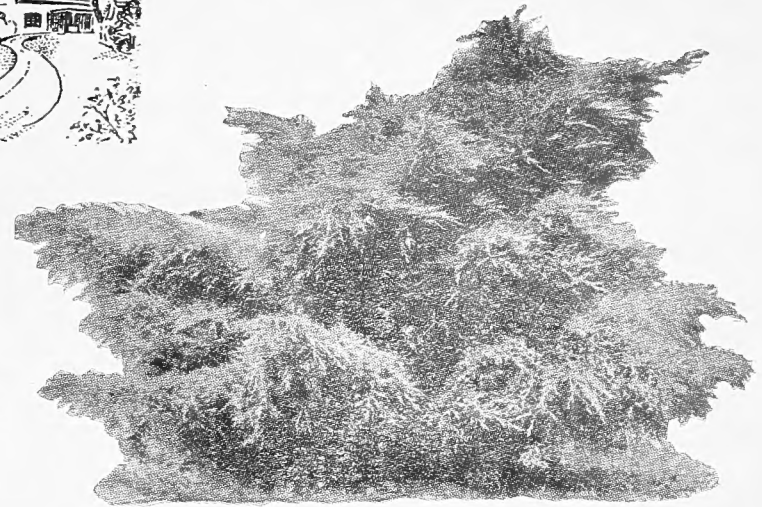
ARISTOCRATIC EVERGREENS

JAPANESE SPREADING YEW (*Taxus cuspidata*). The beautiful yew of moderate bushy growth, the upright spreading branches densely clothed with short leaves of dull green. Hardest of all yews, grows in semi-shady locations.

SPREADING ENGLISH YEW (*Taxus baccata repandens*). Low spreading, dwarf grower, with dark, glossy green foliage.

Prices of above Varieties: 12 to 15 in. spread 85c each, 3 for \$1.95, 10 for \$5.50; 15 to 18 in. spread \$1.35 each, 3 for \$3.30, 10 for \$9.00; 18 to 24 in. spread \$2.00 each, 3 for \$5.25, 10 for \$15.00.

UPRIGHT ENGLISH YEW (*Taxus baccata capitata*). Upright grower, dense, green foliage. Makes a most attractive specimen plant when fully matured. 12 to 15 in. 85c each, 3 for \$1.95, 10 for \$5.50; 15 to 18 in. \$1.35 each, 3 for \$3.30, 10 for \$9.00; 18 to 24 in. \$2.00 each, 3 for \$5.25, 10 for \$15.00; 2 to 3 ft. \$3.00 each, 3 for \$8.10, 10 for \$25.00; 3 to 4 ft. \$4.50 each, 3 for \$12.75, 10 for \$37.50.



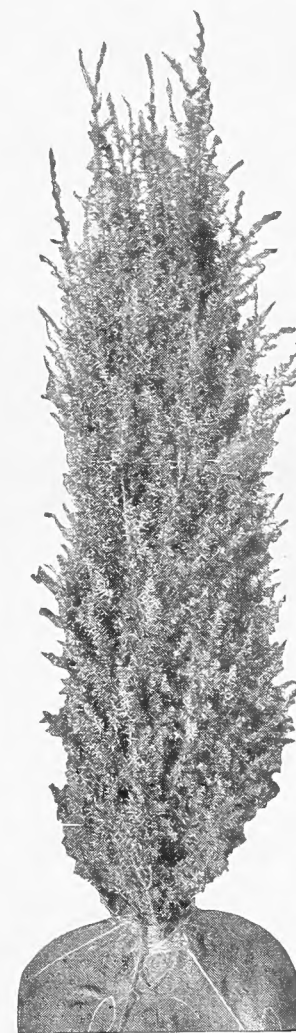
PFITZERS JUNIPER

Aristocratic Evergreens, Continued,

IRISH YEW (*Taxus baccata hibernica*). This evergreen is the aristocratic member of the Yew family. It grows tall and narrow with stout, crowded, spirally arranged leaves which are dark green in color. Fortunately, we have some specimen plants in our nurseries from which we are able to propagate. 12 to 15 in. \$1.25 each, 3 for \$3.00, 10 for \$9.50; 15 to 18 in. \$1.50 each, 3 for \$3.75, 10 for \$12.00; 18 to 21 in. \$2.00 each, 3 for \$5.25, 10 for \$17.00; 21 to 24 in. \$2.75 each, 3 for \$7.50, 10 for \$24.00; 2 to 2½ ft. \$3.75 each, 3 for \$10.50, 10 for \$34.00; 2½ to 3 ft. \$5.00 each, 3 for \$13.50, 10 for \$44.00.

INDIAN CEDAR (*Cedrus deodara*). Feathery blue-green foliage, graceful drooping branches, tall growing. 4 to 5 ft. \$4.00 each, 2 for \$7.00.

JAPANESE CEDAR (*Cryptomeria japonica lobbi*). A very picturesque looking evergreen; grows tall and narrow and is very rapid growing. Everyone who sees this variety is very enthusiastic about it. 2 to 3 ft. \$3.00 each, 2 for \$5.00; 3 to 4 ft. \$4.00 each, 2 for \$7.00; 4 to 5 ft. \$5.50 each, 2 for \$10.00.



IRISH JUNIPER

Immediate
Results are
Secured with
Harrisons'
"Hi-Quality"
Evergreens

The roots of each
evergreen is dug with
a ball of rich earth
and wrapped in bur-
lap.

They are sure
to please you

Freight is the most
economical way of
shipping Balled and
Burlapped plants.



Remember! Houses Are Cold and Uninviting Until The Marvel of Growing Things Transform Them Into Real Homes



47 Roses

IN TONES OF BUFF-VERMILLION PINK and FLAME TINTS

Overblooming Hybrid Tea Varieties

they Flower Abundantly

Harrisons' Supreme
 EVERBLOOMING OUTDOOR GROWN
 HYBRID TEA ROSES
 50c each, 3 for \$1.35; 6 for \$2.40; 12 for \$4.44; 50 or more 35c each.

Harrisons' Supreme Roses

THEY ARE A SENSATION WHEREVER GROWN



Talisman



Red Radiance

BETTY UPRICHARD. Salmon pink inside, carmine red outside. Very beautiful.
BRIARCLIFF. Flower silvery pink. Very fragrant.
COLUMBIA. Upstanding garden rose. Bright pink flowers, stiff petals.
CALEDONIA. Opens ivory, changing to pure white. Exquisite long buds on great stems, opening to a large fully double rose of great beauty, soft velvety texture.
CRUSADER. Rich velvety crimson of bright hue and massive form, extremely double.
DUCHESS OF WELLINGTON. Beautiful buds of soft yellow deeply tinted with orange.
E. G. HILL. It constantly produces beautiful buds on long stems, opening into large, double, fragrant flowers of shining red. Belongs in every garden.

EDITOR MCFARLAND. A very fine brilliant pink rose, destined to great popularity.
EDITH NELLIE PERKINS. Exquisite two toned pink. Always in bloom.
ETOILE DE FRANCE. An old favorite, sparkling red. Very desirable.
ETOILE DE HOLLANDE. Bright red; fragrant.
FRANCIS SCOTT KEY. Large, double, perfectly formed flowers of crimson-red.
GRUSS AN TEPLITZ. The great bedding rose. Brilliant scarlet, very hardy, always in bloom.
INDEPENDENCE DAY. A brilliant orange-copper rose that is always in bloom. Admired by all.
JOANNA HILL. A fine yellow rose; fragrant.
KAISERINE AUGUSTE VICTORIA. Creamy buds which develop into absolutely perfect blooms of dazzling snow-white, tinted slightly with lemon-yellow at center.

LUXEMBURG. A fine yellow rose.
LOS ANGELES. Very popular brilliant salmon-pink.
MRS. W. C. MILLER. Beautiful large flowers of clear rose and soft pink.
MME. BUTTERFLY. Light pink, faintly tinted with gold near base of petals. Richly perfumed.
MRS. CHAS. BELL. Shell-pink tree bloomer; very fragrant. Should be in every garden.
MRS. PIERRE S. DUPONT. It is a glorious sight from early summer until freezing weather, always a mass of bloom, a rich golden yellow. We consider it the best yellow rose.
MME. EDOUARD HERRIOTT. Brilliant orange-red and salmon-tinted, always in bloom.
MARGARET MCGREY. The most popular red rose, always in bloom; a thrifty, healthy, vigorous grower. One of the finest of all roses.
MEV. G. A. VAN ROSSEM. An exceedingly fragrant rose of orange and bronze, beautifully veined. Fine for cutting.
MCGREY'S SCARLET. Free bloomer, beautiful flowers of deep vivid scarlet.
MRS. LOVELL SWISHER. Freely produces immense flowers of light salmon-pink on long stems.
PINK RADIANCE. Successful everywhere and all summer produces lovely pink, fragrant blooms. Most popular pink rose and should be planted everywhere.
PRES. HERBERT HOOVER. One of the outstanding roses. A glorious new rose of vivid carmine-red tinted with yellow, orange and scarlet, richly perfumed and free flowering.
RAPTURE. Glowing pink, fine for cutting.
ROSLYN. A new rose deep yellow shaded orange.
RED RADIANCE. America's favorite red rose, hardy, healthy, freeblooming.
ROSELANDIA. Blooms freely, flowers are soft pink.
SOUV. DE CLAUDIUS PERNET. A real yellow.
SOUV. DE GEORGES PERNET. Magnificent blooms, brick red.
SUNBURST. Yellow shaded orange. Handsome.
SENSATION. Dark velvety scarlet-crimson.
TALISMAN. Flowers of brilliant red, gold and orange are freely produced all season.
WATERLAND. Dark red rose and very double, strong grower.
VILLE DE PARIS. A fine yellow rose.

HYBRID PERPETUAL OR JUNE ROSES

FIELD GROWN PLANTS

45c each; 3 for \$1.20; 6 for \$2.20; 12 for \$4.00; 50 or more 30c each.
FRAU KARL DRUSCHKI. Enormous pure white.
GENERAL JACQUEMINOT. Fragrant perfect formed blooms of scarlet crimson.
MAGNA CHARTA. A rosy-pink full rounded globular rose of marked fragrance.
MRS. JOHN LAING. Soft pink, beautiful formed large, double blossoms.
PAUL NEYRON. The well-known H. P., immense pink flowers.
ULRICH BRUNNER. Brilliant scarlet-crimson.

CLIMBING ROSES

FIELD GROWN PLANTS

40c each; 3 for \$1.10; 6 for \$2.00; 12 for \$3.60.
AMERICAN PILLAR. Large clusters of single rosy-pink flowers, with yellow shadings. Rank climber.
DOROTHY PERKINS. Full, double, shell-pink flowers in large clusters. A very attractive climber.
DR. W. VAN FLEET. Light shell-pink to silver-flesh color blooms; double climber.
GARDENIA. Small yellow buds, opening to creamy white; very fragrant climber.
HARRISONS YELLOW. Bright golden yellow; very hardy.
PRIMROSE. A hardy, undying primrose-yellow climbing rose, double flowers. Vigorous.
PAUL'S SCARLET CLIMBER. Large intense scarlet-colored blooms; freely produced. It is strong and perfectly hardy. The most popular climbing rose.
SCORCHER. A new rose from Australia with enormous ruffled blooms of vermilion-red. Very free bloomer. Grows rapidly to a height of ten feet or more. No other climber like it.

GARDEN PEONIES

THEY RIVAL THE ROSE

Prices of all Peonies—Strong 3 to 5 eye divisions
 30c each; 4 for \$1.00; 8 for \$1.75; 12 for \$2.40; 50 or more at 15c each.
ALEXANDER DUMAS. Pink; early.
AUORE. White; late.
AVALANCHE. Blush white; late midseason.
BARONESS SCHROEDER. Flesh-white; late midseason.
DELACHEL. Crimson-purple; midseason.
DUC de WELLINGTON. Sulphur-white; late.
DUCHESS de NEMOURS. Sulphur-white; late.
EDULIS SUPERBA. Rose-pink; very early.
FELIX CROUSSE. Brilliant crimson; late midseason.
FESTIVA MAXIMA. White; early.
GERMAINE BIGOT. Lilac-rose; midseason.
JEANNE D'ARC. Pink; midseason.
LA PERLE. Soft pink; midseason.
LA ROSERIE. Cream-white; midseason.
MADAME DUCEL. Old-rose; early midseason.
MADAME de VERNEVILLE. White; early.
MADAME GEISSLER. Rose-pink; late midseason.
MADAME LEMOINE. White; very late.
MARECHAL VAILLANT. Milk-white; early.
MARGUERITE GERARD. Pale pink; midseason.
MONS. DUPONT. Ivory-white.
PHILOMELE. Dark rose; early.
PRESIDENT ROOSEVELT. Deep red; midseason.
SARAH BERNHARDT. Dark rose-pink; late.
SUZETTE. Rose-pink; midseason.
UMBELLATA ROSEA. Violet-rose; very early.

Broad-Leaved Evergreens

AZALEAS

AZALEA HINODEGIRI. Deep carmine blooms, evergreen foliage. The most desirable kind. Spreading dwarf type grower.
AZALEA AMOENA. Rose-purple flowers, blooms in early spring and retains its foliage all year.
AZALEA MACRANTHA. Large, single, salmon-red flowers, late bloomer.
 Prices of the above Azaleas: 4 to 6 in. spread, B&B \$0.85 each; 3 for \$0.85; 6 for \$1.50; 10 for \$2.00. 6 to 8 inch spread, B&B \$0.50 each; 3 for \$1.15; 6 for \$2.10; 10 for \$3.00. 8 to 10 inch spread, B&B \$0.70 each; 3 for \$1.65; 6 for \$3.00; 10 for \$4.50. 10 to 12 inch spread, B&B \$0.95 each; 3 for \$2.25; 6 for \$4.20; 10 for \$6.50. 12 to 15 inch spread, B&B \$1.25 each; 3 for \$3.00; 6 for \$5.70; 10 for \$9.00. 15 to 18 inch spread, B&B \$1.75 each; 3 for \$4.50; 6 for \$8.40; 10 for \$13.00.
DWARF ENGLISH BOXWOOD (*Buxus sempervirens suffruticosa*). A widely known and popular form of dwarf boxwood. It has small, deep green, dense leaves which hold their bright color throughout the winter months. Suitable for low hedges and edgings. Can be trimmed in various forms.
 Prices of the above variety: 4 to 6 in. 35c each; 3 for 90c; 6 for \$1.35; 10 for \$2.00. 6 to 8 in. 50c each; 3 for \$1.20; 6 for \$2.20; 10 for \$3.50. 8 to 10 in. 70c each; 3 for \$1.80; 6 for \$3.40; 10 for \$5.50. 10 to 12 in. 90c each; 3 for \$2.25; 6 for \$4.35; 10 for \$7.50. 12 to 15 in. \$1.25 each; 3 for \$3.30; 6 for \$6.00; 10 for \$9.50. 15 to 18 in. \$1.60 each; 3 for \$4.50; 6 for \$8.40; 10 for \$13.00.

BOXWOOD (*Buxus sempervirens*). Handsome shrubs of dense, compact growth. Leaves evergreen, quite small, deep glossy green. An ideal plant, more extensively used for shaping in various forms than possibly any other evergreen.
 Prices of the above variety: 4 to 6 in. 30c each; 3 for 75c; 6 for \$1.35; 10 for \$2.00. 6 to 8 in. 40c each; 3 for 95c; 6 for \$1.80; 10 for \$2.70. 8 to 10 in. 50c each; 3 for \$1.20; 6 for \$2.20; 10 for \$3.50. 10 to 12 in. 60c each; 3 for \$1.50; 6 for \$2.80; 10 for \$4.50. 12 to 15 in. 75c each; 3 for \$1.80; 6 for \$3.40; 10 for \$5.50. 15 to 18 in. \$1.00 each; 3 for \$2.55; 6 for \$4.80; 10 for \$7.50. 18 to 21 in. \$1.30 each; 3 for \$3.45; 6 for \$6.60; 10 for \$10.50. 21 to 24 in. \$1.75 each; 3 for \$4.50; 6 for \$8.40; 10 for \$13.00.

BUSH ARBUTUS (*Abelia grandiflora*). Dark glossy green leaves, pink tinted tubular shaped flowers from June until frost. Very popular. 1 to 1 1/2 ft. 50c each; 3 for \$1.20; 6 for \$2.00.

AMERICAN HOLLY (*Ilex opaca*). The Christmas Holly. Its bright green, spiny leaves and brilliant red berries make it one of our handsomest plants. We offer the Howard strain grown from grafts. 12 to 18 in., \$1.00 each; 18 to 24 in., \$1.50 each.

JAPANESE HOLLY (*Ilex crenata*). A much branched evergreen shrub with oval crenate leaves. Clusters of black berries form during the fall. Makes a splendid specimen plant. We offer two types, small or large leaf. 12 to 15 in., 75c each; 15 to 18 in., \$1.00 each; 18 to 24 in., \$1.50 each.

HOLLY LEAVED MAHONIA (*Mahonia aquifolium*). Bright, glossy green, holly-like leaves, turning rich red and bronze in autumn. Clustered racemes of attractive yellow flowers in spring. 18 to 24 in., \$1.25 each; 2 for \$2.25.



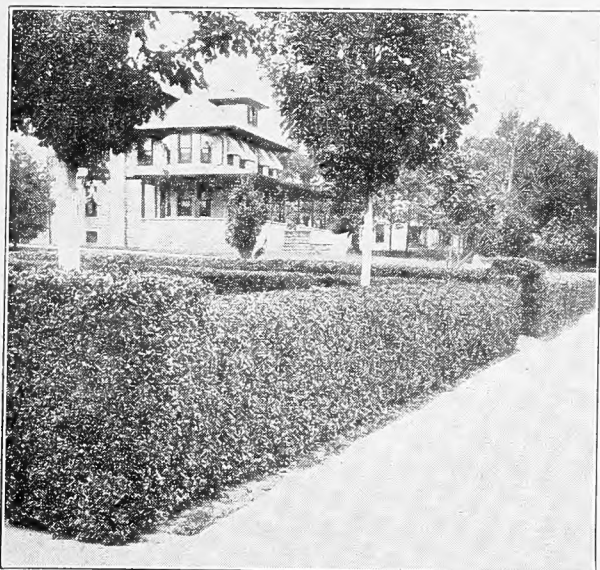
AZALEA HINODEGIRI



Every Rose We Offer Is A Hardy Two Year Field Grown Plant And Has Already Bloomed In The Nursery Row



America's Favorite Flowering Shrubs & Trees



California Privet

BETTER SHRUBS FOR LESS MONEY

- ANTHONY WATERER SPIREA.** Dwarf, bright pink flowers in June and July.
- ALTHEA OR ROSE OF SHARON.** Double red or semi-double white with crimson center.
- BILLARDI SPIREA.** Long spikes of attractive blooms. White or pink.
- BUTTERFLY BUSH.** Lilac colored flowers in midsummer.
- DEUTZIA, PRIDE OF ROCHESTER.** Double white flowers, which are slightly tinged with rose, appear in mid-June.
- GOLDEN BELL (Forsythia).** Upright grower, yellow flowers in early spring.
- GOLDEN BELL WEEPING.** Yellow flowers, arching branches.
- GOLDEN TWIG DOGWOOD (Cornus stolonifera flaviramea).** Dwarf grower, branches are golden in color, most attractive in winter.
- GARLAND or SWEET MOCK ORANGE (Philadelphus coronarius).** Of upright habit, and produces in June a wealth of white fragrant flowers.
- JAPANESE FLOWERING QUINCE (Cydonia japonica).** Scarlet flowers in April and May. No doubt one of the most attractive spring blooming shrubs.
- JAPANESE BUSH HONEYSUCKLE (Lonicera morrowi).** Early white flowers in June, followed by red berries.
- PINK WEIGELIA.** Delicate pink bell-shaped flowers.
- PUSSY WILLOW.** Shrub or dwarf tree with fur-like catkins during early spring.
- RED BRANCHED or CORAL DOGWOOD (Cornus alba sibirica).** Bright red bark, white flowers, blue fruit; rapid grower; beautiful winter effect.
- SPIREA REEVESIANNNA.** Fast grower, graceful white flowers in the spring.
- TARTARIAN HONEYSUCKLE.** Abundance of pink or white flowers followed by red berries. State color desired.
- TAMARISK AFRICANA.** Feathery, gray-green foliage; effective near water. Thrives at seashore.
- Prices of above varieties: 12 to 18 in. 25c each; 3 for 60c; 6 for \$1.00; 10 for \$1.50. 18 to 24 in. 30c each; 3 for 75c; 6 for \$1.35; 10 for \$2.00. 2 to 3 ft. 40c each; 3 for \$1.05; 6 for \$1.95; 10 for \$3.00.

Beautiful Shrubs For Special Purposes

- FIRETHORN.** A beautiful shrub covered with a profusion of white flowers in early spring, followed by bright orange berries which hang on all winter. 1½ to 2 ft. \$1.00 each; 2 to 3 ft. \$1.50 each; 3 to 4 ft. \$2.00 each.
- CREPE MYRTLE.** Red or pink varieties. 1½ to 2 ft. \$1.00 each, 3 for \$2.50; 2 to 3 ft. \$1.50 each, 3 for \$3.75.
- FRAGRANT SNOWBALL.** Pink, fragrant flowers in May and June. 12 to 15 in. 75c each; 3 for \$1.80; 15 to 18 in. \$1.00 each; 3 for \$2.50.
- HYDRANGEA PEE GEE.** Large flowers; at first snowy-white, then changing pink to reddish-bronze in the fall. 1½ to 2 ft. 40c each; 3 for \$1.05; 2 to 3 ft. 50c each; 3 for \$1.35.
- NANDINA DOMESTICA.** White flowers followed by red berries. Very attractive. 1 to 1½ ft. at 50c each; 1½ to 2 ft. at 75c each.
- PINK OR BLUE HYDRANGEA.** Color depends on acidity of soil. Field grown. 60c each; 3 for \$1.30.
- WEIGELA EVA RATHKE.** Very attractive deep carmine-red flowers, making a very showy shrub. 1½ to 2 ft., 40c each; 3 for \$1.05. 2 to 3 ft., 50c each; 3 for \$1.35.

Hedges Make Beautiful

Living Fences

CALIFORNIA PRIVET (Ligustrum Ovalifolium)

We grow California Privet by the mile. Most popular hedge plant; can be trimmed to any desired shape. For planting long hedges, this is the most economical variety. Quick grower.

	1 to 9 plants	10 to 49 plants	50 to 299 plants	300 or more plants
8 to 12 in.	\$0.05	\$0.04	\$0.03	\$0.02
1 to 1½ ft.07	.05	.04	.03
1½ to 2 ft.10	.07	.06	.05
2 to 3 ft.15	.12	.10	.08

JAPANESE BARBERRY (Berberis Thunbergi)

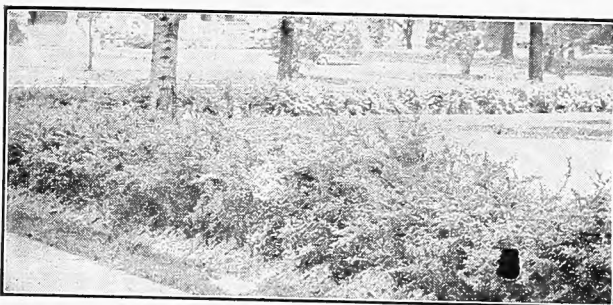
Best low dense hedge plant grown. Its abundant, small light green leaves, which turn to rich colors in autumn, and its wealth of scarlet berries make it very attractive. Extremely hardy and requires but little pruning. Ornamental and graceful the whole year.

	1 to 9 plants	10 to 49 plants	50 to 299 plants	300 or more plants
each plant.				
9 to 12 in.	\$0.12	\$0.07	\$0.05	\$0.04
12 to 15 in.15	.09	.07	.06
15 to 18 in.20	.15	.10	.09

RED-LEAVED BARBERRY (Berberis Thunbergi Atropurpurea)

A highly important introduction among shrubs, giving us for the first time a practical easily grown shrub of medium height, with good, distinctly red foliage. This must prove a boon to all types of landscaping, where studied contrasts are to be worked out with the shrub foliage depended on for colors.

	1 to 9 plants	10 to 49 plants	50 or more plants
each plant.			
9 to 12 in.	\$0.15	\$0.12	\$0.10
12 to 15 in.20	.17	.15
15 to 18 in.27	.23	.20



Hedge of Japanese Barberry

SPIREA VAN HOUTTEI

Beautiful in or out of bloom, and the medium tall, broad, compact screen it makes, is protective as well as ornamental. It is always hardy, growing anywhere and will do well in partial shade. Even when trimmed and kept low, it is a splendid hedge, dense to the ground.

	1 to 9 plants	10 to 49 plants	50 to 299 plants	300 or more plants
12 to 18 in.	\$0.15	\$0.10	\$0.07	\$0.06
18 to 24 in.20	.15	.12	.09
2 to 3 ft.25	.20	.15	.12
3 to 4 ft.30	.25	.20	.16

THE LOVELIEST LILACS

BELLE DE NANCY. Double satiny-rose.
CAERULA.

COMMON PURPLE. Purple.

HUGO KOSTER. Simple purple.

LAVELLENSIS.

LUDWIG SPAETH. Dark purplish-red.

MADAME ABEL CHATENAY. Double white.

MARLEYENSIS. Red.

MICHAEL BUCHNER. Pale lilac color.

PERSIAN PURPLE. Purple.

PRESIDENT GREVY. Double bright blue.

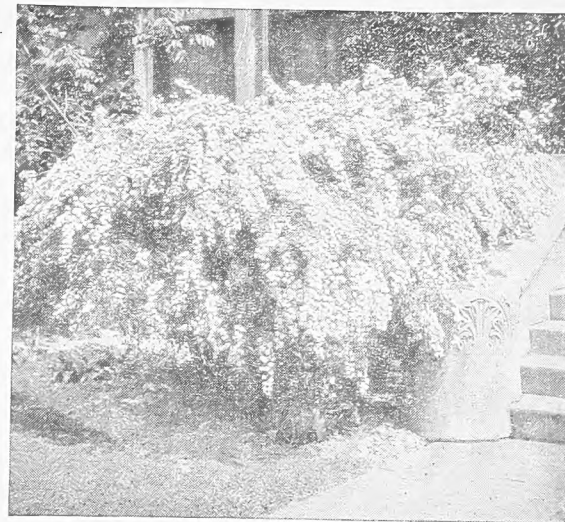
ROTHOMAGENSIS. Dark red.

RUBRA DE MARLEY. Light red.

VILLOSA. Late bloomer—pale pink.

Prices of all Lilacs

12 to 18 in. 35c each; 3 for 90c; 6 for \$1.50.



Spirea Van Houttei

VINES THAT CLING AND CREEP

ENGLISH IVY (Hedera helix). The most popular evergreen vine; large, deep, green glossy foliage. Excellent for covering walls. Useful for shady locations. 2 year plants, 25c each; 3 for 65c; 10 for \$1.80.

BOSTON or JAPANESE IVY (Ampelopsis veitchi). A popular climber, clinging firmly to brick, stone or other material. Deep, glossy, green, ivy-shaped foliage which turns to cream and gold color in autumn. Strong 2 year plants, 30c each; 3 for 75c; 10 for \$2.25.

CHINESE WISTERIA. Blue flowers in large drooping clusters, during May and June. Strong 2 year plants, 40c each; 3 for \$1.05; 10 for \$3.00.

HALL'S JAPANESE HONEYSUCKLE. Dark, glossy green foliage; fragrant flowers from July to fall. Strong 2 year plants, 25c each; 3 for 65c; 10 for \$1.80.

SWEET AUTUMN CLEMATIS (Clematis paniculata). A splendid climber for covering porches and trellises. Flowers snowy white; produced in immense quantities during late summer and autumn. Strong 2 yr. plants, 40c each; 3 for \$1.05; 10 for \$3.00.

Planter's Guide

Will be Sent Free

ASK FOR A COPY

We issue a 52 page catalog which gives more complete descriptions of our nursery products and we will be very glad to send you a copy, it's free for the asking.

Our 1938 Planter's Guide will be ready for mailing during the latter part of January. Each person who received a copy of our fall price list will be mailed a copy of our 1938 catalog as soon as they are off the press.

MONEY BACK. In the event that any nursery stock sold by us should prove untrue to name under which it is sold, we hereby agree, on proper proof of such untruthfulness to name to replace the original order or to refund the purchase price. Except for such liability, and in respect to all nursery stock sold by us, we give no warranty, express or implied, as to description, quality, productiveness or any other matter.

—HARRISONS' NURSERIES, INC.

If Shipment Is Desired By Parcel Post
Add 10 Percent To Your Remittance.



Terms: F. O. B. Berlin, Worcester County, Maryland. We allow 5 percent discount for cash with order or prior to date of shipment (except strawberry plants). OTHERWISE TERMS NET.



Harrison Grown Shade Trees

For Farm, Suburban and City Planting



Lombardy Poplar

AMERICAN ELM (*Ulmus americana*). A noble native tree of great size, wide spreading, gracefully curving branches growing up in a form like the outline of long-stemmed flowers in a tall vase. The handsomest American tree for lawns, avenues and parks.

AMERICAN PLANE OR SYCAMORE (*Platanus occidentalis*). A very rapid growing tree for yard or street planting. The bark is grayish-green and peels off during the winter, like as sycamore, as the Oriental Plane but it is a much more rapid grower.

CATALPA SPECIOSA. A fast growing large leaved tree.

ORIENTAL PLANE (*Platanus orientalis*). A rapid, upright, dwarf growing tree long lived, beautiful, dense foliage. It is very hardy and not affected by insects.

SILVER MAPLES (*Acer spicatum*). Tall stately tree, rapid grower, graceful, leaves silvery underneath.

Price of the above trees: 6 to 8 ft. \$1.00 each; 3 for \$2.25; 6 for \$4.20; 10 for \$6.00. 8 to 10 ft. \$1.25 each; 3 for \$3.75; 6 for \$6.30; 10 for \$10.00. 10 to 12 ft. \$1.75 each; 3 for \$4.50; 6 for \$8.40; 10 for \$13.50. 12 to 14 ft. \$2.50 each; 3 for \$6.00; 6 for \$11.40; 10 for \$18.00.

JAPANESE BLOODLEAF MAPLE (*Acer palmatum atropurpureum*). Very dwarf, graceful, red foliage. Best color in sunny locations. A wonderful addition to any lawn. 15 to 18 in. \$1.00 each, 3 for \$2.50; 18 to 24 in. \$1.50 each, 3 for \$3.75; 2 to 3 ft. \$2.25 each, 3 for \$5.50.



Norway Maple—the most popular shade tree

LOMBARDY POPLAR (*Populus n. gra italica*). A tall, spirelike tree used for screens and formal plantings. It is fast growing, distinctly ornamental and beautiful. 6 to 8 ft. 85c each; 3 for \$1.95; 10 for \$6.00; 100 for \$50.00. 8 to 10 ft. \$1.10 each; 3 for \$2.55; 10 for \$8.00; 100 for \$70.00. 10 to 12 ft. \$1.50 each; 3 for \$3.75; 10 for \$11.50; 100 for \$100.00. Write for prices on larger sizes. 50 at 100 rate.

NORWAY MAPLES (*Acer platanoides*). Most popular and best known shade tree. Green foliage remains until late fall and turns to rich yellow.

SYCAMORE MAPLE (*Acer pseudoplatanus*). Typical maple foliage. A good tree for street or lawn planting.

RED OR SWAMP MAPLE (*Acer rubrum*). Particularly pleasing during the fall when its leaves turn a brilliant red.

MOLINE ELM. Grows into a dense conical specimen.

CHINESE ELM (*Ulmus pumila*). This tree is of recent introduction in this country. It is a very rapid grower.

PIN OAK (*Quercus palustris*). The daintiest and most graceful of the oaks, with deeply cut, bright, fresh green foliage; beautiful autumn effect. A very graceful tree for the lawn and fine for streets or roadsides.

Prices of the above trees: 6 to 8 ft. \$1.50 each; 3 for \$3.75; 6 for \$6.90; 10 for \$11.00. 8 to 10 ft. \$2.00 each; 3 for \$4.95; 6 for \$9.00; 10 for \$14.00. 10 to 12 ft. \$2.75 each; 3 for \$6.75; 6 for \$12.60; 10 for \$20.00. 12 to 14 ft. \$3.75 each; 3 for \$9.75; 6 for \$18.00; 10 for \$29.00.

Think of the Future
Plant Your Trees Now

FLOWERING TREES

WHITE FLOWERING DOGWOOD (*Cornus florida*). One of the native spring flowering small trees, with white flowers and bright red berries in fall. 3 to 4 ft. 75c each, 3 for \$1.95; 4 to 5 ft. \$1.00 each, 3 for \$2.40; 5 to 6 ft. \$1.50 each, 3 for \$3.75.

RED FLOWERING DOGWOOD (*Cornus florida rubra*). One of the most popular small ornamental trees. Handsome red flowers in early spring. Makes an attractive lawn specimen. 1 1/2 to 2 ft. \$1.00 each; 3 for \$2.75; 2 to 3 ft. \$1.50 each, 3 for \$3.75.

FLOWERING PEACH. Very beautiful, large, double blooms in the spring time. The ideal low-priced flowering tree. We can supply the flowering peach in three colors: white, red or pink. 2 to 3 ft. 40c each, 3 for \$1.05; 3 to 4 ft. 50c each, 3 for \$1.35; 4 to 5 ft. 60c each, 3 for \$1.65.

PURPLE-LEAVED OTHELLO PLUM. Upright grower, foliage brilliant, reddish purple, holding its color throughout season. Prolific bearer, with crimson fruit producing ornamental effect. Same price as Flowering Peach.

BECHTELS FLOWERING CRAB. The only genuine double-flowered Crab, when in bloom appears to be covered with delicate, pink, perfectly double small roses of delicious fragrance. 18 to 24 in. 50c each, 3 for \$1.25. 2 to 3 ft. 65c each, 3 for \$1.65.

JAPANESE FLOWERING CHERRY—DOUBLE WHITE. A handsome variety that flowers profusely in the spring. Worthy of a place in every garden. 2 to 3 ft. 65c each, 3 to 4 ft. 80c each, 4 to 5 ft. \$1.00 each.

Harrison's
NURSERIES, INC.

BERLIN, MARYLAND



Silver Maple

EUROPEAN MOUNTAIN ASH (*Sorbus aucuparia*). Valuable for a small lawn; orange-scarlet berries.

BABYLON WEeping WILLOW (*Salix babylonica*). A rapid-growing, hardy tree, thriving in any moist soil. The willows are valuable and interesting subjects on account of their graceful aspect.

GOLDEN BARK WEeping WILLOW. Similar in habit and growth to the Babylon Weeping Willow, except the bark is of golden color, making a showy effect in the winter time.

EUROPEAN LINDEN (*Tilia platyphyllos*). Pyramidal in form. Its abundant foliage forms a dense shade.

SWEET GUM (*Liquidambar styraciflua*). A shapely tree with slender, corky-ridged branches. Leaves are bright green and lustrous; in autumn they change to a pleasing tone of crimson color.

Prices of the above trees: 6 to 8 ft. \$1.50 each; 3 for \$3.75; 6 for \$6.90; 10 for \$11.00. 8 to 10 ft. \$2.00 each, 3 for \$4.95; 6 for \$9.00; 10 for \$14.00. 10 to 12 ft. \$2.75 each; 3 for \$6.75; 6 for \$12.60; 10 for \$20.00. 12 to 14 ft. \$3.75 each; 3 for \$9.75; 6 for \$18.00; 10 for \$29.00.

CATALPA BUNGEI or Umbrella Tree. Umbrella-shaped heads without pruning. Hardy, have large, glossy green leaves; usually planted in pairs on opposite sides of an entrance or walks. 3 yr. head, 5 to 6 ft. stem \$1.50 each, 2 for \$2.50.



Oriental Plane



Growers of High Quality Fruit and Ornamental Nursery Products

