























QK  
1  
5664  
SI-Ref C.2

Morden-Smithsonian Expedition  
to Dominica:  
The Lichens (Thelotremataceae)

MASON E. HALE, JR.



SMITHSONIAN CONTRIBUTIONS TO BOTANY • NUMBER 16



## SERIAL PUBLICATIONS OF THE SMITHSONIAN INSTITUTION

The emphasis upon publications as a means of diffusing knowledge was expressed by the first Secretary of the Smithsonian Institution. In his formal plan for the Institution, Joseph Henry articulated a program that included the following statement: "It is proposed to publish a series of reports, giving an account of the new discoveries in science, and of the changes made from year to year in all branches of knowledge." This keynote of basic research has been adhered to over the years in the issuance of thousands of titles in serial publications under the Smithsonian imprint, commencing with *Smithsonian Contributions to Knowledge* in 1848 and continuing with the following active series:

*Smithsonian Annals of Flight*  
*Smithsonian Contributions to Anthropology*  
*Smithsonian Contributions to Astrophysics*  
*Smithsonian Contributions to Botany*  
*Smithsonian Contributions to the Earth Sciences*  
*Smithsonian Contributions to Paleobiology*  
*Smithsonian Contributions to Zoology*  
*Smithsonian Studies in History and Technology*

In these series, the Institution publishes original articles and monographs dealing with the research and collections of its several museums and offices and of professional colleagues at other institutions of learning. These papers report newly acquired facts, synoptic interpretations of data, or original theory in specialized fields. These publications are distributed by mailing lists to libraries, laboratories, and other interested institutions and specialists throughout the world. Individual copies may be obtained from the Smithsonian Institution Press as long as stocks are available.

S. DILLON RIPLEY  
*Secretary*  
Smithsonian Institution

Morden-Smithsonian Expedition  
to Dominica:  
The Lichens (Thelotremataceae)

*Mason E. Hale, Jr.*

AUG 1 1974



SMITHSONIAN INSTITUTION PRESS

City of Washington

1974



## ABSTRACT

Hale, Mason E., Jr. Morden-Smithsonian Expedition to Dominica: The Lichens (Thelotremataceae). *Smithsonian Contributions to Botany*, number 16, 46 pages, 20 figures, 1974.—A revision is made of the lichen family Thelotremataceae in Dominica, based on previously published records by Elliott and on collections by the author. The family comprises 48 species in 4 genera, *Leptotrema*, *Ocellularia*, *Phaeotrema*, and *Thelotrema*. The following 15 species are described as new: *Ocellularia antillensis*, *O. conglomerata*, *O. dominicana*, *O. maculata*, *O. mordenii*, *O. nigropuncta*, *O. rimosa*, *O. sovediana*, *Phaeotrema aggregatum*, *P. obscurum*, *Thelotrema confusum*, *T. dominicanum*, *T. papillosum*, *T. tenue*, and *Leptotrema deceptum*. Three new combinations, *Ocellularia fecunda* (Vainio) Hale, *Phaeotrema disciforme* (Leighton) Hale, and *Leptotrema occultum* (Eschweiler) Hale, are also made. Morphological characters are reviewed and the chemistry of each species is presented in detail. The family is exceptionally well developed in mature rain forest.

OFFICIAL PUBLICATION DATE is handstamped in a limited number of initial copies and is recorded in the Institution's annual report, *Smithsonian Year*. SI PRESS NUMBER 5043. SERIES COVER DESIGN: Leaf clearing from the katsura tree *Cercidiphyllum japonicum* Siebold and Zuccarini.

---

### Library of Congress Cataloging in Publication Data

Hale, Mason E.

Morden-Smithsonian Expedition to Dominica: the lichens (Thelotremataceae).

(Smithsonian contributions to botany, no. 16)

Bibliography: p.

1. Thelotremataceae. 2. Lichens—Dominica. I. Title. II. Series: Smithsonian Institution.

Smithsonian contributions to botany, no. 16.

QK1.S2747 no. 16 [QK585.T5] 581'.08s [589'.1] 73-22465

---

For sale by the Superintendent of Documents, U.S. Government Printing Office  
Washington, D.C. 20402 • Price \$1.05 (paper cover)

## Contents

	<i>Page</i>
Introduction .....	1
Morphological Characters .....	2
Thallus Structure .....	2
Apothecial Characters .....	2
Spores .....	8
Generic Limits .....	11
Chemistry .....	11
Ecology and Habitats .....	13
The Thelotreme Flora .....	13
Collecting Localities .....	14
<i>Ocellularia</i> .....	15
Key to the Species of <i>Ocellularia</i> .....	15
<i>Phaeotrema</i> .....	28
Key to the Species of <i>Phaeotrema</i> .....	28
<i>Thelotrema</i> .....	31
Key to the Species of <i>Thelotrema</i> .....	31
<i>Leptotrema</i> .....	38
Key to the Species of <i>Leptotrema</i> .....	38
Literature Cited .....	43
Index .....	46





# Morden-Smithsonian Expedition to Dominica: The Lichens (Thelotremataceae)

*Mason E. Hale, Jr.*

## Introduction

The Thelotremataceae comprise a very large family of crustose lichens that has attracted the attention of many lichenologists, beginning with Acharius (Hale, 1972). They have unique crater-like apothecia, but this characteristic feature can usually only be seen under magnification. As a matter of fact, these inconspicuous lichens will often be overlooked in the field unless a hand lens is used. Furthermore, because of the small size of the apothecia, very few species can be recognized at sight. All must be collected and examined later for morphological and chemical characters. Thallus color, however, is rather constant, light greenish or ashy gray. Only a few species have the deep green color of the equally common pyrenocarpous lichens, which, together with the Graphidaceae and Thelotremataceae, account for the majority of crusts that are collected in lowland tropical regions.

This paper is part of an on-going project on a modern treatment of the lichen flora of Dominica. As I mentioned in the first part on the Parmeliaceae (Hale, 1971a), where climate and topography are discussed, Dominica has the greatest remaining areas of virgin or relatively undisturbed forest of all the islands in the Lesser Antilles. Though

easily accessible by car and well-kept trails, these forests have as yet suffered little from human activity. Logging operations in the Dleau Gommier Forest Reserve, for example, have ceased, at least temporarily. Other islands in the Antilles are by contrast much more intensively cultivated and undisturbed forests are confined to higher, often inaccessible mountain slopes.

On my first trip to Dominica in 1969 I was interested primarily in foliose lichens, which proved to be relatively poorly developed. Many of the numerous crusts that I collected more or less randomly and blindly were actually thelotremes. The obvious richness of the family inspired me to undertake a second trip to the island in December 1971, once again under the Morden-Smithsonian Expedition, to concentrate exclusively on this family. A final brief trip for the same purpose was made in May 1972 under National Geographic Society support. Altogether, nearly 550 specimens of thelotremes were collected, making this one of the most intensive collecting programs ever undertaken for a crustose lichen group.

Special thanks are due Mrs. William J. Morden, who supported most of the field work for this project. Assistance is also gratefully acknowledged from the National Geographic Society for a broader study of the evolution of the Thelotremataceae in the Lesser Antilles, which included Dominica. Curators at a number of museums and universities have sent loans of type-specimens, and their help

---

*Mason E. Hale, Jr., Department of Botany, National Museum of Natural History, Smithsonian Institution, Washington, D.C. 20560.*



and patience are deeply appreciated: Dr. T. Ahti (H), Dr. Reino Alava (TUR), Dr. Ove Almborn (LD), Dr. C. E. Bonner (G), Mr. M. Skytte Christiansen (C), Mr. Peter James (BM), Mme Jovet-Ast (P), Dr. I. M. Lamb (FH), Dr. R. A. Maas Geesteranus (L), Prof. H. Merxmüller (M), Dr. Harald Riedl (W), and Dr. R. Santesson (UPS). I wish also to thank Dr. Chicita Culberson for help in identifying or verifying most of the chemical substances of the various specimens.

### Morphological Characters

After curating and labeling each specimen, I studied the various morphological characters that appear to be most important for taxonomic purposes. The descriptions, therefore, are not exhaustive but should be adequate for species identification. Redinger (1936) and Salisbury (1972a, 1972b) have drawn up useful summaries of the essential features of this family and a number of the species which may also be consulted.

#### THALLUS STRUCTURE

The anatomy of crustose lichens is not as complex as that found in typical foliose lichens. Cortical structure is less distinct, and, lacking a free lower surface, the medullary hyphae usually penetrate the outer layers of bark periderm (or rock substratum). The algal layer (*Trentepohlia*) may also be indistinct. Large colorless crystalline inclusions are commonly found in the medulla, as in *Ocellularia nigropuncta*, new species, and *Thelotrema interpositum*.

Sections examined under a scanning-electron microscope show some of these structures vividly. *Ocellularia olivacea*, *O. perforata*, and *Thelotrema confusum*, new species (Figure 1a,b,c), all with well-developed epiphloeodal thalli, have a cortex consisting of several layers of heavily gelatinized cells appearing almost paraplectenchymatous; the loosely organized medulla penetrates the periderm. The surface is essentially smooth and featureless (Figure 2a-d). In some species the cortex is similar but peculiar aculeate hyphae protrude from the surface in greater or lesser abundance (Figure 3a,b). They appear to be collapsed, perhaps because of vacuum treatment needed for specimen preparation. This aculeate orientation, reported

here for the first time, is characteristic of *Myriotrema* species (*Ocellularia terebratula*, *Thelotrema clandestinum*) as well as a few species with emergent apothecia (*T. depressum*, *T. praestans*). I have observed similar orientation in several species of *Graphis* and *Graphina*. Most thelotremes, however, have an irregularly organized surface, as in *O. mordenii*, new species (Figure 3c,d), and a poorly defined cortex.

*Leptotrema wightii* has an unusual cortex previously described by many lichenologists. The thallus is very thick (up to 1 mm) and has a grainy surface (Figure 5d). The cortex is arranged in tall columns with algae scattered vertically (Salisbury, 1971) (Figure 1d).

The so-called hypophloeodal species lack the structures described above. The external thallus is reduced to a microscopic layer of hyphae spread thinly over the bark surface (Figure 4), and these hyphae penetrate several layers of periderm with very sparse symbiotic algae apparently located just below the periderm surface. Representatives of this group from Dominica include *Ocellularia concolor*, *O. pyrenuloides*, *Phacotrema disciforme*, new combination, *Thelotrema leucomelaenum*, and *T. tenue*, new species.

#### APOTHECIAL CHARACTERS

Several morphologists have studied the internal structure and probable ontogeny of ascocarps in the Thelotremataceae (Redinger, 1936; Johnson and Brown, 1941; Letrouit-Galinou, 1966). The most commonly studied species is *Thelotrema lepadinum*, which has a distinct exciple breaking away free from the apothecial wall. The following Dominican species have more or less similar structure: *Ocellularia conglomerata*, new species, *O. dominicana*, new species, *O. exanthismocarpha* (Figure 5a), *Leptotrema occultum*, *L. subcompunctum*, and *Phacotrema aggregatum*, new species. I will call this arrangement "lepadinioid" in the descriptions; Salisbury (1972a) uses the term "*Thelotrema lepadinum* group."

What appears to be an extreme stage of this configuration of apothecial wall and exciple is seen in the *Chroodiscus*-type apothecium (here termed "chroodiscoid"). The outer wall or margin is erect and becomes recurved (Salisbury, 1972b), almost as in *Geaster*, and the exciple usually persists as a



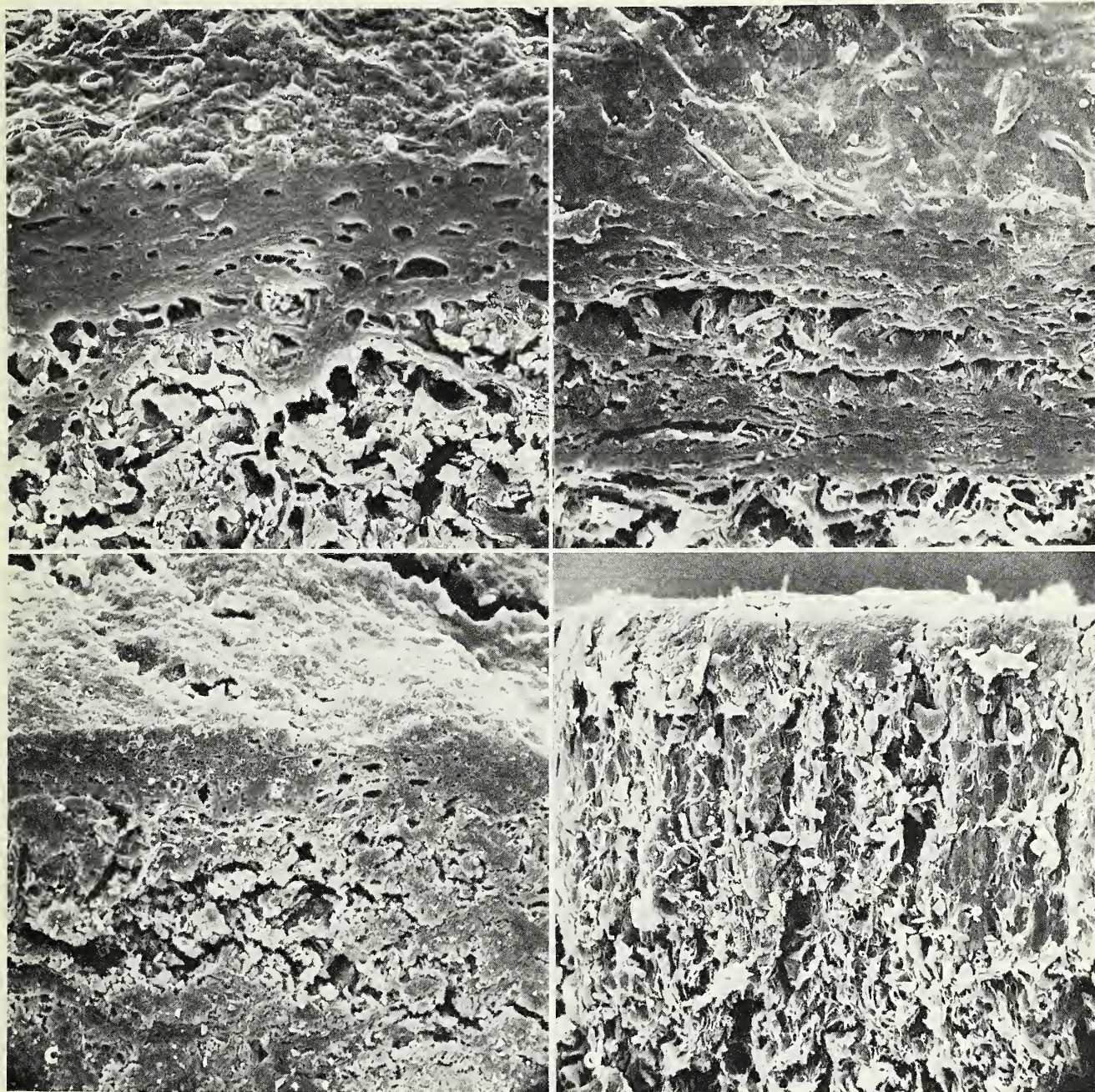


FIGURE 1.—Cross-sections of epiphloeodal lichens viewed with a scanning-electron microscope (a, b, and c, sectioned obliquely; d, vertically): a, *Ocellularia olivacea* (Hale 35226) ( $\times 1000$ ); b, *O. perforata* (Hale 38145) ( $\times 1000$ ); c, *Thelotrema confusum*, new species (Hale 37697) ( $\times 500$ ); d, *Leptotrema wightii* (Hioram 5850 from Cuba) ( $\times 500$ ).

second inner rim. The disc is widely exposed and nothing resembling the discrete pore characteristic of the other thelotremes remains (Figure 5b). This type was first recognized among the foliicolous lichens, but it seems identical to that in the non-

foliicolous species of the Thelotremataceae, including in Dominica *Ocellularia alborosella* and *O. dilatata*. It is called the "*Thelotrema platycarpum* group" by Salisbury (1972b). In the absence of more detailed ontogenetic research,



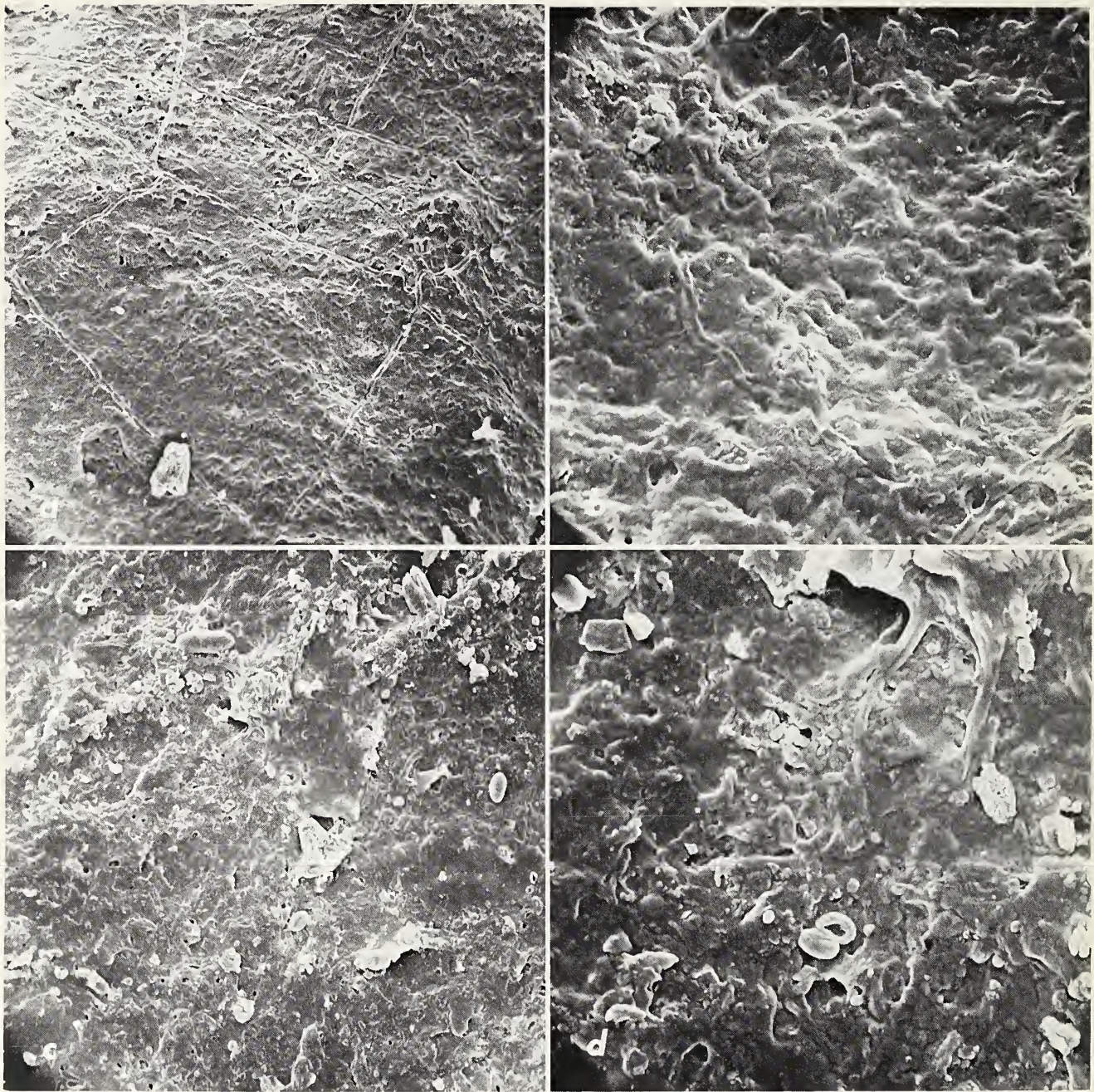


FIGURE 2.—Surfaces of epiphloccal lichens viewed with a scanning-electron microscope: *a, b*, *Ocellularia nigropuncta*, new species (Hale 35365) ( $\times 500$  and  $\times 2000$ ); *c, d*, *O. dominicana*, new species (Hale 37967) ( $\times 500$  and  $\times 2000$ ).

however, we cannot yet say that *Chroodiscus* is a good genus, that the *Chroodiscus*-like nonfoliicolous thelotremes should be transferred to *Chroodiscus*, or that *Chroodiscus* should be transferred to *Ocellularia*. Chroodiscoid species, incidentally, are distributed among the four presently recognized

genera, *Ocellularia*, *Leptotrema*, *Phaeotrema*, and *Thelotrema*, on the world level.

The majority of species in the Thelotremataceae are neither lepadinioid or chroodiscoid. The exciple is fused with the receptacle wall and the main rim or margin closes over most of the disc



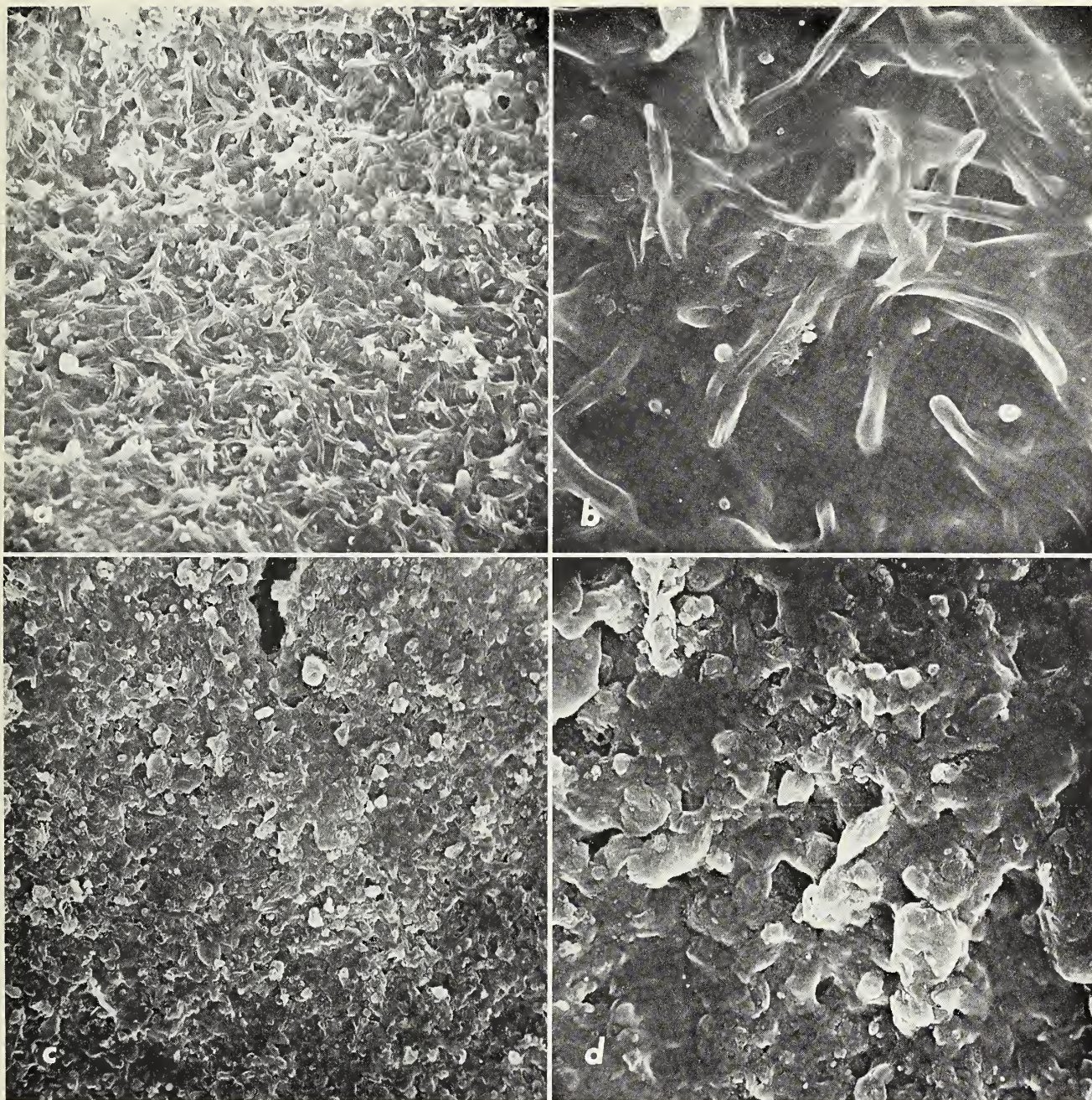


FIGURE 3.—Surfaces of epiphloeodal lichens viewed with a scanning-electron microscope: *a, b*, *Ocellularia olivacea* (Hale 38054) ( $\times 500$  and  $\times 2000$ ); *c, d*, *O. mordenii*, new species (Hale 37764) ( $\times 500$  and  $\times 2000$ ).

leaving only a small constricted pore. The upper wall is usually carbonized. There are, broadly speaking, three groups that can be recognized for practical purposes on the basis of degree of emergence from the substratum. One, represented by the "Myriotrema" type, has immersed noncarbon-

ized apothecia and a pore flush with the thallus surface (Figure 5*c,d*). The apothecia are always quite small, 0.1–0.3 mm in diameter. Typical examples in Dominica are *Ocellularia olivacea* and *Thelotrema clandestinum*.

A second group, which includes the majority



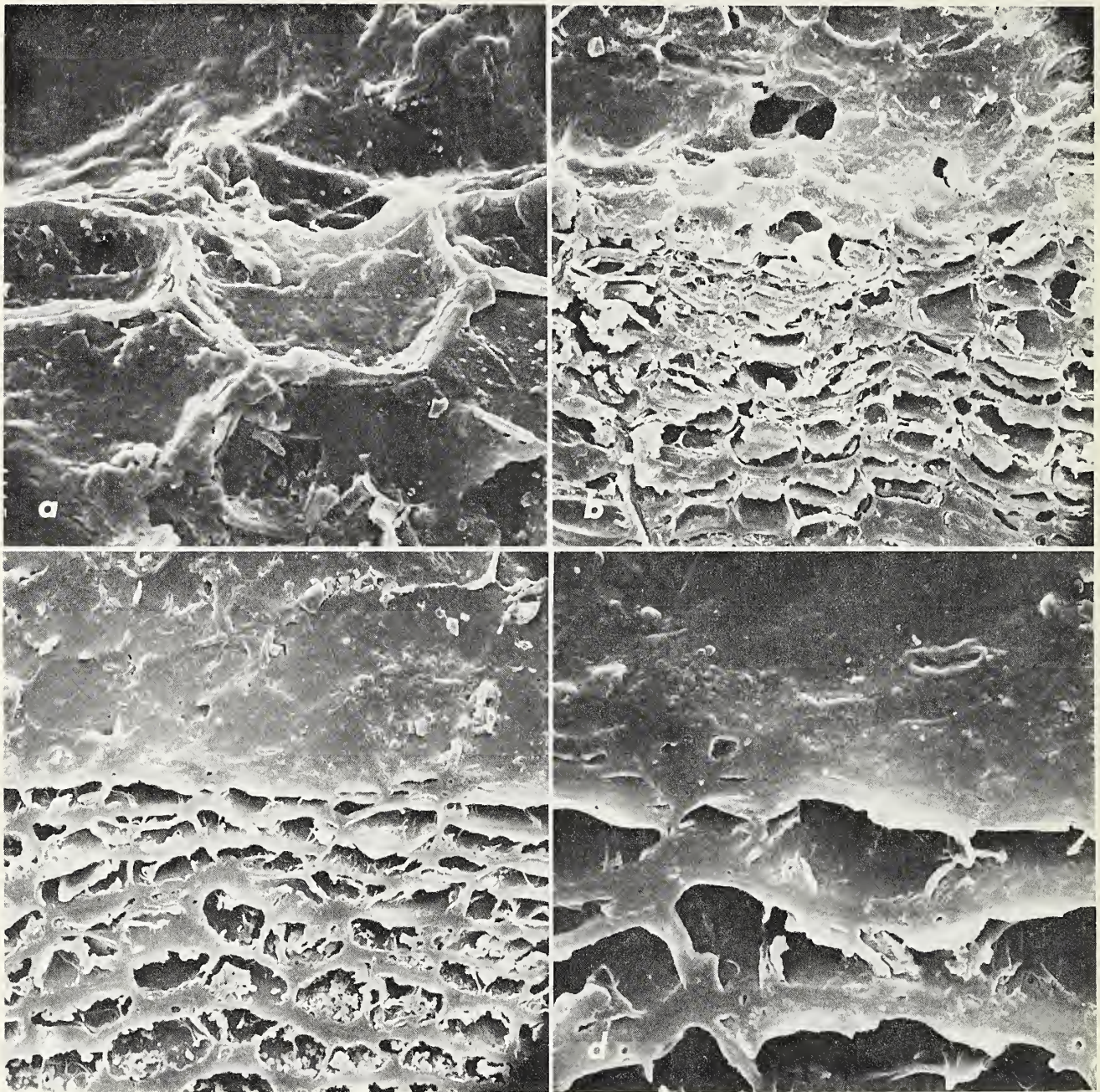


FIGURE 4.—Surface and cross-sections of hypophloeodal lichens viewed with a scanning-electron microscope: a, *Thelotrema leucomelaenum*, surface view (Hale 35491) ( $\times 2000$ ); b, *T. leucomelaenum*, cross-section (Hale 35491) ( $\times 500$ ); c, d, *T. tenue*, new species (Hale 35430) ( $\times 500$  and  $\times 2000$ ).

of the species, has emergent apothecia, neither basally constricted or strongly raised (Figure 5e,f). They are usually 0.4–1.0 mm in diameter, although in a few species (for example, *Thelotrema praestans* in Figure 17e) nearly 2 mm in diameter.

A third group, typified by *Ocellularia rhodostroma* and *O. cavata*, has strongly emergent apothecia with a partially constricted base (Figure 5g). The pore is small and sometimes annulate or open at maturity, as in *O. fecunda* (Figure 11h,i).



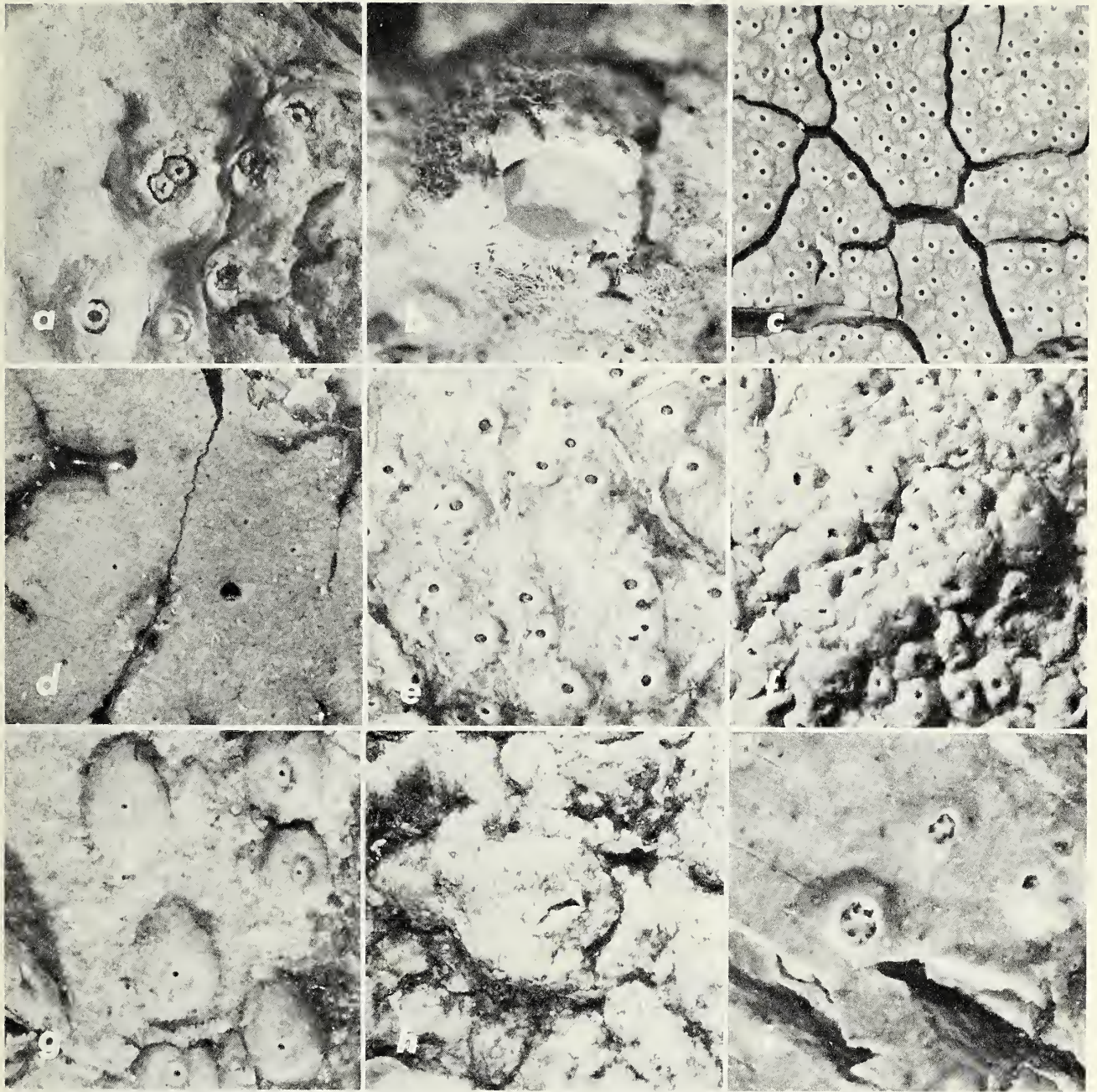


FIGURE 5.—Types of apothecia in the Thelotremataceae (all  $\times 10$ ): a, *Ocellularia exanthismocarpha* (type of *O. multilocularis*); b, *O. alborosella* (Hale 35371a); c, *O. olivacea* (Hale 35243); d, *Leptotrema wightii*, (type of *L. prevostianum*); e, *O. perforata* (Hale 37727); f, *L. bahianum* (type of *Thelotrema rudius* var. *dominicanum*); g, *O. rhodostroma* (Hale 38122); h, *Phaeotrema leiostomum* (Hale 37956); i, *O. comparabilis* (Hale 37372).

Diameter varies between 0.6 and 2.0 mm. This group was called *Ascidium* by Fée (1824), not so much because of emergence but because of a duplicate membrane in the perithecium (the nature of which is not clear to me) and a marginate pore.

Although Nylander continued to use *Ascidium* for strongly emergent species, no modern lichenologists have employed it. The type of the genus, *A. cinchonarum* Fée, is synonymous with *Ocellularia cavata*. Naturally there are intergradations



between the *Ascidium*-type and the more common emergent type, but I believe the descriptive term "ascidioid" is still useful.

A final group forms a transition to the Graphidaceae. The apothecia become irregularly elongate with a lirelliform dehiscence. In Dominica this includes *Phaeotrema leiostomum*, which can produce both round and elongate apothecia (Figure 5*h*). Other species from South America have this trait developed much more conspicuously and have been described in the Graphidaceae (as *Phaeographis chionodisca* Redinger (1936:69)). They should probably be transferred to the Thelotremaaceae.

Redinger (1936) further divides the Thelotremaaceae into two groups that differ in position of the ascogonial initial. In one group the initial is located on or just below the periderm surface so that at maturity the apothecial wall develops on and apart from the unbroken periderm (for example, *Ocellularia rhodostroma* and *Phaeotrema disciforme*, new combination). The other group, including most nonchroodiscoid species in Dominica, has ascogonial initials deeply embedded in the periderm. The maturing apothecia must break through this layer to reach the surface. Several layers of periderm cells are thereby included in the apothecial receptacle and can be easily recognized in sections (Figure 6*f*). This character deserves much more detailed study.

Development of a central cylindrical columella is particularly characteristic of the Thelotremaaceae, and for the most part presence or absence of a columella is a good species character (Figure 6). As a rule, columellate species do not have perfect counterparts that lack a columella. Noteworthy exceptions in Dominica are *Ocellularia papillata* and *O. perforata*, each of which has a large population where a columella is clearly developed and a smaller one where it is either absent or very difficult to find. I have not recognized such eolumellate species as new without correlating morphological or chemical characters. Columellate species always have heavily carbonized apothecial walls.

Redinger (1936:6) proposed an interesting hypothesis that the columella plays a role in breaking open the periderm layer in species that develop deeply embedded. As the apothecia mature, the columella pushes up against the upper carbonized

walls and periderm, acting as a kind of ramrod. Not all species with periderm inclusions have a columella, but as Redinger found for the Brazilian species the correlation is high.

The range in development of a columella is very great (Figure 6), from the weak thin columella in *Ocellularia mordenii*, new species, to the multiple actinoid structures of *Ocellularia comparabilis* (Figure 5*i*) and *Leptotrema fissum* (Figure 19*a,c*). The most highly developed species is *Ocellularia glaziovii* (Müller-Argau known from South America Vainio (1921:184) recognized these species under a separate genus, *Rhabdodiscus*.

### SPORES

Spore size is an important and relatively constant character. The range of spore length, for example, is usually quite small except for very large spores (more than 100 $\mu$ ) which may vary between 100 $\mu$  and 300 $\mu$ . We can distinguish four very broad categories among the Dominican species: (1) spores less than 20 $\mu$  long with 4-6 transverse locules, e.g., *Leptotrema wightii*, *Ocellularia terebratula*, *Thelotrema clandestinum*; (2) spores 20 $\mu$ -36 $\mu$  long with 6-10 transverse locules, e.g., *Ocellularia perforata* (Figure 7*a*), *Thelotrema leucomelaenum*; (3) spores 40 $\mu$ -90 $\mu$  long with 12-24 transverse locules, e.g., *Leptotrema deceptum*, new species (Figure 7*d*), *Ocellularia exanthismocarpa*; and (4) spores 80 $\mu$ -300 $\mu$  long with numerous locules, e.g., *Ocellularia rhodostroma* (Figure 7*b*), *Thelotrema praestans*, *T. tuberculiferum*.

The number of longitudinal septations in *Leptotrema* and *Thelotrema* varies according to length, from 1 or 2 septae in small spores (up to about 30 $\mu$  long) to 4-6 or more in large spores.

Spores are colorless or brown. It is sometimes a problem to determine color in large-spored species of *Leptotrema* and *Thelotrema* where, on the one hand, a *Thelotrema* species might have some senile spores turning brown and on the other a *Leptotrema* will have some colorless spores (Figure 7*d*). In *Phaeotrema disciforme*, new combination, in fact, one often finds a mixture of colorless, mature brown, and shriveled brown spores (Figure 7*c*). Shriveling (Figures 7*c,d*) is characteristic of brown-spored species; I know of no cases where *Thelotrema* or *Ocellularia* spores shrivel.



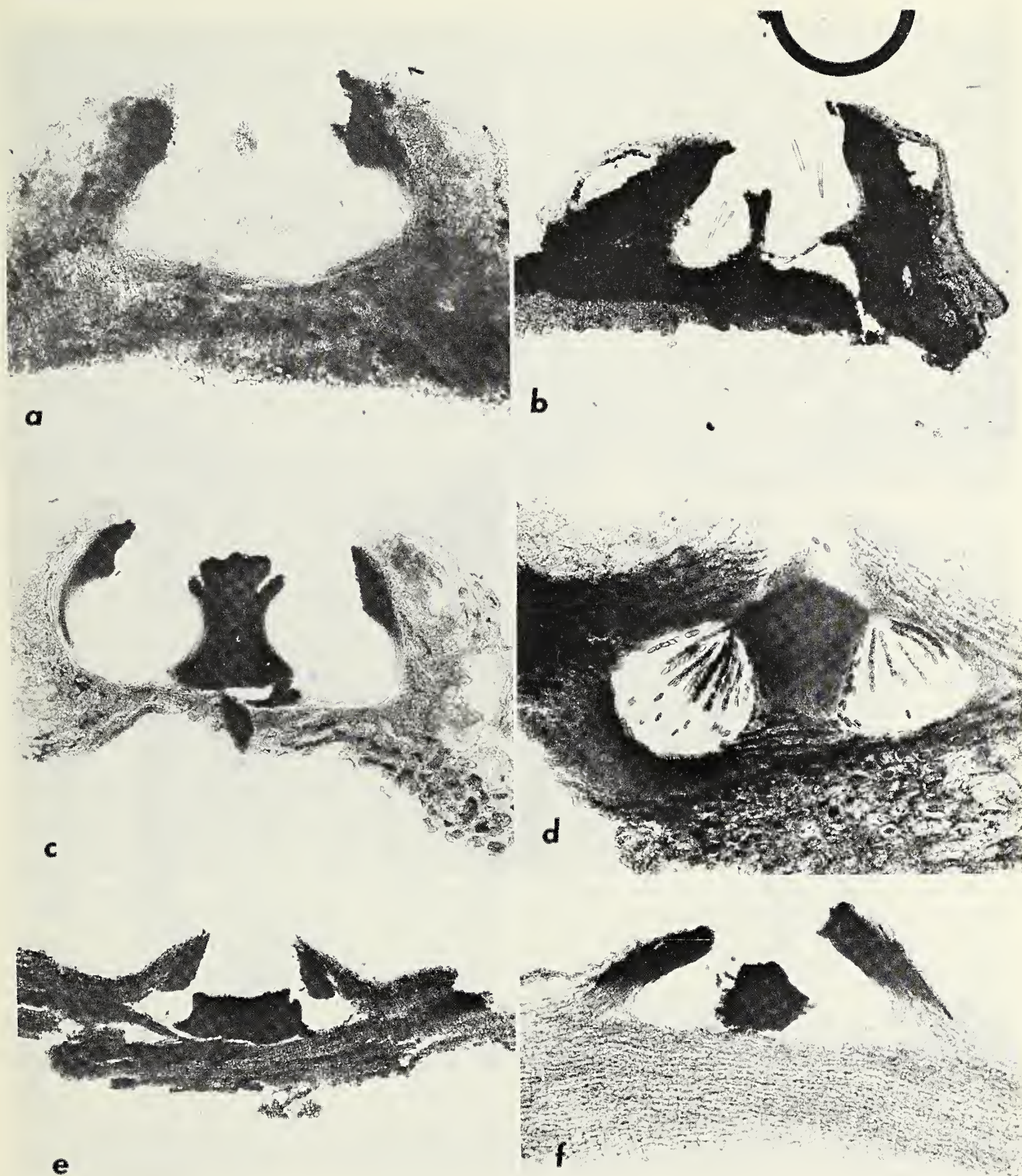


FIGURE 6.—Cross-section of apothecia (all about  $\times 130$ ): a, *Ocellularia nigropuncta*, new species (Hale 35365); b, *O. mordenii*, new species (Hale 37764); c, *O. cavata* (Hale 35134); d, *Phacotrema leiostomum* (Hale 35203); e, *Thelotrema leucomelaenum* (Hale 35491); f, *T. tenue*, new species (Hale 35430).



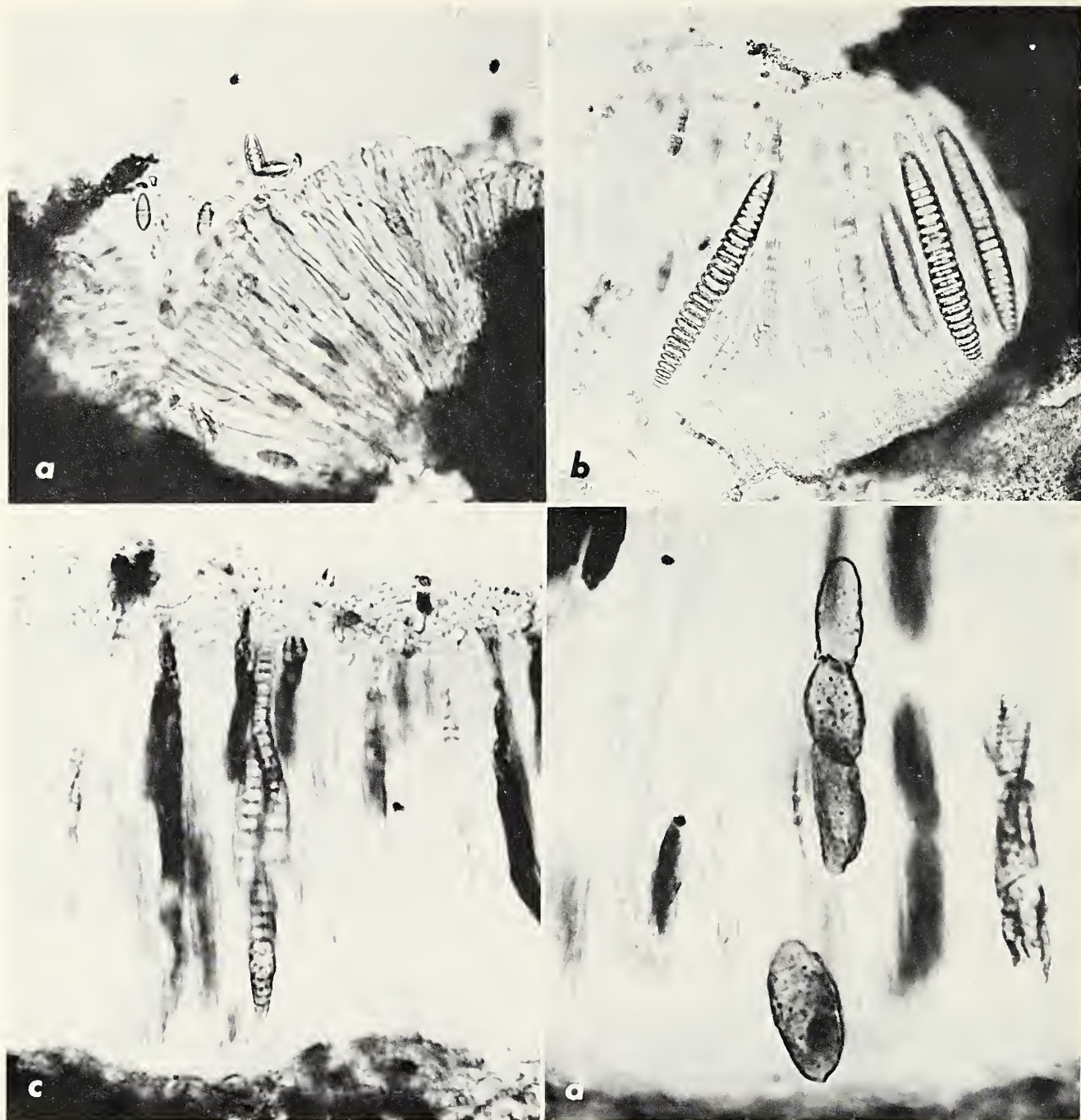


FIGURE 7.—Spores of the Thelotremataceae: a, *Ocellularia perforata* (Hale 37784) ( $\times 400$ ); b, *O. rhodostroma* (Hale 35440) ( $\times 130$ ); c, *Phaeotrema disciforme*, new combination, with a mixture of colorless spores, brown spores, and shrivelled brown spores (Hale 37939) ( $\times 400$ ); d, *Leptotrema deceptum*, new species, with colorless muriform spores on the right (Hale 38110) ( $\times 400$ ).

In any event, transitional species should be judged individually, and the presence of a few anomolous brown-spored specimens among many colorless specimens (as in *Ocellularia secunda*, new combi-

nation, or *O. subcavata* on Dominica) should not be totally unexpected; nor should these isolated cases prejudice the value of spore color as a generic character.



### Generic Limits

The generic delimitation of the Thelotremataceae has undergone many changes since the classic work of Acharius. Fée (1824), for example, established two genera, in addition to recognizing *Thelotrema*, based on external features and apothecial characters: *Ascidium* and *Myriotrema*, both presently considered to be synonyms of *Ocellularia*. Müller-Argau (1887a) proposed the most far-reaching changes, using spore septation and coloration to separate four genera (in addition to foliicolous *Chroodiscus*): *Ocellularia* (transversely septate colorless spores), *Phaeotrema* (transversely septate brown spores), *Thelotrema* (muriform colorless spores), and *Leptotrema* (muriform brown spores).

While Vainio, one of the truly creative thinkers in lichen classification, rejected many "spore genera," almost all authors since Müller-Argau have accepted these genera (and, indeed, spore-based genera in other families). Poelt (1973:613) refers to these as "artificial genera," yet almost any character we select is in a sense artificial. I don't believe this term does justice in that it implies spore characters are artificial.

We are, in reality, faced with at least three choices for generic delimitation in the family: (1) one genus (*Thelotrema*) to accommodate all thelotremataceous species; (2) four spore-based genera (*Ocellularia*, *Phaeotrema*, *Thelotrema*, and *Leptotrema*); (3) five or more genera (*Ascidium*, *Chroodiscus*, *Myriotrema*, *Rhabdodiscus*, and *Thelotrema*) based on apothecial emergence and excipular structures. Most lichenologists, as I said, have opted for spore-based genera. While a majority opinion does not necessarily prove the naturalness or validity of such genera, they do represent one possible biological differentiation, broadly correlated with chemical, morphological, and ecological characters (as I will discuss briefly under each genus).

I cannot agree with Salisbury's (1972a) recent rejection of spore-based genera in favor of a single massive genus *Thelotrema* with 400 species subdivided into "groups" according to excipular structure, a character that is difficult to identify. His keys and descriptions show how cumbersome this approach is, for in each instance one must desig-

nate the spore type, e.g., *Thelotrema wightii* with *Leptotrema*-type spores, etc. If one is forced to make this critical distinction every time a species is identified and described, then they should be treated as distinct genera, a more coherent and certainly a more pragmatic, working solution. Spore characters are well proven, even critical, in the taxonomy of nonlichenized fungi. A retrogressive generic concept in lichens will hardly encourage a better understanding of their biology and evolution. My experience in the Thelotremataceae suggests that spore-based genera are reasonably natural, easily manageable units that are probably diverging in terms of habitat requirements and biogenetic characters as reflected in chemical differences.

### Chemistry

As in almost every other group of lichens studied, chemistry is an important and fundamental character in understanding the evolution and population biology of the Thelotremataceae. The family has an unexpectedly rich chemistry with a predominance of P+ depsidones and related compounds (Culberson and Culberson, 1968; Culberson and Hale, 1973). I will discuss the possible significance of this chemistry below under the species and hope to explore the broader aspects of biochemical evolution of the family in another paper.

All of the specimens were initially tested with *p*-phenylenediamine and chromatographed on Brinkman thin-layer plates according to the P reaction. I would recommend, however, that lichenologists consider using this reagent as little as possible because of the well-known carcinogenic properties of volatile amines. Identification of the lichen substances can be made just as easily with TLC without recourse to a P test except in doubtful cases.

Standard thin-layer solvent systems (hexane-ether-formic acid, 130:80:20 v/v, and benzene-dioxane-acetic acid, 180:45:5, v/v) were used to identify the chemical content of each specimen.

**HYPOPROTOCETRARIAC ACID AND 4-0-DEMETHYLNOTATIC ACID.**—*Ocellularia fecunda*, new combination, (hypoprotocetrariac acid predominating), *O. rhodostroma* (4-0-demethylnotatic acid predominating), and *Phaeotrema leiostomum* (4-0-deme-

thlynotatic acid sometimes lacking). These acids were recently examined in detail by Culberson (Culberson and Hale, 1973), who discusses the biogenesis. *Ocellularia secunda* and *O. rhodostroma* were not included in that study.

**NORSTICTIC ACID.**—*Leptotrema occultum*. This is a rare acid in the Thelotremataceae (especially in contrast to the Graphidaceae) and is largely confined to *Leptotrema* on the world level.

**PROTOCETRARIC ACID.**—*Ocellularia nigropuncta*, new species, *O. perforata*, *Leptotrema bahianum*, and *Thelotrema confusum*. This well-known P+ red acid is easily identified on TLC plates. It is sometimes accompanied by a higher gray spot that I have termed the "amplior" unknown because of its constant occurrence in *Ocellularia amplior* (Nylander) Redinger. Culberson believes it to be protocetraric acid combined with a carboxylic acid, comparable to fumarprotocetraric acid or the recently described succinprotocetraric acid.

**PSOROMIC ACID.**—*Ocellularia antillensis*, new species, *O. comparabilis*, *O. subcavata*, *O. terebratula*, *Leptotrema fissum*, *Thelotrema carassense*, *T. clandestinum*, *T. conforme*, *T. leucinum*, and *T. interpositum*. This is the commonest P+ acid in the Thelotremataceae. It is almost always accompanied by an unknown compound "conpsoromic acid," appearing as a spot below psoromic acid. It, too, is P+ yellow.

**STICTIC AND CONSTICTIC ACIDS.**—*Ocellularia conglomerata*, new species, *O. dilatata*, *O. exanthismocarpa*, *O. pyrenuloides*, *Phaeotrema obscurum*, new species, *Thelotrema glaucopallens*, *Leptotrema deceptum*, new species, *L. microglanoides*, and *L. subcompunctum*. This widespread and well-known acid is actually rather rare in the Thelotremataceae except for the genus *Leptotrema*. Constictic acid, appearing as a H<sub>2</sub>SO<sub>4</sub>+ yellow spot just below salazinic acid, is a constant accessory compound. One or two other gray spots, as yet unidentified, may occur between stictic and constictic acids on TLC plates. Another rarer accessory is the highest H<sub>2</sub>SO<sub>4</sub>+ orange-red spot in the "quintaria" series (Hale, 1971b), still unidentified but being discovered in a variety of genera.

**VIRENSIC ACID.**—*Leptotrema spondaicum*. This acid is P+ red. It was previously unknown in the Thelotremataceae, having been first identified in *Alectoria*.

**"CINCHONARUM" UNKNOWN.**—*Ocellularia cavata*

and *Thelotrema dominicanum*, new species. Several species of *Ocellularia* and this single *Thelotrema* react P+ red, but neither protocetraric acid or fumarprotocetraric acid can be demonstrated with TLC. Instead there are at least two gray spots above both of these acids on the plates (and often a high H<sub>2</sub>SO<sub>4</sub> yellow spot). These are apparently derivatives of protocetraric acid.

**"PRAESTANS" UNKNOWN.**—*Thelotrema praestans*. This unidentified depsidone reacts P+ red orange and forms a very distinct orange to reddish brown spot below psoromic acid in both solvents.

**"OLIVACEA" UNKNOWN.**—*Ocellularia olivacea*. This P- compound produces a distinct H<sub>2</sub>SO<sub>4</sub> gray spot below lecanoric acid in both solvents. It may be a depside. While the lectotype of *Ocellularia olivacea* contains only this one spot, all West Indian collections, otherwise morphologically indistinguishable, contain a lower gray spot in addition. All specimens have thick white acetone residues.

**OTHER P- UNKNOWN.**—*Ocellularia rimosa*, new species, and *O. sorediata*, new species. The unidentified spots in these species may or may not represent lichen substances. Some species were examined for fatty acids by dipping the plates in water and trying to detect white water-repellant spots as the water evaporated. Some spots resembling fatty acids were seen but microchemical tests with G.E. and G.A.W. were unsuccessful. Another major group of P- compounds is terpenes. All TLC plates showed numerous terpenes, identifiable as purple, blue, or brown spots falling generally above R<sup>F</sup> .5 and fading within a few hours. Probably all of these originate from the bark and are not lichen products, as can be proved by co-chromatographing the lichens with lichen-free bark samples from the same specimen.

**NO SUBSTANCES PRESENT.**—*Ocellularia alborosella*, *O. concolor*, *O. dominicana*, new species, *O. maculata*, new species, *O. mordenii*, new species, *O. papillata*, *Phaeotrema aggregatum*, new species, *P. disciforme*, new combination, *Thelotrema depressum*, *T. leucomelaenum*, *T. papillosum*, new species, *T. tenue*, new species, and *T. tuberculiferum*.

**PIGMENTS.**—*Ocellularia mordenii*, new species and *Leptotrema wightii* (anthraquinones) and *O. secunda*, new combination, *O. rhodostroma*, and *Phaeotrema leiostomum* (K- yellow compounds).



The anthraquinones are generally produced in the thallus, while the yellow compounds occur in the medulla of the apothecia and not in the thallus.

### Ecology and Habitats

I paid considerable attention to the ecology of the species and habitat requirements in Dominica in the hope that this information would help in understanding the distribution and evolution of the species on the island. Lichenologists have all too often prepared revisions of tropical lichens on the basis of preserved herbarium specimens alone with little if any opportunity to observe the species in the field. Labels on specimens collected by non-professionals rarely give pertinent information on ecology and habitat. For example, tropical rain forests have distinct layering and great vertical variation in microclimate. Elevational differences are also important and once again such data are rarely given in full on herbarium labels.

Base level species in Dominica form a distinctive group. They grow on roots, lianas, buttresses, prop roots, and saplings within 2–3 m of the forest floor. Characteristic species are *Ocellularia concolor*, *O. papillata*, *O. perforata*, *Thelotrema glaucopallens*, *T. tenue*, new species, and *Leptotrema deceitum*, new species. At the opposite extreme we find canopy species that occur high above the forest floor in tree tops, exposed to great changes in insolation and wetting-drying cycles. These include *Ocellularia mordenii*, new species, *O. olivacea*, *O. subcavata*, *O. terebratula*, *Phaeotrema leiostomum*, *Thelotrema clandestinum*, and *T. praestans*. Other species on Dominica have less stringent habitat requirements or have been collected too infrequently to categorize.

On a broader scale altitudinal differences are also pronounced. The rain forest becomes stunted in Dominica above about 800 m and gradually merges into an elfin mossy forest best developed above 1000 m. Thelotremes become scarce in this wind-swept zone where rain falls almost every day. Two species, however, *Thelotrema leucomelaenum* and *T. tuberculiferum*, are restricted to the highest elevations. *Ocellularia rhodostroma* and *Thelotrema tenue*, new species, occur here as well but also at lower elevation.

The vast bulk of thelotreme collections were made between 300 and 800 m on Dominica, the

zone where rain forest is optimally developed, the trees being 30–40 m high (Figures 2 and 3 in Hale, 1971a, illustrate this forest type). It would appear that this lichen family is totally dependent on undisturbed rain forest as a primary habitat and site for speciation. When this forest is destroyed, it seems inevitable that the lichens associated with it will become extinct. In Dominica, I have seen only two species able to invade disturbed or planted forests; namely, *Leptotrema spondaicum* and *Ocellularia exanthismocarpa*. They have a highly successful means of propagation and become established very quickly.

### THE THELOTREME FLORA

As I had found with *Parmelia* (Hale, 1971a), almost all previous collections of the Thelotremataceae on Dominica were made by W. R. Elliott in the 1890s. H. A. Imshaug also made about ten collections in 1963 which are preserved at Michigan State University. I have not had access to these. Elliott collected five specimens, identified by Vainio (1896, 1915) as follows:

*Thelotrema excavatum* Vainio var. *impresulum* Vainio (Morne Anglais, the type-locality, Elliott 160, specimens in BM and TUR). This is synonymous with *Ocellularia perforata*.

*Thelotrema leucomelaenum* var. *elevatum* Vainio (Morne Anglais, Elliott 1534, specimen in TUR). This is *T. leucomelaenum*.

*Thelotrema rhodostromum* (Montagne) Vainio (Morne Anglais, Elliott 521, specimens in BM and TUR, and Prince Rupert, Elliott 1305, specimen in TUR). These are *Ocellularia rhodostroma*.

*Thelotrema rudius* Vainio var. *dominicanum* Vainio (Prince Rupert, Elliott 1303, specimen in TUR). This is the same as *Leptotrema bahianum*.

The thelotreme flora of Dominica now includes 48 positively identifiable species (and three additional species represented by poor material). I collected all of these except for *Leptotrema bahianum*. No one locality, of course, had anywhere near this number of species (see p. 14, "Collecting Localities"). The richest area was one site (16b) in the Dleau Gommier Forest Reserve which was being logged in December 1971; I collected a total of 19 species there over an area of about 3 hectares. An adjacent site had 14 species as did the trail to Morne Anglais. Dleau Gommier locality 15 had

12 different species. A logged rain forest on the Layou Road (12) had 11 species. Five other localities (11, 16c, 18a, 21, and 24a), all between 350 and 750 m, had 9 species each.

The homogeneity of the flora is remarkably high. Locality 16, for example, contains three adjacent collecting sites. Out of a total flora of 21 species there, 8 were found in common at each site. Three occurred at two of the three sites and 10 were collected at only one of the three sites. The greatest variance in homogeneity obviously comes about when we collect at two very different elevations or sites where habitat conditions are significantly different.

It should be evident that we have not yet inventoried the whole thelotreme flora of Dominica. I would estimate that there are at least 55 species (including the three unidentified collections as possible additions). It would require at least one more intensive collecting trip, possibly two, to reach this number.

#### COLLECTING LOCALITIES

Specimens were collected at 28 separate localities on the island (Figure 8), and multiple visits were made at different times to six of these, giving a total of 35 collecting sites. These are coded as follows for convenience in citing specimens, going from localities at low elevation in the scrub forest to those at highest elevations.

1. Scrub forest, Rodney's Rock, sea level.
2. Scrub forest near Mero, elevation 15 m.
3. Scrub forest on slopes of Barbers Block, elevation 60 m.
4. Scrub forest near Calibishie, elevation 15 m.
5. Palm forest at Rosalie Bay, elevation sea level.
6. Rain forest along trail to Madjini, elevation 30 m.
7. Virgin rain forest logging area, Newfoundland, elevation 250 m.
8. Rain forest above Newfoundland, elevation 300 m.
9. Rain forest logging area, Castle Bruce Road, elevation 300 m.
10. Dleau Gommier rain forest near Emerald Pool, elevation 450 m.
11. Felled rain forest along new road cut about

2 km northwest of Pont Cassé, elevation 430 m.

12. Rain forest logging area on Layou Road, elevation 420 m.
13. Mixed secondary forest logging area at Brant-ridge Estate, elevation 500 m.
14. Rain forest logging area just east of Pont Cassé, elevation about 550 m.
15. Virgin rain forest area at Dleau Gommier Forest Reserve, elevation 500 m.
- 16a, 16b, and 16c. Virgin rain forest logging at Dleau Gommier Forest Reserve, elevation 350–370 m.
17. Remnants of rain forest at Felicité, elevation 370 m.
- 18a and 18b. Remnants of rain forest along road to Jean Estate, elevation 600–700 m.
19. Citrus grove at Laudat, elevation 400 m.

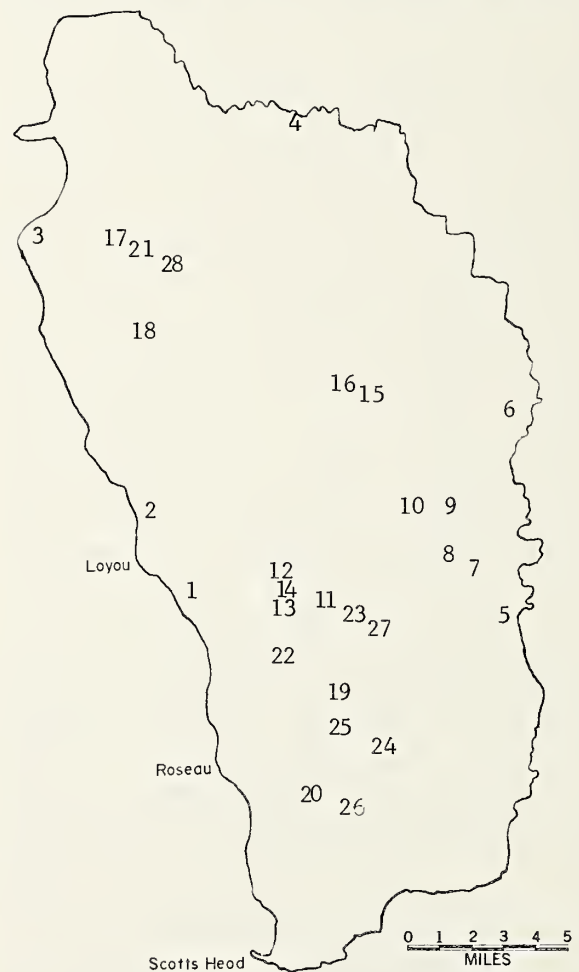


FIGURE 8.—Outline map of Dominica showing localities where specimens of Thelotremataceae were collected.



- 20a and 20b. Remnants of rain forest in pastures above Giraudel, elevation 550–600 m.
21. Virgin rain forest at Syndicate Estate, elevation 650–700 b.
22. Mixed rain forest along trail through Middleham Estate, elevation 650–700 m.
23. Rain forest at the base of Trois Pitons, elevation 650–700 m.
- 24a and 24b. Mixed secondary forest along trail to Boiling Lake, elevation 650–700 m.
- 25a and 25b. Rain forest-mossy forest along trails at Fresh Water Lake, elevation 800–900 m.
- 26a and 26b. Rain forest-mossy forest along trail up Morne Anglais, elevation 800–1000 m.
27. Stunted rain forest-mossy forest on slopes of Trois Pitons, elevation 900–1200 m.
28. Mossy forest area on slopes of Morne Diablotin, elevation 1000–1200 m.

Sixteen localities were visited on the first trip in January 1969 (1, 2, 5, 6, 7, 13, 14, 15, 17, 18b, 19, 20b, 24b, 25b, 26b, and 28). On the second trip seven additional localities were found (3, 11, 12, 16a–c, 22, 23, and 27) and five sites adjacent to localities previously were examined (18a, 20a, 24a, 25a, 26a), all during December 1971. Four new localities were visited in May 1972 (8, 9, 10, 21). All specimens are deposited in US unless otherwise indicated and duplicates will be deposited in the British Museum (BM).

I have provided illustrations of the Dominican species as well as of most type-specimens for comparison. These photographs also serve to show the range of variation in pore size and apothecial emergence. I have found these  $\times 10$  photographs to be extremely useful in identification, more so than line drawings of cross-sections. All specimens, including the types listed, were tested with thin-layer chromatography.

### *Ocellularia*

This is the largest genus in the family, comprising about 165 species on the world level or about 40 percent of the total 400 known species. I had almost the same percentage on Dominica (22 of 48 species) but it makes up a disproportionately large percentage of the specimens actually collected, 410 out of 530 (77%). Ecologically the genus is best adapted to mature rain forest and cannot withstand extremes of very dry lowland and wet exposed high elevation. The ten commonest species (with number of specimens collected in parentheses) are: *O. rhodostroma* (93), *O. fecunda*, new combination (64), *O. perforata* (55), *O. papillata* (48), *O. subcavata* (40), *O. exanthismocarpha* (25), *O. nigropuncta*, new species (16), *O. olivacea* (12), *O. mordenii*, new species (10), and *O. terebratula* (10). Rarities, known from single collections each, are *O. antillensis* and *O. cavata*.

### Key to the Species of *Ocellularia*

1. Medulla of thallus and/or ascocarps pigmented.
  2. Medulla and ascocarps entirely deep red ..... 12. *O. mordenii*, new species
  2. Medulla of ascocarps yellow or pink but thallus medulla white.
    3. Pigment yellow; pore large, 0.3 mm wide ..... 10. *O. fecunda*, new combination
    3. Pigment deep pink; pore tiny, 0.1 mm wide, annulate. .... 18. *O. rhodostroma*
1. Medulla of thallus and ascocarps white.
  4. Apothecia lacking a central columella.
    5. Apothecia immersed, 0.2–0.3 mm in diameter.
      6. Thallus P+ yellow ..... 22. *O. terebratula*
      6. Thallus P- ..... 14. *O. olivacea*
    5. Apothecia emergent, 0.6–2.0 mm in diameter.
      7. Disc open with a strongly recurved exciple.
        8. Exciple thick, disc irregularly elongate; stictic acid present ..... 7. *O. dilatata*
        8. Exciple thin and delicate, disc round; stictic acid absent ..... 1. *O. alborosella*
      7. Disc closed, lacking an outer recurved exciple.
        9. Inner lepadinoid exciple strongly developed.
          10. Apothecia aggregated in groups.
            11. Apothecial groups round; stictic acid lacking ..... 8. *O. dominicana*, new species

11. Apothecial groups oblong; stictic acid present ..... 6. *O. conglomerata*, new species
10. Apothecia solitary.
12. Spores large, 55 $\mu$ -75 $\mu$  ..... 9. *O. exanthismocarpa*
12. Spores small, 15 $\mu$  ..... 6. *O. conglomerata*, new species
9. Inner exciple not developed.
13. Thallus P-.
14. Thallus distinctly fissured; pore area black rimmed ..... 19. *O. rimosa*, new species
14. Thallus continuous; pores not black rimmed ..... 15. *O. papillata*
13. Thallus P+ red.
15. Pore area black rimmed ..... 13. *O. nigropuncta*, new species
15. Pore area not black rimmed ..... 16. *O. perforata*
4. Apothecia with a well-developed black central columella.
16. Thallus with large scattered verrucose outgrowths becoming sorediate ..... 20. *O. sorediata*, new species
16. Thallus lacking soredia.
17. Apothecia large, 0.5-1.1 mm in diameter, more or less emergent.
18. Thallus dull tan, hypophloeodal, P- ..... 5. *O. concolor*
18. Thallus distinctly epiphloeodal, P+.
19. Columella becoming actinoid; thallus P+ yellow ..... 4. *O. comparabilis*
19. Columella remaining simple; thallus P+ red ..... 3. *O. cavata*
17. Apothecia smaller, 0.2-0.5 mm in diameter, barely emergent to immersed.
20. Pore annulate; spores small with crowded septae, 5 $\mu$ -6 $\mu$   $\times$  9 $\mu$ -11 $\mu$  ..... 21. *O. subcavata*
20. Pore not annulate; spores generally 20 $\mu$ -30 $\mu$  long (except smaller in *O. maculata*).
21. Thallus P-.
22. Pore tiny, less than 0.1 mm in diameter; spores 4-loculate ..... 11. *O. maculata*, new species
22. Pore larger, 0.1-0.2 mm wide; spores 6-7-loculate ..... 15. *O. papillata*
21. Thallus P+ red or orange yellow.
23. Thallus very thin to hypophloeodal; P+ orange ..... 17. *O. pyrenuloides*
23. Thallus thick, epiphloeodal.
24. Thallus P+ red; apothecia barely emergent ..... 16. *O. perforata*
24. Thallus P+ yellow; apothecia strongly emergent ..... 2. *O. antillensis*, new species

### 1. *Ocellularia alborosella*

FIGURES 5*b*, 9*b*

*Ocellularia alborosella* (Nylander) Santesson, 1952:308.

*Graphis alborosella* Nylander, 1863:372 [type-collection: Colombia, Lindig 2694 (H, lectotype; FH-Tuck, UPS, isotypes); Figure 9*b*].

*Thelotrema platycarpellum* Vainio, 1923:138 [type-collection: Arima, Trinidad, Thaxter 57 (TUR, lectotype); Figure 9*a*].

*Ocellularia platycarpella* (Vainio) Zahlbruckner, 1923:598.

Thallus whitish gray, thin but continuous, shiny, smooth, forming colonies 5-8 cm broad; apothecia chroodiscoid, up to 1.5 mm across, round to irregular, the marginal flap conspicuous, the disc flesh colored to white pruinose; hymenium about 60 $\mu$

high; spores 8, 5-6 loculate, 4 $\mu$ -5 $\mu$   $\times$  8 $\mu$ -15 $\mu$ , I- or weakly blue (Figure 5*b*).

CHEMISTRY.—No substances present.

HABITAT.—Tree trunks at mid or higher elevation in rain forest.

This was the first corticolous chroodiscoid species to be described. It is characterized by the small spores and lack of lichen substances. The Dominican collections have a wider disc than the type from Colombia but they fall within a predictable range of variation. It is a rare and easily overlooked species.

SPECIMENS EXAMINED.—8 (38143), 16*b* (37883), 26*b* (35371*a*).



## 2. *Ocellularia antillensis* Hale, new species

FIGURE 9g

Thallus corticola, albidus, epiphloeodes, planus vel minute verrucosus, nitidus, 3–5 cm latus; apothecia numerosa, emergentia, 0.3–0.5 mm diametro, apice obfusca, columellata, columella 0.15 mm lata; ostiolum 0.1–0.12 mm diametro, intus nigrum; hymenium 70 $\mu$ –80 $\mu$  altum; sporae 8:nae, transversim 7 loculatae, 7 $\mu$   $\times$  20 $\mu$ , I+ coerulescentes (Figure 9g).

CHEMISTRY.—Psoromic and conpsoromic acids.

HOLOTYPE.—Trail to Madjini, low elevation windward rain forest, Dominica, elevation about 30 m, Hale 35612, January 1969 (US).

HABITAT.—Upper trunk of stunted rain forest trees (30m).

The whitish minutely verrucose thallus and numerous emergent apothecia with the large contrasting black pore area distinguish this rare species. *Ocellularia comparabilis* var. *microcarpa* Redinger has larger spores (6 $\mu$   $\times$  30 $\mu$ –34 $\mu$ ), sparse apothecia, and a smooth thallus, while *O. terebrata* (Acharius) Müller-Argau has barely emergent apothecia (see Hale, 1972). I later collected this species from Trinidad and Panama, both at low elevation.

SPECIMENS EXAMINED.—3 miles NW of Sangre Grande, Trinidad, Hale 37444 (US); Barro Colorado Island, Panama, Hale 38659 (US).

## 3. *Ocellularia cavata*

FIGURES 6c, 9f

*Ocellularia cavata* (Acharius) Müller-Argau, 1882b:499.

*Thelotrema cavatum* Acharius, 1812:92 [type-collection: Sierra Leone, Afzelius (H, lectotype; S, UPS, isotypes)].—Hale, 1971b, fig. 1a.

*Ascidium cinchonarum* Fée, 1824:96 [type-collection: On *Cinchona*, South America (G, lectotype; H, L, M, P, isotypes); Figure 9e].

*Ocellularia cinchonarum* (Fée) Sprengel, 1827:242.

*Ascidium cinchonarum* f. *intermedium* Nylander, 1867:319 [type-collection: Pie de Cuesta, Colombia, Lindig 5 (H, lectotype; BM, G, M, isotypes); Figure 9c].

*Ocellularia lindigiana* Müller-Argau, 1887a:9 [type-collection: Colombia, Lindig 2757 (G, lectotype; BM, FH, UPS, isotypes); Figure 9d].

*Ocellularia cinchonarum* (Fée) Sprengel f. *intermedia* (Nylander) Zahlbruckner, 1923:586.

Thallus whitish mineral gray, epiphloeodal, continuous, more or less roughened, forming colonies

up to 8 cm across; apothecia ascidioid, 0.7–0.9 mm in diameter, apically carbonized with a large columella (Figure 6c); pore round, 0.07–0.12 mm in diameter, the top of the columella clearly visible; spores 8, 6–8 loculate, 6 $\mu$ –8 $\mu$   $\times$  22 $\mu$ –28 $\mu$ , I+ blue. (Figure 9f).

CHEMISTRY.—“Cinchonarum” unknowns A and B and a yellowish pigment.

HABITAT.—Canopy branch in mid-elevation rain forest (about 550 m).

I had previously typified this distinctive but rare Acharian species. It appears to be rare in the Lesser Antilles. The chief diagnostic features are the unusual chemistry, small ascidioid apothecia, and the large columella which protrudes into the pore area.

SPECIMEN EXAMINED.—14 (35134).

## 4. *Ocellularia comparabilis*

FIGURES 5i, 9i

*Ocellularia comparabilis* (Krempelhuber) Müller-Argau, 1883:318.

*Thelotrema comparabile* Krempelhuber, 1876:220 [type-collection: Rio de Janeiro, Brazil, Glaziou 5463 (M, lectotype; BM, C, G, M, P, UPS, W, isotypes); Figure 9i].

Thallus pale greenish to whitish mineral gray, epiphloeodal, smooth, forming colonies 5–12 cm broad; apothecia emergent, 0.8–1.2 mm in diameter, the walls carbonized, columella simple to actinoid; pore open, 0.2–0.5 mm broad, the white pruinose disc clearly visible; hymenium 50 $\mu$ –60 $\mu$  high; spores 8, 4–5 loculate, 5 $\mu$ –6 $\mu$   $\times$  10 $\mu$ –14 $\mu$ , I+ blue. (Figure 5i).

CHEMISTRY.—Psoromic and conpsoromic acids.

HABITAT.—Lower trunks in rain forest (300–700 m).

The columella in this rare species is imperfectly actinoid. To judge from collections made in South America, the range of variation is very great with gradations into related psoromic acid-containing species. For example, *Ocellularia discoidea* (Acharius) Müller-Argau (Hale, 1972) and *O. antillensis*, new species, have a simple columella. *Ocellularia efformata* (Krempelhuber) Müller-Argau has a very similar actinoid columella but the outer margin is semi-erect, leaving an open rather lacerate pore; *O. berkeleyana* (Montagne) Zahlbruckner and *O. glaziovii* Müller-Argau both have highly developed



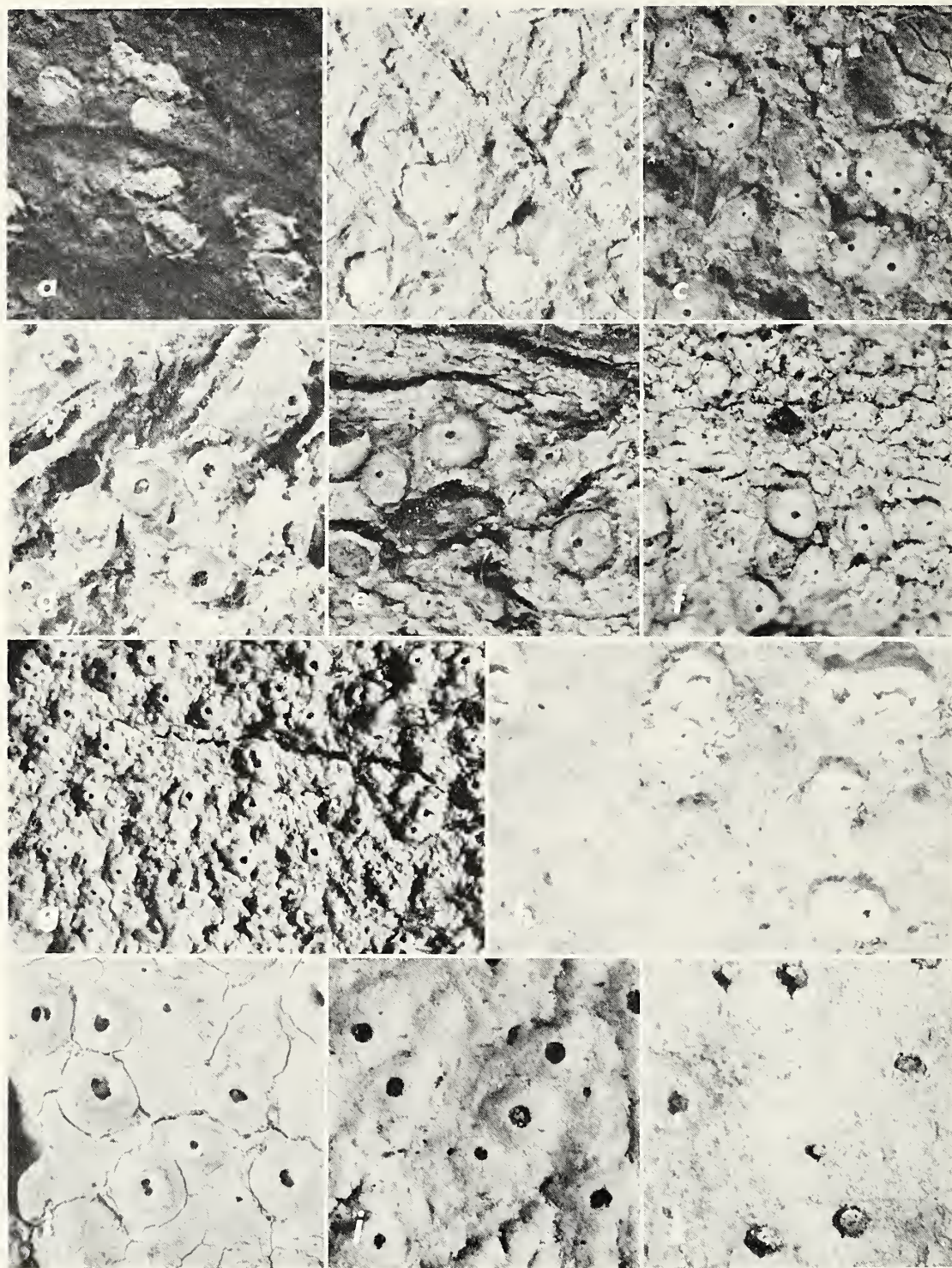


FIGURE 9.—Specimens of Thelotremataceae (all about  $\times 10$ ): *a*, *Ocellularia platycarpella* (lectotype in TUR); *b*, *O. alborosella*, (isotype in FH-Tuck); *c*, *O. cinchonarum* f. *intermedia* (lectotype in H); *d*, *O. lindigiana* (lectotype in G); *e*, *O. cinchonarum* (lectotype in G); *f*, *O. cavata* (Hale 35134); *g*, *O. antillensis*, new species (Hale 35612); *h*, *O. conglomerata*, new species (Hale 37959); *i*, *O. comparabilis* (isotype in BM); *j*, *O. concolor* (lectotype in G); *k*, *O. concolor* (Hale 38167).



actinoid discs; and *O. latilabra* (Tuckerman) Müller-Argau has an actinoid columella and a recurved margin.

SPECIMENS EXAMINED.—9 (38128), 21 (37372, 38144).

### 5. *Ocellularia concolor*

FIGURE 9j,k

*Ocellularia concolor* Meyen and Flotow, 1843:230.

TYPE-COLLECTION.—Manila, Philippines, Meyen (G, lectotype) (Figure 9j).

Thallus light grayish tan, dull, mostly hypophloeodal, forming colonies 3–4 cm broad; apothecia numerous, 0.8–1.1 mm in diameter, more or less emergent, apically carbonized, columella present, 0.2–0.3 mm wide; pore open, round to somewhat irregular, 0.3–0.5 mm in diameter, the rim black and the flat black columnar disc easily seen; hymenium 140 $\mu$  high; spores 8, 5–7 loculate, 5 $\mu$ –8 $\mu$   $\times$  13 $\mu$ –20 $\mu$ , I+ blue (Figure 9k).

CHEMISTRY.—No substances present.

HABITAT.—Lianas, saplings, base and lower trunk of trees in dense rain forest (300–370 m).

This easily recognizable species was first described from the Philippines and appears to be pantropical. The tannish hypophloeodal thallus and habitat are characteristic. There are no comparable species in this kind of habitat.

SPECIMENS EXAMINED.—8 (38167), 16a (37665), 16b (37801, 37809, 38075).

### 6. *Ocellularia conglomerata* Hale, new species

FIGURE 9h

Thallus corticola, cinereo-albidus, epiphloeodes, continuus, nitidus, 4–5 cm latus; apothecia primo solitaria, 0.6–0.9 mm diametro, semi-emergentia, mox 2–3:nae conglomerata, margine exteriori erecto, excipulo interiore evoluto, pulverulento, disco aperto, carneo; ostiolum irregulare, latum; hymenium 70 $\mu$  altum; sporae 8:nae, transversim 6–7 loculatae, 5 $\mu$ –6 $\mu$   $\times$  15 $\mu$ –18 $\mu$ , I+ coerulescentes (Figure 9h).

CHEMISTRY.—Stictic and constictic acids.

HOLOTYPE.—Trail to Morne Anglais, Dominica, elevation about 900 m, Hale 37959, 13 December 1971 (US).

Chemistry places this species near *O. exanthismocarpa* but the exciple is not so clearly separate from the thick, erect, pulverulent margin, leaving the disc open. The spores are much smaller. Another West Indian stictic acid-containing species, *Ocellularia alboolivacea* (Vainio) Zahlbruckner, has a more typically recurved margin and a thin, entire exciple.

### 7. *Ocellularia dilatata*

FIGURE 11a,b

*Ocellularia dilatata* Müller-Argau, 1895:452.

TYPE-COLLECTION.—Rio de Janeiro, Brazil, Glaziou 5531 pro parte (G, lectotype; BM, isotype). (Figure 11a).

Thallus whitish gray, thin, dull, in part hypophloeodal, forming colonies 4–6 cm broad; apothecia chroodiscoid, large, up to 2.5 mm broad, round to elongate, marginal flap rather coarse; disc white pruinose; hymenium about 60 $\mu$  high; spores 8, 6–7 loculate, 5 $\mu$ –6 $\mu$   $\times$  15 $\mu$ –17 $\mu$ , I+ blue (Figure 11b).

CHEMISTRY.—Stictic and constictic acids.

HABITAT.—Lower trunk area in higher rain forest zone (850 m).

This rare species is related to *Ocellularia alborosella*, but it has a thicker recurved margin and a different chemistry. I have collected a number of specimens at low elevation in Trinidad, suggesting that the species is more at home on continental land masses.

SPECIMENS EXAMINED.—26a (37695, 37702).

### 8. *Ocellularia dominicana* Hale, new species

FIGURES 2c,d; 10

Thallus corticola, brunneo- vel viridi-albidus, epiphloeodes, continuus, nitidus, 5–10 cm latus; apothecia semi-emergentia, 0.7–1.1 mm diametro, apice incolores, columella nulla, solitaria vel 2–3 arcte aggregata, habitu similia apothecio singulari, excipulo interiore evoluto, ostiolum complente; ostiolum rotundum, 0.1–0.5 mm diametro; hymenium 60 $\mu$ –80 $\mu$  altum; sporae 8:nae, transversim 6–7 loculatae, 6 $\mu$ –8 $\mu$   $\times$  16 $\mu$ –25 $\mu$ , I+ coerulescentes (Figure 10).

CHEMISTRY.—No substances present.

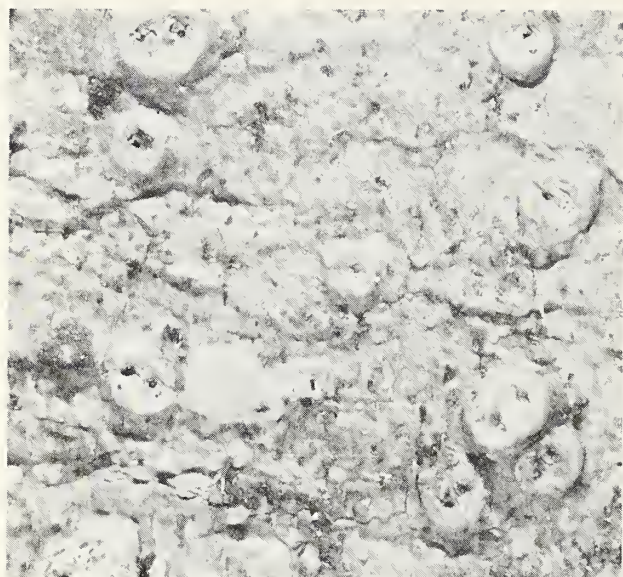


FIGURE 10.—*Ocellularia dominicana*, new species (Hale 37841) (about  $\times 10$ ).

**HOLOTYPE.**—Submossy forest on upper slopes of Trois Pitons, Dominica, elevation about 1000 m, Hale 37967, 6 December 1971 (US).

**HABITAT.**—Trunk and lower base of trees in submossy forest (700–1100 m).

The apothecia are so tightly aggregated that I first interpreted the wall between them as a columella. The combined outer margin and exciple are minutely pulverulent and crowded, filling the broad disc but leaving a distinct pore area. The species was rather common at Trois Pitons but not found elsewhere.

**SPECIMENS EXAMINED.**—23 (38053), 27 (37683, 37688, 37829, 37832, 37841, 38041).

### 9. *Ocellularia exanthismocarpa*

FIGURES 5a, 11c,g

*Ocellularia exanthismocarpa* (Leighton) Zahlbruckner, 1923: 590.

*Thelotrema exanthismocarpum* Leighton, 1869:169 [type-collection: Central Province, Ceylon, *Thwaites* C.L. 97 (BM, lectotype; H, isotype); Figure 11c].

*Thelotrema porinoides* Montagne and von der Bosch, 1855: 484 [type-collection: Java, *Junghuhn* 151 (L, lectotype; FH, G, P, W, isotypes); Figure 11e].

*Ocellularia multilocularis* Zahlbruckner, 1912:369 [type-collection: Lanai, Hawaii, *Rock* 17 (W, holotype); Figure 5a].

*Ocellularia isertii* Vainio, 1915:40 [type-collection: Guadeloupe, *Iser* 87 (C, lectotype; TUR, isotype); Figure 11f].

*Thelotrema homothecium* Vainio, 1921:190 [type-collection: Irosin, Mt. Bulusan, Prov. Sorsogon, Philippines, *Elmer* 14852 (TUR, lectotype; FH, G, L, S, US, W, isotypes); Figure 11d].

*Ocellularia homothecia* (Vainio) Zahlbruckner, 1923:593.

*Ocellularia porinoides* (Montagne and von der Bosch) Zahlbruckner, 1923:599 [not *O. porinoides* (Acharius) Sprengel, 1827:242].

Thallus white to ashy, thin, smooth, in part hypophloeodal, forming colonies 1–4 cm across; apothecia numerous, semi-emergent, the rim becoming erect, noncarbonized and without a columella, the inner exciple distinct, intact, forming an apical pore within the main pore; main pore open, 0.2–0.4 mm in diameter; hymenium 160 $\mu$ –180 $\mu$  high; spores 4–8/ascus, 18–22 loculate, 12 $\mu$ –18 $\mu$   $\times$  60 $\mu$ –100 $\mu$ , 1+ deep blue (Figure 11g).

**CHEMISTRY.**—Stictic and constictic acids and rarely the higher "quintaria" unknown B.

**HABITAT.**—Trunks, canopy branches, fence posts, and planted trees (300–900 m).

This common pantropical species is unique because of the pore-within-a-pore arrangement. The large spores are also distinctive but it is not unusual to find sterile specimens. It is also one of the few species in the family to invade secondary forests, fence posts, etc., in wet areas up to very high elevation.

**SPECIMENS EXAMINED.**—8 (38114), 11 (38009), 16b (37982), 17 (35605), 20a (37780, 37781, 37786, 37788, 38019, 38025), 25a (37708, 37709, 37713, 37714, 37715, 37716, 37849, 37996, 38069), 25b (35473, 35516), 26a (37692, 37944), 27 (38042, 38055).

### 10. *Ocellularia fecunda* (Vainio) Hale, new combination

FIGURE 11h,i

*Thelotrema domingense* var. *fecundum* Vainio, 1896:208 [type-collection: Richmond Valley, St. Vincent, *Elliott* 243 (BM, lectotype; TUR, isotype); Figure 11h].

*Ocellularia domingensis* var. *fecunda* (Vainio) Zahlbruckner, 1923:590.

Thallus light greenish or whitish mineral gray, epiphloeodal, smooth and shiny, forming large colonies up to 30 cm broad; apothecia large, strongly emergent, 1.5–1.8 mm in diameter, the cortex soon breaking away and revealing a light yellowish orange medulla, walls heavily carbonized,



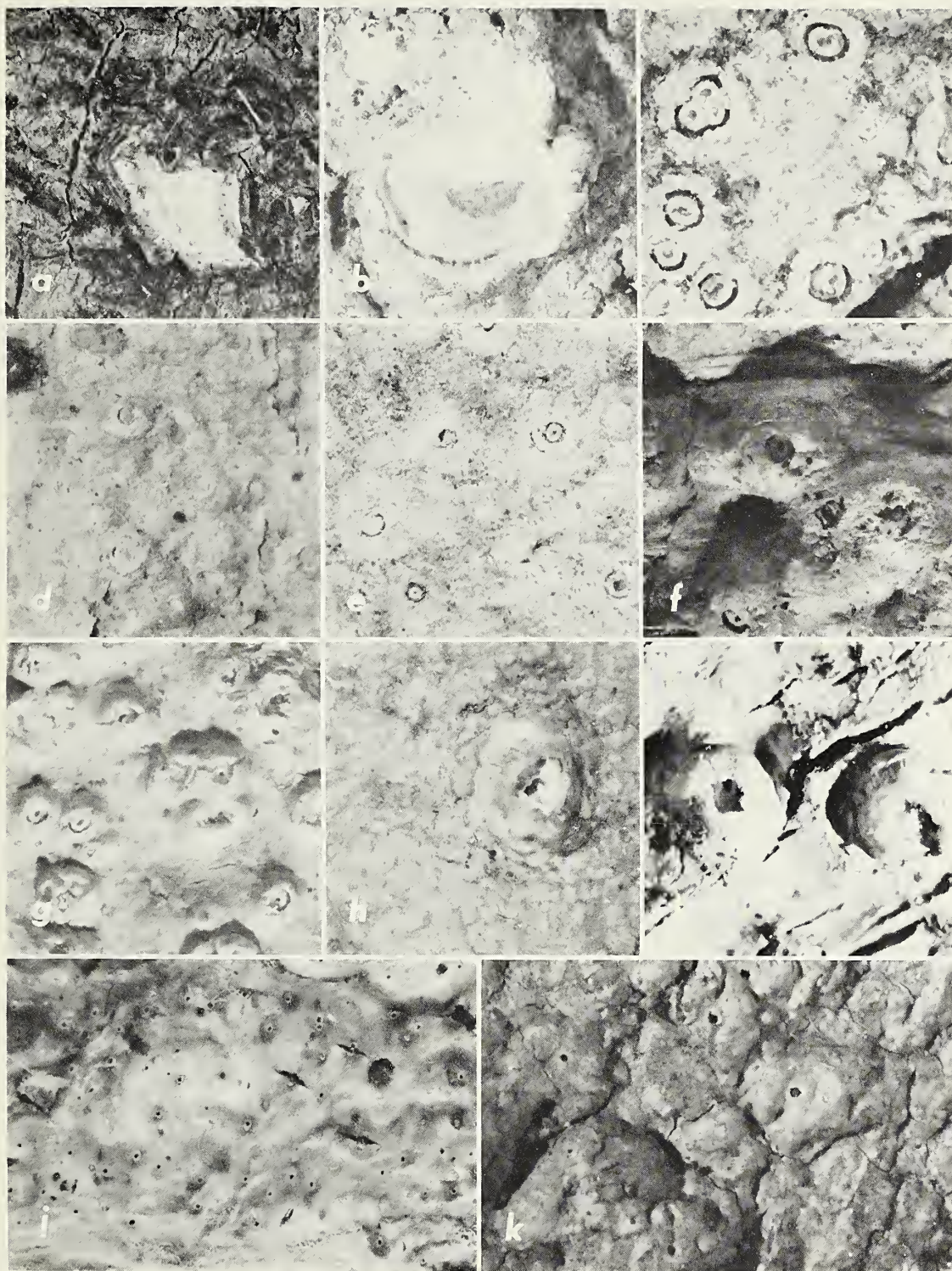


FIGURE 11.—Specimens of Thelotremataceae (all about  $\times 10$ ): a, *Ocellularia dilatata* (isotype in BM); b, *O. dilatata* (Hale 37702); c, *O. exanthismocarpha* (lectotype in BM); d, *O. homothecia* (isotype in FH); e, *O. porinoides* (lectotype in L); f, *O. isertii* (lectotype in C); g, *O. exanthismocarpha* (Hale 37996); h, *O. fecunda*, new combination (lectotype in BM); i, *O. fecunda*, new combination (Hale 35218); j, *O. maculata*, new species (Hale 38015); k, *O. mordenii*, new species (Hale 37887).



columella absent or weakly and irregularly developed; pore gaping, round to irregular and jagged, 0.4–0.8 mm in diameter, the white pruinose disc clearly visible; hymenium 200 $\mu$ –250 $\mu$  high; spores 1–1/ascus, 30–40 loculate, 12–20  $\times$  80 $\mu$ –150 $\mu$ , rarely turning brown, I+ blue (Figure 11i).

CHEMISTRY.—Hypoprotocetraric acid and in lesser concentration 4–0-demethylnotatic acid along with unidentified pigments.

HABITAT.—Basal area of trees into the upper bole and canopy in the rain forest (300–850 m).

This is one of the few species in the family that can be recognized at sight in the field. The apothecia are very large and the yellow-orange medulla is exposed by rubbing the cortex off. It is the second commonest species in Dominica and forms very extensive colonies. As far as I have determined, the species is restricted to the West Indies and has no close relatives.

SPECIMENS EXAMINED.—8 (38120), 11 (37811, 37816, 37820, 38003, 38046, 38061), 12 (37902, 37906, 37913, 37920, 37921, 37931), 15 (35155, 35167, 35218), 16a (37658, 37942, 37970, 38050), 16b (37796, 37802, 37810, 37874, 37881, 37954), 16c (37765, 37766, 37774, 37943, 37980), 18a (37725, 37957, 37962, 37986, 38039), 21 (38080, 38081, 38089, 38103, 38106, 38107, 38132, 38137), 22 (37639, 37641, 37828, 37838, 37843, 37844, 37844a, 37845, 37856, 37858, 37960, 38026), 23 (37679), 24a (37740, 37743, 37063, 37064), 25a (37711), 26a (38056).

### 11. *Ocellularia maculata* Hale, new species

FIGURE 11j

Thallus corticola, cinereo-albidus, epiphloeodes, planus, continuus, nitidus, 9 cm latus; apothecia numerosa, minuta, 0.2–0.3 mm diametro, apice obfusca, columellata vel columella parce evoluta; ostiolum rotundum, 0.05–0.1 mm diametro, anguste nigrocinctum, columella protrusa; hymenium 100 $\mu$  altum; sporae 8:nac, transversim 4 loculatae, 5 $\mu$ –7 $\mu$   $\times$  11 $\mu$ –13 $\mu$ , I– (Figure 11j).

CHEMISTRY.—No substances present.

HOLOTYPE.—Remnants of rain forest in pastures above Giraudel, Dominica, elevation 650 m, *Hale* 38015, 11 December 1971 (US).

*Ocellularia maculata* might seem at first glance to be *O. papillata* but the apothecia and spores

are much smaller. There are no related species.

SPECIMEN EXAMINED.—18b (35524).

### 12. *Ocellularia mordenii* Hale, new species

FIGURES 3c,d; 6b; 11k

Thallus corticola, pallide cinereo- vel brunneo-albidus, epiphloeodes, continuus, aetate rimosus, nitidus, usque ad 12 cm latus; medulla omnino sanguinea; apothecia dispersa, vix emergentia, apice obfusca, extus crasse verrucosa, verrucis fragilibus, rumpentibus, columella nulla vel parce evoluta (Figure 6b); ostiolum rotundum, 0.08–0.12 mm diametro; hymenium circa 200 $\mu$  altum; sporae 1–2:nac, transversim 24–30 loculatae, 15 $\mu$ –20 $\mu$   $\times$  70 $\mu$ –150 $\mu$ , I+ coerulescentes (Figure 11k).

CHEMISTRY.—Unidentified anthraquinone pigments only.

HOLOTYPE.—Canopy branches in primary rain forest, Dleau Gommier Forest Reserve, Dominica, elevation about 370 m, *Hale* 37764, 12 December 1971 (US).

HABITAT.—Canopy branches in rain forest (370–800 m).

The deep red pigment and large warts are distinctive. It is a conspicuous canopy species. A very similar species in Cuba, *O. xanthostroma* (Nylander) Zahlbruckner, differs mainly in containing a K– pale yellow-orange pigment. This lichen is named in honor of Mrs. William J. Morden.

SPECIMENS EXAMINED.—12 (37909), 15 (35198), 16a (38051), 16b (37791), 16c (37762, 37886, 37887, 37010), 26a (37863).

### 13. *Ocellularia nigropuncta* Hale, new species

FIGURES 2a,b; 6a; 12a

Thallus corticola, pallide brunneo- vel viridicinereus, epiphloeodes, continuus vel rarius rimosus, 5–8 cm latus; apothecia numerosa, emergentia, 0.6–0.8 mm diametro, apice obfusca, columella nulla (Figure 6a); ostiolum rotundum, 0.1–0.2 mm diametro, nigrocinctum; hymenium 100 $\mu$ –110 $\mu$  altum; sporae 8:nac, transversim 6–8 loculatae, 6 $\mu$ –10 $\mu$   $\times$  20 $\mu$ –32 $\mu$ , I+ coerulescentes (Figure 12a).

CHEMISTRY.—Protocetraric acid.

HOLOTYPE.—Trail to summit of Morne Anglais, Dominica, elevation about 900 m, *Hale* 35365, January 1969 (US).



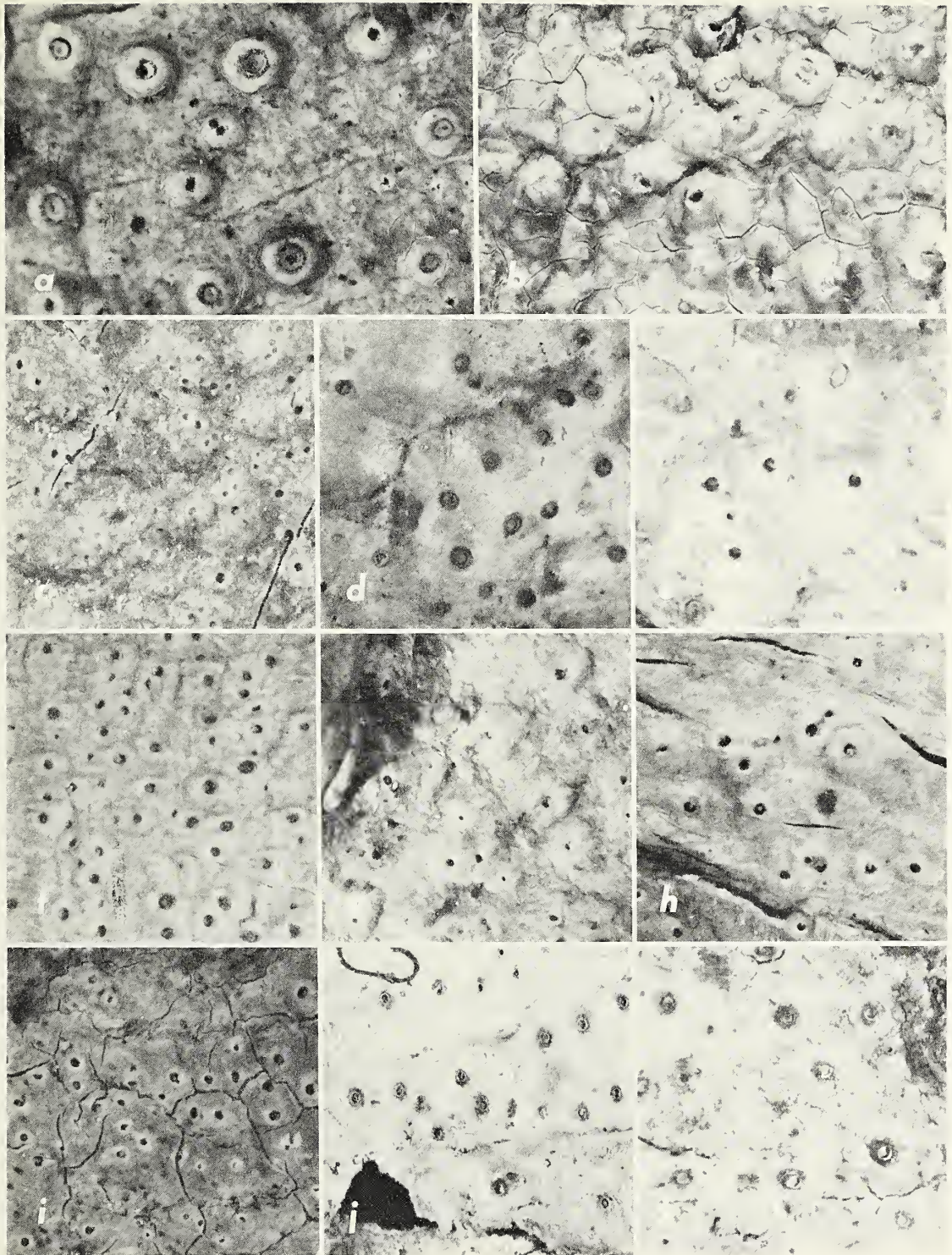


FIGURE 12.—Specimens of Thelotremataceae (all about  $\times 10$ ): a, *Ocellularia nigropuncta*, new species (Hale 35365); b, *O. rimosa*, new species (Hale 38052); c, *O. olivacea* (lectotype in G); d, *O. papillata* (lectotype in BM); e, *O. papillata* (Hale 38098); f, *O. perforata* (lectotype in BM); g, *O. excavata* (lectotype in BM); h, *O. rufocincta* (lectotype in G); i, *O. terebrata* var. *abbreviata* (isotype in FH); j, *O. pyrenuloides* (isotype in W); k, *O. pyrenuloides* (Hale 35524).



HABITAT.—Lianas, lower bole and base, *Symploca* roots, rarely canopy of trees in the rain forest (300–900 m).

The black-rimmed pore area and smooth thallus are diagnostic features. Other ecolumellate protocetraric acid-containing species include *Ocellularia bonplandiae* (Fée) Müller-Argau, which has a grainy surface, and *O. verrucosa* (Fée) Müller-Argau, which has an irregular open pore and larger spores (over 30 $\mu$  long). Under the scanning-electron microscope *O. nigropuncta*, new species, has a finely pitted but otherwise smooth surface (Figure 2*a,b*), whereas *O. verrucosa* appears to have an aculeate orientation and *O. bonplandiae* is verrucose and fissured.

SPECIMENS EXAMINED.—8 (38115, 38158), 10 (38169), 12 (37903), 16*a* (37660), 16*b* (37798), 16*c* (37755, 37770, 37963), 18*a* (37948), 21 (38092, 38094, 38138), 22 (37852), 24*a* (37751).

#### 14. *Ocellularia olivacea*

FIGURES 1*a*; 3*a,b*; 5*c*; 12*c*

*Ocellularia olivacea* (Fée) Müller-Argau, 1887*a*:7.

*Myriotrema olivacea* Fée, 1824:103 [type-collection: On *Bonplandia trifoliata*, South America (G, lectotype); Figure 12*c*].

*Ocellularia olivacea* (Fée) C. and D. Van Overcem-De Haas, 1922:118 [superfluous combination].

Thallus light greenish to ashy white, shiny, thick, up to 0.5 mm (Figure 1*a*), forming extensive colonies up to 50 cm broad, sometimes finely cracked and fissured; apothecia very numerous, immersed, 0.15–0.3 mm in diameter, noncarbonized and without a columella; pore small, flush, about 0.1 mm in diameter; hymenium 65 $\mu$ –75 $\mu$  high; spores 8, more or less uniseriate, 4 loculate, 4 $\mu$ –6 $\mu$   $\times$  8 $\mu$ –12 $\mu$ , I+ blue (Figure 5*c*).

CHEMISTRY.—“*Olivacea*” unknown and a second lower spot.

HABITAT.—Canopy branches to mid-bole in rain forest (240–700 m).

This is one of three “*Myriotrema*” species that occur in Dominica, the other two being *O. terebratula* and *Thelotrema clandestinum*, all typically found on canopy branches in dense rain forest. *Ocellularia olivacea* is characterized by the rather small spores and unusual chemistry. The West Indian material all produces a second spot below the “*olivacea*” unknown, probably a related dep-

side. The type-specimen of *O. olivacea* lacks this spot. The surface under the scanning-electron microscope is strongly aculeate (Figure 3*a,b*).

SPECIMENS EXAMINED.—7 (35226, 35243, 35249), 8 (38164), 9 (38154), 11 (38001), 12 (37965), 15 (35205), 16*a* (37992, 38054), 18*a* (37965), 21 (38113).

#### 15. *Ocellularia papillata*

FIGURE 12*d,e*

*Ocellularia papillata* (Leighton) Zahlbruckner, 1923:597.

*Thelotrema papillatum* Leighton, 1869:169 [type-collection: Central Province, Ceylon, Thwaites C.L. 129 (BM, lectotype; H, G, P, S, UPS, W, isotypes); Figure 12*d*].

Thallus whitish to pale greenish ashy, smooth to more or less warty, shiny, forming colonies 3–12 cm broad; apothecia numerous, 0.6–0.8 mm in diameter, immersed to slightly emergent, the upper walls carbonized, columella present, thin to scarcely developed to absent; pore round, 0.1–0.2 mm in diameter; hymenium 50 $\mu$ –70 $\mu$  high; spores 8/ascus, 7–9 loculate, 6 $\mu$ –10 $\mu$   $\times$  20 $\mu$ –36 $\mu$ , I+ blue. (Figure 12*e*).

CHEMISTRY.—No substance present.

HABITAT.—Saplings, prop roots, lianas, and tree bases at mid-elevation in rain forest (300–900 m).

This common species has few outstanding features. The columella is usually present, although often weakly developed and difficult to find. Some specimens, as indicated below, seem to lack it entirely. The apothecia are inconspicuous, almost immersed to slightly emergent, but the pore is always distinct. The thallus is well developed, usually quite whitish, and smooth. There are no close relatives without lichen substances, although *O. perforata*, which has protocetraric acid, is very close in general aspect except perhaps that the apothecia are more often emergent. Both species occupy similar base level habitats in the rain forest and were collected together at 11 of the localities. At eight other localities only one of the species was found.

SPECIMENS EXAMINED (columella present).—8 (38123, 38130, 38165, 38168), 9 (38131), 11 (37825), 16*a* (37795, 37991), 16*b* (37662, 37804, 37805, 37808), 18*a* (37721, 37964); 21 (38084, 38085, 38097, 38098, 38152), 22 (37645, 37837, 37842), 23 (37671, 37681, 37682), 27 (37850, 38072), 28 (35428).



SPECIMENS EXAMINED (columella absent).—7 (35227), 10 (38127, 38150), 16a (37655, 37661), 16b (37792, 38074), 16c (38045) 21 (38086, 38088), 22 (37649, 37834, 37851, 37854, 37855), 23 (37677, 38967), 24a (37746).

### 16. *Ocellularia perforata*

FIGURES 1b, 5e, 7a, 12f

- Ocellularia perforata* (Leighton) Müller-Argau, 1892:284.  
*Thelotrema perforatum* Leighton, 1866:447 [type-collection: Casiquiari, Brazil, Spruce 254 (BM, lectotype); Figure 12f].  
*Thelotrema terebratum* var. *abbreviatulum* Vainio, 1890:83 [type-collection: Caraça, Minas Gerais, Brazil, Vainio 1551 (TUR, lectotype; BM, FH, UPS, isotypes); Figure 12i].  
*Ocellularia rufocincta* Müller-Argau, 1893:146 [type-collection: Foret du Rio Général, Tondoz s.n. (Pittier 6107) (G, lectotype); Figure 12h].  
*Thelotrema excavatum* Vainio, 1896:208 [type-collection: Mt. St. Andrew, St. Vincent, Elliott 153 (TUR, lectotype; BM, FH, isotypes); Figure 12g].  
*Thelotrema excavatum* var. *impressulum* Vainio, 1896:208 [type-collection: Morne Anglais, Dominica, Elliott 169 (BM, lectotype)].  
*Ocellularia terebrata* var. *abbreviata* (Vainio) Zahlbruckner, 1923:602.

Thallus whitish to pale greenish ashy, smooth to more or less warty with age, shiny, forming colonies 3–10 cm broad; apothecia numerous, immersed to moderately emergent, 0.4–0.6 mm in diameter, the upper wall carbonized, columella usually developed, thin 50 $\mu$ –70 $\mu$  in diameter, but sometimes lacking or difficult to find; pore round, 0.07–0.15 mm in diameter; hymenium 55 $\mu$ –70 $\mu$  high; spores 8/ascus, 6–8 loculate, 7 $\mu$ –10 $\mu$   $\times$  20 $\mu$ –34 $\mu$ , I+ blue (Figure 5e).

CHEMISTRY.—Protocetraric acid and the “amplior” unknown as an accessory substance.

HABITAT.—Buttresses, saplings, and bole to rarely canopy branches in rain forest at mid-elevation (300–850 m).

This is one of the commonest species in Dominica at base level. The smooth whitish thallus (see cross-section in Figure 2b) and the small semi-emergent apothecia resemble *O. papillata*, as discussed above. Some of the specimens as listed below lacked any sign of a columella.

SPECIMENS EXAMINED (columella present).—8 (38149), 11 (37812, 37817, 37997, 38030, 38033), 12 (37899, 38078), 14 (35139), 16a (37651, 37666, 38007, 38032), 16b (37884), 16c (37759, 37761,

37775, 37952), 18a (37727, 37728, 37730, 37732, 37735, 37961, 37969, 37983, 38020), 20a (37784, 37785, 38016, 38017), 21 (38108, 38134, 38145), 22 (37646, 37647, 37830, 35857, 38036), 23 (37675), 24a (37752), 26a (37698, 37701), 27 (37686, 37827).

SPECIMENS EXAMINED (columella absent).—8 (38160, 38163), 16a (38018), 21 (38093, 38140, 38157), 23 (37674), 24a (38066), 27 (37684, 37847), 26a (37700), 26b (35370).

### 17. *Ocellularia pyrenuloides*

FIGURE 12j,k

*Ocellularia pyrenuloides* Zahlbruckner in Magnusson and Zahlbruckner, 1943:46.

TYPE-COLLECTION.—Wailuku, Maui, Hawaii, Faurie 676 (UPS, lectotype; S, W, isotypes) (Figure 12j).

Thallus ashy mineral gray, thin to evanescent, continuous, forming colonies about 5 cm broad; apothecia numerous, nearly immersed to moderately emergent, 0.5–0.7 mm in diameter, walls heavily carbonized, columella present, 130 $\mu$  in diameter; pore round, 0.1–0.15 mm wide, pore area surrounded by a blackish ring, in part white pruinose, the pruinose top of columella visible through the pore; hymenium about 60 $\mu$  high; spores 8/ascus, 6–7 loculate, 6 $\mu$   $\times$  12 $\mu$ –15 $\mu$ , I+ blue (Figure 12k).

CHEMISTRY.—Stictic and constictic acids.

HABITAT.—Tree branch in rain forest (650 m).

The darkened pore area is similar to that in *Thelotrema tenue*, new species. There are no related species with stictic acid. It is still surprising to find a Hawaiian species on Dominica, but to me this suggests how poorly the Thelotremataceae have been collected.

SPECIMEN EXAMINED.—18b (35524).

### 18. *Ocellularia rhodostroma*

FIGURES 5g, 7b, 13a

*Ocellularia rhodostroma* (Montagne) Zahlbruckner, 1923:600.  
*Ascidium rhodostromum* Montagne, 1851:75 [type-collection: Cayenne, French Guiana, collection 1334 (P, lectotype); Figure 13a].

Thallus light greenish tan to gray, smooth to finely warty, continuous and epiphloeodal, the medulla white or pink, forming colonies 5–10 cm



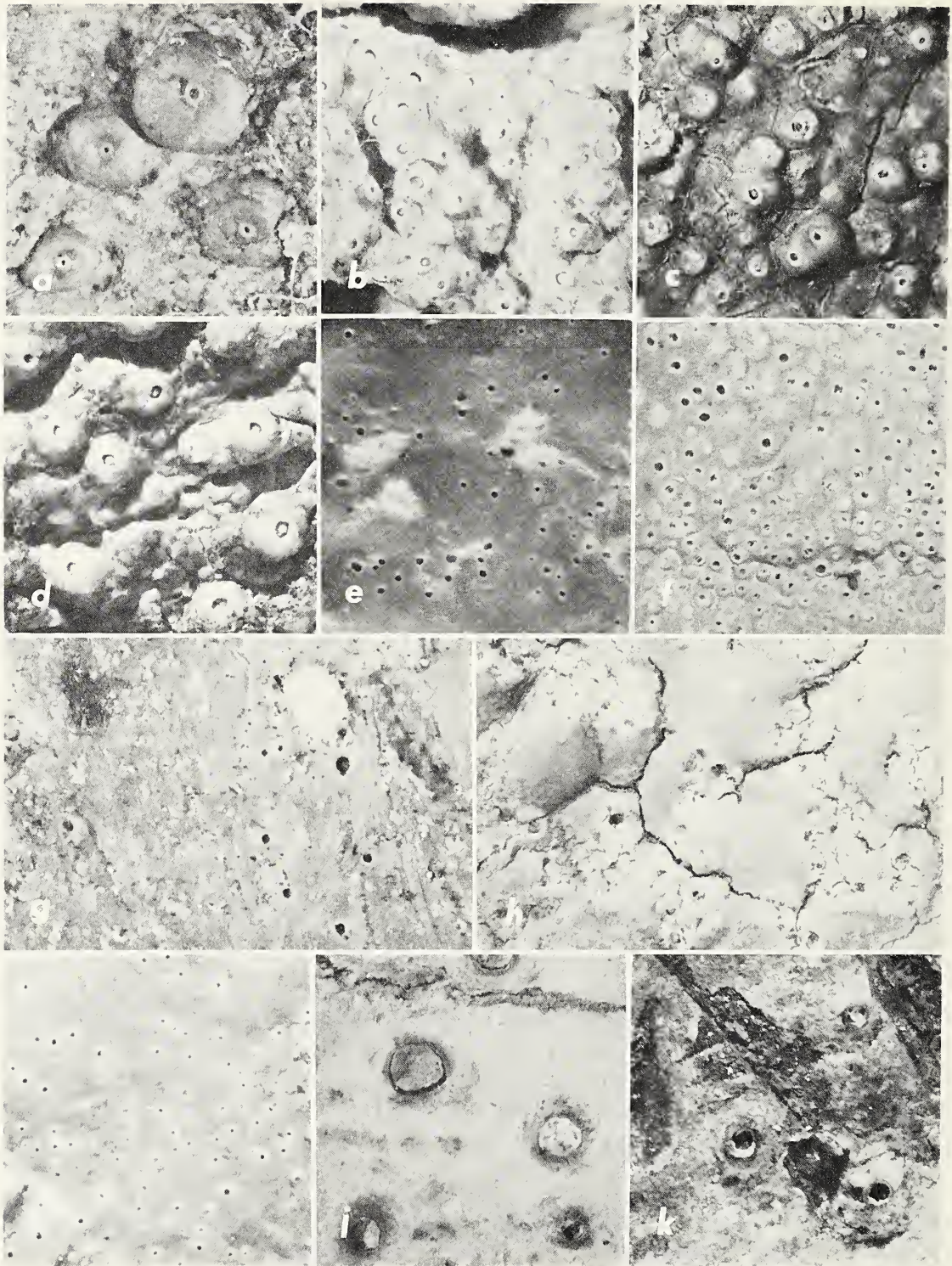


FIGURE 13.—Specimens of Thelotre mataceae (all about  $\times 10$ ): a, *Ocellularia rhodostroma* (lectotype in P); b, *O. subcavata* (lectotype in H); c, *O. vaga* (isotype in FH); d, *O. subcavata* (Hale 37769); e, *O. terebratula* (lectotype in H); f, *O. remanens* (isotype in G); g, *O. sorediata*, new species (Hale 37908); h, *Phacotrema aggregatum*, new species (Hale 35229); i, *O. terebratula* (Hale 37793); j, *P. disciforme*, new combination (lectotype in BM); k, *P. aquilinum* (lectotype in TUR).



broad; apothecia large and easily visible with the naked eye, ascidioid, 1.0–1.8 mm in diameter, the walls heavily carbonized and the medulla deep pink, readily exposed as the fragile cortex breaks away, columella lacking; pore round and small, 0.05–0.1 mm in diameter, surrounded by a raised ring; hymenium 200 $\mu$ –275 $\mu$  high; spores 1–2/ascus, 25–30 loculate, 25 $\mu$ –40 $\mu$   $\times$  100 $\mu$ –250 $\mu$ , I+ blue (Figures 5g and 7b).

CHEMISTRY.—Hypoprotocetraric acid and in greater concentration 4–0–demethylnotatic acid along with unidentified pigments.

HABITAT.—Canopy branches to lower bole at all elevations on the island.

*Ocellularia rhodostroma* is the commonest thelotrema on Dominica and the easiest to identify as well. The large ascidioid apothecia have a deep pink medulla exposed when the fragile cortex breaks. The pore is strongly annulate. While occurring at all elevations, it seems best developed at higher elevation into the mossy forest, perhaps because it competes with so few other species there.

SPECIMENS EXAMINED.—7 (35246), 8 (38122, 38146, 38166), 10 (38119), 11 (37815, 37823, 37824, 38004, 38023, 38049), 12 (37894, 37916, 37917, 37927, 37930, 37934), 13 (35279 35448), 14 (35111, 35133), 15 (35160, 35170, 35188, 35314, 16a (37653, 37938), 16b (37800, 37806, 37875, 37994, 37995), 16c (37756, 37870, 37979), 18a (37729, 37731, 37987), 18b (35517, 35522, 35523, 35587), 20a (37777, 38065), 21 (38035, 38147), 22 (37641, 37643, 37650, 37835, 37861), 23 (37672, 38975), 24a (37736, 37742, 37745, 37749, 37754, 38068), 24b (35629), 25a (37705, 37707, 37720, 37840, 37846, 37848, 37862, 37867, 37971, 37975), 25b (35469), 26a (37689, 37690, 37693, 37694, 37699, 37703, 37864, 37866, 37885, 37947 38000, 38014), 26b (35354, 35366, 35371, 35372, 35376), 27 (37831), 28 (35435, 35440).

### 19. *Ocellularia rimosa* Hale, new species

FIGURE 12b

Thallus corticola, brunneo- vel viridi-cinereus, epiphloeodes, nitidus, continuus sed aetate rimosus, usque ad 15 cm latus; apothecia numerosa, emergentia, 0.7–0.9 mm diametro, apice obfusca, columella nulla; ostiolum rotundum vel irregulare,

0.1–0.2 mm diametro, nigrocinctum; hymenium 110 $\mu$ –150 $\mu$  altum; sporae 8:nae, transversim 6–8 loculatae, 7 $\mu$ –10 $\mu$   $\times$  24 $\mu$ –32 $\mu$ , I+ coerulescentes (Figure 12b).

CHEMISTRY.—No substances present.

HOLOTYPE.—Base of tree in primary rain forest, Dleau Gommier Forest Reserve, Dominica, elevation 370 m, *Hale* 37978, 1 December 1971 (U.S.).

HABITAT.—Prop roots, tree bases, and lianas in rain forest (370–430 m).

Except for chemistry and slightly larger apothecia, this species is very close to *O. nigropuncta*, new species. Both are base level species, but *O. rimosa* has a more restricted elevational range. The two species were collected together only at Dleau Gommier.

SPECIMENS EXAMINED.—11 (38052), 16a (37654), 16b (37392, 37803), 16c (37758).

### 20. *Ocellularia sorediata* Hale, new species

FIGURE 13g

Thallus corticola, viridi-albidus, epiphloeodes, continuus, planus, nitidus, usque ad 15 cm latus, sorediatus, soraliis sparsis, verrucosis, circa 1 mm latis; apothecia immersa vel semi-emergentia, 0.4–0.6 mm diametro, apice fuliginea, columellata; ostiolum, rotundum, 0.08–0.11 mm diametro; hymenium 60 $\mu$ –70 $\mu$  altum; sporae 8:nae, transversim 3–4 loculatae, 6 $\mu$ –8 $\mu$   $\times$  12 $\mu$ –16 $\mu$ , I+ coerulescentes (Figure 13g).

CHEMISTRY.—No substances present.

HOLOTYPE.—Logging area about 3 km northwest of Pont Cassé on the Layou Road, Dominica, elevation 420 m, *Hale* 37908, 10 December 1971 (US).

HABITAT.—Mid-bole of tree in rain forest.

This is, as far as I know, the only soreciate species in the family. Large corticate tubercles are produced first, and some of these become coarsely soreciate. Although these peculiar structures seem to originate from the main thallus, there is still the possibility that they have an extraneous origin.

SPECIMEN EXAMINED.—16b (38029).

### 21. *Ocellularia subcavata*

FIGURE 13b,d

*Ocellularia subcavata* (Nylander) Zahlbruckner, 1923:601.

*Thelotrema subcavatum* Nylander, 1876:561 [type-collection: Cuba, Wright 509 (H, lectotype; FH—Tuck, isotype); Figure 13b].

*Thelotrema vagum* Vainio, 1896:209 [type-collection: Richmond Peak, St. Vincent, Elliott 260 (BM, lectotype, FH, isotype); Figure 13c].

*Ocellularia vaga* (Vainio) Zahlbruckner, 1923:603.

Thallus ashy whitish to greenish gray, shiny, more or less warty and cracked, forming colonies up to 12 cm broad; apothecia very numerous, emergent to ascidioid, 0.7–1.0 mm in diameter, crowded, walls carbonized, columella present, basally carbonized but usually colorless in the upper half; pore round, small, 0.1–0.2 mm in diameter, surrounded by a whitish, more or less raised ring, the center filled with the often protruding pruinose columella; hymenium about 100 $\mu$  high; spores 8/ascus, usually uniseriate, 5–6 loculate with narrow locules, 4 $\mu$ –7 $\mu$   $\times$  8 $\mu$ –20 $\mu$ , very rarely turning brown with age, I+ blue (Figure 13d).

CHEMISTRY.—Psoromic and conpsoromic acids.

HABITAT.—Canopy branches and upper bole in rain forest (240–800 m).

This is one of the commonest thelotremes in the canopy and can be recognized in the field with a hand lens because of the numerous crowded apothecia with a white annulate pore and protruding columella. The columella is well developed in cross-section but unique in being more or less noncarbonized in the upper half.

SPECIMENS EXAMINED.—7 (35248, 35252), 9 (38161), 10 (38129), 12 (37893, 37896, 37898, 37900, 37905, 37912, 37924, 37925, 37926, 37928, 37929, 37933), 13 (35294), 15 (35158, 35209), 16a (37652, 37795, 38012), 16b (37662, 37794, 37865), 16c (37767, 37769, 37772, 37773, 37924, 37941, 37972), 18a (37724, 37889, 37949, 38038), 23 (37680), 24a (37737, 37744, 37750), 26a (37691, 37704).

## 22. *Ocellularia terebratula*

FIGURE 13e,i

*Ocellularia terebratula* (Nylander) Müller-Argau, 1887:12.

*Thelotrema terebratum* Nylander, 1867:315 [type-collection: Rio Negro, Colombia, Lindig 129 (H, lectotype; FH, G, M, P, isotypes); Figure 13e].

*Thelotrema clandestinum* f. *remanens* Nylander, 1867:317 [type-collection: Monte del Morro, Colombia, Lindig 90 (H, lectotype; BM, G, P, isotypes); Figure 13f].

*Ocellularia remanens* (Nylander) Müller-Argau, 1887:7.

Thallus light greenish to ashy white, thick and continuous, smooth, shiny, often forming extensive colonies up to 15 cm broad; apothecia numerous, 0.2–0.4 mm in diameter, immersed, noncarbonized and without a columella; pore flush, 0.05–0.1 mm in diameter, usually surrounded by a faint whitish ring; hymenium about 65 $\mu$  high; spores 8/ascus, 3–5 loculate, 5 $\mu$ –9 $\mu$   $\times$  15 $\mu$ –20 $\mu$ , I+ blue (Figure 13i).

CHEMISTRY.—Psoromic and conpsoromic acids.

HABITAT.—Canopy branches and upper bole in rain forest (300–400 m).

*Ocellularia terebratula*, previously known only from Colombia, is a typical canopy level species. It is very similar to *Thelotrema clandestinum*, as explained below, except for spore characters.

SPECIMENS EXAMINED.—8 (38125), 10 (38126), 12 (37904, 37918), 16a (37668, 37878, 37937, 38011, 38040), 16b (37793).

## *Phaeotrema*

This genus is very similar to *Ocellularia* in spore septation but the spores are brown and sometimes shriveled at maturity, especially in large-spored species. The iodine reaction often seems to be negative, while almost all species of *Ocellularia* are strongly I+ blue. On the world level, *Phaeo-*

### Key to the Species of *Phaeotrema*

1. Apothecia aggregated ..... 23. *P. aggregatum*, new species
1. Apothecia solitary.
  2. Apothecia large, about 0.6 mm in diameter, strongly emergent; columella lacking ..... 24. *P. disciforme*, new combination
  2. Apothecia smaller, less than 0.5 mm in diameter, immersed; columella more or less developed.
    3. Pore 0.1–0.2 mm in diameter, sometimes elongate, with a white annulus ..... 25. *P. leiostomum*
    3. Pore 0.5–0.1 mm in diameter, round, annulus lacking .... 26. *P. obscurum*, new species



*trema* is represented by about 40 species, a rather small group, moreso because few of the species are well represented by herbarium material. In Dominica only six collections (four species) were found, these all occurring below 350 m elevation.

### 23. *Phaeotrema aggregatum* Hale, new species

FIGURE 13*h*

Thallus corticola, pallide viridi-cinereus, epiphloeodes, planus, acetate rimosus, 8 cm latus; apothecia irregulariter aggregata, 0.4–0.6 mm diametro, immersa, intus incolores, columella nulla, excipulo interiore bene evoluto; ostiolum 0.1–0.2 mm latum, in centro excipulo interiore congesto, albido-pruinoso; hymenium 110 $\mu$ –120 $\mu$  altum; sporae 8:nae, transversim 4–5 loculatae, 8 $\mu$   $\times$  16 $\mu$  (Figure 13*h*).

CHEMISTRY.—No substances present.

HOLOTYPE.—Logging area at Newfoundland, Dominica, elevation 250 m, Hale 35229, January 1969 (US).

HABITAT.—Upper branches of tree in rain forest.

This unusual species has densely aggregated, immersed apothecia. The pore is usually distinct but may be obscured by the pulverulent exciple and margin, giving the appearance of a *Phlyctis*.

### 24. *Phaeotrema disciforme* (Leighton) Hale, new combination

FIGURES 7*c*, 13*j*, 14*a*

*Thelotrema disciforme* Leighton, 1869:170 [type-collection: Central Province, Ceylon, *Thwaites* (BM, lectotype; H, isotype); Figure 13*j*].

*Thelotrema exalbidum* Stirton, 1881:184 [type-collection: Assam, *Watt* s.n. (BM, lectotype)].

*Thelotrema aquilinum* Vainio, 1915:137 [type-collection: St. Croix, *Boergesen* s.n. (TUR, lectotype; C, isotype)].

*Leptotrema exalbidum* (Stirton) Zahlbruckner, 1923:634.

*Thelotrema galactinum* Vainio, 1926:24 [type-collection: Maloapan, Mexico, *Liebmann* 7712 (C, lectotype); Figure 13*k*].

*Phaeotrema galactinum* (Vainio) Zahlbruckner, 1932:245.

Thallus whitish, dull, very thin and evanescent to hypophloeodal, forming colonies 2–4 cm broad; apothecia large, emergent, 0.7–1.1 mm in diameter, upper walls becoming suberect, carbonized, columella lacking, the inner exciple weakly developed and pulling away from the main margin, the

white-pruinose disc clearly visible; pore open, round, 0.2–0.5 mm in diameter, the rim usually darkened; hymenium 120 $\mu$ –140 $\mu$  high; spores apparently 4/ascus, 20–24 loculate, 7 $\mu$ –12 $\mu$   $\times$  40 $\mu$ –55 $\mu$ , colorless when immature but mostly turning brown and shriveled at maturity, I– (Figure 14*a*).

CHEMISTRY.—No substances present.

HABITAT.—Lower trunk area (sea level to 370 m).

A thorough examination of the lectotype showed that the spores are transversely septate without any longitudinal septae. Old shriveled spores, however, give the false impression of being muriform. It is a widespread pantropical species characterized by the large emergent apothecia without periderm inclusions, wide pore, pruinose rim and disc, and lack of a columella.

SPECIMENS EXAMINED.—4 (*Wirth* s.n.), 16*b* (37939).

### 25. *Phaeotrema leiostomum*

FIGURES 5*h*, 6*d*, 14*b,c*

*Phaeotrema leiostomum* (Tuckerman) Zahlbruckner, 1923: 608.

*Thelotrema leiostomum* Tuckerman, 1862:407 [type-collection: Cuba, *Wright* 149 (FH, lectotype); Figure 14*b*].

Thallus ashy to pale greenish white, epiphloeodal, continuous, smooth and shiny, forming colonies 2–5 cm broad; apothecia immersed to slightly emergent, 0.3–0.6 mm in diameter, weakly carbonized, columella absent to well developed, noncarbonized (Figure 6*d*); pore round to irregularly elongate, surrounded by a raised ring, 0.1–0.3 mm long; hymenium 130 $\mu$ –150 $\mu$  high; spores 8/ascus, brown, 4 loculate, 8 $\mu$ –10 $\mu$   $\times$  16 $\mu$ –18 $\mu$ , I– (Figures 5*h*, 14*c*).

CHEMISTRY.—Hypoprotocetraric acid with or without 4–0–demethylnotatic acid along with pale unidentified pigments.

HABITAT.—Canopy and mid-bole branches in rain forest (350–500 m).

A raised annulate pore is characteristic of this species. Elongation of the apothecia was best developed in collection 37956. The extreme form can be seen in *Phaeotrema livelliforme* (Tuckerman) Zahlbruckner, which lacks any lichen substances. When apothecia are lacking, the thallus of *Phaeotrema leiostomum* alone would not permit identification.



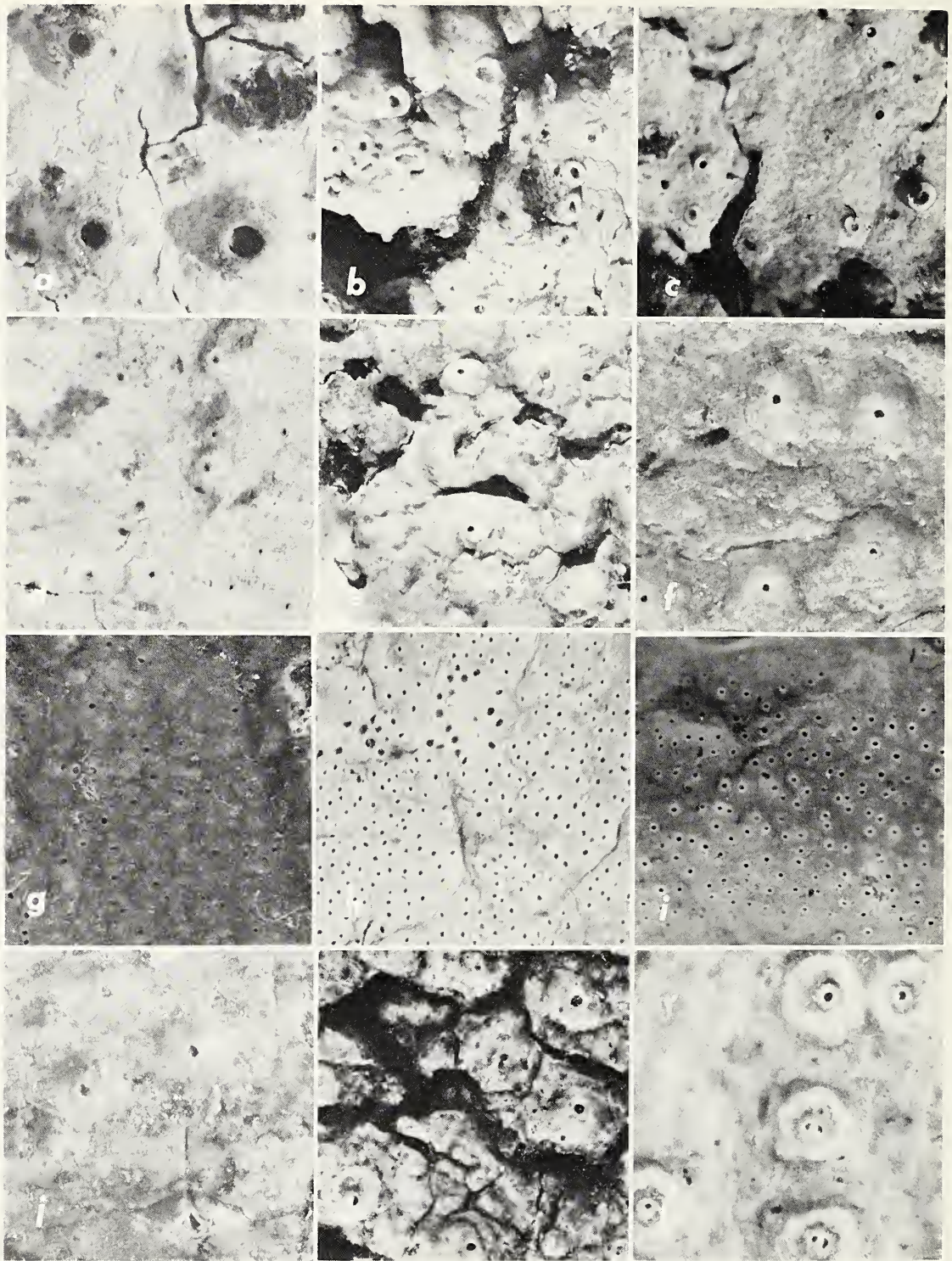


FIGURE 14.—Specimens of Thelotremaaceae (all about  $\times 10$ ): a, *Phacotrema disciforme*, new combination (Hale 37929); b, *P. leiostomum* (lectotype in FH); c, *P. leiostomum* (Hale 35203); d, *P. obscurum*, new species (Hale 38091); e, *Thelotrema carassense* (isotype in FH); f, *T. carassense* (Hale 37873); g, *T. clandestinum* (lectotype in G); h, *T. subcaesium* (lectotype in H); i, *T. clandestinum* (Hale 35136); j, *T. conforme* (lectotype in G); k, *T. consanguineum* (lectotype in G); l, *T. conforme* (Hale 38062).



SPECIMENS EXAMINED.—15 (35203), 16a (37956), 16b (37993).

## 26. *Phaeotrema obscurum* Hale, new species

FIGURE 14d

Thallus corticola, pallide brunneo-albidus, tenuis vel hypophloeodes, 5 cm latus; apothecia modice emergentia, 0.3–0.5 mm diametro, apice fuliginea, columellata; ostiolum rotundum, 0.1 mm diametro, intus albedo-pruinose; hymenium circa 120 $\mu$  altum; sporae 8-nae, transversim 5–6 loculatae, 10 $\mu$ –14 $\mu$   $\times$  24 $\mu$ –28 $\mu$  (Figure 14d).

CHEMISTRY.—Stictic and constictic acids.

HOLOTYPE.—Forty centimeters up trunk of a small tree, Rosalie Road above Newfoundland, elevation 300 m, Hale 38091, 10 December 1972 (US).

HABITAT.—Tree in rain forest.

This tiny species could easily be overlooked. It is unusual to find a well-developed columella in apothecia this small. There are no other species

in the genus with similar morphology. *Phaeotrema albidulum* (Nylander) Müller-Argau also has stictic and constictic acids, but the apothecia are immersed and clustered and the spores larger (40 $\mu$ ).

## *Thelotrema*

*Thelotrema* is a common genus in Dominica, represented by 14 species among 80 collections. On the world level there are about 130 species. Variation in spore size is as great as in *Ocellularia* but longitudinal septae are always clearly developed (except in *T. clandestinum*). The six commonest species were *T. praestans* (21 collections), *T. glaucopallens* (16), *T. clandestinum* (10), *T. interpositum* (7), *T. leucomelaenum* (7), and *T. depressum* (4).

As I noted for *Ocellularia*, *Thelotrema* avoids the dry lowlands but is widespread in the rain forest. *Thelotrema papillosum* and *T. tuberculiferum* are restricted to the mossy forest.

## Key to the Species of *Thelotrema*

1. Central columella present.
  2. Thallus thin, hypophloeodal; apothecia not emergent, small, less than 0.6 mm in diameter.
    3. Columella narrow; spores less than 20 $\mu$  long ..... 39. *T. tenue*, new species
    3. Columella very broad; spores more than 30 $\mu$  long ..... 36. *T. leucomelaenum*
  2. Thallus distinct, epiphloeodal; apothecia emergent, 0.5–1.5 mm in diameter.
    4. Spores 20 $\mu$ –40 $\mu$  long, 4–8/ascus.
      5. Spores about 20 $\mu$  long; pore not annulate but becoming black rimmed ..... 35. *T. leucinum*
      5. Spores about 40 $\mu$  long; pore becoming annulate ..... 29. *T. conforme*
    4. Spores more than 100 $\mu$  long, 1/ascus.
      6. Thallus warty-granular, P+ yellow ..... 34. *T. interpositum*
      6. Thallus smooth, P– or P+ orange.
        7. Thallus P– ..... 31. *T. depressum*
        7. Thallus P+ orange ..... 38. *T. praestans*
  1. Central columella lacking.
    8. Apothecia immersed, the pore flush with thallus surface.
      9. Thallus greenish, thin, and shiny ..... 33. *T. glaucopallens*
      9. Thallus whitish, thick, dull ..... 28. *T. clandestinum*
    8. Apothecia emergent, pores not flush with thallus surface.
      10. Spores less than 20 $\mu$  ..... 30. *T. confusum*, new species
      10. Spores more than 70 $\mu$  long.
        11. Thallus P–; collected in mossy forest zone.
          12. Apothecia 1 mm tall, eroding around a large area of the pore ..... 40. *T. tuberculiferum*
          12. Apothecia barely emergent, pore area not eroding ..... 37. *T. papillosum*, new species
        11. Thallus P+ orange or yellow; collected in rain forest zone.
          13. P+ yellow; apothecia up to 1.0 mm in diameter ..... 27. *T. carassense*
          13. P+ red; apothecia about 0.5 mm in diameter ..... 32. *T. dominicanum*, new species

27. *Thelotrema carassense*

FIGURE 14e,f

*Thelotrema carassense* Vainio, 1890:79.

TYPE-COLLECTION.—Carassa, Brazil, *Vainio* 1523 (TUR, lectotype; BM, FH, isotypes). (Figure 14e).

Thallus greenish ashy mineral gray, epiphloeodal, continuous and shiny, forming colonies up to 15 cm broad; apothecia semi-emergent, 0.8–1.0 mm in diameter, upper wall weakly carbonized, columella lacking; pore about 0.1 mm in diameter, with a weak raised ring; hymenium 110 $\mu$ –130 $\mu$ ; spores 8/ascus, muriform, 1–2  $\times$  8–10 loculate, 12 $\mu$ –15 $\mu$   $\times$  30 $\mu$ –40 $\mu$ , I+ blue (Figure 14f).

CHEMISTRY.—Psoromic and conpsoromic acids.

HABITAT.—Mid and lower bole of trees in rain forest (370–800 m).

The Dominican material is not a perfect fit for the South American type, but it agrees in essential features, lack of columella, intermediate spores, and presence of psoromic acid. The apothecia are larger and spores smaller than in Vainio's specimen (about 70 $\mu$  long). The taxonomy of the ecolumellate psoromic acid-containing *Thelotremata* is unfortunately still incomplete. *Thelotrema postpositum* Nylander has large spores (more than 100 $\mu$ ), but all other species, excluding *T. carassense*, have small spores (less than 20 $\mu$  long).

SPECIMENS EXAMINED.—16b (37859), 24b (37738), 26b (37873).

28. *Thelotrema clandestinum*

FIGURE 14g,i

*Thelotrema clandestinum* Fée, 1837:90.

*Thelotrema subcaesium* Nylander, 1869:120 [type-collection: Brazil, *Glaziou* 2193 (H, lectotype; BM, C, FH–Tuck, UPS, US, W, isotypes); Figure 14h].

*Thelotrema concretum* Fée var. *subcaesium* (Nylander) Redinger, 1936:96.

TYPE-COLLECTION.—On *Cinchona lancifolia* in America, without collector (G, lectotype). (Figure 14g).

Thallus whitish to greenish ashy gray, shiny, thick, and continuous, forming colonies up to 20 cm broad; apothecia numerous, immersed, 0.15–0.3 mm in diameter, noncarbonized and without a columella; pore flush, round, 0.07–0.1 mm in diameter, usually with a whitish rim; hymenium

65 $\mu$ –75 $\mu$  high; spores 8/ascus, uniseriate, 4–5 loculate, muriform with 1–2 longitudinal septae in at least one of the locules, 6 $\mu$ –10 $\mu$   $\times$  15 $\mu$ –20 $\mu$ , I+ blue (Figure 14i).

CHEMISTRY.—Psoromic and conpsoromic acids.

HABITAT.—Canopy branches in rain forest (500–670 m).

*Thelotrema clandestinum* has small spores with few longitudinal septations. It would, in fact, be classified as an *Ocellularia* unless the spores are carefully examined. Chemically similar *O. terebratula* has only transverse septae. Both species have a thick, continuous thallus and occupy the same kind of habitat. They were collected at a total of ten localities but never together in the same one.

SPECIMENS EXAMINED.—13 (35298, 35393), 14 (35103, 35105, 35136), 15 (35207), 16c (37768, 37872, 37981), 24b (35624a).

29. *Thelotrema conforme*

FIGURE 14j,l

*Thelotrema conforme* Fée, 1837:89.

*Thelotrema consanguineum* Müller-Argau, 1887b:398 [type-collection: Apiaby, Brazil, *Puiggari* 477 (G, lectotype); Figure 14k].

TYPE-COLLECTION.—On *Cinchona*, America meridionalis, without collector (G, lectotype) (Figure 14j).

Thallus whitish mineral gray, smooth and shiny, epiphloeodal, forming colonies up to 10 cm broad; apothecia emergent, 0.8–1.0 mm in diameter, apically carbonized, distinct columella present; pore round, 0.1–0.15 mm in diameter, surrounded by a whitish, sometimes raised ring; hymenium 170 $\mu$ –200 $\mu$  high; spores 4/ascus, muriform, 8–10 loculate transversely, 2–4 loculate longitudinally, 18 $\mu$ –20 $\mu$   $\times$  35 $\mu$ –50 $\mu$ , I+ blue (Figure 14l).

CHEMISTRY.—Psoromic and conpsoromic acids.

HABITAT.—Lower bole and trunk in open rain forest (670 m).

The Dominican material is a satisfactory match for Fée's type-specimen, which has slightly smaller apothecia and a less consistently developed annulate pore. The spores are definitely in the intermediate size range in contrast to related *T. leucinum* which has small spores.

SPECIMENS EXAMINED.—24a (37739, 38062).



### 30. *Thelotrema confusum* Hale, new species

FIGURES 1c, 15

Thallus corticola, cinereo- vel viridi-albidus, epiphloeodes, planus, continuus vel rimosus, nitidus, 4–8 cm latus; apothecia numerosa, emergentia, 0.8–1.0 mm diametro, apice obfusca, columella nulla; ostiolum rotundum, 0.15–0.2 mm diametro, margine nigrocinctum; hymenium 120 $\mu$ –130 $\mu$  altum; sporae 4:nae, murales, transversim 6–7 loculatae, longitudinaliter 0–2 loculatae, 6 $\mu$ –10 $\mu$   $\times$  12 $\mu$ –26 $\mu$ , I+ coerulescentes (Figure 15).

CHEMISTRY.—Protocetraric acid.

HOLOTYPE.—Trail to Boiling Lake, elevation 650 m, Hale 37747, 9 December 1971 (US).

HABITAT.—Canopy branches or lower bole in open areas (650–800 m).

The black-rimmed pore and fissured thallus resemble *Ocellularia nigropuncta*, but the spores are clearly muriform. This presents an interesting example of close morphological and chemical convergence with spore septation being the crucial diagnostic character. There are no related species in *Thelotrema*.

SPECIMENS EXAMINED.—16b (37807), 26a (37697).

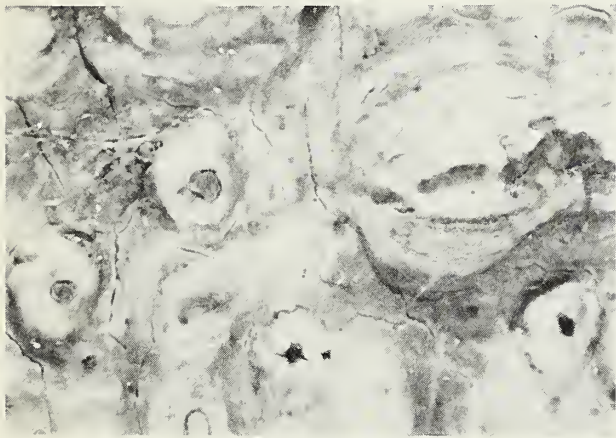


FIGURE 15.—*Thelotrema confusum*, new species (Hale 37747) ( $\times$  10).

### 31. *Thelotrema depressum*

FIGURE 16b,c

*Thelotrema depressum* Montagne, 1851:73.

TYPE-COLLECTION.—Cayenne, French Guiana,

Leprieur 701 (BM, lectotype; H, isotype) (Figure 16b).

Thallus and apothecia as in *Thelotrema praestans* (see below); spores 1–2/ascus, muriform with numerous transverse and longitudinal locules, 35 $\mu$ –50 $\mu$   $\times$  150 $\mu$ –300 $\mu$ , I+ blue (Figure 16c).

CHEMISTRY.—No substances present.

HABITAT.—Canopy branches of trees in the rain forest (300–500 m).

The type-material of *Thelotrema depressum* is very fragmentary but color and chromatographic tests established that no P+ compounds were present. The four specimens from Dominica are identical. They may represent only a chemical population of *T. praestans*, which is morphologically identical, as far as we can judge from available specimens, but contains a strong P+ orange-red unknown substance. *Thelotrema praestans* is more common (20 collections) and has a broader altitudinal range (250–800 m).

SPECIMENS EXAMINED.—8 (38141), 12 (37901, 37922), 15 (35150).

### 32. *Thelotrema dominicanum* Hale, new species

FIGURE 16a

Thallus corticola, pallide brunneo-albidus, epiphloeodes, continuus, nitidus, 4–6 cm latus; apothecia numerosa, emergentia, 0.3–0.4 mm diametro, apice obfusca, columella nulla vel parce evoluta; ostiolum rotundum, 0.05 mm diametro; hymenium 140 $\mu$ –160 $\mu$  altum; sporae 2–4:nae, murales, transversim 24–30 loculatae, longitudinaliter 2–3 loculatae, 15 $\mu$ –20 $\mu$   $\times$  80 $\mu$ –90 $\mu$ , I+ coerulescentes (Figure 16a).

CHEMISTRY.—“*Cinchonarum*” P+ unknown substances.

HOLOTYPE.—Tree along trail to Morne Anglais, Dominica, elevation about 800 m, Hale 35355, January 1969 (US).

HABITAT.—Tree bole in higher elevation rain forest.

The most unusual feature of this rare lichen is the presence of the “*cinchonarum*” unknown, previously thought to be restricted to the genus *Ocellularia*. Without a chemical test one might identify it with *T. carassense*, which has larger apothecia and a wider pore. Otherwise there are no comparable species in the New World.



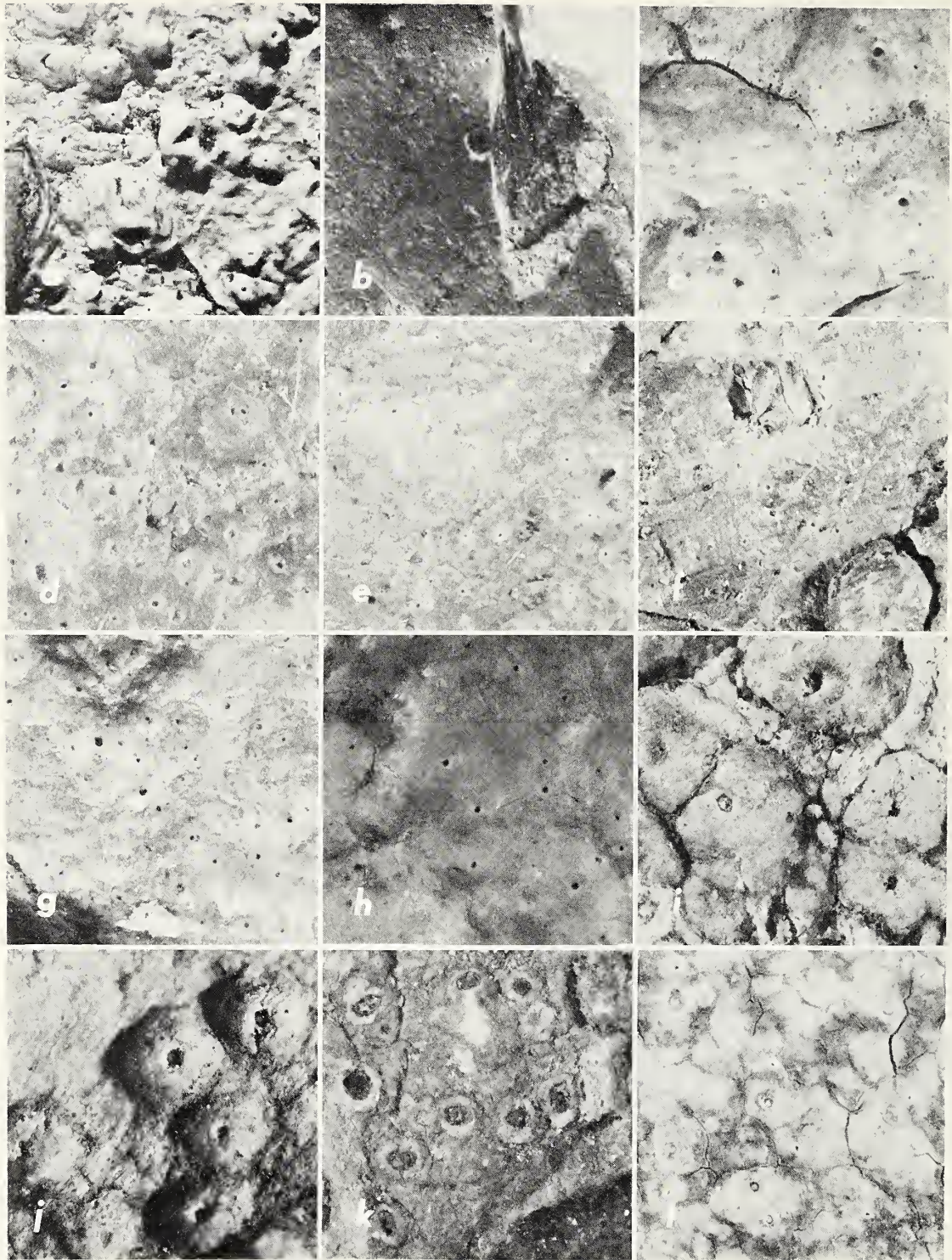


FIGURE 16.—Specimens of Thelotremaaceae (all about  $\times 10$ ): *a*, *Thelotrema dominicanum*, new species (*Hale* 35355); *b*, *T. depressum* (isotype in H); *c*, *T. depressum* (*Hale* 38141); *d*, *T. glaucopallens* (lectotype in FH-Tuck); *e*, *T. pechueli* (lectotype in G); *f*, *T. butuanum* (lectotype in W); *g*, *T. homopastoides* (lectotype in TUR); *h*, *T. glaucopallens* (*Hale* 35147); *i*, *T. interpositum* (isotype in L); *j*, *T. interpositum* (*Hale* 35388); *k*, *T. leucinum* (lectotype in G); *l*, *T. leucinum* (*Hale* 38100).



33. *Thelotrema glaucopallens*

FIGURE 16d,h

*Thelotrema glaucopallens* Nylander, 1863:327.*Pyrenula clandestina* Acharius, 1814:10 [type-collection: on *Cinchona flava*, South America (H, lectotype; S, isotype)].*Thelotrema laevigans* Nylander var. *avertens* Nylander, 1867: 318 [type-collection: Tequendama, Colombia, Lindig 893 (H, lectotype; BM, FH-Tuck, G, P, W, isotypes)].*Thelotrema pechueli* Müller-Argau, 1880:34 [type-collection: Quillu River, Angola, *Pechuel-Loesche* s.n. (G, lectotype); Figure 16e].*Ocellularia clandestina* (Acharius) Müller-Argau, 1877a:7.*Thelotrema homopastoides* Vainio, 1896:207 [type-collection: Richmond Valley, St. Vincent, Elliott 327 (TUR, lectotype; BM, isotype); Figure 16g].*Thelotrema butuanum* Vainio, 1921:183 [type-collection: Luzon, Philippines, Fenix, BS-28347 (W, lectotype); Figure 16f].

TYPE-COLLECTION.—Cuba, Wright (FH-Tuck, lectotype, as 28; L, UPS, isotypes) (Figure 16d).

Thallus light greenish gray, very thin and shiny, breaking away in thin sheets, forming extensive colonies up to 15 cm broad; apothecia numerous to rather rare, immersed to slightly emergent, 0.2–0.4 mm in diameter, uncarbonized or slightly carbonized apically, without a columella; pore flush to barely raised, round, rarely angular, 0.05–0.12 mm in diameter; hymenium 60 $\mu$ –80 $\mu$  high; spores 8/ascus, muriform, 6–8 loculate transversely, 2–3 loculate longitudinally, 7 $\mu$ –10 $\mu$   $\times$  15 $\mu$ –24 $\mu$ , I– (Figure 16h).

CHEMISTRY.—Stictic and constictic acids.

HABITAT.—Buttresses, base of large trees, exposed roots, lianas, rarely upper bole and canopy in the rain forest (450–800 m).

The thallus of this pantropical species is unique. It is extremely thin and shiny and tends to break away in thin waxy sheets when bruised or cut. The color is a pyrenocarplike dark yellowish green. Apothecia are usually quite numerous with flush pores having considerable variation in development of a rim, from no distinct annulus to an obviously raised area. Some anomalous specimens may even have semi-emergent apothecia, but the small I– spores and the presence of stictic acid will positively identify them.

SPECIMENS EXAMINED.—10 (38082), 11 (37999, 38008, 38047), 15 (35147), 16a (37670, 37876, 38043, 38044), 20a (37783), 21 (38083, 38095, 38155, 38156), 23 (37678), 26b (35367), 27 (37891), 28 (35431).

34. *Thelotrema interpositum*

FIGURE 16i,j

*Thelotrema interpositum* (Nylander) Müller-Argau, 1881:526.*Ascidium interpositum* Nylander, 1863:336 [type-collection: Cuba, Wright 28 (H, lectotype; BM, FH, L, M, P, UPS, isotypes); Figure 16i].Thallus light brownish ashy gray, epiphloeodal, smooth to minutely warty, forming colonies 5–8 cm broad; apothecia strongly emergent, 0.8–1.1 mm in diameter, walls heavily carbonized, columella present; pore round, 0.15–0.2 mm in diameter, opening into a tubelike area leading to the pruinose top of the columella; hymenium 200 $\mu$  high; spores 2/ascus, muriform with numerous transverse and longitudinal locules, 28 $\mu$ –40 $\mu$   $\times$  85 $\mu$ –125 $\mu$ , I+ blue (Figure 16j).

CHEMISTRY.—Psoromic acid.

HABITAT.—Canopy branches and upper bole area (sea level to 670 m).

The coarsely verrucose thallus and large emergent apothecia with large spores distinguish this species. Two other columnellate psoromic acid-containing species, *T. conforme* and *T. leucinum*, have a smooth thallus and much smaller spores.

SPECIMENS EXAMINED.—5 (35388), 7 (35231), 15 (35148, 35174), 16a (37656, 37657), 16c (37760), 22 (37853, 37976).

35. *Thelotrema leucinum*

FIGURE 16k,l

*Thelotrema leucinum* Müller-Argau, 1887a:10.TYPE-COLLECTION.—On *Cinchona*, South America (G, lectotype) (Figure 16k).Thallus light ashy gray, epiphloeodal, continuous to cracked with age, shiny, forming a colony about 10 cm wide; apothecia numerous, nearly immersed to semi-emergent, 0.4–0.6 mm in diameter, upper wall carbonized, columella present, 0.2 mm wide; pore round, 0.05–0.12 mm in diameter; hymenium 110 $\mu$ –120 $\mu$  high; spores 8/ascus, muriform with 4 locules transversely, 2 locules longitudinally, 7 $\mu$ –11 $\mu$   $\times$  12 $\mu$ –18 $\mu$ , I+ blue (Figure 16l).

CHEMISTRY.—Psoromic and consporomic acids.

HABITAT.—Canopy branches in rain forest (300 m).

The type of *T. leucinum*, one of Fée's *Cinchona*

bark specimens, is in very poor condition and it is unfortunate that Müller selected it. Identification with the Dominica material is at best provisional, depending largely on the wide columella, small spores, and presence of psoromic acid. A better understanding of the species will come when more specimens are available.

SPECIMEN EXAMINED.—9 (38100).

### 36. *Thelotrema leucomelaenum*

FIGURES 4a,b; 6e; 17a,d

*Thelotrema leucomelaenum* Nylander, 1863:329.

*Thelotrema pauperius* Nylander, 1867:318 [type-collection: Rio Negro, Colombia, Lindig (H, lectotype; BM, M, isotypes); Figure 17b].

*Thelotrema leucomelaenum* var. *elevatum* Vainio, 1915:137 [type-collection: Morne Anglais, Dominica, Elliott 1534 (TUR, lectotype); Figure 17c].

TYPE-COLLECTION.—Fusagasuga, Colombia, Lindig 2777 (H, lectotype; BM, FH, G, M, P, UPS, isotypes) (Figure 17a).

Thallus white, thin and in part hypophloeodal (Figure 4a,b), forming colonies up to 8 cm broad; apothecia immersed to semi-emergent, 0.6–0.9 mm in diameter, apically carbonized with a broad columella 0.2–0.3 mm wide; pore round to subirregular, 0.2–0.3 mm across, opening to the pruinose columella top (Figure 6e); hymenium 130 $\mu$  high; spores 8/ascus, muriform, 4–6 loculate transversely, 2–3 loculate longitudinally, 12 $\mu$ –15 $\mu$   $\times$  30 $\mu$ –36 $\mu$ , I– (Figure 17d).

CHEMISTRY.—No substances present.

HABITAT.—Smaller branches of trees in mossy forest (800–900 m).

A pantropical species, *T. leucomelaenum* has been correctly identified by most lichenologists. The apothecia, while at most semi-emergent, stand out because of the black pore rim. The broad columella occupies most of the interior of the apothecia.

SPECIMENS EXAMINED.—25a (37706, 37710, 37717, 37718, 37871), 25b (35491), 26a (38076).

### 37. *Thelotrema papillosum* Hale, new species

FIGURE 17j

Thallus corticola, cinereo-viridis, epiphloeodes, minute papillosus, nitidus, 6 cm latus; apothecia vix emergentia, 0.7–0.9 mm diametro, intus in-

colores, columella nulla; ostiolum rotundum vel irregulariter laceratum, 0.1–0.3 mm diametro; hymenium circa 200 $\mu$  altum; sporae 1–2:nae, murales, loculis numerosis, 36 $\mu$ –40 $\mu$   $\times$  140 $\mu$ –150 $\mu$ , I– (Figure 17j).

CHEMISTRY.—No substances present.

HOLOTYPE.—Rain forest above Newfoundland, Dominica, elevation about 300 m, Hale 38124, 7 May 1972 (US).

HABITAT.—Canopy branch in rain forest.

This species would be easy to miss in the field. The small greenish warty thallus is not like any *Thelotrema*. The large noncarbonized apothecia are not numerous and seem lost among the thallus irregularities. The closest relative in terms of apothecial structure is *Thelotrema tuberculiferum*, which has large spores but strongly emergent eroding apothecia.

### 38. *Thelotrema praestans*

FIGURE 17e,g

*Thelotrema praestans* Müller-Argau, 1895:453.

*Thelotrema elliottii* Vainio, 1896:207 [type-collection: Richmond Valley, St. Vincent, Elliott 246 pro parte (BM, lectotype); Figure 17j].

TYPE-COLLECTION.—Rio de Janeiro, Brazil, *Portella* s.n. (G, lectotype; BM isotype) (Figure 17e).

Thallus light greenish to whitish gray, smooth and continuous, epiphloeodal, forming colonies 5–10 cm broad; apothecia semi-emergent to strongly emergent, up to 2 mm in diameter, heavily carbonized with a thick columella; pore 0.15–0.3 mm in diameter, opening through a deep tube into the ascocarp; hymenium about 200 $\mu$  high; spores 1–2/ascus, muriform with many transverse and longitudinal locules, 30 $\mu$ –45 $\mu$   $\times$  100 $\mu$ –275 $\mu$ , I+ blue (Figure 17g).

CHEMISTRY.—“*Praestans*” unknown.

HABITAT.—Canopy branches, less commonly bole, liana, or base in rain forest (250–800 m).

This conspicuous thelotreme is related to *T. depressum* but differs in producing a P+ orange-red unknown substance just below psoromic acid in both hexane and benzene solvents. The apothecia are large and heavily carbonized. The fine structure of the cortex is aculeate, as in *T. depressum*.

SPECIMENS EXAMINED.—7 (35237, 35244, 35254, 35273), 8 (38087, 38121, 38159), 9 (38135), 11



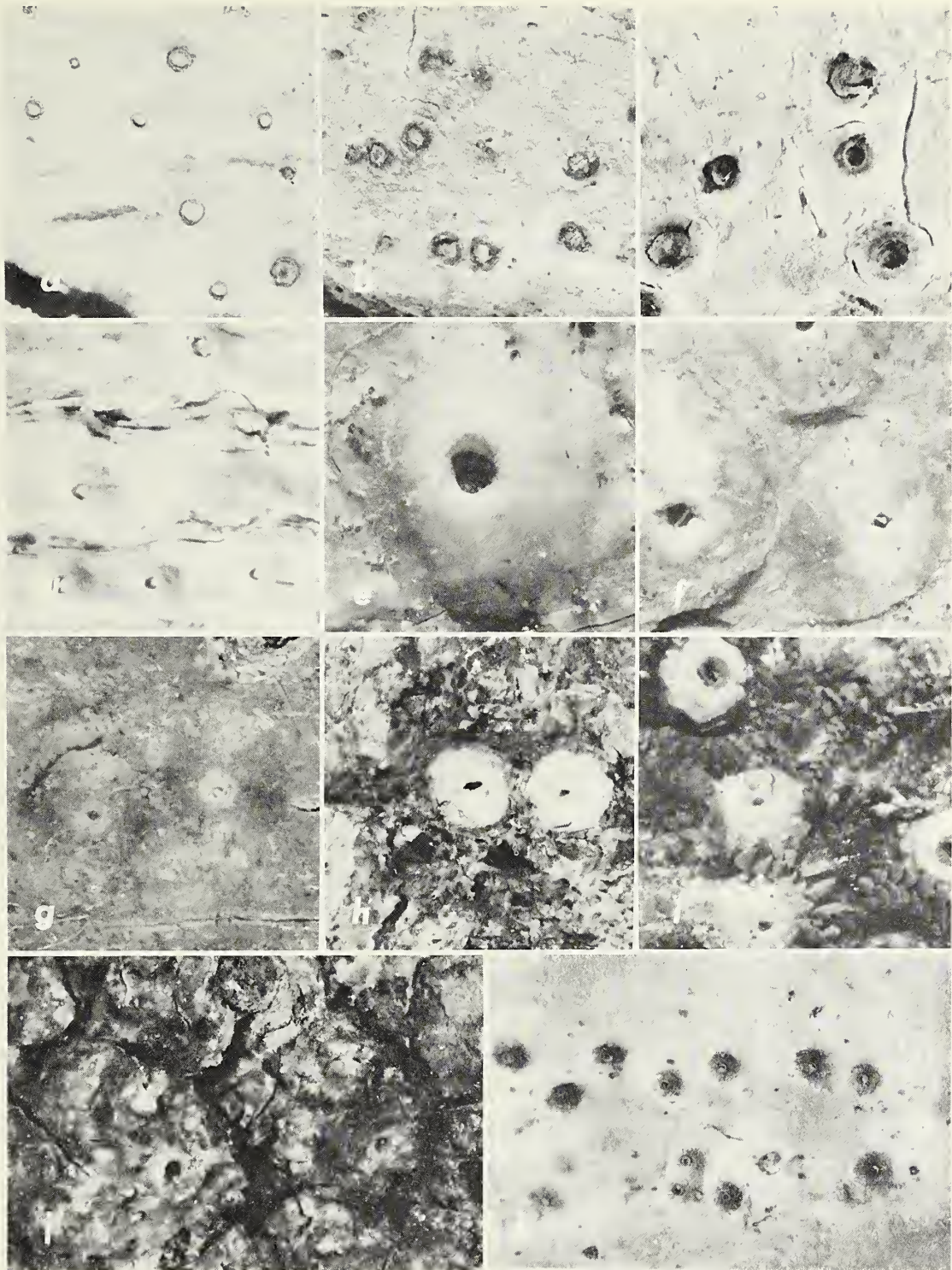


FIGURE 17.—Specimens of Thelotremaaceae (all about  $\times 10$ ): a, *Thelotrema leucomelaenum* (lectotype in H); b, *T. pauperius* (lectotype in H); c, *T. leucomelaenum* var. *elevatum* (lectotype in TUR); d, *T. leucomelaenum* (Hale 35491); e, *T. praestans* (lectotype in G); f, *T. elliottii* (lectotype in BM); g, *T. praestans* (Hale 35273); h, *T. tuberculiferum* (lectotype in TUR); i, *T. tuberculiferum* (Hale 37719); j, *T. papillosum*, new species (Hale 38124); k, *T. tenue*, new species (Hale 35430).

(37821, 37998, 38002, 38048), 12 (37907, 37911), 15 (35171), 18a (37734, 37968), 18b (35521), 20a (37776), 26a (38070).

### 39. *Thelotrema tenue* Hale, new species

FIGURES 4c,d; 6f; 17k

Thallus corticola, cinereo-albus, hypophloeodes (Figure 4c,d), nitidus, 7 cm latus; apothecia numerosa, immersa vel parce emergentia, 0.3–0.4 mm diametro, apice obfusca, columellata (Figure 6f); ostiolum rotundum, 0.05–0.1 mm diametro; hymenium 90 $\mu$ –100 $\mu$  altum; sporae 8:nae, murales, transversim 4–5 loculatae, longitudinaliter 1–2 loculatae, 6 $\mu$ –7 $\mu$   $\times$  17 $\mu$ –19 $\mu$ , I– (Figure 17k).

CHEMISTRY.—No substances present.

HOLOTYPE.—Mossy forest zone on trail to Morne Diablotin, Dominica, elevation about 1100 m, Hale 35430, January 1969 (US).

HABITAT.—Lower trunk in rain forest to mossy forest.

Superficially this species resembles *Ocellularia pyrenuloides* in having small blackish apothecia and a thin columella. *Thelotrema leucomelaenum*, another hypophloeodal mossy forest species, has larger spores and a very broad columella. Other than these there are no related species.

### 40. *Thelotrema tuberculiferum*

FIGURE 17h,i

*Thelotrema tuberculiferum* Vainio, 1915:136.

TYPE-COLLECTION.—Savane-aux-Ananas, Guadeloupe, Duss 1497 (TUR, lectotype) (Figure 17h).

Thallus ashy whitish, thin and in part evanescent, scattered, forming colonies 4–8 cm broad; apothecia strongly ascidioid, about 1.0 mm in diameter and 1.0 mm high, noncarbonized and lacking a columella, cortex eroding away toward the apex leaving a pulverulent area; pore round, 0.1–0.2 mm in diameter, surrounded by a gray, sometimes raised ring and the broader pulverulent area; hymenium 140 $\mu$ –160 $\mu$  high; spores 1–2/ascus, muriform with numerous transverse and longitudinal locules, 30 $\mu$ –50 $\mu$   $\times$  60 $\mu$ –120 $\mu$ , I+ pale blue (Figure 17i).

CHEMISTRY.—No substances present.

HABITAT.—Exposed moss-covered branches in mossy forest (800–900 m).

This *Thelotrema* might be mistaken at first for a *Pertusaria*. It was first described from Guadeloupe and is probably endemic to the Lesser Antilles, occurring at high elevations in the upper limit of the mossy forest.

SPECIMENS EXAMINED.—25a (37719), 26a (37868).

## *Leptotrema*

This genus differs from *Thelotrema* in having brown spores which tend to shrivel at maturity regardless of size and appear to be I–. Eight species occur on Dominica among my 36 collections (in-

### Key to the Species of *Leptotrema*

1. Columella present, simple to actinoid ..... 43. *L. fissum*
1. Columella lacking.
  2. Pore wide, 0.5–0.8 mm in diameter, the exposed disc dark brown to black ..... 46. *L. spondaicum*
  2. Apothecia immersed to emergent with pores 0.1–0.2 mm in diameter.
    3. Thallus thick with a columnar cortex; red crystalline inclusions often present ..... 48. *L. wightii*
    3. Thallus thin with a normal cortex lacking pigments.
      4. Apothecia with an inner lepadinoid exciple.
        5. Spores about 20 $\mu$  long ..... 45. *L. occultum*
        5. Spores about 45 $\mu$  long ..... 47. *L. subcompunctum*
      4. Apothecia lacking a lepadinoid exciple.
        6. Pore distinct, 0.1–0.2 mm in diameter; spores 20 $\mu$ –30 $\mu$  long ..... 41. *L. bahianum*
        6. Pore very tiny, less than 0.1 mm in diameter; spores large, more than 40 $\mu$  long.
          7. Pore depressed in a darker area ..... 42. *L. deceptum*, new species
          7. Pore not depressed, surrounding area the same color as the thallus.
            8. Apothecia immersed with flush pores ..... 47. *L. subcompunctum*
            8. Apothecia more or less emergent ..... 44. *L. microglanoides*



cluding the collection of *L. bahianum* by Elliott). It is rarer than would guess from this number of collections since one species, *L. deceptum*, is represented by 21 specimens. *Leptotrema spondaicum* was found 8 times, *L. wightii* 3 times, and the remainder once each. On the world level the genus has about 50 species.

*Leptotrema* behaves in a peculiar way on Dominica. It is virtually the only thelotreme (5 of 7 collections) in the dry scrub forest. It then essentially skips the rain forest zone and reappears in the submossy forest. Only 5 collections were made in the broad rain forest zone in contrast to 25 above 900 m.

#### 41. *Leptotrema bahianum*

FIGURE 5f

*Leptotrema bahianum* (Acharius) Müller-Argau, 1887a:12.  
*Thelotrema lepadinum* var. *bahianum* Acharius, 1803:132  
 [type-collection: Bahia, Brazil, without collector (H, lectotype; L, UPS, isotypes)].—Hale, 1972:193, fig. 2c.  
*Thelotrema rudius* Vainio var. *dominicanum* Vainio, 1915: 136 [type-collection: Prince Rupert, Dominica, Elliott 1303 (TUR, lectotype); Figure 5f].

Thallus corticolous, epiphloeodal, light tannish white, about 4 cm broad; apothecia numerous, emergent, 0.4–0.6 mm in diameter, noncarbonized and without a columella; pore round, about 0.1 mm in diameter; hymenium 150 $\mu$  high; spores 8/ascus, muriform with 5–6 transverse locules and 2–3 longitudinal locules, 12 $\mu$ –14 $\mu$   $\times$  16 $\mu$ –24 $\mu$ , I– (Figure 5f).

CHEMISTRY.—Protocetraric acid.

HABITAT.—Tree branch in dry scrub forest near sea level.

This well-known Acharian species (Hale, 1972) seems to be very rare on Dominica since it has not been found since Elliott's time. It is generally a lowland species in drier areas of the tropics.

#### 42. *Leptotrema deceptum* Hale, new species

FIGURES 7d, 18

Thallus corticola, brunneo-cinereus, epiphloeodes, planus, nitidus, continuus vel rimosus, usque ad 12 cm latus; apothecia immersa, 0.3–0.4 mm diametro, intus incolores, columella nulla; ostiolum minutum, 0.02–0.05 mm diametro, depressum,

ambitu obfuscans; hymenium 100 $\mu$ –120 $\mu$  altum; sporae obfuscae, 4:uae, murales, loculis numerosis, 14 $\mu$ –28 $\mu$   $\times$  40 $\mu$ –70 $\mu$ , I– vel I+ pallide coerulescentes (Figure 18).

CHEMISTRY.—Stictic and constictic acids.

HOLOTYPE.—*Sloanea* buttress, disturbed primary forest at Middleham Estate, elevation about 670 m, Hale 37860, December 1971 (US).

HABITAT.—Buttresses and exposed roots, saplings, lianas, lower bole in higher elevation rain forest (about 670 m).

This species belongs to a large group of difficult species characterized by a very tiny pore and presence of stictic and constictic acids, including in Dominica *L. microglaenoides* and *L. subcompunctum*. It is separated from related species by the smooth, usually fissured thallus and a distinct darker depressed area surrounding the pore, this area in turn surrounded by a whitish ring. Spent apothecia remain as large, open corticate pits.

At first I had considered this (and similar species) as having closer relationships to the Pyrenulaceae. Mr. Richard Harris, a student of the Pyrenulaceae, gave the following opinion in support of placing *L. deceptum* in the Thelotremaaceae:

Most pyrenocarpous lichens have some sort of carbonized "wall" surrounding the hymenium [*L. deceptum* is noncarbonized]. The spores react with IKI; a few pyrenocarps have this reaction also but have entirely different paraphyses. The paraphyses [of *L. deceptum*] are unlike those in the pyreno-

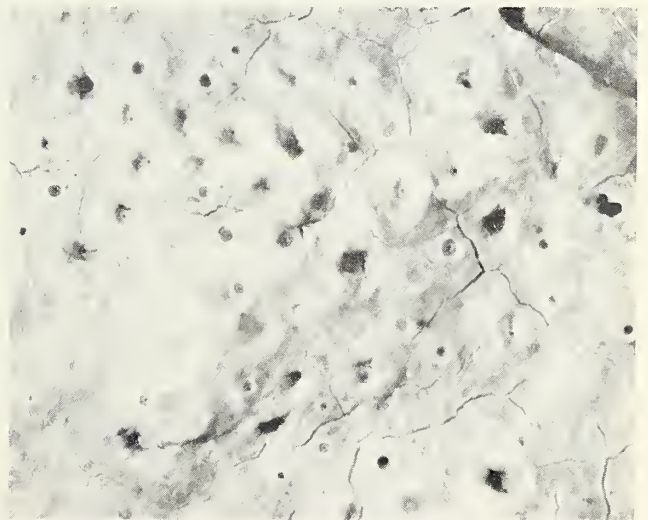


FIGURE 18.—*Leptotrema deceptum*, new species (Hale 37860) ( $\times$  10)

carpous lichens in the relative lack of branching and especially in the very thick, coherent gelatinous wall or sheath around them (also found in the Graphidaceae). The asci are also unlike any pyrenocarpous asci. They are closest to *Porina* but lack any "chitinoid" apical ring. *Thelotrema lepadinum* has asci very like those in your specimen. Finally I have never found depsides or depsidones in any pyrenocarpous lichens.

SPECIMENS EXAMINED.—21 (37373, 38104, 38105, 38109, 38110, 38112, 38117, 38133, 38136, 38139, 38142, 38148, 38151, 38153), 22 (37640, 37648, 37836, 37839, 38037), 23 (37673).

### 43. *Leptotrema fissum*

FIGURE 19a,c

*Leptotrema fissum* (Nylander) Müller-Argau, 1882a:333.

*Thelotrema fissum* Nylander, 1859:258 [type-collection: Bourbon, Richard s.n. (H, lectotype; G, P, isotypes); Figure 19a].

*Leptotrema integrum* Müller-Argau, 1887b:399 [type-collection: Australia, Sayer (G, lectotype; S, isotype); Figure 19b].

*Leptotrema fissum* (Nylander) Zahlbruckner, 1923:634 [superfuous combination].

Thallus greenish ashy gray, epiphloeodal, smooth, continuous or cracked with age, forming colonies 4–6 cm broad; apothecia semi-emergent, round to irregular, 0.7–1.2 mm wide, with thick erect to coarsely recurved carbonized upper walls, columella variable, barely developed to actinoid, the disc white pruinose; pore initially round but opening at maturity, up to 1 mm broad; hymenium about 100 $\mu$  high; spores brown, muriform with 4–6 transverse locules and 0–2 longitudinal locules, 6 $\mu$ –7 $\mu$   $\times$  10 $\mu$ –13 $\mu$ , I– (Figure 19c).

CHEMISTRY.—Psoromic and consporomic acids.

HABITAT.—Canopy branches in rain forest (430 m).

The diagnostic features of this pantropical species are the open, often imperfectly actinoid disc, semi-erect lacerated margin, and presence of psoromic acid. It is close in these respects to *Ocellularia comparabilis*.

SPECIMEN EXAMINED.—11 (38031).

### 44. *Leptotrema microglanoides*

FIGURE 19d,e

*Leptotrema microglanoides* (Vainio) Zahlbruckner, 1923:637.

*Thelotrema microglanoides* Vainio, 1896:206 [type-collection: St. Vincent, Elliott 266 (BM, lectotype); Figure 19d].

Thallus light whitish tan, epiphloeodal, continuous and shiny, forming a colony about 6 cm broad; apothecia semi-emergent, 0.8–1.0 mm in diameter, walls not carbonized, columella lacking; pore very tiny, 0.02–0.05 mm in diameter, depressed but with a tiny darker ring at the periphery; hymenium 150 $\mu$ –170 $\mu$ ; spores brown, 4/ascus, muriform with numerous transverse and longitudinal locules, 18 $\mu$ –22 $\mu$   $\times$  36 $\mu$ –48 $\mu$ , I– (Figure 19e).

CHEMISTRY.—Stictic and constictic acids.

HABITAT.—Branches of tree in rain forest (430 m).

The lectotype of this species is rather fragmentary with very few well-developed apothecia. The thallus is continuous, but with a faint grainy appearance, thin and shiny. The Dominican material is close to the type-specimen, although Vainio reported spores in the range of 120 $\mu$  long. I found spores about 50 $\mu$  long in the lectotype. The large complex of stictic acid-containing species (e.g. *Leptotrema monosporum* (Nylander) Müller-Argau, *L. phaeosporum* (Nylander) Müller-Argau, and *L. reclusum* (Krempelhuber) Zahlbruckner) is still far from resolved.

SPECIMEN EXAMINED.—11 (37984).

### 45. *Leptotrema occultum* (Eschweiler) Hale, new combination

FIGURE 19f,g

*Thelotrema occultum* Eschweiler in Martius, 1833:174 [type-collection: South America (M, lectotype; G, isotype); Figure 19f].

Thallus tannish white, epiphloeodal, continuous, smooth to minutely pitted, forming colonies 3–5 cm broad; apothecia numerous, immersed, 0.2–0.3 mm in diameter, noncarbonized and without columella, inner lepadinioid exciple well developed and pulling away from the wall, lightly pruinose surface of hymenium visible; hymenium 65 $\mu$ –70 $\mu$  high; spores 4–8/ascus, brown, muriform with 5–7 transverse locules, 2–3 longitudinal locules, 9 $\mu$ –10 $\mu$   $\times$  18 $\mu$ –21 $\mu$ , I– (Figure 19g).

CHEMISTRY.—Norstictic acid.

HABITAT.—Trees in dry scrub forest near sea level.

*Leptotrema occultum* can be typified with the Martius specimen in Munich and the isotype fragment in Geneva. It is virtually indistinguishable



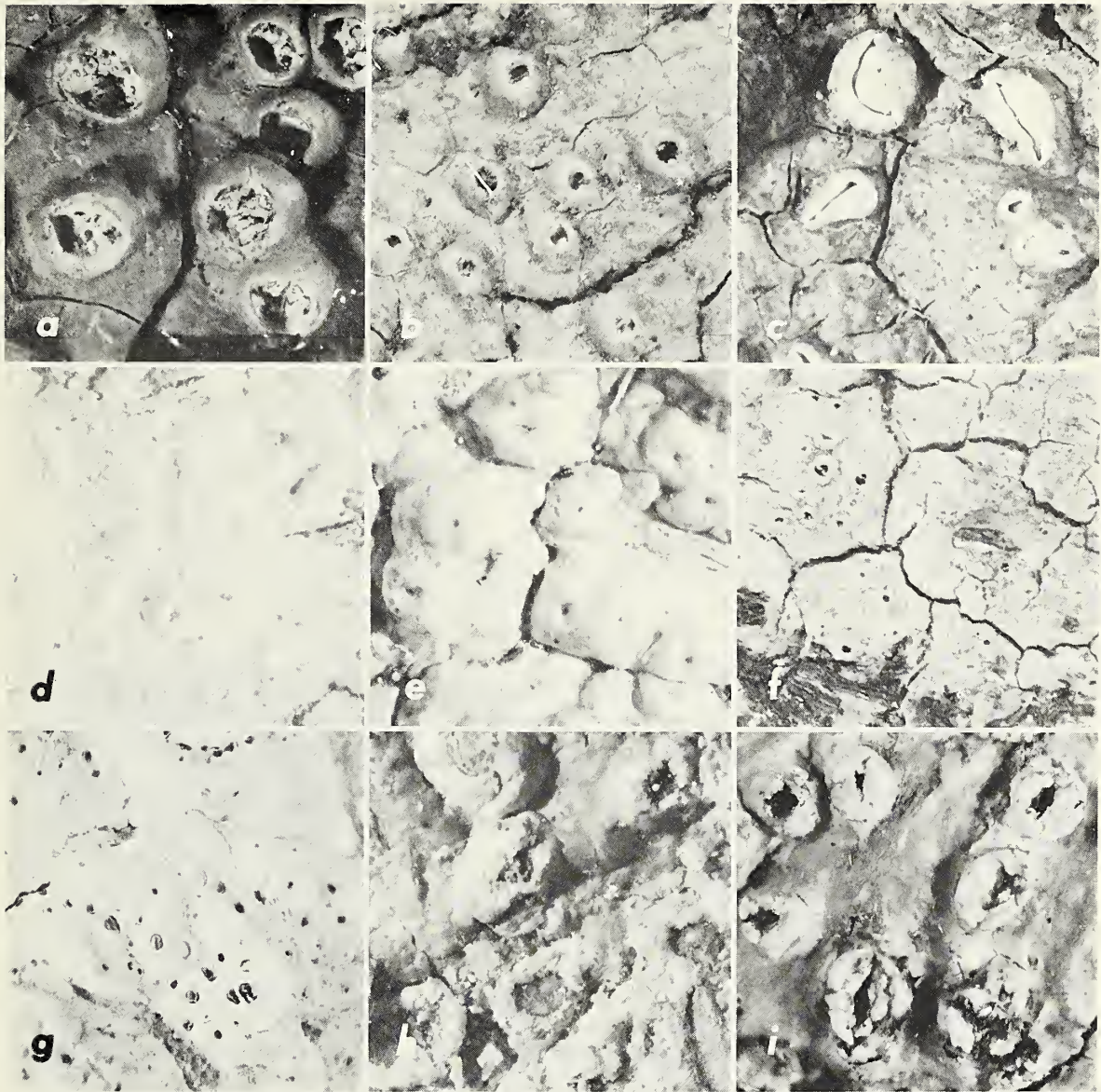


FIGURE 19.—Specimens of Thelotre mataceae (all about  $\times 10$ ): a, *Leptotrema fissum* (lectotype in H); b, *L. integrum* (isotype in S); c, *L. fissum* (Hale 38031); d, *L. microglænoides* (lectotype in BM); e, *L. microglænoides* (Hale 37984); f, *L. occultum* (isotype in G); g, *L. occultum* (Hale 35718); h, *L. spondaicum* (lectotype in FH-Tuck); i, *L. spondaicum* (Hale 35503).

from pantropical *L. compunctum* (Acharius) Müller-Argau, which contains stictic acid in addition to norstictic acid. I am keeping *L. occultum* separate until study of more material shows whether the chemical and spore variation (spores being generally smaller in norstictic acid-containing specimens) are valid or not. The *L. compunctum* group is very characteristic of dry scrub forest throughout the tropics.

SPECIMEN EXAMINED.—2 (35718).

#### 46. *Leptotrema spondaicum*

FIGURE 19*h,i*

*Leptotrema spondaicum* (Nylander) Zahlbruckner, 1923:640.  
*Thelotrema spondaicum* Nylander, 1863:330 [type-collection:  
 Cuba, Wright 35 (FH-Tuck, lectotype); Figure 19*h*].

Thallus ashy white, epiphloeodal to evanescent, waxy, smooth, forming colonies 3–15 cm wide; apothecia numerous, round to irregular, 0.8–1.4



mm across, emergent, walls weakly carbonized, columella lacking; pore initially distinct, about 0.2 mm wide, but soon opening, wide and irregular, to 0.5 mm wide, exposing the dark brown disc, outer rim becoming pulverulent; hymenium  $150\mu$ – $170\mu$  high; spores 1–2/ascus, brown, muriform with numerous transverse and longitudinal locules,  $30\mu$ – $40\mu \times 80\mu$ – $130\mu$ , 1– (Figure 19i).

CHEMISTRY.—Virensic acid.

HABITAT.—Trunks of primary and secondary trees in open pastures and citrus groves at higher elevations (600–700 m).

*Leptotrema spondaicum* stands apart from all other thelotremes in having an open blackish disc surrounded by a thick, often pulverulent margin. One might be tempted to treat it as a species of *Diploschistes*. The chemistry is unique in the family. It is also different ecologically in that the primary habitat seems to be planted trees in disturbed areas.

SPECIMENS EXAMINED.—18b (35590), 19 (38077), 20a (37779, 37789, 37790), 20b (35492, 35503), 26a (37696).

#### 47. *Leptotrema subcompunctum*

FIGURE 20a,b

*Leptotrema subcompunctum* (Nylander) Zahlbruckner, 1923: 640.

*Thelotrema subcompunctum* Nylander, 1868:76 [type-collection: Lifu, Loyalty Islands, Thiébaud s.n. (H, lectotype; G, P, isotypes); Figure 20a].

Thallus light tannish mineral gray, epiphloeodal, continuous, smooth, dull, forming colonies 4–5 cm broad; apothecia numerous, 0.3–0.4 mm in diameter, immersed to slightly emergent, noncarbonized and without a medulla, the inner lepadinioid exciple clearly developed; pore round, 0.05–0.1 mm in diameter; hymenium  $140\mu$ – $160\mu$  high; spores

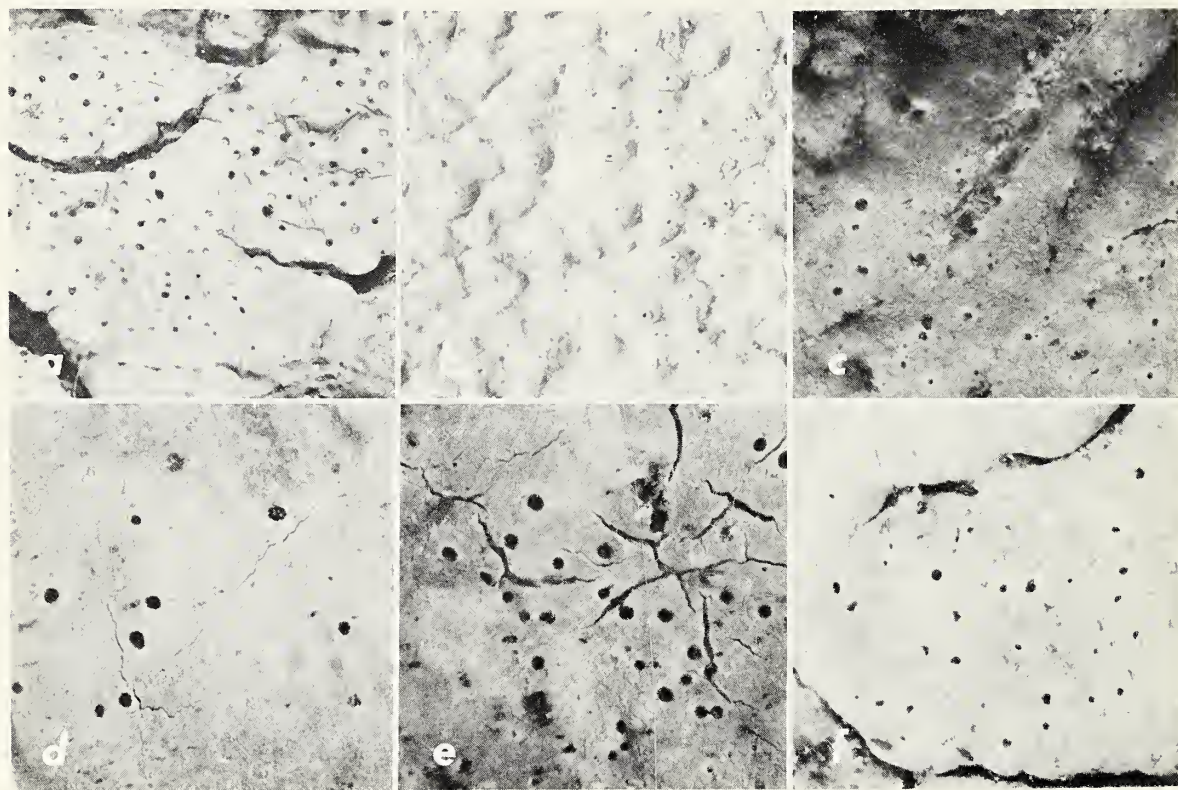


FIGURE 20.—Specimens of Thelotremataceae (all about  $\times 10$ ): a, *Leptotrema subcompunctum* (isotype in P); b, *L. subcompunctum* (Hale 37888); c, *L. wightii* (lectotype in FH); d, *L. flavicans* (lectotype in G); e, *L. subconcretum* (lectotype in BM); f, *L. wightii* (Hale 35882).



brown, 1-2/ascus, muriform with 8-11 transverse locules and 2-4 longitudinal locules,  $10\mu-13\mu \times 45\mu-55\mu$ , I- (Figure 20b).

CHEMISTRY.—Stictic and constictic acids.

HABITAT.—Tree bole in open rain forest (600 m).

Except for the inner partially free exciple this species would probably be identified as *L. microglanoides*. The thallus, however, is dull and the ascocarps barely emergent to immersed. This is the only collection that I have seen from the New World.

SPECIMEN EXAMINED.—18a (37888).

#### 48. *Leptotrema wightii*

FIGURES 1d, 20c,f

*Leptotrema wightii* (Taylor) Müller-Argau, 1882:499.

*Endocarpon wightii* Taylor, 1847:155 [type-collection: Madras, India, *Wight* (FH, lectotype; BM, G, isotypes); Figure 20c].

*Thelotrema prevostianum* Montagne, 1849:292 [type-collection: Antilles, Prévost s.n. (P, lectotype); Figure 5d].

*Leptotrema prevostianum* (Montagne) Montagne, 1856:364.

*Thelotrema subconcretum* Leighton, 1869:169 [type-collection: Central Province, Ceylon, *Thwaites* 89 (BM, lectotype; H, G, P, S, UPS, W, isotypes); Figure 20e].

*Phaeotrema subconcretum* (Leighton) Müller-Argau, 1887a: 10.

*Leptotrema subconcretum* (Leighton) Müller-Argau, 1891:277.  
*Leptotrema flavicans* Müller-Argau, 1888:114 [type-collection: Guarapi, Paraguay, *Balansa* 4170 (G, lectotype; BM, M, W, isotypes); Figure 20d].

Thallus pale greenish mineral gray, thick and epiphloeodal, bulging up and flaking away with age, surface smooth but grainy in appearance, the columnar cortex with or without red crystal masses (Figure 1d), forming colonies up to 10 cm broad; apothecia immersed, 0.2-0.3 mm in diameter, non-carbonized, without a columella; pore round, 0.08-0.11 mm in diameter, flush; hymenium about  $100\mu$  high; spores brown, 8/ascus, muriform with 4-6 transverse locules and 1-2 longitudinal locules,  $9\mu-11\mu \times 20\mu-28\mu$ , I- (Figure 20f).

CHEMISTRY.—No substances present except for the unidentified anthraquinone pigment.

HABITAT.—Tree trunks in dry scrub forest near sea level.

This pantropical species has been discussed in detail by Salisbury (1971). It seems to occur at low elevations in dry scrub forest and extends northward into temperate forests of North America and southward into Argentina.

SPECIMENS EXAMINED.—1 (35582, 35584), 3 (32918).

#### Literature Cited

- Acharius, E.  
1803. *Methodus qua omnes detectos Lichenes*. 394 pages. Stockholm.  
1812. Anmärkningar vid Lafsläktet *Thelotrema* med Nogare Bestämmande af Dess Arter. *Kongliga Vetenskapliga Akademiska Nya Handlingar*, 1812:79-95.  
1814. *Synopsis Methodica Lichenum*. 392 pages. Lund.
- Culberson, C. F., and W. L. Culberson.  
1968. The Constituents of Some Species of the Thelotremataceae. *The Journal of Japanese Botany*, 43:316-323.
- Culberson, C. F., and M. E. Hale, Jr.  
1973. 4-0-Demethylnotatic Acid: A New Depsidone in Some Lichens Producing Hypoprotocetraric Acid. *The Bryologist*, 76:77-84.
- Fée, A. L.  
1824. *Essai sur les cryptogames des écorces exotiques officinales*. 167 pages. Paris.  
1837. *Essai sur les cryptogames des écorces exotiques officinales, II: Supplément et Revision*. 178 pages. Paris.
- Hale, M. E., Jr.  
1971a. Morden-Smithsonian Expedition to Dominica: The Lichens (Parmeliaceae). *Smithsonian Contributions to Botany*, 4:1-25.  
1971b. Studies on *Parmelia* Subgenus *Xanthoparmelia* (Lichenes) in South Africa. *Botaniska Notiser*, 124: 343-354.  
1972. Typification of Species in the Lichen Family Thelotremataceae Described by Acharius. *Botaniska Notiser*, 125:186-198.
- Johnson, G. T., and W. L. Brown  
1941. Stages in the Development of *Thelotrema interpositum*. *Mycologia*, 33:601-608.
- Krempelhuber, A.  
1876. Lichenes Brasiliensis Collecti a D. A. Glaziou in Provincia Brasiliensi Rio Janeiro. *Flora*, 59:217-224.
- Leighton, W. A.  
1866. Lichenes Amazonici et Andini. *Transactions of the Linnean Society of London*, 25:433-460.  
1869. The Lichens of Ceylon Collected by G. H. K. Thwaites. *Transactions of the Linnean Society of London*, 27:161-185.

- Letrouit-Galinou, M.-A.  
1966. Recherches sur l'ontogénie et l'anatomie comparées des apothécies de quelques discolichens. *Revue Bryologique et Lichénologiques*, 34:413-588.
- Magnusson, A. H., and A. Zahlbruckner  
1943. Hawaiian Lichens. *Arkiv för Botanik*, 31A(1):1-96.
- Martius, C. F. P. von  
1833. *Flora Brasiliensis*. Stuttgart. [Lichens, by F. Eschweiler, 1(part 1):1-390.]
- Meyen, F., and J. Flotow  
1843. Observationes in Itinere Circum Terram Instituta: Lichenes. *Novorum Actorum Academiae Caesareae Leopoldino-carolinae Naturae Curiosorum*, Supplement 1, 19:209-232.
- Montagne, J. F.  
1849. Sixième centurie de plantes cellulaires exotiques nouvelles, cryptogamae taitensis. *Annales Sciences Naturelles Botanique*, series 3, 12:285-320.  
1851. Cryptogamia Guyanensis seu Plantarum Cellularium in Guyana Gallica Annis 1835-1849 a Cl. Leprieur Collectarum Enumeratio Universalis. *Annales Sciences Naturelles Botanique*, series 3, 16:47-81.  
1856. *Sylloge Generum Specierumque Cryptogamarum*. 498 pages. Paris.
- Montagne, J. F., and R. von der Bosch  
1855. Lichenes. Pages 427-494 in F. Junghuhn, *Enumeratio Plantarum Ques in Insulis Java et Sumatra Detexit*.
- Müller-Argau, J.  
1880. Lichenes Africa Occidentalis a C11. Dr. Pechuel-Uvesche et Soyou e Regione Fluminis Quilla et ex Angola Missi, in Mus. Bot. Reg. Berolinensi Servati. *Linnaea*, 43:31-48.  
1881. Lichenologische Beiträge XIV. *Flora*, 64:513-527.  
1882a. Lichenologische Beiträge XV. *Flora*, 65:327-336.  
1882b. Lichenologische Beiträge XVI. *Flora*, 65:492-509.  
1883. Revisio Lichenum Meyeniorum. *Jahrbuch der Königl. Botanische Gartens zu Berlin*, 2:308-319.  
1887a. Revision Lichenum Fœanorum. *Revue Mycologique*, 35:1-16  
1887b. Lichenologische Beiträge XXVI. *Flora*, 70:396-402.  
1888. Lichenes Paraguayensis. *Revue Mycologique*, 10: 113-120.  
1891. Lichenes Victoryenses. *Nuovo Giornale Botanico Italiano*, 23:276-279.  
1892. Lichenes Exotici. *Hedwigia*, 31:276-288.  
1893. Lichenes. In J. Durand and H. Pittier, editors, *Primitiae Florae Costaricensis*. *Bulletin Société Botanique Belgique*, 32:122-173.  
1895. Thelotremae et Graphideae Novae Quae Praesertim ex Herb. Reg. Kewensi Exponit. *Journal of the Linnean Society of London, Botany*, 30:451-463.
- Nylander, W.  
1859. Lichenes Exotici. *Annales Sciences Naturelles Botanique*, series 4, 11:203-264.  
1863. Lichenes. In J. Triana and J. E. Planchon, editors. *Prodromus Florae Novo-Granatensis ou Enumération des Plantes de la Nouvelle-Grenade. Annales Sciences Naturelles Botanique*, series 4, 19:286-382.
1867. Lichenes. In J. Triana and J. E. Planchon, editors, *Prodromus Florae Novo-Granatensis ou Enumération des Plantes de la Nouvelle-Grenade. Additamentum. Annales Sciences Naturelles Botanique*, series 5, 7: 301-354.  
1868. Synopsis Lichenum Novae Caledoniae. *Bulletin Société Linnée Normandie*, series 2, 2:39-140.  
1869. Lichenes in Brasilia a Cl. Glaziou Lecti. *Flora*, 52: 117-126.  
1876. Collemacei, Caliciei, Cladonieci et Thelotremaei Cubani novi. *Flora*, 59:558-562.
- Poelt, J.  
1973. Classification. Pages 599-632 in V. Ahmadjian and M. E. Hale, editors, *The Lichens*. New York: Academic Press.
- Redinger, K. M.  
1936. Thelotremataceae Brasiliensis. *Arkiv för Botanik*, 28A(8):1-122.
- Salisbury, G.  
1971. *Thelotrema wightii* (T. Tayl.) Nyl. *Portugaliae Acta Biologica*, series B, 11:35-37.  
1972a. *Thelotrema* Ach. sect. *Thelotrema*, 1: The *T. lepadinum* group. *Lichenologist*, 5:262-274.  
1972b. *Thelotrema* sect. *Thelotrema*, 2: The *T. platycarpum* group. *Revue Bryologique et Lichénologique*, 38:281-290.
- Santesson, R.  
1952. Foliicolous Lichens, I: A Revision of the Taxonomy of the Obligately Foliicolous, Lichenized Fungi. *Symbolae Botanicae Upsalienses*, 12 (1):1-590.
- Sprengel, K.  
1827. *Systema Vegetabilium* 4. Edition 16. Part 2, 410 pages. Gottingae.
- Stirton, J.  
1881. On Vegetable Parasites on the Tea Plant, More Especially That of Assam. *Proceedings of the Philosophical Society of Glasgow*, 13:181-193.
- Taylor, T.  
1847. New Lichens, Principally from the Herbarium of W. J. Hooker. *London Journal of Botany*, 6:148-197.
- Tuckerman, E.  
1862. Observations on North American and Other Lichens. *Proceedings of the American Academy of Arts and Sciences*, 5:383-422.
- Vainio, E. A.  
1890. Étude sur la classification naturelle et la morphologie des lichens du Brésil. *Acta Societas Fauna et Flora Fennica*, 7(7):1-247.  
1896. Lichenes Antillarum a W. R. Elliott Collecti. *Journal of Botany British and Foreign*, 34:204-210.  
1915. Additamenta ad Lichenographia Antillarum Illustrandam. *Annales Academiae Scientiarum Fennicae*, 6A (7):1-226.  
1921. Lichenes Insularum Philippinarum III. *Annales Academiae Scientiarum Fennicae*, 15A:1-368.  
1923. Lichenes in Insula Trinidad a Professor R. Thaxter



- Collecti. *Proceedings of the American Academy of Arts and Sciences*, 58:129-147.
1926. Lichenes Mexicani. *Dansk Botanisk Arkiv*, 4:1-25.
- Van Overeem-De Haas, C. and D.
1922. Verzeichnis der in Niederländisch Ost-Indien bis dem Jahre 1920 Gefundenen Myxomycetes, Fungi und Lichenes. *Bulletin du Jardin Botanique*, series 3, 4:1-146.
- Zahlbruckner, A.
1912. Neue Flechten VI. *Annales Mycologici*, 10:359-384.
1923. *Catalogus lichenum universalis*. 2:580-643. Leipzig.
1932. *Catalogus lichenum universalis*. 8:244-247. Leipzig.

## Index

(Index to main entries only; synonyms in italics)

- Ascidium cinchonarum*, 17  
*interpositum*, 35  
*rhodostromum*, 25
- Endocarpum wightii*, 43
- Graphis alborosella*, 16
- Leptotrema bahianum*, 39  
deceptum, 39  
*exalbidum*, 29  
fissum, 40  
*flavicans*, 43  
*integrum*, 40  
microglaenoides, 40  
monosporum, 40  
occultum, 40  
phaeosporum, 40  
*prevostianum*, 43  
reclusum, 40  
spondaicum, 41  
subcompunctum, 42  
*subconcretum*, 43  
wightii, 43
- Myriotrema olivacea*, 24
- Ocellularia alboolivacea, 19  
alborosella, 16  
antillensis, 17  
berkeleyana, 17  
bonplandiae, 24  
cavata, 17  
*cinchonarum*, 17  
*cinchonarum* f. *intermedia*, 17  
*clandestina*, 35  
comparabilis, 17  
comparabilis var. *microcarpa*, 17  
concolor, 19  
conglomerata, 19  
discoidea, 17  
*domingensis* var. *fecunda*, 20  
dominicana, 19  
efformata, 17  
exanthismocarpa, 20  
fecunda, 20  
glaziovii, 17  
*homothecia*, 20  
*isertii*, 20  
latilabra, 19
- lindigiana*, 17  
maculata, 22  
mordenii, 22  
*multilocularis*, 20  
nigropuncta, 22  
olivacea, 24  
papillata, 24  
perforata, 25  
*platycarpella*, 16  
*porinoides*, 20  
pyrenuloides, 25  
*remanens*, 28  
rhodostroma, 25  
rimosa, 27  
*rufocincta*, 25  
sorediata, 27  
subcavata, 27  
terebrata, 17  
*terebrata* var. *abbreviatula*, 25  
terebratula, 28  
*vaga*, 28  
verrucosa, 24  
xanthostroma, 22
- Phaeotrema aggregatum, 29  
albidulum, 31  
disciforme, 29  
*galactinum*, 29  
lelostomum, 29  
lirelliforme, 29  
obscurum, 31  
*subconcretum*, 43
- Pyrenula clandestina*, 35
- Thelotrema aquilinum*, 29  
*butuanum*, 35  
carassense, 32  
*cavatum*, 17  
*clandestinum*, 32  
*clandestinum* f. *remanens*, 28  
*comparabile*, 17  
*concretum* var. *subcaesium*, 32  
conforme, 32  
confusum, 33  
*consanguineum*, 32  
depressum, 33
- disciforme*, 29  
*domingense* var. *fecundum*, 20  
dominicanum, 33  
*elliottii*, 36  
*exalbidum*, 29  
*exanthismocarpum*, 21  
*excavatum*, 25  
*excavatum* var. *impressulum*, 13, 25  
fissum, 40  
*galactinum*, 29  
glaucopallens, 35  
*homopastoides*, 35  
*homothecium*, 20  
interpositum, 35  
*laevigans* var. *avertens*, 35  
*lelostomum*, 29  
*lepadinum* var. *bahianum*, 39  
leucinum, 35  
leucomelaenum, 36  
*leucomelaenum* var. *elevatum*, 13, 36  
*microglaenoides*, 40  
occultum, 40  
*papillatum*, 24  
papillosum, 36  
*pauperius*, 36  
*pechueli*, 35  
*perforatum*, 25  
*platycarpellum*, 16  
*porinoides*, 20  
postpositum, 32  
praestans, 36  
*prevostianum*, 43  
*rhodostromum*, 13  
*rudius* var. *dominicanum*, 13, 39  
*spondaicum*, 40  
*subcaesium*, 32  
*subcavatum*, 28  
*subcompunctum*, 42  
*subconcretum*, 43  
tenue, 38  
*terebratulum*, 28  
*terebratum* var. *abbreviatulum*, 25  
tuberculiferum, 38  
*vagum*, 28









## Publication in *Smithsonian Contributions to Botany*

*Manuscripts* for serial publications are accepted by the Smithsonian Institution Press, subject to substantive review, only through departments of the various Smithsonian museums. Non-Smithsonian authors should address inquiries to the appropriate department. If submission is invited, the following format requirements of the Press will govern the preparation of copy.

*Copy* must be typewritten, double-spaced, on one side of standard white bond paper, with 1½" top and left margins, submitted in ribbon copy with a carbon or duplicate, and accompanied by the original artwork. Duplicate copies of all material, including illustrations, should be retained by the author. There may be several paragraphs to a page, but each page should begin with a new paragraph. Number consecutively all pages, including title page, abstract, text, literature cited, legends, and tables. The minimum length is 30 pages, including typescript and illustrations.

The *title* should be complete and clear for easy indexing by abstracting services. Taxonomic titles will carry a final line indicating the higher categories to which the taxon is referable: "(Leguminosae: Faboideae)." Include an *abstract* as an introductory part of the text. Identify the *author* on the first page of text with an unnumbered footnote that includes his professional mailing address. A *table of contents* is optional. An *index*, if required, may be supplied by the author when he returns page proof.

Two *headings* are used: (1) text heads (boldface in print) for major sections and chapters and (2) paragraph sideheads (caps and small caps in print) for subdivisions. Further headings may be worked out with the editor.

In *taxonomic keys*, for easy reference, number the taxa and their corresponding headings throughout the text; do not incorporate page references in the key.

In *synonymy*, use the long form (taxon, abbreviated author, abbreviated journal or book title, volume, part if necessary, page, year) with no reference at the end of the paper under "Literature Cited" or use the short form (taxon, author, date: page) with a full reference at the end of the paper under "Literature Cited." Begin each taxon at the left margin with subsequent lines indented about three spaces. Within an entry, use a period-dash (.—) to separate each supplementary reference. Enclose with square brackets any annotation in, or at the end of, the entry. For *references within the text*, use the author-date system: "(Jones, 1910)" and "Jones (1910)." If the reference is expanded, abbreviate the data: "Jones (1910:122, pl. 20: fig. 1)."

Simple *tabulations* in the text (e.g., columns of data) may carry headings or not, but they should not contain rules. Formal *tables* must be submitted as pages separate from the text, and each table, no matter how large, should be pasted up as a single sheet of copy.

Use the *metric system* instead of, or in addition to, the English system.

*Illustrations* (line drawings, maps, photographs, shaded drawings) can be intermixed throughout the printed text. They will be termed *Figures* and should be numbered consecutively; however, if a group of figures is treated as a single figure, the components should be indicated by lowercase italic letters on the illustration, in the legend, and in text references: "Figure 9b." If illustrations (usually tone photographs) are printed separately from the text as full pages on a different stock of paper, they will be termed *Plates*, and individual components should be lettered (Plate 9b) but may be numbered (Plate 9: figure 2). Never combine the numbering system of text illustrations with that of plate illustrations. Submit all legends on pages separate from the text and not attached to the artwork. An instruction booklet for the preparation of illustrations is available from the Press on request.

In the *bibliography* (usually called "Literature Cited"), spell out book, journal, and article titles, using initial caps with all words except minor terms such as "and, of, the." For capitalization of titles in foreign languages, follow the national practice of each language. Underscore (for italics) book and journal titles. Use the colon-parentheses system for volume, number, and page citations: "10(2):5-9." Spell out such words as "figures," "plates," "pages."

For *free copies* of his own paper, a Smithsonian author should indicate his requirements on "Form 36" (submitted to the Press with the manuscript). A non-Smithsonian author will receive 50 free copies; order forms for quantities above this amount with instructions for payment will be supplied when page proof is forwarded.















SMITHSONIAN INSTITUTION LIBRARIES



3 9088 01698 5053