

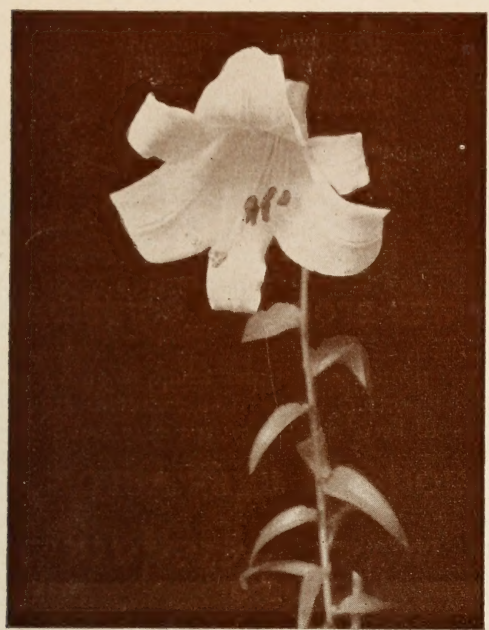
Historic, archived document

Do not assume content reflects current scientific knowledge, policies, or practices.



62.87

Mosaic-free Lilies for Fall planting



Pride of Charlotte

Plant clean, healthy stock free of the insidious mosaic which has accounted for most of your past failures with lilies.

Horsford's healthy bulbs will guarantee your success. Recent discoveries by scientists show mosaic as the greatest contributor to all losses in Hardy Lilies.

We can offer the following varieties in certified stock and we give complete cultural directions with every order.

Henryi. Given heights will vary with soil and growing conditions, but we've honestly seen this Lily 9 feet high. Very easy to grow, too. Graceful sprays of brilliant apricot-yellow. August, September. 75c each, \$7.50 per doz.

Horsfordi. This splendid creation arrived through the crossing of the vigorous and tall growing *L. maximowiczii* and the lovely *L. batemanni*. Color is a mild apricot with black spots. 3 ft. July. Price \$1.50 each.

Pride of Charlotte. This stately offspring of *L. sargentiae* is more rugged than its parent. Long, white funnel-shaped flowers with yellow throat and sometimes marked externally a deep reddish brown. 3 to 4 ft. July. 80c each, \$8.00 per doz. Large bulbs \$1.00 each.

Regale. A truly Regal beauty, and the best behaved queen of the lot. Parade her before a royal curtain of Delphinium to show her off to best advantage. White, slightly suffused with pink, shading to beautiful shade of canary-yellow at the throat. July. 3 to 5 ft. 75c each, \$7.50 per doz.

Superbum. America's handsomest native Lily, in our opinion, with its immense, pyramidal cluster of blooms right up high where you can admire them. Brilliant orange-red shading to yellow and spotted with brown. July. 4 to 6 feet. 35c each, \$3.50 per doz.

Tenuifolium. A small slender growing lily, not more than eighteen inches tall, with bright scarlet flowers and recurved petals. One of the prettiest little lilies in cultivation. Early June. 12 to 18 in. 25c each, \$2.50 per doz.

Tenuifolium. Var. *Golden Gleam.* A fine type of *L. tenuifolium* with flowers of a beautiful apricot shade. A free and vigorous grower. 30c each, \$3.00 per doz.

Tenuifolium. Var. *Red Star.* New. Outstanding red flowers of great brilliance. 35cts. each, \$3.50 per doz.

Amabile. A rare Korean of interesting shape. Grenadine-red, freely spotted black. July. 3 to 4 ft. 40c each, \$4.00 per doz.

Callosum. Flowers unspotted orange red and Turkscap-shaped. Height, 2 to 3 ft. August-September. 30c each, \$3.00 per doz.

Canadense. We're sorry we can't guarantee the color of this wild Lily, but everything else about it is all right. May be a brick-red, or a clear golden yellow. June, July. 2 to 5 ft. 15c each, \$1.50 per doz.

Centifolium. This variety is called a giant among lilies, with long, trumpet-shaped white flowers, streaked outside with brown and flushed inside with yellow at the base of the trumpet. July. Strong, flowering size bulbs, \$1.00 each.

Concolor. Handsome little variety only 18 in. high with striking upright star-shaped flowers of a deep crimson shade with darker spots. It will stand full sun, lime soil and is suitable for rockeries. Base rooting and is best set only 4 in. deep. June-July. 40c each, \$4.00 per doz.

Davidii. A very vigorous and dependable Lily of Turk's Cap type. Numerous red flowers. July-August. 4 to 6 ft. 80c each. \$8.00 per doz.

Hansonii. Its nodding flowers, with their thick waxen petals, will bring you their delicate fragrance; the earliest of all lilies. Six to ten reddish orange blooms in a cluster. June. 3 to 4 ft. 60c each, \$6.00 per doz.

REGAL Plants
and Bulbs

F. H. HORSFORD
CHARLOTTE - VERMONT

1945 Autumn
Supplement

Get Full Bloom a Whole Year Sooner

Save from 25 to 50 Per Cent — with Fall Planting

The plants listed in this folder are the very same ones we will be shipping next Spring (with the exception of the Peonies and Spring bulbs, which must be planted now). In *your* garden through the Fall and over the Winter they can be storing up energy, spreading out their roots, getting firmly established, ready to pay you extra dividends of bloom and fragrance as a result.

Summer and Fall are ideal for planting, too, because you can plan for your garden with it spread out before you in full growth. There's no question of "remembering" what you need—you can actually see the holes that need filling or the pictures that need completing.

FALL PRICES ARE LOWER

We offer many collections in the Fall at prices that can save many dollars in building or maintaining your garden. It is not simply that digging the plants is easier and better—everything about Fall shipping saves us money.

The season is longer, we are not so rushed. It is actually easier to ship. Our stock is usually complete on all varieties. Frequently we have a surplus of some varieties that we offer at extra-special savings. (See the prices on our Peony Collections this year.)

We reflect all those savings in the prices in this list. And this year we believe prices are lower for our plants and bulbs than we will be able to make them for many years to come.

THIS FALL SUPPLEMENT

This Fall Supplement is not a full list of our stock. It is designed to call your attention to such plants and bulbs as are best set in autumn.

ALL PRICES ARE NET

Peonies, and all Collections must be shipped Express Collect. On all other plants or bulbs we will prepay postage or express, as you prefer, if 10 per cent is added to the price of the plants and bulbs in your order. Add 20 per cent for points west of the Mississippi. This covers both shipping cost and special packing. If no shipping method is specified, we will ship Express Collect.

Perennial beauty comes with Perennials

TWO REGAL PERENNIAL COLLECTIONS OF RARE VALUE

Fall is the ideal time to plant perennials. In late August or early September, the Spring-and-Summer-blooming plants are making root-growth for next year's flowering. These two selections are true "pictures," chosen for their range of color, height, and form. Bought singly, they would be 50 per cent more expensive. No substitutions, please, at these special prices.

EARLY-BLOOMING COLLECTION

Aquilegia, mixed colors
Mertensia virginica
Delphinium belladonna
Dictamnus rubra
Digitalis ambigua
Doronicum plantagineum (excelsum)
Hemerocallis flava
Papaver nudicaule
Lupinus, mixed
Lychnis chalcidonica
Pyrethrum hybridum
Trollius europaeus

SUMMER-BLOOMING COLLECTION

Achillea ptarmica, Perry's
Liatris pycnostachya
Astilbe, Salmon Queen
Coreopsis lanceolata
Echinacea purpurea
Gaillardia grandiflora
Hemerocallis thunbergi
Monarda Salmon Pink
Oenothera missouriensis
Phlox, Enchantress
Phlox, Frau Anton Buchner
Iris kaempferi, mixed

36 HARDY PLANTS **\$5.50**
(3 each of above varieties) Value \$7.50

36 HARDY PLANTS **\$5.50**
(3 each of above varieties) Value \$7.50

PROTECTING PLANTS

A little protection is essential for nearly all the hardy plants in winter; not a protection so much against frost, for this is natural to them, but a protection against mild winter weather. Plants that are hardy enough for the severest winter weather may be killed by alternate freezing and thawing. Nature often provides protection in the dead foliage falling about the plant but we should protect them with three or four inches of marsh hay or straw put on in early November, with a little brush to prevent this covering being blown off.

These hardy plants and bulbs will bring you the

REGAL PEONIES Ready to Grow and Bloom for You Next June

Somehow the idea has gained acceptance that Peonies require a lot of special care, a thought that always amazes us when we hear it. True, they don't like fresh manure around their roots, and they are particular about how deep you plant them, but beyond that their smash of bloom is ready for anyone willing to give them an ordinary Winter "blanket," and their fair share of fertilizer.

A lot of trouble probably comes from the use of tiny divisions instead of full-grown plants (at least a year old), such as our Regal Peonies are. And, certainly, no other plant can give such masses of brilliant green and such smashes of whites, pinks, and reds to repay you for the comparatively little care they require. Full, yet simple, instructions accompany every shipment of Regal Peonies.



Oriental Poppies

The Oriental Poppies form a striking set of perennial plants. Their immense blooms and their striking colors make a wonderful display. The following varieties can be supplied in field-grown plants dormant in August and September. They require almost no care, are completely hardy, and usually "steal the show" for two weeks in June.

Collection 1 each of 7 varieties **\$2.75**

Name	Color	Each	Doz.
Sass Pink	Flesh-pink	\$.50	\$5.00
Joyce	Cerise-pink	.25	2.00
Orange Beauty	Orange	.25	2.00
Perry's White	Pure white	.75	7.50
Gerald Perry	Light pink	.25	2.00
Mahony	Carmine-purple	.75	7.50
Jeanne Mawson	Geranium pink	.50	5.00

Name	Color	Each	Doz.
Albatre	White	\$.75	\$7.50
Albert Crousse	Pink	.50	5.00
Alsace Lorraine	White	1.00	
Arlequin	Pink	1.00	
Asa Gray	Lilac-pink	.75	7.50
Auguste Dessert	Rose-red	1.00	
Baroness Schroeder	White	1.00	10.00
Cherry Hill	Red	.75	7.50
Chestine Gowdy	Pink	1.00	
Claire Dubois	Pink	1.00	
Dorchester	Pink; late	.75	
Eugenie Verdier	Light Pink	1.00	10.00
Faribault	Deep rose	1.00	
Felix Crousse	Bright red	1.00	10.00
Festiva Maxima	White	1.00	
Frances Willard	White	1.00	
Georgiana Shaylor	Pink	1.00	
Gismonda	Flesh-pink	.75	
Hazel Kinney	Pink	2.00	
Karl Rosenfield	Crimson	1.00	
Kelway's Glorious	White	2.00	
Kelway's Queen	Pink	2.00	
Lady Alexandra Duff	Light pink	1.00	
La Fee	Pink	1.00	
Le Cygne	White	3.00	
Livingstone	Lilac-rose	.75	7.50
Lord Kitchener	Cherry-red	1.00	
Marguerite Gaudichau	White	1.00	
Marguerite Gerard	Pale pink	.75	7.50
Marie Jaquin	White water lily	1.00	
Martha Bulloch	Soft pink	1.50	
Mary Brand	Red	1.00	
Mme. Auguste Dessert	Pink	.75	
Mme. de Verneville	White	.60	6.00
Mme. Emile Galle	White; late	1.00	10.00
Mme. Emile Lemoine	White	.75	7.50
Mme. Gaudichau	Dark crimson	1.00	
Mme. Jules Dessert	Pale rose	1.00	
Mons. Jules Elie	Pale rose	1.00	10.00
Mrs. R. B. Ware	Flesh-pink	2.00	
Philippe Rivoire	Dark crimson	2.00	
Primevere	Creamy yellow	1.50	
Prince Imperial	Red	.50	5.00
Raoul Dessert	Mauve-pink	1.00	
Richard Carvel	Crimson	1.00	
Sarah Bernhardt	Light pink	1.00	
Solange	White	1.00	
Souvenir de Louis Bigot	Pink	1.50	
Tourangelle	Salmon-pink	1.00	
Triomphe de Lille	Pale pink	.60	6.00
Victoire de la Marne	Dark crimson	1.00	
Victor Lemoine	Dark red	.60	6.00
Winnifred Domme	Scarlet-red	1.00	
Officialis mutabilis	Soft pink	.50	5.00
Officialis rosea plena	Rose-pink	.50	5.00
Officialis rubra plena	Red	1.00	

SINGLE PEONIES

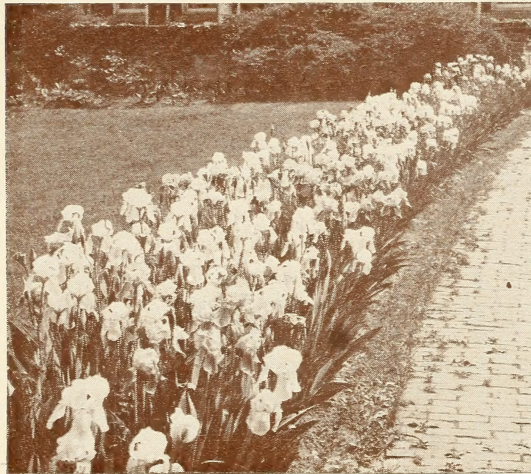
L'Etincelante	Carmine-pink	1.00	
Petit Louis	Deep red	.50	5.00
The Moor	Dark red	1.00	

joy of their color and fragrance next Spring

Thirty-Three IRIS Selected for Your Garden

There are literally thousands of Iris varieties grown today. Many of them vary so slightly that none but the veriest professional can distinguish between them. We cannot grow them all, and we make no pretense of attempting to grow more than a truly representative list of types.

This is our selection of the best of each color pattern. Many of them may be purchased at a considerable saving in a collection.



Border of Iris

REGAL IRIS Give You Color, Variety

There's a whole rainbow of color in the collections below. Just keep their feet dry (good drainage) and this selection of Iris and the more extensive list on this page will assure you of just about any Spring color-scheme you wish. If you are an "Iris fan," you may want other combinations than these, which have been selected for their universal popularity and harmonious blending of colors.

Victory Collection

We offer a collection of this type each year. It contains the best of the newer varieties.

- 1 Gudrun 1 Blue Peter
- 1 Giralda 1 Miss California
- 1 Indian Hills 1 Matula
- 1 Royal Coach 1 Wm. A. Setchell

8 Choice Roots \$3.50
(VALUE \$4.75)

Variety Collection

Most good growers can furnish these varieties, but like all our other offerings, these are Regal quality, and we believe the price is really unusual.

- 3 Pres. Pilkington 3 Pink Satin
- 3 Pink Opal 3 Shirvan
- 3 Min. David 3 Dep. Nomblot
- 3 Castalia 3 King Juba

24 FINE ROOTS \$3.50
(VALUE \$8.10)

Bargain Collection

Many people like to add a few new vigorous bulbs of these standard varieties each year to their perennial border, especially at the price of only a few cents each.

- 4 Imperator 4 Pluie d'Or
- 4 Farandole 4 Midgard
- 4 Duke of Bedford 4 Folkwang
- 4 Realm 4 Chromylla

32 Hardy Plants \$3.00
(VALUE \$8.20)

Name	Color	Each	Doz.
Blue Peter	Dark blue	.40	
Castalia	True blue	.15	1.50
Chloris	Yellow and orchid	.35	3.50
Chromylla	Yellow	.15	1.50
Coronet	Tan and rose	.50	
Depute Nomblot	Red	.20	2.00
Duke of Bedford	Blue	.20	2.00
Dymia	Deep purple	.25	2.50
Farandole	Lilac-rose	.15	1.50
Folkwang	Pink and white	.15	1.50
Giralda	Pink	.50	
Golden Hind	Pure yellow	.35	3.50
Gudrun	White	.35	3.50
Imperator	Red	.20	2.00
Indian Chief	Red	.15	1.50
Indian Hills	Purple-red	.40	
King Juba	Citron and red	.15	1.50
Matula	Pink and old-rose	1.00	
Midgard	Pink and yellow	.15	1.50
Ministre David	Purple	.20	2.00
Miss California	Pink	.50	
Missouri	Blue	.50	
Pink Opal	Light Pink	.25	2.50
Pink Satin	Pink	.25	2.50
Pluie d'Or	Golden yellow	.15	1.50
Pres. Pilkington	Lavender and buff	.25	2.50
Realm	Blue	.15	1.50
Royal Coach	Yellow and brown	.35	
Shirvan	Tan and brown	.25	2.50
Wm. A. Setchell	Violet	1.25	

Russell Lupines

The Russell Lupines we had in flower here at our nursery this year proved to be a sensation. There are creamy shades, amber, coppery orange and almost canary yellow, mingled with bronze, bright rose, terra-cotta, slate and lavender blue. Some are distinctly bi-colored, having wings or standards of one solid color and keel of another, in some the whole flower is suffused and overlaid with a glossy sheen of rose, or copper over a groundwork of pale yellow or amber. 35c each, 3 for 90c, \$3.00 per doz.

Delphinium Pacific Hybrids

This strain of Hybrid Delphinium has proved outstanding with us. Heavy, compact growth, large individual flowers in long dense spikes. Colors range from pink shades to deep blue and are mostly double. 35c each, 3 for 90c, \$3.00 per doz.

Three Peony Collections at about One-Half Price

Our Peonies were gorgeous this year, great smashing masses of colorful bloom that almost made one's eyes ache with their brilliance in the full sun. We took orders for hundreds of plants during the blooming season.

These collections have been Fall "favorites" for many years (by name). Each year we bring them up to date, discarding and adding a few varieties where the change will increase their value. (See Peony list for descriptions.)

Collection Superb

Choice varieties. Each Regal plant can be a high-spot in your garden. (See descriptions inside.)

- 1 Victoire de la Marne
- 1 LeCygne
- 1 Primevere
- 1 Richard Carvel
- 1 Mrs. R. B. Ware
- 1 Martha Bulloch

6 CHOICE PEONY ROOTS

for \$6.50

(VALUE \$10.00)



For sheer display peonies are supreme

Everyman's Collection

Selected to give long blooming period, color-range, and economy.

- 1 Tourangelle
- 1 Winnifred Domme
- 1 Marie Jaquin
- 1 Felix Crousse
- 1 Mons. Jules Elie
- 1 Baroness Schroeder

6 CHOICE PEONY ROOTS

for \$3.50

(VALUE \$5.75)

Bargain Collection

Our stock is a little over-balanced on these varieties, and we're willing to make this sacrifice price this Fall.

- 2 Victor Lemoine
- 2 Petit Louis
- 2 Alsace Lorraine
- 2 Triomphe de Lille
- 2 Arlequin
- 2 Mme. Auguste Dessert

12

Choice Peonies for \$3.50

(VALUE \$8.90)

OWN-ROOT LILACS

will bloom next Spring

And they are so different from the common Lilac (*Syringa vulgaris*). Flowers are both double and single, colors are interesting, and the shrub doesn't get out of control. Try these five. The prices are a "give away" for own-root plants.

- Charles X. Single; reddish purple.
- Mme. Casimir-Perier. Double; white.
- Belle de Nancy. Double; pink.
- President Poincare. Double; deep pink; reddish purple buds.
- Pascal. Single mauve.

Single plants, 2 to 3 ft., \$1.00 each
3 to 4 ft., 1.50 each

COLLECTION

One each of above varieties in 3 to 4 ft. plants **\$6.50**
in 2 to 3 ft. plants **\$4.50**

Other Standard Varieties Now Available in Own-root Stock

- Bleuatre. Single; vinaceous-lilac.
- Charles Joly. Double; deep purple red.
- Emile Lemoine. Double; pinkish without, violet within.
- Ludwig Spaeth. Single; dark rich red-purple.

Any of the five last named varieties in 4 to 5 ft. plants at \$2.00 each, 3 to 4 ft. plants @ \$1.50 each.



Hybrid Lilac

HEMEROCALLIS

The Dependable Perennial

The new improved Hemerocallis (Daylilies) are among the most satisfactory of the more easily grown perennials and by using different varieties a long succession of bloom may be obtained in the garden.

NEW GIANT HEMEROCALLIS

- Bagdad.** Rich brown red tones. June-July. 4 ft. \$1.00 each.
 - Cinnabar.** Light bronzy red suffused with gold. June. 2½ ft. 50c each.
 - Dauntless.** Pale cadmium yellow, greenish throat, fulvus touch on each petal. July. 2½ ft. \$1.00 each.
 - Hyperion.** Immense pale yellow flowers. July-August. 3½ ft. 75c each.
 - Mikado.** Large, rich orange flowers marked with purple-red. June-July. 2½ ft. 35c each.
 - Rajah.** Delicate orange, eye zone of garnet brown. June-July. \$1.50 each.
- Collection of one each of above varieties \$4.50.

SPECIAL HYBRID HEMEROCALLIS

- Amaryllis.** A tall variety with medium light yellow flowers, wide open and large. July. 50 cts. each.
 - Bay State.** A stately tall pure deep yellow of fine form. Blooms mid-July. 35 cts. each, three for 90 cts.
 - Latest.** Large clear yellow flowers providing a wealth of bloom in August. 25 cts. each, three for 60 cts., \$2 per dozen.
 - Margaret Perry.** Brilliant orange red lined soft yellow. July-August. 25 cts. each, three for 60 cts., \$2 per dozen.
 - Woodlot Gold.** Tall variety blooming in July and Aug. Flowers of soft gold. 50c
- Collection of three each of special Hybrid Hemerocallis (fifteen plants in all), \$3.75. (Value \$5.10).

EASY-TO-GROW FERNS

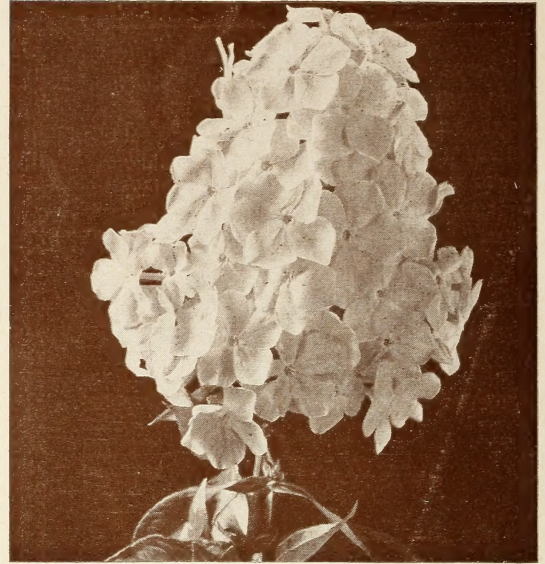
For Moist, Shady Places

The wealth of plants which will flourish in moist, shady places is embarrassing. Ferns are no exception. Choose those of relatively low stature, among which to mingle blooming plants such as bog orchids.

- 6 *Adiantum pedatum*. 1-1½ ft.
- 6 *Aspidium cristatum*. 1 ft.
- 6 *Polystichum acrostichoides*. 1 ft.
- 6 *Aspidium spinulosum*. 1½-2 ft.
- 6 *Aspidium marginale*. 1½-2 ft.
- 6 *Asplenium acrostichoides*. 3 ft.
- 6 *Asplenium felix-fœmina*. 1-3 ft.
- 6 *Phegopteris hexagonoptera*. 1 ft.
- 6 *Asplenium angustifolium*. 2-3 ft.

54 Ferns for \$5.00

HARDY PHLOX



Phlox are the most dependable and showy of the mid-summer perennials. Our list contains some of the newer introductions.

- Annie Cook.** Flesh pink.
- Annie Laurie.** Deep rich salmon.
- Betty Lou.** Orange-scarlet.
- Count Zeppelin.** White, crimson eye.
- Daily Sketch.** Rose and salmon.
- E. I. Farrington.** Soft salmon.
- Enchantress.** Bright salmon.
- Europa.** White, red band.
- George Stipp.** Deep salmon.
- Peach Blow.** Appleblossom-pink.
- Prof. Virchow.** Orange and carmine.
- Von Hochburg.** Brilliant red.
- Von Lassburg.** Pure white.

Any of the above 25c each, three for 60c, \$2.00 per doz. Collection of three each of any eight varieties (twenty-four plants in all), \$3.50.



Echinacea Purpurea